

SENATORIAN

1964

**PORTSMOUTH WEST
HIGH SCHOOL**

ANNUAL STAFF

presents

the

SENATORIAN

1963-1964

Portsmouth West High School
West Portsmouth, Ohio
Editor..... Yvonne Yost
Business Manager... Sue Knauff

TABLE OF CONTENTS

ADMINISTRATION and FACULTY	Page 3
SENIORS 1964	Page 15
JUNIORS 1964	Page 37
SOPHOMORES 1964	Page 47
FRESHMEN 1964	Page 57
SCHOLASTIC 1964	Page 71
ORGANIZATIONS 1964	Page 67
ATHLETICS 1964	Page 95
FEATURES 1964	Page 123
ACTIVITIES 1964	Page 135
ADVERTISEMENTS 1964	Page 155

ADMINISTRATION

and FACULTY



EDWARD R. McCOWEN

County Superintendent of Schools

B.S. Degree, Ohio University; Master's Degree, Northwestern University; has attended Otterbein College and Harvard University

Mr. McCowen said in a statement to us: "The rural schools of Scioto County shall continue meeting the demands of its youth. We are very proud of our students and their achievements. It is hoped this year, as in the past, that our seniors will enter their roadway of life with high ideals and a very good educational foundation. In these trying times, perhaps more than ever before in our history, the United States of America needs strong members of its society -- members who have firm and solid ideas as to the democratic way of life."

SCHOOL BOARD



WILLIAM DILLER
President



CAROLYN ANDREWS
Clerk



FLOYD WARREN
Vice President



DAVE EASTER



EDITH ENTLER



ADRIAN HINZE

JAMES L. WILSON
Executive Head

B.S., Elementary Education
and B.S., Secondary Education,
Rio Grande College; Summer
Session, Wilmington College;
Finance School Graduate,
Army Service Forces; M.A.,
School Administration, Mar-
shall University; Post Graduate,
Ohio University



MARIANNE LUCAS
Secretary to Executive Head



EUGENE MCKENZIE
Principal

Ohio University, B.S. in Education; Marshall University



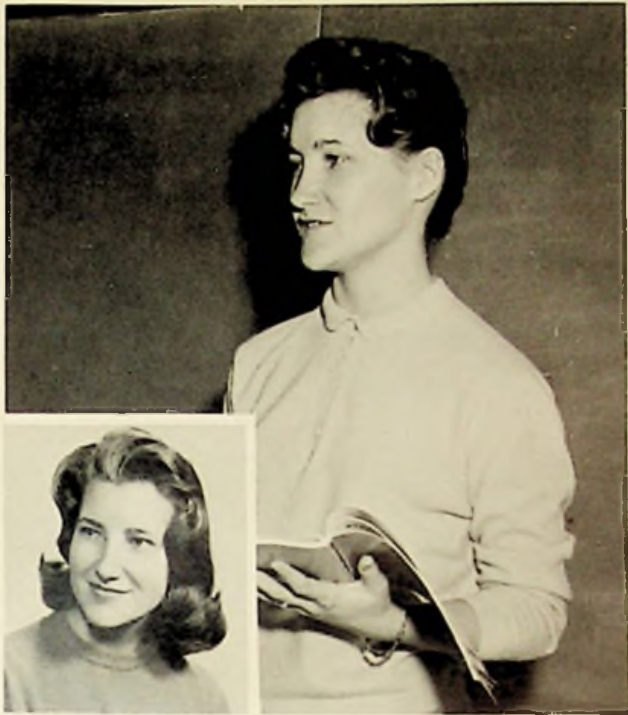
MARGARET BRICKEY
Receptionist

Secretary to the
Principal

JAMES H. NICKEL
Assistant Principal and Guidance

Wilmington College, B.S. in Education; Ohio University, Ohio State University, Marshall University, M.A.





NADINE CARVER

Morehead State College, A.
B. English and History

WILLIAM E. CAUDILL, JR.

Marshall University, B. A.
Business English, Business
Math



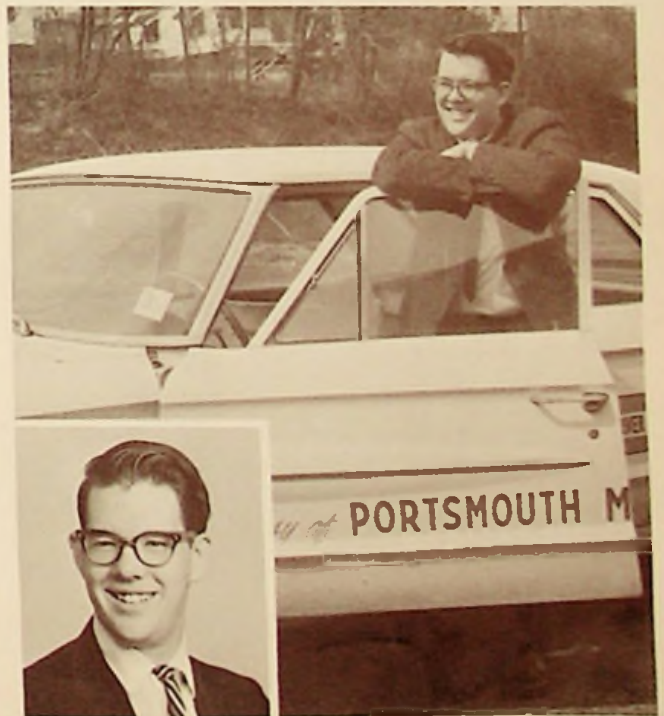
DAVID DAUDEL

Cedarville College, A. B.;
Central State College, B. S.
Algebra, Drivers Education



R. LEE CONLEY

University of Miami, L. L. B.
World History, Business Law





TIM DUMMITT

Morehead State College,
English

THOMAS GILES

Ohio University, Vocal
Music



WANDA DEVER GRASHEL

Ohio State University, Ohio
University; Home Economics



MARY B. GILLETTE

Ohio University, A. B. and
B. S. in Commerce





ERNEST E. GRISWALD

Morehead State College,
Wayne University, B.S. Al-
gebra, Geometry, Trigon-
ometry

CHARLES C. HARRISON

Morehead State College
Chemistry, Math



KATHRYN HOPKINS

Ohio State University, B.S.
Spanish



DICK HILL

Capital University, H.B.
Ohio State University, M.A.
Accounting





CLIFFORD JENKINS, JR.

Rio Grande College, B.S.;
Marshall University, Govern-
ment

MARY F. KAH

Western College for Women,
A.B. English



ROGER G. LUNDY

Lincoln Memorial University,
B.S. Physical Education,
Health, Biology, Sociology



JAMES KETTER

Ohio University, B.S. Phy-
sics, General Science





CHARLES ANTHONY MOLES

Morehead State College, A.
B.; Social Science, Latin



JAMES M. MORGAN

Morehead State College, A.
B. Instrumental Music



OLYMPIA ORLETT

College of Saint Teresa, A.
B.; English



ORVILLE REISER, JR.

Marshall University, Ohio
University; Industrial Arts



GARNET N. RENN

Ohio University, B.S. English,
Math

ELIZABETH RESSINGER

B.S. in Education; Ohio Uni-
versity, M.A.; Marshall Uni-
versity; Library Science



AVERY STANLEY

University of Kentucky, A.B.
in Political Science; Ameri-
can History



JAMES ROWLAND

Morehead State College, Eng-
lish, Speech





THOMAS SWAIN

Morehead State College, A.
B. Physical Education, Biology

HATTIE TERRILL

Morehead State College, Eng-
lish



MONA K. WOTEN

Ohio University, B.S. Physi-
cal Education, Health



JAMES A. WILLIAMS

Ohio University, Biology,
World History



PEOPLE WE APPRECIATE



COOKS:

D. Patrick, R. Hudson, D. Red-
outey, F. Porter, I. Sthal, R.
Carperter, H. Kennard.



CUSTODIANS:

W. Smith,
D. Boyd,

B. Howard,
P. Moore,
R. Calver

BUS DRIVERS:

ROW ONE: P. Mathews, J. Rob-
erts, T. Hoop, R. Davis, C.
Wilson.

ROW TWO: J. Arnett, H. Wessell,
J. H. Mitchell, P. Benson, E.
Harris.



SENIORS

1964

SENIOR CLASS OFFICERS



Lewis, Gardner, Robinson, Spriggs

President	-----	Jerry Spriggs
Vice President	-----	Dan Robinson
Secretary	-----	Elaine Gardner
Treasurer	-----	Bill Lewis

GARY ABRAMS "Gary" - Industrial Arts: Mixed Chorus 1; Electronics Club at Portsmouth. LOU NEVA ADAMS "Lou" - Commercial. SANDRA KAY ADAMS "Sandy" - College Preparatory: Band 1, 2, 3, 4; Dance Band 2, 3, 4; Festival Band 2, 3, 4; Majorette 1, 2, 3, 4; Head Majorette 4; Wind Ensemble 4; Spanish Club 1, 2; Biology Seminar 1; Prom Committee 3; All-School Play 2; F. T. A. 4; Debate Club 4; Student Council 4; Class Play 4; F. T. A. Play 4. BETTY ANN ARTHUR "Little Bet" - Commercial: Band 1, 2, 3, 4; Biology Seminar 1; Mixed Chorus 1; Prom Committee 3; Office Assistant 4; Class Play 4; F. T. A. 4. FANNIE DELORES ARTHUR "Penny" - Elective: Home Ec. Club 1, 2, 3. FORREST G. BAUER "Butch" - Commercial: Band 1, 2, 3, 4; Librarian 2, 3, 4; Class Play 4; Pep Club 4. WALTER E. BIBBY "Nut" - Elective: Band 1, 2, 3.

Gary Abrams

Lou Neva Adams

Sandra Kay Adams

Robert Adkins

Betty Ann Arthur

Fannie Delores Arthur

Forrest G. Bauer

Walter E. Bibby





Lanita Sue Blevins

Linda L. Bloomfield

Donna Charlene Bower

James Darwin Boyd

Donna Lee Brickey

Gordon L. Brickey

Judith Ann Briggs

James Johnson Jr.

LANITA SUE BLEVINS "Susie"-Elective: Spanish Club 1, 2; Mixed Chorus 1, 2; New Life Club 1, 2, 3, 4; Biology Seminar 1; Home Ec. Club 2; Class Play 3; Prom Committee 3; Annual Ad Salesman 4; Latin Club 4. LINDA L. BLOOMFIELD "Linda"-Commercial: Mixed Chorus 1; Band 1, 2, 3, 4; Pep Club 2, 4; Home Ec. Club 2; Prom Committee 3; Festival Band 3, 4; Wind Ensemble 4; Class Play 4; Office Assistant 4; F.T.A. 4; New Life Club 4. DONNA CHARLENE BOWER "Bow Wow"-College Preparatory: Mixed Chorus 1, 2, 3, 4; "Top 24" 3, 4; Mixed Ensemble 3, 4; Spanish Club 1, 2, 3; Biology Seminar 1; Class Officer 1; Scholarship Teams 1, 4; Newspaper Staff 2; Class Plays 3, 4; Honor Society 3, 4; Honor Society Officer 4; Typing Contest 3; Pep Club 3; Prom Committee 3; Office Assistant 4; Annual Staff 4; F.T.A. 4; Miss Flame Attendant 4. JAMES DARWIN BOYD "Darwin"-Industrial Arts: Football 1, 2, 3, 4; "W" Club 3, 4; Basketball 1; Intramural Basketball 1, 2; Industrial Arts Club 3, 4; F.T.A. Play 4; Band 3; Mixed Chorus 2; Prom Committee 3; Class Plays 3, 4; Class Officer 3; Annual Ads Salesman 4. DONNA LEE BRICKEY "Brick"-College Preparatory: Class Officer 1; Spanish Club 1, 2, 3; Pep Club 1, 2; New Life Club 1, 2; Scholarship Teams 1, 2, 3, 4; Band 1, 2, 3, 4; Music Festival 1, 2, 3; Biology Seminar 1; Great Books Club 2; Prom Hostess 2; Honor Society 3, 4; Honor Society Officer 4; Senior Survey 4; Newspaper Staff 3; Prom Committee 3; Buckeye Girls State 3; Class Play 3; Annual Ads Salesman 4; F.T.A. 4. GORDON L. BRICKEY "Butch"-Elective: Intramural Basketball 1, 2; Biology Seminar 1; Basketball 2; Pep Club 2; Industrial Arts Club 3, 4; Prom Committee 3; Annual Ads Salesman 4; Debate Club 4; Class Play 4; Football 4. JUDITH ANN BRIGGS "Judy"-Commercial: Band 1, 2; Student Council 3. JAMES JOHNSON JR. "Jay"-Elective: Football 3, 4; Pep Club 3, 4.

ALBERT BROWN JR. "Junior" - Elective: Football 1; Football Manager 3. SANDRA KAY BROWN "Saner Purple" - College Preparatory: Biology Seminar 1; Pep Club 1, 2, 3; Spanish Club 1, 2, 3; Scholarship Team 1, 2, 3; All-School Play 2; Honor Society 3, 4; Honor Society Officer 4; Annual Staff 3, 4; Annual Ad Salesman 4; Class Plays 3, 4; Prom Committee 3; Librarian 3; Mixed Chorus 4; F. T. A. 4. SANDRA KAY BURCHETT "Sandy" - Commercial: Pep Club 1, 2, 3; New Life Club 1; Librarian 3; Prom Committee 3; Home Ec. Club 3, 4; Basketball Queen 4. RICHARD LAWRENCE BUSA "Bussa" - College Preparatory: Boys' Ensemble 1, 2, 3, 4; Top Twenty 1, 2, 3, 4; Intramural Basketball 1, 2; Mixed Chorus 1, 2, 3, 4; Baseball Statistician 2; Class Play 3; Newspaper Staff 4. GARY W. CADE "Slip" - Commercial: Band 1, 2, 3, 4; Class Play 4. ALICE SUE CALDWELL "Susie" - Elective: New Life Club 1, 2, 3, 4; Prom Committee 3; Latin Club 4; Annual Ad Salesman 4. JOSEPH CALLIHAN "Joe" - Elective: Basketball 1; Intramural Basketball 2; Industrial Arts Club 3. ZANE CAMPBELL "Zane" - Vocational Training at Portsmouth.

Albert Brown Jr.

Sandra Kay Brown

Sandra Kay Burchett

Richard L. Bussa

Gary W. Cade

Alice Sue Caldwell

Joseph Callihan

Zane Campbell

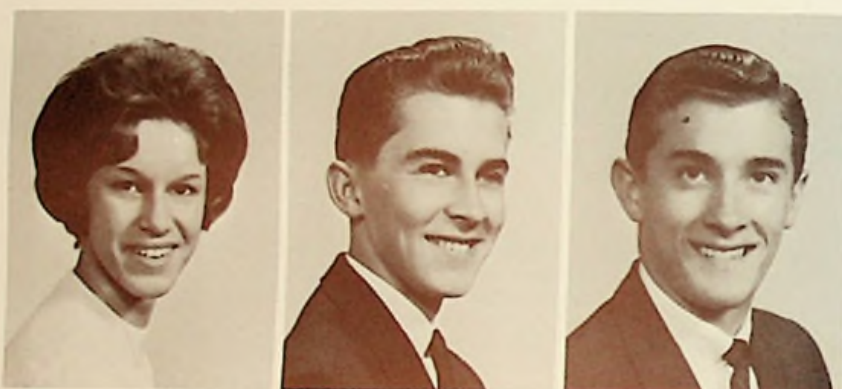


BRENDA CARVER "Shorty" - Elective: Band 1; Mixed Chorus 1, 2; Home Ec. Club 2, 3, 4; Prom Committee. HAROLD STEVE CHARLES "Steve" - Elective: Basketball 1; Football Manager 1, 2. FRANK EDWARD CIRASO "Eddie" - College Preparatory: Biology Seminar 1; Intramural Basketball 1; Prom Committee 3; Librarian 3; Library Officer 3; Class Plays 3, 4; Annual Ads Salesman 4. FRANK COBURN "Doc" - College Preparatory: Biology Seminar 1; Prom Committee 3. KEN COBURN "Bear" - Elective: Varsity Football 1, 2, 3, 4; Reserve Basketball 1, 2; "W" Club 1, 2, 3, 4; Pep Club 1, 2, 3, 4; S. O. C. All Star 3, 4; Industrial Arts Club 3; Librarian 3.

Brenda Carver

Harold Steve Charles

Frank Edward Ciraso



Frank Coburn

Ken Coburn

Sandra Sue Coburn

Genoa Ann Conley

SANDRA SUE COBURN "Sandy" - College Preparatory: Band 1, 2, 3, 4; Spanish Club 1, 2; Pep Club 1, 2, 3, 4; Dance Band 1, 2, 3, 4; Biology Seminar 1; Scholarship Teams 1, 2, 3, 4; Majorette 2, 3, 4; Drum Majorette 4; Honor Society 3, 4; Class Play 2, 4; Senior Survey 4; F. T. A. 4; Annual Ads Salesman 4; Prom Committee. GENOA ANN CONLEY "Jo" - Elective: Home Ec. Club 1, 2, 4; Mixed Chorus.

LARRY CONLEY "Larry" - Commercial: Basketball 2. LARRY COOPER "Leo" - College Preparatory: Band 1, 2, 3; Biology Seminar 1; Intramural Basketball 1, 2; Spanish Club 2, 3; Prom Committee 3; F. T. A. 4; F. T. A. Play 4. RALPH COOPER "Coop" - Elective: Spanish Club 1, 2; Football 1; Basketball 1, 2, 3, 4; Biology Seminar 1; F. T. A. 3, 4; Prom Committee 3; "W" Club 3, 4; Librarian 3, 4; Student Council 3, 4; Buckeye Boys' State 3; Class Play 4; Annual Ad Salesman 4; Co-Captain Basketball Team 4. BILL COPE "Bill" - Elective: Band 1, 2.

Larry Conley

Larry Cooper

Ralph Cooper

Bill Cope



Linda Lee Cox

Carol Jean Cunningham

Chester M. Davis

David Lee Davis

LINDA LEE COX "Windy" - Elective: Prom Committee 3; Newspaper Staff 4. CAROL JEAN CUNNINGHAM "Tex" - Commercial: Band 1, 2, 3, 4; Dance Band 1, 2; Prom Hostess 2; Alternate Major-ette 2; Class Plays 3, 4; Prom Committee 3; Annual Ad Salesman 4; Football Homecoming Queen 4. CHESTER M. DAVIS "Chet" - Elective: Football 1; Industrial Arts Club 2, 3, 4. DAVID LEE DAVIS "Dave" - Industrial Arts: Football 1; Class Plays 3, 4.

JOYCE ANN DAYS "Joy" - Elective: Mixed Chorus 1, 2, 3; Top "24" 4; Home Ec. Club 4. PEGGY VIOLA DUNN "Peg" - College Preparatory: Band 1, 2, 3, 4; Pep Band 1, 3; Spanish Club 1, 2; Pep Club 1, 3; Dance Band 2, 3, 4; Scholarship Team 2, 3, 4; Prom Committee 3; Class Plays 3, 4; Festival Band 3, 4; Wind Ensemble 4; F. T. A. 4; Debate Team 4; Senior Survey 4; Annual Staff 4; F. T. A. Play 4. JOHN DAVID EARLY "David" - College Preparatory: Spanish Club 1, 2; Biology Seminar 1; Intramural Basketball 1, 2; Prom Host 2; Prom Committee 3; All-School Play 2; Class Play 3; Debate Team 3; Librarian 3; Honor Society 3, 4; Annual Staff 3, 4; Annual Ads Salesman 3, 4; Golf Team 3, 4; Senior Survey 4; Scholarship Team 1, 4. DENNIS EDWARDS "Dennie" - In-

Joyce Ann Days

Peggy Viola Dunn

John David Early

Dennis Edwards



Joseph Estep

Ralph Flowers

Sheila Ann Frye

Katherine L. Gallimore

dustrial Arts: Band 1, 2, 3, 4; Dance Band 1, 2; Industrial Arts 1, 2, 3; Prom Committee 3; Class Play 4; Wind Ensemble 4. JOSEPH ESTEP "Joe" - Elective: Intramural Basketball 1, 2. RALPH FLOWERS "Dimps" - Elective: Biology Seminar 1; Intramural Basketball 1, 2; Industrial Arts Club 2, 3, 4; Prom Host 2; Prom Committee 3; Librarian 3, 4; Class Plays 3, 4; F. T. A. Play 4; Annual Ads Salesman 4. SHEILA ANN FRYE "She-She" - Commercial: Unioto High School 1, 2; Mixed Chorus 3, 4. KATHERINE L. GALLIMORE "Kathy" - Commercial: Library 2, 3, 4.

ELAINE GARDNER "Elaine" - Commercial: Band 1, 2; Pep Club 1; Newspaper Staff 4; Class Officer 4; Annual Staff 3; Annual Ad Salesman 4. ELMER LEE GINN "Elmo" - Industrial Arts: Industrial Arts: Industrial Arts Club 1, 2, 3. RICHARD JOSEPH GLEASON "Rick" - College Preparatory: Band 1, 2, 3, 4; Biology Seminar 1; Stage Band 1, 2, 3, 4; Festival Band 1, 2, 3, 4; Pep Band 2, 3; All Ohio Boys' Band 2; All Star Stage Band 3; F.T.A. 4; F.T.A. Play 4; Latin Club 4. LARRY GREENE "Gan" - Elective: Football 1; Mixed Chorus 1; Industrial Arts Club 1, 2, 3. KEITH GREGORY "Keit" - College Preparatory: Biology Seminar 1.

Elaine Gardner



Elmer Ginn



Richard Joseph Gleason



Larry Greene



Keith Gregory



Joyce Gregory



Kenneth L. Griffith



Rita Kaye Hale

JOYCE GREGORY "Jo" - Elective: Home Ec. Club 1, 2, 3; Pep Club 1, 2; Mixed Chorus 1, 2, 3, 4; Girls' Ensemble 2; Librarian 3, 4. KENNETH L. GRIFFITH "Ken" - College Preparatory: Biology Seminar 1; Prom Committee 3; Student Council 4. RITA KAYE HALE "Peaches" - Commercial: Mixed Chorus 2, 3, 4; County Music Festival 2; New Life Club 3, 4; Top 24 3, 4; Class Play 3.



Sandra Carol Hall

Linda Irene Hamilton

Robert M. Hamm

Lucy A. Henderson

Wanda Hill

Selma Jane Hopkins

Danny Michael Hornikel

Michael G. Howard

SANDRA CAROL HALL "Tiger" - Commercial: Pep Club 1, 2, 3; Girls' Kickball Team 2; Biology Seminar 1; Home Ec. Club 4; Mixed Chorus 4. LINDA IRENE HAMILTON "Lynn" - Commercial: Lancaster High School 1, 2, 3; Office Staff 4; F. T. A. 4; Class Play 4. ROBERT M. HAMM "Bob" - College Preparatory: Spanish Club 1, 2; Biology Seminar 1; Prom Host 2; Football Manager 2, 3, 4; Intramural Basketball 2; Class Play 3; Basketball Manager 3; Newspaper Staff 4; F. T. A. 4; "W" Club 4; F. T. A. Play 4. LUCY A. HENDERSON "Windy" - Commercial: New Life Club 1, 2, 3, 4; Biology Seminar 1; Home Ec. Club 2; Class Play 3; Prom Committee 3; Librarian 3, 4. WANDA HILL "Wanda" - Elective: Pep Club 1, 2, 3, 4; Spanish Club 1, 2; Prom Committee 3; Class Plays 3, 4. SELMA JANE HOPKINS "Janie" - Commercial: Band 1, 2, 3, 4; Honor Society 3, 4; Annual Ad Salesman 4. DANNY MICHAEL HORNIKEL "Dan" - College Preparatory: Spanish Club 1; Band 1; Prom Committee 3; Scholarship Team 3; Class Play 4. MICHAEL G. HOWARD "Howie" - College Preparatory: Intramural Basketball 1, 2; Spanish Club 1, 2; Class Plays 3, 4; Annual Ad Salesman 4; Librarian 3, 4; F. T. A. 4; Newspaper Staff 4; Debate Team 4.

SHARON SUE HOWARD "Sharon" - College Preparatory: Spanish Club 1, 2; Pep Club 1, 2, 3; New Life Club 1; Prom Committee 3; Class Plays 3, 4; Office Assistant 3, 4. MICHAEL EUGENE HUGHES "Rainbow" - College Preparatory: Biology Seminar 1; Prom Committee 3; Pep Club 4; Class Play 4. CAROLYN HURST "Carol" - Elective: Pep Club 1, 2, 3, 4; New Life Club 1, 2; Home Ec. Club 3, 4; Class Play 4; Mixed Chorus 4. TIMOTHY LO JACKSON "Jet" - Elective: Mixed Chorus 1, 2. DAVID C. JEWETT "Squirt" - Commercial: Northwest High School 1, 2, 3. DANNY JOHNSON "Dan" - Elective: Class Play 3. CHARLES KENNEDY "Chase" - Commercial: Maysville 1, 2; Football 3; Class Play 4; Pep Club 4; Industrial Arts Club 4.

Sharon Sue Howard

Michael Eugene Hughes

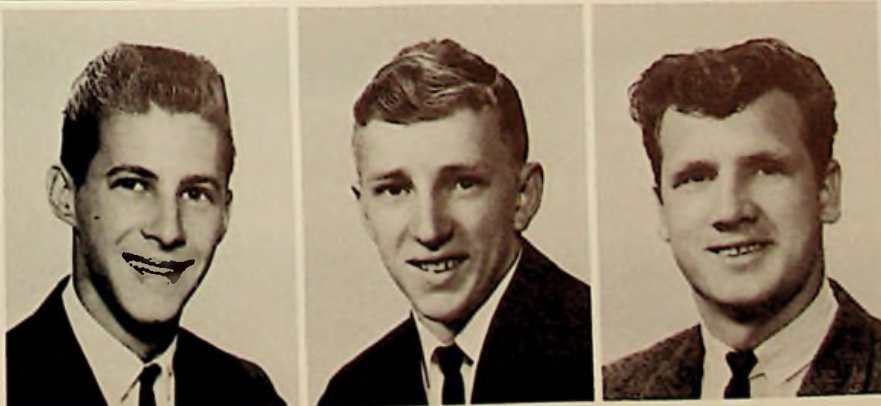
Carolyn Hurst

Timothy Lo Jackson

David Jewett

Danny Johnson

Charles Kennedy



JENNIFER E. KINOLAU "Jenny" - Commercial: Band 1, 2; Pep Club 2, 3, 4; New Life Club 3, 4; Class Plays 3, 4; Prom Committee 3; Office Assistant 3, 4; Miss Flame Attendant 4; Homecoming Attendant 4; Home Ec. Club 4. DAVID KIRK "Dave" - College Preparatory: Band 1, 2, 3; Prom Committee 3. GREGORY KIRSCH "Krunch" - College Preparatory: Biology Seminar 1; Band 1, 2, 3, 4; Pep Band 3; Annual Staff Photographer 1, 2, 3, 4; Baseball Manager 2; Newspaper Staff Photographer 3; Prom Committee 3; F. T. A. 4; Annual Ad Salesman 4. HELEN SUE KNAUFF "Knauffie" - College Preparatory: Biology Seminar 1; Spanish Club 1, 2, 3; Scholarship Team 1, 2, 3, 4; Great Books Club 2; Mixed Chorus 2; Girls' Ensemble 2; Prom Hostess 2; All-School Play 2; Top 24 2; Cheerleader 3; Pep Club 3; Honor Society 3, 4; Honor Society Officer 4; Debate Club 3, 4; Class Play 3; Office Assistant 3; Newspaper Staff 3; Prom Committee 3; F. T. A. 4; Senior Survey 4; Annual Ads Salesman 4; Annual Staff 4; F. T. A. Play 4; Popularity Poll 4. WILLIAM LEWIS "Bill" - Industrial Arts: Football 1; Class Officer 4; Industrial Arts Club 3, 4. JAMES LEE LOVENGUTH "Goose" - Elective: Varsity Football 1, 2, 3, 4; Mixed Chorus 1, 2; Top "20" 1, 2; Boys' Ensemble 2; "W" Club 2, 3, 4; Pep Club 3; S. O. C. Honorable Mention 3; Industrial Arts Club 3, 4; CARL LOPER "Bud" - Industrial Arts: Football Manager 2, 3, 4. MARY L. MARTIN "Mary" - Commercial: Band

Jennifer E. Kinolau

David Kirk

Gregory Kirsch

Helen Sue Knauff

William Lewis

James Lee Lovenguth

Carl Loper

Mary L. Martin





Brenda McCleese

Mary Lou McCown

Gary McCoy

Rozenna McGlone

Timothy Meeker

Robert Mignery

Suzanne Mitchell

Angela Morgan

1, 2, 3; Mixed Chorus 1; Festival Band 1, 2; Home Ec. Club 2; Annual Staff 4; Annual Ads Salesman 4. BRENDA McCLEESE "Brennie" - Commercial: Prom Committee 3; Pep Club 3; Honor Society 3, 4; Honor Society Officer 4; Mixed Chorus 4; Annual Ads Salesman 4. MARY LOU McCOWN "Hoochie" - Commercial: Spanish Club 1; Librarian 3, 4. GARY McCOY "Gary" - Industrial Arts: Industrial Arts Club 1, 2, 3. ROZENNA McGLONE "Rose" - Elective: Pep Club 2, 3, 4; Prom Committee 3; Mixed Chorus 4. THIMOTHY MEEKER "Tim" - College Preparatory: Band 1, 2, 3, 4; Intramural Basketball 1, 2; Prom Committee 3; Pep Band 3; All-County Music Festival 3; Annual Ads Salesman 4; Class Play 4; Band Officer 4. ROBERT MIGNERY "Bob" - Elective: Football 1, 3, 4; Biology Seminar 1; Mixed Chorus 1; Intramural Basketball 1, 2; Prom Host 2; Prom Committee 3; Pep Club 3, 4; Librarian 3; "W" Club 4; Industrial Arts Club 3, 4. SUZANNE MITCHELL "Mitch" - College Preparatory: Class Officer 1; Spanish Club 1, 2; Pep Club 1, 2, 3, 4; Mixed Chorus 1, 2, 3; Biology Seminar 1; Top "24" 2, 3; Prom Hostess 2; All-School Play 2; Cheerleader 2, 3, 4; Spring Festival 2, 3; Prom Committee 3; Student Council 3; Annual Ads Salesman 4; Miss Flame Attendant 4; Home Ec. Club 4; Basketball Homecoming Attendant 4. ANGELA MORGAN "Angie" - Commercial: Mixed Chorus 3; Home Ec. Club 3, 4; Prom Committee 3; Pep Club 3.

BONNIE LOU MURPHY "Blondie" - Commercial: Home Ec. Club 1, 2, 3; Prom Committee 3.
 MARCIA JOAN MYERS "Sweetie" - Elective: Home Ec. Club 1, 2; Biology Seminar 1; Pep Club 2, 3, 4; Kick-ball Team 2; Mixed Chorus 3, 4; Librarian 3, 4; Prom Committee 3; F. T. A. Club 4; Class Play 4. SUE MYERS "Susie" - Commercial: Pep Club 1, 2; Office Assistant 3. BRENDA SUE NEWMAN "Bren" - Commercial: Pep Club 1, 2; Prom Committee 3; Class Play 3; Newspaper Staff 4. SHARON FAYE NICHOLS "Nickie" - Elective: Band 1, 2, 3; Home Ec. Club 1, 2; Pep Club 1, 2; Class Plays 3, 4; Dance Band 3; Pep Band 3; Newspaper Staff 4; Annual Staff 4. PHYLLIS G. NOEL "Phyl" - Commercial: Band 1, 2, 3, 4; Majorette 1, 2, 3, 4; Dance Band 1, 2; Pep Club 1, 2, 3, 4; New Life Club 1, 2, 3; Class Plays 3, 4; Annual Staff 4. ELIZABETH ANN O'DELL "Susie" - Commercial: Mixed Chorus 1, 4; Pep Club 2, 3, 4; Prom Committee 3; Class Play 4.

Bonnie Lou Murphy

Marcia Joan Myers

Sue Myers

Brenda Sue Newman

Sharon Nichols

Phyllis G. Noel

Elizabeth Ann O'Dell





Connie S. Oppy

Joyce Lea Osborne

Stewart Parker Jr.

Linda Lou Payne

Susan Kay Penn

James L. Price

Debra Ratliff

Robert E. Rayburn

CONNIE S. OPPY "Conn" - Commercial: Pep Club 1; Librarian 3; Prom Committee 3; Class Play 3. JOYCE LEA OSBORNE "Twerp" - Elective: Pep Club 2, 3, 4; Home Ec. Club 3, 4; Prom Committee 3; Class Play 4. STEWART PARKER JR. "Sonny" - Industrial Arts Club 3. LINDA LOU PAYNE "Lynn" - Elective: Philadelphia 1; Prom Hostess 2; Mixed Chorus 3, 4; Honor Society 3, 4; Homecoming Attendant 4; Annual Ads Salesman 4. SUSAN KAY PENN "Susie" - College Preparatory: Band 1; Biology Seminar 1; Spanish Club 1, 2; Pep Club 1, 2, 3, 4; Prom Hostess 2; Class Play 3; Office Assistant 3, 4; Annual Staff 3, 4; F. T. A. 4; F. T. A. Play 4; Home Ec. Club 4; Annual Ads Salesman 4. JAMES L. PRICE "Jim" - College Preparatory: Scholarship team 1, 2, 3, 4; Spanish Club 2, 3; Honor Society 3, 4; Honor Society Officer 4; Prom Committee 3; Annual Staff 4; Annual Ads Salesman 4; Student Council 4; Senior Survey 4; Popularity Poll 4. DEBRA RATLIFF "Debbie" - Commercial: Pep Club 1, 2, 3; Mixed Chorus 2, 3, 4; Top "24" 3, 4. ROBERT E. RAYBURN "Bob" - Elective: Scholarship Team 1.



Carl Eugene Redoutey

Bertha Reedy

Carol Ann Reiser

Oliver Reutzel

Gary Lee Reynolds

Harold Riffe

Patricia Ann Riley

Danny Edward Robinson

CARL EUGENE REDOUTEY "Carl" - College Preparatory: Basketball 1; F. T. A. 4. BERTHA REEDY "Bert" - Commercial: Pep Club 1, 2, 3, 4; Class Plays 3, 4; Mixed Chorus 3, 4; Prom Committee 3. CAROL ANN REISER "Hot Rod" - Commercial: Band 1, 2, 3, 4; Home Ec Club 1, 2; Class Plays 3, 4; Librarian 3, 4; Wind Ensemble 4. OLIVER REUTZEL "Ollie" - Elective: Biology Seminar 1; Football 1, 2, 3, 4; Basketball 1; Intramural Basketball 1, 2; Pep Club 1, 2, 3, 4; Prom Host 2; "W" Club 3, 4; Prom Committee 3; Librarian 3, 4; Class Plays 3, 4; Mixed Chorus 3; Music Festival 3; Industrial Arts Club 4; Annual Ads Salesman 4. GARY LEE REYNOLDS "Gair" - College Preparatory: Band 1, 2, 3, 4; Freshman Basketball 1; Intramural Basketball 1, 2; Biology Seminar 1; Stage Band 1, 2, 3, 4; Pep Band 1, 2, 3, 4; All-County Select Band 3; Morehead Clinic Band 3, 4; Ashland Clinic Band 3; Wind Ensemble 4; Festival Band 3, 4; Prom Host 2; Prom Committee 3; Class Plays 3, 4; F. T. A. 4; Annual Ads Salesman 4. HAROLD RIFFE "Harold" - Industrial Arts Club 1, 2, 3. PATRICIA ANN RILEY "Putts" - College Preparatory: Biology Seminar ; Band 1; Annual Ads Salesman 4; Pep Club 2, 3; Home Ec. Club 4; Prom Hostess 2; Popularity Poll 4; Mixed Chorus 3, 4; County Music Festival 3; Homecoming Attendent 3; Librarian 3; Annual Staff 3, 4; Class Plays 3, 4; Prom Committee 3; Top "24" 4; Miss Flame 4. DANNY EDWARD ROBINSON "Robbie" - College Preparatory: Class Officer 1, 3, 4; Band 1, 2, 3, 4; Stage Band 1, 2, 3, 4; Pep Band 1, 2, 3, 4; Freshman Basketball 1; Biology Seminar 1; Band Officer 2, 3, 4; Class Plays 3, 4; Prom Committee 3; Student Council 3; Festival Band 2, 3, 4; All-Star Band 3; Ashland Clinic Band 3; Morehead Clinic Band 3, 4; Wind Ensemble 4; Popularity Poll 4; All County Select Band 3.

HAROLD R. SAYRE "Bud" - College Preparatory: Reserve Basketball 1; Baseball 1, 2, 3, 4; Spanish Club 1, 2; Pep Club 1, 2, 3, 4; Intramural Basketball 1, 2; Varsity Basketball 2, 3, 4; "W" Club 2, 3, 4; Class Officer 2, 3; Prom Committee 3; SOC All-Star 3, 4; F. T. A. 4; Newspaper Staff 4; Librarian 4; Honor Society 4. JERRY SEISON "Jerry" - College Preparatory: Football 1, 2; Basketball 1, 2. LARRY SEISON "Larry" - Industrial Arts: Industrial Arts Club 2, 3; Football 1; Basketball 1. DIANA JOYCE SEXTON "D. J." - Commercial: Pep Club 1, 2, 3; Prom Committee 3; Class Play 4. CLARENCE FRED SHEPHERD "Fred" - Industrial Arts: Football 1. ERIC LYNN SHEPHERD "Rick" - College Preparatory: Band 1, 2, 3, 4; Dance Band 1, 2, 3, 4; Pep Band 1, 2, 3, 4; Wind Ensemble 4; Spanish Club 2; Class Play 4; Music Festival 4. BEVERLY SHUPERT "Bev" - College Preparatory: Spanish Club 1, 2; Mixed Chorus 1, 3, 4; Cheerleader 3, 4; Pep Club 3, 4; Prom Committee 3; F. T. A. 4; Class Play 4; Annual Ads Salesman 4; Office Assistant 4.

Harold R. Sayre

Jerry Seison

Larry Seison

Diana Joyce Sexton

Clarence Fred Shepherd

Eric Lynn Shepherd

Beverly Shupert



JERRY SIMPSON "Jerry" - Industrial Arts: Scholarship Team 1; Industrial Arts Club 2, 3; Annual Ads Salesman 4. PHYLLIP E. SISSEL "Cecil" - Industrial Arts: Intramural Basketball 2; Industrial Arts Club 3. JOHN HAROLD SIZEMORE "John" - Elective: Vocational Training at Portsmouth. EVA JEAN SMITH "Sweetie Pie" - Commercial: Biology Seminar 1; Pep Club 1, 2, 3; Mixed Chorus 1, 3, 4; Girls' Ensemble 3; Scholarship Team 2; Prom Committee 3; Debate Club 4. JUDY SNYDER "Kay" - Commercial: Mixed Chorus 3, 4; Prom Committee 3; Office Assistant 3; Class Play 4.

Jerry Simpson

Phillip E. Sissel

John Harold Sizemore

Eva Jean Smith



Judy Snyder

Carolyn Sparks

Jerry Dean Spriggs

Douglas Richard Staggs

CAROLYN SPARKS "Kate" - Home Economics: Mixed Chorus 1, 2, 3, 4; Home Ec. Club 1, 2, 3; Kick-ball Team 2; Pep Club 2; Librarian 3. JERRY DEAN SPRIGGS "Speed" - College Preparatory: Football 1, 2, 3, 4; Basketball 1, 2, 3, 4; Baseball 2; Football Honorable Mention 3, 4; Intramural Basketball 1, 2; "W" Club 2, 3, 4; Class Officer 3, 4; Pep Club 1, 2, 3, 4; Spanish Club 1, 2; Class Play 3; Prom Committee 3; F. T. A. 4; Popularity Poll 4. DOUGLAS RICHARD STAGGS "Dick" - College Preparatory: Spanish Club 1, 2; Prom Committee 3; Football 1; Intramural Basketball 1; F. T. A. 4; Golf Team 4; Popularity Poll 4.

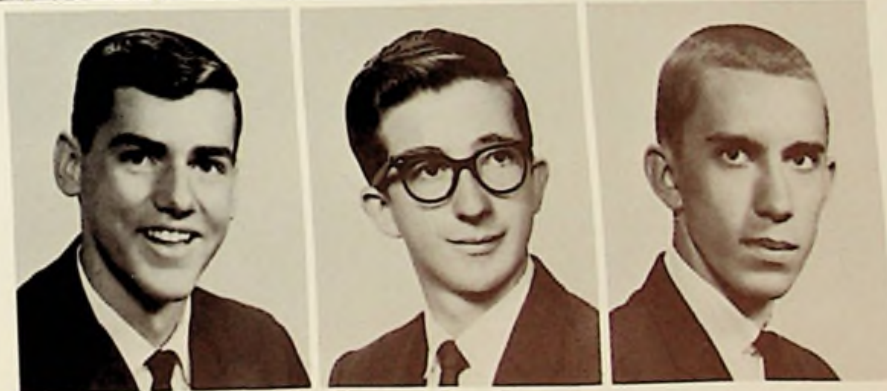
WILLIAM EUGENE STEELE "Bill" - Industrial Arts: Industrial Arts Club 1. CHARLOTTE ANN STEPHENS "Lotty" - Commercial: Mixed Chorus 1, 2, 3, 4; Girls' Ensemble 2; Top "24" 3, 4; Scholarship Team 2; Librarian 3; Office Assistant 4; Home Ec. Club 4; Annual Staff 4; F. T. A. 4; Annual Ads Salesman 4; Student Council 4; Popularity Poll 4. RALPH STIDHAM "The Weed" - Industrial Arts: Basketball 1; Baseball 1, 2, 3, 4; Intramural Basketball 2; Industrial Arts Club 2, 3. RODNEY SUMMERFIELD "Red" - College Preparatory: Basketball 1; Intramural Basketball 1, 2; Scholarship Team 2, 3; Prom Committee 3; Annual Ads Salesman 4. ROGER TACKETT "Rog" - Industrial Arts: Football 1; Basketball 1; Industrial Arts Club 2, 3. ARTHUR TATMAN "Butch" - College Preparatory: Band 1, 2, 3, 4; Biology Seminar 1; All-School Play 2; Class Plays 3, 4; Wind Ensemble 4; Scholarship team 3; Typing Contest 3; Festival Band 3; Senior Survey 4; Annual Ads

William Eugene Steel

Charlotte Ann Stephens

Ralph Stidham

Rodney Summerfield



Roger Tackett

Arthur Tatman

Ronald Edward Vastine

Salesman 4; Annual Staff 4; F. T. A. 4. RONALD EDWARD VASTINE "Ron" - College Preparatory: Spanish Club 1, 2; Band 1, 2, 3, 4; Stage Band 1, 2, 3, 4; Biology Seminar 1; Class Plays 3, 4; Annual Staff 3, 4; F. T. A. 4; Senior Survey 4; Annual Ads Salesman 4.

LARRY VEACH "Butch" - Elective: Football 1, 2, 3, 4; Basketball 1, 2; Band 1; Intramural Basketball 1, 2; Pep Club 1, 2, 3, 4; Class Officer 2; Industrial Arts Club 2, 3, 4; "W" Club 4; Annual Ads Salesman 4; Honorable Mention SOC 4. BARBARA ELLEN WATKINS "Bobbi" - Commercial; Prestonburg High School 1, 2, 3, 4. LINDA CAROL WEBB "Shag" - Commercial: Mixed Chorus 1, 2, 3, 4; Top "24" 3, 4; Girls' Ensemble 2; Librarian 3; Home Ec. Club 4; F. T. A. 4; Office Assistant 4; Annual Ads Salesman 4; Girls' Kick-ball Team 2; Ohio State Fair Representative 4; Popularity Poll 4. CHARLOTTE WEBSTER "P.K." - Commercial: Beaver High School 1; Pep Club 2, 3, 4; Mixed Chorus 3, 4; Top "24" Spring Festival 4.

Larry Veach

Barbara Ellen Watkins

Linda Carol Webb

Charlotte Webster



John G. Wessell

Robert Wilson

Anita Gail Wiltshire

Patricia Lynn Wise

JOHN G. WESSELL "John" - College Preparatory: Spanish Club 1, 2; Football 1, 2, 3, 4; Intramural Basketball 1, 2; All-School Play 2; Class Plays 3, 4; Scholarship Team 2; "W" Club 2, 3, 4; Baseball Team 2, 3, 4; Debate Team 3, 4; Prom Committee 3; Pep Club 3, 4; F. T. A. Play 4; Annual Ads Salesman 4; Honorable Mention SOC 4. ROBERT WILSON "Bob" - Industrial Arts; Industrial Arts Club 2. ANITA GAIL WILTSHIRE "Gail" - Elective: Band 1, 2, 3, 4; Home Ec. Club 2; Prom Committee 3; Class Play 4; F. T. A. 4. PATRICIA LYNN WISE "Butch" - Commercial: Mixed Chorus 1, 2, 3, 4; Girls' Ensemble 2; Top "24": 3, 4; Cheerleader 2, 3, 4; Pep Club 2, 3, 4; Home Ec. Club 2; F. T. A. 4; Annual Ads Salesman 4; Office Assistant 4; Football Homecoming Attendant 4; Popularity Poll 4.

MARVIN WOLFE "Bo" - Commercial: Northwest High School 1, 2, 3. YVONNE KAY YOST "Yo" - College Preparatory: Spanish Club 1, 2, 3; Pep Club 2, 3; Biology Seminar 1; Newspaper Staff 1, 3; Great Books Club 2; All-School Play 2; Class Plays 3, 4; Prom Committee 3; Mixed Chorus 1, 2, 3, 4; Mixed Ensemble 4; Top 24, 2, 3, 4; Debate Club 3, 4; Annual Staff 3, 4; Annual Ads Salesman 4; Scholarship Teams 1, 2, 3, 4; Honor Society 3, 4; Honor Society Officer 4; Senior Survey 4; All-County Music Festival 2, 3; Student Council 3; Clean -up Campaign Queen 4.

Marvin Wolfe

Yvonne Kay Yost



SENIOR CANDIDS



The great Robinson in action!



The smiling seniors and Eddie.



The seniors honor Queen Carol.

JUNIORS

1964

JUNIOR CLASS OFFICERS



Risner, Brescia, Payne

President ----- Steve Risner
Vice President (Not Pictured) ----- Bart Riordan
Secretary ----- Susie Brescia
Treasurer ----- Carolyn Payne



R. Adams



J. Barnett



B. Bays



D. Blair



E. Boggs



M. Boling



J. Book



S. Bowling



G. Bouman



S. Brescia



W. Brown



C. Browning



D. Callihan



E. Carver



D. Cline



P. Collier



T. Collier



P. Colvin



G. Compton



J. Conley



C. Cooper



J. Cooper



L. Cope



L. Cox



R. Craycraft

S. Danill

E. Davis

B. Dietrich

D. Dillow

S. Distel



R. Drake

M. Easter

R. Entler

G. Evans

K. Feagans

R. Fraley



L. Freymuth

L. Frump

T. Frye

C. Galloway

K. Gifford

D. Gleason



F. Glenn

B. Haddox

D. Haffner

S. Hale

A. Hamilton

K. Hamilton



L. Haws



J. Hinze



J. Hinze



L. Hinze



J. Hobbs



S. Hobbs



G. Hopkins



S. Hornikel



M. Howard



M. Jarrells



L. Howard



R. Jayne



V. Jewel



J. Journey



J. Kegley



J. Kenyon



S. Kessinger



C. Kitchen



C. Krekler



S. Kuhn



C. Lewis



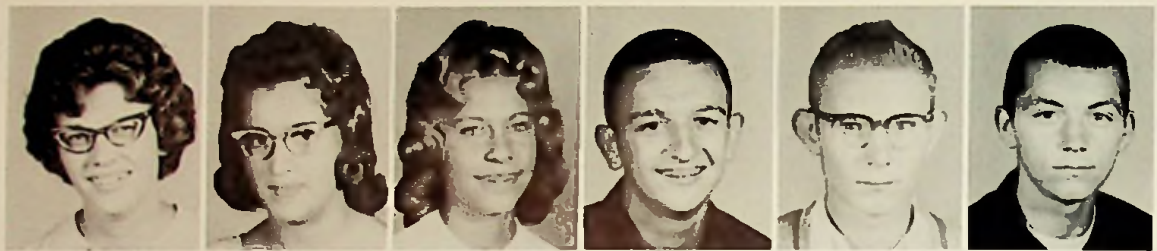
M. Lewis



R. Liles



E. Logan



K. Lovenguth

E. Lucas

K. Maple

L. Maynard

R. McManis

M. McNutt



P. Meeker

R. Miller

J. Milstead

G. Monaskie

M. Moore

C. Moore



R. Moore

L. Mowery

B. Nelson

B. Newman

G. Newman

C. Norman



M. Oakes

K. Odle

L. Odle

C. Oppy

H. Parker

C. Payne



M. Payne



L. Penn



D. Pennington



R. Pennington



A. Perry



C. Perry



B. Pertee



M. Phau



R. Piatt



J. Pick



R. Pick



G. Pollard



E. Pollitt



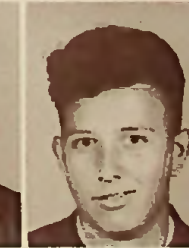
J. Pringle



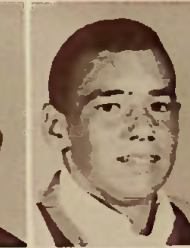
T. Raines



H. Ratliff



R. Ridgeway



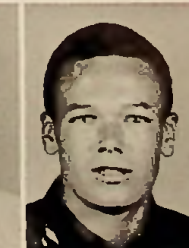
D. Riehl



R. Riffe



B. Riordan



S. Reisner



S. Roberts



C. Rose



P. Scheid



D. Simon

C. Siye

P. Smalley

E. Smith

M. Smith

B. Snook



W. Speas

S. Spradlin

N. Staten

D. Stockham

G. Swearingen

J. Swords



R. Swords

L. Thacker

P. Traylor

J. Tumer

J. Tumer

J. Urton



J. Veach

J. Virgen

B. Watkins

D. Wear

R. Wellman

S. Werner



D. Whaley



J. Williams



E. Wilson



D. Windsor



C. Zornes



L. Salem





Well, I'll be darn!



He went thata way!



What did you say your name was?

SOPHOMORES

1964

SOPHOMORE CLASS OFFICERS



Salsbury, Brown, Hall.

President ----- Ed Salsbury
Vice President ----- Ron Brown
Secretary (not pictured) ----- Richard Parker
Treasurer ----- Roger Hall



D. Abrams

C. Adkins

M. Adkins

P. Adkins

S. Anderson

D. Andre



W. Appel

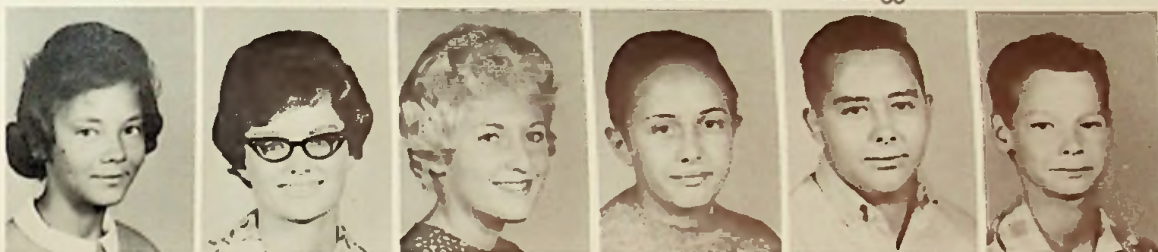
C. Atkins

R. Barber

G. Bates

C. Biggs

A. Blevins



E. Bloomfield

G. Bolton

G. Bolton

J. Born

D. Bower

G. Boyd



C. Brannan

J. Brouhard

C. Brown

M. Brown

R. Brown

P. Browning





C. Bowles



W. Caldwell



P. Campbell



C. Canter



P. Carver



C. Castle



L. Chaffin



L. Collier



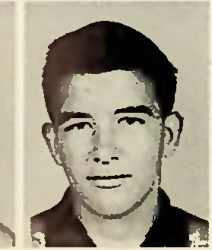
J. Collins



T. Conley



G. Cooper



L. Cooper



S. Cooper



B. Creech



B. Damron



T. Daum



R. Davis



B. Dillon



C. Distel



R. Drake



G. Duckett



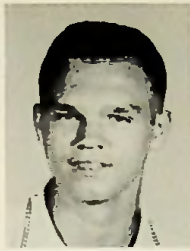
D. Dunham



J. Easter



J. Easter



T. Easter



L. Edwards



J. Enyart



L. Euton



N. Evans



R. Flaker



B. Fraley



J. Frazier



K. Frye



R. Frye



V. Fuhr



M. Fuller



O. Galloway



S. Galloway



H. Ginn



C. Hall



G. Hall



R. Hall



L. Hamilton



B. Harkless



J. Harris



B. Hayslip



L. Hill



D. Himes





K. Hobes



S. Holt



J. Hoover



K. Horsley



G. Hossman



Z. Howell



M. Hudson



P. Hurd



D. Jordan



M. Jordan



J. Journey



C. Kammer



S. Kammer



C. Keibler



R. Keller



C. Kitchen



S. Ledingham



W. Lewis



B. Lindsey



S. Lindsey



M. Little



E. Loper



B. Lute



K. Lykins



L. Major



R. Malone



C. McCall



S. McCleese



S. Mangus



S. McManus



G. McNutt



J. Meeker



K. Miller



S. Miller



B. Morgan



M. Morrow



D. Mosley



J. Murphy



J. Myers



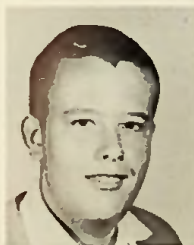
D. O'Dell



R. Parker



G. Peed



S. Penn



D. Pennington



L. Perry



A. Pfau



L. Pollard



C. Porter





C. Monk



S. Rapp



D. Reed



D. Rice



K. Richards



G. Ridout



P. Rigsby



A. Rose



V. Rowe



D. Rutherford



S. Salem



E. Salsbury



C. Shultz



D. Smith



J. Smith



N. Sparks



G. Spriggs



K. Staggs



J. Srofe



F. Stevens



J. Stevens



L. Stout



E. Summerfield



B. Swords



D. Rhea



C. Swords



O. Swords



K. Tackett



B. Tatman



L. Tewalt



S. Thomas



D. Trisler



C. Turner



S. Vaughters



G. Vendura



P. Vicars



D. Vogler



M. Waller



S. Wamsley



L. Warren



P. Watts



V. Weaver



S. Webb



P. Wendall



G. Windsor



J. Woods



S. Yehle



T. Zaph



SOPHOMORE CANDIDS

What's the matter, Sharon-camera shy?



A boys' gym class-hard at play!

I never knew English was so pleasant!



FRESHMEN

1964

FRESHMAN CLASS OFFICERS



Preston, Conley, Boggs, Workman

President ----- Beverly Conley
Vice President ----- Mary Boggs
Secretary ----- Bill Preston
Treasurer ----- Jim Workman



FRESHMEN

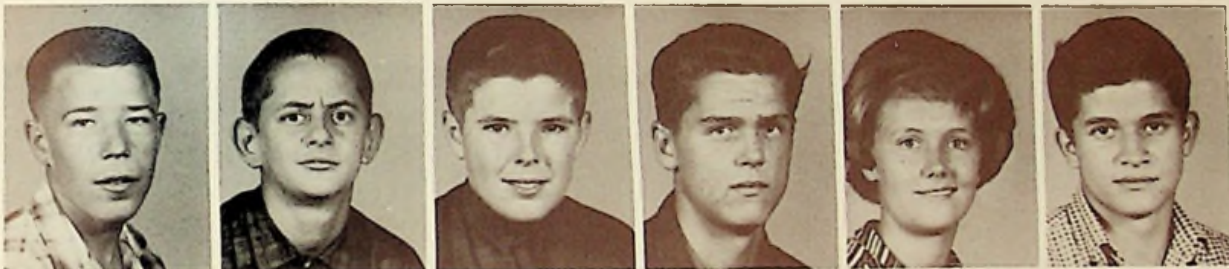
S. Adams M. Allen T. Alley



D. Atkins L. Atkins D. Back L. Backs P. Baldrige J. Barber



E. Bartley C. Basford D. Berry M. Bice N. Blake J. Blevins



J. Bloomfield F. Bobst T. Boland D. Bolton M. Boggs T. Book



D. Branson M. Bretz C. Brickey L. Brown R. Buckler L. Burchett



R. Canter R. Carver L. Childers B. Claypool N. Cochran D. Coleman



G. Colley B. Conley C. Conley



D. Conley R. Conely R. Conley C. Cook L. Cooper P. Cooper



G. Comish G. Davis L. Deaver P. Dickison G. Diddle S. Dietrich



W. Diller R. Dodds R. Duzan R. Ealey C. Easter M. Easter



W. Evans A. Fenker B. Fleeman C. Fouch A. Fegley D. Fraley



M. Frazier B. Gallimore D. Glenn J. Graham K. Gary D. Gregory



R. Grooms R. Groves R. Hale



R. Hall C. Hamilton R. Hamm C. Harkless W. Havens B. Hobbs



D. Hobbs R. Hodge M. Hopkins P. Hopkins T. Horsley D. Hornikle



B. Howard D. Howard E. Howard J. Howard R. Howell C. Humble



S. Humphrey D. Ishmael V. Ingles H. James P. Johnson J. Jones



C. Kammer T. Kammer D. Kegley V. Kemper L. Kennedy K. Kiser



R. Kuhn D. Lindsey T. Logan



R. Lucas J. McCoy M. McCoy S. McGlone G. McGraw H. McGraw



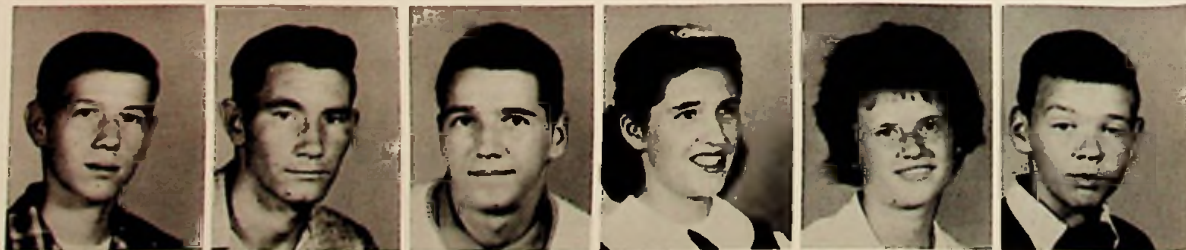
J. McGraw B. McGue S. Madden P. Major M. Malone D. Maple



R. Marasek S. Mershon L. Messer R. Messer B. Meyers D. Meyers



W. Meyers S. Myers D. Newman A. Nickel G. Nolan D. Norman



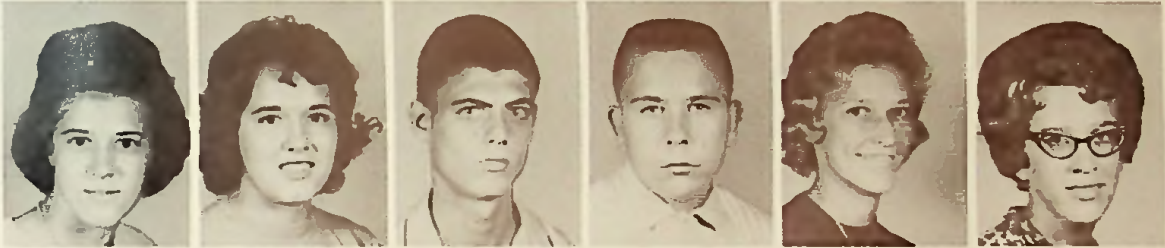
J. O'Dell J. Pack K. Pearl S. Peart S. Pertie F. Phillips



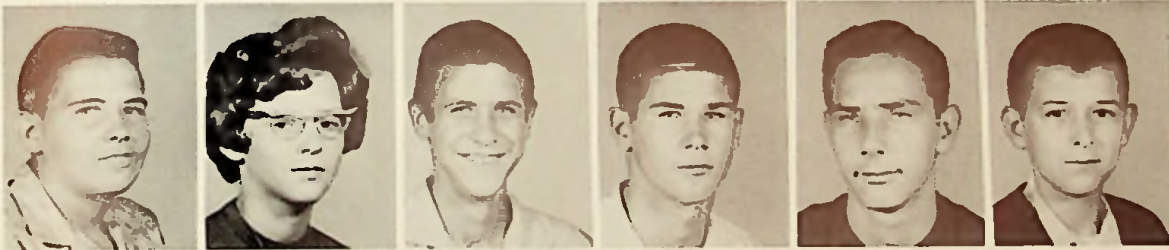
M. Pollard M. Pollitt P. Porter



W. Preston L. Pringle H. Puckett O. Pullman K. Raines E. Ratliff



R. Ratliff P. Rayburn R. Rayburn J. Redden R. Redoutey P. Reiser



P. Reynolds R. Rice E. Ridout P. Ridout J. Robinson L. Rollins



T. Rose B. Setty L. Shaffer N. Shaffer B. Shaw R. Simpson



R. Sisler D. Sissel M. Sissel S. Sissel P. Skaggs J. Smalley



S. Smedley D. Smith E. Smith



P. Sowards T. Sowards J. Spence M. Spindler K. Spriggs D. Strofe



G. Staten T. Stegall P. Stevens P. Sturgill G. Swords J. Swords



L. Swords S. Swords D. Tackett R. Tackett J. Thompson J. Thurman



O. Thurman A. Tieman B. Traylor L. Traylor S. Tumbleson W. Twaddle



L. Vandyke L. Vendura M. Vernier D. Vogler R. Walker D. Warner



R. Watkins

J. Weber

J. Wellman



N. Williams

J. Wilson

D. Wiltshire

T. Wise

P. Wolfe

P. Wolfe



R. Witt

J. Workman

F. Yount

J. Zaph

R. Zimmerman



FRESHMAN CANDIDS

Typical freshmen---



thirsting for knowledge.

..And she makes it!



A home run!

How you say...



..Viva la Espana!?

SCHOLASTIC

1964



VALEDICTORIAN
Sue Knauff



SALUTATORIAN
Donna Brickey

SCHOLARSHIP TEAM



ROW ONE: B. Creech, G. Windsor, B. Dietrich, S. Coburn, S. Knauff, R. Vastine, D. Simon, G. Bates.
 ROW TWO: P. Windle, S. Cooper, B. Harkless, R. Craycraft, D. Gleason, T. Logan, A. Nickel, G.
 Pollard. ROW THREE: C. Cook, L. Perry, D. Vogler, N. Sparks, B. Dillon, E. Wilson, S. Rapp, B.
 Loper. ROW FOUR: J. Smalley, P. Smalley, P. Collier, S. Vaughters, ROW FIVE: D. Bower, Y. Yost,
 D. Brickey, T. Daum, W. Caldwell, S. Risner, D. Smith, J. Myers, P. Reiser, M. Malone. ROW SIX:
 P. Dunn, R. Conley, G. Peed, E. Salsbury, F. Yount, K. Hamilton, D. Early, J. Price, J. Srofe, V.
 Smith, L. Penn.

HONOR SOCIETY INDUCTEES



ROW ONE: Sharon Vaughters, Brenda Dillow, Paula Windle, Steve Rapp, Tim Daum. ROW TWO: Becky Creech, Peggy Vicars, Charlotta Kitchen, Ed Salsbury. ROW THREE: Cindy Keibler, Connie Norman, Richard Flaker. ROW FOUR: Debbie Vogler.

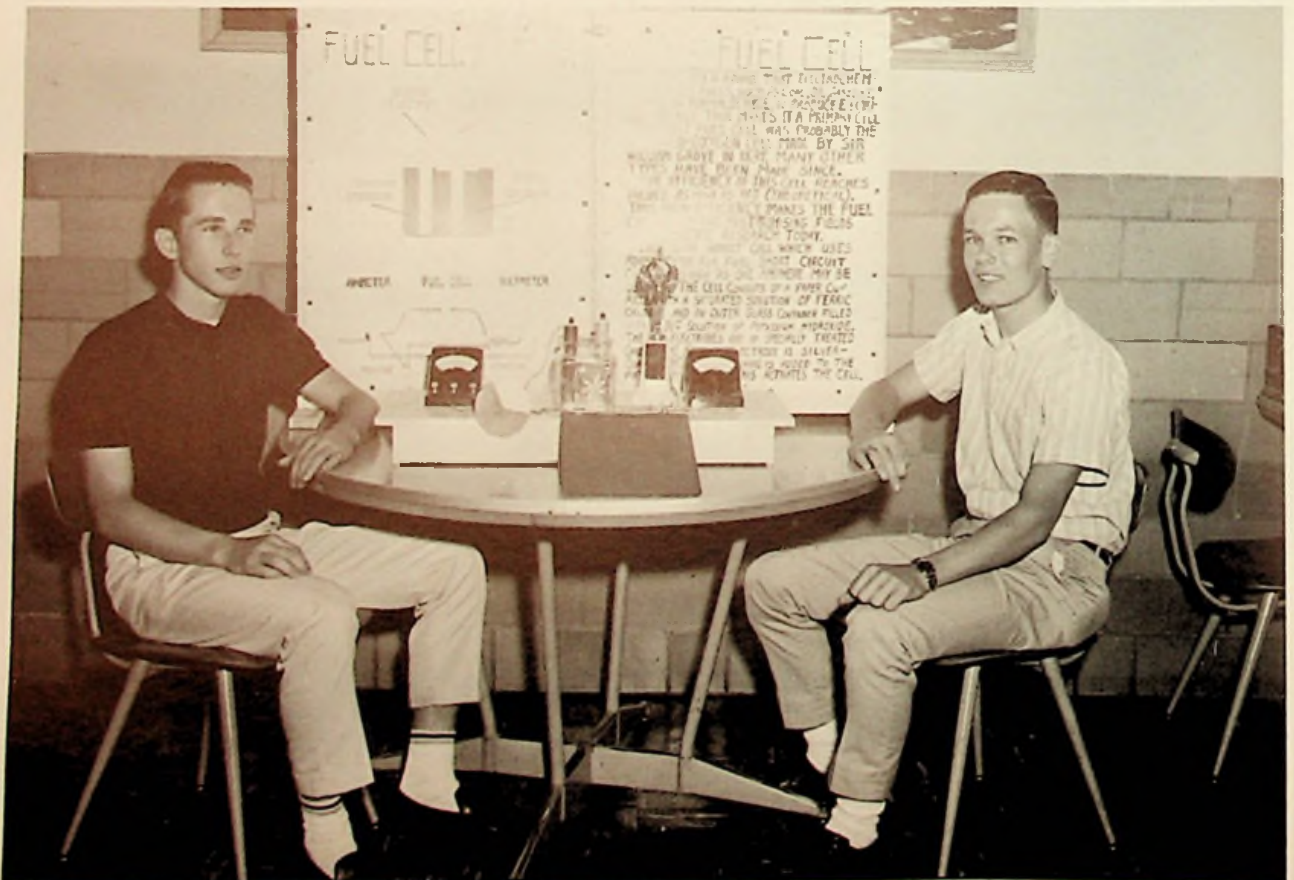


Ohio History Test Winners, JAMES PRICE and PAUL MEEKER, review past presidents from Ohio.

SCIENCE FAIR



KENNETH HAMILTON, winner of the Grand Prize in the Senior Division of the Science Fair of 1964.



RICHARD CRAYCRAFT and STEVE RISNER, winners of the First Prize in the Senior Division of the Science Fair of 1964.

ORGANIZATIONS

1964

VARSITY

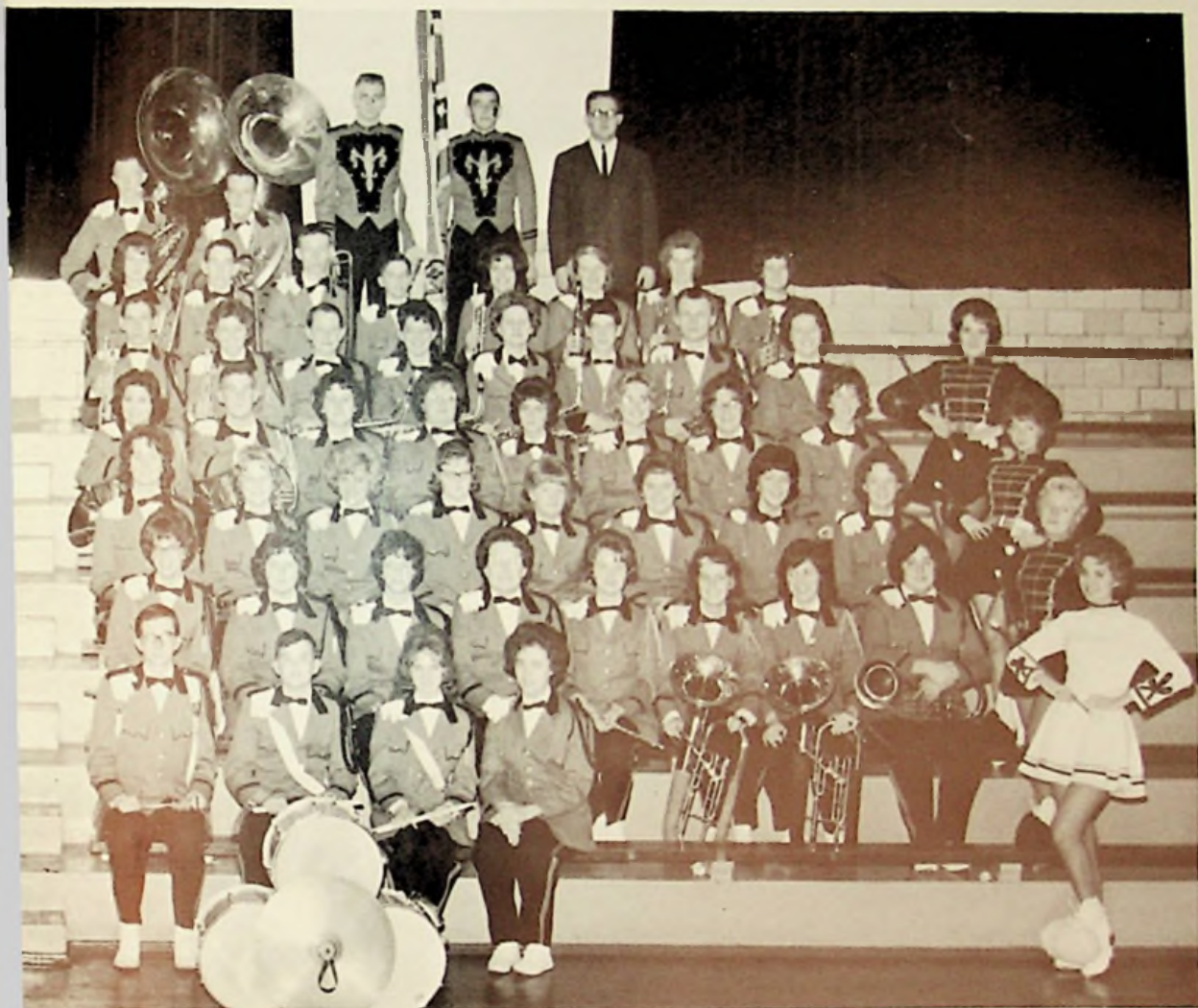


ROW ONE: G. Pollard, W. Speas, R. Glaker, D. Robinson, A. Tatman, J. Wilson, B. Conley, K. Hobbs. ROW TWO: F. Bauer, C. Kitchen, C. Keibler, R. Groves, D. Simon, R. Barber, D. Vogler, P. Vicars, P. Reiser, R. Kuhn, J. Spence, J. Smalley, C. Cunningham, D. Brickey, D. Pennington. ROW THREE: R. Kemper, R. Pennington, D. Reed, P. Collier, B. Arthur, L. Major, P. Major, S. Hill, K. Miller, L. Mowery, D. Haffner, B. Lute, L. O'Dell, C. Bashford, L. Bloomfield. ROW FOUR: V. Weaver, B. Sisler, E. Smith, P. Dickerson, P. Sturgill, N. Staten, L. Hinze, T. Meeker, P. T. Meeker, P. Dunn, G. Kirsch, F. Shaffer, N. Sparks, C. Krekeler, D. Pennington,



Tim Meeker, Treasurer; Mary Jane Smalley, Freshman Representative; Donna Reed, Secretary; Steve Risner, Vice President; Danny Robinson, President

BAND



C. Reiser. ROW FIVE: J. Hinze, R. Vastine, P. Meeker, K. Richards, J. Kegley, R. Liles, J. Harris, R. McManus, G. Cade, B. Dillow, B. Evans, C. Biggs, P. Windle, R. Marasek, L. Penn, J. Windsor. ROW SIX: H. James, L. Maynard, R. Shephard, S. Risner, R. Gleason, G. Reynolds, G. Diddle, R. Dodds, A. Perry, D. Edwards, S. McManus, G. Wiltshire, P. Hurd, M. Hudson, S. Salem. ROW SEVEN: G. Bates, G. Staten, G. Compton, G. Hopkins, S. Penn. STANDING: S. Adams, K. McCall, P. Smalley, E. Wilson, G. Bolton, Mr. Morgon, S. Coburn, R. Hamm, D. Vogler, S. Smedley, J. Milstead, D. Riehl.



Okay, gang, that's enough!

MAJORETTES



MAJORETTES: Kathy McCall
Sandy Coburn
Gloria Bolton
Peggy Smalley
Susie Brescia
Gail Bolton
Sandy Adams
Elsie Wilson

DRUM MAJORETTE:
Sandy Coburn

ALTERNATE MAJORETTES:
Linda Mowery
Janie Smalley
Donna Reed
Beverly Conley

DRUM MAJOR: Ronald Hamm



DRUM MAJORETTE



ALTERNATE MAJORETTES



DRUM MAJOR



STAGE BAND

ROW ONE: R. Vastine, L. Penn, R. Liles, P. Windle, S. Coburn, D. Robinson. ROW TWO: S. Adams, G. Reynolds, S. McManus, R. Gleason, B. Dodds, G. Staten. ROW THREE: P. Dunn (vocalist), L. Maynard, P. Smalley, R. Shepherd, B. Dillon, S. Risner, Mr. Morgan (director).

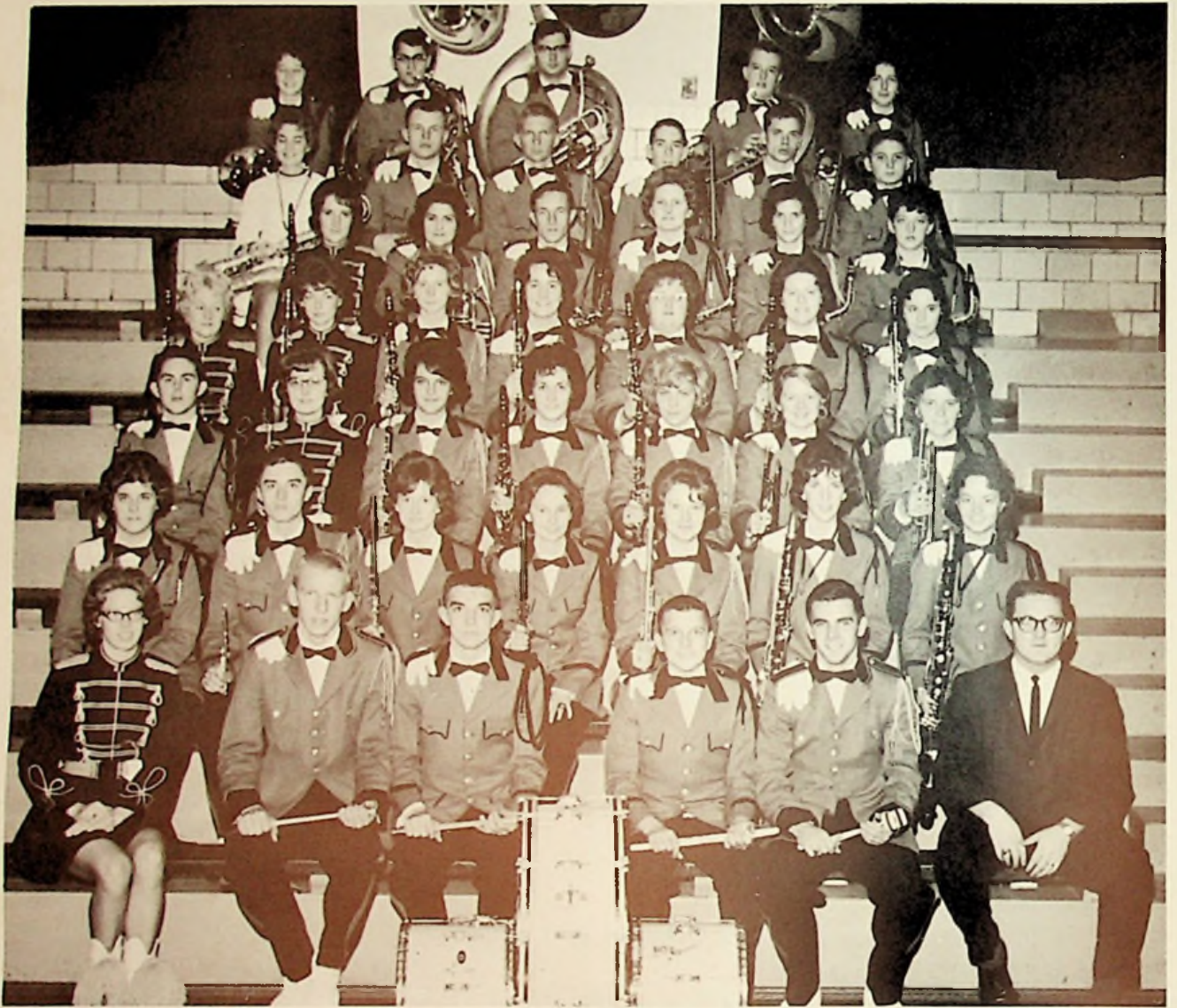
“MAGNIFICENT SEVEN”

PEP BAND

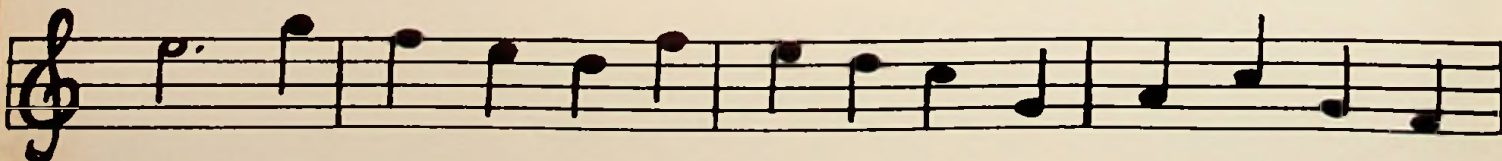


Eric Shepherd, Larry Maynard, Dan Robinson, Steve Penn, Paul Meeker, Gary Reynolds, Larry Penn.

WIND ENSEMBLE



ROW ONE: S. Adams, G. Pollard, W. Speas, R. Flaker, D. Robinson, Mr. Morgan. ROW TWO: J. Hinze, D. Simon, D. Vogler, P. Vicars, J. Smalley, C. Riser, L. Bloomfield. ROW THREE: E. Shepherd, P. Smalley, N. Staten, P. Collier, L. Mowery, P. Hurd, B. Dillons. ROW FOUR: G. Bolton, S. Brescia, D. Reed, S. Hill, G. Windsor, S. Vaughters, D. Sturgill. ROW FIVE: E. Wilson, P. Dunn, P. Meeker, P. Branson, R. Liles, C. Biggs. ROW SIX: S. Coburn, L. Penn, G. Reynolds, D. Edwards, R. Gleason, B. Dodds, ROW SEVEN: C. Kitchen, G. Blake, G. Compton, L. Penn, C. Kiebler.



MIXED CHORUS



ROW ONE: Mr. Giles, Y. Yost, K. Feagans, S. Distel, M. Moore, S. Bowling, G. Calendar, B. Snook, R. Hale, D. Ratliff, L. Payne, B. McCleese, S. Brown. ROW TWO: L. Thacker, R. Canter, B. Damron, P. Rice, D. Blair, C. Distel, D. Rutherford, R. Entler, K. Odle, K. Staggs, M. Meyers, C. Castle, C. Sparks, C. Cook, C. Shultz, M. Payne, M. Boling, M. Pollard, M. Hamilton, I. Horsely, D. Wiltshire, R. McGlone, J. Snyder, B. Reedy, S. O'Dell, C. Hurst. ROW FOUR: S. Hobes, E. Smith, P. Wise, C. Stephens, L. Webb, L. Bussa, J. Easter, D. Bower, P. Riley, B. Shupert, S. Werner, C. Webster, R. Lucas, J. Gregory, S. Frye. ROW FIVE: T. Daum, M. Pfau, J. Sibrel, G. Cooper, J. Born, J. Virgin, E. Summerfield, J. Days, L. Stout, C. Brannan, B. Meyers, R. Redouty, M. Smith. ROW SIX: S. Hornikel, J. Milstead, A. Hamilton, G. Monoski, S. Hale, E. Davis, R. Brown, M. Lewis, G. Hossman, C. Rose, J. Miller, L. Rollins.



Come on, you jugheads, Sing!

TOP TWENTY-FOUR



ROW ONE: M. Boling, D. Ratliff, Y. Yost, D. Rutherford, G. Calendar, P. Wise, R. Entler. ROW TWO: R. Hale, D. Bower, C. Stephens, B. Snook, S. Homikel, G. Hossman, C. Rose, J. Easter, C. Webster, B. Meyers, J. Days, L. Webb. ROW THREE: M. Pfau, G. Monoski, A. Hamilton, T. Daum, M. Lewis, G. Cooper, L. Bussa, J. Sibrel.

BOYS ENSEMBLE



A. Hamilton, T. Daum, J. Sibrel, S. Hornikel, C. Rose, L. Bussa, G. Cooper, J. Easter

DEBATE CLUB



Now, what is that resolution, John?



SEATED: Yvonne Yost, Peggy Smalley, Sue Knauff. STANDING: Sandra Adams, Butch Brickey, Peggy Dunn, Mike Malone, Eva Smith, Mr. Rowland, John Wessell, Nancy Staten, Roberta Groves, Peggy Smalley, Jerry Pringle.

Our "researchers" hard at work!



LATIN CLUB



ROW ONE: G. Bates, E. Wilson, D. Trisler, W. Caldwell, J. Myers, R. Flaker, S. Rapp, J. Journey, S. Risner, R. Gleason, P. Reiser, P. Sturgill. ROW TWO: Mr. Moles, R. Pick, P. Hopkins, S. Peart, M. Easter, F. Bobst, A. Caldwell, C. Fouch, D. Fraley, P. Porter, D. Warner, S. Yount; ROW THREE: R. Groves, B. Diller, D. Pennington, S. Sissel, M. Malone, K. Marshall, S. Blevins, G. Swords, J. McCoy, L. Atkins, C. Biggs. ROW FOUR: R. Pullman, D. Glenn, J. Hiber, T. Logan, J. Thompson, B. Marasek, G. Diddle, S. Smedley, D. Bronson, P. Wolfe.

SPANISH CLUB



ROW ONE: J. Kenyon, C. Keibler, G. Pollard, P. Collier, B. Snook, S. Vaughters, D. Pennington, J. Meeker. ROW TWO: C. Kitchen, K. Richards, G. Windson, S. Hill, L. Perry, S. Thomas, S. Anderson, Mrs. Hopkins. ROW THREE: N. Sparks, D. Vogler, P. Vicars, G. Bolton, B. Dillon, C. Norman, D. O'dell. ROW FOUR: D. Smith, E. Salisbury, J. Easter, T. Daum, S. Penn, J. Brouhard, L. Freymuth.

OFFICE ASSISTANTS



OFFICE ASSISTANTS: J. Hinze, S. Penn, Mr. Nickel, B. Arthurs, P. Wise, J. Kinolau, K. Odle, B. Shupert, K. Maple, L. Webb, L. Bloomfield, S. Howard.

NEW LIFE CLUB



ROW ONE: D. Smith, D. Pennington, C. Krekeler, L. Major, E. Lucas, R. Hale. ROW TWO: Mrs. Ressinger, L. Frump, J. Kenyon, K. Feagans, L. Cope. ROW THREE: A. Caldwell, B. Snook, K. Maple, S. Blevins, C. Norman.

NEWSPAPER



Pat Collier, Co-Editor; Mr. Dummitt, Advisor; David Gleason, Co-Editor.



Tim Daum, Dept. Editor; Sue Brescia, Dept. Editor; Becky Rice, Dept. Editor; Bev Conley, Dept. Editor; Pat Rice, Dept. Editor; Gary Pollard, Sports; Bud Sayre, Sports; Bob Hamm, Sports Editor.

STAFF



SEATED: Elaine Gardner, Typist; Linda Cox, Typist; Brenda Newman, Typist. STANDING: Rae Jean Entler, Proof Reader; Sharon Vaughters, Proof Reader; Sandra Adams, Typist; Linda Mowrey, Proof Reader; Sharon Nichols, Typist



Denis Simon, Business Manager; Connie Norman, Dept. Editor; Larry Bussa, Sports; Diana Cline, Art; (Not pictured) Mike Howard, Art.

HONOR SOCIETY

First Semester Officers:

Yvonne Yost, (Treasurer)
Jim Price
(President)



Sue Knauff, (Vice
President) Sandra
Brown, (Secretary)

ROW ONE: S. Coburn, S. Brown, Y. Yost, S. Knauff, E. Early, J. Hopkins, Mrs. Hopkins. ROW TWO: R. Entler, D. Brickey, B. McCleese, D. Bower, P. Collier, J. Hinze, L. Payne, D. Gallimore. ROW THREE: K. Hamilton, E. Pollitt, R. Craycraft, S. Risner, B. Sayre, L. Gifford, J. Srofe. ROW FOUR: J. Price, C. Kitchen, K. Maple, S. Brescia, P. Smalley, R. Liles, G. Pollard.



Second Semester Officers:

Donna Brickey
(President)
Donna Bower
(Vice President)



Brenda McCleese
(Secretary)
Sandra Coburn
(Treasurer)

STUDENT COUNCIL



ROW ONE: R. Redoutey, S. Penn, R. Cooper, J. Price, B. Snook, K. Griffith. ROW TWO: L. Hamilton, N. Blake, C. Stephens, M. Smalley, D. Howard, C. Keibler, D. Vogler, D. Pennington. ROW THREE: R. Marasek, R. Conley, J. Weber, Lee Gifford, W. Caldwell.

LIBRARIANS



ROW ONE: B. Traylor, Mrs. Ressinger, R. Craycraft, R. Cooper, M. Morrow, B. Sayre, J. Gregory. ROW TWO: M. McCown, L. Coper, M. Myers, L. Henderson. ROW THREE: C. Kitchen, B. Dillon, E. Lucas, P. Hurd, L. Pollard, K. Gallimore, R. Flowers, O. Reutzel, C. Reiser, J. Woods, E. Pollit, F. Bauer.

ANNUAL STAFF



JUNIOR EDITOR, Karen Maple; EDITOR-IN-CHIEF, Yvonne Yost; ADVISOR, Mr. Rowland; BUSINESS MANAGER, Sue Knauff; JUNIOR BUSSINESS MANAGER, Peggy Smalley.



JUNIOR SCHOLARSHIP EDITOR, Bonnie Dietrich; SENIOR SCHOLARSHIP EDITOR, David Early; JUNIOR FACULTY EDITOR, Elsie Wilson; SENIOR FACULTY EDITOR, Mike Howard.

JUNIOR CLASSES EDITOR, Judy Hinze
 SENIOR CLASSES EDITOR, Pat Riley
 SENIOR SPORTS EDITOR, Ralph Cooper
 JUNIOR SPORTS EDITOR, David Riehl



JUNIOR ORGANIZATION
 EDITOR, Linda Haws

SENIOR ORGANIZATIONS
 EDITOR, Mary Martin



SENIOR ACTIVITIES
 EDITOR, Peggy Dunn

JUNIOR ACTIVITIES
 EDITOR, Cindy Kitchen



JUNIOR ADVERTISING EDITOR, David
 Stockham; SENIOR ADVERTISING ED-
 ITOR, Sandra Brown; SENIOR SUBSCRIP-
 TIONS EDITOR, Phyllis Noel; JUNIOR
 SUBSCRIPTION EDITOR, Ruth Ann Riffe.

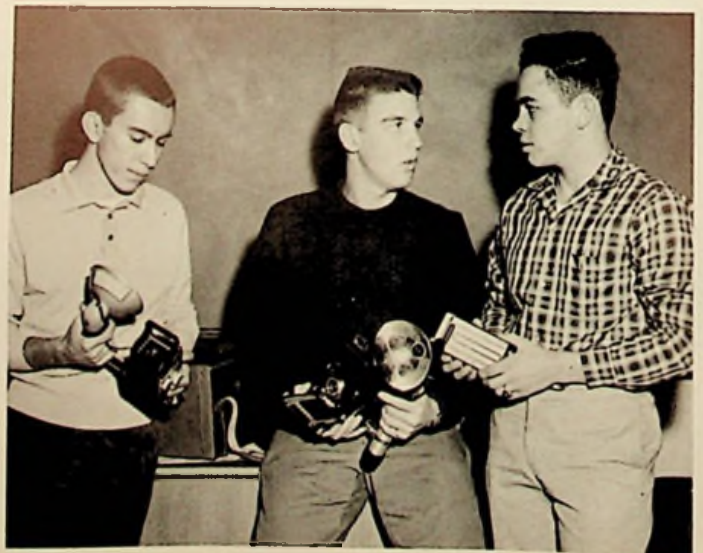


SENIOR FEATRES EDITOR; Jim Price
 JUNIOR FEATRES EDITOR; Nancy
 Staten
 JUNIOR COPY EDITOR; Lonnie Freymuth
 SENIOR COPY EDITOR; Arthur Tatman



TYPYST; Sharon
 Nichols
 CHIEF TYPYST;
 Donna Bower
 TYPYST; Susan
 Penn

SENIOR BOOKKEPPER;
 Charlotte Stephens
 JUNIOR BOOKKEPPER;
 Mary Boling



PHOTOGRAPHERS;
 Ron Vastine
 Greg Kirsh
 Mike Jarrells



ROW ONE: R. Flowers, R. Summerfield, R. Cooper, J. Wessel, B. Sayre, K. Coburn, D. Boyd, O. Reutzel, A. Tatman. ROW TWO: B. Brickey, S. Blevins, P. Wise, L. Webb, C. Stephens, S. Penn, E. Gardner, J. Hopkins, M. Martin, D. Early. ROW THREE: L. Henderson, D. Brickey, P. Riley, S. Brown, S. Mitchell, B. McCleese, L. Payne, D. Ratliff, D. Bower. FOW FOUR: Y. Yost, S. Knauff, L. Veach, G. Kirsh, J. Sibrel, J. Simpson, B. Rayburn, J. Price, T. Meeker, E. Ciraso.



Now let's go sell those ads!

INDUSTRIAL ARTS CLUB



Watch that saw!



ROW ONE: L. Maynard, J. Johnson, R. Piatt, Mr. Reiser, R. Flowers, O. Reutzel, J. Milstead, T. Urton.
ROW TWO: T. Frye, C. Browning, B. Cope, D. Boyd, C. Kennedy, L. Veach, J. Lovenguth, S. Hornikel.
ROW THREE: S. Daniels, B. Miller, J. Turner, G. Brickey, A. Hamilton, G. McCoy, C. Davis. ROW
FOUR: R. Windsor, G. Carver, S. Van Dyke, H. Parker, C. Cooper, J. Turner, T. Collier, R. Craycraft.

HOME ECONOMICS CLUB



ROW ONE: Mrs. Grashel, B. Claypool, M. Smith, S. Khun, C. Hornikel, A. Morgan, S. Mangus, B. Murphy, M. Adkins, B. Carver, C. Monk, S. Holt, S. Lindsey, C. Brown. ROW TWO: J. Journey, S. Swords, J. Blevins, D. Smith, L. Cope, C. Adkins, P. Campbell, B. McGue, E. Ratliff, W. Montgomery, J. Tackett, K. Horsley, L. Brown. ROW THREE: S. Hobes, S. Mitchell, J. Virgin, P. Riley, L. Hinze, C. Turner, S. Frye, H. Ginn, M. Fuller, B. Morgan, D. Ishmael, V. Fuhr, P. Rigsby, G. Newman. ROW FOUR: B. Bays, K. Staggs, S. Lewis, S. Warner, K. Hamilton, C. Hurst, J. Osborne, S. Bowling, L. Cox, R. Lucas, C. Shultz, M. Hudson, C. Distel, C. Stephens, S. Yehle. ROW FIVE: L. Howard, S. Miller, S. McGlone, L. Childers, A. Rose, C. Brannan, C. Castle, S. Penn, J. Kinolau, C. Payne, L. Odle, B. Lute, C. Hall, L. Whaley, S. Miller. ROW SIX: K. Lykins, B. Newman, S. Hall, K. Hobes, B. Damron, R. Russel, F. Arthurs, P. Clay, S. Adams, L. Denver, W. Twaddle, L. Swords, R. Moore, R. Grooms, P. Skaggs.



What's this--future Edith Heads?

FUTURE TEACHERS of AMERICA



ROW ONE: P. Wise, C. Stephens, B. Sayre, J. Wessell, S. Knauff, D. Bower, S. Penn. ROW TWO: L. Bloomfield, B. Arthurs, S. Adams, P. Dunn, S. Coburn, S. Brown, B. Shupert, Mrs. Ressinger. ROW THREE: D. Brickey, L. Webb, D. Staggs, J. Spriggs, B. Hamm, M. Myers, A. Wiltshire. ROW FOUR: R. Gleason, G. Kirsch, L. Cooper, R. Cooper, A. Tatman, R. Vastine.



What do YOU think, Mr. Lundy?

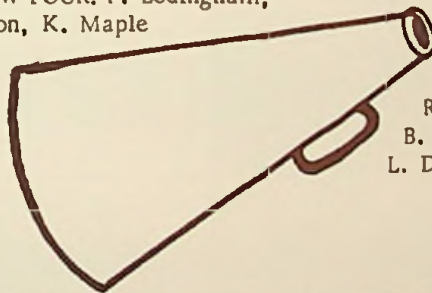


"Fore score and seven years ago..."

PEP CLUB



CHEERLEADERS: P. Wise, C. Kitchen, B. Shupert, S. Mitchell. ROW ONE: S. Bowling, J. Journey, P. Mangus, K. Feagans, S. Penn, J. Kinolau, C. Payne, M. Smith, K. Lovenguth, W. Hill, E. Smith, J. Smalley, P. Sturgill, M. Pollard, C. Cook. ROW TWO: B. Reedy, M. Hughes, S. O'Dell, J. Virgin, S. Cobum, J. Kenyon, C. Norman, S. Roberts, P. Schied, S. Frye, C. Turner, M. Morrow, V. Weaver, L. Messer. ROW THREE: L. Howard, R. Cooper, G. Bolton, C. Adkins, L. Cope, K. Cobum, S. Kuhn, R. Redoutey, K. Staggs, C. Kennedy, L. Hamilton, G. Bolton, C. Bowles. ROW FOUR: P. Ledingham, C. Hurst, C. Kitchen, P. Hurd, D. Callihan, C. Kiebler, B. Dillon, K. Maple P. Smalley, J. Spriggs, B. Mignery, K. McCall, O. Reutzel. ROW FIVE: B. Damon, P. Rice, S. M. Meyers, C. Castle, C. Brescia, R. Craycraft, D. Gleason, Brannon, B. McCleese, S. Brown. ROW SIX: B. Dietrick, R. McGlone, J. Milsted, J. Wessell, J. Hoover, B. Folsom, D. Smith. ROW SEVEN: F. Bauer, Lienger, T. Conley, L. Daum, C. Rose, M. Howard, B. Sayre, S. Rapp, J. Johnson, L. Veech.



Our cheerleaders are PRACTICING!!

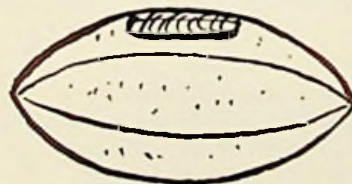
"W" CLUB



ROW ONE: R. Piatt, O. Reutzel, D. Boyd, K. Coburn, J. Spriggs, J. Lovenguth. ROW TWO: B. Mignerey, D. Dunham, J. Wessel, G. Cooper, R. Cooper, T. Easter, E. Salsbury. ROW THREE: B. Sayre, J. Johnson, J. Hinze, B. Roirden, R. Craycraft. ROW FOUR: L. Veach, G. Pollard, S. Risner, A. Hamilton.



Get that jump ball, Salsbury!



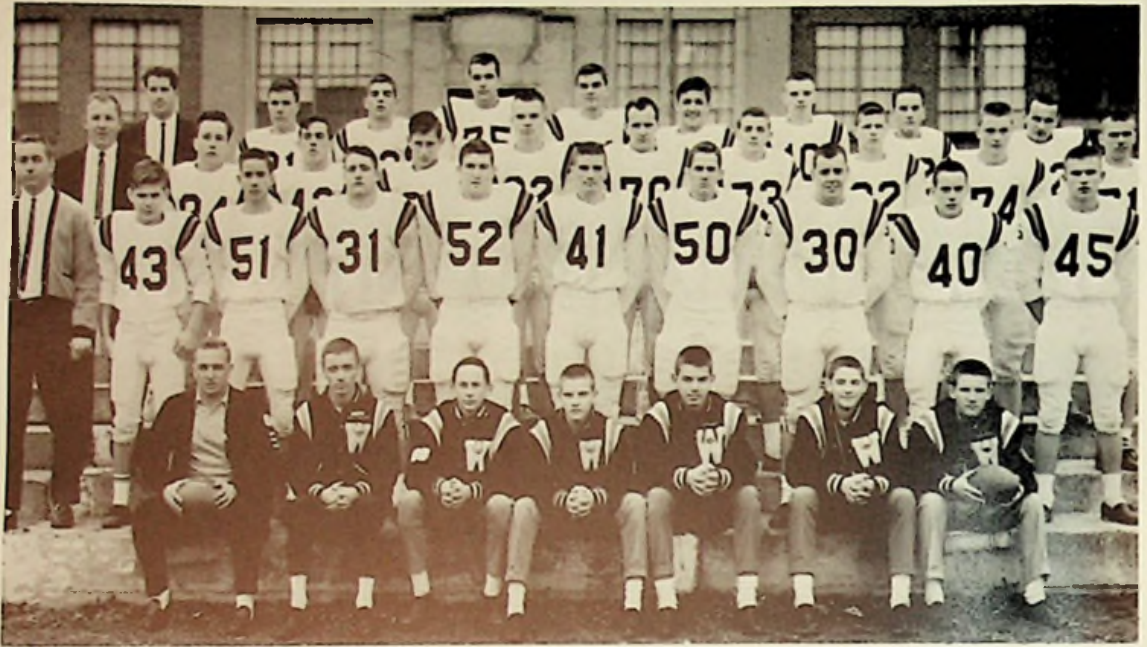
Will Piatt make it?



ATHLETICS

1964

VARSITY FOOTBALL TEAM



ROW ONE: MANAGERS; J. Lovenguth, B. Hamm, J. Hoover, C. Loper, S. Dietrich, G. Hall, B. Loper. ROW TWO: HEAD COACH; Mr. Swain, T. Conley, R. Davis, K. Coburn, J. Spriggs, G. Cooper, D. Boyd, R. Piatt, B. Tatman, O. Reutzel. ROW THREE: ASSISTANT COACH, Mr. Caudill, R. Parker, J. Wessell, J. Johnson, T. Easter, J. Williams, B. Riordan, J. Hinze, E. Salsbury, J. Woods. ROW FOUR: ASSISTANT COACH, Mr. Lundy, O. Swords, D. Dunham, L. Veach, D. Himes, J. Weber, T. Easter, A. Hamilton, S. Kessinger.



ASSISTANT COACHES; Mr. Caudill, Mr. Lundy.
HEAD COACH; Mr. Swain.

Gridiron Heroes



S.O.C. HONORABLE MENTION, KNEELING: Ed Salsbury, Ron Piatt. STANDING: John Wessell, Larry Veach, Jerry Spriggs.



CO-CAPTAINS: Jerry Spriggs and Ken Coburn.



ALL S.O.C. FULLBACK: Ken Coburn



JERRY SPRIGGS
Senior



KEN COBURN
Senior



OLLIE REUTZEL
Senior



MANAGERS

ROW ONE: Steve Dietrich, Bud Loper, Bob Hamm,
Carl Loper. ROW TWO: Gary Hall, John Hoover,
Jim Lovenguth.



JOHN WESSELL
Senior



LARRY VEACH
Senior



DARWIN BOYD
Senior



OSCAR SWORDS
Sophomore



JIM WILLIAMS
Junior



RICHARD PARKER
Sophomore



JIM HINZE
Junior



ALAN HAMILTON
Junior



SAM KESSINGER
Junior



ROGER DAVIS
Sophomore



TERRY EASTER
Sophomore



JERRY EASTER
Sophomore



DANNY HIMES
Sophomore



GARY COOPER
Sophomore



Colors for the game.



BART RIORDAN
Junior



TIM CONLEY
Sophomore



BILL TATMAN
Sophomore



JOE WEBBER
Freshman



RON PIATT
Junior



JIM WOODS
Sophomore



DAVE DUNHAM
Sophomore



JAY JOHNSON
Senior



ED SALSURY
Sophomore



One of our heroes heads for the dirt!

1963 FOOTBALL SCHEDULE

West
West
West
West
West
West
West
West
West
West



at Coalgrove
Notre Dame
at Minford
Waverly
at Valley
at Lexington Dunbar
Wheelersburg (Homecoming)
New Boston
Northwest
at Portsmouth East

VARSITY BASKETBALL

SQUAD

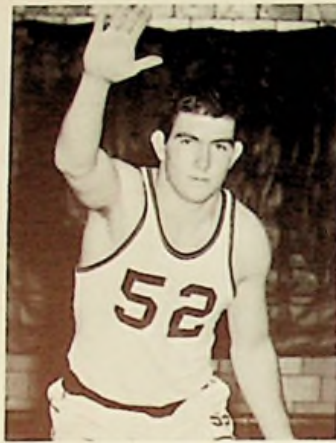


ROW ONE: B. Loper, Manager, D. Riehl, S. Hale, S. Risner, J. Spriggs, R. Craycraft, J. Milstead, Manager.
ROW TWO: COACH-Mr. Lundy, B. Sayre, G. Hopkins, G. Pollard, M. Howard, R. Cooper, D. Gleason,
Coach-Mr. Dautel.





BUD SAYRE
Senior



JERRY SPRIGGS
Senior



RALPH COOPER
Senior



CO-CAPTAINS
Ralph Cooper Bud Sayre
COACH-Mr. Lundy



MANAGERS
Jim Milstead - Dave Riehl



STEVE RISNER
Junior



RICH CRAYCRAFT
Junior



STEVE HALE
Junior



GARY POLLARD
Junior



GARY HOPKINS
Junior



MIKE HOWARD
Junior



DAVID GLEASON
Junior



"Hey, boys, is that fair?"



DAVE RIEHL
Junior



Surprise! It's made of rubber!



Get that rebound, West!



Sayre tries to block a basket.



Howard goes for a long one.



Another rebound for West!



S.O.C. All Star-BUD SAYRE
S.O.C. Honorable Mention-MIKE HOWARD

RESERVE BASKETBALL



ROW ONE: Managers--B. Loper, T. Easter, G. Hall. ROW TWO: B. Tatmann, S. Rapp, D. Smith, R. Davis, R. Simpson. ROW THREE: COACH-Mr. Dautel, T. Logan, E. Salsbury, J. Easter, G. Peed, J. Hoover, G. Cooper, Coach-Mr. Lundy.



GARY COOPER



BILL TATMAN



JERRY EASTER



GREG PEED



ROGER SIMPSON



DANNY HIMES



STEVE RAPP



TIM LOGAN



JOHN HOOVER



ROGER DAVIS



DAVE SMITH



ED SALSURY



CAPTAIN
Pat Wise



SENIOR
Suzanne Mitchell



VARSIITY CHEERLEADERS
Suzanne Mitchell Pat Wise Becky Creech
Cindy Kitchen Beverly Shupert



SENIOR-Beverly Shupert

Mitchell, Kitchen
Creech, Shupert
Wise

JUNIOR-Cindy Kitchen



SOPHOMORE-Becky Creech



FRESHMAN BASKETBALL



ROW ONE: Manager-D. Vogler, S. James, J. Workman, G. Nolan, D. Warner, Manager-T. Rose.
ROW TWO: P. Porter, J. Barber, D. Kegley, G. Ridout, COACH-Mr. Swain, E. Back. ROW THREE:
B. Preston, D. Mershon, B. Diller.

GOLF TEAM



R. Craycraft, R. Cooper, COACH-Mr. Caudill, D. Early, D. Staggs, G. Pollard

BASEBALL TEAM



ROW ONE: D. Riehl, W. Speas, M. Dillow, C. Rose, G. Cooper. ROW TWO: G. Reynolds-Manager, G. Hopkins-Manager, E. Boggs, D. Simon, J. Hoover, M. Pollit-Manager. ROW THREE: COACH-Mr. Dautel, J. Easter, R. Stidham, R. Cole, T. Easter, D. Gleason, J. Milstead, B. Sayre, S. Kessinger, Coach-Mr. Morgan.

1963-1964 SCHEDULE

West
West
West
West
West
West
West
West
West
West
West
West
West



Clay
Green
Waverly
Portsmouth
Valley
Northwest
South Webster
New Boston
Green
Minford
East
Wheelersburg
Clay

1963-1964 S.O.C. & S.C.L. CHAMPS!

Football Funnies



"Come on in, Coach, the water's fine!"



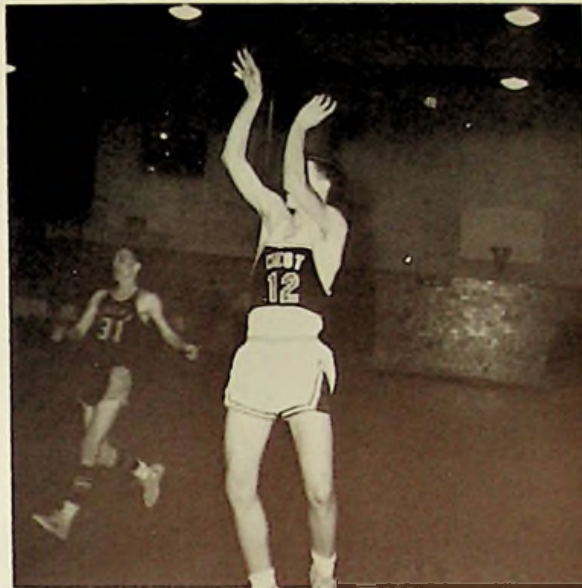
"To one side, son!"



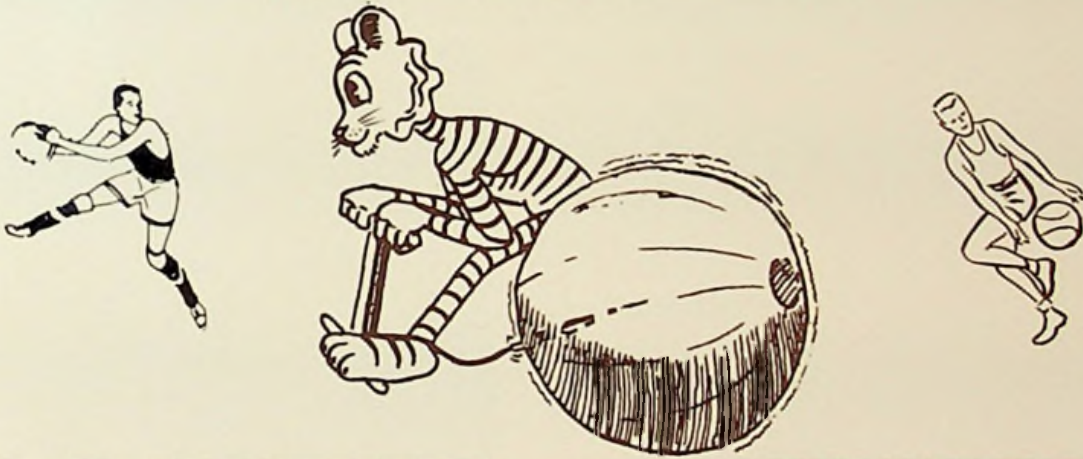
"Did you ever get the feeling you were conspicuous?"

Basketball Bloopers

Man, look at



that form!



Well, if you can't bring the BALL to the NET....



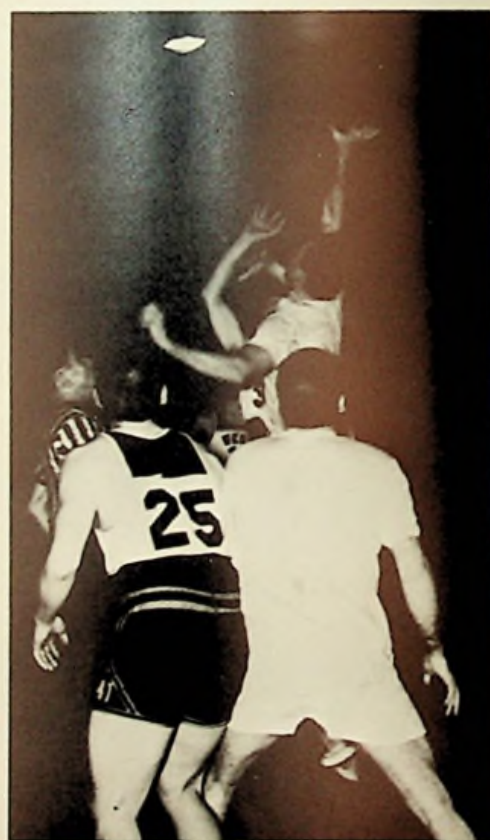
Look, Pollard, this is no time to be reading trademarks!

Faculty at



"Okay, guys, who took the soap?"

"Sure scared you, didn't it?"



"Patty-cake, patty-cake....."



and Students Play

"If it doesn't rain in a couple of minutes, I quit!"



"You get it...."
"No, you take it...."
"No, you can have it...."

And Wise goes in for a TOUCHDOWN!!!





'Round About-

Remember this?

Here is where
many



we spent
'quiet' hours.



Gee, it looks different at night, doesn't it?

WEST

Football??



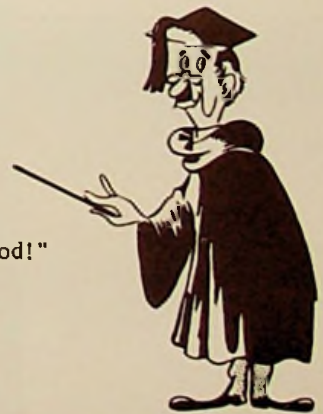
Room of



reminiscence.



"Okay, gang - play period!"



“Ask Not....”

November 22, 1963--a date we shall never forget. This day brought to us, the students at West, the first real national tragedy we could understand. The loss of our beloved President, John Fitzgerald Kennedy, was a thing we all felt very keenly and painfully. As throughout the whole nation and the very world, our school was stunned and horrified at the reports of the deed. We looked at each other with shock and grief, and hoped someone would tell us it was a terrible mistake.

Because the assassination of the President happened during the school year, we felt a memorial of it should be included in our book of memories. To that purpose this space is dedicated. By one simple page printed with words trying to express the way we, as young Americans, received the death of our leader. Humble in its actualities, but earnest in its intent, this is the student body of West's tribute to John F. Kennedy.

The late President's attachment to anything athletic was well known to all of us. He has set an example to all youth everywhere by rising above physical pain of great intensity and becoming an out-standing athlete. No obstacle was too over-powering to John Kennedy. Though such exertion was agony, swimming, basketball and football were mastered expertly by him. This athletic training made it possible for him to endure the hospital stays and the grueling presidential campaign. This is why we have put our page to him in the athletic section of our book.

John F. Kennedy's scholastic achievements are a shining indication of the wealth of knowledge and wit that were stored in his brilliant mind. He was a one-man organization, striving to attain that which was best for the country and the people he loved. Activity never ceased during the working hours of his life. Any phase of his career could be a feature of utmost beauty. And every work and deed of John Kennedy advertised the success and worth of our form of democracy to any person who would hear and observe. Thus this memorial could have been placed in any part of our publication and his influence would have been as great.

Oh, if he but could have lived to see the completion of his every dream! But such was not the will of God. God's reasons for taking John F. Kennedy from us we can not know; but that it was His manifestation we can be sure. Therefore, it is so very important that we students work to defend the nation John Kennedy loved, strengthen the institutions of our government, and above all, stay close to the God without whose help we could not accomplish these ends.

This is what John F. Kennedy would have wanted.

YVONNE YOST
Editor



FEATURES

1964

Football Homecoming Queen



CAROL CUNNINGHAM
Our lovely queen chosen by the senior class



SENIOR ATTENDANT
Jennifer Kinolau



SENIOR ATTENDANT
Linda Payne



SENIOR ATTENDANT
Pat Wise

Football Homecoming Attendants



JUNIOR ATTENDANT
Cindy Kitchen



SOPHOMORE ATTENDANT
Gail Bolton



FRESHMAN ATTENDANT
Joyce Boyd

Homecoming Candid



Queen Carol in her royal coach



"On behalf of the football team....."



"Watch it, son!"



ROW ONE: Senior, PAT WISE; Queen, CAROL CUNNINGHAM; Senior, LINDA PAYNE.
ROW TWO: Junior, CINDY KITCHEN; Freshman, JOYCE BOYD. ROW THREE: Senior,
JENNIFER KINOLAU; Sophomore, GAIL BOLTON.

Homecoming Candids

Two of our lovely senior attendants, Linda and Jenny.



Junior Cindy waves while senior Pat beams at the crowd.

Here are Joyce and Gail, freshman and sophomore.



Basketball Homecoming Queen



SANDRA BURCHETT
Our lovely queen chosen by the senior class

Basketball Homecoming Attendants



SENIOR ATTENDANT
Suzanne Mitchell



JUNIOR ATTENDANT
Nancy Staten



SOPHOMORE ATTENDANT
Gloria Bolton



FRESHMAN ATTENDANT
Debbie Lindsey



TOP ROW: DEBBIE LINDSEY, Freshman; NANCY STATEN, Junior;
SUZANNE MITCHELL, Senior; GLORIA BOLTON, Sophomore; SANDY
BURCHETT, Queen.



Look at Ed's smile!



Gloria is escorted by Roger Davis.

Queen Sandy twists it up!



What a beautiful bevy!

Everyone seems to be enjoying the Queen's entertainment.



Miss Flame



ROW ONE: Miss Senior, JENNIFER KINOLAU; Miss Flame, PATRICIA RILEY; Miss Senior, SUZANNE MITCHELL; Miss Senior, DONNA BOWER. ROW TWO: Miss Freshman, KATHY RAINES; Miss Sophomore, GLORIA BOLTON; Miss Junior, CAROLYN PAYNE.



Look at the birdie, Mike!



Miss Flame receives her trophy from Bill Diller.



What are you looking for, Pat?

Miss Spring



Junior, SUSIE BRESIA; Senior, SUE MYERS; Miss Spring, YVONNE YOST; Sophomore, CAROL HAMILTON; Freshman, KATHY RAINES.



Miss Spring waves from her convertible.



Susie and Sue are ready for the parade.



Aren't Kathy and Carol lovely?

Popularity Poll



BEST SCHOLARS
Sue Knauff and Jim Price



MOST POPULAR
Danny Robinson and Pat Wise



FRIENDLIEST
Pat Riley and Bud Sayre



FUNNIEST
Linda Webb and Danny Robinson



BUSIEST
Jim Price and Sue Knauff



MOST TALENTED
Danny Robinson and Charlotte Stephens



BEST ATHLETES
Jerry Spriggs and Ken Coburn



MOST LIKELY TO SUCCEED
Sue Knauff and Jim Price



BEST COUPLE
Linda Webb and Dick Staggs

ACTIVITIES

1964

Senior Class Play



"BOOKS AND CROOKS"
Cast

Danny Robinson.....Gerard
 Donna Bower.....Miss Hamilton
 Charles Kennedy.....Mr. Brown (Francis)
 Ralph Cooper.....Arnold Henley
 Peggy Dunn.....Mrs. Gunklock
 Darwin Boyd.....Lt. Shaw

Carol Cunningham.....Mrs. Blicke
 Arthur Tatman.....Mr. Burkholder
 Phyllis Noel.....Lindy Willams
 Eddie Ciraso....."Legs"
 Sandy Adams.....Goody Gulfhopper
 Mike Howard (not pictured)... Larry



EXTRAS-ROW ONE: A. Wiltshire,
 J. Osborne, R. Summerfield,
 P. Riley, S. Brown. ROW TWO:
 M. Hughes, S. O'Dell, M. Myers,
 B. Shupert, C. Hurst, B. Reedy, D.
 Hornickel.



BAND-ROW ONE: L. Bloomfield, C. Reiser, B.
 Arthur. ROW TWO: F. Bauer, G. Cade, D.
 Edwards, T. Meeker, E. Shepherd.

Senior Class Play



STAGE CREW-B. Brickey, O. Reutzel, R. Flowers, D. Davis.



STUDENT DIRECTOR-
John Wessell



PROGRAMS-D. Sexton, S. Nichols. PUBLICITY-S. Coburn. PROPERTIES-S. Brown. MAKE-UP-B. Reedy, J. Snyder, W. Hill, B. Shupert, P. Riley, A. Wiltshire.



SOUND-R. Vastine. CURTAIN-R. Summerfield. LIGHTING-G. Reynolds.



PROMPTERS-Y. Yost, S. Howard, J. Kinolau.



Junior Class Play



"I want to go, too!"

CLASS RING CAST

Elsie Wilson.....	Toby Heydon	Bart Riordan.....	Brose
Karen Maple.....	Laura Heydon	Denis Simon.....	Henry Heydon
Cindy Kitchen.....	Midge Heydon	Peggy Smalley.....	Barbie
Marilyn Payne.....	Kay	Linda Mowery.....	Mary
Wayne Speas.....	Dick	Jerry Pringle.....	Kip
Paul Meeker.....	Itchy	Sharon Hobes.....	Judy
Karen Odle.....	Miss Jefferson	Ken Hamilton.....	Julian Thorpe
Robert Wellman.....	The Egg Man		



SEATED: D. Simon, C. Kitchen, K. Maple, M. Payne. STANDING: W. Speas, J. Pringle, P. Meeker, P. Smalley, L. Mowery, K. Hamilton, K. Olde, S. Hobes.
(Inserts: E. Wilson, B. Riordan)

Junior Class Play



STAGE CREW and PROPERTIES--J. Turner, D. Wear, T. Urton, J. Turner, S. Bresia, R. Pick, S. Bowling, C. Zorns.



"Psst! What do I do now?"



PROMPTERS and MAKE-UP--ROW ONE: R. Liles, S. Distel, J. Virgin. ROW TWO: C. Perry, L. Haws, S. Bresia, C. Krekeler, C. Norman, A. Perry.



"Any one for a fast game of Russian roulette?"



STUDENT DIRECTOR--Judy Kegley
ADVISER--Mrs. Orlett



PUBLICITY, PROGRAMS, and TICKETS--C. Norman, R. Entler, C. Payne, M. Boling.

Arsenic and Old Lace



ROW ONE: S. Penn, S. Knauff, S. Adams, P. Dunn. ROW TWO:
B. Hamm, L. Cooper, D. Boyd, G. Reynolds, J. Pringle, D. Staggs,
D. Robinson.



"The devil it's your turn!"



"For gosh sakes, Harry! You forgot the
Kleenex!"



"All right gang, let's all sing along one
more time."

Quotes

"Oh, Larry,



...you're impossible!"



"Oh, excuse me, Mr. Thorpe!"

"Francis, wake up!"



Quotes



"There's about one too many boys around here, Toby."

"Thank you for the pills, Miss Hamilton."



"Uuck!"

Candid



One thing about the band--they're NEAT!



True and lasting friendships are made at West, by golly!



Is it true blondes have more fun?



Boy, ya really know how to hurt a fella!



Man, like you've got to shake this persecution complex!

Candid



"Yes, that's one ham on rye....."



"By George, he did break his leg, didn't he?"



Having a royal ball!



"Oh, Clyde, you finally got your Social Security!"



"Well.... I guess we could take two boxes of Girl Scout cookies..."

Candid



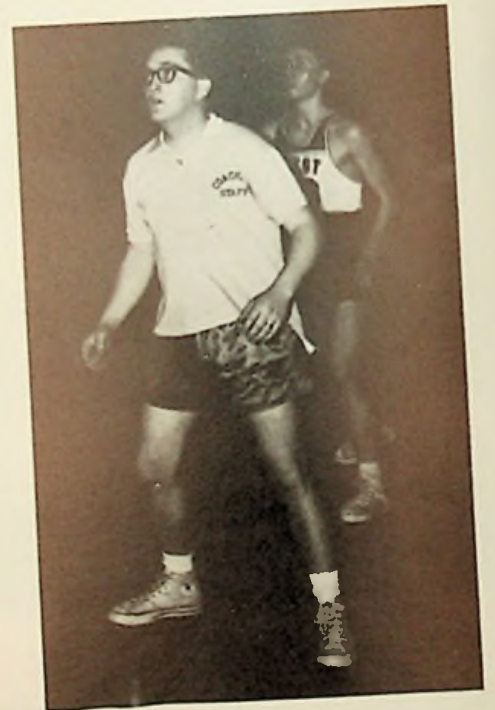
"Then there's the one about the traveling elephant....."



"She loves you, yeah, yeah, yeah....."



"You take the high road....."



"Gee, he IS a tall one!"



"All right, who thieved the ball?"

Candid



"You mean the poker game's called off?"



"Well, I did it again!"



"But all I did was hit
one teensy, weensy,
little ol' truck!"



"And then she asked me how OLD I was!"



"Are you sure this is how the
Rockettes started?"



"Well, men, what goes up--MUST come down!"

More Candid



If this method fails, try the usual method of artificial respiration.



"Man, this is a TOUGH basement"



"You guys in the corner, knock it off!"



"Awe, come on, Mr. Lundy, it's only a little ole game!"



"But you said I should 'develop my creativity'!"



More Candid



"I just love these assemblies, don't you?"



"'Northern Dancer' doesn't have anything on us, kid!"

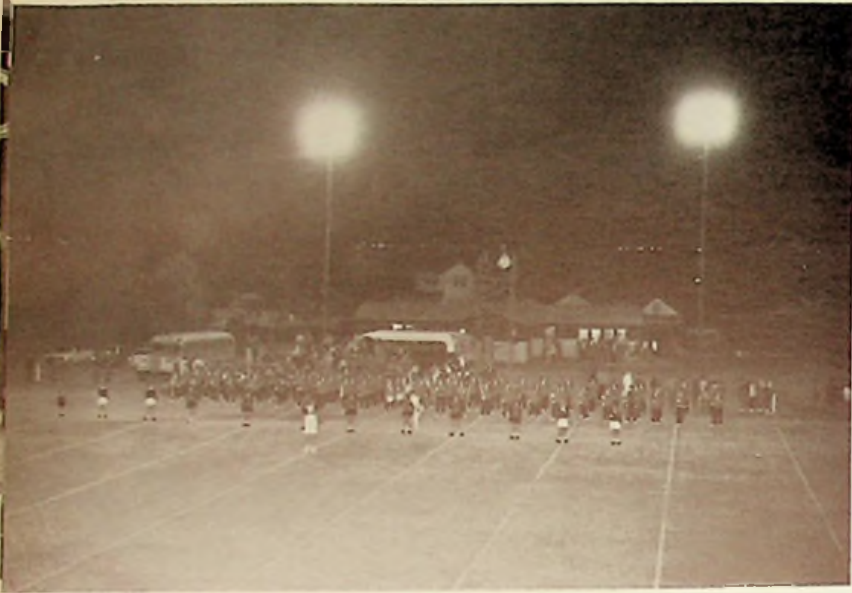


"Don't you think Sam is kinda over-doing this 'house-warming bit?'"



"This is not what I had in mind when I entered show biz!"

Familiar Things



Our snappy band getting ready to take the field.



Halls of Ivy(?)



Fun at a school dance.



Old Man Winter comes to West.



One of our pert majorettes.



Make-up for a class play and PRESTO!



Cheerleaders discussing the game.



FOOD!!



Always trying to win.



Mrs. Brickey hard at work.



"The Magnificent 7" giving out with a rocker.



A twist at the football party.

Honor Society Induction



A torchbearer goes into the audience to tap a new inductee.



A nervous inductee lights her candle from the President's.



A senior member gives a speech on the requirement of Character.

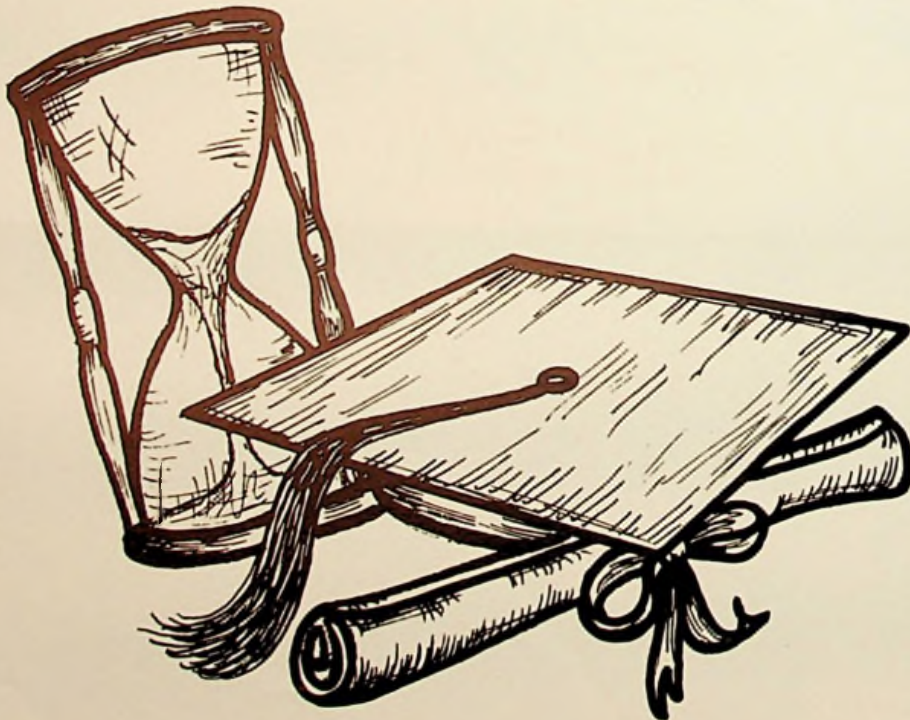
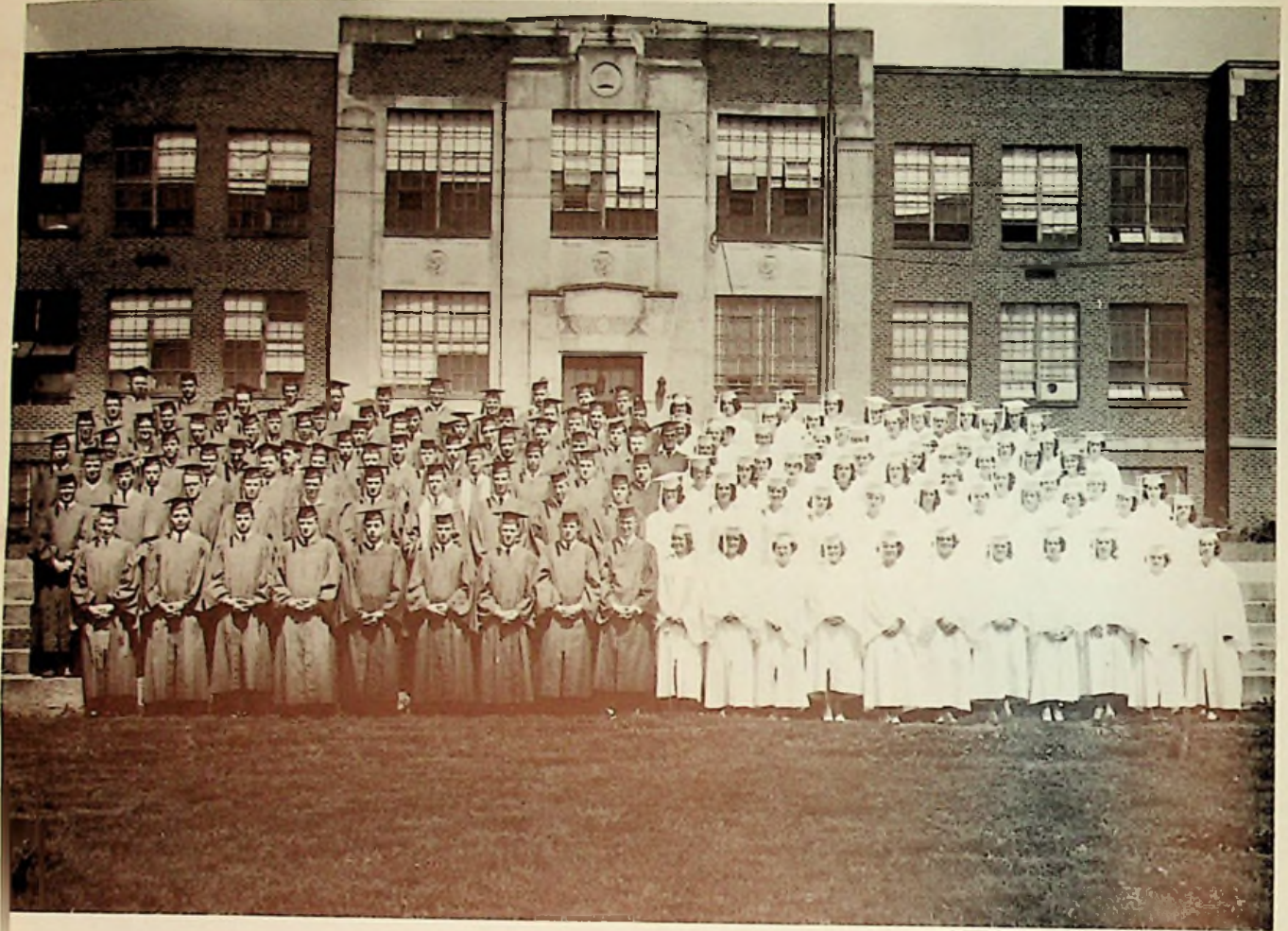


A junior member receives her pin and membership card.

M i s c e l l a n e o u s



Class of 1964



ADVERTISEMENTS

1964

SCHISLER PROVISION COMPANY

Fresh and Smoked

Meats

RETAIL

801 John Street

Phone EL 3-4670

PLANT

Spring Lane and Railroad

Phone EL 3-2139

PAUL'S DAIRY BAR

WEST OF PORTSMOUTH

ROUTE 52 RAVEN ROCK

Milk Shakes

Sundaes

Floats

Hot Fudge

Other Drinks

Barbecue

Footers

Good Sandwiches

Chuckwagon Steak

Chicken in Basket

Hamburgers

Hot Dogs

Cheese Burger

Pizza Steak



PORTSMOUTH BAPTIST CHURCH

1702 Sixth Street
QUENTIN KING, Pastor
Ride Our Free Bus To And From Church
Phone EL 3-2909

- *Bible Teaching Sunday School-----10:00 A.M.
- *Christ Centered Preaching---11:00 A.M.; 7:30 P.M.
- *Wednesday Evening Prayer Service---7:30 P.M.
- *Young Peoples' Meeting (Saturday)---7:30 P.M.

"Back to the Bible, Home, and God."

MITCHELL'S SERVICE - STATION



Galena Pike

West Portsmouth, Ohio

Ph. UL 8-9121

Compliments of



**RAY FERGUSON
SHELL SERVICE**

12th and Robinson at Franklin

Portsmouth, Ohio

**GLENN'S (ASTRONAUT)
PLUMBING CO.**

Sewer Service-Septic Tank Cleaning

Electric "EEL" Service

Free Plumbing Estimate

Phone UL 8-4491

MOBIL HEAT

The Clean Burning
Heating Oil

Mobil Oil Co.
2703 Galena Pike
West Portsmouth, Ohio
UL 8-2095

PORTSMOUTH SELECT DAIRY

Quality Dairy Products
Since 1918

Phone EL 3-8290
2345 Gallia Street
Portsmouth Ohio

OHIO VALLEY WHOLESALE COMPANY

Wholesale Tobacco and Candy

Phone EL 3-4171
714 Fifth Street
Portsmouth Ohio

E.J. KENRICK COMPANY

Since 1886

Distributors of
Candy, Cigars, Cigarettes,
and Sundries
Phone EL 3-3165
119 Market Street
Portsmouth, Ohio

HERMANN'S

"Quality Meats"

Fair Prices

EL 3-3660

221 Market Street

Portsmouth Ohio

BROCK FUNERAL HOME

Licensed Directors

W. Dale Brock

Ruby D. Brock

Glenn W. Brock

Gallia and Waller Sts.

Portsmouth, Ohio

Gallia at Hayport Road

Wheelersburg, Ohio

Atlas Fashions

Since 1885

Portsmouth Ohio

"Everything Fine in the Pastry Line"

ANNE'S PASTRY SHOP

Phone EL 3-5790 708 Chillicothe St.

Portsmouth, Ohio

Congratulations

to

The Class of '64

From

DAVE'S MOBILE

SERVICE

**LYNN
FUNERAL HOME**

"One of Portsmouth's Oldest"

Oxygen Equipped

PAUL GALLAGER, Owner

Phone EL 3-2770

303 Washington Street

Portsmouth, Ohio

**MART GLYNN
FUNERAL HOME**

Air Conditioned-Modern

EL 3-2700

Our Work Speaks For Itself

1147 Second Street

Portsmouth, Ohio

**SAND'S
SPORTING GOODS**

Cameras, Film, Developing

Gallia and Gay Sts.

Phone EL 3-6310

Portsmouth, Ohio

Congratulations of

Class of '64

HERMS

FLORAL COMPANY

837 Sixth Street

Portsmouth Ohio

Congratulations



**KIRBY KRAFT
FLORISTS**

111 Court St.
EL 4-2280

DOERR

and ASSOCIATES

Display Designers and Manufacturers

EL 3-2125

Portsmouth Ohio

CHRISTIAN

LUMBER COMPANY

1403 Fourth Street

West Portsmouth, Ohio

Phone UL 8-5401

HALL & WATT'S

Concrete Septic Tanks

Backhoe Piggng and

Building Materials

Phone UL 8-1042

1815 Galena Pike

West Portsmouth, Ohio

VALLEY VIEW SERVICE STATION

"Mobilgas-Mobiloil and Mobil
Tires and Batteries"

All Kinds of Mechanical
and Body Work

Galena Pike

West Portsmouth, Ohio

Phone UL 8-5281



NEWBERRY SPORTING GOODS

"Specializing in Team Equipment"

816 Gallia Street

Phone EL 3-0644

Portsmouth Ohio

TRUCK & TRACTOR GARAGE



International Sales and Service

F. R. Cook, Owner

Fifth and Market Streets

Portsmouth Ohio

BOWER'S BARBER SHOP



1223 9th Street

West Portsmouth, Ohio

SEE PETE COBURN

Capitol Pontiac-Buick, Inc.

1002 Washington St.

Portsmouth, Ohio

Telephone EL 4-3151

Home UL 8-6042

Martini's

"One of Ohio's Good Stores"

WISHES THE
GRADUATING
CLASS OF 1964

*HEALTH
*HAPPINESS
*SUCCESS

STAKER'S

Rexall Drugs
West Portsmouth's Family Pharmacy
Galena Pike West Side Center

West Portsmouth
Ohio
UL 8-3131

Prescription Our Specialty

STAHLER'S PHARMACY

GEORGE E. WELDE

Your Rexall Store
For Your Drug Needs

208 Market St.

EL 3-2569
Portsmouth, Ohio

VAN'S SOHIO SERVICE

Clayton and Carrie

Van Curen

1 1/2-miles West of Friendship
Route 52

ALLEN'S BARBER SHOP

Barber on appointment or walk in

811 7th Street EL 3-5819

Portsmouth, Ohio

MARKET ST. HARDWARE

Hardware & Appliances

Phone EL 308959

217 Market St.
Portsmouth Ohio

ROBERTS GROCERY

Groceries That Are Fresh And
At Reasonable Prices Always

Pleasing You Pleases Us

1127 Calverts Lane
West Portsmouth, Ohio
Phone UL 8-5571

WILLIAMS GROCERY

Phone UL 8-4123
1413 Washington Boulevard
West Portsmouth, Ohio

BURCHETT AUTO UPHOLSTERING CO.

- *Custom Seat Covers
- *Convertible Tops
- *Complete Auto Upholstery
- *Boat Tops
- *Cushions
- *Covers

Phone EL 4-2234
915 10th St. Portsmouth, Ohio

CAROLINA LUMBER CO.

1011 Lincoln Street
Portsmouth Ohio
Phone EL 3-2171

BARB'S BEAUTY SHOP

1359 5th Street
West Portsmouth, Ohio

BAZLER COAL COMPANY

245 4th Street

EL 3-0309

Wholesale and Retail

Coal and Fuel Oil

Portsmouth Ohio

OHIO ASPHALT

PAVING COMPANY

823 Prospect Street

Portsmouth Ohio

EL 3-2101

Reasonable Rates

Free Estimates

FREDERICK COBURN

Painting

Interior - Exterior

Phone PR 6-7297

The

CITIZENS SAVING and LOAN ASSOCIATION CO.

505 Chillicothe Street

Portsmouth, Ohio

HOLLAR'S COINS

Buy • Sell • Trade

Portsmouth, Ohio

1910 Robinson Ave. Phone EL 31515

PARTLOW GULF SERVICE

17th Kendall Ave.

Portsmouth, Ohio

"ABE" AGANBRIGHT

INSURANCE

Call us For Any Insurance Needs
821 Fourth Street
Portsmouth, Ohio
Phone EL 3-6480

WRIGHT HATCHERY

430 2nd St.
Portsmouth, Ohio
Phone EL 3-2570
Feed - Seed - Fertilizer
Chicks and Supplies

GENE'S GROCERY

611 Offner
Portsmouth, Ohio

HUFFMAN'S PURE OIL

6th & Gay Streets
Portsmouth, Ohio
Phone EL 3-9252

Congratulations to the
Class of '64'

J.W. STIR CO.

Floors - Walls - Ceilings
516 2nd EL 3-2105
Portsmouth

CUNNINGHAMS ACE HARDWARE

Frigidaire
Maytag
Amana
Appliances
Portsmouth

Our 51st. Year

WOLFF

Quality Clothes For Men and Boys
Portsmouth

Phone EL 4-3136

STIR'S

Furniture & Appliances
624-626 Second St.
Portsmouth, Ohio

**PORTSMOUTH MONUMENT
COMPANY**

1617 Offner Street
Portsmouth, Ohio
Phone EL 3-4055

WESTSIDE CLEANERS

NAOMI EUBANKS
Cityview and Galena Pike
Phone UL 8-1331
West Portsmouth Ohio

Best Wishes to
Class of "64"

From

MILLHUFF DEPARTMENT

Store and Super Market

BARQ'S BOTTLING CO.

BARQ'S
Portsmouth Ohio

AMERICAN FOOD MARKET

Imported & Domestic Foods
Superior Brand Macaroni
Cheese and Olive Oil
1417 Findlay Street
Portsmouth, Ohio

LINDBURGH INN

Specialists in T-Bone Steaks,
Dinners, Luncheons and
Sandwiches
Phone UL 8-2236
Route 52

**AMERICAN SAVINGS and
LOANS ASSOCIATION**

Insured Savings-Home Financing
503 Chillicothe Street
Portsmouth, Ohio

WARNOCK'S DOLLAR STORE

302 Chillicothe Street
Phone EL 3-3511
Portsmouth, Ohio

"Howard & John"

BERNDT INSURANCE

709 Sixth Street

Portsmouth, Ohio

EMRICK

FUNERAL HOME

1422 Lincoln Street

Phone EL 3-4161

Portsmouth, Ohio

WEST SIDE AUTO PARTS

Route 52

Phone UL 8-6121

DEREXSON'S

HUMBLE SERVICENTER

12th & Lincoln St.

Portsmouth, Ohio

EL 3-9251

Compliments of

PIATT FUNERAL HOME

Phone EL 3-3600

926 Ninth Street

Portsmouth

Ohio

BRIDWELL'S

GENERAL MERCHANDISE

Phone UL 8-2864

Friendship

Ohio

**CRISPY CREME
DONUTS**

1209 Gallia Street

Portsmouth Ohio

NORMA JEAN'S BEAUTY SALON

Carey's Run

**BOB and FLOYD
SERVICE STATION**

401 Second Street

Phone EL 3-9283

Portsmouth

Ohio

**WEST END
ELECTRIC CO.**

"Electrical Contractors"

Commercial and Industrial

Light and Powers

Ralph J. Yuenger, President

714 Tenth Street

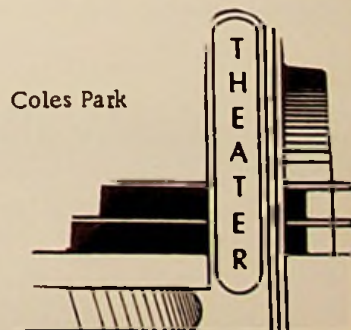
Portsmouth Ohio

Congratulations to the

Class of '64

**SUNSET
DRIVE INN**

Coles Park



ROBERTS JEWELERS

"Teen Age Accounts Welcomed"

421 Chillicothe Street

Portsmouth

Ohio

Compliments of

DODD'S MARKET

3946 Rhodes Avenue

Portsmouth

Ohio

RICHARDS NEWS

1828 Gallia

Portsmouth, Ohio

Reading Center
of Portsmouth

REITZ

MUSIC CENTER

713 6th Street

Portsmouth

Ohio

WINDEL - HOWLAND

FUNERAL HOME

1503 Offnere

EL 3-0500

Portsmouth

Ohio

PEPSI

2415 Scioto Trail

Phone EL 3-3126

Portsmouth, Ohio

WILMA SMITH'S

BEAUTY SALON

Dry Run

Portsmouth

Ohio

BENNETT'S

MARVEL CLEANERS

150 Main Street

South Shore, Kentucky

Phone YE 2-3722

BURCHAM EQUIPMENT CO., INC.

1122 Findlay Street

Portsmouth, Ohio

Phone EL3-1989

Distributors-Restaurant, Institutional

And Bar Supplies And Equipment

SETTY GROCERY

AND GARAGE

Route 125

Portsmouth, Ohio

Congratulations
Class of "64"

CARR'S JEWELRY STORE

811 Gallia Street

Portsmouth

Ohio

DON C. STOCKHAM & SON

General Store

Since 1914

PORTSMOUTH INTERSTATE BUSINESS COLLEGE

815 Gallia Street

Portsmouth, Ohio

"The School That Means Business"

WURSTER DRUG COMPANY

"Portsmouth's Prescription Centers"

Established 1897

419 Chillicothe Street

1221 Kinney's Lane

Portsmouth, Ohio

KAY JEWELRY COMPANY

For the Most Beautiful

Wedding Gifts

It's O.K. to Owe Kay

817 Gallia Street

Portsmouth

Ohio

LIVINGSTON & CO.

Scrap Iron-Copper-Brass

Used Auto Parts

K. Edward Livingston--Owner

2502-2560 Gallia St.

Portsmouth, Ohio

Phone EL3-0763

FARLEY'S GROCERY

Calvert Lane
Phone UL 8-3034

West Portsmouth

Ohio

HUGHES GENERAL STORE

1376 Tenth Street

West Portsmouth

Ohio

MARTIN PLUMBING and HEATING CO.

1538 Gallia Street

Portsmouth, Ohio

Phone EL 4-1250

Compliments of

SUNSET CLASSIC RAINBOW

Bowling Lanes

HIGGINS TOGGERY

McDermott, Ohio

Clothing and Shoes

Compliments of

LUTE PUMP & PLUMBING SUPPLY

655-627 Second Street

Portsmouth

Ohio

KOBACKER'S

"Your Friendly Store"

Phone EL 3-1171
405 Chillicothe

Portsmouth

Ohio

ZIMMERMAN'S

Office Supplies

Office Machines

810 Chillicothe St.

Portsmouth

Ohio

MOORE'S

Two Big Stores to Serve You

209 Market St.

Portsmouth, Ohio

Gallia St.

New Boston, Ohio

Compliments of

CUSTOM CARPET CO.

"King of Carpets"

820 Fourth Street

Portsmouth

Ohio

Compliments of

LIBERTY CAFE and CARRY OUT

1430 Chillicothe

Portsmouth

Ohio

NORMA JEAN'S BEAUTY SHOP

Hair Styled as You like It

Phone UL 8-3831

Route 1

Carey's Run

Congratulations Class of '64

THE STANDARD SUPPLY CO.

Wholesale Distributors

Plumbing-Heating-Air Conditioning

Electrical-Industrial Supplies

1004-1012 Findlay Street
Portsmouth, Ohio

ARTHUR H. ADAMS

Electrician

1332 Fourth St.

West Portsmouth, Ohio

Phone UL 8-2721

THOMPSON'S TIRE SERVICE

Don Thompson

Hawkinson Treads

1118 Chillicothe St.

Portsmouth, Ohio

Ph. EL 3-1260

B & B Loan Co.

Diamonds

Watches

Luggage

837 Gallia St.

Portsmouth

Ohio

Compliments of

ZUEFLE'S JEWELERS

Keepsake Diamonds

"Portsmouth's Oldest Jewelers"



533 Second Street

Portsmouth, Ohio

WEBB'S SPORTING GOODS & MARINE SALES

633 2nd Street

Portsmouth, Ohio

Phone EL 3-5440

ABC' FURNACE COMPANY

213 Market St.

Portsmouth, Ohio

Phone EL 3-3939

When You Young Folks Get
Married
Buy Your Home Furnishings at

DISTEL FURNITURE CO.

Phone EL 3-3810
616 Chillicothe Street
Portsmouth, Ohio

LEET LUMBER CO.

"Quality Lumber and
Building Supplies"

931 Washington Street
Portsmouth, Ohio

Compliments

of

DR. J. R. SHEETS

BIHL OFFICE EQUIP. & SUPPLY CO.

Sales - Service - Rentals

920 Gallia
Portsmouth, Ohio
EL 3-2311

**NEWMAN'S TIN SHOP
and SUPPLY, INCORPORATED**

434 Second Street
Phone EL 3-3549

Portsmouth Ohio

WEST END FURNITURE COMPANY

518 Second Street

Portsmouth Ohio

WILLIAMS MARKET

516 Poole Street

West Portsmouth, Ohio

MONTGOMERY WARD & CO.

514 Chillicothe St.
Portsmouth, Ohio

EL 3-3111

R. L. 'DICK' KIZER

REALTOR

713 Second Street
Portsmouth, Ohio
Phone EL 4-1789

PORTSMOUTH PAINT CO.

Dean & Barry Paints
Pratt - Lambert Paints
Wallpaper, Janitor Supplies
Phone EL 3-7180
928 Gallia Street

Portsmouth Ohio

PORTSMOUTH T.V.

1801 11th

Portsmouth, Ohio

EL 3-7369

Compliments of

PATSY INN

Portsmouth Ohio

BRUSH ELECTRIC CO.

10 Glover
Portsmouth, Ohio
EL 3-1920

DEHNER DEPARTMENT STORE

613 Chillicothe
Portsmouth, Ohio

Compliments
of

SAMUEL H. COX

KAH PRINTING CO.

711 Chillicothe
Portsmouth, Ohio

ROBERT CONLEY GROCERY

Groceries - Fresh Meats
and Notions
Phone UL 8-1852
West Portsmouth Ohio

Compliments of

FRED LESTER

HAROLD'S RESTAURANT

Delitefully Different Cocktails

1630 Gallia Street

Portsmouth, Ohio

HOBES FRIGIDAIRE APPLIANCES

"The Complete Line of
Frigidaire Appliances"

1101 Gallia St.
Portsmouth, Ohio
Phone EL 3-2433

EVERT HOBES, Owner

The Place Where Service Counts

SAMUEL LEVI & CO.

Furniture
General Electric Appliances

840-844 Gallia Street

Portsmouth Ohio

NELL'S RESTAURANT

"For the Best in Home Cooked
Meals and Friendly Service"

2029 Galena Pike

West Portsmouth, Ohio

LOWES FINE FOOD

(You are Welcome)

908 Gallia Street

Portsmouth Ohio

Compliments of

CHARLES GROCERY

Poole Street

West Portsmouth, Ohio

SUMMER & SON, INC.

"Everything Musical"

Our 93rd Year

319 Chillicothe Street

Portsmouth Ohio

AEH'S FOOD MARKET

Home of the BEST in Fresh
Vegetables, Meats and Groceries

Phone EL 3-6189

345 Second Street

Portsmouth, Ohio

Compliments of

THE BAKE SHOP

817 6th Street

Portsmouth Ohio

Phone EL 3-3340

FARRIS MUZZLE GUNS

Target Guns & Equipment
Guns for Big Game

1640 Gallia Street

Portsmouth, Ohio

BLUE BIRD BAKERY

4208 Gallia Street
New Boston, Ohio
Phone GL 6-4345
and

228 Harding Ave.
Sciotoville
PR 6-7075



Compliments of

CARDINAL EZ-CHECK SUPERETTE

DRY RUN

Portsmouth, Ohio

Compliments of

SEARS, ROEBUCK and CO.

301 Chillicothe St.

Portsmouth, Ohio

**GEMPERLINE
FURNITURE CO.**

612-14-16 Second Street
Portsmouth, Ohio

McKEE'S GROCERY

1920 Washington Boulevard
West Portsmouth, Ohio

Compliments of

GRIERSON'S RESTAURANT

611 Chillicothe Street
Portsmouth's Newest
Restaurant

HIBBS HARDWARE

1723 10th Street
Portsmouth, Ohio
Phone EL 3-2995

Compliments

of

DR. BERWIN MILLER

Compliments

of

DRS. BABCOCK & BABCOCK

JARVIS JEWELRY CO.

2901 Gallia
Portsmouth, Ohio

Tommie Nesbitt
at

SCIOTO DAIRY BAR

5810 Harding Ave.
Sciotoville, Ohio

On Highway 335
Special on Footers

Compliments

of

DR. N. E. LETT D. D. S.

Compliments

of

**COOPER & FERRELL
AUTO SALES**

Compliments

of

ALLEN'S DAIRY BAR

FRISCH'S BIG BOY RESTAURANTS

2004 Scioto Trail
Gallia & Kendall
Rosemount Point

Office 20th & Scioto Trail

**FRANKLIN
RESTAURANT**

Cocktails
"Meals That Appeal"
Scioto Trail Route 23
One Mile North of Portsmouth

DUNN COAL CO.

Wholesale and Retail
Yard and Office
Gallia at Broadway
EL 3-2197
Portsmouth Ohio

Compliments of

FERGIE'S RESTAURANT

2nd Street
Portsmouth, Ohio

Compliments
of

NICKEL'S SOHIO

Compliments of

PORTSMOUTH GLASS CO.

Paint And Glass
515 2nd
Portsmouth, Ohio
Paul Duplain, Owner
Dial EL 4-2190

Compliments of

RAVEN ROCK ROLLER RINK

Rt. 52
Portsmouth, Ohio

Compliments of

**BIERLEY HENDERSON
TIRE SALES**

12th & Chillicothe
Goodyear Tire Distributors

TACKETT'S BRIDGE CARRY OUT

201 2nd St.
Portsmouth, Ohio

VETTER & SONS, INC.

INSURANCE

739 5th Street
Portsmouth, Ohio

FULLER'S SOUND ELECTRONIC

SUPPLIERS, INC.

7th and Findlay Street
Portsmouth Ohio

BILL LITZ

Viaduct Mobil Service
Phone EL 3-8250
Portsmouth Ohio

BROWNIE'S BEAUTY SHOP

DIXIE BROWN-operator
Galena Pike
West Portsmouth Ohio

Compliments
of

TAYLOR'S MARKET

PINSON FARM

EQUIPMENT CO.

Lucasville
Phone BL 9-5901

HINZE'S BEAUTY SALON

1533 3rd Street
West Portsmouth, Ohio

CLASSIC BARBER SHOP



Luither Caudill
Phone EL 3-4404

JONES HAMBURGER

INN & DRIVE INN

411 2nd Street
Portsmouth, Ohio
Phone EL 3-1008

Compliments of



3001 Scioto Trail
Portsmouth, Ohio
Telephone EL 3-6580

ELLEN'S BEAUTY SHOP

220 Custus Street
West Portsmouth, Ohio
Phone UL 8-4722

Cecil Caudill

ALUMINUM PRODUCTS CO.

1628 Grandview
Portsmouth, Ohio
Phone EL 3-0668

VALLEY VIEW AUTO SALES



Galena Pike
West Portsmouth, Ohio

McCLAIN AUTO SALES



917 Chillicothe Street
Portsmouth, Ohio



THE RECORD SHOP

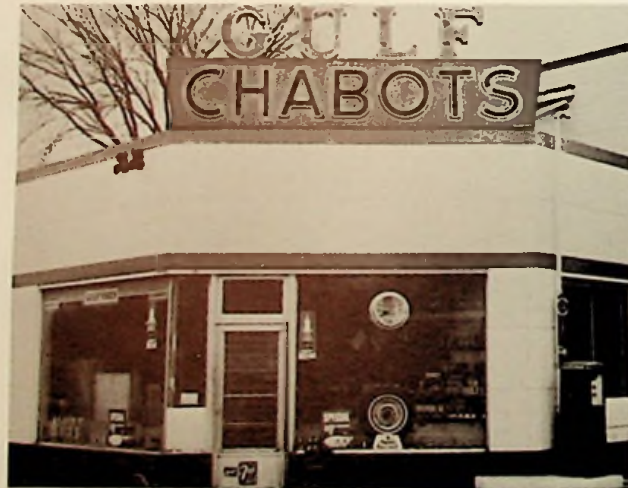
"The House of Music"

Roy Rodgers Esplanade

Portsmouth, Ohio

"MUSIC SWEET OR WITH A BEAT"

CHABOT'S SERVICE STATION



1428 Gallia at Offnere

Portsmouth, Ohio

Phone EL 3-2185

STONE'S DAIRY BAR



"All Kinds of Treats"

Galena Pike

West Portsmouth, Ohio

MORGAN BROTHERS JEWELERS



VERNON AND VICTOR MORGAN, Owners

734 Fifth Street

Portsmouth, Ohio

Phone EL 3-3259

Congratulations to

The Class of '64

WEST END RECORDS

809 Second Street

Portsmouth, Ohio

ADAMS BAKING COMPANY

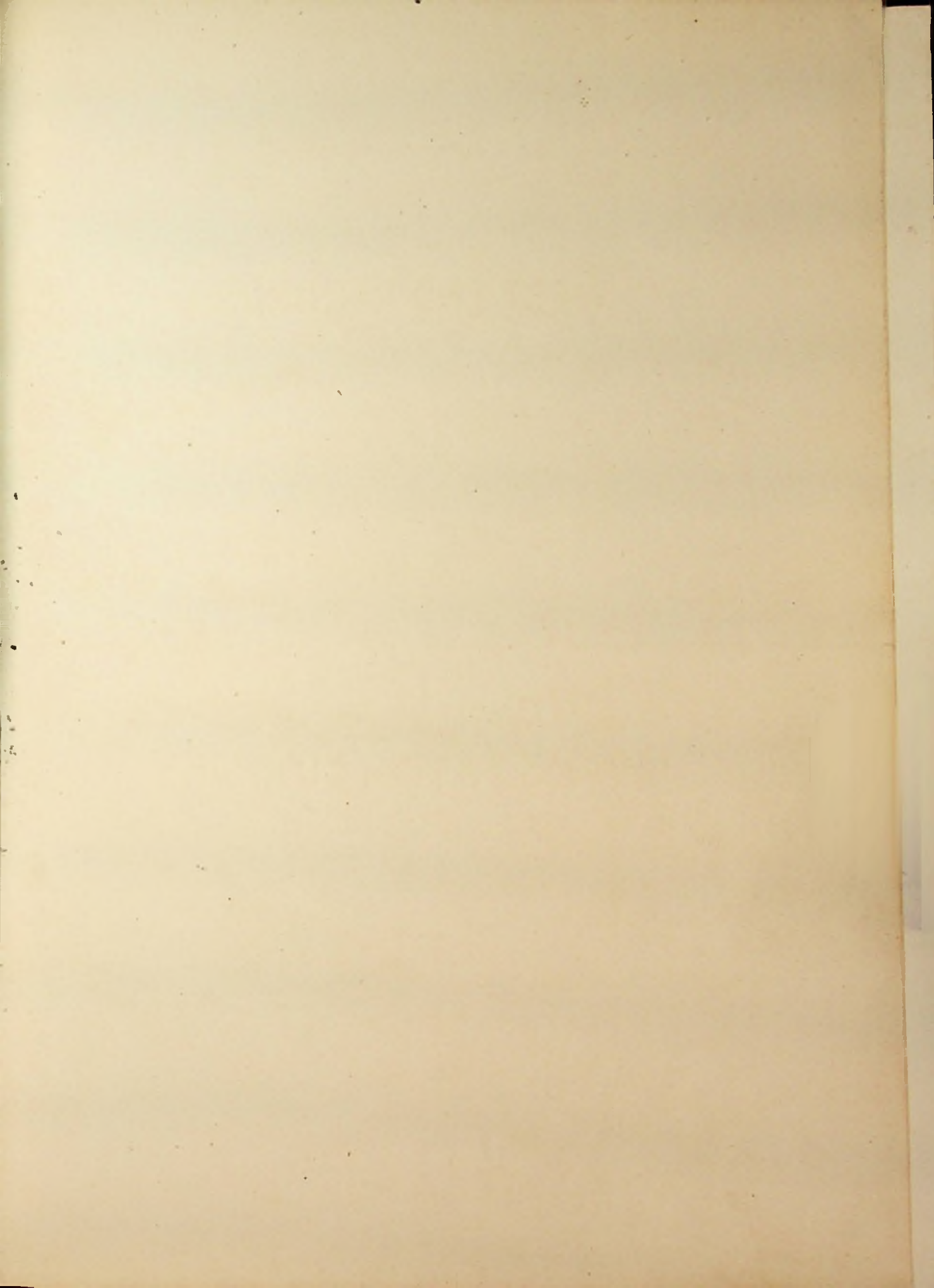
Fine quality bakery products for more than 55 years.

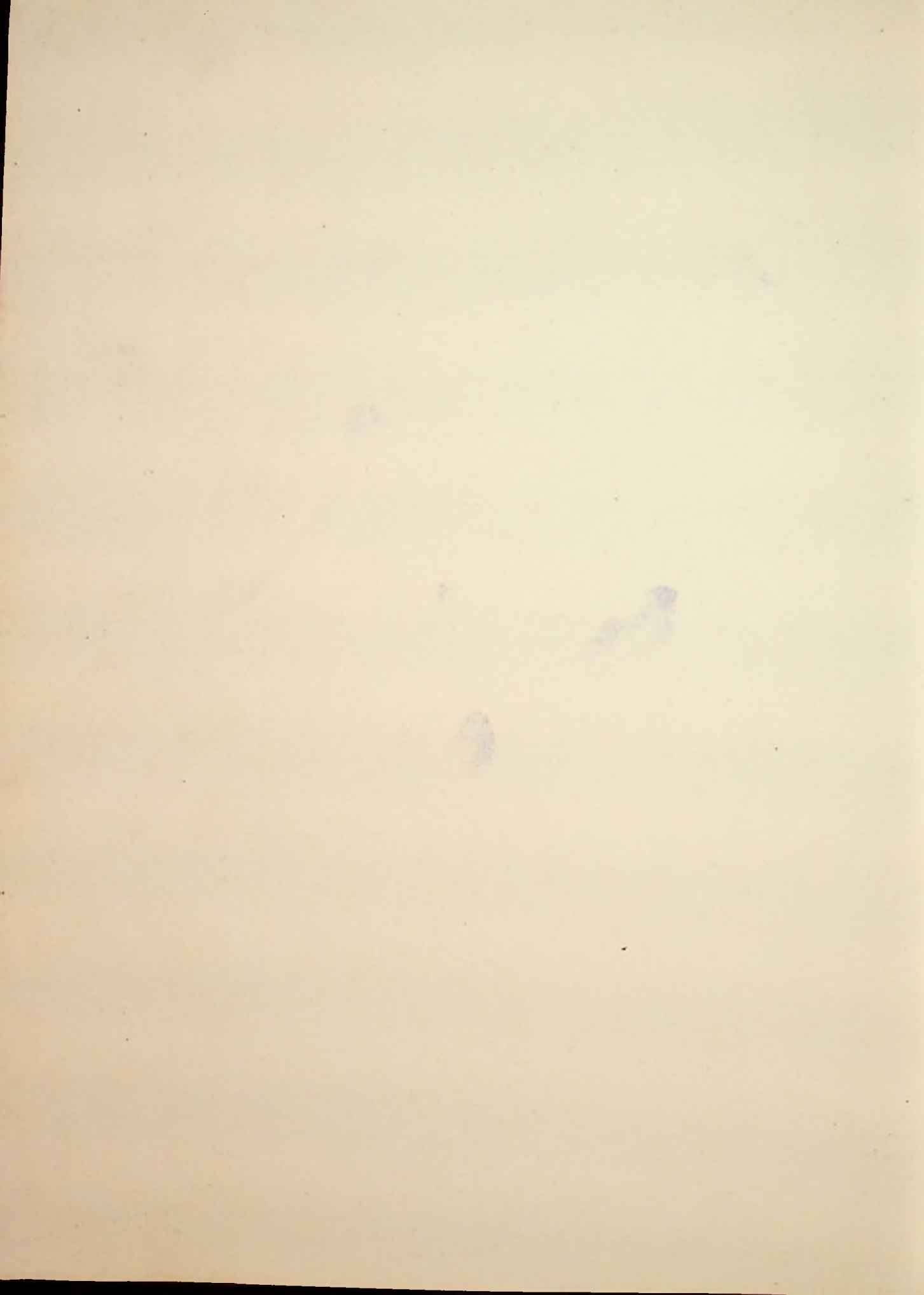
Pan Dandy Bread

1009 Offnere St.

Portsmouth Ohio

Dial EL 3-0290





1871