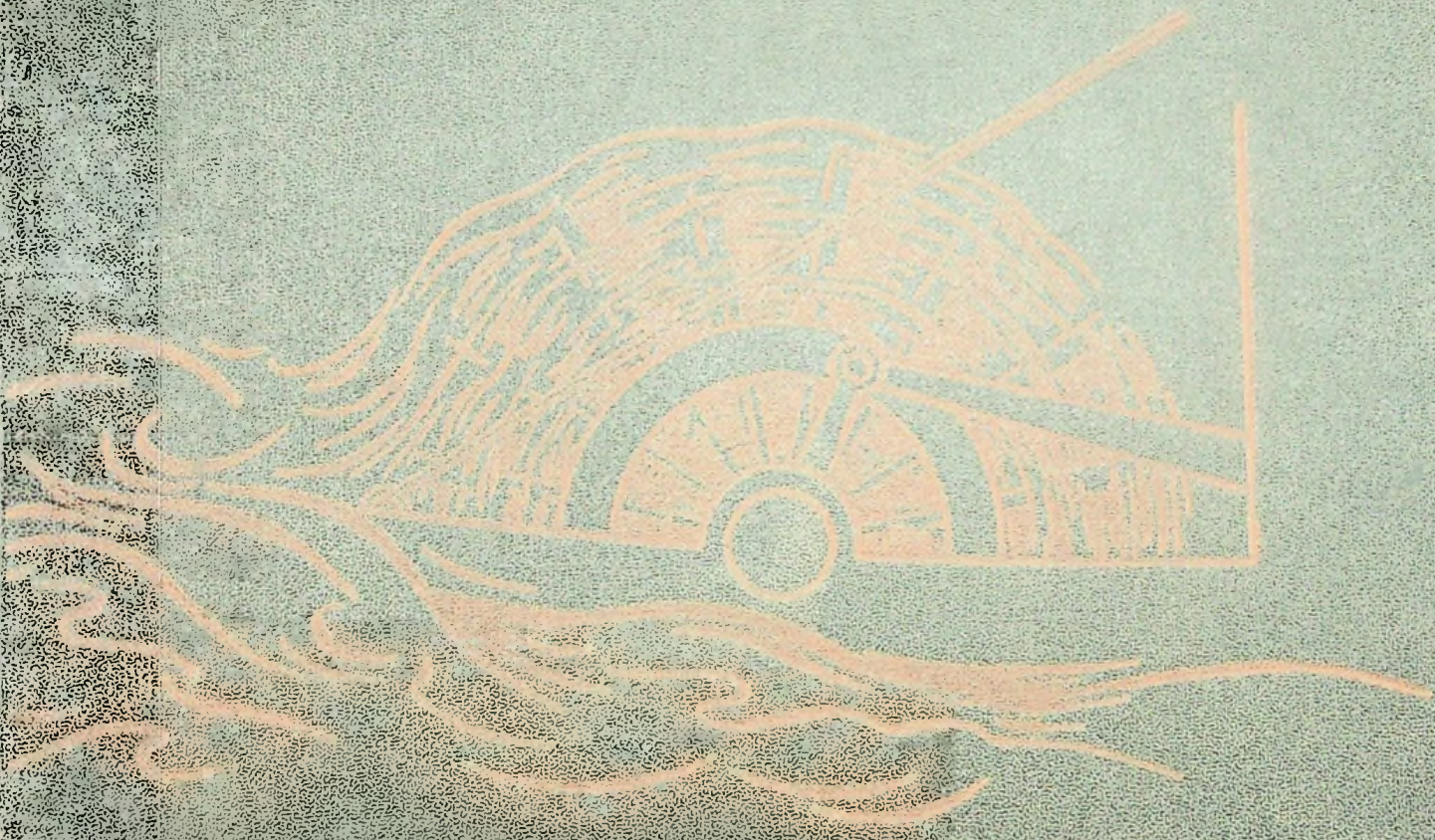


The Wheel



1942

Orville Kinker

"Keep 'em flying."
Gaye Burke
Ruth Humphrey
Eleanor Morrison
Burke
Humphrey
Morrison

Teachers

Board of Directors
J. J. Smith
Leonard B. Burns
Mitchell

Commercial
Walter Wells
Harley B. Gooding
Floyd W. Schneider
Eva Stella
Vaughn S. Snoop
Orville Kinker
Eleanor R. Morrison
Ernest C. McKinney
Catherine
Morrison
Wells
Gooding
Schneider
Snoop
Kinker
Morrison
McKinney



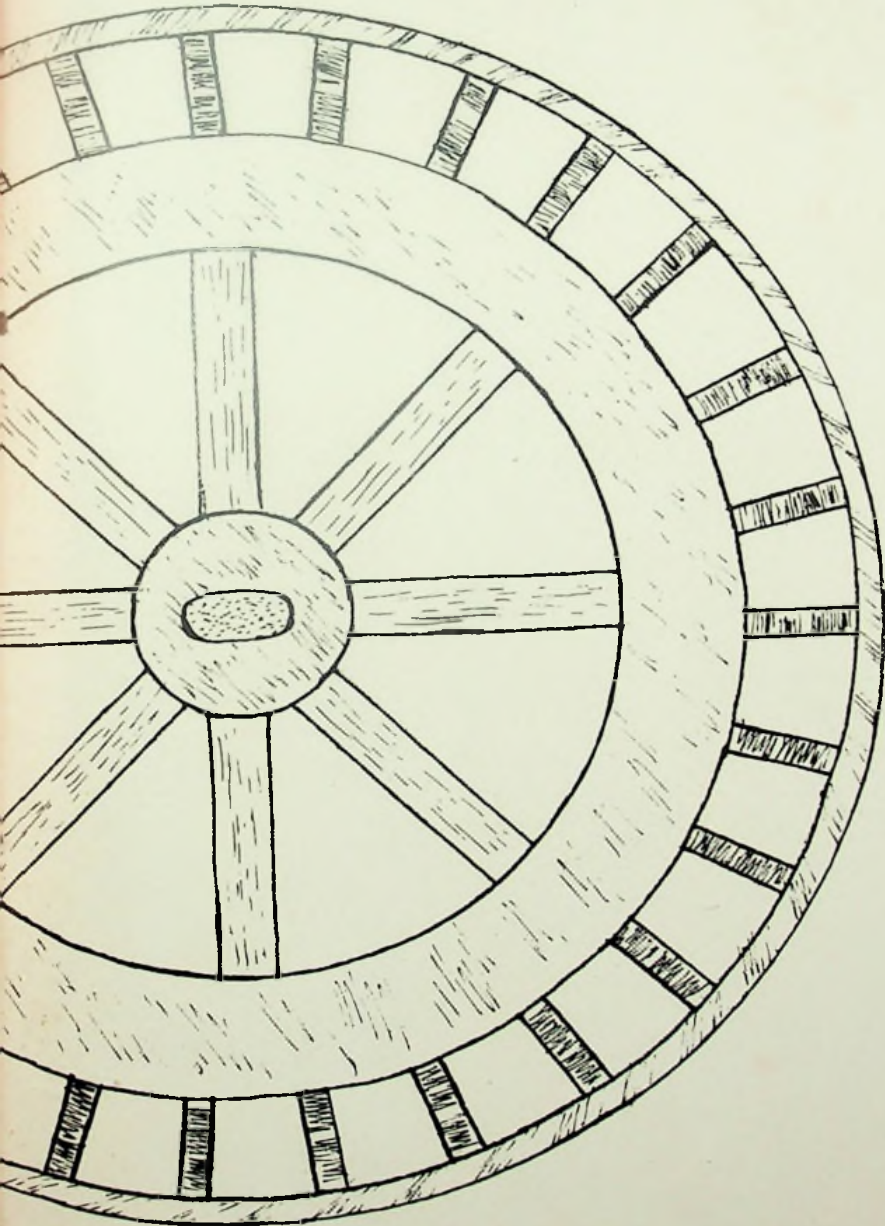
60

Te

THE WHEEL

PUBLICATION OF WHEELERSBURG HIGH SCHOOL

NINETEEN HUNDRED FORTY-TWO



As wheels of industry rotate throughout the nation

As paddle wheels of river packets churn the Ohio

So wheels of progress turn in the schools of the community portraying in miniature the life of America.



WHEELERSBURG HIGH SCHOOL





C. HAROLD DUDUIT
Supervising Principal

*Bachelor of Science in Education, Master of Science in Education, Ohio University.
Wilmington College, University of Florida, The Ohio State University. Member of Kappa Delta Pi, National Honorary Education Society*

D E D I C A T I O N

To you, Mr. Duduit . . . who have turned the wheels of progress toward the advancement of our schools with your eagerness, your keen judgment, and your leadership . . . we Seniors dedicate this, our first yearbook, that your efforts may continue for the betterment of our schools and community.



EDWARD O. McCOWEN

*County Superintendent of Schools
Ohio Northern University, Bachelor of Science
Ohio State University, Bachelor of Science in
Education, University of Cincinnati, Master of
Education.*

Mr. McCowen is one of two of the eighty-eight original county superintendents who have served since August 1, 1914, the beginning of county supervision in Ohio. He is president of the Ohio Educational Association and is now serving his fourth three-year term, elected each time without opposition, as a member of the executive committee of the association. He is also a member of Phi Delta Kappa, national honorary education society.



N. B. POTTS
*Assistant County Superintendent
 Ohio University, Rio Grande College,
 Bachelor of Arts, Graduate Work,
 University of Cincinnati.*



EDWARD R. McCOWEN
*Assistant County Superintendent
 and County Music Supervisor
 Otterbein College, Ohio University,
 Bachelor of Science in Education
 Northwestern University (Graduate
 School of Music)*



WHEELERSBURG BOARD OF EDUCATION

LEFT TO RIGHT, SEATED: SUPERINTENDENT E. D. McCowen; LANDON L. BALL, PRESIDENT; CARL J. HERMS, CLERK; R. L. MAY, STANDING; C. H. DUDUIT, SUPERVISING PRINCIPAL; GEORGE W. SMITH, VICE PRESIDENT; FRED POLLOCK.

FACULTY



ARVY BEVINS

Science

*B S in Science Eastern Kentucky
Teachers College, University of
Kentucky*



LEONARD B. BURNS

Science

*A B Lincoln Memorial Univer-
sity, University of Kentucky,
Marshall College, Ohio Uni-
versity*



AGNES H. GAUMER

English, Latin

*B A Wittenberg College, Uni-
versity of Cincinnati*



HARLEY B. GOODING

*History, Physical Educator,
Coach*

*B S in Education Ohio Univer-
sity, Ohio State*



RUTH HUMPHREY

Commercial, Literature

*A B Ohio University, M A
Ohio State University*



HELEN JONES

Vocal Music

*B S in Education, Ohio State
University, Rio Grande*



ORVILLE KINKER

Mathematics

*B S in Education, Wilmington
College, Rio Grande, Ohio Uni-
versity, University of Cincinnati*



ERNEST C. McCHESNEY

Industrial Arts

*B S in Education, Ohio Univer-
sity, University of Cincinnati*



DONALD McCOWEN

Science

*B S in Education, Ohio Univer-
sity, Ohio State University*

FACULTY



J. H. MITCHELL
Instrumental Music
B S in Education, Ohio University, Cincinnati Conservatory of Music



ELEANOR R. MORRISON
Science, Physical Education
B S in Education, University of Cincinnati



ARTHUR PRESTON
History, Industrial Arts
B S in Education, Wilmington College, Ohio University, University of Cincinnati



FLOYD W. SCHNEIDER
English
B S in Education, Wilmington College, Ohio University, Rio Grande College



ALICE SCHOCKE
Home Economics
B S in Education, Miami University



ELVA SHELA
English
B S in Education, Ohio University



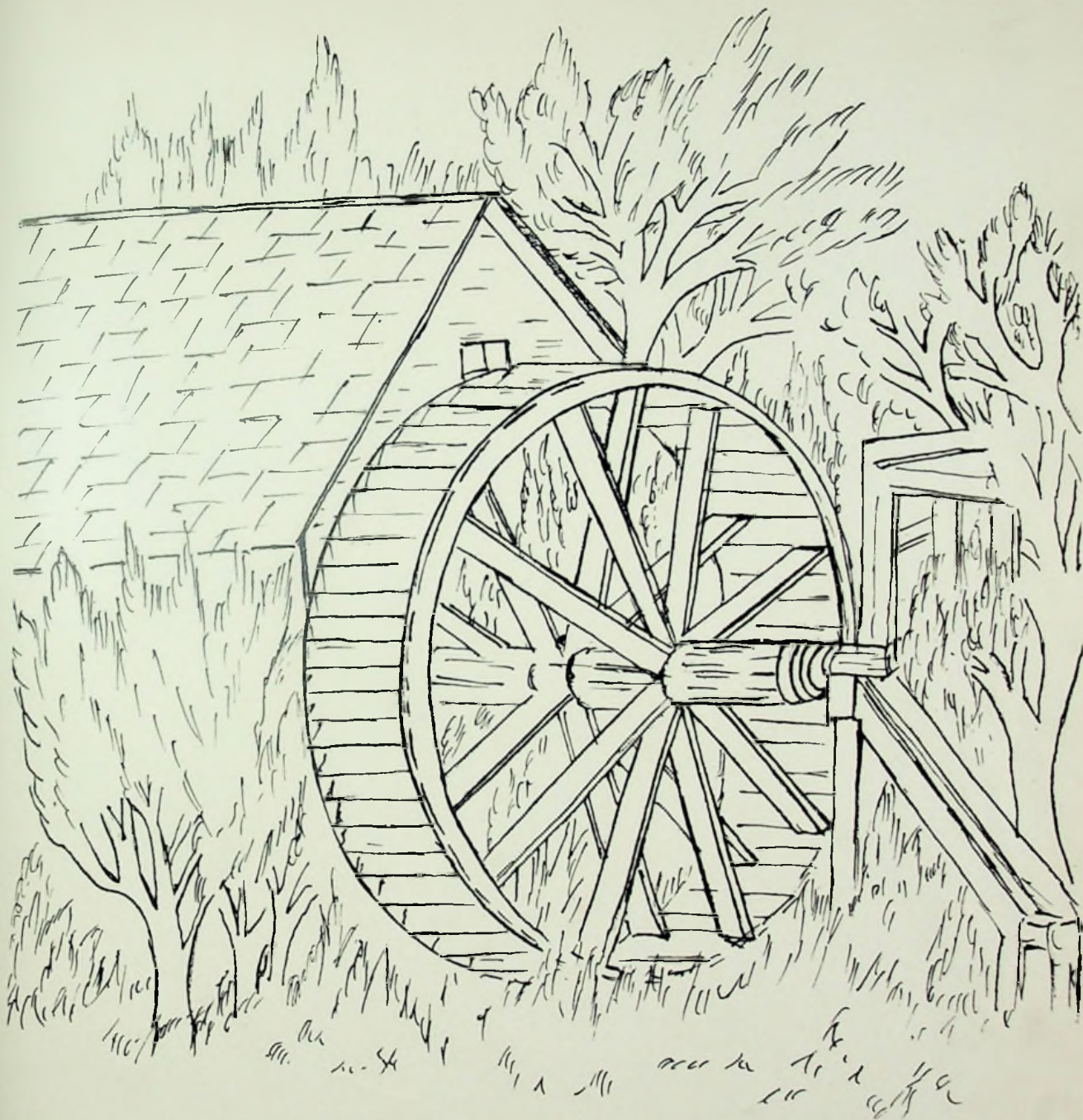
PEARL G. SMITH
Mathematics
B S in Education, Ohio University, University of Cincinnati



VAUGHN L. SNOOK
History, Assistant Coach
B A Olivet College, Rio Grande College



CATHARINE WELLS
Commercial
A B Ohio State University, Ohio University, Bliss Business College



C L A S S E S



HARRIET ABBOTT
"Harriet"
Home Ec. Club 3-4, Library Club 3, Booster Club 4, Latin Club 2.

RUBY JEAN BALL
"Ruby Jean"
Basketball 1-2, Glee Club 2-3 President 4, Operetta 3, "Pigtails" 4, Booster Club 3, Annual Staff 4, County Broadcast 3-4, Scholarship Team 1-4, County Music Festival 4.



HELEN LOUISE BAYS
"Helen"
Home Ec. Club 3-4, Latin Club 2, Library Club 2, G.A.A. 2, Booster Club 4, Scholarship Team 1-3, Dramatics Club 2.

DONALD CARTER
"Don"
Glee Club 1-4, Band 2-3-4, Minstrel 4, Booster Club 3, County Band 3-4.



SENIORS



ARTHUR BENNETT
"Ari"
Football 1-2, Industrial Arts Club 3-4, "Wheel" Staff 3, Baseball 3.

VIRGINIA CARVER
"Jennie"
Glee Club 1-2-3-4, Home Ec. Club 2-3-4, Operetta 1-2-3, Minstrel 4, County Music Festival 3.



CHARLES BRADLEY
"Charley"
Grant Junior High 1.

EUGENE BROOKS
"Brooksie"

DELILAH BROWN
"Lila"
Portsmouth High School 1, Green Township High School 2, Home Ec. Club 3-4, Minstrel 4, Office Staff 4.

GAYLEN BURKE
"Gaylen"
Band 1-2-3-4, Track 1-2-3-4, Football 2, Varsity "W" Club 4, Class Vice President 1, Class Treasurer 2, Model Airplane Club 3.



DARATHA MAY CAUDILL

"Dor"

Green Township High School 1-2, Glee Club 1-2, Home Ec. Club 2-3, Operetta 1-2.

NORMA JEAN CHRISTIAN

"Kris"

Glee Club 1-2-3-4, Home Ec. Club 2-3-4, Senior Knitting Club 4, G.A.A. 2, Operetta 1-2-3, Minstrel 4, County Music Festival 3.



BETTY JEAN EHLENDT

"Bet"

Glee Club Accompanist 2-3-4, Operetta 2-3, Minstrel 4, Dramatics Club 2, G.A.A. 2, Band 3, Scholarship Team 4, County Broadcast 3-4, Office Staff 4, Latin Club 2.



IRENE DAVIS

"Irene"

Home Ec. Club 3, Glee Club 2-3-4.



GERALDINE FRALEY

"Gerry"

Scholarship Team 1, Basketball 1-2, Library Club President 2, Glee Club 2-3, Vice-Pres. 4, G.A.A. President 2, County Music Festival 3, Operetta 3, "Tom Sawyer" 3, Sports Editor of "Wheel" 3, Sports Club 4, Senior Knitting Club 4, Home Ec. Club President 4, Minstrel 4, "Pigtails" 4, "Demon in the Dark" 4, Annual Editor-in-chief 4.



ORVILLE DUNN

"Orv"



HAROLD FRALEY

"Perk"

RALPH FRITZ

"Fritzie"

Band 1-2-3-4, "Tom Sawyer" 3, Industrial Arts Club 4, County Band 3-4, "Demon in the Dark" 4.

RICHARD FRITZ

"Fritz"

Band 1-2-3-4, Industrial Arts Club 3-4, "Wheel" Staff 3, "Demon in the Dark" 4.

HAROLD HALL

"Doc"

Latin Club 2, Track 1-2-3-4, Cheerleader 3-4, Varsity "W" Club 4, Booster Club 3-4, Annual Staff 4.





EVELYN HARMON

"Evie"

Latin Club 2, Basketball 1-2, Cheerleader 3-4, Home Ec. Club 2, "Tom Sawyer" 3, G.A.A. 2, Dramatics Club 3, Glee Club 2-3-4, Senior Knitting Club 4, Office Staff 4.

MARY ELLEN HENIZE

"Mary Ellen"

North High School, Binghamton, New York 2, Glee Club 3-4, Operetta 3, Home Ec. Club 3-4, Minstrel 4, County Music Festival 3, Annual Staff 4, Senior Knitting Club 4, Library Club 4, G.A.A. 3, Dramatics Club 3, County Broadcast 3.



JACK HOBSON

"Peck"

Football 1-2, Track 3-4, Basketball Reserves 2-3, Glee Club 3-4, "Tom Sawyer" 3, Operetta 3, Class Vice-President 3.

JOHN MAUCK

"Johnny"

Glee Club 3-4, Industrial Arts Club 3-4, Dramatics Club 3, Operetta 3, Minstrel 4.



WALTER HOWARD

"Wali"

Minford High School 2, Reserve Basketball 1-2, Varsity Basketball 3-4, Track 1-2-3-4, "Wheel" Staff 3, Varsity "W" Club 4, Art Editor of Annual 4, "Demon in the Dark" 4.

ROBERT MAY

"Bob"

Mathematics Club 4, Library Club 4, Scholarship Team 1-2-3-4, Class Treasurer 1, Latin Club 2.



MILDRED HUGHES

"Mid"

Basketball 1-2, Cheerleader 4, Booster Club 3-4, Operetta 3, Dramatics Club 3, Office Staff 4, Annual Staff 4.

RICHARD JOHNSON

"Rick"

Portsmouth High School 1-2.

PEGGY LEMASTER

"Peggy"

Home Ec. Club 3-4, Latin Club 2, Dramatics Club 3, "Demon in the Dark" 4.

RAY LEWIS

"Ray"

Band 1-2-3-4, Scholarship Team 3-4, Football 1-2, Mathematics Club 4, Latin Club 2.



RICHARD McHENRY
"Henry"

VIRGINIA McHENRY

"Jennie"

Glee Club 2-3-4, Minstrel 4, Operetta 2-3, Home Ec. Club 2, Latin Club 2, Dramatics Club 3, County Broadcast 3-4.



MARGARET MOLEN

"Margie"

Basketball 1, G.A.A. 2, Glee Club 2-3-4, Operetta 2, Minstrel 4, Dramatics Club 3, Library Club 3, Home Ec. Club 2-3.



JACK MILLER

"Jack"

Minford High School 1, Basketball Reserves 1-2-3, Baseball 2-4, Track 2-3-4, Varsity "W" Club President 4, Glee Club 3.



ROSEMARY MONTAVON

"Rosie"

Scholarship Team 1-2-3-4, Basketball 1-2, Latin Club 1-2, G.A.A. 2-3, Class Vice-President 2-3, Class Secretary 4, Student Council 3-4, Home Ec. Club 4, Senior Knitting Club 4, Library Club 2, "Wheel" Staff 3, Annual Staff 4.



VIRGINIA LORRAINE MILLER

"Lorraine"

Home Ec. Club 2-3, Scholarship Team 2.



ROBERT MOORE

"Hootsie"

Portsmouth High School 1, Football 1-2, Track 2 Baseball 2, Basketball Varsity 2-3, Class President 3-4.

EVERETT MORRISON, JR.

"Pete"

Industrial Arts Club 3-4, Photography Club 3-4, Annual Photographer 4.

CLARENCE NOBLE

"Sweet"

Athletic Manager 2, Varsity "W" Club Treasurer 4, Glee Club 2.

VINCENT NORMAN

"Vinny"

Minford High School 1, Basketball Reserves 1-2, Basketball Varsity 3-4, Baseball 1-2, Track 2-3, Glee Club 3-4, Varsity "W" Club 4, Class Vice-President 4, Annual Staff 4, Student Council 4, Operetta 3, Minstrel 4.





PAUL OBENCHAIN

"Obie"
Industrial Arts Club 3-4,
Photography Club 3-4,
"Tom Sawyer" 3, Glee
Club 2.



LOIS PAYNE

"Paynie"
Home Ec. Club 1-2-3-4, Glee
Club 2-3-4, Basketball 2,
Senior Knitting Club 4,
"Tom Sawyer" 3, G.A.A. 2-
3, Operetta 2-3, Minstrel 4.



ALICE ROSS

"Alice"
Scholarship Team 1-2, Latin
Club 1-2, Class Secretary 2,
Class Treasurer 3-4, Student
Council 3-4, Library Club 2,
G.A.A. 2-3, Home Ec. Club
4, Senior Knitting Club 4,
Annual Staff 4, Office Staff
3-4, Gold Medal Queen 4,
"Demon in the Dark" 4.

GERALDINE TACKETT

"Jerry"
Glee Club 1-2-3-4, Latin Club
1-2, Operetta 1-2-3, Minstrel
4, "Pigtails" 4, "Tom Saw-
yer" 3, Home Ec. Club Sec-
retary 3, Treasurer 4, Sen-
ior Knitting Club, "Demon
in the Dark" 4.



RAY SAUL

"Saul"
Basketball Reserves 3-4,
Glee Club 2-4, Library Club
4, "Tom Sawyer" 3, Track
2-3-4, Baseball 2, Dramatics
Club 3, Minstrel 4.

NEVA MAE TACKETT

"Neva"
Home Ec. Club 3-4, Library
Club 3-4, Dramatics Club 3.



KATHLEEN SKIVER

"Kai"
Scholarship Team 2-3-4, G.
A.A. 2, Senior Knitting Club
4, Annual Staff 4.

DAVID SMITH

"Dave"
Football 1, Basketball Reser-
ves 1, Basketball Varsity 2-3,
Baseball 2, Varsity "W"
Club 4.

LESTER SMITH

"Les"
Industrial Arts Club 4,
Photography Club 4, Glee
Club 1.

RICHARD SMITH, JR

"John"
Basketball Manager 3-4,
Track 2, Varsity "W" Club
Secretary 4, Glee Club 2-3,
Class President 2, "Tom
Sawyer" 3, Student Council
2, "Demon in the Dark" 4.



RUTH THIEKEN

"Ruthie"

Home Ec. Club 2, Secretary 3, Vice President 4, Glee Club 2-3-4, "Tom Sawyer" 3, Operetta 2, Minstrel 4, "Demon in the Dark" 4.

WILLIAM THIEKEN

"Bill"

Industrial Arts Club 3-4, Photography Club 4, Glee Club 4, Minstrel 4, "Demon in the Dark" 4.



MARILYN TURNER

"Marilyn"

Library Club President 4, Booster Club 2-3-4, Home Ec. Club 2-3-4, Glee Club 2-3-4, Operetta 2, Minstrel 4.

MARY THOMAS

"Mary"

Library Club Secretary-Treasurer 4, Home Ec. Club 3, "Tom Sawyer" 3, Booster Club 4, Scholarship Team 4, G.A.A. 2, "Demon in the Dark" 4.



GENEVIEVE ONETTA VANCE

"Genevieve"

Glee Club 2-3-4, Operetta 2, Home Ec. Club 3-4.

GUILFORD THORNTON

"Gib"

Football 1-2, Glee Club 3-4, Operetta 3, Minstrel 4, Baseball 2, "Demon in the Dark" 4.



LAURA NELL WILLIAMS

"Laura Nell"

Glee Club 2-3-4, Home Ec. Club 2-3-4, Library Club Secretary-Treasurer 4, G.A.A. 2, Operetta 2, Minstrel 4, County Music Festival 3.

ROBERT WOODS

"Bob"

Valley High School 1, Band 1-2-3-4, Glee Club 1-2-3, Dramatics Club 2, "Tom Sawyer" 3, "Pigtails" 4, Operetta 3, County Band 3-4.

LOUISE WYANT

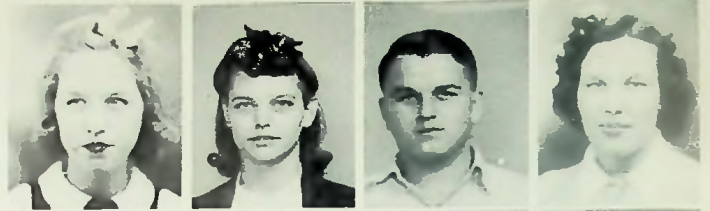
"Louise"

Latin Club 2, Home Ec. Club 2-3-4, Dramatics Club 2, Annual Staff 4, Scholarship Team 3-4, "Demon in the Dark" 4.



J
U
N
I
O
R
S

Loueda Abbott
Glorena Ach
Clyde Atkins
Betty Ault



Ray Bailey
Irene Baker
William Bennett



Ray Billups
William Burke
Ruth Caudill



William Clutters
Flora Conklin
Calvin Courtwright



Carl Coyle



Ralph Davis
Donald Dressler
Roberta Evans



Paul Fraley
Marilyn Fritz
Donald Garrett



Wilma Garvey
Dorothy Gilpin
Catherine Gleim



Helen Gleim
Marie Hacker
Helen Hall
Georgiana Hamilton





Dorothy Hansgen
Robert Hartle
Harold Hicks
Robert Johnson



Clarence Justice
Mildred Kidd
Lemone Kinnison



James LeMaster
Mary Frances Lewis
Wilma Lykins



Joan Lyon
Joe Manley
Helen Maynard



Richard McLeod

Mary Middaugh
Paul Miller
Edgar Montavon



Glenn Moore
Bertha Nance
Berty Nickell



Phyllis Ottney
Gerald Overholtzer
Janet Perry



Norma Pitts
Billy Price
Garnet Ramey
Richard Riddlebarger



Walter Riddlebarger
 Billie Ruth Robinson
 Joan Rolf
 Albert Schwamberger



Kathleen Selby
 Dale Semones
 Ada Setters



Jean Sexton
 Doris Slone
 Harland Smith



Harry Smith
 Donald Staker
 Juanita Strickland



Helen Strother
 Ralph Townsend
 Eugene Vanhooose



Evelyn Vinson
 Lucille Vinson
 Helen Ruth Voiers



Jack Watts
 Donald Wente
 Ned Wilhoite



Ruth Williams
 Betty Woodrum
 Bill Young

SOPHOMORES



First Row: left to right
 Betty Abbott
 John Adkins
 Earlene Arthur
 Jacqueline Barnett
 Janet Bays
 Bertha Bennett
 Richard Blake

Second Row:
 Mary Lou Blum
 Mildred Brown
 Eloise Burke
 Colleen Burton
 Opal Campbell
 Wilma Cartee
 Martha Carter

Third Row:
 Clyde Cartwright
 Eloise Cole
 Gale Conklin
 Lois Cook
 Herbert Damron
 Harold Drake
 Denville Dunn

Fourth Row:
 Robert Eichenlaub
 Robert Ellis
 Gladys Fout
 Effie Freeman

Fifth Row:
 Richard Frowine
 Benny Garrett
 Wanda Hammond



First Row: left to right
 Charlene Hobson
 James Howard
 Audrey James
 Wrignal Jarvis
 Kenneth Johnson
 Violet Lambert
 Oliver Lawson

Second Row:
 Iris Leadingham
 Joanne LeMaster
 Clarabelle Lewis
 Mary Lewis
 Helen Lykins
 Inez Lyon
 Alice Mauck

Third Row:
 Janet May
 Elizabeth McGraw
 Catherine McHenry
 Melvin Means
 Betty Miller
 Gerald Miller
 Harold Mucha

Fourth Row:
 Junior Munyon
 Junior Perry
 Dorothy Reed
 Bud Reese

Fifth Row:
 Clarence Reynolds
 Carl Rice
 Colleen Ridings

Sixth Row:
 Evelyn Riggs



First Row: left to right
 Donald Rockwell
 Betty Jo Ross
 Sheila Ruggles
 Dorothy Russ
 Paul Scherer
 William Schroeder
 Betty Shaffer

Second Row:
 Evelyn Skiver
 Darlene Sloas
 Dorothy Smith
 Glen Smith
 Raymond Sommer
 Betty Springer
 Betty Stark

Fourth Row:
 Elizabeth Wagner
 Joe Watts
 Raymond Welch
 William Werner

Fifth Row:
 Eloise Williams
 Norma Lee York
 Alfred Zuhars

Sixth Row:
 Charles Zuhars

Third Row:
 Freda Stephenson
 Rosemary Thicken
 Lorena Thompson
 Fred Tyree
 John VanHorn
 Wilfred Vicars
 Harry Voiers

Freshmen

UPPER RIGHT, READING LEFT TO RIGHT. FIRST ROW: HAROLD GOLDMAN, RUTH BOWEN, JUNIOR BOYCE. SECOND ROW: FLOESSIE BRADLEY, EARL BURGESS, WANDA BURKE. THIRD ROW: EVERETT CHANDLEY, WILLIAM COOK, LUTHER CRAFT. FOURTH ROW: ROBERT CRAFT, GENEVA CROSE, JAMES DARBY.

BELOW, READING LEFT TO RIGHT. FIRST ROW: LUCILLE DAVIS, STANLEY DUTIEL, WILLIAM EAGLESON, LOIS EDWARDS, KATHLEEN EGGERS, HELEN EICHENLAUB, ROBERT EVANS, JENNINGS FERGUSON. SECOND ROW: PHYLLIS JUNE FRALEY, JOAN FREDERICK, JANICE FROWINE, IRENE GALLOWAY, MARY LOU GILPIN, NORMA JEAN GLASCOCK, MARTHA GLEIM, MARCELLA GOSE. THIRD ROW: HENRY HANSGEN, HOLLY HARRIS, JUANITA HAY, CHARLES HENTHORN, BETTY HILL, NORMAN HILL, PHYLLIS HILTON, IDA HOLSINGER. FOURTH ROW: BARBARA HOWARD, MARILYN HULL, GENEVA JENKINS, GENE JOHNSON, PAULINE JUSTICE, ARLENE KEGLEY, LILLY KIDD, DONALD LAMBERT. FIFTH ROW: KARMA LEMASTER, DONALD LEWIS, JUNIOR LEWIS, CARL LONG, THELMA LYON.



Freshmen



UPPER LEFT, READING LEFT TO RIGHT, FIRST ROW: ALBERT MADDIX, JACK MANLEY, OVAL MAY. SECOND ROW: ETHEL MESSER, IRENE MESSER, EARL MILLER. THIRD ROW: JANICE MINOR, WELMA MOORE, WILLIAM ORLETT. FOURTH ROW: LOWELL POLLEY, ELLSWORTH PORTER, LESTER PURTEE.

BELOW, READING LEFT TO RIGHT, FIRST ROW: PAULINE REFFIT, PHYLLIS REIDENBACH, JAMES REYNOLDS, JUANITA RICE, RUTH RIDDLEBARGER, MAXINE RISNER, ROBERT ROGERS, WALLACE RUGGLES. SECOND ROW: JUNE RUTH, MARTHA SAMPSON, JAMES SAUL, HAROLD SHINGLER, MILDRED SHOPE, LORETTA SKIVER, JANET SMITH, KARL SMITH. THIRD ROW: FRED SOMMER, CLYDE SPARKS, NORMA JEAN STANLEY, VERNA STANLEY, JOSEPH STATEN, JUNE STEVISON, TOM STITT, PEARLDEAN STOREY. FOURTH ROW: CARL STRICKLAND, HENRY STUART, EZRA THACKER, FRANCIS THIEKEN, JAMES ROBERT THORNTON, EDITH TURNER, BETTY TURNER, LILA LEE UNDERWOOD. FIFTH ROW: SHIRLEY WILHOITE, EBERT WILLIAMS, ROSEMARY WILLIAMS, WILDA WILLIS, HAZEL WORKMAN.



Eighth Grade

NINTH ROW, LEFT TO RIGHT: BERNARD HAMILTON, ZENNA HARRISON, JUNIOR HOGAN, EVERETT KELLY, FRANK KNAPP, GENE LAWSON, ALBERT LAYBERGER, HELEN LEWIS, NORMA LEE MAPLE.
 EIGHTH ROW: JAMES FREEMAN, CHESTER GALLION, LESTER GALLION, SHIRLENE GALLION, NINA GALLOWAY, KATHLEEN GLEIM, VELMA GLEIM, BLANCHE HACKER, JOYCE HAHN, SEVENTH ROW: BILLY RAY DIALS, JEAN DRAKE, ELLIS FISHER, RUBY FISHER, FAYE FRALEY, WANDA FRALEY, EARL FRAZIE, SIXTH ROW: RAY CONLEY, RUTH COPPOCK, LESLIE CRAMER, DAVID CRAYCRAFT, DONALD CREGGER, GLEN DAVIS.

FIFTH ROW: ANNA BURGESS, HERBERT CARVER, BETTY CAUDILL, OTIS CHRISTIAN, DONALD COLE, FOURTH ROW: DONALD BOLANDER, MARY ALICE BORN, WILMA BRADLEY, DAVID BROWNING, THIRD ROW: ALBERTA BENTLEY, CARL BESCO, ROBERTA BLAIR, SECOND ROW: WALTER BARKER, EUGENE BENNETT, FIRST ROW: RAYMOND AEH.





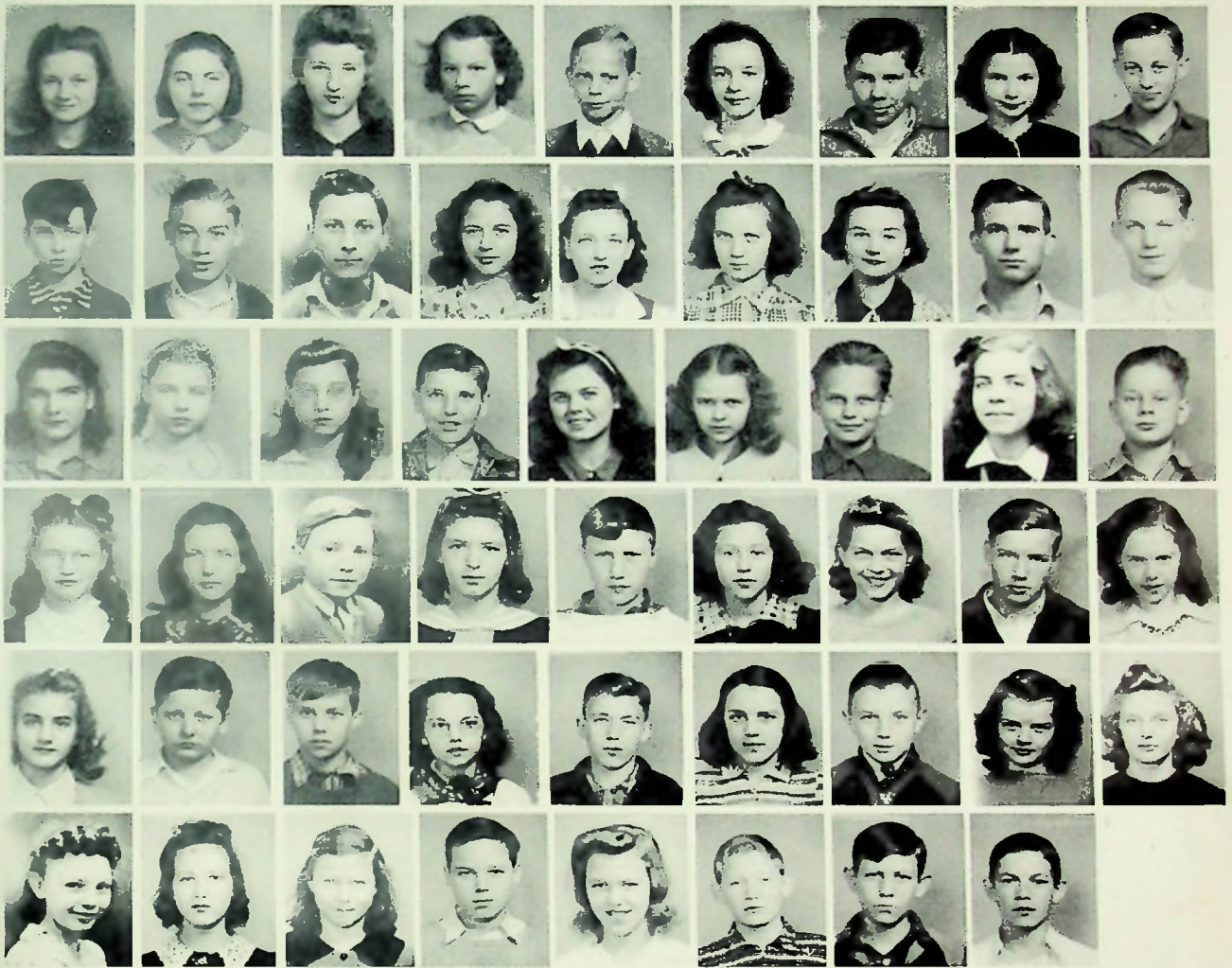
NINTH ROW: VERN YOUNG EIGHTH ROW: LOLA WYANT, MARY LOU YORK. SEVENTH ROW: EUGENE WILLIAMS, HAZEL WRIGHT, WILLIAM WRIGHT. SIXTH ROW: JUANITA VINSON, MARGARET WATKINS, VIRGINIA WATTS, RAYMOND WENTE. FIFTH ROW: ERNEST THOMAS, LOIS THOMPSON, DAVID THORNTON, JAMES TURNER, MARY VANHORN.

FOURTH ROW: JOHN SOMMER, LOWELL STAKER, RUBY STAMPER, RUTH STAMPER, HELEN STANLEY, DONALD THIEKEN. THIRD ROW: WILLIAM ROWLEY, IMOGENE SALLEY, MARY SAMPSON, CHARLES SETTERS, JOHN SHERMAN, BETTY SKAGGS, GEORGE SMITH. SECOND ROW: HAROLD NOEL, CHARLES NOLEN, CAROLYN OVERHOLTZER, PAULINE PACE, BETTY POLLOCK, REATHA RATCLIFF, TED REESE, RICHARD RIDEOUT, HAROLD ROBINSON. FIRST ROW: BETTY MARTIN, WILBUR MAUCK, BUDDY MAYNARD, PAUL MIDDAGH, JOHN MILLER, JANET MOLEN, BOBBY MORGAN, RICHARD MUNYON, BARBARA NOEL.

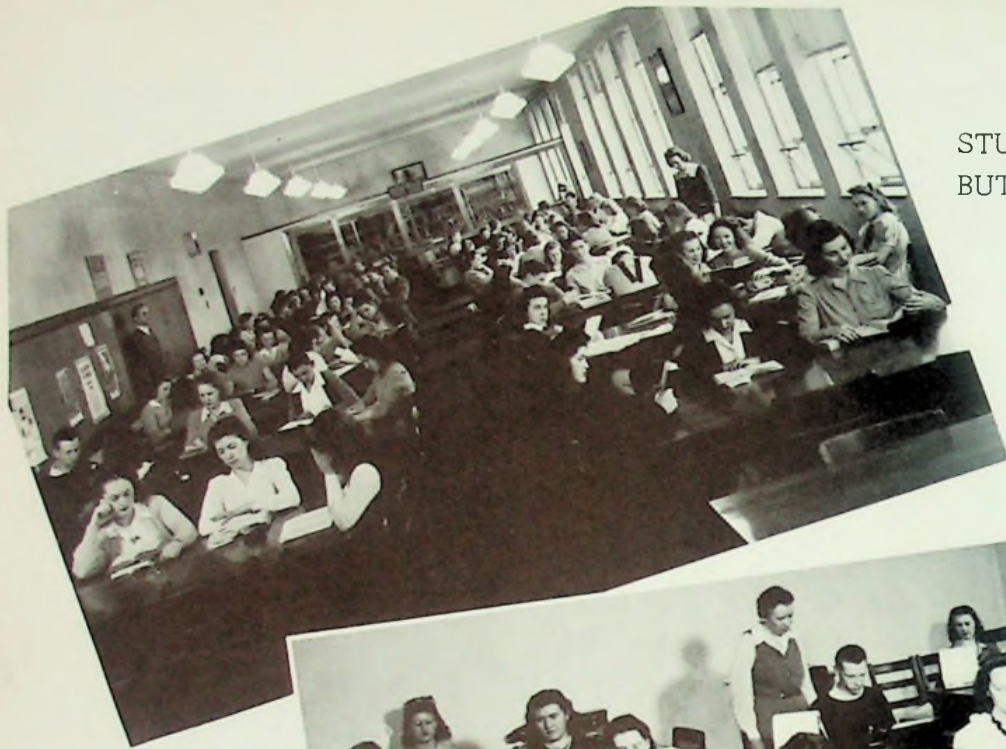
Seventh Grade

FIRST ROW, LEFT TO RIGHT: ADA BARBER, RICHARD BATTERSON, ARNETTA BENDER, NORMA BENNETT, JOYCE BENSON, DONALD BILLUPS, MARIE BOOTH, MARY JANE BOWEN, PAUL BROWN. SECOND ROW, JOHN CAMPBELL, JUDY CARTER, EDWARD CARTWRIGHT, LLOYD CAUDILL, WILMA CHANDLER, WALTER CLEARY, FLORA CLIFFORD, HUGH COGAN, FOREST COLEGROVE. THIRD ROW: PAUL COMPLIMENT, LORRAINE CONLEY, MARCELLA CONLEY, JAMES CORNELL, BETTY JO CRAIG, VERA DOWNS, JOHN DOYLE, PHYLLIS DRAKE, VIRGINIA DUNN. FOURTH ROW: EDWARD EVANS, BETTY FRALEY, JUANITA FRALEY, RALPH GILPIN, JOSEPH HAHN, ROBERT HAMMOND, GWENDOLYN HANSGEN, CLED HARMON, ADAH HARPER. FIFTH ROW: ALMA HARPER, BEULAH HARRISON, CHARLES HATTEN, DENNY HAY, JAMES HENIZE, DORIS HILL, VIOLET HOLSINGER, LUCILLE HOLT, WILLIAM HUGHES. SIXTH ROW: BETTY JAMES, JOYCE JOHNSON, WILMA JOHNSON, JEAN JONES, MARY KETTER, CARL KINKER, JAMES LAMBERT, HAROLD LAWSON, ROBERT LEADINGHAM.





FIRST ROW, LEFT TO RIGHT: KATHLEEN LEE, DELORES LEICHER, ELFIE LOPER, JEAN LYKINS, RAY LYKINS, JANE LYON, OTIS LYON, NORMA MADDIX, JAMES MAUK. SECOND ROW: HOWARD MCHENRY, STANLEY MYERS, ELBERT MILLER, MARIE MILLER, JOAN MINEER, NORMA JEAN MONTAVON, ETHEL MORRISON, JAMES MORRISON, LLOYD MUCHA. THIRD ROW: LOUISE NELSON, LUCILLE DICKERMAN, MARCELLA DICKERMAN, GRENVILLE PHIPPS, JEWEL PLUMMER, JEAN ANN PURTEE, GUS REFFIT, BARBARA REIDENBACH, NORMAN REITER. FOURTH ROW: JULIA RICE, DORATHEA ROGERS, HAROLD RUGGLES, JUNE SCHOFIELD, WILLIAM SELBY, WILMA SEMONES, NOVA SEXTON, STANLEY SPARKS, WILLA STAGGS. FIFTH ROW: RENNA JEAN STANLEY, RALPH STATEN, HERBERT STRICKLAND, DELORES THOMPSON, RICHARD THOMPSON, LUCILLE TOWNSEND, FOREST TURNER, REVA VANHORN, WANDA VAUGHTERS. SIXTH ROW: DELDRES VINSON, PHYLLIS WHITE, BETTY WILLIAMS, EDWARD WILLIAMS, KATHLEEN WILLIAMS, LEE WILLIAMS, RAY WOODRUM, WILLIAM WORKMAN.



STUDIOUS TODAY
BUT TOMORROW?

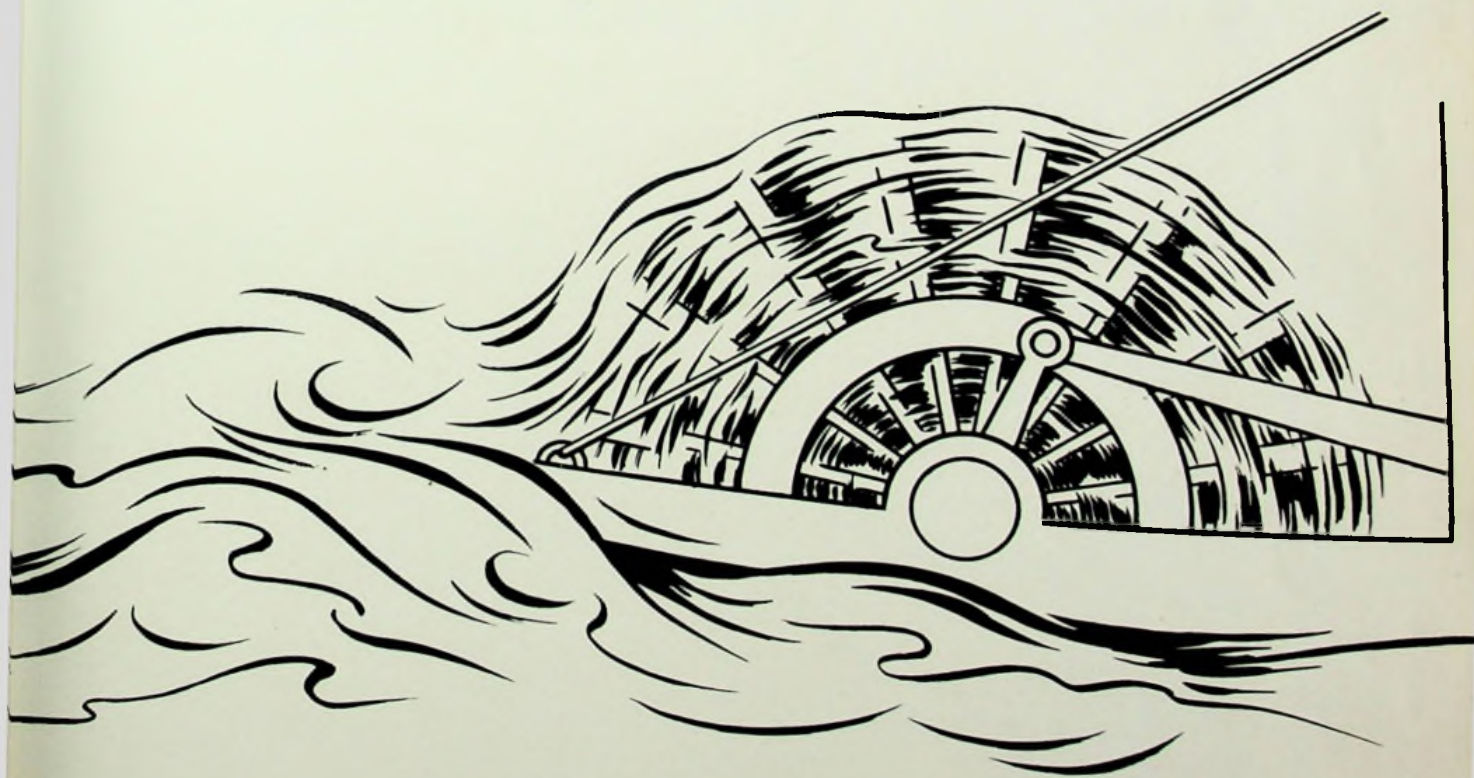


INDUSTRIOUS SOULS
... THESE TYPISTS



SULPHUR!

ORGANIZATIONS





Wheelersburg Band

FIRST ROW: DOROTHY RUSS, DOROTHY GILPIN. SECOND ROW: JUDY CARTER, GWENDOLYN HANSGEN, NORMA STANLEY, BARBARA REIDENBACH, BENNY GARRETT, BILL YOUNG, JOE MANLEY, WILDA WILLIS, LORETTA SKIVER, JANICE FROWINE, BETTY POLLOCK, MR. MITCHELL. THIRD ROW: NORMA GLASCOCK, CHARLENE HOBSON, MARY LOU GILPIN, MARY LEWIS, BETTY TURNER, TOM STITT, CARL LONG, GERALD OVERHOLTZER, RAY BAILEY, MARTHA CARTER, THELMA LYON, LUCILLE DAVIS, WILMA GARVEY. FOURTH ROW: DOROTHY HANSGEN, LOWELL STAKER, KATHLEEN WILLIAMS, BERTHA BENNETT, MARY VANHORN, LOIS COOK, GARNET RAMEY, BETTY STARK, JOAN LYON, RALPH GILPIN, HELEN LYKINS, LORENA THOMPSON, LOIS EDWARDS. FIFTH ROW: NED WILHOITE, ROBERT WOODS, HELEN STROTHER, RICHARD FRITZ, DONALD DRESSLER, RAY LEWIS, RALPH FRITZ, RICHARD RIDDLEBARGER, GAYLEN BURKE, HARRY SMITH, RICHARD McLEDD, JUNIOR LEWIS, HAROLD MUCHA, INEZ LYON, DONALD CARTER. SIXTH ROW: TED REESE, CHARLES ZUHARS, CHARLES NOLEN, DONALD STAKER, WALTER RIDDLEBARGER, GALE CONKLIN.

The Wheelersburg High School Band, for the second year under the direction of J. H. Mitchell, is composed of sixty-one musicians.

At the beginning of this year's activity the members of the band selected Gaylen Burke, President; Robert Woods, Vice-president; and Martha Carter, Secretary-treasurer. At this time twenty-six members were chosen to participate in the All County Band, under the direction of E. R. McCowen.

This band has been a featured part of all basketball games this season. Fanfare, special marches, and baton twirling by the drum majorettes kept the fans entertained at the half.

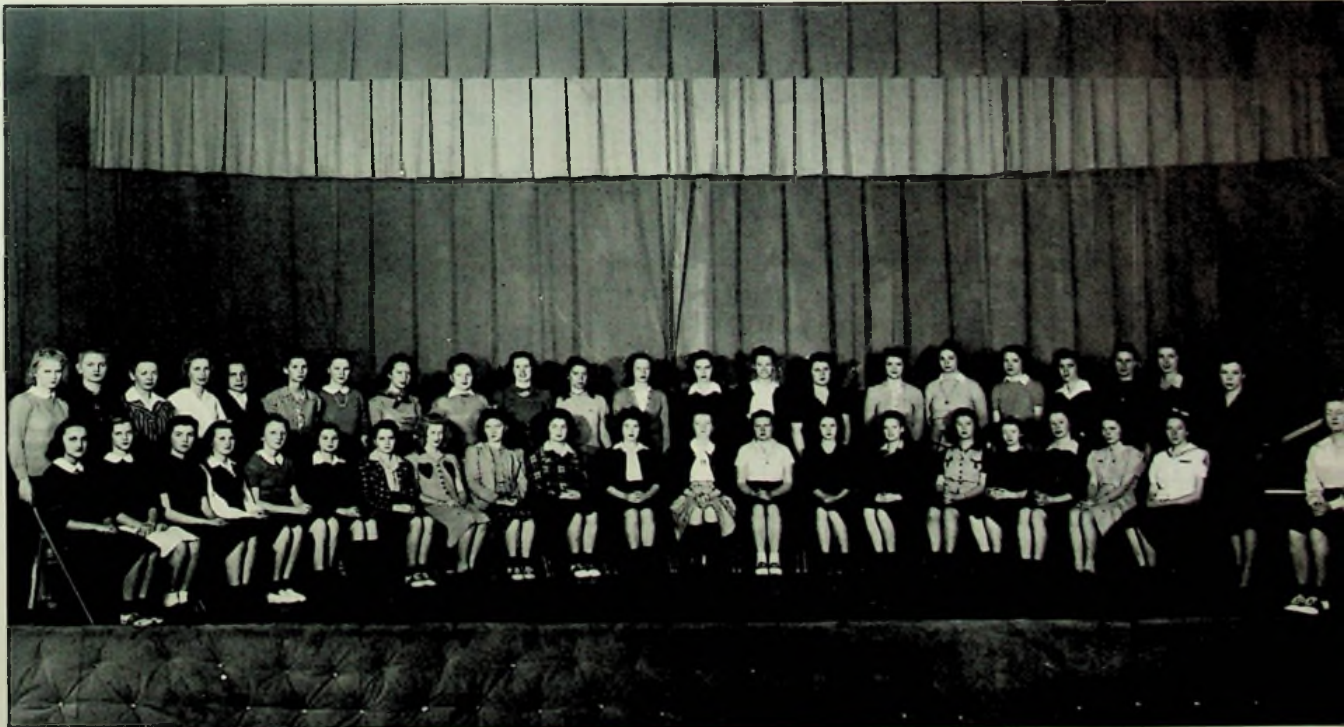
High-lighting the year's activity was the annual band concert presented on April 23rd.

Girls' Glee Club

This organization, composed of forty-six young women under the direction of Miss Helen Jones, needs no introduction to the community. Responsible for both Christmas and Baccalaureate music, the Girls' Glee Club has taken an active part in high school assemblies and activities. Many of its members are represented in the All County Music Festival and in the Wheelersburg broadcasts heard twice yearly over Radio Station WPAY, Portsmouth. This year the combined glee clubs were instrumental in staging "Mellow Moon", an interesting minstrel.

The officers of the Girls' Glee Club include: Ruby Jean Ball, President; Geraldine Fraley, Vice-president; Marilyn Fritz, Secretary-treasure; Mary Lou Blum and Lois Cook, Librarians.

FRONT ROW: MARY LOU BLUM, BETTY JO ROSS, VIRGINIA MCHENRY, GENEVIEVE VANCE, BETTY TURNER, NORMA JEAN STANLEY, ROSEMARY THIEKEN, LOIS COOK, NORMA LEE YDRK, MILDRED KIDD, JANET MAY, BETTY WOODRUM, MARILYN TURNER, JUNE STEVISON, EDITH TURNER, CATHERINE MCHENRY, CHARLENE HOBSON, MARGARET MOLEN, IRENE MESSER, MARCELLA GOSE. BACK ROW: BETTY STARK, RUTH RIDDLEBARGER, EVELYN HARMON, DOROTHY HANSGEN, RUTH THIEKEN, VIRGINIA CARVER, ALICE MAUCK, MARY ELLEN HENIZE, GERALDINE TACKETT, GERALDINE FRALEY, RUTH CAUDILL, RUTH WILLIAMS, MILDRED HUGHES, LAURA NELL WILLIAMS, IRENE DAVIS, MARY MIDDAGH, MARILYN FRITZ, NORMA JEAN CHRISTIAN, GEORGIANA HAMILTON, LEMONE KINNISON, RUBY JEAN BALL, MISS HELEN JONES, BETTY EHLENDT.





Boys' Glee Club

FRONT ROW: RAY BAILEY, LUTHER CRAFT, PAUL SCHERER, JACK MANLEY, NED WILHOITE, GUILFORD THORNTON, MISS HELEN JONES, BETTY EHLENDT, RICHARD RIDDLEBARGER, WILLIAM CLUTTERS, HARLAND SMITH, DONALD WENTE, RAYMOND WELCH, DONALD GARRETT. BACK ROW: JACK HOBSON, RAY BILLUPS, JOHN ADKINS, JOE MANLEY, CLYDE CARTWRIGHT, HERBERT DAMRON, ROBERT WOODS, DONALD CARTER, PAUL FRALEY, RAY SAUL, WILLIAM THIEKEN, JOHN MAUCK, HAROLD HICKS, BENNY GARRETT.

Can high school boys sing? If you don't think so, stop at Room 4 during a rehearsal of Miss Jones' Boys' Glee Club composed of thirty young tenors, baritones, and basso profundos doing their best in practice for assembly programs and county broadcasts. This group becomes coeducational when the Girls' Glee Club is called in for the resulting mixed chorus. Most interested in their work are these boys. (We suspect that some of their interest arises from the obvious need to impress their coed rivals.)

To promote an interest in music and skill in its interpretation is the purpose of both the Boys' and Girls' Glee Clubs. These groups are accompanied by Betty Ehendt.

LIBRARY CLUB

The Library Club was organized by a group of students who are interested in literature and in library work.

Three faculty members, Miss Humphrey, Chairman, Miss Gaumer, and Mrs. Bevins, served as sponsors of the club. Marilyn Turner, President, and Laura Nell Williams, Secretary-treasurer are the student officials.

The most outstanding meeting during the year was one at which Mr. Preston gave a book review of Jan Valtin's "OUT OF THE NIGHT".

Approximately three hundred books have been added to our library this year. These books have been catalogued, pocketed, date-slipped and put into circulation. The new magazine rack and shelves for the encyclopedias were made by the N.Y.A.

The inventory for the current year was taken recently and the list of new books for next year has been made tentatively.

SEATED: COLLEEN RIDINGS, RUTH ANN BOWEN, EVELYN SKIVER, AND MARY LOU BLUM. STANDING: BERTHA BENNETT, MARTHA CARTER, WILLIAM COOK, DONALD GARRETT, ROBERT MAY, EARLENE ARTHUR, MISS HUMPHREY, MARILYN TURNER, AND LAURA NELL WILLIAMS. NOT PICTURED: BETTY JO ROSS, NEVA TACKETT, PHYLLIS REIDENBACH, LOIS COOK, ELOISE BURKE.





The Home Economics Club

FIRST ROW: BETTY SHAFFER, IRENE MESSER, HELEN BAYS, GENEVIEVE VANCE, MARILYN TURNER, HARRIET ABBOTT, NEVA TACKETT, BETTY ABBOTT, FREDA STEPHENSON, ROSEMARY THIEKEN, DELILAH BROWN. SECOND ROW: MILOREO SHOPE, PEGGY LEMASTER, LOUISE WYANT, ELIZABETH WAGNER, RUTH THIEKEN, VIRGINIA CARVER, ROSEMARY MONTAVON, GERALDINE FRALEY, GERALDINE TACKETT, MARY ELLEN HENIZE, ALICE ROSS. THIRD ROW: MISS SCHOCKE, LAURA NELL WILLIAMS, SHIRLEY WILHOITE, NORMA JEAN CHRISTIAN, MARILYN FRITZ, GEORGIANA HAMILTON, LEMONE KINNISON, BILLIE RUTH ROBINSON, RUTH WILLIAMS, HAZEL WORKMAN.

For the third consecutive year Miss Alice Schocke organized the Home "Ec." Club open to all girls in the four year high school. Since the formation of the club in 1939, both interest and membership have mounted steadily.

When the club organized for the current year, Geraldine Fraley was elected President; Ruth Thieken, Vice-president; and Geraldine Tackett, Secretary-treasure. The group also selected a committee, composed of one girl from each class, to outline the year's program for the members. Those serving on the committee were Harriett Abbott, Senior; Marilyn Fritz, Junior; Rosemary Thieken, Sophomore; and Shirley Wilhoite, Freshman.

Helping both school and community, promoting social functions, and aiding those girls who are unable to take a course in home economics are the primary purposes of the club.

This year the girls started their activities by taking charge of the food booth at the fall carnival, and those who attended were so free in their praise of the delicious sandwiches and other refreshments that the booth proved more popular than any of the amusement booths.

Later in the year the girls began contributing their bit to national defense by sewing useful articles for the U. S. army camps. This work was under the direction of the Portsmouth Red Cross Chapter.

In March the group served the annual athletic banquet which proved highly pleasing to the palates of the fellows who provided the thrills in the sporting wars.

As a fitting climax to another successful year of club work, the girls are responsible for the alumni banquet with all the trimmings characteristic of the dinners served in past years by the girls from the home economics department of Wheelersburg High School.

These girls behind the stoves are what the men behind the guns should have.

Smell good? Um hum! These girls are really out to get their men, and they're surely proceeding in the right way. Under the direction of Miss Alice Schocke the girls can "cook up" anything from chicken pie to cocoanut macaroons. Keep the coffee perkin' on the home front, girls!





INDUSTRIAL ARTS CLUB

LEFT TO RIGHT: ARTHUR BENNETT, WALTER RIDDLEBARGER, MR. MCCHESENEY, LESTER SMITH, WILLIAM THIEKEN, HARLAN SMITH, JOHN MAUCK (FOREGROUND), RICHARD RIDDLEBARGER (REAR), PAUL OBENCHAIN, DONALD GARRETT, JOE MANLEY, RALPH FRITZ, BILLY PRICE, RICHARD FRITZ.

The Industrial Arts Club was organized in 1938 under the supervision of Mr. McChesney. This year it was reorganized for junior and senior boys with two years shop experience. Officers of the club are Ralph Fritz, President; Arthur Bennett, Vice-president; Walter Riddlebarger, Secretary-treasurer.

The purpose of the club is to give the boys an opportunity to learn more about the skill in which they are most interested, whether it be photography, woodworking, metal working, mechanical drawing, or blue-printing. In addition to shop work, field trips are made to various industries, and qualifications for many occupations are studied at the meetings of the club.

MATHEMATICS CLUB

The Mathematics Club was organized in December, 1941, for the students who have completed courses in algebra I and plane geometry and who are interested in the study of higher mathematics.

There were fourteen juniors and seniors who were qualified and showed the desired interest to become members. Officers are Robert Johnson, President; Robert May, Vice-president; Eugene Vanhoose, Secretary-treasurer.

The club has started a study of series and the slide rule. Each member of the club has purchased a slide rule and a detailed study of it will be made so that each member can use it in working problems involving square root, squaring, logarithms, or ratio and proportion.

The club is sponsoring a campaign, through the entire school system, for the collection of valuable waste metals. Any money derived from this collection will be used to purchase some mathematics reference material for the library.

STANDING: MR. SMITH, ADVISOR. FRONT ROW: RALPH DAVIS, JACK WATTS, EUGENE VANHOOSE, ROBERT JOHNSON, PAUL MILLER, DONALD STAKER, GLENN MOORE. SECOND ROW: ROBERT HARTLE, GERALD OVERHOLTZER, WILLIAM BURKE, WILLIAM BENNETT, HARRY SMITH, DONALD DRESSLER, RAY LEWIS.





Student Council

SEATED: ROSEMARY MONTAVON, ALICE ROSS, ROBERT MOORE, MR. DUDUIT, HARRY SMITH, DONALD DRESSLER, DOROTHY HANSGEN, AND ROBERTA EVANS. STANDING: PAUL BROWN, ROBERT LEADINGHAM, CHARLES ZUHARS, BARBARA REIDENBACH, ALFRED ZUHARS, BETTY STARK, HENRY STUART, JACK MANLEY, BETTY TURNER, MARY VANHORN, OTIS CHRISTIAN, AND BUDDY MAYNARD.

The Student Council of Wheelersburg High School is composed of all officers of the Freshman, Sophomore, Junior and Senior classes and of the presidents of each seventh and eighth grade home room.

In 1939 the council was first formed under Mr. Duduit's supervision. Since then it has attempted to promote good will among the other schools, and to promote scholarship by presenting awards to outstanding students. The council also worded the motto of the Wheelersburg schools and placed both the American flag and the school flag in each room of the Wheelersburg schools.

The council has as its objective the promotion of the ideals expressed in the motto of the Wheelersburg schools: namely: scholarship, sportsmanship, cooperation, courtesy, cleanliness, and honesty.

THE OFFICE FORCE

Each period of the day a pleasant, efficient, responsible student performs the duties of office girl . . . answering the telephone, mimeographing, filing, writing letters, running errands and, in short, acting as receptionist and go-between for Mr. Dudit's inner office and the outside world.

This work does not count toward credit for graduation; however, the girls are as regular in their hours in the office as in any class. They are chosen for dependability and very seldom is it necessary to change a member of the office force during the school year.

Most of the office girls are Juniors or Seniors, but occasionally a particularly outstanding student is selected from one of the lower classes. This year's force includes five Seniors, three Juniors, and one Freshman.

SEATED: EVELYN HARMON, DELILAH BROWN, WILMA GARVEY. STANDING: BETTY EHLENDT, ALICE ROSS, MILDRED HUGHES, JOAN LYON, HELEN STROTHER, THELMA LYON.





PUBLICATION STAFF

SEATED: ROSEMARY MONTAVON, JOAN LYON, ALICE ROSS, GERALDINE FRALEY, EDITOR-IN-CHIEF, MARY LOU BLUM, ROBERTA EVANS. STANDING: PETER MORRISON, MR. MCCHESENEY, MISS SHELA, MISS WELLS, MR. SCHNEIDER, WILLIAM SCHROEDER, WALTER HOWARD

ANNUAL STAFF

BUSINESS STAFF

SEATED: MILDRED HUGHES, LOUISE WYANT, KATHLEEN SKIVER, MR. SMITH, MR. MCCOWEN, RUBY JEAN BALL. STANDING: HAROLD HALL, VINCENT NORMAN, ROBERT JOHNSON, HAROLD SHINGLER, HELEN STROTHER, MARY ELLEN HENIZE



SCHOLARSHIP TEAM

These students represented Wheelersburg High School in the annual county scholarship tests. Those who took the tests and the subjects in which they competed are:

FIRST ROW: ROBERT JOHNSON, ENGLISH 3; DONALD DRESSLER, AMERICAN HISTORY; EUGENE VANHOOSE, AMERICAN HISTORY; DONALD STAKER, PHYSICS; HAROLD SHINGLER, BUSINESS ARITHMETIC. SECOND ROW: RALPH DAVIS, AMERICAN HISTORY; JOE WATTS, PLANE GEOMETRY; ROBERT ELLIS, PLANE GEOMETRY; JACK WATTS, PHYSICS; NED WILHOITE, TYPING 1; RAYMOND SOMMER, BIOLOGY; WILLIAM BENNETT, AMERICAN HISTORY; RAY LEWIS, CHEMISTRY AND COMMERCIAL LAW. THIRD ROW: KATHLEEN SKIVER, ENGLISH 4 AND SHORT HAND 2; BARBARA HOWARD, LATIN 1; NORMA JEAN STANLEY, LATIN 1 AND ALGEBRA; LORETTA SKIVER, ALGEBRA AND ENGLISH 1; LILLY KIDD, GENERAL SCIENCE; BETTY JO ROSS, WORLD HISTORY; MARY LOU BLUM, ENGLISH 2; JUNE STEVISON, ENGLISH 1 AND GENERAL SCIENCE. FOURTH ROW: MARY THOMAS, LATIN 2; FLORA CONKLIN, AMERICAN HISTORY; CATHERINE GLEIM, ENGLISH 3 AND SHORTHAND 1; MARY FRANCES LEWIS, SHORTHAND 1; LOUISE WYANT, TYPING 2; EVELYN SKIVER, ENGLISH 2. FIFTH ROW: ROSEMARY MONTAVON, ENGLISH 4, AND COMMERCIAL LAW; COLLEEN BURTON, LATIN 2; BERTHA BENNETT, BUSINESS ARITHMETIC; ALICE MAUCK, WORLD HISTORY; BETTY EHLENDY, TYPING 1; RUBY JEAN BALL, TYPING 2, AND SHORTHAND 2.





Sports Club

FIRST ROW: JAUNITA FRALEY, NOVA SEXTON, BARBARA REIDENBACH, BETTY LOU WILLIAMS, DELORES LEICHER, WANDA VAUGHTERS, GWENDOLYN HANSGEN, MISS MORRISON, ALMA HARPER, JUDY CARTER, REVA VANHORN, CLEO HARMON, BETTY JO CRAIG, JEAN LYKINS, DELORES THOMPSON. SECOND ROW: VIRGINIA DUNN, RENNA JEAN STANLEY, MARY JANE BOWEN, JANET MOLEN, MARY LOU YORK, MARY ANN KETTER, ADAH HARPER, ELDOISE COLE, WILDA WILLIS, NORMA JEAN GLASCOCK, MARY LOU GILPIN, LUCILLE DAVIS, CHARLENE HOBSON, DOROTHY REED, JANET SMITH, LILA LEE UNDERWOOD. THIRD ROW: KATHLEEN GLEIM, NORMA JEAN MONTAVON, JANE LYON, JUNE RUTH, THELMA LYON, PHYLLIS HILTON, PHYLLIS REIDENBACH, RUTH ANN BOWEN, KATHLEEN WILLIAMS, JOYCE JOHNSON, WILMA JOHNSON, ALICE MAUCK, VIOLET LAMBERT, BETTY LOU MILLER, JANET BAYS. FOURTH ROW: WANDA HAMMOND, BERTHA BENNETT, COLLEEN RIDINGS, COLLEEN BURTON, GERALDINE FRALEY, LOIS COOK, DOROTHY SMITH, PHYLLIS WHITE, INEZ LYON, DOROTHY RUSS, MAXINE RISNER.

Organized in 1939 by Miss Moulton, the Sports Club started its third year under the faculty sponsorship of Miss Eleanor Morrison.

As the purpose of the club is to promote for all girls in the junior and senior high school (1) physical development (2) enjoyment of action (3) development of sportsmanlike attitudes and (4) acquisition of skills in variety of games and activities, any girl enrolled in the Wheelersburg High School and actively participating the regular gym program is eligible.

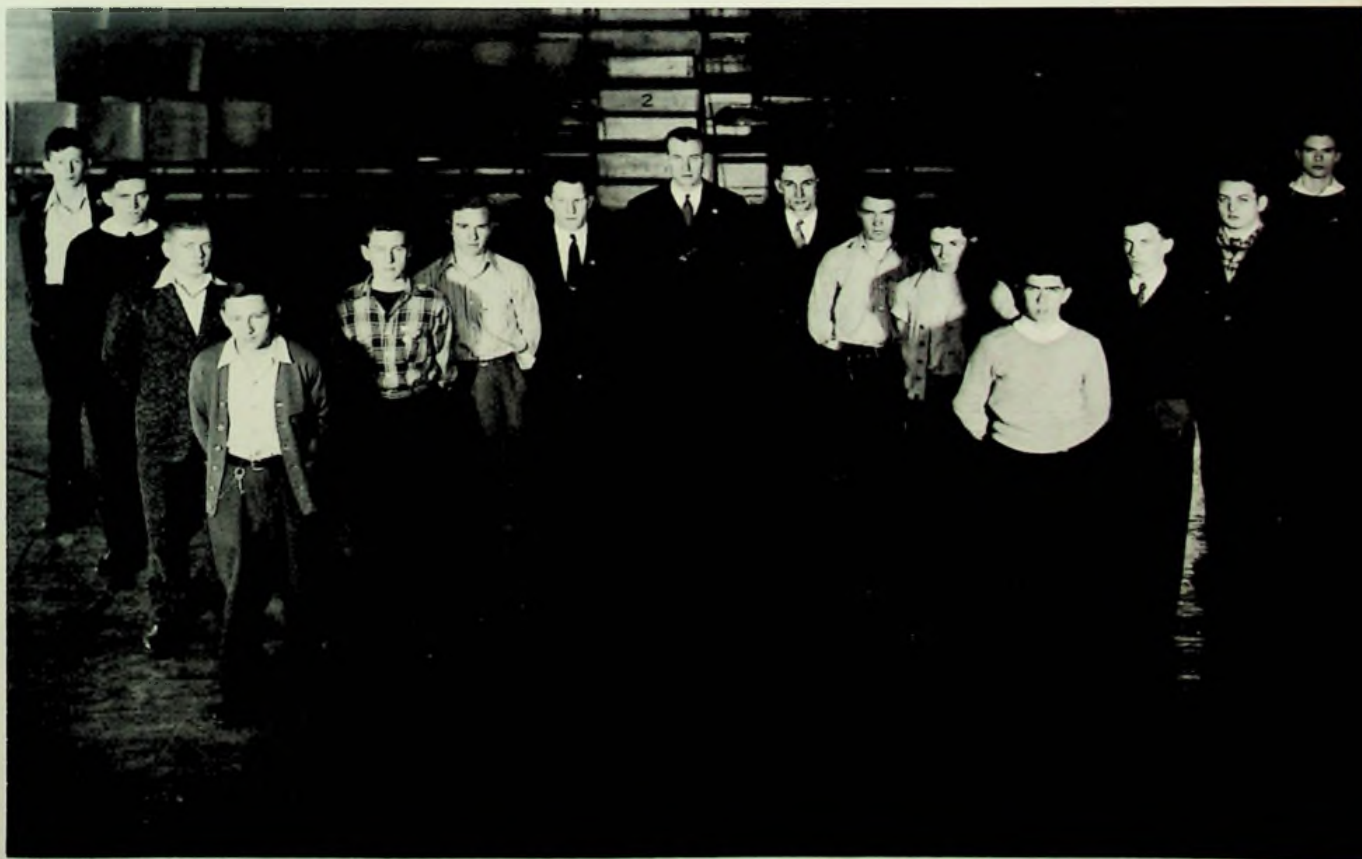
The Varsity "W" Club

The Varsity "W" Club was formed with the express purpose of giving Wheelersburg High School boys earning varsity letters an opportunity to obtain more recognition. The members also have attempted to increase interest in major sports of the high school. These boys must earn their "W" in varsity competition to be eligible for membership.

Three Senior letter winners served as officers of the club in this first year of organization. They are: Jack Miller, President; Richard Smith, Vice-president; Clarence Noble, Secretary-treasurer.

The activities of the club have been under the direction of H. B. Gooding, coach of the Wheelersburg Pirates, and Vaughn Snook, assistant coach.

LEFT TO RIGHT: GLEN SMITH, DONALD DRESSLER, JOHN VANHORN, FRED TYREE, CLARENCE NOBLE, WALTER HOWARD, MR. SNOOK, MR. GOODING, MR. DUDUIT, JAMES HOWARD, RICHARD SMITH, JOE MANLEY, JAMES LEMASTER, RICHARD RIDDLEBARGER, AND GAYLEN BURKE.

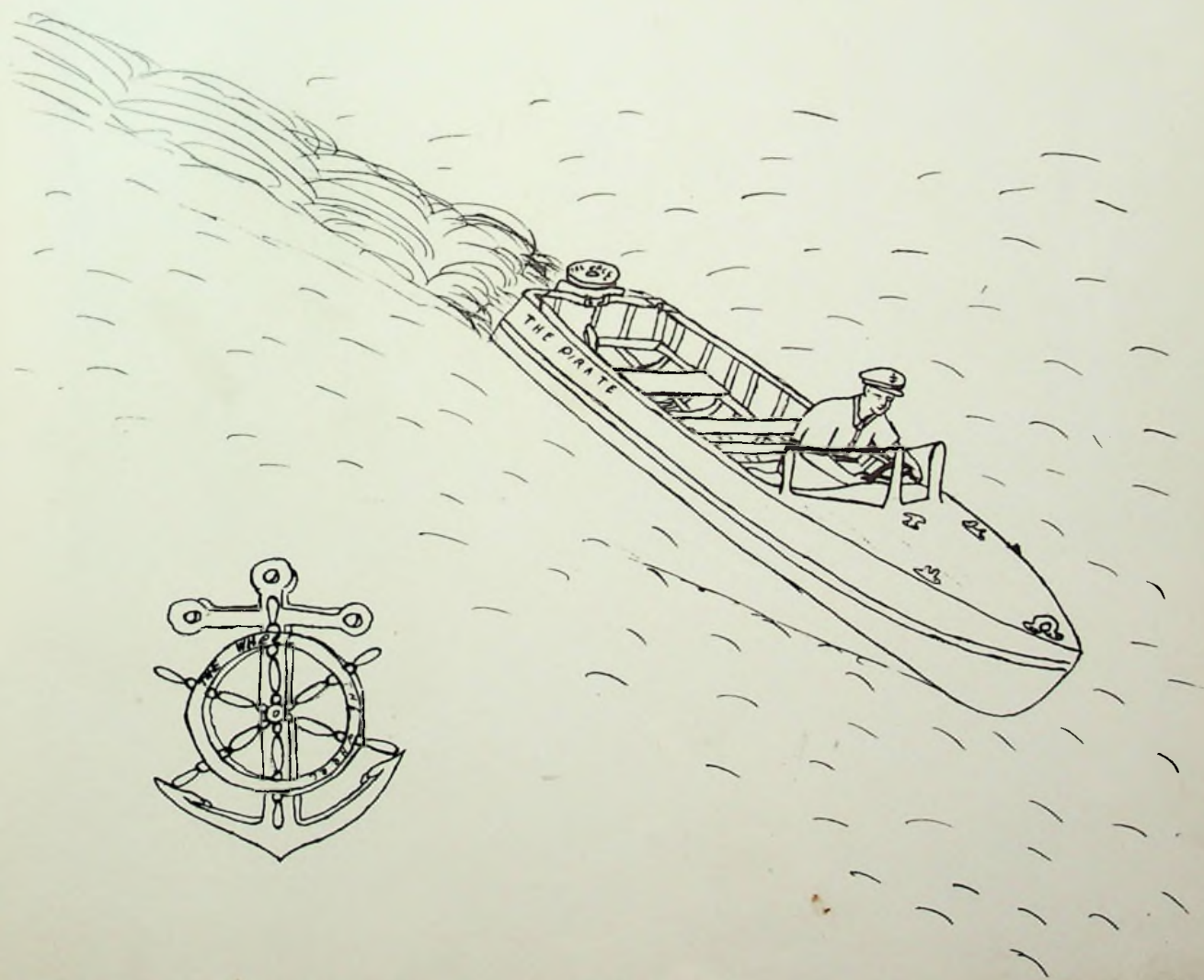




ELEMENTARY TEACHERS

FRONT ROW: LILLIAN BARNEY, SIXTH; AVANELLE STAKER, FIRST; LOREAN STANLEY, THIRD; MILDRED BLAIR, FIFTH; IRENE GROH, FIFTH; MARY MCCARTY, SIXTH. SECOND ROW: FRANCES CHRISTIAN, THIRD AND FOURTH AT ALLENTOWN; VIOLET PRESTON, FIRST AND SECOND AT SCIOTODALE; SEVAH SWIFT, THIRD, FOURTH AND FIFTH AT SCIOTODALE; BERTHA PERDUE, SECOND; CECIL POLLOCK, SECOND; LUCILLE BURKE, FOURTH AND FIFTH AT WILSON ADDITION. BACK ROW: ANNE THOMPSON, SIXTH; OLLIE HIBBITTS, FIRST; LOYZELLE HAFNER, FIRST, SECOND AND THIRD AT WILSON ADDITION; CHARLES PAYNE, SIXTH; GRACE CARTER, FIRST AND SECOND AT ALLENTOWN; RUTH SNOOK, THIRD; FAITH HOGAN, FOURTH.

S P O R T S



VARSITY and RESERVES



FIRST ROW: RICHARD McLEDD, ROBERT JOHNSON, JAMES HOWARD, WALTER HOWARD, JOHN VANHORN, HERBERT DAMRON, HARRY SMITH, GLEN SMITH. SECOND ROW: MR. SNOOK, HENRY HANSGEN, DONALD STAKER, HAROLD MUCHA, PAUL MILLER, RAY SAUL, DONALD ROCKWELL, MR. GOODING. THIRD ROW: RICHARD RIDDLEGARGER, MANAGER: ROBERT ELLIS, HOLLY HARRIS, KARL SMITH, DONALD DRESSLER, HARRY VOIERS, MANAGER.

VARSITY BASKETBALL

The Pirate's record of eight victories and fourteen defeats in the 1941-42 season does not indicate the fighting spirit shown in the various games.

At the beginning of the season our new coach, H. B. Gooding, was faced with the task of building a team around only two returning letter men, Vincent Norman and Walter Howard. However, with the assistance of Vaughn Snook, he developed a team which carried the burden very satisfactorily and provided ample thrills for the loyal fans.

The fact that this year's squad was made up largely of Sophomore makes the outlook extremely bright for a successful record next season.

The complete season's record is as follows:

Opponents	We	They	Opponents	We	They
South Webster	20	26	Green	41	32
Otway	26	15	Rarden	29	27
Lucasville	29	30	+Central Catholic	27	46
Green	35	27	Clay Twp.	27	26
Rarden	42	23	Washington	45	51
Clay Twp.	23	45	+Central Catholic	10	25++
Washington	23	45	Minford	43	29
Minford	54	40	McDermott	32	34
McDermott	28	33	Washington	30	39
South Webster	29	42		(Exhibition Game)	
Otway	28	31	Hillsboro	36	42
Lucasville	32	52		(Tournament)	

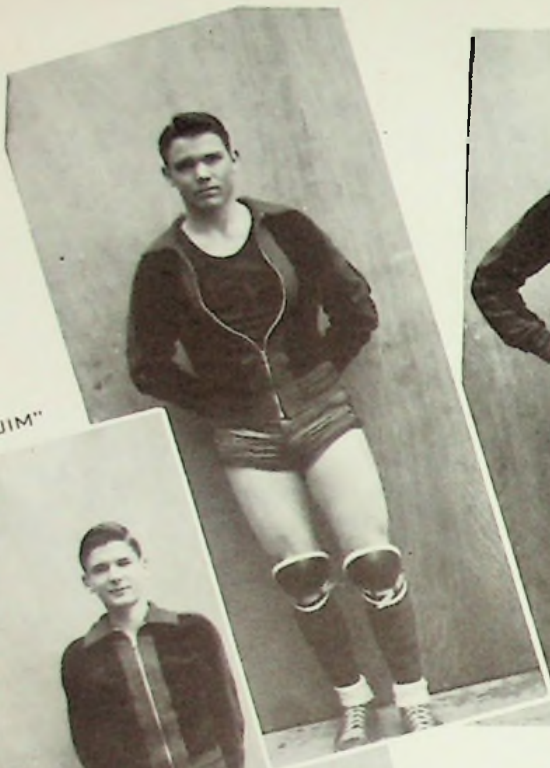
+ Non League Game

++ Game not completed

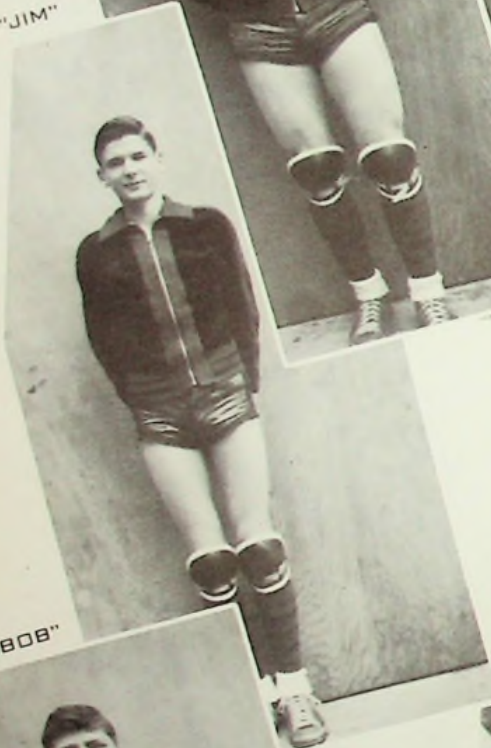
"WALT"



"JIM"



"JOHNNY"



"BOB"



"SALLY"



"HERB"



"VINNY"



"CLOUDIE"

FRONT ROW: GENE LAWSON, RAY CONLEY, EUGENE WILLIAMS, LOWELL STAKER, VERN YOUNG, EVERETT KELLY. SECOND ROW: CHARLES ZUHARS, MANAGER; LEE WILLIAMS, LESTER GALLION, EVERETT BIGGS, CHARLES NOLEN, RALPH GILPIN, CHESTER GALLION, MR. PRESTON. THIRD ROW: PAUL BROWN, EUGENE BENNETT, TED REESE, PAUL COMPLIMENT, DAVID CRAYCRAFT, JOYCE HAHN, EDWARD EVANS



The Junior High team under Coach Preston was organized to teach the boys some basketball fundamentals before they are eligible for varsity participation. They won approximately three-fourths of their games this season and should furnish some good varsity material for the future.

Mr. Burns organized this team to give high school boys, who although not members of the varsity are nevertheless interested in basketball, an opportunity to practice. Development of sportsmanship and character are stressed in this squad.



FRONT ROW: LUTHER CRAFT, RALPH DAVIS, ARTHUR BENNETT, JACK HOBSON, LESTER SMITH, GAYLEN BURKE, ROBERT CRAFT. SECOND ROW: CHARLES ZUHARS, MANAGER, RICHARD SMITH, FRED SOMMER, HAROLD HICKS, ROBERT HARTLE, WILLIAM BURKE, HARLAND SMITH, MR. BURNS, COACH. THIRD ROW: CLYDE ATKINS, WILLIAM THIEKEN, GERALD MILLER, EUGENE VANHOOSE, RAY BILLUPS.



TRACK

The track team, working under coach Vaughn Snook, provided the only spring sport for Wheelersburg High School this year.

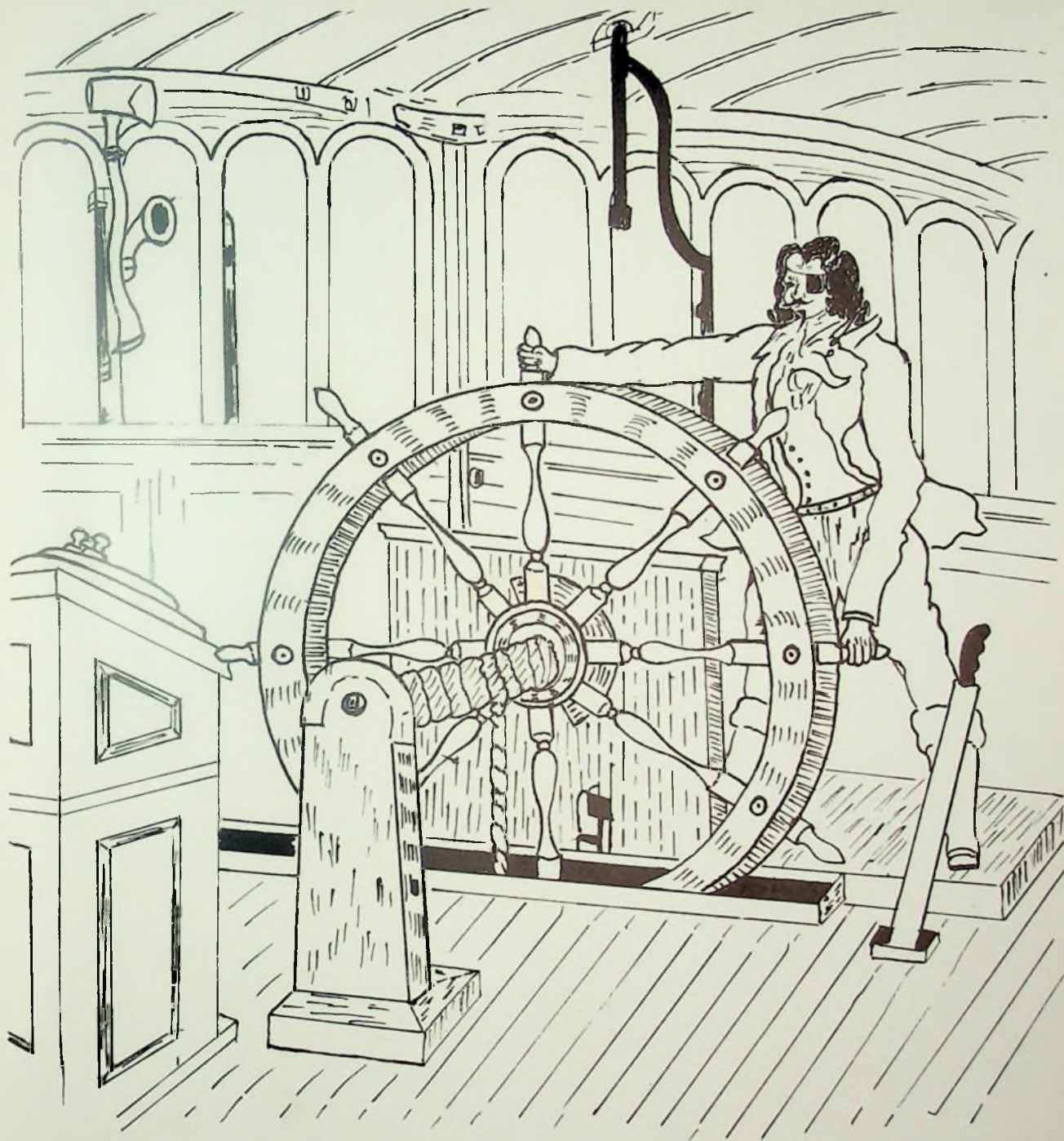
FRONT ROW: DONALD DRESSLER, GAYLEN BURKE, JAMES HOWARD, GLEN SMITH, JOHN VANHORN. SECOND ROW: JACK MILLER, JACK HOBSON, EUGENE VANHOESE, HAROLD HICKS, HAROLD SHINGLER. THIRD ROW: EVERETT CHANDLEY, KARL SMITH, RAY LEWIS, JOHN MAUCK, ARTHUR BENNETT, WILLIAM COOK, EARL MILLER. BACK ROW: MR. SNOOK, HARRY VOIERS, CHARLES ZUHARS, PAUL SCHERER.

CHEERLEADERS

Coached by Miss Morrison, these running, bounding, cart-wheeling five have been the inspiration of our Varsity and Reserves. They're pretty, he's sharp and all-in-all they've been a great sensation.

PICTURED ARE: MAXINE RISNER, MILDRED HUGHES, HAROLD HALL, EVELYN HARMON, JEAN SEXTON.





FEATURES

Senior Play



FRONT ROW: ALICE ROSS, PEGGY LEMASTER, RUTH THIEKEN, GERALDINE FRALEY, LOUISE WYANT. SECOND ROW: MR. SCHNEIDER, MISS BURKE, GERALDINE TACKETT, MARY THOMAS, RICHARD SMITH, MR. MCCOWEN. BACK ROW: WALTER HOWARD, RALPH FRITZ, WILLIAM THIEKEN, RICHARD FRITZ, GUILFORD THORNTON.

"Demon in the Dark" has a ghostly, ghastly, and spine chilling background. The apparitions of a sea demon, a bloated corpse, and a severed hand which goes hopping around using its fingers as feet are of a nature guaranteed to awaken the nerves of an Egyptian mummy. After two and one half acts of cold sweat, the audience is restored to normal heartbeat by the cast of two Scotch parts, two darky characters, a sinister villain, excellent leads and juveniles.

The Junior class play, "Spring Fever", a farce in three acts puts the audience in stitches and keeps them there throughout.

Mrs. Spangler's boarding-house is more frenzied than usual on the day before the commencement exercises at Brookfield College. Spring fever is bad enough at any time but when it hits a college town, it's devastating!

Junior Play

FRONT ROW: NED WILHOITE, BETTY ADLT, WILMA GARVEY, GARNET RAMEY, JACK WATTS. SECOND ROW: RALPH DAVIS, BETTY NICKELL, RUTH WILLIAMS, WILLIAM BENNETT. THIRD ROW: ROBERT HARTLE, HELEN STROTHER, HARRY SMITH.





All High School Play

FRONT ROW: LOIS COOK, MARILYN FRITZ, RUBY JEAN BALL, LEMONE KINNISON, CATHERINE McHENRY. SECOND ROW: MISS HUMPHREY, GERALDINE TACKETT, GERALDINE FRALEY, DOROTHY RUSS, MISS GAUMER. BACK ROW: DENVILLE DUNN, ROBERT WOODS, NED WILHOITE.

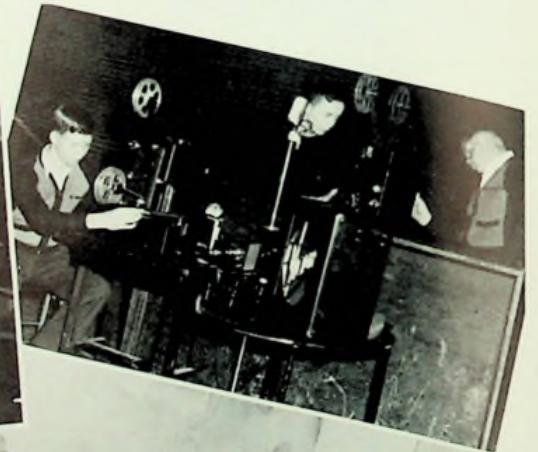
The all-high-school play, "Pigtails", concerns a girl who, upon the death of her father, comes East to live with Mr. and Mrs. Sidney Campbell. When Mr. Campbell's business fails, it is "Pigtails" who steps in and organizes a band to play at a summer hotel nearby. In spite of her efforts, she flops dismally in all her attempts. Just before the curtain falls, however, good luck crowns her efforts; and in a series of screamingly funny episodes she manages to put her benefactor back on his feet and is started on the road to fame herself.

Minstrel

"Mellow Moon Minstrel" was presented by the combined boys' and girls' glee clubs. A mixed chorus of approximately sixty-five voices, blending together in a pleasing rendition of popular southern melodies, served as the background for the show. Tap-dancing, solos, duets, and quartets were the feature attractions.

SEATED: DONALD CARTER, JAMES GLASCOCK, JOHN ADKINS, NED WILHOITE, DONALD GARRETT. STANDING: PAUL FRALEY, CLYDE CARTWRIGHT, HELEN MAYNARD, JOHN VANHORN, MISS JONES, VINCENT NORMAN, GERALDINE FRALEY, BENNY GARRETT.









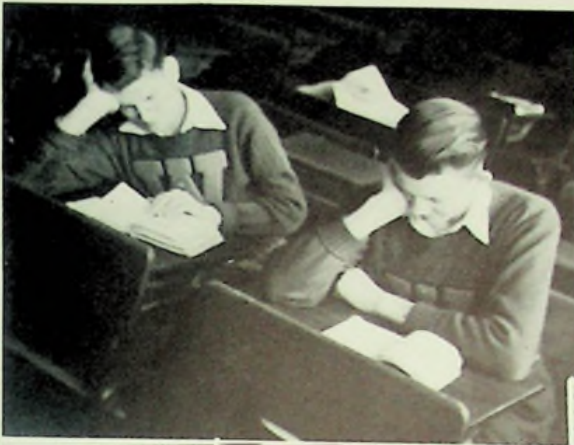
The bus drivers for the
Wheelersburg schools are:
LEFT TO RIGHT: J. H. WARNER,
HENRY BUSSLER, C. F. FRITZ, CHESTER
CONKLIN, Z. E. FRALEY, E. E. GLEIM.



D. A. PHILLIPS, ENGINEER



The janitors are:
LEFT TO RIGHT: SPURGEON VAN-
HOOSE, D. C. LAWSON, CRATE BLAIR.









Compliments Of

G. M. ROSS COMPANY

G. W. Shela Gordon Handley

Dee Garvey C. L. Melvin

O. E. Miller

G. M. Ross

Compliments Of

AUTOMOTIVE
SUPPLY COMPANY

MOBILE PRODUCTS

Sciotoville Wheelersburg

Compliments Of

W. E. McCARTY, Mgr.
KROGER STORE

Masonic Temple Wheelersburg

Compliments Of

GRANADA

DINE AND DANCE

Old Route 52
Wheelersburg, Ohio

SMITH AND AEH

GROCERIES AND MEATS

Wheelersburg, Ohio

MEISEL MOTOR CO.

CHRYSLER AND
PLYMOUTH DEALERS

Phone Scioto 22 We Deliver

224 Second St.

Phone 1

Buy United States Defense Bonds

GREETINGS, CLASS OF '42

McCURDY—SCOTT

FUNERAL HOME

LOCAL AMBULANCE SERVICE FREE

PHONE SCIOTO 51-R

CONKLIN

SERVICE STATION AND GARAGE

COMPLETE CAR SERVICE

WHEELERSBURG, OHIO

Phone 983-K

Route 52

McGhee's Service Station

TEXACO PRODUCTS

Wheelersburg, Ohio

Phone 987-X

Route 52

McCormick's

SERVICE STATION

STANDARD OIL PRODUCTS

ATLAS TIRES & TUBES

Phone 984-X

Wheelersburg

YE OLDE TAVERN CANDY SHOP

Candy, Ice Cream, Toys,

School Supplies

COMPLIMENTS

OF

WHEELERSBURG

CUT RATE GROCERY

Prop., R. S. Hoskins

Carl Herms, Prop.

Wheelersburg,

Ohio

CITIES SERVICE FILLING STATION

Henry Bussler, Prop.

Wheelersburg, Ohio

COMPLIMENTS OF

A Friend

Buy United States Defense Stamps

<p>HIBBITT'S HARDWARE</p> <p>PAINTS AND HARDWARE</p> <p>Sciotoville, Ohio</p> <p>Harding Ave. Phone Scioto 23-X</p>	<p>COMPLIMENTS OF</p> <p>POP'S PLACE</p> <p>Phone Scioto 987-R</p> <p>Route 52 Wheelersburg, Ohio</p>
<p>The HARSHA-JOHNSON Co.</p> <p>INSURANCE OF ALL KINDS</p> <p>Let us handle your Insurance Problems</p> <p>Heron M. Johnson W. Howard Harsha</p> <p>Phone 2920 117-20 Masonic Temple</p>	<p>HIBBITT'S BROS.</p> <p>GENERAL STORE</p> <p>Wheelersburg, Ohio</p> <p>Phone Scioto 981-R</p>
<p>COMPLIMENTS OF</p> <p>Dehner Department Store</p> <p>613 Chillicothe Street</p>	<p>COMPLIMENTS OF</p> <p>PORTSMOUTH</p> <p>PURE MILK COMPANY</p>
<p>OUR BEST WISHES</p> <p>TO THE GRADUATES OF</p> <p>WHEELERSBURG HIGH SCHOOL</p> <p>Distel Furniture Company</p> <p>Phone 400</p>	<p>COMPLIMENTS OF</p> <p>Portsmouth</p> <p>Interstate Business College</p> <p>PORTSMOUTH, OHIO</p> <p>Phone 2630</p>

Buy United States Defense Bonds

<p>COMPLIMENTS OF</p> <p>Johnson Bros. Grocery</p> <p>Corner Harding and Mayo Sciotoville, Ohio</p>	<p>ROBERTS JEWELERS</p> <p>421 Chillicothe Street Portsmouth, Ohio</p> <p>"Cash Prices on Credit"</p>
<p>"Insurance of all kinds except Life"</p> <p>C. E. (Tink) Nodler</p> <p>PHONE 1062 415 Glover Street</p>	<p>LONG AND COMPANY</p> <p>729-733 Sixth Street</p> <p>"THE HOUSE OF QUALITY FURNITURE" Portsmouth, Ohio</p>
<p>COMPLIMENTS OF</p> <p>CHECKER STORES, INC.</p> <p>824 Gallia St. (Next to LaRoy Theatre)</p> <p>AUTO SUPPLIES - SPORTING GOODS</p> <p>RADIOS PAINTS</p>	<p>Summers & Son</p> <p>Portsmouth's Oldest and Largest Music House</p> <p>The home of the famous Baldwin, Story and Clark, Gulbransen and Winter Pianos. Exclusive representative for the Hammond Organ. Representative of the Conn, Selmer, King, Pan American, Cavalier and other fine band instruments. RCA and PHILCO RADIOS</p> <p>Our 71 years of fair dealings is your guarantee 906 Gallia St. Phone 1971</p>
<p>CARROLL'S</p> <p>WALL PAPER PAINTS</p> <p>ENAMELS VARNISHES</p> <p>540 Second St. Phone 724</p> <p>Portsmouth, Ohio</p>	<p>COMPLIMENTS OF</p> <p>S & M MARKET</p> <p>WHEELERSBURG ICE & COAL CO.</p> <p>Coal, Sand, Gravel, Brick, Ice</p> <p>Phone Scioto 51-L Wheelersburg, Ohio</p>

Buy United States Defense Stamps

<p>THE Reidenbach Pharmacy PRESCRIPTION DRUGGIST</p> <p>Masonic Temple Phone Scioto 51-Y Wheelersburg, Ohio</p>	<p>Litteral & Craycraft F O O D S</p> <p>WE DELIVER Phone 980-L Wheelersburg, Ohio</p>
<p>COMPLIMENTS OF W. R. Bryan CLEANING & PRESSING Sciotoville, Ohio</p> <p>COMPLIMENTS OF G. E. Koch HARDWARE CO. Phone 968-L "Where your dollars have more sense"</p>	<p>ROY ZUEFLE</p> <p>Authorized Dealer for HAMILTON ELGIN GRUEN BULOVA WATCHES</p> <p>533 Second St. Gifts that Last</p>
<p>RASE'S MARKET</p> <p>Groceries and Home Killed Meats</p> <p>We Deliver Phone 983-L</p>	<p>BALL'S SERVICE STATION Allentown, Ohio Phone Scioto 944-R</p> <p>Compliments of SCHOMBURG 233 Harding Ave. Phone Scioto 39</p>
<p>HAVE YOUR KODAK FILMS FINISHED AT F O W L E R ' S</p>	<p>The Joyce Company J E W E L E R S C. C. SCHINDELL Expert Watch, Clock and Jewelry Repairing Phone 2740 2901 Gallia St. Portsmouth, Ohio</p>

Buy United States Defense Bonds

ELECTRIC COOKERY IS



LOW 2½¢ RATE

OHIO POWER CO.

DRINK



IN BOTTLES

The Portsmouth
Cement & Lime Co.

3rd and Jefferson Street

Phone 2916

Portsmouth, Ohio

Samuel Levi & Co.

FURNITURE

930-932 Gallia Street at Findlay

Portsmouth, Ohio

SHOP LEVI'S — SAVE MONEY

K O B A C K E R ' S

Buy United States Defense Stamps

SCIOTO OFFICE SUPPLY

"EVERYTHING FOR THE OFFICE"

L. C. Smith and Corona Typewriters
Duplicators and Accessories
Paper, Files, Desks

Typewriter Repair Service

Every Home needs a Portable

Call in for quotations

736 Seventh St. Phone 1072-X
Portsmouth, Ohio

CONGRATULATIONS TO
THE CLASS OF 1942

from

MARTING'S

"One Of Ohio's Good Stores"

Portsmouth, Ohio

IDEAL MILK COMPANY

Phone 623

Southern Ohio Maytag Co.

934 Gallia

Phone 194

The H. Leet Lumber Co.

has served this community since

1856

Phone Scioto 98-L

for Prompt Service

Buy United States Defense Bonds

W. T. GRANT

310-312 Chillicothe Street

Portsmouth, Ohio

Ramey's Feed Store and Hatchery

Wheelersburg, Ohio

Phone Scioto 233-L

Congratulations, Graduates



Sport, dressy, or gift occasions are more exciting when you're the center of attention. An Atlas Choice can't go wrong.

ATLAS FASHION

Swan-Morgan Company

Huntington, W. Va.

Complete line of Supplies and
Office Equipment

A. B. Dick Mimeographs

Victor Adding Machines

Royal Typewriters

Craigmiles Furniture Store

HOME FURNISHED COMPLETE

936 Gallia Street

Phone 319

G. H. MILLHUFF

GENERAL MERCHANDISE

Sciotoville, Ohio

Phone 15

Buy United States Defense Stamps

DeVOSS and DONALDSON
ARCHITECTS

DESIGNERS OF OUR NEW SCHOOL BUILDING

National Bank Building

Portsmouth, Ohio

SEE'S GREENHOUSE
FLORISTS

Plants and Cut Flowers for all Occasions

We Deliver Phone Sc. 188-L

Youthful Vitality through your Life
Drink Borden's Fresh Milk every day

Borden's Modern Dairy

Phone 1801 237 Second St.

If it's Borden's . . . It's got to be good

Congratulations to
The Class of 1942

Richman Bros. Clothing

311 Chillicothe Street

Phone 2250 Portsmouth, Ohio

CRICHTON

OFFICE SUPPLY COMPANY

Everything for the Office

740 Fifth Street

Buy United States Defense Bonds

<p>Sheets Furniture Co.</p> <p>526-30 Second St. Phone 22</p> <p>Complete Home Outfitters</p> <p>Out of the high rent district</p>	<p>COMPLIMENTS OF</p> <p>BAKE SHOP</p> <p>MARTING'S CORNER</p> <p>6th and Chillicothe St.</p>
<p>REDOUTEY & STERN</p> <p>PAINT STORE</p> <p>1006 Gallia Telephone 2136</p> <p>Portsmouth, Ohio</p>	<p>BEST WISHES</p> <p>from</p> <p>EVERETT'S</p> <p>HAMBURGER SHOP</p> <p>Sciotoville, Ohio</p>
<p>Phone 2937 Portsmouth, Ohio</p> <p>Ed Lockner's Auto Supply</p> <p>9th and Chillicothe Street</p> <p>Distributors of Auto Parts</p>	<p>PEPSI-COLA</p>
<p>Say it with Flowers . . .</p> <p>but</p> <p>. . . Say it with Ours</p> <p>HERMS FLORAL CO.</p> <p>817 Sixth Street</p> <p>Phone 1008 Portsmouth, Ohio</p>	<p>Good Coffee Home Made Pies</p> <p>Ohio Valley Restaurant</p> <p>Gallia at Mill Street</p> <p>Wheelersburg, Ohio</p> <p>WE SPECIALIZE IN HOME COOKING</p> <p>Phone Scioto 982-R</p> <p>Mrs. J. W. Hoskins, Prop. Mrs. Jr. Price</p>

Buy United States Defense Stamps

HERFF - JONES COMPANY

DESIGNERS AND MANUFACTURERS OF
SCHOOL AND COLLEGE JEWELRY, GRADUATION ANNOUNCEMENTS
MEDALS, CUPS AND TROPHIES

INDIANAPOLIS, INDIANA
1411 North Capitol Avenue

JEWELERS AND STATIONERS TO WHEELERSBURG HIGH SCHOOL
REPRESENTATIVE — P. J. BURKART

COMPLIMENTS OF

HIBBS HARDWARE

PORTSMOUTH, OHIO
737 Fifth Street Phone 85

GRAF LUMBER CO.

Sciotoville, Ohio

LUMBER AND BUILDING MATERIAL

Phone Scioto 169-L

Gemperline Furniture

Quality Goods, Reasonable Prices

Authorized Dealers for
Westinghouse Refrigerators,
Washers and Appliances

612 Second Street Phone 1063

Buy United States Defense Bonds

Buy your New Chevrolet or an
O. K'd Used Car
Glockner Chevrolet Co.
26 years your Chevrolet dealer
2nd and Chillicothe St.

COMPLIMENTS OF
ORTHMEYER'S
BAKERY

We Specialize in
Plate Lunches
Fountain Service and Sandwiches
ADRIAN'S GRILL
5720 Gallia
Mrs. Pearl Tingler, Mgr.

COMPLIMENTS
O. CARSON BARKLOW
County Engineer

Printed by
COMPTOLITH
COMPTON ENGRAVING AND PRINTING CO.
1412 THIRD STREET
PHONE 3490
PORTSMOUTH, OHIO

Buy United States Defense Stamps



