

THE  
LIBRARY  
OF THE  
MUSEUM OF  
ART AND  
ARCHAEOLOGY  
OF THE  
UNIVERSITY OF  
CAMBRIDGE  
1921



James Humphries

"42"

Lucas Mitchell

Bill <sup>Duncan</sup> Duncan

"41"



1  
9  
4  
1



*Senatorian*



Jan









Jan

## DEDICATION

We, the class of 1941, sole publishers of this our first official annual, to show in part our deep sense of gratitude and appreciation, dedicate this book to the county Superintendent, county and local Boards of Education, and to all the citizens of Washington Township, who have helped to make this our Washington Township High School possible.



*Administration*



Jan



**E. O. McCOWEN**  
Superintendent of County Schools



**N. B. POTTS**  
Ass't. County Sup't.  
of High Schools



**EVA R. KELLER**  
Ass't. County Sup't.  
of Elementary Schools



**E. R. McCOWEN**  
Supervisor of Music



**SCHOOL BOARD**

Seated left to right: Roy Cunningham,  
Bessie Greene, George Jenkins, William  
Evans, Ellison Ladd.

George Jenkins - - President  
William Evans - - Vice President  
Bessie Greene - - Clerk

The consolidated school system of  
Washington Township was made possible  
only by the combining of three townships  
- Nile, Lower Nile, and Washington - into  
one. Its president, Mr. Jenkins, has served  
42 years as a member of the school board.

The board has spoken for itself with  
action - - which is always stronger than  
words - - leaving nothing left for us to say  
but that we are grateful for such a modern  
high school, which we can call our own.





FRANK B. ROLF  
Principal

The efficiency and smoothness of the way in which a school is run can always be determined by the personality of its principal and the interest shown by him in its many problems. Mr. Frank Rolf has done a very thorough job in organizing Washington High School from the weak, beginning which it had two years ago into the well recognized class A school that has been given a superior rating by the State Supervisor. Mr. Rolf richly deserves the gratitude and praise which everyone has for him.



Jan

# FACULTY



**EMERSON FLANNERY**  
History



**CHALMERS POOLE**  
Industrial Arts



**MARGUERITE RAPP**  
Latin



**FRED STAMM**  
Science



**RUTH HAGEN**  
Home Economics



**EDNA JOLLY**  
Home Economics



**JOHN W. DAULTON**  
Science



**MARGARET BINNS**  
Commercial





**AMY MITCHELL**  
English



**MARY BENNETT**  
Commercial



**JOHN TULIPAN**  
Mathematics



**LILLIAN DAVENPORT**  
English



**RUSSEL B. CHRISTIAN**  
History and Physical Education



**DALE GILLETTE**  
Instrumental Music



**ANNA HARTLEY**  
Vocal Music

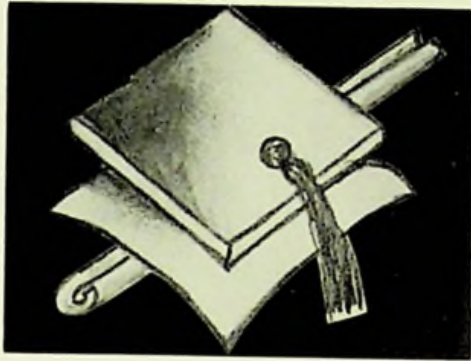


Jan

# CALENDER

- September 4 School begins. Wrong room, freshie.  
5 Where do I go from here?  
14 Glee Club organized. Sing, ah-h please.  
16 Band started. Strains of "Star Spangled Banner" drifted through the halls.
- October 3 Clubs organized.  
6 Girls begin donning stockings. Br-r!  
10 Six weeks tests. Oh, my head!  
30 Hallowe'en over. Can wash windows now.
- November 2 Here comes winter.  
3 Senior carnival. Complete with sawdust, fortune teller, and bingo.  
23 F. D. R. says today is Thanksgiving.  
24 No more school this week! Hooray!
- December 1 Preparation for Santy Clause.  
20 Christmas assembly. Vacation begins.  
25 Merry Christmas.
- January 2 Back to school! Heck!  
18 First broadcast of W. H. S.  
31 Nothing happens.
- February 2 Ground-hog didn't see shadow.  
12 Rev. McCown, speaker from Alabama, at special assembly.  
14 Valentine's Day. Nice to be young again!  
22 Mr. Washington's birthday, but no holiday for us. Falls on Saturday.
- March 1 Windy month. Hang on to your hats.  
7 First broadcast of band. 60 members. Not bad!  
7 Band sponsors play "Womanless Wedding". Mr. Gillette looking very cute in knee pants.  
11 Layne the magician, mystifies all with his magic.  
17 St. Patrick's Day. Wearin' of the green.  
18 Band presents play again by popular request. Mr. Gillette looking cute in knee pants or did we say that before?  
19 Senior play try-outs. Gee, am I nervous?  
26 Cast selected for Senior olay.
- Aoril 1 Spring is in the air, tra-la!  
3 Scholarship tests here.  
4 Music contest at Wellston.  
4 Excursion to Washington, D.C.  
10 Junior Class Play, "Phanton Bells". Nice work!  
18 Scholarship tests at Wheelersburg.
- May 2 Senior Class Play, "Small-town Romeo".  
9 Junior-Senior Prom. Some fun.  
11 Baccalaureate. Just try to keep these caps on.  
14 Graduation. Your turn is next, Juniors.  
16 Hurrah! School's over.





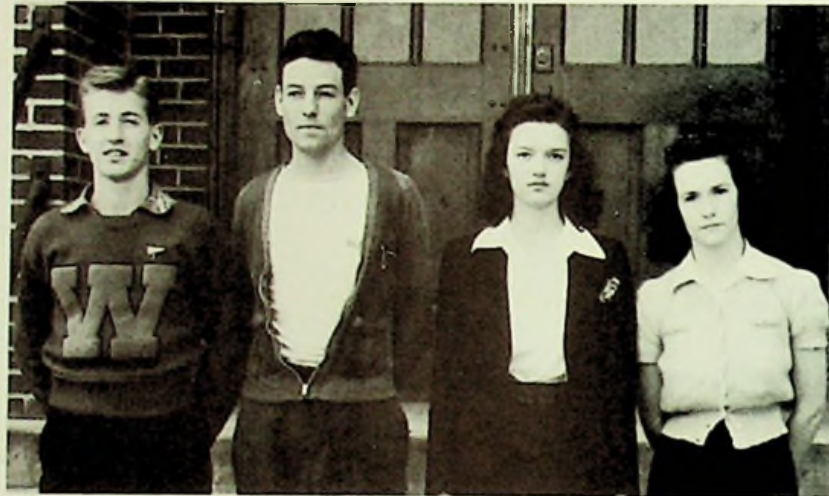
*Seniors*



Jar

## SENIOR OFFICERS

COLORS:  
MAROON AND  
GOLD



MOTTO:  
EXCELSIOR,  
AMERICA

Bill Cooley - President, Raymond Davis - Vice President, Naomi Smith - Secretary, Betty Addis - Treasurer.

## CLASS OF '41

"All aboard, Freshmen!, 'Miss Class of '41' is loading at Gate 1, Grant Junior High, for immediate flight to Washington High School." Grant: swell place -- nice teachers. Each home room elects officers. Various activities -- skating parties, clubs, spring dance. Five Nauvoo students merit a rank in the National Honor Society. That was a smooth take-off. We have flown one-fourth the journey. Now we run into a cloud bank known as final exams.

Gate II - "P.H.S." New teachers, new faces. Basketball games, dances, skating parties, football games. Now we cut off our motors and idle for a mile or two, but we must pep up our speed to meet the schedule.

Gate III - New building, Washington High. Election of Junior officers: Betty Addis, President, Anna Crabtree, Vice President, Thelma Franz, Secretary,

Bill Lowe, Treasurer -- clubs organized. Mrs. Davenport selected advisor, Mr. Daulton, assistant advisor. Junior Class Play, "Look Who's Here", great success. More basketball games, skating parties, and of course our Junior-Senior Prom.

Gate IV - Seniors -- almost the end of the flight. We have made progress the last lap of the journey in the capable hands of Miss Washington High, our hostess, and our pilots, the faculty. Miss Hagen chosen advisor. Mr. Flannery, assistant advisor. Exciting events: Club meetings, Fall Festival, Class play "Small Town Romeo", Junior-Senior Prom, Commencement, and Baccalaureate.

Fasten your safety belts, Seniors, and make ready for the final dive to a perfect three-point landing. We've reached our destination. Graduation!



# GRADUATING SENIORS . . .

BETTY ANN ADDIS - - Commercial. Crestview High (Columbus) 1, P.H.S. 2, "Look Who's Here" 3, Debaters 4, Office Assistant 4, Newsette 3, 4, Senatorian 3, 4, Class President 3, Class Officer 4, Honor Society 1, 2, Cheerleader 3, Scholarship 3, Student Council 2, "Small Town Romeo" 4.



EVERETT BAILEY - - Commercial. Grant 1, P.H.S. 2, Ind. Arts Club 3, Science Club 1, Glee Club 3, Eng. Club 3, 4, Debate Club 4, "Look Who's Here" 3, "Small Town Romeo" 4.

JACK BAZLER - - Elective. Grant 1, P.H.S. 2, Science Club 1, Glee Club 3, Ind. Arts Club 3, Model Airplane Club 4.



HELENA BELLOMY - - Commercial. Grant 1, P.H.S. 2, Science Club 1, Glee Club 1.

BILL BLOSSER - - Elective. Grant 1, P.H.S. 2, Band 2, 3, 4.



ALICE LUCILLE BOLTON - - Commercial. Grant 1, P.H.S. 2, Glee Club 1, 3, Orchestra 2.

ALICE LOUISE BRAY - - Commercial. McDermott 1, P.H.S. 2, Cheerleader 1, 3, 4, Glee Club 1, Band 1, "M" Club 1, Health Club 1, Home Ec. Club 1.



LYNN C. CALLENDAR - - Elective. Grant 1, P.H.S. 2, 3, Reserve Football 2, 3, Reserve Basketball 4, Baseball 4.



Jax

JAMES CLIFTON --Grant 1, P.H.S. 2, Ind. Arts Club 2, Eng. Club 3, Editor Newsette 3, 4, Editor Senatorian 3, 4, Phy-Chem 4, Scholarship Team 4.



JOSEPH CLIFTON -- Elective. Grant 1, P.H.S. 2, Industrial Arts Club 2.

HELEN LOUISE CONLEY - - Commercial. Grant 1, P.H.S. 2, Band 4, Glee Club 2, 3, Eng. Club 3, Newsette 3, 4, Senatorian 3, 4.



WILLIAM COOLEY - - Industrial Arts. Grant 1, P.H.S. 2, "Athenum" 1, Scholarship Team 2, 3, 4, Honor Society 1, Ind. Arts Club 3, Eng. Club 3, 4, Latin Club 4, Phy-Chem 4, Reserve Basketball 3, 4, Varsity Basketball 4, Class President 4, "Small Town Romeo" 4.

PAULINE COOPER - - Commercial. Grant 1, P.H.S. 2.



ANNA CATHERINE CRABTREE - - Commercial. Grant 1, P.H.S. 2, Scholarship Team 3, Office Assistant 1, Class Officer 3, English Club 3, 4, Cheer leader 3, Senatorian 4, Newsette 4, Home Ec. Club 1, Glee Club 1, Honor Society 1, 2, Annual Staff 1, "Small Town Romeo" 4.

ARTHUR CURTIS - - Commercial. Grant 1, P.H.S. 2, Science Club 1, Librarian 4, Eng. Club 2, 3, 4, Debaters 4, Reserve Basketball 3, 4, Commercial Club 2, Honor Society 1, "Small Town Romeo" 4.



RUTH DAVIDSON - - Commercial. P.H.S. 1, 2, Glee Club 3, Cheerleader 3.



RAYMOND E. DAVIS--College Prep.  
Grant 1, P.H.S. 2, Science Club 1,  
Eng. Club 3, 4, Latin Club 4, Phy-  
Chem 4, Class Officer 4, Reserve  
Basketball 3, 4.



MABEL DENNIS - - Commercial.  
Grant 1, P.H.S. 2, 3, Glee Club 4,  
"Two Days to Marry" 4, Commer-  
cial Club 2.

WILLIAM DUNCAN - - Elective.  
Grant 1, P.H.S. 2, Track 2, Football  
2, Basketball 3, 4, Ind. Arts Club  
2, 3.



HARRY EASTER - - Elective. Grant 1,  
P.H.S. 2, Science Club 1, Ind. Arts  
Club 3, Baseball 3, Model Airplane  
Club 4, Band 4.

RAY ENTLER - - Commercial. Grant  
1, P.H.S. 2, Basketball 3, 4.



EDWARD FANNIN - - Elective. Grant  
1, P.H.S. 2, Science Club 1, Glee  
Club 3.

VERN FLANNERY - - Elective. Pioneer  
High (Oklahoma) 1, P.H.S. 2, 3,  
Debaters 4, Glee Club 1, Basket-  
ball 1, English Club 4.



THELMA RUTH FRANZ - - Commer-  
cial. Grant 1, P.H.S. 2, Office Assis-  
tant 4, Glee Club 1, 2, 3, Newsette  
4, Senatorian 4, Class Officer 3,  
Eng. Club 3, Home Ec. Club 2, Schol-  
arship Team 3, Cheerleader 3,  
"Look Who's Here" 3, Science  
Club 1, Basketball 1.



Jan

ANN GABBERT - - Commercial.  
Grant 1, P.H.S. 2, Glee Club 1, 3,  
Eng. Club 1, 3, 4, Newsette 3, 4, Sen-  
atorian 3, 4, "Small Town Romeo" 4.



CARL GEORGE - - Elective. Grant 1,  
P.H.S. 2, Reserve Football 1, 2,  
Baseball 3, 4, Basketball 3, 4, Latin  
Club 4, Eng. Club 4, Glee Club 1.

GEORGE GREENE - - College Prep.  
Grant 1, P.H.S. 2, Latin Club 4,  
Newsette 3, 4, Senatorian 3, 4,  
Baseball 3, 4.



BETTY HART - - Commercial. Grant  
1, P.H.S. 2, "Look Who's Here" 3,  
Eng. Club 3, 4, Science Club 1,  
"Small Town Romeo" 4.

EUGENE HOWELL - - Elective. Grant  
1, P.H.S. 2, Librarian 1, 4, Band 4,  
Glee Club 1.



JUANITA KEENE - - College Prep.  
Grant 1, P.H.S. 2, Science Club  
1, Eng. Club 3, 4, "Look Who's  
Here" 3, Phy-Chem 4, Latin Club  
4, Newsette 3, Senatorian 3, Bas-  
ketball 1, 2.

MAYBELLE KROGER-- College Prep.  
Grant 1, P.H.S. 2, Eng. Club 3, 4, Phy-  
Chem 4.



BILL LOWE--College Prep. P.H.S. 1,  
2, Latin Club 1, 2.



JAMES MAUK -- Commercial. Grant 1, P.H.S. 2, Science Club 1, Intramural Basketball 2, Ind. Arts Club 3.



ROZELLA McCALL -- College Prep. Grant 1, P.H.S. 2, Basketball 1, 2, Sockball 1, 2, English Club 3, Newslette 3, 4, Senatorian 3, 4.

JAMES F. McKAY--Elective Grant 1, P.H.S. 2, Football (tots) 1, 2, Track 2, Eng. Club 3.



MARY MULLEN - - Commercial. Grant 1, P.H.S. 2, Betty Lamp Club 2, Girls Model Airplane Club 4, Commercial Club 2, History Club 2, G.A.C. 2.

MIRIAM O'DELL - - Commercial. Grant 1, P.H.S. 2, Science Club 1, Tumblers 1, Commercial Club 2, English Club 3.



LOWELL PACK --Elective. Grant 1, P.H.S. 2, Baseball 3, Ind. Arts Club 2.

ROBERT PEED -- Ind. Arts. Grant 1, P.H.S. 2, English Club 4, Librarian 1, "Look Who's Here" 3, Ind. Arts Club 3, Newslette 3, 4, Senatorian 3, 4, Phy-Chem 4, "Small Town Romeo" 4.



ELVA LEAH PRINCE -- Commercial. Grant 1, P.H.S. 2, 3, Eng. Club 1, 2, 4, Home Ec. 2, 3, Verse-makers 3, Commercial Club 2, 3, Debaters 2.



Jan

AVANELLE RAPP - - College Prep.  
Grant 1, P.H.S. 2, Eng. Club 3, 4,  
Latin Club 4, Phy-Chem 4, Science  
Club 1, Basketball 1, Newsette 3,  
Senatorian 3, 4.



JAMES RATLIFF - - Commercial.  
Grant 1, P.H.S. 2, Glee Club 1.

KATHERINE RATLIFF--College Prep.  
Grant 1, P.H.S. 2, Eng. Club 3, 4,  
Phy-Chem 4, Glee Club 1, 3, "Look  
Who's Here" 3, Latin Club 4, Sci-  
ence Club 1, "Small Town Romeo" 4.



GENEVIEVE REXROAD - - Commer-  
cial. Grant 1, P.H.S. 2, Athletic  
Club 1.

CHARLOTTE ROARK - - Commercial.  
Grant 1, P.H.S. 2, Eng. Club 4.



CLARENCE ROTH - - Elective. Bloom  
School (Cin.) 1, Woodward High  
(Cin.) 2, Parkersburg High (W.Va.)  
3, Wrestling 3, Book Club 1, 2, 3,  
HiY 3, Football 2, 3.

RAYMOND SHAW - - Ind. Arts. Grant  
1, P.H.S. 2, Ind. Arts Club 2, 3, Sen-  
atorian 4.



ROBERT SHAW - - Ind. Arts. Grant  
1, P.H.S. 2, Ind. Arts Club 3, Eng.  
Club 3, 4, Band 4.



MARY LOUISE SHIVNER--Commer-  
cial. Grant 1, P.H.S. 2, Eng. Club 3,  
4, Glee Club 1, Newsette 4.



EVELYN SMITH - - Commercial.  
Grant 1, P.H.S. 2, Glee Club 1,3, Eng.  
Club 4.

DARLENE SMITH - - Elective. Grant  
1, P.H.S. 2.



NAOMI SMITH - - Commercial.  
Grant 1, P.H.S. 2. Lathan 3, Junior  
Plays 3, Class Officer 3, 4, Newsette  
4, Eng. Club 4, Glee Club 1, 2, 3,  
Orchestra 2, 3.

BROOKS SPARKS--Ind. Arts P.H.S.  
1, 2, Glee Club 3, Ind. Arts Club 3,  
Science Club 1, Basketball (Intra-  
mural) 1, 2, "Small Town Romeo" 4.



OTTIS STATEN--Commercial. Grant  
1, P.H.S. 2, Commercial Club 2.

FAYE STONE--Commercial. Grant 1,  
P.H.S. 2, English Club 4.



VIRGIL SWORDS - - Commercial.  
Grant 1, P.H.S. 2, Paper Staff 1,  
Reserve Basketball 3, 4, Eng. Club  
3, "Look Who's Here" 3.



Jam

ANNA LOUISE TIMBERLAKE -- Commercial. Jackson 1, P.H.S. 2, Senior Music 1, Glee Club 2, 3.



OLIVER TIPTON - - College Prep. Grant 1, P.H.S. 2, Eng. Club 3, 4, Newsette 3, 4, Senatorian 3, 4, Latin Club 4.

GEORGIA TRACY - - Commercial. Grant 1, P.H.S. 2, Glee Club 1, 2, 3, Science Club 1, Commercial Club 2.



WILMA JEAN WARNOCK - - Commercial. Grant 1, P.H.S. 2, 3, Eng. Club 4.

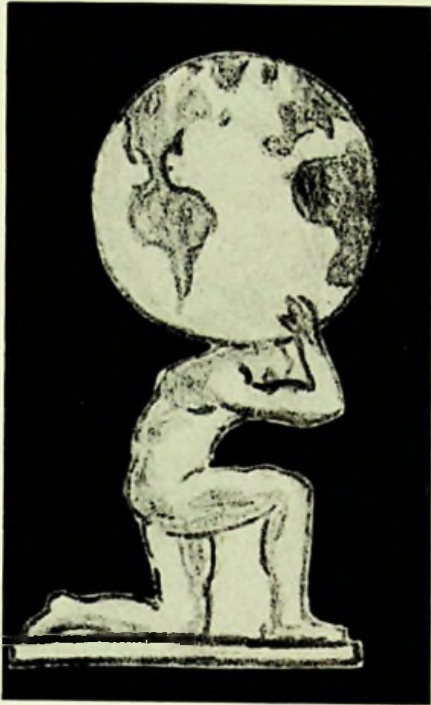
BETTY WELLS - - Commercial. Grant 1, P.H.S. 2, Glee Club 1, 2, 3, Orchestra 1, 2, Eng. Club 4, Newsette 4, Senatorian 4, "Look Who's Here" 3, Scholarship 3, 4.



JAMES WORLEY - - College Prep. Grant 1, P.H.S. 2, Debaters 4, Phy-Chem 4, Ind. Arts Club 3.

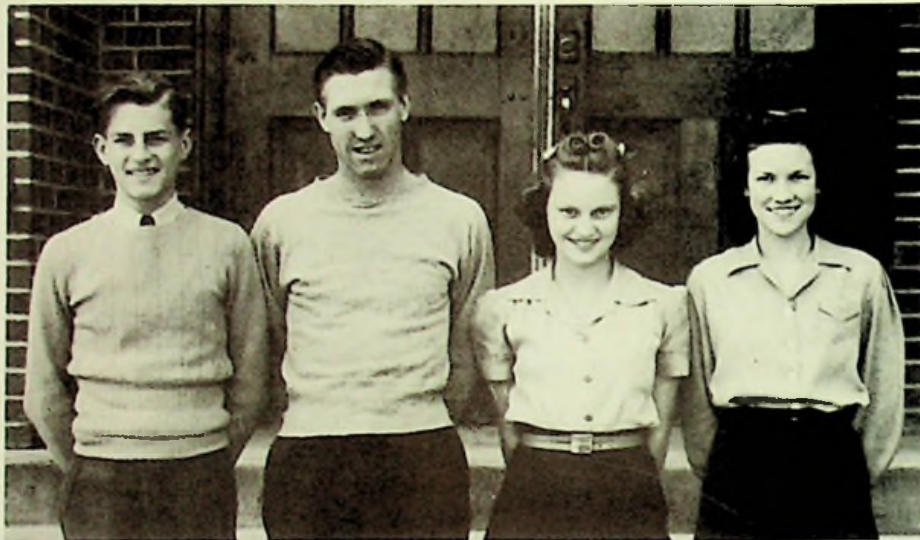
DICK LOOKABAUGH--(Not pictured) Elective. Grant 1, P.H.S. 2, Freshman Basketball 1, Capt. Basketball 3, 4, Baseball 3, 4, Golf 3.





*Underclassmen*

## JUNIOR OFFICERS



Robert Vernier-President, Cliff Williams-VicePresident, Erma Anderson-Secretary,  
Mary Ann Reynolds - Treasurer.

The history of any class begins with the first day at Junior High. This first day the present junior class found themselves assembled in the huge auditorium of the U. S. Grant School. Then followed several days of being lost and being late for classes. Here they had their first taste of Latin, algebra, etc., and declared that they never would learn to conjugate *venio*, and solve  $2x + 4x - 60$ .

But before they knew it, this first year had passed and they entered Washington High School as sophomores. First of all, the class officers were elected. President, Dick Lookabaugh; Vice President, Erma Anderson; Secretary, Mary Ann Reynolds; Treasurer, Delores Moriarity. Mr. Christian was chosen as class advisor.

On reaching their junior year, the class was confronted with a responsibility of raising a fund sufficient for the Junior-Senior Prom. After box suppers, skating parties, plays, and all kinds of money-making enterprises, they finally secured the amount needed, ending a very successful year.



## CLASS OF '42



*First Row:* B. Nolder, R. Craycraft, J. Smith, E. Anderson, V. Webb, F. Howard, H. Wireman, E. Evans, V. Houston, L. Howard, Mr. Daulton, Advisor.

*Second Row:* Mrs. Davenport, Advisor; B. Kazee, K. Blevins, H. Ratliff, D. Moriarity, M. M. Bealor, N. Gilliland, D. Meyers, D. Anderson, D. Kayser, B. Simons.

*Third Row:* J. Allen, M. Litz, M. Hart, M. McComas, M. Reynolds, H. Sanford, H. O'Dell, B. Vernier, J. Strickland.

*Fourth Row:* I. Journey, M. Gibson, L. Mowery, S. Culp, C. McCowen, F. Hayslip, R. Barber, E. Raines.

*Fifth Row:* M. Vaughters, C. Williams, E. Davidson, M. Ladd, P. Craigmiles, D. Belcher, J. Hamilton, R. Walther, G. Conley.

*Sixth Row:* D. Barber, J. Brown, N. Peed, B. Castle, R. Shepherd, E. Kegley, L. Hoop, C. Williams, G. Nelson.

*Seventh Row:* D. Ratliff, K. Jarrell, R. Stamm, D. Andre, H. Chandler, J. Van Hoose, B. Ralston.

*Eighth Row:* K. Gifford, B. Sowkulech, R. Fletcher, C. Castle, C. Estep, B. Adams, J. Howard.

*Ninth Row:* R. Cooley, D. Mitchell, J. Eubanks, M. Mitchell.



## SOPHOMORE OFFICERS



Evan Surran - President, Helen Veach - Secretary, Loretta Mitchell - Treasurer.

When the sophomore class entered W. H. S. as freshmen last year, it found the schedule and the subject matter very different from the usual kind of school life it had previously known. Strange as it may seem the class officers selected constituted all boys: Eugene Mutter, President; Bill Singleton, Vice President; Roderick Tipton, Secretary; and Harry Kennedy, Treasurer. The class advisors were Miss Jolly and Mr. Daulton. As the year progressed various clubs were organized in which the sophomores took an active part. They had a skating party and also ended the year with a picnic at Roosevelt Lake.

When they returned to school as sophomores, they were more democratic individuals and became better acquainted with the student body and faculty. They have taken greater interest in clubs and all activities, and rank high scholastically as well as in athletics. They furnished some of the star athletes on the basketball team as follows: Bill Singleton, James Davis, Eugene Shepherd, and Russell Holt. Next year they hope to obtain even higher honors and gain more knowledge and understanding.



# SOPHOMORE CLASS



*Seated, Left to Right:* H. Lewis, B. Humphries, S. Briggs, M. Ferguson, E. Staten, C. Wolfenbarger, G. Entler, N. Wakefield, O. Wilson. *Second Row:* W. J. Bealor, J. Litz, E. J. Jackson, P. Riehl, C. Daulton, L. McGinn, W. McCleese, P. Hale. *Third Row:* B. Hopkins, J. Hart, A. Swords, J. Mitchell, B. Bias, D. McKay, T. Swords, M. Bailey, H. Evans, D. Riley. *Fourth Row:* J. Parker, T. Craycraft, A. Keene, M. Horsley, G. Davis, J. Himes, C. Sowkulech, L. Gibbs. *Fifth Row:* T. Vernier, E. McGlone, L. Lewis, M. Howell, W. Boyes, E. Gray, P. Hackworth, J. Schreich. *Sixth Row:* D. Miller, E. Hill, H. Veach, W. Wolery, H. Phillips, J. Davis, Miss Bennett, Advisor.

*Seated, First Row:* V. Puckette, J. Estep, L. Mitchell, N. Rose, R. Jennings, I. Cooper, D. Dunaway. *Second Row, Standing:* R. Gabbert, K. Conley, C. Huston, E. Fawns, E. Maynard, E. Humble, D. Collignon, N. Cannaday, J. Hazelbaker, M. Easter. *Third Row:* J. Swords, E. Mutter, P. Wilburn, H. O'Dell, H. Graham, L. Joseph, N. Carver, W. Smith. *Fourth Row:* B. Conley, R. Kuhn, P. Stone, E. Risner, E. Surran, R. Prince, A. Creech, W. Kroger. *Fifth Row:* D. Bazler, E. Shepherd, H. Kennedy, R. Tipton, B. Singleton. *Sixth Row:* R. Holt, D. White, H. Hopkins, E. Shepherd, B. Hall, C. Easter, K. Rapp.





Jan

## FRESHMAN OFFICERS



Orville Reiser - President, Leah Jane Prince - Vice President, Patty Wakefield - Secretary, Jack Sheets - Treasurer.

A group of young people, bubbling over with pep and enthusiasm about a new sort of school life, stormed W. H. S. in the fall of 1940. These "freshies" had just completed a definite period of their lives when they graduated from elementary school where they attained high scholastic ratings. This was the beginning of a new era for them.

The class was well represented in clubs and school activities, and contributed largely to the new spirit of sportsmanship and loyalty to our Alma Mater. They produced their share of good students, band members, cheerleaders, scholastic teams and the king and queen of the school were chosen from their class.

The upper classmen have complete confidence in this group and gladly relinquish their place that they may follow through and pursue the course of a greater life, made possible by a thorough education such as Washington High provides.

'Tenshun, On to '44.



# FRESHMAN CLASS



*First Row, Seated Left to Right:* L. J. Prince, E. Noel, L. Weghorst, L. Marcum, W. Windsor, L. Littleton, J. Stevenson, E. Lewis, L. Jones. *Second Row:* Mr. Tulipan, Advisor, V. Giles, J. Lookabaugh, M. Liston, H. Sparks, H. Moore, L. Shaw, E. Smith, D. Stamm, V. Morgan, D. Lewis, Mr. Stamm, Advisor. *Third Row:* A. Smith, B. Rose, P. Wakefield, D. Pyle, B. Shaw, M. Simpson, F. Riehl, C. Sanford, H. Mann. *Fourth Row:* E. Riser, J. Ralston, M. James, V. Mullen, S. Mault, J. Sheets, L. Riser, M. James. *Fifth Row:* E. McCleese, B. Shaffer, I. Williams, N. McGohtlin, M. Wolery, G. Shover, G. Lilly, E. Zores, O. Reiser. *Sixth Row:* E. Williams, I. Zores, C. Lewis, M. Whaley, R. Litz, F. Kuhn, P. Schwamberger, W. Williams. *Seventh Row:* R. O'dell, C. Shepherd, F. McCall, G. Ratliff, B. Stone, J. McNeil, D. Kennard, E. Lansing. *Eighth Row:* L. Schoettle, M. Sexton, C. Woten, L. Maynard, D. Stone, V. Sartan, D. Piatt, H. Kinnaman, V. Roe.

*Seated, Left to Right:* T. Hamilton, W. Clifton, T. Dillow, M. E. Addington, I. Dameron, R. M. Diller, B. Gibbs, A. Hall, J. Davis. *Second Row:* G. Gabbert, W. Hopkins, L. Hale, L. Clifford, D. Chaffin, B. Hazelbaker, A. Hall, L. Hall, M. Distel. *Third Row:* L. Cook, E. Hall, B. Farley, M. Chaffins, B. Grice, C. Collignon, W. Hamm, C. Grumme, D. Cooley. *Fourth Row:* D. Andre, E. Hall, I. Evans, D. Hilt, M. Estep, A. Greene, C. Bridwell, N. Crawford. *Fifth Row:* P. Colburn, J. Folsom, C. Bodmer, W. Howard, M. Double, W. Hobbs, H. Coburn. *Sixth Row:* C. Hill, P. Goodie, C. Houston, T. Frye, C. Coriell, R. Distel, L. Evans. *Seventh Row:* J. Briggs, C. Hale, I. Church, D. Boren, M. Distel, J. Davis, C. Hamilton, R. Foster, J. Elliott.





Jan

### HOME ECONOMICS

A Sophomore class in cooking. Sewing room is shown beyond



### LABORATORY; WOODSHOP



### INDUSTRIAL ARTS

Freshman boys learning to use the tools - lathe, drill-press and saw.





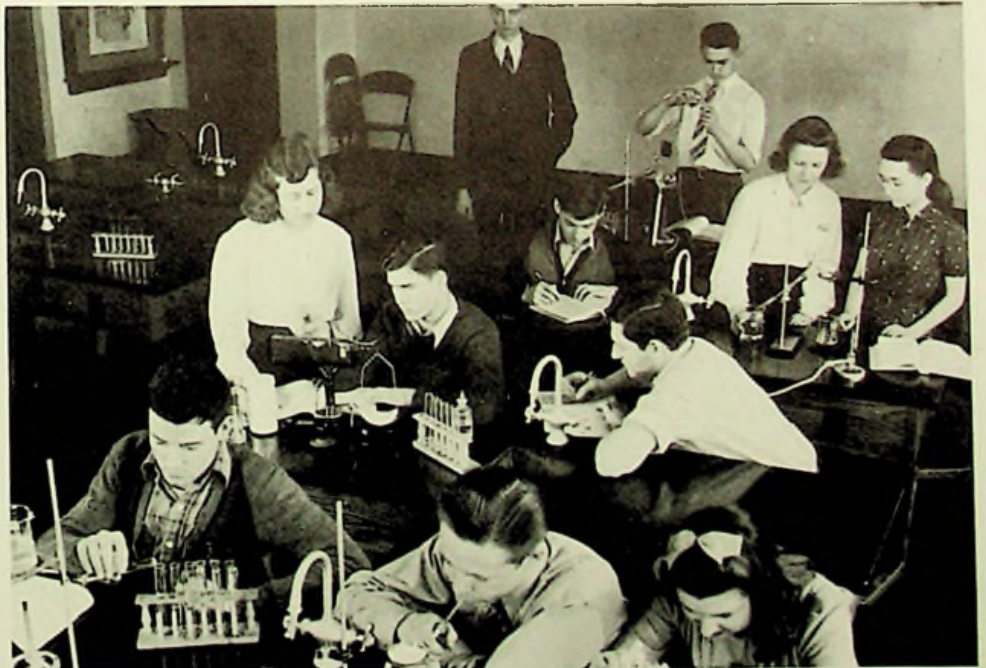
## TYPING ROOM

Juniors who are endeavoring to master the typing technique.

## CLASSROOM - ROUTINE

## CHEMISTRY

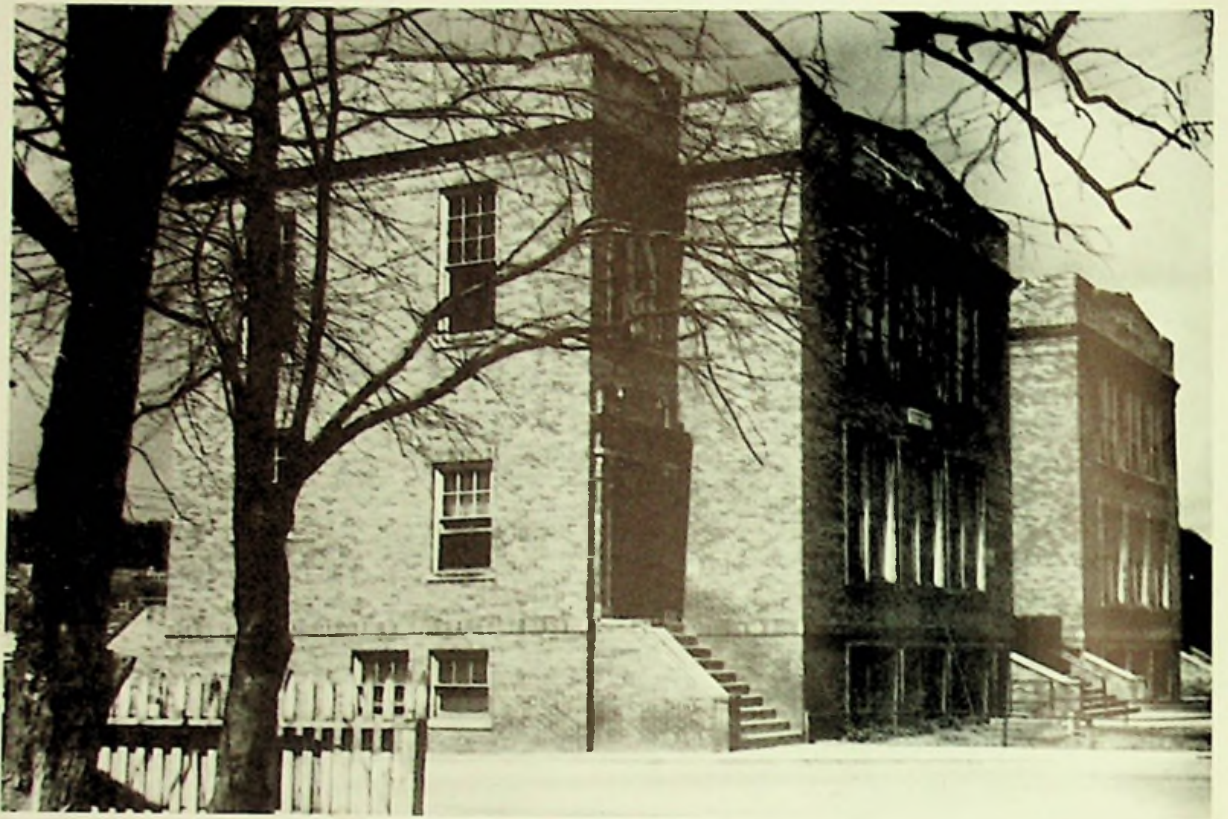
Seniors learning accuracy in their laboratory experiments.





Jan

# Large Elementary Schools

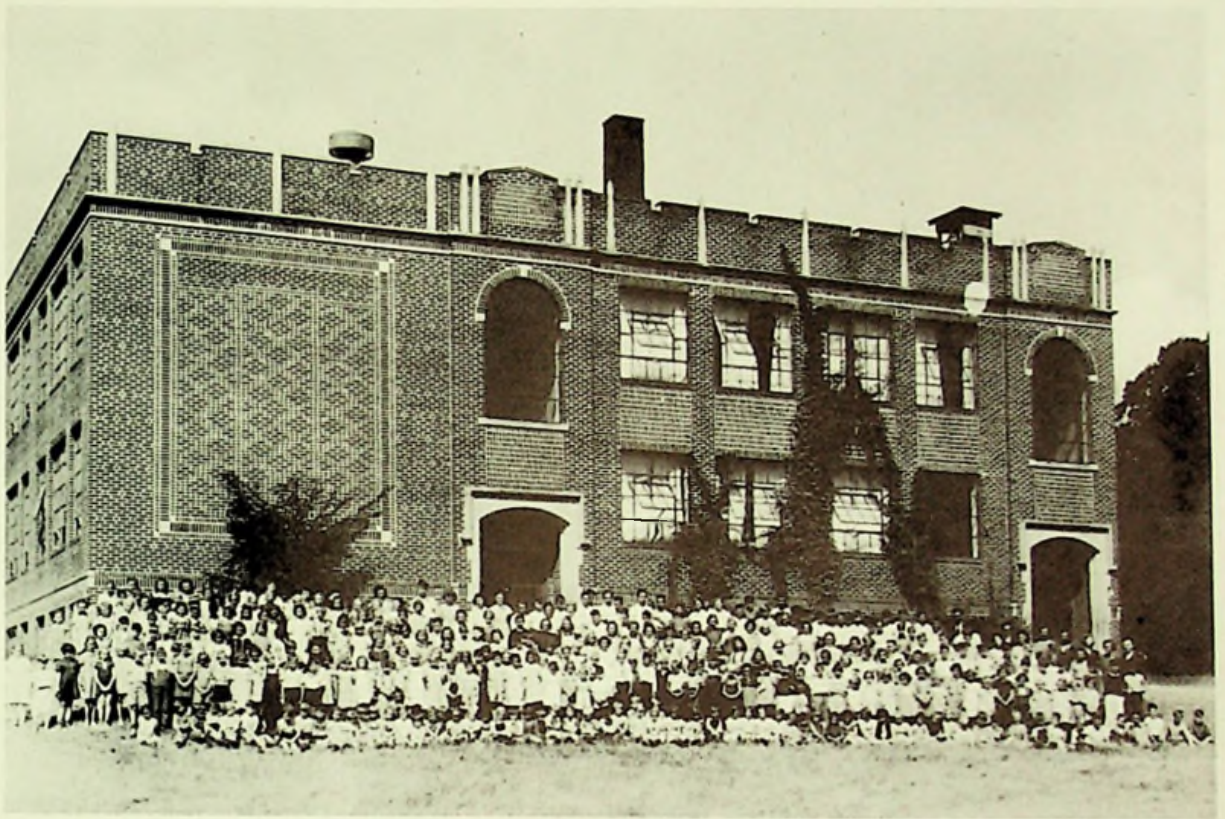


NAUVOO



DRY RUN





## FRIENDSHIP

Nauvoo—Robert De Long, Prin.; Martin Noel, Paul Poole, Margaret Strickland, Stella Bradney, Catherine Browning, Elizabeth Jackson, Esta Stahl Brigner, Libbie Goetz, Agnes Bradford, Rosa Bradford Hinze, Cleo Mitchell Cooper, Beatrice Shelton, Maude May, Harry Hamer.

Friendship—Claude Addis, Prin.; John Brandel, Carlos Walker, Bertha Foster, Pearl Ellis, Eleanor Jane Hopkins, Eva Anderson, Clara White, John W. Shively.

Lower Dry Run—V. C. McCall, Prin.; W. W. Fouch, Mary Crowe Kinker, Jeanette South, Thelma Appleton, Elizabeth Kemper.

Upper Dry Run—Edward Warren, Prin.; Thelma Evans.

Sugar Grove—Harry Grimshaw, Prin.; Dean Jackson, Mary Bennett Perdue.

Buena Vista—J. H. Bouts, Prin.; Louise Bennett.

Elm Tree—M. L. Webb, Prin.; Nell Watters.

Upper Careys Run—Foster Kirker, Prin.; Augusta Stamm, Louise Cuppett.

Lower Careys Run—Mariam Millison.

Slab Run—Elizabeth Ressinger.

Hygean Run—Helen Arnett.

8th Grade, Washington High School—Richard Fenton.

(Pictures for the smaller schools were not obtained).



Ja







*Activities*



# ANNUAL STAFF



*First Row:* A. Crabtree, B. Addis, H. Conley, A. Gabbert, A. Rapp, R. McCall, Mrs. Rapp, Advisor. *Second Row:* B. Peed, G. Greene, B. Wells, T. Franz, J. Clifton, O. Tipton. *Third Row:* J. Hamilton, R. Barber, R. Shaw, R. Walther.

Editor.....	James Clifton	Art Editor.....	James Hamilton
Business Manager		Advertising Managers..	Ralph Walther
and Photographer.....	Robert Peed		Ray Shaw
Activities Editors.....	Rozella McCall	Circulation Managers...	George Greene
	Avanelle Rapp		Oliver Tipton
	Ann Gabbert		Richard Barber
	Helen Conley	Typists.....	Betty Addis
Feature Editors.....	Betty Wells		Thelma Franz
	Anna Crabtree		

This year's senior staff of the *Senatorian* under the supervision of Mrs. Rapp has worked earnestly to complete this 72-page year book in time to get it in the hands of all customers before the close of school.

Most of the pictures in the book this year were taken by professional photographers because of the lack of equipment by the high school, but much praise is due the student photographers for their many snapshots in and around the school. The ad solicitors are also due much praise for making this book possible with the advertisements which they collected from the Portsmouth and local merchants.

Each section of the features, including the senior activities, sports and entire makeup of the book, is handled by a different department under the supervision of that department and is assembled in its final form by the editors and advisor.

Involving one of the largest business transactions in the school, this year's staff has ably handled all problems connected with publishing the first annual of Washington High School.



# LATIN CLUB



*Seated:* Mabel Horsley, President; Janet Smith, Vice-President; Billie Bias, Secretary and Treasurer. *First Row:* Mrs. Rapp, Advisor, R. Craycraft, E. Anderson, L. Marcum, B. Humphries, W. Clifton, I. Damron, R. M. Diller, L. McGinn, L. Hall. *Second Row:* H. Ratliff, N. Crawford, E. Noel, V. Webb, R. McCall, A. Rapp, S. Briggs, L. Mitchell, I. Journey. *Third Row:* J. Parker, G. Entler, C. Wolfenbarger, J. Mitchell, A. Keene, P. Reihl, D. Moriarity, K. Blevens. *Fourth Row:* C. Daulton, J. Lookabaugh, J. Ralston, P. Wakefield, M. Gibson, R. Tipton, A. Creech, K. Rapp. *Fifth Row:* T. Vernier, C. Sowkulech, M. M. Liston, E. Mutter, J. Folsom, D. Cooley, H. Kennedy, B. Singleton. *Sixth Row:* R. Walther, C. Castle, G. Greene, R. Davis, K. Ratliff, J. Keene, W. Wolery, J. Himes, E. Shepherd, O. Tipton.

The Latin Club is a new club formed this year by Mrs. Rapp, for the purpose of creating new interests in Latin as well as becoming better acquainted with the Roman Classics. All four classes are eligible for this club if they have had one year of Latin, or if they are taking it now. Our meetings have proved very successful and at the present time we have sixty-five members in our club. At the first of the year all members were initiated by the initiation committee, followed by a ceremony read in Latin by the President. At Christmas time the Latin club members marched through the halls singing carols in Latin.



Ja

## FRESHMAN - SOPHOMORE ENGLISH CLUB

The Freshmen-Sophomore English Club was revised this year, the Juniors and Seniors having a club of their own. The club consisted of approximately fifty members. In order that a student may be eligible to enter this club he must have at least an average grade of VG or above. The club advisors were Mrs. Davenport and Miss Jolly. The purpose of the organization tended to help the members with their English. Many noted speakers addressed the club during the meetings which were held monthly in the study hall. Highlights of the year were, perhaps, accomplished in the joint meetings held with the Junior-Senior Club.



*Seated, Left to Right: Harry Kennedy, President; Mabel Horsley, Vice-President; Eugene Mutter, Secretary and Treasurer. Standing, First Row: Mrs. Davenport, Advisor, R. M. Diller, L. Mitchell, W. Clifton, N. Wakefield, O. Wilson, J. Davis, I. Dameron, L. Weghorst, L. Hall, Miss Jolly, Advisor. Second Row: R. Gabbert, J. Ralston, M. James, S. Briggs, T. Dillow, C. Wolfenbarger, I. Williams, W. Hamm. Third Row: B. Farley, B. Bias, P. Riehl, D. McKay, L. J. Prince, P. Hackworth, C. Grumme, B. Stone. Fourth Row: A. Creech, R. Tipton, J. Mitchell, A. Keene, L. Lewis, L. Gibbs, M. James, D. Cooley, O. Reiser.*



## JUNIOR - SENIOR ENGLISH CLUB

The Junior-Senior English Club was organized this year under the direction of Mrs. Mitchell and Miss Bennett. Last year there was but one club to which all four classes belonged. This year the Juniors and Seniors were organized into a separate club, the only requirement being to have at least a VG in English. The guest speakers for the club have been very entertaining as well as educational. Following up a good beginning, next year this organization hopes to become one of the outstanding activities of the school.



*Seated, Left to Right:* Marjorie Gibson, President; Anna Crabtree, Vice-President; Mary Ann Reynolds, Treasurer; Mary Louise Shivner, Secretary (*not pictured*). *First Row, Standing:* Mrs. Mitchell, Advisor, A. Gabbert, R. Craycraft, E. Anderson, M. Hart, E. Smith, J. Smith, M. Kroger, V. Webb, H. J. Wireman, Miss Bennett, Advisor. *Second Row:* I. Journey, H. Ratliff, C. Roark, B. Hart, N. J. Gilliland, H. J. Sanford, M. Vaughters, D. Moriarity, J. Keene. *Third Row:* B. Kazee, R. McCall, A. Rapp, C. McCowen, L. Mowery, D. Ratliff, K. Blevins, K. Ratliff. *Fourth Row:* A. Curtis, W. Warnock, M. O'Dell, D. J. Barber, B. Cooley, H. O'Dell, B. Vernier, B. Shaw, B. Peed. *Fifth Row:* O. Tipton, J. Strickland, R. Davis, V. Flannery, C. George, E. Bailey, R. Walther.



JG

# NEWSLETTE

Bi-weekly signs on the blackboards and announcements over the loud speaker were the methods used to let the subscribers and customers know that the Newsette was ready.

This year's Newsette was published by the seniors, under the advisorship of Miss Binns, but will again be turned over to the juniors as their publication next year.

Ever improving as the year progressed, it became of maximum importance during the middle part of the year. Regular features which have become very popular are: "The Snooper", latest in the scandal line, "Among the Students", a description of prominent students from each class, and a part-time feature, a letter from Mary Ann to Clomie and Millie, in the form of a hill-billie's letter.

Experience is the main opportunity afforded by the newspaper to the reporters and ad solicitors as well as to the rest of the staff. As a whole the staff profits by its own mistakes as it meets every other Monday as a group and offers both constructive and destructive criticisms.

*First Row:* Miss Binns, Advisor, N. Smith, B. Wells, H. Conley, A. Gabbert, M. L. Shiver. *Second Row:* B. Addis, A. Crabtree, T. Franz, C. Williams, R. McCall. *Third Row:* R. Peed, W. Stepp, J. Clifton, R. Walther, O. Tipton.





## PHY-CHEM

The Phy-Chem Club, under the supervision of Mr. John W. Daulton, was organized at the beginning of the school year with a membership of seventeen physics and chemistry students. The purpose of the club was to acquaint students better with laboratory work. When there was no outside entertainment, the members amused themselves by performing experiments. The club has had a very successful and enjoyable year, and it hopes to grow bigger and better next year.

*Seated:* Bill Cooley, President; Katherine Ratliff, Vice-President; Erma Anderson, Secretary-Treasurer. *First Row:* M. Kroger, H. Ratliff, J. Keene, R. Craycraft, A. Rapp, Mr. Daulton, Advisor. *Second Row:* J. Wolery, R. Davis, R. Walther, R. Barber, B. Vernier. *Third Row:* B. Ralston, J. Clifton, J. McKay, B. Peed.





## MODEL - AIRPLANE CLUB



*Seated, First Row:* Bob Vernier, President; Jack Bazler, Vice-President. *Kneeling, First Row:* J. Hart, A. Creech, J. Sheets, W. Wolery. *Second Row:* Mr. Tulipan, Advisor; J. Estep, B. Galmore, J. Folsom, E. Hill, H. Kinnaman, C. Lewis, T. Frye. *Third Row:* C. Hill, P. Coburn, R. Barber, O. Reiser, E. Fannin. *Fourth Row:* C. Estep, H. Cooper, B. Ralston, H. Easter.

The club was organized under the direction of Mr. Tulipan. The members began working on small solid models. Several were placed on display in the show case.

The boys who had graduated to the flying class began experimenting with their models trying to pick a possible winner for the best flying and best looking model.

After noting the interest aroused by the club this year, the members plan to reorganize again next year and make the club a greater success.



# BAND



*First Row:* L. Cook, M. Chaffin, J. Risher, S. Risner, J. McGinn, M. Liston, H. Conley, A. Keene, T. Dillow, M. Mooney, L. Weghorst, D. Pyle. *Second Row:* C. Estep, C. Jordon, D. Boren, H. Sanford, L. Mitchell, C. Bodmer, L. McGinn, D. Hilt, A. Greene, E. Gray, D. Andre. *Third Row:* W. Stepp, R. Shaw, R. Barber, F. Riehl, D. Moriarity, L. Prince, E. Hill. *Fourth Row:* M. Hart, A. Emerson, L. Joseph, D. Dunaway, R. Bolton, M. Easter, J. Hazelbaker. *Fifth Row:* H. O'Dell, D. McKay, T. Frye, J. Folsom, K. Blevens. *Sixth Row:* B. Blosser, F. Howard, V. Stepp, J. Strickland, R. Stamm, E. Howell. *Seventh Row:* F. Parry, D. Stamm, B. Stamper, G. Parry, V. Morgan. *Eighth Row:* N. Hall, W. Naygel. *Ninth Row:* P. Wakefield, J. Estep, H. Easter, E. Kegley, T. Vernier, E. Staten.

This year our school has a new High School Band. Mr. Dale Gillette, who holds a B. S. Degree in music from Bowling Green State University and who has had additional training at Ohio State University, was appointed Instrumental Music Director. This marked the introduction of instrumental music study in our school.

The band has played two concerts already this year and also made an appearance at our last home basketball game.

The band is proud of the active support of the school board, the school administrator, and an energetic Band Mothers' Club.



## GLEE CLUB

The Glee Club was formed early in the school term under the direction of Mrs. Hartley. It has been handicapped by the lack of enough male members, but a better turnout is expected from the boys next year.

The chorus made its first appearance in November on Washington High School's broadcast over WPAY in which several selections were sung. They also made appearances at the Junior class play, and at the Christmas program of Nauvoo.

A concert was held during the month of April with both the grade schools and high school participating.

As a grand finale for the season the entire glee club journeyed to Wheelersburg for the May festival which combined the voices of all schools.



*First Row:* M. M. Bealor, L. Weghorst, M. M. Liston, M. E. Addington, D. McKay, L. Marcum, M. Mooney, C. Grumme, M. Chaffin, D. Dunaway. *Second Row:* L. Prince, C. Wolfenbarger, T. Dillow, H. Evans, J. Ralston, V. Liles, L. McGinn. *Third Row:* M. Horsley, J. Mitchell, T. Hamilton, M. Evans, V. Stepp, E. Pyles, C. Bridwell, E. Lansing. *Fourth Row:* J. Strickland, B. Vernier, S. Culp, E. Staten, H. Lewis, E. Mann, N. McGlothlin, J. Lookabaugh. *Fifth Row:* B. Simon, A. Creech, E. Surran, H. Kennedy, N. Carver, B. Farley, B. Gibbs, I. McGinn.



## G. A. C.

The Girls' Athletic Club is a newly organized one; the idea was comprised by four sophomore girls and put into practice almost instantaneously. They selected as their advisor Miss Edna E. Jolly. Among the many projects the club has undertaken, the purchasing of an electric scoreboard was the most difficult, but thanks to the student body, the drive was successful. They also sold orange and black scarfs, with the school initial, to the students, the proceeds of which went to our school library. Lastly, was their skating party which was a tremendous success, and these proceeds were used toward the annual basketball banquet. All in all, the Girls' Athletic Club has proved itself very successful and beneficial to our school.



*Seated:* Peggy Riehl, President; Billie Bias, Vice-President; Mable Horsley, Secretary; Jean Mitchell, Treasurer. *First Row:* Miss Jolly, Advisor; P. Wakefield, O. Wilson, N. Wakefield, H. Evans, E. Staten, L. Mitchell. *Second Row:* J. Ralston, G. Entler, A. Keene, H. Smith, J. Parker. *Third Row:* C. Wolfenbarger, D. McKay, C. Bodmer, N. J. Wessel, L. Lewis.



## DEBATERS

This was the first year that Washington High School has had debating. About twenty students reported from which five teams were selected by Mr. Flannery, the coach.

Our teams have met the debaters from Portsmouth High School in two contests. Also, on the schedule for the season was the Round-Robin-Debate Tournament at Ashland, Kentucky. Due to an accident, our debaters did not arrive at Ashland; hence, they missed the only tournament on the schedule. Russell, Kentucky debaters furnished the last debate of the season.

The question for debate this year was the National Debate topic — Resolved: That the Power of the Federal Government Should Be Increased.

The prospects look bright for next year's debate club because the sophomore and freshmen members will be returning.

*First Row:* D. Lewis, L. Marcum, B. Addis, I. Williams, M. Mooney, Mr. Flannery, Advisor.  
*Second Row:* A. Curtis, V. Flannery, J. Wolery, E. Mutter.





## HOME EC. CLUB

The Home Economics Club was organized in November under the supervision of Miss Ruth Hagen. Since it was a new organization in the department, the girls took great interest in it. At the beginning of the year there was a membership of about eleven, but later increased to about twenty. The girls have had several candy sales during the noon hour and have planned to use their money for equipment in the department. The aim of the Club is to prepare the girls for home life, and in the meetings they have discussed several questions which have been of benefit to the girls in helping them at home.

*Seated, First Row:* Eunice Staten, President; Irma Williams, Vice-President; Evelyn Lewis, Secretary and Treasurer. *Standing, Second Row:* Miss Hagen, Advisor; M. Bailey, B. Farley, N. Wakefield, O. Wilson, Miss Jolly, Advisor. *Third Row:* C. Bodmer, T. Craycraft, M. Howell, W. Boyes, L. Lewis.





# SENIOR CLASS PLAY

"Small Town Romeo"



*First Row:* B. Hart, K. Ratliff, B. Wells, B. Cooley, A. Gabbert, B. Addis. *Second Row:* Miss Hagen, Advisor; B. Sparks, E. Bailey, A. Curtis, R. Peed.

— Cast —

Joe Stanford, a breezy young playwright.....Brooks Sparks  
 Sly Perkins, the village constable.....Everett Bailey  
 Bud Williams, the village mechanic.....Arthur Curtis  
 Morton, Kendall, the village miser.....Bill Cooley  
 L. B. Lloyd, the mysterious guest.....Robert Peed  
 Betty Braxton, the young owner of the hotel.....Betty Addis  
 Sarah Higgins, the spinster maid-of-all-work.....Ann Gabbert  
 Miss Gates, another mysterious guest.....Betty Hart  
 Jane Hastings, the village banker's daughter..... (not pictured) Anna Crabtree  
 Anna Aldrich, the village school teacher.....Kathryn Ratliff

— Stage Crew —

Ray Shaw, Ed Fannin, Naomi Smith, Thelma Franz, Ruth Davidson, Alice Bray,  
 Lucille Bolton, Raymond Davis, Mary Louise Shivner

\* \* \*

Joe Stanford finds himself in a small village searching for a plot for his new play. All his ingredients are found in a small hotel run by Betty Braxton. The comedy relief is furnished by Sarah, Betty's spinster aunt, who has been courted for years by the town constable. Of course, through all the mix-up, everything ends happily.



# JUNIOR PRODUCTIONS

## "Meet The Folks"

*Seated:* M. A. Reynolds as Mary Jane Smith; J. Smith as Jewel Cartwright; D. Barber as Parker; F. Howard as Hedy Harrington; D. Kayser as Mrs. Smith. *Standing:* R. Simon as Chuck Sage; B. Vernier as Harold Watson; Mr. John Daulton, Advisor; R. Meyers as James Smith; W. Stepp as Gilly Gillenwater; Mrs. Davenport, Advisor.



This 3-act comedy, a streamlined version of the Hardys', was a carnival of laughs and contained a great part for every member of the cast.

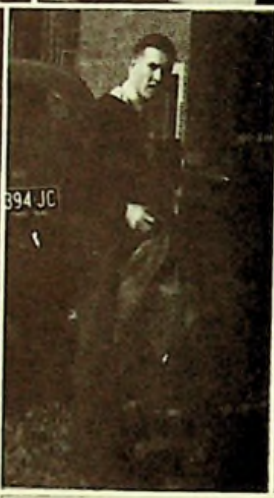
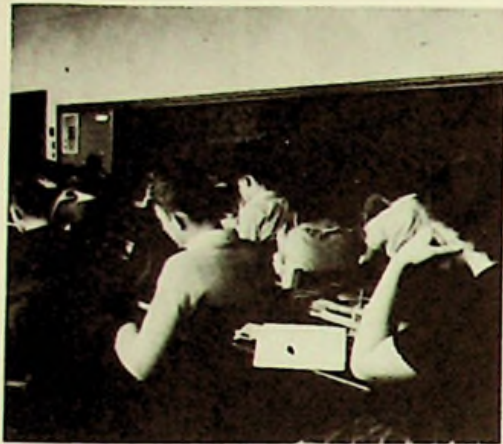
This 3-act mystery takes place in a long-deserted house where peculiar events take place. Each character does his part in solving the mysteries of the play.



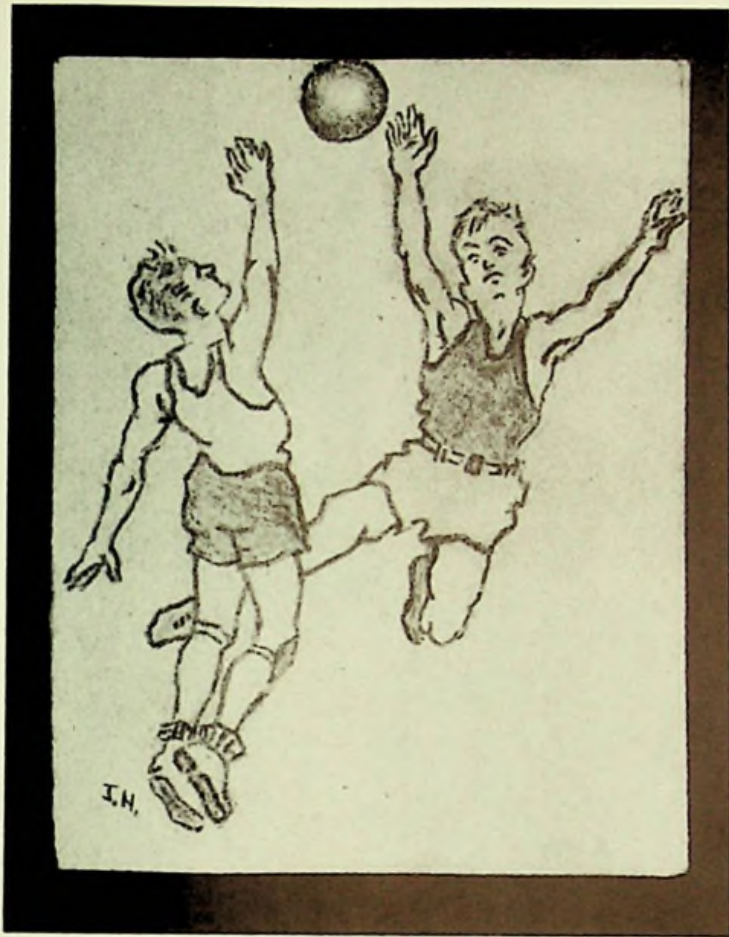
*Seated:* J. Smith as Miriam Booth; R. Cooley as Jack Page; M. A. Reynolds as Jean Rhodes; D. Moriarity as Laura Rhodes; J. Strickland as Victor Lavelle; D. Barber as Lela Sayles. *Standing:* R. Simon as Joe Kennedy; B. Vernier as Ned Carruthers; Mr. John Daulton, Advisor; D. Kayser, as Harriet; R. Walther as Darrel Carson; Mrs. Davenport, Advisor.

## "THE PHANTOM BELLS"









*Athletics*

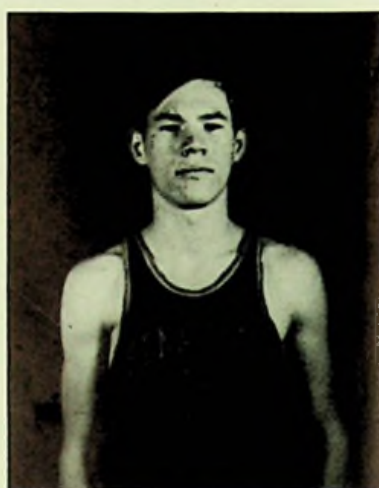




# VARSITY BASKETBALL TEAM



CAPT. DICK LOOKABAUGH  
GUARD



GLENN NELSON  
FORWARD



CARL GEORGE  
CENTER

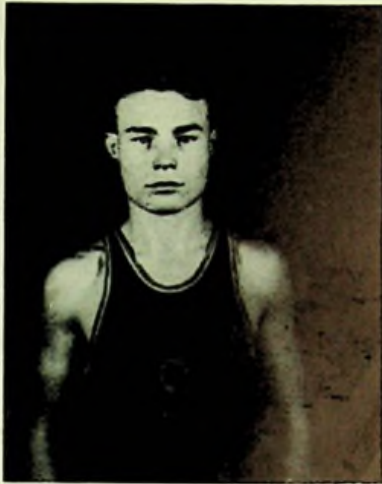


CLIFF WILLIAMS  
FORWARD

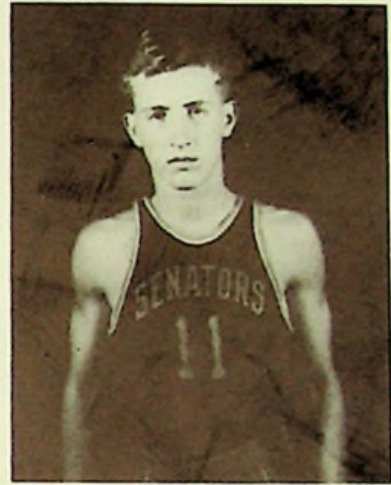


DON MITCHELL  
GUARD





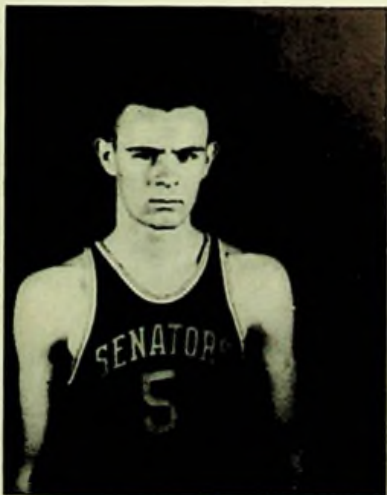
ALFRED NELSON  
GUARD



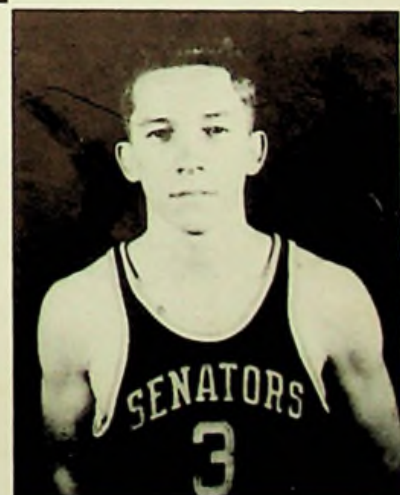
BILL COOLEY  
FORWARD



BILL DUNCAN  
CENTER



RAY ENTLER  
GUARD



KENNETH JARRELL  
FORWARD



# BASKETBALL

The Washington Senators' basketball squad, composed of ten members, under the management of Coach Russell Christian, enjoyed a very successful season and gained statewide recognition as one of the fastest and smoothest quintets in Southern Ohio. They suffered their only defeat of the season at the hands of the Waterloo Wonders on Waterloo's home floor and so spoiled the Senators' chance for a perfect season's record, but they won 29 out of the 30 games.

Among their outstanding accomplishments this year was the winning of the Scioto County League Championship without a defeat to beat out South Webster by only a few games. They topped Wheelersburg in a special exhibition game by a close score at the Scioto County Tourney Finals for a special Class A trophy and reached the climax of the season by going to the semi-finals in the district tournament at Athens only to be eliminated in that round by Marietta.

Even though they are losing several players through graduation, prospects are bright for another winning combination for the '41-'42 season.

Their complete season's scores are as follows:

Washington	Opponents	Washington	Opponents
32	Green .....	19	*Waterloo .....
39	Valley .....	26	*East High .....
23	Wheelersburg ....	38	Wheelersburg ....
36	South Webster ...	40	South Webster ...
46	Clay .....	47	*Stockdale .....
32	Otway .....	26	*Glenwood .....
62	*Blue Creek .....	37	Clay .....
47	McDermott .....	50	Otway .....
65	Minford .....	49	*East High .....
49	Rarden .....	40	McDermott .....
33	*Waterloo .....	47	*Glenwood .....
46	*Stockdale .....	60	Minford .....
51	Green .....	39	Rarden .....
48	*Oak Hill .....	46	*Oak Hill .....
45	*Rockbridge .....	27	**Wheelersburg ....
51	Valley .....		

\*Non League Games

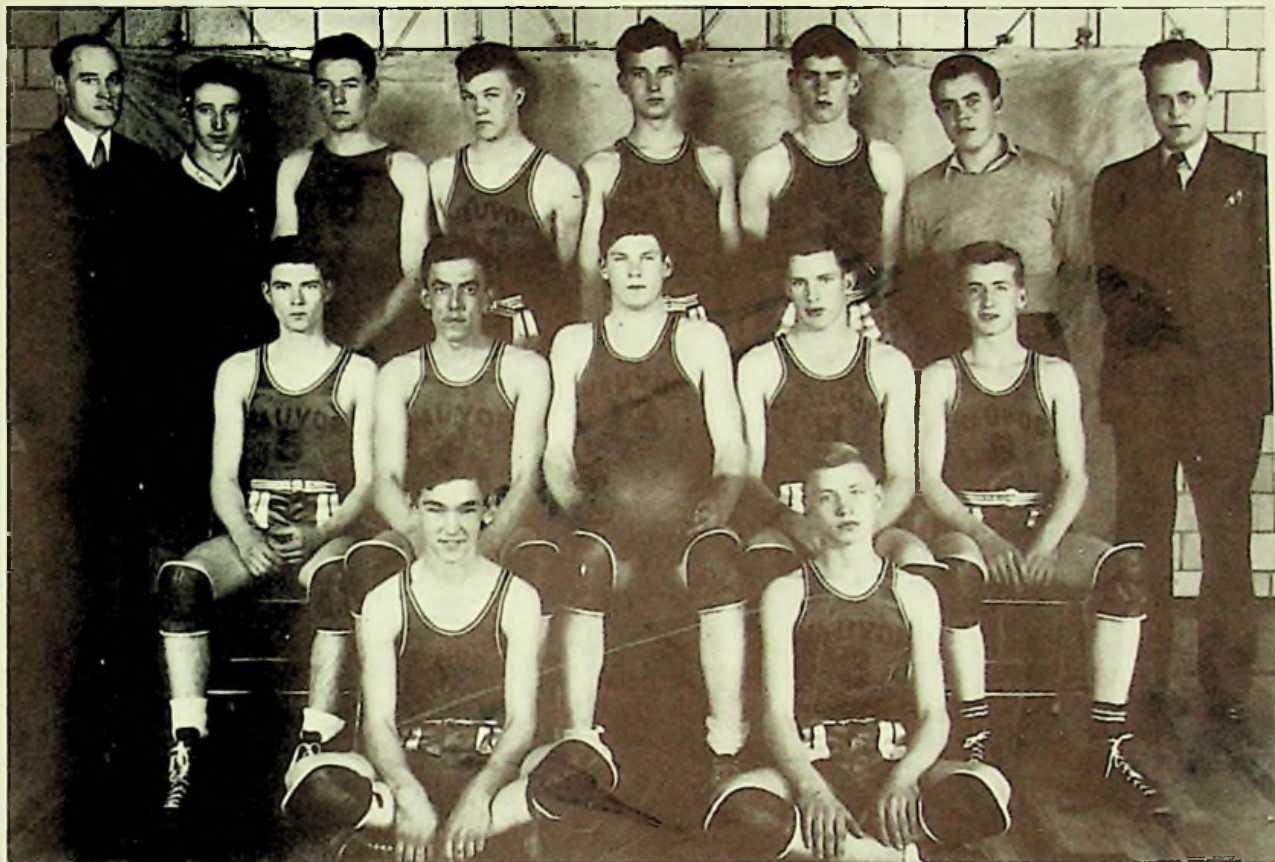
\*\*Exhibition game (Scioto Tournament Finals)

## TOURNAMENT AT ATHENS

Washington	Opponent
35	Jackson .....
47	Gallipolis .....
33	Marietta .....
28	Greenfield .....



## RESERVE TEAM



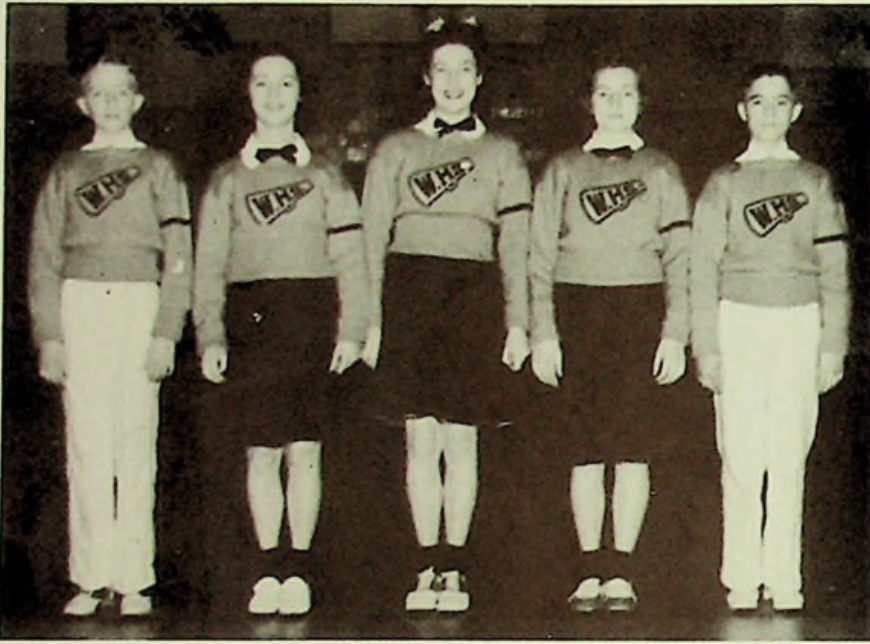
*First Row:* A. Curtis, J. Davis. *Second Row:* R. Schwamberger, M. Mitchell, E. Shepherd, V. Swords, B. Cooley. *Third Row:* Mr. Christian, Coach; L. Hoop, R. Davis, E. Kegley, L. Callender, R. Holt, D. Andre, Mr. Rolf, Principal. Bill Singleton not pictured.

The reserve basketball squad dropped only two games during its regular season. One of these was to New Boston and the other to Sciotoville, both non-league teams.

They won the Scioto County League Reserve Championship without a defeat and won a special trophy by beating Lucasville, Western Reserve tournament champions. The reserve team is also coached by Russell Christian and has enjoyed a completely successful season and will undoubtedly place several men on next year's varsity team.



## CHEER LEADERS



*Left to Right:* Don Cooley, Alice Bray, Delores Moriarity, Peggy Riehl, Jack Hart.



*Seated:* B. Rose, D. Boren, D. Kennard. *Second Row:* B. Shaffer, P. Schwamberger, R. Davis. *Third Row:* F. McCall, D. Stone, M. James, Mr. Fenton, Coach.

## FRESHMAN SQUAD

Nothing much was said about the Freshman Basketball Team this year. Everyone was too busy watching the varsity boys come through. The varsity deserves a lot of credit, but let no one forget that there are other years and other teams that W. H. S. hopes to point to with as much pride as this year's team.

The Freshman Basketball Team won seven games: four from Wheelersburg, two from Webster, and one from Valley. The boys know their fundamentals and can play good ball. Remember, though W. H. S. has lost part of a great team, it can still look forward to seeing another good one in a year or two.



# BASEBALL



*Left to Right:* Cliff Williams, Pitcher and Outfielder; Al Nelson, Shortstop; Carl George, Catcher; Harold Easter, Right Fielder and Outfielder; Lynn Callendar, 2nd Base; James Davis, 3rd Base; Glenn Nelson, 1st Base; Dick Lookabaugh, 3rd Base; (Not pictured). *Front:* Marvin Mitchell, Manager.

## BASEBALL RESULTS

Practice Games		
Washington		Opponent
11	McDermott .....	0
5	South Webster .....	1
10	McDermott .....	1
8	South Webster .....	1

Washington High School is a member of the Scioto County Baseball League composed of the following 7 teams: Washington, Lucasville, Minford, Clay, Green, McDermott, and South Webster.

Last fall the teams played only four games, these being practice tilts. By winning all of them they have shown good prospects for an excellent season this spring. To end the season they will play in the Class A tournament at Athens a few days after the close of our school in May.





Western Reserve  
Trophy



Hold 'em SHEP



Nice shot "Lefty"



Winning Toss



ANOTHER TROPHY  
Cooley in action



Tough Luck  
Carl



# SENIOR WILL

We, the senior class of nineteen hundred and forty-one and second class to graduate from Washington High School, having done our best in booklearning for the past 4 years, declare the following to be our last will and testament:

To our principal, Mr. F. B. Rolf, we bequeath our sincere sympathy for the sleepless nights and week ends of worry we have caused him during the past two years. We hope that we have not caused any extra lines to appear upon his pleasant face nor any gray hairs among his curly locks. We give him our deepest gratitude, for he has stood the strain magnificently.

To the faculty we bequeath our pure contentment for having passed all of the tests which they have sprung on us and for the knowledge and pleasure which has been duly received by us all.

To the sophomores we give our "new and original methods of torture" to experiment with on the freshmen.

To the freshmen we bestow our gift of good sportsmanship in hopes that they will live down all discouraging ordeals imposed by their upper-classmen.

Finally to our successors, the juniors hoping that they will live up to the great standards set by the class of "41", we will the following:

Betty Addis (Rebecca) wills her typing ability to Mary Ann Reynolds.  
Everett Bailey's dark curly hair to Donald Mitchell.  
Jack Bazler (Jackson) wills his white teeth to Ferman Hayslip.  
William Blosser (Bill) wills his musical talent to Ralph Stamm.  
Helena Bellomy (Buckshot) wills her love to dance to Evelyn Davidson.  
Lucille Bolton (Lucy) wills her lipstick and rouge to Shirley Culp.  
Alice Bray's cheerleading ability to Delores Mortarity.  
Lynn Callendar (Speed) wills his being a ladies-man to Walter Eubanks.  
James Clifton (Jim) wills his editing ability to Ralph Walther.  
Joe Clifton's girl shyness to Lundy Howard.  
Pauline Cooper (Blondie) wills her blond locks to Flossie Howard.  
William Cooley (Bill) wills his scholarship to Helen Ratliff.  
Helen Conley (Hedy) wills her pleasing personality to Doris Jean Barber.  
Anna Crabtree (Annie) wills her happy disposition to Doris Kayser.  
Arthur Curtis (Art) wills his heart to Betty Kazee.  
Ruth Davidson's (Ruthie) giggles to Cloma Williams.  
William Duncan (Bill) wills his stature to Don Miller.  
Raymond Davis (Davy) wills his love of the fiddle to Billy Sowkulech.  
Mabel Dennis' (Mab) coquetry to Helen O'Dell  
Harry Easter's dimples to Junior Van Hoose.  
Ray Entler (Zeke) wills his natural curls to James Humphries.  
Edward Fannin (Ed) wills his dare-devil driving to Elwood Kegley.  
Vern Flannery's debating ability to Marjorie Mooney.  
Thelma Franz's shorthand ability to Ralph Cooley.  
Ann Gabbert (Gabby) wills her gabbiness to Richard Meyers.  
George Greene (Pete) wills his wild-pitching to Russell Schwamberger.  
Carl George (Tracy) wills his physique to Kenneth Jarrell.  
Eugene Howell's (Gene) singing to Howard Chandler.  
Betty Hart (Dobbie) knack of writing themes to Ruth Craycraft.  
Maybelle Kroger's shyness to Kenneth Gifford.  
William Lowe (Froggy) wills his chewing gum to Mickie Hart.  
Rozella McCall (Lefty) poetry writing to Norma Jean Gilliland.  
James McKay (Jim) swinging walk to Jack Strickland.  
Mary Mullen (Moonlight) shortness to Catherine McCowen.  
Miriam O'Dell (Mim) wills her pretty hair to Dorothy Anderson.  
Elva Leah Prince (Princey) motherly disposition to Merle Grice.  
Lowell Pack's (Mayo) meanness to Harold Hopkins.  
Robert Peed (Bob) wills his photography to Richard Barber.  
Avanell Rapp (Nellie) wills her funny jokes to Roby Sheppard.  
Katherine Ratliff wills her industriousness to Mildred Vaughters.  
Genevieve Rexroad (Jenny) winning smile to Maxine Litz.  
Charlotte Roark (Shorty) complexion to Erma Anderson.  
James Ratliff (Big Apple) slow drawl to Berle Adams.  
Clarence Roth (Snookie) wills his paper throwing to Bernard Castle.  
Mary Louise Shivner (Bees) art of discarding boy friends to Helen Jean Wireman.  
Otis Staten's ability to dance to Grover Conley.  
Virgil Swords (Buck) muscles to Cliff Williams.  
Faye Stone's blue-black hair to Mary M. Bealor.  
Raymond Shaw's (Ray) advertisement collection to Wendell Stepp.  
Robert Shaw (Bob) Jack-of-all-musical instruments to Charles Castle.  
Darlene Smith's pleasing plumpness to Margaret Ladd.  
Evelyn Smith's knowledge of English to June Allen.  
Brooks Sparks' slowness to Lloyd Hoop.  
Oliver Tipton (Ollie) wills his laziness to Chester Estep.  
Georgia Trace (Trace) ability-to-make-you-laugh to Bob Simon.  
Anna Louise Timberlake (Timmie) quietness to Janet Smith.  
Wilma Warnock's argumentiveness to Kathleen Blevins.  
James Wolery (Jim) butterfly collection to Alfred Nelson.  
Betty Wells' musical talent to Persis Craigmiles.  
Richard Lookabaugh (Dick) wills his basket shots to Glenn Nelson.













Farewell to the seniors of W. H. S.  
Who will soon close their books for a  
well-earned rest,  
There are 64 members of the graduating class,  
They're all true blue, every lad and lass,  
The year is ended and so I guess,  
We must bid farewell to W. H. S.!



# K O B A C K E R ' S

## THE STOCKHAM CO.

- - I C E - -

AIR CONDITIONED  
REFRIGERATORS

HOUSEHOLD  
APPLIANCES

OFFICE & DISPLAY ROOM  
1109 Chillicothe St.  
Portsmouth, Ohio  
FOR SERVICE PHONE 10

## *Kirby's Flowers*

Gallia and Findlay Streets  
PHONE 493

W. L. WILHELM

J E W E L E R

JAS. E. WILHELM

O P T O M E T R I S T

507 Chillicothe St.

A LITTLE OUT OF THE WAY,  
A WHOLE LOT LESS TO PAY

## SHEETS FURNITURE CO.

525-28-30 Second St.      Portsmouth, Ohio  
PHONE 22

YOUTHFUL VITALITY . . .  
THROUGH YOUR LIFE  
DRINK BORDEN'S FRESH MILK EVERY DAY

## BORDEN'S MODERN DAIRY

PHONE 1801      237 SECOND ST.  
IF IT'S BORDEN'S - IT'S GOT TO BE GOOD



**IDEAL MILK COMPANY**

PHONE 623

**PEPSI-COLA**

5c

COMPLIMENTS OF

**HERMS FLORAL COMPANY**



**STAR OF  
VALUES**

**FURNITURE**

COMMUNITY SALES CO.

Farver. Mgr.

630 Second St,

Phone 3101

*BUY YOUR NEW CHEVROLET*

*OR AN O.K.'d USED CAR*

*from*

**GLOCKNER CHEVROLET CO.**

2nd and Chillicothe St.

**J. W. Robertson**

**VETERINARIAN**

434 Second St.

Portsmouth, Ohio

PHONE 262

**NAUVOO CAMERA SHOP**

FILMS

DEVELOPING

NAUVOO P. O.

Portsmouth, Ohio

HARRY SKINNER



**RICHMAN BROS. CLOTHES**

DIRECT FROM OUR FACTORY TO YOU

You Save the Middle Man's Profit.

STUDENTS SUITS \$16.95

**R I C H M A N B R O S .**

311 Chillicothe St.

**ADAMS BAKING CO.**

1009 Offnere St.

PHONE 1027

HOME OF PAN DANDY AND  
BUTTERNUT BREAD

*C O M P L I M E N T S O F*

**PORTSMOUTH**

**PURE MILK COMPANY**

**C A R R O L L ' S**

WALL PAPER - - PAINTS  
ENAMELS - - VARNISHES

540 Second St.

Phone 724

Portsmouth, Ohio

**MEISEL MOTOR COMPANY**

CHRYSLER & PLYMOUTH

Wholesale and Retail Distributor

When you buy, sell or trade a new or used car,  
see us first and do better.

PHONE NO. 1

224 SECOND ST.

**LYNN FUNERAL HOME**

PHONE 1 1

303 Washington St.

**LIBBIE'S LUNCH**

317 Second St.

Portsmouth, Ohio

24 HOUR SERVICE

Phone 2093

**HARRIS STUDIO**

PORTRAITS OF QUALITY  
COMMERCIAL WORK - FRAMES

MOTION PICTURES

If its Photographic - We do it.

304 1-2 Chillicothe St.

Phone 355-X



# HERFF - JONES COMPANY

DESIGNERS AND MANUFACTURERS

OF

SCHOOL AND COLLEGE JEWELRY, GRADUATION ANNOUNCEMENTS

MEDALS, CUPS AND TROPHIES

INDIANAPOLIS, INDIANA

JEWELERS AND STATIONERS TO WASHINGTON RURAL HIGH SCHOOL

Representative: P. J. Burkart



STYLE-RIGHT  
Clothes for the  
Modern Miss!

## ATLAS FASHION

## THE HIBBS HARDWARE CO.

Fifth St. near Chillicothe

UNIVERSAL ELECTRIC RANGE, WASHERS,

IRONERS and all small appliances.

COOKING UTENSILS, PAINTS, VARNISHES,

ENAMELS, SPORTING GOODS, ELECTRIC

REFRIGERATORS, and all other

GENERAL HARDWARES



**DRINK**

*Coca-Cola*

**IN BOTTLES**

PAINTS - GLASS - WALL PAPER

**PORTSMOUTH PAINT CO.**

GALLIA at FINDLAY

**THE CRICHTON OFFICE SUPPLY CO.**

740 FIFTH STREET

Everything for the Office

**SERVICE SHOE REPAIR SHOP**

206 CHILlicothe ST.

Portsmouth, Ohio

Just Across the Bridge

Phone 2937

Portsmouth, Ohio

**ED. LOCKNER'S AUTO SUPPLY**

9th and Chillicothe Sts.

Distributors of

TIRES - BATTERIES - MOTOR OIL - BRAKE  
LINING - SEAT COVERS - IGNITION PARTS  
PISTON RINGS

**SELBY SHOES**

1007 GALLIA ST.

QUALITY SHOES

FOR MEN, WOMEN, CHILDREN



PHONE 2920

117-20 Masonic Temple

# THE HARSHA - JOHNSON COMPANY

## INSURANCE

FIRE  
WINDSTORM  
FARM  
LIVE STOCK  
PLATE GLASS

AUTOMOBILE  
ACCIDENT  
LIFE  
SURETY BONDS  
BURGLARY

LET US HANDLE YOUR INSURANCE PROBLEMS  
HERON M. JOHNSON

W. HOWARD HARSHA

*COMPLIMENTS OF*

### DEHNERS

613 Chillicothe St.

*COMPLIMENTS OF*

### BAKE SHOP

Martings Corner

6th and Chillicothe St.

### STONES FOOD MARKET

FANCY & STAPLE GROCERIES

FRESH and CURED MEATS

FRUITS and VEGETABLES

123 Market St.

PHONE 647

*COMPLIMENTS OF*

### CHECKER STORES, INC.

842 Gallia St. (next to LaRoy Theater)

AUTO SUPPLIES - SPORTING GOODS

RADIO

PAINTS



## HILT LUNCH

4th and Calvert Lane Phone 0117-R

COMPLIMENTS OF  
APPLETON'S GROCERY  
3rd and Custus Phone 6205-L  
NAUVOO

COMPLIMENTS OF  
C. E. WARD CO.  
Makers of Graduation Supplies  
NEW LONDON, OHIO

COMPLIMENTS OF  
A Friend

## ECHO DRY CLEANERS

1803 ROBINSON AVE.

ALL WORK GUARANTEED  
AND INSURED  
PHONE 2406

OUR BEST WISHES  
TO THE GRADUATES OF  
Washington Township  
High School

## DISTEL FURNITURE CO.



*Electric*  
**COOKERY**  
IS  
**FLAMELESS**



## SCIOTO OFFICE SUPPLY

"EVERYTHING FOR THE OFFICE"

L. C. SMITH & CORONA TYPEWRITERS  
DUPLICATORS AND ACCESSORIES

PAPER, FILES, DESKS  
TYPEWRITER REPAIR SERVICE

*Every Home Needs a Portable*

CALL IN FOR QUOTATIONS

736 Seventh St.

Phone 1072-X

Portsmouth, Ohio



**DeVoss and Donaldson**  
**ARCHITECTS**

Designers of our New School Building

NATIONAL BANK BUILDING

PORTSMOUTH, OHIO

**SUPERIOR CEMENT CORPORATION**

Manufacturers of  
SUPERIOR PORTLAND  
WIFCO MORTAR  
TRI-CAL, HIGH EARLY  
SUPERIOR WATERPROOFED  
CEMENTS

**SUMMERS & SON**

Portsmouth's Oldest and Largest Music House

The home of the famous Baldwin, Story and Clark,  
Gulbransch and Winter Pianos.

Exclusive Representatives for the  
HAMMOND ORGAN

Representatives for the Conn, Selmer, King, Pan  
American, Cavalier and other fine Band Instruments.

R.C.A. PHILCO and ZENITH RADIOS

Our 71 years of fair dealing is your Guarantee!

906 GALLIA ST.

PHONE 1971



**THE PORTSMOUTH SAND & GRAVEL CO.**

Foot of Third Street

Phone 296

Portsmouth, Ohio

**LONG and COMPANY**

729-733 Sixth Street

"The House of Quality Furniture"

Portsmouth, Ohio

GET A  
**KODAK**  
AT  
**FOWLERS**

COMPLIMENTS OF  
**CITY COAL COMPANY**

PHONE 29

**T. K. BRUSHART**  
DISTRIBUTOR

GOODYEAR  
TIRES



WASHING  
POLISHING  
BATTERIES

SUNOCO A-Z LUBRICATION

Gallia & Hutchins Sts.  
317 Second St. (24 hour service)  
15th & Chillicothe Sts.

Phone 530  
Phone 3169-L  
Phone 2233-X

Congratulations

to the

Class of 1941

from

**MARTING'S**

*"One of Ohio's Good Stores"*

Portsmouth, Ohio

PORTSMOUTH'S  
YOUTH-CENTER

for

Boys and Girls  
"Smart Clothing"

BRAGDON'S  
DEPARTMENT STORE

COMPLIMENTS OF

**DOERR'S HARDWARE**

519-21 Second Street

Portsmouth, Ohio

**BRUSHART'S**  
TYPEWRITER STORE  
TYPEWRITERS  
ROYAL

SALES - SERVICE - RENTALS - EXCHANGE  
811 Chillicothe St. Phone 2366

COMPLIMENTS OF

**GEMPERLINE FURNITURE CO.**

612-14-16 SECOND ST.

HOME OF  
WESTINGHOUSE APPLIANCES

"Insurance of all kinds except life"

**C. E. (Tink) NODLER**

PHONE 1062

415 GLOVER ST.

**DAULTON BROS.**

GROCERIES, MEATS and MILK

402-404 Second Street

DELIVERY SERVICE

PHONE 153



CALL 2916

For

BUILDERS SUPPLIES

THE PORTSMOUTH  
CEMENT & LIME CO.

Third and Jefferson Sts.

COMPLIMENTS OF

A Friend

COMPLIMENTS OF

THE HURT CANDY CO.

MEAL, FEED and COAL  
GARDEN and FIELD SEEDS and FERTILIZER

W. H. RUPERT

436 Fourth St.

Phone 43

Portsmouth, Ohio

PRINTED BY

COMPTOLITH

Compton Engraving and Printing Co.

1412 THIRD STREET

PHONE 3490

PORTSMOUTH, OHIO

# *Autographs*



owner Donald Mitchell



