

The
SILHOUETTE

19 29

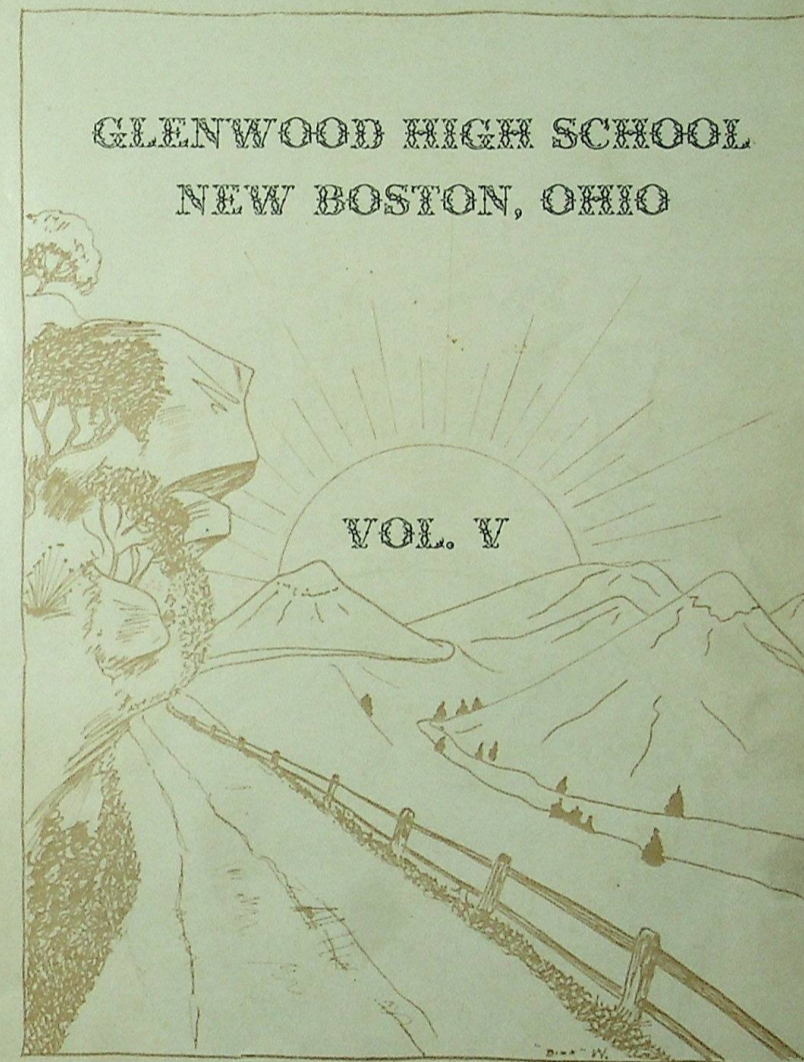


2-18-16
damage page 23

THE SILHOUETTE

PUBLISHED BY THE
GRADUATING CLASS OF
1929

GLENWOOD HIGH SCHOOL
NEW BOSTON, OHIO



Charles Buckley, Editor-in-Chief
Edward Wintersole, Business Manager

FOREWORD

MAY THIS VOLUME OF THE SILHOUETTE OF NINETEEN HUNDRED AND TWENTY-NINE HELP TO KEEP FRESH THOSE MEMORIES AS SWEET AS A BREATH OF VIOLETS AND AS ENDURING AS THE HILLS AND CLIFFS OF OUR OWN OHIO.



*A cliff that hung on high,
Roof'd the world with doubt and fear.*

Dink Washington

DEDICATION

TO MISS FERN CURRY WHEELER, WHO HAS GUIDED
AND ENCOURAGED OUR HIGH SCHOOL CAREER AND WHO
HAS WORKED INCESSANTLY TOWARD THE SUCCESS OF
OUR ANNUAL, WE, THE CLASS OF 1929, RESPECTFULLY
DEDICATE THIS FIFTH VOLUME OF THE SILHOUETTE.



*Who is true to herself,
Therefore is true to others.*

Dink Washington

DIVISIONS

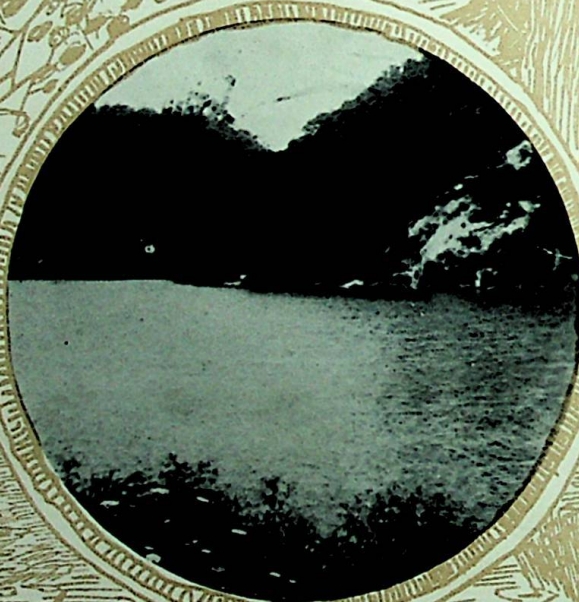
BOOK I - ADMINISTRATION

BOOK II - CLASSES

BOOK III - ORGANIZATIONS

BOOK IV - ATHLETICS

BOOK V - ADVERTISEMENTS



Gift by many an azure wave
With which the clouds and mountains pave
A lake's blue chasm.

Shelley.

Glenwood by the Hill

Scarlet stands for bravery,
Gray stands for might;
For Alma Mater dear,
Go right in and fight.
(rah! rah! rah!)
Ever we'll play the game,
If in the victory;
And then our lives will gain
Strength and poise from thee.

Let us then be ever true,
To Glenwood dear;
Let Scarlet and the Gray,
Fill our hearts with cheer.
(rah! rah! rah!)
Though distant we may roam,
Thoughts will linger still,
On school-days spent within,
Glenwood by the hill.



Oh! for our friends and our happy school days,
Full of studies, lessons, pranks, and plays,
Dunk Washington

AT LAST

you have opened the pages of the 1929 Silhouette. The staff has toiled hard and earnestly to put forth this volume of memories of which the school may well be proud.

If you like it, boost our school; if you do not, boost the next staff and help them make the next year-book better.

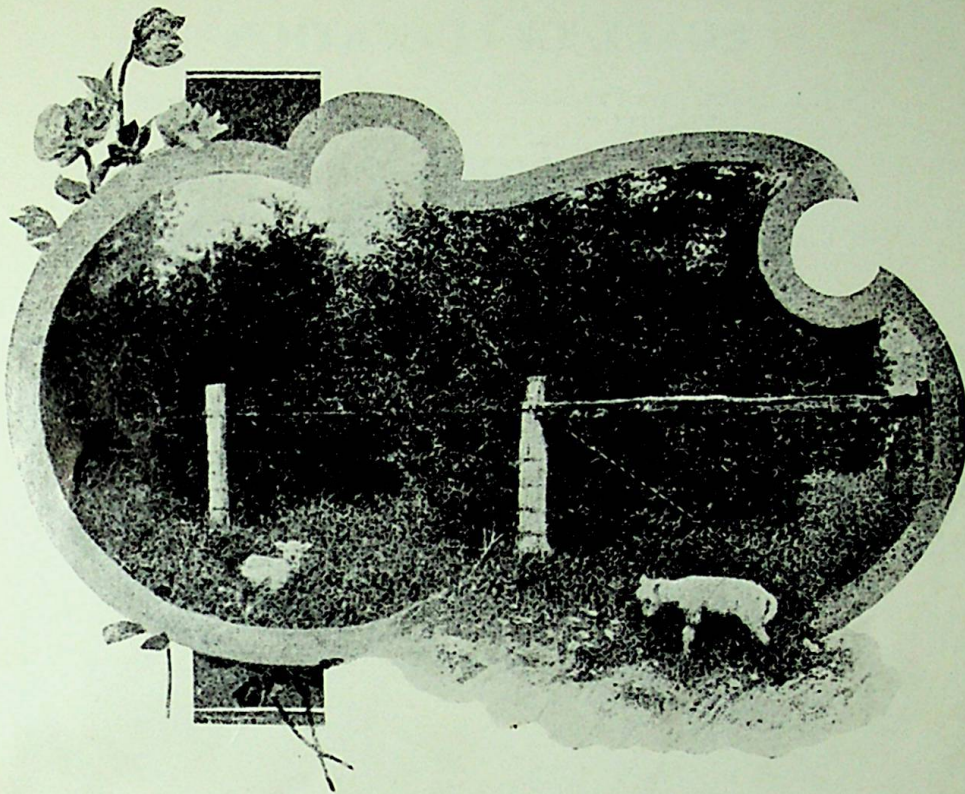
I am taking this opportunity to thank those who have helped us issue this volume.

—THE EDITOR.



*They's been a heap o' snow, but the sun's out to-day;
And the clouds of gray are all cleared away.*

Dink Washington



*For nature ever faithful is
To such as trust her faithfulness.*

—EMERSON

BOOK I

ADMINISTRATION

BOARD OF EDUCATION

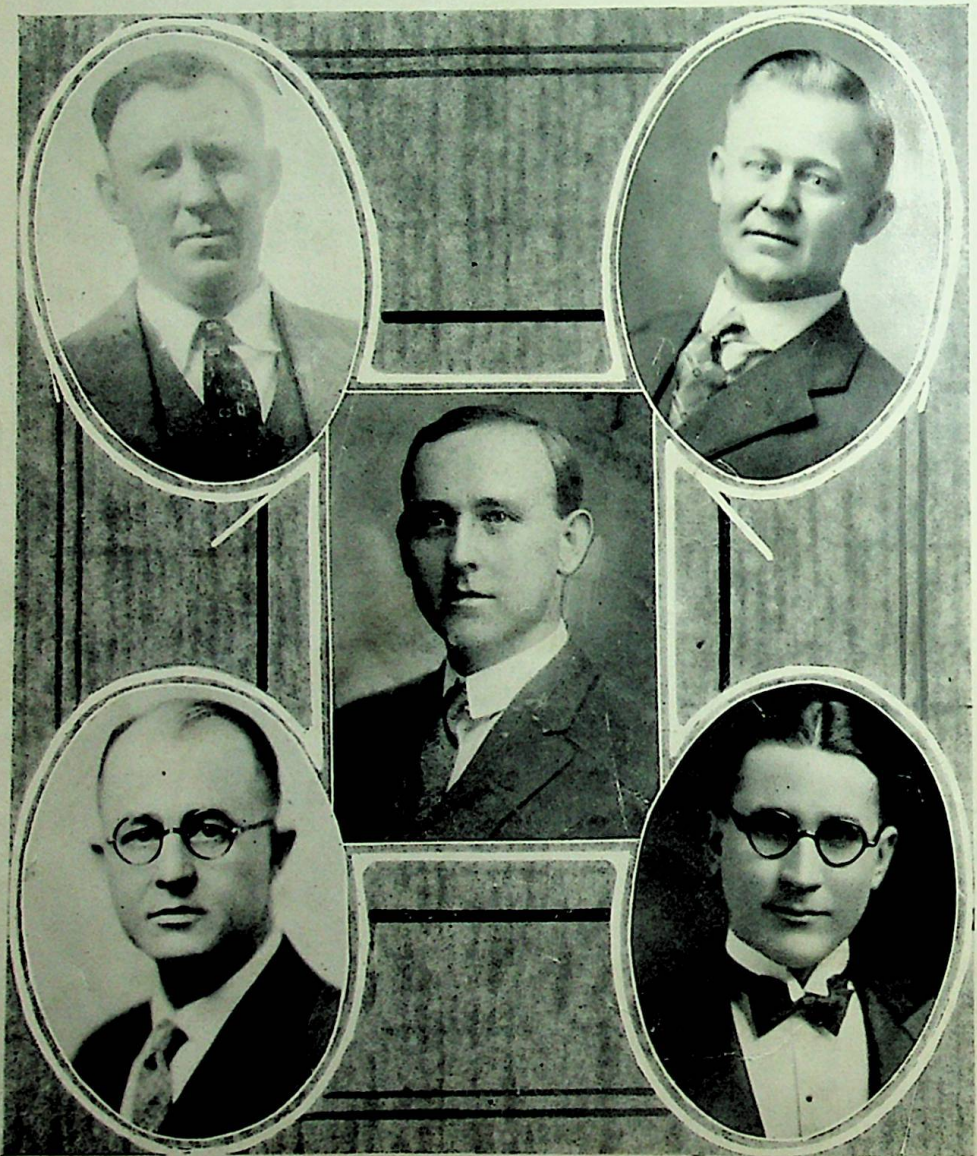
J. E. HALE, *Vice-President*
1928-1932

E. E. COOPER
1925-1929

J. C. HARRIS
1925-1929

F. E. COOPER, *President*
1925-1929

DR. GEORGE BLUME
1928-1932



SILHOUETTE



D. E. Ross

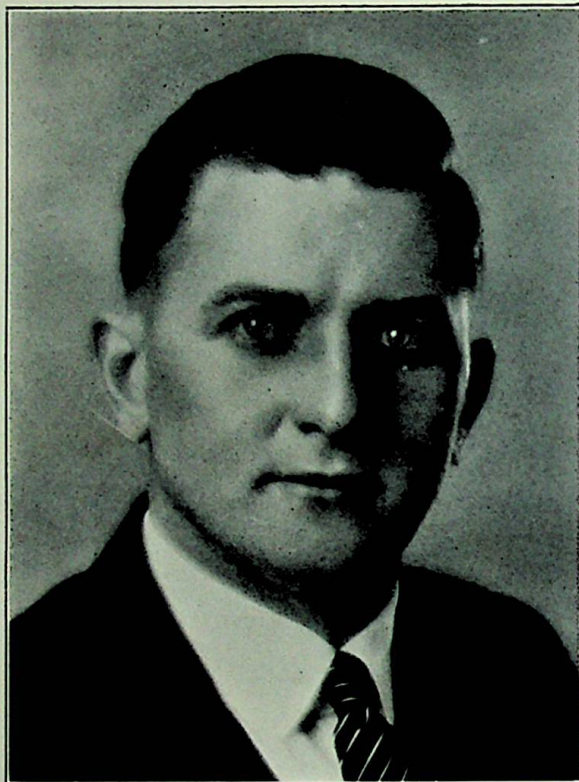
Superintendent of Schools

The schools of New Boston have been fortunate to have had the services of Mr. Ross as superintendent for the past fourteen years.

During this time many a pupil has had the privilege of enjoying his wise counsel and admonition.

His sterling character and advanced ideals have won for him the high regard of the school and community.

SILHOUETTE



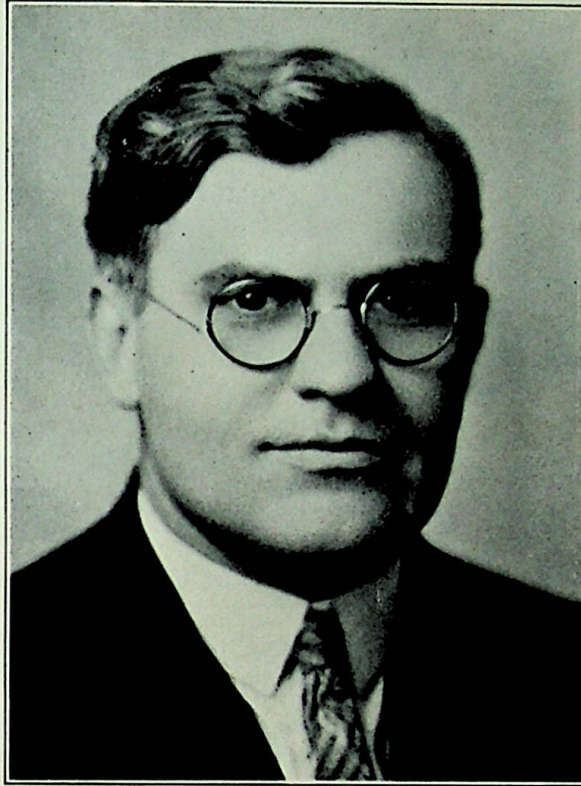
ARNOLD W. DREWES

Principal Senior High School

*A. B. Ohio Wesleyan
A. M. Ohio State
University of Chicago
Chemistry; Mathematics.*

It is rather an accepted fact that a two-fold purpose must be realized in the performance of high school activities. The product must reflect a greater sympathy for human beings and display an appreciation of the finer arts than is evidenced by his less fortunate brother. Secondly, this same product must be equipped to enter some gainful pursuit upon his graduation.

The mechanism by which these results are to be produced is often one of extremes. The typical American high school is not a technical institution. Its program, however, has ranged from the classical to the purely vocational during our brief national existence. Our heterogeneous population and the gigantic and rapidly revolutionizing industries make a stable program impossible. It must be flexible to meet satisfactorily the legitimate demands placed upon it while at the same time cling tenaciously to the accepted standards of virtue and morality without which, no nation, however materially enlightened, has been able to endure.



F. E. KIRK

Principal Junior High School

*B. S. Ohio University
Miami University*

History, Civics.

The Junior High School has tried to provide its students with adequate opportunities for self-expression and initiative through its regular class-room work and extra-curricular activities.

We have endeavored to keep constantly in mind the fact that the primary object or aim of any school should be to prepare its pupils for good citizenship. Aside from scholastic achievement, the school should aim to instill in the minds of the pupils the desire for right living, good sportsmanship, obedience to authority, and to prepare themselves for some worthwhile occupation.

The degree to which these aims have been accomplished in the school life of the pupils, constitutes a fair index as to the success of the department.

SILHOUETTE



ESTHER GRAF
A. B. Ohio Wesleyan
Physical Education
Biology
Geometry
Junior Adviser



CHARLES E. PRICE
A. B. Rio Grande
English
Bookkeeping
Librarian



LENA M. CUTRIGHT
B. S. Ohio University
B. C. S. Bliss College
Commercial
Commercial Club Adviser

HAROLD ROOT
Ohio University
Ohio State
Mechanical Drawing
Manual Training
Sophomore Adviser

ANNA KANOUSE
Normal Diploma
Ohio University
Miami University
English

RALPH ELLIOTT
Normal Diploma
Ohio University
Miami University
Geography
Physical Education
Assistant Coach



SILHOUETTE



FERN C. WHEELER
B. S. Denison University
Latin
Business English
Community Civics
Senior Adviser
Silhouette Adviser



ROME RANKIN
A. B. Waynesburg
Director of Athletics
Physical Education
History
English
Coach



MILDRED K. PFAUF
Battle Creek, Ohio State
Virginia Intermont
Home Economics
Dorcas Club Adviser

HERBERT RICKEY
Alexander Hamilton
Institute
Ohio University
Mathematics

EMMA ADDIS
Normal Diploma
Miami University
Wilmington College
Geography
Hygiene
History

HERMAN BENDER
B. S. Ohio University
Mathematics
Science



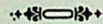
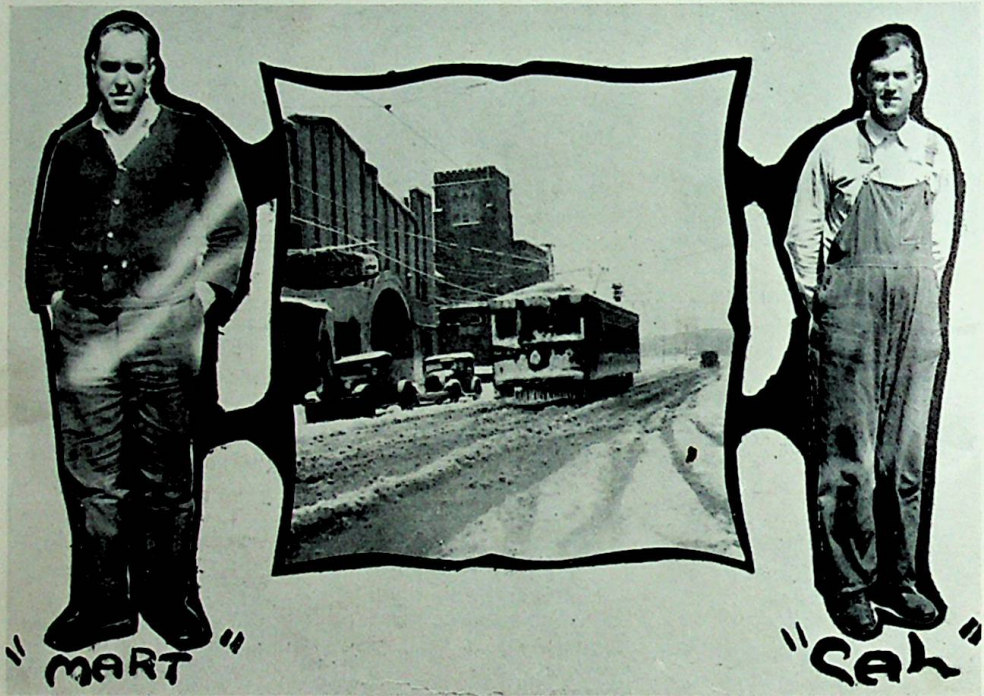
SILHOUETTE

MEET OUR CUSTODIANS!

Ding-a-ling! there's the bell. A big rush for classrooms and all is quiet again. Down the halls come our Mutt and Jeff of the janitorial staff.

Martin Hall has served Glenwood as custodian for the past eleven years in an efficient and capable manner. True to the tradition of large people, Mart is ever jolly and a booster for the school.

Mr. Calvert has been an able assistant to Mart for the last four years. Any odd wood repair jobs about the building seem to find their way to Cal's work-bench.



JUNIOR HIGH NURSERY RHYME CONTEST

Jack Horner—good boy.....	Douglas Copelan
Tommy Tucker—best singer.....	Paul Jones
Jack Sprat—big eater.....	Fred Wolfe
Goldilocks—girl with prettiest hair.....	Doris O'Neal
Mary, Mary, Quite Contrary—most contrary.....	Mary Otney
Little Boy Blue—excels with horn.....	Howard Ramey
Little Red Riding Hood—best natured.....	Frances Oliver
Old Mother Hubbard—most old-fashioned.....	Esta Hay
Humpty Dumpty—clumsiest.....	Norman Rockwell
Bo-Peep—has lost her sweetheart.....	Dorothy Buckley
Cinderella—prettiest girl.....	Reatha Moore
Miss Muffet—most timid.....	Ruth Stevens
Simple Simon—funniest.....	Harold Everling
Pied Piper—most popular.....	Oscar Huffman
Jack the Giant Killer—best athlete.....	Elmer Abrams
Bluebeard—ladies' man.....	Wallace Booten
Rip Van Winkle—sleepy head.....	Harold Arnold
Cat and the Fiddle—excels with violin.....	Theora Rickey
Nancy Etticoat—shortest girl.....	Viola Cottle
Tom Thumb—smallest boy.....	Forest Kinney
King Cole—jolliest.....	Theodore Withrow
Mary and Her Little Lamb—girl and her most devoted admirer.....	Ada Yeley, Paul Mosley
Jack and Jill—mutually interested couple.....	Virginia Kendall, Herald Lockbaum



*It hain't no use to grumble and complain;
It's jest as cheap and easy to rejoice.—
When God sorts out the weather and sends rain,
W'y rain's my choice.*

—RILEY

BOOK III

CLASSES



COMMENCEMENT

GLENWOOD HIGH SCHOOL AUDITORIUM

FRIDAY EVENING, MAY THIRTY-FIRST, NINETEEN HUNDRED TWENTY-NINE

EIGHT O'CLOCK

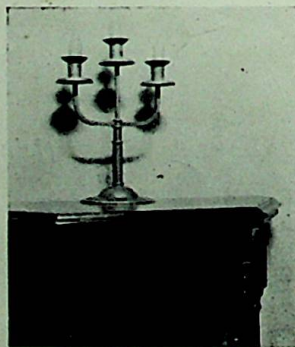
PROGRAM

March—Militaire No. 1	Schubert
Invocation	Rev. R. R. Black
Overture—Mignonette	Bauman
Salutatory	Louella Ross
Elegie	Alletter
Valedictory	Helen Venturino
Selection from Carmen	Bizet
Class Address	Supt. C. L. Wright, Huntington, W. Va.
Songs from the South	Foster
Presentation of Diplomas	F. E. Cooper
	President New Boston Board of Education
G. H. S., Song	Arr. Schnabl
Benediction	Rev. R. S. Meyer
March—Our National Honor	Brooks

CLASS FLOWER—*Yellow Rose Bud*

CLASS COLORS—*Old Rose and Silver*

CLASS MOTTO—*To Be, Not To Seem*



S
H
I
T
R
S



WINTER

*Full knee-deep lies the winter snow,
And the winter winds are wearily sighing;
Toll ye the church-bell sad and low,
And tread softly and speak low
For the old year lies a-dying.*

—TENNYSON

SILHOUETTE



CHARLES BUCKLEY

Industrial Course

Basket ball 1, 2, 3, 4; Football 1, 2, 3, 4; Annual 2, Editor 3, 4; Dramatics 1, 3, 4; Silhouette 1, 2, 3; Track 2; Honorary Athletic Society 4; President 4; Secretary-Treasurer 3; Hi-Y 3; Student Government 3.

When one a favor craves to be done,
His step with hasty tread is turned
To find this laughing, merry son
With sunny smile and cheerful mien.
He knows just how, just when, and where
To edit an annual, or mend a chair.



CLASS OFFICERS

CHARLES BUCKLEY	President
EDWARD WINTERSOLE	Vice-President
FOSTER ELLIOTT	Secretary-Treasurer
FERN CURRY WHEELER	Class Adviser

CLASS MOTTO—*To be, not to seem*

FLOWER
Yellow Rose Buds

COLORS
Old Rose and Silver

CLASS PLAY—*"Whimsy"*

SILHOUETTE



LAURA OLIVER

Latin Course

Basket Ball 1; Dramatics 1, 4; Annual 4; Silhouette 4; Class Treasurer 1; Vice President 3; Commercial Club 4; Class Basket Ball 4; Intra-mural Champs 2.

Merry, merry, and quite contrary
That's the tune of this sweet lass,
With a disposition light and airy
And a smile that wins more than a glance.

GLADYS DAVIS

Latin Course

Basket Ball 1; Tennis 1, 2, 3, 4; Dramatics 1, 4; Annual 4; Silhouette 4; Vice President 1, 2; Commercial Club 4; Class Basket Ball 4; Intra-mural Champs 2, 4.

The dignified school teacher with specs and such,
That's the course that "Gladie" has taken;
I never could picture her in that role much,
But you see I must be mistaken.



CAROL FINNEY

Latin Course

Silhouette 2, 3, 4; Annual 2, 4; Librarian 2, 4; Glee Club 4; Commercial Club 4; Class Basket Ball 4; Volley Ball 4; Dramatics 4.

'Tis just a pose, not an everyday face
Of this dear child, this sober face!
'Tis just a shame! A fraud! To try to sell
This picture of this sunny "gel".



SILHOUETTE

JOHN OLIVER

Latin Course

Annual 3; Silhouette 3; Intra-mural Champs 3; Dramatics 3, 4; Hi-Y 3.

Now about this boy I've not much to say.
He's busy though 'most all the day;
When school is over, he shakes a hoof
And journeys up street to work for Wolff.



FOSTER ELLIOTT

Industrial Course

Dramatics 1, 3, 4; Football 1, 2, 3, 4; Basketball 1, 2; Basketball Manager 3, 4; Class Secretary-Treasurer 2, 4; Honorary Athletic Society 4; Track 2, 4; Southeastern Team 4; Annual 1, 3, 4; Intra-mural Champs 2, 4; Student Government 3; Hi-Y 3.

Athletics yes, and my; oh, my!
With the girls he's not a bit shy,
But one certain girl sure takes his eye,
And she thinks that "Fos" is a regular guy.

CHARLES BARBEE

Industrial Course

Dramatics 1, 3, 4; Class President 2; Annual 4; Silhouette 2, 3, 4; Skeeters 2; Football Manager 3; Intra-mural Champs 2.

The ladies' man of every class
And likes one certain junior lass
With dark brown eyes and coal-black hair;
Some day she'll wear a solitaire.



SILHOUETTE



ALMA BRADY

Commercial Course

Dramatics 1, 4; Commercial Club President 4, Vice President 3; Silhouette 3, 4; Annual 4; Class Basketball 4.

This demure-looking little lady
Has winning ways, and let's say maybe
Later on in the trend of life
Will make some man a real good wife.

MILDRED DUNFEE

Commercial Course

Commercial Club 3, 4; Dramatics 2, 4; Class Basketball 4; Annual 4; Intra-mural Champs 3.

With a winning way and the guiltless guile
Of a child, and a sweet and wholesome smile
She wins her way into our hearts
Without a display of woman's arts.



HELEN VENTURINO

Commercial Course

Commercial Club 2, 3; Class Basketball 3; Silhouette 3.

And here's the girl who likes to toil;
She burns the fuel called "midnight oil".
In Rankin's class she's some historian;
In reality she's the valedictorian.



SILHOUETTE

ANNA LEVINE

Latin Course

Librarian 2, 3; Glee Club 3; Orchestra 2, 3.

That puzzling instrument with its black and
white keys,
Which seem so terrifying to me
Is an open book to this young lady here
From "low A" to highest "C".



LILLA MAY ELKINS

Commercial Course

Commercial Club 3, 4; Silhouette 4; Office
Training 3; Class Basketball 4; School Treas-
urer 4; Book Store Manager 3; Dramatics 4;
Librarian 2.

And this little girl we all know
Her disposition is, well—just so, so.
But she's good at "figgers", typing and "sich"
And runs things along without any "hitch".

HELEN CHASE

Home Economics Course

Class Basketball 4; Glee Club 4; Dramatics
3, 4; Culinary Artist 2, 3.

She always looks so nice and neat
And a certain boy just thinks she's sweet.
She's taking Domestic Science, they say;
I guess she'll need it, what say?



SILHOUETTE



WILLIAM SIMON D

Industrial Course

Dramatics 4; Football Manager 4; Skeeters 3; Silhouette 4.

Just here, there, and everywhere,
And never stays in any one place.
And in mischief, boy! I'll say he's there.
Oh, we all know this familiar face.

RALPH McCOY

Industrial Course

Orchestra 2, 3, 4; Intra-mural Champs 3;
Wrestling 3; Dramatics 4.

A carpenter who works with wood;
A mechanic who makes all old things new;
A studious boy who's always good,
And has his work on the day it's due.



TRUXTON CRULL D

Industrial Course

Athletic Assistant 4; Dramatics 4; Intra-mural Champs 4.

~~Not a poet, but "Do thus and so."~~

A poet? Yes? Well, now I swan,
I'll be a rig-a-jig son-of-a-gun.
I never a-thought that G. H. S.
'd turn out a bloomin' poetess.



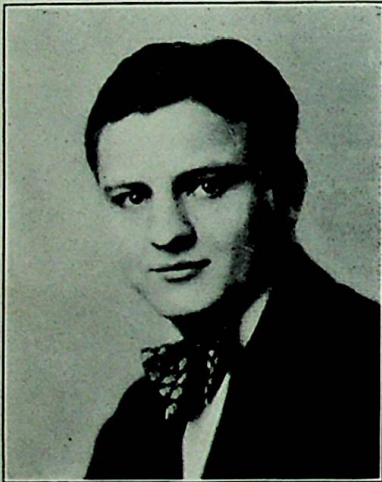
SILHOUETTE

VIRGIL STURGELL

Industrial Course

Football 1, 2, 4; Basketball 1, 2, 3, 4; Dramatics 2, 3, 4.

With wavy hair and mischievous eyes
And a smile that's always ready,
He likes to think he is very wise
And although he's slow, he is steady.



BEECHER LESLIE

Industrial Course

Football 1, 2, 3; Basketball 1, 2; Wrestling 3; Dramatics 1, 2; Hi-Y 3; Track 2.

With a keen mind and a heart that is strong
And the will a boxer to be
He will climb up the ladder of fame
At least that is his idee (idea).

GEORGE SANFORD

Industrial Course

Athletic Assistant 4; Dramatics 4.

She always looks so nice and neat
And a certain boy just thinks she's sweet.
She's taking Domestic Science, they say;
I guess she'll need it, what say?



SILHOUETTE



MARY LOUISE BARNES

General Course

Class Basketball 4; Dramatics 3, 4.

Some like one, some like two,
"Lou" likes 'em all including you.
Sometimes naughty and trying in class,
But we all like this winsome lass.

DAISY WALLACE

Home Economics

Class Basketball 4; Dramatics 3, 4; Culinary Artist 2, 3.

Domestic Science seems her bent.
We need not fear for the "lucky gent";
He'll never have those familiar aches
That come from soggy pies and cakes.



DESSIE COOPER

Commercial Course

Silhouette 3; Annual 4; Dramatics 4; Commercial Club 3; Basketball 2; Athletic Association 1.

A poet? Yes? Well, now I swan,
I'll be a rig-a-jig son-of-a-gun.
I'd never a-thought that G. H. S.
Would put out a bloomin' poetess.



SILHOUETTE

GERTRUDE HELFENBEIN

Commercial Course

Commercial Club 3, 4; Annual 4; Bookstore Manager 3; Dramatics 4.

Skinny's idea of school life
Is an era of hazy daze (days).
Skinny's ambition is not to be a "wife"
But a fashion plate with wily ways.



LOUELLA ROSS

Latin Course

Basketball 1; Dramatics 1, 2; Glee Club 3; Secretary-Treasurer 2 of Class of '30; Salutatory.

She's the "Super's" daughter and studies, of course,
Like all good girls should do.
But to all the class she's that same lass
That never seems to be blue.

FRANCES LESTER

Commercial Course

Commercial Club 3; Dramatics 2, 4; Dorcas Club 4; Basketball 4.

Commercial work she majored in,
But this year I heard the few words
That she's taking "Home Ec" along on the
side;
'Twas told me by a few little "birds".



SILHOUETTE



EDWARD WINTERSOLE

P

Industrial Course

President 1, Vice President 4; Football 1, 2, 3, 4; Basketball 1, 2, 3, 4; Track 2, 4; Dramatics 1, 3, 4; Silhouette 2, 3, 4; Annual 4; Orchestra 2, 3, 4; Southeastern Team 4.

Strong and steady, slow and sure,
Ed's not much on lit-er-a-ture
But some old kick he sure does wield
As full-back on a foot-ball field.

KENNETH CAULLEY

Industrial Course

Orchestra 2, 3, 4; Dramatics 1, 4; Intra-mural Champs 2, 3.

A good word for "Ken", well, we'll try—
He's got one good point, he's not shy.
But much to his and the teacher's sorrow,
He puts off today what he can do tomorrow.



GLEN FITCH

Industrial Course

Annual 3, 4; Skeeters 2, 3, 4; Dramatics 4.

Now everyone should know "Butch",
Just tell me a time when he isn't in "dutch";
But some day he'll change for better or worse
And let's hope he'll remember this prophetic
verse.



SILHOUETTE

OUR SENIORS FROM A TO Z

BY WASHINGTON

A IS FOR ALMA
SO NEAT



B IS FOR "BUCK
BARBEE
BARNES AND
OTHERS YOU
MEET



C IS FOR CHASE
THATS HELEN
I KNOW



D IS FOR DESS,
AND DAVIS
TWO NICE GIRLS
ALSO



E IS FOR "ED"
AND ELLIOT
TWO BIG BUMS



F IS FOR FINNEY
AND FRANCIS
OVR CHUMS



G IS FOR GEORGE
AND GLEN ARE
THEIR GRADES LOW?



H IS FOR HEL-
FENBEIN'
ANOTHER GIRL I
KNOW



I IS FOR "INTELL-
IGENCE" THE
WHOLE CLASS HAS



J IS FOR JOHN
JONE YOU CAN'T
RAZZ



K IS FOR KEN-
NETH SO
BOLD



L IS FOR LILLA
MAE AND
LOUELLA WHO
TURNS'EM DOWN
COLD



M IS FOR MIL-
DRED SO
SHY AND TIMID



N IS FOR NAUGHTY
THE SENIORS
HAVE IT



O IS FOR OLLIVER
OUR LAURA
SO FINE



P IS FOR PRIZE
FIGHTER WHERE
BEECH SHINES



Q IS FOR QUITE
OF WHICH
WE KNOW NOT



R IS FOR RALPH
ANOTHER ONE
IN THE POT



S IS FOR SIMON,
AND STURGILL,
OUR MUTT + JEFF



T IS FOR TRUX-
TON, THE SIZE
OF A PILL



U IS FOR UNITY,
THATS HOW
WE ACT



V IS FOR VENT-
URINO AS
SHARP AS A TACK



W IS FOR WALLACE A
DARK HAired LASS



X IS FOR XAIVER
A COLLEGE BY
CAST



Y IS FOR YEAR
AND OUR LAST



Z IS FOR ZERO
THIS STAGE
IS PASSED



A
U
T
U
M
N



AUTUMN

*The warm sun is failing, the bleak wind is wailing,
The bare boughs are sighing, the pale flowers are dying,
And the year
On the earth, her death-bed, in a shroud of leaves dead;
Is lying.*

—SHELLEY.

JUNIOR OFFICERS

RUSSELL HUFFMAN	President
MABEL ROLFE	Vice President
LEONA SHONKWILER	Secretary
JOSEPH HENSLEY	Treasurer
ESTHER M. GRAF	Class Adviser

MOTTO—*We lead, others follow.*

FLOWER—*Red Rosebuds*

COLORS—*Blue and White*

IMPORTANT DATES

Hallowe'en Party	October 28, 1928
Christmas Party	December 20, 1928
St. Patrick's Party	March 15, 1929
Wiener Roast at Selco Park	October 26, 1928
The Play, "Mother Mine"	December 13, 1928
Junior Class Rings Arrived	February 16, 1929
The Junior-Senior Banquet	May 24, 1929
Pennant Day	March 29, 1929

Upper Row: Severino Pellegrinon, Virginia Booten, Virginia Pettry, Dorothy Payton, Joseph Hensley
 Second Row: Isaac Morris, Herman Krueger, Leona Shonkwiler, Willard Meyer, Celia Jacobs
 Lower Row: Mabel Rolfe, Irene Harper, Kathryn Chase, Rosemary Munn, Irwin Washington



SILHOUETTE

ACTIVITIES

SPORTS

Here are some football and basket-ball stars the Juniors can well be proud of ;

JOSEPH HENSLEY
SEVERINO PELLEGRINON

HERMAN KRUEGER
ISAAC MORRIS

And they still have another year for their Alma Mater.

ORCHESTRA

ANNA LEVINE
LOUISE WINTERSOLE

KATHRYN CHASE
WILLARD MEYER

DORCAS CLUB

LOUISE WINTERSOLE	<i>President</i>
IRENE HARPER	<i>Vice-President</i>
VIRGINIA PETTRY	RUBY FITCH

COMMERCIAL CLUB

EDNA BENNER, LEONA SHONKWILER, OPAL LEWIS AND
HELEN VENTURINO *Treasurer*

Upper Row: Floyd Coburn, Edna Benner, Charles Woten, Virginia Copelan, Elnora Wolfe.

Second Row: Louise Wintersole, Howard Cooper, Lueda Anderson.

Lower Row: Ruby Fitch, Russell Huffman, Opal Lewis, Mary Ellen Pennington,
Felicit Wolfe.



SILHOUETTE

JUNIOR FOOTBALL GAME

PRESENT OFFICIALS

Referee—MR. ROSS

Umpire—E. M. GRAF

Score Keeper—MR. DREWES

Time-keeper—MR. SCHOOL BOARD

Head Linesman—MART HALL

Captain—RUSSELL HUFFMAN

TIME—*One Year Quarters*

FIRST QUARTER

The class started the fireworks with a class meeting, followed by a wiener roast which totaled for nice gains. Almost everyone showed good form in this period. Elsworth Upton was taken from the game because of marriage.

SECOND QUARTER

Eighteen others were taken from the game at the beginning of this period. The Sophomores started off by taking the attendance record for the month of September. Another wiener roast was good for a gain.

Sub, Baldy, and Ike received athletic letters making a nice gain. Leona Shonk-wiler got away with the bond issue contest. Latin, History, English, and Biology stopped several for big losses in this period.

THIRD QUARTER

In this quarter the Juniors opened up with everything, making easy gains with the Junior-Senior banquet. The Seniors stopped them on the goal line by taking down the Junior pennant in Senior chapel. The big stars so far in the game are Helen Venturino with 27 A's out of 31 tries, and Louella Ross with 16 A's out of 26 tries.

Others who are showing good form are Mabel Rolfe, Anna Levine, Louise Wintersole, Irwin Washington, Joe Hensley and Mary Ellen Pennington.

The score at the end of third quarter stands 96 A's, 154 B's, 345 C's and 149 D's.

The class is resting up three months intermission for the fourth and last quarter.



S
O
F
T
M
O
R
N
I
N
G



SUMMER

*Tell you what I like best—
'Long about knee-deep in June,
'Bout the time straw-berries melts
On the vine,—some afternoon
Like to jis' git out and rest,
And not work at nothin' else!*

—RILEY.

SILHOUETTE

SOPHOMORE OFFICERS

RONALD GREENE *President*
 PAUL DUNCAN *Vice-President*
 ARTHUR PELLEGRINON *Treasurer*
 EDWARD BURKHARDT *Secretary*

First Row:

James Warren
 Alexander Wallace
 Edith Lester
 Dorothea Charlton
 Paul Duncan

A fine chap in every way.
 Oh! what an athlete.
 Strictly adheres to her business
 Strictly tailored.
 A hard worker

Second Row:

Jessie Price
 Gordon Riggs
 Estalene Rickey
 Allene McManus
 Arthur Pellegrinon
 Helen Goddard

A smile will go a long, long way.
 Aw! Now you quit.
 A girl with charming ways.
 Busy, speedy, capable, and peppy.
 The ladies' man.
 A maiden, reliable and sunny

Third Row:

Alma Mitchell
 Ronald Greene
 Vincent Meyer
 Edward Burkhardt
 Thelma Dalton

Happy, studious and good-natured.
 Meet the President!
 You should hear him play.
 Another athlete.
 The steady, dependable type.



SILHOUETTE

SOPHOMORES—Continued

MOTTO—*Be Your Age!*

COLORS—*Black and Blue*

FLOWER—*Black-eyed Susan*

Top Row:

Edna Crum
Morris Magee
Jane Hammes
Ernest Musser
Helen Stapleton

She can both quiet and happy be.
Little but mighty.
The champion typist.
He's there when duty calls.
The same yesterday, today, etc.

Second Row:

Homer Adkins
Walter Horner
Frank Dodd
Charles Starrett
Paul Mosley
Harold Moore

Sophomore's long boy.
Windy as ever.
He saves men's soles.
The basketball hero.
God's gift to women.
Sophomore's fat boy.

Third Row:

Charles Fitch
Maxine Davis
Gene Harr
Charlotte Schloss
Roy Davis

Of the famous line of "Butchers".
Now, ain't she sweet.
He's a nice boy.
Words can't express it.
Another important Sophomore.



THE FABLE OF A SOPHOMORE

(Apologies to Mercury and the Woodman)

A well known Senior was busy studying, when by chance, his Latin book was misplaced. He looked all around, but could not find it.

In great distress at the loss of his book he laid his head down on the desk and grieved bitterly.

Mr. Root appeared and asked him what was the matter. Having heard the story, he went up to his desk and brought back "Tarzan of the Apes," and offered it to him. The Senior refused to take it, saying that it was not his book.

Mr. Root went the second time and brought back "Wild West Weekly." This also was refused by the Senior, who said that it was not the right book.

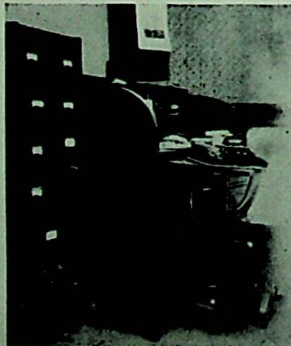
He went a third time and brought back a Latin book, which was the one the Senior wanted. This the poor Senior took with great thankfulness and joy. Mr. Root was so pleased with his honesty that he gave him the other two in the bargain.

The Senior told his adventure to a number of Sophomores and one of them at once threw his book out of the window on purpose. He then began to lament his loss in a loud voice.

Mr. Root appeared, as before, and demanded the cause of his grief.

After hearing the "Sophs" account, he went over and got the book, "Buffalo Bill," and asked him if that was his book. Beside himself with joy at the sight of the precious book, the fellow eagerly answered that it was and greedily attempted to snatch it.

The teacher, detecting his falsehood and impudence, not only declined to give it to him, but flunked him for the semester.



J
U
N
I
O
R
~
H
I
G
H



SPRING

*In spring, when the green gets back in the trees,
And the sun comes and stays,
And yer boots pulls on with a good tight squeeze,
And you think of yer bare-foot days.*

—RILEY.

SILHOUETTE

FRESHMAN

CLASS OFFICERS

ELOISE CLARK	President
VIOLA COTTLE	Vice-President
HERALD LOCKBAUM	Secretary-Treasurer
RALPH ELLIOTT	Class Adviser

CLASS MOTTO

"Knowledge is the Foundation of Success"

CLASS COLORS—*Green and White*

CLASS FLOWER—*White Carnation*

"By their fruits ye shall know them"

SCHOLARSHIP

Flora Adkins
Mary Ottney
Paul Bowen
Charles Newman

Elizabeth McKinstry
Virginia Sisson
Herald Lockbaum
Everett Skivers

Florence Ruth Meyer
Minnie Yerardi
Edwin McKenzie
Floyd Warner

First Row: Eloise Clark, May Abraham, Floyd Warner, Austin Lee, Homer Abrams, Herald Lockbaum

Second Row: Albert Reed, Virginia Sisson, Thelma Oliver, Gladys Carver, Robert King,

Third Row: Alma Kasee, Oscar Huffman, Cecilia Jenkins, Minnie Yerardi, Louella Shonkwiler, Paul Bowen

Fourth Row: Flora Adkins, Harold Payton, Mary Ottney, Elizabeth McKinstry, Della Rawlins, Eileen Yinger.



SILHOUETTE

ORCHESTRA

Edwin McKenzie
Mary Ottney

Fred Wolfe
Jessie Oliver

Helen Sheridan
Reatha Moore

JUNIOR HIGH PLAY

Robert King
Charles Newman
Reatha Moore
Florence Ruth Meyer

Edwin McKenzie
Herald Lockbaum
Jessie Oliver

Paul Bowen
Eloise Clark
Elzada Adkins
Elizabeth McKinstry

SCIENCE CLUB

Robert King
Charles Newman

Edwin McKenzie

Paul Bowen
Herald Lockbaum

OFFICE WORK

Virginia Sisson
Mary Ottney

Eloise Clark
Jessie Oliver

Viola Cottle
Elizabeth McKinstry

GLEE CLUB

May Abraham
Viola Cottle
Eloise Clark

Florence Ruth Meyer
Elizabeth McKinstry

Olive Cooper
Reatha Moore
Minnie Yerardi

First Row: Grace Roberts, Charles Newman, Robert Moore, Fred Wolfe, Florence Ruth Meyer, Everett Skivers

Second Row: William Kavlish, Viola Cottle, Elmer Abrams, John Killen, Elzadah Adkins.

Third Row: Helen Sheridan, Lila Maple, Jessie Oliver, Edwin McKenzie, Arthur Fannin, Edna Caudill.

Fourth Row: Reatha Moore, Olive Cooper, Gardner Mershon, Margaret Davison, Sam Pennington, Sarah Morris.



FRESHMAN FLOWER PARTY

I.

*May is the month for the Flora,
And Minnie adorn the hill;
Where the merry warblers are singing
To Eileen and red-headed Bill.*

II.

*Viola gather a Reatha flowers,
From under the Maple tree
And present them to Oscar and Libbie,
For they are Bowen you see.*

III.

*Here come Homer and Elmer
Running across the Lee,
And their coat-tails are Fannin,
For a Wolfe is in pursuit you see.*

IV.

*Ce-Celia tug at Alma
While Grace hid by A. Reed;
And Jessie tried to Warner,
But Sarah failed to heed.*

V.

*When the Gardner made his appearance,
Louella cried with glee,
"They are Killen the ferocious animal
And I am Gladys can be."*

VI.

*No King could have been prouder
Than Virginia and Helen and Ruth,
Because Hardy Cooper told them
The honest downright truth.*

VII.

*Elzada, Margaret, and Edna
Dressed up Payton you see;
With Combs and brushes and fur,
So like an animal he'd be.*

VIII.

*When Herald and Thelma and Mac,
Saw the Joke played on the crew,
They told Della the mystery
And instantly she began to chew.*

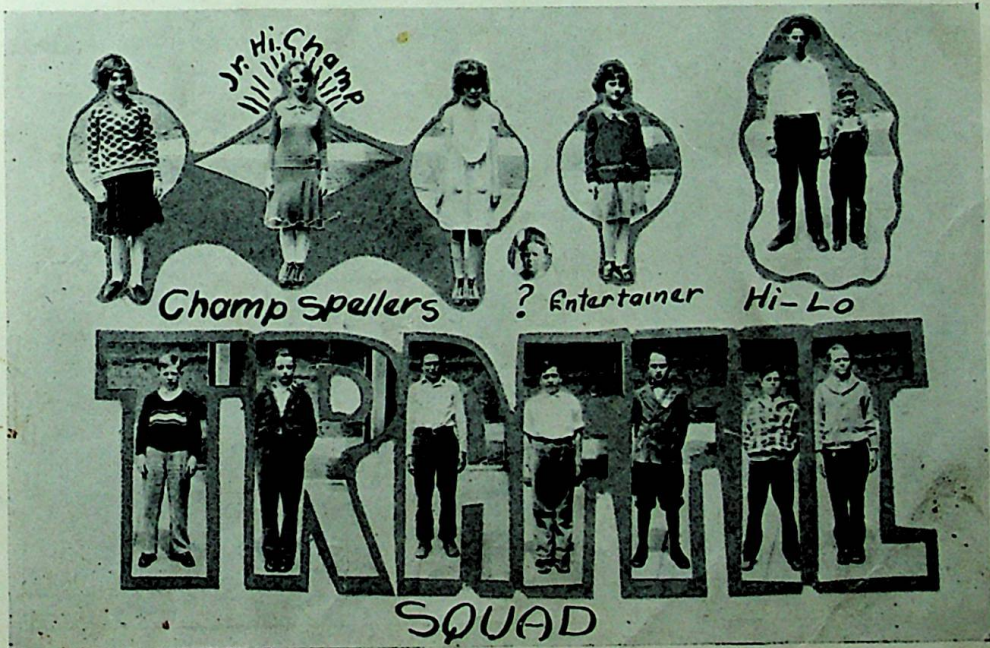
IX.

*The Clark bar she was eating
Vanished like home-made chow;
And she was so excited she cried,
I feel like a Newman now."*



S

B



SILHOUETTE

EIGHTH GRADE A SECTION

CLASS OFFICERS

THEORA RICKEY	President
THEODORE WITHROW	Vice-President
HELEN SHUMAN	Secretary
VIRGINIA KENDALL	Treasurer
ANNA KANOUSE	Class Adviser

MORNING OF LIFE

*We are living in the morning of Life,
Our hearts are happy and gay;
But the habits we form in this early morn
We keep through the livelong day.*

*Some acts will lead us to treasures untold,
If they are honorable and righteous and just;
But the acts that degrade we must evade
Or our lives will wither with lust.*

*We must mold our lives in this morning of Life
With the thought of the coming day;
For the order we give that life we live,
So let us choose wisely while we may.*

First Row: Ruth Stevens, Norman Rockwell, Herschel Cunningham, Paul Jones, Martha Morris.

Second Row: Reba Lockhart, Wilbert McGraw, Erma Yeley, Ray Staten, John Goddard.

Third Row: Charles Curcio, Mable Benner, Ellen Mitchell, Evelyn McManus, Frank Curcio.

Fourth Row: Henrietta Harris, Clyde Meadows, Theora Rickey, Wallace Booten, Bessie Goff.



REBA
LOCKHART →

C. CURCIO →

H. HARRIS →

SILHOUETTE

In September nineteen hundred twenty-eight, quite a number of boys and girls assembled in room two-hundred-twenty, eager to start on their quest of knowledge for the year. To reach their goal no task seemed too great and no problem too difficult. Since this is only our second year at Glenwood and we have taken an active part in all the activities that the school has offered, we feel confident that some of our dreams will come true before we graduate in nineteen hundred thirty-three.

At the close of the term when we check the results, we find that we have not fallen much short of our anticipations. For scholastic ability we are justly proud to name Ellen Mitchell, Theora Rickey, Mabel Benner, Genevieve Riepenhoff, Paul Jones, Eugene Newberry, Harlan Erwin, and Theodore Withrow.

In the Senior orchestra we have Theora Rickey, Edith Graham, and Mabel Benner. In the Junior we have Eugene Newberry, Paul Jones, and Virginia Kendall.

We are exceptionally proud that there are five students who have been neither absent nor tardy. They are Ralph Sparks, Ray Staten, Eugene Newberry, Ruth Stevens, and Genevieve Riepenhoff.

We had one representative, Wallace Booten, in the Junior High play, "Beads on a String."

Since Rosemary McCullah from this section was the champion speller of the two eight grades, we were privileged to partake of a wonderful feast prepared by 8-B Section.

First Row: Gilbert Porter, Virginia Kendall, Kenneth Dutiel, Edith Graham, Eugene Payton.

Second Row: Theodore Withrow, Genevieve Riepenhoff, Evelyn Greene, Clyde DePriest
Eva Mae Bradley.

Third Row: Geneva Brisker, Frank Adkins, Dorothy Sutton, Marvin Upton, Harlan Erwin,
Helen Shuman.

Fourth Row: Helen Bickett, Carmel Jenkins, Douglas Copelan, Rosemary McCullah,
Charles Sparks.



SILHOUETTE

EIGHTH GRADE B SECTION

CLASS OFFICERS

DONALD HICKMAN	<i>President</i>
FREIDA HELFENBEIN	<i>Vice-President</i>
HELEN YORK	<i>Secretary</i>
OLIVE ADAMS	<i>Treasurer</i>

I.
*Glenwood is a garden
 Where happy children grow
 And feed upon the knowledge
 Which every child should know.*

II.
*The keepers of the garden
 Are industrious you see;
 They cultivate with care and patience
 Children like you and me.*

III.
*Let us beautify our garden
 And honor its HALLOWED name,
 By giving the very best we can
 And in return we'll receive the same.*

- Top Row: Olive Adams, Wilbur Huffman, Eugene Newberry, Harold Cullem,
 Dorothy Buckley.
- Second Row: Meredith Roe, Agnes Grierson, Carmen Evans, Lester Keeney, Ralph Sparks,
 Lucille Woods.
- Third Row: Ethel Hay, Homer Davis, Frieda Helfenbein, Alva Dyer, Roy Armstrong,
 Anna Hamilton.
- Fourth Row: Marjorie Erwin, Ralph Butcher, Lawrence Essman, Harold Everling,
 Frances Oliver.



SILHOUETTE

The fall of 1928 found a group of eager youngsters awaiting for the doors of Glenwood to open for the present school year; scattered among this throng were a whole host of eighth grade pupils: so many in fact that the classes had to be divided into two groups: Section A and B.

Immediately after the class was divided, group B organized its class and elected its officers. These people have been very sincere in their work as class officers. The class as an organization has been very successful in both social activities and class work.

From the stand-point of scholarship we have some in this class who are real students. They are Frances Oliver, LeOscar Fitch, Helen York, and Donald Cameron. There are also those who deserve honorable mention: Freida Helfenbein, Olive Adams, Delmas Phillips, Joy Freeman, and Rosalyn Henson.

This section is not represented in the orchestra in large numbers or size but Marjorie and LeOscar can make enough noise so the lack of these qualities are not noticed. And the same is true in basketball. We had only one boy from our section, but Harry in himself made up for large numbers in his playing ability and scoring points, the necessary factors in winning a game.

Top Row: Roscoe Cox, Max Huey, Florence Vanhorn, Donald Cameron, Harry Conklin, Hazel Marion.

Second Row: Rosalyn Henson, Charles Sims, Joy Freeman, Melvin Franz, Donald Hickman, Jean Killen.

Third Row: Earnest Bailey, Harold Arnold, Leah Brady, Talmage Sparks, Robert Newman, Helen York.

Fourth Row: Harold Booth, Eloise Smith, Roy Locher, Gladys Leslie, Delmas Phillips.



SILHOUETTE

SEVENTH GRADE A SECTION

CLASS OFFICERS

JOE BUCKLEY	<i>President</i>
MARJORIE CRULL	<i>Vice-President</i>
MARY SHUMAN	<i>Secretary</i>
ORVILLE CURTIS	<i>Treasurer</i>
HERBERT RICKEY	<i>Class Adviser</i>

On the fourth day of the ninth month of the year nineteen hundred and twenty-eight, we entered the Junior High department at Glenwood. We were always glad to enter a higher grade, but in this instance there was a greater thrill due to the fact that we were now entering a new department, the Junior High.

In scholastic ability this section has some who deserve honorable mention. The following are the outstanding pupils in this section: Wanda Malone, Hilton Newberry, Richard Canter, Ralph Phillips and Mary Shuman.

This section has four pupils who have a perfect attendance record for the year. They are Marjorie Crull, Hilton Newberry, Ralph Phillips and Frances West. One of these, Marjorie Crull, has not been tardy or absent for the last six years.

Two members of the orchestra were furnished by this section. They are Ruth Moon and Orville Curtiss.

Top Row: Orville Curtis, Joe Buckley, Edward Wren, Marjorie Crull, Jerome Ehoodin, Avanel McFan, Floyd Potts, Isabel McGee.

Second Row: Edward New, Francis West, Forest Kinney, Mary Shuman, Ada Yeley, Woodrow Alexander, Vivian Vicars, Hilton Newberry.

Third Row: Olen Mills, Richard Canter, Eva Henthorn, Orville Curtis.

Fourth Row: Alma Birch, Kathern Willis, Analay Tipton, Raymond Blume.

Fifth Row: Great Thompson, Ruth Moon, Wallace Sloan, Willis Gayheart.

Sixth Row: Donald Ferguson, Bessie Tibbs, Wanda Malone, Myrtle Fitch, Anna Mershon, Theodore Hardin, Ralph Phillips, Idaline Adkins.



SEVENTH GRADE B SECTION

CLASS OFFICERS

HOWARD RAMEY	<i>President</i>
DORIS O'NEAL	<i>Vice-President</i>
WILLIAM JORDAN	<i>Secretary-Treasurer</i>
FRANK E. KIRK	<i>Faculty Adviser</i>

This section has made contributions in honor students, orchestra, athletics, and dramatics.

The honors for scholarship go to Leon Bradley, Howard Ramey, and Leon Roberts. The seventh grade spelling contest was won by Leon Bradley.

Howard Ramey is a member of the senior orchestra, and Doris O'Neal, Myrtle Nickell, Darlene Porter, Harold Everling, and Homer Moon are members of the junior orchestra.

Our section was very well represented on the best teams of the League C Intramural Basketball tournament. We had four members Kenneth Hempill, Harry Gilpin, George Elkins, and Russell Hamilton on the winning team, and two members, Edward Cottle and James Childrey on the team that took second place.

Ruth Levine had one of the leading roles in the annual Junior High play.

First Row: Jean Kavilish, Margaret Chase, Guy Lytten, Darel Semones.
 Second Row: Harry Gilpen, Durward Semones, Pearl Schultz, Leonard Phillips, Howard Ramey.

Third Row: Darlene Porter, Walter Lytten, Oscar Coldiron, George Elkins.
 Fourth Row: Kenneth Hempill, Amanda Duncan, Wulfred Raynard, Ruth Levine, Roy Benner.

Fifth Row: Frances Worstell, Edward Cottle, Harold Everling.

Sixth Row: William Jordan, Jesse Adkins, Homer Moon, Leon Roberts, Charles Colley.

Seventh Row: Myrtle Nickel, Russell Hamilton, Grace Everman, Darlene Porter.

Eighth Row: George Worstell, Doris O'Neal, Leon Bradley, Emma Adkins, James Childrey.



← DORIS O'NEAL

SYLHOUETTE

SEVENTH GRADE C SECTION

CLASS OFFICERS

CHARLES BOLIN	<i>President</i>
WILLIAM TURNER	<i>Vice-President</i>
COY HALE	<i>Secretary-Treasurer</i>
EMMA ADDIS	<i>Faculty Adviser</i>

The most outstanding characteristic of this section has been in classroom work. Among our best students were Emma Adkins, Virgil Withrow, Frederick Cross, Coy Hale, William Turner, Dorothea Sylvia, and Goldie Jordan.

We were represented in the Junior Orchestra by Nora Smith and Mildred Schwamberger.

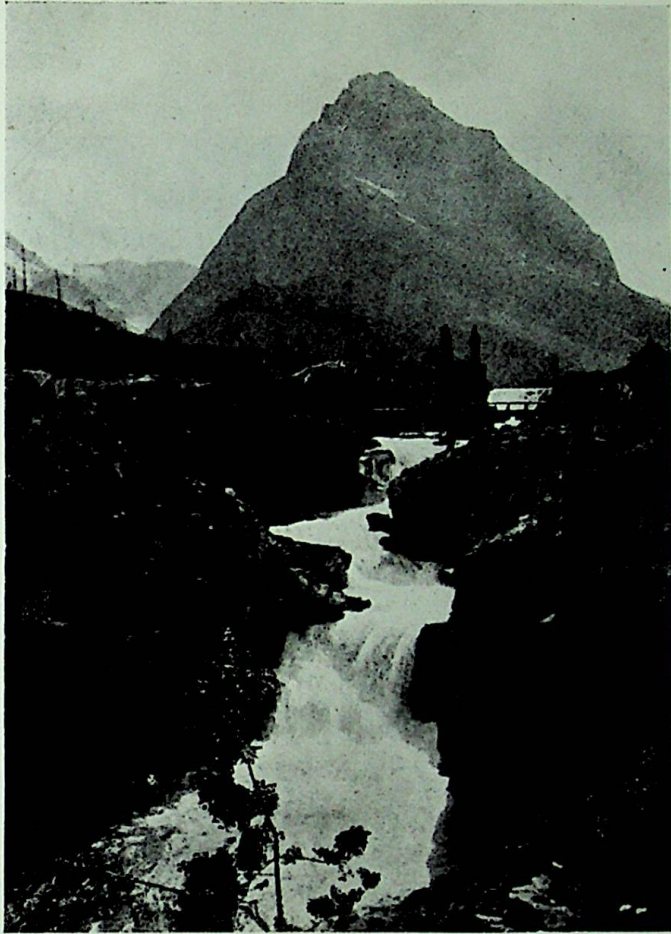
Charles Bolin, Ralph Shurlock, and Herbert Dutiell were members of the Bulldogs Basketball team that played in the finals of the League C Intramural tournament.

Three of our group have a perfect attendance record for the year. They are Edward Patton, Ray Duncan, and Bishop Hamilton.

We have tried to maintain a high spirit of loyalty and honesty toward our work and the school. If we have fallen short this year, we hope to continue this aim in the years that are to come. By so doing there is no limit to the good we can bring to ourselves and Glenwood.

- First Row: Roscoe Buckley, Dorothea Sylvia, Frederick Cross, Ray Duncan, Emma Lou Adkins, Hazel Mae Colley, Mildred Schwamberger.
 Second Row: Coy Hale, Herbert Dutiell, Dorothy Barnes, William Turner, Josephine Crum, Lucille Clark, Edward Patton.
 Third Row: Goldie Jordan, Eva Mae Thomas, Nora Smith, Ruth Moore, Opal Stone, Ralph Shurlock, (Anala Tipton in 7-A Section).
 Fourth Row: Frances Worstell, James Lester, Emma Adkins, Virgil Withrow, Marie Payton, Charles Bolin, Bishop Hamilton.





*Monadnoc is a mountain strong,
Tall and good my kind among
But well I know, no mountain can
Measure with a perfect man.*

—EMERSON

BOOK III

ATHLETICS

SILHOUETTE



ROME RANKIN
*Director of Athletics
and
Physical Education*

FOOTBALL

For five years Glenwood High School has been fortunate in having the services of Coach Rome Rankin. He has been very successful in turning out teams of good calibre in both football and basketball. During the first three years of Rankin's coaching, the football team had a clean slate, and the basketball team held an enviable record.

It was in the fourth year of Rankin's career at Glenwood that the high school was admitted into the Southeastern Ohio Athletic Association. Several Class A teams appeared on the schedule of Glenwood as a result of membership in the league. This last year has been successful in the two major sports of Glenwood. The football and basketball teams secured second place in the league, and this casts a good reflection in the coaching ability of Coach Rankin.

Coach Rankin received instructions from such coaches as "Pat" Dwyer, "Pop" Warner, and Knute Rockne.

ROME RANKIN, *Coach*; FOSTER ELLIOTT, *Captain*; CHARLES BUCKLEY, *Captain*; RALPH ELLIOTT, *Ass't Coach*.



LOUISE WINTERSOLE *Cheer Leaders* MABEL ROLFE

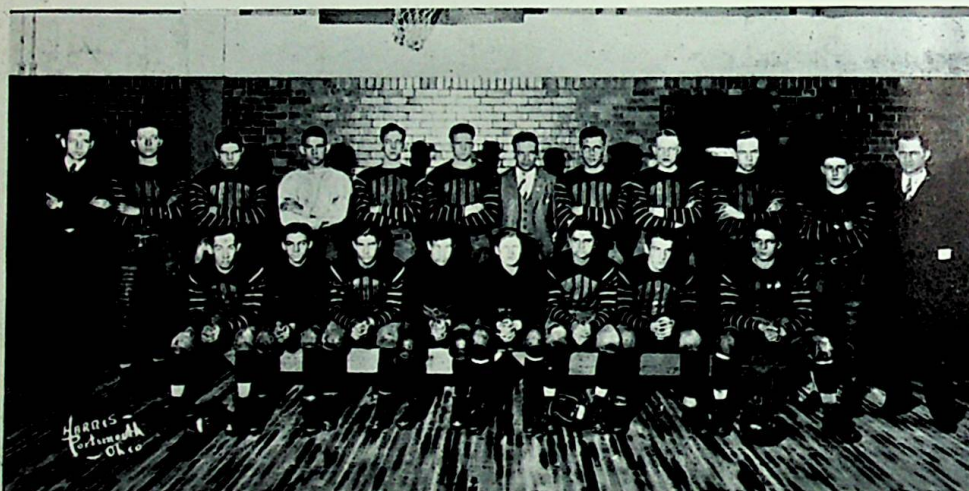
Ralph Elliott a graduate of the class of '21 has three years been assistant coach of the Glenwood High School teams. He was always out with Coach Rankin ready to offer suggestions, and he made a very capable physician for the injured members of the team.

"Yea! Team," and how those fans did cheer when these two yell leaders started their uncanny motions. We all want to compliment these two girls for their good work during the season of 1928.

SILHOUETTE

1928 FOOTBALL RECORD

Glenwood.....	6—Hillsboro	0
Glenwood.....	0—Athens	25
Glenwood.....	0—Portsmouth	31
Glenwood.....	71—Waverly	0
Glenwood.....	18—Gallipolis	6
Glenwood.....	26—Pomeroy	0
Glenwood.....	0—Wellston	6
Glenwood.....	2—Jackson	0
Glenwood.....	6—Sciotoville	0
Glenwood.....	0—Ironton	31
—		
Glenwood.....	129—Opponents	99



VARSITY FOOTBALL SQUAD

CAPTAINS

FOSTER ELLIOTT

CHARLES BUCKLEY

Back Row: William Simon, Manager; Isaac Morris, Charles Buckley, Joseph Hensley, Irwin Washington, Foster Elliott, Coach Rome Rankin, Edward Wintersole, Sherman Bickett, Albert Ridinger, Virgel Sturgell, Ralph Elliott, Ass't. Coach
 Front Row: Herman Krueger, Ronald Greene, Alexander Wallace, Homer Abrams, Harold Payton, Eugene Vash, Edgar Jones, Severino Pellegrinon.

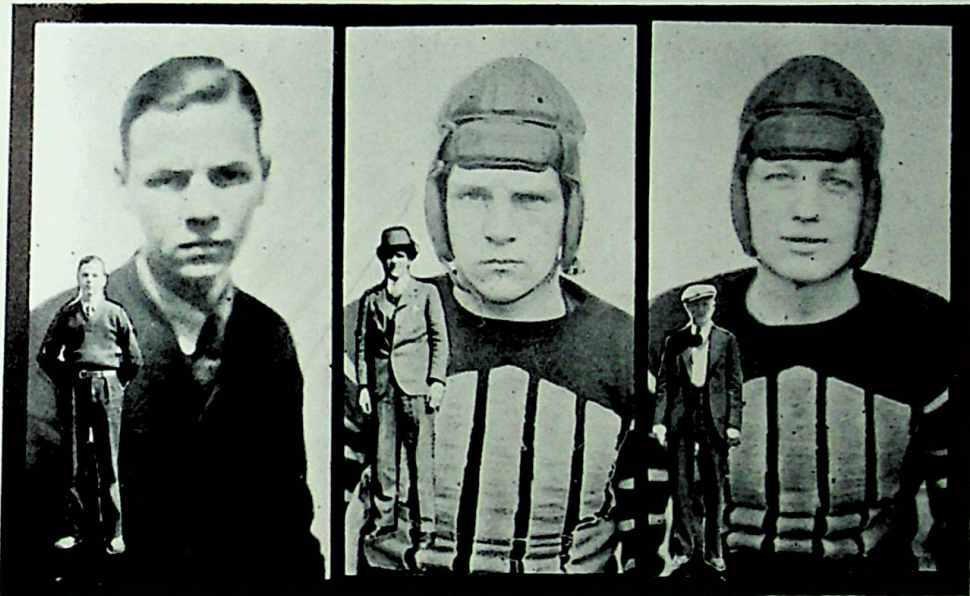
SOUTHEASTERN LEAGUE STANDING 1928

	<i>Won</i>	<i>Lost</i>	<i>Tie</i>	<i>Pct.</i>
Wellston	5		1	1000
New Boston	3	2		600
Logan	2	2		500
Gallipolis	2	2		500
Jackson	2	3		400
Nelsonville	1	4		200
Pomeroy	0	4	1	000

SILHOUETTE

In spite of the difficulties encountered by the coach the 1928 football season reached a new high-water mark. There were only seven letter men out for the team but before the first game Coach Rankin had whipped into shape a strong defensive team.

Glenwood opened the season by beating the strong Hillsboro eleven by the score of 6-0. This game encouraged Glenwood gridders to exert even greater efforts in the next game.



WILLIAM SIMON

FOSTER ELLIOTT

SHERMAN BICKETT

To "Bud" Simon were left all the managerial duties after the resignation of Barbee. His duties were performed always in the most admirable manner.

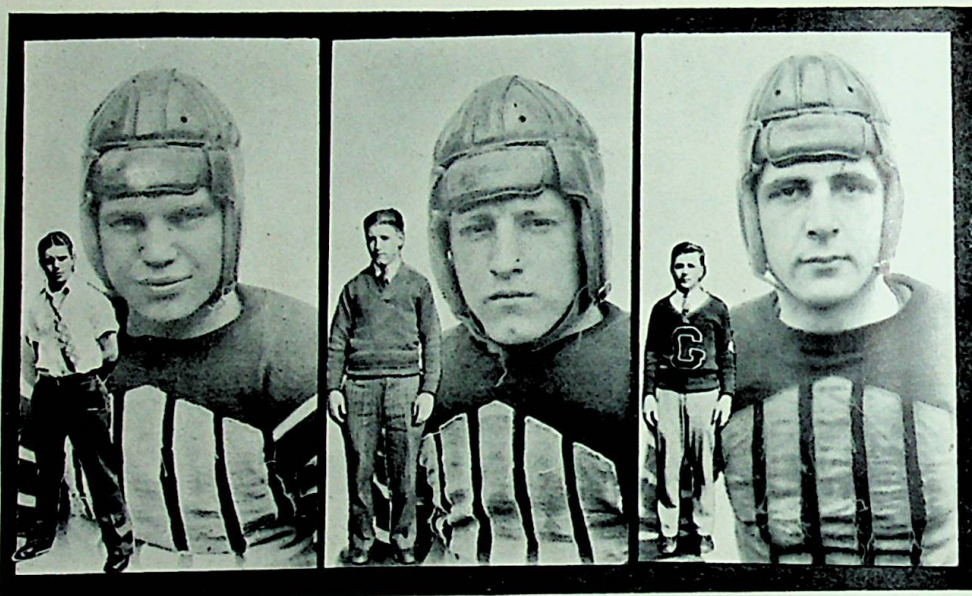
"Fos" is another Senior who will be missed next year. His clean football playing gave him the honor of being selected captain on the mythical Southeastern-Ohio team. Here's hoping, Fos, that you will do as well in your future work as you did on the football field.

"Bick" capably filled Hall's place as center. He puts up a hard fight and never loses sight of his man. This is "Bick's" last year.

SILHOUETTE

The next week-end the Scarlet Devils journeyed to Athens with high hopes, their hopes were blasted when they were beaten 25-0.

After one week of practice Glenwood went up against her long time rival and was beaten 31-0. In the first half of the game the Glenwood gridders outclassed the Trojans and held them scoreless. In the second half the Portsmouth coach continually sent in subs thus wearing out the Glenwood men and accounting for the large score.



CHARLES BUCKLEY

VIRGEL STURGELL

EDWARD WINTERSOLE

"Buck" is that boy who possesses a great quality of high standard "stick-to-it-iveness." He was a good ball-toter and interference man. This is "Buck's" last year and we hunt long and far before finding such ability for fullback.

Charging low, hitting hard, and a sure tackler was this "Tarzan." Stocky, sturdy, steady, he was fit for the position he played. It will be difficult to fill his position next year.

"Whee" there soars another long punt from "Ed's" powerful hoof. Ed gained fame in the Portsmouth game when he put up such a wonderful defense. We lose "Ed" this year, but we are wishing lots of luck in his college days.

SILHOUETTE

The next Friday the Scarlet and Gray outfit traveled to Waverly, the only class B team that we played. The Waverly team was completely outclassed as shown by the score of 71-0.

Playing her first game at home, Glenwood avenged herself for the defeat handed her by Gallipolis High last year, and beat them to the tune of 18-6.

The line-plunging of our back-field proved too much for the strong Pomeroy eleven which went down to defeat 26-0.



HERMAN KRUEGER

SEVERINO PELLEGRINON

IRWIN WASHINGTON

How well we remember that 70-yard trot against Gallipolis. In this game "Baldy" showed that even a small person was needed in football. Krueger who is back for another year will be a valuable asset to the team of '29.

A small, but fast, hard-plunging boy is "Sub." A good general when it came to tearing holes in the line. Being a triple-threat man of no mean ability, "Sub" struck fear into all his opponents.

Playing his first, but marvelous year, "Dink" showed rare form. No one thought that he would make the team, but "Dink" stuck and soon was playing a regular game. Watch him star next year!

SILHOUETTE

With much confidence Glenwood traveled to Wellston hoping to gain first place in the league by beating them. Lady Luck played into the hands of Wellston during the last few minutes of play, giving them the only touchdown.

The following week end at the Jackson stadium the Scarlet Gridders bowed to Jackson High with a score of 33-12. This game was later forfeited due to Jackson's three ineligible men.

Playing a snappy game for the class B championship of Scioto County the Glenwood Warriors downed the Sciotoville eleven 6-0.



JOSEPH HENSLEY

ALEXANDER WALLACE

ISAAC MORRIS

"Joe" was forced to quit before the season was over due to an injured knee, but he gave a good account of himself the first of the season. Glenwood expects a big come-back from "Joe" next year.

Is he good? We all know how "Ally" with his quick thinking grabbed the ball and ran for a touch-down, defeating Hillsboro in the last few minutes of play. If he plays as well next year as he has this, how proud Glenwood will be of him.

Young, tough, and ready—this was "Ike." "Ike" is a real guard and had been in several scrappy games this year. He is a Junior and will make a valuable man next year.

SYLHOUETTE

The hardest fought game of the season was the one played on Thanksgiving with Ironton. The Glenwood warriors fought hard but found it impossible to overcome the big lead that the Tigers piled up at the beginning of the game. The score at the end of the game was 31-0.

Thus the football season, in which Glenwood played mostly against class A teams ended with a record of six victories and four defeats. The total points scored were Glenwood 139 and Opponents 132.



EUGENE VASH

EDGAR JONES

ALBERT RIDINGER

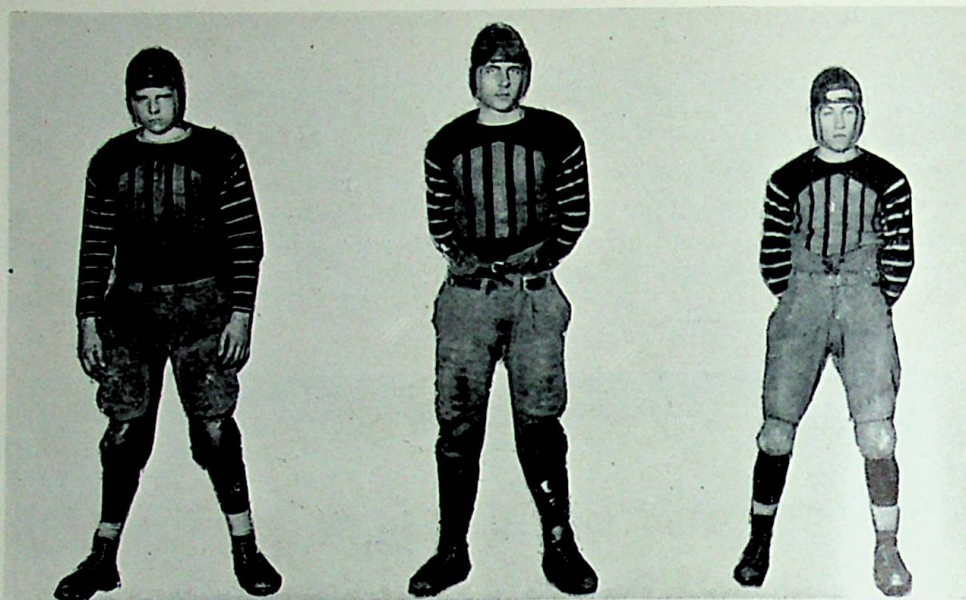
"Yenny" who played at end was always breaking up plays of the opposing backs. "Yenny" was a hard fighter and fought till the final whistle. We are sorry to lose him this year.

"Ed," another end, although handicapped the first of the season with an injury came out and made a record for himself. From the beginning to the end he fought the same smooth game and never knew the word quit. Jones is lost through graduation.

A big, strong, rough, and ready boy was "Red." He was like a stone wall on the line and spoiled many plays from his place at tackle.

Red was injured in the Wellston game and was unable to appear during the remainder of the season.

SILHOUETTE



FOSTER ELLIOTT EDWARD WINTERSOLE HERMAN KRUEGER

ALL SOUTHEASTERN TEAM

The climax of the football season came with the selection of three Glenwood gridgers on the mythical All Southeastern team.

Edward Wintersole was placed at full back; Herman Kreuger at half back; Foster Elliott at guard and unanimously elected captain of the team.

NATIONAL ATHLETIC SCHOLARSHIP SOCIETY

THE PURPOSE OF

The National Athletic Scholarship Society is to recognize more fully the unselfishness of the boys, who in a sportsmanlike manner, represent their school in athletics and who, at the same time, do their school work so well as to warrant recognition. A charter was granted by this society to G. H. S. on January 26 of this year.

Charles Buckley and Foster Elliott of the Class of '29 were chosen as charter members of this society.

CHARLES BUCKLEY, FOSTER ELLIOTT



BASKET BALL

Coach Rankin has been athletic director and basketball coach in Glenwood for the past four years and among his many notable achievements is the piloting of his basketball boys through four successful years with sixty games won and twenty-two lost.

EDWARD WINTERSOLE, *Capt.*; ROME RANKIN, *Coach*; VIRGEL STURGELL, *Capt.*



MABEL ROLFE

Cheer Leaders

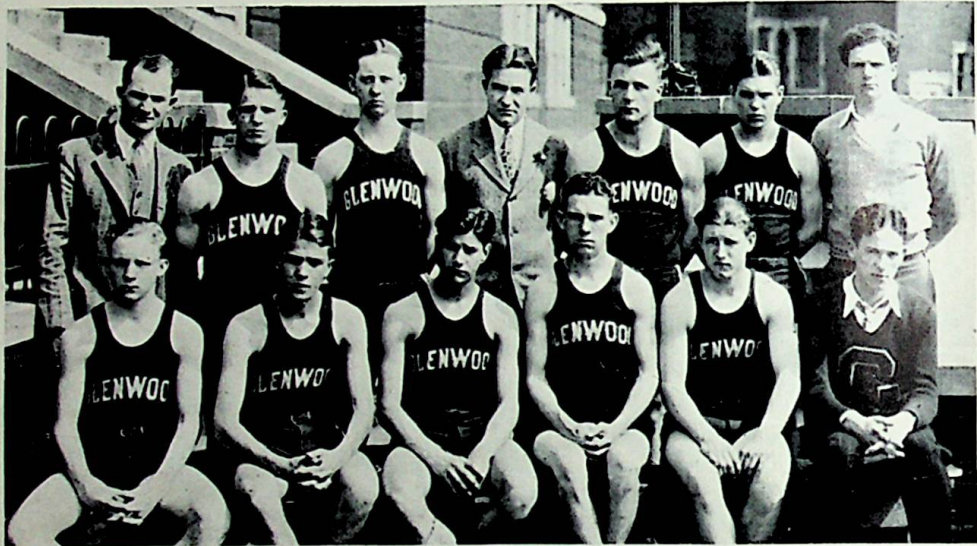
ELOISE CLARK

The boosters portrayed pep and enthusiasm when the cheering section was started by our snappy cheer-leaders Mabel Rolfe and Eloise Clark. These yell leaders deserve much credit for inspiring the boys on to victory.

SILHOUETTE

1928-1929 BASKET BALL RECORD

Glenwood	21—West Union	27	Glenwood	21—Portsmouth	29
Glenwood	33—St. Marys	24	Glenwood	24—Gallipolis	25
Glenwood	29—Wakefield	13	Glenwood	28—Portsmouth	34
Glenwood	17—West Union	27	Glenwood	36—McDermott	18
Glenwood	33—Holy Redeemer	13	Glenwood	44—Piketon	23
Glenwood	32—Sciotoville	22	Glenwood	24—Pomeroy	23
Glenwood	32—Wellston	28	Glenwood	18—Hillsboro	39
Glenwood	50—Russell	8	Glenwood	64—Alumni	32
Glenwood	22—Ironton	17	Glenwood	19—Marshall	21
Glenwood	26—Logan	24			
Glenwood	22—Russell	10	Glenwood	595—Opponents	457



VARSITY BASKETBALL SQUAD

CAPTAINS

EDWARD WINTERSOLE

VIRGEL STURGELL

Top Row: Ralph Elliott, Assistant Coach; Severino Pellegrinon, Isaac Morris, Rome Rankin, Coach; Edward Wintersole, Charles Buckley, Foster Elliott, Manager.

Front Row: Edward Burkhardt, Arthur Pellegrinon, Alexander Wallace, Joseph Hensley, Virgel Sturgell, Irwin Washington, Assistant Manager.

SOUTHEASTERN LEAGUE STANDING 1928-29

	<i>Won</i>	<i>Lost</i>	<i>Pct.</i>
Nelsonville	7	0	1000
New Boston	5	1	833
Ironton	4	2	666
Pomeroy	5	3	625
Middleport	4	4	500
Logan	4	5	444
Wellston	1	7	125
Gallipolis	1	8	111

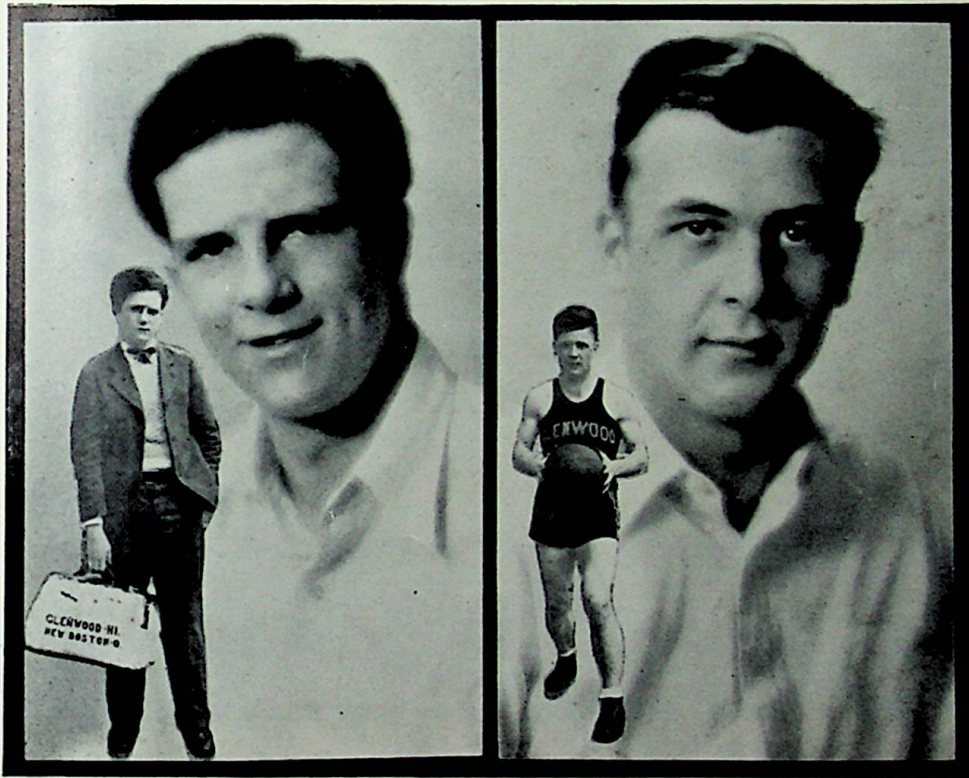
SILHOUETTE

When the call was issued for basketball, Coach Rankin found five of the last year's squad available. Most of this year's team was made up of seniors and it will be very hard indeed to fill their places.

West Union furnished the opposition for the game that lifted the lid from the Glenwood basketball season of '28-'29. New Boston lost to the former Adams County champions by six points. The score was standing 21-27.

Glenwood defeated the St. Mary's five with a score of 33-24. The Glenwood team was never in danger throughout the game.

Another scalp was hung to Glenwood's belt when they defeated Wakefield to the tune of 29-18.



FOSTER ELLIOTT

EDWARD WINTERSOLE

"Fos" is a good manager and is always on hand to receive the check. Whenever the team was ready to go on a trip, Fos never forgot a thing. We hope Fos will manage some big business just like he did the basketball squad.

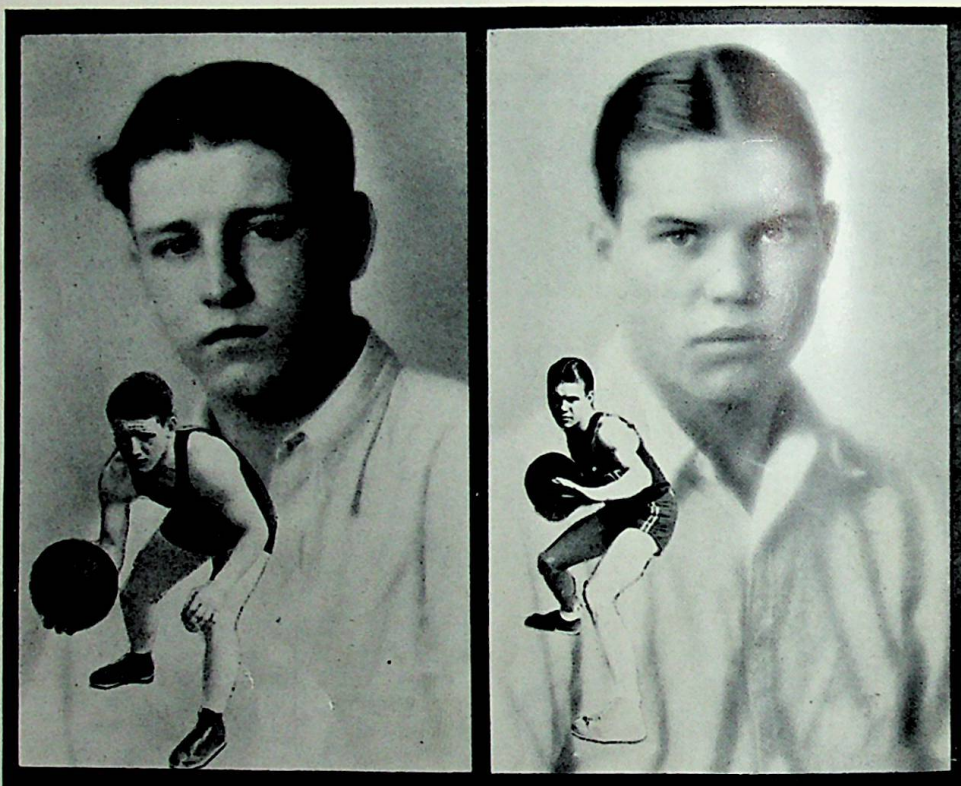
"Ed" played back guard and kept many a cocky forward from making a nice little short shot which counts two points. Ed was in every game and proved himself a thorn in the flesh of the enemy. This is his last year at Glenwood and he will be greatly missed next year.

SILHOUETTE

Planning to beat the strong Glenwood five, the "Fighting Irish" of Holy Redeemer High School of Portsmouth came to New Boston. They were defeated by a wide margin, as the score of 33-13 shows.

New Boston received the city class "B" championship when they defeated the team representing the village of Sciotoville. Sciotoville just proved to be another victim of the Scarlet and Gray team when the score of 32-22 proved to be in favor of New Boston.

Winning the game from Wellston, the Scarlet Devils were assured of a good start in the league. The game was won by a safe margin the score being 32-28. Wellston had a strong team but they fell before the onslaught of the Scarlet and Gray team.



VIRGEL STURGELL

CHARLES BUCKLEY

"Why didn't he make that basket." That was an easy question to answer when the crowd saw who was defending Glenwood. This is Tarzan's last year and it will be very hard indeed to fill his place.

A basket, hurrah! That was Buck's idea of basketball, slipping up on the guards and running up the score for old Glenwood. This is Buck's last year but we will always think of him as the ideal athlete.

Glenwood had one practice game. At least that is what the Russell-New Boston game could be called. The score of 50-8 shows that Russell could not begin to hold her own with the basketball team of Glenwood High.

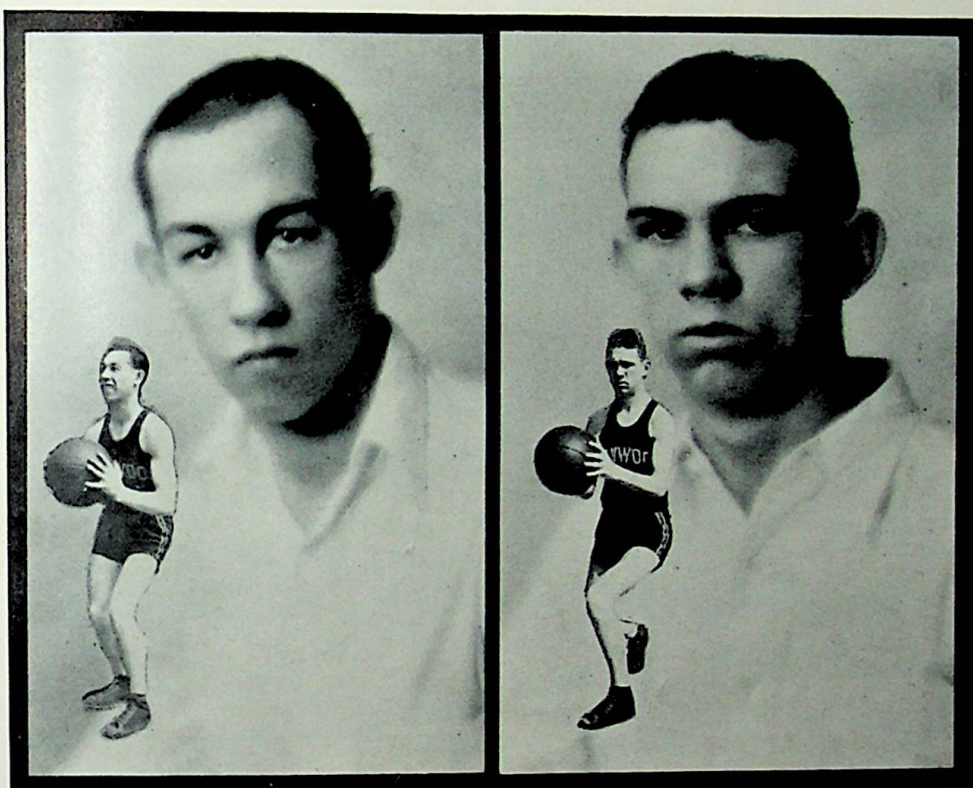
Another league game proved to be a victory for the lads of Glenwood when they beat the Ironton Tigers 22-17. Ironton defeated the Scarlet and Gray team in football last Thanksgiving day, and the basketball team was out with the thought, "Revenge is Sweet," in their minds.

SILHOUETTE

Logan came to the village to avenge the stinging defeat they received last year at the hands of Rankinmen of Glenwood. Their hopes were blasted, however, when New Boston came out on the long end of the score 26-24.

Making a journey to Russell for a return game, the Glenwood team was determined to hang another scalp to its belt. This game was won by Glenwood, and the score of 22-10 shows that members of the team gave a good account of themselves.

Giving many people a surprise by their basketball ability the Glenwood floor skippers held the Portsmouth Trojans 21 to 29. The game was in New Boston's favor until the final quarter when Johnny Fugitt began to make his efforts count something by putting the ball through the hoop.



HERMAN KRUEGER

JOE HENSLEY

"Baldy" played at forward and his ability to use his feet and to shoot baskets along with his light weight, made him one of the causes for our opponents getting gray hairs. Baldy will be with us again next year.

Stop, Hensley! That was always the opponents' cry. With his usual way of getting around the guards he always gave the visiting team something to worry about. Joe has one more year to play for his Alma Mater.

Playing away from home the Scarlet Devils had a heart-breaking experience when they lost to the Gallipolis team by one point. The score was 24-25.

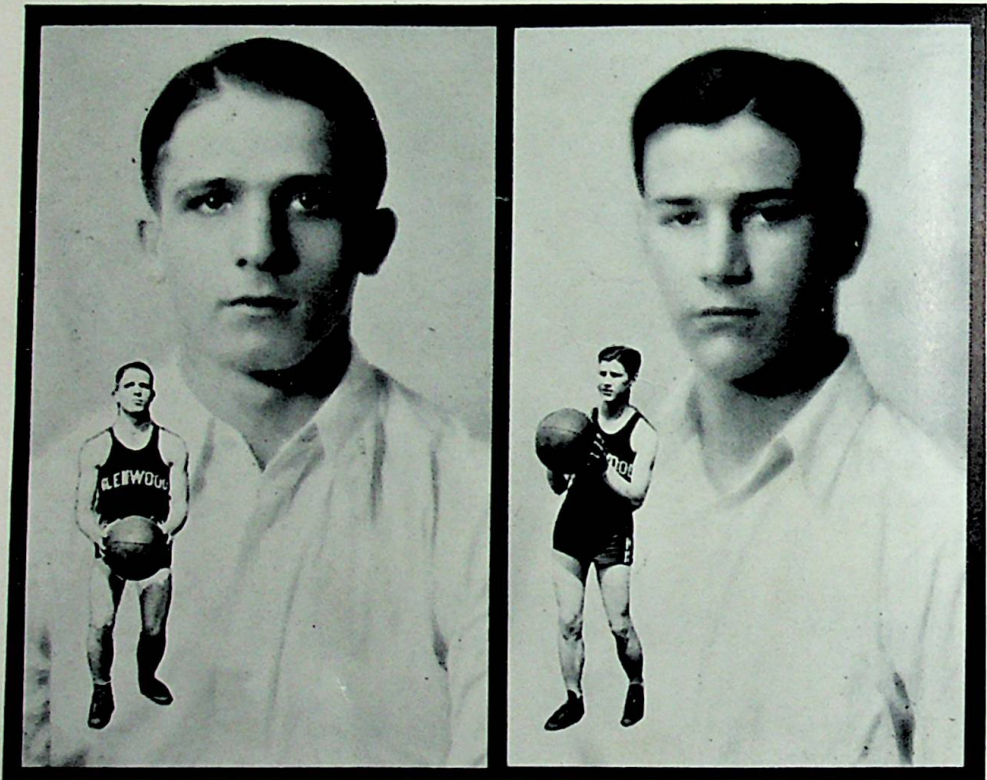
In a return game with Portsmouth the Glenwood team gave another good account of themselves by staging a comeback in the fourth quarter and scoring 21 points to Portsmouth's 6 points. The rally made the score 28-34 when the final whistle blew.

SILHOUETTE

By defeating two teams in one evening the Glenwood lads showed their excellent physical condition. The first team to go down in defeat was McDermott and the second one was the Piketon five. The scores for the evening were 36-18 and 44-23 respectively.

One of the most thrilling games of the season was the one played between Pomeroy and the Scarlet and Gray team. The Glenwood five made one of their last quarter rallies and won with the score standing 24-23. This game was an important one to Glenwood, because it meant second place in the Southeastern Ohio League.

Hillsboro came to New Boston and staged a runaway by defeating Glenwood 39-18. Glenwood was off form and could not seem to find the basket.



SEVERINO PELLEGRINON

ALEXANDER WALLACE

"Two points for Glenwood." That was "Subs" motto, making his efforts count. In the game old Sub was there with the goods. He will be back next year to help defend the honor of the Scarlet and Gray.

"Ally" was a new member of the squad this year, but he snapped out of it and was in most of the games playing a fast game at guard. "Ally" has two more years to serve old Glenwood and should make a real mark for himself and the school.

The Alumni team was put back in its place when the high school team beat them to the tune of 64-32. Members of the Alumni team may have been good in their high school days, but their lack of training showed up in this game.

Glenwood was eliminated from Southeastern Ohio Tournament for class "B" teams when they were defeated by Marshall. New Boston had a lead until the last few minutes of game and then Marshall made a few long baskets and won the game 21-19. Marshall was the former class "B" champion.

SKEETER RECORD

Skeeters.....	11—St. Mary's	13
Skeeters.....	10—St. Mary's	15
Skeeters.....	8—Sciotoville	14
Skeeters.....	10—Ex-Skeeters	8
—		—
Skeeters.....	39—Opponents	50



SKEETER SQUAD

CHARLES FITCH *Captain*

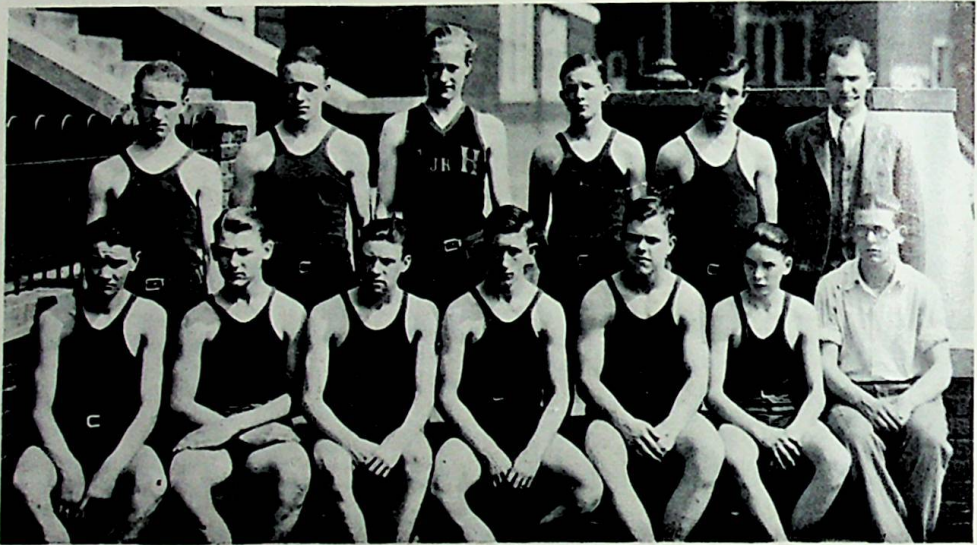
Top Row: Harold Moore, Charles Fitch, James Warren, Roy Davis.
 Middle Row: Paul Duncan, Manager, Charles Starrett, Frank Dodd, Morris Magee,
 Howard Cooper, Mr. Drewes, Coach.
 Front Row: Homer Adkins, Vincent Meyer, Harry Fitch.

The Skeeters had a very good and capable team under the supervision of Mr. Drewes as coach. Although they did not play many games they showed some real playing when they did get into action. Their experience will aid them greatly when trying for the varsity squad.

SILHOUETTE

JUNIOR HIGH RECORD

Jr. High.....	32—Sciotoville	14
Jr. High.....	38—Wakefield	6
Jr. High.....	24—St. Mary's	8
Jr. High.....	13—Russell	9
Jr. High.....	18—St. Mary's	15
Jr. High.....	9—Russell	10
Jr. High.....	25—Piketon H. S.	23
Jr. High.....	18—Holy Redeemer	13
Jr. High.....	22—Bond	12
<hr/>		
Glenwood.....	199—Opponents	110



JUNIOR HIGH SQUAD

CAPTAINS

ELMER ABRAMS

HOMER ABRAMS

Top Row: Albert Reed, Gardner Mershon, Frank Adkins, Harry Conklin,
Homer Abrams, Ralph Elliott, Coach.

Front Row: Theodore Withrow, Oscar Huffman, Austin Lee, Elmer Abrams, John Killen,
Edwin McKenzie, Delmas Phillips.

The Junior High school living up to their name as a winning basketball team finished a very successful season losing only one game by a lone point. They met teams of all sizes and classes and showed real playing every game.

SILHOUETTE

ATHLETIC SNAPS



The Famous Charging Legs of Our Backs—1, "Buck"; 2, Hensley; 3, Sub; 4, Krueger; 5, Wallace; 6, Wintersole; 7, "Buck" in a hybrid uniform; 8 "Fos" our dignified manager; 9, Just before the battle.

Our Basketball Reserves—10, Ike; 11, Tudo; 17, Burky; 12, Rankin's cavalry in action.

Our Football Reserves—13, Abrams; 14, Payton; 16, Greene; 15, Mabel Rolfe, our popular cheer leader.

SILHOUETTE

INTRA-MURAL LEAGUES



Upper Row: Rome Rankin, Physical Education Director; Royal Five, winners of the Senior High Tournament; Foster Elliott, Captain; Ralph Elliott, Director, Junior High.
Middle Row: Esther Graf, Director of the Senior High Girls; Apes, winners of the Junior High League B Tournament; Harold Booth, Captain.
Front Row: Senior Class winners of the Girls Inter-class Tournament, Gladys Davis, Captain; Grays, winner of the Junior High League A Tournament, Frank Adkins, captain.



*Little brook! Little brook!
You have such a happy look—
Such a very merry manner,
As you swerve and curve and crook—
And your ripples, one and one,
Reach each other's hands and run
Like laughing little children in the sun.*

—RILEY

BOOK IV

ORGANIZATIONS

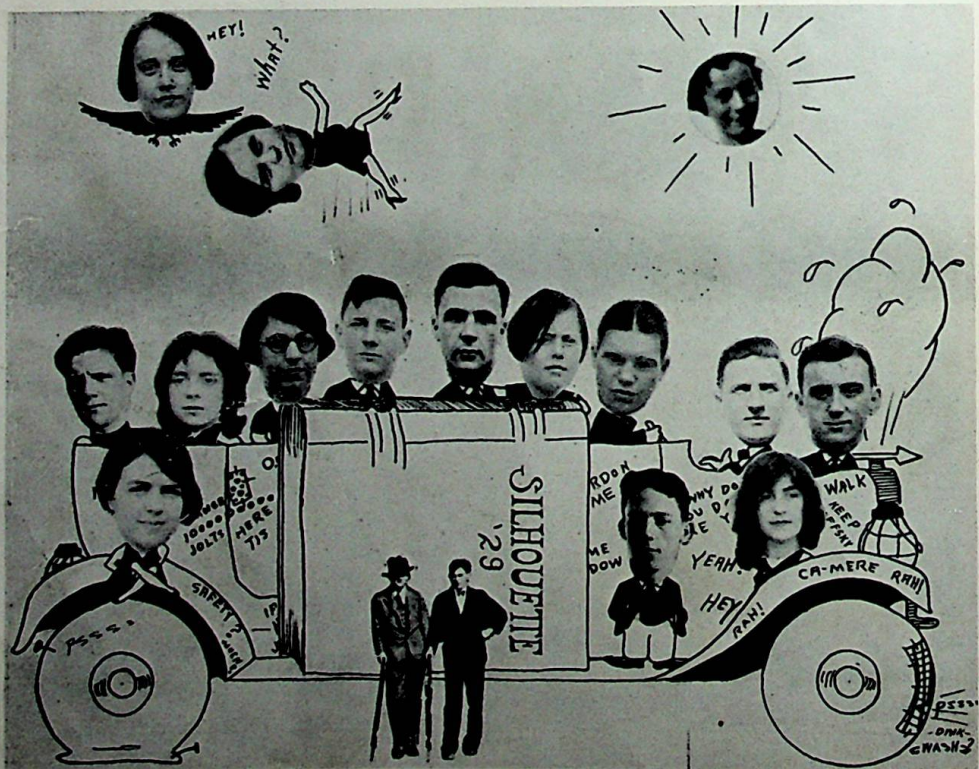
SILHOUETTE

THE ANNUAL STAFF

CHARLES BUCKLEY	Editor-in-Chief
EDWARD WINTERSOLE	Business Manager
KENNETH CAULLEY	Advertising Manager
GLENN FITCH	Ass't Advertising Manager
DESSIE COOPER	Circulation Manager
PAUL DUNCAN	Ass't Circulation Manager
GLADYS DAVIS	Sports Editor
IRWIN WASHINGTON	Art Editor
CHARLES BARBEE	Literary Editor
CAROL FINNEY	Literary Editor
LAURA OLIVER	Literary Editor
ALMA BRADY	Typist
MILDRED DUNFEE	Typist
GERTRUDE HELFENBEIN	Accountant
FOSTER ELLIOTT	Photographer
FERN WHEELER	Adviser
A. W. DREWES	Adviser

The publication of a school annual is a project that utilizes the immediate results of learning. Under proper supervision, the selection of the staff, the planning and editing of the book can be a very profitable and interesting undertaking. The problems that arise challenge the ability of the staff. The proper solution of these problems must be wisely guided by the adviser. The efforts of the present staff have been exerted with a minimum loss of class time for which they are to be commended. Their mistakes have proved the necessity of proper organization. The advisers have found it a pleasure to work with the Staff of 1929 and join with them in the satisfaction gained from a task well performed.

—THE ADVISERS.



SILHOUETTE

SILHOUETTE STAFF

CAROL FINNEY	Editor-in-Chief
GLADYS DAVIS	Sports Editor
CELIA JACOBS	Exchange Editor
MARY ELLEN PENNINGTON	Reporter
CHARLOTTE SCHLOSS	Reporter
LAURA OLIVER	Business Manager
EDWARD WINTERSOLE	Advertising Manager
JOSEPH HENSLEY	Ass't Advertising Manager
ALMA BRADY	Chief Typist
LILLA MAY ELKINS	Ass't Typist
HELEN VENTURINO	Ass't Typist
JANE HAMMES	Ass't Typist
WILLIAM SIMON	Chief Printer
VINCENT MEYER	Ass't Printer
LOUISE WINTERSOLE	Circulation Manager
IRWIN WASHINGTON	Cartoonist

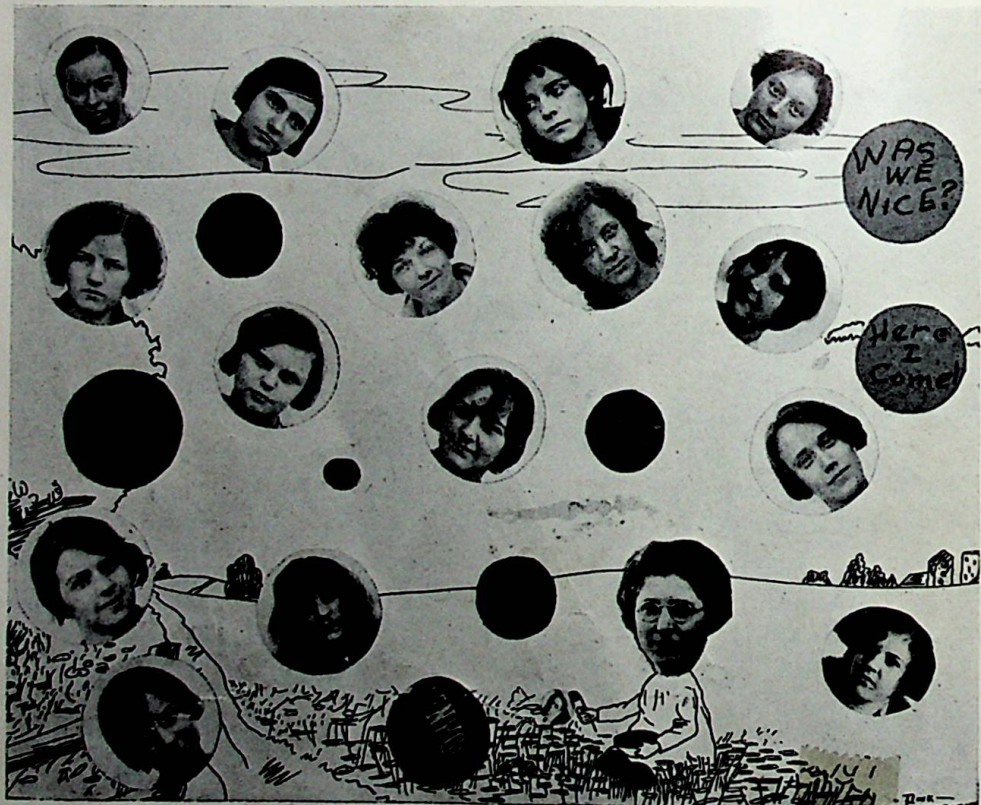
The question of "shall we or shall we not have a school paper" was up before the school. The question was about to be forgotten when Miss Wheeler offered her services as adviser. Although we had much difficulty in securing a person to act as editor-in-chief we finally secured the services of Carol Finney.



GREGG ARTISTS

- | | |
|------------------|----------------|
| ALMA BRADY | President |
| LILLA MAY ELKINS | Vice-President |
| MILDRED DUNFEE | Secretary |
| HELEN VENTURINO | Treasurer |

The Gregg Artists of Glenwood High School are sponsored by Mrs. Lena M. Cutright, head of the Commercial Department. The purpose of this club is to bring the commercial student in contact with the business world. Interest in the club was maintained by alternating the business meetings with some of a social nature. The type of work done by members of this club can well be ascertained from the showing made in the Southeastern District Typing and Shorthand Contest. Jane Hammes took first honors in the Novice Typing class. Lilla May Elkins and Alma Brady shared first and second honors in both Typing and Shorthand in the Special Class. Jane Hammes and Edna Crum placed fourth and fifth respectively in the Novice Shorthand division.



DORCAS CLUB

LOUISE WINTERSOLE *President*
 IRENE HARPER *Vice-President*
 JESSIE PRICE *Secretary-Treasurer*

The Dorcas Club was organized by the members of the Home Economics Department under the supervision of Miss Pfau. Any student in Home Economics who has an average grade of "B" is eligible for membership.

CLUB ROSTER

Ruby Fitch
 Irene Harper
 Virginia Pettry
 Louise Wintersole

Frances Lester
 Edith Lester
 Allene McManus
 Jessie Price

Gladys Carver
 Margaret Davidson
 Mary Hardy
 Lila Maple

Mildred Pfau, Adviser.



THE ORCHESTRA

The orchestra, under the direction of Mr. Schnabl, deserves much credit for their splendid work this year.

For the first time in the history of our school has our own orchestra furnished the music at commencement exercises.

In the Music contest, held by Anderson Bros., in Portsmouth they played their way into second place.

The orchestra organized the "Glenwood Music Society" with the following officers:

- | | |
|----------------------------|---------------------|
| EDWARD WINTERSOLE | President |
| LOUISE WINTERSOLE | Vice-President |
| JANE HAMMES | Secretary-Treasurer |
| KENNETH CAULLEY | Business Manager |
| RALPH MCCOY, WILLARD MEYER | Ass't Directors |

The society granted letters to all members who have participated in the orchestra for two years and have performed at class plays and churches in the community.

First Row: Howard Ramey, Edwin McKenzie, Mable Benner, Alma Mitchell.

Second Row: Theora Rickey, Anna Levine, Estaline Rickey, Jane Hammes, Louise Wintersole.

Third Row: Kenneth Caulley, Willard Meyer, Mr. Schnabl, Edward Wintersole, Kathryn Chase.

Fourth Row: Fred Wolfe, Eunice Shultz, Vincent Meyer, Ralph McCoy.



SILHOUETTE

CHARACTER CASTS IN DRAMATICS



- | | | |
|------------------------|---|--------------|
| No. one and eight..... | "Beads on a String"..... | Junior High |
| No. two and three..... | "Whimsy"..... | Senior Class |
| No. four and five..... | "Mother Mine"..... | Junior Class |
| No. six..... | "Importance of Pam"..... | Senior Class |
| No. seven..... | Senior Window Display at The Fair Store | |

SILHOUETTE

NURSERY RHYME CONTEST

1 Jack + Jill

2 Jack Sprat

3 Mother Hubbard

4 Humpty Dumpty

5 Mary + Her Little Lamb

6 Simple Simon

7 Jack the Giant Killer

8 RIP VAN WINKLE

9 Bo-PEEP

10 Bluebeard

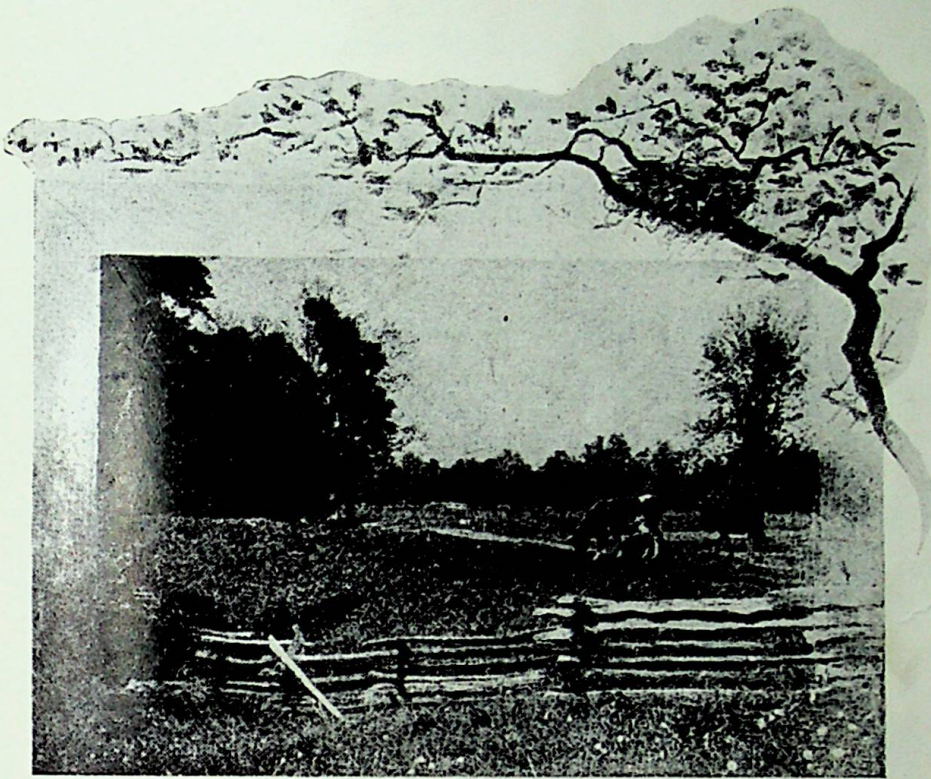
11 MARY MARY QUITE CONTRARY

12 CINDERELLA

13 RED PIPER

14 LITTLE RED RIDING HOOD

-KEY TO NUMBERS FOUND AMONG ADS-



*Ores you'll find there; wood and cattle; water transit sure and steady
(That should keep the railway rates down) coal and iron at your doors.
God took care to hide that country till He judged his people ready
Then He chose me for His whisper, and I've found it, and it's yours.*

—KIPLING

BOOK V

ADVERTISEMENTS



ONLY THE BEST

In this day and age people insist on the best of everything. Old inefficient ways of doing things must give way before the March of progress and the business which cannot keep pace must drop out of line. Our line is no exception to the rule. There are constant changes in the technical methods, constant improvements in equipment and merchandise. The funeral director must keep on the alert. We believe that only the best is good enough for this community. That is why we are constantly improving our methods, renewing our equipment and showing the latest developments in merchandise.

In selecting merchandise in our display rooms patrons are allowed perfect freedom of choice. We gladly furnish any information or advice that may be desired, but no attempt is made to sell more expensive goods than the purchaser wishes. We consider ourselves confidential advisers, ready to give experienced counsel. Foremost in our minds is our responsibility as servants of the public.

SOWARD'S FUNERAL HOME

24-HOUR AMBULANCE SERVICE

4003 Gallia Street

Phone Boston 93

NEW BOSTON, OHIO

NURSERY RHYME CONTEST

(1)

**Foster Elliott and Louise Wintersole
(Mutually Interested Couple)**



BOOSTERS FOR G. H. S. ALWAYS

FAIR STORE

New Boston
4018-20 Gallia

M. Meidenberg & Son

Exclusive Distributors Peter's Shoes

MEN'S—WOMEN'S—CHILDREN'S WEARING APPAREL



Say It With Flowers to Her

ON HER birthday or for any social occasion. You can not please her more and it will please us to have you buy them at

Herms Floral Co.

Phone 1009

817 Sixth St.

MEET ME AT



THE CAMEO

"For a bit o' sweet
or a bite to eat."

OUR

CONGRATULATIONS TO
GLENWOOD HIGH SCHOOL
STUDENTS OF 1929

B. G. HARRIS

PHOTOGRAPHER

PORTSMOUTH, OHIO



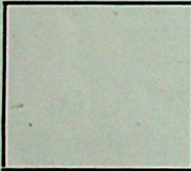
WE PLACE OUR FAITH IN GOOD
MERCHANDISE, SO THAT YOUR
FAITH IN US WILL BE JUSTIFIED
COME TO US FOR ALL KINDS OF
MERCHANDISE.

COOPER BROTHERS

Hardware and Department Store

NEW BOSTON, OHIO

PHONE 82-L



NURSERY RHYME CONTEST

(2)

Virgel Sturgell
(Big Eater)

This is a knot hole view of Jim Warren without
chewing gum.

PHILLIPS' MEAT MARKET

4140 GALLIA AVE.

Wishes

Each of the 1929 graduating
class God's richest blessing
(Health) and the best of suc-
cess all through life.

COMPLIMENTS
OF

O'Neal Confectionery

321 Ohio Avenue

Soft Drinks, Candy

School Supplies

New Boston,

Ohio



MUTUAL TIRE SERVICE Co.

KELLEY
TIRES

GENERAL MOTORS
TRUCKS

PHONE 78

1014 GALLIA STREET

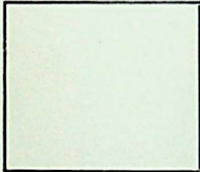
GALLIA MOTOR COMPANY

FORD SALES AND SERVICE

(Better Ford Service)

5415 Gallia Street, SCIOTOVILLE

Phone 84



This in an attic view of the editor's impression of
Gertrude Helfenbein weighing 200 pounds.

J. S. DAVIS



Elected 3 times Mayor of
New Boston

Now Candidate For Mayor of
New Boston

Election November 5, 1929

J. C. Penney Co.

(INCORPORATED)

315-17 Chillicothe Street
Portsmouth, Ohio

STYLE WITHOUT
EXTRAVAGANCE

QUALITY WITHOUT
HIGH PRICE

SERVICE THAT
YOU WILL LIKE

Dry Goods, Notions, Ready-to-Wear,
Millinery, Clothing, Furnishings, Hats
and Caps, Hosiery, Underwear, and
Shoes for entire family.

1250 Stores and Growing Fast



SHEALTON PERMANENT WAVE SPECIALTY MARCELS

LA-ROSE BEAUTY SHOPPE

MRS. EARL GILBERT, Prop.

We specialize in Permanent Waving. The New Marcel Method.
Finger Waving and Marcelling
For Appointments Call

Boston 215-L

4002½ Gallia Ave.

SOUTHERN BROTHERS

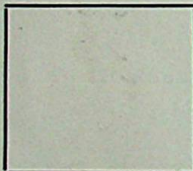
PORTSMOUTH BUSINESS UNIVERSITY
(Incorporated)

BEST EQUIPPED COMMERCIAL SCHOOL IN THE SOUTH

PORTSMOUTH,

Phone 882

OHIO



This is a grease painting of Irene Harper and Ruby Fitch arriving at school on time.

The Cannonball
Transportation Co.

Interstate Motor
Transit Co.

Chartered Coaches

Our Specialty

RIDE WITH US

J. E. HALE



Groceries and
Meats

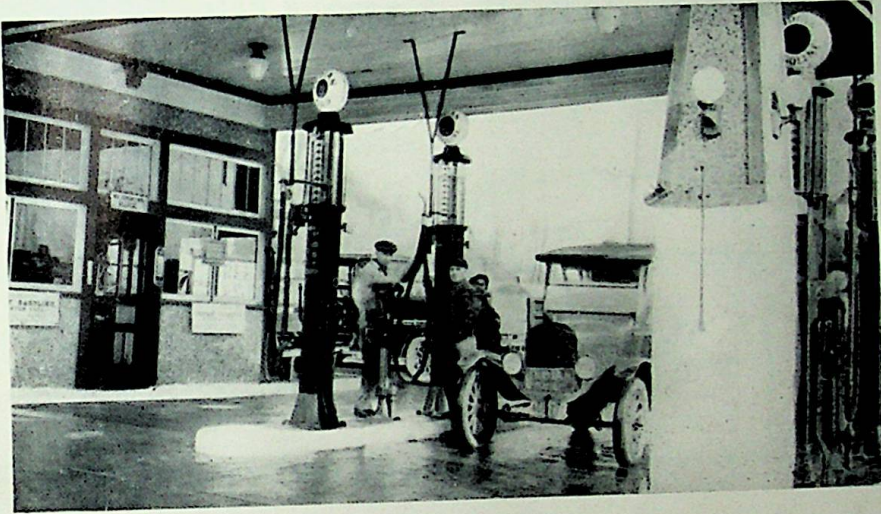
402 Ohio Ave.

Phone 42

SILHOUETTE

Service Oil Station

GALLIA AND HARRISONVILLE AVE.



Try Our Indian Gas
and
Havoline Oils and Greases
Indian Red or Super Fuel

NURSERY RHYME CONTEST

(3)

Frances Lester
(Most Old-fashioned)

✓
SILHOUETTE

STEWART'S
Original Cut-Rate Drug Store
904 GALLIA STREET

HOME PHONE 46

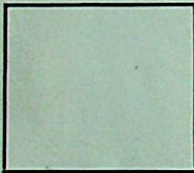
PORTSMOUTH, OHIO

Williams' Bros. Tire Co.

"SERVICE WITH A SMILE"

Corner Sixth and Gay Streets

Phone 2450



This is a nice little portrait of Mr. Drewes' little
sweet piece of femininity.

THE STOCKHAM Co.

ICE

For Service Phone 10

New Boston Station

4230 Rhodes Ave.

NURSERY RHYME CONTEST

(4)

Harold Moore
(Clumsiest Person)



COPELAN'S
For
Graduation Gifts



Gallia and Park

Boston 159

NEW BOSTON, OHIO



COMPLIMENTS
OF

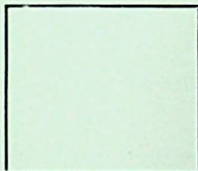
**Pennington
Barber Shop**

LADIES' AND CHILDREN'S
WORK OUR SPECIALTY

4030 Rhodes Ave.

Boston 98-X

NEW BOSTON, OHIO



This is a house painting of coach on a diet.

BUY YOUR FURNITURE AT

DISTEL'S

You May Win \$500.00 in Gold Given July 6.

THE DISTEL FURNITURE CO.

W. E. WHITE PHARMACY

"THE STORE OF CHEERFUL SERVICE"

4148 GALLIA AVE.

PHONE BOSTON 156

NEW BOSTON, OHIO



YOU KEEP SNAP SHOTS
OF THOSE YOU LIKE

FOWLER'S
KODAKS

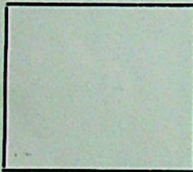
824 GALLIA STREET

PORTSMOUTH, OHIO

NURSERY RHYME CONTEST

(5)

Charles Barbee and Opal Lewis
(Girl and her most Devoted Admirer)



This is a terrible scene of Alma without Mildred.

AHREND'S

SOCIETY BRAND CLOTHES

DOBBS HATS



838 Gallia Street

COMPLIMENTS
OF
SCHINE THEATERS



LA-ROY

COLUMBIA

GARDEN

LYRIC



KINNEY'S Big Family Shoe Store

FIVE FACTORIES

OVER 300 STORES

Our Prices Make Two Pairs Possible

G. R. KINNEY CO. INC.

HENRY (DOC) TAYLOR, Prop.

PORTSMOUTH,

837 Gallia Street

OHIO

Home of
Home Made Candies



Home of
Home Made Candies

FOR GOOD THINGS TO EAT MEET ME AT THE

Boston Confectionery

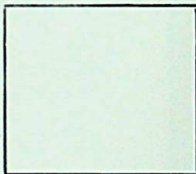
For Light Lunches and All Kinds of Home Made Candies

TRY OUR BUTTER TOASTEE SANDWICH

Home of
Home Made Candies



Home of
Home Made Candies



This is a moving picture of "Tut" Meyer scoring a
winning touchdown for Glenwood.

COMPLIMENTS OF A GLENWOOD BOOSTER



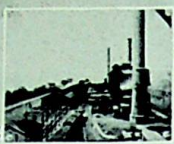
NURSERY RHYME CONTEST

(6)

Gertrude Helfenbein
(Funniest)

THE PORTSMOUTH BY PRODUCT COKE CO.

A SUBSIDIARY OF
 WHEELING STEEL CORP.
 AMERICAN ROLLING MILL CO.
 MANUFACTURERS OF
 BLAST FURNACE, FOUNDRY & DOMESTIC COKE
 AMMONIA, GAS, TAR & BENZOL PRODUCTS



ANNUAL CAP.
 750,000 TONS

-80% OPERATION

CAPACITY
 800,000 TON COAL
 600,000 TON COKE



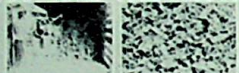
565,000 TONS HIGH VOLATILE COAL FROM CO. MINES
 75,000 " LOW " " PURCHASED

640,000 TONS COAL COKED



475,000 TONS COKE PRODUCED

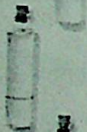
(85% FURNACE
 10% DOMESTIC
 5% FOUNDRY)



6,615,000,000 CU. FT. GAS PRODUCED (USE: STEEL MAKING)
 4,000,000,000 " " " SOLD



3,500,000 LBS. } AMMONIA PRODUCT
 1,750,000 GAL. }
 USE:- EXPLOSIVES, CHEMICALS, REFRIGERATION.



1,800,000 GAL. BENZOL PRODUCTS
 USE:- MOTOR FUEL, DYES, DRUGS, PERFUMES,
 PRESERVATIVES, EXPLOSIVES & SOLVENTS.



5,700,000 GAL. TAR PRODUCED
 USE:- ROOFING & ROAD MATERIAL,
 PRESERVATIONS & DISINFECTANTS.



\$ 940,000 COMPANY } FREIGHT PAID R.R.
 442,000 CUSTOMER }
 1,382,000 TOTAL }

\$ 5,500,000 GROSS BUSINESS
 1,000,000 ANNUAL PAY ROLL
 550 EMPLOYEES, COKE PLANT & MINES.



NURSERY RHYME CONTEST
 (15)
 Mabel Rolfe
 (Prettiest Hair)



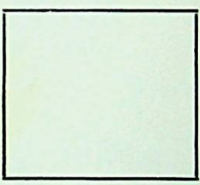
GEORGE SEMONES
GROCERY AND MEAT MARKET

FREE DELIVERY

4302 Gallia Avenue

Phone 19-L

NURSERY RHYME CONTEST
(7)
Joe Hensley
(Best all-around Athlete)



An art sketch by Rip Van Winkle of Kenneth
Caulley receiving a High School Diploma

COMPLIMENTS
OF A
GLENWOOD BOOSTER

A NEW STORE WITH NEW IDEAS

Make your dollars count 100%

Buy your ready-to-wear, shoes and furnishings at

The Underselling Store, New Boston

MORE GOODS FOR LESS MONEY

WHEELING STEEL CORPORATION
PORTSMOUTH WORKS PORTSMOUTH, OHIO.
FROM MINE TO MARKET

PRODUCTS

PIG IRON
OPEN HEARTH INGOTS
BILLETS
SLABS
SHEET BAR
TIE PLATES
BLACK SHEETS
BLUE ANNEALED SHEETS
GALVANIZED SHEETS
AUTO BODY SHEETS
ELECTRICAL SHEETS
VITREOUS ENAMELING SHEETS
FORMED ROOFINGS

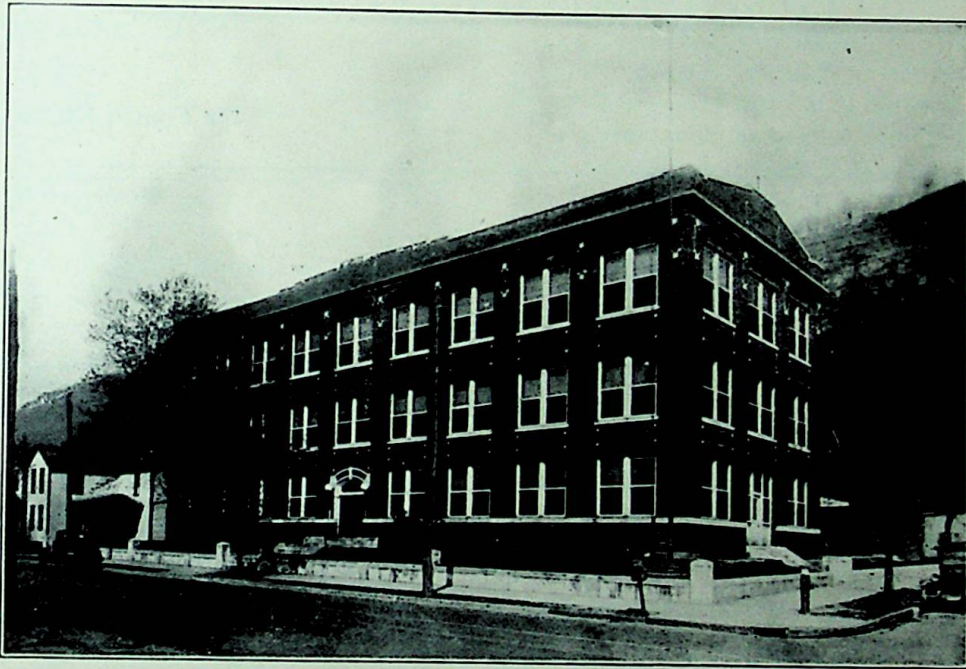


PRODUCTS

RANGE BOILERS
STEEL BARRELS
RODS
BRIGHT WIRE
GALVANIZED WIRE
ANNEALED WIRE
BARBED WIRE
STANDARD NAILS
GALVANIZED NAILS
COATED NAILS
STAPLES
RIVETS
WOVEN FENCE

SILHOUETTE

FROM MINE TO MARKET



MAIN OFFICE BUILDING
WHEELING STEEL CORPORATION
PORTSMOUTH WORKS
PORTSMOUTH, OHIO.



WELL DRESSED MEN USUALLY BUY FROM

WOLFF

NEW BOSTON STYLE CENTER

WM. HYLAND, Mgr.

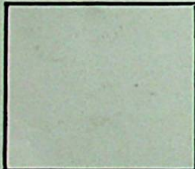
JOHN OLIVER, Ass't

FOR SERVICE AND QUALITY WORK CALL

THE KEYSTONE PRESS CO.

Phone 233

842 Fourth Street



This is a turtle snap of "Rosebud" without "Buck".

BE SURE TO INSTALL

Burrow's Metal Weather Strips

Keeps out cold and dust, eliminates drafts and Window Rattles—Saves 80% of your fuel bill—Let us estimate the cost—It's surprisingly low.

Metal Products Company

Three Phones: 683-5422-1116-X

Portsmouth, Ohio

COMPLIMENTS
OF
THE PORTSMOUTH DAILY TIMES
THE PORTSMOUTH MORNING SUN

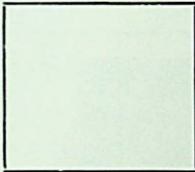
Dunn Coal Co.

COAL -:- COKE

Gallia and Broadway

Phone 445

PORTSMOUTH, OHIO.



This is a field mouse's view of Home Economics not burning something.

Peoples Corner Restaurant

A Good Place to Eat

Regular Meals or Light Lunches
Sandwiches and Soft Drinks
of all Kinds

Phone Boston 28-L

Corner of Rhodes and Park Avenue

YEA GLENWOOD

To the class of '29 we join with your family and friends in extending to you and each of you our hearty wishes for your accomplishment.

Proudly you stand on the pinnacle of success with a pride that is rightfully yours, a pride which is shared by every good citizen, on your bright and shining shield is emblazoned "Achievement."

Your day of graduation will be one of the high points in your young life. It is the first guide post to direct you on the long and broad highway of experience to the goal of success.

Commencement, the beginning of the end. The last of high school and the beginning of larger duties of citizenship. The testing of base metal that makes men and women.

May the great honor and responsibility that comes to you at this time be but the beginning of a successful career for each of you. May you reflect credit to the splendid men and women responsible for the school's success.

Kobackers

NURSERY RHYME CONTEST

(8)

Severino Pellegrinon
(Sleepy Head)



Compliments of a Better Furniture Store

Horchow's

842-44 GALLIA

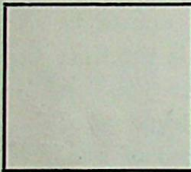
American Steam Laundry Co.

All Kinds of Dry Cleaning

HATS CLEANED AND BLOCKED

Portsmouth, Ohio,

Phone 176




Bird's eye view of our beautiful campus.



THE ONES YOU MEET AT EMNETT'S GROCERY
THE PLACE WHERE YOU GET WHAT YOU WANT AS YOU WANT IT

SERVICE WITH A SMILE

Service and Quality is the  of Our Business

Phone Boston 23

New Boston, Ohio.

FRANK EMNETT



KELSO'S DRUG STORE

Full line of drugs and sundries, school supplies.
Prescriptions carefully compounded

DR. JAMES KELSO Chiropractor and Optician
EYES EXAMINED AND GLASSES FITTED

4002 Gallia Avenue

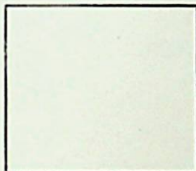
Phone Boston 2

R. V. HANCOCK GARAGE

HUDSON AND ESSEX SALES AND SERVICE
GOODYEAR TIRES
WRECKER SERVICE

3814 Gallia Avenue

Phone 20



This is a crayon sketch of our Senior Prom.

McClurg Insurance Agency

GENERAL INSURANCE

SIMPLICITY
SINCERITY
SERVICE

3836 Gallia Avenue
New Boston, Ohio
Phone Boston 143-X

SHOES

S
H
O
E
R
E
P
A
I
R
I
N
G

SEE



TURNER'S



413 Park Avenue

S
H
O
E
R
E
P
A
I
R
I
N
G

SHOES



NEW AND CORRECT STYLES
IN YOUNG MEN'S APPAREL

HALL BROS.

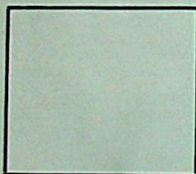
831-833 Gallia Street

COMPLIMENTS
OF

New Boston Shoe Repair Shop

C. G. TURNER, Prop.

420 Center St.



This is an imaginary view of a waiter's thoughts
when Sub Pellegrinon ordered a soda
without two straws.

COMPLIMENTS
OF
**RICHMAN'S
CLOTHES**

ALL **\$22.50**

311 Chillicothe Street
PORTSMOUTH, OHIO

**HUDDY'S
BARBER SHOP**

**WOMEN'S AND CHILDRENS'
Hair Cutting a Specialty**

3844 Gallia Avenue



THE ARMY STORE

We carry a complete line of clothing and shoes for the entire family, at cut prices, give us a trial and be convinced.

NATE KESSLER

4106 Gallia Avenue

Phone Boston 464

JOE HLADICK

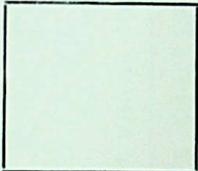
THE SANITARY RESTAURANT

Home Cooking

WE SERVE ONLY THE BEST

3643 Rhodes Avenue

Phone 253-R



Photographer's view of Mart Hall Working.

The Burkhardt Co.

DEPENDABLE PLUMBING AND HEATING

4057 Rhodes Avenue

Phone Boston 4

Let us make a Health Examination of your home

NURSERY RHYME CONTEST

(9)

Edward Wintersole
(Ladies' Man)



DEVOSS AND DONALDSON
ARCHITECTS FOR GLENWOOD HIGH SCHOOL Lyric Theatre Bldg.

NURSERY RHYME CONTEST

(10)

Gladys Davis

(Pupil who has lost her sweetheart)



PEEBLES BLOCK STANDARD OF QUALITY
FOR TWENTY-SEVEN YEARS

The Peebles Ceramic Products Company

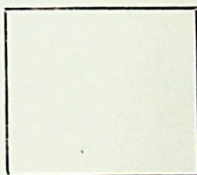
New Boston Coal & Ice Company

C. F. BARD, Mgr.

3742 Rhodes Avenue. Phone Ports. 3006-X—Boston 34

“We Keep You Cool and We Keep You Warm”

GIVE US A CALL



This is a spot light view of Chad without Opal.

Gilbert Grocery Company

Distributors of

HUNTS CANNED FRUITS

FLAGS CANNED VEGETABLES

OLD SQUIRE FLOUR

NURSERY RHYME CONTEST

(11)

Lilla May Elkins

(Most Contrary)



COVERT'S

Along with the compliments to Glenwood High it is our desire to give the best to be had for the money. We want to make life worthwhile at home and make home a happy place to live.

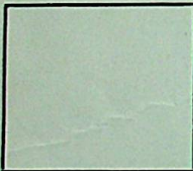
Covert Furniture Co.

On Gallia Street Right Here in New Boston

NURSERY RHYME CONTEST

(12)

Alma Brady
(Prettiest Girl)



This is a teacher's view of Paul Mosley knowing his place.

COMPLIMENTS
OF

THE MOOSE

Soft Drinks and Sandwiches
DANCING

JOHN ZERVOS, Prop.
4022 Gallia Street

MARTING'S

"One of Ohio's Good Stores"



32%
More
Power
GLOCKNER
CHEVROLET
COMPANY

for Economical Transportation



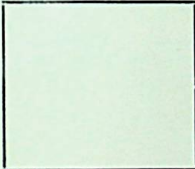
More Than
20 Miles
To the Gallon
SECOND
AND
CHILlicoTHE

SEE THE NEW CHEVROLET SIX

COMPLIMENTS

OF

Breece Manufacturing Co.



This is an artist's sketch of Ike Morris eating a ham sandwich.

The
Western & Southern
Life Insurance Co.

Masonic Temple, Portsmouth, Ohio

We issue Policies which pay
the Following:

A monthly income for wife and children.

A retirement income commencing at the age of sixty-five.

A life income if totally disabled by disease or accident.

A trust fund to guarantee children's education.

A special policy to pay mortgage.
Business Insurance — partnership or corporation.

Insurance to meet inheritance tax.

Whether Senior or Junior

one must dress well to succeed. Buy Frat Clothes and you have the solution. Frocks of distinction in all the wanted materials for the girl graduates.

The W. L. Reinert
Clothing Co.

Phone 965

840 Gallia St.



New Boston Furniture Company

WM. SCHLOSS, Mgr.

4136 Gallia Street, Phone Boston 71

We furnish your home complete on liberal credit plan.
Give us a call and convince yourself with the
merchandise and prices.

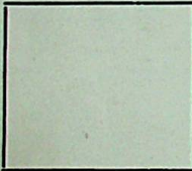
THE LEADER

A sale every day on the best merchandise, for less money.

J. LEVINE, Prop.

3948 Gallia Avenue

Phone 40-X



Mole's eye view of Fos Elliott curling his hair.

PRESS OF THE KAH-PATTERSON PRINTING COMPANY



"The Home of Better Printing"
PORTSMOUTH, OHIO

NURSERY RHYME CONTEST

(13)

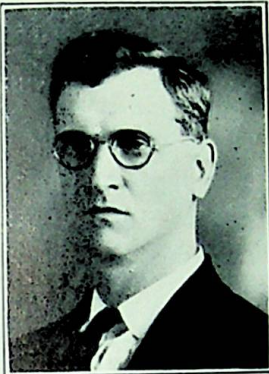
Charles Buckley
(Most Popular)



COMPLIMENTS
OF
THE CENTRAL NATIONAL BANK
(Next to the Post-Office.)

PORTSMOUTH,

OHIO



VOTE FOR
I. N. UPTON
For Mayor of New Boston, Ohio
Republican Candidate
August 13, 1929 Primary

"I Will Greatly Appreciate Your Vote"

"A Man With Your Village at Heart."

—Political Advertisement

This is an all night view of the A's on Virgel
Sturgell's Latin Report.

CLOTHES MAY NOT
MAKE THE MAN—

—But most graduates know that fashion-right clothes are a distinct asset in the eyes of family, faculty, and friends. Here, for your choosing, we've assembled a lovely array of commencement frocks, and accessories which lend such chic to the costume picture. In planning your commencement wardrobe, we invite you to see our offerings, and observe how very correct and moderately priced they are.

The Anderson Bros. Co.
PORTSMOUTH, OHIO.

George C. Lauder

FIRE AND AUTOMOBILE
INSURANCE

Local Newspaper Agency

4056 Rhodes Ave.

Phone 44-L

New Boston,

Ohio



THE WORLD'S BEST

BALDWIN PIANOS

BOSCH RADIOS

ZENITH RADIOS

ALL PRICES

TERMS TO SUIT YOU

BALDWIN PIANO COMPANY

818 CHILLICOTHE STREET

FLOYD E. STEARNES, Prop.

ROLLS

PIES

THE BEST IN BAKED GOODS

You have tried the rest
Now try the best

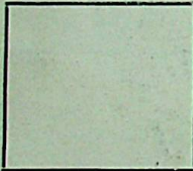
THE BLUE BIRD BAKERY

4208 Gallia Avenue.

JOHN COUNTS, Prop.

CAKES

BREAD



This is an oil painting without oil of Laura Oliver
and Gladys Davis powdering their noses.

JOSEPH F. ROE

Staple and Fancy Groceries

Dry Goods and Notions

Fresh and Salt Meats

Boston 154-R

4326 Gallia

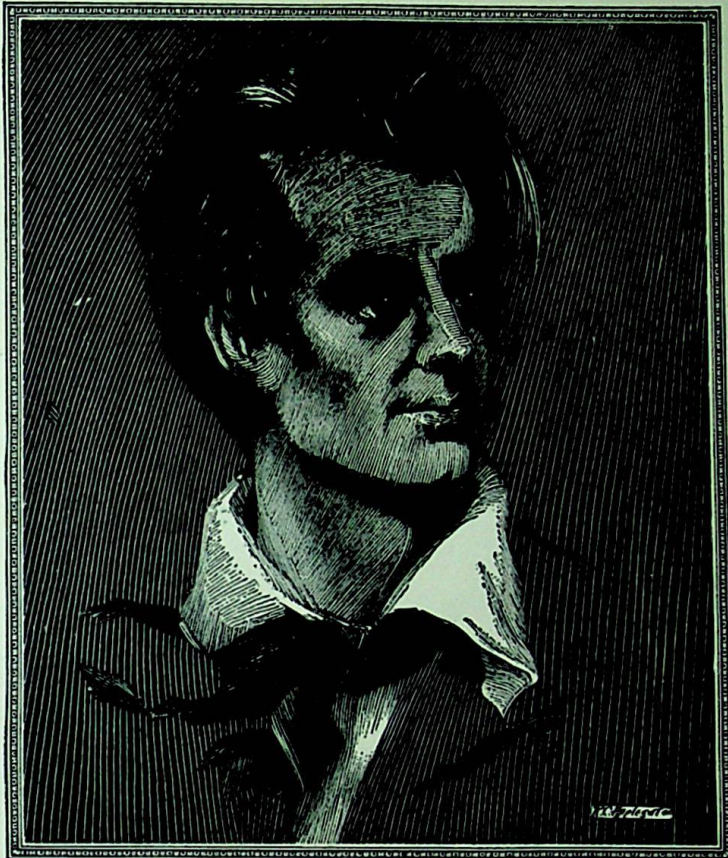
New Boston

COMPLIMENTS
OF

OHIO WASTE PRODUCTS CO.

MYER TICATCH, Prop.

New Boston, Ohio



*A Fine Portrait is a true
expression of a personality*

The Ideal Year Book is a portrait of school life expressing
the personality of the institution which it represents.

The Indianapolis Engraving Co. through its *Annual Planning
& Service Department* can help you express in your year
book the true personality and tradition of your school

Write for Information

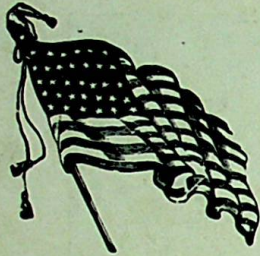
This Book Engraved by

The Indianapolis Engraving Co. Wulsin Bldg. Indianapolis

NURSERY RHYME CONTEST

(14)

Laura Oliver
(Best Natured)



*Our Flag, the Flag of Liberty,
The Flag that flies for you and me;
Upheld by Right from day to day—
The Stars and Stripes are here to stay!*

TO OUR ADVERTISERS

*The Business Staff of the 1929 Silhouette takes
this opportunity to express its appreciation to all those
business and professional men who have made this
publication possible.*

EDWARD WINTERSOLE, Business Mgr.



THE RAM-PATTERSON CO., PRINTERS, PORTSMOUTH, O.

