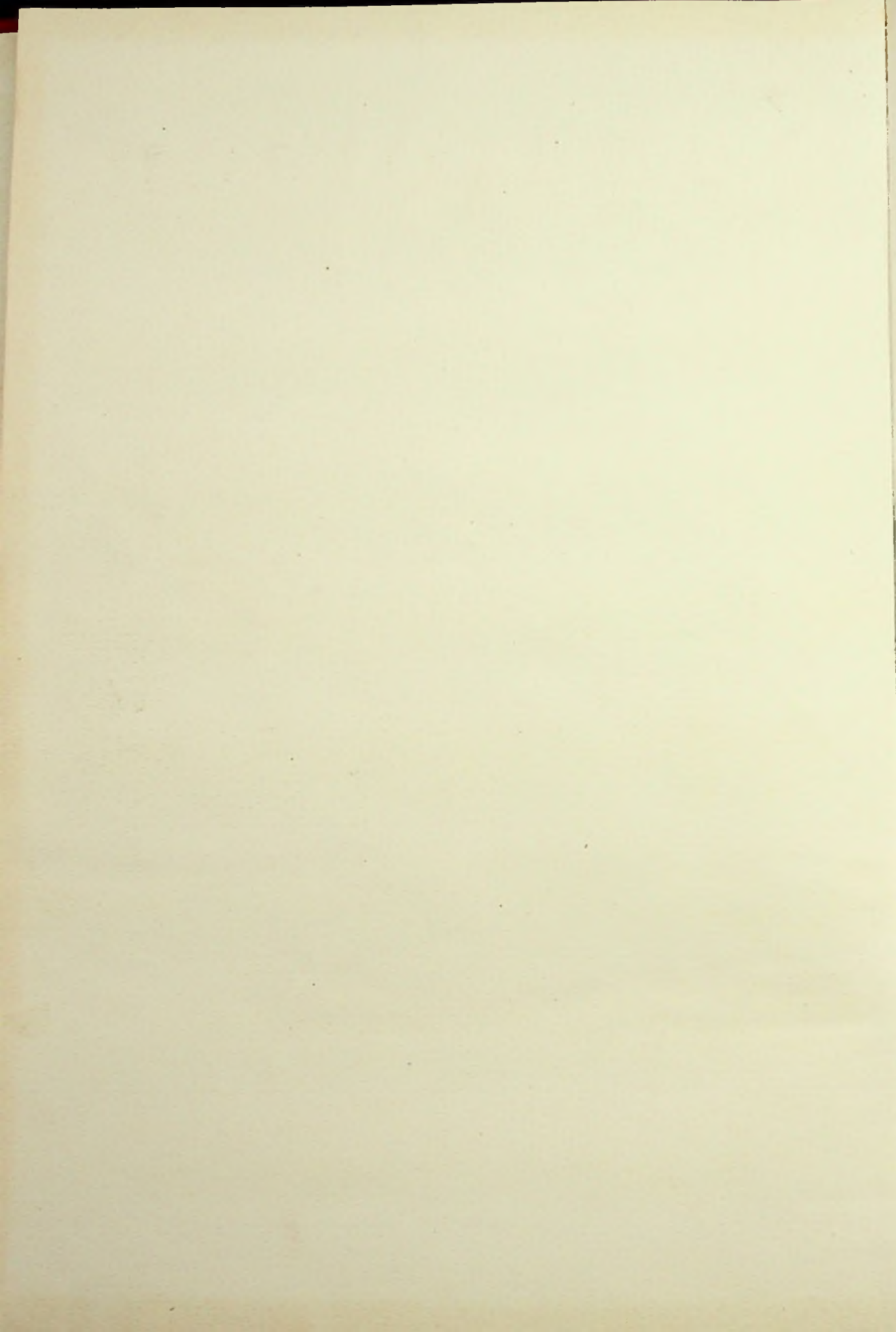




1947

The

Senatorian



Senatorian

Published
by



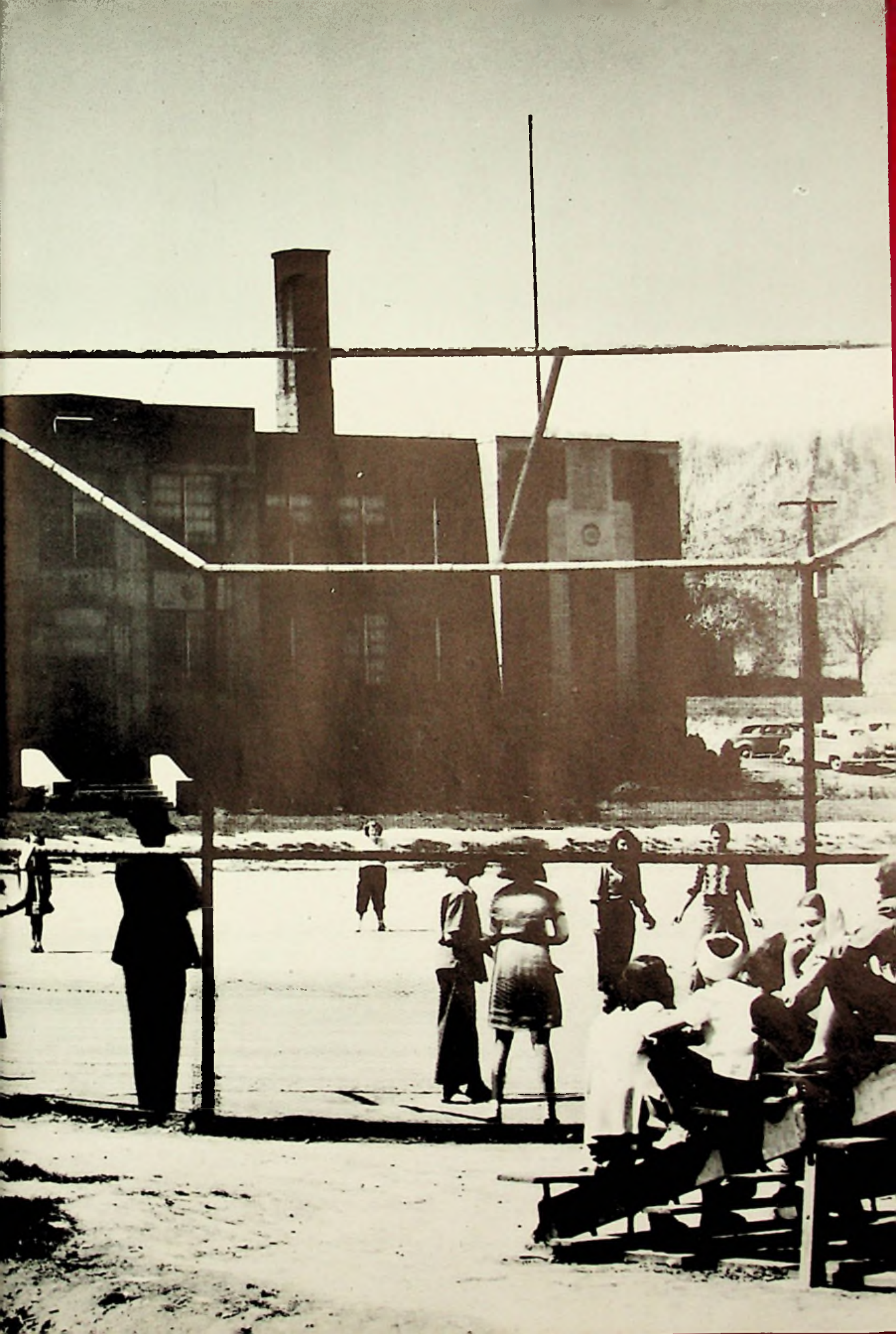
THE SENIOR CLASS
WASHINGTON HIGH SCHOOL

NINETEEN HUNDRED AND FORTY-SIX

and

NINETEEN HUNDRED AND FORTY-SEVEN







TOUGH OPPOSITION!



FUMBLE!



HOPKINS KICKING



MORIARITY PASSING



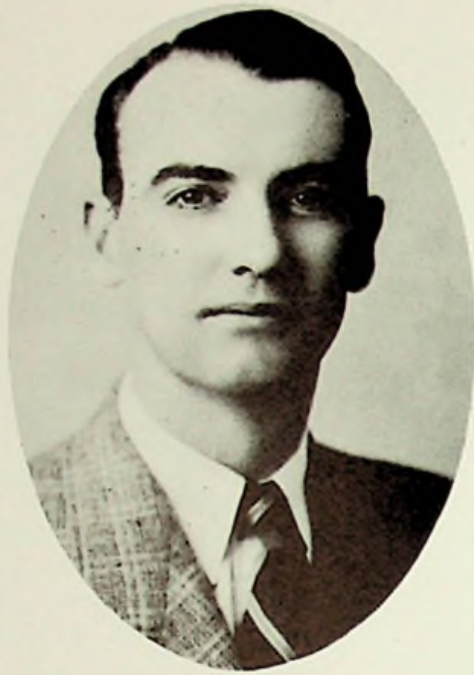
HUDDLE!



SCRAMBLE!



ADMINISTRATION



E. R. MCCOWEN
County Superintendent



N. B. POTTS
Assistant County Superintendent

BOARD OF EDUCATION



GEORGE JENKINS, President
46 Years of Service



BESSIE GREEN, Clerk



ELZA CALLENDAR



CHARLES PRINCE



LOWELL STRICKLAND



FRANK B. ROLF
Supervising Principal



FACULTY

MARY BENNETT

COMMERCIAL



JOHN BOUTS

PHYSICS
CHEMISTRY



RUSSELL CHRISTIAN

COACH
SOCIAL SCIENCE



MARCELLA DONLEY

LATIN
ENGLISH I, II



HAROLD EVERLING

COACH
SOCIAL SCIENCE



DALE GILLETTE

INSTRUMENTAL MUSIC



MARTHA HEATH

VOCAL MUSIC



KATHRYN HOPKINS

BIOLOGY
SPANISH



AUTOGRAPHS

ALVA BURTON JONES
MATHEMATICS



JOHANNA KEAN
HOME ECONOMICS

AMY MITCHELL
ENGLISH III, IV



SAMUEL MOORE
INDUSTRIAL ARTS

HELEN RATLIFF
ENGLISH I, II



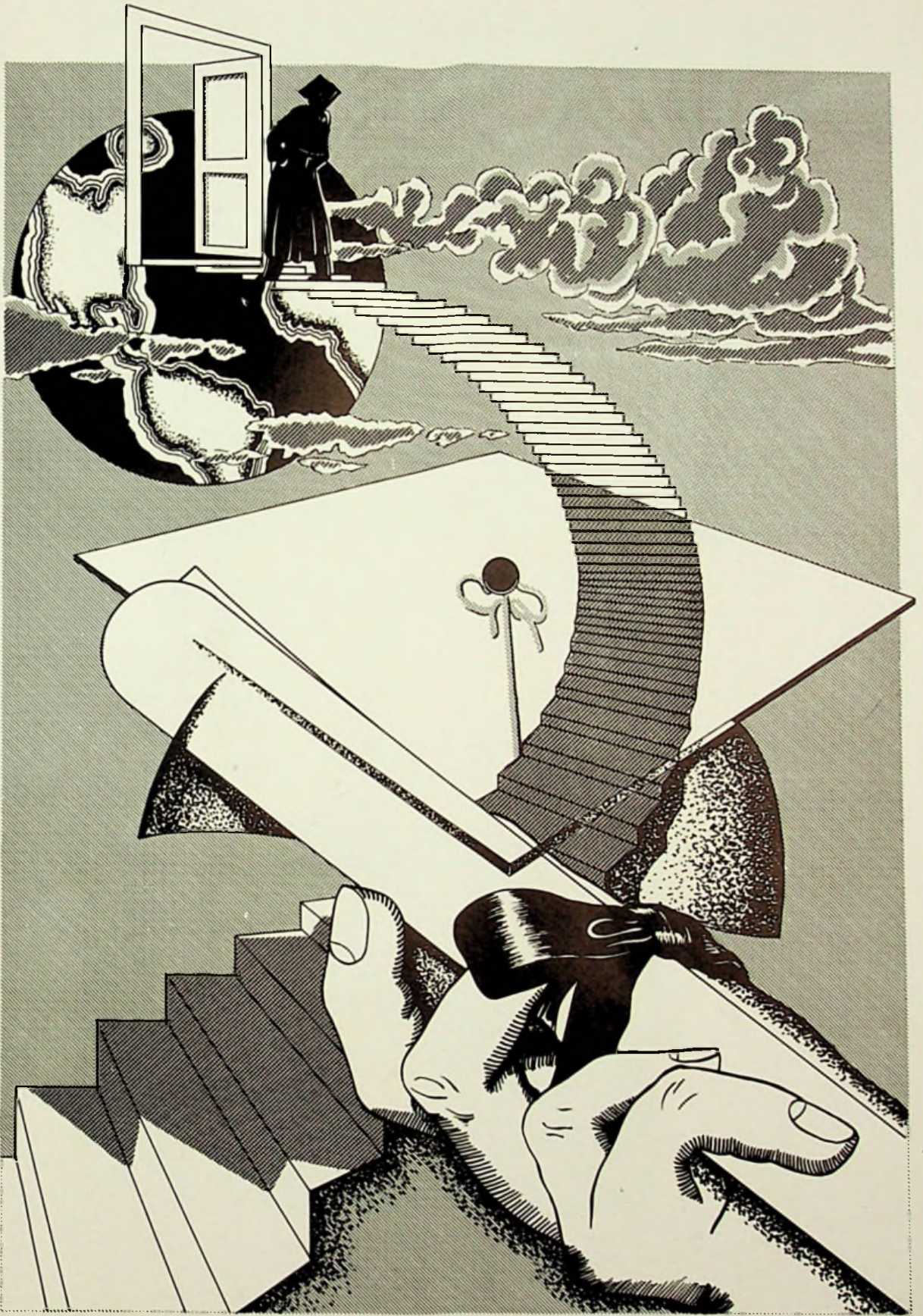
JOHN SHIVELEY
SOCIAL SCIENCE
DEBATE

FRED STAMM
GENERAL SCIENCE



LORETTA WOODS
COMMERCIAL ARTS

AUTOGRAPHS



The SENIOR Class

OFFICERS



*Left to right: Paul Reiser, vice president; Jack Blake, treasurer;
Robert Moriarity, president; Paul Stone, secretary.*

ADVISERS



Marcella Donley and Amy Mitchell

ALPH ARNETT

INDUSTRIAL ARTS

Intramural Basketball 1, 2; Reserves 3; Varsity 4; Glee Club 1.



ROBERT ASKINS

COMMERCIAL

Portsmouth High 1, 2, 3; Varsity 4.

JEAN BAKER

COLLEGE PREPARATORY

Mixed Chorus 1; Glee Club 2, 3; Choir 3; Latin Club 2.



JEAN BARNES

COLLEGE PREPARATORY

English Club 3, 4; Latin Club 3; Science Club 1; Glee Club 3; Mixed Chorus 3; Band 2, 3, 4; Annual Staff 4; Newspaper 4.

JACK BLAKE

COLLEGE PREPARATORY

English Club 1, 2, 3, 4; Latin Club 1, 2, 3; Science Club 1; Honor Society 3, 4; Class Officer 4.



HOWARD BRADSHAW

INDUSTRIAL ARTS

Baseball 3; Intramural Basketball 4; Football 4.

BETTY BOGGS

COMMERCIAL

English Club 1, 2, 3; Latin Club 1, 2; Band 1, 2, 3, 4; Glee Club 1, 2; Class Officer 1; Scholarship 1, 2; Annual Staff 4; Newspaper 4.



GERTRUDE CARRINGTON

COMMERCIAL

Science Club 1; English Club 2; Glee Club 1, 3; Scholarship 1, 2.

AUTOGRAPHS

RUBY CARTER

COMMERCIAL

"The Campbells Are Coming" 3; English Club 3, 4; Newspaper 4; Annual Staff 4; Mixed Chorus 1; Glee Club 1, 2; Cheerleader 2, 3.



RALPH CLIFTON

INDUSTRIAL A

Reserves 3; Intramural Basketball 4.

LONNIE COBURN

COLLEGE PREPARATORY

Latin Club 1, 2; Science Club 1; Algebra Scholarship 1; English Club 3; Intramural Basketball 4.



WILLIAM COOK

INDUSTRIAL A

Spanish Club 3, 4; Glee Club 2; Mixed Chorus 1, 2; "Off" 3; Band 1, 2, 3, 4; Intramural Basketball 4.

RUTH COOPER

COMMERCIAL and HOME EC.

Glee Club 1, 2; Choir 3; Minstrel 1.



JAMES CRAYCRAFT

INDUSTRIAL A

"The Campbells Are Coming" 4; Football 4; Science Club 1; Scholarship 2.

ROGER CUNNINGHAM

COLLEGE PREPARATORY

Science Club 1; Latin Club 1, 2, 3; English Club 1, 2, 3, 4; Scholarship 1, 2, 3, 4; Newspaper 1, 2; Honor Society 3, 4; Camera Club 3; Radio Club 4; Senior Survey.



DAVID DAULTAN

COLLEGE PREPARATORY

English Club 1, 2, 3, 4; Latin Club 1, 2, 3; Science Club 1; Scholarship 1, 2; "The Campbells Are Coming" 3; Radio Club 4.

AUTOGRAPHS

DONALD DAVIS

INDUSTRIAL ARTS

Intramural Basketball 1.



BRUCE DUNAWAY

INDUSTRIAL ARTS



DONNA FENIMORE

**COMMERCIAL
and HOME EC.**

Glee Club 1, 2; English Club 3;
Home Ec. Club 4.



CAROL GABBERT

ELECTIVE

Latin Club 1, 2; Spanish Club
3, 4; Camera Club 3; Science
Club 1; Glee Club 1, 2, 3; Min-
strel 1.



MARVIN GRICE

COMMERCIAL

Band 1, 2, 3, 4; Annual Staff 4;
Newspaper 4; Football 4; Intra-
mural Basketball 4.



RICHARD HARRISON

INDUSTRIAL ARTS

Freshman Basketball; Intramural
Basketball 2, 3, 4; Glee Club
3; Spanish Club 3, 4.



BARBARA HAZELBAKER

**COMMERCIAL
and ELECTIVE**

Portsmouth High 1, 2; Spanish
Club 4; Debate 4.



NORMAN HULL

INDUSTRIAL ARTS

"Hats Off" 3; Band 1, 2, 3, 4;
Intramural Basketball 2, 3, 4;
Glee Club 2, 3, 4; English Club
4; Radio Club 3, 4.



AUTOGRAPHS

WILLIAM JACKS, JR.

COMMERCIAL

Baseball 1, 3, 4; Intramural Basketball 1; Manager 1; Freshman Basketball; Reserves 3; Varsity 4; Glee Club 1.



WILLIAM KNAUFF

INDUSTRIAL

Freshman Basketball; Base 3, 4; Football 4; Biology Science Club 1.

KATHRYN KRAFT

COMMERCIAL

Latin Club 1, 2; Home Ec. Club 3; Glee Club 1, 3.



WILLIAM LAUDER

INDUSTRIAL

Freshman Basketball.

MARZELLA LITZ

COMMERCIAL and HOME EC.

Glee Club 1, 2.



MARY MALONE

COMMERCIAL

Latin Club 1, 2; English 1, 2, 3; Camera Club 3; Science Club 1; Scholarship 1, 2; "Campbells Are Coming" 3.

DONALD MANN

INDUSTRIAL ARTS



KENNETH MARTIN

COLLEGE PREPARATORY

Toledo High 2; Band 1, 2, 3; Scholarship 4; Boys Glee Club 1, 3; Mixed Chorus 1; Intramural Basketball 1, 3; R Club 3.

AUTOGRAPHS

JEANETTE McCALL

COLLEGE PREPARATORY

Band 1, 2, 3, 4; Class Officer 2, 4; Score Keeper 3; Cheerleader 4.



BETTY McCOWEN

COMMERCIAL

English Club 1, 2, 3, 4; Latin Club 1, 2; Scholarship 2.



ROBERT McGINN

COLLEGE PREPARATORY

Band 1, 2, 3, 4; "The Campbells Are Coming" 3; Football 4; Intramural Basketball 4; Glee Club 1, 2; Mixed Chorus 1; Baseball Manager 3; The "W" Club 4.



HELEN McMASTER

COMMERCIAL

Central High School 1; English Club 3, 4.



RAYMOND C. MILLER

COLLEGE PREPARATORY

Class Officer 1; Latin Club 1, 2; Scholarship 3; Reserves 3; Varsity 4; Intramural Basketball 1; Freshman Basketball; Baseball 3, 4; Science Club 1.



BETTE MOORE

COLLEGE PREPARATORY

Band 1, 2, 3, 4; "The Campbells Are Coming" 3; Latin Club 2; Annual Staff 4; Newspaper 4; Glee Club 1, 2; Mixed Chorus 2; Minstrel 1.



ROBERT MORIARITY

COLLEGE PREPARATORY

Latin Club 1, 2; English Club 1, 2; Science Club 1; Freshman Basketball; Reserves 2, 3, 4; Football 4; Intramural Basketball 1, 2; Band 1, 2, 3, 4; Class Officer 1, 3, 4; History Club 3; Radio Club 3; Newspaper 3.



CLYDE MOWERY

INDUSTRIAL ARTS

Basketball 3; Football 4; Baseball 3, 4; Intramural Basketball 2, 3, 4.



AUTOGRAPHS

GLENN MULLINS

INDUSTRIAL ARTS

Glee Club 1, 2; "The Campbells Are Coming" 3.



RICHARD NEWMAN

INDUSTRIAL

Band 1, 2, 3, 4; Glee Club 3, 4; Radio Club 4; Freshman Basketball.



EUGENE NICKELL

INDUSTRIAL ARTS

Freshman Basketball; Intramural Basketball 2, 3, 4; Basketball Manager 3; Glee Club 3.



GEORGE PARRY

COLLEGE PREPARATORY

Science Club 1; Glee Club Scholarship 3, 4; Band 1, 2, Freshman Basketball; Reserve Intramural Basketball 3; Football 4; Baseball Manager 3; Football 4.



MILDRED PERRY

COMMERCIAL

Portsmouth High 1, 2, 3.



BENNY PIATT

INDUSTRIAL ARTS

Class Officer 2; Glee Club Reserves 2; Baseball 2; Intramural Basketball 2, 3, 4.



NORMA PLUMMER

COLLEGE PREPARATORY

Latin Club 1, 2; English Club 1, 2, 3, 4; Science Club 1; Honor Society 3, 4; Scholarship 1, 2, 3, 4; Newspaper 4; Annual Staff 4; "The Campbells Are Coming" 3; Cheerleader 1, 2, 3, 4; Mixed Chorus 2; Class Officer 3.



MADONNA PURTEE

COMMERCIAL

Portsmouth High 1, 2, 3.



AUTOGRAPHS

ROSENA RAMEY

COMMERCIAL



ADA RANKIN

COLLEGE PREPARATORY

"The Campbells Are Coming" 3; Class Officer 1; Science Club 1; English Club 3, 4; Mixed Chorus 1; Latin Club 2, 3.

PAUL REISER

INDUSTRIAL ARTS



LILLIAN REYNOLDS

COMMERCIAL

"The Campbells Are Coming" 3; Class Officer 3, 4; Camera Club 3.

English Club 1, 2, 3; Science Club 1; Mixed Chorus 1, 4; Glee Club 2, 3; Choir 3; Minstrel 1; Scholarship 1; Basketball Queen 4; Basketball Queen's Court 3.

HAZEL RICE

COMMERCIAL



BETTY RICHEY

COMMERCIAL and HOME EC.

English Club 1, 2, 3; Scholarship 1, 2; Glee Club 1, 2, 3, 4; Band 2, 3, 4; Latin Club 1, 2.

Band 1, 2, 3, 4; Science Club 1; Glee Club 2, 3.

SHARON RISNER

COLLEGE PREPARATORY



VERA SANFORD

HOME EC.

Latin Club 2, 3; English Club 1, 2, 3, 4; Honor Society 3, 4; Band 1, 2, 3, 4; Scholarship 1, 2, 3, 4; Science Club 1; Class Officer 2, 3; "The Campbells Are Coming" 3.

Camera Club 3; Glee Club 1.

AUTOGRAPHS

LORENE SARTIN

COMMERCIAL
and HOME EC.

English Club 3.



VIRGINIA SCHWAMBERGER

COMMERCIAL
and HOME EC.

Cheerleader 2, 3; English Club
1, 2, 3, 4; Latin Club 1; Science
Club 1; Annual Staff 4; News-
paper 4; Home Ec. Club 4.

IRENE SCOTT

COMMERCIAL
and HOME EC.

Science Club 1; Glee Club 1, 2.



ANN SHEFFIELD

COLLEGE PREPARATORY

Scholarship 1, 2, 3; English Club
1, 2, 3, 4; Latin Club 1,
Science Club 1; Debate 4.

MAXINE SHEPPARD

COMMERCIAL
and LATIN

Latin Club 1, 2; English Club
1, 2, 3; Annual Staff 4; News-
paper 4; Scholarship 1, 2; Science
Club 1; "The Campbells Are
Coming" 3.



JOAN SIBREL

COMMERCIAL

MORRIS STAMM

COLLEGE PREPARATORY

Science Club 1; Scholarship 2;
Camera Club 3; Latin Club 2;
Class Officer 2; Radio Club 4;
Intramural Basketball 4.



WILLIAM STAMPER

INDUSTRIAL ARTS

AUTOGRAPHS

ROBERT STATEN

INDUSTRIAL ARTS



PAUL STONE

INDUSTRIAL ARTS



IRENE SWORDS

**COMMERCIAL
and HOME EC.**



JOHN TIPTON

COLLEGE PREPARATORY

English Club 1, 4; Latin Club 1, 2; Science Club 1; Scholarship 3, 4; Camera Club 3; Senior Survey; Intramural Basketball 4.



ARLEY WILTSHIRE

INDUSTRIAL ARTS

Science Club 1; Intramural Basketball 1.



RAYMOND WILTSHIRE

COLLEGE PREPARATORY

Latin Club 1, 2; English Club 1, 2, 3, 4; Science Club 1; Radio Club 3; Glee Club 1; Honor Society 3, 4; Band 1, 2, 3, 4; Scholarship 1, 2, 3, 4; Mixed Chorus 1, 2; Newspaper 3, 4; Annual Staff 4; Senior Survey; Minstrel 1.



FREDA WHITE

COLLEGE PREPARATORY

Prince of Peace Contest 3, 4; Annual Staff 4; Newspaper 4; Mixed Chorus 1; Glee Club 2; Choir 3; Science Club 1; Latin Club 2; English Club 4; Minstrel 1; Cheerleader 3, 4.



BETTY YELEY

COMMERCIAL

South Webster High 1, 2; English Club 3, 4; Newspaper 3.



AUTOGRAPHS



KUHN



CARTER



HAPPY THOUGHTS!



SCHOOL DAZE!



LOOK PRETTY!



STAMM



REYNOLDS



STONE



BANDMEN



1920'S



DAN . . . ?



GLAMOUR GIRL



ALL SMILES!



SHOPE



RATLIFF



HI!



MEADE



The JUNIOR Class

OFFICERS

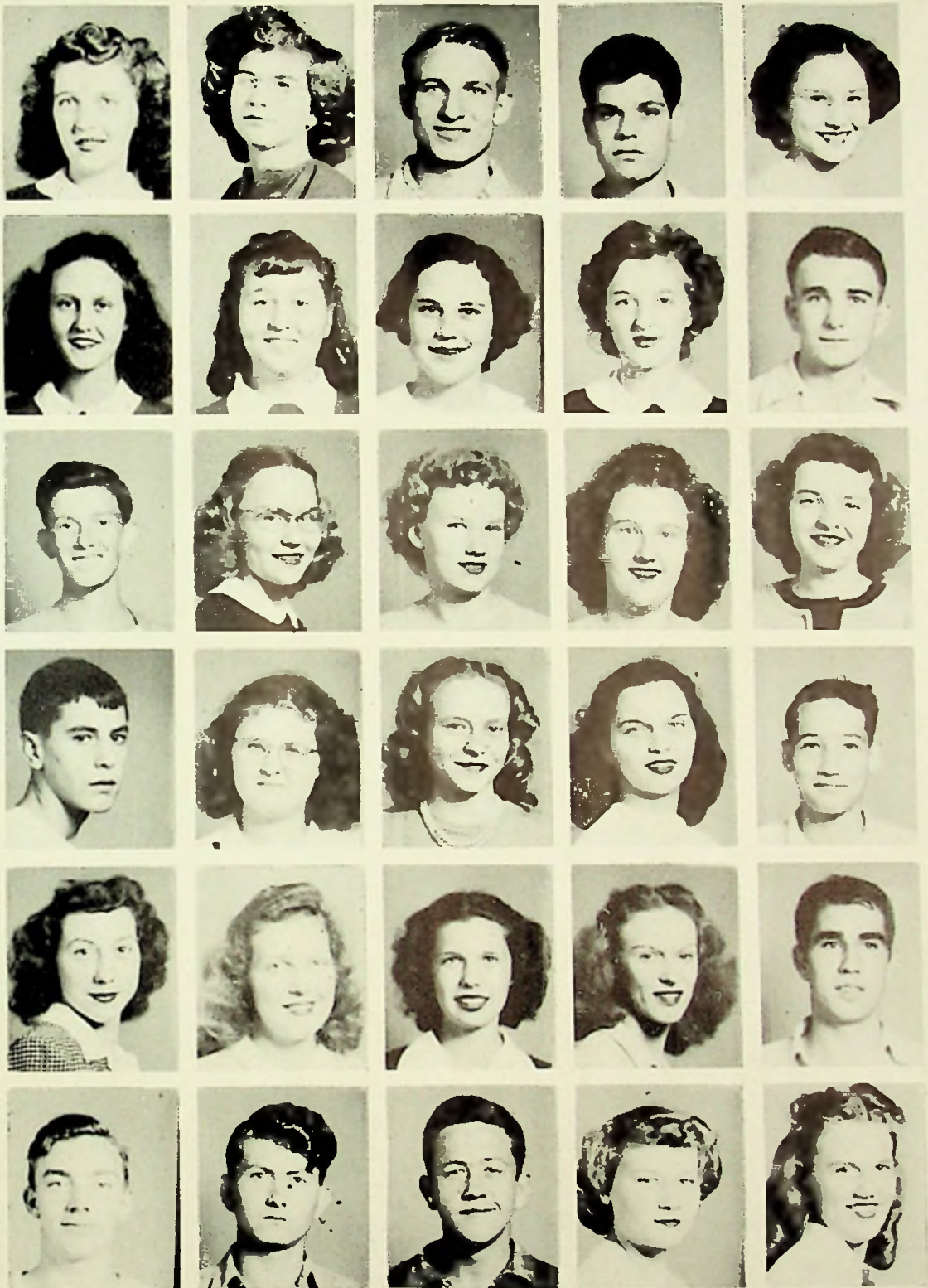


Left to right: John Shockley, vice president; Eulene Mullins, treasurer; Jean Pack, secretary. Kneeling: Joan Cooley, president.

ADVISER



Johanna Kean



Row 1—B. Addis, C. Albrecht, H. Barber, J. Bazler, J. Beck. Row 2—F. Boggs, H. Castle, R. Clifton, J. Cooley, J. Cooper. Row 3—F. Cox, D. Crull, J. Diller, K. Diller, B. Dixon. Row 4—R. Duckwall, C. Frump, G. Frye, B. Gregory, R. Hall. Row 5—V. Harrison, A. Hazelbaker, C. Hill, A. Holt, C. Hopkins. Row 6—D. James, B. Jewett, D. Keene, L. Jones, E. Kuhn.



Row 1—N. Kuhn, B. Liston, B. Martin, R. Meade, E. Mullins. Row 2—H. O'Dell, J. Pack, H. Payton, L. Porter, L. Porter. Row 3—V. Pyles, M. Quickel, C. Ratliff, C. Roark, M. Roth. Row 4—D. Sheets, R. Shepherd, J. Shiveley, J. Shivener, N. Smith. Row 5—R. Sparks, R. Thompson, M. Thurman, E. Vaughters, C. Wessell. Row 6—C. Williams, L. Williams, J. Woods, J. Wolery, S. Wright.



The SOPHOMORE Class

OFFICERS



Left to right: Bill Damron, president; Helen Thomas, secretary;
Ray McCoy, treasurer; Helen Flannery, vice president.

ADVISERS



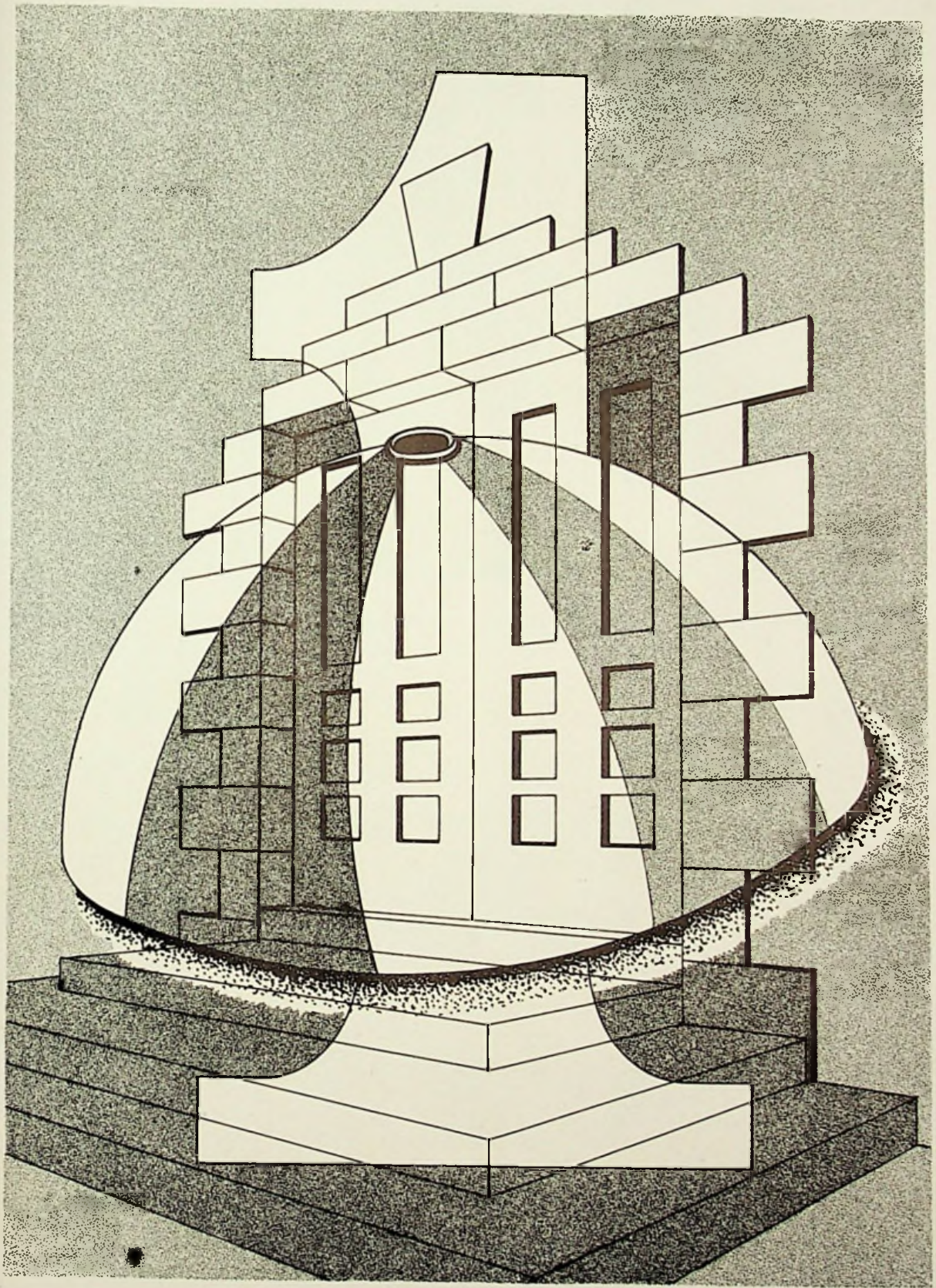
Loretta Woods and Fred Stamm



Row 1—R. Arn, R. Arnett, N. Austin, J. Barber, W. Book, M. Bower. Row 2—M. Bridwell, W. Bridwell, W. Carter, E. Cochenour, P. Colley, E. Conley. Row 3—E. Colley, W. Dameron, A. Dunn, H. Flannery, M. Foster, W. Frasher. Row 4—L. Frazier, G. Graham, T. Grice, E. Grubbs, M. Harper, J. Harrison. Row 5—D. Hoover, P. Hopkins, H. Horsley, H. Howard, R. Howard, J. Hughes. Row 6—J. Jones, R. Jones, J. Journey, J. Kayser, M. Kennard, D. Kessinger. Row 7—R. Kessinger, W. Knauff, P. Lauder, M. Lewis, R. Lewis, J. Liston.



Row 1—P. Litteral, E. Lucas, E. Malone, J. McCall, V. McComas, R. McCoy. Row 2—L. McGovney, M. McKay, D. Meade, R. Meyers, B. Miller, R. Miller. Row 3—B. Nickols, C. Parsons, J. Partlow, J. Payton, L. Perry, B. Pertuset. Row 4—M. Ramey, S. Rexroad, H. Rollins, L. Sartin, J. Salyer, M. Schoettle. Row 5—N. Schwamberger, H. Sheppard, J. Shinkle, H. Shope, L. Shump, P. Sowards. Row 6—D. Staggs, J. Staggs, B. Stahler, J. Stamper, N. Stephenson, F. Swearingen. Row 7—H. Thomas, G. Thompson, N. Tracy, C. Watters, A. Weaver, N. Williams. Row 8—H. Witten, B. Windsor, J. Wright, D. Young.



The FRESHMAN Class

OFFICERS

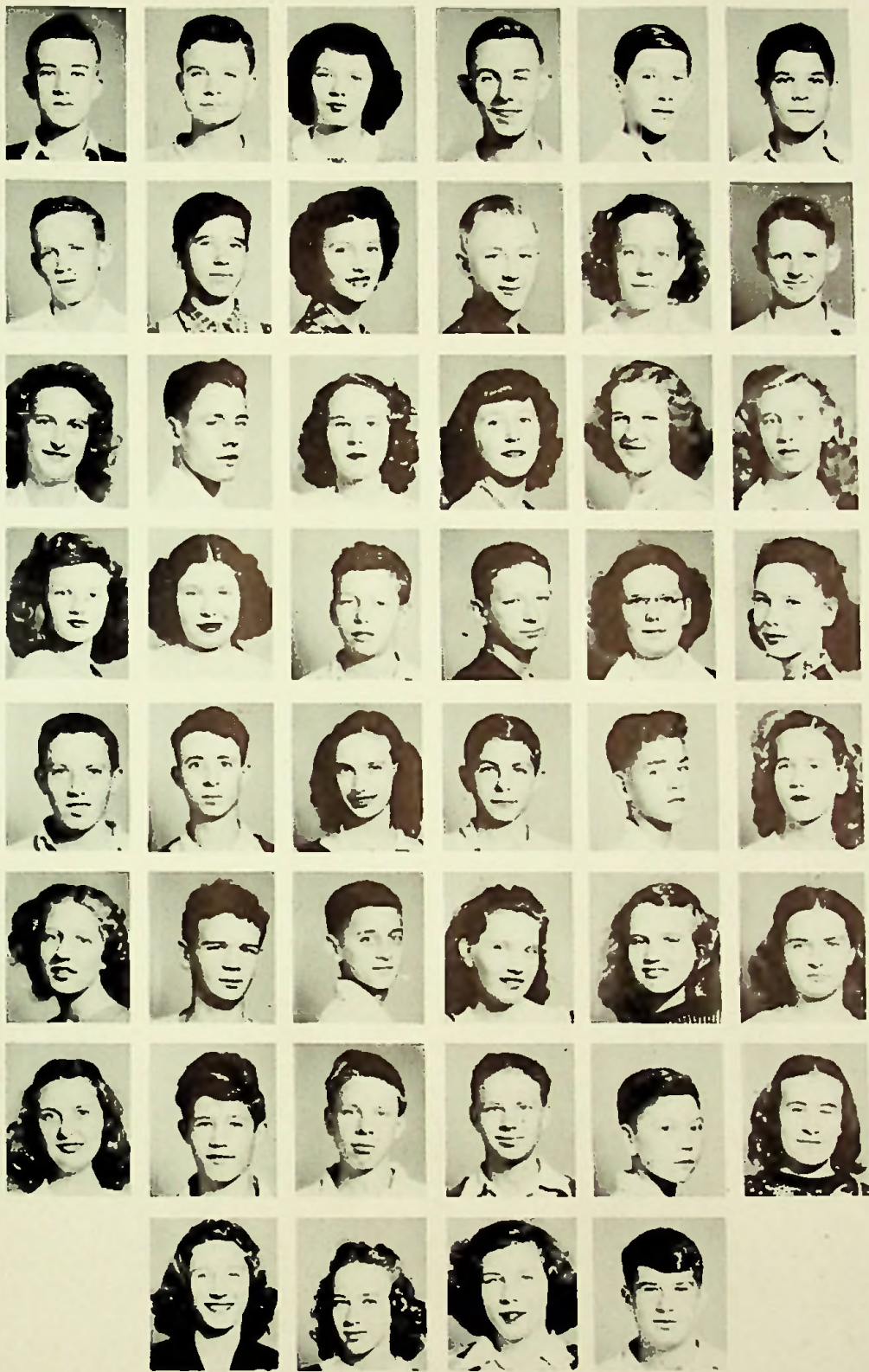


Above: Alma Clifton, secretary; Floyd Wolery, vice president; Delbert Entler, treasurer. *Below:* Nancy Moore, president.

ADVISERS



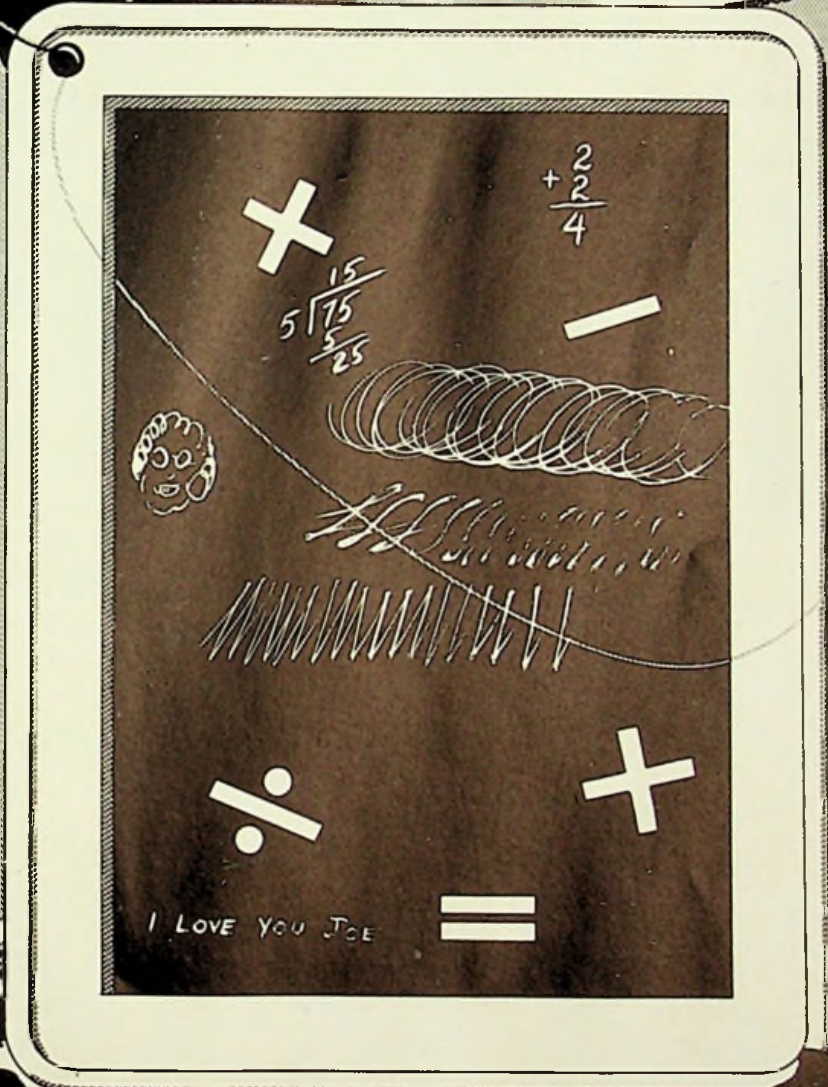
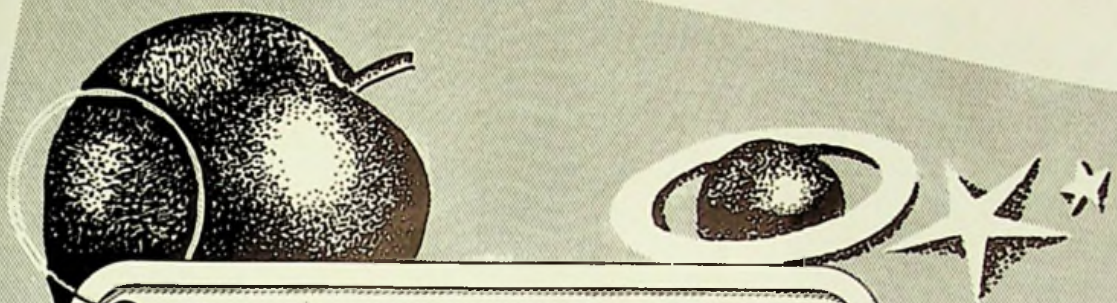
Harold Everling and John Shiveley



Row 1—R. Andrews, J. Applegate, J. Bailey, R. Barnett, E. Black, J. Book. Row 2—J. Bower, F. Brooks, M. Burchett, D. Bussa, B. Campbell, C. Carter. Row 3—J. Chancey, D. Chandler, M. Charles, M. Church, A. Clifton, C. Coburn. Row 4—B. Cochran, T. Cochran, B. Coleman, C. Cook, L. Cook, R. Craycraft. Row 5—R. Craycraft, F. Crumm, R. Cunningham, C. Davis, H. Davis, I. Dillow. Row 6—M. Elmore, D. Entler, D. Fenimore, D. Flite, J. Frost, A. Foster. Row 7—P. Frasher, R. Gilkerson, E. Gordon, W. Grooms, W. Harrison, D. Hickman. Row 8—J. Hopkins, J. Jordan, L. Johnson, A. Journey.



Row 1—E. Kannard, C. Kidder, E. Klever, B. Kuhn, R. Lewis, M. Mann. Row 2—J. Martin, E. McGlone, J. McNeill, R. Meeker, D. Milstead, E. Mitchell. Row 3—W. Mitchell, N. Moore, R. Moore, P. Morrow, E. Mowery, W. Mowery. Row 4—H. Meyers, B. O'Dell, P. O'Dell, M. Oppenheimer, A. Pertuset, A. Pollard. Row 5—R. Railiff, M. Rexroad, R. Rice, O. Rodgers, E. Rose, J. Salyer. Row 6—R. Shvener, G. Smalley, R. Smith, D. Staten, D. Steele, J. Tipton. Row 7—A. Walker, F. Thurman, J. Veach, D. Vernier, F. Vicars, E. Virgin. Row 8—J. Williams, W. Williams, E. Windsor, F. Wolery, H. Wright.



EIGHTH GRADE

OFFICERS



Left to right: Ray Fraley, president; Lavaughn Speck, vice president; Bernice Litz, secretary; William Gilkerson, treasurer.

ADVISERS



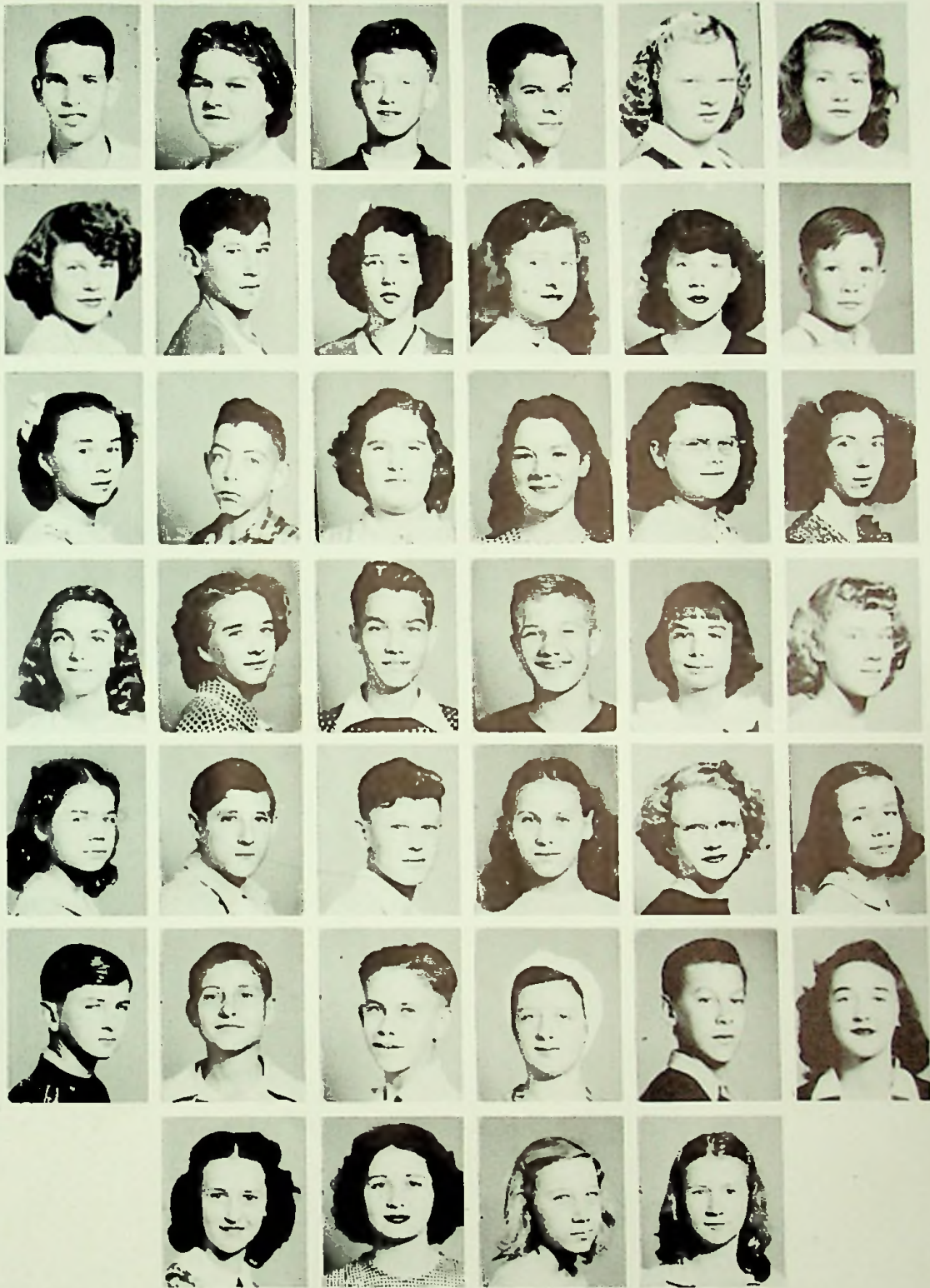
Kathleen Rolf



Foster Kirker



Margaret Strickland



Row 1—S. Adkins, B. Albrecht, J. Askins, F. Bellomy, E. Biggs, L. Boyd. Row 2—D. Bradford, R. Bradford, J. Bridwell, B. Brown, J. Chandler, J. Colley. Row 3—M. Conley, J. Cook, R. Cook, H. Craiger, N. Creech, B. Dodridge. Row 4—L. Dodridge, W. Dunn, R. Fraley, W. Gilkerson, R. Gray, C. Hazelbaker. Row 5—R. Hill, C. Holley, B. Hopper, C. Howard, M. Huff, J. Hurst. Row 6—J. Jewell, J. Lauder, D. Lester, A. Lewis, B. Litz, B. Litz. Row 7—D. Litz, J. Lundy, V. Mangus, B. Meyers.



Row 1—S. McCall, S. Miler, V. Mullens, A. Mustain, T. Nunley, V. Oney. Row 2—J. Osborne, A. Pack, N. Payton, B. Pistole, D. Pistole, R. Pistole. Row 3—W. Price, J. Puckett, N. Rapp, B. Railiff, B. Reutinger, N. Richey. Row 4—B. Ridout, B. Ridgeway, P. Sapp, D. Sanford, R. Schackari, R. Shepherd. Row 5—P. Shump, D. Sparks, V. Sparks, T. Speck, A. Sowards, G. Sowards. Row 6—T. Sword, F. Smith, C. Stephens, B. Thompson, T. Waller, P. Webb. Row 7—B. Wessel, R. Whaley, M. Williams, M. Willis.

ENGLISH CLUB



Row 1—F. Smith, N. Payton, W. Dunn, J. Hurst. Row 2—B. Meyers, B. Litz, N. Rapp, L. Boyd, J. Chandler.

SCHOLARSHIP TEAM



J. Hurst, B. Meyers.

BASKETBALL TEAM



Row 1—R. Fraley, B. Gilkerson, J. Askins, B. Hopper, Coach Kirker, R. Pistole,
J. Browning, J. Cook. Row 2—S. Adkins, B. Pistole.

CHEERLEADERS



V. Oney, F. Smith, N. Rapp, C. Hazelbaker.



ACTIVITIES

ANNUAL STAFF



Row 1—R. Carter, V. Schwamberger. Row 2—B. Boggs, B. Moore, J. Barnes, M. Grice, R. Wiltshire, N. Plummer. Standing—Mrs. Hopkins.

Editor	Ray Wiltshire	Classes	Jean Barnes
Business Manager	Freda White	Activities	Bette Moore
Circulation	Ruby Carter	Sports	Marvin Grice
Advertising	Virginia Schwamberger	Art	Norma Plummer
Administration	Betty Boggs	Typist	Maxine Sheppard



All work, no play . . .

THE WASHINGTON HERALD



Row 1—R. Carter. Row 2—N. Kuhn, Y. Sutton, P. George, R. Wiltshire, M. Sheppard, B. Addis, J. Pack, B. Murray. Row 3—Mrs. Hopkins, J. Shivener, F. Boggs, H. Castle.

Editor	Ray Wiltshire	News	Faye Boggs
Business Manager	Jean Pack		Helen Castle
Art Editor	Ruby Carter		Bernistene Addis
Typist	Maxine Sheppard		Norma Kuhn
Printing	Ray Wiltshire		Janet Shivener



Cutting stencils . . .

JUNIOR — SENIOR ENGLISH CLUB



Bottom Row—G. Frye, F. Boggs, N. Plummer, S. Risner, R. Carter, V. Schwamberger, J. Cooper, D. Crull, L. Williams. Second Row—S. Wright, B. McCowen, H. Castle, B. Gregory, J. Shivener, B. Addis, J. Barnes, B. Meade, B. Martin. Top Row—N. Smith, M. Quickel, J. Blake, J. Wolery, R. Wiltshire, H. O'Dell, R. Cunningham, H. McMaster, E. Kuhn.

FRESHMAN — SOPHOMORE ENGLISH CLUB



Bottom Row—J. Jordan, T. Cockran, P. O'Dell, E. Lewis, D. Hickman, H. Meyers, M. Church, M. Burchett. Second Row—W. Mowery, L. Cook, J. Bailey, L. Perry, M. Harper, P. Frasher, I. Dillow, J. McCall, E. Rose, L. Johnson, M. Mann. Top Row—B. Cochenour, J. Book, N. Schwamberger, M. Pinson, B. Morrow, M. Elmore, N. Williams, N. Moore, L. Crowe, B. Book, P. Lauder, P. Morrow.

LATIN CLUB



Seated—R. Lewis, D. Sheets, H. Meyers, A. Dunn, M. Harper, B. Martin. Row 2—B. Rutherford, J. Tipton, J. Martin, L. Williams, D. Crull, C. Watters, N. Smith, D. Moore. Row 3—N. Moore, B. Kuhn, W. Frasher, N. Tracy, M. Bridwell, J. Partlow, P. Lauder, G. Thompson.

SPANISH CLUB



Seated—C. Gabbert, J. Cooper, B. Gregory, F. Cox.
Standing—R. Harrison, C. Parsons, J. Wolery, B. Cook, R. Sparks.

Sponsor: PORTSMOUTH FUR SHOP

INDUSTRIAL ARTS CLUB



Row 1—J. Veach, D. Fenimore, L. Crowe, F. Brooks, R. McCoy, D. Staten. Row 2—J. Salyer, H. Wright, B. Liston, G. Smalley, J. Applegate, P. O'Dell, W. Knauff, R. Smith, B. Jones, B. Arn. Row 3—J. Shinkle, B. Miller, B. Rice, D. Hoover, E. Virgin, E. Mitchell, E. Malone, E. Jordan, F. Crumm, B. Barnett.



WORKSHOP
J. Salyer, W. Gillmore, O. Rodgers, R. Craycraft, Mr. Moore.

DRAWING CLASS
B. Rice, D. Bussa, D. Staten, J. Bower, B. Groo, J. Veach, J. McNeil, R. Meeker, E. Mitchell, Moore (standing).



HOME EC. CLUB



Row 1—A. Pertuset, E. Windsor, I. Gllkerson, F. Vicars, E. Mullens, D. Fenimore, V. Schwamberger, J. Diller, J. Sparks, J. McCall. Row 2—B. Hodge, R. Shivener, B. Cochran, B. Cochenour, J. Hopkins, J. Bailey, B. Schaeffer, J. Wright, E. Rose, M. Rexroad, L. Sartin, P. Colley. Row 3—B. Hall, V. Pyle, N. Schwamberger, H. Shope, L. McGovney, J. Kayser, N. Williams, J. Frost, J. Staggs, M. Schoettle, L. Frazier, K. Diller, J. Liston, M. Thurman, E. Kuhn.

Duties of the Home Ec. class are to learn to sew, measure, and to operate sewing machines.



Sponsor: WALKER'S SHOE STORE

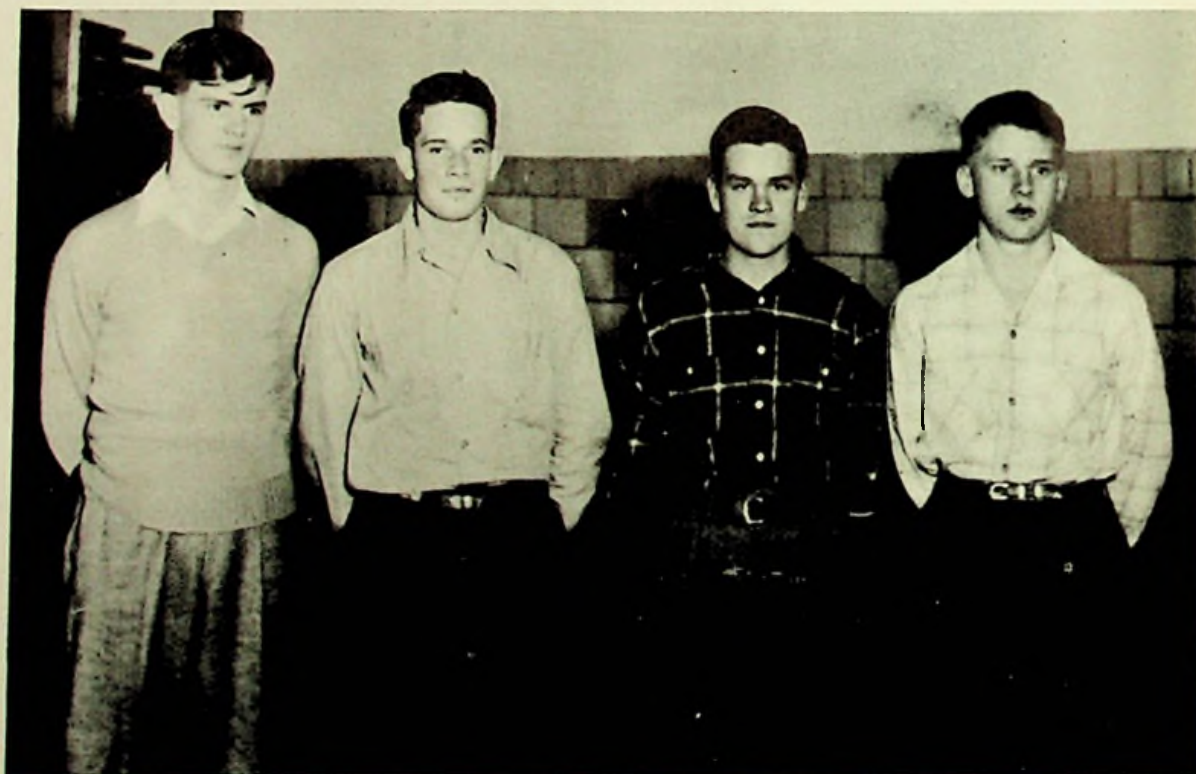
"Shoes for the entire family"

SCHOLARSHIP STUDENTS



Row 1—S. Wright, T. Cochran, J. Jordan, D. Vernier, M. Harper, H. Meyers, B. Martin, L. Cook, L. Mathews, E. Grubbs. Row 2—H. Castle, L. Williams, N. Smith, B. Gregory, H. Thomas, B. Kuhn, A. Weaver, J. Partlow, M. Bridwell, N. Tracy, C. Watters. Row 3—S. Risner, N. Plummer, J. Cooley, P. Hopkins, N. Schwamberger, N. Moore, K. Coburn, G. Thompson, R. McCoy, L. Johnson. Row 4—J. Cooper, K. Martin, G. Perry, F. Cox, F. Wolery, L. Shump, R. Wiltshire, D. Daulton, J. Tipton. Row 5—J. Book, C. Cook, D. Moore, C. Davis, B. Sparks, R. Cunningham, M. Stamm, R. Craycraft, W. Knauff.

SENIOR SURVEY



Left to Right—D. Daulton, R. Cunningham, J. Tipton, R. Wiltshire.

HONOR SOCIETY



Seated—F. Boggs, J. Cooper, S. Risner, N. Plummer, D. Crull, L. Williams.
Standing—H. Castle, N. Smith, M. Quickel, R. Wiltshire, J. Blake, R. Cunningham.

These members were chosen from the student body because they have maintained a VG average or above during their Freshman and Sophomore years.

The qualifications necessary for membership are Leadership, Character, and Service to the School, as well as Scholarship.

The students are taken into the society their Junior year in school and must keep a VG average or their membership will be withdrawn.



"A DATE WITH JUDY"

Presented by the Junior Class, Directed by Mrs. Keàn



Seated—J. Pack, J. Bazler, V. Pyle, B. Jewett, K. Diller, J. Cooley, H. Barber.
 Standing—L. Williams, R. Clifton, J. Shivener, N. Smith, J. Blevins, F. Cox, C. Hill.



STAGE CREW:
 Seated—B. Gregory.
 Standing—B. Thompson, C. Williams, E. Mullins.

CAST:

<i>Judy Foster</i>	Jean Pack
<i>Oogie Pringle</i>	Fred Cox
<i>Marvin Foster</i>	Jim Bazler
<i>Dora Foster</i>	Virginia Pyle
<i>Randolph Foster</i>	Bill Jewett
<i>Barbara Winsocket</i>	Janet Shivener
<i>Mitzi Hoffman</i>	Joan Cooley
<i>Hannah</i>	Kathleen Diller
<i>Mr. Martindale</i>	Jack Blevins
<i>Susie O'Connor</i>	Carol Hill
<i>Rexford Meridith O'Connor</i>	Howard Barber
<i>Mrs. Hotchkiss</i>	Lois Williams
<i>Mrs. Schlutzhammer</i>	Norma Smith

"BUT FAIR TOMORROW"

Presented by the Senior Class, Directed by Mrs. Mitchell



Seated—R. Carter, B. Jacks, N. Plummer, F. White, R. Wiltshire, B. Yeley, B. Boggs, J. Blake.
Standing—D. Daulton, M. Litz, I. Scott, V. Sanford, C. Gabbert, I. Swords, G. Carrington, M. Grice,
A. Sheffield.

CAST:

<i>Gethsemane</i>	Ann Sheffield
<i>Barbara Howard</i>	Norma Plummer
<i>Violet Hatfield</i>	Ruby Carter
<i>Muriel Morrison</i>	Betty Yeley
<i>Randolph Howard</i>	Bill Jacks
<i>Harriet Howard</i>	Freda White
<i>Louise Howard</i>	Betty Boggs
<i>Ralph Mason</i>	Jack Blake
<i>Walter Howard</i>	Raymond Wiltshire
<i>Philip Ward</i>	Norman Hull
<i>David</i>	David Daulton
<i>Giggly Girls</i>	Marzella Litz, Irene Scott, Vera Sanford, Carol Gabbert, Irene Sowards, Gertrude Carrington



STAGE CREW:
Seated—W. Stamper, R. Harrison, B. McGinn, J. Barnes,
J. Baker. Standing—D. Daulton, R. Cunningham, M.
Grice, P. Stone, J. Tipton, R. Reiser, R. Clifton.

JUNIOR - SENIOR PROM



DINING



DANCING

MIXED CHORUS



Row 1—A. Foster, D. Hickman, B. Cochran, B. Rutherford, M. Charles, B. Liston, C. Davis, R. Cunningham. Row 2—D. Steele, M. Rexroad, I. Dillow, R. Meyers, J. Pack, J. Wolery, B. Addis, B. Gregory, V. Pyles, D. Crull, J. Beck, B. Cochenour, J. Salyers. Row 3—C. Walters, B. O'Dell, B. Kuhn, A. Hazelbaker, D. Moore, W. Frasher, B. Pyles, H. Shope, H. Barber, G. Graham, B. Book, D. Milstead, C. Parsons, B. Thompson, B. Murray. Row 4—H. Flannery, P. Hopkins, P. Frasher, N. Smith, M. Bridwell, J. Baker, A. Weaver, C. Cook, D. Newman, A. Holt, H. Thomas, J. Liston, J. Frost, R. Davis, D. James, F. Swearingen, N. Hull, E. Kuhn, R. Windsor, P. Colley.



GIRLS'
GLEE
CLUB

Seated—Mrs. Heath. Row 1—B. Cochran, E. Klever, R. Cunningham, H. Shope, H. Thomas, N. Smith, W. Frasher, B. Cochenour, A. Foster, D. Hickman, D. Steele. Row 2—M. Rexroad, J. Frost, J. Liston, J. Baker, C. Walters, P. Hopkins.



BOYS'
GLEE
CLUB

Row 1—H. Wright, P. O'Dell, D. Fenimore, F. Brooks, R. Ratliff, B. Arn, R. Smith, H. Davis, W. Knauff, J. Applegate, B. Liston. Row 2—J. Journey, B. Thompson, D. James, W. Mitchell, R. McCoy, L. Crowe, G. Smalley, M. Kennard, R. Craycraft, R. Van Dyke, W. Gilmore, F. Crumm, E. Harrison, B. Barnett, J. Veach. Row 3—D. Entler, E. Mitchell, B. Reynolds, E. Jordon, E. Malone, S. Rexroad, D. Hoover, E. Conley, E. Virgin, B. Rice, J. Salyers, J. Shinkle, F. Thurman, B. Miller, B. Windsor.

Sponsor: GEMPERLINE FURNITURE STORE
Authorized Dealers for Westinghouse Appliances
"Quality Furniture at Reasonable Prices"

TWIRLERS



L. JONES



M. LEWIS



J. WOLERY



A. HOLT



E. BACKUS

SECTIONS



SWEET MUSIC



KEEP 'EM PLAYING



DALE GILLETTE, DIRECTOR



THEY SPEAK FOR THEMSELVES

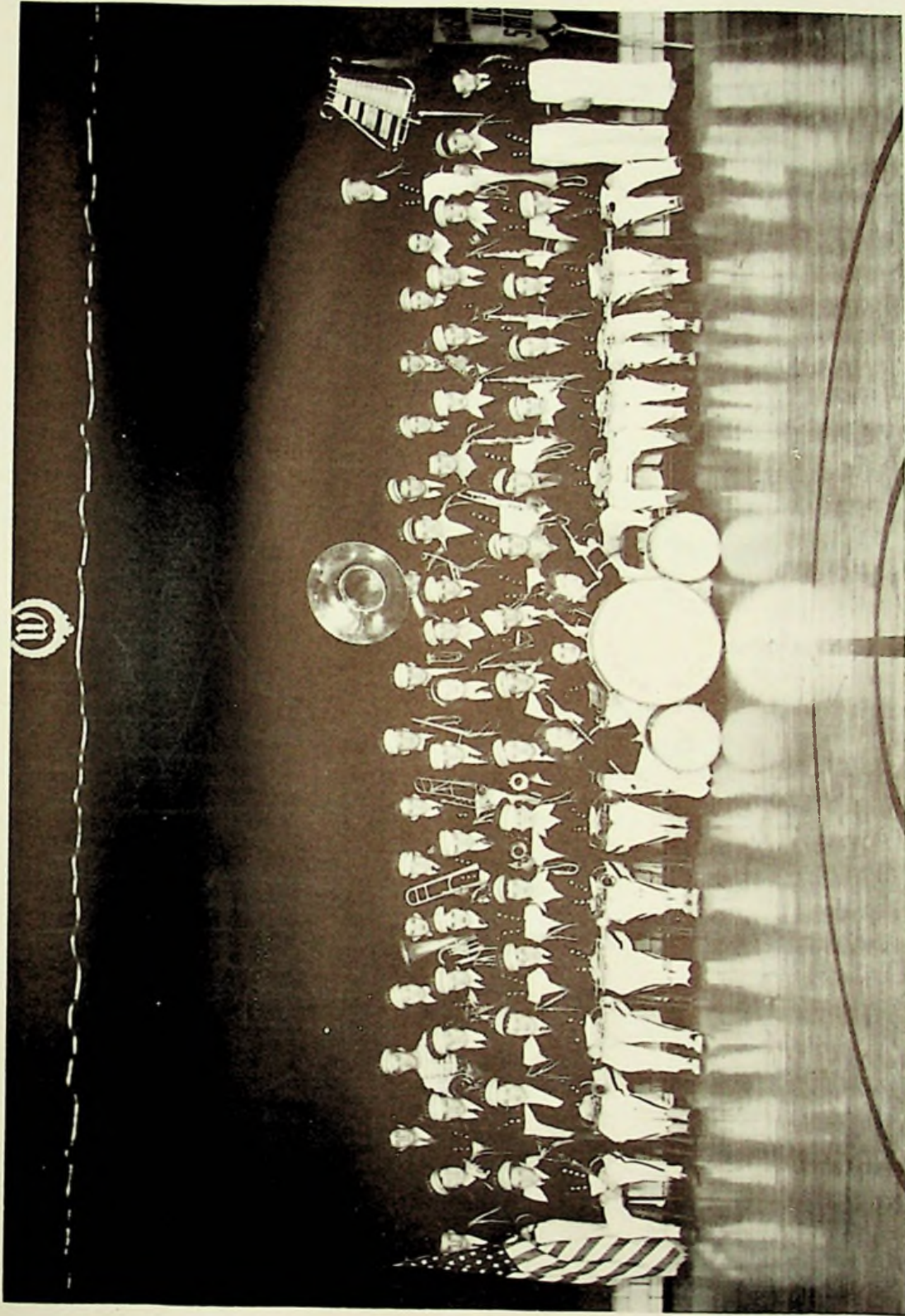


MUSIC IS MORALE



UM-PAH!

BAND



Row 1—A. Holt, M. Lewis, L. Jones. Row 2—B. Jones, J. Staggs, N. Kuhn, J. Pack, J. Cooley, B. Moore, K. Diller, B. Windsor, M. Grice, R. Thompson, B. Jewett, C. Hill, N. Rapp, R. Shvner, D. Sparks. Row 3—W. Hopkins, J. Shvner, B. Morlarity, H. Castle, S. Risner, H. Horsley, J. Applegate, R. Wiltshire, W. Frasher, F. Cox, K. Martin, G. Parry, R. Newman, H. Thomas, J. Shiveley, R. Davis, B. Richey, M. Kennard, J. Cook. Row 4—J. Harrison, D. James, V. Harrison, D. Moore, W. Liston, B. Meade, N. Hull, W. Cook, G. Graham, W. Dameron, F. Boggs, R. McGinn, A. Dunn, J. Barnes, D. Crull.

SOCIAL SCIENCES



Around the World . . . Life in U.S.A. with Everling, Christian and Shiveley.

MATHEMATICS



Mr. Jones and students watching classmate give illustration.

COMMERCIAL



General Business Class

Gaining speed in typing.

SPEECH



Seated, left to right—A. Holt, A. Sheffield, J. Wolery. Standing—Mr. Shiveley, J. Blake.

PHYSICS



Left to Right—R. Moriarity, W. Lauder, W. Stone, B. Piatt, R. Clifton, P. Reiser,
R. Sparks, J. Craycraft, Mr. Bouts.

CHEMISTRY



Seated—N. Plummer, S. Risner, D. Daulton, R. Wiltshire, R. Carter. Outer Circle—A. Sheffield,
R. Miller, R. Cunningham, R. Moriarity, M. Stamm, J. Tipton, G. Parry, R. McGinn, A. Rankin,
F. White, J. Barnes.

BIOLOGY



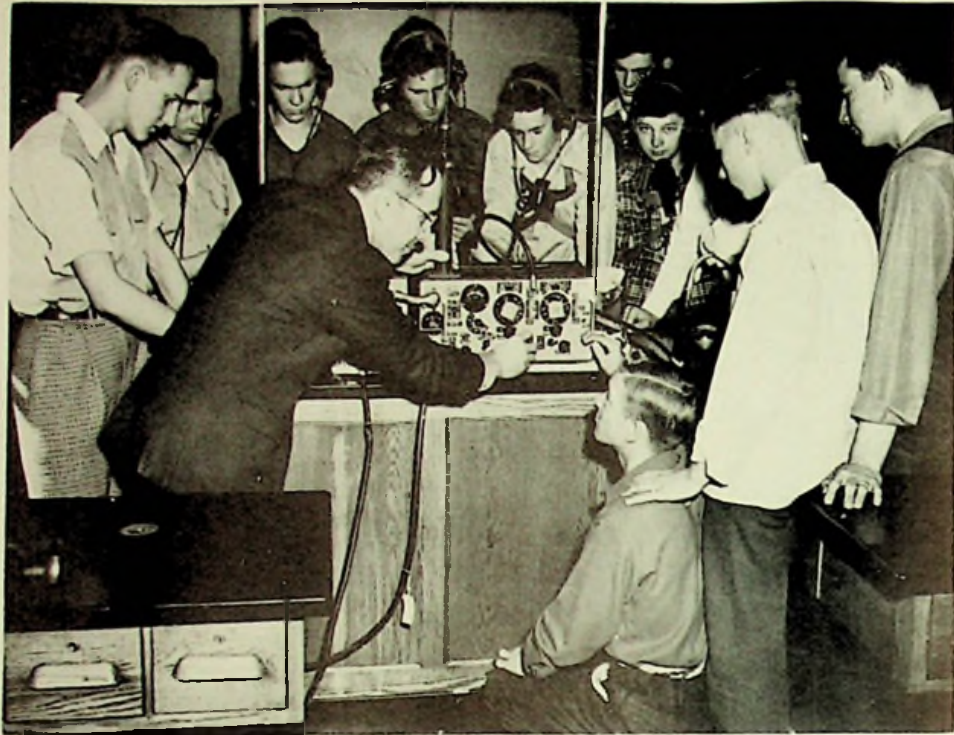
How the heart functions.

GENERAL SCIENCE



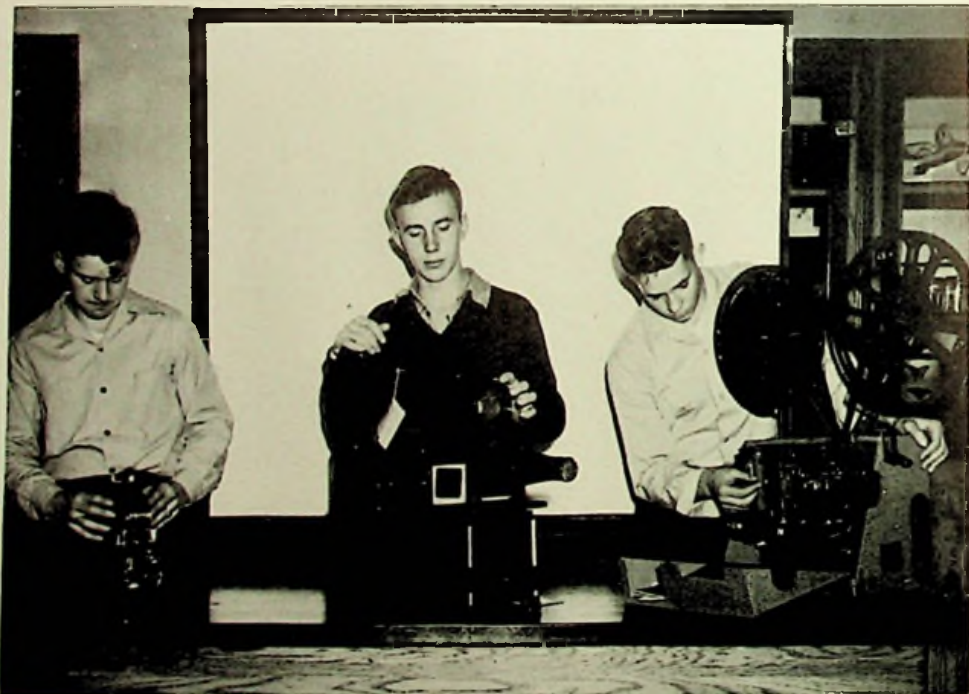
Bird study in science class.

RADIO



Row 1—Mr. Gillette, E. Colley. Row 2—D. Staggs, R. Newman, N. Hull, J. Shinkle, R. Cunningham, D. Daulton, R. Lewis, P. Stone, J. Shiveley, J. Craycraft.

VISUAL AIDS



Left to Right—R. Wiltshire, J. Blake, R. Cunningham.

LIBRARY



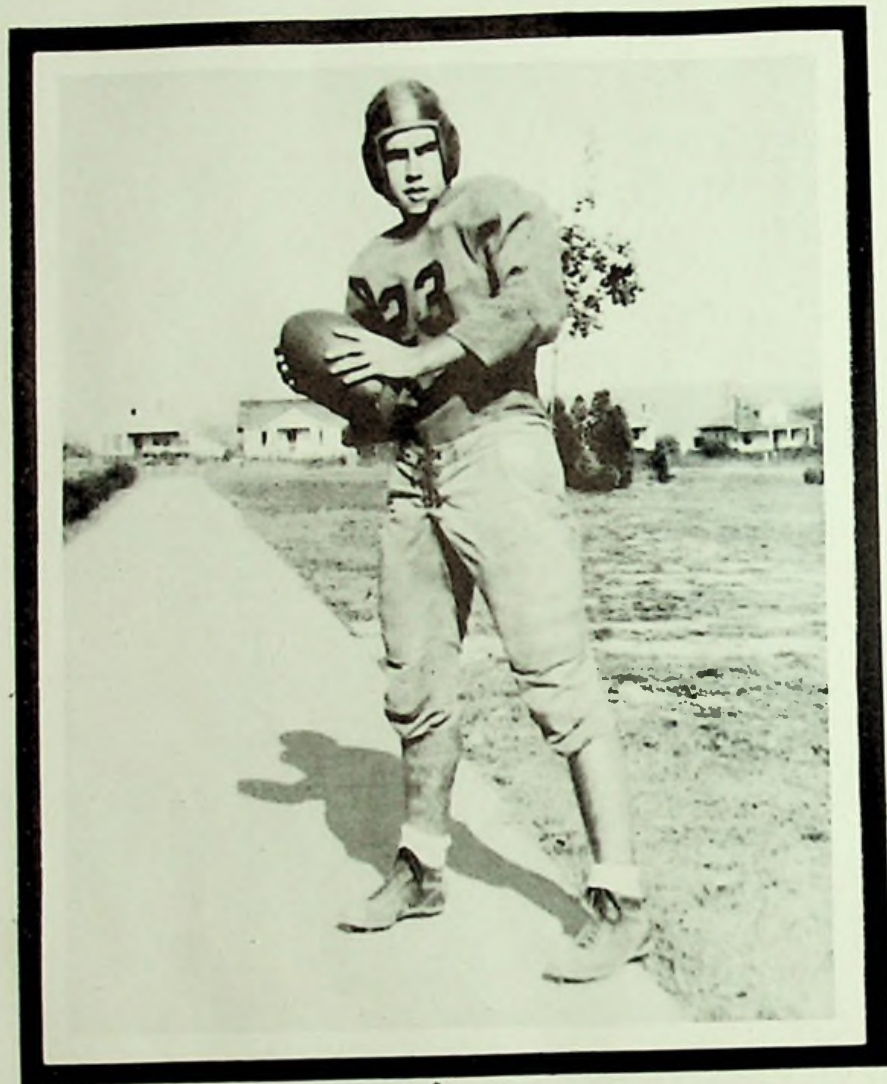
Librarians J. Young and D. Sheets looking over the new and old additions.

STUDY HALL



... delving their minds in the pool of knowledge.

IN MEMORIAM



CLARENCE HOPKINS
"Shorty"

1929

1947



ATHLETICS

FOOTBALL SQUAD



Row 1—R. Gilkerson, H. Bradshaw, R. Morisrity, W. Damron, D. Keene, J. Blevins, B. Toms, C. Wessell. Row 2—F. Cox, W. Puckett, D. Slaggs, J. Bazler, C. Mowery, J. Craycraft, E. Mitchell, R. McGinn, R. Barnett, D. Entler. Row 3—Coach Everling, A. Journey, C. Ratliff, M. Grice, W. Knauff, J. Woods, C. Hopkins, H. Howard, D. Chandler, G. Parry, Coach Christian.

COACHES AND CAPTAIN



CHRISTIAN

MORIARITY

EVERLING



ROBERT BARNETT
Center



JACK BAZLER
End



JACK BLEVINS
Halfback



HOWARD BRADSHAW
Halfback



JAMES CRAYCRAFT
Tackle



WILLIAM DAMRON
Quarterback



ROBERT GILKERSON
Guard



CLARENCE HOPKINS
Quarterback



HOBART HOWARD
End



ALLEN JOURNEY
Guard



DONALD KEENE
Center



WILLIAM KNAUFF
Tackle



ROBERT MCGINN
Guard



VIRGIL MCCOMAS
End



CLYDE MOWERY
Halfback



GEORGE PARRY
End



WOODROW PUCKETT
Guard



CLIFFORD RATLIFF
Tackle



DONALD STAGGS
Tackle



BERNARD TOMS
Guard



CARL WESSELL
Guard



WOODROW GILLMORE
Halfback



FRED COX
Manager

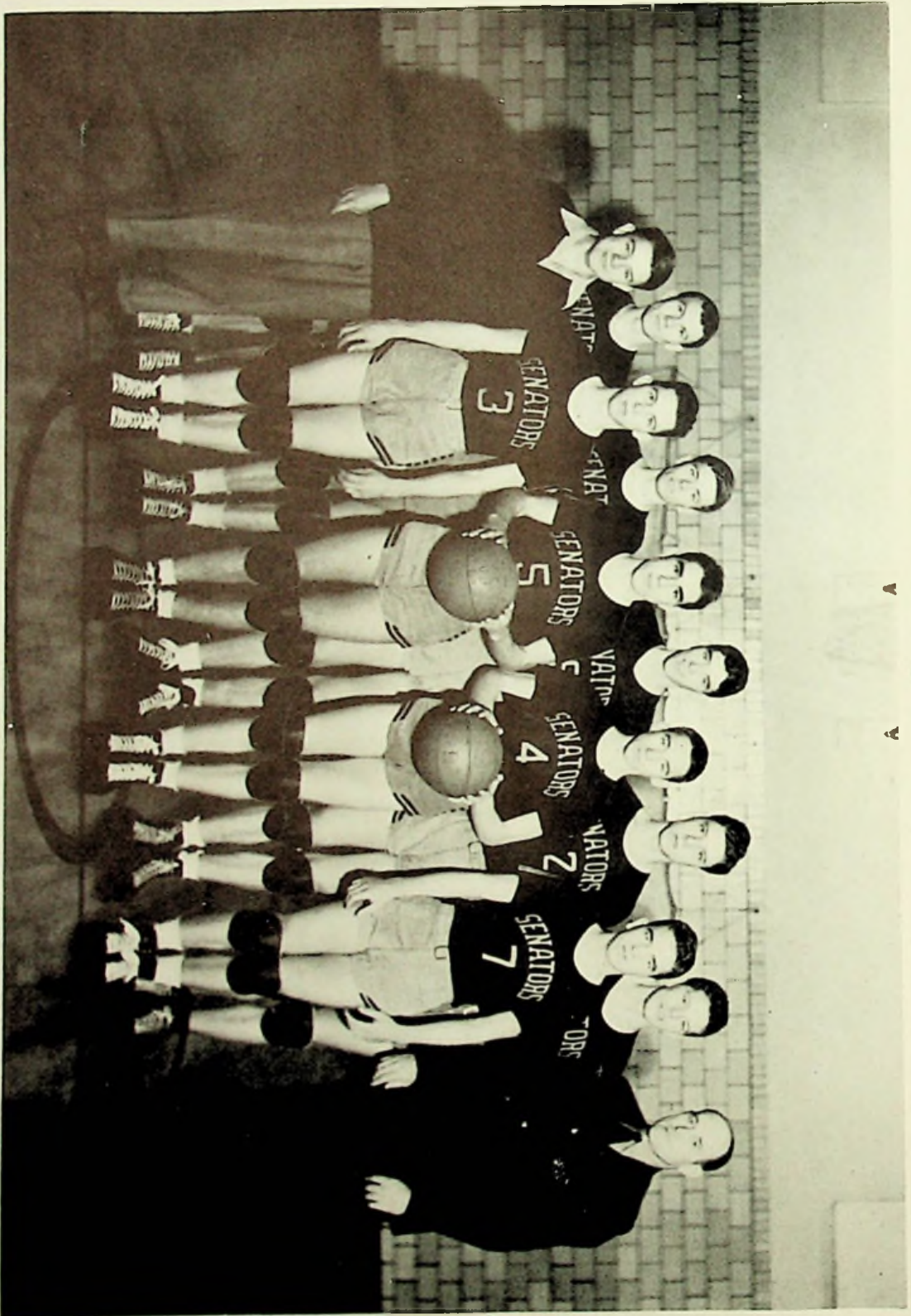


ROBERT MORIARITY
(Captain)
Halfback



DELBERT ENTLER
Manager

VARSITY



Row 1—D. Young, Manager; H. O'Dell; C. Hopkins; W. Jacks; W. Damron; Mr. Christian, Coach.
 Row 2—J. Woods; R. Askins; R. Miller; R. Arnett; G. Parry.



ROBERT ASKINS
Forward



HARRY O'DELL
Forward



RAYMOND MILLER
Center



JIM WOODS
Guard



CLARENCE HOPKINS
Guard



BILL DAMRON
Guard



GEORGE PARRY
Forward

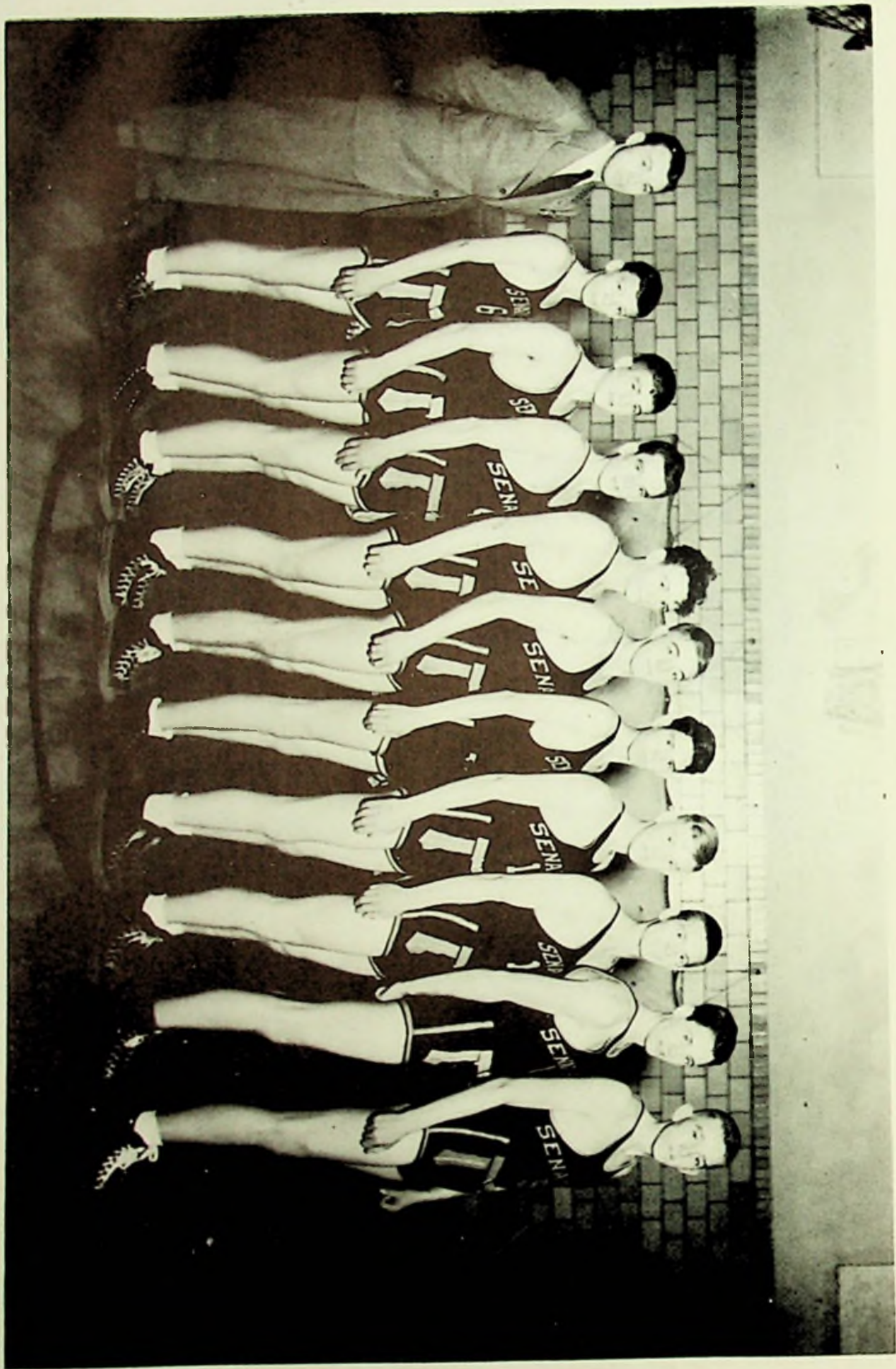


RALPH ARNETT
Center



BILL JACKS
Guard

RESERVES



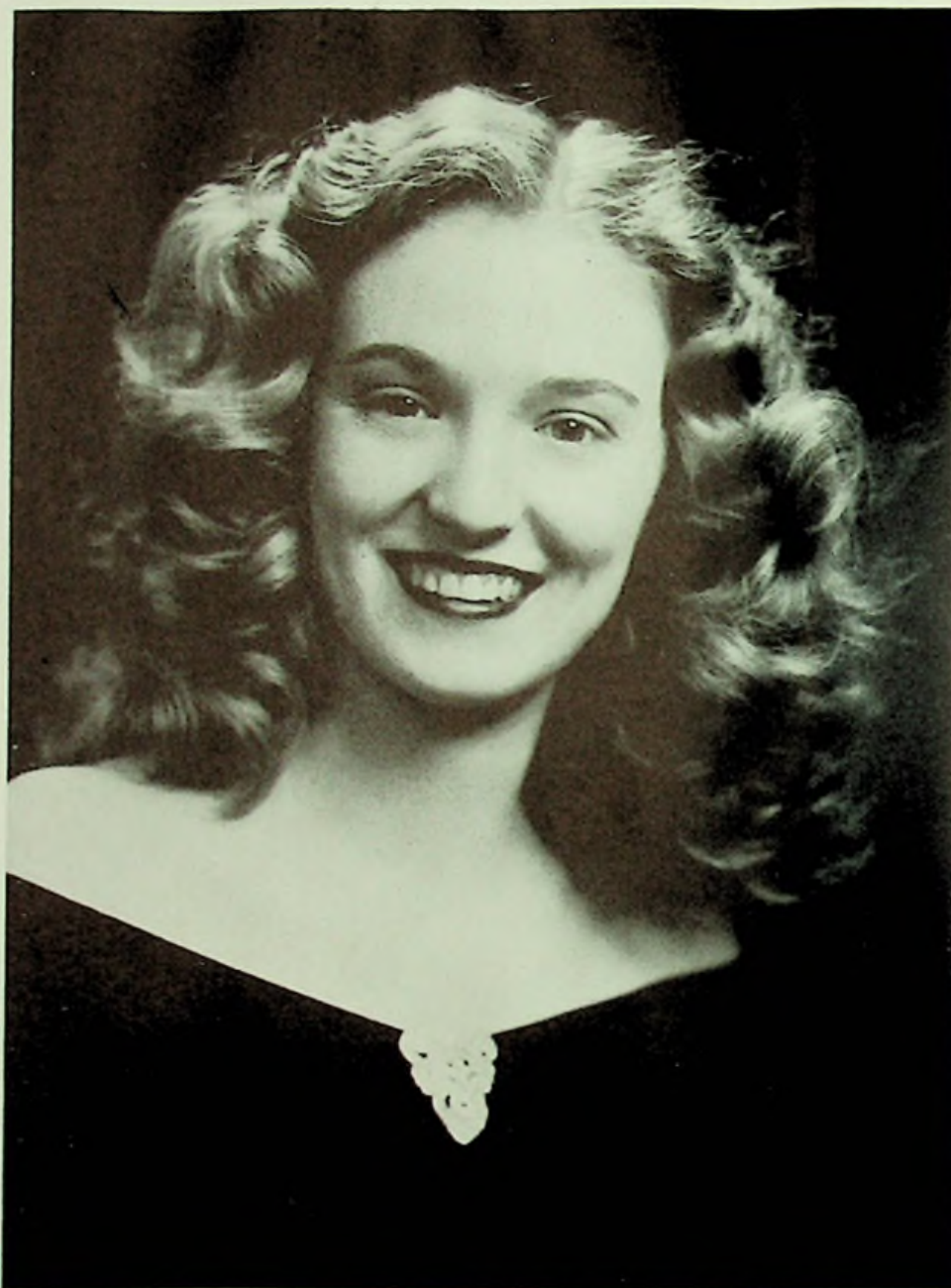
Left to Right—Coach Everling, D. Keelinger, M. Kennard, B. Nichols, D. Entler, E. Conley, W. Bridwell, S. Rexroad, H. Howard, D. Chandler, B. Windsor.

FRESHMAN TEAM



Front Row—B. Rico, W. Puckett, B. Barnoff, G. Smalley, Coach Shiveley.
Top Row—J. Williams, R. Andrews, D. Fenimore, P. O'Dell, O. Rodgers, C. Cook.

LILLIAN REYNOLDS



BASKETBALL QUEEN

CROWNING



Clarence Hopkins crowns Queen Lillian Reynolds.

QUEEN AND HER COURT



Lillian Reynolds, Bernistene Addis, Louella Perry, Marcella Rexroad.

CHEERLEADERS



JOAN COOLEY



JEAN PACK



NORMA PLUMMER
(Captain)



FREDA WHITE



HELEN FLANNERY

RESERVES



PHYLLIS HOPKINS



JEANETTE MCCALL



PHYLLIS FRASHER

TRACK



Row 1—B. Book, B. Arn, K. King, J. Applegate, R. Smith, J. Book, F. Wolery. Row 2—B. Gilkerson, W. Puckett, W. Gilmore, C. Cook, J. Black, G. Graham, F. Crumm. Row 3—Coach Everling, J. Blevins, G. Mullins, D. Staggs, H. Howard, C. Ratliff, O. Rodgers, E. Conley, J. Harrison, D. Keene.



D. STAGGS



D. KEENE



C. RATLIFF

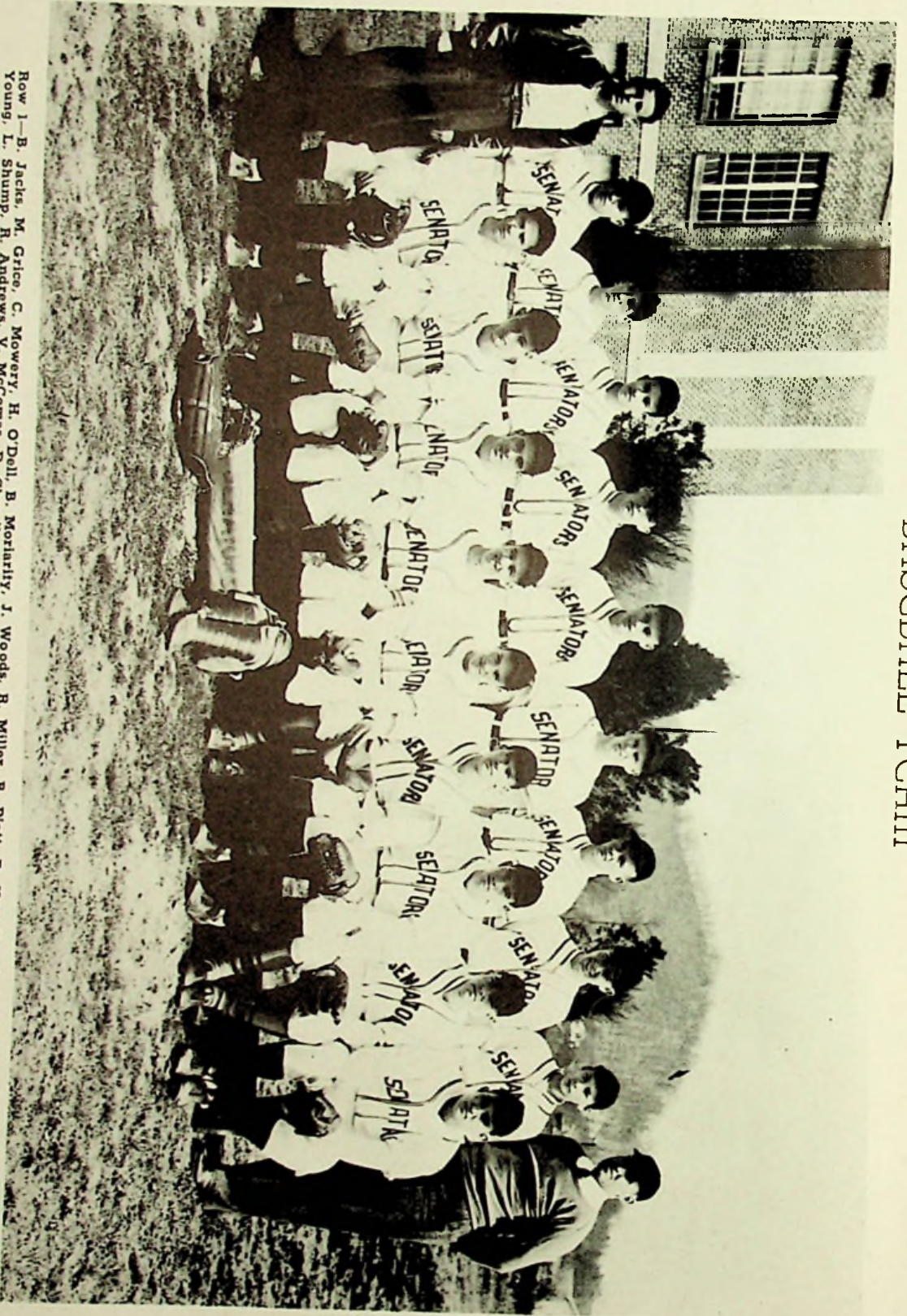


GET SET . . .



GO-O-O!!

BASEBALL TEAM



Row 1—B. Jacks, M. Grice, C. Mowery, H. O'Dell, B. Moriarity, J. Woods, R. Miller, B. Platt, B. Knauft, Row 2—R. Myers (Manager), D. Young, L. Shump, R. Andrews, V. McComas, D. Chandler, D. Hoover, D. Entler, B. Barnett, D. Kessinger, Coach Christian.



MARVIN GRICE



BILL JACKS



BILL KNAUFF



R. C. MILLER



BOB MORIARITY



CLYDE MOWERY



HARRY O'DELL



BENNIE PIATT

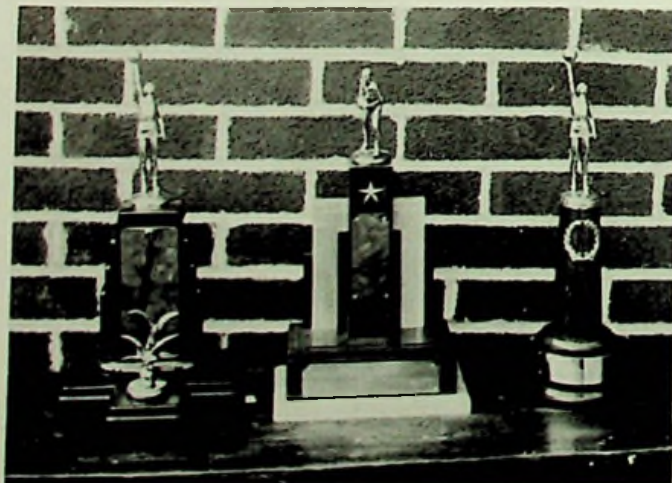


JIM WOODS



Bob Moriarity was honored by receiving a trophy for being chosen the most valuable player to his football team for the year 1946. Sid Gillman, Miami University Coach, was guest speaker at a dinner sponsored by WPAY at the Wilmere Tea Room. Carl Bodmer, WPAY, presented the trophy to Bob.

- 1—Eighth Grade Basketball Champs.
- 2—Western Reserve Champions, 1946.
- 3—Baseball 1946 District Champions, Class B.
- 4—Reserve Tournament Champs, 1946.
- 5—Reserve League Winner, 1946.
- 6—County Baseball Champs, 1946.



- 1—Reserve S.O.C. Champs, 1947.
- 2—Varsity County League Runner-up, 1947.
- 3—Reserve League Champions, 1947.



1—Pals! 2—Sleepy Heads! 3—Chums . . . 4—Red. 5—Mid. 6—Jack.
 7—Star! 8—Blow, Blow! 9—Joe . . . 10—Gabby! 11—Nick!
 12—Richey . . . 13—Smiling Paul! 14—Farmer! 15—Pack!
 16—Steadies . . . 17—Dreamers. 18—Vera!



1—Malone. 2—Freshmen. 3—Schwambergers. 4—Book Learning . . .
 5—Addis. 6—Thurman. 7—Betty. 8—Rosena. 9—Quickel.
 10—M. Litz. 11—Duet. 12—White. 13—Hurry, Hall! 14—Studying . . .



BAND CHUMS!



JUST RESTING!



THREE MUSKETEERS!



MATES!



MILSTEAD'S HAREM!



JOY



COOKS



SNOW SCENE



GRICE AND RICHEY



**SOME DAY HELL
COME ALONG . . .**



SIT DOWN, FLANNERY!



**PRETTY POSE,
MRS. HAZELBAKER**



COACH EVERLING



TOUGH GAME!



HOPKINS



BARNETT



PUNT FORMATION



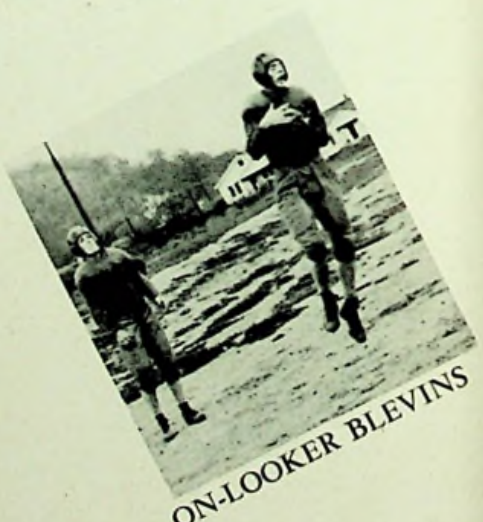
COX



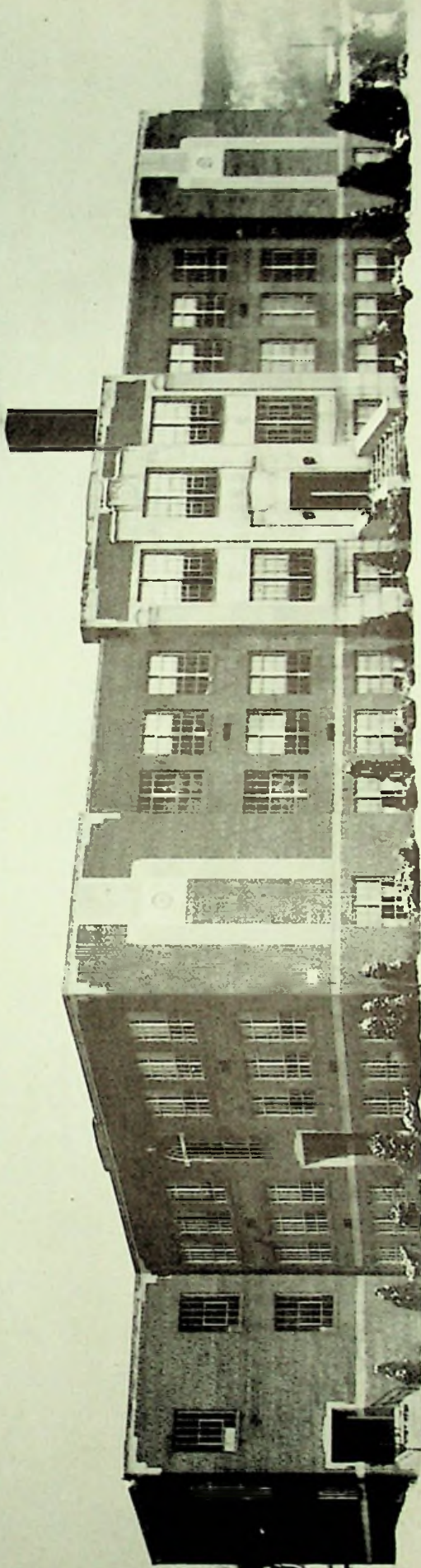
HOLD THAT LINE!



ENTLER



ON-LOOKER BLEVINS



CALENDAR

SEPT. 3—School Started.

SEPT. 5—Books.

SEPT. 13—McArthur Football Game, first for WHS.

SEPT. 23—Rip Van Winkle Play.

SEPT. 27—Won West Liberty Football Game.

OCT. 14—Wade Quartet.

OCT. 21—Senior Pictures Taken.

NOV. 5—McKell Football Game, last game of season.

NOV. 13—Bird Circus.

NOV. 15—Clay Basketball Game, first of season.

DEC. 13—Ironton Basketball Game.

DEC. 17—Christmas Cantata.

DEC. 27-28—Portsmouth Carnival.

FEB. 15—Waverly Basketball Game, last game of season.

FEB. 17—Zoology Show.

FEB. 24—X-Rays Taken.

MAR. 6—"Hopalong Cassidy Rides Again", Movie.

MAR. 7—Junior Class Play, "A Date With Judy."

MAR. 28—Minstrel—By the Band.

APR. 18—Junior-Senior Prom.

APR. 25—Senior Class Play, "But Fair Tomorrow."

MAY 2—Festival at Wheelersburg.

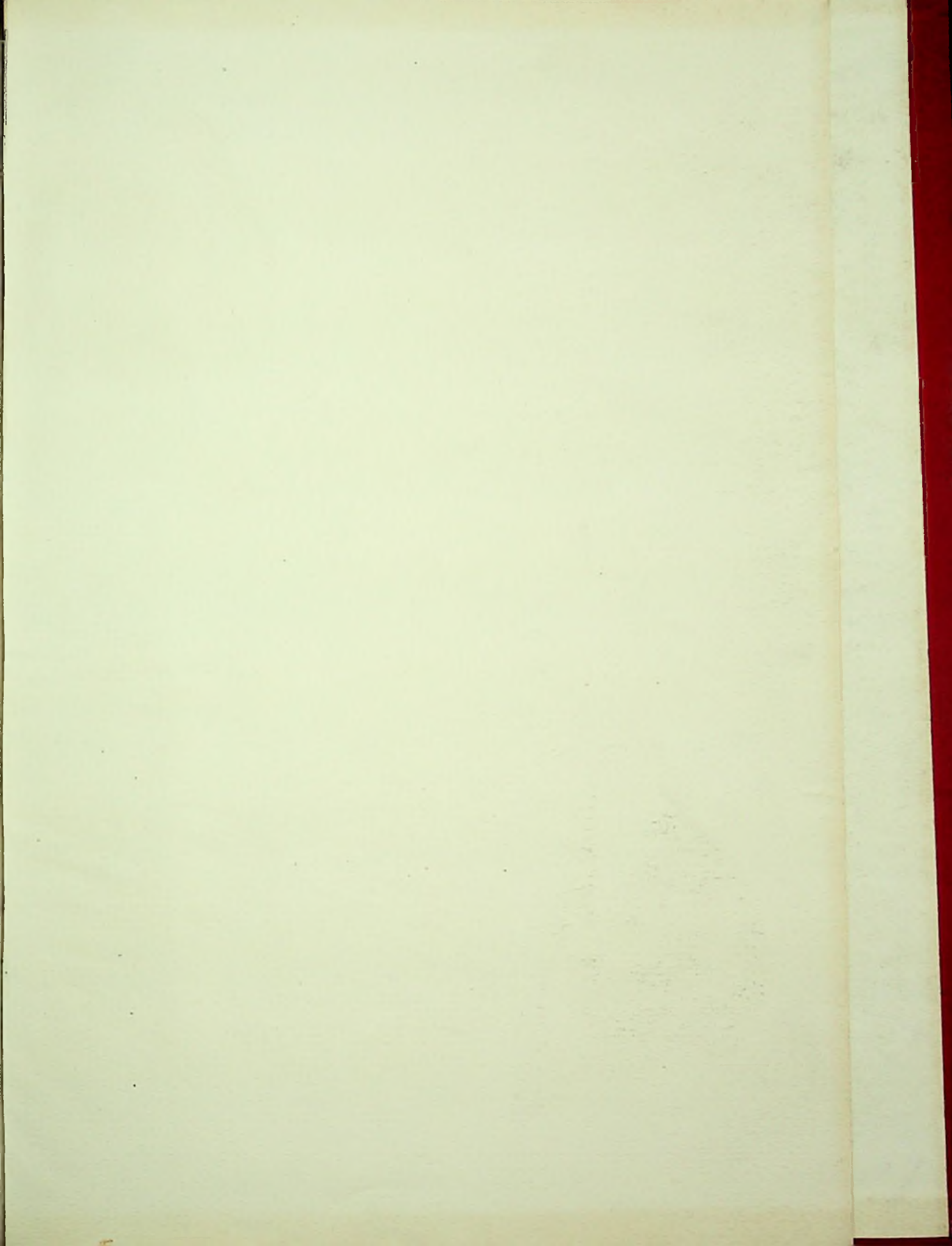
MAY 4—Baccalaureate.

MAY 5—Graduation.

MAY 9—Eighth Grade Banquet.

MAY 21—Summer Vacation Starts.







W. H. BAKER
BOSTON
MASS.