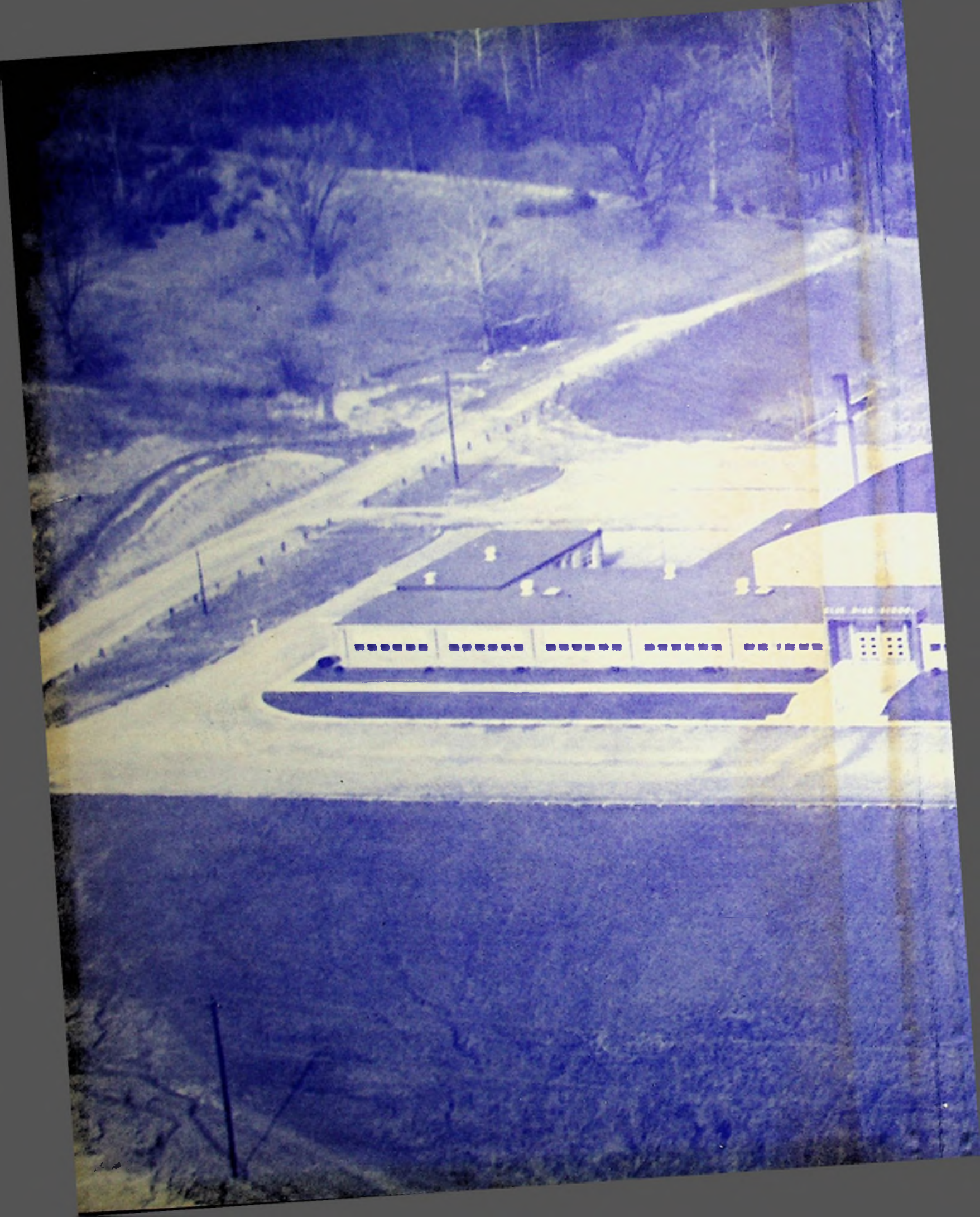
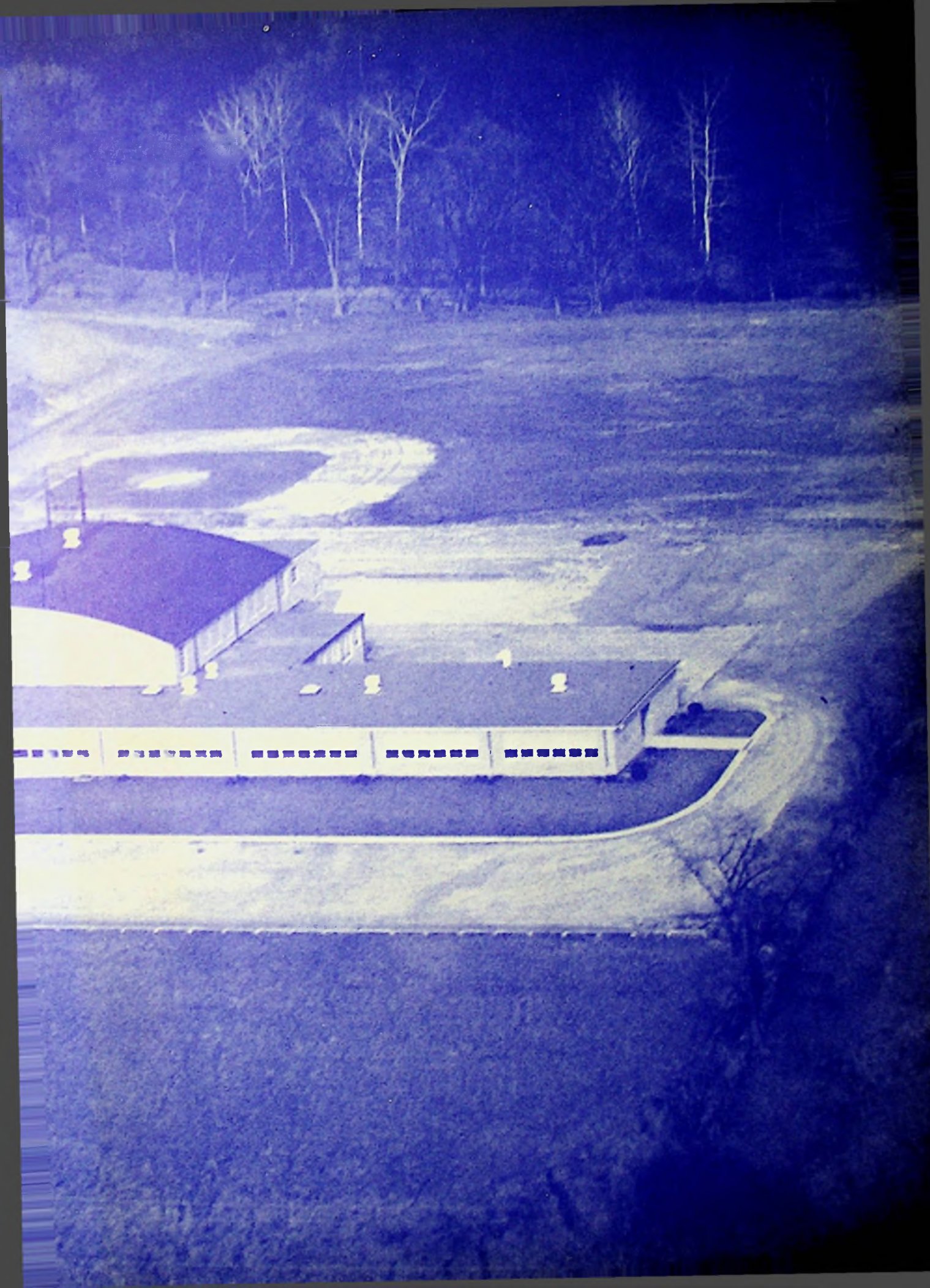


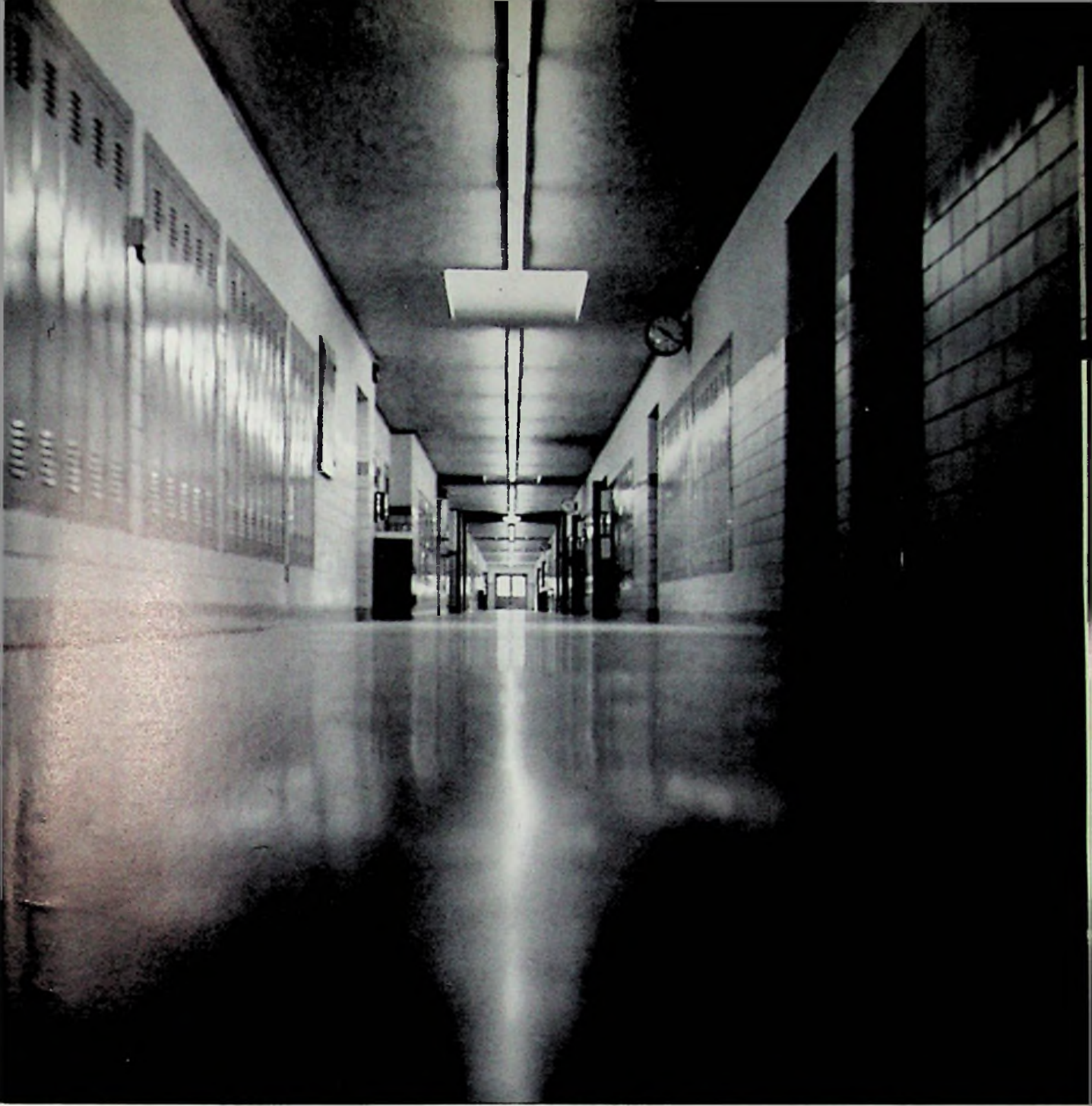


阿5宿









How noiseless falls the foot of time!

1958

**Panther**

# Table of

ADMINISTRATION



SENIORS



SCHOLARSHIP



# Contents

## ADVERTISING



## ACTIVITIES



## SPORTS



## UNDERCLASSMEN



Editors Judy Hunter and Marianne Hunt

The editors sat in their sanctum,  
Their countenance furrowed with care,  
Their minds at the bottom of business,  
Their feet at the top of a chair,  
Their chair-arm an elbow supporting,  
Their right hands upholding their heads,  
Their eyes on their dusty old table,  
With different documents spread.





I have but one lamp by which my feet are guided,  
and that is the lamp of experience.

# Administration



EDWARD R. MC COWEN

County Superintendent of Schools

County Superintendent McCowen received his B.S. degree in Education from Ohio University, the Masters degree from Northwestern University and has attended both Otterbein College and Harvard University.

Mr. McCowen said in a statement to us, "We shall continue to fight very vigorously for the ideals and principles on which our Republic was founded and to preserve in our schools the fundamentals of sound education. Good schools make for better communities. Therefore, for better communities, we must constantly strive to improve the whole educational program. Our motto shall be, 'May all Rural Schools continue to excel in buildings and curriculum!'"



N. B. POTTS

Assistant County Superintendent



FRANK TAYLOR

High School Supervisor

CARL D. BANDY  
Executive Head

Now, more than ever before, citizens are interested in and concerned about their schools. We, as teachers, must direct this interest and concern into a constructive force to help improve the school. We must use the interest to help the community define the basic purpose of the school.

We must caution our communities not to expect miracles overnight; we must help our communities to understand that their schools are but one part of society and that respect for scholarship must be evident outside as well as inside the classroom.

Finally, we know in a democracy that as each individual is unique, so each is of worth. The public school must never forget that in the long run the best hope for strength and for enduring peace lies in providing the highest type of educational experience for all the youth of all the people.



Thy word is a lamp unto my feet,  
And a light unto my path.

ROBERT ESTEPP  
Supervising Principal

TO THE MEMBERS OF THE GRADUATING CLASS  
OF 1958:

You are to be congratulated upon your success thus far. We sincerely wish you all the success in whatever you attempt to do.

We hope that your days here at Clay High School have been happy and beneficial ones; and that you will always remember and cherish those school days. Our greatest hope is that your education will serve you as a guide and stepping stone to higher attainments in life.



# Board of Education



RUSSELL MUNN  
President



GLENN MORITZ



ROBERT ALLEN



PERRY TANNER



ALVIS GLENN



DONALD CRAFT  
Clerk

# Faculty

WILLARD BASHAM

Olivet College  
B. S. In Music  
Education  
Ohio University  
Marshall College



RICHARD BEADLE

Ohio University  
B. S. in Education  
Marshall College  
M. A. in School  
Administration



BEATRICE BENDER

Ohio University  
Ohio State University  
B. S. in Education



LILLIAN DAVIS

Miami University  
B. S. in Education



CATHLEEN FLUTY

Marshall College  
A. B. Degree



KINNEY LONG

West Virginia University  
Marshall College  
Rio Grande College  
Ohio University  
Morehead College  
B. S. in Education



DONALD MONK

Ohio University  
University of Cincinnati  
B. S. in Education



SAMUEL MOORE

Ohio University  
B. S. in Education  
M. S. in Education

ALVA PFLEGER

Ohio University  
B. S. in Education



RUTH TAYLOR

Wilmington College  
B. S. Education



LORETTA WOODS

Ohio State University  
New York University  
Colorado University  
George Washington  
University  
University of Southern  
California  
B. S. in Education



KATHERINE MILLER

Secretary



LEFT TO RIGHT: Mrs. Davis, Mr. Loudenslager, Mrs. Woods, Mrs. Bender, Mr. Long, Mr. Pflieger, Mr. Bandy, Mr. Estep, Mr. Basham, Mr. Beadle, Mrs. Fluty, and Mr. Moore.

## The teachers' view of a student

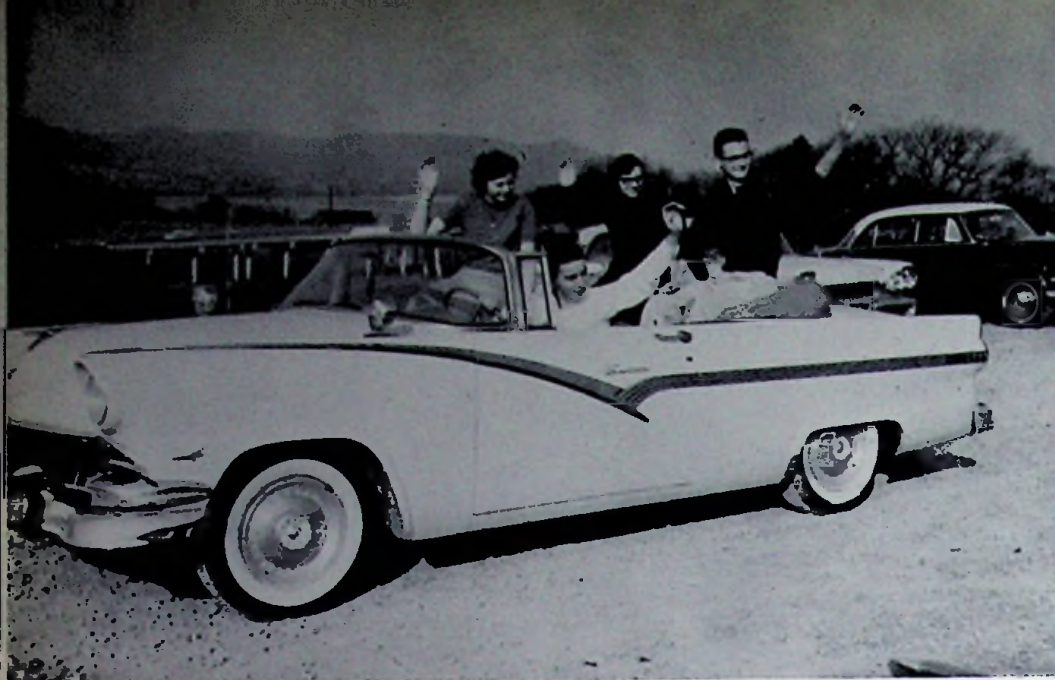
Students are so interesting. They are protoplasmic creatures, as are jelly fish and orchids. They respond to food, fads, automobiles, and assignments in that order. They are so capable, so dependable, so trustworthy when they 'need' the family car. They are so helpless and listless, or perhaps downright lazy, when confronted with homework. They are allergic to dirty dishes and disorderly lockers. They spend hours washing, waxing, and polishing their cars, swimming in the pool, practicing ball, and conversing on the telephone. They carelessly forget to make up assignments accrued during an absence. When a teacher is absent, they thoughtfully send flowers; and the morning she returns greet her with "Hello! Glad to see you're back." Without a doubt they will develop in time into responsible citizens quite capable of managing tomorrow's world. They present a fascinating challenge to the teacher and to the teaching profession.





Morning awaits at the end of the world,  
And the world is all at our feet.

# Seniors



CLASS  
OFFICERS  
Left to Right

SECRETARY  
Barbara Willis

VICE-PRESIDENT  
Ron Schuyler

TREASURER  
Georgianna Cantrell

PRESIDENT  
Harry Long

Where we love is home;  
Home that our feet may leave,  
But not our hearts.

Four years of high school have left the class of '58 with innumerable memories, life-long friends, and a vast thesaurus of knowledge.

The first year of high school we selected Margaret Phillips as class President; Harry Long, Vice-President; Judy Hunter, Secretary; and Dwight Hershey, Treasurer. Margaret served also as the Freshman Homecoming Attendant.

Moving into the new school was the big event of the Sophomore year. Dwight Hershey held the Presidency; with Ernie Vastine, Vice-President; Donna Grimshaw, Secretary; and Annis Moore and Harry Long handling the money. Barbara Willis was Homecoming Attendant. Four varsity cheerleaders came from this class: Donna Grimshaw, Faye Thompson, Debbie Newberry, and Judy Hunter.

Things really began to pop our Junior year with the annual Junior - Senior Prom and the class play, "Mother Is A Freshman", taking precedence. Harry Long was our President that year; Ron Schuyler, Vice-President; Patty Munn, Secretary; and Faye Thompson, Treasurer. The Homecoming Attendant post was filled by Phyllis Bayless. Ron Schuyler and Ernie Vastine, having served two years on the reserve squad, graduated to the varsity.

Our Senior year presented many memorable moments: The New York trip, the class play, frenzied preparations for graduation, and last but not least, the big moment itself.

Elected to the position of President was Harry Long; Vice-President, Ron Schuyler; Secretary, Barbara Willis; and Treasurer, Georgianna Cantrell. Margaret Phillips, this year's Homecoming Queen, had as a member of her court another Senior, Judy Hunter.

It is with mixed emotions that we face the world today. Gratitude to our teachers for a job well done, sadness at leaving our friends, many of whom we shall never see again, and eager anticipation of the future, all find their places in our hearts and minds as we prepare to embark on our journey into life.

So we, the class of 1958, wish to express our heartfelt thanks to all who had a part, however small, in our preparations for the future.

WILLIAM JOSEPH ALDRIDGE  
"Bill"

Boys Chorus 1,2,3,4  
Mixed Chorus 1,2,3,4  
Music Festival 1,2,3,4  
Panther Staff 4  
Junior Play Crew 3  
Senior Class Play 4  
Photogenic Contest 4



CLARENCE LEE BENDER  
"Benny"

Class Officer 2  
Boys Chorus 4  
Senior Class Play 4  
Photogenic Contest 4  
Intramural Sports 1,2



WENDELL WILKIE BLAKEMAN  
"Wick"

Junior Play Crew 3  
Senior Play Crew 4

NORMA LOUISE BURCHETT  
"Norma"

Office Staff 2,3,4  
Girls Glee Club 1,3  
Mixed Chorus 1,2  
Music Festival 3  
Senior Class Play 4  
Intramural Sports 1





GEORGIANNA CANTRELL  
"George"

Class Officer 4  
Girls Glee Club 1, 2, 3, 4  
Mixed Chorus 1, 3, 4  
Music Festival 3, 4  
Senior Class Play 4  
Pep Club 3, 4



LUTHER HARRY COBURN  
"Sonny"

Senior Class Play 4

JANET CUNNINGHAM DOYLE  
"Jan"

Girls Glee Club 1, 2, 3, 4  
Mixed Chorus 3, 4  
Music Festival 3, 4  
Majorette 1, 2  
Junior Class Play 3  
Senior Play Crew 4  
Intramural Sports 1, 2, 3



MARY ANN FITCH  
"Mary"

Library Staff 4  
Latin Club 2, 3, 4  
Band 3, 4  
Girls Glee Club 1, 2  
Mixed Chorus 1, 2  
Music Festival 3  
Senior Class Play 4  
Pep Club 4



JAMES HOWARD HAVENS  
"Jim"

Junior Class Play 3  
Senior Class Play 4  
Photogenic Contest 4



DWIGHT ELMER HERSHEY  
"Dwit"

Class Officer 1,2  
Band 1,2,3,4  
Boys Chorus 4  
Mixed Chorus 4  
Pep Club 3,4  
Pep Band 2,3  
Panther Staff 3,4  
Latin Club 3,4  
Student Council 1,2,3,4

National Honor Society 3,4  
Scholarship Team 1,2,3  
Senior Scholarship 4  
Music Festival 1,2,3,4  
Junior Class Play 3  
Senior Class Play 4  
Photogenic Contest 4  
Intramural Sports 1,2,3



MARIANNE HUNT  
"Mar"

National Honor Society 3,4	Library Staff 4
Scholarship Team 1,2,3	Typing Contest 3,4
Girls Glee Club 1,2	Latin Club 2,3,4
Accompanyist 1,2,3	Band 1,2,3,4
Music Festival 1,2,3,4	Pep Club 1,3,4
Junior Class Play 3	Panther Staff 3,4
Senior Class Play 4	Mixed Chorus 1,2
Intramural Sports 1	Future Teachers 4



JUDITH RUTH HUNTER  
"Judy"

Girls Glee Club 1,2,3,4	Band 1,2,3,4
Homecoming Attendant 4	Class Officer 1
Photogenic Contest 4	Mixed Chorus 1,2,3
Intramural Sports 2,3	Music Festival 3,4
Junior Class Play 3	Cheerleader 1,2,3,4
Senior Class Play 4	Panther Staff 3,4
Future Teachers 4	





WILLIAM LEE HUTCHINSON  
"Bill"

- Boys Chorus 4
- Mixed Chorus 4
- Music Festival 4
- Junior Class Play 3
- Senior Class Play 4
- Photogenic Contest 4
- Intramural Sports 1, 2, 3



CLYDE EDWARD LEACH  
"Clyde"

- Junior Play Crew 3
- Senior Play Crew 4

HARRY WILLIAM LONG  
"Harry"

- |                     |                             |
|---------------------|-----------------------------|
| Panther Staff 3, 4  | Class Officer 1, 2, 3, 4    |
| Latin Club 2, 3, 4  | Student Council 3, 4        |
| Band 1, 2, 3, 4     | National Honor Society 3, 4 |
| Pep Club 3, 4       | Scholarship Team 1, 2, 3    |
| Pep Band 2, 3       | Senior Scholarship 4        |
| Junior Class Play   | Intramural Sports 1, 2, 3   |
| Senior Class Play 4 | Music Festival 1, 2, 3, 4   |



CHRISTIAN FRANKLIN MEENACH  
"Chris"

- Boys Chorus 4
- Mixed Chorus 4
- Music Festival 4
- Junior Play Crew 3
- Senior Play Crew 4
- Intramural Sports 1, 2, 3



LINDA LOU MORGAN  
"Midge"

Junior Play Crew 3  
Senior Class Play 4  
Pep Club 1, 3, 4  
Intramural Sports 1, 2, 3



PATTY LOU MUNN  
"Patty"

Class Officer 3  
Office Staff 4  
Library Staff 2, 3  
Panther Staff 3  
Band 1, 2, 3, 4  
Pep Club 1, 3, 4  
Future Teachers 3

National Honor Society 3, 4  
Senior Scholarship 4  
Girls Glee Club 1  
Music Festival 1, 2, 3, 4  
Junior Class Play 3  
Senior Class Play 4



DEBRA LEE NEWBERRY  
"Debbie"

National Honor Society 3, 4  
Intramural Sports 1, 2, 3  
Music Festival 2, 3  
Mixed Chorus 1, 2  
Band 4  
Junior Class Play 3

Girls Glee Club 1, 2, 3, 4  
Cheerleader 1, 2, 3, 4  
Student Council 1, 4  
Scholarship Team 1, 2, 3  
Senior Class Play 4  
Photogenic Contest 4



GLENN LEON NICHOLS  
"Glenn"

Junior Play Crew 3  
Senior Play Crew 4



MARY MARGARET PAYNE  
"Mary"

Office Staff 2  
Library Staff 4  
Girls Glee Club 1, 3, 4  
Mixed Chorus 1  
Music Festival 3, 4  
Pep Club 1, 3, 4  
Junior Play Crew 3  
Senior Class Play 4  
Intramural Sports 1, 2, 3



DORIS JEAN PHILLIPS  
"DJ"

Band 3, 4  
Girls Glee Club 4  
Majorette 3, 4  
Yearbook Attendant 3  
Junior Class Play 3  
Senior Play Crew 4  
Pep Club 4  
Intramural Sports 3  
Music Festival 4

MARGARET JOYCE PHILLIPS  
"Marg"

National Honor Society 3, 4	Girls Glee Club 1, 3, 4
Library Staff 2, 3	Pep Club 1
Homecoming Queen 4	Panther Staff 2, 3
Homecoming Attendant 1	Music Festival 3, 4
Photogenic Contest 4	Class Officer 1
Junior Class Play 3	Student Council 1, 3
Senior Class Play 4	Mixed Chorus 1, 3, 4



DAVID FLOYD PRIOR  
"Dave"

Baseball 3, 4  
Junior Play Crew 3  
Senior Class Play 4  
Intramural Sports 1, 2, 3





STEPHEN RATCLIFF  
"Steve"

Junior Play Crew 3  
Senior Play Crew 4  
Intramural Sports 1, 2, 3



JOHN EDWARD RICKEY  
"Johnny"

Junior Play Crew 3  
Senior Play Crew 4  
Senior Class Play 4  
Intramural Sports 1, 2, 3



PHYLLIS ANNE RIFFE  
"Phyllis"

Girls Glee Club 3, 4  
Mixed Chorus 3



FREDERICK JOSEPH ROCK, JR.  
"Fred"

Scholarship Team 2  
Junior Play Crew 3  
Senior Class Play 4



MARY MARGARET PAYNE  
"Mary"

- Office Staff 2
- Library Staff 4
- Girls Glee Club 1, 3, 4
- Mixed Chorus 1
- Music Festival 3, 4
- Pep Club 1, 3, 4
- Junior Play Crew 3
- Senior Class Play 4
- Intramural Sports 1, 2, 3



DORIS JEAN PHILLIPS  
"DJ"

- Band 3, 4
- Girls Glee Club 4
- Majorette 3, 4
- Yearbook Attendant 3
- Junior Class Play 3
- Senior Play Crew 4
- Pep Club 4
- Intramural Sports 3
- Music Festival 4

MARGARET JOYCE PHILLIPS  
"Marg"

- |                             |                         |
|-----------------------------|-------------------------|
| National Honor Society 3, 4 | Girls Glee Club 1, 3, 4 |
| Library Staff 2, 3          | Pep Club 1              |
| Homecoming Queen 4          | Panther Staff 2, 3      |
| Homecoming Attendant 1      | Music Festival 3, 4     |
| Photogenic Contest 4        | Class Officer 1         |
| Junior Class Play 3         | Student Council 1, 3    |
| Senior Class Play 4         | Mixed Chorus 1, 3, 4    |



DAVID FLOYD PRIOR  
"Dave"

- Baseball 3, 4
- Junior Play Crew 3
- Senior Class Play 4
- Intramural Sports 1, 2, 3



STEPHEN RATCLIFF  
"Steve"

Junior Play Crew 3  
Senior Play Crew 4  
Intramural Sports 1, 2, 3



JOHN EDWARD RICKEY  
"Johnny"

Junior Play Crew 3  
Senior Play Crew 4  
Senior Class Play 4  
Intramural Sports 1, 2, 3



PHYLLIS ANNE RIFFE  
"Phyllis"

Girls Glee Club 3, 4  
Mixed Chorus 3



FREDERICK JOSEPH ROCK, JR.  
"Fred"

Scholarship Team 2  
Junior Play Crew 3  
Senior Class Play 4



WILLIAM CRAIG ROSE  
"Craig"

Latin Club 3, 4  
Boys Chorus 4  
Mixed Chorus 4  
Music Festival 4  
Senior Class Play 4  
Junior Play Crew 3



RONALD KEITH SCHUYLER  
"Ron"

Class Officer 3, 4  
Scholarship Team 1  
Basketball 1, 2, 3, 4  
Baseball 1, 3, 4  
Boys Chorus 2, 4  
Mixed Chorus 4  
Junior Class Play 3  
Senior Class Play 4  
Pep Club 1

LYDIA FAYE THOMPSON  
"Faye"

Class Officer 3  
National Honor Society 3, 4  
Girls Glee Club 1, 2, 3, 4  
Mixed Chorus 1, 2, 3, 4  
Music Festival 3  
Cheerleader 2, 3, 4  
Junior Class Play 3  
Senior Class Play 4  
Pep Club 1, 3, 4  
Intramural Sports 1, 2, 3  
Future Teachers 4



ERNEST JAMES VASTINE  
"Ernie"

Class Officer 2  
Basketball 1, 2, 3, 4  
Baseball 2, 4  
Boys Chorus 2, 3, 4  
Mixed Chorus 3, 4  
Junior Class Play 3  
Senior Class Play 4  
Pep Club 1  
Music Festival 4



PHYLLIS ANITA WHEELER  
"Phyl"

Latin Club 2, 3, 4  
Band 1, 2, 3, 4  
Girls Glee Club 1  
Music Festival 1, 2, 3, 4  
Pep Club 1, 3, 4  
Senior Class Play 4  
Future Teachers 4



BARBARA ANN WILLIS  
"Barb"

Class Officer 4	Library Staff 2, 3, 4
Typing Contest 3, 4	Girls Glee Club 1, 2, 3
Office Staff 3, 4	Mixed Chorus 1, 2, 3
Band 1, 2	Music Festival 1, 2, 3
Panther Staff 3, 4	Homecoming Attendant 2
Junior Class Play 3	Photogenic Contest 4
Senior Class Play 4	Intramural Sports 1, 2



And with ambitious feet,  
secure and proud,  
we ascend the ladder  
leaning on a cloud!



### Best Personality

Dwight Hershey and Margaret Phillips



### Best Athlete

Linda Morgan and Bill Hutchinson



### Best Dressed

Debbie Newberry and Benny Bender



### Most Popular Couple

Marianne Hunt and Craig Rose

# SENIOR SUPERLATIVES



FOUND! A NEW WAY TO "MAKE" MONEY!!  
Harry Long and Patty Munn

**Most Likely To Succeed**



Students always "look up" to  
Glenn Nichols and Judy Hunter.

**Best Looking**

# Senior Superlatives



SO THAT'S WHERE YOU KIDS GET YOUR WITS!  
Johnny Rickey and Janet Doyle

**Wittiest**



THESE TWO CERTAINLY LOOK "ACTIVE"!!  
Dave Prior and Doris Jean Phillips

**Laziest**

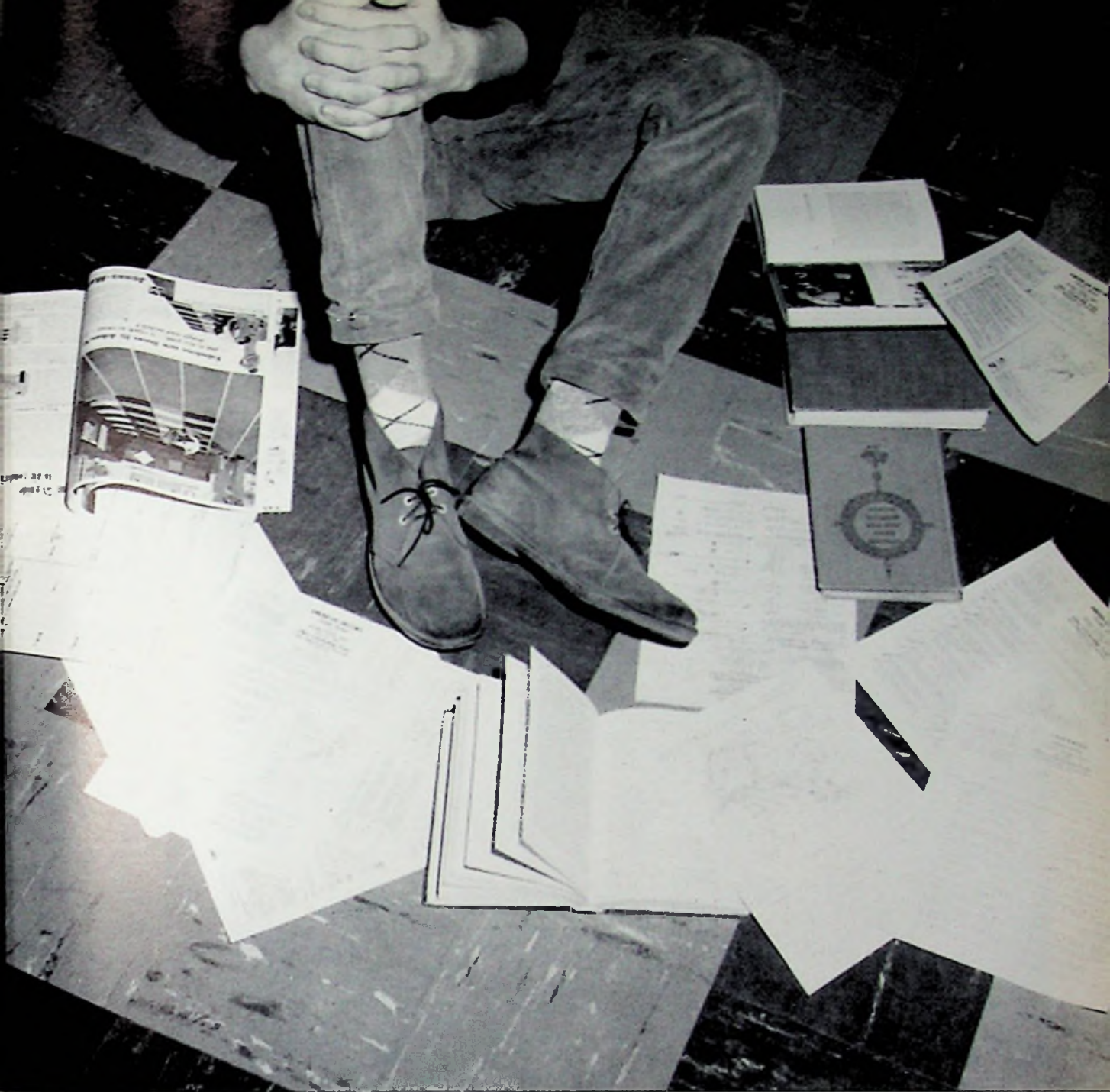


LEFT TO RIGHT: B. Willis, W. Blakeman, G. Cantrell, H. Coburn, P. Wheeler, B. Aldridge, M. Fitch, P. Riffe, B. Bender, P. Munn, C. Meenach, F. Thompson, E. Vastine, D. Prior, M. Hunt, C. Rose, M. Phillips, S. Ratcliff, D. Newberry, J. Rickey, F. Rock, L. Morgan, C. Leach, N. Burchett, G. Nichols, D. Phillips, R. Schuyler, B. Hutchinson, J. Havens, J. Doyle, H. Long, D. Hershey, M. Payne. NOT SHOWN: Judy Hunter.

Equipped with skills and high ideals  
They'll march toward tomorrow's sun.

# Seniors





He who has imagination without learning  
has wings but no feet.

# Scholarship

# Scholarship Teams

## SENIOR SCHOLARSHIP TEAM

LEFT TO RIGHT: Mrs. Bender, advisor; Dwight Hershey, Patty Munn, Harry Long.



BACK ROW: C. Long, B. Maple, H. Long, D. Hershey, G. Hunter, S. Colburn, R. Pack, R. O'Doherty.  
FRONT ROW: S. Truman, M. Wells, K. Reed, D. Newberry, M. Wells, B. Hunter, J. Barr. NOT SHOWN: D. Stafford.

## TYPING CONTEST

LEFT TO RIGHT: K. Houston, J. Willis, B. Willis, M. Hunt.



# Co-Valedictorians Harry Long Dwight Hershey

THERE ARE GEMS OF WONDROUS  
BRIGHTNESS OFTIMES LYING AT OUR  
FEET, AND IF WE PASS THEM, WALK-  
ING THOUGHTLESS, DOWN THE BUSY,  
CROWDED STREET, IF WE KNEW OUR  
PACE WOULD SLACKEN, WE WOULD  
STEP MORE OFT WITH CARE, LEST  
OUR CARELESS FEET BE TREADING TO  
THE EARTH SOME JEWEL RARE.



# Salutatorian Marianne Hunt

THE TRAIN OF ACTION!

WHERE HAVE MY FEET CHOSEN OUT THEIR WAY?  
WHAT HAVE I LEARNT, WHERE'ER I'VE BEEN?  
WHAT HAVE I DONE THAT'S WORTH THE DOING?  
WHAT HAVE I SOUGHT THAT I SHOULD SHUN?  
WHAT DUTY HAVE I LEFT UNDONE, OR INTO  
WHAT NEW FOLLIES RUN?

# NHS



CHARACTER  
Margaret  
Phillips



SCHOLARSHIP  
Dwight  
Hershey



LEADERSHIP  
Faye  
Thompson



SERVICE  
Debbie  
Newberry





LEFT TO RIGHT: Mr. Long, Sponsor; Ron Pack, Margaret Phillips, Harry Long, Debbie Newberry, Faye Thompson, Steve Colburn, Marianne Hunt, Mrs. Woods, Patty Munn, and Dwight Hershey.

## National Honor Society

The National Honor Society is an organization of high esteem. This society is a nation-wide organization with each secondary school organizing its own club with the national standards of Character, Scholarship, Leadership, and Service. In order to become a member of this society, one must have at least a B average, have good character, have the ability to lead others, and have a good record of services rendered throughout the high school years.

There are four types of members in National Honor: The Probationary, the Active, the Honorary, and the Graduate. Each of these members are of great importance and each must maintain the standards in order to remain in this society.

Our National Honor Society, the Kiwanis Chapter, has initiated a new project of constructing a Scholarship Walk with each block containing the names of the graduating members of this society.



## WORLD HISTORY

FRONT, Left to Right: Mrs. Fluty, Bob Hunter, Norma Hutchinson, and Bill Bailey.

I DO LOVE THESE ANCIENT RUINS  
WE NEVER TREAD UPON THEM,  
BUT WE SET OUR FOOT UPON  
SOME REVEREND HISTORY.



## AMERICAN HISTORY

FRONT, Left to Right: Callie Benner, Doris Osborne, and Mr. Estepp.

I KNOW OF NO WAY OF  
JUDGING THE FUTURE BUT  
BY THE PAST.

## AMERICAN GOVERNMENT

FRONT, Left to Right: Harry Long, Mrs. Fluty.

WITH ACHING HANDS AND  
BLEEDING FEET,

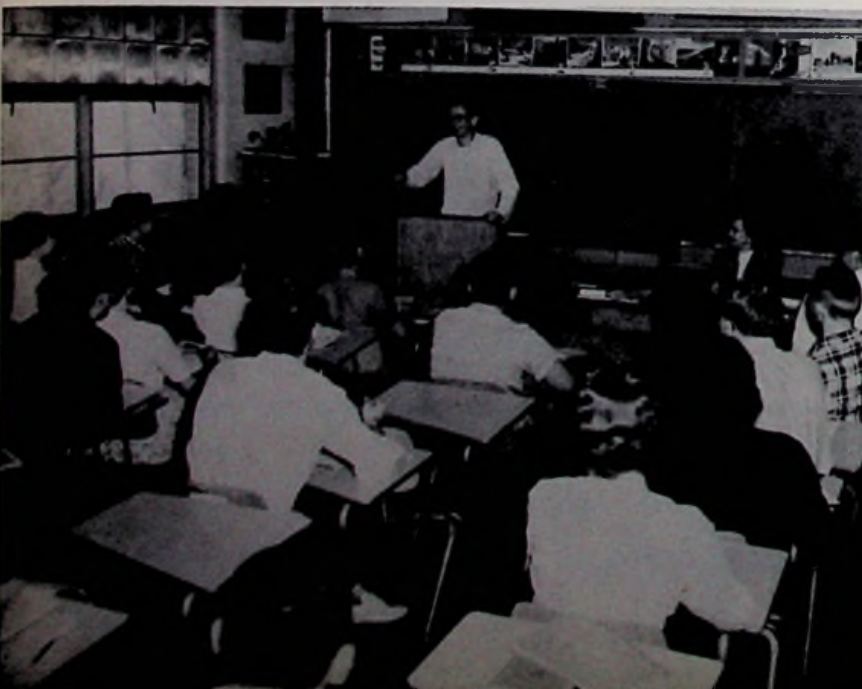
WE DIG AND HEAP, LAY STONE  
ON STONE;

WE BEAR THE BURDEN AND THE  
HEAT

OF THE LONG DAY AND WISH  
TWERE DONE.

NOT TILL THE HOURS OF LIGHT  
RETURN

ALL WE HAVE BUILT DO WE  
DISCERN.



IN MATHEMATICS THE  
MAN WHO IS IGNORANT  
IS LIKELY TO BE LOST.

ALGEBRA I



MATHEMATICS IS NOT  
DETACHED FROM MAN.

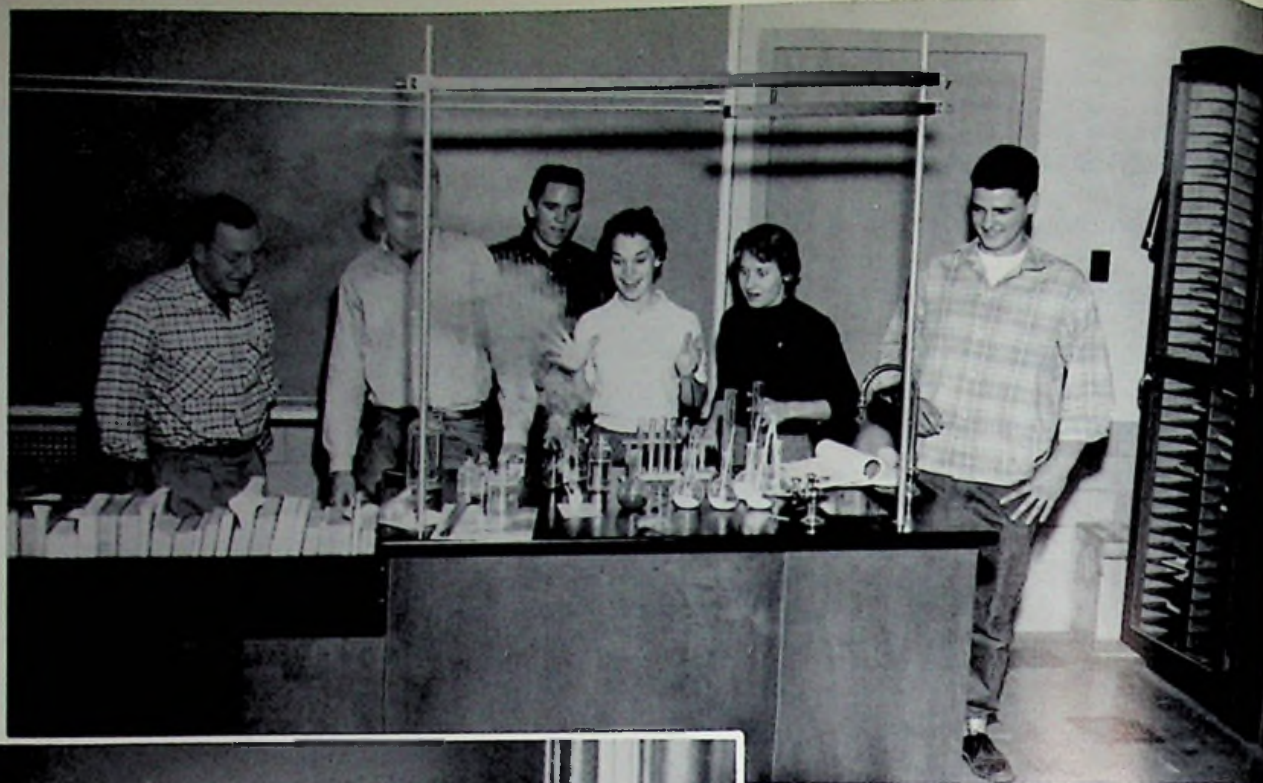
PLANE GEOMETRY



MATHEMATICS SUPPLIES  
THE PRACTICAL MAN  
WITH THE TOOLS  
ESSENTIAL TO HIS EVERY-  
DAY WORK.

ADVANCED MATH





LEFT TO RIGHT: Mr. Long, Glenn Nichols, Clyde Leach, Faye Thompson, Marg Phillips, Wendell Blakeman.



TOP TO BOTTOM: C. Meenach, C. Leach, M. King, J. Havens, D. Hershey.

## Chemistry

Happy is he who can  
 learn the causes of  
 things and who puts  
 beneath his feet  
 all fears.





MIKE SMITH, first place winner of Scioto County Essay Contest of the World Conservation Exposition and Plowing Contest, reading his winning essay to Mr. Beadle's SCIENCE class.



Mr. Pflieger and his BIOLOGY class discussing the parts of the human body.



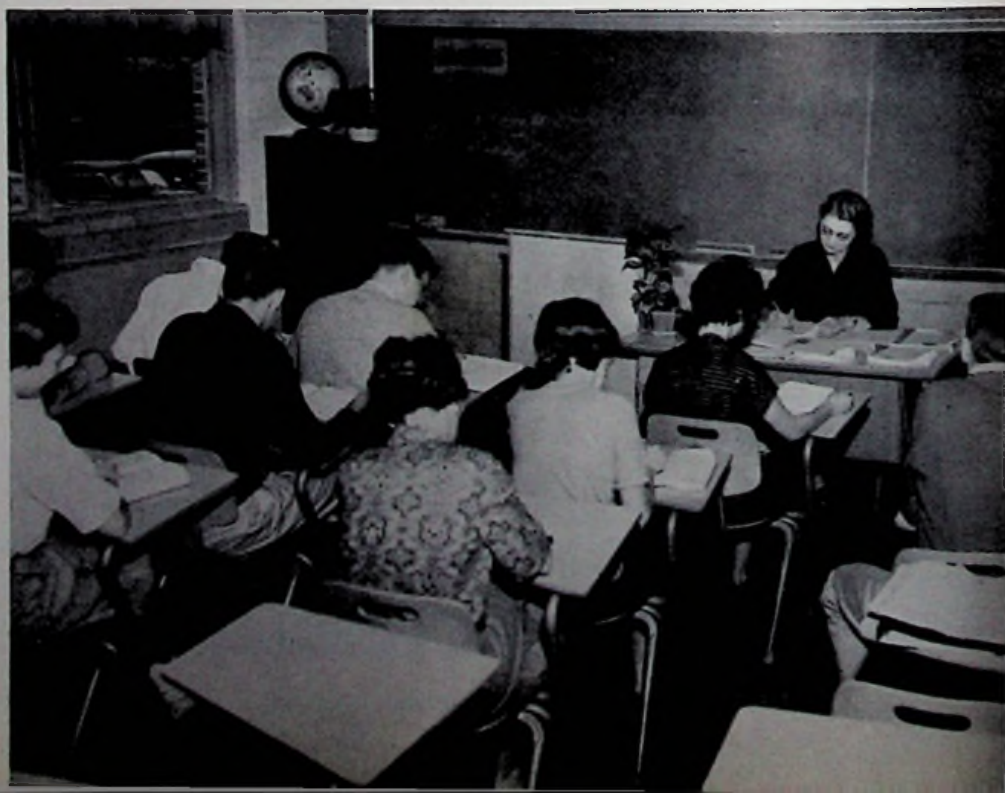
ENGLISH XI

STANDING: S. Colburn,  
R. Pack. SITTING AT  
DESK: Mrs. Bender. SEATED:  
D. Conklin, S. Cottrell,  
J. Ison, L. Keaton.

Better the feet slip than the tongue.

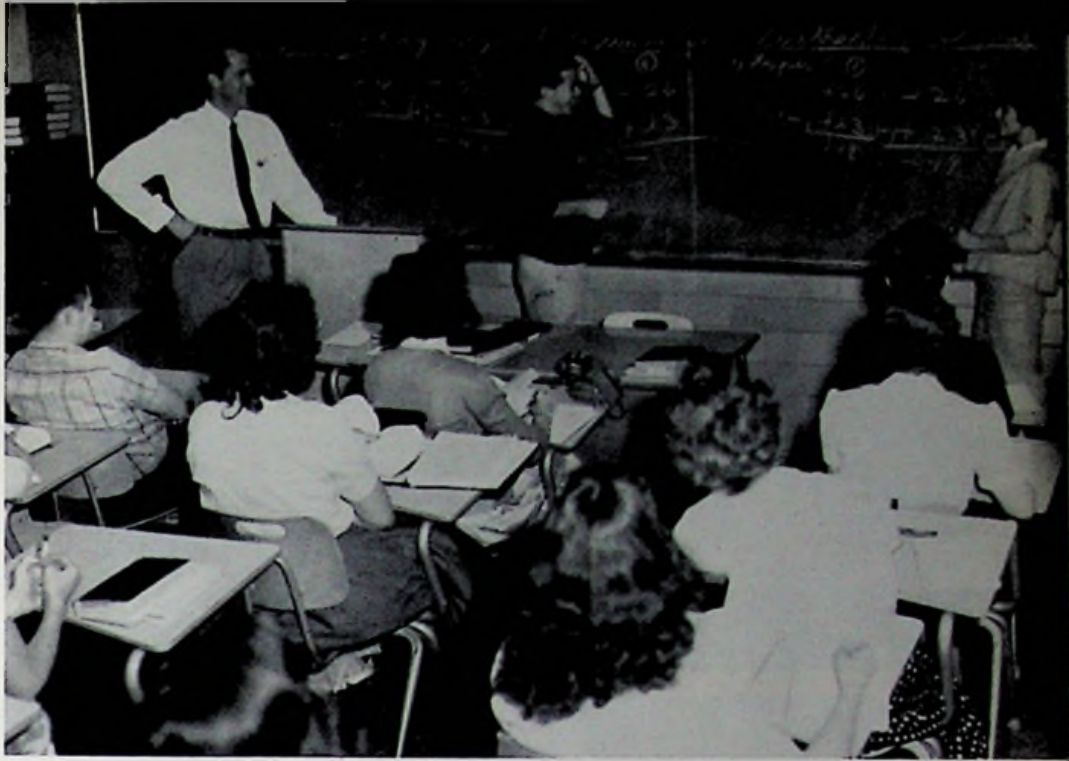
ENGLISH XII

Mrs. Bender, at desk.  
SEATED: W. Blakmen, B.  
Bender, J. Hunter, G.  
Nichols, J. Havens, J.  
Doyle, S. Mathis, P.  
Riffe, B. Aldridge, M.  
Hunt.



MATH

WE ALWAYS KNEW GIRLS  
WERE SMARTER THAN  
BOYS, AND NANCY  
BURGESS PROVES THAT  
TO TOM NOLEN AND  
MR. PFLEGER!



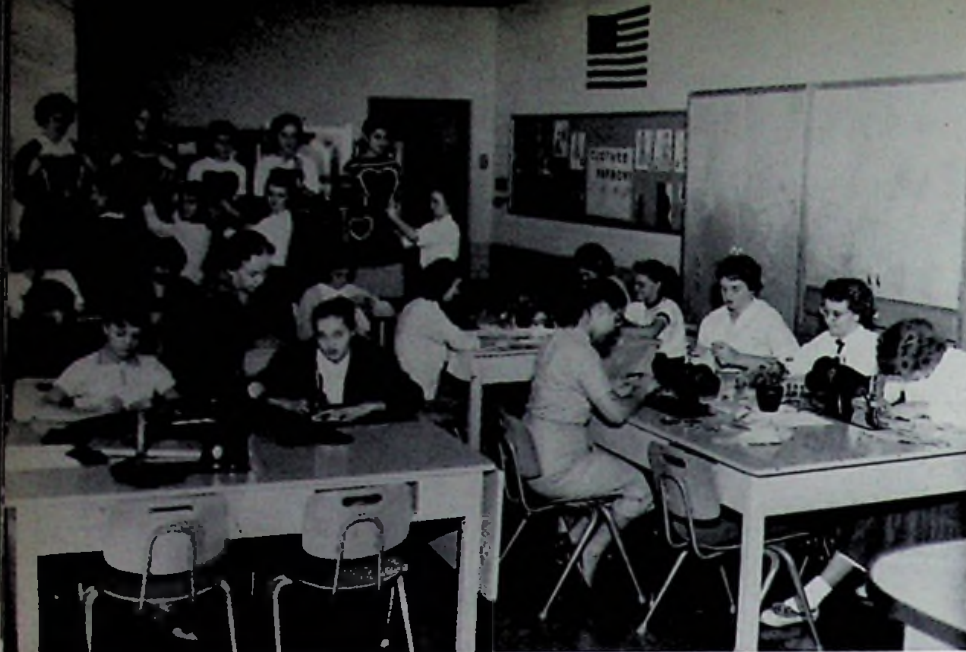
Man is all symmetrie,  
Full of proportions, one limb to another.



ENGLISH

"YOU SEE, ENGLISH  
CAN BE EASY AFTER  
ALL," MR. PFLEGER  
SAYS TO SHARON  
TAYLOR AND MELISSA  
WELLS.

HOME ECONOMICS



LEFT TO RIGHT: N. Richards, J. Davis, L. McGlone, N. Burgess, C. Mathis, L. Steele, L. Harris, U. Phillips, B. Mathis, Mrs. Taylor, C. Murphy, S. Newman, K. Pigg, N. Morgan, B. Leonard, B. Stevens, J. McCann, G. Fry, M. Wells, C. Biars, G. Willis, K. Vanderpool, S. Frazier.



LEFT TO RIGHT: K. Oakes P. Clifford B. Sweinsburg J. Barnett J. Duncan D. Havens P. Cox C. McCann Mrs. Taylor J. Leonard B. Cordial P. Payne S. Hamblin S. Cordle B. Radabaugh S. Curtis C. Buffington

# Home Economics

When youth and Home Ec. meet,  
They chase the glowing hours  
with flying feet.

Georgene Kalb



## TYPING

Students prepare themselves for when they will go to work in an office, go to college, or type for their own personal use.



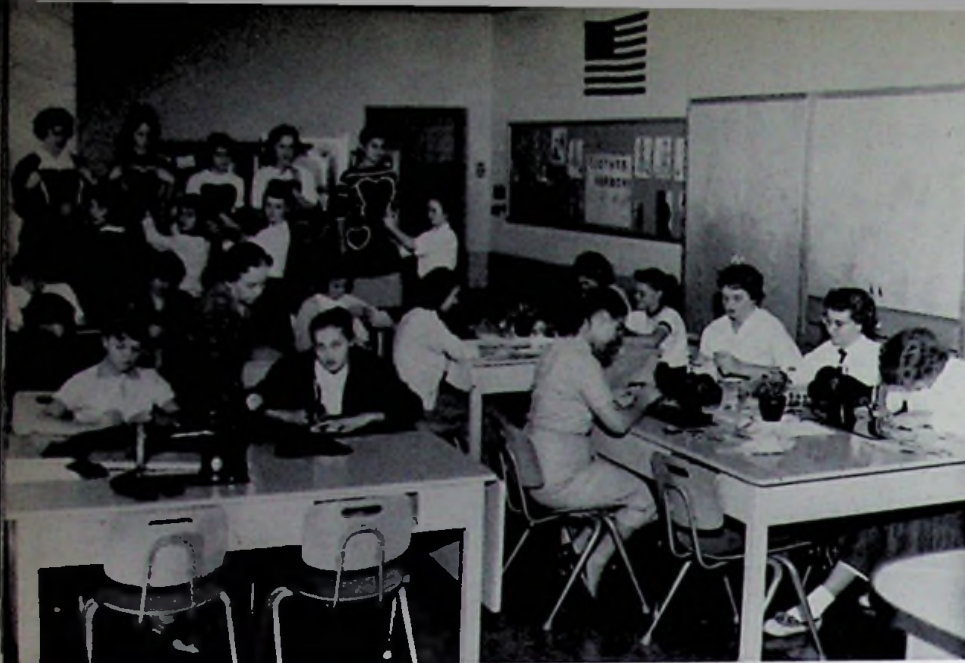
Ruth Ann Hardwick reads her shorthand notes to the girls who take

## SHORTHAND I



Working with BUSINESS MACHINES always did interest Norma Burchett.

**Commercial**  
These are the girls who will get the job done.



HOME ECONOMICS

LEFT TO RIGHT: N. Richards, J. Davis, L. McGlone, N. Burgess, C. Mathis, L. Steele, L. Harris, U. Phillips, B. Mathis, Mrs. Taylor, C. Murphy, S. Newman, K. Pigg, N. Morgan, B. Leonard, B. Stevens, J. McCann, G. Fry, M. Wells, C. Biars, G. Willis, K. Vanderpool, S. Frazier.



LEFT TO RIGHT:

K. Oakes  
 P. Clifford  
 B. Sweinsburg  
 J. Barnett  
 J. Duncan  
 D. Havens  
 P. Cox  
 C. McCann  
 Mrs. Taylor  
 J. Leonard  
 B. Cordial  
 P. Payne  
 S. Hamblin  
 S. Cordle  
 B. Radabaugh  
 S. Curtis  
 C. Buffington

# Home Economics

When youth and Home Ec. meet,  
 They chase the glowing hours  
 with flying feet.

Georgene Kalb



## TYPING

Students prepare themselves for when they will go to work in an office, go to college, or type for their own personal use.



Ruth Ann Hardwick reads her shorthand notes to the girls who take

## SHORTHAND I



## Commercial

These are the girls who will get the job done.

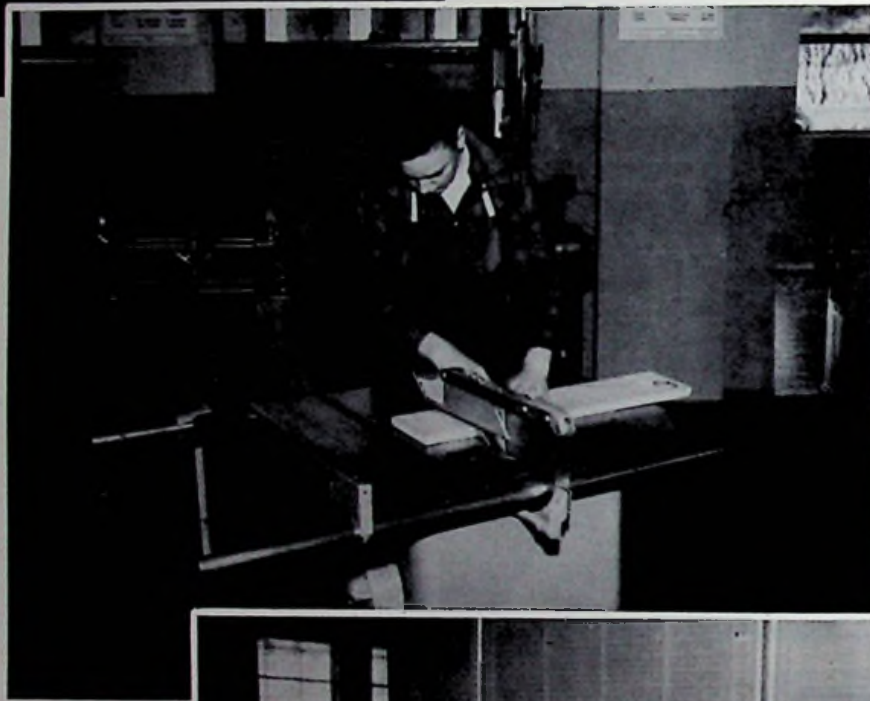
Working with BUSINESS MACHINES always did interest Norma Burchett.





METAL WORKING  
Johnny White

# Manual Training



WOOD WORKING  
Dave Long



DRAFTING

LEFT TO RIGHT: W.  
Keaton, J. Justice, J.  
Bush, D. Adams, L. Nagle,  
Mr. Moore, J. McGlone.



DRIVERS EDUCATION

LEFT TO RIGHT: Mr. Estepp, D. Flaucher, J. Bush, R. Buckle, K. Clark, P. Evans, S. Meenach, A. Fields, D. Buckle, C. Meenach, R. Kempton.

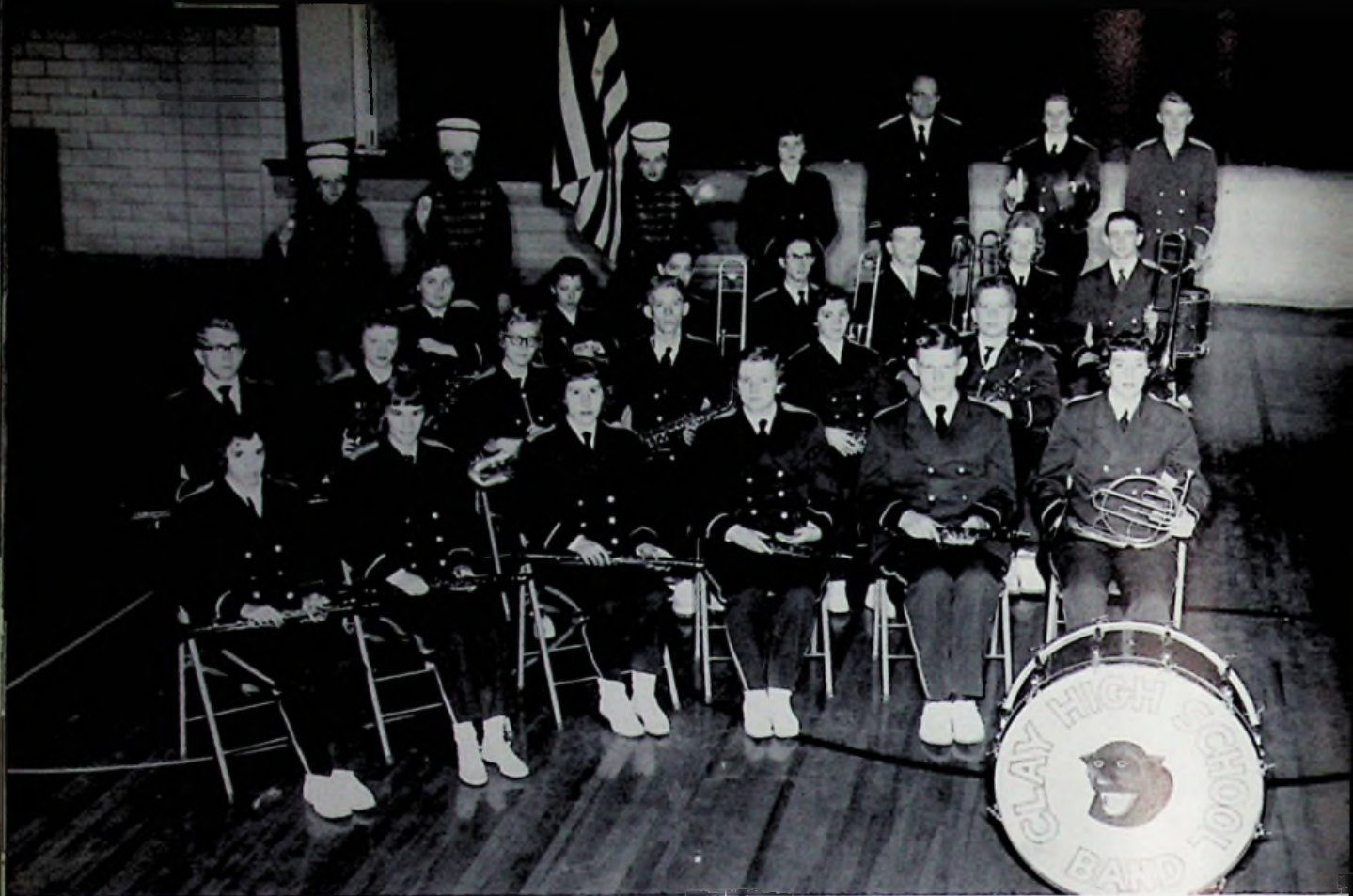


A driving class with steadier feet  
Was never before our pleasure to meet  
Their eyes on the road, their hands on the wheel  
They drive along in their new automobile.



DRIVERS EDUCATION

LEFT TO RIGHT: J. White, Mr. Estepp, S. Truman, J. Leonard, P. Clifford, S. Hamblin, F. Reed, R. Riffe,



FRONT ROW: D. Osborne, D. Havens, A. Moritz, P. Munn, F. Reed, P. Wheeler. SECOND ROW: D. Hershey, J. Hunter, N. Bryan, B. Meixner, C. Gable, G. Bainer. THIRD ROW: M. Wells, K. Houston, P. Payne, M. Smith, T. Keller, J. Willis, M. Shonkwiler. FOURTH ROW: D. J. Phillips, N. Hutchinson, B. Lilly, S. Meenach, Mr. Basham, G. Willis, J. White.

# Clay Hi



A man must not go to  
law because the  
musician keeps false  
time with his foot.

INDIVIDUAL INSTRUCTION

LEFT TO RIGHT: M. Wells, B. Cordial,  
Mr. Basham, T. Beard, B. Maple.



FRONT ROW: M. Hunt, D. Newberry, F. Curtiss, J. Spence, S. Newman, J. Wiget. SECOND ROW: H. Long, S. Colburn, M. Howard, S. Truman, B. Radabaugh, H. Moritz, B. Bratt, D. Long. THIRD ROW: B. Harris, M. Fitch, S. Bryan, J. Leonard, B. Schweinsburg, G. Shy, D. Fenton, D. Walters, J. Keller. FOURTH ROW: C. Long, K. Reed, S. Joseph, S. Holcomb, S. Thomas.

# gh Band

To brisk notes in cadence  
 beating glance their many-  
 twinkling feet.

## MAJORETTES

D. Phillips, N. Hutchinson, S. Holcomb, S. Joseph, S. Thomas.





BOYS' CHORUS, FRONT ROW: Mr. Basham, F. Reed, G. Shy, R. Nelson, M. Smith, R. Pack, T. Tanner, C. Rose, D. Fenton, SECOND ROW: T. Keller, R. O'Doherty, R. Schuyler, S. Colburn, B. Aldridge, THIRD ROW: E. Vastine, P. Doty, D. Hershey, Hutchinson, Meenach.



The voices so sweet, the girls so fair.



God shall be my hope,  
My stay, my guide, and lantern to my feet.

# Underclassmen



JUNIOR

CLASS

OFFICERS

(Left to Right)

PRESIDENT  
Charles Bayless

SECRETARY  
Kay Houston

TREASURER  
Carolyn Gable

VICE-PRESIDENT  
Steve Cottle

**SEPTEMBER:**

- a. Back to school as upperclassmen! Thought we'd never make it!
- b. Sixty-three students enrolled as Juniors with Mrs. Bender and Mrs. Davis our sponsors.
- c. Band marched at Apple Festival in Jackson with participation of eleven junior members.
- d. Junior candy sales and first skating party (very successful financially and otherwise).
- e. Baseball games won with efforts of eleven Junior players.

**OCTOBER:**

- a. Really into the swing of school life again.
- b. Individual pictures of students taken.
- c. Basketball practice began.
- d. AT LAST! WE FINALLY ORDERED OUR CLASS RINGS!!

**NOVEMBER:**

- a. Those all-fatal flu shots. OUCH!
- b. DON'T JUMP ON THOSE BLEACHERS! Group pictures were taken for yearbook.
- c. Carolyn Gable and Kay Houston elected varsity cheerleaders.
- d. First basketball game. We're proud of our Junior players (and the others, too).
- e. Retakes were made of the underclassmen whose faces evidently broke the camera.

**DECEMBER:**

- a. THE ALL-IMPORTANT CLASS RINGS ARRIVED!!!!!!
- b. Santa Claus came to town with all his toys for little boys and girls.

**JANUARY:**

- a. HAPPY NEW YEAR!
- b. Don't do today what you can put off until tomorrow. That was the feeling of everyone on the first day back after vacation.

**FEBRUARY:**

- a. Induction of N.H.S. members Steve Colburn, Gary Hunter, and Ron Pack.
- b. BASKETBALL TOURNAMENT TIME. Naturally the Varsity and Reserve squads won both Championships, and of course Clay's Junior, Howard Richard, won the Foul Shooting Contest.

**MARCH:**

- a. Arrangements for the Prom began.

**APRIL:**

- a. A READY MADE FAMILY--Junior play.
- b. The big blast, Junior-Senior Prom. PERFECT CONDUCT
- c. Students (with brains) took scholarship tests.

**MAY:**

- a. SCHOOL'S OUT!! Our thanks and appreciation to the faculty, counselors, and supporters of the glorious third year of high school for the class of '59.

ROW ONE

John Barr  
Charles Bayless  
John Beard



ROW TWO

Callie Benner  
Bob Booth  
Donald Buckle



ROW THREE

Ronald Buckle  
Jerry Bush  
Haila Chandler



ROW FOUR

Maxine Chandler  
Steve Colburn  
Arlene Conklin



ROW FIVE

Darold Conklin  
Steve Cottle  
Judy Curtiss



ROW SIX

Paul Doty  
Arthur Elrod  
Betty Evans



ROW ONE

Patricia Evans  
Alice Fields  
Dick Flaughter



ROW TWO

Sandra Frazier  
Carolyn Gable  
Sam Hamblin



ROW THREE

Ruth Ann Hardwick  
Roy Hayton  
Sharon Holcomb

ROW FOUR

Kay Houston  
Gary Hunter  
John Ison



ROW FIVE

Larry Keaton  
Roger Kempton  
Donna Mathis



ROW SIX

Lowell McGlone  
Carol Meenach  
Sandra Meenach





ROW ONE

Kenneth Miller  
Anna Moritz  
Ron Mowery



ROW TWO

Roger Nelson  
Doris Osborne  
Ron Pack



ROW THREE

Tom Payne  
Jerry Phillips  
Patty Piatt



ROW FOUR

Bud Pyles  
Gale Radabaugh  
Howard Richard



ROW FIVE

Paul Rolfe  
Gordon Ruby  
Monte Shonkwiler



ROW SIX

Linda Spradlin  
Rita Stollsteimer  
Tom Tanner



ROW ONE:

Judy Taylor  
Sharon Thomas  
Jeannie Warnock



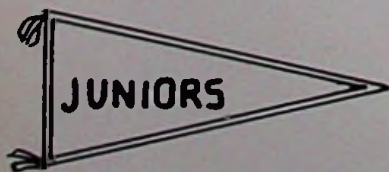
ROW TWO:

Johnny White  
Janet Willis  
La Dean Wright



ROW THREE:

Ron Wright  
James Curtis  
Mike King



M. Shonkwiler, J. Willis, A. Conklin.

SOPHOMORE

CLASS OFFICERS

LEFT TO RIGHT:

SECRETARY

Fred Reed

TREASURER

David Baker

VICE-PRESIDENT

Winfred Keaton

PRESIDENT

Dick Fenton



The foolish man seeks happiness in the distance;  
The wise grows it under his feet.

Struggling Freshmen no longer are we  
For now we are Sophomores, about 63  
You'll have to agree we're a class of renown  
Though the Juniors and Seniors still down on us frown.

All our activities, many more than a few  
We would now like to list in this poem for you.  
All other classes, now don't you feel sad  
Because of the good reputation we Sophomores have had.

In Scholastic achievements we are on the beam  
With our N. H. S. members and Scholarship Team.  
Our voices rang out, both far and near  
In boys chorus and Glee Club we were something to hear.

We had students in Latin and Shop Club, too,  
On the Library Staff and the Girls League, that's new.  
Without our five members, what would the Annual Staff do?  
And to the Pep Club and Band we were always so true.

Doing our duties with much delight  
We never did gripe about things we disliked.  
There was only one thing we did with regret,  
That was to pay our class dues to keep us from debt.

We would like to thank those who have lead us thus far,  
For the faculty has been our guiding star.  
So thanks to the teachers with all of our might  
And to all who have read this, Happy Day and Goodnight!



ROW ONE

Danny Adams  
 Bill Bailey  
 David Baker



ROW TWO

Jeanette Barnett  
 Gerald Barrett  
 Sandy Brush



ROW THREE

Carolyn Buffington  
 Sharon Callender  
 Kenneth Church

ROW FOUR

Ruth Ann Church  
 Patty Clifford  
 Barbara Cordial



ROW FIVE

Shirley Cordle  
 Phyllis Cox  
 Pamela Crawford



ROW SIX

Sandra Curtiss  
 Judy Duncan  
 Dick Fenton



ROW ONE

David Fry  
Gene Gambill  
Dee Greenhill



ROW TWO

Sharon Hamblin  
Bob Harris  
Jack Harris



ROW THREE

Doris Havens  
Bernard Howard  
Bob Hunter



ROW FOUR

Norma Hutchinson  
Sandy Joseph  
Denver Justice



ROW FIVE

Georgene Kalb  
Winfred Keaton  
Jennie Leonard



ROW SIX

Becky Lilly  
David Long  
Collin Madden



ROW ONE

Carolyn McCann  
 Jim McGlone  
 Mickey McManus



ROW TWO

Max Miller  
 Helen Moritz  
 Ruth Mounts



ROW THREE

Jack Muck  
 Jerry Millins  
 Mike Mullins

ROW FOUR

Larry Nagle  
 Katherine Oakes  
 Patty Payne



ROW FIVE

Arthur Personett  
 Gary Pollock  
 Beverly Radabaugh



ROW SIX

Fred Reed  
 Karen Reed  
 Billie Schweinsberg



ROW ONE:

Gary Shy  
Jim Spence  
Mike Spradlin



ROW TWO:

Shirley Truman  
Margaret Wells



NOT SHOWN:

Charlene Curtis  
Bill Meixner  
Robert Runyon



Junie Keaton

He isn't skinny-  
He's just tall,  
That's All.



CLASS OFFICERS

Left to Right

VICE-PRESIDENT

Ronnie King

TREASURER

Nancy Bryan

SECRETARY

Judy McCann

PRESIDENT

Roy O'Doherty

Pleasures newly found are sweet;  
When they lie about our feet.

We make it, high school at last! This first year has been a busy one, becoming acquainted with new teachers, classes, and high school routine. A fair share of Clay High's scholars, athletes, and musicians have been contributed by the Freshman Class.

We are eagerly anticipating the challenge ahead of us, and have high hopes of making Clay High proud of us. Our slate is clean and we are off to a flying start.



ROW ONE

Harold Adams  
Judy Barrett  
Tom Beard



ROW TWO

Carolyn Biars  
William Bratt  
Nancy Bryan



ROW THREE

Richard Burchett  
Nancy Burgess  
Kenny Burton



ROW FOUR

Roylene Callender  
Jim Clausing  
James Colegrove



ROW FIVE

Donald Cox  
Ronald Cox  
Bob Cross



ROW SIX

Faye Curtis  
Janet Davis  
David Duty



ROW ONE

Richard Evans  
Sharon Flaughter  
Ann Frazier



ROW TWO

Geneva Fry  
Larry Grant  
Jo Ann Harris



ROW THREE

Linda Harris  
George Holcomb  
Richard Horn

ROW FOUR

Mary Lois Howard  
Naomi Howard  
Maxie Johnston



ROW FIVE

Tom Keller  
Ronald King  
Barbara Leonard



ROW SIX

Darrel Lewis  
Chuck Long  
Gary Martin



ROW ONE

Brenda Mathis  
Clara Mathis  
Judie McCann



ROW TWO

Pat McCoy  
Lorna McGlone  
Nancy Morgan



ROW THREE

Robert Muck  
Camilla Murphy  
Shirley Newman



ROW FOUR

Tom Nolen  
Roy O'Doherty  
Carl Owens



ROW FIVE

Jerry Payne  
William Payton  
Paul Pelphrey



ROW SIX

Unita Phillips  
Kathryn Pigg  
Nancy Richard



ROW ONE

Joe Riffe  
Bob Rowe  
Mike Smith



ROW TWO

Linda Steele  
Rebecca Stevens  
Sharon Taylor



ROW THREE

Karen Vanderpool  
David Walters  
Melissa Wells

ROW FOUR

Eugene Wilson  
David Yeagle



NOT SHOWN

Janet Bailey  
Bill Maple  
Donna Stafford



NOT SHOWN

Glenda Willis  
Kenny Spradlin





The exhilaration of success lent  
wings to our sorely battered feet

# Sports



WINFRED KEATON

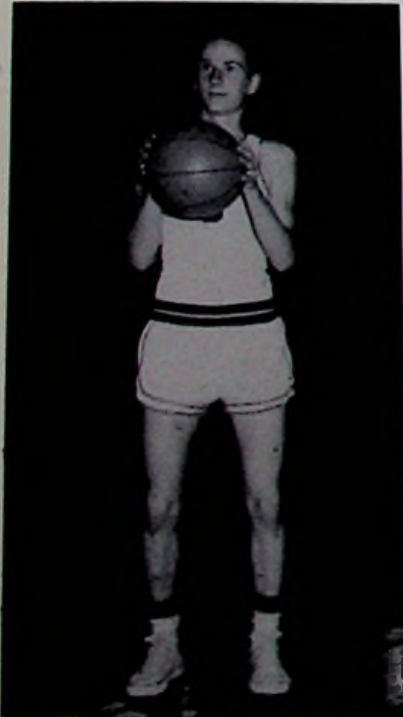


GALE RADABAUGH



RON WRIGHT

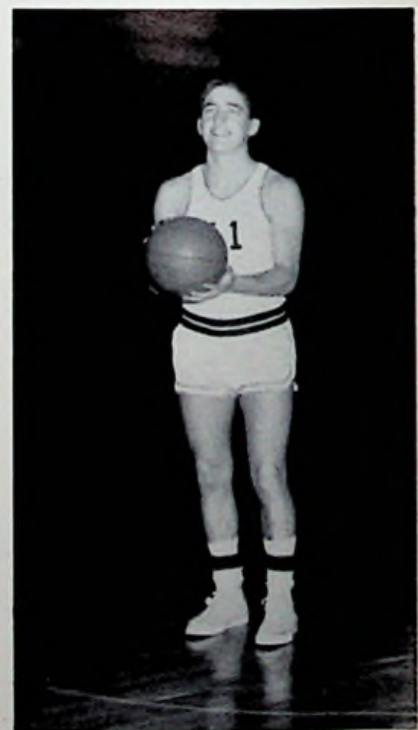
## Varsity Basketball Players



ERNIE VASTINE



ARTHUR ELROD



RON PACK



PAUL ROLFE



HOWARD RICHARD



LARRY KEATON

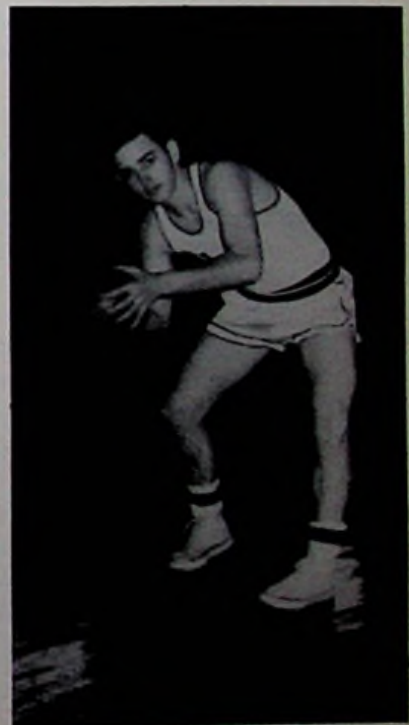
## Varsity Basketball Players



PAUL DOTY



RON MOWERY



RON SCHUYLER



## VARSITY BASKETBALL SQUAD

LEFT TO RIGHT: E. Vastine, R. Pack, H. Richard, R. Wright, S. Colburn, R. Mowery, W. Keaton, Mr. Monk, P. Rolfe, A. Elrod, R. Kempton, G. Radabaugh, R. Schuyler, P. Doty.

The Clay High Panthers were defeated in their initial contest by Manchester due mainly to inexperience. Although two of our boys were in double figures, we were still nudged out by the Greyhounds 47-44.

In our second start we began to look like a ball team, rolling over Rarden 81-55.

We were again turned to the trail of defeat when we met Minford's superior height and speed which outscored us 69-55 without allowing us to scare them throughout the game.

In our fourth contest, we won our second game and remained undefeated in the County A League by defeating Green 54-40.

Another non-league match, another defeat. Lucasville made us bow to a 63-44 setback.

GAME NINE. CLAY DOWNS WEBSTER 72-54. Our League record was still top: Five wins--no losses. We have beaten every team in the League, now to do it again.

Against Stockdale we scored our first non-league win 54-42. (82% of the foul shots were made. Best all year.)

Before our second clashing with Green, we held the undisputed lead in the League, but Green came from behind after trailing six points in the first half to defeat us 64-40 and tie us with 6-1 records each.

Although we played a terrific game, it wasn't good enough to beat Lucasville or Haney, whose 30 points in the second half kept them far enough ahead to down us 76-65.

CLAY DEFEATS OTWAY 66-38. Green won also, so it was still a deadlock in the League.

Although we outscored New Boston 38-34 on field goals, they beat us 42-41 by making eight foul shots to our three. It was a thriller all the way.

In our last League game, we ran over Webster's Jeeps 76-35 making us co-champions in the County A League with a 9-1 record; the same as Green.

In our first game of the 1958 tournament we met Rarden. We outscored them after a close battle. The combined scoring in the third quarter was only five points due to Rarden's playing possession ball which also resulted in an extremely low score of 39-28.

In our second tournament match, we faced McDermott and defeated them 56-46.

After splitting the honors in the League with Green, we showed our superiority by downing them 42-38.

Now the CHAMPIONSHIP GAME!! Once again we faced Green, once again we were victorious, winning the Scioto County Class A Tournament 55-46.

As newly crowned Scioto County Champs, we met the Lawrence County representative in our first Sectional Tournament Contest. Lawrence's Chesapeake overpowered us 58-28. It seemed as though we were waiting for a signal to start which never came. Now finished for the season, we could only say,

"LOOK FOR US IN COLUMBUS NEXT YEAR!"



RESERVES

FIRST ROW, Left to Right:  
Mr. Monk, D. Duty, R.  
O'Doherty, T. Nolen, D.  
Fenton, T. Tanner. SEC-  
OND ROW: D. Justice, J.  
Clausing, B. Rowe, B.  
Cross, G. Barrett.



# Reserves

The Clay High Reserves ended a highly successful season defeating South Webster 43 to 34, which made their record an impressive 14 to 4. This also gave them the League Championship. Not yet content, they went on to down second place Green 36 to 28, and win the County Reserve Championship.

James Clausing led the scoring for the year with 175 points, while Tom Nolen tallied 141 markers and Dick Fenton racked up 122.

With this successful year of experience behind them, this team should provide us with plenty of action next year.

Clay	49	Manchester	30
Clay	39	Rarden	23
Clay	29	Minford	25
Clay	34	Green	32
Clay	39	McDermott	29
Clay	24	Minford	26
Clay	39	Otway	34
Clay	38	Lucasville	39
Clay	28	South Webster	26
Clay	35	Stockdale	22
Clay	49	Rarden	32
Clay	27	Green	30
Clay	46	Notre Dame	28
Clay	55	McDermott	39
Clay	34	Lucasville	33
Clay	35	Otway	30
Clay	31	New Boston	52
Clay	43	South Webster	34



HOWARD RICHARD WON THE FOUL SHOOTING CONTEST FOR US AGAIN THIS YEAR. HE MADE 23 BASKETS OUT OF 25. NICE GOING HOWARD, THANKS. . . .

# Year Of Trophies

## 1957-58 BASKETBALL TROPHIES

Left to Right:

Reserve League Champions

Scioto County League Co-Champions

Grand Champion Trophy

Scioto County Tournament Trophy

Foul Shooting Trophy

Reserve Tournament Champions





VARSITY CHEERLEADERS: C. Gable, F. Thompson, J. Hunter, K. Houston, D. Newberry.

A voice, some pep, a little wit,  
and a cheer is formed that makes a hit.



RESERVE CHEERLEADERS: K. Reed, N. Burgess, B. Leonard.





KNEELING, Left to Right: J. McGlone, P. Pelfrey, T. Nolen, D. Adams, C. Bayless, R. Schuyler, R. Buckle, D. Buckle, D. Long, D. Duty, D. Walters. STANDING: B. Hunter, S. Cottle, P. Doty, H. Richard, B. Baily, J. Ison, R. Wright, J. Keaton, L. Keaton, D. Prior, T. Tanner, E. Vastine, Mr. Long.

Deliberate speed, majestic instancy, came on the following feet, and a voice above them beat . .

## Make It Be In There!

B

A

S

E

Clay	7	Valley	0
Clay	2	South Portsmouth	3
Clay	12	Valley	6
Clay	13	McDermott	1
Clay	10	Minford	3
Clay	17	Green	3
Clay	14	South Webster	1
Clay	8	Green	0
Clay	4	South Portsmouth	5
Clay	0	McKell	10
Clay	1	Portsmouth	7
Clay	7	South Portsmouth	10
Clay	7	South Webster	1
Clay	12	Orway	1
Clay	16	New Boston	0
Clay	3	Fairland	4
Clay	2	McKell	4

L  
L  
A  
B



STEVE COTTLE



ERNIE VASTINE



TOM TANNER

# Baseball

DAVID PRIOR



JOHN ISON



LARRY KEATON





PAUL DOTY



RON SCHUYLER

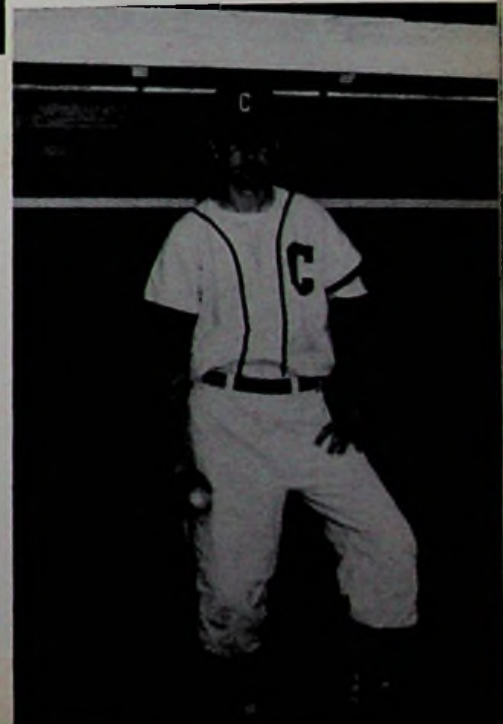


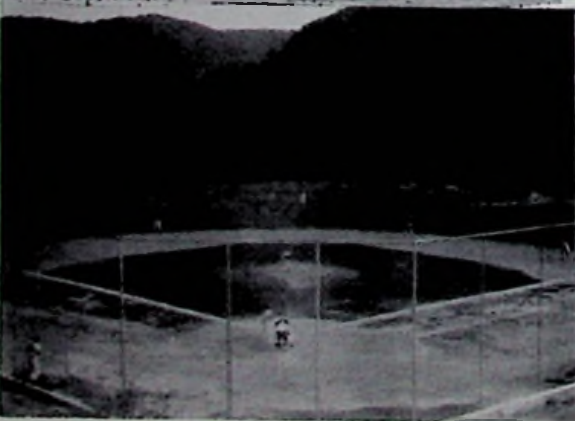
COACH LONG

BILL BAILY

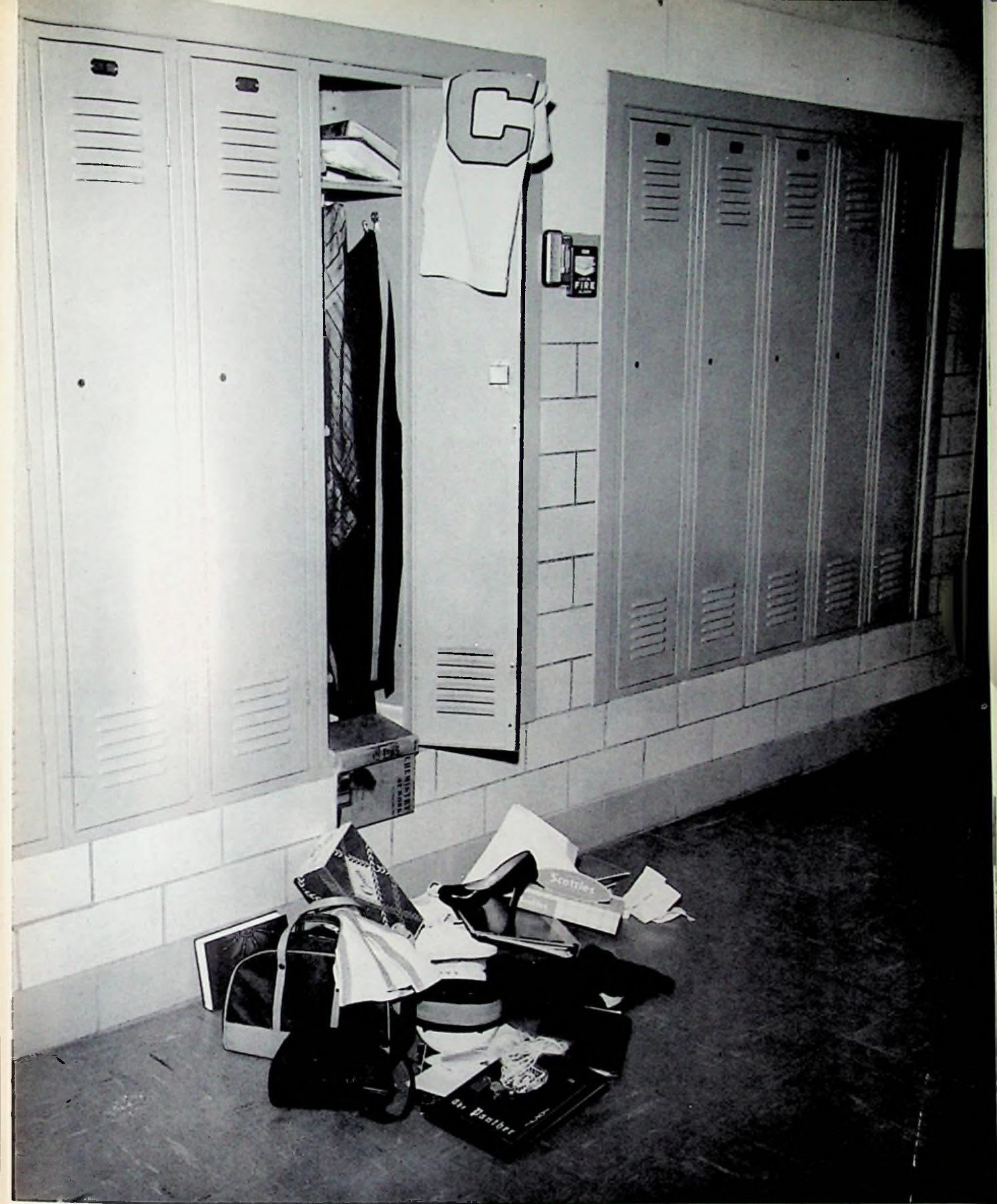


RON WRIGHT









# Activities



**Mr. Panther**  
**Benny Bender**



**JIM HAVENS**



**BILL HUTCHINSON**



**DWIGHT HERSHEY**



**BILL ALDRIDGE**



**Miss Panther**  
**Debbie Newberry**



BARBARA WILLIS



DORIS JEAN PHILLIPS



JUDY HUNTER

SENIOR  
CLASS  
PLAY





J  
U  
N  
I  
O  
R  
  
C  
L  
A  
S  
S  
  
P  
L  
A  
Y



C  
H  
R  
I  
S  
T  
M  
A  
S  
  
A  
T  
  
C  
L  
A  
Y





## Student Council

SEATED: S. Colburn, C. Long, H. Long, Mr. Estep, D. Newberry, S. Joseph, M. Wells. STANDING: C. Bayless, D. Hershey, M. Smith, R. O'Doherty, D. Fenton, S. Holcomb.



## Latin Club

STANDING: D. Hershey, P. Wheeler, P. Crawford, M. Wells, K. Reed. SEATED: M. Fitch, S. Truman, S. Brush, B. Hunter, C. Long, H. Long, J. Warnock, B. Meixner, S. Callender, S. Colburn.



## Industrial Arts Club

TOP ROW: D. Long, M. McManis, Mr. Moore, R. Horn, B. Bratt. BOTTOM ROW: J. Spence, M. Mullins, M. Shonkwiler, R. Nelson.



## Girls' League Officers

LEFT TO RIGHT: K. Houston, R. Stollsteimer, M. Wells, P. Munn, H. Moritz.





## Library Staff

LEFT TO RIGHT: M. Payne, M. Wells, M. Hunt, D. Osborne, G. Cantrell, M. Fitch, R. Stollsteimer, P. Munn, S. Truman, B. Willis.



## Office Staff

LEFT TO RIGHT: C. Benner, Mrs. Woods, N. Burchett, S. Meenach, B. Willis, P. Munn.



## Future Teachers of America

LEFT TO RIGHT: J. Hunter, P. Wheeler, N. Burchett, M. Wells, F. Reed, S. Truman, M. Hunt, Mrs. Bender, S. Holcomb, D. Osborne, L. McGlone, J. Barr, P. Evans, J. Warnock, P. Munn, S. Brush, H. Moritz, and K. Reed.



## First John Phillip Sousa Award Presentation

Mr. Estep and Mr. Basham present the First Annual John Phillip Sousa Band Award to Dwight E. Hershey.



Thou hadst, for weary feet, the gift of rest.



First come, first served.

"First"



Steve Colburn  
Sharon Holcomb  
Karen Reed

# Yearbook Staff At Work And Play



Chuck Long  
Dwight Hershey



Ron Pack  
Harry Long



Barbara Willis  
Doris Osborne

Roy O'Doherty



Helen Moritz  
Margaret Wells  
Doris Havens



LEFT TO RIGHT: Mrs. Davis, advisor; Marianne Hunt, editor; Bill Aldridge, art editor; and Judy Hunter, business manager.

## Yearbook Staff



Patty Piatt



Sandy Brush and Sharon Taylor



Mr. Hunt, Mrs. Fluty, Mrs. Davis,  
Mr. Davis, Mr. Pflieger.



M. Hunt, C. Rose, A. Conklin.

P  
R  
O  
M  
  
N  
I  
G  
H  
T



J. Taylor, R. Kempton, K. Houston.



S. Meenach, P. Doty.



L. Wright, J. Willis, H. Long.



L. Keaton, C. Gable, B. Evans.



JUDY HUNTER, Senior Attendant



SANDY FRAZIER, Junior Attendant

Queen



MARGARET PHILLIPS, HOMECOMING QUEEN

Marg



CHARLENE CURTIS, Sophomore Attendant



JUDY MC CANN, Freshman Attendant



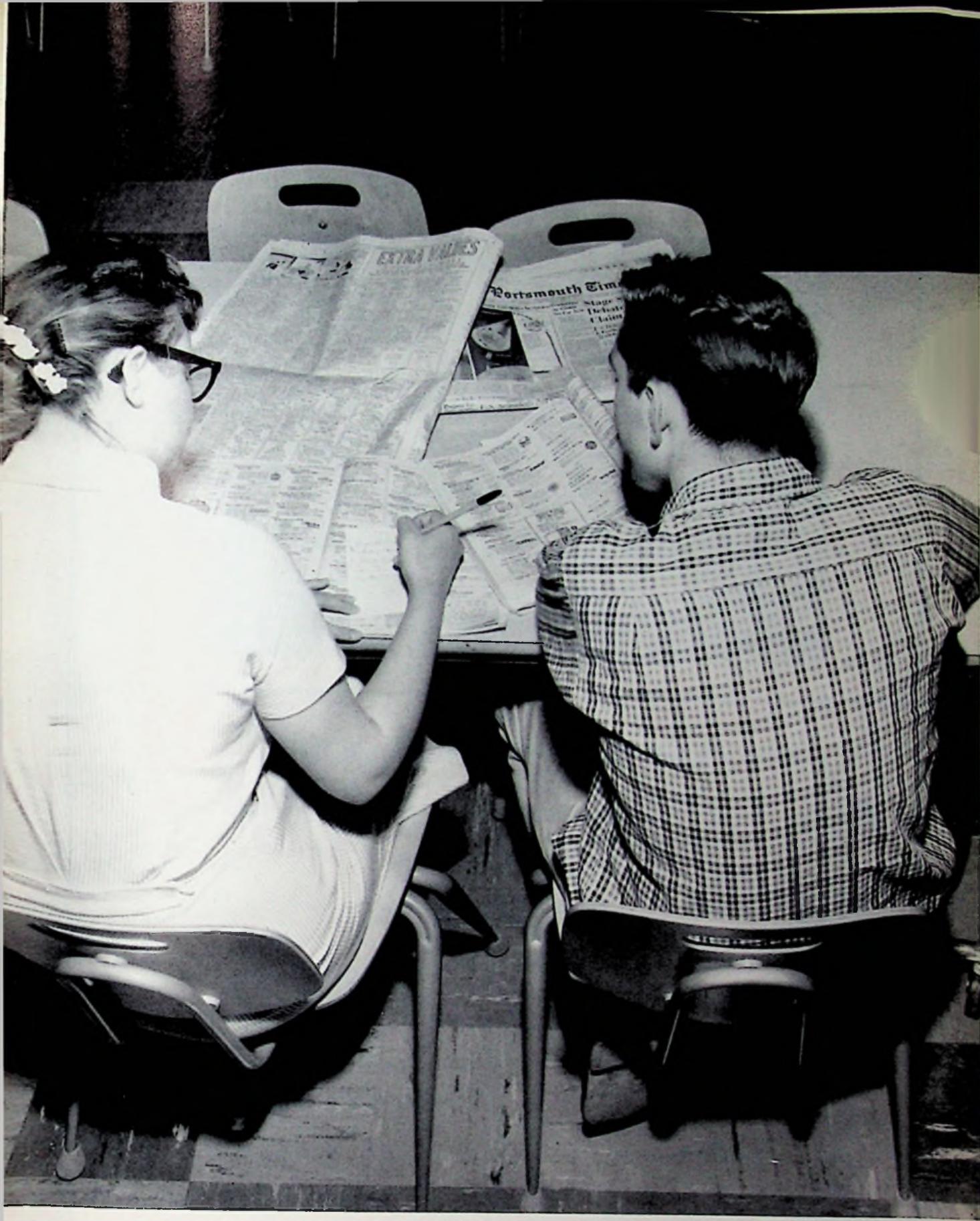
S  
E  
N  
I  
O  
R  
  
T  
R  
I  
P



N  
E  
W  
  
Y  
O  
R  
K







# Advertising

Compliments of

## BLANTON'S MARKET

Drugs and Records

Quality Meats, Fresh Fruits, and Produce  
Staple Groceries - Wayne Feeds

Eden Park, Ohio

*Atlas Fashions*

Portsmouth, Ohio

## SANDS SPORTING GOODS

"Everything for the Sportsman"

822 Sixth Street

Portsmouth, Ohio

Phone: EL 36310

BURCHAM'S RESTAURANT

SUPPLIES

1122 Findlay Street

Portsmouth, Ohio

BLUE BIRD BAKERY

Birthday & Wedding Cakes

are our Specialty

4208 Gallia Street

New Boston, Ohio

Phone: Boston 18



HUNTER'S LOCK  
AND  
BICYCLE SHOP



Key Making - Safe Repairing

Door Checks and Repairing

1552 Gallia Street  
Phone EL 3-0654

Authorized  
Briggs & Stratton and  
Lawn Boy Service

*Marting's*

"One of Ohio's Good Stores"

Wishes SUCCESS

... HEALTH

... HAPPINESS

To the Graduating

Class of '58!

Congratulations

To

The Class of 1958

C.M. DONALDSON

*Ideal*

Quality  Chekd  
MILK

Best Energy Food for all  
Panthers!



F. C. DAEHLER  
MORTUARY CO.  
HOME FOR FUNERALS

W O L F F

Clothes for Men and Boys

Portsmouth, Ohio

DEAN & BARRY PAINTS

Imperial Washable Wallpaper

PORTSMOUTH PAINT COMPANY

928 Gallia Street

SCIOTO VALLEY PRODUCE CO.

Fresh Fruits & Vegetables

1004 Chillicothe Street

Portsmouth, Ohio

Phone EL 3-2173

Compliments of

S. S. KRESGE'S

400 Chillicothe Street

Portsmouth, Ohio

Edward Livingston  
Gordon Flinders

LIVINGSTON & FLINDERS SALVAGE  
CO.

Scrap Iron - Copper - Brass  
Used Auto Parts  
Phone EL 3-0763

2502-2518 Gallia Street  
Portsmouth, Ohio

Congratulations

To the Class of '58

HERMS FLORAL COMPANY

837 Sixth Street

Portsmouth, Ohio

SAMUEL LEVI & CO.

FURNITURE

840-844 Gallia Street

Next to LaRoy Theatre

Compliments

of

PORTSMOUTH  
INTERSTATE  
BUSINESS  
COLLEGE

# DETROIT STEEL CORPORATION

Producers Of

Quality Hot and Cold Rolled Sheet and Strip Steel

and Rod and Wire Products

SALUTES

THE 1958 GRADUATING CLASS

OF CLAY HIGH SCHOOL

DETROIT STEEL CORPORATION

PORTSMOUTH DIVISION

New Boston, Ohio

<p>Best Wishes from O. CARSON BARKLOW Your County Engineer</p>	<p>AMERICAN SAVINGS &amp; LOAN ASSOCIATION 503 Chillicothe Street Portsmouth, Ohio Insured Savings and Home Financing</p>
<p>Drive Safely Protect Our Children Your Sheriff of Scioto County BURL E. JUSTICE</p>	<p>GEMPERLINE FURNITURE COMPANY 612 Second Street Westinghouse Dealer 6 Floors of Furniture</p>
<p>Compliments of DOROTHY J. BREWER Your Clerk of Courts Scioto County</p>	<p>J. W. STIR COMPANY Carpets - Linoleum - Tile 514-516 Second Street Portsmouth, Ohio Phone EL 4-1290</p>
<p>MOORE'S STORES 209 Market Street Portsmouth Gallia at the lake New Boston</p>	<p>W. L. WILHELM "Jeweler" "Diamonds are our Specialty" 507 Chillicothe Street Portsmouth, Ohio</p>



KNOW WHOM TO CALL FOR RESPECTFUL SERVICE

OUR LONG EXPERIENCE AND BEAUTIFUL HOME  
ASSURES YOU THE DIGNITY AND FREEDOM FROM  
DETAILS YOU WANT AT THIS TIME OF STRESS.



## SOWARDS FUNERAL HOME

WE ARE AS NEAR AS YOUR PHONE

Boston 93

3983 Gallia Street

A. C. SOWARDS  
Licensed Funeral  
Director and Embalmer

OVER 25 YEARS  
Serving In Your  
Community

Compliments

SEARS ROEBUCK and CO.

301 Chillicothe St.

Portsmouth, Ohio

Compliments of



2nd & Chillicothe  
in Portsmouth  
Where you're Always Welcome

ED LOCKNER

"for the best in auto needs"

818 Chillicothe Street  
Portsmouth, Ohio

Phone: EL 3-6565

MORGAN BROTHERS, JEWELERS

Diamonds - Watches

Gifts for all Occasions

734 Fifth Street

Portsmouth, Ohio

Eden Park

HUSTON'S SERVICE STATION

Atlas Tires

Batteries and  
Accessories

Phone - Boston 877-Y

EDEN-PARK

Self-Serve Grocery

Proprietor - Glenn McManus

Boston 819-X

Where Everyone  
Buys with Confidence

EHRMAN & COMPANY, INC.

Big Discount Store  
Furniture - Appliances

4006-12 Gallia Street

New Boston

Ohio

J. R. NEWKIRK

Produce & Fresh Meat

Rubyville

Phone: Boston 850-L

# HERFF-JONES CO.

INDIANAPOLIS, INDIANA

JEWELERS AND ENGRAVERS

BILL BLANTON, REPRESENTATIVE



FOR  
SPORTING GOODS                      SHOES  
CLOTHES      HOUSEHOLD EQUIPMENT  
OR TOYS

## NEWBERRY'S

Phone Boston 38

New Boston, Ohio

## PORTSMOUTH MONUMENT CO.

Dealers In

High Grade Monuments and Markers

Barre Guild, Wausau Red, Missouri Red, Rose Demass,  
Melrose Mahogany

Opposite Main Entrance Greenlawn Cemetery

1617 Offnere Street                      Estepp Brothers                      Phone El.-34055  
Portsmouth, Ohio



## ADAMS BAKING COMPANY

1009 Offnere Street

Phone ELmwood 3-0290

TRY PAN DANDY, OLD STYLE -- BIG PAN DANDY, SANDWICH BREAD

AVAILABLE AT YOUR INDEPENDENT GROCERS

BAKED IN PORTSMOUTH



BOTTLING COMPANY OF PORTSMOUTH  
2415 Chillicothe St.  
Portsmouth, Ohio  
Telephone: ELmwood 3-6730

STAN RUBY'S SERVICE STATION

Route 6  
Portsmouth, Ohio

ALSYNITE COMPANY OF AMERICA

2502 Gallia Street

Portsmouth, Ohio

Originators of Translucent  
Glass Fiber Building Panels

Compliments To  
Class of 1958

THE STANDARD SUPPLY COMPANY  
Tenth and Findlay Streets  
Portsmouth

GRACE L. KELSO

4002 Gallia Street

and

DOCTOR JAMES KELSO  
Optometrist & Chiropractor  
Eyes Examined  
& Glasses Fitted  
Phone Boston 2

Compliments  
of

HAROLD HANES  
County Recorder

Baldwin  
Pianos - Organs  
Band Instruments

"Best Wishes"  
Class of '58"



SUMMERS & SON  
319 Chillicothe  
Phone ELmwood 3-7380

NEW BOSTON HARDWARE COMPANY

Plumbing, Electrical  
And Heating Contractors

Phone Boston 82  
4203 Gallia Street  
New Boston, Ohio

BUCKLE'S ROYAL BLUE MARKET

Quality Meats - Groceries  
and Paints

Clarktown, Ohio  
Phone - Boston 707-X

Compliments of

FITCH'S USED CARS

4114 Gallia Street

New Boston, Ohio

Phone Boston 20

Residence Boston 877-L

LEET LUMBER COMPANY

914 Washington Street

404 Harding Avenue

Lumber, Millwork  
and

Builders' Supplies

Prompt Service

Compliments of

BIERLEY HENDERSON TIRE SALES

Twelfth & Chillicothe Streets

Distributors of

Goodyear Tires

WEST END FURNITURE COMPANY

518 Second Street

Complete Line of Furniture  
and Appliances

We specialize in  
Three Room Outfits  
Complete with Appliances.

B O R D E N

Milk - Ice Cream

237 Second Street

Portsmouth, Ohio

RUBYVILLE SELF SERVE MARKET

Betty Richard

Groceries, Produce, Fresh Meats

Phone - Boston 813-Y

Compliments

# R.H. "RUFÉ" BARRETT

"Your Clay Township Insurance Man"

107-8 Masonic Building

Portsmouth, Ohio

Phone EL 3-3510



Compliments of

# ERWIN-DODSON FUNERAL HOME

Minford, Ohio

Compliments

of

HARRY L. KIDD

Congratulations to the

Graduates of "58"

from

CARR'S JEWELRY STORE

811 Gallia Street

ELmwood 3-4480

Portsmouth

Ohio

WURSTER DRUG CO., INC.

419 Chillicothe Street

Portsmouth, Ohio

The Safe Drug Store

"Over 60 Years of Faithful  
Service"

DEHNER'S

Clothing and Shoes for

The Entire Family

613 Chillicothe Street

Portsmouth, Ohio

Compliments

of

B R A G D O N ' S

CITIZEN'S SAVINGS & LOAN

ASSOCIATION COMPANY

"Let us help you save for  
your future education."

CRICHTON OFFICE SUPPLY

Supplies for Offices  
Accountants, and Schools  
Royal and Smith-Corona  
Portable Typewriters

740 Fifth Street

Portsmouth

Ohio

Phone: EL 3-8290

Comparison Proves Roberts' Values Greater

**ROBERTS**

*The Diamond Store*

421 Chillicothe St.





Smith-Corona Typewriters  
Complete School Supplies

1946 - Our 12th Year - 1958

## STAPLETON

OFFICE SUPPLY COMPANY

829 Sixth Street

Phone EL 3-1187

## CRAFT'S

CUSTOM BUILT CABINETS

BUILT-IN RANGES, OVENS & REFRIGERATORS

CABINET HARDWARE AND PITTSBURGH PAINTS

Rubyville

Phone Boston 833-Y

## DIVIDE INN

Groceries & Meats

Dairy Bar

Legal Beverage

CARRY OUT

Twin Valley, Ohio

Edward Brichta, Owner

Phone Boston 845-W

<p>Luggage Jewelry Guns</p> <p>B &amp; B LOAN CO.</p> <p>837 Gallia Street Portsmouth Ohio</p>	<p>Compliments of</p> <p>FOUR KEYS</p> <p>Portsmouth</p>
<p>NICK'S CAFE</p> <p>3964 Gallia Street New Boston, Ohio</p> <p>Hot Dog Stand</p>	<p>Compliments of</p> <p>CLARK BUS LINES Charter Service Clarktown Sciotoville 1301-Y Boston 707-L</p>
<p>WALKERS</p> <p>Your Family Shoe Store</p> <p>420 Chillicothe Street In Portsmouth</p>	<p>SCHULER SHOE STORE</p> <p>The Latest in High Style Shoes</p> <p>905 - Gallia Street EL 4-2550</p>
<p>MC CLAIN CLEANERS</p> <p>3966 Gallia Street New Boston, Ohio</p> <p>Free Moth Proofing with Cleaning</p>	<p>ANN'S KOFFEE KUP</p> <p>Drive-in Restaurant</p> <p>Call in, Drive-in or Come in 1018 Chillicothe St. EL 3-3239</p>
<p>FRAZIER'S GROCERY</p> <p>TWIN VALLEY</p> <p>Phone Boston 805-Y</p>	<p>VERNAL RIFFE, SR.</p> <p>Mayor</p> <p>Phone Boston 267 City Building New Boston Ohio</p>
<p>CLEANING SUPPLIES CO.</p> <p>3rd &amp; Court Streets</p> <p>"Working for a cleaner and more sanitary Ohio Valley"</p> <p>ELmwood 3-7529 Portsmouth Ohio</p>	<p>STAR SALES COMPANY</p> <p>Home Products &amp; Building Specialties</p> <p>923 Findlay Portsmouth, Ohio</p> <p>A Division of the Wm. A. Newman Co.</p>



**AUTOMOTIVE SUPPLY  
COMPANY**

8th and Gay Streets

Portsmouth, Ohio

Motorola Television  
General Tires  
Mobil Gas & Oil



**A·B·DICK**

**DUPLICATING  
PRODUCTS**

Phone JACKSON 9-1361

**MORGAN'S**

**DUPLICATING, INC.**

735 Seventh Avenue

Huntington, West Virginia

**ZIMMERMAN'S OFFICE SUPPLIES  
& EQUIPMENT**

Underwood Typewriters  
Sundstrand Adding Machines  
810 Chillicothe Street  
EL 3-0530

Compliments of

**DISTEL FURNITURE COMPANY**

Seventh & Chillicothe  
EL 3-3810

# BOOSTERS

C. C. Horton Grocery  
Rubyville, Ohio

Dan E. Brushart, Chairman  
Scioto County Board of Elections

Ronald Greene  
County Treasurer

Cooper & Ferrill Auto Sales  
229 Second Street

Paul Kinker, Doctor of Optometry  
ELmwood 3-2780

Montgomery Ward  
514 Chillicothe Street

Cameo Restaurant  
839 Gallia Street

Marc Canter's Kopy Kat  
509 Chillicothe Street

Compliments of a Friend  
Portsmouth, Ohio

Dr. Roy Adams  
Minford, Ohio

C. R. Flack Barber Shop  
809 Murray Street

Tilene's Dress Shop  
902 Gallia, Portsmouth

Grierson's Drive Inn  
4450 Gallia, New Boston

Tops Laundromat  
505 Harrisonville, New Boston

Copelan's Drug Store  
Gallia Street, New Boston

Hoppy's Pure Oil Station  
Gallia Street, New Boston

Teen Canteen  
Gallia Street, New Boston

Wards Grocery  
Rosemount Road

# Index

## Administration

Mr. McCowan, 6  
Mr. Potts, 6  
Mr. Taylor, 6  
Russell Munn, 8  
Glenn Moritz, 8  
Robert Allen, 8  
Perry Tanner, 8  
Alvis Glenn, 8  
Donald Craft, 8  
Mr. Bandy, 7, 12  
Mr. Estep, 7, 12, 41, 77, 79, 82  
Mr. Basham, 9, 12, 42, 44, 82  
Mr. Beadle, 9, 12, 33, 35  
Mrs. Bender, 9, 12, 28, 36, 82  
Mrs. Davis, 9, 12, 85, 86  
Mrs. Fluty, 10, 12, 32, 36  
Mr. Long, 10, 12, 31, 34, 69, 71  
Mr. Loudenslager, 12  
Mrs. Miller, 11  
Mr. Monk, 10, 64, 65, 66, 68  
Mr. Moore, 10, 12, 40, 80  
Mr. Pfleger, 11, 12, 35, 37, 86  
Mrs. Taylor, 11, 38  
Mrs. Woods, 11, 12, 31, 81

## A

Adams, Danny, 40, 52, 69  
Adams, Harold, 57  
Aldridge, Bill, 15, 26, 36, 44, 74, 83, 85

## B

Bailey, Bill, 52  
Bailey, Janet, 60, 69, 71  
Baker, David, 51, 52  
Barnett, Jeanette, 35, 52  
Barr, John, 47, 82  
Barrett, Gerald, 35, 52, 65  
Barrett, Judy, 33, 37, 38, 57  
Bayless, Charles, 39, 46, 47, 69, 79  
Beard, John, 47  
Beard, Tom, 35, 42, 57  
Bender, Clarence, 15, 24, 26, 33, 36, 74  
Benner, Callie, 39, 44, 47, 81  
Biars, Carol, 38, 57  
Blakeman, Wendell, 15, 26, 34, 36, 100, 76  
Booth, Bob, 47  
Bratt, William, 43, 57, 80  
Brush, Sandra, 32, 33, 52, 79, 82  
Bryan, Nancy, 42, 56, 57

Buckle, Donald, 33, 41, 47, 69  
Buckle, Ronald, 33, 41, 47, 69  
Buffington, Carolyn, 38, 52  
Burchett, Norma, 15, 26, 39, 76, 81, 82  
Burgess, Nancy, 35, 38, 44, 57, 67, 83  
Burton, Kenneth, 57  
Bush, Jerry, 39, 40, 41, 47

## C

Callender, Roylene, 33, 44, 57  
Callender, Sharon, 44, 52, 79  
Cantrell, Georgianna, 16, 14, 26, 44, 76, 81, 83, 89  
Chandler, Haila, 39, 44, 47  
Chandler, Maxine, 39, 47  
Church, Ken, 52  
Church, Ruthanne, 52  
Clark, Sandra, 39, 41  
Clausing, James, 57, 65  
Clifford, Patty, 32, 38, 41, 52  
Coburn, Harry, 16, 26, 33, 76  
Colburn, Steve, 28, 31, 33, 36, 43, 44, 47, 65, 77, 79, 84  
Colegrove, James, 57  
Conklin, Arlene, 39, 44, 47, 50, 77, 86  
Conklin, Darold, 36, 47  
Cordial, Barbara, 38, 42, 44, 52, 83  
Cordle, Shirley, 38, 52  
Cottle, Steve, 36, 46, 47, 69, 70  
Cox, Donald, 57  
Cox, Ronald, 57  
Cox, Phyllis, 38, 52  
Crawford, Pamela, 44, 52, 79  
Cross, Robert, 57, 65  
Curtis, Charlene, 35, 55, 87  
Curtis, Faye, 37, 43, 44, 57  
Curtis, James, 50  
Curtiss, Judy, 47  
Curtiss, Sandra, 32, 38, 52

## D

Davis, Janet, 38, 57  
Doty, Paul, 33, 44, 47, 63, 64, 69, 71  
Doyle, Janet, 16, 25, 26, 36, 44, 76  
Duncan, Judy, 38, 52  
Duty, David, 57, 65, 69

## E

Elrod, Arthur, 47, 62, 64  
Evans, Betty, 47, 86  
Evans, Patricia, 39, 41, 44, 48, 82  
Evans, Richard, 58

# Index

## F

Fenton, Dick, 32, 43, 44, 51, 52  
Fields, Alice, 39, 41, 48  
Fitch, Mary, 16, 26, 43, 76, 79, 81  
Flaughner, Richard, 41, 48  
Flaughner, Sharon, 58  
Frazier, Sandy, 39, 44, 48, 83, 87  
Frazier, Sharon, 37, 38, 44, 58  
Fry, Geneva, 35, 37, 38, 58  
Frye, David, 53

## G

Gable, Carolyn, 39, 42, 46, 48, 67, 86  
Gambill, Gene 53  
Grant, Larry, 58  
Greenhill, Dee, 35, 53

## H

Hamblin, Sam, 48  
Hamblin, Sharon, 38, 41, 44, 53, 83  
Hardwick, Ruth Ann, 39, 48, 83  
Harris, Jack, 53  
Harris, Jo Ann, 32, 44, 58  
Harris, Linda, 38, 44, 58  
Harris, Robert, 35, 43, 53  
Havens, Doris, 32, 38, 42, 53, 84  
Havens, Jim, 17, 26, 32, 34, 36, 74  
Hayton, Ron, 32, 48  
Hershey, Dwight, 17, 24, 26, 28, 29, 30, 31,  
32, 34, 42, 44, 74, 76, 79, 82, 84  
Holcomb, George, 33, 35, 58  
Holcomb, Sharon, 39, 43, 44, 48, 77, 79, 82, 84  
Horn, Richard, 58, 80  
Houston, Kaye, 28, 32, 39, 42, 46, 48, 67, 80, 86  
Howard, Bernard, 53  
Howard, Mary Lois, 43, 58  
Howard, Naomi, 33, 58  
Hunt, Marianne, 4, 17, 24, 26, 28, 29, 31, 32, 36, 43,  
76, 81, 82, 85, 86  
Hunter, Bob, 33, 53, 69, 79  
Hunter, Gary, 28, 48  
Hunter, Judy, 105, 4, 17, 25, 32, 36, 42, 44, 67, 75,  
76, 82, 85, 87  
Hutchinson, Bill, 18, 24, 26, 44, 76, 74  
Hutchinson, Norma, 42, 43, 44, 53

## I

Ison, John, 36, 48, 69, 70

## J

Johnston, Maxie, 58  
Joseph, Sandy, 43, 44, 53, 79  
Justice, Denver, 35, 40, 53, 65

## K

Kalb, Georgene, 38, 53  
Keaton, Larry, 35, 48, 63, 69, 70, 86  
Keaton, Winfred, 35, 40, 51, 53, 55, 62, 64, 69  
Keller, Tom, 42, 44, 58  
Kempton, Roger, 32, 39, 41, 48, 64, 86  
King, Ronald, 56, 58  
King, Michael, 34, 50

## L

Leach, Clyde, 18, 26, 32, 34, 76  
Leonard, Barbara, 38, 58, 67  
Leonard, Jennie, 38, 41, 44, 53  
Lewis, Darrel, 32, 37, 58  
Lilly, Becky, 35, 42, 53  
Long, Charles, 28, 33, 37, 43, 58, 79, 89  
Long, David, 32, 35, 40, 43, 53, 69, 80  
Long, Harry, 14, 18, 25, 26, 28, 29, 31, 32, 43, 76,  
79, 84, 86

## M

Madden, Collin, 53  
Maple, William, 28, 42, 60  
Martin, Gary, 58  
Mathis, Sharon, 36  
Mathis, Brenda, 35, 38, 59  
Mathis, Clara, 38, 59  
Mathis, Donna, 48  
Meenach, Carole, 41, 48  
Meenach, Chris, 18, 26, 32, 34, 44, 48, 76  
Meenach, Sandy, 39, 41, 42, 44, 81, 86  
Meixner, Bill, 32, 33, 42, 55, 79  
Miller, Kenneth, 49  
Miller, Max, 32, 35, 54  
Morgan, Linda, 19, 24, 26  
Morgan, Nancy, 37, 38, 44, 59  
Moritz, Anna, 39, 42, 44, 49  
Moritz, Helen, 32, 33, 43, 44, 54, 80, 82, 84  
Mounts, Ruth, 54  
Mowery, Ron, 49, 63, 64  
Muck, Jack, 35, 54  
Muck, Robert, 59  
Mullins, Jerry, 54

# Index

## M

Mullins, Mike, 35, 54, 80  
Munn, Patty, 19, 25, 26, 28, 31, 42, 76, 80, 81,  
82, 83  
Murphy, Camilla, 37, 38, 44, 59

## Mc

McCann, Carolyn, 35, 38, 44, 58  
McCann, Judy, 32, 38, 44, 54  
McCoy, Pat, 33, 44, 59  
McGlone, Jim, 40, 54, 69  
McGlone, Lorna, 35, 38, 44, 59, 82  
McGlone, Lowell, 48  
McManus, Mickey, 35, 54, 80

## N

Nagle, Larry, 40, 54  
Nelson, Roger, 44, 80, 49  
Newberry, Debbie, 19, 24, 26, 28, 30, 31, 43, 44,  
67, 100  
Newman, Shirley, 38, 43, 44, 59, 83  
Nichols, Glenn, 19, 25, 26, 34, 36, 76  
Nolen, Tommy, 35, 59, 65, 69

## O

Oakes, Katherine, 32, 38, 54  
O'Doherty, Roy, 28, 44, 56, 59, 65, 79, 84  
Osborne, Doris, 39, 42, 44, 49, 81, 82, 84  
Owens, Carl, 35, 59

## P

Pack, Ron, 28, 31, 36, 44, 49, 62, 64, 77, 84  
Payne, Harold, 49  
Payne, Jerry, 59  
Payne, Mary, 20, 32, 44, 81, 83  
Payne, Patty, 38, 42, 44, 54, 83  
Payton, William, 59  
Pelphrey, Paul, 59, 69  
Personett, Arthur, 33, 54  
Phillips, Doris Jean, 20, 25, 26, 32, 42, 43, 44,  
75, 76  
Phillips, Jerry, 49  
Phillips, Margaret, 20, 24, 26, 30, 31, 32, 44, 76, 87  
Phillips, Unita, 38, 59  
Piatt, Patricia, 39, 49, 85  
Pigg, Kathryn, 38, 59  
Pollock, Gary, 33, 54

Prior, David, 20, 25, 26, 69, 70, 76  
Pyles, Gerald, 49

## R

Radabaugh, Beverly, 43, 44, 54, 83  
Radabaugh, Gale, 38, 49, 62, 64  
Ratcliff, Stephen, 21  
Reed, Fred, 32, 33, 41, 42, 44, 51, 54, 83  
Reed, Karen, 28, 33, 32, 43, 44, 54, 67, 79  
Richard, Howard, 33, 49, 63, 64, 66, 69, 77  
Richard, Nancy, 38, 59  
Rickey, Johnny, 21, 25, 26, 35, 89  
Riffe, Joe, 35, 60  
Riffe, Phyllis, 21, 26, 36, 41, 44, 77  
Rock, Fred, 21, 26, 76  
Rolfe, Paul, 29, 55, 63, 64  
Rose, Craig, 22, 24, 26, 44, 76, 86  
Rowe, Bob, 60, 65  
Ruby, Gordon, 49  
Runyon, Robert, 55

## S

Schuyler, Ron, 22, 14, 26, 32, 33, 44, 63, 64, 69,  
71, 76  
Schweinsberg, Billie Jean, 35, 38, 43, 44, 54, 83  
Shonkwiler, Monte, 42, 49, 50, 77, 80  
Shy, Gary, 32, 43, 44, 55  
Smith, Michael, 33, 37, 42, 44, 60, 79  
Spradlin, Kenny, 60  
Spradlin, Linda, 44, 49  
Spradlin, Mike, 35, 55  
Spence, Jim, 32, 33, 35, 43, 55, 80  
Stafford, Donna, 33, 60  
Steele, Linda, 38, 60  
Stollsteimer, Rita, 32, 39, 77, 80, 81  
Stevens, Rebecca, 38, 60

## T

Tanner, Tom, 33, 44, 49, 65, 69, 70  
Taylor, Judy, 32, 44, 50, 86  
Taylor, Sharon, 33, 37, 49, 60, 85  
Thomas, Sharon, 39, 43, 44, 50, 77  
Thompson, Faye, 22, 30, 31, 32, 34, 44, 67, 100  
Truman, Shirley, 28, 41, 43, 44, 55, 79, 81, 82, 83

## V

Vanderpool, Karen, 37, 38, 44, 60  
Vastine, Ernie, 22, 26, 32, 33, 44, 62, 64, 69, 70, 76

# Index

## W

Walters, David, 43, 60, 69  
Warnock, Jean, 50, 79, 82  
Wells, Margaret Corinne, 28, 32, 33, 42, 55, 79, 80, 81, 82, 84  
Wells, Melissa, 33, 37, 38, 42, 60, 79  
Wheeler, Phyllis, 23, 26, 42, 76, 79, 82  
White, Johnnie, 40, 41, 42, 50  
Willis, Barbara, 14, 23, 26, 28, 75, 76, 81, 84  
Willis, Glenda, 62, 38, 42, 44, 60  
Willis, Janet, 28, 39, 42, 44, 50, 77, 86  
Wilson, Eugene, 55, 60  
Wright, LaDean, 39, 50, 77, 86  
Wright, Ron, 39, 50, 55, 62, 64, 69, 71

Yeagle, David, 60

THE YEARBOOK STAFF WISHES TO THANK MRS. DAVIS  
FOR HER HELP IN PUTTING THE YEARBOOK TOGETHER  
--FROM BEGINNING TO END





---

**INTER-COLLEGIATE PRESS**

*Publishers · Cover Manufacturers · Book Binders*

FACTORY · HOME OFFICE

**Kansas City**

PRINTED IN U. S. A.

---





