



TARTAN

1960





Link Shirely





THE 1960 TARTAN

PUBLISHED BY THE SENIOR CLASS
PORTSMOUTH EAST HIGH SCHOOL
PORTSMOUTH, OHIO

EDITOR JANET WILLIS
ASSISTANT EDITOR SHELBY FALLS
BUSINESS MANAGER DALE KEGLEY

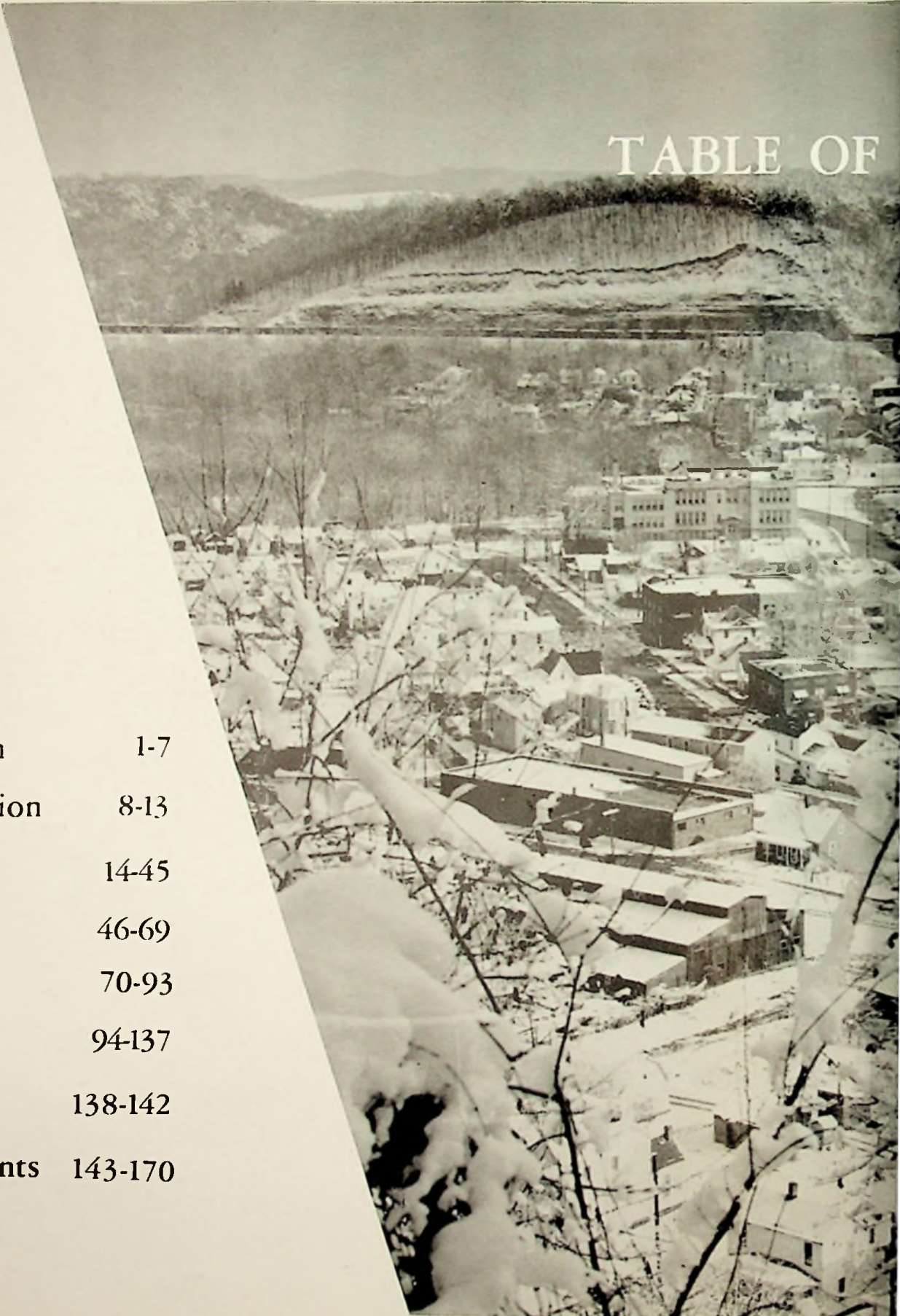


TABLE OF

Introduction	1-7
Administration	8-13
Classes	14-45
School Life	46-69
Sports	70-93
Activities	94-137
Elementary	138-142
Advertisements	143-170

CONTENTS





East High Forever, We Will Stand By You
We'll Defend Your Standards In Whatever We Do
Hail, Hail, The Gang's All Here
Cheering You Tonight,
We'll Stick Together For The Blue And The White.



The TARTAN Staff Is Happy To Dedicate The 1960
TARTAN To The Music Department Of East High School.
Not Only Do We Appreciate The Honor And Recognition
Our Band And Choral Groups Have Brought To Our
School, But Also We Are Aware Of The Enthusiasm
And The Fellowship Fostered By These Groups. They
Have Added That Spark Which Has Helped To Light Up
All The Other Memories Of Our Old Days.



HELEN BASHAM has been the vocal director at East since 1953. The sincere interest which she shows in her work has inspired many of her pupils. Her willingness to help is demonstrated in her position as Tri-Hi-Y and sophomore class advisor.

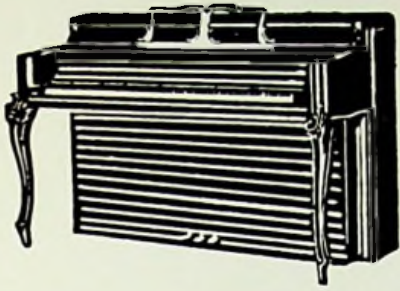
B. Mus. Ch., B. Music University of Delaware, Ohio University, Marshall College, Olivet College.



ROBERT MC COY is finishing his second year as instrumental director at East. In this short length of time he has developed the band into an organization respected throughout the school and community. His leadership ability and wonderful sense of humor has gained him the admiration of all his pupils.

A. B. Music, Ohio State University, Marshall College.





Pep Band livens ball games



Assemblies are beautified with choral singing



H. W. MCKELVEY

Mr. McKelvey has served as Superintendent of the Portsmouth City School System for eleven years. He received his B.A. degree at Ohio University, and his M.A. degree and certificate of graduate work at Ohio State.

The superintendent and the board of education continually work together to improve our school system.



Superintendent and School Board



LEFT TO RIGHT: Att. W. J. Eisnaugle, Mr. William Cropper, Mr. James Samuel, Mrs. Glenn Brock, Mr. John Smith.

TEACHNOR W. SMITH

Mr. Smith has completed his nineteenth year as Principal of East High School. Because of his high ideals and strong character, Mr. Smith has been a constant source of inspiration and encouragement. He received his A.B. Degree from Ohio University and his M.A. Degree from the University of Cincinnati.

Mr. Smith also serves as advisor to the Student Council. Members include a representative from each club and organization of the school. This group works out various difficulties which arise in and around the school.

ROW ONE: Left to Right: Jim Smith, Joyce Akers, Mr. Smith, Angela Helm, Dale Kegley. ROW TWO: Left to Right: Marilyn Brown, Nancy Melvin, Janet Willis, Linda Belloat, Betty Craft, Price Gammon, Judy Birkheimer, Judy Hickman, Sandy Weaver, Marsha Webb, Phoebe Gilpin, Pete Chamberlain. Absent: Shelby Falls, Clyde Haller.



STUDENT COUNCIL



DEAN HELEN TAYLOR MOORE

Our yearbook advisor, Dean Moore, is completing her twentieth year as Dean of Girls of East High School. She is also advisor to the Tri-Hi-Y and the Girls' League.

Mrs. Moore is always friendly to everyone and eager to give help and advice. She is respected and admired by students and faculty alike.

Dean Moore received her A.B. degree from Miami University and her M. A. degree from Ohio University.

Capable Faculty Lead Students Toward

DEAN JOHN FUGITT

Mr. Fugitt has been Dean of Boys at East for two years. He is one of our guidance counselors and is also a science teacher.

Dean Fugitt is completing his twenty-third year as a teacher at East. He is always willing to help in any way he can.

Mr. Fugitt attended Ohio State University and Marshall College. He holds his B.S. and M.A. degrees.



WILLIAM HANSGEN
 Physics, Plane Geometry, Business
 Arithmetic, Advanced Algebra
 B. S., M. S., Marshall College.

ELSIE BRADSHAW
 Chemistry, Algebra
 B. S., Moorhead State College, Ohio
 State University, University of Ken-
 tucky,
 Senior Class Advisor.

LENA GOBEL
 Biology, Physical Education
 B. S., Lincoln Memorial Universi-
 ty.



Higher Educational Goals



PHYLLIS MADIERRA

English
 B. S., Marshall College.

CHRISTINE HEER

English, Library
 B. S., M. S., Library Science, Sar-
 gent School of Boston University;
 Western Reserve University

JOHN STEVENSON

English, Latin, Spanish, Speech,
 Newspaper Advisor A. B., M. A.,
 Denison University; O.S.O. National
 University of Mexico
 Senior Class Advisor.



MILDRED BAILEY

Business English, Civics, Social Living, Shorthand,
Business Law, Typing I
University of Cincinnati; Portsmouth Interstate
Business College

LESLIE KEENE

Typing 1 & 2, Bookkeeping.
A. B., Moorhead State College; Marshall College
Senior Class Advisor.

Variety Of Courses Expand



VIOLET COOK

English, Home Economics, Psychology
B.S., Marshall College
Senior Class Advisor.



VIRGIL DONLEY

Industrial Arts
B. S. in Education, Ohio University

HERMAN SCHOMBURG

American History, Basketball Coach,
Assistant Football Coach, Guidance
Counselor

A. B., M. A., Marshall College, Holbrook
College

LOU CARSON

Physical Education, Civics, American
Problems, Drivers Training
Marshall College, A. B.

EDWARD POGUE

World History, Football, Baseball Coach,
Assistant Basketball Coach
B. S., M. A., Marshall College, Hanover
College



Students' Tastes And Talents



RUFUS PERKINS has been a custodian at East since 1948. His good-natured manner has won all of our hearts and has earned him the beloved nickname, "Perk".

GEORGE SPRECHER has finished his fourth year as custodian at East High School. Because of his efficiency, our school has received many compliments from visitors.



HAIL, HAIL, THE

CLASSES



GANG'S ALL HERE . . .



Senior Class History

Seniors, this is your life. This is only a partial record of your four glorious years here at East High.

We decended on East in September of 1956 147 strong. Our wonderful advisors were Mr. John Stevenson and Mrs. Elsie Bradshaw. We elected the following officers: Joyce Akers, President; Ruth Adams, Vice-President; Jane Call, Treasurer; Marsha Webb, Secretary. Angela Helm was chosen our Homecoming Attendant, and Joyce Akers and Price Gammon were our candidates for Tartan King and Queen. Sharon Swick and Jim Wordman were the Valentine Princess and Prince. We presented the play "You Ain't Heard the Half of It."

When we returned our sophomore year, we were a much more experienced group. Our class elected as its officers Joe Morgan, President; Dale Kegley, Vice-President; Joyce McGlone, Treasurer; Carolyn Kazee, Secretary. Our Homecoming Attendant was Linda Beloit, our Tartan King and Queen candidates were Mary Hines and John Walker, and Judy Birkhimer reigned as Autumn Queen. This year's spectacular was the hillbilly play, "It's Cold in Them Thar Hills." Joyce Akers, Sandra Webb, Shelby Falls, and Angela Helm were chosen as majorettes, and Linda Beloit and Sharon Swick were elected cheerleaders.

Our junior year things really began to happen! The class officers were Joyce Akers, President; Keith Buckley, Vice-President; Gary Burleson, Treasurer; Sandy Weaver, Secretary. Our projects were the Magazine sales, concession stand, and the Junior-Senior Prom. Mrs. Viola Cook and Mr. Keene were added to the list of our advisors. This year's Homecoming Attendant was Sandy Weaver, and Shelby Falls and Gary Burleson were our Tartan King and Queen candidates. Joyce Akers received the coveted Junior Cup. The National Honor Society inducted five from our class: Shelby Falls, Dale Kegley, Sandy Weaver, Marsha Webb, and Janet Willis.

Now, at last, we were seniors, and this was truly our greatest year. Our officers were Dale Kegley, President; John Walker, Vice-President; Priscilla Farmer, Treasurer; Linda Beloit, Secretary. Linda Beloit was elected Homecoming Queen with Joy Walker as her senior attendant. Priscilla Farmer and Clyde Haller were crowned Tartan King and Queen. Now we are to graduate and we must start to determine our destinies.



SENIOR CLASS ADVISORS--Left to Right: Mrs. Cook, Mr. Keene, Mr. Stevenson, Mrs. Bradshaw.

President, Dale Kegley; Vice President, John Walker; Secretary, Linda Beloit; Treasurer, Priscilla Farmer.



Class Of 1960



Class Of '60 Is Richest



JOYCE ETTA AKERS

"She has a knack of seeing things as they are and doing things as they ought to be done."

Class Officer 1,3; Student Council 1,3,4, Officer 4; Miss Tartan Candidate 1; Girls' League 1,2,3,4; Band 1,2,3,4; Majorette 2,3,4; Head Majorette 4; Pep Club 1,2,3,4, Officer 2,3; Home Economics Club 3,4, Officer 4; Junior Cup Winner 3; Prom Waitress 2; Annual Staff 4; Tri-Hi-Y 3,4, Officer 4; Style Show 2,3,4; Class Play 3,4; Class Assemblies 1,2; Intramural Basketball 1,2,3, Champions 3; Honor Council 4.

FRED KEITH ALLARD

"Never let your studies interfere with your education."

Football 2; Baseball 2; Hi-Y 4; Speech Club 4; Class Play 3, 4; Glee Club 4; Science Fair 3.



LINDA LOUISE ALLARD

"Her ways are the ways of pleasantness."

Glee Club 1,2,3,4; Latin Club 1,2; Tri-Hi-Y 3,4; Home Economics Club 4; Style Show 4; Newspaper Staff 3; Girl's League 1,2,3,4; Class Assembly 1; Class Play 4; Science Fairs 3; Speech Club 4; My True Security Contestant 4; National Honor Society 4.

DIANNA ARNETT

"A just fortune awaits the deserving."

Woodrow Wilson High School 2; East High School 3,4; Speech Club 3; Assembly 3; Scholarship Team 3; Class Play 4.

LINDA ANN BELOAT

"She moves a goddess, looks a queen."

Glee Club 1,2,3,4; Girl's League 1,2,3,4; Tri-Hi-Y 3,4, Officer 4; Class Officer 4; Pep Club 1,2,3,4; Honor Council 4; Student Council 4; Cheerleader 2,3,4; Homecoming Queen 4; Personality Contest 4; Class Play 4; Annual Staff 4; Banquet Waitress 1; Intramural Basketball 1; Homecoming Attendant 2.



To Graduate So Far



MARY LOU BENTLEY

"Let thy words be few."

Glee Club 1,2,3,4; Girls League 1,2,3,4; Spanish Club 2; Speech Club 4; Home Economics Club 4; Style Show 4; Tri-Hi-Y 4; Newspaper Staff 3.

BARBARA BINKLEY

"Her quiet ways have won our hearts."

Pensacola High School 2,3,4; Zata Thata Y-Teen 2; Chic and Charming Club 3; Christian Youth Club 3; F.H.A. Club 3; Girls Sports Club 4, Officer 4; National Bata Club 4; East High School 4; Home Economics Club 4; Style Show 4; National Honor Society 4.

JUDY ANN BIRKHIMER

"Her smile, her speech, her winning way, made many a man give his heart away."

Glee Club 1,2,3,4; Girls League 1,2,3,4; Autumn Queen 2; Tri-Hi-Y 3,4; Home Economics Club 4, Officer 4; Style Show 4; Cheerleader 4; Pep Club 1,4; Student Council 4; Intramural Basketball 1.



RAYMOND BROWN

"Let every man mind his own business."

Speech Club 4.

ALLAN KEITH BUCKLEY

"Not very quiet, not very shy; but we'll all agree he's a pretty swell guy."

Latin Club 1,2; Speech Club 4; Class Officer 3; Hi-Y 3,4; Glee Club 1,2,3,4; Football Manager 1,3; Annual Staff 4; Intramural Basketball 3; Class Assemblies 2; Basketball timekeeper 1,2,3,4; Senior Personality Contest 4; Science Fairs 3.



"The Best Is Yet To Come"



DONNA KAYTHERN BURKE

"It is easier not to speak a word at all than to speak more words than we should."
Speech Club 3; Home Economics Club 3; Pep Club 1; Glee Club 1; Style Show 2,3,4;
Football Banquet Waitress 3; Girls League 1,2,3,4.

GARY RAY BURLESON

"The lad was ever a rover, loving and laughing free."
Latin Club 1,2; Newspaper Staff 3; Annual Staff 4; Basketball 1,2,3,4; Intramural
Basketball 1,2,3,4; Class Officer 3; Concession Stand 3; Senior Personality Contest
4; Tartan King Candidate 3, Manager 4; HI-Y 3,4, Officer 4; Class Play Stage
Manager 3,4; Science Fair 3; Homecoming escort 4; National Honor Society 4.



BETTY JEWELL BURRIS

"Her hair is a glorious hue."
Latin Club 1; Glee Club 1,2,3,4; Speech Club 4; Librarian 3; Class
Play 3; Home Economics Club 4; Prom Waitress 2; Football Ban-
quet Waitress 4; Girl's League 1, 2, 3, 4; Style Show 4.

JOYCE MARIE BUSSLER

"Wisdom is the wealth of the wise."
Glee Club 1,2,3; Latin Club 1; Scholarship Team 1,2.

JANE ELLEN CALL

"A quiet girl, modest and true, who does her work with out much
ado."
Glee Club 1,2,3,4; Girl's League 1,2,3,4; Tri-HI-Y 3,4; Scholarship
Team 1,2; Class Officer 1; Prom Waitress 2; Newspaper Staff
3; Home Economics Club 4; Concession Stand 3; Pep Club 1; Home
Economics Style Show 4; National Honor Society 4.



Is 1960 Class Motto

SHIRLEY ANN CHARLTON

"Cheerfulness wins friends wherever it goes."

Girl's League 1,2,3,4; Glee Club 1,2,4; Speech Club 4.

LINDA LOU CLARK

"Silence is the best fence around wisdom."

Roseville High School 1; Logan High School 2, 3; East High School 4; Band 1,2,4; Newspaper Staff 1, Scholarship Team 1,3; St. Clairsville Music Clinic 1; Glee Club 1; Tri-Hi-Y 4; Girl's League 4; National Honor Society 4.



LINDA FAYE COLE

"Judge her by her merits."

Glee Club 1,2,3,4; Annual Staff 4; Latin Club 1,2; Girl's League 1, 2,3,4; Tri-Hi-Y 4; Intramural Basketball 1,2,4; Class Play Prompter 1,4; Pep Club 1,2; Concession Stand 3; Librarian 4.



JAMES LEE COLLINS

"O Happy mortal! He never failed to have his jest."

Football 2,3; Class Assembly 2; Class Play 3,4; Latin Club 1,2; Speech Club 4; Concession Stand 3,4; Hi-Y 4; Intramural Basketball 2,3; Science Fair 3.

STEVEN EUGENE COLLINS

"Noble deeds which are concealed are most esteemed."

Latin Club 1,2; Football 1,2,3,4; Basketball 2.



Many In Our Class Place



CAROLYN IRENE CORIELL

"As good-natured a soul as ever trod on shoe of leather."

Glee Club 3,4; Speech Club 4; Home Economics Club 4; Style Show 4; Girls League 1,2,3,4; Committees 3.

DIANNE CREIGHBAUME

"Better late than never."

Shawnee High School 1,2,3; East High School 4.



JAMES CARL DE HOFF

"The man who has no music in his soul is fit for treason."

Football 1; Glee Club 1,3,4; Spanish Club 2; Latin Club 1; Science Club 3; Science Fairs 3; Class Plays 3,4; Speech Club 4.

SANDRA SUE DEVER

"Ever gentle, sweet, and true."

Glee Club 1,2; Girls League 1,2,3,4; Speech Club 3, Assembly 3; Class Assemblies 2; Pep Club 1; Tri-Hi-Y 4.

WENDELL DOYLE

"Silence is wisdom; I'll be a wise man yet."



High On HONOR ROLL

JOYCE DUNNAGAN

"... Sweet and modest ..."

Van High School 2,3; Bible Club 3; East High School 2,3; Girls League 4.

DOW EDWARD EICHENLAUB

"There is no other like him-take it as you please."

Glee Club 1,2; Band 3,4; Basketball Manager 2; Football 1; Annual Staff 4.

SHELBY ANITA FALLS

"The good stars met in her horiscope and made her of spirit, fire, and dew."

Latin Club 1,2; Spanish Club 4; Glee Club 1,3; Band 1,2,3,4; Majorette 2,3,4; Student Council 4; Honor Council 4; Tartan King and Queen Candidate 3; Girls League 1,2,3,4; Pep Club 1,2,3; Tri-Hi-Y 3,4, Officer 4; Class Assemblies 1,2; Intramural Basketball 1,2; National Honor Society 3,4, Officer 4; Science Club 2,3,4, Officer 4;

Football Banquet Waitress 1; Senior Personality Contest 4; Annual Associate Editor 4; Bible Club 1; Scholarship team 1,2,3,4; Newspaper Staff 3; Class Play 3,4; Science Fairs 2,3.



PRISCILLA JANE FARMER

"You like her because she is always herself."

Glee Club 1,2,3,4; Girls League 1,2,3,4, Officer 4; Annual Staff 4; Intramural Basketball 1,3; Banquet Waitress 1; Speech Club 4; Concession Stand 3; Spanish Club 2,3; Tri-Hi-Y 3,4; Cheerleader 4; Tartan King and Queen Winners 4; Honor Council 4; Home Economics Club 4; Style Show 4; Class Officer 4; Class Play 4.

FRANKLIN PRICE GAMMON

"A fine fellow, a good sport, and a staunch friend."

Football 1,2,3,4; Basketball 1,2,3,4; Baseball manager 3; Track 4; Hi-Y 3,4; Speech Club 4, Officer 4; Annual Staff 4; Intramural Basket 3; Tartan King and Queen Candidate 1; Senior Personality Contest 4; S.O.C. Honorable Mention 4.



Students Select Senior Candidates



CAROL SUE GARRETT

"She was O' so fair."

Intramural Basketball 2; Home Economics Club 1.

EVELYN JEAN GEARHART

"A charm of her own--her friendliness."

Glee Club 1,2,4; Latin Club 1,2; Class Plays 3,4; Intramural Basketball 1,2; Girls League 1,2,3,4; Concession Stand 3.



DAVID ALLEN GEE

"A little shyness is no discredit to any man."

Newspaper Staff 3; Science Club 2,3; Science Fairs 3.

PHOEBE LORENE GILPIN

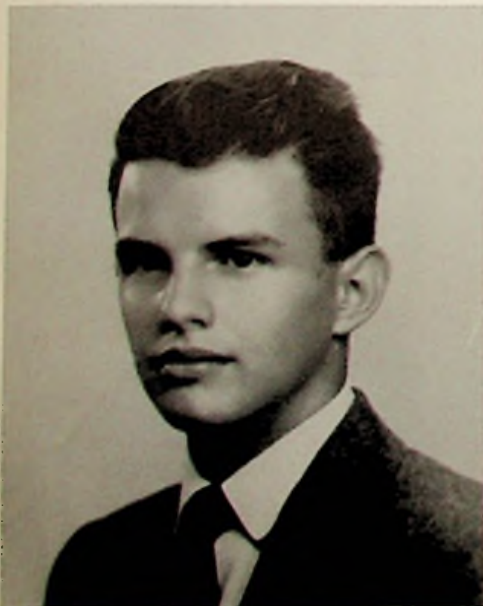
"The mildest manners and the gentlest heart."

Girls League 1,4; Bible Club 1; Band 1, 2, 3, 4, Officer 4; Prom Waitress 2; Class Play 3,4; Newspaper Staff 3,4; Science Club 3; Tri-Hi-Y 3,4; All-Star Band 3; Personality Contest 4; Student Council 4; Class Assemblies 2, National Honor Society 4.

RUSSELL MORTON GREEN

"A heart with fun and laughter in it."

Intramural Basketball 2,3; Science Fairs 3; Senior Personality Contest 4.



For Tartan King And Queen

MICHAEL CLIFFORD HALL

"My idea of an agreeable person is one who agrees with me."

Football 2,3,4; Basketball 3; Baseball 2; Class Play 3; Spanish Club 3; Latin Club 1; Speech Club 4; Graduation Usher 3; Class Assemblies 1,2; Newspaper Staff 3; Annual Staff 4; Intramural Basketball 1,2,3.



CLYDE DOUGLAS HALLER

"And Life itself is just a game of football."

Spanish Club 3; Assembly 3; Speech Club 4, Officer 4; Student Council 4; Hi-Y 4, Officer 4; Tartan King and Queen Contest winners 4; Senior Personality Contest 4; Intramural Basketball 1,2,3,4; Science Fairs 3; Football 1,2,3,4; Captain 4; Baseball 1,2,3,4; S.O.C. All Star 4.

WILLIAM JASON HARRISON

"You can never plan the future by the past."

Intramural Basketball 2; Band 3,4; Officer 4; Drum Major 4.



RONALD HEEREN

"I would rather have a fool make me happy than experience make me sad."

ANGELA JAYNE HELM

"Every virtue is more fair when it appears in a beautiful person."

Band 1,2,3,4; Majorette 2,3,4; Latin Club 1,2; Homecoming Attendant 1; Pep Club 1; Class Assemblies 1; Intramural Basketball 1; Girls League 1,2,3,4, Officer 4; Tri-Hi-Y 3,4; Science Fairs 3; Football Banquet Waitress 1; Science Club 4, Officer 4; Speech Club 4, Officer 4; Honor Council 4; Class Play 4; Senior Personality 4; Annual Staff 4; Style Show 4; Home Economics Club 4; Bible Club 1; National Honor Society 4.



Our Queen, Symbol Of Beauty And Grace At East,



JUDY ANN HICKMAN

"Always on the go, she'll never be a stay-at-home."

Glee Club 1,2,3,4; Pep Club 1,2,3,4, Officer 2,4; Girl's League 1,2,3,4; Spanish Club 3; Speech Club 4, Officer 4; Student Council 4; Class Play 3,4; Class Assemblies 1,2; Intramural Basketball 1,2,3, Champions 3; Tri-Hi-Y 3,4; Science Fair 3; Science Club 3; Home Economics Club 4; Bible Club 1,2; Annual Staff 4; Scholarship Team 2; Style Show 3,4.

JOSEPH EARL HOOD

"That I have lived I know; that I have loved is quite as plain."

Track 1; Band 1; Intramural Basketball 1,2,3,4; Football 3,4; Hi-Y 4; Science Fair 3.



DEENA KAY HOWELL

"A little work, a little play . . ."

Spanish Club 1,2; Glee Club 3,4; Speech Club 4.

CARL ROBERT HUBERT

"Once he was almost killed by a train . . . of thought passing through his mind."

Band 1,2,3,4; Latin Club 1, 2; Spanish Club 4; Class Assembly 2; Intramural Basketball 1,3.

KENNETH JOHNSON

"He is not merely a chip off the old block, but the old block itself."

Football 2,3; Baseball 2; Intramural Basketball 2.



Reigns Homecoming Night

SHARON KAY JONES

"She has a natural grace of her own."

Glee Club 1,2,3,4; Girls League 1,2,3,4; Home Economics Club 4; Style Show 4.



CAROLYN LEA KAZEE

"Begone, dull care, you and I shall never agree."

Glee Club 1,2,3,4; Latin Club 1; Intramural Basketball 1,2; Class Officer 2; Pep Club 1,2,3,4, Officer 4; Class Play 3,4; Class Assemblies 1; Tri-Hi-Y 3,4; Speech Club 4; Newspaper Staff 3; Annual Staff 4; Home Economics Club 4; Style Show 4; Girls League 1,2,4.

DALE KEITH KEGLEY

"Wherever he sits, there is the head of the table."

Glee Club 1, 2; Latin Club 1, 2; Spanish Club 3; Newspaper Co-Editor 3; Speech Club 4; Science Club 3; Class Play 3, 4; Scholarship Team 1, 2, 3, 4; Business Manager of Annual 4; Class Officer 2, 4; National Honor Society 3, 4, Officer 4; Hi-Y 3, 4, Officer 4; Student Council 3, 4, Officer 3, 4.



MARY ALICE KIRK

"May she always be free to speak her thoughts."

Band 1,2,3,4; Officer 4; Girls League 1,2,3,4; Class Assemblies 2; Class Plays 3; Latin Club 1,2.

CAROL SUE LANGLEY

"She talks by day and winds up by night."

Senior Personality Contest 4; Glee Club 1,2,4; Girls League 1,2, 3,4; Pep Club 1; Intramural Basketball 1,4; Latin Club 1.



Seniors Choose Red Carnation As Class Flower;



SHARON KAYE LAVENDER

"The shortest pleasures are the sweetest."

Home Economics Club 4; Officer 4; Glee Club 4; Annual Staff 4; Class Play 4; Girls League 1,4.

JOHN LARRY LILLY

"Let the world slip by; we'll never be younger".

Midview High School 1,2,3; East High School 4; Football 2; Intramural Basketball 1,2,3; Basketball 3.



LESLIE LINDBERG

"At life he sometimes takes a peep, but bless the man who invented sleep."

Portsmouth High School 1,2; John Burrough High School 3; East High School 4; Intramural Basketball 1,2,3; Basketball 3; Speech Club 4.

RUSSELL MANNING

"His shy and boyish smiles are irresistible."

Intramural Basketball 2.

STEVE HURD MAULT

"He said little but to the purpose."

Band 1,2; Football 1,2,3,4; Hi-Y 3,4; Science Fairs 3, Winner 3.



Blue And White, Class Colors

CORNELIA ANN MCCALL

"Good sense, which only is the gift of heaven, is hers."

Glee Club 1,2,3,4; Pep Club 1,2,3,4; Latin Club 1,2; Spanish Club 3; Girl's League 1,2,3,4; Prom Waitress 2; Science Fair 3; Tri-Hi-Y 4.

ALFRED W. MCGRAW

"A little Caesar, small but mighty."

Football 1,2,3; Basketball 1,2,3; Intramural Basketball 2,3; Baseball 1,2,3; Most Valuable Player Award 3; All S.O.C. Football 3; Baseball Manager 3; Basketball 4.



READA LOU MCKELVEY

"Every word she speaks with a kind tongue."

Speech Club 4; Tri-Hi-Y 4; Glee Club 3,4; Girl's League 1,2,3,4; Annual Staff 4; Style Show 4; Home Economics Club 4.

JOE ERNEST MORGAN

"I never knew so young a body with so old a head."

Band 1, 2, 3, 4; Scholarship Team 1,2; Class Officer 2; Class Assemblies 2; Student Council 2; Class Play 3; Newspaper Staff 3; Annual Staff 4; Science Fairs 3; Science Club 4, Officer 4; HI-Y 3; Rotary Club Representative 4. National Honor Society 4.



DANNA LOU NARDI

"Lead a good life and you are sure to be well."

Glee Club 1,2,4; Tri-Hi-Y 4; Girl's League 1,2,4; Newspaper Staff 3; Annual Staff 4; Spanish Club 3; Bible Club 1,2,3,4; Pep Club 1.



Theme Of Our Prom Is



BENJAMIN HARRISON NEWELL

"Variety, that's my motto."

Football 3; Science Club 3; Intermural basketball 3; Speech Club 3; Assembly 3; Bible Club 3.

LINDA LOU PACK

"She chortles in her joy."

Pep Club 1; Glee Club 1,2,3; Class Play 3,4; Speech Club 4; Class Assembly 2; Concession Stand 3; Tri-Hi-Y 4; Girl's League 1,2,3,4; Newspaper Staff 3,4.



EVELYN MARIE PARKER

"Size does not always count."

Pep Club 4; Bible Club; Tri-Hi-Y 4; Home Economics Club 4; Annual Staff 4; Newspaper Staff 4; Girl's League 1,2,3,4; Style Show 1,4.

LINDA LOU PATRICK

"An air of kindness went about her."

Glee Club 1,2.

EUGENE PICKLESIMER

"One cannot know everything."

Intramural Basketball 2,3; Basketball 4.



"Hawaiian Cruise"

NICK REINHARDT

"Merrily, merrily, shall I live now!"

Homecoming Escort 3.



BARBARA ANN ROSE

"She's forever laughing, always full of fun."

Girl's League 1,2,3,4; Tri-Hi-Y 4; Home Economics Club 4; Style Show 4; Annual

Staff 4; Speech Club 4.

MARY ANN RUTH

"Silence is sweeter than speech."

Tri-Hi-Y 4; Speech Club 4, Officer 4; Glee Club 3,4; Style Show 1,2,4; Girl's League 1,2,3,4; Home Economics Club 4; Annual Staff 4.



SANDRA KAYE SAMSON

"The best quality of a person is his sincerity."

Bible Club 1, Officer 1; Glee Club 2,3,4; Latin Club 1,2; Tri-Hi-Y 4; Girl's League 1,2,3,4.

JUDY LEA SHEAR

"A finger in every pie."

Glee Club 1,2,3,4; Band 3,4; Tri-Hi-Y 3,4; Girl's League 1,2,3,4; Personality Contest 4; Home Economics Club 4; Newspaper Staff 3; Intramural Basketball 1,2; Pep Club 1,2; Concession Stand 3; Class Assemblies 1; Class Play Entertainment 4.



Seniors Present



MARY JAYNE SHIELDS

"A sunbeam on a cloudy day."

Latin Club 1; Band 1,2,3; Glee Club 3,4; Newspaper Staff 3; Home Economics Club 4; Style Show 4.

CAROLYN LEE SHONKWILER

Latin Club 1; Glee Club 1,2,3; Girl's League 1,2,3,4; Secretary of Girl's League 4; Honor Council; Tri-Hi-Y 4; Betty Crocker Award, Christmas Messiah 1,2; Spring Festival 1,2; Style Show 4.



JUDITH ANN SIMPSON

"A goodly heart, a goodly smile."

Girl's League 1,2,3,4; Glee Club 1,2,3,4; Home Economics Club 4; Tri-Hi-Y 4; Annual Staff 4; Speech Club 4; Style Show 4.

MICHAEL TIMMINS SINGLETON

"My candle burns at both ends; it will not last the night."

Speech Club 4; Speech Assembly 4; Prom Committee 3; Intramural Basketball 2,3; Hi-Y 4.

JAMES LEE SMITH

"A fool may talk, but a wise man speaks."

Baseball 2; Football 3,4; Latin Club 1; Spanish Club 3; Speech Club 4; Glee Club 1,2,3,4; Hi-Y 3,4, Officer 4; Boy's State Representative 3; Rotary Club Delegate 4; Scholarship Team 3,2; President of the Student Council 4.



"Twelve Angry Women"

CHARLES SNYDER

"In many ways a man of action."

Sportsmouth High School 1,2; Football 1,2; Basketball 1,2; Glee Club 1,2,3,4; East High School 3,4; Speech Club 4.



BARBARA ELAINE SOMMER

"The best mirror is an old friend."

Annual Staff 4; Home Economics Club 4; Style Show 4; Librarian 4; Pep Club 1,2,3,4; Glee Club 1,2; Girl's League 1,2,3,4.

DENNIS FRANKLIN SPENCE

"He might be better if he would, but it's so lonesome being good."

Intramural Basketball 3; Baseball 2; Latin 1.



ALICE LOUISE STOREY

"She smiled on many just for fun."

Tri-Hi-Y 4; Librarian 3; Band 1,2,3; Home Economics Club 4; Style Show 4; Annual Staff 4; Glee Club 4; Girls' League 1,2,3,4; Pep Club 1,2,3,4; Speech Club 4; Senior Personality Contest 4; Intramural Basketball 1,2,3,4; Class Play 3; Football banquet Waitress 4.

LARRY TRUITT

"He in his heart was ever meek and humble."



After Four Years We Bid



RAYMOND TROUT

"As ornery as the day is long."

Wheelersburg H.S. 1,2,3; Intramural Basketball 4.

JOHN PHILIP WALKER

"A combination hard to beat--scholar, friend, and athlete."

Basketball 1,2,3,4; Football 3,4; Glee Club 1,2,4; Personality Contest 4; Tartan King Candidate 2; Graduation Usher 3; Class Officer 4; Latin Club 1, 2; Science Fair 3; Marshall Fair Winner; National Honor Society 4.



JOY PATRICIA WALKER

"Mighty souls are found in little bodies."

Latin Club 1; Pep Club 1,2,3,4; Band 1,2,3,4; Majorette 3,4; Intramural Basketball 1,2,3,4; Homecoming Attendant 4; Science Fair 3; Class Play Entertainment 3, 4.

JUDY ANN WALKER

"Be sure you are right, then go ahead."

Tri-Hi-Y 4; Girl's League 1,2,3,4; Latin Club 1; Bible Club 1,2,3,4; Glee Club 4.

SHIRLEY JEAN WATSON

"Fair words never hurt the tongue."

Pawnee High School 1,2,3; Bible Club 4; Home Economics Club 4; Girl's League 4.



East A Sad Farewell

SANDRA JO WEAVER

"Remembering you, we shall be glad and gay."

Girl's League 1,2,3,4; Band 1,2; Intramural Basketball 1; Assembly 1; Pep Club 1,2; Bible Club 4; Latin Club 1,2; Spanish Club 3; Home Economics 4, Officer 4; Scholarship Team 3; Class Officer 3; Homecoming Attendant 3; Tri-Hi-Y 3, Officer 4; Annual Staff 4; Newspaper Staff 3; Glee Club 3,4; Science Fair 3; Class Play 3,4; National Honor Society 3,4, Officer 4; Student Council 4; Honor Council 4; Style Show 4; Concession Stand 3; Speech Class Assembly 3.



MARSHA JO WEBB

"Fashioned so slenderly and so fair."

Class Officer 1; Scholarship Team 1,2; Glee Club 1,2,3,4; Latin Club 1,2; Spanish Club 4; Home Economics Club 4; Newspaper Staff 3; Tri-Hi-Y 3,4, Officer 4; Science Fair 3; Annual Staff 4; Bible Club 1,2,3,4, Officer 4; National Honor Society 3,4, Officer 4; Class Play 3,4; Student Council 4; Girls League 1,2,3,4; Honor Council 3,4; Concession Stand 3; Class Assemblies 1,2; Pep Club 1.

SANDRA LEE WEBB

"Her hair is not more sunny than her heart, though like a golden coronet it circles her head with careless art."

Band 1,2,3,4; Majorette 2,3,4; Head Majorette 3; Co-Head Majorette 4; Home Economics Club 1; Speech Club 4; Speech Club Assembly Entertainment 2,3,4, Champs 3; Tri-Hi-Y 4; Senior Personality Contest 4.



LINDA LOU WHITELY

"She can because she thinks she can."

Bible Club 1,2,3,4; Girl's League 1,2,3; Scholarship Team 2,3; Spanish Club 2,3; Newspaper Staff 3; Tri-Hi-Y 3,4; Librarian 3; Annual Staff 4; Speech Club 4; Pep Club 1,2,4; Class Plays 3,4.

CLAUDE HAROLD WHITT

"For he's a jolly good fellow."

Basketball 1,2,3,4; Baseball 1,2; Latin Club 1.



Graduation Day Is June 9, 1960



SHARON WIDDIG
 "A quiet tongue shows a wise head."
 Home Economics Club 4; Girls'
 League 4.



JANET SUE WILLIS
 "A rare combination of intelligence
 and common sense."
 Glee Club 1,2,3,4; Latin Club 1,2;
 Newspaper Staff Co-Editor 3; Speech
 Club 4; Scholarship Team 1,2,3,4;
 National Honor Society 3,4, Officer
 4; Annual Editor 4; National Merit
 Scholarship test; Daughters of
 American Revolution Test Winner;
 Class Play 4; Class Assemblies 2;
 Student Council 4; Honor Council 4;
 Personality Contest 4; Girl's League
 1,4.



FLORENCE ZORNES
 "A day for toil, an hour for sport."
 Bible Club 1,2; Speech Club 4, Officer
 4; Tri-Hi-Y 4; Class Assemblies 1,2;
 Annual Staff 4; Speech Class
 Assembly 4; Glee Club 1,2,4; Girl's
 League 1; Pep Club 1,2.

Just For Fun

	KNOWN FOR	USUALLY SEEN	SHOULD BE	PROSPECTS
J. Akers	BLOND hair	in her blue bug	more ambitious	marriage
F. Allard	wise cracks	Inn	more studious	electrician
L. Allard	loud voice	skating rink	ringmaster	uncertain
D. Arnett	quietness	reading	more talkative	uncertain
L. Beloit	attractiveness	mailing letters to Tom	postwoman	secretary
M. Bentley	dark eyes	skating rink	louder talker	marriage
B. Binkley	gentleness	in typing room	minister's wife	?
J. Birkhimer	clothes	wearing something new	dress designer	?
R. Brown	wrecking cars	at Chabody's	junk man	work
K. Buckley	silly actions	goofing around	clown	pharmacy
D. Burke	red hair	Cathy Cream	waitress	secretary
G. Burleson	accidents	with a basketball	less clumsy	pre-med
B. Burris	temper	Inn	more studious	marriage
J. Bussler	ill health	not seen	pill pusher	getting well

	KNOWN FOR	USUALLY SEEN	SHOULD BE	PROSPECTS
J. Call	love life	with Dave	Lovelorn Editor	Mrs. Gee
S. Charleton	dimples	laughing	judge	uncertain
L. Clark	intelligence	bowling	good scorekeeper	marriage
L. Cole	scatterbraininess	Inn	scatterbrained innkeeper	WAF's
J. Collins	getting in trouble	arguing with a teacher	debator	loafer
S. Collins	build	driving	bar bouncer	engineering
C. Coriell	pleasantness	Inn	vocal director	marriage
J. DeHoff	deep voice	talking to Barb	preacher	?
S. Dever	yelling at games	with Janet	hog caller	business
W. Doyle	quietness	Mr. Fugitt's office	office boy	?
J. Dunnagan	shy looks	but not heard	yodeler	nursing
D. Eichenlaub	loud clothes	trying to play a guitar	tailor	graduation
S. Falls	playing cupid	with bow and arrow and Gary	Robin Hood's girl	nursing
P. Farmer	many boyfriends	flirting	Army enlistment officer	teaching
P. Gammon	good looks	looking in a mirror	Don Juan	uncertain
C. Garrett	being absent	at Busa's	time keeper	business
J. Gearheart	goofiness	acting silly	dentist	?
D. Gee	dark complexion	with Jane	Romeo	work
P. Gilpin	politeness	knitting	housewife	teaching
R. Green	green car	in his car	less car-crazy	work
M. Hall	laziness	sleeping	mattress tester	Navy
C. Haller	football	with Gary	more independent	?
B. Harrison	prancing	strutting	more modest	marriage
R. Heeren	crazy driving	driving crazy	painter	none
A. Helm	beauty	with her dog	canine beautician	teaching
J. Hickman	private parties	with Coocie	seen but not hear	college
J. Hood	fast driving	mad	marriage counsellor	engineering
D. Howell	quietness	with her mother	more expressive	uncertain
C. Hubert	dumb questions	moping around	eliminated	none
K. Johnson	stockiness	with the gang	wrestler	?
S. Jones	attitude	on her scooter	auto repairman	business
C. Kazee	slyness	with Sam	innocent	nursing
D. Kegley	leadership	with a girl	less girl crazy	pharmacy
M. Kirk	bluntness	with Sandy	WAVE	marriage
C. Langley	voice	laughing	referee	work
K. Lavender	black hair	sun bathing	sun tan lotion model	marriage
L. Lilly	fast cars	in Wheelersburg	race driver	work
L. Lindberg	Snatching towels	thumbing	towel salesman	work
R. Manning	chewing gum	around home	taller	?
S. Mault	admiring Zane Grey	reading Zane Grey's books	cowboy	?
C. McCall	giggling "huh-huh"	at Millhuff's	more serious	business
A. McGraw	ruggedness	locker room	baseball umpire	work
R. McKelvy	quietness	smiling	toothpaste advertisement	?
J. Morgan	big mouth	saying something	barker	scholarship
D. Nardi	her boyfriend	driving	more careful	college
B. Newell	mannerisms	mouthng off	more settled	work
L. Pack	love affairs	with Linda	less amorous	marriage
E. Parker	tininess	Deen Moore's office	owner of an Austin	?
L. Patrick	pleasantness	sitting quietly	louder	marriage
E. Picklsimer	differentness	nowhere	more common	?
N. Reinhardt	silliness	in trouble	a graduate	work
B. Rose	actions	around Mike	watchbird	?
M. Ruth	quietness	with Reada	louder	business
S. Samson	running into phone booths	Shawnee	phone repairwoman	business
J. Shear	ability to get ahead	head of the line	radio	college
R. Snyder	making school flag	Automotive Supply	seamstress	?
B. Sommer	neatness	between Inn and Pop's	shoe tester	marriage
D. Spence	orneriness	talking to policemen	jailer	who knows

A. Storey	KNOWN FOR	USUALLY SEEN	SHOULD BE	PROSPECTS
L. Truitt	skipping school	with Dale	truant officer	marriage
R. Trout	dumbness	with Linda	more studious	uncertain
John Walker	speeding	Bussa's steps	policeman	?
J. Walker	pleasantness	smiling	success	engineering
Judy Walker	tattling on John	Pop's Place	truck driver	nursing
S. Watson	her walk	office	traveling saleswoman	?
S. Weaver	meeekness	Kresge's	louder	?
M. Webb	wreckless driving	in a ditch	driving instructor	college
S. Webb	sweetness	in Roger's car	nurse	marriage
L. Whitely	dancing ability	dance studio	beautician	boys
C. Whitt	art work	eating with her mouth open	etiquette instructor	doctor
S. Widdig	white hair	playing basketball	Santa "Claude"	uncertain
J. Willis	shyness	nowhere	less shy	?
F. Zornes	intelligence	in church	nut house director	teaching
	singing ability		bartender	church youth
				director



SENIOR ASSEMBLY
June 2, 1960



Seniors at the prom.
Steve, Jim and who else?

Class of 1961



President, Pete Chamberlin; Vice President, Barbara Withrow; Secretary, Rena Young; Treasurer, Doug Ruth.





ROW ONE: Bob Cole, Judy Chamberlin, Jackie Coriell, Judy Downey, Carol Chamberlin, Patty Fox, Geneene Chamberlin, Cecil Burns. ROW TWO: Edith DeHoff, Pam Fitch, Lillian Flannery, Donna Conley, Bobbie Birkhimer, Phyllis Bussler, Joyce Chamberlin, Glenna Gammon. ROW THREE: Dick Bonzo, Pete Chamberlin, Harvey Bear, Sue Bailey, Vicki Curcio, Larry Campbell, Dudley Evans, Joe Boyd. ROW FOUR: Jerry Craft, Dannel Chaney, Jon Bryant, Roger Blackburn, Larry Conley, Gene Cabiness, Don Bauer.

Spring Prom Highlights

ROW ONE: Doris Jackson, Betty Grandin, Barbara Leach, Juanity Moore, Donna Nagel. ROW TWO: Gay Hickman, Mary Lykins, Alvena Henson, Pamela Hawe, Ruth Johnson, Nancy Melvin. ROW THREE: Pat McKelvy, Allen Hanson, Jerry Mershon, Jack Nichols, Morris Gullion, Judy Hartalage. ROW FOUR: Harold Neal, Russel Jordan, W. G. Harr, Mike Partridge, Jim Hieneman, Eugene Holsinger. ROW FIVE: Roger Keller, Sam Hogan, Allan Lee, Bruce White, Mike Knight, Tom Haney.



As one of its main projects, the Juniors have a concession at the home football games. Coffee, pop, candy, hot dogs, and popcorn are sold.



Year For Junior Class



ROW ONE: Judy Williams, Nancy Walker, Shirley Stamper, Evelyn Porter, Janet Pugh, Darlene Rickman, Barbara Williams. ROW TWO: Rena Young, Janet Weaver, Charlotte Welch, Cheryl Samson, June Schneider, Mary Powell, Barbara Withrow, Sue Starling. ROW THREE: Richard Whitely, Mike Perkins, Marsha Zornes, Diana Williams, Harriett Saunders, Tom Phillips, Larry Salyers. ROW FOUR: Bob Payton, Benjamin Stillmer, Gary Payne, Dave Steele, Gary Percell, Doug Ruth, Keith Turner.



Class Officers: President, Marilyn Brown; Vice-President, Marilou Goddard; Secretary, Sharon Swick.

Selling School Supplies Is

ROW ONE: Dick Bolander, Bill Davis, Patricia Chatfield, Marilyn Brown, Wanda Fetty, Roger Benner, Phil Fultz. ROW TWO: Larry Adams, Jim Falls, Jim Dressler, Bryan Arnett, Forrest Everhardt, Bob Coriell. ROW THREE: Linda Baer, Betty Allen, Bonnie Courtright, Kathy Arthur, Romonia Brown, Sharon Abbott. ROW FOUR: Marty Daniels, Harold Carter, Jerry Bonzo, Marilou Goddard, Tom Campbell, David Brewer.



ROW ONE: Jack Hurst, Peggy Haller, Janet Leslie, Wilma Hale, Martha Manning, Rieda Hughes, Mike Hood. ROW TWO: David Hieneman, Elaine Martin, Gary Lee, Verla Howard, Don Porter, Tim King. ROW THREE: Donna Hollbrook, June Hood, Donna Newell, Emmett Gregory, Joe Hanson, Sharon May. ROW FOUR: Lester Phillips, Elmer Kegley, Bill Grashel, Gary Reinhardt, Roy Johnson, Cecil Percell, Bob Johnson.



Sophomore Class Project



ROW ONE: Kay Smith, Dearie Slack, Jim Turner, Otis White, Bruce Rigsby, Lloyd Simpson. ROW TWO: Pat Schomburg, Brenda Storey, Sue Ward, Ken Stephens, Tony Watt, Don Trout, Lowell Shonkwiler, David Snyder, Sue Swick, Donna Tussey, Nadine Shepherd, Esther White, Linda Shear, Rosemary Swavel, Randy Schneider. ROW FOUR: Larry Williams, Floyd Zornes, Gary Ward, Wayne Weeks, Bob Rhodes, Danny Widdig, John Ruley, Jim Vogel.



President, Betty Craft; Vice-President, Cheryl Miller; Secretary, Donna Hammond, Treasurer, Jean Fankell.

Shamrocks, Crepe Paper Provide



ROW ONE: Judy Brown, Patrica Copper, Opal Coriell, Lois Crabtree, Denny Boggs, Marilyn Chamberlin, Nancy Conkey, Edna Cooper, Betty Craft. ROW TWO: Carolyn Bently, Wanda Bayes, Kathy Bowman, Judy Adams, Vickie Caseman, Ron Chamberlin, Gerald Coriell, Jennie Brack. ROW THREE: Lonnie Edwards, Jerry Bussey, Louise Blevins, Carolyn Cater, Judy Davic, Bobbie Adkins, Mike Craig, Ricky Boggs, Donnis Brown. ROW FOUR: Walter Baer, Mike Craft, Bob Boggs, Phyllis Adams, Anna Bently, Mike Bibl, Ron Chochard, Tom Cooper.



ROW ONE: Sheryl McKee, Kenny Gardner, Elaine Gregory, Ronnie Johnson, Bobby Holsinger, Latrica Horner, Jean Hale, Madonna Loop, Carolyn Filkins. ROW TWO: Roberta Luster, Larry Kershner, Laquita McClure, Virginia Fitch, Sharon McKee, Janie Hibbits, Gre Martin, Jeanie Fankell, Donna Hammond, Nancy Gilpin. ROW THREE: Sharon Imes, Donna Humphrey, Anita Gee, Nancy Eldreidge, Margaret Keller, Fern Keller, Karen Keller, Alta Horner, Stanley Lawhorn, Tom Howard, Russel Johnson, Elwood Jarves, Harold Martin, Blaine Etterling, Bill Logan, Phillip Haywood, Jerry Knight, Elijah Fletcher.

Effect For Freshman Dance

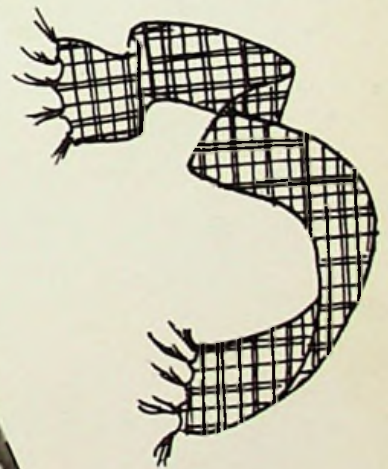


ROW ONE: Donna Stacey, Jerry Wadkins, Sue Welch, Linda Piquet, David Wolfe, Donald Wolfe, Roger Smith, Charlene Schouster, Glenda Payton, Larry Owens. ROW TWO: Gwen Mault, Cheryl Miller, Kay Ramey, Mary Mershon, Karen Williams, Ralph Truitt, Dwane Spence, Carol Miller, Opal Waren, Loren Schouster. ROW THREE: Randy Singleton, Tim Moorehead, Mary Whitt, Ann Sylvia, Sonja Ramey, Gerteried Ridout, George Weber, Tim Smith, Ronnie Thompson. ROW FOUR: Mark Turner, Russell Sparks, Daniel Zornes, Bill Redman, Roy Weaver, Vernon Parker, Kenny Williams, Stanley Rooney, Jim Wilson, Novel Simpson.



IN WHAT'RE

SCHOOL LIFE



WE DO



CLASS CHATTERBOX

Keith Buckley
and
Carol Langley

Our definition for class chatterbox: "The ability of letting your tongue run loose for a period of 45 minutes and ending up with it still in your mouth."

If you are wondering why a class is always in an uproar, it's probably because SUE and KEITH is a member of it. They are constantly cutting-up and having a good time.

SENIOR



BEST MANNERED

John Walker
and
Phoebe Gilpin

Our definition for manners: "The art of indulging in Emily Post's book of etiquette and accidentally forgetting what you have read."

The familiar little words of "excuse me" or "I'm sorry" are the trademarks of PHOEBE and JOHN. They are always polite to their teachers and fellow classmates.

BEST DANCERS

Dow Eichenlaub and Sandra Webb

Our definition of dancing: "The art of pulling your feet away faster than your partner can step on them."

If there is a dance to be held, you can be sure that SAM and DOW will be there with their best feet forward. Not only are they great as partners, but they stand out with anyone they dance with.



SHYEST
Claude Whitt
and
Barbra Sommer

Our definition of shy: "Wishing you were somewhere else at the time."

BARB and CLAUDE may wish this, but they are always making new friends in new places, and, if you knew them, you couldn't help but like these two "meek" little students.



PEPIEST
Bill Harrison
and
Alice Storey

Our definition for pep: "The ability to keep one step ahead of the person in front of you even though there is usually a crash landing."

ALICE and BILL are always getting a bang out of something that they are doing, no matter where they are. "Activity" is their motto.



PERSONALITIES



CUTEST COUPLE
Russ Green and Carol Garret

Our definition of courtship: "A man pursuing a woman until she catches him."

CAROL and RUSS have been going steady through most of their high school years. Their admiration for each other outshines the sun.

MOST LIKELY TO SUCCEED
Shelby Falls
and
Dale Kegley

Our definition for ambition: "What it takes to get where you'll wish you hadn't bothered."

Cute, but it certainly doesn't apply to SHELBY and DALE. They have achieved many of their past goals and have made definite plans for their futures.



BEST ATHLETES
Clyde Haller
and
Steve Collins

Our definition of sports: "When a man wants to murder a tiger he calls it sport: When the tiger wants to murder him he calls it ferocity."

Clyde and Steve have both been very active in sports throughout high school. Clyde was chosen as this year's football captain and Steve was very outstanding in that sport also.



SENIOR



MOST POISED
Angela Helm
and
Price Gammon

Our definition for poise: "The act of raising the eyebrows instead of the roof."

As ANGELA and PRICE stand in the picture, so you will always see them--erect, serene, capable of handling any situation.



MOST STUDIOUS

Jim Smith
and
Janet Willis

Our definition of a bookworm: "A person who would rather read than eat, or a worm that would rather eat than read."

Whenever you see JANET and JIM there is usually a book around. Whether they study or not is something we will never know, but they always have an answer for every question they are asked by their teachers.

PERSONALITIES



BEST PERSONALITY

Gary Burleson and Linda Beloat

Our definition of personality: "The name we give to our own little collection of funny habits."

The only little habit that LINDA and GARY have is being friendly to everyone. You will always see them with a smile on their faces and a friendly word on their lips.

MOST INQUISITIVE

Carl Hubert
and
Judy Shear

Our definition for inquisitive: "The art of finding out something you are not supposed to know."

JUDY and CARL are certainly capable of doing this. They both love to ask questions. If there isn't a question to be asked, you can bet they will think one up!





"Mrs. Moore, we dig your brain cover."

"We shall dance to our victory!"



Kootie re-union!!!

What's wrong Juniors, camera shy???



shots



"There are too many big mouths in here."

"But where are the boys??"



"Hope you choke, friends"

"Love at first sight"





"Me Big Chief Romeo"



"Look out! Here comes Everett!"



"Mom is a girl's best friend."



"Aw, please let me kiss your boyfriend."



"All wittle girls wike dolls."



Rum . . . Tum . . . Rum, Tum, Tum.



You would never know we were in the Tri-H -Y, would you???



They are never satisfied unless they are outside of the school!!

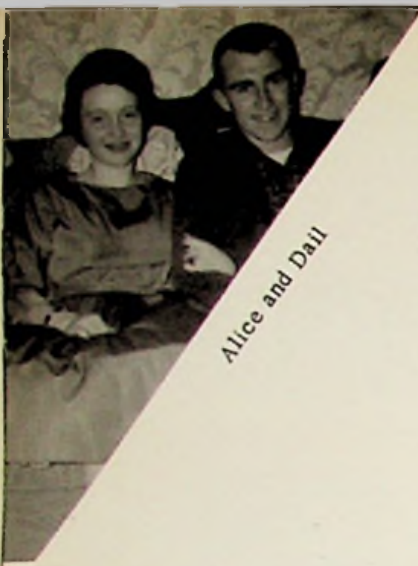


Mr. and Mrs. Bill Harrison Jr. !

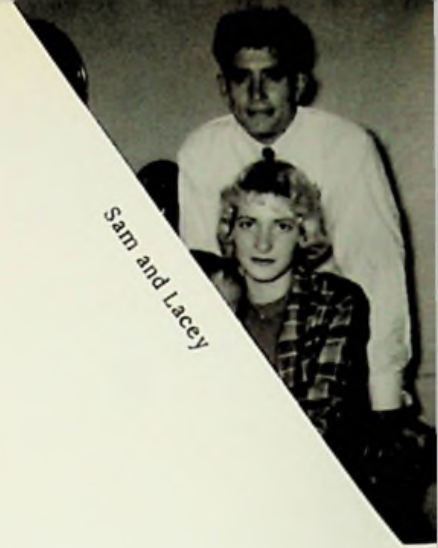


Probation for another weekend!!

Goin' Steady



Alice and Dail



Sam and Lacey



Evelen and W.G.



Mary and Dave



Mary Lou and Bobby



J
a
n
e
a
n
d
D
a
v
i
d
a
n
d
B
o
b
b
i
e
a
n
d
P
r
i
c
e



C
h
e
r
y
l
a
n
d
D
a
v
e
a
n
d
C
a
r
o
l
a
n
d
T
o
m



SHAMROCK DANCE

Sponsored by the Freshman Class
March 11, 1960



HOMECOMING



ARRIVING AT DANCE--Our Queen, Linda Beloat; her escort, Gary Burleson, and court Joy Walker and Mike Singleton; Gay Hickman and Mike Partridge; Karen Sue Swick and Mike Neal; Jean Fankell and Dennis Spence.



Queen Linda and Escort Gary



Pretty, don't you think?

DANCE



The Royal Court watching the dancing couples at the dance.



Couples dancing at dance held for Queen Linda.



BEATNICK DANCE



KING BEATNICK - Gary Payne
"Cool man, Cool"



QUEEN BEATCHICK - Cornelia McCall
"Beat dad, Beat"



Like I'm dragging man.

Stroll, Dig me?

Man, dig all this bread!



SOCK HOPS





We just love to study. Don't you?

Seems like I just can't get anything to come out right.





Why does it always have to be something different?

We are always prepared for any emergency.





First things first. This is a car!

Careful, you might learn something!





Why doesn't that bell ring!!
Miss Maderia - Fourth Period



No, not recess -- just a break -- for home!!

TARTAN King And Queen



Above. Shelby Falls, Associate Editor, gives results of contest. LEFT TO RIGHT: Shelby Falls, Clyde Haller, Priscilla Farmer, Don Bauer, David Brewer, Breude Story, Betty Craft, Mike Craft.



Middle. Shelby Falls and Dale Kegley crown Clyde Haller and Priscilla Farmer, the Tartan King and Queen of 1960.



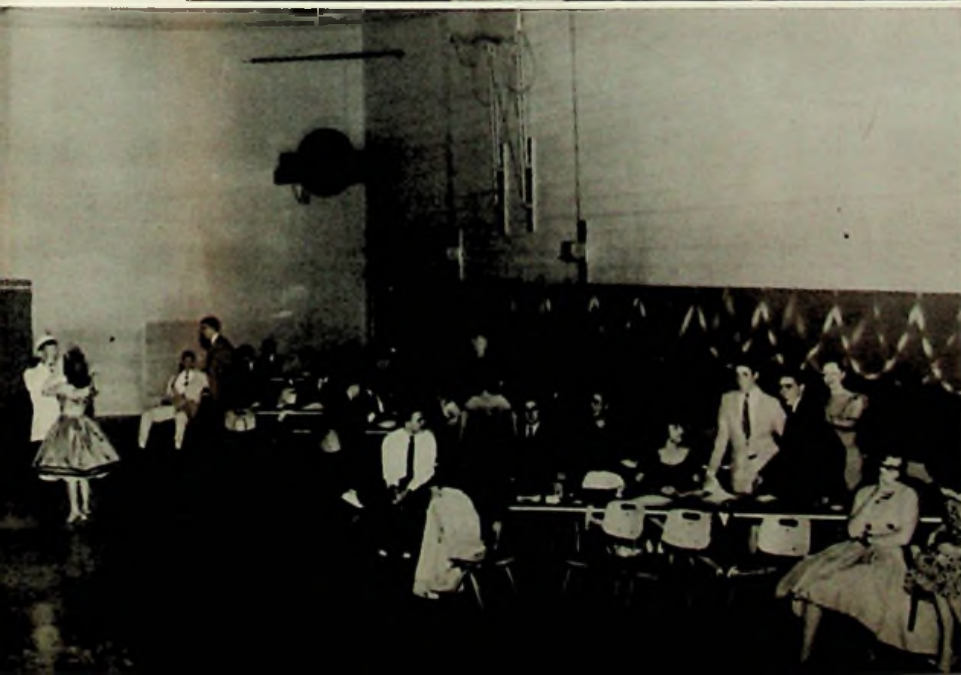
AN nd Queen NCE



This year's Tartan King and Queen contest raised \$737.00 for the yearbook, the largest amount ever collected from a contest at East.

The pair of candidates who raised the largest amount of money won the title of Tartan King and Queen.

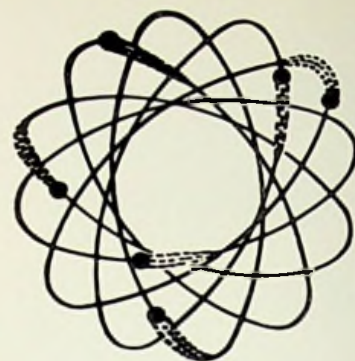
Bottom. Priscilla and Clyde led off the first dance.



Clyde Haller
and
Priscilla Farmer
Tartan King & Queen
1960



Clock watchers!



Nothing to it! All you have to do is to put a few things together!



Strike up the band!

The Cafeteria In Action



Anyone coming to the cafeteria will always find the smiling faces of the cooks ready to greet them at lunch time. Here they are ready to serve lunch.

Here in the pleasant surroundings of the lunch room the students of East High enjoy their lunch.

The cafeteria has many new facilities that help to make lunch an enjoyable process.

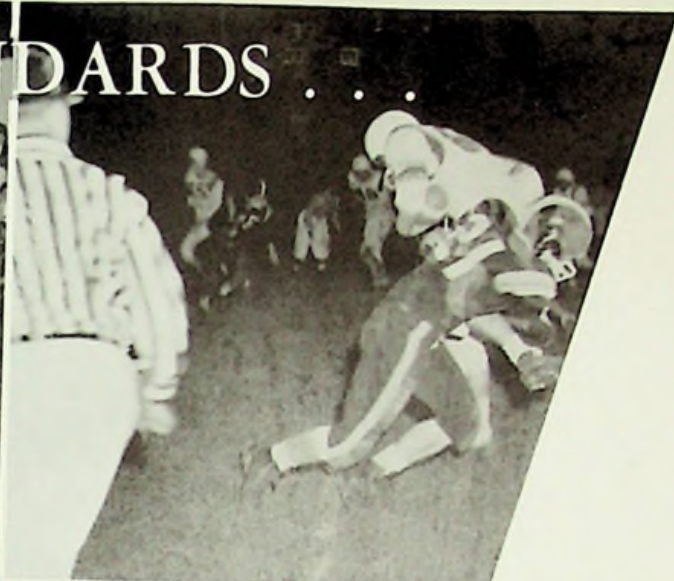
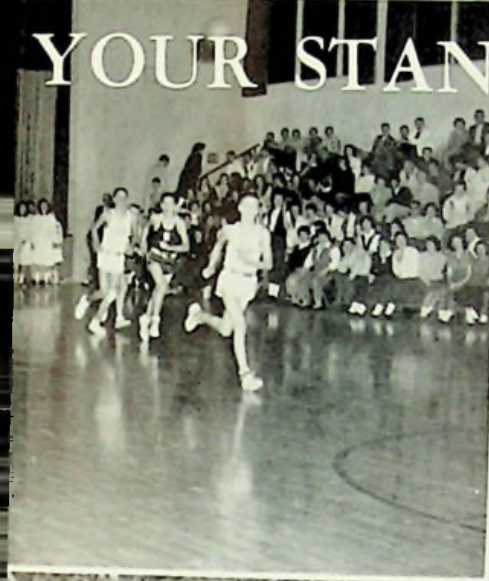


After preparing and serving lunch, the cooks take time out to have coffee. Left to right they are: Mrs. Beloa Shepherd, Mrs. Helen Cole, Cafeteria Manager Mrs. Ethel Brown, Mrs. Elizabeth Moge, and Mrs. Ethel Burke.

WE'LL DEFEND



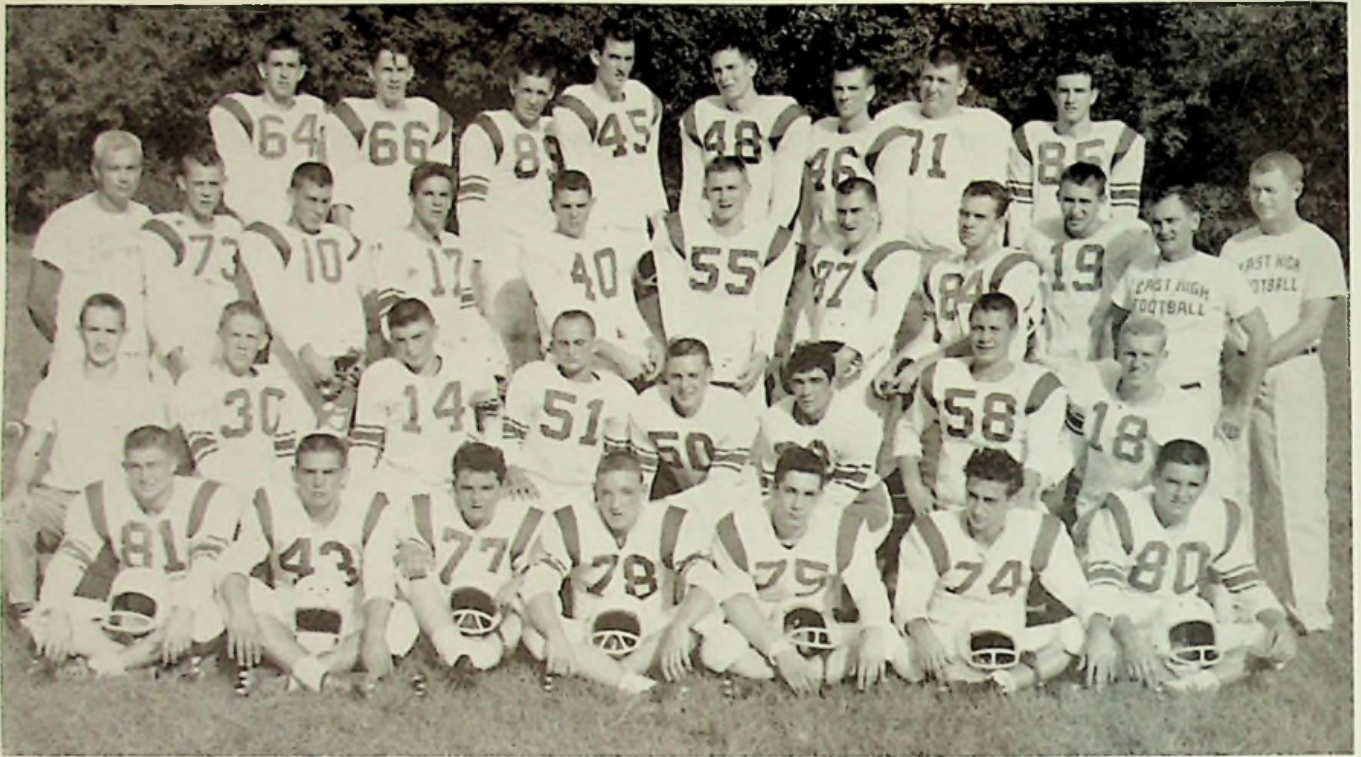
YOUR STANDARDS . . .



SPORTS



Won Six; Lost Three;



FIRST ROW, Left to Right: Bear, Gullion, Gregory, Schnieder, Falls, Walker, Haller. SECOND ROW: A. Hanson, Manager; J. Hanson, Shonkwiler, Benner, Harr, Weeks, Whitley, Partridge. THIRD ROW: Buzz Rogue, Coach; Mault, Steele, Brewer, Gammon, Ruley, Smith, Newell, Turner, Lou Carson, Assistant Coach; Herm Schomburg, Assistant Coach. FOURTH ROW: Bauer, Ruth, Collins, Keeton, Craft, Cabiness, Lee, Hall.

Coach Buzz Pogue

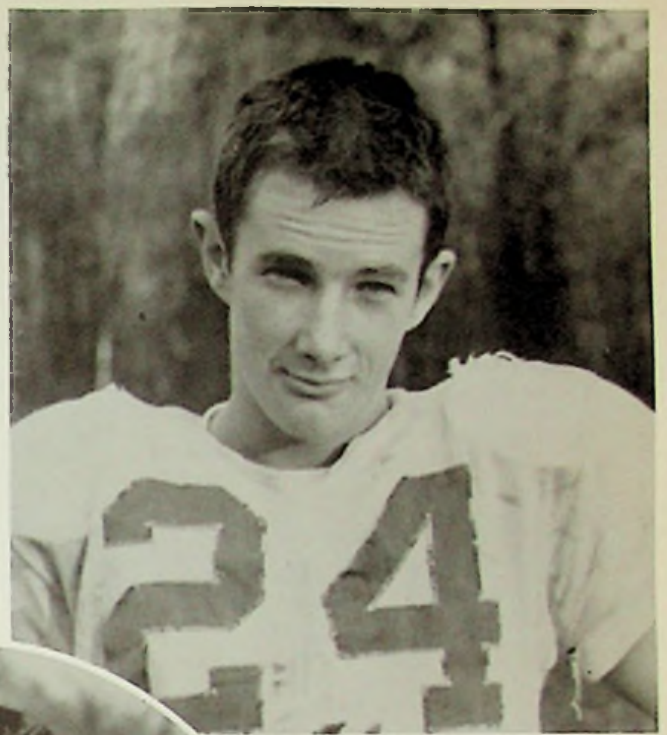


VARSITY FOOTBALL RECORD

EAST	OPPONENT	
0	Waverly	14
26	Lucasville	0
6	Wheelersburg	12
36	Piketon	12
36	West	0
30	Chesapeake	12
14	South Point	8
38	New Boston	12
8	Notre Dame	46



David Steele, Junior
Quarterback



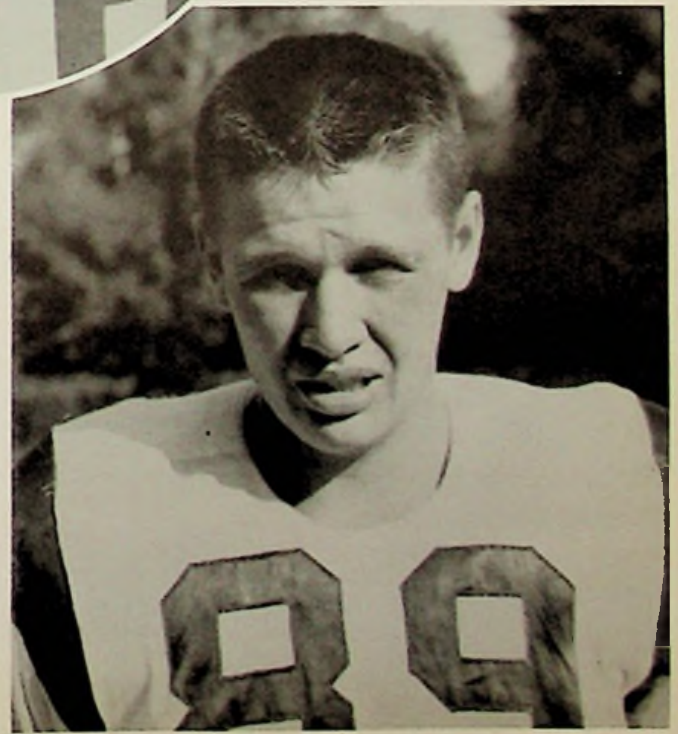
Joe Hood, Senior
Tackle



Price Gammon, Senior
Fullback

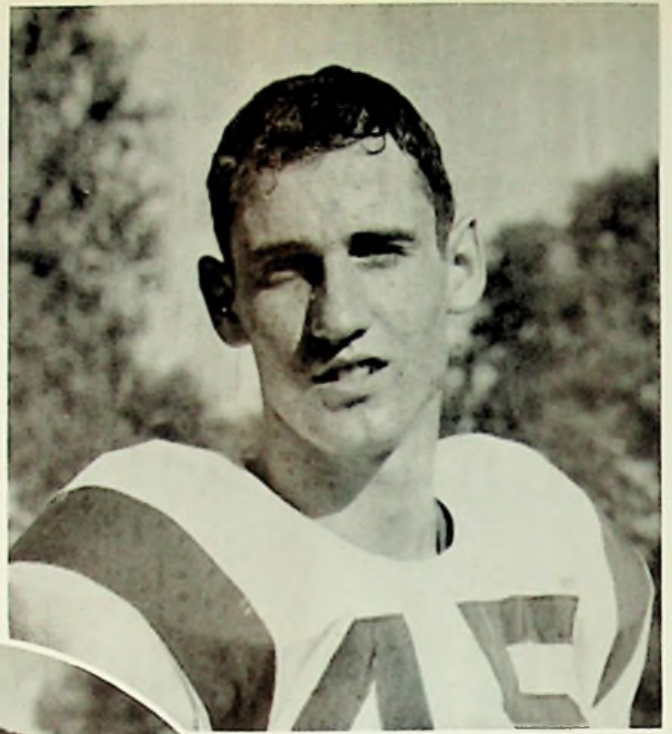
David Brewer, Sophomore
Guard

Steve Collins, Senior
Guard

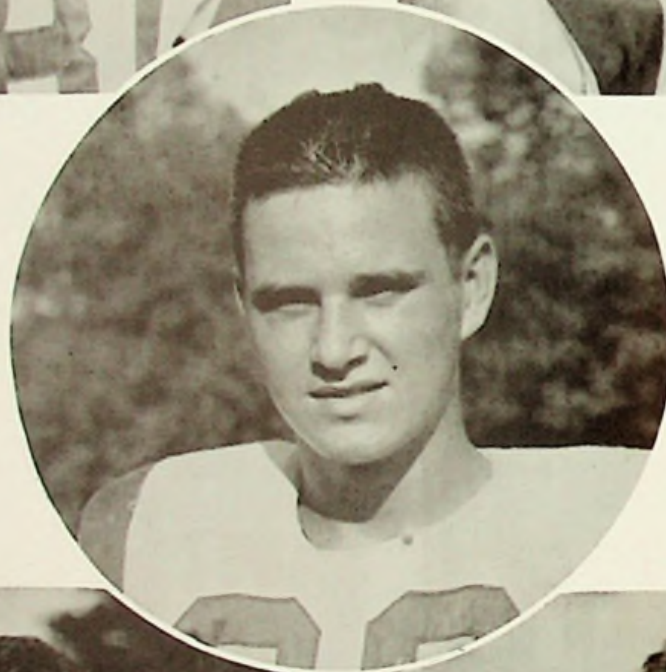




Harvey Bear, Junior
Halfback



Ray Keeton, Junior
End



Clyde Haller, Senior
Captain; End

Jim Falls, Sophomore
Tackle

Emmet Gregory, Sophomore
Quarterback





Joe Hanson, Sophomore
Halfback



Mike Partridge, Junior
End



Allen Lee, Junior
Center

Ben Newell, Senior
Center

Randy Schnieder, Sophomore
Halfback

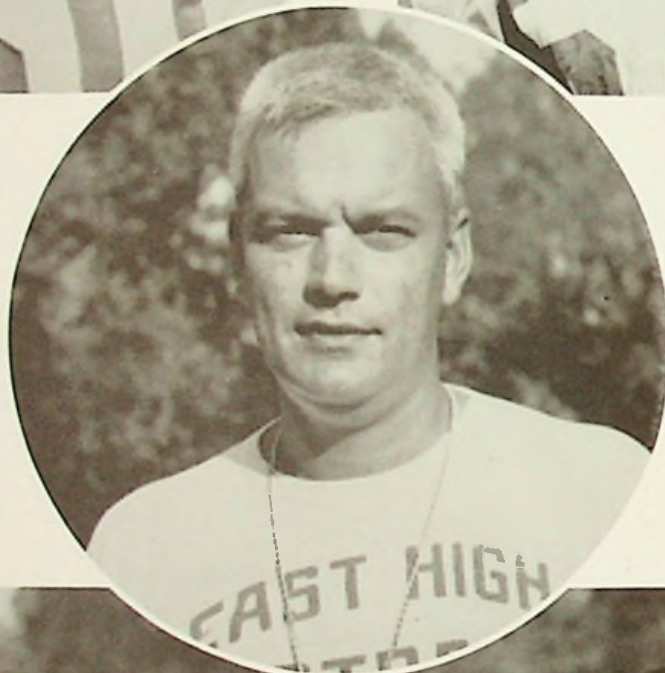




W. G. Harr, Junior
Guard



Pete Chamberlin, Junior
End



Buzz Pogue
Head Coach

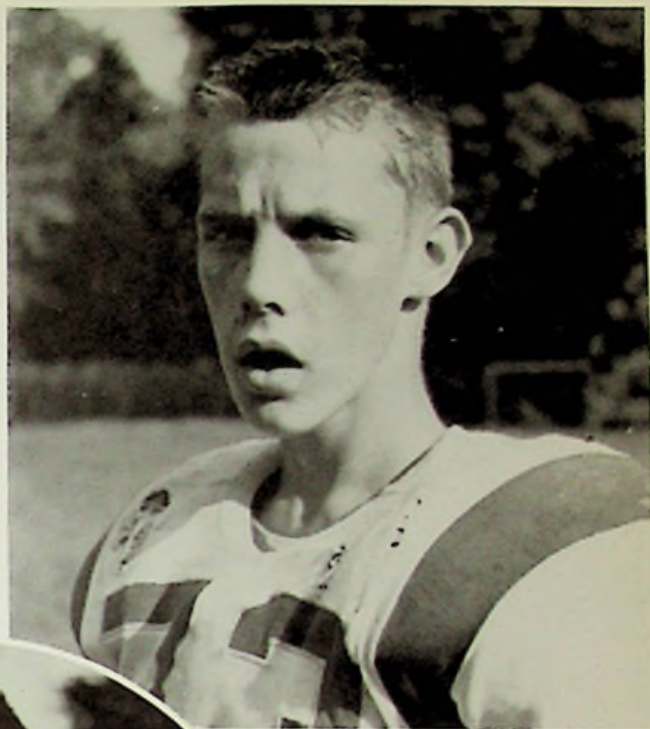
Roger Benner, Sophomore
Guard

Jim Smith, Senior
Tackle





Doug Ruth, Junior
End



Steve Mault, Senior
Guard

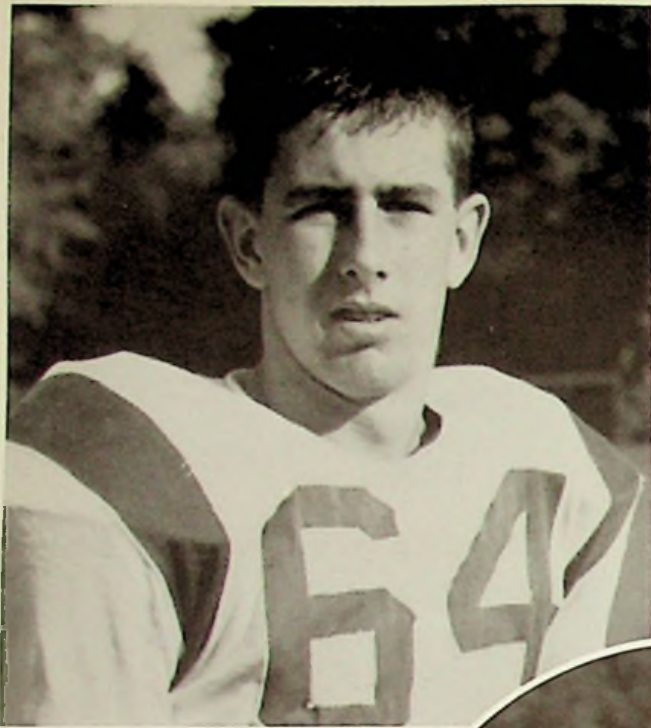


Gene Cabiness, Junior
Fullback

Keith Turner, Junior
End

Wayne Weeks, Sophomore
End





Don Bauer, Junior
Tackle



Morris Gullion, Junior
Halfback



John Ruley, Sophomore
Quarterback

Jerry Craft, Junior
Guard

John Walker, Senior
Halfback





Richard Whitely, Junior
Tackle



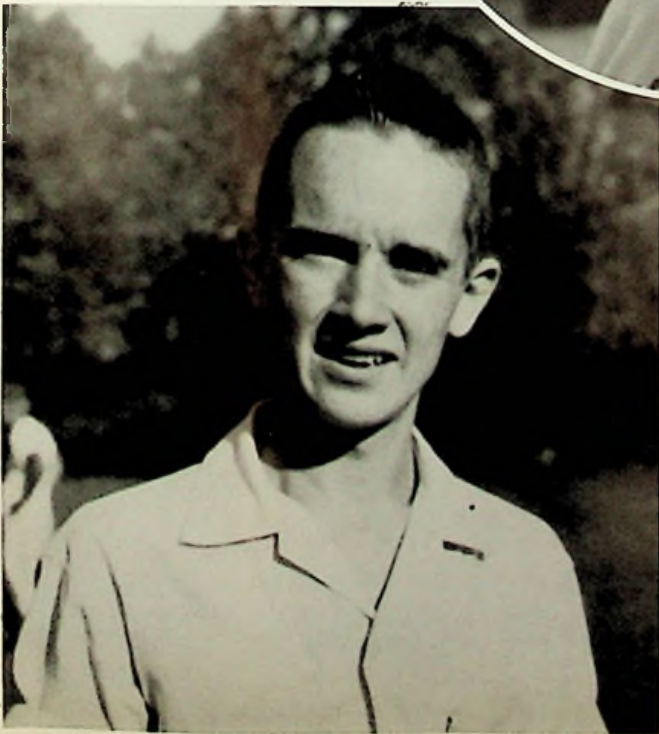
Lowell Shonkwiler, Sophomore
Guard



Herm Schomburg
Assistant Coach

Allen Hanson, Junior
Manager

Mike Hall, Senior
Tackle



Practice Makes Perfect



They don't call me fingers for nothing.



Let's try to hit it this time Gammon.

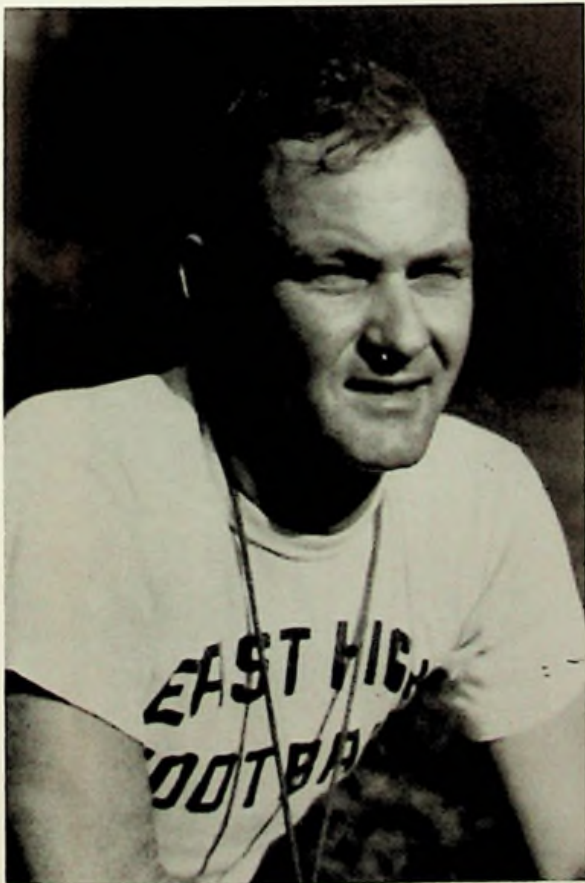


Hey! You're hitting the wrong dummy.

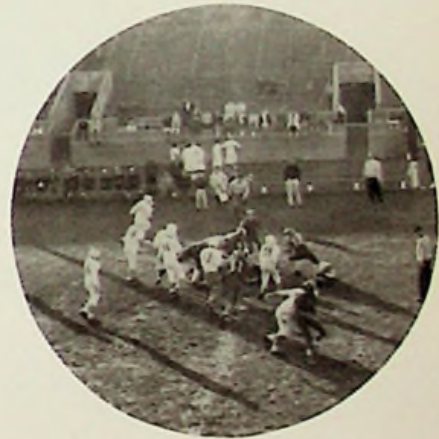


ROW ONE: Rooney, Singleton, Wadkins. ROW TWO: Johnson, Owens, Bihl, Wolfe, Coach Carson. ROW THREE: Logan Craft, Sparks, Weber, Edwards.

Freshmen Compete In Freshman League For First Time



Freshman coach, Lou Carson



Our Freshman team in action.



They did a fine job all season.

Ended Fourth In The S.O.C.



Surprise! Look what Price found.



Haller snags a pass.

Pre-game warm up.



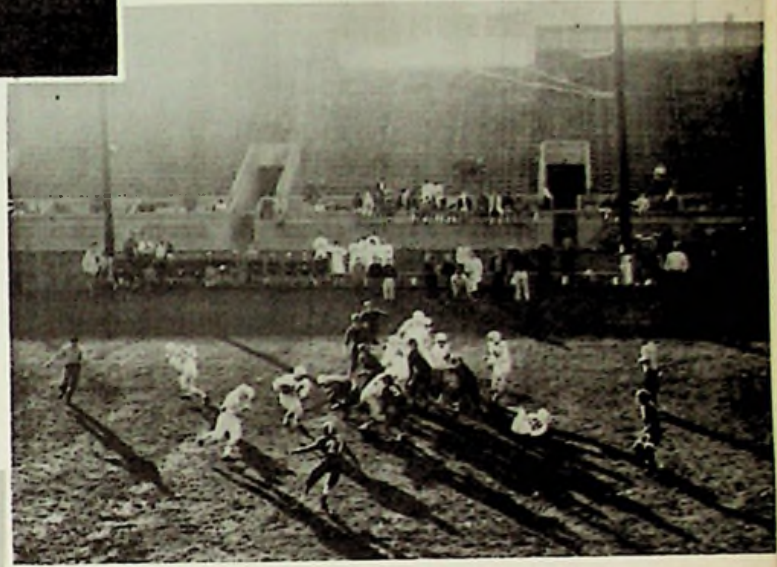
Gullion goes for a T. D.





Freshman

Action



Shots



Football Banquet Honors Athletes



Everyone enjoyed the food at the Football banquet.

Clyde Haller receiving Millhuff's Most Valuable Player trophy.



Price Gammon receives his fourth varsity award.



ROW ONE: Ruley, Everhart, Steele, Gammon, Walker. ROW TWO: Ruth, Craft, Keeton, Picklesimer, Burleson. ROW THREE: Al McGraw, Manager; Herm Schomburg, Coach.

VARSITY BASKETBALL

EAST	OPPONENT	
63	West	60
43	S. Webster	29
37	N. Boston	76
66	Valley	51
74	Waverly	68
51	Notre Dame	55
68	Piketon	64
73	Wheelerburg	60
70	Valley	61
62	Minford	46
60	Wheelerburg	54
56	Piketon	62
30	N. Boston	69
47	Notre Dame	59
60	West	57
58	Waverly	53
100	Minford	44



Aw! Coach, that wouldn't be fair to the other team.



Craft gets the rebound



Jerry gets the tip

Athletics Stress Sportsmanship, Teamwork

Keeton at the charity line



Two points coming up



Impressive JV's Spell Future S.O.C. Success



EAST

OPPONENT

27	West	24
37	S. Webster	36
35	N. Boston	26
41	Valley	37
43	Waverly	42
44	Notre Dame	34
51	Piketon	14
38	Wheelersburg	34
56	Valley	46
43	Minford	28
26	Wheelersburg	35
45	Piketon	40
55	N. Boston	37
46	Notre Dame	32
62	West	38
42	Waverly	47
61	Minford	38

Everhart sinks one from underneath against Waverly.

ROW ONE: Shonkwiler, Ruth, Ruley, Everhart, Hieneman. ROW TWO: Gullion, Williams, Lee, Conley, Daniels. ROW THREE: Hanson, Manager; Turner, Herm Schomburg, Coach.

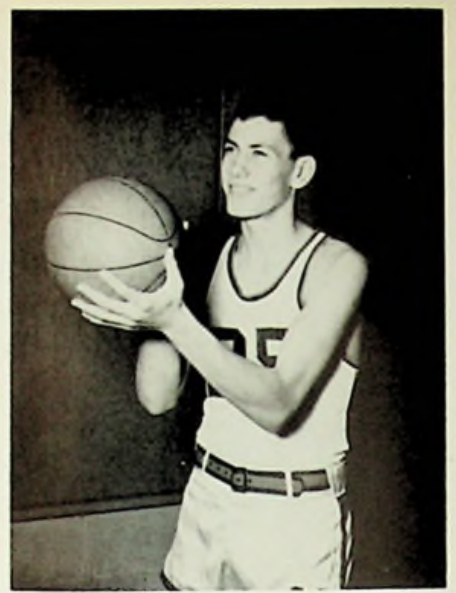




Eugene Picklesimer



Gary Burleson



David Steele



Morris Gullion



Jerry Craft



John Walker



Herm Schomburg, Coach



Ray Keeton



Price Gammon



Larry Williams



Forrest Everhart



Allen Lee



Doug Ruth



Allen Hanson, Manager



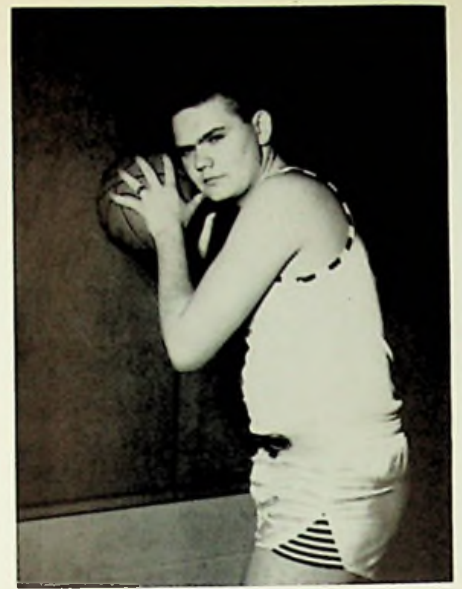
John Ruley



Al McGraw, Manager



Dave Hieneman



Larry Conley



Lowell Shonkwiler



Keith Turner



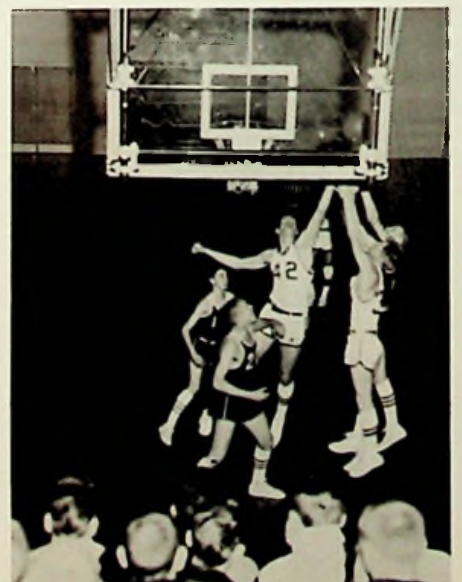
Marty Daniels



The game begins.



We cheer the team on to victory!



Oh! Where is that ball going?



FRESHMAN BASKETBALL TEAM--ROW ONE: Edwards, Rooney, Bear, Wolfe. ROW TWO: Singleton, Owens, Logan. ROW THREE: Bihl, Lou Carson, Coach; Craft.

VARSITY CHEERLEADERS--Barbara Withrow, Evelen Porter, Priscilla Farmer, Judy Birkhimer, Linda Beloar. ABSENT: Vicki Curcio.



Seasons Over, Time For Awards



Gary Burleson receives Most Valuable Player award from Coach Schomburg.



Don Wolfe receives award from Coach Carson.



Everyone had a wonderful time at the Basketball Banquet.



ROW ONE: Edwards, Falls, Phillips, Gullion, Craft, Ruley, Craft. ROW TWO: Keeton, Hood, Burleson, Cabiness, Brewer, Williams, Moorhead, Bonzo, Coach Buzz Pogue.

We Are S.O.C. Champions In Baseball

BASEBALL 1960

East	5	Green Twp.	3
East	6	Valley	0
East	5	Northwest	0
East	4	Valley	2
East	4	West	5
East	8	Wheelersburg	3
East	10	Wheelersburg	1
East	7	Minford	6
East	9	Minford	4
East	2	N. Boston	1



WE'LL WORK



ACTIVITIES



TOGETHER





Some Work-

Above
EDITORIAL STAFF
Danna Nardi
Dale Kegley
Janet Willis
Shelby Falls



TYPISTS
Florence Zornes
Marsha Webb
Evelyn Parker



SPORTS--Keith Buckley, Linda Beloit,
Price Gammon.



PHOTOGRAPHERS--Jim Smith, Allen Han-
son.
ARTIST--Linda Whitely.

Some Play,



ACTIVITIES--Priscilla Farmer, Judy Hickman, Angela Helm, Joyce Akers.



ANNUAL STAFF--G. Burleson, K. Lavendar, M. Ruth, B. Rose, D. Eichenlaub, B. Newell, J. Gearhart, J. Morgan, A. Storey, S. Weaver.

Makes Our Annual,



ANNUAL STAFF--J. Shear, C. Kazee, S. Webb, L. Cole.



ANNUAL STAFF--STANDING: Sandra Weaver, Jean Gearhart, Angela Helm, Janet Willis, Linda Beloit, Shelby Falls, Danna Nardi. SITTING: Cornelia McCall, Dale Kegley, Mary Kirk.

Turn Out O.K.!



Nancy Walker
and
Nancy Melvin
Co-Editors
for the
1961 Tartan.



Business Managers

Allen Hanson



Photographer



Cheryl Samson



Jerry Mershon



OUR QUEEN LINDA BELOAT



SENIOR ATTENDANT Joy Walker



JUNIOR ATTENDANT Gayle Hickman



SOPHOMORE ATTENDANT Sue Swick



FRESHMAN ATTENDANT Jean Fankell



HOMECOMING 1959





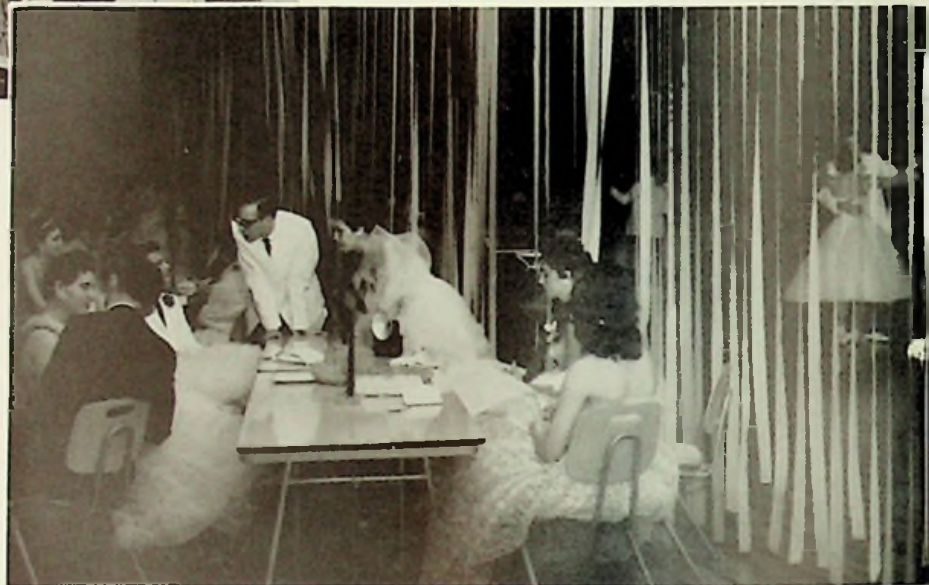
GLEE CLUB--ROW ONE: L. Whitely, J. Moore, S. McKee, S. McKee, J. Birkhimer, L. Piquet, J. Davis, G. Payton, A. Storey, J. Coriell. ROW TWO: S. Jones, L. Beloat, C. Kazee, S. Sampson, J. Adams, F. Zornes, C. Miller, J. Hickman, L. Cole. ROW THREE: M. Whitt, S. Charleton, S. Webb, C. Coriell, B. Williams, O. Warren, B. Burriss, C. Langley, L. Allard, M. Bentley. ROW FOUR: M. Craft, B. Rhodes, P. Hawes, M. Ruth, R. McKelvey, J. Gearhart, B. Withrow, V. Curcio, J. Willis, J. Walker, T. Moorhead. ROW FIVE: L. Phillips, G. Payne, M. Neal, J. Smith, F. Allard, B. Redmond, J. DeHoff, R. Snyder, K. Buckley, J. Bryant, R. Jordan.

MUSIC, MUSIC, MUSIC



GLEE CLUB--ROW ONE: O. Coriell, K. Lavendar, D. Nagel, M. Manning, D. Jackson, E. Martin, J. Downey, P. Farmer. ROW TWO: D. Conley, D. Slack, J. Call, M. Brown, P. Chatfield, D. Nardi, K. Williams, C. McCall. ROW THREE: S. Weaver, J. Shear, D. Howell, V. Caseman, J. Fankell, N. Shepherd, K. Arthurs, C. Welch, D. Rickman. ROW FOUR: J. Shields, J. Simpson, L. Baer, S. Starling, M. Webb, D. Tussey, N. Ogg, R. Schwable, M. Lykins, M. Goddard.

PROM



"HAWAIIAN"



MAY

8:00



1959



CRUISE"

WAITRESSES--Barbara Williams, Frances Keller, Nancy Melvin, Bobbie Birkhimer, Sue Starling, Pamela Hawes.



15, 1959

P.M.



RESERVE CHEERLEADERS: Sue Swick,
Sharon May, Mary Lou Goddard.



VARSITY CHEERLEADERS --Judy Birkhimer,

RAH!
RAH!
RAH!



Barbara Withrow, Vicki Curcio, Linda Bel oat, Priscilla Farmer, Evelyn Porter.

Future Homemakers



HOME ECONOMICS ANNUAL SPRING STYLE SHOW AND CHRISTMAS TEA





LATIN CLUB--ROW ONE: M. Loop, S. McKee, M. Mershon, M. Chamberlain, L. Crabtree, D. Wolfe, S. Welch, J. Hibbits, C. Filkins, W. Bayes. ROW TWO: S. Imes, D. Hammond, C. Carter, S. Ramey, J. Watkins, J. Adams, R. Luster, D. Humphrey, L. McClure. ROW THREE: G. Martin, L. Kirchner, A. Sylvia, M. Whitt, B. Craft, L. Edwards, M. Bihl, R. Boggs. ROW FOUR: N. Simpson, R. Singleton, B. Etterling, J. Knight, R. Weaver, S. Rooney, Mr. Stevenson.

VENI, VIDI, VICI



LATIN CLUB--ROW ONE: L. Simpson, G. Lee, M. Brown, J. Leslie, P. Schomburg, M. Hood. ROW TWO: D. Bolander, R. Brown, E. White, D. Hieneman, D. Porter, S. May, R. Swavel. ROW THREE: J. Falls, D. Schnieder, S. Abbott, N. Ogg, S. Swick, M. Goddard, R. Coriell, F. Everhart. ROW FOUR: M. Daniels, L. Phillips, F. Zornes, J. Bonozo, T. Campbell, Mr. Stevenson.



HONOR COUNCIL--ROW ONE: L. Beloat, A. Helm, Mrs. Moore, J. Akers, S. Falls. ROW TWO: P. Schomburg, E. White, J. Williams, C. Shonkwiler, J. Willis, M. Webb, S. Weaver, L. Whitely, J. Hartledge, P. Farmer.

Only The Deserving Gets-



LIBRARIANS--ROW ONE: M. Zornes, J. Corriell, Miss Heer, C. Welch, J. Hartlage. ROW TWO: B. Grandin, L. Pack, D. Arnett, M. Bentley, L. Flannery, D. Rickman, P. Fox.



BAND OFFICERS--LEFT TO RIGHT: R. Young, B. Harrison, P. Gilpin, M. Kirk.

Below. PEP CLUB OFFICERS--KNEELING: D. Conley, J. Hickman. STANDING: S. Starling, C. Kazee, C. Miller.

Elected!



STUDENT COUNCIL OFFICERS--J. Smith, J. Akers, A. Helm, D. Kegley.



HOME EC. CLUB--Judy Birkhimer, Joyce Akers, Sandra Weaver, Kay Lavender.



F. T. A. OFFICERS--Dave Wolfe, Betty Craft, Edith DeHoff, Marilou Goddard, Nancy Melvin.

Homemakers, Teachers, Scientists

(Someday, maybe!)



SCIENCE CLUB OFFICERS--Jerry Mershon, Shelby Falls, Angela Helm, Mike Partridge.



SPANISH CLUB--ROW ONE: C. Burns, K. Williams, G. Hickman, S. Falls, T. King. ROW TWO: D. Williams, L. Shear, J. Mershon, S. Starling, M. Webb. ROW THREE: D. Ruth, D. Chaney, M. Partridge, B. Rhodes, R. Bonzo, C. Hubert. ROW FOUR: G. Cabiness, J. Bryant, M. Neal, J. Craft, Mr. Stevenson.

If We Worked Together

We Could Have A

Spanish Newspaper!

NEWSPAPER STAFF--ROW ONE: E. Porter, M. Brown, N. Melvin, N. Walker, E. Parker. ROW TWO: D. Conley, L. Pack, P. Bussler, P. Gilpin, J. Mershon. ROW THREE: G. Hickman, J. Gearhart, L. Shear, C. Burns, C. Sampson, J. Williams. ROW FOUR: R. Johnson, A. Hanson, M. Partridge, J. Falls, D. Hinaman, D. Williams. ROW FIVE: B. Withrow, E. DeHoff, L. Conley, M. Goddard, V. Curcio.





TRI-HI-Y--BACK ROW: M. Bentley, C. Shonkwiler, D. Rickman, D. Williams, R. McKelvy, E. DeHoff, J. Gearhart, J. Simpson, M. Ruth, B. Withrow, B. Rose, S. Webb, L. Allard, J. Shear, A. Helm. V-- Left to Right: L. Cole, P. Gilpin, C. Sampson, C. Kazee, C. McCall, J. Cortell, L. Clark, L. Whiteley, J. Walker, P. Farmer, E. Parker, E. Porter, S. Dever, L. Pack, A. Storey, J. Call, D. Nardi, N. Walker, N. Melvin, B. Birkhimer, S. Samson, R. Johnson. CENTER: L. Beloat, S. Weaver, M. Webb, S. Falls, J. Akers.



“To Create & Maintain Clean & High



HI-Y--LEFT SIDE: J. Craft, L. Conley, J. Bryant, D. Ruth, S. Collins, S. Mault, P. Gammon, J. Smith, F. Allard, D. Spence, C. Haller, J. Hood, B. Cole, J. Mershon. RIGHT SIDE: G. Burleson, S. Hogan, B. Harrison, J. Collins, K. Buckley, C. Hubert, L. Cambell, M. Partridge, M. Singleton, D. Kegley.



Standards Of Christian Living"



TRI-HI-Y--BACK ROW: M. Bentley, C. Shonkwiler, D. Rickman, D. Williams, R. McKelvy, E. DeHoff, J. Gearhart, J. Simpson, M. Ruth, B. Withrow, B. Rose, S. Webb, L. Allard, J. Shear, A. Helm. V-- Left to Right: L. Cole, P. Gilpin, C. Sampson, C. Kazee, C. McCall, J. Coriell, L. Clark, L. Whiteley, J. Walker, P. Farmer, E. Parker, E. Porter, S. Dever, L. Pack, A. Storey, J. Call, D. Nardi, N. Walker, N. Melvin, B. Birkhimer, S. Samson, R. Johnson. CENTER: L. Beloat, S. Weaver, M. Webb, S. Falls, J. Akers.



"To Create & Maintain Clean & High



HI-Y--LEFT SIDE: J. Craft, L. Conley, J. Bryant, D. Ruth, S. Collins, S. Mault, P. Gammon, J. Smith, F. Allard, D. Spence, C. Haller, J. Hood, B. Cole, J. Mershon. RIGHT SIDE: G. Burleson, S. Hogan, B. Harrison, J. Collins, K. Buckley, C. Hubert, L. Cambell, M. Partridge, M. Singleton, D. Kegley.



Standards Of Christian Living”



TRI-HI-Y
OFFICERS
Marsha Webb
Shelby Falls
Joyce Akers
Sandy Weaver
Linda Beloit

"The Visions Of God Are Only Seen
Through The Lens Of A Pure Heart."



HI-Y
OFFICERS
Steve Collins
Clyde Haller
Jim Smith
Gary Burleson
Dale Kegley



**GIRLS' LEAGUE
OFFICERS**

Priscilla Farmer
Angela Helm
Linda Whitely
Carolyn Shonkwiler



**BIBLE CLUB
OFFICERS**

Cheryl Samson
Marsha Webb
Vicki Curcio

**"Only Those Who See The
Invisible,
Shall Do Exploits!"**



Junior Cup

Joyce Akers, called "Butch" by her classmates, was honored last year to win the coveted Delphic Society's Junior Cup.

The cup is presented each spring to a member of the junior class who has made many contributions to his class and school.

Character, leadership, scholarship, co-operation, and athletics are considered in the selection of the winner. This coveted cup was presented at the annual Senior Day assembly.

Joyce was president of the Tri-Hi-Y, a member and officer of Student Council, a majorette and drum majorette, class officer, band, and Home Economics Club officer.





Scholarship Team Gets Awarded





Junior Class Presents
“THE STAG LINE”

The Cast Of Characters,

Mac	Sam Hogan
Margaret	Darlene Rickman
Jerry	Jerry Craft
Sylvia.	Vicki Curcio
Carol	Mary Powell
Ting	Rena Young
Mrs. Mason	Edith DeHoff
Mr. Mason.	Larry Conley
Smitty	Jackie Coriell
Mrs. Farrington Smith	Judy Williams
Julie	Cheryl Samson
Ronald	Mike Partridge
Snoots	Douglas Ruth
Alix	Evelyn Porter
Maudie	Nancy Melvin
Chi	Jerry Mershon
Davy	Allen Hanson
Lybeth	Nancy Walker



Senior Class Presents:
“TWELVE ANGRY WOMEN”

The Cast Of Characters.

Judge	Jim DeHoff
Clerk	Fred Allard
Guard	Jim Collins
Foreman of the Jury	Marsha Webb
Juror No. Two	Linda Pack
Juror No. Three	Janet Willis
Juror No. Four	Angela Helm
Juror No. Five	Dianna Arnett
Juror No. Six	Linda Allard
Juror No. Seven	Carolyn Kazee
Juror No. Eight	Shelby Falls
Juror No. Nine	Linda Whitely
Juror No. Ten	Judy Hickman
Juror No. Eleven	Joyce Akers
Juror No. Twelve	Sandy Weaver



"Tuning Up"



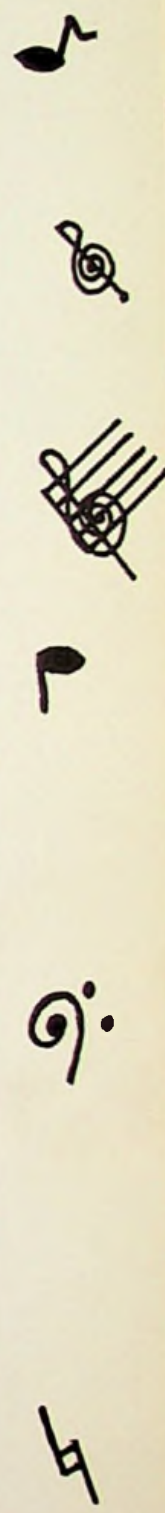
"Toot - toot"



"Natural-ly"
McCoy



BAND--Drum Major, Bill Harrison, Mary Powell, Harriet Saunders. ROW Carter. ROW TWO: C. Samson, E. ROW THREE: K. Gardner, E. White, Snyder, A. Gee, L. Crabtree, J. Snyder, M. Mershon, S. Ramey, C. Carter, R. N. Walker, J. Mershon.



Majorettes, Joyce Akers, Angela Helm, Joy Walker, Glenna Gammon, Sandra Webb, Shelby Falls, ONE: J. Morgan, G. Martin, A. Sylvia, L. Kirshner, D. Hammonds, D. Humphry, S. Imes, H. Gregory, M. Loop, C. Filkins, J. Hibbits, N. Conkey, M. Chamberlain, B. Craft, D. Wolfe. B. Storey, S. Abbott, F. Hughes, P. Schomberg, M. Kirk, C. Miller, J. Shear. ROW FOUR: D. P. Bussler, J. Hood, D. Eichenlaub, G. Mault. ROW FIVE: J. Leslie, L. Shear, B. Birkhimer, Luster, C. Hubert. ROW SIX: L. Clark, P. Gilpin, R. Young, B. Payton, N. Melvin, R. Johnson,



Joyce Akers, Senior
Head Majorette



Shelby Falls, Senior
Majorette



Sandra Webb, Senior
Assistant Head Majorette



Angela Helm, Senior
Majorette



Joy Walker, Senior
Majorette



Glenna Gammon, Junior
Majorette



Mary Powell, Junior
Majorette



Harriet Saunders, Junior
Majorette



Majorettes doing an Oriental dance!

"Salute to the school and the team."



Girls Intramurals Of 1960

"CHAMPS"



BUBBLE-GUM BEAUTIES--
STANDING: L. Blevins, D. Hammonds, B. Craft, F. Henson, L. McClure. SEATED: L. Piquet, J. Hibbitts, S. Welch.



FOUL . . . !



AW . . . REF. !



Get em!

Runners-Up



Championship Game



AKERS' ANGELS--STANDING: J. Walker, J. Hickman, C. Langley, J. Gearhart. SEATED: A. Storey, B. Akers, and S. Webb.



MAJORETTES--KNEELING: Joy Walker, Shelby Falls, Mary Powell, Glenna Gammon. STANDING: Angela Helm, Butch Akers, Sandra Webb, Harriet Saunders.

The Rockettes? No! The "TarTan-ettes."



ALTERNATES--Janie Hibbits, Pat Schomburg, Nancy Melvin, Donna Hammonds, Barbara Birkhimer, Lynda Shear.



The second semester speech class presents "Call it a Day."

The patients.

The doctor and his wife.



The student body and faculty enjoyed the speech club assembly.



FIRST SEMESTER--ROW ONE: R. McKelvey, L. Whitely, P. Farmer, J. Hickman, A. Helm. ROW TWO: D. Kegley, J. Akers, J. Willis, C. Coriell, B. Burris. ROW THREE: K. Buckley, C. Haywood, F. Allard, J. Smith, P. Gammon, J. Collins. ROW FOUR: L. Conley, R. Snyder, J. DeHoff, R. Brown, Mr. Stevenson.

Talking Is Our Business



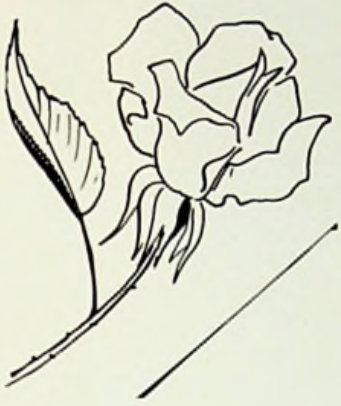
Second semester speech class in room 22.

TARTAN KING AND QUEEN



Priscilla Farmer And Clyde Haller
Seniors

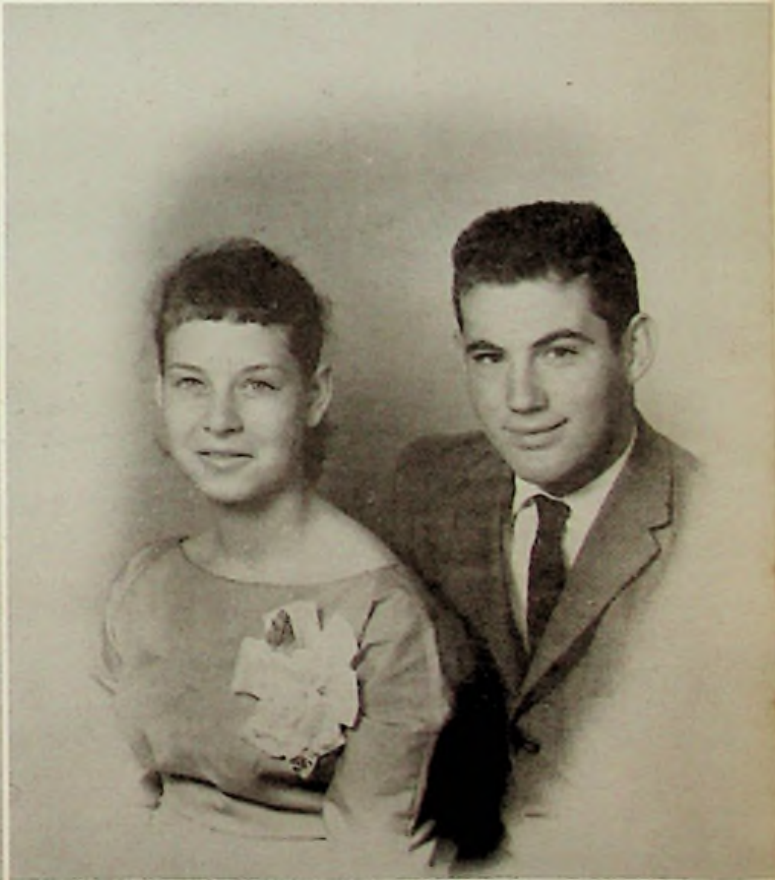




Juniors
Rena Young and Donald Bauer



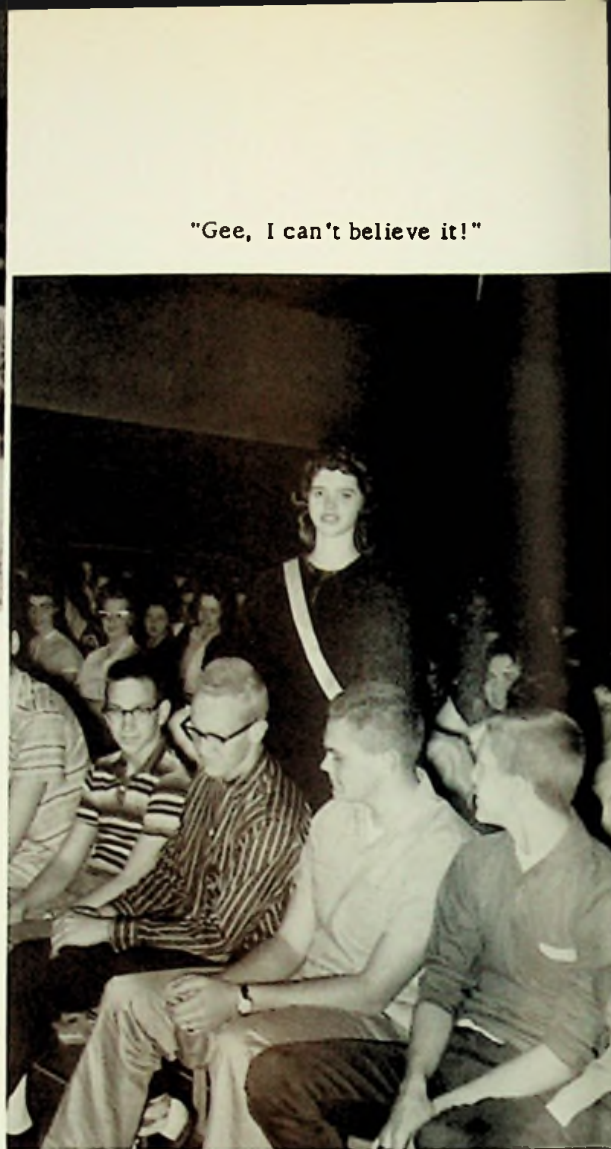
Sophomores
Brenda Storey and Dave Brewer



Freshmen
Betty Craft and Mike Craft



Angela Helm -- Into National Honor



"Gee, I can't believe it!"

"Edith, help me up!"



"Good Heavens, not me!"



National Honor Society



OFFICERS--Janet Willis, Sandra Weaver, Dale Kegley, Shelby Falls, and Marsha Webb.



GIRLS' LEAGUE



XMAS PARTY





Mrs. Bosham directs the Girls' Ensemble at the Spring Festival.

Music Goes Round & Round And It Comes Out Here.

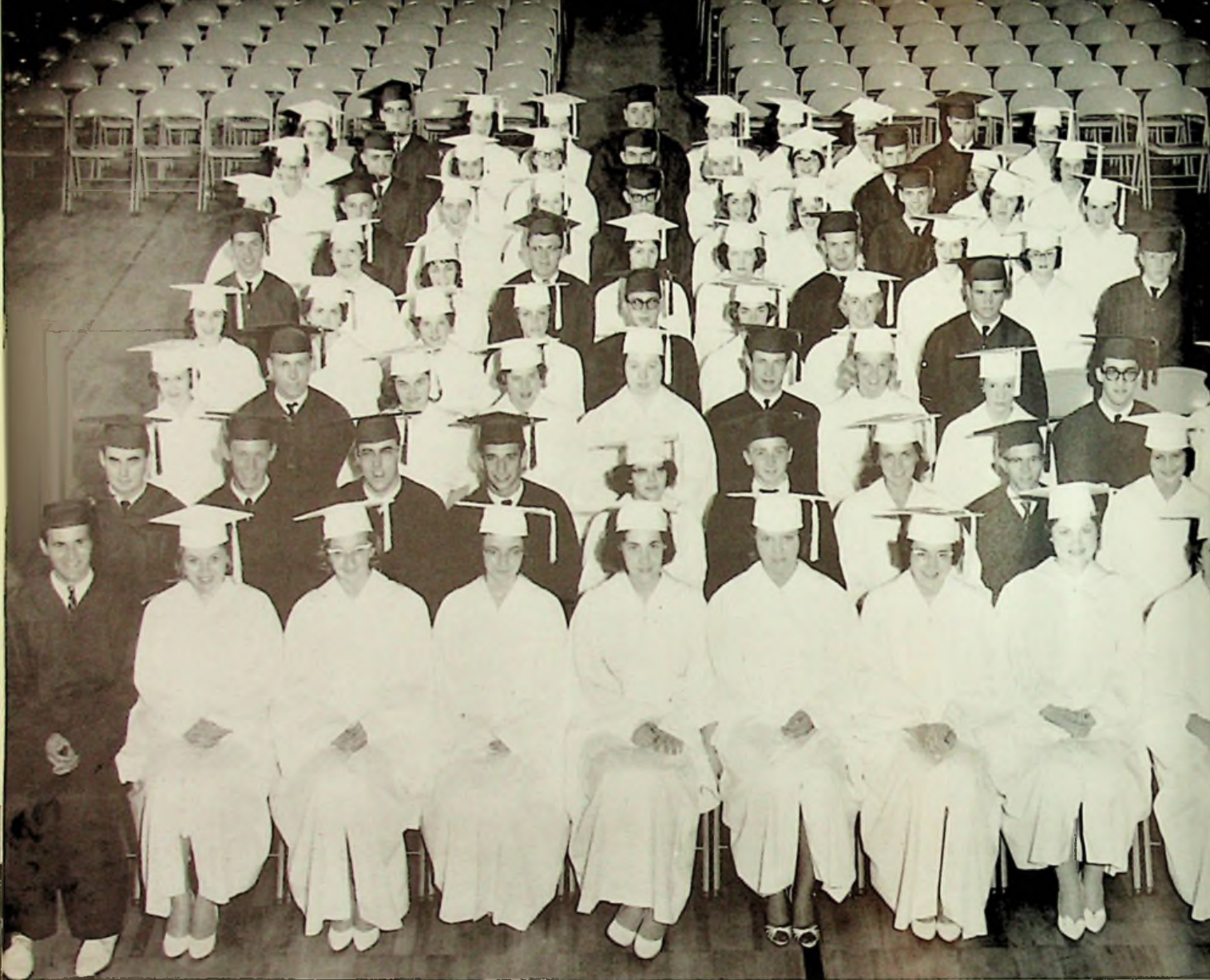


Practice! Practice!



Our Band Assembly Program.

Baccalaureate Service, June 5, 1960



Judy Walker and Who? at the prom.



John Walker at the



Les Lindberg
prom.



Senior Assembly, June 2, 1960



Joyce Akers presents Mike Partridge with the Junior Cup.



Halloween Parties



EAST
ELEM

Grades
1,2,3,&4.





HIGH ELEMENTARY

And Kindergarten



On the playground.





Ready McKelvy and Judy Simpson with JoAnne Hibbitts and Bruce Martin.

The Kindergarten children resting.





THIRD and FOURTH GRADE--ROW ONE: J. Hibbitts, K. Arn, Mrs. Helm, J. Hawes, B. Purdy, K. Cooper.
 ROW TWO: M. Will, U. Dials, J. Davison, J. Hartlage, S. Sprunger, Billy Davis. ROW THREE: J. Hansgen,
 T. Bailey, T. Sherman, D. Thompson. ROW FOUR: R. Staten, B. Keyer, D. Imes, B. Martin, T. Artis.

FIRST GRADE--ROW ONE: B. Arn, V. Will, T. Marsh, C. Overholtzer, T. Hibbitts, T. Selbee, S. Thompson,
 S. Bays. ROW TWO: J. Kennedy, K. Burns, P. Green, A. Lykins, J. Frazier, M. Hardy, P. Baxter, D.
 Cooper. ROW THREE: P. Stephenson, R. Bierley, M. Hall, J. Vallance, M. Newberry, D. Martin, T.
 Sherman, R. Sturgill. ROW FOUR: M. Thompson, D. Baxter, P. Payton, S. Martin, K. Starling, D. Basham.



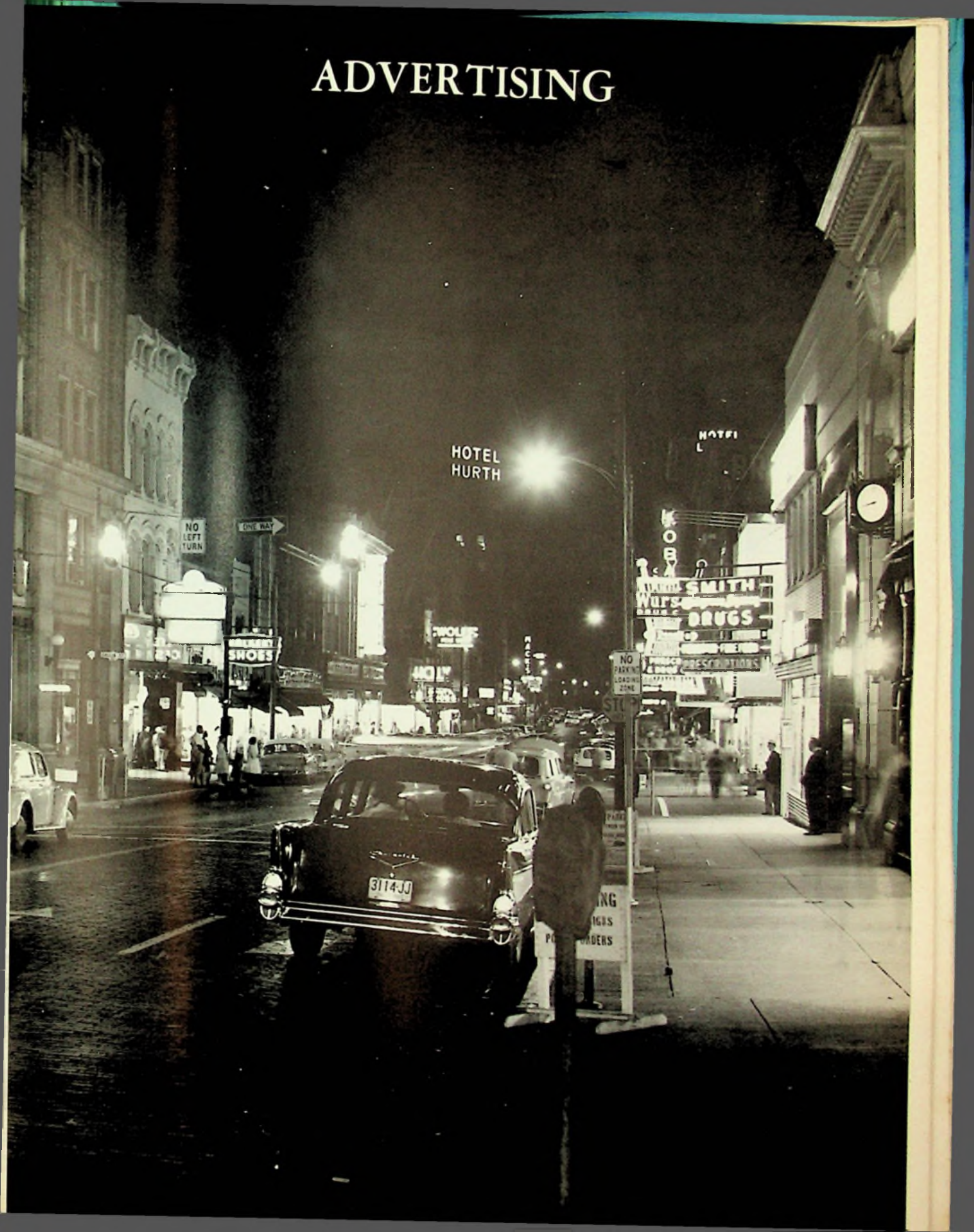


KINDERGARTEN--ROW ONE: P. Riggs, D. Remy, B. Altman, C. Bierley, L. Green, Miss Doria. ROW TWO: K. Christopher, D. Frazie, L. Burke. J. Talani, C. Secrest, J. Neu. ROW THREE: J. Mauk, J. Roney, W. Holland, D. Brown, M. Millhuff, D. Sparks.

ROW ONE: B. Wilson, L. Fannin, C. Carson, T. Donley, G. Morris, M. Slone, R. Dials. ROW TWO: M. Estes, D. Porter, C. Webb, G. Glass, S. Wineka, V. Conrad, D. Stapleton. ROW THREE: L. Welch, A. Sturgeon, D. Johnson, L. Bailey, M. Hansgen, D. Kinker.



ADVERTISING





EAST HIGH BOOSTER'S CLUB

BOOSTER'S CLUB OFFICERS

- President Jack McGlone
- Vice-President Ray Thompson
- Secretary Tom Taulbee
- Treasurer Harry Scott

**NEW BOSTON
REXALL DRUGS**

4152 Gallia Street
Phone GLendale 6-4855
New Boston, Ohio



Best Wishes

to

The Class of 1960

from

**SHERMAN HIBBITS
AND
SON
DEPARTMENT STORE**

212-214 Harding Avenue
Sciotoville, Ohio
Phone PResident 6-2302

Compliments of

**PRICE
TV AND APPLIANCE**

226 Harding Avenue
Sciotoville, Ohio

Motorola Sales & Service



**COVERT FURNITURE
COMPANY**

"Where You Buy
The Best For Less"

5605 Gallia Street
Sciotoville, Ohio

Phone PResident 6-2237



EAST HIGH BOOSTER'S CLUB

BOOSTER'S CLUB OFFICERS

President Jack McGlone
Vice-President Ray Thompson
Secretary Tom Taulbee
Treasurer. Harry Scott

**NEW BOSTON
REXALL DRUGS**

4152 Gallia Street
Phone GLendale 6-4855
New Boston, Ohio



Best Wishes

to

The Class of 1960

from

SHERMAN HIBBITS

AND

SON

DEPARTMENT STORE

212-214 Harding Avenue

Sciotoville, Ohio

Phone PResident 6-2302

Compliments of

**PRICE
TV AND APPLIANCE**

226 Harding Avenue

Sciotoville, Ohio

Motorola Sales & Service



COVERT FURNITURE

COMPANY

"Where You Buy
The Best For Less"

5605 Gallia Street

Sciotoville, Ohio

Phone PResident 6-2237

GEMPERLINE FURNITURE COMPANY

612 Second Street

Phone EL 3-2179

"Six Floors Of Good Furniture"

Portsmouth, Ohio



Compliments of

CHOB'S COOPER

TIRE SALES

6220 Bahner Road
Sciotoville, Ohio

Phone PResident 6-6620

GILL FUNERAL HOME



Oxygen Equipped Ambulance Service
Dial PR 6-6111

Sciotoville
Thomas J. Gill

Ohio
Jessie A. Gill

THE PORTSMOUTH TIMES

Established 1852

A Brush-Moore Newspaper

Elmwood 3-3101
637 Sixth Street
Portsmouth, Ohio

CALL A

YELLOW CAB

Dial EL 3-1121

Five Can Ride

For The

Price Of One

EVANS FLORAL SHOP

Plants and Cut Flowers

For All Occasions

6804 Gallia Street

Portsmouth, Ohio

Congratulations
and
Best Wishes
to the
Graduating Class
of 1960

THE PORTSMOUTH GAS CO

"The flame that will

lighten your future"



Compliments

of

DEHNER'S

613 Chillicothe Street

Shoes

Clothing

SCIOTO DRUG COMPANY

Your

Rexall

Store in Sciotoville

Prescription Service

224 Harding Avenue

Phone PResident 6-6066

SCHOMBURG'S

Complete Food Market

229 Harding Avenue

Sciotoville, Ohio

Phone PResident 6-6737





HOUSE OF FASHION

707 Sixth Street

Portsmouth, Ohio

"Headquarters for Formals"

Compliments of
COEY'S BARBER SHOP
222 Harding Avenue
Sciotoville, Ohio



Best Wishes
to
The Class of 1960
from
Everyone at

Borden's

237 Second Street
Portsmouth, Ohio

Milk and Ice Cream

ELECTRONICS SERVICE COMPANY

Radio and Television Repair

5788 Gallia Street

Sciotoville, Ohio

Phone PResident 6-7666



Compliments of
CREATIVE BEAUTY SHOP
228 Harding Avenue
Sciotoville, Ohio

KOBACKER'S
Portsmouth's
Greatest Value Store
405 Chillicothe Street
Portsmouth, Ohio

REESE'S HAMBURGER INN



5721 Gallia Street

Sciotoville, Ohio

Buy 'Em By The Sack

Buy 'Em By The Sack

Get The Food That Makes You Glad You're Hungry!

WURSTER
DRUG COMPANY
Portsmouth's
Prescription Center
419 Chillicothe Street
Portsmouth, Ohio
Established 1897

Compliments of
WEBER MOTOR SERVICE
Formerly Jones Motor Service
5737 Gallia Street
Sciotoville, Ohio

Compliments of
BETTY'S BEAUTY SHOP
5803 Gallia Street
Sciotoville, Ohio

Phone PResident 6-2641



CARTER'S MOBIL SERVICE
3800 Rhodes Avenue
New Boston, Ohio



Designers and Manufacturers

of

School and College Jewelry

Graduation and Announcements
Medals, Cups, and Trophies

Bill Blanton, Representative

Compliments of
ZIMMERMAN'S INC.
810 Chillicothe Street
Portsmouth, Ohio

Phone ELmwood 3-0530
Office Supplies and Equipment

Compliments
of

DR. OWEN MOORHEAD



Compliments of
SCIOTO DAIRY BAR
Ice-Cream Drive-In
5810 Harding Avenue
Sciotoville, Ohio

Tommie Nesbitt

Owner

WALKERS PURE OIL STATION

General Auto Repair

Wheelersburg, Ohio

"Try Us - We Satisfy"

EDWARD STAEBLER, JEWELER

1117 Gallia Street

Portsmouth, Ohio

Compliments of
BUSSA'S GROCERY
520 Harding Avenue
Sciotoville, Ohio

Phone PResident 6-2785

PORTSMOUTH
INTERSTATE BUSINESS COLLEGE

"Training Young America to
Cherish and Preserve the
Free-Enterprise Way of Life"

815 Gallia Street
Portsmouth Ohio

RICHARDS NEWS
Magazines - Hallmark Cards
1328 Gallia Street
Portsmouth, Ohio



AUTO

FIRE

LIFE

FRAZIER'S INSURANCE

5807 Gallia Street

Sciotoville, Ohio

Phone PResident 6-2023

Ray Frazier

BOURGHOLTZER'S DRUG STORE

225 Harding Avenue

Sciotoville, Ohio

Phone PResident 6-6966



"Come to Hibbits to Get the Best"

HIBBITS HARDWARE COMPANY

315 Harding Avenue

Sciotoville, Ohio

Phone PResident 6-7880

IDEAL MILK COMPANY



1637 Tenth Street

Portsmouth, Ohio

Phone ELmwood 3-5191



WILLIAMS FURNITURE COMPANY

"A Complete Line of
Home Furnishings"

Gallia Street

Wheelersburg, Ohio

Phone PResident 6-2542

Best Wishes

From

PARKER'S GROCERY

Sciotoville

Ohio

WHOLESALE MEATS

Ray Akers

Phone PResident 6-2917

Sciotoville, Ohio



TONIE'S BEAUTY SHOP

6311 Harding Avenue

Sciotoville, Ohio

Phone PResident 6-7222

THE DISTEL FURNITURE CO.

616 Chillicothe Street

Portsmouth, Ohio

Phone ELmwood 3-3810



AUTOMOTIVE
MAINTENANCE SERVICE

Sciotoville, Ohio

Mobilgas Mobiloil

Mobil Batteries

Mobil Tires Mobilheat

Compliments of

TRI-STATE BEAUTY SCHOOL

422½ Gay Street

Portsmouth, Ohio

Phone ELmwood 3-3088

PORTSMOUTH
CEMENT AND LIME CO.

401 Third Street

Portsmouth, Ohio

Phone ELmwood 3-2320



DUVENDECK'S

PAINT STORE

5619 Gallia St.

Dial PR 6-7333

Sciotoville, Ohio



SCHISLER PROVISION COMPANY

Fresh and Smoked Meats

Distributors of Frozen Foods

Plant - Spring Lane & Rail Road

Store - 801 John St.

Portsmouth

Ohio



Compliments of

LAWSON'S DAIRY

Wheelersburg

Ohio

Compliments of

BARBARA'S BEAUTY SALON

460 Bloom Street

Sciotoville

Ohio



Best Wishes
to the
Class of 1960
from

MILLHUFF'S DEPARTMENT AND GROCERY STORE

500 Harding Avenue

Sciotoville, Ohio

Phone PResident 6-6666

Marting's

"One of Ohio's Good Stores"

Wishes the

Class of 1960

- . HEALTH
- . HAPPINESS
- . SUCCESS

HESS ENGLE'S

HOME SUPPLY COMPANY

RCA Electric Appliances

831 Sixth Street

Portsmouth, Ohio

Phone

ELmwood 3-4173



"ANDY" MUCHA'S GROCERY

5900 Farney Avenue

Sciotoville, Ohio

Phone PResident 6-2633



Long and Co



"House of Quality Furniture"

729-733 Sixth Street

Portsmouth, Ohio

Compliments of
GRAF LUMBER COMPANY
6467 Bahner Road
Sciotoville, Ohio



AMERICAN
SAVINGS AND LOAN ASSOCIATION
Incorporated 1892
503 Chillicothe Street
Portsmouth, Ohio

DALE'S PHARMACY
Twelfth & Offnere Streets
Portsmouth, Ohio
Phone ELmwood 3-5240
Sick Room Supplies
Prescription Specialists
Free Off-Street Parking

BRYAN'S ECON-O-WASH
5710 Gallia Street
Open 25 Hours Daily
Owners-"Fat" & Marge Bryan



MUCHA SHELL SERVICE STATION
Gallia and Bloom Streets
Sciotoville, Ohio

SEARS, ROEBUCK AND CO.
301 Chillicothe Street
Portsmouth, Ohio





**JOHN AND JIM'S
SERVICE STATION
ASHLAND PRODUCTS**

5803 Harding Avenue

Phone PResident 6-9409



B & B LOAN CO.

Diamonds

Watches

Luggage

837 Gallia Street
Portsmouth, Ohio
Phone ELmwood 3-4250

Compliments of

WINEBRENNERS
SOHIO STATION

Atlas Products

Harding & Gallia St.

Phone PResident 6-2444

Sciotoville, Ohio

STAPLETON
OFFICE SUPPLY CO.

Stationery Office Outfitters
Smith-Corona Typewriters

829 Sixth Street
Phone ELmwood 3-1187
Portsmouth, Ohio

1946 Our 14th Year 1960

Compliments of

PIXIE DRIVE-IN

"Try our chicken in a basket"

Harding & Gallia St.

Sciotoville, Ohio

Phone PResident 6-7622

Save For Your Future
at

CITIZENS SAVINGS AND
LOAN ASS'N CO.

505 Chillicothe Street
Portsmouth, Ohio

22 Years of Insured
Safety for Savings

SCIOTO VALLEY PRODUCE
CO.

Wholesale Dealer

Fruit and Vegetables

1004 Chillicothe - EL 3-2189

Portsmouth, Ohio





CLEANING SUPPLIES COMPANY

224 Court Street

Portsmouth, Ohio

Telephone ELmwood 3-7529

"Providing Products & Services that
make better Public Health Possible"

MORGAN BROS. JEWELERS

Diamonds Watches

A Complete Repair Service
For Watches And Jewelry

Phone ELmwood 3-3259

734 Fifth Street
Portsmouth, Ohio

Congratulations

to the Class of 1960

MORTON'S
RESTAURANT & DRIVE-IN

1018 Chillicothe Street
Portsmouth, Ohio
Phone ELmwood 3-8239

Best Wishes

From

HARLAN DANNER

Your

County Engineer



PEPSI-COLA BOTTLING CO.
OF PORTSMOUTH

2415 Chillicothe Street
Portsmouth, Ohio



WALKER'S SHOE STORE

420 Chillicothe Street

Portsmouth, Ohio



DETROIT STEEL CORPORATION



Producers of
Quality Hot and Cold Rolled Sheet and Strip Steel
and Rod and Wire Products

Salutes
The 1960 Graduating Class
Of East High School

DETROIT STEEL CORPORATION
Portsmouth Division
New Boston, Ohio

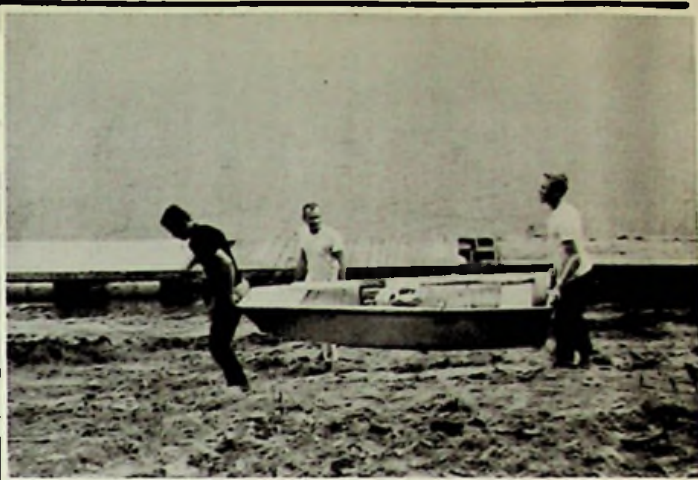
WEST END FURNITURE CO.

In the Low-Rent District

518-20 Second Street

New Furniture and
Appliances at Lower Prices

Phone ELmwood 3-8259



JOHNSON FLOWER SHOP

5914 Harrison

"If You Care Enough,
To Send The Best"

Phone PResident 6-7100

ORTHEMEYER BAKERY

5500 Gallia Street

Sciotoville, Ohio

Phone PResident 6-6868

SCHULER'S JEWELRY SHOP

5728 Gallia Street

Portsmouth, Ohio

Phone PResident 6-2770

For The Gift You Will Give
With Pride,
Let Your Jeweler Be Your Guide

WOLFF'S

"Clothes for Men and Boys"

320 Chillicothe Street

Portsmouth, Ohio

Compliments of

SHERMAN & RIFFE INS. AGENCY

422 Center Street

New Boston, Ohio

Phone GLendale 6-4191



Best Wishes

From

CUSTOM CARPET CO.

820 Fourth Street

Portsmouth, Ohio

"ABE" ARGANBRIGHT

INSURANCE

821 Fourth Street

Portsmouth, Ohio

Phone ELmwood 3-6480

Baldwin Pianos ConnSelmer Band
and Organs Instruments

Everything Musical

SUMMERS & SON, INC.

Portsmouth, Ohio
Fourth and Chillicothe Streets

Gibson String Instruments



MORGAN BROS. INSURANCE CO.

341 Masonic Temple Building

Portsmouth, Ohio

Phone ELmwood 3-2226

Dee Mauk

Manager

SELECT DAIRY

2345 Gallia Street

Portsmouth, Ohio

Phone ELmwood 3-8209

THE PORTSMOUTH PAINT CO.

"Home Owned Since 1926"

928 Gallia at Findlay Streets

Portsmouth, Ohio

Phone ELmwood 3-7180

PAINT VARNISHES WALL PAPER

"Howard" & "John"
BRENDT INSURANCE
709 Sixth Street
Portsmouth, Ohio

Compliments of
GAMPP'S SERVICE STATION
501 Harding Avenue
Sciotoville, Ohio



DEEMERS SUPER MARKET

We Specialize In Home Killed Meats

Open 8 till 12- Every Nite of the Week

All Kinds of Choice Cuts - Guaranteed Fresh

Phone PResident 6-2276

Bragdon's

409 Chillicothe Street
Portsmouth, Ohio

CHABOUDY'S GROCERY
Gallia Street & Eastern Avenue
Phone PResident 6-7422
Sciotoville, Ohio

Compliments of

Atlas Fashions

Since 1895

307 Chillicothe Street
Portsmouth, Ohio

ACME QUALITY PAINTS INC.

"Peak of Paint Perfection
Since 1884"

210 Chillicothe Street
Portsmouth, Ohio

CARROLL AUTO SALES

"Quality Used Cars"

Tenth & Chillicothe Streets
Portsmouth, Ohio
Phone ELmwood 3-4493

BRYAN'S APPLIANCE

601 Harding Avenue
Sciotoville, Ohio



BOTTLED UNDER AUTHORITY OF THE COCA-COLA COMPANY BY

Portsmouth Coca-Cola Bottling Co. Inc.



POP'S DRIVE-IN RESTAURANT

"Best Food on Route 52"

Wheelersburg, Ohio



NEW --- IMPROVED BATTER-WHIPPED

Sunbeam Bread

ROBERTS JEWELERS

421 Chillicothe Street

Portsmouth, Ohio

Phone ELmwood 3-4193

PATRONS

ARTWIL DRESS SHOP

GILBERTS FOOD

MC CLAIN'S AUTO SALES

MERIT SHOES

SHIFF SHOES

KOPY KAT

Compliments of

BEISLEY'S GROCERY

Bonser and Harding

Sciotoville, Ohio

Best Wishes

to

The Class of 1960

from

LIBBY'S BEAUTY SHOP

Sciotoville, Ohio

KAH PRINTING COMPANY

Quality Job Printing
at
Reasonable Prices

711 Chillicothe Street

Portsmouth, Ohio

Dial ELmwood 3-18796

Compliments of

SMITH'S DRUGS

Your Walgreen Agency

Fifth and Chillicothe Streets

Portsmouth, Ohio

JOHNSON BROTHERS GROCERY



Corner of Harding and Mayo Streets

Sciotoville, Ohio

Good Store for a Good Community

Compliments of

LITTERAL'S GROCERY

Wheelersburg, Ohio

Phone PResident 6-6330

Compliments of

LAKEVIEW CLEANERS

5711 Chillicothe Street

Portsmouth, Ohio

THE REIDENBACH PHARMACY

"Prescription Druggist"

Masonic Temple

Wheelersburg, Ohio

Phone PResident 6-2311



BURLESON

TEXACO SERVICE

Gallia at Harrisonville

New Boston, Ohio

"Buy The Best. Buy Texaco.

The Best Friend Your Car

Has Ever Had."

MURFIN INSURANCE AGENCY

Glen R. Briggs-John H. Emmert

"Insure In Sure Insurance"

1143 Gallia St.
Portsmouth, Ohio



811 Gallia Street
Portsmouth, Ohio

J. W. STIR COMPANY

Floor and Wall Covering

516 Second Street

Portsmouth, Ohio

Phone ELmwood 4-1290

ESCOM WILEY

REAL ESTATE

City, Suburban, and
Farm Property

921 Chillicothe Street

Portsmouth, Ohio

Phone ELmwood 3-5520



FINIS



There were times we thought we wouldn't!

There were times we thought we couldn't!

Our minds are wracked,

Our backs are stooped,

The "TARTAN" is here and we are POOPED!!

THE TARTAN STAFF

To Castro!

If you had a train you would get caught for smuggling!

"62"

"To Tommy Lee"
"My Hazel Eyed Pretty Boy"
"Sharon Ann"
AS

To a swell guy
with a swell
"personality"
Gloria Payton
"63"

From you
Sweet, loving,
kind, understanding
little, small, big, brother?!;

203 Phillips
2114 Gallia Street
Sciotoville Station
Parkersburg, Ohio

PA-6-7678

Sept. 22, 1930

26 years old
Junior
East High School



INTER-COLLEGIATE PRESS

Publishers — Manufacturers

Yearbooks — Yearbook Covers

Diplomas — Graduation Announcements

Factory — Home Office

Kansas City, Mo.

U.S.A.





hall

L. White

