

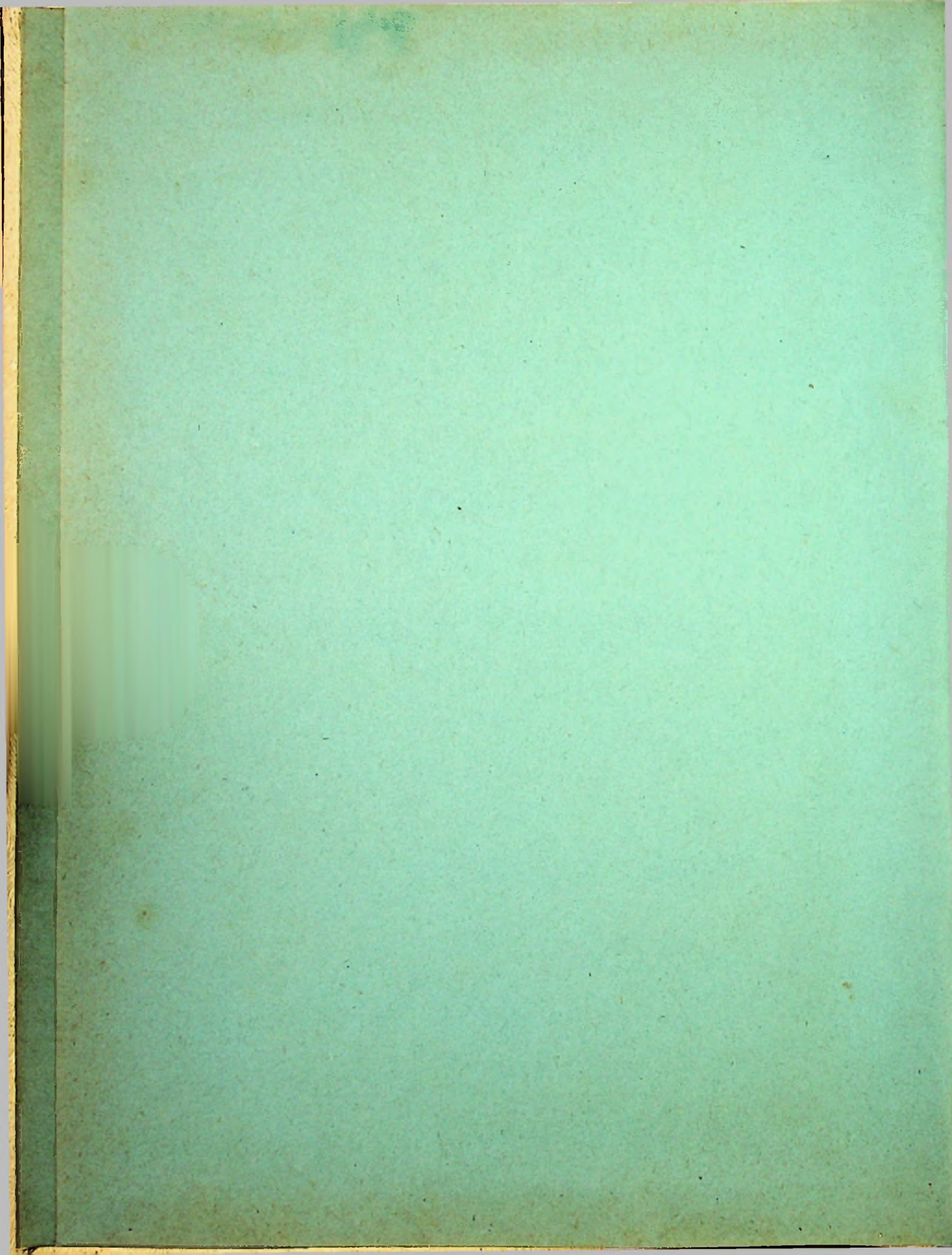
TARTAN

1 9 5 0



Judy Pemberton '84

2930





“EAST TARTAN”

Published by the Senior Class of
1950 Portsmouth East High School

Editor—Jerry Imm
Co-Editor—Helen Kemp
Associate-Editor—Harold Etterling
Business Manager—Mary Millhuff



PORTSMOUTH EAST

CONTENTS

Faculty

Classes

Activities

School Life

Sports

Advertisements



IGH SCHOOL



DEDICATION

We wish to dedicate this annual to one of the most valuable of all human traits, Good Sportsmanship. We sincerely hope that this trait has been observed to the fullest extent possible by the members of our graduating class, and will be observed by all those classes which will enter this school in the future. It is our desire that all who read this dedication will strive forward toward advancing Good Sportsmanship.

Editorial

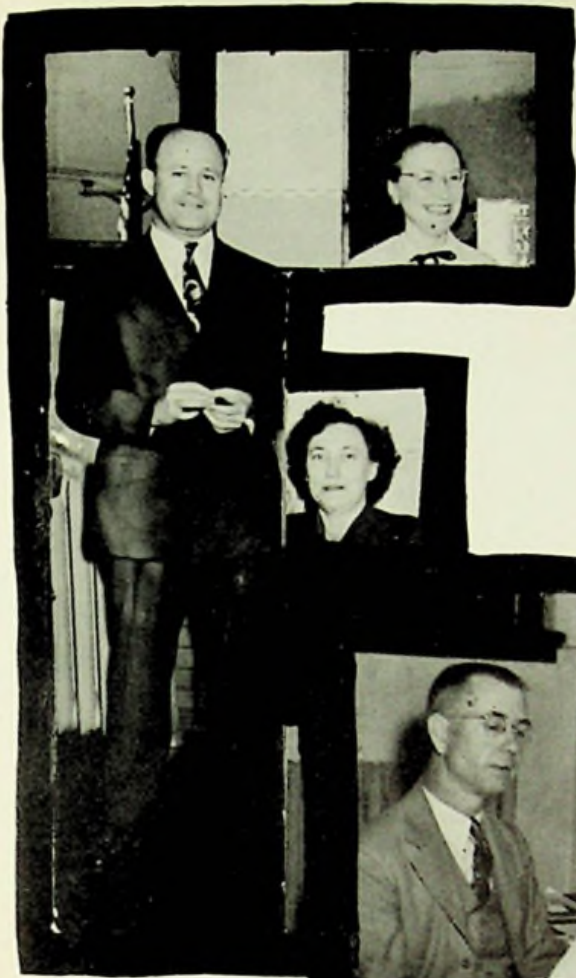
The class of 1950 was challenged to do a better job in publishing an annual by the preceding three classes. During the early part of the summer, three boys were sent to the Journalism Conference at Ohio University in order to obtain a better idea on how to publish an annual.

This year the Annual Staff has endeavored to give you a yearbook which will both satisfy and please its readers. We hope that we have succeeded in accomplishing our purpose.

We are now challenging the future classes of East High to surpass our yearbook.

Editor,
Jerry Imm

FACULTY



FACULTY



Mr. McKelvey is completing his first year as Superintendent of Portsmouth City Schools.

He received his A.B. degree from Ohio University and his M.A. degree from Ohio State. Before coming to Portsmouth, Mr. McKelvey taught school in West Virginia and in Barnsville, Ohio. He came to Portsmouth from the Painesville School System in Lake County, Ohio. He had been Principal at Harvey High School for four years. After serving as Principal of Portsmouth High School, he was elevated to the superintendency of the Portsmouth School System in August of 1949.

The students would like to compliment Mr. McKelvey on his fine work in his first year as Superintendent of the Portsmouth School System.



PORTSMOUTH CITY SCHOOL BOARD

SITTING: Mr. Arthur Rau; Mr. William Horr, President; Mrs. Arthur C. Huston. STANDING: Dr. William Duvendeck, Dr. Thomas C. Swope.



Betty Lavender, Secretary

Betty Lavender Shock



MR. TEACHNOR W. SMITH—Principal

Mr. Smith is completing his ninth year as principal at East High School. He has been at East High for 24 years. He received his A.B. degree from Ohio University and his M.A. degree from University of Cincinnati. Prior to becoming Principal, Mr. Smith taught Chemistry and Physics at East High.

The students and faculty respect and admire Mr. Smith's ideals and attitude toward maintaining and advancing the high standards of East High School.

Dean Helen M. Taylor



MISS HELEN M. TAYLOR—Dean of Girls

Miss Taylor is completing her tenth year as Dean of Girls at East High School. She received her A.B. degree at Miami University and her M.A. degree from Ohio University.

Miss Taylor is Girls' League Sponsor, Co-Sponsor of the Tri-Hi-Y, and Sponsor of this year's annual. The Seniors are very grateful to her for taking this responsibility, and keeping the book up to her high standards.



HERMAN SCHOMBURG
 Holbrook College, A.B.
 American History, English,
 Ass't. Coach

EDWARD L. POGUE
 Hanover College, B.S.
 Civics, World History, Physical
 Education, Ass't. Basketball,
 Football Coach, Head
 Baseball Coach

Herman Schomburg Pogue

Elizabeth Whitehouse

ELIZABETH WHITEHOUSE
 Eastern Kentucky State
 Teachers' College, George
 Peabody College for Teachers,
 A.B. and M.A.
 English

John C. Stevenson

JOHN C. STEVENSON
 Denison University, Ohio State
 University, National University
 of Mexico, A.B. and M.A.
 Latin, English, Spanish



Christine Herr

CHRISTINE HERR
 Sargent School of Boston
 University, Ohio University,
 Western Reserve University,
 B.S.
 Librarian, Physical Education



MARY COE BROWN
Ohio State University, B.S.
English, Home Economics

Virgil H. Donley

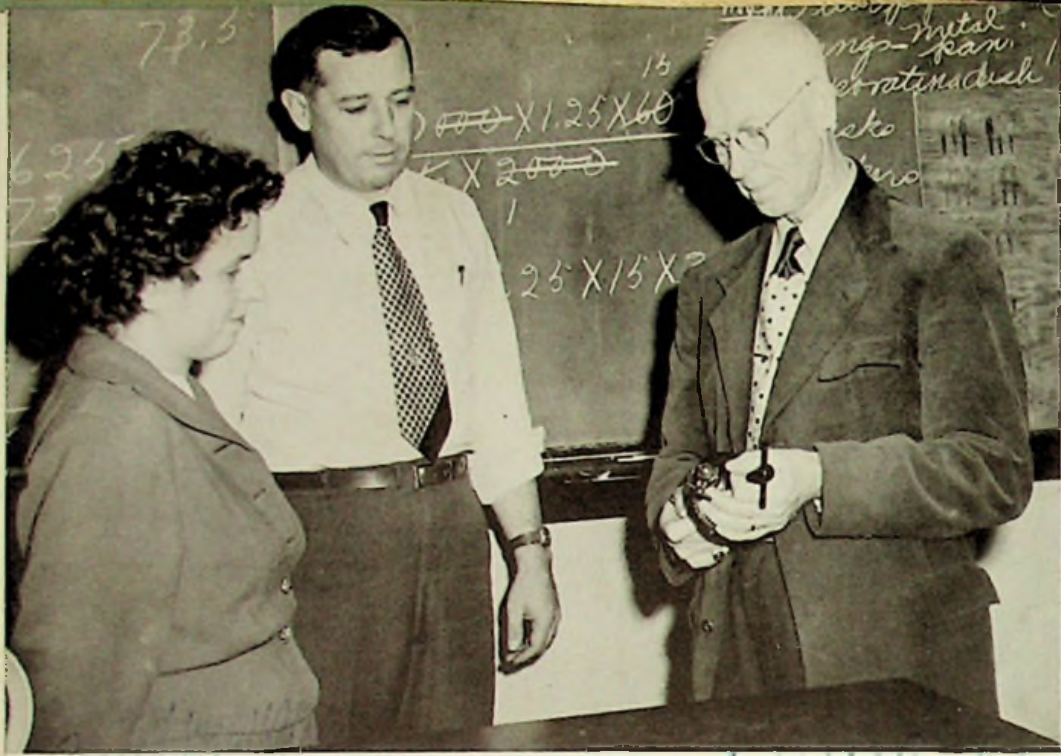
VIRGIL DONLEY
Ohio University, B.S.
Industrial Arts

AUGUSTA JACOBS
University of Cincinnati, B.S.
Typing, Bookkeeping, Economic
Geography

Alene Scott

ALENE SCOTT
University of Kentucky, A.B.
Shorthand, Business Information,
Business English, English





ALICE J. YOUNGMAN
Ohio University, B.S.
Chemistry, Biology,
General Science

JOHN FUGITT
Ohio State University, B.S.
General Science,
Head Coach

John Fugitt

A. KIRK WHEELER
Denison University, B.S.
Advanced Algebra,
Physics, Algebra

A. K. Wheeler

CHARLES BOPE BUTLER
Alma Conservatory, Western
Reserve, Music Diploma,
B.S. and M.A.
Glee Club

RICHARD VAN METER
Marshall College, B.S.
Band



CLASSES



CLASSES



Senior Class



In November the Homecoming Football Game was held. Of six candidates, Ann Fannin, Helen Kemp, Margaret Plummer, Mary Millhuff, Beverly Kinker, and Davida Fannin, Beverly Kinker was elected Queen. Her senior attendant was Ann Fannin.

The announcements and name cards were chosen in November from Herif-Jones. In February we were measured for our caps and gowns by the same company.

Our graduation pictures were made at Martings during October.

The senior scholarship tests were held in February.

The annual staff held one dance as did the senior class.

The senior officers are:

- Carl BusseyPresident
- Elza FraleyVice-President
- Imogene FanninSecretary
- Mary Lou Mougey.....Treasurer



Margaret Eileen Arthurs
"Marg"

Glee Club 1, 3; Girls' League 2; Tri-Hi-Y 4; Cheerleader 2, 3, 4; Captain 4; Honor Society 3, 4; Ring Committee 3; Prom Committee 3; Annual Staff 4; Tartan Staff 3, 4; Waitress at Prom 3; Student Council 2; Scholarship Team 1, 2; "We Shook the Family Tree" 3; Latin Club Assembly 1, 2; Hall Monitor 2.



Ray Bolton
"Ray"

Football 1, 2, 3; Basketball 2, 3, 4; Baseball 2, 3, 4; Annual Staff 4; Glee Club 4; Prom Committee 3; Junior Class Play (stage crew).



Donald Kenneth Atkins
"Cisco"

Junior Class Assembly; Glee Club 1.



Carl Bussey
"Carlos"

Football 1, 2, 3, 4; Basketball 1, 2, 3, 4; Track 3, 4; "We Shook the Family Tree" 3; Class President 4; Class Vice President 3; Sophomore Assembly 2; Annual Staff 4; Prom Committee 3; Hi-Y 4; Scholarship Team 1; "H.M.S. Pinafore" 4; Spanish Assembly 3; Student Council 1, 2, 3; Student Council Vice-President 3.



Nannie Laura Bennett
"Nan"

Glee Club 1, 2, 3, 4; Latin Club 1, 2; Latin Club Assembly 1, 2; Girls' League 1, 2, 3, 4; Waitress at Prom 2.



Jack Brumfield
"Cracker"

Football 1, 2, 3, 4; Basketball Manager 1, 3; Baseball 3; "Rose of the Danube" 3; Sophomore Assembly; Glee Club 2, 3, 4; Spanish Club 3; Spanish Club Assembly 3; Hi-Y 2, 3; Float Committee 3; Anderson High 4.



Roy C. Charles
"Charlie"
Glee Club 1.



Frances E. Duduit
"Buddy"

Football 1, 2, 3, 4; Basketball 1, 2, 3, 4; Baseball Manager 1, 2; Glee Club 2, 3; "Rose of the Danube" 3; Sophomore Assembly; Spanish Club 2, 3; Spanish Assembly 2; Prom Committee 3; Dance Committee 2, 3; Assembly Committee 2, 3; Concession Committee 3; Hi-Y 2, 3, 4; Hi-Y Vice-President 4; Track 3, 4; Annual Staff 4; "We Shook the Family Tree" 3; Float Committee 2; Spanish Dance Committee 3.



Marilyn Clemens
"Marilyn"

Latin Club 1; Latin Club Assembly 1; Spanish Club 4; Spanish Club Assembly 4; Glee Club 1, 2.



Grant Elliott
"Wild Bill"

Football 3, 4; Track 3, 4; Spanish Club 3; Junior Class Play (Stage Manager); Spanish Assembly 3.



Edwin Coriell
"Sonny"

Football 1; Basketball 1, 2; Junior Class Play (Stage Crew); Sophomore Assembly.



Eleanor Ervin
"Tom"

Glee Club 1, 2, 3, 4; Usherette for Class Play 3; Usherette for Operetta 2; Girls' League 1; Waitress at Prom 2; Spanish Club 3, 4; Spanish Assembly 3.



Jo Ann Faine
"Jo"

Glee Club 1, 2, 3, 4; Girls' League 1, 2, 3, 4; Dance Committee 1; Library Club 2; Spanish Club 3; Spanish Club Assembly 3; Concession Committee 2, 3; Prom Committee 3; Sophomore Assembly; Marching Corps 1; Student Council Assembly 1.



Margaret Ann Fannin
"Ann"

Glee Club 1, 2, 3, 4; Glee Club President 2; Girls' League 1, 2, 3, 4; Student Council 1; Hall Monitor 1; Annual Staff 1; Carnival Queen 2; Sophomore Assembly; Concession Committee 1, 2; Dance Committee 2, 3; Tri-Hi-Y 3, 4; Tri-Hi-Y President 4; Prom Committee 3; "H.M.S. Pinafore" 4; Tartan Staff 4; Cheerleader 2, 3, 4; Queen Attendant 4; Tri-Hi-Y Assembly 3.



Davida Jane Fannin
"Dee"

Girls' League 1, 2, 3, 4; Waitress at Prom 2; Glee Club 1; Tri-Hi-Y 3, 4; Tri-Hi-Y Assembly 3; Tri-Hi-Y Treasurer 4; Assembly Committee 2; Queen Attendant 3; Class Treasurer 3.



Elza F. Fraley
"Little Elza"

Football 3, 4; Track 3, 4; Annual Staff 4; Glee Club 4; Class Vice-President 4.



Imogene Fannin
"Jemie"

Student Council; Hall Monitor; Glee Club 4; Freshman Assembly; Spanish Club 1, 2; Spanish Club Assembly 1, 2; Sophomore Assembly; Prom Waitress 2; Tri-Hi-Y 4; Class Secretary 4; Scholarship Team 1, 2.



Orville Garrett
"Junior"

Football 2, 4.



Blaine A. Gilliland
"Pete"

Baseball 2, 3, 4; Basketball 1, 2, 3, 4; Stage Crew—Junior Class Play.



Paul L. Hughes
"Pablo"

Football 1, 3; Track 3, 4; Spanish Club 3, 4; Annual Staff 4; Spanish Club Assembly 3, 4; Art Club 2; Science Club 1; Concession Committee 3; Hi-Y 2, 3, 4; Stage Crew—Junior Class Play; Spanish Dance Committee 3, 4; Annual Dance Committee 4.



Margaret Anne Hackworth
"Marg"

Band 1, 2, 3; Latin Club 1, 2; Latin Club Assembly 1, 2; Assembly Committee 1, 2, 3; Class Treasurer 2; Ring Committee 3; Announcement Committee 4; Waitress at Prom 2; Prom Committee 3; Annual Staff 4; Girls' League 1, 2, 4; Girls' League President 4; Tri-Hi-Y 4; Junior Class Play Prompter 3; Scholarship Team 2, 3.



Jerry L. Imm

Dance Committee 1, 2, 3, 4; Class Vice-President 2; Concession Committee 2, 3; Latin Club 1, 2; Latin Club Assembly 1, 2; Hi-Y 1, 2, 3, 4; Hi-Y Secretary 3; Student Council 3; Hall Monitor 3; Spanish Club 3, 4; Spanish Club Counselor 3, 4; Football 2; Spanish Club Assembly 3, 4; Hi-Y President 4; Associate Annual Editor 3; Annual Editor 4; Tartan Staff 3; Prom Committee 3; "We Shook the Family Tree" 3; Latin Dance Committee 1, 2; Track 4; Announcement Committee 4; Sophomore Assembly.



Richard H. Hoskins
"Cue Ball"

Glee Club 1, 4; Hi-Y 2, 3, 4; Junior Class Play Stage Crew 3; Football 1, 2, 3, 4.



Ralph E. Jenkins
Hi-Y 2, 3, 4.



Helen Ruth Kemp

"Helen"

Glee Club 1, 2; Girls' League 1, 2, 3, 4; Latin Club 1, 2; Latin Assembly 1, 2; Concession Committee 1, 3; Assembly Committee 2; Sophomore Assembly; Waitress at Prom 2; Ring Committee 3; Tri-Hi-Y 3, 4; Tri-Hi-Y Vice-President 4; Honor Society 3, 4; Student Council 2, 3; Student Council Assembly 3; Junior Cup; Announcement Committee 4; Prom Committee 4; Annual Staff 4; Spanish Club 3, 4; Spanish Assembly 3, 4; Tartan Staff 4; Scholarship Team 1, 2, 3, 4.

Ernestine Maggard

"Teenie"

Band 1, 2; Glee Club 1, 2, 3, 4; Glee Club Treasurer 1; Girls' League 1, 2, 3, 4; Girls' League Vice-President 4; "Rose of the Danube" 3; "H.M.S. Pinafore" 4; Sophomore Assembly; Student Council 2; Assembly 2; Assembly Committee 1, 2, 3; Dance Committee 4; Prom Committee 3; Annual Staff 4; Tri-Hi-Y 4; Scholarship Team 2.



Beverly Jane Kinker

"Bev"

Glee Club 1, 2, 3; Latin Club 1, 2; Latin Club Assembly 1, 2; Girls' League 1, 2, 3, 4; Spanish Club 3, 4; Spanish Club Assembly 3, 4; Dance Committee 1, 2, 3, 4; Prom Committee 3; "We Shook the Family Tree" 3; Sophomore Assembly; Scholarship Team 3; Annual Staff 4; Queen Attendant 1; Queen 4; Marching Corps 1; Concession Committee 3, 4.

Ralph Eugene Mays

"Ugly"

Hi-Y 3, 4; Latin Assembly 1, 2; Sophomore Assembly; Spanish Assembly 3, 4; Glee Club 3; Co-Chairman of Prom 3.



Helen Geneve Lantz

"Jenny"

Central 1, 2, 3; Tri-Hi-Y 4; Girls' League Treasurer 4.

Norma Lee Meek

"Norm"

Glee Club 1, 2, 3, 4; Dance Committee 1, 2, 3, 4; Tri-Hi-Y 3, 4; Tri-Hi-Y Secretary 4; Tri-Hi-Y Program Committee 4; Concession Committee 3; Prom Committee 3; Annual Staff 4; Girls' League 1, 2, 3, 4; Tri-Hi-Y Assembly 3.





Mary Louise Millhuff
"Weezie"

Glee Club 1, 2; Latin Club 1, 2; Latin Assembly 1, 2; Girls' League 1, 2, 3, 4; Spanish Club 3, 4; Spanish Club Assembly 3, 4; Class Vice-President 1; Class Secretary 2, 3; Tri-Hi-Y 3, 4; Honor Society 3, 4; Cheerleader 2, 3, 4; Co-Chairman of Prom 3; Junior Class Play Business Manager 3; Annual Staff 4; Marching Corps 1; Sophomore Assembly; Science Club 1; Tartan Staff 2, 3.



Paul Paige
"Paul"

Football Manager 2, 3, 4; Basketball Manager 2, 3, 4; Baseball Manager 3, 4; Hi-Y 2; Glee Club 4.



Mary Lou Mougey
"Mary Lou"

Concession Committee 1; Glee Club 1, 2, 3, 4; "Rose of the Danube" 3; Spanish Club 2, 3, 4; Spanish Club Assembly 2, 3; "We Shook the Family Tree" 3; Glee Club Assembly 3; Class Treasurer 4; Tri-Hi-Y 4; Girls' League Secretary 4; Annual Staff 4; Tartan Staff 3, 4; Scholarship Team 2, 3; Play Committee 3; Girls' League 1, 4.



Robert E. Patrick
"Bob"

Football 1, 2, 3, 4; Basketball 1, 2, 3, 4; Baseball 2, 3, 4; Hi-Y 3, 4; Spanish Club 3; Spanish Club Assembly 3; Glee Club 3, 4; Track 3.



Frank J. Neimer
"Nank"
Wheelersburg 1, 2, 3.

Margaret Plummer
"Marg"

Drum Majorette 1, 2, 3; Drum Major 4; Latin Club 1, 2; Girls' League 1, 2, 3, 4; Glee Club 1, 2, 3, 4; Tri-Hi-Y 4; Student Council 1; "We Shook the Family Tree" 3; Tartan Staff 3; Latin Assembly 1, 2; Announcement Committee 4.





Francis Nadine Ramey
"Denie"

Glee Club 1, 2, 3, 4; Girls' League 1, 2, 3; Tri-Hi-Y 4; Marching Corps 1; Spanish Club 2, 3; Spanish Club Assembly 2, 3; "H.M.S. Pinafore" 4.



Patsy Maureen Risner
"Pat"

Glee Club 1, 2; Waitress at Prom 2; Usherette at Class Play 3.



Wilma Ramey
"Jeannie"
Glee Club 1, 2, 3, 4.



Margaret Lucille Shonkwiler
"Lucy"

Glee Club 1, 2; Girls' League 1; Waitress at Prom 2; Usherette at Class Play 3.



Clarice Louise Reinhardt
"Rusty"

Glee Club 1, 2, 3; Girls' League 1, 2, 3, 4; Student Council 3; "We Shook the Family Tree" 3; Tri-Hi-Y 3, 4; Prom Committee 3; Concession Chairman 3; W.P.A.Y. Program 4; Latin Club 1, 2; Annual Staff 4; Annual Write-up 3; Marching Corps 1; Dance Committee 1, 2; Latin Assembly 1, 2; Sophomore Assembly; Student Council Assembly 3.



Elizabeth JoAnne Smith
"Jo"

Class Secretary 1; Scholarship Team 1, 2, 3; Assembly Committee 1, 2, 3; Glee Club 1, 2, 3, 4; Girls' League 1, 2, 3, 4; Tri-Hi-Y 4; Annual Staff 4; Tartan Staff 4; "We Shook the Family Tree" 3; Spanish Club 2, 3, 4; Latin Club 1, 2; Marching Corps 1; Sophomore Assembly; Latin Assembly 1, 2; Spanish Assembly 2, 3, 4; Science Club 1; W.P.A.Y. Program 4; Announcement Committee 4; Play Committee 3.

Richard Snodgrass
"Dick"



Lowell Dean Stanley
"Coondog"

Sophomore Assembly; Spanish Club 3; Spanish Assembly 3; Hi-Y 2, 3, 4; Football 1, 2, 3, 4; Football Captain 4; Basketball 1, 2, 3, 4; Track 3, 4; "We Shook the Family Tree" 3; Annual Staff 4; Class Treasurer 1; Prom Committee 3; Float Committee 3; Hi-Y Dance Committee 4; Glee Club 4; "H.M.S. Pinafore" 4.

Laurence Dale Sommer
"Dale"



James Frederick Steele
"Sid"

Football 1, 2, 3, 4; Basketball 1, 2, 3, 4; Baseball 1, 2, 3, 4; Track 4; Spanish Club 2, 3; Spanish Club Assembly 2, 3; Hi-Y 3, 4; Hi-Y Dance Committee 4; Sophomore Assembly; Prom Committee 3; Float Committee 2.

Owen Dale Spearry
"Pheb"

Glee Club 3; Art 2.

Patricia Ann Taulbee
"Pat"

Glee Club 1, 2, 3, 4; Girls' League 1, 2, 3, 4; "Rose of the Danube" 3; Sophomore Assembly; Dance Committee 1, 2, 3, 4; Prom Committee 3; Annual Staff 4; Tri-Hi-Y 4; Scholarship Team 1; Leader of Marching Corps 1; "We Shook the Family Tree" 3; Concession Committee 3; Librarian 3.





Howard Walter Taylor
"Doc"

Baseball 2; Glee Club 3; Spanish Club 3, 4; Hi-Y 2, 3; Hi-Y Secretary 4.



Carl D. Warner
"Carl"

Hi-Y 1, 2, 3; Latin Club Assembly 1, 2; Latin Club 1, 2; Spanish Club 3, 4; Spanish Club Assembly 3; Sophomore Assembly; Glee Club 4; "H.M.S. Pinafore" 4; Scholarship Team 1, 2.



James Tipton
"Tip"

Football 1, 2, 3, 4; Basketball 1, 2; Scholarship Team 1, 2; Class President 2, 3; U.N. Representative 2; Latin Club Assembly 1, 2; Spanish Club Assembly 2, 3; Glee Club 3, 4; "Rose of the Danube" 3; "We Shook the Family Tree" 3; Sophomore Assembly; Business Manager of Magazine Sale—3; Annual Staff 4; Tartan Staff 3; Student Council 2, 3; Hall Monitor 2, 3; Hi-Y 2, 3, 4; Hi-Y President 3; Hi-Y Treasurer 4; Annual Representative to Athens 4; Spanish Club Council 3; Hi-Y District President 3; Hi-Y Christmas Dance Co-Chairman 4.



Frank E. Wente



Douglas Wallen
"Doug"

Student Council 1; Spanish Club 2, 3, 4; Girls' League 1, 2, 3; Latin Club 3; Scholarship Team 2, 3; Glee Club 1, 2; Spanish Club Assembly 2, 3; Prom Waitress 2; Dance Committee 1, 2, 3; Prom Committee 3.



Elsie Eileen Williams
"Else"

Girls' League 1, 2, 3; Entertainment Committee 3.



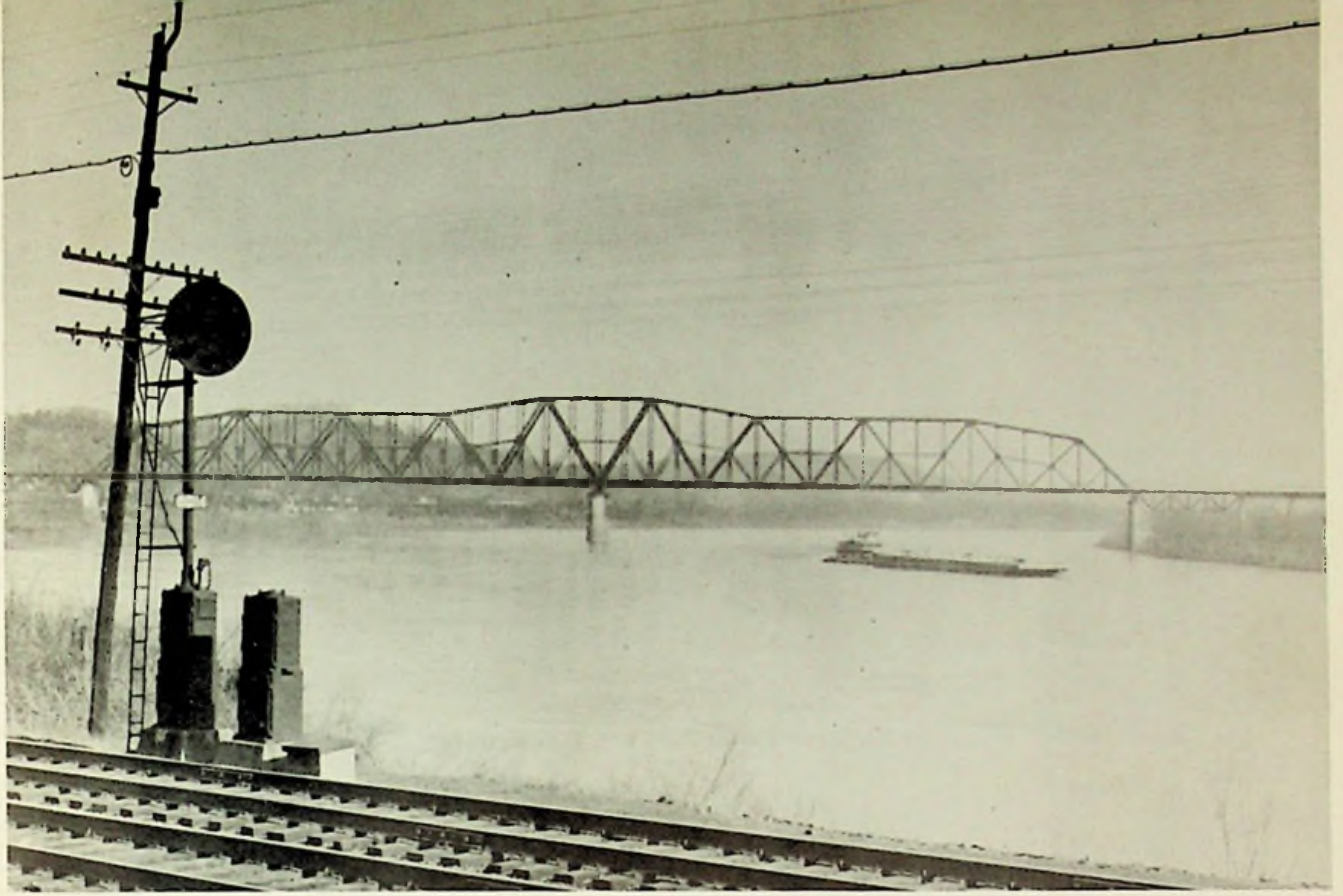
Richard Williams
"Dick"
Glee Club 2; Football 1; Student Council
1; Vocation Course, P. H. S. 3, 4.



Norma Williams
"Normie"
Glee Club 1, 2; Girls' League 1, 2, 3;
Waitress at Prom 2; Entertainment Com-
mittee 3.

Snapshots of Senior Groups after School





Junior Class



In September the Junior Class held its first meeting and the following officers were elected:

President..... Normale Taylor
Vice-President..... Wanda Fankell
Secretary..... Lois Stewart
Treasurer..... Janice Ervin

This class sold candy on Wednesdays in order to raise money. Their assembly was held on October 19, and was given in the form of a minstrel. The class play was a comedy called, "Don't Blame Me." The Junior-Senior Prom was held on May 26, at Harding gym. The junior dance was held on March 17, and the decorations were based on a St. Patrick's Day Theme. The class advisors for this year were: Miss A. Jacobs, Mr. J. Fugitt, and Mr. A. K. Wheeler.



FIRST ROW: Bertha Roof, June Snodgrass, Helen Stiltner, Wanda Winebronner, Sheila Starrett, Maudie Stiltner, Normale Taylor, Ethlyn Ruley, Patricia Noel.
 SECOND ROW: Eloise Schaefer, Helen Stewart, Lois Stewart, Douglas Wallen, Naomi Ricks, Phyllis Saunders, Juanita Taylor, Marlene Slattery, Edna Smith, Ernie Roof.
 THIRD ROW: Charles Veach, Bob Welch, Charles Montgomery, Bob Will, Mile Mullins, Gary Wilson, Clifford Williams, Bob Royster, Leonard Oiler, Jack Wineka.

FIRST ROW: Betty Baldrige, Hazel Davis, Wanda Barteo, Betty Kemp, Alice Mault, Judy Burke, Ramah Frazier, Leota Bailey, Bernard Evans.
 SECOND ROW: Ronald McGraw, Nina Lunsford, Wanda Fankeil, Hazel Bradshaw, Erma Campbell, Maxine Ellifritt, Juanita Allard, Betty Brown, Janice Ervin, Joy Jean Frazier.
 THIRD ROW: Lila Dudit, Jacqueline Brown, John Etterling, Philip Bowling, Harold Etterling, Charles Bond, Jim Brady, Carl Atkins, Dick Kitchen, Bob Chapman, Wells Basham, Paul Brigner.



Sophomore Class



The class officers who were elected for this year are as follows:

- Bill MartinPresident
- Ruby LambertVice-President
- Peggy EvansSecretary
- Harry ScottTreasurer

The Sophomore Assembly consisted of a play and several variety numbers. The name of the play was "Billy's First Date" and it was a continuation of the play given in their assembly last year.

The scene of the dance sponsored by this class was a very original winter scene. From ninety-five members, \$75 was collected as dues.



FIRST ROW: Richard Bussa, June Arnett, Irma Cooper, Mary Howard, Vivian Garrett, George Brown, Jo Ann Fannin, Carol Brown, Wallace Evans.
 SECOND ROW: Esther Coppock, Wanda Henson, Virginia Charleton, Bob Crabtree, Patricia Craft, Betty Haney, Carol Hutchinson, Marilyn Baer, Betsy Askin.
 THIRD ROW: Ramona Fraley, Robert Dortch, John Hall, Kenneth Ellifritt, Elwood Compton, Bill Essman, Wanda Hoskins, Juanita Conley, Peggy Evans, David Fannin, Paul Fraley, Jack Etterling.

FIRST ROW: Regina Pierce, Pat Nardi, Judy Pemberton, Bill Martin, Sue Manley, Betty Mustain, Colleen Kellogg, Lois Myers, Faye Maddix, Betty Montgomery.
 SECOND ROW: George Niemer, Nettie Jenkins, Helen King, Betty Peach, Janet Ramey, Willa Moore, Margaret Russell, Ann Knigge, Ruby Lambert, Wanda Kiser.
 THIRD ROW: Joan May, Jacqueline Kirtchner, Joyce McClurg, James Porter, Carl Payton, Charles Noel, Franklin Moore, Ronnie Patton, Ronald Partridge, Marvin Patrick, Bob Kilgallen.





FIRST ROW: Evelyn White, Betty Wentz, Sue Snyder, Amy Weidner, Arnold Stevens, Shurl Shoemaker, Elizabeth Wilson, Judy Tussey, Barbara Yeley.
 SECOND ROW: Roger Summer, Nettie Smith, Judy Thomas, Judy Sargent, Esther Seth, Ruth Sisler, Alice Whitt, Harry Scott, Ralph Silcott.
 THIRD ROW: Wilma Stevenson, Clinton Springer, Donald Vallance, Gay Sowkulech, Bonnie Widdig, Sylvia Torges, David Watts, Leonard Toliver, James Williams, Richard Spaulding, Jerry Winebrenner.



S
O
P
H
S





Freshmen Class



The Freshmen held their first class meeting during the third week of school. In this meeting the class officers were elected and the fate of the 137 Freshmen students was put into the hands of four officers for their first year in East High.

This class held several activities during the year. Some of these were: A weiner roast, freshman assembly, and freshman class dance. These and all other freshman activities were under the supervision of Miss Scott, Miss Taylor, Mr. Donley, and Mr. Schomburg.

Freshman Class Officers

President..... Dorothy Kline
Vice-President..... Raymond Boyd
Secretary..... Barbara Cooper
Treasurer..... Herma Cabiness



FIRST ROW: Rovena Coriell, Geneva Fields, Sue Sennel, Betty Welch, Janet King, Jacqueline Colley, Alma Bennett, Rosemary Russell, Lavelle Doyle.

SECOND ROW: Phyllis Holbrook, Buren McLaughlin, Roger Miller, David Myers, Wilbur Simpson, Sam Christy, Georgena Lantz, Phyllis Holt, Nina Saunders, Joyce May, Patty Conley.

THIRD ROW: Rotha Massie, Carol Knigge, Dolores Brannen, Cletus Jordan, George Beloit, Wilbur Haney, Brooks Parks, Ronnie Deemer, Joe Essman, Richard Dduuil, John King.

FIRST ROW: Donna Gyor, Ronald Seagraves, Raymond Will, Joe Chamberland, Joann Castle, William Simpson, Polly Ashworth, Frank Gilliam, Wilma Whitt.

SECOND ROW: Eddie Ramey, Carl Felty, Douglas Dials, Roy Knight, Donald Conklin, Ruth Beadle, Carl Campbell, Carol Jenkins.

THIRD ROW: Glenda Etterling, Olive Horner, Darlene Hammond, Sylvia Dill, Joyce Minter, Helen Smith, Ruth Chamberland, Freda Patrick, Geloma Spearry, Evelyn Brown, Dorothy Kline, Barbara Cooper, Herma Cabiness.





FIRST ROW: James Stockham, John Warneke, Ira Mault, Glen White, Ray Burke, Max Kinker, David Vallance, James Smith, Grover Frazier, Glen Leesburgh.
 SECOND ROW: Ted Dortch, Angus Jones, Donald Armstrong, Jack Terry, Larry Atkins, James Oiler, Mima Taylor, Barbara Salyers, Clementine Parker, Shirly Williams, Jane Thompson.
 THIRD ROW: Evelyn Jenkins, Joan Belveal, Janet Tomlin, Lena Brigner, Juanita Clifford, Regina Booten, Patty Nobel, Geraldine Pitts, Sue Hehl, Emma Lou Hensley, Virginia Adams.

FIRST ROW: Donald Smith, Kenneth Smith, Robert Bowman, Lawrence Williams, Carl Gee, Clifford Perkins, Phillip Smith, Louis Snodgrass.
 SECOND ROW: Don Bussey, Leonard Powell, Robert Towe, Harold Ach, Robert Brown, Jerry Hensen, Ray Cottle, Bill Gammon.
 THIRD ROW: Leroy White, Stanley Thompson, Lowell Atkins, Benny Jenkins, Carl Jenkins, Frank Otworth, Gary Sergeant, Herbert Brown, Roger McMeans, Charles Cooper.



ACTIVITIES



ACTIVITIES





Beverly Jane Kinker

Beverly was chosen by the student body to reign as Homecoming Queen of '49-'50. She was also the Freshman Attendant in '46.



Junior
Attendant
Janice
Ervin



Senior
Attendant
Ann
Fannin



Freshman
Attendant
Betty
Welch

C
O
U
R
T



Sophomore
Attendant
June
Arnett





Bill Martin, June Arnett, Carl Bussey, Janice Ervin, Beverly Kinker, Lowell Stanley, Jerry Imm, Betty Welch, Ann Fannin, James Steele.



Bev.

June Arnett, Ann Fannin, Beverly Kinker, Queen; Janice Ervin, Betty Welch.



Varsity Cheerleaders

Janice Ervin
Mary Millhuff
Wanda Fankell
Ann Fannin
Lois Stewart
Margaret Arthurs
Captain



Reserve Cheerleaders

Amy Weidner
Wanda Hoskins
Sue Manley





Margaret Plummer

Margaret was the leader of the East High Band this year. She led the band in all the activities of the year which included marching at the halves of the football games, and in various parades.

This is Margaret's last year as our Drum-Major and we wish to express our appreciation to her for the fine job she did.

Mr. VanMeter

The East High School Band of the school year 1949-50 consisted of 45 members. During the year they participated in athletic events by playing for the home football games and one out-of-town game and by organizing a pep band for the basketball games. Several of the band members attended the Southeastern Ohio Band Festival at Ironton this year. The band took part in various parades in Portsmouth. The band members and band boosters worked together during the year to raise money for new uniforms. Several of the activities undertaken were Tag Day, a Spring Concert, a dance, and a minstrel.





June Arnett

Phyllis Holbrook



Rheta Massie

Wanda Hoskins



Director.....Mr. Van Meter
 Drum Major.....Margaret Plummer
 Majorettes: Wanda Hoskins, Rhetha
 Massie, June Arnett, Phyllis Hol-
 brook.

Flag Bearers.....Polly Ashworth,
 Betty Welch

BAND MEMBERS

Rhetha Massie, Herma Cabiness,
 Phyllis Holbrook, Lewis Snodgrass,
 Buren McLaughlin, Gary Sergeant,
 Harold Aeh, Nina Saunders, Geor-
 gena Lantz, Bob Rowe, Donna Gyor,
 Ira Mault, Raymond Will, Raymond
 Boyd, Brooks Parks, Joe Essman,
 Dick Duduit, Warren Riddelbarger,
 Phyllis Holt, Bill Martin, Harry Scott,
 Bob Will, Shurl Shoemaker, Gary
 Wilson, Jim Porter, Gorden Snyder,
 Paul Brigner, Joyce McClurg, Sylvia
 Torges, Lila Duduit, Phyllis Saunders,
 Esther Seth, Ruby Lambert, Bernard
 Evans, Alice Mault, Dave Watts,
 Margaret Hackworth, Carol Knigge,
 Barbara Cooper.

East High Band





Norma Meek
 Helen Kemp
 Ann Fannin
 Davida Fannin
 Howard Taylor
 Buddy Duduit
 Jerry Imm
 Jim Tipton
 Carl Warner

Hi-Y and Tri-Hi-Y Officers

Girls' League Officers

Ernestine Maggard
 Mary Mougey
 Miss Taylor, Advisor
 Margaret Hackworth
 Geneve Lantz





Glee Clubs

The high light of this year's Glee Clubs was the performance of the operetta, "H. M. S. Pinafore," under the direction of Mr. Butler.

Both Glee Clubs participated in various assemblies during the year, including the Easter Services. Mr. Butler also organized a girls' a capella group which sang at the baccalaureate services.

The Glee Club was larger than it has been for several years past, numbering 70 girls and 24 boys.

First Row: Glen White, Ray Burke, Johnny Warneke, Mr. Butler, director; Ted Dortch, Bill Martin, Grover Frazier.

Second Row: Dick Bussa, Robert Bowman, Bob Crabtree, Harry Scott, Don Vallance, Carl Felty, Bob Dortch.

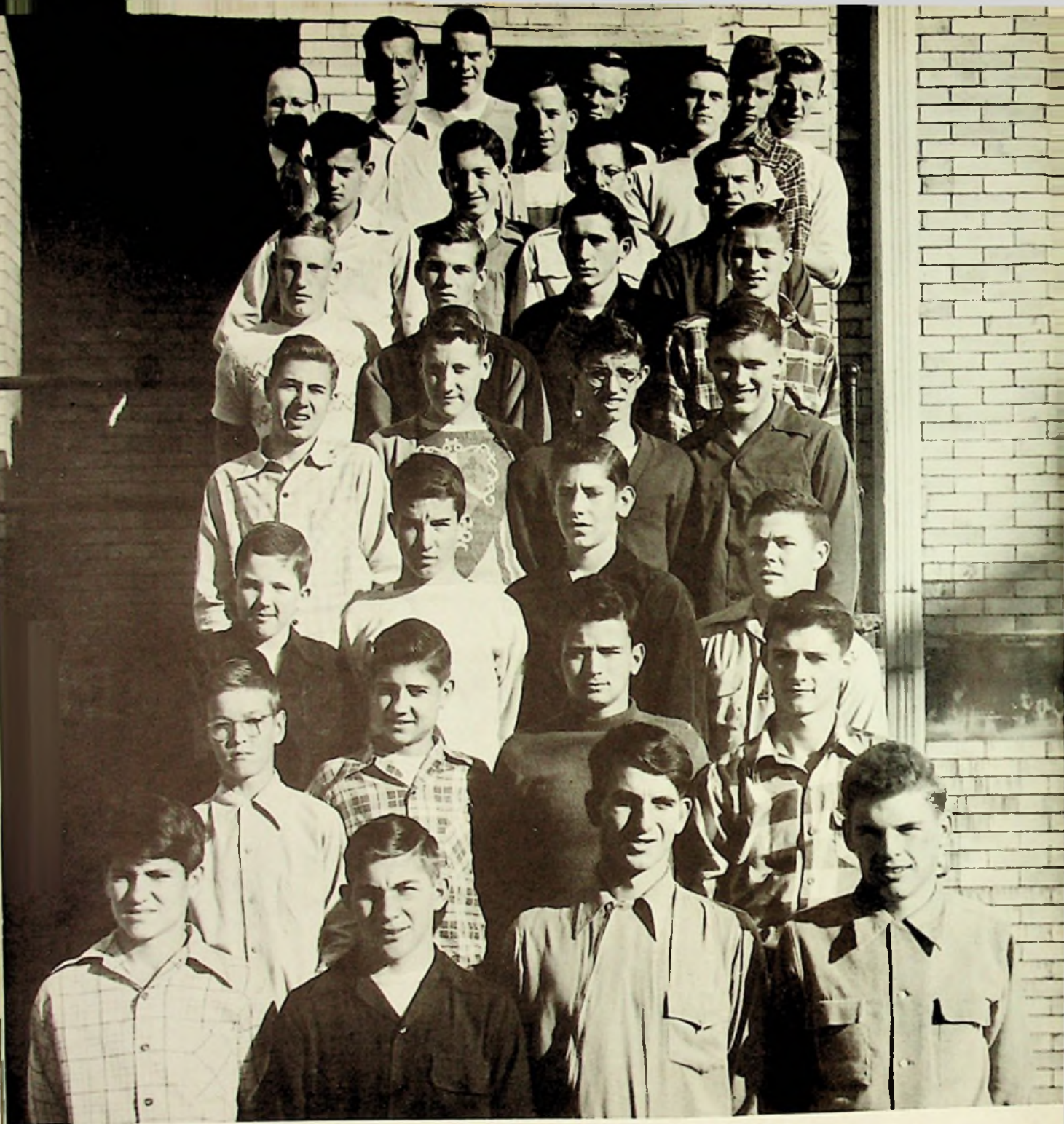
Third Row: Carl Warner, Jack Etterling, Dave Watts, Jerry Winebrenner, Paul Paige, James Tipton, Bob Patrick.

Fourth Row: Lowell Stanley, Ray Bolton, Jack Wineka, Bob Royster, Paul Brigner, James Brady, Elza Fraley.



FIRST ROW: Pat Taulbee, Jo Ann Faine, Regina Pierce, Jane Thompson, Evelyn White, Betty Baldridge, Colleen Kellogg, Sheila Starrett, Betty Mustain, Sue Ann Manley, Joan Castle, Faye Maddix, Judy Tussey, Sue Snyder, Amy Weidner. SECOND ROW: Wilma Ramey, Betty Montgomery, Lena Brigner, Nina Lunsford, Ruth Beadle, Helen Smith, Patty Noble, Regina Booten, Normale Taylor, Geraldine Pitts, Joan Belveal, Janet Tomlin, Carol Brown. THIRD ROW: Ruth Chamberland, Esther Seth, Judy Sergent, Lois Meyers, Nettie Jenkins, Geneva Fields, Carol Jenkins, Janet Ramey. FOURTH ROW: Norma Meek, Ethlyn Ruley,

Aulive Horner, Joyce Mays, June Ramey, Retha Massie, Joy Jean Frazier, Wanda Hoskins. FIFTH ROW: Wanda Kiser, Marlene Slattery, Charlene Carleton, Joan Mays, Gay Sowklich, Jackie Brown, Joan Smith, Mary Lou Mougey, Phyllis Holbrook. SIXTH ROW: Evelyn Brown, Ernestine Maggard, Ann Fannin, Lois Stewart, Mary Millhuff, Helen Stewart, Eloise Schaefer, Juanita Taylor. SEVENTH ROW: Margaret Plummer, Dot Kline, Bonnie Widdig, Jackie Kirchner, Mr. Butler, Margaret Hackworth, Barbara Cooper, Sue Sennett, Betsy Askins, Nannie Bennett.



HI-Y

FIRST ROW: Wally Evans, Howard Taylor, Buddy Duduit, Bob Patrick.
SECOND ROW: Dick Bussa, Bernard Evans, Don Vallance, Harry Scott.
THIRD ROW: Bill Martin, Bob Crabtree, Bob Dortch, Ramah Frazier.
FOURTH ROW: Carl Warner, Bob Will, Dave Watts, Jerry Winebrenner.
FIFTH ROW: Ronnie Partridge, Jerry Imm, Carl Bussey, Dick Spalding.
SIXTH ROW: Ralph Jenkins, Ralph Mays, Bob Kilgallin, Charles Montgomery.
SEVENTH ROW: Mr. Stevenson, Advisor; Lowell Stanley, Jack Wineka, James Tipton, Paul Hughes, James Steele, Bob Royster, Grant Elliott.



Miss Scott, Advisor

Clarice Reinhardt, Ernestine Maggard

Mary Mougey, Margaret Plummer

Ann Fannin, Helen Kemp, Lois Stewart

Davida Fannin, Norma Meek

Imogene Fannin, Joan Smith

Hazel Bradshaw, Nina Lunsford

Normale Taylor, Betty Kemp

Betty Baldrige, Pat Taulbee

Miss Taylor, Advisor

Marg Hackworth, Jenny Lantz

Mary Millhuff, Marg Arthurs



Hi-Y and Tri-Hi-Y





Initiation





EDITORS
Jerry Imm
Harold Etterling
Helen Kemp
Miss Taylor, Advisor

ADS
Lowell Stanley
James Tipton

BUSINESS MANAGER
Mary Millhuff

ASSISTANT BUSINESS
MANAGERS
Ernestine Maggard
Norma Meed



ACTIVITIES

Carl Bussey
Margaret Hackworth

SENIOR EDITORS

Mary Lou Mougey
Jo Ann Smith

SPORTS

Dick Hoskins
Buddy Duduit

ART EDITORS

Elza Fraley
Paul Hughes





SCHOOL LIFE
Ray Bolton
Beverly Kinker
Margaret Arthurs

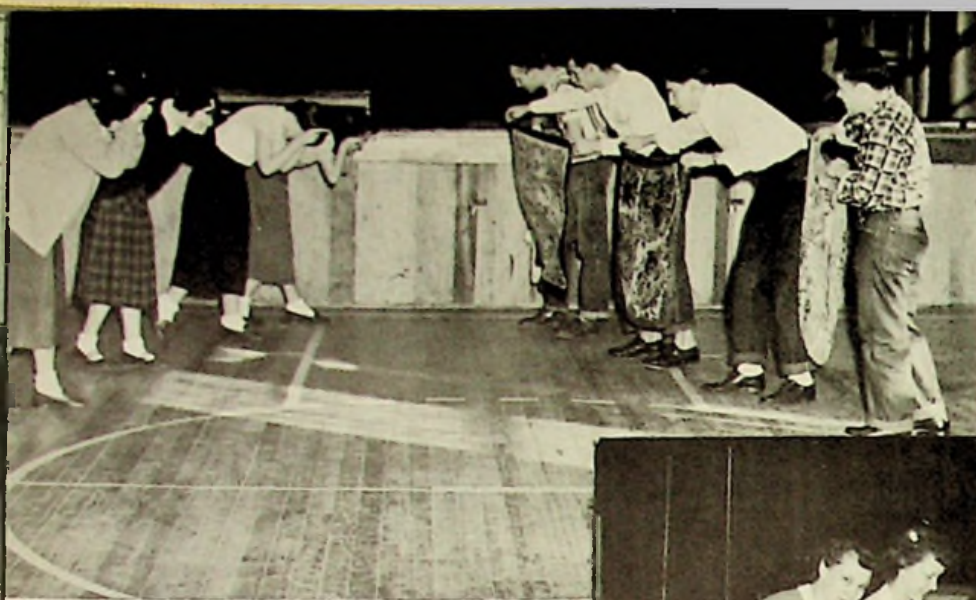


TYPISTS
Rusty Reinhardt
Pat Taulbee

Latin Club

June Arnett, Marilyn Baer, Hazel Bradshaw, Carol Brown, Jacqueline Brown, David Burke, Richard Bussa, Ester Coppock, Robert Crabtree, Robert Dortch, William Essman, Peggy Evans, Wally Evans, Carol Hutchinson, Robert Kilgallen, Anne Knigge, Ruby Lambert, Bill Martin, Alice Mault, Charles Noel, Ronnie Partridge, Ronald Patton, Judy Pemberton, Margaret Russell, Sue Schneider, Harry Scott, Dick Spaulding, Shurl Shoemaker, Normale Taylor, Judy Thomas, Sylvia Torges, David Watts, Jerry Winebrenner, Donald Armstrong, Herma Cabiness, Joe Essman, Grover Frazier, Joy Jean Frazier, Donna Gyor, Phyllis Holbrook, Phyllis Holt, Marie Howard, Bennie Jenkins, Wanda Kiser, Buren McLaughlin, Ira Mault, Dave Myers, Brooks Parks, Naomi Ricks, James Rose, Robert Rowe, Barbara Salyers, Geloma Spearry, Mima Taylor, Jack Terry, Douglas Wallen, Betty Welch, Robert Will, Shirley Williams, Raymond Boyd, Roy Knight.





Lila Dudit, Betty Kemp, Nina Lunsford, Douglas Wallen, Paul Hughes, Jerry Imm, Ralph Mays, Ramah Frazier.

Sylvia Torges, Marilyn Clemens, Joan Fannin, Charlie Veach, Bob Welch, Charles Montgomery.

Wanda Hoskins, Jack Wineka, Pat Nardi, Bob Will, Sue Ann Manley, Harold Etterling.

Wanda Bartee, Howard Taylor, Carl Warner, Janice Ervin, Imogene Fannin, Eleanor Ervin, Helen Kemp, Beverly Kinker, Mary Millhuff.





Welcoming Committee

Helen Kemp, Janice Ervin, Juanita Taylor, Harold Etterling, Dick Kitchen, Carl Bussey.

Tartan Staff

FIRST ROW: Margaret Arthurs, JoAnn Smith, Mary Mougey, Harold Etterling, Helen Kemp, Ethlyn Ruley.

SECOND ROW: Wallace Evans, Normale Taylor, Jerry Imm, Wanda Hoskins, Ann Fannin, Douglas Wallen, Bennie Jenkins, Donnie Martin, Dick Duduit.





Junior Cup

The custom of making an award to the outstanding Junior was begun by the old Delphic Literary Club of East High School in 1925. The Junior is chosen by the faculty on the basis of such merits as scholarship, leadership, services, attitude, and co-operation.

The possession of this cup is one of the highest honors in this school and the name of the winner is known to only one person until the presentation of the cup is made.

The name of the winner is inscribed on this Junior Cup. Helen Kemp is the 24th person who has attained the honor of being the most outstanding Junior.



Honor Society

The annual assembly of the National Honor Society was held Wednesday, March 29.

The new members inducted into the society were: Juniors: Janice Ervin, Harold Etterling, Betty Baldrige. Seniors: Jo Ann Smith, Margaret Hackworth, Ann Fannin, Imogene Fannin, and Pat Taulbee.

The program was planned by the Senior members who were selected in their Junior year: Helen Kemp, Margaret Arthurs, and Mary Millhuff. It was under the direction of Miss Helen Taylor and Mr. John C. Stevenson.

The guest speaker at this impressive ceremony was Miss Pauline Walden. Since the society in our school had started under her influential guidance, we were honored by naming the Society after her, and calling it the Pauline Walden Chapter.

This organization is based upon four main points. These are: Character, Scholarship, Leadership, and Service. Every student in the school should strive to maintain these goals because it certainly is an honor to be a member.

FIRST ROW: Miss Helen Taylor, advisor; Mary Millhuff; Margaret Arthurs; Helen Kemp.

SECOND ROW: Mr. J. C. Stevenson, advisor; Imogene Fannin; Margaret Hackworth; Ann Fannin; Jo Ann Smith; Harold Etterling; Janice Ervin; Pat Taulbee; Betty Baldrige; Miss Pauline Walden, speaker.

Mary Millhuff; Helen Kemp; Miss Pauline Walden, speaker; Margaret Arthurs.





"Don't Blame Me"

The Junior Class of East High School presented a three act comedy, "Don't Blame Me" on April 27 and 28, 1950. The comedy portrayed the amusing troubles and ideas of Tommy's teen-age life and friends. The play was directed by Mr. Fugitt.

THE CAST

Tommy.....	Bob Welch
Mrs. Prentiss.....	Normale Taylor
Mr. Prentiss.....	Charles Montgomery
Mack.....	Harold Etterling
Linda.....	Joy Jean Frazier
Mrs. Conway.....	Janice Ervin
Mr. Conway.....	Bob Will
Danny.....	Bernie Evans
Miss Britton.....	Lois Stewart
Mrs. Davies.....	Wanda Barte
Marlene.....	Wanda Fankell
Betty.....	Helen Stewart
Gerald.....	Charles Veach
Vangie.....	Nina Lunsford

S
C
H
O
O
L



S
C
H
O
O
L

Football Banquet



John Fugitt
Head Coach

James Richardson
Ex-President of
Booster Club

Adolph Rupp
Basketball Coach
Kentucky U.

Herb Busa
President of
Booster Club



Marg Hackworth. Norma Meek



Jenny Piquet
Wanda Hoskins



Wanda Hoskins
 Jenny Piquet
 Marg Hackworth
 Norma Meek
 Eloise Schaefer
 Maudie Stiltner
 Helen Stewart
 Wanda Winebrinner
 Phyllis Saunders
 Hazel Bradshaw
 Clarice Reinhardt
 Maxine Ellifritt
 Leota Bailey
 Nina Lunsford
 Betty Brown
 Douglas Wallen



Bob Clemen's Orchestra



Mr. Jimmie Richardson
 Mr. Herb Bussa
 Mr. Adolph Rupp



J U N I O R



SEATED: Jerry Imm, Marilyn Clemens, Buddy Dudit, Bob Patrick, Pat Taulbee, Ann Fannin, Helen Kemp, Dick Harmon.
STANDING: Norma Williams, Margaret Arthurs, Margaret Plummer, Joan Arthurs.



Margaret Plummer, Sonny Hoskins.

S E N I O R



Mr. and Mrs. Schomburg, Mr. and Mrs. Pogue.



Joan Arthurs
 Faye Sherman
 Marg Plummer
 Marg Arthurs

P
 R
 O
 M



Marg Hackworth
 Don Imes

- Imogene Fannin
- Janice Ervin
- Elhlyn Ruley
- Hazel Bradshaw
- Wanda Winebrenner
- Maudie Stillner
- Marlene Slatery
- Phyllis Saunders
- Joy Jean Frazier
- Charlotte Frazee
- Betty Kemp
- Wanda Bartee
- Nina Lunsford
- Jenny Piquet



SNAP



Glenn Duttel, Davida Fannin



Betty Kemp, Janice Ervin,
Wanda Bartee



Phyllis Holt



Carl Bussey, Ray Bolton,
Beverly Kinker, Ralph Mays



Don Atkins
Juanita Allard

SHOTS



Freshman
Get-together



I'm c-o-l-d



Basket, basket, we wanta' basket



Old Pals



Aren't I cute?



Seniors, of course!



Sad sacks



Gay Group



Just Sophomores



Time to go home.



Santa Claus

REMEMBER
THESE?



Mr. & Mrs. T. W. Smith



Homecoming Dance



64

It's easy, if you know how.



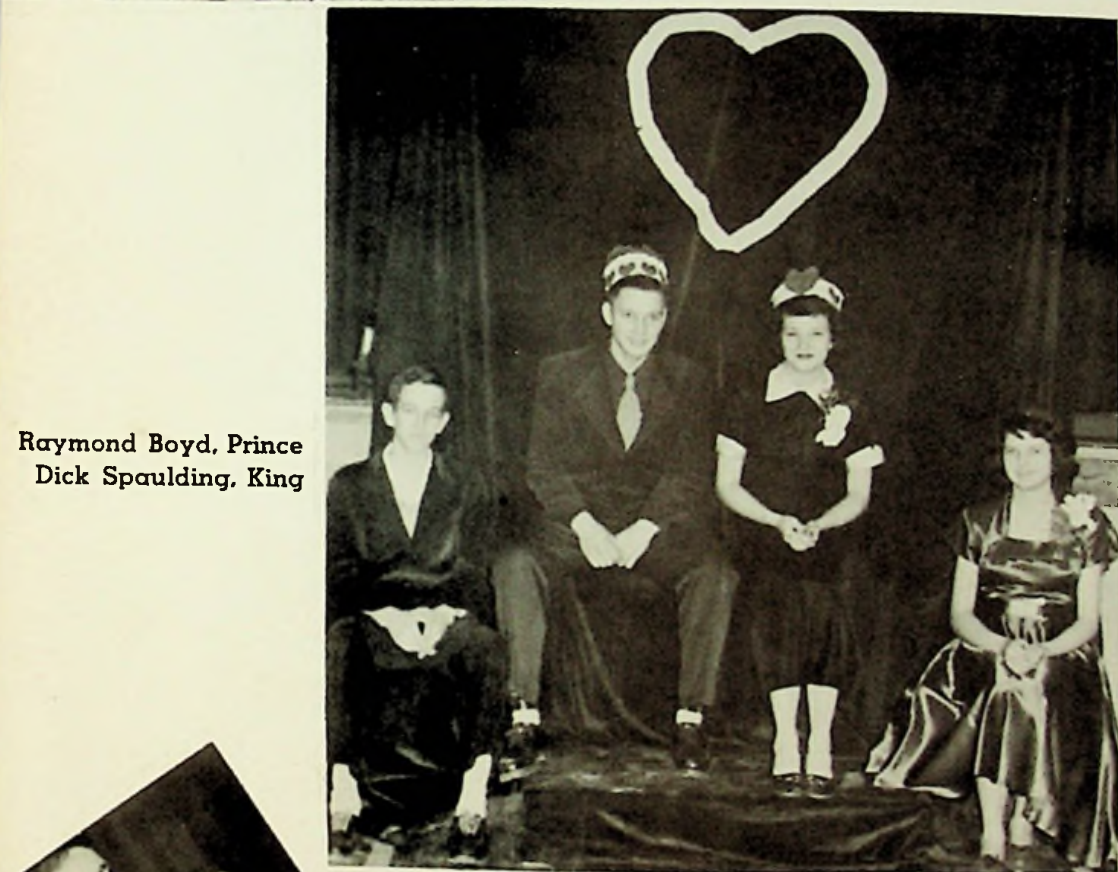
A doll and—



Gay party



Gay Partners



Raymond Boyd, Prince
Dick Spaulding, King

Carol Hutchinson, Queen
Phyllis Holt, Princess



Innocent Bystanders





First year shorthand class

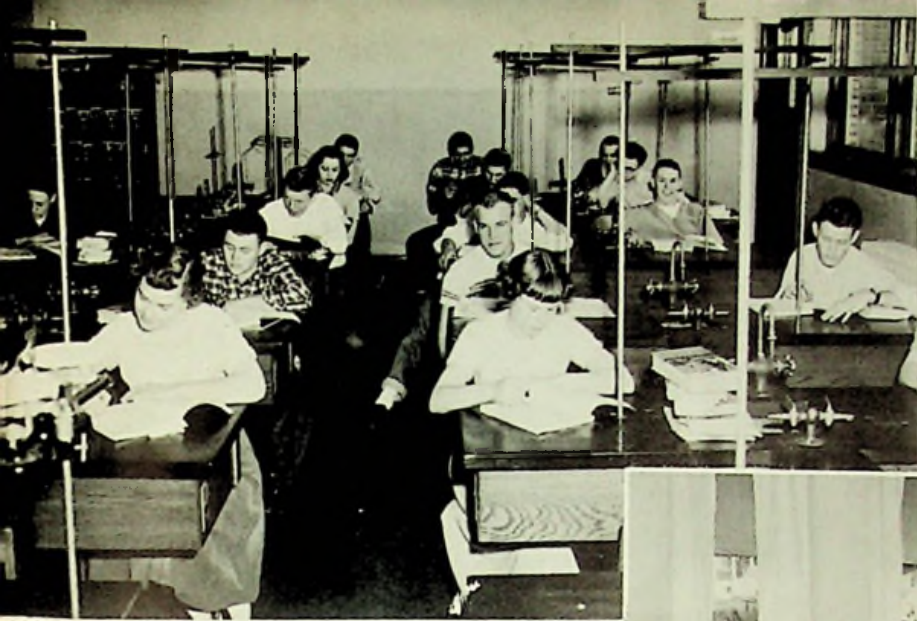


Miss Whitehouse's
Third Year English Class



First year typing class

Special Classes



Chemistry Class



Home Economics Classes



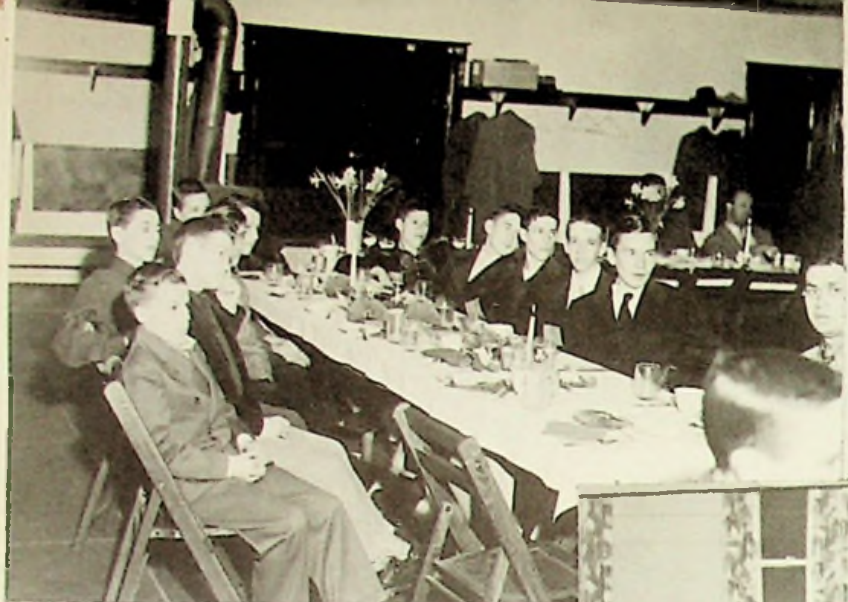
Library



Manual Arts Class



ANNUAL



BASKET



BALL

BANQUET





Betty Brown, Juanita Conley, Wilma Stevenson, Joan Fannin, Bonnie Baer, Bonnie Widdig.



Remona Fraley, Joan Mays, Betty Mustang, Erma Campbell, Faye Maddix, Lois Meyers.



Boys' and Girls' Physical Education Classes



Bill and June



Mary + Don



Mary + Don



Rusty + Bill



Ann + Steve

G
O
I
N
G
G
I
O
G



Genevieve + Howard

S
T
E
A
D
Y



Mary + John



Buddy + Phyllis

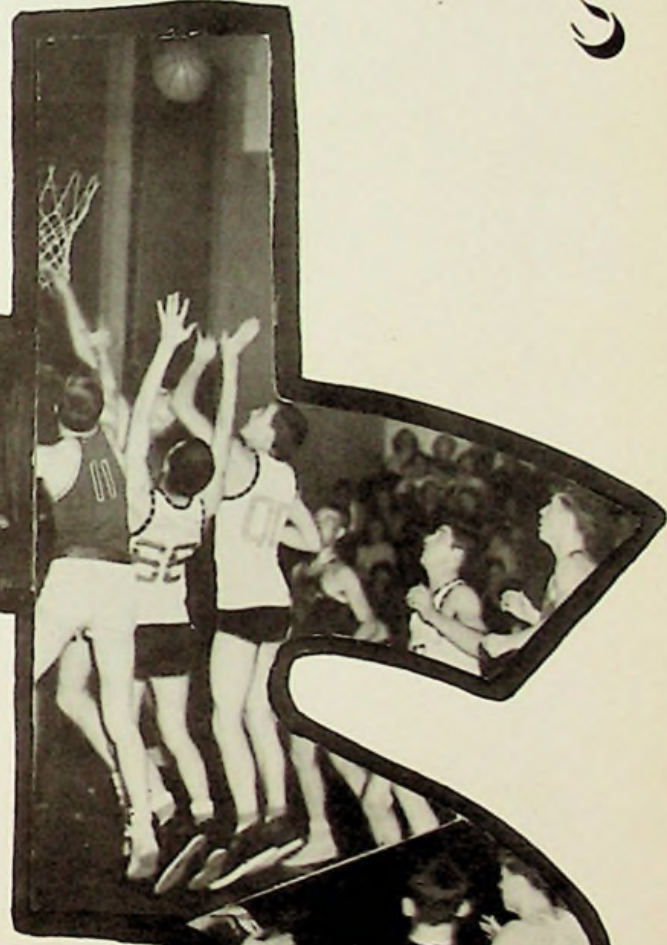


Doug + Paul



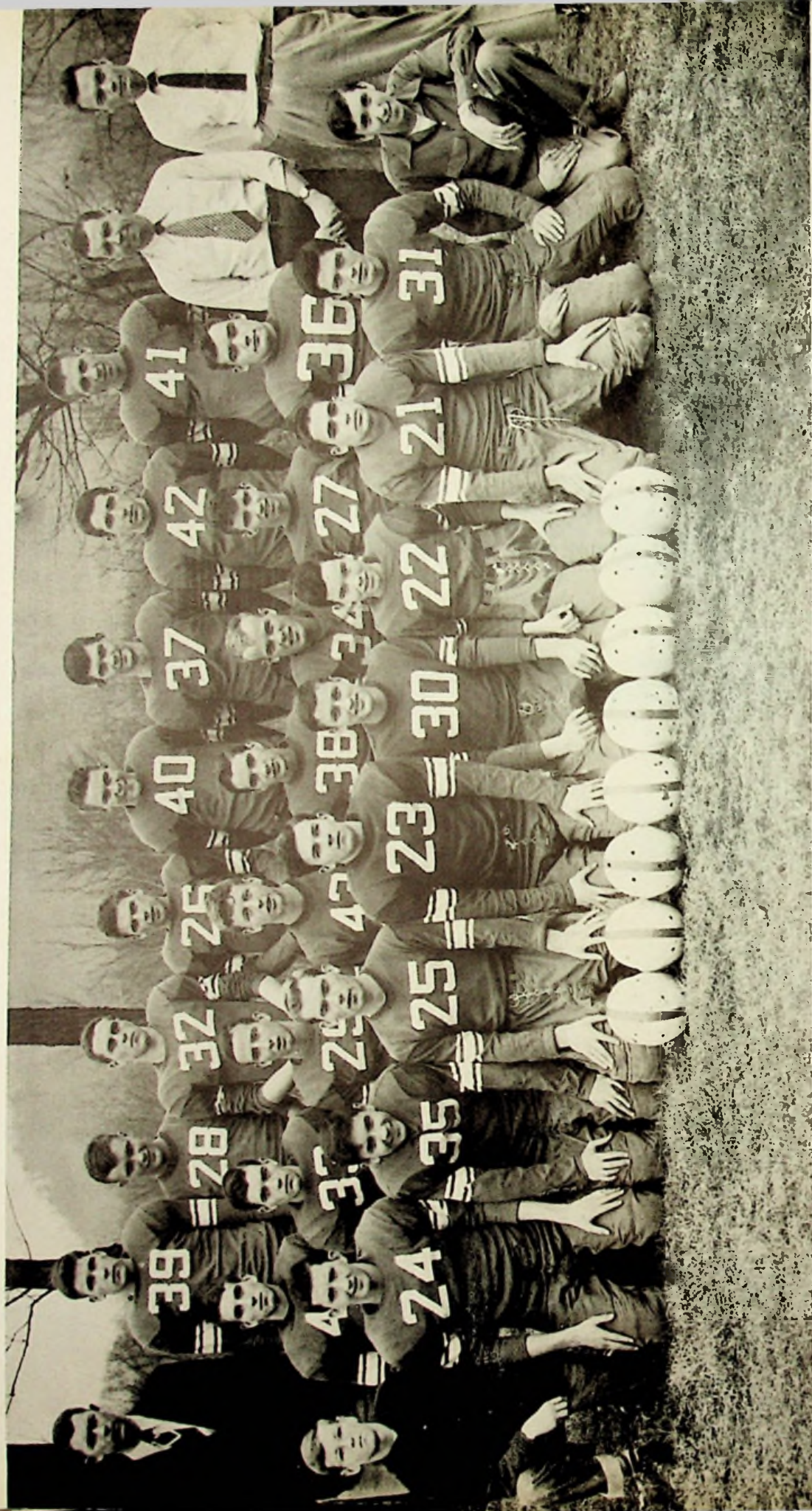
Dave + Beth

SPORTS

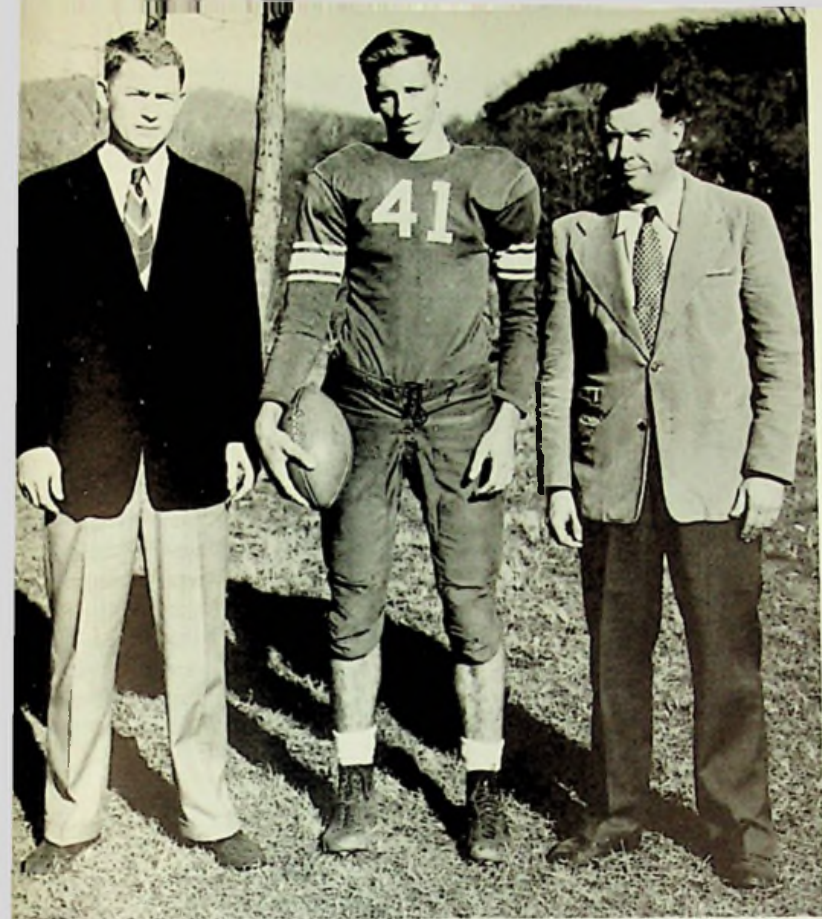


1949-50

S. O. C. CHAMPS



FIRST ROW: Dick Bussa, Mgr.; Charlie Bond, Orville Garrett, John Hall, Charles Montgomery, Dick Spalding, Shurle Shoemaker, Bob Welch, Elza Fraley, Paul Paige, Mgr.
 SECOND ROW: Buddy Duduit, Jim Brady, Jim Tipton, Grant Elliott, Dick Kitchen, Ernie Roof, Dave Watts, Milo Mullins.
 THIRD ROW: Herm Schomburg, Ass't. Coach; Richard Hoskins, Jerry Winebronner, Jim Steele, Bob Patrick, Jack Wineka, Ray Bolton, Carl Bussa, Lowell Stanley, John Fugitt, Coach Buzz Pogue, Ass't. Coach.



Herm Schomburg, Ass't. Coach
Lowell Stanley, Captain
John Fuggitt, Head Coach



Wildcat Martin

Water Boy for the Big Tartan Team



Paul Paige, Dick Bussa, Managers



EAST TOPS B. I. S., 13 TO 6

East high, playing its second home game of the 1949 season, found stiff opposition in an underrated Boys' Industrial grid team Friday night, but pulled the game out, 13 to 6, with a touchdown in the last quarter.

Jim Steele, who also tallied the first Tartan touchdown, scored the winning marker after taking a pass from Bob Welch on a play which carried 20 yards. The Tartans' third quarter score came the same way—via a Welch to Steele pass.



EAST BEATS HILLSBORO, 39 TO 0

Clicking on all 11 cylinders from the opening whistle to the final gun, the East Tartans smashed to a 39 to 0 win over Hillsboro at Allard Park Friday night.

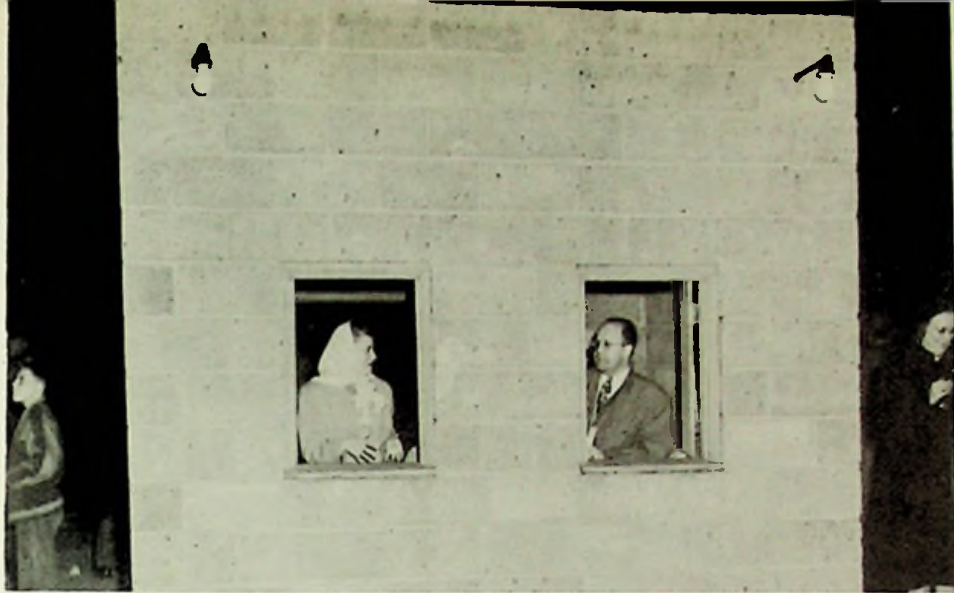
Jim Steele scored two touchdowns for the tartans, and Bob Welch, Grant Elliott, Lowell Stanley, and Jerry Winebrenner each tallied one.



**TARTANS, SENATORS CLASH IN BATTLE FOR S. O. C. TITLE
EAST TAKES S. O. C. TITLE WITH 18 TO 6 VICTORY**

After taking the opening kickoff of the game, Lowell Stanley moved the ball almost single-handedly to the 13, from where Bob Welch raced off tackle for the initial score of the game.

East took over and began a drive which carried the length of the field for another score. The drive was successful when Stanley tallied from the 4. At the half East seemed a good bet to take the all-important contest with a 12 to 0 lead.



EAST VS. CENTRAL CATH.

East High Gridders beat Central Titans, 18 to 0. The first score came early in the game with James Steele going over from the 6 yard line. The pass from Steele to Stanley for the extra point was incomplete. The second score came when Steele and Fraley carried to the 4 yard line where Jerry Winebrenner plunged over the center for the second score. Midway in the last period a pass from Welch to Stanley took the ball to the Central 3 yard line, on the next play Stanley plunged off tackle for the third touchdown making the final score 18 to 0. Fathers were honored at half time.





EAST TOPS B. I. S.. 13 TO 6

East high, playing its second home game of the 1949 season, found stiff opposition in an underrated Boys' Industrial grid team Friday night, but pulled the game out, 13 to 6, with a touchdown in the last quarter.

Jim Steele, who also tallied the first Tartan touchdown, scored the winning marker after taking a pass from Bob Welch on a play which carried 20 yards. The Tartans' third quarter score came the same way—via a Welch to Steele pass.



EAST BEATS HILLSBORO. 39 TO 0

Clicking on all 11 cylinders from the opening whistle to the final gun, the East Tartans smashed to a 39 to 0 win over Hillsboro at Allard Park Friday night.

Jim Steele scored two touchdowns for the tartans, and Bob Welch, Grant Elliott, Lowell Stanley, and Jerry Winebrenner each tallied one.



**TARTANS, SENATORS CLASH IN BATTLE FOR S. O. C. TITLE
EAST TAKES S. O. C. TITLE WITH 18 TO 6 VICTORY**

After taking the opening kickoff of the game, Lowell Stanley moved the ball almost single-handedly to the 13, from where Bob Welch raced off tackle for the initial score of the game.

East took over and began a drive which carried the length of the field for another score. The drive was successful when Stanley tallied from the 4. At the half East seemed a good bet to take the all-important contest with a 12 to 0 lead.



EAST VS. CENTRAL CATH.

East High Gridders beat Central Titans, 18 to 0. The first score came early in the game with James Steele going over from the 6 yard line. The pass from Steele to Stanley for the extra point was incomplete. The second score came when Steele and Fraley carried to the 4 yard line where Jerry Winebrenner plunged over the center for the second score. Midway in the last period a pass from Welch to Stanley took the ball to the Central 3 yard line, on the next play Stanley plunged off tackle for the third touchdown making the final score 18 to 0. Fathers were honored at half time.





FIRST ROW: Ray Burke, Joe Chamberlain, Glen White, Frank Gilliam, Ted Dortch, John King, Joe Essman, Carl Sergant, Clifford Perkins.
 SECOND ROW: Carl Campbell, Jerry Hensen, Ronald Deemer, Ray Cottle, Lowell Atkins, Bennie Jenkins, Brooks Parks, Stanley Thompson, "Buzz" Pogue—Coach.

Coach Fuggitt looking over his miniature S. O. C. football champions.





James Steele, Carl Bussey, Buddy Dudit, Charles Bond, Bob Patrick.

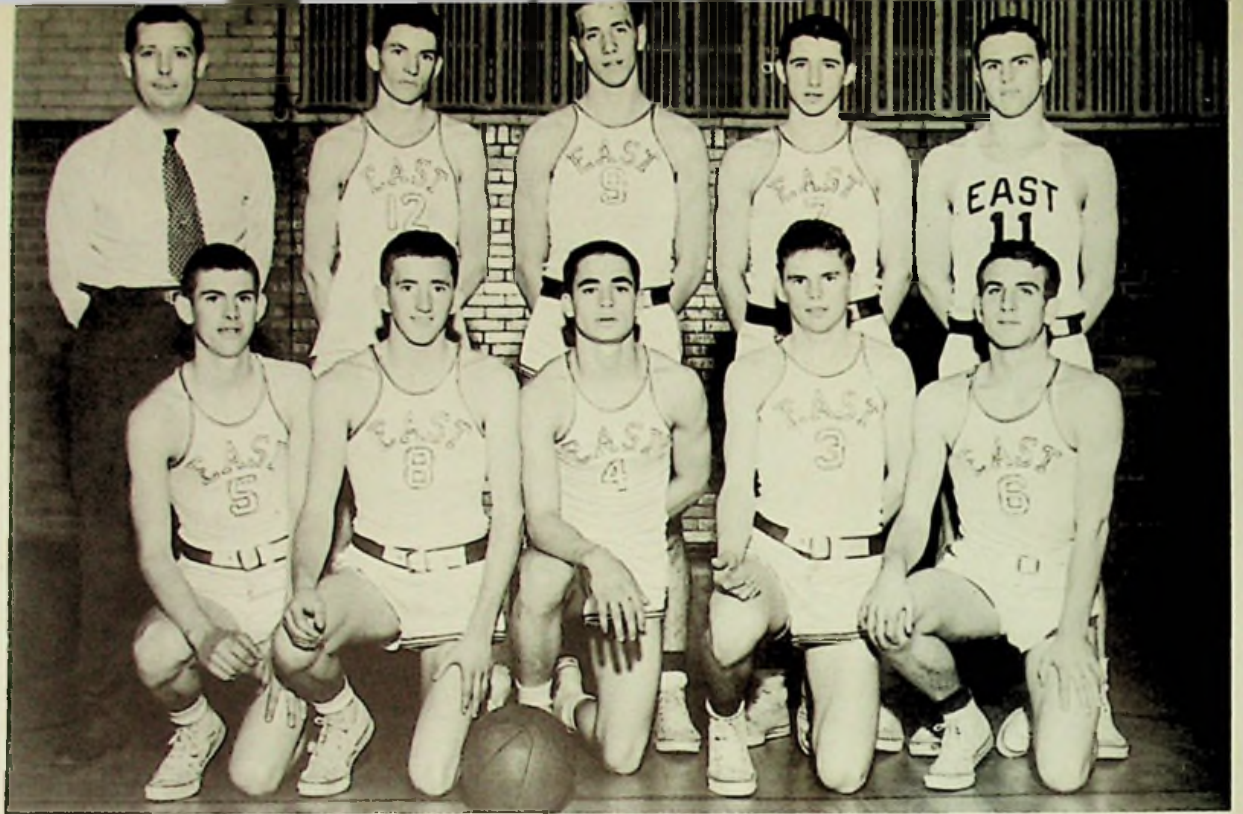
EAST	OPPONENT		EAST	OPPONENT	
28	Portsmouth	62	38	Waverly	50
38	Stockdale	36	26	New Boston	35
46	Central	35	44	Wheelersburg	53
36	S. Webster	38	32	Hillsboro	45
32	Wheelersburg	28	44	Chesapeake	35
65	Washington C. H.	52	56	Ironton	53



Bob Welch, Leonard Oiler, Mr. Fugitt, Pete Gilliland, Lowell Stanley.

EAST	OPPONENT	
35	S. Webster	46
49	Washington Twp.	41
41	New Boston	43
30	Chesapeake	32
48	Minford	51
38	Stockdale	46

EAST	OPPONENT	
84	Central	41
TOURNAMENT AT ATHENS		
EAST	OPPONENT	
51	Hillsboro	45
34	Portsmouth	67



STANDING: Coach John Fuggitt, Leonard Oiler, Lowell Stanley, Carl Bussey, James Steele, Captain.
 SITTING: Pete Gilliland, Charles Bond, Bob Welch, Bob Patrick, Buddy Dudit.

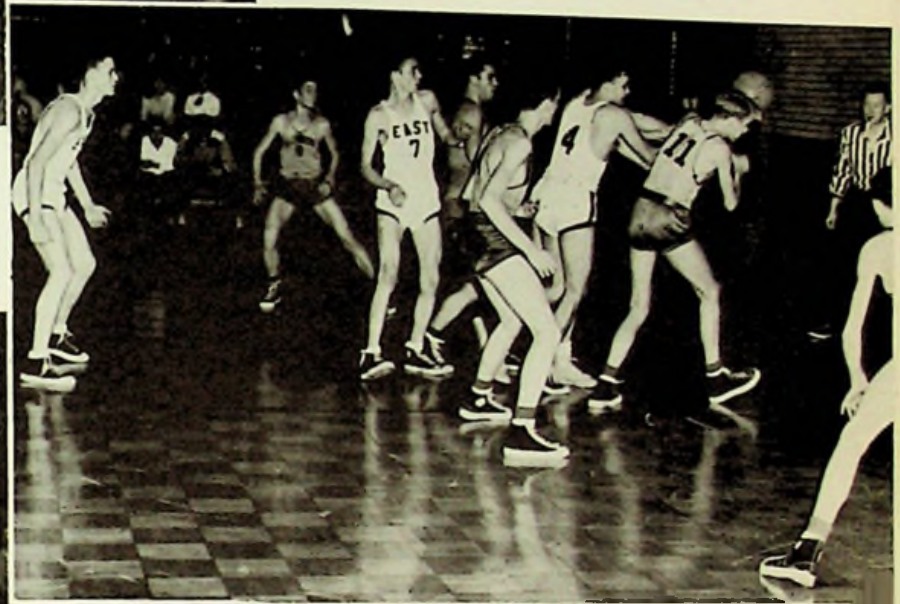
STANDING: Bob Royster, Wells Basham, Jack Wineke, Jerry Winebrenner, Herb Schomberg, Coach.
 SITTING: Benny Jenkins, Jim Brady, Jim Graham, Dave Watts, Bill Essman.





PORTS.

EAST



VS.



**M
A
N
A
G
E
R
S**



NEW BOSTON



FIRST ROW: Glen White, Scorekeeper; Dick Bussa, Manager.
 SECOND ROW: James Steele, Joe Essman, Ronnie Partridge, Bill Essman, George Beloit, Dave Burke, Pete Gilliland.
 STANDING: E. L. Pogue, Coach; Bob Welch, Grant Elliott, Dave Watts, Jerry Winebrenner, Ray Bolton, Frank Moore, Ralph Jenkins, Paul Paige, Manager.



Mr. Pogue giving Jim Steele some pointers on pitching.



Pitching staff—Ralph Jenkins, Dave Watts, Dave Burke, James Steele.



Ronnie Partridge



Frank Moore



Joe Essman



Ray Bolton



Grant Elliott



Bob Welch



Jerry Winebrenner



Bill Essman



George Beloit



Pete Gilliland



ACTION





Each year the team winning the Southern Ohio Conference is host to the all star team of the League. This year, 1949, Portsmouth East won the title of the S. O. C. by defeating every team which opposed them in league play.

All stars are chosen by the coaches of each school participating in the League, and are honored by the League Champion. The school's team which wins the league has a special assembly to honor the all stars and pass out individual trophies.

We are very proud of Portsmouth East's football record this year. They won 7 while losing only 2. Both defeats were suffered at the hands of very powerful teams, Athens and Washington C. H.

Let's see if the boys of 1950 will produce as good a ball club as the boys of the past season did.

Player	F.G.	F.	T.P.	Ave. per Game
Lowell Stanley	77	33	187	10.3
James Steele	71	32	174	9.6
Buddy Dudit	48	26	122	7.6
Leonard Oiler	33	8	74	7.4
Bob Patrick	19	10	48	6.0
Carl Bussey	29	12	70	5.0
Bob Welch	36	15	87	4.8
Pete Gilliland	10	7	27	3.8
Charles Bond	3	2	8	2.3
Ray Bolton	0	0	2	1.0
	<hr/>	<hr/>	<hr/>	<hr/>
Total	326	147	799	44.3

ADS.



Paul + Elza

MILLHUFF'S

*Sincere Best Wishes And Success To A
Fine Graduating Class*



MODERN SELF-SERVICE GROCERY

**FROZEN FOODS—MEATS
SHOES AND DRY GOODS**

If we serve you—you serve the best

Marting's

HIGH SCHOOL SHOPS

Corner of Sixth and Chillicothe

Portsmouth, Ohio

SCOTT'S SPORTING GOODS

"Everything for the Sportsman"

E. J. KENRICK

Market Street
Portsmouth, Ohio

Distributors of Pop & Candy

822 SIXTH STREET

PORTSMOUTH
OHIO

Congratulations to the
Class of '50

ELITE APPAREL SHOP

Nora Wilhelm

BOURGHOLTZER'S DRUGS

Prescriptions

Cosmetics Perfumes

Philco Radio & Refrigerators

**THE CRAIGMILES
FURNITURE CO.**

SEE THE STYLES AT
CRAIGMILES

Phone 319

936 Gallia St.

CLIFFORD M. FOSTER

PHOTOGRAPHER

6440 Gallia Street

Phone 170-Y

SCIOTOVILLE

OHIO

*Compliments
of*

ORTHMEYER

BAKERY

GALLIA and HARDING

PHONE 47

Courtesy
of

**WINEBRENNER
SERVICE STATION**

Lubrication

Gas

Oil

BRING YOUR **FORD** BACK HOME
FOR THE BEST SERVICE

PORTSMOUTH MOTORS, INC.

Gallia Street

Portsmouth, Ohio

EVANS FLORAL SHOP

"Big Enough To Serve You—
Not Too Big To Know You"

6804 Gallia St. Phone Scioto 188-L

KRAUSS

FURNITURE APPLIANCES
PHONOGRAPH RECORDS

831-833 Gallia St. 830-832 Sixth St.



TRADE-MARK REG. U. S. PAT. OFF.

Best Wishes To The
Graduating Class

**JACK DEMPSEY
GROCERY**

Meats of All Kinds

Corner Harding & Third Phone 88

LANTZ GROCERY

Phone 933-W

the smart little shop
with the friendly air

Tilene's

gallia and gay

ATLAS FASHIONS

Established 1895

FEMININE CLOTHES
FROM HEAD TO TOES

Five Great Selling Floors
of Feminine Fashions

DETROIT

STEEL

PORTSMOUTH

DIVISION

PRES. MAX ZIVIAN

Phone 2010

THE H. LEET LUMBER CO.

404 Harding Ave.

BUILDING SUPPLIES

Compliments of

**CLIFF JONES
MOTOR SERVICE**

5737 GALLIA

PHONE 9

**THE PORTSMOUTH
PAINT CO.**

PAINT • GLASS • WALLPAPER

Gallia at Findlay Street

SELBY SHOES

1007 Gallia Street

Portsmouth, Ohio

Best Wishes Seniors

**CLARY'S
SANDWICH SHOP**

Harding Avenue

Compliments
of

H E R M S

837 6th St.

Phone 1018

**SHERMAN HIBBITTS
AND SONS**

Department Store

212 Harding Ave.

Phone 36-G

Compliments
of

GILPIN DAIRY

Phone 921-L

SCHOMBURG'S

Complete Food Market

Phone Scioto - 39 229 Harding Ave.

Sciotoville, Ohio

Admiral • Emerson Radios

E V A N S

Radio Sales and Service

John L. Evans—Manager

215 Harding Ave.

Phone Sc. 91-R

Congratulations
Class of '50

LAWSON DAIRY

Wheelersburg

Phone 277-X

JOHNSON BROS. GROCERY

Corner of Harding and Mayo



"A good store for a good community"

RICHMAN BROTHERS CLOTHES

311 Chillicothe Street

HIBBITTS

HARDWARE COMPANY

315 Harding Avenue

Sciotoville, Ohio

Phone 186

***KINKERS* BEAUTY SHOP**

324 Marshall Avenue

Emma Kinker

Lucille Burkheimer

Compliments
from

JOHNSON'S GREEN HOUSE

"Flowers for Every Occasion"

WALT GRAHAM

Route 140
Pennsylvania Tires

Gas

Oil

E. J. KENRICK

Market Street
Portsmouth, Ohio

Distributors of Pop & Candy

Compliments
of

ABBOTT'S GROCERY & CONFECTIONERY

520 Harding

Ice Cream

Candy

GREENWICH INN

606 Harrisonville Ave.
New Boston, Ohio

Always a School Booster

Sandwiches

Magazines

*Get the food that makes you glad you're hungry;
Prepared before your very eyes on all stainless steel.*

Buy
'Em
By
The
Sack

Buy
'Em
By
The
Sack



HAMBURGER SHOP

5721 GALLIA

I. Everett Reese, Proprietor



GILL FUNERAL HOME

AMBULANCE SERVICE

Phone 100

Sciotoville, Ohio



Jessie A. Gill

Thos. J. Gill

W O L F F

"Clothes For Dad 'n Lad"

Compliments
of

ADRIANS' GRILL

Sandwiches Fountain Service

5720 GALLIA ST.

Mom and Pop Ford, Proprietors

NEWBERRY BROTHERS

Variety Store
New Boston, Ohio

**For Fine
Clothing and Sporting Goods**

Compliments of
DUVENDECK'S

WALLPAPER PAINT

LINOLEUM

5619 Gallia

Phone 276

Compliments
of

Portsmouth Interstate
Business College
Portsmouth, Ohio

L. C. BLACKBURN
Director

For Graduation

you will be your best in a
HYDE PARK
suit

THE CRITERION
"The men's shop"
Portsmouth, Ohio

Pepsi-Cola

BOTTLING COMPANY
OF PORTSMOUTH

2415 Chillicothe St. Portsmouth, Ohio

SCIOTO DRUGS



Compliments of Mrs. W. Elton Smith

Scioto 220-L

224 Harding Avenue

Compliments
of
STANLEY THEATRE

*The House of
Always Good Pictures*

Mgrs.

E. R. McGlone

J. W. Bassett

**BEST WISHES TO THE
CLASS OF "50"**

Congratulations
and
Best Wishes

CLARIANNA BAKERY

604 Gallia

BOYER'S GARAGE

Route 140

GENERAL REPAIR

**COMMERCIAL
EQUIPMENT CO.**

1001 Gallia

Portsmouth, Ohio

Grocery and Restaurant

REFRIGERATION

FIXTURES

SUPPLIES

Congratulations Graduates

**STAPLETON
Office Supply Company**

STATIONERS • OFFICE OUTFITTERS
SCHOOL SUPPLIES

Phone 3767

829 Sixth St.

"Courtesy and Service"

SCHULERS JEWELRY

"Gifts that Last"

WATCHES • JEWELRY • APPLIANCES

Watch Repairing

Stanley Theatre Bldg.

Congratulations to the Class of '50

"SNACK SHOP"

—Stop in for a Snack

Good Sandwiches—

"SEAL TEST ICE CREAM"

**HERFF - JONES
COMPANY**

Designers and Manufacturers of
**SCHOOL AND COLLEGE JEWELRY,
GRADUATION ANNOUNCEMENTS,
CUPS AND TROPHIES**

INDIANAPOLIS, INDIANA

Representatives: P. J. and R. J. Burkhart

AUTOGRAPHS

M.G. Shank
51"
Betty Mustain
Janice
50-51"
Bob Bell
Glenwood
50"
Faye McClary
52"
Marilyn Bell
50"
Janice Eavin
Senior
51"
Margie Russell
52"
Bob D. Dostak
52"
June Arnell
52"
Joe Ann Manby
52"
Walter Riddleberger
52"
Ronnie Partridge
52"
Lyle Madditt
52"
Ronald Patton
52"
Bob Kilgallon
52"
Barbara Galey
52"
Betty
51"
Always a friend
Betsy Brown
51"
Pat
52"
Bonnie
52"

AUTOGRAPHS

M. G.



