



*The Tiger Silhouette*  
1955



Glenwood High School  
of New Boston, Ohio  
presents

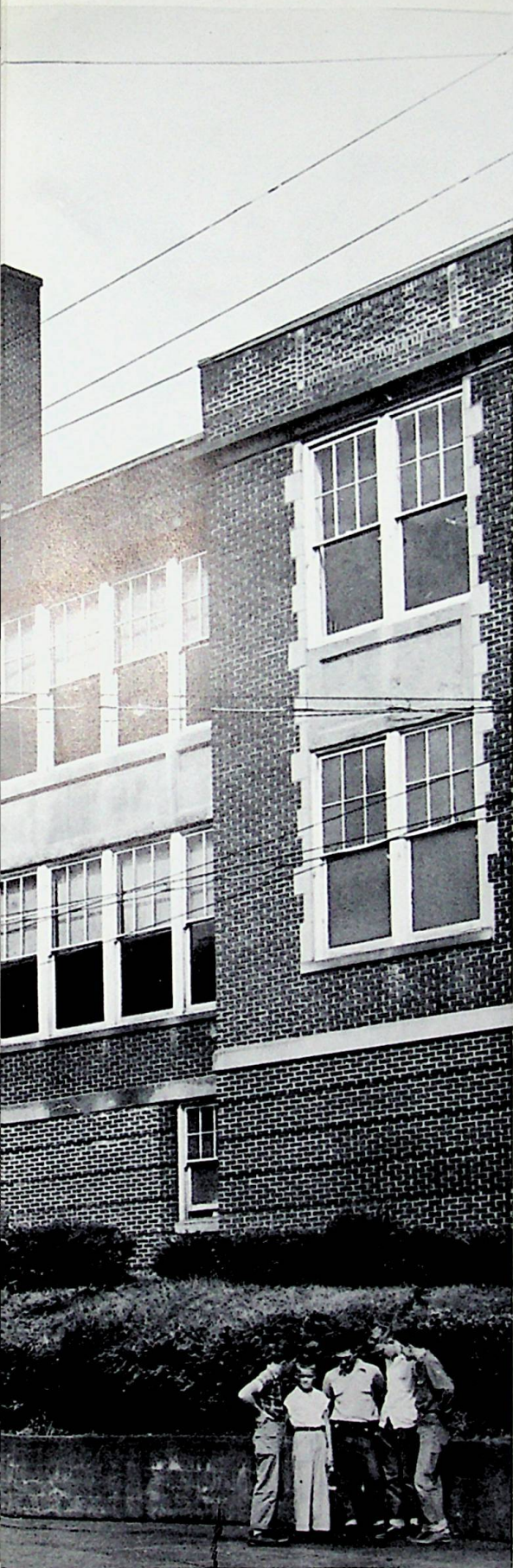
The 1955 Edition of ...

The

Tiger

Silhouette





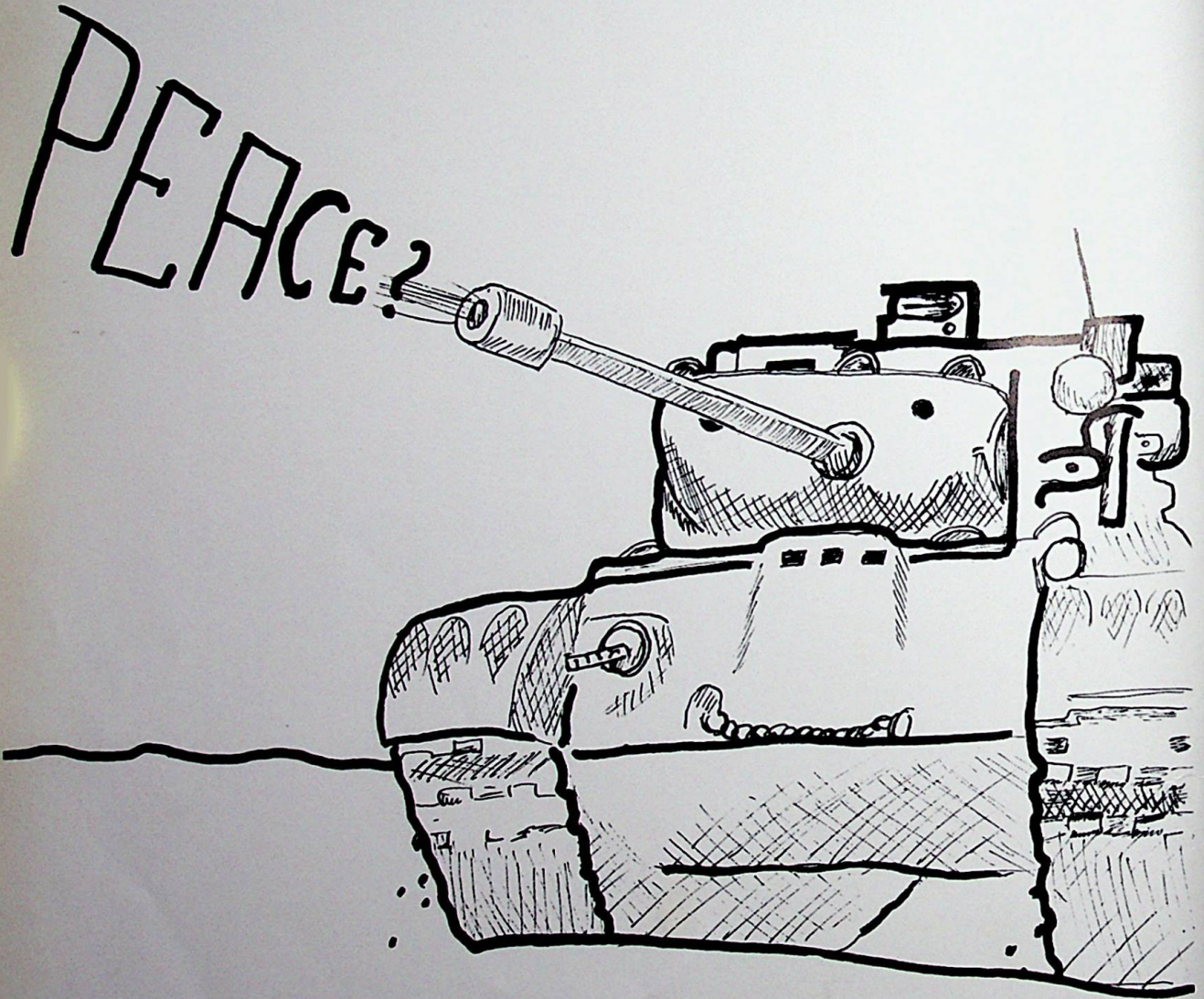
### THE SCHOOL SONG

Scarlet stands for bravery;  
Gray stands for might.  
For Alma Mater, dear  
Go right in and fight. Rah! Rah! Rah!  
Ever we'll play the game  
Win the victory;  
And then our hearts will gain  
Strength and poise from thee.  
Let us then be ever true  
To Glenwood dear;  
Let scarlet and the gray  
Fill our hearts with cheer; Rah! Rah!  
Rah!  
Though distant we may roam,  
Thoughts will linger still  
Of school days spent within  
Glenwood by the hill.

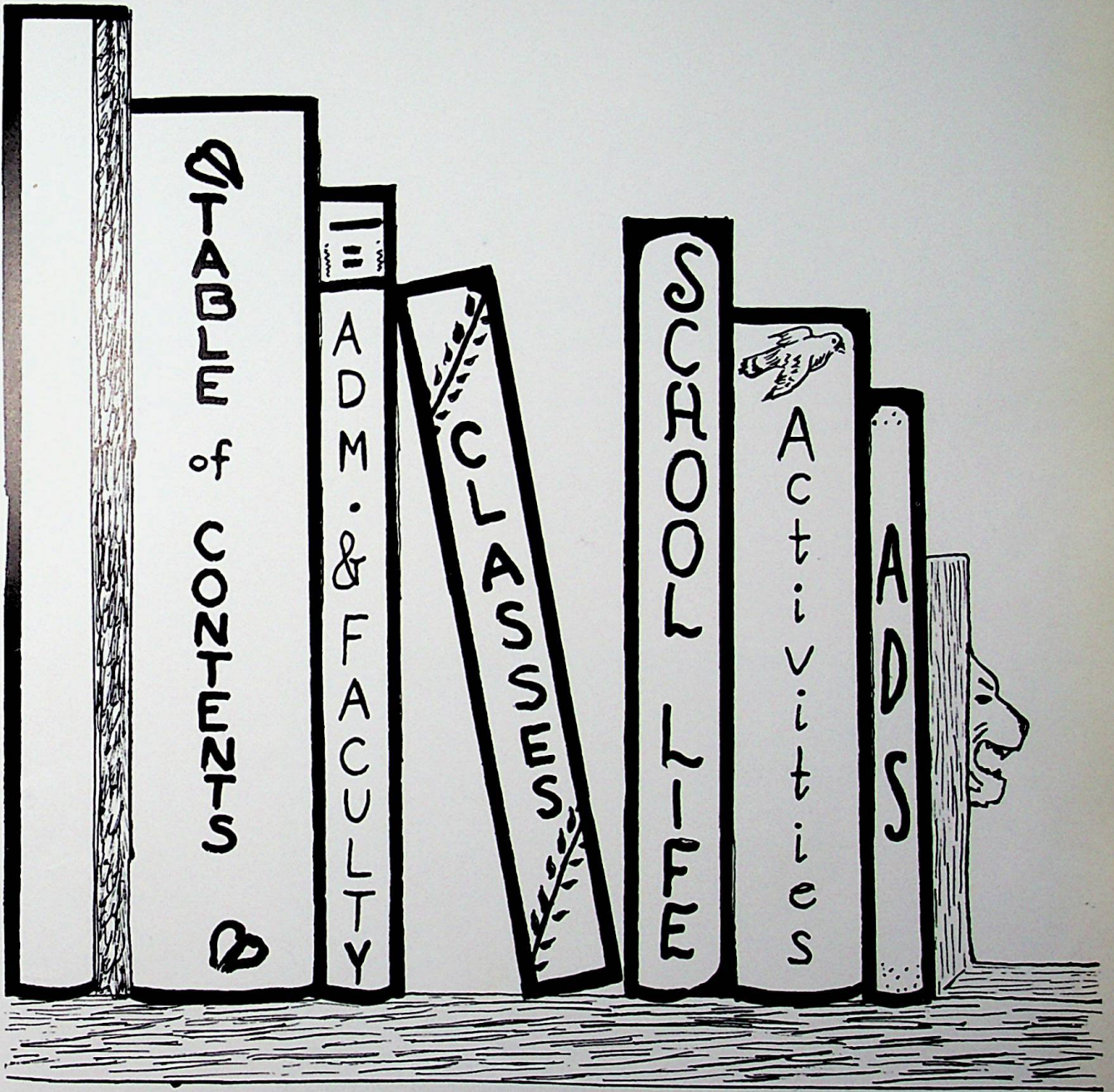
### THE ALMA MATER

For our Alma Mater, we will do or die;  
For our Alma Mater, wave the flag on  
high.  
As each season passes, friends who  
were so near  
Will linger in our memories of Alma  
Mater dear.

WE, THE GLENWOOD HIGH SCHOOL ANNUAL STAFF,  
DEDICATE THIS BOOK TO . . . . .



Is this the way to peace?





THE BOARD OF EDUCATION  
SEATED LEFT TO RIGHT: Wendell Wohler, president; Paul Hempill, clerk. STANDING: Orville Wolfe, Theodore Harding, Roy Manuel, vice-president; and Charles Pellegrinon.



SUPERINTENDENT  
OF  
SCHOOLS  
Mr. Raymond E. Hall





JAMES N. WARREN  
Principal

MR. WARREN SPEAKS. . . .

Our high school has made outstanding progress during the past several years in the enrichment of our curriculum and by the expansion and the modernization of each department classroom and other related facilities needed to carry on an outstanding educational program.

The New Boston Board of Education and the Superintendent of Schools should be highly commended for their foresight in the recent renovation and the installation of the most modern equipment known to schools of today.

The students are very proud of our high school and show their appreciation not only in our school, but also in the community.

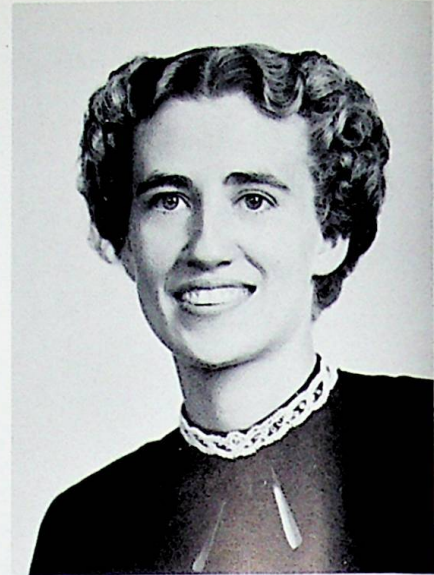


MRS. HELEN STARRETT  
Secretary to the Principal



GENEVIEVE CAMPBELL  
English

LORRAINE S. CLERICO  
Typing  
Shorthand



ELMON C. CAUDILL  
Science

MARJORIE CURRY  
Librarian  
Geography



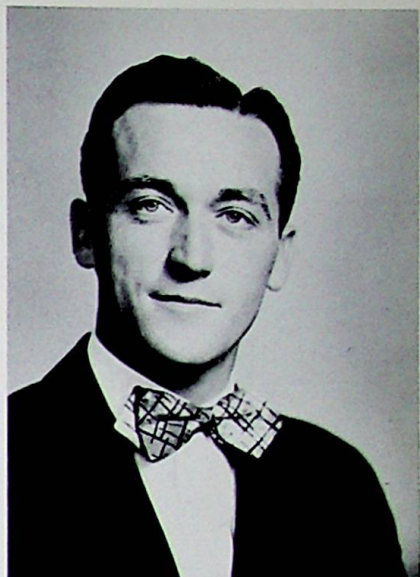
DOROTHY CLARK  
Health  
Physical Education

RALPH O. DARLING  
Head Football Coach  
Social Science





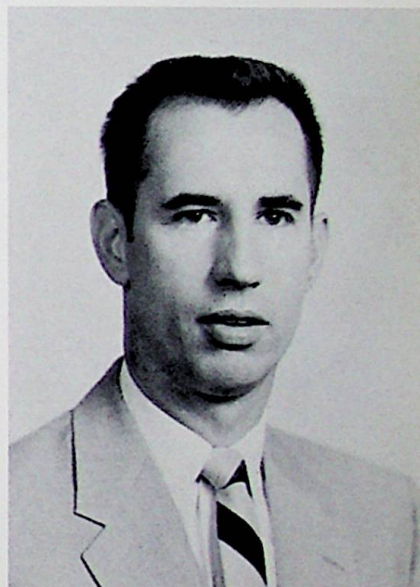
AGNES DAVIS  
Home Economics



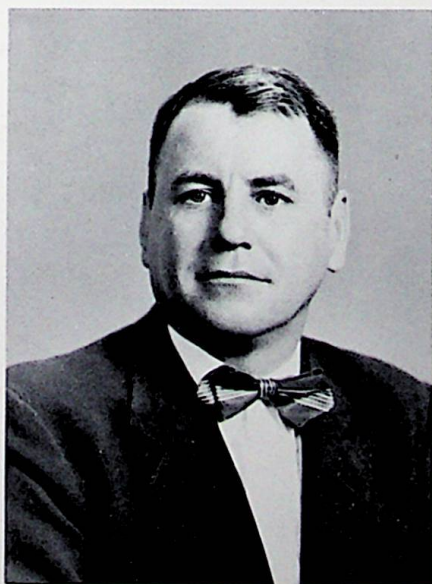
DAVID B. LODWICK  
Biology  
Chemistry



LAURA HAVENER  
Mathematics



THOMAS NEWBERRY  
English



JOE JENKINS  
Drivers' Education

HOMER PELLEGRINON  
Head Basketball Coach  
Health  
Physical Education





HERBERT C. RICKEY  
Mathematics



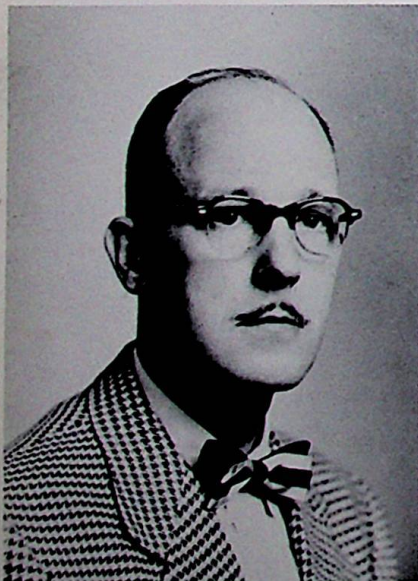
FERN C. WHEELER  
Latin



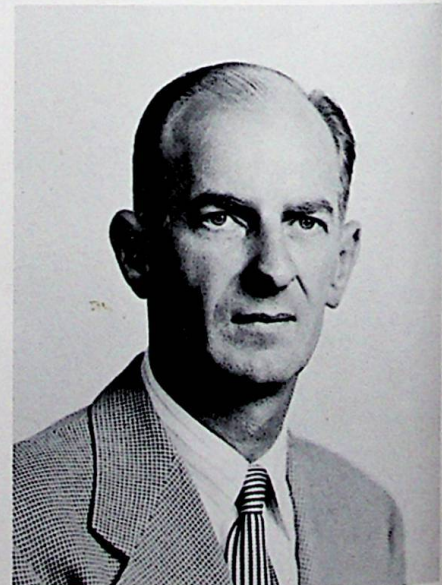
ALBERT SQUIBB  
Industrial Arts



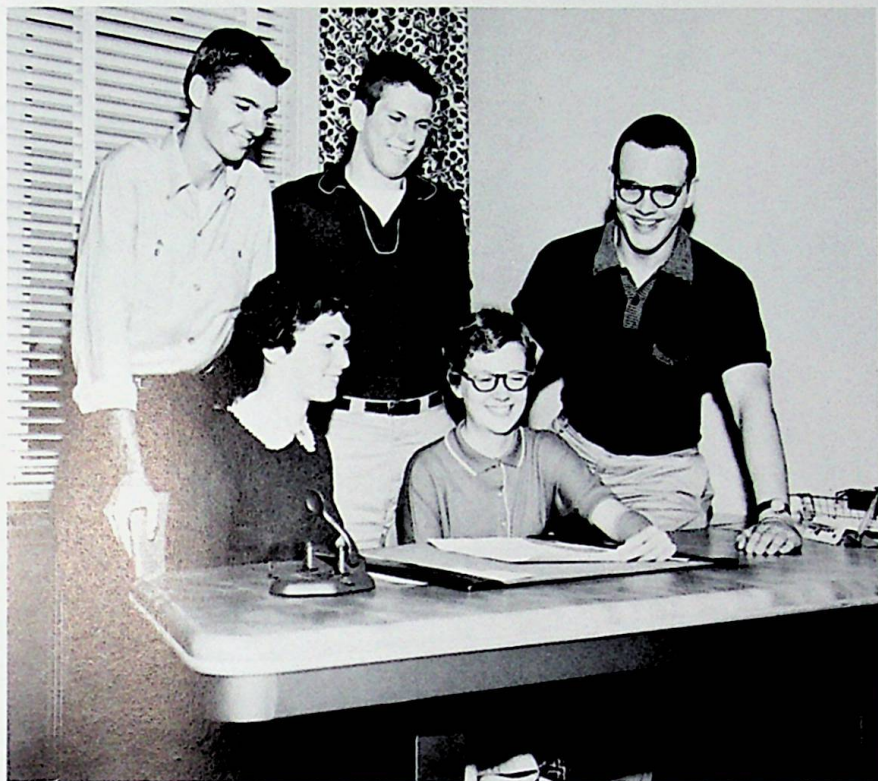
JUNE STARRETT  
Vocal Music



I. D. WASHINGTON  
English



WILLIAM C. GRABHAM  
Instrumental Music




CLASS OFFICERS  
President -- Phillip Sebastian  
Vice President -- Roger Hamilton  
Secretary -- Sally Brown  
Treasurer -- Ron Patrick  
Reporter -- Laura Fultz

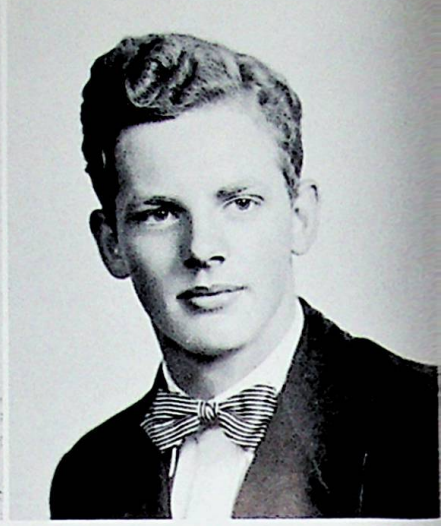
Colors: Blue and White

Flower: White rose

Motto: "We have crossed the bay; the ocean lies before us."

# SENIORS





GLEENDA ADAMS  
"Shan"

G.A.A. 1,2,3,4; Secretariat 3,4; Tri-Hi-Y 3,4; White Ribbon Club 1,2,3,4; Office Staff 4; Annual Staff 4; Class Play, Student Director 4.

RONALD DEAN AEH  
"Dean"

White Ribbon Club 4; Basketball 1,2,3,4.

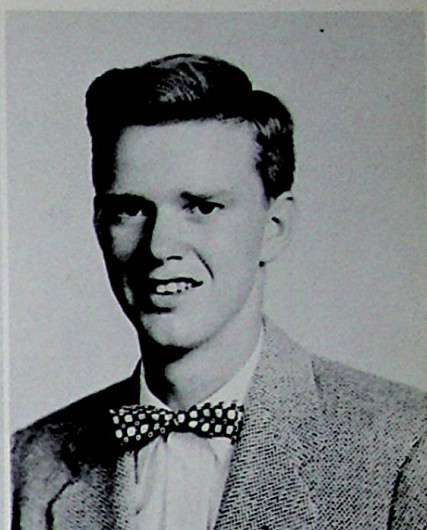
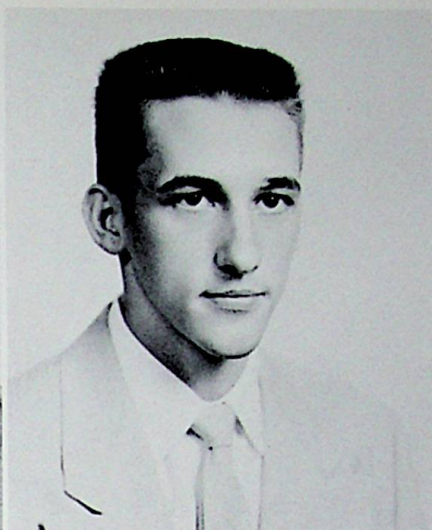
JACK ALLARD  
"Hot Rod"  
White Ribbon Club 4.

REGINA ARTHUR  
"Gina"

National Honor Society 3, Chaplain 4; G.A.A. 3. Secretary 4; Secretariat Club, Vice-President 3,4; Tri-Hi-Y 3,4; White Ribbon Club 2,3,4; Orchestra 1; Office Staff 4; Annual Staff 4; Annual Sales 4; Senior Scholarship Test 4.

JUDY BICKETT  
"Judy"

Glee Club 1; Dorcas Club 2,3; Library Club 2,3; White Ribbon Club 1,2,3,4; Minstrel 2; Tri-Hi-Y 3,4; G.A.A. 1,2.



BONNIE LAFRIEDA BLEVINS  
"Frieda"

G.A.A. 1,2,3; White Ribbon Club 1,2,3,4; Tri-Hi-Y 3,4; Secretariat Club 1,2,3,4; Senior Attendant 4; Minstrel 1,2,3; Class Play 4.

GARY BOWLING  
"Gert"

Latin Club 2; White Ribbon Club 1,2; Vice-President of White Ribbon Club 2; Class Reporter 3; Youth Center, chairman of Trustees 4; Hi-Y 2; Class Play 3; National Honor Society 2,3,4; Scholarship Team 2; Senior Scholarship Test 4.

SIDNORE BOYDSTON  
"Sid"

Band 1; Hi-Y 2; Football 2,3; Class President 2; White Ribbon Club 4; Class Play 4.

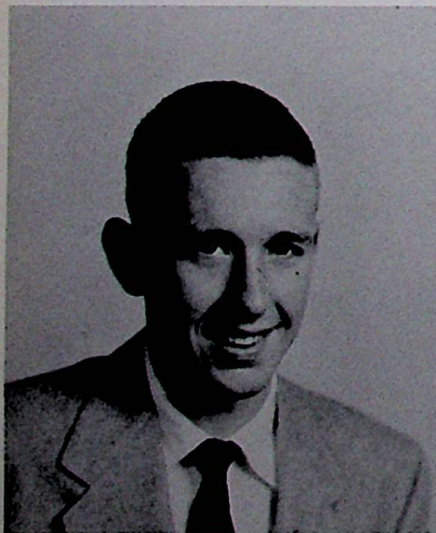
GARY BRADY  
"Gary"

Class Play 3; Football 3,4; White Ribbon Club 1,2,3,4; Hi-Y 2; Intramurals 2,3,4.

SALLY BROWN  
"Sally"

White Ribbon Club 1,2,3,4; Secretariat Club 4; Tri-Hi-Y 3,4; F.T.A. 3,4; G.A.A. 1,2; Band 1,2,3,4; Glee Club 4; Ensemble 4; Office Staff 1,2,3; Class Secretary 1,4; Class Vice-President 3; Library Staff 2; Class Play 4.





CLYDE COMBS  
"Mac"

Poplar Bluff, Missouri 1; Louisville, Kentucky 1; Houston, Texas 2; Class Play 3,4; Scholarship Test 3; Football 4; Christmas chapel 3; Prince of Peace Contest 4.

CAROLYN DOUGLAS  
"Carolyn"

Band 1,3; Flagbearer 3; Library Staff 3; Tri-Hi-Y 3, 4; Dorcas Club, Vice-President 4; Secretariat 3,4; G.A.A. 2,3,4; Office Staff 4; White Ribbon Club 1,2, 3,4; Knowledge and Aptitude Test 4; Scholarship Test 4; Annual Staff, Advertising Solicitor, Annual Sales 4; F.T.A. 3; Class Play 4.

LAURA FULTZ  
"Laura"

White Ribbon Club 1,2,3,4; National Honor Society 3,4; Secretariat Club, President 3,4; Class Officer, Reporter 4; F.T.A. 3,4; Tri-Hi-Y 3,4; G.A.A. 2,3; Office Staff 4; Jr. Class Play, Student Director 3; Annual Sales 4; Scholarship Team 4; Christmas Chapel 4; Class Play 4.

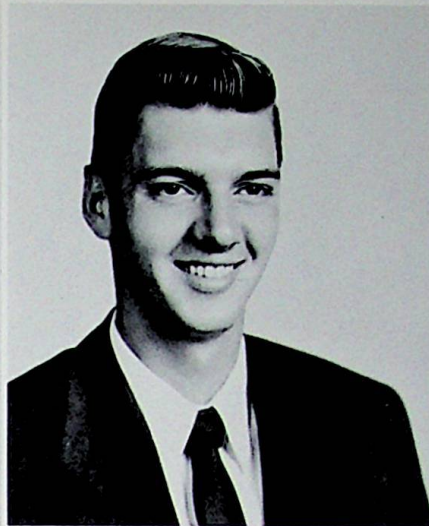
BARBARA GOODMAN  
"Barb"

G.A.A. 1,2,3,4; White Ribbon Club 1,2,3,4; Tri-Hi-Y 3,4; Secretariat Club 3,4; Office Staff 4.

ROGER BLAINE GREGORY  
"Fuddy Dud"

Football 2,3,4; Basketball 3,4; Baseball 3,4; Hi-Y 2; White Ribbon Club 1,2,3,4.





BEATRICE FAY GRIFFIN  
"Fay"

National Honor Society 2,3,4; G.A.A. 1,2,3,4; Tri-Hi-Y 3,4; Secretariat 3,4; Senior Scholarship 4; White Ribbon Club 1,2,3,4; Office Staff 4; Student Council 3; Student Director, Class Play 4.

ROGER HAMILTON  
"Satch"

White Ribbon Club 1,2,3,4, President 4; F.T.A. 3; Basketball 1,2; Latin Club 1,2; Basketball Scorekeeper 4; Class Vice-President 4; Christmas Chapel 3,4; Annual Staff 3,4; Visual Education 3,4; National Honor Society 2,3,4, Vice-President 4; Class Play, Sound effects 3; Scholarship Team 1,2,3,4; Intramurals 1,2,3,4; Senior Scholarship Test 4; Class Play 4.

DOROTHY HAYES  
"Dot"

G.A.A. 1,2; White Ribbon Club 1,2,3,4; Tri-Hi-Y 4; Secretariat 3,4; Glee Club 1,2,3,4; Freshman Attendant 1; Homecoming Queen 4; Minstrel 1,2,3; Library Staff 2,3,4; Class Play 3; Band 1,2; F.T.A. 3,4; Christmas Play 3,4; Ensemble 2,3,4.

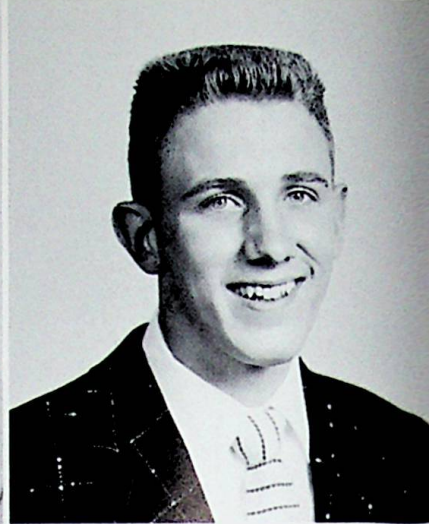
HELEN HORNER  
"Helen"

Dorcas Club 1,2,3,4, Secretary 4; Tri-Hi-Y 3,4; White Ribbon Club 2,3,4; G.A.A. 1,2,4; Drivers' Education 3; Minstrel 1; Home Ec Scholarship Test 4.

JOANNE KALLAM  
"Joanne"

White Ribbon Club 1,2,3,4; Office Staff 2; Tri-Hi-Y 3,4; Dorcas Club 4; G.A.A. 1,2,3; Secretariat Club 3,4.





DARLENE LANDS  
"Darlene"

G.A.A. 1,2,4; White Ribbon Club 1,2,3,4; Dorcas Club 1,2,3,4; Tri-Hi-Y 3,4; Annual Staff 4; Minstrel 1,2; Scholarship Test 4.

HAROLD LAWHUN  
"Harold"

White Ribbon Club 1,2,3,4; Industrial Arts Club 4.

CHARLES WILLIAM MANUEL  
"Willie"

White Ribbon Club 1,2,3,4; Latin Club 1,2; Basketball 1; Visual Education 1,2,3,4; Library Staff 1; Class Reporter 2; Hi-Y 2; Annual Sports Editor 2,3; Reserve Basketball 2,3; National Honor Society 2,3,4; Chaplain 4; Scholarship Team 2,3; Class Play 3; Varsity Basketball 4; Annual Staff Assistant Editor 4; President Youth Center 4; Prince of Peace Contest 4; Senior Scholarship Test 4; Class Play 4.

RICHARD McALISTER  
"Dick"

United States Marine Corps 1950-1954.

SHIRLEY ANN McCOY  
"Shirley"

Library Staff 2; G.A.A. 1,2,3; Tri-Hi-Y 3,4; Secretariat Club 3,4; Class Play, Student Director 3; White Ribbon Club 1,2,3,4; Office Staff 2,4.



ROSE MARIE MEENACH  
"Rosie"

Glee Club 1,2,3,4; Tri-Hi-Y 3,4; G.A.A. 3; Secretariat 3; Library 1,2,3,4; White Ribbon Club 1,2; Class Play 3; F.T.A. 3,4; Minstrel 1,2; Annual Attendant 1,4; Band 1; Student Council 1.

RONALD MERSHON  
"Ron"

Intramurals 2,3,4; Industrial Arts Club 4; White Ribbon Club 1,2,3,4; Football 2,3,4; Freshmen Reserve Basketball 1; Hi-Y 4.

JOHN RALPH MOTT  
"John"

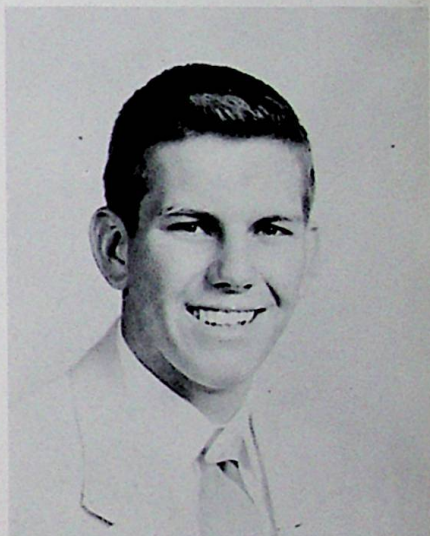
Varsity Basketball 4; Reserve Basketball 3; Varsity Football 2,3,4; Class Play, Large Props 3,4; White Ribbon Club 2; Hi-Y 2; Intramural Basketball 2; Library Club 2.

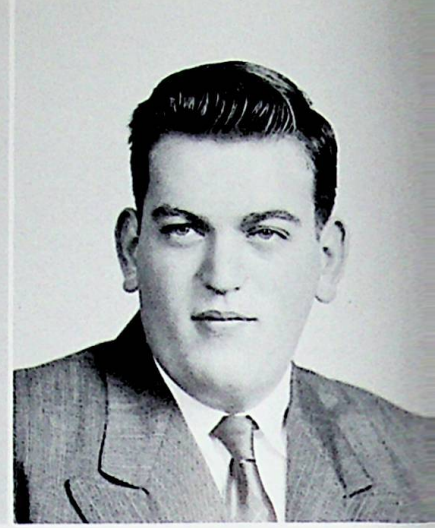
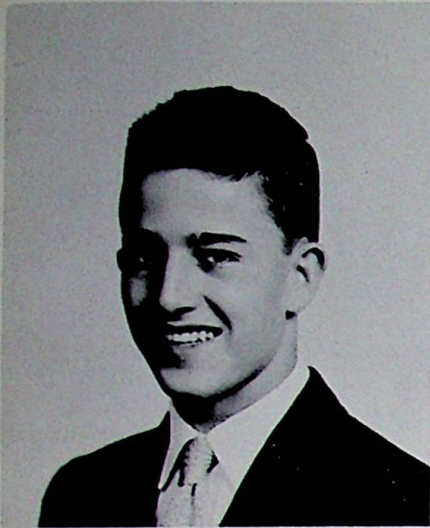
RONALD PATRICK  
"Apple"

Football 1,2,3,4; Basketball 1,2,3,4; Baseball 1,2,3,4; Class Play 3,4; National Honor Society 2,3,4, President 4; Class Officer 2,4; Hi-Y 2; Latin Club 2; White Ribbon Club 1,2,3,4; Scholarship Team 3,4; Visual Education 1,2,3,4; Annual Staff 3,4; Christmas Chapel 3,4; Prince of Peace Contest 4; Intramurals 2; Senior Scholarship Test 4.

SHARON PATTON  
"Sharon"

White Ribbon Club 1,2,3,4; Tri-Hi-Y 3,4; Band 1,2; G.A.A. 1,2,3,4; Class play 3; Secretariat Club 4.





DELBERT LEE PERRY

"Deb"

Football 3,4; White Ribbon Club 1,2,3,4; Industrial Arts Club 4.

SHELBY PURDY

"Shelby"

Cheerleader 3,4; Glee Club 1,2,3,4; Tri-Hi-Y 3,4; G.A.A. 3,4; Secretariat Club 3,4; Band 1; Minstrel 1, 2; Class Play 3; Knowledge & Attitude Scholarship Test 4; White Ribbon Club 1,2,3,4; Representative for Youth Center 4; Future Teacher Association 3; Library Club 1,2,3,4.

TED ROBERTSON

"Ted"

White Ribbon Club 1,2,3,4; Latin Club 2.

PATRICIA SCHWABLE

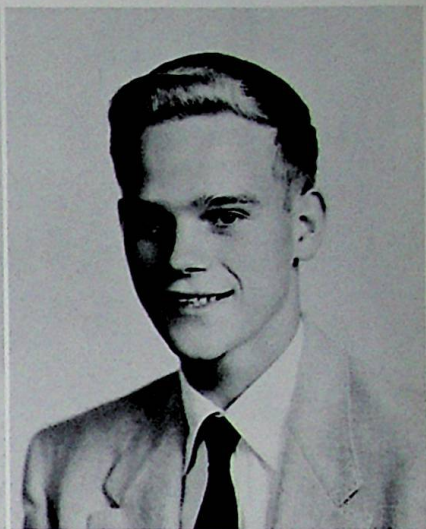
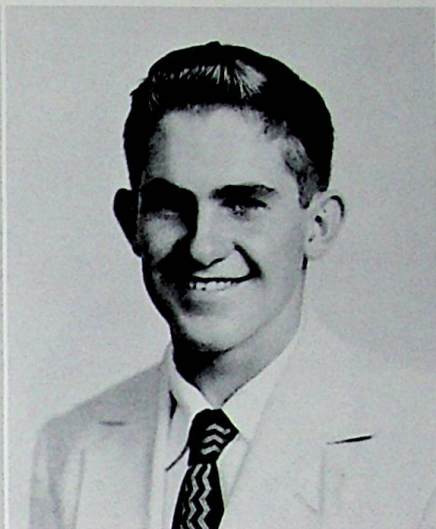
"Pat"

Band 1; G.A.A. 1,2; Glee Club 1,3,4, Vice-president 4; Tri-Hi-Y 3,4, President 4; Library Staff 1,2,3,4, Sr. Assistant 4; Football Cheerleader 3; Sophomore Attendant 2; Class Play 3,4; Class Secretary 3; Minstrel 1,2,3; Annual Staff 4; White Ribbon Club 1,2,3,4; F.T.A. 4.

ELMO PHILLIP SEBASTIAN

"Phil"

Previous School-Cairo, Illinois; Student Council Representative 1,2; Glee Club Accompanist 2; Annual Editor 4; National Honor Society 3,4, Secretary 4; F.T.A. 3; Football 4; Senior Scholarship 4; Prince of Peace Contest 4; Scholarship Team 3; School Announcer 2; Class President 3,4; Minstrel 3,4; Christmas Chapel 3,4; Class Play 3,4; Student Representative Assembly 3; Latin Club 1,2; White Ribbon Club 3,4.



FRANK EDWARD SHUFF  
"Bud"

Band 1,2,4; White Ribbon Club 1,2,3,4; Industrial Arts Club 4.

EUGENE SMITH  
"Eugene"

Intramurals 1,2,3; Band 1,2,3; Track 4; White Ribbon Club 1,2,3,4.

JAMES D. SMITH  
"Jim"

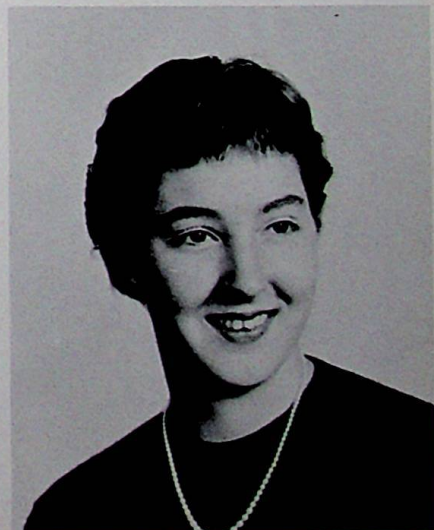
Band 1,2,3,4; Track, manager 4.

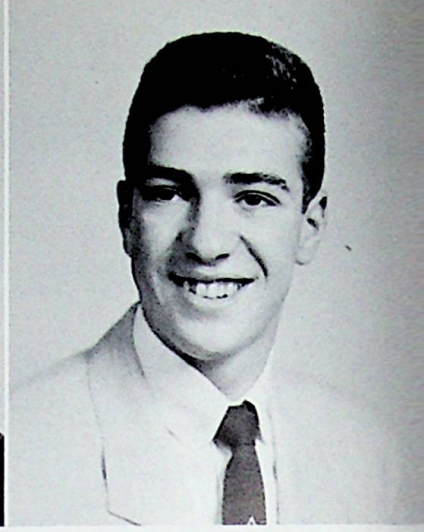
THOMAS SPEARS  
"Tom"

Football 3,4; Baseball 3,4; White Ribbon Club 1,2,3,4; Industrial Arts Club 4; Basketball Manager 4.

SHARON WAGNER  
"Sharon"

White Ribbon Club 1,2,3,4; Library Staff 1,2,3,4; G.A.A. 1,2,3,4; Tri-Hi-Y 3,4; Annual Staff 4; Class Play 3,4; Cheerleader 4; Prince of Peace Contest 4; Band 1,2; Glee Club 3,4; Class Secretary 1; Minstrel 3,4; Secretariat 4; Office Staff 4.





MADELYN WALKER  
"Madge"

F.T.A. 3,4; G.A.A. 1,3,4; Tri-Hi-Y 3,4; White Ribbon Club 1,2,3,4; Office Staff 3; Library Club 3; Dorcas Club 4; Glee Club 2,3,4; Band 1; Class play 3; Ensemble 4; Annual Sales Solicitor 4.

JANET WARNOCK  
"Janet"

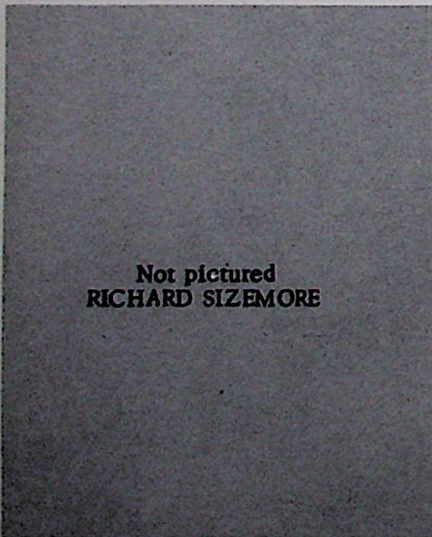
G.A.A. 1,2,3,4; White Ribbon Club 1,2,3,4; Tri-Hi-Y 3; Secretariat Club 3,4; Minstrel 2.

RONALD YINGER  
"Ron"

White Ribbon Club 1,2; Football 1,2,3,4; Intramural Basketball 2,3,4; Baseball 1; Baseball Manager 2; Hi-Y 2; Secretary 2; Library Club 1,2; Scholarship Team 1; Industrial Arts Club 4; Class play 3; Class Ring Committee 2; Chess Club 3.

ROBERT MORRIS LANG  
"Bob"

Stockdale, Ohio 1,2,3; F.F.A. 1,2,3; 4-H Club 1,2; Basketball 1,2,3,4.



Not pictured  
RICHARD SIZEMORE

# PROPHECY FOR THE CLASS OF 1955

During the spring of 1985 while touring the Mid-West giving lectures on interior decorating, I, Sharon Wagner, decided to stop off in New Boston to renew old acquaintances. I checked into what used to be the American Restaurant but which had now been expanded into a luxurious hotel, owned by Delbert Perry and Darlene Lands. As I was going through the lobby whom should I see but Frieda Blevins, who now owns the Jet Jaguar Journey Service. She and I got into her private Jaguar and started for a jaunt around the great city of New Boston to see the marvelous transformations that had taken place during the last few decades.

We came upon a great health center, which was under the direction of two great x-ray technicians, Glenda Adams and Faye Griffin. We were greeted by their nurse, Joanne Kallam, who told us that Sally Brown and Barbara Goodman were also working here at the clinic as dieticians. We talked; then we said our "goodbyes" and started on our way to Gallia Street when we spotted one of the well-known Bowling Chain Stores. As we entered the store, whom did we see but our little "homemaker" Carolyn Douglas Bowling, who took us to see her very distinguished husband, Gary. As we were standing there talking about old times, we looked around and there stood Judy Bickett Skeens, now living in the lap of luxury. After we left them we were driving along when we realized that we had better stop to get some gas and to our amazement, whom should we see, but Jack Allard and co-partner Harold Lawhun, as proud owners of a huge Drive-In Gasateria. We continued on our way to visit the school when we hit a dog, we immediately took him to the closest Vet, which happened to be -- "Mott's Mongrel Service." John turned the dog over to his associate Tom Spears, and being confident that the dog was in good hands, we continued on to the school which we learned now had expanded to cover two city blocks. When we reached the school we found Coach Ron Yinger and assistant coach, Roger (Fudd) Gregory, whom we asked to show us around. We got in the elevator and was greeted by the elevator operator, Bob Lang, who took us to the 10th floor to visit the newly appointed superintendent, Phillip Sebastian, and principal, Clyde Combs and their secretaries, Patty Schwable and Laura Fultz. They told us that Dorothy Hayes had just made her first appearance in the Metropolitan Opera (which we weren't surprised to hear because of the experience she had acquired singing in her high-school days). Then they showed us through the newly decorated Art Department taught by Regina Arthur, who told us to be sure to catch her TV show that evening on Station WGHS. As we were leaving we saw another of our classmates, Frank Shuff who was one of the janitors of the building. He took us through the school cafeteria where we found the cook to be Helen Horner, who at this time had the reputation as one of the world's finest cooks. We inquired where she got her superior food and were informed that it was purchased from Aeh's Super Market, owned by Dean Aeh.

Later at WGHS, waiting for the art show to begin, we were surprised to see that Richard McAlister, the owner of the station had just started two new shows, "Madelyn's Kitchen" which starred Madelyn Walker and featured Rose Marie Meenach, and Ted Robertson's News Caravan, whose first guest was the well-known navy hero, Sid Boydston. After watching these two every fine programs we were asked to stay tuned for the "late show" which starred "The Cactus Quintet" Richard Sizemore, Gary Brady, Ron Mershon, and Eugene and Jim Smith. The sponsor of the late show, the "No-Glow Cosmetic Co." was owned by Shelby Purdy.

Early the next morning we saw a new building going up for the Little Theatre. The architects were Ronald Patrick and Bill Manuel. The stars for the first presentation in this building are Roger Hamilton and Sharon Patton, two of the most famous stars at this time.

Realizing that the time of departure was drawing near, I hurried to the airport, boarded the plane and there was seated by the airline hostess, Janet Warnock. As the plane rose above the tall buildings I hoped that I would be able to return again soon.

# CLASS WILL

We, the Class of 1955, being of sound mind and body, do hereby publish and declare this to be our last will and testament.

- I, Glenda Adams, leave my quiet disposition to my brother, Darrell (not that he needs it.)
- I, Dean Aeh, leave my curly hair to Bill Clark and Clayton Wellman. Remember boys, first a beer and rum shampoo, then a short jaunt to the Cow Shed.
- I, Regina Arthur, leave my demure blush to Barbara Ross. I hope you wear enough make-up to hide it, Barbara.
- I, Judy Bickett, leave my blond hair to Janet Morris. Note: A daily washing in peroxide will do the trick.
- I, Frieda Blevins, leave my out-of-town boyfriends to Betty Stump. All it takes is a 3-cent stamp a day, Betty.
- I, Gary Bowling, leave my ability to find something to do in the library (as long as Carolyn was in there) to Richie Yinger.
- I, Sid Boydston, leave my position as Admiral in the Navy to John Maynard. Remember, only three girls at each port.
- I, Sally Brown, leave "Baby" Imes my curly auburn hair; remember "Baby," a dye job the second Tuesday of every week.
- I, Carolyn Douglas, do will and bequeath my treasured possession, my false tooth, to Judy Fitch in case she loses hers.
- I, Barbara Goodman, leave my pierced ears to Marty Pennington.
- I, Roger Gregory, will my quiet charm and bashful way with all the girls to Mike Morris. Call if you need assistance, Mike.
- I, Clyde Combs, leave my mathematical brains to Gary Spears. Remember Gary, oil them with advanced algebra.
- I, Laura Fultz, leave my Little-League score book and job as score keeper to Barbara Wickline. It's only for the summer months, Barb.
- I, Gary Brady, leave my quick answers in English class to Tom Seth. Study every night, Tom.
- I, Fay Griffin, leave my blond hair to Fanny Zeleles.
- I, Dorothy Hayes, following the old custom leave my crown to some lucky junior girl.
- I, Roger Hamilton, leave my position as president of the White Ribbon Club to Sam Briggs. The motto is "More egg and less nog." Just ask the veep, Bill Manuel.
- I, Joanne Kallam, leave my position as No. 1 cook in Home Economics to Geraldine Holsinger and Blanche Jenkins. After all, it will take two to do the job I did.
- I, Ronald Mershon, leave my noisy disposition to Carol Sexton. Practice screaming every day, Carol.
- I, John Mott, leave my beautiful physique to Mary Stacey. Exercise, Mary, exercise.
- I, Sharon Patton, leave my acting career to Sidney Giles and Paul Hileman. Rehearsals are important.
- I, Ron Patrick, leave my athletic ability to Richard Martin. But first, Richard, you must give up your paper route.
- I, Shelby Purdy, leave government and Mr. Darling to Louella Kallas. You will just have to get used to it gradually.
- I, Phillip Sebastian, leave my sophomore friends in care of Darrel Yeley and Delores Belford. Be good "parents" to them, kids.



- I, Eugene Smith, wish to leave Norma Clark to Paul White. Remember Paul, grin and bear it.
- I, Tom Spears, leave my ability to get into and out of trouble with Mrs. Campbell to Bill Turner. Just grin and bear it, Bill.
- I, Sharon Wagner, leave my ability to play hookey and get caught to Dorothy Arms and Carolyn Davis. Remember to keep it in a crowd girls.
- I, Madelyn Walker, leave my black book of schemes and plan X to Barbara Cunningham. WARNING: It doesn't work on sophomore boys Barb.
- I, Janet Warnock, leave my duck tails to Joann Worley. That's duck TAILS, not Duck Burton.
- I, Ron Yinger, leave Ruth Sebastian to Paul Clevenger. He has a car that runs, Ruth.
- I, Darlene Lands, leave my reserved seat in the Ohio to Esther Horner. Proceed as follows: Obtain a boy friend who is usher and then pounce on him.
- I, Bob Lang, leave my car to Don Grayson. Take good care of it, Don.
- I, Bill Manuel, leave Mary Stroman in the capable hands of Jack Pauley. This is only during school hours, Jack.
- I, Rose Marie Meenach, leave my ability to get to school at 8:29 to Rodney Johnson. I'm sure it won't be too hard, Rodney.
- I, Richard McAlister, just leave and hope that Joyce Wright and Ruth Maple get along all right walking to school.
- I, Helen Horner, leave Dorothy Stevens and Mary Williams my ability to get a diamond during my senior year. Just take it slow and easy girls.
- I, Jim Smith, leave Patty Ruhlman to Carl Williams. It's not my choice, Carl.
- I, Harold Lawhun, leave my ability to sleep through most of my classes to Bob Welch. It doesn't take sleeping pills, Bob.
- I, Frank Shuff, leave my place in the band to Joe Meadows. It does wonders for the figure, Joe.
- I, Ted Robertson, leave my late-model car to Mitchell Waring. Save your money Mitch and maybe you can get a good trade-in value.
- I, Jack Allard, leave my love of motor cycles to John Staten. It's more fun in warm weather, John.
- I, Pat Schwable, leave but certainly wish I could stay.

Pat Schwable and Madelyn Walker

# CLASS HISTORY

For 34 years--from the time it was built in 1917--Glenwood High School had been waiting, waiting for the class of "55". Then in September of 1951, we were here--the long awaited fulfillment of their hopes. Sixty-three vigorous freshmen began tearing through the halls of Glenwood. Our freshmen advisors were Mrs. Laura Havener and Mr. Herbert Rickey. We elected Jim Chandler to be our class president. We chose as our queen's attendant to the homecoming football game Miss Dorothy Hayes.

The year went by; then, in 1952 we were sophomores, 55 in number. We elected Sid Boydston, president; Gary Bowling, vice-president; Ronald Yinger, secretary-treasurer; Bill Manuel, reporter. Our advisors were Miss Jane McLeod and Mrs. Minta Sisler. Miss Patty Schwable was our choice as queen's attendant at the homecoming football game.

Then 1953 found us juniors; fifty-five of us harassing Mr. L. C. Curry and Mr. D. B. Lodwick, our advisors. That year we departed from tradition by changing the style of our class ring from the "G" to a tiger's head. We selected Phillip Sebastian, president; Sally Brown, vice-president; Pat Schwable, secretary-treasurer; Gary Bowling, reporter as our officers. Sally Brown we also chose as our attendant to the homecoming football game. We presented John McGreevey's "Thursday Murders" as our class play which was under the splendid direction of Mrs. Genevieve Campbell. Apostles of change, we departed from the customary banquet procedure and gave the seniors an all-night prom instead. This event took place at the Elk's Country Club. It was something different and fun.

We survived our junior year; we became seniors; our number is now only forty-three. It is our privilege to have as sponsors Miss Fern Wheeler and Mr. Ralph Darling. Our class officers are Phillip Sebastian, president; Roger Hamilton, vice-president; Sally Brown, secretary; Ronald Patrick, treasurer; and Laura Fultz, reporter. Marting's had the honor to make our photographs and soon our radiant faces will grace the school walls. Before graduation we anticipate a trip of a lifetime--we are going to New York City. Many projects have been undertaken to raise the money including the senior circus. Among the many booths at our circus were the fun house, the fishing pond, the teachers' graveyard and the fun house. We made a lot of money and now "heigh ho" we are going to the biggest fair of them all--New York City. Our class play was Donald Payton's "Deadly Ernest" under the direction of Mrs. Lorraine Clerico. Her first venture at directing a play proved to be a big success.

We elected Frieda Blevins to be the queen's attendant at the homecoming football game. The entire student body selected Dorothy Hayes to be the homecoming queen.

Now we are forty-three proud seniors and we want to see what life can do for us and what we can do for life. Our experiences are about to become memories. To each of us there is the question in our mind, "Quo vadis?"

Joanne Kallam



#### JUNIOR CLASS OFFICERS

PRESIDENT  
Martin Pennington  
VICE PRESIDENT  
Richard Yinger  
SECRETARY  
Merlin Woodward  
TREASURER  
Janet Morris  
REPORTER  
Esther Horner

# JUNIORS

Blanche Jenkins  
Joyce Wright





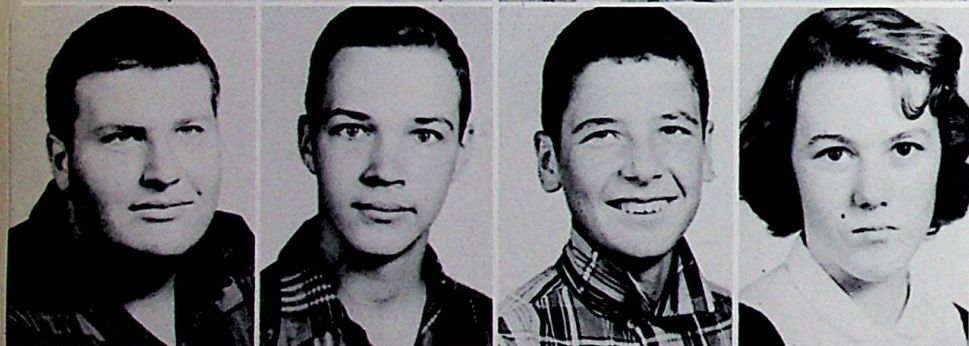
Sidney Giles  
Paul Clevenger  
Paul White  
Donald Grayson



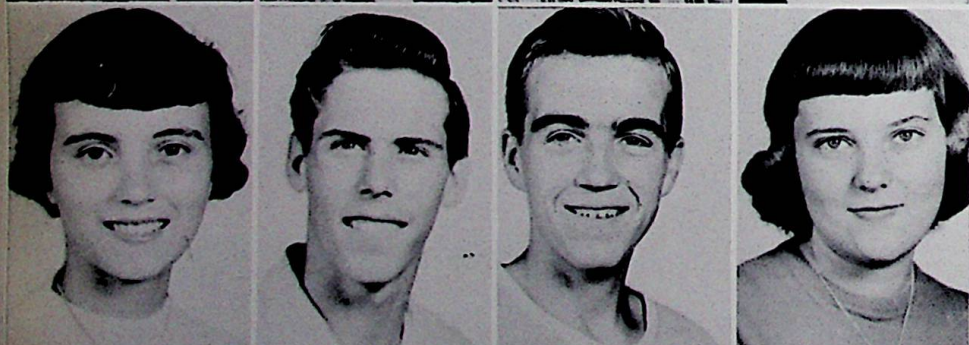
Louella Kallas  
Norma Clark  
Merlin Woodward  
Delores Belford



Martin Pennington  
Bill Clark  
Joe Meadows  
Bill Turner



Ralph Imes  
Richard Martin  
Darrell Adams  
Gloria Croy

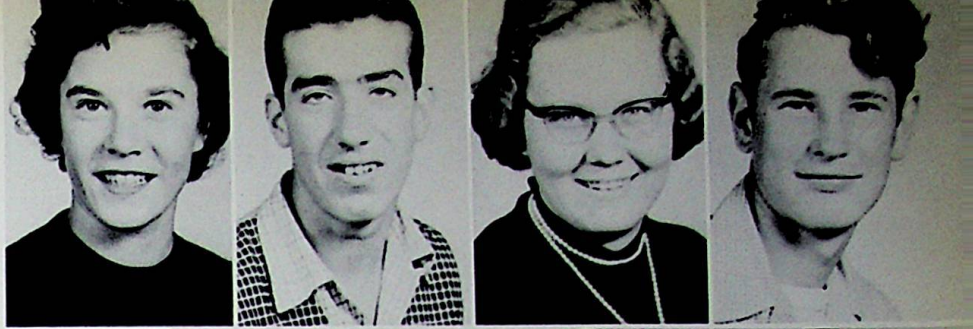


Barbara Ross  
Bob Welch  
Bob Staten  
Mary Stacey



Geraldine Holsinger  
Darrell Yeley  
Dorothy Stevens  
Betty Stump

Judy Fitch  
Richie Yinger  
Carol Sexton  
Tom Seth



Mike Morris  
Mitchell Waring  
Carl Williams  
Kaye Duncan



Joann Worley  
Barbara Wickline  
Esther Horner  
Clayton Wellman



Fanny Zeleles  
Ruth Maple  
Janet Morris  
Jack Pauley



Shirley Green  
Jack Payne  
Mary Williams  
Carolyn Davis



Gary Spears  
Bruce Maynard  
Barbara Cunningham  
Rodney Johnson



PRESIDENT  
Nolan Traylor  
VICE PRESIDENT  
Jerry Ruark  
SECRETARY  
James Key  
TREASURER  
Opal Aldridge  
REPORTER  
Robert Skelton



It looks as though Opal, the treasurer, has come up with a good idea for the Sophomore class.

# SOPHOMORES





Jeanie Sanford  
 Helen Chase  
 Betty Riley  
 Patty Smith  
 Jerry Ruark

Mary Jones  
 Janet Raike  
 Nancy Blackburn  
 Preston Marlowe  
 Harold Spurlock

Jim Key  
 Nancy Tomlin  
 Mary Stroman  
 Joyce Fry  
 Nolan Traylor

Joe Mingus  
 Kay Pinkston  
 Ruth Sebastian  
 Larry Stephens  
 Lloyd Hall

Carol Faulkner  
 Doug Phipps  
 David Brown  
 Elnora Gill  
 Delbert Scott

Joyce Allen  
 Bill Baker  
 Barbara Hamon  
 Patti Combs  
 Delores Stone



O. Aldridge  
 R. Gilliland  
 B. Stone  
 O. Collins  
 D. Caseman

R. Jamison  
 F. Bear  
 B. Pendleton  
 G. Thomas  
 P. Stevens

W. Thompson  
 D. Johnson  
 C. Smith  
 R. Jackson  
 D. LeMaster

J. Kirsch  
 C. Roberts  
 J. Voglesong  
 R. Cornwell  
 D. Noble

L. Hall  
 D. Campbell  
 W. Lineberger  
 R. Stephenson  
 G. Bickett

P. Jamison  
 D. Conklin  
 B. Dodd  
 J. McCoy  
 D. Cox





FRESHMAN OFFICERS  
 Rita Kay Shingler, Vice-president;  
 Carol Carter, Treasurer; Harold  
 Schwable, President; Arnold High-  
 field, Secretary.

Rain makes everything grow-even Freshmen.

# Freshmen



R. Adkins  
 P. Yarnell

L. Mills  
 R. Crabtree

B. Hopper  
 J. Caseman

B. Moore  
 G. Plummer

P. Jamison  
 R. Shingler

B. Welch



Bill Travis  
 Lillian Price  
 Ted Hilebronner  
 Sharon Lauder  
 Ronnie Hale

Kootela Payne  
 Eugene Brady  
 Norma Craycraft  
 Roger Dillow  
 Yvette Oney

Guy Aaron  
 Janet Bonner  
 Lanny Harding  
 Carol Carter  
 Leslie Allen

Carolyn Tosi  
 Roger Jenkins  
 Rozella Pendelton  
 Junior Conley  
 Ruth Briggs

Harold Schwable  
 Janet Stapleton  
 Gay Wooten  
 Carlene Johnson  
 Lena Kongos

Jim Allard  
 Hallie Mayna  
 Don Hickman  
 Mary Johnson  
 Pat Smith



Phyllis Cooper  
 Morris Magee  
 Richard Mershon  
 Ralph Fox  
 Jeannetta Adkins

Franklin Drake  
 Sue Woodward  
 Judy Horne  
 Marsha Haws  
 Mary Adkins

Maxine Miller  
 Clarice Greenhill  
 Gary Hamilton  
 Erma Callender  
 Shirley Russell

Ruth Griffin  
 Jim Boydston  
 Larry Brown  
 Gary Coburn  
 Arnold Highfield

Doug Booth  
 Paul Tomlin  
 Elbie Mathis  
 Betty Hall  
 Lorene Holsinger

Dahl Maynard  
 Linda Wickline  
 Phyllis Baglin  
 Carol Ramey  
 Glenda Fritz



# FIGHTER

ROW ONE: D. Bell, J. Horner, R. Drake, D. Young, B. Martin, J. Callender, M. Moore. ROW TWO: D. Carter, B. Ruark, D. Jamison, T. Davis, R. Spears, A. Hanners, L. Hale. ROW THREE: N. Roberts, J. Harr, F. Wolfe, G. Cook, J. Mingus, M. Jenkins, M. Sowards. ROW FOUR: B. Anderson, E. Sheridan, S. Pence, P. Ruhlman, K. Cassity, W. Noble, M. Maple. ROW FIVE: S. Kegley, M. Mathis, P. Mathis, H. Barklow, J. Daniels, B. Webster, D. Spriggs. ROW SIX: J. Spriggs, J. Kegley, J. Quarles, R. Smith, C. Hanners, T. Lewis, J. Hoover. ROW SEVEN: M. Schomburg, T. Highfield, S. Cockrell, J. Griffin, J. Holbrook, P. Meadows, D. Staten.



ROW ONE: B. Adams, C. Clark, P. Bates, R. LeMaster, V. Strasbaugh, S. Travis, B. Neal. ROW TWO:  
 R. Stone, R. Maxwell, D. Porter, H. Cullum, J. Blevins, T. Tomlin, E. Fritz. ROW THREE: S. Groh, J.  
 Bush, P. Sowards, P. Pinkston, H. Cooley, J. Ison, D. Hall. ROW FOUR: W. Hughes, D. Carver, R. Fox,  
 N. McCleese, L. Gartin, J. Martin, E. Gregory. ROW FIVE: K. Clevenger, A. Willis, S. Brammer, J.  
 Meenach, P. McCleese, A. Hall, S. Vaughn. ROW SIX: A. Walk, R. Lutz, F. Stidham, B. Clark, G. Stone,  
 B. Adkins, B. Stone. ROW SEVEN: J. Cinereski, P. Bates, C. Hanners, F. Perkins, A. Montgomery, R.  
 Maddox.

M  
O  
D  
E  
R  
N  
I  
-  
Z  
E  
R  
S  
O  
R  
I  
E  
S



Eddie Lewis  
 John Williams  
 Jim Hill  
 Raymond Skaags  
 Roscoe Eblin  
 Janet Vaughn

Sharron Pollard  
 Connie Walker  
 Penny Sowards  
 Brenda Phillips  
 Barbara Cordial  
 Larry Suthers

Marilyn Combess  
 Eugene Brady  
 Carolyn Gulley  
 Jerry Jones  
 Joe Cornwell  
 Richard Dunham

Joe Hood  
 Larkin Smith  
 Paul Harr  
 Donald Lochbaum  
 Wayne Riggs  
 Leroy Frazier

Gary Tackett  
 Earl Stewart  
 Carolyn Phipps  
 Pat Thomas  
 Clarence Burchett  
 Bobby Thompson

Ross Oakley  
 Bob Walton  
 Ronald Gile  
 Steve Jenki  
 Jim Groh



James Adkins  
Darrel Ishmael  
Joyce Green  
Sandra Oney  
Donna Douglas  
Steve Ross

Larry Cockrell  
Brenda Jackson  
Diana Cornwell  
Brenda Pennington  
Gary Montgomery  
Edward Mathis

Ronald Crabtree  
Rozella Schultz  
Tony Oakley  
Tom Manuel  
Mark Coburn  
Edward Johnson

Nancy Briggs  
Rhelda Owens  
Harold Doyle  
Joann Fry  
Sharon Hanson  
Linda Ishmael

Mary Ann Quarles  
Rosie Martin  
Theresa Thacker  
Karen Holbrook  
Barbara Montgomery  
Peggy Bloomfield

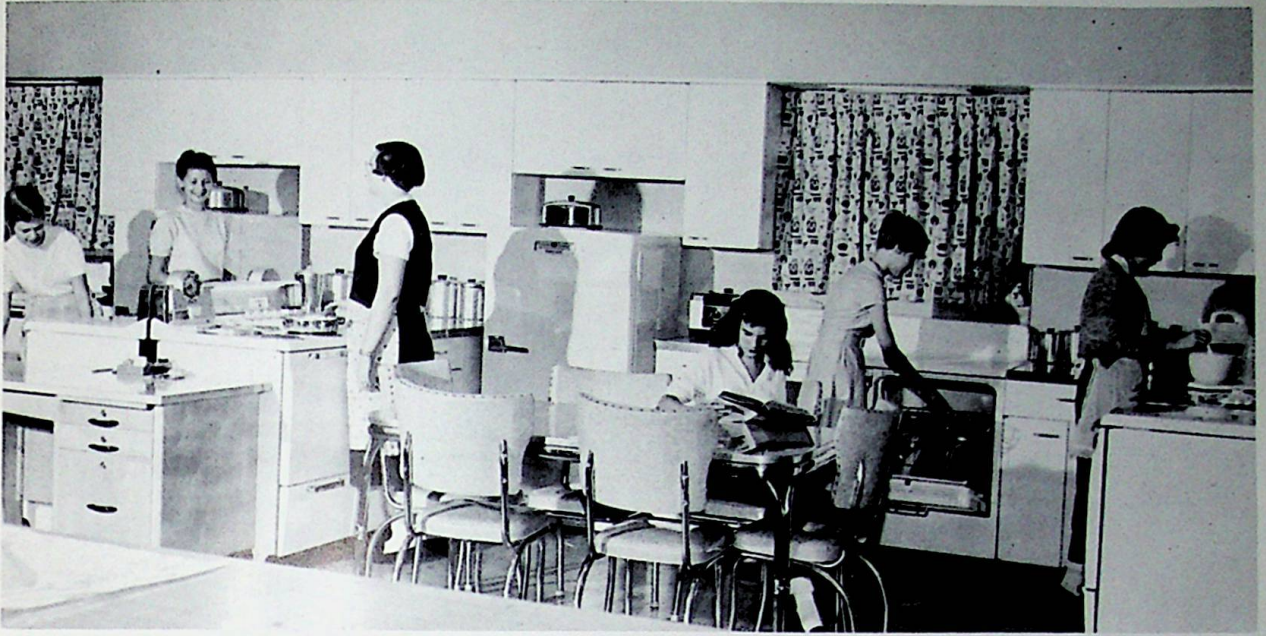
Virginia Yarnell  
Judy Welch



## INSIDE OUR SCHOOL . .

These pictures of the inside of our school give a general view of everyday activities. In these study halls, classrooms, and work shops, the students develop the intangible products of creative thinking into material things. In these classrooms, mathematical enigmas have been solved, wood and metal products of the shops have been created, and many fine essays, stories, and poems have been written. This is our school.





THE HOME ECONOMICS DEPARTMENT



After a hard day's work, the girls relax in their living room.

Under the direction of Mrs. Davis, the girls learn the art of home making.





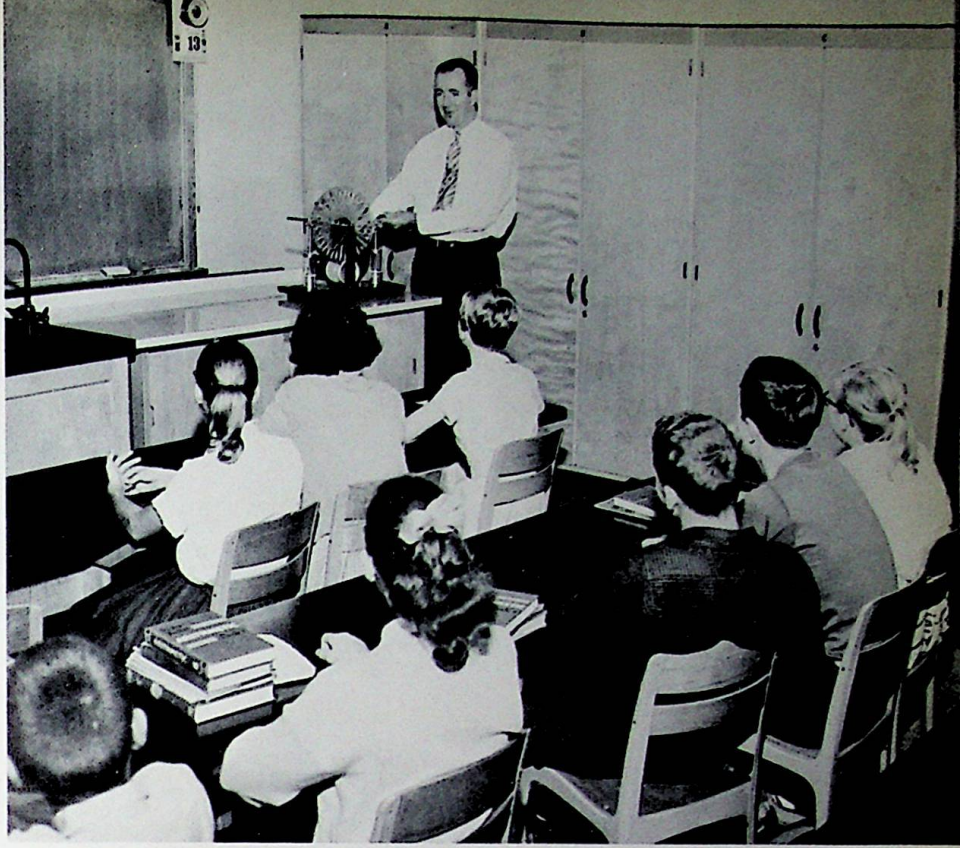
Mr. Squibb is shown here instructing some of his students how to plane.

MR. SQUIBB -- INDUSTRIAL ARTS

STUDY HALL

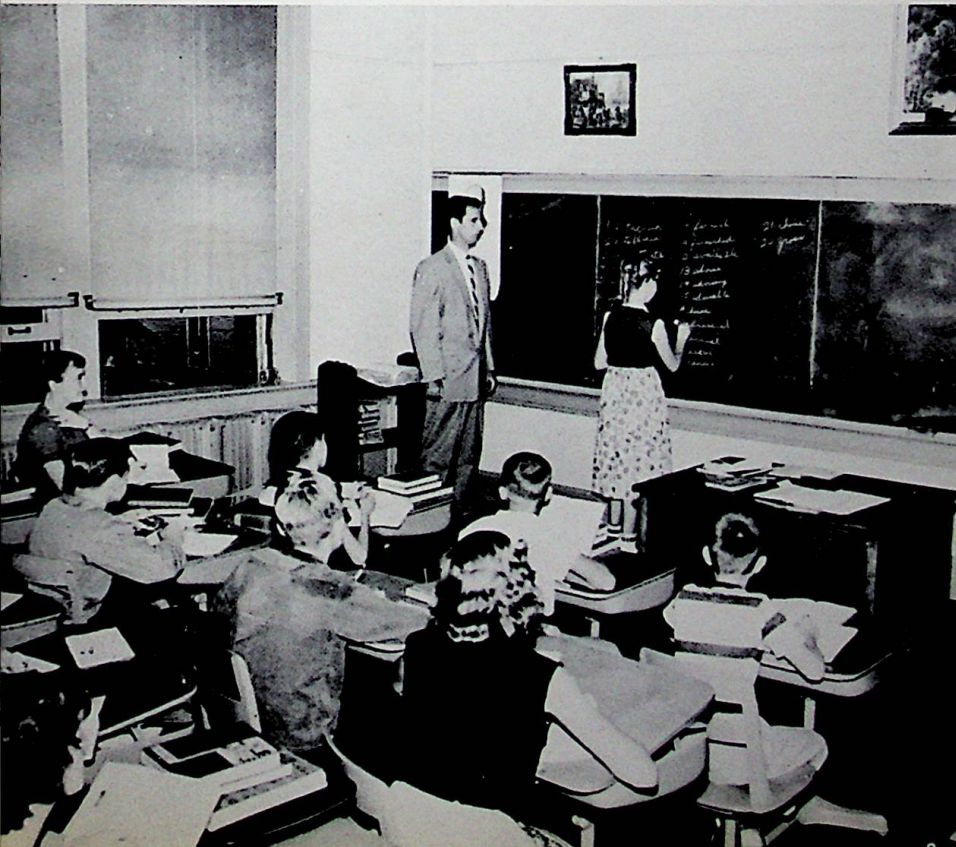


"Class, this is a static machine . . ."



MR. CAUDILL -- GENERAL SCIENCE

MR. NEWBERRY -- ENGLISH



"This is how to spell 'financial'."



MR. JENKINS - DRIVERS' EDUCATION

MRS. CLERICO - OFFICE PRACTICE

Here Mrs. Clerico demonstrates how to put a stencil on the mimeograph machine.



"What are the dates of the American Revolution?"

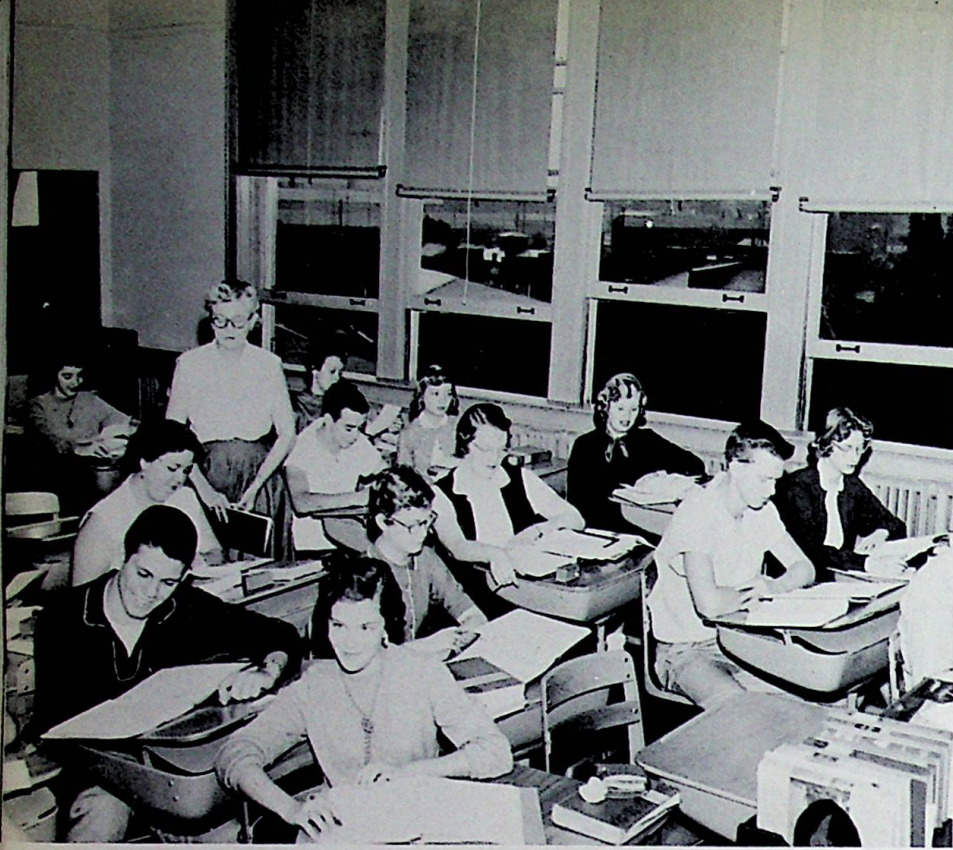


MR. DARLING - HISTORY

MISS CLARK - GIRLS' PHYSICAL EDUCATION



"Strike three!"

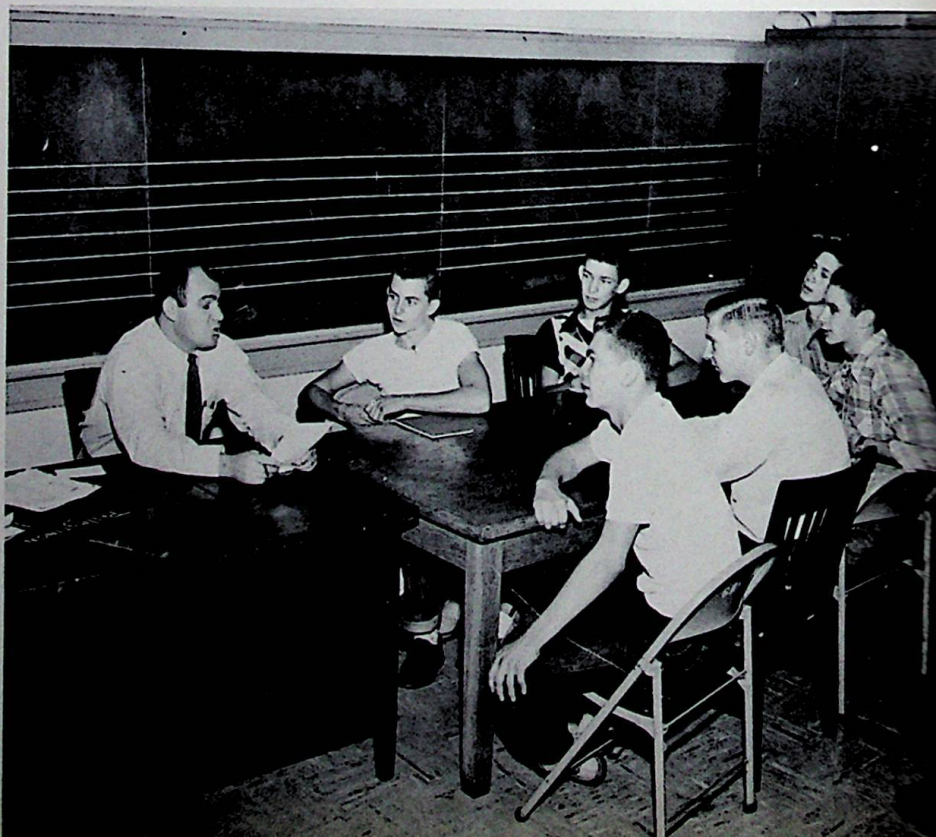


"Now, students, let's get down to brass tacks."

MRS. CAMPBELL -- ENGLISH

MR. PELLEGRINON -- HEALTH

"Oh, here's a clever answer."

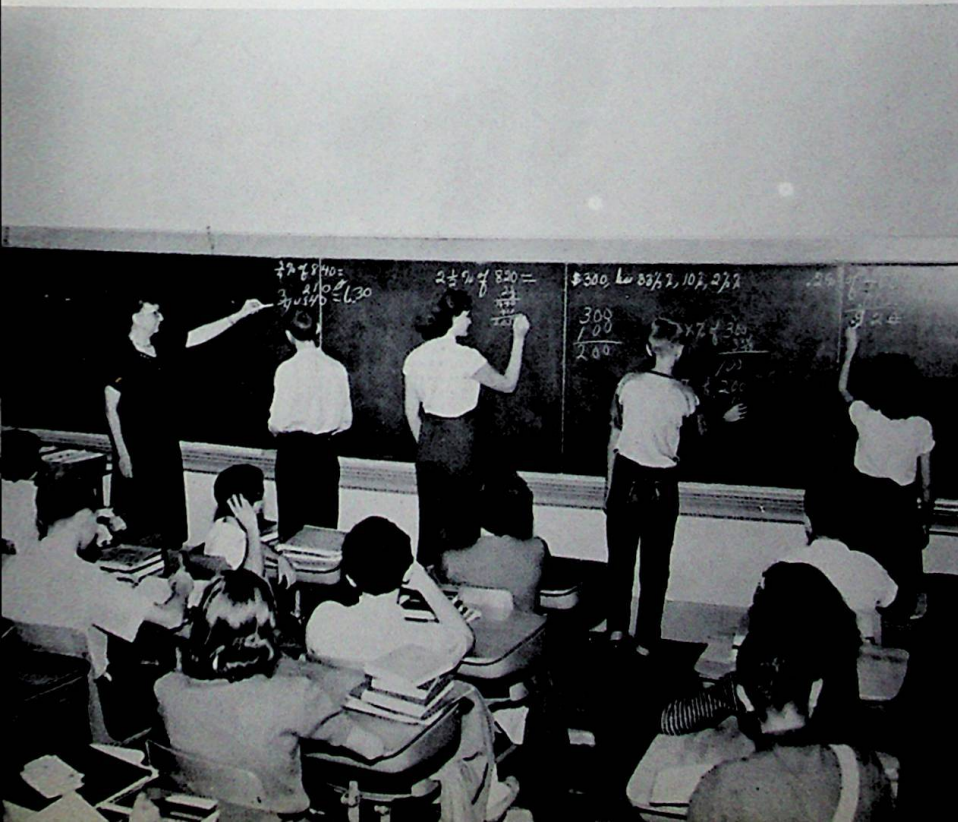


"This note here is B."

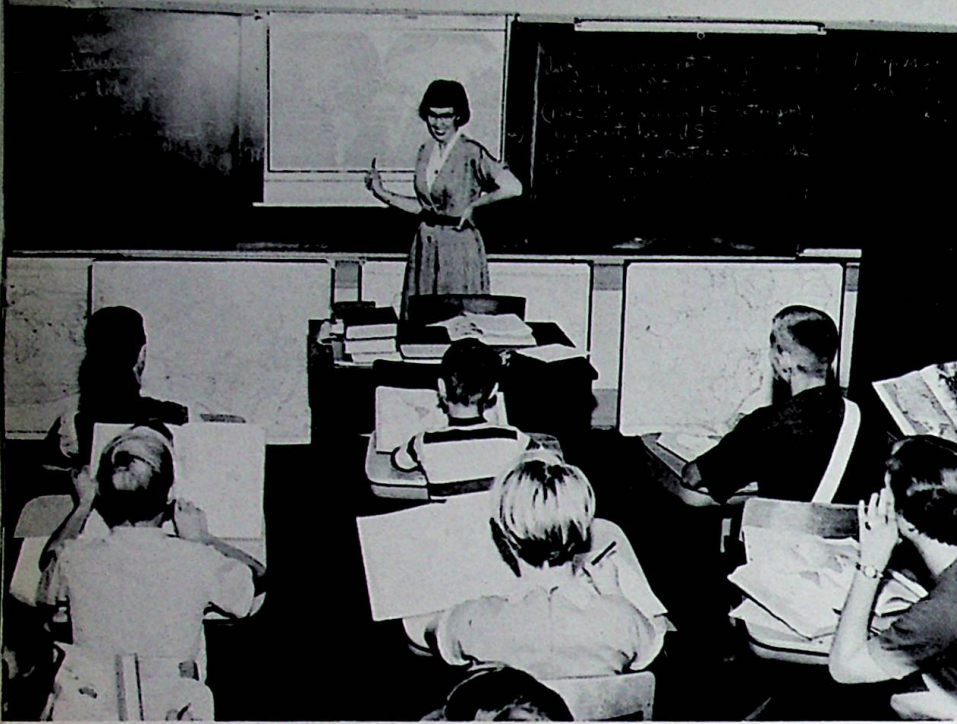


MR. GRABHAM -- BAND

MRS. HAVENER -- MATHEMATICS



Under the fine instruction of Mrs. Havener, students learn how to multiply fractions.



MISS CURRY - GEOGRAPHY

"Where is Brazil?"

MR. DUTIEL - ATTENDANCE OFFICER

"Are you sure you were ill yesterday?"



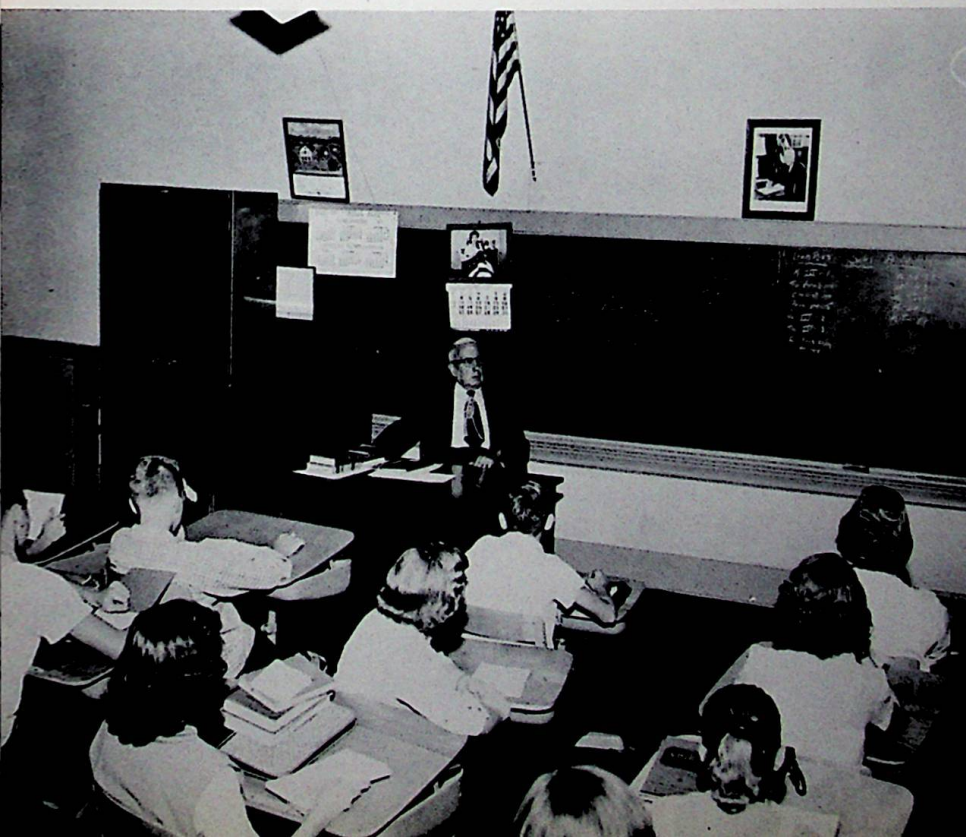


"Let's see, young lady, how much you weigh."

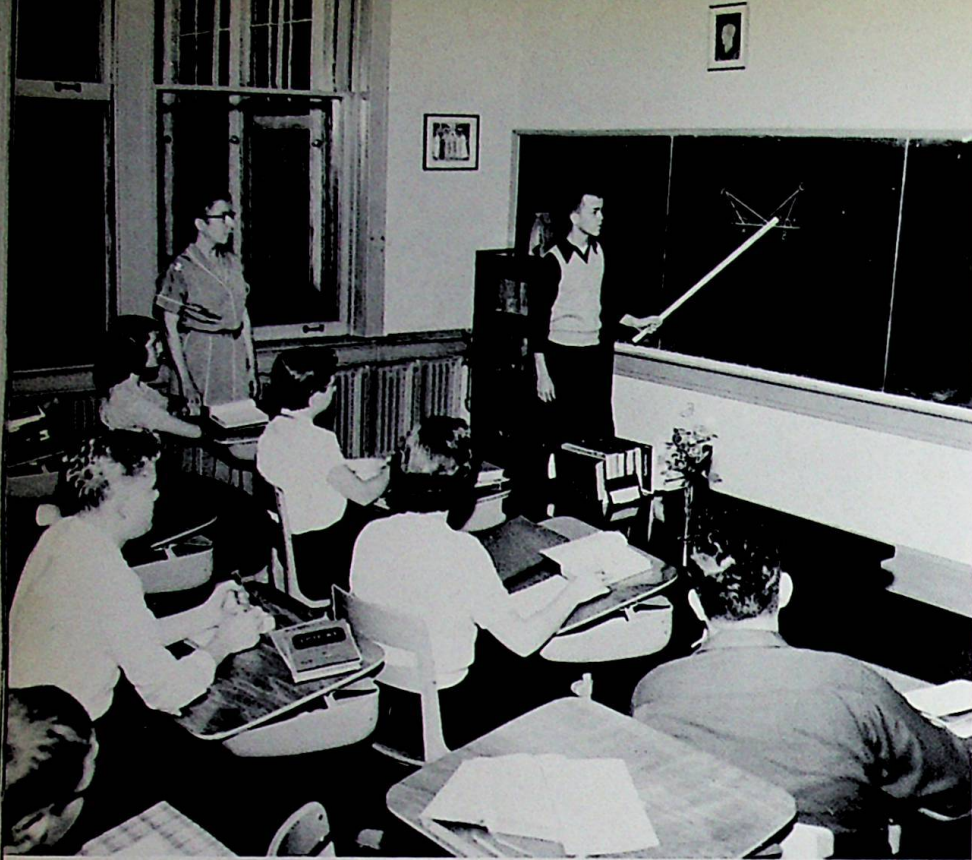


MRS. LEWIS - NURSE

MR. RICKEY - ALGEBRA



"Your assignment, class, is on the board."



"Tell us why those triangles are congruent."

MISS WHEELER -- PLANE GEOMETRY

MR. LODWICK -- CHEMISTRY



"What is H<sub>2</sub>O<sub>4</sub>?" ... "To drink."

"What is the definition of 'hyperbole'?"



MR. WASHINGTON-ENGLISH

MISS STARRETT-MUSIC

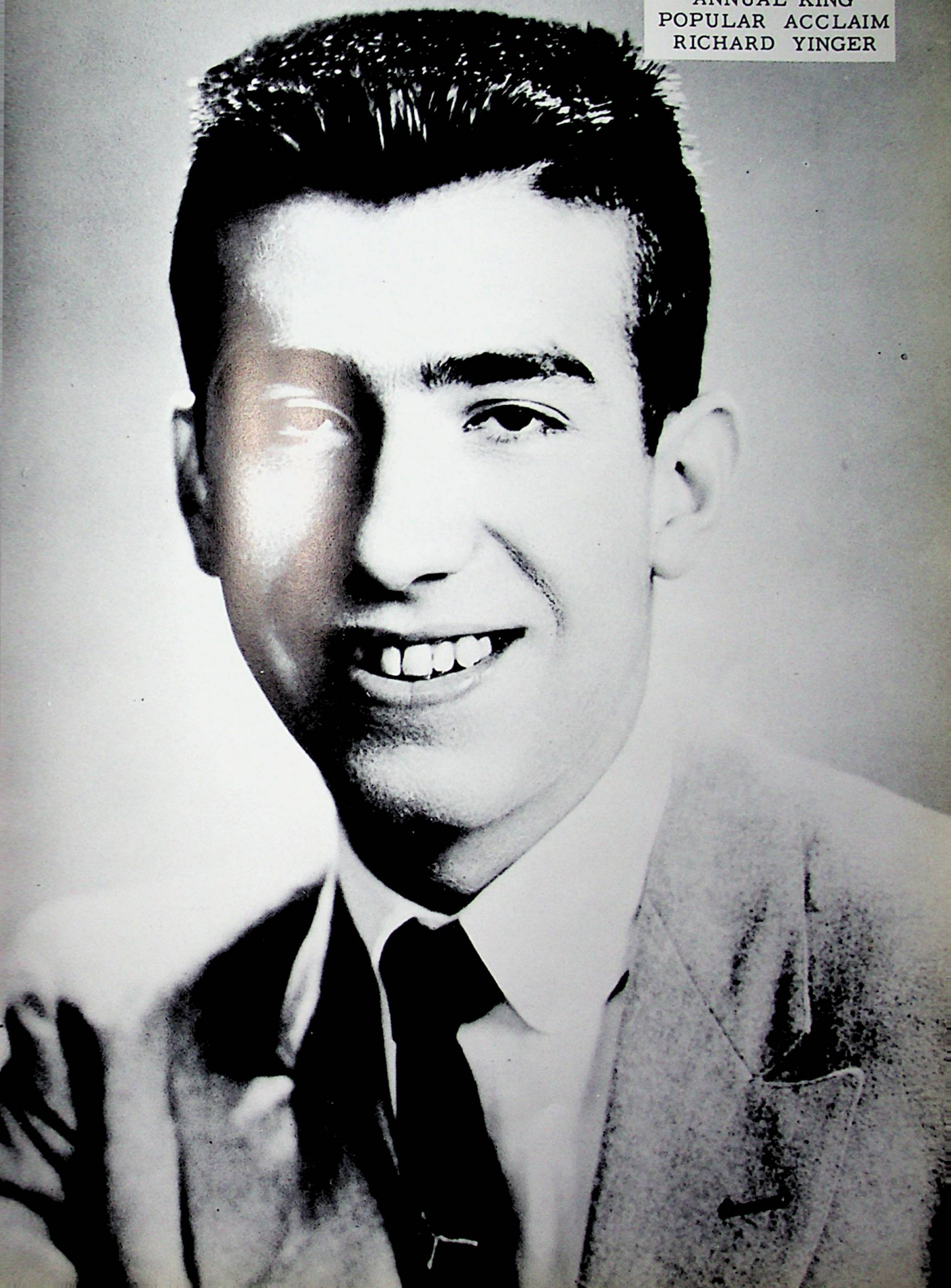


Miss Starrett is listening to her ensemble sing.

ANNUAL QUEEN  
POPULAR ACCLAIM  
JUDY FITCH



ANNUAL KING  
POPULAR ACCLAIM  
RICHARD YINGER



DOROTHY HAYES  
HOMECOMING  
QUEEN





Frieda Blevins-Senior Attendant



Barbara Cunningham-Junior Attendant

Deanna Conklin-Sophomore Attendant



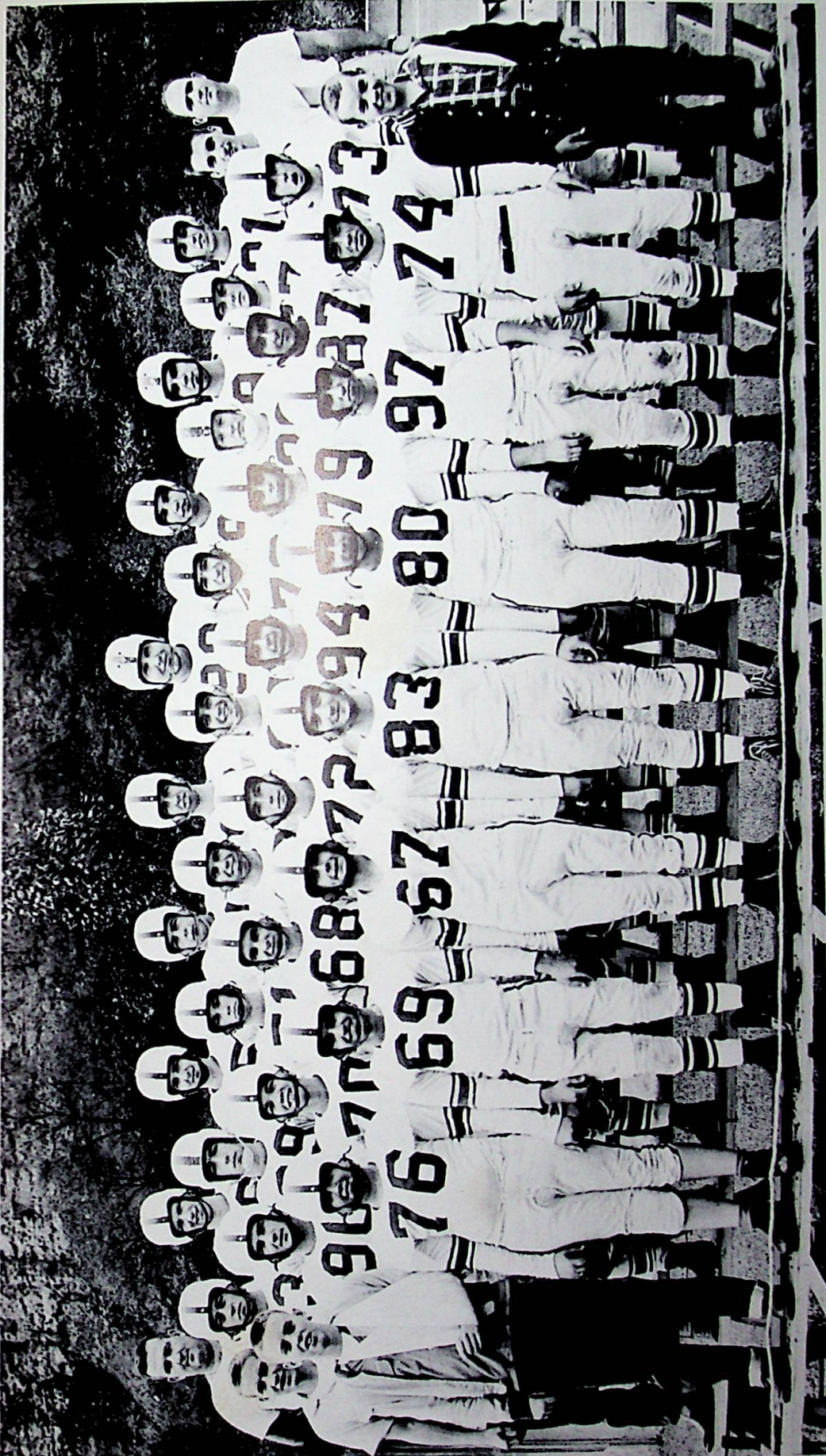
Rita Shingler-Freshman Attendant



# SPORTS at G.H.S.







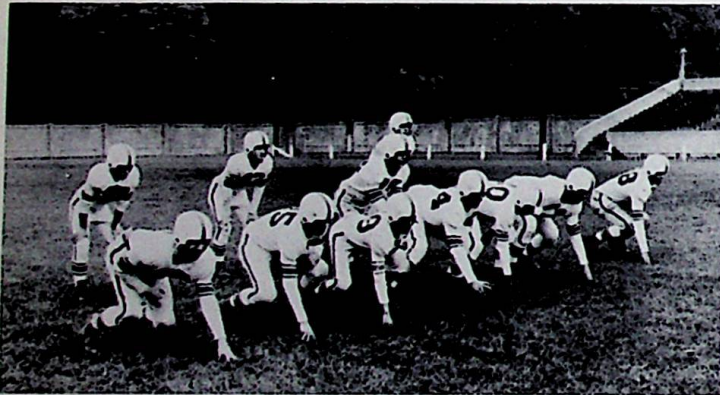
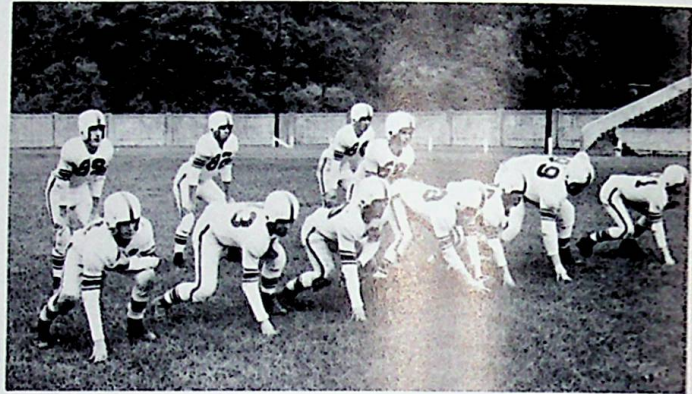
## FOOTBALL SQUAD

FIRST ROW, left to right: Gary Bickett, Don Hickman, Delbert Perry, Larry Mills, Ted Hilebronner, Jack Payne, Sam Briggs, Jim Allard, Tommy Tomlin.  
 SECOND ROW: Bill Clark, David Mills, Richard Jackson, Nolan Traylor, Harold Spurlock, Jim Key, Gary Brady, Roger Jenkins, Bill Travis. THIRD ROW: Tom Spears, Richie Yinger, Merlin Woodward, Ron Patrick, John Mott,

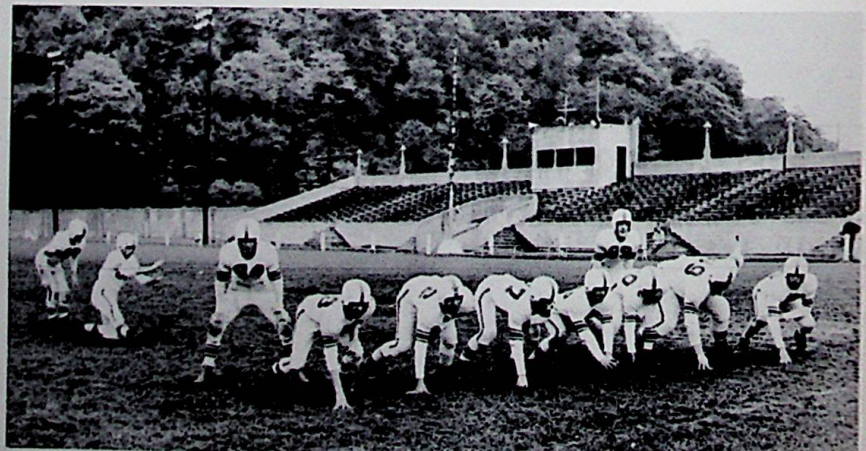
Ron Yinger, Rodney Johnson, Guy Aaron, Gary Bowling, Manager. FOURTH ROW: Coach Ralph O. Darling, Ron Mershon, Jerry Ruark, Gary Spears, Roger Gregory, Ralph Imes, Bill Thompson, Phillip Sebastian, Jack Pauley, Assistant Coach Homer Pellegrinon.

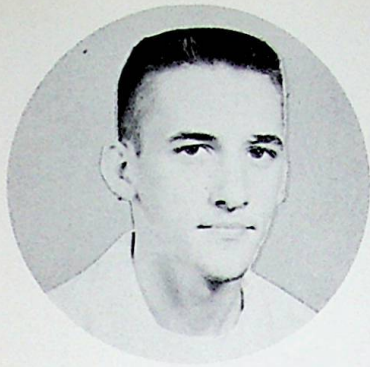


COACHES DARLING AND PEL-  
LEGRINON WITH RETURNING  
LETTERMEN.

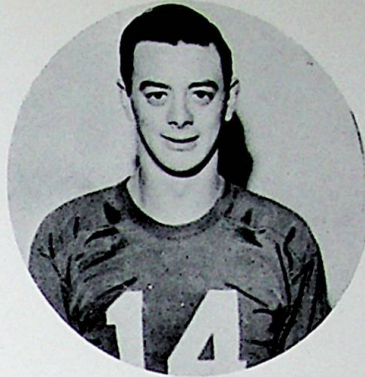


"Extra point...GOOD!"

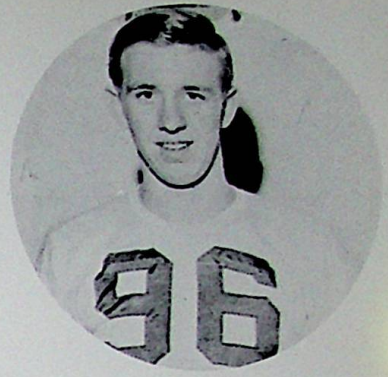




GARY BOWLING  
Manager



GARY BRADY  
Halfback

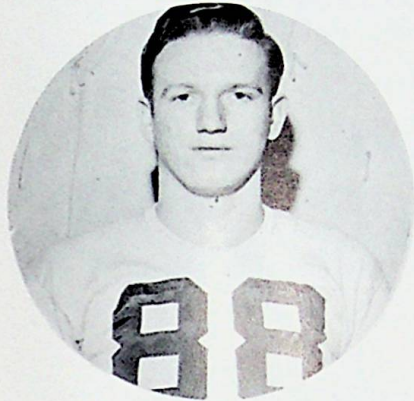


ROGER GREGORY  
End

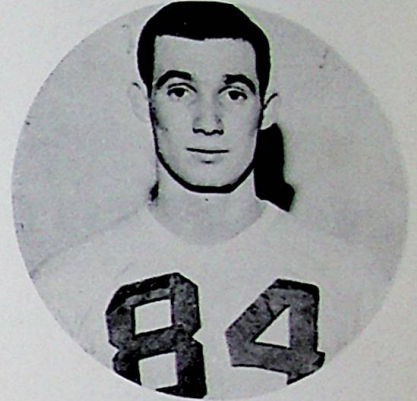
## SCORES

### FOOTBALL SCORES

OPPONENT	WE	THEY
Waverly	0	28
Wheelerburg	7	14
Greenfield	0	46
Portsmouth East	6	0
McKell	29	6
Chesapeake	18	24
Portsmouth West	13	0
Hillsboro	13	13
Notre Dame	27	6



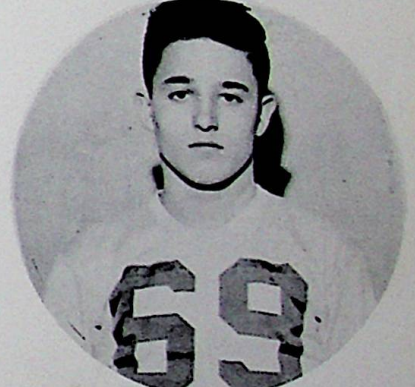
RON MERSHON  
End



JOHN MOTT  
Halfback

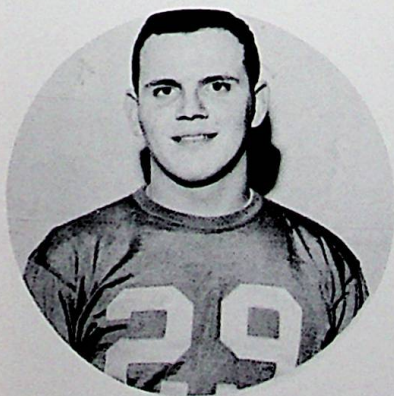


RON PATRICK  
Fullback

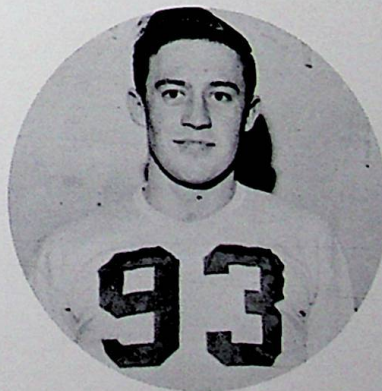


DELBERT PERRY  
Guard

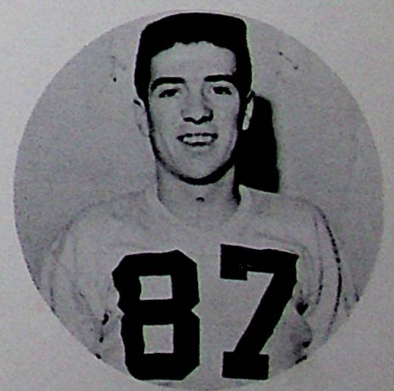
## SENIORS



PHIL SEBASTIAN  
Tackle

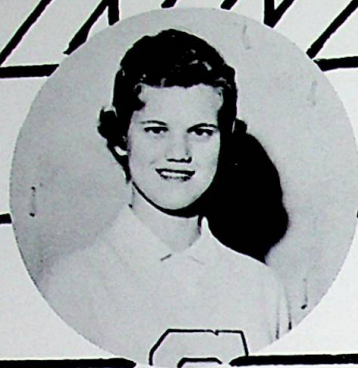


TOM SPEARS  
Tackle



RON YINGER  
End

✓



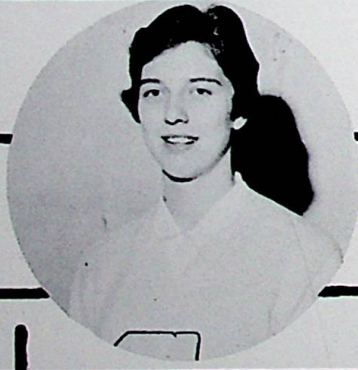
Shelby Purdy



Barbara Cunningham

Ruth Maple

Sharon Wagner



Kaye Duncan

Judy Fitch

Mary Jones





## VARSITY SQUAD

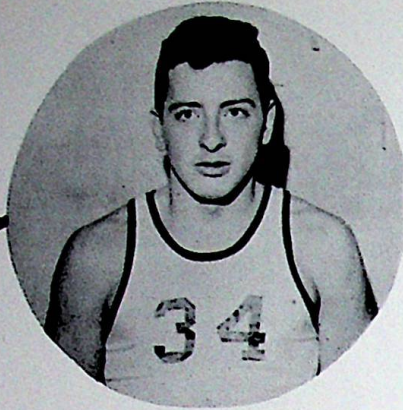
SITTING, Left to right: Sam Briggs, Jack Pauley, John Mott, Ron Patrick, Dean Aeh, and Bill Manuel. STANDING: Ralph Imes, Manager, Harold Spurlock, Paul White, Roger Gregory, Bob Lang, Coach Homer Pellegrinon.

## RESERVE SQUAD

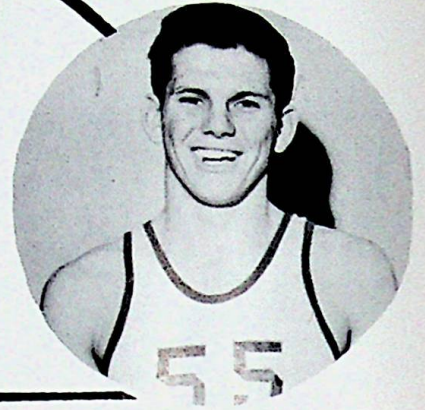
SITTING, Left to right: Bill Travis, Richard Yinger, Bill Thompson, Lloyd Hall, Nolan Traylor, and Doug Booth. STANDING: Tom Spears, Manager, Don Caseman, Arnold Highfield, Bob Hopper, Gary Thomas, Coach Ralph Darling.



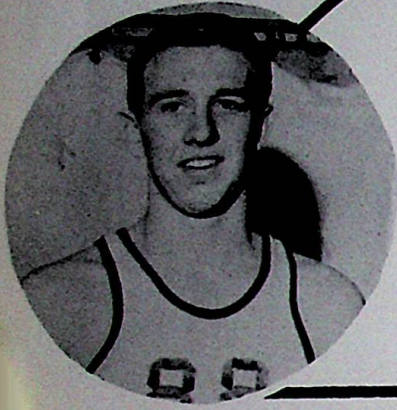
# VARSITY BASKETBALL '54-'55



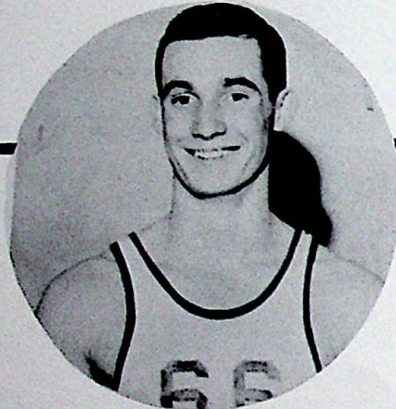
DEAN AEH  
Senior



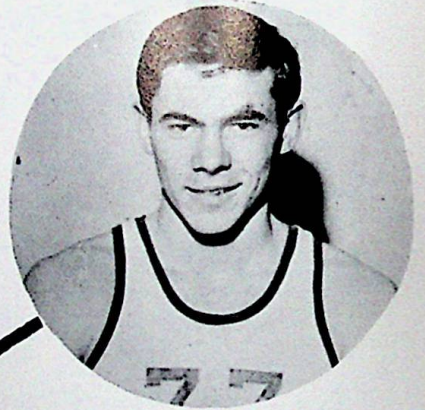
RON PATRICK  
Senior



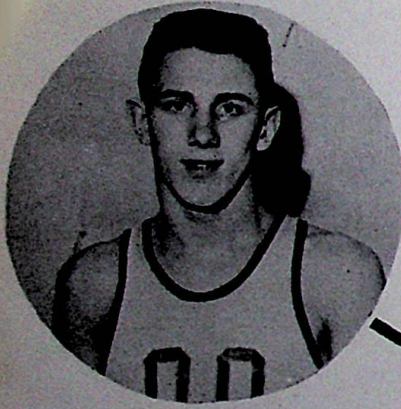
ROGER GREGORY  
Senior



JOHN MOTT  
Senior



BOB LANG  
Senior



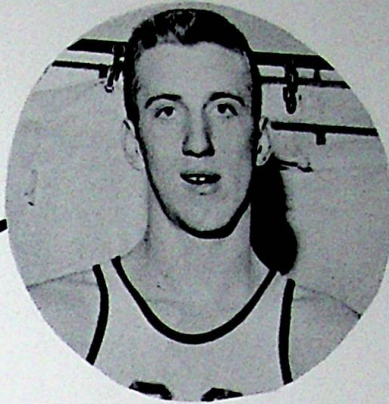
BILL MANUEL  
Senior

OPPONENTS	WE	THEY
Hillsboro	39	60
Notre Dame	49	54
Manchester	55	57
Wheelerburg	37	61
Clay (Xmas. Tour.)	40	72

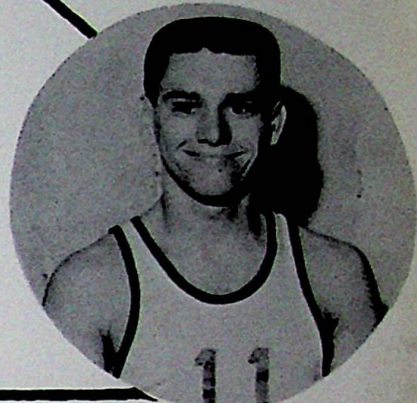
OPPONENTS	WE	THEY
Notre Dame (Xmas Tour.)	63	52
Minford	36	59
West	43	74
Chesapeake	65	43
Wheelerburg	46	41



# VARSITY BASKETBALL '54-'55



PAUL WHITE  
Junior



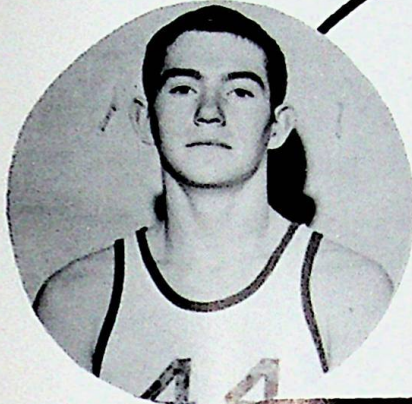
SAM BRIGGS  
Junior



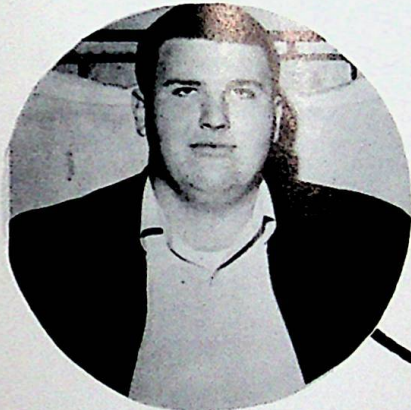
JACK PAULEY  
Junior



TOM SPEARS, Manager  
Senior



HAROLD SPURLOCK  
Sophomore



RALPH IMES, Manager  
Junior

OPPONENTS	WE	THEY
West Union	63	66
Waverly	56	55
Green	65	76
Notre Dame	71	46
Portsmouth East	57	55
South Webster	63	58

OPPONENTS	WE	THEY
Clay	55	59
Valley	55	62
S.E.O. Tournaments, Athens Third Place		
Chillothe Central Catholic	57	52
New Lexington	59	67
Nelsonville	67	52
S.O.C. Tournaments, Oak Hill		
Clarksburg	65	76

< 1

17

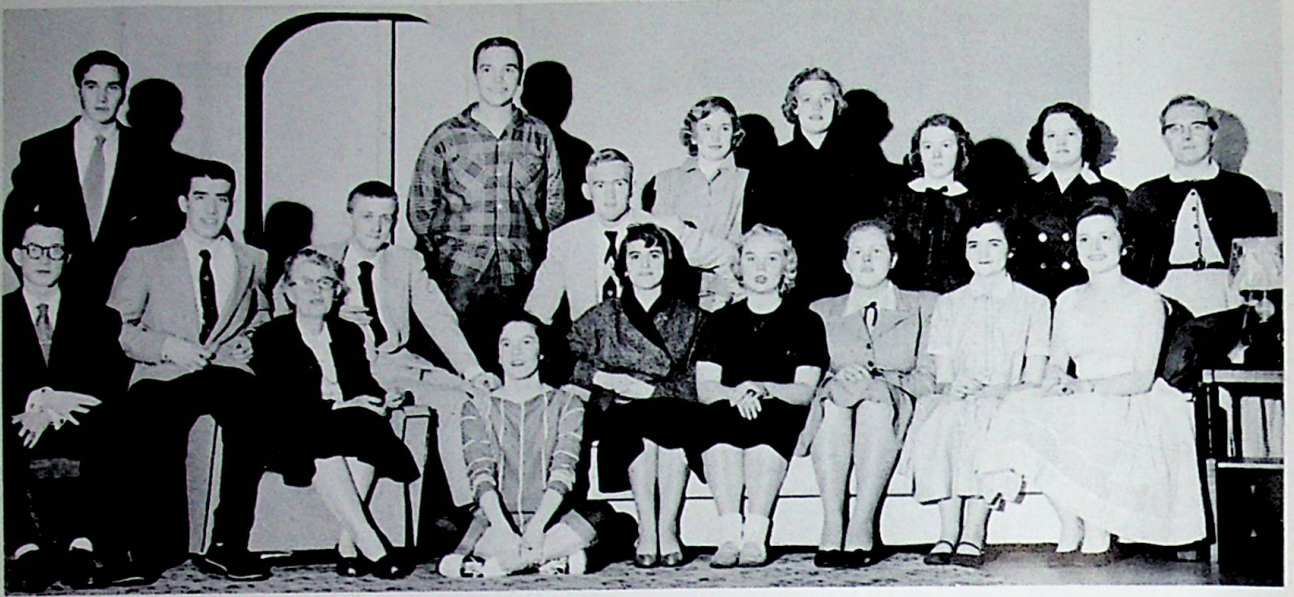






### ANNUAL STAFF

Editor . . . . .	Phillip Sebastian
Assistant Editor . . . . .	Bill Manuel
Typists . . . . .	Gloria Croy
	Regina Arthur
	Glenda Adams
	Barbara Cunningham
Artists . . . . .	Sharon Wagner
	Joyce Allen
Sports . . . . .	Bill Manuel
	Ron Patrick
Miscellaneous . . . . .	Roger Hamilton
	Harold Spurlock
	Nolan Traylor
	Kaye Duncan
Adviser . . . . .	I. D. Washington



The Junior Class presents  
ON WITH THE NEW

The cast included the following persons, left to right: Martin Pennington, Mitchell Waring, Richard Yinger, Mrs. Campbell, director, Bill Turner, Richard Martin, Judy Fitch, Carl Williams, Louella Kallas, Norma Clark, Shirley Green, Barbara Cunningham, Betty Stump, Gloria Croy, Janet Morris, Carolyn Davis, Kaye Duncan, Carol Sexton.



The Senior Class presents  
DEADLY ERNEST

SEATED, left to right: Sally Brown, Carolyn Douglas, Regina Arthur, Pat Schwable, Laura Fultz, Frieda Blevins, Glenda Adams, Fay Griffin, and Sharon Wagner. STANDING: Barbara Goodman, Roger Hamilton, Phillip Sebastian, Clyde Combs, Sid Boydston, Ron Patrick, Mrs. Lorraine Clerico, director, Bill Manuel, and Gary Brady.



#### THE NEW BOSTON YOUTH CENTER

SEATED, left to right: Bill Turner, vice-president; Shelby Purdy, Emily Sheridan, junior-president; Mary Ann Quarles, Ruth Ann Smith, Sandra Oney. ROW TWO: Dennie Joe Cornwell, Robert Fox, Rita Kay Shingler, Donna Campbell, Secretary; Janet Morris, Bill Manuel, president. ROW THREE: Gary Hamilton, treasurer; Martin Pennington, Gary Bowling, chairman of the Board of Trustees; Lloyd Hall, Ted Hilebronner, Mary Jones, reporter.

#### HISTORY AND ORGANIZATION

The New Boston Youth Center was organized September, 1954, by a committee affiliated with the Glenwood High P. T. A. During the first year of operation it has been very successful. The Youth Center has a present membership of 306. The meetings are held in the C. I. O. Hall twice each week with an average attendance of 150.





**NATIONAL HONOR SOCIETY**

ROW ONE, left to right: Jack Pauley, Bill Manuel, Mr. Caudill-advisor, Ronald Patrick, Gary Bowling, Phillip Sebastian. ROW TWO: Carol Sexton, Judy Fitch, Joann Worley, Janet Morris, Frances Martin, Esther Horner, Kaye Duncan, Fay Griffin. ROW THREE: Laura Fultz, Regina Arthur, Bill Turner, Roger Hamilton, Martin Pennington, Barbara Cunningham, Shirley Green.



**LATIN CLUB**

ROW ONE, left to right: Janet Kirsch, Bobbi Dodd, Willadean Lineberger, Roberta Gilliland. ROW TWO: Janet Morris, Opal Aldridge, Judy Fitch, Kay Duncan, Martin Pennington, Pati Combs. ROW THREE: Ruth Sebastian.



#### TRI-HI-Y

ROW ONE, left to right: Laura Fultz, Carolyn Douglas, Darlene Lands, Helen Horner, Mary Williams, Delores Belford, Rosemarie Meenach. ROW TWO: Joanne Kallam, Carol Sexton, Fay Griffin, Barbara Wickline, Joann Worley, Sally Brown, Shirley Green, Norma Clark, Judy Fitch. ROW THREE: Louella Kallas, Betty Stump, Dorothy Stevens, Frieda Blevins, Dorothy Hayes, Fanny Zeleles, Frances Martin, Esther Horner, Janet Morris, Kaye Duncan. ROW FOUR: Shirley McCoy, Barbara Goodman, Sharon Patton, Glenda Adams, Barbara Ross, Shelby Purdy, Barbara Cunningham, Sharon Wagner, Madelyn Walker, Patricia Schwable, Regina Arthur.



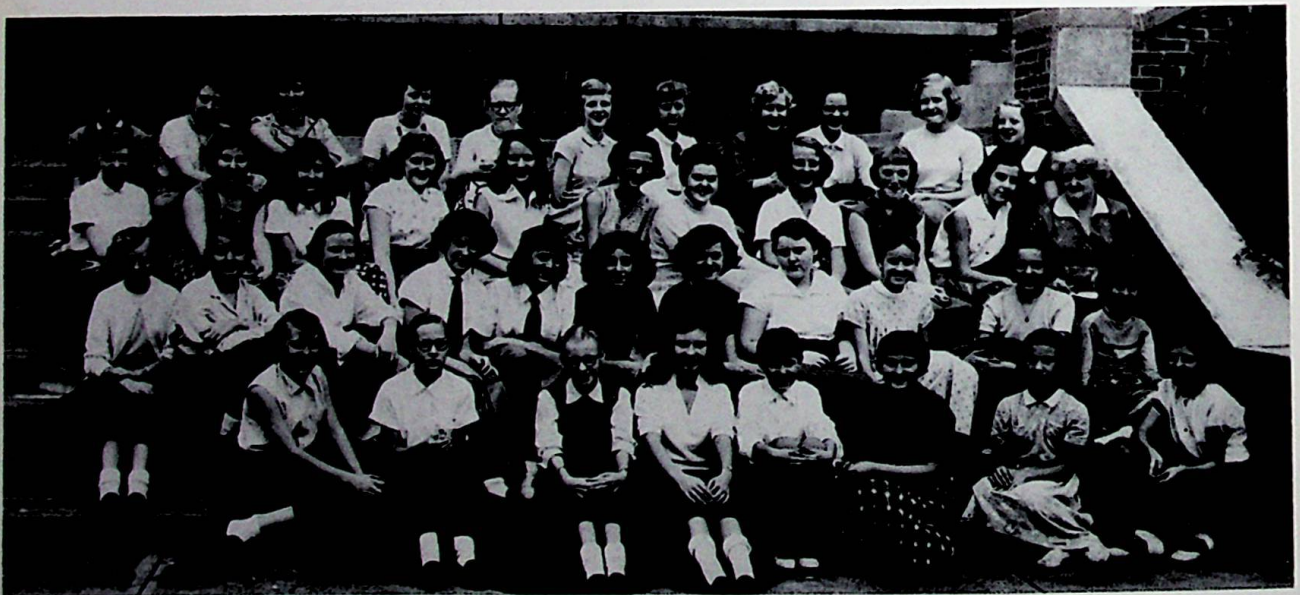
#### LIBRARY STAFF

ROW ONE, left to right: Nancy Blackburn, Mary Adkins, Carol Faulkner, Donna Campbell, Mary Stroman, Jeanine Sanford. ROW TWO: Sharon Wagner, Rosemarie Meenach, Madelyn Walker, Opal Aldridge, Janet Morris, Judy Fitch, Patty Schwable, Dorothy Hayes, Deanna Conklin, Launa Hall.



**FUTURE TEACHERS OF AMERICA**

FRONT ROW, left to right: Carl Williams, Dorothy Hayes. ROW TWO: Madelyn Walker, Patricia Schwable, Sally Brown, Laura Fultz. ROW THREE: Richard McAlister, Barbara Goodman, Joanne Kallam, Shirley Green.

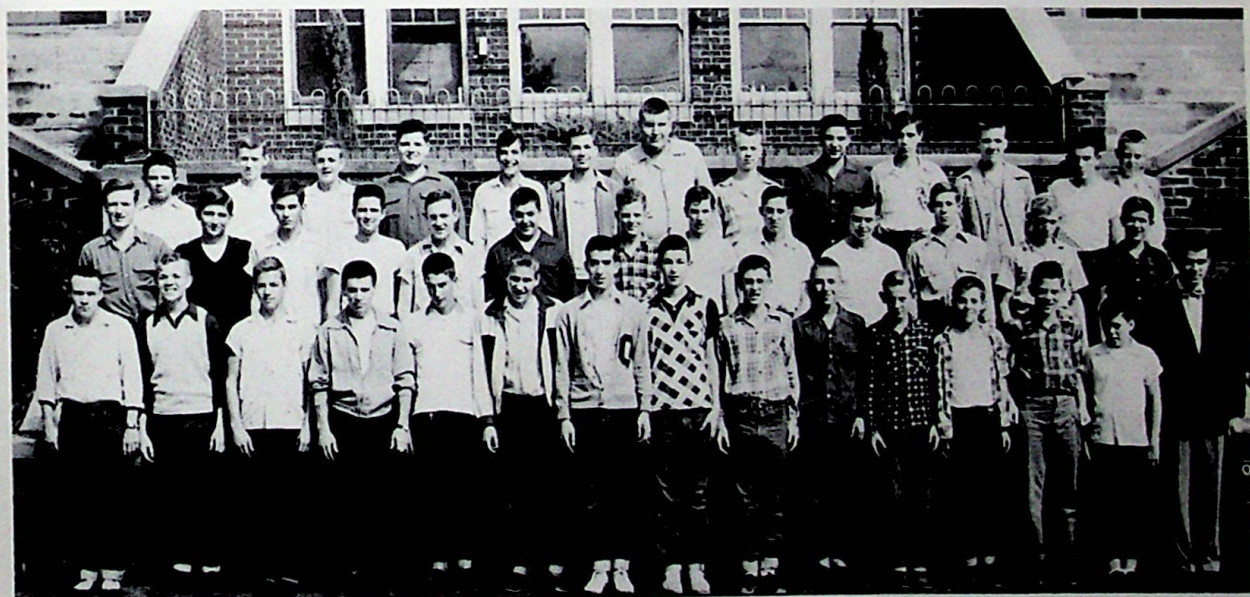


**TEENAGERS' CLUB**

ROW ONE, left to right: Nova McCleese, Mary Mathis, Connie Hanners, Patty Ruhlman, Donna Bell, Collette Clark, Patty Mathis, Janet Callender. ROW TWO: Helen Barklow, Donna Jamison, Bonnie Clark, Shelby Travis, Janet Daniels, Shirley Vaughn, Alice Willis, Ruth Smith, Kay Clevenger, Judy Martin, Bonnie Adkins. ROW THREE: Barbara Stone, Sue Brammer, Donna Staten, Wilma Noble, Bonnie Neal, Sharon Cockrell, Sandra Pence, Emily Sheridan, Tylitha Lewis, Janet Meenach, Mrs. Davis. ROW FOUR: Betty Anderson, Patty Bates, Judy Quarles, Kay Cassidy, Joyce Holbrook, Sandra Groh, Mary Schomburg, Bonita Webster, Emalene Fritz, Emily Gregory, Judy Griffin.



**WHITE RIBBON CLUB**  
 The officers for the White Ribbon Club are: Roger Hamilton, president; Bill Manuel, vice president; Bill Turner, secretary; Esther Horner, assistant secretary. The representatives for the four high school grades are Sid Boydston, Mike Morris, Opal Aldridge, and Gay Wooten. The junior high representatives are Martha Maple and Tom Manuel.



**INDUSTRIAL ARTS CLUB**  
 ROW ONE, left to right: Ron Cornwell, Richard Jackson, Elbie Mathis, Sam Briggs, Charles Yarnell, Bill Clark, Richard Yinger, Gary Thomas, Bill Travis, Delbert Scott, Paul Tomlin, Ronnie Hale, Jim Allard, Larry Harding, Mr. Al Squibb, instructor. ROW TWO: Ron Mershon, Clayton Wellman, Mitchell Waring, Mike Morris, Carl Williams Jim Key, Jack Allard, Don Caseman, Preston Marlowe, Dave Johnson, Dave Stevens, Rodney Crabtree, Darrell Yeley. ROW THREE: Don Hickman, Jim Boydston, Don Porter, Oliver Collins, Doug Phipps, Joe Mingus, Ralph Imes, Merlin Woodward, Bill Thompson, Forrest Greenhill, Joe Meadows, David Brown, Gary Bickett.



G. A. A.

ROW ONE, left to right: Judy Horne, Fay Griffin, Helen Horner, Shirley Green, Mary Stacey, Shelby Purdy, Louella Kallas, Darlene Lands, Carolyn Douglas, Sharon Wagner. ROW TWO: Janet Bonner, Janet Kirsch, Nancy Blackburn, Betty Riley, Janet Raike, Carol Faulkner, Donna Campbell, Barbara Hamon, Phyllis Baglin, Linda Wickline, Carol Carter. ROW THREE: Jeanie Sanford, Madelyn Walker, Joann Worley, Kaye Duncan, Judy Fitch, Ruth Maple, Frances Martin, Janet Warnock, Janet Morris, Esther Horner. ROW FOUR: Gay Wooten, Glenda Adams, Barbara Goodman, Barbara Cunningham, Regina Arthur, Carolyn Tosi, Ruth Briggs, Rita Shingler, Sharon Lauder, Joanne Kallam.



TRAFFIC SCOUTS

Pictured here are: Adam Walk, Tom Davis, Gary Montgomery, Roger LeMaster, Bill Ruark, David Hall, Jack Ison, John Horner, Don Porter, Frank Perkins, Ronald Crabtree, Gary Plummer, Tommy Tomlin, Gary Stone, Bob Martin.





**SECRETARIAT**

ROW ONE, left to right: Laura Fultz, Fay Griffin, Louella Kallas. ROW TWO: Dorothy Hayes, Sharon Wagner, Shirley Green, Sally Brown, Gloria Croy, Carolyn Davis. ROW THREE: Carolyn Douglas, Mary Williams, Shelby Purdy, Frieda Blevins, Barbara Cunningham, Regina Arthur, Barbara Goodman. ROW FOUR: Mrs. Clerico, Shirley McCoy, Joanne Kallam, Esther Horner, Frances Martin, Glenda Adams.



**DORCAS CLUB**

ROW ONE, left to right: Dorothy Stevens, Carolyn Douglas, Linda Wickline, Carol Carter, Helen Chase, Madelyn Walker, Joyce Caseman, Phyllis Baglin. ROW TWO: Fanny Zezeles, Shirley Kegley, Carlene Johnson, Yvette Oney, Helen Horner, Darlene Lands, Mary Stacey, Fern Bear, Janet Stapleton, Kootela Payne. ROW THREE: Hallie Maynard, Norma Clark, Patty Yarnell, Joyce Wright, Ruth Maple, Joanne Kallam, De- lores Belford, Mary Williams, Mrs. Davis. ROW FOUR: Blanche Jenkins, Joann Worley, Barbara Wickline.



Left to right: Sharon Wagner, Bill Turner, Laura Fultz, and Regina Arthur.

MR. HALL'S OFFICE STAFF

MR. WARREN'S OFFICE STAFF



Left to right: Fay Griffin, Carolyn Davis, Esther Horner, Shirley McCoy, Barbara Goodman, and Carolyn Douglas.



**VISUAL EDUCATION STAFF**

Mr. Lodwick, center, is shown here instructing Oliver Collins. Ron Patrick, Roger Hamilton, Dean Noble, Bill Turner, Martin Pennington, and Bill Manuel how to thread a projector.

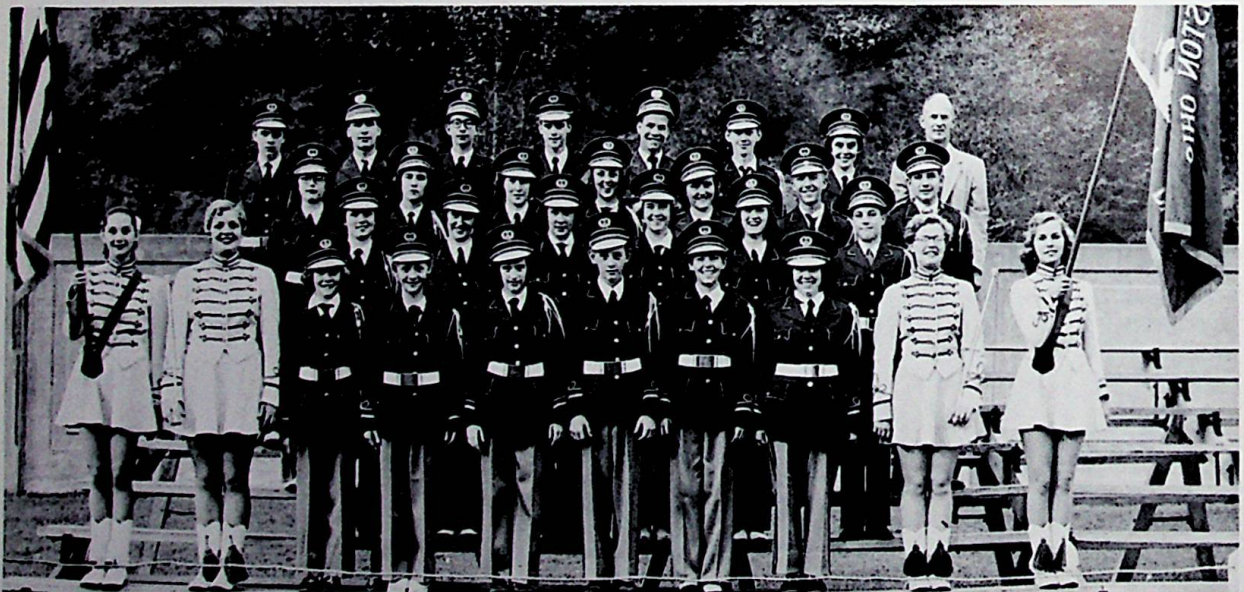


Changing classes always is a good time for catching up on the "latest news."



#### GLEE CLUB

FRONT ROW, left to right: Ruth Griffin, Linda Wickline, Ruby Braden, Janet Bonner, Rosemarie Meenach, Carol Roberts, Dorothy Hayes, Bea Stone, Judy Horne, Roberta Gilliland. ROW TWO: Mary Stroman, Phyllis Baglin, Joyce Caseman, Donna Campbell, Erma Callender, Carol Sexton, Pat Smith, Jeanine Sanford, Judy Vogel song, Mary Adkins, Miss Starrett, director. ROW THREE: Barbara Ross, Deanna Conklin, Ruth Briggs, Hallie Maynard, Gay Wooten, Sharon Lauder, Virginia Jamison, Yvette Oney, Janet Raiké, Joyce Fry, Barbara Hamon, Shelby Purdy, Madelyn Walker, Sharon Wagner, Mary Jones, Donna Cox, Betty Stump, Joyce Allen, Carol Carter, Frieda Blevins, Pat Schwable.

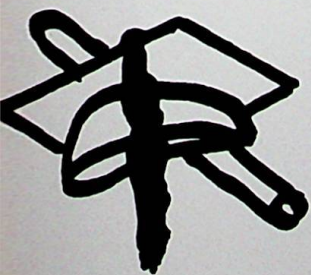


#### BAND

ROW ONE, left to right: Barbara Wickline, Barbara Cunningham, Jeanetta Adkins, Mary Schomburg, Phyllis Cooper, Paul Tomlin, Donna Bell, Marsha Haws, Ruth Maple, Joann Worley. ROW TWO: Sally Brown, Patti Combs, Shelby Travis, Betty Hall, Janet Daniels, Darrell LeMaster. ROW THREE: Opal Aldridge, Shirley Russell, Blanche Jenkins, Emily Sheridan, Connie Smith, Delbert Scott, Gary Montgomery, Bob Pendleton, Joe Mingus, Sid Giles, Jim Smith, Bob Hopper, Jim Boydston, Ruth Sebastian, Mr. Grabham, Director.

Jr.-Sr. Prom

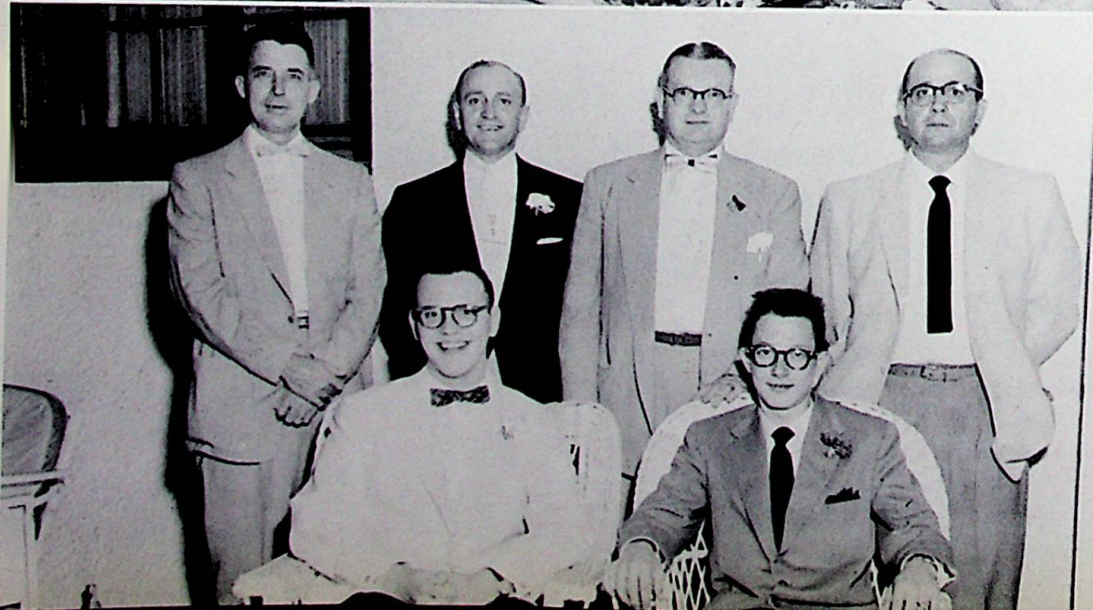
Baccalaureate



Commencement

# JUNIOR-SENIOR PROM

MAY 20, 1955





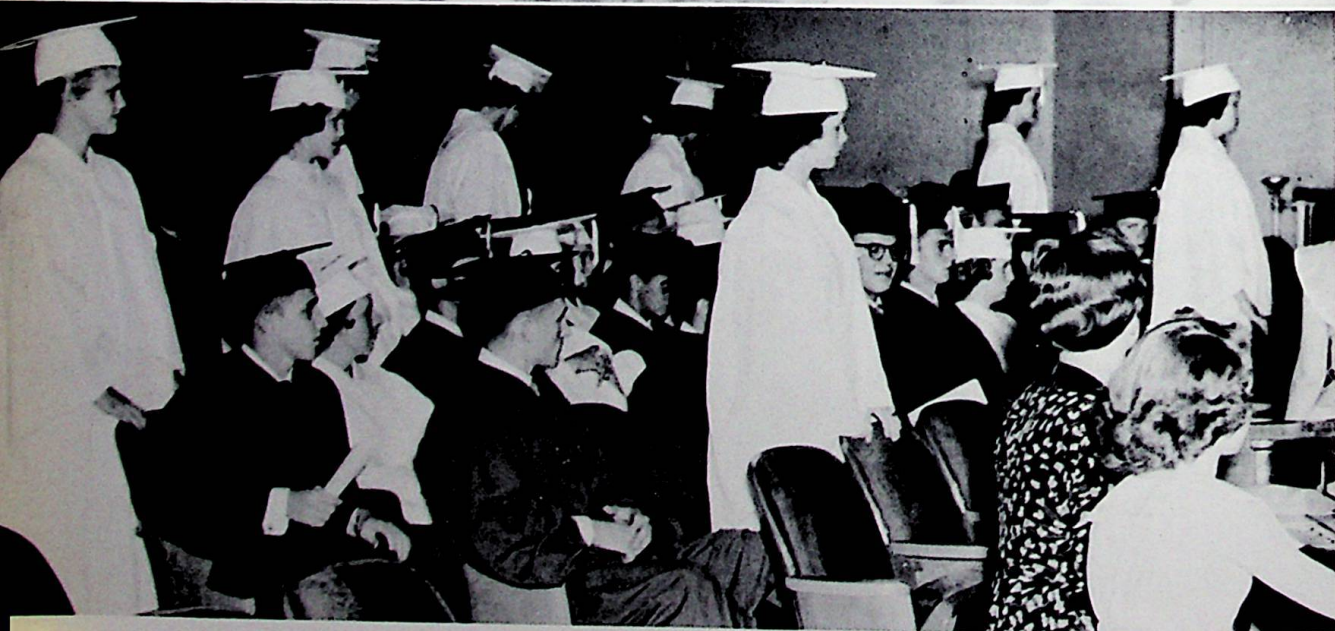
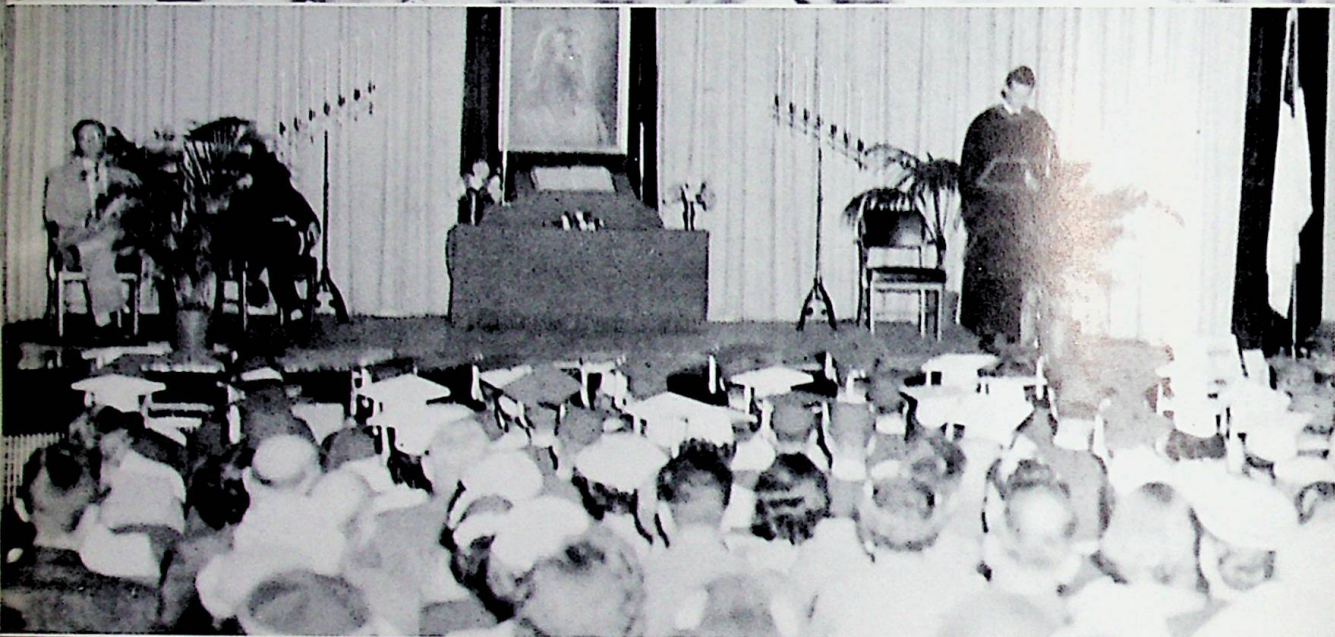
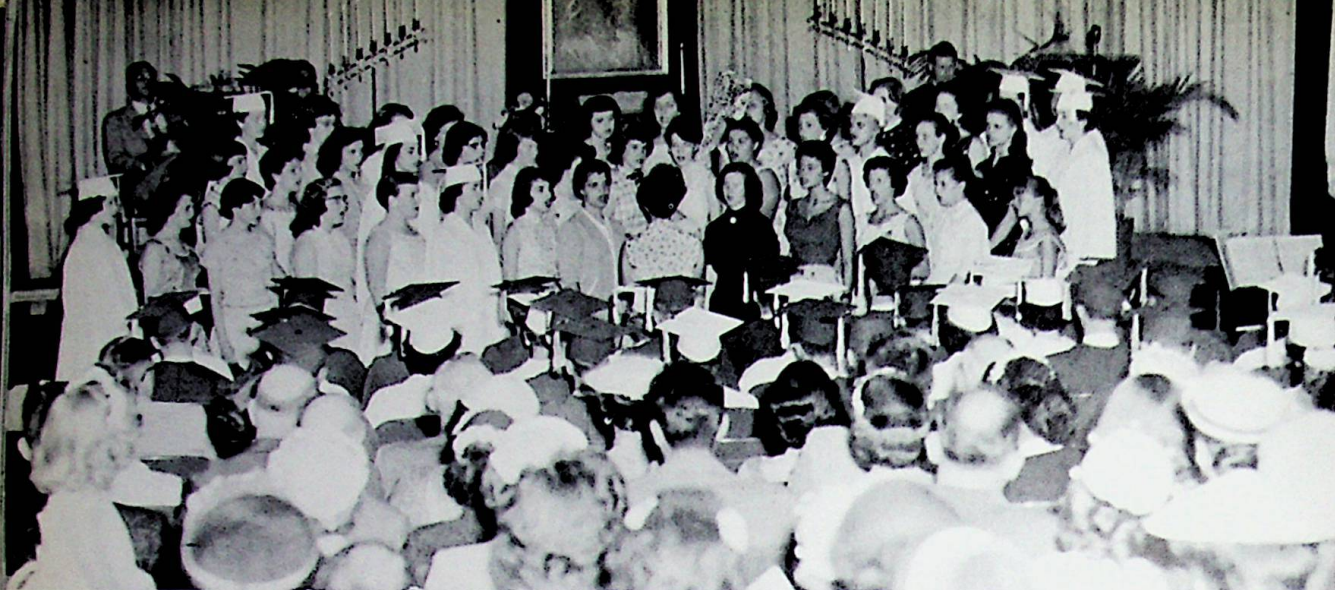
"Isn't that a terrific band?"



Anyone hungry?



Here is a group of juniors really having a "ball."



BACCALAUREATE SERVICE  
May 29, 1955

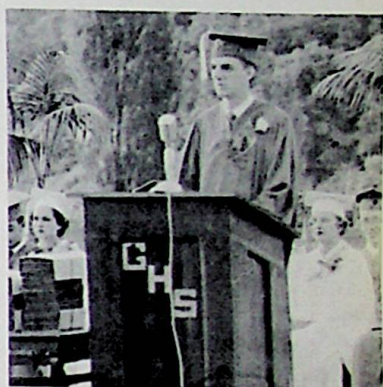




"We are the class of '55 you've heard so much about!"



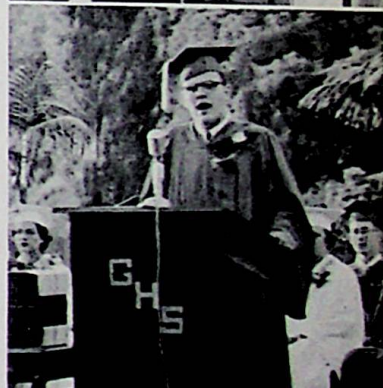
CHARLES WILLIAM MANUEL  
President  
Youth Center



HERMAN ROGER HAMILTON  
President  
White Ribbon Club



RONALD LEE PATRICK  
President  
National Honor Society



ELMO PHILLIP SEBASTIAN  
President  
Class of 1955

COMMENCEMENT EXERCISES  
June 1, 1955







Here sit the ad solicitors resting after a hard job well done.  
FRONT ROW, LEFT TO RIGHT: Madelyn Walker, Pat Schwable, Sharon Wagner.  
SECOND ROW: Regina Arthur, Laura Fultz, Darlene Lands, and Carolyn Douglas.



# SPONSORS

Here's to the class  
of '55

# **CLEVENGER'S**

**Self-Serve**

**Super Market**

**Everything that one could wish**

**for at mealtime**

**Specializing in produce of all kinds**

**Gallia Street**

**New Boston, Ohio**

**Phone 558**

**Compliments of**

**ZIMMERMAN'S OFFICE SUPPLY  
AND  
EQUIPMENT**

**810 Chillicothe Street**

**Portsmouth, Ohio**

*Herff-Jones Company*

*Designers and Manufacturers*

*of*

*School and College Jewelry*

**GRADUATION AND ANNOUNCEMENTS  
MEDALS, CUPS, AND TROPHIES**

*Indianapolis, Indiana*

**ROBERT BURKART, REPRESENTATIVE**



#### **CLASS OF 1955**

Detroit Steel Corporation extends hearty congratulations to this year's graduates upon completion of another step in the process of preparing yourselves to become useful citizens in your community.

Your career after graduation will develop in a nation whose progress is a direct result of its freedoms, so that you will have an opportunity to grow and to develop in a land of opportunity.

The future will offer many additional opportunities for continued study and improvement. We urge all graduates to pursue all opportunities to further increase knowledge in order to stay abreast of our rapidly expanding technology in a highly technical world. More than ever it can be said for the future that "knowledge is power."

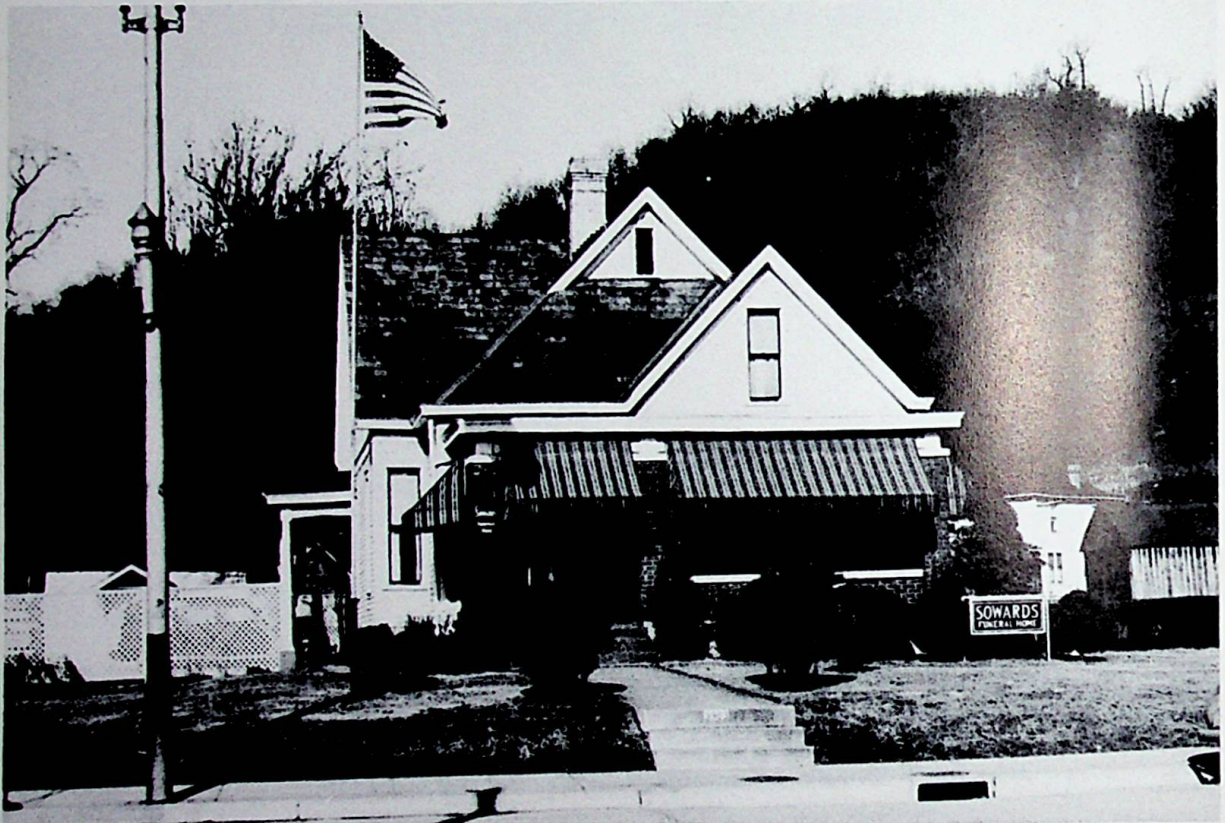
## **DETROIT STEEL CORPORATION**

**PORTSMOUTH DIVISION**

**PORTSMOUTH, OHIO**

**KNOW WHOM TO CALL FOR RESPECTFUL SERVICE**

**Our Long Experience and Beautiful Home Assures You The Dignity and Freedom  
From Details You Want At This Time Of Stress.**



## **SOWARDS FUNERAL HOME**

**We Are As Near As Your Phone**

**Boston 93**

**3983 Gallia Street**

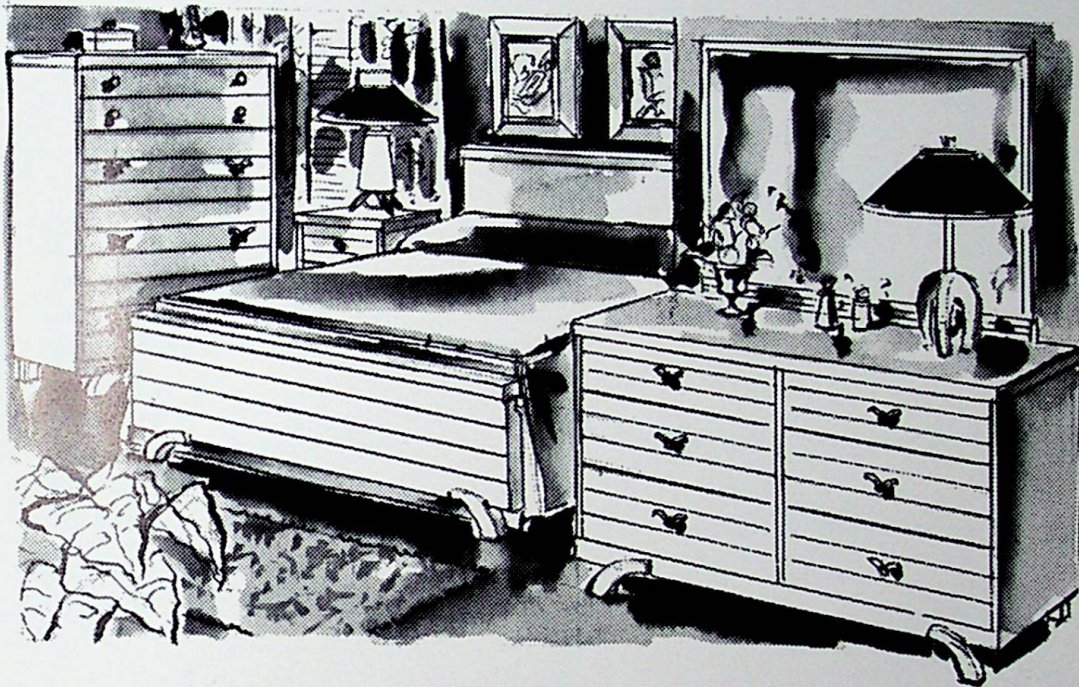
**A. C. SOWARDS  
Licensed Funeral  
Director and Embalmer**

**Over 25 Years  
Serving in Your  
Community**



See **COVERT'S**

for all your needs for the home



**FRIGIDAIRE**

and

**MAYTAG**

**Appliances**

**3975 Gallia Street**

**5605 Gallia Street**

**New Boston, Ohio**

**Sciotoville, Ohio**

*Good Luck*

**Bill Nichols**

724 Sixth

**HUNTER'S  
LOCK & BICYCLE SHOP**

**Key Making  
Door Checks and Repairing  
Safe Repairing**

1552 Gallia Street

Phone 6-6884

*Compliments of*

**Semones Grocery**

4302 Gallia Street

Phone Boston 11

*Compliments of*

**Moore's Store**

**Motorola TV**

**Auto Accessories**

Gallia Street at the Lake

**BORDEN'S**

**"The Atomic Area's Finest"**

**Milk - Ice Cream  
Dairy Products**

Phone 2-1351

237 Second

*Compliments of*

**J. W. Stir Company**

**Floor Covering  
and Venetian Blinds**

514-516 Second Street  
Portsmouth

Ohio

**The Hibb's Hardware Co.**

**Wholesale Hardware**

Portsmouth

Ohio

**Patronize Your Local Hardware Dealer**

*Congratulations Graduates*

**When in Portsmouth visit  
Stapleton Office Supply**

829 Sixth Street

**School Supplies  
"Courtesy and Service"**

*Compliments of*

**ACME HARDWARE**

70-L

3802 Gallia

*Compliments of*

**GILL FUNERAL HOME**

**Oxygen Equipped  
Ambulance Service**

Phone Sc. 100

Sciotoville

Ohio

*Best Wishes  
to  
Class of '55*

**Dr. C. E. Beatty**

*Compliments of*

**Evans Floral Shop**

6804 Gallia Street  
Phone Scioto. 188-L

**Flowers for every occasion**

*Congratulations  
To the Graduates*

**Emnett's Super Market**

**New Boston's Largest and Finest**

4045 Rhodes Avenue

*Best of Luck and Success  
to the Class of '55  
from*

**Your Mayor**

**Vernal G. Riffe, Senior**

**It's O.K. to Owe Kay**

**Kay's Jewelry**

817 Gallia Street

Portsmouth

Ohio

*Compliments  
of*

**Wolford Machine Company**

**Roy Manuel**

**Manager**

**SCHOMBURG'S**

**Complete Food Market**

920 Harrisonville  
New Boston Ohio

Phone Bos. 25

Clothes of Distinction  
always at

**THE CRITERION**

**"The Men's Store"**

819 Gallia Street  
Portsmouth Ohio

**Cameo Restaurant**

838 Gallia Street

**B & B Loan Co.**

837 Gallia Street

**HUSTON PONTIAC COMPANY**

Gallia - Lincoln Street

Phone 2-2951

*CONGRATULATIONS  
to the  
GRADUATES  
of 1955  
from*

**CARR'S JEWELRY STORE**

811 Gallia Street

*Compliments of*

**BURTON'S BEAUTY SHOP**

3965 Gallia Street  
New Boston Ohio

**Portsmouth  
Interstate Business College**

Leo Blackburn, President

*Compliments of*

**Copelan's Drug Store**

New Boston

Ohio

*Compliments of*

**Gladys E. Davis**

**Class of '29**

**Dr. James Kelso**

**Optometrist & Chiropractor**

**Eyes Examined**

Phone Boston 2

**Lewis  
TV And Radio Service**

**Pick Up and Deliver  
All Makes And Models**

Bos. 44-Y

3978 Gallia Street

New Boston

Ohio

*Compliments of*

**McClain Cleaners**

3466 Gallia Street

New Boston

Ohio

**McClurg Insurance Agency,**

**Agent**

3840 Gallia Street

New Boston

Ohio

Phone Bos. 60

**For A Better Deal In Used Cars  
See**

**PAULEY AUTO SALES**

3956 Gallia Street

New Boston

Ohio

Bos. 15-X

**Tiger Den**

**Pocket Billiards**

**Bill Day**

**Manager**

**Isabelle Greene**

**THE HOUSE OF FASHION**

707 Sixth Street

Portsmouth

Ohio

Phone 2-0307

*Compliments of*

**Johnson's Terminal Restaurant**

**The Home of Fried Chicken**

2828 Gallia Street

Portsmouth

Ohio

Telephone No. 20051

**Nu-Way Cleaning Co.**

Office and Plant

2314 Gallia Street

*Compliments of*

**Standard Supply Co.**

10th and Findlay

Portsmouth

Ohio

**Mart Glynn Funeral Home**

**Ambulance**

**50 Years of Service**

1147 Second Street

Phone 2-3021

**Bottling Company of Portsmouth**



3001 Scioto Trail

Portsmouth

Ohio

Telephone 2-8461

*Compliments*

**Burl E. Justice**  
**Sheriff of Scioto County**

*Compliments of*

**THE CITIZENS SAVING AND  
LOAN ASSOCIATION AND  
COMPANY**

*Compliments  
of*

**Dehner's Department Store**

613 Chillicothe Street

*CONGRATULATIONS  
TO THE GRADUATES!*

**Sears, Roebuck and Company**

301 Chillicothe Street  
Portsmouth Ohio

**"When you Young Folks Get Married  
Come to us to Buy  
Your Home Furnishings"**

**Distel Furniture Co.**

**Wolff Good Clothes**

**Diamonds - Watches**

**ZOELLNER JEWELRY CO.**

**Established in 1857**

Third and Chillicothe  
Portsmouth Ohio

*Compliments of*

**AMERICAN SAVINGS  
AND LOAN ASSOCIATION**

503 Chillicothe Street  
Portsmouth Ohio

**Insured Savings and Home Financing**

**Blackburn's Market**

**Lowest Meat Prices  
in the Tri-State area**

3502 Gallia Street

**Portsmouth  
Coca-Cola Bottling Co.**

2001 Scioto Trail  
Portsmouth Ohio

Phone 2-8311

*Compliments of*

**Morgan Bros., Jewelers**

734 Fifth Street

Portsmouth

Ohio

Your New

**OLDSMOBILE-CADILLAC DEALER**

**Fred Brown, Inc.**

**Used Cars**

717 Fifth Street

905-907 Chillicothe Street

**Crichton Office Supply**

**Everything for  
offices, accountants, schools.**

740 Fifth Street

Portsmouth

Ohio

Phone 3-3381

**O. L. WEBB**

**Building Supplies**

**"Consult Us About Your Building Problems"**

**"It is a pleasure to serve you"**

4200 Rhodes Avenue

New Boston

Phone 54

**Hammond  
Furnace Company**

**Sales and Service of  
Heating Equipment**

4077 Rhodes Avenue

New Boston

Ohio

Bos. 13

*Compliments of*

**West End Furniture Company**

**Cunningham Hardware Company**

**Glockner's Chevrolet**

**Langwell's Cafeteria**

**Z. A. Hale**

**Bowling's Market**

**Tilene's**

**Lewis Bros.**

**James E. Wilhelm**

**Wagner Implement Company**

**Sudden Dry Cleaners**

Phone Boston 3

2112 Harrisonville Avenue

Portsmouth

Ohio



**Fitch's Used Cars**

Where Quality & Price meet your desires

4114 Gallia - Phone 31-M

*Compliments of*

**Vernal G. Riffe, Jr.  
Insurance Agency**

3970 Gallia Street  
New Boston Ohio

*Compliments  
of*

**MILHUFF'S**

500 Harding Avenue  
Sciotoville Ohio  
Phone 15

*Compliments  
of*

**HIBBITTS HARDWARE**

315 Harding Avenue  
Sciotoville Ohio

*Compliments of*

**BLUE BIRD BAKERY**

Wedding and Birthday Cakes Our Specialty

Gallia at Harrisonville  
New Boston Ohio

**John Counts, Owner and Baker**

**J. C. PENNEY COMPANY**

**Always First Quality**

Compliments of

**DEEMER'S SUPER MARKET**

*Compliments of*

**OHIO WASTE MATERIALS**

2825 Gallia

Phone Bos. 254-6

Post Office Station No. 3  
Hunting and Fishing Licenses  
Expert Prescription Service  
Patent Medicines  
Complete Magazine Section  
Extensive Greeting Card Section

**FLOOD DRUGS, INC.**

2109-11 Gallia Street  
Portsmouth  
Phones 9-3851 and 3-1481  
"The One Stop Drug Store"

Ohio

**Murfin's Insurance Agency**

"Insure In Sure Insurance"

Phone 446

1542 Gallia St.

Portsmouth

Ohio

*Compliments of*

**HORNE'S APPLIANCES**

Phone Bos. 508

3236 Gallia

"The Best in Dairy Products"

**SELECT DAIRY**

2345 Gallia Street

*Compliments of*

**W. L. Wilhelm, Jeweler**

**Kobacker's**

**Bragdon's**

Grandeur . . .  
Happiness . . .  
Success . . .

*To the Class of '55  
From -*

*Marting's*

"One of Ohio's Good Stores"

*Atlas*

*Fashionous*

*Class of '55*  
*Congratulations and Best Wishes*  
*from*

**PATTERSON - EMERSON - COMSTOCK, INC.**

**Portsmouth, Ohio**

**NEWBERRY BROTHERS**

**Sporting Goods and Clothing**

4132 Gallia Street

Boston 38

New Boston, Ohio

**C. HERRMANN & SONS**

**PACKING CO.**

**Market**  
913 Gallia Street Phone 3-5011

**Packing House**  
3750 Gallia Street Phone 3-4341

**Market**  
Eighth and Murray Streets Phone 3-1661

**Market**  
221 Market Street Phone 2-4681

*Compliments of*

**Hoppy's Pure Oil**

4141 Gallia Street

Boston - 114

*Compliments of*

**COOPER BROTHERS**

Corner Gallia and Harrisonville Avenue  
New Boston, Ohio

**Kirby's Flowers**

Phone 3-2661

Gallia and Findlay Streets  
Portsmouth Ohio

**New Boston Pharmacy**

**The Prescription Store**

**Rexall Products**

Phone: Boston 156

4152 Gallia Street  
New Boston Ohio

*Compliments of*

**Grace L. Kelso**

4002 Gallia St.  
New Boston Ohio

**Dairy Queen**

"The Cone With The Curl On Top"

**Jarvis Co. Jewelers**

**N. & W. Watch Inspectors**

**Diamonds, Jewelry, Electrical Goods,  
Leather Goods, Watches**

2901 Gallia Street

Phone 2-0851

*Compliments of*

**Dr. A. P. Allizer**

**Optometrist**

822½ Gallia Street  
Portsmouth Ohio

Ralph Lewis "40" Daryl "56" Adams J.C. Stockham Bill Setb 54  
Bloomers

Thud King Ding Ginger Bane C. Le. Senger Roberts Gilliland "57" Finnie Blackburn

Bob Fern 55 Paul White Bill Frank Sexton Jessie Zinger

Jack "Loose" Pauley "56" <sup>"57"</sup> <sup>"57"</sup> Nancy Blackburn Ronnie Zinger "55"  
~~John Senger~~ ~~Marjorie Sheridan~~

Phillip Saylor Harold William J. Wilful Sheridan Gladys Metzler

Jim Sheridan Bonnie Patton Mark C. Harris Clarence Metzler

Luci Patti Thomas Newberry James D. Warren Earl S. Suter

Janet N. Wickie "52" Elmon C. Caudill Harold Spurlock "TOKER" "57"

Gardner Mershon "Near Bee" "53" R. Dean Noble George Lemmon

Ray Manuel Freda Martin Tom Manuel Ruth Sebastian "57"

David B. Lodwick Gelma Sheridan

Wm G. Dutch W.C. Gabbam Gordon L. Froly D.C. Lewis Carey South "57"

Jerry H. Rouse "57" Reba Lockhart St. Mitchell Eugene Smith "57"

Nolan Taylor "57" Nova Lockhart Herald M. Key Frank Beckler

Levina Campbell Gertrude Key Paul Dyer Mrs Paul Kirsch

Laura Havner Wendell Kehler Mrs A. C. Sowards Edward Wintersole

Lorraine S. Clario D. Phamercan Ada Douglas Robert J. Kirsch

Ronald Mershon Henry Lother Charles L. Otney "56" Emma Suter

St. Washington Lilla Henge Fern C. Floyd

Fern C. Wheeler Sharon Lander John T. Soper Inez Dyer

Herbure Kirney Jesse Meyberry Raymond E. Hall Janet Kirsch

June Starrett Lorde J. Suter Charles H. Hottel Jan Bickel "54"

Dorothy Clark Howard Newberry "55" Phil Sebastian "54" Roy Suter

# Boosters



