



PANTHER

DAVID LEE HUSTON

To David  
to a real nice guy.  
Love in the future  
dickie

To Dave  
to a real nice cat "Berry"



To Dave  
red red  
brown  
Your friend  
Bill  
77

To Dave,  
A sweet boy  
who went to the Apple  
Festival with the band  
Love  
Judy  
Gannin  
"78"



To Dave  
a cool guy  
who hits Homeruns  
after other and is  
a good basketball player  
Ron  
McClure  
"76"

To Dave  
a real hunk  
of a man  
really buff,  
Good  
Luck  
Helena  
7

To: Dave  
To a real  
sweet and  
nice guy - Good  
Luck in Everything  
ya do.  
See ya  
Cathy

To Dave,  
a real sweet guy  
who everyone like.  
Good Luck in every-  
thing you do.

see ya!  
Jill Frazier  
+  
Rich Parsons

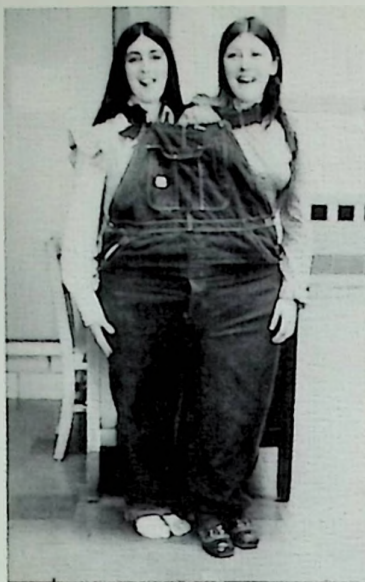


*Editors:*

*Lori Grose*

*Jeff Hunter*

# Memories That Leave Prints

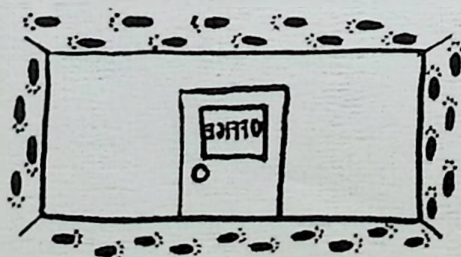


On Your Mind —

## Table of Contents

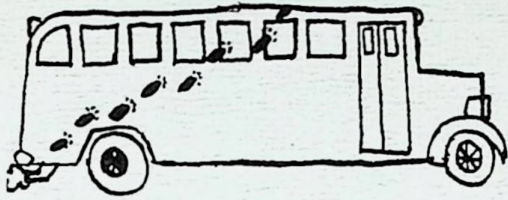


Introduction . . . . .	1
Seniors . . . . .	5
Juniors . . . . .	33
Sophomores . . . . .	47
Freshmen . . . . .	55
Jr. High . . . . .	63
Activities and Sports . . . . .	79
Administration and Faculty . . . . .	121
Advertisers . . . . .	133





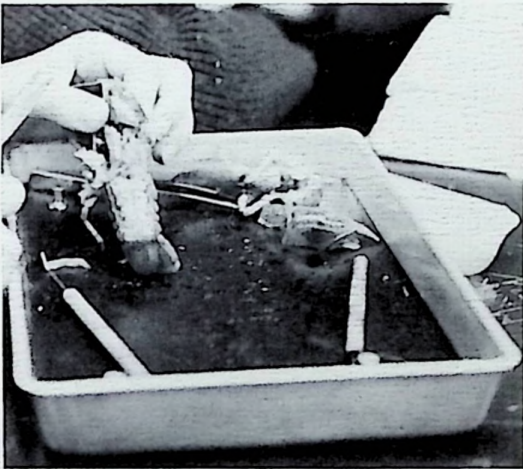
The band had a great year as they won first place honors in both marching and concerts competitions.



TO STATE

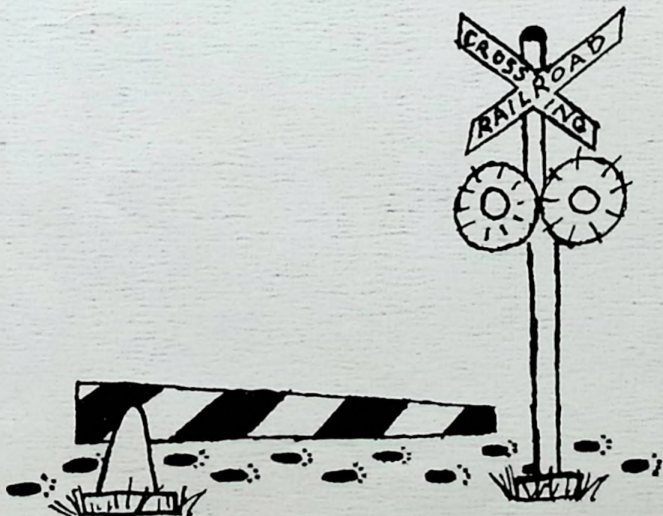


Role Confusion!



Lunch Time??

Harvey the Hustler





*Custodians*

Mr. Ruby  
and  
Mr. Benner



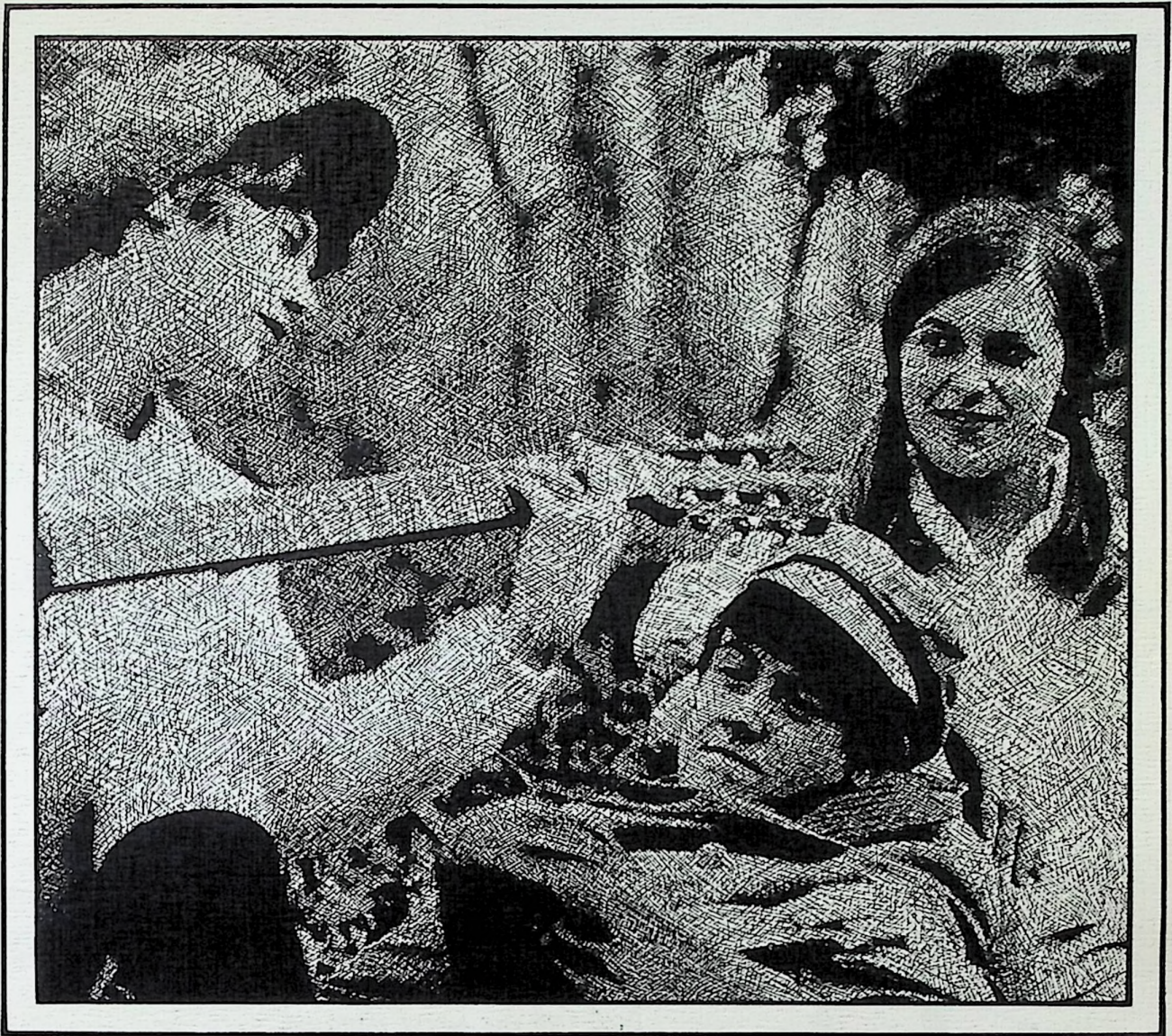
OUR DRAMATICS COACH  
Mr. Paul Nibert and Mrs. Nibert

*Bus Drivers*

Mr. Benner  
Mr. Moritz  
Mr. Burke  
Mr. Ruby  
Mr. Coriell  
Mr. Fry  
Mr. Canter  
Mr. Coldiron  
Missing From Picture:  
Mr. Burchett







Seniors

# 1973 Seniors

SEC.  
S. Price

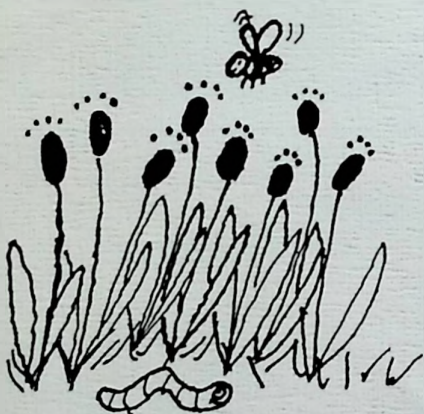
TREAS.  
S. Chilcote



PRES.  
J. Hunter

V. PRES.  
G. Montavon

Class Officers



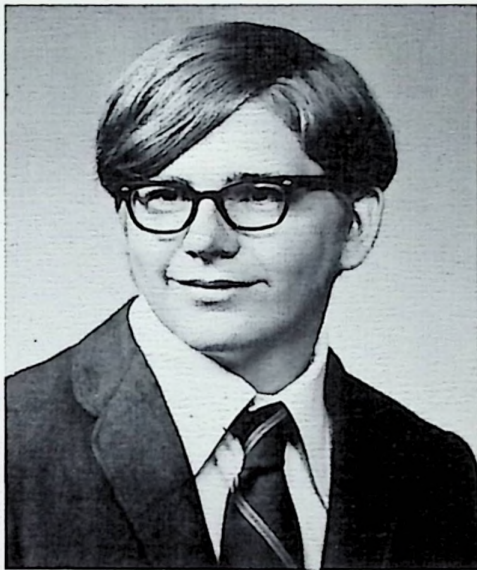
*Class Motto: Don't be  
pushed by your problems  
but led by your dreams.*

*Song "Nights in White Satin"*

*Flower: Violet*

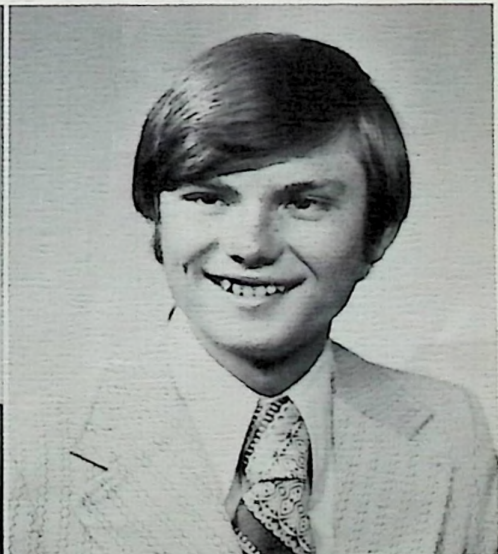
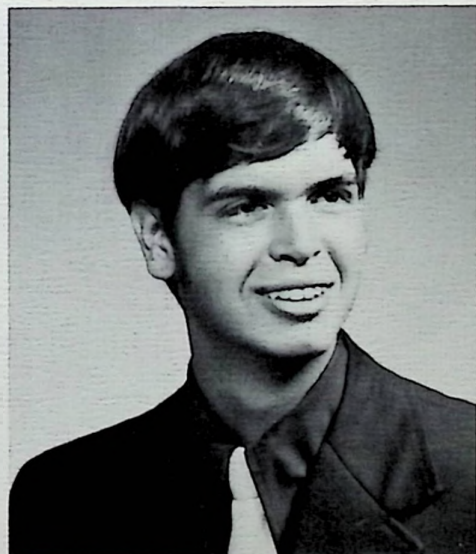
*Colors: Shades of Purple*

*Randy Allard  
Kathy Allen*



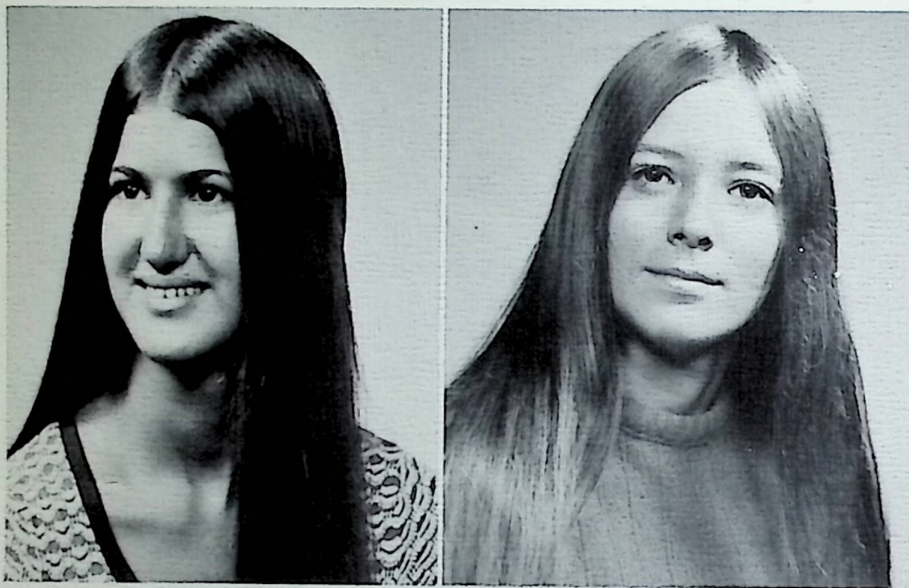
*Bob Batterson  
Audrey Browning*

*Jeff Canter  
Randy Canter*





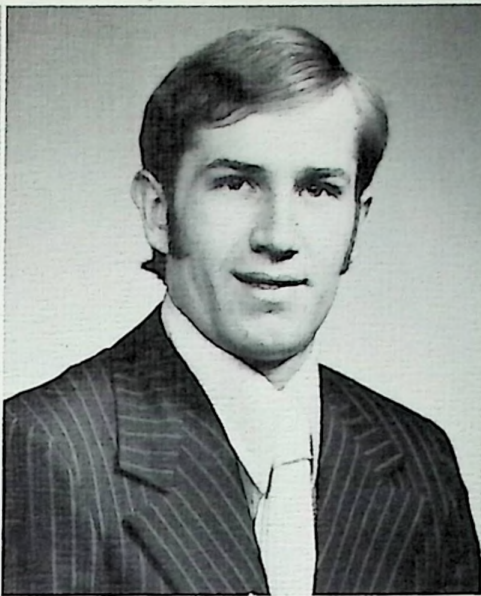
*Cindi Carpenter  
Allen Channal*



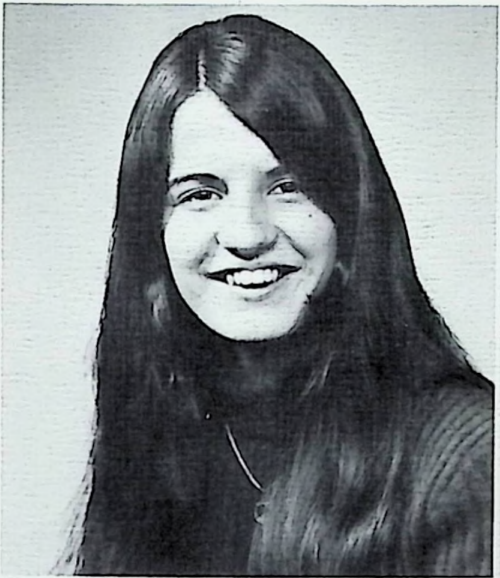
*Sue Chilcote  
Debbie Clark*

*Greg Collier  
Elaine Collins*



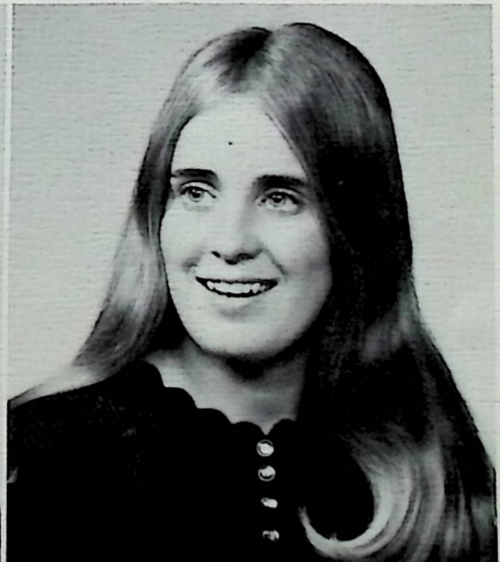


*Wayne Colvin  
Terry Conkel*

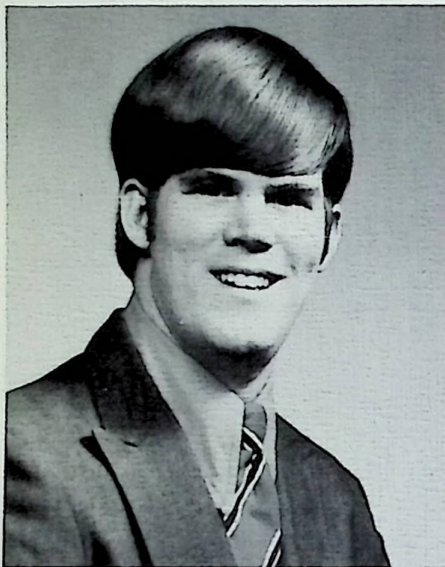
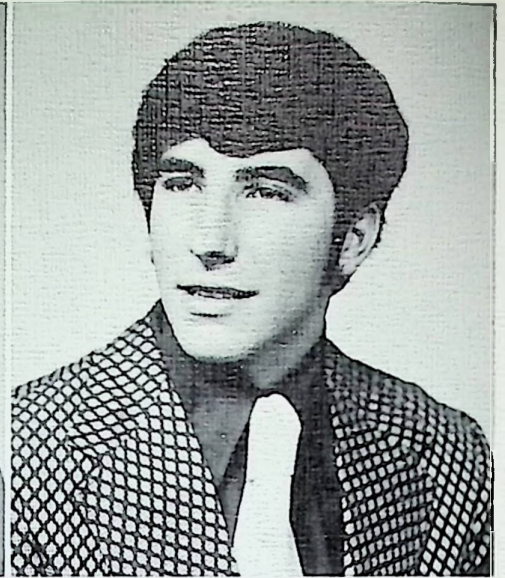


*Cathy Conley  
LeaAnn Dotson*

*Jan Dransfield  
Pam Flannagan*



*Charlie Franklin  
Rick Fuller*

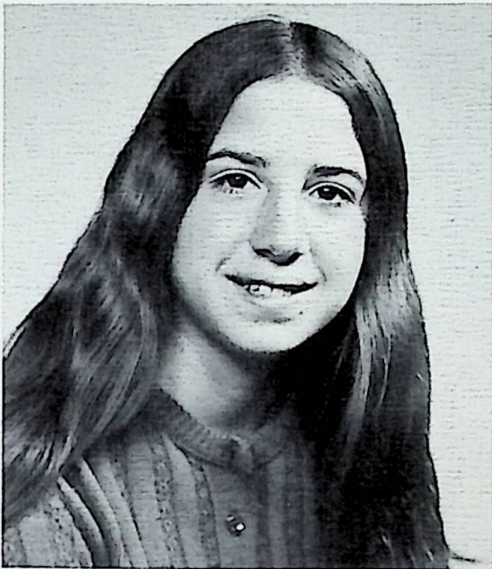
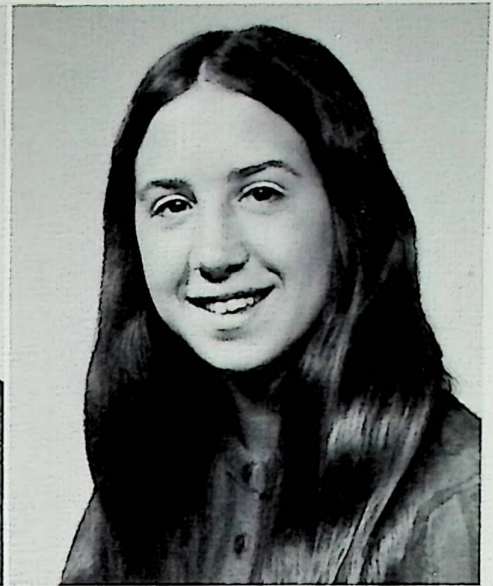
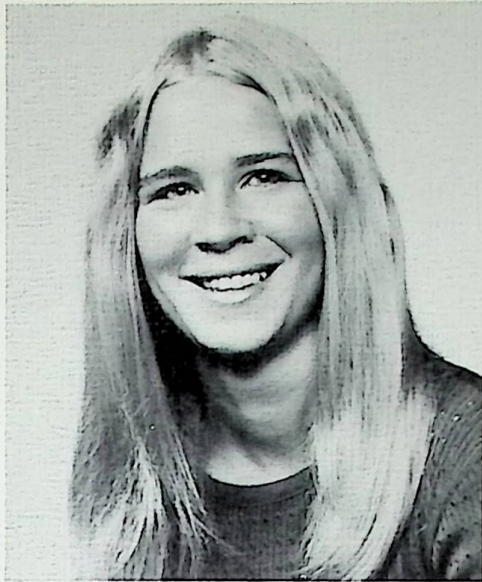


*Jim Gambill  
Kyna Gemperline*

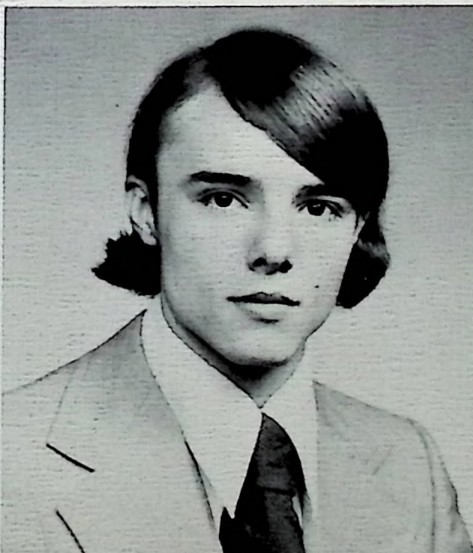
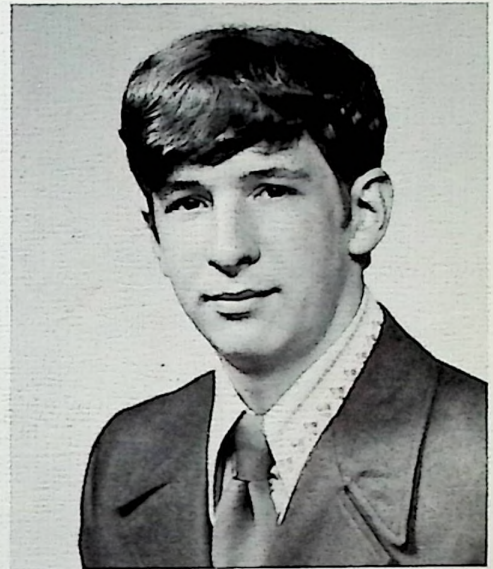


*Gary Glenn  
Patti Gregory*

*Lisa Grose  
Jane Hansgen*



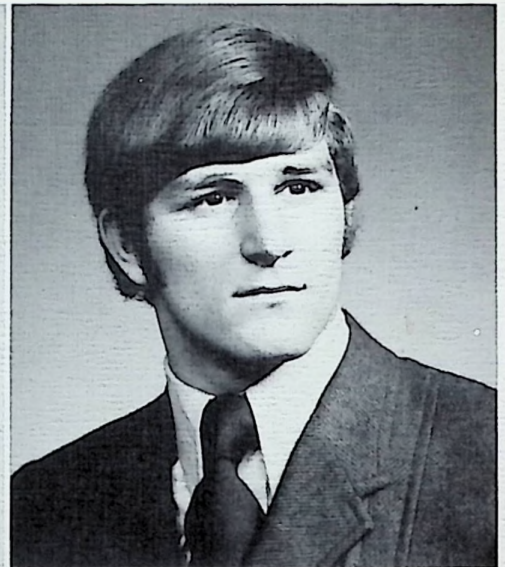
*Jean Hansgen  
Steve Henthorn*



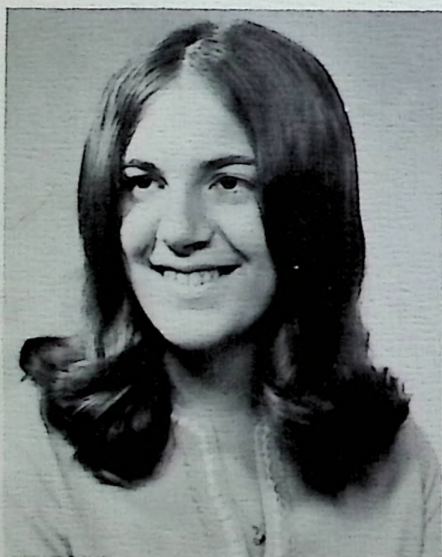
*Hazel Howard  
Jeff Hunter*



*Patti Ison  
Denise Kalb*

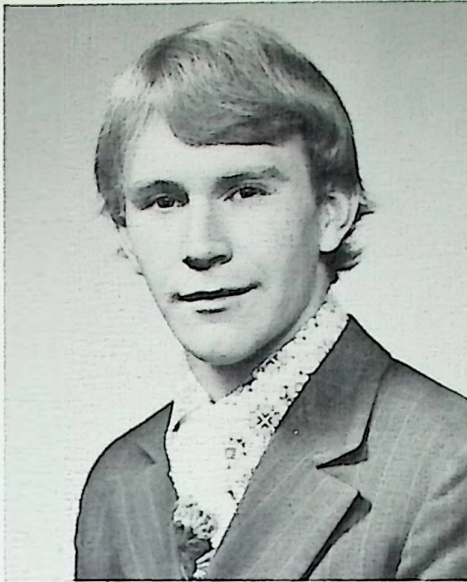


*Marcella Kalb  
Carl Keller*

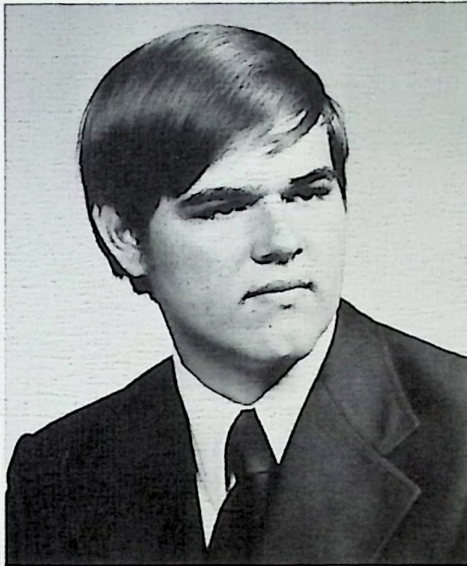
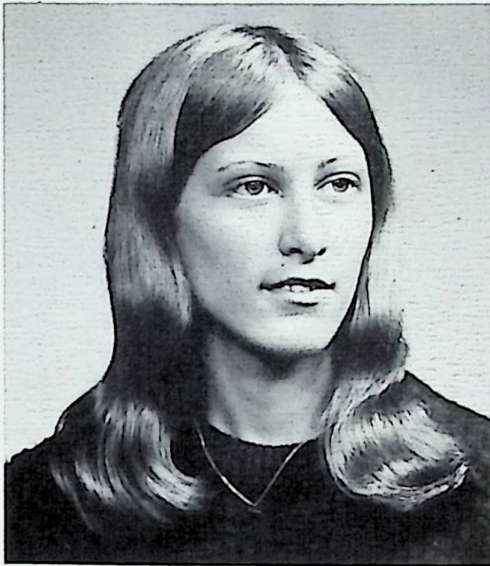


*Kathy Kelley  
David Leightenheimer*





*Melinda Locher*  
*Bill Lutz*

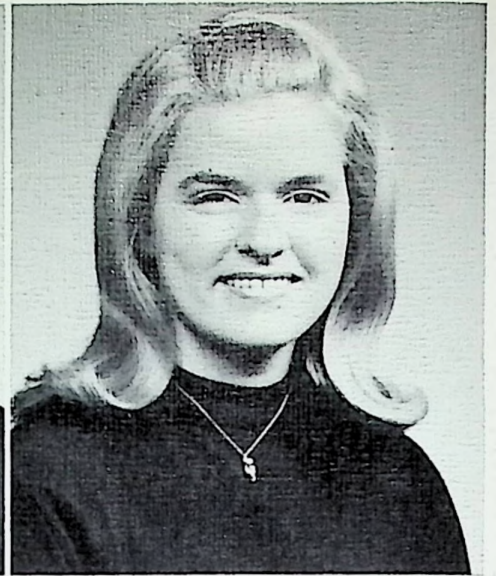


*Debbie Lybrook*  
*Richard McCleese*

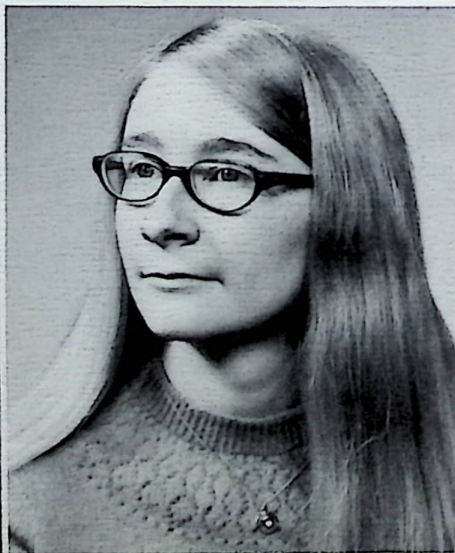
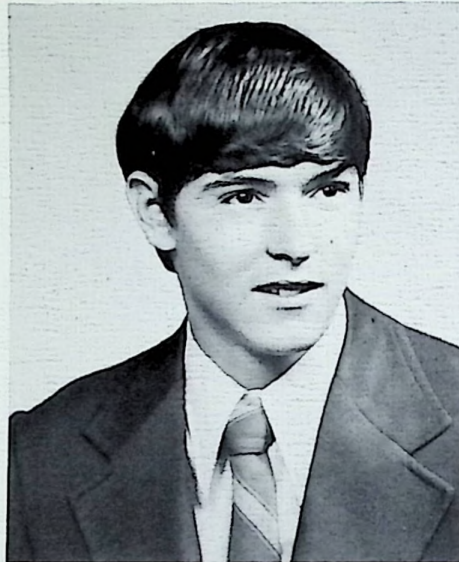
*Rosemary Malone*  
*Debbie Marcum*



*Steve Martin  
Connie Miler*

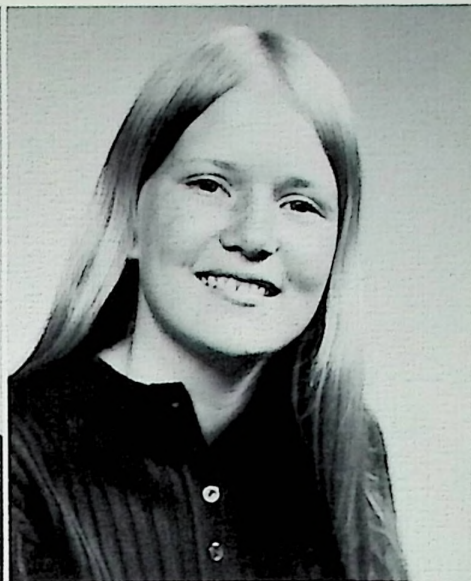
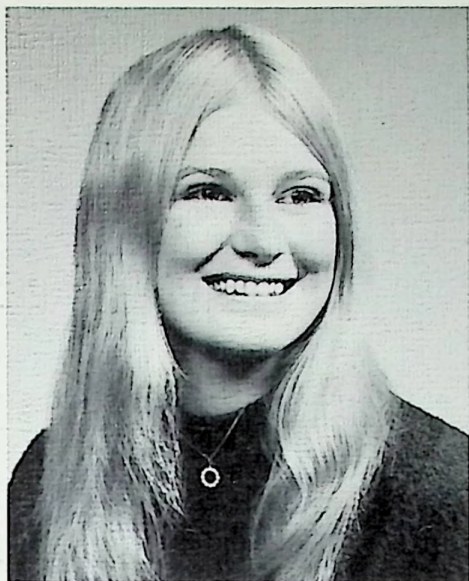


*Chuck Miller  
Louise Miller*

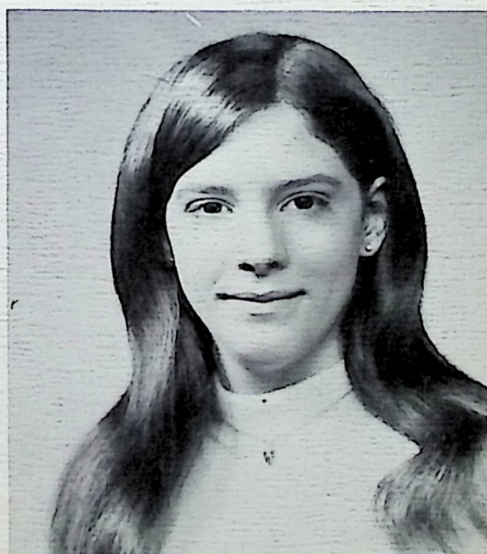


*Greg Montavon  
Karen Moore*

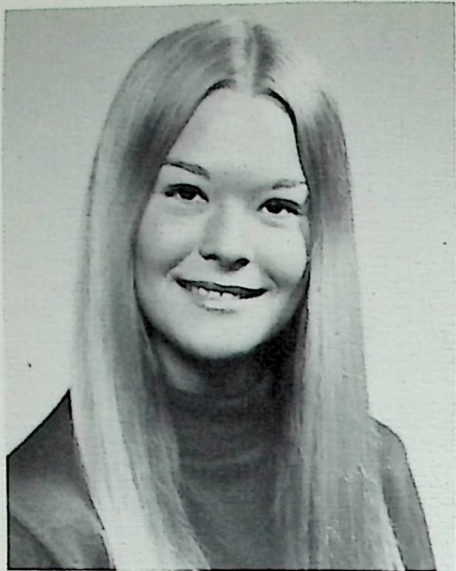
*Marilyn Moore  
Vicky Muncy*



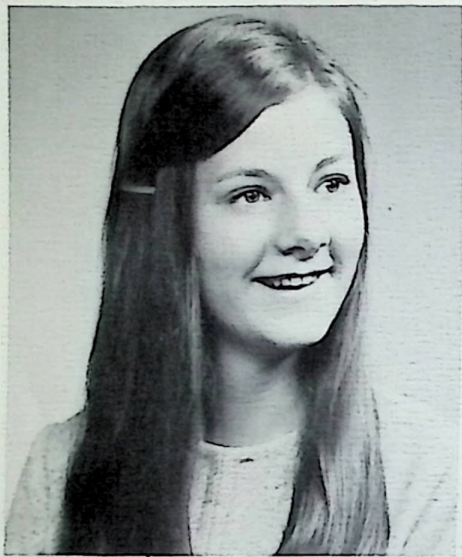
*Marcia Nourse  
Debby Patton*



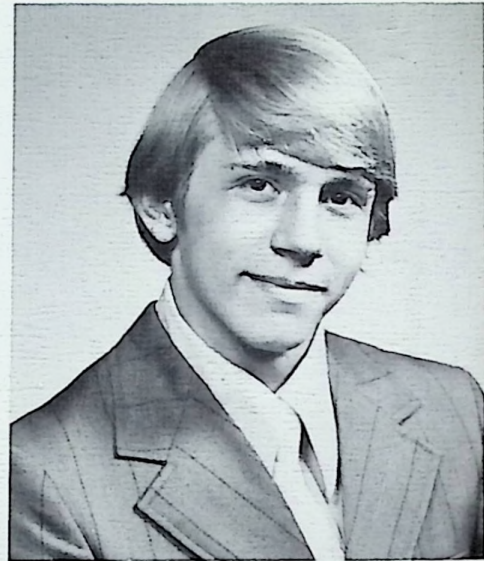
*Sandi Phillips  
Sharon Price*



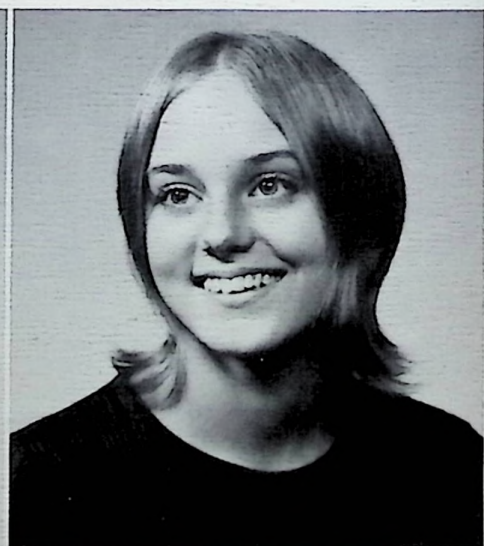
*Cheryl Ricks  
Debbie Robirds*



*Cathy Ruby  
Danny Scaggs*



*Karen Schuler  
Alesia Smoot*





*Chuck Spaulding  
Cindy Stamper*



*Kim Swayne  
Steve Thomas*

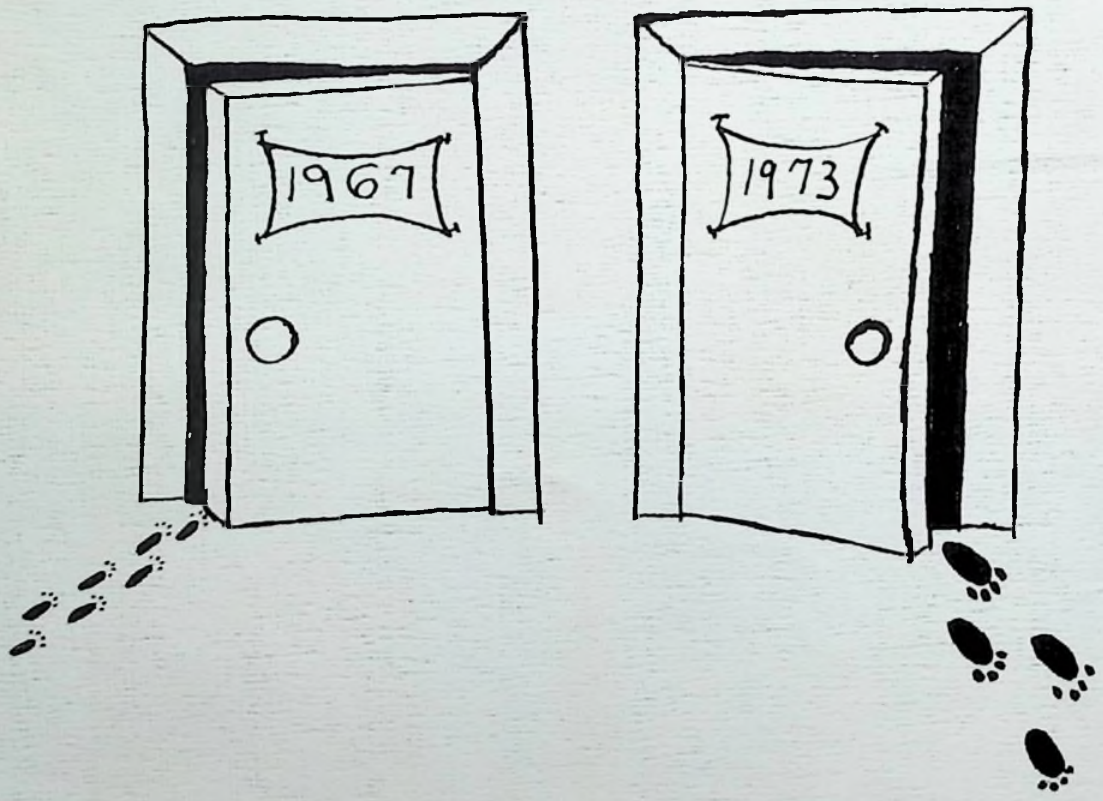


*Peggy Weakland  
Roseann Weekly*

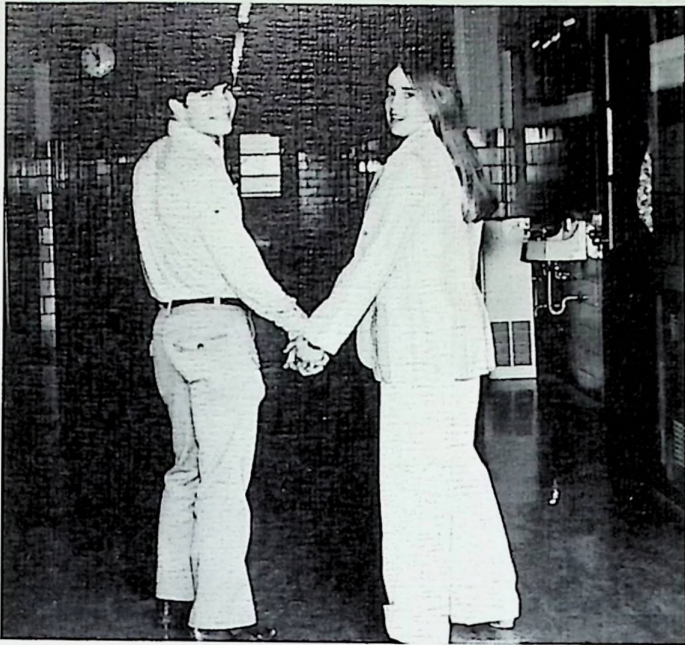




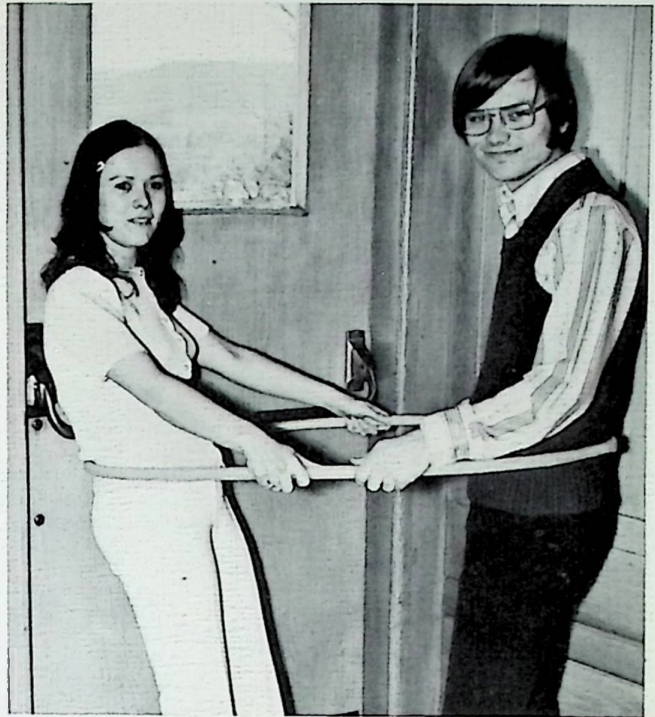
*Ron Whisman  
Theresa Winters*



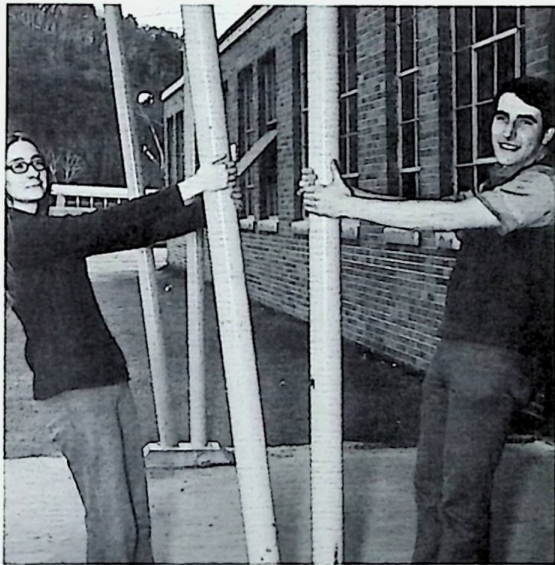
# Senior Superlatives



CUTEST COUPLE: G. Montavon, P. Flanagan



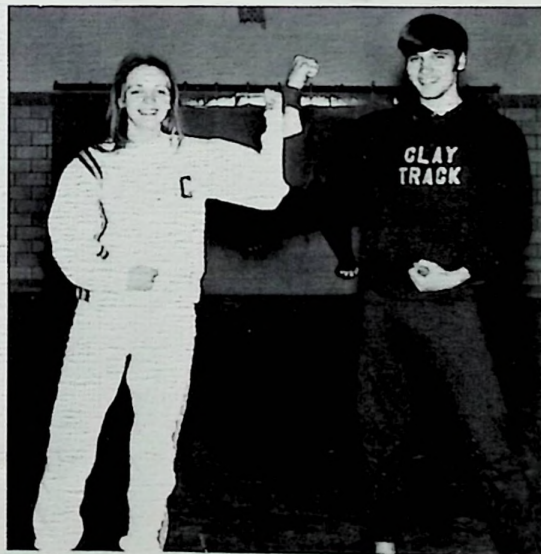
BEST ALL AROUND: S. Price, R. Canter



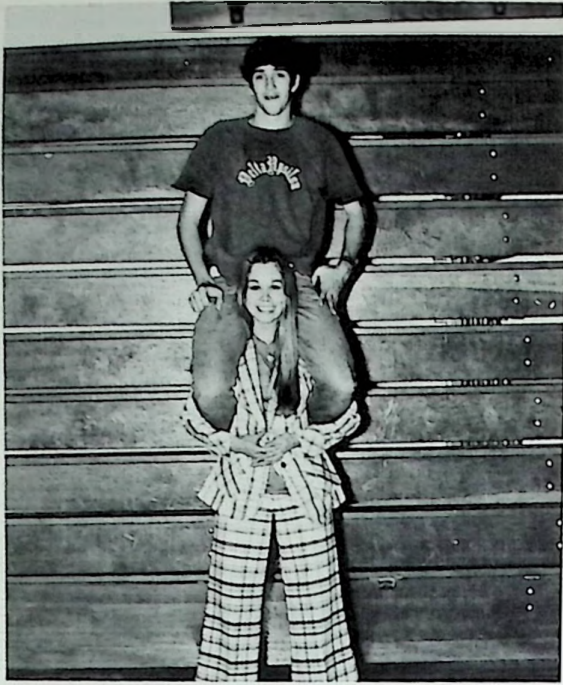
SHYEST: K. Moore, R. Fuller



LAZIEST: C. Franklin, D. Marcum



ATHLETIC: D. Robirds, G. Collier



CLASS CLOWNS: R. Vournazos, L. Miller



FRIENDLIEST: W. Colvin, M. Moore



TALENTED: J. Hunter, D. Patton



BEST DRESSED: T. Conkel, L. Dotson



CLASS FLIRTS: J. Hansgen, D. Leightenheimer



# Senior Class Play



CAST: 3rd ROW: C. Stamper, C. Ruby, J. McCulloch, M. Moore, D. Patton, C. Keller. 2nd ROW: L. Miller, J. Hansgen, C. Miller, L. Dotson, E. Collins, K. Gemperline, D. Marcum. FRONT: D. Leightenheimer, G. Montavon, G. Collier.

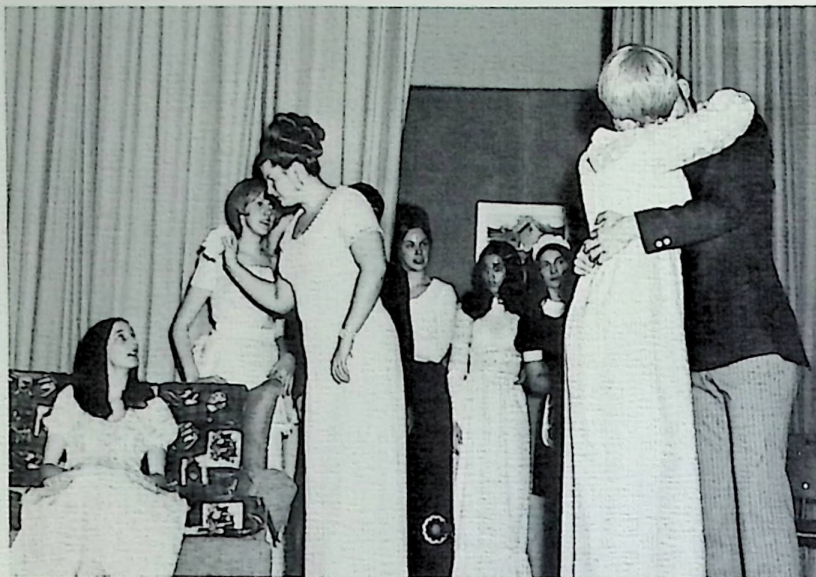


Romeo? Romeo? How much did you say you made?



By Jove! I believe you have your hand caught.

# "Here Comes Charlie"



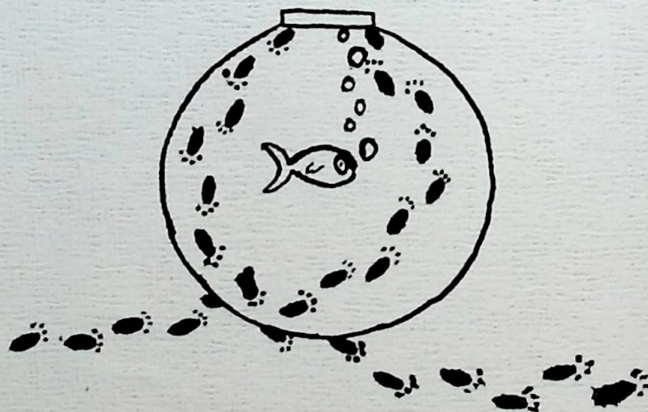
Finale .



Three ladies  
in waiting .



Behind the scenes: T. Conkel,  
J. Hunter, K. Kelly, J. Hansgen .



# *This Was Graduation*



Both girls and boys anxiously await



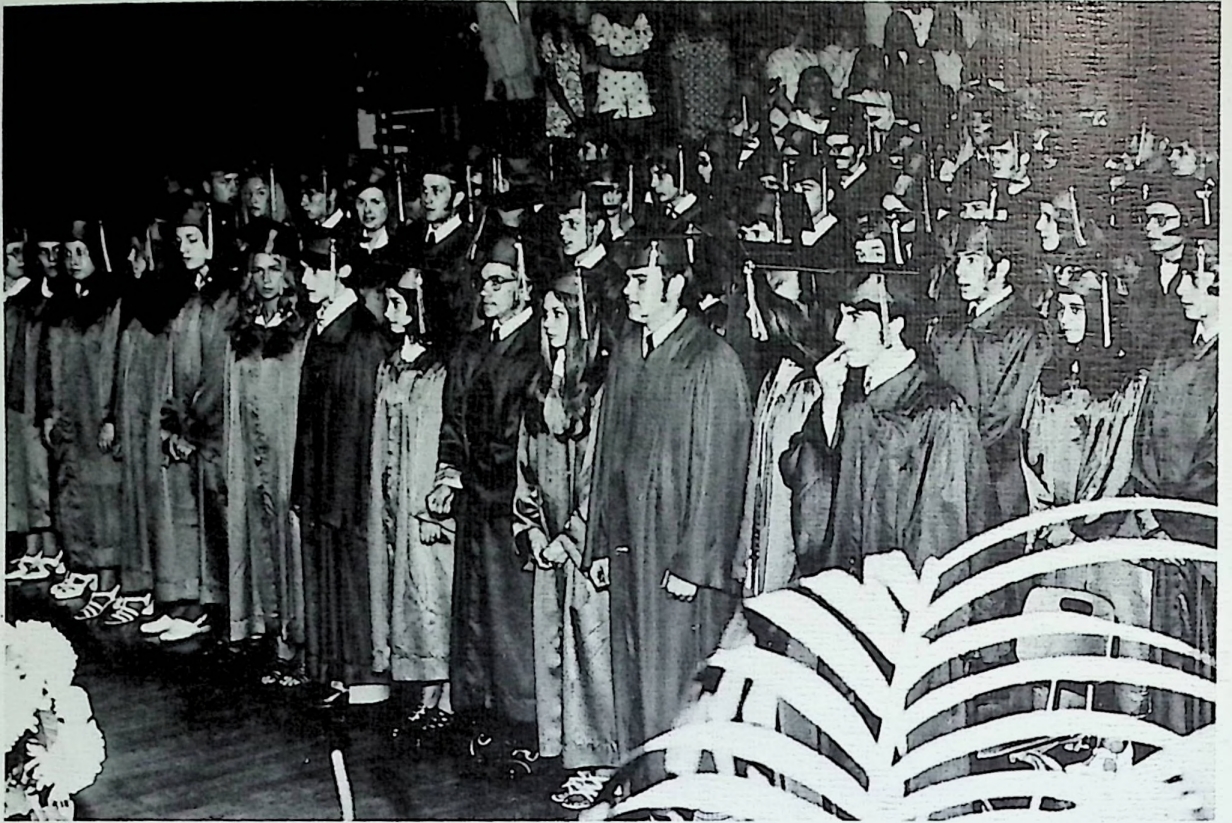
The gymnasium was filled



Debbie Justice and Steve Jenkins were the guides

# *Faces of Graduation*





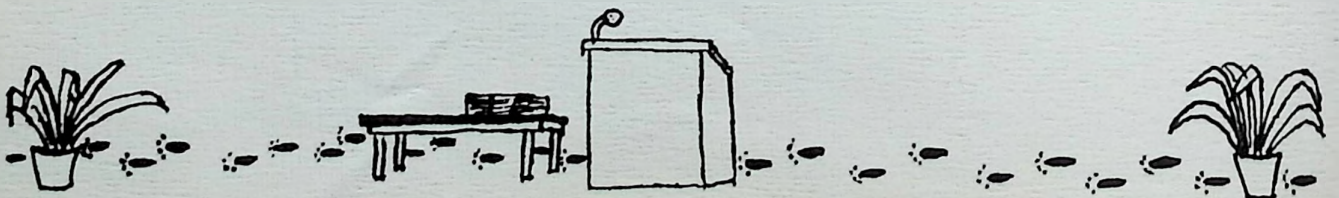
Out of the masses emerges the individual ... all that he is and all that he will become.



LAST MINUTE INSTRUCTIONS



And  
Everyone  
Departs



# Seniors Around



When I'm in class and things get too deep, I just give up and go to Sleep!

Charlie F.



Everyone enters happy? and leaves -



Seniors like Pick-ups??



D. L. is at it again.



Do we have lazy seniors?



More fun in Bachelor Living

Gather your wits and hold on fast,  
Your mind has learned to roam;  
The theme of the sermon has  
come unto us,  
Love will find a way.



Can Seniors  
hold the  
World up?



Oh! my  
Gosh!



# Remember

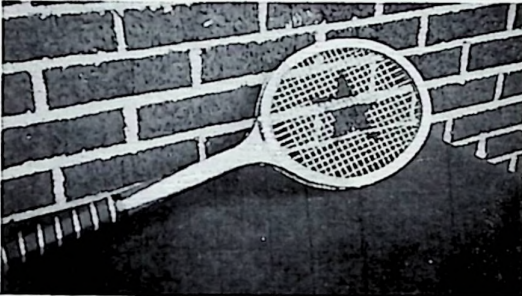
## 73



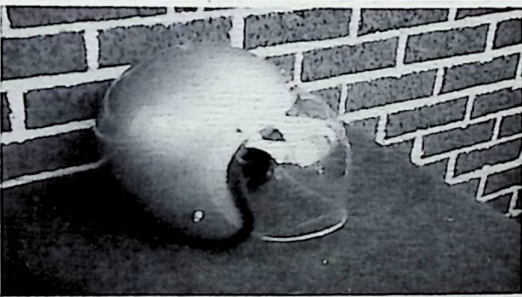
10 speed bicycles



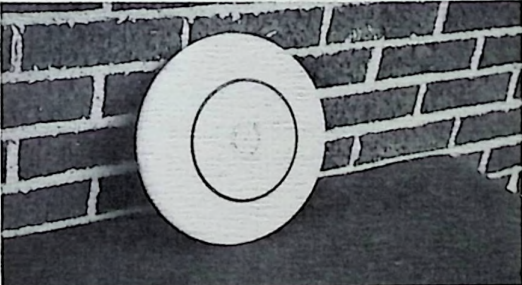
Those new saddle shoes



Tennis made it big in '73"



Motorcycle rides



Playing Frisbee



Graduation Picnic - What's going on down there?



Now we see ...



This was us!!!

# Index — Class of "73"

- ALLARD, RANDY: Co-operative Education 4; Cafeteria worker 1,2,3
- ALLEN, KATHY: Class Play 3; Mixed Chorus 1; Track 1; Home Ec. Style Show 1,2; Vo. Tech. Class Officer 3,4; Church Youth Group 2; Candy Striper 3
- BATTERSON, ROBERT: Representative for Vocational School in O.E.A. contest 3,4
- BEAUMONT, BOB: Attended Notre Dame 1,2; Track 3; Vo-Tech 3,4
- BELLAMY, JERRY: Track 1,2; VICA Club 3,4; Vo-Tech 3,4
- BROWNING, AUDREY: Track 1; Home Ec. Style Show 2; OEA 3,4; Vo Tech Student Senate 4; 4-H 2,3,4; Bowling Team 1
- BURTON, MIKE: Class Play 3
- CANTER, JEFF: Church Youth Group 2,3,4; Vo Tech 3,4
- CANTER, RANDY: Baseball 1,2,3,4; Basketball 1; Class Play 3,4; Student Council 1,3; Mixed Chorus 3; Class Pres. 3; Church Youth Groups 1; Summer Baseball 2,3,4
- CARPENTER, CINDI: Band 1,2,3,4; Class Play 3; Student Council 3; Majorette 3,4; Mixed Chorus 1,2; Scholarship Team 1; FTA 3,4; National Honor Society 4; Music Festival 2,3; Church Youth Groups 1; Candy Striper 3; Moved to Florida
- CARROLL, MIKE: Track 2; Vo-Tech 3,4
- CHANNEL, ALLEN: Vo-Tech Class Officer 3,4; Track 2; VICA 4
- CHILCOTE, SUE: Band 1,2,3; Class Play 3; Cheerleader 1,2,3; Mixed Chorus 2; Scholarship Team 1,2,3; Class Pres. 1,4; FTA 3,4; Band Council 3; Dance Band 1,2,3; Music Festival 1,2; Prom Hostess 2; Morehead Band Clinic 2; YMCA 1; Candy Striper 3; Class Treas. 4
- CLARK, DEBBIE: Cafeteria Worker 3; Mixed Chorus 1; Track 1,2,3; Home Ec. Style Show 1; VICA Officer 3; Vo-Tech 3,4; Church Youth Group 2; Candy Striper 3
- COLLIER, GREG: Attended Grove City High School 1,2,3; Basketball 4; Class Play 4; Track 4; Scouting
- COLLINS, ELAINE: Class Play 3,4; Mixed Chorus 1,2,3; Track 1; Library 1; Home Ec. Style Show 3; Music Festival 1,2; Home Ec. Club 3,4; YMCA 4; Church Youth Group 1,2,3; 4-H 1; Talent Review 1
- CONKEL, TERRY: Basketball 1,2,3,4; Mixed Chorus 1,2,3; Class Play 3,4; Projection Crew 1,2
- COLVIN, WAYNE: Shop Club 1; Vo-Tech 3,4
- CONKLIN, JEFF: Vo-Tech 3,4
- CONLEY, CATHY: Band 1,2,3,4; Class Play 3,4; Track 1,2; Music Festival 1,2; VICA Officer 4; Vo-Tech Student Senate 4; Newspaper 4; Annual 4; Class Officer 4; Bowling Team 3,4; 4-H 3; Summer softball 3; Summer bowling 3; Jr. Leadership 4; Vo-Tech 3,4
- DRANSFIELD, JAN: Scholarship Team 1; Church Youth Group 1,2,3; Volunteer Service 1,2; Bible School Teacher 1,2



DOTSON, LEA ANN: Class Play 3,4; Mixed Chorus 1; Yearbook 1; Office Staff 4; Home Ec. Club 3; Scouting 1; Church Youth Group 1, 2; Rainbow Girls 1,2,3,4; Candy Striper 3; Sunday School Teacher 1,2

FLANAGAN, PAM: Band 1,2,3; Basketball 1, 2,3; Class Play 3; Track 1,2,3; Library 1; Band Council 3; National Honor Society 3,4; Homecoming Attendant 3; Vo-Tech 3,4; Vo-Tech Yearbook 4; Newspaper 3; OEA 1st in Region Data Processing 3; Volunteer Work 3,4

FRANKLIN, CHARLES: Baseball 1,2; Mixed Chorus 3; Church Youth Group 1

FULLER, RICK: Class Play 3; Scholarship Team 2; Track 2,3; FTA 3

GAMBILL, JIM: Band 1,2,3; Basketball 2,3; Baseball 1,4; Mixed Chorus 2,3; Projection Crew 2,3; Pep Band 1; Church Youth Group 2, 3; Camp Counselor 3

GEMPERLINE, KYNA: Band 1,2,3,4; Class Play 3,4; Majorette 1,2,3,4; Mixed Chorus 2; Yearbook 1,2,3; Band Council 3,4; Home Ec. Style Show 3; Music Festival 1; Home Ec. Club 3; Talent Review 2; YMCA 3; 4-H 1; Volunteer Service 2,3,4

GLENN, GARY: Cafeteria Worker 1,2,3,4

GREGORY, PATTI: Track 1,2; Home Ec. Style Show 2; OEA 3,4; Vo-Tech 3,4; Newspaper 3,4; Church Youth Group 1; Candy Striper 2,3,4; Volunteer Service 1,3; Daughters of America 4

GROOMS, (BUTCH): Baseball 1,2; Vo-Tech 3, 4; Class Officer 3,4; VICA 4; 4-H 1; Summer Baseball 1; Sons of the American Legion 1

GROSE, LISA: Band 1,2,3,4; Class Play 3; Mixed Chorus 2,3; Scholarship Team 1,2,3,4; Yearbook 3,4; Science Club 2; Marshall Science Fair 2; Clay Science Fair 2; FTA 3,4;

Home Ec. Club 3,4; Home Ec. Style Show 3; Home Ec. Exhibit 4; Betty Crocker Award 4; Social Studies Club 2; Library 1; Stage Band 4; Music Festival 1,2,3,4; Rainbow Girls 1,2,3, 4; Candy Striper 2,3; Played with Cincinnati Symphony Orchestra 3; Youth in Politics 4; M.I.P., Band 4

HANSGEN, JANE: Band 1,2,3,4; Class Play 3,4; Majorette 2,3,4; Mixed Chorus 3; Track 1; Pep Band 1,2; Band Council 3,4; Home Ec. Style Show 3; Home Ec. Club 3,4; Music Festival 2,3; Talent Review 1; Church Youth Group 1,2,3,4; Rainbow Girls 1

HANSGEN, JEAN: Band 1,2,3,4; Class Play 3; Majorette 1,2,3,4; Mixed Chorus 3; Track 1, 2; Pep Band 2,3; Dance Band 3,4; Home Ec. Style Show 3; Home Ec. Exhibit 4; Home Ec. Club 3,4; Music Festival 3; Church Youth Group 1,2,3; Rainbow Girls 1; Talent Review 1,2; Volunteer Social Work 4

HENTHORN, STEVEN: Projection Crew 2; Shop Club 2; Vo-Tech 3,4

HOWARD, HAZEL: Track 1; OEA 3,4; OEA Officer 3; Vo-Tech 3,4; 4-H 3,4

HUNTER, JEFF: Band 1,2,3,4; Class Play 4; Student Council 2,3,4; Scholarship Team 1, 2,3,4; Class Treas. 1,4; Track 1; Yearbook 4; Science Club 4; Athletic Manager Basketball 1,2; Statistician 1,2; Library 1,2; Pep Band 1, 2,3; Dance Band 3,4; Band Council 3,4; Ohio University History Contest 4; Volunteer Service 1,3,4; Drug Abuse Council 4; Class Pres. 4; Stu. Coun. V. Pres. 3, Pres. 4; M.V.P.; Percussion 4

ISON, PATTI: Band 1,2,3,4; Class Play 3; Student Council 2; Majorette 2,3,4; Class Treas. 3; Church Youth Group 1,2,3

KALB, DENISE: Mixed Chorus 1; Vo-Tech 3, 4; Class Officer 4; Newspaper 3,4; OEA 3,4;

Home Ec. Style Show 2; Church Youth Group 1; Candy Striper 3,4

KELLER, CARL: Attended Minford High School 1,2,3; Class Play 4; Basketball 4; Baseball 4; YMCA 3; 4-H 1,2,3,4; Camp Counselor 3,4; Summer Baseball 1,2,4

KELLY, KATHY: Class Play 4; Mixed Chorus 1,2,3,4; Rainbow Girls 1,2,3,4; Candy Striper 3,4

LEIGHTENHEIMER, DAVE: Band 1,2,3,4; Baseball 2,3,4; Basketball 1,2,3,4; Class Play 3,4; Student Council 2; Mixed Chorus 1,3,4; Scholarship Team 2,3; Class V. Pres. 1,2; Track 1; Library 1,2; Pep Band 1,2,3,4; Band Council 3,4; Dance Band 2,3,4; National Honor Society 4; Music Festival 1,2,3,4; All Ohio Boys Band 3; Church Youth Group 1,2,3,4; 4-H 1,2; Summer Baseball 3,4; Volunteer Service 1,2,3,4; Class Pres. 2; John Philip Sousa Award 4

LOCHER, MELINDA: Band 1,2,3; Class Play 3; Student Council 4; Mixed Chorus 2; Scholarship Team 1,2,3; Track 1,2; Prom Hostess 2; FTA 3,4; Pep Band 1; Band Council 3; Dance Band 1,2,3; National Honor Society 4; Music Festival 1,2,3,4; Social Studies Club 2; Rainbow Girls 1; Candy Striper 3

LYBROOK, DEBBIE: Band 1,2,3,4; Class Play 3,4; Mixed Chorus 2; Pep Band 1,2,3,4; Dance Band 2,3,4; Band Council 1,2; Music Festival 1,2,3,4; Vo-Tech 3,4; Class Officer 4; Yearbook 4; Newspaper 4; Church Youth Group 1,2,3,4; Candy Striper 3,4; 4-H 3,4; Volunteer Service 1,2,3,4

MALONE, ROSEMARY: Cafeteria Worker 1,2,3,4; Library 4

McCLEESE, RICHARD: Baseball 3,4; Spanish Club 4; Church Youth Group 4; Summer Baseball 3,4; Church Basketball 4; Basketball Coach 2; Baseball Coach, Babe Ruth League 4

McCULLOCH, JIM: Baseball 1,2,3,4; Basketball 2; Class Play 4; Scholarship Team 1,3; National Honor Society 3,4; School Representative to Rotary Club 4; Church Youth Group 3,4; Summer Baseball 3,4; Volunteer Service 3

MARCUM, DEBBIE: Band 1,2,3; Class Play 4; Pep Band 1,2; Dance Band 3; Home Ec. Style Show 3; Music Festival 2,3; Bowling League 2,3,4; 4-H 2,3,4

MARTIN, STEVE: Baseball 3; Mixed Chorus 1,2; Statistician 2; Church Youth Group 1,2,3,4; 4-H 1

MILER, CONNIE: Class Play 3,4; Home Ec. Style Show 1,2; Vo-Tech 3,4; Newspaper 3,4; Annual 4; Church Youth Group 2,3,4; Candy Striper 2,3,4; Sunday School Teacher 2; Vo-Tech Student Senate 4; Volunteer Service 1

MILLER, CHUCK: Baseball 1,2,3,4; Basketball 1,2,3,4; Class Play 3; Mixed Chorus 3; Summer Baseball 3,4; Swim Team 1,2,3,4

MILLER, LOUISE: Class Play 3,4; Mixed Chorus 1,2,3; Class Treas. 2; Home Ec. Style Show 3; Home Ec. Club 3,4; Music Festival 2,3; Volunteer Service 3

MILLER, MARTIN: Baseball 1; Cafeteria Worker 1; Church Youth Group 1; Summer Baseball 1

MONTAVON, JEFF: Sons of American Legion 1; Vo-Tech 3,4

MONTAVON, GREG: Band 1,2,3; Class Play 3,4; Scholarship Team 1,2; Class V. Pres. 2,4; Track 1,2; School Representative to Rotary Club

MOORE, KAREN: Band 1,2,3,4; Mixed Chorus 2,3; Scholarship Team 1,2,3,4; Yearbook 1; Science Club 2; Clay Science Fair 2; Marshall Science Fair 2; FTA 3,4; Library 1; Pep

Band 2,3; Dance Band 4; Music Festival 2;  
Social Studies Club 2; Home Ec. Club 3,4;  
Home Ec. Exhibit 4; National Honor Society  
3,4; Officer 4; Candy Striper 3

MOORE, MARILYN: Class Play 3,4; Mixed  
Chorus 1; Scholarship Team 1; Yearbook 3;  
FTA 3; Bowling Team 1,2

MORITZ, DANNY: Cafeteria Worker 1,2,3,4

NOURSE, MARCIA: Band 1,2,3,4; Class Play  
3; Mixed Chorus 2,3,4; FTA 3,4; Pep Band 1,  
2,3; Dance Band 1,2,3; National Honor Socie-  
ty 4; Music Festival 1,2,3; Morehead Band  
Clinic 2,3; Church Youth Group 1,2,3,4; Can-  
dy Striper 2,3; Sunday School Teacher 1,2,3,  
4; 4-H Band 1,2,3,4; M.V.P., Band 4

PATTON, DEBBY: Band 1,2,3,4; Class Play  
3,4; Mixed Chorus 2; Science Club 2; FTA 3,  
4; Pep Band 1,2,3,4; Dance Band 1,2,3,4;  
Music Festival 1,2,3; Church Youth Group 1,  
2,3,4; Candy Striper 3,4; Sunday School  
Teacher 1,2,3,4; 4-H 2,3; Volunteer Service  
1,2,3,4; M.V.P., Band 4

PHILLIPS, SANDI: Band 1,2,3; Class Play 3,  
4; Mixed Chorus 2; Athletic Manager, Track  
1,2; Music Festival 1,3; Vo-Tech 3,4; VICA  
4; YMCA 1,2,3,4; Scouting 1,2; Church Youth  
Group 1; Rainbow Girls 1,2,3,4; Sunday School  
Teacher 1,3; Candy Striper 1,2,3

POOLE, JOE: Track 2; Vo-Tech 3,4

PRESTON, MARCELLA KALB: Home Ec. Style  
Show 1; Vo-Tech 3,4; Class Officer 3; News-  
paper 3; 4-H 1

PRICE, SHARON: Class Play 3,4; Class Sec.  
4; Track 1,2; Office Staff 4; United Fund Paint-  
ing Contest 2; Illustrated Concert Programs 2,  
3,4; "Hoop" designer 3,4; YMCA 2; Rainbow  
Girls 1,2,3,4; Bowling Team 1,2,3,4

RICKS, CHERYL: Band 1,2,3,4; Class Play 3,

4; Cheerleader 3,4; Student Council 1; Major-  
ette 1,2; Class Sec. 3; Pep Band 2; Band Coun-  
cil 3,4; Freshman Attendant 1; Social Studies  
Club 2; Homecoming Queen 4; "Miss River  
Days" 4; Rainbow Girls 1,2,3,4; Talent Review  
1; Swim Team 1

RIGGS, RON: Vo-Tech 3,4

ROBIRDS, DEBBIE: Band 1,2,3,4; Class Play  
3; Majorette 2,3,4; Track 1,2,3,4; Pep Band  
1,2; National Honor Society 3,4; Music Festi-  
val 2; Officer of Student Senate at Vo-Tech 4;  
VICA Officer 4; Newspaper 4; Rainbow Girls 2;  
School Revue 2

RUBY, CATHY: Band 1,2,3,4; Class Play 3,  
4; Mixed Chorus 2,4; Scholarship Team 2,3,4;  
Class Sec. 1,2; Yearbook 1,2; Science Club 2,  
3; FTA 3,4; Library 1,2; Pep Band 4; National  
Honor Society 3,4; Music Festival 2,4; Social  
Studies Club 2; Church Youth Groups 1,2,3,4;  
4-H 1,2,3,4; Athens Band Competition 1; Play-  
ed with Cincinnati Symphony Orchestra 3

SCAGGS, DANIEL: Track 2; Shop Club 1,2;  
Vo-Tech 3,4

SCHULER, KAREN: Band 1,2,3,4; Class Play  
3; Student Council 3; Drum Majorette 3,4;  
Mixed Chorus 2,3; Track 1,2,3,4; Pep Band 1,  
2,3,4; Band Council 2,3,4; Music Festival 1,  
2,3,4; Played with Cincinnati Symphony Orch-  
estra 3; Social Studies Club 2; Home Ec. Club  
4; Home Ec. Exhibit 4; Church Youth Group 1,  
2,3,4; Sunday School Teacher 1; Volunteer  
Service 1; Rainbow 1,2,3,4; Swim Team 1;  
Talent Review 1; Youth in Politics 4

SCAGGS, ROBERT: Vo-Tech 3,4

SMOOT, ALESIA: Cheerleader 1; Mixed Cho-  
rus 1; Vo-Tech 3,4

SPAULDING, CHUCK: Projection Crew 1;  
Shop Club 1; Vo-Tech 3,4

STAMPER, CINDY: Class Play 3,4; Mixed Chorus 1,2; Class V. Pres. 3; Yearbook 2; FTA 3,4; Office Staff 4; Library 1; Homecoming Attendant 4; Candy Striper 3; 4-H 1,2,3,4

SUTER, BILL: Basketball 1; Vo-Tech 3,4; Track Team 1,2; 4-H 1,2,3,4

THOMAS, STEVE: Track Team 1,2,3,4; Vo-Tech 3,4

VOURNAZOS, RICK: Basketball 3,4; Student Council 4; Went to P.H. S. 1,2; Yearbook 1; Track 4; Attended Portsmouth High School

WEAKLAND, PEGGY: Class Play 4; Mixed Chorus 1,2,3,4; Typing Contest 3; Music Festival 3,4; Church Youth Group 1,2; Sunday School Teacher 3

WEEKLY, ROSEANN: Class Play 4; Home Ec. Fair 2,3

WHISMAN, RONNIE: YMCA 4; Church Youth Group 4; 4-H 1,2; Summer Baseball 1,3

WINTERS, THERESA: Scholarship Team 1; Track 1,2,3,4; Social Studies Club 2; VICA 3,4; Vo-Tech Newspaper 3,4; Church Youth Group 1,2; National Honor Society 3,4



Junior's

*Junior Class Presents:*

*No More Homework*





FRONT: Gwen Elliott, Debbie Justice, Roxanne Gulley, Brenda Clausing, Rhonda Wright, Debbie Kight. ROW 2: Phil Bickel, Jim Cross, Oral Gulley, Jeff Justus, Ron Horsley. ROW 3: Brent Richard, Janice Johnson, Ray Willis, Beth Kaut, Lori Grose, Daryl Belcher.

FRONT: S. Lenyo, J. McCleese, J. Montgomery.  
 BACK: S. Jenkins, T. Porter, B. Winters, D. Widdig, K. Harris.

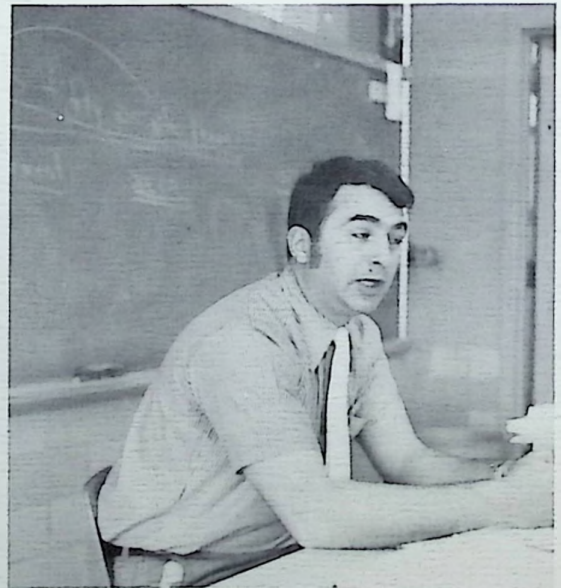
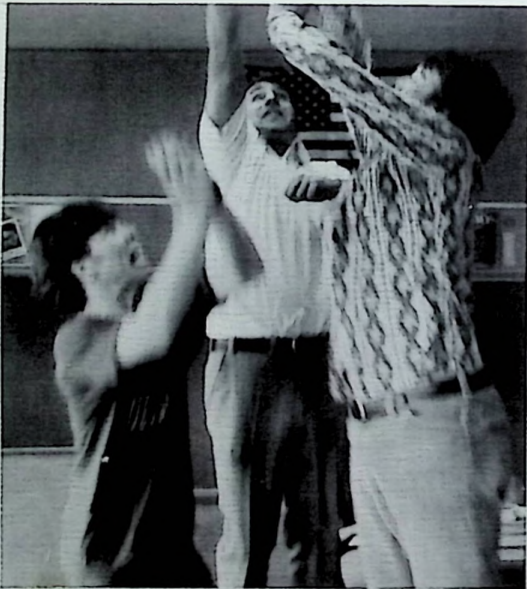
B. Ratliff, M. Walter, M. Porter, K. Adkins, D. Schuler.





JUNIOR CLASS OFFICERS: Jeff Justus, Brent Richard, Brenda Ratliff, and Marijane Walter.

ADVISOR: Mr. LeMaster







Karen Adkins



Kathy Adkins



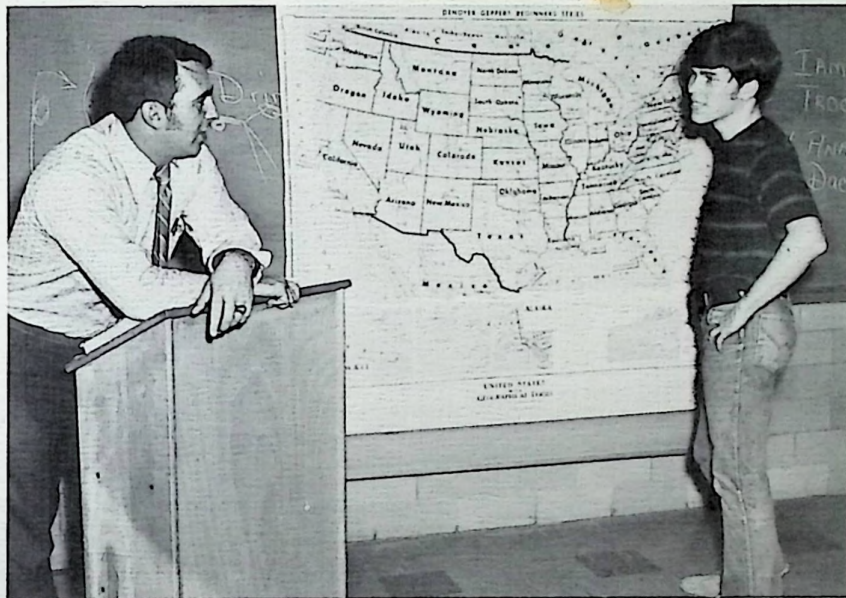
Anna Ashmore



Dianne Azbell



Beverly Bailey



Beth Barrett



Brent Barrett

Absent when pictures were made



Don Barry



Daryl Belcher



Monica Bentley



Phil Bickel



Karla Bloomfield



Richard Brown



Steve Burt



Kathy Call



PHOTO  
Not Available



Eddie Caudill

Linda Clark





Brenda Clausing  
Jim Cross  
Mark Crumm

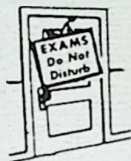


PHOTO  
Not Available



Joyce Darst  
Danny Davis  
Lana Flanagan

David Foster  
Wayne Fox  
Teresa Fuhr



PHOTO  
Not Available

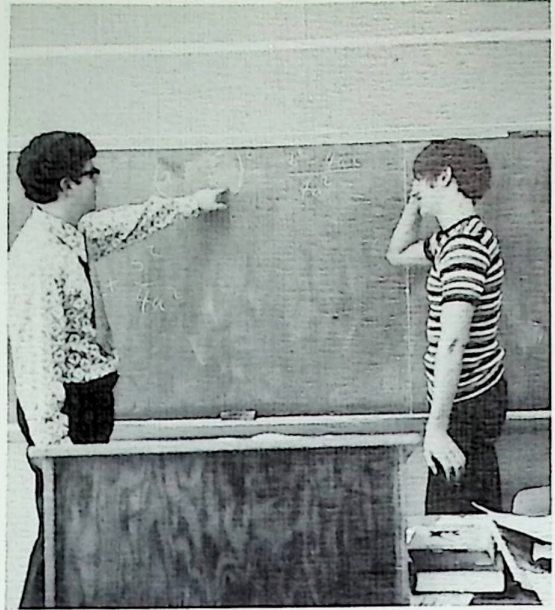


Mary Gable  
Lori Grose  
Oral Gulley





Typing I!



I don't understand.



Roxanne  
Gulley



Gwen  
Haney  
Elliot



Sandra  
Haney



Kevin  
Harris



Ron  
Horsley



Eddie  
Hughes



Shauna  
Hulett



Mark  
Hunter



Caroline  
Inlow



Denise  
Jackson



Peek-a-boo!



Steve  
Jenkins



Janice  
Johnson



Mmm Good. Mmm Good!



Debbie  
Justice



Jeff  
Justus



Beth  
Kaut



Debbie  
Kight



Mike  
Knauff



Susan  
Lenyo



Janie  
McCleese



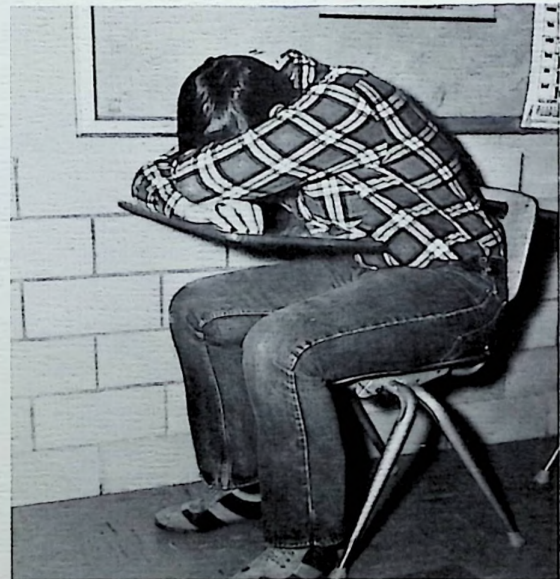
Robin  
Mercer



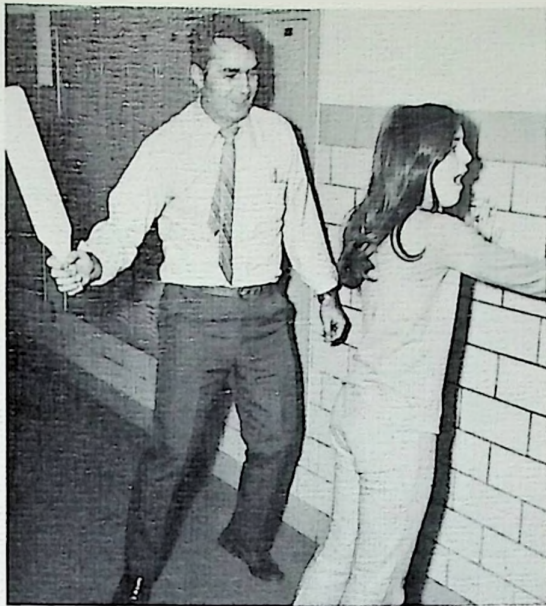
John  
Montgomery



Greg  
Mullinnix



An exciting day in the life of a student at Clay!



OUCH!



Good bye, Bickel.



Kathy  
Payton



Teresa  
Partuset



Mary  
Porter



Tom  
Porter



Linda  
Powell



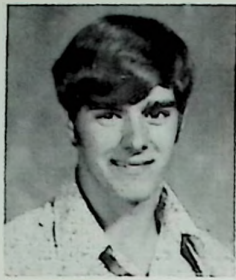
Brenda  
Ratliff



Daryl  
Rhoden



Debbie  
Rhoden



Brent  
Richard



Ron  
Riggs



Jeff  
Roberts



Greg  
Robertson



Larry  
Ruggles



Mark  
Scaff



Judy  
Scherer



Dale  
Schuler

Lori Grose accepting 2nd place award  
in the Voice of Democracy Contest.



Jr. English Singing Group.







Cheryl  
Simon



Billie  
Slack



Barb  
Smith



Leigh  
Smith



Marsha  
Spaulding



PHOTO  
Not Available

Steve  
Spradlin



Current Events!



Mike  
Stewart



Patty  
Stewart



Wayne  
Thompson



Debbie  
Tipton



Linda  
Tipton



Mike  
Trapp



Scott  
Vice



Marijane  
Walter



Bertha  
Waring



John  
Wessell



Debbie  
Widdig



Ray  
Willis



Barbara  
Winters



Rhonda  
Wright



Arnold Scott sat here!





Sophomores

President  
Rick Martin

Vice-President  
Mike Lawless

Secretary  
Claudia Duckworth

Treasurer  
Teresa Gulley



NOT  
SHOWN



Bill Baker  
Jeff Benner  
Rita Blanton

Phil Bloomfield  
Ramona Bloomfield  
Kim Boggs



Tom Bridwell  
Debby Burchett  
Jeff Burke



Cindy Burns  
Terry Burns  
Terry Burton



Jeff Canter  
Diane Chandler  
Dreama Clark



Cheryl Coldiron  
Patty Colovin  
Terri David



Cheryl Davis  
Phil Day  
Claudia Duckworth



Diana Durham  
Steve Easter  
Tim Erwin



Joyce Fannin  
Chris Franklin  
Susie Frazier



Barry Gilliam  
Mark Gilliam  
Gerry Gilliland



Teresa Gulley  
Bonnie Herles  
Chuck Hess



Randy Hiles  
Marquita Hoover  
Sam Horsley



PHOTO  
Not Available



Sorry NO PHOTO

Neil Howard  
David Huston  
Larry Huston

Donna Ison  
Bruce Kalb  
John Kessinger



Mike Lawless  
Kim Manely  
Rick Martin

Marilyn McCoy  
Bryan McGlone  
Ron McLaughlin



LuAnn McManus  
David Meyers  
Harry Milar

Gary Miller  
Mike Miller  
Jeana Mullinnix





PHOTO  
Not Available



Gary Muncy  
Tom Noel  
Mark Osborne

Bonnie Owens  
Cheryl Payne  
Randy Payton



Diane Perkins  
Cathy Rammel  
Larry Rickey

Tony Rockwell  
Patty Rockwell  
Jeanine Royal



PHOTO  
Not Available



Greg Schneider  
Sharon Shaw  
David Shoemaker





Tena Thomas  
Mark Thompson  
Cindy Thurman



Marcia Todd  
Patti Todd  
Patty Trimble



David Van Bibber  
Dwight Van Bibber  
Ruthie Van Bibber



Kobi Vulgamore  
Hank Waring  
Rick Webb



Sharon Weekly  
Debbie Whisman  
Debbie Whitt



Rose Skaggs



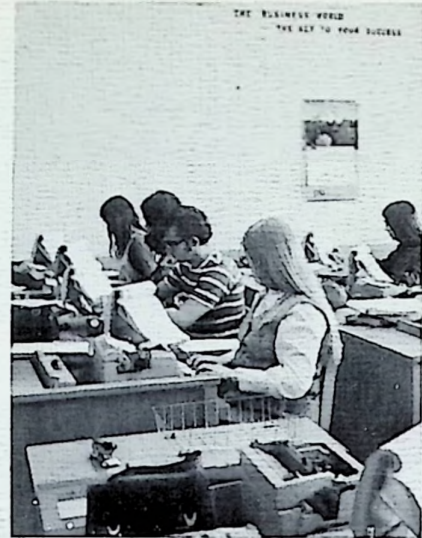
Susan Sparks



Gib Spradlin



Our year in Geometry was hard but learning to make triangles was fun necessary to the background needed for other Math classes.



Typing I was a challenge at first but soon became part of our daily routine.

Mrs. Miller's 1st period English class was so exciting that everyone learned a lot.



Walter Sword



Carol Williams



Julia Williams

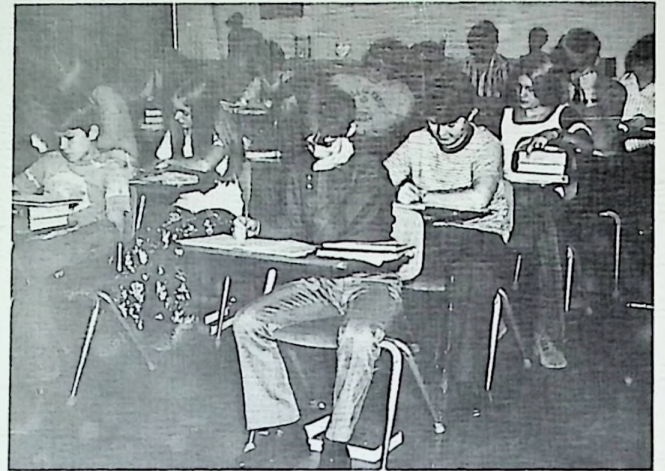


Dan Wright



Freshmen

The first year of high school proves to be very challenging.



T. Abendshein

D. Booth

J. Burns

M. Clausing

D. Azbell

D. Bowe

L. Castle

J. Clevenger

R. Basham

B. Bradley

K. Charlton

D. Collins

L. Bayless

T. Bridwell

F. Boldman

J. Burns



S. Cox



J. Davis



D. Dautel



J. Dotson



B. Dransfield



P. Duncan



R. Elam



C. Foster

### Freshman Class Officers

L. Estep

P. Gemperline

C. Euton

D. Gibson



J. Heslep

S. Horsley

R. Hollis

D. Howard

M. Horsley

C. Jessee



C. Gilliland

J. Kirkpatrick

P. Gookin

B. Knauff

H. Grooms

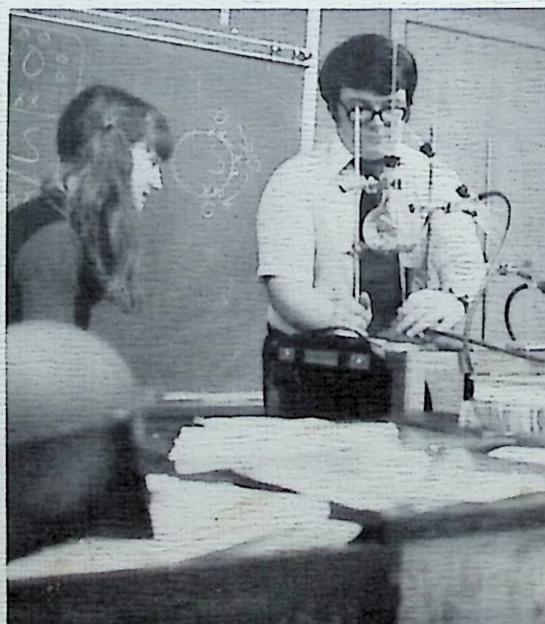
K. Kohser

R. Gulley

S. Kohser

S. Gulley

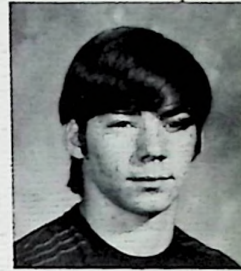
S. Lewis



Chris McCreary watches as Mr. Walker demonstrates an experiment.



The freshman boys' basketball team made a fine showing as they were undefeated during the regular season.



R. McCleese

P. McGraw

J. Milar

D. Moritz

C. McCreary

D. Marcum

D. Moore

F. Mowery

S. McCulloch

M. Mershon

T. Moore

R. Multer



P. Rammel

R. Reed



Sherwood Forest???



R. Muncy

N. Peters

J. Ratcliff

S. Rhoden

S. Nibert

R. Phillips

S. O'Connell

D. Poole

C. Owen

D. Porter

S. Pack

D. Porter





E. Riehl

G. Rucker

M. Saunders

J. Simon

A. Roberts

Y. Ruggles

C. Scherer

J. Smith

B. Rockwell

B. Runyon

T. Schuler

M. Smith



One project of the Freshman biology class was dissecting and examining crayfish.



B. Withers

D. Wright



B. Whisman

A. Willis

P. Winters



R. Smoot

R. Spaulding

L. Spires

B. Spriggs

C. Steele



M. Stewart

B. Todd

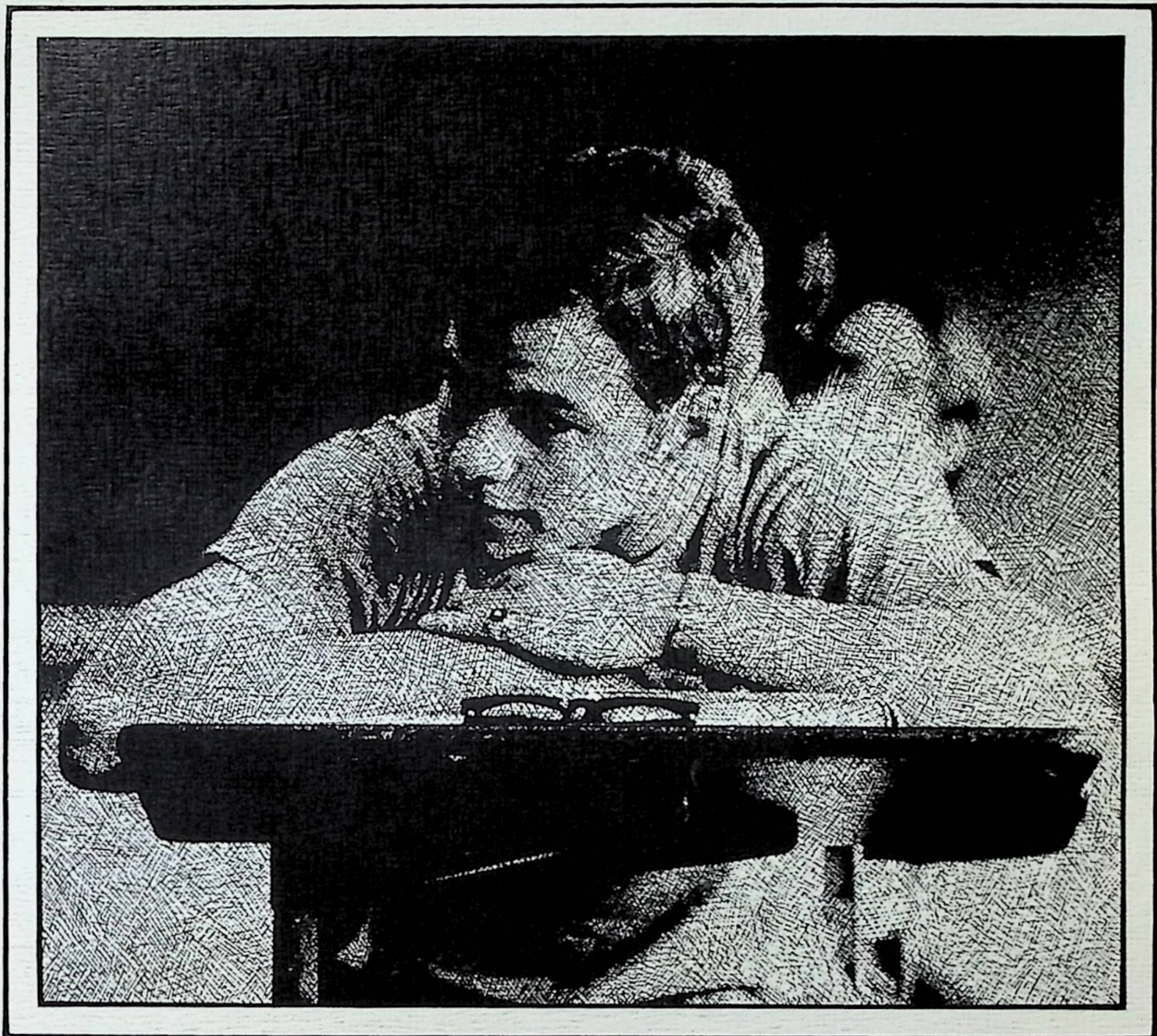
A. Triplett

J. Warner

J. Weakland

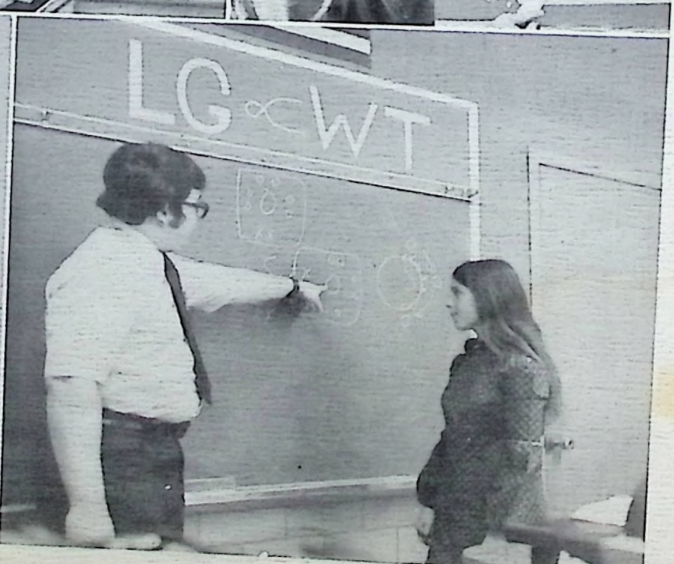
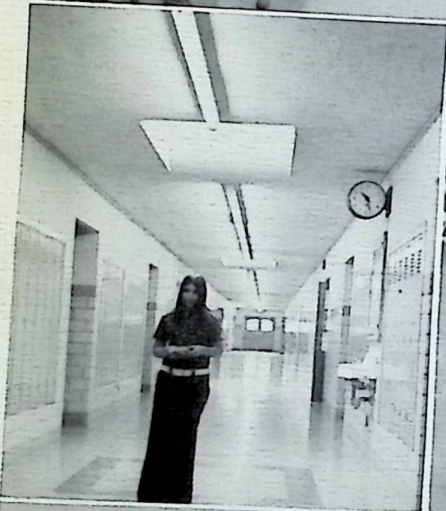


Many freshman boys participated in shop.



Junior High

# Candid



# *Eighth Grade*



Tim Adkins



Melinda Arthur



Jerry Bailey



Tom Baldrige



Betty Barry



Barbara Bates



Dave Batterson



John Bayless



Brad Benner



Carlotta Bentley



Paul Bloomfield

Dave Bramlette

Clyde Broughton

Teddy Buffington

Terry Buffington



Eddie Call



Vickie Campbell



Danny Clausing



Debbie Clevenger



Bret Collier



Cheri Conley



Matt Cottle



Tamela Cooper



Pam Craft



John Davis



Linda Debo



Sharon Delotelle



Greg Dingess



Linda Durham



Julie Eastwood



Brian Estep



Kathy Euton



Tina Felts



Deana Fitch



Karl Foster

Cheryl Franklin



Steve Fuller



Karen Gilliland



Cathy Glenn



Mark Greene



Kenny Hall



Brenda Haney



Paul Harris



Margaret Hoover



Richard Hoover



Debra Howell



Jim Hovme



Marcia Hughes



Linnett Holt



Cathv Irish





Kim Kenney



Jeff Kight



Lisa Kouns



Bob LeMaster



Shirley LeMaster



Lorrie Lutz



Vicki Masters



Mary McCoy



Bill McCreary



Larry McCulloch



Charles Miller



Mary Mowry



Beth Patrick



Shelly Pavey



Brian Payne



Pam Perkins



Randy Pertuset



Chuck Phillips



Lori Porterfield

Brian Ramsey



Tim Reed



Jeanie Richard



Cindy Robinson







Bobby Royal



Kim Sanders



Dale Scaff



Paul Scherer



Susan Sell



Keith Shoemaker



Rachel Skaggs



Gary Souders



Brian Sparks



Jeff Stroud



Jeff Swayne



Brenda Sword



Rachel Taylor



Rhonda Thompson



Kim Trapp



Tary Vulgamore





Steve Waring



Vicki Whisman



Howard Whitt



Sandra Williams



Barb Winters



## *Seventh Grade*



Anne Adams



Jay Batterson



Marty Belcher



Donnie Booth



Cathy Braden



Debbie Brown



Kelly Brown



Bill Burchett



Chris Burns



Tim Clark



Lisa Clausing



Keith Collier



Billy Colvin



Cindy Conley



Hazel Cooper

Mike Cottle



Tim Cottle



Altha May Crabtree



Jeff Craft



Kathy Crager



Jeannie Crum



Brent Crumm



Cindy Davis



Mark Davis



Yolanda Day



Terri Duckworth



Rhonda Duduit



Tina Engle



Teresa Erwin



Teri Flinchbaugh



Nancy Foster

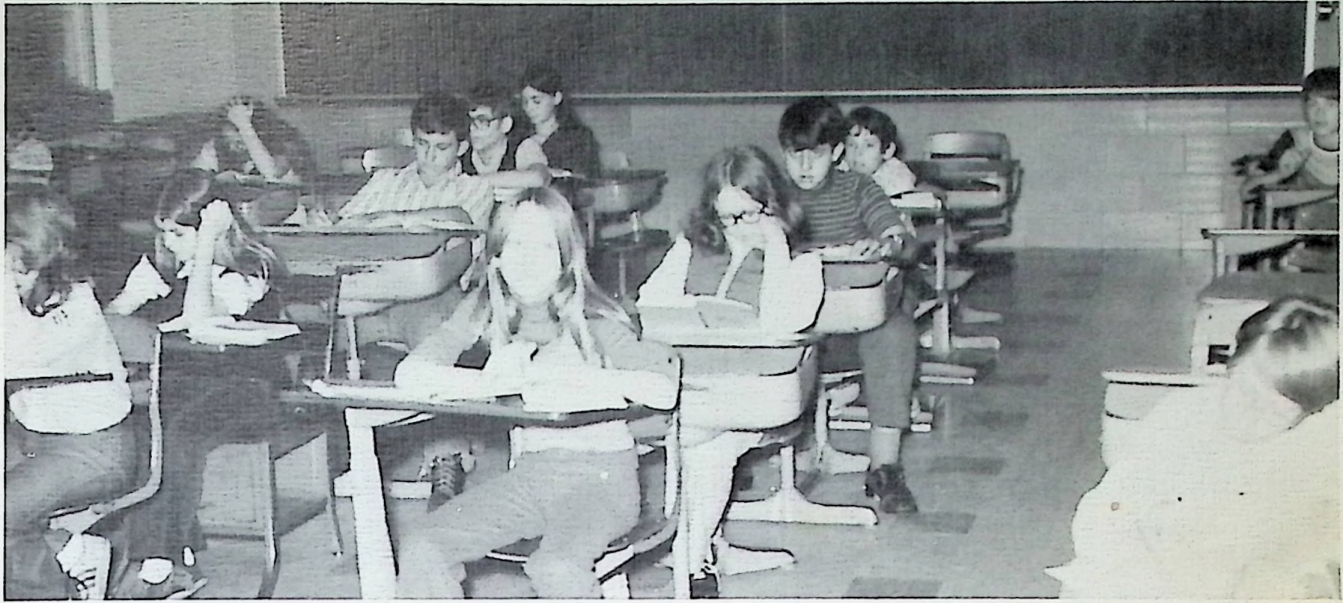


Teresa Franklin



Orvie Gable





Joe Gumm

Rita Haney

Jim Hess

Mark Hollis

Ronda Holt



Darla Hoover

Mike Horton

Regina Ingles

Yvonna Ison

Wayne Jarrells



Vicki Jesse

Mark Keaton

Greg Kight

Julie Knittel

Doug Leightenheimer



Brian Loper



John Montavon



Diane Meyers



Tammy Moore

Hugh Mowery  
Steve Muncy  
Robin Musick



Lynn Nance  
Sherrí Newkirk  
Sheila Pack



David Parker



Jay Ramsey



Ken Reed



Eddie Rickey



Gina Robertson





Kathy Saunders



Cynthia Scags



Sandy Schneider



Bill Slaymaker



Brian Smith



Elizabeth Spencer



Donna Spires

Tina Spriggs

Joey Taylor

Carole Thomas



Bart Todd



Brian Todd



Kellie Vice



Patti Vournazos



Lajohna Warner



Connie Weekly



David Wright



Beth Yinger

### BASKETBALL SCORES

Clay	Opponents	
44	Valley	20
51	McDermott	12
56	Otway	23
62	* Vernon	6
44	Beaver	54
50	McDermott	21
52	* Minford	39
33	Beaver	19
25	* Wheelersburg	28
40	Valley	33
31	* Green	13
33	* South Webster	15
39	McKinley	46
53	* New Boston	32
43.8	averages	25.8

\* League Games      Record - 11-3

TEAM MEMBERS: FRONT ROW: J. Bailey, D. Clausing, M. Cottle, P. Simon, M. Belcher, and J. Gumm. SECOND ROW: O. Gable, P. Bloomfield, M. Greene, B. Estopp, and B. Collier. THIRD ROW: Coach Leive, J. Batterson, J. Hess, L. McCulloch, E. Call and J. Hoyme.







Debbie Clevenger

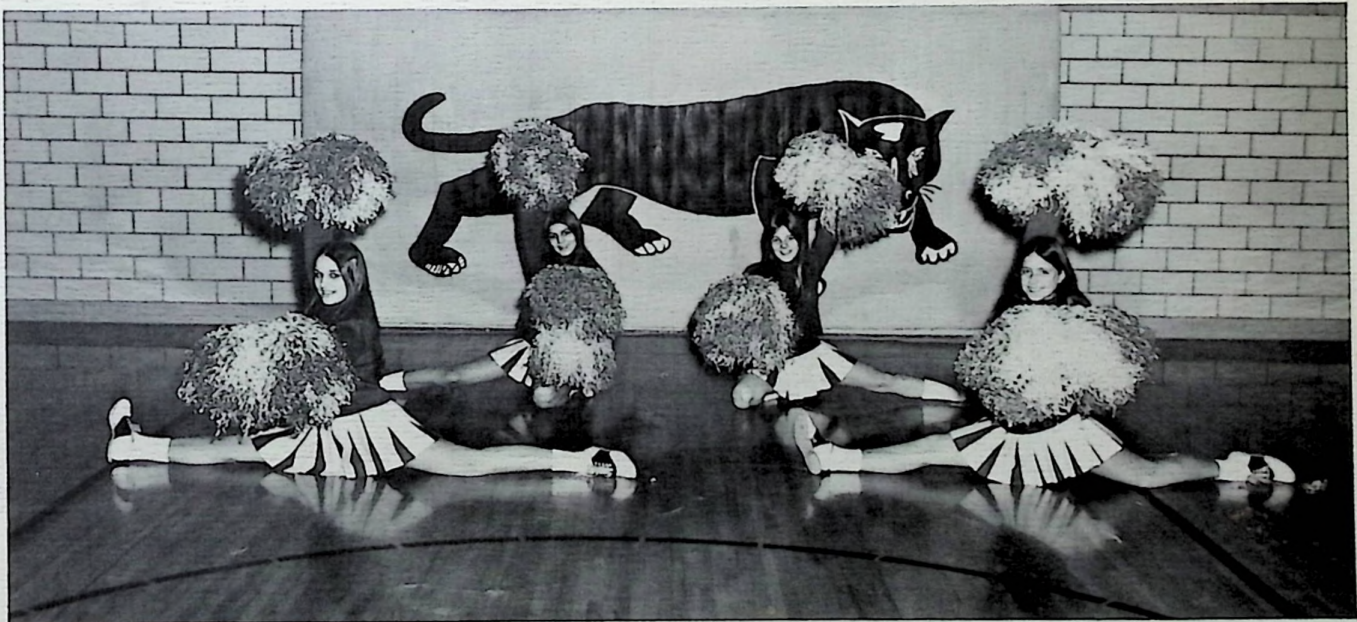
Pam Craft



Brenda Haney

Kim Kenney

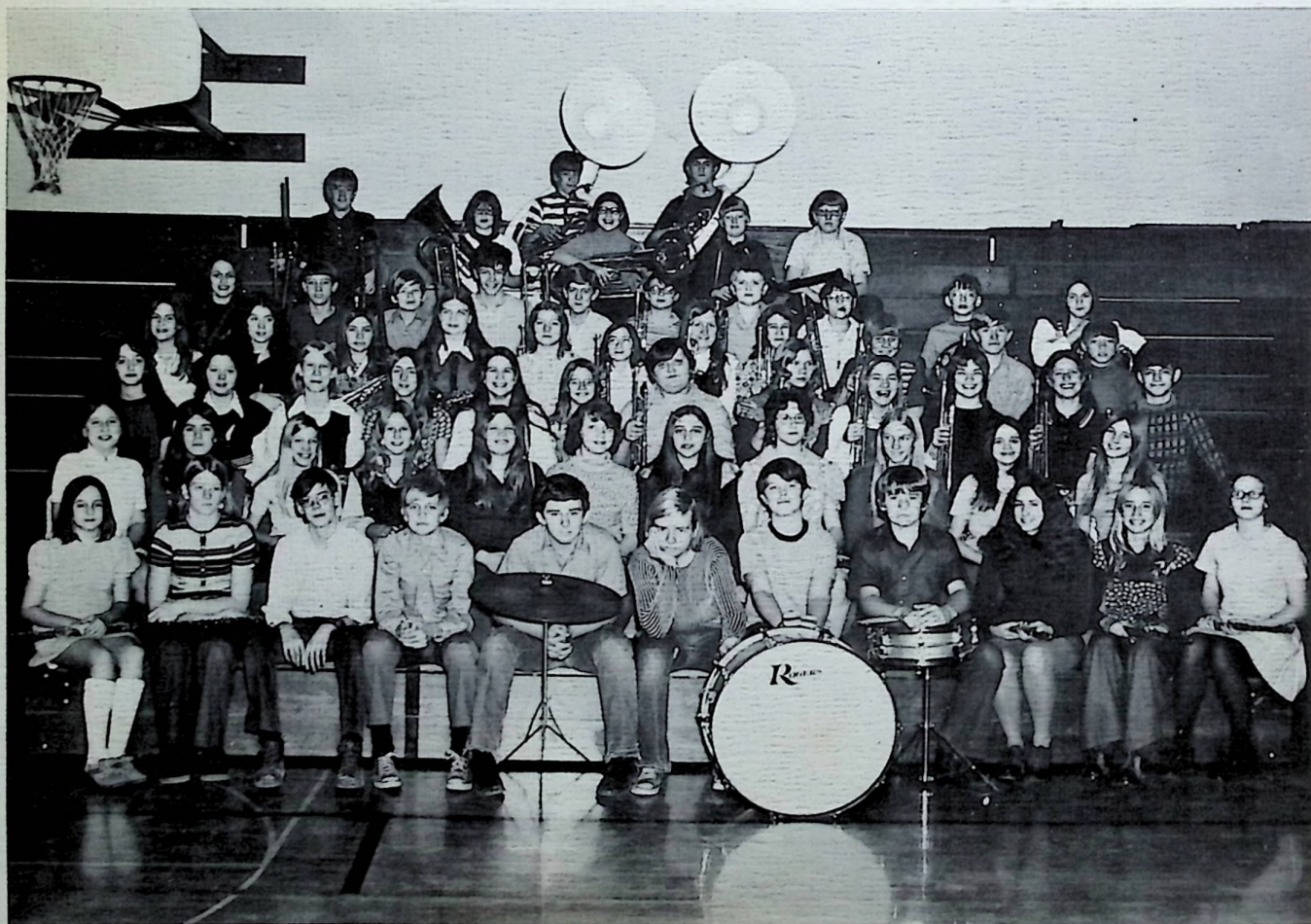
## *Jr. High Cheerleaders*

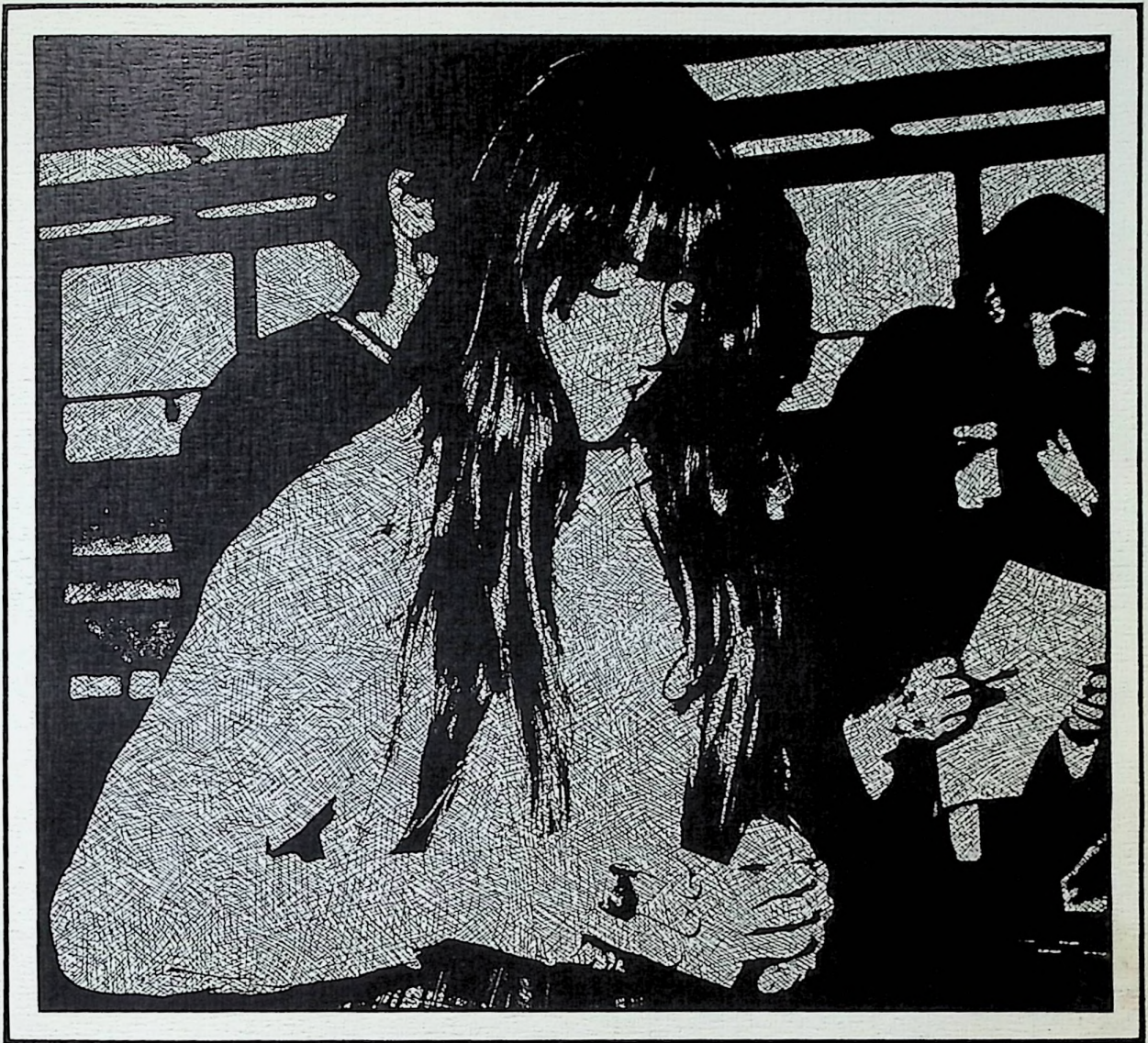


SMILE! YOU'RE ON CANDID CAMERA!!

# *Jr. High Band*

FIRST ROW: J. Crumm, V. Masters, K. Collier, E. Call, O. Gable, E. Riehl, D. Gibson, B. Rockwell, S. Pavey, J. Knittel, and M. McCoy. SECOND ROW: C. Braden, R. Dudit, R. Holt, L. Clausing, V. Campbell, S. Lemaster, K. Sander, D. Fitch, J. Eastwood, T. Vulgamore, and P. Craft. THIRD ROW: E. Spencer, L. Nance, Y. Day, D. Spires, D. Meyers, C. Conley, B. Sparks, S. Sell, T. Felts, L. Porterfield, B. Haney, and B. LeMaster. FOURTH ROW: T. Engle, S. Delottelle, C. Glenn, L. Kouns, L. Warner, S. Schneider, A. Adams, C. Thomas, D. Clausing, K. Shoemaker, and B. Benner. FIFTH ROW: K. Kenney, M. Greene, T. Clark, J. Batterson, P. Harris, B. Crumm, J. Taylor, M. Belcher, D. Leightenheimer, and K. Gilliland. SIXTH ROW: M. Cottle, C. Irish, B. Yinger, T. Cottle, K. Hall. SEVENTH ROW: B. Estepp, P. Bloomfield.



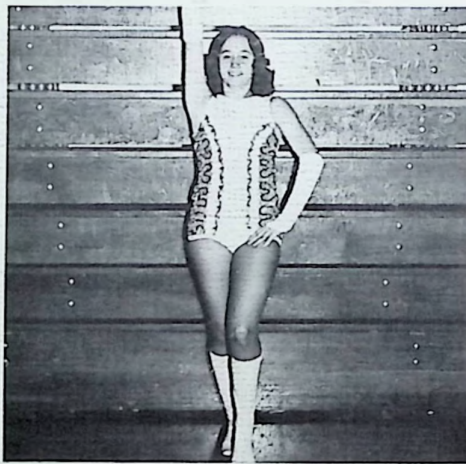


# Activities

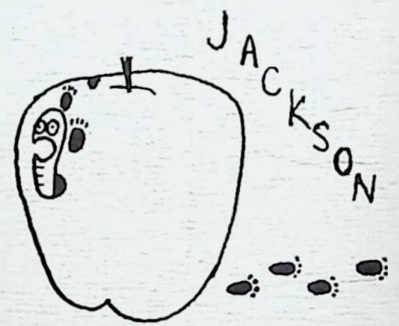
# Music: Marching Band



RIVER DAYS: #1

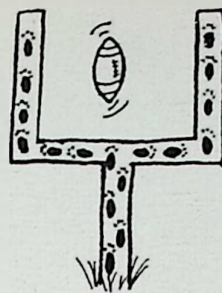


FIELD COMMANDER:  
Karen Schuler



MISS RIVER DAYS: Cheryl Ricks

# Football Shows



Tuning Up?



No. 1, again!



Did you hear what she said?



In step - for once!!!



Mr. Billups and Brenda with the certificate for a "superior" rating at district competition which enabled us to advance to state ...

... where we received a second place or "excellent" rating.



The Stage Band brings "73" to a close at the Spring Concert.

# Majorettes



Kyna - Head



Jane - Asst.



Jean



Patti



Debbie



Brenda



Della

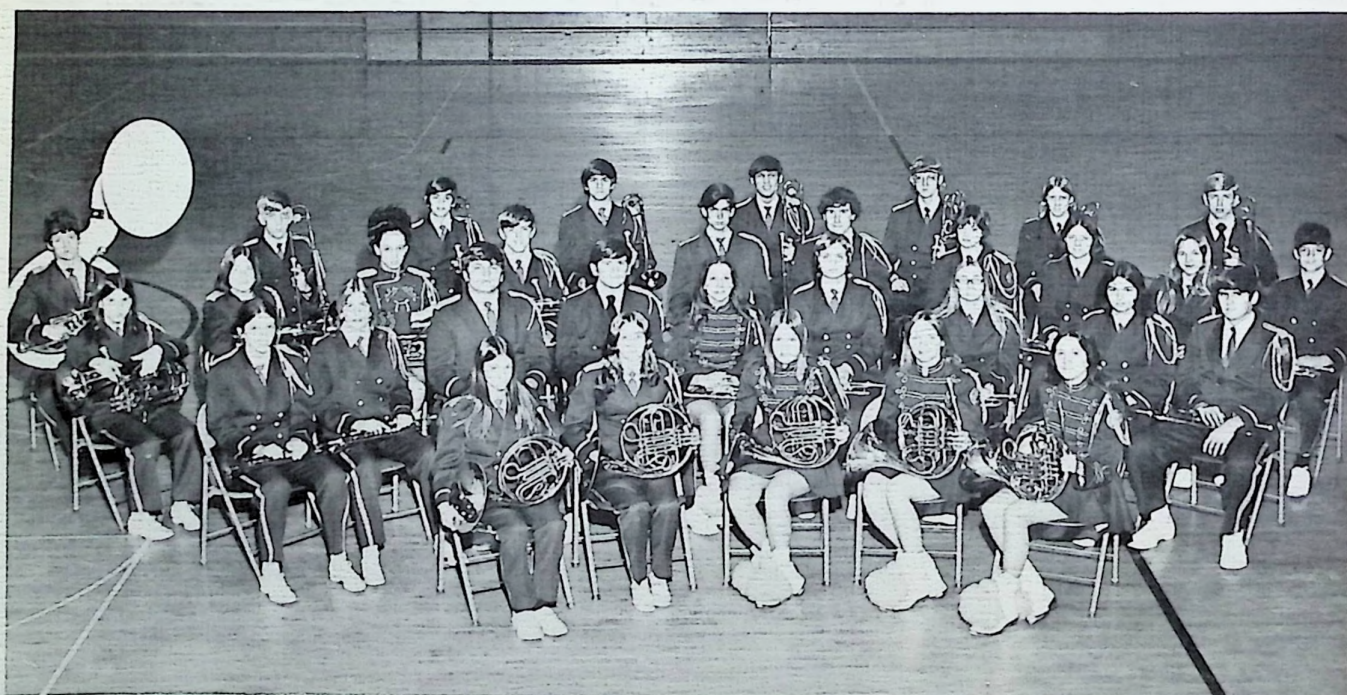


Debbie and Patti - Banner

# Concert Band



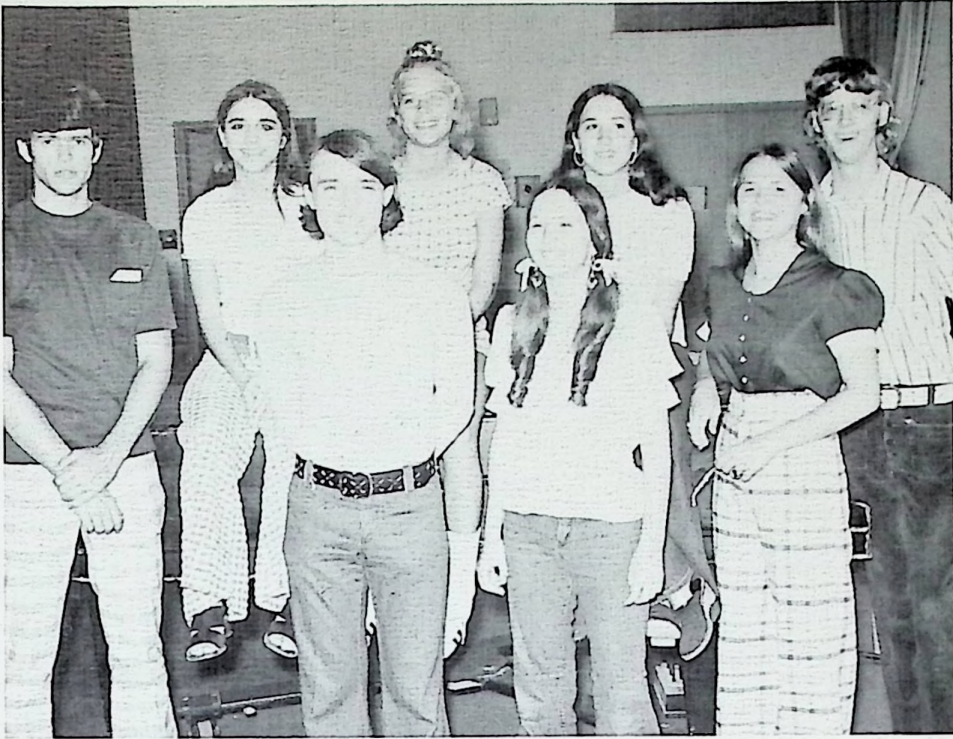
ROW 1: L. Grose, B. Smith, M. Porter, S. Lenyo, K. Gemperline, C. Ruby. 2: B. Clausing, M. McCoy, R. Blanton, J. Weakland, B. Dransfield, J. Fannin, C. Payne, J. Justus, L. Grose. 3: C. Conley, B. Herles, R. Bloomfield, D. Whitt, D. Clark, T. David, J. Mullinix, D. Justice, D. Perkins, R. Webb, N. Peters. 4: P. Rockwell, K. Charlton, M. Clausing, S. Nibert, J. Smith, V. Fox, P. Duncan, K. Kinney, T. Noel. 5: J. Hunter, E. Caudill, L. Huston, B. Rockwell, M. Hunter, J. Kirkpatrick, D. Gibson, E. Reihl, R. Elam.



ROW 1: D. Azbell, S. Lewis, D. Wright, D. Robirds, J. Hansgen. 2: L. Castle, J. Dotson, R. Horsley, D. Shoemaker, J. Hansgen, M. Nourse, K. Moore, D. Patton, S. Jenkins. 3: R. Gulley, B. Withers, K. Schuller, W. Thompson, G. Miller, M. Mershon, L. Porterfield, B. Haney, T. Felts, B. LeMaster. 4: M. Crumm, D. Porter, P. Gemperline, D. Belcher, J. Montgomery, K. Harris, D. Lybrook, D. Leightenheimer.



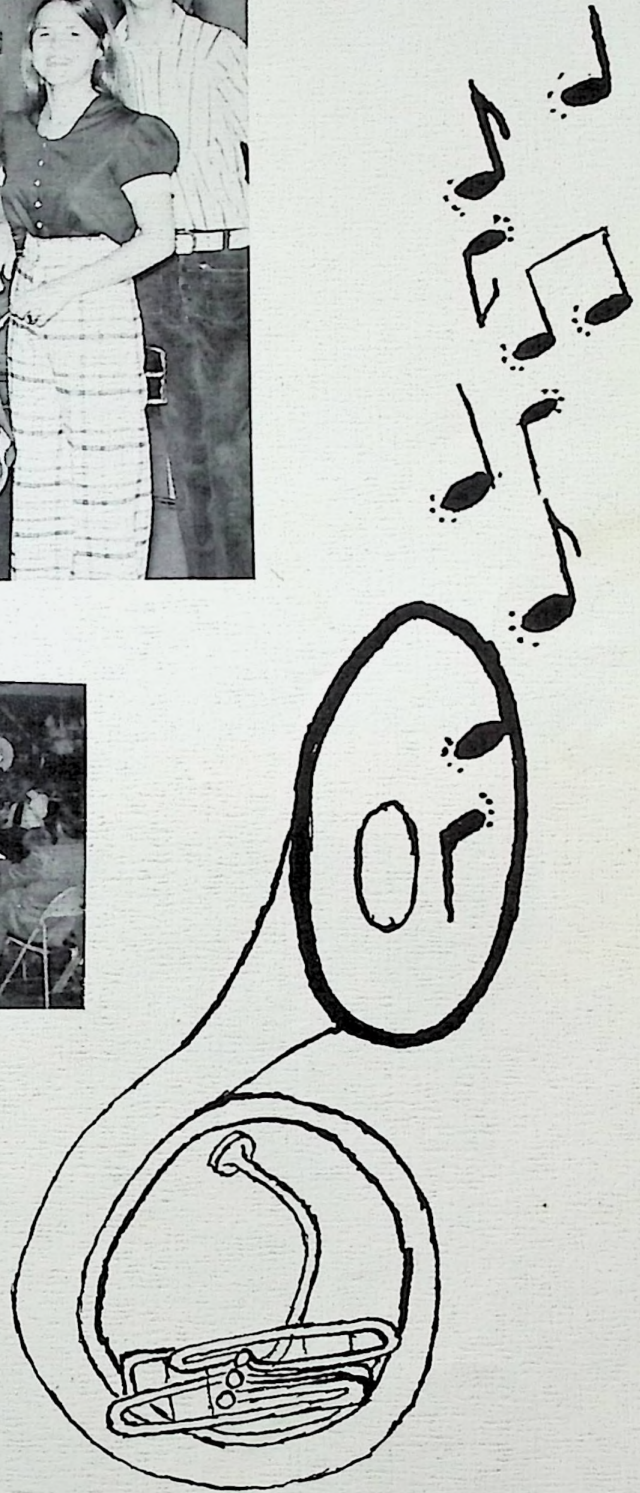
# Band Council



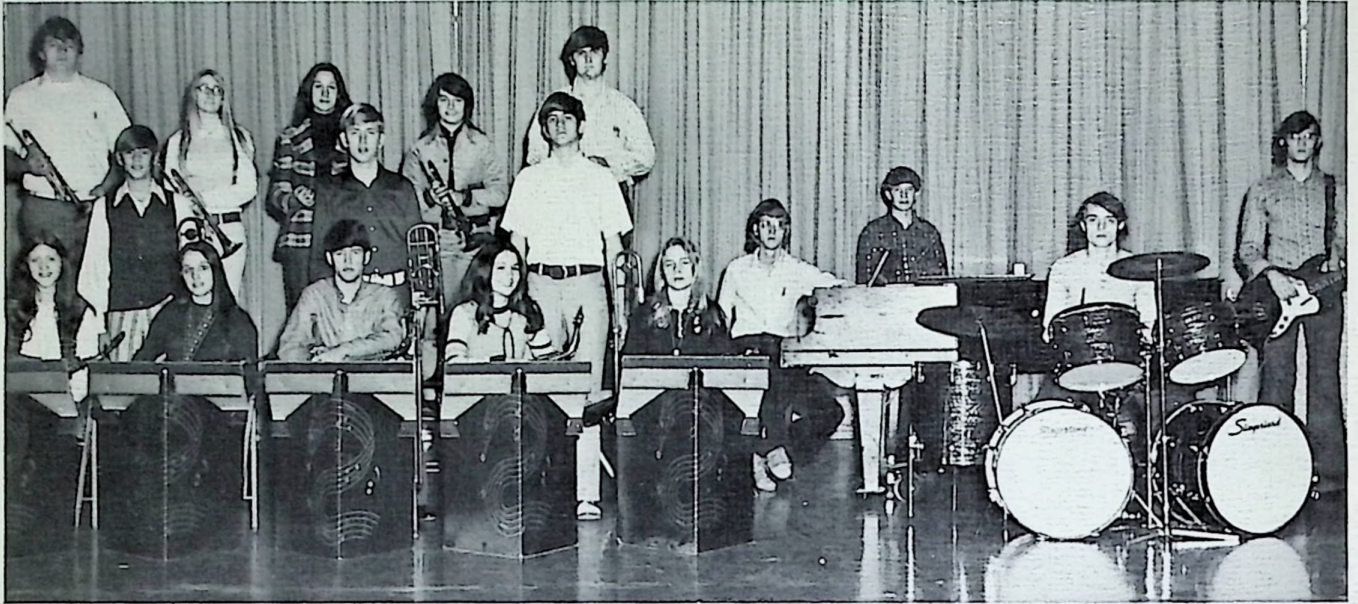
J. Hunter, L. Grose, B. Barrett.  
2: J. Justus, K. Gemperline,  
L. Grose, J. Hansgen, K. Harris.



*in Concert*



## Stage Band



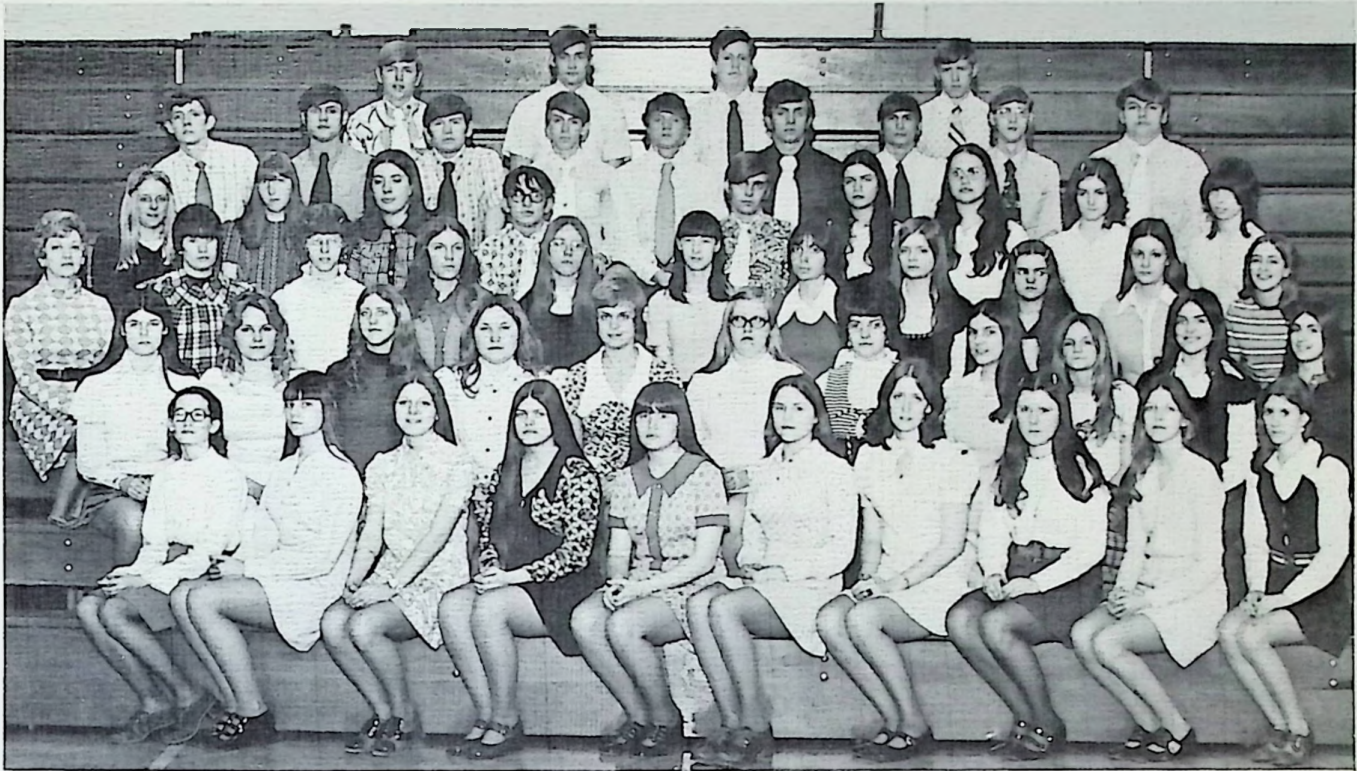
ROW 1: B. Clausing, K. Kenney, J. Justus, L. Grose, L. Grose, K. Harris, R. Webb, J. Hunter, M. Hunter.  
 ROW 2: P. Gemperline, D. Leightenheimer, D. Belcher. ROW 3: R. Horsley, K. Moore, J. Hansgen, D. Patton, S. Jenkins.

## Pep Band



ROW 1: D. Gibson, E. Reihl, B. Rockwell. ROW 2: L. Castle, L. Porterfield, B. Haney, D. Shoemaker, R. Horsley. ROW 3: N. Peters, C. Ruby, K. Schuler, K. Moore, D. Patton, S. Jenkins.

# Mixed Chorus



ROW 1: A. Willis, P. Gookin, R. VanBibber, P. Colvin, S. Shaw, B. Barrett, R. Wright, K. Vulgamore, C. Payne, B. Owens. 2: D. Widdig, D. Tipton, B. Clausing, C. Burns, M. Nourse, S. Sparks, C. Coldiron, R. Gulley, K. Boggs, B. Ratliff, G. Elliot. 3: Mrs. Leightenheimer, T. David, M. McCoy, K. Kelly, P. Weakland, D. Whitt, C. Duckworth, T. Gulley, D. Whisman, C. Ruby, S. Lewis. 4: C. Thurman, C. Rammel, J. Fannin, D. Schuler, D. Wright, D. Chandler, D. Ison, P. Todd, P. Winters. 5: T. Rockwell, J. Montgomery, D. Shoemaker, M. Thompson, G. Mullinix, R. Martin, D. Foster, K. Harris, R. Horsley. 6: D. Leightenheimer, R. Willis, B. McGlone, T. Porter.



YULE-TIME



SPRING FEVER

# Clubs and Organizations

## Student Council



ROW 1: J. Hunter, Pres., J. Justus, V.P., M. Hunter, Treas., M. Locher, Sec. ROW 2: R. Martin, R. Vournazos, B. Hollis, D. Wright, C. Gillilan. ROW 3: C. Payne, D. Shoemaker, J. Johnson.

## Home Ec. Club



ROW 1: K. Boggs, Sec., Louise Miller, Pres., C. Duckworth, V.P., T. Gulley, Treas. ROW 2: C. Ramel, S. Sparks, M. Moore, R. Skaggs. ROW 3: C. Euton, B. Owens, S. Frazier, K. Schuler, L. Grose, E. Collins, K. Moore, D. Clark, T. David, M. Stewart, L. Smith.

# National Honor Society

ROW 1: J. McCulloch, T. Winters, K. Moore, C. Ruby. 2: D. Jackson, M. Locher, M. Nourse, D. Robirds, S. Lenyo, D. Tipton, P. Flanagan, L. Grose. 3: J. Justus, D. Leightenheimer, J. Montgomery.



## Permanent and Newly Inducted Members



ROW 1: K. Adkins, B. Smith, S. Frazier, M. Porter, S. Haney, J. Johnson. 2: R. Bloomfield, M. McCoy, R. Gulley, C. Payne, S. Shaw, B. Ratliff. 3: R. Horsley, B. Kaut, S. Jenkins.

## Probationary Members

## Candy Strippers



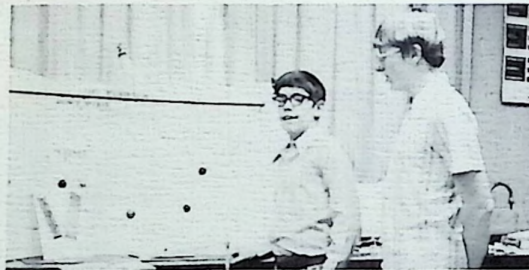
Barbara Winters  
Roxanne Gulley  
Debbie Widdig  
Kyna Gemperline  
LeaAnn Dotson

## Science Club

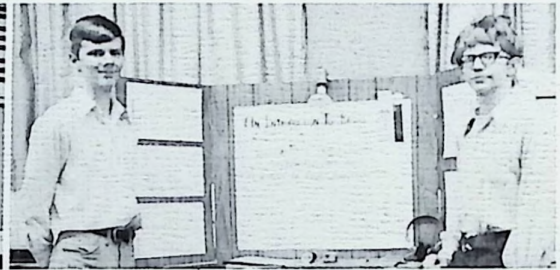


ROW 1: J. Justus, V.P., L. Grose, Pres., O. Gulley, Rec. ROW 2: Mr. Walker, J. McCleese, J. Hunter, J. Davis, A. Triplett, S. Lenyo, Mr. Keller. ROW 3: D. Booth, B. Bradley, M. Hunter, D. Belcher, J. Cross.

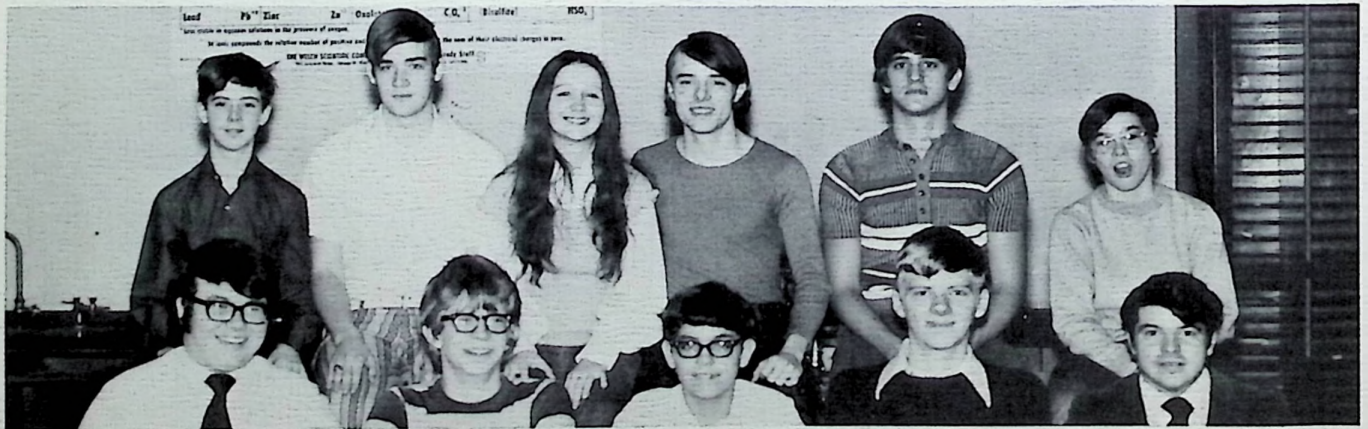
## Science Fair



Marshall: First Place

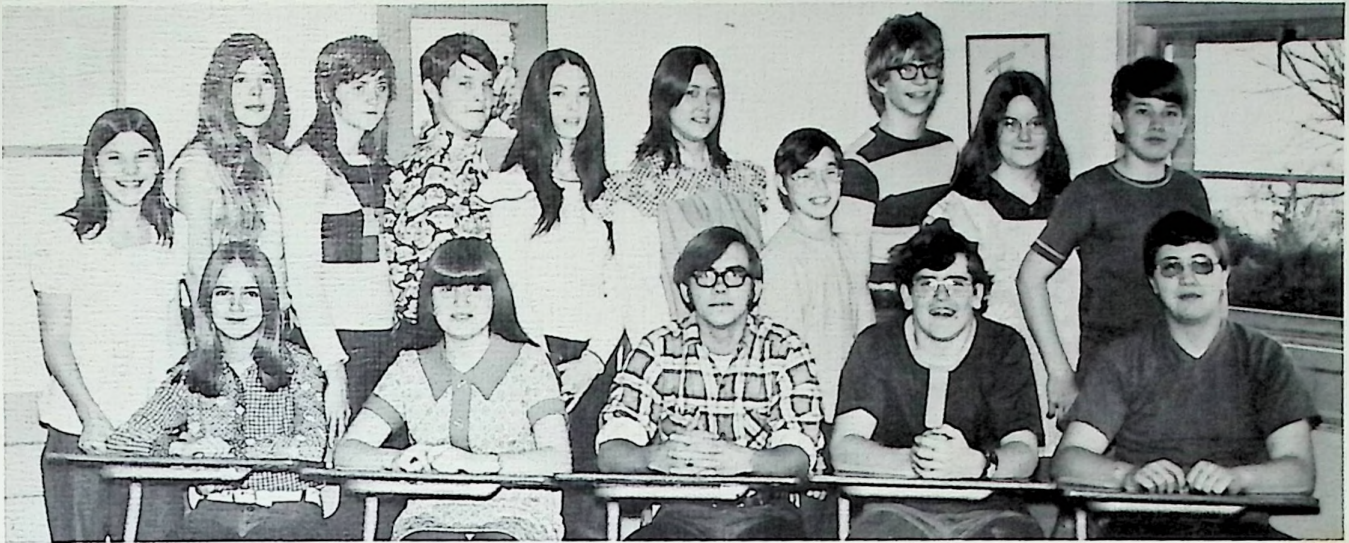


Third Place



ROW 1: Mr. Walker, J. Davis, Exc., B. Spriggs, Sup., D. Booth, Exc., Mr. Keller. ROW 2: R. Basham, R. Willis, Fair, L. Grose, Exc., J. Hunter, Good, D. Belcher, Good, J. Burns, Exc.

## Latin Club

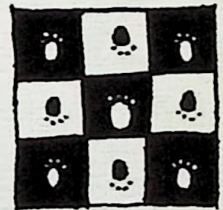


ROW 1: Betsy Dransfield, S. Shaw, W. Sword, M. Smith, B. Bradley. ROW 2: R. Gulley, L. Estepp, M. Clausing, D. Gibson, R. Elam, D. Perkins, J. Burns, J. Davis, R. Bloomfield, A. Triplett.

## Chess Club



ROW 1: D. Booth, B. Bradey, Booth. ROW 2: D. Gibson, A. Triplett, T. Cottle, D. Harness, C. Irish. ROW 3: J. Davis, B. Rockwell, D. Wright, Mr. Walker.



## Spanish Club



ROW 1: Anita Willis, I. Rockwell, J. Montgomery, Treas., R. McCleese, Pres. D. Shoemaker, V. Pres., D. Wright, Sec'y, L. Rickey, G. Snyder, Mr. Samor. ROW 2: R. Martin, M. Thompson, G. Gillilan, P. Day, B. Spriggs, J. Dotson, J. Kessinger. ROW 3: C. Burns, T. Erwin, B. Withers, R. Blanton, C. Gillilan, S. Lewis, D. Marcum, C. Owens.

## Library Staff



ROW 1: T. Cottle, L. Grose, D. Tipton, R. Bloomfield, C. Burns, R. Malone, D. Leightenheimer. ROW 2: Mrs. Bender, J. Johnson, J. Burke, J. Bailey, M. Smith, J. Kessinger, J. Canter, J. Davis, I. Rockwell, S. Horsley, R. Hoover, D. Perkins.

## Future Teachers of America



ROW 1: L. Grose, M. Locher, S. Chilcote, Pres., D. Patton, Sec'y, M. Nourse, Treas., K. Call, Mrs. Cottle, K. Moore, J. McCleese, C. Stamper, M. Porter, M. Moore, C. Rubby, R. Wright, B. Smith, B. Ratliff, M. Walter.



## Drivers Education



ROW 1: E. Caudill, R. Horsley, J. Kessinger, L. Rickey, P. Day, B. Richard, M. Miller. ROW 2: B. Kaut, J. Johnson, J. McCleese, L. Smith, D. Justice, M. Porter, M. Hoover, D. Whisman, B. Herles, T. Petusett, B. Smith, D. Whitt, C. Payne B. Ratliff, D. Tipton, B. Barrett, L. Grose, Mr. "L."



ROW 1: C. Burns, J. Fannin, C. Duckworth, T. Gulley, D. Clark, T. Fuhr, T. Thomas, C. Rammel. ROW 2: P. Bloomfield, G. Snyder, D. Myers, T. Burns, T. Noel, L. Rickey, J. Kessinger. ROW 3: N. Howard, R. Payton, B. Baker, R. Martin, P. Day, R. Webb. ROW 4: S. Easter, M. Gilliam, T. Bridwell, B. Kaub, C. Hess.

# Yearbook Staff



ROW 1: L. Grose, B. Kaut, J. McCleese, M. McCoy, J. Fanin. 2: K. Gemperline, M. Hunter, K. Call, M. Porter. 3: L. Grose, J. Hunter, T. Fuhr, D. Jackson.



Lisa Grose:  
Seniors

Kyna Gemperline:  
Sports

Mary Porter,  
Kathy Call:  
Jr. High



Mr. Stone:  
Advisor



Lori Grose, Jeff Hunter: Activities,  
Editors, Introduction



Sharon Shaw:  
Freshman



Mark Hunter: Artist

Beth Kaut:  
Freshman

Jane McCleese:  
Junior

Denise Jackson,  
Teresa Fuhr:  
Business  
Managers



# Scholarship Teams and Results



## Science

Fred  
Boldman

Jim  
Kirkpatrick



Jeff with certificate of award for the Ohio University American History Scholarship Test.

## Results

	State: Div. III	District: Div. III	Dist: Regardless of Division
<b>SENIOR SOCIAL STUDIES</b>			
Jeff Hunter	1	4	5
<b>BIOLOGY:</b>			
Betsy Dransfield	5		
Bob Hollis	1	7	2
<b>ENGLISH 9</b>			
Brent Bradley	3	10	
Reba Elam	2	8	8
<b>GEOMETRY</b>			
Debbie Tipton	2	20	
<b>AM. HISTORY</b>			
Jim Cross	3	Hm	
Jeff Justus	2	Hm	
<b>ENGLISH 12</b>			
Karen Moore	4		
<b>TYPING II</b>			
Patti Ison	Third in County		

# Scholarship Teams



## Algebra

Chris Scherer  
Dean Booth

## Geometry

Walter Sword  
Debbie Tipton



## Senior Social Studies



Jeff Hunter  
Lisa Grose

## Biology



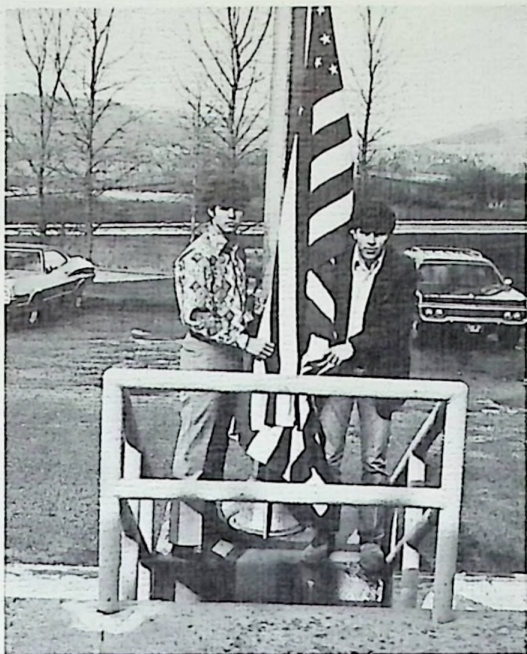
Bob Hollis     Betsy Dransfield

## Chemistry



Janice Johnson     Lori Grose

*American History English 9, 10, 11, 12*



Jeff Justus Jim Cross



Reba Elam  
Brent Bradley

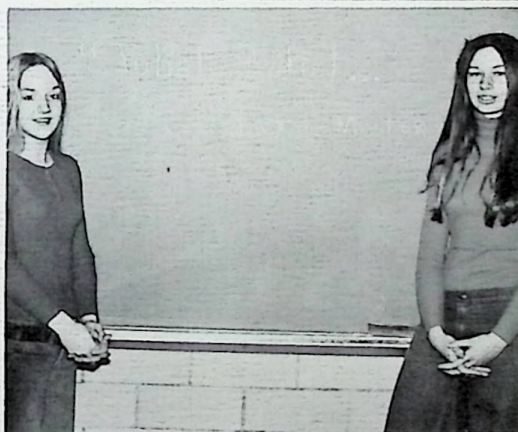
Marilyn McCoy  
Sharon Shaw



*Typing I and II*



Susan Lenyo Patti Ison  
Brenda Clausing Mary Porter (Not Pictured)



Susan  
Lenyo  
Beth  
Kaut



*Spanish*

*I* Bob Basham Dave Foster  
*II* Cindy Burns Tony Rockwell

Karen  
Moore  
Cathy  
Ruby



# Homecoming '73



*Queen: Cheryl Ricks*

CHERYL

Song: "SOMETHING"

Color: WHITE

CINDY

Song: "LOVE THEME FROM  
THE GODFATHER"

Color: GREEN

BETH

Song: "THEME FROM ROMEO  
AND JULIET"

Color: LAVENDER

RUTHIE

Song: "FOR ALL WE  
KNOW"

Color: PINK

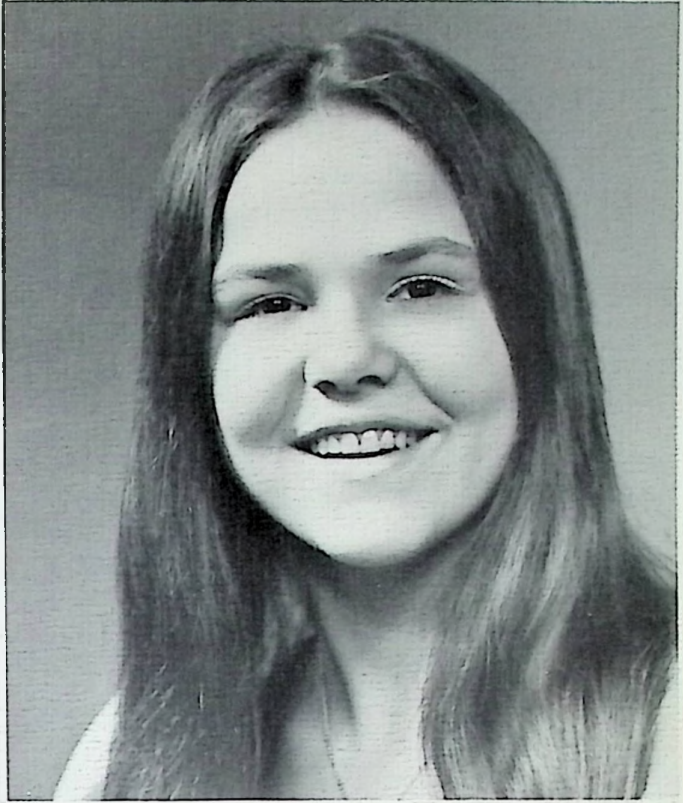


*John Ricks  
Angie Ison*

# *Attendants:*



SENIOR: Cindy Stamper



JUNIOR: Beth Barret



SOPHOMORE: Ruthie Van Bibber



FRESHMAN: Debbie Howard

# Dances:

## The Prom



This year the festivities were held at the Shawnee State Lodge.



NO MATTER IF ARRIVING



E  
A  
T  
I  
N  
G



DANCING



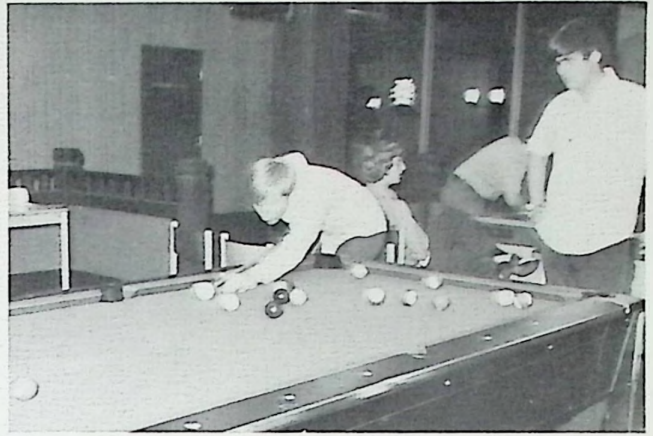
Or just hanging around - everyone seemed to have a good time.



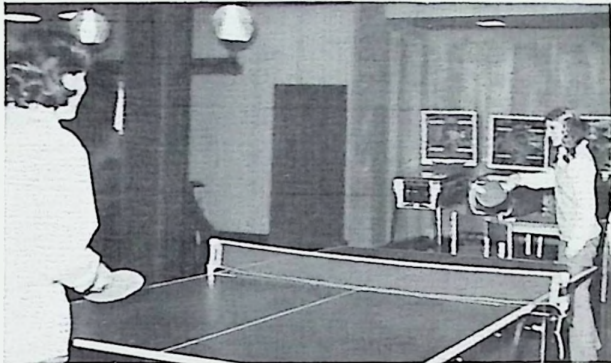
# and After



There was a variety of things to do, such as



playing pool



or ping pong



or drowning



It started strong, and a few made it to 5 A.M.



# Homecoming Dance



## Freshman — Sophomore



Romantic and ...



... foot-stompin' music



camera shy



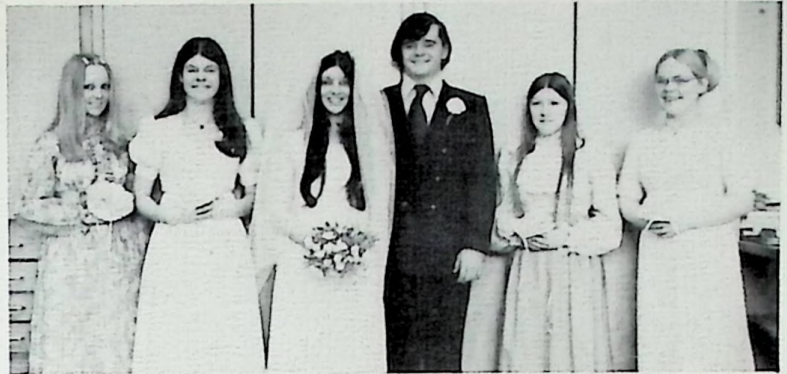
And around and around they go-o-o-o!



## Classic Capers



Making friends with a new student



Make-up and pretend as Linda and Kim ... get MARRIED?!!!



Clyde, Bonnie and Zeke



That couldn't be me!



Long, long ago - 6 years!

# Sports:

## Boys Track



ROW 1: D. Houston - Mgr., T. Porter, S. Burt, J. Warner, G. Collier, B. Collier - Mgr. 2: D. Belcher, M. Hunter, D. Foster, A. Roberts, R. Vournazos, Mr. Little.



Clay --- 49 --- Piketon --- 78  
 Clay --- 45 --- New Boston --- 42 --- East --- 72 --- Western --- 68  
 Clay --- 37 --- New Boston --- 30 --- Wheelersburg --- 88  
 Clay --- 55-1/2 --- S. Webster --- 32-1/2 --- Green --- 60  
 Clay --- 65 --- Minford --- 39-1/2 --- S. Webster --- 54-1/2

PIKETON INVITATIONAL

Clay --- 13 --- New Boston --- 13 --- Piketon --- 30 --- Valley --- 14 --- East --- 11

NEW BOSTON INVITATIONAL

Clay --- 23 --- New Boston --- 34 --- Green --- 29-1/2 --- Notre Dame --- 51 --- Valley  
 --- 48 --- S. Webster --- 23 --- East --- 15-1/2

TRI-COUNTY MEET

Clay --- 34-1/2 --- S. Webster --- 37 --- Green --- 43 --- Piketon --- 67 --- West --- 67  
 --- East --- 38-1/2

SCL

Clay --- 28 --- N. Boston --- 19 --- S. Webster --- 11-1/2 --- West --- 17-1/2 --- Green  
 --- 21 --- Wheelersburg --- 95-1/2 --- N. West --- 7-1/2 --- Valley --- 37 --- Minford ---  
 --- 3



RECORDS BROKEN

- D. Belcher - Discus - 121'6-1/2"
- D. Foster - 220 Yd. Dash - 24.0 Sec.
- G. Collier - High Jump - 5'10"
- Pole Vault - 11'
- Low Hurdles - 24.0 Sec.
- R. Vournazos - High Jump - 5'10"
- High Hurdles - 19.5 Sec.



## Girls Track



ROW 1: P. Winters, S. Gulley, A. Willis, B. Withers, T. Winters. 2: M. Todd, K. Kosher, P. Gookin, K. Schuler, D. Robirds. 3: Miss Martin, M. Stuart, K. Foster, S. McCulloch, J. Dotson, J. Heslip, S. Kosher - Mgr.



And ther-r-re off!!!

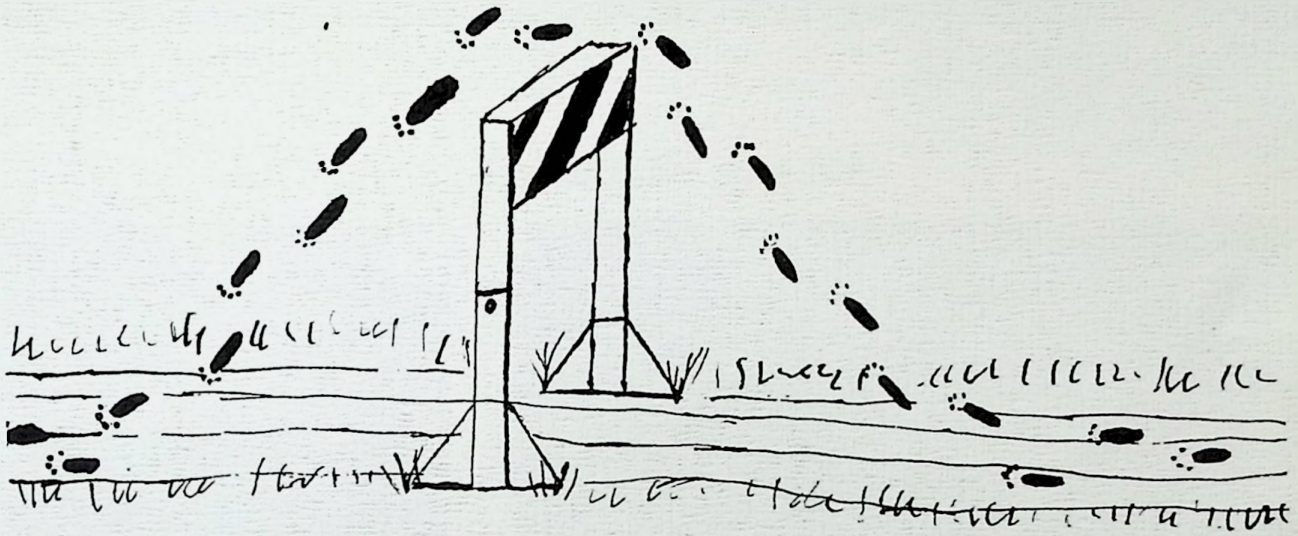


Morning exercises

Clay	----	42	----	Valley	----	78-1/2	----	Green	----	16-1/2
Clay	----	38	----	Wheelersburg	----	63-1/2	----	East	----	35-1/2
Clay	----	28	----	Wheelersburg	----	58	----	Minford	----	45

COUNTY MEET:

Basketball Throw	-----	Sheila Gulley	-----	2nd
100 Yd. Dash	-----	Kathy Foster	-----	4th
50 Yd. Dash	-----	Kathy Foster	-----	2nd
440 Relay	-----	Kathy Foster	-----	-3rd
Long Jump	-----	Jerri Heslip	-----	4th
Long Jump	-----	Joni Dotson	-----	5th

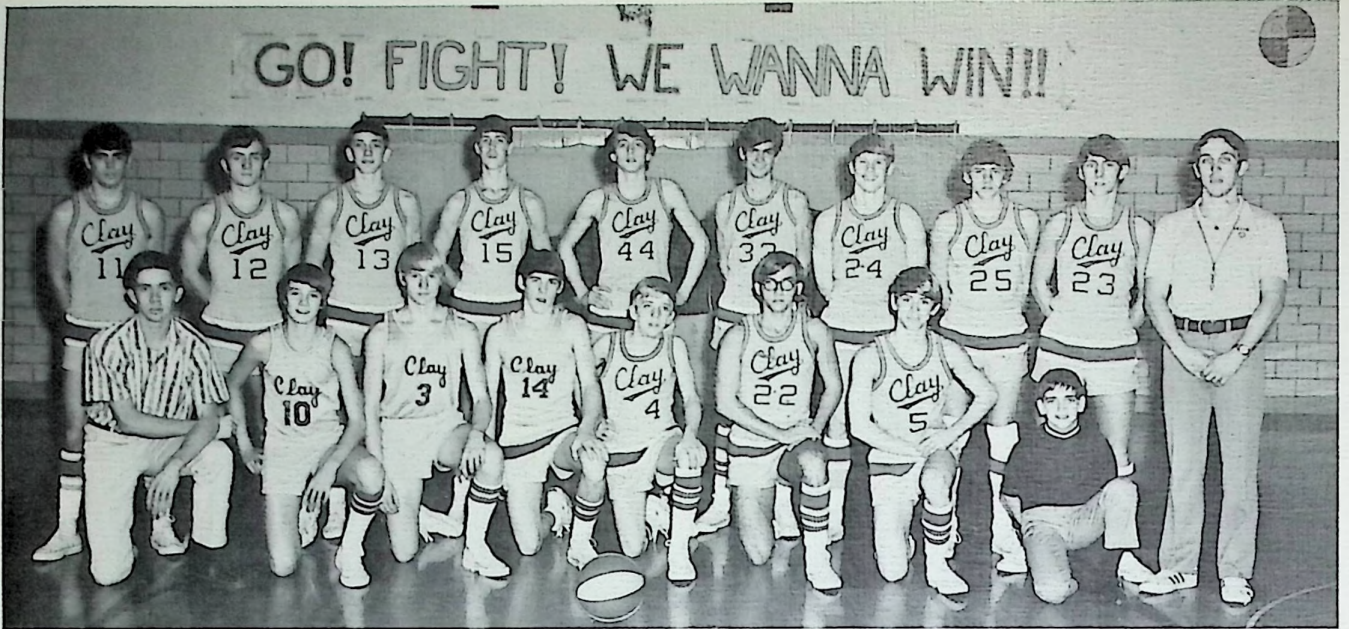


Graceful, very graceful.



She flies through the air with the greatest of ease

...



ROW 1: D. Houston - Mgr., C. Scherer, J. Kirkpatrick, C. Gilliland, D. Porter, W. Sword, M. Thompson, B. Payne - Mgr. 2: G. Gilliland, R. Martin, P. Day, D. Bowe, B. Hollis, G. Miller, T. Erwin, G. Spradlin, L. Spires, Mr. Little.

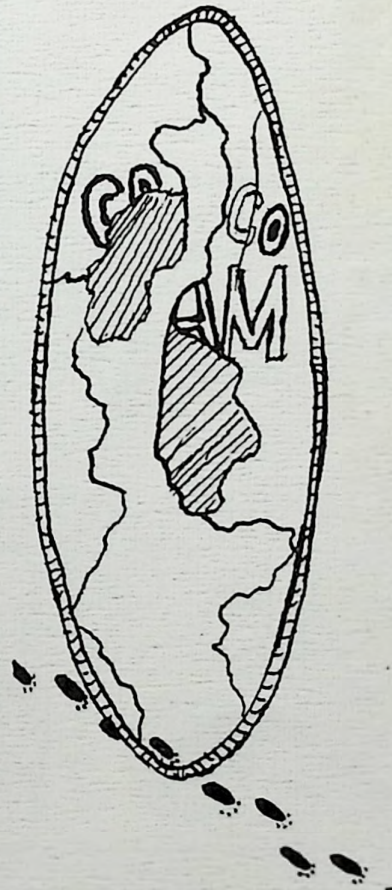
## *Reserve Basketball*





Clay	38
Clay	25
Clay	35
Clay	37
Clay	32
Clay	51
Clay	42
Clay	32
Clay	48
Clay	47
Clay	42
Clay	38
Clay	42
Clay	31
Clay	48
Clay	47
Clay	38
Clay	38
Clay	40

West Union	27
East	41
Green	27
S. Webster	29
Minford	34
Valley	43
New Boston	34
Rock Hill	40
Western	41
N. West	42
Wheelerburg	56
Eastern	50
Minford	44
West	39
Valley	45
Bishop Flaget	45
S. Webster	60
Green	39
Peebles	52



## Reserve Cheerleaders



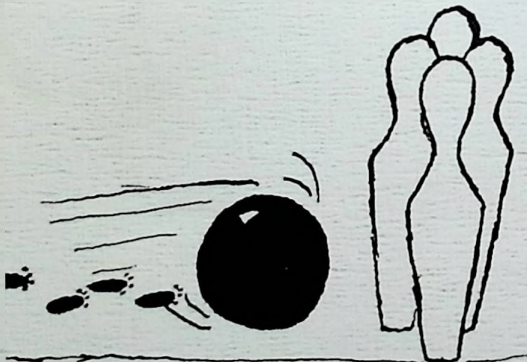
Brenda Withers, Kim Charleton, Cindy Thurman, Terri Burton.



Hard at work?

## Bowling Team

ROW 1: D. VanBibber, R. Wright, K. Manley, B. Smith. 2: M. Gilliam, T. Burton, D. VanBibber, D. Marcum. 3: S. Haney, T. Winters, C. Conley, D. Lybrook. 4: R. Phillips, K. Call, M. Porter, B. Barrett. 5: J. Kissenger, D. Wright, J. Canter, D. Schuler. Captains on right.



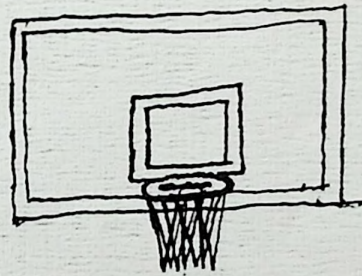
# Girls Basketball



R. Gulley, S. Gulley, B. Withers, T. Bridwell, J. Dotson, M. Clausing, D. Wright, J. Mullinix, A. Willis.  
 KNEELING: S. Kosher, Miss Martin, K. Kosher.

## SEASON RECORD

Clay - - - - - 21	vs. Rock Hill - - - - -	22
Clay - - - - - 26	vs. West - - - - -	27
Clay - - - - - 38	vs. Green - - - - -	18
Clay - - - - - 18	vs. West - - - - -	31
Clay - - - - - 28	vs. Rock Hill - - - - -	22
Clay - - - - - 35	vs. Green - - - - -	12
Clay - - - - - 32	vs. Eastern - - - - -	33



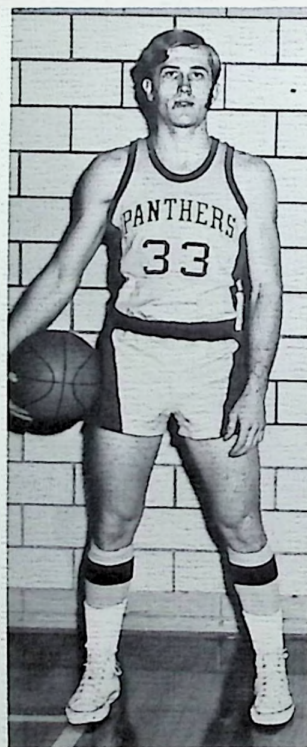
# Varsity Basketball



FRONT TO BACK (L to R): G. Mullinix, D. Leightenheimer, J. Cross, C. Miller, T. Porter, J. Justus, G. Collier, T. Conkel, D. Belcher, R. Vournazos, S. Vice, L. Ruggles - Mgr., Coach Justus, D. Foster - Mgr.  
NOT PICTURED: R. Brown, C. Keller.



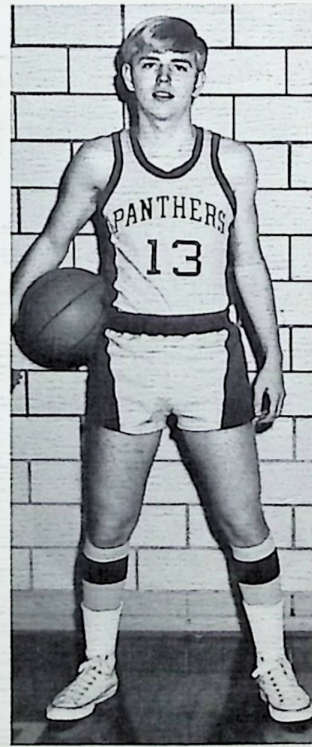
RICK VOURNAZOS  
6'0"  
Senior Forward



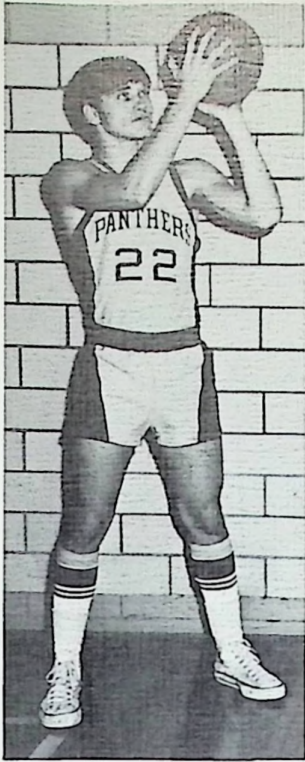
TERRY CONKEL  
5'11"  
Senior Center



CHUCK MILLER  
5'9"  
Senior Forward



DAVE LEIGHTENHEIMER  
5'10"  
Senior Guard



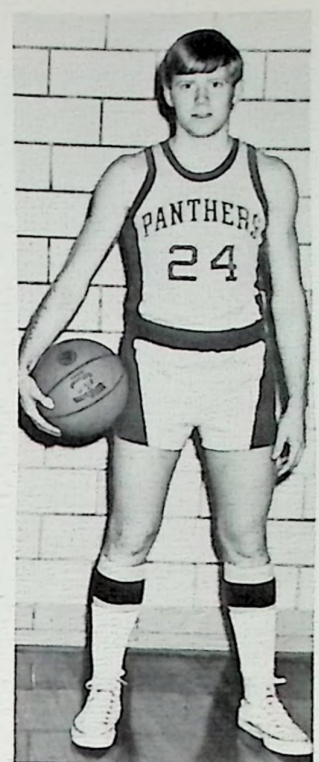
GREG COLLIER  
6'0"  
Senior Forward



JEFF JUSTUS  
5'11"  
Junior Guard



GREG MULLINIX  
5'10"  
Junior Guard



TOM PORTER  
5'9"  
Junior Forward

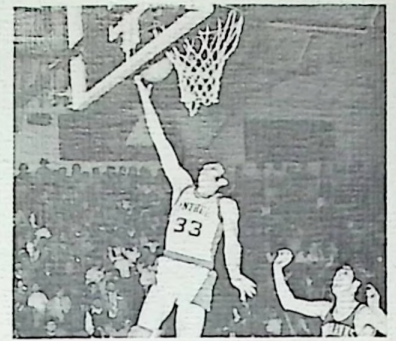


Clay	86
Clay	52
Clay	76
Clay	66
Clay	80
Clay	62
Clay	51
Clay	80
Clay	69
Clay	86
Clay	65
Clay	76
Clay	87
Clay	53
Clay	79
Clay	90
Clay	66
Clay	71
Clay	55

West Union	63
East	50
Green	51
S. Webster	67
Minford	40
Valley	61
New Boston	67
Rock Hill	82
Western	79
Northwest	62
Wheelerburg	70
Eastern	71
Minford	50
West	84
Valley	51
Bishop Flaget	70
S. Webster	78
Green	62
Peebles	63

SECTIONAL TOURNAMENT

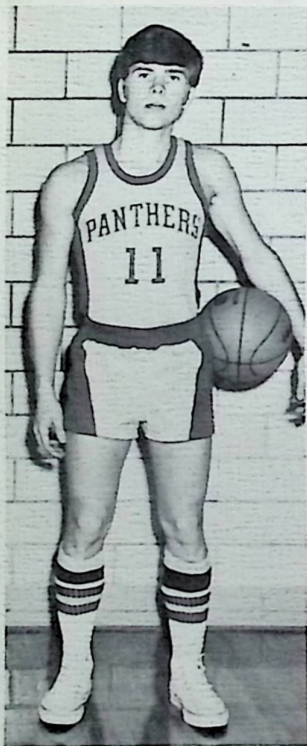
Clay	52	N. Boston	39
Clay	52	Notre Dame	59



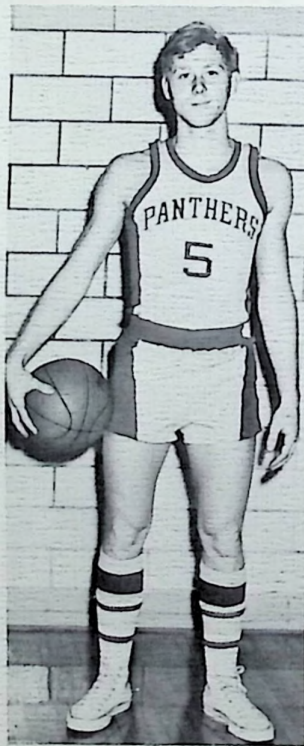
Statisticians



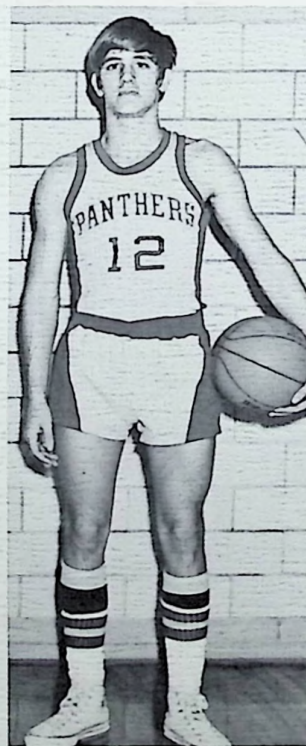
Oral Gulley, Mark Hunter, (Not Pictured: Ed Hughes, Brent Richards).



JIM CROSS  
5'9"  
Junior Guard



SCOTT VICE  
5'11"  
Junior Forward



DARYL BELCHER  
6'0"  
Junior Forward



# Varsity Cheerleaders



CHERYL RICKS



ROXANNE GULLEY



GWEN ELLIOTT



Sign 'em up!!!



BRENDA RATLIFF



BETH BARRETT



# Baseball Team



I'll show you how it's done.

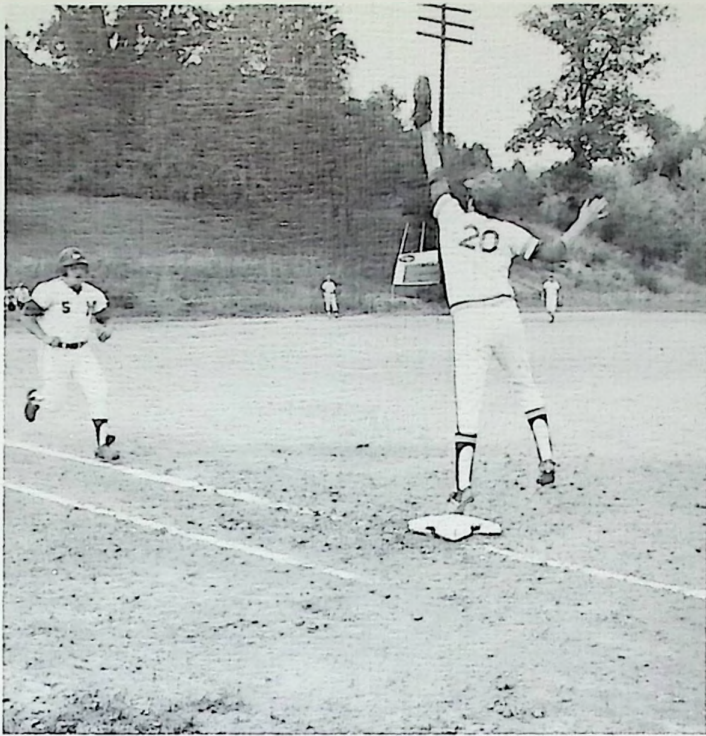


SENIORS: C. Keller, J. McCulloch, J. Gambill, R. McCleese, R. Canter, C. Miller, D. Leightenheimer.

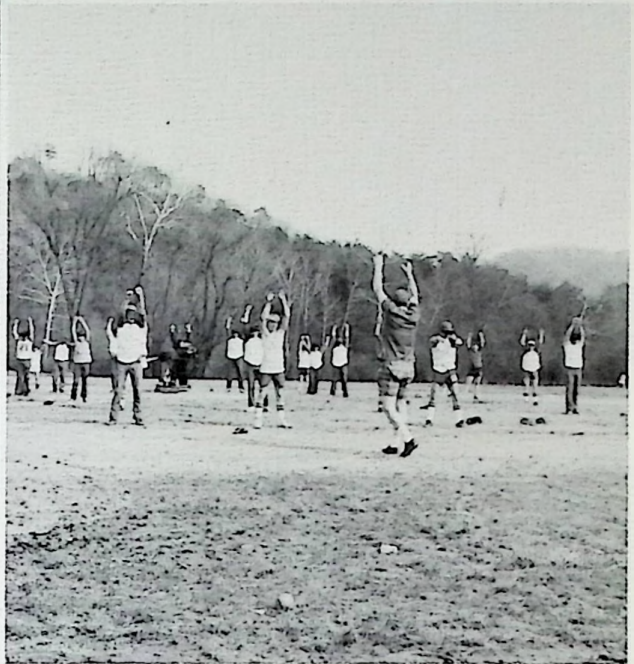


ROW 1: G. Rucker, B. Rockwell - Mgr., D. Gibson - Mgr., D. Porter - Mgr., J. Clevenger. 2: J. Kessinger, E. Caudill, M. Trapp, O. Gulley, C. Phillips, G. Mullinix, C. Gilliland, R. Canter, C. Miller. 3: R. McCleese, J. Gambill, T. Erwin, P. Day, C. Keller, D. Bowe, J. McCulloch, D. Booth, D. Leightenheimer, S. Jenkins, G. Gilliland, Coach Leightenheimer.

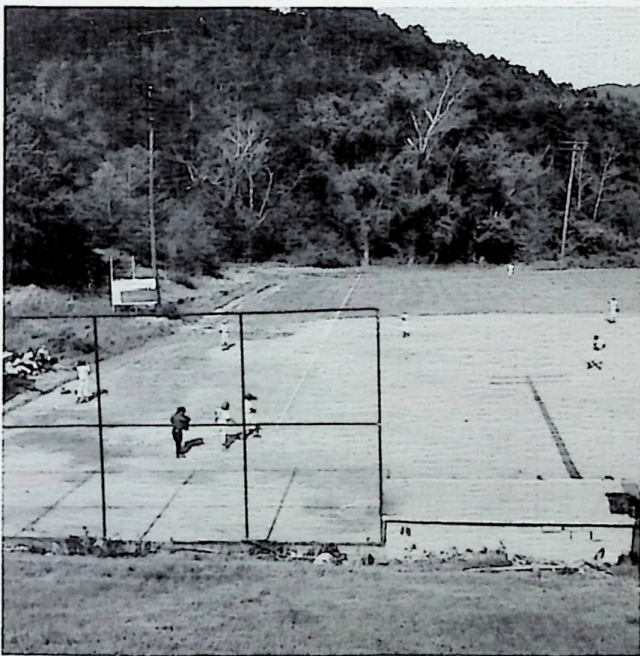




STR-R-R-R ...



... E-E-ETCH!!!



Spring's here, and due to rain, the team almost wasn't.



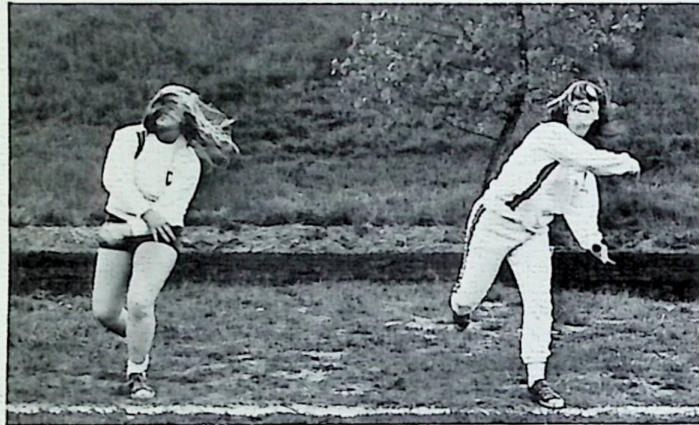
THE TREES OR BUST!!! He busted.

# Sports Anonymous



All right, girls, how about a little spirit.

Just a "little" out of shape



Who says you can throw it farther than I can?



What in this world are they doing out there?

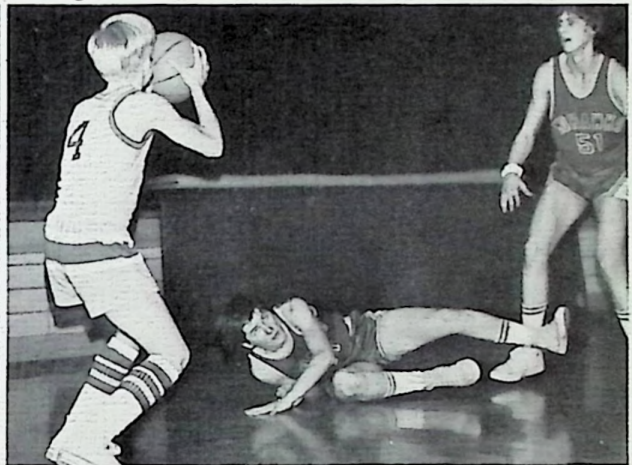
All right, unroll Miss Martin, and next time let's use the ball.



They must be doing something out there.



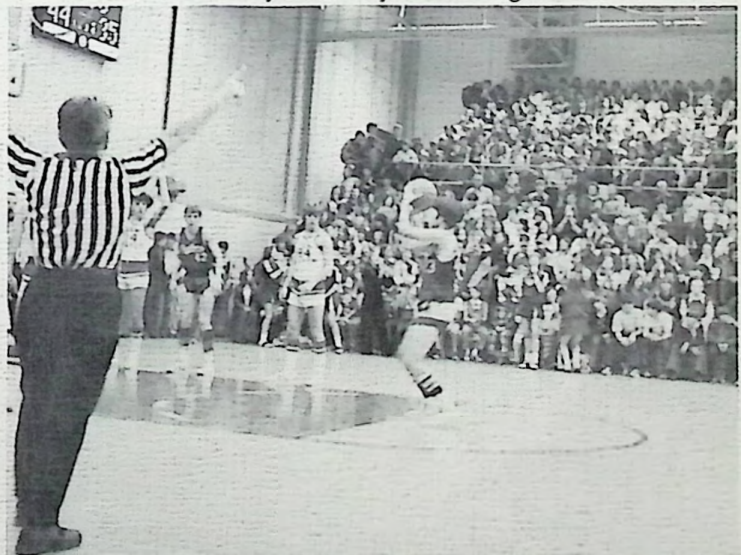
False start?



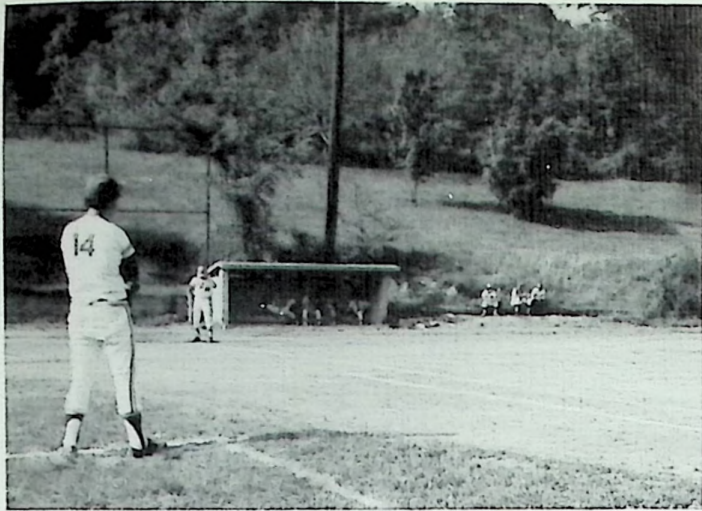
What do you think you're doing on the floor?



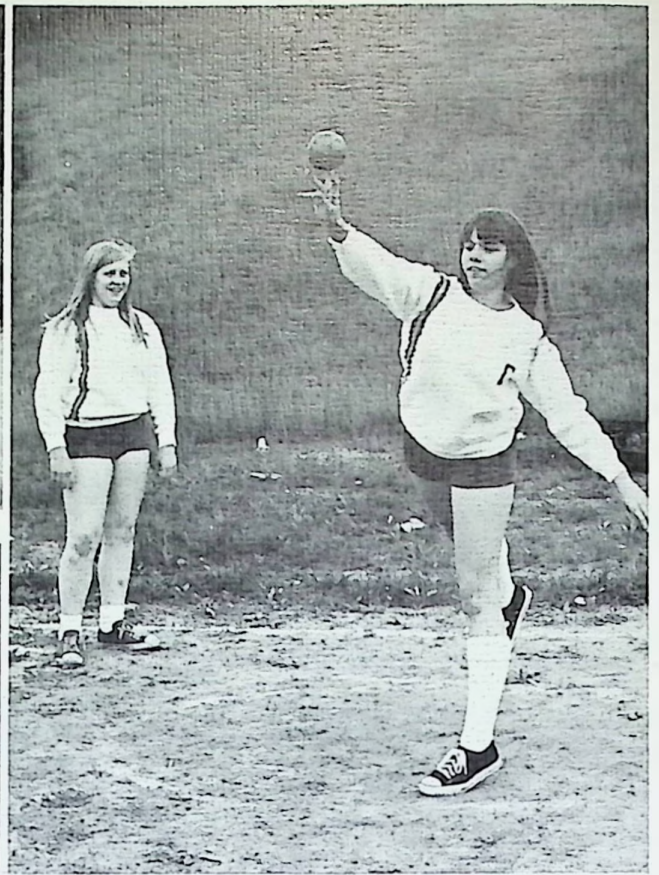
Hold it! Wait till the rest of 'em get here.



Touchdown!!!



We're ready, but where's the other team?



That's an odd way to catch a ball.



Don't you dare get in front of me.



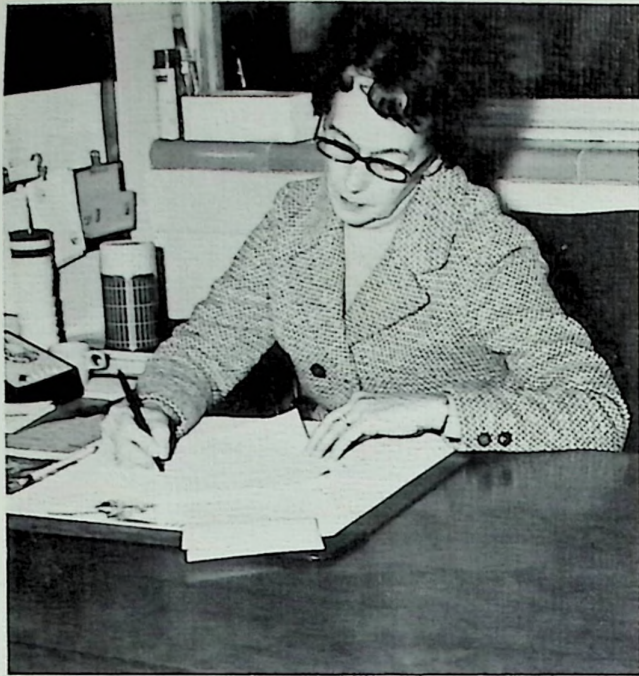
Boo Boo looks lost.



But what happened to the ball?



Faculty



MRS. RUTH TAYLOR gives advice, solves problems, and answers the questions of the student body.



MRS. BENDER helps the students with just about anything - term paper information, books to read.

MRS. DOYLE is the school secretary. She keeps the books, she answers the phone, and a little bit of everything.



MRS. BUCKLE is our clerk. She pays the teachers as well as works with the Board of Education.





**BOARD OF EDUCATION:**

Raymond Belcher, Pres.; James Bailey; Gerald Porter; Rawland Rickey, V. Pres.; Ronald Horsley

**LOCAL SUPERINTENDENT:** Robert Estep

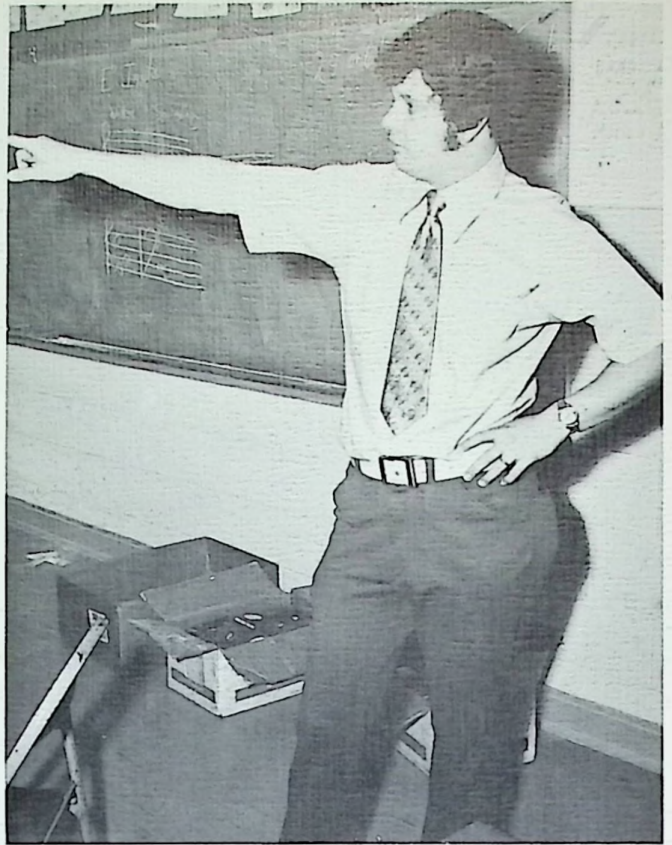


**COUNTY SUPERINTENDENT:** Dale Gillette





MR. JUSTUS keeps everyone in line and coaches our Panther basketball team.



MR. BILLUPS is the director of our marching band, concert band, stage band, pep band, and Jr. High band.

MRS. LEIGHTENHEIMER directs our fine Mixed Chorus.

MISS WELCH student taught under Mrs. Martin for health and phys. ed.







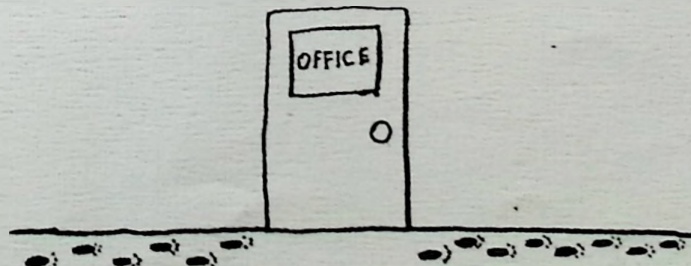
OUR COOKS

Mrs. Duncan  
Mrs. Horsley  
Mrs. Soulder  
Mrs. Nibert



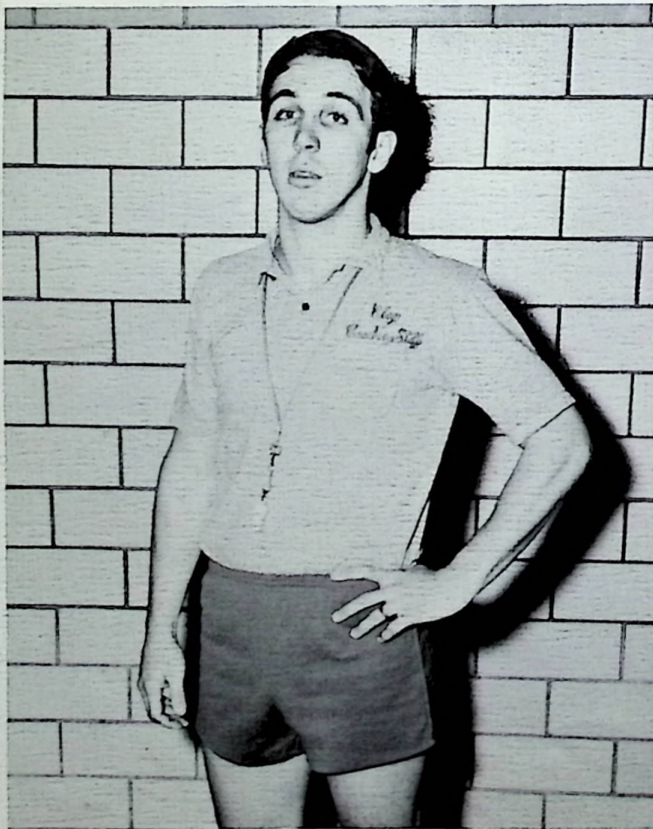
MAINTENANCE  
SUPERVISOR

Mr. Church

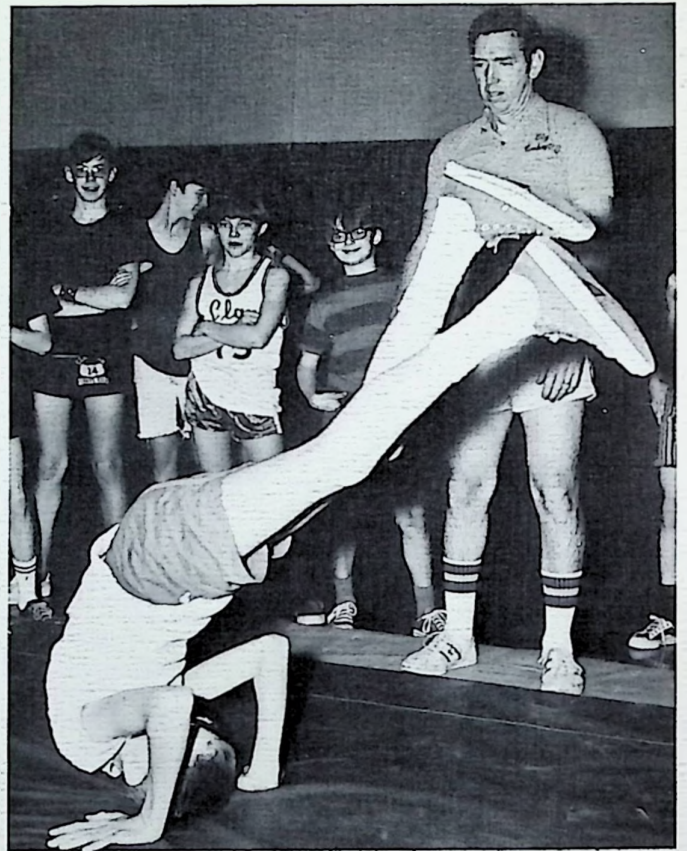




MISS MARTIN - Girls Phys. Ed., Health, and Girls Track Team advisor.

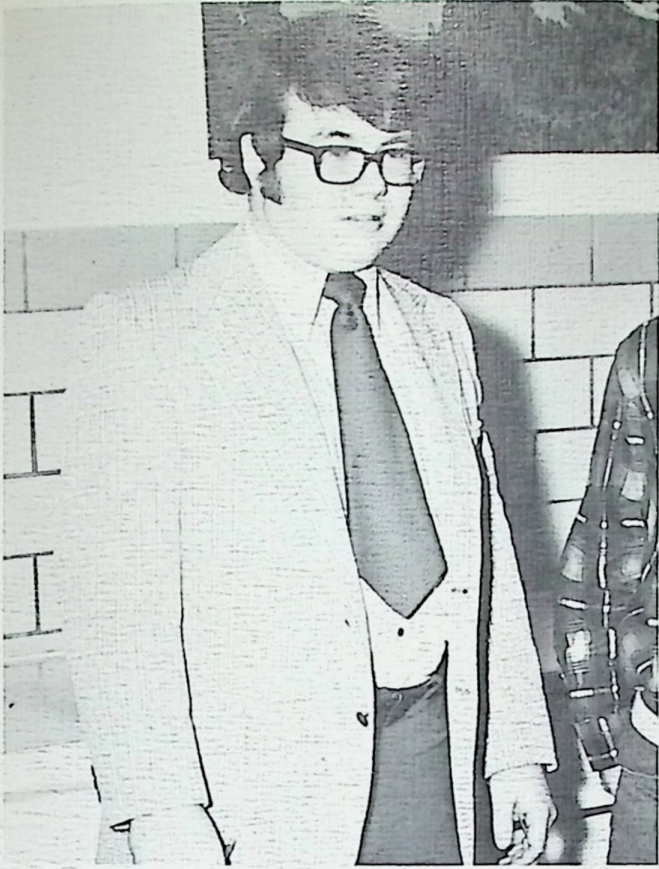


MR. LEIGHTENHEIMER - Drivers Ed., Boys Phys. Ed. and Health, coach of the Baseball Team.

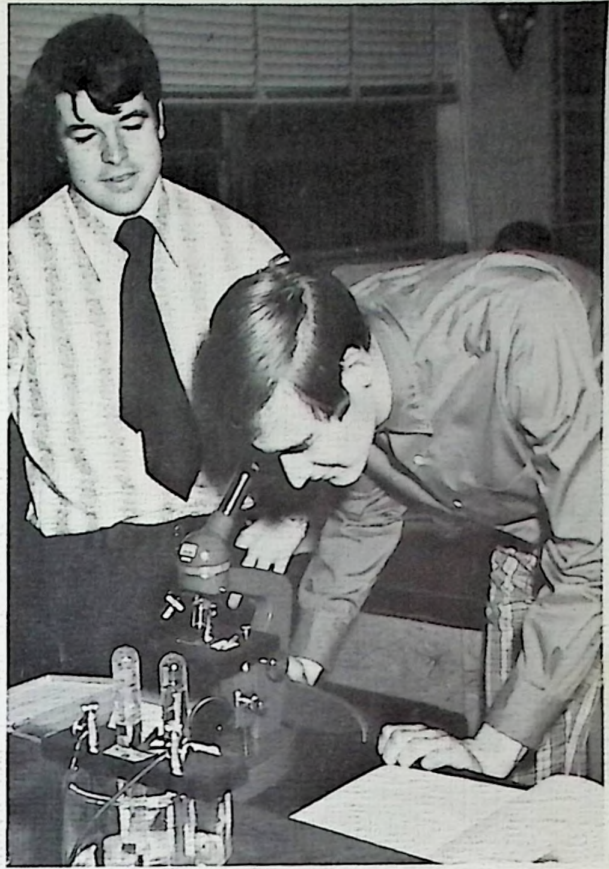


MR. LITTLE (and daughter, Julie) - Boys Phys. Ed., coach of the Reserve Team and Track Team.



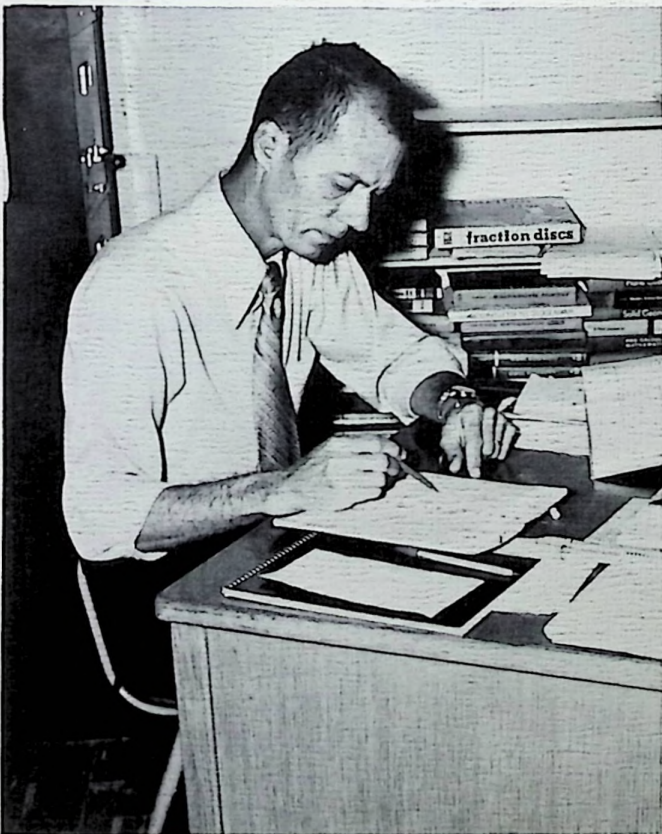


MR. WALKER - Jr. High Science, General Science.

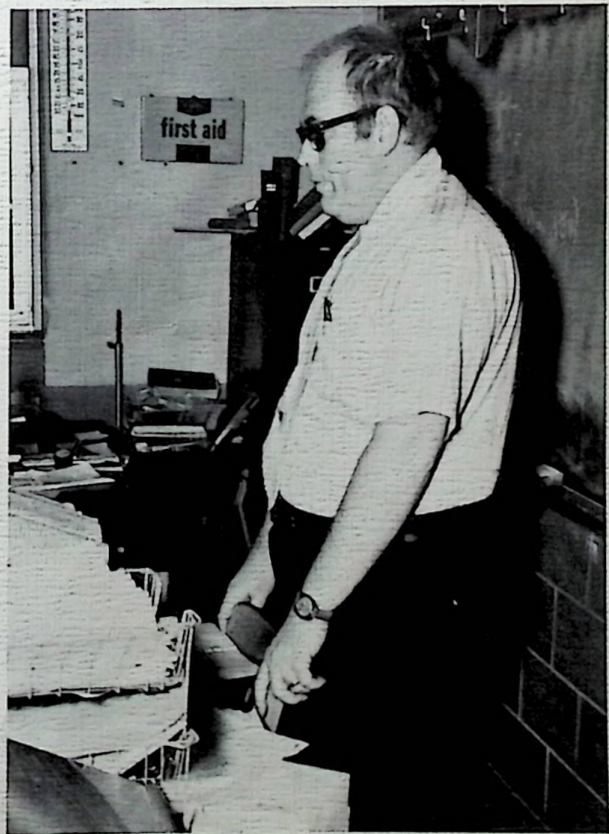


MR. KELLER - Biology, Physics, Chemistry.

MR. LEIVE - 7th Grade Math, Basic Math, and Plane Geometry.

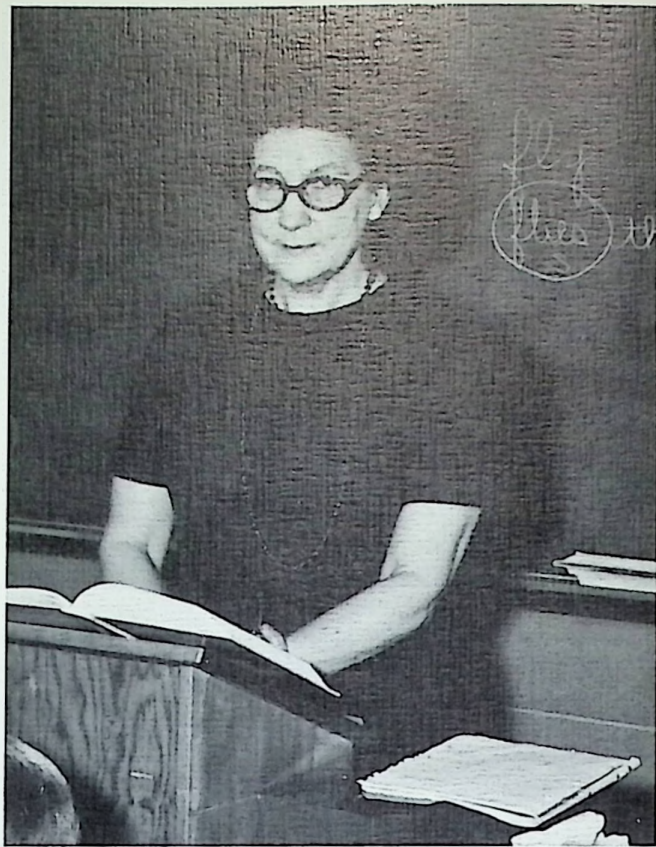


MR. MORITZ - Jr. High Science, and 8th Grade Math.



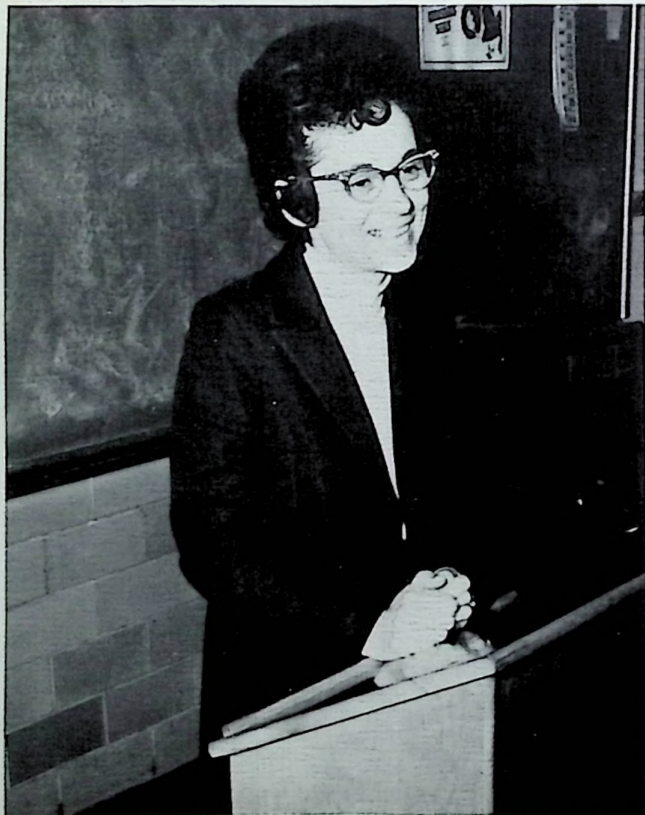


MRS. MILLER - English II, III, and IV.



MRS. RUBY - Jr. High English.

MRS. BEAUMONT - English I, Latin, Sociology, Psychology, and National Honor Society Advisor.



MR. SANOR - Spanish, English I and II.





MRS. COTTLE - General Business, Clerical Office Practice, Business Math, Shorthand I, and Business Machines. FTA Advisor.



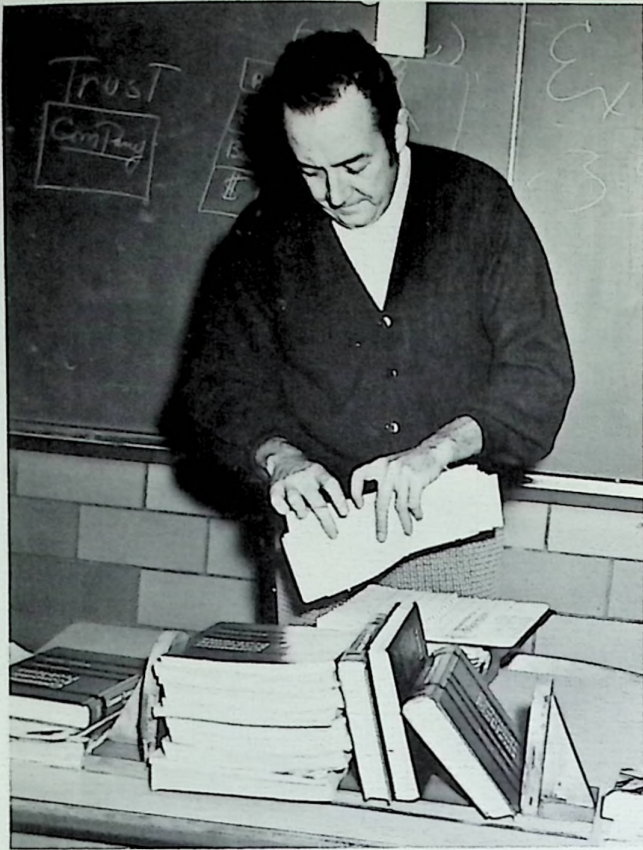
MRS. WOODS - Typing I and II, Bookkeeping, and Shorthand II.

MR. STONE - Special Education.

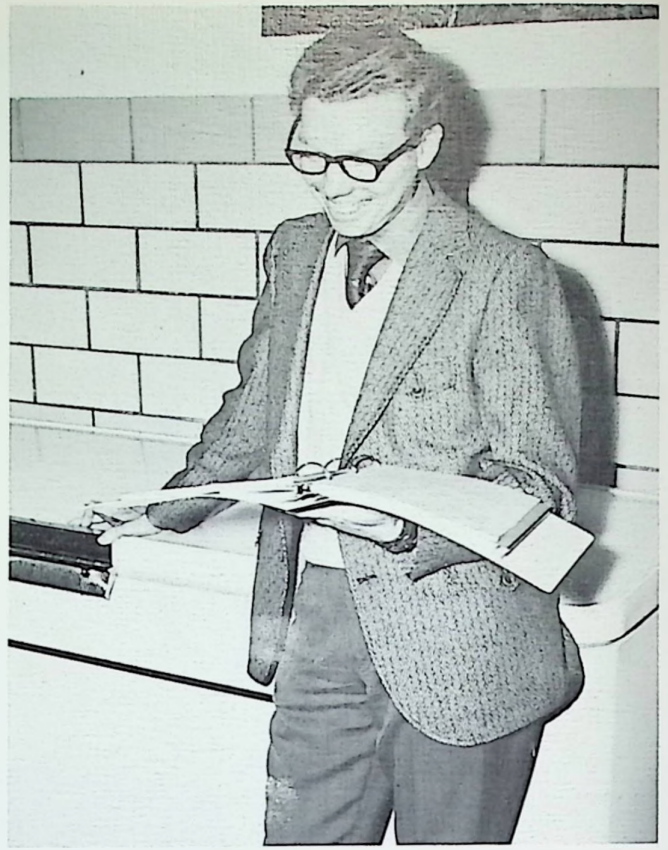


MR. ROSE - Special Education.





MR. JOHNSON - Consumer Economics, Bachelor Living, World History, and Government.



MR. WILLIAMSON - 7th Grade English, World Geography, and 8th Grade Social Studies.

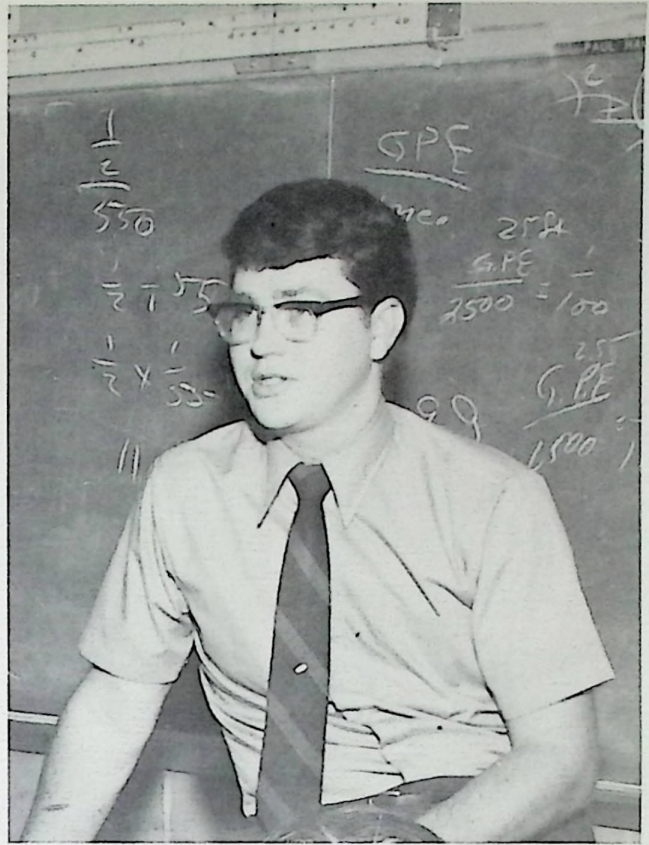
MR. LEMASTER - American History, Speech, Journalism, English I.



MRS. PHILLIPS - Art, Spelling, and Reading.

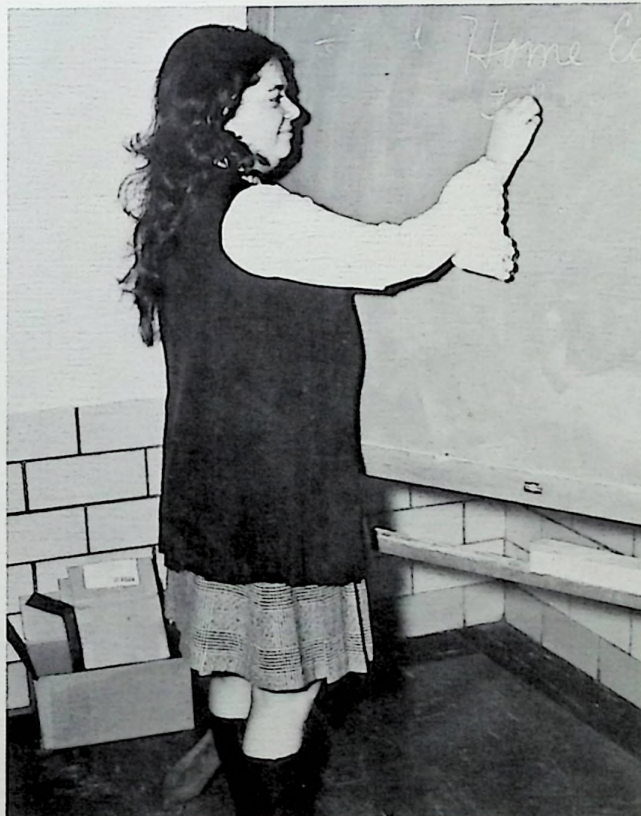


MR. MOORE - Shop and Drafting.



MR. HAGEN - Basic Math, Advanced Math, and Algebra I, II.

MISS MORE - Home Economics and Family Living.



School Is :

PhyS  
Ed

Art SpeeCh AlgebRA

PHYSICS LiterAtURE

**history**

Home  
Ec

SHOP

CHEMistry  
JOURNALISM

PSYCHOLyGy  
FAMILY Living

ENgLISH

TYPING

BiOLOgY

SHOrTh And MATh





Advertisers

## MORGAN BROS. JEWELERS

Serving Portsmouth for 2 decades  
734 Fifth St. Portsmouth, Ohio  
Phone 353-3259



## BOTTLING COMPANY OF PORTSMOUTH

2415 Scioto Trail  
Portsmouth, Ohio  
Phone 353-3126

## PORTSMOUTH CEMENT & LIME

BUILDING  
SUPPLIES

Phone 354-8833  
402 Third St.  
Portsmouth Ohio

## WHOLESALE ELECTRONIC INC.

- Sony Products
- Panasonic Products
- Eight track tape center
- Needles
- Batteries
- Tubes
- Antennas

816 Gallia Street  
Portsmouth, Ohio

## BRANT & APPEL

- Hardware
- Lumber
- Kitchen Cabinets
- Plumbing
- Plywood
- Windows
- Doors
- Aluminum

Lucasville, Ohio

259-2401

Compliments

## PRE-CAST CONCRETE CO. INC.

2044 8th St.

Portsmouth, Ohio

Phone 353-6610



"Best by Taste Test"

116 Jefferson Street  
Portsmouth, Ohio

## EMRICK-SCOTT FUNERAL HOME

1422 Lincoln Street  
Portsmouth, Ohio

**WRIGHT'S  
CHAIN  
LINK  
FENCE**

Residential  
and Commercial

Sales and  
Installation

456-4346  
Route #2  
Rubyville, Ohio

**COLDIRON'S  
BODY  
SHOP**

Complete  
Auto Body  
Repair and  
Painting

Houston Hollow  
Road

Rubyville Ohio

Phone 456-4342



**CAMPBELL'S MARKET**

Groceries Meats Produce  
Notions

State Route — 139  
Rubyville, Ohio  
Phone 456-5547

"Your Patronage is appreciated"

Congratulations  
Class of '73

**Stan Ruby's  
Service  
Station**

Route #2  
Rubyville  
Ohio

*Martiny's*

100th  
Year

"ONE OF OHIO'S GOOD STORES"

Congratulates  
The Class of '73

**WNXT  
RADIO**

The Personality  
Station

1260 AM  
99.3 FM

Compliments of  
**CUSTOM CARPET, INC.**

Home of famous brand  
name Carpets

729 Sixth Street  
Phone 354-2893  
Portsmouth, Ohio

Compliments of  
**NEWBERRY'S  
DEPARTMENT STORE**

Clothing — Gifts — Dry Goods

4132 Gallia St.  
Phone 456-4300

**PURDY LUMBER CO. INC.**

Your one stop building center  
Lucasville, Ohio

**NEWMAN'S TIN SHOP**

434 Second Street

- Air Conditioning
- Heating
- Roofing
- Sheet Metal

1930 — Our 42nd Year — 1972

**WILLIAMS  
FURNITURE**

Wheelersburg  
Ohio

Quality Furniture  
at a Reasonable Price  
Nationally Known Brands  
Phone 574-2022

**KAY  
JEWELRY**

Fine  
Jewelers  
Since 1916

Class  
Rings

817 Gallia  
Street

Compliments of  
**PORTSMOUTH  
MONUMENT  
COMPANY**

Dealers in monuments and Markers

1617 Offnere Street  
Portsmouth, Ohio  
Phone 353-4055

Compliments of

# FAIRTRACE SHOES

Ninth and Waller  
Portsmouth  
Ohio

## Sherman, Riffe & Bennett Insurance Agency Inc.

422 Center Street  
New Boston, Ohio  
Phone 456-4191

## RHODES AVE. SERVICE CENTER UNION '76

4012 Rhodes Ave.  
New Boston, Ohio  
Phone 456-9952

## WOLFF

Better Clothes for Men and Boys

Since 1912  
Portsmouth, Ohio

Compliments

## G. R. ZALER AGENCY INSURANCE CO.

Lucasville, Ohio  
Phone 259-4063

Congratulations  
Class of '72

## LUTE PUMP & PLUMBING SUPPLY

Phone 354-1790  
519 Second Street  
Portsmouth, Ohio

ANDY'S  
"Don't fuss  
Call us"



1621 8th Street  
Phone 354-2859

Compliments of

# ADAMS BAKING COMPANY

BAKERS OF MR. BIG BREAD



1009 Offnere Street  
Portsmouth, Ohio

Phone 353-0290

## PENNINGTON FUNERAL HOME

Licensed for Ohio and Kentucky

24 hour Ambulance Service  
with trained attendants

Air Conditioned Chapel and Cars

Radio Equipped



3768 Gallia Street  
New Boston, Ohio

Phone 456-4650

# *Security Central*

*"That's My Bank"*



**"The highest rate of interest you will ever receive is the return on your investment  
in higher education."**



## **The Only Bank...**

*... A Person Ever Needs.*



**BOTTLING  
COMPANY  
OF  
PORTSMOUTH**

2415 Scioto Trail  
Portsmouth, Ohio  
Phone 353-3126

**STAPLETON OFFICE  
SUPPLY COMPANY**

607 Chillicothe St.

Office supplies and equipment  
Typewriters and office machines  
1946 — Our 28th year — 1973

**TRUE VALUE  
STORES**

209-11 Market Street  
4342 Gallia St. New Boston  
751 Main Street, South Shore, Ky.

Annex  
Gallia and Harrisonville St.

Congratulations  
Class of '73

**JO AND ANN'S  
SHAKE SHOPPE**

Route #23 in Rosemont

**THE  
NATIONAL  
BANK  
OF  
PORTSMOUTH**

With  
3 Branch Offices

428  
Chillicothe St.

Eastown Office  
1925-11th Street

Rosemont Office  
U.S. Rt. 23 N.

Sciotoville  
Office  
411 Harding Ave.

Compliments

**RONALD  
GREENE**

Your  
County  
Treasurer

**MARKET STREET  
HARDWARE**

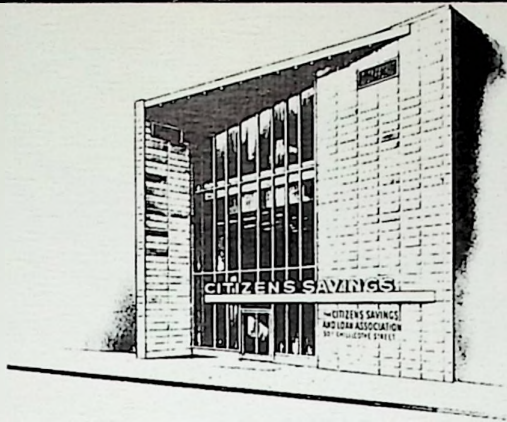
217 Market Street

Compliments

**McKINLEY  
FUNERAL HOME**

Phone 259-2981





Compliments of

# CITIZENS SAVINGS

AND LOAN ASSOCIATION

507 Chillicothe St.  
Portsmouth



WHEELERSBURG OFFICE  
OHIO RIVER RD.



"Best Of Luck"

MILDRED E. THOMPSON  
Clerk of Courts



## ORIGINAL HAMBURGER INN NO. 1

"The Granddaddy of them all"

1567 Gallia Street Portsmouth, Ohio

## NEWBERRY'S SPORTING GOODS

"Specializing in team equipment"

313 Chillicothe St. 353-0644

## ERNIE KENNARD REALTOR

1631 Offnere Street  
Portsmouth, Ohio

Phone: 354-6633

"PUT KENNARD in YOUR YARD"

## SCIOTO COUNTY NEW CAR DEALERS ASSOCIATION

Portsmouth, Ohio

Fred Brown, Inc.  
Glockner Chevrolet & Co.  
Henry Oberling Motor Co.  
Capitol Pontiac-Buick, Inc.  
Hanes Chevrolet Co.  
Frank Tiedge Ford, Inc.  
Cole Lincoln-Mercury, Inc.  
Portsmouth Volkswagen, Inc.

# HUNTER INSURANCE

**354-3124**

CORNER OF 7th & GAY  
840-7th ST. - PORTSMOUTH



- AUTO
- FIRE
- HOMEOWNERS
- LIABILITY
- BONDS
- HOSPITALIZATION
- HEALTH
- ACCIDENT
- LIFE
- BUSINESS
- FARMOWNERS
- BOATS



YOUR *Independent*  
*Insurance* - **AGENT**

"SERVES YOU FIRST"  
© NAIA



## BOOSTERS

Milhuffs Sciotoville, Wheelersburg  
Center Plaza Medical Center  
Pop's Place  
Keys Inn Luxury Hotel  
Koch Hardware Store  
Radio WPAY  
Bhil Office Equipment and Supply  
Naomi's Beauty Salon  
Reese Hamburger Shop  
Larry Moore Sporting Goods  
Wheelersburg Lumber  
Russell Glass Co.  
The Distel Furniture Co.  
Berts Tropical Fish  
The Bake Shop  
Record Shop  
Mr. J.  
Compliments of C. E. Refractories  
Roberts Jewelers

## PATRON

Mr. and Mrs. Walter Ruby



Dave  
TO A REAL  
GOOD BASEBALL, FOOT-  
BALL, BASKETBALL PLAYER  
IF YOU PLAY THE SAME  
WAY YOU ARE, YOU WILL GO  
TO THE PRO'S

Chuck  
Phillips

To Dave  
A real nice  
boy good luck in  
the future Dave your  
friend  
Paul  
Don't forget to  
write back



