





**MARY BENNETT**  
Commercial



**RUSSELL CHRISTIAN**  
Coach, History



**MARCELLA DONLEY**  
Latin 1, 2, 3; English 1, 2



**HAROLD EVERLING**  
Coach  
American Government



**DALE GILLETTE**  
Instrumental Music



**MARTHA HEATH**  
Vocal Music



**BETTY MEISEL**  
Biology, English 2  
Speech



**AMY MITCHELL**  
English III, IV



**SAM**  
Indus

**HELEN RATLIFF**  
English I, II



**ETHEL REECE**  
Home Economics  
Chemistry

**FRED STAMM**  
General Science  
Agriculture

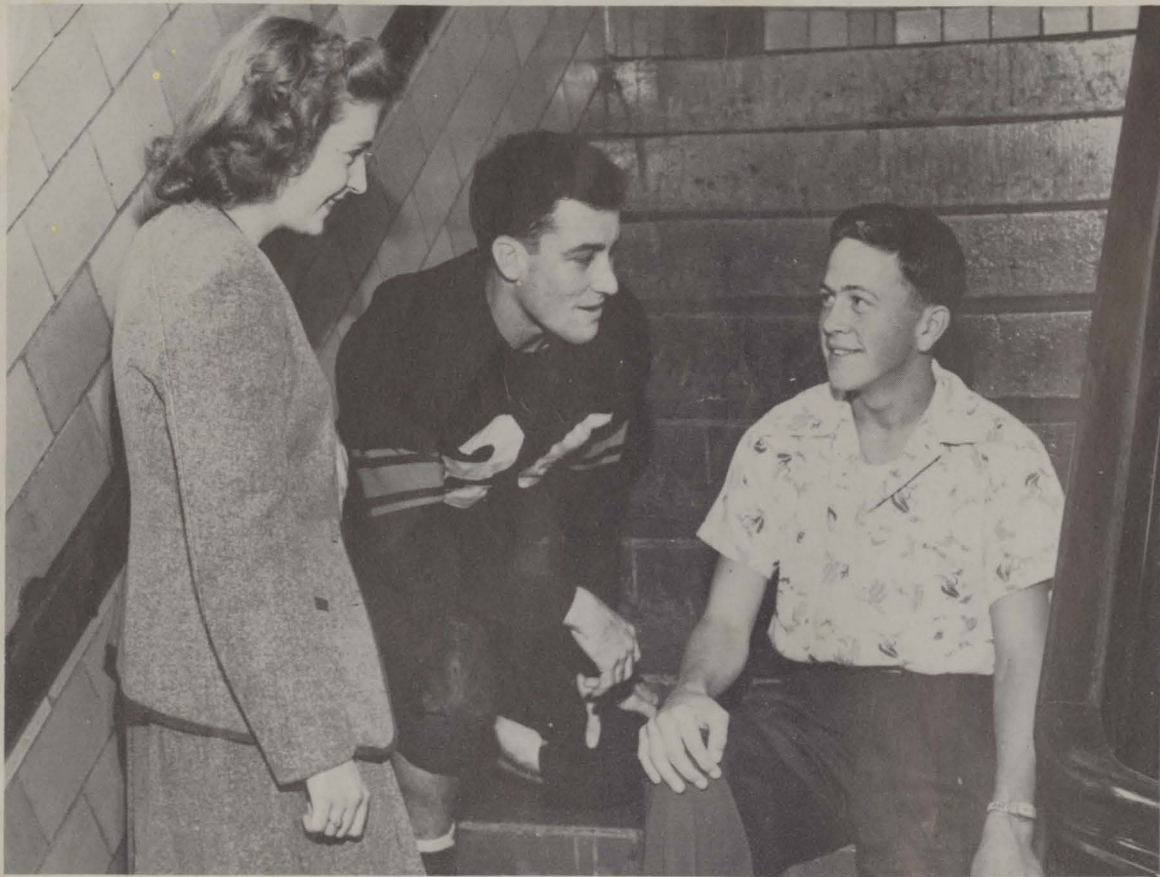


**LORETTA WOODS**  
Commercial



# SENIORS

CAPITOL STATION  
AT CH...



**Senior Officers**

SECRETARY-TREASURER.....Bernistene Addis      PRESIDENT.....Jack Blevins  
 VICE-PRESIDENT.....Don Keene

**Senior Advisers**

Mrs. Donley and Mrs. Mitchell



FRED  
 General Science  
 Agriculture



Sponsor:

**MOTOR CO.**  
 "Give You a Better Deal Always"



**BERNISTENE JANE ADDIS "Bernie"**

"Stately and proud of mein, a fairer girl  
 was never seen."

Commercial

Glee Club 2; Mixed Chorus 3; Newspaper 3, 4; Annual Staff 4; Basketball Queen's Court 3; English Club 1, 2, 4; Minstrel 3; Class Officer 4; Future Homemakers Club 4.

**DONALD ANDRE**

Washington High 1, 2, 3; Navy 4.



**HOWARD BARBER "Windy"**

"I never dare to be as funny as I can."

Industrial Arts

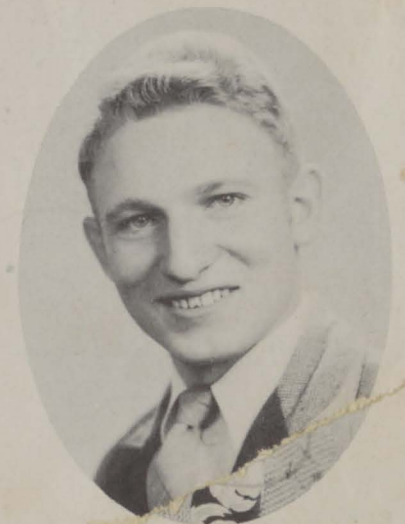
English Club 2; Glee Club 3; "Date With Judy" 3; Intramural Basketball 3; "Everybody's Crazy" 4.



**MARY CATHERINE ALBRECHT "Kate"**

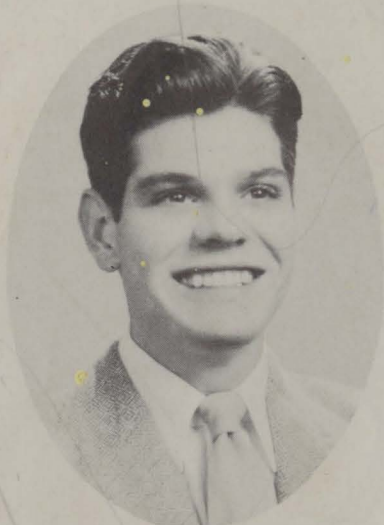
"Modest and shy as a maid is she."

Commercial and Home Economics  
 Future Homemakers Club 4.



Sponsor:

**CHARLIE CAPERSON**  
 "EAT DIRT CH... STATION"

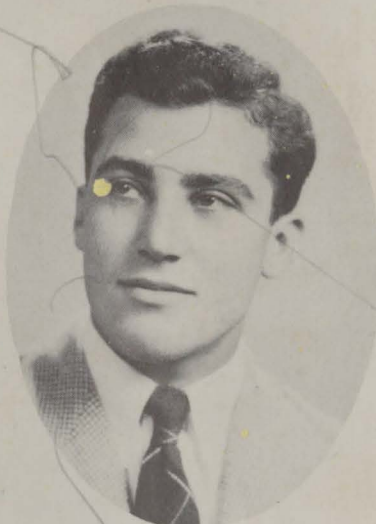


**JACK W. BLEVINS "Toots"**

"I am not in the role of common men."

Industrial Arts

Football 3, 4; "W" Club 3; Glee Club 1; Class Officer 4; "Date With Judy" 3; "Everybody's Crazy" 4.



**JAMES LEONARD BAZLER "Baz"**

"Impossibility — there's no such word."

Commercial

Portsmouth High 1; Football 3; Newspaper 4; Annual 4; Glee Club 3, 4; Band 4; Mixed Chorus 4; "Date With Judy" 3; "Everybody's Crazy" 4; Speech Club 4; Minstrel 4.



**DELORES FAYE BCGGS "Cuddles"**

"She speaks, behaves, and acts, just as she thinks."

College Preparatory

Band 1, 2, 3, 4; English Club 1, 2, 3, 4; Latin Club 1, 2, 3; Glee Club 1, 2, 3; Honor Society 3; Scholarship 1, 2, 3; Minstrel 3, 4; Newspaper 3; Librarian 1, 2, 3, 4; Mixed Chorus 1, 2; Chemistry Club 4; "Everybody's Crazy" 4; Minstrel 4.



**JACQUELINE BECK "Jackie"**

Agriculture "Silence has many advantages."

Commercial

1, 2; Glee Club 2; Mixed Chorus 3;



**HELEN MARIE CASTLE "Cass"**

"Knowledge is power."

College Preparatory

English Club 1, 2, 3, 4; Band 1, 2, 3, 4; Scholarship 1, 2, 3; Honor Society 3, 4; Glee Club 2; Newspaper 3; Latin Club 1, 2; Future Homemakers Club 4; "Everybody's Crazy" 4; Minstrel 3, 4; Librarian 1, 2, 3, 4.



**RUTH CLIFTON "Clif"**

"I can be pushed just so far."

Commercial

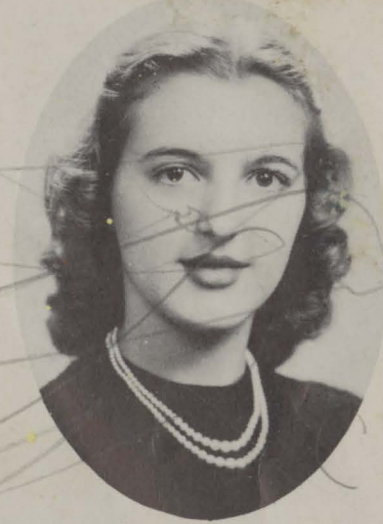
"Date With Judy" 3; Newspaper 4; Annual 4; Future Homemakers Club 4.

**MARIAN JOAN COOLEY "Jeep"**

"A sure cure for the blues."

Commercial

Scholarship 1, 2, 3; Home Economic Club 3, 4; English Club 1, 2, 3; Latin Club 1, 2; Class Officer 2, 3; Minstrel 3, 4; Cheerleader 1, 2, 3, 4; Glee Club 2; "Date With Judy" 3; Chemistry Club 4; Band 1, 2, 3, 4; "Everybody's Crazy" 4.

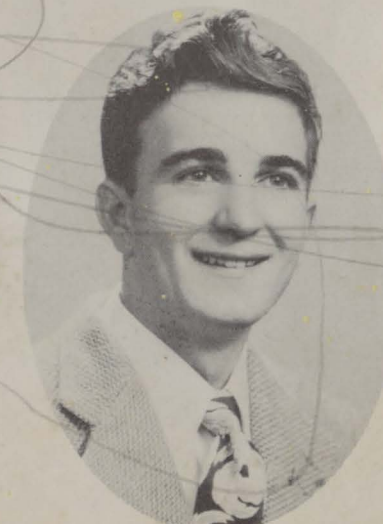


**JONAS COOPER "Bus"**

"Wit and wisdom were born with this man."

College Preparatory

Scholarship 2, 3, 4; English Club 1, 2, 3, 4; Spanish Club 3; Honor Society 3, 4; Chemistry Club 4; Intramural Basketball 3.

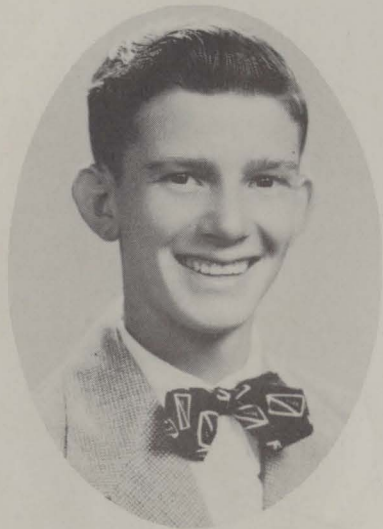


Sponsor:

**DON T. STOCKHAM & SONS**  
GENERAL STORE AND FILLING STATION

Sponsor:

**WOODS CUT-RATE DRUG**  
CIGARETTES, AND FOUNTAIN SERVICE



**L. FREDERICK COX "Fagan"**

"One cannot know everything"

College Preparatory

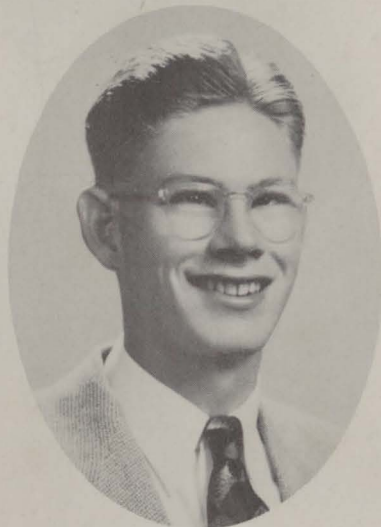
Glee Club 1, 2, 3, 4; Band 1, 2, 3, 4; Freshman Basketball; Baseball Manager 1; Scholarship 1, 2, 3; Radio Club 2; "Date With Judy" 3; English Club 1, 2, 3, 4; Spanish Club 2, 3; Football Manager 3; Intramural Basketball 3; Speech Club 3, 4; Prince of Peace 4; Minstrel 3, 4; Annual Staff 4; Newspaper 4; Mixed Chorus 1, 2; "W" Club 3; "Everybody's Crazy" 4.

**RALPH EDWARD DAVIS "Detective"**

"He views things from an unusual attitude."

College Preparatory

English Club 1, 4; Glee Club 3, 4; Band 1, 2, 3, 4.



**KATHLEEN DILLER "Dill"**

"The best of life is conversation"

Commercial

Band 1, 2, 3, 4; Glee Club 2; Minstrel 3, 4; "Date With Judy" 3; "Everybody's Crazy" 4; Newspaper 4; Annual 4; Future Homemakers Club 4.

**BETTY JOY DIXON "Betts"**

"How much better it is to get wisdom than gold."

Home Economics and Commercial  
Portsmouth High 1; Scholarship 2; English Club 4.



**DOROTHY ANN CRULL "Dot"**

"Goodness is a special kind of truth and beauty."

College Preparatory

English Club 1, 2, 3, 4; Honor Society 3, 4; Glee Club 3, 4; Class Officer 2; Minstrel 3, 4; Band 3, 4; Scholarship 1, 2, 4; Future Homemakers Club 4.

**JUANITA FAYE DILLER "Nita"**

"The greatest pleasures of life are love."

Commercial

Cheerleader 1, 2; Home Economic Club 3, 4; Band 1, 4; Minstrel 4.



**PHYLLIS DILLOW "Dinke"**

"Her smile is bright, her heart is light."

College Preparatory

McDermott High 3; Scholarship 3; English Club 2, 4; Prince of Peace 4; Glee Club 1, 2, 3; Mixed Chorus 2; Speech Club 4; Band 1, 2, 3, 4; Debate 4.

**CATHERINE RUTH FRUMP "Kate"**

"Simplicity is a jewel rarely found."

Commercial

Glee Club 1, 2; Choir 2; Mixed Chorus 2; Future Homemakers 4.



Sponsors:

**FOLSOM'S GROCERY  
RALPH SKINNER**

Sponsor:

**T & T GARAGE  
2740 GALLIA ST.**



**GARNET FAYE FRYE "Star"**

"Men are mortal gods."

Commercial  
English Club 1, 2, 3, 4.

**ANNA LEE HAZLEBAKER "Annie"**

"Action speaks louder than words"

Home Economics  
Home Economics Club 2; Glee Club 3; Future Home-  
makers Club 4.



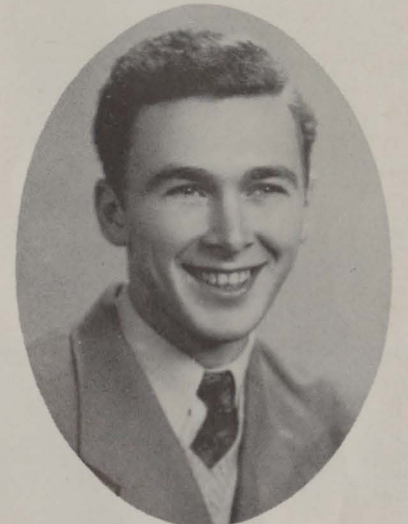
**LORETTA MAXINE JONES "Retta"**

"I bear a charmed life"

Commercial  
Majorette 1, 2, 3; Glee Club, 1, 2; Newspaper 4; Annual  
Staff 4; Minstrel 3, 4; Future Homemakers Club 4.

**DONALD KEYSER "Don"**

Washington High School 1, 2, 3; Army 4.



**VIRGINIA PAULINE HARRISON "Ginny"**

"The mildest manners and the gentlest heart"

Commercial  
Band 1, 2, 3, 4; English Club 1, 2; Scholarship 1, 2; Glee  
Club 2; Minstrel 3, 4; "Everybody's Crazy" 4.

**DAVID H. JAMES "Dave"**

"Speech is the index of mind"

Industrial Arts  
Radio Club 2; Class Officer 1; Band 1, 2, 3, 4; Industrial  
Arts Club 2, 3; Minstrel 3, 4; Camera Club 2; Intramural  
Basketball 3; "Everybody's Crazy" 4.



**DONALD L. KEENE "Shotgun"**

"Nothing evil can dwell in such a temple"

Industrial Arts  
Class Officer 4; Basketball 4; Football 3, 4; Baseball  
Manager 2; Track 3, 4; Minstrel 3, 4; Score Keeper 2, 3;  
Intramural Basketball 3; Band 1; "W" Club 3.

**FLORA ELIZABETH KUHN "Liz"**

"The style is the girl herself"

College Preparatory  
Latin Club 1, 2; Mixed Chorus 3; English Club 1, 2, 3, 4;  
Band 1; Home Economics Club 3; Chemistry Club 4;  
"Everybody's Crazy" 4.



Sponsors:

**STANDARD SUPPLY  
COUNTS BAKERY**

Sponsor:

**CONLEY'S GROCERY  
FOR BETTER SERVICE**



**NORMA JEAN KUHN "Dudgie"**

"Born with the gift of laughter"

Commercial

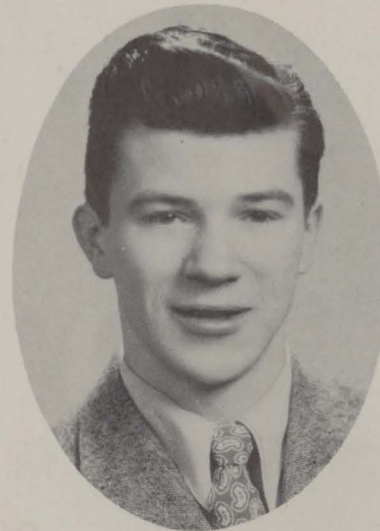
Home Economics Club 1, 2; Band 2, 3, 4; Glee Club 1, 2; Mixed Chorus 1, 2; Minstrel 3; Newspaper 3, 4; Annual Staff 4; Future Homemakers Club 4.

**BETTY JO MARTIN "Jo"**

"Quiet but studious"

Commercial

Scholarship 2, 3; English Club 1, 2, 3, 4; Latin Club 3; Band; Future Homemakers Club 4; Glee Club 1, 2.



**THOMAS MONTGOMERY "Tom"**

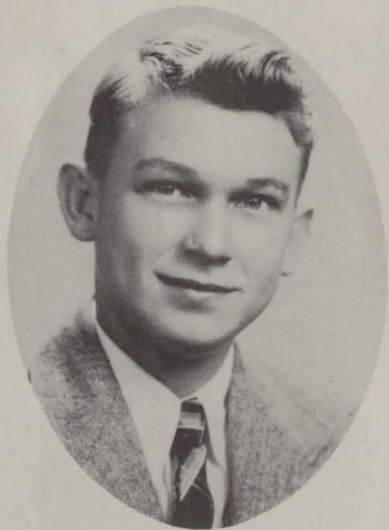
Washington High School 1, 2, 3; Navy 4; "Everybody's Crazy" 4.

**HARRY ANDREW O'DELL "Spike"**

"In action faithful; in honor clear"

Industrial Arts

Baseball 1, 2, 3, 4; Intramural Basketball; Varsity 3, 4; Industrial Arts Club 1; English Club 1, 2, 3; Minstrel 4.



**WILLIAM J. LISTON "Bill"**

"Tell him also, he is a man."

Industrial Arts

English Club 1; Radio Club 3; Minstrel 3; Mixed Chorus 2, 3, 4; Camera Club 3; Band 1, 2, 3, 4; Annual Staff 4; Industrial Arts Club 2, 3.

**ROBERT LEE MEADE "Bob"**

"Free and gay; no women in his life"

College Preparatory

Baseball 3, 4; English Club 2, 3; Band 1, 2, 3, 4; Intramural Basketball 1.



**EULENE MULLINS "Dube"**

"Cheerful she seems and gentleness she loves."

Commercial

English Club 3, 4; Basketball Queen's Court 2; Home Economics Club 3; "Everybody's Crazy" 4.

**JEAN ALICE PACK "Beans"**

"Laugh and the world laughs with you"

Commercial

Glee Club 2; Mixed Chorus 3; Band 1, 2, 3, 4; Newspaper 3, 4; Annual 4; Class Officer 3; Cheerleader 1, 2, 3; "Date With Judy" 3; Minstrel 3, 4; "Everybody's Crazy" 4.



Sponsor:

**SAMUEL LEVI & CO.**  
"SHOP LEVI'S - SAVE MONEY"

Sponsor:

**STEWART'S DRUG STORE**  
"PRESCRIPTION SPECIALISTS"





**LOUELLA PORTER "Lot"**

"Silence is power"

Commercial

Glee Club 2; Mixed Chorus 2; Choir 2; Home Economics Club 4; English Club 1.

**VIRGINIA LEE PYLE "Ginny"**

"She tells you frankly what her mind is."

Commercial

"Date With Judy" 3; Newspaper 4; Scholarship 2; Annual 4; Glee Club 1, 2; Mixed Chorus 1, 2, 3, 4; English Club 2; Prince of Peace 2; Home Economics Club; "Everybody's Crazy."



**CLIFFORD TAXON RATLIFF "Punk"**

"All my life is lost in laboriously doing nothing"

Industrial Arts

Football 3, 4; Track 3, 4; Score Keeper 4; Intramural Basketball 1, 2, 3; Band 1, 2, 3, 4; Minstrel 3, 4; Freshmen Basketball; "W" Club 3; Radio Club 2, 3; Boys Glee Club 2; Industrial Arts Club 3.

**MARCELLA ROSE ROTH "Marcy"**

"In many there are dreams"

Commercial and Home Economics  
English Club 4.



**LOVELLA PORTER "Love"**

Commercial

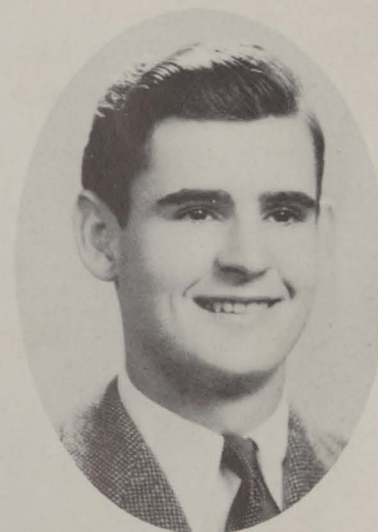
Glee Club 2; Mixed Chorus 2; Choir 2; Home Economics Club 4; English Club 1.

**MARY ANNA QUICKEL "Annie"**

"Believe that you have it and you have it"

Commercial and Home Economics

English Club 1, 2, 3, 4; Honor Society 3, 4; Homemakers Club 4; Librarian 4.



**CHARLES ROBERT ROARK "Charlie"**

"Free and gay; no women in his life"

College Preparatory

Intramural Basketball 3; Latin Club 1; Scholarship 1.

**DORIS SHEETS "Butch"**

"She draws them with a single eyelash"

College Preparatory

Latin Club 3; Chemistry Club 4; English Club 4.

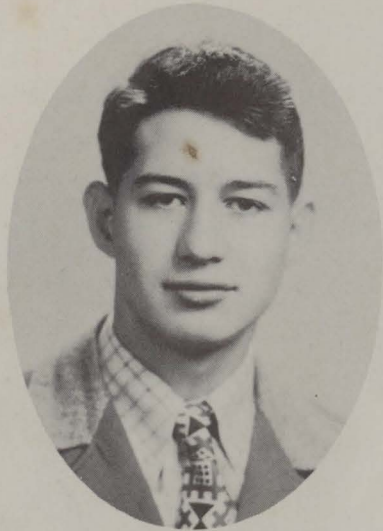


Sponsors:

**WEST PORTSMOUTH BLOCK CO.  
RISNER'S GROCERY**

Sponsors:

**O. G. HOWARD  
MEADOWS INS. & TERMITE**



**RAY EDWIN SHEPHERD "Shep"**

"Tomorrow will come, why the hurry?"

Industrial Arts

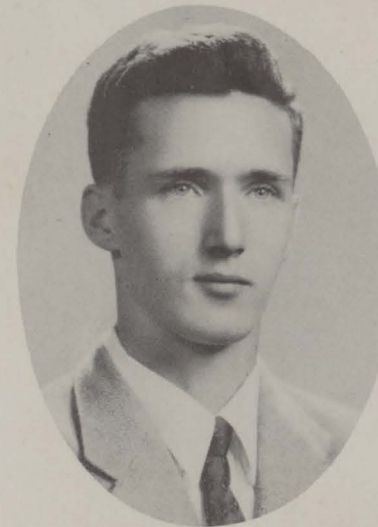
English Club 1; Baseball 2; Intramural Basketball 3.

**JANET MARIE SHIVENER "Curley"**

"Gaiety is the soul's health"

Commercial

Band 1, 2, 3, 4; Cheerleader 1, 2; English Club 1, 2, 3; "Date With Judy" 3; Glee Club 1, 2; Newspaper 3; Minstrel 3, 4; Class Officer 1.



**ROBERT SPARKS "Bob"**

"How strangely easy difficult things are"

College Preparatory

Scholarship 1, 2, 3, 4; English Club 1, 2; Chemistry Club 4; Spanish 2, 3.

**EVA ERNESTINE VAUGHTERS "Ernie"**

"The friendly heart has many friends"

Commercial

Scholarship 2; English Club 1, 2, 3, 4.

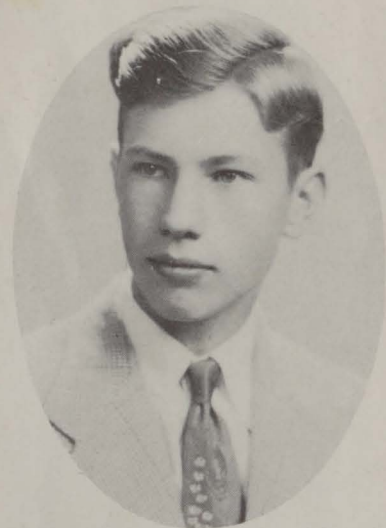


**NORMA JEAN SMITH "Smitty"**

"All work and no play"

College Preparatory

Maryland High 1; English Club 2, 3, 4; Latin Club 2, 3; Glee Club 2, 3, 4; Honor Society 3, 4; Minstrel 3, 4; "Date With Judy" 3; Scholarship 2, 3; "Everybody's Crazy" 4.



**JAMES THOMAS SHIVELY "Tommy"**

"I have loved many, the more and the few"

College Preparatory

Manchester High 1, 2; Band 3, 4; Chemistry Club 4; Radio Club 3; Minstrel 3, 4; Scholarship 4.



**MARY ELLEN THURMAN "Mary"**

"A true friend is forever a friend"

Commercial

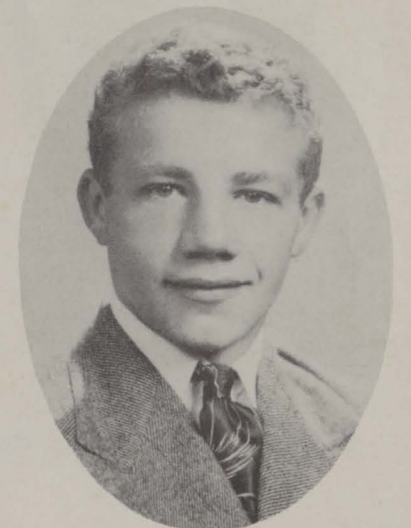
Home Economics Club 2; Future Homemakers Club 4.

**CARL WESSELL, JR. "Sonny"**

"My deeds will speak"

Industrial Arts

Radio Club 2; Football 3, 4; Intramural Basketball 3; Track Manager 3; "W" Club 3; Minstrel 4; "Everybody's Crazy" 4.



Sponsors:

**NEWBERRY'S DRIVE INN  
KINDLER'S SOHIO**

Sponsors:

**ROY ZUEFLE  
DOERR'S ADVERTISING**



**LOIS WILLIAMS "Pooch"**

*"A charm attends her everywhere"*

College Preparatory

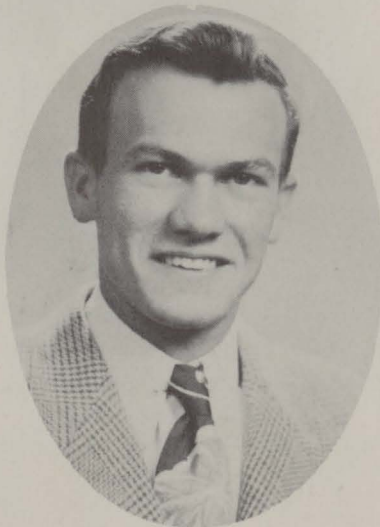
Glee Club 2, 3; Scholarship 1, 2, 3; Class Officer 2; Honor Society 3, 4; English Club 1, 2, 3, 4; Latin Club 2, 3; "Date With Judy" 3; Newspaper 4; Annual 4; Future Homemakers Club 4; "Everybody's Crazy" 4.

**JAMES G. WOODS "Jimmy"**

*"A man cannot spend all his life in leisure"*

Industrial Arts

Radio Club 2; Basketball 2, 3, 4; Football 3, 4; Baseball 3; Track 3; Band 2, 4; "W" Club 3.



**SHIRLEY MAE WRIGHT "Sher"**

*"A personality plus"*

College Preparatory and Home Economics

Scholarship 1, 3; Home Economics Club 1, 2; English Club 1, 2, 3, 4; "Hats Off" 1; Chemistry Club 4; "Everybody's Crazy" 4.



**DOROTHY RUTH WOLFE "Dot"**

*"A soft answer turneth away wrath"*

Commercial

Valley High 1, 2, 3; Speech Club 4; Glee Club 4.



## *In Memoriam*

We, the Class of 1948, in behalf of ourselves and the entire student body, dedicate this page to the memory of four deceased friends, whom we cherish as beloved and dear to us as students of Washington High School.

To MR. JENKINS, who gave so much as president of our school board, we hold deep gratitude and reverent thanks.

To CLARENCE "Shorty" HOPKINS, who would have graduated with us this year, we hold fond memory of one who was both friend and "pal," on the field of sports and in the halls of our school.

WANDA MOWERY and MARY JANE BURCHETT, we shall remember as two wonderful girls and great friends through the short years we knew them.

These four friends, we shall hold deep in our minds and hearts and shall cherish always the memory of the friendship and kindness they gave to us in their lives upon this earth.

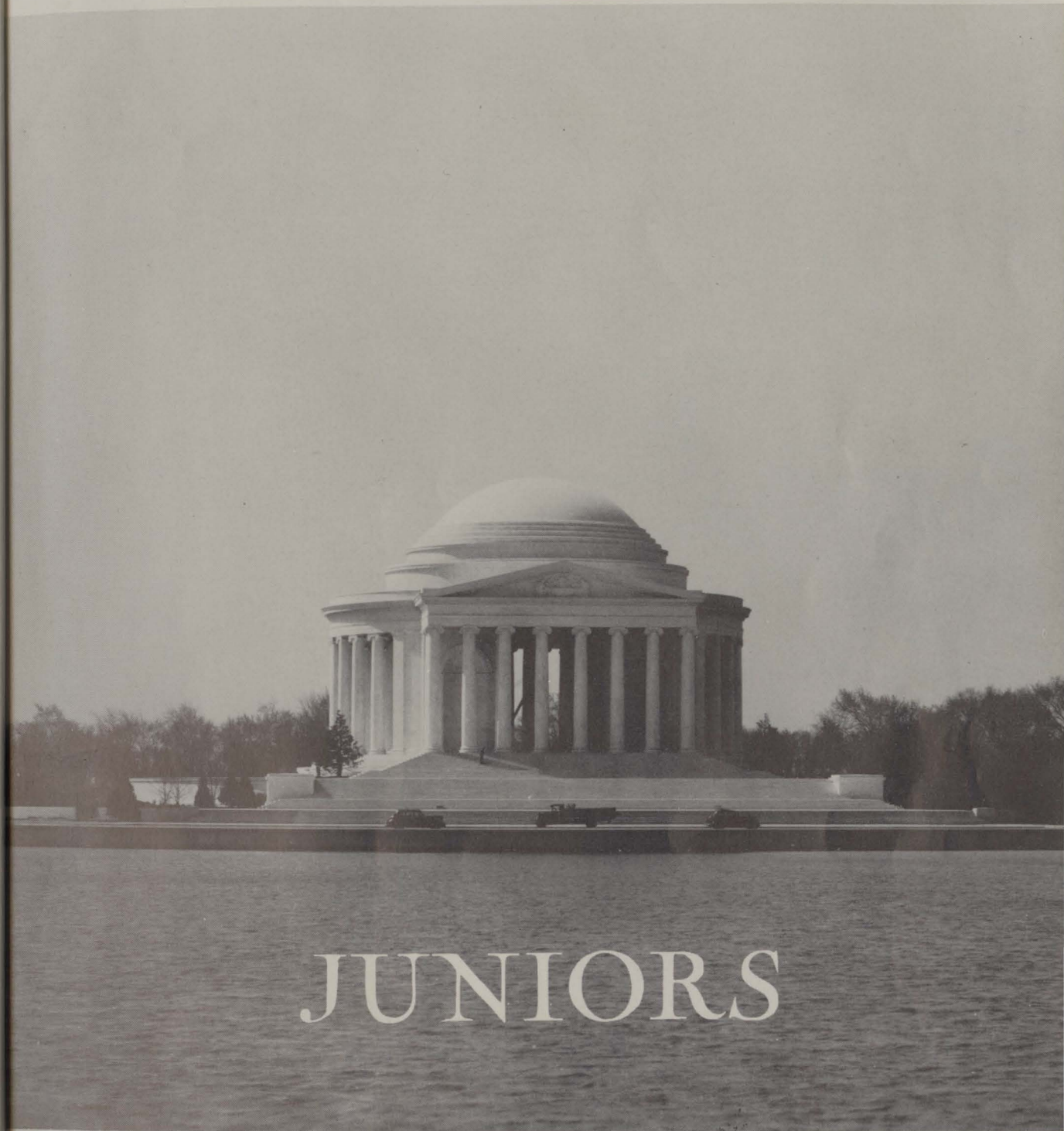
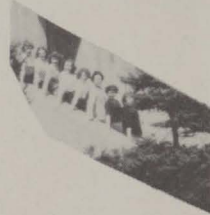
Sponsors:

**SPURLOCK GROCERY  
STERN PAINT CO.**

Sponsor:

**PIATT'S FUNERAL HOME**

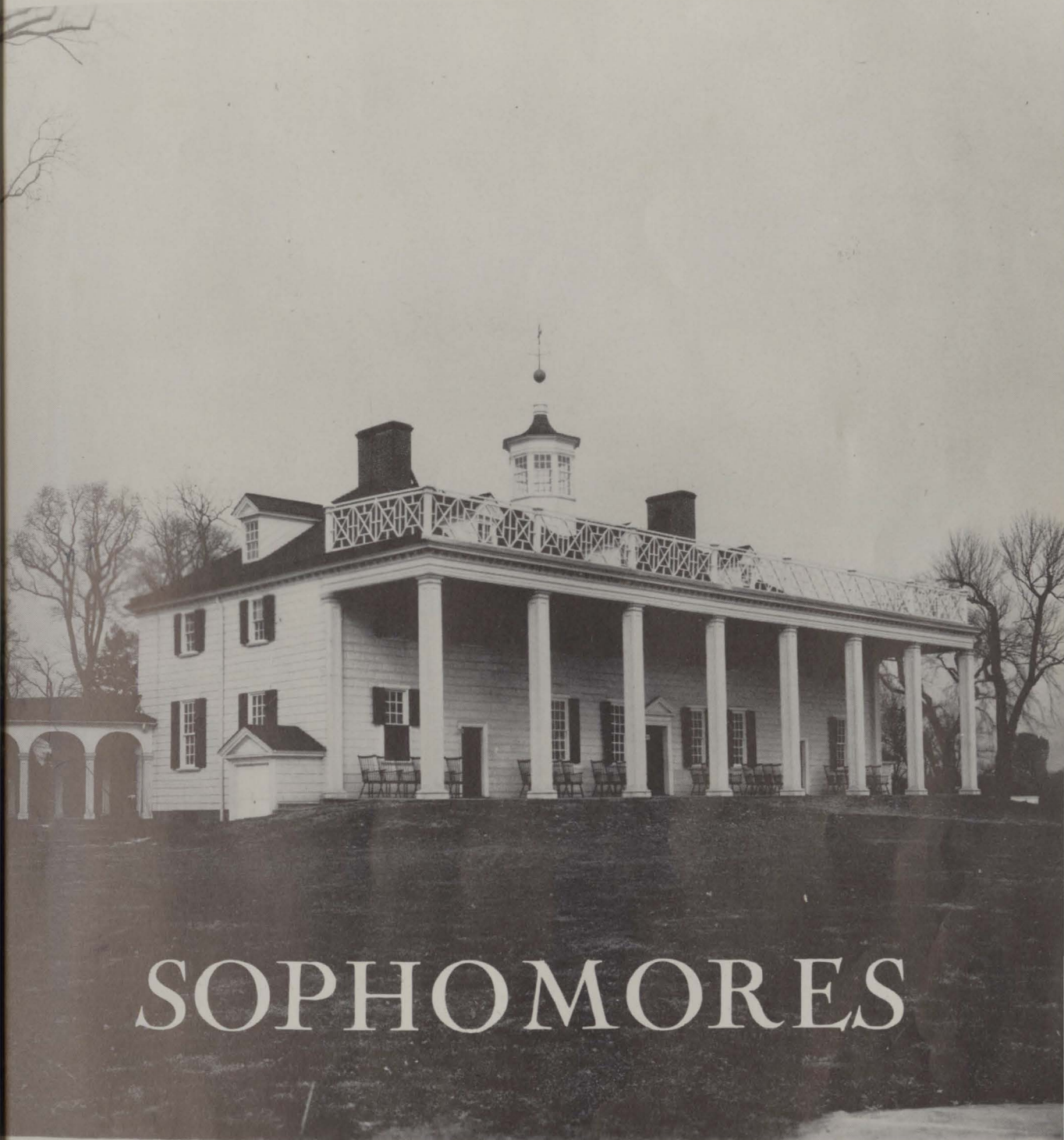
# Senior Snaps



# JUNIORS



# Junior Snaps



# SOPHOMORES

Sponsors:

**RICHMAN BROS.  
LANGWELL CAFETERIA**



# Sophomore Snaps



IN THIS TEMPLE  
AS IN THE HEARTS OF THE PEOPLE  
FOR WHOM HE SAVED THE UNION  
THE MEMORY OF ABRAHAM LINCOLN  
IS ENSHRINED FOREVER



# FRESHMEN

*[Handwritten signatures and scribbles]*





**FRESHMAN OFFICERS**

**Row 1:** Carol Hazelbaker, Secretary; Bill Hopper, Treasurer; Ray Fraley, President; Bill Gilkerson, Vice President.

**MR. STAMM**  
Freshman Adviser



Sponsor:  
**KOBACKER'S**



**FRESHMAN CLASS**

**Row 1 (left to right):** M. Conley, F. Smith, N. Payton, L. Dodiedge, R. Hann, L. Vaughters, E. Dillow, B. Ratcliff, J. Hard, E. Wistman, D. Bradford, A. Lewis. **Row 2:** B. Litz, H. Crager, B. Myles, N. Richey, N. Creech, V. Mangus, M. Belmony, B. Albrecht, J. Chandler, P. Siveargen. **Row 3:** N. Rapp, D. Lucas, L. Frump, R. Sheppard, R. Cook, G. Mitchell, O. Smalley, J. Bridwell, M. Willis, D. Day, B. Williams, C. Swords, I. Nunley, M. Hazelbaker, R. Gray. **Row 4:** P. King, B. Wessell, P. Shump, B. Ridout, C. Hazelbaker, R. Wailey, B. Thompson, J. Vaughters, M. Huff, G. Howard, L. Boyd, P. Adams, E. Bates, M. Batterick, V. Oney. **Row 5:** E. Wilburn, D. Limpedee, G. Stout, J. Sowards, L. Shaw, J. Andre, M. Caudwell, J. Colley, J. Puckett, S. Michelhaugh, J. Lindsey, P. Haffner, B. Brown, V. Sparks, H. McGraw, B. Atkins, M. Richards. **Row 6:** R. Bradford, J. Lauder, G. Graham, B. Ridernor, R. Fraley, B. Gilkerson, B. Sparks, D. Sanford, R. Woten, J. Sparks, J. Schaffer, N. Hamilton, L. Speck, J. Scibler. **Row 7:** J. Askins, F. Bellemly, R. Pistole, L. Shiveley, J. Jewett, D. Pistole, J. Cook, E. Mitchell, J. Foster, E. Jones, D. Sparks, H. Weghorst, J. Ruark, R. Lucas, D. Gardner, V. Mullins, M. Shaw. **Row 8:** B. Litz, J. Browning, C. Henderson, B. McNutt, V. Flannery, B. Hopper, M. Williams, B. Price, B. McCann, D. Lester, T. Waller, T. Royal, K. Horsley, P. Sapp.



Sponsors:  
**CARR'S JEWELRY**  
**WALKER'S SHOES**

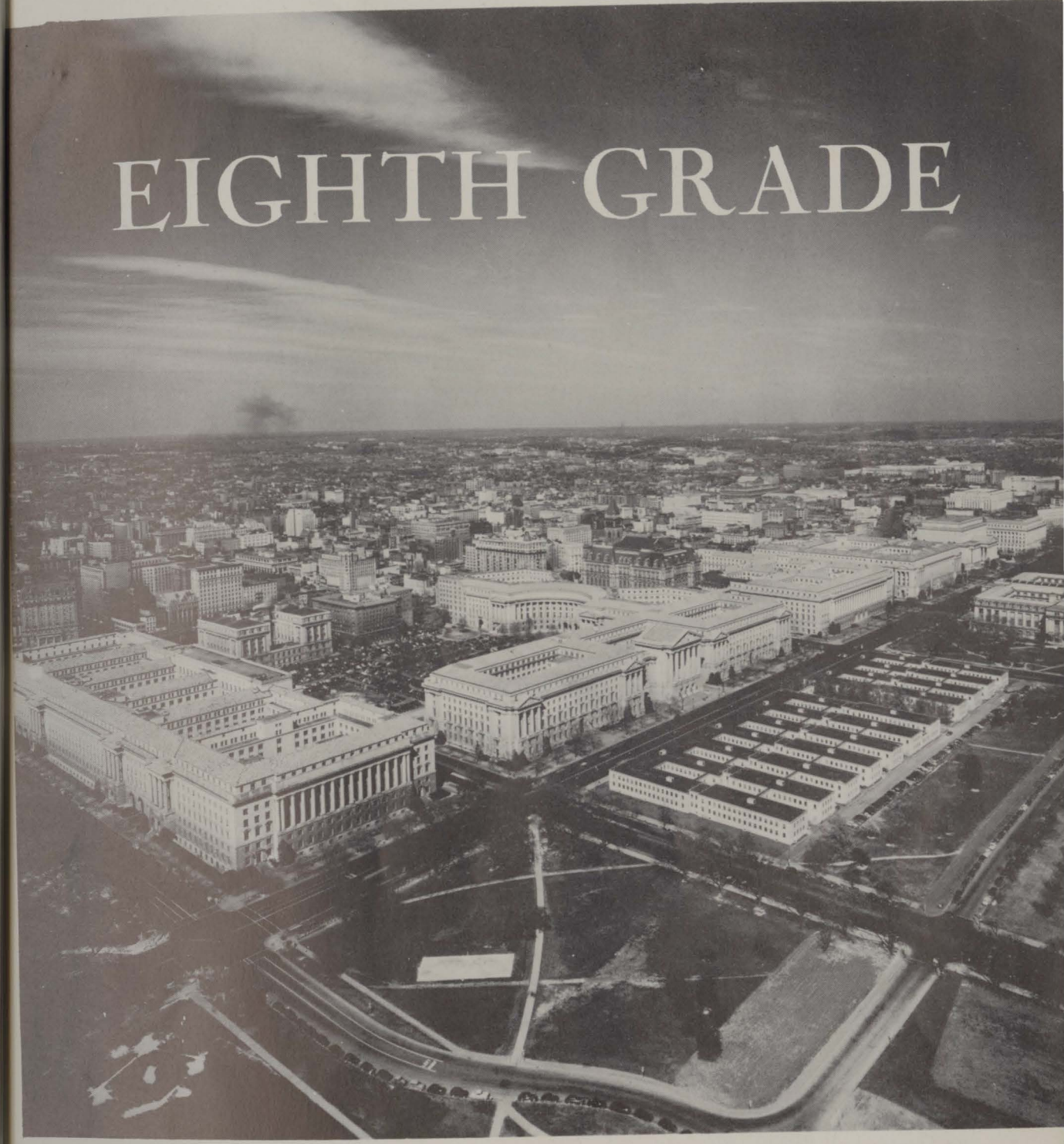
# Freshman Snaps



Sponsor:

**SELBY SHOE COMPANY**  
"QUALITY SHOES FOR MEN, WOMEN, AND CHILDREN"

# EIGHTH GRADE





**Eighth Grade Officers**

PRESIDENT.....Ethel Dennings      VICE-PRESIDENT.....Naomi Williams  
 SECRETARY.....Harold Blevins      TREASURER.....Paul Conley



**Eighth Grade Teachers**

Kathleen Rolfe, Foster Kirker, and Margaret Strickland

Sponsors:

**ELITE APPAREL  
 KIRBY'S**



**EIGHTH GRADE**

**Row 1** (left to right): Richard Spurlock, Junior Bailey, Donald Caudill, Jay Chaffin, William Schaffer, Dolores Boyd, Glenna McGovney, Sophia McCall, Betty Brown, Alberta Howard, Evangeline Messer, Kenneth Stowers, Shirlene Miler. **Row 2:** Robert Cooper, Jesse Brown, Yvonne Risner, Bonnie Thurman, Helen Holley, Paul Conley, Tommy Spurlock, Robert Kennard, William Smith, Walter Frazier, Charles Elrod, George Redoutey, Mary Montgomery. **Row 3:** Jean Howard, Lorraine Shepherd, Bettie Mullins, Juanita Speck, Harold Keene, Naomi Williams, Bertie McCann, Harold Hall, William Pistole, Harold Herles, Dale Biggs, Ronald Floyd, Ethel Denning, Gloria Watts. **Row 4:** Ruth Murta, Roma Mullen, Harold Blevins, Tom Shump, Lois Porter, Dolores Keyser, Barbara Webb, Phyllis Yeager, Frankie Schackart, Dolcia Bower, Jean Payne, Jacqueline Bibbey, Ida Bond, Mary Wear, Janet Kitchen, Jean Hunnel. **Row 5:** Mary Conley, Velma Earles, Keith Hopkins, Paul Meyers, Billie Conley, Agnes Davis, Arthur Kitchen, Arnold Mustain, Lonnie Mustain, Kenneth Bailey, Donald Edington, Mary Boyd, Anna Ridgeway, Donna Jones, Nora Pick. **Row 6:** Judith Whaley, Alberta Redoutey, Ruth Hill, Thomas Michelhaugh, Earl Bloomfield, Carl Shively, Richard Fraley, Kenneth Elrod, Leon Royce, Jesse Franklin, Leslie Cochran.

Sponsors:

**MODERN GRILL  
 QUICK DRY CLEANERS**



**EIGHTH GRADE BASKETBALL TEAM**

**Row 1** (left to right): B. Kenard, H. Keene, P. Myers, K. Hopkins, T. Spurlock. **Row 2:** R. Spurlock, P. Conley, H. Blevins, C. Elrod, K. Bailey.

Sponsor:

**E. J. KENRICK & CO.**  
"HOME OF ORANGE CRUSH"



# ATHLETICS



**FOOTBALL TEAM**

**Row 1:** R. Meyers, R. Meeker, R. Craycraft, B. Sparks, D. Milstead, B. Gilkerson, C. Cook, B. Gilkerson, D. Moore. **Row 2:** M. Kennard, D. Entler, H. Howard, C. Ratliff, C. Wessell, D. Pistole, D. Staggs, J. Woods. **Row 3:** D. Keene, D. Meade, E. Malone, A. Journey, J. Blevins, B. Dameron, B. Barnett, W. Gilmore, B. Nichols, E. Colley, Mr. Everling.

Sponsor:

**COCA-COLA BOTTLING CO.**  
"DRINK COKE FROM THE BOTTLE"

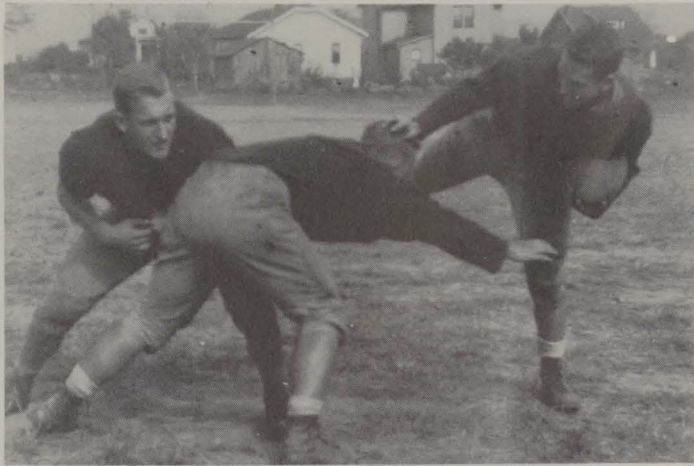


Left to right: Harold Everling, Russell Christian.

*Coaches*

Sponsor:

**CHABOT'S SUPER SERVICE**



**FOOTBALL TEAM**

Row 1 (left to right): B. Dameron, M. Kenard. Row 2: J. Blevins, B. Nichols, B. Barnet, W. Gilmore, E. Malone.



Sponsors:

**NOEL BRIDWELL  
DEVOSS & DONALDSON**



W. Gilmore, D. Kessinger, D. Milstead, R. Meeker, J. Blevins, D. Meade, M. Kennard, B. Nichols, B. Gilkerson, C. Wessell (co-capt.).

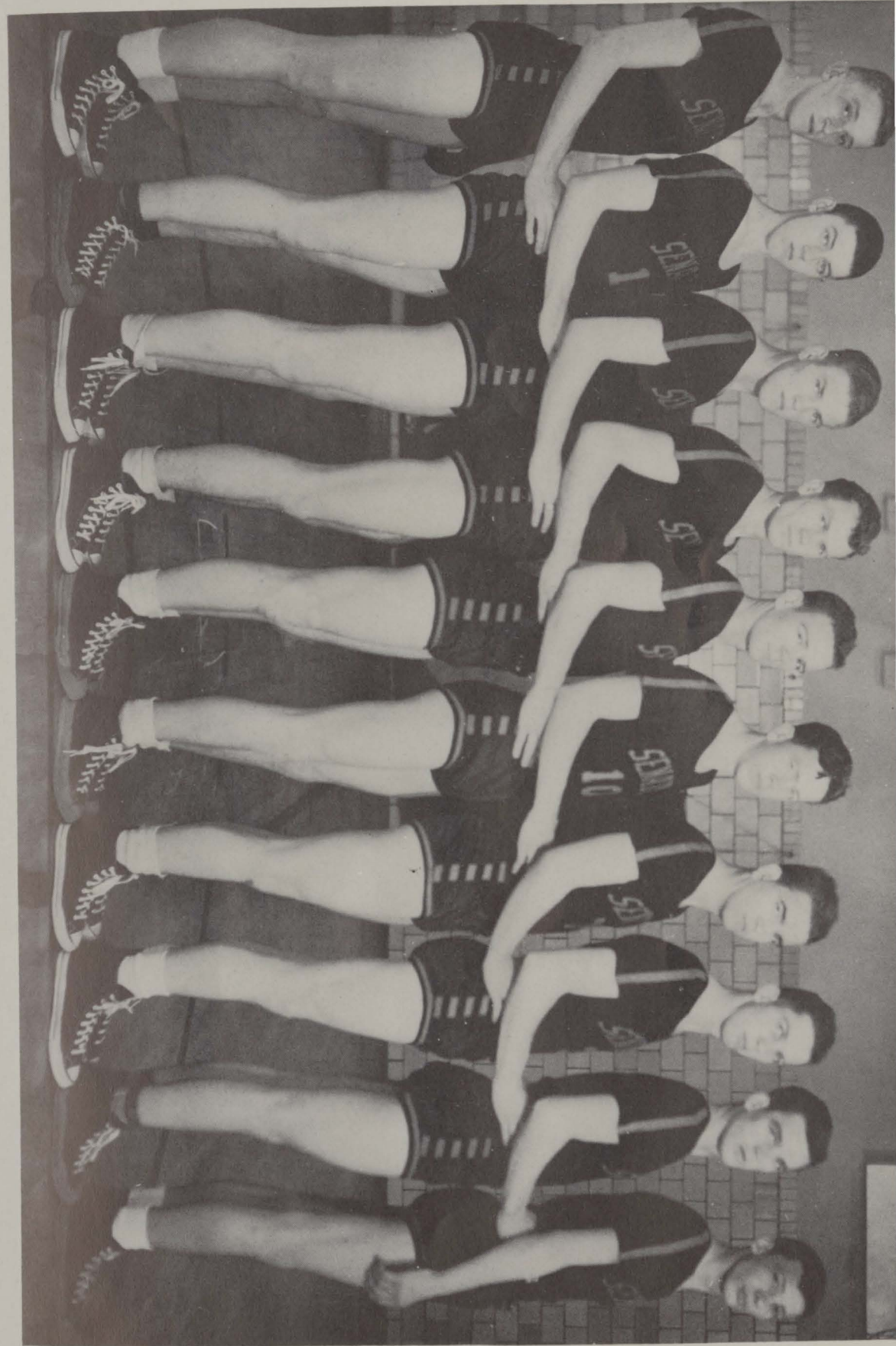
Sponsors:

**STELL C. HALL  
APPEL'S RADIO SHOP**



D. Staggs, B. Sparks, A. Journey, C. Ratcliff, B. Gilkerson, B. Dameron, H. Howard, B. Barnett, G. Colley, D. Entler, D. Keene (co-capt.).

Sponsors:  
**MIKE'S PLACE**  
**ED BODMER**



Left to right: B. Windsor, B. Rice, S. Rexrood, J. Woods, D. Entler, D. Keene, B. Dameron, H. O'Dell, B. Nichols, D. Kessinger.

Sponsor:  
**SMALLEY'S GROCERY**  
**"YOUR FRIENDLY GROCER"**



H. O'dell, B. Nichols, B. Winsor, B. Rice, J. Woods, S. Rexroad, B. Damron,  
D. Keene, D. Entler.

Center — Mr. Christian and co-captains, Damron and O'dell.

Sponsors:

**CHARLES EUBANK  
STAHLER'S DRUGS**



**RESERVE BASKETBALL TEAM**

Left to right: J. Williams, D. Kessinger, B. Kessinger, B. Barnett, I. Mitchell, C. Cook, P. Morrow, B. Rice, B. Hopper, R. Freley, D. Fenimore. Managers—C. Carter, E. Kenard.

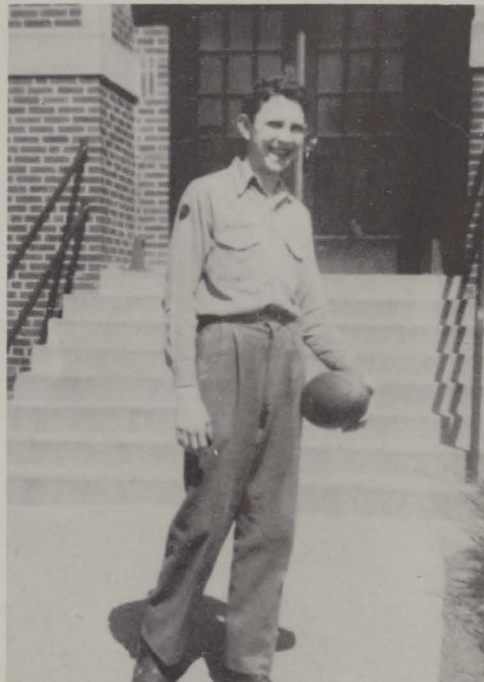
Sponsor:

**DOERR'S HARDWARE**  
"DOERR'S HARDWARE IS THE BEST PLACE TO BUY"





Basketball Managers  
**EDDY KENNARD, CHARLES CARTER**



Football Manager  
**DON MOORE**

Sponsors:  
**MARVIN JONES  
ADAMS BAKING**



**VARSIITY**

Left to right: Norma Schwamberger, (Capt.) Joan Cooley, Jean Liston.



**RESERVES**

Left to right: R. Shivner, J. Hopkins, A. Pertuset.

Sponsors:  
**HILT'S GROCERY  
CRICHTON OFFICE SUPPLY**



Front row: J. Andre, Manager; D. Kessinger, H. O'Dell, W. Gilmore, B. Barnett, P. Fenimore, G. Smalley, B. Meade, R. Pistole, Manager. Second row: B. Sparks, V. Flannery, D. Meade, B. Rice, S. Rexroad, T. Grice, R. Woten, J. Applegate, G. Colley, Mr. Christian, Coach.

Sponsors:

O. L. WEBB CO.  
INTERSTATE MUSIC

R. Pistole, Mgr.



B. Barnett, B. Rice, G. Colley, D. Meade, B. Sparks, H. O'dell, S. Rexroad, D. Kessinger, V. Flannery, G. Smalley, J. Applegate, R. Wooten, W. Gilmore, P. Fenimore, B. Meade, T. Grice.



Joe Andre, Mgr.

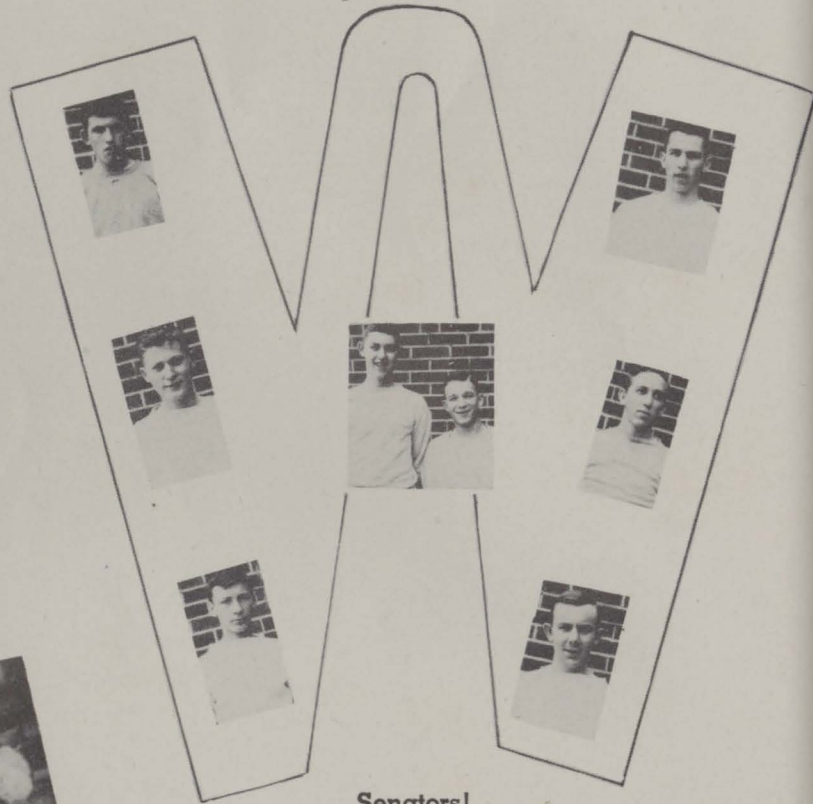
Sponsors:

STONE'S MARKET  
COCHRAN SHOE REPAIRING

# Senator Highlights



Coach



Senators!



Mr. Reynolds



Shirley



Fred and Gene



Tom



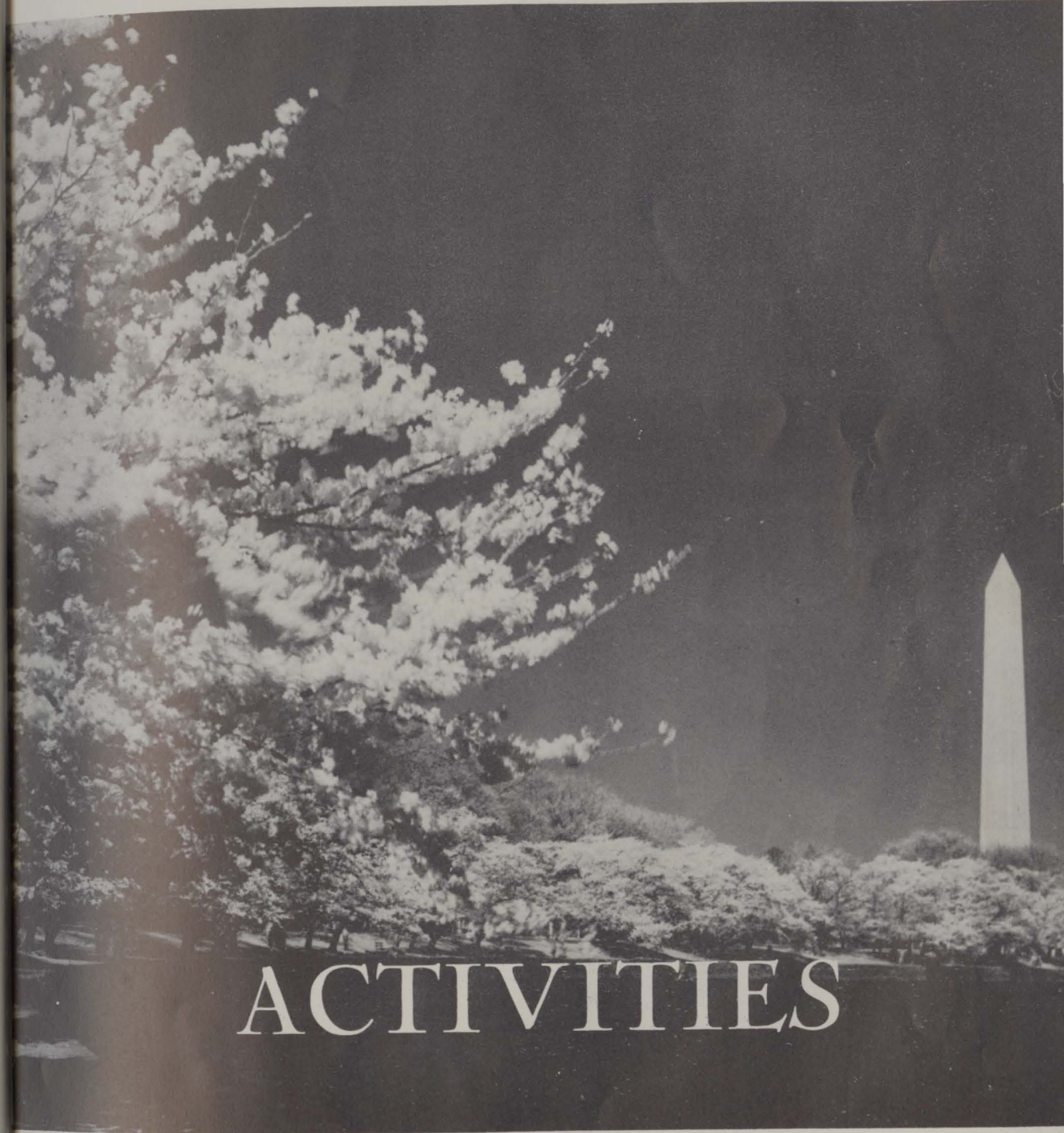
Betty and Marcella



Jeanie



Cuties



# ACTIVITIES



**ANNUAL STAFF**

Left to right: Miss Meisel, Adviser; J. Pack, B. Addis, L. Jones, R. Clifton, L. Williams, J. Bazler, B. Liston, N. Kuhn, K. Diller, V. Pyle, F. Cox.



**QUOTARIAN STAFF**

**Standing** (left to right): J. Stamper, B. Arn, W. Knauff, N. Schwamberger, L. Jones, R. Clifton, P. Hopkins, C. Watters, J. Barber, J. Wright, D. Davis, L. Fraizer, H. Shope, L. Perry, J. Liston, N. Kuhn, E. Grubbs, Miss Meisel. **Seated** (left to right): B. Addis, V. Pyle, J. Pack, L. Williams, K. Diller, F. Cox, J. Bazler.

Sponsors:  
**MELCHER'S**  
**J. W. RUSSELL**



**BAND**

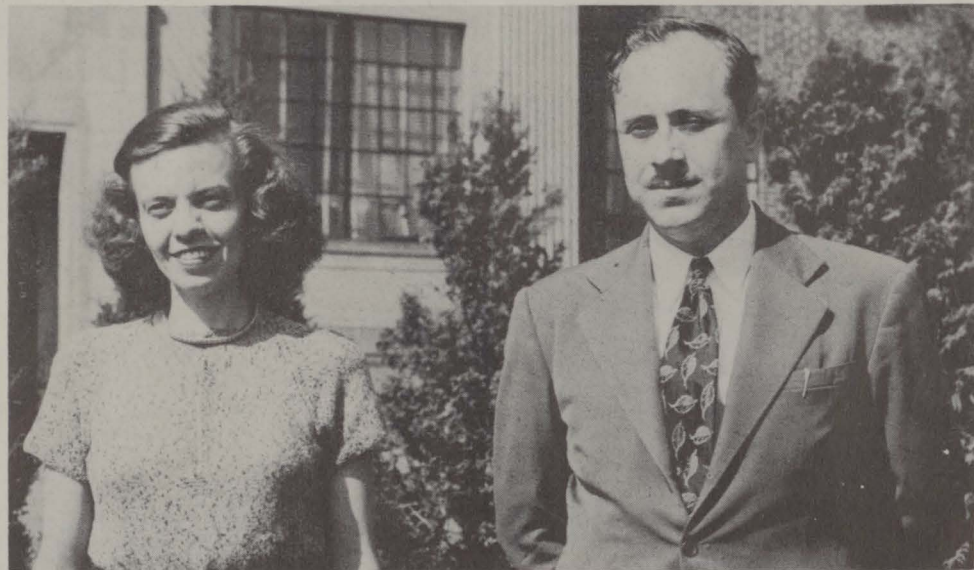
**Row 1** (left to right): Mr. Gillette, L. Boyd, P. Hoffener, B. Litz, J. Cook, H. Meyers, J. Tipton, J. Bazler, J. Shivner, J. Diller, P. Frasher, B. Cochran, M. Rexroad, F. Wolery. **Row 2:** H. Horsley, H. Thomas, J. Saylor, B. Kuhn, T. Shively, C. Watters, W. Frasher, H. Castle, H. Wedhorst, J. Hurst, B. Morrow. **Row 3:** L. Perry, K. King, C. Hill, R. Cook, R. Davis, N. Kuhn, J. Stagg, J. Cooley, B. Windsor, K. Diller, J. Applegate, R. Shivner, N. Rapp, J. Pack, D. Sparks, G. Graham, L. Frazier. **Row 4:** J. Williams, M. Richards, N. Ritchey, V. Harrison, L. Johnson, F. Cox, A. Clifton, D. James, R. Meede, A. Dunn, D. Lester, B. Liston, P. Dillow, F. Boggs, D. Crull.

Sponsor:  
**MARTING'S**  
 "ONE OF OHIO'S GOOD STORES"



**DRUM MAJORETTES AND DRUM MAJOR**

Left to right: B. Litz, B. Cochran, P. Hoffner, B. Morrow, M. Rexroad, L. Boyd, F. Wolery.



Music Teacher: **MRS. HEATH**  
Band Director: **DALE GILLETTE**

Sponsor:  
**CAMEO RESTAURANT**



**GLEE CLUB**

**Row 1:** V. Oney, B. Ratcliff, L. Vaughters, M. Hazelbaker, D. Nichols, M. Charles, I. Dillow, B. Litz, B. Cockran, T. Nunley, B. Williams. **Row 2:** C. Mitchell, V. Mangus, L. Matthews, B. Cochenour, J. Sibrel, R. Shivener, L. Speck, B. Adkins, P. Haffner, V. Mullins, H. Flannery, P. Frasher. **Row 3:** A. Foster, C. Howard, B. Brown, L. Johnson, M. Mann, B. Ridout, A. Shump, D. Wolfe, D. Crull, J. Salyers, H. Shope, B. Wessell, N. Smith. **Row 4:** N. Hamilton, C. Walters, W. Frasher, M. Huff, B. Morrow, A. Weaver, S. James, H. Thomas, S. Askins, M. Shaw, J. Liston.



**MIXED CHORUS**

**Row 1:** J. Jordan, M. Conley, N. Payton, J. Hurst, E. Whistman, D. Hickman, R. Cunningham. **Row 2:** C. Sowards, L. Deboyd, M. Richards, J. Schaffer, S. Michenhall, D. Lucas, J. Chandler, V. Lempede, L. Brown, J. Liston. **Row 3:** T. Grice, C. Mann, B. Liston, F. Woolery, F. Cox, D. Pistole, G. Colley, J. Cook, D. Milstead. **Row 4:** L. Dillow, B. Book, E. Virgin, C. Parson, F. Swearingen, R. Davis, D. James, J. Bazler, D. Windsor.

Sponsor:  
**PORTSMOUTH PAINT CO.**  
PAINTS, GLASS, WALLPAPER



LIBRARY



ENGLISH I — MISS RATLIFF



LIBRARIANS

Seated (left to right): B. Cochenour, I. Brown, H. Castle, F. Boggs. Standing: M. Quickel, L. Perry, E. Clever, H. Myers, D. Crull, P. Hopkins.

Sponsors:  
**V. I. BURCHAM**  
**WEST END SANDWICH SHOP**



ENGLISH IV — MRS. MITCHELL

Sponsor:  
**SCOTT'S SPORTING GOODS**



GIRLS' GYM — MISS RATLIFF



SCHOLARSHIP TEAM

Row 1 left to right: J. Hurst, J. Jordan, M. Harper, N. Payton, M. Richards, B. Myers, H. Myers.  
 Row 2: N. Moore, C. Hazelbacker, C. Waters, R. Cook, L. Johnson, I. Dillow, D. Nichols, D. Crull.  
 Row 3: J. Jewett, L. Shump, C. Coburn, B. Brandel, M. Quickel, C. May, L. Shaw, J. Colley.  
 Row 4: G. Thompson, J. Harrison, R. Pistole, J. Browning, P. O'Dell, W. Knauff, T. Shivley, F. Cox, E. Moore.

Sponsor:

COOPER-TACKETT GARAGE



Row 1: J. Puckett, B. Harrison, J. Andre, D. Staten, P. O'Dell, R. Bradford, R. Smith, R. Woten, P. Fennimore. Row 2: J. Bower, B. Sparks, V. Flannery, K. King, J. Applegate, H. Wright, B. Gilkerson, W. Mitchell. Row 3: H. Davis, T. Waller, B. Gilkerson, G. Evans, F. Crumm, D. Pistole, J. Lauder, E. Jones, B. Rudinger. Row 4: B. McNutt, E. Jordan, R. Meeker, B. Price, W. Gilmore, E. Smalley, C. Henderson, B. Barnett. Row 5: E. Virgin, R. McCann, B. Hopper, B. Litz, T. Royal, W. Williams, R. Andrews, B. Rice, F. Thurman.



Sponsors:

CRITERION  
 ZOELLNER'S



Back Row (left to right): Mrs. Reece, V. Mangus, I. Dillow, B. Albrecht, M. Charles, D. Shaw, B Adkins, R. Cook, N. Richey.



**HOME ECONOMICS DEPARTMENT**

Left to right: J. Hopkins, E. Boling, E. Winsor, Mrs. Reece, S. James, J. Bailey, J. Frost, A. Pertuset, B. Cochran, B. Campbell.



**FUTURE HOMEMAKERS CLUB**

Row 1: B. Martin, L. Porter, L. Porter, J. Diller, L. Jones, L. Williams, J. Pack. Row 2: J. Beck, C. Albrecht, B. Cochenour, L. Mathews, D. Crull, H. Castle, E. Grubbs. Row 3: S. Wright, C. Watters, M. Quickel, R. Clifton, J. Shivener, V. Pyle. Row 4: C. Frump, M. Schoettle, H. Flannery, N. Kuhn, K. Diller, B. Addis.



Row 1: V. Oney, R. Gray, M. Hazelbaker, T. Nunley, B. Atkins, B. Litz, B. Cochran, D. Nichols. Row 2: A. Pollard, M. Charles, A. Lewis, E. Speck, N. Richey, B. Ratcliff. Row 3: I. Dillow, M. Charles, R. Shepherd, A. Lewis, N. Hamilton, L. Speck. Row 4: D. Vernier, J. Frost, M. Shaw, E. Boling, S. James, M. Rexroad, J. Bailey.





**SPEECH CLUB**

Row 1: F. Cox, D. Wolfe, L. Frazier, C. Watters, J. Bazler, P. Dillow.



**GEOMETRY — MRS. MIGNERY**

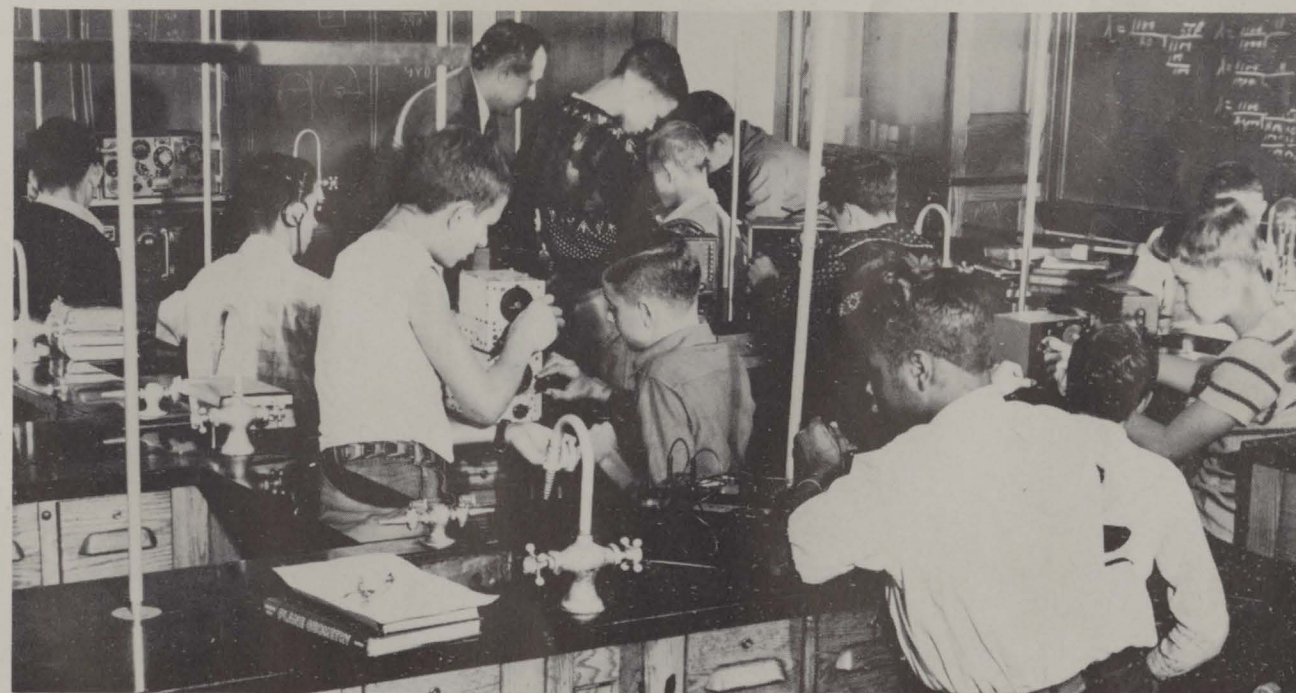


**LATIN CLUB**

Row 1: J. Jordan, J. Hurst, B. Williams, M. Vicors, E. Wistman, H. Meyers, B. Meyers. Row 2: P. Haffner, V. Mullen, D. Sparks, N. Rapp, B. Rutherford, J. Tipton, B. Brandel, A. Dunn, F. Boggs. Row 3: D. Crull, L. Williams, H. Castle, S. Michelhagues, B. Kuhn, N. Moore, L. Shump, J. Harrison, G. Thompson.

Sponsor:

**ROBERTS JEWELRY**



**RADIO — MR. GILLETTE**



**JUNIOR AND SENIOR ENGLISH CLUB**

**Row 1:** N. Stephenson, J. Jones, G. Frye, S. Wright, B. Dixon, E. Vaughters, L. Mathews, D. Sheets, P. Dillow. **Row 2:** M. Harper, H. Whitten, D. Crull, L. Williams, B. Addis, N. Smith, I. Brown, H. Shope, C. Watters. **Row 3:** H. Castle, W. Frasher, H. Thomas, M. Roth, M. Quickle, M. Bridwell, J. Partlow, P. Lauder, L. Kuhn. **Row 4:** F. Boggs, N. Tracy, C. May, E. Colley, J. Cooper, L. Shump, R. Davis, G. Thompson.



**FRESHMAN AND SOPHOMORE ENGLISH CLUB**

**Row 1:** N. Payton, J. Jordan, T. Cochran, J. Hurst, L. Vaughters, E. Whistman, A. Pollard. **Row 2:** I. Biggs, B. Williams, P. Swearingen, B. Litz, L. Boyd, H. Meyers, J. Bridwell, L. Speck, N. Rapp. **Row 3:** B. Meyers, B. Campbell, D. Nichols, G. Mitchell, B. Rutherford, D. Steele, D. Viener, L. Cook, J. Tipton, P. King. **Row 4:** B. Brandel, B. O'Dell, S. Michelhaugh, H. McGraw, L. Johnson, M. Mann, C. Colburn, L. Brown, C. Hazelbaker, B. Kuhn. **Row 5:** N. Moore, M. Elmore, B. Marrow, L. Shaw, D. Gardner, B. Lewis, J. Williams, B. Barnett.

Sponsors:

**WINDEL-HOWLAND  
CARR CONSOLIDATED BISCUIT CO.**



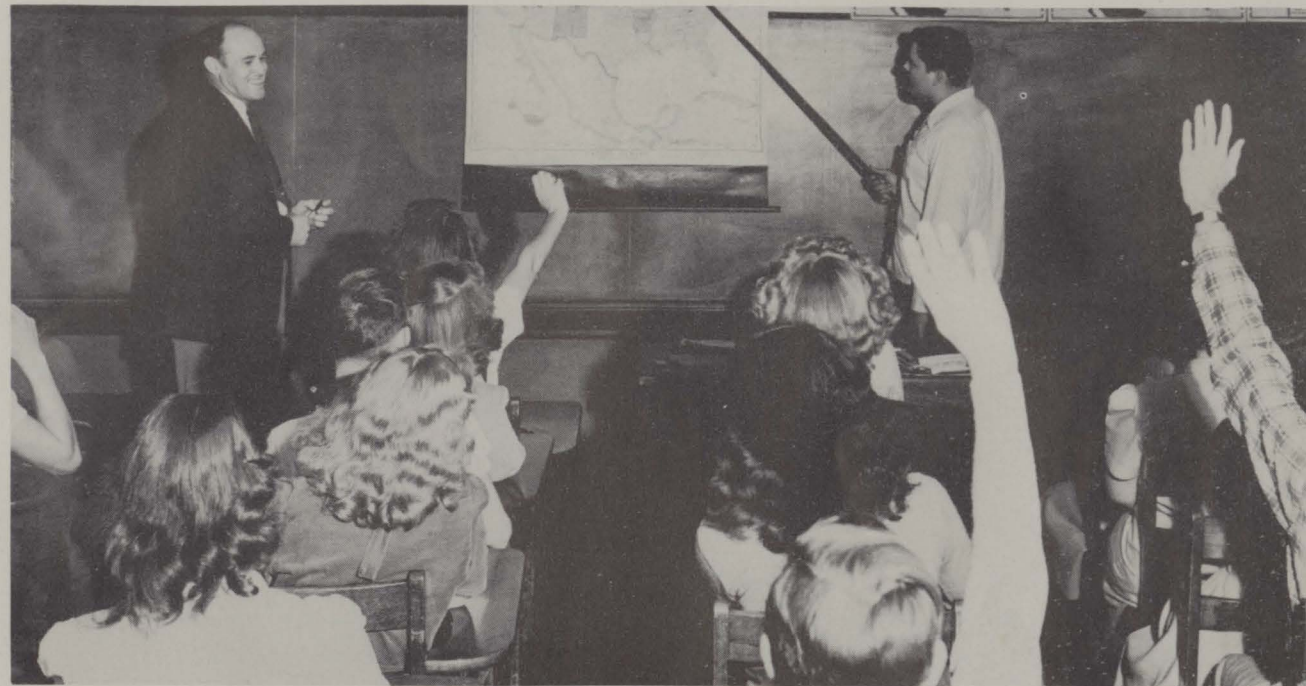
**BIOLOGY — MISS MEISEL**



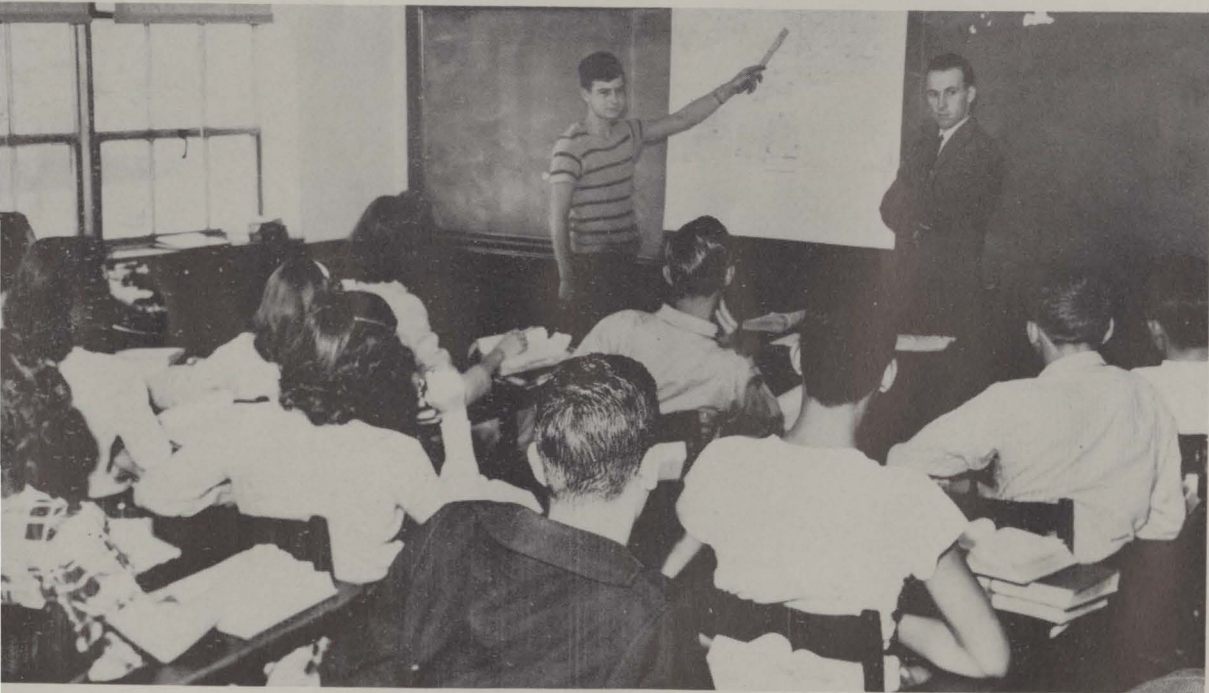
**GENERAL SCIENCE — MR. STAMM**



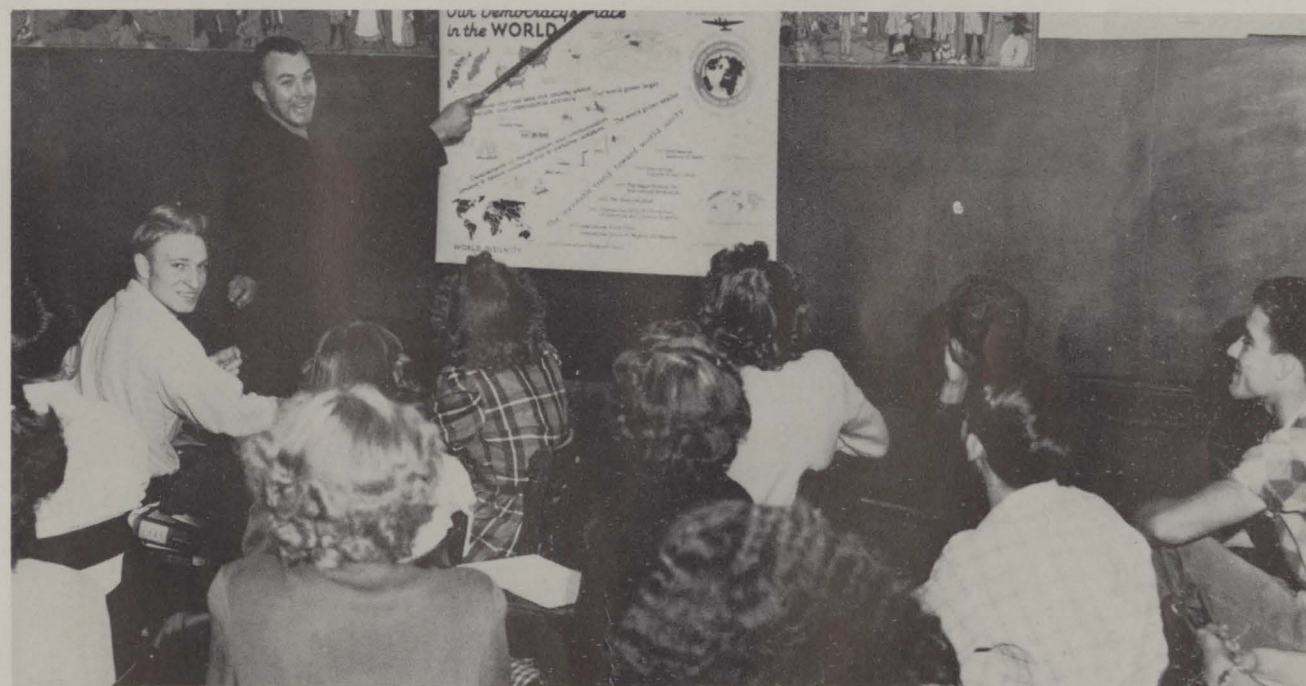
LATIN II — MRS. DONNELLY



U. S. HISTORY — MR. CHRISTIAN



WORLD HISTORY — MR. ANDERSON



DEMOCRACY — MR. EVERLING

Sponsors:  
BROCK'S FUNERAL HOME  
STONE'S FOOD MARKET



BOOKKEEPING — MISS BENNETT

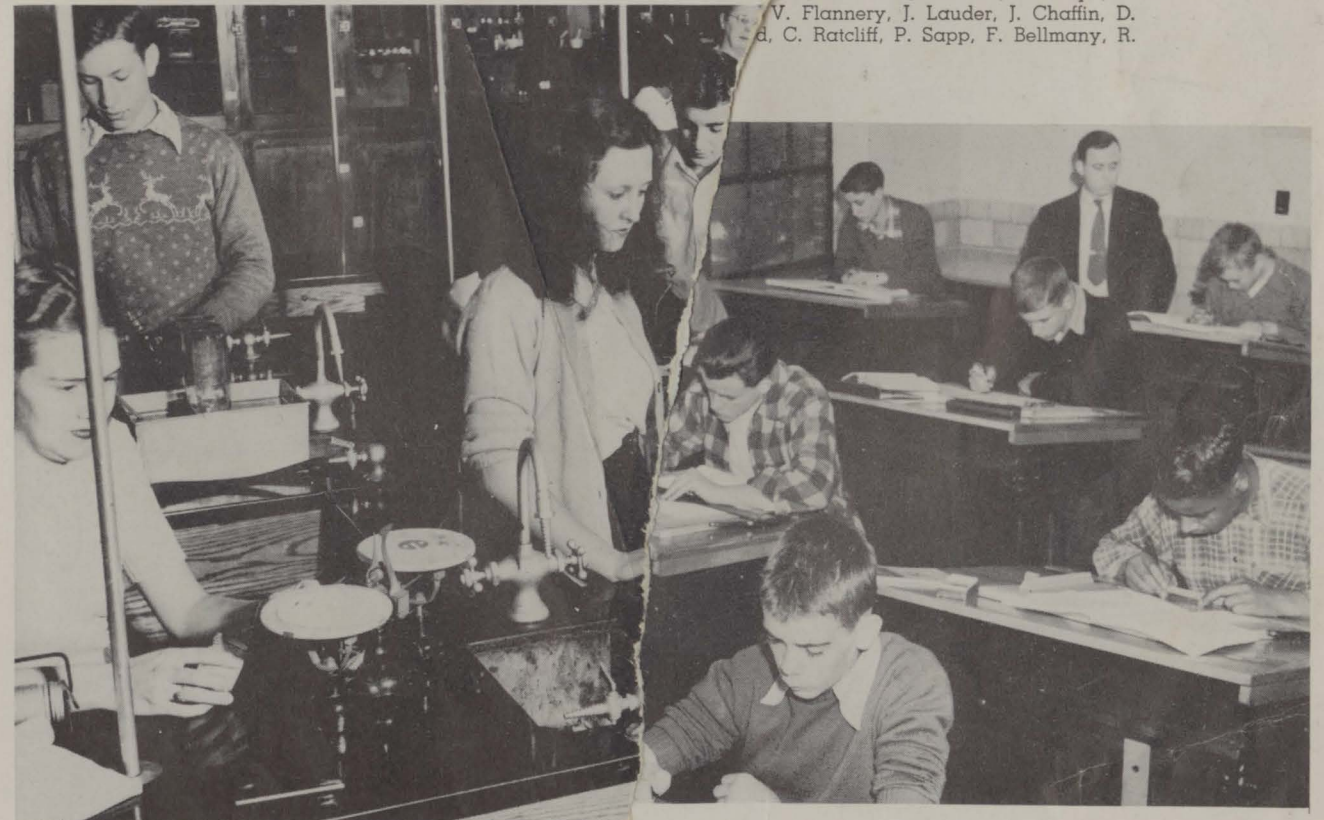


TYPING I — MRS. WOODS



BASIC MATH — MR. BOPARKS  
 MEASURER.....Jack Cook

ney, K. Elrod, L. Cochran, L. Royce.  
 ord, B. Liston, H. Hall, R. Floyd, T.  
 V. Flannery, J. Lauder, J. Chaffin, D.  
 d, C. Ratcliff, P. Sapp, F. Bellmany, R.



CHEMISTRY — MR. MOORE



# Washington High Scenes



STUDY HALL



CHANGING CLASSES





Back row: B. Book, W. Frasher, J. Partlow, P. Lauder, E. Conley. Front row: R. Meyers, B. Cochenour, M. Bower, H. Shope, M. Stephenson, F. Swearengin.

R. Meyers, B. Cochenour, B. Book, W. Frasher, N. Stephenson, F. Swearengin.



## *"The Nutt Family"*



### STAGE CREW

First row: J. Payton, L. Matthews, L. Perry. Second row: A. Dunn, I. Brown, N. Tracy. Third row: G. Graham, J. Liston, J. Shinkle.



DIRECTOR — MISS MEISEL

## *"The Nutt Family"*

### CAST

Dr. P. Nutt	Bill Book
Meta Nutt	Wanda Frasher
Ima Nutt	Barbara Cochenour
Wall Nutt	Frank Swearengin
Orestus	Ed Conley
Sylvia Gaylord	Helen Shope
Cerise	Cora Watters
Bea Wise	Patty Lauder
Helene Shelton	Jackie Partlow
Larry Smart	Ray Meyers
Vivian Tepper	Helen Thomas
Charlotte Neal	Norma Stevenson
Lila	Mary Alice Bower



"Everybody's Crazy"

First row: Lois Williams, S. Wright, F. Boggs, J. Pack, H. Barber, B. Liston.  
 Second row: E. Mullins, P. Dillow, K. Diller, V. Pyle, V. Harrison, R. Clifton, C. Wessel.  
 Third row: J. Cooley, H. Castle, F. Cox.  
 Fourth row: J. Bazler, E. Kuhn, J. Blevins, R. Sheppard, D. James.



MRS. DONLEY

## "Everybody's Crazy"

### DOUBLE CAST

Herbert Stanley . . . . .	Fred Cox
Elmer Sneed . . . . .	Jim Bazler
Tommy Wilkins . . . . .	Bill Liston
William Bates . . . . .	Ralph Davis
Ketura Katt . . . . .	Kathleen Diller, Elizabeth Kuhn
Julie Mather . . . . .	Jean Pack, Faye Boggs
Mrs. Spooner . . . . .	Phyllis Dillow, Virginia Harrison
Godfrey Van Gordon . . . . .	Howard Barber
Caroline . . . . .	Ruth Clifton, Helen Castle
Celia . . . . .	Virginia Pyle, Eulene Mullins
Adam Pottle . . . . .	Jack Blevins, Carl Wessell
Libby Ann . . . . .	Joan Cooley, Norma Smith
Gladiola . . . . .	Lois Williams, Shirley Wright
Jasper . . . . .	David James
The Ghost . . . . .	?????
Messenger Boy . . . . .	Edwin Shepherd



# May Festival



NAOMI WILLIAMS  
May Queen



Crowning by Mr. Rolf



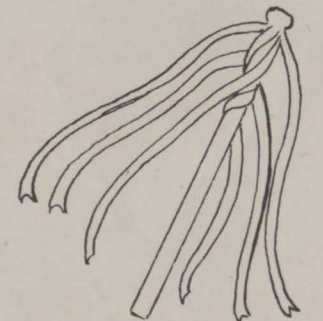
Procession



Sponsor:  
**HERFF-JONES CO.**  
"America's Shrine for Class Rings"



# May Festival



# School Days!



1—Julia. 2—Snob. 3—Glamour Girl. 4—The Old Gang. 5—Legs. 6—Pals. 7—Waiting. 8—Sore. 9—Lonesome. 10—Alberta. 11—Monk. 12—Don. 13—Smile. 14—Norma. 15—Kuhnle. 16—Hi-hats. 17—Irma. 18—"High Wall." 19—Jo. 20—"Beauts." 21—Gene.



Dan and Jackie



Ginny and Pete



Mary and Joe



Cloise and Lake



Naomi and Howard



Janet and Harry



Dave and Phyllis



Sue and Ed



Rita and Buddy



Barbara and Elmer



Norma and Don



Norma and Bill



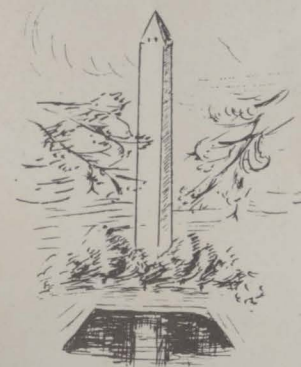
Jean and Dave



Bill and Joan



Pat and Paul



*"Steadies"*

## Senior

- I, BERNISTENE ADDIS, will my cap and gown to Don Moore.
- I, CATHERINE ALBRECHT, will my quiet ways to Gene Colley.
- I, DON ANDRE, will my pipe to Buster McKay.
- I, HOWARD BARBER, will my drawing of airplanes(????) to Bob Arn.
- I, JIM BAZLER, will my trips to Waverly to Joe Applegate.
- I, JACQUELINE BECK, will my neatness to Sue Askins.
- I, JACK BLEVINS, will my fickle-eye to Delbert Entler.
- I, FAYE BOGGS, will my library job to Ida Brown.
- I, HELEN CASTLE, will my ability of management to Nancy Moore.
- I, RUTH CLIFTON, will my friendly ways to Helen Thomas.
- I, JOAN COOLEY, will my punctuality to Mr. Bouts.
- I, JONAS COOPER, will my brains to Elmer Malone.
- I, FRED COX, will my pick and shovel for gold digging to Don Sparks.
- I, DOROTHY CRULL, will my piano playing to Janet Hurst.
- I, RALPH DAVIS, will my bass voice to Howard Weghorst.
- I, JUANITA DILLER, will my natural blonde hair to Helen Flannery.
- I, KATHLEEN DILLER, will my "Cow Martha," to Jack Stamper.
- I, PHYLLIS DILLOW, will my chauffeur boy-friend to Louella Perry.
- I, BILLY DIXON, will my shorthand ability to Helen Horsley.
- I, CATHERINE FRUMP, will my near perfect attendance to Joan Chandler.
- I, GARNET FRYE, will my way with the boys to Phyllis Frasher.
- I, RALPH HALL, will my courtesy to Jack Harrison.
- I, GINNY HARRISON, will my cheery "Hello" to Mary Bower.
- I, ANNA LEE HAZELBAKER, will my curly hair to Violet Mullen.
- I, DAVID JAMES, will my hooky playing to Vernon Flannery.
- I, LORETTA JONES, will Wheelersburg to Jean Liston.
- I, DONALD KEENE, will my love for an underclassman to Jim Williams.
- I, DONALD KEYSER, will my photography ability to Charles Cook.

## Will

- I, ELIZABETH KUHN, will my height to Judy Jordan.
- I, NORMA KUHN, will my strawberry blonde hair to Cort Watters.
- I, BILL LISTON, will my trombone playing to Maxine Richards.
- I, BETTY JO MARTIN, will my piano to anyone who can carry it.
- I, BOB MEADE, will my love for red-heads to David Kessinger.
- I, TOM MONTGOMERY, will my play book, "Everybody's Crazy," to Gene Cox.
- I, EULENE MULLINS, will my Basic Math book to Helen Shope.
- I, HARRY O'DELL, will my athletic ability to Woodrow Gilmore.
- I, JEAN PACK, will my straight bangs to Bernice Litz.
- I, LOUELLA and LOVELLA PORTER, will our ability to dress alike to A. Pertusit and J. Hopkins.
- I, VIRGINIA PYLE, will my acting ability to Don Staggs.
- I, CLIFF RATLIFF, will my size to Leon Royce.
- I, CHARLES ROARK, will my calm behavior to Bill Dameron.
- I, DOROTHY WOLFE, will my church mouse voice to Marilyn Schoette.
- I, MARCELLA ROTH, will my 100 lbs. to Donna Jones.
- I, DORIS SHEETS, will my' tricky eyelashes to Wanda Frasher.
- I, RAY SHEPHERD, will my farmer's stride to George Graham.
- I, THOMAS SHIVLEY, will my courteous manners to Charles Parsons.
- I, JANET SHIVENER, will my ability to go steady to my sister, Rita.
- I, NORMA SMITH, will my job at the telephone office of anyone who wants it.
- I, BOB SPARKS, will my smile to Alma Clifton.
- I, MARY THURMAN, will my long walk home to Darlene Lucas.
- I, ERNESTINE VAUGHTERS, will my freckles to Earlene Grubbs.
- I, CARL WESSELL, will my ability for mathematics to Glenn Graham.
- I, LOIS WILLIAMS, will Bob Windsor to Norma Schwamberger.
- I, JIM WOODS, will my long basketball shots to Bill Nichols.
- I, SHIRLEY WRIGHT, will my personality to Carolyn Hazelbaker.



**SENIOR CLASS**

**Row 1** (left to right): L. Porter, L. Porter, F. Boggs, L. Jones, S. Wright, C. Hill, E. Mullins, B. Dixon, G. Frye. **Row 2:** E. Vaughters, J. Beck, J. Pack, C. Albrecht, V. Harrison, D. Sheets, J. Diller, C. Frump, B. Addis, J. Shivner. **Row 3:** J. Cooley, V. Pyles, P. Dillow, N. Kuhn, H. Castle, D. Crull, L. Williams, N. Smith, J. Young, D. Wolfe. **Row 4:** K. Diller, R. Clifton, M. Roth, M. Quickel, M. Thurman, E. Kuhn, J. Cooper, B. Liston, C. Wessell. **Row 5:** F. Cox, B. Meade, H. Barber, T. Shively, C. Williams, R. Hall, J. Blevins, H. O'Dell, C. Roark. **Row 6:** R. Davis, D. James, J. Bazler, J. Woods, B. Sparks, D. Boland, R. Shepherd, C. Ratliff.

Sponsors:

**CRAIGMILES  
A.B.C. CLEANERS**