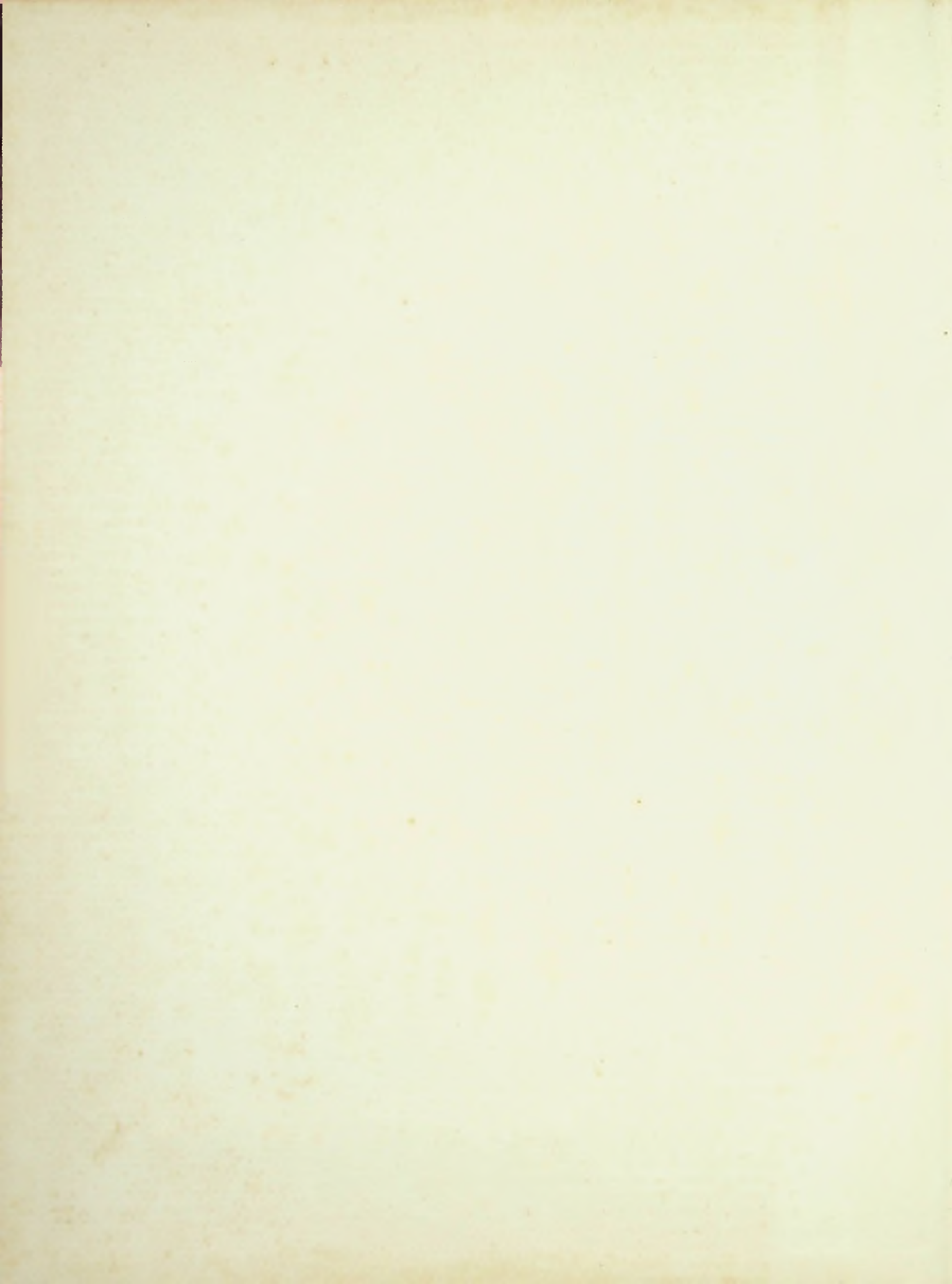




1965

Tartan



East High

J. M. Roney

THE
1965 TARTAN
PUBLISHED BY
THE SENIOR CLASS
PORTSMOUTH EAST
HIGH SCHOOL
PORTSMOUTH, OHIO



CO-EDITORS

Kay Bahner
Keriann Marsh
Anna Turner
Mary Wheeler

BUSINESS MANAGER

Tom Massie

ASSISTANT EDITOR

Jennie McCall

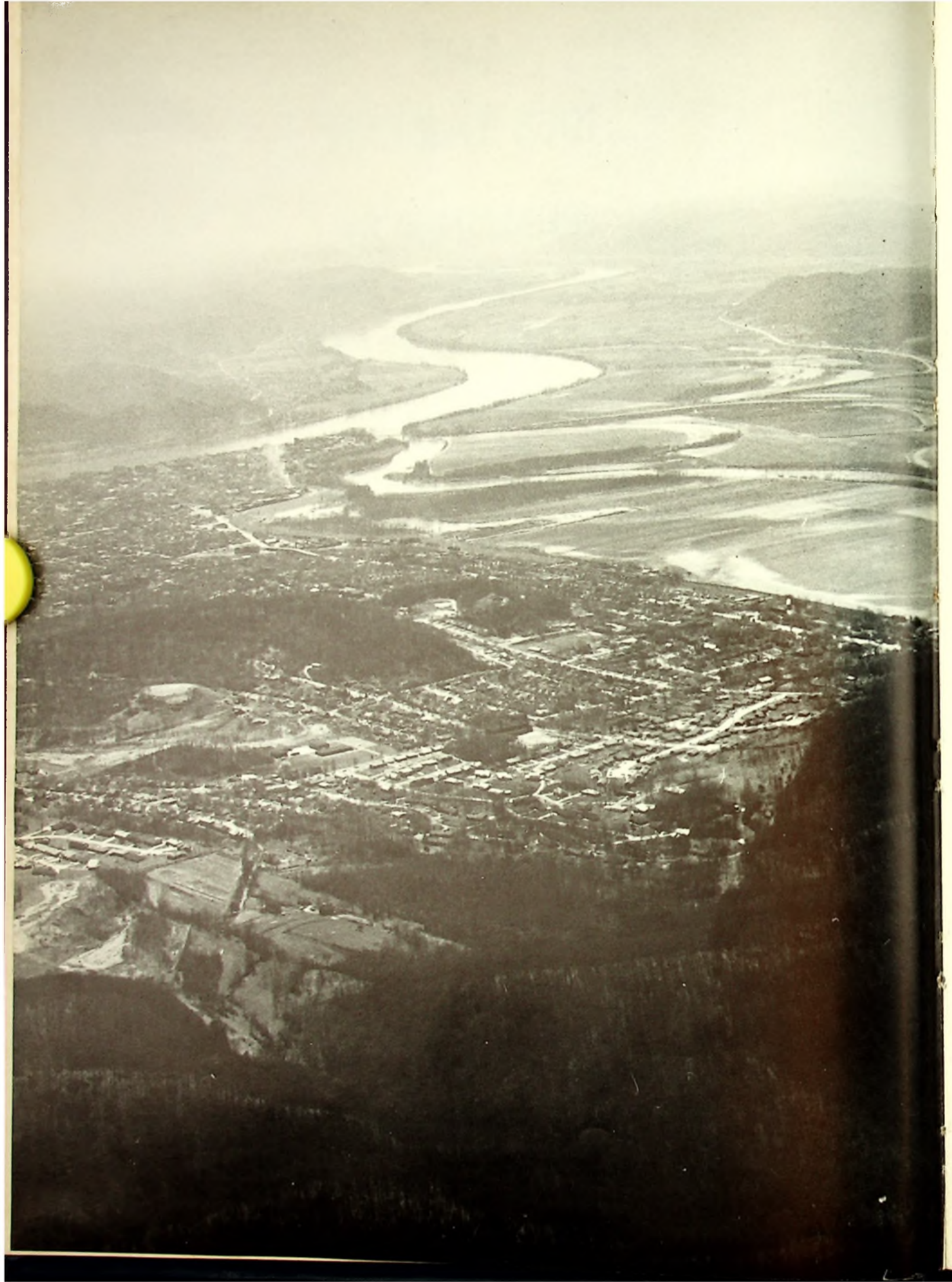


TABLE OF CONTENTS

1965 ANNUAL

I.	CLASSES	6-49
II.	ACTIVITIES & HONORS	50-81
III.	ORGANIZATIONS	82-100
IV.	SPORTS	101-121
V.	ANNUAL STAFF	122-123
VI.	ADMINISTRATION	124-134
VII.	GRADUATION	135-137
VIII.	SESQUICENTENNIAL	138-141
IX.	ADVERTISEMENTS	142-155

FOREWORD



We who live on the Ohio River are a part of it. Our city grew from the river, and the river is still a major force in its growth.

1965 is the year of the 150th anniversary of Portsmouth's city charter. The Sesquicentennial Celebration and the annual River Days stress the importance of our river. We of the annual staff would like to dedicate this yearbook to the river which affects so much of our lives.

IN MEMORIAM

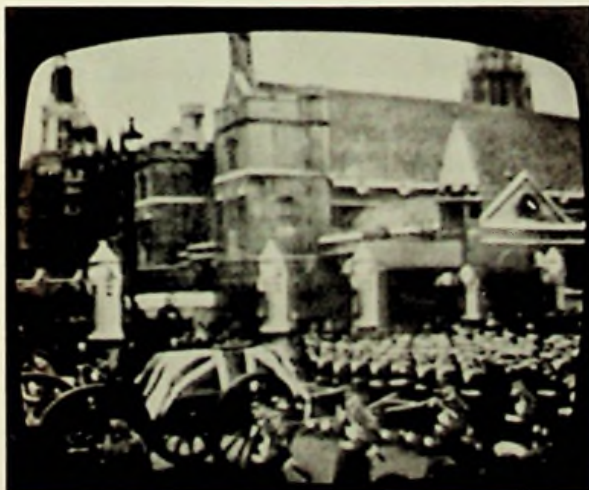


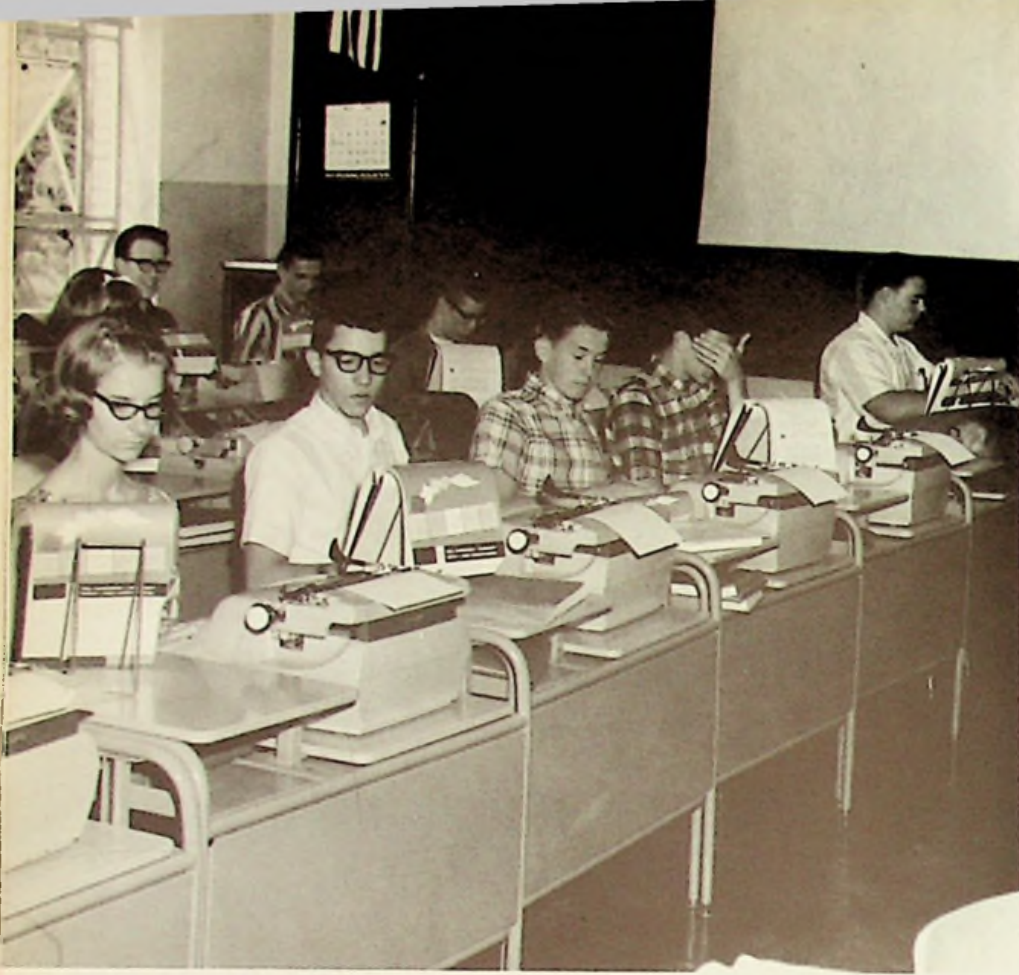
SIR WINSTON SPENCER CHURCHILL (1874-1965)

A WORLD LEADER WHO WAS TRULY GREAT

"Some must be great. Great offices will have great talents. And God gives to every man the virtue, temper, understanding, taste that lifts him into life and lets him fall just in the niche he was ordained to fall."

William Cowper







CLASSES



CLASS ADVISORS



ADVISORS--LEFT TO RIGHT: Miss Madeira, Mr. Donley, Mr. Wadsworth, Mr. Stevenson.

CLASS OFFICERS

CLASS OFFICERS--LEFT TO RIGHT:
Treasurer, Shirley Martin; Secretary,
Linda Thompson, President, Larry Martin,
Vice-president, Marie Gammon.





HOPE TERESA ADAMS



NANCY LEE ADAMS



BARBARA ANN ALLARD



JANET
RUTH
ALLEN



RALPH
LEE
BAER



KAY ELLEN BAHNER



JAMES KENDELL BARNETT



MARY KATHERINE BAUER 9



RICHARD ANTHONY BAYERL



LARRY BEAR



BONNIE SUE BEASLEY



THOMAS
F.
BIHL



NANCY
KAYE
COX



10 BEVERLY JEAN BREWER



WILLIAM THOMAS BRYAN



GARY LEE BUCHANAN



JERRY LEE BURNS



JACK DEE BUSSA



JILL LEE BUSSA



DAVID
WAYNE
BUSSEY



MARY
IMOGENE
BUSLER



ROBERT FRANKLIN BUSLER



THOMAS CAMPBELL



PHILIP DAVID CARTER



DAVID OREN CHAMBERLIN



WILLIAM GLEN CHAMBERLIN



RODGER L. CHAPMAN



STEVEN
L.
CLARK



DONLEY
W.
CLITHERO



12 MICHAEL ROY COOK



BRENDA JEAN COOPER



JUDITH KAY CREMEANS



BARBARA A. CUNNINGHAM



SHARON KAY DANIELS



MARY F. DELABAR



MICHAEL
LEE
DRAKE



CAROL
ELAINE
DRESSLER



HURSCHEL D. DUNCAN



PAUL RAY ETTERLING



MILDRED MARIE GAMMON 13



MICHAEL A. GARLINGER



WILLIAM F. GILLILAND



JOHN LEE GREGORY



SANDRA
ELAINE
HALLER



WILLIAM
LOUIS
HARTLAGE



BETTY JO HATFIELD



DANNA JEAN HEBNER



JUDITH ANN HOSKINS



ARTHUR W. HOSSMAN



CHARLES DEE HUGHES



GERUN MICHAEL JENKINS



JACK
DUNCAN
JENNINGS



JOYCE
ANN
JOHNSON



DELBERT E. KAYSER



JAMES R. KELLER



BRENDIA DEAN MC GUIRE 15



CHALLIS LEON KILGORE



TIMOTHY WAYNE KNIGHT



ROBERT DEAN LOVILL



SANDRA
JOYCE
LYCANS



VIRGIL
CORBIN
LYON



16 JENNIE LEE MC CALL



JUDITH ANN MC ELROY



CAROL JEAN MC GRAW



KERI ANN MARSH



BETTY J. MARSHALL
COOPER



LARRY STEPHEN MARTIN



SHIRLEY
ANN
MARTIN



TOMMIE
RAY
MASSIE



MICHAEL WAYNE MERSON



KEITH EDWIN MILLER



MARILYN JEAN MILLHUFF 17



CAROLYN ANN MING



GEORGE (BUD) MOON



VIRGINIA L. MORGAN



LARRY
RAY
NEAL



WAYNE
PENIX



18 LARRY PENNINGTON



LORNA DIANE PHILLIPS



KAREN SUE PORTER



NANCY LEE RATLIFF



LINDA RISNER



FREDA KAY ROBBINS



RITA
FAYE
ROBBINS



KARON
ANN
SALYERS



WENDELL E. SKINNER



ELLEN SYLVIA



LINDA KAYE THOMPSON 19



ANNA C. TURNER



JUDY ANN VAN DYKE



JOANN SUE WEAVER



MICHAEL
JAMES
WEEKS



MARY
ELLEN
WHEELER



20 PEGGY ARLENE WHITT



MARY JANE WHITTAKER



SHARON KAYE WICKLINE



ALLEN J. WILAMOWSKI



BETTY LOU WILLIAMS



BONNIE ANN WILLIAMS



DANNY
RAY
WINKLER



GLORIA
JEAN
WOMACK



LINDA SUE RUTH



CATHY MARSH BEAR



DAVID JENKINS

SENIOR CLASS

HOPE TERESA ADAMS

SOS Club 2; GAA 3; Class Play 3, 4; Pep Club 4; Bible Club 4; Girls' League 4; Tri-Hi-Y 4; Circleville High School 1, 2, 3.

NANCY LEE ADAMS

Band 1, 2, 3, 4; Pep Club, 2 - President, 2; Tri-Hi-Y 3, 4; Girls' League 1, 2, 3, 4.

BARBARA ANN ALLARD

Glee Club 3; Girls' League 1, 2, 3, 4.

JANET RUTH ALLEN

Band 1, 2, 3; Brass Ensemble 3; Stage Band 2, 3; Pep Band, 3; Girls' League 1, 2, 3, 4; Spanish Club 3, 4; Bible Club 3, 4 - Treasurer 4; Tri-Hi-Y 3, 4; Class Treasurer 3; Prom Waitress 2; Senior Personality; Pep Club 3, 4 - President 4; Cheerleader 4; Perfect Attendance 2; Newspaper Staff 3; Prom Committee 3; Class Play 4.

RALPH LEE BAER

Band 1; Spanish Club 3; Science Club 2.

KAY ELLEN BAHNER

Latin Club 1, 2; Spanish Club 3, 4; National Honor Society 3, 4; Scholarship Team 1, 2, 3, 4; Annual Staff 4 - Editor 4; Ad Salesman 4; Student Council 2, 3 - Vice-President 3; Band 1, 2, 3; Majorette 2, 3; Brass Ensemble 1, 2; Band Council 3 - Secretary-Treasurer 3; Tri-Hi-Y 3, 4; Youth-in-Government Delegate 3; Junior Cup; State Board Certificate 4; Perfect Attendance 2; Girls' League 1, 2, 3, 4; Pep Club 1, 2, 4; Senior Personality; Valedictorian 4; Bible Club 2; NEDT Certificate 1; Student-Government-Day Delegate 4; Science Club 1; Science Fair 1; Prom Committee 3; Talent Show Committee 3.

JAMES KENDELL BARNETT

Spanish Club 3, 4; Baseball 3, 4; Basketball 2, 3, 4; Perfect Attendance 4.

MARY KATHERINE BAUER

Latin Club 1, 2; Annual Staff 4; Ad Salesman 4; Class President 1; Senior Personality; Science Club 1; Girls' League 1, 2, 3, 4 - Treasurer 4; Band 1, 2, 3; Majorette 1, 2, 3; FTA 4; Prom Committee 3.

RICHARD ANTHONY BAYERL

Band 1, 2, 3, 4; Stage Band 2, 3; Prom Committee 3.

BONNIE SUE BEASLEY

Band 1, 2, 3, 4; Stage Band 2, 3, 4; Pep Band 3, 4; Prom Waitress 2; Perfect Attendance 4; Tri-Hi-Y 3, 4; Prom Committee 3; Girls' League 1, 2, 3, 4; Librarian 3, 4; Bible Club 3; Talent Show Committee 3.

THOMAS F. BIHL

Annual Photographer 3; Spanish Club 3, 4.

BEVERLY JEAN BREWER

Girls' League 1, 2, 3, 4.

WILLIAM THOMAS BRYAN

Band 1, 2, 3; Latin Club 1, 2; Scholarship Team 1, 3, 4; Prom Committee 3; National Honor Society 4; Hi-Y 4; Student-Government-Day Delegate 4; Perfect Attendance 4.

GARY LEE BUCHANAN

Latin Club 1, 2; Band 1, 2, 3, 4; Band Council 2, 4 - President 4; Stage Band 2, 3, 4; Hi-Y 3, 4; Speech Club 4; Speech Club Play 4; Senior Personality; Perfect Attendance 2, 3, 4; Class Play 4; Prom Committee 3.

JERRY LEE BURNS

Baseball 2, 3, 4; Hi-Y 3; Class Play 4; Glee Club 2, 3, 4; De Rerum Natura 4; Perfect Attendance 4; Prom Committee 3; Talent Show Winner 3.

JACK DEE BUSSA

Band 1, 2, 3, 4; Pep Band 4; Perfect Attendance 1, 2, 3, 4; Prom Committee 3; Stage Band 2.

ACTIVITIES

JILL LEE BUSSA

Latin Club 1; Class Secretary 3; Band 1, 2, 3, 4; Brass Ensemble 2; Stage Band 3, 4; Tartan Queen Candidate 2; Perfect Attendance 1, 2, 3, 4; Pep Club 1, 2, 4; Tri-Hi-Y 4; Student Government Day Delegate 4; Librarian, 3, 4; Girls' League 1, 2, 3, 4; Science Club 1; Science Fair 1; Bible Club 1, 2; Prom Committee 3; Class Play 4; Sterling Silver Award 4.

MARY IMOGENE BUSSLER

Band 1, 2, 3; Clarinet Ensemble 3; Latin Club 1; Pep Club 1, 2, 3, 4; FTA 2, 3, 4 - Officer 4; Prom Committee 3; Girls' League 1, 2, 3, 4; Tri-Hi-Y 3.

ROBERT F. BUSSLER

Speech Club 4.

PHILLIP DAVID CARTER

Perfect Attendance 3, 4; Student Government Day Delegate 4.

DAVID OREN CHAMBERLIN

Latin Club 1, 2; Baseball 2, 3; Senior Personality.

WILLIAM GLEN CHAMBERLIN

Football 1; Speech Club 4.

STEVEN L. CLARK

Prom Committee 3.

DONLEY W. CLITHERO

Latin Club 1, 2; Spanish Club 3; Basketball 1, 2, 3; Football Manager 2, 3.

MICHAEL ROY COOK

Basketball 1, 2, 3, 4; Spanish Club 3; Band 1; Speech Club 4.

BRENDA JEAN COOPER

Newspaper Staff 3; Student Council 2, 3; Librarian 3; Tri-Hi-Y 3, 4 - Chaplain 4; Youth-in-Government Delegate 4; National Honor Society 3, 4; Student Government Day Delegate 4; Band 1, 2, 3, 4; Prom Committee 3.

NANCY KAYE COX

Glee Club 1, 2, 4; Librarian 1, 2; Class Play 3; Prom Committee 3; Pep Club 3; GAA 1, 2, 3; Girls' League 4; Scholarship Team 2, 3; French Club 1, 2; Glenwood High School 1, 2, 3.

JUDITH KAYE CREMEANS

Glee Club 2, 3, 4; Girls' League 1, 2, 3, 4; Office Assistant 4; Tri-Hi-Y 4; Pep Club 1, 2, 3, 4; Perfect Attendance 2, 3; Prom Committee 3.

BARBARA A. CUNNINGHAM

Girls' League 1, 2, 3, 4; Glee Club 2, 3, 4; Tri-Hi-Y 3, 4.

SHARON KAY DANIELS

Latin Club 1, 2; Spanish Club 3, 4; Pep Club 1, 2; Bible Club 2; Concession Stand 3; Prom Committee 3; Tri-Hi-Y 3, 4 - Treasurer 4; Girls' League 1, 2, 3, 4; Youth-in-Government Alternate 4; Class Play 4; Finance Committee 4; State Board Certificate 4.

MARY F. DELABAR

Librarian 1; Glee Club 1; Scholarship Team 2; FTA 3, 4 - Officer 4; Science Club 3, 4; Annual Staff 4; Pep Club 4; Ad Salesman 4; Concession Stand 3; Prom Committee 3; Spanish Club 3, 4; Girls' League 2, 3, 4; Green High School 1.

MICHAEL LEE DRAKE

Band 1, 2, 3, 4; Band Council 4; Pep Band 2, 3, 4; Stage Band 2, 3, 4; Dixieland Band 3, 4; Science Club 1, 2; De Rerum Natura. 3 - Treasurer 3; Latin Club 1, 2;

LARGEST CLASS TO

Scholarship Team 1, 2, 3, 4; Newspaper Staff 3; Boys' State Delegate 3; Hi-Y 3, 4 - Vice-President 4; Youth-in-Government Delegate 4; Prom Committee 3; Senior Personality; National Honor Society 4; Y Council Delegate 4; Rotary Club Delegate 4; Student-Government-Day Delegate 4.

CAROL ELAINE DRESSLER

Glee Club 2, 3, 4; Pep Club 1, 2; Latin Club 1, 2; Bible Club 2, 3; FTA 1, 2; Science Club 4; Girls' League 1, 2, 3, 4; Prom Committee 3; Concession Stand 3; Finance Committee 4; Class Play 4; Tri-Hi-Y 3, 4; Annual Staff 4; Ad Salesman 4; Librarian 2, 3, 4; Science Fair 1.

HURSCHEL DUAINE DUNCAN

Football 1, 2, 3, 4; Latin Club 1, 2; Hi-Y 3, 4; Science Club 1; Speech Club 4; Prom Committee 3.

PAUL ROY ETTERLING

Spanish Club 3, 4.

MILDRED MARIE GAMMON

Class Vice-President 1, 4; Cheerleader 1, 2, 3, 4; Pep Club 1, 2, 3, 4; Girls' League 1, 2, 3, 4; Tri-Hi-Y 3, 4; Glee Club 3; Homecoming Attendant 4; Latin Club 1, 2; Speech Club 4; Prom Committee 3; Senior Personality.

MICHAEL ALBERT GARLINGER

National Honor Society 3, 4; Band 1, 2, 3, 4; Drum Major 4; Band Council 3; Outstanding Freshman Band Award; Stage Band 2, 3, 4; Pep Band 1, 2, 3, 4; Dixieland Band 3, 4; Speech Club 4; Speech Club Play 4; Class Play 4; Class President 3; Basketball 1; Hi-Y 3, 4 - Officer 4; Student - Government - Day Delegate 4; Senior Personality; Scholarship Team 1, 2, 4.

WILLIAM F. GILLILAND

Baseball 1, 2, 3, 4; Basketball 1, 2, 3, 4; National Honor Society 3, 4; Scholarship Team 2; Latin Club 1, 2; Spanish Club 3, 4; Perfect Attendance 3, 4; State Board Certificate 4.

JOHN LEE GREGORY

Football 2, 3, 4; Student - Government Day Delegate 4.

SANDRA ELAINE HALLER

Band 1, 2; Latin Club 1, 2; Science Club 1; FTA 2; Tri-Hi-Y 4.

WILLIAM LOUIS HARTLAGE

Football 1, 2, 3, 4; Basketball Manager 1, 2, 3, 4; Tartan King 3; Senior Personality; Latin Club 1, 2; Spanish Club 3, 4; Hi-Y 3, 4 - Chaplain 4; Youth-in-Government Delegate 3; State Board Certificate 4.

BETTY JO HATFIELD

Girls' League 1, 2, 3, 4.

DANNA JEAN HEBNER

Scholarship Team 2; Annual Staff 4; National Honor Society 4; Perfect Attendance 3; Science Club 1, 2, 3, 4; Science Project 2, 3; Speech Club 4; Speech Club Play 4; Spanish Club 2, 3; Latin Club 2; FTA 4; Tri-Hi-Y 3, 4; Prom Committee 3; Glee Club 2, 4; Girls' League 1, 2, 3, 4.

JUDITH ANN HOSKINS

Latin Club 1, 2; Tri-Hi-Y 3, 4; Class Vice-President 2; Band 1; Cheerleader 2; De Rerum Natura 4; Pep Club 1, 2, 4; Girls' League 1, 2, 3, 4 - President 4; Prom Committee 3; Senior Personality; Librarian 4; Speech Club 4.

ARTHUR W. HOSSMAN

Latin Club 1, 2; Basketball 1; Band 1, 2; Pep Band 1, 2; Stage Band 2; Football 3, 4; Hi-Y 3, 4; Prom Committee

GRADUATE SO FAR

3; Annual Staff 4; Student-Government-Day Delegate 4; Office Assistant 4; De Rerum Natura 4; Perfect Attendance 1, 2, 3, 4; Ad Salesman 4.

GERUN MICHAEL JENKINS

Scholarship Team 2, 3, 4; Newspaper Staff 3; Ad Salesman 4; National Honor Society 4; Perfect Attendance 4; Science Club 1, 2, 3, 4 - President 4; Speech Club 4; Speech Club Play 4; Class Play 4; Spanish Club 3, 4; Latin Club 1, 2; Student - Government - Day Delegate 4; Rotary Club Delegate 4; Boys' State Alternate 3; FTA 4; Hi-Y 4; State Board Certificate 4; Prom Committee 3; Honor Roll 2, 3, 4.

JACK DUNCAN JENNINGS

Football 1, 2, 3, 4; Basketball 1, 2, 3, 4; Baseball 1, 2, 3, 4; Tartan King Candidate 2; Senior Personality; Glee Club 2, 3, 4.

JOYCE ANN JOHNSON

Glee Club 2, 3, 4; Bible Club 3 - Secretary 3; Homecoming Attendant 3; Girls' League 1, 2, 3, 4; Speech Club 4; Senior Personality.

DELBERT E. KAYSER

Band 1, 2, 3, 4; Stage Band 2, 3, 4; Dixieland Band 3, 4; Student Council 1; Scholarship Team 4; Latin Club 1, 2.

JAMES R. KELLER

Football 1, 4; Librarian 3, 4.

CHALLIS LEON KILGORE

Band 1, 2.

ROBERT DEAN LOVILL

Latin Club 1, 2; Prom Committee 3; Football 1, 2, 3, 4;

All - SOC Honorable Mention 3, 4; Basketball 1, 2; Baseball 1, 2, 3, 4; Hi-Y 3, 4; Scholarship Team 2.

SANDRA JOYCE LYCANS

Glee Club 3, 4; Girls' League 1, 2, 3, 4; Speech Club 4; Perfect Attendance.

VIRGIL CORBIN LYON

Football 1, 2, 3, 4; Basketball 1, 2, 4; Baseball 1, 2; Latin Club 1, 2; Hi-Y 3, 4 - Sergeant-at-Arms 4; Science Club 3, 4; Senior Personality; De Rerum Natura 4; Bible Club 2, 3; Newspaper Staff 3; Speech Club 4.

JENNIE LEE MC CALL

National Honor Society 3, 4; Scholarship Team 1, 2, 3, 4; Science Club 2, 3, 4 - Officer 4; Science Fair 1, 2, 3; District Science Fair 3; Latin Club 1, 2; Spanish Club 3, 4; FTA 4; Class Play 4; NEDT Certificate 1; DAR Award 4; Prom Committee 3; Student-Government-Day Delegate 4; Tri-Hi-Y 4; Girls' League 1, 2, 3, 4; Annual Staff 4; Editor's Assistant 4; Ad Salesman 4; Finance Committee 4; Valedictorian 4; Senior Personality; Perfect Attendance 2, 3, 4.

JUDITH ANN MC ELROY

Science Club 1; Latin Club 1, 2; Speech Club 4; Speech Club Play 4; Class Play 4; Glee Club 3; Prom Committee 3; Tri-Hi-Y 3, 4; Finance Committee 4; Girls' League 1, 2, 3, 4; Pep Club 4.

CAROL JEAN MC GRAW

Girls' League 1, 2, 3, 4;

BRENDIA DEAN MC GUIRE

Girls' League 1, 2, 3, 4; Spanish Club 2.

KERI ANN MARSH

Latin Club 1, 2; Band 1, 2, 3; Class Treasurer 1; Pep Club 1, 2, 3, 4; Girls' League 1, 2, 3, 4 - Vice-President 4; Newspaper Staff 3; Prom Committee 3; FTA 1, 2;

CLASS IS OUTSTANDING

Annual Staff 4 - Editor 4; Ad Salesman 4; De Rerum Natura 4; Senior Personality; Prom Waitress 2; Speech Club 4; Speech Club Play 4; Class Play 4; Tri-Hi-Y 3, 4; Cheerleader 2, 3, 4; Science Project 4; Science Club 4; Perfect Attendance 2.

BETTY J. MARSHALL

Spanish Club 3, 4; Speech Club 4; Tri-Hi-Y 3, 4; Prom Committee 3; Finance Committee 4.

LARRY STEPHEN MARTIN

National Honor Society 4; Class President 4; Band 1, 2, 3; Band Council 3 - Vice President 3; Drum Sergeant 2, 3; Class Play 4; Scholarship Team 4; Student Government Day Delegate 4; IBM Computer Class 3; Annual Photographer 2, 3, 4; Ad Salesman 4; Annual Staff 4; State Board Certificate 4; Science Club 1, 3; Science Fair 1, 3; District Science Fair 3; Hi-Y 3, 4 - President 4; Latin Club 1, 2; Newspaper Staff 3; Class Vice-President 3; Prom Committee 3; Dixieland Band 3; De Rerum Natura 4; Tartan King Candidate 1; Senior Personality; Perfect Attendance 3; Tartan Trio 3.

SHIRLEY ANN MARTIN

Perfect Attendance 2, 3; Cheerleader 2; Pep Club 1, 2, 3, 4; Girls' League 1, 2, 3, 4; Spanish Club 2; Speech Club 4; Prom Committee 3; Tri-Hi-Y 3, 4; Class Treasurer 4; Senior Personality; Office Assistant 4; National Honor Society 4.

TOMMIE RAY MASSIE

National Honor Society 4; Science Club 1, 3; Latin Club 1, 2; Spanish Club 3, 4; State Board Certificate 4; Annual Staff 4 - Business Manager 4; Ad Salesman 4; Science Fair 1, 3; District Science Fair 3; Hi-Y 4; Newspaper Staff 3; Ad Salesman 4; Student Government Day Delegate 4; Scholarship Team 3, 4; Class Play 4; Senior Personality; Librarian 2, 3, 4; Student Council 2, 3; Speech Club 4.

MICHAEL WAYNE MERSHON

Glee Club 2, 3, 4.

KEITH EDWIN MILLER

Latin Club 1; Tartan King Candidate 4.

MARILYN JEAN MILLHUFF

Latin Club 1, 2; Tri-hi-Y 3, 4; Science Club 3, 4; FTA 4; Girls' League 1, 2, 3, 4; Finance Committee 4; Senior Personality.

CAROLYN ANN MING

Girls' League 1, 2, 3, 4; Spanish Club 2; Glee Club 2, 3; Student-Government-Day Delegate 4.

VIRGINIA LOUISE MORGAN

Science Club 1, 2, 3; Latin Club 1, 2; Spanish Club 3, 4; Speech Club 4; Speech Club Play 4; Class Play 4; Band 1, 2, 3, 4; Scholarship Team 1, 2, 3, 4; National Honor Society 4; Class Treasurer 2; Science Fair 1, 2; Newspaper Staff 3.

WAYNE PENIX

Football 4; Latin Club 1.

LORNA DIANE PHILLIPS

Band 1, 2; Latin Club 1, 2; Girls' League 1, 2, 3, 4.

KAREN SUE PORTER

Pep Club 4; Girls' League 1, 2, 3, 4.

NANCY LEE RATLIFF

Senior Personality; Girls' League 1, 2, 3, 4; Pep Club 3, 4; Glee Club 4; Prom Committee 3.

LINDA LOU RISNER

Band 1, 2, 3; Majorette 1, 2; Homecoming Attendant 1; Homecoming Queen 4; Senior Personality; Spanish Club

IN MANY AREAS

3, 4; Girls' League 1, 2, 3, 4 - Officer 4; Tri-Hi-Y 3, 4; President 4; Class President 2; Ad Salesman 4; Student 2, 3; Newspaper Staff 3.

FREDA KAY ROBBINS

Girls' League 1, 2, 3, 4; Glee Club 2; Prom Committee 3.

LINDA SUE RUTH

Girls' League 1, 2, 3, 4; Glee Club 2, 3, 4; Pep Club 2, 3; Prom Committee 3.

KARON ANN SALYERS

Pep Club 1, 2, 3; Glee Club 2, 3, 4; FTA 1, 2, 3; Tri-Hi-Y 3, 4; Girls' League 1, 2, 3, 4; Librarian 3, 4; Perfect Attendance 2, 3.

WENDELL E. SKINNER

Latin Club 1; Spanish Club 3; Football 3, 4; Baseball 3; Band 1, 2; Prom Committee 3.

ELLEN SYLVIA

Latin Club 1; Spanish Club 3, 4; Tri-Hi-Y 3; Bible Club 3; Girls' League 1, 2, 3, 4; Band 1, 2, 3; Newspaper Staff 3; Ad Salesman 4; Speech Club 4; Pep Club 1, 2, 3, 4.

LINDA KAYE THOMPSON

Glee Club 1, 2, 4; Latin Club 1, 2; Spanish Club 3, 4; Newspaper Staff 3; Girls' League 2, 3, 4; Concession Stand 3; FTA 2, 3, 4 - Chaplain-3 Treasurer 4; Tri-Hi-Y 3, 4 - Secretary 4; National Honor Society 4; State Board Certificate 4; Prom Committee 3; Pep Club 2; Scholarship Team 1; GAA 1; Speech Club 4; Minford High School 1.

ANNA CATHERINE TURNER

Scholarship Team 1, 4; National Honor Society 3, 4; FTA 1, 2; Science Club 1, 2, 3; Newspaper Staff 3 - Editor 3; Annual Staff 4 - Editor 4; Student-Government-Day Delegate 4; Latin Club 1, 2; Spanish Club 3, 4.

JUDY ANN VAN DYKE

Latin Club 1, 2; Science Club 2; Tartan Queen Candidate 1; Tri-Hi-Y 3, 4; Band 1, 2, 3, 4; Majorette 4; Prom Committee 2; Girls' League 1, 2, 3, 4; Class Play 4.

JOANN SUE WEAVER

Glee Club 2, 3, 4; Tri-Hi-Y 3, 4; Girls' League 1, 2, 3, 4.

JAMES MICHAEL WEEKS

Glee Club 1; Football 1, 2, 3, 4; Baseball 2, 3, 4; Basketball 1.

MARY ELLEN WHEELER

National Honor Society 4; Scholarship Team 1, 2, 3, 4; Betty Crocker Award 4; NEDT Certificate 1; Science Fair 1; Class Play 4; Speech Club 4; Speech Club Play 4; Band 1, 2, 3, 4; Stage Band 3, 4; FTA 1, 2, 3, 4 - President 4; Tri-Hi-Y 3, 4 - President 4; Newspaper Staff 3 - Editor 3; Annual Staff 4 - Editor 4; Science Club 1, 2, 3; Latin Club 2, 3; Spanish Club 3, 4; Prom Committee 3; Librarian 3, 4; Perfect Attendance 2; Girls' League 1, 2, 3, 4.

PEGGY ARLENE WHITT

Latin Club 1, 2; Spanish Club 3, 4; Girls' League 1, 2, 3, 4; Tri-Hi-Y 3, 4-Sergeant-at-Arms 4; FTA 1, 2, 3, 4; Class Play 4; State Board Certificate 4.

MARY JANE WHITTAKER

Band 1, 2, 3; Spanish Club 3, 4; Pep Club 2, 3; FTA 1, 2, 3, 4; Prom Committee 3; Girls' League 1, 2, 3, 4; Tri-Hi-Y 3, 4.

SHARON KAYE WICKLINE

Girls' League 1, 2, 3, 4; Prom Committee 3.

ALLEN J. WILAMOWSKI

Football 2, 3, 4; Baseball 2, 3; Spanish Club 3, 4; Latin Club 1, 2; Student-Government-Day Delegate 4; Speech Club 4; Speech Club Play 4.

GRADUATION JUNE 1, 1965

BETTY LOU WILLIAMS

Tri-Hi-Y 4; Pep Club 4; Senior Personality; Girls' League 1, 2, 3, 4; Prom Committee 3.

BONNIE ANN WILLIAMS

Band 1, 2, 3; Majorette 1, 2, 3; Latin Club 1, 2; Speech Club 4; Newspaper Staff 3; Homecoming Attendant 2; Girls' League 1, 2, 3, 4; Bible Club 2, 4 - President 4;

Tri-Hi-Y 3, 4; Speech Club Play 4; FTA 1, 2; Prom Committee 3; Pep Club 1, 2, 3, 4; Senior Personality.

DANNY RAY WINKLER

Glee Club 3, 4; Senior Personality.

GLORIA JEAN WOMACK

Band 1, 2, 3, 4; Latin Club 1, 2; Tri-Hi-Y 3, 4.

PAST AND PRESENT CLASS OFFICERS--STANDING. Left to Right: Virginia Morgan, Linda Thompson, Larry Martin, Mike Garlinger, Shirley Martin, and Marie Gammon. SEATED: Linda Risner Holcomb, Mary Bauer, Keriann Marsh, Judy Hoskins, Janet Allen, and Jill Bussa.



SENIOR CLASS HISTORY

We entered East High School in September in 1961. Our class officers were Mary Bauer, president; Marie Gammon, vice-president; Priscilla Fuhr, secretary; and Keriann Marsh, treasurer. Linda Risner was Homecoming attendant, and Judy VanDyke and Larry Martin were our Tartan King and Queen candidates. The majorettes in the freshman band were Mary Bauer, Linda Risner, and Bonnie Williams. Marie Gammon was our only reserve cheerleader.

Our sophomore year we elected Linda Risner president, Judy Hoskins vice-president, Virginia Morgan secretary, and Priscilla Fuhr treasurer to lead our class. Our class projects included a car wash and a dance. The big event of the year was receiving our class rings. Bonnie Williams was homecoming attendant, and Jill Bussa and Jack Jennings were Tartan King and Queen candidates. Mary Bauer, Linda Risner, and Bonnie Williams were majorettes, and Kay Bahner served as substitute. Keriann Marsh, Marie Gammon, and Judy Hoskins were reserve cheerleaders, and Shirley Martin was substitute. Serving as prom hosts were Judy VanDyke and Steve Ketter, and the waitresses were Keriann Marsh, Janet Allen, Bonnie Beasley, and Cathy Marsh.

Our main project our junior year was raising money for our prom. Leading us in our efforts were Mike Garlinger, president; Larry Martin, vice-president; Jill Bussa, secretary; and Janet Allen, treasurer. The theme of our prom was "Moonlight Gardens." Marching in the band as majorettes were Mary Bauer, Bonnie Williams, and Kay Bahner. Marie Gammon was varsity cheerleader, and Keriann Marsh was substitute. Joyce Johnson was homecoming attendant, and Keriann Marsh and Bill Hartlage were Tartan King and Queen. Inducted into the National Honor Society were Brenda Cooper, Jennie McCall, Mike Garlinger, Frank Gilliland, Anna Turner, and Kay Bahner. The Junior Cup was awarded to Kay Bahner.

During our senior year we were concerned with publishing an annual. Our class officers were Larry Martin, president; Marie Gammon, vice-president; Linda Thompson, secretary; and Shirley Martin, treasurer. Our Homecoming Queen was Linda Risner and her attendant was Marie Gammon. Our Tartan King and Queen candidates were Ellen Sylvia and Eddie Miller. Judy VanDyke was our only majorette and Mike Garlinger served as drum major. Marie Gammon and Keriann Marsh were varsity cheerleaders and Janet Allen was substitute. Inducted into the National Honor Society were Linda Thompson, Larry Martin, Shirley Martin, Tom Massie, Tom Bryan, Mike Drake, Danna Hebner, Virginia Morgan, Mary Wheeler, and Gerun Jenkins. Our valedictorians were Jennie McCall and Kay Bahner.

We owe many thanks to our class advisors Miss Madeira, Mr. Stevenson, Mr. Donley, and Mr. Wadsworth. They were always willing to help. We now eagerly look to the future. May it bring success and happiness.

CLASS OF '66

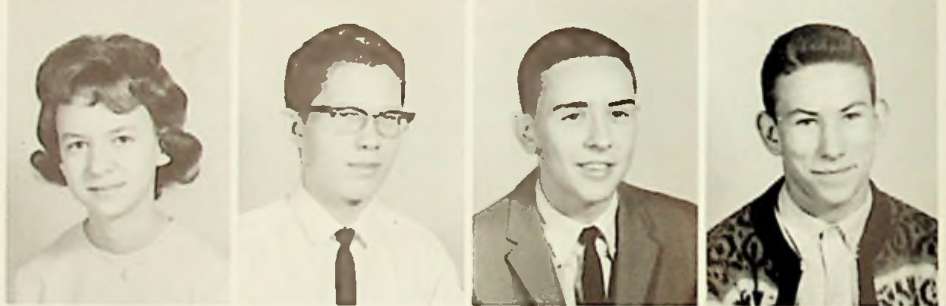
Mike Adams
 Donald Adkins
 Mark Baer
 Barbara Bayerl



Patty Bonzo
 Penny Born
 Charles Bramblett
 Marc Bryant



Deborah Buffinger
 John Burgess
 Roger Burleson
 Danny Chamberlin



Dwight Chamberlin
 Paul Chapman
 Patti Cole
 Carolyn Collins



Sharon Conkle
 Ron Cook
 Dennis Cooper
 Lois Cox





David Craft
Kenny Curcio
Allen Daugherty
Cheryl Davis



Ron Davis
Danny DeHart
Diane Donley
Karen Eichenlaub



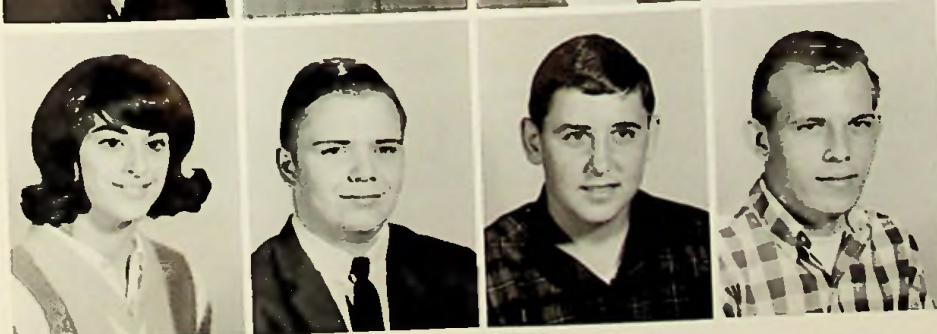
Mike Filkins
Nick Gampp
William Gilpin
Mary Ann Greer



Jim Hamilton
Steve Hammonds
Brent Harbour
Ben Hebner



Dinell Hoskins
Steve Howard
Sandra Howell
John Huddleston



Linda Imes
Paul Jennings
Tom Johnson
Harold Justice



Neal Kingery
Steve Ketter
Carol Lewis
Marsha Lockhart



Randy Luster
Gary McClintic
Patty McClintic
Shannon McKee



Mary Lou Manley
Jim Mershon
Linda Mershon
Terry Noel



Paulette Mershon
Charles Mullens
Gary Mullins
Timothy Neal



Kathy Nesler
Tony Ogg
Patty Phillips
Steve Phillips



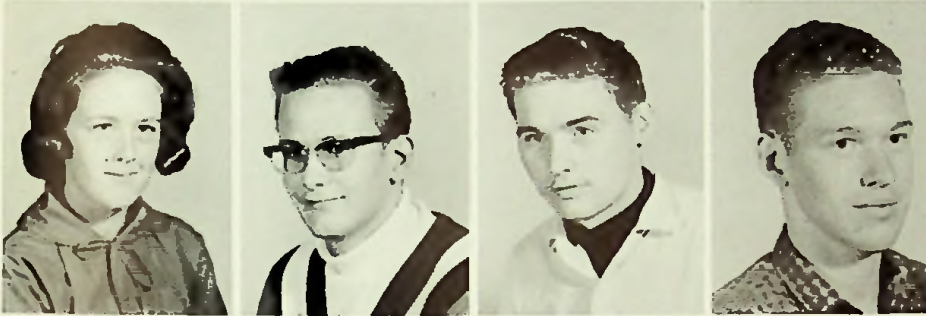
Anita Price
Jean Purdy
Sharon Riley
Jackie Romines



Paula Roney
Marlene Rooney
Dora Jean Rose
Gary Ruckel



Doniece Salyers
Linda Simpson
Danny Skaggs
Barbara Sparks



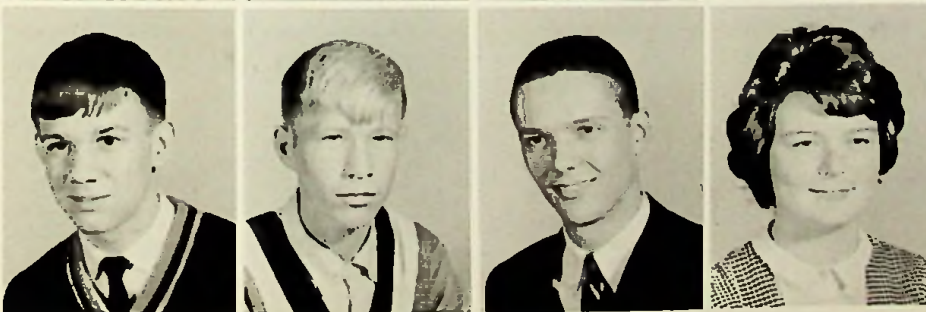
Connie Stapleton
Bob Stevens
Floyd Stiltner
Vernon Stiltner



Carolyn Storey
Eddie Taylor
Linda Terry
Patty Thompson



John VanBibber
Violet Wallace
Patty Ward
Ruth Weaver



Larry White
Roger Whitt
Mike Yeagle
Jane Young

SOPHOMORE CLASS

Paula Adams
Nellie Allard
Pamela Allard
Tead Adams



Cora Anderson
Mike Arrowood
Karen Arthur
Vaudeen Artis



Bill Basham
Sharon Bear
Connie Brenner
Diana Bennet



William Billings
Rita Bloomfield
Mildred Boggs
Jean Born



Barbara Brown
Helen Brown
Deniss Burgess
Jayne Burke





Tim Bussler
 Jim Cantrell
 Margaret Carpenter
 Becky Carpenter



Roberta Chamberlin
 Sandra Chamberlin
 Paul Chapman
 Kathie Clausing



Connie Corrin
 Danny Cellie
 Lois Cooper
 Wyatt Cooper



Rita Coriell
 Laberta Curtiss
 John Daniels
 Gary Daugherty



Lila Dillow
 Sandy Dube
 Roger Eldridge
 Richard Etterling



Gay Evans
 Charles Farmer
 Bob Farrar
 Danny Fetty

Danny Figlestahler
Linda Fitch
Carmen Fittro
Barbara Garlinger



Bob Gee
Paul Gilpin
Janet Gullett
Mike Hale



Jim Hartlage
John Haynes
Malcolm Haywood
Jean Hieneman



Mike Holcomb
Toka Holland
Charles Horner
Janice Howell



Patsy Imes
Roger Jones
Ronnie Gordan
Marilyn Kazee



Walt Keeton
Linda Kennedy
Coloway King
Vicki King





Dale King
John King
Gary Leach
Mike Leesburg



Phil Liles
Steve Little
Karen McClintic
Julia McGraw



Harry McGuire
Donna Marshall
Bradley Martin
Larry Martin



Mike Martin
Penny Mershon
Rodney Millhuff
Rachael King



Mary Montavon
Connie Moore
Bill Morrison
Dick Musser



Randy Neal
Forrest Noel
Donna Pelfrey
Barbara Penix



Randy Piquet
John Porter
Pam Robbins
Stanley Robbins



Kay Scaggs
Mike Schomburg
Jim Schwamburger
Jamie Secrest



Beckie Shoemaker
Clyde Skaggs
Donna Skinner
Gruder Smith



Danny Spence
Sharon Spaulding
Allen Spradlin
Greg Stamper



Elaine Stone
Cheryl Sturgill
Janie Sturdivant
John Terry



Sharon Turner
Linda Weaver
David Whitt
Brenda Whitt



Mike Williams
Edith Young

Kenny Wadkins

SNAPS



Guess who! You'd never guess it was T. A. & T. A., would you?



Cheerleaders pose.



Is this an East High basketball game or an elegant ballet dance?



A picture taken of a picture taken. Smile pretty, Connie!

Our own freeway.



FRESHMAN CLASS



Marsha Allen
Sandie Armbruster
Theresa Artis
Eddie Bell



Caroline Bowling
Becky Brady
Ella Breech
Westley Bussey



Mary Bussler
Margaret Carpenter
Valerie Chaney
Barbara Chamberlin



Don Chamberlin
Randy Chamberlin
Patty Chapman
Trent Coburn

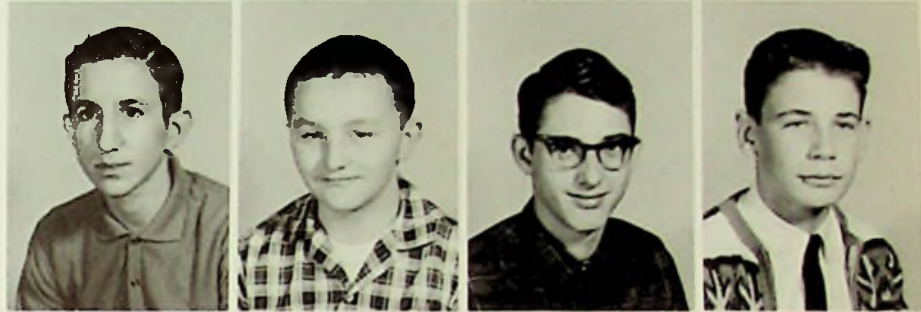


Chuck Coburn
Cathy Cooper
John Coriell
Bob Coriell

Susie Cox
 Jim Cremeans
 Janie Cunningham
 Ronda Curtis



Howard Daughtery
 Bill Davis
 David Dials
 Chip Duncan



Leon Earwood
 Keith Edwards
 Joyce Ervin
 Richard Etterling



Kenny Flinders
 Pam Gampp
 Lois Garrett
 Nancy Gee



Marsha Giles
 Mike Gilliland
 Danny Haywood
 Jim Hebner



Ricky Hensley
 JoAnn Hibbits
 Sandie Hogan
 Jay Howell





Gary Hughes
Debbie Imes
Roger Jones
Mary Ann Jordan



Bob Keller
Brenda Johnson
Keith Jones
Penny Kelly



Danny King
Pamela Kingory
Barbara Kitchen
Jane Knight



Steve Kisor
Steve Luster
Paul Leslie
Kay McCardle

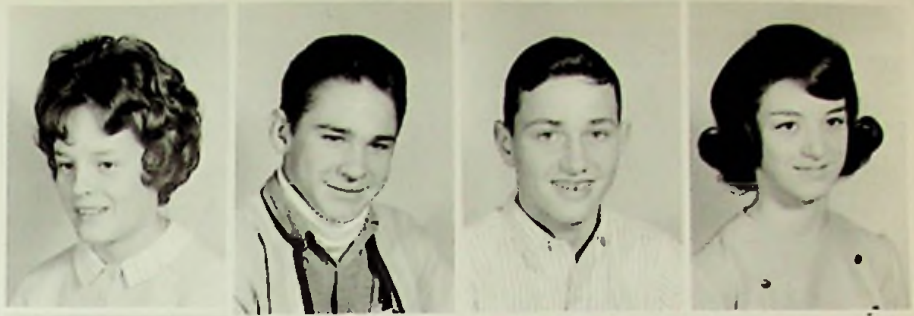


Brenda McCellan
John McClintic
Mark McGorn
Roger McGraw



Lula Bell McGuire
Shauna McKee
Artie Marshall
Bruce Martin

Debera Mershon
Dick Musser
John Miller
Marsha Milliron



Linda Musser
Tom Montavon
May Nichols
Patty Phillips



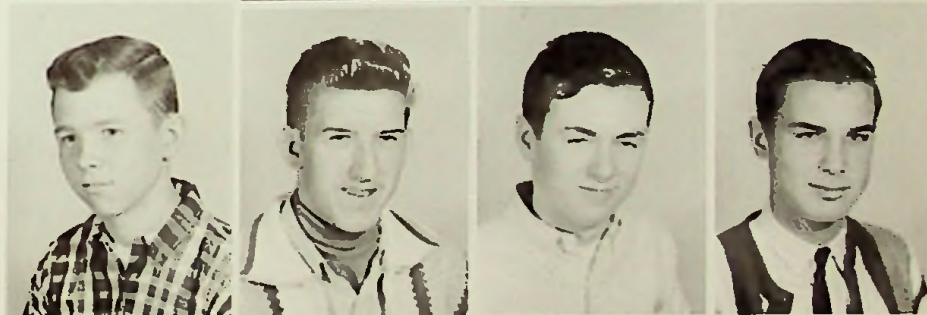
David Porter
Barbara Prudy
Patty Ratliff
Jim Reed



Randy Ruggles
David Russel
Susie Russel
Gary Secrest



Tim Shuter
Eddie Smith
Chuck Sowards
Larry Smith



Sharon Sparks
Judy Stilner
Linda Stilner
Karen Swavel





Janet Sylvia
Beth Torgues
Harold Turner
Larry Turner



Lois Walburn
George Ward
Bill Warner
Sandie Weaver



John Welch
Diane Wilson
Bob Winkler



There, there, Tom. It's all right. We'll let you keep the spear.



Miss Heer's English I class. Karen Swavel recites.



CLASS OFFICERS



JUNIOR CLASS OFFICERS

LEFT TO RIGHT: Treasurer, Carol Lewis; President, Paul Jennings; Vice-President, Violet Wallace, and Secretary, Janie Young.

SOPHOMORE CLASS OFFICERS

LEFT TO RIGHT: Treasurer, Jean Hieneman; President, Mike Schomburg; Vice-President, Edith Young; and Secretary, Kathie Clausing.



FRESHMAN CLASS OFFICERS

LEFT TO RIGHT: Treasurer, Patty Phillips; President, Wes Bussey; Vice-President, Janet Sylvia; and Secretary, Diane Wilson.



MOCK-PRESIDENTIAL ELECTION--Mr. Pogue's civic class conducted a mock-Presidential election. President Johnson won by a landslide. Above: students in booths.



LATIN IV--PICTURED ABOVE, Left to Right: Larry Martin, Anna Turner, Kay Bahner, Jennie McCall, Patty Phillips, and Carol Lewis.



Mr. Donley's industrial arts class at work



The home economics class enjoying a meal

Mrs. Horton's biology class



Mr. Keene's Bookkeeping I class





Chemistry students do research in lab.



LIBRARY--Reading is the pathway to knowledge and the library.



Study Hall. Study! Work! Play?





ACTIVITIES & HONORS





HOMECOMING QUEEN - LINDA RISNER



MARIE GAMMON - Senior



DIANE DONLEY - Junior

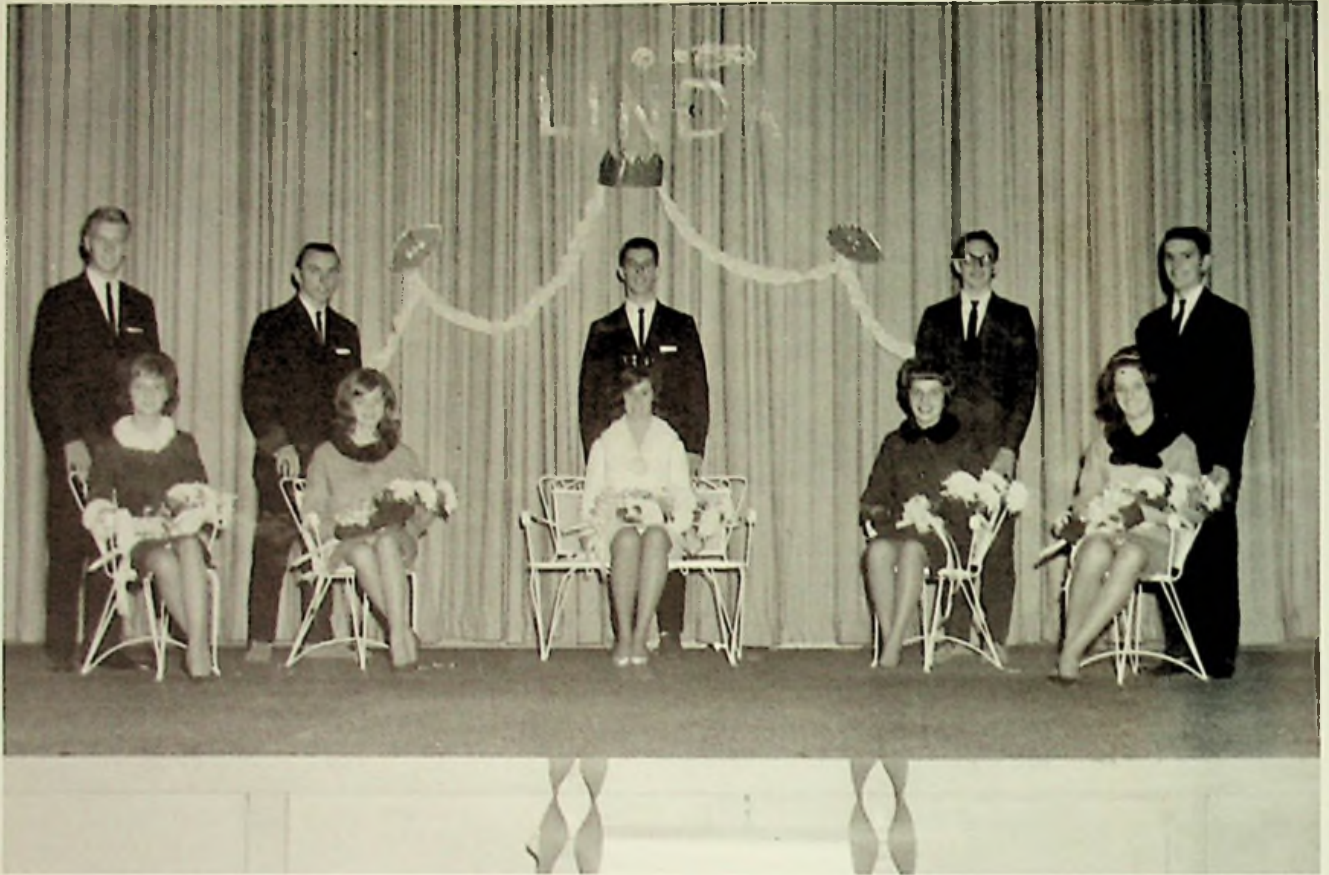
ATTENDANTS

DONNA SKINNER - Sophomore

MARSHA MILLIRON - Freshman



THE QUEEN AND HER COURT



Sophomore Attendant Donna Skinner, Escort Jim Reed; Senior Attendant Marie Gammon, Escort Jerry Burns; Queen Linda Risner, Escort Larry Martin; Junior Attendant Diane Donley, Escort Mark Baer; Freshman Attendant Marsha Milliron, and Escort Wesley Bussey.



The queen is presented with her crown and flowers by football captain Jack Jennings.

QUEEN AND ATTENDANTS IN CARS



Queen Linda and her escort wait to be driven onto the football field in a 1965 Chevrolet.



Attendants Diane Donley and Marie Gammon wait with escorts and driver Charles Strickland.



Attendants Marsha Milliron and Donna Skinner with escorts and driver Challis Kilgore.

"ASK ANY GIRL"



CHARACTERS

Meg Wheeler	Jennie McCall
Miles Doughton	Gerun Jenkins
Evan Doughton	Michael Garlinger
Mrs. Wheeler	Danna Hebner
Mr. Wheeler	Larry Martin
Aunt Fern	Elaine Dressler
Aunt Lettie	Judy McElroy
Ada	Jill Bussa
Lisa	Judy Van Dyke
Ruby	Peggy Whitt
Heidi	Keri Marsh
Jeannie	Janet Allen
Alvin	Tom Massie
Terri	Mary Wheeler
Vince	Jerry Burns
Ellen	Sharon Daniels
Jane	Virginia Morgan
Conductor	Gary Buchanan
Telephone Operator	Brenda Cooper
Prompters:	Brenda Cooper
	Terri Adams

CLASS PLAY



Class play cast awaits Mr. Wadsworth in order to present him a gift for his services as play director.

Gerun and Jennie, as Miles and Meg, perform a "big kissing scene." Look absorbed in their work, don't they" Go to it, Gerun!

"ASK ANY GIRL"





TARTAN KING AND QUEEN
MIKE YEAGLE AND MARLENE ROONEY



First Runners-up
Seniors
EDDIE MILLER and ELLEN SYLVIA

Second Runners-up
Sophomores
JIM HARTLAGE and JEANIE HIENEMAN



The annual staff would like to thank all the people who worked so hard for the candidates. And, of course, thanks to the candidates themselves.



Third Runners-up
Freshmen
BARBARA CHAMBERLIN and LARRY SMITH

The total, \$729.78, was the largest amount ever collected in the TARTAN KING and QUEEN contest.



From left to right they are Freshmen Barbara Chamberlin and Larry Smith, Sophomores Jeanie Hieneman and Jim Hartlage, Queen Marlene Rooney and King Mike Yeagle, and Seniors Ellen Sylvia and Eddie Miller.



The candidates walk to the stage as the crowd watches.

SNAPS

SCHOLARSHIP BANQUET



Speaker for the Awards Banquet was Mr. Tennyson Fannin, Supervisor of Elementary Education, Portsmouth City Schools.



These PTA members made our Scholarship Banquet possible; Left to Right: President, Mr. James T. Bussey; Vice-President, Mrs. Betty Schwamburger; Secretary, Mrs. Mary Bussa; and Treasurer, Mrs. Margaret Gregory.

Students enjoy banquet.



MR. PERKINS RETIRES

Mr. Roney presents a gift to Mr. Perkins, who retired after many years of faithful service.



FROSTED

Couples at tables, Marlene Rooney and Jim Hamilton in foreground, Marie Gammon and Bob Bussler in background.

(Note beautiful "frosty" decorations)



Sophomore Prom Waitresses--Left to Right: Donna Skinner, Patsy Imes, Edith Young, Beckie Shoemaker, Patty Thompson, and Jean Ann Born.

Patty Cole and Mark Baer pose at the entrance to the fabulous Junior-Senior Prom, "FROSTED FANTASY."



DECORATING FOR THE PROM





JUNIOR-SENIOR PROM "FROSTED FANTASY"



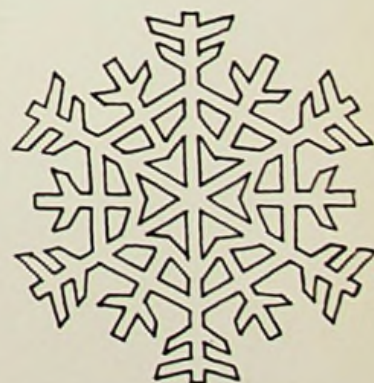


Several of the teachers who attended the Prom are pictured above.



The McCoy - Wadell Orchestra provided fine music for our Junior - Senior Prom.

We students who attended the Junior - Senior Prom shall never forget it. The Prom is an outstanding event of every student's high school life.





BEST DANCERS

Wherever there is music you are sure to find Nancy Ratliff, Delbert Kayser, Shirley Martin, and Danny Winkler.

SENIOR

MOST INQUISITIVE

What's this? Judy Hoskins and Jim Keller seem to be looking for the answers to their many questions.



BEST ATHLETES

Betty Williams is sitting on top of the world, and Virgil Lyon and Larry Bear are trying to hold it up. These three really have it where sports are concerned.



MOST LIKELY TO SUCCEED

Ah, sweet fame and fortune! Larry Martin and Kay Bahner will be busy studying in September to start their climb to success.



BEST ALL-AROUND

Every day in every way there's no greater pair than Bill Hartlage and Keriann Marsh.

PERSONALITIES

MOST STUDIOUS

Wouldn't you know! Tom Massie and Jennie McCall are hitting the books again.





CLASS CLOWNS

Hey, watch where you're pointing that thing!
Wendell Skinner and Janet Allen are the
two live-wire's around dear ol' East.

SENIOR

SHYEST

You might think these two are shy, but we
know better. Joyce Johnson and Frank Gil-
liland are simply tops!



BEST MANNERED

True graciousness shows. Just look at Bon-
nie Williams and Dave Chamberlin.

BEST PERSONALITIES

A good personality is a wonderful asset. Linda Risner Holcomb and Jack Jennings have personality plus!



BEST DRESSED

Who are these two fashion plates? Gary Buchanan and Marilyn Millhuff always look sharp.

PERSONALITIES

PEPPIEST

Wherever there's action you're sure to find these two. Marie Gammon and Mike Garlinger surely keep things popping.





MOST POISED

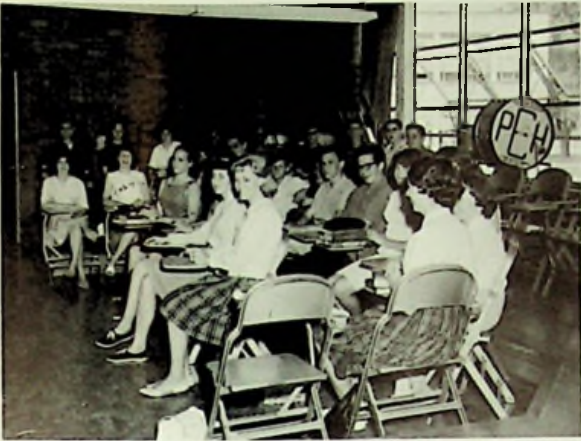
"Put your best foot forward" is the motto of Mike Drake and Mary Bauer.

THOSE WERE THE DAYS!



Remember when? These bright graduates are ready and raring to go. 1965 graduates of East included are Marilyn Millhuff, Ellen Sylvia, Larry Martin, Elaine Dressler, Virgil Lyon, Bill Hartlage, Artie Hossman, Kerriann Marsh, Kay Bahner, and Shirley Martin.

SNAPS



The band class smiles for us.



"Happy physics party!"



Massie breaks down door to get back in school.
Go to it, Tom!



An alert class.



Mr. Lewis gives aid to geometry students.



Remember the fair? Hi- Y booth?

Yea, East!



SPEAKERS



A scientist from Battelle Institute spoke to the physics and chemistry classes.



The Latin American girls from P. I. B. C. danced for the student body in an assembly arranged by the Spanish classes.

BANQUETS



Besides the Basketball Banquet shown at the left, several other banquets were held during the year. Among them were the Band, Glee Club, Football, and Scholarship Banquets.



Frank Gilliland received a trophy for the most valuable player.



Mike Cook received a trophy for the best defensive player.

NEW YORK TRIP



The gang boards the train for the long journey ahead.



Larry and Tom look as if they might be headed somewhere.

On April 11, 1965, thirty-three Tri-Hi-Y and Hi-Y members and four chaperones left for New York City. After a brief stop in Washington D. C., the group arrived at the Taft Hotel. They spent the next five days sightseeing and having fun. Points of interest included in the tour were the Empire State Building, Chinatown, and the Statue of Liberty. Some of the group went to see the Broadway hit "Hello Dolly". The New Yorkers arrived home tired and happy April 17, 1965.



The group took a ferry to Liberty Island to see the Statue of Liberty.



This is the view of the city from the Empire State Building.

V
A
L
E
D
I
C
T
O
R
I
A
N



V
A
L
E
D
I
C
T
O
R
I
A
N

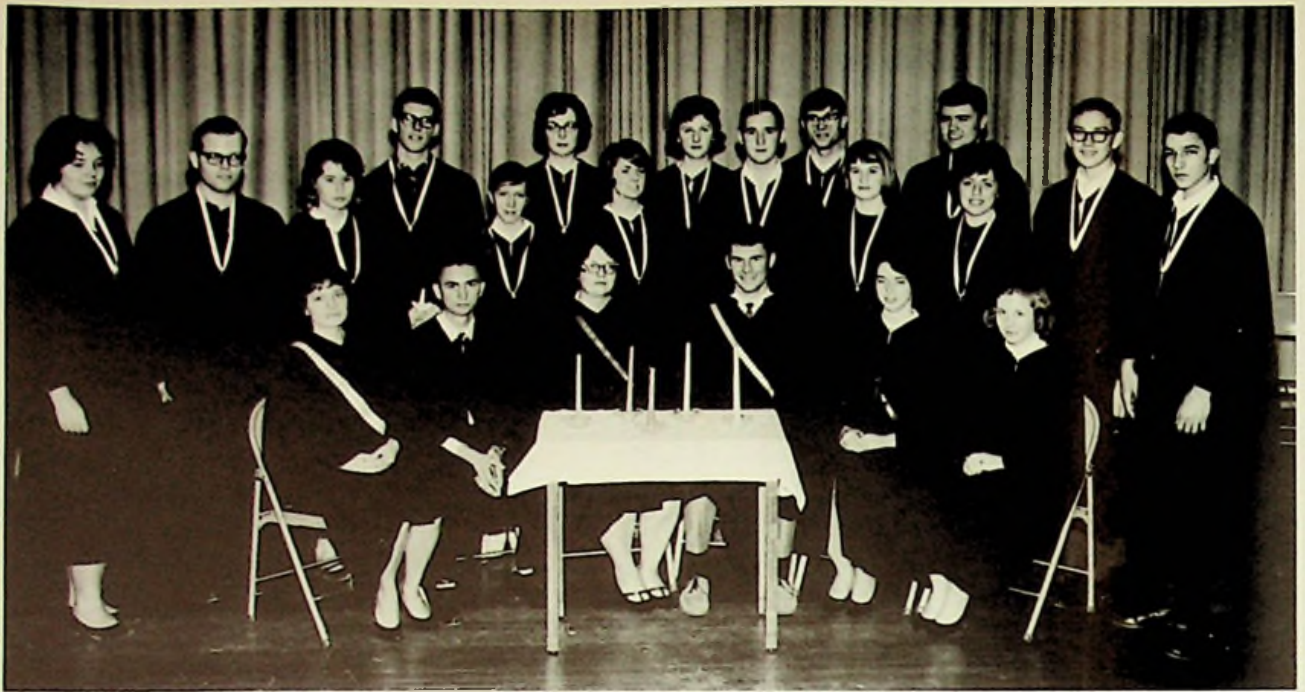
Jennie McCall and Kay Bahner are valedictorians of the class of 1965. Both have maintained a 4.0 average during their four years of high school. They have participated in many school activities and have served their class faithfully. Pictured above at left is Kay Bahner and at right Jennie McCall.





Kay Bahner was chosen last year to receive the coveted Delphic Society's annual Junior Cup. The award is given to an outstanding member of the junior class at the Senior Day Assembly. Kay has always maintained a high-grade average and has participated in many school activities.

JUNIOR CUP AWARD



National Honor Society Induction. Seated left to right are old members: Jennie McCall, Frank Gilliland, Anna Turner, Mile Garlinger, Kay Bahner, and Brenda Cooper. Standing are new members: Shirley Martin, Virginia Morgon, Carol Lewis, Tom Bryan, Sharon Conkle, Mary Lou Manley. Last row: Danna Hebner, Tom Massie, Larry Martin, Mary Wheeler, Linda Thompson, Mike Drake, Gerun Jenkins, Mark Baer, and Kenny Curcio.

NATIONAL HONOR SOCIETY



Mr. Harry Colburn, our guest speaker for the induction.

SCHOLARSHIP TEAM



SCHOLARSHIP TEAM--FIRST ROW, Left to Right: Steve Luster, Sandi Chamberlin, Barbara Gartinger, Jo Ann Hibbitts, Susan Russell, Karen Etterling, Virginia Morgan, and Tim Shuter. SECOND ROW: Patty Bonzo, Violet Wallace, Carol Lewis, Becky Shoemaker, Kathie Clausing, Helen Brown, Karen Arthur, Lois Garrett, and Beth Torges. THIRD ROW: Jennie McCall, Kay Bahner, Janet Gullett, Marsha Lockhart, Janie Sargent, Paul Jennings, Dale Noel, Jim Mershon, Ken Wadkins, and Tom Massie. FOURTH ROW: Dwight Chamberlin, Anna Turner, Sandra Howell, Janie Young, Karen Swavel, Penny Born, Patty Phillips, Dinell Hoskins, and Linda Weaver. FIFTH ROW: Bruce Martin, Mary Wheeler, Mike Drake, Mike Garlinger, Tom Bryan, Kenny Curcio, John Schwamburger, and Edith Young. TOP ROW: Mark Baer, Larry Martin, Delbert Kayser, Gerun Jenkins, Ben Hebner, Ted Adams, and Bob Gee.

- District Honors
- State Honors

BIOLOGY

John Schwamburger
Janie Sturdivant
Linda Weaver

GENERAL SCIENCE

Wesley Bussey
Chuck Sowards
Tim Shuter

CHEMISTRY

Mark Baer •
Penny Born
Dwight Chamberlin

PHYSICS

Tom Bryan •
Mike Garlinger
Delbert Kayser

ALGEBRA I

Steve Luster
Bruce Martin

ALGEBRA II

Patty Bonzo
Kenny Curcio
Carol Lewis

PLANE GEOMETRY

Ted Adams
Helen Brown
Barbara Garlinger

AMERICAN HISTORY

Violet Wallace
Jim Mershon
Ben Hebner

WORLD HISTORY

Bob Gee
Becky Shoemaker
Edith Young

CIVICS

Mike Drake •
Gerun Jenkins
Anna Turner

ENGLISH I

Lois Garrett
Susan Russell
Beth Torges

ENGLISH II

Janet Gullett
Kenny Wadkins

ENGLISH III

Dinell Hoskins
Sandra Howell
Paul Jennings

ENGLISH IV

Larry Martin
Tom Massie
Mary Wheeler

LATIN I

Karen Etterling
Jo Ann Hibbitts
Karen Swavel

LATIN II

Karen Arthur
Sandra Chamberlin
Kathie Clausing

SPANISH I

Patty Phillips •
Janie Young •

SPANISH II

Kay Bahner ••
Jennie McCall •
Virginia Morgan

BOOKKEEPING I

Marsha Lockhart



DELEGATES TO STUDENT GOVERNMENT DAY--FIRST ROW, Left to Right: Carol Lewis, Sharon Conkle, Kay Bahner, Mr. Danner, Brenda Cooper, Jennie McCall, and Jill Bussa. SECOND ROW: Violet Wallace, Jim Mershon, Paul Jennings, Tom Massie, John Gregory, Tom Bryan, Mark Baer, Larry Martin, David Carter, Artie Hossman, Mike Garlinger, Gerun Jenkins, Allen Wilamowski, and Jim Hamilton.



Rotary Club Delegates: Gerun Jenkins, and Mike Drake.



Youth-In-Government Delegates. Left to Right: Brenda Cooper, Randy Luster, Mary Lou Manley, and Mike Drake.



STATE BOARD CERTIFICATE AWARDS--FRONT ROW, Left to Right: Frank Gilliland, Kay Bahner, Sharon Daniels, Peggy Whitt, and Larry Martin. SECOND ROW: Tom Massie, Anna Turner, Gerun Jenkins, Linda Thompson, and Bill Hartlage.

AWARD WINNERS



Mary Wheeler. According to Betty Crocker Test results, Mary is our perfect homemaker. She was awarded a fine medal for homemaking knowledge.



D. A. R. Winner Jennie McCall. A Good Citizen medal was presented to Jennie by the Daughters of the American Revolution Society.



Jim Mershon is our delegate to Boy's State. He will participate in a mock government session.



Delbert Kayser received the coveted Band Award.



Mary Lou Manley was the recipient of the Delphic Society's Junior Cup. The cup is given to the most outstanding junior.



Senior members of the Scholarship team who placed in the district were, top to bottom: Mike Drake, Kay Bahner, Tom Bryan, and Jennie McCall.

Other students who placed in the district (Ohio University is our district) were, left to right: Janie Young, Mark Baer, Patty Phillips, and Cathie Clausing.



AWARDS



Gerun Jenkins received the Woodsman-of-the-World Award on Senior Day.



Michael Drake received the American Legion Award.



Sandy Pence Award winner, Karon Salyers.



Sterling Silver Award Winners, Jill Bussa.



These three seniors were on the Honor Roll every time during their four years of high school - left to right: Jennie McCall, Frank Gilliland, and Kay Bahner.





ORGANIZATIONS

TRI-HI-Y



TRI-HI-Y--FRONT ROW, Left to Right: Kathy Nesler, Kay Bahner, Carol Lewis, Keriann Marsh, Anita Price, Lois Cox, Shirley Martin, Judy Cremeans, Debbie Buffinger, Janet Allen, Betty Williams, Bonnie Beasley. SECOND ROW: Sharon Conkle, Paula Roney, Jennie McCall, Karen Eichenlaub, Mary Lou Manley, Diane Donley, Patti Cole, Terry Noel, Nancy Hager, Cheryl Davis, Marilyn Millhuff, Judy VanDyke, Jill Bussa. THIRD ROW: Linda Imes, Vi Wallace. FOURTH ROW: Bonnie Williams, Karon Salyers, Gloria Womack, Nancy Adams, Betty Cooper, Patty McClintic, Barbara Bayerl, Janie Young, Marlene Rooney, Penny Born, Barbara Cunningham, Joann Weaver, Linda Simpson. BACK ROW: Jackie Romines, Carolyn Collins, Marie Gammon, Elaine Dressler, Danna Hebner, Dinell Hoskins, Janie Whittaker, Terrie Adams. LEFT SIDE, Front to Back: Linda R. Holcomb, Mary Wheeler, Linda Thompson, Judy Hoskins. RIGHT SIDE: Sharon Daniels, Brenda Cooper, Peggy Whitt, Sandra Haller.



Rev. Lester Taylor spoke at our induction ceremony held at the Sciotoville Methodist Church.



The inductees received their pins from the officers in a candlelighting ceremony.

HI-Y



HI-Y--LEFT SIDE, Front to Back: Larry Martin, Mike Drake, Mike Garlinger, Bill Hartlage, Virgil Lyon, Tom Massie, Duaine Duncan, Roger Burleson, Randy Luster, Tony Ogg, Nick Gampp, Eddie Taylor. RIGHT SIDE: Artie Hossman, Bob Levill, Gerun Jenkins, Tom Bryan, Ben Hebner, Marc Bryant, Gary Buchanan.

OFFICERS



TRI-HI-Y and HI-Y OFFICERS--SEATED, Left to Right: Sergeant-at-Arms, Peggy Whitt; President, Linda R. Holcomb; Sec. -Treas., Mike Garlinger; Chaplain, Brenda Cooper; Vice-president, Mary Wheeler. STANDING: Chaplain, Bill Hartlage; Treasurer, Sharon Daniels; Sergeant-at-Arms, Virgil Lyon; Vice-president, Mike Drake; President, Larry Martin; Secretary, Linda Thompson;

NEWSPAPER STAFF



NEWSPAPER STAFF--SEATED, Left to Right, FIRST ROW: Patty Cole, Mark Baer, Janie Young, and Paul Jennings. STANDING: Violet Wallace, Carol Lewis, Ben Hebner, Greg Stamper, Mike Schomburg, Patty Phillips, and Sharon Conkle.

LIBRARIANS



LIBRARIANS--SEATED, Left to Right: Bonnie Beasley, Judy Hoskins, Ruth Weaver, Paula Roney, Elaine Dressler, Linda Mershon, Laron Salyers, and Mary Wheeler. STANDING: Tom Massie, Anna Turner, Jill Bussa, Lila Dillow, Danny Fetty, Jim Hamilton, Helen Brown, Jeannie Hieneman, Paula Adams, Danny Figlestahler, Larry White, Tony Ogg, and Jim Cantrell.



SPANISH I--FRONT ROW, Left to Right: David Craft, Larry White, Jim Mershon, Ken Curcio, Mike Yeagle, Mark Baer, and Jay Cooper. SECOND ROW: Sharon Conkle, Diane Donley, Anita Price, Dinell Hoskins, Debbie Buffinger, Janie Young, Patty Phillips, Patty Bonzo, and Violet Wallace. THIRD ROW: Brent Harbour, Nick Gampp, Ron Davis, Roger Burleson, and Ben Hebner.

SPANISH CLUB



SPANISH II CLUB--FIRST ROW, Seated: Janet Allen, Jennie McCall, Betty Cooper, and Paul Jennings. SECOND ROW: Left to Right: Dwight Chamberlin, Allen Wilamowski, Janie Whittaker, Kay Bahner, Mary Delabar, Mary Wheeler, Virginia Morgon, and Tom Massie. THIRD ROW: Anna Turner, Peggy Whitt, Linda Holcomb, Sharon Daniels, Cheryl Davis, Ellen Sylvia, Linda Thompson, and Bill Hartlage. TOP ROW: Paul Etterling, Eddie Taylor, Frank Gilliland, Jim Barnett, Gerun Jenkins, and Tom Bhil.



GLEE CLUB--FIRST ROW, Left to Right: Penny Mershon, Helen Brown, Patty Phillips, Carolyn Story, Sandi Chamberlin, Sandy Dube, and Jamie Secrest. SECOND ROW: Lois Walburn, Cheryl Sturgill, Vaudeen Artis, Peggy Whitt, Janet Howell, and Connie Corrin. THIRD ROW: Leon Earwood, Karen Swavel, Jackie Romines, Paula Adams, Joan Weaver, Barbara Cunningham, and Cheryl Curtis. FOURTH ROW: David Whitt, John Terry, Randy Luster, Tim Bussler, Dow Mullins, John Schwamburger, Jay Howell, and Kenny Flenders. FIFTH ROW: Mike Mershon, John Haynes, Mike Adams, Paul Jennings, and Jerry Burns.

GLEE CLUB



GLEE CLUB--FIRST ROW, Left to Right: Barbara Penix, Joyce Johnson, Sharon Bear, Jo Ann Hibbitts, Kay McCardle, Marsha Milliron, Pam Gampp, and Karen Eichenlaub. SECOND ROW: Marian Jordon, Nancy Rattliff, Elaine Dressler, Patty Cole, Teresa Artis, Nancy Gee, and Pam Allard. THIRD ROW: Rhonda Curtis, Linda Weaver, Sandy Lykins, Judy Cremeans, Karon Salyers, and Linda Ruth. FOURTH ROW: Jim Hebner, Larry White, Becky Carpenter, Danna Hebner, Linda Thompson, Paul Lesley, and Steve Luster. FIFTH ROW: Mike Filkins, Larry Smith, Danny Winkler, Nick Gampp, Ron Cook, and Jim Cremeans.



LATIN I--FIRST ROW, Left to Right: Jo Ann Hibbitts, Susan Russell, Sharon Sparks, Diane Wilson, Karen Etterling, Brenda Johnson, Janie Knight, Patty Ratliff, and Barbara Purdy. SECOND ROW: Tom Montavon, Larry Turner, Tim Shuter, Ken Flinders, Leon Earwood, Pamala Gamp, Kathie Cooper, Patty Phillips, Nancy Gee, and Kay McCardle. THIRD ROW: John Davidson, Bruce Martin, Marsha Milliron, Janie Cunningham, Dave Russell, John Miller, Marsha Giles, Beth Torges, Debbie Imes, Artie Marshall, and Trent Coburn. FOURTH ROW: Jim Hebner, Steve Kisor, Chuck Sowards, Dave Dials, Ronda Curtiss, Janet Sylvia, Karen Swavel, J. Howell, Larry Smith, and John Coriell.



LATIN II--FIRST ROW, Left to Right: Barbara Garlinger, Barbara Penix, Sharon Bear, Sandy Dube, Karen Arthur, and Sandi Chamberlin. SECOND ROW: Becky Shoemaker, Sharon Spauldin, Mary Montavon, Janet Gullett, Linda Kennedy, Cheryl Sturgill, and Vaudeen Artis. THIRD ROW: Nina Bowling, Helen Brown, Kay Skaggs, Kathie Clausing, Jean Ann Born, Janet Howell, Patsy Imes, and Jennie Heineman. FOURTH ROW: Ted Adams, Robert Gee, Jim Hartlage, Mike Leesburg, Edith Young, Dale Nole, Danny Fetty, John Schwamburger, and Kenny Wadkins.

DE RERUM NATURA



DE RERUM NATURA --FRONT ROW, Left to Right: Carol Lewis, Keriann Marsh, Sharon Conkle, Lois Cox, Paula Roney. SECOND ROW: Penny Born, Judy Hoskins, Cheryl Davis, Marlene Rooney, Barbara Bayerl and Terry Noel. BACK ROW: Artie Hossman, Nick Gampp, Jim Hamilton, Larry Martin, Virgil Lyon, Jerry Burns, and Bob Farrar.

DE RERUM NATURA OFFICERS--LEFT TO RIGHT: Paula Roney, Cheryl Davis, Barbara Bayerl, Marlene Rooney, and Nick Gampp.



FUTURE TEACHERS OF AMERICA



FTA--FRONT ROW, Left to Right: Peggy Whitt, Mary Delabar, Mary Wheeler, Linda Thompson, Imogene Holbrook, and Mr. Lewis. SECOND ROW: Bob Farrar, Paul Jennings, Mary Bauer, Keriann Marsh, Danna Hebner, Jennie McCall, Patty Phillips, Elaine Dressler, and Lois Cox. BACK ROW: Karen Swavel, Marilyn Millhuff, Eddie Taylor, Jim Hamilton, and Gerun Jenkins.

FTA OFFICERS--LEFT TO RIGHT:
Treasurer, Peggy Whitt; President, Mary Wheeler; Chaplain, Linda Thompson; Vice-President, Mary Delabar; and Secretary, Imogene Holbrook.





SPEECH CLUB--FRONT ROW, Left to Right: Marie Gammon, Keri Ann Marsh, Mary Lou Manley, Virginia Morgan, Joyce Johnson, Shirley Martin, Mr. Wadsworth. SECOND ROW: Betty Cooper, Tom Massie, Ellen Sylvia, Judy Hoskins, Bonnie Williams, Mike Garlinger, and Sandy Lycans. THIRD ROW: Judy McElory, Bob Bussler, Bill Chamberlin, Virgil Lyon, Danna Hebner, Gary Buchanan, Duaine Duncan, and Linda Thompson. ROW TOP: Jim Hamilton, Steve Ketter, Allen Wilamowski, Mike Cook, and Mary Ellen Wheeler. At Podium: Gerun Jenkins.

SPEECH CLUB



The cast members of the Speech Club play "Grandpa Hangs the Holly" were, Front Row, Left to Right: Judy McElory, Danna Hebner, Virginia Morgan, Gerun Jenkins, and Gary Buchanan. Seated in the Second Row: Allen Wilamowski, Mary Ellen Wheeler, Keri Ann Marsh, Bonnie Williams, Mike Garlinger, and Mary Lou Manley. The Speech Club also attended a Shakespearean drama at Ohio University, Athens, Ohio.



SCIENCE PROJECT CLUB--FIRST ROW, Left to Right: Jean Ann Bom, Sharon Bear, Gay Evans, Paul Jennings, Barbara Bayerl, Danna Hebner, Gerun Jenkins, Dinell Hoskins, Jennie McCall, Jim Hebner, Carolyn Collins, Karen Swavel, Keri Marsh, and Carol Lewis. SECOND ROW: Susan Russell, Barbara Purdy, Patty Bonzo, Sandra Howell, Bruce Martin, Larry Martin, Mark Baer, Tom Massie, Sharon Conkle, Duaine Duncan, Virgil Lyon, Sharon Daniels, Jim Mershon, Dwight Chamberlin, Bill Hartlage, Barbara Kingery, and Pam Gampp.

SCIENCE ACTIVITIES



SCIENCE CLUB OFFICERS--LEFT TO RIGHT: Jennie McCall, Gerun Jenkins, and Dinell Hoskins.



Science Projects Adviser, Mrs. Bradshaw.

TARTAN



SENIOR BAND--FRONT, Majorettes: Linda Imes, Barbara Chamberlin, Diane Bennett, Penny Born, Marsha Giles, Judy VanDyke, Doniece Salyers. FIRST ROW: Mike Garlinger, Paula Roney, Connie Benner, Sharon Sparks, Anita Price, Lois Cox, Virginia Morgan, Sandy Armbrister, Linda Mershon, Barbara Garlinger, Director James May. SECOND ROW: Malcolm Haywood, Larry Turner, Lila Dillow, Kathie Clausing, Becky Shoemaker, Terry Noel, Susan Russell, Karen Arthur, Brenda Cooper, Barbara Sparks. THIRD ROW: Jean Purdy, Diane Wilson, Janet Sylvia, Sharon Spaulding, Bonnie Beasley, Jill Bussa, Debbie Buffinger, Linda Kennedy, Penny Mershon, Patti Cole, Jim Mershon. FOURTH ROW: Danny Fetty, Phil Lyles, Paul Jennings, Bill Basham, John Daniels, Debbie Imes, Sue Curtiss, Carmen Fittro, Beth Torges, Gloria Womack. FIFTH ROW: Mary Wheeler, Mike Drake, Marc Bryant, Eddie Taylor, Jack Bussa, Delbert Kayser, Bill Morrison, Gary Buchanan, and Edith Young.

MARCHING BAND

LEADING THE BAND



DRUM MAJOR--Mike Garlinger



MAJORETTES--FRONT, Head Majorette--Penny Born. STANDING, Left to Right: Linda Imes, Marsha Giles, Barbara Chamberlin, Diane Bennett, Judy VanDyke, Doniece Salyers. NOT PICTURED: Patsy Imes.



STAGE BAND--FRONT ROW, Left to Right: Mary Wheeler, Patti Cole, Paul Jennings, Jill Bussa, Sharon Spaulding, Sue Curtiss. SECOND ROW: Bonnie Beasley, Eddie Taylor, Darryl Carter, Yvonne Whitt, Delbert Kayser. BACK ROW: Marc Bryant, Mike Drake, Mike Garlinger, Gary Buchanan, Lois Cox, Terry Noel, and Phil Lyles.

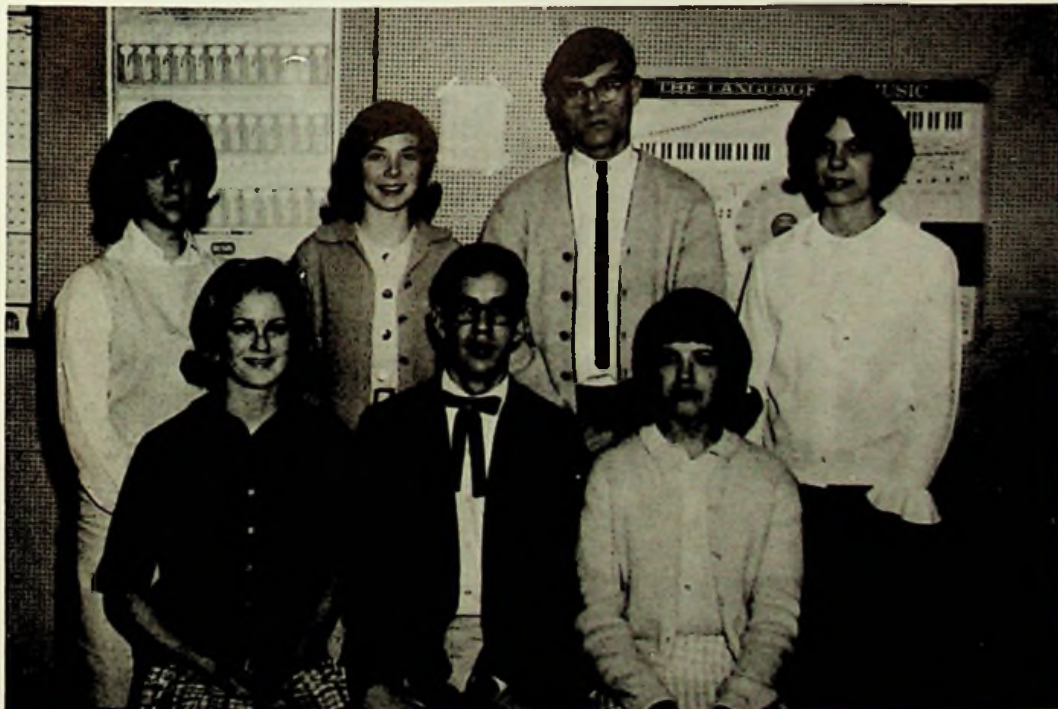
PEP BAND--SEATED: Mike Drake, Malcolm Haywood, Jim Mershon, Jack Bussa. STANDING: Mike Garlinger, Paul Jennings, Paula Roney, Marc Bryant, Eddie Taylor, Bonnie Beasley, and Bill Basham.



DIXIELAND BAND--LEFT TO RIGHT: Marc Bryant, Eddie Taylor, Delbert Kayser, Phil Lyles, Mike Drake, Paul Jennings, and Mike Garlinger.



MUSIC THEORY CLASS--LEFT TO RIGHT: Mr. May, Janet Sylvia, Beth Torges, Gloria Womack, Phil Lyles, Jerry Burns, Delbert Kayser, and Paul Jennings.



BAND COUNCIL--SEATED, Left to Right: Publicity Chairman, Deniece Salyers; President, Gary Buchanan; and Secretary-Treasurer, Terry Noel. STANDING: Paula Roney, Patsy Ines, Mike Drake, and Beth Torges.

SNAPS



The band's spring concert.



A Latin American dance.



The Band Boosters' booth at the Korn Karnival of River Days.



If you couldn't tell, these are the new Hi-Y members.

BIBLE CLUB



BIBLE CLUB--FRONT ROW, Left to Right: Janet Allen, Kay McCardle, Mary Lou Manley, Bonnie Williams, Mark Baer, and Patti Cole. SECOND ROW: Jackie Romines, Carolyn Collins, Carmen Fittro, Jean Hieneman, and Bill Morrison. THIRD ROW: Jamie Secrest, Barbara Purdy, Nellie Allard, Janice Cunningham, and Janet Gullet. BACK ROW: Bob Farrar, Jim Hamilton, Terrie Adams, Vaudeen Artis, and Joyce Johnson.

GIRLS' LEAGUE OFFICERS--LEFT TO RIGHT: Treasurer, Mary Bauer; President, Judy Hoskins; Vice-President, Keriann Marsh; and Secretary, Linda Risner Holcomb.







SPORTS

TARTANS SEE FAST



FRONT ROW, Left to Right: J. Coriell, M. Gilliland, D. Chamberlin, D. Russell, K. Edwards, J. Hebner, B. Martin, B. Coriell, S. Kisor, J. Welch, Manager T. Shuter. SECOND ROW: Coach Ralph Kisor, R. McGraw, W. Penix, M. Arrowood, G. Leach, D. Figlestahler, M. Leesburg, J. Porter, D. Duncan, B. Morrison, Manager P. Gilpin, Coach Lou Carson. THIRD ROW: Manager D. DeHart, J. Keller, R. Cook, A. Hossman, R. Davis, D. Chamberlin, J. Terry, K. Curcio, S. Little, B. Hebner, Coach Buzz Pogue. ROW FOUR: M. Schomburg, T. Bussler, M. Adams, B. Hartlage, J. Hartlage, A. Wilamowski, J. Jennings, B. Loviol, J. Gregory, M. Weeks, L. Bear. ROW FIVE: V. Lyon, R. Luster, T. Ogg, W. Skinner, T. Adams, J. Schwamburger, J. Cremeans, G. Stamper, R. Chamberlin, B. Keller.

1964 FOOTBALL SCHEDULE

East	8	Notre Dame	28
East	0	Waverly	6
East	28	West	22
East	12	Minford	0
East	8	Valley	12
East	22	New Boston	8
East	28	Wheelerburg	12
East	34	Northwest	33
East	0	Piketon	60

Won 5
Lost 4

ACTION IN FOOTBALL '64

ASS'T. COACH--
Lou Carson



HEAD COACH--
Buzz Pogue



MANAGERS--Paul Gilpin, Tim Shuter, Danny DeHart.



Bob Lovill
Back
Senior
Wt. 178 lbs.



John Gregory
Back
Senior
Wt. 173 lbs.



Jack Jennings
Back
Senior
Wt. 200 lbs.



Virgil Lyon
Back
Senior
Wt. 161 lbs.



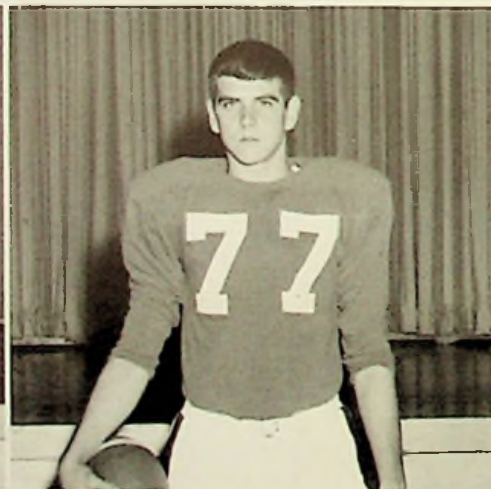
Duaine Duncan
Back
Senior
Wt. 130 lbs.



Wendell Skinner
Back
Senior
Wt. 135 lbs.



Bill Hartlage
Center
Senior
Wt. 225 lbs.



Jim Keller
Guard
Senior
Wt. 165 lbs.



Wayne Penix
Guard
Senior
Wt. 190 lbs.



Mike Weeks
Guard
Senior
Wt. 145 lbs.



Larry Bear
End
Senior
Wt. 155 lbs.



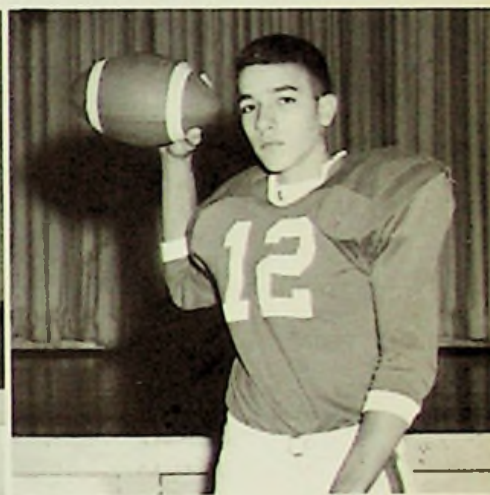
Allen Wilamowski
Tackle
Senior
Wt. 160 lbs.



Art Hossman
Tackle
Senior
Wt. 160 lbs.



Danny Chamberlin
Back
Junior
Wt. 115 lbs.



Kenny Curcio
Back
Junior
Wt. 142 lbs.



Ron Cook
Center
Junior
Wt. 165 lbs.



Ron Davis
End
Junior
Wt. 130 lbs.



Tony Ogg
Tackle
Junior
Wt. 137 lbs.



Mike Adams
Tackle
Junior
Wt. 225 lbs.



Tim Bussler
Tackle
Junior
Wt. 166 lbs.



Randy Luster
Guard
Junior
Wt. 190 lbs.



Ben Hebner
Guard
Junior
Wt. 170 lbs.



Mike Schomburg
Back
Sophomore
Wt. 120 lbs.



Greg Stamper
Back
Sophomore
Wt. 124 lbs.



Mike Leesburg
Center
Sophomore
Wt. 139 lbs.



Bill Morrison
Center
Sophomore
Wt. 140 lbs.



Steve Little
Guard
Sophomore
Wt. 156 lbs.



John Porter
Guard
Sophomore
Wt. 150 lbs.



Gary Leach
Guard
Sophomore
Wt. 115 lbs.



John Terry
Guard
Sophomore
Wt. 120 lbs.



Jim Hartlage
Tackle
Sophomore
Wt. 245 lbs.



Danny Figlestahler
End
Sophomore
Wt. 152 lbs.



Mike Arrowood
End
Sophomore
Wt. 166 lbs.



John Schwamberger
Tackle
Sophomore
Wt. 149 lbs.



Ted Adams
End
Sophomore
Wt. 150 lbs.

ACTION



AND WHO? --Our gridiron grabblers fight the never-ending battle for T. D. 's, justice, and the Tartan way.



YOU CAN'T CATCH GREASED LIGHTNING!
--Hi-ho, Virgil! --Away!



GO. TEAM. GO! --Jack Drives on for a touch-
down against West.



Stand up and cheer! Here come the Mighty Tartans!



Swami Mary Lou Manley sees victory for East in the crystal ball.

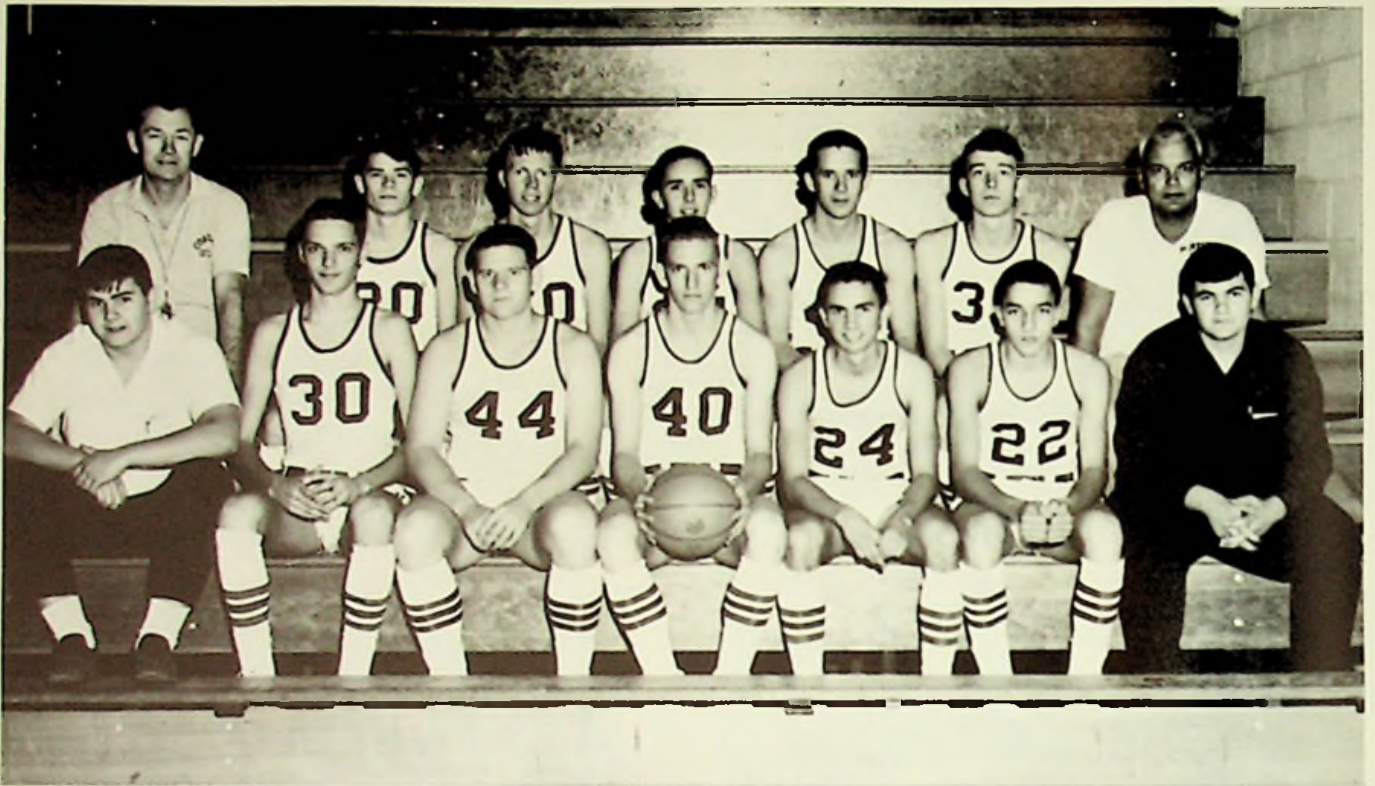


The Campus Cuties sing a sweet tune at the football rally.



"It's a happy pep party!" The loyal Tartans provide lots of spirit.

BASKETBALL '65



VARSIY BASKETBALL TEAM--FRONT ROW, Left to Right: Manager Bill Hartlage, Mike Yeagle, Jack Jennings, Jim Barnett, Frank Gilliland, Kenny Curcio, Manager Jim Hartlage. BACK ROW: Coach Herm Schomburg, Mike Schomburg, Red Millhuff, Roger Burleson, Virgil Lyon, Mike Cook, Coach Buzz Pogue.

BASKETBALL SCHEDULE

Notre Dame	53	East	65
Valley	39	East	66
South Point	45	East	65
Northwest	50	East	85
Chesapeake	66	East	76
Minford	63	East	74
Waverly	44	East	42
Notre Dame	26	East	28
Piketon	48	East	79
Manchester	52	East	89
New Boston	74	East	56
South Webster	64	East	73
Wheelersburg	57	East	62
Waverly	77	East	74
Portsmouth West	65	East	50
South Webster	69	East	73
Minford	69	East	77
Tournament: South Webster---59 East---69			
New Boston-----69 East---51			

Won 14
Lost 5



VARSITY COACH---Herm Schomburg.



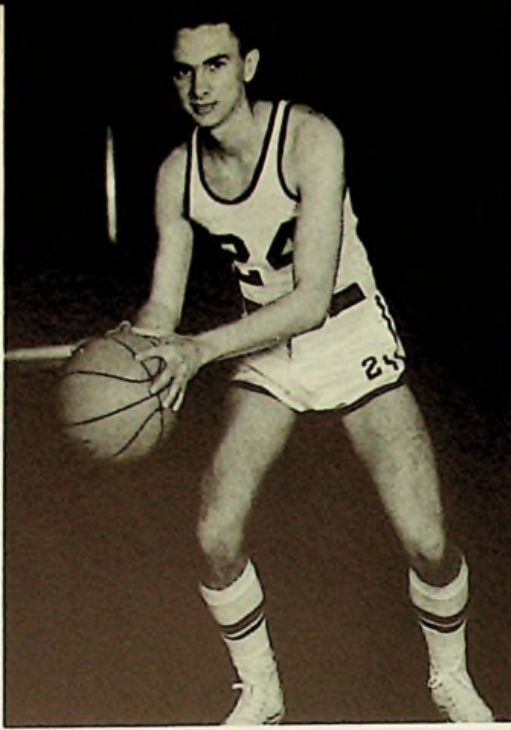
RESERVE COACH--Buzz Pogue.



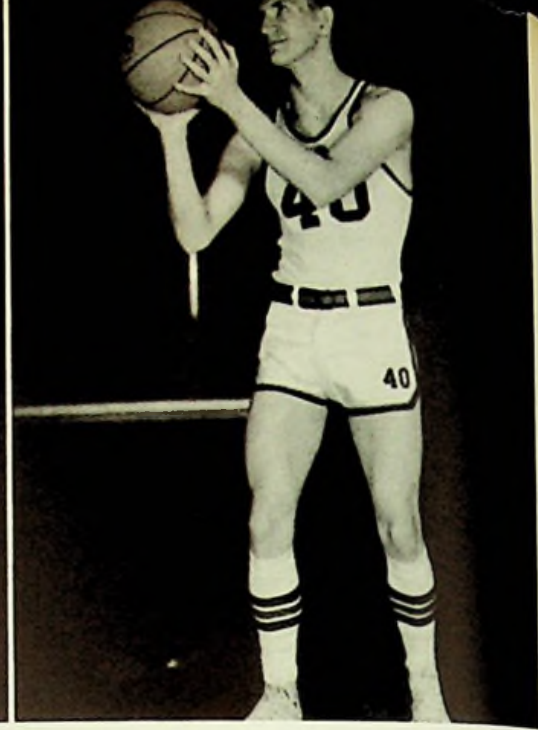
FRESHMAN COACH--Lou Carson.



Mike Cook
Senior
Forward



Frank Gilliland
Senior
Forward



Jim Barnett
Senior
Guard

Kenny Curcio
Junior
Guard



Mike Yeagle
Junior
Center



Virgil Lyon
Senior
Forward





Jack Jennings
Senior
Guard



Roger Burleson
Junior
Guard



Mike Schomburg
Sophomore
Guard

Rod Millhuff
Sophomore
Forward





RESERVE TEAM--FRONT ROW. Left to Right: John Miller, Paul Lesley, Paul Gilpin, Dennis Cooper, Mike Schomburg, Manager Jim Hartlage. BACK ROW: Coach Herm Schomburg, Bob Coriell, Greg Stamper, Roger Bureson, Steve Williams, Ted Adams, Danny Figlestahler, and Coach Buzz Pogue.



FRESHMAN TEAM--FRONT ROW. Left to Right: Roger McGraw, Steve Luster, Larry Smith, Mike Gilliland, Randy Chamberlin. SECOND ROW: John Miller, Paul Lesley, David Dials, Wes Bussey, Howard Daugherty. BACK ROW: Manager Tim Shuter, and Manager Bruce Martin.

CAGE ACTION



HE'S THERE! Cook snags the rebound for East.



PUT IT IN! Mike Yeagle's up for two.



SCRAMBLE! Barnett makes a grab for the ball.



JUMP BALL! Yeagle jumps for East.



RESERVE TEAM--FRONT ROW, Left to Right: John Miller, Paul Lesley, Paul Gilpin, Dennis Cooper, Mike Schomburg, Manager Jim Hartlage. BACK ROW: Coach Herm Schomburg, Bob Coriell, Greg Stamper, Roger Burleson, Steve Williams, Ted Adams, Danny Figlestahler, and Coach Buzz Pogue.



FRESHMAN TEAM--FRONT ROW, Left to Right: Roger McGraw, Steve Luster, Larry Smith, Mike Gilliland, Randy Chamberlin. SECOND ROW: John Miller, Paul Lesley, David Dials, Wes Bussey, Howard Daughterty. BACK ROW: Manager Tim Shuter, and Manager Bruce Martin.

CAGE ACTION



HE'S THERE! Cook snags the rebound for East.



PUT IT IN! Mike Yeagle's up for two.



SCRAMBLE! Barnett makes a grab for the ball.



JUMP BALL! Yeagle jumps for East.

BASEBALL '65



VARSITY BASEBALL TEAM--FRONT ROW, Left to Right: Manager Steve Luster, Bob Lovill, Mike Weeks, Steve Ketter, Mike Gilliland, Manager Kenny Wadkins. SECOND ROW: Manager Danny Fetty, Kenny Curcio, Jerry Burns, Brent Harbour, Frank Gilliland, Bill Gilpin, Paul Gilpin. BACK ROW: Jim Barnett, Ted Adams, Mike Yeagle, Mike Leesburg, Jack Jennings, Mike Schomburg, Coach Lou Carson.



MANAGER--Kenny Wadkins



MANAGER--Danny Fetty



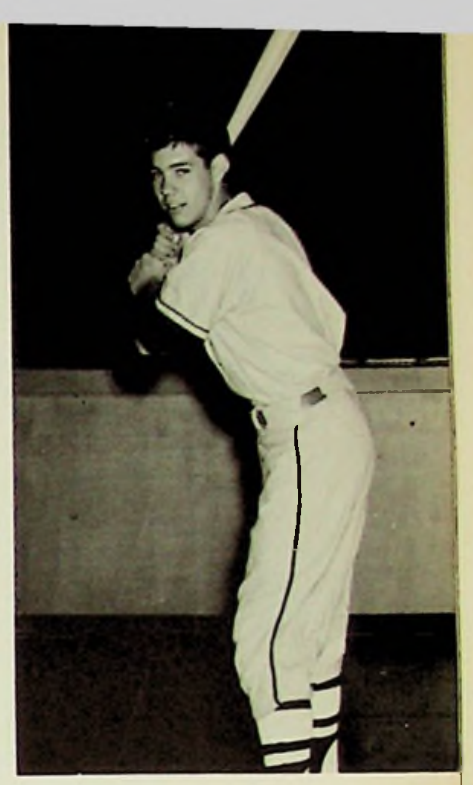
MANAGER--Steve Luster



Frank Gilliland
Second Base
Senior



Jim Barnett
Pitcher
Senior



Steve Ketter
Catcher
Junior

Mike Weeks
Pitcher
Senior

Jack Jennings
First Base
Senior

Bob Lovill
Third Base
Senior





Jerry Burns
Outfield
Senior



Mike Yeagle
Pitcher
Junior



Kenny Curcio
Short Stop
Junior

Brent Harbour
Pitcher
Junior



Bill Gilpin
Outfield
Junior



Mike Schomburg
Outfield
Sophomore





Ted Adams
First Base
Sophomore



Paul Gilpin
Outfield
Sophomore



Mike Leesburg
Outfield
Sophomore

BASEBALL SCHEDULE

Wheelersburg	11	East	0
Ironton St. Joe	2	East	5
Valley	4	East	2
New Boston	3	East	9
New Boston *	9	East	10
Eastern	1	East	12
Northwest	1	East	12
Chesapeake *	6	East	2
Eastern	1	East	5
Minford	1	East	3
Valley	1	East	4
Waverly	3	East	2
New Boston	4	East	2
West	7	East	2
Wheelersburg	3	East	0

Won 8

Lost 7

Tournament Games *

Mike Gilliland
Second Base
Freshman



SUPPORTING THE TEAM



VARSITY FOOTBALL CHEERLEADERS
--FRONT ROW, Left to Right: Carol Lewis, Keriann Marsh, Mary Lou Manley. BACK ROW: Janet Allen, Marie Gammon, and Sharon Conkle.

RESERVE BASKETBALL CHEERLEADERS
--FRONT ROW, Left to Right: Barbara Garlinger, Sandy Chamberlin, Jamie Secrest. BACK ROW: Jeanie Born, and Jeanie Heineman.



VARSITY BASKETBALL CHEERLEADERS--Carol Lewis, Keriann Marsh, Sharon Conkle, Mary Lou Manley, and Marie Gammon.

PEP ASSEMBLIES



Mr. Pogue recognizes the senior players at the last football pep assembly.



The cheerleaders lead the student body in cheers to liven up the school spirit.



What is this? Willing seniors help in acting out skits for the assemblies.



The band lends its talents to make the assemblies successful.



HEADING THE STAFF--FRONT. Left to Right: Co-Editors Keriann Marsh, Kay Bahner, Mary Wheeler. BACK: Co-Editor Anna Turner, Business Manager Tom Massie.

ANNUAL



SECOND PERIOD STAFF--SEATED: Mary Delabar. STANDING, Left to Right: Artie Hossman, Elaine Dressler, Mary Bauer, Jennie McCall, Larry Martin.



AD SALESMEN--SEATED, Left to Right: Mary Delabar, Elaine Dressler, Keriann Marsh, Mary Bauer. STANDING: Tom Massie, Gerun Jenkins, Danna Hebner, Mary Wheeler, Kay Bahner, Jennie McCall, Ellen Sylvia, Artie Hossman, and Larry Martin.

S
T
A
F
F

ANNUAL PHOTOGRAPHER--
Larry Martin.





A photograph of an office interior. In the foreground, a light-colored, rectangular box sits on a desk. A white sheet of paper is partially visible inside the box. In the background, a person's hand is visible near a desk. The scene is dimly lit, with a dark background.

ADMINISTRATION



Mr. C. H. Dudit, Superintendent of Portsmouth City School District.



Mr. James Roney, Our Principal at Portsmouth East High.



Portsmouth City School Board and Business Affairs Directors. Mr. James Secrest, Mr. James McKenzie, Mr. Wesley Ridenour, Dr. Otto Apel, Mr. Arthur Horr, Mr. Richard Eisnaugle, and Mr. George L. Dairs.



ANNE HOSSMAN
School Secretary



VIOLET COOK
Dean of Girls, Home Economics; B. S., Marshall
University.



IRENE BROWN
Biology, General Science; B. S., Ohio University.



HERMAN SCHOMBURG
Guidance Counselor; BA., MA., Marshall University,
Holbrook College.



VIRGIL CONLEY
Industrial Arts; B. S. Education, Ohio University.



EDWARD POGUE
World History, Football Coach, Assistant Basketball Coach; B. S., M. A.; Marshall University, Hanover College.



JAMES MAY
Band Director. Attended Marshall University and Marshall State Teachers' College.



PHYLLIS MADEIRA
English; B. S.; Marshall University, National University of Mexico.



CHRISTINE HEER

English, Library; B. S., M. S. L. S.; Sargent School of Boston University, Ohio University, Western Reserve University.



CARL WADSWORTH

English, Speech; B. A., Morehead State College.



ARTHUR E. LEWIS

Physics, Plane Geometry, Advanced Algebra; M. A.; Cedarville College, Marshall University.



JOHN DANNER

American History; B. S., Ohio University.



ELSIE BRADSHAW

Chemistry, Algebra; B. S. ; Morehead State College, Ohio State University, University of Kentucky.



JOHN STEVENSON

Latin, Spanish, English Composition, Newspaper Advisor, Annual Advisor; B. A., M. A. ; Denison University, Ohio State University, National University of Mexico.



HELEN BASHAM; Glee Club; B. Ch. Music, B. Voc. Music, M. A. ; University of Delaware, Ohio University, Marshall University, Olivet College.

LESLIE KEENE

Typing I. Bookkeeping, B. A., M. A. ; Morehead State College, Marshall University.



JOHN VERGNE
General Math., Plane Geometry, Psychology, Business Arithmetic; B. A., Morehead State College.



LOU CARSON
Physical Education, American Government; B. A., Marshall University.



JANET HOLLEY
Shorthand, Typing, Business Training; B. A., M. A.; Marshall University.



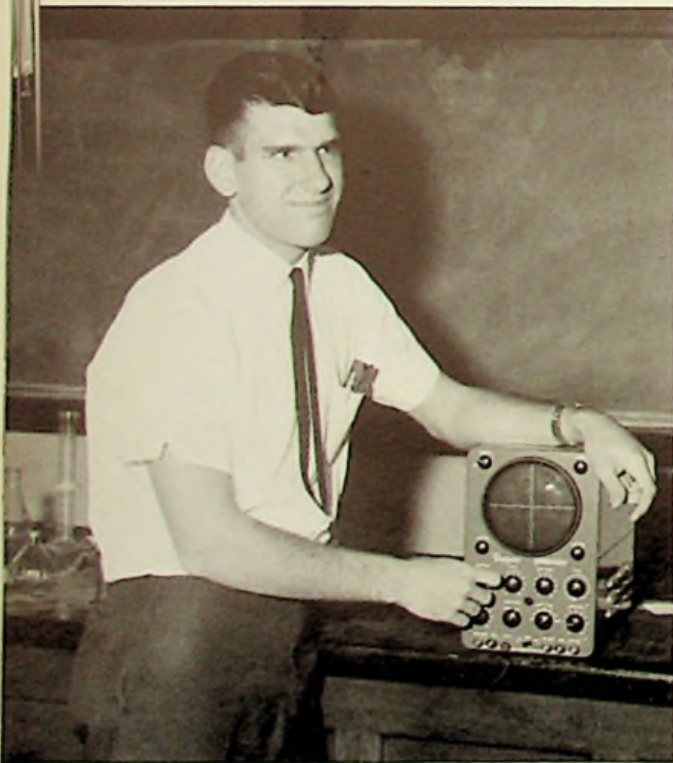
RAMONA HORTON
Biology, Physical Education; B. S., University of Kentucky.



ROBERT WALTON
World History, Civics; Student Teacher; Ohio University.



GAIL MOSSBARGER
Shorthand, Business Training; Student Teacher; Ohio University.



CHARLES STRICKLAND
Physics, Trigonometry; Student Teacher; Ohio University.



DALLAS FOSTER
Bookkeeping; Student Teacher; Ohio University.

OFFICE ASSISTANTS--LEFT TO RIGHT: Arthur Hossman, William Hartlage, Ellen Sylvia, Judy Cremeans, John Gregory, Linda Holcomb, and Shirley Martin.



CASHIERS--LEFT TO RIGHT: Mike Garlinger, Jerry Burns.

LUNCHROOM COOKS--LEFT TO RIGHT: Mildred Musser, Elizabeth Mougey, Ethel Burke, Helen Cole, and Ethel Brown.





George Sprecher--Custodian



Mrs. Cook's Home Economics Class.



Perfect Attendance. Pictured Above, Left to Right: Jack Bussa, Artie Hossman, Jill Bussa, Mike Garlinger. These four seniors have had perfect attendance for four years.

SNAPS



That's one way to get the ball in the basket.



Go, Mary go!



Portsmouth East bus stop.



Not another physics party.



A happy group.



Adkins models his shirt for us.



Who else! Bonnie, Judy, and Mary.

SNAPSHOTS



PORTSMOUTH SESQUICENTENNIAL



Old-fashioned Fire Truck.



A Sesqui "Daniel Boone".

Pantaloon Promenaders.



PORTSMOUTH CELEBRATES ITS 150th YEAR



Indian chief (heap big) leads his squaws in Sesquicentennial parade.



Huge crowd jams street to enjoy parade.



What's this? Pioneer ghosts return for the Sesquicentennial celebration. Gee!

Mike Garlinger, scarcely visible in picture, drives Sesqui belles through town in the parade.





PORTSMOUTH SESQUICENTENNIAL KANGAROO COURT is in session. Beardless men without shaver's permits and women who were not dressed in the sesquicentennial belle fashion were hauled into court and tried.



YE OLD PADDY WAGON AND YE OLD KEYSTONE COPS were also on hand to liven up festivities. Their whistle could be heard everywhere.

SESQUI WEEK



A beardless offender is sentenced to the stocks. Note the prison stockade in the background. Portsmouth really "went all out" for Sesquicentennial Week. After all we only enjoyed the pleasure of celebrating it once in 150 years.



100 GRADUATE AT

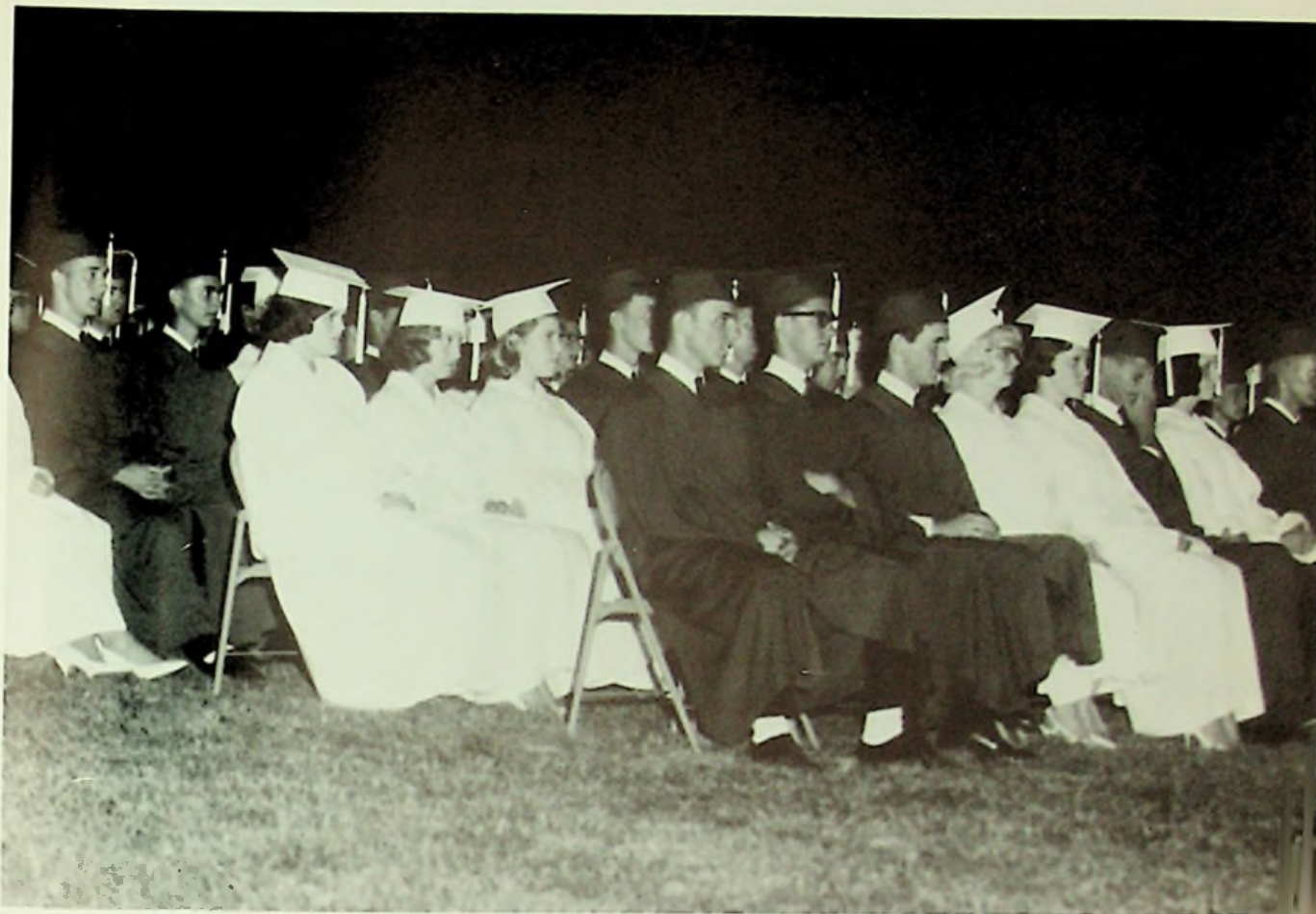


The graduates bravely march in to the strains of "Pomp and Circumstance."

Our speaker is Mr. Chester A. Roush, Superintendent of the Kettering City School District.



ALLARD PARK



The class listens to the speaker.



ADVERTISEMENTS



Our football "cheerleader" boys lead the way to the Ad Section.

ADVERTISEMENTS





BEST WISHES TO THE

CLASS OF 1965

FROM

**MILLHUFF'S
DEPARTMENT STORE
&
SUPER MARKET**

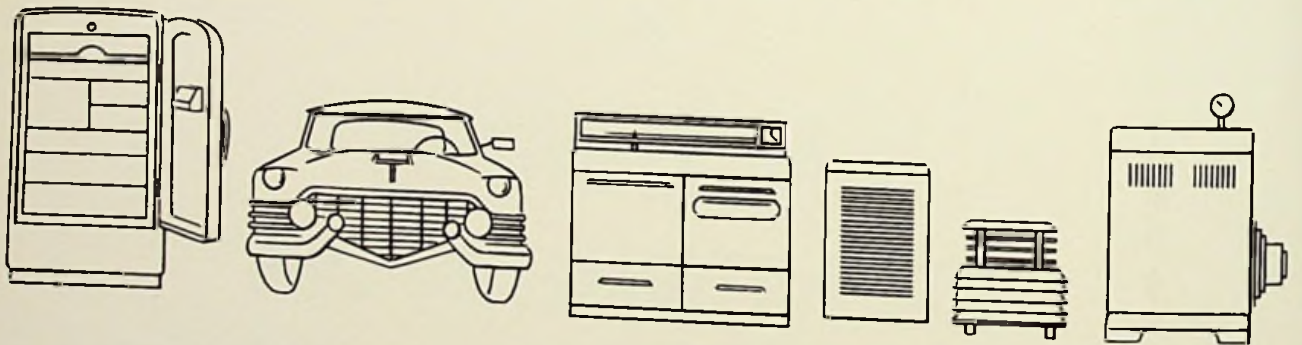
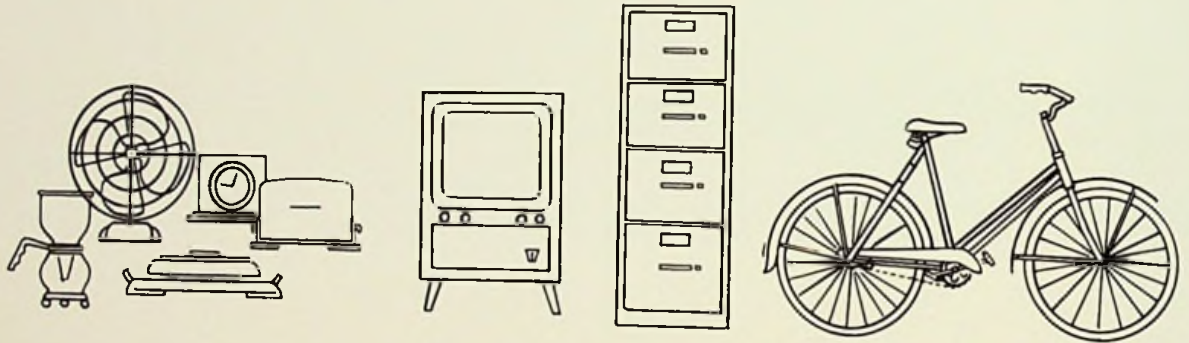
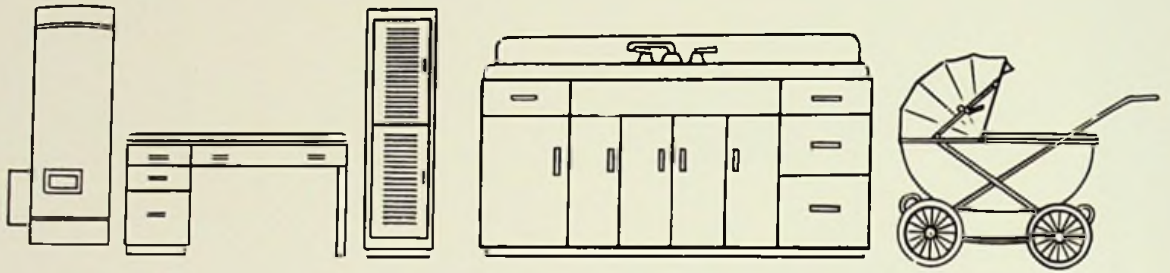
500 Harding Avenue

Sciotoville, Ohio

Phone President 6-6666



Detroit Steel and its employees are proud to be part of the American steel industry which has contributed so richly and so greatly to our nation's growth, prosperity and strength. On this page are a few of thousands of everyday items made from DSC quality steel.



**DETROIT STEEL
CORPORATION**
PORTSMOUTH DIVISION



JOHN AND JIM'S SERVICE STATION



ASHLAND PRODUCTS
5803 Harding Avenue
Phone President 6-9409



Phone
President
6-2302

212-214
Harding
Avenue

HIBBITTS DEPARTMENT STORE

LONG & CO.



"HOUSE OF QUALITY FURNITURE"

729-733 Sixth Street

Portsmouth, Ohio

I  EAT  RAT 

POP'S

DRIVE-IN RESTAURANT

"BEST FOOD ON

ROUTE 52"

Wheelersburg, Ohio



BLUEBIRD BAKERY

222 Harding Avenue
• Sciotoville

"BIRTHDAY AND WEDDING CAKES ARE OUR SPECIALTY"

Compliments of
CORNER MARKET
Dave Evans, Owner
Corner of
Harding & Harrison

CLAUSING JEWELERS
Better and Faster Service
Watch, Clock, Jewelry
Repairs
714 Chillicothe Street
Portsmouth, Ohio

DUVENDECK'S PAINT STORE
5619 Gallia Street
Sciotoville, Ohio
Phone President 6-7333

VANDERVORT'S
The Homebuilder's
Shopping Center
1532 Gallia Street
Portsmouth, Ohio

SAMUEL LEVI & CO.

Furniture



841 Gallia Street
Portsmouth, Ohio

RONALD ARTIS SHELL STATION

Gallia Street & Bloom Street
Sciotoville, Ohio
Complete Auto Service
Phone PR 6-9304

WILLIAMS FURNITURE

Gallia Street
Wheelersburg, Ohio
Phone PR 6-2542

WHEELERSBURG LUMBER

Phone PR 6-2101
or PR 6-2102
Route 52 Center Street
Wheelersburg, Ohio
Free Estimates And Delivery



ECONOMY HEATING AND AIR CONDITIONING CO.

7429 Ohio River Road

Phone PResident 6-7127

Sciotoville.



OHIO HEATING CO.

3238 Gallia Street

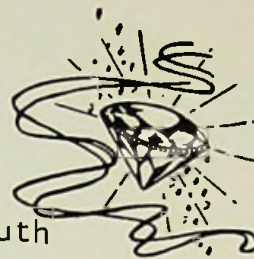
Phone Glenwood 6-5655

LAWSON DAIRY
Wheelersburg
PResident 6-7523



MORGAN BROTHERS JEWELERS

734 Fifth Street



Portsmouth

Ohio

CHABOUDY'S GROCERY

Gallia Street &
Eastern Avenue
in Sciotoville

Store Phone PR 6-7422

DR. JACK D. WHITE
Optometrist

Gallia Street

New Boston



Compliments of
SCIOTO DAIRY BAR



Ice Cream Drive-In

5810 Harding Avenue
on Route #335
Sciotoville
Tommie Nesbitt
Owner

HARRISON FUNERAL HOME

Wheelersburg, Ohio

PResident 6-2800



ED LOCKNER
AUTO SUPPLY

See All The Styles
At CRAIGMILES
936 Gallia Street
Portsmouth Ohio
Phone EL 3-3720

HIBBITTS HARDWARE & COMPANY

Complete Line Of Hardware

315 Harding Avenue
in Sciotoville
PR 6-7880

For Expert
CARPENTERS
Call: EL 3-7519

Local Union
Portsmouth,
Ohio
Jas. C. Buchanan
Bus. Rep.



GILL FUNERAL HOME



OXYGEN-EQUIPPED

AMBULANCE SERVICE

PResident 6-2115
Sciotoville, Ohio

Thomas J. Gill

Jessie A. Gill

GAMPP'S SERVICE STATION

SLOCUM STATION

PResident 6-2362

NEWBERRY SPORTING GOODS

816 Gallia Street
Portsmouth, Ohio

Phone Elmwood 3-0644
"Specializing In Team
Equipment"



SCHOMBURG'S MARKET

229 Harding Avenue

Sciotoville



ZIMMERMAN'S INC.

810 Chillicothe Street
Portsmouth Ohio

Phone Elmwood 3-0530
Office Supplies and
Equipment

Your Underwood Agent
Since 1935

"ANDY" MUCHA'S GROCERY

5900 Farney Avenue
Sciotoville



Phone PResident 6-2633

Compliments of
Portsmouth Business College
(Interstate) Serving Youth,
Business, and Government
Featuring Speed Reading And
Study Skills For Grades 7
through 12

PORTSMOUTH INTERSTATE
BUSINESS COLLEGE

SCIOTO VALLEY PRODUCE
Wholesale Fruits
and Vegetables

P.O. Box Phone Elmwood
1048 2-2137
1002-04 Chillicothe Street
Portsmouth Ohio

PORTSMOUTH PAINT

Home Owned Since 1926
928 Gallia at Findlay
Elmwood 377
Portsmouth, Ohio
Paint - Varnishes - Wall
Paper - Glass
We Rent Sanders, Edgers &
Steamers

RAY HOUCK FURNITURE

BEST WISHES, CLASS OF 1965

In Sciotoville at 5605 Gallia

AMANA



KELVINATOR

BOURGHOLTZER'S DRUG STORE



225 Harding Avenue

Portsmouth, Ohio

Phone PResident 6-6966

DUVENDECK'S PAINT STORE

5619 Gallia Street
Dial PResident 6-7333

Sciotoville, Ohio



KOBACKER'S

Portsmouth's Greatest Value
Store

405 Chillicothe Street

Portsmouth

Ohio

Congratulations
Class of 1965

BRAGDONS

Young Juniors' and
Young Men's Shops

Portsmouth, Ohio

AMERICAN SAVINGS & LOAN
ASSOCIATION

Insured Savings, Home
Financing
Incorporated 1892

303 Chillicothe Street
Portsmouth Ohio

RECORD
SHOP

813 Gallia Street
Portsmouth, Ohio



"For Music Sweet Or With
A Beat."

THE CITIZENS SAVINGS and
LOAN ASSOCIATION

505 Chillicothe Street
Portsmouth, Ohio

Where You Save Does Make A
Difference

PATRONS

Compliments of

ATLAS FASHIONS

Elmwood 3-3191
307 Chillicothe

You'll find the height of
FASHION AT ATLAS FASHIONS.

BETTY LEESBURG

ELECTRONICS SERVICE COMPANY

LIBBY'S BEAUTY SHOP

CECIL CAUDILL ALUMINUM

CRISPIE CREME DONUT SHOP

BIHL OFFICE EQUIPMENT & SUPPLY

ROCKWELL'S FLORAL SHOP

THE DISTEL FURNITURE COMPANY

B & B LOAN COMPANY

CARR'S JEWELERS

SCIOTO DRUG CO.



224 HARDING AVENUE

SCIOTOVILLE, OHIO

PRESIDENT 6-6066

GARY B. JOHNSON



WOLFF

Better Clothes
for
Men and Boys

Portsmouth

KAY JEWELRY COMPANY
817 Gallia Street
Portsmouth Ohio
For The Most Beautiful
Engagement Rings,
Wedding Rings,
Household Appliances,
Jewelry
"It's O.K. to Owe Kay."

CRABTREE'S SOHIO STATION



Gallia Street

New Boston, Ohio

RIDER & BENDER MOBIL

501 Harding Avenue

Sciotoville, Ohio







INTER-COLLEGIATE PRESS

Kansas City — Winnipeg

Yearbooks — Yearbook Covers

Diplomas — Graduation Announcements

USA

