



WASHINGTON  
HS

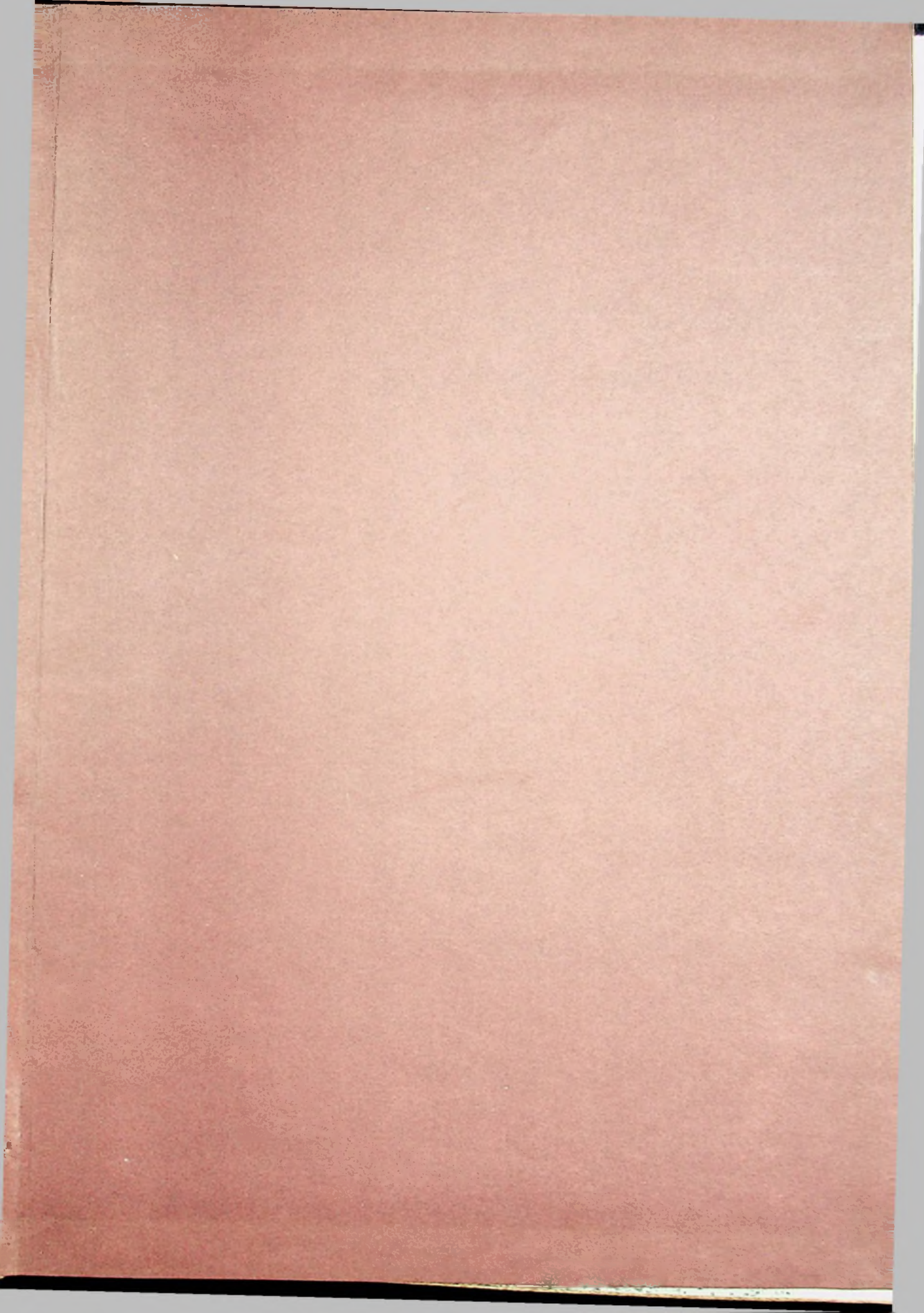
1953

SENATORIAN















## DEDICATION

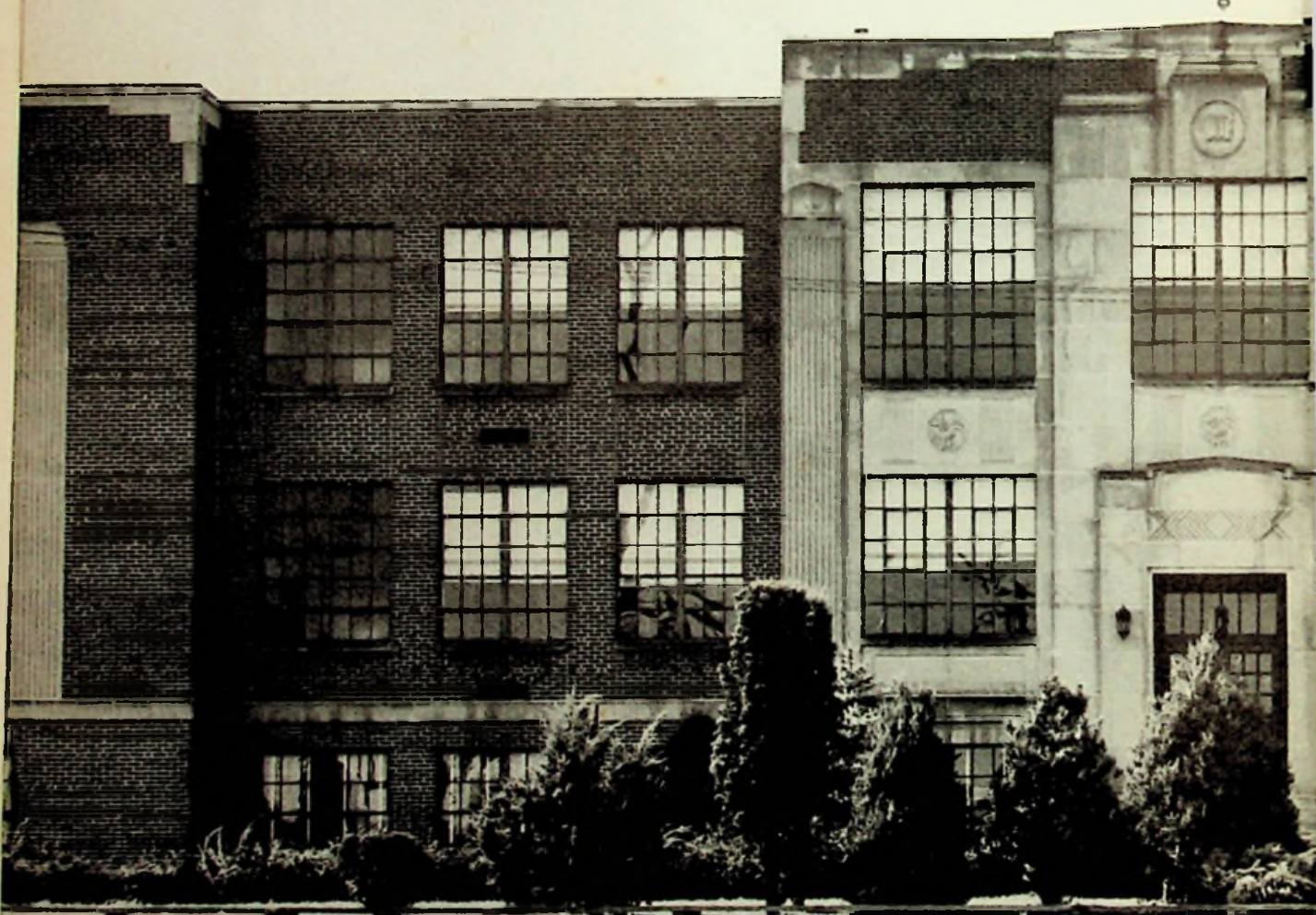
**W**e, the class of nineteen hundred and fifty-three, dedicate this our high school year book, to the great state of Ohio on its one hundred and fiftieth anniversary of statehood.

Ohio has produced more famous men and women than any other commonwealth of North America. The Ohio story is a saga of illustrious lives that were lived in unsung grandeur in the days when a great empire was in the making.

Ohio pioneers, statesmen, inventors, artists, authors, musicians, educators, and leaders in industries and professions have built monuments as enduring as the Egyptian pyramids.

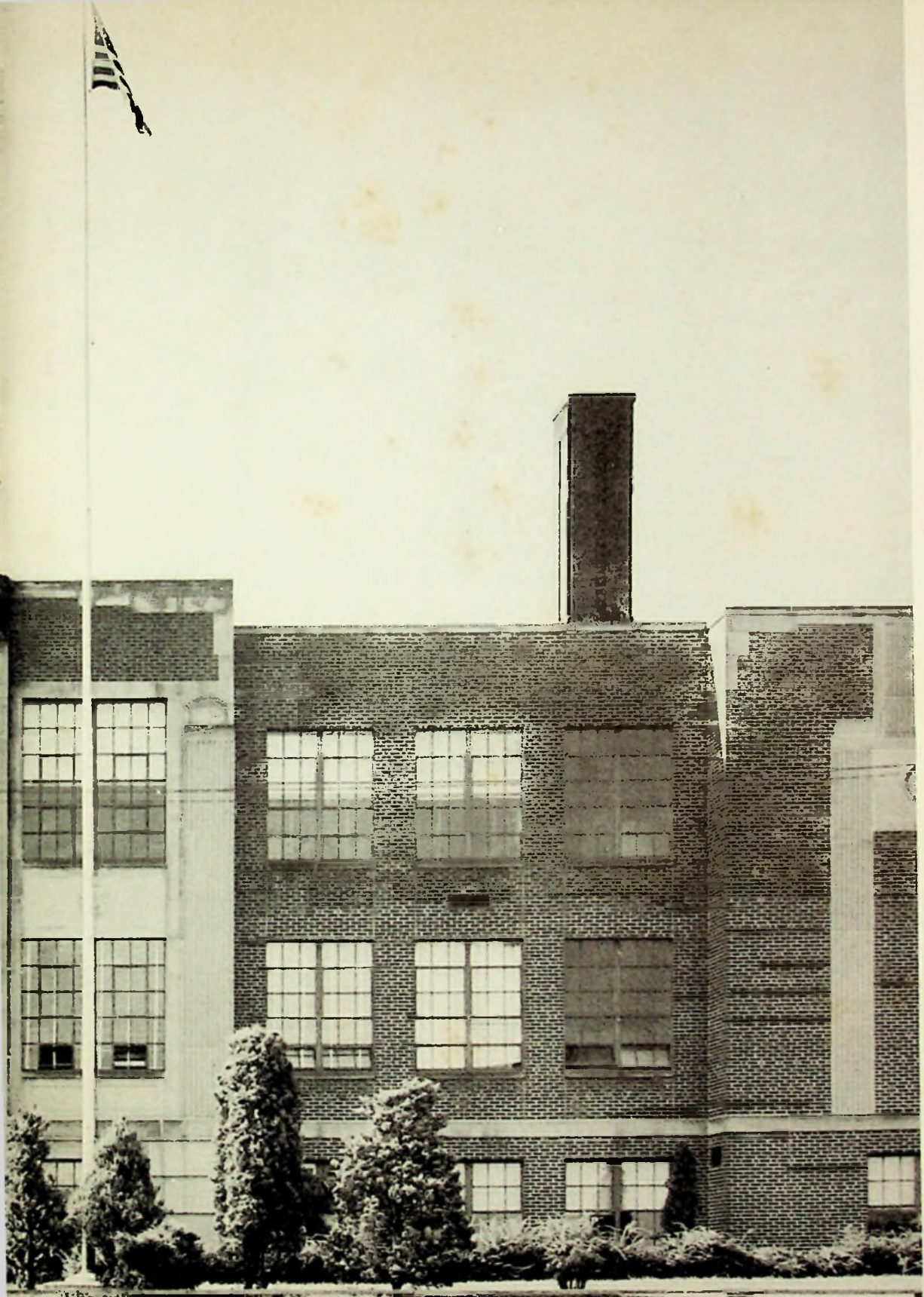
Let us look forward to the fulfillment of the message which Lewis Wetzel carved in 1752 on a rock in the Muskingum River for the future generations of Ohio—  
"Enjoy the peace I have prepared for you."





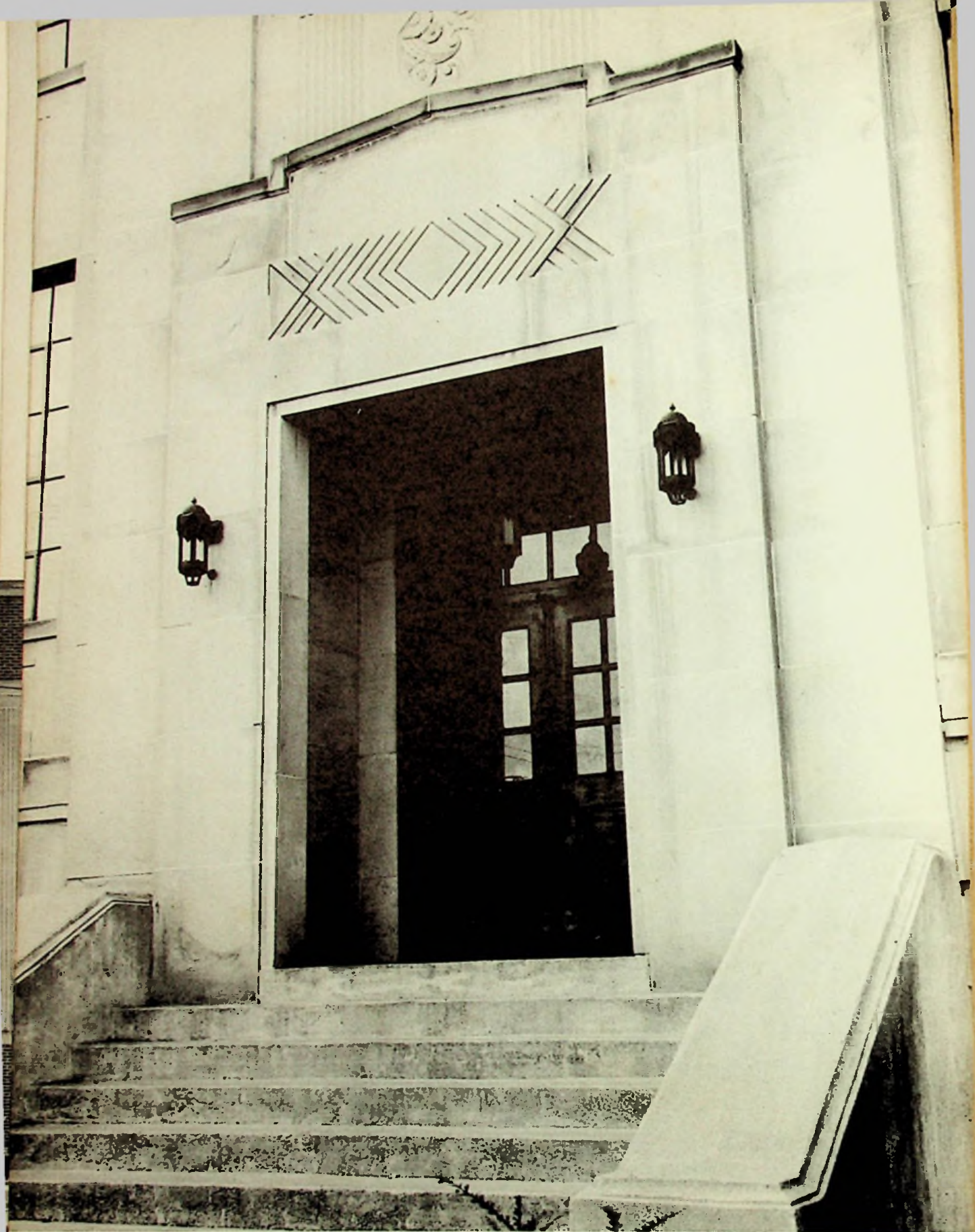
*Loyal, Loyal to old Washington:*





*we will do our best for you.*





***So Enter That Daily Thou Mayest Grow  
In Knowledge, Wisdom, And Love.***





*Ohio's First Wilderness Highway  
Zane's Trace 1796—Wheeling, West Virginia to Maysville, Ky.*







1953 SENATORIAN  
OF  
WASHINGTON HIGH SCHOOL

WEST PORTSMOUTH, OHIO

YEARBOOK STAFF

Co-Editors—Carole Brooks, Jane Hazelbaker

Assistant Editor—Phyllis Smith

Classes, Administration, and Music—Donna Davis, Mildred Weaver

Sports and Activities—Roy Swearingen

Art—Letitia Scheid

Business Manager—Wilma Howard

Advisor—Margaret Yonovitz

TABLE OF CONTENTS

INTRODUCTION  
ADMINISTRATION  
CLASSES  
MUSIC  
SPORTS  
ORGANIZATIONS  
ACTIVITIES  
ADVERTISEMENTS  
INDEX





Mr. Frank B. Rolf, supervising principal of Washington Township Schools, received his B. S. degree from Ohio University and has studied further at Ohio Northern University.

He is completing his thirteenth year as principal of Washington High School. He previously served as grade school principal at Wheelersburg, Glendale and Friendship Schools.

Under Mr. Rolf's guidance, Washington High School, as a Class A school, has continued to maintain high standards in scholarship and has excelled in athletics. His untiring efforts and interest in our progress and development have resulted in the present expansion plan. The student body wishes to extend its appreciation for his thoughtfulness, co-operation, leadership and guidance.



Mr. McCowen received his B. S. degree in education from Ohio University, the Master's degree from Northwestern University and has attended both Otterbein College and Harvard University.

Many educational leaders of the State point toward the rural schools of Scioto County as being outstanding and excellent examples of good planning and sound leadership.

Mr. McCowen said in a statement to us, "The rural schools of Scioto County will be extremely hard pressed to meet the impact which is bound to come with the construction of the Atomic plant. All of us will have our problems increased due to this growth. I am sure we will meet the challenge and by all of us working together we will be able to continue our status near the top of the educational ladder."



Edward R. McCowen  
County Superintendent



## SCHOOL POLICY MAKERS

The Washington Local Board of Education should be highly commended for its contribution to the progress and expansion of our schools.

Their interest and perseverance convinced the State Board of Education of the need for greater facilities to take care of the increased enrollment in Washington Local Schools. We can point with great pride to the splendid cooperation between the Community, the School Board and the School officials in the passing of School Bonds amounting to \$260,000 and in the School Board's presentation of our problems to the State Department of Education, persuading them to contribute an additional amount of \$215,000, making a total of \$475,000, for the construction of needed buildings.

SEATED: Mrs. Margaret Parry; Mrs. Bessie Greene, Clerk; Mr. Charles Prince, President. STANDING: Mr. Elza Calendar, Mr. Farrell Vaughters, Mr. Lowell Strickland, Vice-President. LEFT CENTER INSET: Mrs. Ruth Nolder, Secretary to Mr. Rolf.



# FACULTY



MARY M. BENNETT  
A.B. and B.S., Ohio University  
Commercial Subjects



JEAN BLAIR  
B.A., Bob Jones University  
Vocal Music and Senior Class  
Advisor



HORTENSE A. BURRIS  
B.S. in Education, Miami Uni-  
versity  
English and Algebra



LEON DAVIS  
B.S. in Secondary Education,  
Rio Grande College  
World History, Physical Edu-  
cation, Head Basketball Coach  
and Junior Class Advisor



HAROLD E. EVERLING  
B.S., Eastern Kentucky Univer-  
sity, M.S., Ohio University  
Social Studies, Physical Edu-  
cation, Head Football Coach,  
and Senior Class Advisor



DALE W. GILLETTE  
B.S. in Education, Bowling  
Greene State University  
Instrumental Music, Radio and  
Sophomore Class Advisor



KATHRYN K. HOPKINS  
B.S. in Education, Ohio Uni-  
versity  
General Science, Spanish, and  
Freshman Advisor



JAMES EDWARD KETTER  
B.S. in Education, Ohio Uni-  
versity  
General Business, Physics,  
and Chemistry



# FACULTY

## FOSTER R. KIRKER

Wilmington College, Ohio University  
American History and Eighth  
Grade Advisor



## ELIZABETH RASE MELVIN

B.S. in Education, Wilmington  
College  
Home Economics and Junior  
Class Advisor

## AMY E. MITCHELL

B.S. in Education, Ohio Uni-  
versity  
English III, IV



## SAMUEL MOORE

B.S. and M.S. Education, Ohio  
University  
Industrial Arts and Freshman  
Advisor

## KENNETH E. RAPP

B.S. in Education, Wilmington  
College  
Social Studies



## HELEN RATLIFF

B.S. in Education, Wilmington  
College  
English II and Physical Edu-  
cation, Sophomore Class Ad-  
visor

## KATHLEEN ROLF

Ohio University  
English and Literature, Eighth  
Grade Advisor



## MARGARET STRICKLAND

Miami University  
Mathematics and Eighth  
Grade Advisor



# FACULTY

EARL THROCKMORTON  
B.S. in Education, Ohio Uni-  
versity  
American History



GORDON J. WILLIAMS  
B.S. in Education, Cedarville  
College  
Algebra and Geometry,  
Assistant Coach, Basketball  
and Football

ELIZABETH LLOYD  
WILSON  
B.A. in Ohio Wesleyan  
Commercial Subjects



MARGARET E.  
YONOVITZ  
B.A. College of Wooster  
English, Latin, Library and  
Annual Advisor



*First Capital Building — Birthplace of Ohio's Constitution 1801*





*Ohio's oldest University, Ohio University 1802*









## SENIOR CLASS OFFICERS

Donna Davis, Secretary; Paul Whaley, President;  
Patti Flannery, Treasurer; Robert Tieman, Vice-  
President.





JACK EDWARD ANDREWS  
"Eagle"  
Industrial Arts  
Industrial Arts Club 1, 2, 3; Band  
3,4; English Club 1; Baseball 2-  
3,4.

DAVID LAURENCE  
BEEKMAN  
"David"  
Commercial  
Math Club 1,2,3; English Club 1,4;  
Latin Club 1,2; Radio 4.



JOHN BERRY  
"Johnny"  
English Club 4.

GALE NATHAN BIGGS  
"Biggsie"  
Industrial Arts  
Industrial Arts 1,2; Football 2,3,4;  
"People Are Funny" 3; English  
Club 4; Scholarship 3.



CAROL LEE BROOKS  
"Peanut"  
Commercial  
Annual Staff 4; Cheerleader 2,3-  
4; Class Officer 2; "People Are  
Funny" 3; English Club 1,2,3,4;  
Honor Society 3,4; Math Club 1;  
Latin Club 3; Spanish Club 2,4;  
Queen's Court 1,3,4; Athletics  
Club 1,2; Scholarship 2,3; Glee  
Club 1,2; Ohio History Test 4.

CHARLES RODNEY  
CAUDILL  
"Rod"  
Industrial Arts  
Industrial Arts Club 1,2,3,4; Radio  
4; Baseball 1,2; "People Are Fun-  
ny" 3; Minstrel 2; English Club 4.



DEWEY EDWARD CONLEY  
"Dewey"  
Commercial  
"People Are Funny" 3; Basket-  
ball 3,4; Basketball Manager 2;  
Math Club 2; English Club 4;  
Mixed Chorus 1,2; Boy's Chorus  
1,2; May Festival 1,2.

ROBERT EUGENE COOPER  
"Bob"  
Commercial  
English Club 4; Chemistry Club  
4.



RUSSELL LEE COX  
"Hecky"  
Industrial Arts  
Industrial Arts Club 1; Math Club  
1,2; English Club 2,4; Band 1,2-  
3,4; "People Are Funny" 3; Mu-  
sic Festival 1,2,3; Pep Band 2,3;  
Radio 3.

RAMONA JEAN DAULTON  
"Jeanie"  
Commercial  
Math Club 1; Glee Club 2,3,4;  
Band 1,2,3,4; Minstrel 2; Spring  
Festival 3,4; Librarian 4.



# SENIORS

**DONNA LOU DAVIS**

"Donna"

Commercial

English Club 1,2,3,4; Girls Glee Club 4; Mixed Chorus 1,2,3; Band 3,4; "People Are Funny" 3; Athletic Club 1; Spring Festival 1,2,3; Annual Staff 3,4; Class Officer 3,4; Math Club 1.

**ROBERT EDWARDS DAVIS**

"Bob"

Commercial

Band 1,2,3; Mixed Chorus 3; Boys Glee Club 3; "People Are Funny" 3.

**PAUL ROYAL DENNING**

"P. D."

Commercial

Football 1,2,3,4; Basketball 1,2,3; Class Officer 1.

**JACOB ALFRED DUNAWAY**

"Jake"

Industrial Arts

Industrial Arts Club 1,2; English Club 2,4; Glee Club 1,2,3; Mixed Chorus 1,2,3,4; May Festival 1,2,3,4; "People Are Funny" 3.

**VIVIAN BERNESTINE DYER**

"Vivian"

Commercial

Girls Athletic Club 2; Girls Glee Club 4; English Club 4.

**EVA AVANELLE EASTER**

"Red"

Commercial

Girls Glee Club 1,4; English Club 3,4; Home Ec. Club 2,3,4; Athletics Club 1,2.

**BETTY RUTH ELROD**

"Betty"

Commercial

English Club 1,2,3,4; Math Club 1; Girls Athletics Club 1,2; Scholarship 3; Girls Glee Club 4; Latin Club 3; Honor Society 3,4.

**RICHARD EUGENE ENTLER**

"Zeke"

Industrial Arts

Industrial Arts Club 1,2,3; Football Manager 1; Football 2,3,4; Basketball 2,3,4.

**CARL ALFRED ERLLENWEIN**

"Sam"

Commercial

English Club 2,3,4; Math Club 1; Agriculture Club 3; Mixed Chorus 1,3,4; Boys Glee Club 1,3,4; "People Are Funny" 3.

**CARL LLOYD FIELDS**

"Fieldsy"

Commercial

Math Club 1; English Club 1,2.





# SENIORS



**PATRICIA ANNE  
FLANNERY** "Patti"  
Commercial

Portsmouth High 1; Math Club 1;  
Chemistry Club 4; Girls Athletic  
Club 3; English Club 3,4; Class  
Officer 3,4; Cheerleader 3,4.



**RUTH ELIZABETH  
FRAILEY** "Ruthie"

Spanish Club 2; Mixed Chorus 1;  
Girls Glee Club 1,2,3,4; "People  
Are Funny" 3; Minstrel 2; Home  
Ec. Club 1,2,3,4; Athletics Club  
1,3; Class Officer 1; Newspaper  
4.



**JANE ANNE GEYER**  
"Puddin"

Commercial  
Home Ec. Club 1,2; English Club  
1,2,3; Librarian 4; Athletics Club  
1,2.



**STEVEN GIBSON GILMORE**  
"Buddy"

Industrial Arts  
Football 1,2,3,4; Basketball 1,2,3;  
Baseball 1,2,3; Agriculture Club  
3; Chemistry Club 4; Army 4.



**MARY KATHERINE  
GRAHAM**

"Cracker"  
Commercial  
Band 2,3,4; Girls Glee Club 1,2,  
3,4; English Club 1,2,3; Math  
Club 1; "People Are Funny" 3;  
Class Officer 2; Minstrel 2.



**EDWARD GULICK**  
"Ed"

College Preparatory  
Scholarship 2,3; Agriculture Club  
3; Chemistry Club 4; Annual  
Staff 3.



**DONNA LOUISE GYOR**  
"Pinkie"

College Preparatory  
East High School 1; Band 1,2,3,4;  
Girls Glee Club 1; Latin Club 1,2;  
Math Club 2; Spanish Club 3,4;  
Minstrel 2; Librarian 4; "People  
Are Funny" 3; Spring Festival 2,  
3,4; English Club 2,3,4; Scholar-  
ship 3,4.



**JOSEPH ERNEST  
HACKWORTH** "Joe"

Industrial Arts  
English Club 4; Industrial Arts  
Club 1,2,3; Basketball 2,3,4.



**WANDA JANE  
HAZELBAKER**

"Janie"  
Commercial  
English Club 1,2; Mixed Chorus  
3; Girls Glee Club 4; "People  
Are Funny" 3; Annual Staff 3,4;  
Math Club 1.



**JACK VERNON HICKS**  
"Bull"

Industrial Arts  
Football 1,2,3,4; Baseball 1,2,3;  
Basketball 1; Agriculture Club 3.



# SENIORS

RALPH CECIL HILL  
 "Windy"  
 Commercial



JOHN PHILIP HOPKINS  
 "Hoppy"  
 College Preparatory  
 Latin Club 1; English Club 1,2.

DAVID EDWARD HORSLEY  
 "Dave"



Industrial Arts  
 English Club 1; Industrial Arts  
 Club 1,2,3,4; Basketball 1; "Peo-  
 ple Are Funny" 3.

WILMA HOWARD  
 "Brownie"  
 Commercial

English Club 1,2; Mathematics  
 Club 1; Spanish Club 2,4; Annual  
 Staff 3,4; Newspaper Staff 4;  
 Girls Glee Club 1,2,4; Mixed Cho-  
 rus 3; Athletics Club 1.

RICHARD LEE HURST  
 "Dick"



Industrial Arts  
 English Club 1; Band 1,2,3,4;  
 Boys Glee Club 2; Mixed Chorus  
 1,2; Industrial Arts Club 1,2; Ra-  
 dio Club 1.

JUDITH WILMA JEAN  
 JACKSON  
 "Judy"

Commercial  
 English Club 1,2; Spanish Club 1;  
 Glee Club 4.

JERRY LEE KESSINGER  
 "Buck"



Industrial Arts  
 Industrial Arts Club 1, 2, 3, 4;  
 Chemistry Club 4; English Club  
 4; Scholarship 4.

SHIRLEY JEANNE KIRKER  
 "Shirl"

Commercial  
 Glee Club 1,2,3,4; English Club  
 1,2,3; Math Club 1; Scholarship  
 2; Librarian 4; Spring Festival  
 2,3,4.

JOHN PAUL KNAUFF  
 "John"



Commercial  
 Basketball 1,2,3,4; English Club  
 1,4.

KARL FREDERICK KUHN  
 "Kuhnie"

Industrial Arts  
 English Club 1; Math Club 1; In-  
 dustrial Arts Club 1,2,3,4; Foot-  
 ball 2,3; "People Are Funny" 3.



# SENIORS

BETTY JANE LEWIS

"Janie"

Commercial

English Club 1,2,3,4; Math Club 1; Latin 2; Girls Athletics Club 1; Scholarship 1; Honor Society 3,4; "People Are Funny" 3; Ohio History Test 4.

JACQUELINE LITTERAL

"Jackie"

Commercial

Girls Athletics Club 1,2,3,4; Latin Club 2; English Club 4; Mixed Chorus 3.

JUNE RAE LOVE

"Honey"

College Preparatory

Latin Club 1,2; Math Club 1,2,3,4; Scholarship 1,2,4; Girls Glee Club 1,3; English Club 1,2,3,4; Senior Survey 4; Honor Society 3,4; Science Club 4; Girls Athletics Club 1,2; Newspaper 4; Cheerleader 1; Majorette 4.

ALBERTA MAXINE LYONS

"Bonnie"

Commercial

English Club 1,3,4; Girls Glee Club 4; Girls Athletics Club 2; Librarian 4.

JUDITH ANN McKEE

"Judy"

College Preparatory

Valley High School 1; Girls Glee Club 1; Latin Club 1; Math Club 2; Band 2,3,4.

ALBERT LESLIE MANN

"Ab"

Industrial Arts

Industrial Arts Club 1,2.

DANIEL BRUCE MANN

"Danny"

English Club 1,2,3,4; Science Club 4.

BETTY MATTHEWS

"Betty"

Home Ec.

Home Ec. Club 1,4; English Club 4; Columbus 2,3.

MARION GARNETT MEADE

"Marion"

College Preparatory

Girls Athletics Club 1,2; English Club 1,2,3,4; Girls Glee Club 1,3; Honor Society 3,4; Science Club 4; Latin Club 1,2; Math Club 1,2,3,4; Librarian 3,4; Scholarship 1,2,3,4; Senior Survey 4; Newspaper 4.

LOUELLA RUTH MERRITT

"Ruth"

Commercial

English Club 1,2; Librarian 3.



# SENIORS

ALYCE JEWELL MERSHON  
"Frenchie"

Commercial

English Club 1,2,3,4; Girls Glee Club 1,4; Math Club 1; Scholarship 1,3; Librarian 4; Girls Athletics Club 2; Honor Society 3,4.

CAROL FLORENCE MILLISON  
"Flip"

Commercial

English Club 1,2,3,4; Band 1,2,3,4; Ohio History Test 4; Scholarship 1,2,3; Latin Club 3; Librarian 3,4; Science Club 4; Math Club 1; Minstrel 2; Spring Festival 3,4;

ALTA MAE MONTGOMERY

"Shortie"

Home Economics

Math Club 1; Science Club 4; Home Economics Club 1,2; Science Club 4; English Club 4.

NANCY LEE MORROW  
"Bootsie"

Commercial

Home Ec. Club 1,2; Mixed Chorus 2; Girls Glee Club 3,4; English Club 1; "People Are Funny" 3.

ROBERT MURTA

"Bob"

Commercial

LAURA MARIE PRIEST  
"Laurie"

Commercial

English Club 1,2,3; Math Club 1.

RUTH ELLEN QUICKEL

"Ruthie"

Commercial

English Club 1,2,3,4; Math Club 1; Girls Glee Club 1,4; Mixed Chorus 3; Honor Society 3,4; Scholarship 2; Librarian 4.

JOHN FRANKLIN RHEA  
"Johnny"

Commercial

Perfect Attendance 11 Years; English Club 1,2,3; Spring Festival 1,2,3,4; "People Are Funny" 3; Boys Glee Club 1; Minstrel 1,2; Band 1,2,3,4; Mixed Chorus 1.

WILLIAM JAMES RICHARDSON, JR.

"Slim"

College Preparatory

Science Club 4; Latin Club 2; Math Club 2; Agriculture Club 3.

WYLODINE JUNE RISNER  
"Dugan"

Commercial

English Club 1,2; Girls Athletics Club 1,2; "People Are Funny" 3; Mixed Chorus 1,2; Girls Glee Club 3,4; Home Economics Club 1,2,3; Spring Festival 1,2,3.





# SENIORS



BETTY JEAN ROSE

"Rosie"

Commercial

English Club 1,3,4; Spring Festival 3; "People Are Funny" 3; Girls Glee Club 4; Mixed Chorus 2,3; Math Club 1.

RONALD RUSSELL ROTH

"Star"

Industrial Arts

Scholarship 1,2,3,4; English Club 3,4; Science Club 4; Baseball 2; Agriculture Club 3.



LAWRENCE LEE ROYAL

"Lee"

Commercial

Math Club 1; Basketball 1; Newspaper 4.

LEON VERNON ROYCE

"Shorty"

Industrial Arts

Industrial Arts Club 1,2; Football 1,2 Basketball 4.



BETTY CHRISTINE SANFORD

"Bet"

Home Economics

Math Club 1; English Club 1,2,3,4; Majorette 2,3,4; Home Ec. Club 1,2,3; F. H. A. 1,2,3,4.

CHARLOTTE SCHAFFER

"Char"

Commercial

Home Ec. Club 1; English Club 1,2,3; Girls Glee Club 1,2; Spring Festival 3.



JAMES LLOYD SHAW

"Jim"

Commercial

VERNA RAE SHAW

"Verna"

Commercial

English Club 1,2,3,4; Math Club 1,2; Latin Club 1,2; Girls Athletics Club 1,2; "People Are Funny" 3; Girls Glee Club 4.



CLARA LOUISE SHEETS

"Clara"

Commercial

English Club 1,2,3,4; Honor Society 3,4; Latin Club 1; Math Club 1; Scholarship 1; "People Are Funny" 3; Ohio History Test 4; Girls Athletics Club 3.

FRANKLIN SHEPHERD

"Long John"

Football 1,2,3,4; Basketball 1,2,3,4; Baseball 3.



# SENIORS

CARL EUGENE SHIVELEY  
"Shive"

Commercial  
Radio Club 3.



BARBARA LOUISE  
SHUPERT  
"Barb"

Commercial  
English Club 1,2,3,4; Math Club 1.

JOYCE JEAN SMITH  
"Smittie"

College Prep  
English Club 1,2,3,4; Math Club 1,2,3,4; Latin Club 1,2; Chemistry Club 4; Honor Society 3,4; Scholarship 1,2,3,4; "People Are Funny" 3; Librarian 4; Newspaper Staff 4; School Reporter 4; Girls Athletics Club 1,4; Ohio History Scholarship Tests 4.

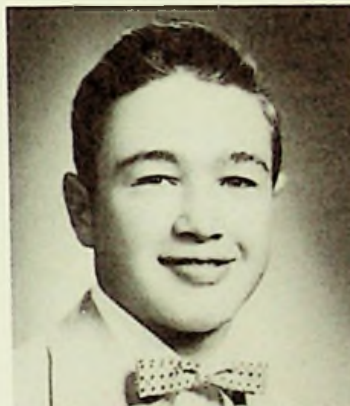


VIRGINIA ANN SMITH  
"Ginny"

Commercial  
English Club 1,2,3,4; Math Club 1; Scholarship 3; Honor Society 3,4.

RONALD LEROY STATEN  
"Motorcycle Maniac"  
College Prep

Latin Club 1,2; English Club 1,2,3,4; Math Club 1,2,3,4; Chemistry Club 4; Honor Society 3,4; Scholarship 1,2,3,4; Ohio History Scholarship Test 4; Newspaper Staff 4.



PAULINE SWEARINGEN  
"Nuch"

Commercial  
English Club 1,2,3,4; Math Club 1; Latin Club 2; Girls Athletics Club 2; Girls Glee Club 2,3; Mixed Chorus 3; "People Are Funny" 3.

ADA MAE SWORDS  
"Ade"

Commercial  
English Club 3.



JAMES THOMAS IV  
"Jim"

Industrial Arts  
Industrial Arts Club 1,2; English Club 1; Math Club 1.

ROBERT CARL TIEMAN  
"Bob"

Industrial Arts  
Band 1,2,3,4; English Club 2,4; Class Officer 4.



WANDA LEE THURMAN  
"Wanda"

Commercial  
English Club 3; Girls Glee Club 4; Girls Athletics Club 2; Cheerleader 1.



# SENIORS



BETTY LUCILLE  
VAUGHTERS

"Ike"

Commercial

Girls Glee Club 1,4; English Club  
3,4; Home Ec. Club 2,3,4; Girls  
Athletics Club 1,2;



JOSEPH RAY WALTERS

"Tiny"

Commercial

Math Club 1,4; English Club 4;  
FFA Club 3; Football 2,4; Base-  
ball 3; Basketball 2,3; Cincinnati  
2,4;



BETTY JEAN WEDEBROOK

"Bets"

Commercial

Math Club 1; English Club 1,2,3,  
4; Girls Athletics Club 1,2; Li-  
brarian 1,2,3,4; "People Are Fun-  
ny" 3.



JOHN PAUL WHALEY

"Hotrod"

College Preparatory

Latin Club 1,2; English Club 1,2,  
3,4; Math Club 1,2,3,4; Science  
Club 4; Honor Society 3,4; Schol-  
arship 1,2,3,4; Ohio History Test  
3,4; Class Officer 3,4; Newspaper  
Staff 4; Senior Survey 4.



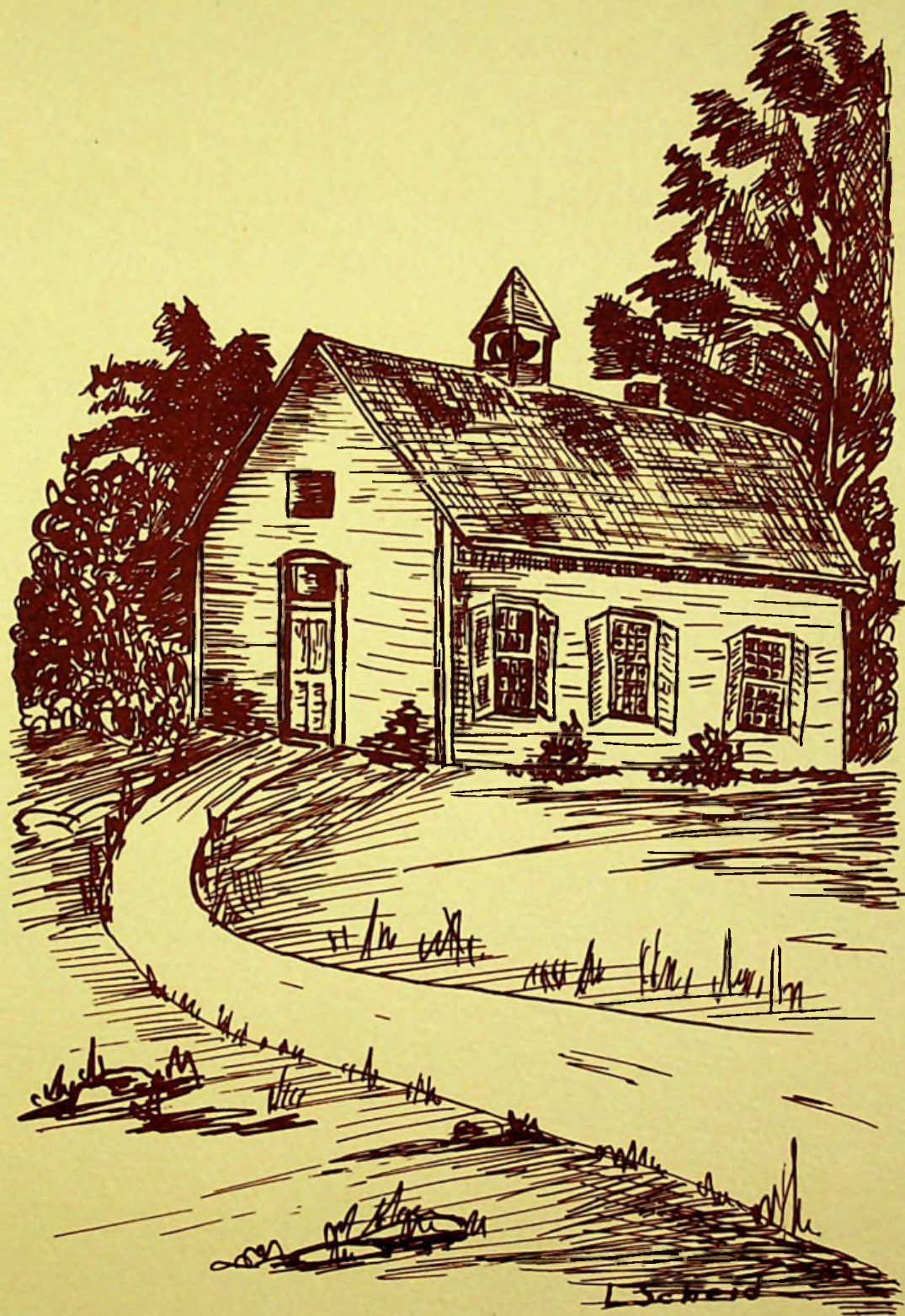
DARLENE WILLIAMS

"Darlene"

Commercial

Home Ec. Club 1; English Club  
1,2,3; "People Are Funny" 3;  
Mixed Chorus 2,3; Girls Glee  
Club 4; Math Club 1, Football  
Queen 4.





*The Little Red School House—a familiar landmark in Ohio.*









## JUNIOR OFFICERS

Ernest Kennard, President; Sue Gilkerson, Secretary;  
 Bill Sparks, Vice-President; Richard Elrod, Treasurer.



*A. Scheid*

*The First Grist Mill—Wolf Creek Mill 1790*



## JUNIORS



DARLENE ABBOT  
 JANET ADAMS  
 PAT ANDRE  
 PATTY ARNETT  
 ROGER BEAN



BARBARA BENSON  
 NELLIE BOND  
 BETTY BOOK  
 JERRY BOWER  
 RONALD BOWER



JOYCE BRADSHAW  
 PRESTON BRICKEY  
 JANET BROWN  
 JOAN CALLIHAN  
 CHARLES CONLEY



JOYCE CONLEY  
 KENNETH COOPER  
 FRED COOPER  
 RONALD DAMRON  
 SYDNEY DILLOW



FONDA DUNN  
 SALLY ELLIOTT  
 SANDRA ELLIOTT  
 RICHARD ELROD  
 GENEVA FIELDS



BONNIE FIFE  
 GLENN FRAZIER  
 SUE GILKERSON  
 DON GRAHAM  
 PERRY HALL



KAROL HAMER  
 KENNETH HAMER  
 WANDA HODGE  
 MINNIE HOWARD  
 TOM JONES



SHIRLEY JORDAN  
 ERNEST KENNARD  
 CAROLYN KINCAID  
 JEANETTE KING  
 SHIRLEY KITCHEN



## JUNIORS

KARLENE KNAUFF

GENE KUHN

ANTOINETTE LACKEY

GAYLE LAKIN

SARA LAUDER



BILL LOGAN

KATHLEEN LUCAS

BARBARA McCALL

RUTH McCALL

SHIRLEY McCALL



MADONNA McCOWEN

MARIE McNEIL

MARY McNEIL

DONALD MALONE

DOLORES MANNING



LENORA MEADE

NORMA MILLER

BETTY MOORE

PAULINE MOORE

DICK MOWERY



PANSY MULLEN

ROBERT MURPHY

SHIRLEY NICHOLS

MARTHA OBER

RONALD PAYNE



TOM PAYNE

GARNET PENNINGTON

NANCY PETERS

DON POLLARD

JACKIE PRICE



BETTY PRUITT

TOM REISER

CAROLE REYNOLDS

DARLENE RHODEN

GARNET RICHARDS



PAUL RILEY

DOLORES ROBERTS

BETTY ROLLINS

GAYLE SCOTT

BETTY SCHAFER





## JUNIORS



FRANK SHAW  
DON SMITH  
GEORGE SMITH  
LOUISE SMITH  
MERLIN SMITH



NORMA SMITH  
PHYLLIS SMITH  
BILL SPARKS  
PATSY SPARKS  
DON STILLWELL



CHARLOTTE STOUT  
JOHN SCHWAMBERGER  
ROY SWEARINGEN  
CHARLOTTE SWORDE  
JUANITA SWORDE



LAURA THOMAS  
ALWILDA TIEMAN  
HELEN WALKER  
FRANCIS WILBURN  
LORRAINE WILBUR



MELBA WILLIAMS  
RUBY WILLIAMS  
BILL WOLERY



*First Settlement in Ohio—Schoenbrunn 1772-77*





## SOPHOMORE OFFICERS

Paul Farley, President; Jolinda Bishop, Treasurer;  
Bill Boyd, Secretary; Homer Hudson, Vice-President.



*The Logan Elm—Where Chief Logan Spoke 1774*



# SOPHOMORES



JOAN ARNETT  
 BARBARA BARBER  
 JOE BIGGS  
 JOLINDA BISHOP  
 JOHN BOOK



JAMES BOOTH  
 BILL BOYD  
 ROSEMARY BRADLEY  
 KATHRYN BROOKS  
 DON BYRD



WILLIAM CARPENTER  
 LUCY CAUDILL  
 GARNET CONLEY  
 TESSANNE COOPER  
 EUGENE CUMMING



RALPH DENNING  
 SHIRLEY DINGUS  
 CHARLES DICKSON  
 FORREST ELLIOTT  
 NANCY EVANS



NORMAN EVANS  
 PAUL FARLEY  
 JOYCE FRAZIER  
 FLOYD FRUMP  
 JANET GRAHAM



WALTER GREGORY  
 GLENN GIFFORD  
 JACKIE GULICK  
 JERRY HALL  
 LEON HAZLEBAKER



DONNA HILLIARD  
 KENNETH HODGE  
 WILMA HOPKINS  
 DOROTHY HOOVER  
 ALBERTA HOWARD



JUDY HOWELL  
 HOMER HUDSON  
 JOAN INGLES  
 DAVID ISHMAEL  
 WALTER JARRELLS



# SOPHOMORES

WAYNE IANE  
 JEAN JONES  
 SUZANNE JONES  
 ANITA JORDAN  
 RICHARD JORDAN



BETTY KILLEN  
 DOROTHY KITCHEN  
 ELOISE LACKEY  
 ANITA LANCASTER  
 DUANE LANG



ROY LEWIS  
 CHARLES LISTON  
 ROGER LOWE  
 BARBARA LUCAS  
 DON McCOWN



SHIRLEY McGLONE  
 PATTY McGLOTHLIN  
 PHYLLIS McGRAW  
 ROSETTA McNEIL  
 DON McNUTT



BILLIE MANGUS  
 MARY MEDLEY  
 SHIRLEY MEEKER  
 WAGNER MESSER  
 PATTY MORGAN



JAMES MULLINS  
 ANNA M. MURPHY  
 JERRY NEELEY  
 JANET NIBERT  
 GEORGE OBER



LYNN O'DELL  
 PATTY OSBORNE  
 GAYLE PERRY  
 PATSY PERRY  
 RICHARD PHILLIPS



JOYCE NOLDER  
 RONALD POLLARD  
 CAROL PRIODE  
 LULA RATLIFF  
 LORETTA RENN





## SOPHOMORES



JERRY RICHARDSON  
DON RIFFE  
PHYLISS ROBERTS  
PATTY ROARK  
NANCY ROYAL



NORMA SCHACKART  
LETTIA SCHEID  
IRIS SCOTT  
JOYCE SHAW  
BONNIE SHEPPARD



JOHN SHUPERT  
RUTH SHINKLE  
JANET SISSEL  
JUDY SKAGGS  
ALBERTA SMITH



CHARLENE SMITH  
NORMAN STILLWELL  
BETTY THOMAS  
LOIS THOMPSON  
TOM TIPTON



PAUL VERNIER  
JOHN WALKER  
SANDRA WARREN  
DOROTHY WEAR  
MILDRED WEAVER



TOM WILSON



*L. Scheid*

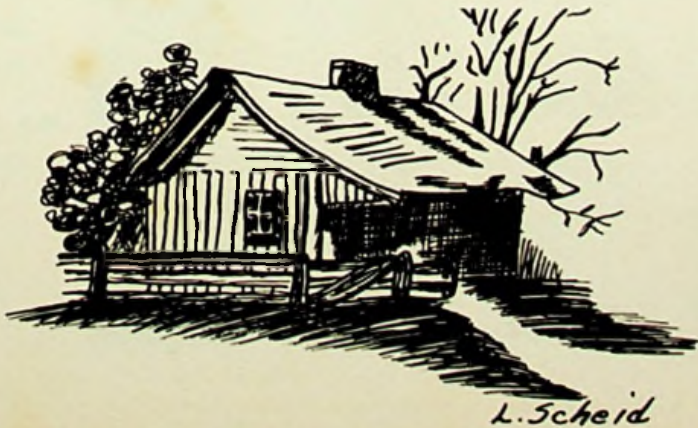
*Lyme Church—1836—Ohio's oldest church*





## FRESHMAN OFFICERS

John Gayhart, Secretary; Ronald Mowery, President;  
Connie Jayne, Treasurer; Loretta Brown, Vice-President.



L. Scheid



## FRESHMAN



ARDITH ABRAMS  
LILLIAN ADAMS  
IDA BAKER  
JOYCE BASFORD  
PEGGY BEAN



KATHERINE BEEKMAN  
DENVER BELLOMY  
CAROL BERTRAM  
MARY LOU BERTRAM  
JAMES BIBBEY



WILLIAM BIRCHFIELD  
DOLORES BLOOMFIELD  
VIRGINIA BOOK  
MARLENE BOOTH  
JOAN BRICKEY



ROGER BRIDWELL  
LORETTA BROWN  
RICHARD BROWN  
ROBERT BROWNING  
PHYLLIS BURCHETT



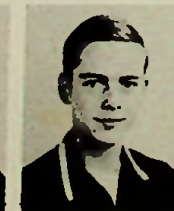
JAMES CALDWELL  
DAVID CANTER  
DONNA CANTER  
HERBERT CONLEY  
GARY COOK



DARLENE COOPER  
LORETTA COOPER  
ROSEMARY CROWE  
DOROTHY EULETT  
LOVELL FAIRCHILD



DOLORES FIELDS  
WANDA FIFE  
PAULA FLOWERS  
CRADDIE FRYE  
HILDA FULTZ



HERBERT GARDNER  
JOHN GAYHART  
TOM GEYER  
RICHARD GILKERSON  
PHYLLIS GOODMAN



# FRESHMAN

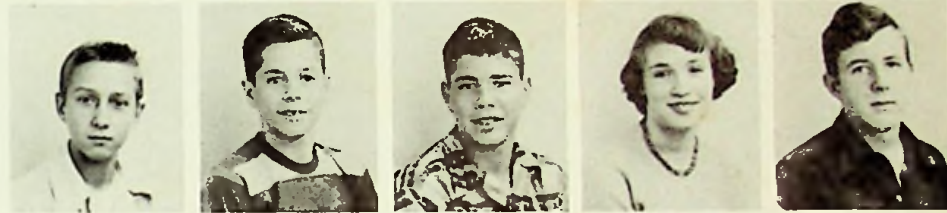
BARBARA GRAY  
 HORTON GREENE  
 DOLORES HALL  
 NANCY HALL  
 RENA HALL



WILLIAM HALL  
 CHARLOTTE HARRISON  
 LOIS HAYSLIP  
 ROSEMARY HERALD  
 RONALD HOBBS



JERRY HOPKINS  
 GLENN HOWARD  
 JAMES HOWARD  
 JANET HOWE  
 RONALD HOWELL



LACY HUNT  
 WILLARD HURST  
 CAROL JACKSON  
 CONNIE JAYNE  
 BEN JOHNSON



BEULAH JOHNSON  
 BILL JOHNSON  
 LINDA JONES  
 MARY KESSINGER  
 GOBLE KITCHEN



HURST KLEVER  
 GARY KNAUFF  
 LOUELLA KNAUFF  
 JOE LAUDER  
 GAYNELLE LEEDY



BERNARD LESTER  
 DOROTHY LOGAN  
 MAE LOWE  
 HOWARD McCANN  
 JOAN McGLONE



RUFUS McGRAW  
 PHYLLIS MALONE  
 RUSSELL MALONE  
 MARY MARTIN  
 BETTY MEADE





# FRESHMAN



JOE MEADE  
PHILIP MELVIN  
RONALD MEYERS  
BERNARD MONK  
JOETTA MOORE  
RONALD MOWERY



DON MURPHY  
RUSSELL MURTA  
DOLORES O'DELL  
WALTER PARTLOW  
PAUL POLLARD  
BETTY RAYBURN



PHYLLIS REDOUTE  
DON REYNOLDS  
MARY RICE  
JAMES ROYCE  
JERRY ROYCE  
SANDRA RUTHERFORD



JOE SCHACKART  
ALLEN SCHEID  
RONALD SHEPHERD  
SHELBY SHILTZ  
EUGENE SHIVELEY  
SHIRLEY SHIVENER



FRANKLIN SHORTER  
HOMER SIMPSON  
CAROLYN SMITH  
DOLORES SMITH  
EUGENE SMITH  
LOUISE SMITH



DAVID SOWARDS  
JOAN SOWARDS  
ROBERT SWORDS  
DAVID SPARKS  
JACKIE SPARKS  
DENVER STEVENS



JAMES SUTTON  
JERRY TITUS  
DOROTHY VARNEY  
PAULINE WEDEBROCK  
MARIANNE WESSINGER  
JAMES WHITMAN



ZELMA WILBURN  
MARY SUE WILLIAMSON  
BARBARA YOUNG  
BOB APPLIGATE  
LINDA HAMILTON





## EIGHTH GRADE OFFICERS

Robert Sparks, Treasurer; Shirley Hall, President;  
Barbara Vaughn, Secretary; Marianne Rollins, Vice-  
President.



# EIGHTH GRADE



EMOGENE ADKINS  
 CHARLES BARTLEY  
 JERRY BELFORD  
 JACKIE BOYD  
 CAROLYN BRAD



MIKE BRESCIA  
 JACK BRIDWELL  
 HOWARD CARR  
 BETTY CARROLL  
 HAZEL CONLEY



SHIRLEY COOPER  
 SUE COOPER  
 WALTER COTTRELL  
 BILLY CRAIGER  
 CARL CRISP



CLARENCE CRAYCRAFT  
 JUDY CUMMINGS  
 RONALD CUNNINGHAM  
 SANDRA DeLONG  
 LORETTA DOOLEY



JACK FAIRCHILD  
 ROGER FLOYD  
 JACK FROST  
 MARY GALLOWAY  
 MIKE HAFFNER



SHIRLEY HALL  
 RAYMOND HERALD  
 LYDA HODGE  
 VIOLET HODGE  
 ELLA HOWARD



PAUL HOWARD  
 PHYLLIS HUMPHREYS  
 DEELENA HUNT  
 PATTY JACKSON  
 MARILYN JAMES



BETTY JEWEL  
 FRANCES JORDAN  
 GARY KENYON  
 MILDRED KING  
 WILLIAM LEWIS



# EIGHTH GRADE

ROY LOGAN

PAUL LONG

JAMES MADDEN

FREDIA MANNING

RHUMONIA MANNING



JAMES MEDLEY

JOHN MERSON

WILLIAM MEYERS

JUANITA MIDDLETON

ROSALIE MULLEN



MARY MORROW

DOROTHY NEWMAN

JUDY NEWMAN

ROGER NIBERT

ROBERT NICHOLS



ROBERT OSBORNE

AKLA PENN

GEORGE PERRY

PHYLLIS POLLARD

DONALD PONTIUS



BETTY RATLIFF

MARGARET RATLIFF

PAUL RATLIFF

JOE REITER

CARL RHEA



CHARLES ROBERTS

MARYANNE ROLLINS

BILLIE ROSE

ROBERTA ROYAL

IMOGENE RUARK



DAVID RUSSELL

JANET SCOTT

CAROLYN SHEPPARD

LOLA SHUMP

FRED SHUPERT



YVETTA SIBREL

RALPH SIMPSON

EDITH SKAGGS

CHARLES SMITH

LOUELLA SMITH





# EIGHTH GRADE



ROBERT SPARKS  
 JERRY STATEN  
 EUGENE STILLWELL  
 BEATRICE STEVENS  
 JAMES STEVENSON



WINONA TATMAN  
 DONALD THACKER  
 BETTY VANDERPOOL  
 BARBARA VAUGHN  
 GARY WADE



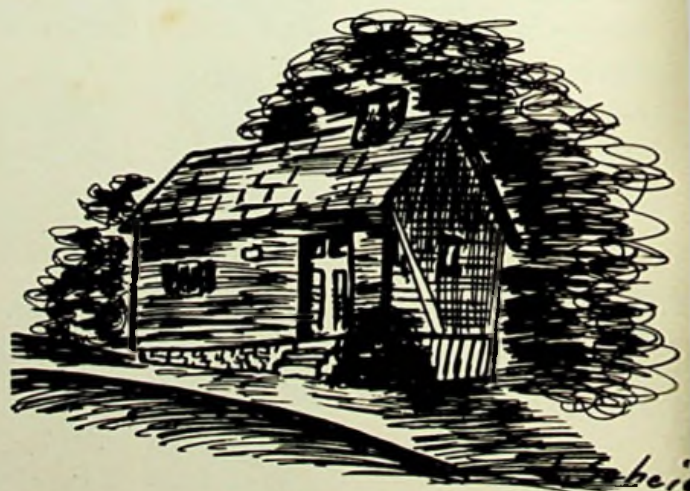
RUTH WARNOCK  
 PATTY WEBB  
 STANLEY WEBB  
 RICHARD WESSEL  
 DAVID WOLERY



SHELA WOOD  
 PATRICIA YOST



*Home of Ulysses S. Grant  
 Second Ohio President  
 Point Pleasant, Ohio 1822-1885*



*Ohio's oldest Building—The Ohio Land Office 1778*





Our modern Industrial Arts Department offers wood-turning, wood-working, sheet and metal work, welding, electricity, craft work and mechanical drawing.



Jolinda Bishop sews on an electric White sewing machine; Carol Kline uses an electric Singer. Eloise Lackey is cutting and measuring curtains.



Boys in the Mechanical Drawing Class, under the supervision of Mr. Samuel Moore, work at drawing boards with special instruments.



Judy Skaggs, Shirley Dingus, Charlotte Siout, Barbara Benson and Billie Mangus at work in Washington High School's all electric Hoipoini kitchen.





Figures! Figures! Figures! Will they balance?  
Mrs. Elizabeth Wilson's Bookkeeping Class.



In Miss Mary Bennett's class, are there any typewriters  
which do not spell correctly???



Lawrence Royal and Bob Cooper are responsible for the  
printing of the school newspaper and other mimeograph  
work for the building.



Betty Rose, Miss Secretary of 1953, at her dictaphone in  
Office Practice Class under Miss Mary Bennett.



Concentration in operation in Mr. Harold Everling's Sev-  
enth Period Study Hall.



Mrs. Amy Mitchell's Junior English Class busily engaged  
in workbook preparation.





George Ober points to a section of Central Europe in Mr. Leon Davis' World History Class.



Is the Chemistry Class responsible for the pleasant (?) odors permeating the halls?



Mrs. Kathleen Rolf's Eighth Grade Class prepares tomorrow's assignment.



Ella Howard points to the southern boundary of Missouri—Mr. Foster Kirker's Eighth Grade History Class.

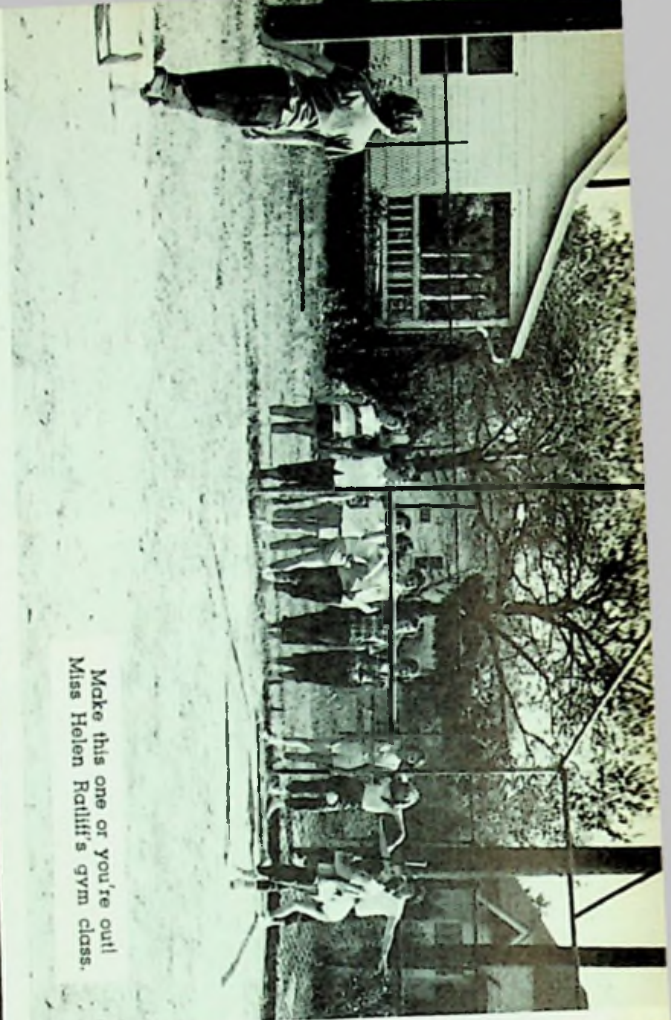


Mrs. Margaret Strickland's Math Class holds deep interest for everyone but Gary Wade; he seems to like photography.



The matter seems too heavy for James Caldwell and Gary Knauff—Mrs. Kathryn Hopkins' Freshman Science Class.





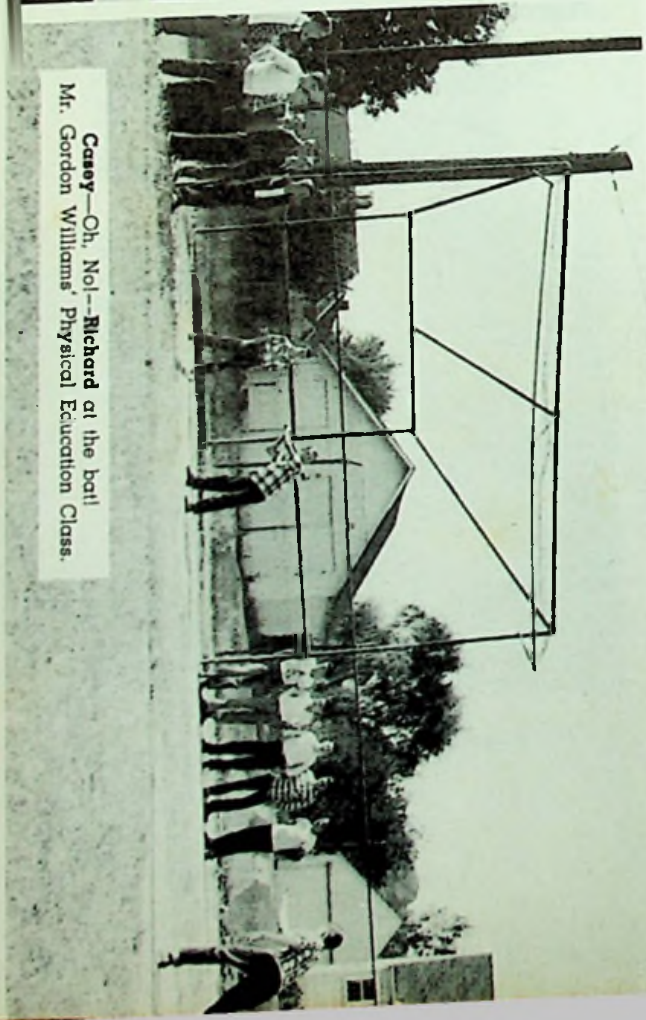
Make this one or you're out!  
Miss Helen Ralliff's gym class.



Move along Mr. Rapp—This is not a slick-up.



The hoppiest twenty minutes of each day.



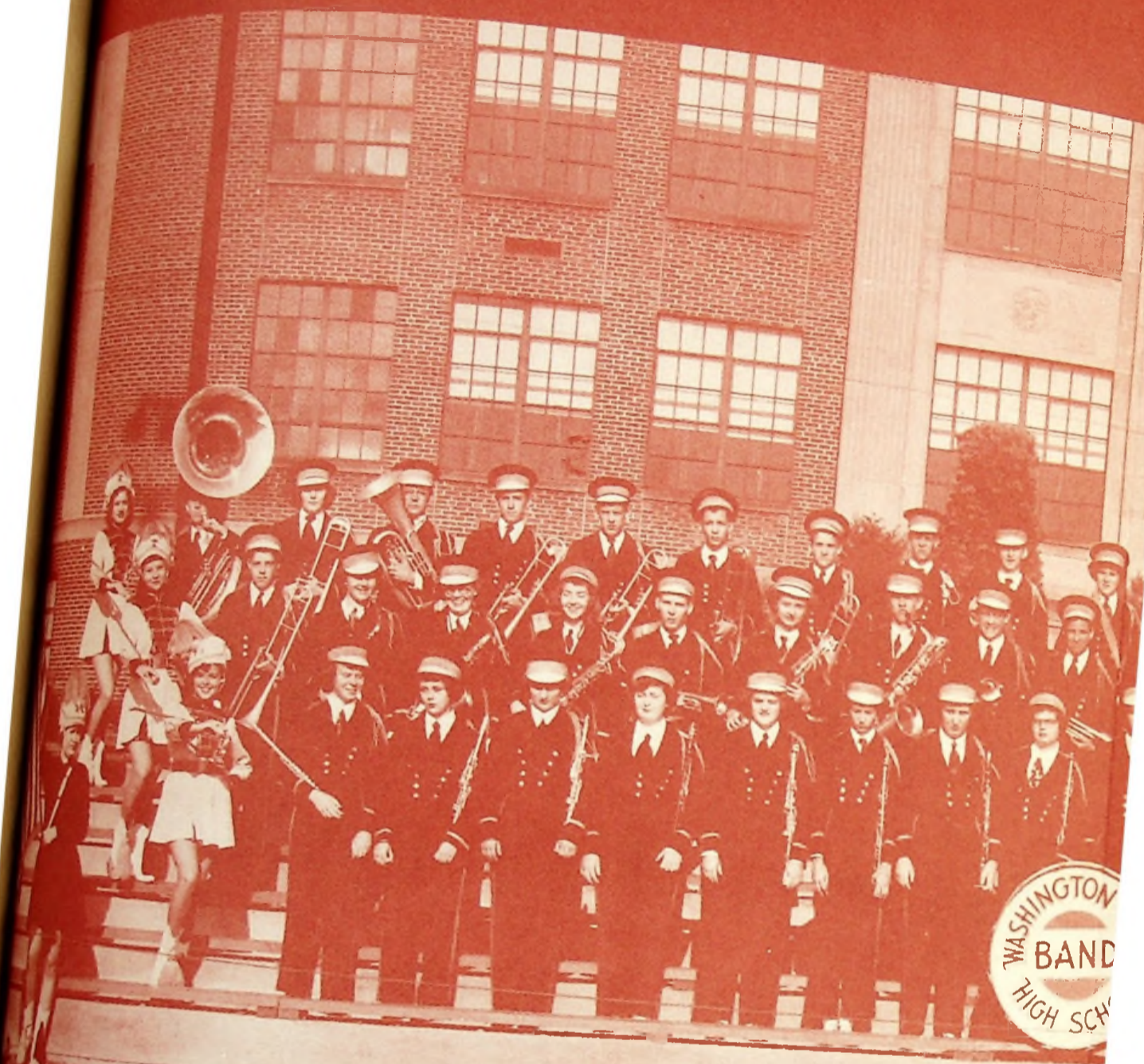
Casey—Oh, Nol—Richard at the ball!  
Mr. Gordon Williams' Physical Education Class.





*A Steamboat on the Ohio—  
One of the early packets in "Steamboat Days".*

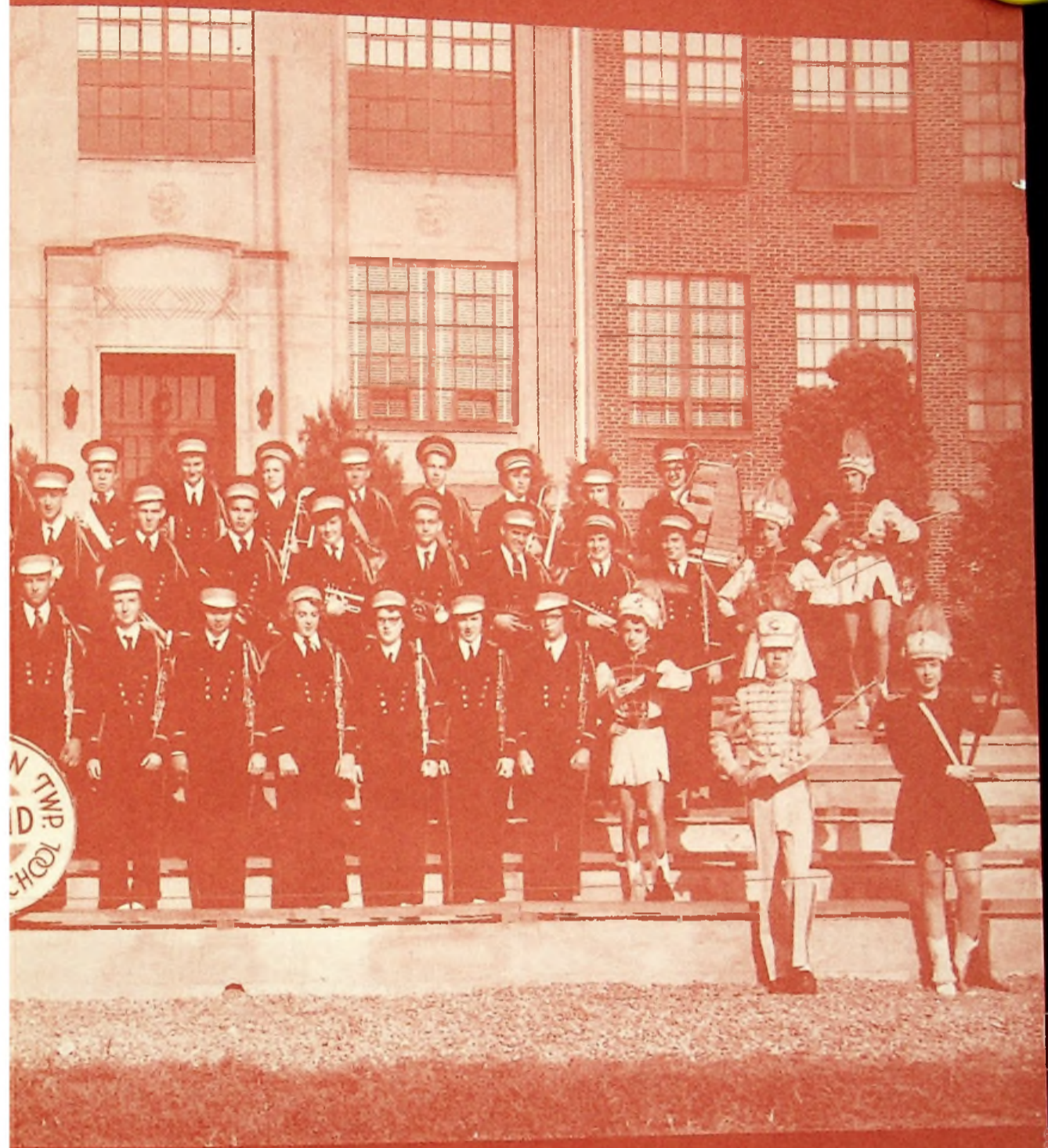




**WASHINGTON HIGH S**

FRONT ROW: Joyce Conley (flag), Tess Ann Cooper (majorette), Sandra Elliott, De  
 McKee, Carol Millison, Rodney Caudill, JoAnne Ingles, Madonna McCowen, Dolly  
 (majorette), Kenneth Cooper (drum major), Carol Reynolds (banner). SECOND ROW  
 Janet Graham, Robert Tleman, Anita Jordan, Jack Shupert, Joe Biggs, Don Byrd, J  
 McNutt, Jimmy Royce, Sue Gilkerson, Jeannette King, Suzanne Jones (majorette), T  
 Rhea, Denver Stevens, Glenn Frasher, Richard Hurst, John Walker, Richard Phillip  
 Varney, Hurst Klever, Jerry Carroll, Joanne Smalley, Dorothy Hoover, Carolyn King



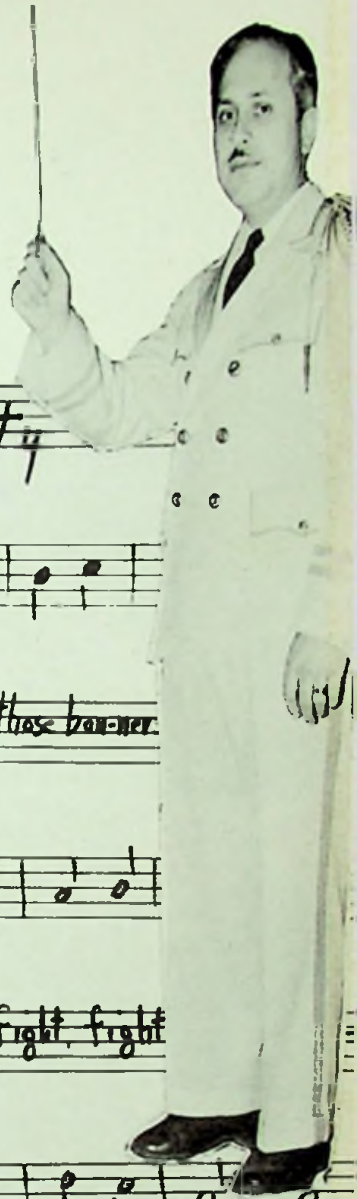


**SCHOOL BAND**

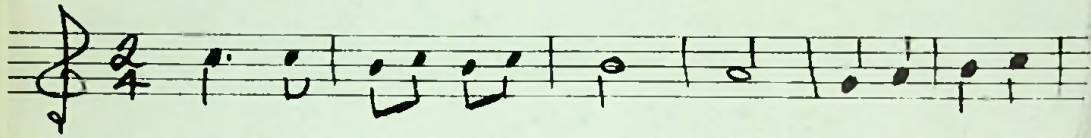
Donna Gyor, Janet Brown, Jean Jones, Jean Daulton, Janet Nibert, Judy  
ly Tieman, Laura Thomas, Nancy Peters, Sally Elliott, Shirley Jordan  
W: June Love (majorette), Don McCowen, Donna Davis, Mary Graham,  
Jack Andrews, Russell Cox, Charles Conley, Shirley Kitchen, Donald  
THIRD ROW: Gayle Scott (majorette), Donald Graham, Pat Andre, John  
ps, William Wolery, Ruth Shinkle, Allen Scheid, Judy Howell, Dorothy  
scaid, Betty Sanford (majorette).



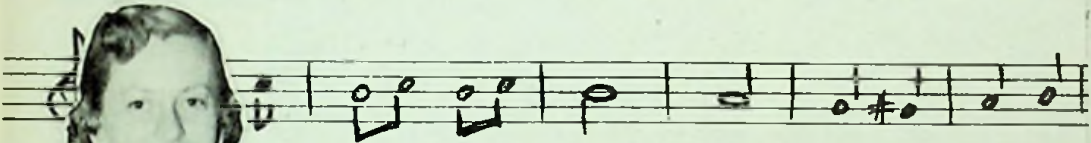
# MUSIC



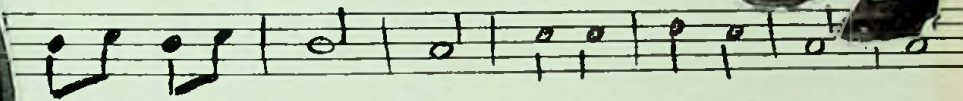
## Washington Loyalty



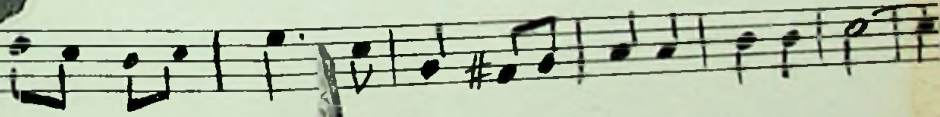
Loy-al Loy-al to our high school, Raise those ban-ner



will fight for you for-ev-er, Fight, fight, fight



er a path of glo-ry, Always brave and true



Loy-al to old Wa-sh-ton, We will do our best for you







### PRANCING PRETTIES

June Love, Tessanne Cooper, Suzanne Jones, Shirley Jordan, Gayle Scott, Betty Sanford.



High Stepping, Drum Major, Kenneth Cooper.



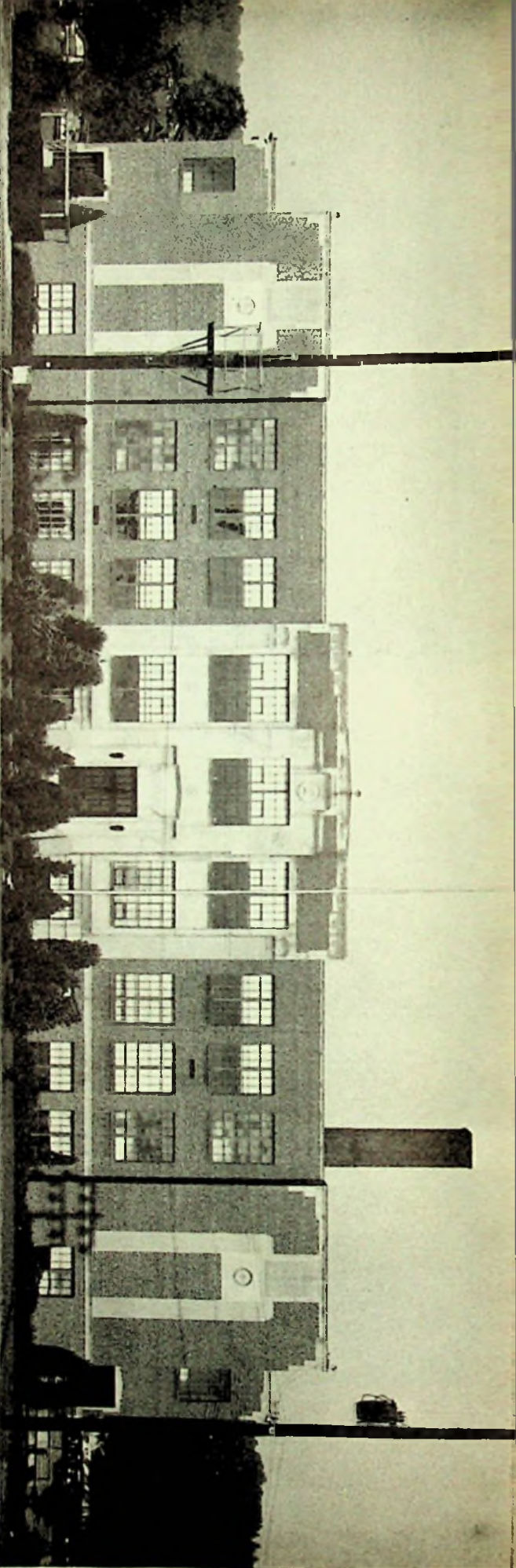


The Washington Band in action. Hear those Saxophones play!



A composite Section including woodwind and percussion instruments: Flagbearer, Joyce Conley, at the left and Drum Major, Kenneth Cooper at the right.





The favorite formation of Washi

ol Band.





### JUNIOR BAND

The Junior Band is the training band for students preparing to enter the Senior Band. Any student playing an instrument is eligible to play in Junior Band and vacancies in the Senior Band will be filled from this group.

ROW ONE: Roger Nibert, David Wolery. ROW TWO: Helen Walker, Phyllis Pollard, Patricia Yost, Sue Cooper, Fred Shupert. ROW THREE: James Stevenson, Sandra DeLong, Roger Floyd, Carl Rhea, Bob Sparks.



A section of the Senior Band plays for a school assembly.

FIRST ROW: S. Elliott, L. Thomas, D. McCowen, R. Caudill, J. McKee, J. Daulton, D. Gyor, C. Millison. SECOND ROW: J. Royce, D. McNutt, J. Biggs, R. Tieman, R. Cox, J. Andrews, C. Conley, D. Byrd, D. Hoover, S. Gilkerson, S. Kitchen. SEATED LEFT: A. Scheid, S. Elliott, J. Rhea. SEATED RIGHT: D. Varney, A. Jordan, J. Graham.



The Glee Club and Mixed Chorus, under the direction of Miss Jean Blair, sing at special assemblies, over the radio and at Baccalaureate and Commencement exercises.



### GLEE CLUB

ROW ONE: A. Easter, P. Bean, B. Thomas, L. Ratliff, B. Elrod, J. Jackson, R. Frailey, J. Moore, M. Weaver, M. Graham. ROW TWO: S. Jordan, P. Roark, C. Shaffer, B. Rose, S. Rutherford, M. Lowe, M. McNeil, D Manning, P. Swearingen, V. Shaw. ROW THREE: B. Barber, D. Smith, D. Kitchen, A. Mershon, B. Lyons, W. Howard, N. Morrow, J. Daulton, R. Quickel, B. Vaughters. ROW FOUR: L. Caudill, K. Knaufl, J. Sparks, B. Johnson, M. McNeil, D. Williams, S. Kirker, W. Risner, D. Davis, V. Dyer, W. Thurman.

### MIXED CHORUS

ROW ONE: E. Lackey, G. Leedy, M. Ober, P. Morgan, M. Rice, G. Royce, M. Martin, R. Bradley, T. Cooper, D Ware. ROW TWO: B Schaffer, D. O'Dell, J. Dunaway, P. Mullens, R. Cox, L. Thomas, J. King, L. Royce, P. McGlothlin, G. Conley. ROW THREE: L. Adams, J. Sissel, D. Logan, J. Swords, A. Jordan, J Graham, B Rollins, C. Kincaid, C. Jackson, M. Williams. ROW FOUR: M. Wessel, K. Beekman, A. Howard, J. Brown, C Conley, R. Jordan, K. Cooper, S. Jordan, P. Andre, A. Lackey.





## 1952 FOOTBALL GAME RESULTS

Washington.....	37	Wurtland.....	0
Washington.....	72	Notre Dame.....	0
Washington.....	7	Coal Grove.....	0
Washington.....	6	Waverly.....	19
Washington.....	37	Chesapeake.....	6
Washington.....	44	Wheelersburg.....	7
Washington.....	12	New Boston.....	6
Washington.....	26	Ports. East.....	13
Washington.....	34	Frankfort.....	12

### WASHINGTON TROUNCES WURLAND IN OPENER 37-0

The Washington Senators showing mid season form rolled to an easy 37-0 victory over an outclassed Wurtland High eleven at Washington Stadium in the opening tilt for both squads before 3000 fans.

Coach Monk Everling turned loose a group of hard-running backs and a big powerful forward wall to trounce the Wurtland team. Three Senator backs accounted for all six Washington T.D.'s. Dick Mowery and Jack Hicks, the halfbacks, and Ken Hamer, a bull-dozing fullback, scored two touchdowns each to lead the Senator attack.

Washington jumped off to a 24-0 half time lead and coasted the rest of the way to win.

### WASHINGTON BEATS NOTRE DAME IN A ONE SIDED GAME 72-0

Volcanic Washington, ringing up scores with a merciless precision of a cash register, erupted before 1,200 fans and smothered weak Notre Dame 72-0 at Municipal Stadium.

Striking from a single wing attack, the Senators scored twice in the first quarter, three times in the second, twice again in the third, and four times in the fourth. Ken Hamer scored four times, Dick Mowery three times, Paul Denning twice, Perry Hall and Tommy Payne once, each to pace the Senator attack.

Coach Everling tried to hold the score down by playing the reserves the last half, but they still piled up touchdowns.

It was a great victory for the Senators who at this point had won their last of 17 ball games.

### WASHINGTON EDGES COAL GROVE 7-0 FOR 18th STRAIGHT WIN

The Washington Senators won their third straight victory of the season and the 18th straight in a row by defeating a good Coal Grove eleven 7-0 on the winner's field. For the third consecutive week the opponets failed to score against the powerful Senator defense. The lone Senator tally came on a 68 yard run by Dick Mowery who circled his own right end and raced down the sidelines for the T. D. The game was almost entirely a defensive battle with the Washington eleven out-fighting the adversary in a grueling contest.

### WAVERLY UPSETS THE SENATORS 19-6

The passing of Jerry Dutcher to Al Rhodes powered the Waverly Tigers to an upset victory over the powerful Washington Senators 19-6 at Waverly. The loss snapped an 18-game winning streak by the Washington eleven and dropped them out of the conference lead.

For the second time in three years the Waverly eleven spoiled Washington's perfect record. The Tigers defeated the Senators 14-8 in 1950, and that was the last defeat the West Portsmouth eleven was handed until the Waverly game.

For Waverly, Dutcher passed to Rhodes for two touchdowns and Knight added an assurance T. D. in the final quarter after the game had been decided.

Washington's lone tally came late in the game as Hicks passed to Denning for the score.

### WASHINGTON ROMPS OVER CHESAPEAKE 37-6

The Washington Senators starting a new victory skein smothered a weak Chesapeake team 37-6 at Washington Stadium. Dick Mowery paced the offense by scoring four T. D.'s and passing to Jack Hicks for a fifth. Ken Hamer added a sixth tally on a five yard plunge. By the end of the third period the Senators were leading 37-6. The Washington reserves played the entire fourth quarter. Chesapeake finally got its weak offense clicking for a score.

### WASHINGTON WALLOPS WHEELERSBURG 44-7

The Washington Senators, performing before their Mothers and Dads on Mom and Dad night, and scoring the first time they got their hands on the ball, continued their winning way with a convincing 44-7 triumph at Washington Stadium. Nearly 400 fans saw Coach Monk Everling's lads score their fifth triumph in six tilts this season. Halfback Jack Hicks supplied the offensive punch scoring 3 T. D.'s. Hamer, Mowery, Gardner, and Shepherd followed with one six pointer.

### WASHINGTON EKES OUT WIN OVER NEW BOSTON 12-6

Frank Shepherd, the Senators' big combination end and tackle, blocked a New Boston punt early in the fourth quarter and raced 15 yards with the ball for a TD as Washington edged New Boston 12-6. The win put the Senators on top of the SOC. Washington, playing inspired ball, took the lead 6-0 at the half on a 30 yard pass interception. Three plays later, Thomas scored, 6-6. In the fourth period, Penix on a fourth down standing on his 20 yard line had his punt blocked by Shepherd who picked it up and raced to the goal line.

New Boston took the ball and drove to the Senators' 14 yard line. On the next play, Hicks intercepted a New Boston pass on his two as the game ended.

### SENATORS TAKE S. O. C. CROWN, BEATING THE TARTANS 26-13

The Washington Senators, paced by Frank Shepherd who scored 2 TD's, roared to their second straight SOC Championship by defeating East 26-13.

East scored first as Ron Sturgill intercepted a pass on his own 10 yard line and raced 90 yards for a score. The Senators roared right back and scored on a Hicks to Shepherd pass and the Senators led 7-6 at the first quarter. The second quarter was a great defensive battle with neither team able to score. In the third quarter the Senators marched 52 yards for a score with Hamer carrying over from the two. The Senators led 13-6.

In the fourth quarter a bad punt set up the Senators' 3rd score as Hicks passed 22 yards to Shepherd for a TD, 19-6. The next Washington score came on a 28 yard run by Dick Mowery and the Senators led 26-6 with time running out.

A stubborn East offensive however drove 65 yards and scored again. The game ended a minute later, Washington winning 26-13.

### SENATORS END SEASON WITH 34-12 TRIUMPH OVER FRANKFORT

Washington High's Senators' 34-12 victory over Frankfort High at Frankfort was the final game of the season for the West Portsmouth eleven.

The Senators got off to a slow start but scored 14 points in the second period and 14 more in the third to ice the game. Frank Shepherd was the big gun in the Washington attack as the big end caught two touchdown passes and lateralled off to Hamer for another. Hicks and Farley each added a tally to complete the Senators' scoring.

This brought the Senators' season record to an admirable 8-1-0 and they are S. O. C. Champions for the third consecutive time.



FOOTBALL AND CHEERLEADERS  
CHEERING FOR DEAR OLD WASHINGTON HIGH!



C. Brooks, P. Flannery, K. Hamer, S. Kitchen, P. Smith, and S. Gilkerson.



TOM PAYNE  
Junior  
End

DICK MOWERY  
Junior  
Halfback

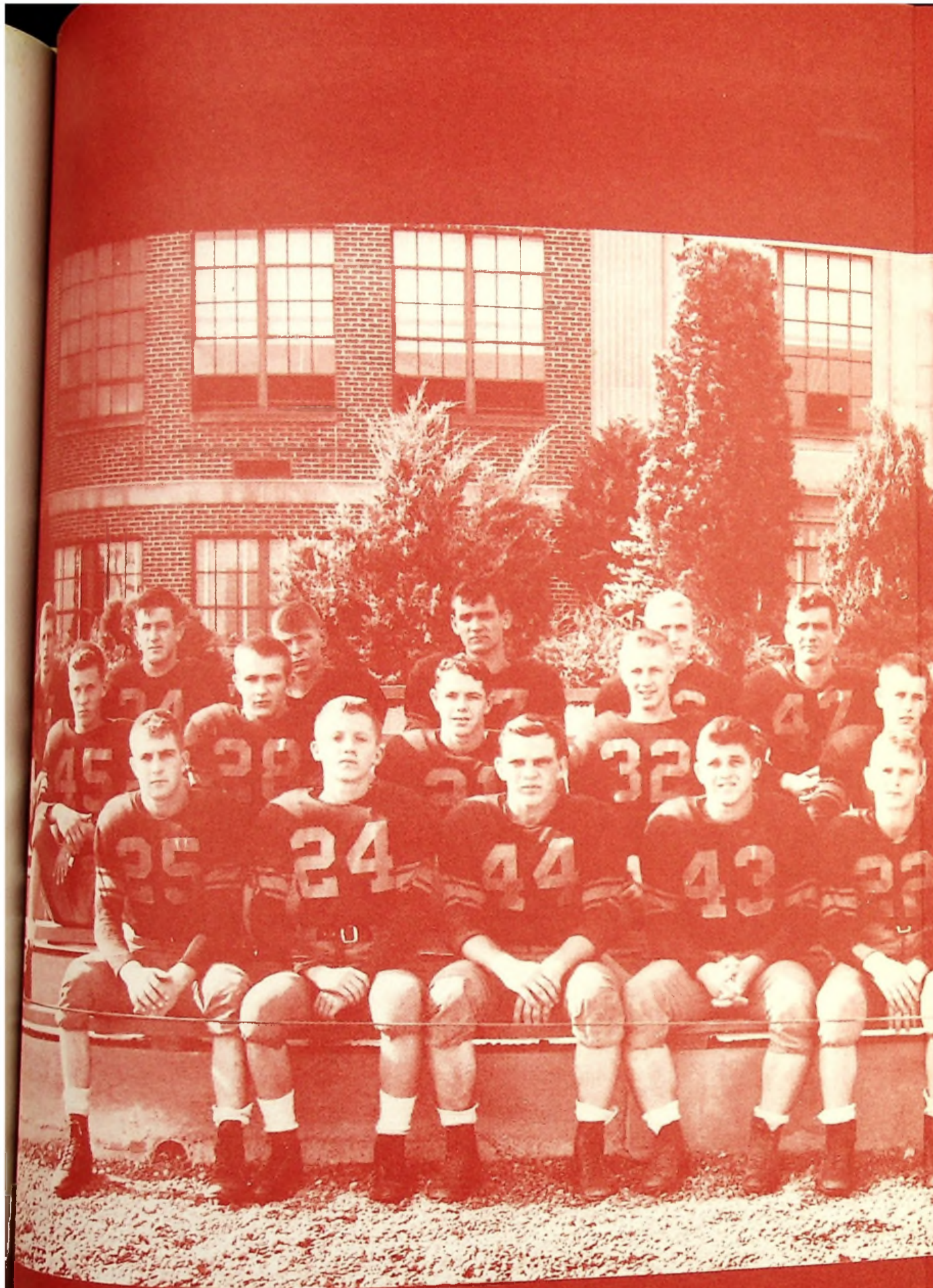
JACK HICKS  
Senior  
Halfback

BILL SPARKS  
Junior  
Center

PAUL DENNING  
Senior  
End

RICHARD ENTLER  
Senior  
End

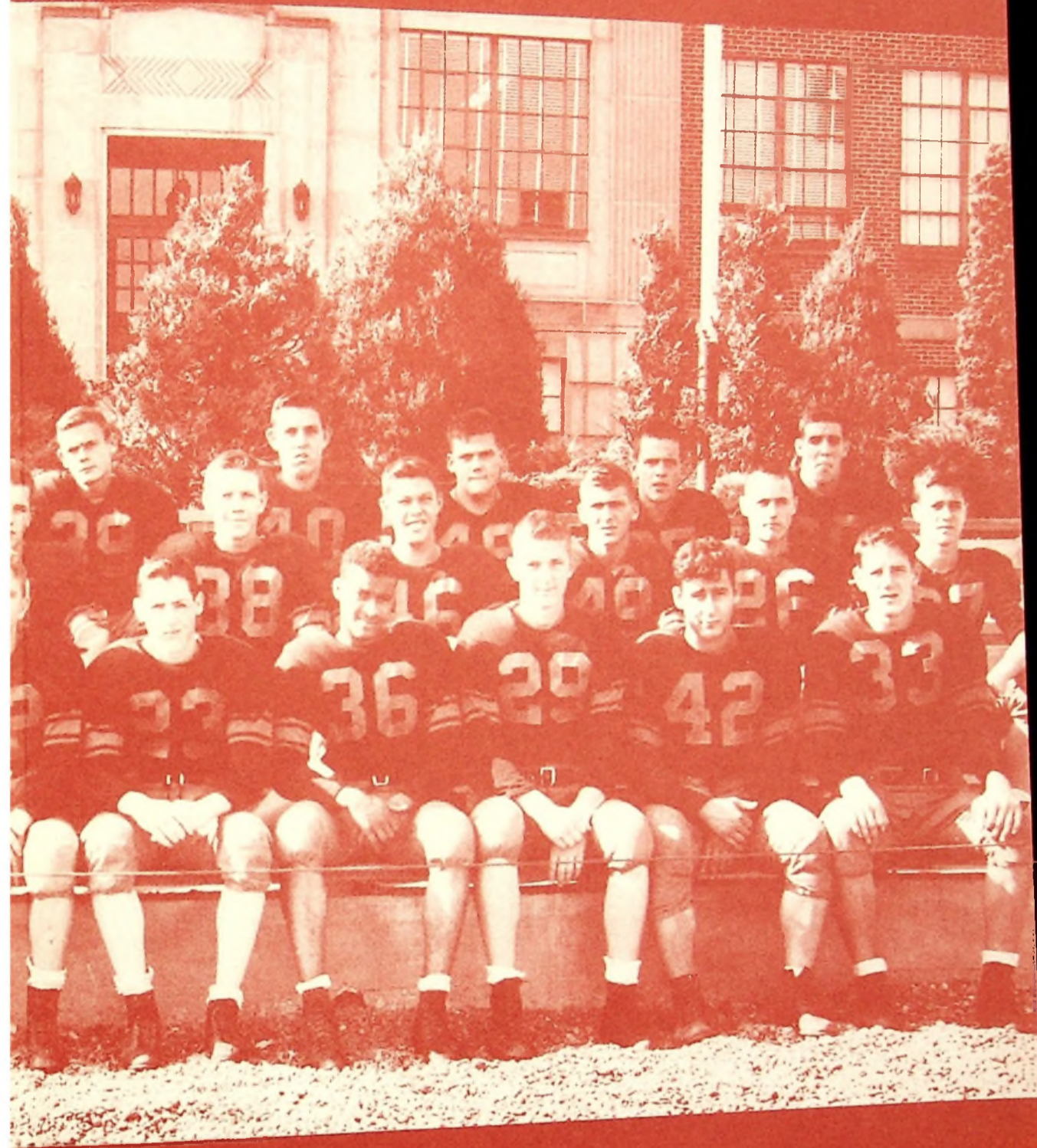




## VARSIY FOOTB

ROW ONE: Ernest Kennard, Richard Jordan, Jack Hicks, Steven Gilmore, Ronald Bill Sparks. ROW TWO: Gale Biggs, Tom Jones, Don Malone, Gene Kuhn, Kell Jarrells. ROW THREE: Dick Mowery, Paul Denning, Bill Boyd, Ronny Payne, M Eulett, Frank Shepherd.





### FOOTBALL TEAM

Wald Damron, Paul Thompson, Herbert Gardner, Charles Dixon, James Ruck,  
Kenneth Hamer, Paul Farley, Donald Smith, Perry Hall, Tom Tipton, Walter  
Merlin Smith, Tom Payne, Richard Entler, John Ward, Joe Walters, Carl









GALE BIGGS  
Senior  
Guard

RONNIE PAYNE  
Junior  
Tackle

ERNEST KENNARD  
Junior  
Guard

PAUL FARLEY  
Sophomore  
Quarterback

CARL EULETT  
Senior  
Guard

KENNETH HAMER  
Junior  
Fullback



WASHINGTON'S QUEEN AND HER COURT

Mary Sue Williams, Patty Arnett, Queen Darlene Williams, Lois Thompson, Beatrice Stevens, and Carole Brooks.





TOM TIPTON  
Sophomore  
Quarter Back



CHARLES DIXON  
Sophomore  
Center



JOE WALTERS  
Senior  
Tackle



PAUL THOMPSON  
Sophomore  
End



GENE KUHN  
Junior  
End



WALTER JARRELLS  
Sophomore  
Full Back



DON MALONE  
Junior  
Guard



DON SMITH  
Junior  
Tackle



MERLIN SMITH  
Junior  
Guard



TOM JONES  
Junior  
Guard



JOHN WARD  
Junior  
Tackle



RONALD DAMRON  
Junior  
Quarter Back



HERBERT GARDNER  
Freshman  
Half Back



BILL BOYD  
Sophomore  
Guard



PERRY HALL  
Junior  
Half Back





Crowd goes wild  
as Washington  
romps over East.



Will we make it?? Yes, we did!!



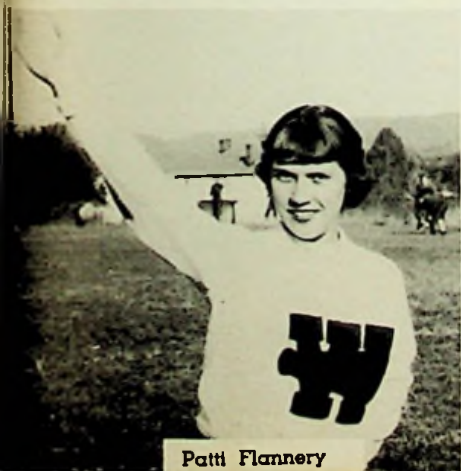
Phyllis Smith



Carole Brooks



Sue Gilkerson



Patti Flannery



Karol Hamer



Shirley Kitchen



WASHINGTON S.O.C.  
CHAMPION FOR THIRD  
TIME IN 1952



Mr. Rolf congratulates Coach Everling upon receiving the S. O. C. Trophy for the third consecutive year. Mr. Caldwell of Waverly is making the presentation.



FOOTBALL MANAGERS

Ralph Hill, George Ober, and Ralph Denning.



Gordon Williams, Freshman Coach; Harold E. Everling, Head Coach; Leon Davis, Assistant Coach.



FOOTBALL COACH

Harold E. Everling

Why the look of determination?  
Waverly???





## FRESHMAN FOOTBALL

The Freshman, Coached by Mr. Williams, played their first game at New Boston where they battled to a 7-7 tie. Next came Portsmouth who seemed to have too much for our boys. The game ended and the score stood 20-0 in favor of Portsmouth. Our last game saw Portsmouth again out in front to the score of 14-0.

### Schedule for 1952-53

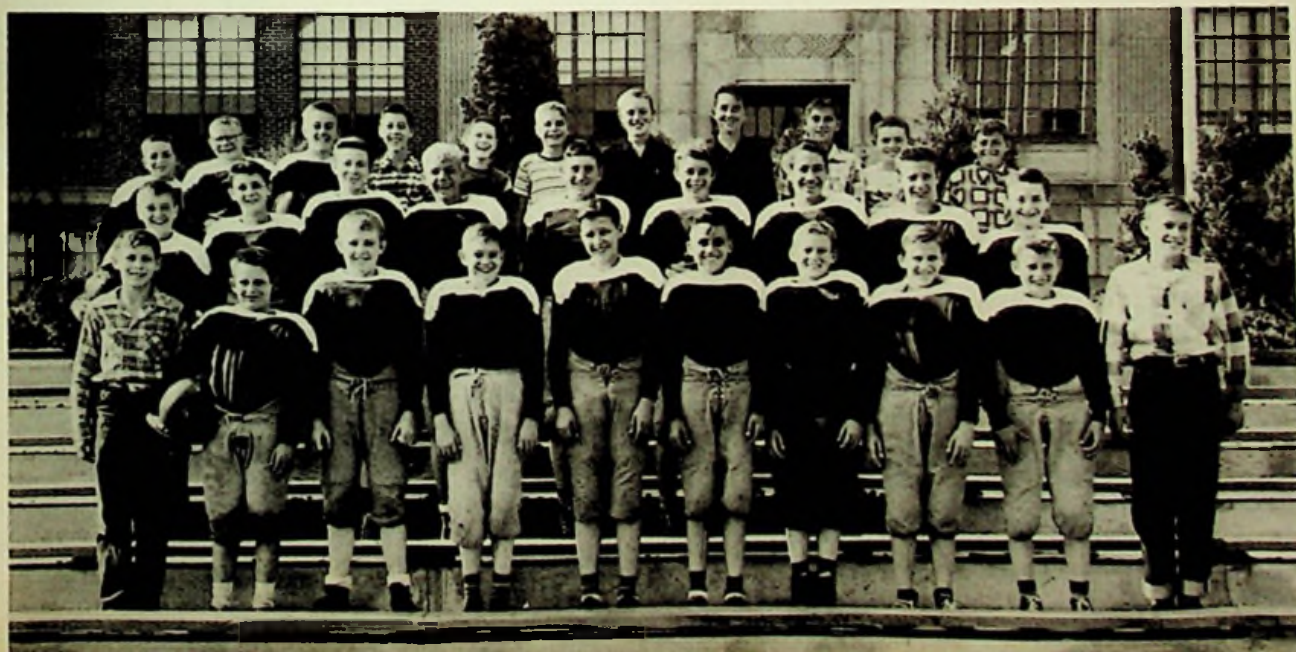
New Boston .....	7	Washington .....	7
Portsmouth .....	20	Washington .....	0
Portsmouth .....	14	Washington .....	0

ROW ONE: Ronald Browning, Howard McCann, Ronald Mowery, Mike Likens, Richard Gilkerson, Garry Cook, Jerry Hopkins. ROW TWO: Franklin Shortridge, W. C. Smith, Ronald Shepherd, Don Reynolds, Hurst Klover, James Whitman. ROW THREE: Jerry Lewis, David Canter, Homer Hudson, Stanley Howard, Russ Malone, Bernard Lester, Philip Melvin.

## EIGHTH GRADE FOOTBALL

The Eighth Grade football team was coached by Mr. John Collins of Dry Run School. Only one game was played this year. This game was played at Friendship. The score was 27-0 in favor of Friendship.

ROW ONE: Mgr. Ralph Simpson, Robert Nichols, Mike Haffner, James Medley, George Perry, Jack Frost, William Meyers, James Madden, Carl Rhea, Mgr. Roger Floyd. ROW TWO: Douglas Hall, Gary Wade, Carl Crisp, Jack Boyd, Howard Carr, John Hall, Otis Sapp, Robert Sparks, David Wolery. ROW THREE: Jerry Staten, Eugene Stillwell, Jerry Belford, Jack Bridwell, Gary Kenyon, John Mershon, Bernard Webb, William Rose, Paul Ratliff, Mike Brescia, Stanley Webb.







OUR FOOTBALL QUEEN—DARLENE WILLIAMS





PATTY ARNETT  
Junior Attendant



LOIS THOMPSON  
Sophomore Attendant



CAROLE BROOKS  
Senior Attendant



MARY SUE WILLIAMS  
Freshman Attendant



BEATRICE STEVENS  
Eighth Grade Attendant





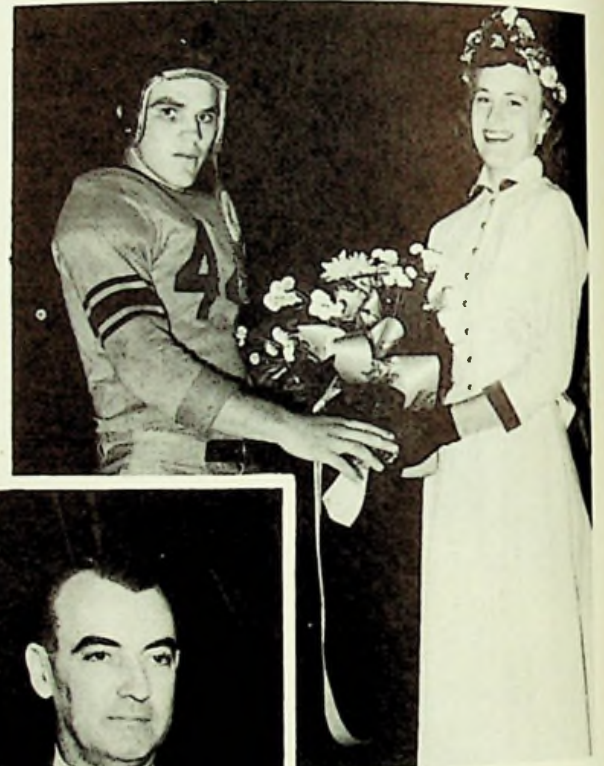
Coach Everling congratulates Frank Shepherd with most valuable player trophy.



Jack Hicks receives Newberry Trophy for school's most valuable player.



Mr. Rolf and Mr. Williams enjoy one of Mr. McCowen's jokes at the annual football banquet.



Queen Darlene Williams receives bouquet from Captain Jack Hicks.



Mr. E. R. McCowen, speaker at 1952 banquet.



Rev. Butterbaugh and Mr. Davis attending the 1952 banquet.



ALL STARS FROM W. H. S.  
Ronnie Payne, Frank Shepherd, Dick Mowery,  
Carl Eulett, Jack Hicks.





**VARSITY BASKETBALL TEAM**

Left to right: Richard Entier, Richard Mowery, Kenneth Hamer, Joe Hackworth, Coach Leon Davis, John Knauif, Paul Farley, Jerry Bower, Paul Arnett.



SCENES FROM THE CLASS A BASKETBALL TOURNAMENT AT ATHENS



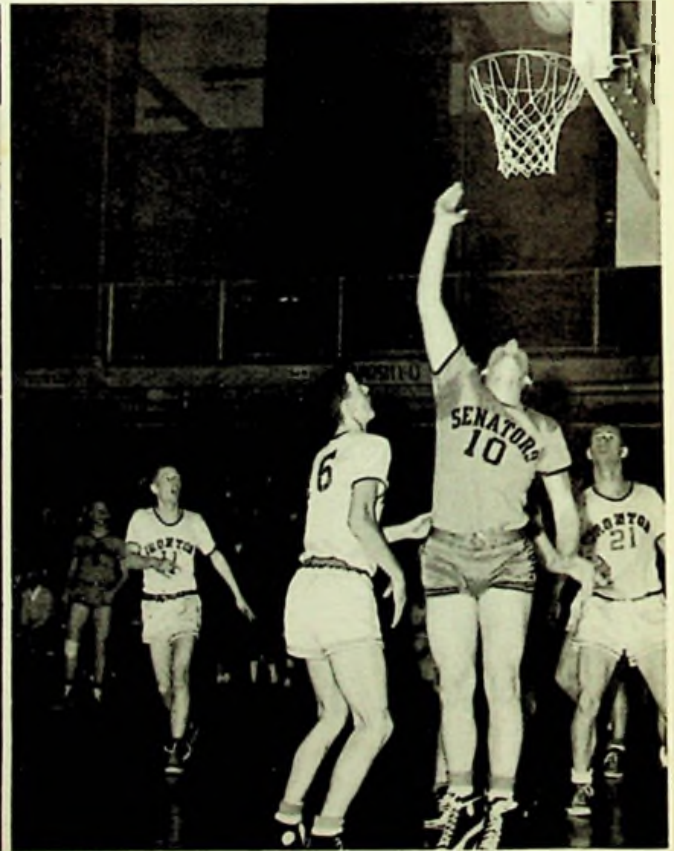
A shot blocked by John Knaufl.



Suspense!



An attempt to "tip in" by Charles Dickson.



Kenneth Hamer scores for Washington.





Jerry  
Bower  
"Guard"  
5' 8" Junior



Charles  
Dickson  
"Center"  
6' 2" Sophomore



Albert  
Mann  
"Forward"  
6' Senior



John  
Knaulf  
"Forward"  
6' 1" Senior



Kenneth  
Hamer  
5' 11" Junior



### CHEERLEADERS

Carole Brooks, Shirley Kitchen, (Standing) Karol Hamer, (Splits)  
Phyllis Smith, Patti Flannery, Sue Gilkerson.  
"A Cheer a Day Keeps the Team in Play"



Richard  
Mowery  
"Forward"  
5' 11" Junior



Richard  
Entler  
"Forward"  
6' 2" Senior



Paul  
Arnett  
"Forward"  
6' 1" Junior



Joe  
Hackworth  
"Guard"  
5' 9" Senior



Paul  
Farley  
"Guard"  
6' Sophomore





### RESERVE BASKETBALL TEAM

Front Row: Hurst Klever, Ronald Damron, Gary Knauff, John Walker, Homer Hudson. Second Row: Raymond Jones, Roger Lowe, Wayne Jayne, Tom Wilson, John Ward, Bob Swords, Tom Tipton.

### FRESHMAN BASKETBALL TEAM

Front Row: Jerry Hopkins, Ronald Meyers, Walter Partlow, Ronald Browning. Second Row: Ronald Mowery, Denver Stevens, Herbert Gardner, Horton Greene, William Hall.





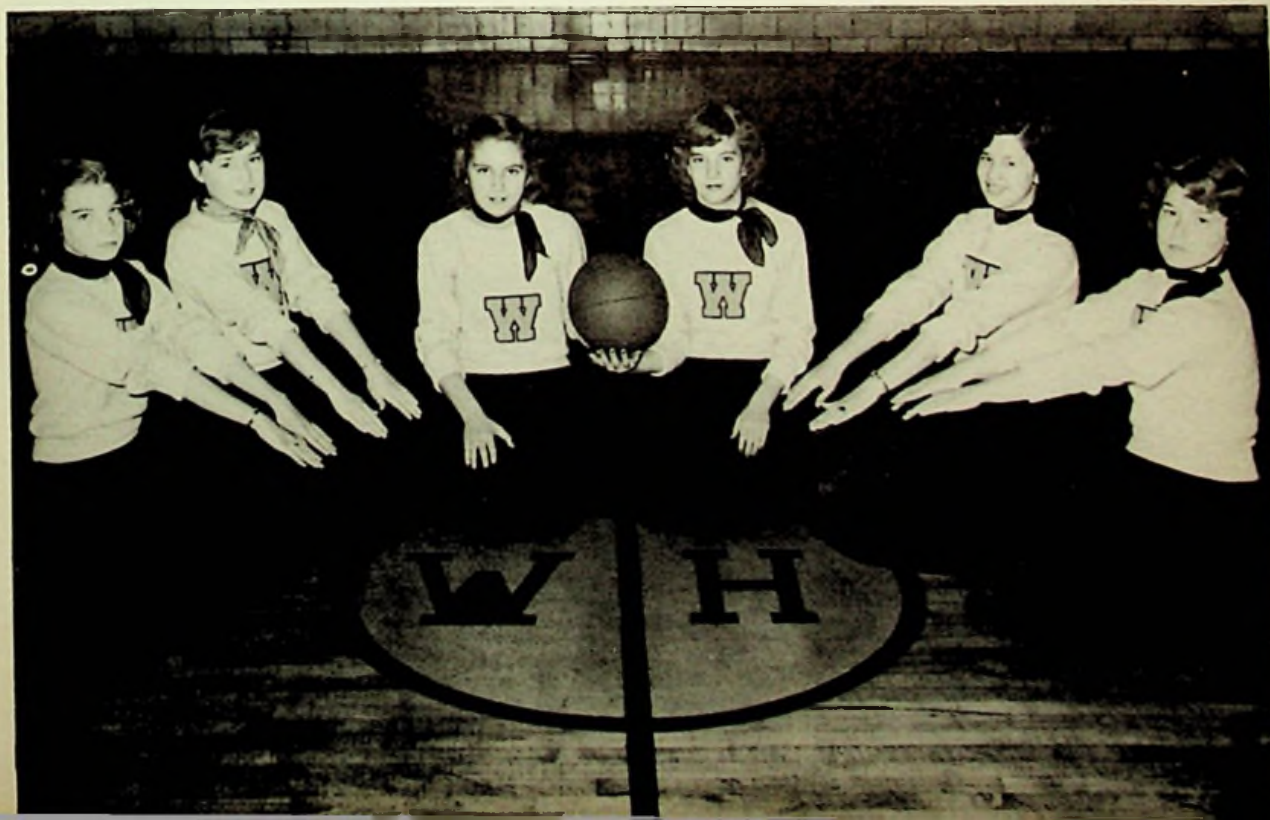


### EIGHTH GRADE BASKETBALL TEAM

Standing: Richard Wessel, Gerald Belford, Gary Wade, Donald Pontious, Paul Howard, Walter Cottrell, Larry Dugan, William Craiger, Mike Brescia, Bill Meyers. Seated: Carl Crisp, Jack Bridwell, Robert Sparks, George Perry, Fred Shupert.

### EIGHTH GRADE CHEERLEADERS

Left to right: Shirley Hall, Sandra DeLong, Phyllis Pollard, Beatrice Stevens, Barbara Vaughn, Patty Webb.







Top. Basketball Coaches:  
 Mr. Gordon Williams, Reserve Coach.  
 Mr. Leon Davis, Varsity Coach.  
 Mr. Earl Throckmorton, Eighth Grade Coach.  
 Top. Varsity Managers:  
 James Booth, Leon Royce, Bob Nichols, David Wolery, Clarence Craycraft.

The duties of a basketball manager are many. Some of these include the packing of uniforms before the games, keeping score books in order, supplying the coaches with necessary equipment, cleaning of basketballs, keeping the gym office and supply room clean and orderly and the washing of uniforms before Tournaments.

Bottom:  
 Coach Leon Davis shows the boys a play.  
 Bottom:  
 "This one should work", says Coach Davis.

**WASHINGTON BASKETBALL SCHEDULE 1952-1953**

Washington	51	Rarden	45	Nov. 26
Washington	53	Waverly	59	Dec. 2
Washington	69	Minford	89	Dec. 5
Washington	44	South Webster	66	Dec. 12
Washington	62	Chesapeake	81	Dec. 13
Washington	47	Notre Dame	63	Dec. 17
Washington	56	Wheelersburg	61	Dec. 19
Washington	51	Otway	37	Jan. 2
Washington	61	Green	57	Jan. 9
Washington	71	New Boston	87	Jan. 13
Washington	70	Clay	75	Jan. 16
Washington	57	Lucasville	54	Jan. 23
Washington	51	McDermott	49	Jan. 30
Washington	69	Wheelersburg	68	Jan. 31
Washington	68	Minford	81	Feb. 3
Washington	77	Oak Hill	90	Feb. 6
Washington	56	East	84	Feb. 7
Washington	72	McKell	68	Feb. 13

**CLASS A TOURNAMENT AT ATHENS**

Washington	66	Ironton	63	Feb. 24
Washington	60	Athens	75	Feb. 28



*Serpent Mound—Great Pre-historic Shrine—Adams County*





*The Ohio Erie Canal—1845—Cleveland to Portsmouth.*









## HONOR SOCIETY

The National Honor Society, composed of Junior and Senior boys and girls, is a select group, for members of the society must maintain at least a "B" average throughout their high school years. Before a student is inducted into the society, four things are taken into consideration—Character, Leadership, Service, and Scholarship; Thus the purpose of the Honor Society is to uphold these high ideals.

ROW ONE: Norma Miller, Shirley Jordan, Betty Elrod, Joyce Smith, Carole Brooks, June Love, Marion Meade. ROW TWO: Sara Lauder, Dolores Manning, Phyllis Smith, Joyce Bradshaw, Geneva Fields, Patsy Sparks, Laura Thomas. ROW THREE: Lanora Meade, Clara Sheets, Joan Callihan, Janet Brown, Betty Pruitt, Alice Mershon, Ruth Quickel, Carolyn Kincaid. ROW FOUR: Richard Elrod, Betty Lewis, Virginia Smith, Betty Rollins, Carol Millison, Patty Arnett, Patty Andre, Ronald Staten. ROW FIVE: Jerry Bower, Kenneth Hamer, Paul Whaley, Tom Reiser, Charles Conley, Kenneth Cooper.



## SENIOR SURVEY

Senior Survey is a review of the four basic subjects—English, History, Mathematics and Science. After this review is given, a general statewide test, called the Senior Test, is taken. Students ranking high on this test are often awarded scholarships to well-known colleges and universities.

ROW ONE: Marion Meade, June Love, Joyce Smith. ROW TWO: Ronald Staten, Paul Whaley.

Geneva Fields, a Junior, ranked fifth in the state in the Ohio History test given on the campus of Ohio University in November.





### PRELIMINARY TESTS

These students studied under the supervision of their respective teachers, and took the various preliminary scholarship tests given by the state in March. The three highest in each subject then took the final scholarship tests in May at Portsmouth High School.

ROW ONE: Shirley Jordan, Sara Lauder, Lenora Meade, Geneva Fields, Virginia Smith, Betty Elrod, Sue Gilkerson, Carole Brooks. ROW TWO: Letitia Scheid, Donna Gyor, Tessanne Cooper, Janet Nibert, Carol Millison, Ronald Damron, Richard Elrod, Phyllis Smith, Joyce Smith, Laura Thomas. ROW THREE: Charlene Smith, Joan Arnett, Patsy Sparks, Carol Kincaid, Jerry Carroll, Charles Conley, John Walker, Betty Pruitt, June Love, Patty Andre. ROW FOUR: Janet Brown, Paul Whaley, Dorothy Kitchen, Lucy Caudill, Joan Callihan, Barbara McCall, Alice Mershon, Marion Meade, Lois Thompson. ROW FIVE: Walter Gregory, Alberta Howard, Judy Howell, Tom Tipton, Carl Fields, Jack Andrews, John Shupert, Jim Ruark, Roger Lowe. ROW SIX: Ronald Staten, Joe Biggs, Jerry Bower, Edward Gulick, Tom Reiser, Ronald Roth, Bill Wolery, Kenneth Cooper.

### TROPHY WINNERS

LEFT TO RIGHT: John Walker, Geneva Fields, Jerry Bower, Paul Whaley, Marian Meade.

Trophies are presented annually to the four students making the highest ratings on the State Scholarship Tests. In 1952 there was a tie between Marion Meade and Paul Whaley and a duplicate award was made.

The ratings, regardless of classification, were as follows:

District		State
Geneva Fields .....	1	(English X) .....
Marian Meade .....	4	(American History) .....
Paul Whaley .....	4	(American History) .....
John Walker .....	5	(English IX) .....
Jerry Bower .....	6	(English X) .....







## SCHOLARSHIP RATINGS

Although these students did not win trophies, their ratings on the Scholarship Tests were excellent and they should be commended for a job well done. They have brought high honors not only to themselves, but to their school as well.

In the high school, by District Division, the ratings were as follows:

Joe Biggs .....	4 .....	(General Science)
Bill Wolery .....	5 .....	(Biology)
Ronald Roth .....	6 .....	(American History)
Patsy Sparks .....	6 .....	(Spanish)
Alberta Howard .....	7 .....	(Algebra)
Lois Thompson .....	7 .....	(Algebra)
Charlene Smith .....	9 .....	(English IX)

In the County Tests given to the Eighth Grade, Joe Meade was second, Gary Knauff, third, and Joyce Basford, ninth. Joe and Gary were among the high 1% in Scioto County.

ROW ONE: Joyce Basford, Lois Thompson, Charlene Smith, Alberta Howard, Patsy Sparks, Joe Meade. ROW TWO: Ronald Roth, Joe Biggs, Gary Knauff, Bill Wolery.

## LIBRARIANS

The student librarians assist in checking books in and out of the school library. They catalogue and number new books, as well as repair and maintain all books on the shelves. Also through their help, the magazines and reference books are kept in an orderly manner.

ROW ONE: Joyce Nolder, Ruth Quickel, Alice Mershon. ROW TWO: Joyce Frazier, Laura Priest, Shirley Kirker. ROW THREE: Carol Millison, Donna Gyor, Alberta Howard, Jean Daulton, Bonnie Lyons, Pauline Wedebrook. ROW FOUR: Jane Geyer, Nancy Hall, Betty Wedebrook, Marlon Meade. ROW FIVE: Patsy Sparks, Hilda Fultz, Joyce Smith, Loretta Renn, Kathryn Beekman, June Love, W. C. Smith.







### JR.—SR. ENGLISH CLUB

These clubs are for the purpose of maintaining an interest in and a desire for further study of the English language and literature. One of the outstanding meetings of the year is at Christmas when the two clubs unite and have an outside speaker. This year the speaker was Miss Pauline Walden.

Sponsors of the club are Mrs. Amy Mitchell, Junior-Senior club; Mrs. Hortense Burris, and Miss Helen Ratliff, Freshman-Sophomore club.

ROW ONE: L. to R. Shirley McCall, Norma Miller, Garnet Richards, Donna Gyor, Carole Brooks, Kathleen Lucas, Dolores Roberts. ROW TWO: Alwilda Tieman, Lorraine Wilburn, Joyce Smith, Geneva Fields, Alta Montgomery, Sara Lauder, Jake Dunaway, Sam Erlenwein. ROW THREE: Carol Millison, Betty Wedebrook, Clara Sheets, Sue Gilkerson, Ernest Kennard, Ronald Damron, Betty Pruitt, Lenora Meade, Betty Schaffer. ROW FOUR: Virginia Smith, Betty Lewis, Karol Hamer, Patti Flannery, Joyce Bradshaw, Laura Thomas, Carolyn Kincaid, Dewey Conley. ROW FIVE: Jim Ruark, Joan Callihan, Barbara McCall, Pat Arnett, Gayle Scott, Carol Reynolds, Marion Meade, June Love. ROW SIX: Janet Brown, Jackie Litteral, Janet Adams, Pat Andre, Betty Sanford, Donna Davis, John Berry. ROW SEVEN: Ronald Staten, Rodney Caudill, Joe Hackworth, Danny Mann, Tom Reiser, Jim Richardson, Bob Cooper, Joe Walters. ROW EIGHT: Jerry Kessinger, Ronald Roth, Dave Beekman, George Justice, Edward Gulick, Paul Whaley.

### FRESHMAN—SOPHMORE ENGLISH CLUB

ROW ONE: Virgie Howard, Mary Lou Martin, Joyce Basford, Carol Smith, Dorothy Eulett, Anna Mae Murphy, Janet Howe, Donna Canter, Mary Lou Rice. ROW TWO: Russell Murta, Glenn Howard, Phyllis Burchett, Janet Sissle, Lovella Fairchild, Dolores Hall, Lula Ratliff, Lois Hayslip, Loretta Brown, Carol Bertrum. ROW THREE: Linda Jones, Mary Wessel, Gaynell Leedy, Marlene Booth, Letitia Scheid, Patty McGlothlin, Nancy Evans, Joe Meade, Jerry Lewis. ROW FOUR: Barbara Gray, Garnet Conley, Paula Flower, Mary Kessinger, Dolores Fields, Dorothy Varney, Mary Bertrum, Jim Royce, Carol Kline, Louise Smith, Peggy Bean. ROW FIVE: Katherine Beekman, Janet Nibert, Phyllis Goodman, Mildred Weaver, Dorothy Wear, Tess Ann Cooper, Lillian Adams, Mary Williams, Carol Jackson, Ida Baker, Joan Brickey. ROW SIX: Patty Morgan, Linda Hamilton, Betty Rayburn, Shirley Shivener, Nancy Hall, Rosemary Crowe, Louella Knauff, Rosemary Bradley, Beulah Johnson. ROW SEVEN: Mickey Lykens, Joanne Ingles, Dorothy Logan, Connie Jayne, Betty Killen, Betty Meade. ROW EIGHT: Anita Jordan, Alberta Howard, Joan Arnett, Charlene Smith, Suzanne Jones, Barbara Barber, Dorothy Kitchen, Barbara Young. ROW NINE: Richard Phillips, Bob Journey, Walter Gregory, Joe Lauder, Don Reynolds, Lois Thompson, Judy Howell. ROW TEN: Joe Biggs, James Booth, Charles Dickson, Gary Knauff, John Walker, John Gayhart, Ruth Shinkle, Sandra Warren.







### LATIN CLUB

The Latin Club is organized to create an interest in the study of Latin and Roman Civilization. Members are encouraged to learn of our great heritage from the Romans. The sponsor is Mrs. Margaret Yonovitz.

ROW ONE: J. Arnett, G. Leedy, M. Booth, A. Murphy, M. Martin, G. Conley, L. Scheid, J. Meade.  
 ROW TWO: K. Beekman, D. Roberts, C. Jackson, J. Gayhardt, G. Knauff, J. Walker, C. Kincaid.  
 ROW THREE: J. Booth, J. Howell, A. Howard, C. Smith, W. Gregory, J. Nibert, S. Warren, J. Biggs, L. Thompson, J. Bower.

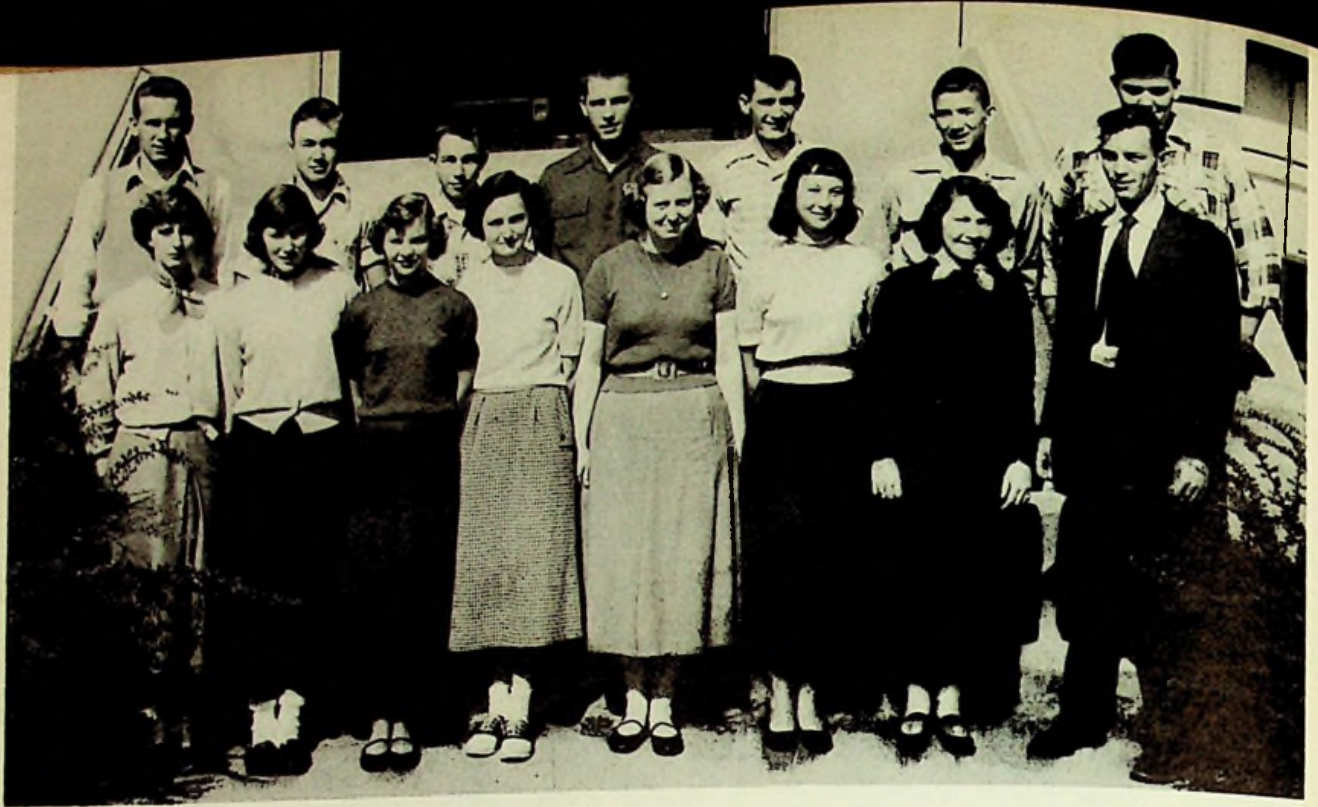
### SPANISH CLUB

The Spanish Club is made up of students who have taken or who are taking at least one year of Spanish. A course in Spanish helps a student to become better acquainted with the customs and ideals of our neighbors in the South. The Spanish language is a Romance language and is one of the most interesting to study. The sponsor is Mrs. Kathryn Hopkins.

ROW ONE: Shirley Kitchen, Sue Gilkerson, Karol Hamer, Carole Brooks, Wilma Howard. ROW TWO: Ruby Williams, Francis Wilburn, Carolyn Kincaid, Donna Gyor, Patsy Sparks.







### MATH CLUB

The Math Club includes all students who average A or B in Mathematics. The purpose of this organization is to promote a greater interest in Algebra and related subjects. The sponsor is Mr. Williams.

ROW ONE: Betty Pruitt, Gayle Lakin, Norma Miller, Geneva Fields, Marian Meade, June Love, Joyce Smith, Mr. Williams. ROW TWO: George Justice, Ronald Staten, Jerry Carroll, Kenneth Hamer, Paul Whaley, Jerry Bower, Joe Walters.

### CHEMISTRY CLUB

The Chemistry Club is composed of members of the Chemistry and Physics Classes. It is the purpose of the club to increase interest in science through social activities and informal discussions. The sponsor is Mr. Ketter.

ROW ONE: Joyce Smith, Ronald Staten, Pat Flannery, Paul Whaley, June Love, Marion Meade, Mr. Ketter. ROW TWO: Alta Montgomery, Garnet Richards, Carolyn Kincaid, Carol Millison, Geneva Fields, Madonna McCowen, Nancy Peters, Dewey Conley. ROW THREE: Lawrence Royal, Charles Conley, Bill Wolery, Carl Eulett, Jerry Kessinger, Jim Richardson, Bob Cooper. ROW FOUR: Jerry Bower, Steven Gilmore, John Hopkins, Ronald Roth, Fred Cooper, Danny Mann, Edward Gulick.







### FUTURE HOMEMAKERS CLUB

Future Homemakers of America, Washington Chapter, is a member of the National Organization of pupils studying homemaking. It offers opportunity for the further development of social qualities, and promotes better home life for the students and members of their families. The theme for 1952 is "Homemaking Training Today Brings Happier Homes Tomorrow". The sponsor is Mrs. Melvin.

ROW ONE: B. Mangus, R. Hall, N. Royal, C. Leedy, M. Howard, W. Fife, L. Fairchild, C. Smith.  
 ROW TWO: D. Hilliard, J. Sowards, A. Abrams, S. Shivener, D. Manning, C. Burtrum, M. Burtrum, G. Perry, B. Schaffer. ROW THREE: S. Dingus, M. Medley, B. Young, B. Meade, C. Stout, R. Frailey, P. Roberts, M. Lowe. ROW FOUR: J. Skaggs, B. McCall, N. Smith, N. Schackart, E. Lackey, B. Killen, D. Cooper, D. Smith. ROW FIVE: R. McCall, A. Lackey, B. Rollins, S. Nichols, B. Benson, J. Price, B. Sanford, Mrs. Melvin, advisor.

### INDUSTRIAL ARTS CLUB

The Industrial Arts Club provides extra time for additional shop work. Each year the members through various ways purchase some equipment for the Industrial Arts Department. The annual club outing is held near the close of the school year. The sponsor is Mr. Moore.

ROW ONE: Paul Venier, Joe Lauder, Robert Applegate, Mr. Moore. ROW TWO: Craddie Frye, David Ishmael, Ronald Pollard. ROW THREE: Jerry Kessinger, Charles Liston, Karl Kuhn, David Horsley, Jerry Hall.







### GIRLS ATHLETIC CLUB

The Girls Athletic Club is organized on a competitive basis. In order to become a member a girl must have earned 150 points in a six weeks' period. The purpose of the G. A. C. is to keep the girls interested in athletics and intramural sports. At the end of the school year, letters will be awarded to those who have earned them.

ROW ONE: Barbara Barber, Miss Ratliff, Tess Cooper. ROW TWO: Jackie Litteral, Janet Sissle, Joyce Smith, Betty Schaffer, Phyllis Roberts, Rosetta McNeil, Joyce Frazier, Joan Ingles, Charlene Smith.

### ANNUAL STAFF

ROW ONE: Wilma Howard, Letitia Sheid. ROW TWO: Carole Brooks, Roy Swearingen. ROW THREE: Donna Davis, Jane Hazelbaker, Mildred Weaver. INSERT: Phyllis Smith.







This is what our dress would be like if me lived in Java.



Making cakes with Lime batter.



Secret Operation.



Our future Varsity Team.



Martha at the "steak".



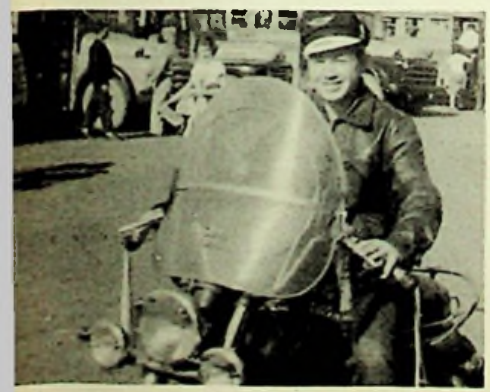
"The Scotts are Coming"



Library day at W. H. S.



Never a dull moment at a PEP meeting.



"Ron", the speed demon.



Getting to the Point.



# SCHOOL LIFE



Rest period for Mr. Reynolds, Mr. Calver and Mr. Pistole, our capable custodians.



A modern "Sir Walter Raleigh"



All aboard that can get aboard!



Million Dollar Smiles from the Newspaper Staff.



Dick's pride and joy! Trophy?? Shirley??



Three minutes almost gone and still Joe can't move!



# SCHOOL LIFE



"Don't Let the Stars Get in your Eyes."



A penny for your thoughts, Jake.



"See you later, Biggsey."



Last Minute Dash



Double Seven of the Junior Class.



"Make Mine Music."



Do you ever get your dates mixed, girls?





Hercules and Wilbur seem to have taken a fancy to Nina and Celeste, while Madelyn, Mr. Shuster and Dr. Brown have problems of their own.



Mr. Quigley (a live corpse) enjoys a joke with grannie; Frankie is interested in Frankenstein; Claude tries to stir Daphne to action; Aunt Mary and Uncle Bob arrange for another funeral.



# "FINDERS CREEPERS"

By DONALD PAYTON

Presented By

THE JUNIOR CLASS

of

WASHINGTON HIGH SCHOOL

MISS HELEN RATLIFF, Director

Wilbur Maxwell, a young boy	Ernest Kennard
Hercules Nelson, age 13	Preston Brickey
Celeste Nelson, Herc's cousin	Karlene Knauff
Nina Quigley, just 13	Sandra Elliott
Frankie, Celeste's sister	Betty Shaffer
Aunt Mary, Hercules' aunt	Darlene Abbott
Uncle Bob, Mary's husband	Tom Jones
Granny, "Unclo" Bob's mother	Nancy Peters
Mr. Quigley, over 75	William Wolcry
Dr. Brown, Mr. Quigley's doctor	Don Malone
Madeline, Mr. Quigley's sister	Phyllis Smith
Harry Schuster, Mr. Quigley's lawyer	Kenneth Cooper
Daphne, maid	Laurann Thomas
Claude, caretaker	Kenneth Hamer



(Seated) Sally Elliot (prompter), Antoinette Lackey (make-up), Patty Andre (prompter). (Standing) George Smith and Tom Reiser (properties), Glenn Frasher, Tom Payne, Ronnie Payne (stage crew). (Not pictured) Betty Rollins (make-up).



# *The Senior Class Presents, Under The Direction Of Miss*



In this scene in a Chicago Cabaret, the waiter (Bob Davis) takes orders from the guests as the Cabaret singer (Darlene Williams) looks on. Guests include (left to right) Jake Dunaway (Clarence Green), Joyce Smith, Carole Brooks (Gladys Merridew), John Hopkins, Alta Montgomery, John Rhea, and June Love (Cabaret Dancer).



In Mrs. Berry's kitchen, Gladys Merridew, (Betty Rose), who has been frightened by a mouse, is standing in the rocking chair. Mrs. Berry. (Wylodine Risner), misses the mouse and hits Aaron Slick, (Sammy Erlenwein), instead. Enjoying the scene is Sis Riggs, (Betty Elrod), while Mr. Merridew, (Russell Cox), looks on grimly.



# Jean Blair, "AARON SLICK FROM PUNKIN CRICK"

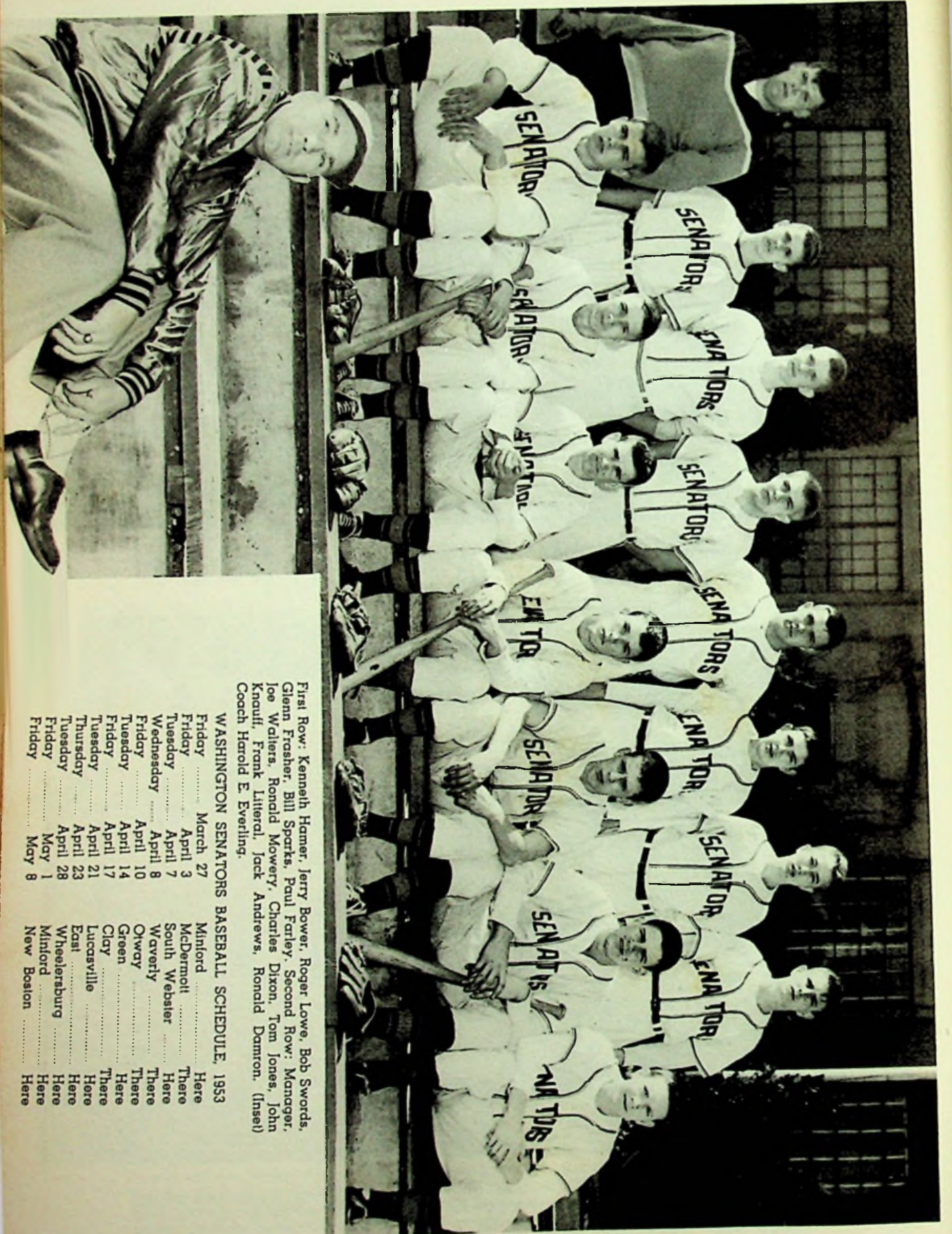


On being chased by a cow, Gladys Merridew (Betty Rose) comments to her Uncle Merridew, (Carl Fields). Looking on is Aaron Slick (Sammy Erlenwein) in the rocking chair. Mrs. Berry (Carol Millison) is peeling potatoes and Sis Riggs (Ruth Frailey) is churning.



This strange exhibition is a group of senior girls who are supposed to look like old farm women. These girls make up the chorus that accompanied the play cast. They are (left to right front row) Jean Daulton, Mary Graham, Bonnie Lyons, Shirley Kirker. (Second row) Alice Mershon, Wilma Howard, Nancy Morrow, Donna Davis, Jane Hazelbaker.





First Row: Kenneth Hamer, Jerry Bower, Roger Lowe, Bob Swords, Glenn Frasher, Bill Sparks, Paul Farley. Second Row: Manager, Joe Walters, Ronald Mowery, Charles Dixon, Tom Jones, John Knouff, Frank Litteral, Jack Andrews, Ronald Damron. (Inset) Coach Harold E. Everling.

WASHINGTON SENATORS BASEBALL SCHEDULE, 1953

Friday	March 27	Minford	Here
Friday	April 3	McDermott	There
Tuesday	April 7	South Webster	Here
Wednesday	April 8	Waverly	There
Friday	April 10	Owney	There
Tuesday	April 14	Green	Here
Friday	April 17	Clay	There
Tuesday	April 21	Lucasville	Here
Thursday	April 23	East	Here
Tuesday	April 28	Wheelersburg	Here
Friday	May 1	Minford	Here
Friday	May 8	New Boston	Here



"PRINTERS THE MODERN WAY"

COMPTON ENGRAVING  
& PRINTING

1412 THIRD STREET

PHONE 3-1911

COMPLIMENTS OF

HERFF-JONES  
COMPANY

ROBERT BURKART - Representative

KOBACKERS  
Portsmouth, Ohio

Everything For School And Office At  
CRICHTON'S

Compliments Of  
E. J. KENRICK



COMPLIMENTS OF

SCHISLER  
PROVISION COMPANY

Fresh and Smoked Meats

STORE  
801 JOHN STREET

PLANT  
SPRING LANE & RAILROAD

CALLIHAN  
BODY SHOP

BODY WORK AND PAINTING

Phone: West Portsmouth 6592

1420 6th St.

West Portsmouth, O.

RICHARD  
A. BROWN

BUILDING CONTRACTOR

West Portsmouth, O.

Phone 7-4621

Compliments Of

U. S.  
LAUNDRY

Compliments Of  
MODERN RADIO-TELEVISION 1637 10th St. IDEAL MILK COMPANY Portsmouth, O. BORDEN'S DAIRY 237 2nd St. Portsmouth, O.





VISIT  
CHURCH  
REGULARLY

BARQ  
BOTTLING CO.

ED. HERBOLD, Mgr.

Comparison Proves Roberts' Values Greater

**ROBERTS**  
*The Diamond Store*

421 Chillicothe St.

Forestdale Auto  
Radio Service

1215 Calvert Lane West Portsmouth, O.  
DON HINZE Prop.

"COOPER'S  
WOOD SHOP"

CABINETS — FURNITURE  
ALL TYPES OF WOOD WORK

1603 10th St. West Portsmouth, O.

THE STANDARD  
SUPPLY COMPANY

PLUMBING — ELECTRIC — MILL  
AND MINE SUPPLIES

1004 Findlay St. Portsmouth, O.  
PHONE 3-1121

Phone 3-4351

SAGRAVES  
Electric Company

ELECTRICAL CONTRACTORS  
COMMERCIAL, INDUSTRIAL AND  
RESIDENTIAL WIRING

1661 11th St. Portsmouth, O.

AEH'S FOOD MARKET  
Portsmouth, O.

"Always A Washington Booster"  
COOPER AND FERREL AUTO SALES

Compliments Of  
A FRIEND



"THE SILVER STORE"

CARR'S  
JEWELRY STORE

811 Gallia St.

Phone 2-7571

FEEDS — CHICKS AND  
POULTRY SUPPLIES

WRIGHT  
HATCHERIES

Main St.  
Peebles, O.

Phone 10

430-432 2nd St.  
Portsmouth, O.

Phone 2-3261

DAVIS GROCERY

1127 Calvert Lane West Portsmouth, O.

Phone 9241

Compliments Of

OHIO  
CONSOLIDATED  
TELEPHONE CO.

Compliments Of

A FRIEND

Phone West Portsmouth 6443

WEST END  
ELECTRIC CO.

ELECTRICAL CONTRACTING

R. J. YUENGER, Owner

710 10th St.

Phone 2-4181

Portsmouth, O.

CHRISTIAN  
LUMBER CO.

1403 4th St.

West Portsmouth, O.

MORGAN BROTHERS JEWELERS  
DAVIS AUTO BODY SHOP'

KOPY KAT  
ATLAS FASHIONS

WEST PORTSMOUTH BLOCK COMPANY  
S. S. KRESGE & COMPANY



PIATT  
FUNERAL  
HOME

926 9th St. Portsmouth, O.

Phone 2-4071

BEST WISHES FROM

Mr. and Mrs. Donald Brooks  
Mr. and Mrs. Oran Hazelbaker  
Mr. and Mrs. George Flannery  
Mr. and Mrs. Oscar Gyor  
Mr. and Mrs. Robert Lyons  
Mr. and Mrs. Frank Millison  
Mr. and Mrs. Thomas Royce

CAMEO  
RESTAURANT

"For A Bit O' Sweet Or  
A Bite To Eat"

839 Gallia St. Open 24 Hours

FRANCIS R.  
FREEHILL

BUS SERVICE

2003 Galena Pike West Portsmouth, O.

NORMAN  
KITCHEN

GENERAL AUTO REPAIRS

Phone 7-0162 825 4th St.

PORTSMOUTH PRESCRIPTION  
PHARMACY

Wurster Drug Co., Inc.  
THE REXALL STORE

Public Phone Prescription Dept.  
3-3521 2-1581

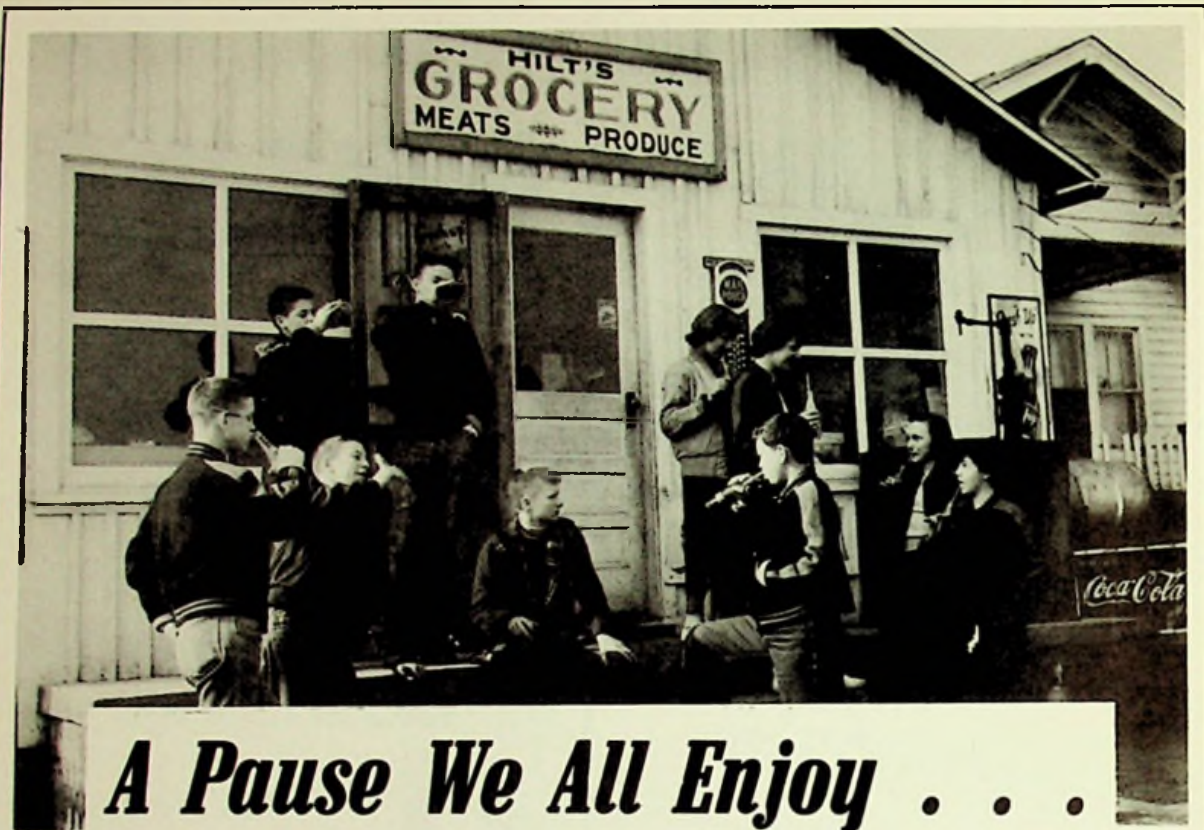
"Save With Safety"  
"Over 55 Years Of Faithful Service"

HIBBS HARDWARE CO.  
Wholesale Hardware

MILLER'S STORE  
Buena Vista, O.

EMRICK FUNERAL HOME Phone 2-1811  
Ralph F. Scott, Mgr. Don Wolfe, Ass't





*A Pause We All Enjoy . . .*

Dial 2-4251

JOHNSON'S  
Automatic Heating

COAL — GAS — OIL FURNACES  
Oil Or Gas Conversion Burners

2034 Robinson Ave. Portsmouth, O.  
Dwain (Buck) Johnson



BOTTLING COMPANY  
OF PORTSMOUTH

2415 Chillicothe St. Portsmouth, O.  
Phone 2-8461

Compliments Of Your

Sheriff

MR. BURL E. JUSTICE

GEMPERLINE

FURNITURE CO.

612 2nd St. Portsmouth, O.

RAY O'DELL

Interior Decorating

Phone W. Ports. 2391 Friendship, O.

ATLAS FASHIONS

Welding

WORK'S GARAGE

Friendship, O.



Compliments Of

A FRIEND

To You Who Made The Grade—

CONGRATULATIONS, Class of '53

DRINK



IN BOTTLES

MARTING'S

Portsmouth

Ohio

Where FOOD Is Really Tasty

Phone 9-3371

Tourist Information

C. & C.  
RESTAURANT

HARRY & PHYLLIS CASE, Props.

717 2nd St.

Portsmouth O.

DRUGS    SUNDRIES    PRESCRIPTIONS

STAHLER'S  
PHARMACY

GEORGE F. WELDE, Prop.

The Drugstore of Service And Economy

208 Market St.

Phone 2-3171

CAROLINA  
LUMBER CO.

"Everything To Bulld Anything"

1011 Lincoln St.

Portsmouth, O.

PORTSMOUTH  
MOTORS, INC.

1112 Gallia St.

Portsmouth, O.

VAUGHTER'S SHELL STATION    ADAMS BAKING COMPANY    KIRKENDALL SERVICE STATION  
11th & Offnere St.    Pan Dandy Bread    Coles Park



NEWMAN'S  
TIN SHOP

ROOFING AND SHEET METAL

Stanley Newman, Owner Phone 2-4061

434 2nd St. Portsmouth, O.

W. L. WILHELM  
Jeweler

507 Chillicothe St. Phone 2-7851

STANDARD  
OIL COMPANY

2nd & Madison Sts. Portsmouth, O.

Compliments Of

ROBERTS  
JEWELRY CO.

HENRY  
OBERLING  
MOTOR CO.

DODGE — PLYMOUTH — DODGE

"JOB RATED TRUCKS"

924 Gallia St. Phone 3-2681

DIAMONDS — WATCHES

ZOELLNER  
JEWELRY CO.

3rd & Chillicothe Portsmouth, O.

KIRBY'S  
FLOWERS

Gallia & Findlay Sts. Portsmouth, O.

DON C. STOCKMAN & SONS  
General Merchandise

ATLAS FASHIONS

HERRMANN'S QUALITY MEATS  
221 Market — 913 Gallia — 2640 Gallia



## HALL AND WATTS

Concrete and Cinder Blocks

BUILDING SUPPLIES

Galena Pike  
Phone 9342

West Portsmouth, O.

## Stapleton Office Supply Company

STATIONERS — OFFICE OUTFITTERS —  
SCHOOL SUPPLIES  
SMITH-CORONA TYPEWRITERS

829 6th St.

Portsmouth O.

"Courtesy And Service"

## SAMUEL LEVI AND COMPANY Furniture

840-844 Gallia Street

Next To LaRoy Theater

SHOP LEVI'S

SAVE MONEY!

## HARRY HAMILTON GARAGE

AUTO PAINTING AND  
GENERAL REPAIRS

Galena Pike

West Portsmouth, O.

Phone West Portsmouth 9348

## Skinner's Sohio Service Station

Phone West Portsmouth 9641

2021 Galena Pike West Portsmouth, O.

Come In Often—

We Like To See You And Serve You

DELICIOUS FRESH FRUIT



NOEL BRIDWELL  
Gen'l Merchandise Friendship, O.

MARVIN JONES  
Lincoln And Mercury

DAULTON'S GROCERY  
402 2nd Street



# FROWINE CONSTRUCTION CORPORATION

General Contractors

PHONE 3-4451

821 PROSPECT STREET

PORTSMOUTH, OHIO

## HERMS FLORAL CO.

Congratulations To The Class Of "53"

837 6th St.

Portsmouth, O.

Phone 3-1641

Compliments Of

## HILT'S GROCERY

Phone West Portsmouth 6391

332 Calverts Ln.

West Portsmouth, O.

## C. M. DONALDSON

AND

## ASSOCIATES

## Architects

National Bank Building

Portsmouth, O.

APPLETON'S GROCERY

CUNNINGHAM HARDWARE

ATLAS FASHIONS



POLLY'S  
EAT SHOP

Route 52

Friendship, O.

Compliments Of

HUSTON  
PONTIAC  
COMPANY

Compliments Of

WEST SIDE  
DRY CLEANERS

West Portsmouth, Ohio

Gallia-Lincoln-9th Streets

Portsmouth, O.

LOWE'S QUICK SERVICE  
COAL COMPANY

10th & HUTCHINS STREETS

PHONE 3-3711

BEST GRADES WEST VIRGINIA COALS  
LUMP, EGG, STOVE AND NUT

DOMESTIC OR COMMERCIAL  
STOKER COAL FOR ANY TYPE STOKER

LOWEST PRICES NOW

See All The Styles At  
CRAIGMILES FURNITURE COMPANY

Compliments Of  
DON'S MARKET

ROY ZUEFFLE  
533 2nd Street



DONALD T.  
DILLON

Insurance Agency

FIRE — AUTO — BOND

202 Masonic Temple Building

Phone 2-7181

Portsmouth, O.

Folsom's Grocery

Confections And School Supplies

Hunting And Fishing Licenses

1437 5th St.

West Portsmouth, O.

TAILORED SUITS . . . \$50.00 UP

THE CRITERION

The Men's Shop

Portsmouth, O.

Best Wishes

Windel-Howland

FUNERAL & AMBULANCE SERVICE

Offnere, Opposite Greenlawn Cemetery

Portsmouth, O.

Phone 3-4111

THE  
HARSHA-JOHNSON  
INSURANCE  
COMPANY

All Kinds Of Insurance & Surety Bonds

Telephone 2-2731

Portsmouth, O.

M17-20 Masonic Temple Building

MELCHER  
FUNERAL SERVICE

AMBULANCE SERVICE

1417 Offnere St.

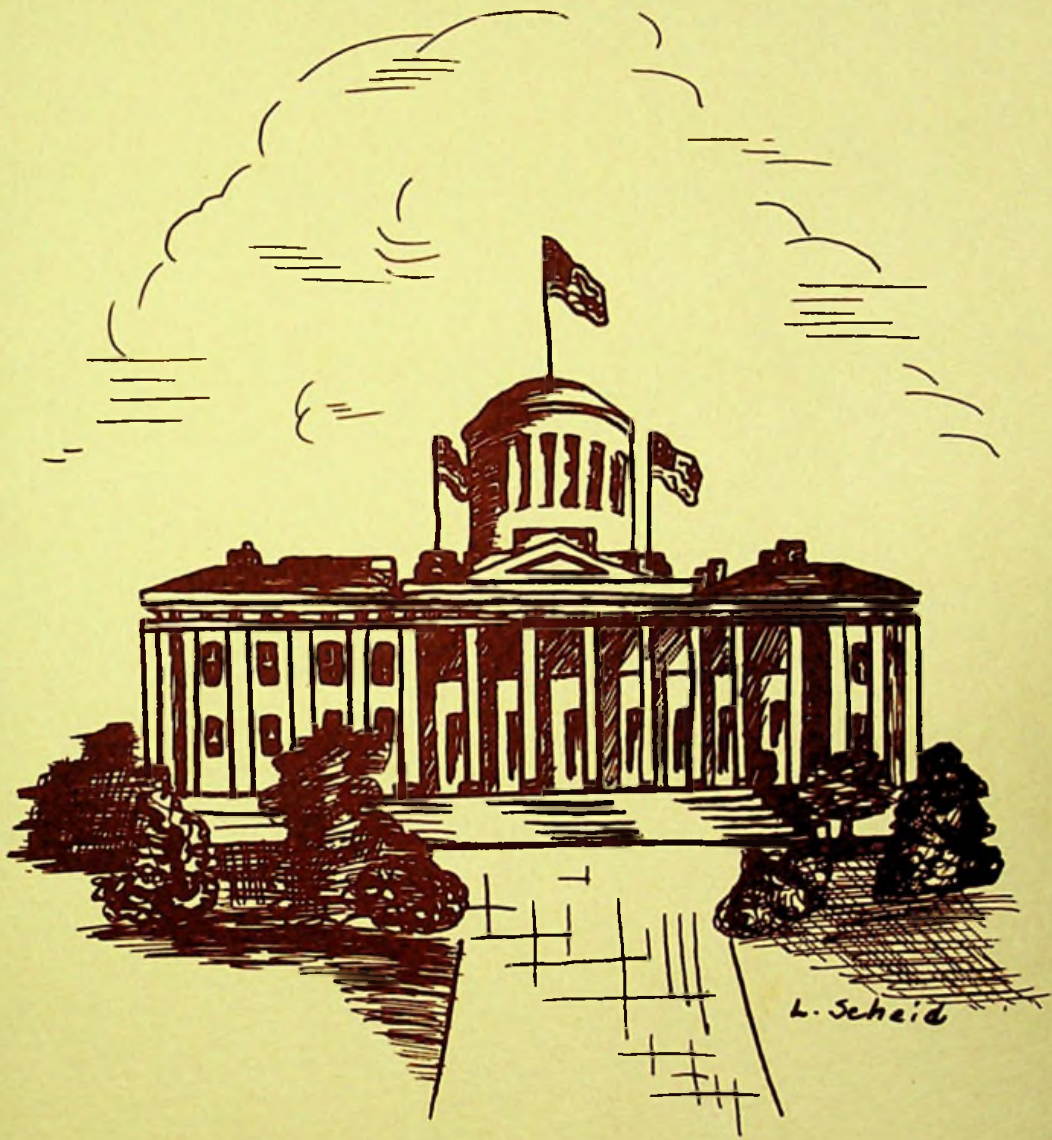
Phone 2-3191

WOLFF  
Good Clothing

McCARTY'S GROCERY  
West Portsmouth, O.

PORTSMOUTH PAINT COMPANY





*The State Capitol 1857*  
*The Heart of Ohio*







# INDEX

## A

Annual Staff .....	70
Awards, S. O. C., .....	56

## B

Band .....	43-45
Basketball .....	57-62
Bennett, Miss Mary .....	8
Blair, Miss Jean .....	8, 41
Burris, Mrs. Hortense .....	8

## C

Cheerleaders .....	46, 51, 59, 61
Chemistry Club .....	68
Classes .....	21-36
Clubs .....	63-70
Coaches, Basketball .....	62
Coaches, Football .....	52

## D

Davis, Mr. Leon .....	8, 52, 56, 57, 62
Dedication .....	1
Drum Major .....	42

## E

Eighth Grade .....	33-36
Eighth Grade Basketball .....	61
English Club, Freshman-Sophomore .....	66
English Club, Junior-Senior .....	66
Everling, Mr. Harold .....	8, 28, 52, 56, 78

## F

Football .....	47-56
Football Banquet .....	56
Football, Eighth Grade .....	53
Football, Freshman .....	53
Football, Varsity .....	46, 49, 50
Freshman Basketball .....	60
Freshman Class .....	29-32

## G

Gillette, Mr. Dale .....	8, 41, 73
Girls' Athletic Club .....	70
Glee Club .....	46

## H

Home Economics Club .....	69
Honor Society .....	63
Hopkins, Mrs. Kathryn .....	8

## I

Industrial Arts Club .....	69
----------------------------	----

## J

Janitors .....	72
Junior Class .....	21-24
Junior Class Play .....	74-75

## K

Ketter, Mr. James .....	8
Kirker, Mr. Foster .....	9

## L

Latin Club .....	7
Librarians .....	65

## M

Majorettes .....	42
Managers, Basketball .....	62
Managers, Football .....	52
Math Club .....	68
McCowen, Mr. E. R. ....	7, 56
Melvin, Mrs. Elizabeth .....	9
Mixed Chorus .....	46
Moore, Mr. Samuel .....	9
Music .....	41-46

## N

Newspaper Staff .....	72
Nolder, Mrs. Ruth .....	7

## O

Officers, Eighth Grade .....	33
Officers, Freshman .....	29
Officers, Junior .....	21
Officers, Senior .....	11
Officers, Sophomore .....	25

## P

Plays .....	74-77
Preliminary Tests .....	64

## Q

Queen's Attendants .....	55
Queen, Football .....	49, 54, 56

## R

Rapp, Mr. Kenneth .....	9
Ratliff, Miss Helen .....	9
Reserve Basketball .....	60
Rolf, Mr. Frank B. ....	6, 56
Rolf, Mrs. Kathleen .....	9

## S

Scholarship Ratings .....	65
School Board .....	7
School Life .....	37-40; 72-73
Seniors .....	12-20
Senior Class Play .....	76-77
Senior Survey .....	63
Sophomore Class .....	25-28
Spanish Club .....	67
Strickland, Mrs. Margaret .....	9

## T

Throckmorton, Mr. Earl .....	10-62
Tournament, Athens .....	58
Trophy Winners .....	64

## V

Varsity Basketball .....	57-59
Varsity Football .....	48, 49, 50

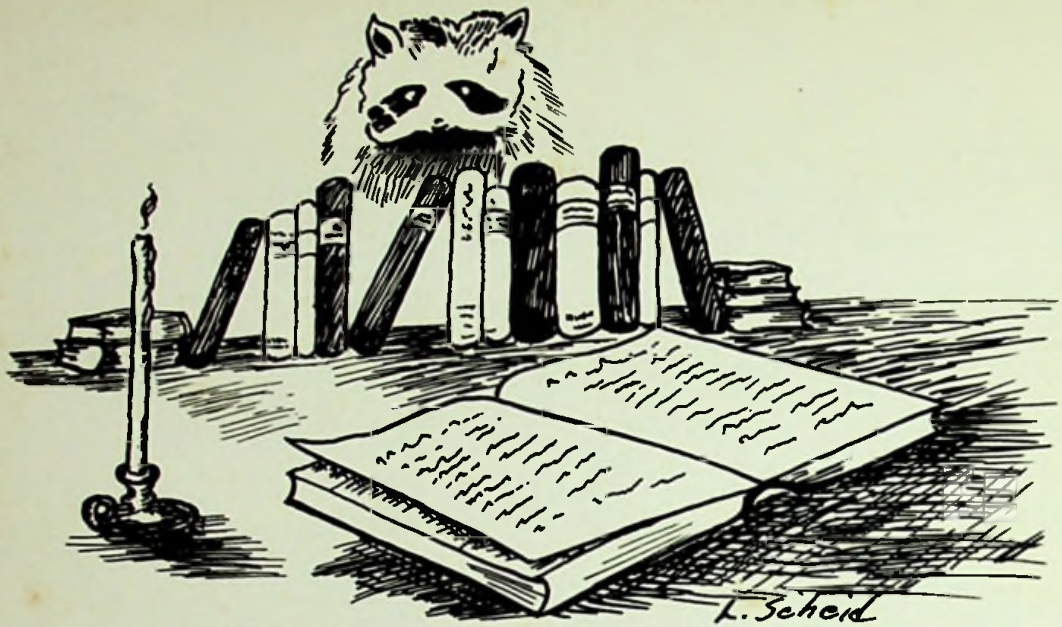
## W

Williams, Mr. Gordon .....	10, 52, 56, 62
Wilson, Mrs. Elizabeth .....	10

## Y

Yonovitz, Mrs. Margaret .....	10
-------------------------------	----





*Coon Skin Library - The Western Library Association 1804*

THIS BOOK BELONGS TO

Name \_\_\_\_\_

Address \_\_\_\_\_

Class Of \_\_\_\_\_











