



THE YEARBOOK

1952





"East Tartan"

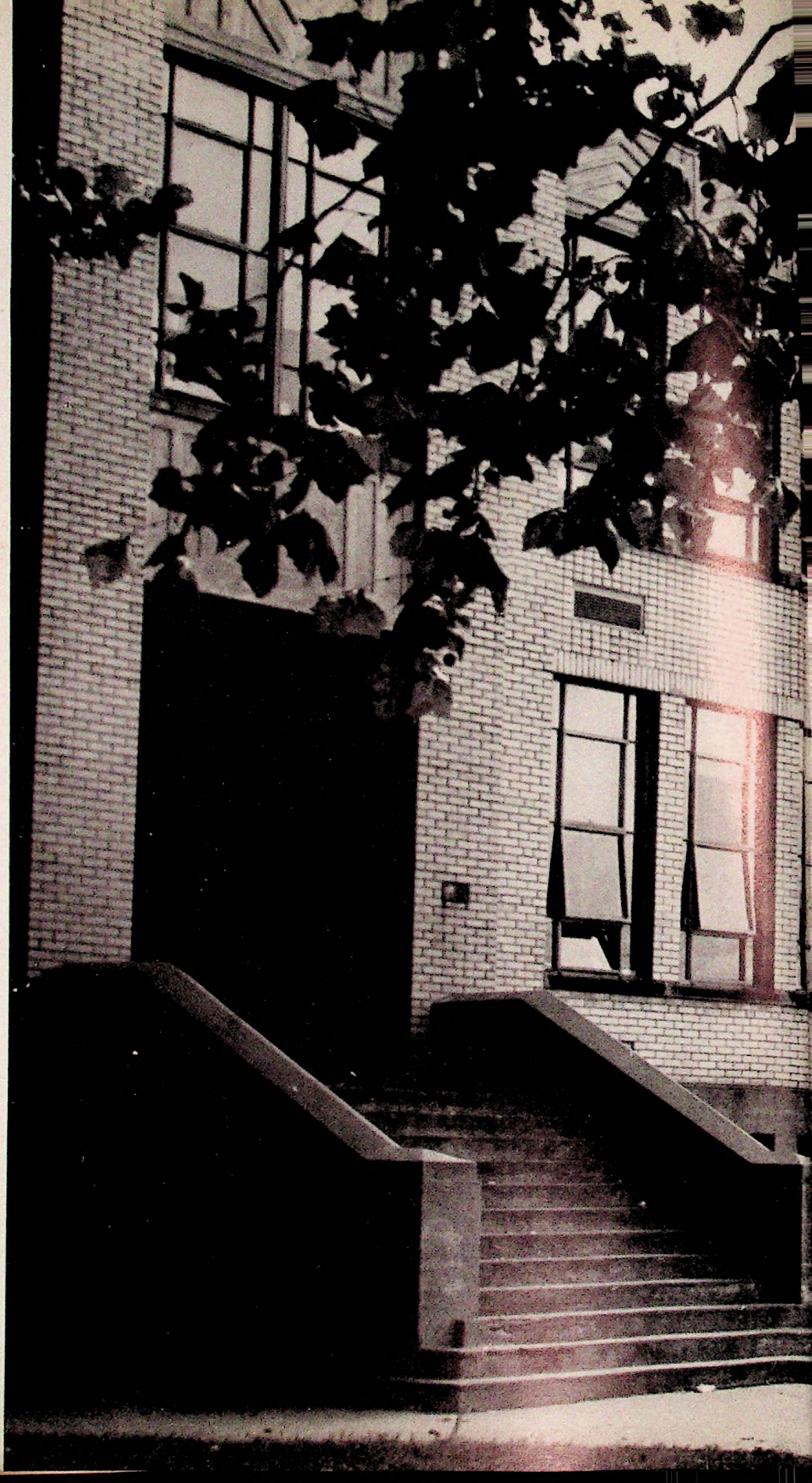
Published by
Senior Class of 1952
Portsmouth East
High School

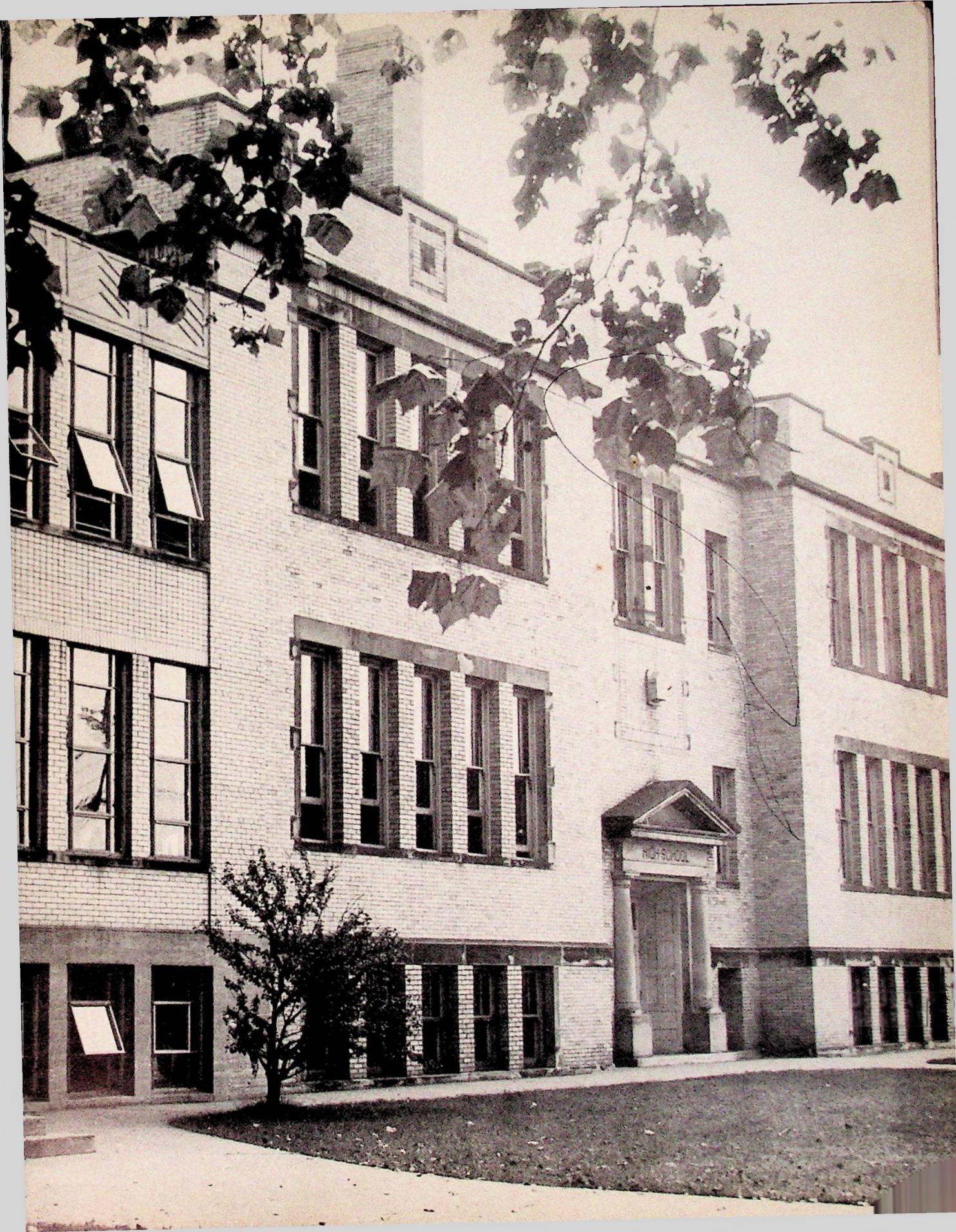


Editor ----- Marilyn Baer
Co-Editor ----- Wallace Evans
Asst. -Editor ----- Phyllis Holbrook
Business Mgr. ----- Sue Schneider

**Table
of
Contents**

**Introduction
Administration
Classes
School Life
Sports
Activities
Ads**







DEMOCRACY

All of us have heard this word used, but how many of us stop to think what it really is. In these trying times the youth of America don't realize that the people of many other countries don't enjoy freedom of speech, press, religion, etc. For these reasons the Senior Class of 1952 decided to use democracy as the theme of their yearbook. The future of the world depends upon its youth.

It has taken the co-operation of not only our advisor Miss Taylor and the Senior Class, but of our principal, Mr. Smith, the faculty, and the student body as well, to have this yearbook published. Everyone has worked hard and the annual staff hopes this yearbook pleases the student body.

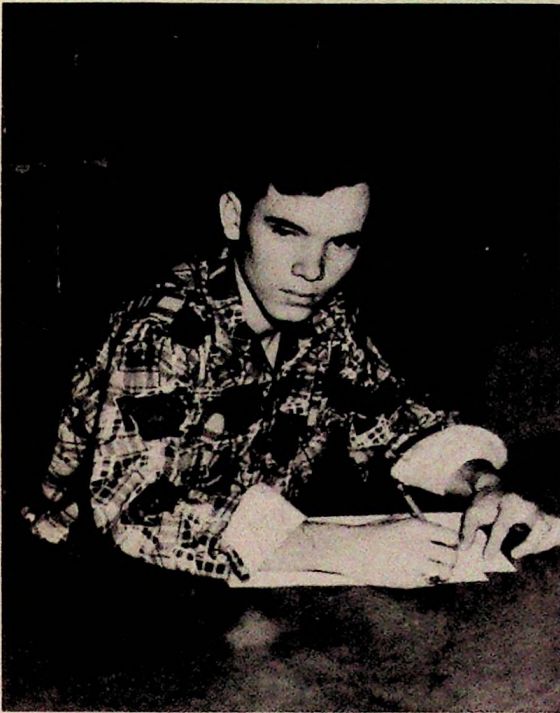
I SPEAK FOR DEMOCRACY

By Buddy Shoemaker

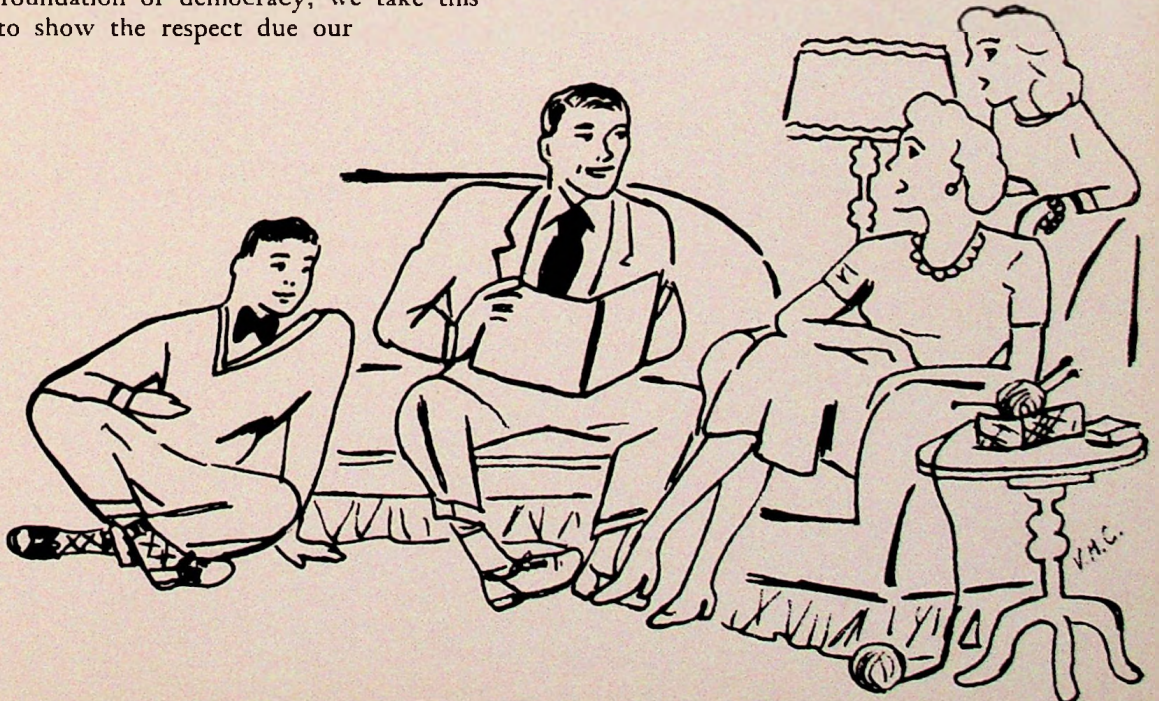
It was indeed a great pleasure and an unusual opportunity to have been East High's "Voice of Democracy" Representative the past school year.

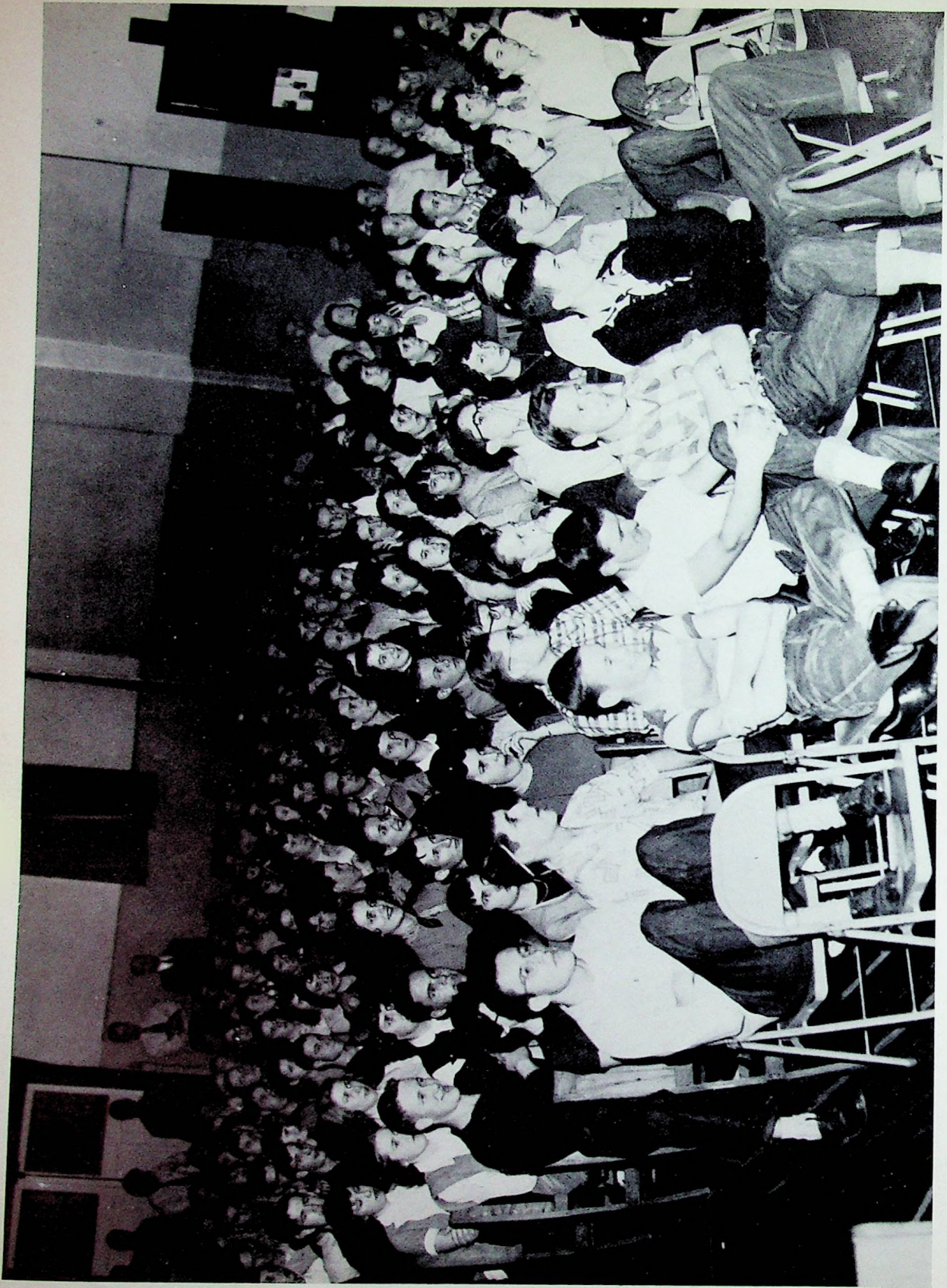
From a competing group of seven others, my script was chosen the winner. We were to be judged on originality and deliverance. They could not be more than five minutes long.

After winning at school, I then was our eligible representative in the District Contest. My voice was again recorded, this time at radio station WPAY. Although I did not win there, I was only too glad that such an opportunity was given me that I might tell to others that through God, our Democracy can be safe.



The Senior Class of 1952 wishes to dedicate this annual to our parents. Since the home is the foundation of democracy, we take this opportunity to show the respect due our parents.





STUDENT BODY



GLEE CLUB

STUDENT BODY





STUDENT ADVISORY BOARD

The Student Advisory Board was introduced one year ago as a replacement for the Student Council. It is the same type of organization as the Student Council, but is composed of the presidents of all the school organizations with the intention of giving the students a chance to voice their opinions in school government.

Pictured from left to right: Sue Manley, Barbara Yeley, Joyce McClurg, Mr. Smith, Pat Kline, Phyllis Holbrook, Wallace Evans, Phillip Stanley, Ronnie Partidge. Not Pictured: Marilyn Baer and Amy Weidner.





Administration



SITTING: Mr. W. P. Ridenour, Mr. Arthur Rau, Mrs. Arthur C. Huston. *STANDING:* Dr. William Duvenduck, Mr. William Horr, Dr. Thomas C. Swope, and Mr. H. W. McKelvey.

PORTSMOUTH CITY SCHOOL BOARD

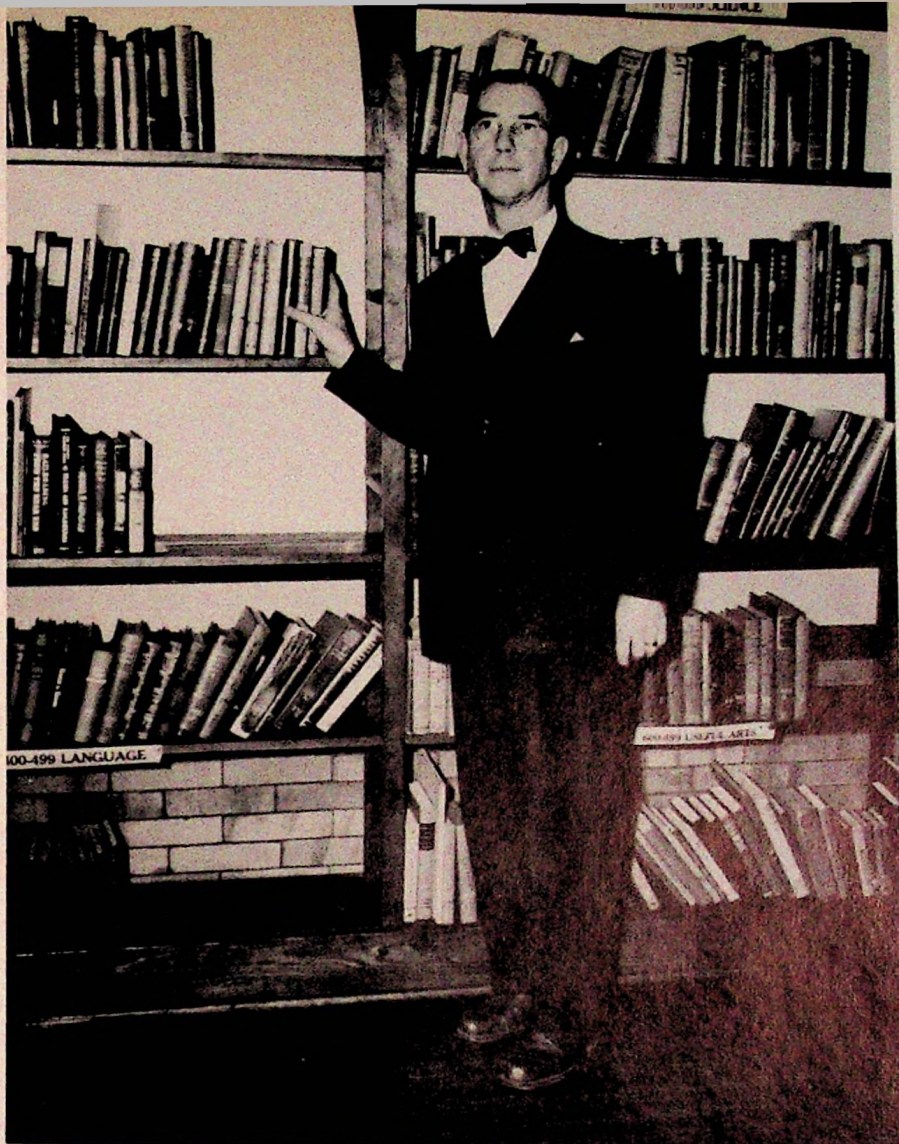


Mr. McKelvey is completing his third year as Superintendent of Portsmouth City Schools.

He received his A.B. degree from Ohio University and his M.A. degree from Ohio State.

After serving as Principal of Portsmouth High School, he was elevated to the superintendency of the Portsmouth School System in August of 1949.

Mr. McKelvey is to be complimented on his fine work and excellent leadership as Superintendent of the Portsmouth School System.



Mr. Teachnor W. Smith Principal

Mr Smith has been associated with East High School for twenty-five years. He is completing his eleventh year as principal. His honesty and sincerity in all matters has gained the respect and admiration of all the students. Mr. Smith received his A.B. degree from Ohio University and his M.A. degree from the University of Cincinnati.



MISS HELEN M. TAYLOR
Dean of Girls

Miss Taylor is completing her twelfth year as Dean of Girls at East High School.

She is Girls' League Sponsor and advisor of the Tri-Hi-Y. This year Miss Taylor also took the responsibility of sponsoring the annual yearbook.

Miss Taylor is a personal friend and guide to all the girls at East High School, and everyone respects and admires her.

She received her A.B. degree at Miami University and her M.A. degree from Ohio University.

MISS DELORES SKEENS
Secretary

This is Miss Skeens' first year at East High School and she has proved herself very capable and cheerful. She was graduated from Portsmouth High School in 1949.





JOHN C. STEVENSON

Denison University
Ohio State University
National University of Mexico
A.B. and M.A.
Latin, English, Spanish

ELIZABETH WHITEHOUSE

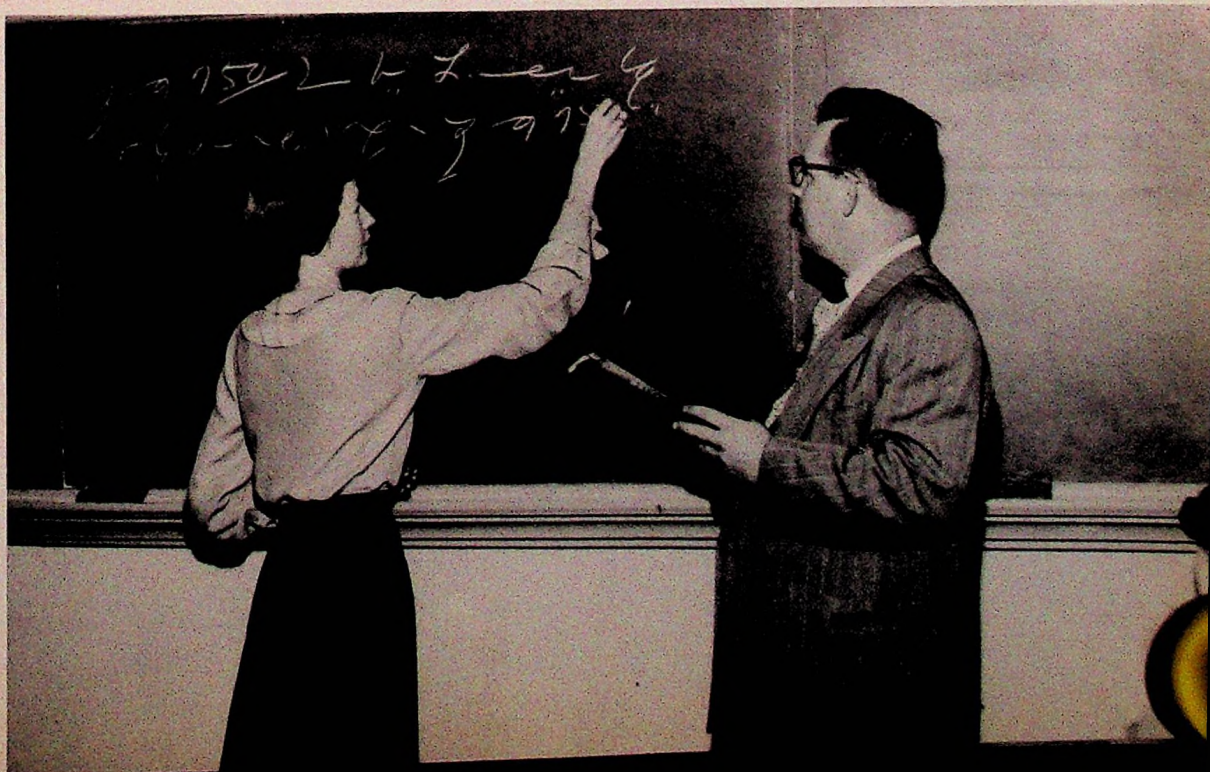
Eastern Kentucky State Teachers'
College, George Peabody College
for Teachers
A.B. and M.A.
English

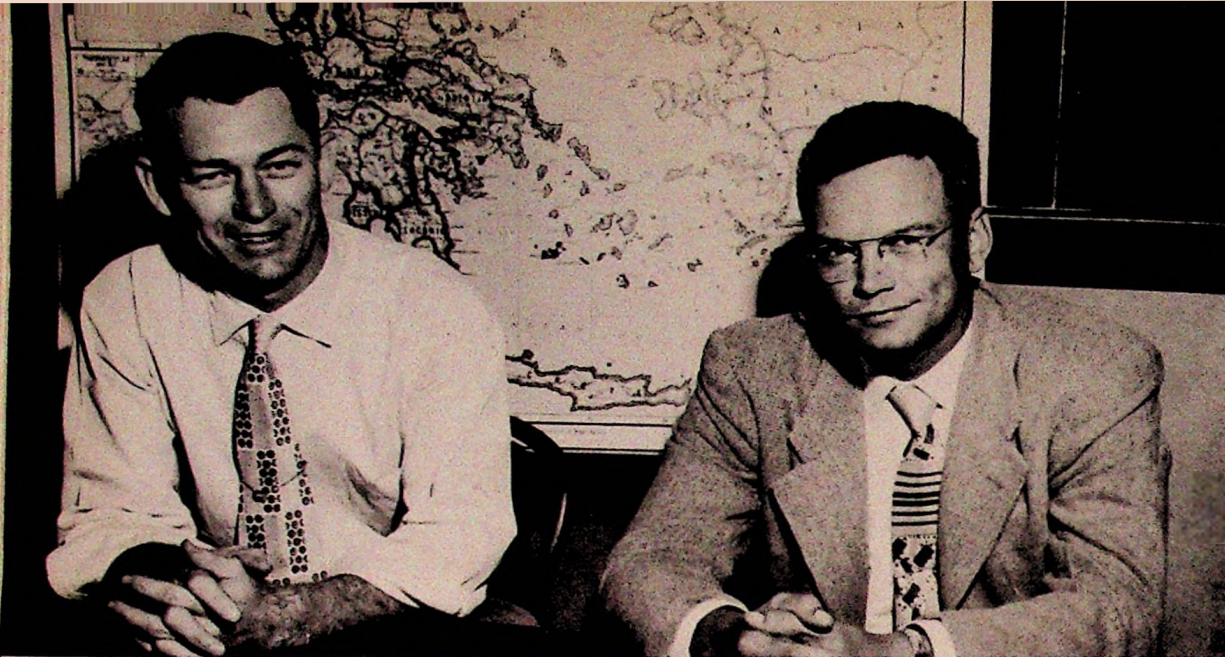
MRS. CECIL COTTLE

University of Kentucky A.B.
Shorthand, Business English
Business Arithmetic, Business Training

MANVERN F. SHOCK

Michigan State, Salem College, B.S.
Typing, Bookkeeping





HERMAN SCHROMBURG

Holbrook College, A.B.
American History, English
Head Basketball Coach
Assistant Football Coach

EDWARD L. POGUE

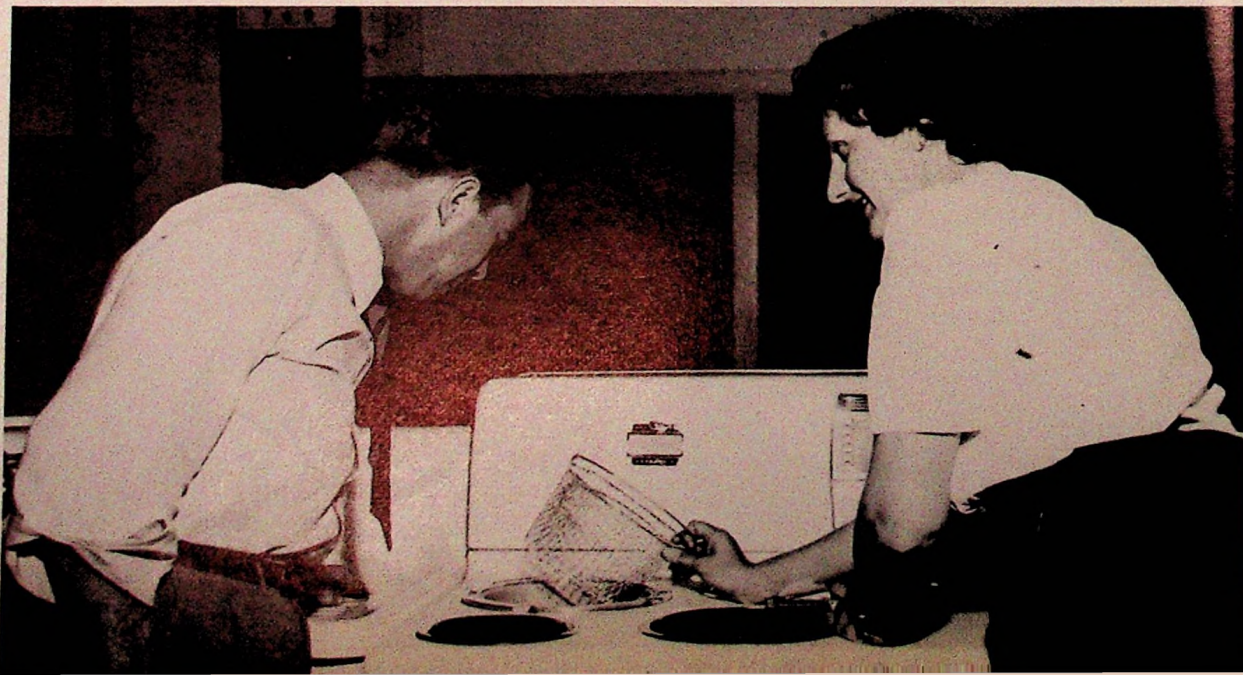
Hanover College, B.S.
Civics, World History
Physical Education, Assistant
Basketball and Football Coach
Head Baseball Coach

VIRGIL DONLEY

Ohio University, B.S.
Industrial Arts,
American Problems

MRS. HOWARD C. BROWN

Ohio State University, B.S.
Home Economics, English





CHRISTINE HERR

Sargent School of Boston University
Ohio University, Western Reserve
University, B.S.
M.S. Library Science
Librarian, Physical Education

GLORIA L. SMITH

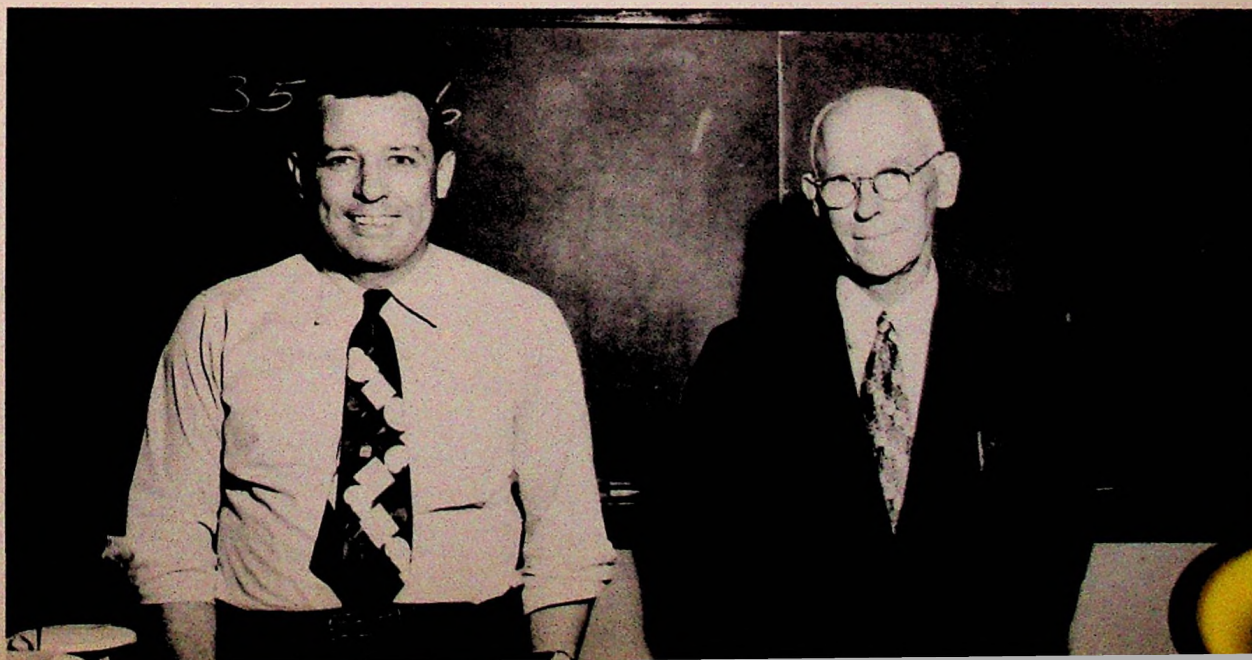
Ohio State University, B.S.
Chemistry, Biology

JOHN FUGITT

Ohio State University, B.S.
M.A. Education
General Science
Assistant Basketball Coach, Head
Football Coach

A. KIRK WHEELER

Denison University, B.S.
Algebra, Geometry,
Physics, Adv. Math.





HELEN BASHAM

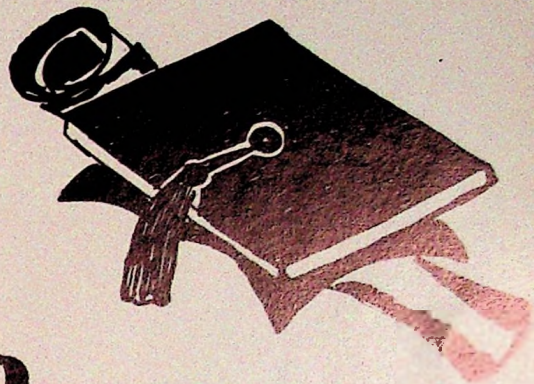
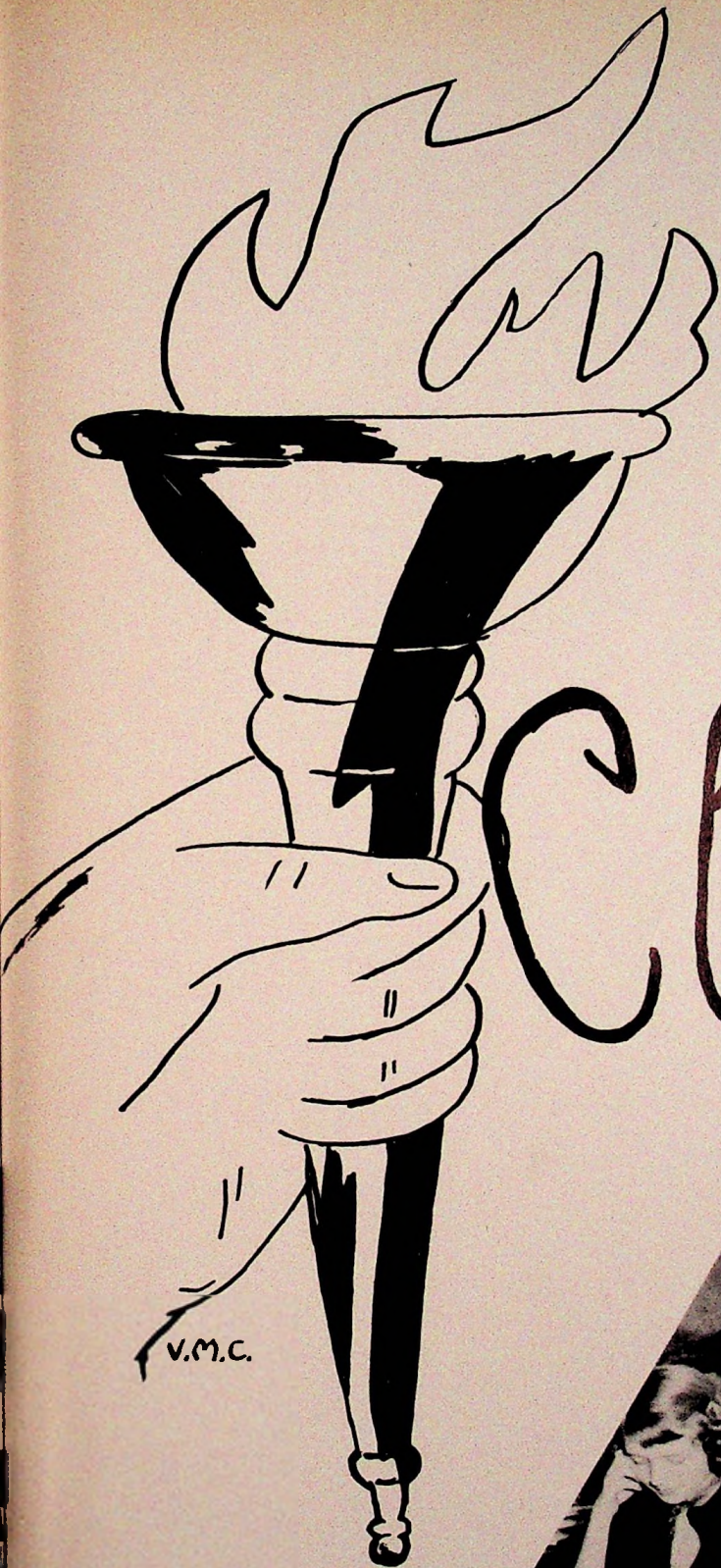
Orient College — Kankakee, Illinois
B.M. 47 B.M. 50
Music

ROBERT E. KLEIN

Eastman School of Music
B.A. Flute
M.A. Music Education
Band

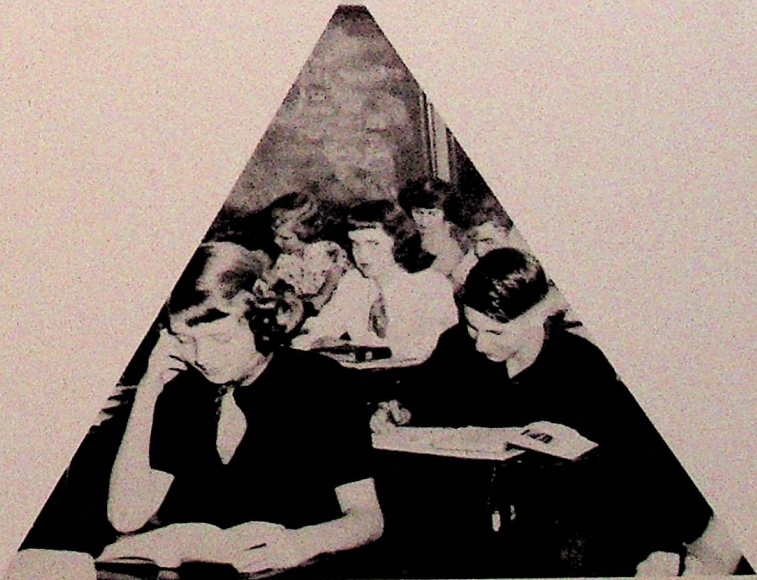
Study Hall





Classroom

V.M.C.



SENIOR CLASS



The Senior Class this year ordered their announcements from the Bastian Brothers Co. They presented their class play in March. The chief ambition of this class has been the publication of the annual.

The officers are:

Bill Martin	Treasurer
Wallace Evans	President
Joyce McClurg	Secretary
Ronnie Partridge	Vice President





June Arnett
"Juana"

Minford 1; Queen Attendant 2; Latin Club 2; Latin Club Assembly 2; Dance Committee 2, 3, 4; Majorette 2, 3, 4; Scholarship Team 3; Class Play, "Huckleberry Finn" 3; Spanish Club 3, 4; Spanish Club Assembly 3, 4; Annual Staff (Photographer) 4; Class Assembly 2, 4; Waitress at Prom 2; Tri-Hi-Y 3, 4; Tri-Hi-Y Officer, Girls' League 2, 4; Prom Committee 3; Spanish Consul 4; Ring Committee 3.



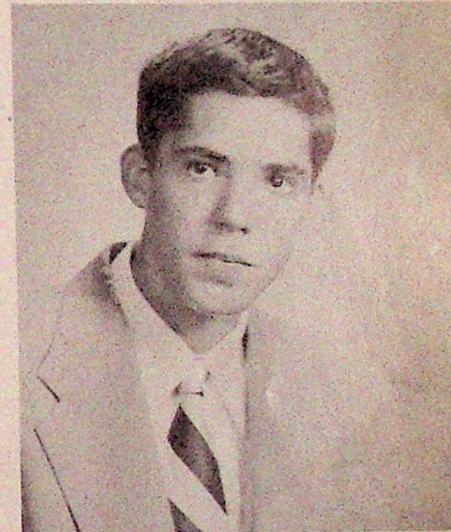
Betsy Askin
"Bets"

Glee Club 1, 2, 4; Operettas, "Rose of the Danube" 1, "H.M.S. Pinafore" 2; Girls' League 1, 2, 4; Waitress at Prom 2; Junior Class Play; Annual Staff (Collector) 4; Highlander Staff 3, 4; Class Assembly 2, 3, 4; Glee Club Assembly 4.



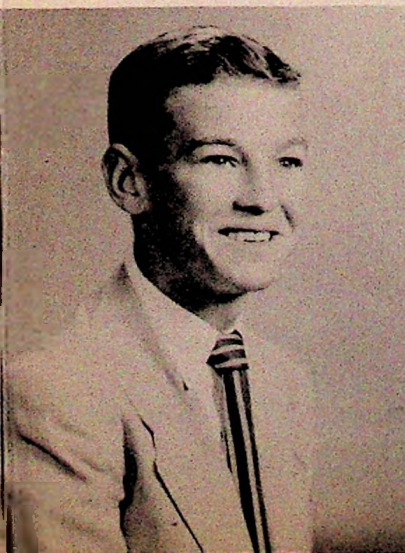
Marilyn Baer
"Minnie"

Glee Club 1, 3; Girls' League 1, 2, 3, 4; Latin Club 1, 2; Latin Club Assembly 1, 2; Highlander Staff 3, 4; Operetta, "Rose of the Danube" 1; Glee Club Minstrel 3; Tri-Hi-Y 4; Class Assembly 2, 3, 4; Junior Class Play; Student Advisory Board 4; Glee Club Assembly 3; Scholarship Team 1; National Honor Society 3, 4; Dance Committee 4; Associate Annual Editor 3; Annual Editor 4; Student Advisory Assembly 3.



David Burke
"Zeke"

Basketball 3, 4; Baseball 1, 2, 3, 4; Football 3, 4; Latin Club 1, 2; Spanish Club 3, 4; Scholarship Team 3; Latin Club Assembly 1, 2; Spanish Club Assembly 3, 4; Prom Committee 3; Hi-Y 2, 3, 4; Glee Club 1.



Richard Bussa
"Da Da"

Latin Club 1, 2; Spanish Club 3, 4; Baseball Mgr. 1, 2; Football Mgr. 2, 3, 4; Basketball Mgr. 2, 3; Class Assembly 1, 2; Class Play, "Huckleberry Finn" 3; Hi-Y 2, 3, 4; Prom Committee 3; Annual Staff (Collector) 4; Baseball 3, 4; Spanish Club Assembly 3, 4; Latin Club Assembly 1, 2; Glee Club 2.



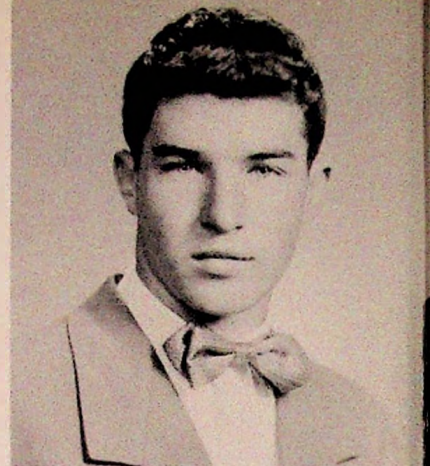
Virginia Charlton
"Gimmy"

Tri-Hi-Y 4; Glee Club 1, 2, 4; Girls' League 1, 3, 4; Dance Committee 3; Class Assembly 3, 4; Operettas, "Rose of the Danube" 1, "H.M.S. Pinafore" 2; Highlander Staff 3, 4; Annual Staff (Art Editor) 4; Dance Committee 4; Junior Class Play; Concession Stand 3; Glee Club Assembly 2, 4; Senior Class Play; Glee Club Cantata 4; Prom Decoration Chairman 3.



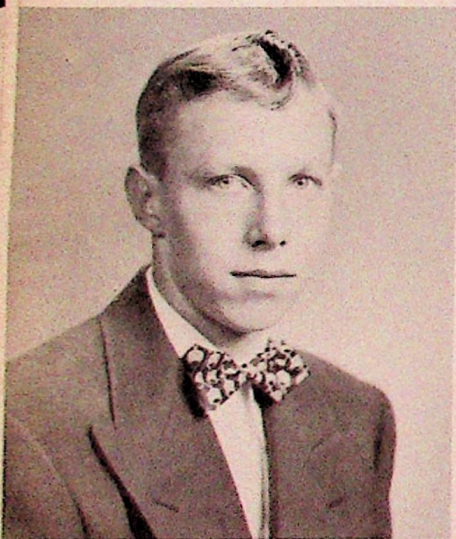
Juanita Conley
"George"

Glee Club 1; Operetta, "Rose of the Danube" 1; Girls' League 1, 2, 3, 4; Junior Class Play (Usherette); Concession Committee 2; Ring Committee 3.



Robert Crabtree
"Bob"

Glee Club 2, 3; Hi-Y 2, 3, 4; Latin Club 1, 2; Spanish Club 3, 4; Class Assemblies 2, 3, 4; Glee Club Minstrel 3; Spanish Club Assembly 3; Latin Club Assembly 1, 2.



William Essman
"Bill"

Latin Club 1, 2; Spanish Club 3, 4; Spanish Club Assembly 3, 4; Basketball 1, 2, 3; Baseball 1, 2, 4; Latin Club Assembly 1, 2.



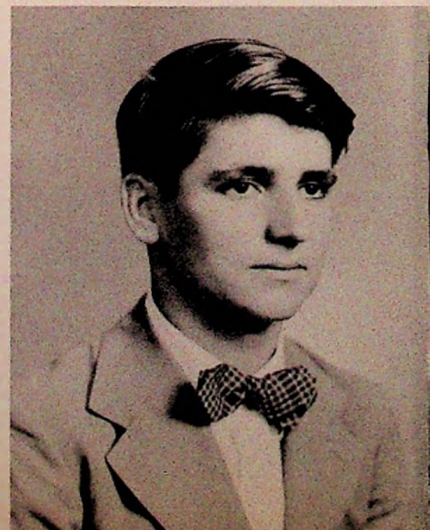
Jack Etterling
"Kiljoy"

Prom Committee 3; Glee Club 4; Hi-Y 4; Class Dance Committee 4.



Peggy Evans
"Peg"

Class Off. 1-3; Class Assembly 1-4; Latin Club 1, 2; Latin Club Assembly 1, 2; Co-chair. Class Dance 2; Tri-Hi-Y 3, 4; Prom Chair. 3; Prom Waitress 2; Co-chair. Concession Com. 3; Hi-Y, Tri-Hi-Y Dist. Council Rep. 3; Scholarship Team 1-3; Class Play 3; Glee Club 1, 4; Glee Club Off. 4; Girls' League 1-4; Girls' League Social Com. 4; Tri-Hi-Y Formal Init. Com. 4; Highlander 3, 4; Operetta 1; Student Adv. Board 3; Stud. Adv. Bd. Assembly 3; Annual Staff (Sr. Ed.) 4; Decor. Chair., Class Dance 4; Dance Comm. 3; Glee Club Assembly 4; Cantara 4; Athletic Banq. Waitress 3; Homecoming Dance Comm. 4.



Wallace Evans
"Lolly"

Student Council 1; Latin Club 1, 2; Hi-Y Officer 3; Scholarship Team 1, 2, 3; Class Play, "Huckleberry Finn" 3; Hi-Y 2, 3, 4; Student Advisory Board 4; Class Officer 4; Spanish Club 4; Prom Committee 3; Class Assembly 3, 4; School Paper Staff 1, 2, 3, 4; National Honor Society 3, 4.



David Fannin
"Dave"
 Vocation Course at P.H.S. 3, 4.



Jim Graham
"Shag"
 Basketball 2, 3; Football 3, 4; Football Co-captain
 4; Prom Committee 3; Spanish Club 4; Glee
 Club 3.



Wanda Delores Henson
"Delores"
 Girls' League 2, 4; Concession Committee 3; Class
 Dance Committee 2, 4.



Wanda Hoskins
"Lulu"
 Class Assembly 1, 2, 3, 4; Latin Club 4; Latin
 Club Assembly 4; Prom Entertainment Chairman
 3; Waitress at Prom 2; Glee Club 2; Girl's League
 1, 2, 3, 4; Tartan Staff 2; Operetta "H.M.S. Pina-
 fore" 2; Annual Staff (Activities Ed.) 4; Class
 Dance Com. 1, 2, 3, 4; Class Officer 3; Hall Moni-
 tor 1; Majorette 1, 2; Drum Major 3; Cheerleader
 2, 3, 4; Homecoming Co-chairman; Spanish Club
 2, 3; Spanish Club Assembly 2, 3; Student Ad-
 visory Assembly 3; Spanish Dance Chairman 3;
 Hat Check at Football Banquet 2; Cheerleaders'
 Dance Committee 4.



Carol Hutchinson
"Hutch"
 Girls' League 1, 2, 3, 4; Tri-Hi-Y 4; Glee Club
 1, 4; Waitress at Prom 3; Valentine Queen 2;
 Latin Club 1, 2; Annual Staff (Collector); Glee
 Club Assembly 4; Glee Club Cantata 4.



Nettie Jenkins
"Burl"
 Glee Club 2, 3; Operetta "H. M. S. Pinafore" 2;
 Glee Club Minstrel 3; Class Play (Usherette) 3;
 Girls' League 1, 2, 3; Annual Staff (Collector) 4.



Robert Fred Kilgallin
"Jock"

Hi-Y 2, 3, 4; Latin Club 1, 2; Annual Staff (Ads) 4; Spanish Club 4; Football 3, 4; Latin Club Assembly 1, 2; Prom Committee 3.

Jacqueline Kirchner
"Jackie"

Class Assembly 1; Glee Club 1, 2, 4; Float Committee; Operetta "H.M.S. Pinafore" 2; "Rose of the Danube" 1; Glee Club Assembly 4; Glee Club Cantata 4.



Anne Knigge
"Nancy"

Glee Club 1, 3; Latin Club 1, 2; Girls' League 1, 2, 3, 4; Valentine Queen 1; Waitress at Prom 2; Latin Assembly 1, 2; Tri-Hi-Y 4; Annual Staff (Typist) 4; Concession Committee 3; Operetta "Rose of the Danube" 1; Glee Club Minstrel 3; Prom Committee 3; Scholarship Team 1, 4; Ring Committee 3; Dance Committee 4.

Sue Ann Manley
"Susie"

Girls' League 1, 2, 3, 4; Operetta "Rose of the Danube" 1; Class Assembly 1, 2, 3, 4; Cheerleader 2, 3, 4; Cheerleader Captain 4; Glee Club 1, 4; Glee Club Officer 4; Waitress at Prom 2; Tri-Hi-Y 4; Queen Attendant 3; Spanish Club 2, 4; Spanish Assembly 2, 4; Prom Committee 3; Student Advisory Board 4; Annual Staff (Activities); Highlander Staff 3, 4; Homecoming Queen 4; Class Dance Chairman 1; Refreshment Chairman Class Dance 4; Glee Club Assembly 4; Glee Club Cantata 4.



Faye Maddix
"Cricket"

Girls' League 1, 2, 3, 4; Girls' League Officer 4; Tri-Hi-Y 4; Homecoming Dance Committee 4; Glee Club 1, 2, 4; Waitress at Prom 2; Spanish Club 4; Concession Committee 3; Operettas, "Rose of the Danube" 1, "H.M.S. Pinafore" 2; Annual Staff (Typist); Class Assembly 1; Glee Club Assembly 4.

William Ronald Martin
"Bill"

Student Council 1; Latin Club 1, 2; Latin Club Assembly 1, 2; Hall Monitor 1; Glee Club 2; Operetta, "H.M.S. Pinafore" 2; Hi-Y 2, 3, 4; Hi-Y Chaplain 3; Class Officer 2, 4; Band 1, 2, 3, 4; Tartan Staff 2; Dance Committee 2; Prom Cleanup Co-chairman 3; Ring Committee 3; Class Play, "Huckleberry Finn" 3; Annual Staff (Business Manager) 4; Graduation Announcement Committee 4; Student Band Conductor 4; Class Assembly 4; Pep Band 3.





Joan Sue May
"Jo"

Glee Club 1, 2, 3; Girls' League 1, 2, 3, 4; Prom Committee 3; Class Assembly 2, 3; Operettas, "H.M.S. Pinafore" 3; "Rose of the Danube" 1; Waitress at Prom 2; Glee Club Minstrel 3; Class Dance Committee 1, 2, 3, 4.



Joyce McClurg
"Joycie"

Band 1, 2, 3, 4; Glee Club 3, 4; Girls' League 1, 2, 3, 4; Girls' League 4; Tri-Hi-Y 3, 4; Tri-Hi-Y Officer 4; Class Officer 4; Spanish Club 3, 4; Spanish Club Assembly 3, 4; Waitress at Prom 2; Prom Committee 3; Annual Staff (School Life) 4; Student Council 1; Student Advisory Board 4; Class Assembly 1, 2, 3, 4.



Frank Moore
"Junior"
Baseball 2, 3, 4.

Betty June Montgomery
"Betty"

Glee Club 1, 2; Girls' League 1, 4; Class Assembly 1, 2, 3, 4; Concession Committee 3; Operettas, "Rose of the Danube" 1, "H.M.S. Pinafore" 2.



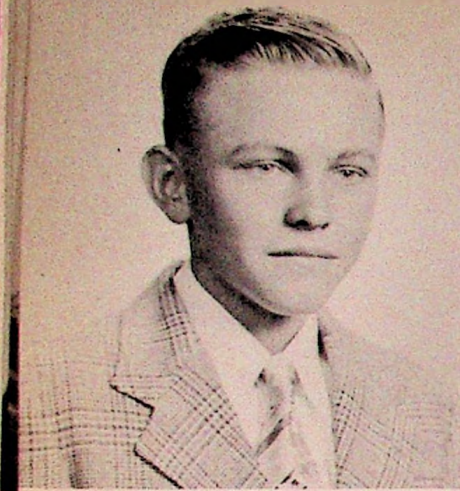
Betty Carol Mustain
"Bett"

Glee Club 1, 2; Girls' League 1, 2, 3; Queen Attendant 1; Operettas, "Rose of the Danube" 1, "H.M.S. Pinafore" 2; Waitress at Prom 2; Annual Staff (Collector) 4.

Patricia Jo Nardi
"Pat"

Glee Club 1; Operetta, "Rose of the Danube" 1; Girls' League 1, 2, 3, 4; Waitress at Prom 2; Spanish Club 2; Spanish Club Assembly 2; Prom Committee 3; Highlander Staff 3, 4; Annual Staff (School Life Editor) 4; Class Assembly 1, 3, 4; Co-chairman of Class Dance 2; Co-chairman Concession Committee 3; Refreshment Committee Class Dance 4.





George John Niemer

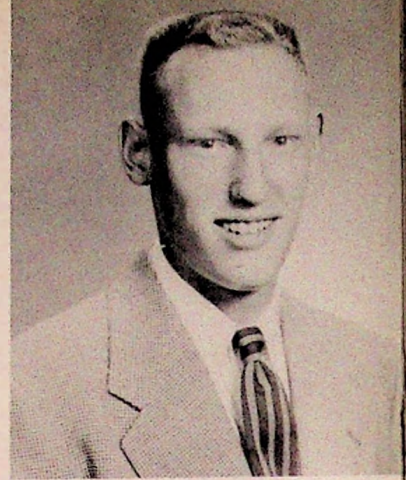
"George"

Glee Club; Spanish Club 4; Class Assembly 4.

Ronald Partridge

"Nonnie"

Class Officer 1, 4; Class Assembly 1, 4; Latin Club 1, 2; Latin Club Assembly 1, 2; Baseball 2, 3, 4; Football 3; Football Mgr. 4; Hi-Y 2, 3, 4; Hi-Y Officer 4; Prom Reservation Chairman 3; Student Council 1; Student Advisory Board 4; Annual Staff (Sports Editor) 4; Scholarship Team 2, 3; Glee Club 3, 4; Glee Club Assembly 4; Basketball Mgr. 4; Float Committee 2; Class Dance Committee 1, 2, 3.



Marvin Patrick

"Pat"

Glee Club 1, 2; Basketball 1, 2; Spanish Club 4; Hi-Y 4.

Carl Payton

"Padie"



Regina Pierce

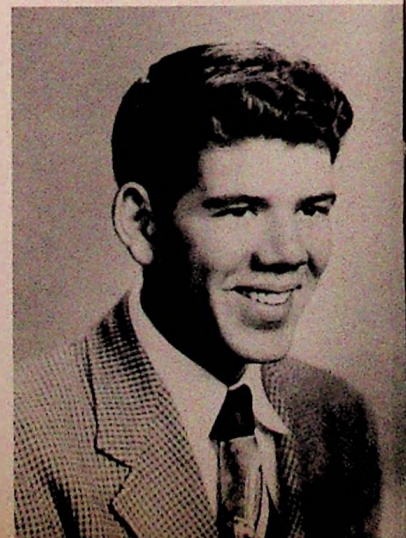
"Shorty"

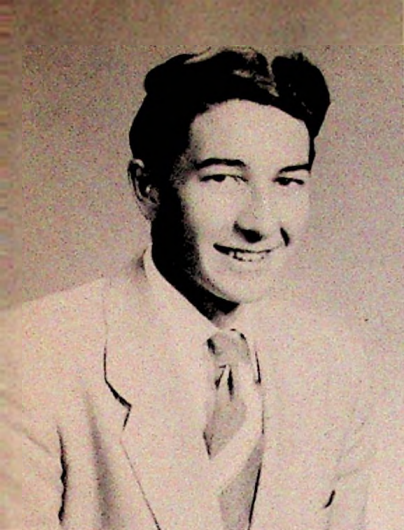
Class Assembly 1, 2, 3, 4; Girls' League 1, 2, 3, 4; Girls' League Officer 4; Scholarship Team 1; Librarian 2; Waitress at Prom 2; Prom Committee 3; Concession Committee 3; Ring Committee 3; Class Play (Usherette) 3; Annual Staff (Collector) 4.

James D. Porter

"Jim"

Band 1, 2, 3, 4; Pep Band 1, 2, 3, 4; Class Ring Committee 3; Band Officer 3; Glee Club 4; Prom Committee 3; Spanish Club 4; Class Dance Committee 4.





Warren Riddlebarger

"Leroy"

Band 2, 3, 4; Hi-Y 4; Class Assembly 2, 3, 4; Class Play, "Huckleberry Finn" 3; Spanish Club 4; Band Festival 3; Glee Club 1, 4; Annual Staff (Collector) 4; Pep Band 2, 3.



Margaret Russell

"Margie"

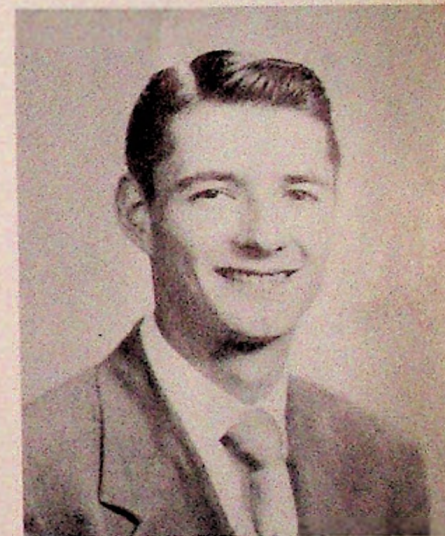
Girls' League 1, 2, 3, 4; Glee Club 1, 4; Scholarship Team 1, 2, 3; Latin Club 1, 2; Spanish Club 3, 4; Waitress at Prom 2; Operetta, "Rose of the Danube" 1; Prom Waitress Chairman 3; Concession Committee 3; Class Play, "Huckleberry Finn" 3; Spanish Assembly 3, 4; Latin Assembly 1, 2; Annual Staff (Collector) 4; Class Assembly 3, 4; Dance Committee 3, 4; Spanish Dance Committee 3, 4; Glee Club Assembly 4; Glee Club Cantata 4; Spanish Consul 4.



Sue Schneider

"Susie"

Latin Club 1, 2; Glee Club 1, 2, 3, 4; Highlander Staff 4; Glee Club Minstrel 3; Latin Club Assembly 2; Tri-Hi-Y 3, 4; Waitress at Prom 2; Girls' League 4; Annual Staff (Business Manager) 4; Operetta, "H.M.S. Pinafore" 2; Prom Committee 3; Glee Club Assembly 3, 4; Glee Club Cantata; Glee Club Officer 4; Tri-Hi-Y Formal Initiation Committee 4; Float Committee 4.



Harry Scott

"Mort"

Band 1, 2, 3, 4; Glee Club 2, 3, 4; Class Officer 1, 2, 3; Class Play, "Huckleberry Finn" 3; Class Assembly 1, 2, 3, 4; Student Advisory Board Assembly 3; Pep Band 1, 2, 3, 4; Band Officer 2; Hi-Y Easter Assembly 2, 3; Prom Committee 3; Operetta, "H.M.S. Pinafore" 2; Glee Club Minstrel 3; Latin Club 1, 2; Latin Assembly 1, 2; Spanish Club 4.



Judith Ann Sergent

"Judy Ann"

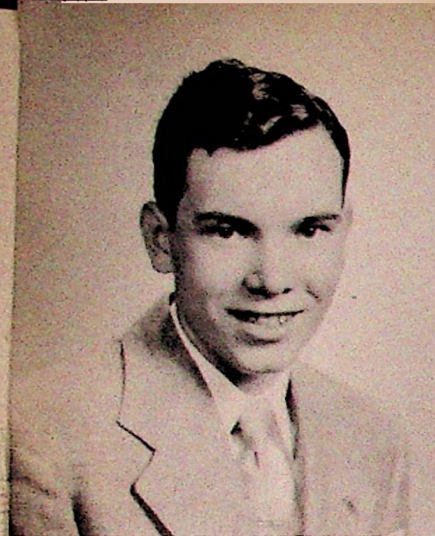
Glee Club 1, 2, 3, 4; Girls' League 1, 2, 3, 4; Class Assembly 1, 2, 3, 4; Junior Class Play; Prom Committee 3; Librarian 1, 3; Highlander Staff 3, 4; Glee Club Minstrel 3; "H.M.S. Pinafore" 2; Glee Club Assembly 3, 4.

Esther Joann Seth

"Tena"

Band 1, 2, 3, 4; Glee Club 1, 2, 3; Highlander Staff 3, 4; Girls' League 1, 2, 3, 4; Class Play, "Huckleberry Finn" 3; Class Assembly 2; Prom Committee 3; Band Librarian 4; Dance Committee 1, 2, 3, 4; Glee Club Minstrel 3; Glee Club Festival 3; Glee Club Assembly 3.





Shurl Kay Shoemaker
"Coach Buss"

Football 1, 2, 3; Band 1, 2; Latin Club 1, 2; Latin Club Consul 1; Latin Club Assembly 1; Hi-Y 2; Pep Band 2, 4; Champion Magazine Salesman 3; Orientation Assembly 4; "Voice of Democracy" Representative; Thanksgiving Assembly Speaker; Christmas Assembly Announcer; Glee Club Cantata Announcer.

Ralph Silcott
"Ralph"

Glee Club 1, 3; Glee Club Festival 3; Glee Club Minstrel 3; Glee Club Assembly 3; Prom Committee 3; Class Assembly 4.



Ruth Sisler
"Ruth"

Glee Club 1, 4; Librarian 1, 2, 3, 4; Girls' League 4; Annual Staff (Photographer) 4.

Joseph Roger Sommer
"Boo"

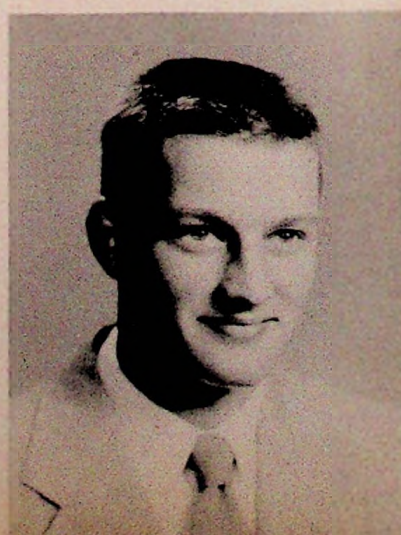


Gay Sowkulech
"Effie"

Portsmouth High School 1; Glee Club 1, 2; Girls' League 3, 4; Waitress at Prom 2; Class Assembly 3, 4; Operetta, "H.M.S. Pinafore" 2.

Richard Spaulding
"Spud"

Football 1, 2, 3, 4; Football Co-captain 4; Basketball Mgr. 3; Class Dance Committee 1, 2, 3, 4; Latin Club 1, 2; Latin Assembly 2; Hi-Y 2, 3, 4; Hi-Y Officer 4; Hi-Y Dance Committee 2, 3; Glee Club 3, 4; Glee Club Officer 4; Spanish Club 4; Prom Committee 3; Class Assembly 1, 2, 3, 4.





Wilma Stephenson

"Willie"

Glee Club 1, 2; Junior Class Play (Usherette); Concession Committee 3; Class Assembly 2, 3, 4; Girls' League 1, 2, 3, 4.

Judy Thomas

"Tomas"

Glee Club 1, 4; Operetta, "Rose of the Danube" 1; Latin Club 1, 2; Latin Club Assembly 1, 2; Girls' League 1, 2, 3, 4; Waitress at Prom 2; Spanish Club 3, 4; Spanish Club Assembly 3, 4; Tri-Hi-Y 3, 4; Tri-Hi-Y Officer 4; Prom Committee 3; Highlander Staff 3, 4; Class Play, "Huckleberry Finn" 3; Annual Staff (School Life) 4; Homecoming Dance Committee 4; Football-Basketball Banquet Waitress 3; Tri-Hi-Y and Hi-Y District Council Representative 3; Class Assembly 4; Glee Club Assembly 4; Glee Club Cantata 4; Girls' League Social Committee 4.



Sylvia Jane Torges

"Sib"

Glee Club 1, 4; Operetta, "Rose of the Danube" 1; Latin Club 1, 2; Latin Club Assembly 1, 2; Girls' League 1, 2, 3, 4; Waitress at Prom: 2; Spanish Club 2, 3; Spanish Dance Committee 2, 3; Spanish Club Assembly 2; Tri-Hi-Y 4; Prom Cleanup Co-chairman 3; Highlander Staff 3; Highlander Editor 4; Annual Staff (School Life) 4; Class Assembly 1, 3, 4; Band 1, 2, 3, 4; Scholarship Team 1, 2, 3; Ring Committee 3; Glee Club Assembly 4; Glee Club Cantata 4.



Judith Ann Tussey

"Judy"

Glee Club 1, 2, 3, 4; Girls' League 1, 2, 3, 4; Class Play, "Huckleberry Finn" 3; Prom Committee 3; Highlander Staff 3, 4; Glee Club Minstrel 3; Operettas, "Rose of the Danube" 1, "H.M.S. Pinafore" 2; Annual Staff (Collector) 4; Concession Committee 3; Glee Club Festival 3; Glee Club Assembly 3, 4; Girls' League Reporter 3, 4; Glee Club Cantata 4; Class Assembly 4.



Gary Vickers

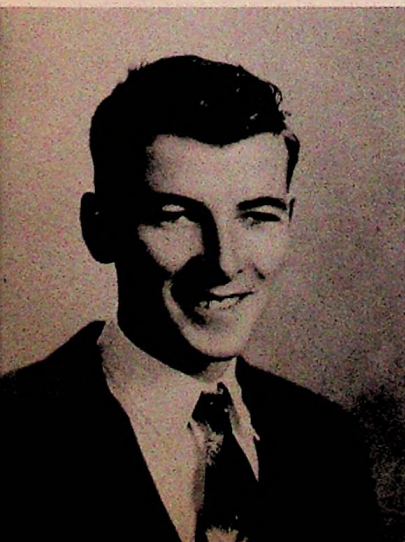
"Vic"

Palo Alto Senior High School in California 2, 3.

David Lee Watts

"Gale"

Football 1, 2, 3, 4; Baseball 1, 2, 3, 4; Basketball 2, 3; Track 1; Band 1, 2, 3, 4; Band Officer 2; Glee Club 1, 2, 3, 4; Operetta, "H.M.S. Pinafore" 2; Glee Club Officer 4; Prom Committee 3; Pep Band 4; Class Assembly 1, 2, 3, 4; Latin Club 1, 2; Latin Club Assembly 2; Spanish Club 4; Spanish Club Assembly 4; Hi-Y 2, 3, 4; Hi-Y Officer 4.





Amy Weidner
"Himey"

Operettas, "Rose of the Danube" 1, "H.M.S. Pinafore" 2; Glee Club 1, 2, 4; Girls' League 1, 2, 3, 4; Girls' League Officer 4; Cheerleader 2, 3, 4; Waitress at Prom 2; Tri-Hi-Y 3, 4; Class Assembly 2, 3, 4; National Honor Society 3, 4; Queen Attendant 4; Student Advisory Board 4; Annual Staff (Collector) 4; Scholarship Team 2.



Bonnie Widdig
"Bonnie"

Librarian 1, 2, 3, 4; Glee Club 1, 2, 4; Waitress at Prom 2; Prom Refreshment Chairman 3; Junior Class Play (Usherette); Tri-Hi-Y 4; Spanish Club 4.



James Williams
"Jim"

Elizabeth Ann Wilson
"Bea Ann"

Glee Club 1, 3; Operetta, "Rose of the Danube" 1; Glee Club Minstrel 3; Girls' League 1, 4; Junior Class Play (Usherette); Waitress at Prom 2.



Jerry Winebrenner
"Jarr"

Football 1, 2, 3, 4; Basketball 1, 2, 3, 4; Baseball 1, 2, 3, 4; Track 1; Latin Club 1, 2; Latin Club Assembly 1, 2; Glee Club 1, 2, 3, 4; Operetta, "H.M.S. Pinafore" 2; Hi-Y 2, 3, 4; Hi-Y Officer 3, 4; Class Assembly 2, 3, 4; Class Play, "Huckleberry Finn" 3; Junior Cup Winner; Prom Committee 3; Spanish Club 4; Spanish Club Assembly 4; Annual Staff (Sports) 4.

Barbara Yeley
"Barb"

Librarian 1, 2, 3; Scholarship Team 3; Spanish Club 3, 4; Spanish Club Assembly 3; Annual Staff (Collector) 4; Waitress at Prom 2; Tri-Hi-Y 3, 4; Tri-Hi-Y Officer 4; Prom Invitation Chairman 3; Student Advisory Board 4; Junior Class Play (Usherette); Spanish Club Assembly 3; Student Advisory Board Assembly 4.

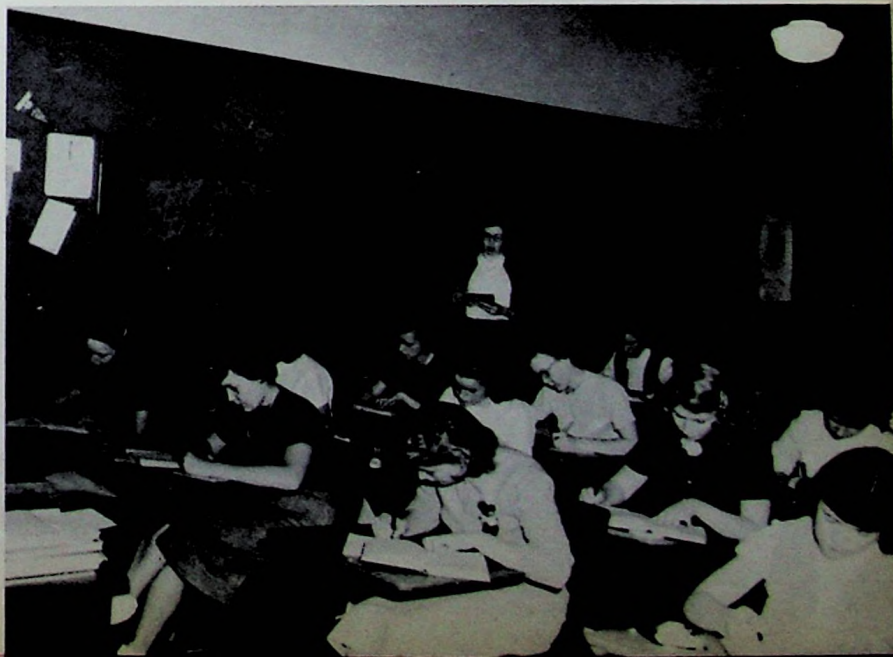




JUNIOR CLASS OFFICERS

Phyllis Holbrook	President
Regina Booten	Secretary
Dot Kline	Vice President
Rhetha Massie	Treasurer

Junior Shorthand Class





Row I: Letita Bentley, Rovena Coriell, Harold Ach, Lena Brigner, Ruth Beadle, Regina Booten, Joan Belveal, Larry Atkins, George Beloat, Ray Burke. *Row II:* Joe Chamberlain, Ray Cortle, Charles Cooper, Joe Essman, Donald Conklin, Richard Diduir, Ray Boyd, Herma Cabiness, Barbara Cooper, Sam Christy. *Row III:* Ruth Chamberlain, Polly Ashworth, Patty Conley, Glenda Etterling, Virginia Adams, Jo Anne Castle, Evelyn Brown, Don Bussey, Ronnie Deemer.

Row I: Ira Mault, Angus Jones, Roger Miller, Max Kinker, David Myers, Carl Gee, Glen Leesburgh, Evelyn Jenkins, Georgena Lantz. *Row II:* Roy Knight, William Gammon, Benny Jenkins, Buren McLaughlin, Dorothy Kline, Sue Hehl, Geneva Fields, Joyce Minter. *Row III:* Phyllis Holt, Phyllis Holbrook, Retha Massie, Bonnie Lou Morris, Barbara Miles, Aulive Horner, Joyce May, Carol Knigge.





Row I: James Stockham, Arnold Stevens, Clementine Parker, Janie Thompson, Freda Patrick, Helen Smith, Mima Taylor, Betty Welch, Janet Tomlin. *Row II:* Wilma Whitt, John Warnecke, Geloma Speary, Nina Saunders, Rosemary Russell, Sue Sennet, Leonard Powell. *Row III:* Ray Will, James Oiler, Ronald Sturgill, Gary Sergent, Brooks Parks, Clarence Scott, Bob Rowe.

Chemistry Class





Patty Kline	President
Sally Ogg	Vice-President
Bobby jo Ketter	Secretary
Shirley Benner	Treasurer

SOPHOMORE CLASS





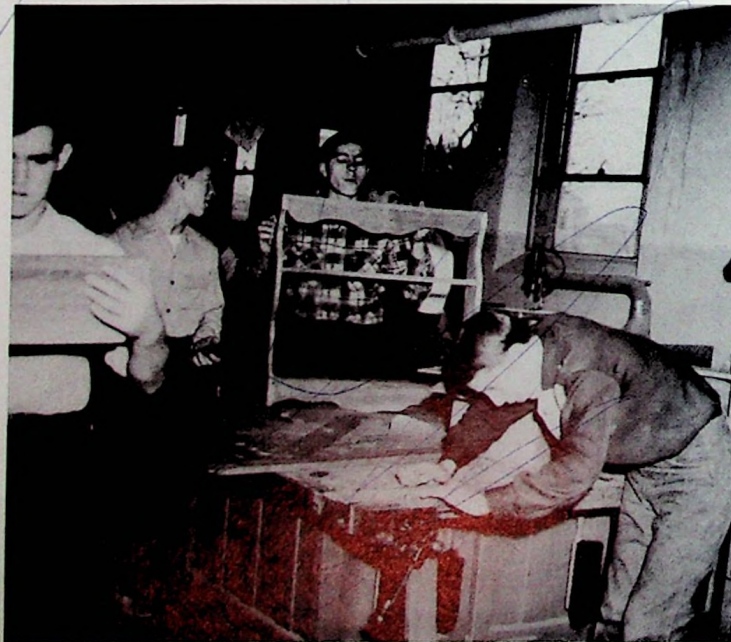
First Row: Shirley Benner, Eva Craig, Mary Lou Davis, Dorothy Bonzo, Florence Fyffe, Wanda Fitch, Don Evans, Shirley Chamberlin, Barbara Dodds, Peggy Boggs. *Second Row:* Carl Frazier, Ronald Felts, Douglas Dials, Lowell Adkins, David Drake, Ray Brown, Phillip Dials, Buford Atkins, Ronald Benson. *Third Row:* Louise Chatfield, Kay Bussa, Phyllis Butler, Florence Burke, Evangeline Craft, Verna Mae Grashel, Elnore Gilpin, Marvin Chamberlin.

First Row: Wanda Johnson, Roberta Ketter, Patty Marcum, Dolores Hickman, Phyllis Lowe, Pat McCardle, Sally Ogg. *Second Row:* Andre Keller, Wilber Harr, La Vaughn Kiser, John Johnson, Gary Hanes. *Third Row:* Bob Knowles, Patty Kline, Wesley Kelley, Myrl Medley, Don Johnson, Richard Hood, Rufus Logan.





First Row: Daisy Smith, Anna Rose, Barbara Salyers, Betty Taylor, Marilyn Stout, Virginia Welch, Doris Williams, Wanda Thompson, Rachael Young, Clifford Reed. *Second Row:* Roy Stevens, Buddy Payton, Robert Ruley, Maurice Smith, Lloyd Preston, Jerry Withrow, Robert Walker, William Simpson, Daniel Sparks. *Third Row:* Jim Smith, David Vallance, Rosalie Purcell, Donna Winters, Nora Robbins, Theora Shonkwiler, Vernie Rudd, Melba Williams, Judy Plummer.



Manual Training



FRESHMEN CLASS OFFICERS

Patty Evans	Sec.
Mary Jane Burton	Treasurer
Phillip Stanley	Pres.
Bill Ogg	Vice Pres





Row I: Candy Williams, Rosemary White, Forrest Pick, Connie Walker, Don Williams, Ruth Warner, Greta Imm, June Howard, Francis Howell, Phyllis Howell, Janet Johnson. *Row II:* Mary Yarnel, Anne Hartlage, Mary Johnson, Lidia Stevens, Wilma Henson, Roger Turner, Ronald Veach, Donald Hutchinson, Larry Harr, Ronald Taylor. *Row III:* Wanda Haynes, Eugene Carver, Richard Williams, Floyd Hensley, Shirley Ward, Madona Hughes, Roy Dever, Evelyn Yelev.

Row I: Lloyd Pierce, Helen Nagel, Mary Jane Burton, Juanita Crabtree, Betty Chamberlin, Carl Niemer, Anne Conrad, Irene Cox, Betty Selby, Katherine Burton, Cynthia Mucha. *Row II:* Vinson Crabtree, Ralph Noxsel, Fleary Pack, David Gee Conkey, Betty Boggs, Betty Crabtree, Noel Burton, William Ogg, James Chamberlin, Keith Bussa. *Row III:* Erma Campbell, Wanda Phillips, Jack Brock, Betty Schouster, Rita Risner, Sharon Plymale, Ruth Ratcliff, Larry Crawford, Leon Caulley.





Row I: Richard Fetty, Jo Shoemaker, Ted Davis, Charles Sparks, Paul Simpson, Dottie Hale, Mary Dill, Jo Ann Gee, Joyce Goodman, Betty Tomlin, Carol Smith. Row II: Eugene Smith, Patty Evans, Sandy Tipton, Marilyn Brown, William Grant, Michael Stewart, Phillip Stanley, Tom Selbie, Shelby Dimmitt, Kenneth Giles, Ronald Frazee, Richard Shoemaker, David Stiltner. Row III: Anna Stout, Janet Smith, Imogene Crisp, Marcia Steele, Barbara Smith, Gladys Stewart, Carolyn Thomas, Patty Smith, Celita Smith, Janet Faine, Janie Fannin, Barbara Diduit.

Row I: Rosemary Brown, Norma McKelvey, Loretta Mays, Jean Brady, Bobbie Kitchen, Nancy Knapp, Loretta Kurtz, Earl Messer, Robert Allen, Ronald Bonzo. Row II: Glenn Keller, William Miller, Evelyn Moyer, Mary Allard, Margaret Baer, Doris Keeton, Donald Kiser, Ranfred Akers, Tom Beasley, Tom Leach, Charles Baer, Billy Allard. Row III: Don Kellar, Junior Bennett, Dexter Adams, Wayne Atkins, Ronald Artis, Roger Brown, Willard McFarland, Homer Knight, Gilbert Bailey, Bill Marshal.

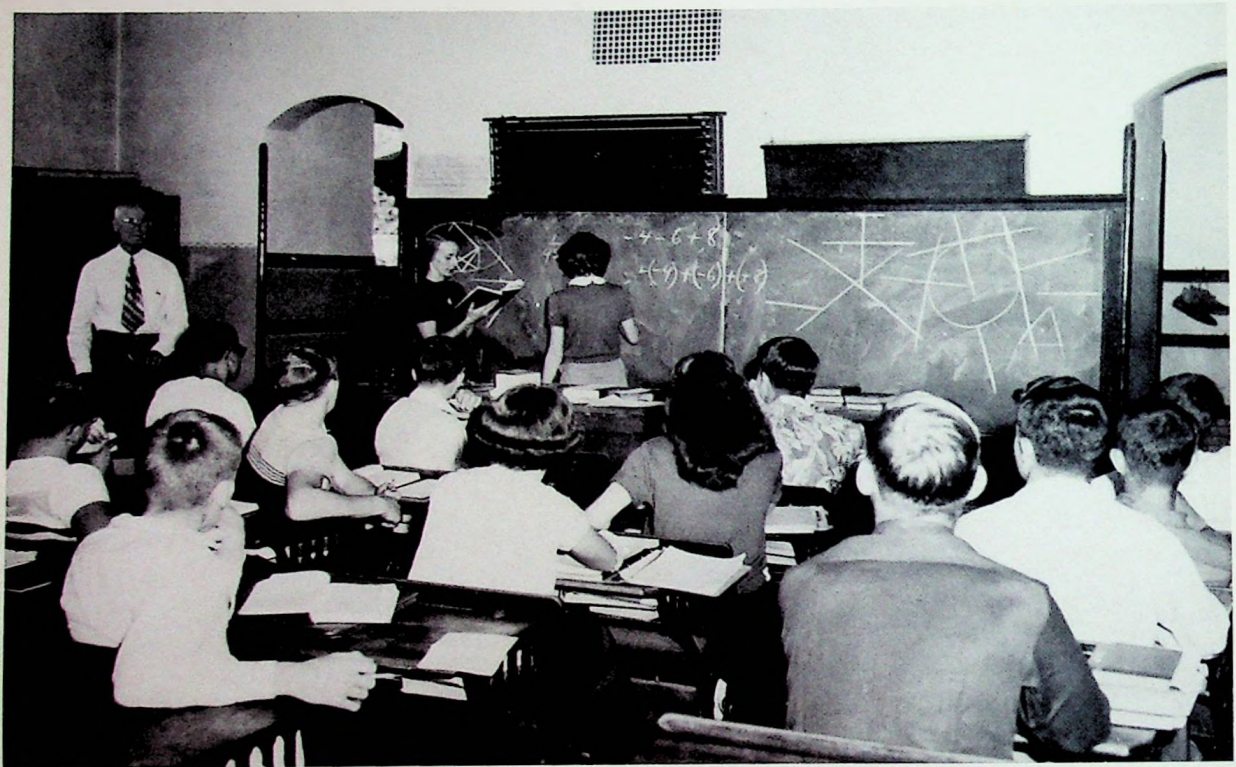




Home Economics



Latin I

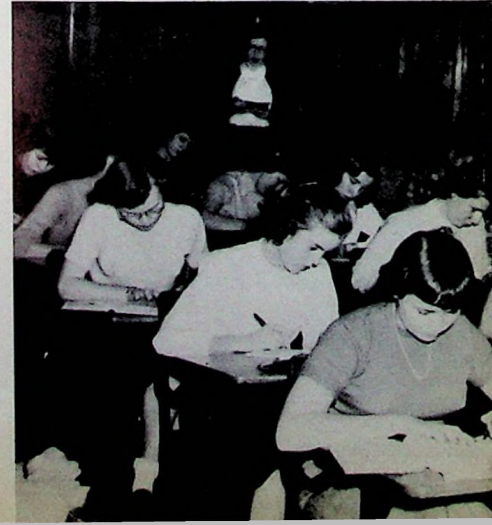


Advanced Algebra

Industrial Arts

Typing I

Shorthand I





Schoollife



Mutt & Jeff



Remember?



Snow girls?

Just resting



S
N
A
P
S

Don't get wet



Smile purty



Big banquet



Studios Sophs.



Three girls & a guy







Prone
B. Knowles



Sitting
P. Nardi



G. Frazier, J. Thomas,
B. Knowles, P. Nardi,
N. Burton

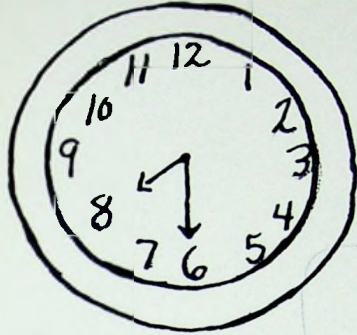


Kneeling
G. Frazier

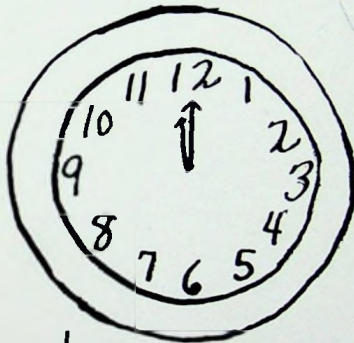
Offhand
J. Thomas



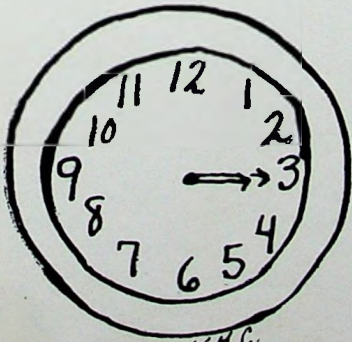
It Happens
Five Days
A Week



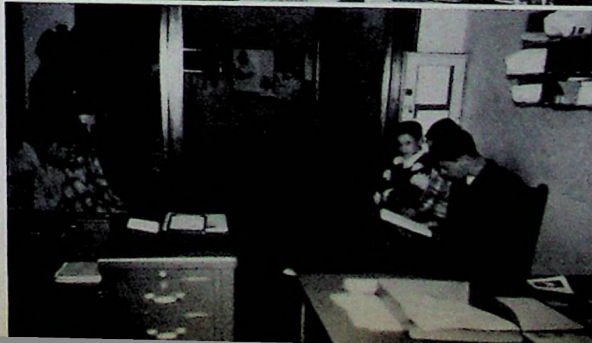
Round One



Food For Thought



V.A.C.
Finale





J. Tussey



J. Conley



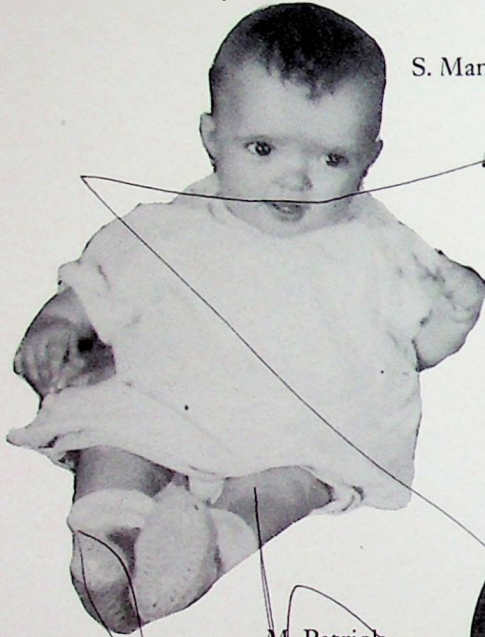
B. Montgomery



B. Yeley



R. Silcott



Miss Smith

S. Manley



P. Evans



E. Seth



S. Shoemaker



B. Martin



J. Arnette



N. Jenkins



S. Torges



J. Thomas

SENIORS

A. Knigge



W. Hoskins

J. McClurg

R. Pierce





D. Bussa



B. Kilgallin



G. Neimer



M. Russell



D. Spaulding



H. Scott



B. Askins



M. Baer



F. Maddix



R. Partridge



J. Winebrenner



J. Porter



S. Schneider



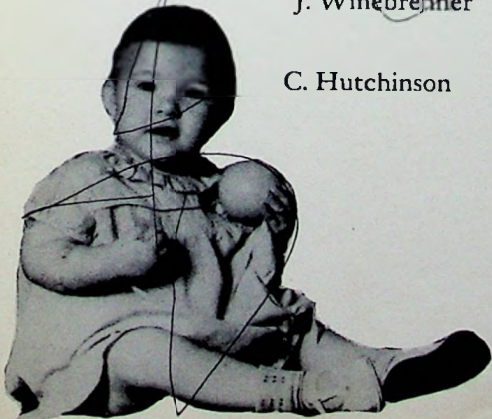
B. Widdig

C. Hutchinson

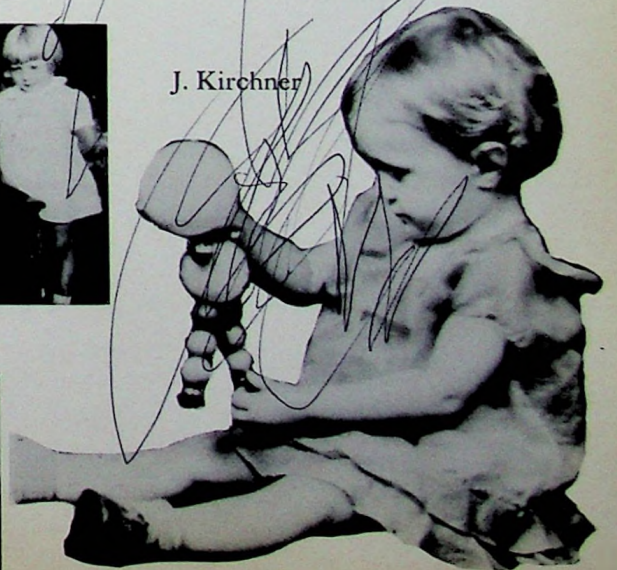


J. & J. Mays

J. Kirchner



P. Nardi



SENIOR DANCE



C
O
M
M
I
T
T
E
E





Swing your partner



Stag line



And
now
we
dip



Chaperons

- Mrs. Brown
- Mrs. Stevenson
- Mr. Stevenson
- Dean Taylor
- Miss Smith
- Mrs. Shock





S N A P S





Wilma and Carl



Joan and Russ



Faye and Ron



W
a
n
d
a
a
n
d
P
e
t
e

**G
O
I
N
G**



G
i
n
n
y
a
n
d
B
o
b



**S
T
E
A
D
Y**

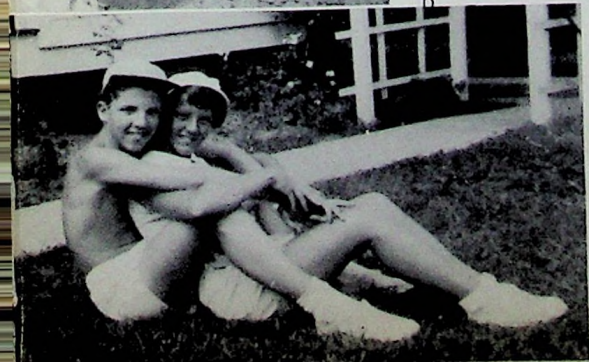
J
i
m
a
n
d
M
a
r
c
i
a



P
a
t
a
n
d
B
o
b

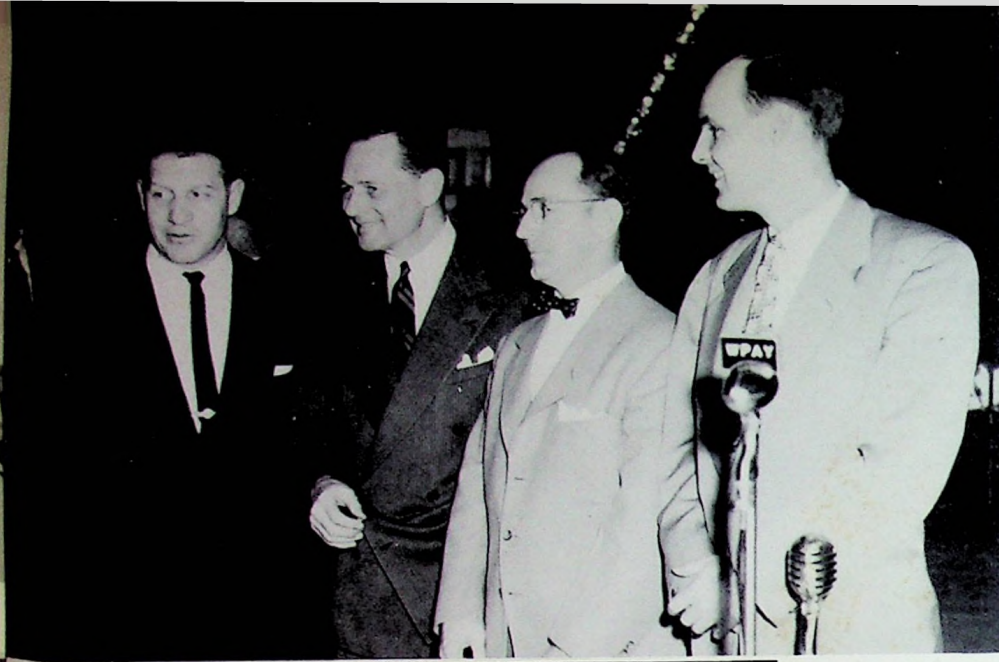


J
e
r
r
y
a
n
d
M
a
r
c
i
a



J
u
n
e
a
n
d
B
i
l
l





Glen Presnell
Waite Hoyt
George Wohler
Bob Gilmore



Boosters Club



Fans

L L A B T O O F
B A S K E T B A L L
T E U O N A B



Banquet



Autograph Hounds

Dance



S
N
A
P
S





Sports

V.M.C.



Row One: Larry Harr, Jerry Withrow, Maurice Smith, John Hoskins, Pat McCardle, Ray Burke, Cliff Reed, Max Kinker, Wilbur Harr. Row Two: Lloyd Preston, Tom Selbee, Rufus Logan, Co-Capt. Jim Graham, Joe Essman, Robert Ruley, Ron Felts, Brooks Parks, Dave Watts, Ray Brown, Roger Brown, Ron Benson, Co-Capt. Dick Spaulding. Row Three: Asst. Coach Schomburg, Jerry Winebrenner, Merle Medley, Phillip Stanley, Dave Burke, Shelby Dummit, Bob Kilgallin, Gary Sergeant, Bill Ogg, Ben Jenkins, Ron Deemer, Sam Christy, Asst. Coach Pogue, Head Coach Fugitt.



Coach Fugitt talking to Co-Captains, Dick Spaulding and Jim Graham.

This year's football team was hampered by injuries and bad breaks and didn't have a very successful season from the standpoint of wins and losses. Even though they had a season's record of one win and eight losses, the boys practiced hard and never quit trying and most of all they played the game clean.

THE 1951 SEASON

East	6	Wellston	47
East	6	Hillsboro	14
East	20	Wheelerburg	0
East	0	New Boston	20
East	15	B.I.S.	19
East	6	Waverly	20
East	18	Central Catholic	33
East	0	Washington	20
East	0	Chesapeake	32

Total 81

Opp. 205



Dave Watts
Most valuable player



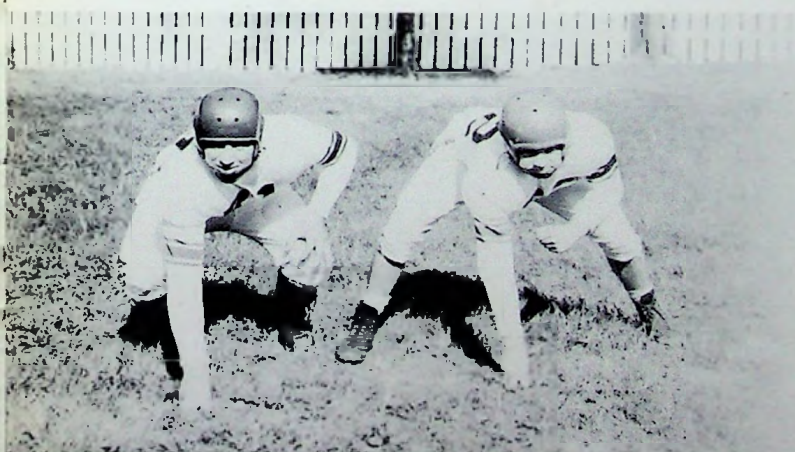
Jim Graham
Co-Captain



Bob Kilgallin



Watts circles Central's right end.



Ron Benson and Brooks Parks



Robert Ruley



Jerry Winebrenner
S.O.C. All Star Team



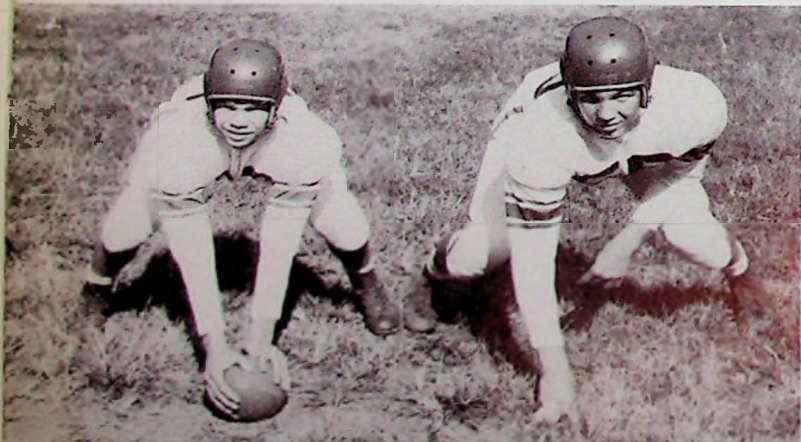
Dick Spaulding
Co-Captain
S.O.C. All Star Team



Ron Deemer



A tackle by Winebrenner and Graham.



Sam Christy and Bill Ogg



Ray Brown



Ben Jenkins



Max Kinker



Jerry Withrow



Joe Essman



Merle Medley



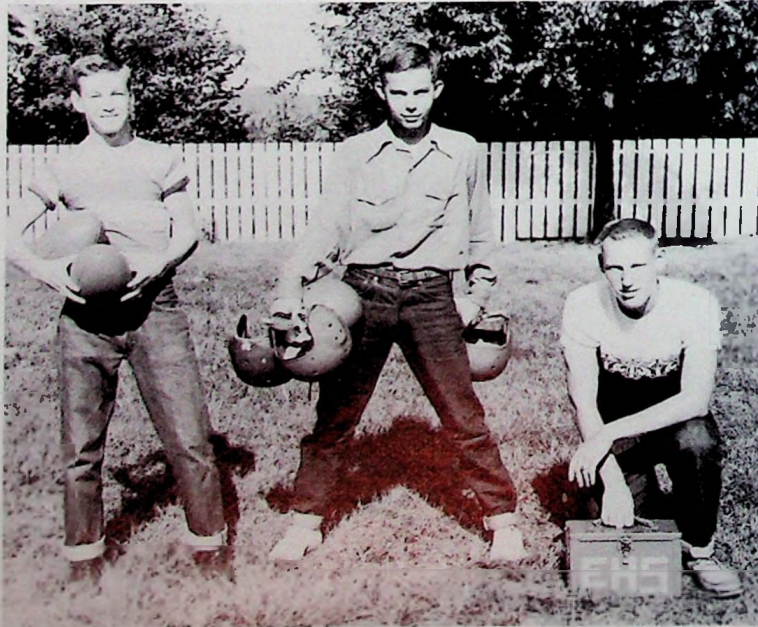
Gary Sergent



Dads Night



Moms Night



Managers: Dick Bussa, George Belloat, Ronnie Partridge

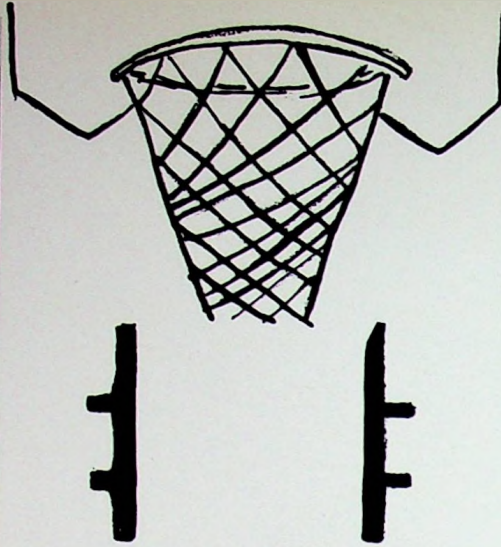


The sports world is a little poorer today. A very fine gentleman has retired from coaching. We salute Mr. John Fugitt as a great football and basketball coach and a great human being. Mr. Fugitt has retired, to the dismay of everyone who has really known him and worked with him at East High School during the past 15 years.

East High students and fans will long remember Mr. Fugitt for his fine football and basketball teams and for his philosophy of coaching, which has always placed the welfare of his "boys" above any other standard.



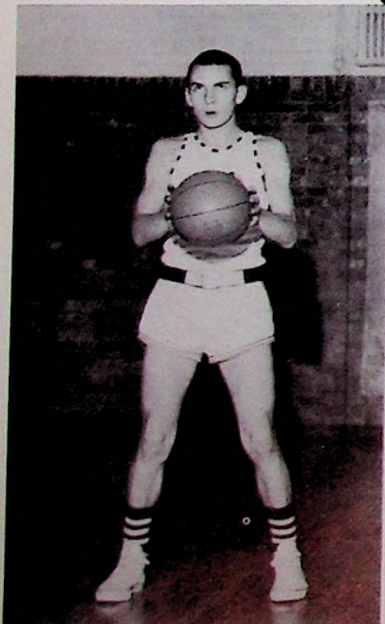
Jerry Henson



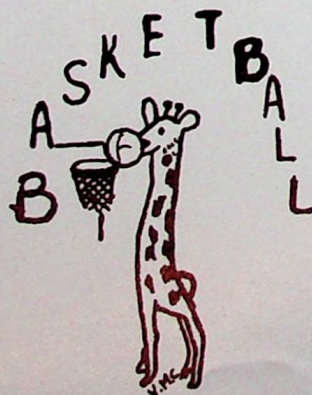
Ron Deemer



Dave Burke



Ben Jenkins



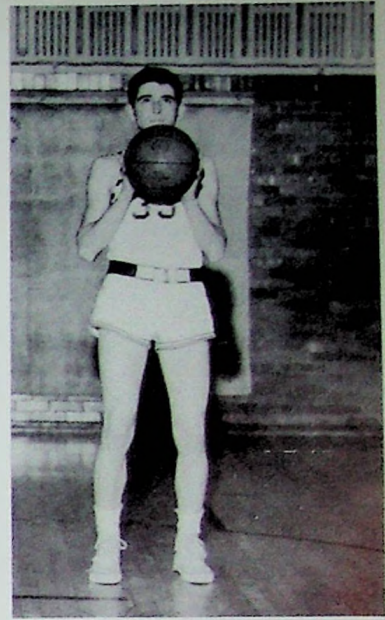
Jerry Winebrenner



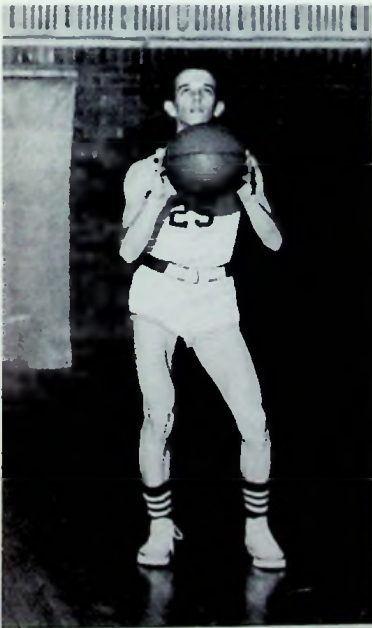
Bob Rowe



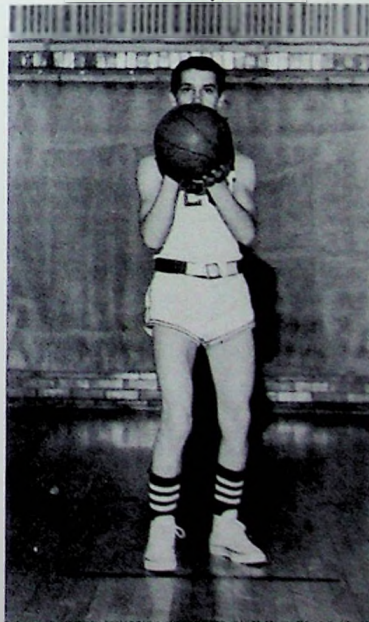
Roy Knight



Don Bussey



Ray Boyd



Jerry Withrow



Dick Dudit



Jerry Withrow, Dick Dudit, Don Bussey, Roy Knight, Ben Jenkins, Dave Burke, Bob Rowe, Jerry Winebrenner, Jerry Henson, Ron Deemer, Ray Boyd.

S.O.C. Champs



Coach, Herm Schomburg



Manager, Ron Partridge



The Tartans enjoyed an extremely successful basketball season. The team, composed of two seniors, seven juniors, and one sophomore, not only was co-champs of the S.O.C., but also was runner-up at the district tournament at Athens. The team rose to great heights when they defeated New Boston, Clay, and Minford in the same week, and again achieved greatness when they almost upset a favored Portsmouth team in the district finals.

	We	They
Coal Grove	57*	45
South Portsmouth	54	63
Central	72	55
Stockdale	56	60
Piketon	86	56
South Point	49	37
Wheelersburg	52*	47
South Webster	89	49
Waverly	60*	54
Chesapeake	56*	47
Greenfield	37	40
New Boston	56	37
Clay	42	41
Minford	51*	49
Central	75*	39
Ironton	64	46
Washington	59*	50
New Boston	46*	60

Won 14 — Lost 4 1063 870

TOURNAMENT

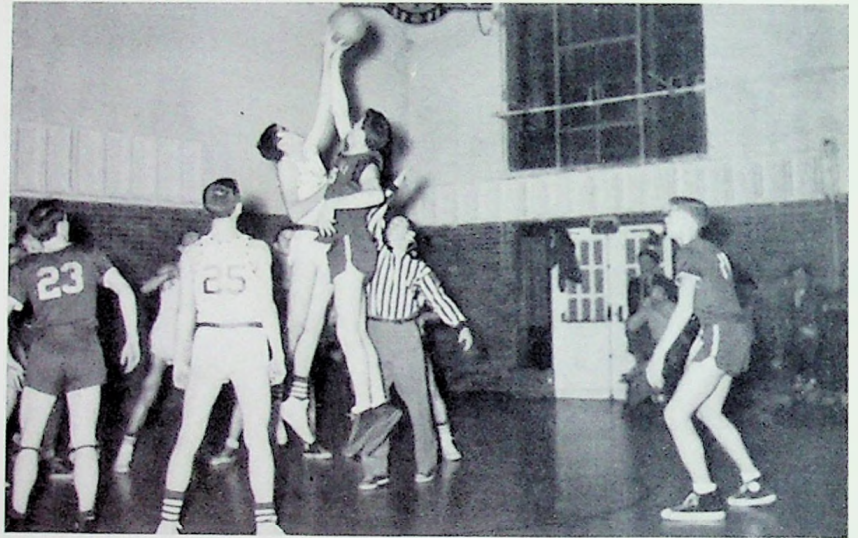
	We	They
Wellston	58	43
Gallopolis	51	43
Athens	48	37
Portsmouth	50	53

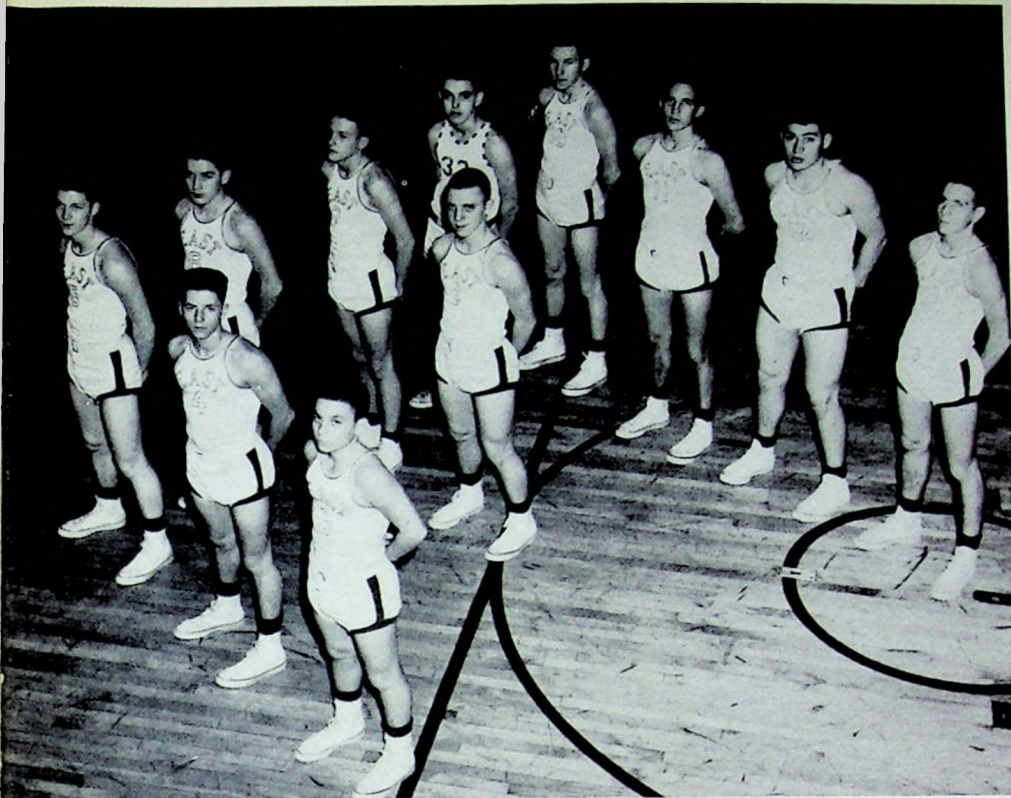
Runner-up 207 176

*denotes S.O.C. games



	F.G.	F.T.	Total	Avr.
Henson	170	109	449	20.4
Jenkins	71	35	177	8.4
Deemer	79	17	175	7.9
Winebrenner	69	10	148	7.4
Burke	52	24	128	5.8
Rowe	32	21	85	3.8
Knight	25	17	67	3.4
Boyd	9	4	22	1.4
Bussey	5	0	10	1.0
Withrow	2	3	7	0.4
Team	514	240	1270	58.0





Joe Shoemaker, Pat McCardle, Rufus Logan, Larry Harr, Willard McFarland, John Hoskins, Bob Knowles, Ron Felts, Bill Ogg, Ron Benson, Phil Stanley.

Coach, Buzz Pogue



	We	They
Coal Grove	40*	11
South Portsmouth	41	32
Central	46	26
Stockdale	32	30
Piketon	35	32
South Point	29	33
Wheelersburg	25*	22
South Webster	49	29
Waverly	26*	36
Chesapeake	64*	27
Greenfield	28	42
New Boston	21	20
Clay	46	35
Minford	35*	38
Central	44*	21
Ironton	53	47
Washington	35*	47
New Boston	34*	57

Won 12 — Lost 6

683

585

*denotes S.O.C. games



Phil Stanley



Joe Shoemaker



Bill Ogg



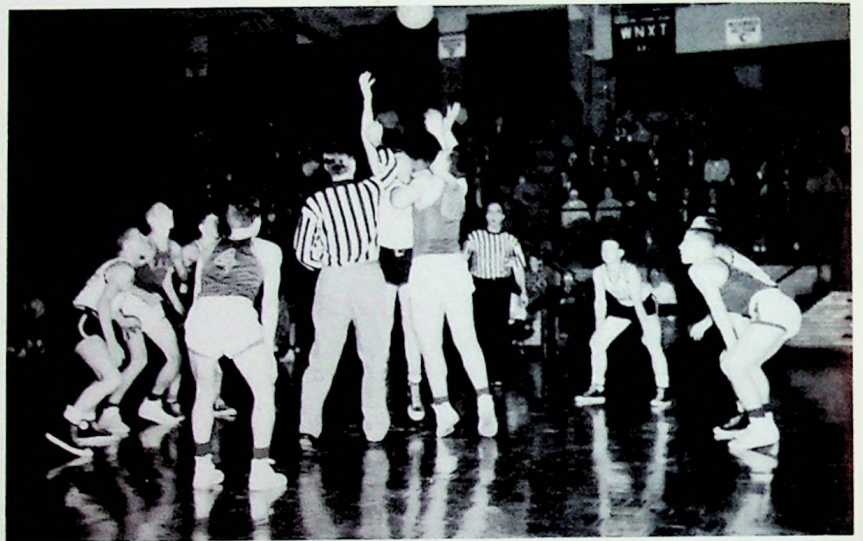
Pat McCardle



Willie McFarland



Bob Knowles



John Hoskins



Larry Harr



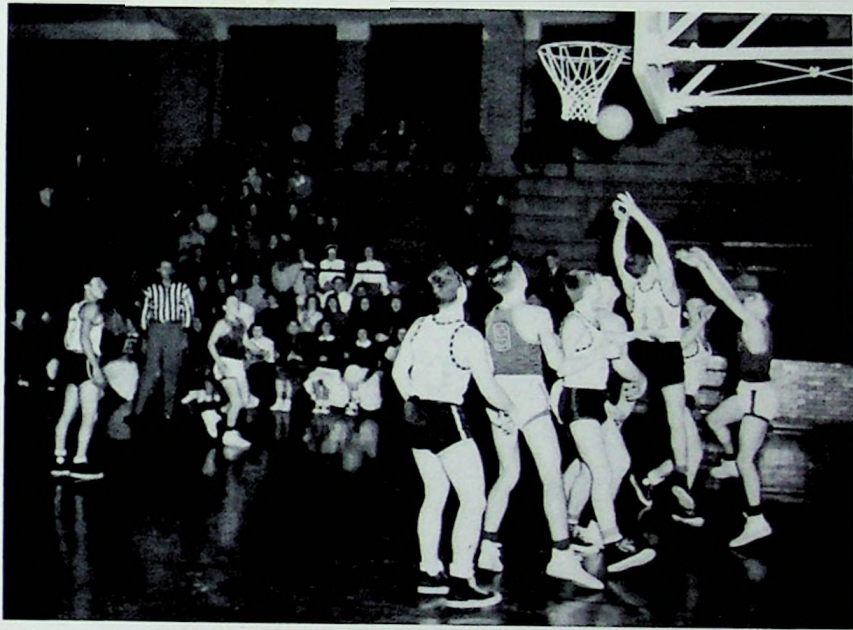
Rufus Logan



Ron Benson



Butch Felts





Sitting: Ray Boyd, Pat McCardle, Butch Felts, Dick Bussa, Dave Watts, Jerry Withrow, George Beloit.

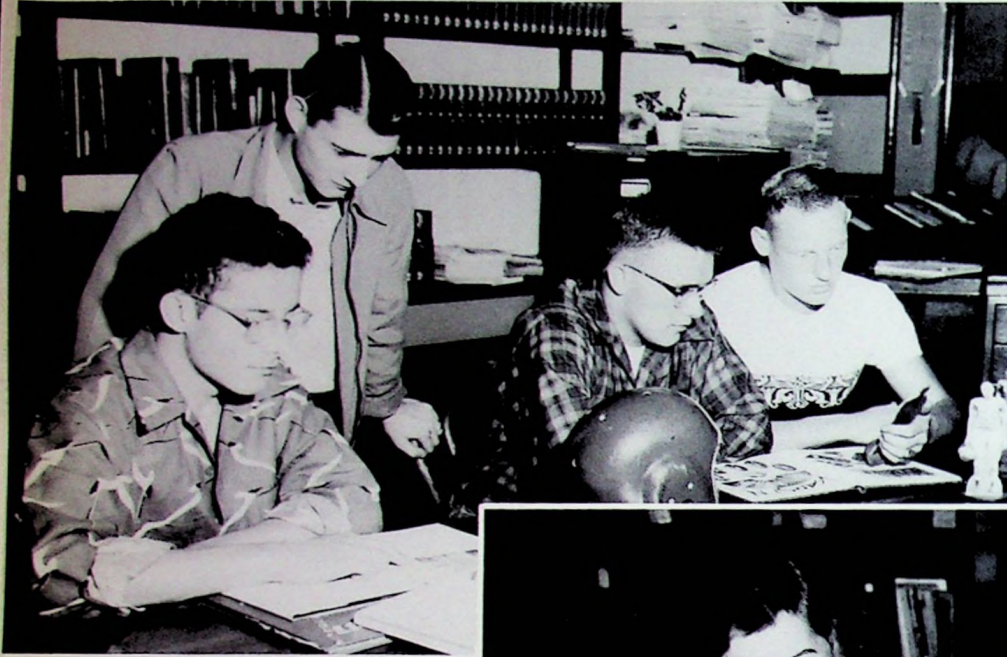
Standing: Jerry Henson, Ron Deemer, Dave Burke, Ben Jenkins, Roy Knight, Ron Partridge, Coach Buzz Poguc, Jerry Winebrenner, Ron Sturgill, Roy Stevens.



Y.M.C.

Activities

'52 TARTAN



ADS
Bob Killgallen
Harry Scott

ACTIVITIES
Wanda Hoskins, Ed.
Sue Manley, Assistant Ed.



SCHOOL LIFE
Sylvia Torges
Joyce McClurg
Pat Nardi, Ed.
Judy Thomas

ANNUAL STAFF



Phyllis Holbrook
Junior Ed.
Peggy Evans
Senior Ed.
Marilyn Baer
Editor
Wallace Evans
Associate Ed.

We have worked industriously to make our efforts a success. Each one has done his best. There have been mistakes and oversights which we hope future classes will foresee and rectify. Obstacles which handicapped us, we trust, will be overcome.

We now challenge the future classes of East High to surpass our yearbook.



ARTIST
Ginny Charlton



BUSINESS MANAGERS
Bill Martin
Sue Schneider



COLLECTORS: J. Tussey, R. Pierce, B. Yeley, M. Russell, N. Jenkins, B. Mustain, C. Hutchinson, B. Askin, A. Weidner, D. Watts, D. Bussa, W. Riddlebarger.

TYPIST
Faye Maddix



TYPIST
Ann Knigge

PHOTOS
June Arnett



PHOTOS
Ruth Sisler

"Where the press is free and every man able to read, all is safe."

—Jefferson.

HIGHLANDER



Working??



STAFF

Secretary	Marilyn Baer
Treasurer	Phyllis Holt
Editor	Sylvia Torges
Feature	Peggy Evans
Sports	Sue Manley
Fashion	Betsy Askin
News	Pat Nardi and Judy Thomas
Artist	Ginny Charleton



Y CLUB OFFICERS



Joyce McClurg
Vice-President
Brooks Parks
Chaplain
Barbara Yeley
President

Judy Thomas
Treasurer
Dave Watts
Treasurer
June Arnett
Secretary

Dick Spaulding, *Vice-President*
Jerry Winebrenner, *Secretary*
Ronnie Partridge, *President*

Mr. John Stevenson, *Hi-Y Advisor*



Dean Helen Taylor, *Tri Hi-Y Advisor*





M. Baer, D. Kline, B. Widdig, H. Cabiness, P. Evans, S. Torges, J. McClurg.



R. Beadle

F. Maddix

A. Knigge

L. Brigner

V. Charleton

A. Weidner

J. Thomas

S. Schneider

C. Hutchinson

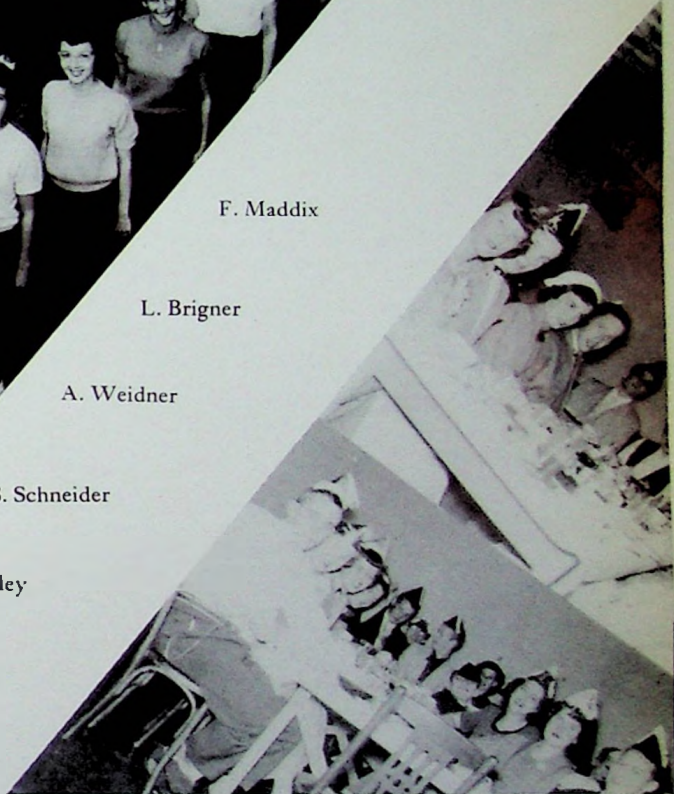
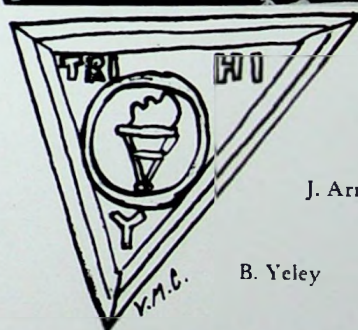
S. Manley

R. Massie

J. Arnett

M. Taylor

B. Yeley



The Tri-Hi Y is a Christian organization composed of Junior and Senior girls whose purpose is to create, maintain, and extend throughout the home, school, and community high standards of Christian character. The club has been affiliated with the Portsmouth YMCA for the past two years.

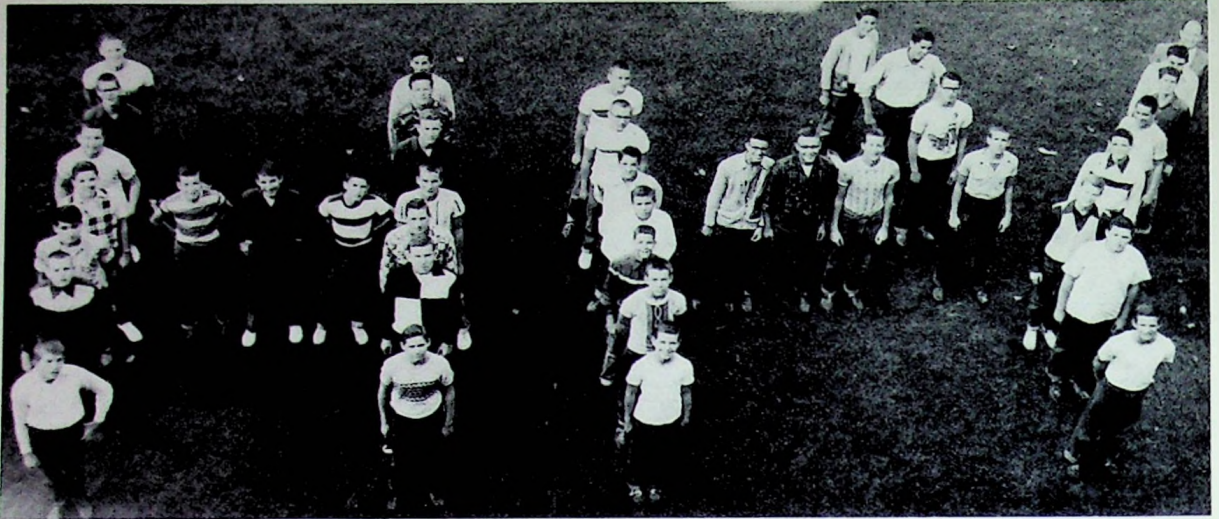
The candlelight initiation ceremony was held in the Berean Baptist Church along with the Hi-Y Club, and the informal initiation on September 28.

The two Y clubs sponsored the Homecoming Dance and the Tri-Hi-Y girls made and sold mums for the Homecoming Football Game.

Other activities carried out were the Christmas scripture readings in the home rooms, and a week of Easter services held in the auditorium before the spring vacation.

The annual Tri-Hi-Y banquet was given in the Blue Room at the Cameo, December 28.

HI-Y CLUB



R. Partridge, S. Christy, L. Powell, B. Martin, W. Evans, R. Will, A. Jones, D. Bussa, L. Atkins, M. Kinker, D. Dudit, B. Killgallen, M. Patrick, B. Jenkins, D. Johnson, B. Felts, G. Hanes, D. Spaulding, B. Parks, J. Johnson, W. Harr, P. McCardle, G. Bailey, D. Evans, D. Watts, J. Winebrenner, G. Sergent, W. Riddlebarger, D. Burke, B. Rowe, R. Boyd, R. Logan, D. Hood, R. Brown, J. Stevenson, L. Knowles, R. Frazier, J. Withrow, D. Bussey.

The Hi-Y is a Christian organization made up of sophomore, junior, and senior boys.

The club sponsored the Homecoming Queen and dance. A paper drive was held to finance these activities.

The formal Hi-Y and Tri Hi-Y initiation was held at the Berean Baptist Church on November 6 with Rev. Vaughn E. Sprunger as speaker.



BIG SHOTS!

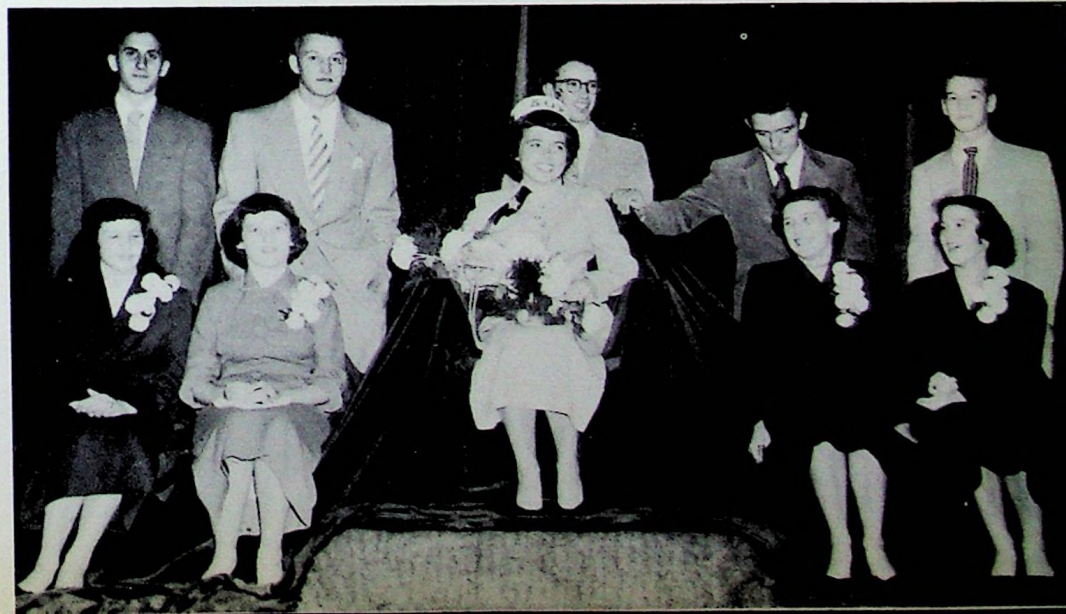


HOMECOMING



OUR QUEEN

Dick Duduit, Mary Burton, Dick Spaulding, Regina Booten, Dave Watts, Sue Manley, Jim Graham, Amy Weidner, Dick Bussa, Phyllis Lowe.





SUE ANN MANLEY

Sue will be remembered as "A Perfect Homecoming Queen in '51" after being junior attendant in '50, and for always having a big smile for everyone.



Amy Ruth Weidner



Regina Ann Booten

Phyllis Louise Lowe



Mary Jane Burton



HOMECOMING ATTENDANTS

CHEERLEADERS

One of the cheerleaders' main activities of the season '51-'52 was the sponsoring of a school dance with the profits used to under ride buses to the basketball tournament at Athens.

Original skits were given by the cheerleaders in various pep assemblies throughout the year.

Due to the constant effort and hard work put forth by the ball teams and cheerleaders, plus the faithful backing of the East high fans, a high goal has been set for the future Tartan teams.



Miss Smith	Advisor
Sue Manley	Captain
Wanda Hoskins	Senior
Amy Weidner	Senior
George Lantz	Junior
Betty Bolton	Junior





SENIORS
Amy, Wanda, Sue

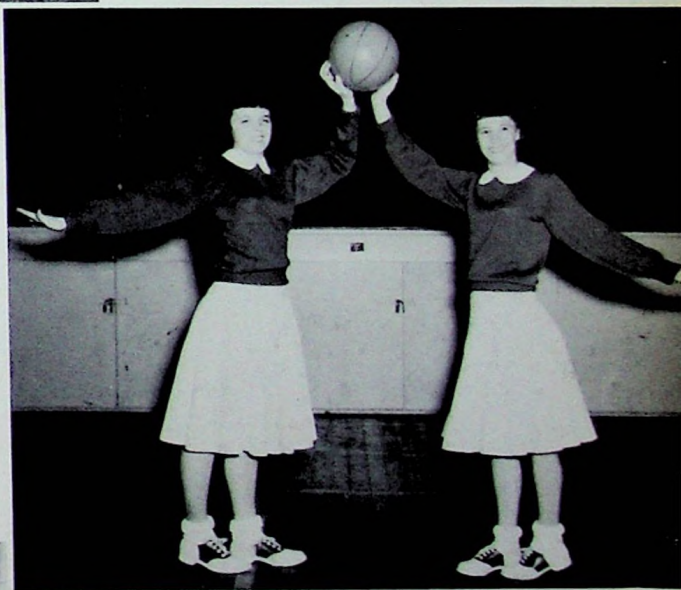


PEP BAND

Thanks fellows for a terrific job! You have given the school and team the backing they needed to become a winner, by attending all games possible, home and away.

Your presence at Athens made up for those students who could not make it. *Our Hats Are Off To You!!!!*

Dick Duduit, Andre Keller, Harry Scott, Dave Conkey (front row); Dave Warts and Gary Withrow (back row).



RESERVE CHEERLEADERS
Wanda Thompson and Sally Ogg



Rhetha Massie



MAJORETTES

Juanita Crabtree



June Arnett



Cynthia Mucha



Phyllis Hölbrook



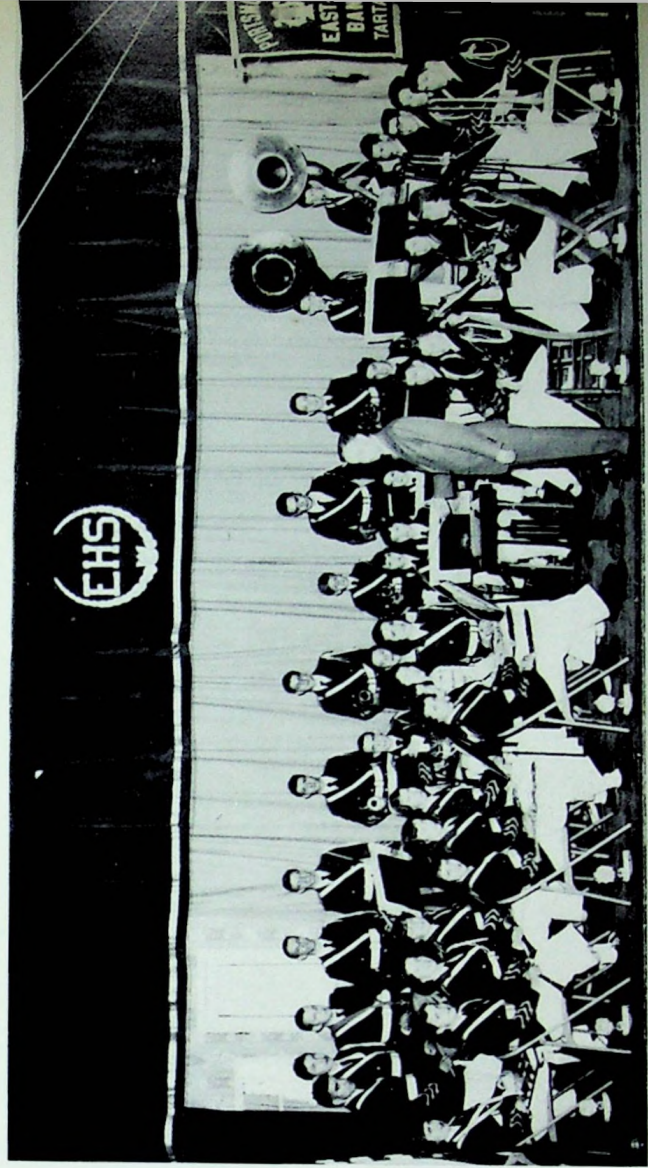
EAST HIGH BAND

The band had a full schedule during the Football Season. They were rained out of the last game, which was Homecoming and the Queening exercise was held indoors.

The band also took part in the Halloween Parade dressed in masks. They got lost as well as thoroughly soaked in the downpour.

They gave a Luncheon Concert before Christmas and had an Assembly in January.

The band participated in the Southern Ohio Band Festival on May 3rd which was held at Grant Gym.



Robert Klein, director.



EAST HIGH BAND

GLEE CLUB



Christmas Cantata



Helen Basham, *director*



OFFICERS

A. Horner, *reporter*, J. May, *reporter*, J. Winebrenner, *sec.*,
 C. Williams, *librarian*, D. Spaulding, *vice-pres.*, S. Schneider,
sec., J. McClurg, *accompanist*, K. Bussa, *treas.*, K. Burton,
bus. manager, D. Watts, *pres.*, P. Evans, *vice-pres.*, S. Man-
 ley, *pres.*, J. Withrow, *treas.*, P. Stanley, *bus. manager*.

GIRLS GLEE CLUB



Row One: Candy Williams, Janie Thompson, Carol Smith, Betty Chamberlain, Frances Howell, Sue Manley, Mary Davis, Greta Imms, Connie Walker, Mary Jane Burton. *Row Two:* Helen Nagel, Loretta Kurtz, Dolores Hickman, Dottie Hale, Joan Gee, Sue Schneider, Ruth Ratcliff, Janet Smith. *Row Three:* Katherine Warner, Mima Taylor, Amy Weidner, Janie Fannin, Janice Faine, Celita Smith, Janet Johnson, Helen Basham, director. *Row Four:* Rose Mary Brown, Katherine Burton, Freda Patrick, Wanda Haynes, Mary Dill, Bobbie Kitchen, Erma Campbell, Gayle Goodman. *Row Five:* Faye Maddix, Judy Sergent, Judy Tussey, Bobbie Morris, Mary Johnson, Donna Hughes, Carol Knigge, Carol Hutchinson, Virginia Charleton. *Row Six:* Judy Plummer, Rosalie Percell, Ferne Rudd, Shirley Chamberlain, Kay Bussa, Evangeline Craft, Norma McKelvey. *Row Seven:* Melba Williams, Rita Risner, Wilma Henson, Margaret Baer, Glenda Etterling, Marilyn Stout, Nora Robbins, Mary Allard. *Row Eight:* Joyce McClurg, Peggy Evans, Sylvia Torges, Margaret Russell, Judy Thomas, Jackie Kirschner, Evelyn Moyer, Betty Crabtree. *Row Nine:* Sue Sennett, Aulive Horner, Joyce May, Doris Keeton, Ruth Sisler, Bonnie Widdig, Betsy Askin, Betty Bolton, Janet Tomlin.

BOYS GLEE CLUB



Row One: Don Williams, Ted Davis, James Stockham, Gary Hanes, John Johnson, Don Keller, Dave Vallance, Ray Burke, Ronald Veach. *Row Two:* Clifford Reed, Wilbur Harr, Floyd Hensley, Dave Myers, Jerry Withrow, Max Kinker, John Hoskins, Gilbert Bailey, Helen Basham, Director. *Row Three:* Larry Harr, Leonard Powell, Glenn Keller, Bill Marshall, Don Bussey, George Niemer, Ronald Frazee. *Row Four:* Ben Jenkins, Richard Duduit, Warren Riddlebarger, Jim Porter, Rufus Logan, Bill Ogg, Philip Stanley. *Row Five:* Bob Knowles, Ronald Partridge, Dick Spaulding, Jerry Winebrenner, Dave Watts, Harry Scott. *Row Six:* Daniel Sparks, Doug Dials, Jack Eterterling, Sam Christy, Gary Vickers.

O
P
E
R
E
T
T
A



M
A
R
T
H
A

SPANISH CLUB



SPANISH II: Barbara Yeley, Revena Correll, Margie Russell, Joyce McClurg, Dot Kline, June Arnett, Sue Manley, Judy Thomas.

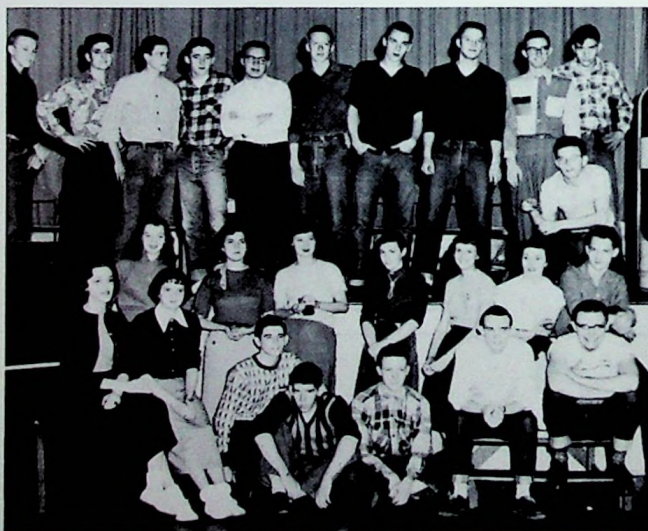
Vamos Dick Bussa, Bob Crabtree, Bill Essman, Dave Burke.



Dancing

EL CLUB ESPAÑOL

Habia más miembros en el Club Español este año que el año pasado. Otra vez recibimos varias cartas de unas niñas de la Secundaria No. 2 de la Ciudad de México. Dos Muchachos nuestros, Jerry Winebrenner y Ricardo Bussa, visitaron a Monterrey, México, en 1951. Dos miembros graduados, Eddie Caulley y Vaughn Hackworth, pasarán tal vez un rato en España y el Brasil respectivamente. Nuestro gran deseo es que alguien de este grupo participe en el Intercambio Estudiantil de las Américas. J. B. Thatcher, Jr. de la P. H. S. nos dió la palabra en el sexto programa español de asamblea, y fué el primer alumno secundario de Ohio que gozó de las ventajas de este intercambio. Como siempre el Club Español dirigió el baile escolar de la Navidad. En el otoño que viene esperamos ver unos bailes españoles en Columbus.



SPANISH I; *Standing*: G. Neimer, W. Evans, R. Deemer, J. Henson, B. Parks, G. Sergent, B. Jenkins, D. Spaulding, D. Warts, R. Walker, B. Kilgallin, P. Holbrook, B. Wilson, R. Sisler, D. Hickman, F. Maddix, F. Patrick, B. Rowe. *Seated*: H. Cabiness, P. Holt, D. Bussey, J. Porter, M. Patrick, B. McLaughlin, J. Winebrenner.

THE LATIN CLUB



KING
Jerry Withrow



QUEEN
Jenny Welch



PRINCESS
Nancy Knapp

The Latin Club's activities have more or less reached a set pattern at East. The group always has the St. Valentine dance. The assembly program consists of three parts: music, folk dancing, and a streamlined version of a Greek or Roman play. Wanda Hoskins and Phyllis Lowe supervised the dancing this year, and Lenore Gilpin wrote a short form of the Plautine comedy, *The Rope*. At the present writing there is no trip planned, but it is hoped that next year's members will resume the annual trip to Cincinnati.



PRINCE
Mike Stewart



Latin Students

"OLD DOC"



P. Holbrook, S. Christy



Brooks Parks
OLD DOC

JUNIOR CLASS PLAY



R. Will, G. Sergeant,
J. Thompson

L. Atkins



CAST



H. Cabiness, J. Castle,
A. Horner, D. Kline

R. Beadle

B. McLaughlin, R. Massie,
M. Taylor



SENIOR CLASS PLAY



"LAST STOP"

This graduating Senior Class is the only one that has had a record of six plays in its four years at East High. Four of the six have been given in the annual assemblies. They are:

Freshman year—As Sure As You Are Born

Sophomore year—Billy's First Date

Junior year—Now Is the Time

Senior year—The Christmas Carol

Our Junior Class Play was *Huckleberry Finn*, and our Senior Class Play was *Last Stop*.

Last Stop was first given at the Ethel Barrymore Theatre in New York on August 28, 1944. It was written by Irving Kaye Davis. The setting was an old ladies' home, and so most of the twenty members of the cast had to change themselves into elderly people to play the roles well,—not an easy thing.

Various members of the class have participated in Spanish and Latin one-act assembly plays as well as operettas.

Mrs. Sheppard	Judy Sergent
Mrs. Chubb	Marilyn Baer
Rev. Cummings	Ralph Silcott
Mrs. Manning	Joan May
Mrs. Hollister	Judy Tussey
Mrs. Miller	Faye Maddix
Mrs. Smith	Gloria Keller
Mrs. Dingman	Ruth Sisler
Mrs. Fitzpatrick	Peggy Evans
Miss Baldwin	Sue Manley
Mrs. Mabledor	Margie Russell
Walter	Ronnie Partridge
Catherine Chandler	June Arnett
Mr. Cook	Bob Kilgallin
Mrs. Anna Haines	Sylvia Torges
Howard Haines	Wallace Evans
Isabel Haines	Amy Wiedner
Mary Stevens	Ginny Charlton
Mr. White	Bill Martin
Miss Snyder	Regina Pierce

HONOR

SOCIETY

SERVICE

CHARACTER

LEADERSHIP

SCHOLARSHIP



Pauline Walden Chapter

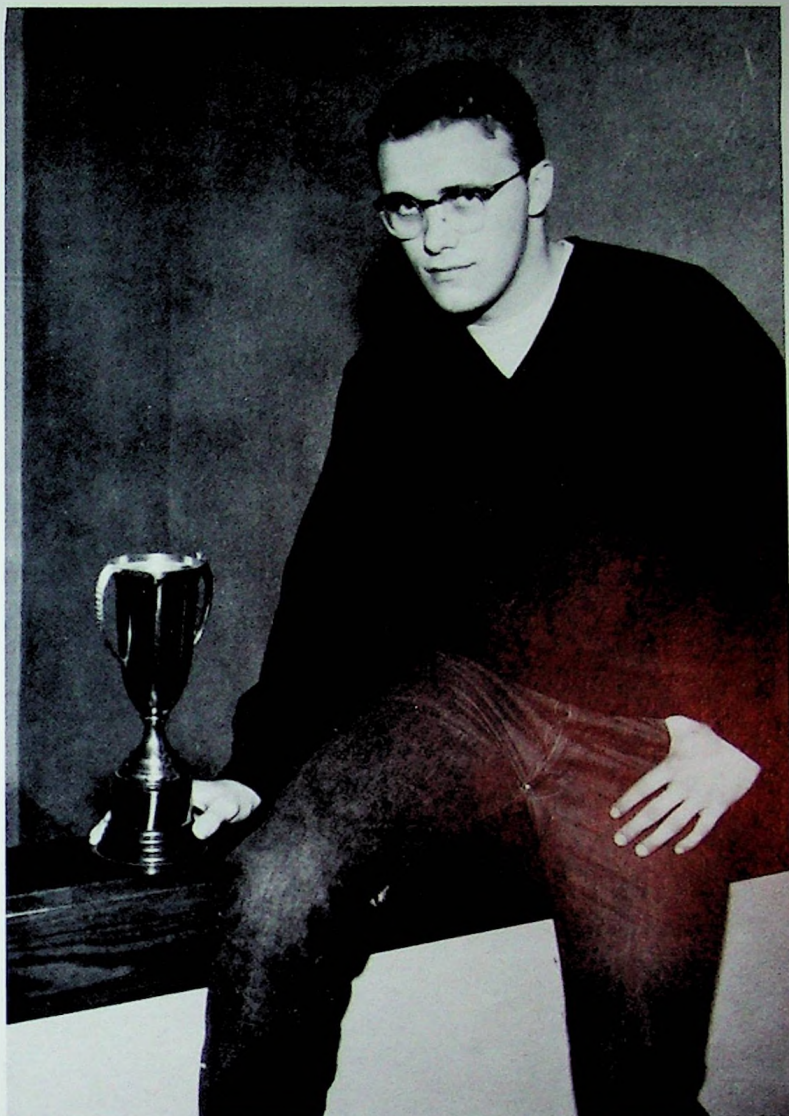


(back row) J. Stevenson, Ruth Beadle, Barbara Yeley, Sylvia Torges, Peggy Evans, Wanda Hoskins, Ronnie Partridge, Phyllis Holbrook, Joan Castle, Dorothy Kline, P. Walden. (seated) Marilyn Baer, Amy Weidner, Wally Evans, Dean Taylor. (absent) Margaret Russell, Sue Manley.



Formal Initiation of new members

JUNIOR CUP



The Junior Cup is presented to a pupil in the junior class who has made outstanding contributions to both school and class. Citizenship, leadership, co-operation, scholarship and athletics are some of the things considered when selecting a winner.

In the past thirty years, the winners have been about equally divided between boys and girls.

In 1951 the cup was won by Jerry Winebrenner as the best all around member of the junior class.

GIRLS' LEAGUE

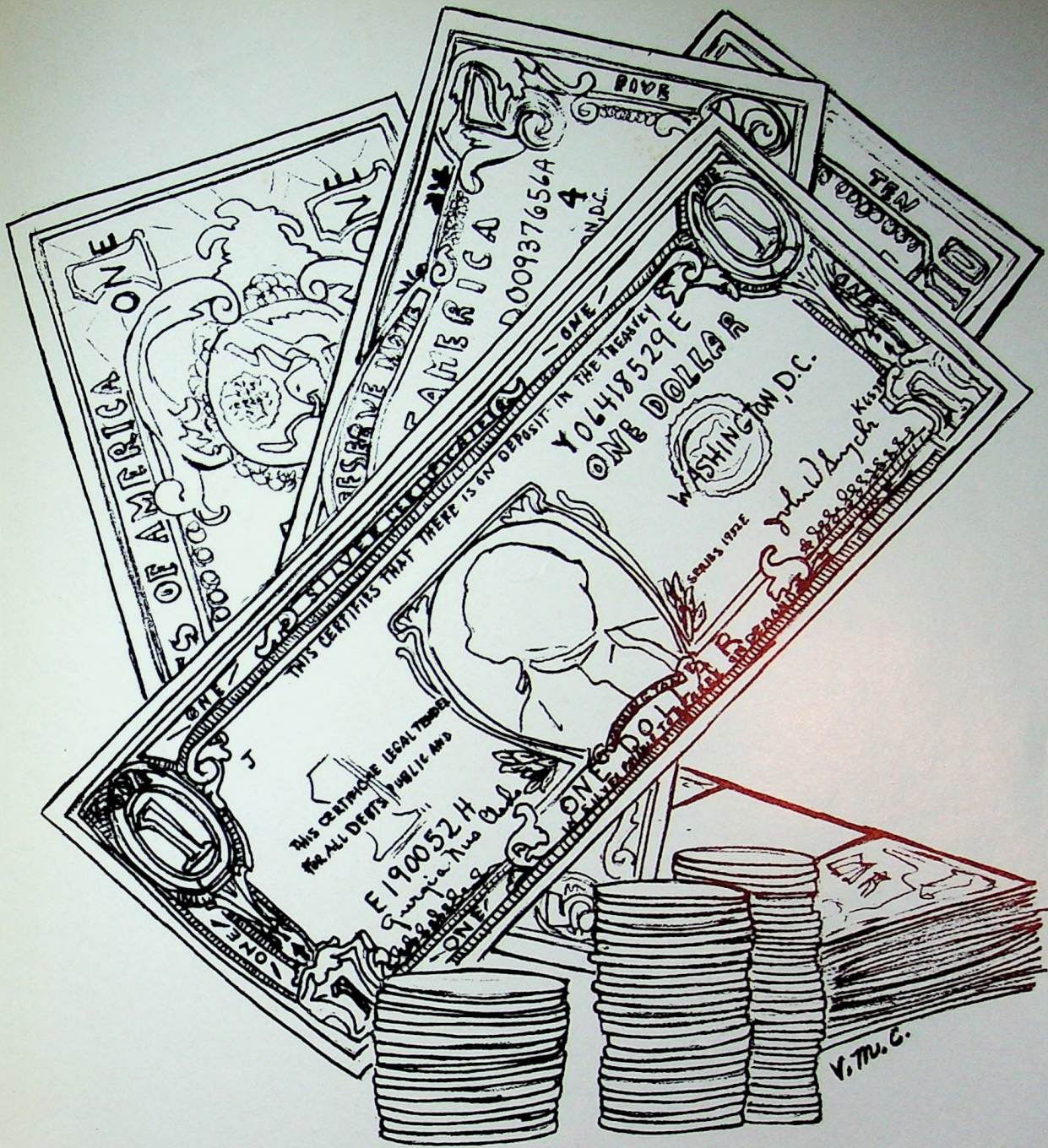


Officers: Joyce McClurg, pres., Regina Pierce, treas., Faye Maddis, sec., Amy Weidner, vice-pres.

SCHOOL LIBRARIANS



Betty Montgomery, Kathryn Warner, Ruth Sisler, Bonny Widig.



Acts

JOHNSONS BROS. GROCERY



Corner of Harding and Mayo

"A good store for a good community"

Compliments
of
KILGALLIN
BARBER SHOP
Gallia Street

Compliments
of
SCIOTO DRUGS

Compliments
of
JOHNSON'S
GREEN HOUSE
Flowers for every occasion

NEWBERRY BROS.
4150 Gallia Street
Newboston, Ohio
For Fine Clothing
and Sporting Goods

COEY'S
BARBER SHOP
241 Harding Avenue

Compliments
of the
GRAF LUMBER CO.
BAHNER ROAD
Phone Scioto 169-L

Good Luck
From
JACK DEMPSEY
GROCERY
Phone Scioto 88

Compliments
of
GILPINS DAIRY

Compliments
of
HIBBITTS
DRY GOODS

Phone 921-L

KAY JEWELRY CO.
817 Gallia Street
PORTSMOUTH, OHIO
Phone 31581

KOPY KAT INC.
Ladies Ready to Wear
509 Chillicothe Street
Phone 23851



Betsy Ross
Bread is good

Since 1934

More for your money

WALKERS SHOES

420 Chillicothe Street
Portsmouth, Ohio

Dean and Barry Paints

Surperical Washable Wallpaper

Janitor Supplies

PORTSMOUTH PAINT CO.

928 Gallia Street

a tribute to your good taste—

“Hyde Park”

Clothes

THE CRITERION

“The Men's Shop”

PORTSMOUTH, OHIO

Best Wishes to the
Graduating Class of '52

CHABOUDYS FOOD MARKET

Corner of Gallia & Easterr

Compliment of

**ADAMS GROCERY &
SERVICE STATION**

1423 Bonser Avenue

GAS – OIL

Grocery Meats

*Compliments
of*

S. T. KENYON & CO.

Engineers Contractors

411 Harding Avenue

Compliments of

**“VIC” STAKER
AUTO BODY SERVICE**

Wrecks Repaired and Auto Painting

Between Wheelersburg & Sciotoville

GILL FUNERAL HOME



AMBULANCE SERVICE

Phone 100

Sciotoville, Ohio

Jessie Gill

Thomas J. Gill

Compliments

of

SCHOMBURG GROCERY

Furnishing

Homes Since 1913

SAMUEL LEVI & CO.

FURNITURE

840-844 Gallia Street

WOLF

Clothes for Dad and Lad

CUNNINGHAM HARDWARE
COMPANY

Building Supplies

Household Utensils

Phone 25571

We Deliver

Here's to the Class of '52

Marting's

PORTSMOUTH, OHIO

Congratulations

Class of '52

CARR JEWELRY STORE

811 Gallia Street

Your Charge Account Invited

HIBBITTS

HARDWARE COMPANY

315 Harding Avenue

Quality Service Courtesy

LAKEVIEW CLEANERS

Sciotoville's only complete Dry Cleaning Plant

5710 Gallia Street Phone 229-W

Wallace "Fat" Bryan

BOURGHOLTZERS DRUG

Prescriptions

Boxed Candies Perfumes

Philco Television & Refrigerators

Compliments
of
DOCTOR MOORHEAD

DUVENDECK'S

5619 Gallia Street

Wallpaper Paint

Linoleum

EVANS TV &
APPLIANCE CENTER

Admiral G. E.

Emerson Television

John Evans—Owner

5720 Gallia Street

*See All The
Styles
At*

CRAIGMILES FURNITURE

936 Gallia Street

Phone 24731

HAMBURGER SHOP

*Buy
'Em
By
The
Sack*



*Buy
'Em
By
The
Sack*

Get the Food That Makes You Glad You're Hungry
Prepared Before Your Very Eyes on All Stainless Steel

5721 Gallia Street

J. Everett Reese—Proprietor

*For a gift you'll
give with pride let
your Jeweler be
your guide.*

SCHULERS JEWELRY SHOP
Theater Building

Best Wishes

From

**TURNER'S
SHOE REPAIR**

KOBACKERS

**CHRYSLER
SALES & SERVICE**

Let your car worries be ours

WHEELERSBURG MOTOR CO.

Gallia Street and Hayport Road
Phone Sciotoville 272

*For a place to eat
That is clean and neat
Stop at the*

TARTAN INN
Thompson's
5801 Harding Avenue

Best Wishes

From

**WINEBRENNER'S
SERVICE STATION**

Compliments

of

HUSTON-PONTIAC CO.

Gallia-Lincoln-Ninth St.

Phone 2-2951 or 2-2961

Compliments

of

SCOTTS BARBER

SHOP

Compliments

of

ABBOTT'S GROCERY

520 Harding Avenue

Scioto 66-W

Compliments of

**MUNN'S
SERVICE
STATION**

**Harding & Winchester
Sciotoville**

Compliments of

EAST HIGH BOOSTERS CLUB

George Wohler—President

C. L. Melvin—Vice President

Herb Bussa—Treasurer

Ed Pogue—Secretary

Compliments
of
BEN STEWART



BOTTLING COMPANY OF PORTSMOUTH
2415 Chillicothe St., Portsmouth, Ohio
Telephone: 2-8461

Compliments
of
STANLEY THEATRE
Pick of the Pictures
"Make the Stanley your place to go"
Best Wishes to the Class of '52

ATLAS FASHIONS
The Style Center of this Area

Compliments
of
CLIFFORD FOSTER

Diamonds *Watches*

ZOELLNER
JEWELRY CO

Third and Chillicothe
PORTSMOUTH, OHIO

Compliments
of
EVANS FLORAL
SHOP

Compliments
of
MARTINS STUDIO

