



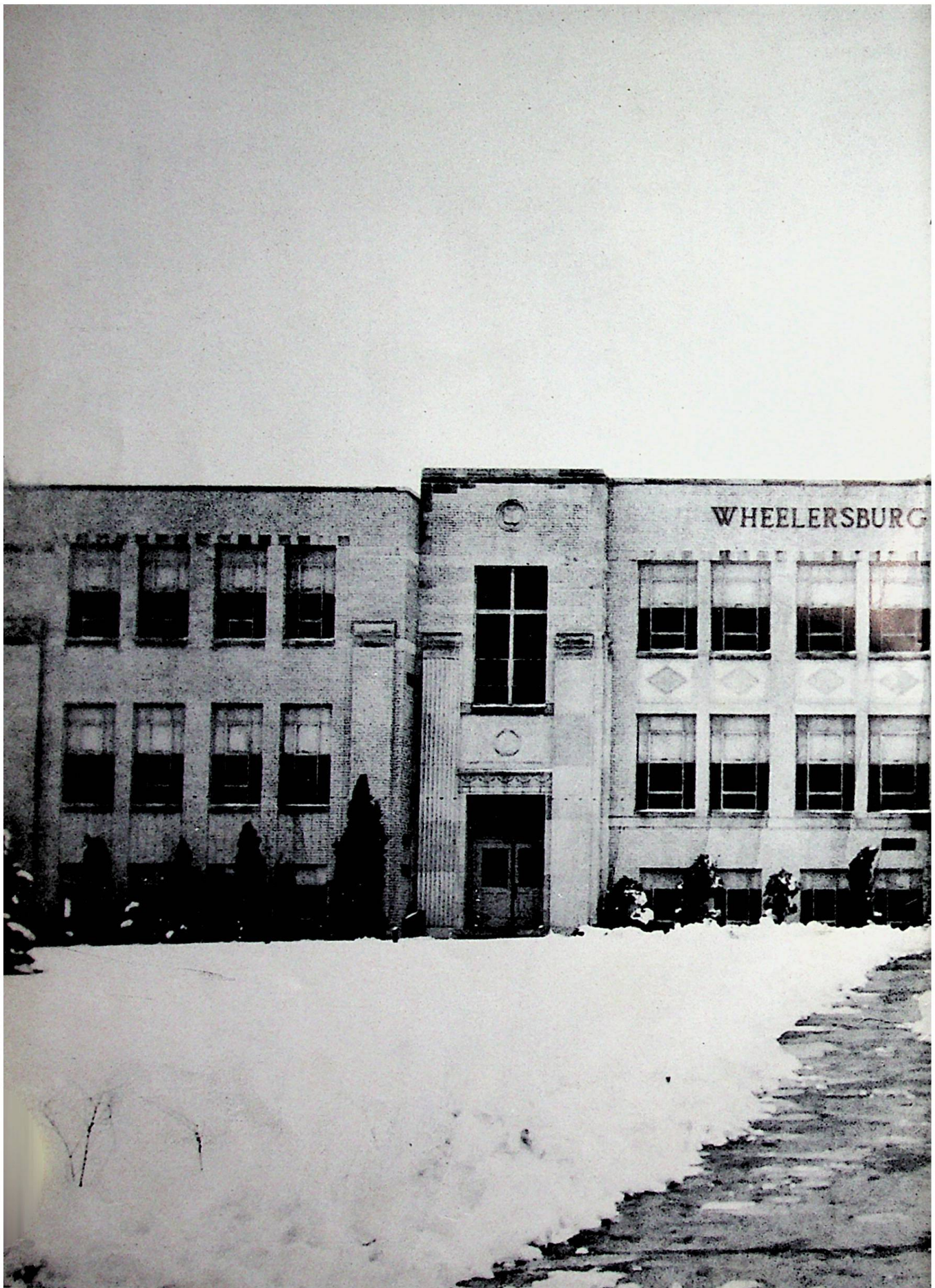
THE

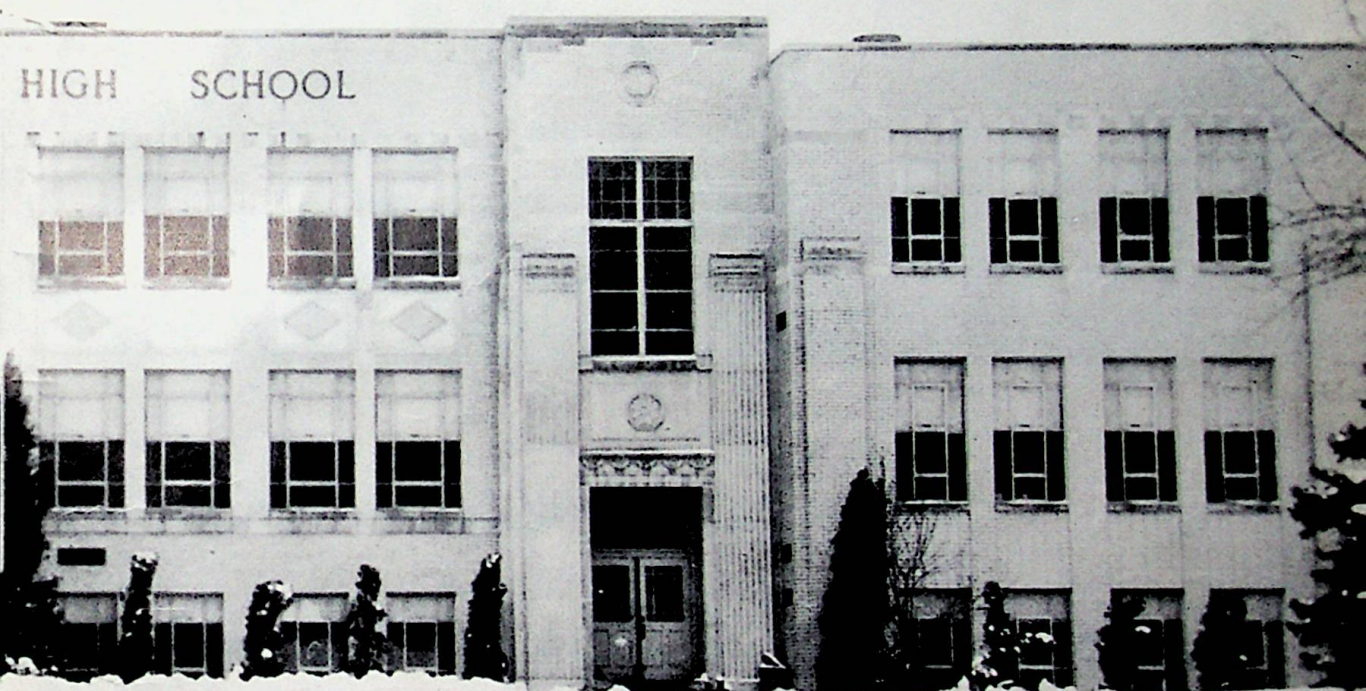
WHEEL

RECEIVED  
MAY 10 1920

The Class of  
Nineteen Forty-five  
presents the  
fourth edition  
of the  
Wheel

LH DEPARTMENT  
DO NOT CIRCULATE





HIGH SCHOOL



## Foreword

So that your life here at Wheelersburg High School will never be forgotten and acquaintances will never fade, we submit to you the 1945 Wheel. We sincerely thank you, who have made it possible for us to publish this Wheel.

# Contents

School . . . . .	13
Classes . . . . .	20
Features . . . . .	44
Our Service Men . . . . .	51
Athletics . . . . .	60
Organizations . . . . .	67
Life at Wheelersburg . . . . .	84
Advertisements . . . . .	98

*He does not teach us how to live. But he does tell us to live, —with courage,  
with love to man, with trust in God, —and he bids us find life glorious, because  
it is still imperfect and therefore full of promise.*

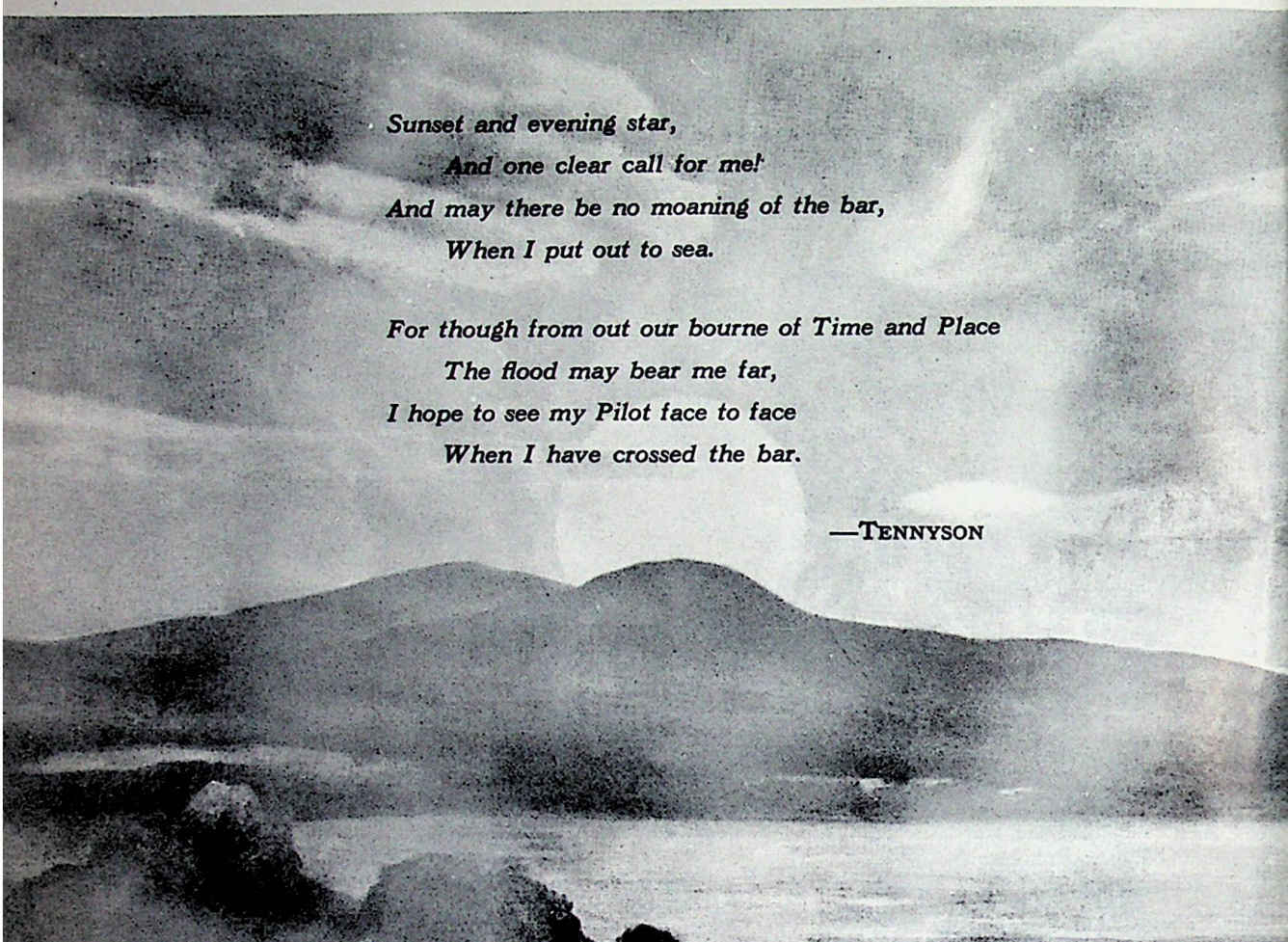
—VAN DYKE

*Dedicated to*





*. . . Mr. Pearl G. Smith, Supervising Principal of Wheelersburg High School, whose splendid example of understanding and helpfulness has been an inspiration to our high school.*



*Sunset and evening star,  
And one clear call for me!  
And may there be no moaning of the bar,  
When I put out to sea.*

*For though from out our bourne of Time and Place  
The flood may bear me far,  
I hope to see my Pilot face to face  
When I have crossed the bar.*

—TENNYSON

*Im*

**ELLIS SETTERS**

**1919-1944**

**CLASS OF '37**

**BILL SELBY**

**1928-1944**

**CLASS OF '47**

**LESTER GALLION**

**1926-1944**

**CLASS OF '46**

**ROYDON WRIGHT**

**1923-1943**

**CLASS OF '44**

**HERBERT RICE**

**1916-1942**

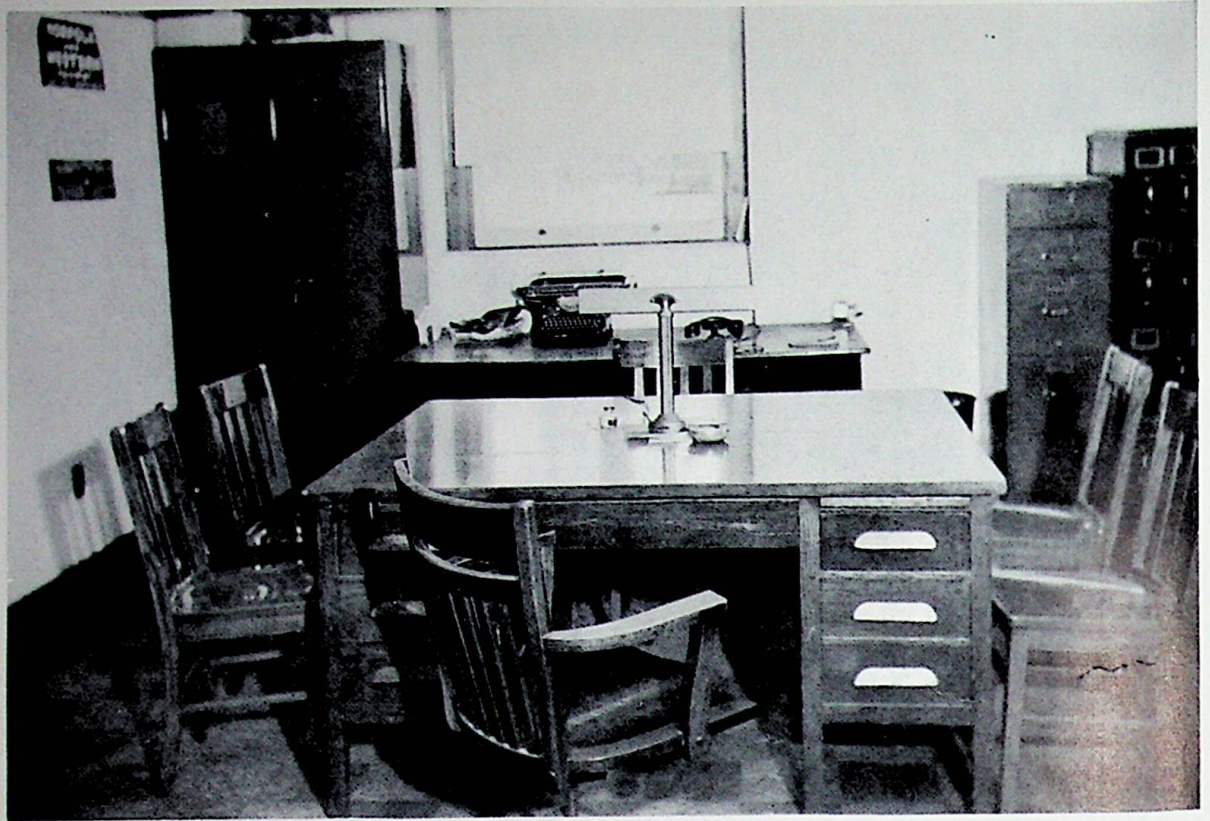
**CLASS OF '34**

**KENNETH HAY**

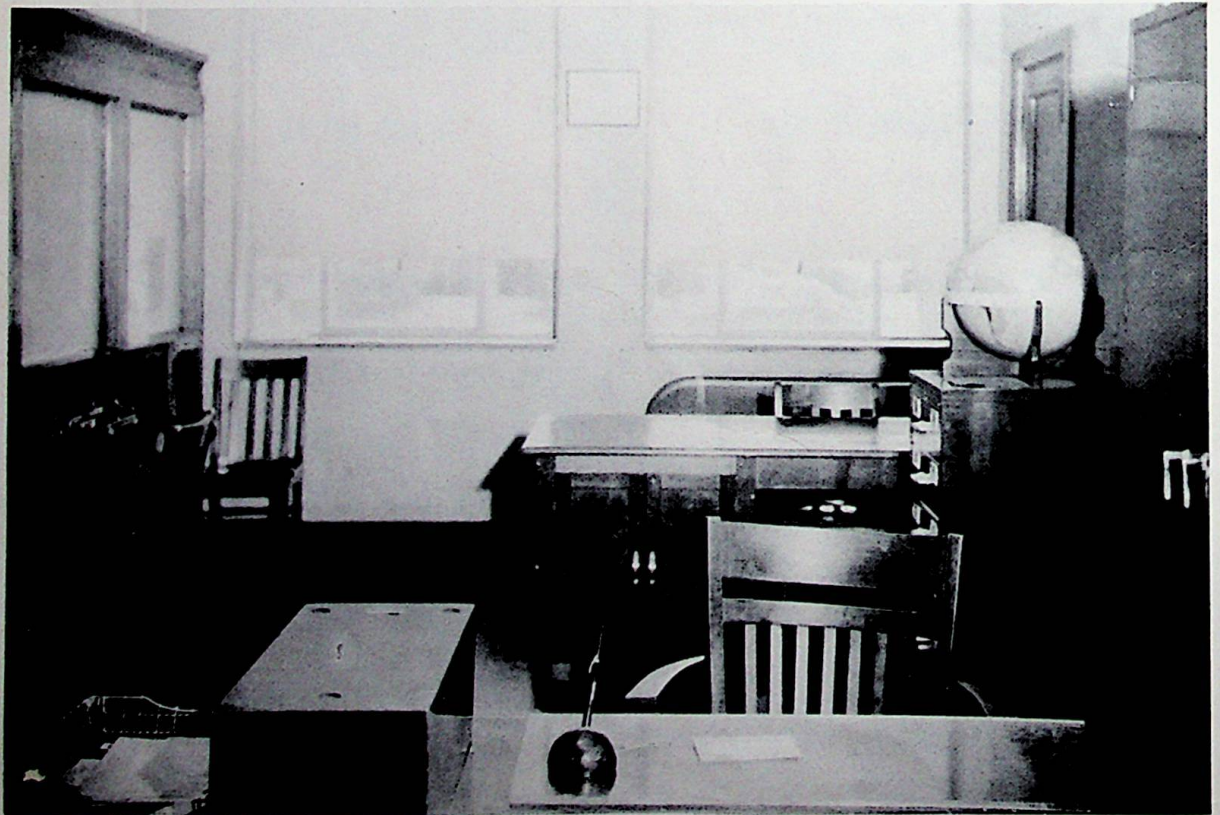
**1926-1943**

**CLASS OF '44**

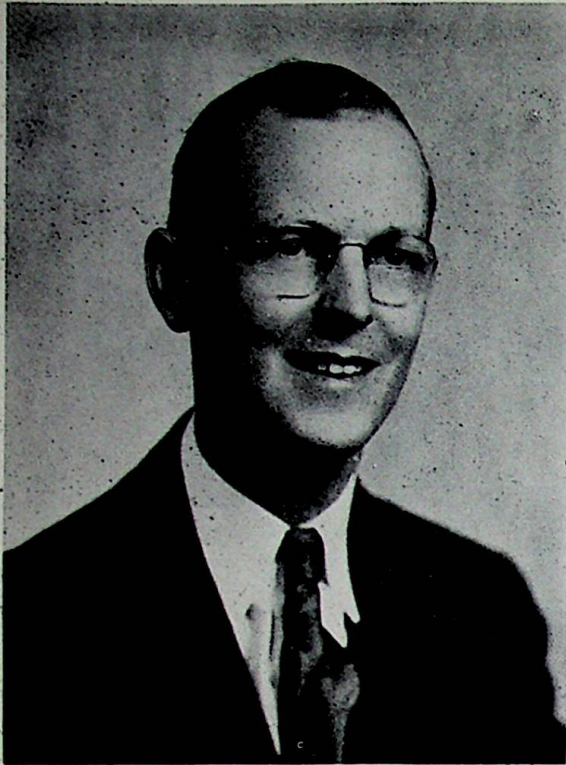
*Memoriam*



OFFICES OF ADMINISTRATION



School



## PEARL G. SMITH

For the past few years Mr. Pearl G. Smith has been Supervising Principal of Wheelersburg High School. During this time he has done outstanding work in promoting scholarship, improving school citizenship and in maintaining the high standard for which Wheelersburg schools have been known. He has won the friendship of the entire student body.

Mr. Smith graduated from Ohio University, Athens, in 1934, majoring in mathematics and educational theory. He was granted his Masters Degree from the University of Cincinnati, with a major in school administration and school supervision.

For nine years he taught mathematics prior to assuming the duties of Supervising Principal of Wheelersburg Schools.

Mr. Smith is a member of the Phi Delta Kappa National Honorary Fraternity.

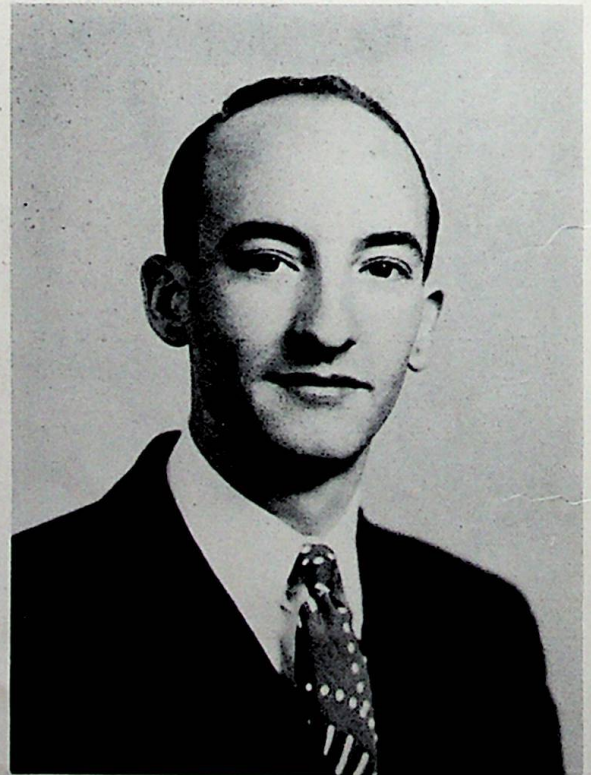
## J. DONALD McCOWEN

Mr. J. Donald McCowen was employed this year to assist Mr. Smith. He was assigned certain office and administrative duties which permitted Mr. Smith greater advantage in supervising the teaching. Mr. McCowen's office duties included the keeping of office attendance records for the upper six grades, promoting scholarship through various activities, checking eligibility for extra-curricular activities, and promoting good sportsmanship throughout all grades.

Mr. McCowen also maintained a full teaching schedule including biology, physiology, radio theory and laboratory work, two general science classes and one laboratory period.

Mr. McCowen graduated from Ohio University, Athens, Ohio. He has done graduate work at Ohio University and Ohio State University, majoring in administration and supervision.

Mr. McCowen's excellent teaching, efficient supervision and ability to understand have won for him the admiration and respect of the student body of Wheelersburg High School.





## BOARD OF EDUCATION

*Back Row:* N. B. Potts, County Superintendent; J. Harper Preston, George W. Smith, Pearl G. Smith.  
*First Row:* Fred Pollock, Vice President; R. L. May, President; Carl Herms, Clerk.

### N. B. POTTS

Mr. N. B. Potts, County Superintendent of Scioto County Schools, attended Ohio University and Rio Grande College. He graduated in 1919, and took post graduate work at the University of Cincinnati.

He has served as Supervising Principal of the Bloom Township High School at South Webster and the Valley Township High School at Lucasville.

Mr. Potts was Assistant County Superintendent from 1934 to March 1, 1944. He has been on the executive committee of the State County Superintendents' Association and is now on the executive committee of the Southeastern Ohio Teachers' Association.

He served one term of four years on the district and state athletic boards.

At the present time he is President of the Scioto County Teachers' Association.





**William Adams**  
 Morehead State Teachers  
 College  
 B. S. Education  
 George Peabody College  
 for Teachers  
 M. A. Biology



**Faye D. Burke**  
 Ohio University  
 History  
 Economics and  
 Commercial Law  
 B. S. Education



**Mrs. Frank Cunningham**  
 Ohio State University  
 Chemistry, Agriculture  
 Physical Education  
 B. S. Education  
 Antioch



**Ruth Distel**  
 Mount St. Joseph on Ohio  
 Home Economics  
 B. S. Education



**Ruth Humphrey -**  
 Ohio University  
 Ohio State University  
 Latin  
 Commercial  
 A. B. Education  
 M. A. Education



**Mrs. Tom McNamara**  
 Ohio University  
 St. Mary's  
 Notre Dame  
 A. B. Education  
 English



**J. E. McNaughton**  
 Ohio State University  
 Ohio University  
 Arithmetic  
 General Science  
 B. S. Education  
 M. A. Education



**Lorraine Potts**  
 Ohio University  
 B. S. Education

# Faculty





Arthur Preston  
University of Cincinnati  
Wilmington  
Ohio University  
Industrial Arts  
American History  
Radio  
B. S. Education



Willa Sue Richards  
Eastern Kentucky  
State Teachers College  
English  
History  
A. B. Education



Mrs. Tillman Schindler  
Ohio State University  
Science  
B. S. Education



Jacob See  
Ohio University  
Mathematics  
Physical Education  
B. S. Education



Elva Shela  
Ohio University  
English  
B. S. Education



Lyda Shepherd  
Eastern Kentucky  
State Teachers College  
Shorthand and Typing  
A. B. Education



James Warren  
Ohio State University  
Ohio University  
Rio Grande  
M. A. Work at Ohio University  
and Ohio State University  
Government  
Industrial Arts  
B. S. Education



Mrs. Fred Winter  
Albion College  
Ohio State University  
Music

# Faculty



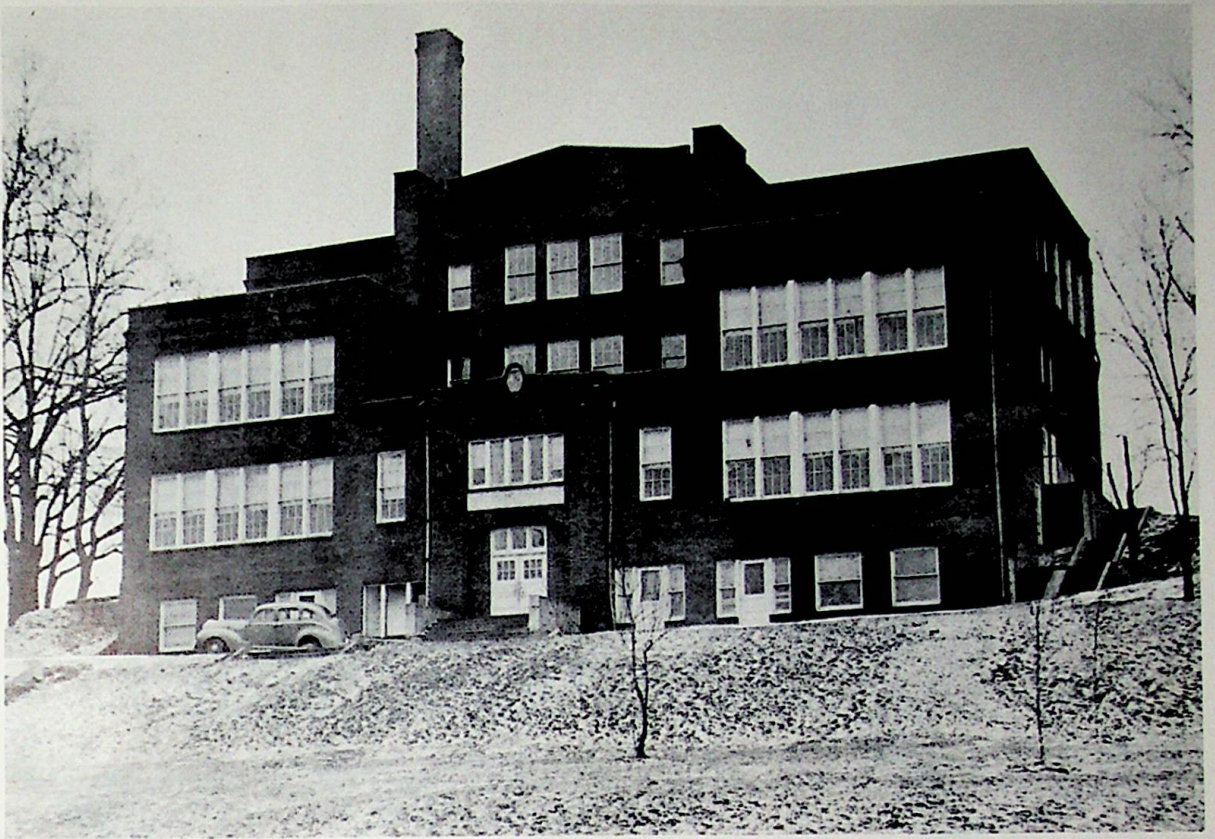
*Seated:* Helen McCowen, Cecil Pollock, Anne Thompson, Irene Groh, Lorraine Stanley, Agnes McCleod.

*Standing:* Mary McCarty, Avanelle Staker, Bertha Perdue, Loyzelle Haffner, Ollie Hibbitts, Lucille Burke, Sevah Swift.

*Not Pictured:* Lillian Barney, Violet Preston, Grace Carter.

## ELEMENTARY TEACHERS

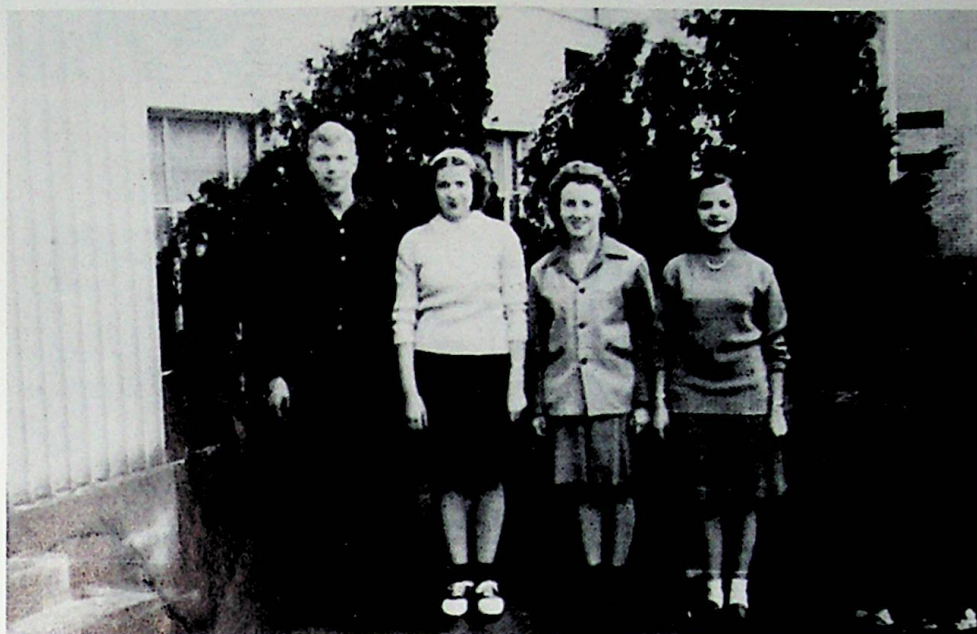




## ELEMENTARY BUILDINGS



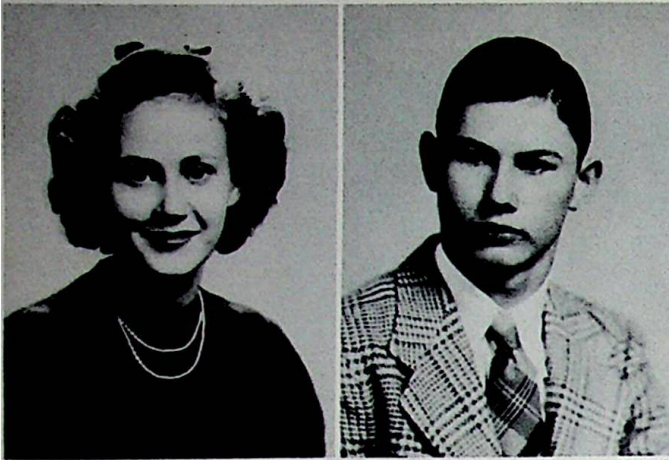
*Classes*



*Left to right:* Earl Miller, Lucille Davis, Betty Turner, Norma Jean Stanley.

## SENIOR CLASS OFFICERS



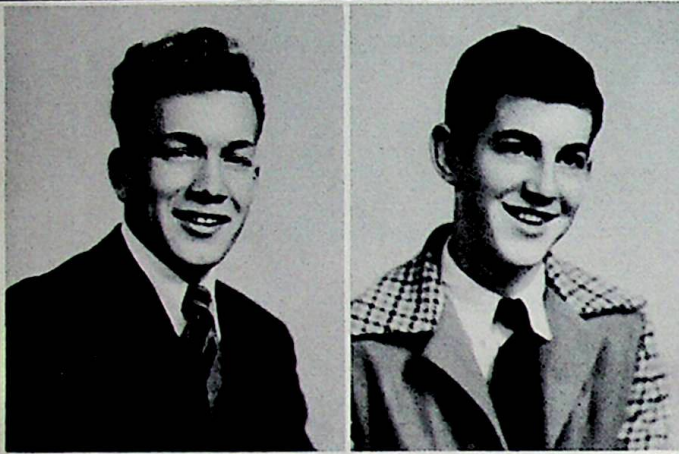


*Wanda Burke*  
"BURKIE"  
Sigma Tau Pi 4.

*Sen*

*Everett Chandley*  
"CHAN"

Track Team 1; Model Airplane Club 1; Scholarship Team 2, 3; Industrial Arts Club 3; Math Club 3; Office Force 3.



*William Cook*  
"BILL"

Industrial Arts Club 1; Model Airplane Club 1, 2; Booster Club 1, 2; Motion Picture Mgr. 1, 2, 3; Safety Patrol 1, 2, 3, 4; Varsity "W" Club 2, 3, 4; C.A.P. 2, 3, 4; "Seventeen" 3; Aviation Club 4; Glee Club 4.

*Robert Craft*  
"SHORTY"

Model Airplane Club 1; Glee Club 1, 2, 3, 4; "Seventeen" 3; Industrial Arts Club 3; Aviation Club 4.



*James Darby*  
"JIM"

*Lucille Davis*  
"LOU"

Scholarship Team 1; Minstrel 1; Booster Club 1, 2; Band 1, 2, 3, 4; G.A.A. 1, 3, 4; Library Club 2; Class V. Pres. 4; Sigma Tau Pi 4; Annual Staff 4; Student Council 4; Newspaper Staff 4.



*Juanita Ferguson*  
"NITA"

Home Ec. Club 1, 2; Usherette 4; Sigma Tau Pi 4.

*Robert Evans*  
"BOB"

Band 1; Model Airplane Club 1, 2; Radio Club 3; Industrial Arts Club 3; "Seventeen" 3; Math Club 4; Aviation Club 4.

# iors

**Janice Frowine**

"JAN"  
County Broadcast 1; Band 1, 2, 3, 4; Sigma Tau Pi 4.



**Mary Lou Gilpin**

"LOU"  
County Broadcast 1; Scholarship Team 1; Minstrel 1; Booster Club 1, 2; Band 1, 2, 3, 4; Glee Club 1, 2, 3, 4; Library Club 2; Cheerleader 2, 3, 4; "Seventeen" 3, 4; G. A. A. 3, 4; Sigma Tau Pi 4.

**Norma Jean Glascock**

"PUNK"  
Minstrel 1; Band 1, 2; Sports Club 1, 2; Booster Club 1, 2; Library Club 2; Cheerleader 2; "Seventeen" 3; Sigma Tau Pi 4.



**Martha Gleim**

"SIS"  
Band 3; Usherette 4; Sigma Tau Pi 4.

**Marcella Gose**

"CELLSIE"  
Glee Club 1, 2, 3, 4; Music Festival 2; Sigma Tau Pi 4; Office Force 4.



**Henry Hansgen**

"HENRY"  
Basketball 1, 2, 3, 4; Varsity "W" Club 2, 3, 4; "Seventeen" 3.

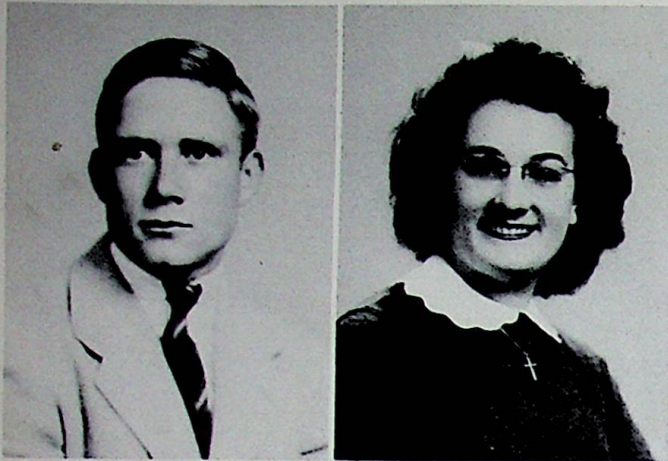
**Phyllis Hilton**

"COLLIE"  
Sports Club 1; Booster Club 1, 2; Scholarship Team 2, 3; "Seventeen" 3; Eta Epsilon 3; Office Force 3, 4; Glee Club 4; Annual Staff 4; Sigma Tau Pi 4; Newspaper Staff 4.



**Barbara Howard**

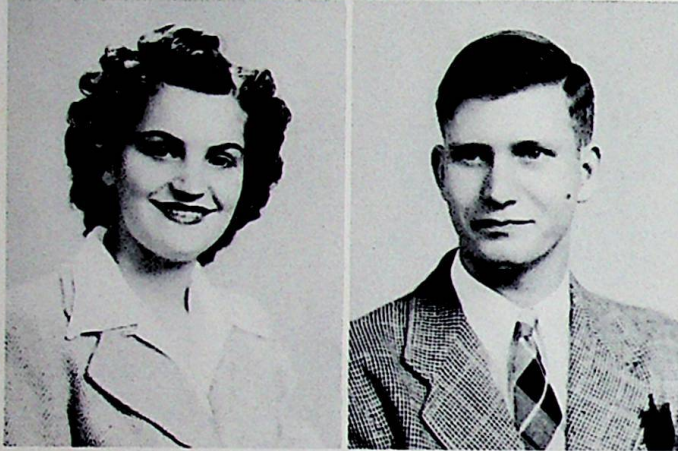
"BARB"  
Prince of Peace Contest 1; Scholarship Team 1, 2, 3; Library Club 2; Eta Epsilon 3; Sigma Tau Pi 4.



**Gene Johnson**  
"RED HORSE"

Model Airplane Club 1, 2; Radio Club 2; Scholarship Team 2, 3; "Seventeen" 3; Industrial Arts Club 3; Basketball Mgr. 3, 4; Varsity "W" Club 4; Math Club 4.

**Arlene Kegley**  
"NENE"

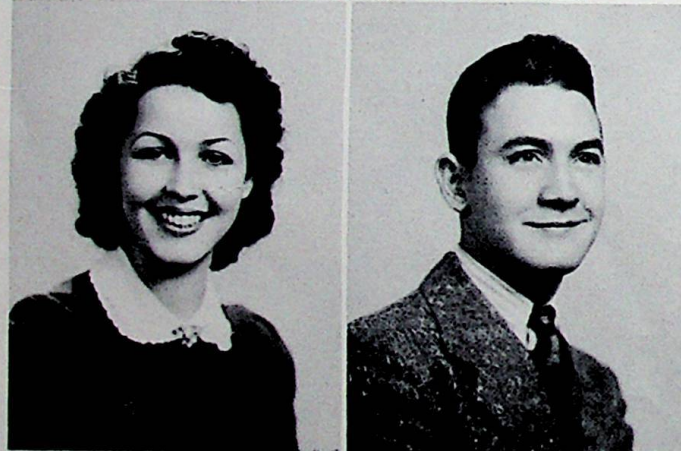


**Lilly Kidd**  
"LIL"

Library Club 1; Scholarship Team 1, 2, 3; G. A. A. 2, 3, 4; Eta Epsilon 3; Usherette 4; Student Council 4; Sigma Tau Pi 4.

**William Lewis**  
"JUNIOR"

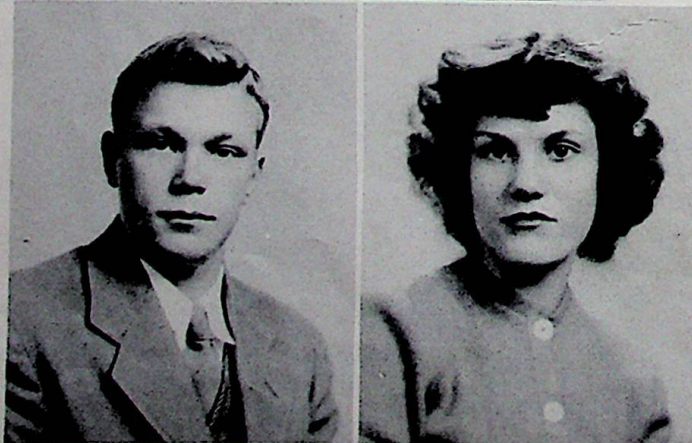
All County Band 1; C. A. P. 1, 2, 3; Visual Education 1, 2, 3, 4; School Electrician 1, 2, 3, 4; Band 1, 2, 3, 4; Reserve Basketball 2; Radio Club 2; Junior High Basketball Adviser 3; Tri-State College 4; Graduate Coyne Electrical School 4.



**Thelma Lyon**  
"LIZ"

County Broadcast 1; County Band 1; Band 1, 2, 3, 4; G. A. A. 1, 3, 4; Booster Club 4; Math Club 4; Newspaper Staff 4; Glee Club 4; Sigma Tau Pi 4.

**Oval May**  
"OVAL"



**Earl Miller**  
"PUG"

Model Airplane Club 1; Glee Club 1, 2, 3, 4; Track Team 2; Basketball Team 2, 3, 4; Baseball Team 2, 3, 4; "Seventeen" 3; Industrial Arts Club 3; Varsity "W" Club 3, 4; Class President 4; Aviation Club 4; Annual Staff 4; Student Council 4.

**Janice Minor**  
"SLUG"

Home Ec. Club 1.



# iors

**Wellma Moore**

"WELLIE"

Library Club 2; Eta Epsilon 3;  
Sigma Tau Pi 4; Newspaper Staff  
4; Usherette 4.



**Doris Norfleet**

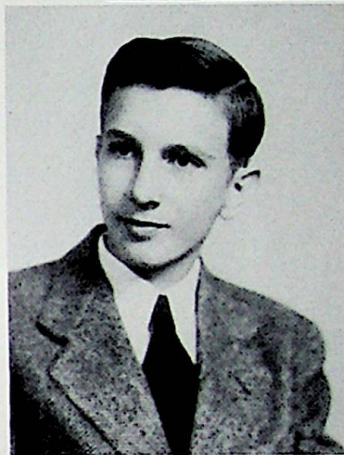
"RED"

Home Ec. Club 1; G. A. A. 3;  
Glee Club 4; Sigma Tau Pi 4.

**Lowell Polley**

"DOC"

Scholarship Team 1, 3; "Seven-  
teen" 3; Math Club 4; Aviation  
Club 4; Office Force 4.



**Lester Purtee**

"BUD"

Glee Club 1, 2, 3, 4; C. A. P. 1,  
2, 3, 4; Scholarship Team 3;  
Aviation Club 4; Math Club 4.



**Phyllis Reidenbach**

"PHIL"

Library Club 1; Booster Club 1,  
2, 4; G. A. A. 1, 3; Office Force  
2, 3, 4; "Seventeen" 3; Student  
Council 3; Class V. President 3;  
Newspaper Staff 4; Annual Staff  
4; Sigma Tau Pi 4.

**Juanita Rice**

"JUANIE"

**Ruth Riddlebarger**

"TAFFY"

Booster Club 1; Minstrel 1; Glee  
Club 1, 2, 3, 4; Band 2, 3, 4;  
G. A. A. 3, 4; Newspaper Staff  
4; Sigma Tau Pi 4.

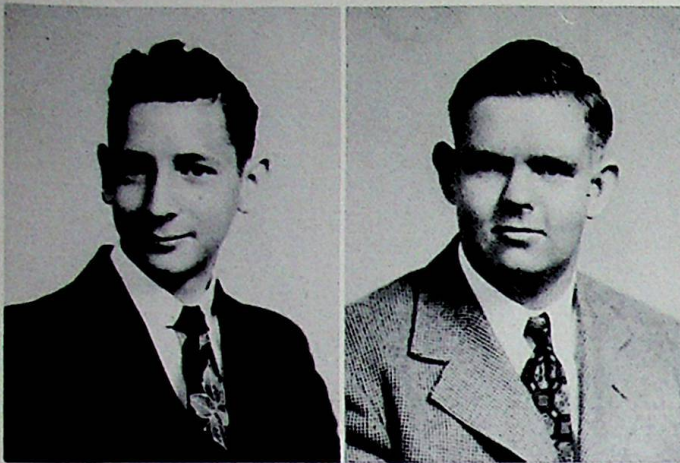


**Maxine Risner**

"MAX"

Minstrel 1; Booster Club 1, 2;  
Glee Club 1, 3, 4; Library Club  
2; Cheerleader 1, 2, 3, 4; Ma-  
jorette 3, 4; G. A. A. 3, 4.

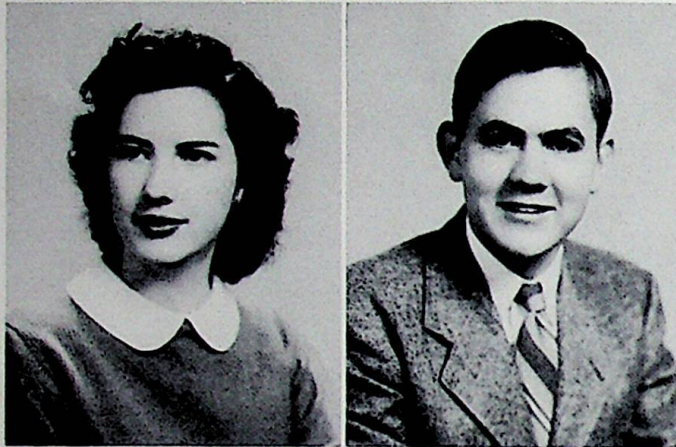
# Senior



**Robert Rogers**  
"BOB"

**Wallace Ruggles**  
"WALLY"

Visual Education 1, 2, 3, 4; Sound Man and Electrician 1, 2, 3, 4; Chief Operator 2, 3, 4; Radio Club 4; National Radio Institute 4; Math Club. 4.



**June Ruth**  
"SONNY"

Booster Club 1, 2, 4; G. A. A. 1, 3, "Seventeen" 3; Glee Club 4; Newspaper Staff 4; Sigma Tau Pi 4.

**James Saul**  
"JIM"

Model Airplane Club 1, 2; Industrial Arts Club 3; Radio 3; "Seventeen" 3; Aviation Club 4; Glee Club 4.



**Loretta Skiver**  
"RETTE"

County Broadcast 1, Band 1, 2; Scholarship Team 1, 2; "Seventeen" 3; Office Force 3, 4; Newspaper Staff 4; Annual Staff 4; Sigma Tau Pi 4.

**Janet Smith**  
"SMITH"

G. A. A. 1, 3, 4; Glee Club 4; Usherette 4; Sigma Tau Pi 4.



**Fred Sommer**  
"FREDDIE"

Varsity Reserve 2, 4; Industrial Arts Club 3; Baseball 3; Aviation Club 4; Glee Club 4.

**Norma Jean Stanley**  
"JEANIE"

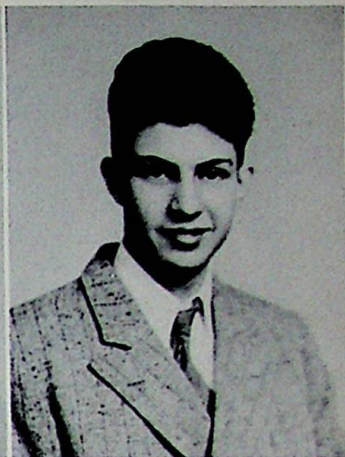
County Broadcast 1; Minstrel Band 1, 2; Scholarship Team 2; Glee Club 1, 2, 3, 4; Office Force 1, 3, 4; Operetta 2; "Seventeen" 3; Class Secretary 4; Newspaper Staff 4; Annual Staff 4; Sigma Tau Pi 4.

# iors

**June Steverson**

"STEVIE"

County Broadcast 1; Minstrel 1; Scholarship Team 1, 2, 3; Glee Club 1, 2, 3, 4; Office Force 1, 2, 3, 4; Operetta 2; "Seventeen" 3; Annual Staff 4; Sigma Tau Pi 4.



**Francis Thieken**

"JOE"

"Seventeen" 3; Honorary English Club 3; Glee Club 4; Aviation Club 4.

**Betty Turner**

"NAT"

County Broadcast 1; County Music Festival 1; Minstrel 1; Band 1, 2, 3, 4; Class Treasurer 1, 2, 3, 4; Glee Club 1, 2, 3, 4; G. A. A. 1, 3; Scholarship Team 2; Operetta 2; Student Council 2; Eta Epsilon 3; "Seventeen" 3; Newspaper Staff 4; Sigma Tau Pi 4.



**Edith Turner**

"EDIE"

Glee Club 1; Library Club 1, 2; Eta Epsilon 3; Sigma Tau Pi 4.

**Lila Lee Underwood**

"LILA"

Model Airplane Club 1; Library Club 1; Newspaper Staff 4; Glee Club 1, 4; Glenwood High School 2; Eta Epsilon 3; Carnival Queen 4; Booster Club 4.



**Ebert Williams**

"EB"

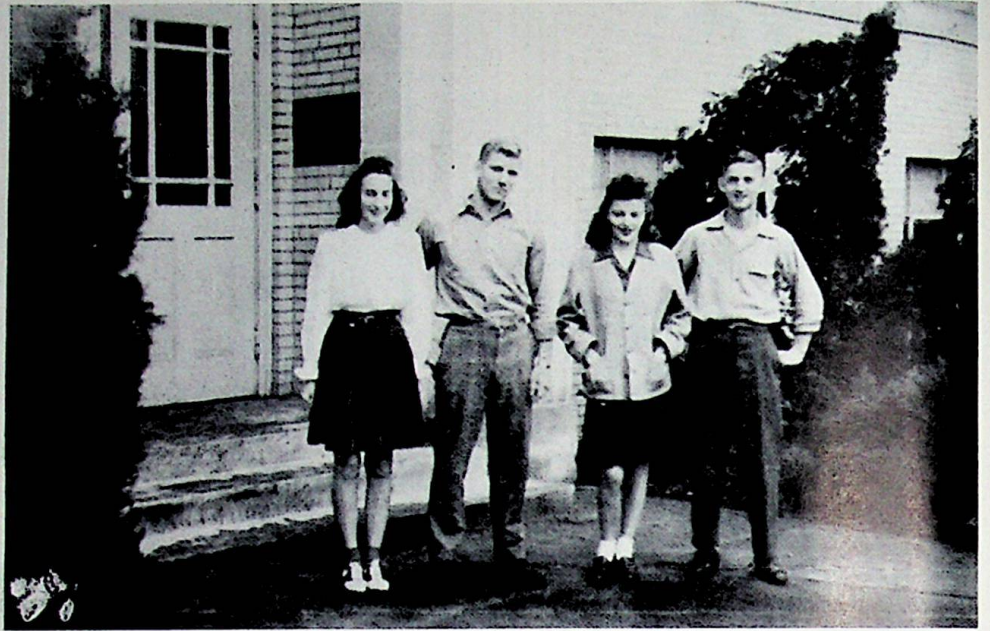
Model Airplane Club 1; C. A. P. 2, 3, 4; "Seventeen" 3; Industrial Arts Club 3; Aviation Club 4; Glee Club 4.

**Wilda Jane Willis**

"JANIE"

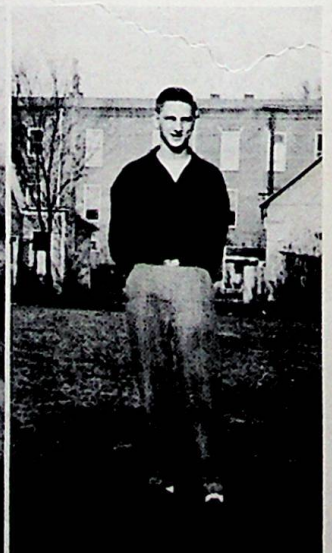
Library Club 1; G. A. A. 1; Eta Epsilon 3; "Seventeen" 3; Cheerleader 2, 4; Band 1, 2, 3, 4; Sigma Tau Pi 4.





*Left to right: Pauline Pace, Leslie Cramer, Betty Pollock, Gene Lawson.*

## JUNIOR CLASS OFFICERS





Jean Bailey, Gene Bennett, Karl Besco, Roberta Blair, Donald Bolander, Jean Bradley

Anna Pearl Burgess, Herbert Carver, Ray Conley, Leslie Cramer, David Craycraft, Donald Cregger

Billy Ray Dials, Bill Eagleson, Lola Ferguson, Earl Frazie, Faye Fraley, Wanda Fraley

## JUNIORS

Chester Gallion, Shirlene Gallion, Helen Gilkison, Kathaleen Gleim, Velma Gleim, Blanche Hacker

Joyce Hahn, Rilla Johnson, Gene Lawson, Oral Maggard, Norma Maple, Wilbur Mauk





John Miller, Janet Molen, Bob Morgan, Carolyn Overholtzer, Pauline Pace, Betty Pollock

Reatha Ratcliff, Imogene Salley, Charles Setters, John Sherman, Betty Skaggs, George Smith

John Sommer, Lowell Staker, Ruby Stamper, Ruth Stamper, Helen Stanley, Carl Strickland

## JUNIORS

Donald Thieken, Mary Thieken, Dave Thornton, Jim Turner, Lois Thompson, Mary Van Horn

Virginia Watts, Karen Werner, Faye Wooten, Mae Wooten, Mary Lou York, Vern Young





*Left to right: Judy Carter, Norma Montavon, Paul Brown, Barbara Reidenbach.*

## SOPHOMORE CLASS OFFICERS





## SOPHOMORES

Ethel Adams, Donald Arbaugh, Adah Barber, Norma Bennett, Donald Billups, Marie Booth,  
Mary Born

Mary Jane Bowen, Paul Brown, Ronald Brown, Judy Carter, Lloyd Caudill, Wilma Chandler,  
Forrest Colegrove

Vera Downs, Phyllis Drake, Edward Evans, Betty Fraley, Juanita Fraley, James Freeman, Joe Hahn

Charles Hall, Bob Hammond, Gwendolyn Hansgen, Richard Harner, Adah Harper, Alma Harper,  
Beulah Harrison

Denny Hay, Emma Jean Herbst, Lorraine Howard, Dorothy Johnson, Joyce Johnson,  
Wilma Jean Johnson, Wilma Lou Johnson

Jean Jones, Mary Ann Ketter, Karl Kinker, Jim Lambert, Harold Lawson





## SOPHOMORES

Della Lewis, Jane Lyon, Jack McAdams, Eula McCleese, Howard McHenry, Wilma Markim,  
James Mauck

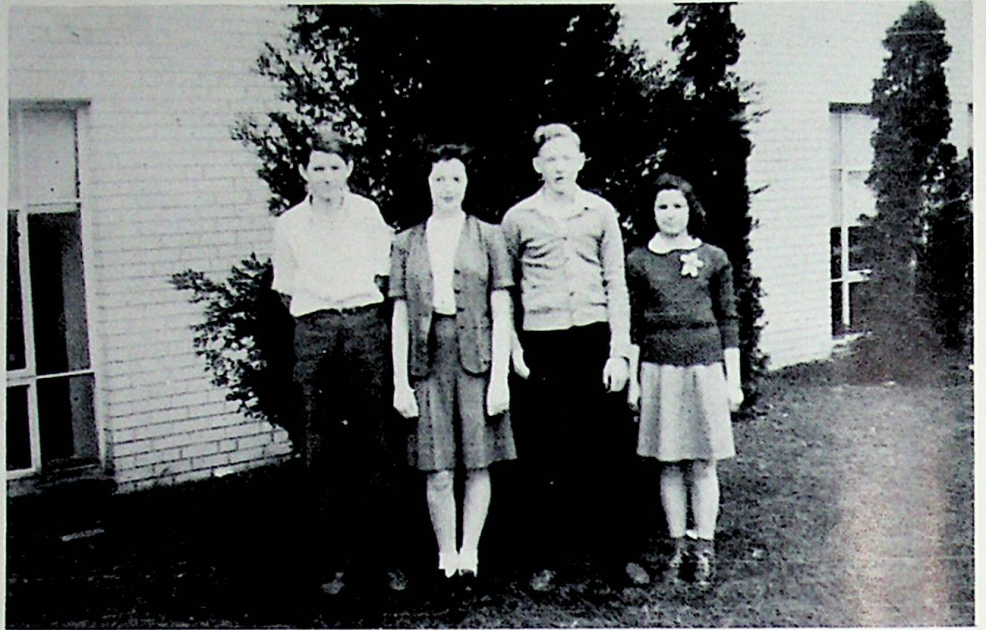
Joan Mineer, Norma Montavon, Lloyd Mucha, Richard Munyon, Stanley Myers, Lucille Ockerman,  
Marcella Ockerman

Jewell Plummer, Betty Price, Jeanne Purtee, Barbara Reidenbach, Norman Reiter, Nellie Rice,  
Helen Riggs

Ralph Roberts, Dorothea Rogers, Juanita Saunders, June Schofield, Nova Sexton, Clara Skaggs,  
Willa Jean Staggs

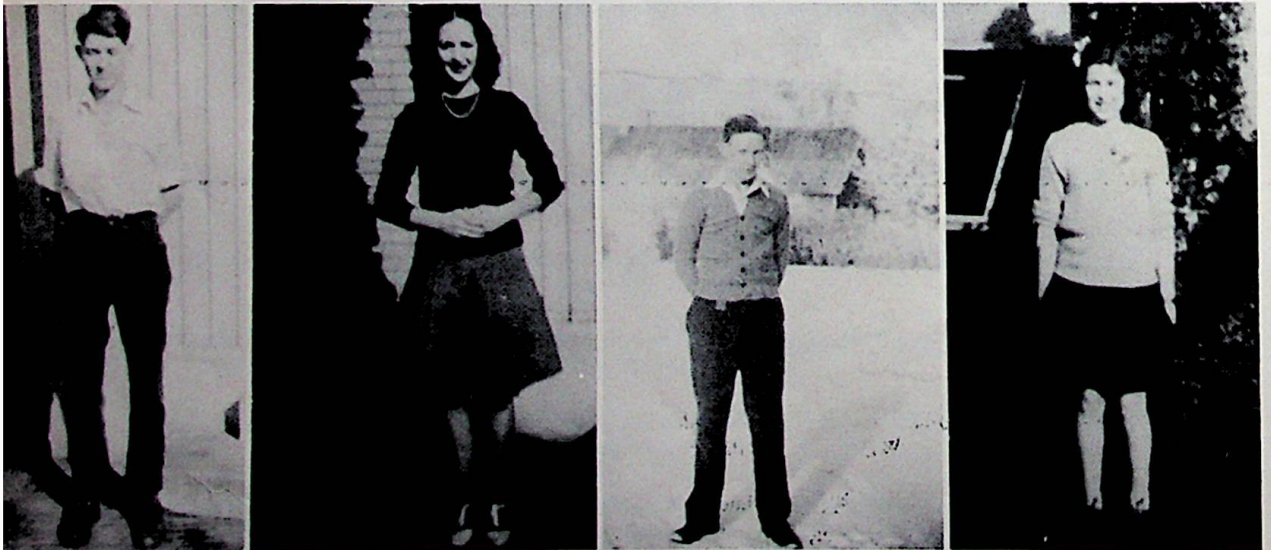
Herbert Strickland, Lawrence Theiken, Lucille Townsend, Forrest Turner, Wanda Vaughters,  
Ena Mae Wagner, Raymond Wentz

Betty Lou Williams, Edward Williams, Kathleen Williams, Raymond Woodrum, Barbara Wright



*Left to right:* Donald Justice, Irene Blair, Russell Colegrove, Patty Smith

## FRESHMEN CLASS OFFICERS





Virginia Adams, Winifred Baker, Maxine Bailey, Jean Bihl, Irene Blair, Erwin Blanton,  
Phyllis Bowen

Anna Mae Burgess, Donna Burke, Teresa Burgess, Mary Caperton, Russell Colegrove,  
Delores Cramer, Betty Dials

## FRESHMEN

Earl Downs, Roy Ellis, Nick Felty, Robert Flannagan, Julia Fout, Joe Gann, James Glascock

Ralph Green, Thelma Hay, Jean Hacker, Kathryn Hinds, Betty Hobbrook, Donald Hoover,  
Imogene Hull

Geraldine Jarvis, Norma Johnson, Sarah Johnson, Donald Justice, Geneva Keeton, Velma Kelley,  
Bob Klingman





Marvin Knapp, Phyllis Lang, Joan Lallow, James Lawson, Helen LeMaster, David McCarty,  
Doris Jean McFerren

Jane McLeod, Opal Maggard, Donald Miller, Mary Ann Moore, Betty Moore, Irene Moore,  
Ruth Mucha

## FRESHMEN

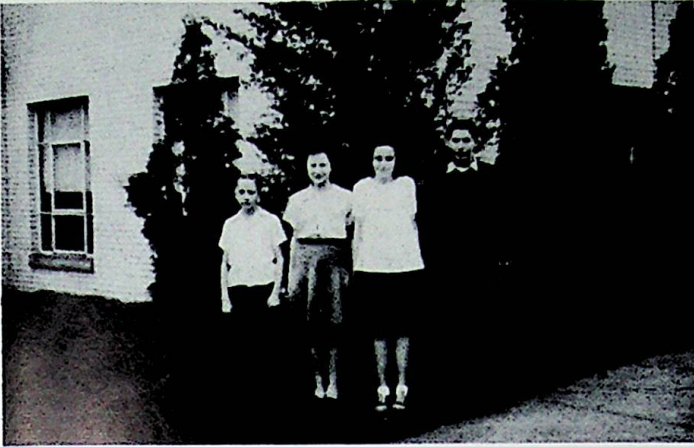
Carl Pierce, Bob Reese, Thelma Rockwell, Lovell Ruggles, Georgia Salley, Bill Simon, Edward Shelton

Bobby Jo Sherer, Maxine Skaggs, Patty Smith, Junior Smith, Betty Stanley, Lorena Stone,  
Charles Thompson

Kathaleen Thompson, Juanita Weidner, Gene Welch, Darlene Wright, Carl Willard,  
Franklin Wicker, Norma Yeley



# CLASS OFFICERS



## EIGHT B

*Left to right:*

Kenneth Green

Wanda Kelley

Jo Anne Gilpin

Donald Williams

## EIGHT A

*Left to right:*

Agnes Blanton

Patricia Fairchild

Betty Boothe

Loretta Armes



## EIGHT C

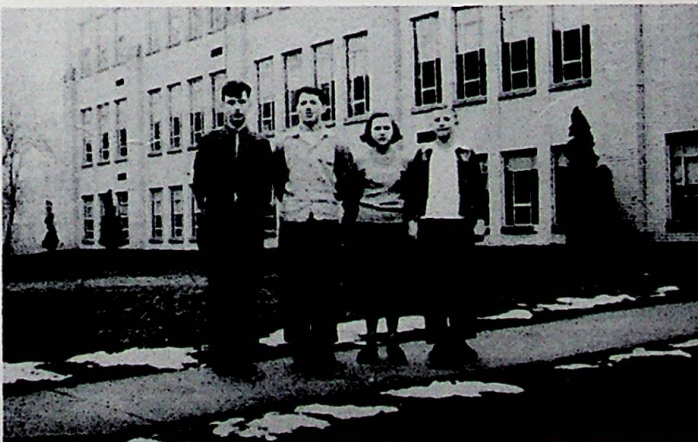
*Left to right:*

Donald Smith

Sidney Smith

Janet Turner

Paul Setters





## EIGHTH GRADE

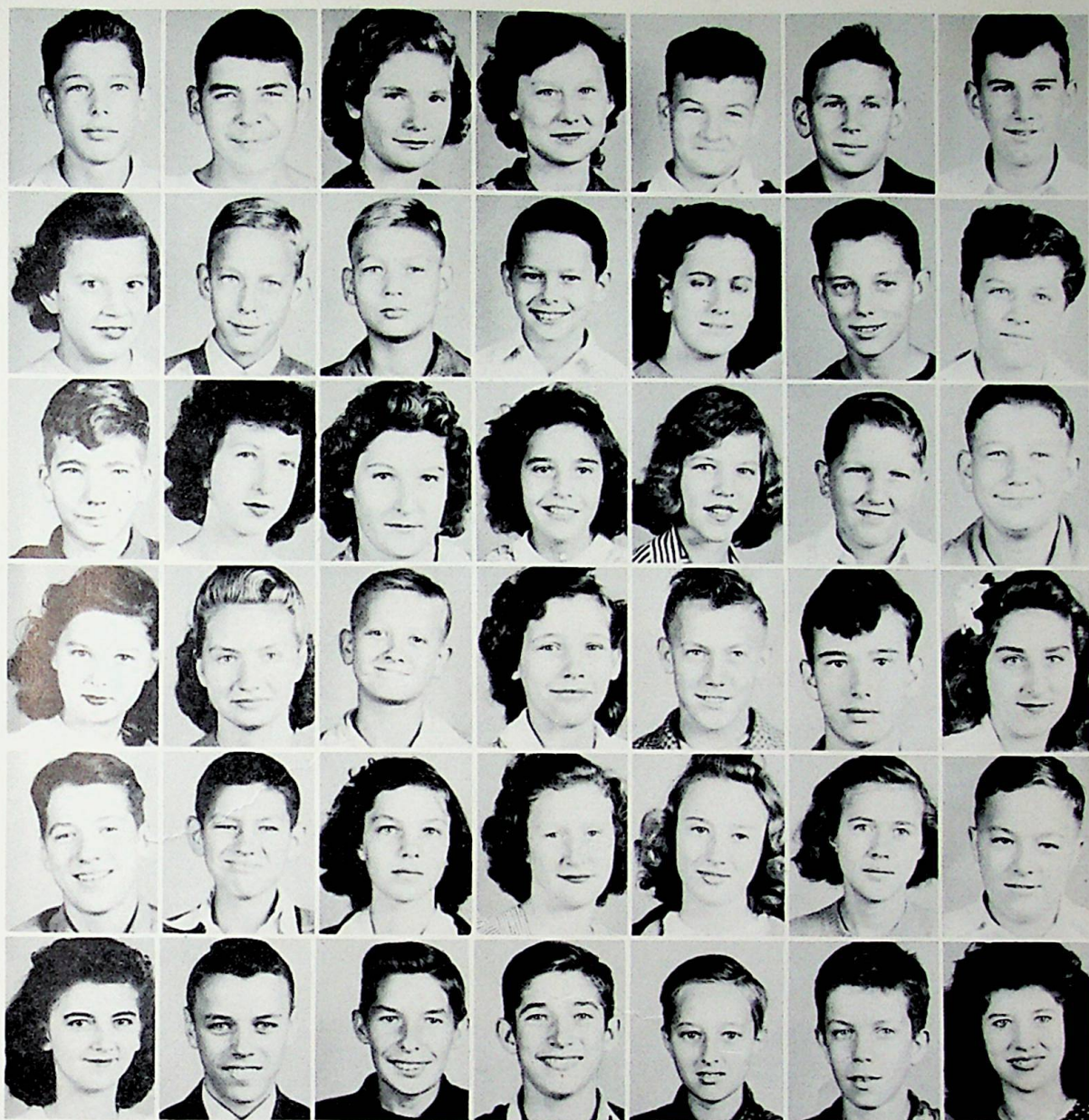
Loretta Armes, Geraldine Bailey, Anna Mae Baisden, Naomi Baisden, James Bennett,  
Kathleen Birchem, Agnes Blanton

Annie Blevins, Beulah Blevins, Betty Bond, Betty Lou Booth, Tommy Bowen, Bill Caudill,  
Rosemary Cleary

Rosemary Collingsworth, Raymond Conley, Charles Cooper, Gracie Crabtree, Hazel Craft,  
Maurice Cremeans, Robert Delabar

Patty Dold, Donald Ellis, James Evans, Patricia Fairchild, Ruby Fisher, Ralph Frazie, Royal Fritz  
Willa Jean Gallion, James Gilkinson, Joan Gilpin, Donald Gleim, Maurita Gleim, Phyllis Gose,  
Charlotte Green

Kenneth Green, Bill Hall, Gerald Hall, Katherine Hammond, Betty Hensley, Joe Hibbitts, John Hill



## EIGHTH GRADE

Virgil Hill, Bill Holt, Jewel Jarvis, Wanda Kelley, James Kidd, Roy Long, Jack LeMaster  
 Norma Lykins, Raymond Lykins, Eugene McCoy, Martin McFerren, Mary Martin, Bob Mauk,  
 Paul Means

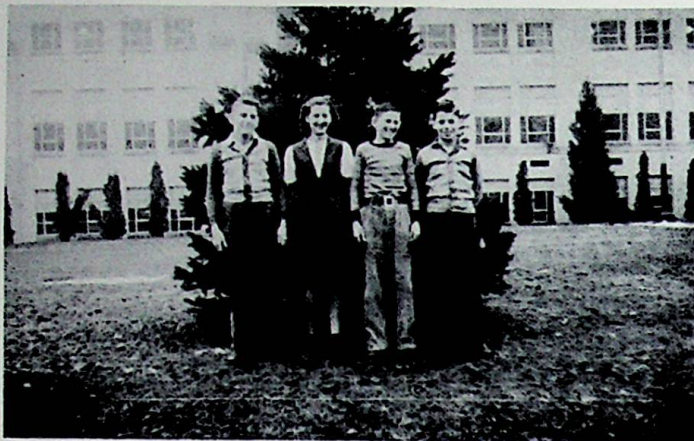
Joe Merrill, Patty Miller, Wilma Mullins, Rosalind Phipps, Joan Purtee, Jesse Ramey, Paul Riggs

Lillian Sagraves, Mary Scaggs, Paul Setters, Lucy Skaggs, Adrian Slone, Donald Smith,  
 Mary Ann Smith

Sidney Smith, David Sommer, Maxine Staggs, Dolores Storey, Barbara Thompson, Janet Turner,  
 Joe Turner

Geneva Webb, Clarence Wente, Don Williams, Donald Williams, Ernest Williams,  
 James Woodrum, Juanita Wright

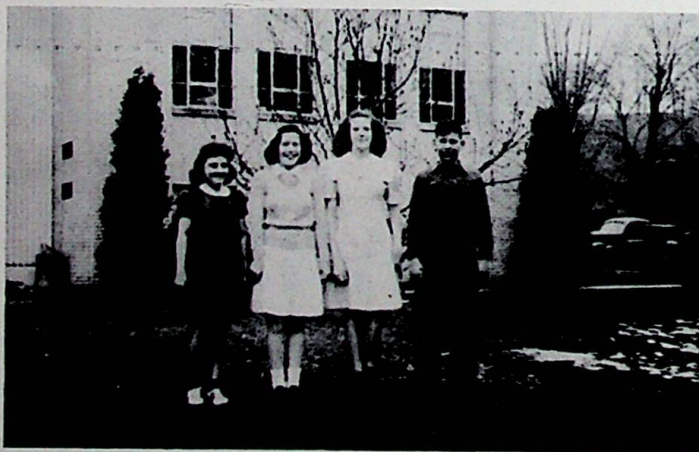
# CLASS OFFICERS



## SEVEN A

*Left to right:*

Gale Aeh, Emma Lambert, Allard Lawson, Harold Montavon



## SEVEN B

*Left to right:*

Barbara Wright, Lillian Phipps, Gertrude Sherman, Jack Stanley





## SEVENTH GRADE

Gale Aeh, Richard Aeh, Betty Arthurs, Robert Blanton, Junior Braden, Junior Burgess,  
Mary Christian

Anna Louise Clark, Joe Cochran, Glen Coriell, Florence Crabtree, Eugene Craycraft, Carol Dheel,  
John De Camp

Peggy De Camp, Patty Dutiell, Ina Erwin, Billy Flannagan, Jane Frederick, Donna Haws,  
Elizabeth Hall

Virginia Hayes, Robert Hibbitts, Alfred Hogan, Janet Hoover, Faye Hutchinson, Wanda Jarvis  
Donald Johnson, Edward Keeney, James Keeney, Emma Lambert, Allard Lawson, Irene Leadingham

Billy Litz, Betty Loper, Howard Lyon, Joann Mahan, Mildred McCoy, Emil McHenry



## SEVENTH GRADE

Helen Miller, Frances Monk, Harold Montavon, Milton Moore, Joann Munyon, Frank Neimer  
Billy Nelson

Georgia Ockerman, Jimmy Parlin, Rachel Pauley, Richard Pennington, Eileen Perkins,  
Kelley Phipps, Lillian Phipps

Emma Jean Pierce, Robert Pyles, Edna Ruggles, Gerald Ruggles, Rosalind Scott, Donald Setters,  
Gertrude Sherman

Howard Staker, Eugene Stanley, Jack Stanley, Jessie Stanley, Junior Stidham, David Stout  
Henry Taulbee, Nancy Thomas, Donald Thompson, Betty Tussey, James Tussey, Sonny Wellman  
Jackie White, Paul Willard, Holly Williams, Barbara Wright, Marcella Wright, Patricia Vines



*JUNIOR ROMEOS*



*FAIRYLAND PLAY*



*LET'S GO!*



*UP AND ABOUT AGAIN*



*A CUTE GROUP*



*MAN'S BEST FRIEND*



*THOSE SUNNY SMILES*



*RECESS*



# Features



# USHERETTES



*Left to right:*

Janet Smith

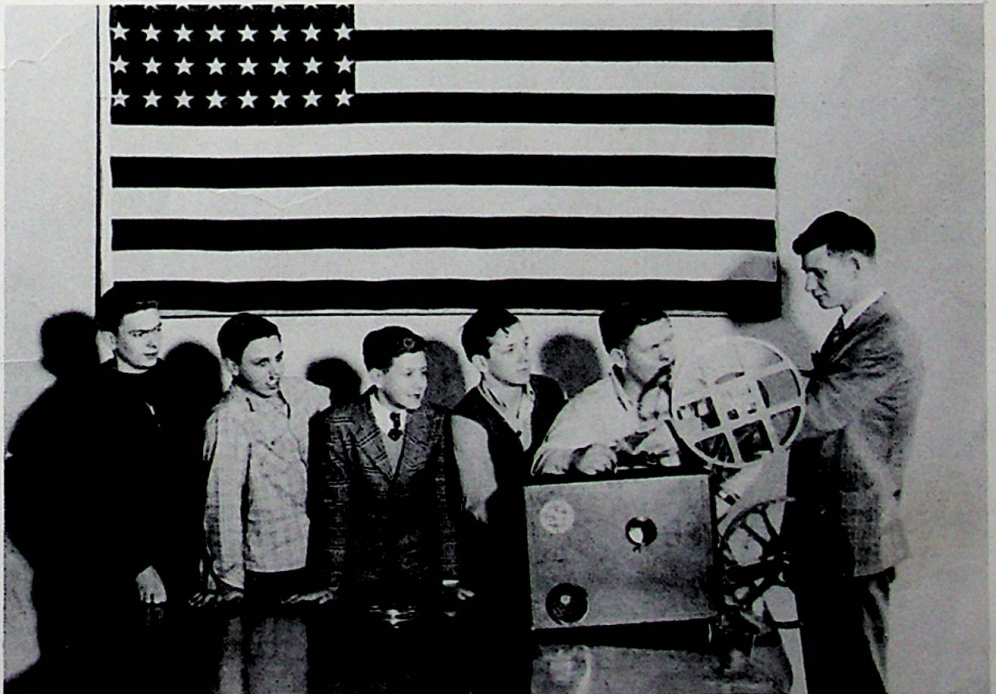
Juanita Ferguson

Martha Gleim

Wellma Moore

Lilly Kidd

# VISUAL EDUCATION



*Left to right:*

Lloyd Caudill

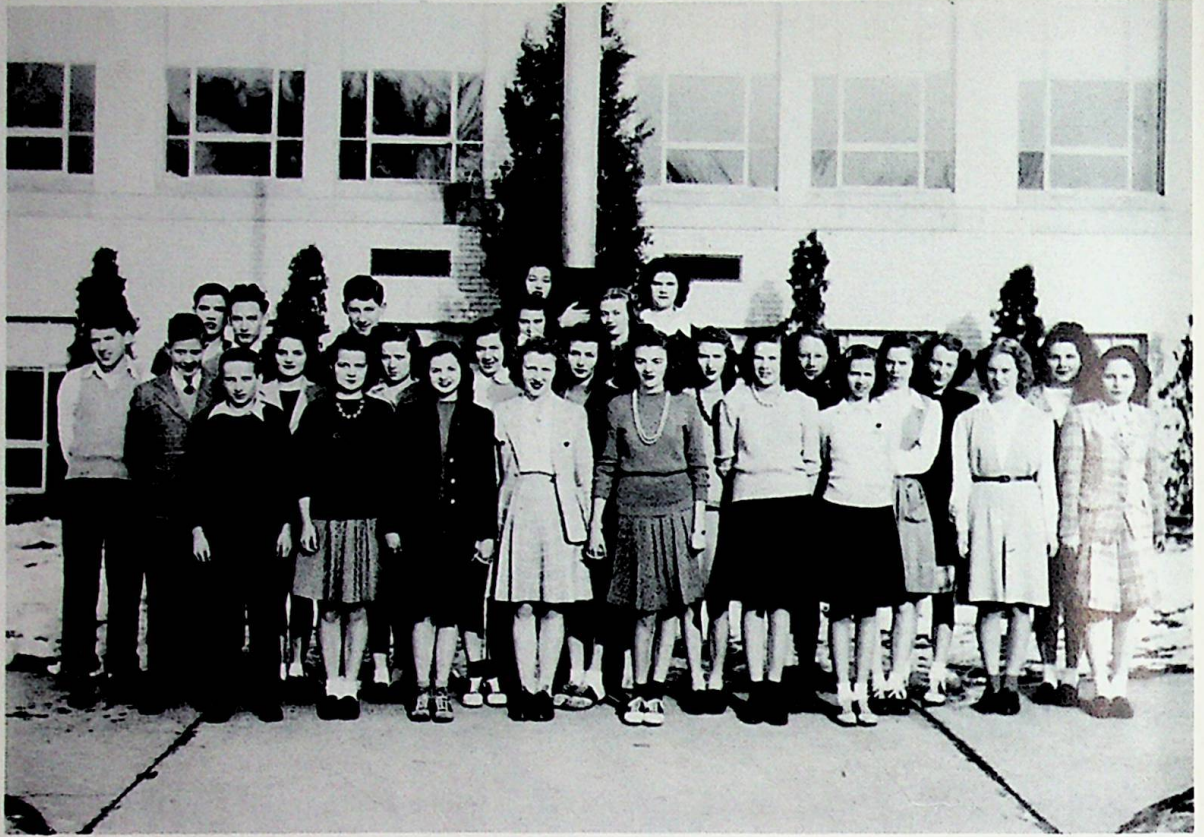
Joe Gann

Royal Fritz

Paul Brown

Wallace Ruggles

William Lewis



*Front Row:* Donald Arbaugh, Loretta Skiver, Norma Jean Stanley, Betty Turner, Betty Pollock, Gertrude Sherman, Doris Jean McFerren, Agnes Blanton, Sarah Johnson.

*Second Row:* Royal Fritz, Lilly Kidd, Norma Jean Montavon, Lucille Davis, Phyllis Hilton, Faye Hutchinson, Phyllis Lang, Willa Jean Staggs, Lois Thompson, Rilla Johnson.

*Third Row:* Sidney Smith, Forest Colegrove, John Sherman, June Stevison, Velma Gleim, Virginia Watts, Kathaleen Gleim.

## SCHOLARSHIP TEAM

These are tops!

The Scholarship Team, organized to promote scholarship throughout the student body, is composed of students selected from the upper six grades having ninety per cent or above as their semester average in all subjects. There are twenty-seven people who qualified to become members of the group this year.

Students representing our school in the annual state tests are usually selected from this group.

From the example set by these people, we feel that other students are beginning to take an increased interest in scholarship and in its meaning. We feel that our school has one of the best educative programs in the state of Ohio.

We are proud to have these people as members of our student body and we extend to them our thanks and congratulations for aiding our promotion of scholarship.



*Seated:* Lois Thompson, student coach; Roberta Blair, Dave Thornton, Mary Lou York, David Craycraft, student coach. *Standing:* Virginia Watts, Charles Setters, Mary Van Horn, Betty Pollock, John Sommer, John Miller, Otis Christian, Reatha Ratcliff, Leslie Cramer.

## JUNIOR PLAY

An evening of mirth and merriment was spent at the Junior Class Play, *For Pete's Sake!* Jack Sommer, playing the part of Peter, had the title role. Bill Bradshaw, played by Leslie Cramer, was Peter's best friend. Reatha Ratcliff was excellent as Peter's aunt. Mary Van Horn was the very superstitious colored cook, Jasmine.

The part of Dean Murglethorpe, a Latin Professor, was played by Dave Thornton. Perhaps the highlight of the evening was Otis Christian as the Dean's nephew, Thorndyke Murglethorpe, a running encyclopedia. He was known as Muggsy. If you didn't meet Muggsy you have missed part of living. He worshipped a young newspaper reporter played by Virginia Watts. Betty Pollock, a social climber, had two daughters, Mary Lou York and Roberta Blair. John Miller, as the wealthy banker, was interested in Nadine, played by Roberta. Dupont Darby, a terrible poet, played by Charles Setters, was interested in Peggy, played by Mary Lou. The student directors were Lois Thompson and David Craycraft. Faculty coaches were Miss Elva Shela and Mr. Jacob See.



*Standing:* Mr. Preston, Frances Thieken, Bob Evans, Lowell Polley, Bill Cook, Earl Miller, Mr. McCowen.

*Seated:* Wilda Willis, Mary Lou Gilpin, Barbara Howard, June Stevison, Lila Lee Underwood.

## SENIOR CLASS PLAY

### "THE PHANTOM BELLS"

When it comes to a senior class play it takes Wheelersburg High School to give an outstanding performance. Of course, you know it's traditional with the seniors now—a mystery—and always a good one. "The Phantom Bells", coached by Mr. McCowen and Mr. Preston, certainly was no exception to the rule. And we aren't being prejudiced either when we say that it was the best senior play ever given.

A mysterious, deserted house, in the walls of which mysterious bells were heard to tinkle at night; a house where people mysteriously disappeared only to return apparently dead; a house where mysterious footprints ended in the middle of the room—what a setting for the plot which was so weird that even the bravest of the audience sat on the edge of their seats—their hair standing on ends.

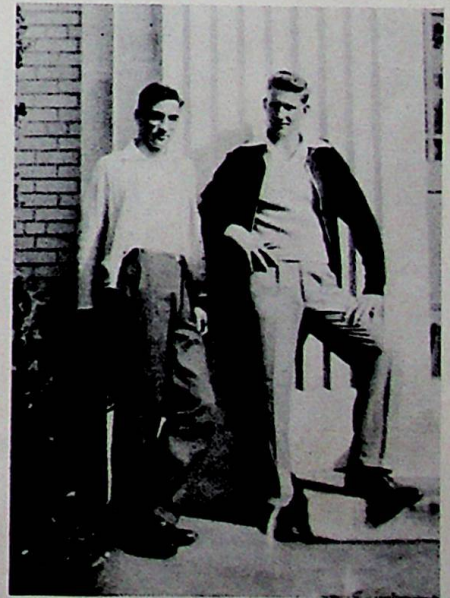
Well, lights on—Curtain—the play is over. It was great! But, say, I wonder who will take me home—I'm afraid!





*Left to right: June Schofield, Attendant; Chester Gallion, King of the Wheel; Lila Lee Underwood, Queen of the Wheel; Ray Conley, Attendant.*

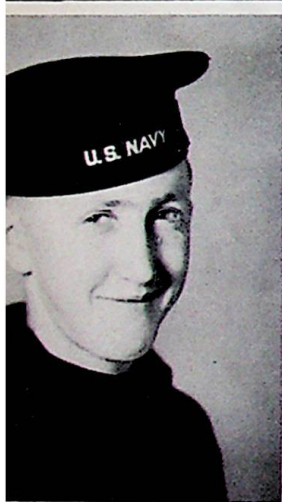
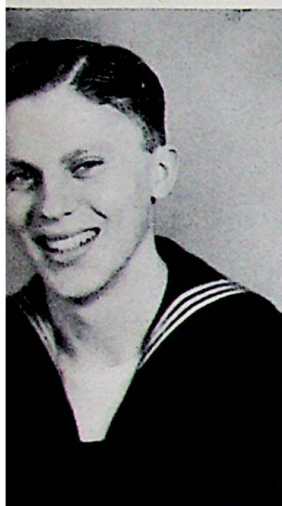
## KING AND QUEEN OF THE WHEEL





Lieutenant Edward R. McCowen served as the Superintendent of Scioto County Schools from January, 1943, until he received his commission in the United States Navy. Lieutenant McCowen is on active duty somewhere in the Caribbean area.

Our Service Men

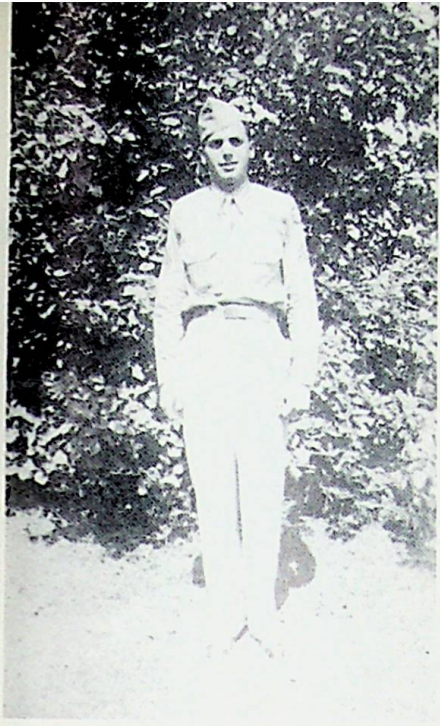


Carl W. Hoskins, S 1/c; T/Sgt. William E. Brame; Sgt. Andrew N. Hopkins;  
George E. Hopkins, HA 1/c

Edgar Montavon, S 2/c; Sgt. Robert Hilton; Pvt. Charles W. Zuhars; Eugene Hall, P.O. 1/c

Earl Burgess, S 2/c; Pvt. John Adkins, Jr.; S/Sgt. George Preston; Clarence Reynolds, S 1/c

*That nations shall have*



Sgt. Robert Montavon; Harry W. Voiers, S1/c; Pvt. Alfred Zuhars

Herb Damron, S 2/c; Pfc. James Lallow; Paul Fraley, S 1/c

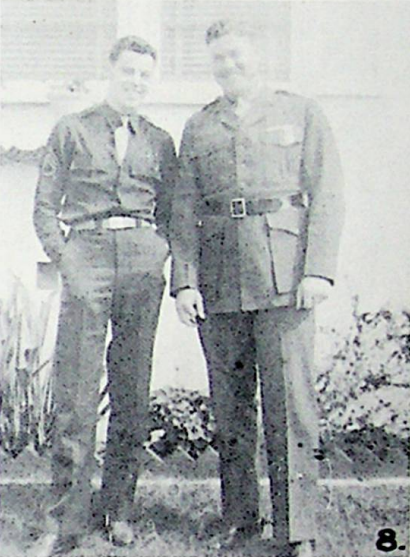
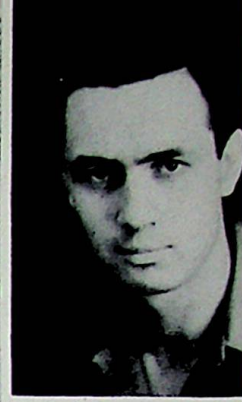
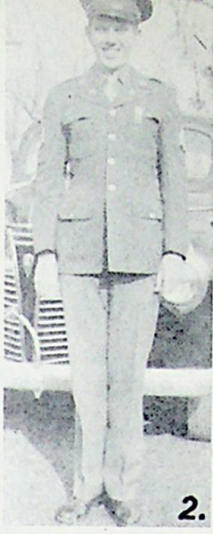
*a new birth of freedom,*



Edward Ault, A.M.M. 1/c; S/Sgt. Ralph Townsend; Gerald Overholtzer, F. 1/c

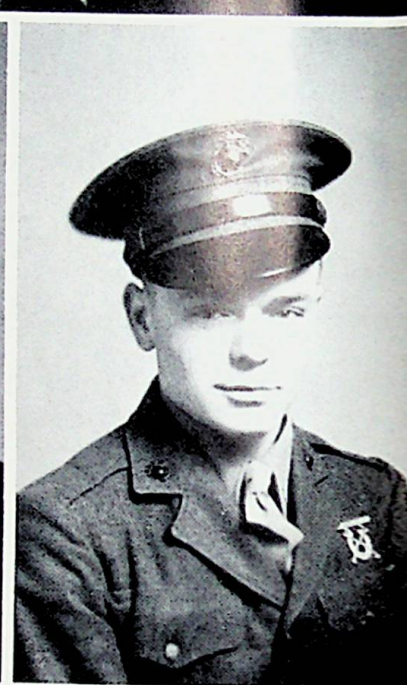
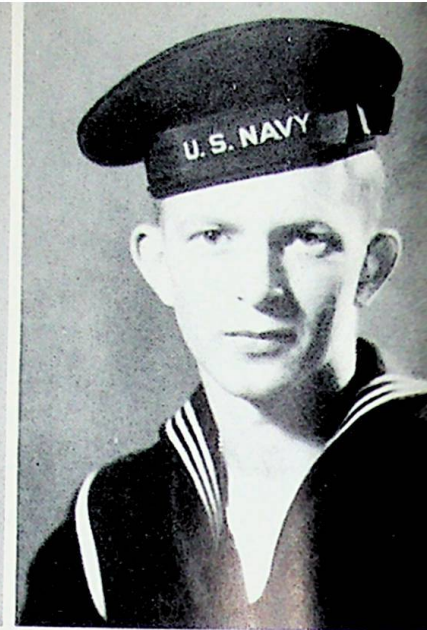
Pvt. Carl Montavon, Doris E. Hull, S 2/c; Cpl. Otis H. Dutiel

*and that government*



1. Cpl. Albert Blum. 2. Sgt. Harold Cleary. 3. S/Sgt. Nevel Ruggles, Pfc. Ansel Ruggles.  
 4. Cadet Nurse Catherine Gleim. 5. Pfc. Clarence Townsend. 6. S/Sgt. Paul Pace.  
 7. Cpl. Grover Conley. 8. S/Sgt. Elbert Christian. 9. Pvt. Paul Miller. 10. Cpl. Glen Moore.  
 11. Paul Scherer, S2/c. 12. Lloyd Adams, Petty Officer. 13. Cpl. Lloyd Schneider.  
 14. Sgt. Everett Morrison. 15. S. A. Daniels, Ensign. 16. Pvt. Paul Eagleson.  
 17. Pvt. David Arthur. 18. Cpl. Clifford Simon.

*of the people,*

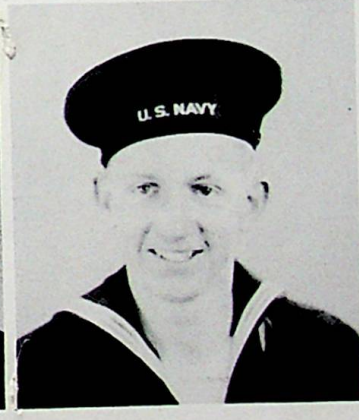
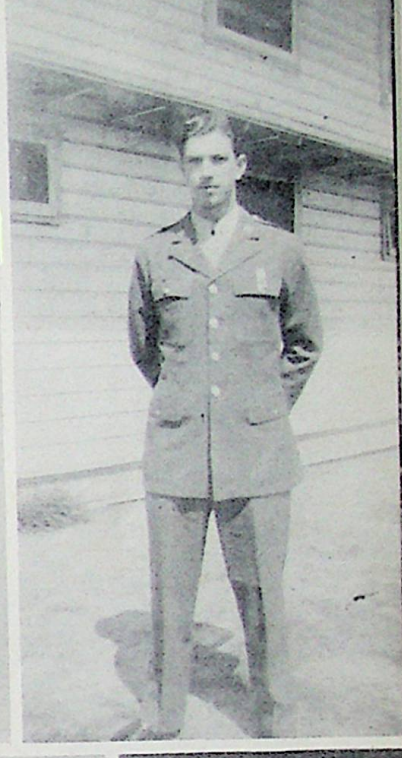
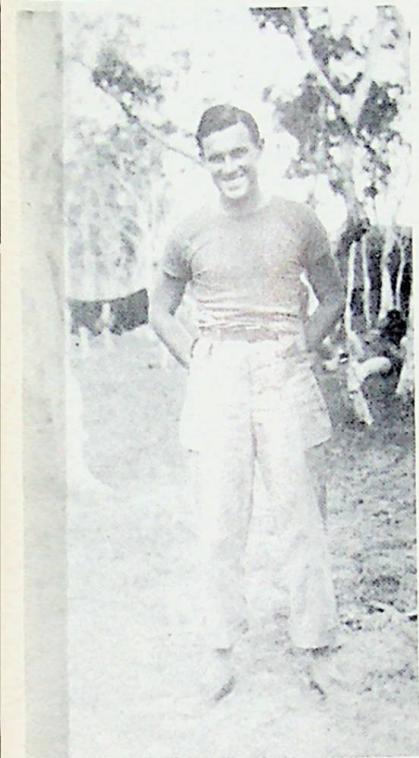


David E. Smith, Coxswain; Pvt. John Van Horn; Glen T. Smith, S1/c

Pfc. Joe Manley; Robert L. Smith, S1/c; Pvt. Estell E. Messer

*by the people,*



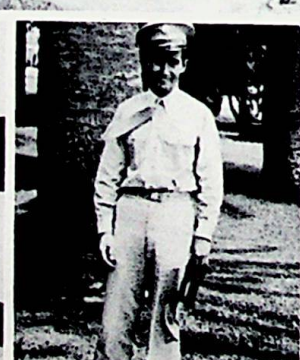
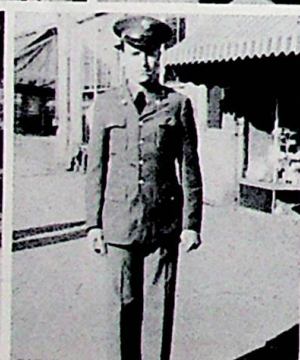
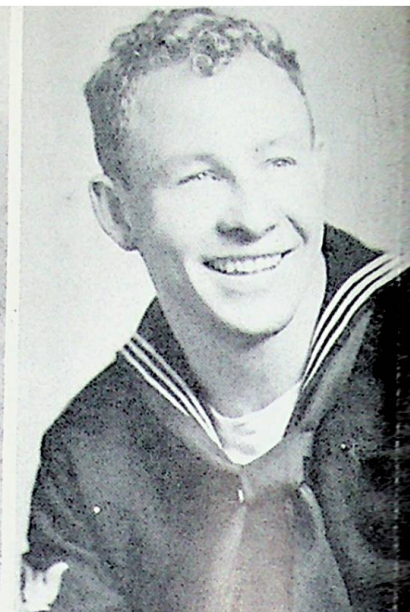
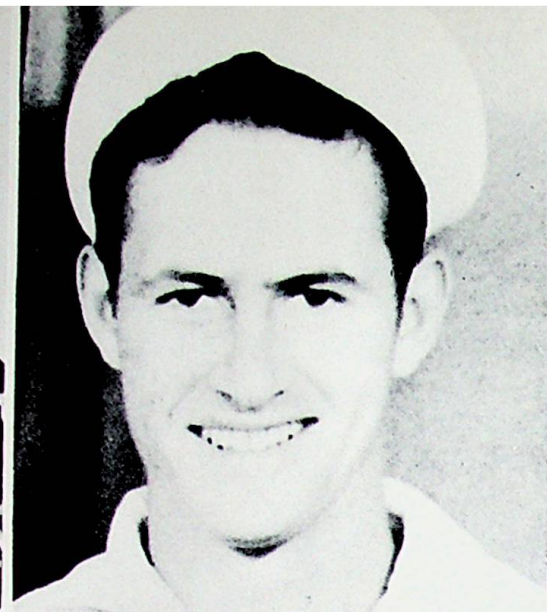


Sgt. Ray Bailey; James Robert Hall, S 2/c; Luther Craft, S 1/c; Pvt. Henry Hansgen

Pfc. James LeMaster; William Maynard, S 2/c; Pvt. Paul Gleim

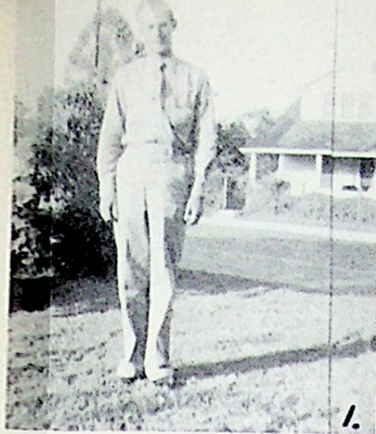
Cpl. Richard Fritz; Bill Thieken, QM 3/c; Ralph Davis, Mo.M.M. 3/c; Pfc. Charles Chandler

*and for the people,*



Sgt. Ralph Fritz; James A. Bennett, G.M. 2/c; Bob Molen, C.P.O. 1/c  
 Lt. Arnold Watts; Pfc. Jack Watts; Sgt. Oscar Burkhart; T/Sgt. Kenneth Bays  
 Jim Reynolds, S 1/c; Cpl. George Loper; Sgt. Harry Ruth; Pfc. Harold Fraley; Nick Coriell, S 1/c

*shall not perish*



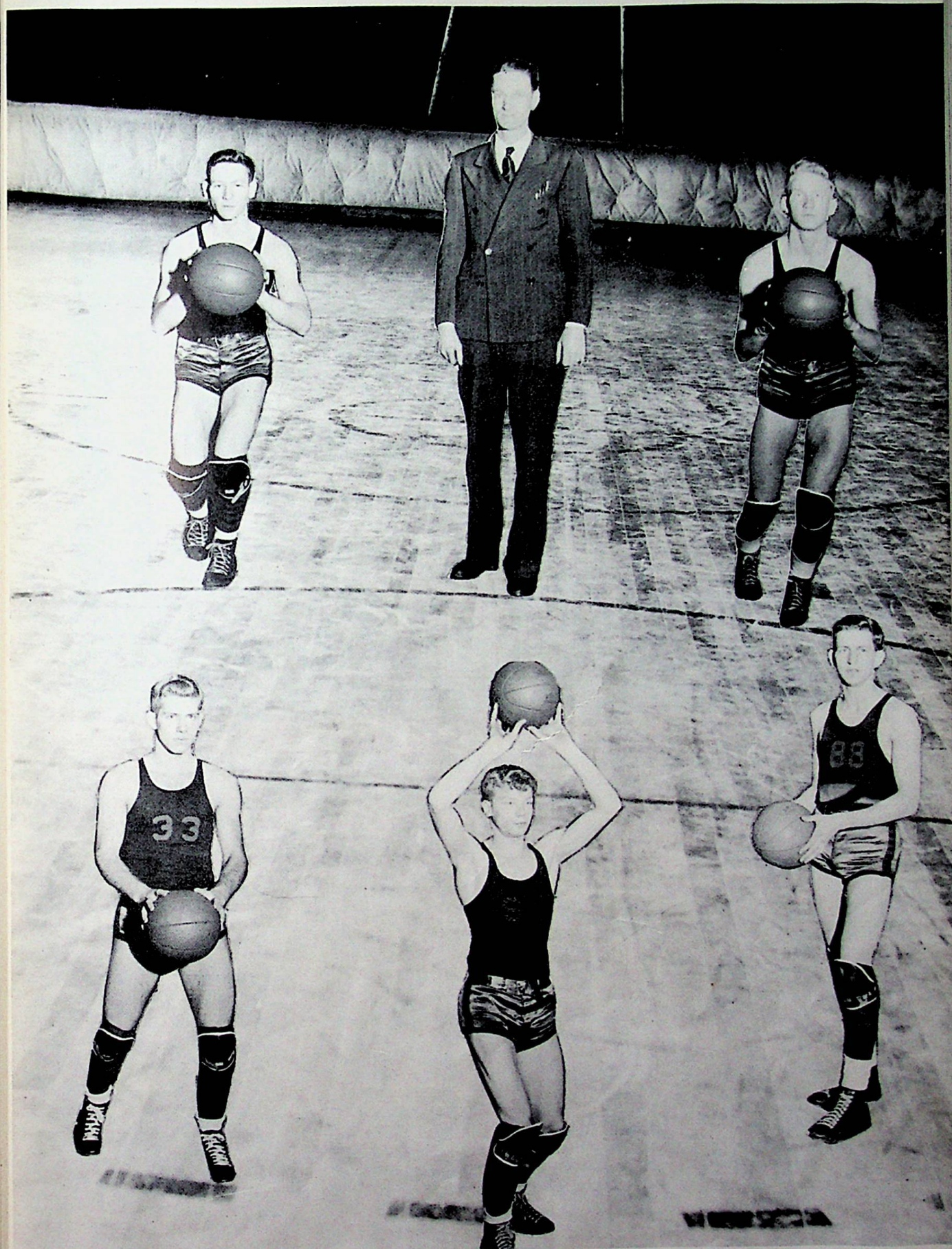
1. Cpl. William Eagleson.  
 2. Pfc. Richard Riddlebarger, S-Sgt. George Riddlebarger, Pvt. Walter Riddlebarger.  
 3. Pvt. Raymond Montavon. 4. Lt. Harold Sagraves. 5. Richard W. McLeod, EM 3-c.  
 6. George Melvin Means, S 1-c. 7. T-Sgt. John Mauk. 8. Cpl. Jay Lyons.  
 9. Cpl. Harlan Smith, Lester Smith, WT 2-c. 10. Pvt. Harold Shingler.

*from the earth."*



# Athletics







Left to right: Mr. See, Leslie Cramer, Mr. Preston, Chester Gallion, Ray Conley, Earl Miller, Lowell Staker, Gene Lawson, Gene Bennett, David Craycraft, Joyce Hahn, Henry Hansgen.

## VARSITY

		VARSITY		RESERVES	
		We	They	We	They
Oct. 17	McDermott	34	22	28	9
Nov. 2	Washington	37	23	27	32
Nov. 10	Clay	35	22	30	19
Nov. 11	Minford	31	25	32	14
Nov. 17	Rarden	71	29	no game	
Nov. 21	Green	50	37	24	17
Dec. 1	Lucasville	42	18	38	31
Dec. 6	Otway	43	18	35	6
Dec. 9	New Boston	37	26	30	12
Dec. 19	McDermott	56	18	22	9
Jan. 4	Minford	32	24	23	20



Front Row: Gene Johnson, Edward Evans, Donald Billups, Harold Lawson, Donald Miller, Wilbur Mauk, Richard Munyon, Robert Morgan. Back Row: Mr. Sec, Lloyd Caudill, Stanley Meyers, Jim Turner, Vern Young, Earl Frazie, Forest Turner, Mr. Preston.

## RESERVES

		VARSITY		RESERVES	
		We	They	We	They
Jan. 11	Washington	31	29	32	26
Jan. 19	Clay	34	26	29	11
Jan. 24	South Webster	42	34	26	13
Jan. 26	Rarden	62	27	no	game
Feb. 2	Green	39	29	28	16
Feb. 3	Portsmouth	38	15	22	17
Feb. 7	Locust Grove	38	27	24	31
Feb. 9	Lucasville	60	22	27	23
Feb. 13	South Webster	66	34	25	14
Feb. 14	Otway	50	31	30	8
Feb. 15	New Boston	33	30	21	41



*First Row:* Donald Miller, Bill Holt, Joe Gann, John De Camp, Ralph Frazie, Carl Pierce, Erwin Blanton, David Stout, Harold Montavon, Ralph Green, Joe Hibbitts.

*Second Row:* Mr. Warren, Robert Reese, Roy Ellis, Joe Cochran, Sidney Smith, James Glascock, Tommy Bowen, Jack Stanley, Stanley Braden, Howard Staker, Bill Hall, Jesse Ramey, Gerald Hall.

## JUNIOR HIGH BASKETBALL

	We	They
Lucasville	25	24
Green	38	24
Washington	18	14
Clay	30	11
Lindsay	58	21
Green	36	24
Lucasville	15	16



# CHEERLEADERS



*Left to right:*

Irene Blair

Maxine Risner

Mary Lou Gilpin

Barbara Reidenbach

Mary Jane Bowen

# MAJOR AND MAJORETTES



*Left to right:*

Ray Conley

Faye Fraley

Mary Lou Gilpin

Maxine Risner



HOME EC.

Organizations



*First Row:* Doris Norfleet, Betty Turner, June Ruth, Maxine Risner, Gwendolyn Hansgen, Juanita Fraley, Judy Carter, Barbara Reidenbach, Jeanne Purtee, Mary Jane Bowen, Norma Jean Stanley. *Second Row:* June Schofield, Lucille Townsend, Betty Craycraft, Nova Sexton, Faye Fraley, Willa Jean Staggs, Adah Harper, Betty Fraley, Reatha Ratcliff, Jewell Plummer, June Stevison, Betty Skaggs, Janet Molen, Karen Werner, Mrs. Winter. *Third Row:* Betty Lou Williams, Velma Gleim, Lila Lee Underwood, Phyllis Hilton, Marcella Gose, Sherlene Gallion, Wanda Fraley, Norma Maple, Betty Pollock, Jean Bailey, Virginia Watts, Mary Lou York. *Fourth Row:* Helen Riggs, Kathleen Williams, Lois Thompson, Pauline Pace, Mary Van Horn, Lucille Davis, Mary Lou Gilpin, Thelma Lyon, Ruth Riddlebarger, Janet Smith, Jane Lyon.

## GIRLS' GLEE CLUB

"There's music in the air!" Whenever you pass Room 4 on certain afternoons, you can always hear melodious sounds. The Girls' Glee Club, under the direction of Mrs. F. B. Winter has been doing excellent work this year. All fifty-three members have been working hard. The results have been pleasing to the ear of the listener. Mrs. Winter had planned a concert of Christmas carols, but due to the extended vacation she was unable to give it. The club worked hard on the spring concert.

The girls are fortunate to have as their director, Mrs. Winter. They have never had a finer more talented leader. She has added much to the musical education of our high school this year!

The Senior accompanist, Miss Norma Jean Stanley, has been a great help to the club. Lois Thompson, a Senior of 1946, is her able assistant.

We salute the entire ensemble!



*First Row:* Betty Skaggs, Janet Molen, Doris Norfleet, Norma Maple, Betty Turner, June Ruth, Maxine Risner, Nova Sexton, Juanita Fraley, Judy Carter, Barbara Reidenbach, Jeanne Purtee, Mary Jane Bowen, Roberta Blair, Norma Jean Stanley. *Second Row:* Betty Pollock, Jean Bailey, Virginia Watts, Mary Lou York, June Schofield, Lucille Townsend, Betty Craycraft, Gwendolyn Hansgen, Faye Fraley, Reatha Ratcliff, Jewell Plummer, Willa Jean Staggs, Adah Harper, Betty Fraley, June Steverson. *Third Row:* Mary Van Horn, Kathleen Williams, Helen Riggs, Lois Thompson, Pauline Pace, Thelma Lyon, Ruth Riddlebarger, Janet Smith, Mary Lou Gilpin, Lucille Davis, Jane Lyon, Betty Lou Williams, Velma Gleim, Lila Underwood, Phyllis Hilton, Marcella Gose, Sherlene Gallion, Wanda Fraley, Norma Montavon, Wilma Jean Johnson, Della Lewis, Mrs. Winter. *Fourth Row:* Edward Evans, Jack McAdams, Robert Craft, Donald Thieken, Lawrence Thieken, Bill Eagleson, Robert Hammond, Bud Maynard, Robert Morgan, Paul Brown, Wilbur Mauk, Donald Creggor, Fred Sommer, Herbert Carver, Lester Purtee, Chester Gallion, Ray Conley, Gene Bennett, Joyce Hahn, David Craycraft. *Fifth Row:* Billy Dials, Forest Turner, James Saul, Ebert Williams, Leslie Cramer, Frances Thieken, Charles Setters, Lowell Staker, Bill Cook, Otis Christian, Earl Miller.

## THE MIXED CHORUS

Although there is a shortage of men this year, we still have a mixed chorus. And a very good one, too! Under the capable direction of Mrs. F. B. Winter, the chorus has accomplished much during the year. There are about eighty talented students in it, practicing every other Wednesday.

The music covers a wide range, extending from classical pieces to popular ones.

The annual Christmas program wasn't presented this year due to unpredictable weather conditions, but many Christmas carols were practiced.

The main project for the year was the annual concert, which was given in the Spring.

I think it will be agreed that this club has done much in promoting good fellowship and entertainment for the students of Wheelersburg High School.



*First Row:* Mary Gilpin, Norma Montavon, Lucille Davis, Patty Miller, James Lawson, James Glascock, Ray Conley, Rilla Johnson, Maxine Risner, Robert Klingman, Bobby Jo Scherer, Howard McHenry, Gwendolyn Hansgen, Juanita Fraley. *Second Row:* Jane Lyon, Betty Pollock, Joe Hibbits, Ray Conley, Betty Turner, Judy Carter, Janice Frowine, Lowell Staker, Miss Lorraine Potts, Faye Fraley. *Third Row:* Norma Lykins, Kathaleen Williams, Carl Willard, Mary Van Horn, Wilbur Mauk, Nick Felty, Herbert Carver, Karl Kinker, Royal Fritz, Barbara Reidenbach, Thelma Lyon, Ruth Riddlebarger.

Thelma Lyon ..... President  
 Lowell Staker ..... Vice President  
 Kathaleen Williams ..... Secretary and Treasurer

## B A N D

The Wheelersburg High School Band, directed by Miss Lorraine Potts, is going places this year! It consists of about thirty-five members, all talented in their various arts. They have rehearsal every Friday afternoon. As Miss Potts' time is divided between two schools, she has done an excellent job in directing our band.

At all the home games the band is an inspiration to both the players and the spectators, and has received many compliments from the out-of-town visitors. Added attractions to the band are the drum major and majorettes. They are: Ray Conley, Mary Lou Gilpin, Faye Fraley and Maxine Risner.

Their annual concert was presented in the Spring. They also played for the commencement exercises.

The band has proved itself to be a fine musical unit. It is quite evident that through the coming years it will grow into a much larger organization, and will bring honor to Wheelersburg High School.



*First Row:* Patty Smith, Doris MsFerren, Georgia Salley, Winifred Baker, Maxine Staggs, Imogene Hull, Norma Johnson, Darlene Wright. *Second Row:* Miss Richards, Betty Stanley, Norma Yeley, Juanita Weidner, Kathleen Hinds, Jane McLeod, Helen Le Master, Mary Ann Moore, Maxine Bailey, Delores Cramer, Lorena Stone. *Third Row:* June Kelley, Geneva Keeton, Thelma Rockwell, Jean Bihl, Kathleen Thompson, Betty Dials, Ruth Mucha, Irene Blair, Phyllis Bowen, Anna May Burgess, Teresa Burgess, Joanne Lallow.

## VERSE CHOIR

Anna May Burgess .....	President
Geneva Keeton .....	Vice President
Teresa Burgess .....	Secretary
Juanita Weidner .....	Treasurer
Irene Blair .....	Reporter
Maxine Bailey .....	Reporter

The Verse Choir was organized for the first time this year in Wheelersburg High School. The director is Miss Willa Sue Richards. It is composed of a group of students working closely together for speech improvement through unison recitation of lovely poems.

Choric speech takes on where the average English class leaves off. It brings a consciousness of beauty and power to both the participants and listeners. It confers mental and spiritual benefits of lasting import through the finest literature and, best of all, raises the ideals of all concerned.

The Verse Choir planned a Christmas program, in the form of a one-act play, to be given at an assembly but due to weather conditions school was dismissed and it could not be given. This club also gave an Easter program at an assembly for the entire student body.



*First Row:* Janet Smith, June Ruth, Betty Turner, Janice Frowine, June Stevison, Norma Glascock, Loretta Skiver, Jeanie Stanley, Wilda Willis, Barbara Howard. *Second Row:* Marcella Gose, Wanda Burke, Martha Gleim, Juanita Hay, Lila Underwood, Miss Shepherd, Phyllis Reidenbach, Phyllis Hilton, Edith Turner, Lucille Davis, Mary Gilpin, Ruth Riddlebarger, Thelma Lyon, Wellma Moore, Lilly Kidd.

Lucille Davis .....	President
Wanda Burke .....	Vice President
Janice Frowine .....	Secretary
Janet Smith .....	Treasurer

## SIGMA TAU PI

The Sigma Tau Pi, an honorary commercial club, is composed of twenty-five members. Each year the membership for the coming year is chosen from the Junior girls who measure up to the following qualities: scholarship, character, leadership and service. New candidates must be approved by all members of the club and the faculty adviser.

Social meetings of the club are held monthly. Along with their fun, the girls try to do constructive work during the school term. This year they have sponsored the school newspaper, *Kampus Kapers*. Members of the club volunteered to serve as ushers at basketball games and other school activities. The club also gave a banquet for the basketball boys and their coaches.





*Left to right:* Ruth Riddlebarger, Loretta Skiver, Wanda Burke, Wellma Moore, Betty Turner, Lila Underwood, June Ruth.

Betty Turner .....	Editor-in-Chief
Wellma Moore .....	Associate Editor
Ruth Riddlebarger .....	Sports Editor
Thelma Lyon .....	Sports Editor
Loretta Skiver .....	Society Editor
Wanda Burke .....	Poet
Phyllis Reidenbach .....	Grade Reporter
Phyllis Hilton .....	Grade Reporter
Jeanie Stanley .....	Grade Reporter

## NEWSPAPER STAFF

Each month this staff edits and publishes a newspaper aided by Martha Gleim, Marcella Gose, Juanita Hay, Edith Turner, Lucille Davis, Mary Gilpin, Lilly Kidd, Janice Frowine, June Stevison, Norma Glascock and Wilda Willis.

The staff, its assistants and a reporter from each grade gather all the news, gossip and sports events that happen from day to day. Then the staff approves it, and it is published.

And do these papers sell! It seems as if there are never enough for everyone that wants one. After a copy has come out, kids can be seen in all halls and doorways reading over the latest gossip—pardon me—news.



# ANNUAL STAFF

## EDITORIAL STAFF

June Stevison .....	Editor-in-Chief
Virginia Watts .....	Assistant Editor
Jeanie Stanley .....	Feature Editor
Phyllis Hilton .....	Feature Editor
Phyllis Reidenbach .....	Sports Editor
Loretta Skiver .....	Photographic and Art Editor

## BUSINESS STAFF

Betty Turner .....	Business Manager
Lucille Davis .....	Business Manager
Lowell Polley .....	Business Manager
Earl Miller .....	Business Manager

### *Faculty Advisers:*

Miss Lyda Belle Shepherd  
Mr. Donald McCowen

Miss Willa Sue Richards  
Mr. James Warren



*Left to right:* Judy Carter, Lilly Kidd, Forest Turner, Gene Johnson, Donald Billups, Chester Gallion, Mr. Smith, Lucille Davis, Earl Miller, Leslie Cramer, Mr. McCowen, Wallace Ruggles, Robert Reese, Junior Braden, Joyce Hahn, Robert Morgan, Sidney Smith, Maxine Bailey.

Earl Miller .....	President
Leslie Cramer .....	Vice President
Lucille Davis .....	Secretary

## THE STUDENT COUNCIL

The W. H. S. Student Council is the law-making body of the school. It consists of representatives from the six years of high school—seventeen in number. These students were elected on October 29, 1944, by the student body and approved by the faculty.

The chief objectives of the student council were:

To train for worthy citizenship through the development of cooperation, self-control, self-reliance, initiative and responsibility.

To establish better understanding and better spirit between the pupils and faculty.

To develop intelligent leadership.

To provide for pupil expression.

To develop interest in school work, school spirit and school pride.

The first project of the student council was to work out a plan to assist the office force, by which hall monitors were stationed to see that students were in their classes.

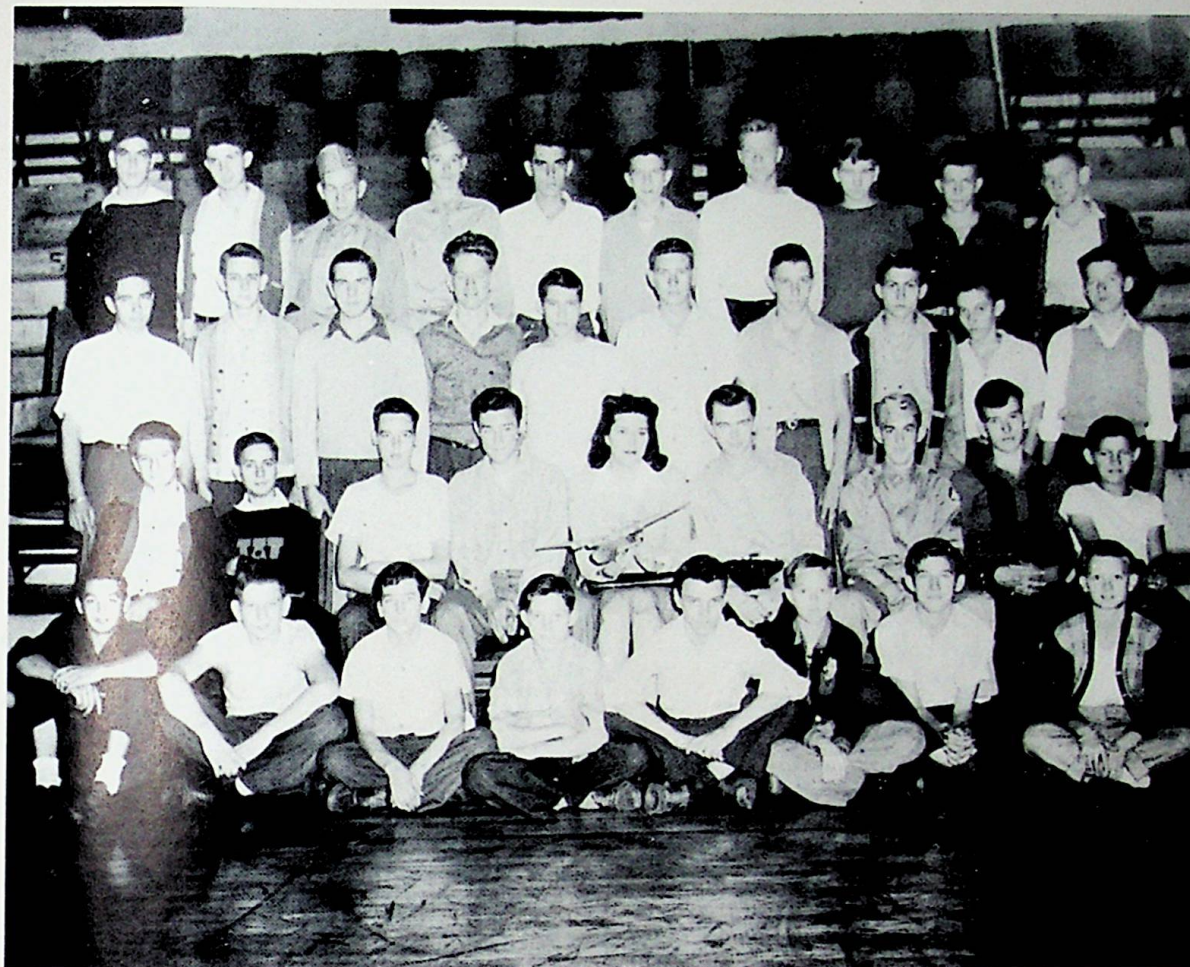


*Standing:* Herbert Carver, Karl Kinker, Otis Christian, Earl Frazie, Billy Ray Dials, Karl Besco, Paul Brown, Donald Cregger, Miss Humphrey, Harold Lawson, Jean Jones, Betty Moore, Opal Maggard, James Mauk, David McCarty, Jewel Plummer, Jeanne Purtee, Kathleen Williams, Betty Skaggs, Jim Lambert. *Seated:* Betty Dials, Irene Moore, Gwendolyn Hansgen, June Kelley, Betty Fraley, Norma Johnson, Mary Ketter, Juanita Fraley, Jane Lyon, Juanita Weidner, Patty Smith, Betty Stanley, Betty Lou Williams, Helen Riggs.

Betty Skaggs .....	President
Pauline Justice .....	Vice President
Harold Lawson .....	Treasurer
Helen Riggs .....	Secretary

## LIBRARY CLUB

The members of the club have given much of their time in the service of the school. The duties of the librarians are checking books, checking files, caring for the library equipment and supervising the library during all periods of the day. Miss Ruth Humphrey, school librarian, advises the library staff and meets with the club as the faculty sponsor. The student body sincerely appreciates the work of Miss Humphrey and her efficient staff.



*First Row:* Jim Lambert, Paul Riggs, Howard McHenry, Bob Mauk, Clarence Wentz, Ernest Williams, Wade Wright, Paul Setters. *Second Row:* Edward Evans, Jack McAdams, Edward Williams, Fred Sommer, Miss Faye Burke, Lester Purtee, Robert Craft, Donald Smith, David Sommer. *Third Row:* Karl Kinker, Bob Evans, Richard Harner, Norman Reiter, Bob Hammond, Ralph Roberts, Forest Turner, Lawrence Thieken, James Mauck, Sidney Smith. *Fourth Row:* Harold Lawson, Frances Thieken, Bill Cook, Ebert Williams, Billy Ray Dials, Lowell Polley, Earl Miller, Joe Merrill, Jimmy Woodrum, Paul Brown.

Lester Purtee .....	President
Fred Sommer .....	Vice President
Robert Craft .....	Secretary
Ebert Williams .....	Treasurer

## THE DAWN PATROL

The Dawn Patrol is a flying club for all students who are interested in aviation. It was organized by Miss Burke, Pilot. The purpose of this organization is to prepare the students for the coming air age. These future pilots of America are studying the theory, problems, methods, history of flight, meteorology, aerodynamics, and the civil air regulations.

During the first semester of school this flying club featured the visual educational picture, "Target for To-night". The second semester it presented a patriotic program with a flight instructor as its guest speaker.

When an appeal was made in December to Scioto county to save the lives of lost pilots in the ocean of air over Portsmouth, the Dawn Patrol immediately responded with a contribution of \$54.98.



Those pictured are:  
 Norma Jean Stanley  
 Norma Montavon  
 Marcella Gose  
 Loretta Skiver  
 Betty Pollock  
 Mr. Smith  
 Mr. McCowen  
 Robert Morgan  
 Judy Carter  
 Virginia Watts  
 Lois Thompson

## OFFICE FORCE



Those pictured are:  
 Barbara Reidenbach  
 Lucille Townsend  
 Mr. Smith  
 Earl Miller  
 Lowell Polley  
 Mr. McCowen  
 Phyllis Reidenbach  
 Phyllis Hilton  
 June Stevison  
 June Schofield



*Front Row:* Ralph Green, Russell Colegrove, Donald Thieken, Robert Mauck, Joe Hibbitts, Ernest Williams. *Back Row:* Bill Cook, Karl Kinker, Herbert Carver, Edward Williams, Donald Cregger, Otis Christian.

## SAFETY PATROL

The Safety Patrol has done excellent work during this school year. The boys have taken much interest in their work. They have patrolled both the old and new highway making them safe for the small children to cross.

Bill Cook has been captain for the past four years. He also serves as the senior adviser to the group.

The entire Wheelersburg student body thanks the organization for its good school citizenship!



*First Row:* Lucille Townsend, June Schofield, Velma Gleim, Mary Jane Bowen, Barbara Reidenbach, Marie Booth, Juanita Weidner, Patty Smith. *Second Row:* Russell Colegrove, Joe Hahn, Ed Evans, Forrest Colegrove, Richard Harner, Paul Brown, Kathleen Williams, Thelma Lyon, Juanita Saunders, Vera Downs, Ada Barber, Mr. See. *Third Row:* Pauline Pace, Kathaleen Gleim, Lester Purtee, Donald Billups, Dave Thornton, Norman Reiter, Charles Setters, John Miller, Gene Bennett, Leslie Cramer, John Sommer.

Leslie Cramer ..... President  
 Robert Evans ..... Vice President  
 Velma Gleim ..... Secretary-Treasurer

## MATH CLUB

The Math Club was organized in 1941 for the benefit of those students who are outstanding in mathematics. Students who have completed courses in algebra I, plane geometry and who are interested in higher mathematics are eligible. Thirty members met the qualifications to compose this club. Mr. See, head of the mathematics department, is the club adviser.

This club has taken an active part in aiding the war effort by collecting old toothpaste and shaving cream tubes and razor blades. This club meets regularly to solve intricate and difficult problems. This year they have mastered the slide rule.





*Those Pictured:* Robert Craft, Sgt.; Wallace Ruggles, Pfc.; Gene Johnson, Pvt.; Robert Morgan, Sgt.; Ebert Williams, Cpl.; Lester Purtee, Commander; Bill Cook, S/Sgt.; Robert Evans, Pvt.



## C. A. P.

The C. A. P. is a direct auxiliary unit of the United States Army Air Force. This is open to all boys who are Juniors and Seniors in high school.

C. A. P. work consists of the fundamentals of drilling, instruction in radio and communications, meteorology and navigation.

There are about eight cadets in the Wheelersburg group, Flight 2. There have been a number of emergencies in which these cadets have given their services to the Army Air Force officials. These cadets deserve much credit for devoting their efforts and time.



*Those Pictured:* Mr. Adams, Gene Johnson, Joyce Hahn, Earl Frazie, Vern Young, David Craycraft, Ed Evans, Chester Gallion, Gene Lawson, Bill Cook, Henry Hansgen, Earl Miller, Richard Munyon, Leslie Cramer, Robert Morgan, Gene Bennett, Ray Conley, John Sherman, Lowell Staker.

Earl Miller .....	President
Leslie Cramer .....	Vice President
John Sherman .....	Secretary
Chester Gallion .....	Treasurer

## VARSIITY "W" CLUB

The Varsity "W" Club has been active for the past four years. This year it is under the able sponsorship of Mr. Arthur Preston. Any boy who has won his varsity letter is eligible to join. The purpose of this club is to give the members a chance to understand each other, and to promote cooperation and sportsmanship.

The club is financing and fixing up a room especially for club members so the boys can relax, read books, play games or partake in some other form of entertainment.

In the annual Carnival these boys had as their booth a basketball skill game. They gave as prizes oil changes, cigarettes, candy and chewing gum.



*First Row:* Norma Johnson, Wanda Vaughters, Sherlene Gallion, Jean Bradley, Judy Carter, Mary Lou York, Barbara Reidenbach, Karen Werner, Eula McCleese. *Second Row:* Beulah Harrison, Betty Lou Williams, Patty Smith, Helen LeMaster, Mary Jane Bowen, Geneva Keeton, Maxine Bailey, Delores Cramer, Betty Dials, Joan Mineer, Barbara Wright. *Third Row:* Janet Molen, Nova Sexton, Juanita Weidner, Betty Pollock, Wilma Chandler, Jean Bihl, Faye Fraley, Norma Maple, Kathleen Williams, Pauline Pace, Kathaleen Gleim, Jean Bailey, Mrs. Cunningham. *Fourth Row:* Norma Montavon, Irene Blair, Anna Pearl Burgess, Anna Mae Burgess, Lilly Kidd, Mary Van Horn, Velma Gleim, Mary Lou Gilpin, Lucille Davis, Thelma Lyon, Ruth Riddlebarger, Janet Smith, Phyllis Bowen, Clara Skaggs.

Janet Molen .....	President
Kathaleen Gleim .....	Vice President
Karen Werner .....	Secretary
Judy Carter .....	Treasurer

## G. A. A.

The Girls Athletic Association was organized by Mrs. Cunningham to stimulate interest in athletics. One of the Fall activities of the club was a weiner roast held on the river bank. The girls often met after school to play soccer and basketball.

The Club members who were outstanding during the year were awarded letters which were presented in assembly.

Site at Shakerburn



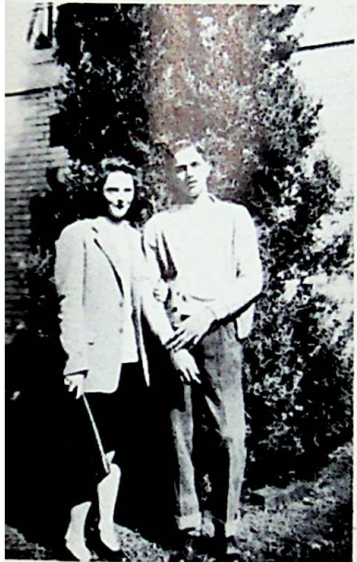
*AREN'T THEY CUTE?*



*NOT AGAIN, BOYS*



*THE PAUSE THAT REFRESHES*



*AIN'T LOVE GRAND?*



*NIT-WITS*



*I'D NEVER HAVE THOUGHT IT!*



*STERLY AND  
BROTHERLY LOVE*



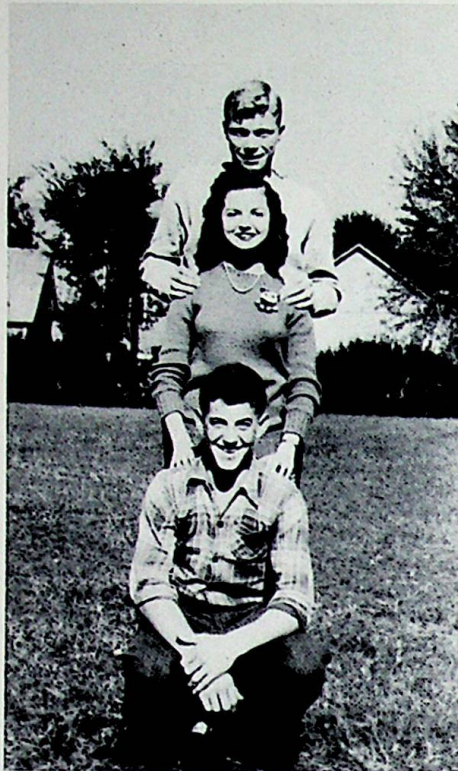
*FIVE SENIOR LASSES*



*I DON'T BELIEVE IT!*



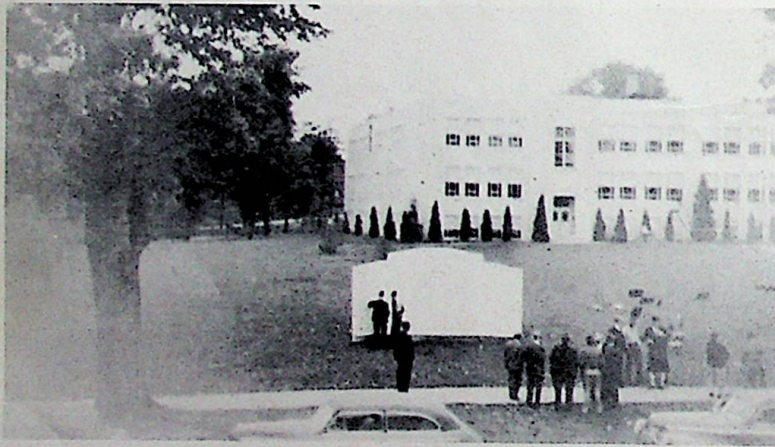
*AHEM!*



*PYRAMID*



*THREE LITTLE NIGHTMARES*



*A NORTHERN VIEW OF W. H. S.*



*TWO LITTLE CHUMS*



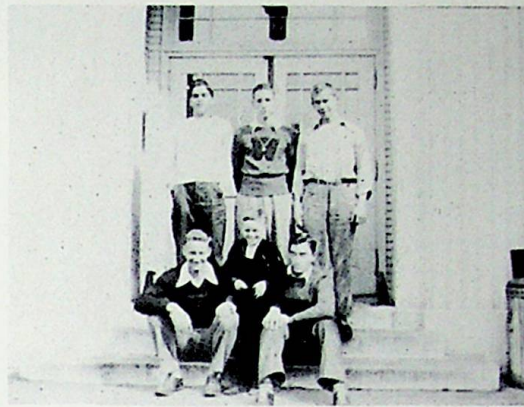
*INSECTS AND BUGS*



*BOING!*



*STUDYING?*



*JUNIOR AND JUNIORS*



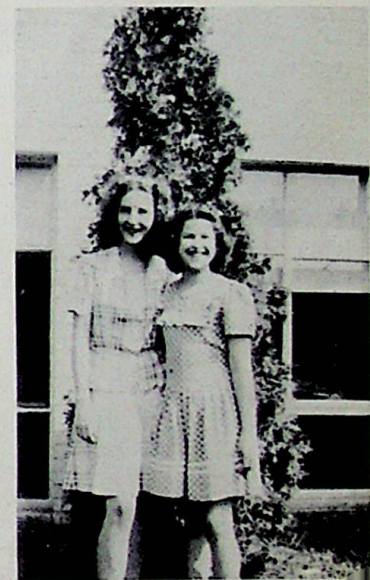
*WHY, MISS POTTS!  
TSK - TSK!*



*A ROSE AMONG  
THE THORNS*



*FOURSOME*



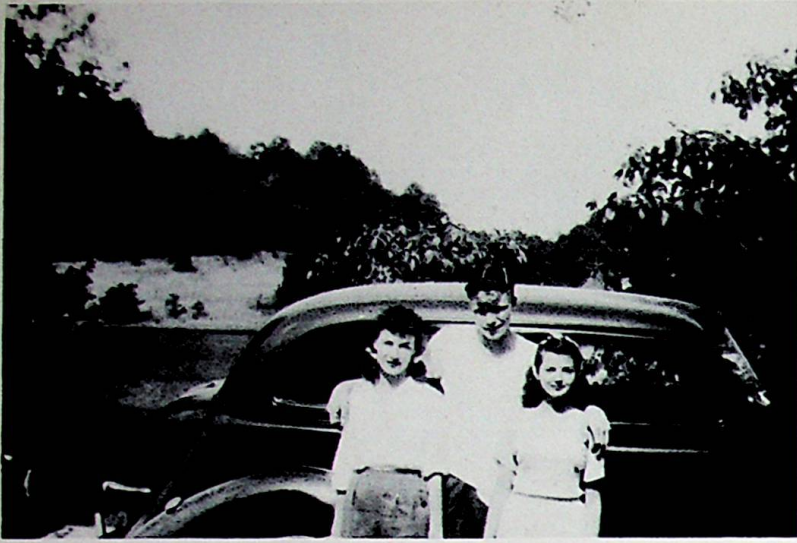
*"FROSH"*



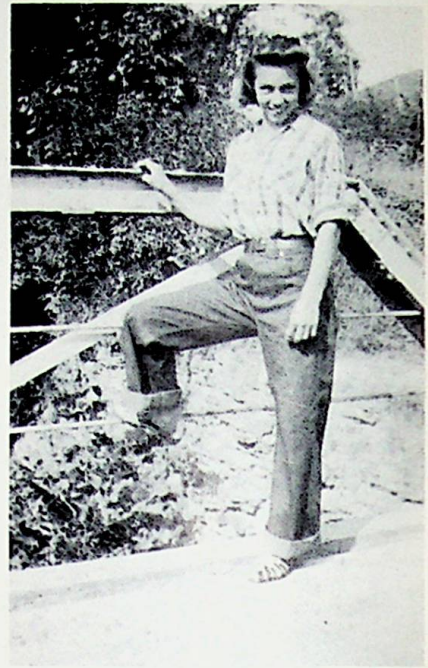
*THE DRUGSTORE "GANG"*



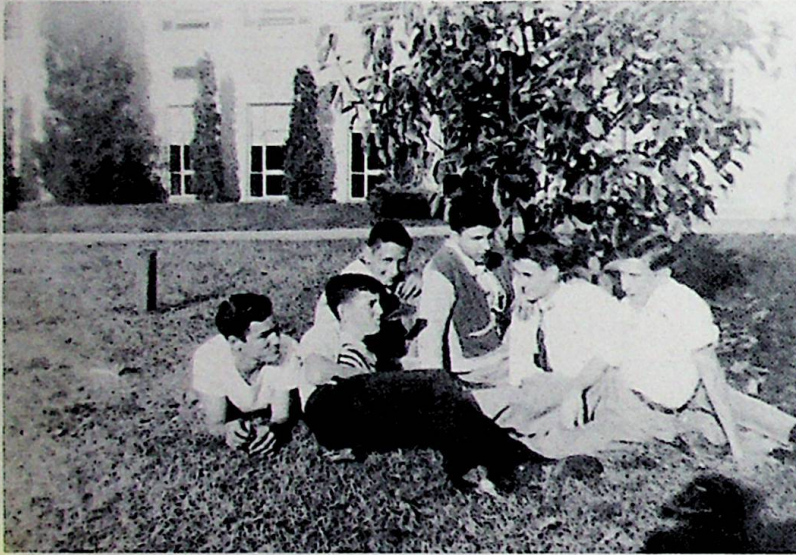
*JUMP BALL*



*BEAUTIFUL SCENERY*



*MARTHA*



*CHECK THAT!*



*SNOW MAIDEN*



*WHERE'S THE AUSTIN, GIRLS?*



*HOW WOULD I KNOW?*

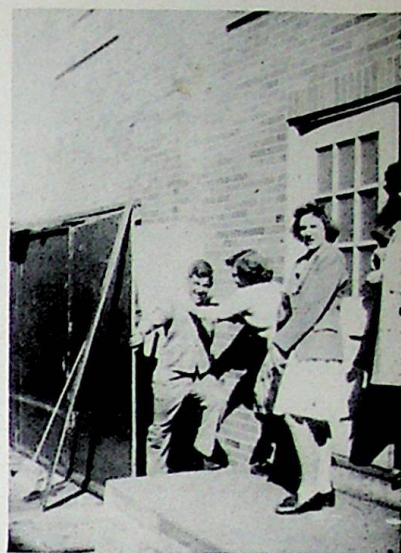




*OH, BROTHER!*



*TIRED, BOYS?*



*MAN SHORTAGE*



*PARADE*



*WHAT'S SO FUNNY?*



*SMILE REAL PRETTY*



*HERE COME THE GIRLS*



*GEE! I MEAN . . . .*



*ALWAYS LOAFING*



*FATHERLY ADVICE*



*GAS SHORTAGE*



*SUN GRINS*



*INTERESTING, NO?*



*GIVE US A BITE, TOO*



*"BILLY" and "SHEP"*



*THREE'S A CROWD*



*PILOT*



*BEAUTY IN THE MAKING*



*"SONNY"*



*LOVE IN BLOOM*



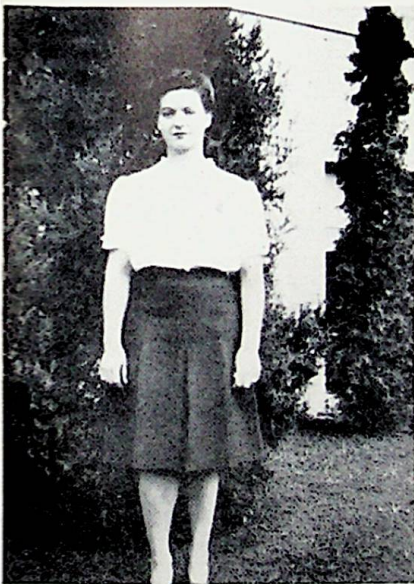
*YOU DON'T SAY!*



*PALS*



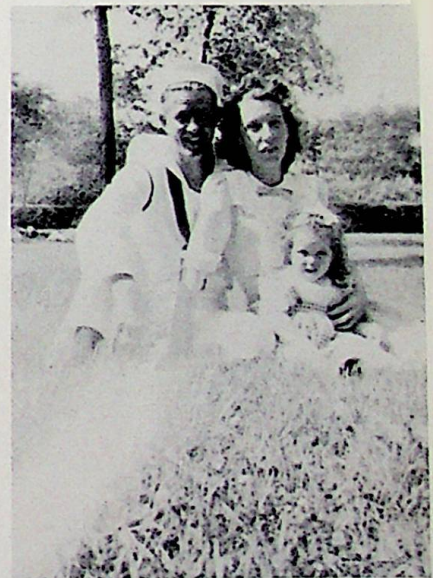
*GALS AND A GUY*



*DIGNITY*



*MAX, JACK and BARB*



*HOME ON LEAVE*



*KINDERGARTEN RECESS*



*PLEASANT SMILES*



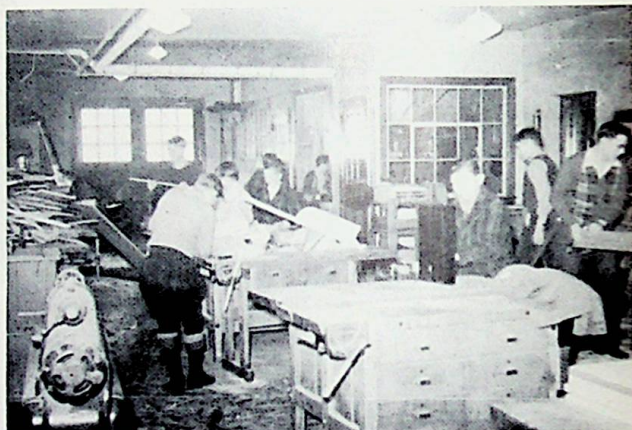
*BUS DRIVERS*



*CLEAN-UP SQUAD*



*INDUSTRIOUS SOULS*



*WORKING HARD?*



*YUM, YUM!*



*MASCOT*



*THAT'S CUTE*



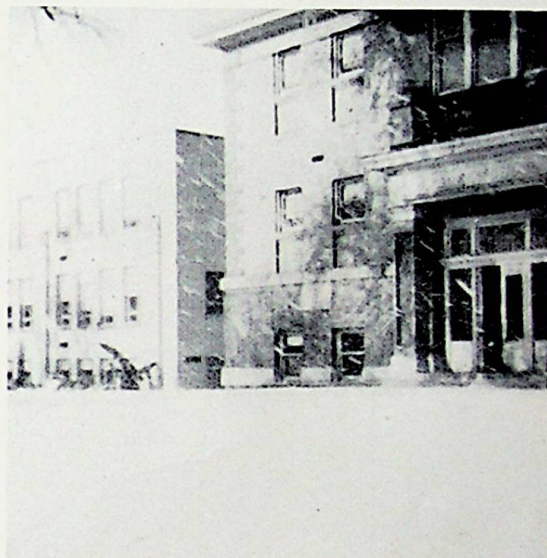
*TYPISTS?*



*THE BAND IN ACTION*



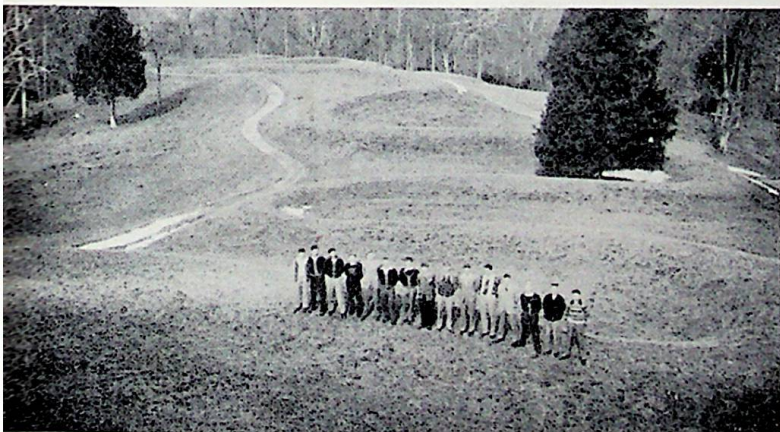
*UPSY-DAISY!*



*DESERTED*



*ON THE STEPS  
OF W. H. S.*



*SERPENTS AT SERPENT MOUND*



*SECRET AGENTS*

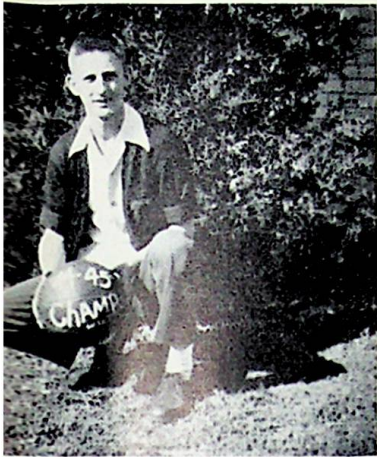


*MR. AND MRS.*

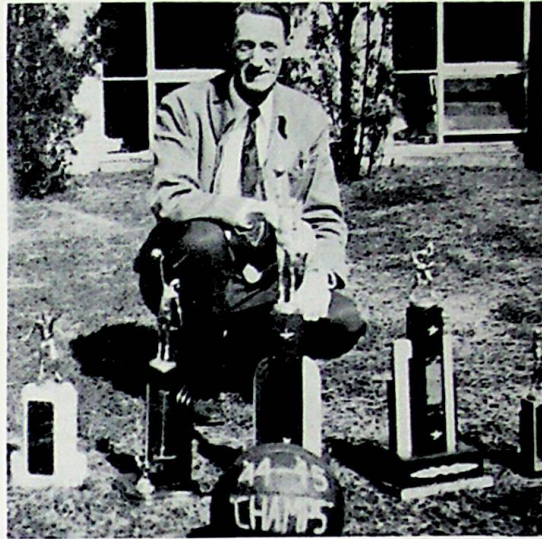
# Topsy-Turvy



# Trophies



**WHEELERSBURG WILL BE CHAMPS!**



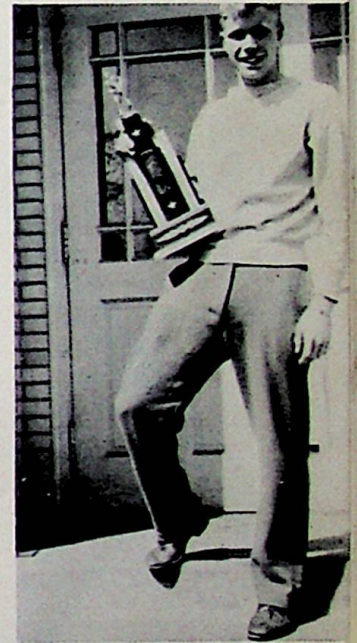
**1944-1945 TROPHIES**



**COUNTY TOURNAMENT TROPHY**



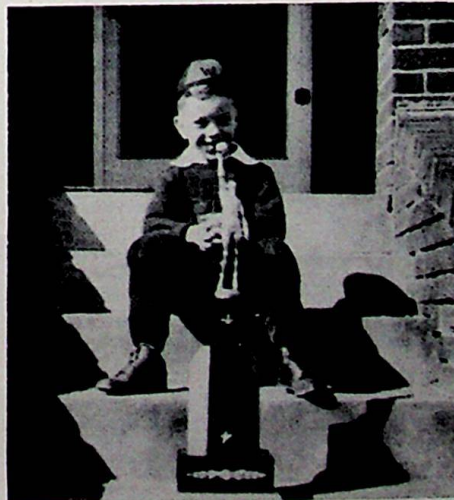
**RESERVE LEAGUE TROPHY**



**DISTRICT TOURNAMENT TROPHY**



**REGIONAL CONSOLATION TROPHY**



**SCIOTO COUNTY LEAGUE TROPHY**

Advertisements





**L. E. COVERT, President and General Mgr.**

STOP AT  
THE  
COVERT  
FURNITURE  
CO.

3973-75 GALLIA STREET

NEW BOSTON, O.

**M**R. LARKIN E. COVERT, better known as Lark, was born and reared in the neighborhood of Wamsleyville and Otway. There he lived and worked on a farm until he was sixteen years of age. He also attended the Jones School. He came to Portsmouth where he spent eight years in the cutting room of the Excelsior Shoe Company.

In 1915 he started in business, selling rugs and blankets from house to house. He purchased the Emmett property at 3973-75 Gallia Street and remodeled it. In 1938 a two story addition was built in the back which now affords about seven thousand feet of floor space and takes care of a good supply of household furnishings.

A good selection of home furnishings is now available at the COVERT FURNITURE COMPANY. After the war all home furnishings, including the most modern that is made in all lines, will be available. Remember it is the COVERT FURNITURE COMPANY for the latest in home furnishings!

R. R. LITTERAL



GROCERIES

MEATS

VEGETABLES



PHONE 980-L

WE DELIVER

SMITH & AEH

MEATS AND GROCERIES

WE DELIVER

PHONE 22

WHEELERSBURG, O.

COMPLIMENTS OF

LOLA'S

BEAUTY SHOP

Assistant—MAVIS TRAYLOR

Phone Scioto 92

5728 GALLIA

HIBBITT'S  
Hardware Company

*Complete Line of*  
HARDWARE — HARNESS — SEEDS  
and SPORTING GOODS

315 HARDING AVENUE

Phone Scioto 23-X

YES, WE HAVE IT!

A TIRE VULCANIZER!

WE REPAIR YOUR TIRES

WHILE YOU WAIT!

CONKLIN

Auto Service

WHEELERSBURG, OHIO

Phone 233-R

MOBILGAS

COMPLIMENTS

of

C. G. TURNER

SHOE REPAIR SHOP

SCIOTOVILLE,

— OHIO

*"Good Coffee"*

*Home Made Pies*

## Ohio Valley Restaurant

GALLIA AT MILL ST.

WHEELERSBURG, OHIO

*We Specialize in Home Cooking*

Phone 982-R

Mrs. J. W. Hoskins

# McGHEE'S

## SERVICE STATION

TEXACO PRODUCTS

Phone 987-X

WHEELERSBURG, O.

# THE REIDENBACH PHARMACY

Prescription Druggist

MASONIC TEMPLE

WHEELERSBURG, OHIO

PHONE SCIOTO 51-Y

## HIBBITT'S BROTHERS

GENERAL STORE

PHONE 981-R

WHEELERSBURG, OHIO

COMPLIMENTS

of

Charles C. Lambert

RAMEY'S  
FEED STORE  
and HATCHERY



*FLOUR — MEAL — FEED*

*Distributors of ESHELMAN FEEDS*



PHONE SCIOTO 233-L

WHEELERSBURG, OHIO

COMPLIMENTS OF

MIRIAM'S  
Beauty Shop

PHONE 952-Y

GLEIM ROAD

WHEELERSBURG, OHIO

CRISPIE CREME  
DONUTS

1546 GALLIA STREET

PORTSMOUTH, OHIO

COLEMAN'S MARKET

2327 GALLIA ST.

PORTSMOUTH, OHIO

*FRESH FRUITS AND VEGETABLES  
GROCERIES AND MEATS*

Open daily except Sunday

CONGRATULATIONS

TO THE

CLASS OF '45

from

GEORGE E. COOK

HARDWARE

PHONE 968-L

WHEELERSBURG, OHIO

COMPLIMENTS OF

NU-WAY  
CLEANING CO.

—OFFICE AND PLANT—

2314 Gallia St.

Portsmouth, Ohio

TEXACO

GASOLINE AND OIL

HENRY BUSSLER

Phone 964-K      WHEELERSBURG, O.

COMPLIMENTS OF

YE OLD TAVERN  
CANDY SHOPPE

*Carl Herms, Prop.*

WHEELERSBURG, OHIO

WHEELERSBURG  
ICE & COAL CO.

ICE, COAL, SAND,  
GRAVEL AND CEMENT BLOCKS

*Buy Slag for Permanent Driveways*

**"WE GUARANTEE SATISFACTION"**

Phone Sciotoville 51-L

COMPLIMENTS

TO THE CLASS OF '45

SCIOTO COUNTY  
FARM SUPPLY

Mitchell Price

G. M. Ross

WHEELERSBURG  
CUT RATE GROCERY

QUALITY GROCERIES AND MEATS AT LOWER PRICES

PAY CASH

—BUY MORE WAR BONDS—

PHONE SCIOTO 982-R

R. S. HOSKINS, Prop.

# Coca-Cola

TRADE-MARK REG. U. S. PAT. OFF.

CONGRATULATIONS

CLASS OF '45

## Atlas' Fashions

AN ATLAS CHOICE CAN'T

GO WRONG

CONGRATULATIONS

CLASS OF '45

from

## MARTING'S

"ONE OF OHIO'S GOOD STORES"

PORTSMOUTH, OHIO

Redoutey & Stern  
PAINT STORE

1006 GALLIA                      PHONE 2136  
PORTSMOUTH, OHIO

COMPLIMENTS

TO THE CLASS OF '45

COOK'S  
BARBER SHOP

Harding Ave.                      SCIOTOVILLE, O.

*SHOES FOR THE ENTIRE FAMILY*

SELBY SHOES

1007 GALLIA STREET  
PORTSMOUTH, OHIO

W. L. WILHELM  
*JEWELER*

JAMES E. WILHELM  
*OPTOMETRIST*

507 CHILlicothe STREET

CRAIGMILE'S  
FURNITURE CO.

936 GALLIA STREET  
HOMES FURNISHED  
COMPLETE

— STOP AT —

MODERN GRILL

*FOR FINER LUNCHES*

*Good Service                      Sodas & Sundaes*

836 Gallia                      Portsmouth, O.  
Next to Columbia Theatre

SALES

SERVICE

DODGE — PLYMOUTH  
DODGE TRUCKS

Scioto Motors Inc.

H. D. OBERLING, Mgr.

Richards' News

1422 GALLIA ST.  
Opposite Trinity Church

MOST COMPLETE SELECTION OF  
NEWSPAPERS AND MAGAZINES  
IN THE CITY

HALLMARK GREETING CARDS

SAMUEL LEVI  
AND COMPANY

—:— FURNITURE —:—

842 GALLIA STREET  
PORTSMOUTH, OHIO  
Next to LaRoy Theatre

TILENE'S

*The Smart Shop for the Girls,*

*A Grand Group of Juniors.*

Sizes 7-17 10-20

"gallia at gay"

PORTSMOUTH, OHIO

PRINTED BY COMPTOLITH—

*THE ECONOMICAL MODERN WAY*

COMPTON Engraving and Printing Co.

1412 THIRD ST.

PORTSMOUTH, OHIO

Artists

Engravers

Printers

Photo-Lithographers

COMPLIMENTS OF

CHABOT'S  
SUPER SERVICE

—Distributor—

PURE OIL GAS and U. S. TIRES

COMPLIMENTS OF

Laurel Biscuit Co.

1609 CHILLICOTHE

PORTSMOUTH, OHIO



COMPLIMENTS OF

SOWARDS  
FUNERAL HOME

3983 GALLIA NEW BOSTON, O.

COMPLIMENTS OF

ORTHMEYER'S  
BAKERY

5500 GALLIA STREET  
SCIOTOVILLE, OHIO

Wheeler & Scott



MEATS — PRODUCE — GROCERIES



PHONE 88 226 HARDING

G. H. MILLHUFF



DRY GOODS — NOTIONS

GROCERIES



PHONE 15 SCIOTOVILLE, OHIO

COMPLIMENTS OF

JOHNSON BROS.  
GROCERY

1101 MAYO  
SCIOTOVILLE, OHIO

*W. ELTON SMITH, Pharmacist*

Scioto Drug Co.

224 HARDING AVENUE  
SCIOTOVILLE, OHIO  
A TRUE DRUG STORE

COMPLIMENTS OF

GRAF LUMBER  
& BUILDING CO.

6467 BAHNER ROAD  
SCIOTOVILLE, OHIO

GILL  
FUNERAL HOME

AMBULANCE SERVICE

PHONE 100  
5602 GALLIA PORTSMOUTH, O

ED. LOCKNER'S  
AUTO SUPPLY

*Distributors of*  
Tires — Batteries — Motor Oil  
Seat Covers — Piston Rings

NINTH AND CHILlicoTHE STS.  
PHONE 2937  
PORTSMOUTH, OHIO

COMPLIMENTS OF  
SCHAEFER'S  
SUPER MARKETS

2034 Eleventh      Third and Market  
Thirteenth and Chillicothe

COMPLIMENTS OF

POP'S PLACE

GAS — OIL — EATS

WHEELERSBURG, OHIO

ON RT. 52

COMPLIMENTS

OF

McCURDY-SCOTT

FUNERAL HOME

PHONE 51-R

AMBULANCE SERVICE

COMPLETE

ONE STOP

SERVICE

COMPLIMENTS OF

American  
Steam Laundry  
and  
Dry Cleaning

PHONE 176

10 GLOVER ST.

COMPLIMENTS OF

Buick Company  
Watkins Motor Sales

PHONE 870

PORTSMOUTH, O.

COMPLIMENTS OF  
HUNTER'S LOCK  
AND BICYCLE SHOP

1538 GALLIA ST.  
PORTSMOUTH, OHIO

DRUMMOND  
IMPLEMENT STORE

1518 GALLIA STREET  
PORTSMOUTH, OHIO  
Phone 30

## HERFF-JONES COMPANY

*Designers and Manufacturers of*

SCHOOL & COLLEGE JEWELRY, GRADUATION ANNOUNCEMENTS,

MEDALS, CUPS AND TROPHIES

INDIANAPOLIS, INDIANA

1411 North Capitol Avenue

JEWELERS AND STATIONERS TO WHEELERSBURG HIGH SCHOOL

REPRESENTATIVE—P. J. BURKART

COMPLIMENTS OF  
K. & S. JEWELERS  
THE JOYCE CO.

*JEWELERS*

2901 GALLIA                      PHONE 2740

COMPLIMENTS OF  
The Pastry Shop

708 CHILLICOTHE STREET

PORTSMOUTH, OHIO

COMPLIMENTS OF

CHARLIE'S  
RESTAURANT

*Sandwiches — Soft Drinks — Chilli*

GALLIA ST.            WHEELERSBURG

COMPLIMENTS OF

DOERR'S  
HARDWARE

519 SECOND STREET

PORTMOUTH, OHIO

COMPLIMENTS

C. W. HUDSON, JUSTICE OF THE PEACE  
McCORMICK'S SOHIO STATION  
CHABOUDY'S VOLUNTEER MARKET  
NICK NAGEL'S SERVICE STATION  
HAMBURGER SHOP  
AUTOMOTIVE SUPPLY CO.  
BOURGHOLTZER DRUGS  
DR. DUVENDECK  
DRS. S. E. AND O. T. MOORHEAD  
WOODRUM'S BARBER SHOP  
SCHOMBURG'S MEAT MARKET  
LEET LUMBER CO.  
McCLAIN'S CLEANERS  
ADRIAN'S GRILL  
SCOTT'S BARBER SHOP  
COOPER BROS. HARDWARE  
GREENWICH INN  
LEHMAN INSURANCE  
SELECT DAIRY  
ACME PAINT STORE  
ARTWIL DRESS SHOP  
COLLINS CLOTHING STORE  
SPOT LUNCH  
GEMPERLINE FURNITURE CO.  
FOWLER'S CAMERA SHOP  
WHEELERSBURG BEAUTY SHOP  
KIDD'S GROCERY

*Autographs*

Autographs

MURFIN'S  
INSURANCE AGENCY

*"INSURE IN SURE INSURANCE"*

1542 Gallia Street

Phone 446

PORTSMOUTH, OHIO

FIRESTONE  
STORES

1408-10 GALLIA STREET

PHONE 567

PORTSMOUTH, O.

Pure Oil Station

BE SURE



WITH PURE

Your Friendly Pure Oil Neighbor

For All Your Car Needs

*IKE BIVENS, Manager*

PHONE BOSTON 114

CONGRATULATIONS

Class of '45

from

Devoss and  
Donaldson

*ARCHITECTS*

National Bank Building

PORTSMOUTH, OHIO

COMPLIMENTS OF  
PITTS'  
DAIRY SHOPPE

1139 GALLIA STREET

Next to P. H. S.

E. H. RUSSELL  
Glass Company

GLASS FOR ANY PURPOSE

*"Give Us a Break"*

1106 GALLIA

PHONE 460

# Carr's Jewelry Store

811 GALLIA  
PORTSMOUTH, OHIO

*Our DIAMOND displays offer superb examples in wide price range. To a brilliant graduation, an achievement of any major sort, DIAMONDS are the beautiful tradition with no substitutes!*

# COMPLIMENTS OF NAN L. MURPHY APPAREL SHOP

*Headquarters for  
Junior and Misses Wear*  
Nora A. Wilhelm Gladys Higgins  
Bertha DeBoer  
813 GALLIA PORTSMOUTH, O.

# STEWART'S DRUG STORE

*PRESCRIPTION SPECIALISTS*

PHONE 2447

904 Gallia St. Portsmouth, Ohio

# ROY ZUEFLE

*Authorized Dealer for*  
HAMILTON ELGIN  
BULOVA GRUEN  
WATCHES

563 Second St. Portsmouth, Ohio

# COMPLIMENTS OF GEORGE LANTZ'S GENERAL STORE

*GROCERIES AND FEED*

PHONE 1009-L

SLOCUM STATION

# COMPLIMENTS OF WALKER'S Family Shoe Store *SHOES FOR THE ENTIRE FAMILY*

402 CHILLICOTHE ST.

PORTSMOUTH, OHIO

# COMPLIMENTS OF The Hotel Hurth

to the Class of 1945

*Direction American Hotel Corp.*

J. Leslie Kincaid, Pres.

# WOLFF

*CLOTHES FOR MEN AND BOYS*

Phone 1083

Chillicothe St.

PORTSMOUTH, OHIO



COMPLIMENTS

OF

STEWART'S GROCERY

VINTON AND YOUNG STS.

PORTMOUTH, OHIO

COMPLIMENTS

TO THE CLASS OF '45

from

ZIMMERMAN'S

OFFICE SUPPLIES

810 CHILLICOTHE

PHONE 2490

*OUR BEST WISHES*

TO THE GRADUATES OF

WHEELERSBURG HIGH SCHOOL

DISTEL

Furniture Co.

PHONE 400

616 CHILLICOTHE

Kobacker's

COMPLIMENTS

TO THE CLASS OF '45

from the

Sears, Roebuck  
and Company

301 CHILLICOTHE STREET

PORTSMOUTH, OHIO

If a boy loves a girl

That is his business.

If a girl loves a boy

That is her business.

If they get married

That is their business.

If they furnish a home

That is our business.

THE SHEETS

FURNITURE CO.

526-532 SECOND STREET

PORTSMOUTH, OHIO

COMPLIMENTS

OF

J. R. Schoonover

1202 NINTH STREET

PORTSMOUTH, OHIO

*IT'S SMART TO SHOP AT*

DENTON'S

IT'S A HOME STORE

Out of the High Rents

See's Greenhouse

*FLORISTS*

Plants and Cut Flowers

for All Occasions

COMPLIMENTS

from

PEPSI COLA

Phone 188-L

Gallia and Butler





GARDNER BROTHERS  
NEW YORK