



SENATORIAN





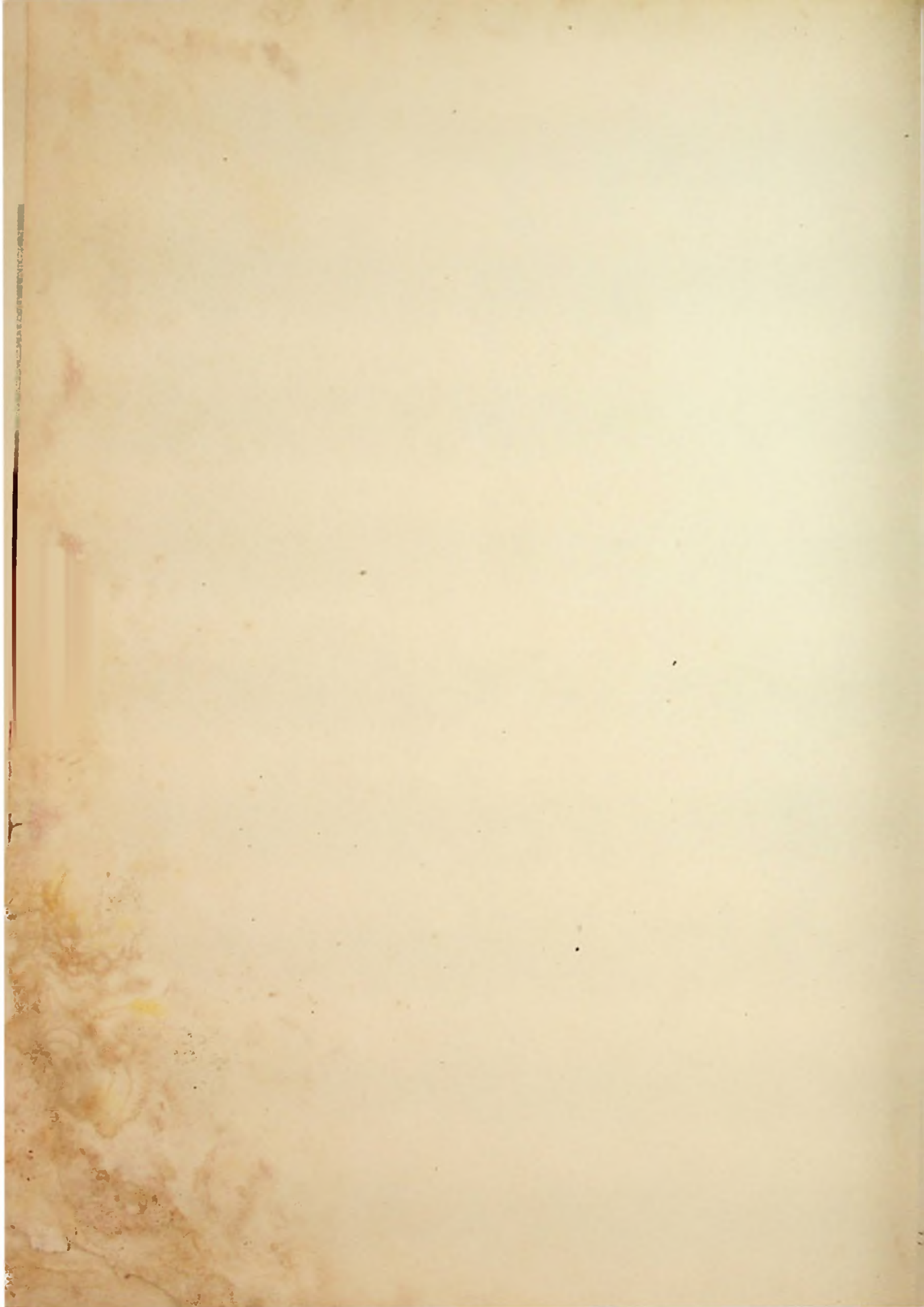


*Our Halls Of Joy*

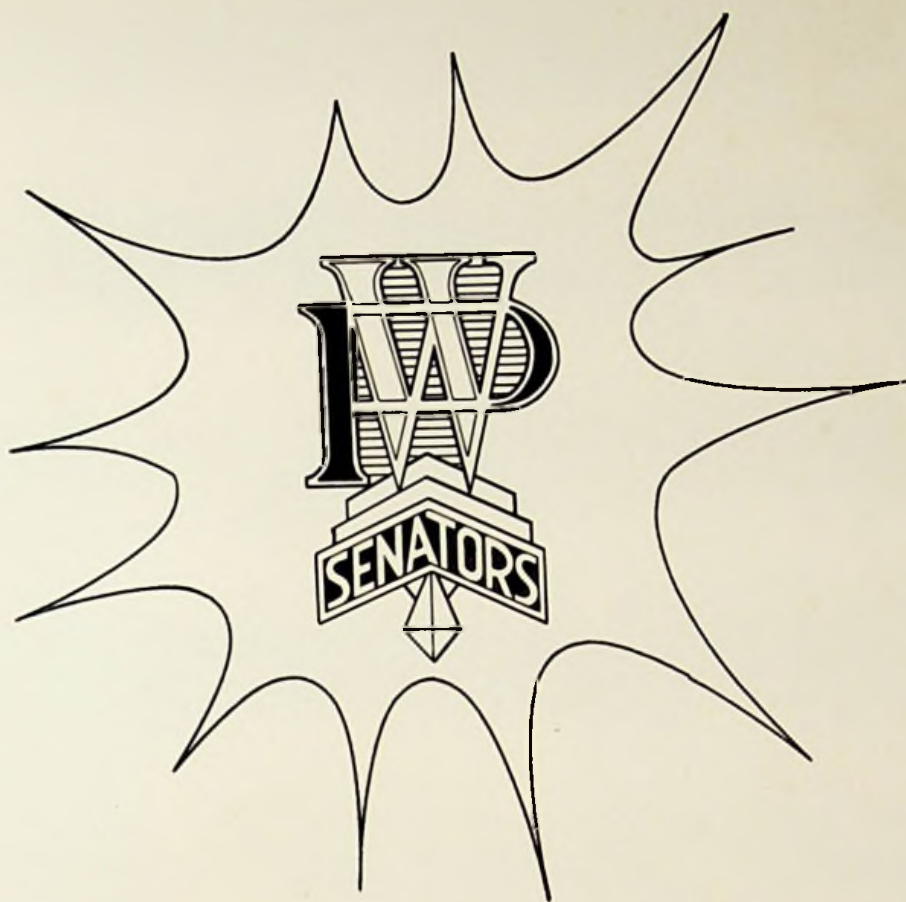


Loyal, Loyal to our West High:  
wave those banners high. We  
will fight for you forever; fight,  
fight, fight's our cry. Blazing  
o'er the paths of glory, always  
brave and true. Loyal, Loyal  
to our West High, we will do  
our best for you.









*The*

*1963*

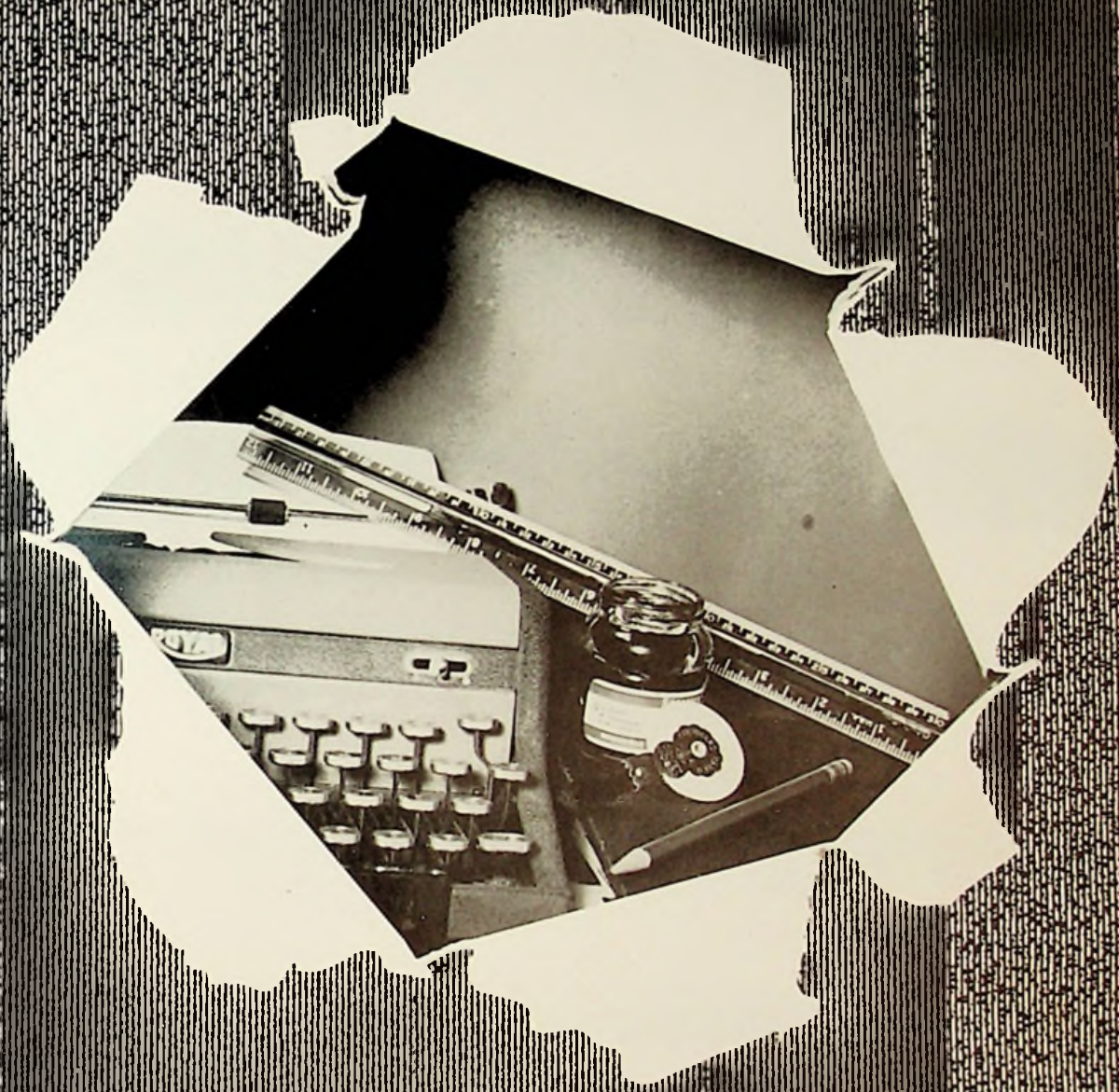
*Senatorian*



# *Table of Contents*

|                |         |
|----------------|---------|
| Administration | 3-7     |
| Dedication     | 8       |
| Faculty        | 9-14    |
| Seniors        | 15-39   |
| Juniors        | 40-48   |
| Sophomores     | 49-59   |
| Freshmen       | 61-69   |
| Athletics      | 70-94   |
| Organizations  | 95-114  |
| Advertising    | 115-138 |
| Organizations  | 139-159 |





Administration





JAMES WILSON  
Executive Head

B. S. , Elementary Education and B. S. , Secondary Education, Rio Grande College; Summer Session, Wilmington College; Finance School Graduate, Army Service Forces; M. A. , School Administration, Marshall University; Post Graduate, Ohio University.



PAUL W. COLLINS  
Principal

Georgetown College, A. B. ; Ohio University; M. A. , Marshall University  
On sick leave effective March 1, 1963.





EUGENE McKENZIE  
Assistant Principal and Guidance  
Ohio University, B. S. in Ed, Marshall University  
Acting principal since March 1, 1963.



MRS. MARGARET BRICKEY  
Receptionist and Secretary



*In Memory of William F. Snook*



*Dedication*

William F. Snook, "Bill" to his friends in the profession, deserves more from our school than we could hope to contribute with this small dedication. Only by filling it with warmth and genuine gratitude can we hope to make it worthy of him. To Bill Snook, the school business was never just a business---it was a mission to which he applied himself with completeness and humanity. To those of us whom he helped personally as a teacher and counselor, no material remembrance is necessary. His contributions to our school surround those of us who missed the pleasure and honor of knowing him. To those who ask, "What was Bill Snook like?" we point to the equipment his efforts produced for the school---we mention a name his counsel and love saved from ruin, and a thousand other things, little and big, he did for us, and we say, "Look for yourself---he is here." To William F. "Bill" Snook, with gratitude and humility, we dedicate this book of memories.





Faculty





Dale Bandy



John DeRossett

MR. DALE BANDY

Ohio University  
B. S. , Education

MR. JOHN H. DeROSSETT

Pikeville College  
B. S. , History and  
Commerce

MRS. JEANNE DREW

University of Kentucky  
Home Economics



Jeanne Drew

Tim Dummitt

Tom Giles



MR. TIM DUMMITT

Morehead State College  
English and History

MR. THOMAS GILES

Ohio University  
Vocal Music



MARY B. GILLETTE

Ohio University  
A. B. and B. S. in  
Commerce



Mary Gillette



Mary Lu Hall

MARY LU HALL

Union College  
Morehead State College  
Commerce



Eunice Harper

EUNICE V. HARPER

Morehead State College,  
A. B.  
Duke University, Masters  
History

Dick Hill

Kathryn Hopkins

DICK HILL

Capital University, H. B.  
Ohio State University,  
M. A.  
Accounting



KATHRYN HOPKINS

Ohio State University  
Spanish





Dale Humphrey



Mary Kah

DALE HUMPHREY

Ohio University  
Social Science

MARY F. KAH

Western College for  
Women  
A. B. , English

JAMES KETTER

Ohio University  
Science, Biology,  
Mechanical Drawing



James Ketter

Roger Lundy

Kenneth McCall



ROGER G. LUNDY

Lincoln Memorial  
University  
B. S. , Physical Education  
and Health



KENNETH McCALL

Ohio University  
Science, Physics,  
Chemistry



JAMES M. MORGAN

Morehead State College  
Instrumental Music, A. B.

ORVILLE REISER, JR.

Ohio University  
Industrial Arts



James Morgan



Orville Reiser



Olympia Orlett

OLYMPIA ORLETT

College of Saint Teresa  
English, Latin, College  
Math

Elizabeth Ressinger

William Riggs

ELIZABETH RESSINGER

B. S. , Education; Ohio  
University  
M. A. , Marshall University  
History, Earth Science,  
Biological Science,  
Library Science

WILLIAM RIGGS

Eastern Kentucky State  
College  
History, Physical Education  
and Health







James Rowland

Donald Staggs

MR. JAMES ROWLAND

Morehead State College  
English, Speech

MR. DONALD STAGGS

Cedarville College  
Government, Physical  
Education

MR. THOMAS SWAIN

Morehead State College  
A. B. , Physical Education



Thomas Swain

Hattie Terrill

Brenda Vergne



MRS. HATTIE TERRILL

Morehead State College  
English

MRS. BRENDA VERGNE

Morehead State College  
A. B. , Physical Education





Seniors



# Senior Class Officers



Suter, Coleman, Wellman, Staten

President - - - - - MIKE WELLMAN

Vice President - - - - - CANDY SUTER

Secretary - - - - - MAXINE COLEMAN

Treasurer - - - - - GREG STATEN





CAROL ADKINS  
Elective  
Home Ec. 2, 3; Class Play 3; Pep  
Club 2, 3

BRENDA ALLEN  
Commercial  
Homeroom Representative 3

THELMA ARTHURS  
Home Economics  
Home Ec. Club 1, 2, 3

LINDA BEAN  
College Preparatory  
Spanish Club 1, 2; Scholarship 1, 2,  
3, 4; Honor Society 3, 4; Senior  
Survey 4



DOUGLAS BIGGS  
College Preparatory  
Latin Club 2, 4; Class Play 4;  
Scholarship 4; Intramural Basketball  
1, 2; Senior Survey 4; Band 1, 2;  
Dance Band 2; Pep Band 1, 2

CLAY GALLOWAY  
Industrial Arts  
Freshman Football; Mixed Chorus



CAROLYN BOLTON  
Home Economics  
Home Economics Club 1, 2, 3



DOUGLAS BRADSHAW  
College Preparatory  
Spanish Club 1; Mixed Chorus 2, 3;  
Top Twenty 2, 3; Annual Staff 4;  
Intramural Basketball 2, 3



PAULA BRANSON  
College Preparatory  
Latin Club 2, 4; Pep Club 2; Honor  
Society 3, 4; Great Books Club 3;  
Newspaper Staff 4; Future Teachers  
Club 4; Annual Ad Salesman 4;  
Sales Club 4

BONNIE BRISKER  
Elective  
New Life Club 1, 2, 3, 4; Spanish  
Club 1, 2; Newspaper Staff 3; Great  
Books Club 3

GOLDIE BROWN  
Home Economics  
Mixed Chorus 1, 2; Pep Club 1, 3;  
Home Economics Club 1, 2, 4

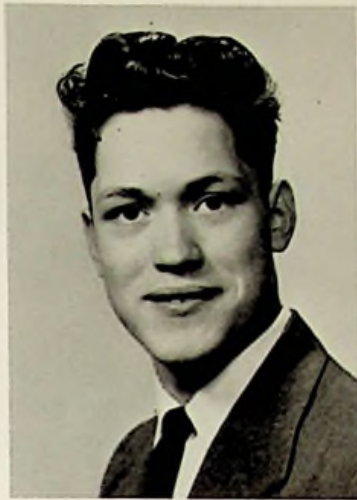


BILL BURCHETT  
Industrial Arts



BILL CARVER  
Industrial Arts

DAVID CARVER  
Industrial Arts



LINDA CARVER  
Home Economics  
Home Ec. Club 1, 2, 3; Pep Club 1,  
2, 3; New Life Club 1, 2; Librarian 4

ROSEMARY CLINE  
Commercial  
Mixed Chorus 2; Home Ec. Club  
2, 3

JUDY COLEMAN  
Home Economics  
Home Ec. Club 2, 3; Pep Club 2;  
Class Play 3, 4

MAXINE COLEMAN  
Commercial  
Class Officer 1, 3, 4; Queen At-  
tendant 1, 3; Majorette 1, 2, 3; Pep  
Club 2, 3; Hostess 2; Annual Staff  
3, 4; Annual Ad Salesman 4; Stu-  
dent Council 4





ROBERT COLEMAN  
Industrial Arts

FELIX COLLIGNON  
Elective  
Annual Staff 3, 4; Annual Ad Sales-  
man 4



JUDY COLLIGNON  
Commercial  
Class Play 3; Annual Ad Sales-  
man 4

DAVE CONLEY  
Industrial Arts

FRED CONLEY  
Industrial Arts

HAROLD CONLEY  
College Prep  
Latin Club 1, 2; Class Officer 2;  
Latin Scholarship 1, 2; Honor Soci-  
ety 3, 4; Prom Host 2; Intramural  
Basketball 1, 2, 3; Newspaper Staff  
4; Great Books 3; Pep Club 4;  
Chemistry Scholarship Committee  
3; Debate Club 3; Class Play 3, 4;  
Future Teachers 4







**DARRELL COOK**  
 Commercial  
 Intramural Basketball 1, 2; Spanish  
 Club 1

**VICKIE COOPER**  
 Commercial  
 Scholarship 1, 2; Latin Club 1;  
 Pep Club 2; Prom Committee 3;  
 Office Assistant 4; Annual Ads 4;  
 Class Play 3

**MIKE CURNUTTE**  
 Industrial Arts  
 Industrial Arts Club 1, 2, 3, 4; Foot-  
 ball 1, 2, 3, 4; Intramural Basket-  
 ball 2, 3; "W" Club 3, 4; Class  
 Play 3

**LARRY DAY**  
 Elective  
 Football 1, 2, 3, 4; Basketball 1, 2,  
 3, 4; "W" Club 2, 3, 4



**CHARLES DICUS**  
 College Prep.  
 Latin Club 1, 2, 4; Intramural Bas-  
 ketball 2, 3; Scholarship 3; News-  
 paper Staff 3, 4; Great Book Club  
 3; Debate Club 3; Prom Commit-  
 tee 3; Pep Club 4; Sales Club 4

**FRANK DILLOW**  
 Industrial Arts



TERRY DRAKE

Elective

Varsity Football Mgr. 2, 3; Reserve Basketball Mgr. 1; Intramural Basketball 1, 2; Scholarship 3; Golf Team 4

RICHARD DUNHAM

Industrial Arts



RITA EUBANKS

Home Economics Club 2, 3, 4; Pep Club 1, 2, 3, 4

RONALD FANNIN

College Preparatory Basketball 2, 3, 4; Reserve Basketball 1; Freshman Basketball 1; Band 1, 2; Latin Club 2, 4; Class Officer 3; Class Play 3, 4; Prom Committee 3; Buckeye Boys' State 3; Pep Club 3, 4; "W" Club 3, 4; Debate Club 3, 4; Great Books Club 3; Future Teachers 4; Newspaper Staff 4; Popularity Poll 4

BETTY FIELDS

College Preparatory

Spanish Club 1, 2, 3; Librarian 1, 4; Scholarship 1, 2, 3; Honor Society 3, 4; Senior Survey 4; Miss Flame 4; Homecoming Queen 4; Popularity Poll 4; Annual Ad Salesman 4

RAYMOND GINN

Industrial Arts

Mixed Chorus 2; Football 1







CLYDIA FITCH

Commercial

Latin Club 1, 2, 4; Pep Club 2, 3, 4; Prom  
Hostess 2; Annual Staff 3, 4; Prom Com-  
mittee 3; Annual Ad Salesman 4



LARRY FRAZIER

Industrial Arts

Basketball 1, 2, 3, 4



RUBY FULLER

Elective

Pep Club 2, 3, 4; Cheerleader 2; Prom  
Hostess 2; Home Ec. Club 2, 3; Prom Com-  
mittee 3; Class Play 3



**PAUL GOODE**  
 College Preparatory  
 Latin Club 2, 4; Intramural Basketball 2; Prom Committee 3; Newspaper Staff 3, 4; Class Play 4; Pep Club 4; Annual Staff 4



**DONNA GRAY**  
 Commercial  
 Mixed Chorus 1, 2, 3; New Life Club 1; Pep Club 2, 3; Home Ec. Club 2, 3, 4; Class Play 3; Annual Ad Salesman 4



**BELINDA HARRIS**  
 Commercial  
 Band 1, 2, 3; Dance Band 1, 2, 3; Pep Band 1, 2, 3; Latin Club 2, 4; Scholarship 1; Class Play 3; All-School Play 3; Prom Committee 3; Office Assistant 4; Annual Ad Salesman 4; Typing Contest 4

**JUANITA HALL**  
 Commercial  
 New Life Club 1; Pep Club 2, 3, 4; Mixed Chorus 2; Class Play 3, 4; Librarian 3; Cheerleader 3, 4; Prom Committee 3; Home Economics 3; Annual Ads 4

**VICKIE HALL**  
 Elective  
 Spanish Club 1, 2; Band 1, 2, 3; Majorette 1, 2, 3; Head Majorette 4; Pep Club 2, 4; Annual Staff 3, 4; Prom Committee 3; Class Play 3, 4; Homecoming Attendant 4; Office Assistant 4; Annual Ads 4

**SANDY HART**  
 Commercial  
 Band 1, 2, 3; Pep Band 1, 2, 3; Home Ec. Club 2; Librarian 2; Prom Committee 3; Pep Club 3; Class Play 4; Annual Staff 4; Office Assistant 4; Annual Ads 4







MARGARET HORNIKEL

Commercial

Home Ec. Club 2, 3; Pep Club 2, 3;  
Prom Hostess 2; Class Play 3, 4;  
Prom Committee 3; Student Council 4; Annual Ad Salesman 4

JUDITH HORSLEY

Commercial

Scholarship 1, 4; Honor Society 3, 4; Junior Class Play 3; Great Books Club 3

JUDY HOWARD

Home Economics

Home Ec. Club 1, 2, 3

CHARLENE HUDSON

Elective

Home Ec. Club 2, 3; Library 4



BETTY ISHMAEL

Elective

Home Ec. Club 1, 2; Mixed Chorus 1, 2

GRACE GLEASON

College Prep

Latin Club 1; Festival 1, 2, 3;  
Band 1, 2, 3, 4; Select Band 4



SUSAN JARRELLS

College Preparatory  
Band 1, 2, 3; Majorette 2, 3, 4;  
Scholarship 1, 2; Latin Club 1, 2, 4;  
Pep Club 2, 3; Newspaper Staff 2,  
3, 4; Class Play 3, 4; Honor Society  
3, 4; Future Teachers 4; Librarian  
4; Prom Committee 3; Homeroom  
Representative 3; Honor Society  
Officer 4; Senior Survey 4; All-  
School Play 3

KAREN E. JOHNSON

Commercial  
Prom Hostess 2; Pep Club 2, 3, 4;  
Home Ec. Club 2, 3; Prom Com-  
mittee 3; Librarian 3; Class Play 3,  
4; Popularity Poll 4; Annual Ad  
Salesman 4



EUGENE JORDAN

Elective

MICHEAL KNAUFF

College Preparatory  
Latin Club 1, 2, 4; Intramural Bas-  
ketball 1, 2, 3; Librarian 1; Schol-  
arship 1, 2, 3; Class Play 3, 4;  
Great Books Club 3, 4; Prom Com-  
mittee 3; Annual Ad Salesman 4;  
Future Teachers 4; Mixed Chorus  
4; Top Twenty 4; Popularity Poll  
4; Senior Survey 4; Pep Club 4

DAVID LESTER

Elective  
Intramural Basketball 1, 2; Mixed  
Chorus 2, 3, 4; Top Twenty 2, 3;  
Top Twenty-Four 4; Boys' En-  
semble 3, 4

DIANA LITZ

Commercial  
Pep Club 2, 3, 4; Newspaper Staff  
3, 4; Prom Committee 3; Annual  
Staff 4; Annual Ad Salesman 4;  
Office Assistant







**DONNA LYONS**  
 Elective  
 Home Ec. Club 3, 4

**PAT WOODWARD**  
 Mixed Chorus 2; Newspaper Staff  
 2; Pep Club 1, 2, 4; Home Ec.  
 Club 2

**SHARON MANGUS**  
 Home Economics  
 Home Ec. Club 1, 2, 3; Dance  
 Band, Pep Band

**MICHAEL McCALL**  
 College Preparatory  
 Basketball 1, 2, 3, 4; Biology  
 Seminar 1; Baseball 1, 2, 3, 4;  
 Great Books Club 3; Class Play 3,  
 4; Newspaper Staff 3, 4; Annual  
 Staff 4; "W" Club 4



**ALBERT McCOY**  
 College Preparatory  
 Scholarship 1, 2, 3, 4; Class Play 3

**JERRY McGINNIS**  
 College Preparatory  
 Football 1, 2, 3, 4; Basketball 1, 2,  
 3, 4; Baseball 1, 2, 3, 4; Class Of-  
 ficer 1; Spanish Club 1, 2; Intra-  
 mural Basketball 1, 2, 3; "W" Club  
 1, 2, 3, 4; Pep Club 1, 2; Prom Com-  
 mittee 3; Class Play 3, 4; S. O. C.  
 All Star 3, 4; Newspaper Staff 4;  
 Lineman of the Year 4; Annual Ad  
 Salesman 4



CONNIE McGUE  
Commercial

GARY MERSHON  
Industrial Arts  
Freshman Football; Basketball 1, 2,  
3, 4



FOREST E. MONOSKIE  
Commercial  
Intramural Basketball 1, 2, 3;  
Scholarship 1; Pep Club 4

CAROLYN MORROW  
Commercial  
Band 1, 2, 3, 4; Librarian 1, 2; New  
Life Club 1, 2, 3, 4; Pep Band 1, 2,  
3; Scholarship 1; Home Ec. Club  
2, 4; Festival Band 2, 3, 4; Pep Club  
2, 3, 4; Class Play 3, 4; Newspaper  
Staff 3; Typing Contest 3; Annual  
Ad Salesman 4; Scioto County  
Honor Band 4; Office Assistant 4

NORA MORROW  
Home Economics  
New Life Club 1; Home Ec. Club 1

JERRY MOWERY  
Industrial Arts  
Class Officer 2; Football 2, 3, 4;  
S. O. C. Honorable Mention 3;  
S. O. C. All Star 4; Football Co-  
Captain 4; Pep Club 3





PEGGY NICHOLS  
Commercial  
Pep Club 2, 3; Class Play 3, 4;  
Librarian 4

WILLIAM O'DELL  
Industrial Arts

SHARON PARTLOW  
Commercial  
Pep Club 2, 3, 4; Prom Committee  
3; Class Play 3, 4; Annual Staff 4;  
Annual Ads 4

TIM PENWELL  
College Preparatory  
Latin Club 1, 2; Intramural Bas-  
ketball



ELAINE PHILLIPS  
Elective  
Band 1, 2, 3, 4; Latin Club 1, 2;  
New Life Club 1; Dance Band 2;  
Class Play 3; Festival 3, 4; Pep  
Band 3, 4; Band Officer 4; Scioto  
Select Band 4

DOUGLAS POLLITT  
College Preparatory  
Football Manager 2, 3, 4; "W"  
Club 3, 4; Prom Committee 3



THOMAS RAYBURN

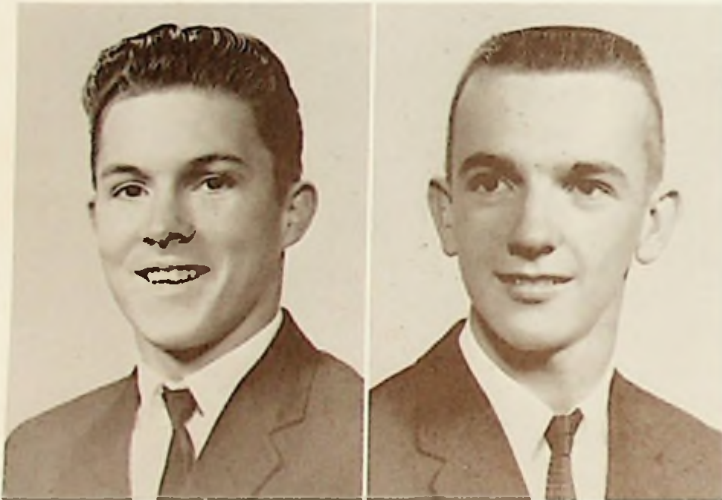
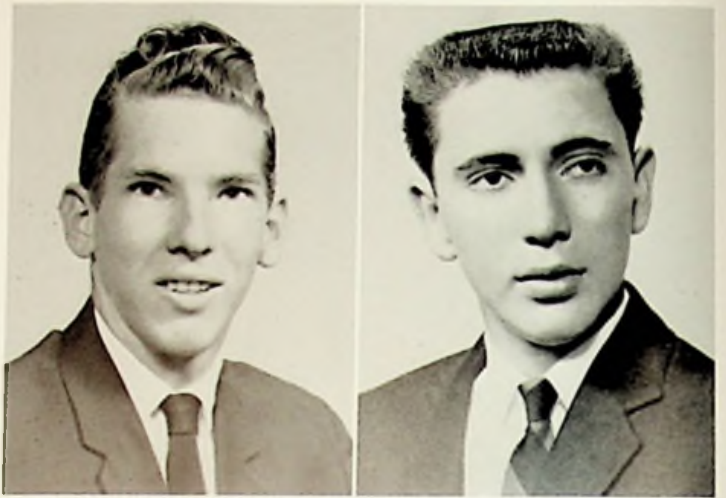
Industrial Arts

Intramural Basketball 2, 3; Fresh-  
man Basketball; Football 1, 3;

Baseball 4; Band 4

PERRY RATLIFF

Industrial Arts



IRVING REEDY

College Preparatory

Latin Club 2; Mixed Chorus 3, 4;  
Top Twenty-Four 4; Intramural  
Basketball 1, 2, 3

DOUGLAS RILEY

Industrial Arts

Pep Band 1, 2, 4; Senior Band 1, 2,  
3, 4; Festival Band 2, 4; Dance  
Band 2, 3, 4; Select Band 4; Mixed  
Ensemble 4; Top Twenty-Four 4;  
Mixed Chorus 4

LAURA SEELEY

Elective

Mixed Chorus 1; Pep Club 2, 3, 4;  
New Life Club 4; Latin Club 1, 2;  
Jr. Class Play 3

NORMA SHAFFER

Commercial





DUANE SHAW  
College Preparatory  
Spanish Club 1, 2; Baseball 4

MARY ALICE SHAW WILSON  
College Preparatory  
Band 1, 2, 3; Spring Festival 1, 2, 3; Scholarship 1, 2, 3, 4; Latin Club 2, 4; Pep Club 2, 3, 4; Dance Band 3; Honor Society 3, 4; Class Play 3, 4; Prom Committee 3; Debate Club 3, 4; Great Books Club 3, 4; Office Assistant 4; Senior Survey 4; Newspaper Staff 3, 4

MARY SHEETS  
Commercial

MARY ANN SHELTON  
College Preparatory  
Scholarship 1, 2, 3, 4; Mixed Chorus 1, 2, 4; Latin Club 2; Pep Club 2, 3, 4; Class Officer 3; Prom Committee 3; Honor Society 3, 4; Newspaper 3, 4; Great Books Club 3, 4; Class Play 3, 4; Popularity Poll 4; Librarian 4; Honor Society Officer 4; Senior Survey 4; County Musical Festival 4



BARBARA SHEPARD  
Commercial  
Home Ec. 1, 2, 4; Mixed Chorus 1, 2; Pep Club 3, 4

JOSEPHINE SHEPARD  
Home Economics  
Home Ec. 1, 2, 3; Mixed Chorus 1, 2; Pep Club 4



CORA SMITH  
 Commercial  
 Mixed Chorus 1, 2; Home Ec. Club  
 2, 3; Pep Club 3, 4

BOBBIE SPRIGGS  
 College Prep  
 Band 1, 2, 3; Spanish Club 1, 2;  
 Newspaper Staff 1, 3, 4; Scholar-  
 ship 1, 2, 3, 4; Pep Club 1, 2, 3;  
 Majorette 2; All-School Play 3;  
 Senior Survey 4; Debate Club 4;  
 Class Play 4; Cheerleader 3, 4;  
 Honor Society 3, 4; Honor Society  
 Officer 4; Popularity Poll 4



CANDACE SUTER  
 College Prep  
 Class Officer 1, 2, 4; Scholarship 1,  
 2, 3, 4; Librarian 1, 4; Latin Club 2,  
 4; Homecoming Attendant 2, 4; Pep  
 Club 2, 3, 4; Class Play 3; Buckeye  
 Girls' State Delegate 3; Honor  
 Society 3, 4; Honor Society Officer  
 4; Prom Committee 3; Newspaper  
 Staff 3, 4; Annual Staff 4; Popular-  
 ity Poll 4; Office Assistant 4; An-  
 nual Ads Salesman 4; Senior Sur-  
 vey 4; Great Books Club 3, 4

GREG STATEN  
 College Prep  
 Future Teachers Club 4; Track 1; Reserve Basketball 2; Latin Club 2, 4; Intramural Basketball 2;  
 Prom Committee 3; Newspaper Staff 3, 4; Class Officer 4; Popularity Poll 4; Annual Staff 4;  
 Annual Ads Salesman 4.

NEVA STAMPER  
 Elective  
 Home Ec. Club 1, 2; Mixed Chorus  
 1, 2, 3; Top Twenty 2, 3; Pep Club  
 2, 3, 4; Cheerleader 2; Newspaper  
 Staff 3, 4; Office Assistant 4; Prom  
 Committee 3; Class Play 3

JAMES SWORDS  
 College Prep  
 Class Play 3, 4





JERRY ALLEN THURMAN  
 Industrial Arts  
 Football 1; Mixed Chorus 1, 2;  
 Baseball 3

WILLIAM JOSEPH TIPTON  
 College Preparatory  
 Class Play 3, 4

DONNA SUE TWADDLE  
 Commercial  
 Mixed Chorus 2; Home Ec. Club  
 2, 3, 4

SHARON KAY VEACH  
 Commercial  
 Spanish Club 1; Mixed Chorus 1, 2,  
 3; New Life Club 1; Home Ec. Club  
 1, 2, 3; Top Twenty 2, 3; Class Play  
 3; Mixed Ensemble 3; All County  
 Music Festival 3; Office Assistant 4



SHIRLEY VEACH  
 College Preparatory  
 Mixed Chorus 1, 2; Spanish Club 1,  
 2; Pep Club 2, 3, 4; Scholarship 2;  
 Prom Hostess 2; Cheerleader 2;  
 Newspaper Staff 3, 4; Prom Com-  
 mittee 3; Senior Survey 4; Annual  
 Ad Salesman 4

HARRY E. WALKER  
 Industrial Arts  
 Stage Crew 3, 4; Annual Ads 4;  
 Intramural Basketball 1, 2, 3;  
 Mixed Chorus 2, 3





ELAINE WEBB  
 Elective  
 Head Majorette 3; Drum Majorette 4; Prom Committee 3; Pep Band 1, 2, 3; Prom Hostess 2; Band 1, 2, 3, 4; Pep Club 2, 3, 4; Popularity Poll 4; Home Ec. Club 1, 2; Class Play (Entertainment) 3; New Life Club 1

DAVID WEBSTER  
 Commercial  
 Mixed Chorus 1, 2; Pep Club 1, 2

MIKE WELLMAN  
 Industrial Arts  
 Football 1, 2, 3, 4; Basketball 1, 2; Intramural Basketball 1; Baseball 1, 2; Pep Club 1; Class Officer 1, 2; Mixed Chorus 1, 2, 3, 4; Boys' Ensemble 2, 3, 4; Top Twenty 1, 2, 3, 4; "W" Club 1, 2, 3; Mixed Ensemble 1, 2, 3, 4; Annual Ad Salesman 4; Popularity Poll 4

CHARLES J. WILSON  
 College Preparatory  
 Spanish Club 1, 2



CHARLES W. WILSON  
 College Preparatory  
 Radio Announcer 1, 2; Latin Club 2, 4; Scholarship 1, 2; Statistician 2, 3; Great Books Club 3, 4; Class Officer 3; Student Council 4; Prom Committee 3; Class Play 3, 4; School Play 3; Newspaper Staff 3, 4; Pep Club 4; Senior Survey 4; Debate Club 4; Popularity Poll 4

CHARLES D. WOOD  
 College Preparatory  
 Football 1, 2, 3, 4; Intramural Basketball 1; Basketball 2, 3; Latin Club 2, 3; Scholarship 2, 3, 4; Class Play 3; "W" Club 3, 4; Future Teachers 4; Pep Club 4; Great Books Club 4; All-School Play 3; Newspaper Staff 3, 4







Pretty ballerina

Really, Jerry!



Knock it off, Guys--Shirley's not laughing.



Conley cheesecakes



Yes, my group had 37% fewer cavities.



And now--back to the gov't.

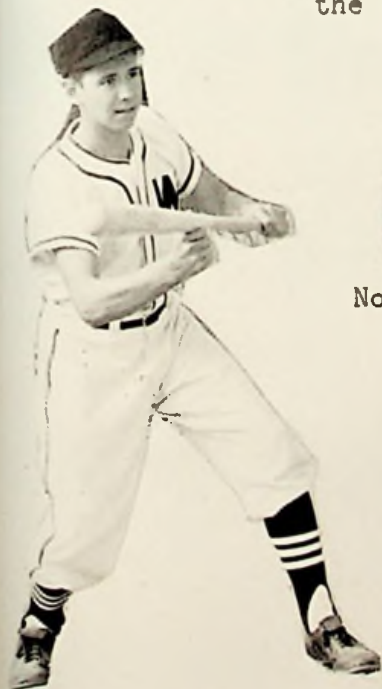
Look busy: here comes Mrs. Harper.



Women!!



So I like to sit on the floor!



Now wait a minute!



We get our clothes cleaner with Tide.



Four?!



No, never too busy to smile.

If I can't bat first, I won't play!



# Popularity Poll



MOST POPULAR - Betty Fields and Mike Wellman



MOST TALENTED - Elaine Webb and Doug Riley

# Popularity Poll



FRIENDLIEST - Mike Wellman and Mary Ann Shelton



BEST COUPLE - Greg Staten and Candy Suter



# Popularity Poll



FUNNIEST - Mike Knauff and Karen Johnson



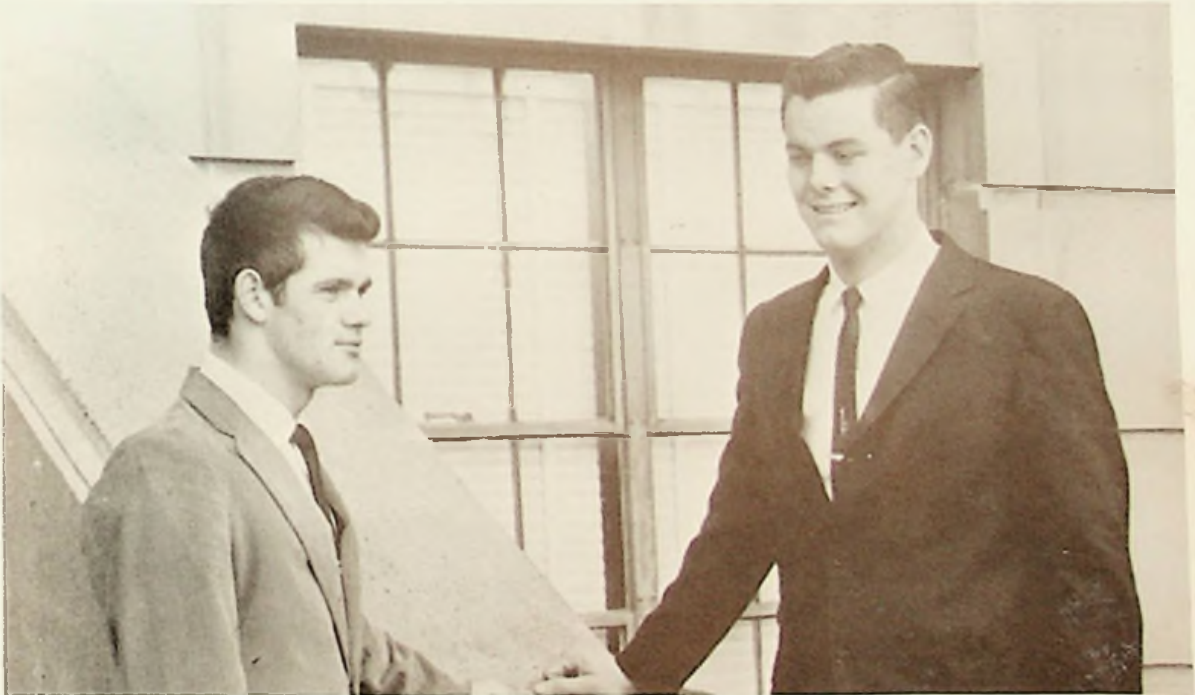
BUSIEST - Candy Suter and Ron Fannin



# Popularity Poll



MOST LIKELY TO SUCCEED - Charles Wilson and Bobbie Spriggs



BEST ATHLETES - Jerry Mowery and Larry Day





Seniors



# Junior Class Officers



Spriggs, Sayre, Robinson, Davis

|                |       |               |
|----------------|-------|---------------|
| President      | ----- | BUDDY SAYRE   |
| Vice President | ----- | JERRY SPRIGGS |
| Secretary      | ----- | DAN ROBINSON  |
| Treasurer      | ----- | LEANNE DAVIS  |





L. Adams

S. Adams

B. Adkins

B. Arthurs



F. Arthurs

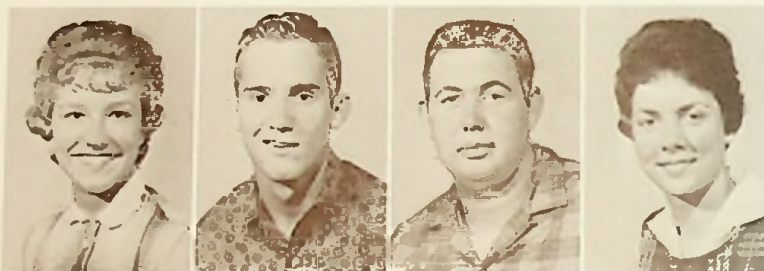
W. Bibbey

D. Black

S. Blevins

L. Bloomfield

F. Book



D. Bower

D. Boyd

G. Brickey

D. Brickey



J. Briggs

A. Brown

S. Brown

C. Buffinger

S. Burchett

L. Bussa



G. Cade

A. Caldwell

J. Callihan

B. Carver



S. Charles

E. Giraso

P. Clay

K. Coburn



M. Coburn

S. Coburn

G. Conley

L. Conley

L. Cooper

R. Cooper



B. Cope

T. Coriell

L. Cox

C. Cunningham



C. Davis

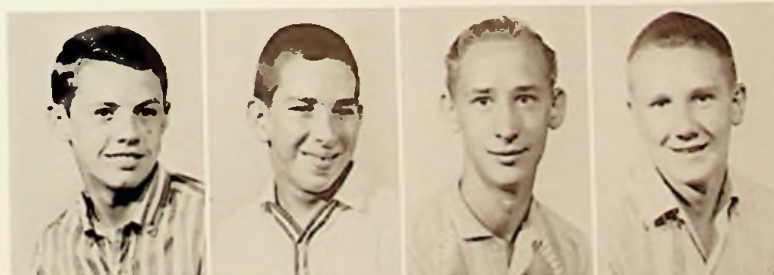
D. Davis

L. Davis

J. Days

C. Distel

P. Dunn



D. Early

D. Edwards

J. Estep

R. Flowers





P. Frost

C. Gallimore

E. Gardner

E. Ginn



R. Gleason

L. Green

J. Gregory

K. Gregory

K. Griffith

R. Hale



S. Hall

B. Hamm

L. Henderson

G. Hill



W. Hill

R. Hodge

B. Holsinger

J. Hopkins

D. Hornikel

M. Howard



S. Howard

M. Hughes

C. Hurst

E. Ishmael

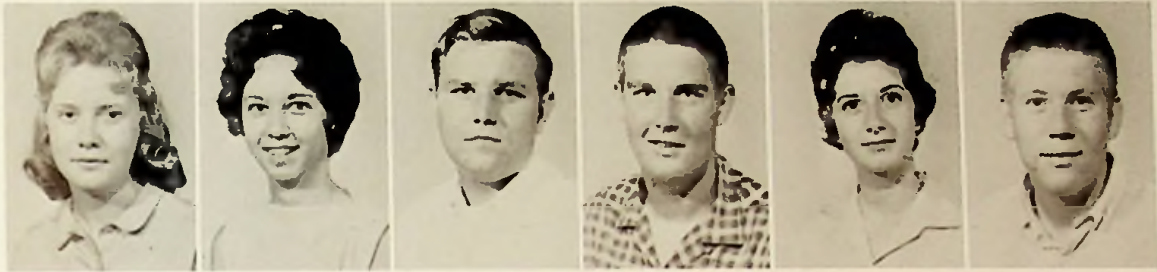


T. Jackson

D. Johnson

J. Jordan

V. Journey



M. Kennedy

J. Kinolau

D. Kirk

G. Kirsch

S. Knauff

B. Lewis



C. Loper

J. Loevenguth

S. Manning

M. Martin



L. Mathews

S. Mays

B. McCleese

M. McCown

G. McCoy

R. McGlone



M. McNutt

T. Meeker

E. Mershon

B. Mignery





S. Mitchell



A. Morgan



B. Murphy



S. Myers



M. Myers



S. Nichols



B. Newman



P. Noel



E. O'Dell



C. Oppy



J. Osborne



C. Pack



S. Parker



L. Payne



S. Penn



J. Price



J. Puckett



D. Ratliff



C. Ratliff



B. Rayburn



C. Redoutey



B. Reedy



C. Reiser



O. Reutzel

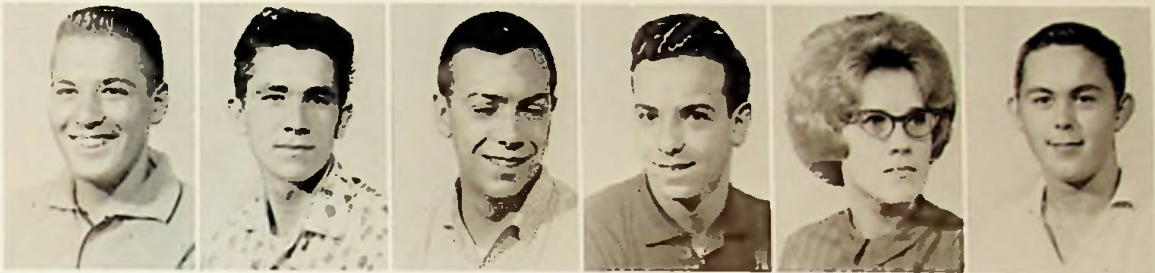


G. Reynolds

P. Riley

D. Robinson

P. Ross



B. Sayre

H. Riffe

J. Seison

L. Seison

D. Sexton

E. Shepherd



F. Shepherd

R. Shepherd

B. Shupert

R. Sibrel



J. Simpson

P. Sissle

E. Smith

J. Snyder

C. Sparks

J. Spriggs



D. Staggs

C. Stevens

B. Steele

R. Stidham





R. Summerfield    R. Sowards    C. Tackett    J. Tackett    R. Tackett



A. Tatman    J. Taylor    B. Thacker    L. Tyree    L. Veach    S. Vandyke



R. Vastine    L. Webb    C. Webster    J. Wessell    P. Wise



A. Wiltshire    B. Wilson    Y. Yost







Sophomores



# Sophomore Class Officers



Smalley, Wilson, Riordan, Piatt

President - - - - - PEGGY SMALLEY

Vice President - - - - - RON PIATT

Secretary - - - - - BART RIORDAN

Treasurer - - - - - ELSIE WILSON



G. Abbot

B. Adams

M. Adkins

B. Appel

S. Banner

J. Barnett



B. Bays

D. Blair

V. Blake

E. Boggs



M. Boling

J. Book

S. Bowling

G. Bowman



N. Breech

S. Brescia

B. Brown

C. Browning



G. Callendar

D. Callihan

E. Carver

D. Cline

R. Cole

P. Collier





T. Collier

T. Collier

P. Colvin

G. Compton

J. Conley

H. Conschafsky



C. Cooper

L. Cope

G. Cornish

L. Cox



R. Craycraft

S. Daniels

E. Davis

B. Dietrich



D. Dillow

S. Distel

B. Drake

R. Drake



M. Dyer

M. Easter

R. Entler

M. Evans

G. Fannin

K. Feagans



J. Fisher



B. Fraley



L. Freymuth



G. Frye



D. Fuller



C. Galloway



O. Galloway



D. Gallimore



L. Gifford



D. Gleason



F. Glenn



L. Gray



B. Haddox



D. Haffner



D. Hale



S. Hale



J. Hamblin



A. Hamilton



K. Hamilton



L. Haws



J. Hinze



J. Hinze



L. Hinze



G. Hobbs





S. Hobbs



G. Hopkins



S. Hornikel



H. Horsley



L. Howard



M. Howard



M. Jarrells



R. Jayne



J. Jenkins



V. Jewell



J. Johnson



J. Journey



J. Kegley



C. Kennedy



J. Kenyon



S. Kessinger



C. Kitchen



M. King



C. Krekeler



S. Kuhn



M. Lewis



C. Lewis



R. Liles



K. Loevenguth



E. Logan



E. Lucas



K. Maple



L. Maynard



C. McGraw



S. McLucas



R. McManus



P. Meeker



R. Miller



J. Milstead



G. Monoskie



C. Moore



M. Moore



R. Moore



D. Morgan



L. Mowery



F. Muncy



B. Nelson



B. Neumann



G. Newmann



G. Nichols



C. Norman



M. Oaks



K. Odle





L. Odle

C. Oppy

C. Parker

H. Parker

C. Payne

M. Payne



L. Penn

D. Pennington

R. Pennington

B. Penny

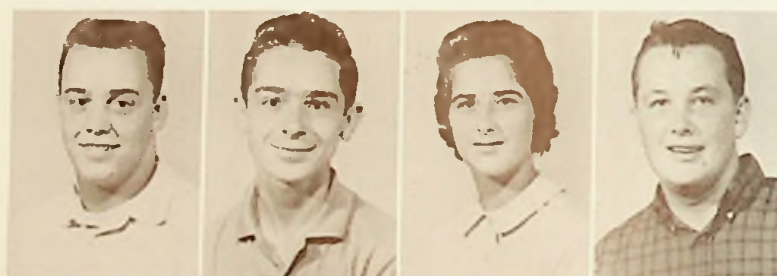


B. Pertee

A. Perry

C. Perry

M. Phau



R. Piatt

J. Pick

R. Pick

E. Pierce



J. Pringle

E. Pollitt

G. Pollard

T. Raines

H. Ratliff

H. Ratliff



P. Rice



R. Ridgeway



D. Riehl



R. Riffe



P. Rigsby



S. Risner



B. Riordan



S. Roberts



C. Rose



D. Royal



S. Ruggles



L. Salem



P. Scheid



G. Sexton



D. Simon



C. Slye



P. Smalley



M. Smith



M. Smith



S. Snook



W. Speas



S. Spradlin



J. Srofe



H. Starner





N. Staten



D. Stockham



G. Swearingen



J. Swords



R. Swords



K. Tackett



J. Thacker



L. Thacker



P. Traylor



J. Turner



J. Turner



P. Twaddle



T. Urton



J. Veach



J. Virgin



R. Wallin



S. Warner



B. Watkins



D. Wear



D. Weghorst



R. Wellman



D. Whaley



J. Williams



E. Wilson



R. Windsor    C. Zorn



A sock hop.



Girls gym class.



Players and fans gather at bonfire.



# People We Appreciate



## COOKS:

F. Porter, D. Redoutey,  
D. Patrick, I. Emerson,  
H. Kennard, M. Havens,  
R. Hudson



## JANITORS:

P. Carver, R. Calvert, W.  
Smith, B. Howard



## BUS DRIVERS:

C. Windsor, C. Wilson,  
P. Mathews, T. Hoop,  
H. Boatman, C. Carver,  
J. Roberts, D. Journey,  
J. Mitchell





Freshmen



# Freshman Class Officers



Perry, Conley, Cooper, Easter

- President - - - - - GARY COOPER  
Vice President - - - - - TIM CONLEY  
Secretary - - - - - LINDA PERRY  
Treasurer - - - - - TERRY EASTER



D. Abrams

C. Adkins

J. Adkins

P. Adkins

S. Anderson

D. Andre



J. Askins

C. Atkins

R. Barber

G. Bentley

C. Biggs

R. Blevins



E. Bloomfield

G. Bolton

G. Bolton

J. Born

D. Bower

C. Bowles



C. Brannan

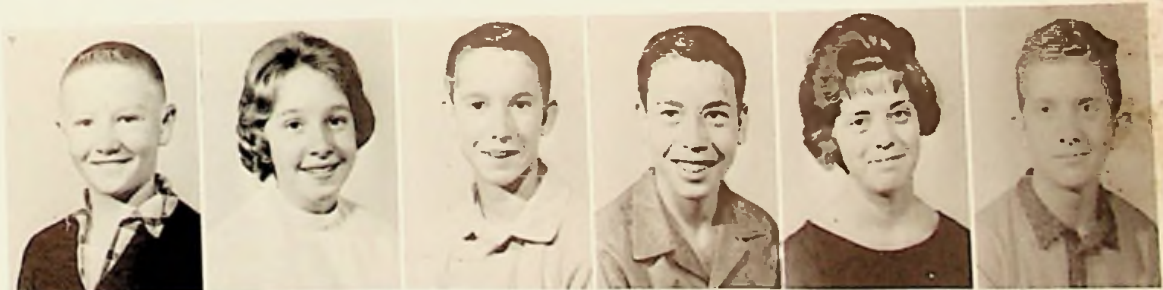
J. Brouhard

R. Brown

C. Brown

M. Brown

P. Browning



W. Caldwell

P. Campbell

C. Canter

P. Carver

C. Castle

L. Chaffin





D. Childers



S. Claypool



K. Clifford



R. Coburn



L. Collier



J. Collins



S. Conley



T. Conley



G. Cooper



H. Cooper



I. Cooper



L. Cooper



P. Cooper



S. Cooper



B. Creech



B. Damron



T. Daum



R. Davis



B. Dillow



M. Dillow



C. Distel



L. Dodridge



H. Drake



G. Duckett



J. Dyer



J. Easter



J. Easter



T. Easter



L. Edwards



J. Enyart



H. Evans



M. Evans



N. Evans



L. Euton



M. Figliola



J. Fisher



R. Flaker



B. Fraley



J. Frazier



S. Frost



C. Frye



K. Frye



M. Fuller



V. Fuhr



D. Galloway



S. Galloway



H. Ginn



C. Hall



G. Hall



M. Hall



R. Hall



S. Hall



L. Hamilton



F. Hammonds



B. Harkless



J. Harris



B. Hayslip



B. Hess



J. Hess



S. Hill





D. Hinze

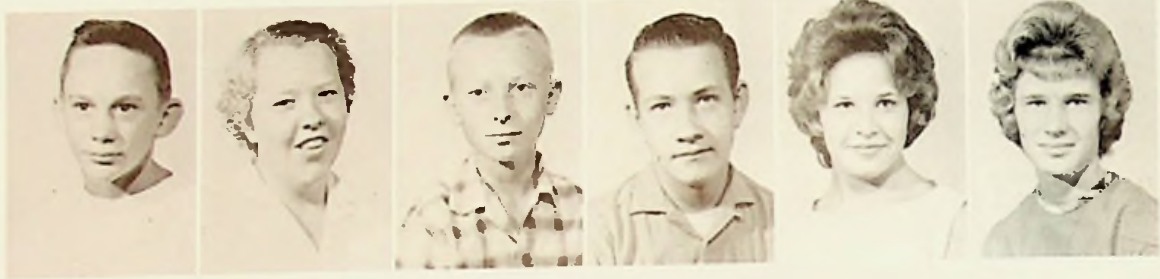
K. Hobbs

C. Hodge

J. Holsinger

L. Holsinger

S. Holt



J. Hoover

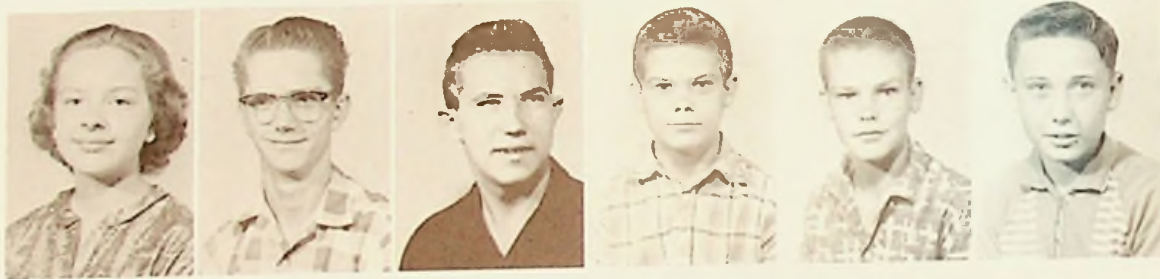
K. Horsley

R. Horsley

G. Hossman

Z. Howell

M. Hudson



D. Hurd

D. Johnson

R. Johnson

D. Jordan

T. Jordan

J. Journey



S. Kamer

C. Kitchen

C. Keibler

R. Keller

L. Knauff

D. Nuckols



D. Ledingham

E. Lewis

B. Lindsey

S. Lindsey

M. Little

B. Loper



H. Lowe

W. Lowe

B. Lute

K. Lykins

A. Madden

L. Major



R. Malone

S. Mangus

D. Mays

J. Meeker

J. Miller

K. Miller



S. Miller

S. Miller

K. McCall

S. McCleese

H. McGraw

S. McManus



C. Monk

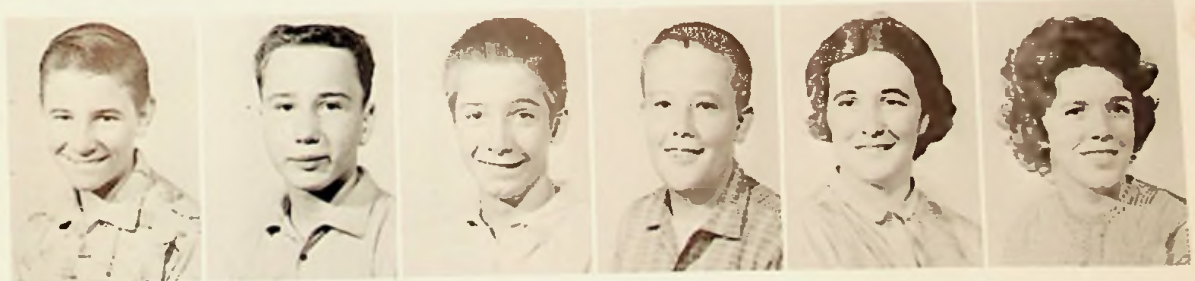
B. Morgan

M. Morrow

D. Mosley

J. Murphy

J. Meyers



D. O'Dell

R. Parker

R. Peed

S. Penn

D. Pennington

C. Perry





A. Pfau

L. Pollard

J. Priode

S. Rapp

D. Reed

D. Rhea



D. Rice

K. Richards

G. Ridout

R. Rowe

V. Rowe

J. Rollins



A. Rose

D. Rutherford

S. Salem

E. Salsbury

C. Shultz

M. Skaggs



M. Slaughter

J. Smith

K. Smith

D. Smith

C. Sowards

T. Sowards



N. Sparks

G. Spriggs

K. Staggs

C. Stout

L. Stout

F. Stevens



J. Starner



J. Stevens



E. Summerfield



O. Swords



R. Swords



B. Tatman



J. Tewalt



S. Thomas



B. Traylor



C. Turner



G. Vendura



S. Vaughters



P. Vicars



D. Vogler



M. Waller



S. Wamsley



L. Warren



P. Watts



V. Weaver



R. West



L. Whaley



P. Windle



G. Windsor



J. Woods



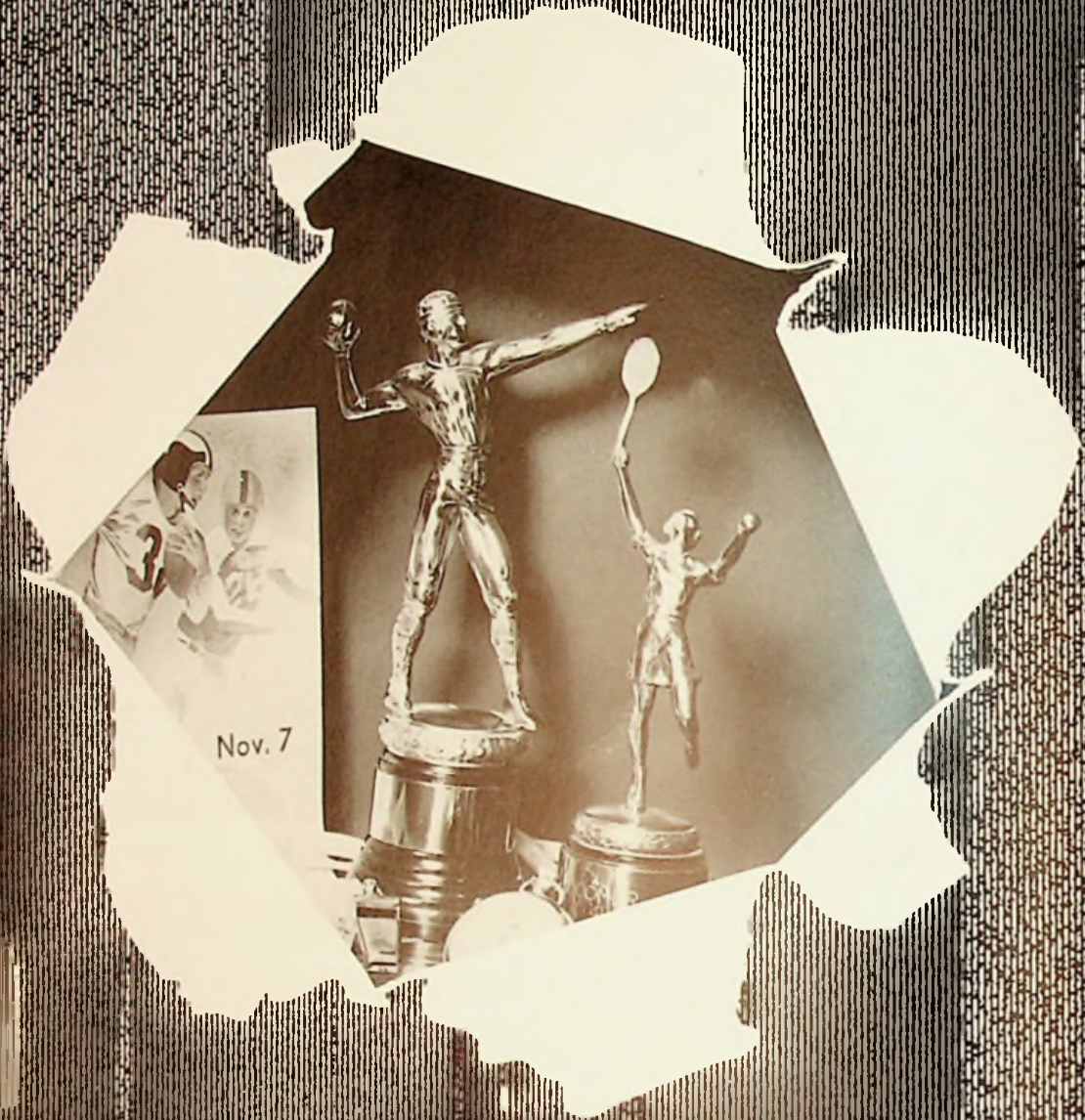
N. Woods



T. Zaph







Nov. 7

# Athletics



# 1963 Football Squad



(ROW 1): B. Swords, T. Conley, C. Loper, manager, D. Pollitt, manager, B. Hamrn, manager, E. Pollitt, J. Miller, (ROW 2): J. Spriggs, K. Coburn, G. Cooper, J. Johnson, D. Parker, M. Figliola, R. Craycraft, scorekeeper, (ROW 3): J. Wessell, D. Dunham, O. Reutzel, J. Woods, J. Taylor, J. Hinze, J. Loevenguth, D. Himes, A. Hamilton, R. Piatt, J. Mowery, M. Curnutte, T. Easter, (ROW 4): S. Kessinger, B. Riordan, J. Jenkins, J. Woods, L. Day, J. Easter, E. Salsbury, J. McGinnis



Mowery and McGinnis receive trophies for Back and Lineman of the Year, respectively.









MR. SWAIN (Assistant), MR. LUNDY (Freshman)  
MR. STAGGS (Head)



CO-CAPTAINS  
Jerry Mowery, Mike Wellman, Jerry McGinnis





JERRY MOWERY - HB  
Senior 165 lbs.



MIKE WELLMAN - HB  
Senior 185 lbs.



JERRY MCGINNIS - E  
Senior 180 lbs.



LARRY DAY - T  
Senior 210 lbs.



JOE WOODS - T  
Senior 220 lbs.



MIKE CURNUTTE - G  
Senior 190 lbs.



JIM LOEVENGUTH - G  
Junior 175 lbs.



KEN COBURN - FB  
Junior 185 lbs.



JERRY SPRIGGS - C  
Junior 175 lbs.





JOHN WESSELL - QB  
Junior 170 lbs.



JOHN TAYLOR - G  
Junior 185 lbs.



OLLIE REUTZEL - HB  
Junior 170 lbs.



ALAN HAMILTON - QB  
Soph. 160 lbs.



RON PIATT - HB  
Soph. 165 lbs.



JAY JOHNSON - G  
Soph. 150 lbs.



ELZA POLLITT - HB  
Soph. 145 lbs.



BART RIORDAN - HB  
Soph. 155 lbs.



JOHN JENKINS - E  
Soph. 190 lbs.



JIM HINZE - E  
Soph. 150 lbs.



SAM KESSINGER - T  
Soph. 160 lbs.





DICK PARKER  
Freshman



DAN HIMES  
Freshman



DAVE DUNHAM  
Freshman



MIKE FIGLIOLA  
Freshman



TIM CONLEY  
Freshman



TERRY EASTER  
Freshman



ED SALSURY  
Freshman



JERRY EASTER  
Freshman



GARY COOPER  
Freshman



JIM WOODS  
Freshman





MANAGERS

Carl Loper, Bob Hamm, Doug Pollitt

1963 SCHEDULE

|          |    |
|----------|----|
| 1. West  | 26 |
| 2. West  | 8  |
| 3. West  | 34 |
| 4. West  | 14 |
| 5. West  | 6  |
| 6. West  | 50 |
| 7. West  | 44 |
| 8. West  | 24 |
| 9. West  | 20 |
| 10. West | 24 |



|              |    |
|--------------|----|
| McKell       | 39 |
| Notre Dame   | 8  |
| Minford      | 6  |
| Waverly      | 6  |
| Valley       | 12 |
| Paint Valley | 0  |
| Wheelersburg | 12 |
| New Boston   | 14 |
| Northwest    | 12 |
| East         | 0  |





S.O.C. ALL STARS

Jerry McGinnis, Jerry Mowery, Larry Day, Mike Curnutte, Ken Coburn

HONORABLE MENTION

Charles Wood, Jerry Spriggs,  
Jim Loevenguth





## "W" Club



FIRST ROW: Mr. Lundy, Mr. Bandy, E. Pollitt, J. Wessell, J. Loevenguth, O. Reutzel, J. Spriggs, K. Coburn, M. Wellman, Mr. Staggs, Mr. Swain, SECOND ROW: J. Johnson, B. Sayre, J. Taylor, J. Woods, J. Hinze, R. Piatt, M. McCall, THIRD ROW: J. McGinnis, A. Hamilton, J. Jenkins, L. Day, J. Mowery, R. Fannin, M. Curnutte



Football  
Scorekeeper and Statistician  
RICHARD CRAYCRAFT





Here come our boys.



Jerry Mowery carrying the ball for West.



Tell them, Coach!



Coach Staggs and the team after another victory.





Ken Coburn carrying the ball for West.

Rousing the boys for the Valley game.



Varsity Cheerleaders Suzanne Mitchell, Pat Wise, Sue Knauff, Bobbie Spriggs, Juanita Hall.





VARSIY CHEERLEADERS

|                  |              |
|------------------|--------------|
| Sue Knauff       | Pat Wise     |
| Bobbie Spriggs   |              |
| Suzanne Mitchell | Juanita Hall |



RESERVE CHEERLEADERS

|                 |               |               |
|-----------------|---------------|---------------|
| Donna Black     | Lynn Mathews  | Sharon Distel |
| Beverly Shupert | Karen Feagens |               |



## *Freshman Football*



FIRST ROW: C. Loper, B. Hamm SECOND ROW: R. Lundy, G. Spriggs, T. Conley, R. Malone, D. Rhea, D. Jordan, D. Smith THIRD ROW: B. Swords, M. Figliola, D. Parker, R. Keller, T. Collier, G. Hall, R. Hall, J. Miller FOURTH ROW: E. Salisbury, T. Easter, J. Easter, D. Dunham, D. Himes, O. Swords, J. Woods, G. Cooper, D. Galloway

## *Eighth Grade Football*



FIRST ROW: J. Workman, mgr., J. Graham, H. Easter, B. Nichols, J. Burden, C. Fouch, mgr., Mr. DeRossett, Coach SECOND ROW: T. Mathews, S. Mignery, M. Pollitt, J. Gray, R. Simson THIRD ROW: J. Ferguson, B. Nuckols, T. Rose, D. Hor-  
nikel, M. Bice, G. Colley FOURTH ROW: E. Ridout, D. Norman, G. Nolan, G. Ridout, D. Mershon, T. Mitchell FIFTH ROW: R. Tacket, J. Doerr, R. Sheperd, S. Preston, E. Back





*Our Lovely Homecoming Queen*

BETTY FIELDS





Senior Attendant  
CANDY SUTER



Senior Attendant  
VICKII HALL



Junior Attendant  
PAT RILEY

*Homecoming  
Attendants*



Sophomore Attendant  
KAREN ODLE



Freshman Attendant  
SUE HAMILTON





Senior attendant,  
Candy Suter, and her  
escort, Greg Staten

Sophomore attendant,  
Karen Odle, and her  
escort, Mike Howard



QUEEN AND HER COURT

Linda Hamilton, Joe Turner, Candy Suter, Greg Staten,  
Karen Odle, Mike Howard, Vickii Hall, Paul Goode, Pat  
Riley, Gary Reynolds, Betty Fields, Doug Riley

Freshman attendant,  
Linda Hamilton, and  
her escort, Joe Turner

Junior attendant, Pat  
Riley, and her escort,  
Gary Reynolds







Queen Betty Fields and her  
escort, Doug Riley, pose  
at the after-game dance.

Queen Betty receiving her  
trophy for Miss Flame.



What's going  
on here?



# Varsity Basketball



COACH: Dale Bandy, Ron Fannin, Jerry McGinnis, Ralph Cooper, Mike Howard,  
Mike McCall, Gary Pollard, Richard Craycraft, Ed Boggs, Bud Sayre, Jerry Spriggs,  
Coach: Roger Lundy





Mr. Lundy, Reserve Coach; Mr. Bandy, Varsity Coach;  
Mr. Swain, Freshman Coach

1963 SCHEDULE

|          |    |
|----------|----|
| 1. West  | 48 |
| 2. West  | 62 |
| 3. West  | 65 |
| 4. West  | 62 |
| 5. West  | 69 |
| 6. West  | 55 |
| 7. West  | 53 |
| 8. West  | 66 |
| 9. West  | 41 |
| 10. West | 68 |
| 11. West | 54 |
| 12. West | 62 |
| 13. West | 48 |
| 14. West | 65 |
| 15. West | 45 |
| 16. West | 52 |



|               |    |
|---------------|----|
| Waverly       | 55 |
| Minford       | 60 |
| New Boston    | 79 |
| Northwest     | 65 |
| Wheelersburg  | 61 |
| South Webster | 49 |
| Clay          | 58 |
| Green         | 75 |
| Notre Dame    | 55 |
| Northwest     | 99 |
| East          | 70 |
| Minford       | 73 |
| Valley        | 55 |
| East          | 61 |
| Wheelersburg  | 73 |
| Valley        | 55 |





RON FANNIN  
Senior 5'8"



GARY MERSHON  
Senior 6'1"



JERRY MCGINNIS  
Senior 5'10"



MIKE McCALL  
Senior 6'2"



MIKE HOWARD  
Sophomore 6'2"



JERRY SPRIGGS  
Junior 5'9"



GARY POLLARD  
Sophomore 6'2"



BUD SAYRE  
Junior 6'0"



RALPH COOPER  
Junior 6'1"



ED BOGGS  
Sophomore 5'10"



# Reserve Basketball



(ROW 1): S. Hale, D. Simon, S. Risner, R. Craycraft, G. Cooper, (ROW 2): Mr. Bandy, R. Cole, D. Gleason, E. Salsbury, G. Pollard, G. Hopkins, E. Boggs, Mr. Lundy





## Freshman Basketball



(ROW 1): G. Peed, J. Easter, T. Easter, D. Himes, R. Hall, R. Watts, G. Spriggs, (ROW 2):  
Mgr. D. Flaker, S. Rapp, D. Smith, R. Davis, J. Rollins, B. Tatman, Mr. Swain

## Eighth Grade Basketball



(ROW 1): J. Workman, J. Graham, R. Hale, C. Fouch, J. Barber, M. Kennard, (ROW 2): E.  
Back, D. Warner, B. Diller, J. Gray, R. Simpson, D. Hornikel, J. Robinson, Mr. DeRossett,  
Coach, (ROW 3): S. Sissel, H. James, J. Smith, T. Logan, R. Tackett, S. Preston, G. Ridout,  
T. Mitchell



MANAGERS: David Riehl  
Carl Loper  
Bob Hamm



TIMEKEEPER: Mr. Morgan  
SCOREKEEPER: Mr. DeRossett



# Baseball Team



(ROW 1): J. Easter, R. Cole, J. Taylor, T. Rayburn, M. McCall, R. Stidham, J. McGinnis, T. Easter, (ROW 2): S. Hornikel, W. Speas, R. Craycraft, D. Riehl, R. Fannin, D. Shaw, J. Wessell, E. Boggs, G. Cooper, H. Sayre, D. Gleason, Mr. Bandy

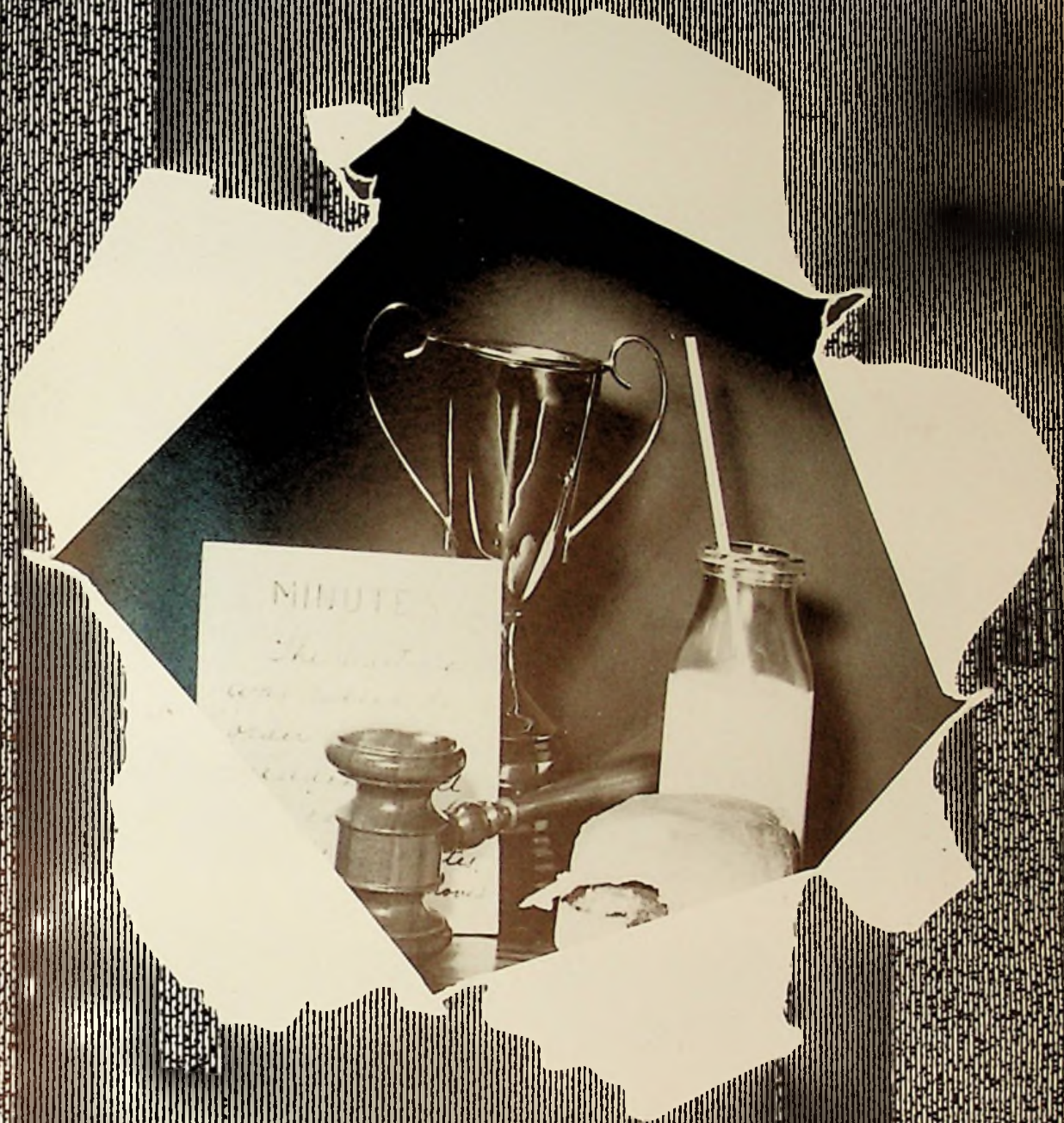
## 1963 SCHEDULE

|          |    |
|----------|----|
| 1. West  | 4  |
| 2. West  | 12 |
| 3. West  | 5  |
| 4. West  | 10 |
| 5. West  | 9  |
| 6. West  | 11 |
| 7. West  | 1  |
| 8. West  | 7  |
| 9. West  | 6  |
| 10. West | 3  |
| 11. West | 5  |
| 12. West | 4  |
| 13. West | 15 |
| 14. West | 0  |



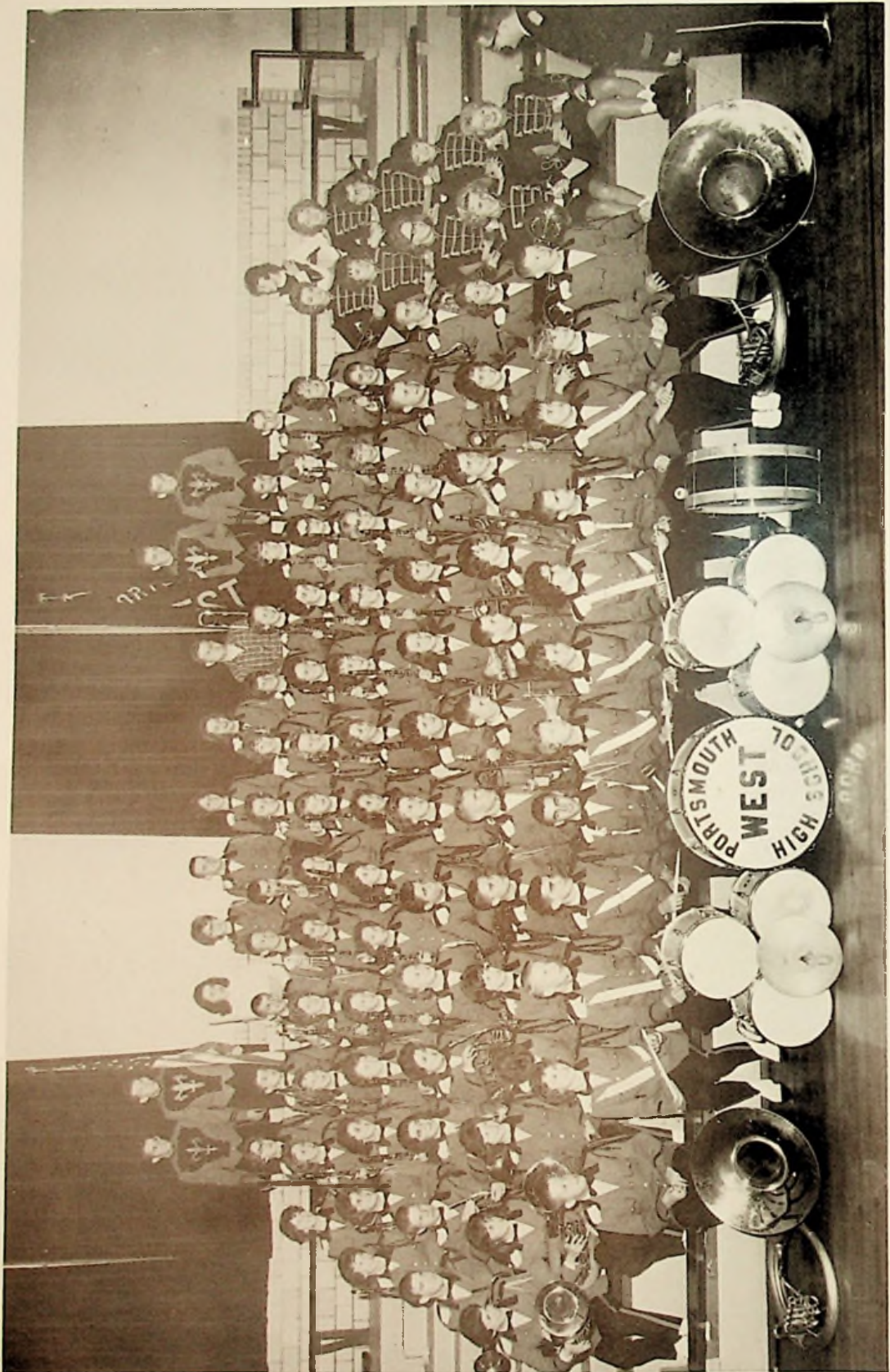
|               |       |
|---------------|-------|
| Portsmouth    | 15    |
| Clay          | 0     |
| Minford       | 5     |
| Waverly       | 0     |
| Valley        | 2     |
| Minford       | 10    |
| Valley        | 2     |
| Northwest     | 11    |
| Portsmouth    | 5     |
| Wheelersburg  | 2     |
| East          | 2     |
| South Webster | 9     |
| Minford       | 0 (T) |
| Northwest     | 7 (T) |





# Organizations



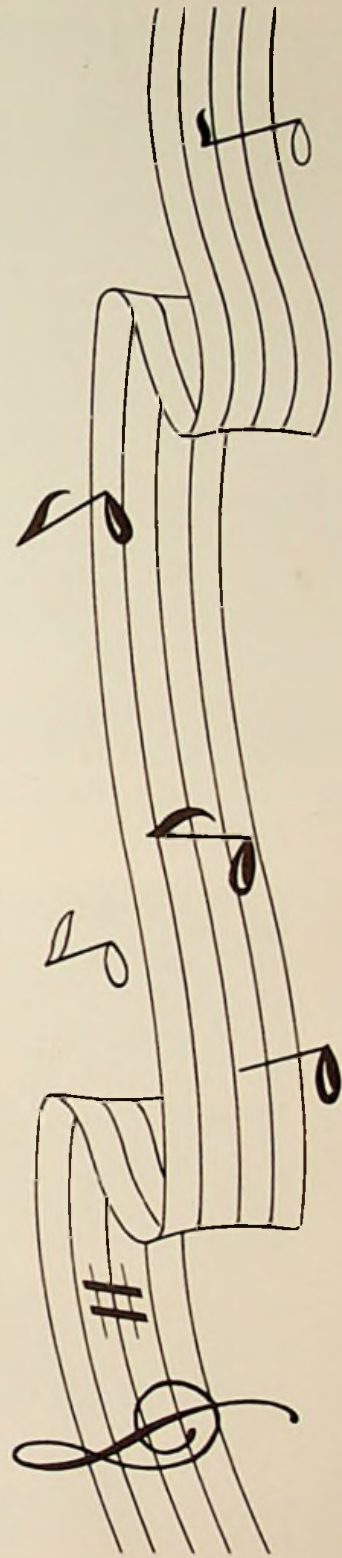




*v*  
*d*  
*r*  
*s*  
*i*  
*t*  
*y*

(ROW 1): S. Penn, A. Pfau, G. Pollard, W. Speas, D. Robinson, S. Mangus, C. Monk, E. Phillips, D. Johnson, K. Hobes, I. Ishmael, G. Hopkins, Mr. Morgan, (ROW 2): D. Brickey, C. Cunningham, R. Barber, P. Vicars, D. Voler, D. Simon, G. Reynolds, S. McManus, D. Edwards, A. Perry, R. Gleason, C. Keibler, C. Kitchen, G. Bolton, S. Jarrels, (ROW 3): G. Kirsch, T. Meeker, D. Pennington, P. Dunn, J. Kegley, L. Cooper, P. Windle, K. Richards, C. Biggs, R. Liles, P. Meeker, L. Penn, R. Vastine, S. Adams, S. Brescia, (ROW 4): V. Weaver, J. Hinze, J. Hopkins, B. Arthurs, L. Bloomfield, E. Bloomfield, K. McCall, L. Major, D. Callihan, S. Hill, D. Pennington, C. Krekeler, L. Mowery, R. Pennington, E. Wilson, G. Bolton, (ROW 5): C. Reiser, D. Reed, K. Miller, C. Morrow, N. Staten, L. Odel, B. Lute, P. Rice, S. Vaughters, P. Collier, L. Hinze, D. Hafner, G. Windsor, S. Colburn, P. Noel, (ROW 6): S. Mangus, J. Harris, L. Maynard, S. Risner, R. Shephard, B. Dillow, M. Hudson, S. Salem, P. Hurd, S. Nichols, W. Bibby, G. Cade, E. Webb, (ROW 7): P. Boyd, T. Rayburn, G. Gleason, P. Smalley, D. Riley, M. Martin, G. Wiltshire, D. Kirk, J. Milstread, D. Reihl

*B*  
*a*  
*n*  
*d*





## Dance Band



(ROW 1): R. Vastine, L. Penn, R. Liles, P. Windle, P. Meeker, S. Coburn, (ROW 2): Mr. Morgan, G. Reynolds, R. Gleason, S. Adams, (ROW 3): S. Mangus, B. Dillon, S. Risner, R. Shepherd, D. Riley, P. Smalley, S. Nichols, A. Tatman, D. Robinson, P. Dunn

## Pep Band



(ROW 1): G. Reynolds, R. Gleason, D. Robinson, G. Pollard, E. Phillips, T. Meeker, D. Pennington, Mr. Morgan, (ROW 2): C. Biggs, J. Kegley, P. Windle, R. Liles, P. Meeker, R. Vastine, L. Penn, (ROW 3): D. Pennington, L. Mowery, P. Collier, J. Hinze, D. Haffner, L. Bloomfield, D. Callihan, V. Weaver, D. Simon, R. Barber, G. Gleason, (ROW 4): S. Penn, J. Harris, S. Risner, R. Shepherd, D. Riley, P. Smalley, S. Nichols, S. Mangus, P. Dunn, B. Dillon, G. Hopkins



## *Our Majorettes*



(ROW 1): S. Jarrells, E. Webb, G. Bolton, (ROW 2): S. Adams, G. Bolton, P. Noel, V. Hall, S. Coburn, E. Wilson, S. Brecia

## *Band Officers*



D. Brickey, Secretary; D. Robinson, Vice President; E. Phillips, President; J. Kegley, Treasurer; G. Bolton, Freshman Representative





Drum Majorette  
ELAINE WEBB



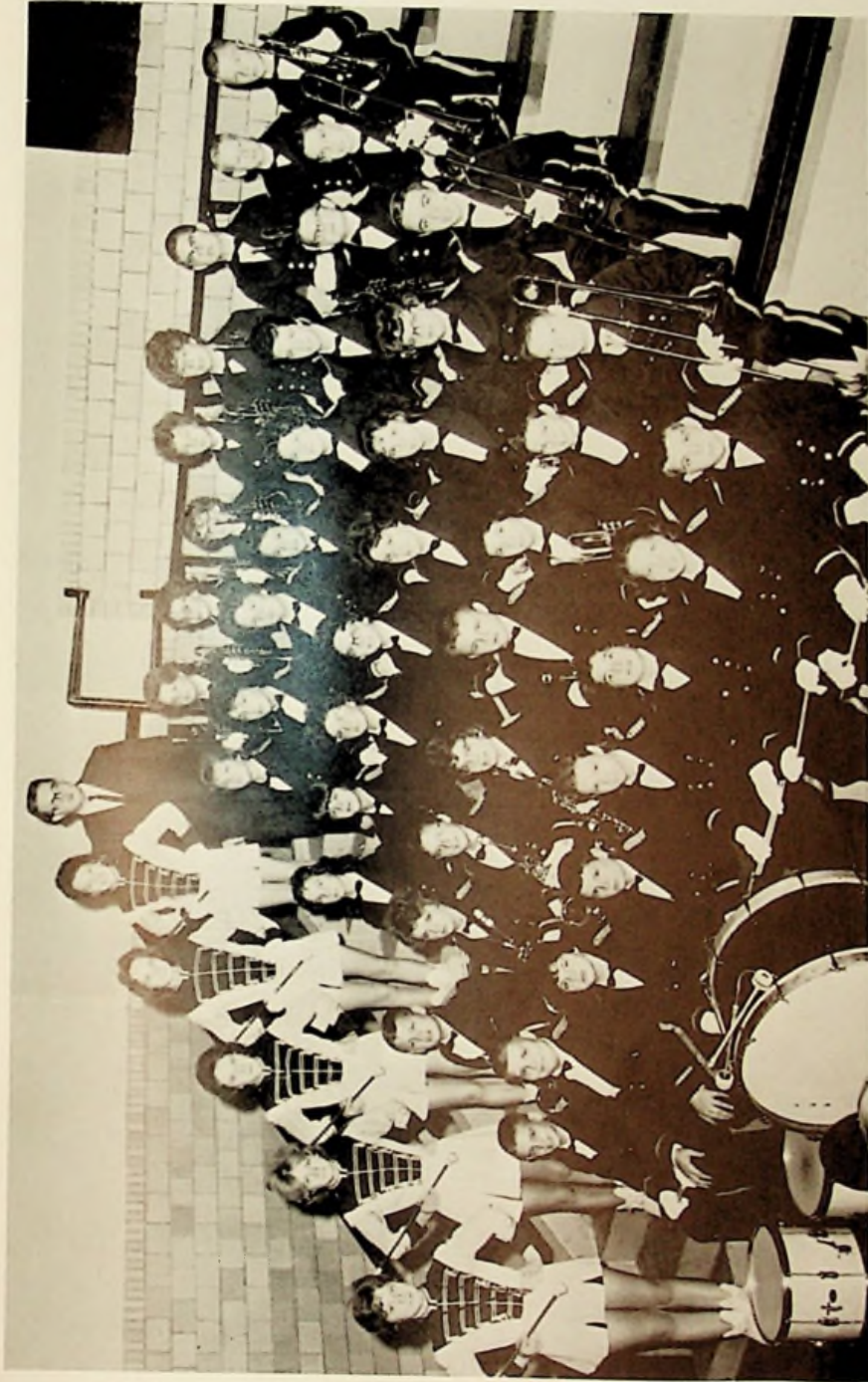
Band on parade



Masquerade party for the band at Pine  
Lodge.



# Cadet



# Band

(ROW 1): J. Smalley, B. Nichols, M. McGinn, B. Gray, R. Risner, S. Ingles, M. Pennington, J. Biggs, C. Wilshire (ROW 2): B. McGue, R. Staten, S. Spry, D. Prince, V. Coburn, J. Doerr, E. Smith, C. Fannin, D. Vogler (ROW 3): P. Dickison, E. Miller, N. Tackett, D. Simon, B. Folsom, L. Shaffer, P. Sturgill, B. Sisler, G. Diddle (ROW 4): L. Reed, V. Kemper, C. Bashford, L. Partlow, C. Hopkins, K. Weghorst, R. Kuhn, R. Lucas, C. Fouch (ROW 5): C. Maynard, Mr. Morgan, Director; P. Easter, M. Mowery, D. Bretz, D. Lathrop, L. Martin, H. James, R. Smith, A. Wise



## Mixed Chorus



(ROW 1): M. Moore, S. Bowling, G. Calender, R. Entler, P. Wise, E. Bloomfield, R. Lucas, S. Frye, A. Morgan, (ROW 2): C. Brannon, C. Distel, D. Rutherford, K. Feagans, B. Shupert, G. Conley, J. Days, B. Hayslip, C. Sparks, C. Stout, L. Stout, (ROW 3): D. Bower, L. Payne, J. Thacker, C. Castle, M. Myers, B. Pertee, C. Slye, S. Kamer, N. Evans, B. Lindsey, D. Nuckols, (ROW 4): P. Campbell, C. Webster, C. Stephens, R. Hale, P. Scheid, K. Odle, L. Thacker, L. Knauff, S. Hall, L. Warren, J. Journey, S. Hobes, (ROW 5): B. Traylor, D. Blair, M. Oakes, L. Mathews, Y. Yost, J. Virgin, P. Riley, A. Rose, B. Damron, E. Smith, B. Reedy, (ROW 6): B. Tatman, M. Smith, D. Ratliff, M. Shelton, S. Mitchell, L. Webb, M. Lewis, J. Easter, R. West, L. Bussa, J. Easter, J. Born, (ROW 7): M. Pfau, I. Reedy, O. Reutzel, G. Hossman, E. Pierce, D. Lester, T. Daum, R. Howard, A. Hamilton, D. Riley, S. Hornikel, M. Knauff



## *Top Twenty-Four*



(ROW 1): R. Hale, C. Stevens, L. Mathews, D. Bower, S. Mitchell, D. Ratliff, Y. Yost, K. Feagans, G. Callender, P. Wise, L. Webb, R. Entler, (ROW 2): S. Hornikel, I. Reedy, T. Daum, M. Wellman, A. Hamilton, M. Pfau, D. Lester, M. Knauff, L. Bussa, J. Easter, D. Riley, T. Easter

## *Mixed Ensemble*



(ROW 1): T. Daum, A. Hamilton, D. Bower, S. Mitchell, S. Callender, R. Entler, D. Riley, T. Easter



## *Girls Ensemble*



(ROW 1): L. Warren, C. Distel, K. Odle, D. Rutherford, (ROW 2): D. Blair, S. Hall, (ROW 3): E. Smith, Smith, M. More

## *Boys Ensemble*



M. Wellman (Left to Right): A. Hamilton, T. Daum, D. Lester, S. Hornikel, L. Bussa, J. Easter, J. Easter



## *Librarians*



(ROW 1): C. Stephens, L. Webb, J. Gregory, L. Davis, C. Suter, E. Ciraso, Mrs. Ressinger, M. Morrow, S. Jarrells, (ROW 2): L. Bloomfield, P. Frost, L. Henderson, C. Reiser, L. Cope, L. Carver, V. Jewell, B. Fields, C. Sparks, M. Shelton, C. Hudson, S. Thomas, (ROW 3): R. Craycraft, K. Hamilton, P. Riley, S. Brown, C. Gallimore, C. Oppy, M. Myers, T. Conley, E. Pollitt, D. Wear, (ROW 4): M. Howard, O. Reutzel, R. Flower, B. Mignerey, D. Early, K. Coburn, R. Cooper, E. Dunham

## *Great Books Club*



(ROW 1): M. Shelton, M. Shaw, C. Wilson, D. Simon, S. Rapp, (ROW 2): C. Suter, B. Spriggs, P. Smalley, B. Dillon, C. McManus, R. McManus



## *Annual Ads Salesmen*



(ROW 1): V. Cooper, V. Hall, K. Johnson, C. Morrow, M. Hornikel, S. Veach, N. Stamper, B. Harris, M. Coleman (ROW 2): D. Litz, J. Hall, C. Fitch, S. Partlow, B. Fields, J. Collignon, C. Suter, P. Branson (ROW 3): M. Wellman, G. Staten, J. McGinnis, R. Fannin, H. Walker, F. Collignon

## *Office Assistants*



V. Hall, C. Morrow, S. Knauff, C. Suter, S. Veach, Mr. McKenzie, M. Shaw, D. Litz, J. Kinolau, V. Cooper, B. Harris



## *Spanish Club*



(ROW 1): E. Pollitt, L. Mowery, S. Knauff, D. Bower, L. Mathews, P. Rice, D. Stockham, (ROW 2): P. Collier, L. Davis, P. Smalley, Y. Yost, J. Hinze, D. Pennington, J. Kegley, R. Liles, (ROW 3): S. Brown, R. Riffe, B. Snook, D. Brickey, D. Simon, C. Norman, S. Risner, (ROW 4): L. Cooper, J. Hinze, K. Hamilton, G. Hopkins, B. Wellman, J. Price, (ROW 5): M. Howard, G. Pollard, L. Freymuth, D. Gleason

## *New Inductees*





# Annual Staff



Editor- VICKII HALL

Assistant - YVONNE YOST



Business Manager  
CANDY SUTER

Assistant  
DAVID EARLY



Activities Editor  
FELIX COLLIGNON

Assistant  
ELAINE GARDNER



Organizations Editor  
DOUG BRADSHAW

Assistant  
SUSAN PENN





Sports Editors

GREG STATEN  
PAUL GOODE



Advisor, Mr. Rowland; Pat Riley, Classes; Sharon Partlow, Coordinator; Sandy Brown, Classes





TYPISTS: Maxine Coleman, Clydia Fitch, Diana Litz, Sandy Brown



PHOTOGRAPHERS: Mike McCall, Greg Kirsch, Ron Vastine



# Senior Class Play



CAST: (ROW 1): B. Spriggs, S. Jarrells, S. Veach, J. Coleman, M. Hornikel, V. Hall, (ROW 2): H. Conley, D. Biggs, R. Fannin, C. Wilson, G. McGinnis



Student Director, M. Shaw; Programs, C. Morrow; Prompter, K. Johnson; Prompter, S. Hart; Stage Manager, M. Shelton; Prompter, J. Hall



Stage Crew: P. Goode, B. Tipton; Make-up: R. Fuller, S. Partlow



Stage Crew: A. McCoy, J. Swords





Promo. C. Dicus and M. McCall

CAST OF  
"WE SHOOK THE FAMILY TREE"

- Shirley Veach - - - - - Hildegarde  
 Charles Wilson - - - - - Mr. Dolson  
 Mary Alice Shaw - - - - - Mrs. Dolson  
 Judy Coleman  
 Bobbie Spriggs - - - - - Sally  
 Douglas Biggs - - - - - Bob  
 Harold Conley - - - - - Jimmy  
 Peggy Nichols - - - - - Paige  
 Susan Jarrells - - - - - Ellie-May  
 Vickii Hall - - - - - Jill  
 Ronald Fannin - - - - - Freddie Shermer  
 Margaret Hornikel - - - - - Mrs. Shermer  
 Jerry McGinnis - - - - - Mr. Shermer



That's the last time that parakeet will smart off to me!



That's strange - it flew OK when the man demonstrated it for me.



OK, No more bets. Round she goes -



Well how would you feel? - Hiding out on golf courses all day?



## Debate Club



(Left to Right): Mr. Rowland, R. Fannin, D. Early, C. Wilson, B. Spriggs, M. Shaw, Y. Yost, J. Wessell, S. Knauff, P. Smalley



(Left to Right): J. Wessell, S. Knauff, B. Spriggs, Y. Yost, Mr. Rowland, Advisor

Winners of second  
place, class AA,  
in Scioto County





Advertisers



**OHIO VALLEY  
WHOLESALE  
COMPANY**

Wholesale Tobacco and Candy

Phone EL 3-4171

714 Fifth Street

Portsmouth

Ohio

**E. J. KENRICK  
COMPANY**

Since 1886

Distributors of  
Candy, Cigars, Cigarettes,  
and Sundries

Phone EL 3-2590

119 Market Street

Portsmouth

Ohio

**LYNN  
FUNERAL HOME**

"One of Portsmouth's Oldest"

Oxygen Equipped

PAUL GALLAGHER, Owner

Phone EL 3-2770  
303 Washington Street  
Portsmouth, Ohio

**MORGAN BROTHERS  
JEWELERS**

VERNON AND VICTOR MORGAN

Owners

Quality Diamonds  
and Watches

734 Fifth Street  
Portsmouth, Ohio  
Phone EL 3-3259



**ROBERTS JEWELERS**

"The Diamond Store  
of Portsmouth"

421 Chillicothe Street  
Portsmouth Ohio

**AEH'S FOOD MARKET**

Home of the BEST in Fresh  
Vegetables, Meats and Groceries

Phone EL 3-6189  
345 Second Street  
Portsmouth Ohio

We Have the Right Car at  
the Right Price at

**McCLAIN AUTO SALES**

"We Trade Up or Down"  
"We Specialize in Convertibles"

917 Chillicothe Street  
Portsmouth, Ohio

See ARNOLD "COBB" LITZ



**WM. APPEL'S T. V. SERVICE**

B. & W. and Color T. V.  
Motorola and Emerson Sales

2029 Galena Pike  
West Portsmouth Ohio

Compliments of  
**CUSTOM CARPET CO.**

"King of Carpets"

820 Fourth Street  
Portsmouth Ohio

**NELL'S RESTAURANT**

"For the Best in Home Cooked  
Meals and Friendly Service"

2029 Galena Pike  
West Portsmouth, Ohio

**NORMA JEAN'S BEAUTY SHOP**

Hair Styled as You Like It.

Phone UL 8-3831  
Route 1 Carey's Run

*Martini's*

"One of Ohio's Good Stores"

WISHES EVERY MEMBER

OF THE

CLASS OF 1963

FULFILLMENT

OF THEIR

LIFE'S GOAL



**WARNOCK'S DOLLAR STORE**

302 Chillicothe Street  
Phone EL 3-3511  
Portsmouth, Ohio

**ZUEFLE'S JEWELERS**

Keepsake Diamonds

"Portsmouth's Oldest  
Jewelers"

Portsmouth, Ohio

**BURCHETT'S**

AUTO TOPS

SEAT COVERS

CUSTOM MADE

915 10th Street

Portsmouth

Ohio



**STAPLETON**

**OFFICE SUPPLY CO.**

Smith-Corona Typewriters

Clary Adding Machines

607 Chillicothe St. EL 3-1187

1946 Our 18th Year 1962

**COLLIGNON AND SON LUMBER  
CO.**

ARNOLD E. COLLIGNON  
BERNARD E. COLLIGNON

Lumber, Ties, and Posts

Buena Vista, Ohio

UL 8-2487

Compliments of

**SCIOTO COUNTY NEW CAR  
DEALERS ASSN.**

Portsmouth, Ohio

**FULLER'S SOUND ELECTRONIC  
SUPPLIERS, INC.**

7th and Findlay Street  
Portsmouth

Ohio

**REITZ  
MUSIC CENTER**

713 6th St. Portsmouth, Ohio



# SCHISLER PROVISION COMPANY

Fresh and Smoked

Meats

RETAIL

801 John Street

Phone EL 3-4670

PLANT

Spring Lane and Railroad

Phone EL 3-2139



**WEST SIDE  
LAUNDROMAT**



Galena Pike

West Portsmouth, Ohio

**EMRICK  
FUNERAL HOME**

Funeral Directors and Embalmers

1422 Lincoln Street

Ph. EL 3-4161

Portsmouth, Ohio

RALPH F. SCOTT, Manager

Good Luck

DODDS DAIRY BAR

Coles Park

Compliments of

COCA-COLA

BOTTLING COMPANY





## ROSE SOHIO



Galena Pike  
West Portsmouth, Ohio

## HERMANN'S

"Quality Meats"

Fair Prices

EL 3-3660

221 Market Streets  
Portsmouth Ohio

## HOOVER SHELL SERVICE

247 Second Street

Phone EL 3-9247

Portsmouth Ohio

## CHRISTIAN LUMBER COMPANY

1403 Fourth Street

West Portsmouth, Ohio

Phone UL 8-5401



Congratulations to the  
Class of '63

**HERMS  
FLORAL COMPANY**

837 Sixth Street

Portsmouth Ohio

Congratulations to  
the Class of 1963!

**J. W. STIR COMPANY**

Phone EL 3-2105  
516 Second Street

Portsmouth Ohio

**DRUMMOND IMPLEMENT CO.**

Oliver - DeLaval  
Continental Shredder  
and Frick Saw Mills

1634 Gallia Street

Portsmouth Ohio

**KIRBY'S FLOWERS**

EL 3-4184  
Gallia and Findlay Sts.  
Portsmouth, Ohio

Compliments of

**LUTE PUMP & PLUMBING  
SUPPLY**

655-627 Second Street  
Portsmouth Ohio

**DUNN COAL CO.**

Wholesale and Retail

Yard and Office

Gallia at Broadway

Telephone  
EL 3-2197

Portsmouth Ohio

**GEMPERLINE  
FURNITURE COMPANY**

Furniture and Appliances

612-16 Second Street  
Portsmouth Ohio

**RURAL DOXOL GAS OF  
PORTSMOUTH, INC.**

"Propane Gas for Home and  
Industry"

203 Market Street

Phone EL 3-6549

Portsmouth, Ohio



DEAL WITH THE WESTSIDE SALESMEN

Deal with a  
reputable  
dealer with  
years of fair  
dealing.



Deal where  
you can find  
the Best  
Used Cars  
and Trucks  
anywhere.

B. Hayslip, Bob Coleman, H. Blakeman, T. Swayne

**GLOCKNER CHEVROLET CO.**

NEW AND USED CARS AND TRUCKS

"Finest Quality Bakery Products for More Than 54 Years"

# PAN DANDY BREAD

1009 Offnere Street

Portsmouth

Ohio

Phone EL 3-0290



# GLENN'S (ASTRONAUT) PLUMBING CO.

Sewer Service - Septic Tank Cleaning

Electric "EEL" Service

Free Plumbing Estimate

Phone UL 8-4491

## HOSSMANS CABINET SHOP

Custom Built Kitchens  
Cabinet-Formica Top

221 Washington Street  
EL 3-4771

## CONLEY'S BARBER SHOP

527 Second Street  
Portsmouth, Ohio

## PORTSMOUTH INTERSTATE BUSINESS COLLEGE

815 Gallia Street  
Portsmouth, Ohio

"The School That Means  
Business"

## HELEN'S BEAUTY SALON

Phone UL 8-6031  
1339 Third Street  
West Portsmouth, Ohio

## ROE'S GROCERY

"Fresh Meats - Fruits  
Vegetables"

Dry Run

## FARLEY'S GROCERY

Calvert Lane  
Phone UL 8-3034  
West Portsmouth Ohio



Prescription Our Specialty

**STAHLER'S  
PHARMACY**

GEORGE E. WELDE

Your Rexall Store  
for Your Drug Needs.

208 Market St.  
EL 3-2569  
Portsmouth, Ohio

**RICHARDS NEWS**

1328 Gallia St.  
Portsmouth, Ohio

Reading Center  
of  
Portsmouth

Hallmark Cards

**SAND'S  
SPORTING GOODS**

Cameras, Film, Developing

Gallia and Gay Sts.

Phone EL 3-6310

Portsmouth, Ohio

**PITTSBURGH PLATE**

**GLASS CO.**

Portsmouth's Headquarters  
for  
Paint, Glass, Storerooms, and  
Auto Glass

EL 3-1164      930 Gallia Street  
Portsmouth, Ohio



PORTSMOUTH PAINT CO.

Dean and Barry Paints  
Pratt-Lambert Paints  
Wallpaper, Janitor Supplies  
Phone EL 3-7180  
928 Gallia Street  
Portsmouth Ohio

LOWES FINE FOOD

(You are Welcome)

908 Gallia Street  
Portsmouth Ohio

THE COVERT FURNITURE CO.

Headquarters for  
Early American Furniture

821 Gallia Street  
Portsmouth Ohio

Congratulations!  
Class of '63

CARR'S JEWELRY STORE

811 Gallia Street  
Portsmouth Ohio

Compliments of

DR. PAUL KINKER

BILL LITZ

Viaduct Mobil Service

Phone EL 3-8250  
Portsmouth Ohio

KAY JEWELRY COMPANY

For the Most Beautiful  
Wedding Gifts  
It's O. K. to Owe Kay

817 Gallia Street  
Portsmouth Ohio

KOBACKER'S

"Your Friendly Store"

Ph. EL 3-1171  
405 Chillicothe Street  
Portsmouth Ohio

CRISPIE CREME  
DONUTS

1204 Gallia Street  
Portsmouth Ohio

Compliments of

WALKER'S FAMILY  
SHOE STORE

420 Chillicothe Street  
Portsmouth Ohio

WESTSIDE CLEANERS

NAOMI EUBANKS  
Cityview and Galena Pike  
Phone UL 8-1331  
West Portsmouth Ohio

SAMUEL LEVI & CO.

Furniture  
General Electric Appliances  
840-844 Gallia Street  
Portsmouth Ohio



**WOLFF**

Clothes for Men and Boys

Phone EL 3-3810  
320 Chillicothe Street  
Portsmouth Ohio

**S. S. KRESGE**

400 Chillicothe Street  
Phone EL 3-3760  
Portsmouth Ohio

**ROBERT CONLEY GROCERY**

Groceries - Fresh Meats  
and Notions

Phone UL 8-1852  
Portsmouth Ohio

**WEST END  
ELECTRIC CO., INC.**

"Electrical Contractors"

Commercial and Industrial  
Light and Power

RALPH J. YUENGER, President

714 Tenth Street  
Portsmouth Ohio

**NEWBERRY  
SPORTING GOODS**

"Specializing in Team Equipment"

816 Gallia Street

Phone EL 3-0644

Portsmouth

Ohio

Compliments of

**PIATT  
FUNERAL HOME**

Phone EL 3-3600

926 Ninth Street

Portsmouth

Ohio



**WORK'S DAIRY BAR**  
1 1/2 Mi. West of Friendship  
Get Your Frozen Treats Here

**ALBERTA E. WORK**  
Proprietor

**WEST END MARKET**

130 Second Street  
Store Hours 7:00 A. M. - 1:00 A. M.  
EL 3-9138

**THE CITIZENS SAVINGS  
AND LOAN ASSOCIATION CO.**

505 Chillicothe Street  
Portsmouth Ohio

Compliments of  
**GRIERSON'S RESTAURANT**

611 Chillicothe Street  
Portsmouth's Newest  
Restaurant

**WEST END FURNITURE  
COMPANY**

518 Second Street  
"Discount Prices on New  
Furniture and Appliances"  
Portsmouth Ohio

**RALPH LEGLER  
TAILOR**

1104 Gallia Street  
Portsmouth Ohio

**BROCK  
FUNERAL HOMES**

Licensed Directors

W. DALE BROCK

RUBY D. BROCK

GLENN W. BROCK

Gallia and Waller Sts.  
Portsmouth Ohio

Gallia at Hayport Road  
Wheelersburg Ohio

**SELECT DAIRY**

Scioto County's Oldest Dairy

Phone EL 3-8290

2345 Gallia Street

Portsmouth

Ohio



## HALL & WATTS

Concrete Septic Tanks

Backhoe Digging and

Building Materials

Phone UL 8-1042

1815 Galena Pike

West Portsmouth, Ohio

## STONE'S DAIRY BAR

Big Thick Milk Shakes

Foot Long Hot Dogs

1901 Galena Pike

West Portsmouth, Ohio

## HAMILTON'S GARAGE

Towing and

Expert Repairing

Phone UL 8-1093

2819 Galena Pike

West Portsmouth, Ohio

H. R. JARRELLS  
LUMBER CO.

Building Supplies

1104 Galena Pike  
Phone UL 8-2981

## FOLSOM'S CASH STORE

Candy, School Supplies,  
Groceries, Hunting and  
Fishing Licenses

1437 Fifth Street  
West Portsmouth Ohio

## McKEE'S GROCERY

1920 Washington Boulevard  
West Portsmouth Ohio



COMPLIMENTS  
OF  
THE  
**“WEST HIGH BOOSTERS CLUB”**



"Call the Pill Wagon"  
for Free R<sub>X</sub> Delivery

Phone UL 8-3131

**STAKERS**

Rexall Drugs

2339 Galena Pike  
West Side Center  
West Portsmouth, Ohio

**BORDENS DAIRY**

237 Second Street

Portsmouth, Ohio

Phone EL 3-2153

# DAEHLER MORTUARY

GERALD W. GILMORE, Manager

Ambulance Service

Phone EL 3-4146

915 Ninth Street

Portsmouth

Ohio

*Atlas Fashions*

Since 1885

Portsmouth

Ohio

Compliments of  
DR. A. P. ALTIZER  
Optometrist

822 1/2 Gallia St.  
Lyric Building  
Portsmouth, Ohio

BOWER'S BARBER SHOP

1223 9th Street

West Portsmouth, Ohio

BOB AND FLOYD  
SERVICE STATION

401 Second Street  
Phone EL 3-9283  
Portsmouth Ohio





**HOBES FRIGIDAIRE  
APPLIANCES**

"The Complete Line of  
Frigidaire Appliances"

1101 Gallia St.  
Portsmouth, Ohio  
Ph. EL 3-2433

EVERT HOBES, Owner

The Place Where Service Counts

PEPSI

2415 Scioto Trail  
Phone EL 3-3126  
Portsmouth, Ohio

PAUL L. ISHMAEL  
AGENT

for  
COMMONWEALTH LIFE  
INSURANCE CO.

"Serving You Is My Business"  
PR 6-9209 EL 3-1840

ZIMMERMAN'S

Office Supplies - Office Machines

810 Chillicothe St.  
Portsmouth Ohio

SUMMER & SON, INC.

"Everything Musical"

Our 92nd Year

319 Chillicothe Street  
Portsmouth Ohio

Compliments  
of

CLASSIC BOWLING LANES

AMERICAN SAVINGS AND  
LOAN ASSOCIATION

Insured Savings - Home  
Financing

503 Chillicothe Street  
Portsmouth, Ohio

BARQ'S BOTTLING CO.



Portsmouth Ohio

NEWMAN'S TIN SHOP  
AND SUPPLY, INCORPORATED

434 Second Street  
Phone EL 3-3649  
Portsmouth Ohio

VETTER & SONS, INC.  
INSURANCE

739 5th Street  
Portsmouth, Ohio

**HIBBS HARDWARE**

1723 10th Street  
Portsmouth, Ohio  
Phone EL 3-2995

**WURSTER DRUG COMPANY**  
"Portsmouth's Prescription  
Centers"

Established 1897  
419 Chillicothe Street  
1221 Kinney's Lane  
Portsmouth, Ohio

**KAH PRINTING CO.**

711 Chillicothe St.  
Phone EL 3-1879  
Portsmouth Ohio

**LEET LUMBER CO.**

"Quality Lumber and  
Building Supplies"  
931 Washington Street  
Portsmouth, Ohio

**FITCH'S GROCERY**  
and  
Texaco Gas and Oil

On Route 52  
Pond Run Ohio

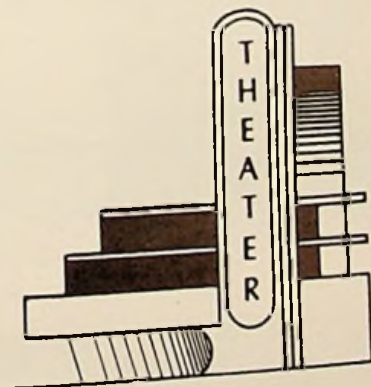
**WINDEL-HOWLAND  
FUNERAL HOME**

1503 Offnere  
EL 3-0500  
Portsmouth Ohio

Congratulations to the  
Class of '63

**SUNSET  
DRIVE INN**

Coles Park



**TRUCK & TRACTOR  
GARAGE**



International Sales and Service

F. R. COOK, Owner

Fifth and Market Streets  
Portsmouth Ohio



When You Young Folks Get  
Married  
Buy Your Home Furnishings at  
DISTEL FURNITURE CO.  
Phone EL 3-3810  
616 Chillicothe Street  
Portsmouth, Ohio

Compliments  
of  
RAVENROCK ROLLER ARENA

LONG & CO.  
"The House of Quality Furniture"  
729-733 Sixth St.  
Portsmouth Ohio

"CRIGHTON"  
School and Office Supplies  
EL 3-8290  
740 Fifth Street  
Portsmouth Ohio

LAWSON & SPARK  
PRODUCE  
516 Second Street  
EL 3-7681  
Portsmouth Ohio

WEST PORTSMOUTH TEXACO  
STATION  
Route 52  
West Portsmouth, Ohio

## MITCHELL'S SERVICE STATION



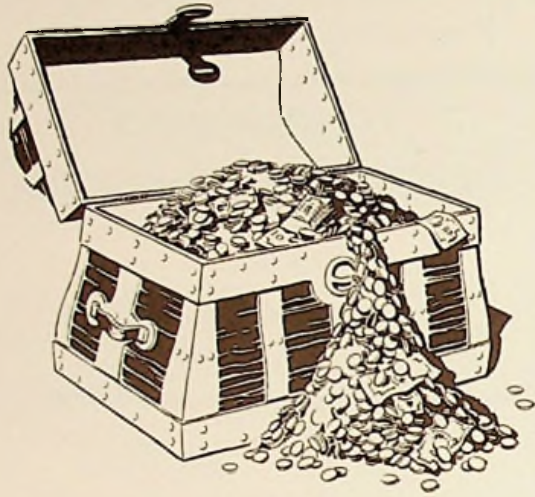
Galena Pike

West Portsmouth, Ohio

Ph. UL 8-9121

|   |   |
|---|---|
| <p>BROWNIE'S BEAUTY SHOP<br/>DIXIE BROWN - Operator</p> <p>Galena Pike<br/>Portsmouth Ohio</p>          | <p>BRIDWELL'S<br/>GENERAL MERCHANDISE</p> <p>Dealer for Hot Point and<br/>Admiral Appliances</p> <p>Friendship Ohio</p>                 |
| <p>BROWN'S SOHIO SERVICE<br/>BOB AND BETTI BROWN</p> <p>1 1/2 Miles West of Friendship<br/>Route 52</p> | <p>LINDBURGH INN</p> <p>Specialists in T-Bone Steaks,<br/>Dinners, Luncheons and<br/>Sandwiches</p> <p>Phone UL 8-2236<br/>Route 52</p> |
| <p>NICKEL'S SOHIO<br/>SERVICE STATION</p> <p>Phone UL 8-3073<br/>Rt. 125 Friendship, Ohio</p>           | <p>WORKS GARAGE</p> <p>General Repair on Cars<br/>and Power Mowers</p> <p>Friendship, Ohio</p>  |
| <p>ALLIED VALVE &amp;<br/>MANUFACTURING CO.</p> <p>Phone UL 8-6479<br/>Friendship, Ohio</p>             | <p>WEST SIDE AUTO PARTS</p> <p>Route 52<br/>Phone UL 8-6121</p>   |
| <p>DON C. STOCKHAM &amp; SON</p> <p>General Store<br/>Since 1914</p> <p>Friendship Ohio</p>             | <p>PELPHREY BROTHERS</p> <p>Ashland Service, Gen. Store</p> <p>Star Rt., Friendship</p>   |
| <p>HUGHES<br/>GENERAL STORE</p> <p>1376 Tenth Street<br/>West Portsmouth Ohio</p>                       | <p>R. E. MILLER<br/>GENERAL MERCHANDISE</p> <p>Buena Vista, Ohio</p>  |





## How Much Is \$165,000,000?

When the current expansion and modernization program is completed at its Portsmouth Division, Detroit Steel Corporation will have spent over \$165,000,000 in its determination to make this southern Ohio steel mill one of the finest, best equipped, most competitive such plants in the nation.

That's a lot of money.

For example, had a man who was living when Christ was born, continued to live until today, and had he spent \$225 every single day during all those long years, he would still not have spent that much money.

One hundred and sixty-five million dollars . . . the savings of thousands of ordinary people who, believing in the American Way, have become part owners in American Industry . . . plus the "plowed back" earnings of the company . . . all that money, within the next few years, will have been invested in the future of the Greater New Boston - Portsmouth Area to provide jobs and security for its citizens.

**DETROIT STEEL  
CORPORATION**  
PORTSMOUTH DIVISION



# FERGUSON SUNOCO SERVICE

Second and Madison Streets

Portsmouth, Ohio



## MART GLYNN FUNERAL HOME

Air Conditioned - Modern

EL 3-2700

1962 Ambulance

Our Work Speaks for Itself

1147 Second Street

Portsmouth, Ohio

## FIESTA

DINING ROOM AND DRIVE-IN



Congratulations  
and  
Best Wishes  
to  
Class of '63



**VALLEY VIEW  
SERVICE STATION**

"Mobilgas - Mobiloil and Mobil  
Tires and Batteries."

All Kinds of Mechanical  
and Body Work

Galena Pike  
West Portsmouth Ohio  
Phone UL 8-5281

**MOBIL AUTO SUPPLY**

713 Gay Street  
Portsmouth Ohio

Best Wishes

From

**MIKE AND DOROTHY  
SOWKULECH**

**MIKE'S LUNCH**

Galena Pike  
at Shell Station

West Portsmouth Ohio

**BREHMER PAINT SERVICE**

Authorized Dealer  
DuPont Paints  
Varnishes - Brushes - Oils

Phone EL 3-7820  
919 Chillicothe St.

**MOORE'S**

Two Big Stores to Serve You  
209 Market St.  
Portsmouth, Ohio  
Gallia St. - New Boston, Ohio

**WORSTELL'S  
PORTSMOUTH HOME SUPPLY CO.**

Quality Home Furnishings  
and Appliances  
Portsmouth, Ohio  
GARY WORSTELL, Manager  
11th and Lawson St.

**WRIGHT HATCHERY**

Feed - Seed - Fertilizers  
Chicks and Supplies

Ph. EL 3-2570  
430 Second Street  
Portsmouth, Ohio

Compliments  
of

**PARAMOUNT BEAUTY  
ACADEMY**

**MARKET STREET  
HARDWARE**

217 Market Street  
Ph. EL 3-8959  
Portsmouth Ohio

## Honor Society



(ROW 1): D. Black, S. Knauff, D. Bower, S. Jarrells, J. Horsley, (ROW 2): J. Jopkins, S. Bean, M. Shaw, M. Shelton, P. Branson, B. Spriggs, (ROW 3): L. Davis, D. Brickey, J. Price, C. Suter, S. Coburn, Mrs. Harper, (ROW 4): H. Conley, B. Fields, S. Brown, B. McCleese, Y. Yost, D. Early

## Officers



(1ST SEMESTER) B. Fields, C. Suter, M. Shelton, M. Shaw



(2ND SEMESTER) B. Spriggs, S. Jarrells, P. Branson, L. Bean



## *Honor Society Inductees*



(ROW 1): D. Gallimore, R. Entler, J. Hinze, L. Payne, S. Brescia, C. Kitchen, (ROW 2): S. Banner, B. Dietrich, P. Smalley, Mrs. Harper, K. Maple, P. Collier, R. Liles, (ROW 3): S. Risner, L. Gifford, B. Sayre, G. Pollard, K. Hamilton, J. Srofe, R. Craycraft, E. Politt





## *Student Council*



(SEATED): B. Dietrich, K. Maple, R. Cooper-Treasurer, M. Coleman-Secretary, P. Collier-Vice President, C. Wilson-President, B. Snook, S. Keibler, D. Vogler, L. Hamilton, (STANDING): S. Risner, S. Kessinger, J. Briggs, G. Bolton, S. Mitchell, Y. Yost, L. Perry, M. McGinnis, D. Robinson, R. Flaker

As every other organization must have a governing body, so does P. W. H. S. and the student council is to serve this purpose. A total of 20 members comprise this organization. In the future, a member from each homeroom will be elected at the beginning of the school year.

The student council is a new activity for the students of P. W. H. S.



## Newspaper Staff



(Left to Right): M. Shaw, Lay-Out; C. Wilson, Co-Editor; Mr. Dummitt, Advisor; D. Bricky, Lay-Out; S. Jarrells, Co-Editor



B. Spriggs, Proofreader

C. Suter, Re-Write



(Left to Right): P. Branson, B. Hamm, T. Daum, Reporters; J. Wood, R. Fannin, Sports; M. Shelton, Activities; J. McGinnis, Sports; S. Knauff, P. Rice, Reporters;



TYPISTS:

D. Litz  
N. Stamper  
S. Veach



## *New Life Club*



(ROW 1): R. Hale, B. Brisker, C. Morrow, M. Morrow, C. Morrow, A. Caldwell, (ROW 2): B. Perte, K. Richards, G. Swearingen, S. Roberts, D. Pennington, C. Kitchen, C. Biggs, Mrs. Ressinger, (ROW 3): S. Blevins, S. Salem, V. Jewell, B. Snook, C. Norman, K. Odle, L. Henderson, (ROW 4): J. Kinolau, L. Seeley, S. Blevins, D. Webster, R. Riffe, K. Maple, D. Brickey

## *Future Teachers Club of America*



(SEATED): Bobbie Spriggs, Paula Branson, Mrs. Ressinger, Candy Suter, Susan Jarrells, (STANDING): Mary Alice Shaw, Ogra Conley, Ron Fannin, Charles Wood, Mike Knauff



## *Latin Club*



(ROW 1): W. Caldwell, S. Rapp, B. Harris, S. Jarrells, J. Myers (ROW 2): M. Shaw, J. Journey, M. Shelton, J. Collins, P. Branson, Mrs. Orlett (ROW 3): E. Phillips, C. Frye, C. Fitch, L. Seeley, C. Suter, C. Wilson (ROW 4): M. Knauff, B. Riordan, G. Staten, J. Sibrel, D. Trisler (ROW 5): R. Fannin, C. Dicus, J. Wood, O. Conley, D. Biggs

## *Senior Survey*



(ROW 1): O. Conley, B. Spriggs, M. Shaw, C. Wilson (ROW 2): S. Jarrells, L. Bean, S. Veach, D. Biggs, M. Knauff, B. Fields, M. Shelton, C. Suter



## Boys' Industrial Club



(ROW 1): C. Loper, D. Edwards, S. Charles, E. Ginn, H. Parker, L. Brussa, K. Coburn, A. Brown, C. Davis (ROW 2): R. Stidham, D. Boyd, C. Distel, G. Hill, J. Callihan, J. Loeven-  
guth, J. Taylor, J. Simpson, T. Milstead, Mr. Reiser (ROW 3): R. Hodge, R. Tackett, D.  
Riley, T. Clifford, T. Jackson, F. Shepherd, B. Mignerey, S. VanDyke, L. Conley (ROW 4):  
B. Adkins, R. Neal, C. Galloway, H. Ratliff, H. Riffe, R. Shepherd, L. Veach, L. Seison,  
B. Lewis, D. Johnson



. . . and now add an egg and stir  
gently.



Mr. DeRossett and his guiding hand.



## Girls Kickball Team



(ROW 1): S. Penn, (official) P. Rice, (scorekeeper) S. McCleese, S. Salem, J. Kegley, (capt.) V. Weaver, C. Biggs, S. Ruggles, J. Miller (official), (ROW 2): G. Swearingen, R. Pick, S. Banner, M. Boling, R. Rowe, A. Pfau, S. Roberts, I. Cooper, Mrs. Vergne, (ROW 3): D. Pennington, F. Hammonds, L. Odle, J. Priode, D. Callihan, R. Pennington, A. Rose, C. Monk, D. Pennington, V. Jewell



Afraid to face the camera?



What? Dancing alone.



## Home Ec. Club



(ROW 1): S. Roberts, B. Morgan, D. Nuckols, P. Campbell, M. Adkins, K. Horsley, P. Twaddle, P. Rigsby, B. Carver, C. Morrow, G. Nichols, L. Odle (ROW 2): C. Moore, L. Whaley, P. Traylor, C. Hurst, E. Ishmael, C. Adkins, E. Mershon, G. Brown, S. Miller, T. Holsinger, G. Duckett, Mrs. Drew (ROW 3): A. Madden, C. Ratliff, L. Gray, D. Gray, J. Gregory, D. Twaddle, A. Perry, A. Morgan, C. Sparks, K. Hobes, J. Days (ROW 4): M. Payne, S. Kuhn, K. Lovenguth, C. Payne, M. Smith, D. Fuller, L. Dodrige, C. McGue, J. Thacker, B. Neumann, V. Jewel, J. Virgin (ROW 5): B. Bays, L. Cox, S. Warner, J. Journey, J. Puckett, S. Manning, J. Tackett, S. Claypool, S. Ruggles, L. Hinze, R. Eubanks, B. Shepherd, L. Howard (ROW 6): J. Osborne, C. Pack, N. Breech, S. McGraw, V. Journey, S. McLucas, N. Morrow, S. Holt, D. Lyons, C. Bolton, C. Perry, J. Howard



# Familiar Scenes



gh:  
e  
ht,  
ig  
ys  
l



## *Candid Teacher Shots*



Yes, Karen, I see you can open your book.



Smile, girls; I've got news.



All together now, a one, a two - - -



Man, like this is a drag!



"Boy! It sho' is cold up here in the north."

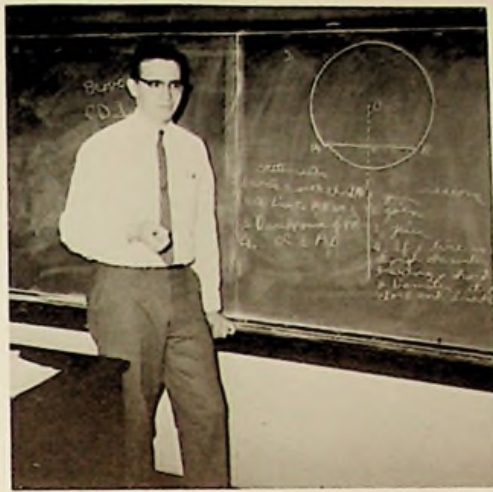


So this is a candid shot!





Mrs. Gillette? Where?



O.K. Prove it.



Sink it, Mr. Collins!



Real concentration.



Attention, everyone!



Now, where's West Portsmouth?



# Junior Class Play



CAST: (ROW 1): Sharon Nichols, Donna Bower, Carol Cunningham, Sharon Howard, Peggy Dunn, (ROW 2): Mike Howard, Darwin Boyd, Sue Blevins, Yvonne Yost, Arthur Tatman, Larry Bussa, (ROW 3): Bob Hamm, Danny Robinson, David Early, John Wessell, Jerry Spriggs



PROMPTERS: Phyllis Noel, Pat Riley, Jennifer Kinolau

PROGRAMS: Lynn Mathews, Connie Oppy, Lucy Henderson, Brenda Newman





STUDENT DIRECTOR: Sandra Co-  
burn presents Mrs. Orlett with a  
plaque.

"CONNECTICUT YANKEE"  
in  
King Arthur's Court

CAST

|                     |           |                  |
|---------------------|-----------|------------------|
| Hank Bennett        | - - - - - | Mike Howard      |
| Marion Bennett      | - - - - - | Sharon Nichols   |
| Mrs. Bennett        | - - - - - | Sharon Howard    |
| King Arthur         | - - - - - | Arthur Tatman    |
|                     |           | Bob Hamrn        |
| Queen Guenevere     | - - - - - | Donna Bower      |
| Merlin              | - - - - - | John Wessell     |
| Sagramor            | - - - - - | Darwin Boyd      |
| Launcelot           | - - - - - | Jerry Spriggs    |
| Clarence            | - - - - - | Danny Robinson   |
| Queen Morgan Le Fay | - - - - - | Yvonne Yost      |
|                     |           | Carol Cunningham |
| Elaine              | - - - - - | Peggy Dunn       |
| A Maiden            | - - - - - | Sue Blevins      |
| Speaker             | - - - - - | David Early      |
|                     |           | Larry Busa       |



PROPERTIES MANAGER: Sandy Brown,  
COSTUMES: Sue Knauff, Leanne Davis,  
Donna Brickey, MAKEUP: Wanda Hill,  
Bertha Reedy, Rita Hale



STAGE CREW: Gary Reynolds, Dan Johnson,  
David Davis, (TOP ROW): Ollie Reutzell,  
Rodney Summerfield, Ron Vastine, STAGE  
MANAGER



# Baby Pictures



SUSAN JARRELLS  
Age 5 years



SHARON PARTLOW  
6 months



RON FANNIN  
Age 3 years



PAULA BRANSON  
Age 3 years



PEGGY NICHOLS  
Age 6 years



CORKY WALKER  
Age 6 years



SHIRLEY VEACH  
Age 5 1/2 years



MARY ALICE SHAW  
Age 5 years





CANDY SUTER  
18 months



BELINDA HARRIS  
6 1/2 years



DIANA LITZ  
3 years



PAULA BRANSON  
6 months



ELAINE WEBB  
3 years



LINDA BEAN  
2 years



MIKE WELLMAN  
3 years



GREG STATEN  
3 months



DOUG BRADSHAW  
3 years



# Prom Night







Hosts and hostesses doing a Virginia reel.



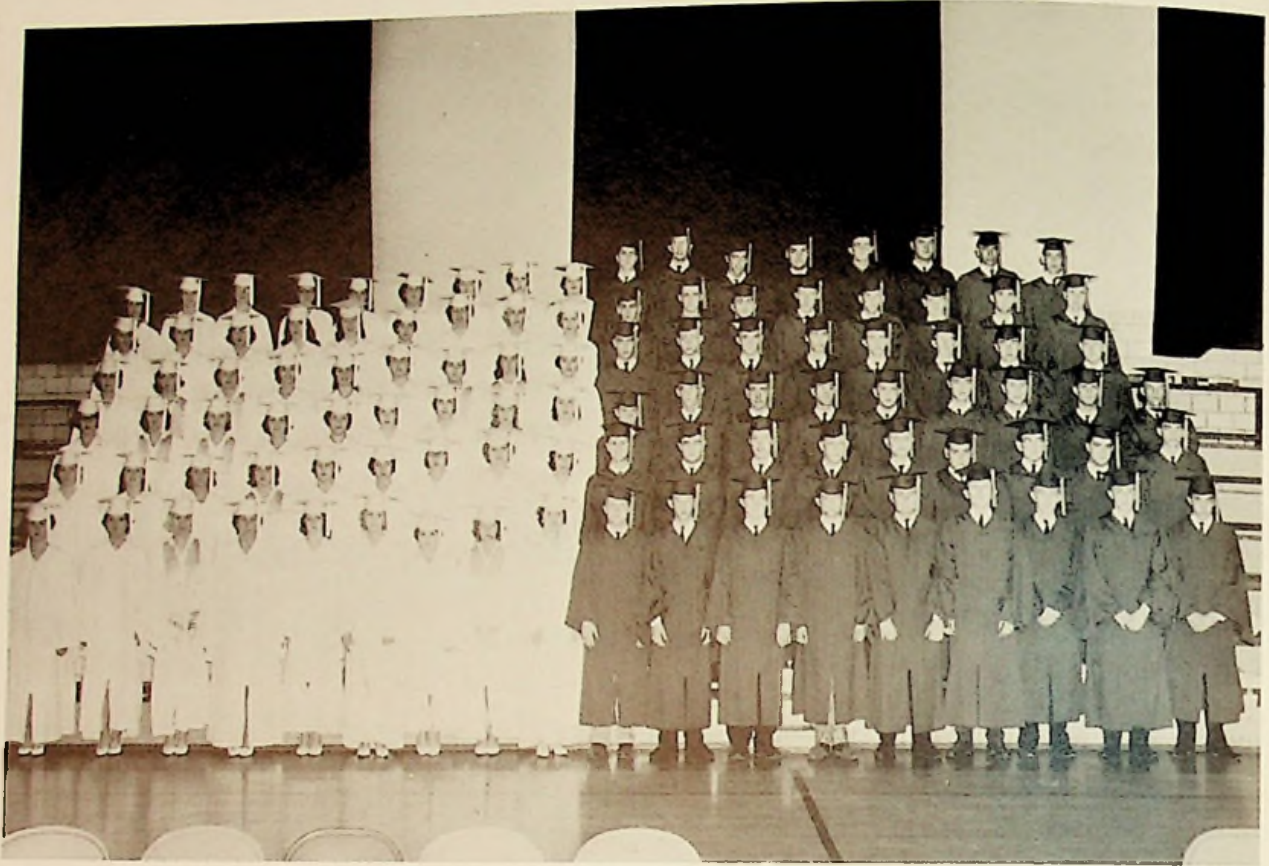
Mel Gillespie and his band



Sophomore "Mammies" discuss prom.



# Graduates of '63



Carol and Doug lead  
the procession



Mr. Easter presents  
the diplomas





Dr. Kermit Daugherty delivers Commencement address.



Honored Seniors march into the gymnasium.

## *Valedictorians*



LINDA BEAN



CANDY SUTER



BOBBIE SPRIGGS



 TAYLOR PUBLISHING COMPANY  
"The World's Best Yearbooks Are Taylor-made"  
YEARBOOKS







*Our Halls Of*



Loyal, Loyal to our West High:  
wave those banners high. We  
will fight for you forever; fight,  
fight, fight's our cry. Blazing  
o'er the paths of glory, always  
brave and true. Loyal, Loyal  
to our West High, we will do  
our best for you.

Joy



