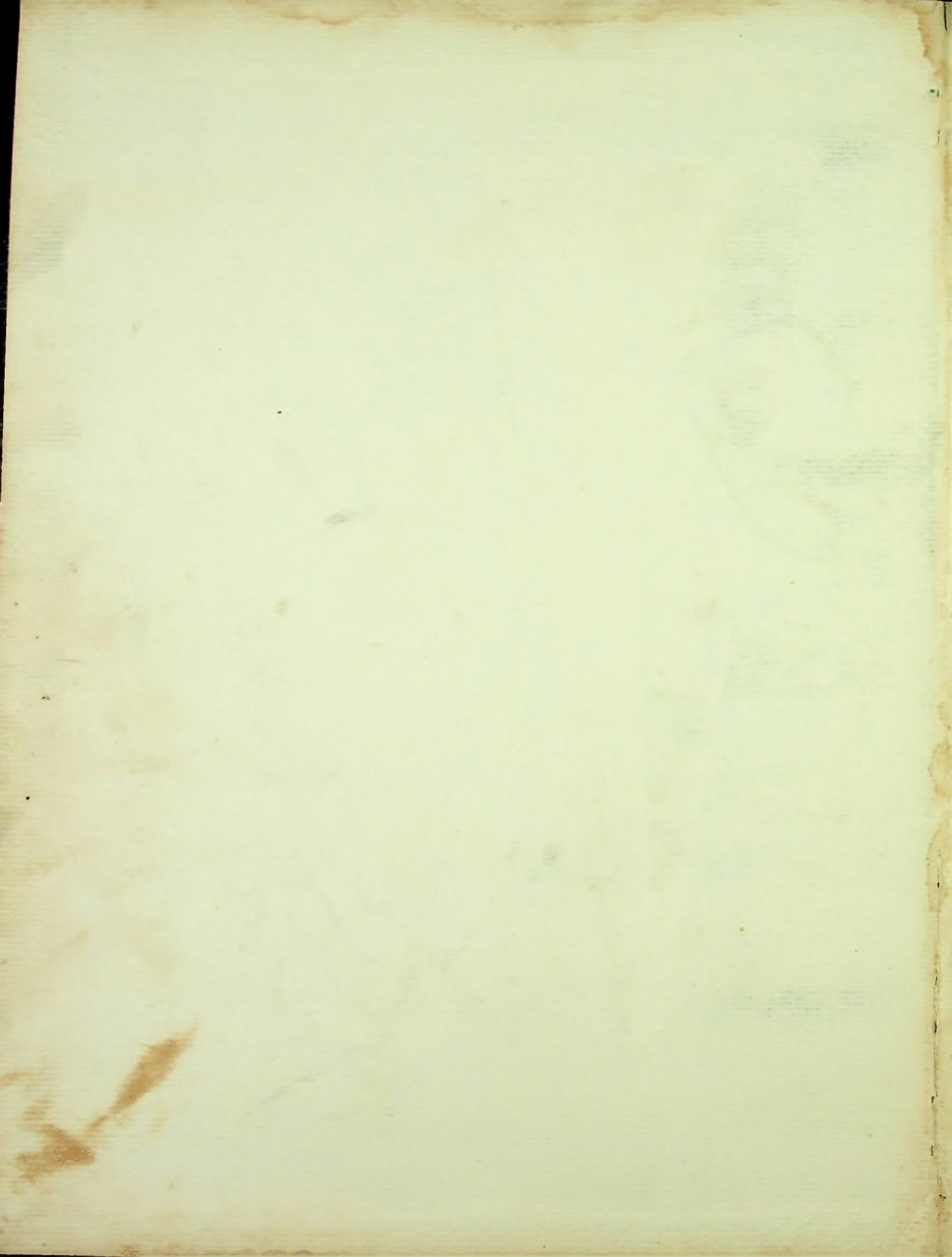
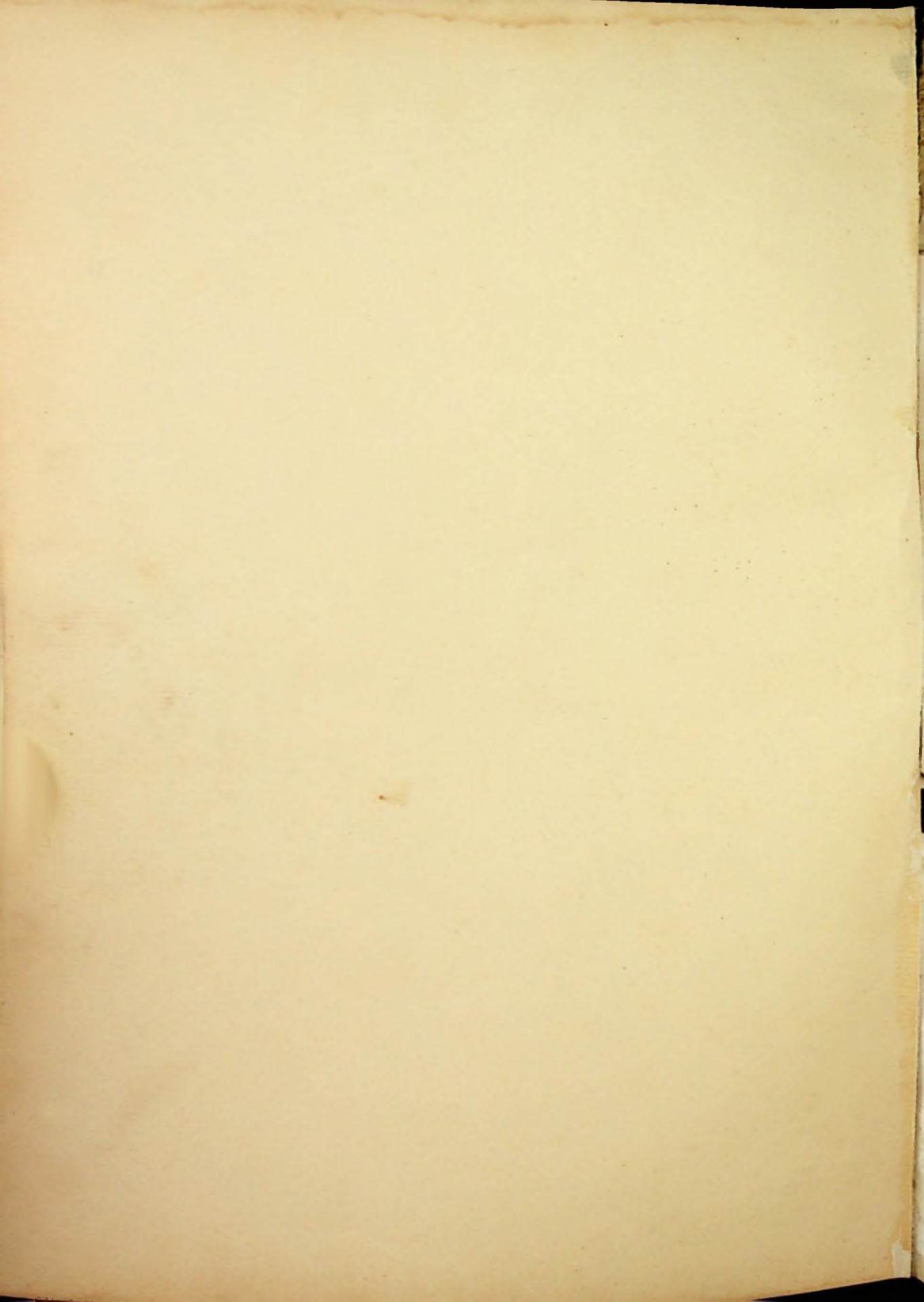


V
Trojan

45





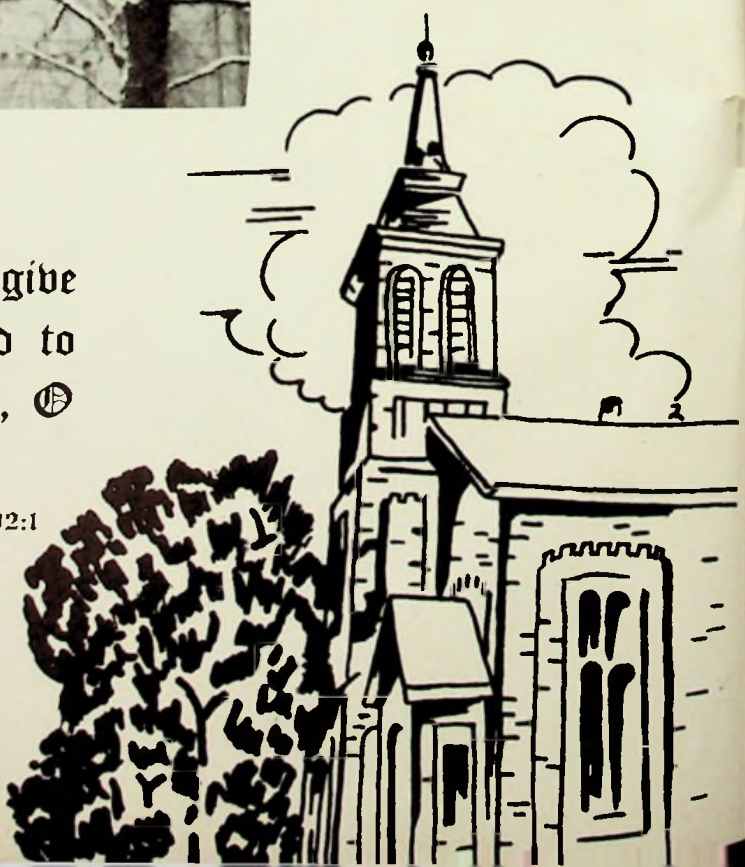






It is a good thing to give thanks unto the Lord, and to sing praises unto thy name, O Most High.

Psalms 92:1

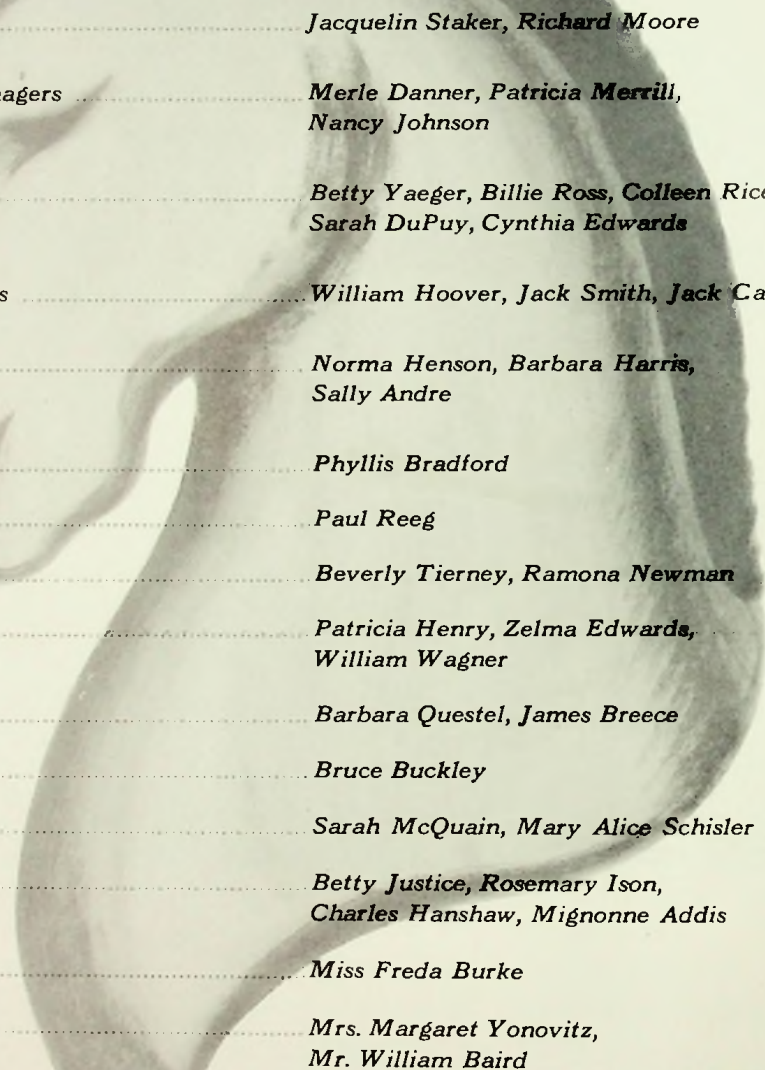




In recognition of her integrity and benevolence toward her students and her faithful service to her profession, the 1945 Trojan dedicates this volume to

MISS ISABEL MUSSER

THE 1945 TROJAN STAFF



Co-Editors	<i>Jacquelin Staker, Richard Moore</i>
Business Managers	<i>Merle Danner, Patricia Merrill, Nancy Johnson</i>
Art Staff	<i>Betty Yaeger, Billie Ross, Colleen Rice, Sarah DuPuy, Cynthia Edwards</i>
Photographers	<i>William Hoover, Jack Smith, Jack Call</i>
Classes	<i>Norma Henson, Barbara Harris, Sally Andre</i>
Faculty	<i>Phyllis Bradford</i>
Boys' Sports	<i>Paul Reeg</i>
Girls' Sports	<i>Beverly Tierney, Ramona Newman</i>
Music	<i>Patricia Henry, Zelma Edwards, William Wagner</i>
School Life	<i>Barbara Questel, James Breece</i>
Dramatics	<i>Bruce Buckley</i>
Clubs	<i>Sarah McQuain, Mary Alice Schisler</i>
Ads	<i>Betty Justice, Rosemary Ison, Charles Hanshaw, Mignonne Addis</i>
Sponsor	<i>Miss Freda Burke</i>
Advisers	<i>Mrs. Margaret Yonovitz, Mr. William Baird</i>





Vocational Trades and Industries Building



Portsmouth High School





“Education is not a destination . . . It is a journey . . .





. . . . Always, we are en route”





★
★
★

**GRADUATING SENIORS
IN THE ARMED SERVICES**

★
★
★

Jesse Junior Hagaman

Samuel Allan Hancock

Lawrence Farrel Howard

George Arthur Irvin

John Dillon Monroe

Howard Bruce Pollitt

David Junior Ratcliff

John Melvin Stanley

Floyd Edward Thompson

This list is complete as of printing date.

★
★
★

★ ★ ★

★ ★ ★



MR. PERKINSON

Mr. W. Dennis Perkinson, is ending his fourth year as Superintendent of the Portsmouth city schools.

Prior to this he had taught at East High, was principal at Massie, and was a teacher and assistant principal at Portsmouth High School.

Mr. Perkinson attended Portsmouth schools and later received his B. S. degree from Ohio Northern and his M. A. at Ohio State. In World War I he served overseas with the Thirty-Seventh Division. His varied experience as a teacher in the school system has raised and will continue to raise the standards of Portsmouth schools.

SCHOOL BOARD

To a large extent, the schools of today will determine what the citizens of tomorrow will be. The responsibility of efficiently administrating the local school system has been given by law to the Board of Education. Surely no public endeavor requires more patience and common sense, greater wisdom and devotion to a cause than that of a school board member.

The members of the Portsmouth Board of Education have served faithfully and well and are to be highly commended.

(left to right) Mr. Arthur D. Lynn; Mr. Lawrence Daniels; Mr. Creighton C. Craigmiles; Dr. S. E. Moorhead; Mr. W. Dennis Perkinson, Superintendent of schools; Mr. Wesley Ridenour, Clerk-Treasurer; Mr. Carl Phipps.





MR. McKELVEY

Mr. Herbert W. McKelvey became principal of Portsmouth High School in the fall of 1944. He received his B. A. degree from Ohio University, his M. A. degree from Ohio State, and served in the Air Corps in World War I. Before coming to Portsmouth, Mr. McKelvey served as principal of junior high school for eight years and as Principal of Harvey Senior High School at Painesville, Ohio, for four years.

His genuine interest and sense of humor have already won a high place in the hearts of the students at Portsmouth High School.

MISS COLENE COX (left),
Secretary to Mr. McKelvey

MISS ALINE McKEEN (right),
Secretary to Mr. McKelvey

MISS THELMA HOPKINS (left),
Secretary to Mr. Perkinson

MISS HAZEL TONEY (right),
Secretary to Mr. Ridenour





MRS. COOKES

Dean of Girls, Mrs. Eleanor Cookes, was born in Portsmouth and received her B. S. degree from Ohio University. Mrs. Cookes has had extensive experience in teaching and school administration. Her duties as dean include acting as adviser for Girls' Senior Honor Council and the Girls' League, checking attendance of all girls, and personally calling upon unaccounted for absentees. She attends all social functions and supervises the completion of the weekly school calendar. Her cheerfulness and understanding are helpful to all girls in Portsmouth High School.

MR. SNOOK

When Mr. Ashbaugh left to become a Red Cross Field Director, the boys of Portsmouth High School were indeed fortunate to have as his successor, Mr. William Snook. After receiving his B. S. degree at Wilmington College, Mr. Snook did graduate work in psychology at Miami, Ohio University, and the University of Cincinnati. He was a teacher for four



years, Principal of Washington Township High School for seven years, and Principal of McDermott High School for five years. He advises boys on college work and proper courses, and is responsible for the attendance of the boys. His experience and sincere interest and understanding have proved most helpful to the boys of Portsmouth High School.

MR. ASHBAUGH

Former Dean of Boys, Rollin D. Ashbaugh, was born in Shawnee, Ohio. He obtained his B. S. degree from Ohio University and his M. A. degree from Ohio State University. During his career in Portsmouth he was principal of Wilson School before being transferred to Portsmouth High School. In January, 1945, he resigned his post to enter the Red Cross overseas service branch. His interest in student activities and his everpresent helpfulness inspired all Portsmouth High School boys.





Mr. Fred Multer,
Industrial Arts



Miss Genevieve Du Pre,
English



Mr. Robert Johnson,
Mathematics



*Miss Joanne Kugelman,
Home Economics*



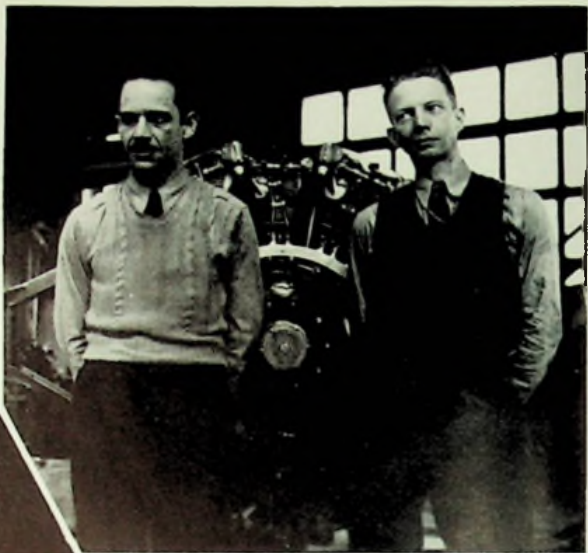
*Mr. Charles Lorentz,
Science*

*Miss Marie Trowbridge,
Mathematics*



*Mr. A. K. Wheeler,
Science*

*Mr. Eugene (left) and
Mr. Gerald (right) Knore,
Aeronautics*



*Miss Ruth Hazlebeck,
Mathematics*



*Miss Elizabeth Whitehouse,
English*

*Mrs. Margaret McGowan,
Music*





*Miss Edith Johnston,
History*



*Miss Margaret Ball,
Latin*



*Miss Mary Elizabeth Schwartz,
English*



*Miss Eleanor Ryan,
Commercial Subjects*



*Mr. Frank Pierson,
Mathematics*

*Miss Freda Burke,
History*



*Mrs. Nellie Niswonger,
Mathematics*

*Miss Margaret Anderson,
English*



*Mr. Willis Aleshire,
Band and Orchestra*

*Miss Isabel Musser,
English*

*Mr. Lowell Adams,
Science*

*Miss Caroline Mackoy,
Study Hall*





*Mr. John Cicanese,
Spanish*



*Mr. Ralph Cole,
Chemistry*



*Miss Helen Du Pre,
English*



*Miss Ruth Jones,
Commercial Subjects*

*Miss Caroline Friel,
Physical Education*



*Mr. William Baird,
Mechanical Drawing*

*Mrs. Margaret Yonovitz,
English*

*Miss Mary Krausz,
History*



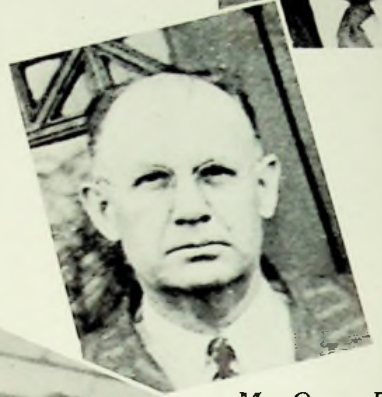


*Miss Florence Litman,
Commercial Subjects*

*Mr. Dent Rowson,
Machine Shop*



*Mr. Harold Whitlatch,
Coordinator of
Vocational Training*



*Mr. Owen Burkha
Machine Shop*



*Mr. Bert Leach,
Commercial Subjects*



*Mr. C. E. Schneider,
Automotive*



*Mr. Paul Walker,
Coach and Physical Education*



*Mr. F. B. McComb,
History*



*Miss Hazel Wyant,
Commercial Subjects*



*Miss Octavia Shinkle,
Home Economics*

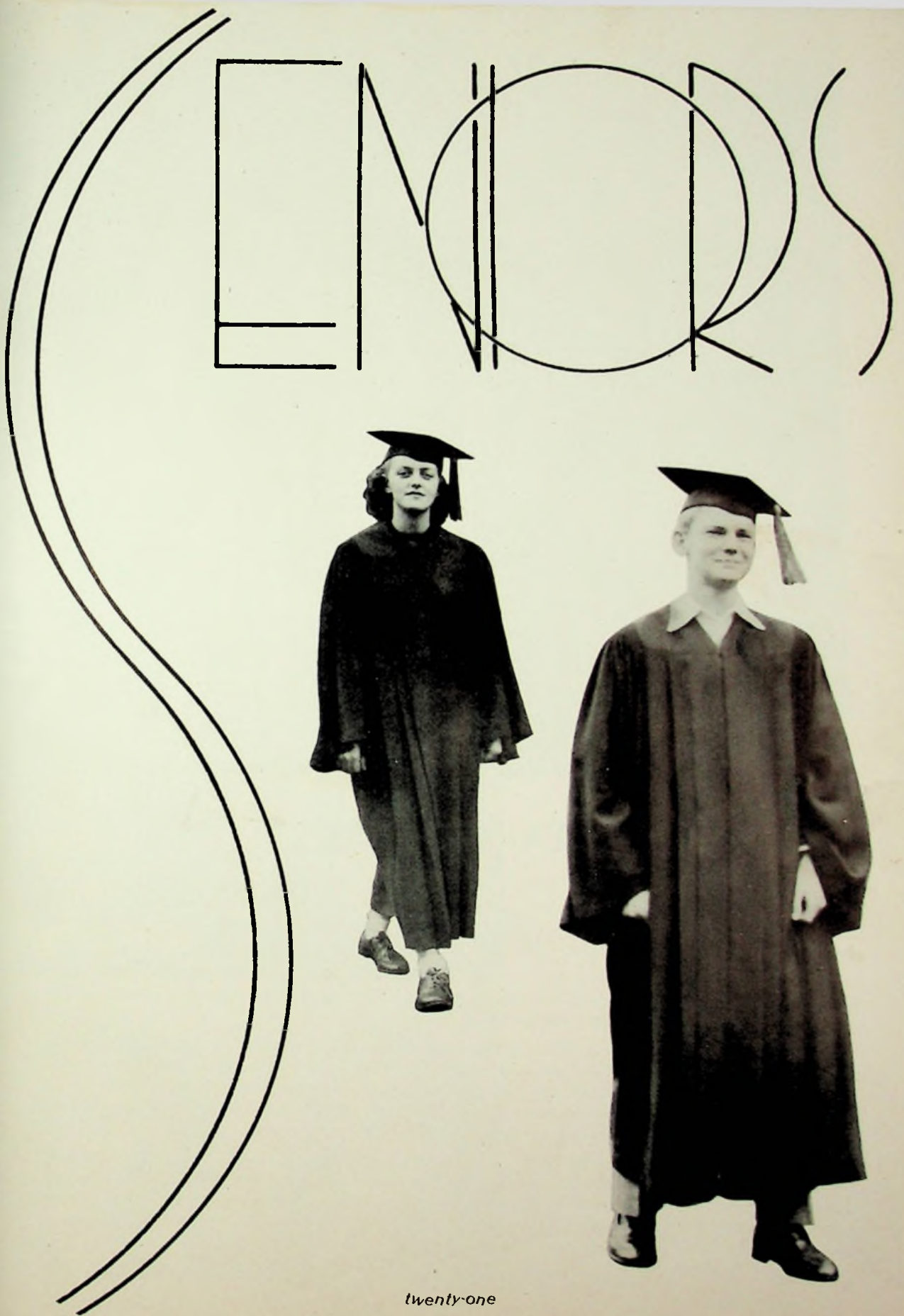


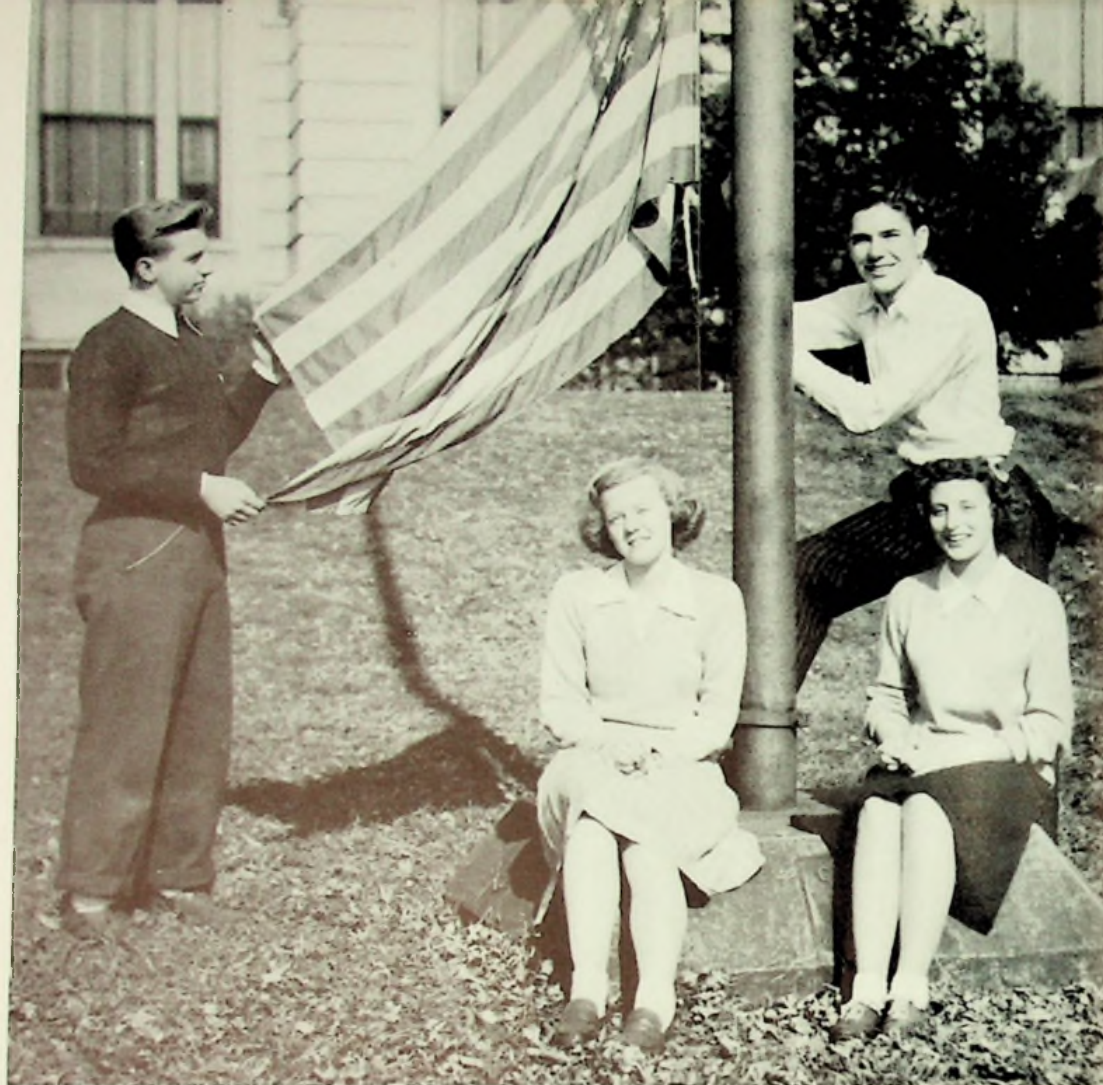
*Miss Anna Blazer,
Latin*



*Miss Goldie Jones,
History*

1
t
s
f





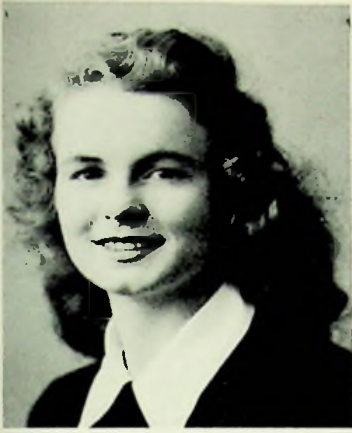
SENIOR CLASS

IN the fall of 1941 a group of "greenies" stumbled through the doors of their new home. Soon they chose their leader, Bob Gardner, and sponsor, Mr. Raymond Smith. After learning some of the tricks of the trade, they held the annual skating party and selected a squad of cheerleaders from their class.

The veterans of one year returned to their studies with the same enthusiasm. They were guided by Jim Fout, as president, and again by Mr. Smith, as sponsor. The year was brought to a triumphal climax with the sophomore dance.

As juniors, they were right on their tiptoes and really got a glimpse of what was in store for them in a year. These three-year-olds appeared before the footlights in their class play, "Suspense". Later, they sponsored a dance to raise money for the "big shindig". Their prom, under the chairmanship of George Ashley, was a huge success. Charles Smith led these juniors during the year, and Mr. Charles Lorentz did his duties as a sponsor.

And now, these noble creatures have passed the twelfth step on the ladder of education. Jim Cassidy, president; Norma Sainopulos, vice-president; Ann Miller, secretary; Richard Moore, treasurer; and Miss Octavia Shinkle and Miss Hazel Wyant, sponsors, were chosen at the beginning of the year. The graduates of '45 enjoyed their class play, prom, and commencement exercises. They definitely are on their way to victory in life.



Mignonne Addis

Inter Nos 1; Plus Ultra 2; Verse-makers 1; Spanish Club 3, 4; Chemistry Club 4; G. A. C. 2, 3, 4; Senior Honor Council 4; Glee Club 1, 2, 3; Choir 3; Trojan Staff 3, 4; "Oh, Doctor" 3; "Hollywood Bound" 2; Basketball 3; Hockey 1, 2, 3; Softball 2; Volleyball 3; Tennis 2; Ping-pong 2; Bowling 1, 2.

Carmita Archie

Junior Club.

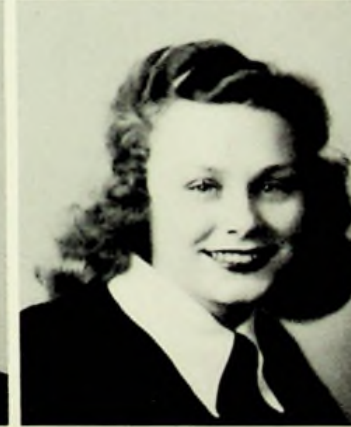


Lois Jean Adkins

Plus Ultra 3; Spanish Club 4; Library 2, 3; Glee Club 1.

Portia Archie

Junior Club.



Ruth Gertrude Albert

Inter Nos 1; English Club 1, 2; Spanish Club 3, 4; Chem. Club 4.

Rosabelle Arms

Commercial Club 1, 2, 3; Glee Club 2, Pres. 1; Choir 3.



Betty Louise Anderson

Betty Lamp Club 1, 2; Senior Honor Council 4; Hall Monitor 3, 4; Football Queen Attendant 3, 4; Bowling 1.

Virginia Louise Ashe

Inter Nos. 1; Plus Ultra 2; Spanish Club 3; Chemistry Club 4; Revelers 4; G. A. C. 3, 4; Basketball 1, 2, 4; Softball 1, 2, 4; Volleyball 2; Tennis 3; Bowling 1, 2, 3, 4.

George Ashley

Industrial Arts Club 1; Student Council Pres. 3; "Aunt Dinah's Quilting Party" 3; Basketball Manager 1, 2, 3; Prom Chairman 3.



Malcolm A. Bagby

Chemistry Club Pres. 4; Hall Monitor 3, 4; Senior Honor Council 4; "Aunt Dinah's Quilting Party" 3; Intramural Basketball 2.



Mary Jo Ashworth

Inter Nos 1; Plus Ultra 2; Commercial Club 1; Dean's Assistant 4; Hall Monitor 1; Basketball 2; Softball 1, 2; Volleyball 2; Bowling 1, 2.

Betty Jean Ball

Inter Nos 1; English Club 1; Chemistry Club 4; Commercial Club 1; Revelers 4; G. A. C. 2, 3, Manager 4; Library Club 3, 4; Varsity Basketball 2, 3; Basketball 1, 2, 3, 4; Hockey 1, 2, 3, 4; Softball 1, 2, 3, 4; Volleyball 1, 2, 3, 4; Tennis 3, 4; Paddle Tennis 3, 4; Archery 4; Ping-pong 3, 4; Bowling 1, 2, 3, 4; Badminton 3, 4.



Mary Anne Babcoch

Inter Nos 1; Plus Ultra 2; Spanish Club 3; Student Council Sec. 2; Secretary of Sophomore Class; G. A. C. 2, Sec. 3, Pres. 4; Cheerleader 1, 2, 3, 4; Basketball 1, 2, 4; Hockey 1, 2; Softball 1, 2, 4; Volleyball 1, 2; Bowling 1, 2.

Robert Ball

Charlotte Bachtrup

Inter Nos. 1; Plus Ultra 2; Spanish Club 3; National Honor 3, 4; Senior Honor Council 4; Chem. Club Sec. 4; G. A. C. 3, 4; Student Council 3; Hall Monitor 3.



Odessa Barrett

Junior Club 3; Glee Club 2, 4; Basketball 2; Volleyball 2.



Paula Bauer



Roy Benson



Mary E. Bazler

Washington High 1, 2; Hall Monitor 4; Glee Club 1, 2; Band 1, 2, 3; Orchestra 3; "Suspense" 3.



Constance Bloomer

Inter Nos 1; Plus Ultra 2; Hall Monitor 4; Softball 1; Bowling 1, 2.



Ann Bender



Aletha Bourholtzer

Inter Nos 1; Plus Ultra 2; Chemistry Club 4; G. A. C. 2, 3, 4; Hall Monitor 4; Girls' League Council 4; Hockey 1, 2, 3; Softball 1, 4; Volleyball 1; Bowling 1, 2, 3, 4.



Nancy Lee Bennett

Glee Club 2, 3; "Oh, Doctor" 3.



Richard Paige Bowen

Spanish Club 3; Chemistry Club 4; Hall Monitor 4; Glee Club 1; "H. M. S. Pinafore" 1.

Barbara Elisabeth Brandel

Inter Nos 1; Spanish Club 3, 4; Chem. Club 4; Revelers 4; Glee Club 1, 3; Orchestra 2, 3, 4.



Bruce Buckley

Spanish Club 4; Chem. Club 4; Revelers 4; Industrial Arts Club 1; National Honor 3, 4; Senior Honor 4; Student Council 4; Debate 4; Hall Monitor 4; Trojan Staff 3; Glee Club 1, 2, 3; Choir 2, 3, Pres. 4; Ensemble 3; "H. M. S. Pinafore" 1; "Hollywood Bound" 2; "Oh, Doctor" 3; "Suspense" 3; "Aunt Dinah's Quilting Party" 3; Stage Crew 3; Tumblers 1, 2.

Charles Richard Brannock

Band 1, 2, 3.



Raymond Buckley

Spanish Club 3; Newsclass 3; Glee Club 1; "Suspense" 3; "Wappin' Warf" 4; Football 1.

James E. Breece, Jr.

Class Vice-Pres. 1; Student Council 2; Trojan Staff 4; "Aunt Dinah's Quilting Party" 3; Basketball 1, 2.



Harold Byrd

Betty Jean Call

Commercial Club 1; Dean's Assistant 3; Hall Monitor 4.



Joyce Carson

Hall Monitor 3; Badminton 2.



Marjorie Call

Doris Louise Cartee

Chem. Club 4; Betty Lamp Club 1; Dean's Assistant 4.



Fay Callihan

Betty Lamp Club 1, 2; Senior Honor Council 4; Dean's Assistant 4; Trojan Staff 4; Bowling 1; Homecoming Queen 4.

James Julius Cassidy

Class Pres. 4; Inter Nos 1; Plus Ultra 2; Newsclass 3; Hall Monitor 4; "Aunt Dinah's Quilting Party" 3; Football 1, 4; Basketball 1, 2, 3, 4.



Betty Chancey

Chemistry Club 4.

Jean Clark

Washington Twp. High School 1, 2.



Wilma Church

Bette L. Clinebell

Library Club 3; Band 1, 2, 3, 4.

Betty Clark

Inter Nos 1; Spanish Club 3;
Senior Honor Council 4; Glee
Club 1, 2, 3; Choir 3.



Bettie Coburn

Glee Club 2, 3; Choir 3, 4;
Girls' Ensemble 3; "Oh, Doctor"
3.



Juanita Ruth Coburn

Inter Nos 1; Plus Ultra 2; G.A.C.
3, 4; Glee Club 2; Basketball 2,
3; Softball 1, 2, 3; Volleyball 1,
2, 3; Bowling 1, 2, 3, 4.

Diane Elaine Cox

Inter Nos 1; English Club 1;
Student Council 1; Glee Club 3,
4; "Oh, Doctor" 3.



Robert Louis Coburn

K. Merle Danner

Senior Honor 4; Dean's Assistant
4; Hall Monitor 2; Choir 2, 3;
Trojan Staff 4; "Hollywood
Bound" 2.

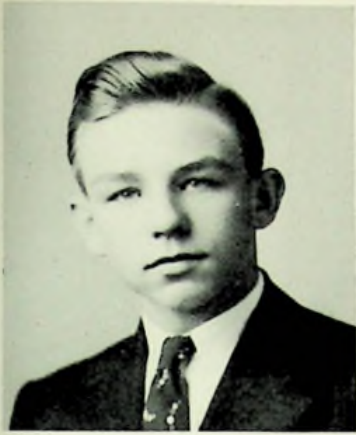


James Everett Coffee

Inter Nos 4; Spanish Club 4.

Mary Anne Darragh

Chemistry Club 4; Senior Honor
4; Dean's Assistant 4.



Harold Edward Coriell

Chemistry Club 4; Senior Honor
4; Band 1, 2, 3, 4.

Arthur Gerald Daulton

Chemistry Club 4.



Darlene Louise Davis

Inter Nos 1; English Club 2;
Softball 2; Bowling 2.

John Delabar



Anna Louise Day

Inter Nos 1; English Club 1, 2;
Spanish Club 3.

Vivian Jane DeLotelle

Glee Club 1, 2; Choir 1.



Dona Lou Day

Hall Monitor 3; Glee Club 1;
Softball 1, 2; Bowling 1.

Rita Dever

Virginia Mae DeBerrienne



Wilbur Doerr

Mary Louise Doherty

Inter Nos 1; English Club 1; Library 1, 2, 4; Revelers Club 4; Band 3, 4; "Suspense" 3.



Ruth Eastwood

Inter Nos 1; English Club 1; Senior Honor 4; Betty Lamp Club 1, 2; Dean's Assistant 4; Orchestra 1, 2, 3.

Phyllis Doll

Inter Nos 1; Plus Ultra 2; Softball 1, 2; Bowling 1.



Charles Egbert

Jeanne Dougherty

Inter Nos 1; Class Sec. 1; Basketball 1, 2, 4; Hockey 2, 3, 4; G. A. C. 2, 3, 4; Softball 1, 2, 3, 4; Bowling 1, 2; Cheerleading 1, 2, 3, 4.



Ray Eisnaugle

Hall Monitor 3, 4; Football 1, 2; Basketball 1, 2, 3, captain 4; Student Council Pres. 4; Glee Club 1, 2, 3; Choir 1, 2; "H. M. S. Pinafore" 1; "Hollywood Bound" 2; "Aunt Dinah's Quilting Party" 3.



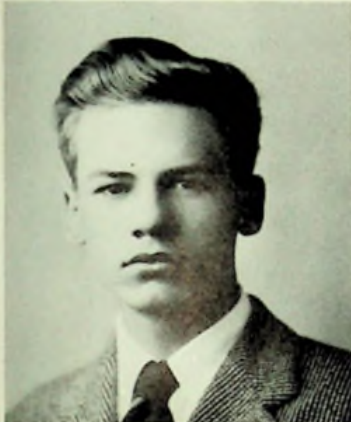
Gene Dunn

Plus Ultra 2, 3; Chem. Club 4; National Honor 3, 4; Senior Honor 4; Band 4; Newsclass 2, 3; Intramural Basketball 1, 2.



Betty Joanne Elliott

Spanish Club 3; Hall Monitor 3; Softball 1; Bowling 3.



James Bernie Estep

Glee Club 3; Band 1, 2, 3, 4; Orchestra 4; "Oh, Doctor" 3.



Wanda Oneita Foster

Inter Nos 3; Plus Ultra 4; Chem. Club 4; Hall Monitor 3, 4.



Allen Faris

Spanish Club 1; Intramural Basketball 2.



James E. Fout

Spanish 3, 4; Chemistry Club 4; Senior Honor Pres. 4; Student Council 1, 2, 4; Football 1, 3, Co-captain 4; "Aunt Dinah's Quilting Parry" 3; Class Pres. 2.



Harold Lloyd Fields

National Honor 3, 4; Senior Honor 4; Choir 1, 3; Band 2, 3, 4; Orchestra 4; "Oh, Doctor" 3.

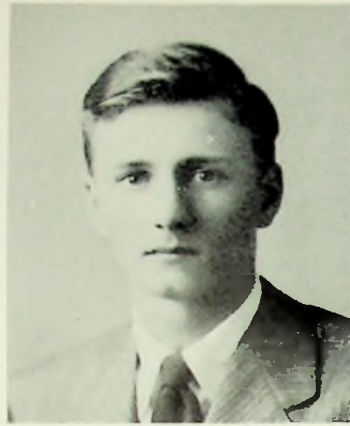


Robert William Frazier

Inter Nos 1; Plus Ultra 2; Spanish Club 3; Chemistry Club 4; National Honor 3, Treasurer 4; Senior Honor 4; Band 1, 2, 3, 4; Orchestra 2, 3, 4.

John Gall

Student Council 3; Band 1, 2, 3;
Orchestra 3; Trojan Staff 4;
"Aunt Dinah's Quilting Party" 3.



Lorraine Gillispie

Darlene Gardner

Glee Club 1, 2, 3, 4.



Mary Alice Grashel

Betty Ruth Gerard

Marvin Griffin

Student Council 2; Glee Club 1,
2; "Hollywood Bound" 2; Foot-
ball 3, 4.



Juanita Griffith

Glee Club 2, 3, 4; Choir 4; "Oh,
Doctor" 3.



Betty Haas

Nos 1; Plus Ultra 2; En-
glish Club 1, 2; Dean's Assistant
4; Hall Monitor 4; Volleyball 1,
2; Softball 1; Bowling 1.

1
ti
S
J



Clara Jean Guilkey

Jesse Hagaman

Band 1, 2, 3, 4; Hall Monitor 3.



Carl Edward Gulley

Areta B. Hager



Samuel Hancock

Drum Major 4.

Warren Calvin Hartz

Band 1, 2, 3.



Charles Ernest Hanshaw

Spanish Club 3, 4; Chem. Club 4; Revelers 4; Senior Honor 4; Trojan Staff 4; Debate Team 4; Hall Monitor 3, 4; Choir 1, 2; "H. M. S. Pinafore" 1; "Hollywood Bound" 2.

Eugene R. Heath

Spanish Club 1, 2.

Barbarann Harris

Inter Nos 1; Plus Ultra 2; G. A. C. 3, 4; National Honor 3, 4; Senior Honor 4; Student Council 3; Coach's Office 4; Trojan Staff 4; Softball 1, 2; Bowling 1, 2; Cheerleader 1, 2, 3, 4; Homecoming Queen's Attendant 4.



Patricia Grace Henry

Inter Nos 1; Plus Ultra 2; Spanish Club 3, 4; Chemistry Club 4; Revelers 4; Trojan Staff 4; Glee Club 2; Basketball 2; Softball 2, 3; Bowling 4.



John E. Hart

Norma Elaine Henson

Inter Nos 1; Plus Ultra 2; English Club 1; Spanish Club 3, 4; Chem. Club 4; Debate Club 4; Revelers 4; Senior Honor 4; National Honor 3, 4; Newsclass 2, 3; Trojan Staff 4; Glee Club 2; Hall Monitor 3; "Oh, Doctor" 3; "Suspense" 3.



Patricia Ann Hiatt

Spanish Club 3, 4; Chem. Club 4; Glee Club pres. 3; Orchestra 3, 4; Girls' League Council 4; Softball 1.

Dorothy Jayne Hobstetter

Inter Nos 1; Plus Ultra 3; Chem. Club 4; Senior Honor 4; Student Council 2, 3.



Betty Hicks

Inter Nos 1; Plus Ultra 2; Spanish Club 3, 4; Softball 1; Bowling 1, 2.

Joyce Marie Hollon

Waycross High School 1, 2, 3; Spanish Club 4.



Izetta Mae Hicks

Library 4.



Richard E. Hopkins, Jr.

Inter Nos 1; Plus Ultra 2; Hall Monitor 2, 3; Spanish Club 3, 4; Class Treas. 1; Basketball 1, 2, 3, 4.



Ralph Hill

Inter Nos 1; Plus Ultra 2, 3, 4; Chem. Club 4; Debate 4; Library Club 3; Glee Club 1; Hall Monitor 4; "H. M. S. Pinafore" 1.



William Alfred Hopkins, Jr.

Spanish Club 3; Chem. Club 4; Hall Monitor 3; Trojan Staff 4.



Janet Hoskins

Spanish Club 1, 2; Hall Monitor 4; Revelers 4; Debate 4; G. A. C. 3, 4; Basketball 1, 2; Bowling 1, 2; Softball 1, 2, 3; Tennis 2; Glee Club 1, 2, 3, 4; Choir 3, 4; "H. M. S. Pinafore" 1 "Hollywood Bound" 2; "Oh, Doctor" 3; "Suspense" 3.



Peggy Jackson

Glee Club 1, 2, 3, 4.



Charles Huffman

Industrial Arts 1.



Joyce Jefferson

Basketball 2; Glee Club 2, Pres. 4; Junior Club, V. Pres. 3.

George Arthur Irvin



Marie Jenkins

McDermott 1.

Rosemary Ison

Senior Honor 4; Library 2;
Dean's Office 3, 4; Glee Club 1.



Marilyn Jean Jenkins

Wheelerburg High School 2.

Betty Jane Johnson

Junior Club 3, Pres.



Mary Elizabeth Johnson

Faye Aileen Johnson

Hall Monitor 4.



Nancy Heron Johnson

Inter Nos 1; Spanish Club 3;
G. A. C. 3, 4; Trojan Staff 4;
Softball 1, 2; Volleyball 1, 2, 3,
4; Tennis 2; Bowling 1, 2.



Glorine Johnson

Junior Club 3; Glee Club 4.



Emma Jean Jones

Inter Nos 1; Senior Honor Council 4; Dean's Assistant 4.



Frances Lee Judd

Spanish Club 2; Senior Honor Council 4; Hall Monitor 4; Hockey 2; Bowling 1.



Truman Edward Kline

Senior Honor Council 4; Hall Monitor 3, 4; Volleyball 2.



Betty Justice

English Club 1; Spanish Club 3; Hall Monitor 3; Trojan Staff 4; Glee Club 1; "Don Alonso's Treasure" 1.



Norman Gene Laker

Pre-Service Club 4.



David M. Kendall

Industrial Arts Club 1; Stage Crew 2.



Winifred La Rue

English Club 1, 2; Volleyball 2, 3; Basketball 2, 3.

Joan Lawson

G. A. C. 3, 4; Senior Honor Council 4; Glee Club 1, 2, 3, 4; Choir 3, 4; Girls' Ensemble 2, 3, 4; "H. M. S. Pinafore" 1; "Oh, Doctor" 2; "Hollywood Bound" 3; Softball 1, 2, 3; Bowling 1, 2.



Ethel Lester

Library Club 2, 3, 4, Sec. 4.

Laura Lehman

G. A. C. 2, 3, 4.



Gloria Jean Lewis

Chemistry Club 4; Dramatics Club 4; Volleyball 3.

Imogene Leightenheimer

Inter Nos 1; Plus Ultra 2; English Club 1, 2; Dean's Assistant 4; Library Club 4, V. Pres. 4; Band 1, 2, 3, 4; B-Sharp Club 3, 4.



Henry E. Lewis

Industrial Arts Club 1; Softball 1; Volleyball 2, 3; Stage Crew 2, 3.

Pearline Lisath

Glee Club, Sec. 3; Junior Club, Treas.



Jean Martin

English Club 1; Chem. Club 4.

1
t
S
J



Martha Jane List

Inter Nos 1; Spanish Club 2; G. A. C. 3, 4; Glee Club 1, 2, 3, 4; Choir 3, 4; "Hollywood Bound" 2; "Oh, Doctor" 3; "Forest Prince" 4.



Sarah McQuain

Inter Nos 1; Plus Ultra 2, 3, 4; Chem. Club 4; English Club 1, 2; Orchestra 1, 2, 3, 4; B-Sharp Club 3, 4; Debate 4; Trojan Staff 4; National Honor 3, 4; G. A. C. 3; Softball 1, 2; Bowling 1, 2.



Janet Louise Little

Spanish Club 1, 2; English Club 2, 3; Library Club 3, 4; Queen's Attendant 4.



Lovell Lee Meadows

Inter Nos 1; Plus Ultra 2; Hall Monitor 3; Basketball 2, 3, 4.



Eugene Looney

Industrial Arts 1; Stage Crew 3; Volleyball 2; "Aunt Dinah's Quilting Party" 3.



Barbara Ann Melvin

Glee Club, V. Pres. 2; Junior Club, Sec.



Patricia Merrill

Ironton High 1, 2, 3; Spanish Club 4; Revelers Club 4; Trojan Staff 4; Volleyball 4.



John Dillon Monroe

"Aunt Dinah's Quilting Party" 3.

Ann Louise Miller

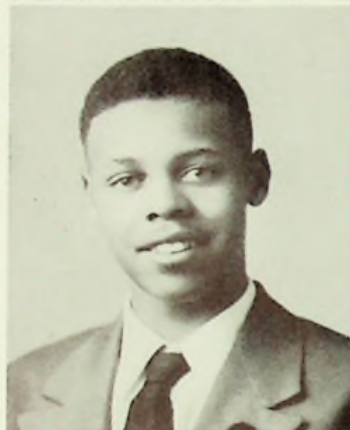
English Club 1, 2; Spanish Club 1, 2; Glee Club 1, 2, 3, 4; Class Sec. 4; Choir 4; "Hollywood Bound" 2; "Oh, Doctor" 3; "Forest Prince" 4; Basketball 1.



Mildred Moore

Betty Lamp Club 1; Glee Club 1, 2, 3; Choir 3, 4; "H. M. S. Pinafore" 1; "Hollywood Bound" 2; "Oh, Doctor" 3; Softball 1, 2; Bowling 1, 2.

Benjamin Miller



Richard F. Moore

Inter Nos. 1; Plus Ultra 2, 4, Co-Pres. 3; Eng. Club 1; Chem. Club Treas. 4; Debate Club 4; Student Council 4; Hall Monitor 3; Senior Honor Sec.; National Honor 3, Pres. 4; Newsclass 2, 3; Trojan Co-Editor 4; Class Treas. 4; "Aunt Dinah's Quilting Party" 3; Football 1; Intramural Basketball 1; Intramural Softball 1; Intramural Paddle Tennis 3; Intramural Table Tennis 3; Volleyball 3.

Paul Dee Mitchell

Inter Nos 1; Student Council 2, 4; Newsclass 3; Senior Honor 4; Hall Monitor 3; Volleyball 3.



Marjorie E. Moree

Senior Honor; Glee Club 4; Choir 4; Band 1; Orchestra 1, 2; Ensemble 4; Softball 2, 3; Bowling 2, 3.

Jane Murfin

Inter Nos 1; Hockey 1; Softball 1, 2; Bowling 1, 2.



Lulu Etta Neff

Inter Nos 1.



Judy Lee Murfin

Inter Nos 1; Plus Ultra 2; Library Club Pres. 3; Library Staff 1, 2, 3; Spanish Club 3; Hall Monitor 4; G. A. C. 3, 4; Hockey 4; Tennis 2; Softball 1, 2, 4; Bowling 1, 2, 3, 4.

Frances Newman

Spanish Club 3; Hall Monitor 4; G. A. C. 3, 4; Tennis 2; Softball 1, 2, 4; Bowling 1, 2, 3, 4.



James David Murphy

Inter Nos 1; Plus Ultra 2; Spanish Club 3, 4; Band 1, 2, 3, 4; Orchestra 1, 3, 4; Intramural Basketball 2.

Romona Charlotte Newman

Inter Nos 1; Plus Ultra 2; Spanish Club 3; Senior Honor 4; Girls League Council Sec. 3; Trojan Staff 4; G. A. C. 3, 4; Basketball 2, 4; Hockey 1, 2, 4; Volleyball 2, 3; Softball 2, 3; Bowling 1, 2; Cheerleader 1, 2, 3, 4; Homecoming Queen 3.



Betty Mae Neal

Library Club 1; Hockey 1; Softball 1, 2; Volleyball 1; Drum Majorette 4.

Thomas R. O'Connor

"Aunt Dinah's Quilting Party" 3; University of Notre Dame 4.



Thomas Orth

Industrial Arts 1; Student Council 1.

Wanda Parlin

Betty Irene Page



Kathleen Patterson

Inter Nos 1; G. A. C. 3; Glee Club 1; Softball 1, 2; Volleyball 1, 2; Tennis 2, 3; Bowling 1, 2.

Regins Parker

Hall Monitor 3.



Tom Philburn

Spanish Club 1; Hall Monitor 2; Football 3, 4.

Lucy Tanner Phillips

Spanish Club 3; Glee Club 3; Basketball 2; Hockey 2; Volleyball 3.



Jack Plymale

Inter Nos 1; Plus Ultra 2; Chem. Club 4; Hall Monitor 4; Intramural Softball 1; "H. M. S. Pinafore" 1; "Hollywood Bound" 2; "Oh, Doctor" 3; "Aunt Dinah's Quilting Parry" 3; Football 2, 3, 4.

Edna Pitts



Howard Pollitt

Hall Monitor 4; Intramural Basketball 1, 2, 3; Basketball Mgr. 4; Intramural Softball 1; Football 1, 2, 3, 4.



Bill Pixley

Industrial Arts 1; Intramural Basketball 2; Stage Crew 3; Pre-Service Club 4.

Bob Powell

Chem. Club 4; Band 1, 2, 3, 4; Orchestra 2, 4, V. Pres. 3.



Robert Prather

Glee Club 2; Choir 3, 4; "Hollywood Bound" 2; "Oh, Doctor" 3; Intramural Basketball 3; Intramural Softball 1, 2; Football 1.

Barbara Questel

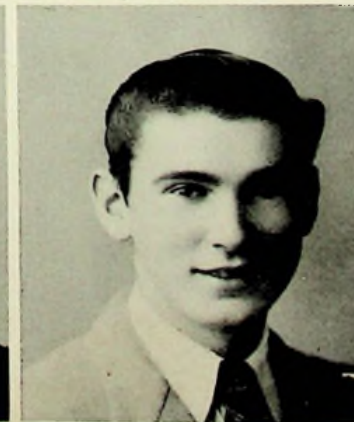
Inter Nos 1; Plus Ultra 2; G.A.C. 2, 3, 4; Senior Honor Council; Student Council 2; Class Sec. 3; Trojan Staff 4; Basketball 1, 2; Softball 1, 2, 4; Volleyball 1, 2, 3, 4; Intramural Volleyball 2; Bowling 1, 2; Cheerleader 1, 2, 3, 4.



Billie Pridemore

Spanish Club 2; Hall Monitor 2.

Phyllis Marie Raike



Marilyn Purdum

Inter Nos 1; Plus Ultra 2; Spanish Club 3, 4; G.A.C. 3, 4; Basketball 3; Softball 1, 2, 3; Volleyball 2, 3, 4; Bowling 1, 2, 3, 4; Badminton 3.

Forrest R. Ratcliffe

Spanish Club 1; Glee Club 2; Cheerleader 1, 2, 3.

Genevieve Reeg

G. A. C. 1; Basketball 1, 2, 3;
Softball 1.



Richard Riehl

Washington Twp. High School
1, 2; Spanish Club 3; Revelers
4; Hall Monitor 3; "Suspense" 3.

Paul Edward Reeg

Spanish Club 2; Chem. Club 2;
Debate 4; Senior Honor Council
4; Trojan Staff 4.



Herman Elmer Rigley

Chem. Club 4; Orchestra 2, 3, 4;
Football Mgr. 1, 2, 3.

Marilyn Pauline Revare

Inter Nos 1; Plus Ultra 2; G. A.
C. 3; Library Club 3; Glee Club
1; Band 2, 3, 4; Orchestra 3;
B-Sharp Club 3, 4; Hockey 1, 2;
Softball 1, 2; Volleyball 3; Bowl-
ing 1.



Helen Lucille Roberts

Spanish Club 1, 2; Softball 2.

Thelma Jean Richey

Inter Nos 4.



Eunice Marie Robertson

Glee Club 2, 3; Choir 4; "Oh,
Doctor" 3.



Eunice Ross

Spanish Club 1.

Leonard Scaggs



Alice Virginia Royal

Glee Club 1.

Julia Jane Schlichter

Verse-makers 1; Spanish Club 1, 2; Senior Honor Council 4; Hall Monitor 4; Glee Club 1, 2, 3, 4; Choir 3, 4; Girls' Ensemble 3, 4; "Hollywood Bound" 2; "Oh, Doctor" 3; "Forest Prince" 4.



John Sagraves

Industrial Arts Club 1, "Aunt Dinah's Quilting Party" 3; Intramural Basketball 2, 3.

Franklyn H. Schmidt, Jr.



Norma Sainopulos

Class V. Pres. 4; Senior Honor Council 4; Hall Monitor 4; Glee Club 1, 2, 3, 4, Pres. 4; Choir 3, Treas. 4; Girls' Ensemble 3, 4; "Hollywood Bound" 2; "Oh, Doctor" 3; "Forest Prince" 4.

Peggy Le Monne Schneller

Lois Jean Scott

Inter Nos 1; Plus Ultra 2; English Club 1, 2; Basketball 1; Softball 1; Bowling 1.



Helen Louise Slusher

Clay Twp. High School 1, 2, 3.

June Scott

Junior Club 3; Glee Club 2, 4; Basketball 2; Volleyball 2.



Virginia Marie Slusher

Clay Twp. High School 1, 2, 3.

Oral Davis Scott

Inter Nos 1; English Club 1, 2.



Horace Small

Inter Nos 1; Plus Ultra 2; "Oh, Doctor" 3; "Aunt Dinah's Quilting Party" 3.

Edith Seiler

Softball 2.



Charles E. Smith

Class Pres. 3; Inter Nos 1; Plus Ultra 2, 3; "Suspense" 3; "Aunt Dinah's Quilting Party" 4.

S
e
i
l
e
r
S
t
r
o
n
g



Marthalee Smith

Inter Nos 1; Plus Ultra 2; English Club 2; Chem. Club 4; Revelers 4; G. A. C. 2, 3, 4; Glee Club 1, 2, 3; Choir 2, 3, 4; Trojan Staff 3; "Oh, Doctor" 3; "Hollywood Bound" 2; "Suspense" 3; Basketball 1, 2, 3, 4; Softball 1, 3, 4; Tennis 2.

Charlene Snyder

Spanish Club 1; Dean's Assistant 4; Basketball 1, 2; Softball 1; Volleyball 1; Bowling 1, 2.



Sara Elizabeth Smith

Spanish Club 1, 2; Basketball 1; Softball 1.

Robert Snyder

Inter Nos 1; Spanish Club 3; Basketball 1, 2, 3, 4; Football 4.



Julia Snook

Inter Nos 1; Plus Ultra 2; English Club 1, 2; Spanish Club 3, 4; Chem. Club 4; V. Pres. 4; Revelers 4; Treas. 4; G. A. C. 2, 3, 4; National Honor 3, 4; Senior Honor Council 4; Hall Monitor 3; Vice President 4; "H. M. S. Pinafore" 1; "Oh, Doctor" 3; "Hollywood Bound" 2; Basketball 2, 3; Hockey 1, 2, 3; Softball 1, 2, 3; Volleyball 3; Archery 3, 4; Bowling 1.

Loraine Sparks



Jeannette Spencer

Betty Lamp Club 1, 2; Glee Club 2; Softball 1, 2; Bowling 1.

John Stanley

Chem. Club 4; Junior Club 3; Hall Monitor 3.

Jacquetta Staiger

Spanish Club 1; G. A. C. 4; Trojan Staff 3; Basketball 1, 2, 3; Hockey 2, 3; Softball 2; Volleyball 1; Tennis 1; Bowling 1, 2, 3.



Roger Leroy Staten

Jacquelin Ann Staker

Inter Nos 1; Plus Ultra 2; Chem. Club 4; Revelers 4, Sec. 4; Debate 4; G. A. C. 2, 3, 4; National Honor 3, 4, V. Pres. 4; Senior Honor Council 3, 4, Pres. 4; Student Council 1, 4; Newsclass 3; Glee Club 1, 2; Choir 3; Trojan Staff 4; "H. M. S. Pinafore" 1; "Oh, Doctor" 3; "Suspense" 3; Basketball 1, 2, 3; Softball 1, 3; Volleyball 1, 2, 3; Tennis 1; Paddle Tennis 2; Bowling 1, 2.



Walter Sullens

Betty Louise Suter

Inter Nos 1; Plus Ultra 2; Spanish Club 3; Glee Club 2, 3, 4; "Oh, Doctor" 3.



Floyd Thompson

Student Council 4; Hall Monitor 3; "Aunt Dinah's Quilting Party" 3; Varsity Football 3, 4; Intramural Basketball 2, 3, 4.

Joyce Taylor

Spanish Club 1, 2; Senior Honor Council 4; Student Council 1, 2; Hall Monitor 4; Bowling 1, 2.



Rosanne Thornton

Spanish Club 2; Revelers 4; Glee Club 1, 2, 3, 4; Choir 2, 3, 4; "Oh, Doctor" 3; "Hollywood Bound" 2; "Suspense" 3; Basketball 1; Hockey 1; Softball 1; Bowling 1, 2.



Walter Thimmes

Intramural Basketball 1, 2, 3, 4;
Freshman Football.



Rosemary Thurman

Hall Monitor 4; Band 2, 3.



Beverly Tierney

Inter Nos. 1; Plus Ultra 2; Spanish Club 3; G. A. C. 3, 4; Senior Honor; Student Council 2, V. Pres. 4; Trojan Staff 4; Basketball 2; Hockey 1, 2, 4; Softball 1, 2, 3; Volleyball 2, 4; Tennis 2; Bowling 1, 2; Girls' League, V. Pres. 4; Cheerleader 1, 2, 3, 4.



Roger Lee Vogel

Chem. Club 4; Revelers 4; Glee Club 1, 2, 3; Choir 1, 3, 4; "H. M. S. Pinafore" 1; "Hollywood Bound" 2; "Oh, Doctor" 3.



Ruth Tubbs

Glee Club 2, 4; Junior Club 3; Basketball 2; Volleyball 2.



William H. Wagner

Senior Honor; Choir 3; Band 1, 2, 3, 4; Orchestra 1, 2, 3, 4; Trojan Staff 4; "Aunt Dinah's Quilting Party" 3.



Roger B. Turrell

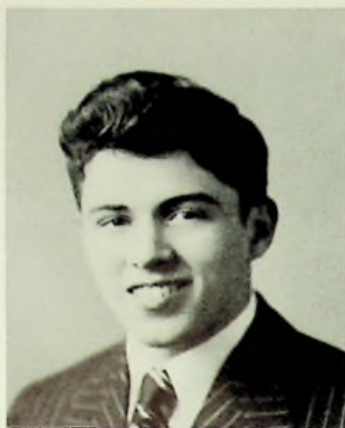
Chem. Club 4; Band 1, 2, 3; Orchestra 1, 2, 3; "Suspense" 3.



Bonnie Lou Walbright

Inter Nos 1; Plus Ultra 2; Hall Monitor 3; Softball 1; Bowling 1, 2.

James Varner

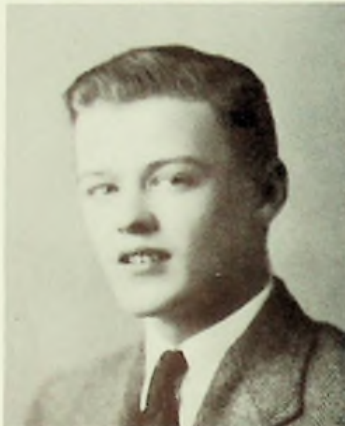


Glenn Edward Walker

Inter Nos 1; Class Treas. 3.

Walter Walters

"Aunt Dinah's Quilting Party" 3;
Chemistry Club 4.



Lois Webb

G. A. C. 3, 4; Basketball 1, 3;
Softball 1; Bowling 1.

George Wartsbaugh



Barbara Jane Wedebrook

English Club 1, 2; Glee Club 1,
2, 3; Choir 3, 4; "Hollywood
Bound" 2; "Oh, Doctor" 3.

**Rosetta Patricia
Washington**

Inter Nos 1; Plus Ultra 2, 3;
Chem. Club 4; Debate 4; Arch-
ery 4; Junior Club.



Marvin H. Whiteside

Inter Nos 1; Plus Ultra 2; Span-
ish Club 3; Revelers 4; Glee
Club 1, 2, 3; Choir 3, 4; "H. M.
S. Pinafore" 1; "Hollywood
Bound" 2; "Oh, Doctor" 3; "Sus-
pense" 3.

S
E
th
si
A



Aileen Webb



Phyllis Winebrenner



Norma Jean Woods



Stephen Yeagle

Hall Monitor 1; "Aunt Dinah's Quilting Party" 3; Intramural Basketball 2, 3, 4; Football 1, 2, 3, Co-Captain 4.



Patricia Yuenger

Inter Nos 1; Plus Ultra 2; English Club 1; Glee Club 1, 2.



THE 1945 TROJAN INTRODUCES
THE JUNIOR CLASS



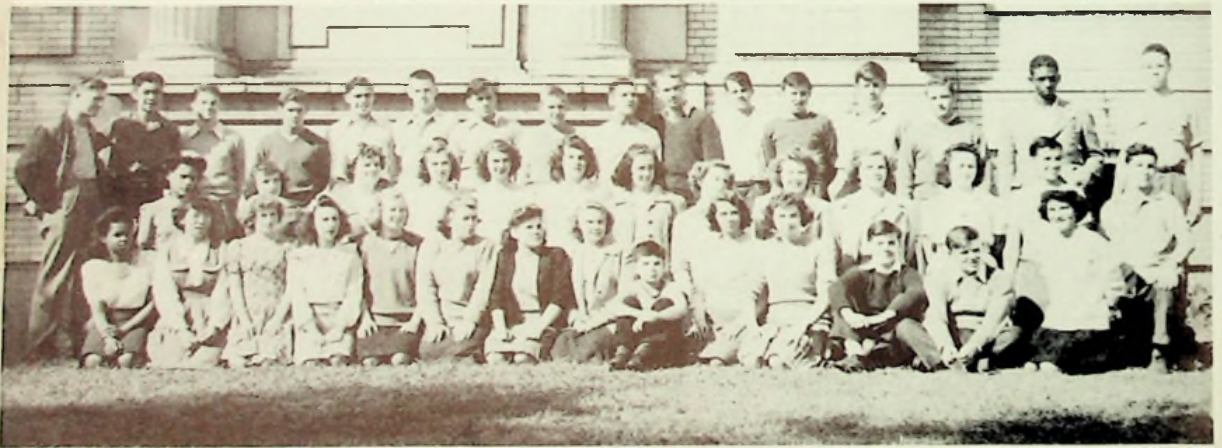


JUNIOR CLASS

THE class of '46 has already proved that it has brains, beauties, talent, and leaders. As freshmen, they chose Jack Hughes, president; Martha Apel, vice-president; Mary Alice Schisler, secretary; and Jane Lloyd, treasurer. Class sponsor was Miss Anna Blazer.

Gene Myers, Jackie Daniels, Judy Pratt, and Eleanor McClure were the officers elected in their second year, with Miss Blazer again sponsoring the class. Several good athletes were making their way to the top, not to mention the addition of Betty Handley and Jackie Daniels to the cheerleading squad.

With the class play over; the juniors began a magazine subscription drive in an effort to raise more money for the junior-senior prom. Officers serving this year were Harry Chastain, president; Billie Ross, vice-president; Maurine McCulloch, secretary; and Jackie Daniels, treasurer. Miss Elizabeth Whitehouse was the sponsor this year.



HOMEROOM 203

First Row: S. Andre, R. Carr, R. Campbell, R. Barker, G. Burke, C. Boyle, R. Burns, P. Bradford, I. Besco, E. Carter, J. Arms.
Second Row: A. Ball, R. Baird, M. Chabot, P. Alls, R. Asche, F. Bays, H. Campbell, B. Campbell, A. Arganbright, G. Bertram, N. Brown, M. Appel, A. Bemse. *Third Row:* C. Campbell, R. Addis, F. Butt, H. Armsey, D. Barney, L. Adkins, D. Ball, D. Benner, F. Boyle, R. Book, D. Burkhardt, C. Callihan, D. Andrews, W. Brickey.

HOMEROOM 205

First Row: B. Doerr, D. Clausing, G. Evans, B. Downing, W. Donathon, D. Doley, E. Conley, I. Fannin, A. Elliot. *Second Row:* J. Edgington, D. Claypool, B. Donahoe, R. Donathon, Z. Edwards, C. Dever, M. Chapman, N. Eba, V. Cook. *Third Row:* N. Fenner, M. Duis, J. Crawford, J. Daniels, J. Fields, S. Combs, D. Delaney, H. Chastain, C. Cockrel, J. Cooper. *Fourth Row:* E. Collins, D. Craig, B. Coleman, W. Daulton, T. Collins, J. Eisnaugle, G. Eubanks, M. Duncan, M. Chucales.

HOMEROOM 205

First Row: P. Harris, L. Gin, M. Giles, B. Handley, A. Harper, W. Fugitt, M. Howard, J. Hogan, W. Harris, E. Hawthorne, J. Harrison, J. Criswell, C. Fultz, R. Taylor. *Second Row:* D. Gibson, M. Hicks, R. Hedrick, E. Haws, M. Frecka, J. Harris, M. Harrison, P. Guilkey, B. Holt, J. Hensge, E. Hamphill, E. Donathon, B. Farr. *Third Row:* J. Ford, C. Harwood, J. Holcomb, P. Howe, F. Dinsmore, D. Craig, D. Howard, R. Hicks, L. Elliott, R. Gibbs, T. Harrison, D. Craycraft, J. Hamilton, W. Galloway, W. Gentry, G. Harris.

HOMEROOM 206

First Row: H. Keibler, T. Luckey, C. Killen, I. Irwin, B. Lawrance, E. McClure, J. Lloyd, B. Ivers, P. Lowe. *Second Row:* F. King, I. Hubbard, M. Hunter, L. Leach, A. Howes, M. McCulloch, R. Lewis, B. Lipker, D. Lathrop, B. Lair. *Third Row:* G. Kah, A. Jefferson, C. Locher, D. Knittel, J. Hughes, S. Johnson, R. Kiser, K. Lewis, C. Litteral, E. Lucas, J. Irwin

HOMEROOM 207

First Row: J. Mathews, B. Moore, K. McMillan, B. Newman, J. Martin, J. Moritz, R. Manley, N. Perry, K. Marshall, H. Melvin. *Second Row:* B. Maze, N. Middlecamp, M. Midkiff, E. Morgan, M. Marcum, M. Maddy, B. Morris, H. Pherson, F. Philburn, N. McGill, G. Myers. *Third Row:* D. McLaughlin, C. McGoron, R. Pelfrey, J. Neikirk, H. Miclethwaite, A. Middendorf, W. Phillips, G. Marsh, L. Peters, R. Parks, E. McHenry.

HOMEROOM 210

First Row: P. Rayburn, N. Rollins, B. Rice, C. Rice, J. Pleasant, E. Pridemore, B. Pyle, P. Phipps. *Second Row:* V. Potter, V. Riggs, R. Ragan, W. Redding, F. Quinn, J. Pratt, J. Rammel, S. Riggs. *Third Row:* J. Reid, W. Riggs, C. Rapalee, J. Rayburn, C. Richter, D. Rice, G. Roberts, C. Riley, W. Robinson.





HOMEROOM 211

First Row: J. Smith, J. Smith, R. Smith, P. Stokes, M. Stewart, B. Schott, D. Skidmore, G. Roush, E. Swavel, K. Shepherd. *Second Row:* B. Shockley, M. Salisbury, S. Schroeder, J. Scott, M. Schisler, D. Shultz, W. Staten, E. Rudiry, V. Salyer. *Third Row:* B. Smith, C. Rose, D. Smith, J. Russell, M. Skaggs, S. Segur, B. Rose. *Fourth Row:* S. Runyan, C. Snedecor, J. Scott, J. Setty, R. Sparks, D. Salsbury, D. Spriggs.

HOMEROOM 212

First Row: B. Yaeger, J. White, D. Young, I. Winters, S. Watkins, L. Williams, J. Vinson, M. White, R. White, M. Tisher. *Second Row:* M. Thompson, V. White, M. Terry, M. Winters, E. Vest, E. Thompson, D. Tracy, E. Young, B. Winters, L. Yeager, J. Woodrum, M. Tubbs. *Third Row:* T. Taylor, D. Wagner, M. Williamson, G. Webb, R. Williams, J. Webb, H. Wolery, C. Thompson, D. Yuenger, M. Williams.



**THE 1945 TROJAN INTRODUCES
THE SOPHOMORE CLASS**





SOPHOMORE CLASS

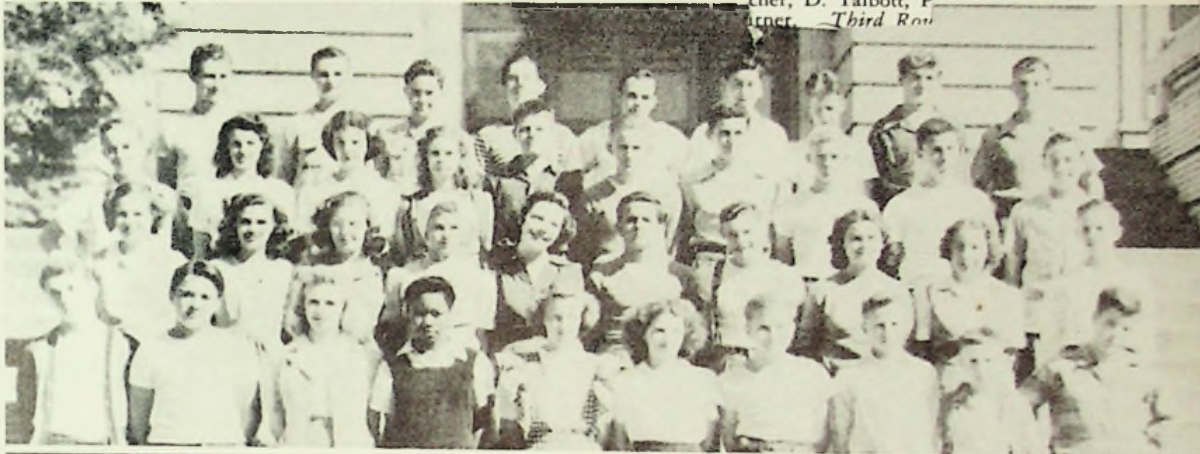
THE sophomores chose Jim Noel, Cynthia Edwards, Sarah Dupuy, and Carolyn Dill to lead them in their initial year in Portsmouth High School. After several "mixers" the class of '47 became well organized and began making plans for a skating party. As always the annual affair was highly successful. Miss Genevieve Dupre was their sponsor.

Dave Thomas made his classmates swell with pride by his all around good playing on the varsity football team. Janet Martin, Margaret Lega, Sarah Dupuy, and Cynthia Edwards added plenty of pep to the cheering section. Dick Nettles served as president this year, and Cynthia Edwards was again vice-president. Mary Lou Elkins and John Fisher were the other officers. Class sponsor was Miss Marie Trowbridge.



rs, B. Shultz. See
bird Row: G. Tagg
Selby, D. Stoute, N

se, K. Vance, R. W
cher, D. Talbott, P
rner. Third Row



HOMEROOM 303

First Row: A. Applegate, D. Bloomer, I. Artis, J. Bowen, A. Arms, M. Armstrong, C. Booth, J. Baker, E. Adams. *Second Row:* U. Anderson, P. Adams, L. Brandel, I. Bocoock, R. Burkhardt, L. Adams, E. Brown, O. Bradford, D. Baker. *Third Row:* E. Antis, L. Berkley, R. Beard, J. Atkinson, D. Bell, T. Bachns, D. Bowen, D. Askew, C. Adkins, T. Barney.

HOMEROOM 304

First Row: A. Cornwell, H. Conkel, C. Dill, K. Collins, H. Burns, D. Donley, R. Davis, J. Diddle, R. Dawson, T. Call. *Second Row:* S. Crabtree, M. Curcio, E. Cobourn, B. Clausing, J. Dodge, G. Chucales, R. Chapman, E. Doherty, W. Dever, W. Cox. *Third Row:* R. Cooper, D. Cook, I. Chapman, I. Carmichael, R. Collins, R. Cullen, D. Crabtree, D. Davis, L. Daniels, R. Day. *Fourth Row:* H. Byers, D. Cooper, H. Clark, N. Bush, H. Cooper, R. Dodge, J. Clark, E. Cooper, J. Cunningham.

HOMEROOM 306

First Row: D. Ferguson, C. Fisher, J. Flamer, K. Gaines, D. Evans, A. Edwards, B. Dunham, N. Galloway. *Second Row:* W. Dunn, R. Goddard, M. Elkins, S. DuPuy, C. Edwards, M. Fisher, M. Ferguson, L. Ginn. *Third Row:* H. Dyer, G. Ellis, M. Eastwood, V. Dunn, B. Gallen, J. Frese. *Fourth Row:* J. Fisher, R. Hack, W. Edwards, R. Evans, E. Goddard, B. Glenn, M. Gimms, S. Golden, L. Frazer.



HOMEROOM 308

First Row: J. Hobbs, L. Harris, N. Grashel, J. Hamilton, H. Harris, E. Greer, J. Hicks, E. Greer. *Second Row:* C. Graham, B. Heath, J. Hicks, C. Hatch, J. Hood, C. Holeston, E. Harrod, R. Hazelbeck. *Third Row:* J. Griffith, H. Hewitt, R. Gordon, L. Hedrick, M. Goodman, P. Hammond, M. Henson, W. Hollis. *Fourth Row:* J. Hess, R. Graham, D. Gordley, D. Grashel, J. Graham, G. Hill, C. Hockenheimer.

Boy's Corner
HOMEROOM 309

First Row: J. Layne, M. Locke, N. Jarvis, B. Lambert, J. Horton, M. Legas, C. Hudson, A. Looney, E. Lancaster, M. Lawson, J. Ison. *Second Row:* R. Little, D. Livingston, B. Long, M. Kidwell, R. Johnson, R. Jenkins, E. Keyser, H. Kemp. *Third Row:* F. Kees, R. Justice, J. Lang, B. Hoover, C. Howard, C. Horton, R. Howard, C. Huffman, R. Jennings, R. Keys.

Handwritten signatures
HOMEROOM 310

First Row: J. Martin, E. Meadows, M. Neal, J. Lycans, M. Mann, S. Nagel, W. Mullins, E. McGlone, E. Lyons, J. McNamara. *Second Row:* C. McGlone, M. Michael, G. McNeil, C. Mitchell, J. Meadows, D. McFarland, J. Mershon, J. Nagel, B. McConnel. *Third Row:* N. Mathis, H. Martin, R. Nettles, G. Mercer, G. Mullins, T. Monroe, J. Meyers, M. Lynn, J. McGuire.

HOMEROOM 311

First Row: O. Prater, C. Roe, P. O'Conner, M. Purtee, B. Reynolds, B. Pidcock, B. Pugh, W. Roe, D. Reeves. *Second Row:* W. Robirds, J. Noel, D. Reider, B. Patrick, R. Robinscn, P. Phillips, J. Roberts, D. Richards, H. Osborne. *Third Row:* L. Reeg, M. Perry, V. Pascoe, E. Preston, M. Nichols, N. Plummer, L. Peake, F. Poole, G. Obrist. *Fourth Row:* L. Patterson, D. Roberts, J. Renison, D. Parker, L. Prior, P. Orth, E. Ratcliff, C. Petee, J. Randall, H. Noel.

HOMEROOM 201

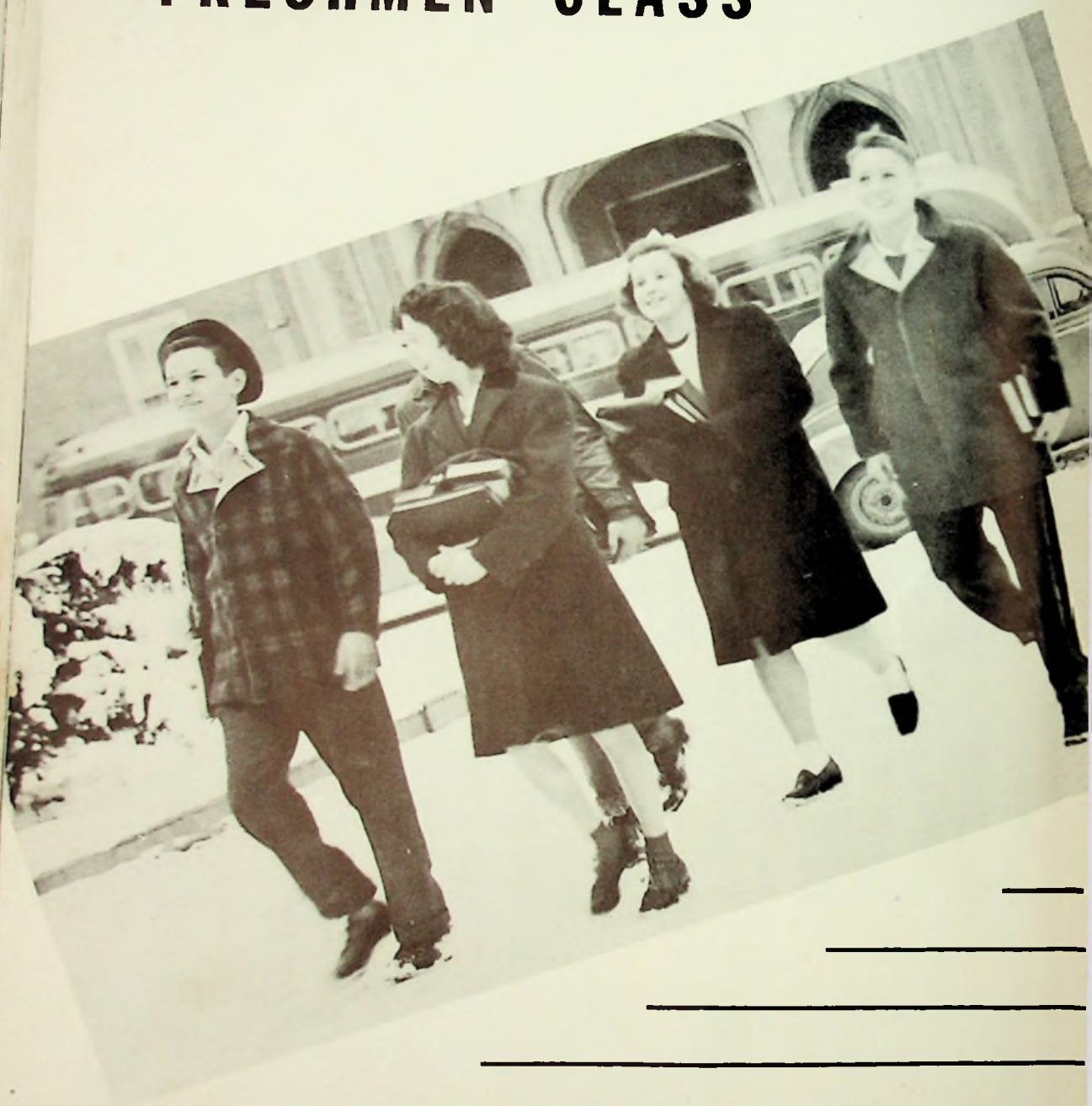
First Row: B. Smith, S. Stokes, B. Snyder, L. Springer, J. Smith, A. Sexton, K. Souders, B. Shultz. *Second Row:* M. Scott, J. Scurlock, R. Spangler, M. Ross, N. Schwartz, S. Shy, N. Salmons, G. Salyers. *Third Row:* G. Tagg, P. Rogers, K. Stanley, J. Ross, B. Stamper, J. Spires, R. Secrest, M. Stout. *Fourth Row:* J. Scott, R. Selby, D. Stoute, M. Scaggs, P. Smith, A. Sgraves, J. Smith.

HOMEROOM 202

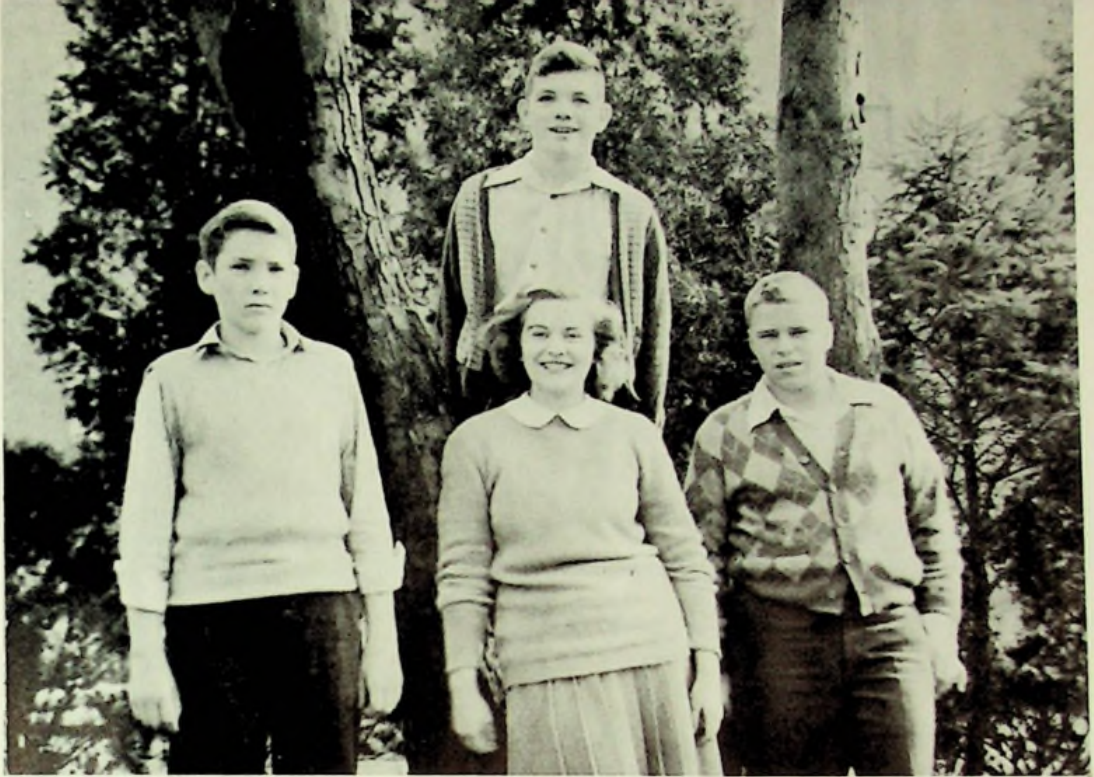
First Row: A. Welton, L. Thornton, R. Womack, M. Wallace, M. Whelan, D. Wise, K. Vance, R. Walker, P. White, B. Tanner, B. Warren, M. Terry, B. Varner. *Second Row:* K. Wedebrook, M. Thatcher, D. Talbott, P. Taylor, D. Vinson, E. Tennant, M. Werner, S. Zuene, T. Workman, J. Van Bibber, V. Williams, J. Turner. *Third Row:* R. Underwood, R. Clifford, J. Walker, J. West, E. Winters, G. Ward, W. Worrell, J. White, C. Winters, R. Yost, D. Thurman, H. Whitehouse, J. Tipton.



FRESHMEN CLASS



th
si
A



FRESHMAN CLASS

THIS year a new group of bewildered students "wandered" through the halls of Portsmouth High School. After several confused weeks, the "greenness" disappeared, and they began to feel as if they had been a part of the high school all their lives. Election day soon arrived and the big moment was at hand when the freshman president was to be named. That honor went to Bill Apel. Gene Hackworth, Jim Daugherty, and Mary Ellen Scott also shared the lime-light by being elected to the offices of vice-president, treasurer, and secretary respectively. Miss Caroline Mackoy and Miss Margaret Anderson were co-sponsors for this promising new class of '48.



HOMEROOM 312

First Row: D. Bauer, H. Bailey, M. Blevings, J. Arnold, J. Abott, D. Arms, W. Beesler, A. Ball. *Second Row:* A. Bending, N. Beekman, H. Bemse, W. Barbee, W. Aeh, S. Burch, P. Alexander, C. Beck. *Third Row:* J. Bickett, B. Adkins, D. Barker, B. Baker, J. Baber, M. Bagby, L. Askins. *Fourth Row:* J. Batterson, R. Anderson, D. Bliss, R. Benner, B. Bloomfield, W. Baer, J. Adams, J. Bazler.

HOMEROOM 313

First Row: C. Bradley, C. Cockrell, H. Brown, D. Campbell, U. Brooks, J. Campbell, J. Carr, B. Carson, D. Carpenter, M. Brown. *Second Row:* L. Call, R. Callihan, K. Brooker, J. Clausing, P. Burns, M. Clutts, J. Buckley, L. Collingsworth, R. Burchett, J. Conley, J. Conley. *Third Row:* B. Bradley, B. Bays, M. Buckley, W. Bright, P. Cassidy, G. Clowe, C. Clinebell, H. Brown, J. Boring, N. Chamberlin.

HOMEROOM 314

First Row: V. Darby, B. Copas, L. Dyer, B. Cummins, B. Copas, B. Dickson, D. Cornett, R. Bauer. *Second Row:* T. Cox, R. Cooper, R. Crisp, B. Cremcas, A. Criswell, M. Dunham, H. Craft, E. Eba. *Third Row:* R. Doerr, J. Cox, G. Davies, M. Cooper, J. Daugherty, P. Diales, K. Cooper, E. Duckett. *Fourth Row:* C. Davis, J. Collen, D. Cottrell, R. DuPuy, M. Crabtree, C. Day, J. Conley.

HOMEROOM 315

First Row: J. Fugitt, N. Gaddis, R. Foster, D. Finder, R. Flowers, J. Fitch, D. Foehr, R. Gerard, D. Fordyce, R. Goddard, P. Evans. *Second Row:* R. Gerald, S. Fraley, E. Fite, L. Fyffe, L. Gardner, M. Evans, J. Graham, R. Glascock, M. Grayson, S. Ferguson. *Third Row:* W. Fleming, H. Fraley, J. Goodman, J. Gillespie, D. Flinders, D. Gray, W. Farris, H. Gannon, D. Gee, A. Green.

HOMEROOM 316

First Row: D. Hicks, R. Harely, J. Himes, C. Hall, M. Greene, W. Hale, R. Heil, G. Hardy. *Second Row:* C. Hodge, M. Hamblin, B. Himes, V. Harrison, J. Homer, N. Hamilton, B. Hammond, C. Hall. *Third Row:* P. Heaberlin, J. Hill, J. Hazlebeck, P. Hauck, P. Henson, J. Hisle, J. Hewitt. *Fourth Row:* E. Hawthorne, R. Haley, E. Hackworth, J. Henderson, C. Hanes, C. Harrison.

HOMEROOM 317

First Row: B. Horton, N. Hoop, M. Kent, E. Horner, B. Johnson, A. Kinney, J. Lawyer, W. Kinker, J. Horsely. *Second Row:* D. Johnson, B. Hovencamp, J. Hollis, N. Jenkins, G. Johnson, C. Johnson, J. King, B. Kenard, M. Hopkins, P. Klock, J. Lever, E. Kerns. *Third Row:* D. Iery, J. Harr, V. Jarrells, C. Knowles, J. James, B. Howard, E. Horne, L. Kaps, F. Kegley.





A

HOMEROOM 318

First Row: H. Lutz, A. Lett, J. Logan, E. McHenry, G. Meade, R. Mayberry, C. Liles. *Second Row:* J. Little, D. Lewis, D. Lyons, P. LeMaster, M. Lewis, B. McGraw, H. McCoy, R. Lykins. *Third Row:* B. McFerren, S. Lessenberry, A. Lester, C. McCann, J. Lowe, R. McCollan, B. Lowe, J. Meade, W. McGuire, D. Leichtenheimer, E. McCoy, J. McClellan.

HOMEROOM 319

First Row: J. Mitchell, D. Moore, M. Parker, R. Nickell, R. Murphy, D. Paul, J. Newman, J. Mosley, R. Nourot, E. Patrick, S. Minter. *Second Row:* E. Newman, M. Miller, C. Neighbors, H. Miller, R. Moore, C. Millirons, B. Myers, R. Mucha, T. Parkinson, R. Miller, E. Parsley. *Third Row:* D. Neal, E. Myers, E. Moore, B. Pelfrey, D. Parsley, J. Parsons, D. Moore, L. Pelfrey, R. Oliver, S. Miller, J. Newman.

HOMEROOM 321

First Row: T. Riffe, E. Rawlins, W. Robinson, D. Richter, H. Potts, M. Raika, R. Robbins, T. Sell, N. Riggs, P. Peters, D. Plymale, D. Prosch, J. Price, H. Pherson, W. Roe. *Second Row:* B. Scheid, B. Pratt, D. Perkins, B. Preston, V. Pifer, A. Pflug, D. Shope, P. Ruggles, S. Schirrmann, C. Pyle, S. Sheehan, J. Scott, J. Robbins, G. Perkins, G. Rose. *Third Row:* I. Ross, W. Rayburn, V. Ruark, M. Scott, B. Samson, A. Ridings, R. Pennywitt, R. Sexton, B. Riggs, J. Poole, R. Shryock, P. Stamm, P. Ryan, D. Ramsey.



HOMEROOM 321

First Row: W. Thacker, W. Staker, K. Thompson, V. Stratton, V. Spriggs, J. Spires, C. Spires, R. Slusher, C. Thacker.
Second Row: N. Speck, R. Simpson, J. Tolle, U. Skeens, E. Smith, J. Skeens, J. Stephenson, N. Thomas, C. Smith, J. Widdig.
Third Row: J. Simpson, H. Taylor, W. Stone, E. Stamper, B. Simms, C. Smith, D. Smith, R. Tolle, H. Tomlin.
Fourth Row: W. Thomas, P. Stewart, O. Taylor, J. Taylor, R. Thomas. *Fifth Row:* H. Tracy, J. A. Thomas, J. R. Thomas, C. Kinker, D. Sutherland, D. Stewart, E. Sparks, P. Spriggs.

HOMEROOM 321

First Row: S. White, H. Wagner, C. Tuttle, J. West, M. Wedebrook, V. Willis, D. Weddington, R. Yarnell, J. Wolford, R. Willis H. Zuliani, M. York, B. Young. *Second Row:* H. Wood, M. Vest, M. Whitely, S. Tracewell, Y. Yuenger, W. Yuenger, P. Warren, J. Whiteside, W. Weisman, M. Williams, M. Williams, R. Wynn. *Third Row:* R. Underwood, H. Underwood, M. Young, D. Underwood, P. White, O. Voiers, R. Whipple, D. Triggs, J. Warnock, E. Wallace.





CLASS BULLETIN BOARD

*♯ ♯ "I want a paper doll that
other girls cannot steal" ♯ ♯
♯ ♯ ♯ ♯ ♯ ♯*

h
311
H

Undeclared Trojans Take the Field . . .



ATHLETICS



the
Sir
AM



VARSITY SQUAD



Captain "Doc" Yeagle



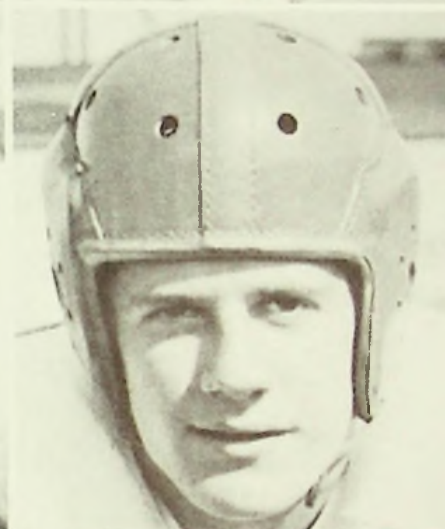
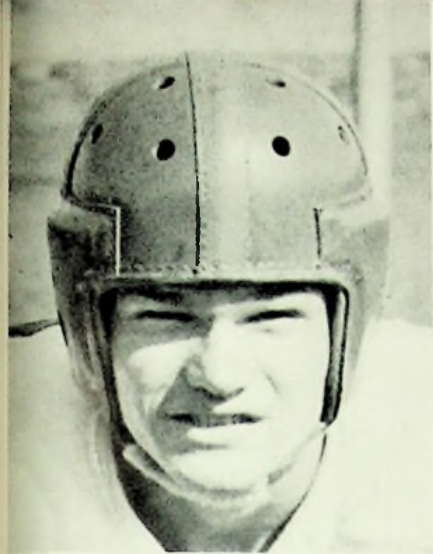
Captain James Fout



*B. Journey
J. Plymale
J. Molster*

*T. Collins
J. Neikirk
M. Griffin*

*R. Parks
H. Pollitt
R. Hicks*



*R. Pellrey
J. Cassidy
F. Thompson*

*A. Cornwell
L. Elliott
F. Butt*

*H. Chastain
J. Rapp
D. Spriggs*

D. Thomas



W. Turner



T. Philburn



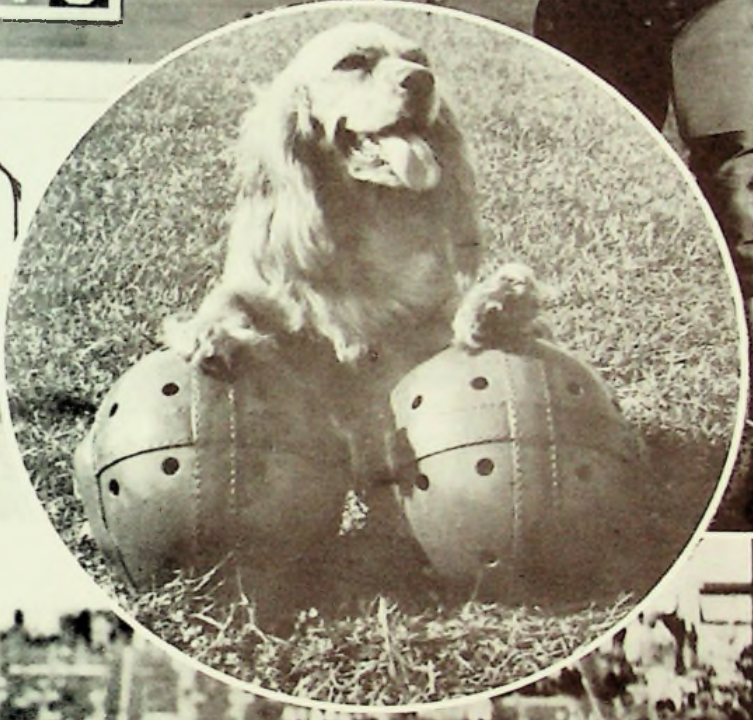
W. Riggs



R. Snyder
seventy-four



W. Green



SCINTILLATING both defensively and offensively, the Trojans defeated Logan 38-14 in the opening game of the 1944 grid season. The game was but four minutes old when Thomas made the first Trojan marker. In the second quarter Griffin went around end for a 26-yard touchdown run. The Wildcats then staged a sparkling offensive which led to two touchdowns, two conversions, and a temporary lead. A few minutes later, Thomas heaved a 34-yard pass to Thompson, who went over to put the Trojans ahead 18-14. Logan, facing a stiffened Portsmouth defense, failed to score in the second half. The fourth Trojan tally came in the third period when Fout scored from Logan's 2. Griffin plunged for the extra point. In the final quarter, Fout intercepted a Logan pass, galloped 52 yards to score, and ran for the point after touchdown. The last tally was made via an aerial play from Thomas to Parks.



A HEAVIER, more-experienced Charleston team was held to a 13-13 tie by the speedy, hard-playing Portsmouth eleven. A sustained 80 yard march, following the initial kick off, gave Charleston their first counter, but their attempted conversion was wide. Portsmouth's first tally came in the middle of the second quarter when Fout went over, unmolested, from the Mountain Lions' 9 yard line. Spriggs' kick from placement was blocked. Charleston played deep in Portsmouth territory during the greater part of the Third period but lacked the scoring punch. With less than four minutes remaining in the final period, Charleston pushed over another touchdown. Mustering all their strength, the Trojans started their drive which was culminated by lanky Bob Parks' catching a 30 yard pass from Thomas, and covering the remaining 34 yards to score. Parks also recovered a fumble behind the goal for the extra and tying point.

PORTSMOUTH 32	LOGAN 14
PORTSMOUTH 13	CHARLESTON 13
PORTSMOUTH 27	SPRINGFIELD 0

THE "away-from-home jinx" that had plagued the Trojans since 1940 was broken when Portsmouth defeated Springfield 27-0 on the Wildcats' field. The Trojans scored twice in the fourth quarter, and once in the third and second, while the Wildcats threatened seriously only once during the entire game, reaching the Trojan 2 before a holding penalty nullified their drive. A series of line plunges in the second quarter set up the first Trojan marker. Chastain tallied the touchdown and Thomas ran for the extra point. In the third period versatile Ray Pelfrey, playing his first game as a backfield man, plowed through for the next tally. The Trojans added two more touchdowns to their lead in the fourth stanza. Early in the quarter Griffin went through the entire Springfield team for 45 yards and a touchdown, and added the extra point by way of a plunge. Turner tallied last for the Trojans, and Spriggs converted from placement.





PLAYING before a homecoming crowd of 5,000, the Trojans and their arch rivals, the Ironton Tigers, battled to a 6-6 tie. Neither team was able to score during the first two stanzas, although the Trojans threatened constantly with a smooth-working offensive. Portsmouth scored first with a touchdown in the third period. Quarterback James Fout set up the score with a 48 yard broken field run. Thomas went off right tackle for the tally, but his attempted point after touchdown run was stopped. In the final quarter a 58 yard run and a 14 yard pass spearheaded a 70 yard drive which gave Ironton their touchdown. The Tigers' attempted placement for extra point failed and the score was tied six all. The Trojans tried valiantly to break the tie and, by resorting to aeriels, were deep in Ironton territory when the gun sounded ending the game.

PLAYING through a steady downpour on a field thoroughly impregnated with water, the Trojans marked up three touchdowns and two conversions, while holding Huntington East scoreless. In the first quarter the Trojans started a drive which advanced the ball to East's 7. The Huntington line stiffened, however, and the Trojans lost the ball on downs. Later, after failing to gain, East was forced to kick. Butt blocked the punt and Parks recovered for the Trojans as the quarter ended. On the first play of the second quarter Fout tallied and Spriggs converted. Portsmouth got into scoring position again later in the quarter when Yeagle recovered a fumble deep in East territory. Fout again tallied and Spriggs added the point after touchdown. In the final period Pelfrey fell on a blocked punt to set up his own touchdown. After a series of line plunges, Fout lateraled to Pelfrey who sped 25 yards for the score.

THE extra points told the tale as the Trojans edged Charleston Stonewall 14-12 in one of the hardest fought games of the season. For the second time in two weeks, the Trojans played on a wet, slippery, field. The first Trojan score followed Butt's recovery of a fumble on the General's 25. Fout passed to Parks for the tally and Pelfrey added the extra point. Charleston, too, scored a touchdown in the initial quarter but their point-after-touchdown plunge was stopped. In the second stanza the Fout-to-Parks passing combination accounted for another Trojan tally. Spriggs converted from placement. The final score of the game was made by the Generals in the waning minutes of the third period, but they again failed to make the point after touchdown. Elliot recovered a Charleston fumble on the Portsmouth goal line to stave off a threatening Charleston offensive in the final minute of play.

PORTSMOUTH 6	IRONTON 6
PORTSMOUTH 20	HUNTINGTON 0
PORTSMOUTH 14	CHARLESTON 12



PORTSMOUTH 27	WAYNE 7
PORTSMOUTH 0	MIDDLETOWN 0
PORTSMOUTH 27	COLUMBUS 17
PORTSMOUTH 32	ASHLAND 7

SCORING proved easy for the Trojans as they chalked up 27 points against the Wayne Pioneers for their sixth victory of the season. The Trojans received the opening kickoff and it was but a matter of minutes before Fout tallied the first touchdown. A bad punt by the Pioneers led to the next Trojan marker. Pelfrey went around end for the touchdown and Fout converted for the extra point. In the second quarter Pelfrey on a reverse, shook off all would-be tacklers and ran 61 yards for a touchdown. Early in the fourth period Pelfrey, behind perfect interference, broke away for a 55 yard run and scored his third touchdown of the game. Wayne refused to give up and kept fighting until the end. With less than a minute remaining in the game the Pioneers blocked a Portsmouth punt and completed a long end zone pass for a touchdown. The Pioneers' placekick for point after touchdown was good.



ALTHOUGH both the Trojans and the Middies threatened numerous times throughout the game, neither team capitalized on their opportunities and the game ended a scoreless tie. Elliot did much to help check the powerful Middies by his well-placed, long-distanced punts, which averaged over 41 yards. Twice during the second period the Trojans saw pay dirt within their reach. Early in the period Thomas heaved a 55 yard pass to Parks, who was standing on the one, but Parks could do no more than touch it. Later in the quarter, a series of plunges and passes advanced the ball to Middletown's 1 inch line. Elliot attempted to take it over but fumbled and Middletown recovered behind the goal for a touchback. During the fourth period Middletown advanced the ball deep into Portsmouth territory, but the hard charging Trojan line repulsed them, and the Middies lost the ball on downs.

IN the last home game of the season the Trojans met the Columbus Aquinas Terriers, and came out on top 27-12. Thomas smashed 53 yards for the first tally and Fout's placement for extra point was good. Later, after an exchange of punts, Fout passed to Thompson; Thompson lateralled to Pelfrey; and Pelfrey ran 65 yards to the Aquinas' goal for another Trojan touchdown. In the second quarter Aquinas scored their first marker after an 88 yard drive. Towards the end of the quarter, Fout and Thomas added two more touchdowns to the Trojan lead. Aquinas scored again in the fourth period but, for the second time, their extra point attempt failed. Portsmouth worked the ball deep into Aquinas territory later in the quarter but muffed their scoring opportunity with several unsuccessful plunges. Aquinas took the ball over on downs on their own 1 inch line and were trying to work the ball out when Politt sped in and trapped an Aquinas player behind the goal for a 2 point safety.



NINE Trojan seniors wound up their high school football careers at Ashland, and all proved their mettle in helping to swamp the highly over-rated Tomcats 32-7. The first touchdown followed Thompson's recovery of a fumble on the Tomcats' 5 yard line. Fout covered the necessary yardage for the tally and Spriggs converted from placement. The Tomcats immediately countered with a touchdown and conversion to tie the score. The tie was broken moments later when Parks, on a cross-buck, raced 81 yards to score. Spriggs' placement was again good. Early in the second stanza, Yeagle tallied after Parks intercepted a Tomcat pass. The attempted placekick was wide. Speedy Dave Thomas returned a Tomcat punt 78 yards for tally number four shortly before the half ended. In the final period Yeagle intercepted a pass and, after several unsuccessful attempts, succeeded in carrying it over for the final tally.

RESERVES

First Row:

J. Batterson, C. Kline, F. Poole, R. Ratcliff, J. Nickles, G. Salyers, R. Anderson, B. Fleming, B. Parsons.

Second Row:

D. Sutherland, J. Pendleton, P. Spriggs, G. Chucales, J. Irvin, D. Lair, J. Dougherty, T. Barney, J. Troutman, B. Erfurth.

Third Row:

Coach Multer, J. Thomas, J. Goodman, B. Vanmeter, B. Howard, P. Cassidy, M. Crabtree, J. Cunningham, B. Bright, R. Radcliffe, Coach Lorentz.

Absent: W. Apel, D. Flinders.



RESERVE BASKETBALL 1944-45

	WE	THEY
South Portsmouth	23	34
Sciotoville Res.	12	25
Greenfield Res.	18	19
South Webster	14	22
South Portsmouth	43	26
Oak Hill	21	27
Minford	17	12
McKell	24	8
Lucasville	21	33
Oak Hill	57	33
New Boston Res.	28	30
Freshman	23	34
Wheelersburg	38	15
Clay	22	27
McKell	27	22
New Boston Res.	22	33
Sciotoville Res.	20	38
Greenfield Res.	22	33
Green	28	30



Sitting:

J. Campbell, J. Young

Kneeling:

E. Newman, J. Shumate

Standing:

C. Campbell, P. Cook

Absent: L. Daniels

Coach Fred Multer

Coach Charles Lorentz

WON 13 LOST 6

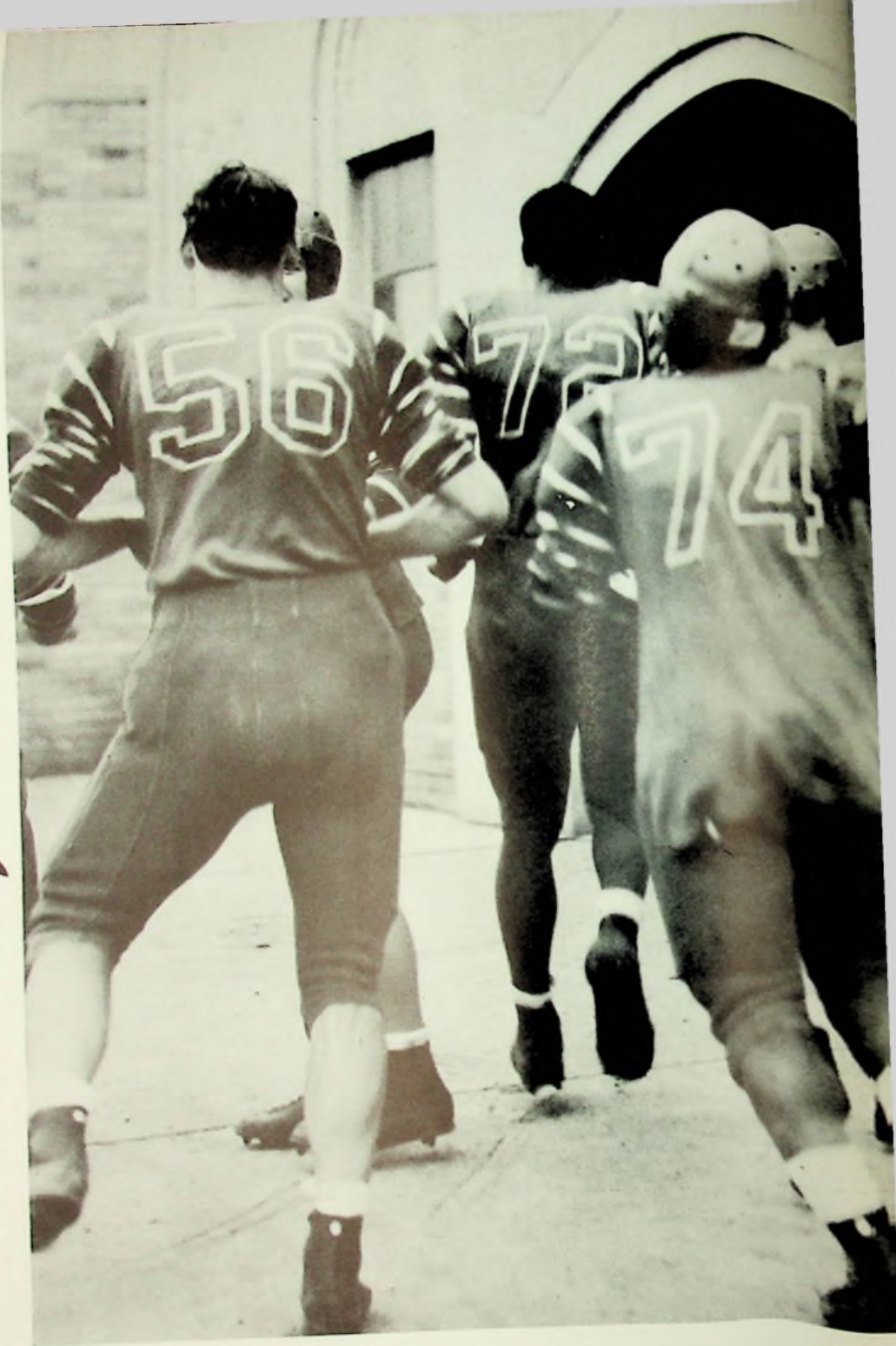
LETTERS

- Walter Green, Capt.*
- George Chucales*
- Robert Askins*
- Wm. Turner*
- Elwood Spark*
- Dave Leightenheimer*
- Wm. Journey*
- Alton Cornwell*
- Fred Kees*
- Jack Lang*
- Lowell Reeg*
- John Cunningham*

seventy-nine



Victorious Trojans Leave the Field






BASKETBALL



COACH PAUL WALKER




"Snyd"



Ray



Harry




Jim




"Hoppy"




Roy




Whitie



Ray



Gene



"Cass"

PORTSMOUTH 34—DAYTON ROOSEVELT 23
PORTSMOUTH 23—PORTSMOUTH EAST 17
PORTSMOUTH 36—CENTRAL CATHOLIC 14
PORTSMOUTH 40—GREENFIELD 37
PORTSMOUTH 25—CHILlicoTHE 57
PORTSMOUTH 30—HAMILTON 37



PORTSMOUTH 47—HUNTINGTON EAST 28
PORTSMOUTH 51—IRONTON 32
PORTSMOUTH 36—ASHLAND 31
PORTSMOUTH 13—MIDDLETOWN 57
PORTSMOUTH 24—SPRINGFIELD 38
PORTSMOUTH 44—CHILlicoTHE 34



PORTSMOUTH 35—NEW BOSTON 36

PORTSMOUTH 20—HUNTINGTON CENTRAL 24

PORTSMOUTH 34—SPRINGFIELD 47

PORTSMOUTH 25—CHARLESTON 32

PORTSMOUTH 33—ASHLAND 44

PORTSMOUTH 36—MIDDLETOWN 48

PORTSMOUTH 48—CENTRAL CATHOLIC 16

PORTSMOUTH 34—PORTSMOUTH EAST 18

PORTSMOUTH 43—GREENFIELD 34

PORTSMOUTH 23—IRONTON 28

PORTSMOUTH 50—NEW BOSTON 29



VARSITY BASKETBALL

First Row:

G. Myers, R. Hopkins, H. Chastain, R. Pelfre

Second Row:

B. Snyder, R. Benson, C. Locher

Third Row:

J. Molester, J. Cassidy, Captain R. Eisnaugh

RESERVE BASKETBALL

Kneeling:

J. Lang, L. Reeg, C. Sparks, A. Cornwell, W. Turner

Standing:

G. Chucalles, F. Kees, B. Journey, B. Adkins,
W. Green

Absent:

D. Leightenheimer, J. Cunningham



FRESHMAN BASKETBALL

First Row:

M. Cooper, K. Brooker, A. Kinney, J. Scott

Second Row:

F. Shumate, S. Sheehan, J. Young,
H. Pherson, W. Young

Third Row:

J. Hazlebeck, E. Dupuy, R. Howard,
J. Goodman, D. Triggs, J. Spaulding



Coach Fred Multer, Coach Charles Lorentz

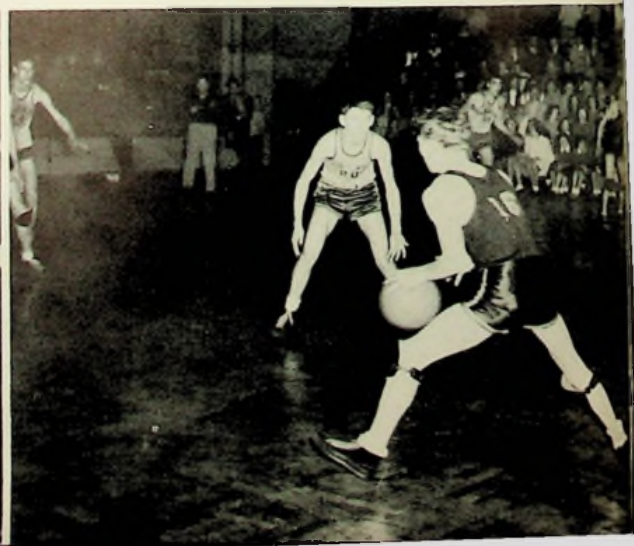


MAKING PLANS?

Managers:

M. Wallace, H. Pollitt, M. Williams, D. Stewart







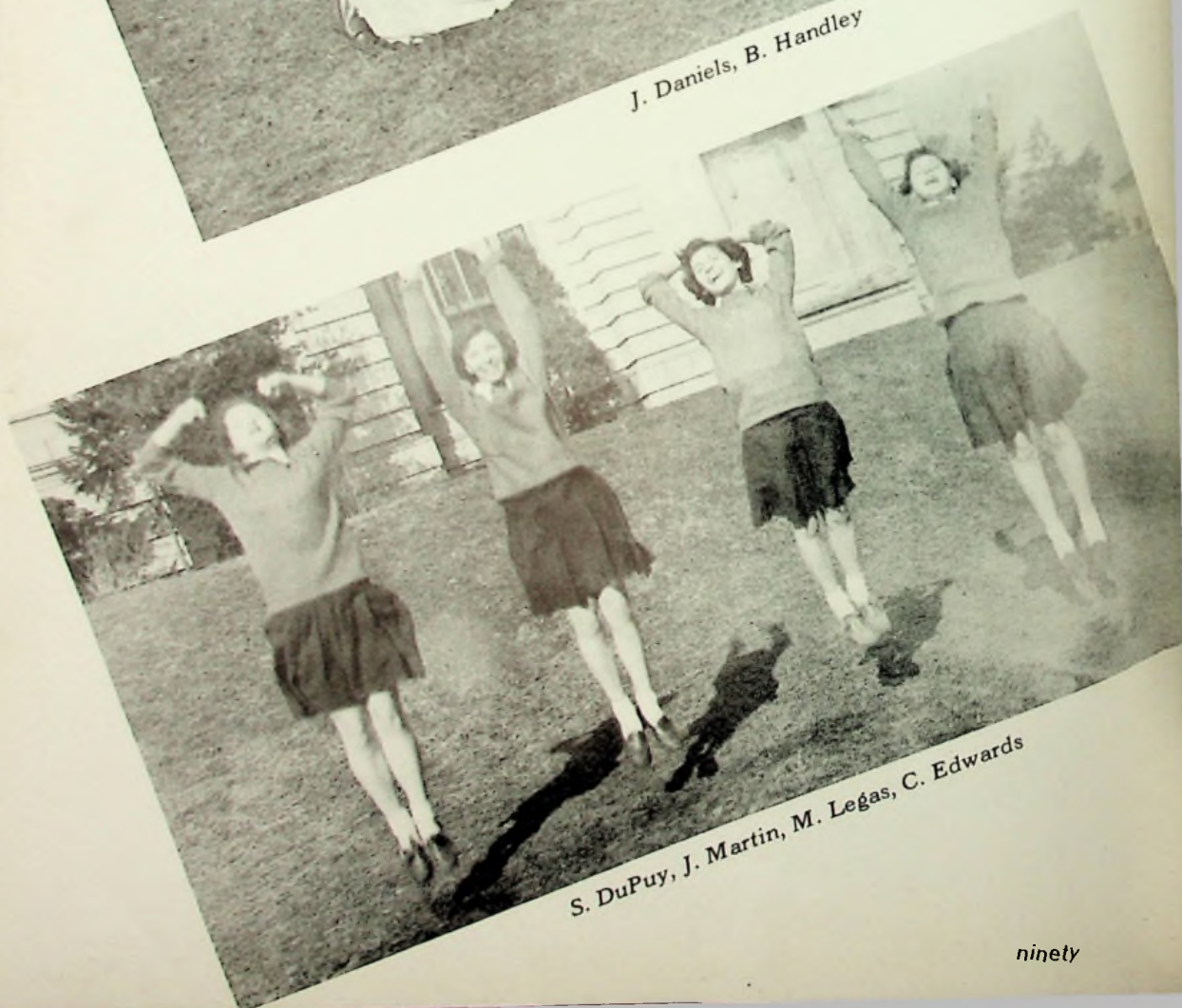
B. Harris, B. Tierney, M. Babcock



R. Newman, J. Dougherty, B. Questel



J. Daniels, B. Handley



S. DuPuy, J. Martin, M. Legas, C. Edwards

CLUBS





First Row: B. Anderson, F. Callihan, B. Tierney, B. Harris, R. Newman, M. Danner.
Second Row: J. Staker, M. Addis, F. Judd, J. Jones, J. Lawson, J. Schlichter, N. Sainopoulos, J. Taylor.
Third Row: C. Bachtrup, R. Eastwood, B. Questel, J. Snook, M. Darragh, R. Ison, M. Moree, N. Henson.

SENIOR HONOR COUNCIL

THE Senior Honor Council consists of twenty-three seniors and one junior girl chosen by Dean Cookes on three outstanding characteristics—leadership, scholarship and character. The girls must be approved by all the faculty before they are taken into Senior Honor Council in May. This year the office of president was filled by Jacquelin Staker, who was chosen as Link Girl at the end of her sophomore year, and automatically became president in her senior year. The other officer elected was Dorothy Hobstetter, secretary. Since the girls are not required to pay dues there is no need for a treasurer. The activities of this group began at the first of the school year, when all the girls turned out the day before school

began to show the freshmen around the school. Next on the calendar of events was a freshman mixer sponsored by the Senior Honor Club, at which the girls received the names of their little sisters, with whom they are to have meetings during the year.

It has been a custom for the past two years that Mrs. Cookes entertain the girls with a buffet dinner at her home the week before Christmas, and in accordance with the season Mrs. Cookes reads a Christmas story *The Other Wise Man*. This year the group served as hostesses at the Mother-Daughter Tea sponsored by the Girls' League. The Senior Honor Council has been active in school affairs this year and looks forward to many more prosperous years.



*Link Girl—
 Mary Alice Schisler*



GIRLS' LEAGUE

GIRLS' LEAGUE is the only organization in the school in which every girl is privileged to join without any specific requirements. The purpose of the Girls' League is to promote a friendly atmosphere among the girls of Portsmouth High School. This year the club chose as its officers: Charlotte Bachtrup, president; Beverly Tierney, vice-president; Mary Alice Schisler, secretary; and Joyce Scurlock, treasurer. Girls' League is under the leadership of Mrs. Eleanor Cookes, dean of girls, who has proved quite capable for the past two years. The various activities of the club include a freshman mixer given

at the beginning of the school year to help get acquainted, and the annual Mother-Daughter Tea given around Valentine's Day at which all the faculty are present and are introduced to the mothers of the girls in the League. The outstanding event on the League calendar is the annual Co-ed Prom, the only formal dance of the year to which the girls invite the boys. This year the League sponsored a boys' beauty contest to make money for this affair. The dance was planned by the Girls' League Council which consists of the officers and chairmen of the various committees.

P. Bradford, A. Bourgholtzer, J. Fields, B. Tierney, P. Hiatt



MOTHERS DAUGHTER TEA





First Row: M. Doherty, B. Doherty, A. Lester, E. McHenry, E. Lester.
Second Row: Miss Kirkpatrick, M. Winters, F. Philburn, E. Young, V. Salyers.
Third Row: I. Leightenheimer, I. Hicks, B. Winters, I. Hubbard.

LIBRARY CLUB

THE chief duty of Library Club members is to keep the library clean and quiet. Club officers this year were Imogene Leightenheimer, president; Florence Philburn, vice-president; Ethel Lester, secretary; and Bernice Winters, treasurer.

DEBATE TEAM

CHARLES HANSHAW was elected president of the Debate Team at Portsmouth High School this year. The club was comprised of juniors and seniors, and Miss Isabel Musser was the sponsor and adviser. The team presented an assembly in November on *Resolved: The Legal Voting Age Should Be Lowered To 18.*



First Row:
 R. Washington
 S. McQuain
 P. Alls
 Miss Musser

Second Row:
 J. Staker
 D. Moore
 N. Henson
 B. Buckley

Third Row:
 C. Hanshaw
 S. Johnson
 R. Hill



First Row: J. Abbott, B. Cornett, B. Himes, L. Francis, C. Hodge, M. Clutts, J. Hollis, J. Conley, J. Buckley. *Second Row:* J. Baber, B. Cremeans, B. Hammond, M. Buckley, M. Hopkins, J. Fitch, E. Hawthorn, W. Hale, R. Harley, R. Bauer. *Third Row:* E. Horne, B. Adkins, N. Gimms, S. Golden, P. Francis, N. Beekman, J. Bickett, C. Hall, K. Brooker, C. Beck. *Fourth Row:* B. Apel, J. Cox, P. Hauck, J. Daugherty, R. DuPuy, W. Bright, J. Batterson, R. Anderson, E. Hackworth, M. Crabtree.

INTER NOS

INTER NOS, meaning "between ourselves" is the club of first year Latin students at Portsmouth High School. Miss Anna Blazer, sponsor, and the officers, Jim Daugherty, Mary Ellen Scott, Eugene Hackworth, and James Rice have charge of all meetings and appoint various committees. The outstanding program of the year was a "battle of the sexes".

First Row: B. Scheid, R. Nourot, W. Wright, J. Minter, M. Scott, S. Schirrmann, P. Peters, H. Zuliani, M. Raiké. *Second Row:* C. Smith, P. LeMaster, W. Yuenger, V. Pifer, V. Stratton, S. Lessenbury, N. Jenkins, P. Ruggles, C. Johnson, U. Skeens. *Third Row:* C. Knowles, D. Shope, E. Stamper, D. Smith, L. Kaps, J. Newman, E. Patrick, S. Miller, J. Richey. *Fourth Row:* H. Potts, A. Lett, R. Oliver, R. Shyrook, J. Mitchell, S. Sheehan, B. Staker.





First Row: J. Diddle, B. Long, C. Dever, M. Elkins, L. Ford, I. Artis, R. Goddard, W. Dever, J. Hobbs. *Second Row:* R. Johnson, L. Brandel, E. Coburn, M. Eastwood, J. Dodge, P. Adams, W. Foster, E. Adams, H. Hazelbeck. *Third Row:* J. Fisher, D. Livingston, J. Lewis, J. Lang, D. Ball, L. Berkley, D. Grashel, R. Dunn.

PLUS ULTRA

THE main purpose of Plus Ultra, Latin club for advanced students, is to hold the student's interest in the language and customs of the ancient Romans. Richard F. Moore was chosen senior consul; Don Delaney, junior consul; Betty Yeager and Billie Ross, quaestors. The singing of Christmas carols in Latin highlighted the Plus Ultra programs throughout the year.

First Row: C. Roe, J. McNamara, S. Zuene, J. Scurlock, B. Yeager, S. McQuain, M. Wallace. *Second Row:* B. Smith, J. McQuire, N. Plummer, J. Van Bibber, M. Werner, C. Rice, W. Redding. *Third Row:* R. Selby, L. Warnock, J. Randall, B. Ross, J. Moritz, R. Moore, G. Obrist.





First Row: J. Abbott, J. Hollis, J. Poole, B. Sampson, A. Pherson, J. Woodrum, L. Yeager, J. Edgington, R. White. *Second Row:* E. Thompson, M. White, L. Adams, V. Salyers, W. Wiseman, F. Philburn, M. Fisher, J. Morris. *Third Row:* C. Rose, D. Warnock, P. Rayburn, W. Rayburn, G. Everman, L. Francis, J. Fields, G. Bertram.

BETTY LAMP CLUB

THE purpose of the Betty Lamp Club is primarily to keep girls interested in home economics. Rebecca White, Gwen Everman, Florence Philburn, and Jean Fields were officers for the club this year.

CHEMISTRY CLUB

MALCOLM BAGBY was president of the Chemistry Club this year. The club has had consecutively good programs concerning chemistry in many different fields. Mr. R. D. Cole was sponsor.

First Row: S. McQuain, R. Washington, B. Brandel, D. Cartee, J. Martin, M. Addis, R. Albert, A. Bourgholster. *Second Row:* M. Darragh, P. Hiatt, M. Smith, J. Snook, J. Staker, V. Ashe, C. Bachtrup, B. Ball. *Third Row:* H. Rigley, R. Turrell, R. Vogel, C. Hanshaw, R. Moore, R. Powell, B. Buckley.





First Row: J. Martin, B. Handley, B. Doerr, P. Bradford, B. Harris, D. Evans, B. Donohoe, M. Hicks, E. Lyons. *Second Row:* M. Appel, R. Reagan, I. Hawthorne, J. Hogan, A. Elliott, D. Clappool, J. Hensge, J. Mershon, B. Gallion, R. Albert. *Third Row:* A. Mittendorf, J. Lloyd, A. Harper, B. Holt, M. Duis, J. Daniels, G. Evans, K. Shepherd, J. Tracy, M. Addis. *Fourth Row:* S. Johnson, L. Berkley, P. Hiatt, J. Harris, J. Snook, B. Buckley, B. Baughman, J. Graham, J. Coffee.

SPANISH CLUB

THE main purpose of the Spanish Club is to stimulate an interest in the Spanish Language. The sponsor of this club is Mr. Cicanese, who was originally from Italy, and is well-qualified to teach Spanish. This year the club elected the following officers: Tom Henderson, president; Dick Hopkins, vice-president; Patricia Hiatt, secretary; and Barbara Brandel, treasurer. The Spanish Club meets once each month and following the club business session there is always an interesting program. For the Christmas meeting, the Club sang Carols in

Spanish and talked about how Christmas is celebrated in Spain and other Spanish-American nations. In February the Spanish Club presented a play for assembly entitled "The Incomprehensible Assembly". The program consisted of several skits conducted in Spanish, and scarcely any, but the Spanish students, could understand the language. The club ended the year by donating money from the treasury for prizes to be given to the most worthy students taking Spanish.

ASSEMBLY COMMITTEE

To plan all assemblies held at Portsmouth High School is the job of the assembly committee. They arranged the year in such a way that at least one assembly was held every two weeks.

Bottom Row: Miss C. Friel, W. Foster, M. Revare, J. Snook, J. Staiger, J. Murfin, Miss H. DuPre. *Top Row:* R. Davis, W. Wagner, R. Eisnagle, W. Phillips, M. Williams.

CHAPEL COMMITTEE

This year, for the first time in several years, Chapel services were held in Portsmouth. The services were held every morning before school and were led by various members of the student body. Ralph Hill was elected the presiding officer, and Colleen Rice, secretary.

Sitting: Ralph Hill. *Top Row:* W. Dever, G. Lewis, C. Dever, K. McMillan.





STUDENT COUNCIL OFFICERS

D. Barney, Miss Blazer, R. Eisnagle, J. King, D. Baker

STUDENT COUNCIL

STUDENT COUNCIL is an organization of homeroom presidents whose job it is to confer with Mr. McKelvey and all faculty members to improve conditions in the high school. Miss Anna Blazer is the sponsor this year and these officers were elected: Ray Eisnagle, president; Jack Barney, vice-president; David Baker, treasurer; and Josephine King, secretary. To start the ball rolling the Student Council gave the first school dance of the year, which carried out a Halloween theme. Members always take an active part in the sale of war stamps and other worthy collections in homerooms. The main project of the Council this year is to compose a handbook which may be used by Freshmen to learn about the activities and organizations around the school.

First Row: R. Womack, G. Treat, M. Elkins, K. McMillan, P. Evans, M. Clutch, J. Pratt, J. Coc.
Second Row: S. Miller, P. LeMaster, I. Winters, C. Smith, N. Beekman, M. Frecka, J. Staker, L. Webb, H. Hazlebeck. *Third Row:* C. Hanshaw, A. Sgraves, D. Knittle, W. Russell, J. Chabot, R. Moore, J. Hazlebeck, H. Morton, J. Randall, P. Mitchell.





First Row: K. McMillan, B. Handley, P. Aills, M. Dougherty, J. Pratt, J. Smith, J. Hogan, B. Doerr, P. Bradford, M. Martin, A. Harper. *Second Row:* P. Hiatt, C. Rice, J. Daniels, M. Duis, N. Middlecamp, M. Frecka, M. Appel, B. Donohoe, M. McCulloch, F. Quinn. *Third Row:* D. Claypool, M. Chabot, N. McClure, M. Schisler, G. Lewis, N. Fenner, R. Hedrick, G. Evans, P. Henry, R. Thornton, J. Hoskins. *Fourth Row:* N. Brown, J. Hensge, B. Baughman, I. Hawthorne, J. Harrison, A. Howes, J. Lloyd, A. Mittendorf, J. Snook, J. Staker, B. Buckley. *Fifth Row:* R. Vogel, M. Whiteside, H. Micklethwaite, R. Riehl, S. Johnson, C. Hanshaw.

REVELLERS

REVELLERS, dramatic club of Portsmouth High School, was for the first time open to both juniors and seniors. "Wappin' Wharf" was the play selected by the group for presentation. The Revellers stage a play annually. Bert Leach is sponsor of the club, and also directs the play.

THE JUNIOR CLUB

THE Junior Club finished its fifth year in Portsmouth High School this June. Mr. Frank Pierson was chosen club sponsor for this year and the following officers were elected: Tabitha Luckey, president; Robert Parks, vice-president; Maude Tubbs, secretary; and Dorothy Gibson treasurer. The main purpose of the club is to raise funds for a prom in the spring.

First Row: M. Tubbs, T. Luckey, C. Ronney, N. Mathews, D. Gibson, *Second Row:* G. Webb, A. Jefferson, J. Irvin, J. Reed. *Third Row:* R. Parks, W. Gentry.





First Row: A. Bourgholtzer, M. Bazler, L. Yeager, D. Claypool, B. Haas, C. Bloomer, J. Hicks, J. Taylor. *Second Row:* F. Judd, V. Ruark, K. Shepherd, B. Call, J. Newman, J. Hoskins, J. Murfin, J. Snook, W. Foster. *Third Row:* D. Flaughner, H. Campbell, B. Harwood, J. Russell, L. Berkley, R. Bowen, D. Delaney, H. Osborne. *Fourth Row:* C. Hanshaw, H. Armsey, T. Collins, T. Kline, M. Bagby, R. Hill, A. Henson, B. Buckley.

MONITORS' CLUB

MONITORS are stationed in the halls throughout the building during school hours. On the first floor they assist strangers and visitors who are looking for some particular room. The hall monitors check permission books and see that no student is in the halls without permission while school is in session. This year the club decided to adopt a constitution, and the committee appointed to draft the constitution was as follows: Wanda Foster, Judy Snook, and Bruce Buckley.

Bea Heath

JUNIOR RED CROSS

THE Junior Red Cross is a comparatively new organization in Portsmouth High School. The idea of a high school Red Cross group was put into action only two years ago by Miss Margaret Anderson and Miss Ruth Hazlebeck. Their idea has proved very useful to people who need help. The work of this organization is carried on by means of representatives chosen from each homeroom. The other projects are the knitting of squares to make afghans for convalescent soldiers and the collecting of scrapbook material and magazines to be read on troop trains. The officers this year were: Gene Dunn, president; Jack Lewis, vice-president; Beatrice Long, secretary; and Jane Schlichter, treasurer.

Left to right: A. Mittendorf, J. Fitch, J. Schlichter, B. Long, G. Roberts, D. Shope.





*Robert Frazier, treas.; Jacquelin Staker, vice-pres.; Richard Moore, pres.
(Not pictured—Norma Henson, sec.)*

NATIONAL HONOR

MEMBERS are selected for National Honor annually on the basis of their scholarship, leadership, character, and service.

Since its beginning in 1927, the society has been merely an honorary organization and performed no duties until the end of the school year, when new members were taken in. This year the club decided to start a project of compiling a history of all its members from its first group up to the present.

The faculty committee is composed of Principal H. W. McKelvey, Mr. A. K. Wheeler, Mr. Bert Leach, Miss Anna Blazer, and co-sponsors Miss Edith Johnston, and Miss Margaret Ball.



*Sarah McQuain, Harold Fields,
Charlotte Bachtrup*



*Judy Snook, Bruce Buckley,
Barbarann Harris*

NATIONAL HONOR SOCIETY

The 1945 initiation of members to the Emily Ball Memorial Chapter of the National Honor Society took place on May 10, 1945.

The following pupils were elected to membership:

Seniors: Lois Adkins, Mignonne Addis, Malcolm Bagby, Constance Bloomer, Doris Cartee, James Cassidy, Harold Coriell, Mary Ann Darragh, James Fout, Lorraine Gillispie, Charles Hanshaw, Dorothy Hobstetter, Richard Hopkins, Janet Hoskins, Emma Jean Jones, Betty Justice, Imogene Leightenheimer, Ramona Newman, Marilyn Revare, Paul Reeg, Norma Sainopulos, Jane Schlichter, Edith Seiler, Rosetta Washington.

Juniors: Phyllis Bradford, Steve Combs, Harry Chastain, Christine Dever, Zelma Edwards, Nadine Fenner, Ilene Hawthorne, Kitty McMillan, Judith Pratt, Frances Quinn, Colleen Rice, Billye Ross, Mary Alice Schisler, Betty Yaeger.

At the close of the initiation ceremony, a memorial service was conducted in memory of members of Emily Ball Memorial Chapter who have given their lives in the service of their country. Names of those recognized were:

Lieutenant William Atkinson, elected to National Honor in 1931, who gave his life in service as a paratrooper over France June 6, 1944.

Lieutenant James Bailey, treasurer of the local society in 1936-37, who was killed while piloting his B-17 over Munster, Germany, October 7, 1944.

Ensign George Stockham, president of Emily Ball Memorial Chapter in 1932-33, who was killed in a mission over Hawaii, November 16, 1943.



AMERICAN LEGION ESSAY CONTEST

THE American Legion conducted an essay contest on the topic, "The Attitude of American Youth Toward Compulsory Military Training". One of the 12 winners in the state was Bruce Buckley, senior at Portsmouth High School, who received an all expense trip to Washington the week of April 19th. The week was spent visiting points of interest in Washington, Old Point Comfort, Virginia, and the Colonial Capital, Williamsburg, Virginia.

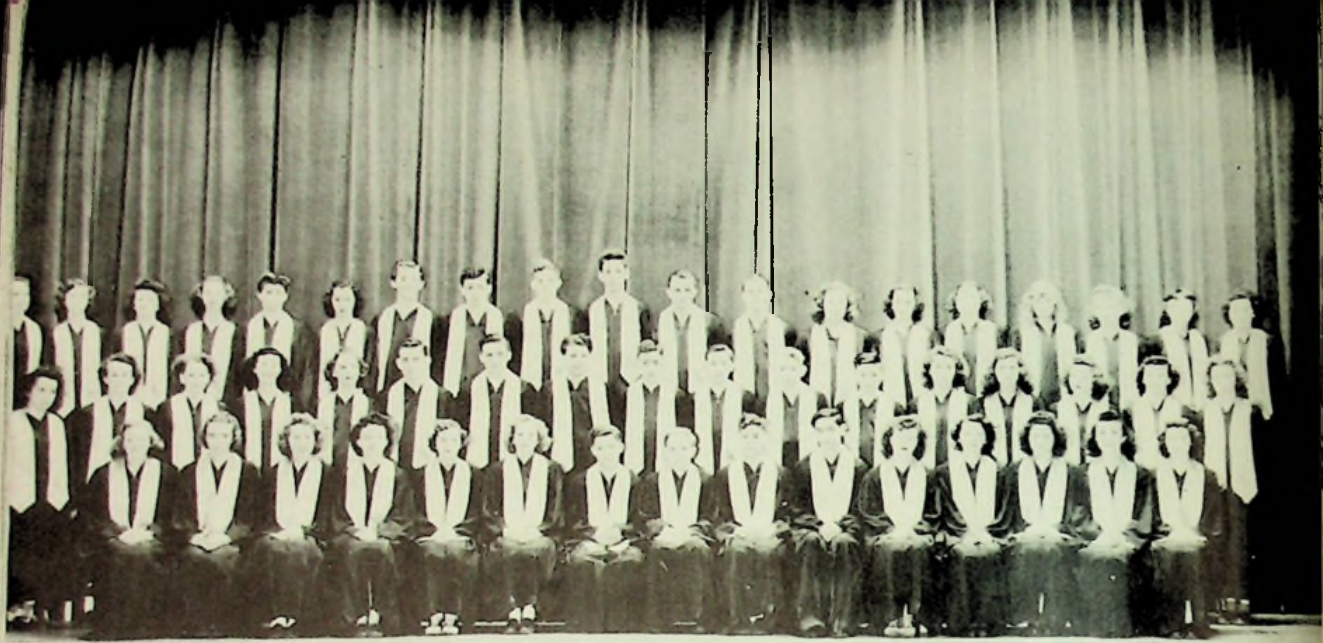
Five students from Portsmouth High school placed in the city and district.

*Mary Lou Elkins, Jackie Howell,
Margaret Wedebrook, David Shultz,
David Baker, Bruce Buckley*



MUSIC





First Row: A. Miller, A. Arganbright, M. Moree, R. Thornton, J. Schlichter, J. Lawson, R. Barnes, R. Davis, M. Henson, R. Lair, A. Elliott, M. Moore, J. Griffith, B. Coburn, N. Sainopulos.
Second Row: R. Barker, F. Quinn, D. Clausing, G. Evans, J. Hoskins, H. Small, J. Gable, R. Prather, R. Oliver, E. McCoy, D. Lewis, V. White, B. Wedebrook, M. List, M. White, D. Doley.
Third Row: M. Harrison, M. McCulloch, U. Robertson, L. Haws, N. Fenner, B. Lipker, C. Winters, C. Hockenheimer, M. Whiteside, R. Vogel, L. Peters, R. Goings, R. Gordon, S. Segur, J. Snook, M. Smith, D. Cox, A. Howes, P. Smith.

CHOIR

MUSIC hath charm, so they say, and this year the students who participated in the activities of the choir and glee clubs charmed the students of P. H. S. with the melodious harmonies which echoed through the halls.

Early in September the choir chose officers, and then planned for their first appearance of the year, an inspiring devotional assembly. As the month of December rolled around, rehearsals were well under way for the annual candle light vesper service, presented the Sunday before Christmas. This program was repeated for our Christmas assembly. A background of evergreens frosted with shimmering icicles made it effective.

Each member took part in the musical production, "The Forest Prince", presented in the spring, and the dramatic recessional from Baccalaureate held in Grant Gym. This devotional service terminated the year's activities.



"O Come All Ye Faithful"

*Mrs. Margaret McGowan,
director of the choir
and the glee clubs*

*Marjorie Moree,
accompanist for the choir*



CHOIR OFFICERS

First Row:

J. Hoskins, N. Sainopulos, M. Smith

Second Row:

R. Day, M. Whiteside, R. Vogel



First Row: J. Hoskins, B. Martin, D. Lathrop, M. Wedebrook, J. Abbott, C. Neighbors, N. Jenkins, M. Vest, S. Miller, I. Ross, U. Skeens, J. Mosley, E. Horne, B. Cummins, R. Crisp, H. Taylor. *Second Row:* J. Barker, W. Kinker, E. McHenry, P. Peters, I. Rawlins, M. Raiké, J. Stevenson, B. Scheid, D. Carpenter, D. Moore, J. Conley, W. Toole, S. White, B. Carson, J. McNamara, S. Berch. *Third Row:* B. Presley, J. Minter, W. Wheeler, D. Fordice, D. Barker, M. Hopkins, W. Yuenger, B. Cornet, V. Pifer, J. Clausing, R. Goddard, L. Fife, J. Buckley, S. Tracewell, J. Yuenger, P. Ruggles. *Fourth Row:* A. Lester, C. Smith, B. Hims, A. Plug, B. Bays, H. Miller, B. Baker, S. Fraley, E. Patrick, J. Boring, L. Dyer, C. Mitchell, P. Phillips, C. Hodge, B. Kinard, D. Shope. *Fifth Row:* B. Riggs, G. Johnson, C. Johnson, M. Buckley, J. Bickett, M. Whitely, B. Adkins, C. McCann, V. Willis, D. Perkins, B. Presley, J. Newman.

JUNIOR GLEE CLUB

THE glee clubs got off to a flying start this fall with their new director, Mrs. Margaret McGowan, who succeeded Miss Elizabeth Moore.

Any girl interested in music may become a member of the Junior Glee Club. It is scheduled ten hours a month, and each member receives one-half credit for a year's work.

Many of the members of the girls' chorus, which was organized in 1943, returned again this year to continue their work on spirituals and southern folk songs.

GIRLS' CHORUS

First Row: T. Luckey, C. Fisher, D. Ferguson, M. Grayson, B. Tanner, C. Collins, S. Ferguson, M. Brown. *Second Row:* J. Fletcher, E. Stanley, D. Gardner, B. McConnel, A. Bemse, H. Bemse, G. Ellis. *Third Row:* P. Harris, R. Washington, G. Johnson, J. Jefferson, M. Tubbs, E. Preston, N. Mathews. *Fourth Row:* M. Miller, M. Nichols, P. Archie, A. Royal, O. Barrett, B. Johnson, C. Ronny.





First Row: P. Smith, R. Jenkins, R. White, S. Stokes, N. Sainopulos, M. Elkins, E. Lyon, J. Nagel, R. Goddard, E. Adams. *Second Row:* E. Thompson, J. Schlichter, J. Hamilton, S. Nagel, W. Dever, A. Edwards, M. Purtee, R. Robinson, L. Prior, B. Varner, P. Jackson, E. Swavel. *Third Row:* J. McGuire, R. Thornton, M. White, P. Stokes, M. Thompson, I. McNamara, C. Hatch, J. VanBibber, M. Midkiff, B. Morris, L. Adams, B. Smith, S. Andre. *Fourth Row:* G. Everman, B. Lair, B. Ivers, P. Adams, P. Francis, N. Plumber, M. Lynn, H. Hazlebeck, M. Frecka. *Fifth Row:* J. Hoskins, M. List, M. Moore, M. Ross, B. Long, S. Zuene, M. Curcio, J. Frese, P. Phillips, N. Mathis, C. Malone, M. Moree. *Sixth Row:* L. Phillips, B. White, B. Glenn, V. Pascoe, E. Meadows, J. Morris, G. McNeal, K. Wedebrook.

SENIOR GLEE CLUB

THE Senior Glee Club consists of girls who have had one year's previous training in the vocal department. They sang numbers in the candlelight vesper program which was repeated for the Christmas assembly, and combined with the choir to form the supporting chorus for the operetta.

Monday morning blues?





*First Row: R. Gordon, J. Lloyd, A. Howes, N. Fenner.
Second Row: R. Davis, C. Winters, M. Whiteside, R. Day.*

MIXED ENSEMBLE

GIRLS' ENSEMBLE

*N. Sainopulos, S. Segur, E. Adams, M. L. Elkins, J. Lawson,
J. Schlichter, J. Hoskins, R. Thornton, H. Hazlebeck.*





BAND

THE Portsmouth High School band under the leadership of Mr. W. O. Aleshire, the new instrumental instructor, performed at football and basketball games throughout the year. At the first games Sam Hancock acted as the drum major for the band on the field. After he was called into the service, he was replaced by Steve Combs. Both were assisted by Betty Mae Neal and Patty Phillips as drum majorettes.

The following students are members of the band:

Row 1: M. Winters, D. Baker, R. Little, J. Cook, I. Leightenheimer, G. Dunn, D. Craycraft, M. Marcum, H. Conkle, K. Burns, J. Hobbs, Director Mr. Aleshire.

Row 2: J. Estep, H. Armsey, S. Combs, J. Murphy, W. Wagner, C. Pettee, H. Coriell, W. Coleman, W. Harwood, J. Davies.

Row 3: J. Little, Z. Edwards, S. Andre, E. Doherty, R. Frazier, C. Harwood, R. Powell, H. Fields, J. Hagaman, M. Revare, R. Mucha.

Color Bearer: Mary Louise Doherty.

Not pictured: R. Allison, P. Peters, O. Bradford, J. Stir, D. Brooks, B. Richey.



Betty Mae Neal



Patty Phillips



Steven Combs



BEFORE coming to Portsmouth, Mr. Aleshire was the director of music at Pomeroy, Ohio. He received his Bachelor of Arts degree at Ohio Wesleyan University, and his Master of Arts and Bachelor of Science degrees at Ohio State University.

ORCHESTRA

WITH a few additions and a few losses, the Portsmouth High School orchestra performed at plays and various school functions throughout the year. Outside school activities they also furnished music for banquets and dinners. Playing at grade schools was the means used to stimulate interest in the high school musical organizations.

Members of the orchestra are:

Violins: Sara McQuain, Barbara Brandel, Nancy Chamberlin, Essie Mae McGlone, Janet Boring. Violas: Zelma Edwards, Patty Hiatt. Clarinets: Jim Cook, Harold Conkle, Dick Sutherland. Bassoon: Jimmy Hobbs. Cornet: Jim Murphy, Steve Combs. Trombone: Bob Powell, Harold Fields. Percussion: Bob Mucha. French Horn: Bill Wagner. Flute: Robert Frazier. String Bass: Herman Rigley. Piano: Frances Quinn.





THE DIXIE SIX

THE Dixie Six is a novelty group which specializes in Dixieland swing. "The Southern Half Dozen" has played at basketball games and in school assemblies and various banquets and social functions.

Members of the group are: Bill Wagner, Bob Mucha, Bob Powell, Jim Cook, Herman Rigley, and Sam Strindberg.



DRAMATICS





On stage! Curtain going up!—The action starts on stage; the actors play their scenes. But what's behind those scenes?—Behind those scenes sit the unsung heroes of the stage crews. Here is one of those unsung heroes—the prompter. Without her many a “ham” would have been “lost at sea”.

Janet Hoskins

CURTAIN

Say! that doesn't look like anyone I know! If you're gruesome and want to be handsome or vice versa, the make-up ladies can do the impossible. Miss Anna Blazer and Miss Margaret Anderson, the ladies behind the “soldiers in grease paint”, have been for many years making people what they aren't. Curtain call for the ladies behind—Curtain going up!

*Left to Right: Miss Margaret Anderson
Roseanne Thornton, Miss Anna Blazer*



Dim the house lights—Curtain going up!—Stage lights down; foots on; play that blue spot on upstage right!—The life of the light man! He dims lights for the touching love scene; turns out lights for the terrifying murder scene. His gleaming *light* is seen by all, but his face by none.

Dick Riehl



GOING UP



“Uncle Bert”, the most essential man of all behind—Curtain going up—He matches wits with the wits of the school to make a smooth production we all appreciate. For quite a few years he has been working to produce entertainment for us, and we hope he will continue to do so for the years to come. He truly typifies—Curtain going up!

Bert Leach



*Top, left to right:
Donald Rice
Myron Williams
David Knittle
Sally Andre
Colleen Rice
Christine Dever
Barbara Doerr
Kitty McMillan*

*Bottom left:
Donald Rice
Myron Williams
Kitty McMillan*



*Middle:
Nonnie McClure
Mary Marcum*

*Bottom right
Kitty McMillan
Mary Alice Schisler
Donald Rice
Myron Williams
David Knittle
Sam Johnson*

JUNIOR CLASS PLAY—"THUMBS UP"





*Norma Henson
Roger Vogel*



*Christine Dever
Charles Hanshaw*

*Bottom, left to right:
Doc Yeagle
Jack Plymale
Raymond Buckley
Roger Vogel
James Fout*



Sam Strindberg

REVELLER'S PLAY—"WAPPIN' WHARF"





*Norma Henson
Imogene
Leighenheimer
Mary Bazler*



*Gloria Lewis
Jane Schlichter
Jacquelin Staker*



*Jim Fout
Barbara Questel*

SENIOR CLASS PLAY—"WHERE'S LAURIE?"



*Jane Schlichter
Jacquelin Staker
Rosemary Ison*

*Gloria Lewis
Imogene
Leighenheimer
Norma Henson*

*Dick Riehl
Barbara Questel*



*James Cassidy
Jack Plymale*

Portsmouth High School had the honor this year of enacting a "first production". The premiere of "Where Is Laurie?" was held May 4th in the Portsmouth High School Auditorium. It was a great show portrayed by members of the senior class. The plot centered around the attractive Laurie and her jealous girl friends. Jinx had Laurie kidnapped in order that the other girls might enjoy their prom, but she finally showed up in a surprise ending. P. H. S. will long remember the 1945 class play.

*Jack Plymale, Jane Schlichter
Jacquelin Staker, Dick Riehl,
Rosemary Ison, James Fout*

Norma Sainopulos, Gloria Lewis, Judy Snook



"THE FOREST PRINCE"

Jester at Tzar's Court—*Robert Davis*



Princess of Russia—*Sally Segur*
Cossack Chief—*Marvin Whiteside*

Cossack Girl—*Ruth Ann Gordon*
Mother Vanya—*Nadine Fenner*
Cossacks—*Robert Day*
Robert Prather



Dancers—
Lawrence Peters, Rosanne Thornton
Ray Goings, Carl Winters
Janet Hoskins

Finale



GIRLS SPORTS



B. Ball

F. Quinn

Miss Friel



G. A. C.

THE G. A. C. is an organization to increase the interest in athletics among the girls of Portsmouth High. Under the leadership of Miss Friel, her assistants, Betty Ball and Frankie Quinn, and the G. A. C. officers, sports aroused a great amount of enthusiasm and interest among the more athletic-minded girls of the school this year.

There were about fifty members in the club. In order to be a member, one must have at least one sport to her credit, and in order to remain a member she must earn at least 50 points through her participation in some sport or sports.

The annual banquet is one of the main highlights of the G. A. C. program. It is held each



F. Quinn

J. Hensge

D. Claypool

Miss Friel

M. A. Babcock

First Row:

S. DuPuy, C. Edwards, P. Bradford,
B. Handley, J. Pratt.

Second Row:

B. Tierney, E. Harrod, L. Adams,
M. Werner, R. Newman.

Third Row:

H. Hazlebeck, J. Van Bibber,
E. McClure, M. Chabot,
G. Everman.



year before the closing of school, and is held for the purpose of assembling all members to give awards to those who have shown outstanding sportsmanship during the year. To be awarded a letter, a girl must have 1500 points, and to earn a medal, 2,000 points. In addition to these, one senior girl is presented a trophy in athletics for her ability, fairness, good spirit, and her fine all-round sportsmanship.

This year the G. A. C. was run efficiently

by Mary Anne Babcock. Other officers were Frances Quinn, vice-president; Joy Hensge, secretary; and Dorothy Claypool, treasurer. Although the club does deserve a great deal of recognition, Miss Friel should also be given credit, for without her there would be no club. Through her willingness and patience she has won the admiration and friendship of all the girls, and has raised girls' sports to a high plane in Portsmouth High School.



First Row:

B. Downing, K. Shepherd, J. White,
B. Newman, K. McMillan,
A. Bourgholtzer.

Second Row:

B. Doerr, B. Baughman, V. Ashe,
C. Bachtrup, I. Hawthorne,
G. Evans.

Third Row:

R. McCulloch, J. Dougherty, M. Appel,
J. Lloyd, J. Staker, B. Ball.

JUNIORS HOCKEY VICTORS



Front Row: B. Ball
Second Row: B. Tierney, J. Dougherty
Captain: J. Dougherty



Front Row: J. White, B. Newman, D. Claypool
Second Row: M. McCulloch, P. Bradford, J. Hensge
Captain: F. Quinn

Front Row: M. Thatcher, E. Souders, R. Goddard, J. Van Bibber
Second Row: M. Gimms, P. Adams, M. Lynn, L. Adams
Captain: G. Everman.



Front Row: J. Abbot, D. Barker, B. Baker
Second Row: S. Lessenberry, D. Shope, J. Baber
Captain: D. Shope.



SENIORS BASKETBALL CHAMPS



First Row: V. Ashe, B. Ball, M. Smith
Second Row: B. Tierney, R. Newman



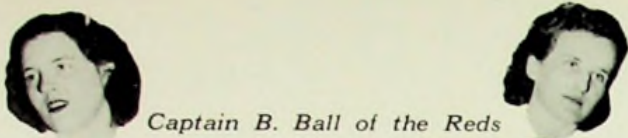
First Row: B. Downing, K. Shepherd, J. Hensge
Second Row: F. Quinn, G. Evans, B. Newman,
 D. Clavpool

Not Pictured: M. Schisler, J. White, B. Ross, B. Yeager, B. Doerr

First Row: M. Legas, M. Werner, V. Brandel, P. Francis, G. Everman, *Second Row:* E. Adams, L. Feurt, S. DuPuy, C. Edwards, E. Souders, E. Sargent, L. Gin. *Third Row:* J. Scurlock, S. Stokes, R. Goddard, M. Lynn, J. McGuire, E. Cobourn, D. Freshour. *Fourth Row:* V. Pascoe, J. Dodge, J. Van Bibber, H. Hazlebeck, P. Adams, M. Gims, N. Plummer.

First Row: C. Hodge, D. Shope, D. Barker, J. Abbot.
Second Row: B. Cummings, P. Ruggles, S. Tracewell, J. Yuenger, M. Raike, C. Knowles. *Third Row:* E. Horne, S. Lessenberry, L. Francis, T. Bagby, J. Buckley, C. Johnson.





Captain B. Ball of the Reds



Captain F. Quinn of the Blues



The two varsity basketball teams, Red and Blue, played only one game this year which was really a "bang-up". The Reds were victors over the Blues by a margin of 23 points, the score being 35 to 12. The Red team is pictured at the left of the "V", and the Blue at the right.

ARSITY



BOWLING

VOLLEYBALL

Another popular sport this year was volley ball. Every day at three, one could find the girls in the gym playing hard at hitting the ball back and forth across the net.

Miss Friel directed the games and most of them were really fast and exciting. The idea is to keep the ball from hitting the ground, and to hit the ball across the net to the opposite team. The first team to fail to get the ball across the net, permits the ball to hit the floor, or for one person to hit the ball twice, thereby, either losing the ball if serving or gaining a point for the other team. There are nine players to a team and each person has a certain area to cover.

All those who went out for the teams made them and as a result, there were several teams in each class. Through practice and team work, the girls built up very efficient and skillful teams. All the teams were closely matched, and a number of exciting and well-played games resulted.

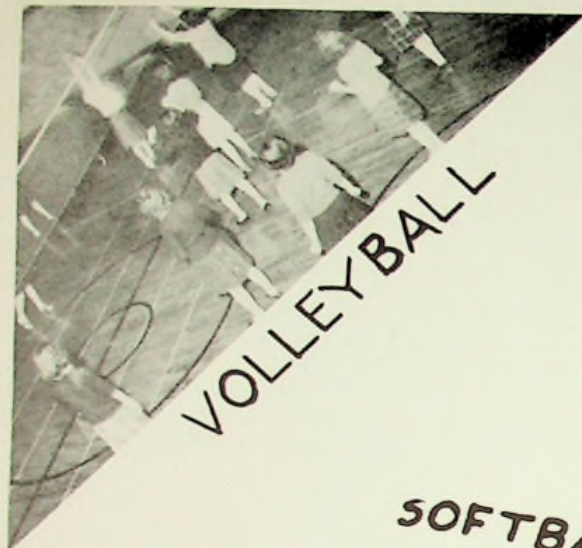
First Row: B. Tierney, N. Johnson, B. Questel, M. Bazler.
Second Row: B. Ball, C. Bachtrup, H. Slusher, V. Ashe.
Third Row: M. Ashworth, R. Newman, M. Addis, P. Merrill.

First Row: P. Bradford, J. Hensge, B. Newman. *Second Row:* F. Quinn, M. McCulloch, B. Yeager, K. Shepherd.
Third Row: B. Ross, L. Hawes, D. Claypool.

First Row: W. Dunn, E. Lyons, G. Everman, P. Francis, L. Brandel, J. Martin, J. Spires. *Second Row:* E. Sargent, L. Gin, H. Burns, C. Edwards, J. Van Bibber, M. A. Thatcher, L. Feurt, M. Legas. *Third Row:* E. Coburn, H. Hazlebeck, J. Scurlock, R. Goddard, S. Stokes, E. Souders, J. Dodge. *Fourth Row:* M. Lynn, M. Gims, L. Adams, V. Pascoe, N. Plummer, R. Gordon, P. Adams, B. Long.

First Row: J. Conley, D. Barker, M. E. Scott, M. Raike, J. Yuenger, P. Peters. *Second Row:* B. Baker, B. Himes, M. Hopkins, W. Yuenger, S. Tracewell, R. Nourot, J. Abbot. *Third Row:* C. Hodge, J. Conley, J. Buckley, S. Lessenberry, L. Francis, B. Adkins. *Fourth Row:* M. Buckley, H. Taylor, T. Bagby, P. Ruggles, D. Shope, J. Baber, C. Knowles.





VOLLEYBALL



ARCHERY

SOFTBALL



BADMINTON

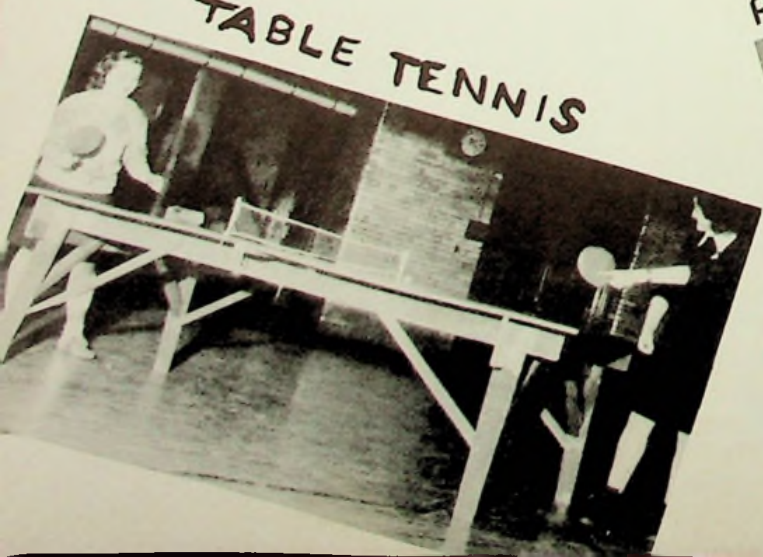


TENNIS

PADDLE TENNIS



TABLE TENNIS





School

Life

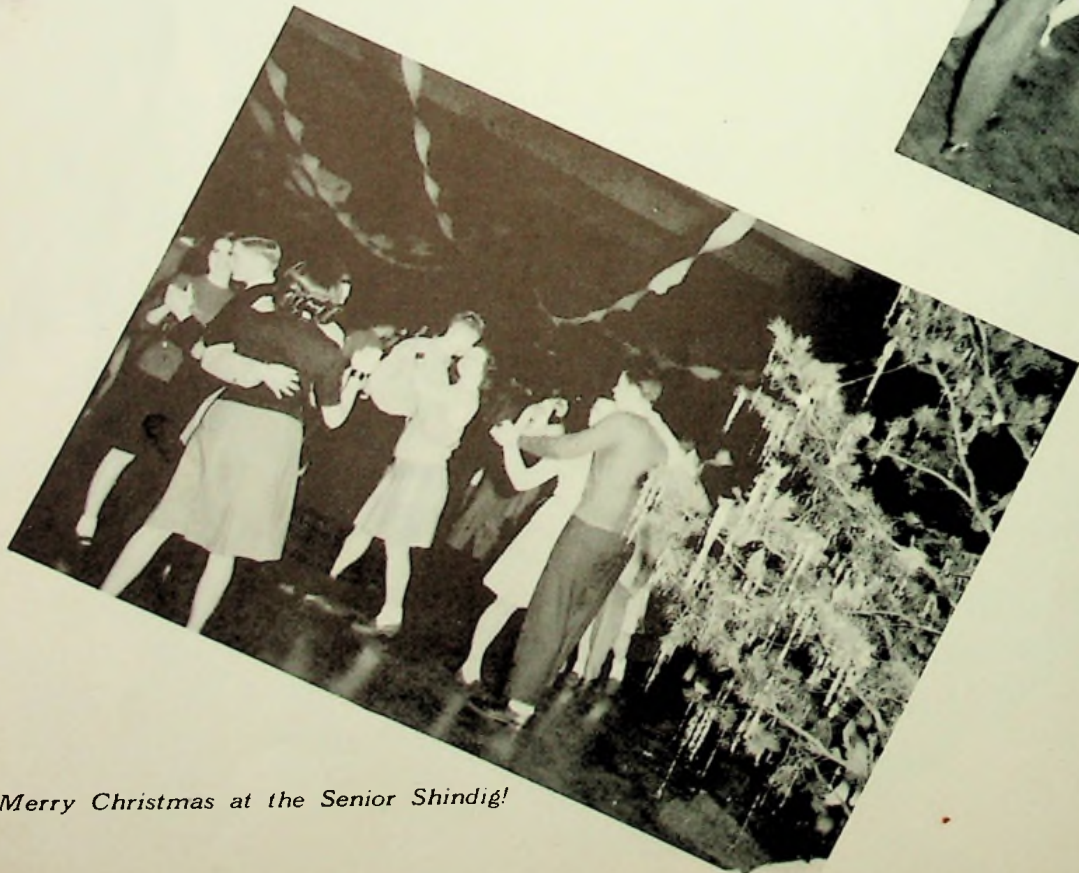
BLUE BIRD
30-0825-A
STAR DUST - Fox Trot
Coleman Hawkins
and his Orchestra



Sam and Norma "take off"!



The joint is jumpin'!



Merry Christmas at the Senior Shindig!



Nick L. Lodian and his orchestra!



We like to riff!



Let's have a yell!



*Stompin'
at the Stall!*



Gee t'anks, Coach!



Oh well, I'm draft bait!

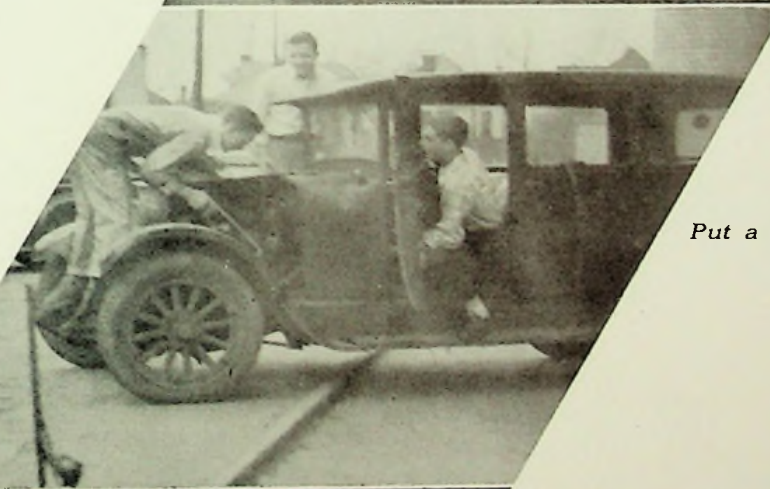




Jackson says "duck!"



Wheeee!



Put a nickle in it!



It's a full house!

*The team's choice—and ours, Fay Callihan,
Homecoming queen of the 1944 football season*



BARBARA HARRIS

BETTY ANDERSON



JANET LITTLE

SARA WATKINS

Count Basie

Jimmy Dorsey

Woody Herman

Kay Kyser

Artie Shaw

Stan Kenton

Bene Krupa



Sonny Lehman

Johnny Mercer

Jimmy Lunceford

Frankie Carle

JAMMIN' AT P. H. S.

Jimmy Dorsey

Cab Calloway

Duke Ellington

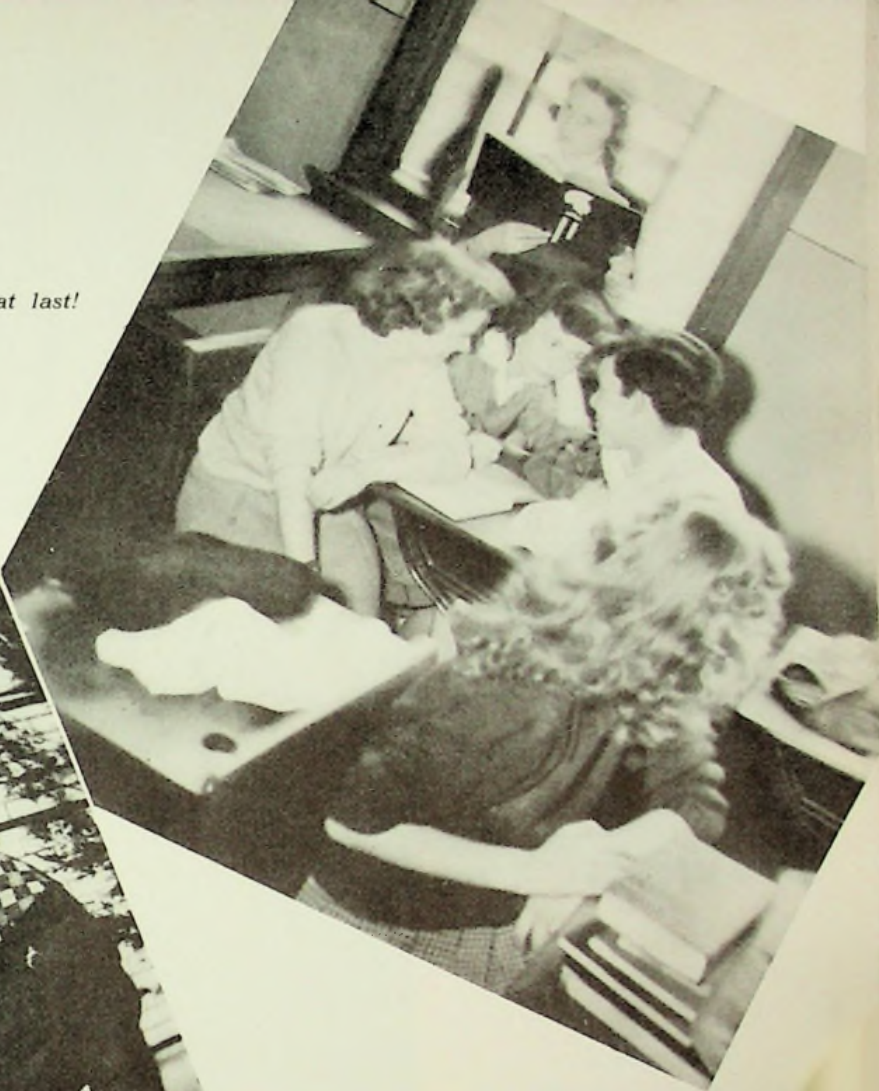
Tony Pastor

Frank

Charlie

Charlie Harnet

Trojans—at last!



Take a BIG bite, Frank!



We want a touchdown!



TROJAN STAFF

CLUBS

*Mary Alice Schisler,
Sarah McQuain*



DRAMATICS

Bruce Buckley



CLASSES

Sally Andre, Barbara Harris



MUSIC

*Bill Wagner,
Patsy Henry, Zelma Edwards*

PHOTOGRAPHERS

*Bill Hoover, Jack Gall,
Jack Smith*

BOYS' SPORTS

*Paul
Reeg*



GIRLS' SPORTS

Ramona Newman, Beverly Tierney



1945

BUSINESS

*Patricia Merrill, Merle Danner,
Nancy Johnson*



CO-EDITORS
*Richard Moore,
Jacquelin Staker*



SCHOOL LIFE

James Breece, Barbara Questel



ADS
*Rosemary Ison, Betty Justice,
Charles Hanshaw*

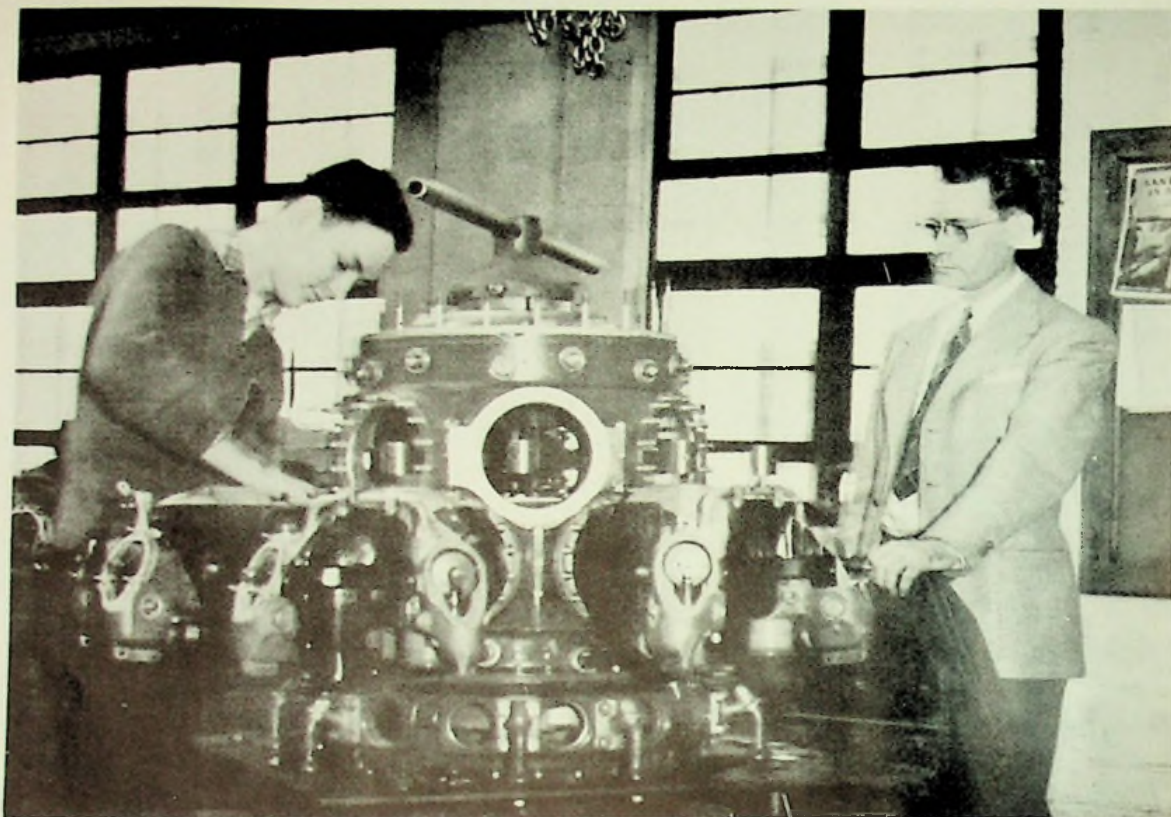
ART STAFF
*Sarah Dupuy, Cynthia Edwards,
Betty Yaeger, Colleen Rice,
Billye Ross.*

ADS — *Mignon Addis*



FACULTY — *Phyllis Bradford*



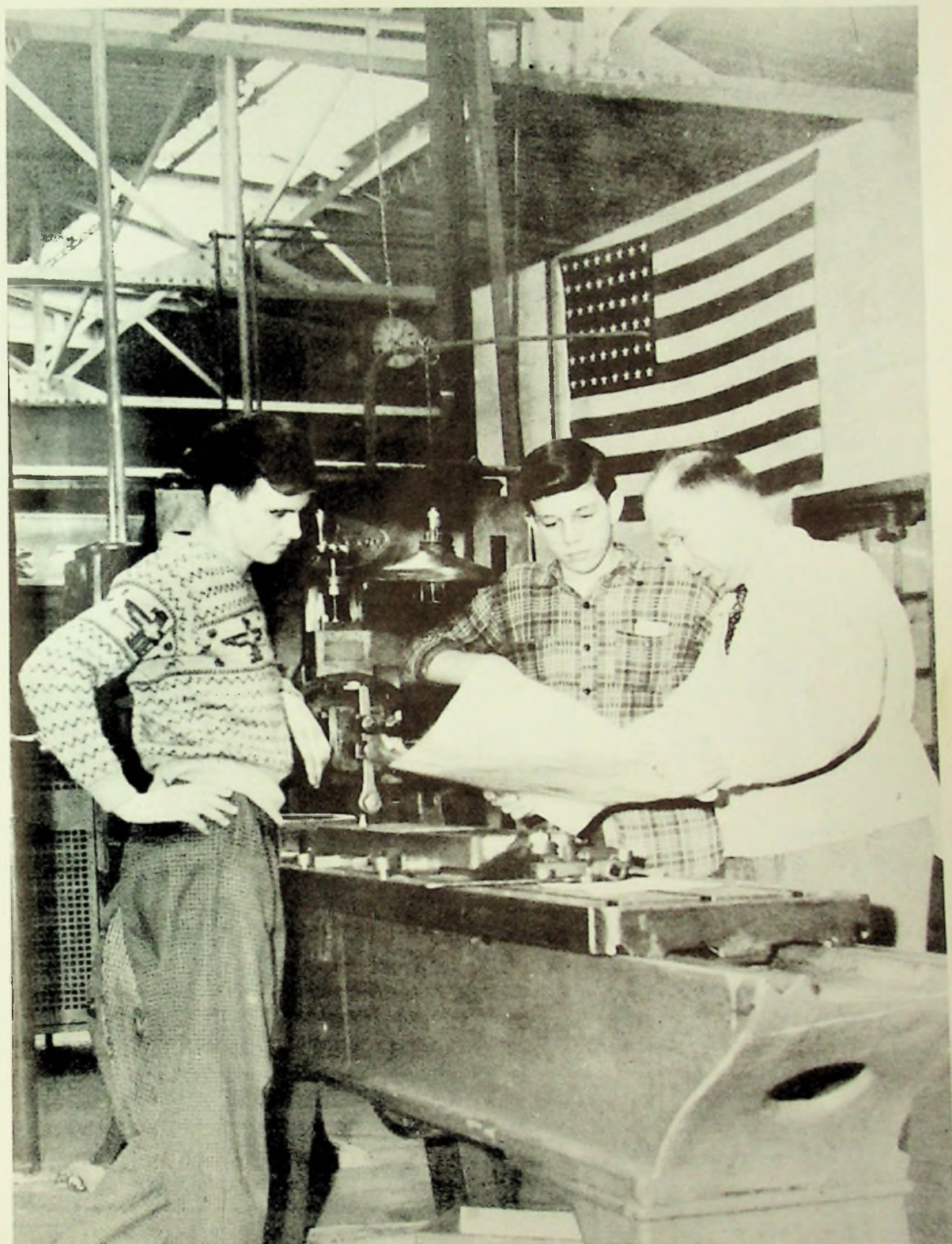


VOCATIONAL SHOPS, P. H. S.

Mr. Harold Whitlatch, coordinator, observes post-graduate Richard West as he brushes up on his engine repair technique before entering the navy air crew training.

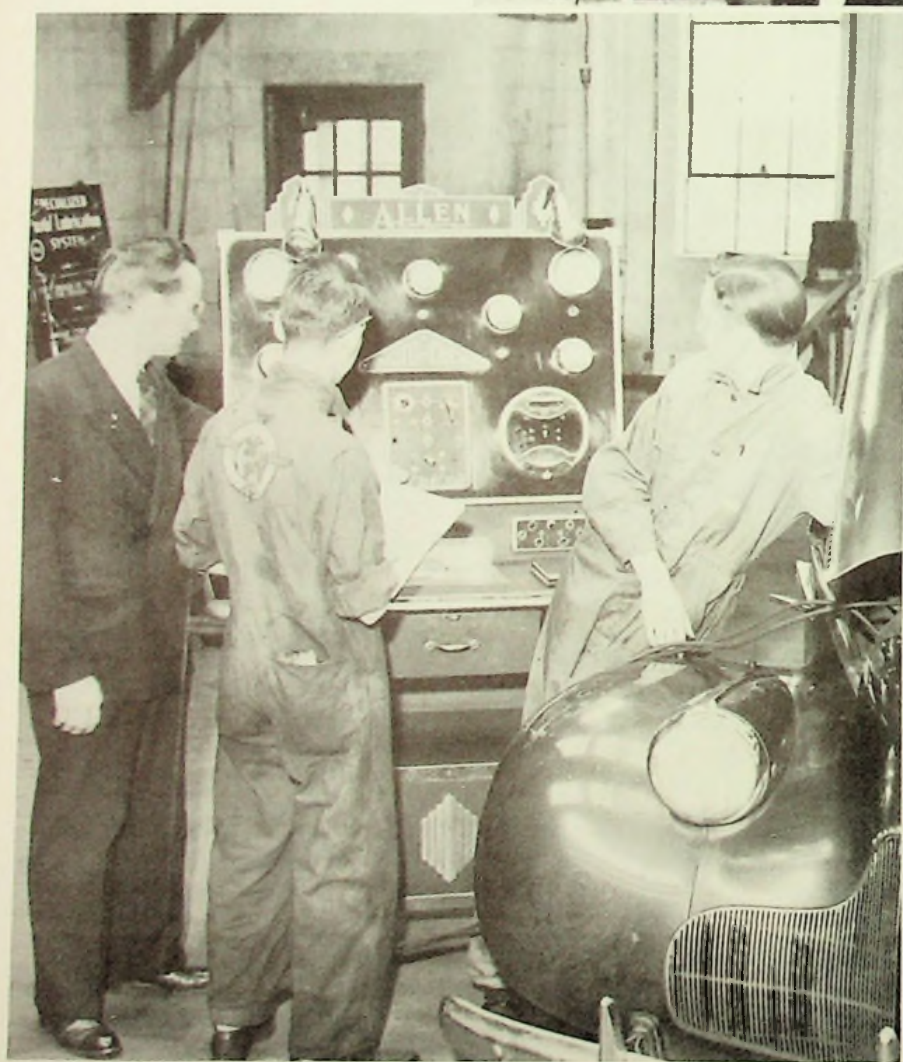
As coordinator, Mr. Whitlatch provides courses of study and necessary tools and supplies for junior and senior students who elect to follow the Machinist, Automotive, or Aircraft Mechanics trades. The daily three hours shop instruction and two hours related class instruction are kept abreast of current trade practices by the vocational staff through contacts by the coordinator. Industrial practices and trade instruction are "coordinated".

Specialists in war time and skilled craftsmen for postwar days receive an excellent start in the modern well equipped vocational shops of P. H. S.



Learning to serve Old Glory better in war time or peace time are these two junior machine course students. Mr. Owen Burkhardt is checking the blue print with them for the accuracy on the milling machine bed which is being planned to production standards.

Acetylene welding instruction is a part of the automotive and aeronautics shop instruction. Senior Dave Kendall has become proficient in this phase.

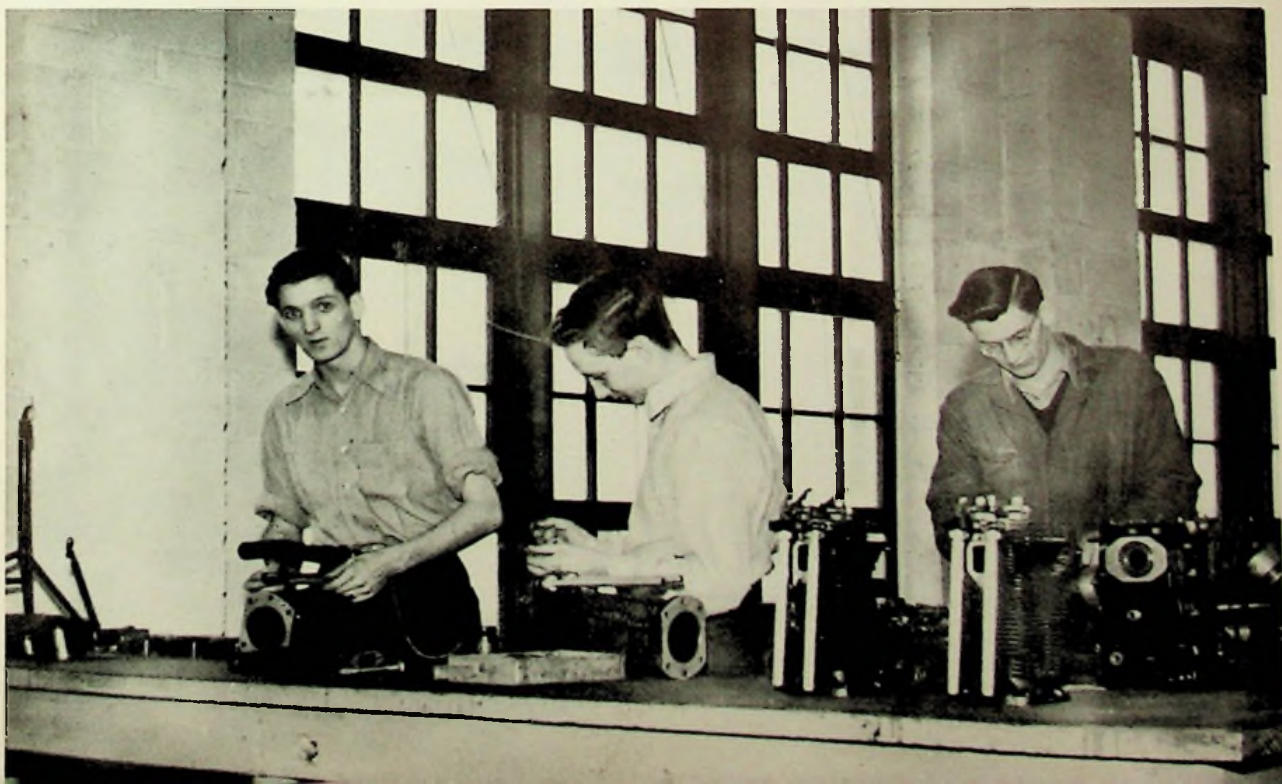


Instructor C. E. Schneider supervises two of his junior automotive students who are learning to use the motor analyzer in engine tune-up.



Mr. Eugene Knore checks closely on assigned work in the Aeronautics science class, a "related subject".

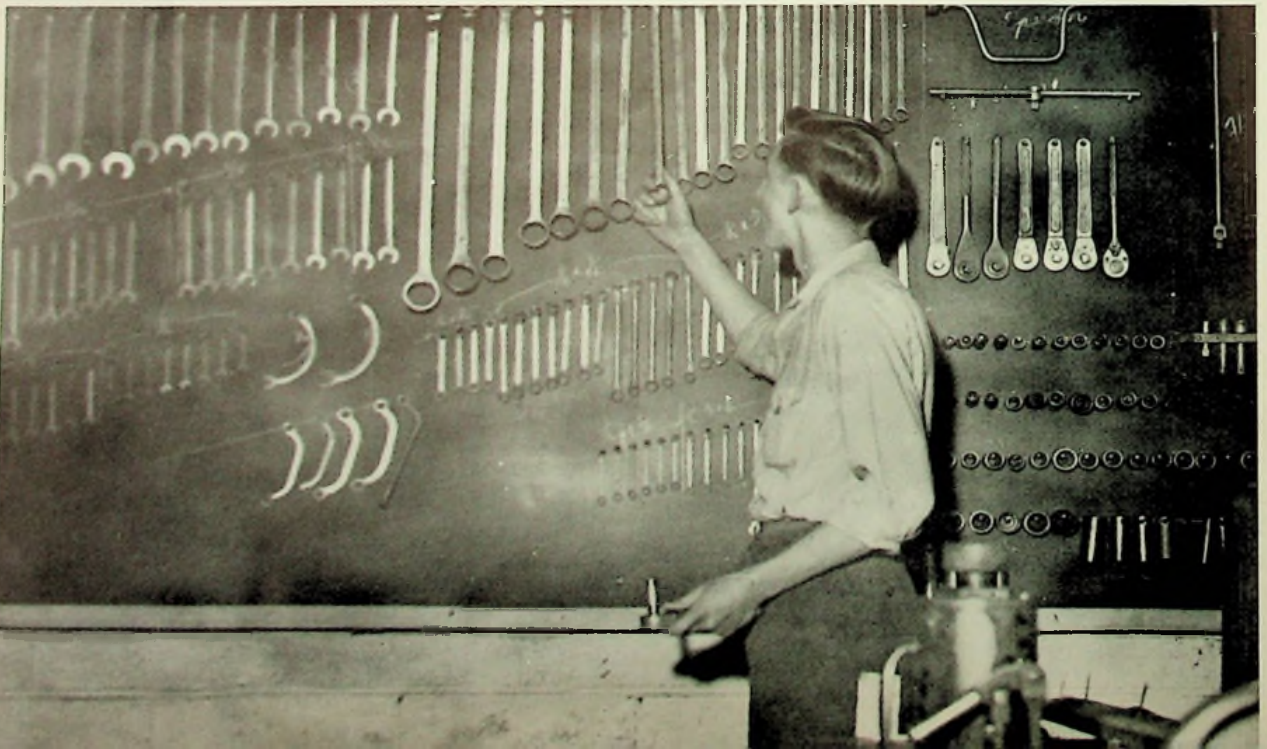
Senior Aeronautics students of Mr. Gerald Knore's Pre-service class. These students will receive their P. H. S. diplomas and certificates from the Air Corps upon graduation. Here they are preparing parts of a radial engine for assembly and test run.





Junior Vocational students devote one hour daily to applied English; Seniors, one hour to American History. Here, the junior group is at work in applied English, capably taught by Mrs. Joseph Yonovitz.

The tool crib attendant is responsible for checking all tools out and in. This "man-sized" job is taken by each student as his shop job at some time during the school year. Here, a student is busy in the combined automotive-aircraft tool crib.



PRINT IT

Comptolith



COMPTON ENGRAVING AND PRINTING CO.

PORTSMOUTH, - - - OHIO

The Trojan Staff gratefully acknowledges and appreciates
the following sponsors of the 1945 Trojan

Collins' Clothing Store
Junior Tog Shop
Dr. Albert N. Conkle

Compliments of

BRUSH ELECTRIC CO.

1838 VINTON AVE.

PHONE 267

PURE MILK CO.

Calvin Clarke, Pres.

QUALITY ICE CREAM

MILK DISTRIBUTORS

We Appreciate Your Business

2001-15 Gallia St. Phones 1028-2981

SELECT DAIRY

The Finest in Dairy Products

2345 GALLIA ST.

PHONE 2822

Compliments of

GEORGE A. SUTER & CO.

BUILDING CONTRACTORS

1617-21 CHILLICOTHE ST.

P. O. BOX 1255

TELEPHONE 875

PORTSMOUTH, OHIO

AL WINDEL

C. M. HOWLAND

WINDEL-HOWLAND

Funeral and Ambulance Service

*"Service For All Within the Means
of All, Anywhere, Anytime"*

PHONE 200

PORTSMOUTH, O.

COMPLIMENTS OF





Portraits by Marting

... are comparable to the finest made anywhere. You will be delighted with our soft light, without glare, which will assure you of truly natural expressions.

BLOW YOUR HORN

FOR THE TROJANS

BUT BUY YOUR HORN AT

THE MUSIC SHOP

MUSIC

RECORDS

PHONOGRAPHS

Instructions On All Instruments

703 CHILlicoTHE ST.

PHONE 3361-R

CONGRATULATIONS TO

CLASS OF '45

ARTWIL

QUALITY GIFTS AT
LOWEST PRICES



421 CHILlicoTHE STREET

NO EXTRA CHARGE FOR CREDIT

COMPLIMENTS

OF

IDEAL MILK CO.

1637 TENTH STREET

Atlas Fashions

— HOME OF —
DORSA

KAY COLLIER
CONNIE CARTER
CAROLE KING
DORIS DODSON

CLASSY JUNIOR FASHIONS

Sizes 9 to 17

WM. ATLAS (P.H.S. '09), General Mgr.



A VERITABLE beacon of liberty, the newspaper illumines the minds of all who read it, showing the way to clear knowledge of the affairs of the world. He who reads must be informed; he who reads THE PORTSMOUTH TIMES

is informed honestly and factually. SERVING every member of the family, THE PORTSMOUTH TIMES is dedicated to furthering the interests of democracy by best serving the interests of this community.

THE PORTSMOUTH TIMES

For 93 Years A Dependable Portsmouth Institution

ORIGINAL
HAMBURGER INNS

NO. 1
1541 GALLIA
NO. 1½
SIXTH AND GAY

Hamburger Inn No. 2

739 FIFTH STREET
A GOOD PLACE TO EAT

Compliments of

American Steam Laundry

PHONE 176

Portsmouth Auto Exchange

*NEW AND USED PARTS
FOR ALL CARS*

See JACK FISH
2332 GALLIA STREET
PHONE 3036



"If It's Borden's
—It's Got to Be
Good"

— FRESH —
DAIRY
PRODUCTS
ICE CREAM

Borden's
MODERN DAIRY

237 SECOND STREET
PHONE 1801

Compliments of

The
Ohio Consolidated
Telephone Co.

HERF-JONES

*MANUFACTURING JEWELERS
AND STATIONERY*

1407-1419 NORTH CAPITOL AVENUE

INDIANAPOLIS, INDIANA



P. J. BURKART, Representative

2201 CAMBRIDGE ROAD

COLUMBUS, OHIO

WASHER, IRONER AND
APPLIANCE SERVICE

H. B. McGAHAN CO.

1026 OFFNERE STREET
PHONE 3276

WE SERVE

QUALITY FOOD

DAVE'S COFFEE SHOP

GALLIA AND OFFNERE STS.

ADAMS BAKING CO.

HOME OF
PAN DANDY BREAD

Quality Assured by Dependable Bakers

1009 OFFNERE STREET
PHONE 1027

THOMPSON'S

FINER FOODS

1732 GRANT STREET
PHONE 2037-459
PORTSMOUTH, OHIO

MELCHER FUNERAL HOME

1417 OFFNERE HILL

AMBULANCE SERVICE

PHONE 160

GLENN WERNER

BATTERY & ELECTRIC SERVICE

Service That Satisfies

M. P. Battery & Electric Co.

921 FOURTH ST.
PORTSMOUTH, OHIO



BRAGDON'S

DEPARTMENT STORE

*THE VALUE STORE
OF THE VALLEY*

409-11 CHILLICOTHE ST.

STEWART GROCERY

Established in 1911

VINTON AND YOUNG STS.

PHONE 358

Schirman Pharmacy

PRESCRIPTIONS

811 CHILLICOTHE STREET

PHONE 12

PORTSMOUTH, OHIO

Compliments of

Holcomb Beauty Shop

1312 McCONNELL AVE.

PHONE 2258

Compliments of

THE PASTRY SHOP

708 CHILLICOTHE ST.

Compliments of

Lovelee Beauty Shop

MRS. JOHN SCHLICHTER, Prop.

402 CAMPBELL

PHONE 2296-X

Art is long
Time is fleeting
When the ranks of mediocrity
are crowded
There is always room at the top

FLOOD—DRUGS, INC.

J. W. FLOOD, Pres.

2109-2111 GALLIA STREET

Compliments of

The Portsmouth Cement and Lime Co.

THIRD AND JEFFERSON STS.

The HIBBS HARDWARE Co.

FIFTH ST. NEAR CHILlicoTHE

GENERAL HARDWARE

TOOLS

PAINTS

ENAMELS

VARNISHES

COMPLIMENTS

OF

**CARR'S
JEWELRY STORE**

IT'S SMART TO SHOP AT
DENTON'S

If Men and Boys Wear It, We Have It

DENTON'S

218-220 CHILlicoTHE STREET

Next to Hurth Hotel

CHECKER STORE, INC.

934 GALLIA STREET

Across from Selby Shoe Store

"STOP-SHOP AND SAVE"

SPORTING GOODS

TIRES RADIOS PAINTS

ACCESSORIES AUTO PARTS

BATTERIES

MANY PICTURES IN

THE "TROJAN"

WERE MADE ON FILMS

AND SUPPLIES FROM

FOWLER'S

COMPLIMENTS

OF

THE OHIO

E. H. Russell Glass Co.

Manufacturers of MIRRORS

Jobbers of GLASS

1106 GALLIA STREET

PHONE 460

"GIVE US A BREAK"

POWER COMPANY

the shop of smart

young fashions

Tilene's

gallia at gay

Compliments of

**Gemperline
Furniture Company**

The Home of Quality Furniture

612 SECOND STREET

PHONE 1063

THE CAMEO

FOR A BIT OF SWEET
OR A BITE TO EAT

Established 1926

839 GALLIA STREET

"Good Food Is Good Health"

BE VALUE WISE

IN YOUR FURNITURE BUYS

Sheets Furniture Co.

Out of the High Rent District

526-30 SECOND STREET

PHONE 22

WE CARRY ONLY THE

SCHOOL SUPPLIES

USED IN THE SCHOOLS

BRANDAU BOOK CO.

304 CHILLICOTHE STREET

FOR BETTER SANDWICHES

PARK AT THE

PARK SHOPPE

SEVENTEENTH & GRANDVIEW

PHONE 2283

COMPLIMENTS

OF

DISTEL

FURNITURE CO.

YOU WILL SOON LEARN THAT

DOERR'S

519-21 SECOND STREET

IS THE

PLACE TO BUY HARDWARE

FUR STORAGE
FUR COATS CLEANED, GLAZED,
REBUILT — EXPERT RELINING

Portsmouth Fur Shop

DALE M. KEES

Portsmouth's Exclusive Furriers

709 CHILlicoTHE STREET
PORTSMOUTH, OHIO

C. E.

“Tink”

NODLER

“INSURANCE OF ALL KINDS”

Coleman's Market

*FRESH FRUITS
AND VEGETABLES*

Open Daily Except Sundays

2027 GALLIA ST.

PHONE 1969-R

Compliments of

Lawson Furniture Co.

S. C. LAWSON, Pres.

Complete Home Furnishers

ELEVENTH & LAWSON STS.

WATKINS'

THE RICHELIEU STORE

CORNER OFFNERE AT FOURTH

Ed Lockner's Auto Supply

WHOLESALE AND RETAIL

AUTO SUPPLIES

CHILlicoTHE AT NINTH

PHONE 2937

Compliments of

CRICHTON
Office Supply Co.

*EVERYTHING
FOR THE OFFICE*

Compliments of

NU-WAY CLEANERS

CLEANING AND FUR STORAGE

C. W. JACKSON

2314 GALLIA STREET

PHONE 2500

GO TO THE . . .

BAKE SHOP

FOR A WIDE VARIETY OF
TASTY PASTRIES

AT MARTING'S CORNER

Phone 1014

CONGRATULATIONS TO THE CLASS OF 1945

F. C. DAEHLER MORTUARY CO.

PHONE 452

PORTSMOUTH, OHIO

JOHN T. CARR, Manager

WURSTER'S

DRUG STORE

"The REXALL Store"

Open Every Day
Sundays and Holidays
7:30 A. M. to 11:30 P. M.

PRESCRIPTIONS DELIVERED TO ANY
PART OF THE CITY AT
NO EXTRA CHARGE

We also carry a full line of
GALES AND WHITMAN'S CANDIES

WURSTER'S
DRUG STORE
The Rexall Store
CHILL 419 STREET



CURNUTTE'S Food Markets

Jackson & Brown — Phone 3018
29th & Scioto Trail — Phone 41

GROCERIES MEAT
FRUITS VEGETABLES
BIRD'S EYE FROSTED FOODS

“KRAUSS”

FURNITURE — APPLIANCES
PHONOGRAPHS and RECORDS

831-833 GALLIA STREET

830-832 SIXTH STREET

MEISEL MOTOR CO.

CHRYSLER & PLYMOUTH Wholesale and Retail Distributor

USED CARS OF ALL MAKES AND MODELS

PHONE No. 1

224 SECOND ST.

Compliments of

LYNN FUNERAL HOME

CHESS RIGGLES

VISIT OUR NEW STORE
NEXT TO LaROY THEATRE



842 GALLIA STREET

“MAKERS OF HAPPY HOMES”

WOODS PHOTO SERVICE

DEVELOPING—PRINTING—ENLARGEMENTS

IF IT'S ANYTHING IN PICTURES WE DO IT

1010 GALLIA STREET

PORTSMOUTH, OHIO

PAINTS

GLASS

WALL PAPER

**The Portsmouth
Paint Company**

GALLIA AND FINDLAY

CONGRATULATIONS TO

THE CLASS OF '45

WILLS

Lingerie and Corset Shop

"KEEP 'EM ROLLING"

With an



Membership

THRU . . .

**The Automobile Club
of Southern Ohio**

GALLIA AT GAY STREET

W. L. WILHELM

Jeweler

JAMES E. WILHELM

Optometrist

507 CHILLICOTHE STREET

"It's Easy to Pay the Lewis Way"

THE HOME OF NATIONALLY
ADVERTISED FURNITURE

LEWIS'

CHILLICOTHE AT THIRD ST.

Accurate Prescription Service

Headquarters for School Supplies

FREE DELIVERY

HAGER & WEBB

GALLIA AT JOHN PHONE 905

CONGRATULATIONS TO

THE CLASS OF 1945

Marc Canter's

KOPY KAT

RICHMAN BROS.

CLOTHES

*DIRECT FROM OUR FACTORY
TO YOU*

311 CHILLICOTHE STREET

Murfin's Insurance Agency

"Insure In Sure Insurance"

1542 GALLIA STREET

PHONE 446 PORTSMOUTH, O.



*The exchange of photographs keeps the
memories—finds the friendships
of Happy School Days . . .*

Photographs of the Class of 1945 made by

HARRIS STUDIO

Portraits of Quality, Commercial Work,

Frames, Motion Pictures

If It's Photographic — We Do It

Phone 355-X

304½ CHILlicoTHE STREET

NAN L. MURPHY APPAREL SHOP

NORA A. WILHELM
GLADYS HIGGINS
BERTHA DeBOER

Make This Your Shopping Center for
Juniors and Misses Wearing Apparel

BEST WISHES

FROM

KOBACKER'S

The Store That Saves You Money

CHILlicoTHE AT THIRD

PORTSMOUTH, OHIO

REDOUTEY & STERN

PAINT STORE

1006 GALLIA STREET

Telephone 2136

PORTSMOUTH, OHIO

CRAIGMILE'S FURNITURE CO.

*HOMES FURNISHED
COMPLETE*

936 GALLIA STREET

PHONE 319

ADAM GIESLER

JOHN HETZEL, Prop.

RETAIL DEALERS IN MEATS

We Deliver

221 MARKET STREET

Compliments of

McKinney's Radio Service

COR. NINTH & OFFNERE STS.

PHONE 2653

WE SERVICE ALL MAKES

Compliments of the

Wolford Machine Co.

PARTS FOR ALL CARS

721-723 FIFTH STREET

Compliments of

Chabot's Super Service

GALLIA AND OFFNERE

DAMARIN HILL

SEVENTEENTH & GRANDVIEW

L. E. Covert Furniture Co.

NEW AND USED FURNITURE

BUY, SELL AND TRADE

515 SECOND STREET

Phone 625-X

LOYALTY DIAMONDS

BULOVA, GRUEN, HAMILTON,

ELGIN WATCHES

ROY ZUEFLE, Jeweler

"Gifts That Last"

533 SECOND STREET

PORTSMOUTH, OHIO

Zuhars Oldsmobile Co.

COMPLETE SERVICE FOR

ALL MAKES OF

CARS AND TRUCKS

717 FIFTH ST.

PHONE 700



COMPLIMENTS
OF
**LEWIS
BAKING COMPANY**

Compliments of
SAMILSON'S
*LADIES'
APPAREL*
319 CHILlicoTHE STREET

**C. Herrmann & Sons
Packing Company**

PLANT 2640 GALLIA

913 GALLIA STREET
CORNER EIGHTH AND MURRAY

GOOD CLOTHES
FOR MEN AND BOYS

WOLFF

FOR STYLE IN PORTSMOUTH

**LEHMAN
INSURANCE AGENCY**

821 FOURTH STREET

PORTSMOUTH, OHIO

Compliments of
PORTSMOUTH GAS CO.
Employees

*THE TASTE
TELLS THE TALE*

**LAUREL
BISCUIT COMPANY**

1609 CHILlicoTHE STREET

ZIMMERMAN'S

*Office Supplies and Equipment
UNDERWOOD Typewriters
SUNDSTRAND Adding Machines*

810 CHILlicoTHE STREET
PHONE 2490 PORTSMOUTH, O.



Drink...

PEPSI-COLA
REG. U. S. PAT. OFF.

Bigger and Better

Automotive Supply Co.

—Distributors—

GOODRICH TIRES MOBILGAS

SCIOTOVILLE
EIGHTH & GAY STS.
VIADUCT & GALLIA

Wm. J. Licht Electric Co.

*ELECTRIC APPLIANCES
AND REPAIRING*

"WE LIGHT THE WAY"

1542 GRANT ST. PHONE 1078

STUDENTS!

NOW IS THE TIME TO GET
STARTED IN FLYING—
AMERICA'S FASTEST GROWING
AND MOST INTERESTING FIELD

*ENROLL NOW AT
RAVEN ROCK FLYING SCHOOL*

Raven Rock Airport

H. C. GRIMES, Operator

A REAL TREAT FOR YOU . . .
RICHLOAF VITAMIN BREAD
TODAY

Richardson Baking Co.

1511 CHILlicoTHE STREET
PHONE 662



Safety

Service

Courtesy

PORTSMOUTH CITY LINES

STOP AT THE
MODERN GRILL

OUR FOOD IS WHOLESOME

SODAS AND ICE CREAM

HIGH SCHOOL SENIORS

Prepare thoroughly before accepting a position. Enter here immediately after graduation. Be a private secretary, stenographer, bookkeeper, or a comptometer operator. Permanent positions for competent people. Salaries \$85.00 to \$150.00 per month.

Portsmouth Interstate Business College
815 GALLIA ST. PHONE 2630

NATIONALLY ADVERTISED

Walker's
Complete Family Shoe Store

LINES FOR THE ENTIRE FAMILY

FOR CHILDREN

"Red Goose" "Play Poise"

FOR WOMEN

"Natural Bridge" "May Mantons"
"Hug-Tites"

FOR MEN

"Jarman" "Portage"
"Walk Overs"

Compliments of

**PORTSMOUTH
MOTORS**

YOUR FORD DEALER

1112 GALLIA STREET

PHONES 1924 - 1504

PORTSMOUTH, OHIO

EDWARD STAEBLER

WATCHMAKER and OPTICIAN

PHONE 1726-Y

1117 GALLIA STREET

PORTSMOUTH, OHIO

Compliments of

W P A Y

Scioto Broadcasting Co.

1009 GALLIA STREET

Ask for these foods . . .

Gilbert's

VOLUNTEER

BEL-DINE

Pure Food Products

The Gilbert Grocery Co.

Daulton's Grocery

FANCY GROCERIES

MEATS AND MILK

PHONE 153

402-404 SECOND STREET

Compliments of

CITY LOAN

& SAVINGS COMPANY

606 CHILLICOTHE STREET

Congratulations

and Best Wishes

Coca-Cola

TRADE-MARK REG. U. S. PAT. OFF.

**SCHISLER
MEAT MARKET**

QUALITY MEATS

805 JOHN STREET

PHONE 1371

CONGRATULATIONS

AND BEST WISHES

RALPH A. STEVENS

(Class of '25)

MUNICIPAL JUDGE

The Western and Southern

JUVENILE INSURANCE

EDUCATIONAL INSURANCE

INCOME INSURANCE

LIFE INSURANCE

COMPLIMENTS

OF

J. F. PARKINSON

CITY MANAGER

— TWO STORES —

K. and S. Jewelers

GALLIA AT GAY

The Joyce Co. Jewelers

Next to N. & W. Y. M. C. A.
at the Terminals

PHONE 2740 PORTSMOUTH, O.

"Trains Run On Our Time"

WATCHES

DIAMONDS

MART GLENN
GLYNN — BROCK
Funeral Home

*Licensed Embalmers and
Funeral Directors*

GALLIA & WALLER — PHONE 117
PORTSMOUTH, OHIO

Congratulations Class of '45

O. CARSON BARKLOW

COUNTY ENGINEER

(P. H. S. '23)

Now Serving Overseas with
U. S. Army Engineers



COMPLIMENTS
OF
SELBY SHOE CO.

1007 GALLIA STREET

PITTS DAIRY SHOPPE

ICE CREAM
FOUNTAIN SPECIALISTS
CANDY LUNCHES

YOUR NEAREST NEIGHBOR
... BY P. H. S.

COMPLIMENTS
OF
RALPH LEGLER
Tailor

ORIGINAL CUT RATE
Stewart's Drug Store

PRESCRIPTION SPECIALISTS

904 GALLIA STREET
PHONE 2447

SAY IT WITH FLOWERS
BUT SAY IT WITH OURS
HERMS FLORAL CO.

838 SIXTH STREET
PHONE 1008

A. B. C. CLEANERS

(formerly Acme Cleaners)
FOR PROMPT SERVICE

PHONE 1200
1035 GALLIA STREET

*"Care For Your Clothes
For Your Country"*

LONG AND COMPANY

"The House of Quality Furniture"

729-733 SIXTH STREET
PORTSMOUTH, OHIO

QUALITY CLOTHING
AND FURNISHINGS
FOR MEN WHO CARE
APPAREL OF CLASS

GEO. W. AHREND

838 GALLIA STREET

INDEX

A

ADAMS, MR. LOWELL	18
AIR PORT PHOTOS	8
ALESHIRE, MR. WILLIS	18, 113
ANDERSON, MISS MARGARET	18
ASHBAUGH, MR. ROLLIN	13
ASSEMBLY COMMITTEE	99

B

BAIRD, MR. WILLIAM	19
BALL, MISS MARGARET	17
BAND	111, 112, 113
BANQUET (football)	77
BASKETBALL (boys' varsity)	83
BASKETBALL (action)	84, 85, 88
BASKETBALL (reserves)	80
BASKETBALL (freshman)	80
BASKETBALL (managers)	87
BASKETBALL (girls')	127
BASKETBALL (girls' varsity)	128
BETTY LAMP CLUB	98
BIGELOW CHURCH	2
BLAZER, MISS ANNA	20
BOARD OF EDUCATION	11
BOWLING	128
BURKE, MISS FREDA	18
BURKHARDT, MR. OWEN	20

C

CHAPEL COMMITTEE	99
CHEERLEADERS	90, 98
CHEMISTRY CLUB	98
CHOIR	100, 107
CICANESE, MR. JOHN	19
CLUBS	91-104
COACH, MR. PAUL WALKER	82
COLE, MR. RALPH D.	19
COOKES, MRS. ELEANOR	13
COX, MISS COLENE	12

D

DEBATE	95
DIXIE SIX	114
DRAMATICS	115-121
DUPRE, MISS HELEN	19
DUPRE, MISS GENEVIEVE	14

E

ENSEMBLES	110
-----------	-----

F

FOOTBALL (varsity)	69, 70, 71, 72, 73, 74, 80
FOOTBALL (captains)	71
FOOTBALL (action)	75
FOOTBALL (queens)	76
FOOTBALL (banquet)	77
FOOTBALL (reserves)	79
FOOTBALL (managers)	79

FRESHMAN OFFICERS	63
FRESHMAN (home rooms)	64, 65, 66, 67
FRIEL, MISS CAROLINE	19

G

G. A. C.	124, 125
GIRLS' LEAGUE	93
GLEE CLUBS	108, 109

H

HAZLEBECK, MISS RUTH	16
HOCKEY	126
HONOR ROLL	10
HOPKINS, MISS THELMA	12

I

INTER NOS	98
-----------	----

J

JOHNSON, MR. ROBERT	14
JOHNSTON, MISS EDITH	17
JONES, MISS GOLDIE	20
JONES, MISS RUTH	19
JUNIOR CLUB	101
JUNIOR (home rooms)	54, 55, 56
JUNIOR OFFICERS	53

K

KNORE, MR. EUGENE	10
KNORE, MR. GERALD	16
KRAUSZ, MISS MARY	19
KUGELMAN, MISS JOANNE	15

L

LEACH, MR. BERT	20
LIBRARY CLUB	95
LINK GIRL	92
LITMAN, MISS FLORENCE	20
LORENTZ, MR. CHARLES	15, 87

M

MACKOY, MISS CAROLINE	18
MAJORETTES	112
MCCOMB, MR. F. B.	20
MCGOWAN, MRS. MARGARET	16, 107
McKEEN, MISS ALINE	12
McKELVEY, MR. H. W.	13
MONITORS' CLUB	102
MOTHER-DAUGHTER TEA	94
MULTER, MR. FRED	14, 87
MUSSER, MISS ISABEL	3, 18

N

NATIONAL HONOR	103, 104
NISWONGER, MRS. NELLIE	18

O

OPERETTA	122
ORCHESTRA	113

P

PERKINSON, MR. W. DENNIS	11
PIERSON, MR. FRANK	18
PLUS ULTRA	97

Q

QUEENS (football)	70
-------------------	----

R

RED CROSS (Jr.)	102
REVELLERS	101, 119
ROWSON, MR. DENT	20
RYAN, MISS ELEANOR	17

S

SCHNEIDER, MR. CLYDE	20
SCHOOL LIFE	131-141
SCHWARTZ, MISS MARY ELIZABETH	17
SENIORS	21-51
SENIOR OFFICERS	22
SENIOR HONOR	92
SENIOR CLASS PLAY	120-121
SHINKLE, MISS OCTAVIA	20
SNOOK, MR. WILLIAM	13
SOPHOMORE OFFICERS	58
SOPHOMORE (home rooms)	59, 60, 61
SPANISH CLUB	90
SPORTS (girls miscellaneous)	130
STUDENT COUNCIL	100

T

"THUMBS UP"	118
TONEY, MISS HAZEL	12
TROJAN STAFF	4, 5, 142, 143
TROWBRIDGE, MISS MARIE	12

V

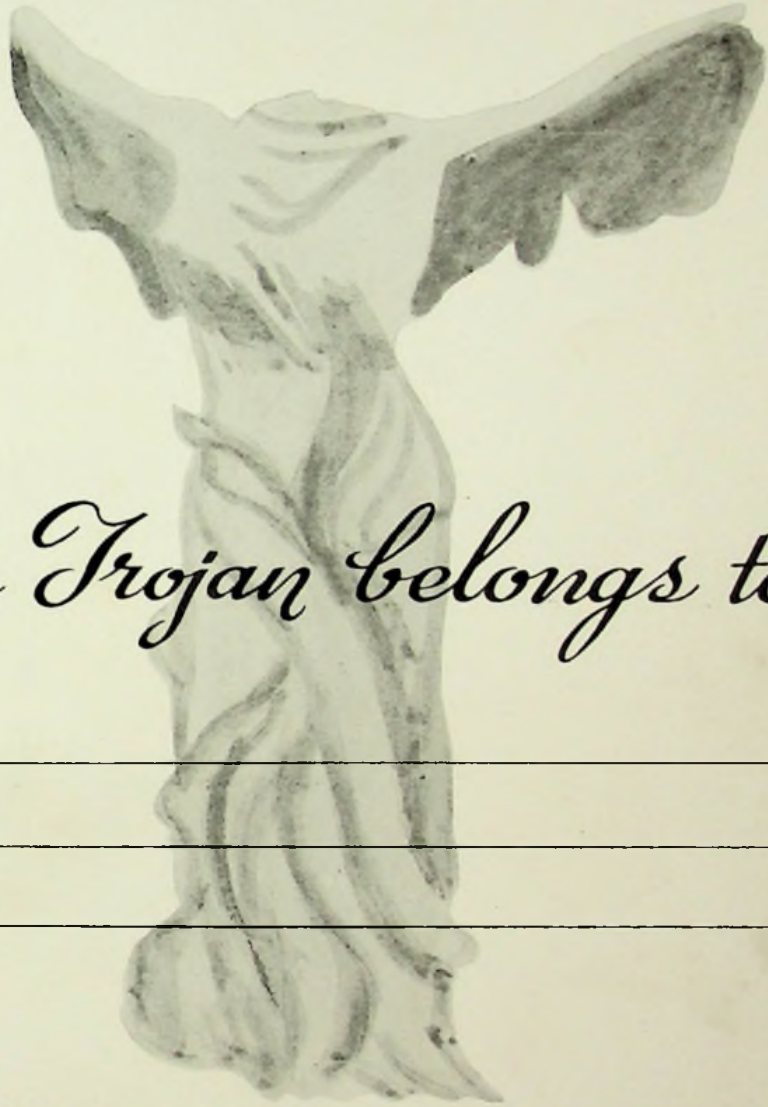
VOCATIONAL TRADES AND INDUSTRIES	6, 142-146
VOLLEYBALL	129

W

WALKER, MR. PAUL	20, 82
WHEELER, MR. A. K.	15
WHITEHOUSE, MISS ELIZABETH	18
WHITLATCH, MR. HAROLD	20, 142
WYANT, MISS HAZEL	20

Y

YONOVITZ, MRS. MARGARET	10
-------------------------	----



This Trojan belongs to:

AUTOGRAPHS

ADAMS
AIR PC
ALSHI
ANDER
ASHBAL
ASSEMB

BAIRD. 1
BALL. M
BAND ...
BANQUET
BASKETB
BASKETB
BASKETB
BASKETB.
BASKETB.
BASKETB.
BASKETB.
BASKETB.
BETTY L.
BIGELOW
BLAZER.
BOARD O
BOWLING
BURKE. 1
BURKHAR

CHAPEL C

DEBATE
DIXIE SIX
DRAMATIC
DUPRE. M
DUPRE. M

ENSEMBL

FOOTBALL
FOOTBALL
FOOTBAL
FOOTBAL
FOOTBAL
FOOTBAL
FOOTBAL
FOOTBAL

Don Stalker
"49"

