



The TARTAN

1951



112750

E

1087/8001



“EAST TARTAN”

Published by the Senior Class of 1951
Portsmouth East High School

Editor Harold Eterling
Senior Editor Hazel Davis
Associate Editor Marilyn Bear
Business Manager Normale Taylor



PORTSMOUTH EAST HIGH SCHOOL



CONTENTS

Administration

Classes

Activities

Sports

School Life

Advertisements



The 1951 Tartan is dedicated to Mr. John C. Stevenson in recognition of his loyal and devoted service to the administration and students of East High School. His unceasing efforts have resulted in countless successful activities.

Mr. Stevenson has also been our traveling faculty member. He has visited numerous European and Pan-American countries and has always returned with modern, interesting, classroom ideas.

EDITORIAL

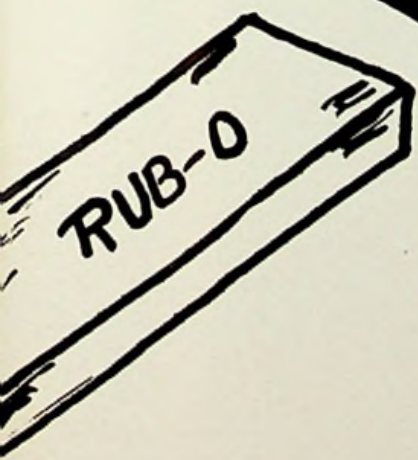
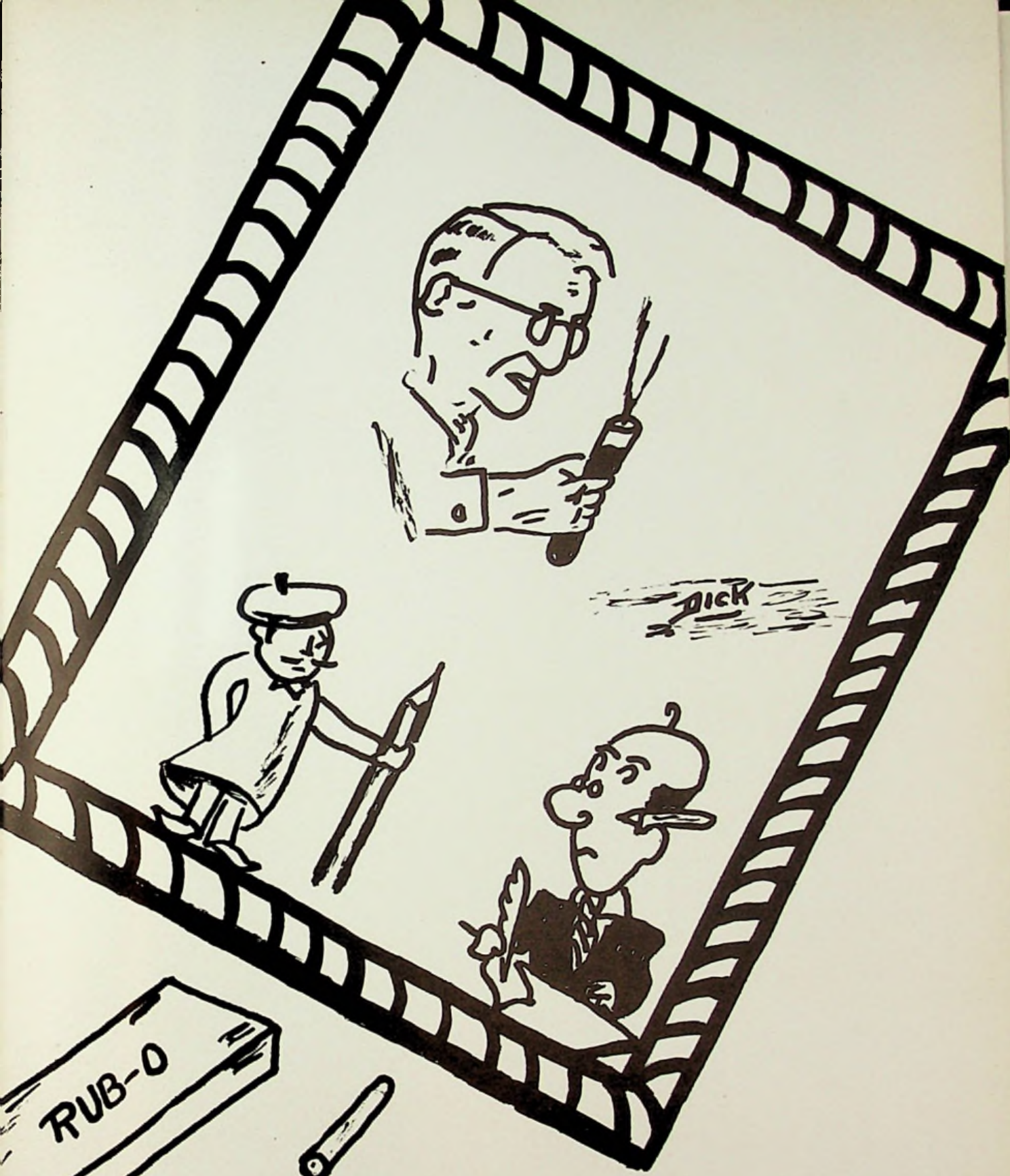


In publishing this Tartan yearbook the annual staff has worked together to produce a book that will satisfy its readers. We hope that our efforts have accomplished this intention. We sincerely wish to extend our appreciation to those who co-operated with us to produce this yearbook.

Our graduating class was challenged to surpass the annual of 1950. We are now extending a challenge to the following class of East High to exceed the qualities of this yearbook.



Arthur Gilliam is raising the flag beside the memorial dedicated to the graduates of East High School who gave their lives in World War II.



ADMINISTRATION



Mr. McKelvey is completing his second year as Superintendent of Portsmouth City Schools.

Before coming to Portsmouth, Mr. McKelvey taught school in West Virginia and in Barnsville, Ohio. He came to Portsmouth from the Painesville School System in Lake County, Ohio. He had been Principal at Harvey High School for four years. After serving as Principal of Portsmouth High School, he was appointed to the superintendency of the Portsmouth School System in August of 1949.

He received his A.B. degree from Ohio University and his M.A. degree from Ohio State University.



PORTSMOUTH CITY SCHOOL BOARD

SITTING: Mr. W. P. Ridenour, Mr. Arthur Rau, Mrs. Arthur C. Huston.

STANDING: Dr. William Duvendeck, Mr. William Horr, Dr. Thomas C. Swope, and Mr. H. W. McKelvey.



MR. TEACHNOR W. SMITH – Principal

Mr. Smith is completing his tenth year as principal of East High School. He has been at East High for twenty-four years. Mr. Smith was a teacher of physics and chemistry before he became principal. He is respected by the students for his sincerity and earnestness with which he directs the activities of the school.

Mr. Smith received his A.B. degree from Ohio University and his M.A. degree from the University of Cincinnati.



Mrs. Donald Shock, Secretary

Miss Helen M. Taylor
Dean of Girls

Miss Taylor is completing her eleventh year as Dean of Girls at East High School. She received her A.B. degree from the University of Miami and her M.A. degree from Ohio University.

Miss Taylor is sponsor of the Girls' League, Tri-Hi-Y, and this year's annual.





Virgil Donley
Ohio University, B.S.
Industrial Arts

Mrs. Thomas O'Connel
St. Marys of the Springs
B.S. Home Economics
English I

Herman Schomburg
Holbrook College, A.B.
American History, World History
Head Basketball Coach



Edward L. Pogue
Hanover College, B.S.
Civics, World History, Physical Edu-
cation, Assistant Basketball, Football
Coach, Head Baseball Coach



John C. Stevenson
Denison University
Ohio State University
National University of Mexico
A.B. and M.A.
Latin, English, Spanish

Elizabeth Whitehouse
Eastern Kentucky State Teachers'
College, George Peabody College for
Teachers
A.B. and M.A.
English

Christine Herr
Sargent School of Boston University,
Ohio University, Western Reserve
University, B.S.
Librarian, Physical Education

Manvern F. Shock
Michigan State, Salem College, B.S.
Typing, Bookkeeping,
American Problems,
Economic Geography



Mrs. Cecil Cottle
University of Kentucky, A.B.
Shorthand, Business English, Business
Arithmetic, Business Training



Charles Bope Butler
Alma Conservatory, Western Re-
serve, Music Diploma, B.S. and M.A.
Glee Club

Richard Van Meter
Marshall College, B.S.
Band



A. Kirk Wheeler
Denison University, B.S.
Algebra, Geometry

Alice J. Youngman
Ohio University, B.S.
Chemistry, Biology, Physics

John Fugitt
Ohio State University, B.S.
General Science
Assistant Basketball Coach, Head
Football Coach

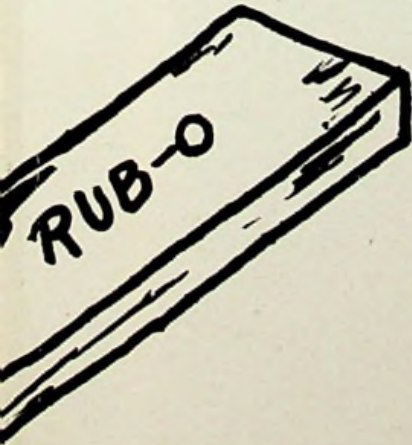
Mrs. Howard C. Brown
Ohio State University, B.S.
Home Economics, English



$$A+B=?$$

$$x+y+z-A=?$$

$$R^2-R=?$$



CLASSES



SENIOR CLASS OFFICERS

The Senior Class met early in September and elected the following officers:

Harold Etterling	President
Wanda Fankell	Vice-President
Hazel Davis	Secretary
Lois Stewart	Treasurer
Normale Taylor	Business Manager

The object of this graduating class was to publish the annual Tartan Yearbook. In addition to this, the Senior Class presented "The Scarecrow Creeps" as their class play.



JUANITA ALLARD ATKINS

"Nita"

"Curly Locks, Curly Locks, wilt thou be mine?"

Glee Club 1, 2; Girls' League 1, 2, 3, 4; Prom Committee 3; Junior Class Play (Usherette) 3; Annual Staff 4.



BETTY DARLENE BALDRIDGE

"Shorty"

"Good articles are put up in small cases."

Student Council 1; Student Council Assembly 1; Operetta 1, 2, 3; Spanish Club 1, 2; Glee Club 1, 2, 3, 4; Class Officer 2; Spanish Assembly 1, 2; Highlander Staff 1, 2, 4; Associate Editor of Highlander Staff 4; Girls' League 1, 2, 3, 4; Tri-Hi-Y 3, 4; Tri-Hi-Y Officer 4; Hall Monitor 1; Honor Society 3, 4; Prom Committee 3; Student Advisory Board 4; Annual Staff 4; Band 4.



CARL ATKINS

"Jock"

"A man cannot spend all his life in frolic."

Prom Committee 3.



WANDA JANET BARTEE

"Bonnie"

"Brave and bonny, and good and gay."

Girls' League 1, 2, 3, 4; Girls' League Officer 4; Spanish Club 2, 3; Spanish Club Assembly 2, 3; Band 1, 2; Prom Waitress 2; Prom Committee 3; Annual Staff 4; Tri-Hi-Y 4; Junior Class Play 3; Class Assembly 1, 3; Student Council Assembly 1; Announcement Committee 4; Highlander Staff 4.



LEOTA BAILEY

"Dody"

"Beauty is its own reward."

Girls' League 1, 2, 3, 4; Prom Committee 3; Prom Waitress 2; Queen 4; Tri-Hi-Y 4; Junior Class Play 3; Annual Staff 4.



WELLS RAYE BASHAM

"Bonba"

"Ob, why should life all labor be?"

Basketball 1, 2, 3, 4; Stage Manager 3, 4; Prom Committee 3.



PAUL RAYMOND BRIGNER

"Blondie"

"His character makes his own high destiny."
Glee Club 2, 3, 4; Band 1, 2, 3, 4; Prom
Committee 3; Pep Band 1, 2, 3, 4; Operetta
3; Minstrel 4.



JACQUELINE BROWN

"Jackie"

"Destined for success she seems."
Latin Club 2, 3; Glee Club 1, 2, 3; Girls'
League 1, 2, 4; Annual Staff 4.



HAZEL MAURINE BRADSHAW

"Sissie"

*"Were she perfect, one could not admire
her more."*
Class Officer 1; Latin Club 2, 3; Spanish
Club 1, 2; Tri-Hi-Y 3, 4; Girls' League 1,
2, 4; Prom Waitress 2; Football Banquet
Waitress 3; Assembly Program 1; High-
lander Staff 2, 4; Prom Committee 3; An-
nual Staff 4; Latin Assembly 2; Spanish
Assembly 1, 2; O. U. Branch 4.



JULIA BURKE

"Judy"

"What can I say better than silence is?"
Glee Club 1, 2; Girls' League 1, 2, 4.



BETTY JANE BROWN

"Brownie"

"Ah! Love! How deadly is thy sting!"
Glee Club 1, 2; Girls' League 1, 3, 4; Tri-
Hi-Y 4; Glee Club Minstrel 4; Highlander
Staff 4; Football Banquet Waitress 3; Prom
Committee 3; Assembly Program 3.



BOB LEE CHAPMAN

"Chief"

"I am not in the role of common men."
Prom Committee 3.



HAZEL LEORA DAVIS

"Hadie"

"The friendly heart has many friends!"

Tri-Hi-Y 4; Senior Editor of Annual Staff 4; Junior Assembly 3; Prom Committee 3; Girls' League 1, 2, 3, 4; Class Officer 4; Junior Class Play (Usherette) 3.



HAROLD EUGENE ETTERLING

"Rock"

"None but himself can be his parallel."

Student Council 2; Spanish Club 3, 4; Honor Society 3, 4; Senior Class President 4; Junior Class Play 3; Student Advisory Committee 4; Basketball 1, 2; Associate Editor of Annual 3; Editor of Annual 4; Welcoming Committee 3; Highlander Staff 3, 4; Prom Committee 3; Junior Cup Winner 3; Scholarship Team 1, 2, 3; Junior Class Assembly 3.

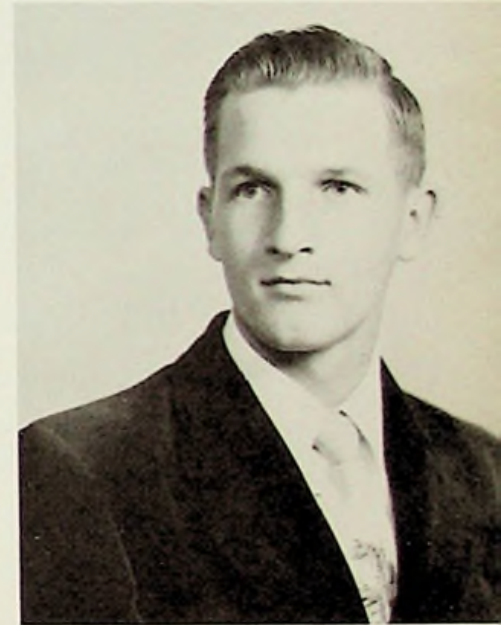


LILA JO DUDUIT

"Jody"

"Tomorrow will come, what's the hurry?"

Band 1, 2, 3, 4; Girls' League 1, 2, 3, 4; Spanish Club 2, 3; Waitress at Prom 2; Prom Committee 3; Tri-Hi-Y 4; Annual Staff 4; Highlander Staff 4; Junior Class Play (Usherette) 3; Announcement Committee 4; Spanish Assembly 2, 3; Freshman Class Assembly 1; Dance Committee 2, 3, 4.



JOHN ETTERLING

"John"

"That man lives happy in command of himself."

Prom Committee 3.



JANICE ALENE ERVIN

"Jannie"

"She draws them with a single eyelash."

Queen Attendant 3; Girls' League 1, 2, 3, 4; Cheerleader 2, 3, 4; Class Officer 3; Spanish Club 2, 3; Junior Class Play 3; Co-Chairman of Prom 3; Prom Waitress 2; Scholarship Team 3; Honor Society 3, 4; Class Assembly 1, 3; Welcoming Committee 3; Tri-Hi-Y 4; Spanish Club Assembly 2, 3; Band 1, 2; Annual Staff 4; Ring Committee 3; Librarian 3.

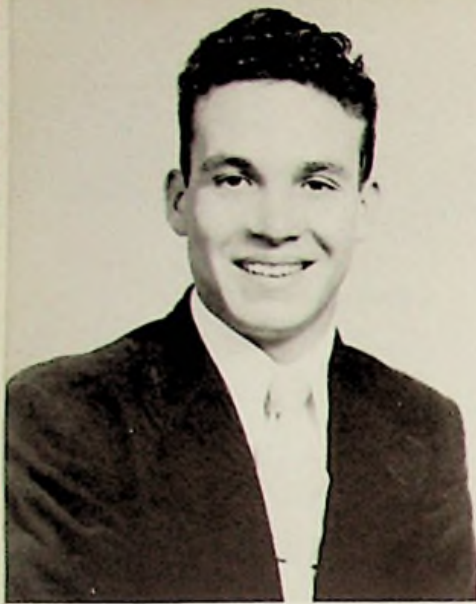


BERNARD EVANS

"Arnellis"

"Who could be more mischievous?"

Band 1, 2, 3; Band Officer 3; Hi-Y 3, 4; Hi-Y Officer 4; Annual Staff 4; Prom Committee 3; Junior Class Play 3; Pep Band 2, 3.



RUSSELL FANKELL

"Russ"

"Every man's a volume, if you know how to read him."

Vocational Course at Portsmouth High School 3, 4.



RAMAH FRAZIER

"Ram"

"Thought alone is eternal."

Spanish Club 2, 3; Spanish Assembly 2, 3; Hi-Y 2, 3, 4; Spanish Dance Committee 2; Stage Crew 3; Band 1, 2; Class Assembly 3; Prom Committee 3; Hi-Y Dance Committee 2, 3.



WANDA FANKELL

"Wanda"

"To know her is to love her."

Class Officer 1, 2, 3, 4; Queen Attendant 1, 4; Girls' League 1, 2, 3, 4; Waitress at Prom 2; Prom Committee 3; Annual Staff 4; Junior Class Play 3; Cheerleader 2, 3, 4; Class Assembly 1, 2; Ring Committee 3; Captain of Cheerleaders 4.



BETTY ANN KEMP

"Betty"

"She is tender, wise and kind."

Queen Attendant 2; Band 1, 2; Class Assembly 1; Girls' League 1, 2, 3, 4; Spanish Club 2, 3; Spanish Club Assembly 2, 3; Waitress at Prom 2; Tri-Hi-Y 3, 4; Tri-Hi-Y Officer 4; Annual Staff 4.



JOY JEAN FRAZIER

"Joy"

"A merry heart goes all the day."

Majorette 1, 2; Glee Club 3, 4; Latin Assembly 2, 3; Junior Class Play 3; Waitress at Prom 2; Scholarship Team 3; Glee Club Minstrel 4; Librarian 4; Latin Club Counselor 3; Class Assembly 1, 2, 3, 4; Operetta 2, 3; Girls' League 1, 2, 3, 4; Annual Staff 4; Latin Club 2, 3; Prom Committee 3.



JOHN KITCHEN

"Big John"

"A fine fellow, a good sport, and a staunch friend."

Football 1, 2, 3, 4; Basketball 1.



RICHARD KITCHEN

"Little Dick"

"Honest men love women, those who deceive, adore them."

Football Portsmouth High School 1; Football 3, 4; Basketball 3; Glee Club 4.



RONALD CLIFFORD McGRAW

"Curly"

"A frivolous exterior, but sincere heart."



NINA MARGARET LUNSFORD

"Nina"

"I found in him the shining of the stars."

Glee Club 1, 2, 3; Class Assembly 1, 2; Spanish Club Assembly 2, 3; Spanish Club 2, 3; Tri-Hi-Y 3, 4; Tri-Hi-Y Officer 4; Prom Committee 3; Waitress at Prom 2; Waitress at Football Banquet 3; Student Council Officer 3; Hall Monitor 2; Annual Staff 4; Junior Class Play 3; Scholarship Team 2; Girls' League 1, 2, 3, 4; Student Advisory Board 4; Operetta 1, 2.



CHARLES MONTGOMERY JR.

"Monte"

"To love is natural in a young man."

Basketball 1; Football 3; Band 1, 2, 4; Hi-Y 2, 3, 4; Hi-Y Officer 4; Junior Class Play 3; Spanish Club 3, 4; Spanish Club Assembly 3; Class Assembly 3; Prom Co-Chairman 3; Annual Staff 4; Highlander Staff 4; Student Advisory Board 4; Announcement Committee 4; Operetta 2; Glee Club 4; Scholarship Team 3; Band Officer 4.



KATHRYN ALICE MAULT

"Alice"

"Not too serious, not too gay."

Latin Club 2, 3; Band 2, 3, 4; Glee Club 1; Girls' League 1, 2, 3, 4.



MILO MULLINS, JR.

"Silo"

"A tree is known by its fruit."

Football 1, 2, 3, 4.



MAXINE ELLIFRITT MUNN

"Mac"

"Cheerful she seems: and gentleness she loves."

Glee Club 1, 2; Girls' League 1, 2, 3, 4; Operetta 1, 2; Junior Class Play (Usherette) 3; Girls' League Officer 4; Annual Staff 4; Tri-Hi-Y 4; Prom Committee 3; Waitress at Football Banquet 3; Operetta 1, 2.



VIRGINIA PIQUET

"Jenny"

"For every why she has a wherefore."

Girls' League 1, 2, 4; Waitress at Prom 2; Annual Staff 4; Prom Committee 3.



LEONARD OILER

"Lun"

"A true friend is forever a friend."

Basketball 1, 2, 3, 4; Football 1; Basketball Captain 4; Annual Staff 4; Stage Crew 3; Prom Committee 3; Class Assembly 3.



NAOMI MARIE RICKS

"Naomi"

"A charm attends her everywhere."

Girls' League 1, 2, 4; Prom Committee 3; Class Assembly 2, 3; Annual Staff 4; Latin Club Assembly 3; Hall Monitor 2; Latin Club 2, 3.



LARRY ALBERT PIERCE

"Larry"

"He tells you flatly what his mind is."

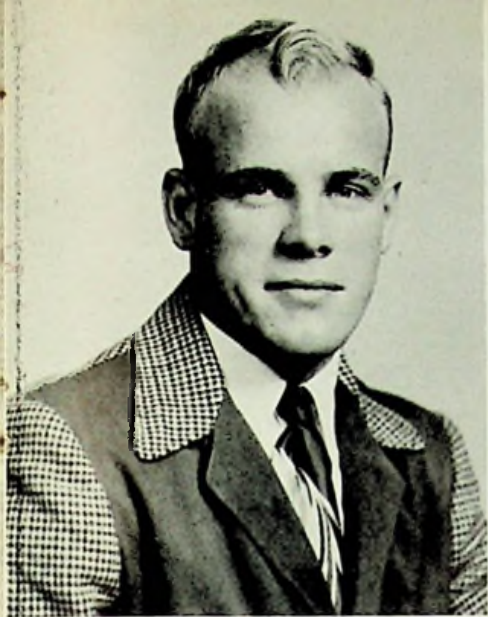


BERTHA ROOF

"Bert"

"Without kindness there can be no joy."

Girls' League 1.



ERNEST ROOF

"Lighting"

"I've lived and loved."

Football 2, 3, 4; Football Co-Captain 4;
Class Assembly 3; Prom Committee 3.



ELOISE SCHAFER

"Weezie"

"When we love, it is the heart that judges."

Girls' League 1, 2, 3, 4; Glee Club 1, 2, 3;
Prom Committee 3; Waitress at Prom 3;
Football Banquet Waitress 3; Concession
Stand 3; Class Assembly 1; Junior Class
Play (Prompter) 3; Librarian 2, 3.



BOB ROYSTER

"Rooster"

"He profits most who serves best."

Basketball 3, 4; Football 4; Hi-Y 3, 4; Glee
Club 3, 4.



PHYLLIS JEAN SAUNDERS

"Phil"

*"She gives a shy glance and looks
down—beware!"*

Waitress at Prom 2; Band 1, 2, 3; Annual
Staff 4; Prom Committee 3; Tri-Hi-Y 4;
Class Assembly 2, 3; Football Banquet
Waitress 3; Girls' League 1, 2, 3, 4; Band
Officer 2.



ETHLYL RULEY

"Ruley"

*"Lively sweetness is the noblest power of
women."*

Class Officer 1; Girls' League 1, 2, 3, 4;
Prom Waitress 2; Glee Club 1, 2, 3, 4;
Hall Monitor 2; Junior Class Play (Usher-
ette) 3; Annual Staff 4; Operetta 1, 3.



MARLENE SLATTERY

"Marty"

"Love me, love my dog."

Operetta 1, 2, 3; Concession Stand 3; Junior
Class Play (Usherette) 3; Hall Monitor 2;
Girls' League 1, 2, 3, 4; Glee Club 1, 2, 3;
Annual Staff 4; Prom Waitress 2; Prom
Committee 3.



EDNA MAE SMITH
 "Dimples"
"Silence has many advantages"
 Girls' League 1.



HELEN STEWART
 "Dimples"
"Laugh and the world laughs with you."
 Glee Club 1, 2, 3; Junior Class Play 3;
 Prom Waitress 2; Football and Basketball
 Banquet Waitress 3; Girls' League 1, 2, 3, 4;
 Class Assembly 1, 2; Concession Stand Com-
 mittee 3.



VIOLET JUNE SNODGRASS
 "June"
"Kindness is wisdom."
 Girls' League 1.



LOIS RUTH STEWART
 "Stevie"
"I can be pushed just so far."
 Class Officer 2, 3, 4; Glee Club 1, 2, 3, 4;
 Class Assembly 1, 2, 3; Librarian 2, 3, 4;
 Ring Committee 3; Announcement Com-
 mittee 4; Cheerleader 2, 3, 4; Spanish As-
 sembly 1, 2; Highlander Staff 4; Prom
 Waitress 2; Junior Class Play 3; Student
 Council Assembly 2; Tri-Hi-Y 3, 4; Girls'
 League 1, 2, 3, 4; Girls' League Officer 4;
 Prom Committee 3; Glee Club Minstrel 4;
 Operetta 1; Scholarship Team 1, 3; Hall
 Monitor 1; Spanish Club 1, 2.



SHEILA STARETT
 "Bill"
"I never dare to be funny as I can."
 Glee Club 1, 2, 3; Spanish Club 2, 3; Girls'
 League 1, 2, 3, 4; Prom Waitress 2; Prom
 Committee 3; Ring Committee 3; An-
 nouncement Committee 4; Class Assembly
 1, 2, 3; Hall Monitor 1.



MAUDIE STILTNER
 "Maudie"
*"Her air, her manner, all who saw
 admired."*
 Girls' League 1, 2, 3; Prom Committee 3;
 Prom Waitress 2.



NORMALE TAYLOR

"Norm"

"Her smile is bright, her heart is light."

Glee Club 1, 2, 3, 4; Librarian 1, 2; Class Officer 3, 4; Latin Club Assembly 2, 3; Spanish Club Assembly 1, 2, 3; Highlander Staff 1, 2, 3, 4; Prom Waitress 2; Football Banquet Waitress 3; Operetta 1, 2, 3; Glee Club Minstrel 4; Tri-Hi-Y 3, 4; Girls' League 1, 2, 3, 4; Prom Committee 3; Class Assembly 1, 2, 3; Junior Class Play 3; Concession Committee 3; Student Council Assembly 1, 2; Latin Club Counselor 1; Announcement Committee 4; Ring Committee 3; Spanish Club 1, 2, 3; Latin Club 1, 2.



ROBERT WELCH

"Little'n"

"My deeds will speak."

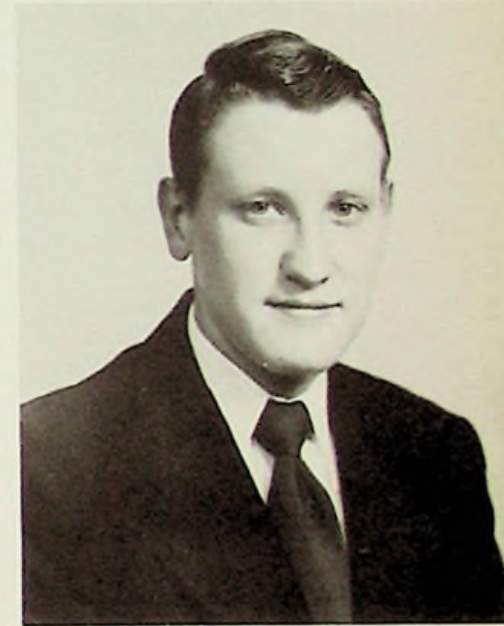
Football 1, 2, 3, 4; Basketball 1, 2, 3, 4; Baseball 1, 2, 3, 4; Football Co-Captain 4; Glee Club 4; Junior Class Play 2; Student Council 2; Spanish Club 3, 4; Junior Assembly 3; Prom Committee 3; Annual Staff 4.

CHARLES VEACH

"Veach"

"Oh, this learning, what a thing it is."

Basketball 1, 2; Class Officer 2; Spanish Club 3, 4; Spanish Club Assembly 3, 4; Junior Class Play 3; Prom Committee 3; Concession Committee 3; Class Assembly 1, 2; Hall Monitor 2.



ROBERT WILL

"Bob"

"A sure cure for the blues."

Hi-Y 2, 3, 4; Class Assembly 3; Spanish Assembly 3; Prom Committee 3; Annual Staff 4; Spanish Club 3; Junior Class Play 3; Band 1, 2, 3, 4; Highlander Staff 4; Basketball 1.



MARGARET WALTER

"Marg"

"The mildest manners and the gentlest heart."

Wellston High 1, 2, 3; Latin 1, 2; Glee Club 1; Girls' League 4.



CLIFFORD BOBBY WILLIAMS

"Clif"

"Patience and gentleness is power."





GARY WILSON
"Gary"
"Worry and I have never met."
Band 1, 2, 3, 4; Prom Committee 3.



WANDA WINEBRENNER
"Windy"
"Kindness and beauty go hand in hand."
Girls' League 1, 2, 3, 4; Glee Club 1, 2;
Operetta 1; Junior Class Play (Usherette)
3; Class Assembly 1; Hall Monitor 2; Con-
cession Stand Committee 3; Dance Com-
mittee 1, 2, 3, 4; Waitress at Football
Banquet 3; Prom Waitress 2; Prom Com-
mittee 3.

JACK OREN WINEKA
"Juanito"
"One cannot know everything."
Basketball 2, 3, 4; Football 1, 2, 3, 4; Glee
Club 1; Hi-Y 2, 3, 4; Spanish Club 3; Span-
ish Club Assembly 3.



JUST PLAIN SENIORS





Third Period Study Hall

Watch the Birdie!



Rarin' to Go



JUNIOR CLASS OFFICERS

The Junior Class met in September and the following officers were elected:

Bob Dortch	President
Peggy Evans	Vice-President
Wanda Hoskins	Secretary
Harry Scott	Treasurer

"Huckleberry Finn" was presented as their annual class play. Later in the year they sponsored a square dance in order to obtain money to help finance the Junior-Senior Prom. The Juniors also sold magazines and held candy sales to pay for their activities.



FIRST ROW: June Arnett, Vivian Garrett, Jo Ann Fannin, Carol Brown, Nettie Jenkins, June Ramey, Wanda Henson, George Brown. SECOND ROW: Wallace Evans, Dick Bussa, Jim Graham, Jack Etterling, Bonnie Baer, Carol Hutchinson. THIRD ROW: Betsy Askins, Marilyn Baer, Juanita Conley, Wanda Hoskins, Peggy Evans, Dave Burke, Bill Essman, Bob Crabtree, Bob Dortch.

FIRST ROW: Pat Nardi, Regina Pierce, Judy Pemberton, Sue Manley, Betty Mustain, Faye Maddix, Gloria Keller, Ann Knigge. SECOND ROW: Joan May, Janet Ramey, Lois Myers, Wanda Kiser, Jackie Kirchner, Joyce McClurg, Bill Martin, Marvin Patrick. THIRD ROW: Warren Riddlebarger, Jim Porter, Frank Moore, George Niemer, Carl Payton, Ronnie Patton, Ronnie Partridge, Bob Kilgallen.





FIRST ROW: Mary Frances Tosi, Judy Tussey, Barbara Yeley, Amy Weidner, Arnold Stevens, Sue Schneider, Bea Ann Wilson, Sue Whitt, Judy Sergeant. SECOND ROW: Esther Seth, Ruth Sisler, Roger Sommer, Shurl Shoemaker, Harry Scott, Don Vallance, Ralph Silcott, Wilma Stevenson. THIRD ROW: Gay Sowkulech, Judy Thomas, Margaret Russell, Bonnie Widdig, Sylvia Torges, David Watts, Dick Spaulding, Jerry Winebrenner, Jim Williams.



JUNIOR HOME ECONOMICS CLASS



Blizzard during Thanksgiving vacation, November, 1950.





SOPHOMORE CLASS OFFICERS

The following officers were elected by the Sophomore Class:

Richard Duduit	President
Gary Sergent	Vice-President
Bob Rowe	Secretary
Lawrence Williams	Treasurer

The activities of the Sophomore Class were composed of a wiener roast early in the year, and a dance which was sponsored later in the year.



FIRST ROW: Patty Conley, Georgena Lantz, Regina Booten, Joan Belveal, Letita Bentley, Lena Brigner, Jo Anne Castle, Rovena Coriell, Lavelle Doyle. SECOND ROW: Sam Christy, Donald Conklin, Joe Essman, George Belloat, Ray Cottle, Don Bussey, Polly Ashworth, Ruth Beadle, Larry Atkins, Ted Dortch, Ray Burke, Ruth Chamberlain. THIRD ROW: Charles Cooper, Harold Aeh, Herma Cabiness, Barbara Cooper, Ray Boyd, Evelyn Brown, Joe Chamberlain, Douglas Dials, Lowell Adkins, Richard Dudit, Ronnie Deemer.

FIRST ROW: Emma Lou Hensley, Evelyn Jenkins, Ira Mault, Angus Jones, Max Kinker, Grover Frazier, Carl Gee, Glen Leesburg, Carol Knigge. SECOND ROW: Sue Hehl, Joyce May, Aulive Horner, Marie Howard, Virginia Adams, Glenda Erterling, Geneva Fields, Retha Massie, Phyllis Holt, Phyllis Holbrook, Dorothy Kline, Joyce Minter. THIRD ROW: Jerry Faris Buren McLaughlin, Frank Gillam, Bill Gammon, Jerry Hensen, Carl Felty, Benny Jenkins.





FIRST ROW: James Stockham, John Warneke, Dave Vallance, Ray Will, James Oiler, Leonard Powell, Jack Terry. SECOND ROW: Clementine Parker, Janie Thompson, Juanita Clifford, Barbara Salyers, Freda Patrick, Mima Taylor, Janet Tomlin, Barbara Miles, Rosemary Russell, Geloma Speary. THIRD ROW: Barbara Khrome, Patty Noble, Betty Welch, Nina Saunders, Sue Sennet, Shirley Williams, Helen Smith, Dave Myers, James Rose, Kenneth Smith. FOURTH ROW: Clifford Perkins, Roger Miller, Ronald Sturgill, Roy Knight, William Simpson, Gary Sergent, Lawrence Williams, Bob Walker, Bob Rowe, Stanley Thompson.



Sophomore English Class



Freshman Manual Arts Class

Freshman Mechanical Drawing Class





FRESHMAN CLASS OFFICERS

The following officers were elected by the Freshman Class in September:

Jerry Withrow	President
Bob Fraley	Vice-President
Mary Lou Davis	Secretary
Florence Burke	Treasurer

The Freshman Class held one dance to secure money for carrying on future activities.



FIRST ROW: Don Evans, Phillip Dials, Florence Fyffe, Carolyn Bowling, Wanda Fitch, Eva Craig, Shirley Benner, Emma Lou Davis, Dorothy Bonzo, Martina Deboard. SECOND ROW: Jean Fletcher, Imogene Crisp, Shirley Chamberlain, Louise Chatfield, Betty Cox, Evangeline Craft, Katherine Burton, Barbara Dodds, Kay Bussa, Phyllis Butler, Florence Burke. THIRD ROW: Ronald Benson, Ray Brown, Buford Atkins, Eugene Charles, Ronald Felts, Bob Fraley, Marvin Chamberlain, Arthur Gilliland, Carl Frazier, David Drake, Gib Bailey.

FIRST ROW: Vaughn Kiser, John McClellan, Gary Hanes, Pat McCardle, John Hoskins, Carl Kilgore, Bill Marshal. SECOND ROW: Janet Jackson, Wanda Johnson, Dolores Hickman, Roberta Ketter, Phyllis Towe, Esther Lawhun, Betty Howard, Louise Kinnison, Patty Marcum. THIRD ROW: Georgist McGraw, Joan Hall, Andre Keller, William Grant, John Johnson, Wilbur Harr, Jim Hurst, Richard Hood, Helen Moore, Patty Kline, Elnore Gilpin. FOURTH ROW: Verna Mac Grashel, Wanda Hacker, Rufus Logan, Lewis Hall, Jane Galleon, Dolores Howard, Myrl Medley, Wesley Kelley, Don Johnson, Bob Montgomery.





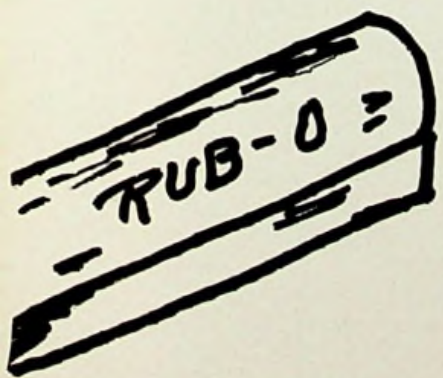
FIRST ROW: Anna Rose, Evelyn Tracy, Joyce Weghorst, Doris Williams, Virginia Welch, Wanda Thompson, Sally Ogg, Buddy Payton, Clifford Reed. SECOND ROW: Jerry Withrow, Jim Smith, Lowell Snobgrass, Lloyd Preston, Rosalie Purcell, Judy Plummer, Theora Shonkwiler, Rachael Young, Nora Robbins, Vernie Rudd. THIRD ROW: Roy Stevens, Lewis Snobgrass, Richard Williams, Roy Whitely, Danny Starrett, Robert Ruley, Donna Winters, Marilyn Stout, Bill Newman.

FRESHMAN ALGEBRA CLASS





We can't study all the TIME



ACTIVITIES



HI-Y and TRI-HI-Y OFFICERS

BOTTOM ROW: Jerry Winebrenner, Vice-Pres.; Wallace Evans, Treas.; Bill Martin, Chaplain; Bernard Evans, Sec. **TOP ROW:** Lois Stewart, Vice-Pres.; Nina Lunsford, Pres.; Charles Montgomery Jr., Pres.; Betty Baldrige, Treas.; Betty Kemp, Sec.



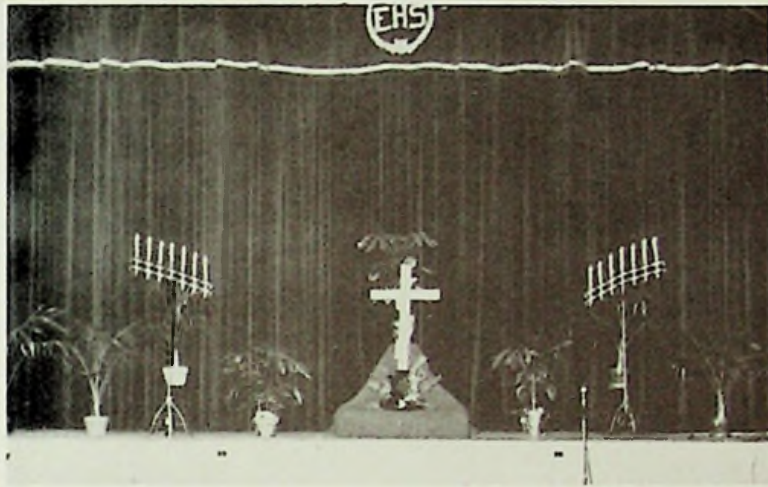
TRI-HI-Y

BOTTOM ROW: Hazel Bradshaw, Nina Lunsford, Betty Baldrige, Judy Thomas, June Arnett, Amy Weidner, Leota Bailey, Janice Ervin, Betty Brown, Lois Stewart. TOP ROW: Hazel Davis, Wanda Bartee, Lila Dudit, Maxine Ellifritt, Betty Kemp, Barbara Yeley, Phyllis Saunders, Sue Schneider, Peggy Evans, Joyce McClurg.



HI-Y

BOTTOM ROW: Sam Christy, Jack Terry, John Warneke, Angus Jones, Bob Will, Bernard Evans, Jerry Winebrenner, Charles Montgomery, Wally Evans, Bill Martin, Ray Will, Harry Scott, Don Vallance, Dick Dudit, Ted Dortch. **TOP ROW:** Jerry Faris, Bob Crabtree, Bob Dortch, Larry Atkins, Dick Bussa, Don Bussey, Ray Boyd, Benny Jenkins, Bob Rowe, Bob Kilgallen, Dick Spaulding, Ronnie Partridge, Dave Burke, Mr. Donley, Stanley Thompson, Jack Wineka, Dave Watts, Max Kinker, Mr. Stevenson.



HI-Y AND TRI-HI-Y INITIATIONS

Our
Queen

is
as



pretty
as

a
Picture

Sue Manley



Wanda Fankell



Donna Winters

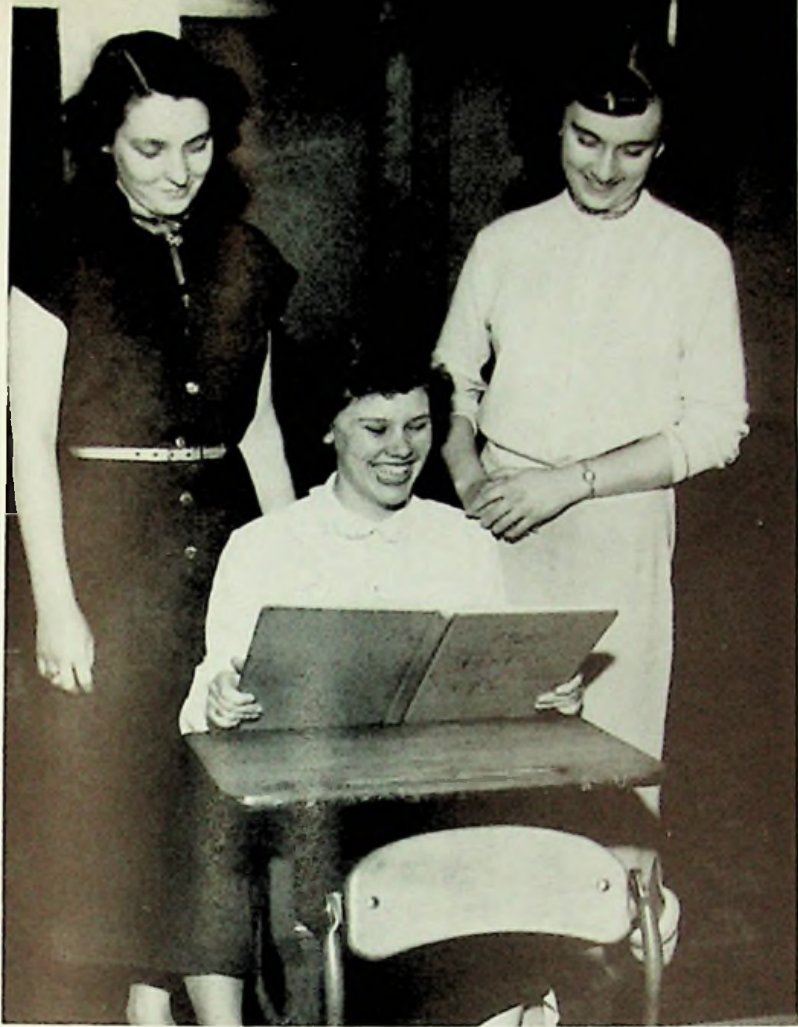
Joan Belveal



Advisor and Editors
Marilyn Baer, Hazel
Davis, Miss Taylor, Leota
Bailey, Harold Erterling.

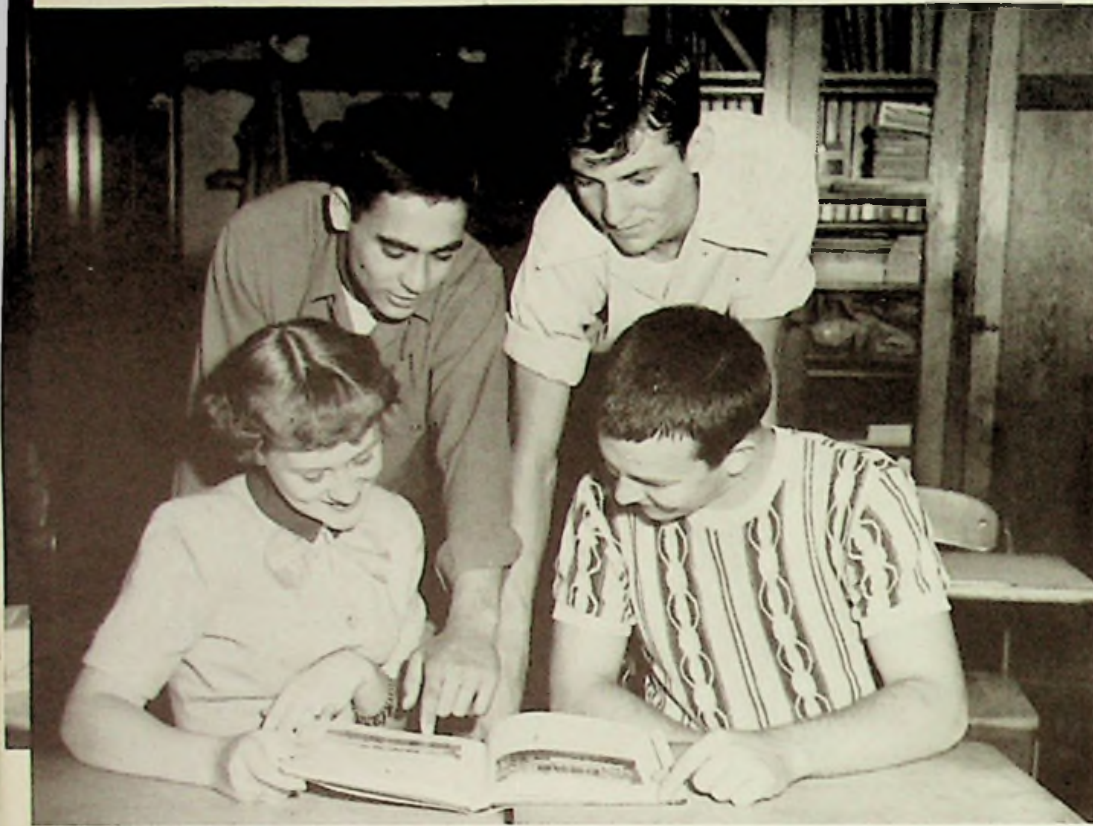


Collectors
Wanda Fankell, Wanda
Bartec, Marlene Slattery,
Naomi Ricks, Janice Er-
vin, Sheila Starrett, Max-
ine Munn, Jackie Brown,
Hazel Bradshaw.



Business Manager and Assistants
Jackie Brown, Janice Ervin, and
Normale Taylor.
Ads Editors—Bob Will, Bernie Evans.
Typists—Betty Brown, Betty Kemp.





Sports Editors—Bob Welch,
Leonard Oiler.
Activities Editors — Nina
Lunsford, Charles Mont-
gomery.

School Life—Virginia Piquet, Ethlyn Ruley, Joy Jean Frazier, Phyllis
Saunders.





Lois Stewart and Lila Dudit
Photography and Layout

Dick Dudit
Artist





Varsity — Janice Ervin, Lois Stewart, Amy Weidner, Sue Ann Manley, Wanda Fankell, Captain; Wanda Hoskins.

OUR CHEERLEADERS



Reserves — Phyllis Holbrook, Georgiana Lantz, Betty Welch.



Wanda Fankell, Vice-President; Maxine Munn, Treasurer; Wanda Barteel, Secretary; Lois Stewart, President.

GIRLS LEAGUE OFFICERS

LIBRARY ASSISTANTS



Bonny Widdig, Judy Sergent, Lois Stewart, Barbara Yeley.

The Junior Class Presents

HUCKLEBERRY FINN



On November 16, and 17, 1950, the Junior Class presented the annual Junior Class Play. Those taking part in the play were: Peggy Evans, Judy Thomas, Margaret Russell, Judy Pemberton, Judy Tussey, Mary Frances Tosi, Harry Scott, Bill Martin, Warren Riddlebarger, Jerry Winbrenner, Wallace Evans, and Dick Bussa.





LATIN ASSEMBLY

MEMBERS OF THE LATIN CLUB





THE HIGHLANDER STAFF

FIRST ROW: Mr. Stevenson, Peggy Evans, Harold Erterling, Normale Taylor, Charles Montgomery, Virginia Charlton, Dick Dudit, Mr. Shock. SECOND ROW: Sue Manley, Pat Nardi, Judy Thompson, Judy Tussey, Wanda Bartec, Esther Seth, Lila Dudit, Hazel Bradshaw, Betty Brown. THIRD ROW: Sylvia Torges, Marilyn Baer, Betsy Askin, Carol Brown, Don Bussey, Wallace Evans, Bob Will, and Lois Stewart.

The Highlander is a newspaper of the students, for the students, and operated by the students. The name "Tartan" is a kind of cloth which comes from the highlands of Scotland. This is how the school newspaper was named. The paper is a senior activity. The staff consists of underclassmen working under a senior editor and a junior associate editor. The junior automatically becomes editor next year.

Director ----- Mr. Van Meter
Drum Major ----- Wanda Hoskins
Majorettes: ----- Rhetha Massie, June Arnett,
Phyllis Holbrook, Joann Fannin
Flag Bearers ----- Betty Welch, Pat Noble

BAND MEMBERS

Sylvia Torges, Joyce McClurg, Phyllis Holbrook, Lila Dudit, Herma Cabiness, Joyce Weghorst, Alice Mault, Eleanor Torges, Lenore Gilpin, Ira Mault, Mima Taylor, Jeloma Spearry, Carolyn Thomas, Phyllis Holt, Barbara Cooper, Rachael Young, Esther Seth, Rhetha Massie, Florence Fyffe, Buren McLaughlin, Nina Saunders, Harold Ach, Bill Martin, Harry Scott, Andre Keller, Gary Sergeant, Brooks Parks, Joe Essman, Pat McCardle, Georgene Lants, Wesley Kelly, James Porter, Robert Rowe, Donald Johnson, David Conkey, Warren Riddlebarger, Richard Dudit, Paul Brigner, Wilbus Harr, Louis Snodgrass, Eric Snodgrass, David Watts, Robert Wills, Gary Wilson, Charles Montgomery, Richard Hood, Betty Baldrige.



EAST HIGH BAND





BOYS' GLEE CLUB

FIRST ROW: John Hoskins, John Warneke, Ted Dortch, Grover Frazier, Louis Hall, John Marshall, Harry Scott, Bernie Evans, Mr. Butler. SECOND ROW: Ralph Silcott, Butch Felts, Bob Crabtree, Don Vallance, Frank Gilliland, Ray Brown, Archie Gilliam, Charles Montgomery, Paul Brigner. THIRD ROW: Raymond Boyd, Dick Spaulding, Jerry Winebrenner, Dave Watts, Dick Kitchen, Ronald Partridge, Benny Jenkins, Stanley Thompson.



GIRLS' GLEE CLUB

FIRST ROW: Doris Williams, Evelyn Tracy, Sue Schneider, Betty Baldrige, Rovena Coriell, Joan Hall, Georgia McGraw, Katherine Burton, Patty Marcum. SECOND ROW: Jean Fletcher, Shirley Williams, Roberta Ketter, Florence Fyffe, Judy Tussey, Mary Frances Tosi, Mima Taylor, Ethlyn Ruley, Carol Brown, Herma Cabiness. THIRD ROW: Judy Sergent, Esther Seth, Gloria Keller, Ann Knigge, June Ramey, Elizabeth Ann Wilson, Lois Myers, Nettie Jenkins, Patty Kline. FOURTH ROW: Janet Ramey, Glenda Etterling, Helen Smith, Shirley Chamberlain, Rosalie, Joyce Mays, Joan Mays, Aulive Horner, Dorothy Kline. FIFTH ROW: Polly Ashworth, Rhetta Massie, Joan Belveal, Betty Welch, Barbara Krohn, Lois Stewart, Ruth Chamberlin, Barbara Cooper. SIXTH ROW: Deloris Howard, Wanda Kiser, Judy Plummer, Marilyn Stout, Mr. Butler, Phyllis Holbrook, Evelyn Brown, Sue Sennett, Marilyn Baer.



GLEE CLUB



MINSTREL





The Mexican Hat Dance.



Bob Crabtree, Charlie Veach.

The Spanish Club held their annual assembly May 2, 1951. The program consisted of a one-act play, two solos and a girls quartet. The Mexican Hat Dance was also given.

A very interesting talk was given by Mr. Middletown, a salesmen for Selby's Shoe Company. Mr. John Stevenson is the Spanish Teacher.



Girls Quartet.

Mr. Middletown, a native of Buenos Aires, Argentina.

"A Tooth or a Shave."



JUNIOR SENIOR PROM



MAY 25, 1951





PAULINE WALDEN HONOR SOCIETY

The annual assembly of the National Honor Society was held Wednesday, May 23. The new members admitted into the society were: Juniors: Amy Weidner, Wallace Evans, and Marilyn Baer. Seniors: Nina Lunsford, Jacqueline Brown, Hazel Bradshaw, Normale Taylor, and Lila Dudit (absent).

The program was arranged by the senior members who were elected last year. Mr. Stevenson and Miss Taylor directed the program. The guest speaker was Miss Pauline Walden.

This organization is based upon four important points. These are: Character, Scholarship, Leadership, and Service. This organization sets an excellent example to the school and each student should strive to become a member of the Honor Society.



Phyllis Holbrook



Jo Ann Fannin



Rhetha Massie



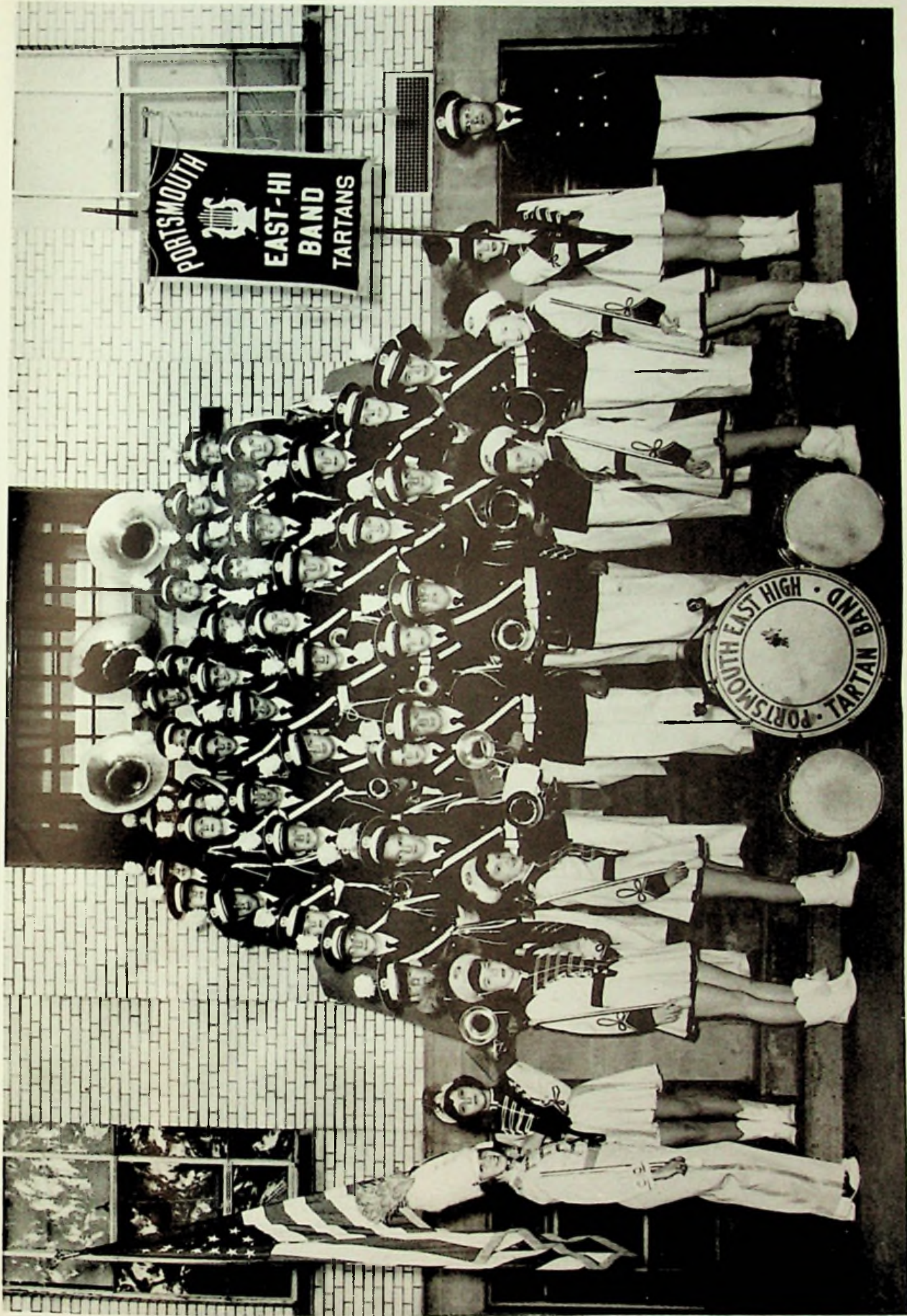
June Arnett



Wanda Hoskins

M
A
J
O
R
E
T
T
E
S





EAST HIGH BAND



The Senior Class of East High School presented a three-act mystery, "The Scarecrow Creeps", on May 17 and 18, 1951. The play was directed by Mr. Shock.

THE CAST

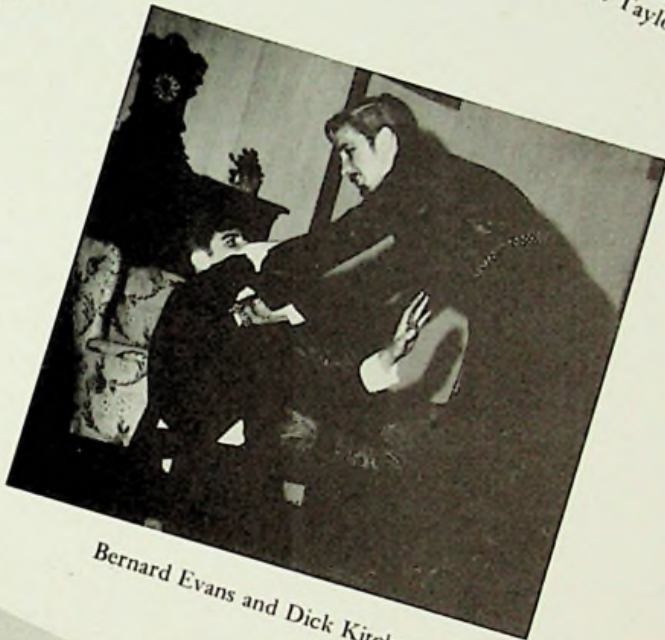
Adam Throgg	Bernard Evans
Maudie Hobbs	Wanda Bartec
Roderick Gage	Dick Kitchen
Dr. Kenneth Gage	Harold Etterling
Aunt Zinna Washington	Normale Taylor
Trailing Arbutus	Leonard Oiler
Perry Gage	Robert Will
Mrs. Annabelle Gage	Nina Lunsford
Miss Amelia Gage	Janice Ervin
Norma Gage	Betty Baldrige



The Scarecrow, Betty Baldrige, Nina Lunsford, and Janice Ervin.



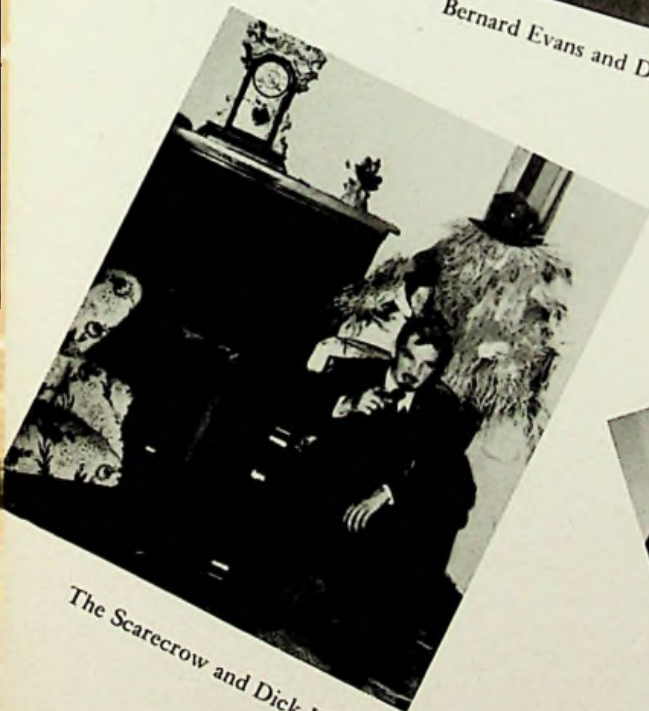
Bernard Evans, Wanda Bartee, Leonard Oiler, and Normale Taylor.



Bernard Evans and Dick Kitchen.



Harold Etterling and Betty Baldrige.



The Scarecrow and Dick Kitchen.



Harold Etterling, Betty Baldrige and Bob Will.



STUDENT ADVISORY BOARD

This group consists of an officer from each class and organization in the school. This was the first year that this board has existed and it proved to be very successful. Every two weeks this group met with Mr. Smith to discuss problems of East High. The members are as follows:

Sitting: Betty Baldrige, Mary Lou Davis, Peggy Evans, Nina Lunsford, Lois Stewart; absent.

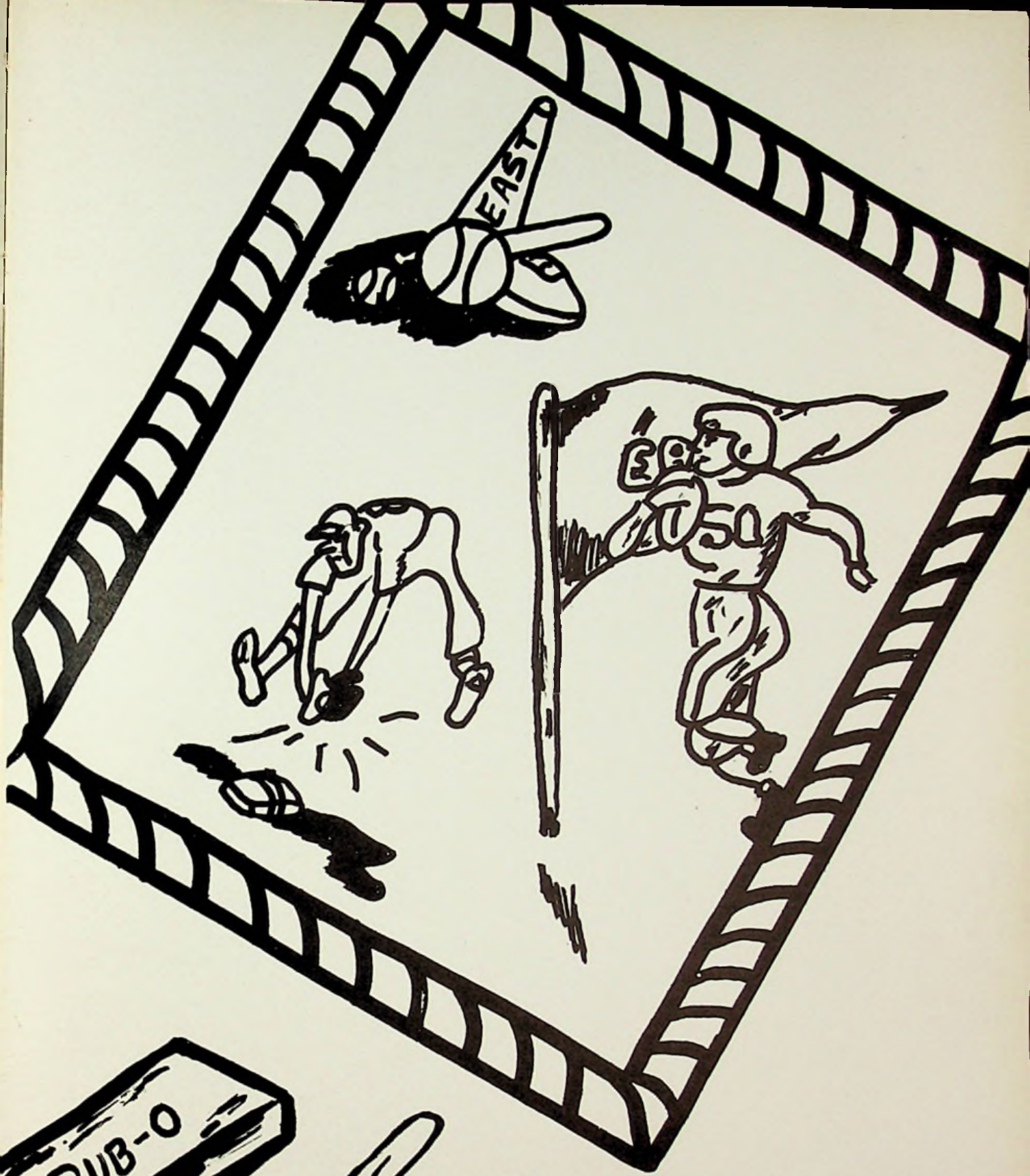
Standing: Harold Etterling, Dick Dudit, Mr. Smith, Charles Montgomery.

JUNIOR CUP

Each year the Junior Cup is awarded to the outstanding all-around Junior. The winner is chosen for his character, leadership, scholarship, service, attitude, co-operation, and athletics. The possession of this cup is one of the highest honors in this school.

In this picture Harold Etterling, winner of the cup last year, is shown presenting the cup to Jerry Winebrenner, this year's winner.





SPORTS



Ben Jenkins



Milo Mullins



Ronnie Partridge



Dick Spaulding



Bob Dortch

Asst. Coach

Asst. Coach

Head Coach

Co-captain

Co-captain



Herm Schomburg



Edward Pogue



John Fugitt



Bob Welch



Ernie Roof



Jack Wineka



Bob Kilgallen



Jim Graham



Ernie Roof



Dave Watts



Jerry Winebrenner



Bob Welch



Shurl Shoemaker



Jerry Henson



Ronnie Deemer



TARTAN VARSITY



Bob Royester



John Kitchen



Ray Brown



Dick Kitchen



Dave Burke



FIRST ROW: L. Preston, J. Withrow, J. Hoskins, G. Bailey, P. McCardle. SECOND ROW: J. Hensen, S. Christy, B. Ruley, R. Logan, T. Dortch, R. Felts, M. Kinker, M. Medley. THIRD ROW: S. Thompson, R. Stevens, C. Perkins, B. Benson, R. Brown, J. Essman, F. Gilliam.

Dick Bussa: Football manager.





Each year there are two football games set aside, one to honor the mothers, and one to honor the fathers of the players, managers, and cheerleaders of the Tartans football team.





In the seasons opener the Tartans battled a rugged Athens eleven. The Bulldogs were too big and fast for the Tartans. Athens led by speedy Nick Parkes, scored in the second and third quarters to take a hard earned 14-0 victory.

The Tartans went to Hillsboro for their second game of the season. The Tartans came close but lost a heartbreaker 13-8. The Tartans were leading with seconds to go when a desperation pass was caught for a touchdown for Hillsboro.

In their third game of the season the Tartans absorbed a 46-13 defeat at the hands of the Washington C. H. Blue Lions. From the opening gun the Tartans played a steady ball game and looked very good in spots, but couldn't cope with the Blue Lions.

The Tartans pulled the upset of the season when they defeated their oldest rival New Boston 13-6. Both teams played heads up ball but the Tartans were too fired up for the Tigers. It was the first victory of the season for the Tartans and a hard earned one.

The Tartans looking for their second straight victory run headon into Boys Industrial School. B.I.S. lead by a big bruising fulback,

defeated the Tartans 34-12. It was the fourth loss in five starts for the Tartans.

Waverly's alert Tigers parlayed a ground devouring attack with a deadly passing attack to down the Tartans 20-6. East came out strong in the second half but the Tigers were too big and fast for the Tartans.

With Bob Welch leading the way the Tartans defeated Central 25-20 in a scoring duel. Welch for East, and Perri for Central were the chief ground gainers of the game. It was the Tartans second win of the season.

A terrific fourth-quarter offensive show gave the Washington Senators a 19-7 victory over the Tartans on a watersoaked field. The game was tied a 7-7 going into the fourth quarter when the Senators chalked up to touchdowns to take the victory.

Near freezing weather and the Chesapeake Panthers joined forces to spoil our homecoming, the Tartans falling before the invaders 7-0. The Panthers scored in the second quarter on a drive starting from their own 35 yd. line, with Wood passing to McWorter from the 11 yd. line for a touchdown.





Benny Jenkins



Wells Basham



Jerry Winebrenner



Capt. Leonard "Luni" Oiler
Coach Herm Schomburg



Leonard Oiler



Bob Welch



Bob Royster



Bill Essman



Jack Wincka



Basketball Varsity



Dave Watts



Jimmy Graham

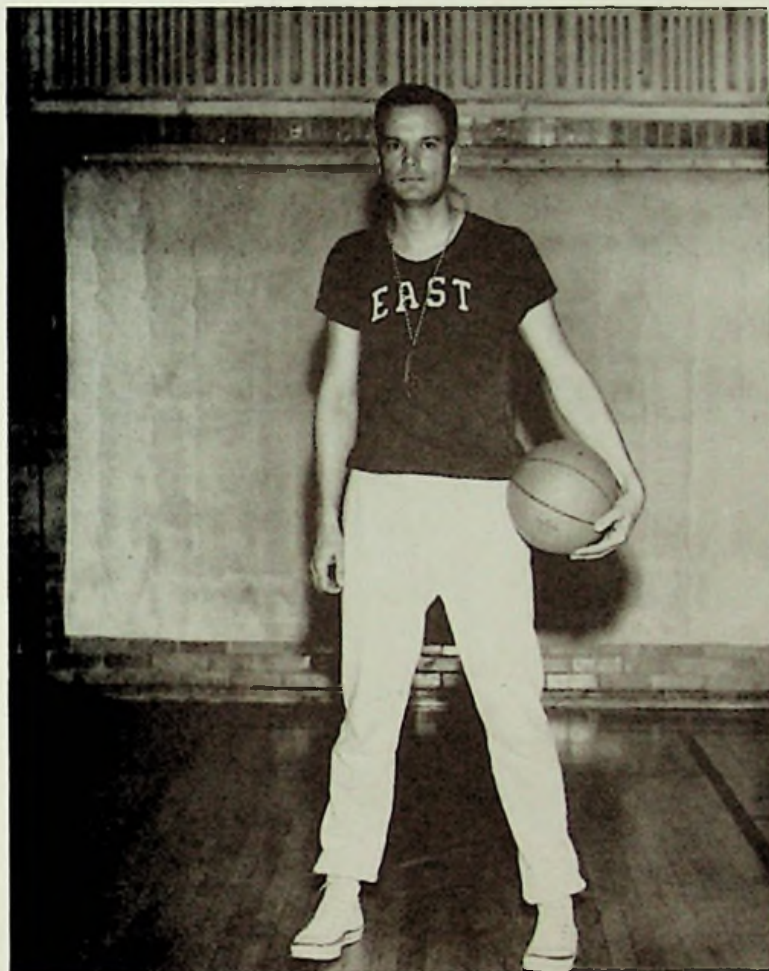


VARSITY GAMES

	We	They
Coalgrove	39	53
Portsmouth	50	73
Clay	57	51
Gren Twp.	44	58
South Webster	38	34
Hillsboro	48	52
Ironton	58	31
Central	53	40
New Boston	44	39
Cheasapeake	50	43
Ironton	51	38
Washington	44	48
Whealersburg	52	64
South Point	50	35
Minford	51	52
Central	62	47
South Webster	47	29
New Boston	42	54
Waverly	36	49
Tournament		
Wellston	48	57

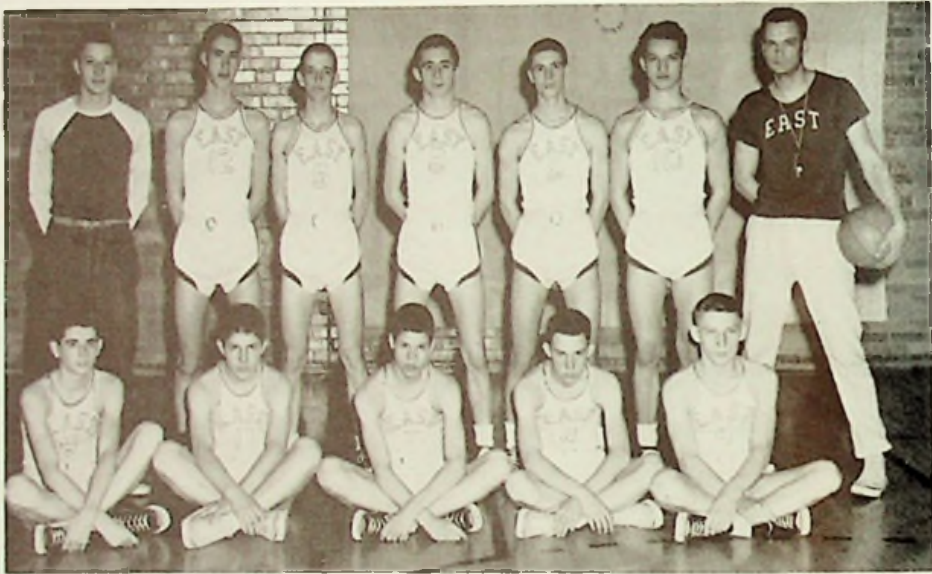
RESERVES

S.O.C.

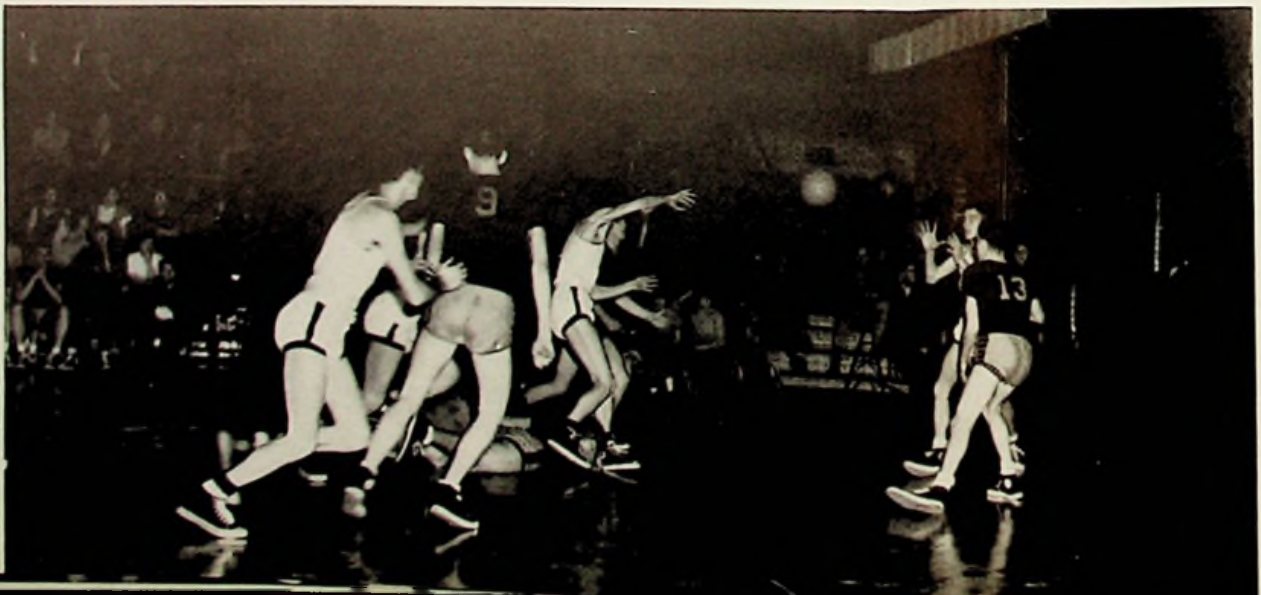


Coach — Buzz Pogue

CHAMPS



RESERVE SQUAD





Roy Knight



Dave Meyers



Ray Boyd



Don Bussey



Sam Christy



Bob Rowe

Won S.O.C. Reserve League

Won — 14	Individual Scorers		
Lost — 5	Hensen	233	
Bussey	8	Deemer	123
Beloat	4	Boyd	112
Essman	1	Rowe	106
		Knight	97
		Christy	28
		Myers	12

Reserve Scorers



Joe Essman



Ronnie Deemer



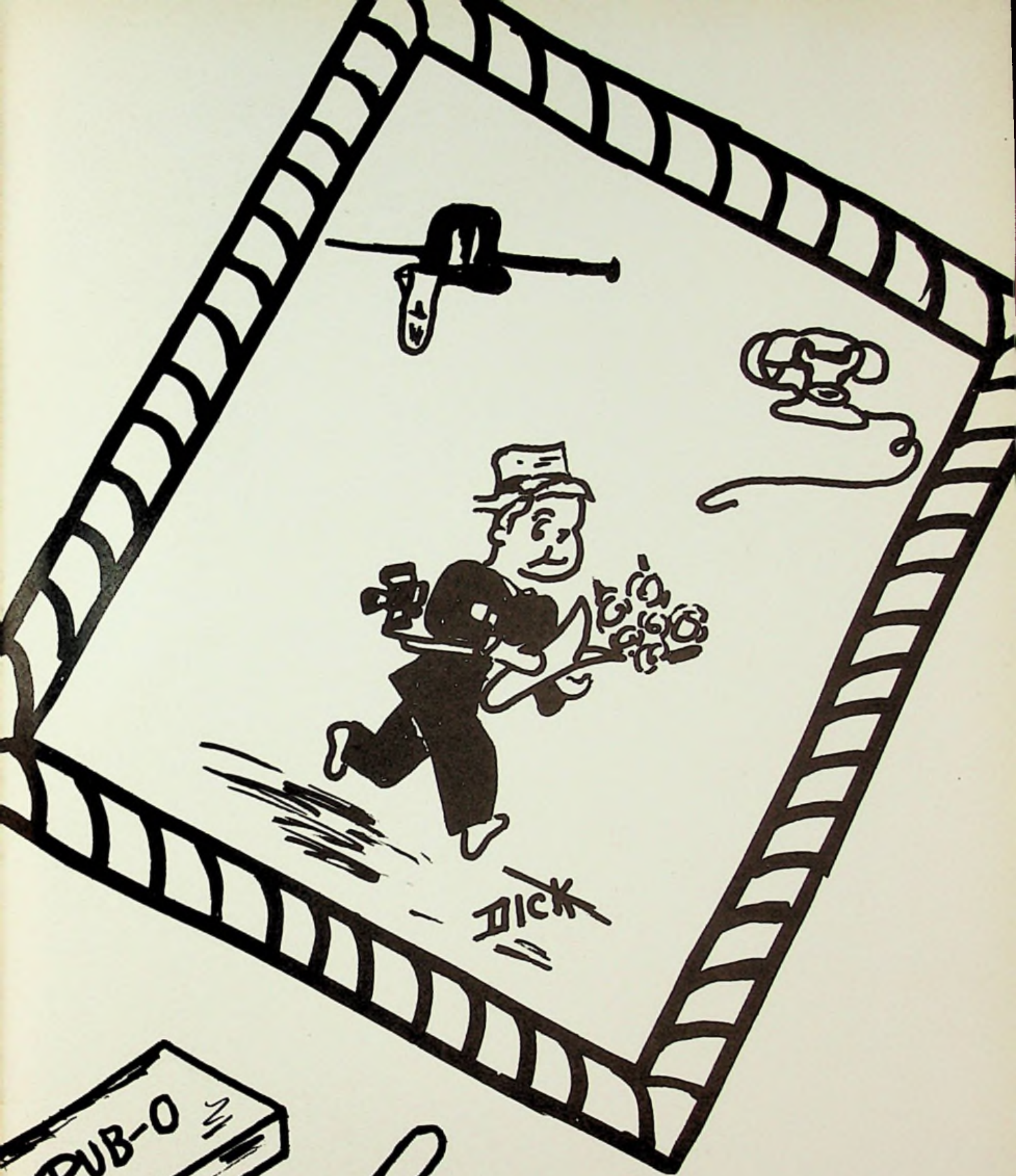
Jerry Henson



George Bloat



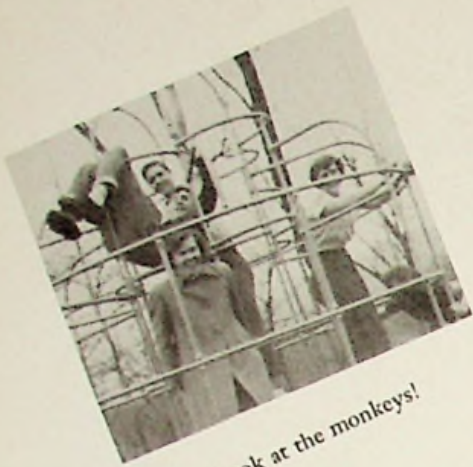
The East High Baseball Team had a very good season, winning 9 ball games and losing 4. The team won the runner-up birth in the district tournament, losing to Portsmouth Trojans 2 to 1. Buzz Pogue wasn't expecting too much from his team this year, but was satisfied with the way his boys shaped up. The team consisted of 4 freshmen, 7 sophomores, 6 juniors, and 1 senior. The freshmen being Roy Stevens, Butch Felts, Jerry Withrow, Pat Macardle. The sophomores were Jerry Henson, Ronnie Deemer, Ronnie Sturgill, Roy Knight, Ray Boyd, Bennie Jenkins, and George Beloit. The juniors consisted of Jerry Winebrenner, Gale Watts, Dave Burke, Dick Bussa, Ron Partridge, and Frank Moore. The one senior was Bob Welch.



DICK



SCHOOL-LIFE



Look at the monkeys!



It's cold outside



Having Fun



Mr. Shock



Soft spots



Hold me tight



Look out



Right this way



Three of a kind



Blizzard



Kids



Glory hog



Hicks



Watch yourself



Don't you dare!



Bicycle built for two



Buren and Rhertha

Party time



School dance



I crown you queen



Oh! My achin' back



Washin' in the snow



"Lois"



L. Dudit and N. Jenkins



Don't throw it



More snow



Hopeless case

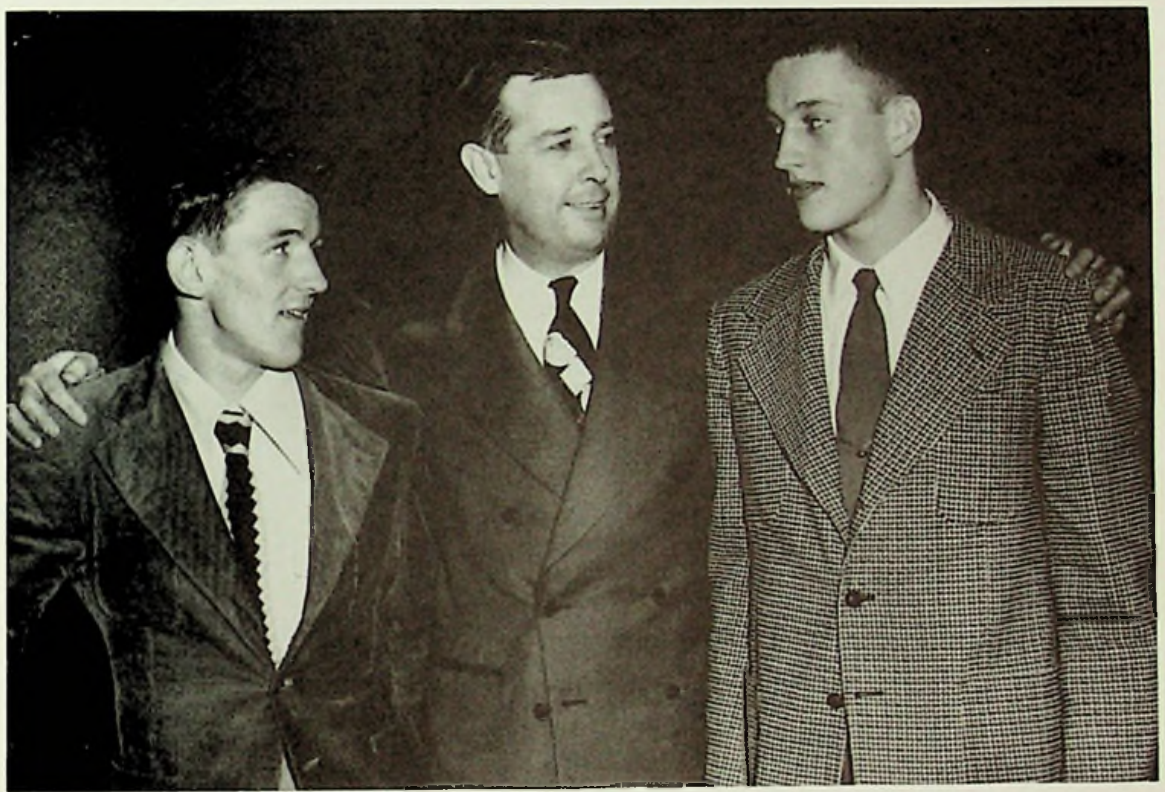


Game time

**FOOTBALL
AND
BASKETBALL**



BANQUET



Waitresses Betty Kenp, Nina Lunsford, Phyllis Saunders, Peggy Evans, Judy Thomas, and Wanda Bartee.

Coach John Fugitt with Co-Captains Jim Graham and Dick Spaulding.



Square Dancing



Santa Claus

PARTIES



Masquerade



"Circle to the right"



Wanda & Bob



Naomi & Lum



Joy & Charlie



Betty & Charles



Barb & Ernie



Jackie & Bill



Betty & Bob



Hazel & Paul



Marlene & Bob



Barb & Ron



Weezy & Wells



Helen & Jack

TARTANS IN THE TROJAN RIFLE CLUB



Judy Thomas, Peggy Evans, Wanda Hoskins, Sue Manley, Pat Nardi.

On Thursday, September 14, just a week and one practice after Pat Nardi, Judy Thomas, and Peg Evans had joined the Trojan shooters, they shot in their first match between the local Civil Air Patrol and the Trojan beginning group. Competition was in a 20-shot prone match. The match was close, but ended with the Trojans the winners.

Since this prone match the Tartan shooters have come a long way; shooting four position course of fire and a number of times holding the spotlight in articles published in the local paper.

The girls have fired in matches with the local C.A.P.; postal matches with Terre Haute (Ind.), Bessemer (Mich.), Granville, and Canton (Ohio); have traveled to Columbus and Chillicothe for the Central Ohio Rifle League meets; have helped in starting a junior rifle club in Greenup, Ky., and are now practicing toward their first Ohio State Junior Tournament at which they hope to make a good showing.

During the past few months Wanda Hoskins and Sylvia Torges have discontinued shooting with the girls' team.



Throw him away



Maybe Arthur Murray?



Going home



Play boys



Slumber Party



Ouch!



Banquet



Twins



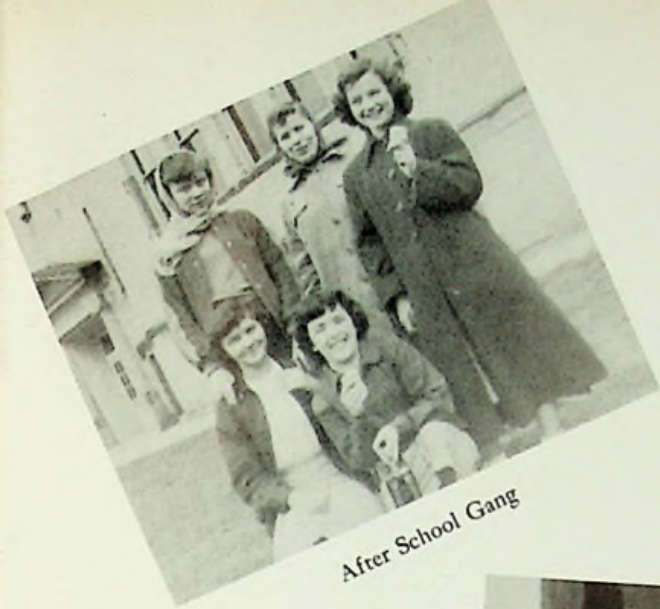
Valentine King and Queen, Bob Rowe and Phyllis Holbrook.



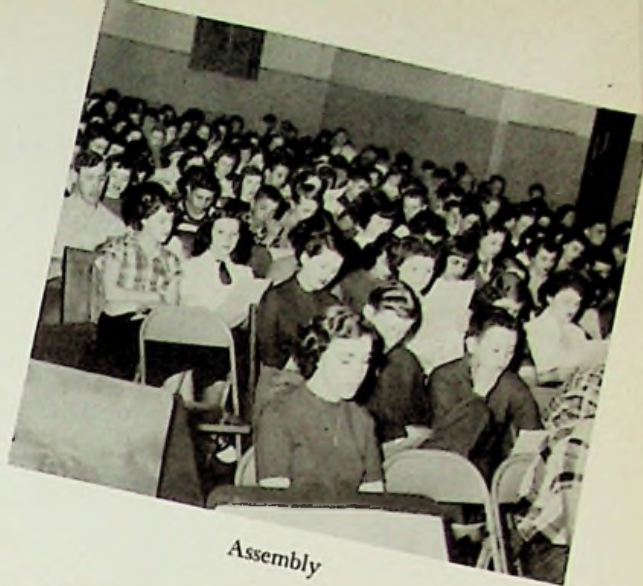
Santa Claus and Dave Warts.

Phyllis Holbrook, Herma Cabiness, Dot Kline.





After School Gang



Assembly



Happy-go-lucky



Tooters



Get off my back!



School days



The great lover



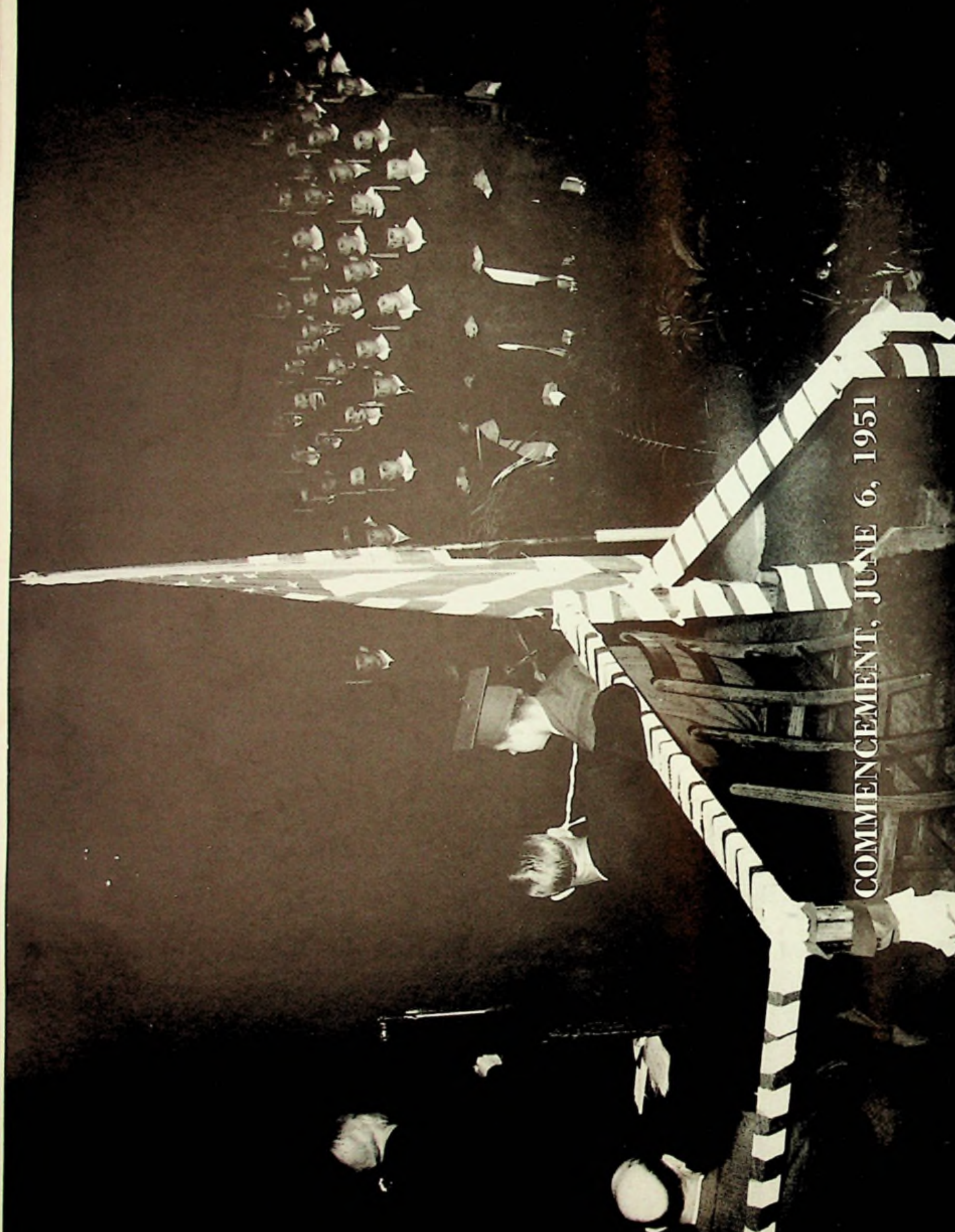
Wanna fight?



Big game



Ouch! My eyes!



COMMENCEMENT, JUNE 6, 1951



Advertising

MILLHUFF'S

Best wishes to the class of '51



Modern self-service grocery
If we serve you - - you serve the best

CONGRATULATIONS
Class of "51"

Lawsons Dairy

Wheelersburg

Phone 277-X

Compliments
of

**Clary's
Sandwich Shop**

Compliments
of

Schomburg's Grocery

Compliments
of

Lowell Caulley

Modern Food Market
Phone — Boston-90-Y

Compliments
of
STANLEY THEATRE

Pick of the Pictures
"Make the Stanley your place to go"
Best wishes to the Class of "51"

Compliments of
"Vic" Staker
Auto Body Service
Wrecks Repaired and Auto Painting
Between Wheelersburg and Sciotoville

Compliments
of
Dempsey's Grocery

Veteran Auto Sales

2419 Gallia Street
Portsmouth, Ohio
Phone 2-7011

Compliments
from
Johnson's Green House
"Flowers for Every Occasion"

Compliments
of
Scioto Drugs

Bourgholtzer's Drug
Prescriptions
Boxed Candies Perfumes
Philco Radio and Refrigerators

DETROIT STEEL

Portsmouth Division

President Max Zivian

Phone 2-1011

Compliments
of
W. G. Harr

Hibbitts
Hardware Company
315 Harding Avenue

Compliments of
Winebrenner Service Station
Gallia & Harding

Compliments
of
Orthmeyer Bakery
Gallia & Harding

JOSTEN'S

Producer of this Yearbook

and

Official Jewelers Supplying

Class of 1952 Class Rings

George Miltenberger, Rep.

Box 7, Mt. Washington

Compliments of

HUSTON-PONTIAC CO.

Gallia-Lincoln-Ninth Sts.

Phone 2-2951 or 22961

Best Wishes to the

Graduating Class of "51"

CHABOUDY'S FOOD MARKET

Corner of Gallia and Eastern

Get the Food That Makes You Glad You're Hungry
Prepared Before Your Very Eyes on All Stainless Steel



Buy
'Em
By
The
Sack

Buy
'Em
By
The
Sack

HAMBURGER SHOP

5721 Gallia Street

J. Everett Reese—Proprietor

MARTING'S
HIGH SCHOOL SHOPS

Corner of Sixth and Chillicothe

Portsmouth, Ohio

Compliments of
**PORTSMOUTH INTERSTATE
BUSINESS COLLEGE**

Portsmouth, Ohio

L. C. Blackburn

Director

Compliments
of
BEN STEWART

MARVIN JONES

LINCOLN - MERCURY

**GILL FUNERAL HOME
AMBULANCE SERVICE**



Phone 100

Sciotoville, Ohio

Jessie A. Gill

Thomas J. Gill

Compliments
of
GILPINS DAIRY
Phone 921-L

ANDY MUCHA'S GROCERY
5900 Farney Ave. Phone Scioto. 62-M
SCIOTOVILLE, OHIO

LOLA'S BEAUTY SHOP
5832 Farney Ave. Phone Scioto. 92
SCIOTOVILLE, OHIO

BARRETT PRINTERS
*"Small parrot
says deal
with Barrett"*
1824 Vinton St.
Phone 5-1832

E. J. KENRICK CO.

119 Market St.
Mfg. of Carbonated Beverages
All Flavors
Tobacco and Candy Jobbers

CLIFFORD M. FOSTER

PHOTOGRAPHER
6440 Gallia Street Phone 170-Y
SCIOTOVILLE, OHIO

SUMMERS

&

SONS

PIANOS - ORGANS

anything Musical

Baldwin



WEST END FURNITURE CO.

"a little more for a little less"

518 second street 520

Quality Service Courtesy

LAKEVIEW CLEANERS

"Sciotoville's Only Complete Dry Cleaning Plant"

5710 Gallia Street Phone 229-W

WALLACE "Fat" BRYAN

CAROLINA LUMBER CO.

"Everything to build anything"

1011 Lincoln Street Phone 2-1671

PORTSMOUTH, OHIO



Compliments of

GREENWICH INN
RASE MEAT MARKET
WHEELERSBURG COAL & FEEDS
MUNN SERVICE STATION
TURNERS SHOE SHOP
BAHNER'S GARAGE

**CHRYSLER - PLYMOUTH
SALES & SERVICE**

Let your car worries be ours

**WHEELERSBURG
MOTOR CO.**

GALLIA ST. & HAYPORT RD.

PHONE SCIOTO 272

G. M. ROSS CO.

327 National Bank Building

Portsmouth, Ohio

Phone 34471

or

Wheelersburg, Ohio

Phone So. 7

INSURANCE & REAL ESTATE

COMPLIMENTS

OF

EVANS FLORAL

SHOP

COMPLIMENTS

OF

LANTZ GROCERY

PHONE 933-W

GROCERY

MEATS

Compliments
of

**ADAMS GROCERY & SERVICE
STA.**

1423 Bonser Avenue

GAS

OIL

EVAN'S TELEVISION CENTER

ADMIRAL and EMERSON TELEVISIONS

5720 GALLIA

PHONE 293

Coca-Cola

TRADE-MARK REG. U. S. PAT. OFF.

GEMPERLINE FURNITURE

Authorized dealer in Westinghouse
appliances

*"The house of quality furniture
at reasonable prices"*

612 Second St. Portsmouth, Ohio

NU-WAY CLEANING CO.

OFFICE and PLANT

2314 Gallia Dial 3-1831

THE PORTSMOUTH PAINT CO.

PAINT - GLASS - WALLPAPER

GALLIA at FINDLAY ST.

NEWBERRY BROS.

4150 Gallia St. New Boston

FOR FINE CLOTHING & SPORTING GOODS

Compliments of

DUVENDECKS

WALLPAPER - PAINT
LINOLEUM

5619 Gallia Phone 276

SELECT DAIRY

2345 Gallia Phone 3-381

THE BEST IN DAIRY PRODUCTS

**WINDEL-HOWLAND
FUNERAL SERVICE**

*"SERVICE FOR ALL WITHIN MEANS OF ALL
ANYWHERE, ANYTIME"*

JAMES H. PURDY

MORTICIAN

PHONE 3-411

1503 OFFNER ST.

"Since 1934"

MORE FOR YOUR MONEY

WALKERS SHOES

420 Chillicothe St.

Portsmouth, Ohio

COMPLIMENTS

OF

DR. MOOREHEAD

"Furnishing Homes Since 1913"

SAMUEL LEVI & CO.

FURNITURE

840-844

Gallia St.

WOLFF

"CLOTHES FOR DAD 'N' LAD"



"BETSY ROSS IS GOOD BREAD"

MOORE'S STORE

GALLIA ST. AT THE LAKE

NEW BOSTON

**JOHNSONS BROS.
GROCERY**



Corner of Harding and Mayo

"A good store for a good community"

**THE H. LEET
LUMBER CO.**

404 Harding Ave.
BUILDING SUPPLIES

**SHERMAN HIBBITTS
AND SONS**

Compliments
of
**KILGALLEN BARBER
SHOP**
Gallia

DEPARTMENT STORE
212 Harding Ave.
Phone 36-G



