



Senatorian

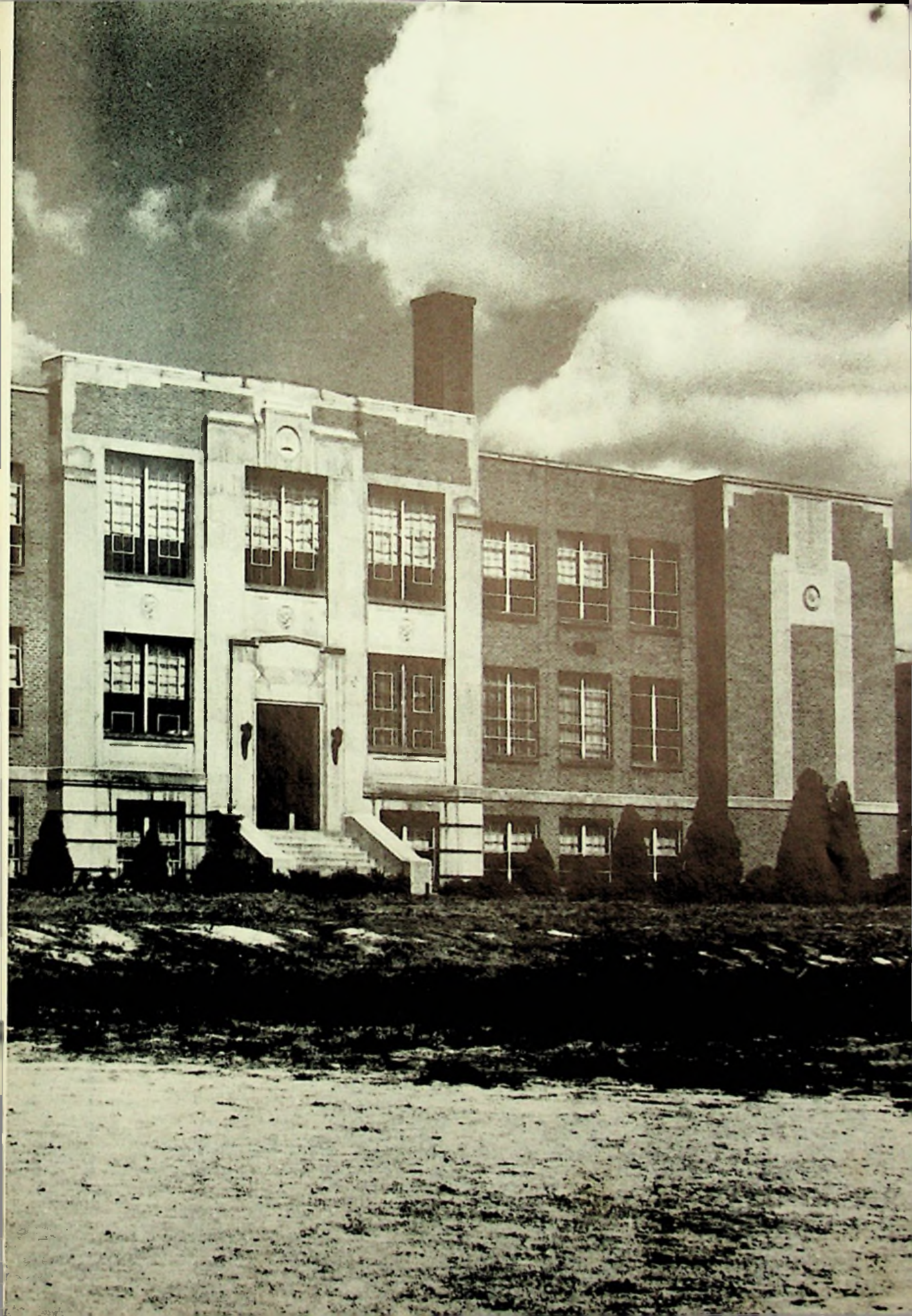
The
SENATORIAN

**Published by
The
Senior Class**

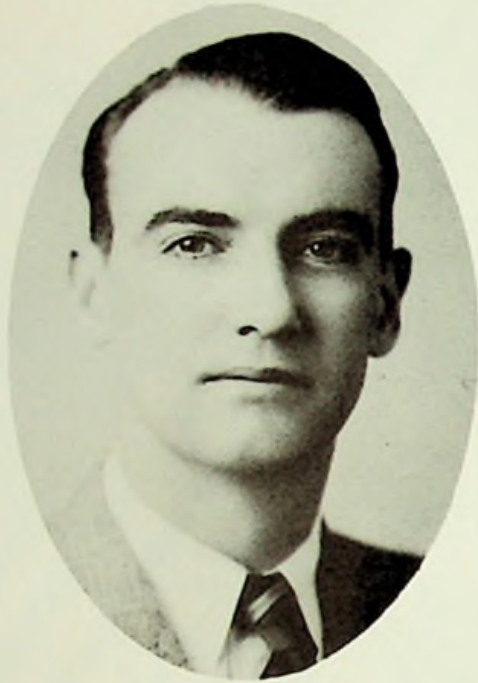
WASHINGTON HIGH SCHOOL, WEST PORTSMOUTH, OHIO

1945 — 46





ADMANSTRATION



Edward R. McCowen

COUNTY SUPERINTENDENT

County Superintendent Edward R. McCowen returned from the armed services and resumed his position as County Superintendent January 1, 1946. Mr. McCowen served as a Lieutenant in the United States Naval Reserve.



N. B. Potts

**ASSISTANT
COUNTY SUPERINTENDENT**



MR. GEORGE JENKINS, President
45 years of service



MRS. BESSIE GREEN, Clerk



MR. ELZA CALLENDAR

BOARD
OF
EDUCATION



MR. CHARLES PRINCE



MR. LOWELL STRICKLAND



Mr. Frank B. Rolf
SUPERVISING PRINCIPAL





J. H. Bouts

Physics



Faye Burke

Social Sciences



Russell Christian

Physical Education



Mary Delebar

Commercial



Marcella Donley

Latin



Dale Gillette

Instrumental Music, Radio



Betty Hodgden

English, Speech



Kathryn Hopkins

Science, Spanish



Johanna Kean
Chemistry, Home Economics



Ruth Mignerey
Mathematics



Amy E. Mitchell
English



Samuel Moore
Industrial Arts



Mabel Stamper
Vocal Music



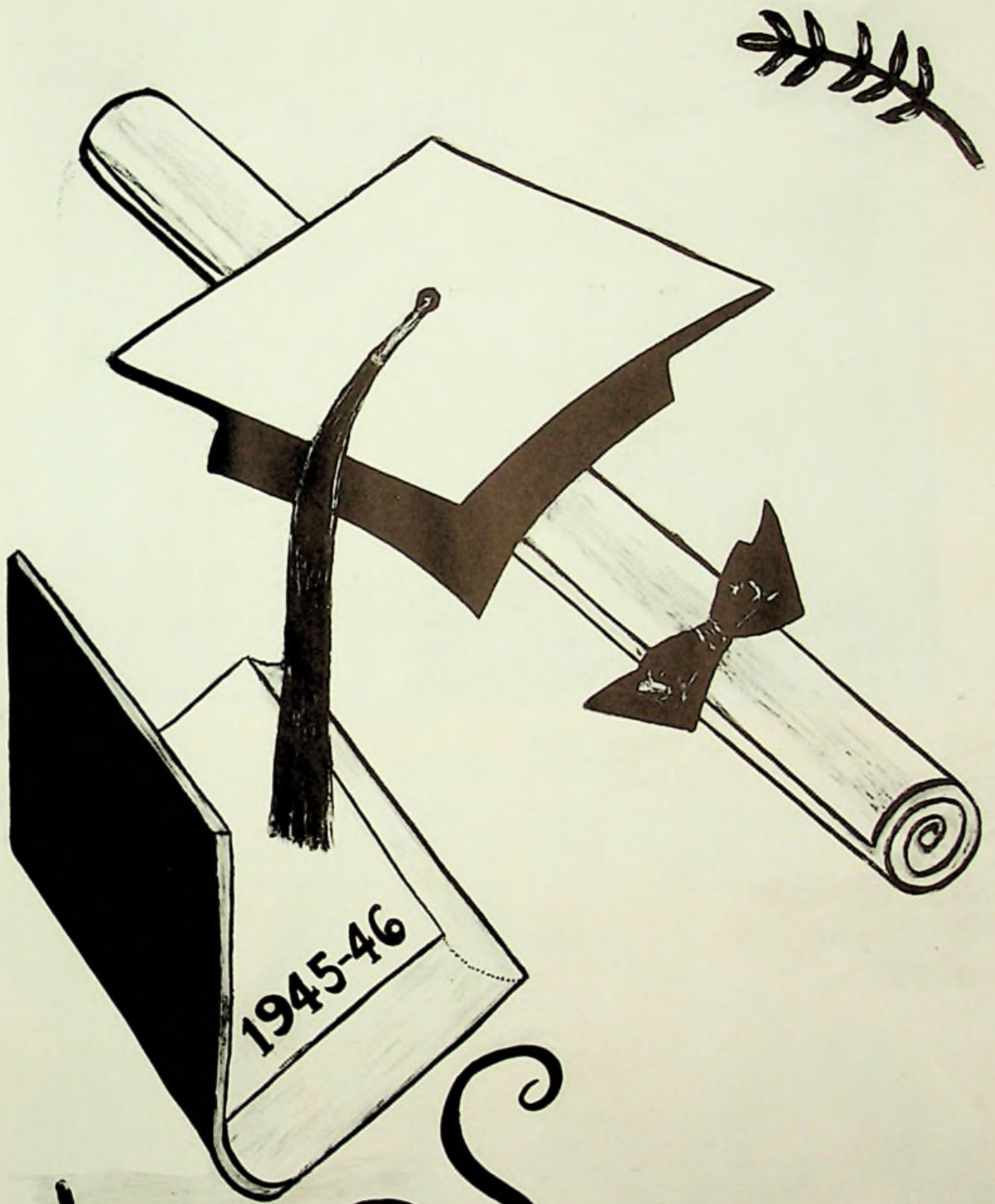
Fred Stamm
General Science



Marion Wagner
Social Sciences



Loretta Woods
Commercial



1945-46

Seniors



SENIOR OFFICERS

President	B. McKay
Vice President	J. Daulton
Treasurer	B. Diller
Secretary	F. Browning

Class Advisers



Marcella Donley



Amy E. Mitchell



**Robert
Andre**

Industrial Arts; Band 1, 2, 3, 4;
Glee Club 3; Basketball 3, 4.



**Robert
Baker**

Industrial Arts; "Hats Off" 3;
Glee Club 3, 4; Basketball 3;
Baseball 3.



**Walter
Barker**

Industrial Arts; Wheelersburg 1,
2; Glee Club 1, 2; English Club
2; Basketball 2, 3, 4; Baseball 4.



**Jean
Bridwell**

Commercial; "Hats Off" 3.



**Faye
Browning**

Commercial and Latin; Latin
Club 2, 3, 4; Glee Club 1, 2;
History Club 3; Camera Club 4;
Class Officer 4.



**Regina
Browning**

Commercial; "Hats Off" 3; Eng-
lish Club 4; Camera Club 4.



**Frank
Burchett**

Industrial Arts; Baseball 2, 3;
Basketball 1, 2, 3, 4; Glee Club
1, 3, 4.



**Norman
Burden**

Industrial Arts; Glee Club 1, 2,
3, 4; "Hats Off" 3; Band 2, 3, 4;
Newsette Staff 4.



**Doris
Bussa**

Commercial and Home Ec.; Glee Club 1, 2; Band 1, 2; Mixed Chorus 1, 2.

**Ruth
Conley**

Commercial and Latin; Latin Club 2, 3, 4; English Club 3, 4; "Hats Off" 3; History Club 3; Honor Society 3, 4.



**Dolores
Criswell**

Commercial; Spanish Club 2.

**John
Daulton**

- College Prep.; Band 2, 3, 4; Glee Club 2, 3; Mixed Chorus 2; Spanish Club 3, 4; Class Officer 4.



**William
Diller**

Industrial Arts; Basketball 3, 4; "Hats Off" 3; Camera Club 4.

**Sarah
Distel**

Commercial and Home Ec.; Glee Club 2, 3, 4.



**Talmage
Estep**

Industrial Arts; Baseball 1; Basketball 3, 4; Glee Club 1, 3, 4; Class Officer 1, 2.

**Betty
Evans**

Commercial and Home Ec.; Glee Club 1, 2; Mixed Chorus 1, 2; Spanish Club 2; Camera Club 4.



**Louise
Evans**
Commercial and Home Ec.



**Wanda
Evans**
Commercial and Latin; Latin
Club 2, 3, 4; History Club 3;
"Hats Off" 3.



**Freda
Fannin**
Commercial and Home Ec.



**Elsie
Farmer**
Commercial and Home Ec.;
Newsette Staff 2, 4; English
Club 3, 4; Prince of Peace 4.



**Audrey
Gardner**
Commercial and Home Ec.;
"Hats Off" 3; English Club 3, 4;
Glee Club 4.



**Mary
Hahn**
Commercial and Home Ec.;
Glee Club 1; Mixed Chorus 1, 2;
Newsette Staff 3; History Club
3; English Club 3, 4; Honor
Society 3, 4; Scholarship 2, 4.



**Jettie
Hall**
Commercial and Latin; Glee
Club 1, 2; Mixed Chorus 1, 2;
Latin Club 1; Newsette Staff
3; "Hats Off" 3; History Club 3;
English Club 3, 4; Honor So-
ciety 3, 4.



**Russell
Hall**
Industrial Arts; "Hats Off" 3.



**Eloise
Howard**

Commercial and Home Ec.; Glee Club 1.

**Joyce
Howell**

Commercial and Home Ec.; Cleveland East High 2, 3; English Club 4.



**Thelma
Lewis**

Commercial and Home Ec.; Glee Club 2, 3, 4; "Hats Off" 3.

**Ruth
Louis**

Commercial and Latin; Portsmouth High 2, 3; Glee Club 1, 4; Mixed Chorus 1.



**Jean
Liles**

Commercial and Home Ec.; Glee Club 3, 4; "Hats Off" 3.

**Charles
Litteral**

Industrial Arts; Portsmouth High 1, 2; Glee Club 3, 4; Basketball 3, 4; Baseball 3, 4.



**Pauline
Malone**

Commercial and Home Ec.

**Betty
Mangus**

College Prep.; Columbus Central High 2; Glee Club 1, 2; "Hats Off" 3; History Club 3; English Club 3, 4; Scholarship 3, 4.



**Kenneth
McCall**

Industrial Arts; "Hats Off" 3;
English Club 4; Baseball 3; In-
tramural Basketball 1; Senior
Survey 4.



**Jean
McCorkle**

College Prep.; English Club 4;
Newsette Staff 4.



**Lucille
McCown**

Commercial; Spanish Club 3.



**William
McKay**

Commercial; Class Officer 4.



**Juanita
Mark**

Commercial and Home Ec.; Lex-
ington High 2; "Hats Off" 3;
English Club 3, 4; Camera Club
4; Senior Survey 4.



**William
Mathews**

Industrial Arts; History Club
3; English Club 3, 4; Honor So-
ciety 3, 4; Scholarship 1, 2, 3, 4.



**Catherine
Mershon**

College Prep.; McDermott High
1, 2, 3; Glee Club 1, 2, 3, 4;
"Hats Off" 3; English Club 4;
Class Officer 1, 3.



**Robert
Mignerey**

Industrial Arts; Glee Club 1, 2;
Mixed Chorus 1, 2; Spanish
Club 3, 4; "Hats Off" 3; Annual
Staff 3; Band 1, 2, 3; Class Of-
ficer 1, 2.



**Marilyn
Miller**

College Prep.; Band 1; News-
ette Staff 4; English Club 4;
Senior Survey 4.

**Dolores
Mitchell**

Commercial; Spanish Club 3, 4;
Glee Club 3; "Hats Off" 3.



**Jack
Nolder**

Commercial; English Club 4.

**Eugene
O'Dell**

Industrial Arts; Glee Club 2, 3,
4; Band 1, 2; "Hats Off" 3; Base-
ball 2; Basketball 3.



**Mary Frances
Parry**

College Prep.; Glee Club 1, 2;
Mixed Chorus 2; Band 1, 2, 3,
4; Scholarship 2, 3, 4; Spanish
Club 3; "Hats Off" 3; History
Club 3; Annual Staff 4.

**Dorothy
Pelphrey**

Commercial; Piketon High 2,
3; Glee Club 3.



**Louis
Pollard**

Industrial Arts; "Hats Off" 3;
Glee Club 1, 2, 3, 4.

**Norma
Prince**

Commercial and Home Ec.; Glee
Club 2, 3; Spanish Club 3; "Hats
Off" 3.



**Betty
Pyle**

Commercial and Home Ec.;
Newsette Staff 2, 4; English
Club 4; Prince of Peace 4.



**Ralph
Rapp**

Industrial Arts; "Hats Off" 3;
Spanish Club 4; Newsette Staff
1, 2; English Club 3, 4; Glee
Club 1, 2, 3, 4; Band 1, 2, 3, 4.



**Annabelle
Ratliff**

College Prep.; English Club 3,
4; Latin Club 1, 2, 3, 4; Honor
Society 3, 4; Scholarship 1, 2,
3, 4; Newsette Staff 4; Class Of-
ficer 3.



**Bryce
Richards**

College Prep.; Beaver High 1;
Scholarship 1, 2, 3, 4; Spanish
Club 3, 4; Glee Club 3.



**June
Risner**

Commercial and Home Ec.;
Spanish Club 3; "Hats Off" 3;
Glee Club 1, 2, 3.



**Michael
Sowkulech**

College Prep.; Glee Club 1, 3;
Class Officer 3.



**Barbara
Sheets**

College Prep.; Spanish Club 3,
4; English Club 3, 4; Latin Club
1, 2; Scholarship 3; "Hats Off"
3; Band 2, 3, 4; Glee Club 4;
Class Officer 3.



**Lois
Shivener**

College Prep.; Glee Club 1, 2,
3, 4; Mixed Chorus 1, 2; Latin
Club 1, 2; English Club 3, 4;
Spanish Club 3, 4; Honor Soci-
ety 3, 4; "Hats Off" 3; News-
ette Staff 3; Scholarship 3, 4;
Annual Staff 4; Cheerleader 2,
3, 4.

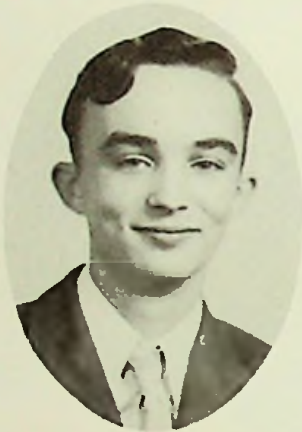
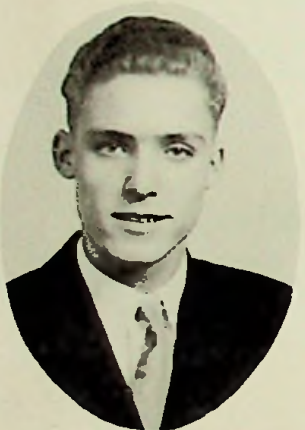


**Ruth
Smith**

Commercial and Home Ec.; Glee
Club 1, 2, 4; Mixed Chorus 1, 2;
"Hats Off" 3.

**Wanda
Spears**

Commercial and Home Ec.



**Everett
Stephenson**

Industrial Arts.

**Harold
Spradlin**

Industrial Arts; Glee Club 1, 2,
3, 4.



**Leona
Stowers**

Commercial; Glee Club 1; "Hats
Off" 3; Scholarship 2.

**Hazel Adkins
Sweeney**

Commercial.



**Florence
Thurman**

Commercial and Home Ec.

**Kathleen
Vernier**

Commercial and Home Ec.



**Jean
Willis**

Commercial and Home Ec.



**Robert
Woods**

Industrial Arts; "Hats Off" 3;
Basketball 4; Intramural Bas-
ketball 2, 3; Radio Club 4.



**Victor
Woods**

College Prep.; Spanish Club 3;
Glee Club 1, 3.



**Lawrence
Woten**

Industrial Arts; Annual Staff 4;
Basketball 2, 3, 4; Baseball 2,
3, 4.



**Ruth
Cook**

College Prep.; Highland Park 3;
Band 4.

Mary Bennett

Member of Faculty
Commercial

Granted leave of absence by
the Board of Education,
January, 1946

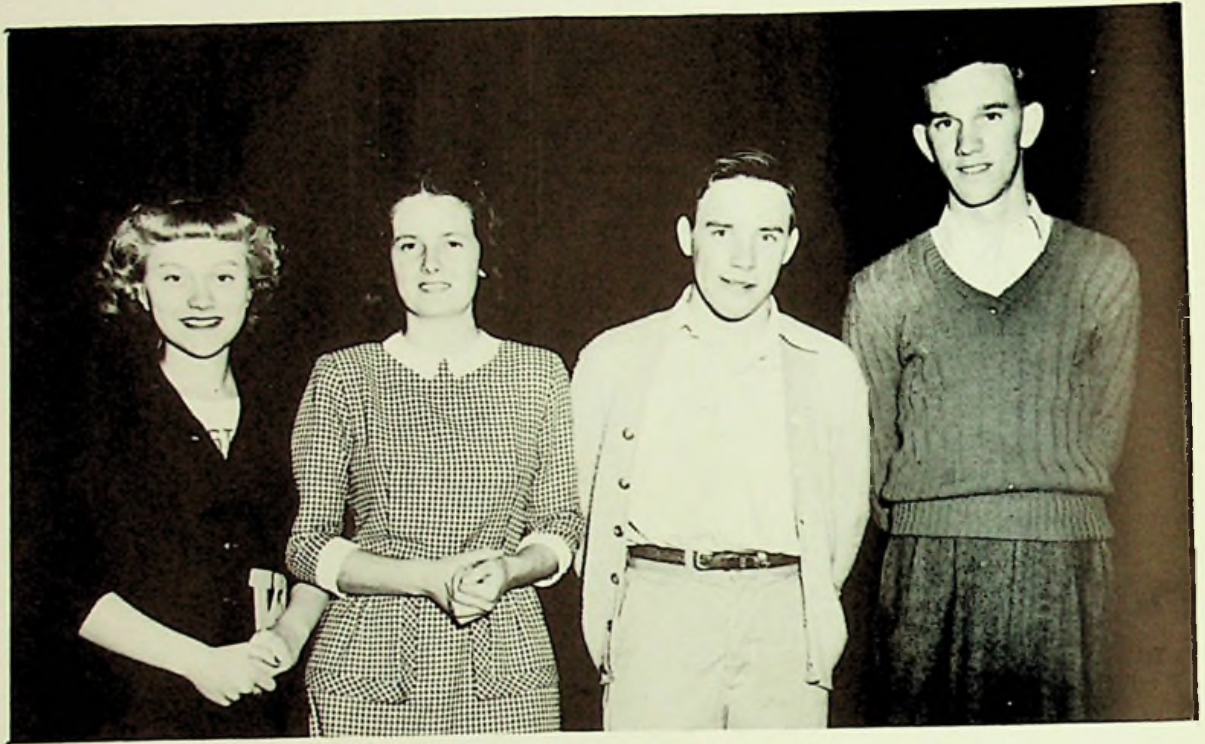


1942—When We Were Freshmen—1943





Juniors



JUNIOR OFFICERS

Secretary	N. Plummer
Vice President	S. Risner
President	B. Moriarty
Treasurer	P. Reiser

Class Adviser



Betty Hodgen

Junior Girls

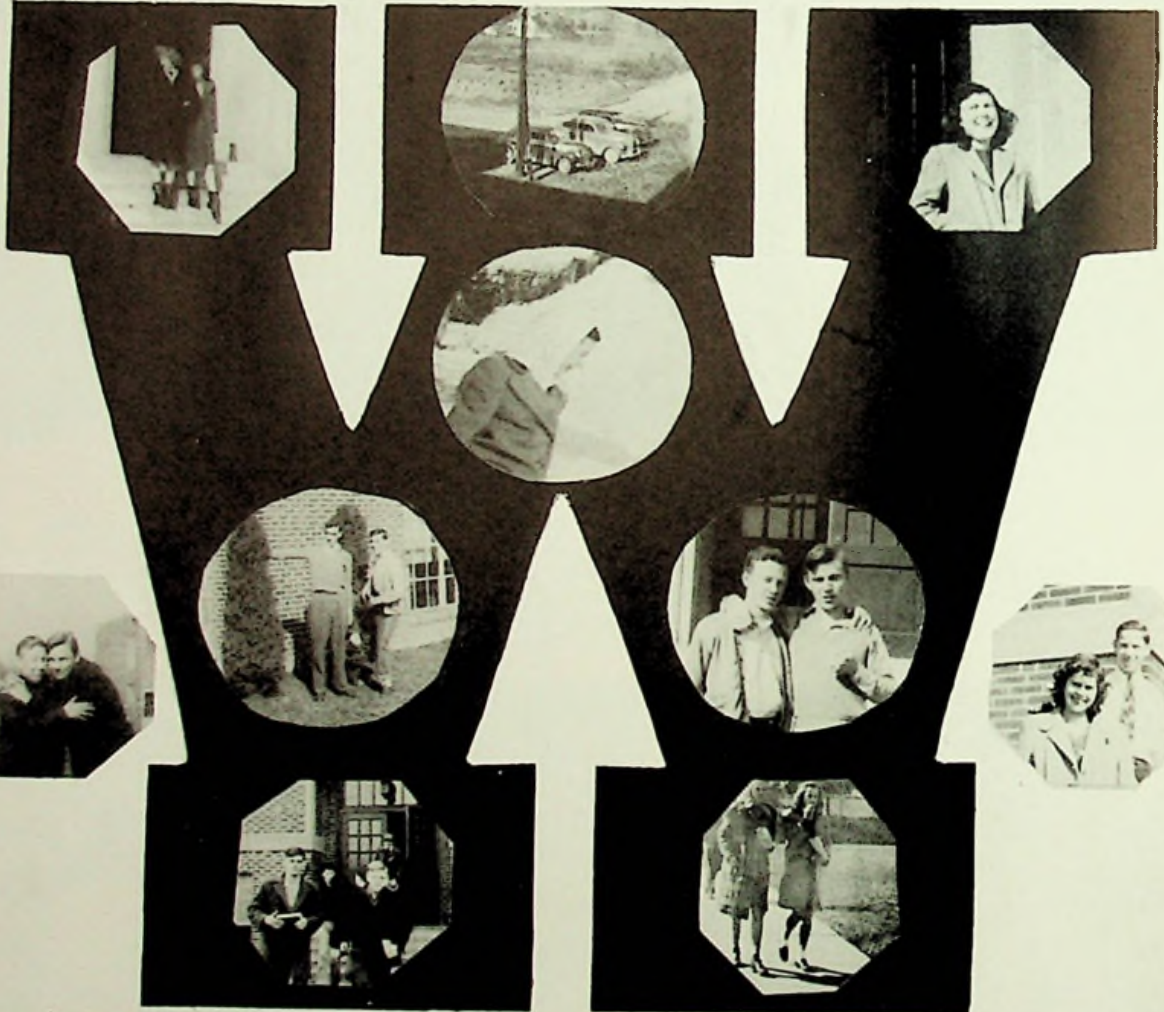
Front Row: D. Fennimore, C. Gabbert, M. Litz, I. Scott, M. Smith, M. Windsor, V. Sanford, G. Carrington. *Second Row:* E. Bond, B. McCowen, B. Cottrell, M. Vicars, M. Crawford, B. Yeley, R. Carter, V. Schwamberger, N. Plummer. *Third Row:* J. Barnes, L. Sartin, H. Rice, S. Risner, L. Reynolds, B. Boggs, B. Moore, M. Malone, R. Ramey. *Fourth Row:* L. Litz, F. White, J. McCall, I. Sowards, H. Shively, A. Sheffield, J. Baker, B. Richey, H. McMasters, J. Sibrel, A. Rankin, R. Cooper.



Junior Boys

First Row: J. Conley, R. Harrison, E. Nichols, C. Hill, E. Womack, B. Dunaway, B. Stamper. *Second Row:* G. Mullins, B. Staten, D. Davis, D. Mann, B. Jacks, J. Blake, B. Moriarty, R. Wiltshire. *Third Row:* B. Piatt, J. Craycraft, A. Wiltshire, R. Cunningham, B. McGinn, C. Mowery, R. Newman, K. Martin. *Fourth Row:* R. Arnett, R. Miller, L. Cobrun, R. Clifton, M. Grice, P. Reiser, B. Knauff, D. Daulton, N. Hull, B. Cook, G. Parry, H. Williams.

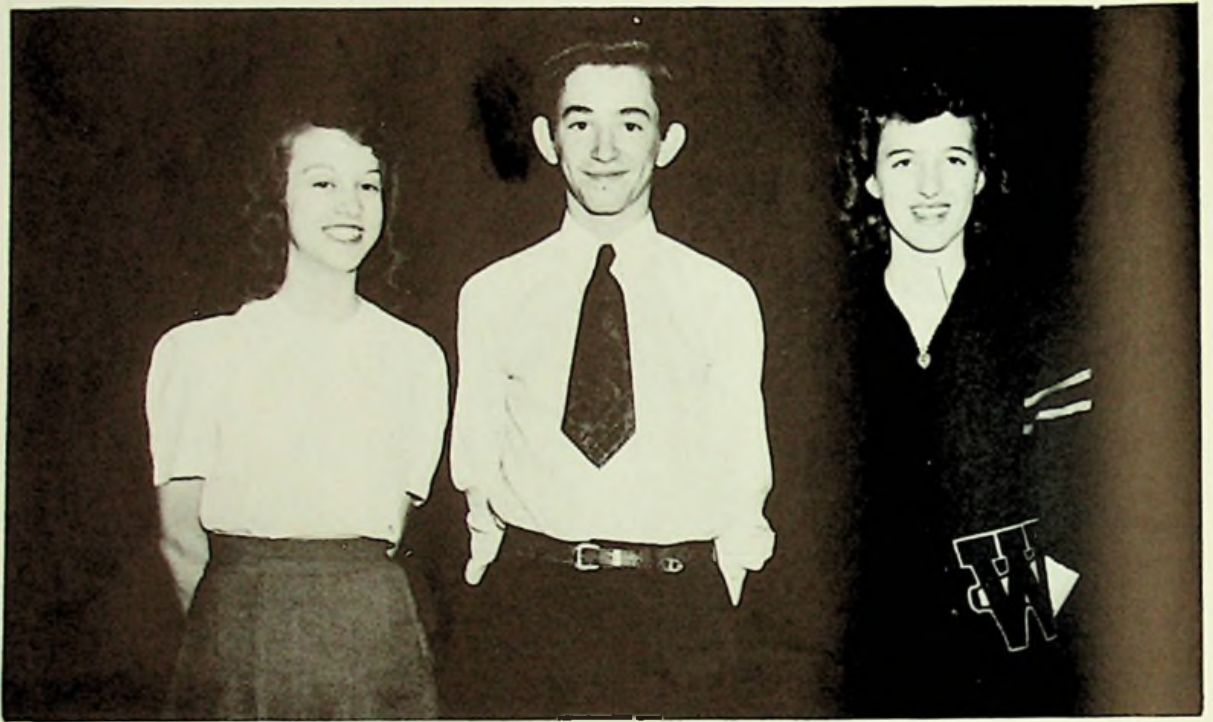






Sophomores





SOPHOMORE OFFICERS

Secretary	L. Williams
President	J. Wolery
Treasurer	J. Cooley

Class Advisers



Mary Delebar



Kathryn Hopkins



Sophomore Girls

First Row: E. Mullins, E. Backus, I. McCall, F. Speck, S. Spriggs, C. Hill, L. Jones, F. Boggs, L. Porter, L. Porter. *Second Row:* L. Williams, B. Martin, G. Burchett, J. Sparks, Y. Sutton, D. Sheets, E. Vaughters, C. Albright, L. Huff, J. Rudiry, J. Diller, A. Gray, G. Frye, S. Wright. *Third Row:* L. Howard, O. Litz, L. Huston, P. Dillow, P. Noel, V. Pyle, J. Beck, J. Cooley, J. Shivener, J. Pack, C. Rose, B. Addis, V. Harrison, H. Castle, B. Gregory, P. Steward. *Fourth Row:* E. Kuhn, M. Thurman, M. Fields, A. Holt, N. Carver, R. Clifton, M. Roth, A. Hazlebaker, M. Quickle, J. Edmisten, B. Murray, N. Smith, J. Young, B. Bodmer, N. Kuhn, C. Goodman.

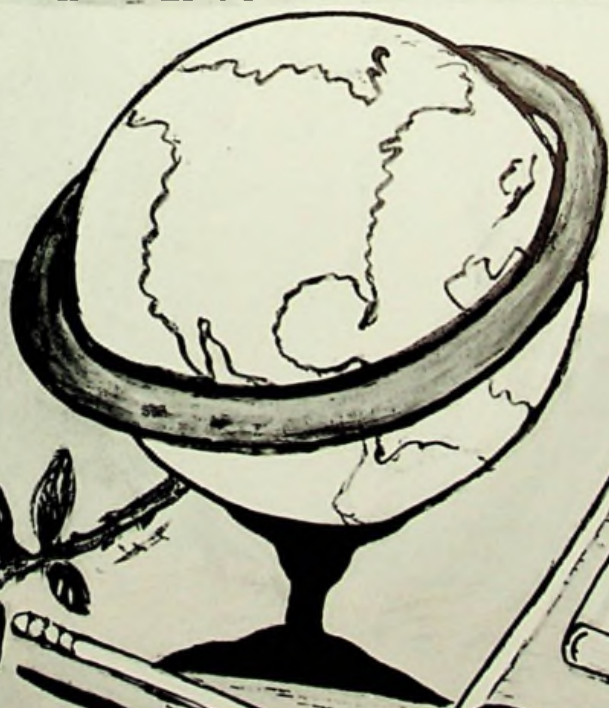


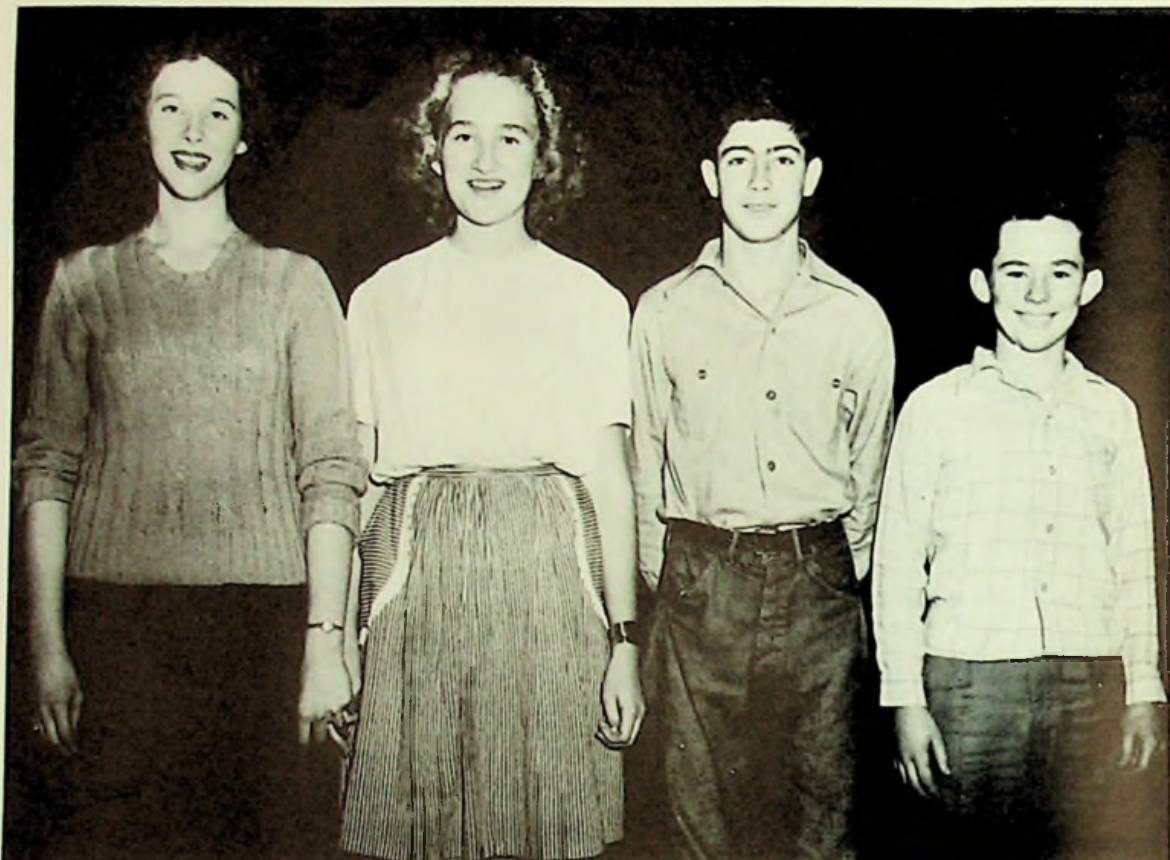
Sophomore Boys

First Row: C. Carrington, F. Cox, R. Hall, R. Meade, B. Liston, J. Cooper. *Second Row:* C. Wessel, B. Thompson, B. Jewett, H. Barber, A. Litz, R. Ratliff, B. Stone, R. Keyser. *Third Row:* H. O'Dell, B. Risner, D. Keen, C. Williams, D. Bowling, J. Wolery, J. Blevins, B. Cockran, R. Davis. *Fourth Row:* R. Myers, J. Woods, M. Foster, C. Ratliff, B. Sparks, J. Bazler, C. Hopkins, E. Shepherd, D. Moore, J. Smith, C. Roark, D. James.



Freshmen





FRESHMAN OFFICERS

Secretary H. Thomas
 Treasurer N. Williams
 Vice President J. Harrison
 President R. Arn

Class Advisers



Samuel Moore



Marion Wagner



Freshman Girls

Front Row: L. Mathews, J. Barber, M. Casey, J. Jones, M. Bower, J. Hughes, C. Liles, N. Stephenson, P. Lovejoy. *Second Row:* B. Baker, R. Brooks, M. Ramey, J. Wright, H. Horsley, L. Sartin, N. Tracy, B. Ratliff, J. McCall, M. Harper, A. Dunn. *Third Row:* J. Kayser, E. Mowery, J. Salyer, N. Schwamberger, P. Sowards, H. Rapp, L. McGovney, N. Austin, G. Knauff, E. Grubbs, I. Brown, M. Lewis, I. Shortridge, R. Kesinger, P. Hopkins, H. Witten, B. Cochenour. *Fourth Row:* D. Medford, A. Weaver, M. Schoettle, M. Bridwell, P. Litteral, R. Miler, H. Thomas, J. Frost, J. Price, J. Liston, H. Shope, N. Williams, G. Morgan, M. Boyd, W. Frasher, M. Hodge, L. Wheeler.



Freshman Boys

Front Row: J. Journey, W. Eichenalub, R. Young, B. Pertuser, C. May, W. Knauff, B. Jones, B. Arn. *Second Row:* B. Nichols, L. Shump, E. Kessinger, L. Dillow, M. Kennard, R. McCoy, G. Graham, R. Myers, J. Stamper. *Third Row:* E. Harrison, C. Holly, P. Liles, S. Rexroad, C. Bias, R. Arnett, D. Meade, J. Harrison, W. Bridwell, B. Carter, B. Book, B. Dameron, T. Grice. *Fourth Row:* B. Windsor, B. Miler, H. Shepherd, F. Swearingen, J. Shingle, D. Staggs, B. Stahler, G. Thompson, V. McComus, B. McKay, D. Hoover, E. Malone, B. Carter, E. Conley.



Elementary



R.C.

EIGHTH GRADE TEACHERS



Kathleen Rolf



Margaret Strickland



Foster Kirker



Eighth Grade Officers

- | | |
|--------------------------|----------------|
| President | Nancy Moore |
| Vice President | Donald Moore |
| Secretary | Robert Louis |
| Treasurer | Delbert Entler |

Eighth Grade Girls

Front Row: T. Cochran, J. Ratliff, D. Nichols, A. Pertuset, W. Dunn, R. Shivener, J. Jordan. *Second Row:* D. Venier, L. Brickey, M. Charles, L. Cook, B. Cochran, H. Myers, D. Fife, E. Klever. *Third Row:* L. Johnson, N. Hale, D. Steele, E. Rose, J. Shaffer, D. Distel, M. Mann, J. Hopkins, D. Hickman, T. Ratliff. *Fourth Row:* M. Elmore, B. Morrow, N. Moore, L. Bartley, L. Brown, E. Adkins, M. Pension, M. Rexroad, B. Howard, D. Pennington.



Eighth Grade Boys

First Row: J. Williams, R. Bradford, R. Ratliff, D. Fennimore, B. Lewis, J. Bower, P. Hill, A. Mustain, B. Harrison, D. Staten. *Second Row:* R. Craycraft, R. Hill, B. Litz, P. Webb, R. McCann, F. Wolery, C. Carter, H. Wright, J. McNeal, B. Coleman, K. King, R. Smith, D. Moore. *Third Row:* J. Veach, H. Denning, E. Belomy, W. Puckett, R. Montgomery, A. Journey, E. Kennard, W. Mitchell, D. Milstead, J. Tisdale, B. Hopper, L. Crow, E. Hall, W. Williams, R. Rudity, E. Smalley. *Fourth Row:* J. Salyer, D. Chandler, J. Tackett, R. Brown, S. Adkins, F. Thurman, E. Mitchell, D. Entler, G. Puckett, L. Hilt, B. Rice, P. Morrow, C. Pick, E. Sword, C. Cook.





EIGHTH GRADE ENGLISH CLUB

First Row:

D. Nichols, J. Jordan, D. Moore.

Second Row:

R. Shivener, L. Cook, L. Johnson, N. Moore.

CHEERLEADERS

Maxine Charles
Alberta Pertuset
Janet Hopkins



BASKETBALL TEAM

D. Fenimore, D. Chandler, D. Entler,
E. Mitchell, G. Smalley, S. Adkins,
R. Meeker, R. Rice, E. Kenard, W. Williams.



ACTIVITIES

Publications

Honor Society

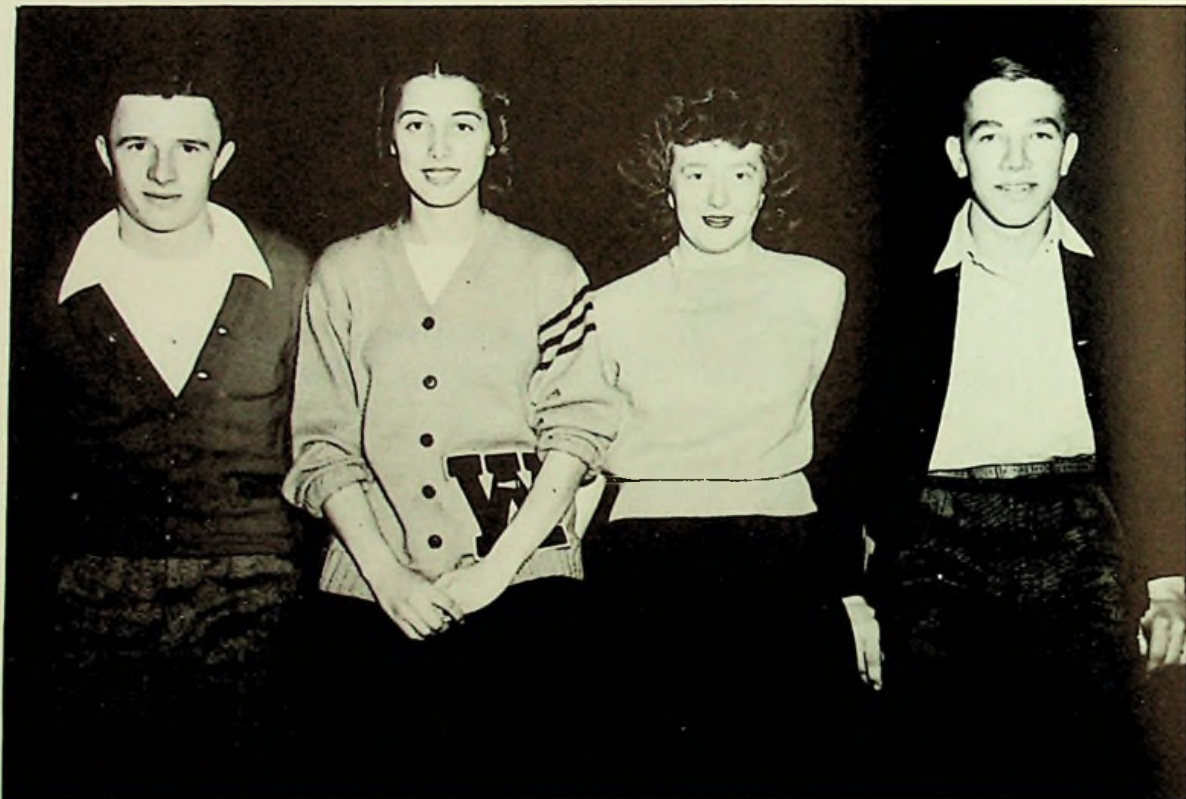
Clubs

Departments

Music

Parties

Plays



Annual Staff



William Diller Editor-in-Chief
Lois Shivener Assistant Editor
Mary Frances Parry Assistant Editor
Lawrence Woten Business Manager

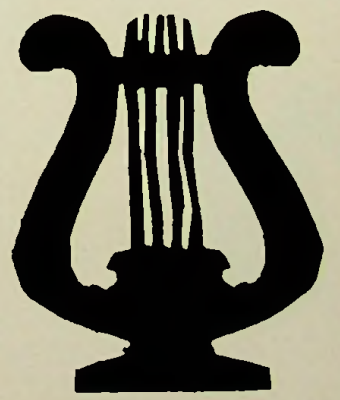
Johanna Kean,
Faculty Adviser



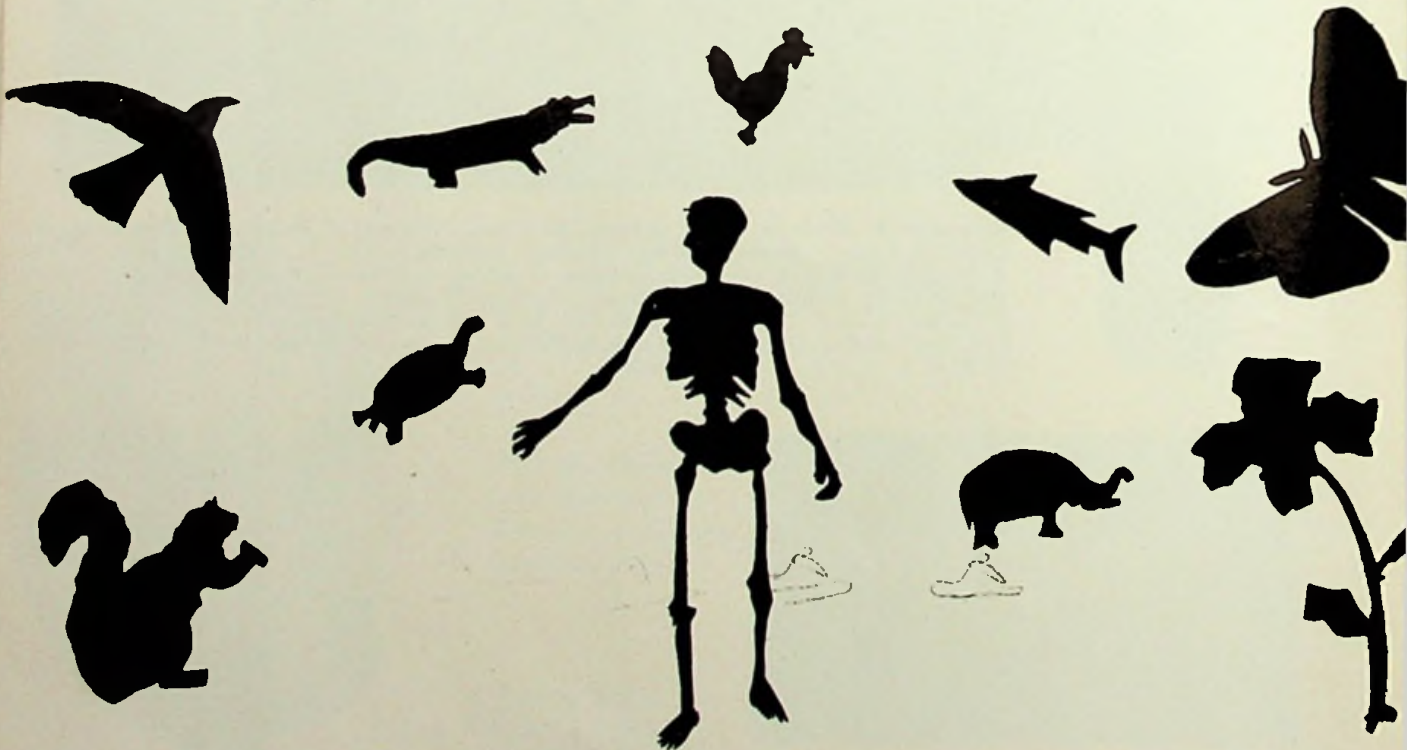
W. H. S. B A N D



Front Row: R. Meade, B. Moore, B. Boggs, M. Parry, J. Shivener, J. Barnes, B. Jewett, F. Boggs, C. Hill, B. Liston. *Second Row:* Mr. Gillette, B. Dameron, F. Cox, Y. Sutton, H. Castle, J. Pack, V. Harrison, H. Rice, B. Moriarity, S. Risner, B. Sheets, N. Kuhn, N. Burden, M. Grice. *Third Row:* J. Cooley, B. Thompson, R. Wiltshire, B. Risner, B. Richey, G. Parry, R. Davis, B. McGinn, J. Daulton, B. Cook, D. James. *Fourth Row:* J. Wolery, N. Hull, C. Ratliff, K. Martin, M. Fields, K. Diller, J. McCall, D. Moore, J. Woods, D. Newman, R. Andre, R. Cook. *Fifth Row:* E. Backus, C. Rose, A. Holt, B. Bodmer, L. Jones.



Biology Club



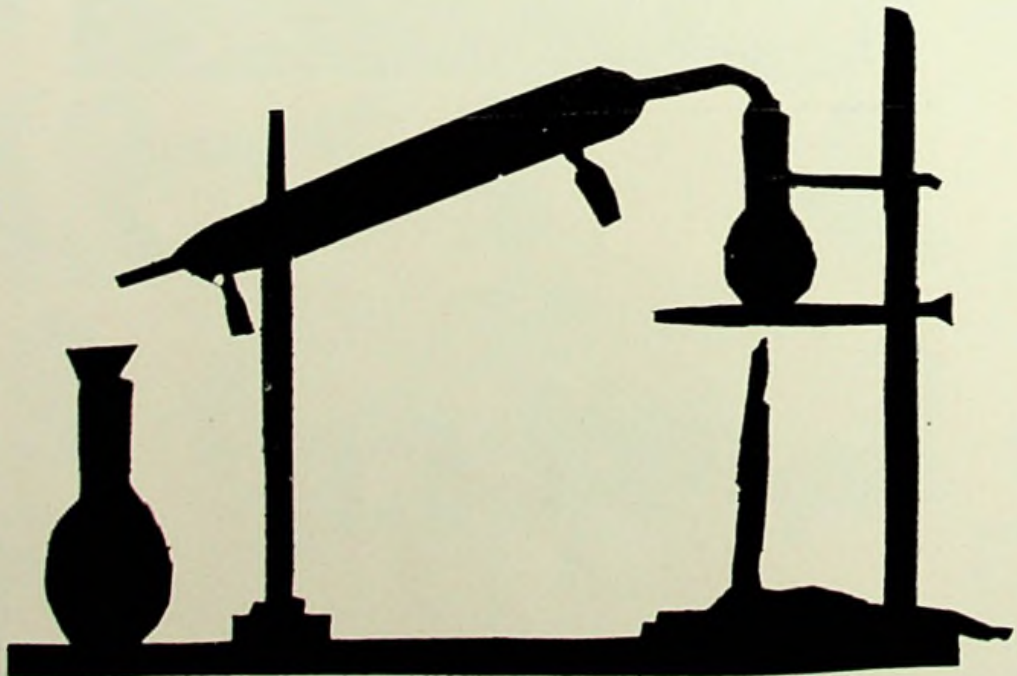
Camera Club



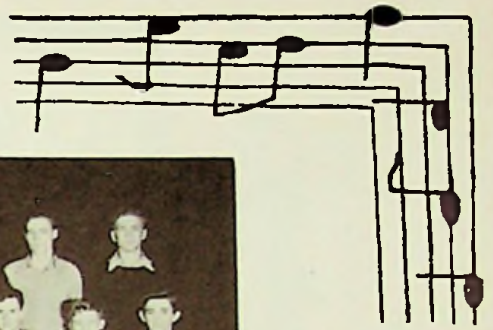
First Row: J. Blake, W. Liston, R. Thompson, H. Barber, J. Tipton. *Second Row:* F. Browning,
 B. Evans, J. Mark, C. Gabbert, V. Sanford, R. Browning, M. Malone. *Third Row:* C. Williams,
 P. Reiser, C. Ratliff, D. James, W. Cochran, W. Diller, N. Burden .



Chemistry Club



Glee Clubs



Boys

Front Row: P. Liles, B. Book, F. Cox, B. Nichols, L. Dillow, G. Graham, R. Meyers, J. Stamper, W. Knauff.
Second Row: C. Litteral, D. Hoover, B. Mignerey, B. Piatt, J. Smith, L. Pollard, R. Davis, R. Newman, R. Wiltshire, J. Wolery. *Third Row:* B. Windsor, T. Estep, R. Andre, F. Burchett, G. O'Dell, F. Swearingen, N. Burden, H. Spradlin, N. Hall.

Girls

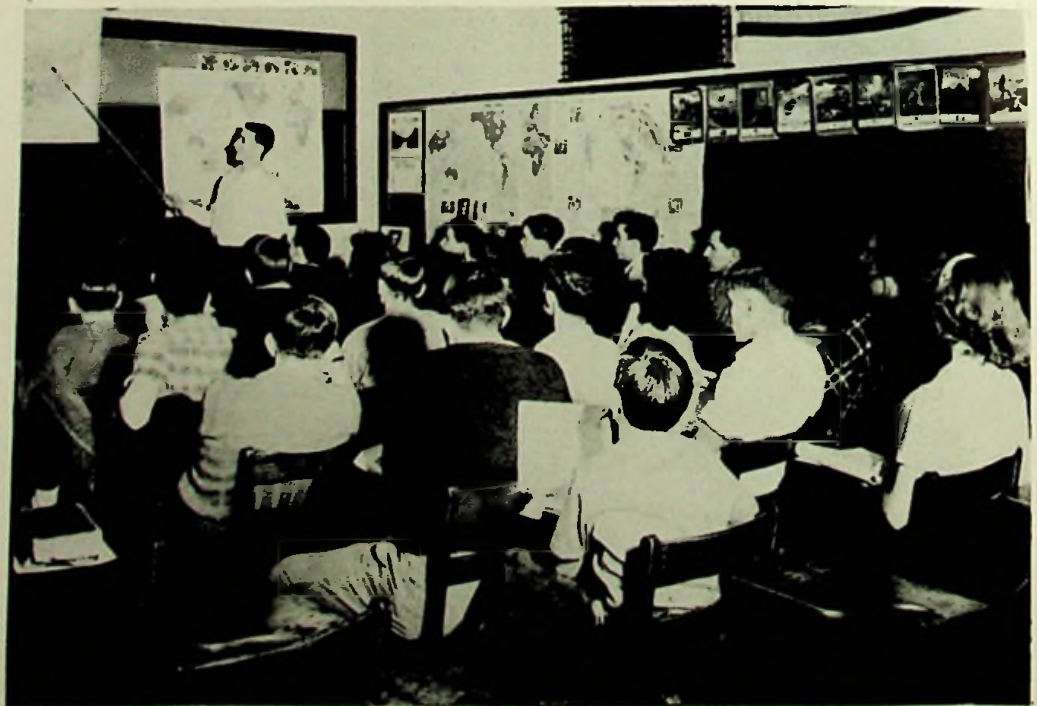
Front Row: B. Cochenour, I. Shortridge, L. Mathews, A. Gardner, J. Hughes, C. Liles, J. Jones, G. Carrington, L. Porter, L. Porter. *Second Row:* J. Barnes, J. Beck, Y. Sutton, G. Burchett, J. Sparks, L. Howard, R. Carter, D. Fennimore, C. Gabbert, B. Baker, B. Martin, J. Rudity, S. Distel, A. Gray, F. Boggs. *Third Row:* N. Austin, H. Rapp, L. McGovney, R. Louis, L. Reynolds, P. Sowards, V. Harrison, H. Castle, H. Rice, B. Gregory, L. Williams, M. Ramey, G. Knauff, J. McCall, A. Dunn, M. Harper, P. Hopkins, R. Kessinger. *Fourth Row:* B. Bodmer, N. Kuhn, R. Cooper, J. Liston, J. Pack, J. Cooley, J. Shivener, L. Shivener, N. Schwamberger, B. Addis, V. Pyle, E. Mowery, L. Huston, M. Lewis, H. Shope, V. Grubbs, N. Tracy, J. Salyer. *Fifth Row:* F. White, M. Schoettle, A. Weaver, M. Bridwell, R. Smith, J. Risner, C. Mershon, J. Baker, T. Lewis, J. Liles, N. Williams, P. Litteral, N. Carver, H. Thomas, N. Smith, J. Price, B. Richey, P. Dillow.



History Club



SHAKESPEARE SIR FRANCIS BACON JOHN MILTON JOHN BUNYAN WILLIAM WORDSWORTH S





SHAKESPEARE SIR FRANCIS BACON JOHN MILTON JOHN BUNYAN WILLIAM WORDSWORTH

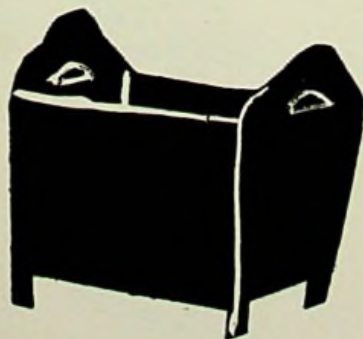
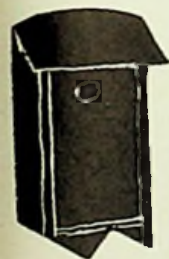
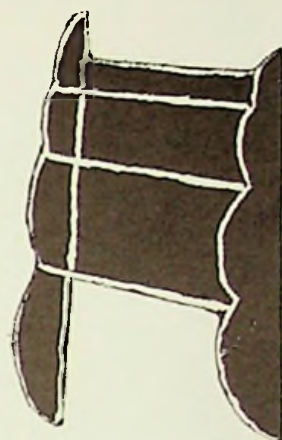


Honor Society



First Row: L. Shivener, J. Hall, S. Risner, N. Plummer, M. Hahn.
Second Row: B. Mathews, R. Cunningham, A. Ratliff, R. Conley, R. Wiltshire, J. Blake.

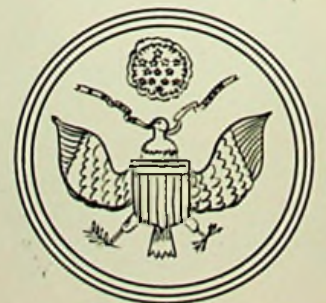
Industrial Arts



Latin Club



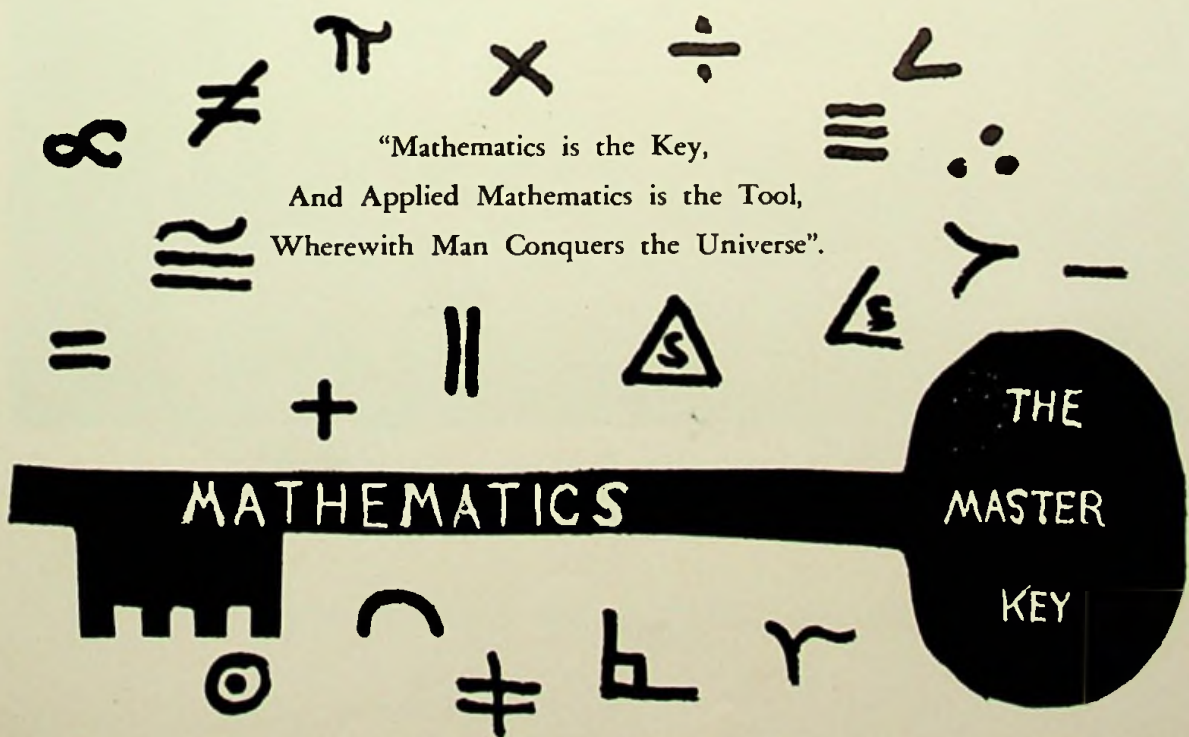
First Row: N. Tracy, L. Shump, E. Kesinger, A. Dunn, M. Harper, P. Hopkins, F. Boggs, R. Myers, F. Browning.
Second Row: J. Blake, W. Frasher, A. Sheffield, A. Rankin, J. Cooley, H. Castle, J. Harrison, B. Gregory, L. Williams, S. Risner, J. Wolery. *Third Row:* E. Kuhn, D. Daulton, C. Hopkins, G. Thompson, R. Cunningham, A. Weaver, R. Conley, M. Bridwell, H. Thomas, N. Smith, A. Ratliff.



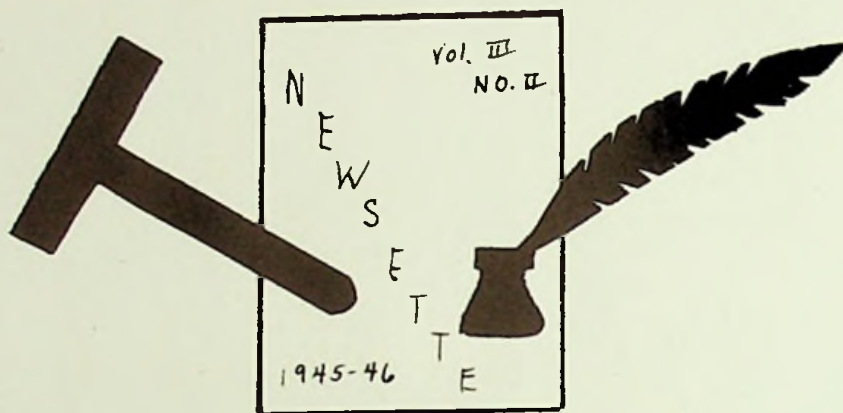
Mathematics



"Mathematics is the Key,
And Applied Mathematics is the Tool,
Wherewith Man Conquers the Universe".

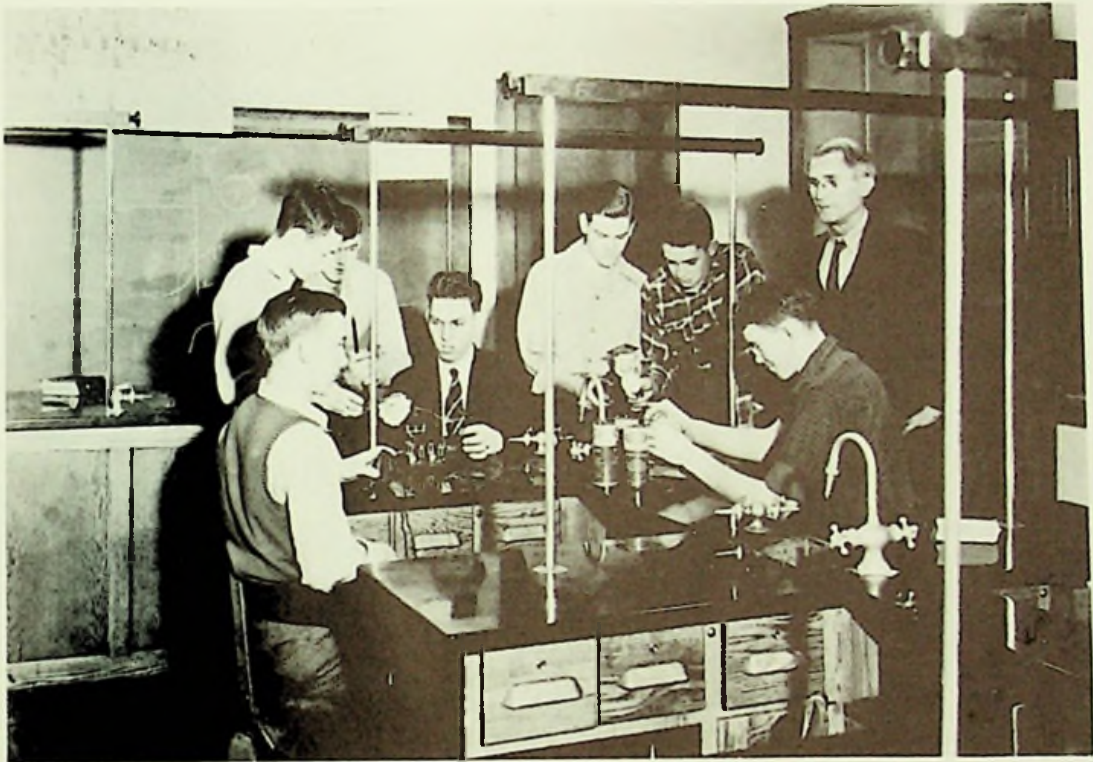


Newsette Staff



*First Row: E. Farmer, B. Pyle, H. Thomas, M. Miller, J. McCorkle.
Second Row: A. Radliff, B. Moriarty, R. Cunningham, R. Wiltshire, B. Arn.*

Physics Club



World progress is due to Physics and other Sciences

Radio Club



Officers

Adviser	Mr. Gillette
Secretary	B. Thompson
Vice President	R. Woods
President	B. Moriarity



Scholarship Students



Front Row: N. Moore, H. Myers, J. Jordan, C. Mershon, M. Hahn, R. Myers, J. Stamper, L. Shump, G. Morgan, N. Stephenson, D. Moore. *Second Row:* F. Boggs, M. Harper, W. Frasher, P. Hopkins, N. Williams, L. Mathews, R. Sparks, P. Lauder, N. Tracy, J. Pardow. *Third Row:* W. Mathews, R. Cunningham, J. Cooper, M. Stamm, J. Blake, J. Tipton, A. Dunn, N. Smith, V. Pyle, M. Quickel. *Fourth Row:* M. Fields, S. Risner, V. Harrison, E. Kuhn, B. Gregory, B. Mangus, J. Mark, A. Gardner, J. Hughes, G. Thompson. *Fifth Row:* G. Parry, J. Harrison, K. McCall, M. Bowers, B. Ratliff, D. Daulton, V. Grubbs, B. Martin, E. Vaughters, B. Dixon, D. Crull. *Sixth Row:* H. Castle, D. James, J. Wolery, M. Parry, L. Shivener, M. Miller, A. Ratliff, L. Williams, D. Moore.

Spanish Club



*First Row: D. Mitchell, L. Shivener, B. Sheets, C. Gabbert.
Second Row: B. Mignerey, B. Sparks, B. Cook, J. Daulton, R. Harrison.*





“The Campbells Are Coming”

Presented by
The Junior Class

MARCH 29, 1946

Cast

Catalpa	RUBY CARTER
Betty	NORMA PLUMMER
Kaye	SHARON RISNER
Ma Brannigan	BETTY MOORE
Agusta	ADA RANKIN
Jeff	PAUL RIESER
Kingston	DAVID DAULTON
Billdad Tapp	JAMES CRAYCRAFT
Cy	GLENN MULLINS
Dick	BOB MCGINN

Director — MRS. BETTY HODGDEN

Senior Class Plays



"PAPA BEHAVE"

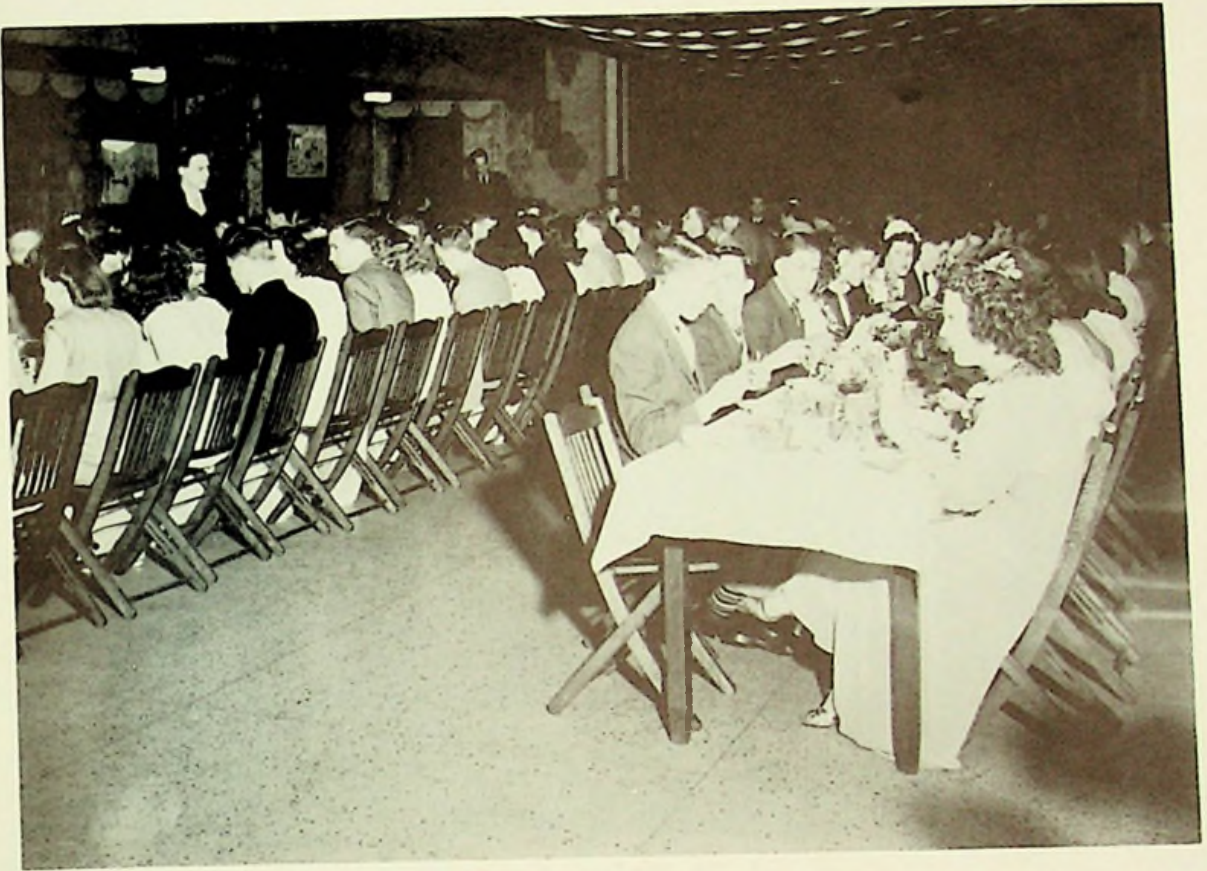
Left to right: Bryce Richards, Robert Mignerey, Charles Litteral, Talmage Estep, Ralph Rapp, Robert Andre, William McKay, William Diller, John Daulton, Harold Spradlin, Mike Sowkulech, Robert Baker, Norman Burden.



"YOUNG LINCOLN"

First Row: Dorothy Pelphrey, Audrey Gardner, Jettie Hall, Faye Browning.
Second Row: Juanita Mark, Anna Belle Ratliff, Mary Parry, William McKay, Ruth Conley, Everett Stephenson.
Third Row: William Diller, Charles Litteral, Robert Andre, Robert Mignerey, Talmage Estep.

Junior-Senior Prom

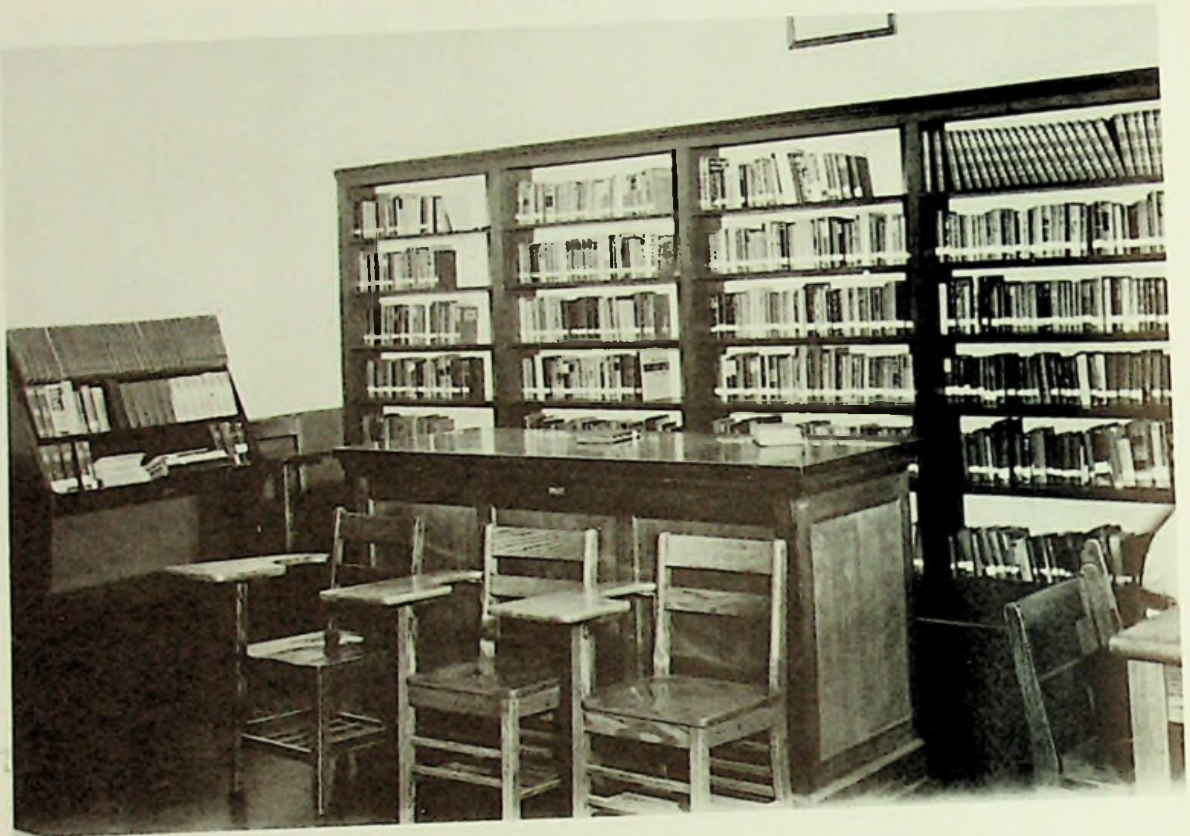


Banquet



Dance

Study Hall

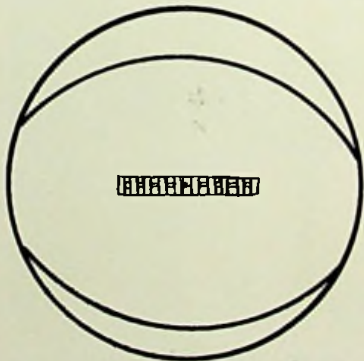


Library

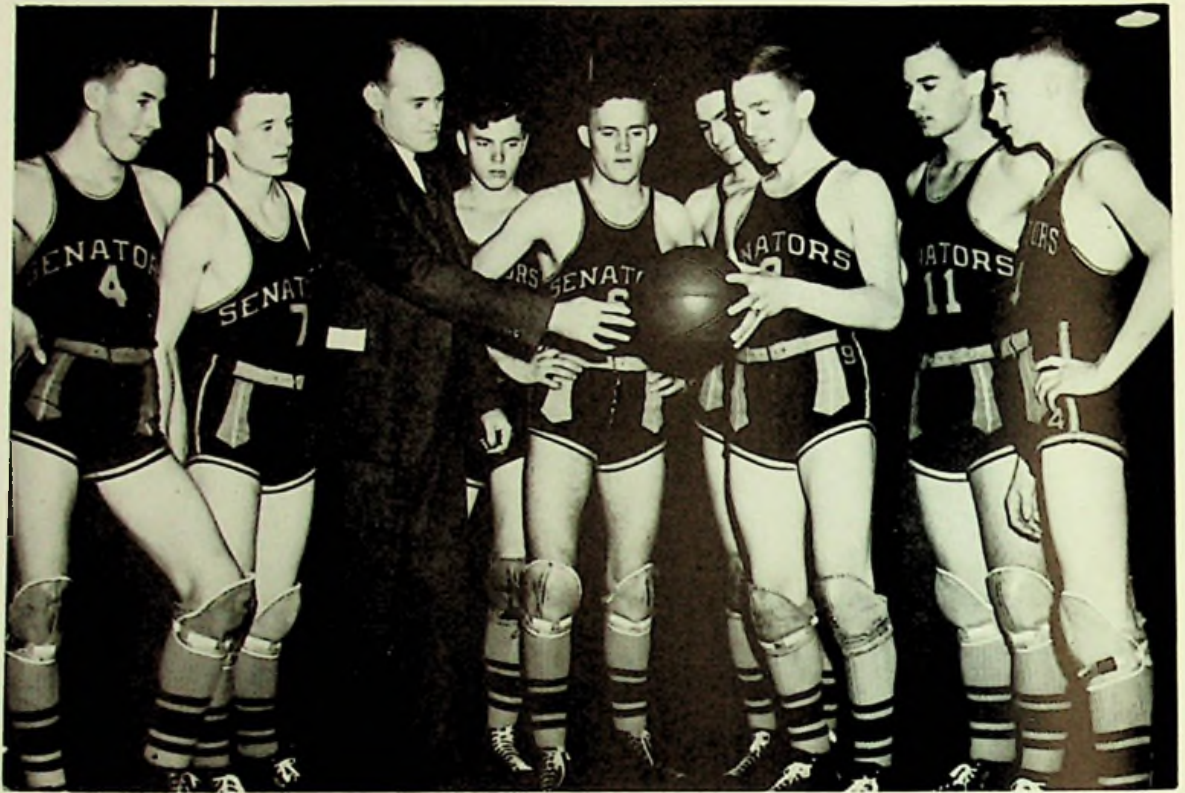




ATHLETICS



Varsity



Left to right:
W. Barker, W. Diller, Mr. Christian, coach, R. Andre, F. Burchett, C. Litteral, L. Woten,
R. Woods, W. Jacks.



ANDRE—Guard



WOODS—Center



BARKER—Guard



BURCHETT—Forward



LITTERAL—Center



ESTEP—Forward



WOTEN—Forward



DILLER—Guard



Reserve Team

Left to right:

R. Miller, R. Arnett, R. Clifton, G. Parry, J. Woods, C. Hopkins, D. Moore, D. James,
H. O'Dell, C. Mowery.



Score Of Games

Varsity

	<i>We</i>	<i>They</i>
Green	19	18
Valley	31	18
Wheelersburg	21	36
South Webster	39	40
Clay	38	31
Otway	55	26
McDermott	33	17
Wakefield	42	36
Minford	35	42
Portsmouth	42	36
Rarden	49	15
Green	36	29
Valley	42	20
Portsmouth East	23	50
Rarden	51	16
Wheelersburg	27	44
Glenwood	23	38
South Webster	46	41
Locust Grove	40	28
Clay	42	29
Otway	37	25
Portsmouth East	21	28
McDermott	45	30
Glenwood	22	57
Minford	26	39

Reserves

	<i>We</i>	<i>They</i>
Green	24	20
Valley	21	17
Wheelersburg	27	23
South Webster	41	18
Clay	34	15
Otway	28	15
Wakefield	22	18
Minford	31	21
Portsmouth	24	15
Green	31	28
McDermott	30	11
Valley	25	20
Portsmouth East	23	12
Wheelersburg	29	22
Glenwood	22	10
South Webster	23	28
Locust Grove	31	9
Clay	31	11
Otway	30	19
Portsmouth East	26	12
Minford	49	21
Glenwood	21	12

Tournament

	<i>We</i>	<i>They</i>
Rarden	48	15
Green	25	36
Minford	37	30
Clay	36	27
Green	42	44

Tournament

	<i>We</i>	<i>They</i>
McDermott	25	15
Valley	30	10
Minford	33	24

Varsity Cheerleaders



Left to right:

L. Shivener, J. Cooley, J. Pack, J. Diller, N. Plummer, V. Schwamberger, R. Carter, J. Shivener.

Reserve Cheerleaders



Left to right: N. Schwamberger, F. White, P. Hopkins.



ANDRE



WOTEN MORIARTY
O'DELL MILLER



MOORE McCALL
JACKS



DUCKWALL



MOWERY



HOPKINS



SHEPHERD



RISNER



LITTERAL



BURCHETT



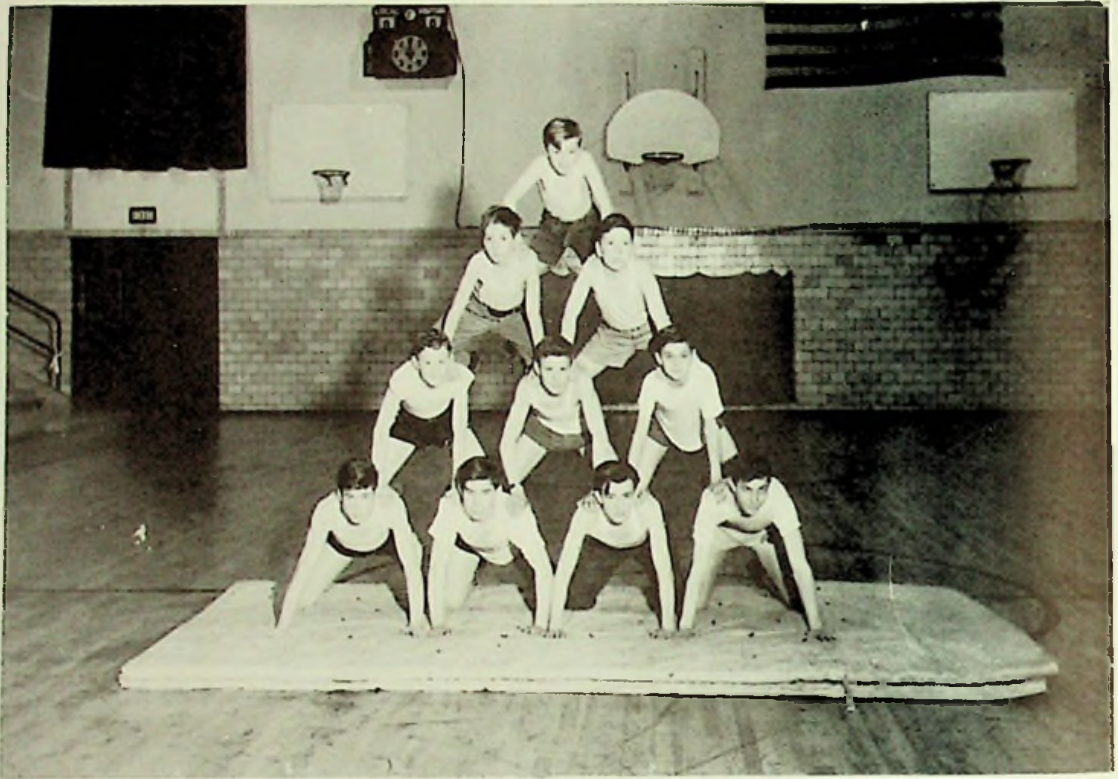
KEAN



KNAUFF



STAMPER



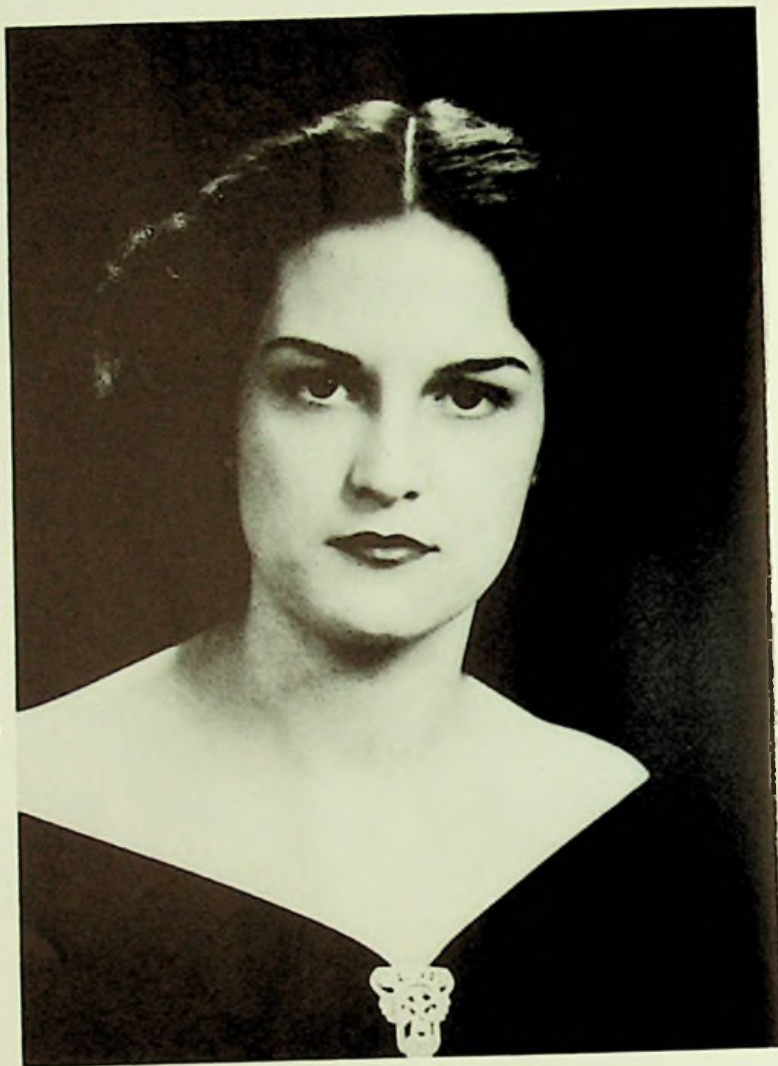
Bottom Row: H. Dennings, W. Puckett, W. Mitchell, E. Virgin. Second Row: B. Hopper, K. King, D. Fenimore. Third Row: R. Lewis, B. Harrison, Top Row: D. Staten.





GYM CLASSES



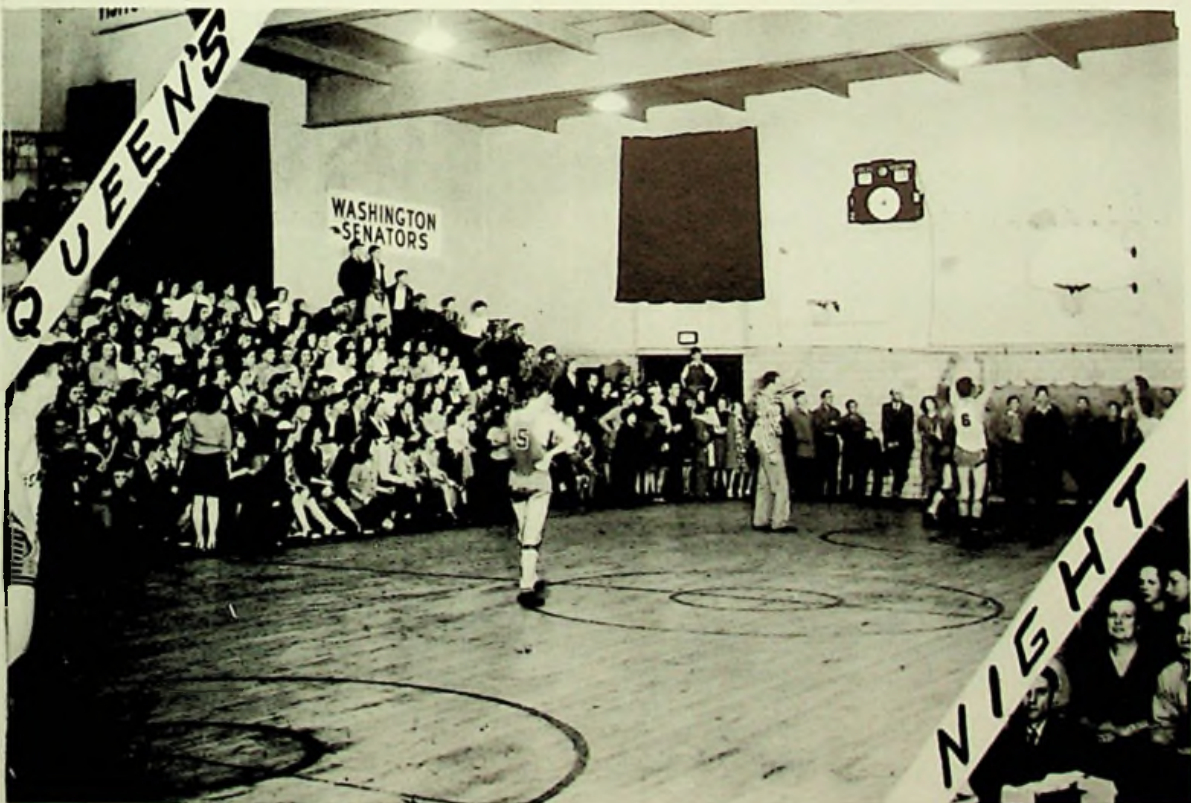


**Norma Prince,
Basketball Queen**



Attendants

Patricia Sowards	Freshmen Candidate
Eulene Mullins	Sophomore Candidate
Lillian Reynolds	Junior Candidate
Norma Prince	Senior Candidate



MISSOURI STATE UNIVERSITY



BROTHERS

SISTERS

AND





BROTHERS AND SISTERS





BROTHERS



SISTERS



ADVERTISEMENTS



THE CRICHTON
OFFICE SUPPLY CO.

EVERYTHING FOR THE OFFICE

740 Fifth St. Portsmouth, Ohio

DAULTON BROS.

GROCERIES AND MEATS

DELIVERY SERVICE

2nd and Jefferson Portsmouth, Ohio

BEST WISHES

to the Graduates of

Washington High School

Distel Furniture Co.

DEVOSS AND
DONALDSON

ARCHITECTS

National Bank Building
PORTSMOUTH, OHIO

WRIGHT HATCHERIES

ALL-WRIGHT CHICKS

FEED AND SUPPLIES

Peebles, Ohio Portsmouth, Ohio

Compliments of

ARTWIL

418 Chillicothe St. Phone 3139

Compliments of

SMITH'S
CUT-RATE DRUGS

Phone 150 Portsmouth, Ohio

KOBACKER'S

Congratulations and Best Wishes

Coca-Cola

TRADE-MARK REG. U. S. PAT. OFF.

The Coca Cola Bottling Co.

Portsmouth, Ohio

PAINTS — GLASS — WALL PAPER

PORTSMOUTH
PAINT COMPANY

GALLIA AT FINDLAY

STONE'S
FOOD MARKET

MEATS, FRUITS and
STAPLE GROCERIES

123 Market St.

Phone 647

SEYMORE COAL CO.

WHOLESALE and RETAIL

4th and Madison Sts.

Phone 2227

Portsmouth, Ohio

KEGLEY'S

CABINS, GASOLINE
GROCERIES

Route 125

Friendship, Ohio

Compliments of
LAYLER'S GROCERY
GROCERIES AND MEATS
Hill Road West Portsmouth

Compliments of
HILT'S LUNCH
Fourth and Calvert Lane
Phone 0117-R

Compliments of
Chabot's Super Service
DISTRIBUTOR
PURE OIL
and
U. S. TIRES

RICHMAN'S CLOTHES
Direct from our factory to you.
You save the middleman's profit.
RICHMAN BROS.
311 Chillicothe St.

CRAIGMILES
FURNITURE CO.
936 Gallia St. Phone 319

Compliments of
KAY JEWELRY CO.
817 GALLIA ST.
PORTSMOUTH, OHIO

ROY ZUEFLE
JEWELER
Authorized Dealer for
Elgin, Hamilton, Gruen, Bulova
WATCHES
Gifts That Last—Convenient Terms
533 Second St. Portsmouth, Ohio

Compliments of
THE BORDERLAND
LUNCH and CABINS
Route 125 Turkey Creek
Phone Sub-4131

HERFF-JONES COMPANY

Designers and Manufacturers of

SCHOOL AND COLLEGE JEWELRY, GRADUATION ANNOUNCEMENTS,

MEDALS, CUPS AND TROPHIES

INDIANAPOLIS, INDIANA

JEWELERS AND STATIONERS TO WASHINGTON RURAL HIGH SCHOOL

Representative: P. J. BURKART

SAYRE RESTAURANT

SCHOOL LUNCHES

Fifth and Rapp Sts.

West Portsmouth, Ohio

RISNER'S

Fourth and Calvert Lane

West Portsmouth, Ohio

Phone 0217-J

Compliments of

FOLSOM'S

GROCERIES and LUNCH

West Portsmouth, Ohio

BOWSER'S

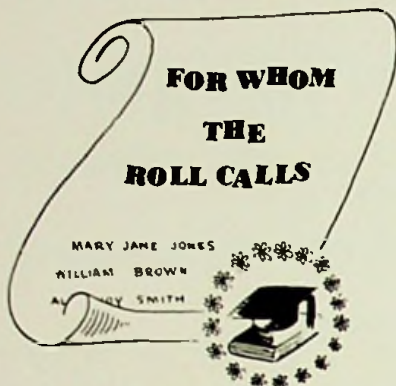
A Complete Line of

GROCERIES and MEATS

Fresh Fruits and Vegetables

Phone 0109-L

Washington Blvd.



CONGRATULATIONS

from

Marting's

GIRLS! A Radio Program For You—

"CALLING ALL GIRLS"

Every Saturday At 11:00 A. M.

W P A Y

"SAY IT WITH FLOWERS"

Compliments of

HERMS FLORAL

GIESLER'S

Phone 294

221 Market St.

QUALITY MEATS

HUNTER'S LOCK and
BICYCLE SHOP

KEY MAKING

Door Check and Safe Repairing

Phone 2688-Y

1538 Eighth St.

EMRICK
Funeral Home

Stahler's Pharmacy

"THE DRUG STORE OF
SERVICE AND ECONOMY"

Phone 137

208 Market St.

AMBULANCE SERVICE

TELEPHONE

33 OR 2563

DAY OR NIGHT

FUNERAL HOME

(No Charge)

R. E. MILLER

GENERAL MERCHANDISE

Fresh Meats and Vegetables

Phone Sub-9202 Buena Vista, Ohio

ED. LOCKNER'S

AUTO SUPPLY

Ninth and Chillicothe Sts.

Phone 2937 Portsmouth, Ohio

Compliments of

SMITH'S GROCERY

1329 Galena Pike

West Portsmouth, Ohio

GEMPERLINE
FURNITURE CO.

AUTHORIZED DEALER FOR
WESTINGHOUSE APPLIANCES

Phone 1063 612-16 Second St.

NOLDER'S GARAGE

TEXACO GAS and OIL

Phone Sub-9204

Buena Vista, Ohio

THE PORTSMOUTH
SAND & GRAVEL CO.

Foot of Third St.

Portsmouth, Ohio

TAYLOR & MILLER

LUMBER, TIES, POSTS

Portsmouth, Ohio

WURSTER'S
SAFE DRUG STORE

Three Registered Pharmacists

419 Chillicothe St.

Open Every Day,

Sundays and All Holidays

CRAWFORD
Coal Company

BEST GRADES OF
STEAM AND DOMESTIC

COAL

Phone 2580

Tenth and Hutchins
PORTSMOUTH, OHIO

Compliments of

THE PORTSMOUTH
CEMENT & LIME CO.

Third and Jefferson Sts.
PORTSMOUTH, OHIO

AEH'S FOOD MARKET

MEAT - PRODUCE - GROCERIES

Experienced Meat Cutlers
347 Second St. Portsmouth, Ohio
Phone 3519-L

E. W. EASTER
A COMPLETE LINE OF

Groceries and Meats

Fresh Fruits and Vegetables

Phone Sub-9223 Buena Vista, Ohio

CONGRATULATIONS,

GRADUATES!

HARSHA-JOHNSON
CO.

CALL ON US FOR
ALL KINDS OF INSURANCE

M-117-120 Masonic Temple
Phone 2920 Portsmouth, Ohio

SAMUEL LEVI & CO.
FURNITURE

840-844 Gallia Street

Next to Laroy Theater

SHOP AT LEVI'S - SAVE MONEY!

COMPLIMENTS OF YOUR NEIGHBORHOOD

DRUG STORE

Your Continued Patronage Always Appreciated At

LANTZ DRUGS

CLAY D. LANTZ

SECOND AND MARKET STREETS

ON THE CORNER AND ON THE SQUARE

BRING YOUR PRESCRIPTIONS HERE

YOU WILL SOON LEARN

THAT

DOERR'S HARDWARE

IS THE

BEST PLACE TO BUY

519-521 Second Street

PORTSMOUTH, OHIO

ARTISTIC CLEANERS

647 Second Street

Phone 834

Portsmouth, Ohio

STEWART'S
DRUG STORE

PRESCRIPTION SPECIALISTS

Phone 2447

904 Gallia Street

THE
IDEAL
MILK CO.

Phone 623

1637 Tenth Street

PORTSMOUTH, OHIO

CLYDE HERDMAN
GENERAL STORE

GAS and OIL

Buena Vista Star Route

WILLIAMS'

PRODUCE, MEATS, GROCERIES

Hill Road and Towpath

West Portsmouth

H. WILLIAMS'
GROCERY

GROCERIES

Second St. West Portsmouth, Ohio

Compliments of

E. F. DELHOTAL

PRODUCE, MEATS, GROCERIES

Galena Pike

West Portsmouth

SPURLOCK GROCERY

Meats, Fruits and
Staple Groceries

Washington Boulevard
West Portsmouth

Compliments of

BERKELEY — SMITH

Phone 2431-R

Compliments of
STEWART'S
GROCERY
Vinton and Young Sts.
Portsmouth, Ohio

COMPLIMENTS
OF
SELECT
DAIRY

MURFIN'S
INSURANCE AGENCY
"INSURE IN SURE INSURANCE"
1542 Gallia St. Phone 446
Portsmouth, Ohio

E. H. RUSSELL
GLASS COMPANY
GLASS FOR ANY PURPOSE
GIVE US A BREAK
1106 Gallia St. Portsmouth, Ohio

DRUMMOND'S
IMPLEMENT STORE
1634 Gallia St. Phone 30
Portsmouth, Ohio

CRISPIE CREME
DONUTS
1546 Gallia St.
PORTSMOUTH, OHIO

ROBERT'S & CO.
CREDIT JEWELERS
CONGRATULATE GRADUATES
Nationally Advertised
Watches — Jewelry — Radios
No Extra Charge For Credit
421 Chillicothe St.

LONG & COMPANY
"THE HOUSE OF
QUALITY FURNITURE"
729-733 Sixth Street
Portsmouth, Ohio

AUTOGRAPHS

