



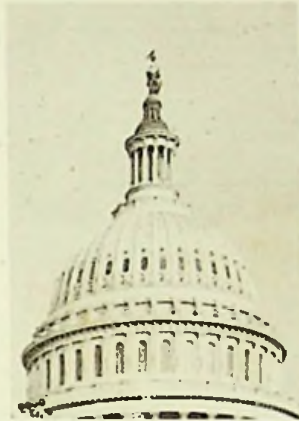
# SENATORIAN

1950





# SENATORIAN



## DEDICATION

The Senior Class of Washington High School wishes to dedicate the 1950 annual to the Senator Booster Club. This club was organized in October, 1948, for the purpose of lighting the field. The lights went on for the first time early in September, 1949 - an almost unsurmountable task admirably accomplished!

The Seniors wish to thank everyone who donated money, who solicited money, and those who donated their time in actual work on the field. They also want to express their appreciation to the Ohio Power Company and its men for their help in erecting the lights.

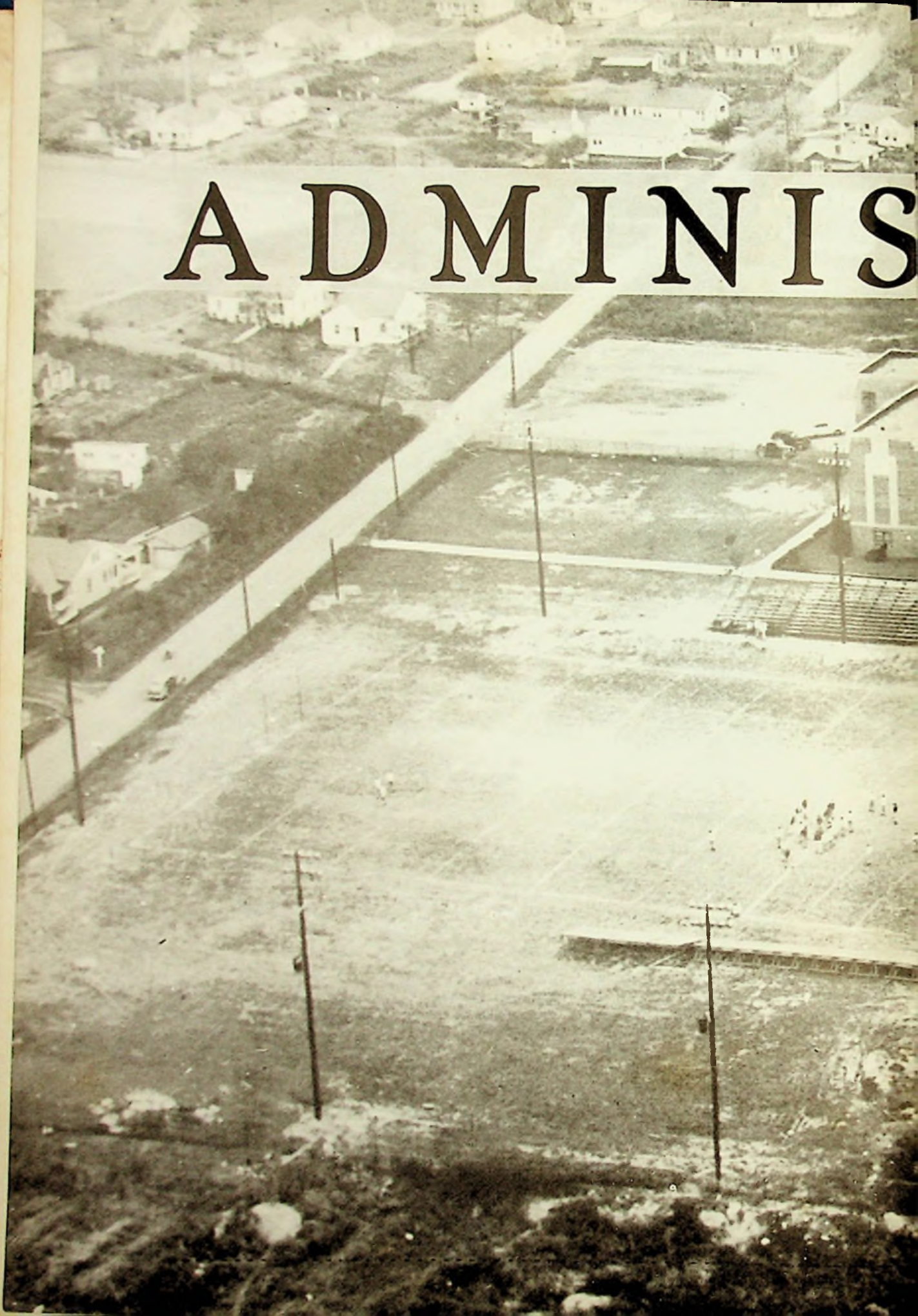
## THE ANNUAL STAFF

WASHINGTON HIGH SCHOOL


West Portsmouth, Ohio



# ADMINIS







# TRATION

## HISTORY OF WASHINGTON TOWNSHIP

Washington Township was first settled at Alexandria, in 1795, by Alexander Parker. This was the first settlement in Scioto County. In 1805, Scioto County was organized, and the first county seat was Alexandria. The first Post Office in Scioto County was located here.

After the first flood, in 1808, inhabitants began to move east of the Scioto River to what is now Portsmouth, and Alexandria gradually was abandoned.

The next settlement in Washington Township was Union Mills. The population of Union Mills in 1880 was about two hundred. The principal occupations of this place were flour milling and distilling.





MR. EDWARD R. McCOWEN  
County Superintendent of Schools

Mr. McCowen received his B.S. degree in education from Ohio University, the Master degree from Northwestern University, and has attended both Otterbein College and Harvard University. His broad vision has helped make it possible for our schools to continue to offer new courses as the need arises.

In a recent letter from Dr. Clyde Hissong, State Superintendent of Public Instruction, the following excerpts will show how the schools of Scioto County rank. Dr. Hissong states, "I have just completed a survey of the high school reports filed in this office by our high school supervisors. I have been favorably impressed by the nature of these reports, and particularly the evidence of the enviable record which you and your administrative staff have made in cooperation with the County Board and the Local Boards of Education in your county. Accept my congratulations upon this fine record and my best wishes for a continued program in Scioto County."

Mr. McCowen points out that the motto for our schools is "Go Forward, Scioto County Schools". Says Mr. McCowen, "We will continue in the years to come to serve our boys and girls in the best manner and continue to improve the educational set-up in all Rural Schools. The best is none too good for our boys and girls."



# BOARD OF EDUCATION



Mr. Elza Callendar



Mrs. Bessie Greene



Mr. Charles Prince  
President



Mr. Lowell Strickland



Mr. Farrell Vaughters





**MR. FRANK B. ROLF**  
Supervising Principal

Mr. Rolf has been principal of Washington High School since the school started in 1939. Since that time, the school has continued to progress in the scholastic field, in athletics, and in the music department. It has shown many physical improvements on the building. Mr. Rolf has been highly commended by the state inspector for his leadership; the Seniors offer their congratulations to him.



# FACULTY



**MISS BENNETT**  
Commercial



**MR. CHRISTIAN**  
American History  
Physical Education



**MR. COTTLE**  
World History  
Physical Education



**MRS. DONLEY**  
English—Latin



**MR. EVERLING**  
Democracy  
Physical Education





**MR. GILLETTE**  
Instrumental Music



**MISS HALL**  
Mathematics



**MRS. HEATH**  
Vocal Music



**MRS. HOPKINS**  
General Science



**MR. LEWIS**  
Science





**MR. McCLURE**  
Commercial



**MRS. MELVIN**  
Home Economics



**MRS. MITCHELL**  
English



**MR. MOORE**  
Industrial Arts



**MISS RATLIFF**  
English  
Physical Education

**MRS. YONOVITZ**  
English





# SENIORS



## SUGAR GROVE

Sugar Grove received its name from the large number of sugar trees that were found there. A maple sugar refinery was located there for a number of years.

The first settler was John Brouse in 1810. The first school was built in 1854, in which 35 students were enrolled. It was considered one of the finest schools in Scioto County.



**SENIOR OFFICERS (L to R)**  
Richard Meeker, treasurer  
Phyllis Frasher, secretary  
Bob Rice, president  
Allen Journey, vice president



**SENIOR ADVISORS**  
Mrs. Donley  
Mr. Everling







**Raymond L. Andrews**  
"Racer"

Industrial Arts  
Industrial Arts Club, 2;  
Biology, 3.



**Glenn Joseph Applegate**  
"Joe"

Industrial Arts  
Industrial Arts Club, 1, 2;  
Minstrel, 1, 2; Band, 1, 2,  
3, 4; May Festival, 2, 3, 4;  
"The Spite Fence," 3; Glee  
Club, 4; Mixed Chorus, 4.



**Norma Jean Austin**  
"Skippy"

Commercial  
Glee Club, 1; Mixed Cho-  
rus, 1; English Club, 4;  
Future Homemakers Club,  
4.



**Joyce Bailey**  
"Joy"

Home Economics and  
Commercial  
Home Economics Club, 1,  
2, 3, 4; English Club, 1, 2,  
4; Chemistry Club, 4;  
Math Club, 4.



**Robert W. Barnett**  
"Barney"

Industrial Arts  
Industrial Arts Club, 1, 2;  
Football, 1, 2, 3, 4; Base-  
ball, 2, 3, 4; Reserve Bas-  
ketball, 2; English Club, 2.





**Jack Andrew Book**  
"Jack"

College Preparatory and  
Commercial

Scholarship, 1; English  
Club, 1, 4; Radio Club, 3;  
Latin Club, 3.



**Elbert Black**  
"Blackie"

College Preparatory and  
Commercial

Radio Club, 2; Latin Club,  
3.



**Jack Lee Bower**  
"Jack"

Industrial Arts

Radio Club, 3; "The Spite  
Fence", 3; Football, 3, 4;  
Baseball, 3, 4.



**Barbara Ann Brandel**  
"Barb"

College Preparatory

Portsmouth High, 1; Latin  
Club, 2; Scholarship, 2;  
English Club, 2, 4; Colum-  
bus High, 3; Chemistry  
Club, 4.



**Donald Eugene Bussa**  
"Don"

Industrial Arts and  
Commercial





**Beulah Lucille Campbell**  
"Boots"

Home Economics and  
Commercial  
Home Economics Club, 1,  
2; English Club, 1, 2, 3.



**Charles Lee Carter**  
"Charley"

Commercial  
Basketball Manager, 2;  
Radio Club, 3; Basketball,  
4.

**Maxine Charles**  
"Mac"

Home Economics and  
Commercial  
Mixed Chorus, 1; Minstrel,  
1, 2; May Festival, 1, 2, 3;  
English Club, 1, 3; Glee  
Club, 2, 3; Home Eco-  
nomics Club, 2, 3, 4; "The  
Spite Fence", 3.



**Alma Clifton**  
"Clif"

Commercial  
Class Officer, 1, 2, 3; Band,  
1, 2, 3, 4; "The Spite  
Fence", 3.



**Mary Elizabeth Church**  
"Lizzie"

Commercial  
Glee Club, 1, 2; English  
Club, 1, 3, 4; Librarian, 2;  
"The Spite Fence", 3.





**Katherine Jewel Coburn**  
"Cathy"

Commercial and College  
Preparatory

Scholarship, 1, 2, 3; Eng-  
lish Club, 1, 2, 3, 4; Glee  
Club, 3; Honor Society, 3,  
4; Latin Club, 3, 4; Chem-  
istry Club, 4; Math Club,  
4.



**Betty Cochran**  
"Bugs"

Commercial and Home  
Economics

Home Economics Club, 1,  
2, 3, 4; Glee Club, 1, 2, 3,  
4; May Festival, 1, 2, 3, 4;  
Majorette, 2, 3, 4.



**Thelma Mae Cochran**  
"Shorty"

Commercial

Scholarship, 1, 2; English  
Club, 1, 2, 3, 4.



**Charles E. Cook**  
"Cookie"

Commercial

Scholarship, 1; Mixed  
Chorus, 1, 4; Minstrel, 2;  
Class Officer, 2; Radio  
Club, 2; Basketball, 2, 3;  
"The Spite Fence", 3; An-  
nual Staff, 3, 4; Boys' Glee  
Club, 4.



**Lois Ann Cook**  
"Cookie"

Commercial

Scholarship, 1; English  
Club, 1, 2, 3, 4; Minstrel,  
2; Glee Club, 3; May Festi-  
val, 3.





**Rosemary Elizabeth Craycraft**  
"Mert"

Commercial  
Biology Club, 2; Librarian,  
3; English Club, 3, 4.



**Lloyd Crowe**  
"Crow"

Industrial Arts  
Industrial Arts Club, 1, 2,  
3; Radio Club, 3; Glee  
Club, 2.



**Forrest Crumm**  
"Crumm"

Industrial Arts and  
Commercial  
Industrial Arts Club, 1, 2;  
Track Team, 1; Radio, 2;  
Boys' Glee Club, 2, 3, 4;  
Mixed Chorus, 4.



**Herbert R. Davis**  
"Herb"

Industrial Arts  
Industrial Arts Club, 1, 2;  
Boys' Glee Club, 2; Radio,  
3.



**Ruby Mae Cunningham**  
"Freckles"

Commercial  
Glee Club, 1, 3; Mixed  
Chorus, 2, 4.





**Mary Jane Elmore**  
"Janie"

Commercial

Glee Club, 1, 2; English Club, 1, 2, 3, 4; Librarian, 2.

**Delbert Lee Entler**  
"Zeke"

Industrial Arts

Football Manager, 1; Baseball, 1; Glee Club, 1; May Festival, 1; Basketball, 1, 2, 3, 4; Industrial Arts Club, 1, 2; Football, 2, 3, 4; "The Spite Fence", 3.



**Gerald Everett Evans**  
"Red"

Industrial Arts

Industrial Arts Club, 1, 2; "The Spite Fence", 3; Football, 3, 4; English Club, 4.



**Carl David Fenimore**  
"Pete"

Industrial Arts

Industrial Arts Club, 1, 2; Basketball, 1, 2, 3, 4; Radio Club, 2; Baseball, 2, 3, 4.



**Phyllis Jean Frasher**  
"Squirrel"

Commercial

Minstrel, 1, 2; Band, 1, 2, 3, 4; Mixed Chorus, 1, 4; May Queen's Court, 2; Glee Club, 2, 3; Cheerleader, 1, 3; Spring Festival, 1, 2, 3, 4; English Club, 4; Class Officer, 4.





**Robert Lee Gilkerson**  
"Bob"

Industrial Arts  
Football, 1, 2, 3, 4; Tum-  
bling Team, 2; Track, 2;  
"The Spite Fence", 3;  
Spring Festival, 3, 4; Glee  
Club, 3, 4; Mixed Chorus,  
4.



**Woodrow Edward Gilmore**  
"Woody"

Industrial Arts  
May Festival, 1; Glee  
Club, 1; Track, 1; Indust-  
rial Arts Club, 1, 2; Foot-  
ball, 1, 2, 3, 4; Baseball,  
1, 2, 3, 4; Radio Club, 3;  
"The Spite Fence", 3.

**William Harrison**  
"Bill"

Commercial and  
Industrial Arts  
Industrial Arts Club, 3, 4.



**Janet Sue Hopkins**  
"Hoppy"

Home Economics and  
Commercial  
Home Economics Club, 1,  
2, 3; Cheerleader, 2, 3, 4;  
"The Spite Fence", 3; An-  
nual Staff, 4.



**Delores Joan Hickman**  
"Dee Dee"

Commercial  
English Club, 1, 2; Glee  
Club, 1, 3; Mixed Chorus,  
2, 4.





**Jean House**  
"Housey"

Commercial

Manchester High, 1, 2, 3;  
Annual Staff, 4; Honor  
Society, 4; Mixed Chorus,  
4.



**Helen Louise Horsley**  
"Lulabelle"

College Preparatory and  
Commercial

Girls' Glee Club, 1; Band,  
1, 2, 3, 4; Minstrel, 3.



**Carolyn Sue James**  
"Susie"

Commercial and  
Home Economics

Betty Lamp Club, 1; Glee  
Club, 1, 2, 4; Home Eco-  
nomics Club, 1, 2, 3, 4;  
Spring Festival, 2, 4; "The  
Spite Fence", 3.



**Lois Evelyn Johnson**  
"Yawn"

Commercial

Scholarship, 1, 2; Band, 1,  
2, 3, 4; English Club, 1, 2,  
3, 4; Minstrel, 2; Glee  
Club, 2; Biology Club, 2;  
"The Spite Fence", 3; An-  
nual Staff, 4.



**Earl Wesley Jordan**  
"Earl"

Industrial Arts

Industrial Arts Club, 1, 2.





**Judith Eileen Jordan**  
"Judy"

College Preparatory and  
Commercial

Scholarship, 1, 2, 3, 4; English Club, 1, 2, 3, 4; Latin Club, 2; Minstrel, 2; May Festival, 2, 3, 4; Mixed Chorus, 2, 4; Honor Society, 2, 3, 4; Glee Club, 3; Class Officer, 3; "The Spite Fence", 3; Band, 3, 4.



**Creed Allen Journey**  
"Speed"

Commercial

Football, 1, 2, 3, 4; Scholarship, 2; Radio Club, 3; "The Spite Fence", 3; Class Officer, 4.



**Edward Lee Kannard**  
"Elk"

Commercial

Basketball Manager, 2;  
Radio Club, 3.



**Evelyn Louise Klever**  
"Peg"

College Preparatory and  
Commercial

Glee Club, 1; Band, 1, 2, 3; Minstrel, 1, 2; Spring Festival, 1, 4; "The Spite Fence", 3; English Club, 3, 4; Mixed Chorus, 4.



**Marvin Raye Kennard**  
"Marv"

Industrial Arts

English Club, 1; Industrial Arts Club, 1, 2; Band, 1, 2; Minstrel, 3; Football, 3, 4.





**Betty Jane Kuhn**  
"Janie"

College Preparatory and Commercial

Mixed Chorus, 1; Scholarship, 1; Spring Festival, 1; Glee Club, 3; Latin Club, 1, 2; Minstrel, 1, 2; Band, 1, 2, 3, 4; English Club, 1, 2, 3, 4; Biology Club, 2; Honor Society, 2, 3, 4; Chemistry Club, 4.



**Robert Lewis**  
"Bob"

College Preparatory

Latin Club, 1; Radio Club, 2; Basketball Manager, 3, 4; English Club, 4.



**Mary Alyce Mann**  
"Mary"

Commercial

Minstrel, 2; English Club, 1, 2, 3, 4; Biology Club, 2; Glee Club, 2, 4; "The Spite Fence", 3; Spring Festival, 4.



**Julia Ann Martin**  
"Jude"

Commercial and College Preparatory

Latin Club, 1, 2; Minstrel, 2; Librarian, 2, 3, 4; English Club, 2, 4; Biology Club, 2; Future Homemakers Club, 3; Annual Staff, 4.



**Richard Donald Meeker**  
"Dink"

Industrial Arts

Industrial Arts Club, 1, 2; Football, 2, 3, 4; Radio Club, 2; Reserve Basketball, 3.





**Hazeldean Meyers**  
"Dean"

Commercial and College  
Preparatory

Latin Club, 1, 2; Band, 1,  
2; English Club, 1, 2, 3, 4;  
Scholarship, 1, 2, 3, 4;  
Spanish Club, 3; Honor  
Society, 3, 4; Chemistry  
Club, 4.



**Charles Eynon Mitchell**  
"Popeye"

Industrial Arts

Basketball, 1, 2, 3; Foot-  
ball, 1, 2, 3, 4; "The Spite  
Fence", 3.

**Donald Ralph Moore**  
"Moe"

College Preparatory

Latin Club, 1; Minstrel, 1,  
2; Scholarship, 1, 2, 3;  
Spring Festival, 1, 2, 3, 4;  
Band, 1, 2, 3, 4; Glee Club,  
1, 4; Mixed Chorus, 1, 4;  
Radio Club, 2; Football  
Manager, 2; "The Spite  
Fence", 3; Annual Staff, 4.



**Nancy Joanne Moore**  
"Nan"

College Preparatory and  
Commercial

Latin Club, 1, 2; Class  
Officer, 1; English Club,  
1, 2, 3, 4; Scholarship, 1,  
2, 3, 4; Minstrel, 2; Honor  
Society, 3, 4; "Prince of  
Peace", 3; "The Spite  
Fence", 3; Glee Club, 3;  
Annual Staff, 4.



**Paul Edward Morrow**  
"Rodney"

Commercial

Basketball, 1, 2, 3, 4; Eng-  
lish Club, 4.







**Barbara Jean O'Dell**  
"Bobbie"

Home Economics and  
Commercial

Band, 1; English Club, 1;  
Mixed Chorus, 1; Home  
Economics Club, 2, 3, 4;  
"The Spite Fence", 3;  
Math. Club, 4; Chemistry  
Club, 4; Glee Club, 4.



**Donna Jean Nichols**  
"Nick"

Commercial

Scholarship, 1, 2; Home  
Economics Club, 1, 2; Eng-  
lish Club, 1, 2, 3, 4; Min-  
strel, 2; Glee Club, 2; Hon-  
or Society, 3,4.



**Paul O'Dell**  
"Digger"

Industrial Arts

English Club, 1; Basket-  
ball, 1; Industrial Arts  
Club, 1, 2; Scholarship, 1,  
2, 3; Biology Club, 3;  
Class Officer, 3; Chemis-  
try Club, 4.



**Marcella Nell Rexroad**  
"Mert"

Home Economics and  
Commercial

Queen's Court, 1; Home  
Economics Club, 1, 2, 3,  
4; Glee Club, 1, 3, 4; Ma-  
jorette, 2, 3, 4; English  
Club, 3; Football Queen,  
4.



**Kermit A. Prince**  
"Mo"

Industrial Arts

Cool Springs, N. Carolina,  
3; Football, 2, 4.





**Robert Rice**  
"Bob"

Industrial Arts

Industrial Arts Club, 1, 2;  
Basketball, 1, 2, 3, 4; Class  
Officer, 2, 4; Biology Club,  
3; Baseball, 3, 4.



**Oscar Rodgers**  
"Buck"

Industrial Arts and  
College Preparatory

Industrial Arts Club, 1;  
Central Vocational High  
School, Cincinnati, 2;  
Scholarship, 3; Biology  
Club, 3; Chemistry Club,  
4.

**Rita Mae Shivener**  
"Speedie"

Home Economics and  
Commercial

Minstrel, 1, 2; Band, 1, 2,  
3, 4; Glee Club, 1, 2, 3;  
English Club, 2, 3; Future  
Homemaker's Club, 2, 3;  
Cheerleader, 2, 4; "The  
Spite Fence", 3; Annual  
Staff, 4.



**Raymond Albert Smith**  
"Smitty"

Industrial Arts

Band, 1; Industrial Arts  
Club, 1, 2; Chemistry  
Club, 3; "The Spite  
Fence", 3.



**Eugene Marvin Smalley**  
"Murphy"

Industrial Arts

Industrial Arts Club, 1, 2;  
Baseball, 3, 4.







**Helen Dolores Steele**  
"Dee"

Commercial

English Club, 1, 2, 3, 4;  
Glee Club, 1, 4; May Festival,  
1, 4; Minstrel, 1; Biology Club,  
2; "The Spite Fence", 3.



**Joy Tipton**  
"Joy"

College Preparatory and  
Commercial

Latin Club, 1, 2; Band, 1,  
2, 3, 4; English Club, 1, 2,  
3, 4; Biology Club, 2; Min-  
strel, 2; Scholarship, 2;  
Class Officer, 2; Honor  
Society, 2, 3, 4; Glee Club,  
3; "The Spite Fence", 3;  
Chemistry Club, 4.



**James Arthur Williams**  
"Jim"

College Preparatory

Minstrel, 1; English Club,  
1, 2; Basketball, 1, 2, 4;  
Spring Festival, 1, 2; Band,  
1, 2, 3, 4; Radio Club, 2.



**Nina Clair Williams**  
"Scottie"

Home Economics and  
Commercial

Class Officer, 1; Glee  
Club, 1; Home Economics  
Club, 1, 2; English Club,  
1, 2, 3; Band, 3, 4;



**Eunice Jean Windsor**  
"Sissy"

Home Economics and  
Commercial

Home Economics Club, 1,  
2; Librarian, 2, 3, 4.



**Haskell Wright**  
"Pollo"

Industrial Arts

Industrial Arts Club, 1, 2;  
Glee Club, 1; Radio Club,  
2; Football, 2.



# UNDER CLASSMEN

## HISTORY OF FRIENDSHIP

Friendship is located at the mouth of Turkey Creek in Nile Township, one of the original townships of the county. Part of this land, which is mostly the Vaughters farm of today, was originally claimed by James Culbertson in 1788. Major John Belli is believed to be the earliest settler of this community-probably in the early 19th Century. Early industry consisted chiefly of Cooper shops. Wesley Chapel, M. E. Church at Friendship was built in 1897.







JUNIOR OFFICERS, (L to R) Omalee Smalley, president; Lavanda Boyd, secretary; Bill Hopper, treasurer; Pearl Swearingen, vice-president.



JUNIOR ADVISORS, (L to R) Mrs. Melvin, Mr. McClure.





**JUNIOR CLASS, (L to R) First Row, P. Swearingen, V. Zimmerman, H. Craiger, J. Hurst, E. Whistman, L. Vaughters, L. Dodridge, N. Payton, W. Dunn, Mrs. Melvin. Second Row, F. Smith, B. Litz, A. Lewis, L. Shaw, D. Sanford, P. Adams, V. Mangus, V. Mullen. Third Row, O. Small-ey, T. Nunley, N. Hamilton, J. Sibrel, M. Bellomy, B. Litteral, H. Weghorst, J. Colley, J. Andre. Fourth Row, Mr. McClure, W. Mitchell, D. Sparks, J. Burke, B. Brown, R. York, D. Lucas, L. Boyd, N. Richey. Fifth Row, E. Dillow, J. Bridwell, N. Rapp, R. Frailey, L. Speck, J. Frump, R. Cook, G. Mitchell, J. Lindsay. Sixth Row, J. Sparks, D. Lester, C. Hazelbaker, B. Wessel, B. Thompson, R. Whaley, A. Shump, J. Vaughters, T. Waller. Seventh Row, B. Hopper, J. Foster, L. Shively, E. Virgin, J. Jewett, D. Gardner, J. Cook, G. Sowards. Eighth Row, R. Lucas, E. Jones, G. Wilburn, J. Schaffer, D. Bricker, G. Stout, B. Meyers, N. Creech. Ninth Row, P. Sapp, K. Horsley, B. Litz, R. Woten, C. Henderson, B. Price, G. Graham, T. Royal.**



**SOPHOMORE ADVISORS**

Mr. Lewis  
Mr. Cottle



**SOPHOMORE OFFICERS**

Ida Eulett, vice-president  
Sue Hoover, secretary  
Paul Conley, president  
Tom Spurlock, treasurer



**WEST SIDE CLEANERS**

Phone 0101-X

*Satisfaction guaranteed*





SOPHOMORE CLASS, (L to R) First Row, Mr. Lewis, M. Conley, J. Kitchen, I. Eulett, B. Knauff, N. Ratliff, G. Watts, D. Jones, Mr. Cottle. Second Row, P. Kennedy, L. O'Dell, J. Payne, J. Bibbey, M. Montgomery, D. Bower, S. Hoover, W. Stephenson. Third Row, A. Ridgeway, L. Taylor, P. Yeager, L. Lakin, B. Journey, R. Murta, A. Davis, A. Redoutey, J. Whaley. Fourth Row, F. Schackart, B. Conley, P. Cooper, R. Hill, E. Wiseman, P. Meyers, K. Elrod, L. Cochran, B. McCann. Fifth Row, L. Rayburn, C. Shiveley, D. Edington, L. Mustain, M. McGlone, M. Renn, N. Martin, L. Porter. Sixth Row, D. Hall, D. Keyser, M. Boyd, M. Wear, W. Woods, L. Denning, L. Sheppard, M. Himes, K. Bailey. Seventh Row, T. Shump, H. Herles, M. Stegall, B. Thurman, J. McComas, H. Blevins, B. Kennard, J. Schwamberger. Eighth Row, B. Hoover, N. Williams, H. Hall, R. Floyd, L. Sutton, S. McCall, W. Frazier, C. Jordan. Ninth Row, P. Conley, F. Brown, R. Pistole, V. Pendleton, R. Mullen, J. Howard, J. Parker, Y. Risner. Tenth Row, T. Sartin, G. McGovney, T. Spurlock, K. Hopkins, H. Bailey, C. Elrod, C. Ferguson, D. Biggs. Eleventh Row, R. Spurlock, B. Brown, H. Keene, R. McCann, J. Stockham, D. Varney, G. Smith, D. Caudill.





FRESHMAN ADVISORS, Miss Ratliff, Miss Hall.



FRESHMAN OFFICERS, (L to R) Ruth Frailey, treasurer; Paul Denning, president; Steven Gilmore, vice-president; Jolene Brown, secretary.

NOEL BRIDWELL  
"General Merchandise"







**EIGHTH GRADE OFFICERS  
(L to R)**

Judy Knauff, secretary  
Shirley Jordan, vice-president  
Shirley McCall, treasurer  
Ronald Damron, president



**MRS. ROLF**  
English



**MR. KIRKER**  
History



**MRS. STRICKLAND**  
Mathematics

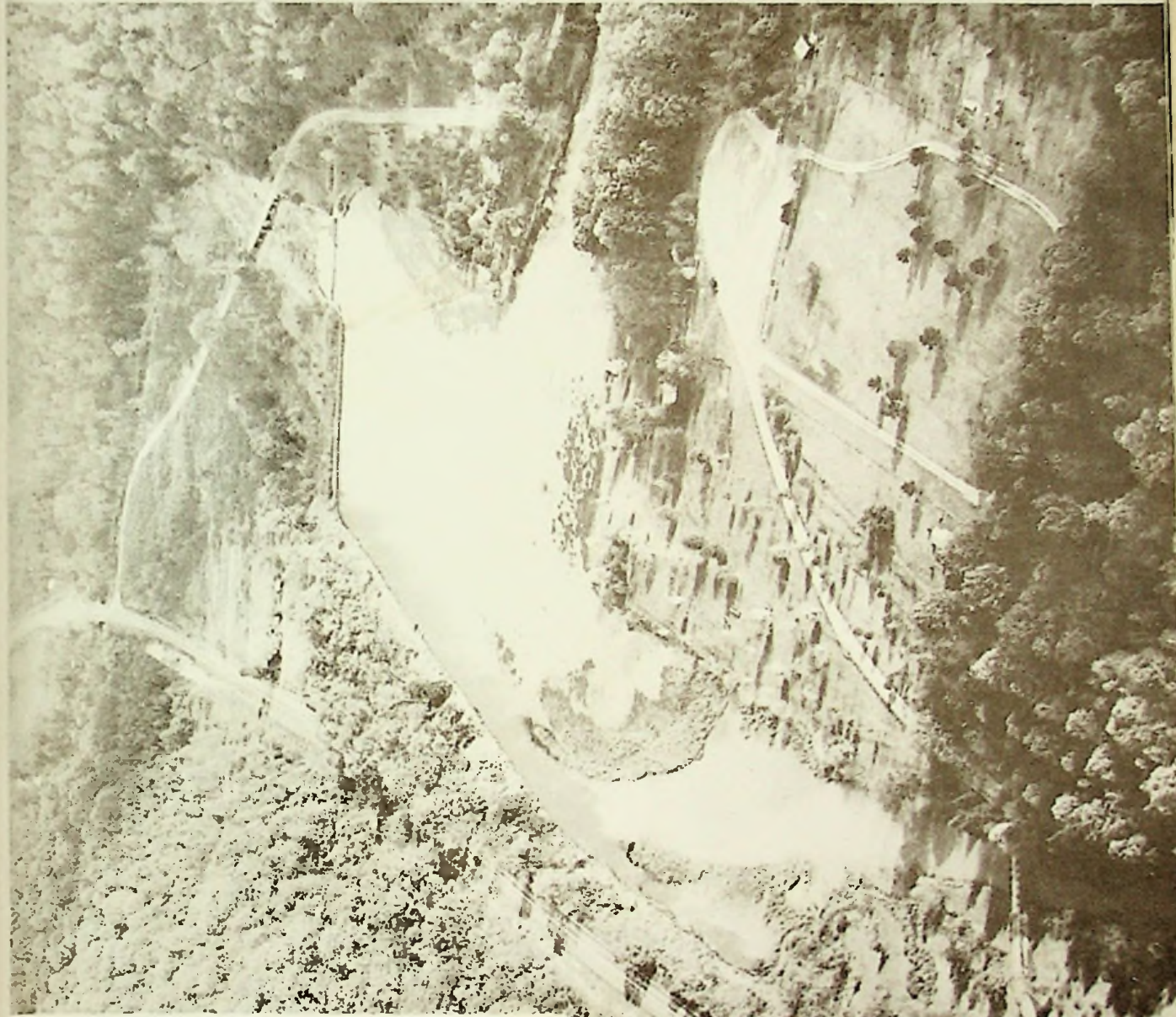




EIGHTH GRADE CLASS, (L to R) First Row, Mrs. Strickland, S. Gilkerson, R. Damron, J. Hobbs, J. Carroll, S. Lauder, S. McCall, S. Jordan, J. King, P. Brickey. Second Row, Mrs. Rolf, A. Bloomfield, N. Smith, P. Morgan, O. Ridgeway, N. Bond, M. Howard, B. Huff, B. Shaffer, L. Meade. Third Row, D. Dillow, A. Snyder, W. Howard, P. Hall, R. Pistole, D. Walker, R. Wolfe, R. Redoutey, M. Ober, L. Bower. Fourth Row, J. Bower, N. Peters, R. Elrod, P. Mullen, B. McCall, J. Callihan, W. Logan, S. Jones, M. McNeil, B. Fife. Fifth Row, R. Carrington, R. Williams, D. Manning, G. Smith, D. Schackart, W. Wolery, K. Hamer, P. Smith, B. Gilmore, S. Kitchen. Sixth Row, Mr. Kirker, M. McCown, J. Knauff, J. Wilson, M. Brickey, J. Smith, W. Penny, P. Arnett, R. McCall, R. McCall. Seventh Row, D. Frost, R. Sowards, M. Sowards, J. Denning, B. Benson, L. Damron, G. Birchfield, U. Sparks, D. Litz, W. Pick. Eighth Row, D. Shaffer, D. Ratcliff, S. Nichols, G. Scott, P. Arnett, C. Reynolds, J. Howell, S. Thurman, M. McNeil. Ninth Row, K. Knauff, H. Wells, G. Pennington, D. Stillwell, D. Smith, S. Howard, E. Kennard, F. Thurman. Tenth Row, A. Salyer, K. Ratliff, B. Knauff, O. Williams, P. Farley, D. Hill, E. Ratcliff, H. Muncy, D. Charles. Eleventh Row, F. Cooper, R. Reynolds, E. Stevens, O. Shepherd, R. Payne, T. Payne, C. Stewart, W. Coleman, E. Ward.



# ACTIVITIES



## ROOSEVELT LAKE

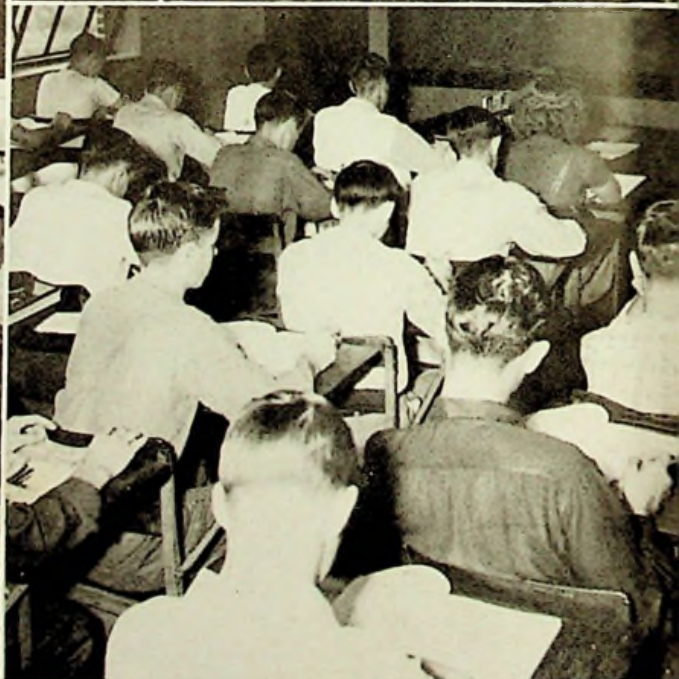
Roosevelt Lake, covering twenty-three acres and surrounded by fifty acres of park facilities, was started in 1933 and completed in 1935. The streams that feed this lake, which is well-stocked with many varieties of fish, are Turkey Creek and Mackletree. The lake is in the heart of the Roosevelt Game Preserve, which is commonly known as the "Little Smokies of Southern Ohio."





# ENGLISH

"A man is known by his words."

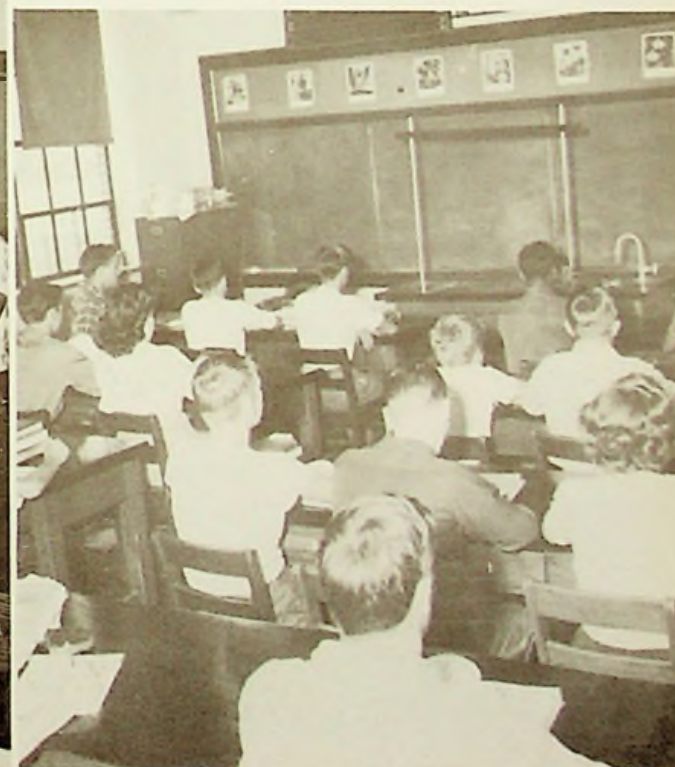
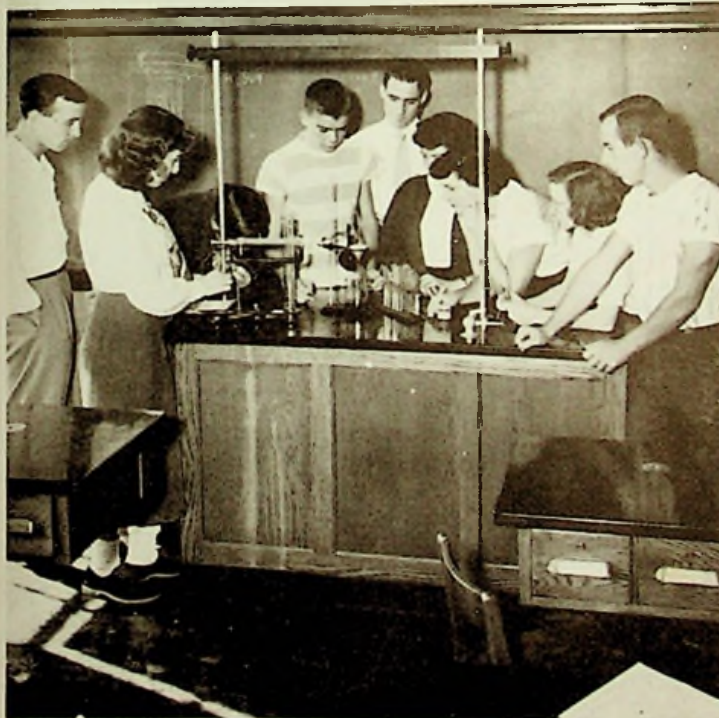
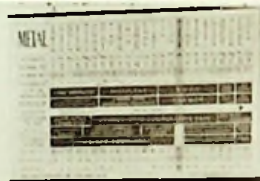




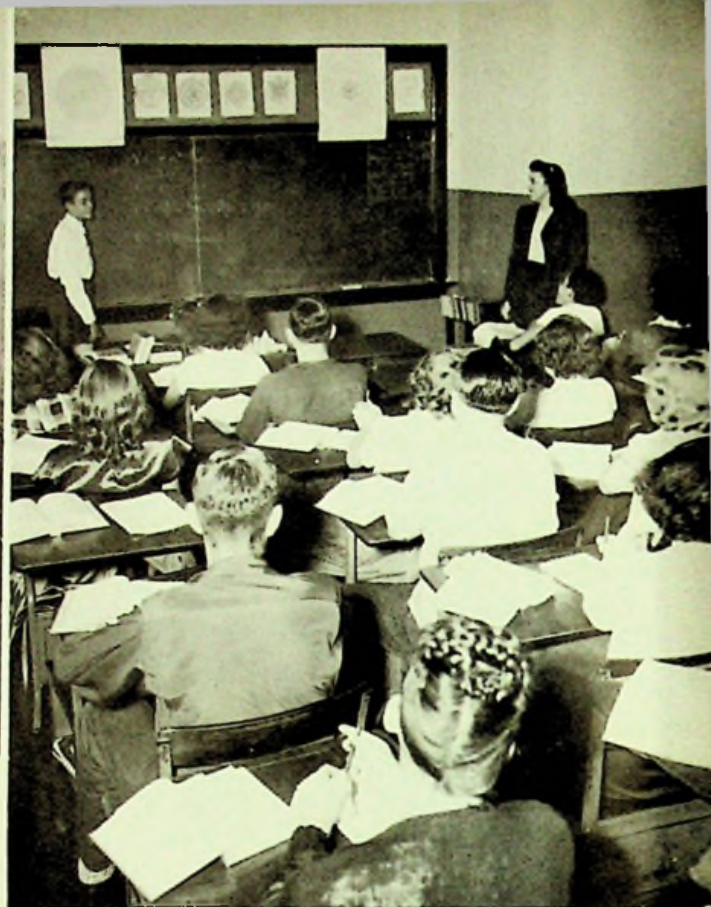


## SCIENCE

"Necessity is the mother of invention."







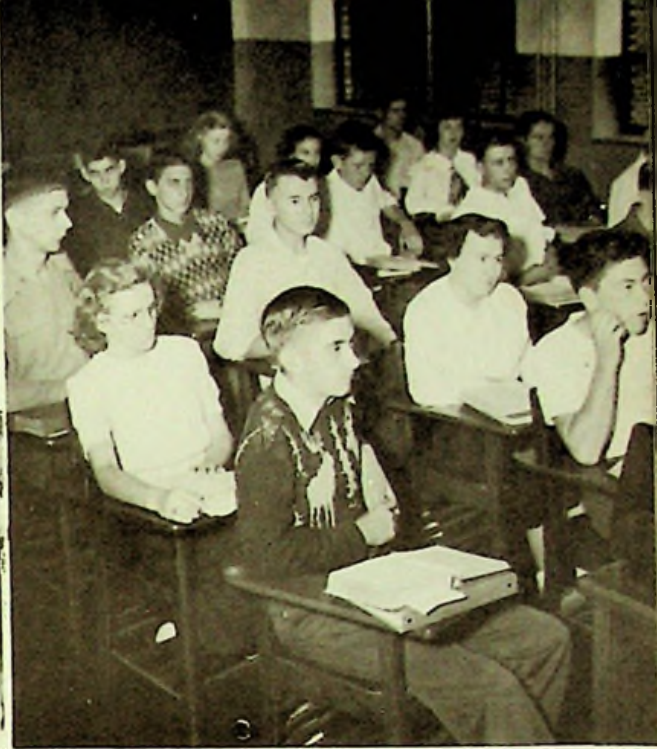
## MATHEMATICS

"The shortest distance between two points is a straight line."



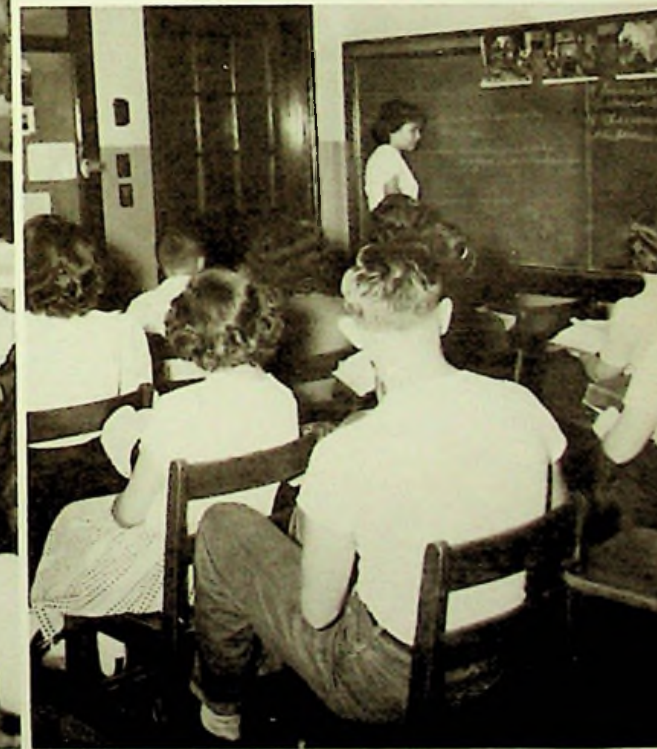
SCOTT'S SPORTING GOODS  
"Everything for the Sportsman"





## HISTORY

"The foundation of every state  
is the education of its youth."



SAMUEL LEVI AND CO.  
840-844 Gallia Street





# VOCATIONAL ARTS

"Learn to do by doing."







## COMMERCIAL

"The road to success leads through the office door."



Plumbing, Heating  
1532 Gallia Street

VANDERVORT'S

Insulation, Roofing  
Phone 1242





## CAFETERIA

"The way to a man's heart  
is through his stomach."



## CAMEO RESTAURANT

*"Facilities are available for your next party or banquet"*





**HOME ECONOMICS CLUB**, (L to R) First Row, C. Schaffer, R. Hill, I. Steele, J. Webb, D. Jones, G. Watts, V. Worstell, Mrs. Melvin. Second Row, W. Herles, J. Jackson, R. Hatliff, M. Charles, A. Ridgeway, M. Jarrells, R. Frailey, W. Dunn. Third Row, J. Smith, N. Morrow, L. Porter, B. Cochran, W. Woods, J. Bailey, M. Conley, D. Bower. Fourth Row, D. Elliott, J. Wright, M. Renn, I. Ratliff, M. Rexroad, L. Taylor, B. Thurman, B. Sanford. Fifth Row, F. Brown, Y. Risner, J. Geyer, L. Jordan, J. Parker, W. Risner, S. James, B. O'Dell.



**INDUSTRIAL ARTS CLUB**, (L to R) First Row, Mr. Moore, R. Hurst, T. Vaughters, R. Cox, H. King, L. Royce, J. Dunnaway. Second Row, D. Hall, J. Thomas, K. Bailey, J. Bellomy, D. Edington, R. Caudill. Third Row, C. Kuhn, P. Conley, C. Jordan, W. Frazier, J. Bailey, H. Herles. Fourth Row, C. Elrod, J. Kessinger, D. Horsley, C. Ferguson, B. McCann, G. Smith.

**STAR CLEANERS**, "Beauty Parlor for your Clothes"  
Phone 1138

508 Second Street





ENGLISH CLUB I AND II, (L to R) First Row, J. Kitchen, I. Eulett, B. Knauff, C. Schaffer, P. Swearingen, V. Shaw, J. Webb, J. Andrews. Second Row, Miss Ratliff, C. Sheets, C. Brooks, E. Day, J. Smith, J. Whaley, B. Lyons, B. Conley, L. Lakin. Third Row, Mrs. Yonovitz, M. Conley, A. Ridgeway, J. Love, B. Tieman, R. Staten, B. Rose, W. Howard, P. Perry. Fourth Row, D. Elliott, B. Elrod, V. Smith, J. Bibbey, L. Rayburn, R. Quickel, M. Graham, N. Martin. Fifth Row, M. Himes, L. Denning, I. Ratliff, J. Rhea, P. Whaley, N. Williams, L. Sheppard, F. Dunn. Sixth Row, B. Lewis, D. Davis, A. Mershon, J. Hazelbaker, J. Knauff, L. Priest, R. Mullen, B. Shupert. Seventh Row, Y. Risner, J. McComas, M. Stegall, J. Brown, L. Jordan, D. Williams, G. McGoveney, T. Sartin. Eighth Row, B. Wedebrook, C. Kuhn, D. Mann, S. Kirker, H. Keene, B. Brown, D. Horsley, D. Caudill.

SPANISH CLUB, (L to R) First Row, Mrs. Hopkins, J. Kitchen, B. Knauff, J. Bibbey, G. Watts, Second Row, D. Sparks, N. Williams, B. Journey, I. Eulett. Third Row, D. Varney, K. Hopkins.







ENGLISH CLUB III AND IV, (L to R) First Row, L. Speck, B. Litz, L. Dodridge, Mrs. Mitchell, J. Hurst, T. Cochran, H. Meyers, J. Jordan. Second Row, O. Smalley, N. Rapp, E. Whistman, L. Shaw, L. Vaughters, V. Mullen, A. Lewis, J. Bailey. Third Row, N. Austin, B. Meyers, P. Swearingen, N. Creech, D. Steele, D. Nichols, J. Bridwell, T. Nunley. Fourth Row, J. Tipton, V. Mangus, B. Litteral, M. Bellomy, L. Cook, L. Johnson, M. Mann, D. Lucas. Fifth Row, K. Coburn, N. Moore, B. O'Dell, B. Brandel, M. Elmore, J. Vaughters, R. Craycraft, B. Thompson. Sixth Row, B. Kuhn, B. Lewis, R. Lucas, C. Hazelbaker, J. Book, I. Cook, J. Browning, P. Morrow.

CHEMISTRY CLUB, (L to R) First Row, J. Schaffer, B. Meyers, J. Tipton, O. Smalley, J. Bailey, E. Whistman, H. Meyers. Second Row, B. Barnett, B. O'Dell, B. Brandel, K. Coburn, B. Kuhn, N. Rapp. Third Row, O. Rodgers, L. Shivley, P. O'Dell, Mr. Lewis.



CLYDE BEATTY

*"The Greatest Animal Trainer in the World"*





**MATH CLUB**, (L to R) First Row, Mr. Lewis, W. Woods, J. Smith, E. Day, C. Sheets, R. Cox, R. Holsinger, Miss Hall. Second Row, C. Lakin, L. Cochran, W. Howard, J. Bailey, T. Nunley, V. Mangus, M. Bellomy, R. Quickel. Third Row, J. Daulton, J. McComas, L. Frump, L. Rayburn, L. Denning, B. Lewis, K. Coburn, P. Whaley. Fourth Row, K. Bailey, R. Floyd, H. Hall, L. Priest, L. Royal, R. Mullen, B. Wedebrook, B. Brandel. Fifth Row, T. Sartin, B. O'Dell, J. Walters, H. Keene, B. Brown, D. Varney, P. Sapp.

**LIBRARIANS**, (L to R) First Row, L. Denning, J. Martin, D. Bower, H. Meyers, E. Windsor. Second Row, Mrs. Donley, B. Meyers, J. Sparks, F. Brown. Third Row, B. Wedebrook, B. Wessell.



LYNN FUNERAL HOME





HONOR SOCIETY, (L to R) First Row, L. Vaughters, E. Whistman, Mrs. Mitchell, J. Hurst, H. Meyers, J. Jordan. Second Row, L. Speck, J. Tipton, P. Swearingen, B. Meyers, J. House, D. Nichols. Third Row, N. Happ, K. Coburn, B. Kuhn, J. Vaughters, N. Moore, C. Hazelbaker.

LATIN CLUB I AND II, (L to R) First Row, J. Smith, V. Shaw, D. Beekman, J. Love, C. Lakin, B. Conley, J. Hopkins, R. Staten. Second Row, J. Sparks, P. Swearingen, L. Denning, L. Rayburn, J. Wright, G. Worstell. Third Row, R. Mullen, K. Coburn, L. Sheppard, J. Richardson, P. Whaley. Fourth Row, B. Brown, H. Keene, J. Vaughters, Mrs. Donley.



SCHISLER PROVISION COMPANY

801 John Street

Portsmouth, Ohio



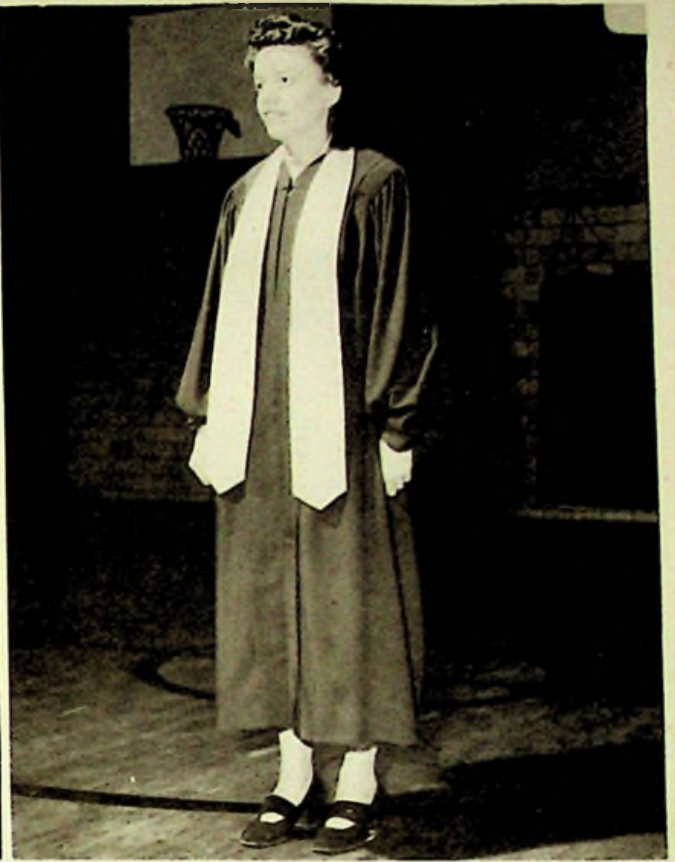
# MUSIC







**MR. GILLETTE**  
Band Director



**MRS. HEATH**  
Vocal Director



**MAJORETTES, (L to R) J. Payne, B. Litz, L. Speck, L. Boyd, G. McGovney, N. Payton, M. Rexroad, B. Cochran, L. Sheppard.**

**GET A KODAK AT FOWLER'S  
VAUGHTERS' SHELL SERVICE**





BAND, (L to R) First Row, B. Cochran, L. Speck, H. Craiger, J. Hurst, P. Yeager, J. Kitchen, W. Woods. Second Row, J. Payne, L. Boyd, R. Cook, C. Millison, E. Wiseman, N. Williams, H. Horsley. Third Row, G. McGovney, B. Kuhn, J. Daulton, D. Sparks, R. Caudill, R. Davis. Fourth Row, V. Worstell, B. Meyers, G. Watts, D. Keyser, P. Frasher, J. Tipton, J. Cook.

REAL ESTATE AND COMPLETE INSURANCE, C. L. MELVIN

50 Portsmouth-221

Scioto.-215-J

Scioto.-7





BAND, (L to R) First Row, J. Applegate, N. Richey, N. Rapp, R. Shivener, R. Floyd, B. Litz, N. Payton, N. Williams. Second Row, S. McCall, F. Smith, S. Hoover, O. Smalley, J. Jewett, K. Horsley, M. Rexroad, L. Sheppard. Third Row, D. Gardner, J. Schaffer, E. Whistman, L. Johnson, A. Clifton, J. Jordan, J. Rhea. Fourth Row, H. Weghorst, D. Moore, J. Williams, D. Varney, N. Creech, R. Hurst, D. Lester, V. Zimmerman.





GIRLS GLEE CLUB, (L to R) First Row, B. Matthews, R. Frailey, J. Bailey, B. O'Dell, B. Cochran, M. Boyd, J. Love, N. Martin, V. McGraw. Second Row, M. Jarrells, M. Graham, R. Quickel, M. Mann, D. Steele, S. James, D. Lucas, G. Mitchell, J. Lindsay. Third Row, L. Dodridge, C. Hazelbaker, L. Vaughters, B. Brandel, M. Tumbleson, P. Sexton, B. Journey, C. Brooks, J. Ilurst. Fourth Row, P. Gee, V. Mangus, T. Nunley, E. Dillow, V. Mullen, J. Wright, R. Murta, B. Wessell, H. Craiger. Fifth Row, B. Conley, N. Creech, A. Lewis, A. Mershon, J. Sparks, V. Day, T. Sartin, M. Rexroad, L. Speck.

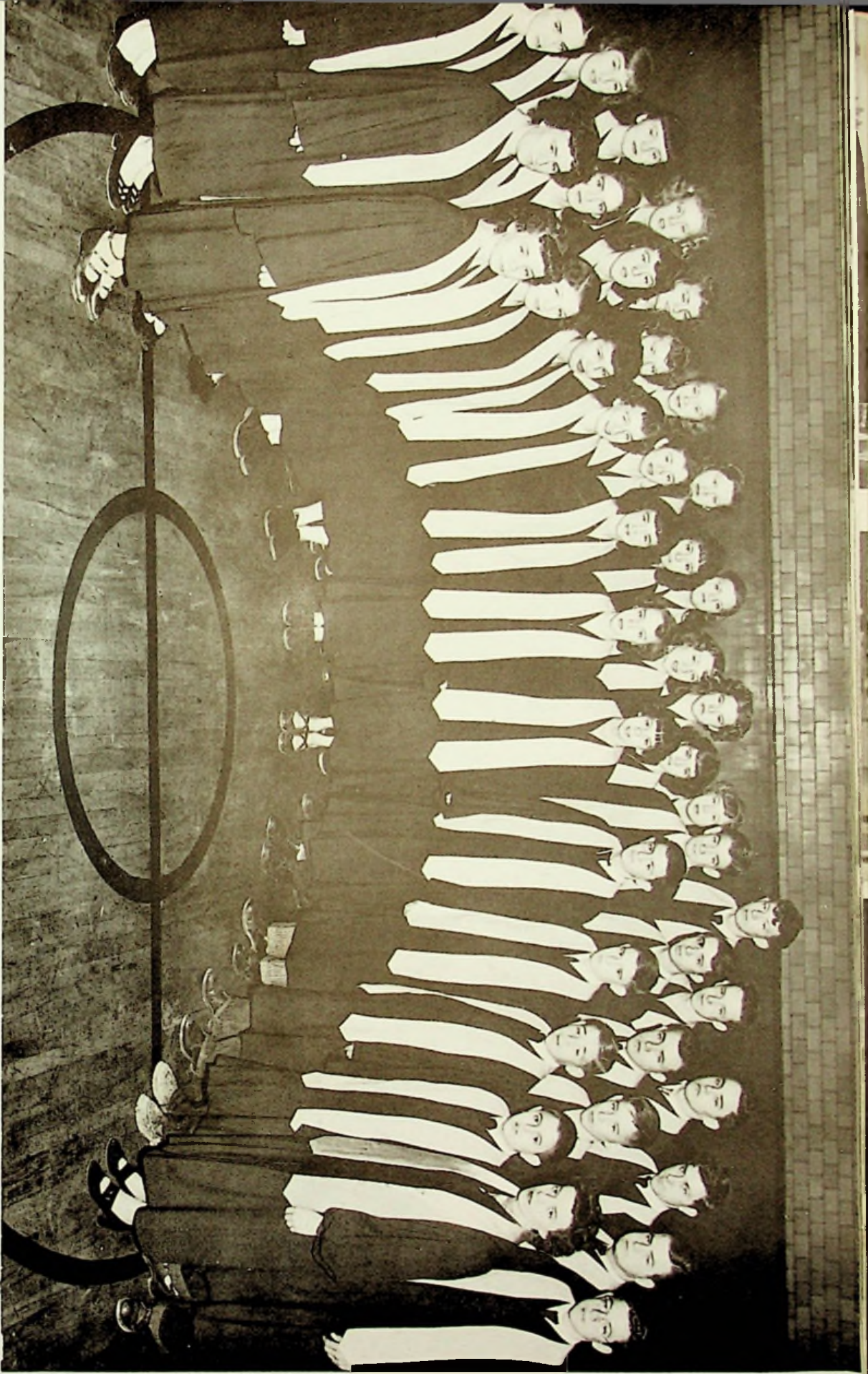


BOYS' CHORUS, (L to R) First Row, J. Hopkins, S. Erlenwein, R. Cox, J. Lockett, D. Conley, J. Dunaway. Second Row, J. Colley, J. Rhea, J. Browning, D. Sparks, W. Mitchell, G. Sowards. Third Row, C. Cook, D. Moore, E. McGlone, J. Applegate, F. Crumm.

U. S. LAUNDRY AND CLEANERS

PORTSMOUTH SAND AND GRAVEL





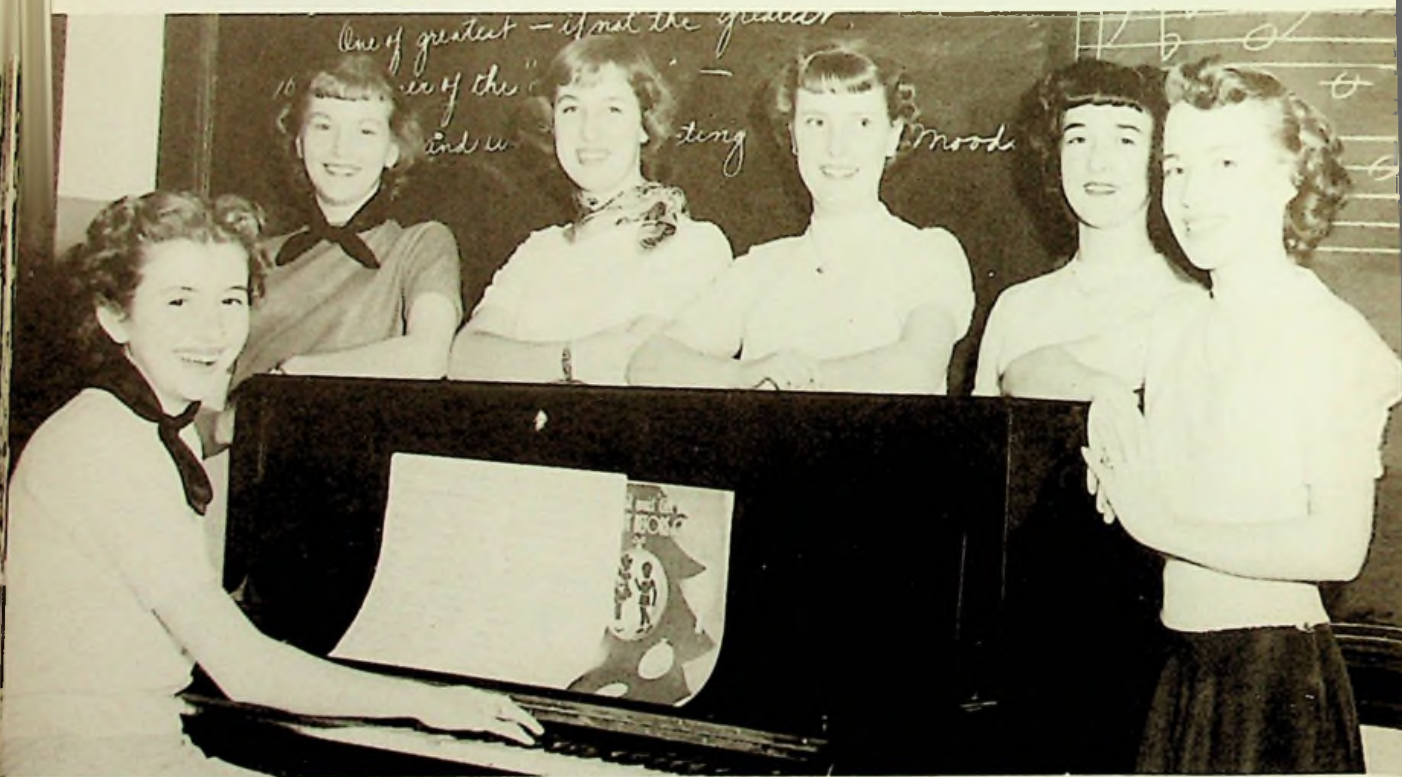
MIXED CHORUS, (l. to R) First Row, J. Hurst, F. Smith, R. Fraley, N. Payton, B. Litz, J. Jordan, W. Herles, S. Erlenwein, R. Cox, D. Conley, J. Dunaway, Mrs. Heath. Second Row, D. Hickman, R. Cunningham, L. Sutton, I. Nunley, L. Vaughters, L. Hayburn, M. Hines, J. House, G. Sowards, F. Crumm, W. Mitchell, J. Hopkins, J. Rhea. Third Row, D. Lucas, B. Brandel, W. Risner, C. Hazelbaker, L. Boyd, R. Mullen, N. Hamilton, J. Daulton, D. Davis, E. Dillow, C. Cook, J. Browning, E. McGlone, E. Virgin, J. Applegate.

COMPLIMENTS OF HILT'S GROCERY  
HAMILTON'S GARAGE





PEP BAND, (L to R) Standing, H. Weghorst, D. Moore. Sitting, D. Gardner, J. Andre, J. Cook, J. Applegate, R. Floyd.



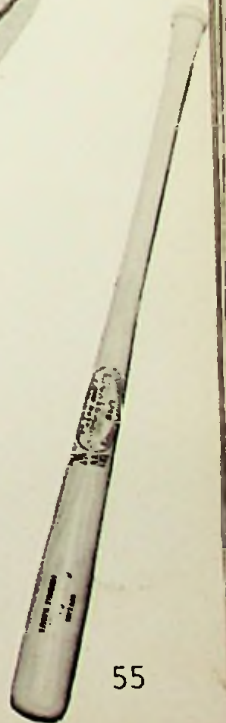
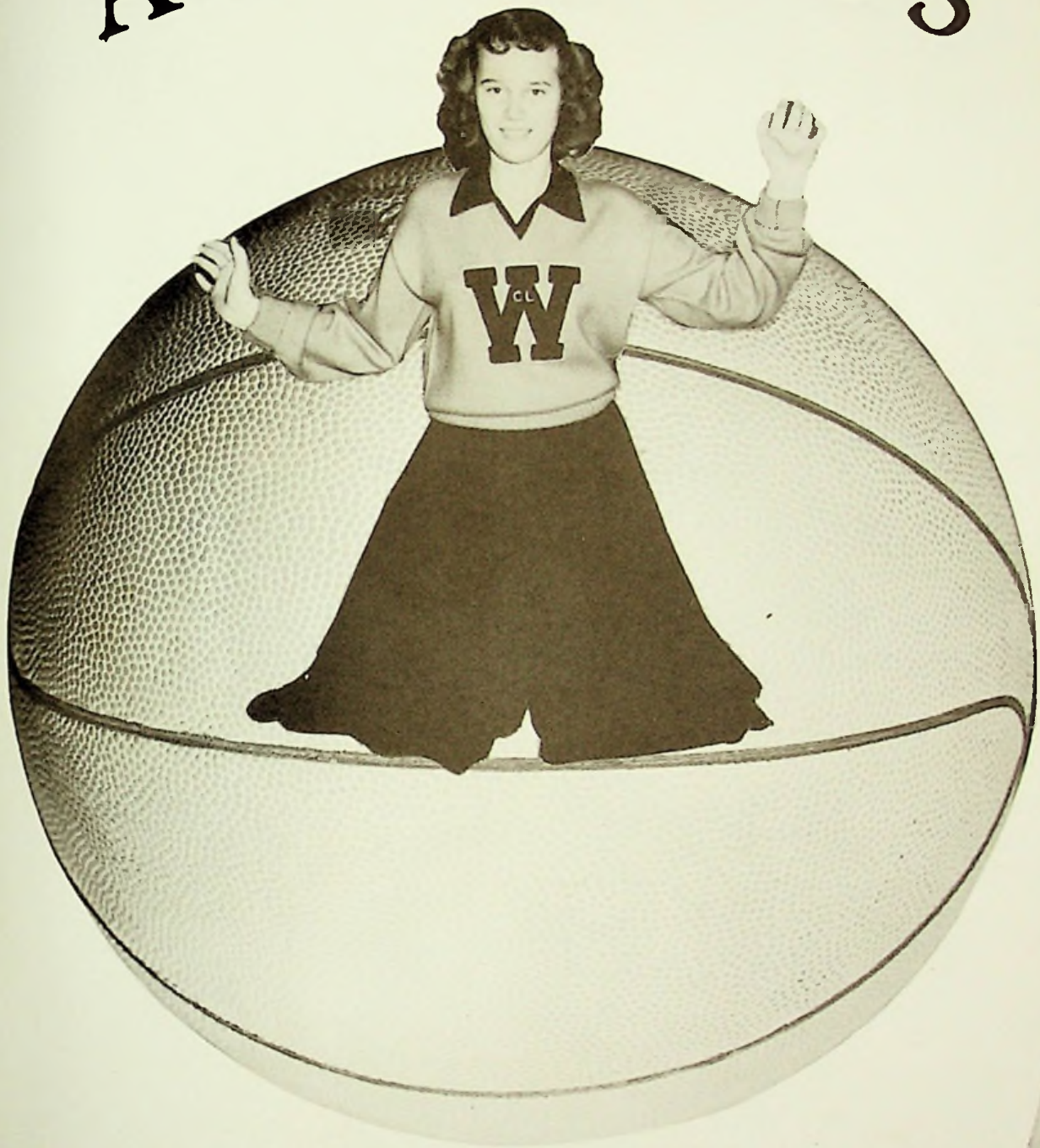
GIRLS SEXTET, (L to R) L. Vaughters (at the piano), L. Speck, B. Brandel, P. Frasher, B. Litz, J. Jordan.

CARTER'S RESTAURANT

FREE PRESS CO. -- PRINTERS



# ATHLETICS







**CHEERLEADERS**

C. Hazelbaker  
 N. Williams  
 R. Shivener  
 D. Keyser  
 N. Rapp  
 J. Love



**COACHES**  
 Mr. Cottle  
 Mr. Everling  
 Mr. Christian

**WRIGHT'S HATCHERIES**  
**ROY ZUEFFLE, JEWELER**

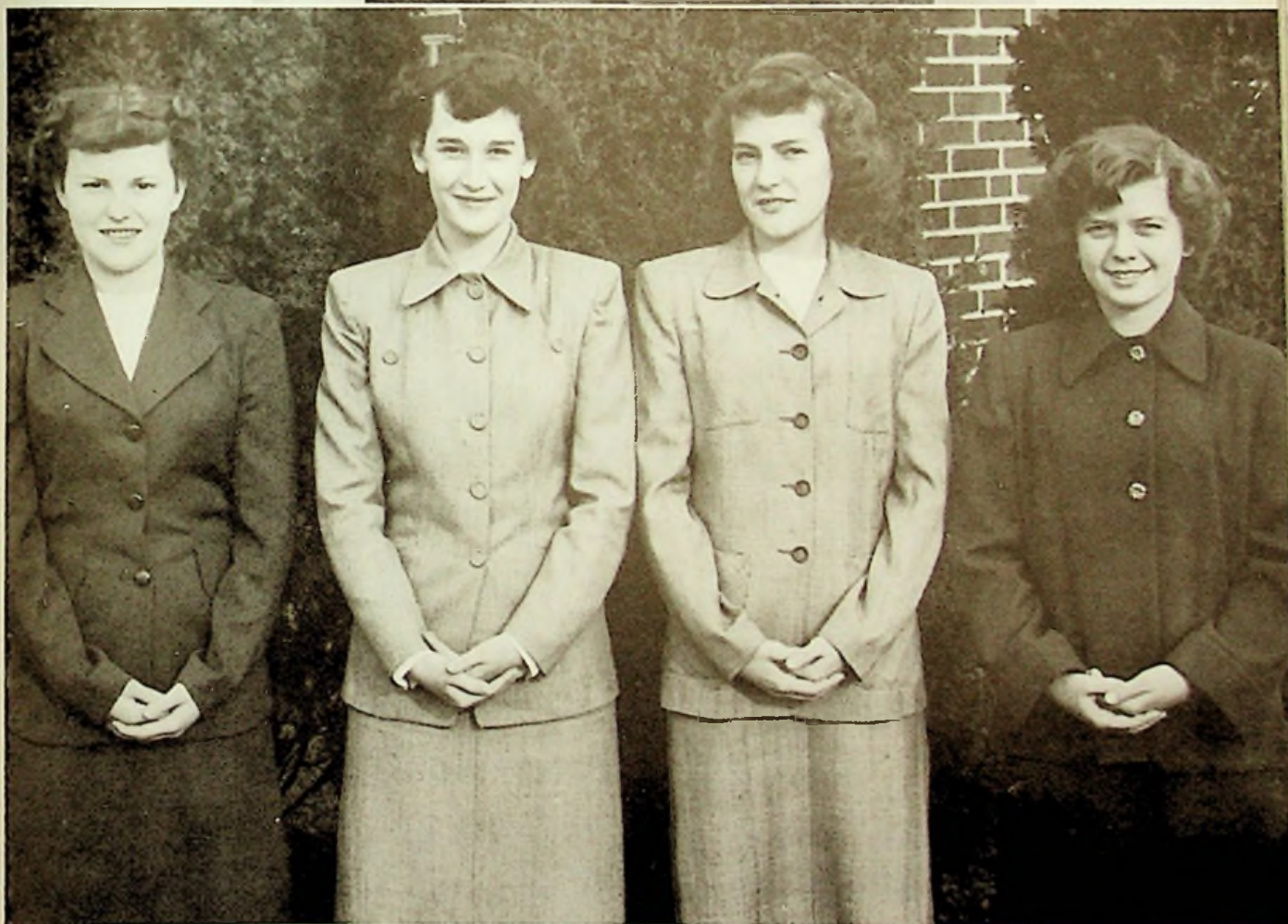


**FOOTBALL**



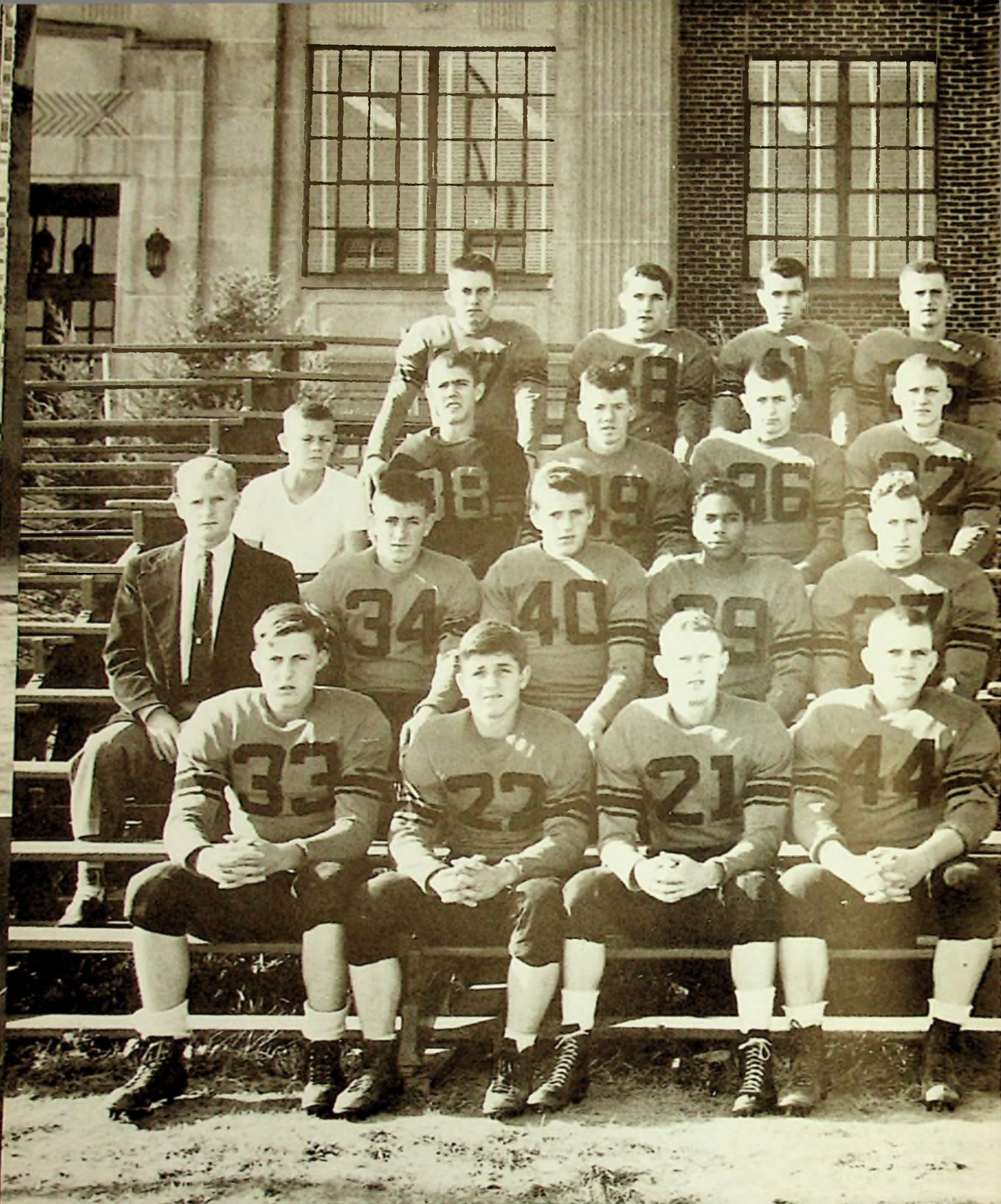
**QUEEN**

QUEEN  
Marcella Rexroad



ATTENDANTS, (L to R) A. Ridgeway, J. Tipton, L. Boyd, C. Brooks





FOOTBALL TEAM, (L to R) First Row, J. Foster, S. Gilmore, B. Hopper, J. Hicks. Second Row, Coach Cottle, P. Denning, J. Stockham, J. Wright, G. Evans. Third Row, Mgr. R. Entler, H. Blevins, H. Bailey, T. Spurlock, H. Keene. Fourth Row, D. Lester, K. Prince, R. Frailey, B. Brown.

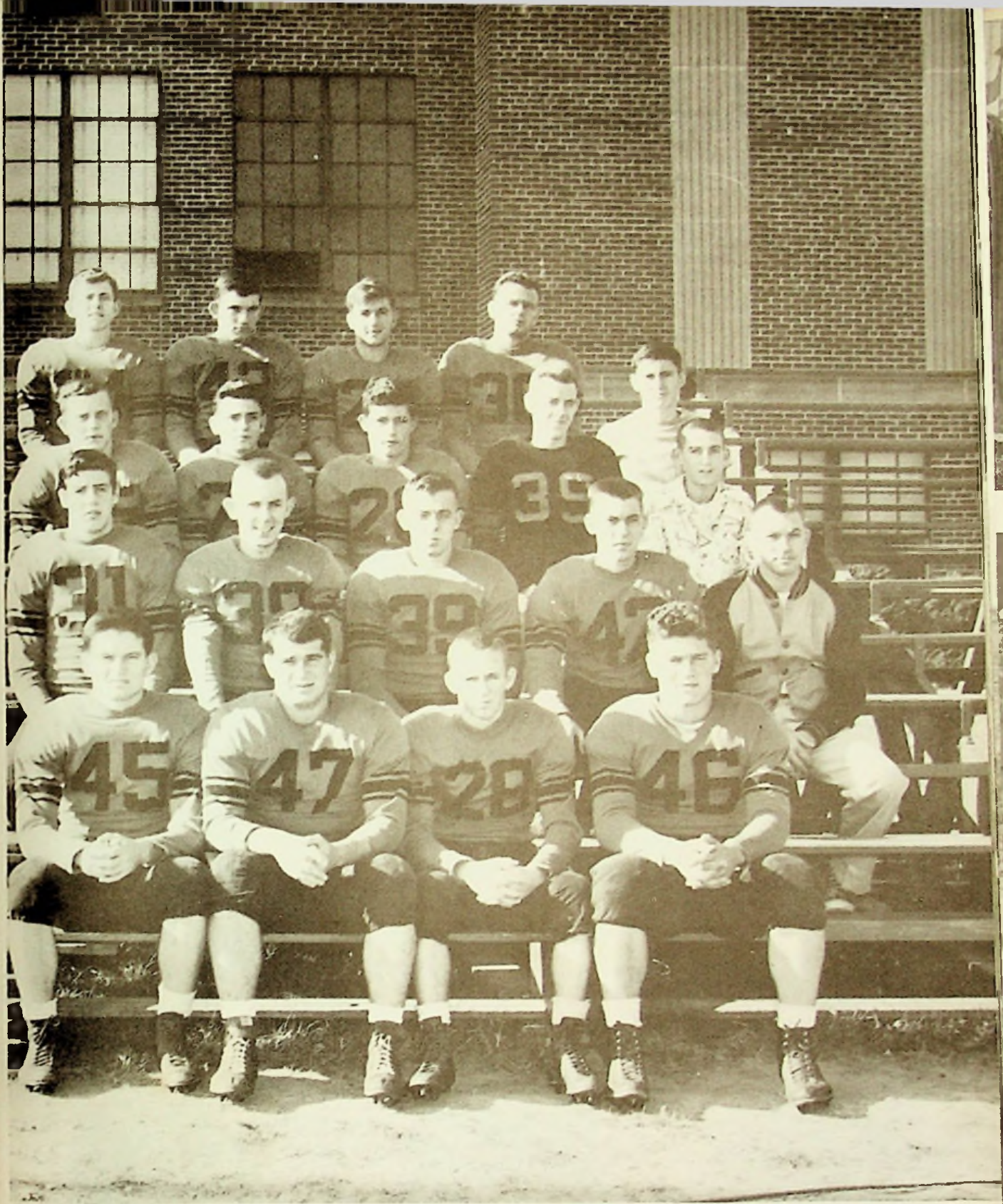
DONALD DILLON, 202 MASONIC BLDG.

58 Fire

-- INSURANCE --

Auto





FOOTBALL TEAM, (L to R) First Row, R. Meeker, A. Journey, J. Bower, C. Henderson. Second Row, F. Shepherd, B. Barnett, E. Mitchell, B. Litz, Coach Everling. Third Row, T. Waller, E. Givens, B. Gilkerson, T. Sutton, Mgr. P. Meyers. Fourth Row, R. Spurlock, W. Gilmore, M. Kennard, D. Entler, J. Schwamberger.





Bob Gilkerson  
Guard



Allen Journey  
Tackle



Bob Barnett  
Center



Marvin Kennard  
Guard



Zeke Entler  
End



Woodie Gilmore  
Half Back



Jack Bower  
Quarterback



Richard Meeker  
End



Kerm Prince  
Tackle

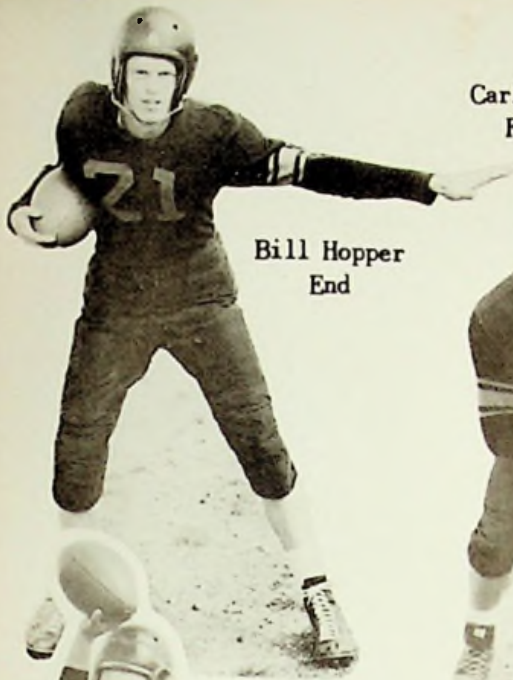


Charles Mitchell  
Tackle



Gerald Evans  
Guard





Bill Hopper  
End

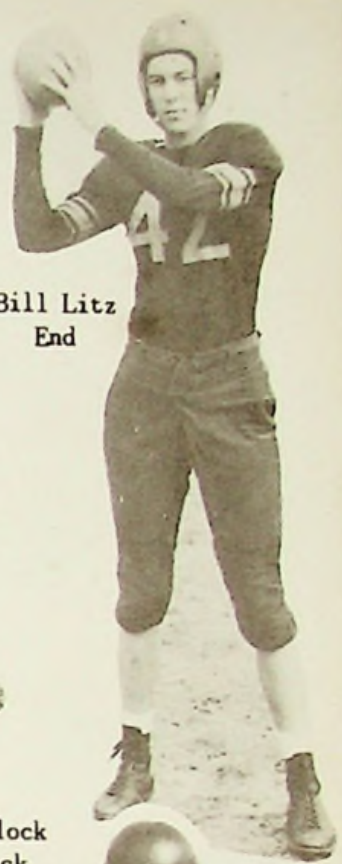
Carl Henderson  
Full Back



Jack Hicks  
Half Back



Bill Litz  
End



Bob Brown  
Quarterback



Junior Bailey  
Center



Tom Spurlock  
Half Back



Don Lester  
Center

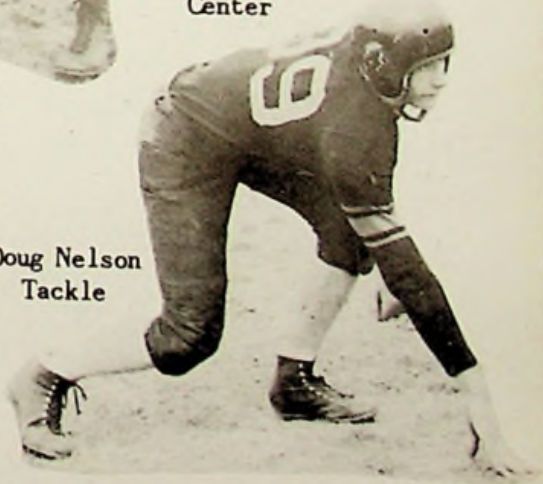


Tom Waller  
Guard

Jack Stockham  
Tackle



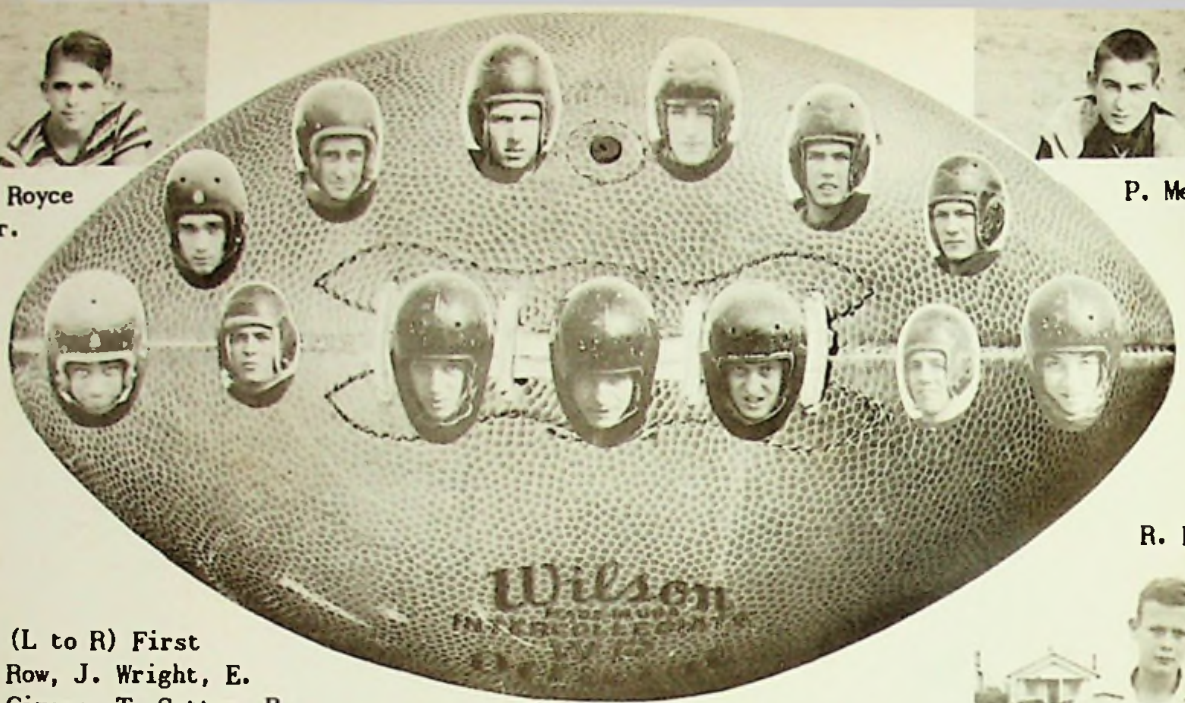
Doug Nelson  
Tackle





L. Royce  
Mgr.

P. Meyers  
Mgr.



Mgr.  
R. Entler

(L to R) First Row, J. Wright, E. Givens, T. Sutton, R. Staggs, J. Foster, F. Shepherd, S. Gilmore. Second Row, R. Frailey, J. Schwamberger, R. Spurlock, P. Denning, H. Blevins, H. Keene.  
(L to R) Captain Gilmore, Coach Everling, Captain Entler.



SEASON RECORD

W.H.S.	54	Coalton	0
W.H.S.	26	C. Catholic	6
W.H.S.	6	McArthur	0
W.H.S.	31	Waverly	12
W.H.S.	19	Oak Hill	27
W.H.S.	31	Hillsboro	7
W.H.S.	26	New Boston	6
W.H.S.	6	East	18
W.H.S.	53	South Point	0

INDIVIDUAL SCORING

Henderson	78 Points
Gilmore	66 Points
Bower	54 Points
Meeker	27 Points
Entler	14 Points
Brown	6 Points
Journey	6 Points
T. Spurlock	1 Point



WOLFF—GOOD CLOTHES

CHABOT'S SUPER SERVICE



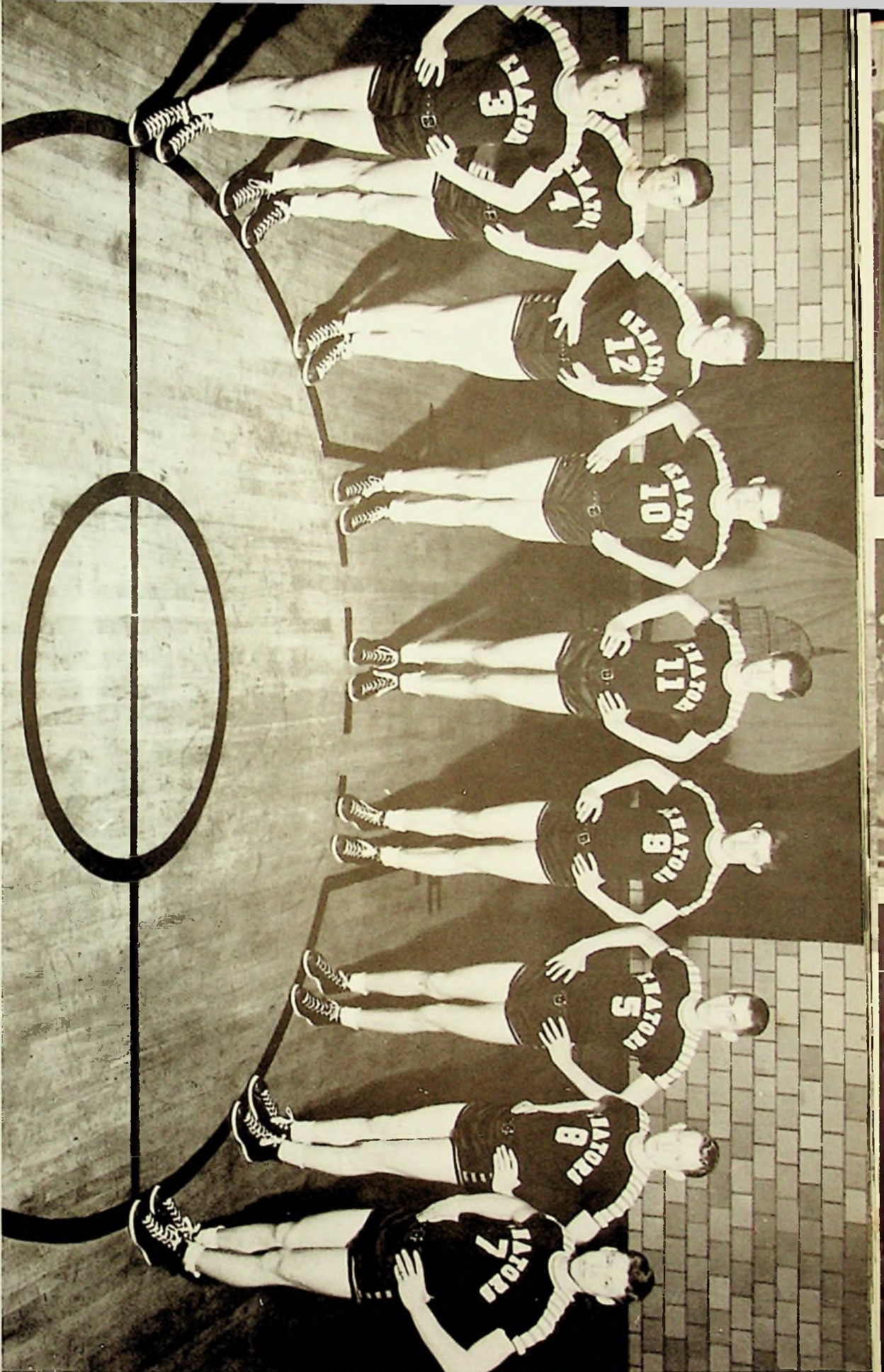


BROCK FUNERAL HOME  
PIATT FUNERAL HOME









VARSIITY BASKETBALL (L to R) Bill Hopper, Pete Fenimore, Jack Stocckham, Kenneth Horsley, Paul Morrow, Bob Rice, Bill Litz, Charles Carter, Jim Williams.

AEH'S FOOD MARKET  
CARR JEWELRY





Bob Rice, Forward



Paul Morrow, Center



Pete Fenimore, Forward



Jack Stockham, Guard



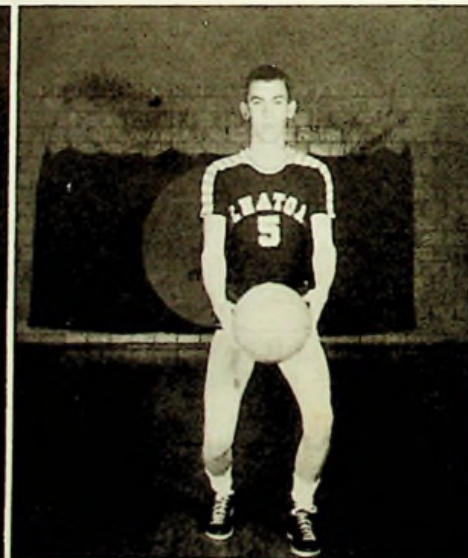
Charles Carter, Forward



Bill Hopper, Forward



Kenneth Horsley, Center



Bill Litz, Guard



Jim Williams, Guard





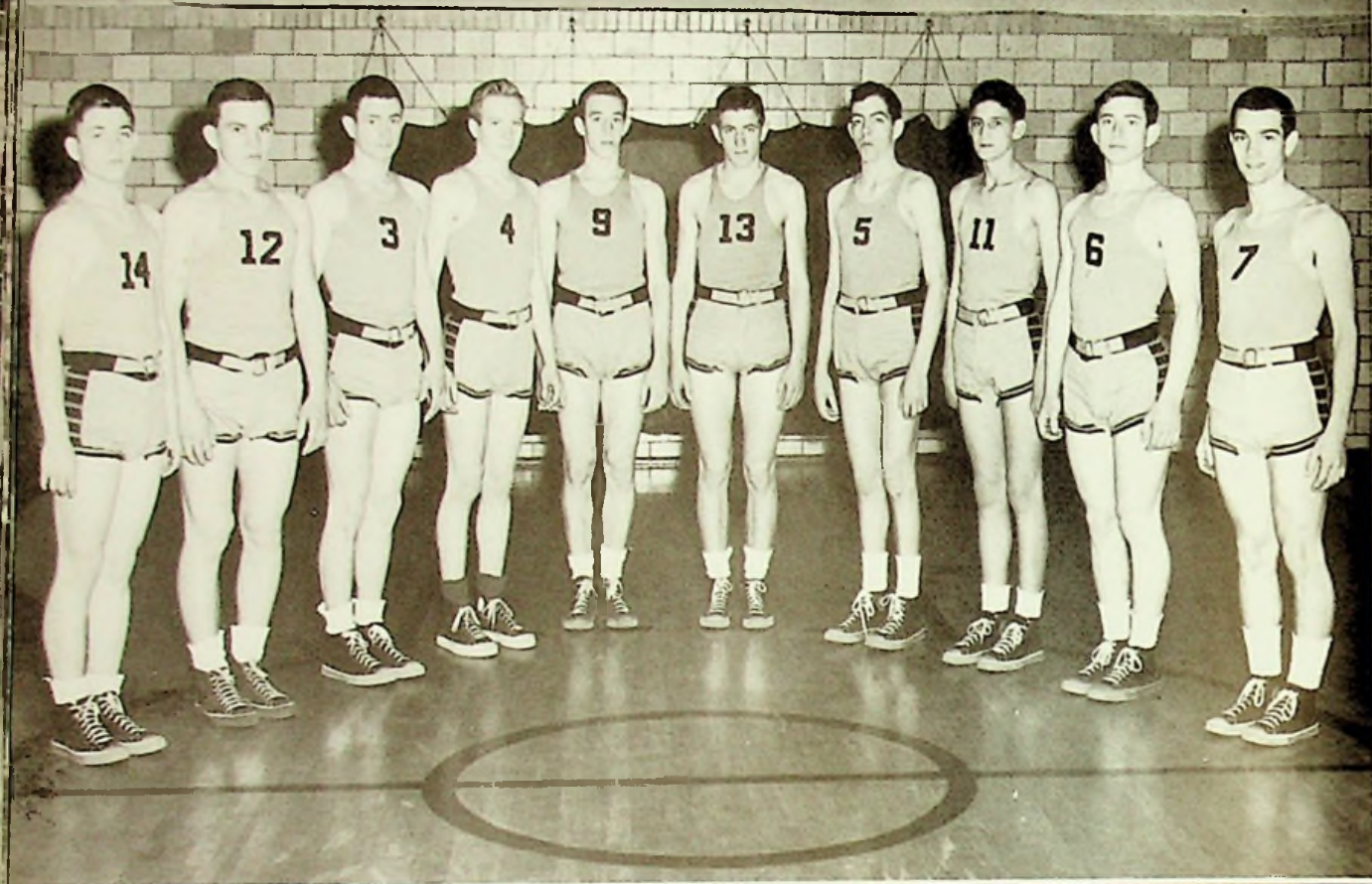
**ACTION**

**SHOTS**



WURSTER'S DRUG STORE  
LONG & COMPANY, Furniture





**RESERVE  
BASKETBALL**

(L to R) S. Gilmore, J. Hicks, T. Spurlock, R. Davis, T. Sutton, P. Denning, J. Cook, H. Mefford, R. Spurlock, R. Frailey.

Manager, Bob Lewis

**CAPTAINS  
Fenimore, Rice**







**EIGHTH GRADE BASKETBALL**, (L to R) First Row, P. Farley, E. Kennard, D. Shaffer, G. Birchfield, R. Elrod, J. Bower, R. Damron. Second Row, K. Hamer, D. Williams, F. Arnett, W. Sparks, E. Ward, T. Payne. Third Row, R. Payne.



**CHEERLEADERS**, (L to R) First Row, N. Smith, N. Peters, J. Callihan, S. Jones, O. Ridgeway. Second Row, L. Bower, S. Kitchen, M. McCoewn, J. Knauff, P. Smith.

**CRAIGMILE'S FURNITURE STORE**  
 "IN ANY EVENT SEND KIRBY'S FLOWERS"



# Fenimore Gets 36 Points For W.H.S.

Pete Fenimore netted 36 points to lead the Washington Senators to a 64-to-41 victory over Otway Saturday night. Davis tallied 16 for the losers.

Washington took the reserve game easily, 35 to 15. On Tuesday night the Senators are host to the East Tartans.

Wash	G	F	T	Wash	G	F	T
Fenimore	0	0	0	Fenimore	17	2	26
Davis	4	2	10	Rice	3	2	8
Stork	5	1	11	Morrow	2	0	4
Stork	1	2	4	Williams	0	0	2
Stork	0	0	0	Srockman	3	0	6
Stork	0	0	0	Hopper	0	0	0
Stork	0	0	0	Smith	3	2	8
Stork	0	0	0	Horsley	0	0	0
Totals	14	13	41	Totals	28	3	44

# W.H.S. Comes From Behind To Nip S.W.

Washington's Senators came from behind to nip the South Webster Jeps, 55 to 48, Tuesday night on the losers' floor in a game which saw 51 personal fowls shed.

Washington lost two men on this and the Jeps lost three. It was a big fourth period which won for the Senators as they outscored the host team, 20 to 6. Morrow got 15 for Washington while Burton got the same number for Webster.

The Senators took the reserve game, 26 to 13.

Washington	G	F	T	So. Webster	G	F	T
Morrow	3	2	8	McGraw	4	1	9
Burton	0	0	0	Bouts	0	1	1
Burton	3	7	13	Culker	3	2	8
Burton	6	3	15	Garrett	0	1	1
Burton	1	1	3	Barton	4	7	15
Burton	4	3	9	Tracy	0	1	1
Totals	17	16	41	Totals	11	15	34

# Valley's Indians Bite Dust, 52-44

Washington's Senators were successful here last night in defeating the local stockade against an attack by the Lucasville Indians, 52 to 44. Rice was No. 1 marksmen for Washington with 11, while Bricker collected 15 elts for the Redskins.

Washington also took the reserve skirmish, 31 to 26, led by Denning with 16. Newsome was the star for the losers. The Senators' next game will be on their home floor against McDermott Thursday. The game originally was set for Friday.

Lucasville	G	F	T	Washington	G	F	T
Bricker	4	7	15	Fenimore	3	2	8
Bricker	2	1	3	McDavid	0	0	0
Bricker	0	0	0	Day	3	0	6
Bricker	0	0	0	Morrow	2	0	4
Bricker	2	2	6	Carter	2	0	4
Bricker	2	4	8	Williams	2	0	4
Bricker	3	1	7	Hopper	0	0	0
Bricker	0	2	2	Totals	13	16	41
Bricker	0	1	1	Totals	12	16	34
Bricker	0	0	0	Totals	16	12	44

# Washington Nip Green Team, 52-49

Washington's Senators came from behind to nip the Green Bobcats, 52 to 49, Friday on the losers' floor. Fenimore scored 17 for Washington.

Denning got 15 as the Senators won, 39 to 12. Leacham scored 11 for Green.

Washington	G	F	T	Green	G	F	T
Fenimore	6	4	17	McDavid	1	0	2
Wright	6	3	15	Day	3	0	6
Morrow	6	2	14	Morrow	2	0	4
Stockman	0	2	4	Bricker	2	1	5
Chapman	1	0	2	Newsome	1	0	2
Williams	0	0	0	VanHorn	0	0	0
Lutz	1	0	2	Totals	12	37	52

# Clay Romps Over Senators, 53-28

The Clay High School Footballers, currently the hottest ball team in the Scioto League, chalked up another victory Saturday night as Washington fell, 52 to 38.

The Panthers led the contest and never were in danger. They scored 33 points in the first half and coasted in front. Pelligrinon led the Panthers with 15 points while Fenimore got the Senators.

The Clay reserves never overtook the Senator reserve team. Denning scored the same for Washington.

Clay	G	F	T	Washington	G	F	T
Lucasville	3	0	6	Arnett	2	1	5
Arnett	0	0	0	Nelson	2	2	6
Arnett	3	2	8	Bricker	0	0	0
Arnett	3	2	8	Moulton	1	0	2
Arnett	0	0	0	Morrice	10	3	25
Arnett	1	0	2	Matlin	1	1	3
Arnett	0	2	4	Adkins	1	2	4
Arnett	0	1	3	Newsome	0	0	0
Arnett	0	1	1	Burton	5	1	11
Arnett	0	0	0	Hancy	0	0	0
Totals	12	8	32	Totals	22	10	54

# Green Five Senator

All the Washington Senators had a scrap fight down in the South Webster and Washington game before the Jeps out of the wire pulled the game out early to 33. The winners treated the losers to a terrific last half.

The Washington Senators reserves edged out the Bobcats in an overtime period, 25 to 23.

Green	G	F	T	Washington	G	F	T
McDavid	1	0	2	Fenimore	3	2	8
Day	3	0	6	McDavid	0	0	0
Morrow	2	0	4	Day	3	0	6
Bricker	2	1	5	Morrow	2	0	4
Newsome	1	0	2	Carter	2	0	4
VanHorn	0	0	0	Williams	2	0	4
Totals	10	1	23	Hopper	0	0	0
Totals	10	1	23	Totals	13	16	41

# Senators Win Fast Nudges Opener Over Washington Rarden, 61-25

Washington's Senators came from behind to nip the Green Bobcats, 52 to 49, Friday on the losers' floor. Fenimore scored 17 for Washington.

Denning got 15 as the Senators won, 39 to 12. Leacham scored 11 for Green.

Washington	G	F	T	Green	G	F	T
Fenimore	6	4	17	McDavid	1	0	2
Wright	6	3	15	Day	3	0	6
Morrow	6	2	14	Morrow	2	0	4
Stockman	0	2	4	Bricker	2	1	5
Chapman	1	0	2	Newsome	1	0	2
Williams	0	0	0	VanHorn	0	0	0
Lutz	1	0	2	Totals	12	37	52

Washington's Senators came from behind to nip the Green Bobcats, 52 to 49, Friday on the losers' floor. Fenimore scored 17 for Washington.

Denning got 15 as the Senators won, 39 to 12. Leacham scored 11 for Green.

Washington	G	F	T	Green	G	F	T
Fenimore	6	4	17	McDavid	1	0	2
Wright	6	3	15	Day	3	0	6
Morrow	6	2	14	Morrow	2	0	4
Stockman	0	2	4	Bricker	2	1	5
Chapman	1	0	2	Newsome	1	0	2
Williams	0	0	0	VanHorn	0	0	0
Lutz	1	0	2	Totals	12	37	52

# Wheelerburg Nips Washington

Washington's Senators came from behind to nip the Green Bobcats, 52 to 49, Friday on the losers' floor. Fenimore scored 17 for Washington.

Denning got 15 as the Senators won, 39 to 12. Leacham scored 11 for Green.

Washington	G	F	T	Wheelerburg	G	F	T
Fenimore	6	4	17	McDavid	1	0	2
Wright	6	3	15	Day	3	0	6
Morrow	6	2	14	Morrow	2	0	4
Stockman	0	2	4	Bricker	2	1	5
Chapman	1	0	2	Newsome	1	0	2
Williams	0	0	0	VanHorn	0	0	0
Lutz	1	0	2	Totals	12	37	52

# Minford Wins 8th Straight In County League

Washington's Senators came from behind to nip the Green Bobcats, 52 to 49, Friday on the losers' floor. Fenimore scored 17 for Washington.

Denning got 15 as the Senators won, 39 to 12. Leacham scored 11 for Green.

Washington	G	F	T	Wheelerburg	G	F	T
Fenimore	6	4	17	McDavid	1	0	2
Wright	6	3	15	Day	3	0	6
Morrow	6	2	14	Morrow	2	0	4
Stockman	0	2	4	Bricker	2	1	5
Chapman	1	0	2	Newsome	1	0	2
Williams	0	0	0	VanHorn	0	0	0
Lutz	1	0	2	Totals	12	37	52

# Wheelerburg Wins Overtime Winner

Washington's Senators came from behind to nip the Green Bobcats, 52 to 49, Friday on the losers' floor. Fenimore scored 17 for Washington.

Denning got 15 as the Senators won, 39 to 12. Leacham scored 11 for Green.

Washington	G	F	T	Wheelerburg	G	F	T
Fenimore	6	4	17	McDavid	1	0	2
Wright	6	3	15	Day	3	0	6
Morrow	6	2	14	Morrow	2	0	4
Stockman	0	2	4	Bricker	2	1	5
Chapman	1	0	2	Newsome	1	0	2
Williams	0	0	0	VanHorn	0	0	0
Lutz	1	0	2	Totals	12	37	52

# Senators Wallop McDermott, 53-33

Washington's Senators came from behind to nip the Green Bobcats, 52 to 49, Friday on the losers' floor. Fenimore scored 17 for Washington.

Washington	G	F	T	McDermott	G	F	T
Fenimore	6	4	17	McDavid	1	0	2
Wright	6	3	15	Day	3	0	6
Morrow	6	2	14	Morrow	2	0	4
Stockman	0	2	4	Bricker	2	1	5
Chapman	1	0	2	Newsome	1	0	2
Williams	0	0	0	VanHorn	0	0	0
Lutz	1	0	2	Totals	12	37	52





Mr. Christian, Advisor; Nancy Moore, Editor

Don Moore, Photographer

Rita Shivener, Typist

# ANNUAL STAFF



ANNUAL STAFF, (L to R) D. Moore, N. Moore, J. House, L. Johnson, J. Martin, J. Hopkins, R. Shivener, J. Lindsay, R. Cook (withdrawn), J. Vaughters, C. Cook.

J. Martin, Sales; J. House, Artist;  
J. Vaughters, Accounts

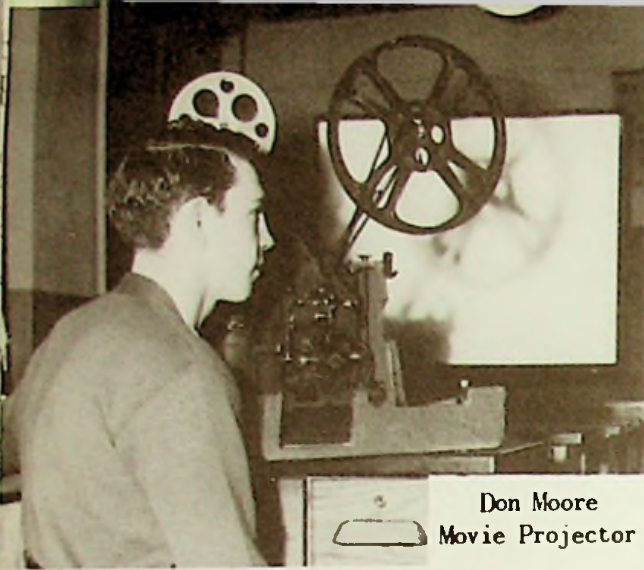
Charles Cook, Assistant Editor

J. Hopkins, Ads; J. Lindsay, Sales  
L. Johnson, Ads

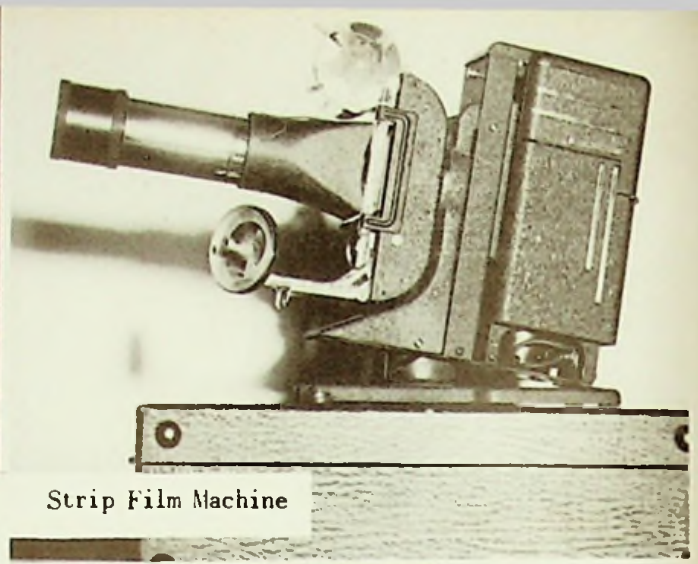


COMPLIMENTS OF SELECT DAIRY  
MARVIN JONES--LINCOLN, MERCURY

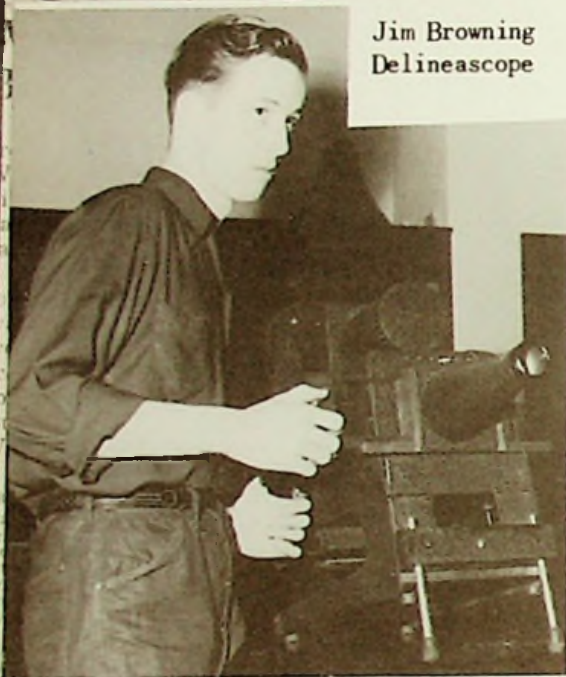




Don Moore  
Movie Projector



Strip Film Machine



Jim Browning  
Delineascope

V  
I  
S  
U  
A  
L



Bonnie Litteral  
Dictaphone

E  
D  
U  
C  
A  
T  
I  
O  
N



Charles Cook  
Mimeograph

Mr. Rolf  
Wire Recorder



"SAY IT WITH FLOWERS FROM HERMS"  
STEWART'S DRUGS





June Love has a promising future in dancing.



Phillis Yeager has been winning many awards in the Portsmouth Rifle Club.



Paul Morrow won the Foul Shooting Contest in the County Tournament.



Allen Journey won the Most Valuable Football Player award.



Pete Fenimore won the Most Valuable Basketball Player award.



# CLASS OF 1940



FIRST SENIOR CLASS, (L to R) First Row, Lee Evans, Carl Meyers, Doris Fawns, Eloise Rianer, Ray Mauk, Paul Hopkins. Second Row, Carlos Stepp, Delbert Peed, Nile Davis, Robert Lowe, Clarence Henderson. Third Row, Mr. Rolf, Principal; Miss Bennett, Advisor.

Since Washington High School has been in operation a decade and there was no annual that first year, the Senior Class of 1950 is proud to present a picture of the first graduating class.

THE PASTRY SHOP AND ANNE'S PASTRY SHOP  
COMPLIMENTS OF MODERN GRILL





(L to R) No. 1, Entler kissing the Queen; No. 2, M. Himes, L. Vaughters; No. 3, E. Virgin, B. Harrison; No. 4, M. Mann, L. Johnson; No. 5, P. O'Dell, O. Rodgers, R. Floyd, H. Wright; No. 6, F. Brown; No. 7, V. Mullen; No. 8, B. Wessel; No. 9, D. Entler and Friend (?)



# SCHOLARSHIP



Barbara Meyers, English 10  
Second in the District  
Eighth in the State



Joyce Vaughters (Top Center)  
Biology - 4th in the District  
Pearl Swearingen (Below)  
Latin 1 - 3rd in the District



Judy Jordan, English 11  
Third in the District

Janet Hurst (Center)  
English 10 - 4th in the District  
12th in the State



Nancy Moore (Bottom Center)  
English 11 - 1st in the District  
2nd in the State



Hazel Meyers, American History  
3rd in the District  
15th in the State

MARTINGS

"One of Ohio's Good Stores"



# SCHOLARSHIP



Billie Conley, English 9  
4th in the District

Don Moore, American History  
5th in the District

Kenneth Horsley (Top Center)  
Bookkeeping 1  
3rd in the District  
17th in the State



Tom Shump (Center), Algebra  
6th in the District

Paul Whaley (Below)  
8th Grade - 3rd in the County



Donald Varney (Bottom Center)  
General Science  
6th in the District



Marian Meade, 8th Grade  
1st in the County  
9th in the State





1913

NAUVOO



NAUVOO

1950

HOMER SCHAFER'S GROCERY AND FILLING STATION  
WILLIAMS' GROCERY, SUGAR GROVE





The pictures at the top of both pages seventy-eight and seventy-nine were furnished through the courtesy of Mrs. Richard Buffinger.

1913



These two pictures of Nauvoo in 1913 were presented to the Annual Staff through the courtesy of Mrs. Richard Buffinger.

The rapid growth of this community is vividly shown by the comparison of the early pictures with those of 1950.





1., N. Payton, D. Lester; 2., M. Charles, E. Mitchell; 3., P. Frasher, R. Meeker; 4., J. Jordan, J. Applegate; 5., J. Bailey, K. Prince; 6., R. Fralley, B. Litz; 7., J. Bower, R. Shiver; 8., L. Boyd, W. Gilmore; 9., A. Journey, M. Mann; 10., B. Barnett, N. Moore; 11., C. Cook, B. O'Dell; 12., D. Moore, N. Craigler.







1. Paul Morrow  
2. Eighth Grade Gym Class



3. Mr. Royce; 4. School Dance; 5. Mr. Delong and Mr. Rolf; 6. School Dance; 7. School Assembly.





**JUNIOR CLASS PLAY**

**" TAKE YOUR MEDICINE "**

- E. Dillow*.....Miss Holt
- F. Smith*.....Lottie
- J. Hurst*.....Pat Pryer
- N. Creech*.....Dottie
- N. Richey*.....Dodie Blake
- E. Jones*.....Henry Dodson
- N. Payton*.....Jackie Benson
- J. Colley*.....A demented patient
- K. Horsley*.....Dr. Jackson
- H. Weghorst*.....Mr. Puckett
- L. Vaughters*.....Dovie Finkledink
- D. Lucas*.....Angela Warren
- B. Wessell*.....Woman visitor
- V. Zimmerman*.....Woman's little girl
- J. Sparks(not pictured)*.Cordelia Puckett
- Inset, Mr. McClure*.....Director

(Top Right)

- B. Meyers*.....Miss Holt
- O. Smalley*.....Lottie
- L. Boyd*.....Dottie
- J. Hurst*.....Pat Pryer
- J. Andre*.....Mr. Puckett
- E. Virgin*.....Henry Dodson
- J. Cook*.....Jack Benson
- N. Rapp*.....Dodie Blake
- D. Lester*.....Dr. Jackson
- J. Wedebrook*.....Cordelia
- B. Litz*.....Angela Warren
- B. Literal*.....Dovie Finkledink
- B. Wessell*.....Woman visitor
- V. Zimmerman*.....Woman's little girl

(Top Left)











Bob Barnett  
Catching



Eugene Smalley  
First base and pitching

Jack Stockham  
Third Base



Pete Fenimore  
Second Base



Woody Gilmore  
Pitcher

Jack Eower  
Shortstop

Bob Rice (not pictured)  
Outfield

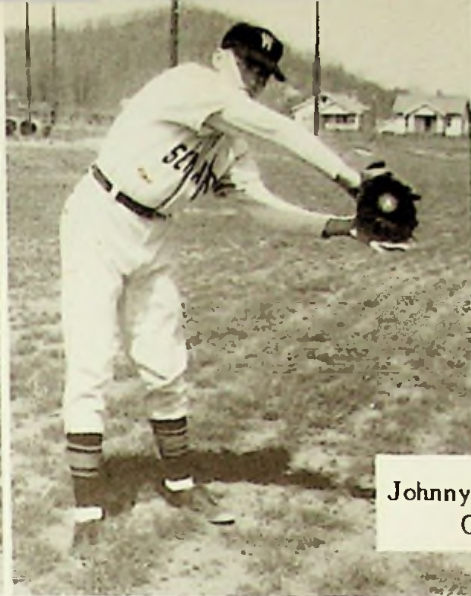
Baseball Schedule

Mar. 31	Minford	Away
Apr. 7	McDermott	Here
Apr. 11	Waverly	Away
Apr. 14	South Webster	Away
Apr. 18	Wheelersburg	Here
Apr. 21	Green	Away
Apr. 25	Clay	Here
Apr. 28	Lucasville	Here
May 2	New Boston	Here
May 3	Chesapeake	Here
May 9	Portsmouth E.	Away
May 16	South Point.	Away
May 18	Central Cath.	Here





Everett Virgin  
Outfield



Johnny Schwamberger  
Outfield

Harold Mefford  
Infield

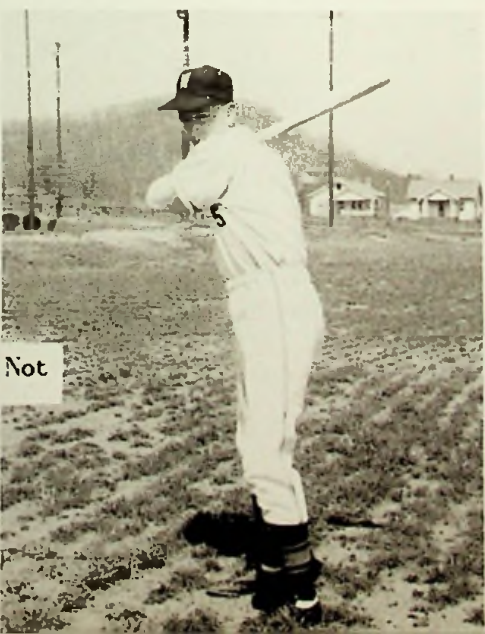
Charles Elrod (Center)  
Manager

Steve Gilmore  
Infield

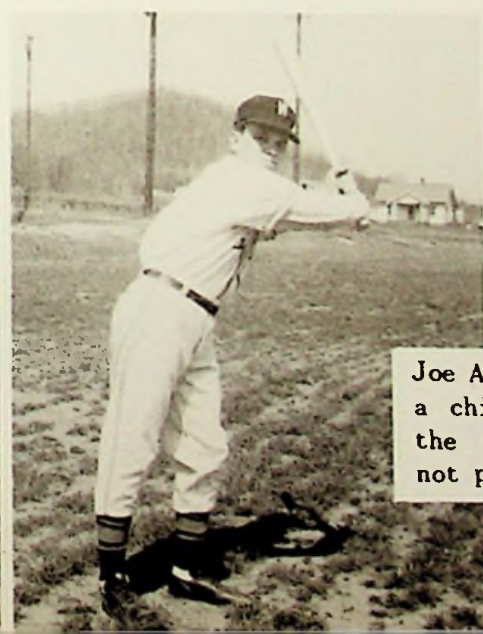


Paul Denning  
Outfield

Jack Hicks  
First base and Pitching



Oscar Swords, Not  
pictured.



Joe Andre suffered  
a chipped bone in  
the elbow and is  
not pictured.





1. Flood Scene; 2. D. Bussa, E. Black, J. Book; 3. Front Row, J. Bower, A. Journey, W. Gilmore; Middle Row, M. Kennard, R. Meeker; Top Row, E. Mitchell, G. Evans, B. Rice; 4. E. Jones; 5. Eighth Grade Gym Class; 6. Building Custodians, C. Reynolds, R. Calver, C. O Neil.

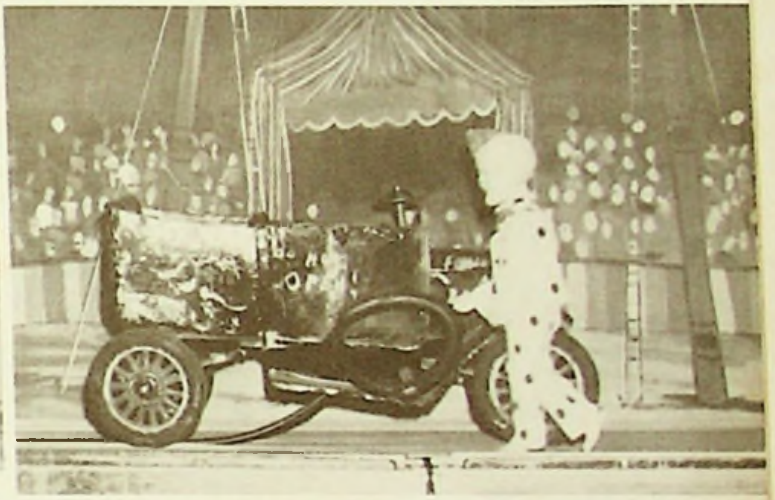
S. S. KRESGE COMPANY

86 ADAMS BAKING COMPANY -- BAKERS OF PAN-DANDY BREAD





Four Shakespearian scenes by Jack Rank, impersonator.



Circus scenes by  
Coles Marionettes.

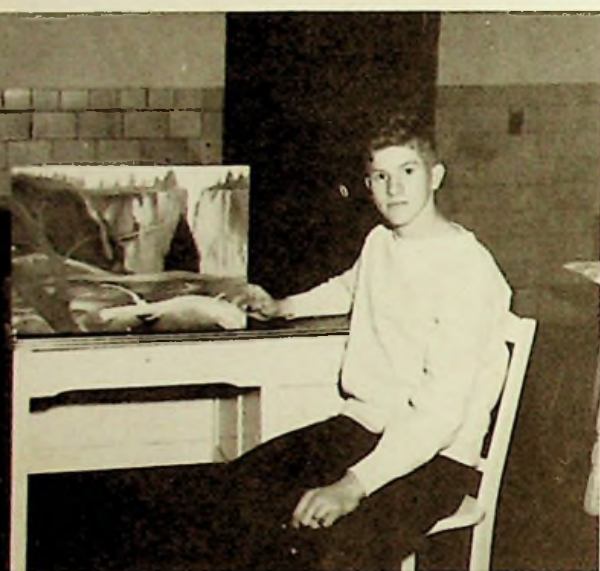
Evelyn, the magician.

Mr. Chavre, speaker from Bom-  
bay, India, and Girdell Mit-  
chell, acting as a model.



*Four Keys*  
  
*Restaurant*





**VARSIY CHEERLEADER**  
 MEDALS  
 CAROLYN HAZELBAKER  
 DELORIS KEYSER  
 RITA SHYENER  
 NAOMI WILLIAMS

**RESERVE LETTERS**  
 JUNE LOVE  
 NANCY RAPP

**RESERVE LETTERS**

JACK COOK  
 RICHARD DAVIS  
 PAUL DENNING  
 RAY FRALEY  
 STEVE GILMORE  
 FRANK SHEPHERD  
 TOM SPURLOCK  
 RICHARD SPURLOCK  
 TED SUTTON

**MOST VALUABLE PLAYER AWARD**  
 PETE FENIMORE

**COUNTY FOUL SHOOTING CHAMP**  
 PAUL MORROW

**BEST SPORTSMAN**  
 PAUL MORROW

**VARSIY BASKETBALLS**

PETE FENIMORE  
 PAUL MORROW  
 BOB. RICE  
 BOB. LEWIS

**LETTERS**

CHARLES CARTER  
 BILL HOPPER  
 BILL LITZ  
 KENNETH WORSLEY  
 JACK STOCKHAM  
 JIM WILLIAMS

1. Jean Housse; 2. Barbara Brandel; 3. Don Gardner; (These three students made these drawings and submitted them for the "Clarence Carter Week" display held in Portsmouth); 4. G. Stout; 5. G. Watts; 6. V. Garris; 7. Scholarship trophies; 8. Balloon blowing contest; 9. Tippy Dye, Ohio State Basketball Coach, speaker at the basketball banquet; 10. The awards made at the banquet.



