

*Panther*  
1961



h+0  
#4  
\$16.00









**PANTHER  
1961**

**CLAY HIGH SCHOOL  
Portsmouth, Ohio**





## CONTENTS

ADMINISTRATION	5
SENIORS	11
SCHOLARSHIP	25
CLUBS AND ACTIVITIES	43
UNDERCLASSMEN	65
SPORTS	81
ADVERTISING	95





## FOREWORD

Each school year brings to the students a new year of growth. The extent of each individual student's growth depends upon his capabilities and interests.

In our 1961 Panther we shall try to give you a glimpse of some of the factors which influence the growth of the students at Clay High School.



Come and get it!



One at a time, fellas!



Changing Classes



Our most popular activity



School's out!



Going home

# ADMINISTRATION



As a tree grows tall and strong with the proper balance of nature's elements, so a student reaches his maximum potentials through a well balanced program planned by the combined efforts of the administrators, teachers, and counselors.



EDWARD R. McCOWEN  
County Superintendent



FRANK TAYLOR  
Assistant County  
Superintendent



N. B. POTTS  
Assistant County  
Superintendent

Superintendent McCowen said in a statement to us, "The future of our great democracy and a free world depends greatly upon the continued success of our rural public schools. We must not be content with the top ratings we now hold. We must constantly strive to advance in all educational fields and continue to lead the way for our American way of life and a greater United States of America.

I want to take this opportunity to congratulate all of the persons concerned in the educational organization of your school district and especially the student body for the excellent job you are doing.



ROBERT ALLEN



ALVIS GLENN



CHARLES VANDERPOOL



PAUL McCOY



GLENN MORITZ



KATHRYN MILLER



CARL D. BANDY  
Executive Head

Every individual is continually faced with the task of making wise choices which require critical thinking and good judgement.

It is our earnest desire here to provide each student and especially Seniors with the educational background to do critical thinking and use good judgement. The elements of critical thinking include (1) defining a problem; (2) locating, selecting and organizing information; (3) drawing conclusions in an acceptable form; (4) reconsidering conclusion.

ROBERT ESTEPP  
Supervising Principal

One aim of our school is to promote a program that will fit the needs of all our students and which will assist the students in adjusting themselves into future activities here at school and society. All activities are organized with this objective of helping and guiding our students into a way of life that will make them the very best of citizens.





JOSEPH CHILDERS

Music



DARLENE HUNTER

English



BEATRICE BENDER  
(English)



JOHN WOODDELL  
Science



LILLIAN DAVIS  
Commercial



ARCH JUSTUS  
Mathematics



CAROL CRUM  
Home Economics



CATHLEEN FLUTY

English



DAVID DAUTEL

History



LORETTA WOODS

Librarian



KINNEY LONG

Science



RUTH TAYLOR

Guidance Counselor



LENA RUBY  
Special Education

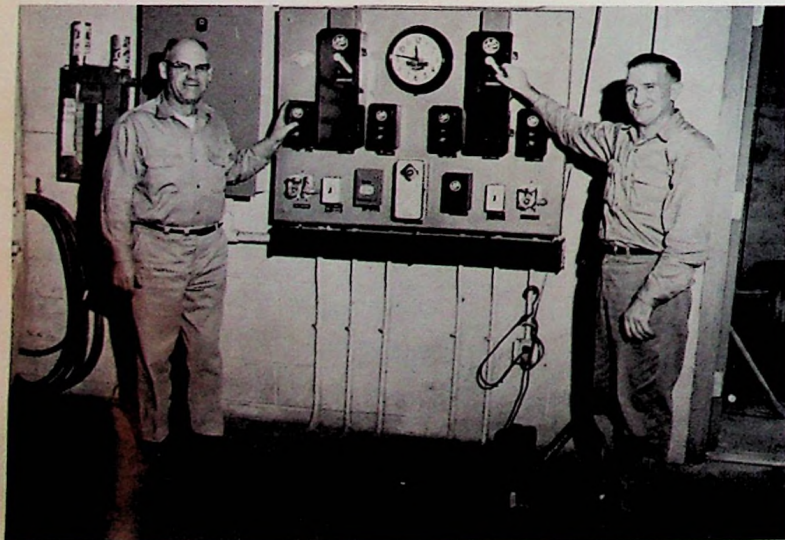


SAMUEL MOORE  
Industrial Arts



Mrs. Miller, the school secretary, performs many useful tasks about our school for the student body as well as the administration.

Feeding a school full of hungry teenagers is certainly an arduous task. Yet, Mrs. Gable and Mrs. Wiget always seem to combine pleasure with their work.



Even our janitors are getting in on the act in this age of push button control. But don't let this picture fool you, there is still plenty of grass to cut, windows to wash, and floors to sweep.



# SENIORS



"Mentally"

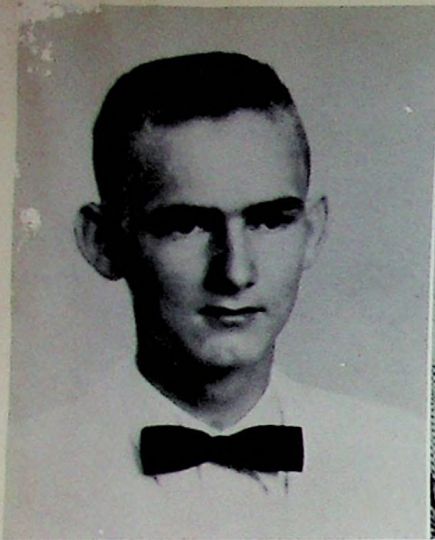


"Spiritually"



"Physically"

How well a tree withstands the inclement forces of nature depends upon the depth and strength of its roots. How well a student meets the rigid standards set by society depends upon the depth and strength of his physical, mental and spiritual development.



HAROLD ELLSWORTH ADAMS



JANET LEE BAILEY

Tony  
Concession Stand Worker 4.

Janet  
Bible Club 4; Girls' League 1, 2, 3, 4;  
Glee Club 1, 2, 3, 4; Mixed Chorus 2, 3,  
4; Class Play Crew 3, 4; Music Librarian  
2, 3, 4.

Judy  
Class Play Cast 3; Latin Club 1, 2, 3, 4;  
Girls' League 1, 2, 3, 4; Pep Club 2, 3, 4;  
Office Staff 3; Glee Club 2, 3; Music  
Festival 2, 3; Mixed Chorus 2, 3; Cheer-  
leader 3; Homecoming Attendant 4;  
Sextette 2, 3; Miss Galaxie Contest 4.

Bill  
Industrial Arts Club 1; Senior Scholarship  
Team 4; Band 1, 2, 3, 4; Music Festival 3,  
4; Dance Band 3, 4.



JUDITH ANN BARRETT



WILLIAM ALBERT BRATT



NANCY ELLEN BRYAN



RICHARD ALLEN BURCHETT

Nancy  
Student Director 4; Latin Club 1, 2, 3, 4;  
Concession Stand Worker 3; Girls' League  
1, 2, 3, 4; Senior Scholarship 4; Office  
Staff 3, 4; Band 1, 2, 3, 4; Music Festival  
2; Scholarship Team 2; Debate Team 3;  
Dance Band 2, 3, 4.

Richard  
Intramural Sports 2; Baseball 3, 4; Indus-  
trial Arts Club 3.



NANCY SUE BURGESS



ROYLENE CAROL CALLENDER

Nancy  
Girls' League 1, 2, 3, 4; Pep Club 1, 2, 3, 4; Glee Club 1, 2, 3; Music Festival 1, 2, 3, 4; Mixed Chorus 1, 2, 3; Cheerleader 1, 2; Homecoming Queen 4; Sextette 2, 3.

Roylene  
Intramural Sports 1, 2; Latin Club 1, 2, 3, 4; Concession Stand Worker 3, 4; Girls' League 1, 2, 3, 4; Pep Club 1, 2, 3; Glee Club 1, 2, 3, 4; Music Festival 2, 3; Mixed Chorus 2, 3, 4; Class Play Crew 3, 4.

Jim

Intramural Sports 1, 2, 3, 4; Baseball 1; Class Play Crew 3, 4; Concession Stand Worker 2, 3, 4; Pep Club 1, 2, 3, 4; Music Festival 3, 4; Mixed Chorus 3, 4; Basketball 1, 2, 3, 4; Intramural Sports Official 1, 2, 3, 4.

Bob

Intramural Sports 1, 2, 3, 4; Baseball 2, 3, 4; Class Play Cast 3; Latin Club 1, 2, 3, 4; FTA 2, 3, 4; Senior Scholarship 4; Pep Club 1, 2, 3, 4; Senior Scholarship Team 3; Debate Team 2, 3, 4; Basketball 1, 2, 3, 4; Newspaper Staff 3, 4; NHS 2, 3, 4.



JAMES HENRY CLAUSING



ROBERT WILLIAM CROSS, JR.



DAVID GAYLE DUTY



FAYE CURTIS ESEM

David  
Intramural Sports 2, 3, 4; Baseball 1, 2, 3, 4; Class Play Crew 3, 4; Latin Club 1, 2, 3, 4; Concession Stand Worker 3; Senior Scholarship 4; Pep Club 1, 2, 3, 4; Student Council 3; Basketball 1, 2, 3, 4.

Faye

Class Play Cast 3; Girls' League 1, 2, 3, 4; Library Staff 2; Band 1, 2, 3; Glee Club 1; Music Festival 1, 2, 3.



RICHARD DALE EVANS



SHARON ANN FRAZIER

Richard  
Class Play Crew 3, 4; Latin Club 1, 2, 3, 4; Concession Stand Worker 2, 4; Senior Scholarship 4; Student Council 3, 4; Newspaper Staff 2.

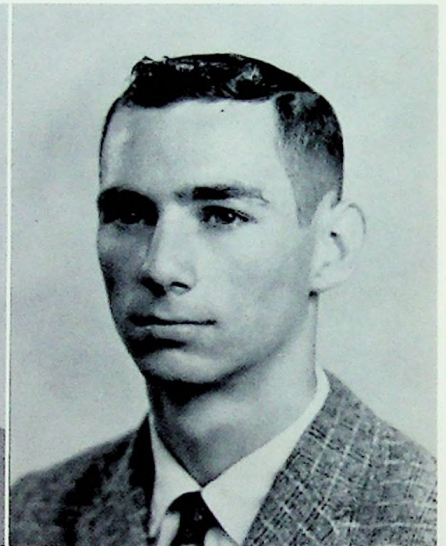
Sharon  
Girls' League 1, 2, 3, 4; Library Staff 1; Band 1, 2; Glee Club 1, 2, 3; Mixed Chorus 2, 3; Class Play Crew 4; FTA 3, 4.

Geneva  
Class Play Crew 4; Girls' League 1, 2, 3, 4.

Larry  
Pep Club 3, 4; Class Play Crew 3, 4.



GENEVA SUE FRY



LARRY EUGENE GRANT



JUDITH MAE HILL



GEORGE ROBERT HOLCOMB

Judy  
Intramural Sports 1, 2; FTA 1, 2; Girls' League 1, 2, 3, 4; Glee Club 1; Class Play Crew 3, 4.

Bob  
Intramural Sports 2, 3, 4; Baseball 1, 2, 3, 4; Class Play Cast 4; Pep Club 2, 3, 4; Class Play Crew 4; Baseball Ground Crew 1, 2, 3, 4.



RICHARD THOMAS HORN



MARY LOIS HOWARD

Richard  
Intramural Sports 1, 3, 4; Industrial Arts  
2, 4; Concession Stand Worker 4; Class  
Play Crew 3, 4; Long's Ground Crew 2,  
3, 4.

Mary Lois  
Intramural Sports 2; Class Play Cast 3,  
4; Latin Club 1, 2, 3, 4; Concession Stand  
Head 4; Concession Stand Worker 2, 3, 4;  
FTA 2, 3; Bible Club 3, 4; Girls' League  
1, 2, 3, 4; Senior Scholarship 4; NHS 2,  
3, 4; Pep Club 1, 2, 3, 4; Band 1, 2, 3, 4;  
Mixed Chorus 2, 3, 4; Class Officer 3;  
Student Council 3, 4; Senior Scholarship  
Team 3; Debate Team 2, 3, 4; Panther  
Staff 3, 4.

Naomi

Latin Club 1; Bible Club 3; Library Staff  
4; Pep Club 1, 2, 3, 4; Glee Club 1, 2, 3;  
Music Festival 1, 2, 3, 4; Sextette 3; Class  
Play Crew 3, 4.

Sue

Intramural Sports 1; Class Play Cast 3, 4;  
Panther Staff 3, 4; Concession Stand  
Worker 3, 4; Typing Contest 3; Girls'  
League 3, 4; Band 1, 2, 3, 4; Glee Club 1,  
2, 3; Majorette 1, 2, 3, 4; Music Festival  
3; Mixed Chorus 3, 4; Class Officer 1, 2,  
3, 4; Student Council 1, 2; Dance Band  
3, 4.



NAOMI DARLENE HOWARD



SUE ANNE JOHNSON



MAXIE GAYLE JOHNSTON



TOM JOSEPH KELLER

Maxie  
Class Play Crew 4; Latin Club 1, 2, 3, 4;  
Girls' League 1, 2, 3, 4; Glee Club 1, 3,  
4; Music Festival 3.

Tom

Class Play Cast 3; Latin Club 1, 2, 3, 4;  
Concession Stand Worker 3, 4; Bible Club  
4; Pep Club 4; Band 1, 2, 3, 4; Music Fes-  
tival 1, 2, 3, 4; Mixed Chorus 2, 3, 4; Boys'  
Chorus 1, 2; Dance Band 2, 3, 4; Class  
Play Crew 4; Mens' Quartet 4.



RONALD KENNETH KING



FORREST DARRELL LEWIS

Ron  
Senior Scholarship 4; Class Officer 1;  
Class Play Crew 3, 4.

Darrell  
Intramural Sports 1, 2, 3, 4; Industrial  
Arts Club 1, 2; Class Play Crew 3, 4; Con-  
cession Stand Head 3; Pep Club 1, 2, 3, 4;  
Mixed Chorus 3, 4; Basketball 3.

Sharon  
Intramural Sports 2; Girls' League 2, 3, 4;  
Pep Club 1, 2, 3, 4; Glee Club 1, 2, 3, 4;  
Music Festival 3; Mixed Chorus 2, 3, 4;  
Class Play Crew 3, 4.

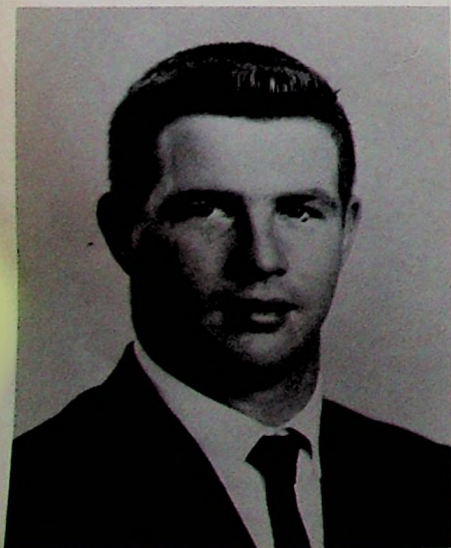


SHARON KAYE LOGAN

Chuck  
Intramural Sports 3, 4; Class Play Cast  
3, 4; Latin Club 1, 2, 3, 4; Panther Staff  
2, 3; Senior Scholarship 4; NHS 2, 3, 4;  
Pep Club 1, 2; Band 1, 2, 3, 4; Cafeteria  
Staff 1, 2; Music Festival 2, 3, 4; Class  
Officer 2, 4; Student Council 1, 2, 4;  
Scholarship Team 1, 2, 3, 4; Debate  
Team 2, 3, 4; Dance Band 2, 3, 4; Stat-  
istician 3, 4; Newspaper Staff 1, 2, 3, 4;  
Track Team.



CHARLES KENNETH LONG



GARY LEE MARTIN



BRENDA KAYE MATHIS

Gary  
Intramural Sports 1, 2, 3, 4; Baseball 2,  
3, 4; Concession Stand Worker 3, 4; Band  
3; Music Festival 3, 4; Boys' Chorus 2, 3,  
4; Basketball 1.

Brenda  
Intramural Sports 2; Pep Club 1, 2, 3, 4;  
Glee Club 2, 3, 4; Mixed Chorus 3; Class  
Play Crew 3, 4.



JUDITH MAE McCANN



PATRICIA SUE McCOY

Judie  
Intramural Sports 1, 2; Girls' League 1, 2, 3, 4; Library Staff 4; NHS 3, 4; Pep Club 1, 2, 3, 4; Glee Club 1, 2, 3; Music Festival 2, 3, 4; Mixed Chorus 3, 4; Class Officer 1, 2, 3, 4; Reserve Cheerleader 2; Varsity Cheerleader 3, 4; Homecoming Attendant 1, 3; Class Play Crew 3, 4.

Pat  
Class Play Cast 4; Latin Club 1, 2, 3, 4; Bible Club 3, 4; Girls' League 1, 2, 3, 4; Pep Club 1, 2, 3, 4; Glee Club 1, 2; Music Festival 2, 3; Mixed Chorus 2, 3, 4; Concession Stand Worker 3.

Mike

Industrial Arts Club 4; Pep Club 3, 4; Mixed Chorus 4.

Nancy

Intramural Sports 2; Concession Stand Worker 3; Bible Club 4; Girls' League 1, 2, 3, 4; Library Staff 4; Pep Club 1, 2, 3, 4; Glee Club 1, 2, 3, 4; Music Festival 3, 4; Mixed Chorus 3, 4; Class Play Crew 3, 4.



MICHAEL ROBERT McCREARY



NANCY LEE MORGAN

Bob

Class Play Crew 3, 4; Concession Stand Worker 4; Pep Club 3, 4.

Camilla

Class Play Cast 3, 4; Panther Staff 3, 4; Concession Stand Worker 3; Glee Club 1, 2, 3; NHS 3, 4; Office Staff 3; Girls' League 1, 2, 3, 4; Music Festival 3, 4; Mixed Chorus 2, 3, 4; Scholarship Team 3, 4; Class Play Crew 3, 4; Co-Editor of Yearbook 4; Coat-Check 2; Newspaper Staff 3, 4.



ROBERT DALE MUCK



CAMILLA RUTH MURPHY



SHIRLEY ANN NEWMAN *m*



THOMAS NOLEN *m*

Shirley

Intramural Sports 1, 2; Panther Staff 3; Concession Stand Worker 3; Girls' League 1, 2, 3, 4; Pep Club 1, 2, 3, 4; Band 1, 2; Glee Club 1, 2, 3; Music Festival 2, 3, 4; Mixed Chorus 1, 2, 3, 4; Class Play Crew 3, 4.

Tom

Intramural Sports 2, 3, 4; Baseball 1, 2, 3; Class Play Crew 3; Class Play Cast 4; Concession Stand Worker 3, 4; Pep Club 1, 2, 3, 4; Band 2; Music Festival 1, 2, 3, 4; Mixed Chorus 2, 3, 4; Boys' Chorus 1; Basketball 1, 2, 3; Baseball 1, 2, 3, 4; Track Team 3, 4.

Roy

Intramural Sports 3, 4; Class Play Cast 4; Latin Club 1, 2, 3, 4; Panther Staff 1; Bible Club 4; Senior Scholarship 4; NHS 2, 3, 4; Cafeteria Staff 3, 4; Music Festival 1, 2, 3, 4; Mixed Chorus 2, 3, 4; Class Officer 1; Student Council 1; Boys' Chorus 1, 2; Scholarship Team 1, 2; Debate Team 2, 4; Class Play Crew 3; Basketball 1, 2, 3; Newspaper Staff 2, 3, 4.

Carl

Baseball 3, 4; Industrial Arts Club 4; Concession Stand Worker 3, 4; Pep Club 2, 3, 4; Music Festival 3; Mixed Chorus 3; Class Play Crew 4.



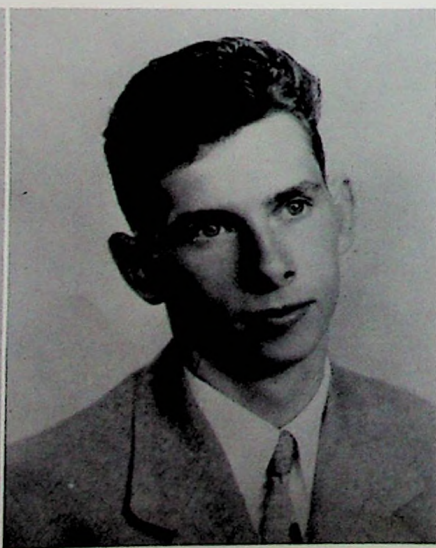
ROY LYNN O'DOHERTY



CARL WYNN OWENS *m*



JERRY DEAN PAYNE



WILLIAM ALBERT PAYTON

Jerry

Long's Ground Crew 2, 3, 4; Class Play Crew 4.

Bill

Intramural Sports 2; Industrial Arts Club 4; Class Play Crew 3, 4; Gym Staff 2, 3, 4; Long's Ground Crew 4.





PAUL DAVID PELPHREY *m*



NANCY CAROLYN RICHARD *m*

**Butch**  
Intramural Sports 2, 3, 4; Baseball 1;  
Panther Staff 3; Class Play Crew 3, 4.

**Nancy**  
Intramural Sports 2; Class Play Cast 4;  
Concession Stand Head 3; Concession  
Stand Worker 3, 4; Bible Club 4; Pep  
Club 1, 2, 3, 4; Girls' League 1, 2, 3, 4;  
Glee Club 1, 2, 3, 4; Music Festival 2, 3;  
Mixed Chorus 3, 4; Class Play Crew 3, 4.

**Joe**  
Intramural Sports 2; Industrial Arts Club  
4; Concession Stand Worker 4; Pep Club  
4; Gym Staff 1, 2, 4; Football 3.

**Bob**  
Intramural Sports 2, 3, 4; Baseball 3;  
Class Play Crew 3, 4; Concession Stand  
Worker 3, 4; Pep Club 1, 2, 3, 4; Cafeteria  
Staff 3, 4; Mixed Chorus 3, 4; Class Offi-  
cer 3; Basketball 1, 2, 3, 4; Intramural  
Official 2, 3, 4.



DELMER LEE RIFFE *m*



ROBERT LEE ROWE



MICHAEL NORMAN SMITH



LINDA LOUISE STEELE *m*

**Mick**  
Intramural Sports 2, 3, 4; Class Play Cast  
3, 4; Latin Club 1, 2, 3, 4; Concession  
Stand Worker 3, 4; Pep Club 1, 2, 3, 4;  
Band 1, 2, 3, 4; Music Festival 1, 2, 3, 4;  
Mixed Chorus 1, 2, 3, 4; Class Officer 2,  
4; Student Council 1; Boys' Chorus 1, 2;  
Dance Band 2, 3, 4; Drum Major 2, 3, 4;  
Quartet 3, 4; Basketball 2.

**Linda**  
Intramural Sports 2; Girls' League 1, 2, 3,  
4; Pep Club 4; Cafeteria Staff 4; Class  
Play Crew 4.



SHARON LEE TAYLOR



KAREN SUE VANDERPOOL <sup>m</sup>

Sharon

Intramural Sports 1, 2; Class Play Cast 3, 4; Latin Club 1, 2, 3, 4; Panther Staff 1, 2, 3, 4; Concession Stand Worker 3, 4; Typing Contest 3; FTA 3, 4; Girls' League 1, 2, 3, 4; Senior Scholarship 4; NHS 2, 3, 4; Pep Club 1, 2, 3, 4; Glee Club 1, 2; Music Festival 1, 2, 3, 4; Mixed Chorus 2, 3; Co-Editor of Yearbook 4.

Karen

Panther Staff 3, 4; Bible Club 3, 4; Girls' League 1, 2, 3, 4; Pep Club 1, 2, 3; Office Staff 4; Glee Club 1, 2, 3; Music Festival 2, 3, 4; Mixed Chorus 2, 3, 4; Class Play Crew 3, 4; Assistant Editor of Yearbook 4.

Dave

Intramural Sports 2, 3, 4; Baseball 1, 2, 3, 4; Industrial Arts Club 3; Class Play Cast 4; Concession Stand Worker 3; FTA 3, 4; Senior Scholarship 4; Band 1, 2, 3, 4; Music Festival 1, 3; Dance Band 2, 3, 4; Class Play Crew 3, 4.

Melissa

Class Play Cast 3, 4; Latin Club 1, 2, 3, 4; Panther Staff 1, 2, 3, 4; FTA 2, 3, 4; Girls' League 1, 2, 3, 4; Library Staff 1, 2, 3, 4; Senior Scholarship 4; NHS 2, 3, 4; Pep Club 1, 2, 3, 4; Band 1, 2, 3, 4; Majorette 4; Music Festival 2, 3; Mixed Chorus 4; Student Council 2, 3; Scholarship Team 1.



DAVID WILLIAM WALTERS JR. <sup>m</sup>



MELISSA RUTH WELLS

Glenda

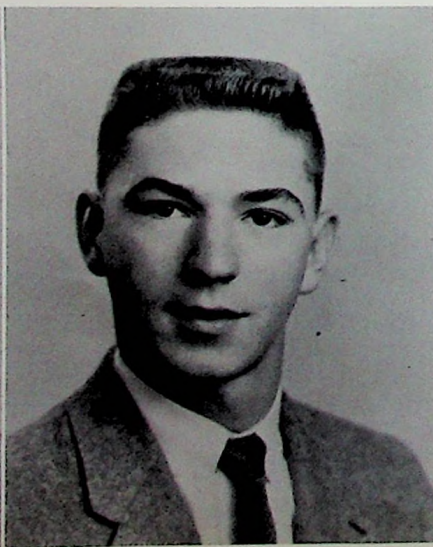
Intramural Sports 2; Class Play Cast 4; Concession Stand Worker 3, 4; FTA 2, 3, 4; Bible Club 3, 4; Girls' League 1, 2, 3, 4; Library Staff 2; Pep Club 1, 2, 3, 4; Office Staff 1, 3, 4; Band 1, 2, 3, 4; Glee Club 1, 2, 3; Cafeteria Staff 1, 2; Music Festival 2, 3; Mixed Chorus 2, 3, 4; Class Play Crew 3, 4.

EUGENE

Intramural Sports 2; Baseball 1, 2, 3; Class Play Crew 3; Latin Club 1, 2, 3, 4; Concession Stand Worker 3; Pep Club 1, 2, 3, 4; Music Festival 3, 4; Mixed Chorus 2, 3, 4; Boys' Chorus 2, 4; Track Team 4; Basketball 1, 3, 4.



GLENDA LOUISE WILLIS <sup>m</sup>



EUGENE DWIGHT WILSON



Mary Lois Howard      Charles Long  
**MOST LIKELY TO SUCCEED**



Judy Barrett      Ron King  
**CUTEST COUPLE**

**SENIOR**

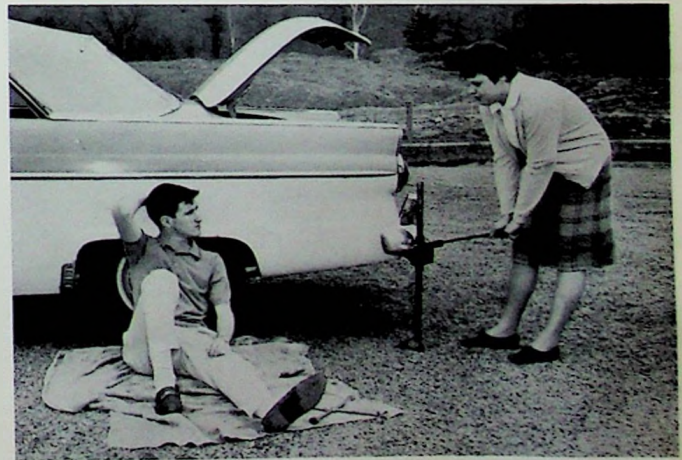


Jerry Payne      Janet Bailey  
**LAZIEST**

**SUPERLATIVES**



Tom Nolen      Karen Vanderpool  
**BIGGEST FLIRTS**



Mike Smith      Roylene Callendar  
**MOST HUMOROUS**



Roy O'Doherty, Sharon Taylor  
MOST STUDIOUS



Nancy Burgess, Bob Holcomb  
BEST LOOKING



Maxie Johnston, Robert Muck  
MOST SHY



Darrell Lewis, Shirley Newman  
BEST DRESSED



Bob Rowe, Sue Johnson  
BEST ALL AROUND



Eugene Wilson, Nancy Richard  
BEST ATHLETE



## VALEDICTORIAN

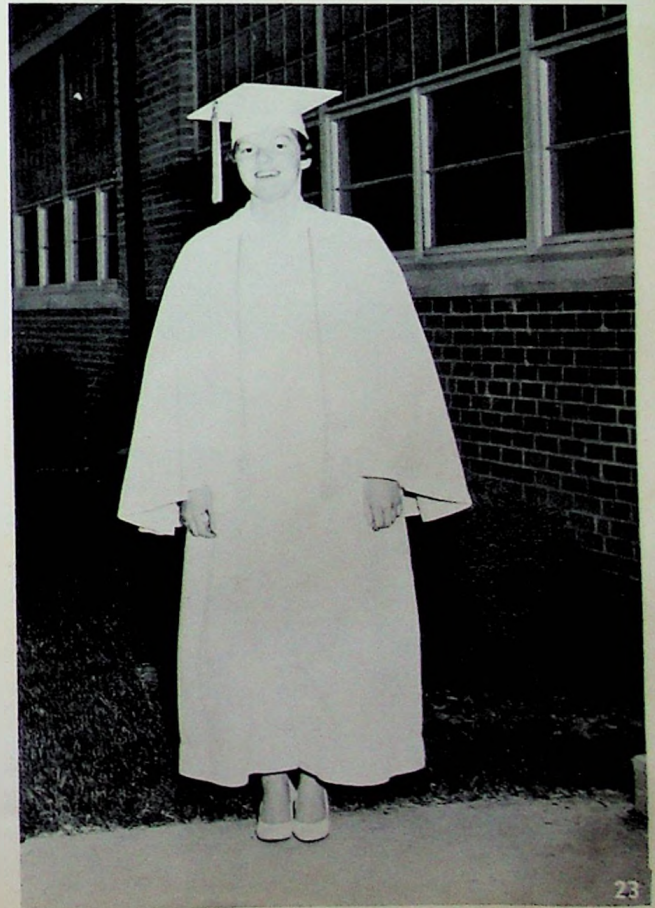
CHARLES LONG

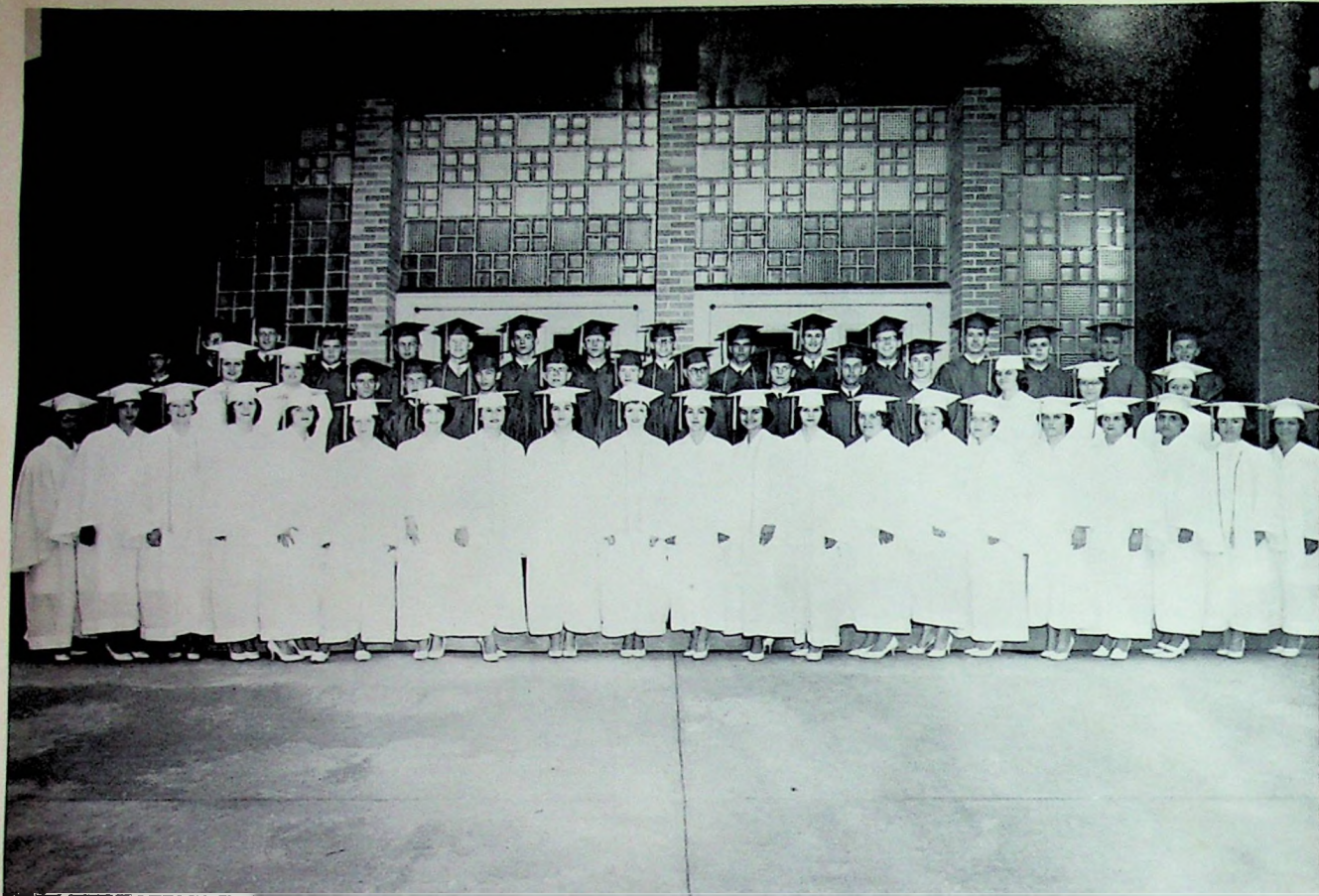
Study is the root of knowledge.

## SALUTATORIAN

MARY LOIS HOWARD

From knowledge branches success.





Karen Vanderpool, Faye Eshem, Mary Lois Howard, Nancy Morgan, Nancy Richard, Sharon Frazier, Naomi Howard, Sue Johnson, Pat McCoy, Camilla Murphy, Nancy Burgess, Melissa Wells, Geneva Fry, Janet Bailey, Linda Steele, Nancy Bryan, Shirley Newman, Sharon Logan, Judy Barrett, Judie McCann, Brenda Mathis, Carl Owens, Sharon Taylor, Roylene Callender, Larry Grant, Mike McCreary, Joe Riffe, Roy O'Doherty, Bob Muck, Richard Burchett, David Duty, Richard Evans, Eugene Wilson, Glenda Willis, Maxie Johnston, Judy Hill, Richard Horne, James Clausing, Paul Pelphrey, Gary Martin, Bob Cross, Jerry Payne, William Bratt, Charles Long, David Walters, Mike Smith, Tom Keller, Bob Rowe, Ron King, Darrell Lewis and Tom Nolen.

CLASS MOTTO - Knowledge is the Key to Success

CLASS FLOWER - White Rose

CLASS COLORS - Mexican Blue and White

Date of Graduation - May 17, 1961

# SCHOLARSHIP



The growth of a tree is a continuous process of acquiring new branches and leaves to bring it to its full beauty and maturity. Each year students enter new classes in an effort to acquire new fields of knowledge. Each day they are exposed to the different aspects of their chosen fields with the hope that they will continue to grow and reach maturity.



Chemistry Class - From left to right are: David Duty, Chuck Long, Bob Cross, Mike Smith, Mary Lois Howard, Jim Clausing, Roy O'Doherty, Melissa Wells, Richard Evans, and Mr. Wooddell.



Susan Copen and Donna Higgins show the physics class the principles of balance.





Science Scholarship Team - From left to right are: Roy O'Doherty, Roger Craig, and J. D. Johnson.



Carolyn Lawson reads a report to the Biology Class while Mr. Long, Laura Greer, Alice Justice, Darlene Whisman, Roger Riggs, Alice Wessel, Janice Riley, David Brown, David Rowe, and Charlotte Clevenger, listen attentively.



The Freshman Science class look on as Mr. Wooddell performs an experiment. Members of the class are: Barbara Moore, Vonnie Pack, Patty Hanes, Jerry Frazier, Veronica Mathis, Karen Conley, Donna Martin, Vicki Groves, Jean Davidson, Joyce Stanley, Pat Breech, Clyde Clevenger, Glen Eddy, Pam Adams, Linda Gilliam, Jerry Howard, Robert Willis, and Hazel Blevins.



Beverly Adams, Eugene Rayburn, Mike Powell, Jim Chapman, Gary Hamblin, Dave Smith, Susie Miller, Rusty Tipton, Bob Walters dissect a mouse in an Eighth Grade Science Class under the direction of Mr. Long.



Under the direction of Mr. Moore, Larry Grant, Joe Gilliam, Gary Clevenger, Clinton Thompson, Sam Hall, and Mike Curtiss study the different forms of mechanical drawing in Shop Class.



Mrs. Crum leads this Phys. Ed. Class in some exercises. Students participating are: J. Miller, A. Justice, C. Lawson, S. Heath, S. Craig, L. Cordle, S. Miller, S. Cookman, Z. Gill, P. Green, J. Sikes, L. King, K. Lynd, E. Clausing, K. Wyrlick, B. Suter, C. Sowards, A. Craft, B. Adams, V. Pack, J. Owen, B. Marcum, K. Kongos, A. Branon, D. Whisman, J. Riley, S. Carver, T. Buckle, and J. Wiget.

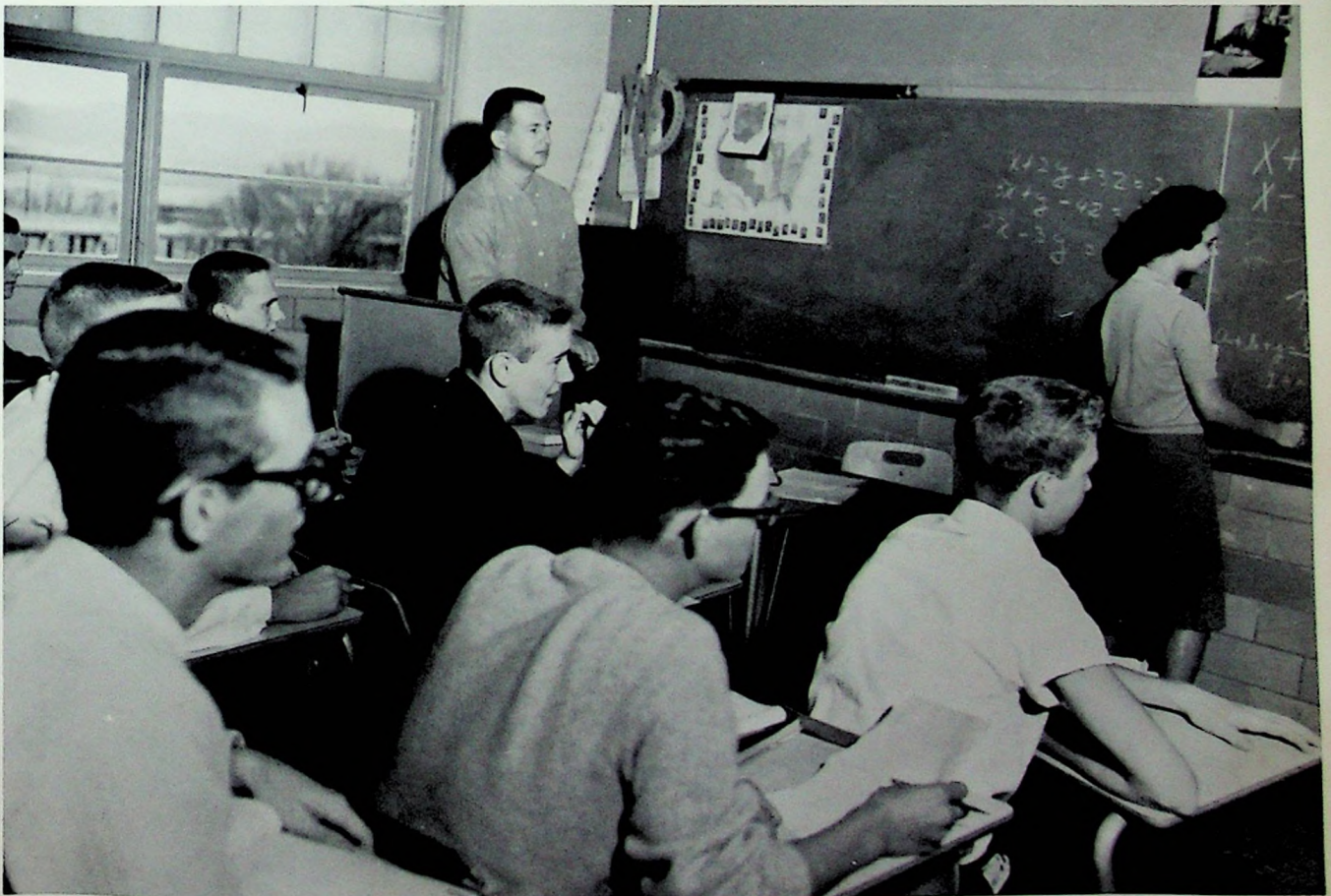
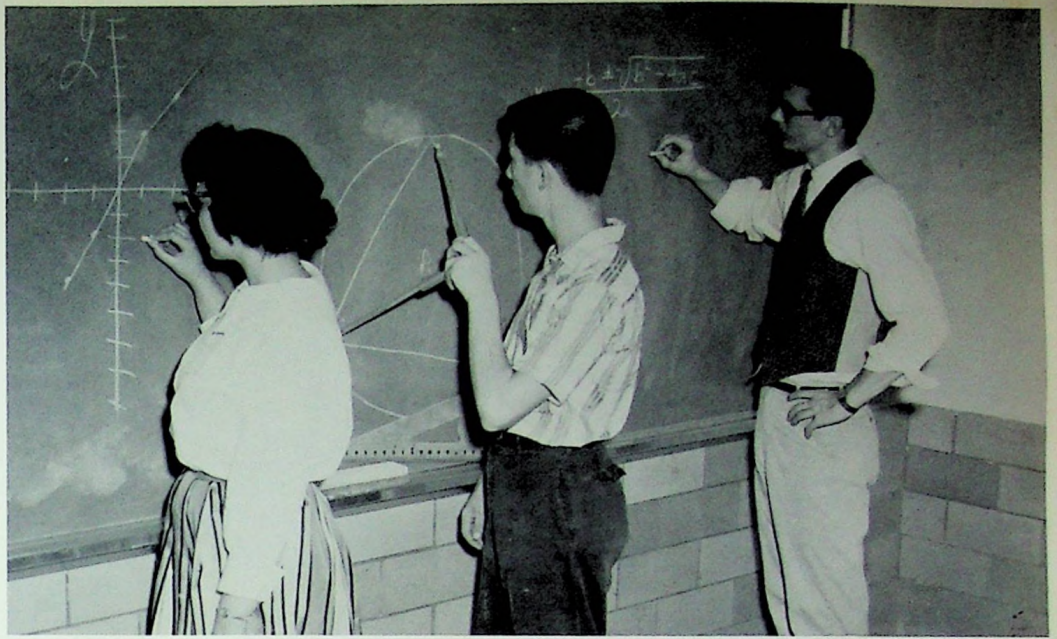


In the advanced Home Ec. Class a buffet luncheon is served to Nancy Morgan, Shirley Newman, Dolly Riffe, Roylene Callender, Darlene McNutt, Shirley Caudill, Geneva Fry, Nancy Cox, Nancy Richard, Paula Adams, Janet Bailey, Judy Hill, and Faye Eshem.

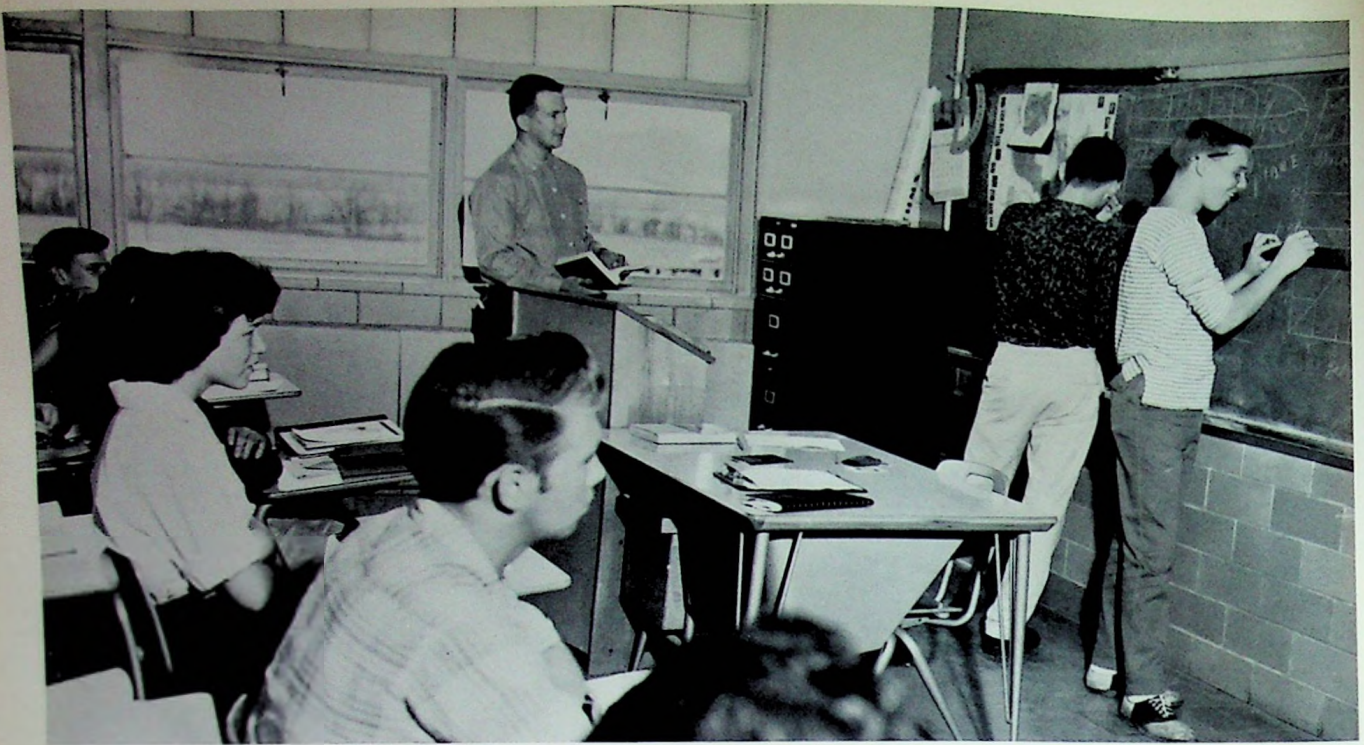


Mrs. Crum points out the parts of the sewing machine in Sophomore Home Ec. to Janie Burt, Linda Cordle, Alice Justice, Carolyn Sowards, Doshia Saylor, Linda Kingery, Alice Wessell, Carolyn Lawson, Janice Riley, Sharon Craig, and Susan Heath.

Math Scholarship Team.  
From left to right are:  
Lorraine Whitt, Dennis  
Lehman, and Charles  
Long.



Melissa Wells solves an equation in Algebra II as Mr. Justus supervises. J. Branon, D. Duty, D. Smith, D. Morrow, L. White, B. Schweinsburg, and C. Long are observing.

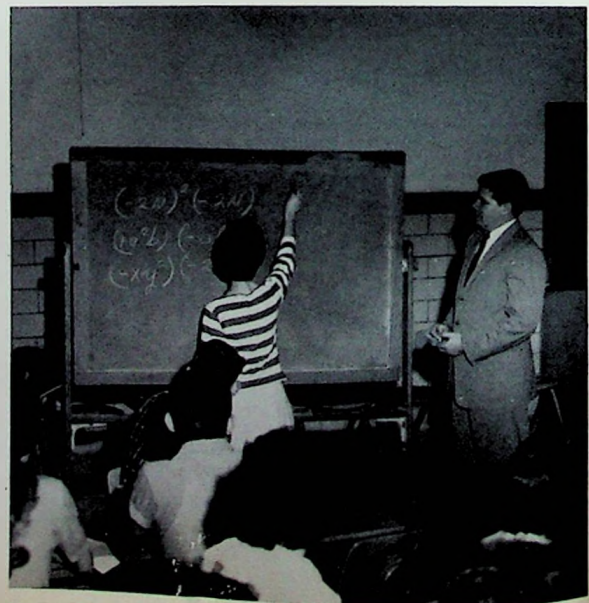


Danny Burt and Johnny Oliver are testing some principles in algebra I under the guidance of Mr. Justus. Other students pictured: Ricky Arbogast, Levi Justice, Kathy Thompson, and Mike McCreary.



In Geometry Paul Pelphrey, Susan Reed, and Carol Bainer demonstrate the construction of Geometric figures. Another member of the class is D. Newberry.

In Freshman Math Sally LeMaster works a math problem under the supervision of Mr. Estep.





Mrs. Davis instruct secretaries of the future in shorthand I: Sue Ann Essman, Sue Raike, Sue Patrick, Sharon Tipton, Letty Kalb, Joyce Kegley, Brenda Moritz, Clarice Mowery, and Avinell Fraley.



The typing I students are learning correct typing procedures: Mike McCain, Mary Rayburn, Horace McGlone, Linda Kingery, Susan Copen, Marsha Burgess, Richard Burchett, Ralph Steele, Letty Kalb, Vernon Jones, Brenda Moritz, Shirley Caudill, Donna Higgins, Gary Clevenger, Dave Bratt, Sharon Tipton, Clarice Mowery, Tommy Dixon, Dave Brown, Sue Essman.

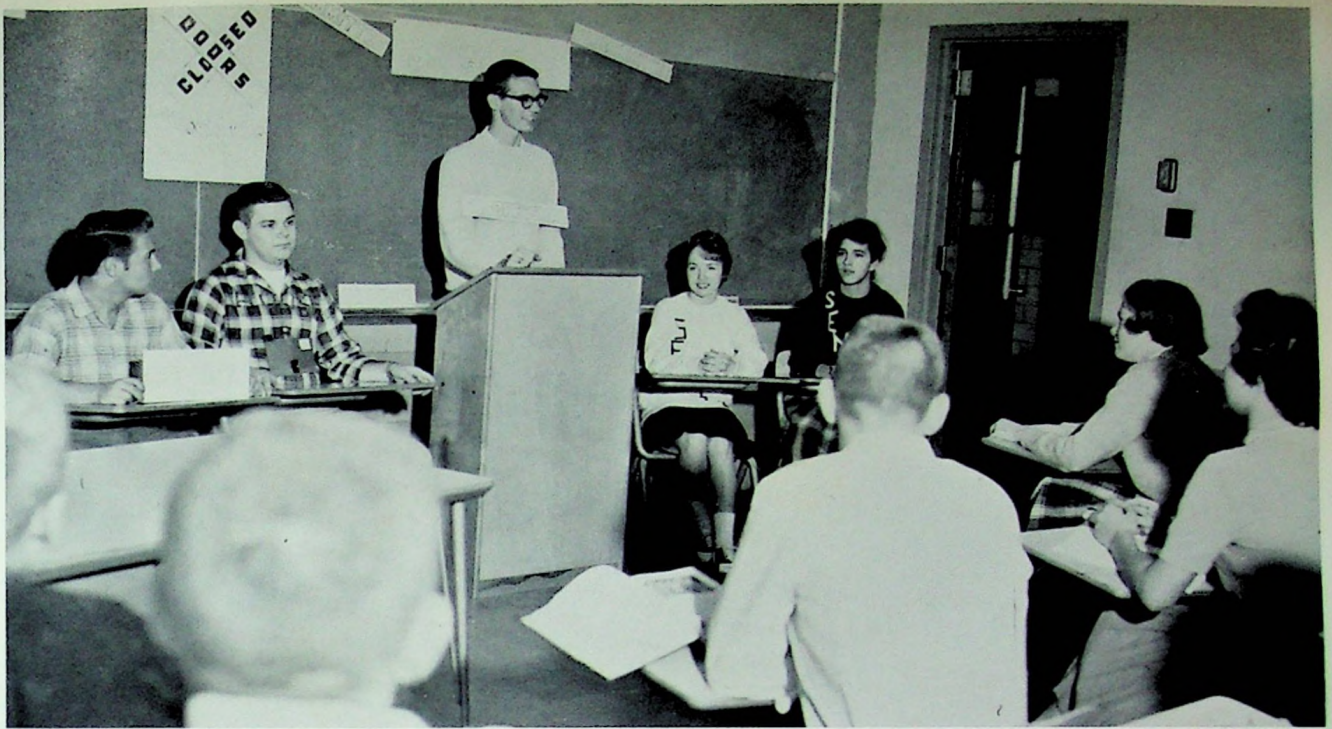


Students in Business Machines Class: Faye Eshem, Sharon Frazier, Nancy Richard, Bob Muck, Karen Vanderpool, Shirley Newman, Judy Hill, Naomi Howard, Judy Barrett, Nancy Morgan, and Camilla Murphy.



Taking dictation from records in Shorthand II are: Karen Vanderpool, Camilla Murphy, Glenda Willis, Sharon Frazier, Judie McCann, and Maxie Johnston.





Mike McCreary, Ron King, Chuck Long, Judie McCann, and Pat McCoy present, "A day in Congress," in Government Class. Dave Duty, Bob Cross, Eugene Wilson, Melissa Wells, and Mary Lois Howard look on.



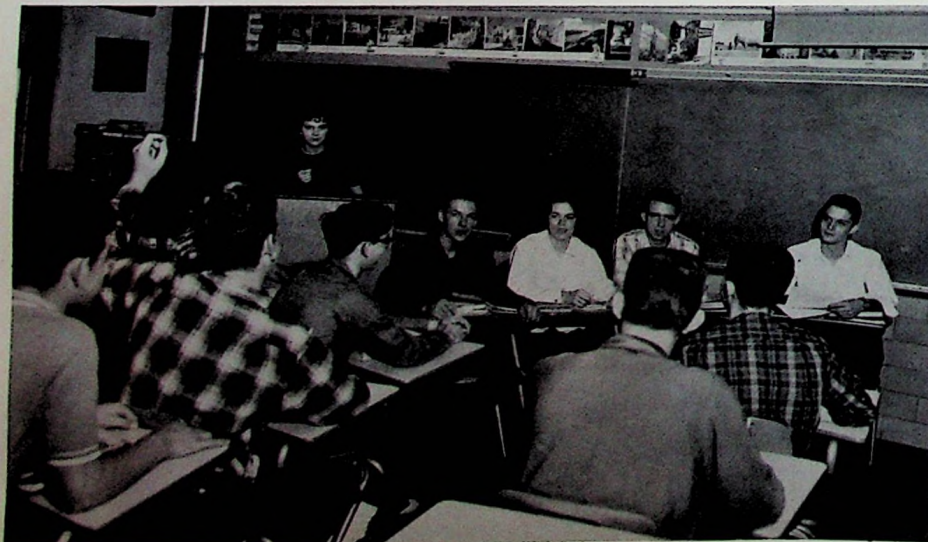
Diane Duty and Gary Bainer locate the Aegean Sea for the other students in World History Class. From left to right are: Janie Burt, Carol Bainer, Mrs. Fluty, Pat Curtiss, Robert Curnutte, Linda Cordle, Janet Craft, Karen Cookman, Jerry Keller, George Horsley, Chuck Henson.



"Ohio History is very important," says Mr. Dautell and Eighth graders: Susie Newman, Buster Cordero, Alice Craft, Jay Newberry, Larry McCain, Judy Sikes, Dave Moore, Kathy Steed, Steve Myers, Wilman Whitt, Janet Wise, Elaine Clausung.



History Scholarship Team. Robert Cross, Mary Lois Howard, Denny Morrow, and Gary Bainer.



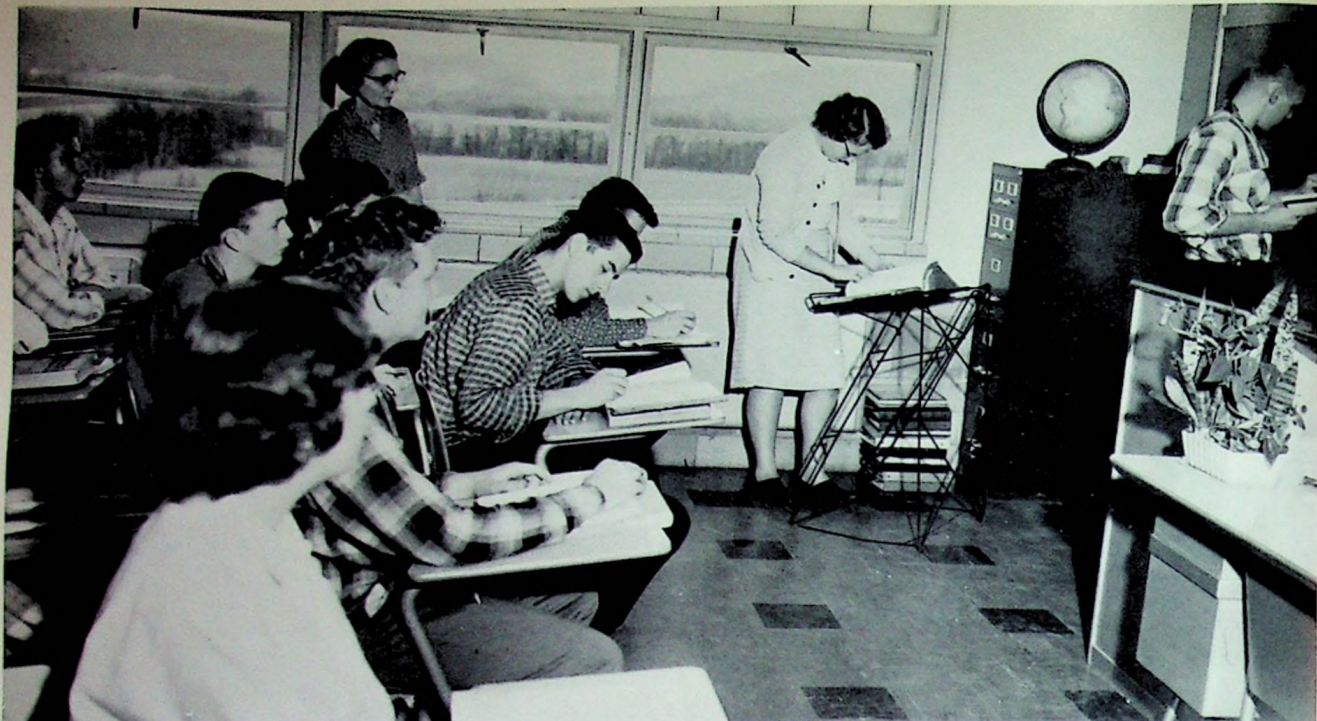
American History Class: Darlene McNutt, Ralph Steele, Mary Rayburn, Gary Clevenger, Keith Yinger, Dave Howard, Tom Dixon, Vernon Jones, Danny Justice, Mike Curtiss, Jim Lynd, and Paula Adams.



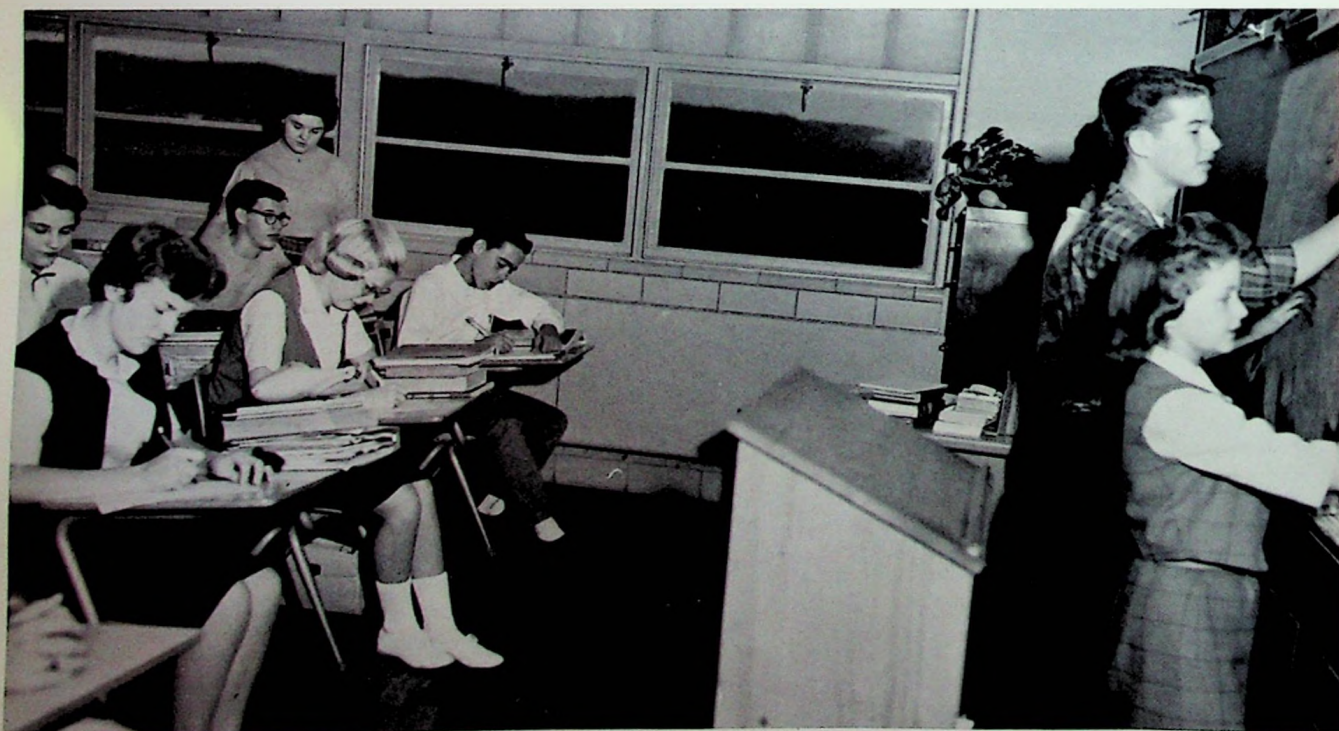
The College Prep English, under the direction of Mrs. Bender, observes Mary Lois Howard as she displays her poetry notebook. Onlookers are: James Johnson, Pat McCoy, Larry White, Nancy Bryan, Chuck Long, Dave Smith, Richard Evans, Roy O'Doherty, Sue Johnson, Sharon Taylor, Mike McCain, Bob Cross, Denny Morrow.



The Senior English is brushing up on their manners. They are Tom Keller, Gary Martin, Judy Barrett, Camilla Murphy, Judie McCann, Mike Smith, Tony Adams, Sharon Frazier, Ron King, Nancy Morgan, Bob Rowe, Shirley Newman, and Eugene Wilson.



Mrs. Bender supervises a vocabulary study in the Junior English Class. Student's are: Joe Gilliam, Gary Clevenger, David Howard, Elaine Brandenburg, Clinton Thompson, Linda Kingery, Dave Bratt, Danny Justice, Dean Gambill, and Mary Rayburn.



Miss Hunter directs a Junior English Class on diagraming sentences. Students are: Clarice Mowery, Bill Schweinsburg, Dean Groves, Lettie Kalb, Sue Essman, Horace McGlone. At the board are Sharon Tipton, Tom Dixon, and Joyce Kegley.



Mike Kelly, Claudia Colburn, Carol Bainer, Janet Craft, Janet Wiget, Charlotte Clevenger, Gary Bainer, William Owen, Bob Eastwood, and Jerry Keller along with Miss Hunter, study different types of newspaper articles for Sophomore English Class.



English Scholarship Team - From left to right are: Camilla Murphy, William Gwynne, Patricia Jackson, and Diane Duty.



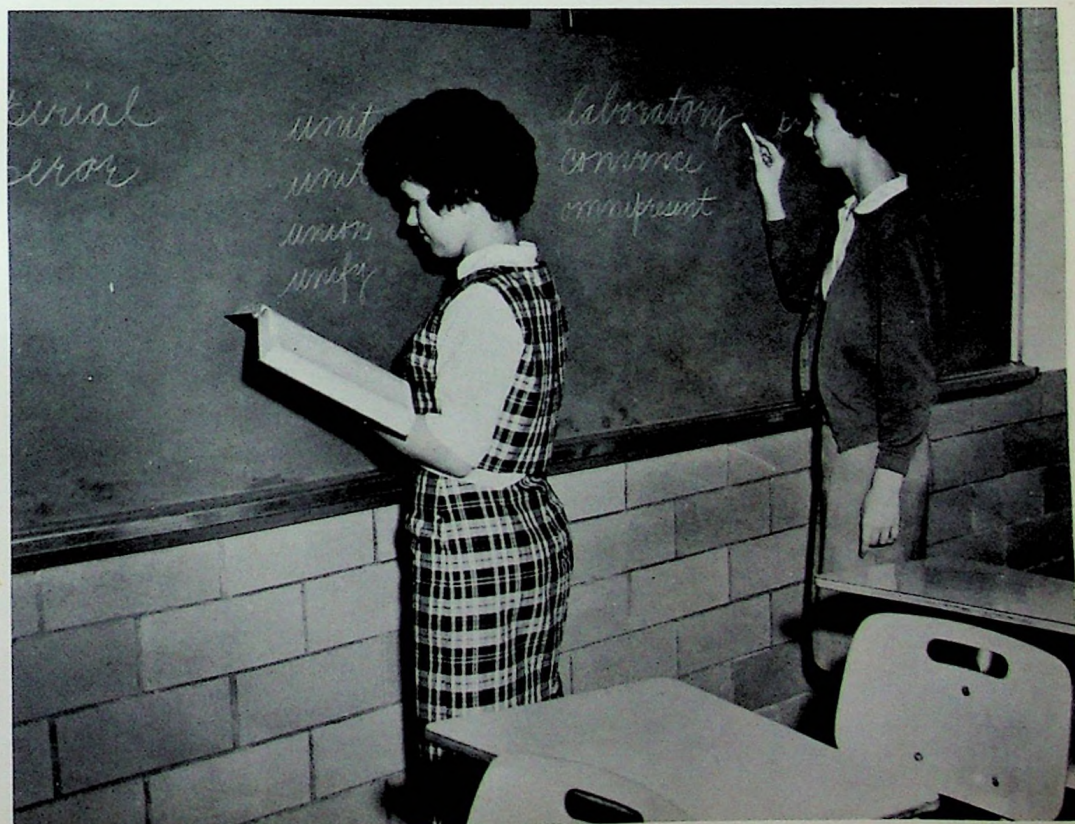
In Miss Hunter's Freshman English Class, charades are acted out by Susie McCall, Mary Heisler, Danny Burt, Johnny Oliver, David Bloomfield Reggie Lilly, Denny Bloomfield, Ricky Arbogast, Melinda Meixner, Dave Stauffacher, Roger Stewart, and Patti O'Doherty.



Paul Taylor reads a Roman Scroll to the first year Latin Class. Other class members are: D. Burt, R. Lilly, J. Oliver, R. Stewart, D. Bloomfield, M. Meixner, S. McCall, P. O'Doherty, M. Cottle, E. Ward, B. Moore, C. Thompson, J. Kingery, M. Heisler, S. Sparks, E. Brandenburg, D. Stauffacher, S. LeMaster.



William Owen and Charlotte Clevenger, members of the Latin II Class, prepare to display a Latin motto.



Latin Scholarship Team - Pictured from left to right are: Susan Reed and Sue Carroll.



Students take advantage of study hall as they prepare for coming classes. Seated are: S. Miller, D. Morrow, M. Powell, B. Cook, B. Cordero, W. Whitt, S. Logan, B. Mathis, S. Myers, D. Fields, M. Clark, P. Adams, J. Chapman, R. Tipton, C. Cobb, L. Clifford, L. Roush, H. Ruby, B. Allison, E. Kalb, D. Marlowe, D. Gable, K. Steed, S. Cookman. In the library are: M. Canter, B. Cross, V. Rayburn, J. McCann, V. Phipps, S. Taylor, J. Owen, C. Johnson, M. Hunter, and P. McCoy.



Mrs. Woods assists Melinda Meixner in using the card catalog.

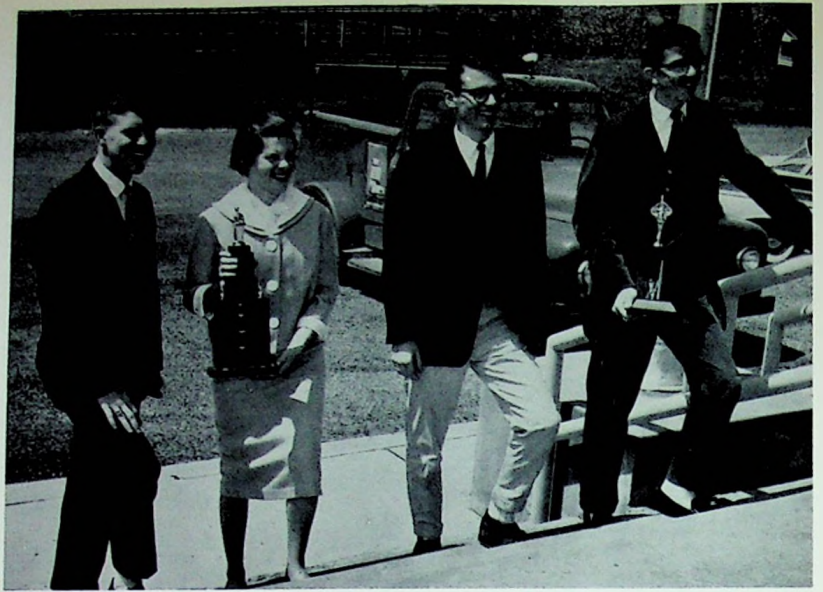


# CLUBS AND ACTIVITIES



Nature's wide variety of trees was planned to satisfy man's material and aesthetic needs. Many clubs are organized, and activities are planned to meet the wide variety of interests of the students at Clay High School.

The Clay High School debate team has had its most successful season in its short history of three years. After winning the district tournament for the second straight year with four consecutive victories, the champs entered the State Tournament in Columbus, placing second in the State of Ohio. The team has begun a fine collection of trophies which are sure to be added to by the formidable group of young speakers presently being coached by Mrs. Woods.



Members of the State Debate Team, from left to right are: Bob Cross, Mary Lois Howard, Charles Long, and Bill Gwynne.

## DEBATE TEAM



DEBATE TEAM - B. Gwynne, J. Brannon, D. Smith, B. Cross, D. Newberry, M. Howard, D. Duty, E. Brandenburg, D. Morrow, M. Rayburn, M. Kelley, D. Lehman, C. Long, S. Reed.



The Student Council officers are from left to right: Richard Evans, Mary Lois Howard, Charles Long, and Principal, Mr. Estepp.

The student council is composed of one representative from each home room, plus all the class presidents, and is advised by the principal, Mr. Estepp. It is active in planning and officiating at various assemblies, sponsoring Homecoming, and supervising the election of cheerleaders.

## STUDENT COUNCIL



STUDENT COUNCIL: C. Long, R. Willis, J. Howard, J. Chapman, R. Evans, Mr. Estepp, M. Kelley, S. Patrick, C. Colburn, S. Carroll, M. Howard, M. McCain, B. Gwynne, G. Horsley, D. Boldman.



Members of the National Honor Society from left to right are: Roy O'Doherty, Mary Howard, Sharon Taylor, Bob Cross, Camilla Murphy, Chuck Long, Melissa Wells, Judie McCann, Mrs. Woods (Advisor), James Johnson, Bill Gwynne, Mr. Long (Advisor).



The National Honor Society is an organization designed to recognize those students which excel in character, scholarship, leadership, and service. Candidates possessing these four qualities are chosen by a faculty council.

There are four classes of members: Probationary, Active, Honorary, and Graduate.

Our chapter is sponsored by the New Boston Kiwanis Club.



PROBATIONARY MEMBERS of the National Honor Society enthusiastically cleaning the plaques are: Susan Reed, Mike Kelley, Dennis Lehman, Danielle Newberry, and Diane Duty.



HONORARY MEMBERS of the National Honor Society are: David Walters, Nancy Bryan, and Sue Johnson. (Not shown)



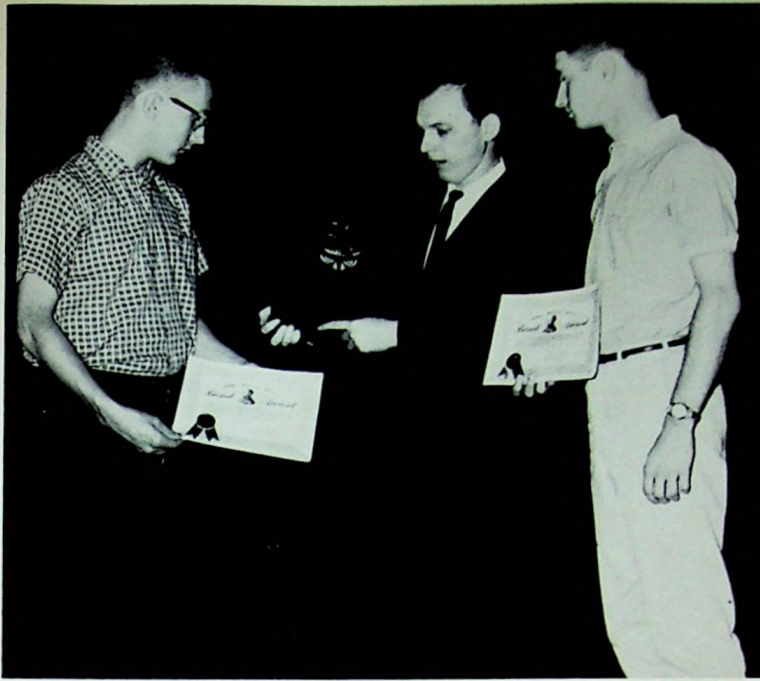
MAJORETTES from left to right are: Sue Carroll, Charlene Cordial, Sally LeMaster, Mary Rayburn, Melissa Wells, and Linda Cordial.

This year the Majorette corps, under the direction of Sue Johnson, has represented our school very favorably in parades, music shows, and home ball games. The entire line with the exception of Sue Johnson and Mary Rayburn were new majorettes this year. The majorettes performed various routines and dances, which were perfected only by weeks of practice and hard work. Mr. and Mrs. Childers have helped a great deal in preparing for the performances.

Candidates for majorette are chosen from the band members on the basis of marching, twirling, and appearance.



DRUM MAJORETTE Sue Johnson and DRUM MAJOR Mike Smith



William Bratt and Mike Smith received the John Philip Sousa Award from Mr. Childers.



Members of the Clay High Quartet from left to right are: Tom Keller, Dave Smith, Mike Smith, and Keith Yinger.



Practicing their favorite tune, the members of the Dance Band from left to right are: Mike Smith, Janet Craft, Nancy Bryan, James Johnson, Mike Kelly, Tom Keller, Gary Bainer, David Walters, Sue Johnson, Roger Craig, Bill Bratt, Chuck Long, Jerry Keller, and Susan Bryan.



From left to right: S. Copen, K. Yinger, T. Morgan, G. Horsley, D. Howard, J. D. Johnson, D. Smith, M. McCain, G. Willis, N. Morgan, J. Owens, S. Carroll, J. Bailey, N. Richard, R. Craig, D. Lehman, H. McGlone, P. McCoy, J. Burt, A. Branon, L. Cordle, M. Meixner, M. Wells, D. Higgins, J. McCann, P. Taylor, D. Morrow, J. Branon, S. Patrick, R. O'Doherty, K. Vanderpool, and Mary Lois Howard.

Initiated two years ago, the Bible Club is our newest organization at Clay. The Bible Club was organized to provide Christian fellowship and Bible study for its members. We hope that the Bible Club will continue to grow, as in the past, both numerically and spiritually.



The Bible Club officers from left to right are: Sue Patrick, Pianist; Karen Vanderpool, Secretary-Treasurer; Mary Lois Howard, President; and Roy O'Doherty, Vice President.





The Advisory Board, composed of all girl class and club officers from left to right are: D. Duty, D. Newberry, C. Colburn, M. Meixner, M. Cottle, P. O'Doherty, S. Johnson, J. McCann, J. Wiget, S. Taylor, Mrs. Woods, K. Vanderpool, S. Patrick, A. Craft, S. Copen, M. Howard.

## GIRLS' LEAGUE

The purpose of the Girls' League is to create enthusiasm and to unite the girls in closer relationship to each other and their school.

This year the league held a spring dance inviting the entire student body. A queen and her court were chosen especially for this occasion by the penny-a-vote method, in order to help purchase needed educational equipment.



Officers are: President, Sue Johnson; Vice President, Sue Copen; Eighth Grade Representative, Alice Craft; Treasurer, Diane Duty; and Secretary, Patti O'Doherty.



Members of the Brass Section are: M. Smith, D. Newberry, P. Taylor, A. Branon, J. D. Johnson, T. Keller, K. Leech, W. Sexton, K. Yinger, R. Lilly, L. Huston, R. Arbogast, R. Craig, C. Colburn, J. Keller, M. Howard, W. Bratt, D. Justice, S. Craig, D. Staffacher, J. Craft, and D. Duty.

## CLAY



Members of the Drum Section are: H. Johnson, R. Eastwood, E. Brandenburg, G. Bellar, G. Willis, L. White, C. Long, T. Dixon, J. Newberry and D. Smith.



Members of the Reed Section are: S. Bryan, D. Martin, M. Cottle, M. Meixner, E. Clausing, S. Reed, C. Bainer, K. Cookman, J. Wise, L. King, J. Harper, L. Holbrook, V. Groves, D. Smith, G. Horsely, J. Sikes, J. Wiget, S. Heath, S. Essman, C. Lawson, N. Bryan, M. Kelly, A. Craft, and G. Bainer.

## BAND



Band rehearsal is held every day at noon. Shown are: D. Martin, M. Cottle, K. Wyrick, R. Craig, C. Colburn, B. Bratt, M. Howard, D. Duty, W. Sexton, L. Huston, A. Branon, J. Harper, J. Keller, G. Bainer, J. Wiget, D. Newberry, L. Holbrook, S. Carroll, K. Cookman, G. Horsley, M. Meixner, J. Sikes, Mr. Childers, E. Clausing, A. Craft, M. Rayburn, and J. Craft.



The Mixed Chorus practice a song that they are going to sing at a coming concert. They are: C. Murphy, M. Howard, E. Brandenburg, M. Wells, M. Burgess, D. Lewis, L. Newberry, J. Clausing, N. Howard, G. Willis, J. McCann, S. Taylor, J. Bailey, S. Johnson, D. Duty, J. Wiget, N. Burgess, S. Newman, R. Callendar, E. Wilson, R. O'Doherty, B. Gwynne, G. Clevenger, J. Johnson, M. McCain, K. Yinger, S. Copen, S. Patrick, C. Sowards, S. Logan, N. Morgan, D. Justus, K. Vanderpool, S. Reed, M. Rayburn, C. Bainer, C. Colburn, B. Rowe, J. Keller, M. Kelly, G. Horsley, D. Lehman, T. Dixon, L. White, D. Smith, D. Rowe, B. Mathis, N. Richard, C. Mowery, D. Newberry, S. Bryan, S. Hall, R. Cross, M. Smith, T. Keller, and G. Martin.



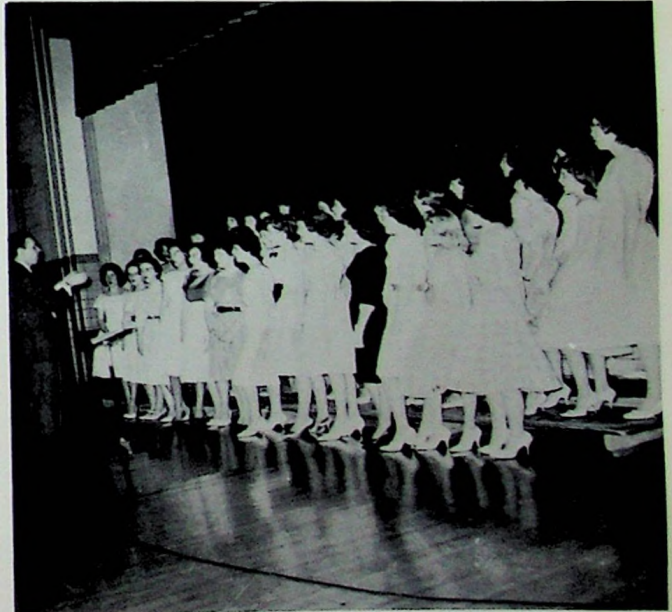
Members of the Eighth Grade Chorus are: V. Rayburn, S. Miller, S. Lake, S. Cookman, Z. Gill, B. Marcum, C. Johnson, T. Buckle, S. Carver, S. Barrett, P. Payne, K. Kongos, B. Adams, P. Green, H. Jardine, A. Craft, S. Leininger, K. Essman, K. Wyrick, B. Carver, L. Runyon, K. Steed, L. Holbrook, E. Clausing, S. Newman, L. King, J. Wise, K. Lynd, B. Suter, B. Beasley, C. Fannin, B. Gwynne, M. Osborne, S. Clifford, H. Ruby, J. Harper, D. Smith, S. Myers, E. Rayburn, M. Canter, H. Johnson, J. Chapman, C. Fenton, D. Boldman, M. Powell, and J. Newberry.



Glee Club Members are: E. Ward, B. Moore, J. Craft, S. Craig, D. Saylor, A. Justice, J. Burt, Mr. Childers, J. Wiget, C. Lawson, S. Heath, M. Heisler, M. Rayburn, C. Mowery, S. Essman, S. Raike, B. Moritz, S. Phipps, P. O'Doherty, C. Thompson, D. Martin, K. Conley, V. Pack, C. Hollis, B. Spence, L. Gilliam, S. Franklin, J. Miller, L. Whitt, V. Mathis, P. Adams, P. Breech, S. McCall, S. Carroll, J. Bailey, P. Conklin, C. Cordial, V. Groves, M. Johnston, M. Cottle, J. Stanley, F. Cordero, J. Davidson, J. Bierley, D. Whisman, K. Cookman, A. Wessel, J. Kingrey, C. Sowards, J. Riley, D. Justice, S. Patrick, M. Meixner, D. Newberry, C. Bainer, L. Cordle, N. Morgan, G. Willis, N. Richard, C. Colburn, and Susan Reed.



Mixed Chorus



Glee Club

SPRING CONCERT



The members of the Junior class play entitled "Susie the Siren" are: Linda Kingrey, Elaine Brandenburg, Donna Higgins, Joyce Kegley, Sue Patrick, Clarice Mowery, Susan Copen, Danny Justice, David Smith, Vernon Jones, Marsha Burgess, Mike McCain, Robert Sheward, Keith Yinger, Mike Curtiss, Denny Morrow, Bill Gwynne, James Johnson, Roger Carver, and Gary Hatfield.



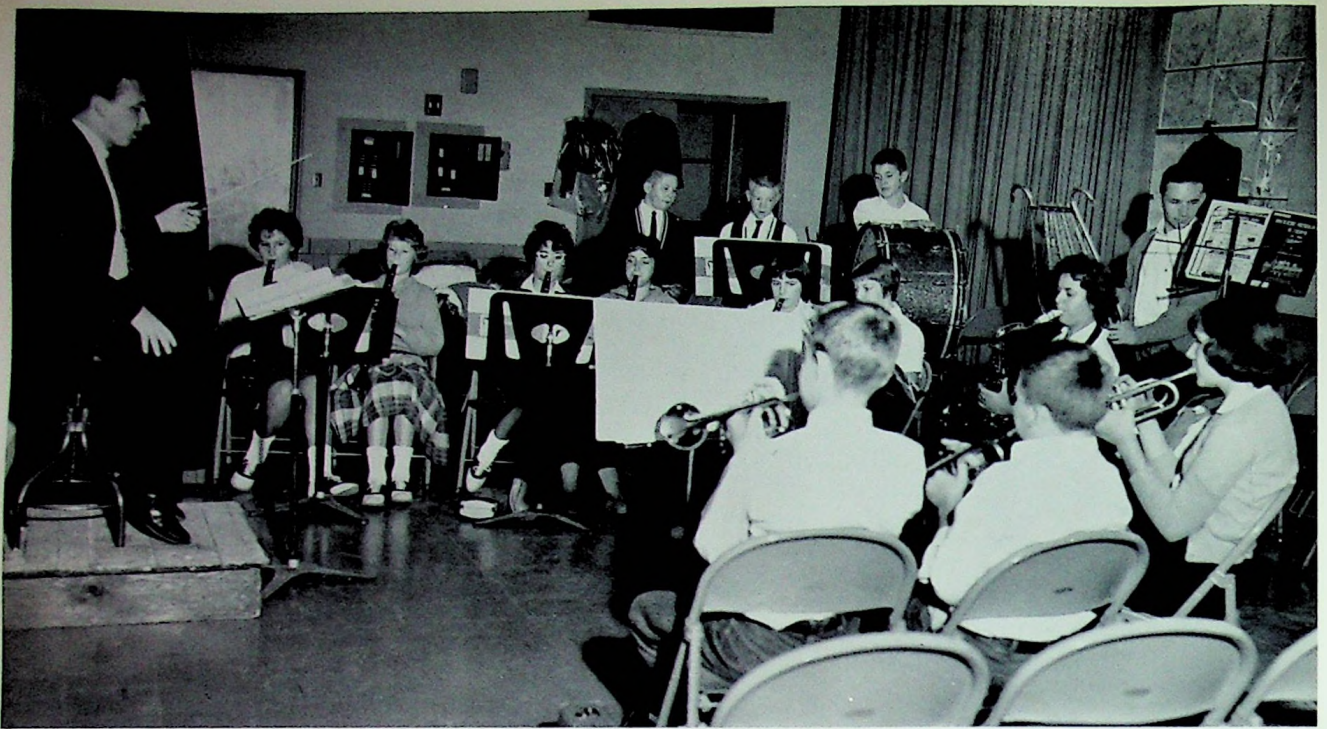
The Junior Class Play Crew includes: Mrs. Morgan, Director; Sam Hall, Larry Newberry, Clinton Thompson, Ralph Steele, Avinell Fraley, and Darlene McNutt.



The members of the Senior class play "Cupid in Pigtales" are: Nancy Richard; Sue Johnson; Melissa Wells; Pat McCoy; Camilla Murphy; Glenda Willis; Richard Evans; Mary Howard; Roy O'Doherty; Sharon Taylor; Miss Hunter, Director; Mike Smith; Charles Long; Bob Rowe; Eugene Wilson; George Holcomb; and David Walters.



Members of the Senior class play crew include: Naomi Howard, Judy Hill, Nancy Bryan, Shirley Newman, Judie McCann, Sharon Logan, Karen Vanderpool, Janet Bailey, Carl Owens, Maxie Johnston, Sharon Frazier, Nancy Burgess, Nancy Morgan, Roylene Callendar, Dave Duty, Richard Horn, Paul Pelphrey, Bill Payton, Darrell Lewis, Jerry Payne, Gary Martin, and Jim Clausing.



The Eighth Grade Band members, under the direction of Mr. Childers, are: Jean Harper, Elaine Clausing, Linda Holbrook, Judy Sikes, Janet Wise, Lena King, Alice Craft, Karen Wyrick, Lowell Huston, Roger Craig, Hal Johnson, Ricky Eastwood, Dave Smith, and Jay Newberry.



Mr. Childers gives private instructions to Jay Newberry and Clyde Fenton.



The Eighth Grade Band plays at the Spring Concert.





The Office Staff perform many useful tasks for our school. They are from left to right: Karen Vanderpool, Joyce Kegley, Robert Eastwood, Mary Cottle, Barbara Moore, and Glenda Willis.



The Library Staff keeps our library in fine working order. They are: Avinell Fraley; Darlene McNutt; Cheryl Johnson; Jacqueline Owen; Melissa Wells; Mrs. Woods, Librarian; Judie McCann; Pat Jackson; Sue Carroll; Diane Duty; Laura Greer; and Alice Wessel.

## LATIN PROJECT



Displayed above are projects completed by the Latin Club members.

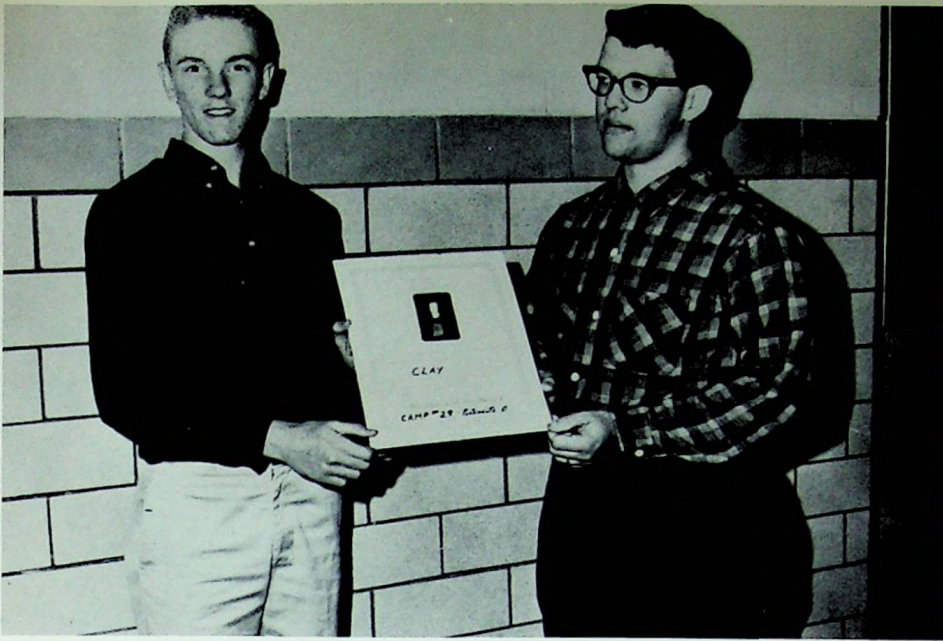
## TYPING CONTEST



Sue Essman and Mary Rayburn represented the Typing I class in the annual county typing contest. Mary placed second in the county.



Sharon Frazier and Judie McCann participated in the typing contest as representatives of the Typing II class. Judie placed third in the county.



Denny Morrow, who was adjudged most proficient in American history, is presented the Woodmen of the World award by Mr. Dautel.

The annual Citizenship Award was presented this year to Mary Lois Howard and Bill Payton.



Mrs. Woods presents the Daughters of American Revolution award to Mary Lois Howard.



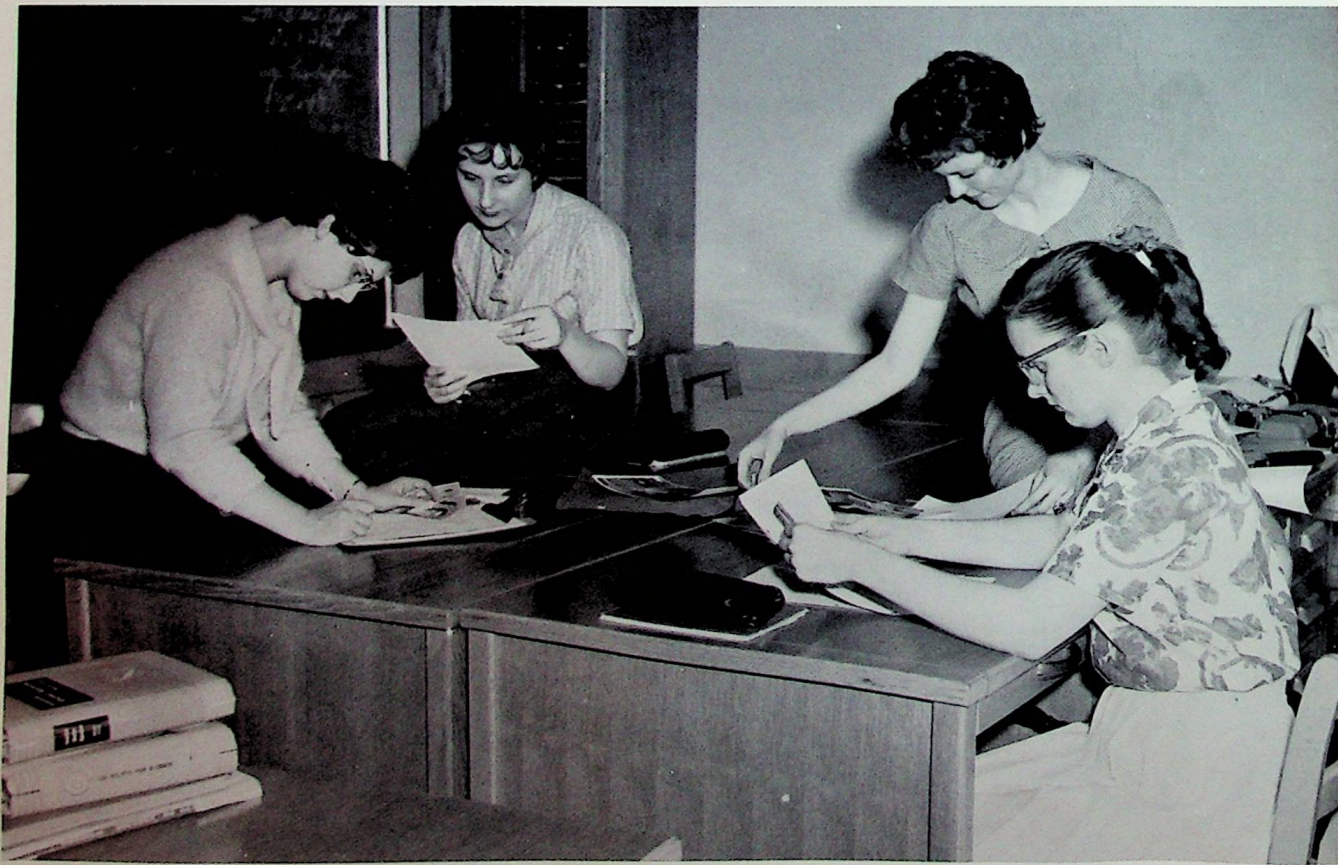


The Clubs and Activities section are being done by Melissa Wells, Pat McCoy, and Claudia Colburn.



Sue Johnson, Donna Higgins, and Karen Vanderpool are finishing the Senior section.

## ANNUAL STAFF



Karen Vanderpool, Sue Johnson, Camilla Murphy, and Sharon Taylor are arranging pictures for the Underclassmen section of the Annual.



Editors of yearbook are: Karen Vanderpool, Sharon Taylor, and Camilla Murphy.



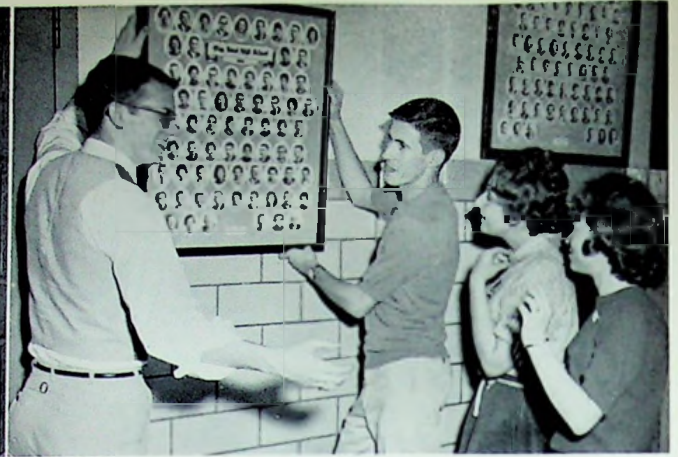
Working on the Sports section are: Mike McCain, J. D. Johnson, and Bill Gwynne.



Danielle Newberry, Diane Duty, Susan Copen, and Susan Reed put the Scholarship pictures in their proper places.



"They published it"



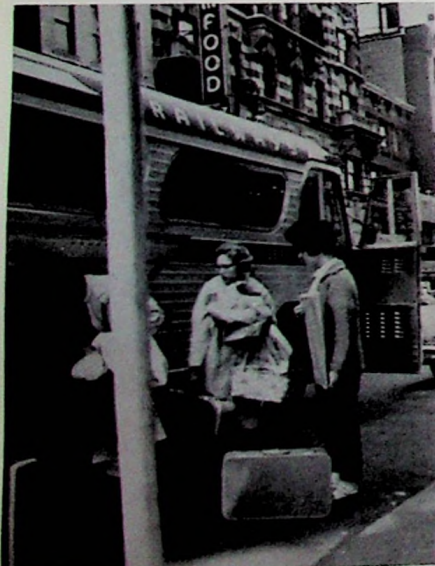
"Senior Class Officers"



Girls' League Queen



"Our Band"



"Ohio here we come"

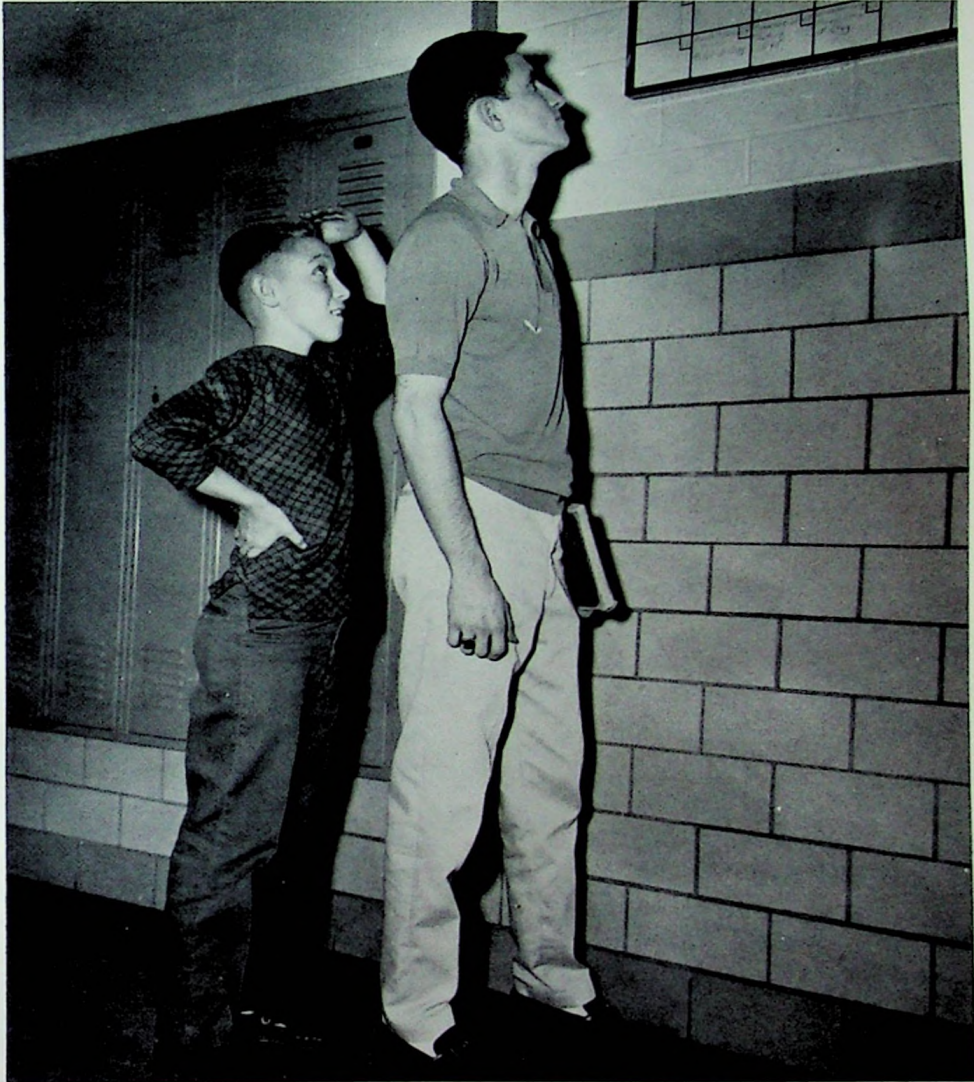


"Hello-o-o down there"



"B-r-r-r"

# UNDERCLASSMEN



A tree that is young and tender can be bent and made to grow in the proper direction. Young minds are pliant and can be guided into those channels which promote proper growth and maturity.

# JUNIORS

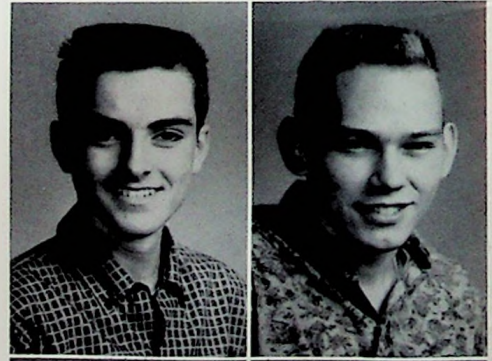


The Junior Class Officers are busily preparing their Prom Programs. They are: Roger Carver, Secretary; James Johnson, Treasurer; Bill Gwynne, President; and Dave Smith, Vice President.



Paula Adams  
Elaine Brandenburg

Jack Branon  
David Bratt



Marsha Burgess *m*  
Roger Carver *m*

Shirley Caudill *m*  
Susan Copen

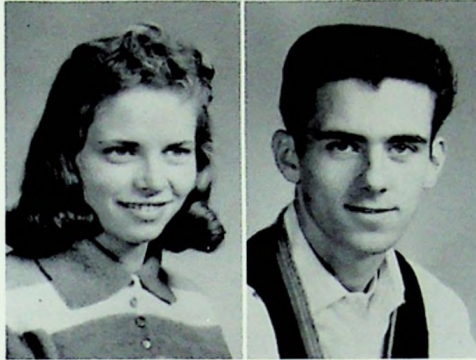
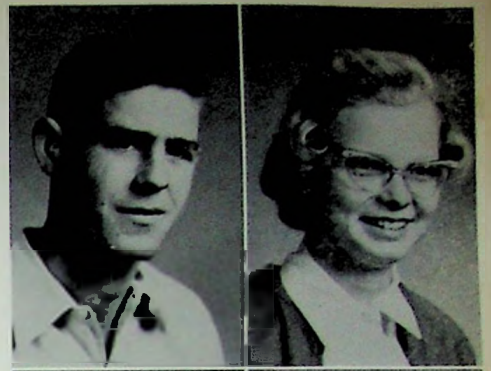






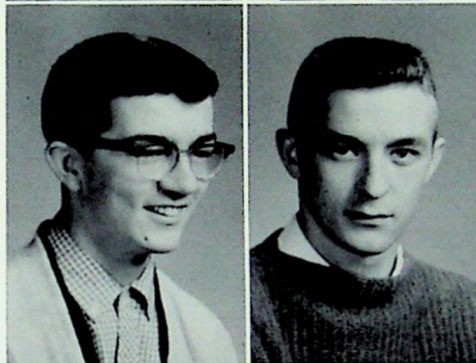
Nancy Cox <sup>m</sup>  
Jim Craft <sup>m</sup>

Mike Curtiss  
Sue Essman



Avinell Fraley <sup>m</sup>  
Robert Gambill

James Gilliam  
Dean Groves <sup>m</sup>



Bill Gwynne  
Sam Hall

Gary Hatfield  
Donna Higgins



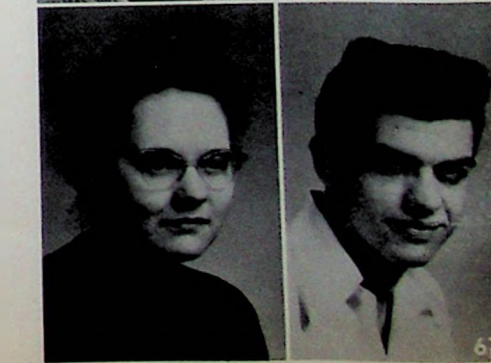
Dave Howard  
Vernon Jones <sup>m</sup>

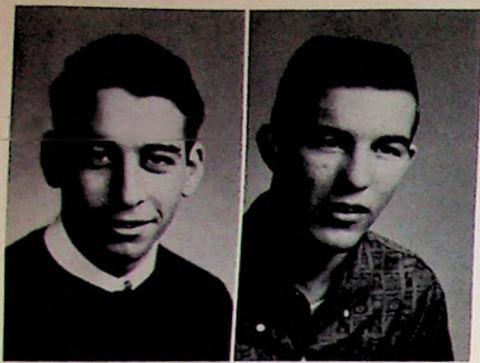
James Johnson  
Daniel Justice <sup>m</sup>



Letty Kalb <sup>m</sup>  
Joyce Kegley

Linda Kingrey  
John Kongos





James Lynd  
Mike McCain



Horace McGlone  
Darlene McNutt



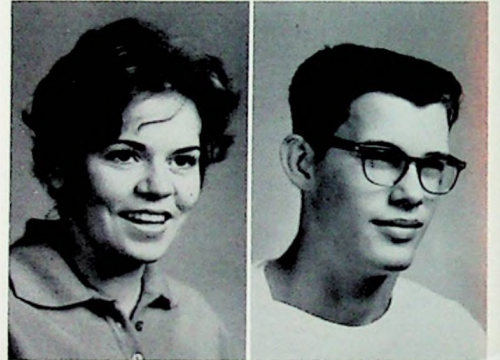
Denny Morrow  
Brenda Moritz



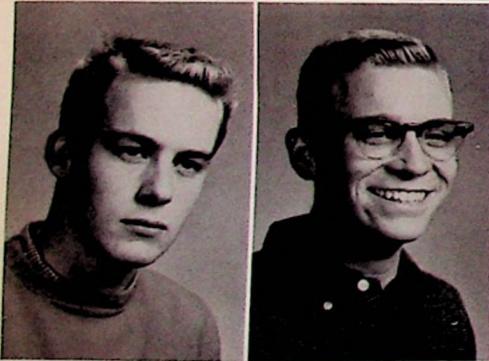
Clarice Mowery  
Larry Newberry



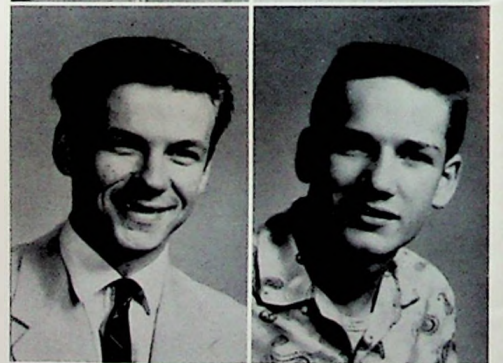
Sue Patrick  
Sue Raiké



Mary Rayburn  
Bill Schweinsberg



Bob Sheward  
Dave Smith



Ralph Steele  
Clinton Thompson



Sharon Tipton  
Larry White



Keith Yinger



Bill  
Allison

Carol  
Bainer



Gary  
Bainer

Richard  
Bloomfield



Susan Bryan  
Janie Burt



Claudia Colburn  
Karen Cookman



Sharon Craig  
Pat Curtiss



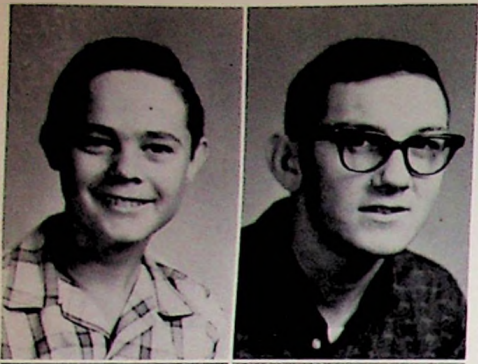
The Sophomore Class Officers are discussing money-making projects. They are from left to right: Secretary, Diane Duty; Treasurer, Janet Wiger; Vice President, Dennis Lehman; and President, Mike Kelly.

Linda Cordle  
Janet Craft

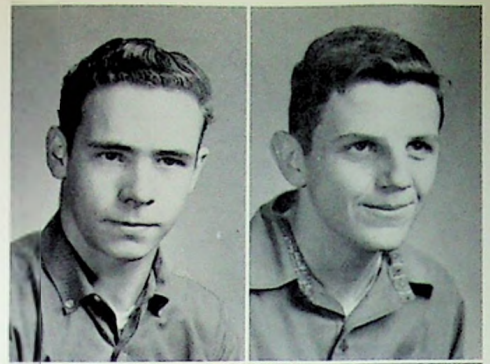
## SOPHOMORES



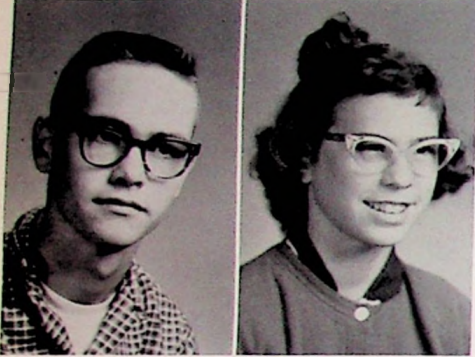
Diane Duty  
Bob Eastwood



Kenneth Elrod  
Paul Franklin



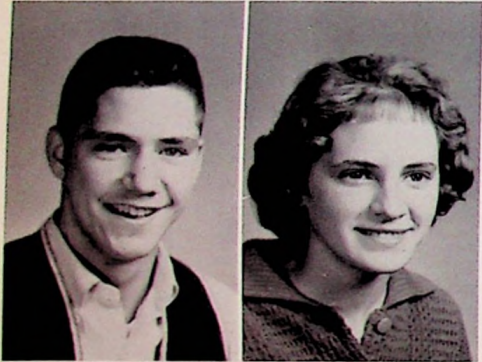
Roger Frazier  
Jim Gasaway



Jerry Ginn  
Laura Greer



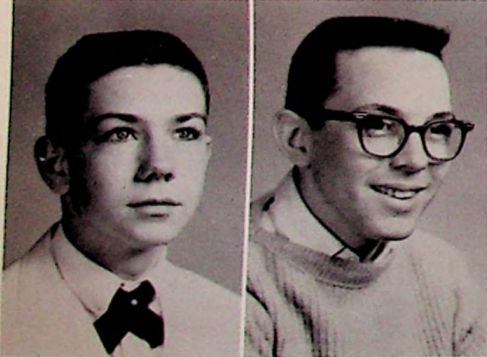
Linda Haney  
Susan Heath



George Horsley  
Alice Justice



Deanna Justice  
Verlin Justice



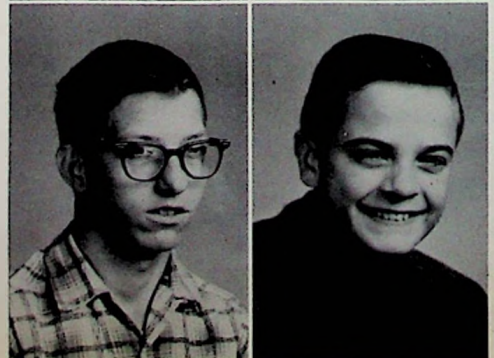
Jerry Keller  
Mike Kelly



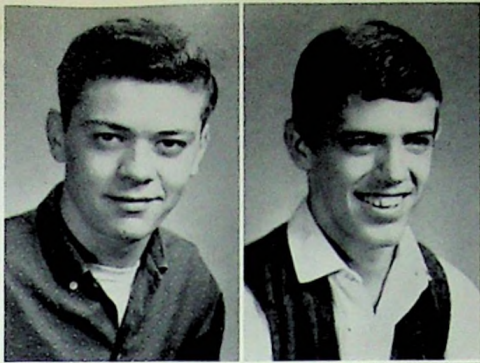
Colin Lackey  
Carolyn Lawson



Dennis Lehman  
Robert Lewis

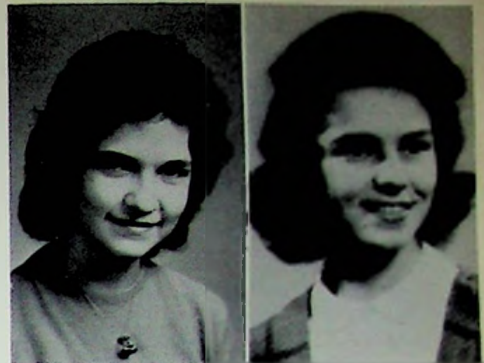


James Marlowe  
David Morrow



Larry Miller <sup>m</sup>  
Thomas Morgan

Joyce Mounts <sup>m</sup>  
Danielle Newberry



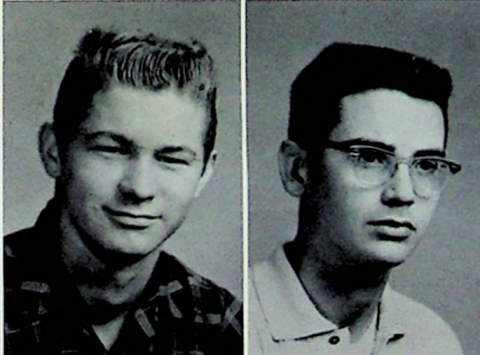
James Nunnery  
Willian Owen

Shirley Phillips  
Robert Piatt



Susan Reed  
Janice Riley <sup>m</sup>

Bill Ritterhoff  
David Rowe

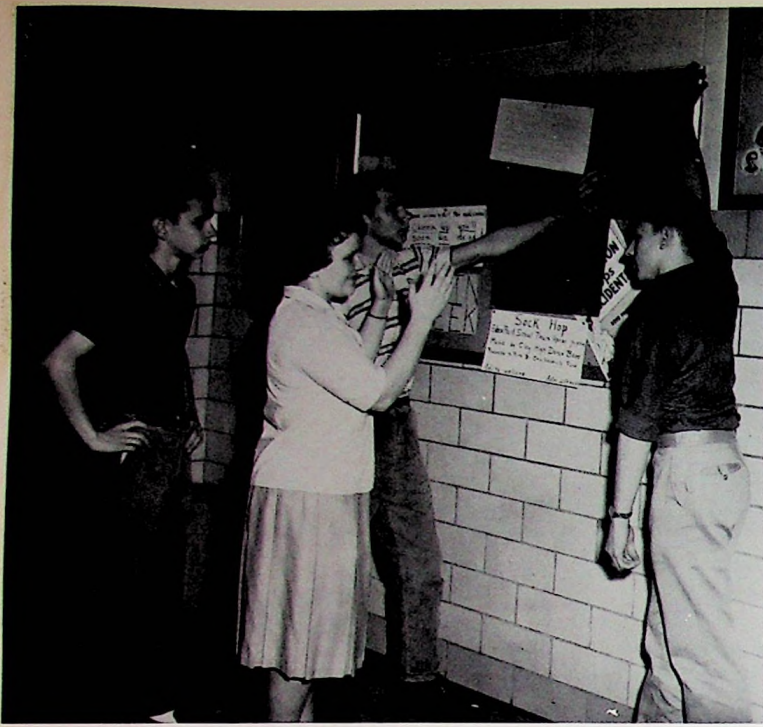


Ripley Scurlock  
Mike Shoemaker <sup>m</sup>

John Spradlin  
Alice Wessel



Darlene Whisman <sup>m</sup>  
Janet Wiget <sup>m</sup>



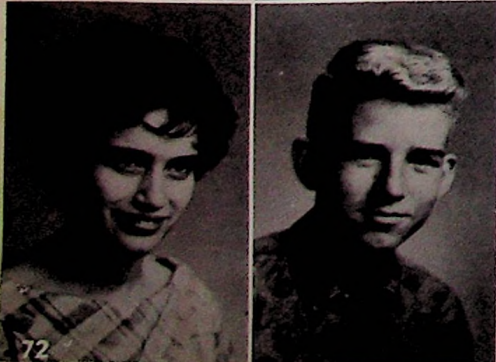
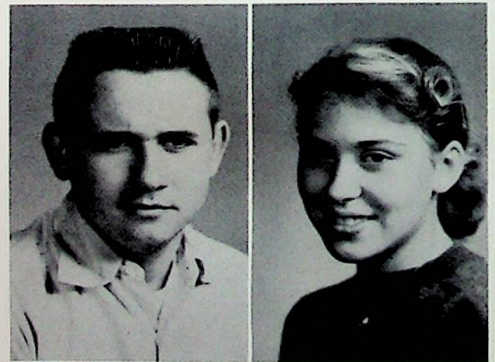
## FRESHMEN

The Sophomore Class Officers are placing a poster advertising their annual dance on the bulletin board. They are: Reggie Lilly, Treasurer; Mary Cottle, Vice President; Jerry Howard, President; and Paul Taylor, Secretary.



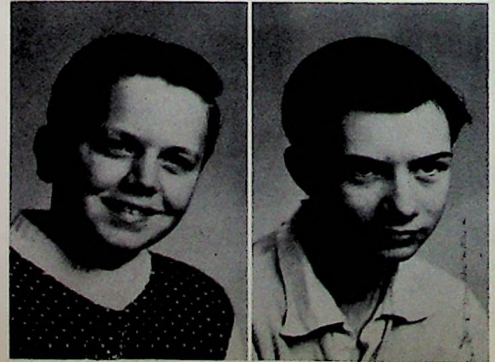
Pamela Adams  
Richard Arbogast

Gary Bellar  
Jane Bierley



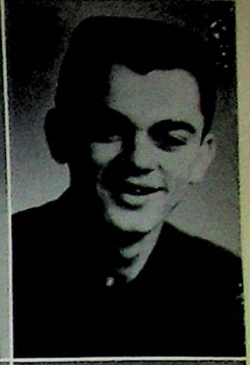
Hazel Blevins  
David Bloomfield

Dennis Bloomfield  
Larry Boldman





Patricia Breech  
Danny Burt



Sue Carroll  
Clarence Chandler



Clyde Clevenger  
Pamela Conklin



Vernon Conley  
Karen Conley



Florence Cordero  
Charlene Cordial



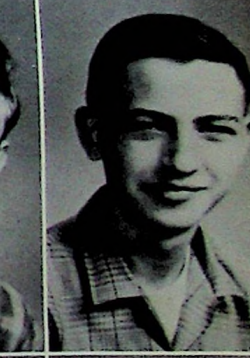
Mary Cottle  
Roger Craig



*Jean Davidson*

Robert Curnutte  
Jean Davidson

Glenn Eddy  
Richard Fitch



Mary Franklin  
Jerry Frazier



Charles Gill  
Linda Gilliam



James Grant  
Vicki Groves



Mary Heisler  
Carol Hollis



Jerry Howard  
Patricia Jackson



Janet Kingrey  
Raymond Leach



Sally LeMaster  
Reggie Lilly



Herman Madden  
Donna Martin



Veronica Mathis  
Susan McCall



Jo Ellen Miller  
Melinda Meixner



Barbara Moore  
John Oliver



Patti O'Doherty  
Vonnice Pack





Virginia Phipps  
James Runyon



Sandra Sparks  
Betty Spence



Joyce Stanley  
David Stauffacher

Roger Stewart  
Paul Taylor



Cathy Thompson  
Eileen Ward



Lorraine Whitt  
Robert Willis



# EIGHTH GRADE

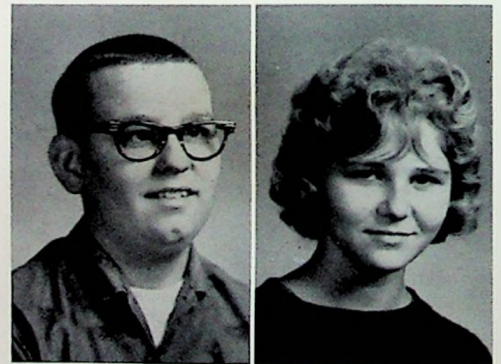


The Eighth Grade Class Officers enjoy a soft drink after an important class meeting. They are from left to right: Dave Gable, Vice President; Alice Craft, Secretary; Larry Felts, Treasurer; and Jim Chapman, President.



Beverley Adams ✓  
Roger Adams

✓ David Allen *Dr.*  
Shanna Barrett *Dr.*



Bonnie Beasley ✓  
James Bierley

Danny Boldman *artist*  
Alice Branon *duet*





Terri Buckle ✓  
 Jack Burke *died*

Mike Canter ✓  
 Brenda Carver ✓



Sue Carver  
 James Chapman ✓

Michael Clark ✓  
 Elaine Clausing



Clarence Clifford  
 Lawrence Clifford

Sharon Clifford  
 Charles Cobb ✓



Robert Cook ✓  
 Sharon Cookman

William Cordero  
 Alice Craft

*Sharon Cookman*  
*@ 10-10-60*



*Ricky*  
 Robert Eastwood ✓  
 Kay Essman

Carol Fannin  
 Larry Felts ✓





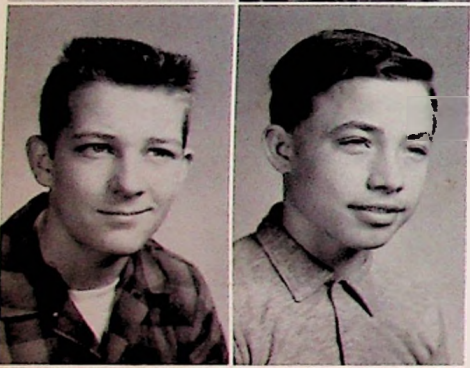
Clyde Fenton ✓  
David Fields ✓

Timothy Fields  
David Gable ✓



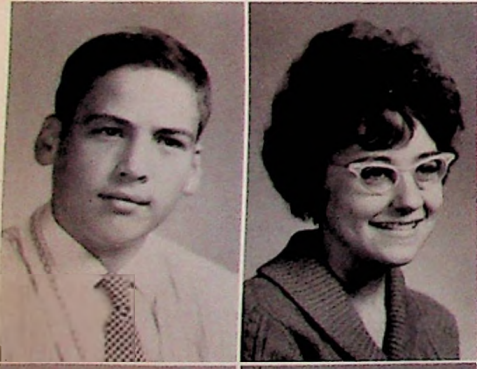
Zola Gill  
Gary Gilliam

Pamela Green ✓  
Barbara Gwynne



Gary Hamblin  
Wayne Hammond

Robert Hanes  
Jean Harper



Robert Hatfield  
Linda Holbrook

Thomas Houston  
Michael Hunter ✓



Lowell Huston  
Hazel Jardine ✓

Cheryl Johnson ✓  
Hal Johnson





Earl Karb ✓  
Lena King ✓

Kay Kongos<sup>M</sup> ✓  
Sue Lake ✓



Sharon Leininger ✓  
Karen Lynd ✓

Brenda Marcum ✓  
Danny Marlowe



Timothy Martin ✓  
Larry McCain

Sue Miller ✓  
David Moore



Chris Moritz ✓  
Darrell Morrow

Steve Myers ✓  
Jay Newberry



Susan Newman ✓  
Mary Osborne ✓

Ralph Osburn<sup>M</sup>  
Jacqueline Owen





Patrica Payne  
Mike Powell

Eugene Rayburn



Vicki Rayburn  
Larry Roush

Harlena Ruby  
Loretta Runyon ✓



Wayne Sexton  
Paul Shively ✓

David Smith  
Paul Spradlin ✓



Kathy Steed  
Beverly Suter ✓

Rusty Tipton ✓  
Robert Walters

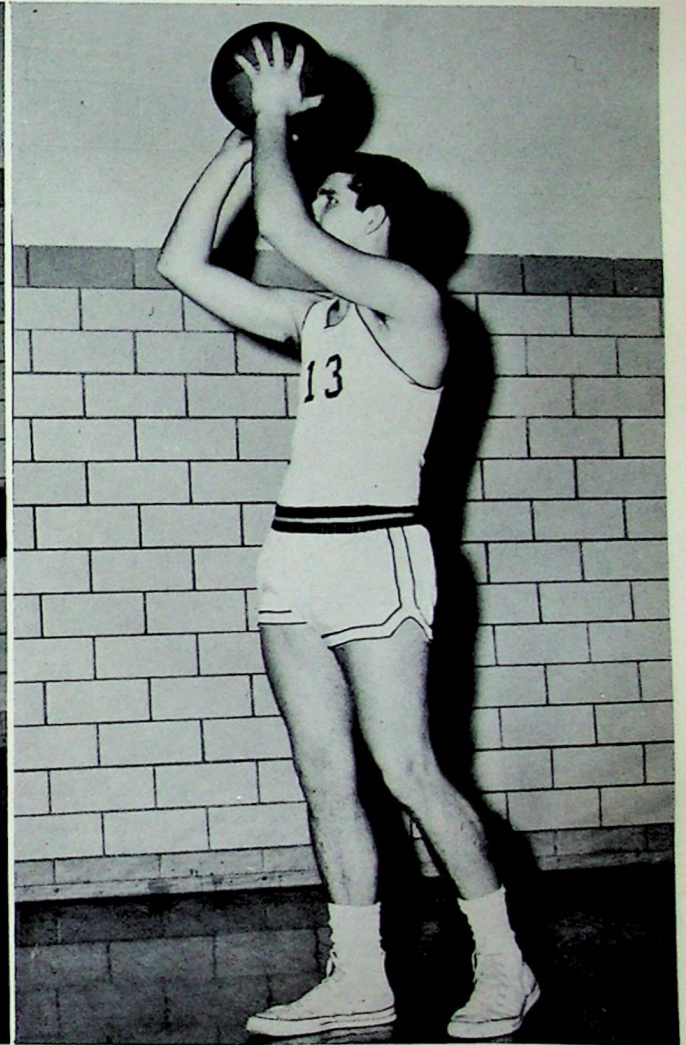


Wilma Whitt

Janet Wise ✓  
Karen Wyrick



# SPORTS



The proper combination of soil along with sufficient amounts of rain and sunshine grows trees which are straight, strong, and beautiful. Bodies which are sound physically due to good food, sufficient sleep, and proper exercise makes good athletes as well as good students.



Standing, from left to right are: Bob Sheward, David Smith, Denny Morrow, Bob Rowe, Sam Hall, Mike Curtiss, Gary Hatfield, Jim Clausing, Bob Cross, Roger Carver, Eugene Wilson, and David Duty.

## VARSITY

Clay	80	West Union	48	Clay	64	Laurelville	75
Clay	48	Green	51 OT*	Clay	43	So. Webster	33
Clay	61	Stockdale	56	Clay	66	Peebles	57
Clay	57	Laurelville	48	Clay	71	Green	57
Clay	61	Locust Grove	49	Clay	67	Chesapeake	48
Clay	46	Latham	44 OT*	Clay	65	Beaver	49
Clay	66	So. Portsmouth	45	Clay	45	Lucasville	41 OT*
Clay	57	Chesapeake	58	Clay	65	So. Webster	33
Clay	46	So. Webster	55	Clay	50	Green	48
Clay	62	Manchester	46	Clay	58	Peebles	46
Clay	75	Oak Hill	45	Clay	63	East	72
Clay	61	Stockdale	41				

\* Over Time

The Varsity outscored all opponents 1422 to 1195, earning an 18-5 record. The team was remarkably well balanced and possessed adequate bench strength. The awards were given as follows: Dave Duty, highest Field Goal percentage; Denny Morrow, highest Free Throw percentage; Jim Clausing, Total Rebounds; and Eugene Wilson, Total Assists.

In tournament action, the Varsity downed three straight opponents to win the County Tournament, and Denny Morrow won the coveted Foul Shooting Award. The District Tournament was not as rewarding with Clay being edged out by powerful East High.



# RESERVE BASKETBALL TEAM

Clay	40	West Union	22	Clay	50	Oak Hill	29
Clay	26	Green	33	Clay	39	Stockdale	19
Clay	48	Stockdale	25	Clay	26	Laurelville	30
Clay	27	Laurelville	25	Clay	32	So. Webster	19
Clay	38	Locust Grove	32	Clay	36	Peebles	19
Clay	46	Latham	18	Clay	21	Green	31
Clay	55	So. Portsmouth	29	Clay	25	Chesapeake	46
Clay	14	Chesapeake	31	Clay	47	Beaver	39
Clay	49	So. Webster	33	Clay	40	Latham	22
Clay	49	Manchester	22	Clay	20	Lucasville	23

The Reserves ended their successful season with a record of 14-6.

George Horsley led the team with the highest Free Throw percentage and Total Rebound. Clarence Chandler led with the highest Field Goal percentage and Paul Franklin had the most assists.

In tournament play, the Reserves lost to the Valley Indians.

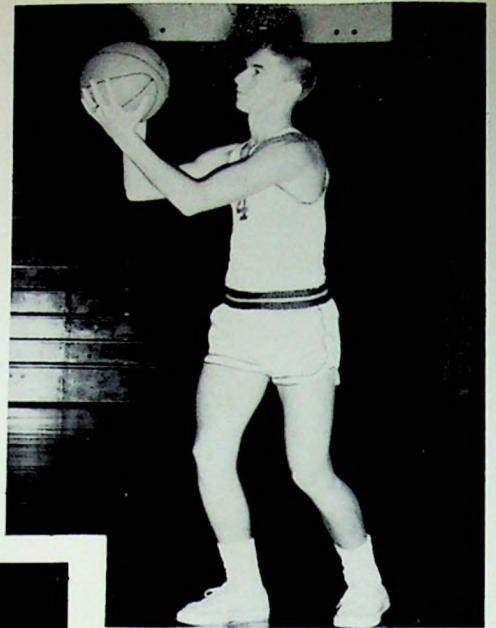


Seated in the first row are: Mr. Justus, Coach, Jerry Howard, Paul Franklin, David Bloomfield, Dave Rowe, Dennis Lehman, Vernon Conley, and David Morrow. Seated in the second row are: Mike Curtiss, Clarence Chandler, George Horsley, Jerry Ginn, James Runyon, Danny Burt, and John Oliver.

# SENIOR SQUAD MEMBERS



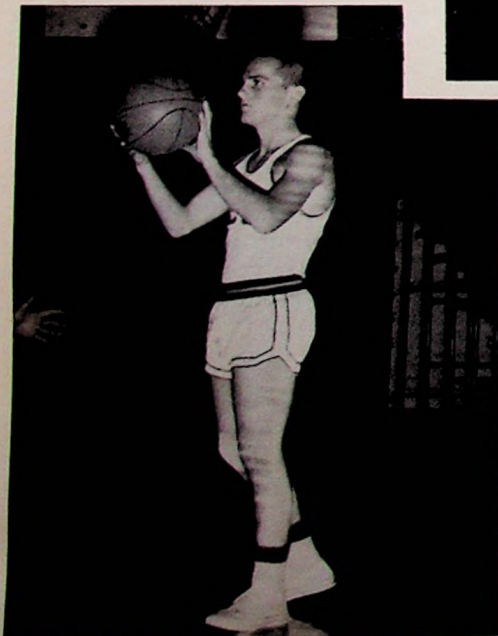
BOB CROSS



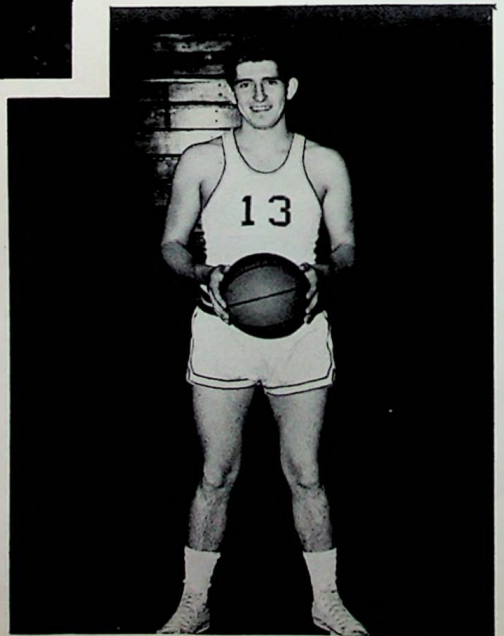
EUGENE WILSON



JAMES CLAUSING



DAVID DUTY



BOB ROWE



ROGER CARVER



DAVID SMITH



ROBERT SHEWARD

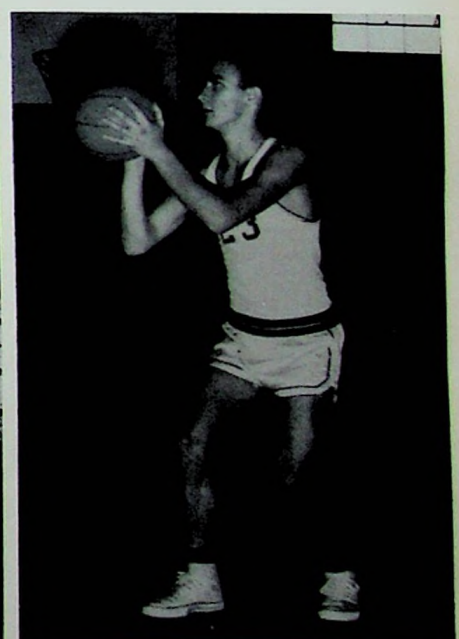
## **JUNIOR MEMBERS**



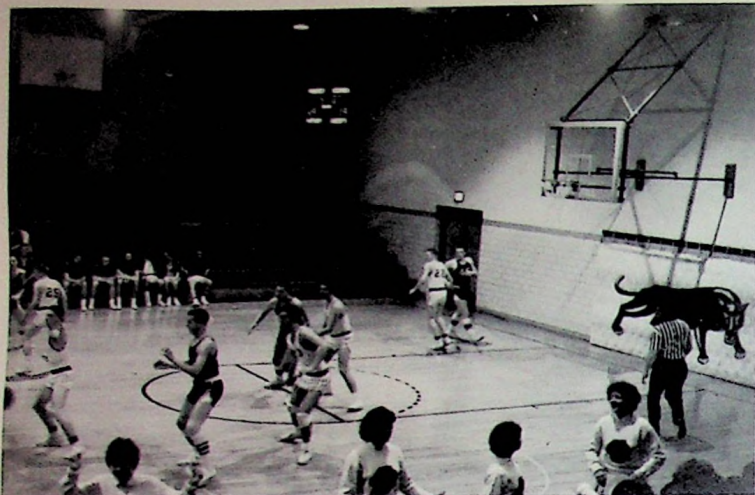
MIKE CURTISS



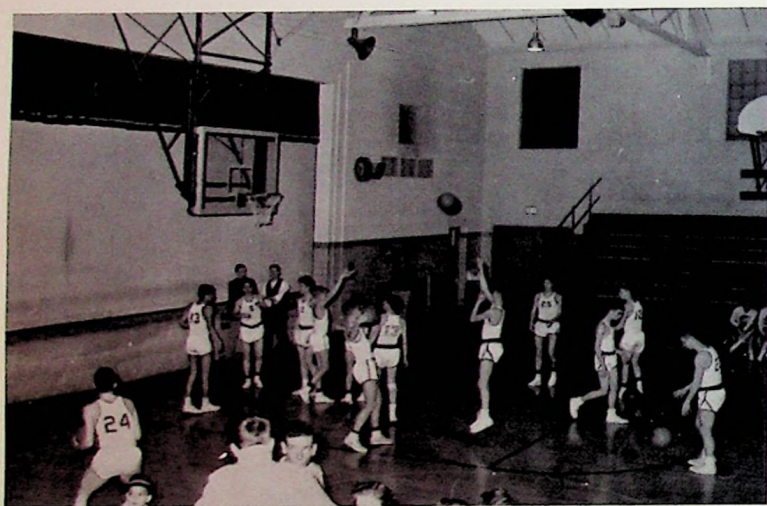
DENNY MORROW



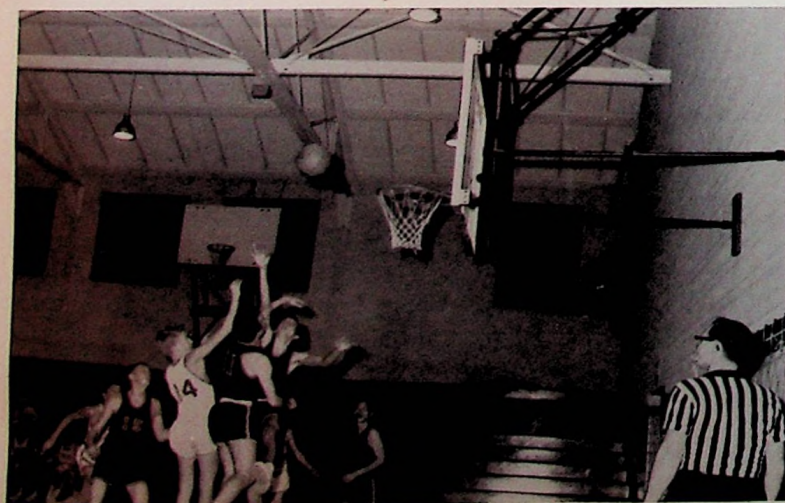
SAM HALL



David Duty, Eugene Wilson, Sam Hall, Bob Rowe, and Bob Cross display the strong defense which helped the Varsity to a winning season this year.

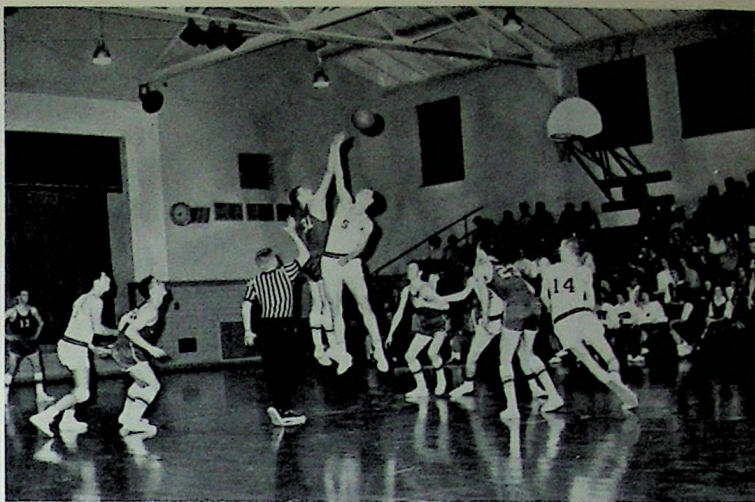


The Reserve Team warms up for an important game.

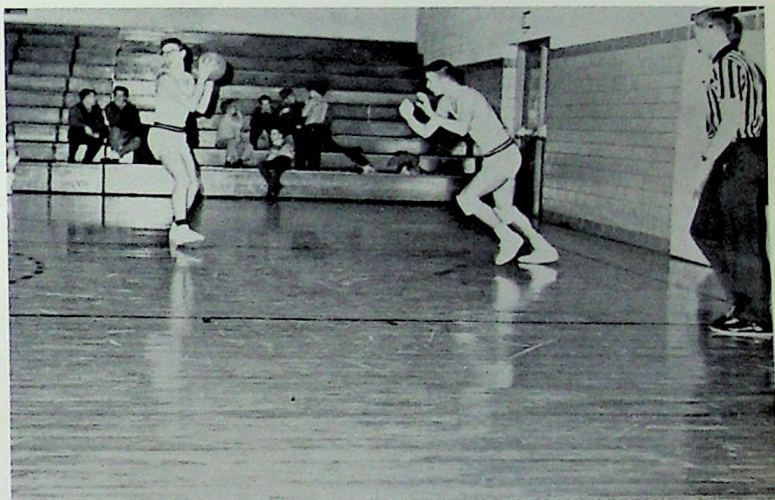


David Bloomfield scrambles for a rebound with the opposition as George Horsley looks on.

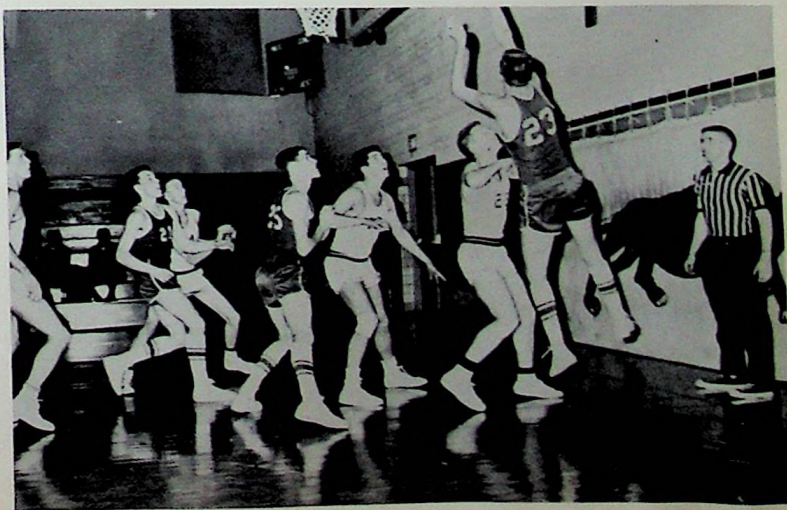
The tip-off starting the second half of play of the Clay-Webster game. Shown are: Bob Rowe, Jim Clausing, Bob Cross, and Denny Morrow.



Eugene Wilson and Sam Hall bring the ball down court to set up an offensive play.



The Varsity defense in action. Pictured are: Jim Clausing, Denny Morrow, Bob Rowe, and Bob Cross.





Any good ball club needs energetic cheerleaders to back it up. They are: Susan Reed, Marsha Burgess, Judie McCann, Claudia Colburn, and Janet Wiget.



The managers and statisticians perform the behind-the-scene jobs of caring for equipment and keeping useful records. The managers are: David Morrow and Jack Branon. The statisticians are: Bill Gwynne, Charles Long, and James Johnson.



First row: David Duty, Robert Cross, David Walters, Carl Owens, George Holcomb, and Mr. Long, Coach. Second row: Clinton Thompson, James Runyon, Robert Gambill, David Smith, Larry Newberry, and Jack Branon.

#### FALL SCHEDULE

Clay	3	Webster	1
Clay	2	Webster	4
Clay	4	Green	9
Clay	6	Green	5

#### SPRING SCHEDULE

Clay	5	Green	14
Clay	2	Valley	9
Clay	11	Webster	4
Clay	4	Green	9
Clay	3	Valley	8
Clay	2	McKell	5
Clay	5	So. Porstmouth	11
Clay	5	McKell	4
Clay	5	So. Porstmouth	6

This year proved to be a rough one for the Baseball Team with the competition throughout the area unusually strong.

The record for the fall schedule was 2-2, while that of the spring was 2-7. The team has gained valuable experience and is determined to have a winning season next year.

Bob Holcomb led the team with a .467 batting average. The other four senior members played equally well, leading the team in Runs-Batted-In and batting averages.

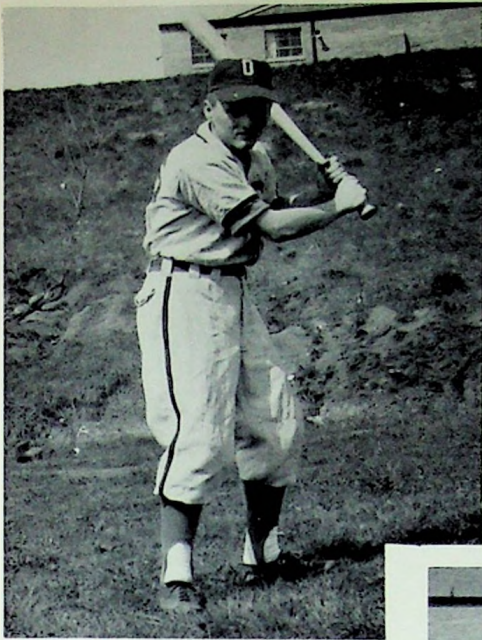


The Baseball Team warm up before an afternoon game. Members of the team are: Larry Newberry, Bob Cross, Bob Holcomb, Dean Gambill, Carl Owens, Dave Walters, and Dave Duty.

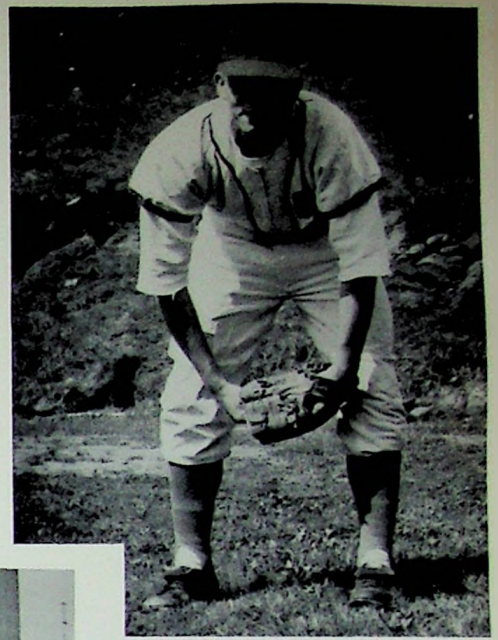


The coach, Mr. Long, smiles approvingly as someone crosses the plate with another run.



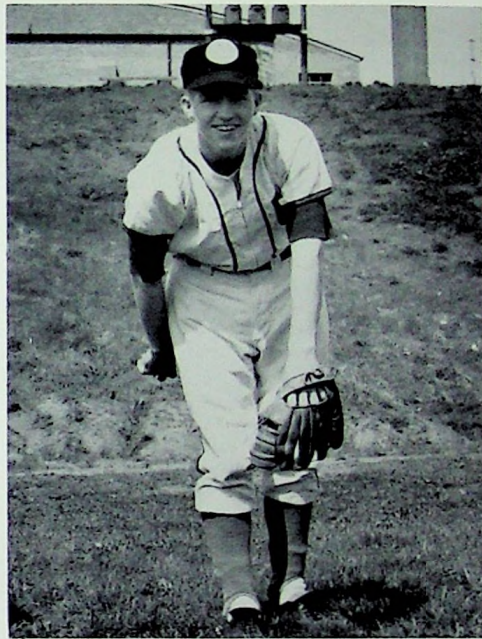


DAVID DUTY



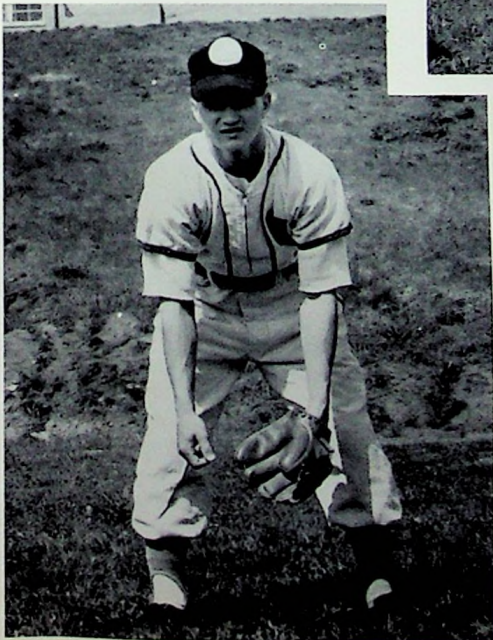
DAVID WALTERS

**SENIOR**

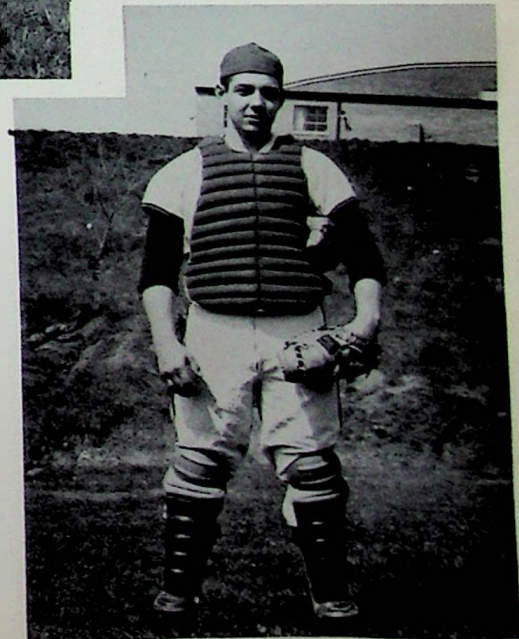


BOB CROSS

**MEMBERS**



CARL OWENS



GEORGE HOLCOMB



SENIOR ATTENDANT  
Judy Barrett



JUNIOR ATTENDANT  
Marsha Burgess

**HOME-**



QUEEN  
Nancy Burgess

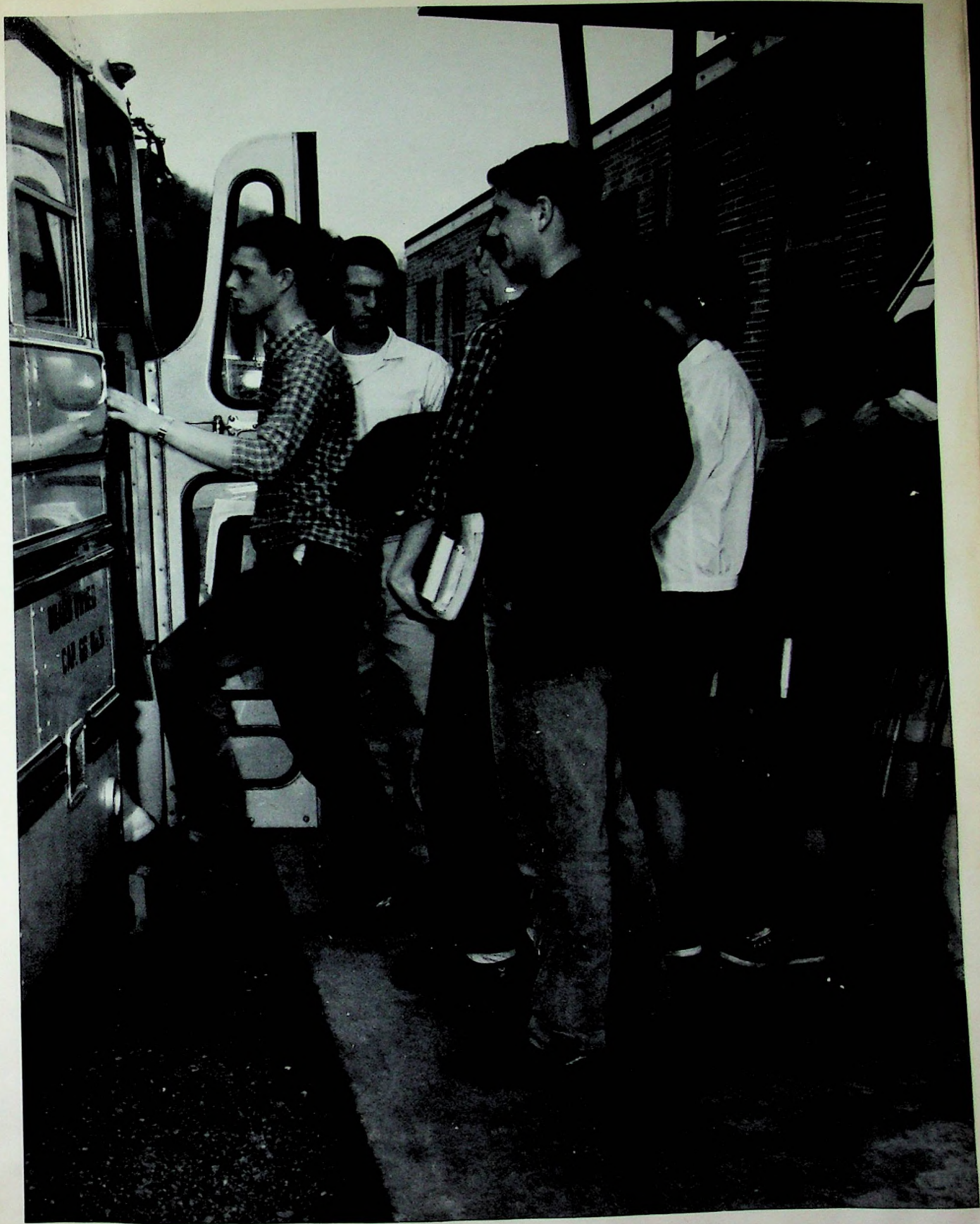
**COMING**



SOPHOMORE ATTENDANT  
Janet Wiget



FRESHMAN ATTENDANT  
Vonníe Pack



With semester tests nearly completed, these students are comtemplating their plans for summer vacation as they eagerly board the bus.



Mr. Estepp, relaxing a moment in the office, thinks how quiet it has become now that the student body has left for the summer. Such a peaceful moment is rare in the life of a high school principal, but that weary gaze cannot overshadow a look of deep satisfaction.

# ADVERTISING



The foliage of one tree is markedly different from that of another, thus making it possible for an individual to choose a favorite. By the means of advertising, purchasers are given the opportunity to know the products and to select those that will fit their needs.

Compliments of  
**ADAMS BAKING COMPANY**

Bakers of  
PAN DANDY BREAD.

1009 Offnere Street

Phone EL 3-0290



**SCHISLER PROVISION CO.**

Wholesale and Retail Meats

Your Meal Is Right

If Your Meat Is Right

Plant

Spring Lane  
and Railroad

Store

801 John St.

**CARROLL'S BEAUTY SHOP**

1336 Rosemount Road

Portsmouth, Ohio

EL 3-3893

**CURTIS GROCERY**

Sciotoale  
PR 6-6198





# F. C. DAEHLER MORTUARY CO.

GERALD W. GILMORE, Manager

ROGER W. DAVIS, Assistant Manager

915 Ninth Street

Portsmouth, Ohio

**J. W. STIR COMPANY**

Floor and Wall Covering  
Cabinets - Metal Trims  
516 Second Street  
Phone EL 3-2105

Compliments of

*Shake Shoppe*

2916 Scioto Trail  
Portsmouth, Ohio

Compliments of

**PIATT FUNERAL HOME**

Ambulance Service  
  
Air-Conditioned  
  
Phone EL 3-3600

**BETSY ROSS**

IS GOOD BREAD

1511 Chillicothe St.

Compliments  
of the

**CRISPIE CREME  
DONUT COMPANY**

Gallia and Waller Street

Congratulations to the  
Graduating Class of 1961

**BRUSH ELECTRIC  
COMPANY, INC.**

10 Glover Street  
Phone EL 3-1920  
Portsmouth, Ohio  
Heating, Air-Conditioning,  
and Contracting

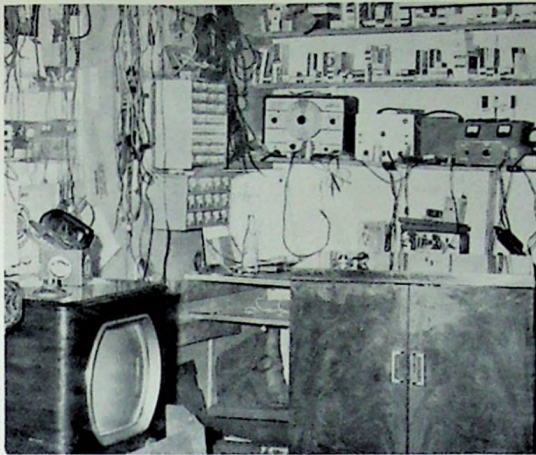
**CRICHTON OFFICE SUPPLY**

Suppliers for  
Accountants, Offices, Schools  
"Serving This Area Since 1923"  
  
740 Fifth Street, Portsmouth  
Phone EL 3-8290

**BURCHAM**

EQUIPMENT COMPANY  
Restaurant and Institutional  
Supplies and Equipment  
Dial ELmwood 3-1989  
1122 Findlay Street  
Portsmouth, Ohio





## EDEN PARK TV

Route 6, Portsmouth

Phone GL 6-5487

"For All Kinds of TV Service  
Philco, Admiral, Zenith  
New and Used Televisions

# Marting's

Congratulates

the Class

of 1961

. . . best wishes

and

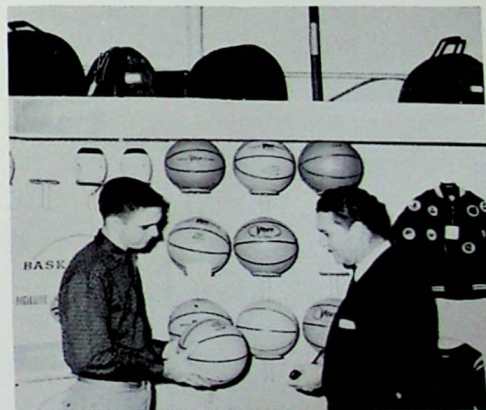
continued success!

# Borden's

Milk - Ice Cream

237 Second Street

Portsmouth, Ohio



## NEWBERRY'S

for

Sporting Goods

New Boston, Ohio

816 Gallia Street  
Portsmouth, Ohio

**RICHARDS' NEWS**

Hallmark Greeting Cards  
Schraffts' Candies  
1328 Gallia Street  
Portsmouth, Ohio

Compliments of

**EMERICK FUNERAL HOME**

RALPH SCOTT, Manager

ELmwood 3-4161

**ED LOCKNER**

"For the Best in Auto Needs"

818 Chillicothe Street  
Portsmouth, Ohio  
Phone: EL 3-5350

**GEMPERLINE FURNITURE**

COMPANY

612 Second Street  
Westinghouse Dealer  
6 Floors of Furniture

**WURSTER**

DRUG CO., INC.

"Portsmouth's Prescription  
Center"

419 Chillicothe St.  
Portsmouth, Ohio  
Established 1897

**CECIL CAUDILL  
ALUMINUM PRODUCTS CO.**

Storm Windows - Doors - Awnings  
Aluminum Siding - Railing - Post  
Column

Bus. Phone      Res. Phone  
EL 3-0668      GL 6-5420  
2525 Gallia St.  
Portsmouth, Ohio

Compliments of

**PORTSMOUTH  
MONUMENT COMPANY**

Dealers in  
Monuments and Markers  
1617 Offnere Street  
EL 3-4055  
Portsmouth, Ohio

Compliments to the Class of  
1961

**THE STANDARD  
SUPPLY CO.**

1004 Findlay St.  
Portsmouth, Ohio



Custom Built Cabinets  
Built-In Ranges  
Ovens and Refrigerators  
Cabinet Hardware and  
Pittsburgh Paints

Rubyville

Phone GL 6-4878

## IDEAL MILK

1637 Tenth Street

Phone EL 3-5191

Dairy Products

# *Ideal*



*QUALITY CHECK*

## CLEANING SUPPLIES CO.

3rd and Court Streets

Portsmouth, Ohio

ELmwood 3-5181

"The Best in Cleaning Supplies  
for Heavy Duty Use"



Comparison Proves Roberts' Values Greater

# ROBERTS

*The Diamond Store*

421 Chillicothe St.

Compliments of

## BURCHETT'S GROCERY

4438 Old Scioto Trail

Portsmouth, Ohio

Phone EL 4-2602

## KOBACKERS

"Portsmouth's Greatest Value Store"

Portsmouth, Ohio

Congratulations  
to the  
Graduating Class

The

## PORTSMOUTH GAS CO.

"Gas Does It Better for Less"



**PEPSI-COLA**  
TRADE MARK

BOTTLING COMPANY  
OF PORTSMOUTH

2415 Old Scioto Trail  
Portsmouth, Ohio  
Telephone: ELMwood 3-3126

## SAMUEL LEVI & CO.

FURNITURE

840-844 Gallia Street

Next to LaRoy Theater

## AMERICAN SAVINGS AND LOAN ASSOCIATION

Incorporated 1892  
503 Chillicothe Street  
Portsmouth, Ohio EL 3-7070

Insured Savings

Home-Financing

Compliments  
of

## PORTSMOUTH INTERSTATE

## BUSINESS COLLEGE

# How Much Is \$165,000,000? . . .

When the current expansion and modernization program is completed at its Portsmouth Division, Detroit Steel Corporation will have spent over \$165,000,000 in its determination to make this southern Ohio steel mill one of the finest, best equipped, most competitive such plants in the nation.

That's a lot of money.

For example, had a man who was living when Christ was born, continued to live until today, and had he spent \$225 every single day during all those long years, he would still not have spent that much money.

One hundred and sixty-five million dollars . . . the savings of thousands of ordinary people who, believing in the American Way, have become part owners in American Industry . . . plus the "plowed back" earnings of the company . . . all that money, within the next few years, will have been invested in the future of the Greater New Boston - Portsmouth Area to provide jobs and security for its citizens.

**DETROIT STEEL  
CORPORATION**  
**PORTSMOUTH DIVISION**



<p>To the Graduating Class of 1961</p> <p>Compliments of</p> <p>McCLAIN CLEANERS</p>	<p>Compliments of</p> <p>CUSTOM CARPETS AND</p> <p>LINOLEUM CO.</p>
<p>WALKERS</p> <p>Your Family Shoe Store</p> <p>420 Chillicothe Street</p> <p>Portsmouth, Ohio</p>	<p>Luggage, Jewelry, Guns</p> <p>B &amp; B LOAN CO.</p> <p>837 Gallia Street</p> <p>Portsmouth, Ohio</p>
<p>NICK'S CAFE</p> <p>Hot Dog Stand</p> <p>3964 Gallia Street</p> <p>New Boston, Ohio</p>	<p>KATHERINE'S BEAUTY SHOP</p> <p>Complete Beauty Service</p> <p>Individual Hair Styling</p> <p>EL 3-4343 Old Scioto Trail</p>
<p>NELSON WILLIAMS INSURANCE</p> <p>AGENCY</p> <p>Motorists Mutual Insurance Co.</p> <p>Fire and Casualty Insurance</p> <p>for Auto, Home, and Business</p> <p>3965 Gallia Street GL 6-4955</p>	<p>McCOY'S SUNDRIES</p> <p>4490 Old Scioto Trail</p> <p>EL 3-4522</p>
<p>GRACE L. KELSO</p> <p>4002 Gallia Street</p> <p>and</p> <p>DOCTOR JAMES KELSO</p> <p>Optometrist and Chiropractor</p> <p>Eyes Examined and Glasses Fitted</p> <p>GL 6-4256</p>	<p>LONG &amp; COMPANY</p> <p>"The House of Quality Furniture"</p> <p>729-733 Sixth Street</p> <p>Portsmouth, Ohio</p>
<p>PAULEY AUTO SALES</p> <p>3956 Gallia Street</p> <p>New Boston, Ohio</p> <p>GLendale 6-4353</p>	<p>DEHNER'S</p> <p>Clothing and Shoes for</p> <p>the Entire Family</p> <p>613 Chillicothe St.</p> <p>Portsmouth, Ohio</p>

CLASS RINGS

BY

**HERFF-JONES CO.**

JEWELERS AND ENGRAVERS

BILL BLANTON, Representative

Indianapolis, Indiana

**EDEN - PARK  
SELF-SERVE GROCERY**

8 MM Films

Proprietor - GLENN McMANUS

*Dunn Coal Company*

Wholesale and Retail

Yard and Office  
Gallia at Broadway

Telephone EL 3-2193  
Portsmouth, Ohio

**HARLAN DANNER**

County Engineer

**WOLFF**

Clothes for Men and Boys

Portsmouth, Ohio

Compliments of

**KENNETH CRANSTON**

Probate and Juvenile Judge

**W. L. WILHELM**

"JEWELER"

"Diamonds Are Our Specialty"

507 Chillicothe Street  
Portsmouth, Ohio

Congratulations to  
the Class of 1961  
From

**S. S. KRESGE'S**

400 Chillicothe Street  
Portsmouth, Ohio

**SCIOTO VALLEY  
PRODUCE CO.**

Fresh Fruits and Vegetables

1004 Chillicothe Street  
Portsmouth, Ohio  
Phone EL 3-2173



## FRAZIER'S GROCERY

Twin Valley

Phone GL 6-4048



## SELECT DAIRY

Home Owned

2345 Gallia Street  
Portsmouth, Ohio

Milk in Glass or Paper Containers

Congratulations

to

the Class of 1961


**C. M. DONALDSON  
AND ASSOCIATES**

## VALLEY FOOD SALES CO.

Wholesale Food Distributors

1619 10th St.  
Portsmouth, Ohio

Sugar --- Flour  
Canned Goods  
Institutional Goods

<p>MILLHUFF'S DEPARTMENT STORE 500 Harding Avenue Sciotoville, Ohio Phone PR 6-6666</p>	<p>DALE'S PHARMACY  12th and Offnere  EL 3-1147</p>
<p>STAN RUBY'S SERVICE STATION  Route 6  Portsmouth, Ohio</p>	<p>WENDEL-HOWLAND FUNERAL COMPANY 1503 Offnere Street Portsmouth, Ohio J. H. PURDY, Mgr. Dial EL 3-0500</p>
<p>MASSEY'S GRAVELY TRACTOR SALES &amp; SERVICE Power Equipment for Lawn, Garden and Field and Farm Route 335      Minford, Ohio Phone SPruce 9-2392</p>	<p>Baldwin Pianos - Organs "Best Wishes" Class of '61 SUMMERS &amp; SON 319 Chillicothe</p> 
<p>BUCKLE'S ROYAL BLUE MARKET  Clarktown, Ohio  Phone GL 6-5239</p>	<p>CLARE LAUNDRY QUEEN 3542 Gallia Street New Boston, Ohio "Do It Yourself" Wash 20 Cents --- Dry 10 Cents</p>
<p>LEET LUMBER COMPANY 913 Washington Street Lumber, Millwork, and Builders' Supplies</p>	<p>SHERMAN AND RIFFE INSURANCE AGENCY, INC.  422 Center Street    GL 6-4191</p>
<p>WEST END FURNITURE COMPANY 518 Second Street Complete Line of Furniture Lane Cedar Chests for Less</p>	<p>KNOST FLORAL COMPANY 1229 17th Street ELmwood 3-6780 Flowers for All Occasions</p>



## PRESTON'S OKEH USED CARS

Seven Miles North of New Boston on Route 139

COMPLIMENTS

OF

**R. H. "RUFÉ" BARRETT**

"Your Clay Township Insurance Man"

107-8 Masonic Building

Portsmouth, Ohio

Phone EL 3-3510

SCHIFFS SHOE STORE

Shoes for the Entire Family

214-216 Chillicothe St.

Portsmouth, Ohio

CRABTREE'S SOHIO SERVICE

4057 Gallia Street

New Boston, Ohio

ACME  
QUALITY PAINTS

EL 3-8670            210 Ch. St.

Portsmouth, Ohio

SHERMAN AND RIFFE  
INSURANCE AGENCY

GL 6-4191

422 Center Street

BENNER'S  
TOPS LAUNDROMAT

505 Harrisonville Ave.

New Boston, Ohio

We Rent, for Home Use,  
Shampoo Cleaning Machines

HIBBS HARDWARE  
WHOLESALE

737 Fifth Street

Portsmouth, Ohio

Phone EL 3-2995

Compliments of  
DISTEL FURNITURE CO.  
"Everything to Furnish the Home"  
Seventh and Chillicothe Streets

HUNTER'S  
LOCK AND BICYCLE SHOP  
Key Making - Safe Repairing  
1552 Gallia Street EL 3-0654  
Authorized Briggs and Stratton  
and Lawn Boy Service

ZIMMERMAN'S OFFICE  
SUPPLIES & EQUIPMENT

Underwood Typewriters

Victor Adding Machines

EL 3-0530

810 Chillicothe Street



Compliments  
of Your  
FRIENDLY JEWELRY  
STORE

811 Gallia St.  
Portsmouth, Ohio



**KAH PRINTING CO.**

DIAL  
EL 3-1879

711 CHILLICOTHE ST. • PORTSMOUTH, O.



MORITZ BROS.  
SERVICE STATION  
Texaco Products

Gates Tires and Batteries  
Scioto Trail and Clare  
Phone EL 3-9296



## WARREN FUNERAL HOME

Air-Conditioned  
Chapels

GL 6-4133

Oxygen Equipped Ambulances

# *Atlas Fashions*

Portsmouth, Ohio



## YORK AND GENE'S TEXACO

Eden Park



## PORTSMOUTH COCA-COLA BOTTLING COMPANY

EL 3-6580

## **NEWKIRK'S SELF-SERVICE**

Health and Beauty Aids

Produce and Fresh Meat

Rubyville

Phone GL 6-5416

Save for Your Future at



The  
**CITIZENS SAVINGS**  
and LOAN ASSOCIATION CO.  
505 Chillicothe Street  
Portsmouth, Ohio

ON THE SQUARE

Compliments of

## **BIERLEY HENDERSON**

Tire Sales

Twelfth and Chillicothe Streets

Distributors of

Goodyear Tires

Men's and Boys' Haircuts

## **SAM'S BARBER SHOP**

Greyhound Bus Station, Gallia St.

Free Parking in Rear

Open 8:00 A. M. to 6:00 P. M.

5 Days a Week

Congratulations

to the Class of '61

## **HERMS FLORAL COMPANY**

837 Sixth Street

Portsmouth, Ohio

## **BLUEBIRD BAKERY**

4208 Gallia, New Boston

Telephone GL 6-4345

Wedding and Birthday Cakes

Our Specialty

Compliments  
of

## **J. C. PENNEY CO., INC.**

Portsmouth, Ohio

## **MORGAN BROTHERS**

JEWELERS

Diamonds - Watches

Gifts for All Occasions

734 Fifth Street  
Portsmouth, Ohio



# ERWIN-DODSON

Minford

Compliments of

## BLANTON'S MARKET

Drugs and Records  
Quality Meats, Fresh Fruits,  
Produce, and Staple Groceries

Eden Park, Ohio



MacGregor

Spalding

## SAND'S SPORTING GOODS

Photographic Supplies

Gallia and Gay

Portsmouth, Ohio



Smith-Corona Typewriters  
Clary Adding Machines  
Olivetti Printing Calculators  
Complete School Supplies  
Service on All Makes  
Typewriters and Adding Machines

## **STAPLETON**

OFFICE SUPPLY COMPANY  
607 Chillicothe Street  
Portsmouth, Ohio, Ph. EL 3-1187  
1946 Our 16th Year 1961



## **PENNINGTON-SOWARDS FUNERAL HOME**

JAMES L. PENNINGTON  
Owner - Mgr.  
Licensed for Ohio and Kentucky  
Ambulance Service  
New Boston, Ohio  
Phone GL 6-4650 3983 Gallia St.

## **PARKER'S TELEVISION REPAIR SERVICE**

Service on Radios, TV  
Hi-Fi, Recorders

"All Work Guaranteed"

Open 9 A. M. - 7 P. M.

Route 139

Minford

Phone SP 9-2762

If No Answer Ph. SP 9-3266





<p>A. C. COLBURN INSURANCE AGENCY 618 Sixth Street Portsmouth, Ohio Phone EL 3-3590</p>	<p>ESCOM WILEY REAL ESTATE City, Suburban and Farm Property 921 Chillicothe EL 3-5520 Portsmouth, Ohio</p>
<p>BARQ-ROYAL CROWN BOTTLING CO. 116 Jefferson Street Portsmouth, Ohio Phone EL 3-6640</p>	<p>EVANS FLORAL SHOP When You Say It With Flowers, Say It With Ours. 6804 Gallia Street PR 6-2920</p>
<p>REXALL NEW BOSTON PHARMACY "Your Prescription Store" 4152 Gallia St. New Boston, Ohio GL 6-4885</p>	<p>BOBST GARDEN CENTER &amp; FLOWER SHOP 1720 Coles Blvd. Portsmouth, Ohio EL 3-7329</p>

**BOOSTERS**

Divide Inn  
Clark & Ramey's Grocery  
and Feed  
Cunningham Hardware  
A Friend  
Maxey's Auto Sales  
Hobstetters Gas Station  
Richard L. Canter  
Dr. William Nichols  
A Friend  
Harold Hanes, County Recorder  
Louis Bannon  
Dr. Bloom  
Berwin Miller  
Lovelee Beauty Shop

Ollie's Drive-Inn  
Marc Canter's Kopy Kat  
West End Electric Co.  
House of Fashion  
E. H. Russell Glass Company  
Emory Smith  
Dr. Gliem  
Mr. Chapman - Sunshine  
Biscuit Co.  
Wolford Machine Co.  
Staker's Service Drugs  
Stratton, Leedom, Montavon  
Harold's Lunch  
Fitches Used Cars  
Ohio Valley Produce

Big Boy

## NAGLE OFFICE MACHINES

Royal Typewriters  
The Brilliant New Royal Comes  
in Five Beautiful Colors - Take  
One to College.

See Us for Sales, Service, or  
Rentals.

704 4th St.

EL 3-4313

Compliments of



2nd and Chillicothe  
in Portsmouth

Where You're Always Welcome



Oxygen Equipped Ambulance Service

PR 6-2115

Sciotoville, Ohio

Hammond Organ, Air Conditioned

THOMAS J. GILL

JESSIE A. GILL

To Your Future Success!

**DOROTHY J. BREWER**

CLERK OF COURTS

Common Pleas and Court  
of Appeals

*The  
Doyle Landscape Nursery*

Design - Planting - Maintenance

4587 Old Scioto Trail

Phone EL 4-2481

Allen, Robert 6  
 Bandy, Carl D. 7  
 Bender, Beatrice 8, 37, 38  
 Childers, Joseph 8, 53, 55, 58  
 Crum, Carol 8  
 Dautel, David 9, 61  
 Davis, Lillian 8, 33  
 Erwin, Sam 10  
 Estepp, Robert 7, 32, 45, 94  
 Fluty, Cathleen 9, 35  
 Gable, Marcella 4, 10  
 Glenn, Alvis 6  
 Hunter, Darlene 8, 38, 40, 57  
 Justus, Arch 8, 32, 83  
 Long, Kinney 9, 27, 28, 46, 89  
 McCowen, Edward R. 6  
 McCoy, Paul 6  
 Miller, Kathryn 6, 10  
 Moore, Samuel 9, 29  
 Morgan, Carol 56  
 Moritz, Glenn 6  
 Potts, N. B. 6  
 Reed, Dockie 10  
 Ruby, Lena 9  
 Taylor, Frank 6  
 Taylor, Ruth 5, 9, 114  
 Vanderpool, Charles 6  
 Wiget, Margarite 10  
 Wooddell, John 8, 26, 28  
 Woods, Loretta 9, 42, 46, 51, 59, 61

## A

Adams, Beverly 28, 29, 54, 76  
 Adams, Harold 12, 37  
 Adams, Roger 76  
 Adams, Pamela 28, 55, 72  
 Adams, Paula 30, 36, 42, 66  
 Allen, David 76  
 Allison, William 42, 69  
 Arbogast, Richard 32, 40, 52, 72

## B

Bailey, Janet 4, 12, 21, 24, 30, 54, 55, 57  
 Bainer, Carol 32, 35, 39, 53, 55, 69  
 Bainer, Gary 35, 36, 39, 49, 53  
 Barrett, Shanna 54, 76  
 Barrett, Judith 12, 21, 24, 34, 37, 64, 92, 96  
 Beasley, Bonnie 54, 76  
 Bellar, Gary 4, 52, 72  
 Bierley, James 76  
 Bierley, Janie 55, 72  
 Blevins, Hazel 28, 72  
 Bloomfield, David 4, 40, 72, 83

Bloomfield, Dennis 72  
 Bloomfield, Richard 69  
 Boldman, Dan 25, 45, 54, 72, 76  
 Brandenburg, Elaine 38, 40, 44, 52, 54, 56, 66  
 Branon, Alice 29, 50, 52, 53, 76  
 Branon, Jack 31, 44, 50, 66, 88, 89  
 Bratt, David 33, 38, 66  
 Bratt, William 12, 24, 49, 52, 53  
 Breech, Patricia 28, 55, 73  
 Brown, David 4, 27, 33  
 Bryan, Nancy 12, 24, 37, 47, 49, 53, 57, 64, 77, 114  
 Bryan, Susan 49, 53, 54, 69  
 Buckle, Terri 27, 54  
 Burchett, Richard 12, 24, 33, 64  
 Burgess, Marsha 33, 54, 56, 66, 88, 92, 96  
 Burgess, Nancy 4, 13, 22, 24, 54, 57, 64, 92, 96, 114  
 Burke, Jack 77  
 Burt, Danny 32, 40, 73, 83, 86  
 Burt, Janie 30, 35, 50, 55, 69

## C

Callendar, Roylene 4, 13, 21, 24, 30, 54, 57  
 Canter, Mike 42, 54, 77  
 Carroll, Sue 4, 41, 45, 48, 50, 53, 55, 59, 73  
 Carver, Brenda 54, 77  
 Carver, Roger 56, 66, 82, 85  
 Carver, Sue 29, 77  
 Caudill, Shirley 30, 33, 66  
 Caudill, William  
 Chandler, Clarence 4, 73, 83, 86  
 Chapman, James 28, 45, 54, 76, 77  
 Clark, Mike 42, 77  
 Clausing, Elaine 29, 36, 54, 58, 77  
 Clausing, James 4, 13, 24, 26, 53, 54, 57, 82, 84, 87, 93  
 Clevenger, Charlotte 27, 39, 41  
 Clevenger, Clyde 4, 28, 73  
 Clevenger, Gary 27, 36, 38, 54  
 Clifford, Clarence 77  
 Clifford, Lawrence 77  
 Clifford, Sharon 54, 77  
 Cobb, Charles 77  
 Colburn, Claudia 39, 45, 51, 52, 53, 54, 55, 62, 69, 88  
 Conklin, Pamela 55, 73  
 Conley, Karen 28, 55, 73  
 Conley, Vernon 73, 83  
 Cook, Robert 42, 77  
 Cookman, Karen 4, 35, 53, 55, 69  
 Cookman, Sharon 29, 42, 54, 77  
 Copen, Susan 5, 26, 33, 50, 51, 54, 56, 63, 66  
 Cordero, Florence 55, 73  
 Cordero, William 56, 42, 77  
 Cordial, Charlene 48, 55, 78  
 Cordle, Linda 29, 30, 35, 48, 50, 55, 69  
 Cottle, Mary 40, 51, 53, 55, 59, 72, 73

Cox, Nancy 30, 67  
Craft, Alice 29, 36, 51, 53, 54, 58, 64, 76, 77  
Craft, James 53, 67  
Craft, Janet 35, 49, 52, 55, 69  
Craig, Roger 27, 49, 50, 52, 53, 58, 73  
Craig, Sharon 29, 30, 52, 55, 69  
Cross, Robert 4, 13, 24, 26, 35, 36, 37, 42, 44, 46, 54,  
64, 82, 84, 86, 87, 89, 90, 91, 95, 114  
Curnutte, Robert 35, 73  
Curtiss, Mike 29, 36, 56, 67, 82, 83, 85  
Curtiss, Pat 35, 69, 86

## D

Davidson, Jean 28, 55, 73  
Dixon, Tommy 33, 36, 38, 52, 54  
Duty, David 12, 24, 26, 31, 44, 57, 82, 84, 86, 89, 91,  
114  
Duty, Diane 35, 39, 47, 51, 52, 53, 54, 59, 63, 69

## E

Eastwood, Richard 38  
Eastwood, Robert 39, 52, 59, 69, 72  
Eddy, Glenn 28, 73  
Eod, Kenneth 70  
Eam, Faye 12, 24, 30, 34  
Eaman, Katherine 54, 77  
Essman, Sue Ann 4, 33, 38, 53, 55, 60, 67  
Evans, Richard 14, 26, 37, 45, 57, 64, 114

## F

Fannin, Carol 54, 77  
Felts, Larry 76, 77  
Finton, Clyde 54, 58, 78  
Fields, David 42, 78  
Fields, Tim 78  
Fitch, Richard 73  
Faley, Avinell 33, 56, 59, 67  
Franklin, Mary Sue 55, 73  
Franklin, Paul 70, 83, 86  
Frazier, Jerry 4, 28, 73  
Frazier, Roger 70  
Frazier, Sharon 14, 24, 33, 37, 57, 60  
Fry, Geneva 14, 24

## G

Gable, David 42, 76, 78  
Gambill, Robert 38, 67, 89  
Casaway, James 70  
Gil, Charles 73  
Gil, Zola 4, 29, 54, 78  
Gilliam, Gary 78  
Gilliam, James 27, 38, 67  
Gilliam, Linda 28, 55, 73  
Ginn, Jerry 70, 83  
Grant, James 74  
Grant, Larry 14, 24, 27

Green, Pamela 29, 54, 78  
Greer, Laura 27, 59, 70  
Groves, Dean 38, 67  
Groves, Vicki 28, 53, 55, 74  
Gwynne, Barbara 54, 78  
Gwynne, William 39, 44, 45, 46, 54, 56, 63, 66, 67, 88

## H

Hail, Sam 4, 29, 54, 56, 67, 82, 85, 86, 87  
Hamblin, Gary 28, 78  
Hammond, Wayne 78  
Hanes, Patty 28  
Hanes, Robert 78  
Haney, Linda 70  
Harper, Jeanne 53, 54, 58, 78  
Hatfield, Gary 56, 67, 82  
Heath, Susan 29, 30, 53, 55, 70, 93  
Heisler, Mary Lou 40, 55, 74  
Henson, Chuck 35  
Higgins, Donna 5, 26, 33, 50, 56, 62, 65, 67  
Hill, Judy 4, 14, 24, 30, 34, 57  
Holbrook, Linda 53, 54, 58, 78  
Holcomb, George 14, 22, 57, 81, 90, 91  
Hollis, Carol 55, 74  
Horn, Richard 4, 14, 57  
Horsley, George 35, 45, 50, 53, 54, 70, 83, 86, 89  
Houston, Thomas 78  
Howard, David 36, 38, 50, 67  
Howard, Jerry 4, 14, 28, 45, 53, 72, 74  
Howard, Mary Lois 11, 15, 21, 23, 24, 26, 35, 36, 37,  
44, 45, 46, 50, 51, 52, 53, 54, 57, 61, 64, 114  
Howard, Naomi 15, 24, 34, 54, 57  
Hunter, Mike 4, 42, 78  
Huston, Lowell 52, 53, 58, 78

## J

Jackson, Patricia 38, 59, 74  
Jardine, Hazel 54, 78  
Johnson, Cheryl 54, 59, 78  
Johnson, Hal 52, 54, 58, 78  
Johnson, James 27, 37, 46, 49, 50, 52, 54, 56, 63, 66,  
67, 88  
Johnson, Sue 15, 22, 24, 37, 47, 48, 49, 51, 54, 56, 62,  
64, 95  
Johnston, Maxie 4, 15, 22, 24, 33, 55, 57  
Jones, Vernon 36, 56, 67  
Justice, Alice 27, 29, 30, 55, 70  
Justice, Daniel 38, 56, 67  
Justice, Deanna 52, 54, 55, 70  
Justice, Levi 4, 32  
Justice, Verlin 70

## K

Kalb, Earl 79  
Kalb, Letty 33, 38, 64  
Kegley, Joyce 4, 33, 38, 56, 59, 67  
Keller, Jerry 35, 39, 49, 52, 53, 54, 70

Keller, Tom 4, 15, 24, 37, 49, 52, 54, 64  
Kelly, Michael 39, 44, 45, 47, 49, 53, 54, 70  
King, Lena 29, 53, 54, 58, 79  
King, Ron 16, 21, 35, 37, 114  
Kingrey, Janet 4, 40, 55, 74  
Kingrey, Linda 30, 33, 38, 56, 67  
Kongos, John 4, 67  
Kongos, Kay 29, 54, 79

## L

Lackey, Colin 70  
Lake, Susie 54, 79  
Lawson, Carolyn 27, 29, 30, 53, 55, 70  
Leach, Raymond 52, 74  
Lehman, Dennis 31, 44, 47, 50, 54, 69, 70, 83, 86  
Leininger, Sheri 54, 79  
LeMaster, Sally 32, 40, 48, 74  
Lewis, Darrell 16, 22, 24, 54, 57  
Lewis, Robert 4, 70  
Lilly, Reginald 40, 52, 72, 74  
Logan, Sharon 16, 24, 42, 54, 57  
Long, Charles 4, 11, 16, 21, 23, 24, 26, 31, 35, 37, 44,  
45, 46, 49, 52, 57, 64, 88, 114  
Lynd, James 36  
Lynd, Karen 29, 54, 79

## M

Madden, Herman 74  
Marcum, Brenda 29, 54, 79  
Marlowe, James 70  
Marlowe, Dan 4, 42, 79  
Martin, Donna 28, 53, 55, 74  
Martin, Gary 4, 16, 24, 37, 54, 57, 64, 93  
Martin, Tim 79  
Mathis, Brenda 16, 42, 54  
Mathis, Veronica 28, 55, 74  
McCain, Larry 36, 79  
McCain, Michael 33, 45, 47, 45, 54, 56, 63, 68  
McCall, Susan 40, 55, 74  
McCann, Judith 17, 24, 34, 35, 37, 42, 46, 50, 51, 54,  
57, 59, 60, 64, 88  
McCoy, Patricia 17, 24, 35, 37, 42, 50, 57, 62, 114  
McCreary, Mike 17, 24, 32, 35  
McGlone, Horace 33, 38, 50, 68  
McNutt, Darlene 30, 36, 56, 59, 68  
Meixner, Melinda 40, 42, 50, 51, 53, 55, 74  
Miller, Sara Sue 28, 29, 42, 54, 79  
Miller, Jo Ellen 29, 55, 74  
Miller, Larry 71  
Moore, Barbara 28, 40, 55, 59, 74  
Moore, David 36, 79  
Morgan, Nancy 17, 24, 30, 33, 34, 37, 50, 54, 55, 57  
Morgan, Tom 50, 71  
Moritz, Brenda 33, 55, 68  
Moritz, Chris 79  
Morrow, Darrell 42, 79  
Morrow, David 50, 70, 82, 83, 88  
Morrow, Richard 31, 36, 37, 44, 56, 61, 68, 85

Mounts, Joyce 71  
Mowery, Clarice 33, 38, 54, 55, 56, 68  
Muck, Robert 17, 22, 33  
Murphy, Camilla 4, 17, 24, 34, 37, 39, 46, 54, 57, 62,  
63, 95  
Myers, Steve 36, 42, 54, 79

## N

Newberry, Danielle 32, 44, 47, 51, 52, 53, 54, 55, 63,  
71  
Newberry, Jay 36, 52, 54, 58, 79  
Newberry, Larry 54, 56, 68, 89, 90  
Newman, Shirley 4, 18, 22, 24, 30, 33, 37, 54, 57  
Newman, Susie 36, 54, 79  
Nolen, Thomas 11, 18, 21, 24  
Nunnery, James 71

## O

O'Doherty, Patti 40, 50, 51, 54, 55, 74  
O'Doherty, Roy 4, 18, 22, 24, 25, 26, 27, 37, 46, 57, 114  
Oliver, John 40, 74, 83  
Osborne, Mary 54, 79  
Osborne, Ralph 79  
Owens, Carl 18, 24, 57, 90, 91  
Owen, Jacqueline 29, 42, 50, 59, 79  
Owen, William 39, 41, 71

## P

Pack, Yvonne 28, 29, 55, 64, 74, 92  
Patrick, Sue 45, 50, 51, 54, 55, 56, 68  
Payne, Jerry 18, 21, 24, 57, 114  
Payne, Pat 54, 80  
Payton, William 4, 18, 24, 57, 61  
Pelphrey, Paul 19, 24, 32, 57  
Phillips, Shirley 71  
Phipps, Virginia 4, 42, 55, 75  
Piatt, Robert 71  
Powell, Mike 28, 42, 54, 80

## R

Raike, Sue 33, 55, 68  
Rayburn, Mary 33, 36, 38, 44, 48, 53, 54, 55, 60, 68  
Rayburn, Eugene 28, 54, 80  
Rayburn, Vicki 42, 54, 80  
Reed, Susan 4, 32, 41, 44, 47, 53, 54, 55, 63, 71, 88  
Richard, Nancy 19, 22, 24, 30, 33, 50, 54, 55, 57, 64  
Riffe, Dolly 30  
Riffe, Joc 19, 24  
Riggs, Roger 27  
Riley, Janice 27, 29, 30, 55, 71  
Ritterhoff, William 71  
Rowe, Bob 19, 22, 24, 37, 54, 57, 64, 81, 82, 84, 86, 87  
Rowe, David 27, 54, 83, 85, 86  
Roush, Larry 42, 80  
Ruby, Harlena 42, 54, 80  
Runyon, James 75, 82, 89

Runyon, Loretta 54, 80  
Rupert, Mary

S

Saylor, Doshia 30, 55  
Schweinsberg, Bill 31, 38, 68  
Scurlock, Ripley 71  
Sexton, Wayne 52, 53, 80  
Sheward, Robert 56, 68, 82, 85  
Shively, Paul 80  
Shoemaker, Mike 71  
Sikes, Judy 29, 36, 53, 58  
Slone, Gary  
Smith, David 28, 31, 37, 44, 49, 50, 53, 54, 56, 66, 68, 82, 85, 89  
Smith, David K. 52, 54, 58, 80  
Smith, Mike 19, 21, 24, 26, 37, 49, 52, 54, 57, 64, 65, 69, 114  
Sowards, Carolyn 29, 30, 54, 55  
Sparks, Sandy 40, 75  
Spence, Betty 55, 75  
Spradlin, John 71  
Spradlin, Paul 65, 80  
Stanley, Joyce 28, 55, 75  
Stauffacher, David 40, 52, 75  
Steed, Kathy 36, 42, 54, 80, 93  
Steele, Linda 4, 19, 24  
Steele, Ralph 33, 36, 56, 68  
Stewart, Roger 40, 75  
Suter, Beverly 29, 54

T

Taylor, Paul 50, 52, 72, 75  
Taylor, Sharon 4, 20, 22, 24, 37, 42, 46, 51, 54, 57, 62, 63, 64, 95, 114

Tipton, Sharon 33, 38, 68  
Tipton, Rusty 28, 42, 80  
Thompson, Cathy 32, 40, 75  
Thompson, Clinton 29, 38, 55, 56, 68, 89

V

Vanderpool, Karen 4, 20, 21, 24, 33, 34, 50, 51, 54, 57, 59, 62, 63, 95

W

Walters, David 20, 24, 47, 49, 57, 89, 90, 91  
Walters, Robert 28, 80  
Ward, Eileen 40, 55, 75  
Wells, Melissa 20, 24, 26, 35, 46, 48, 50, 54, 57, 59, 62, 64, 114  
Wessel, Alice 27, 30, 55, 59, 71  
Whisman, Darlene 27, 29, 55, 71  
Whitt, Lorraine 4, 31, 55, 75  
Whitt, Wilma 36, 42, 80  
White, Larry 31, 37, 52, 54, 68  
Wiget, Janet 29, 39, 51, 53, 54, 55, 59, 64, 69, 71, 92, 96  
Willis Glenda 20, 24, 34, 50, 52, 54, 55, 57  
Willis, Robert 28, 45  
Wise, Janet 36, 53, 54, 58, 75, 80  
Wilson, Eugene 20, 22, 24, 35, 37, 54, 57, 82, 84, 86, 87  
Wyrick, Karen 53, 54, 58, 80

Y

Yinger, Keith 36, 49, 50, 52, 54, 56, 68, 93



