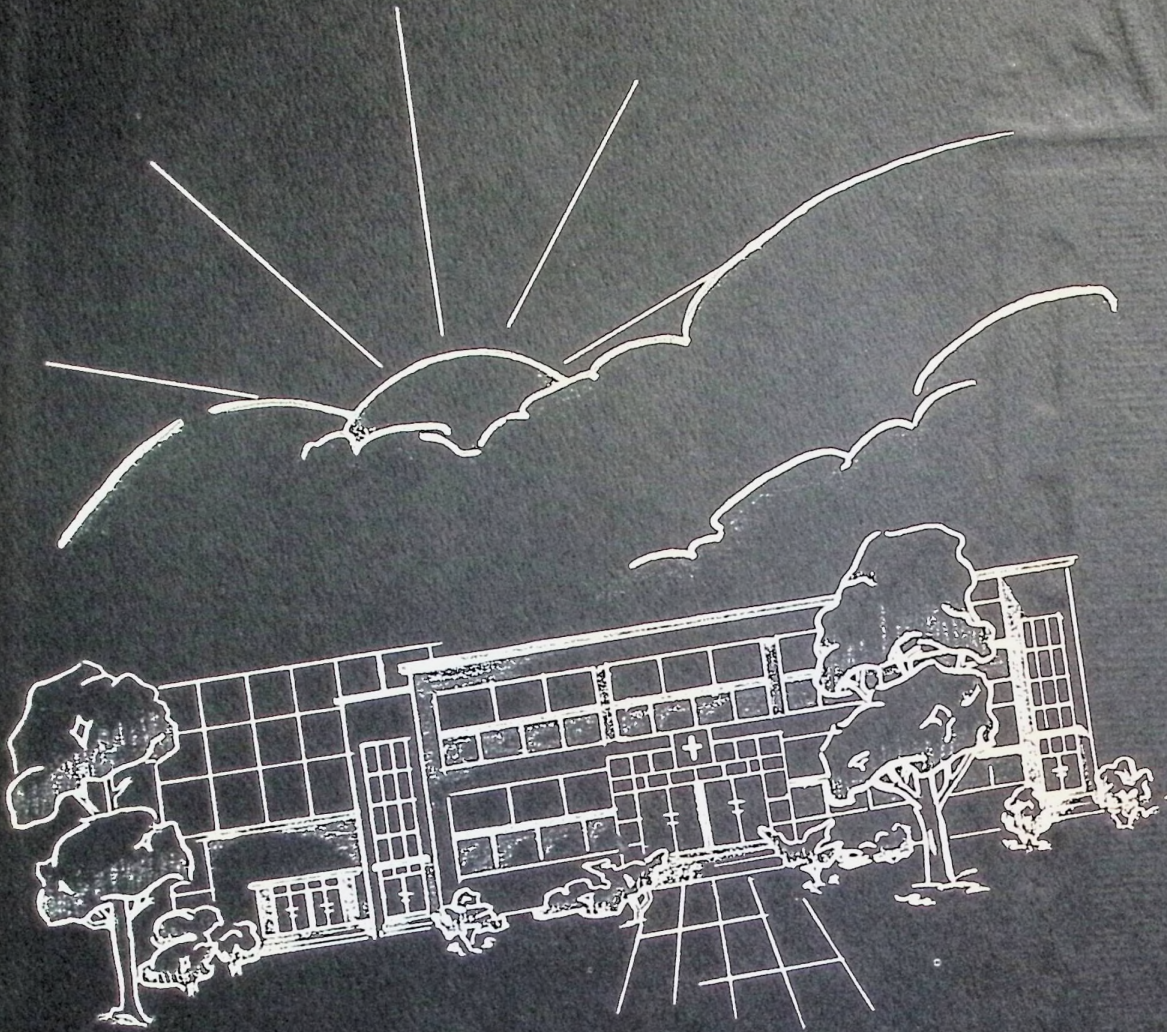


The

1
9
5
2

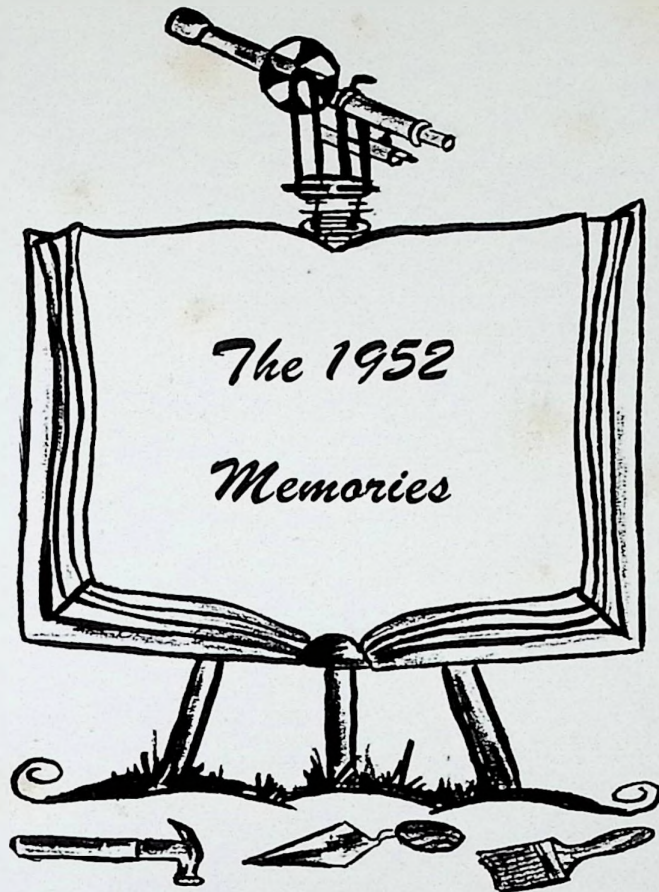
Memories



*All roads lead
to "the new Notre Dame"!*

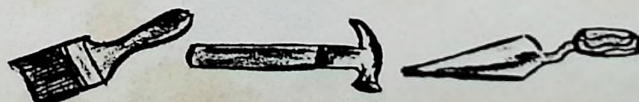






was edited at
**Holy Redeemer and
Saint Mary High Schools**
Portsmouth, Ohio

*by the Senior Class under the direction
of Paul V. Orlett and Jean Phillips, Co-
Editors, Marjorie Vetter and Marilyn
Witter, Associate Editors, and the Busi-
ness Management was by Thomas Gavin,
Donald Grierson, Fred Porginski, and
Daniel Sand.*



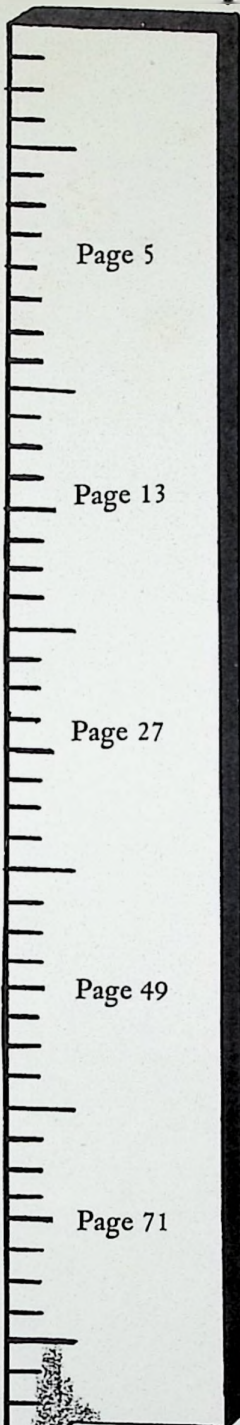


Foreword

Design for Living is the theme that our MEMORIES staff has tried to incorporate in the pages of this yearbook. Just as we see the builders completing the new Notre Dame High School, we the class of 1932 apply the finishing touches to one phase of our personal living.

As the final year draws to a close, we publish this edition of MEMORIES in the hope that we have also designed a fitting memorial to Central Catholic High School.

Table of Contents



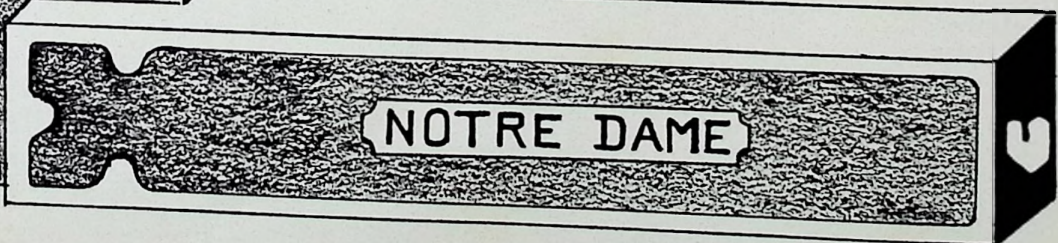
Architects

Raw Materials

Construction

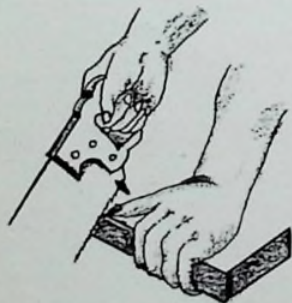
Finishing Touches

Natural Resources



Dedication

The class of 1952 has assembled here the souvenirs of the last year of Central Catholic High School. As a token of appreciation, the members of the MEMORIES staff dedicate this annual to our parents, alumni, and all those who have paved the way for "the new Notre Dame."



Architects



Design for student living is planned by school directors.

The Most Reverend Michael J. Ready, Bishop of Columbus.

Bishop Ready is the chief engineer in the project of building the youth of the diocese. He is a leader to whom we may look for guidance and encouragement to carry us through these days of social upheaval. He is an inspiration leading us forward by teaching and example along the path of virtue.



THE RIGHT REVEREND
MONSIGNOR
TIBURTIUS A. GOEBEL

The construction of the new high school is the realization of Monsignor Goebel's long cherished ambition. Monsignor wielded the spade at the groundbreaking last July 15, and his prayers bring untold blessings as the work proceeds. We also remember Monsignor as the architect who started us on the way of Christian living.

Chief Architects



The Right Reverend Monsignor Joseph R. Casey,
Superintendent of Holy Redeemer

The Reverend Julius G. Klinec, Superintendent of St. Mary

During the past year we have experienced many times the patience and kindness of our pastors, Monsignor Casey and Father Klinec. With a willing spirit and loving hearts they have embedded in our minds deep and lasting truths as the fundamental principles of the great construction of our future lives.

Monsignor Casey and Father Klinec have filled their positions as our chief architects with an ability that is not surprising. We shall remember them as we go forth to serve.



The Reverend Paul W. Meyer
College of Saint Charles Borromeo
Religion

The conscientious efforts of Father Meyer, our religion instructor, have helped to build in us a greater understanding of holiness in the various vocations of life. The "design for living" brought out in his religion class anticipates a strong structure which cannot be shaken.



The Faculty

Saint Mary High School

Sister Mary Caritas
College of Saint Teresa
Catholic University of America
Principal, Social Science

Sister Mary Mathia
College of Saint Teresa
University of Minnesota
C.S.M.C. Moderator
Commercial

Sister Mary Winifred
College of Saint Teresa
Freshman Adviser
Mathematics, English

Sister Mary Beata
College of Saint Teresa
University of Michigan

Glee Club, Choir

Sister Mary Gemella
College of Saint Teresa
University of Minnesota
Catholic University of America
Sophomore Adviser
Science

Sister Mary Elise
College of Saint Teresa
Catholic University of America
Senior Adviser
English, Latin

Sister Mary Tereselle
College of Saint Teresa
Junior Adviser
Business, Music

The Reverend James P. Hanley
College of Saint Charles Borromeo
Laval University, Quebec
Religion



At Holy Redeemer High School, Father Hanley has played an important part in the students' life. He has moulded our thoughts in the classroom and has adequately prepared us for the vocation we shall select in life. We shall always be indebted to Father for his friendship and wise counseling.

Builders of Christian Citizens

Holy Redeemer High School

Sister Mary Wilfrid
College of Saint Teresa
Saint Paul Diocesan Teachers College
Ohio University
Catholic University of America
Principal, Social Science

Sister Mary Felicia
University of Kentucky
Ohio University
College of Saint Teresa
Freshman Adviser
Science, Mathematics

Sister Mary Liam
College of Saint Teresa
Glee Club, Choir

Sister Mary Jose
College of Saint Teresa

Commercial

Sister Mary Magdala
Notre Dame des Anges, Ubbergen by Nijmegen,
Netherlands
University of Amsterdam
College of Saint Teresa
Sophomore Adviser
Latin, French

Sister Mary Carlan
Loyola University
College of Saint Teresa
Senior Adviser
English

Mr. Pasquale Darone
Boston College
Ohio State University
Physical Education, American History



HOLY REDEEMER HIGH SCHOOL

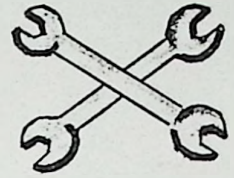
Architects' Workshops

The halls of Holy Redeemer will no longer echo with the sound of high school "raw material". It has been a stepping stone for our entrance into the outside world. We have been moulded by the hands of competent architects who have striven to form our characters and personalities so that we may give off sparks of Christian example.

We shall always be privileged with the memory of being the last graduates from Holy Redeemer High School. The wonderful experiences and times we have had in the classrooms and corridors will forever remain as fond memories.

The graduate of 1952 gazes with pride on Saint Mary's, the architects' workshop. For many years she has sent forth stout-hearted Catholics, who try in their lives to reflect the pattern of her *Design for Living*. Who will ever forget that climb to third floor and the exhaustion felt after having reached its heights? Nevertheless, Saint Mary's is loved and respected by all of us who know her, not just as a building of brick, but as a symbol of guidance in our preparation for meeting with the world.

May Our Lady continue to aid in designing the lives of future Catholic graduates!



SAINT MARY HIGH SCHOOL



Constructors of Memories

Editor – Paul V. Orlett, Jean Phillips

Associate Editor – Marjorie Vetter, Marilyn Witter

Assembly Editors – Anna Fern Cronin, Catherine Foster, Lois Wasil

Feature Editors – Barbara Beaver, Lawrence Hartlage, Patricia Jones,
Barbara Utley

Typists – Lanora Crayton, Judy Ferrell, Janet Frantz

Sports Editors – Dan Kilcoyne, Jerry Pendlum, Gary Pierron, Theodore
Vamvas

Photography Editors – Mary Ann Bendinelli, Thomas Haley, Dorothy
Kempf, Ruth Scherer

Business Managers – Thomas Gavin, Donald Grierson, Fred Porginski,
Daniel Sand

Artists – Sylvia Bolotta, Linda Brushart, Erna Haßmann

Circulation Editors – Janet Debo, Rosena Hornikel, Patricia Tose, Mary
Agnes Weber

Advertising – Joyce Delabar, James Fleming, Edward Gemperline, James
Kricker, John O'Connor, Frank Perri, Gerald Pierron,
Richard Price, James Vamvas, Mary Lou Wessel



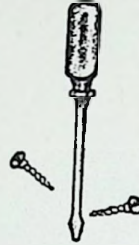
Raw Materials



Students are processed into the finished products of Catholic education.

Class of 1952

This year's graduating class marks the end of the history of Saint Mary and Holy Redeemer High Schools in Portsmouth. Beginning next year they will be replaced by "the new Notre Dame."



LINDA BRUSHART
Holy Redeemer

With all her diversified activities, she has already entered into public life.



MARY ANN BENDINELLI
Holy Redeemer

We have a vigorous and lively supporter of all projects undertaken by Central Catholic.

LANORA CRAYTON
Saint Mary

Reserved and dependable, Lanora is the potential efficiency expert of the class.



SYLVIA BOLOTTA
Holy Redeemer

A singer and dancer, she adds a wealth of artistic talent to the accomplishments of the class.





RAYMOND BRUNNER

Holy Redeemer

Outstanding loyalty, united with his persevering ambition, prepares him for a promising future.

JANET DEBO

Holy Redeemer

Your reputation is safe with Janet, who good-naturedly assumes her own quiet role.



JOYCE DELABAR

Holy Redeemer

With tacit finality, Joyce performs her duties in an unobtrusive manner.



EDWARD GEMPERLINE

Holy Redeemer

Although he will never win a foot race, Eddie is a keen analyst of poetry.

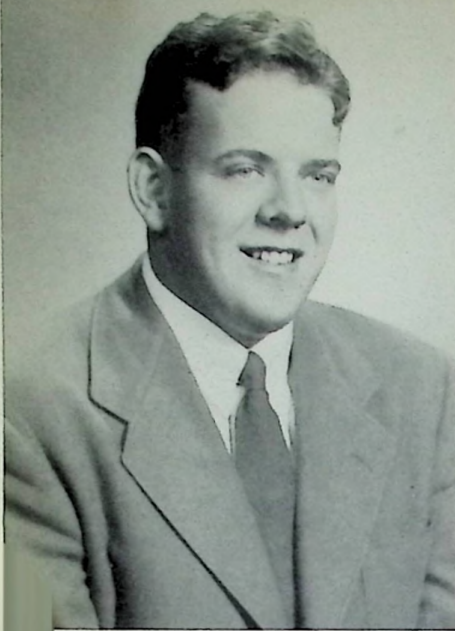


CATHERINE FOSTER

Saint Mary

Here, if anywhere, is a top-notch Sodality prefect --- with eager determination and a bouyant sense of humor.

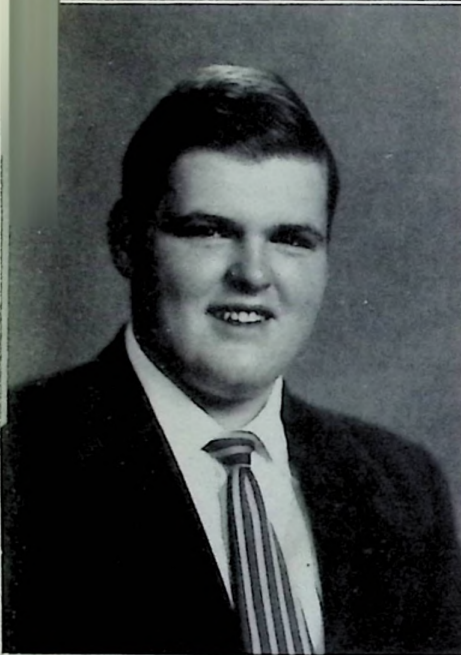




JAMES FLEMING
 Holy Redeemer
 Faithful and affable, nothing
 seems to dampen his good spirits.



ERNA HANSMANN
 Saint Mary
 Ladylike and dainty — yet Erna
 combines an artist's hand and a
 voice of velvet with iron determi-
 nation.



THOMAS GAVIN
 Holy Redeemer
 Congenial and jocular, Tom
 never experiences difficulty in
 expressing his opinions.

LAWRENCE HARTLAGE
 Holy Redeemer
 Class Treasurer
 When he wields his foil and
 recites Shakespeare, Douglas Fair-
 banks, Sr., has nothing on him.

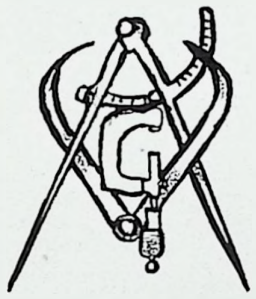


DONALD GRIERSON
 Saint Mary
 Class Secretary
 This wire is very highly charged,
 and under the insulation lies an
 abundance of generosity and sym-
 pathy.





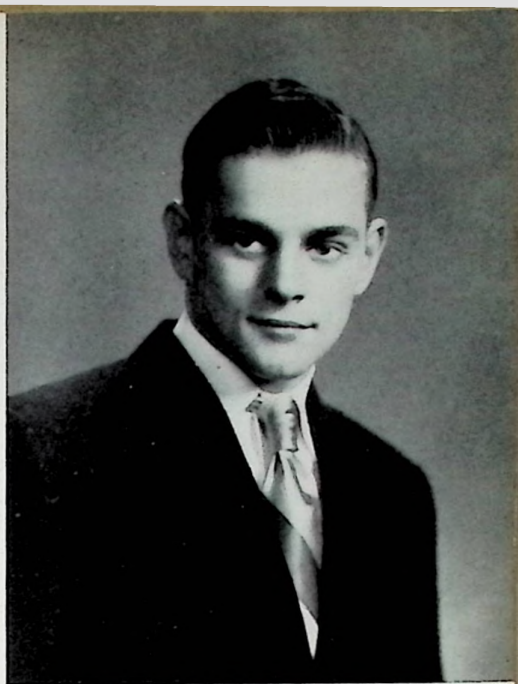
ROSENA HORNIKEL
Saint Mary
Co-operating cheerfully herself, Rosena inspires a like good will in others.



DOROTHY KEMPF
Saint Mary
The cares of life rest lightly on Dorothy, who is never too busy for a friendly chat.



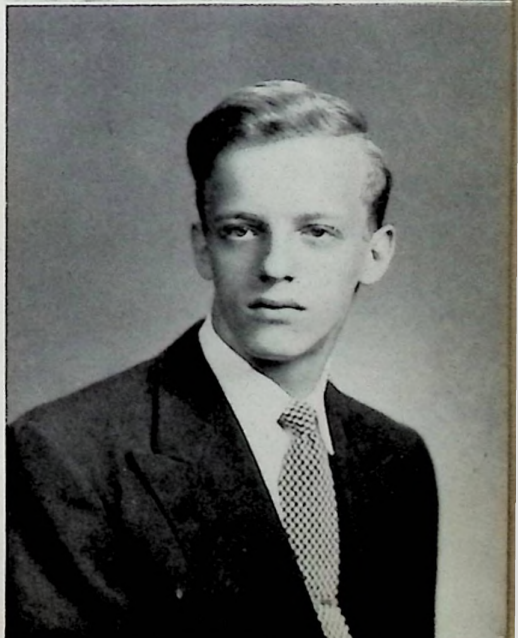
DANIEL KILCOYNE
Saint Mary
Class Treasurer
Conservative and unpretentious, he scores high in quiet courtesy and gentlemanly actions.



PATRICIA JONES
Saint Mary
Apparently quiet and unassuming, she often startles her hearers with frankness and individuality in expressing ideas.



JAMES KRICKER
Holy Redeemer
Mild-mannered and helpful, Jim has made records of all kinds as the only male stenographer.





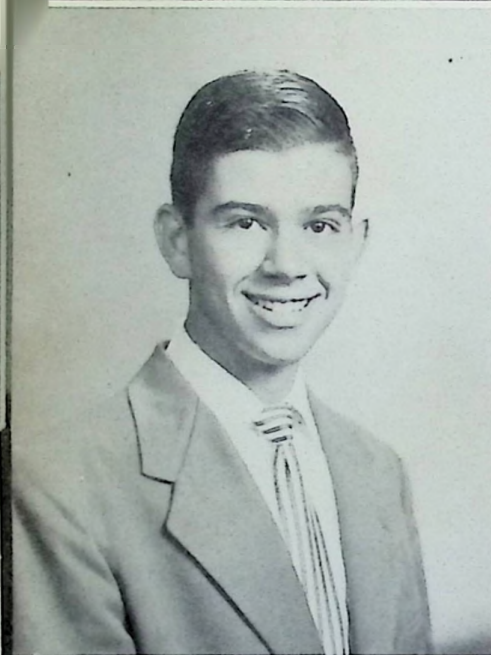
Jean Phillips
Holy Redeemer

Jean handles every situation matter-of-factly and efficiently from chemistry to chauffeuring.



Janet Frantz
Saint Mary

A melodious, expressive voice adds charm to the gaiety of her manner.



Thomas Haley
Holy Redeemer
Class Vice-president

An able leader, he enlivens every debate and street corner argument with his outspoken manner.



Anna Fern Cronin
Saint Mary
Class Vice-president

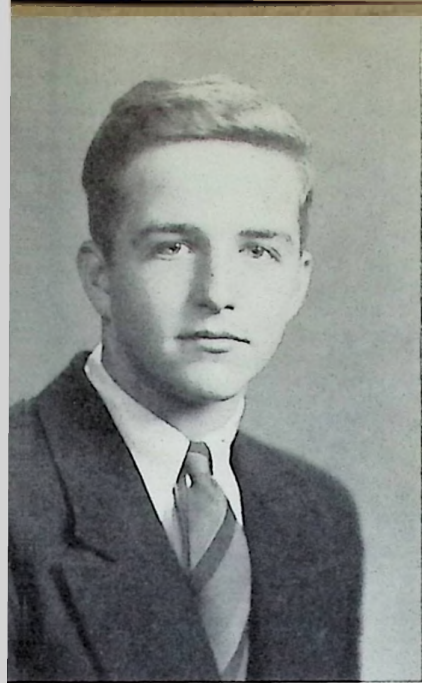
Artistic temperament minus the "temper" leaves a gracious, considerate, pleasant companion.



Judy Ferrell
Saint Mary

Where else would you find a blend of musical talent, attractive personality, and friendly enthusiasm?

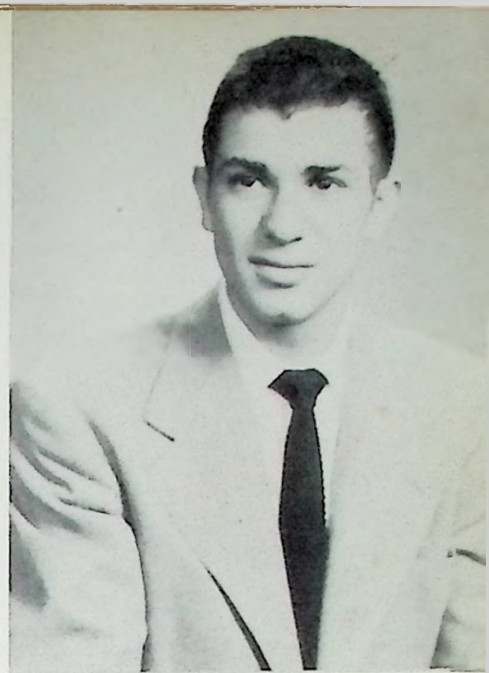




Paul V. Orlett
Saint Mary

Capable on gridiron or gym floor, in choir loft or sanctuary, at staff meeting or in class —this is versatility!

Frank Perri
Holy Redeemer
It would take the voice of Mario Lanza, the football powers of Johnny Lujack and the clowning of Jerry Lewis to equal Frank's accomplishments.



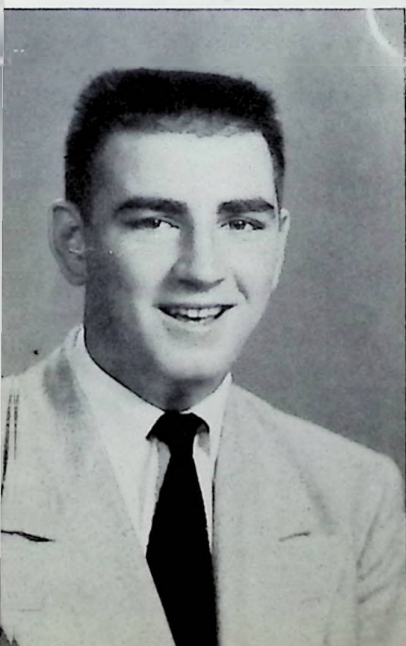
Barbara Beaver
Saint Mary

An enthusiastic Sodalist, a skillful MARIAN editor, and a genial friend, Barbara still leads the class in scholastic attainments.



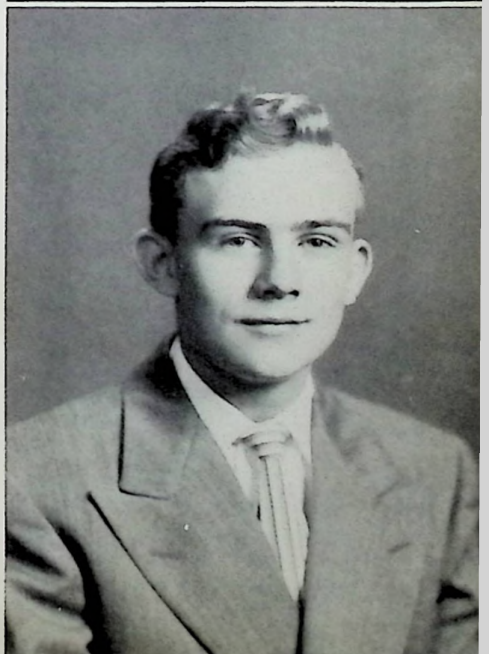
John O'Connor
Holy Redeemer

No one could ever accuse him of being dull, dead or dejected.



Gerald Pendlum
Saint Mary

In spite of roguishness, the class "bus driver" assumes responsibility seriously.





GERALD PIERRON

Holy Redeemer

Class Secretary

Jerry's future will be involved with either mathematical wizardry, the drawing board, or big business.



GERARD PIERRON

Holy Redeemer

His quiet manner and active mind have given him a permanent place at the head of the class.



BARBARA UTLEY

Holy Redeemer

Class President

Her friendly personality and quaint malapropisms are Barbara's outstanding characteristics.



RICHARD PRICE

Holy Redeemer

An avid student, he directs all his interests toward the intellectual.



RUTH SCHERER

Saint Mary

A cordial disposition harmonizes with self-assurance, resulting in queenly poise.



MARJORIE VETTER

Saint Mary

Often the center of a lively crowd, Margie "gets a rise" with her impetuous opinions and winning ways.



PATRICIA TOSE

Holy Redeemer

A peppy cheerleader and a capable stenographer, she has lately uncovered a new talent, dramatic ability.



JAMES VAMVAS

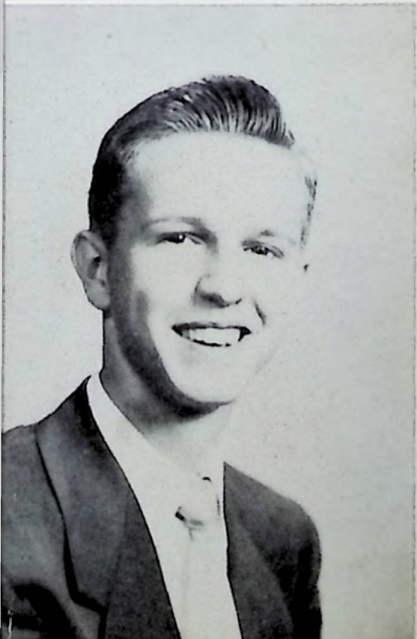
Holy Redeemer

Always smiling and ever ready for a bit of fun is the first section of the Vamvas duet.

DANIEL SAND

Holy Redeemer

His ready smile and likeable personality have won him a place in our hearts.



THEODORE VAMVAS

Holy Redeemer

Powerful on the football squad and graceful on the dance floor, Ted adds the social graces to make him and his twin a popular pair.

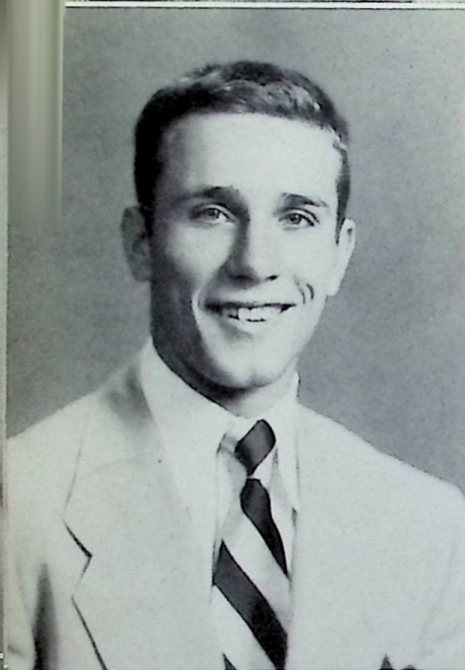




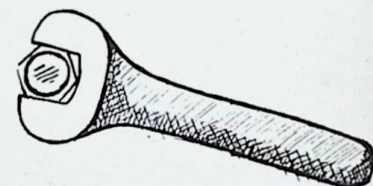
Mary Agnes Weber
 Saint Mary
 A shy, docile exterior – but
 eager queries prove that inter-
 est is not missing.



Lois Wasil
 Holy Redeemer
 Her ability for handling com-
 mercial problems in a cool and
 collected manner will make her
 an outstanding business woman.



Fred Porginski
 Saint Mary
 Class President
 A dynamic personality plus
 varied abilities and an engaging
 "line" equal an unforgettable
 class leader.



Marilyn Witter
 Holy Redeemer
 The best comes last, for here
 at the end of the class we have
 a model of faithfulness, service
 and a bonny lass, too.



Mary Lou Wessel
 Holy Redeemer
 Mental agility and high ideals
 have spurred her in her pur-
 suit of the intellectual.



Class of 1953

Holy Redeemer students
 -HR; Saint Mary students
 -SM.

IR. Albrecht-HR
 J. Bauer-HR
 D. Beaver-SM
 D. Bercik-SM
 J. Born-SM



FF. Brown-SM
 J. Brown-HR
 G. Brunner-HR
 M. Comer-SM
 A. Coyle-HR



S. Davis-HR
 P. Delabar-HR
 J. Devlin-HR
 M. Gavin-HR
 J. Gemperline-HR



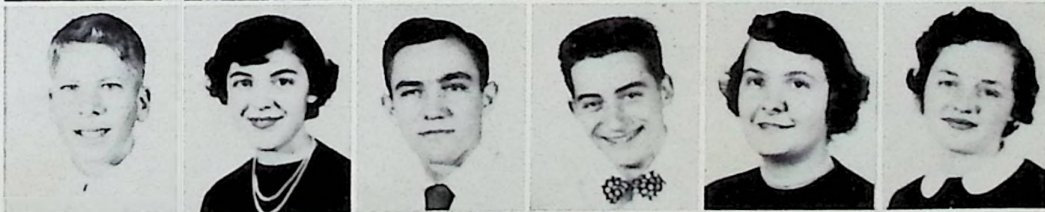
IR. Gill-HR
 E. Gillette-SM
 T. Hock-SM
 S. July-SM
 J. Kleinman-SM



J. McGlothlin-SM
 D. McNamara-HR
 J. Middlecamp-HR
 A. Montavon-SM
 R. Oberling-HR
 P. J. Orlett-SM



C. Rose-SM
 IB. Roth-SM
 J. Sommer-SM
 K. Stamm-SM
 S. Trogus-SM
 P. Vernier-SM



M. Walsh-SM
 C. Wamsley-HR
 J. Warren-SM
 D. Weber-SM
 G. Welty-SM
 N. Zender-SM



Class of 1954



W. Banchy—HR
J. Bauer—SM
A. Bendinelli—HR
P. Bickel—SM
R. Billian—HR



D. Brown—SM
M. Burk—HR
A. Dadosky—SM
M. Doyle—HR
D. Ferrell—SM



G. Fisher—HR
T. Fleming—HR
F. Foster—SM
P. France—HR
R. Frantz—SM



B. Gabriel—HR
L. Gerken—HR
C. Haley—SM
J. Hall—SM
M. Heher—SM



C. Kellison—HR
Z. Kilcoyne—SM
A. Malone—SM
J. Martin—SM
B. Montavon—SM



J. Orlett—SM
J. Ream—HR
G. Russell—HR
C. Scherer—SM
J. Simon—SM



M. Simon—SM
C. Simpson—HR
M. Vetter—SM
I. Von Luhrte—
M. Wamsley—
M. Wasil—H

Class of 1955

P. Albrecht—SM
 M. Banchy—HR
 P. Behmer—SM
 W. Bennett—SM
 A. Brown—SM
 A. Catee—SM

M. Comer—SM
 E. Coriell—SM
 C. Cote—HR
 J. Cronin—SM
 L. Gavin—HR
 D. Glockner—HR

E. Glockner—HR
 J. Hock—SM
 R. Hock—HR
 J. Kellogg—HR
 C. Kirby—SM
 B. Kleinman—SM

J. Lauter—SM
 F. McBride—SM
 E. Mahle—HR
 R. Middlecamp—HR
 D. Mike—HR
 N. Milstead—HR

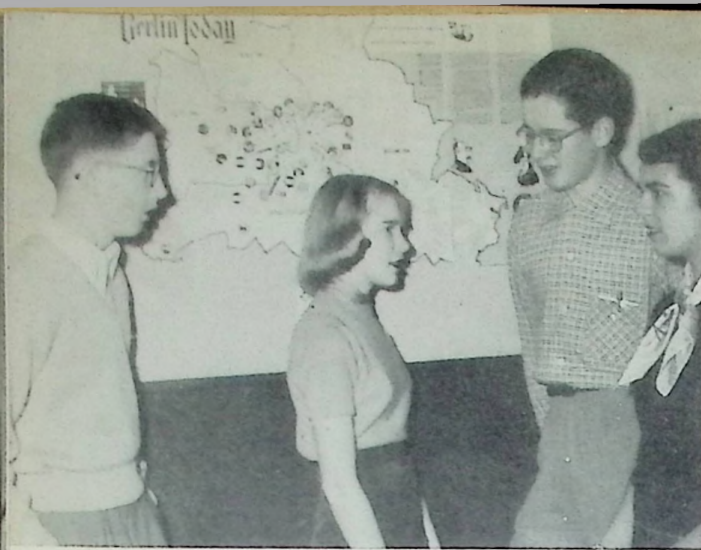
A. Montavon—SM
 H. Oberling—HR
 M. Orlett—SM
 A. Piccolo—SM
 D. Prose—SM
 R. Richards—SM

M. Rose—SM
 F. Ross—SM
 R. Roth—SM
 C. Russell—SM
 E. Russell—HR
 L. Schackert—SM

N. Schackert—SM
 J. Schwamberger—SM
 M. Simpson—HR
 S. Smith—HR
 J. Spangenberg—HR
 R. Stamm—SM

J. von Lührte—SM
 J. Walsh—SM
 J. Walsh—SM
 R. Warren—SM
 M. Weber—SM
 K. Zender—SM





Holy Redeemer Class Officers

Freshmen (above): Jane Kellogg, President; Rita Middlecamp, Treasurer; Elizabeth Glockner, Secretary; Edward Mahle, Vice-President. Sophomores (above left): Gerald Russell, Vice-President; Martha Wasil, Secretary; Gary Fisher, President; Mary Sue Burk, Treasurer. Juniors (left): Anne Coyle, Vice-President; David McNamara, President; Margaret Gavin, Treasurer; John Middlecamp, Secretary.

Saint Mary Class Officers

Freshmen (right): Fred McBride, Treasurer; Fred Ross, President; Carolyn Russell, Secretary; Rosina Richards, Vice-President. Juniors (lower right): Jerry Born, Vice-President; Kenneth Stamm, President; Daniel Bercik, Secretary; Teresa Hock, Treasurer. Sophomores (lower left): Zelda Kilcoyne, President; Madeline Vetter, Secretary; John Bauer, Vice-President; Carol Haley, Treasurer.



Construction



Character building is the work of the school.

Saint Mary



Father Meyer instructs the sophomores in the study of the life of Christ, the Master Builder.



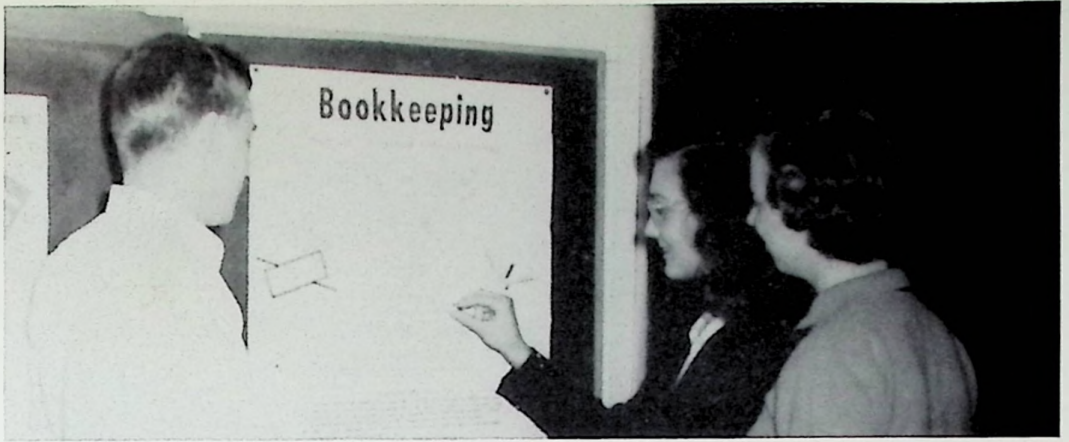
Dave Beaver and Jerry Born act as chief engineers of the new mimeograph.



Physics students find a six weeks' test all-absorbing.

Classes

G. Pendlum, M. A. Weber, and D. Kempf of the book-keeping class examine a chart illustrating the bookkeeping cycle.



L. Crayton, B. Beaver, M. Vetter, and J. Ferrell proudly display the cup awarded to the shorthand class for placing third in the nation's shorthand contest.



Freshmen concentrate on algebra.

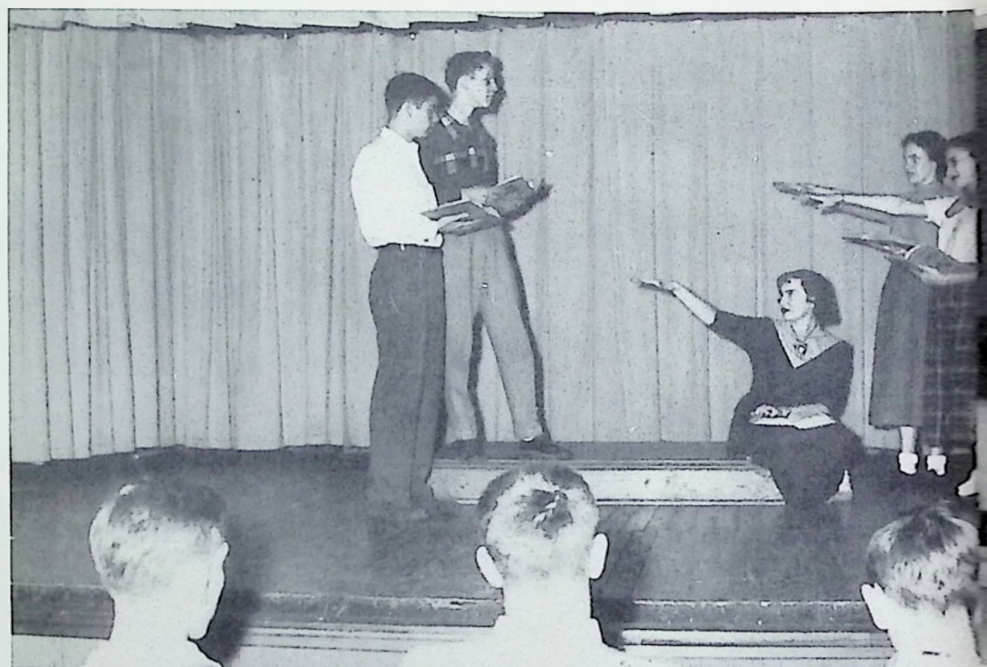




High Lights

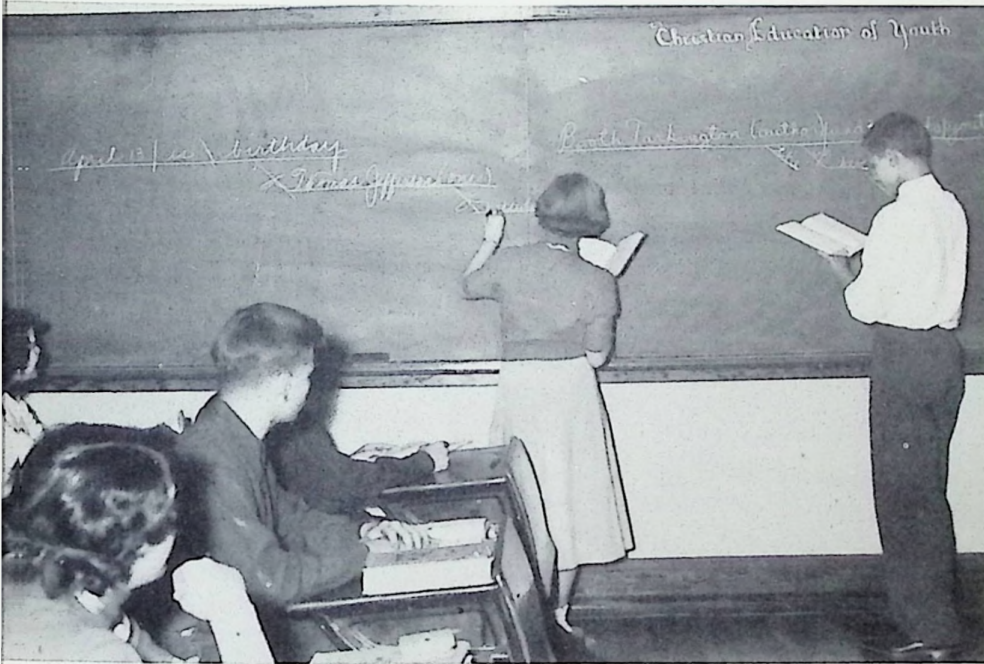
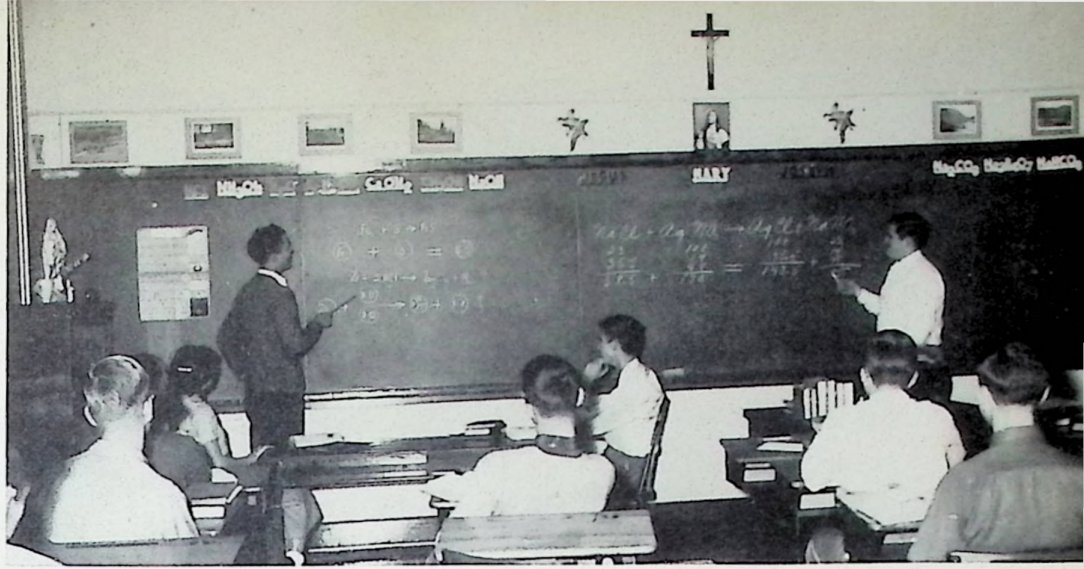
Enthusiastically the freshmen respond during Religion class under the capable supervision of Father Hanley.

Shakespeare's memorable *Macbeth* comes to life as the seniors portray some of its outstanding scenes.



Striving for a bit of the *esthétique*, the students of French I work diligently to master this romantic subject.

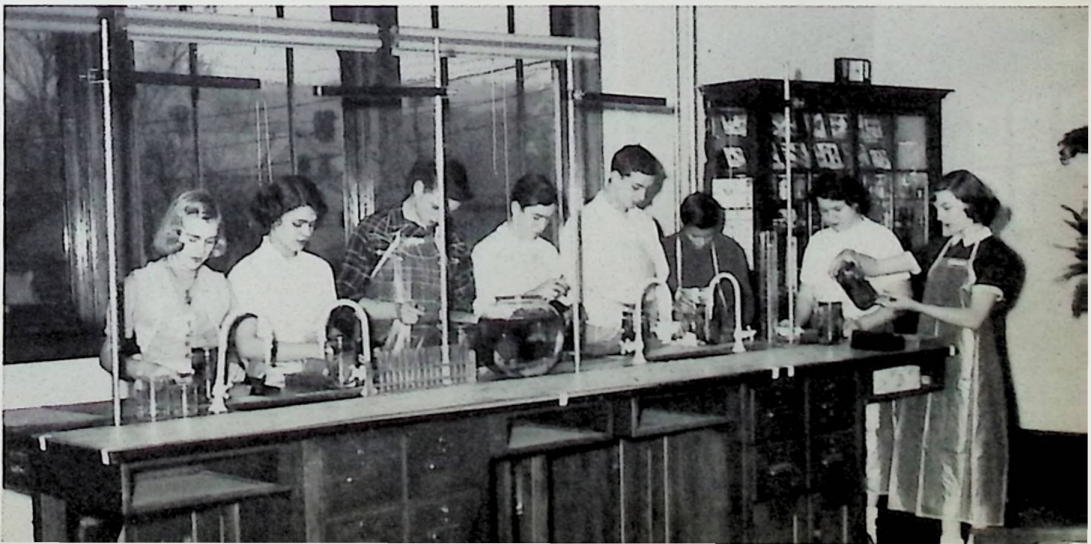
*At
H. R.*

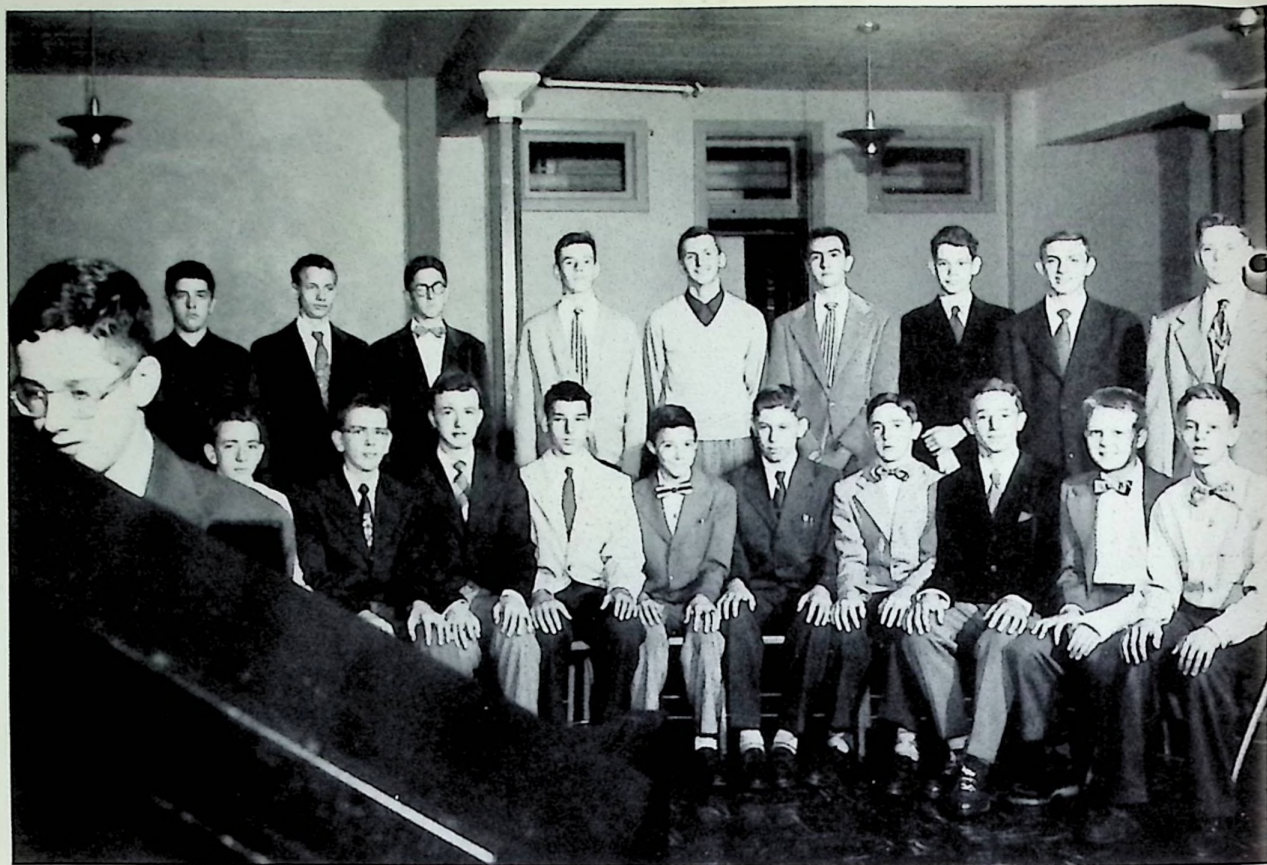


The students of the chemistry class find it a challenging subject calling for a mathematical mind.

In spite of the confusing aspects of the English language, the sophomores delve into it with a rare determination.

The sophomores find the study of biology interesting and are fascinated by some of the wonders of nature.



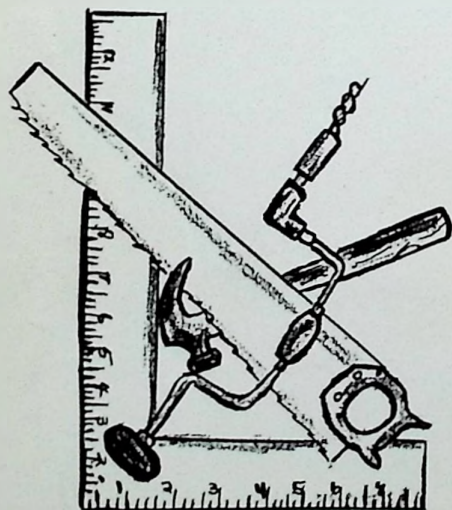


HOLY REDEEMER HIGH SCHOOL BOYS' GLEE CLUB

Front row—J. Brown, E. Gemperline, E. Russell, D. Glockner, J. Ream, C. Kellison, M. Doyle, R. Hock, H. Oberling, M. Banchy.

Back row—L. Gavin, W. Banchy, J. Russell, R. Gill, J. Middlecamp, E. Mahle, C. Cote, P. France, L. Gerken. Accompanist, Gary Fisher.

The Choirs and Glee Clubs are among the most interesting and the most demanding activities in which the students of both schools participate. By daily practice and perse-



ST. MARY HIGH SCHOOL BOYS' CHOIR

The St. Mary High School Boys' Choir is a supplement to the St. Mary Male Choir, which includes about forty boys and men of the parish. *Front row* — F. Ross, D. Ferrell, T. Vetter, J. Martin, *Back row* — D. Beaver, J. vonLuhre, D. Grierson, P. Orlett.



MARI-SINGERS

First row—J. Hall, M. S. Rose, J. Walsh, P. Bickel, M. Comer, C. Kirby, L. Schackert, Z. Kilcoyne, M. Weber, C. Scherer, M. Orlett, M. Wamsley. *Second row*—N. Schackert, N. Zender, P. Albrecht, J. Hock, A. Cattee, A. Montavon, A. Dadosky, A. Malone, R. Richards, C. Russell, E. Coriell. *Third row*—M. R. Walsh, M. Simon, J. Warren, J. Frantz, J. Ferrell, R. Stamm, B. Kleinman, S. July. *Last row*—B. Beaver, C. Foster, S. Trogus, P. Behmer, J. McGlothlin, B. Montavon, M. Vetter, J. Orlett, C. Haley, F. Foster, M. M. Heher, D. Kempf.

vering effort, the choirs erect cathedrals of gorgeous music in the praise of Our Eucharistic Lord. The Glee Club is a valuable asset to the boys and girls, enriching their personalities with an appreciation of finer things.

HOLY REDEEMER GIRLS' CHOIR

On stage—P. Tose, B. Gabriel, E. Glockner, M. Burk, J. Kellogg, J. Debo, M. Witter, S. Smith, L. Brushart, I. VonLuhrt, J. Phillips. *Second row*—J. Spangenberg, M. Bendinelli, R. Middlecamp, M. Simpson, S. Davis, M. Gavin, L. Wasil, B. Utley, A. Bendinelli, N. Milstead. *Third row*—J. Bauer, S. Bolotta, A. Coyle, R. Oberling, R. Billian, M. Wasil, D. Mike, J. Delabar. *Accompanist*—C. Simpson.



Minutes and minutes of debating,
Hours and hours of searching,
Days and days of choosing,
Weeks and weeks of plotting,
Months and months of praying—
It takes all these
To build—MEMORIES!

Yearbook Designers



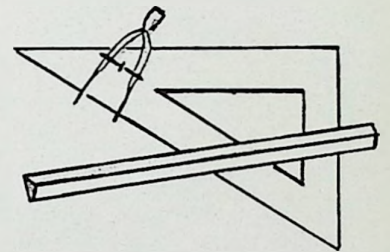
Editors, feature writers, and artists share a common headache: Barbara Utley, Barbara Beaver, Catherine Foster, Lawrence Hartlage, Paul V. Orlett, Jean Phillips, Sylvia Bolotta, Linda Brushart, Erna Hansmann.



Editors, feature writers, and typists blueprint ideas for a "sharp" yearbook: Lois Wasil, Patricia Jones, Marjorie Vetter, Marilyn Witter, Lanora Crayton, Anna Fern Cronin, Jean Phillips.



Business managers, photography and sports editors cooperate in laying the financial groundwork: Donald Grierson, Thomas Gavin, Daniel Sand, Fred Porginski, Mary Ann Bendinelli, Dorothy Kempf, Ruth Scherer, Thomas Haley, Gerald Pendlum, Theodore Vamvas, Daniel Kilcoyne, Gerard Pierron.



Circulation managers, advertising committee, and typists drum up business with a song: Mary Agnes Weber, Mary Lou Wessel, Janet Debo, Rosena Hornikel, James Fleming, Richard Price, Gerald Pierron, Janet Frantz, Joyce Delabar, James Vamvas, Patricia Tose, James Kricker, John O'Connor, Edward Gemperline.

Orators



(l. to r.) Lawrence Hartlage, Holy Redeemer finalist, Barbara Utley, runner-up, Linda Brushart, Jean Phillips, Marilyn Witter, and Richard Price were chosen in the first elimination.

The fourth annual "I Speak for Democracy" contest was sponsored by local Junior Chamber of Commerce Americanism committees throughout the nation. The best radio talks on the chosen subject were selected, and finalists competed for local and national awards.

At St. Mary's, Daniel Bercik (standing) was chosen as school representative. Other contestants were: Bernadine Montavon (standing) and (l. to r.) Annette Dado-sky, Nancy Zender, Anna Fern Cronin, and Lanora Crayton.

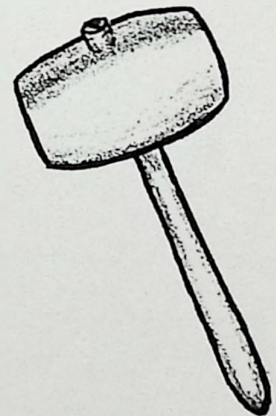


Sodality



According to the reports of Prefect Catherine Foster and Secretary Barbara Beaver, the Summer School of Catholic Action conducted by the Jesuits in Erie, Pennsylvania, was not all work and no play, as Sodalist reactions indicate. Effective social action has demonstrated how well the suggestions of the Jesuits have taken shape in the Saint Mary Sodality. Distributing Our Lady of Fatima leaflets, selling magazine subscriptions, and participating in the SSCA are examples of how the Sodalists are "determining the need, deciding the cause, and doing the job" of social action.

Believing that a school that prays together stays together, the Sodality has also encouraged membership in the Knights and Handmaids of the Blessed Sacrament. With Mary as patroness, the Sodalists have developed mentally, morally, and spiritually in both individual and group apostolates.





SAINT MARY HIGH SCHOOL SERVERS

Front row—R. Roth, F. McBride, C. Rose, F. Ross, J. Cronin, K. Zender, J. Walsh. *Second row*—J. Schwamberger, J. Kleinman, J. Martin, D. Brown. *Third row*—G. Pendlum, J. Bauer, J. VonLuhre, P. V. Orlett, G. Born, D. Beaver.

Mass Servers

The server is endowed with a great and holy honor in assisting the priest in the Holy Sacrifice of the Mass. These boys have been faithful in carrying out their duties with promptness in serving at Mass, evening devotions

SAINT MARY GRADE SCHOOL SERVERS

Front row—D. Blankenship, N. Weber, W. Bingaman, J. Wilson, J. Scherer, D. Kirby. *Second row*—M. Schwamberger, A. Walter, D. Maguire, W. McGovern, H. Herrmann, C. Dettwiller. *Back row*—M. Miller, D. Vernier, M. July, V. Fitzer, T. Jenkins, J. True, G. Frantz.





HOLY REDEEMER HIGH SCHOOL SERVERS

Front row—M. Doyle, L. Gavin, W. Banchy, E. Russell, J. Brown, M. Banchy. Second row—D. Glockner, R. Albrecht, J. Fleming, C. Wamsley, L. Gerken, T. Fleming. Back row—J. Russell, L. Hartlage, E. Mahle, G. Fisher, G. Pierron, D. Sand, T. Gavin, P. France.

and other sacred functions, even though it has cost them many sacrifices and inconveniences. They have come to serve in all kinds of weather and even very early in the morning.

HOLY REDEEMER GRADE SCHOOL SERVERS

Left to right—T. Pierron, H. Witter, P. Rush, James Milstead, Jon Milstead, E. Kean, H. Clyburne, J. Middlecamp, C. Kalb, A. Bendinelli, J. Tannian, J. Wiggins, R. Holzemer, T. Hyle, S. Coyle, M. Maloney, R. Smith, M. Sand, R. Haley, J. Kean, M. Barry, T. Russell, R. Donini.





The library assistants are high school girls who have volunteered their services to help perform the library duties. Besides becoming acquainted with the complicated routine of the library, the girls enjoy themselves browsing among their favorite titles. Pictured at the left are Priscilla Bickel and Johanna Orlett of Saint Mary. Above are the Holy Redeemer assistants: first row, B. Gabriel, J. Delabar, M. Bendinelli, R. Middlecamp, M. Simpson, D. Mike, S. Bolotta, M. Burk. Second row: J. Spangenberg, R. Billian, E. Glockner, A. Bendinelli, P. Tose, L. Wasil, N. Milstead, C. Simpson. Third row: I. VonLuhrt, J. Phillips, B. Utley, J. Kellogg, S. Smith, J. Debo, L. Brushart, M. Witter, and M. Wessel.

Librarians and Journalists

Editor Barbara Beaver (lower left) looks over the first issue of the MARIAN with staff members. **FRONT ROW:** B. Beaver, L. Crayton, typist; D. Kempf, C.S.M.C. editor; P.V. Orlett, assistant editor; E. Hansmann, J. Ferrell, typists. **SECOND ROW:** M. Weber, P. Jones, grade editors; J. Frantz, M. Vetter, news editors; C. Foster, feature editor; R. Scherer, alumni editor; A.

Cronin, feature editor; R. Hornikel, exchange editor. **BACK ROW:** D. Kilcoyne, F. Porginski, business managers; D. Grierson, G. Pendlum, sports editors.

Paul V. Orlett, (bearing the battle scars of the football game with East as shown below) attended the Catholic Press Conference in Milwaukee on October 23-24.





Philip Delabar, James Gemperline, Suzanne Davis, Charles Wamsley and Ruth Oberling of the Holy Redeemer English III class intensify their study of Catholic Magazines during Catholic Press Month.

Catholic Reading Builds Catholic Minds

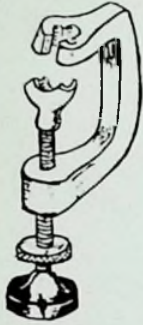


Bookworms Anna Montavon and Norma Schackert were caught burrowing among the shadows of the Saint Mary library.



Knowing the life of the author makes reading his works more interesting, and during Catholic Book Week, Bernadine Montavon, Joan Hall, and Zelda Kilcoyne become acquainted with some of their favorites.





Workers with Words

An essay contest on "How I Can Expand Opportunities in America" challenged the ability of St. Mary juniors and seniors early in the year. Finalists in the contest were: Above, J. Born, K. Stamm, S. July, B. Roth, P. Vernier; below, B. Beaver, R. Hornikel, J. Pendlum, L. Crayton, P. V. Orlett, J. Frantz, M. Vetter.



Each year the National School Poetry Association publishes the efforts of students from all over the country. This year not only poetry but essays also were accepted. Holy Redeemer entrants in the contest were: *Front row*, W. Banchy, R. Albrecht, C. Kellison; *second row*, C. Simpson, M. Gavin, M. Wessel, L. Hartlage, L. Brushhart, J. Bauer; *back row*, R. Hock, M. Simpson, S. Smith, J. Kellogg.



The senior class of Holy Redeemer assembles to conduct the ceremony of the advent wreath, while Janet Frantz lights the candle for the St. Mary seniors' advent wreath.



Judy Ferrell draws a Christmas wreath listing the prayers of the students for their adopted missionary.



Passers-by during the Christmas season often pause to utter a silent prayer before Holy Redeemer's outdoor crib.

O Come, Emmanuel!



M. Simpson, J. Kellogg, S. Smith, and J. Spangenberg admire their Christmas crib in the freshman homeroom.

P. Bickel comforts M. Simon in a C.S.M.C. Christmas play "The Midnight Clear".



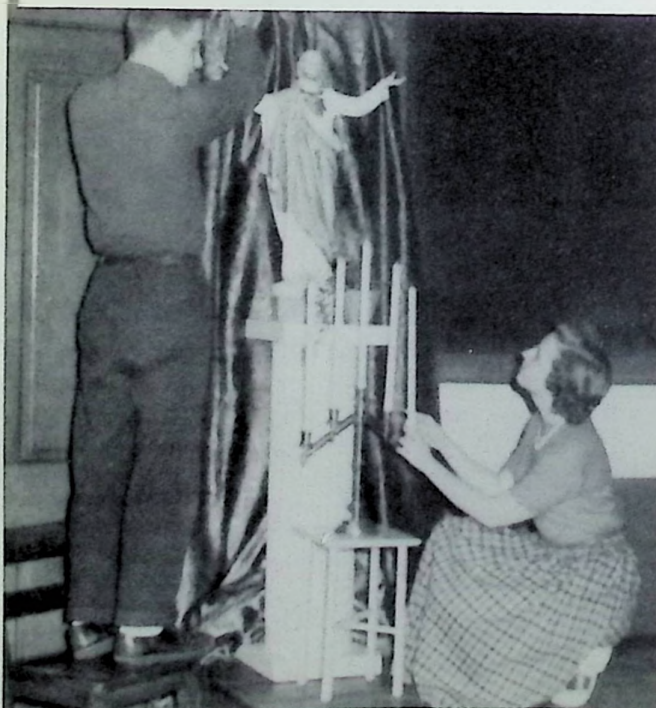


A milestone in the students' year is the annual retreat, a period of concentrated spiritual reconstruction. The end of January brought the Reverend Edwin J. Weber, S.M., to give the conferences. Pictured at left are Judy Ferrell, Erna Hansmann, Ruth Scherer, Anna Fern Cronin and Patricia Jones catching up on a bit of spiritual reading between talks.

Prayer is Power



In Holy Redeemer Church a group of freshmen pray for a strong foundation in faith during their first retreat. They are Jane Spangenberg, Nancy Milstead, Dolores Mike, Rita Middlecamp, Larry Gavin, Henry Oberling, Edward Russell and David Glockner.



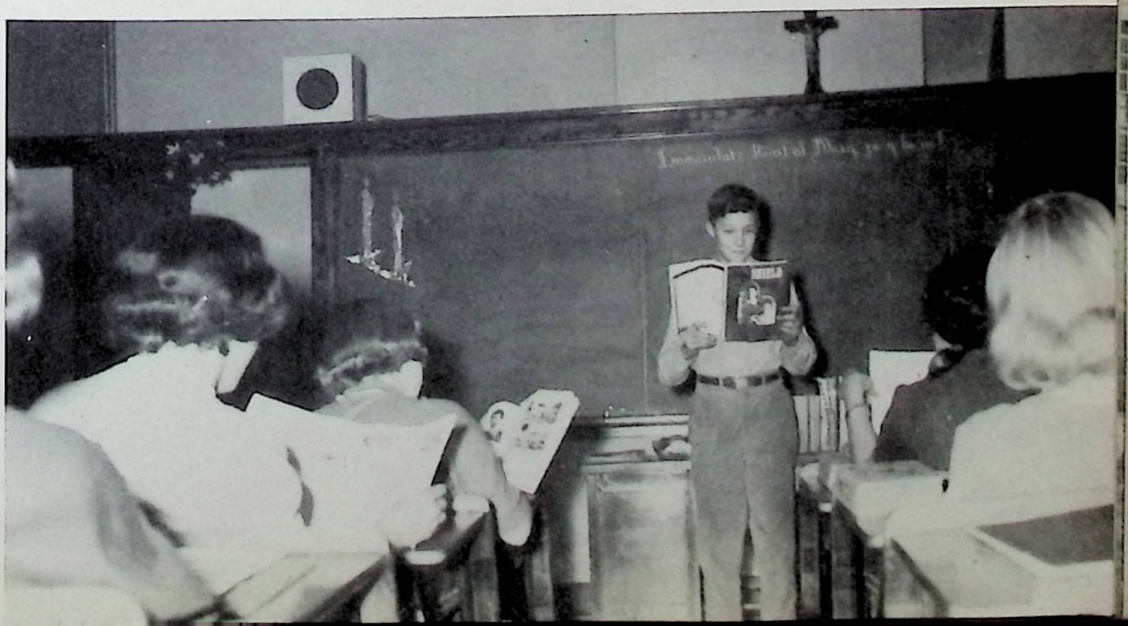
The first Friday in February marked the enthronement of the Sacred Heart in Saint Mary's assembly. Senior officers Dan Kilcoyne and Anna Fern Cronin are shown here preparing the throne.



Father James Kulp, Diocesan Director of the Propagation of the Faith (second from left), spoke at the annual enrollment of the St. Mary Catholic Student's Mission Crusade.

Catholic Students' Mission Crusade

The construction of the new school has not eclipsed the ever present problem of the reconstruction and support of the missions. The monthly meetings call together the students to discuss what has been done and to plan what will be done with the money and prayers which have been collected in the past month. Letters are received from the missionaries asking favors from the students. Weekly round table discussions are held to provide a foundation of knowledge concerning the missionaries. This year delegates were sent to Columbus to acquaint students with what the church expects with regard to the missions.



John Ream leads a group of Holy Redeemer sophomores in a round table discussion.



Right—L. Hartlage, E. Mahle, J. Russell, J. Bauer, J. Phillips, J. Kellogg, C. Simpson, and A. Coyle (not pictured) were the Holy Redeemer delegates sent to Columbus to the Diocesan Mission Workshop held October 16.

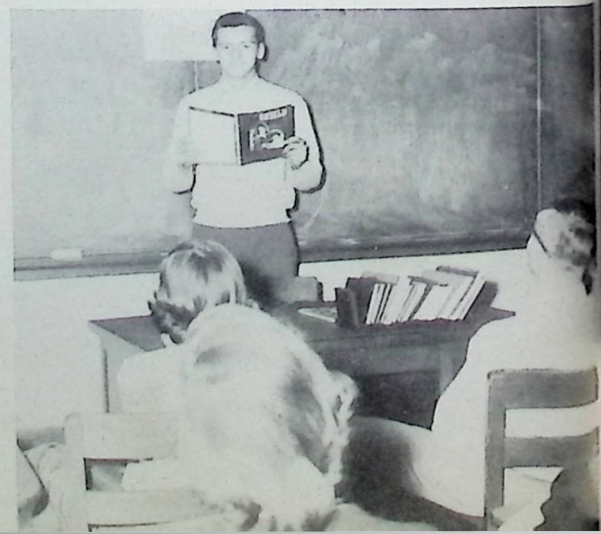
St. Mary delegates to the Columbus workshop were: (back row) J. von Lührte, J. Sommer; (middle row) S. July, Sister M. Mathia, A. Cronin, M. Simon, P. Bickel, E. Hansmann; (front row) B. Koth, J. Hock; (not pictured) D. Beaver.



T. Fleming, M. Doyle, and M. S. Burke are happy with the results of the rosary collection held for the missions.



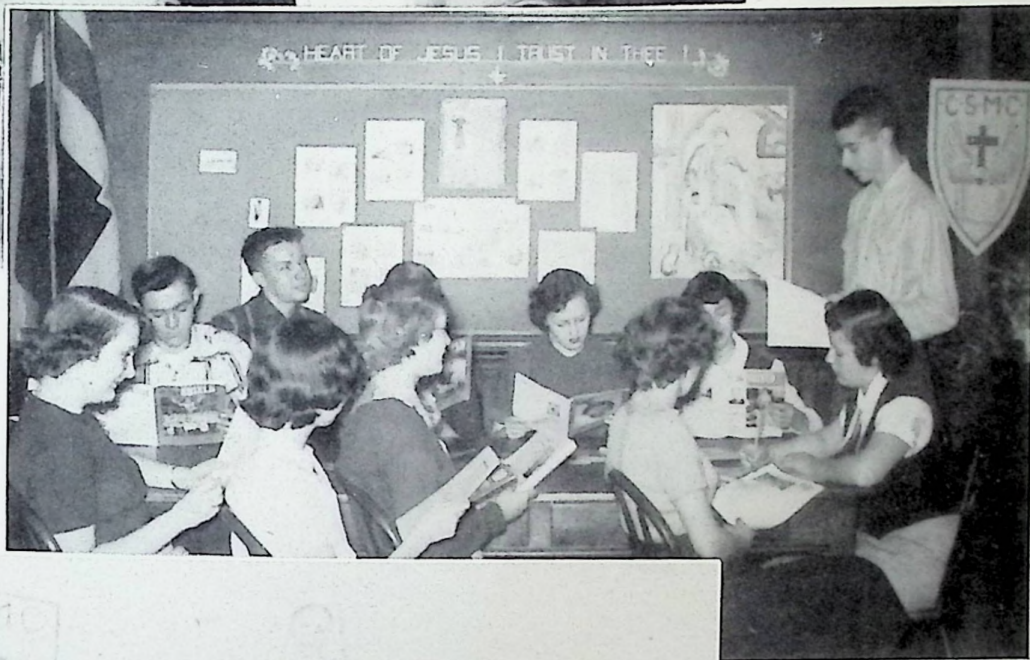
John Middlecamp conducts a Junior round table discussion of a mission subject.





SENIORS

Part of the cast of St. Mary seniors' achievement project, "Betty Carries The Shield," included A Cronin, P. Orlett, J. Frantz, E. Hausmann, J. Ferrell, M. Vetter, M. Weber, B. Beaver. Round Tablers not shown are L. Crayton, C. Foster, D. Grierson, R. Hornikel, P. Jones, D. Kempf, D. Kilcoyne, G. Pendlum, F. Porginski, R. Scherer.



JUNIORS

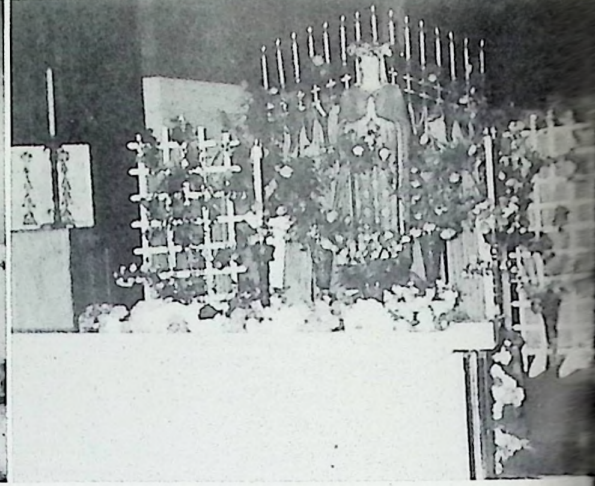
Sitting left to right (above), S. Trogus, J. Sommer, J. Born, N. Zender, J. McGlothlin, M. Walsh, P. Vernier, M. Comer, B. Roth, S. July take part in a group discussion of the junior Round Tablers led by D. Beaver.

SOPHOMORES

Our Lady, Queen of the Missions, extends protecting arms to sophomore Round Tablers. *Front row*—F. Foster, M. Simon, J. Orlett. *Second row*—C. Scherer, A. Malone, P. Bickel, M. Wamsley. *Third row*—J. Martin, J. Bauer, J. Simon, D. Ferrell.



May Crowning - A Final Embellishment



The finishing touch of the school year is the crowning of the Blessed Virgin during the last part of May. Students of both grade and high schools participate in the crowning, which includes a colorful procession around the church, singing of the traditional May hymns, and the coronation of the Blessed Virgin statue. The beautiful exercises close with a sermon and Benediction of the Blessed Sacrament.



Jacob Orlett, Mary Schwamberger, and Stephen Vetter do the honors at the St. Mary May Crowning.



Finishing Touches



The apparatus and equipment are to the building what extracurricular activities are to school life.



"Well, here I am, all dressed up for the Easter Parade."

ROOM FOR ONE MORE

A Play in Two Acts
 by William Davidson
 Presented by
 the Senior Class of
 Saint Mary High School
 at
 Portsmouth High School
 Auditorium
 April 29-May 1

CAST OF CHARACTERS

Mother, two steps ahead of the crowd	Catherine Foster
Joey, a doctor-in-the-making	Paul V. Orlett
Trot, eldest of the Roses	Judy Ferrell
Teensie, a younger Rose	Patricia Jones
Janey, who is afraid of goldfish	Barbara Beaver
Betty, a special friend of Joey's	Mary Agnes Weber
Miss Winston, a businesslike note-keeper	Ruth Scherer
Poppy, who makes room for several more	Jerry Pendlum
Jimmy John, one of "Grease Ball's gang"	Karl Zender
Mrs. Biddle, Betty's mother	Rosena Hornikel
George Biddle, the boy next door	Dan Kilcoyne





"Why, the littlest one has two pails!"

"The story of Jimmy John has been sold to the movies for more money than I knew there was."



You Can't Take It With You
 A Comedy in Three Acts by
 Moss Hart and George S. Kaufman
 Was Presented by the
 Holy Redeemer Masquers
 In the Holy Redeemer Auditorium
 February 22 and 24, 1952



Grandpa Vanderhof



Penelope Sycamore



Paul Sycamore



Tony and Alice



Ed Carmichael

Essie Carmichael





Rheba and Donald



Olga and Kolenkhov

Cast

Penelope Sycamore, who writes plays.....	Carol Simpson '54
Essie, an aspiring ballerina.....	Janet Bauer '53
Rheba, the colored maid.....	Mary Ann Bendinelli '52
Paul Sycamore, the fireworks experimenter.....	Gerald Russell '54
Mr. De Pinna, the milkman who came one day and just stayed	James Fleming '52
Donald, Rheba's boy friend.....	Lawrence Gavin '55
Ed, who prints the daily menu.....	Edward Russell '55
Martin Vanderhof, a lovable Grandpa around whom all the eccentric activities of the family revolve.....	Lawrence Hartlage '52
Alice, the normal member of the Sycamore family....	Barbara Utley '52
Henderson, from the Internal Revenue Department....	Edward Mahle '55
Tony Kirby, the boss' son.....	Daniel Sand '52
Boris Kolenkhov, a mad Russian.....	John Middlecamp '53
Mr. Kirby, who raises orchids at \$10,000 a bulb.....	Gary Fisher '54
Mrs. Kirby, interested in Spiritualism.....	Linda Brushart '52
Three G-Men.....	Thomas Haley '52 Frank Perri '52 Richard Price '52
Olga, an ex-grand duchess now a waitress.....	Marilyn Witter '52



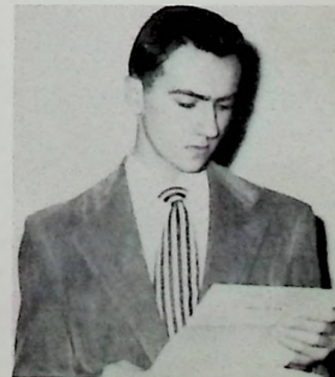
Mr. De Pinna



Mr. and Mrs. Kirby

The Sycamores are a delightfully happy family despite the divided interests of its members. The Kirbys enter the story when Tony, their son, falls in love with Alice and brings his parents to dine at the Sycamore home, on the wrong evening. The highlights of the drama consist of the strange activities of certain members of the household engaged in the manufacture of fireworks, printing subversive literature in the parlor, and Grandpa's interview with the income-tax collector.

Henderson





Christmas on the Village

... A 3-act play by Henri Gheon was presented by the Holy Redeemer Masquers on December 18, 1951.

A group of strolling players have set up their camp in a village square on Christmas Eve. They entertain the townsfolk with their simple presentation of the Five Joyful Mysteries of the Rosary.

Old Melchior . . . Thomas Haley, '52. He was also the Reader, an Angel, one of the Magi, Herod, Simeon, and a doctor of the law.

Old Sara . . . Patricia Tose, '52. She was an old woman, a neighbor, Elizabeth, a Roman Lady, another neighbor and Anna, the prophetess.

Josaphat . . . Gary Fisher, '54. He was also a Jew, Joseph and a doctor.

Mercedes . . . Ruth Oberling, '53. She took the part of Mary.

Bruno . . . Robert Hock, '55. He was an Angel, a little shepherd and the Boy, Jesus.

Jesus in the Crib . . . Jacqueline Haley, '69.

Other gypsies were: Sylvia Bolotta, '52, who danced, Mary Ann Bendinelli, '52, David Glockner, '55, Frank Perri, '52, and William Banchy, '54, who played the drum.

The townspeople were: Thomas Fleming, '54, Betty Jo Gabriel, '54, Thomas Gavin, '52, Elizabeth Glockner, '55, Charles Kellison, '54, Edward Mahle, '55, Carol Simpson, '54, Edward Russell, '55, Gerald Russell, '54, and Sheila Smith, '55.



The Annunciation



The Presentation

The Nativity





The Mocking Bird

An operetta in 3 acts by Rosenfeld and Sloane
 was presented by the Holy Redeemer Glee Clubs
 in the Holy Redeemer Auditorium
 on April 25 and 27, 1952

So scarce were women in the French colony of New Orleans during the 18th century that the mother country sent shiploads of cassettes to provide wives for the colonists. One of them, Manon de Lange, secretly known as the Mocking Bird, leads an "underground" resistance against the Spanish occupation. In the end, the French are victorious, Manon reveals herself a countess and accompanies Bob Finchley to Virginia as his bride.

CAST

General Aubrey, French Governor of New Orleans

Gerald Russell '54

Eugene De Lorme, Aide to the Governor Richard Gill '53

Maxime Grandpre, a wealthy citizen of New Orleans

John Brown '53

Yvette Millet, Maxime's ward Sylvia Bolotta '52

Manon de Lange, an immigrant girl Marilyn Simpson '55

Jean Le Farge, a famous French pirate Patrick France '54

Bob Finchley, a Virginian John Middlecamp '53

Captain Beloit, of the ship "Marseilles" David McNamara '53

Don Aurelio de Mendez, a Spanish envoy Edward Russell '55

The Marquise De Villebois, a wealthy colonist

Linda Brushart '52

The Countess Bellaire, her niece Carol Simpson '54

Janette, an immigrant girl Sheila Smith '55

Lenore, an immigrant girl Janet Spangenberg '55

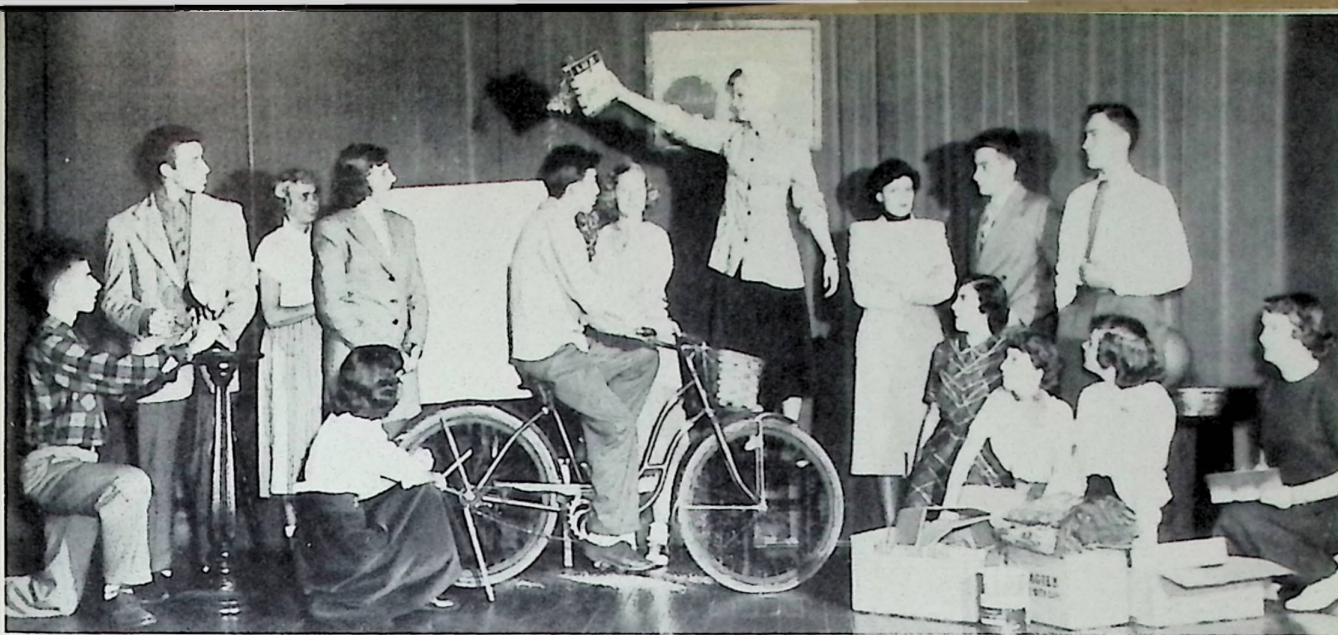
Javotte, the Governor's housekeeper Jean Phillips '52

Chloe, a slave belonging to Maxime Janet Bauer '53

Pierre, a Negro butler Edward Mahle '55

CHORUS

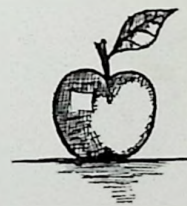
William Banchy, Mark Banchy, Mary Ann Bendinelli, Angela Bendinelli, Ruby Billian, Mary Sue Burk, Conway Cote, Ann Coyle, Suzanne Davis, Janet Debo, Joyce Delabar, Michael Doyle, Betty Jo Gabriel, Lawrence Gavin, Lawrence Gerken, Edward Gemperline, David Glockner, Robert Hock, Charles Kellison, Jane Kellog, Rita Middlecamp, Nancy Milstead, Delores Mike, Henry Oberling, John Ream, Virginia Roberts, Sheila Smith, Janet Spangenberg, Ruth Oberling, Patricia Tose, Barbara Utley, Lois Wasil, Martha Wasil, Marilyn Witter, Imogene Von Lührte.



Our Miss Brooks

Torn between the desire to bring out the best talents in deserving students and the necessity of holding her job, Miss Brooks has to use tact and originality as well as intelligence in coaching the class play. Her enthusiasm at the snow-storm-and-thunder-effects rehearsal meets with smiles from some, doubt from others. Back row: Coach, Faith, Miss Finch, Elaine, Miss Brooks, Miss Audubon, Mr. Wadsworth, Ted. Front row: Martin, Doris, Stan, Jane, Marge, Elsie, Sylvia.

A Comedy in Three Acts by Perry Clark
 Presented by the Saint Mary Juniors
 in the Portsmouth High School Auditorium
 November 7 and 8, 1952



CAST OF CHARACTERS

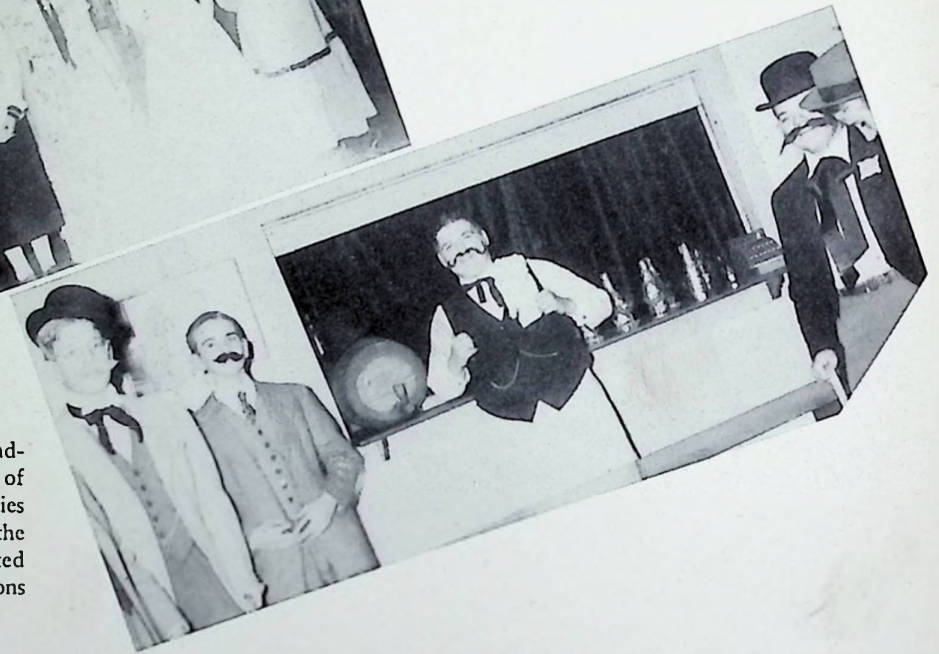
Miss Brooks, English teacher.....	Judy McGlothlin
Miss Finch, librarian.....	Mary Ruth Walsh
Hugo Longacre, athletic coach.....	Jerry Born
Mr. Wadsworth, principal.....	Kenneth Stamm
Miss Audubon, music teacher.....	Frances Gillette
Elsie, who forgets her lines.....	Sandra July
Jane, a would-be English teacher.....	Betty Roth
Sylvia, stage manager.....	Sally Trogus
Doris, whose bus comes too early.....	Nancy Zender
Marge, a self-confident actress.....	Mary Teresa Comer
Faith, a weeping prima donna.....	Jeanne Warren
Rhonda, Mrs. Allen's daughter.....	Patricia Vernier
Ted, basketball star.....	Jerry Sommer
Stanley, whose bus comes too late.....	David Weber
Elaine, dissatisfied with her part.....	Teresa Hock
Martin, who fixes the spotlight.....	David Beaver
Mrs. Allen, school board president.....	Frances Brown



The social year for upperclassmen at Holy Redeemer and St. Mary culminated in the annual junior-senior spring prom in the Naval Armory.



Handlebar mustaches and grandfathers' vests were taken out of mothballs for the Gay Nineties Ball on September 23, and the "belles of the nineties" sported their fetching millinery creations and parasols.



The Sno-Ball at Holy Redeemer ushered in the new year a little early, December 28.

Witches, Indians, figurines, and pirates haunted Holy Redeemer auditorium on October 30 at the Halloween dance.





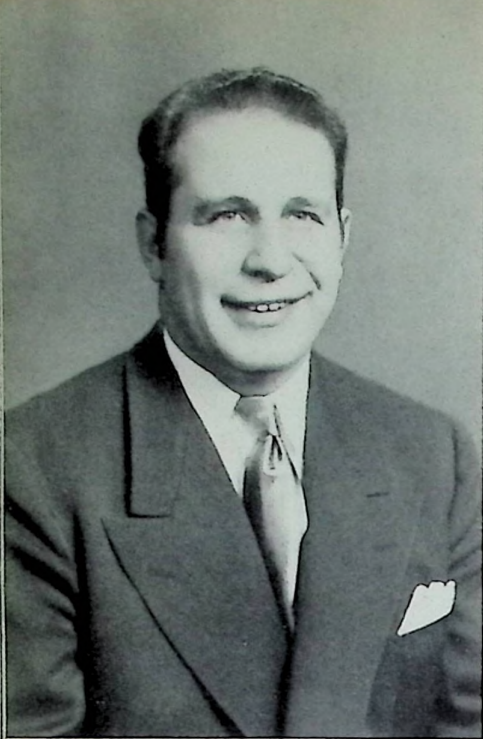
Homecoming queens were feted at the dance after the McKell game on November 17. Below, attendants Lois Wasil and Linda Brushart, queens Barbara Utley and Ruth Scherer, and attendants Janet Frantz and Erna Hansmann enjoy their brief reign.



The Social Whirl

"Go west, young man," said the juniors and all the girls came too, to the Wild West party at St. Mary's on November 23.





Pigskin Parade

Coach Pat Darone, a graduate of Boston College, was welcomed back to Central Catholic this year after a two-year absence. Coach's strict principles of training and his love for long and hard practice resulted in a well-built team, and his extensive knowledge of football was proved by the successful season the Titans enjoyed.



Coach has spoken! The mighty Titans know he tells the truth.



Central 26 Wheelersburg 0

Central opened the season by trouncing the Pirates of Wheelersburg by a decisive margin. Fred Porginski led the Titans in the scoring department with three TD's, two of them on long runs. Pat France also scored for the Titans; the whole Titan line stood out on defense.

Central 7 Washington 41

Central, hampered by injuries to five key players, went down fighting to a powerful Washington eleven, Fred Porginski scoring the Titans' lone marker. Outmanned and overpowered, they were never outfought.

Central 13 Hillsboro 12

Central came back the following week to edge the Hillsboro Indians, as Frank Perri scored both touchdowns for Central. The line, led by Dan Kilcoyne and Jack O'Connor, played a brilliant defensive game, outcharging and outfighting a bigger Hillsboro forward wall.

Central 33 Chesapeake 20

Central made it two in a row by knocking off Chesapeake when Fred Porginski with three touchdowns, and Frank Perri and Pat France with one each, paced the Titans in the scoring department. The offensive line led by Orlett and Middlecamp paved the way for the best offensive show of the season.

Central 19 Waverly 20

A favored Waverly eleven just managed to edge out the fighting Titans, when, with one minute left to play, Porginski took a pass from Gill and raced 30 yards to make the score 20 to 19. Porginski scored twice and Perri once for Central.

Central 21 B. I. S. 37

Central, traveling to Lancaster, was nosed out by a

more powerful eleven. Fumbles hampered the Titan cause, and though Porginski tallied twice and Perri once, it was not enough to overcome the margin rolled up by the Cadets. Standouts for defense were Orlett on the line and McNamara in the backfield.

Central 33 East 18

Central traveled to Allard Park, to do battle with the East High Tartans. Jim and Ted Vamvas led the Titan gridders by paving the way for Porginski's four touchdowns. Perri added the final tally to wrap up the Titans' fourth victory of the campaign.

Central 19 Ironton St. Joe 0

Central ran roughshod over their up-the-river foes in a field of snow, rain and mud. This didn't hamper Central's rugged warriors as they mopped up the Flyers of St. Joe. Porginski and Perri scored in the first half for Central. In the fourth quarter, Perri fumbled crossing the goal line and Middlecamp was standing by to fall on the ball for the third Titan counter.

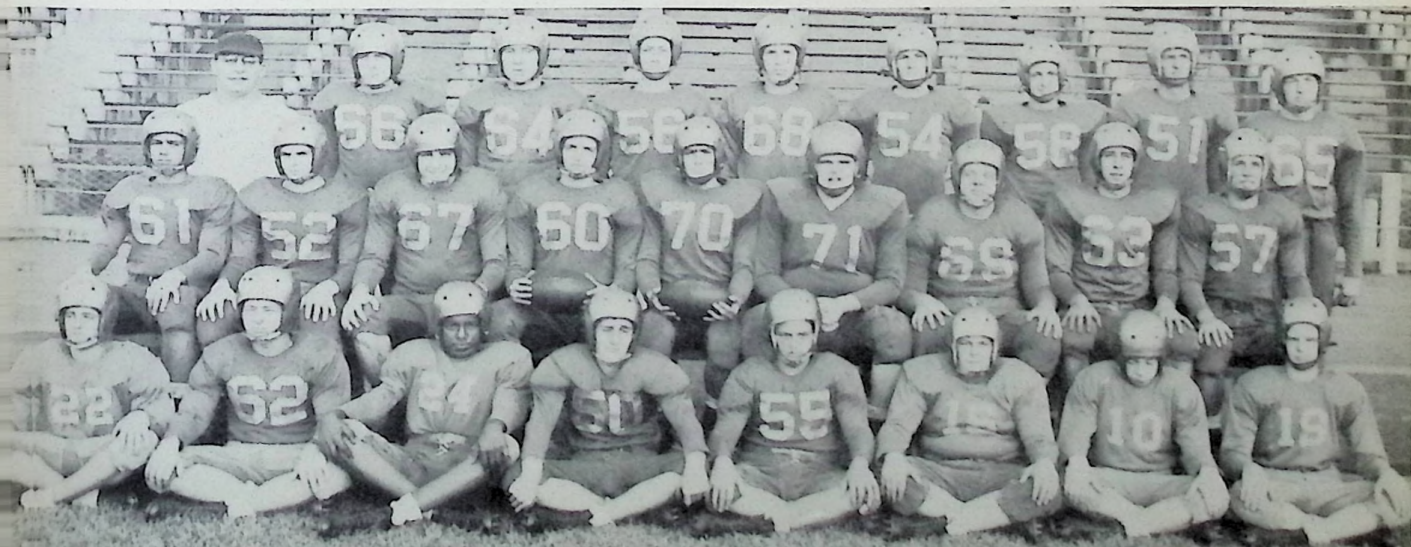
Central 6 New Boston 34

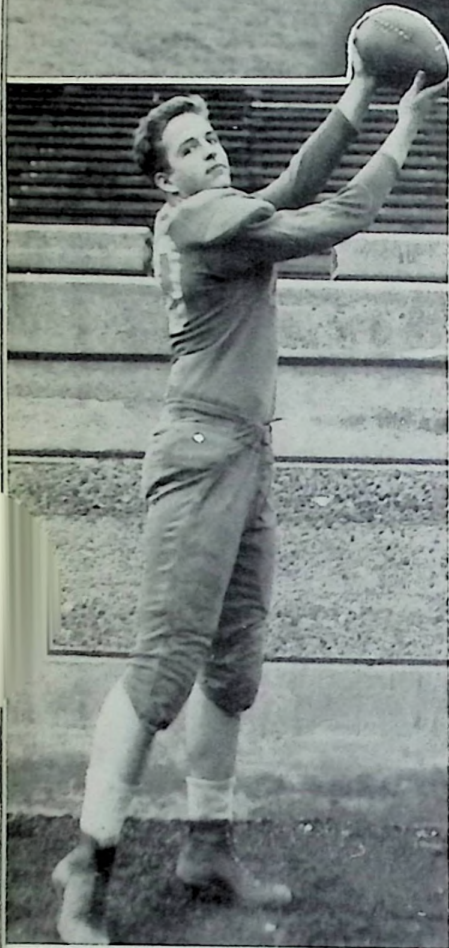
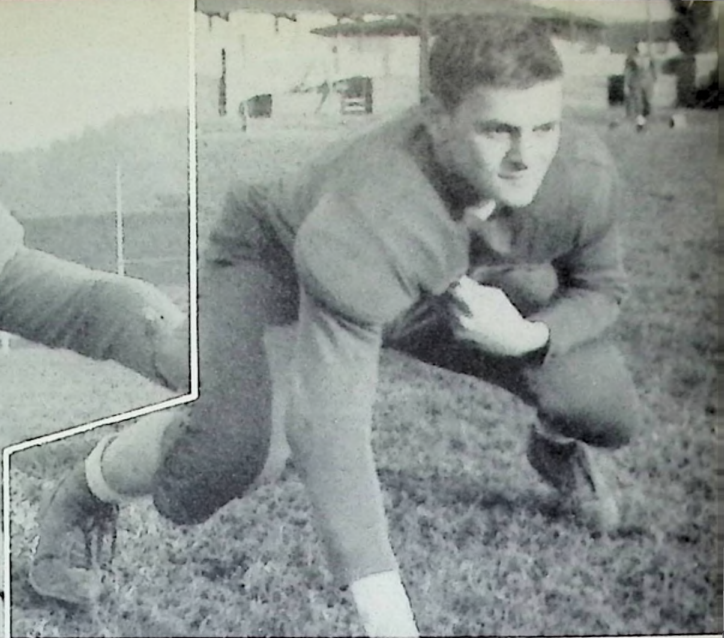
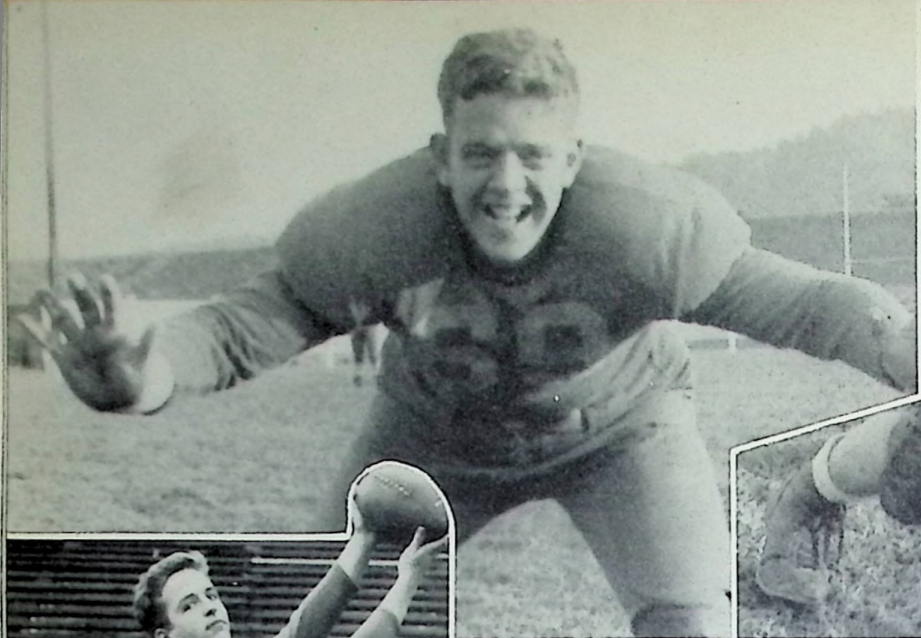
In a game marked by rough play the Titans were defeated by the New Boston Tigers. The New Boston squad, aided by the fumbles of Central's backs near the New Boston goal line, marched to four 6-pointers in the second half. The lone Titan score was chalked up by a France-to-Porginski pass.

Central 31 McKell 20

Central Catholic ended its history as well as its season in a blaze of glory by rolling over McKell's Bulldogs in the homecoming for Central. Pat France, sophomore signal-caller, passed the Titans to a well-deserved victory. He threw three touchdown passes and stood out defensively. Porginski with four touchdowns and Perri with one led the scoring.

First row: L. Gavin, J. Kleinman, A. Brown, D. Bercik, R. Frantz, J. Brunner, J. Brown, C. Malone. Second row: T. Haley, D. Kilcoyne, J. O'Connor, P. V. Orlett, F. Perri, T. Gavin, J. Fleming, J. Vamvas, F. Porginski. Third row: Coach P. Darone, K. Stamm, J. Bauer, D. Grierson, G. Pierron, R. Gill, P. France, J. Middlecamp, J. Born.





Tackle Jim Fleming HR
5' 9" 225 lbs.
A defensive whiz, a hard,
steady player.

Guard Dan Kilcoyne,
SM
5' 8" 150 lbs.
Lack of size made up for
in stamina and fortitude,
terrific on offense and
defense.

End Paul V. Orlett, SM
Co-Captain
6' 175 lbs.
Smart offensive end,
good blocker, capable
leader.

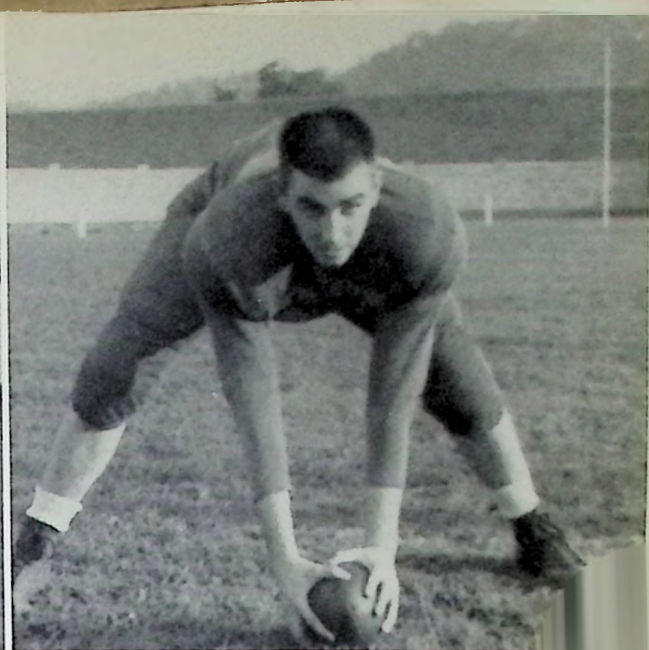
Senior

Halfback Dan Sand HR
6' 145 lbs.
Saved many a touch-
down with open field
tackle, "quit" not in his
vocabulary.

Tackle Tom Gavin HR
5' 11" 245 lbs.
An immovable object at
tackle, hard charger.

End Tom Haley HR
6' 160 lbs.
An alert and fast end,
ambitious.





Halfback Fred Porginski, SM
5' 8" 150 lbs.
Leading scorer in the district, chief weapon is blazing speed.

Fullback Jim Vamvas, HR
6' 178 lbs.
Great defensive line-backer, solid performer, chief threat is power.

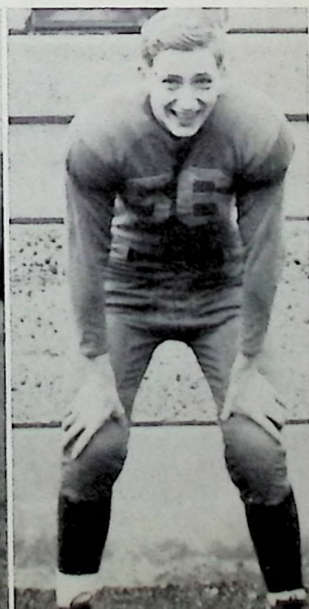
Center Jack O'Connor, HR
6' 2" 190 lbs.
Big, rough and ready, the anchor man of a rugged line.

Salute

Tackle Gary Pierron, HR
6' 3" 160 lbs.
Good, smart lineman, adept at analyzing plays.

Guard Don Grierson, SM
6' 160 lbs.
Floats all over the field to achieve his goal, aggressive.

Guard Ted Vamvas, HR
6' 180 lbs.
A bear on defense, spark plug of the Titan line.





A worn-out Titan crew listens to a lecture on the fine points of football.

Second Team

Front row: D. Bercik, J. Fleming, T. Haley, P. Stamm, J. Born, J. Kleinman, D. Gill.
 Back row: J. Brown, L. Gavin, J. Bauer, D. Sand.



Third String

Front row: J. Simon, T. Montavon, J. Gemperline, G. Brunner, P. Delabar, R. Frantz, D. Ferrell, P. J. Orlett, D. Beaver. Back row: R. Hock, E. Russell, Coach Darone, M. Doyle, J. Walsh.





St. Mary Queen Ruth Scherer



Holy Redeemer Queen Barbara Utley

Homecoming on November 17 marked the last Central Catholic game in history, as the Titans came through with a victory over McKell. This event was highlighted by the short but glorious reign of the student-elected Homecoming Queens and Attendants.



St. Mary Attendant Janet Frantz



Holy Redeemer Attendant Linda Brushart



St. Mary Attendant Erna Hansmann



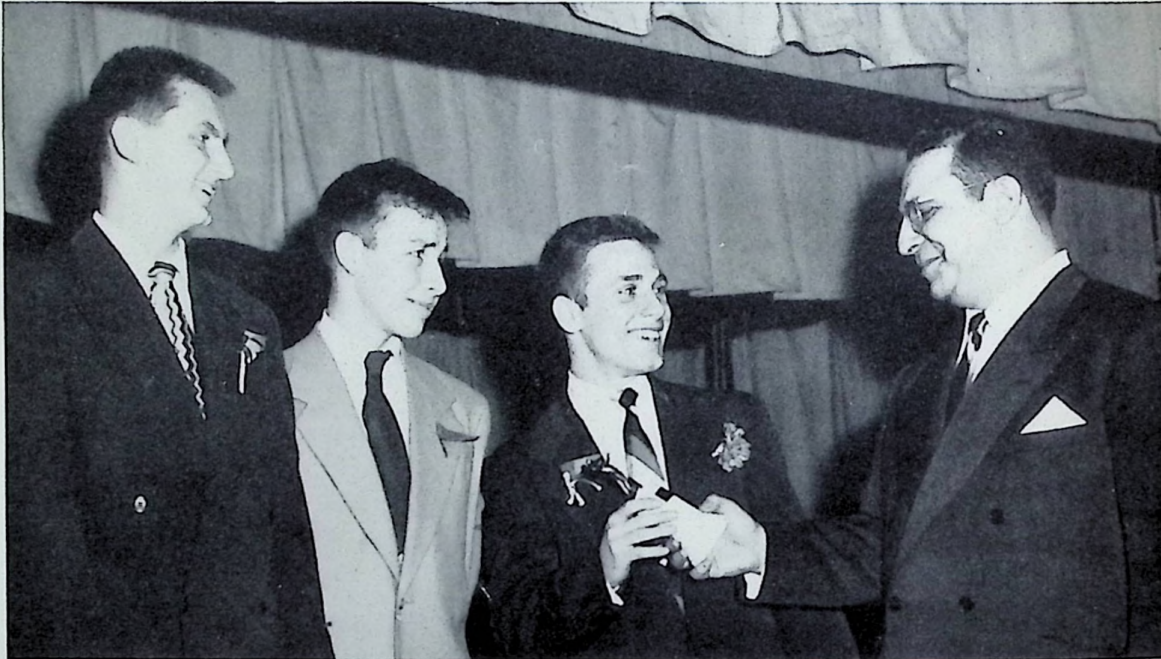
Holy Redeemer Attendant Lois Wasil

Crowns and Chrysanthemums

Banquet Night

Members of Central Catholic's athletic teams were honored by the Athletic Association on January 17 in the Holy Redeemer Auditorium. Guest speaker of the evening was Joe Gavin, head coach at Dayton University, who spoke on the merits and evils of college football. Letters were awarded to players, managers, and cheerleaders. Recognition was given to Fred Porginski for winning a berth on the all SOC ten, and honorable mention was given to Paul Orlett, Dan Kilcoyne, Tom Gavin, and Frank Perri. The captaincy of the Titan football squad for the next season went to John Middlecamp and Gerald Born.

Above left: Guest speaker Joe Gavin



Coach Darone presents trophy to Fred Porginski as the 1952 co-captains John Middlecamp and Gerald Born look on.

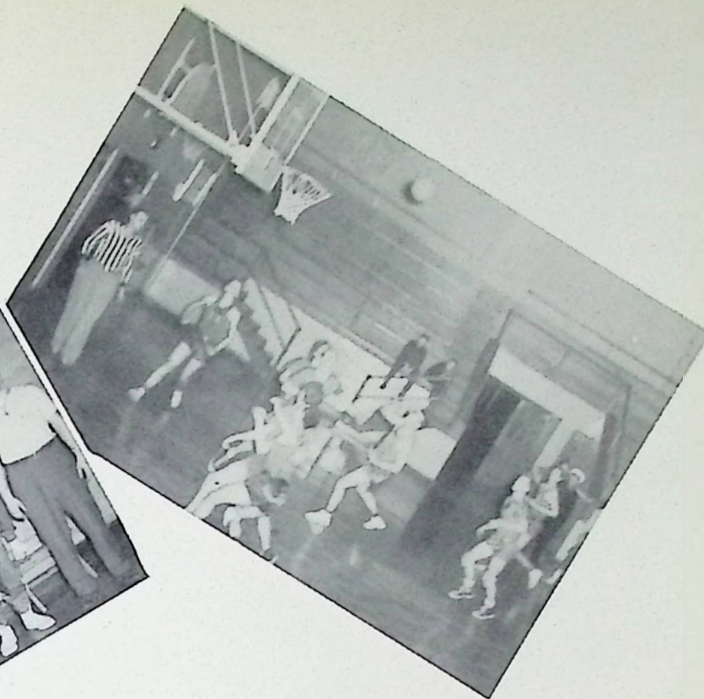
Coach Darone presents the nine retiring seniors.

Paul Fleming holds the football used in the last Central game.

Places were set for 262 banqueters.



Basketball



The Central Catholic Varsity Squad: 1st Row, John Middlecamp, Pat France, Paul Orlett, Frank Perri, Jack O'Connor, Coach Pat Darone. 2 Row, E. Mahle, David Beaver, Mike Doyle, John VonLuhrt, Gary Fisher, Manager Jerry Brunner. Above: The Titans in warm-up togs. Top: O'Conner hooks in two points.

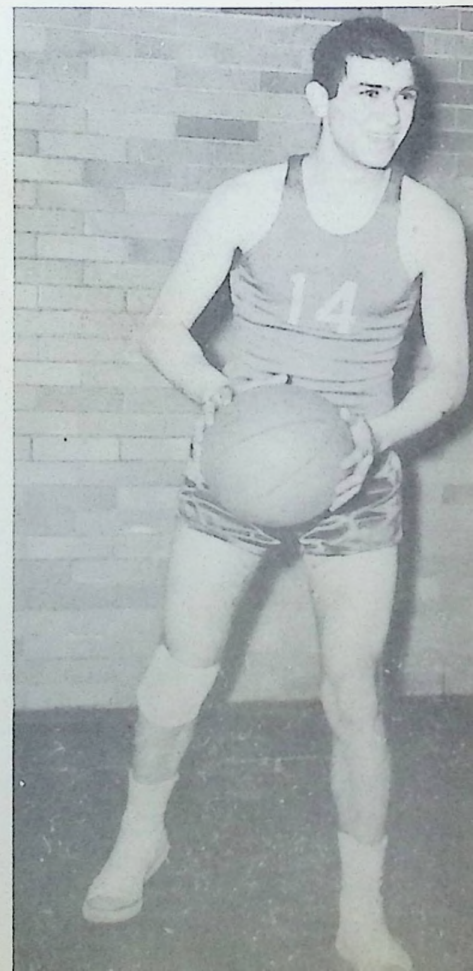
CENTRAL CATHOLIC TITANS BASKETBALL SCHEDULE 1951-52

Nov. 30	P. H. S. Reserves	Home
Dec. 5	Ashland Holy Family	Home
Dec. 9	Ironton St. Joseph	Away
Dec. 12	Wheelersburg	Home
Dec. 14	East High	Away
Dec. 19	New Boston	Home
Dec. 21	Coal Grove	Away
Jan. 4	McKell	Away
Jan. 8	Waverly	Away
Jan. 9	Fairlands	Home
Jan. 15	Chesapeake	Away
Jan. 16	Ironton St. Joseph	Home
Jan. 18	New Boston	Away
Jan. 23	McKell	Home
Feb. 6	Minford	Home
Feb. 8	Washington High	Away
Feb. 10	Ashland Holy Family	Away
Feb. 13	East High	Home
Feb. 19	Hillsboro	Away

Jack O'Connor ----- center.
 Demon on both banking board;
 most of his points were scored on
 his deadly hook shot and tip-ins;
 good defensive player.

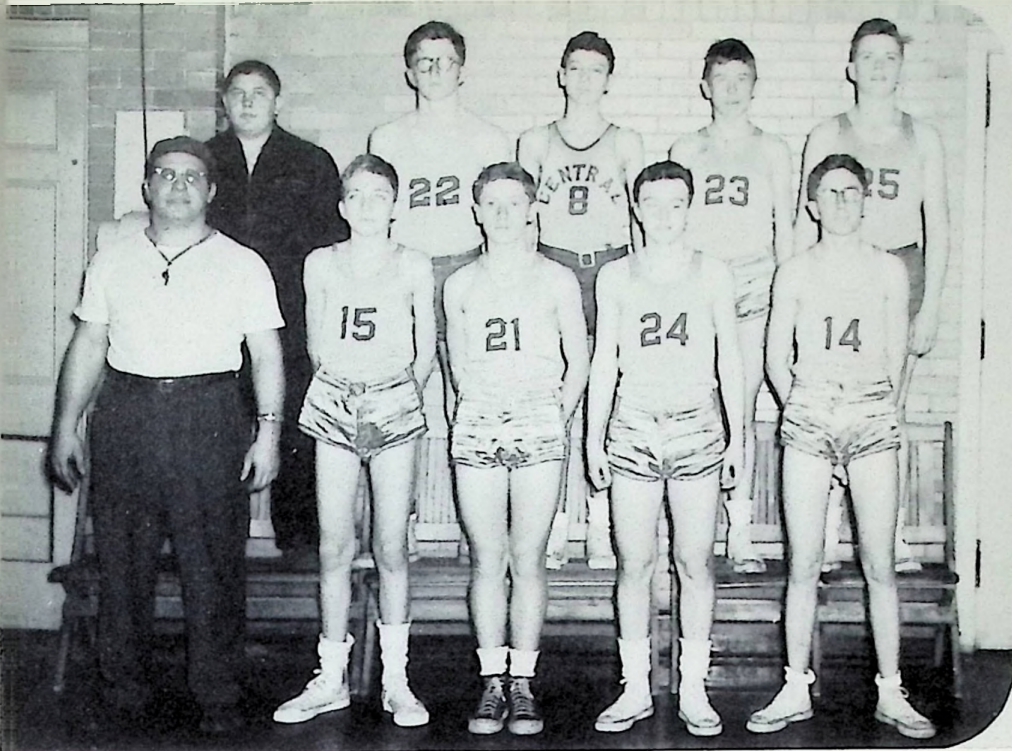
Paul Orlett ----- forward.
 A consistent and steady team play-
 er; playmaker of Titan offense;
 his specialty was driving layups;
 alert defensive man.

Frank Perri ----- guard.
 Good ball hawk and deceptive
 dribbler; led most of the fast
 breaks; good set shot.

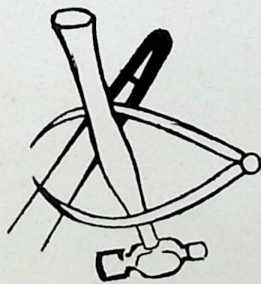


CENTRAL CATHOLIC
RESERVES

Front Row: Coach Darone,
Joe Martin, Don Brown,
Eddie Russell, Jerry Russell.
Back Row: Jerry Brunner,
Charlie Wamsley, Dave Fer-
rell, Charlie Kellison, Larry
Gerken.



Titans in Action





Judy Ferrell Patricia Tose Judy McGlothin



Janet Bauer



Annette Dadosky



Mary Sue Burk

Cheer, cheer for new Notre Dame!

Central's success on the gridiron and never-say-die spirit in basketball were largely due to the peppy enthusiasm and unfailing loyalty of her cheerleaders.

During the past year, these six girls led by Judy Ferrell and Patty Tose, senior cheerleaders, have devoted a great deal of their time to the important task of leading the crowd in cheers for Central High. Central Boosters extend an ardent thank you to the cheerleaders for a job well-done.

Cheerleaders served as guard of honor to Queens Ruth Scherer and Barbara Utley on homecoming night: J. Ferrell, J. Bauer, M. Burk, P. Tose, A. Dadosky, J. McGlothin.





Natural Resources

The school spirit of "the new Notre Dame" will be built from the enthusiasm of today's "young fry."

Pupils of the Grade Schools

Grades 6, 7, 8,

HOLY REDEEMER

ST. MARY 



P. Brown, L. Brunner, R. Brunner, D. Doll, P. Devlin, S. De Voss, R. Donini, S. Emnett, E. Hager, R. Halcy,



S. Kalb, J. Kean, E. Kellison, J. Milstead, M. O'Connor, H. Price, G. Rush, P. Rush, T. Russell, M. Sand,



J. Stebick, J. Wellman, H. Witter, M. Arthurs, E. Beattie, E. Brescia, S. Coyle, H. Clyburn, J. Cox, J. Dawson,



C. Devlin, T. Doyle, P. Greer, T. Hyle, E. Kean, C. McCormack, M. Maloney, J. Milstead, T. Pierron, J. Ream,



P. Rodgers, R. Smith, T. Vamvas, N. Arthurs, T. Barry, A. Bendinelli, P. Cassidy, A. Cote, J. Cubine, D. Dadosky,



M. Debo, J. Doll, A. Glockner, R. Holzemer, C. Kalb, H. Keil, D. Kellison, B. Krick, C. Lynch,



J. Middlecamp, H. Orthmeyer, J. Price, J. Stump, M. Stumpe, J. Tannian, J. Wiggins, S. Wellman, A. Witter,



D. Adams, K. Balsar, M. Born, J. Cooper, D. Downes, V. Fitzer, J. Foster, G. Frantz, P. Gibbons, T. Gillette,



P. Graham, P. Hornikel, M. July, E. Kessinger, C. Kirby, J. Kirby, G. Martin, G. Rudity, M. J. Redoutey, S. Redoutey.



S. Russell, D. Scherer, M. Schwambeger, E. Simon, J. True, R. Welty, J. Adams, J. Albrecht, D. Allemang, J. Bercik.



J. Born, R. Comer, M. Dadosky, S. Derillion, J. Dettwiller, D. Ebmeier, J. Goings, R. Goings, C. Haffner, G. Hartlage, J. Hartlage.



O. Hutchinson, T. Jenkins, C. Kirby, T. Ladd, P. Lang, M. Miller, J. Mitchell, K. Orlett, N. Pasquinelli, D. Petry, W. Prose.



S. Rideout, C. Roberts, A. Ross, A. Russell, G. Scherer, N. Shepherd, T. True, D. Vernier, A. Vetter, G. Weber.



W. Bingaman, D. Boyle, S. Brennan, J. Butler, M. Coriell, D. Dunn, R. Foster, R. Fowler, P. Gibbons, H. Gillette.



G. Gloekner, P. Grierson, J. Haaf, T. Hall, D. McGuire, A. Montavon, C. Payne, J. Roth, P. Russell, M. Schackert.



M. Schwamberger, A. Simon, J. Spencer, J. Stern, M. Trogus, A. Walter, M. Wetta, R. Wetta, J. Wilson.



R. Arthur, D. Blankenship, C. Dettwiller, R. Emmett, J. Frechull, H. Herrmann, D. Kirby, R. Lang, W. McGovern, G. Pasquinnelli, S. Rideout.



J. Scherer, H. Simon, B. Snyder, C. Stephenson, M. Stephenson, B. Thielen, N. Warren, N. Weber, M. Albrecht, J. Bercik.



C. Bickel, M. Burling, B. Davis, E. Davis, B. Dettwiller, R. Gillette, J. Haaf, J. Hutchinson, G. Jenkins, E. Kleinmann,



W. Krick, E. Ladd, M. Lehn, P. Likavec, M. Orlett, R. Orlett, A. Roberts, J. Roth, L. Roth, R. Scherer,



J. Schmidt, M. Schmidt, K. Shaffer, B. Snyder, T. Stern, R. Vernier, R. Weber, S. Welty, D. Wetta



J. Albrecht, J. Augustin, R. Bashaw, J. Beaumont, M. Bercik, M. Brennan, N. Comer, S. Davis, R. Dougherty.



D. Eck, J. Ennis, D. Erwin, R. Fowler, W. Kessinger, C. Kirby, R. Gleason, P. Krick, L. Koehn.



D. Kuhn, J. McGovern, S. Meadows, S. Mitchell, J. Orlett, M. Rothwell, J. Rudity, C. Schillinger, A. Schwamberger.



E. Simon, P. Steahley, L. Toomey, J. True, M. Vetter, S. Walter, S. Williams.

GRADES 3, 4, and 5



S. Allen, J. Bauer, S. Bodmer, A. Burk, W. Burke, M. Burns, J. Cassidy, A. Chapman, M. Cote, M. Cozza,



J. Devlin, K. Fleming, S. Haley, J. Hartlege, J. Hoerr, K. Holzemer, S. Hyland, C. Hyle, S. Kellogg,



M. Mike, A. Ream, W. Simon, R. Simpson, R. Spangenberg, A. Suter, C. Thuma, P. Weems, B. Willis,



R. Barry, G. Beattie, A. Brennan, V. Conroy, A. Cozza, M. Curnutte, S. Delabar, J. Eckstein, L. Figliola,



J. Gerken, M. Hoerr, J. Krick, T. Lanier, T. Maloney, B. Melcher, C. Milstead, T. Petry, J. Reitz,



S. Saltsman, P. Weems, R. Wenzler, J. Schmidt, S. Shanon, R. Soper, T. Wagner, V. Wagner, J. Andrews,



J. Barry, A. Burke, H. Cassidy, J. Coyle, C. Curnutte, R. Eckstein, M. Fannin, P. Grady, J. Kehoe,



M. Kornhoff, R. McNamara, R. Milstead, P. Price, S. Reani, J. Reid, G. Reinhardt, D. Rodgers, B. Smith,

HOLY REDEEMER
GRADES 3, 4, and 5



P. Stebick, D. Stump, S. Suter, C. Wagner, S. Wagner, R. Walter, V. Wiggins,

ST. MARY GRADES 1 and 2



B. Adams, T. Adams, J. Bickel, J. Binghaman, R. Boldman, B. Boyle, W. Comer, G. Dettwiler, M. Duplain, A. Foster, R. Fuller, R. Fuller, D. Gibbons.



M. Herrmann, G. Keeney, S. Kielmar, C. Kirby, N. Lang, A. Lauter, G. Lehn, C. McGovern, M. Redourey, R. Prose, D. Roberts, S. Ross, T. Roth, W. Rothwell.



C. Rudity, R. Sagowitz, S. Sommer, J. Stern, W. Szudlo, G. Tabor, J. Vernier, S. Vetter, D. Vincent, W. Warren, B. Wely, K. Yerardi, J. Augustin, R. Balsar.



M. Behmer, L. Blankenship, B. Brennan, J. Burling, M. Davis, C. Dicus, P. Duplain, B. Duplain, E. Flory, D. Fuller, G. Gleason, M. Hjaaf, J. Jordan, C. Kirby.



U. Kirkendall, J. Kleinman, R. Likavec, R. Likavec, R. Lipker, M. Malone, S. Miller, R. Mitchell, C. Orlett, P. Petry, P. Reeves, B. Shaffer, A. Stevens.



HOLY REDEEMER GRADES 1 and 2



G. Scherer, V. Swearingen, D. Thielen, H. Tracy, S. Warner.

K. Beattie, B. Bennie, A. Bodmer, G. Burchett, K. Burns, R. Delabar, R. Delabar.



P. Emmert, M. Figliola, S. Ford, B. Fucci, R. Grady, T. Kayser, N. Kalb, R. Keil, M. Kellogg, E. Lanier, J. Lease, S. McHugh, C. Melcher, E. Pellegrinon,



M. Petry, T. Saltsman, J. Smith, J. Tannian, P. Bolotta, J. Burke, T. Call, M. Collins, R. Cropper, D. Dadosky, S. Gohmann, R. Haws, B. Holzemer, R. Hyle,



M. Kehoe, R. McShane, M. Orthmeyer, M. Petry, T. Sand, D. Simon, D. Smith, T. Switalski, R. Wagner, D. Walter, N. Wasil, G. Westwood, J. Willis.

Vested Carolers

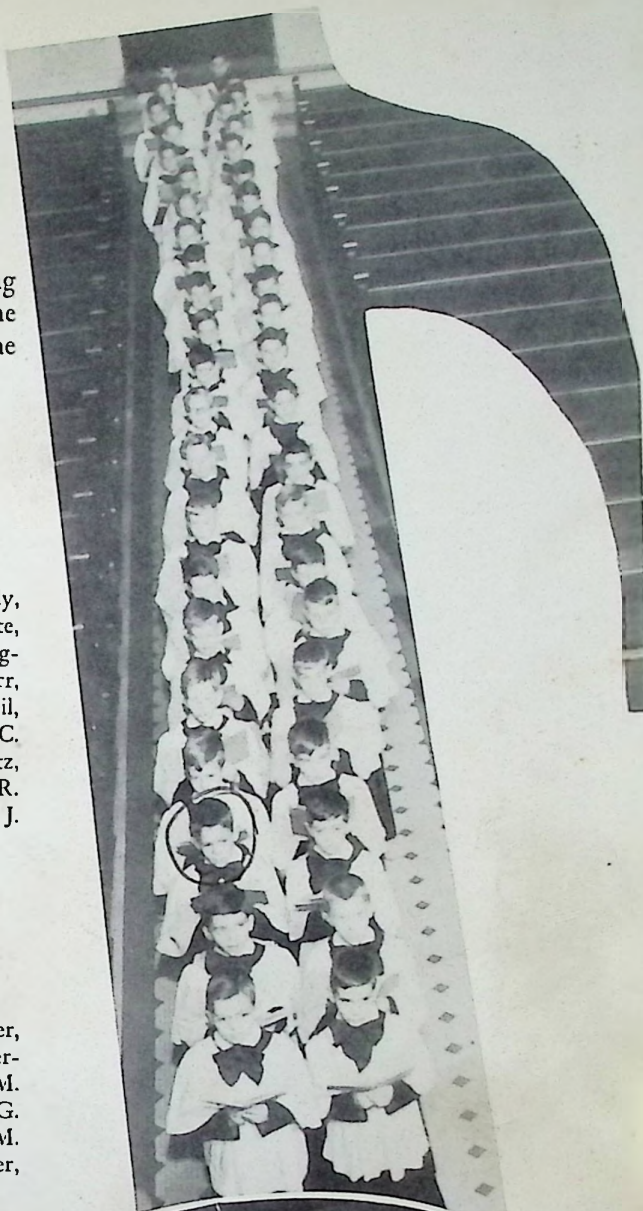
Long hours of practice go into the special training of boys in the vested choir. The great feasts of the Church year are highlighted by their voices in the Mass and hymns.

HOLY REDEEMER BOYS' CHOIR

M. Barry, A. Bendinelli, P. Brown, W. Burke, J. Cassidy, H. Clyburn, A. Core, S. Coyle, J. Cubine, M. Curnutte, S. Delabar, D. Doll, J. Doll, R. Donini, T. Doyle, L. Figliola, J. Gerken, P. Greer, R. Haley, J. Hartlage, J. Hoerr, R. Holzemer, T. Hyle, C. Kalb, E. Kean, J. Kean, H. Keil, T. Lanier, M. Maloney, T. Maloney, J. Middlecamp, C. Milstead, J. Milstead, J. Milstead, H. Orthmeyer, J. Reitz, P. Rush, T. Russell, S. Saltsman, M. Sand, W. Simon, R. Simpson, J. Smith, J. Tannian, T. Vamras, T. Wagner, J. Weems, R. Wenzler, J. Wiggins, H. Witter.

SAINT MARY BOYS' CHOIR

J. Albrecht, J. Bercik, K. Bickel, W. Bingaman, J. Butler, C. Dettwiller, D. Ellmeier, G. Frantz, R. Goings, H. Herrmann, T. Jenkins, M. July, E. Kleinmann, W. Krick, M. Lehn, W. McGovern, M. Miller, D. Petry, T. Ross, G. Scherer, J. Scherer, R. Scherer, M. Schwamberger, M. Stephenson, J. True, D. Vernier, A. Walters, N. Weber, J. Wilson.





Sponsors

AMERICAN STEAM LAUNDRY
BRENNAN, RALPH
CARR'S JEWELRY
CENTRAL CATHOLIC ATHLETIC
ASSOCIATION
CLASS OF 1952 - HOLY REDEEMER
CLASS OF 1953 - HOLY REDEEMER
CLASS OF 1954 - HOLY REDEEMER
CLASS OF 1955 - HOLY REDEEMER
DAEHLER, F. C. MORTUARY COMPANY
DETROIT STEEL CORPORATION
DONALDSON, C. M. AND ASSOCIATES
EMRICK, MRS. GEORGE F.
FROWINE CONSTRUCTION COMPANY
GOLDCAMP, EDWARD G. COMPANY
HOLY NAME SOCIETY -
HOLY REDEEMER
ITALIAN-AMERICAN BROTHERHOOD

J. H. DISTRIBUTING COMPANY
JONES, HERFF, INDIANAPOLIS
JOSTEN'S
LADIES' GUILD - HOLY REDEEMER
MARTIN PLUMBING COMPANY
MARTING BROTHERS COMPANY
MOTHERS' CLUB - HOLY REDEEMER
OHIO ASPHALT PAVING CORPORATION
OHIO VALLEY BAKING COMPANY
PERSUN CONSTRUCTION COMPANY
PIONEER BEVERAGE
RICHMAN BROTHERS COMPANY
A FRIEND
SEARS, ROEBUCK AND COMPANY
SCHISLER MEAT MARKET
WALTER TILE AND MANTEL COMPANY
WURSTER DRUG COMPANY

Patrons

A FRIEND
ADAM'S BAKERY
AHREND'S
ALLEN, DR. CHESTER
AMERICAN BLDG. AND LOAN
ASSOCIATION
AMERICAN FOOD MARKET
ATLAS FASHION
AUTOMOBILE CLUB
BARKLOW, O. CARSON
BARKLOW, O. CARSON
BARRY, DR. R. J.
BENSON'S RECREATION
A FRIEND
BLUE BIRD BAKERY
BORN, A. J.
BRAGDON'S DRY GOODS
BREHMER, THE PAINTER
CATHOLIC LADIES OF COLUMBIA -
HOLY REDEEMER

CATHOLIC LADIES OF COLUMBIA -
ST. MARY'S
CAROLINA LUMBER COMPANY
CHABOT'S SUPER SERVICE
CITIZEN SAVING AND LOAN
CITY COAL COMPANY
CLASS OF 1952 - SAINT MARYS
CLOCK GRILL
COMMUNITY SALES
COURT HOUSE INN
CRAWFORD COAL COMPANY
CRICHTON OFFICE SUPPLIES
CRITERION
CATHOLIC YOUTH ORGANIZATION -
SAINT MARY'S
DeLOTELLE'S GROCERY, 12th St.
DOERR AND ASSOCIATES
EHRMAN AND COMPANY
EMNETT'S FOOD MARKET
FERRELL BROTHERS RESTAURANT





FIRESTONE TIRES
 FLOOD DRUG STORE
 FRANCE AND SON GROCERY
 FREEHILL, FRANCIS
 FROWINE, RALPH E.
 FROWINE, SAMUEL E.
 GEMPERLINE FURNITURE COMPANY
 GEMPERLINE GROCERY
 A FRIEND
 GLOCKNER CHEVROLET COMPANY
 GRADES 5 AND 6 - HOLY REDEEMER
 GRIERSON'S DRIVE INN
 HARTLAGE, DR. W.J.
 HERRMANN, DR. W. J.
 HERRMANN AND SONS, MEATS
 HIBBITT'S HARDWARE COMPANY
 HOLY NAME - SAINT MARYS
 HOME SUPPLY
 HYLAND MANUFACTURING CO.
 IDEAL MILK COMPANY
 JOHNSON'S TERMINAL RESTAURANT
 JONES, MARVIN
 JORDAN'S STUDIO
 JUSTICE, BURL E.
 KAY JEWELRY STORE
 KENRICK, E. T. COMPANY
 KILCOYNE, T. C. REALTOR
 KILCOYNE'S RESTAURANT
 KIRBY'S FLOWER SHOP
 KNIGHTS OF COLUMBUS
 KNOST'S FLORAL COMPANY
 KOBACKERS
 KOPY KAT
 KRESGE, S. S.
 K. T. ENTERPRISE
 LAWSON FURNITURE
 LEGLER, RALPH - TAILOR
 LIBERTY CAFE
 LOCKNER ED, AUTO SUPPLIES
 LEVI FURNITURE COMPANY
 LONG AND COMPANY
 MANTEL NEWS
 McCARTY, JOE - GROCER
 MORGAN BROTHERS, JEWELERS
 NATIONAL CASH REGISTER
 N. C. C. W., SAINT MARYS
 NODLER, C. E. TINK
 NU-WAY CLEANING COMPANY

PEPSI COLA COMPANY
 PORTSMOUTH AUTO EXCHANGE
 PORTSMOUTH CITY LINES, INC.
 PORTSMOUTH COCA COLA
 PORTSMOUTH GAS COMPANY
 PORTSMOUTH INTERSTATE BUSINESS
 COLLEGE
 PORTSMOUTH MIXED CONCRETE
 PORTSMOUTH ROLLER ARENA
 PORTSMOUTH TIMES
 REILLY'S TAVERN
 REINHARDT TRANSFER COMPANY
 REITZ MUSIC AND APPLIANCE CENTER
 RELIABLE COAL COMPANY
 RICHARDS' NEWS
 ROBERTS JEWELRY COMPANY
 SAGRAVES ELECTRIC COMPANY
 SAM SIMON SERVICE STATION
 SAND, MR. AND MRS. OTT
 SCHOONOVER GROCERY
 SCIOTO VALLEY PRODUCE
 SCOTT SPORTING GOODS
 SELECT DAIRY
 SHEETS FURNITURE STORE
 SIMON AND KILCOYNE
 SNYDER, JULIAN J.
 STANDARD SUPPLY COMPANY
 STAPLETON'S OFFICE SUPPLY CO.
 STERN PAINT STORE
 STEWART'S DRUG STORE
 STEWART'S GROCETERIA
 STIR'S FURNITURE
 SUPERIOR CEMENT COMPANY
 TOLEDO SCALES
 TOWN HOUSE
 TURKEY SHOPPE
 VETTER AND SONS, INC.
 WAGNER, DR. RICHARD
 WARNER-WALL TRANSFER
 WASSERMAN AUTO SALES
 WEATHER-SEAL OF PORTSMOUTH
 WESTERN AUTO
 WILEY, ESCOM
 WILHELM DR. JAMES E.
 WILHELM, W. L., JEWELER
 WOLFORD MACHINE COMPANY
 ZIMMERMAN SUPPLY COMPANY
 ZUHARS MOTOR COMPANY





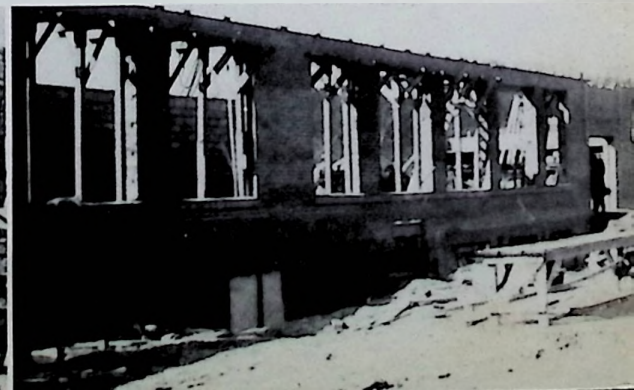
To all — “rich men, poor men, bakers, doctors, lawyers, merchants” — who helped make this 1952 MEMORIES possible, the annual staff expresses sincere thanks.

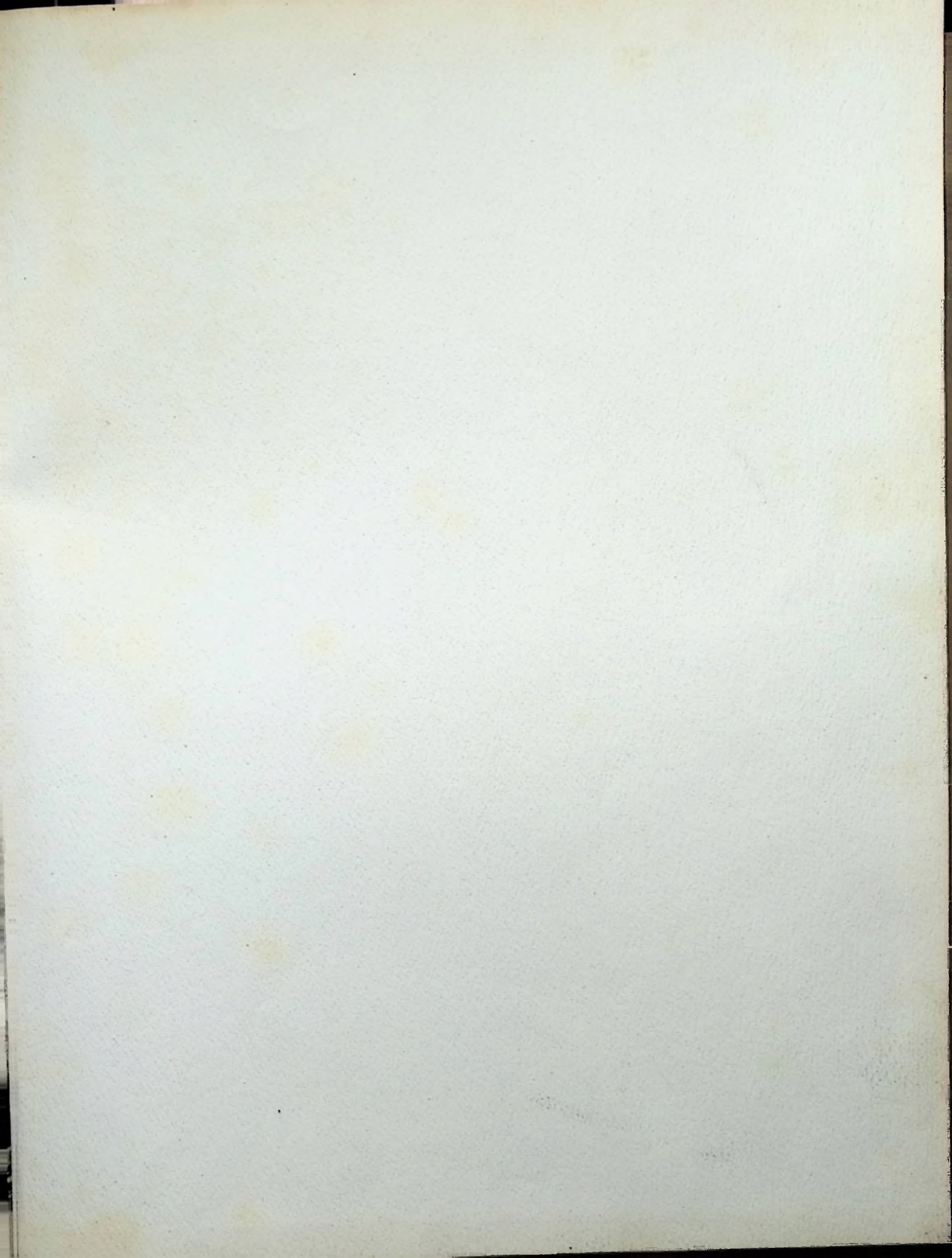
PATRONS

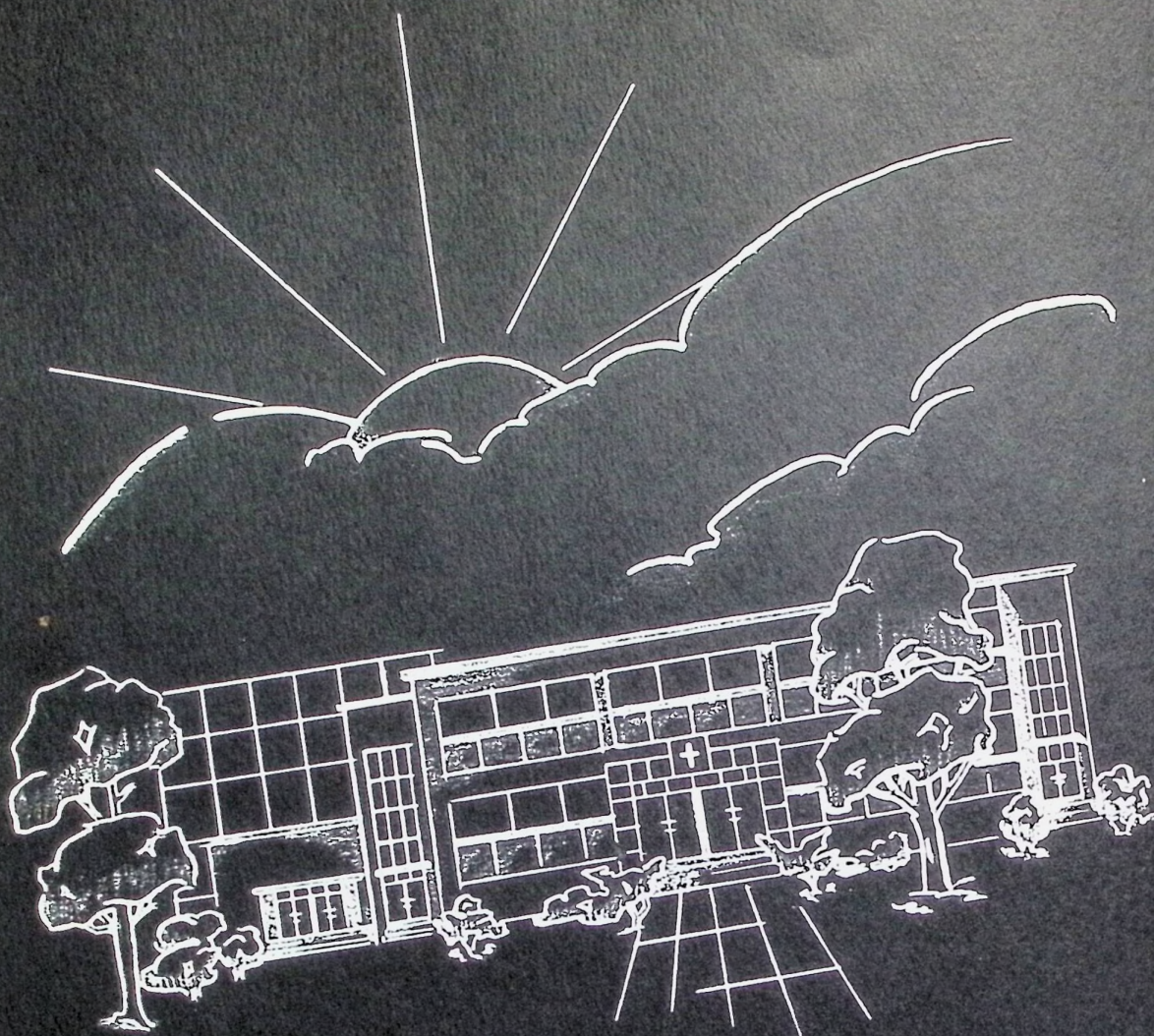
Ace Refrigeration Company
 Alberta's Beauty Shoppe
 Allard, Dr. L. N.
 Allen Barber Shop
 Allen, Dr. Frank
 American Legion Post 471
 American Restaurant
 Ann's Pastry Shops
 B & B Loan
 Bauer, W. A.
 Bendinelli, Mr. and Mrs. Rizzi
 Bennie, Bryann
 Betsy Ross is good bread
 Benny's Cafe
 Bierley and Henderson Tire Service
 Bodner and Son Window Cleaners
 Borden's Modern Dairy
 Brady Brothers Grocery
 Brennan, Paul
 Brennan's Shoe Repair
 Brushart, Mr. and Mrs. Dan E.
 Cablish, Charles
 Cameo Restaurant
 Carroll's Wallpaper
 Civics Club—Holy Redeemer
 Cooper and Thackery Auto Sales
 A Friend
 Covert's Furniture Company
 Covert's Market
 Craigmiles Furniture Company
 Crispie Creme Do Nuts
 Cunningham's Hardware Company
 Curnutte's Market, Jackson Ave.
 Curnutte's Market, Scioto Trail
 Dairy Shoppe
 Darone, Mr. and Mrs. Pat
 Davenport, Dr. Boynton
 Deaterla, Suzanne
 Deberienne Bargain Store
 Debo, Mr. and Mrs. John
 Dehner Department Store
 Delabar Delivery Service
 DeLuxe Cleaners
 Diller, Clyde, Barber
 Dunn Coal Company
 A Friend
 Echo Cleaners
 Eileen's Beauty Shop
 Emmert, Mr. and Mrs. John & Family

Essman Lunch
 Evans Floral Shop
 First Federal Savings & Loan Assoc.
 Free Press
 Fowler Camera Shop
 Gene's Place
 Glynn Funeral Home
 Gohmann, Dr. and Mrs. J. T. and Family
 Grades 1 and 2—Holy Redeemer
 Grimm's Sporting Goods
 Haag, Richard
 Halcy, Mr. and Mrs. Thomas
 Hamburger Inn No. 1
 Harris Food Market
 Hatch Advertising Company
 Head, Shirt and Diaper Laundry
 Herms Floral Company
 Hibbs Hardware Company
 Hollenbeck Shoe Repair
 Holzman, Matt
 Hugenberg, Dr. Wm. C.
 Hughes Dry Cleaners
 Hunter's Lock & Bicycle Shop
 Jacob's Wholesale Meats
 Joe's Wine Store
 Johnley, J. F.
 Johnson Brothers Grocery Company
 Jones' Guld Station
 Journey's T. & M. Grill
 Kah Printing Company
 Karmelkorn Shop
 Kelso Drug Store
 Kidd, Harry
 Kirby Craft Basket Company
 Kricker General Insurance
 Lane Shoppe
 Lantz Grocery
 Lewis Pie Company
 Malone Garage
 Masonic Temple Barber Shop
 McCormick, Dr. T. G.
 McClurg Insurance Agency
 McGahan Tri-State Exterminator
 Melcher Funeral Home
 Modern Cleaners
 Modern Heating Company
 Moore's Restaurant
 Morehead, Drs. O. T. and S. E.
 Morgan Insurance Company

Ohio Valley Wholesale Company
 Orthmeyer Bakery
 Ottie's Cafe
 Patsy Inn
 Phillips, Mr. and Mrs. Lawrence
 Play House
 Portsmouth Beauty and Barber Supply
 Portsmouth Paint Company
 Portsmouth Sand and Gravel
 Reese Restaurant
 Robbitt Awning Company
 Russell Glass Company
 Scaggs, Dr. William
 Schomberg, R. O. Meats
 Scherer's Service Station
 Selby Shoes
 Simpson Brothers
 Smith Grocery
 Staebler Watch Repair
 Stahler Pharmacy
 Staker's Grocery
 Streitenberger Radio Shop
 Sudden Dry Cleaners and Dyers
 Summers and Sons Music Store
 Switalski, James
 Taylor Barber Shop
 Thompson's Grocery
 Tilene's
 Time Loan Company
 Tiny's Place
 Temper, Dr. Hugh
 Triggs Food Market
 WNXT Broadcasting Station
 WPAY Broadcasting Station
 Walkers' Shoe Store
 Walt's Pie Shop
 Watkin's Grocery
 Wear's Ice Cream Store
 Wedebrook's Market
 Weems, Dr. and Mrs. Philip D.
 Weinstein, Dr. M. S.
 West End Electric
 Wheeler's, Mildred Beauty Shop
 Wheelersburg Dry Cleaners
 Wright Hatchery
 Wolf Clothing
 Ziegler's Clothing
 Zoellner Jewelry Company
 Zuefle Jewelry







*All roads lead
to "the new Notre Dame"!*



