



**WHEEEL**

47



*Presenting*

# The Wheel

of Nineteen Hundred and Forty-Seven

LH DEPARTMENT  
DO NOT CIRCULATE





RG HIGH SCHOOL



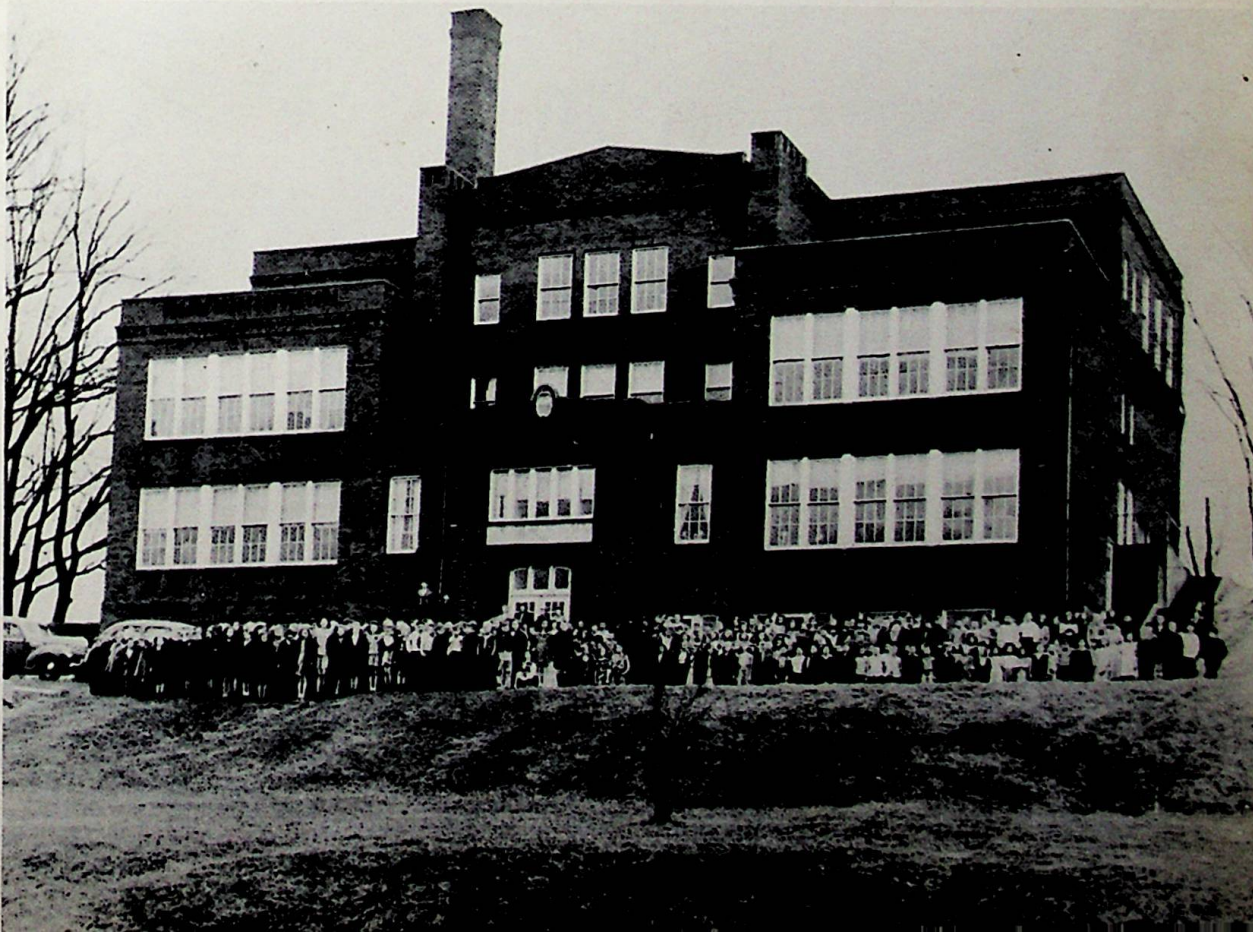
## Our Beginners

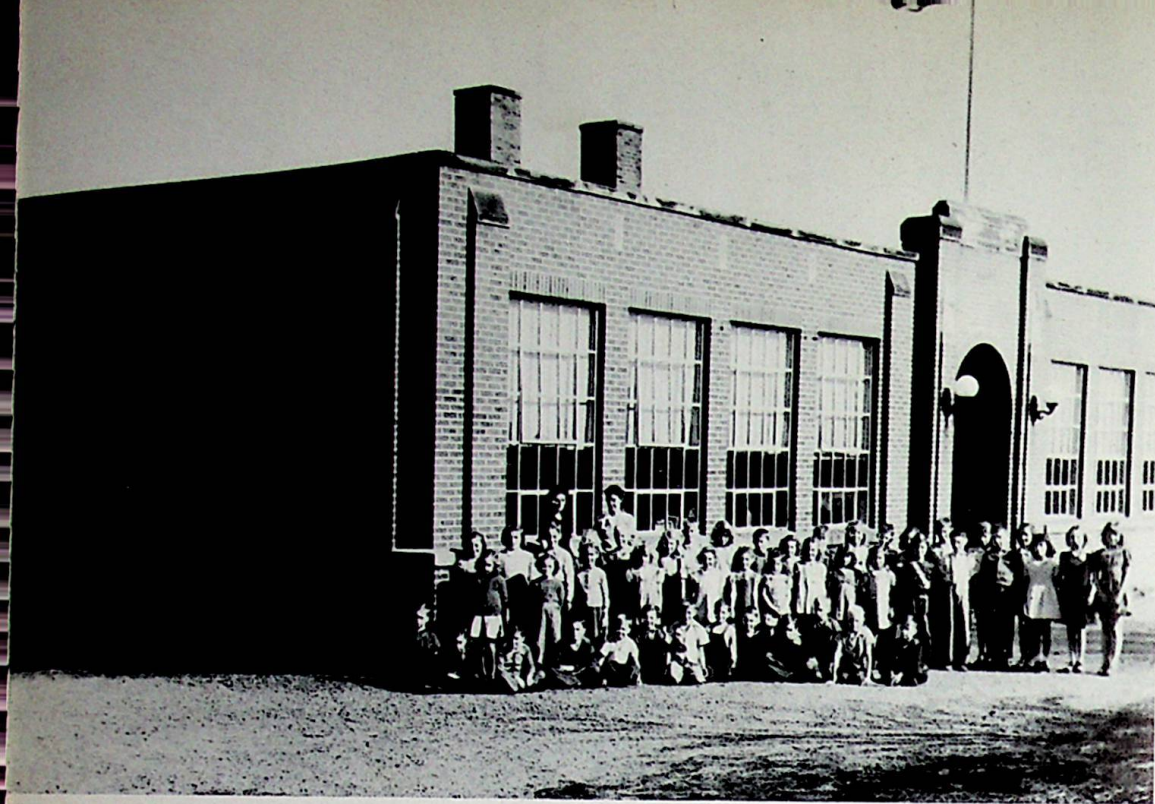
I'm grown up now—only a few days and I'll be graduating from high school. Yes, it's almost over. And as every day brings commencement closer I begin to think of the days gone by. I close my eyes and suddenly the years roll back. It's a hot September morning. I am so excited I can hardly drink the glass of milk Mother is insisting I drink. Why shouldn't I be excited? It's my first day at school! I even have a new dress for the occasion. I hear Bud call, "The bus is coming." Mother gives a final touch to the ribbon on my pigtails. Bud grabs my lunch—half drags me to the bus. Yes, I know now a new world opened for me that morning—a world I've lived in for the last twelve years. In memory of all those happy years, in honor of those dear teachers, who seemed to understand as much as Mother did, I am writing this in the last school yearbook in which I'll ever take part. We'll always remember and love you for the help you gave us in getting started.

There are four elementary buildings in Wheelersburg School district. The first and second grade building is connected to the high school building and the next four grades are located in the old high school building about one-fourth mile east of Wheelersburg High School. Two other elementary schools are located at Sciotodale and Allentown. Wheelersburg High also has the students from Lyra School in Vernon Township. In these schools the foundation of true learning is laid. From those years we spent there we learned to live together, play together and work together. Without those years of early training, there would have been no high school for us.

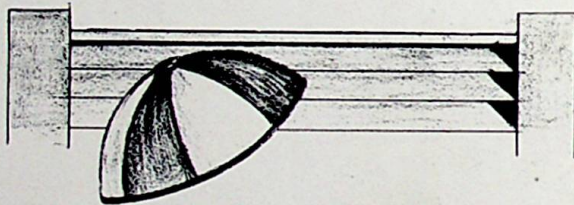


## Our Brothers and Sisters on the Hill

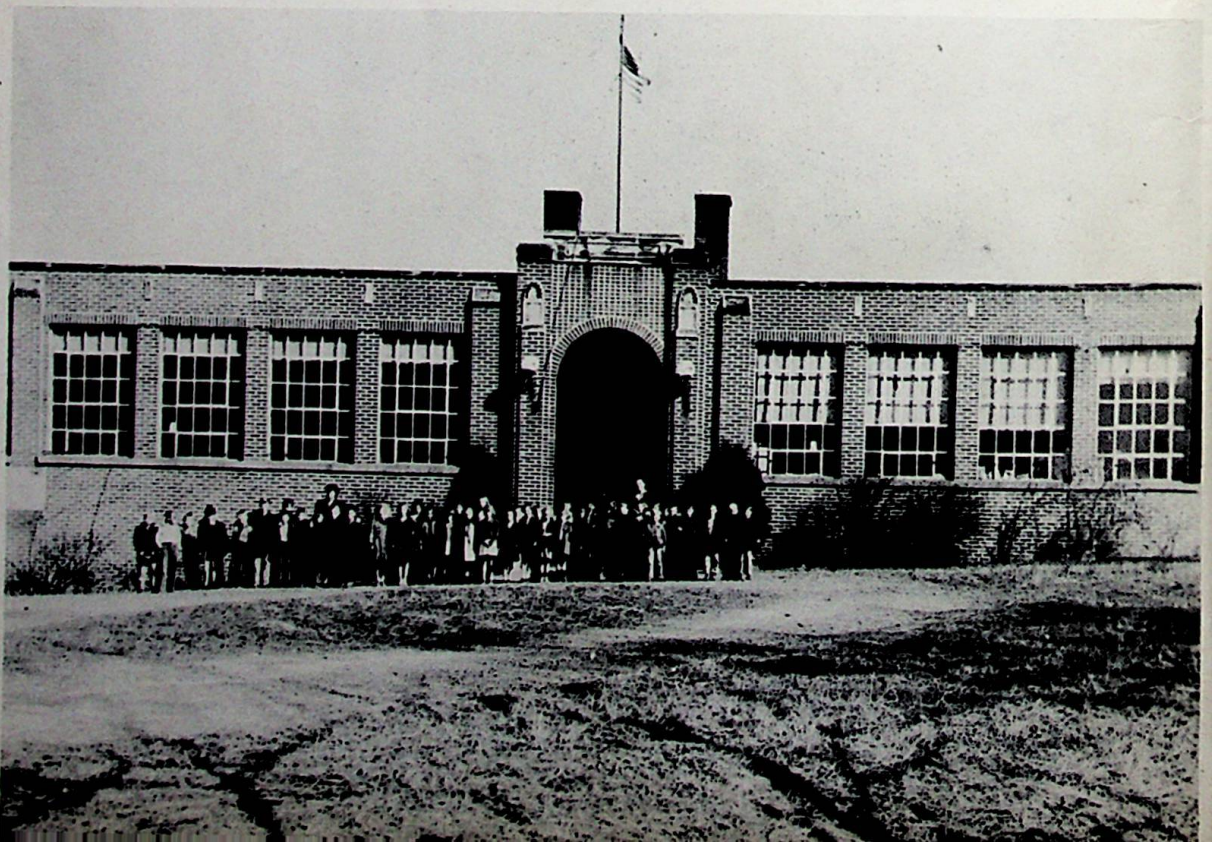




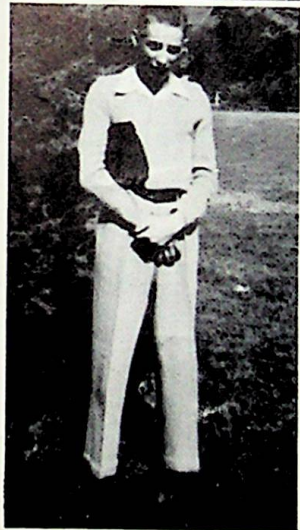
Scioto Dale



Allentown

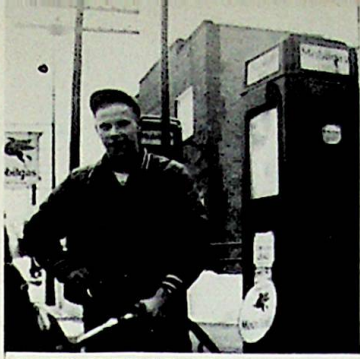






# Contents

Administration .....	12
Classes .....	19
Class Plays .....	44
Departments .....	46
Athletics .....	58
Activities .....	64
Snaps .....	80
Advertisements .....	85





In  
Memory  
of

**RALPH GILPIN**  
1929-1942

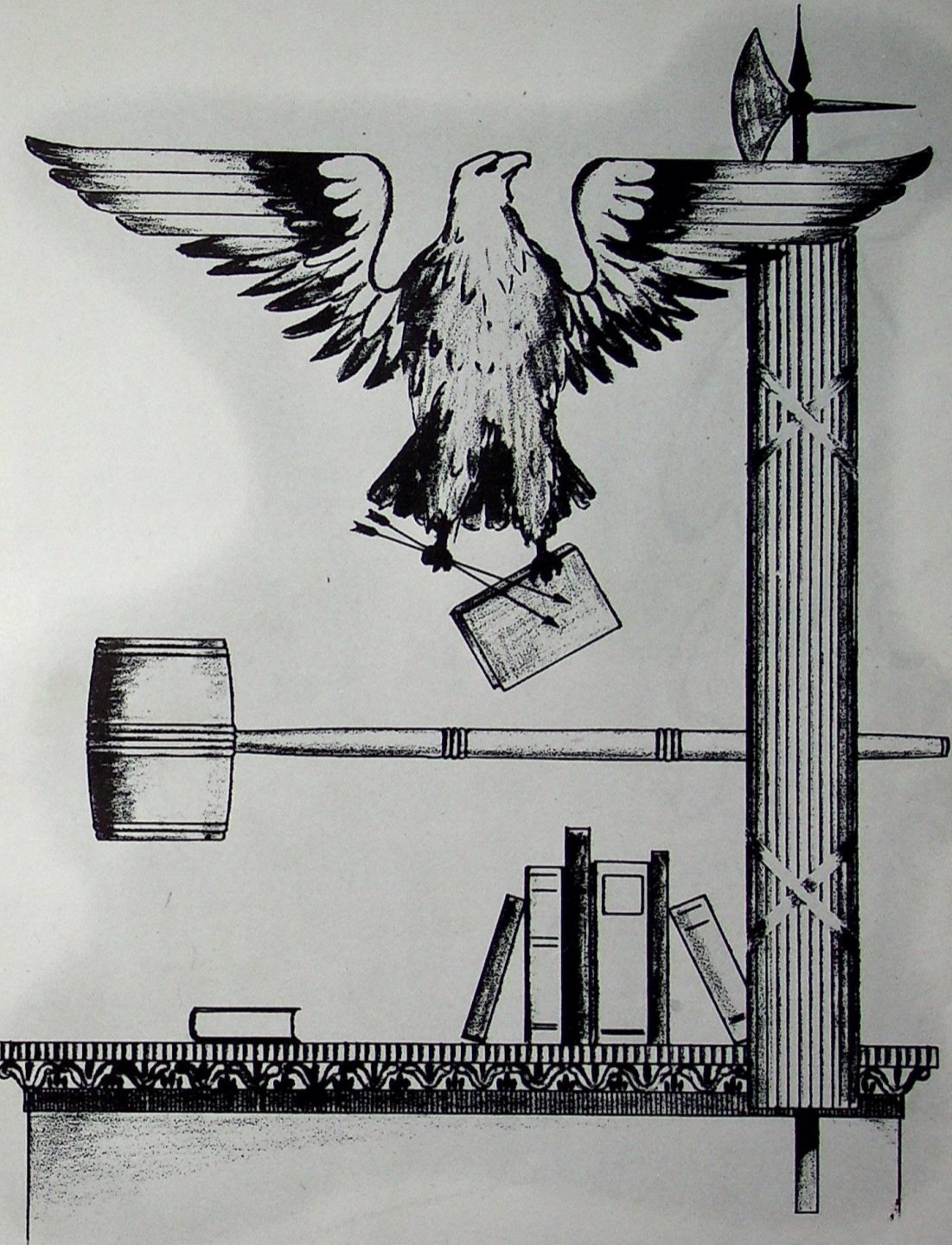
**BILL SELBY**  
1928-1944

I am not dreaming! I am not deluded. Nearer  
to the grave new life streams for me. We shall  
continue to exist. We shall see each other again.

. . . Goethe.



He taught that we are all greater than we know and that wisdom is the means to freedom.  
... W. Somerset Maugham.



ADMINISTRATION



## Edward R. McCowen

County Superintendent Edward R. McCowen was born October 28, 1908, in Wheelersburg and is a graduate of the Wheelersburg High School.

Mr. McCowen received his Bachelor of Science in Education at Ohio University and his Master Degree in Music at Northwestern University.

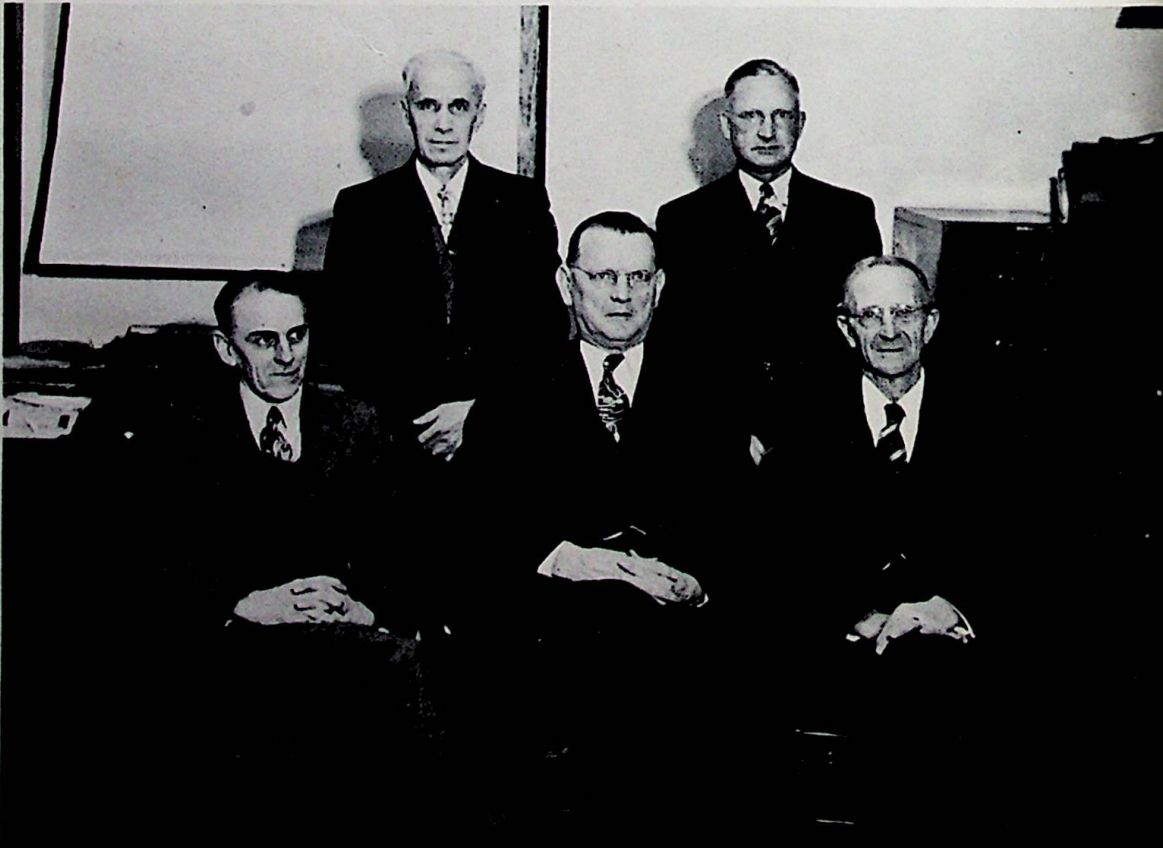
Returning from the Navy in January, 1946, Mr. McCowen resumed his work as County Superintendent. While in service he served in the Caribbean area as a communication watch officer.

Besides his work in the schools, Mr. McCowen also enjoys tennis and fishing.

The County Administration is planning many new things for the post war era, and new classes will be added in the future from time to time to meet the ever changing needs of this generation.

## School Board

Back row—Carl J. Herms, Clerk; J. Harper Preston.  
Front row—Fred Pollock, Vice President; R. L. May, President; George W. Smith.





## C. H. Duduit

Welcome back to W. H. S., Mr. Duduit! We have missed you very much the last three years and sincerely we say, "We're glad you're back."

Mr. Duduit, Supervising Principal of Wheelersburg High School since 1939, returned this year to resume his duties after an absence of three years during which time he served as Lieutenant in the U. S. Navy. For over two years he was on active duty in the North Atlantic and served a year in England following the sinking of his ship.

He received his Bachelor of Science Degree in June, 1935, and his Master's Degree in 1939. He attended Miami University, Ohio University and Wilmington College in undergraduate work. During his graduate work he attended the University of Florida, Ohio University and Ohio State University. Additional graduate work, leading toward a Ph. D. Degree, has been completed at Ohio State University and Baliol College, Oxford, England. Mr. Duduit is a member of two honorary educational societies: Kappa Delta Pi and Phi Delta Kappa.

He likes to travel, listen to foreign broadcasts, read and talk with people.

We, the students of Wheelersburg, are proud that you are our Principal. Mr. Duduit, you have our deepest respect and admiration.



## J. Donald McCowen

During this year Mr. J. Donald McCowen has assisted the Supervising Principal, Mr. Duduit, in certain assigned duties, and in Mr. Duduit's absence he has served as Supervising Principal. The noon hour program, including various types of activities, has been supervised by him, and also the visual education program has been under his direction.

Mr. McCowen has retained a full teaching schedule including general science, radio, and physiology. In the absence of teachers he has also acted as substitute.

Mr. McCowen graduated from Ohio University, Athens, Ohio. He has done graduate work at Ohio University and Ohio State University, majoring in administration and supervision.

His practical application of subject material has ranked him as an excellent and efficient teacher at W. H. S.



**L. B. BURNS**  
Ohio University  
Marshall College  
Lincoln Memorial Institute  
University of Kentucky  
Morris Harvey  
A. B.

**MRS. SYLVIA E. FANNIN**  
B. S. Education  
Eastern Kentucky State  
Teachers College  
History

**MRS. E. V. HOWELL**  
Georgia State College  
B. S.  
Home Economics  
Chemistry

**C. B. DOUGHTY**  
B. S. Education  
Ohio Northern  
B. D.  
Garrett Biblical Institute  
M. A. Northwestern  
English

**JAMES HARRIS**  
B. S.  
Miami  
M. S. Administration  
George Williams  
Physical Education  
Science

# Faculty

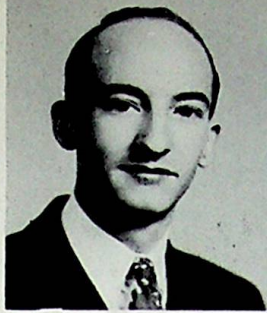
**MRS. ALEX KELSO**  
Mount St. Joseph on Ohio  
Home Economics  
Physical Education  
B. S. Education

**MRS. MARGARET MCGOWAN**  
Oberlin College  
Ohio Wesleyan  
Cincinnati College of Music  
B. M. Music  
M. M. Music  
Music

**RUTH HUMPHREY**  
Ohio University  
Ohio State University  
Latin, Commercial  
A. B.  
M. A.

**ORVILLE KINKER**  
B. S. Education  
Rio Grande  
Wilmington  
Ohio University  
University of Cincinnati  
Mathematics





**J. DONALD McCOWEN**  
Ohio State University  
Ohio University  
B. S. Education  
General Science  
Radio  
Physiology

**LORRAINE POTTS**  
Ohio University  
B. S. Education  
Music

**WILLA SUE RICHARDS**  
Eastern Kentucky State  
Teachers College  
English  
A. B.

**MARGARET ANN MITCHELL**  
B. S. Education  
Ohio University  
History  
English  
Economics  
Commercial Law

**ARTHUR PRESTON**  
University of Cincinnati  
Wilmington  
Ohio University  
Industrial Arts  
Coach  
B. S. Education

Education does not mean teaching people what they do not know. It means teaching them to behave as they do not behave. It is not teaching the youth the shapes of letters and the tricks of numbers, and then leaving them to turn their arithmetic to roguery, and their literature to lust. It means, on the contrary, training them into the perfect exercise and kingly continence of their bodies and souls.

. . . John Ruskin.

**LYDA BELLE SHEPHERD**  
Eastern Kentucky State  
Teachers College  
Shorthand  
Typing  
A. B.

**JAMES N. WARREN**  
Ohio State University  
Ohio University  
Rio Grande  
Industrial Arts  
B. S. Education

**J. H. SEE**  
Ohio University  
Mathematics  
B. S. Education

**WILLIAM F. SNOOK**  
Ohio University  
Miami University  
Wilmington College  
University of Cincinnati  
Science  
Science  
B. S. Education





LUCILLE BURKE



MONA CHICK



RUTH LUCILLE CONKLIN



OLLIE HIBBITTS



MARY McCARTY



HELEN McCOWEN

# Elementary Teachers



AGNES McLEOD



ANNE THOMPSON



BERTHA PERDUE

Not pictured:

LILLIAN BARNEY

GRACE CARTER

SEVAH SWIFT

LOYEZELLE HAFFNER

CECIL POLLOCK

VIOLET PRESTON

THELMA SMITH

AVENELLE STAKER

LOREAN STANLEY



# Presenting the Class of '47



## Class Officers:

President . . . . . Forrest Colegrove  
Vice President . . . . . Forest Turner  
Secretary . . . . . Willa Jean Staggs  
Treasurer . . . . . Norma Jean Montavon





**WILMA LOUISE ALLEN**  
"WILLIE"

Green Twp. High 1, 2, 3;  
Booster Club 4; Band 4;  
Glee Club 4; Senior Girls  
Ensemble 4; Mixed Chorus  
4; Office Force 4; Sigma  
Tau Pi 4.



**DONALD ARBAUGH**  
"ARCHIE"

Scholarship Team 1, 2;  
Annual Staff 4; Radio Club  
3.



**NORMA BENNETT**  
"BENNETT"

Booster Club 3; Glee Club  
4; Mixed Chorus 4; Sigma  
Tau Pi 4; Office Staff 4.



**DONALD BILLUPS**  
"AHMED"

Basketball 2, 3, 4; Motion  
Pictures 2, 3, 4; Glee Club  
1, 4; Math Club 2; Class  
President 3; Varsity W  
Club 3, 4; "Damsels In  
Distress" 3; Mixed Chorus  
1, 4; Student Council 2;  
Safety Patrol 3; Dawn  
Patrol 2.



**ESTEL MARIE BOOTH**  
"SQUIRT"

Sigma Tau Pi 4; Annual  
Staff 4; Usherette 4; Schol-  
arship Team 2, 3, 4; Glee  
Club 4; Math Club 2;  
"Damsels In Distress" 3;  
Booster Club 4.



**MARY JANE BOWEN**  
"JIMMIE"

Glee Club 1, 2, 3, 4; Cheer  
Leader 2; "Damsels In  
Distress" 3; Math Club 2,  
3; G. A. A. 1, 2, 3, 4; Eta  
Epsilon 1; Library Club 1;  
Scholarship Team 1, 2;  
Mixed Chorus 1, 2, 3, 4;  
Operetta 4.



**JUDITH DIANNE CARTER**  
"JUDY"

Sigma Tau Pi 4; Glee Club  
2, 3, 4; Band 1, 2; Annu-  
al Staff 4; G. A. A. 1, 2, 3;  
Office Staff 2; Class Sec-  
retary 2; Mixed Chorus  
3, 4; "Damsels In Distress"  
3; Booster Club 2, 3; Stu-  
dent Council 2, 3; Stude-  
nt Service Center 4; Scho-  
larship Team 4.

S  
E  
N  
I  
O  
R  
S

**LLOYD CAUDILL**  
"PORKIE"

Visual Education 2, 3; Basketball 2, 3; Science Club 1.

**WILMA JEAN CHANDLER**  
"JEAN"

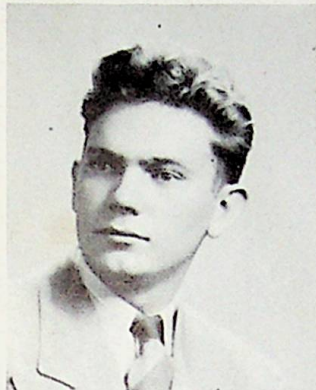
Newspaper Staff 4; Glee Club 3, 4; Sigma Tau Pi 4; Majorette 3, 4; Library Club 1, 2; Operetta 4.

**FORREST COLEGROVE**  
"FORREST"

Annual Staff 3, 4; Student Council 3, 4; Class President 4; Scholarship Team 1, 2, 3, 4; Booster Club 3, 4; Service Center 4; Math Club 3; Hall Monitor 2.

**DONALD CREGGER**  
"DON"

Glee Club 1, 2, 3, 4; Junior Class Play 3; Safety Patrol 1, 2, 3; Booster Club 3; Dawn Patrol 3; Library 1, 2, 3; Operetta 4.



S  
E  
N  
I  
O  
R  
S

**VERA JANE DOWNS**  
"VERA"

P. H. S. 1; Glee Club 2, 3, 4; Mixed Chorus 2, 3, 4; Math Club 2, 3; Operetta 4.



**PHYLLIS DRAKE**  
"PHYLLIS"



**BETTY JANE FRALEY**  
"BETTY"

Glee Club 2, 3, 4; G. A. A. 1, 2, 4; Student Service Center 4; Library 1, 2.





**JUANITA MAE FRALEY**  
"NITA"

Band 1, 2, 3, 4; Glee Club 1, 2, 3, 4; Mixed Chorus 1, 2, 3, 4; Girls Ensemble 4; Office Staff 2, 3, 4; Sigma Tau Pi 4; Booster Club 2, 3, 4; G. A. A. 1, 2, 3, 4; "Damsels In Distress" 3; Library Club 1, 2; Operetta 4; Eta Epsilon 1; County Festival 4.



**CHARLES S. HALL**  
"CHARLIE"



**GWENDOLYN THELMA HANSGEN**  
"GWENIE"

Band 1, 2, 3, 4; Glee Club 1, 2, 3, 4; Mixed Chorus 1, 2, 3, 4; Girls Ensemble 3, 4; Operetta 4; Sigma Tau Pi 4; County Band 3; G. A. A. 1, 2, 3, 4; Booster Club 1, 2, 3, 4; Library Club 1, 2; Hall Monitor 3.



**RICHARD HARNER**  
"RICH"

Math Club 2, 3; Science Club 1; Hall Patrol 2; Radio Club 3; Basketball 3.



**ADAH RUTH HARPER**  
"SIS"

Glee Club 1, 2, 3, 4; Sigma Tau Pi 4; "Damsels In Distress" 3; Library Club 1; Booster Club 2, 3; Girls Ensemble 3, 4; Hall Monitor 2; G. A. A. 1; Service Center 4; County Festival 3; Operetta 4.



**MARY ALMA HARPER**  
"HOMER"

Glee Club 1, 2, 3, 4; Girls Ensemble 3, 4; Library Club 1, 2; "Damsels In Distress" 3; G. A. A. 1, 2, 3, 4; Annual Staff 4; Sigma Tau Pi 4; Newspaper Staff 4; Booster Club 2, 3; Hall Patrol 3; Service Center 4; Class Secretary 3; Mixed Chorus 1, 2, 3, 4; County Festival 3.



**DOROTHY JOHNSON**  
"DOT"

Bookkeeping Club 3; Glee Club 4; Scholarship Team 2, 3, 4; Sigma Tau Pi 4; Newspaper Staff 4.

S  
E  
N  
I  
O  
R  
S



**CARMA JOYCE JOHNSON**  
"JOSH"

Library Club 1, 2; Glee Club 1, 2, 3, 4; Scholarship-Team 1, 2; Eta Epsilon 1; Annual Staff 3, 4; Booster Club 3; G. A. A. 1, 2, 3, 4; Service Center 4; Math Club 3; Science Club 1; Mixed Chorus 1, 2, 3, 4; G. A. A. President 4; "Damsels In Distress" 3; Hall Monitor 3; Operetta 4;

**WILMA JEAN JOHNSON**  
"SHENE"

Mixed Chorus 3, 4; Glee Club 3, 4; Booster Club 2, 3, 4; Sigma Tau Pi 4; Girls Ensemble 4; Office Staff 4; Usherette 4; Operetta 4; "Damsels In Distress" 3.

**WILMA LOU JOHNSON**  
"LOU"

Mixed Chorus 3, 4; Glee Club 1, 2, 3, 4; Booster Club 2, 3, 4; Usherette 4; "Damsels in Distress" 3; Girls Ensemble 4; Office Staff 4; Sigma Tau Pi 4; County Festival 4; Operetta 4.

**RAMONA JEAN JONES**  
"JEAN"

Library Club 2; Bookkeeping Club 3.



S  
E  
N  
I  
O  
R  
S

**MARY ANN KETTER**  
"SHIEK"

Band 3, 4; Glee Club 2, 3, 4; G. A. A. 3, 4; Library Club 1, 2; "Damsels In Distress" 4; Math Club 2, 3; Vice President G. A. A. 4; Mixed Chorus 2, 3, 4; Student Council 1; Eta Epsilon 1; Booster Club 2, 3; 4; Hall Monitor 2.



**KARL A. KINKER**  
"KINKER"

Band 1, 2, 3, 4; Glee Club 2; Library Club 1, 2, 3, 4; Aviation Club 2; "Damsels In Distress" 3; Annual Staff 4; Booster Club 2, 3, 4; Math Club 4; Service Center 4; County Festival 4; Mixed Chorus 2; Hall Monitor 3.



**JIMMIE L. LAMBERT**  
"TURKLE"

Band 1, 2, 3, 4; Glee Club 3, 4; Library Club 2, 3, 4; Safety Patrol 3, 4; Dawn Patrol 2; "Damsels In Distress" 3; Scholarship Team 2; Annual Staff 4; Math Club 3; Operetta 4; Mixed Chorus 3, 4; County Festival 3; Booster Club 3.





**JANE ELLEN LYON**

"JANE"

Band 1, 2, 3, 4; Glee Club 1, 2, 3, 4; G. A. A. 1, 2, 3, 4; Library Club 1; Math Club 2, 3, 4; Scholarship Team 1; Eta Epsilon 1; "Damsels In Distress" 3; Mixed Chorus 1, 2, 3, 4.



**JAMES T. MAUK**

"J. T."

Library Club 1, 4; Dawn Patrol 2; "Damsels in Distress" 4; Radio Club 3; Student Council 3; Student Service 4.



**EULA NELL McCLEESE**

"EULA"

Glee Club 1, 3, 4; G. A. A. 1, 2; Girls Ensemble 3; County Festival 3.



**HOWARD McHENRY**

"TATER"

Band 1, 2, 3, 4; Dawn Patrol 2; Traffic Patrol 1; Radio Club 3.



**NORMA JEAN MONTAVON**

"PUTT"

Band 1, 2, 3, 4; Glee Club 1, 2, 3, 4; G. A. A. 1, 2, 3, 4; Class Treasurer 2, 3, 4; Office Force 1, 2, 3; Annual Staff 4; "Damsels In Distress" 3; Booster Club 2, 3, 4; Math Club 1; Scholarship Team 2, 3, 4; Student Council 4; Sigma Tau Pi 4; Eta Epsilon 1; County Band 4; Mixed Chorus 1, 2, 3, 4;



**STANLEY MYERS**

"DOC"

Basketball 2, 3, 4; Glee Club 1, 2, 3; Class Vice President 3; Varsity "W" 3, 4; "Damsels In Distress" 3.



**MARCELLA OCKERMAN**

"MARCELLA"

S  
E  
N  
I  
O  
R  
S

**BETTY PRICE**  
"BETTY"

G. A. A. 2; Glee Club 4;  
Bookkeeping 3.

**VIOLA JEANNE PURTEE**  
"JEANNIE"

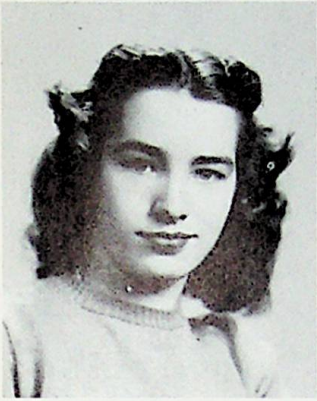
Scholarship Team 4; Glee  
Club 1, 2, 3, 4; Booster  
Club 2, 3, 4; Office Force  
3, 4; Sigma Tau Pi 4;  
G. A. A. 2, 3; Library Club  
1; "Damsels In Distress"  
3; Newspaper Staff 4;  
Student Service Center 4;  
Annual Staff 4; Hall Mon-  
itor 4; Mixed Chorus 1, 2,  
3, 4.

**CLARA QUEEN**  
"CLARA"

Washington Rural 1, 2, 3;  
Whealersburg High 4.

**NORMAN F. REITER**  
"PETER RABBIT"

Scholarship Team 1, 2, 3,  
4; Math Club 1, 2, 3, 4;  
English Club 1; Aviation  
Club 2; Usher 4; Science  
Club 1; Student Service  
Center 4.



S  
E  
N  
I  
O  
R  
S

**NELLIE RICE**  
"NELLIE"

Scholarship Team 1, 3;  
Library Club 2, 3; G. A. A.  
1, 2, 3; Senior Girls En-  
semble 4; Science Club 1;  
Booster Club 3; Glee Club  
3, 4.



**DOROTHEA E. ROGERS**  
"DOT"

Student Service Center 4.



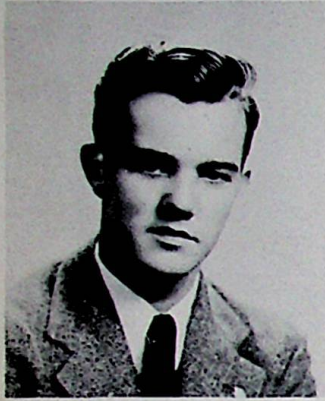
**WILLA JEAN STAGGS**  
"BILL"

Glee Club 1, 2, 3, 4; G.  
A. A. 1, 2, 3, 4; "Damsels  
In Distress" 3; Girls En-  
semble 3, 4; Annual Staff  
4; Sigma Tau Pi 4; News-  
paper Staff 4; Science  
Club 1; Math Club 1;  
Booster Club 1; Student  
Service 4; Class Secretary  
4; Hall Patrol 2; Student  
Council 3, 4.





**RENNA JEAN STANLEY**  
 "JEANNE"  
 Band 1, 2, 3, 4; Glee Club  
 4; G. A. A. 4; Sigma Tau  
 Pi 4.



**CARL STRICKLAND**  
 "STRICKLAND"



**HERBERT STRICKLAND**  
 "HERB"

S  
E  
N  
I  
O  
R  
S



**LAWRENCE THIEKEN**  
 "THIEKEN"  
 Glee Club 3, 4; Radio Club  
 3; Dawn Patrol 2; Booster  
 Club 2, 3.



**DOLORES RUTH  
 THOMPSON**  
 "DODIE"  
 Glee Club 3, 4; Band 3,  
 4; Student Service Center  
 4; Operetta 4; County Festi-  
 val 3, 4; Booster Club 4;  
 Office Force 3.



**LUCILLE TOWNSEND**  
 "LOU"  
 Glee Club 2, 3, 4; Science  
 Club 1, 2; Math Club 1, 2;  
 Office Force 2, 3; Booster  
 Club 2, 3; Hall Monitor 2;  
 Girls Ensemble 4; Sigma  
 Tau Pi 4; "Damsels In  
 Distress" 3; Newspaper  
 Staff 4.



**FOREST TURNER**  
 "BUD"  
 Mixed Chorus 1, 2, 3, 4;  
 Glee Club 1, 2, 3, 4; Bas-  
 ketball 2, 3, 4; Science  
 Club 1; Traffic Patrol 1, 2;  
 Class President 1; Class  
 Vice President 4; "Damsels  
 In Distress" 3; Operetta 4;  
 Aviation Club 2; Student  
 Service Center 4; Student  
 Council 2, 3, 4; Varsity  
 "W" Club 4.

**ENA MAE WAGNER**  
"ENA MAE"

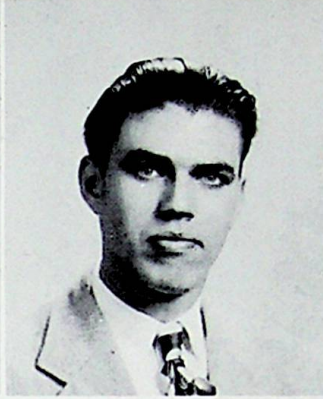
Booster Club 3; Usherette  
4; Sigma Tau Pi 4; News-  
paper Staff 4.

**RAYMOND WENTE**  
"RAY"

**BETTY LOU WILLIAMS**  
"BETTY LOU"  
G. A. A. 1, 2, 4; Library  
Club 2, 3, 4; Sigma Tau  
Pi 4; Newspaper Staff 4.

**EDWARD WILLIAMS**  
"ED"

Baseball 2, 3; Glee Club  
4; Library Club 3; Booster  
Club 3; Aviation Club 2;  
"Damsels In Distress" 3;  
Safety Club 2, 4.



S  
E  
N  
I  
O  
R  
S

**RAYMOND WOODRUM**  
"WOODIE"  
Radio Club 3; "Damsels  
In Distress" 3; Science  
Club 1.



**BARBARA WRIGHT**  
"BARB"  
Glee Club 3; Library Club  
4; Math Club 1; Booster  
Club 2, 3; Hall Patrol 2;  
G. A. A. 1, 2, 3, 4; "Dam-  
sels In Distress" 3.



NOT PICTURED:  
**EARL FRAZIE**  
**EVERETT KELLEY**  
**HAROLD LAWSON**  
**DENNY HAY**



# Presenting the Junior Class

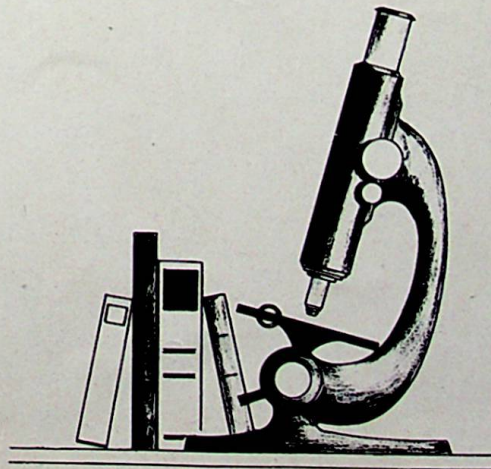
## Class Officers:

President . . . . .	Don Miller
Vice President . . . . .	Bob Flanagan
Secretary . . . . .	Phyllis Lang
Treasurer . . . . .	Juanita Weidner
Advisers . . . . .	Mr. McCowen
	Mr. See



## Juniors

1st row—Maxine Bailey, Jean Bihl, Erwin Blanton, Anna Mae Burgess, Tresa Burgess, Russell Colegrove.  
 2nd row—Delores Cramer, Earl Downs, Roy Ellis, Don Felty, Nick Felty, Bob Flanagan.  
 3rd row—James Glascock, Ralph Green, Jean Hacker, Thelma Hay, Kathryn Hinds, Imogene Hull.  
 4th row—Sarah Johnson, Don Justice, Geneva Keeton, Robert Klingman, Marvin Knapp, Joanne Lallow.





## Juniors

1st row—Phyllis Lang, James Lawson, Helen LeMaster, Opal Maggard, David McCarty,  
Doris Jean McFerren.

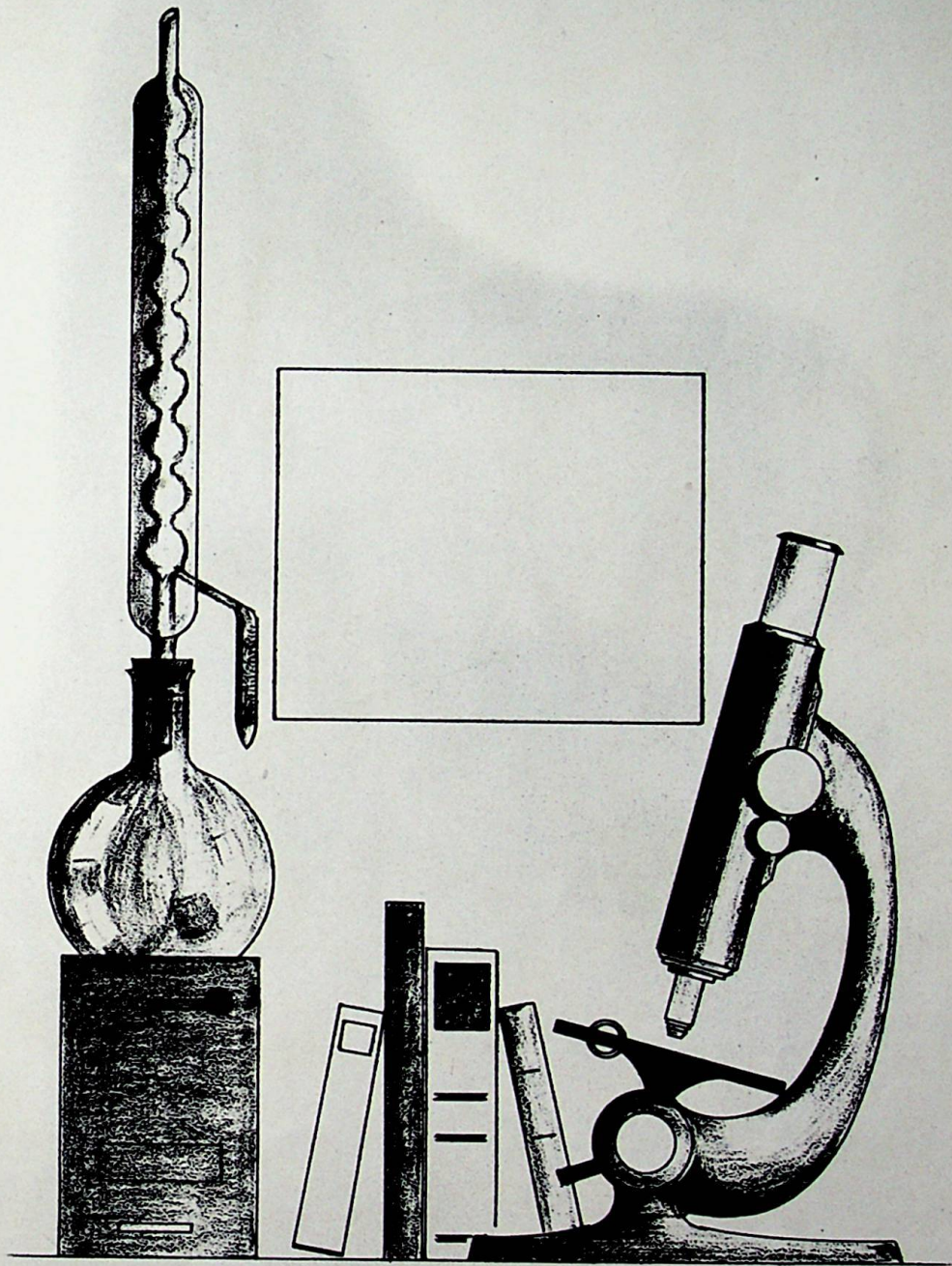
2nd row—Jane McLeod, Donald Miller, Betty Moore, Mary Ann Moore, Ruth Mucha, Robert Reese.

3rd row—Thelma Rockwell, Donna Russ, Georgia Sally, Bill Simon, Patty Smith, Maxine Staggs.

4th row—Lorena Stone, Juanita Weidner, Frank Wicker, Eldon Wilder, Karl Willard, Norma Yeley.







---

# SOPHOMORES



**DON SMITH      SIDNEY SMITH      JANET TURNER      LILLIAN SAGRAVES**

**Class Officers:**

- President . . . . . Donald Smith
- Vice President . . . . . Sidney Smith
- Secretary . . . . . Janet Turner
- Treasurer . . . . . Lillian Sagraves

1st row—Loretta Armes, Jesse Ramey, Imogene Taylor, Sidney Smith, Juanita Monroe, Clarence Wentz, Miss Mitchell, Martin McFerren, Rosemary Cleary. 2nd row—Earl Evans, Opal Court-right, Charles Roe, Donald Gleim, Jewell Jarvis, Donald Williams. 3rd row—Grace Crabtree, Charles Cooper, Lillian Sagraves, Betty Booth, Ralph Frazie, Joanne Wright. 4th row—Paul Means, Patty Dold, Clarence Cardwell, Ruth Bailey, Bill Hall, Patricia Fairchild, Ralph Wright, Norma Lykins, Maurice Cremeans. 5th row—Betty Hensley, Donald Smith, Phyllis Gose, Kenneth Green, Julia Fout, Paul Ishmael.



**Tenth Grade  
1946-1947**

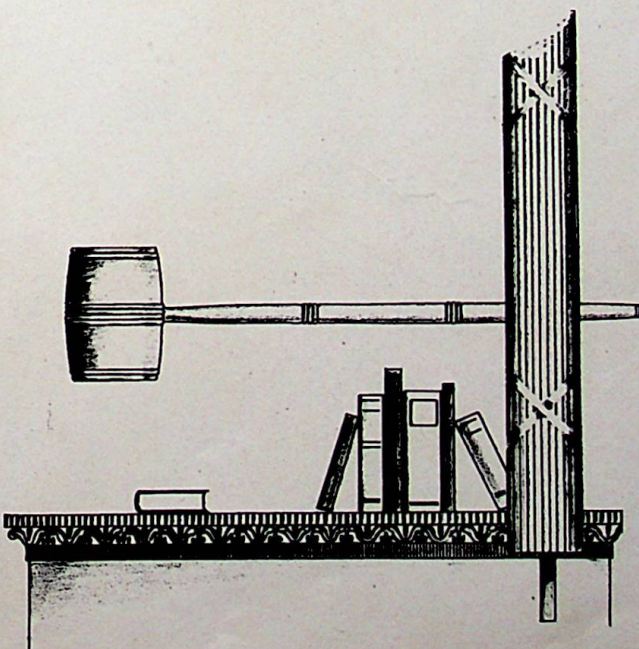


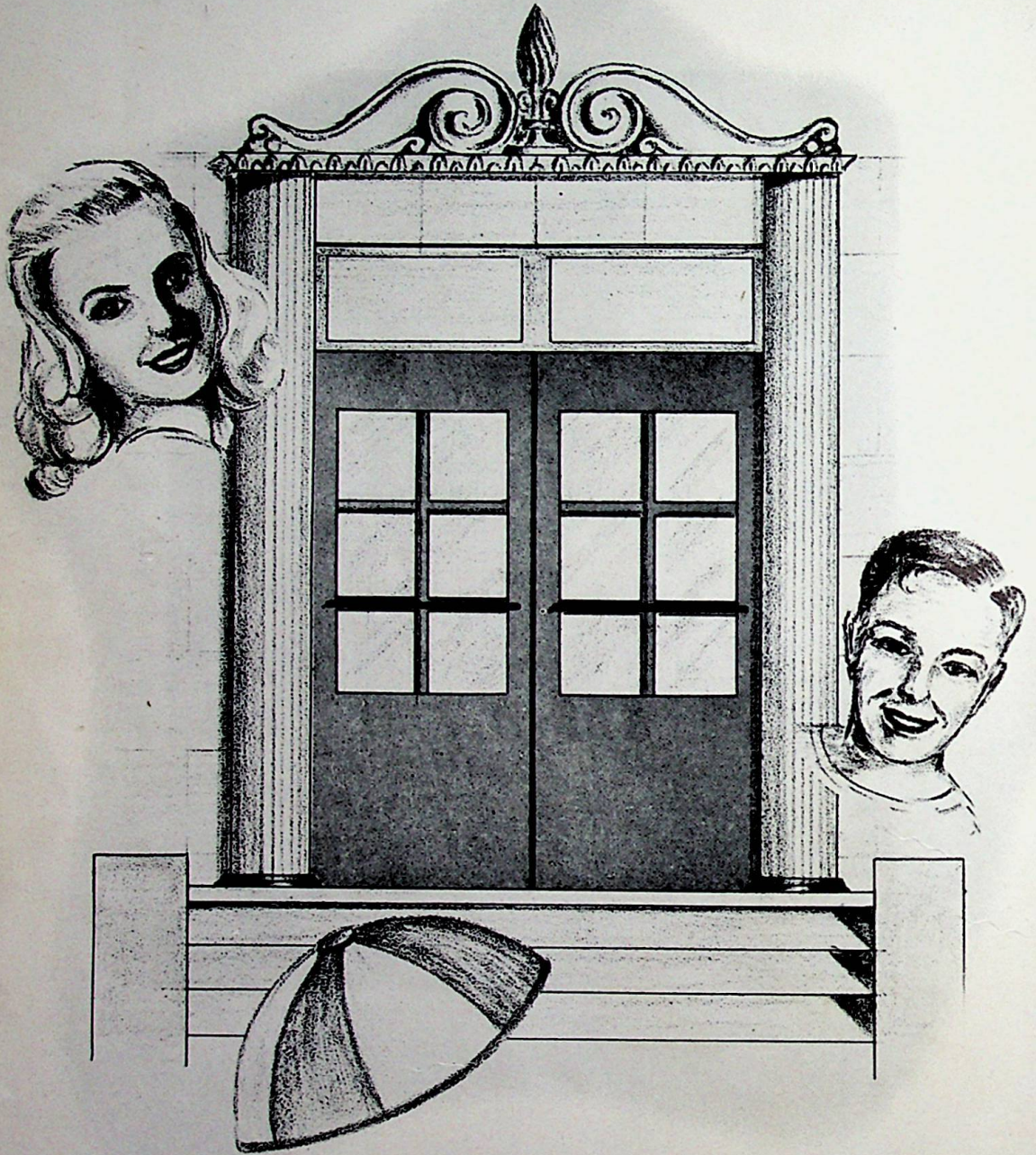


## Tenth Grade 1946-1947

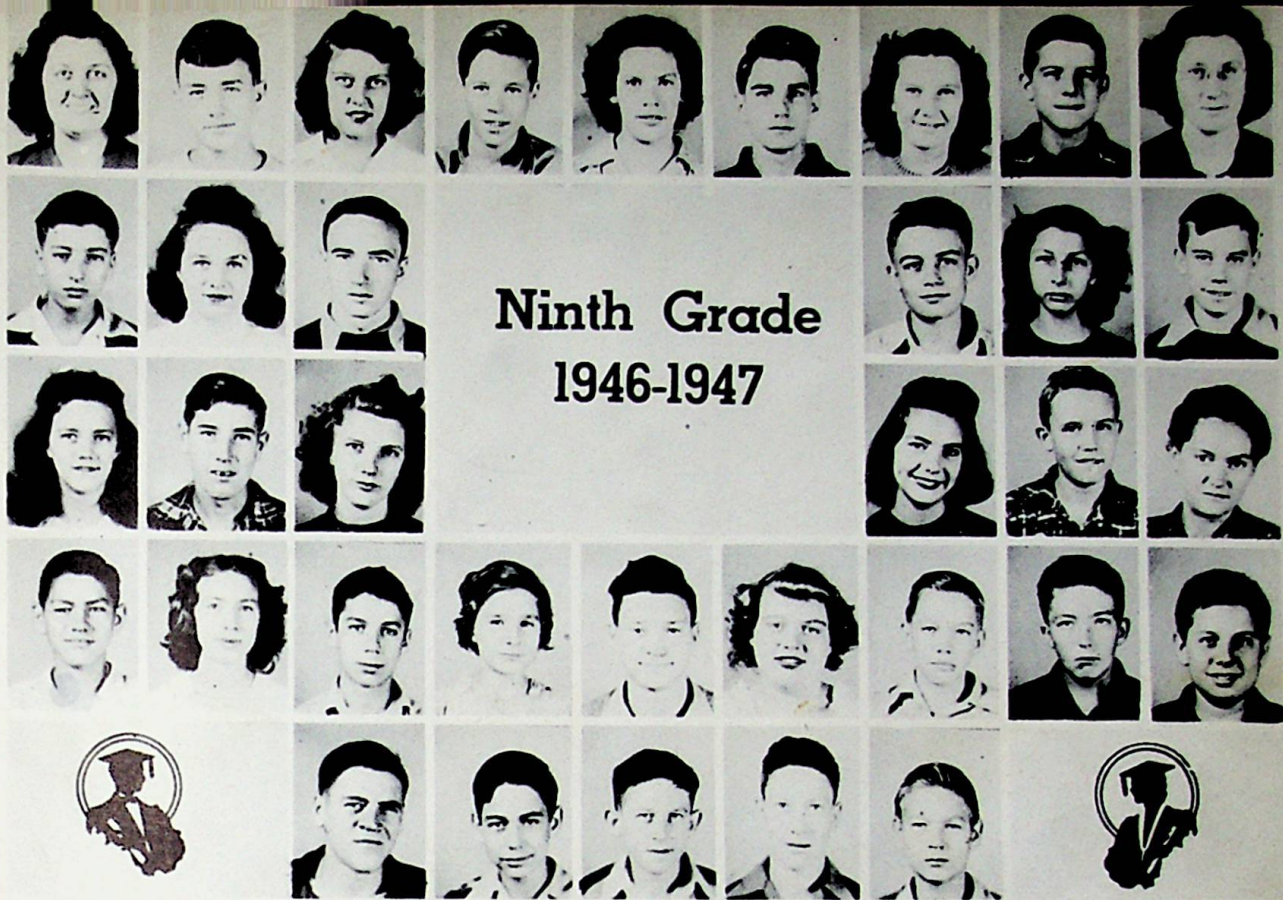
## Sophomores

1st row—Mr. Snook, Hazel Craft, Tom Bowen, Juanita Staggs, Charlotte Green, Jim Woodrum, Janet Turner, James Evans, Jo Ann Gilpin. 2nd row—Frances Lewis, Gene Welch, Kathleen Thompson, Bob Delabar, Joanne Purtee, James Morrison. 3rd row—Lovell Ruggles, Anna Thieken, Raymond Conley, James Kidd, Lucy Skaggs, Wade Wright, Geneva Webb, Paul Riggs, Agnes Blanton. 4th row—Rosemary Collinsworth, James Bennett, Juanita Wright, Joe Merrill, Edith Hacker, Don Ellis, Jerry Bailey, Betty Bond, Don Hoover. 5th row—Geraldine Jarvis, Paul Setters, Royal Fritz, Bill Caudill, Gerald Hall, Betty Jo Fraley, Bob Mauk, Maurita Gleim, Ernie Williams.





# FRESHMEN



## Ninth Grade 1946-1947

### Freshmen

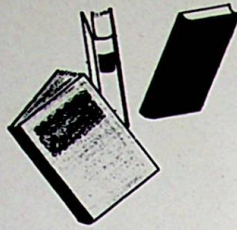
1st row—Mrs. Young, Robert Pyles, Ina Lee Erwin, Holly Williams, Gertrude Sherman, Gale Aeh, Joann Mahan, Howard Staker, Carol Dheel. 2nd row—Emil McHenry, Jackie White, Harold Percell, Erwin Wagner, Virginia Hay, Donald Chick. 3rd row—Marcella Wright, Max Warnock, Elizabeth Hall, Betty Arthurs, Jimmie Parlin, Flossie Madden. 4th row—David Sommer, Joann Hughes, Harold Montavon, Margaret Noel, Paul Brown, Betty Tussey, Frank Niemer, James Keeney, Stanley Braden. 5th row—Donald Ball, Donald Thompson, Allard Lawson, Roger Mullins, Eugene McCoy.

#### Class Officers:

President . . . . .		Robert Pyles
Vice President . . . . .		Howard Staker
Secretary . . . . .		Helen Miller
Treasurer . . . . .		Stanley Braden

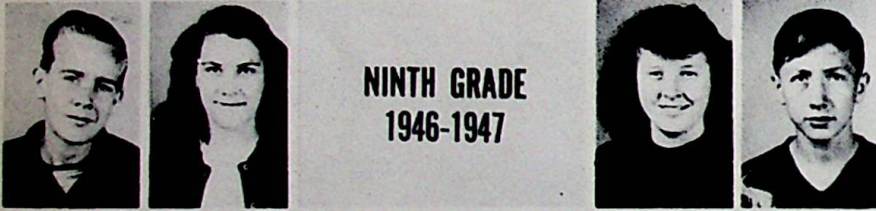
ROBERT PYLES      HOWARD STAKER      HELEN MILLER      STANLEY BRADEN

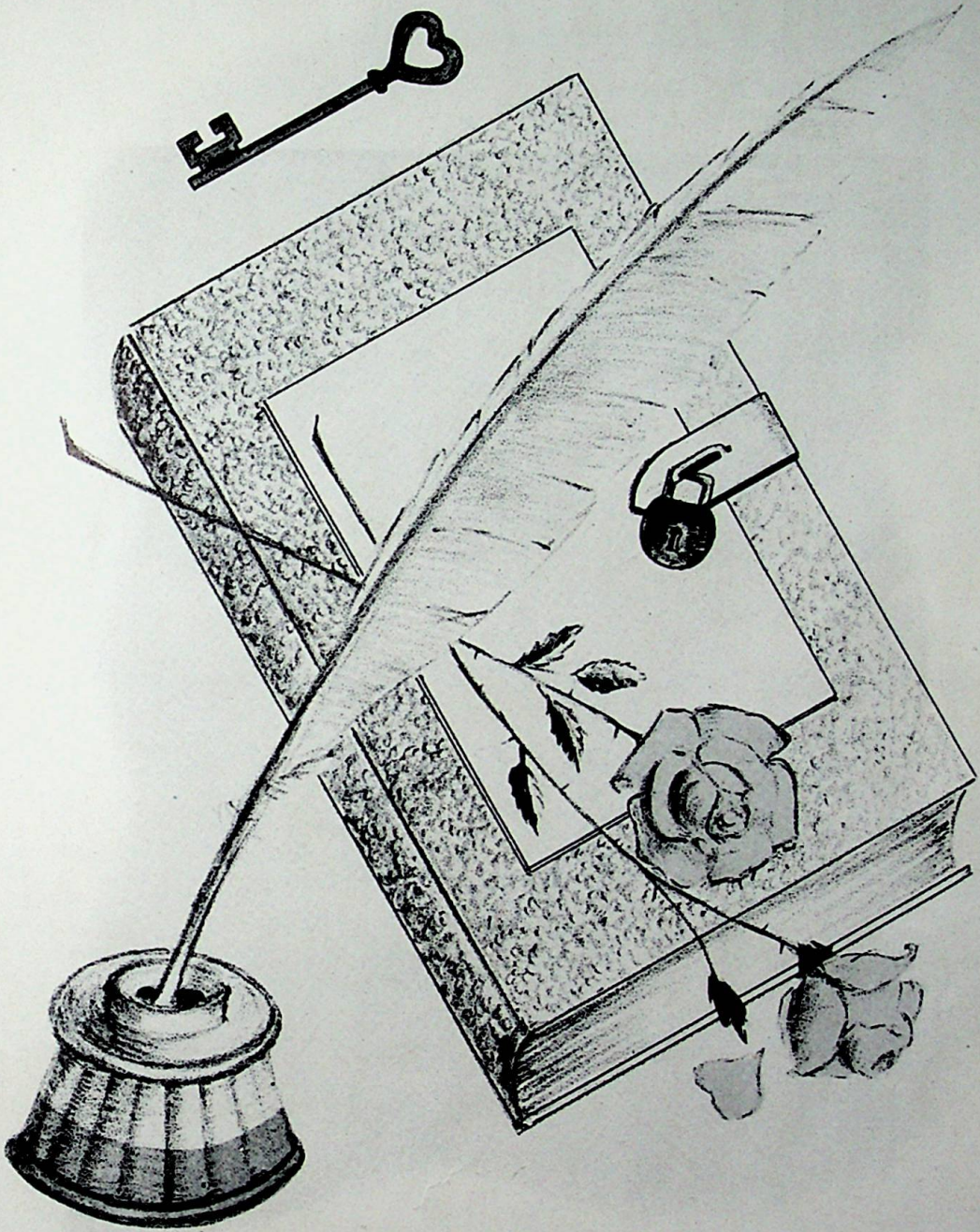




## Freshmen

1st row—Mildred Hale, Bob Hibbits, Edna Ruggles, Betty Skeens, Richard Aeh, Barbara Underwood. 2nd row—Bill Flanagan, Donna Hawes, Anna Triplett, Junior Burgess. 3rd row—Mary Christian, Sonny Wellman, Helen Justice, Janet Hoover, Don Setters, Emma Pierce. 4th row—Jim Tussey, Rosalind Scott, Robert Blanton, Florence Crabtree, Dick Willard, Joan Munyon. 5th row—Patty Dutiel, Betty Yeley, Helen Miller, Henry Taulbee, Miss Distel, Jack Stanley. 6th row—Barbara Wright, Myrtle Rice, Wanda Jarvis, Norma Wicker, Georgia Ockerman, Rachel Pauley.





EIGHTH



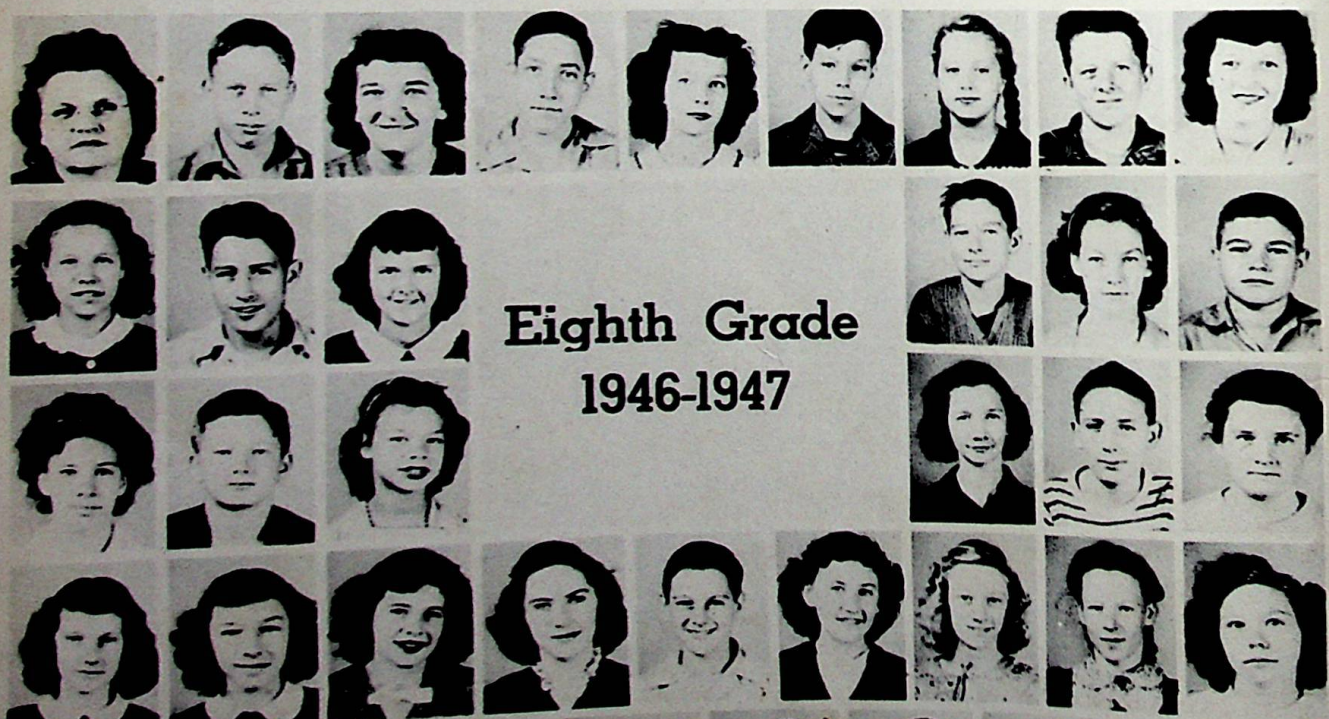
AGNES THORNTON    ANN EMERY    JUDY LeMASTER    ROBERT SIMON

## Eighth Grade

1st row—Mrs. Fannin, Don Staten, Agnes Thornton, Milton Moore, Barbara Strickland, Clarence Stewart, Edith Blair, Clifford Young, Joan Riggs. 2nd row—Dorothy Hall, Marvin Hay, Naomi Turner, Charles Mauk, Helen Sommer, Carl Rice. 3rd row—Betty Felty, Robert Simon, Marcelline Nylund, Herma Maynard, Ronald McCowen, Peggy DeCamp. 4th row—Judy LeMaster, Ann Emery, Barbara Hinds, Joan Bolander, Wells Smith, Sally Pace, Charlotte Salley, Rachel Williams, Ruth Miller. 5th row—Alice Boyer, Earl Benson, Peggy Polley, Kathleen Sexton, Willard Sargent, Gene Roe.

### Class Officers:

- President . . . . . Agnes Thornton
- Vice President . . . . . Ann Emery
- Secretary . . . . . Judy LeMaster
- Treasurer . . . . . Robert Simon



## Eighth Grade 1946-1947







## Eighth Grade 1946-1947

### Eighth Grade

1st row—Mr. Kinker, Goldie Courtright, David Lang, Lorraine Roberts, David Stout, John Fraley, Nora Phipps, Edward Orlett, Helen Montavon. 2nd row—Leonard Jarvis, Mabel Bradley, Jack Maynard, Harold Billups, Delores Colegrove, John Decamp. 3rd row—Dorothy Watts, Delmar Plummer, Joy Blanton, Ralph Gallion, Naomi Craft, Robert Skaggs, Anna Litteral, Bernard Evans, Janet McDaniels. 4th row—Patricia Brown, Mary Turner, Mary Hayslip, Etta Staggs, Howard Lyons, Janice McDaniels, Audrey Craft, Eva Brown, Ray Danes. 5th row—Doris Jean Ross, Geraldine Wright, Emma Wagner, Wilda Hammond, Joan Hatten, Wilma Hammond, Barbara Storey.

#### Class Officers:

President . . . . .	Helen Montavon
Vice President . . . . .	Dorothy Watts
Secretary . . . . .	Dolores Colegrove
Treasurer . . . . .	Mary Lou Turner

HELEN MONTAVON

DOROTHY WATTS

MARY LOU TURNER

DELORES COLEGROVE





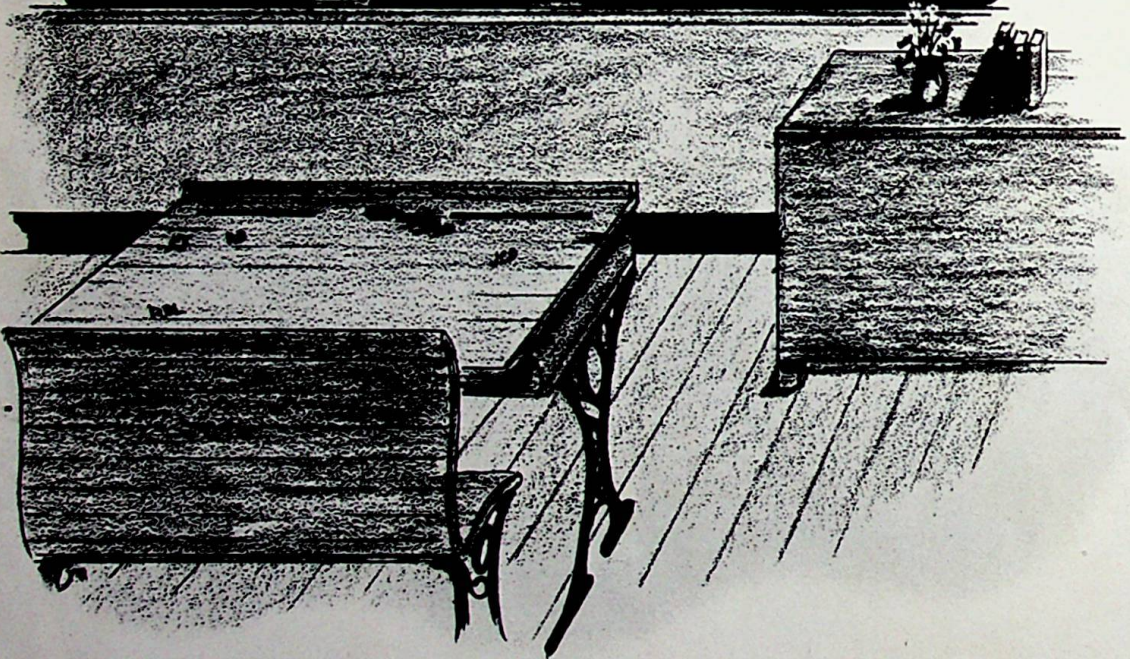
Today's lesson page 7

$$\begin{array}{r} 14 - 7 = 7 \\ 2 \times 7 = 14 \\ 14 \div 7 = 2 \\ 29 - 7 = 22 \\ 176 \div 7 = 25 \end{array}$$

142	427
171	714
724	247
247	724
724	247
247	724

Jordy

John  
 Mary  
 Jennifer  
 Alice  
 Bill



# SEVENTH



## Seventh Grade

1st row—Miss Richards, Donald Gallion, Nancy Hays, Bobby Ockerman, Jacqueline Dye, Dickie Williams, Nellie Nelson, Ralph Baker, Phyllis Burgess, Bobby Bentley. 2nd row—Robert Braden, Joyce Cregger, Jack Green, Gyanith Hogan, Tommy Aeh, Buelah Armes, John Fitch, Patty McGhee. 3rd row—Myrtle Weddington, Charles Maggard, Elizabeth Flanagan, Paul Cole, Joan Moore, Carl Shonkwiler, Irene Pennington, Wallace Evans, Vera Creech, Byrle Sagraves. 4th row—Earl Williams, Alice Crabtree, Bill Arnett, Anna Lou Fraley, Philip Morrison, Gwendolyn Harris, Kenneth Piggney, Thelma Rogers, Carl Delabar, Eddyth Triplett. 5th row—Eugene Collins, Doris Caldwell, Bobby Willard, Fred Miller, Douglas Bayes, Sonny Staten, Carolyn Davis, Archie Richards.

### Class Officers:

President . . . . .	Kenneth Piggney
Vice President . . . . .	Jack Green
Secretary . . . . .	Carolyn Davis
Treasurer . . . . .	Joyce Cregger

**KENNETH PIGGNEY**

**JACK GREEN**

**CAROLYN DAVIS**

**JOYCE CREGGER**





LINDEN HAMMOND    ESTHER HILL    WANDA FRAZIE

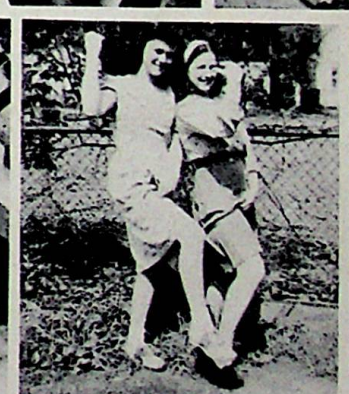
## Seventh Grade

1st row—Mr. Harris, Barbara Duncan, James Stevison, Ethel Massie, Richard Fitch, Virginia Jarvis, Edward Carmichael, Catherine Felty, Billy Poetker, Irene Riggs. 2nd row—Wanda Frazie, George Niemer, June Harrison, Jerry Cassidy, Gertrude Miller, Dickie McGlone, Jean Huffman, Aldon Wilder. 3rd row—Wayne Williams, Jean Storey, James Baisden, Esther Hill, Donald Ruggles, Joan Vaughters, Donald Craft, Juanita Armstrong, Carl Roberts, Billy Rae Wooten. 4th row—Earl Bobst, Earl Pyles, Bill Setters, Jackie Conley, Raymond Thieken, Harold Herles, Donald Smithson, Tommy DeCamp, Linden Hammond, Teresa Conklin, Dick Fleshman, Nina Daniels, Don Williams, Patsy Green, Forrest Arbaugh.

### Class Officers:

President . . . . . Linden Hammond  
 Vice President . . . . . Esther Hill  
 Secretary-Treasurer . . . . . Wanda Frazie



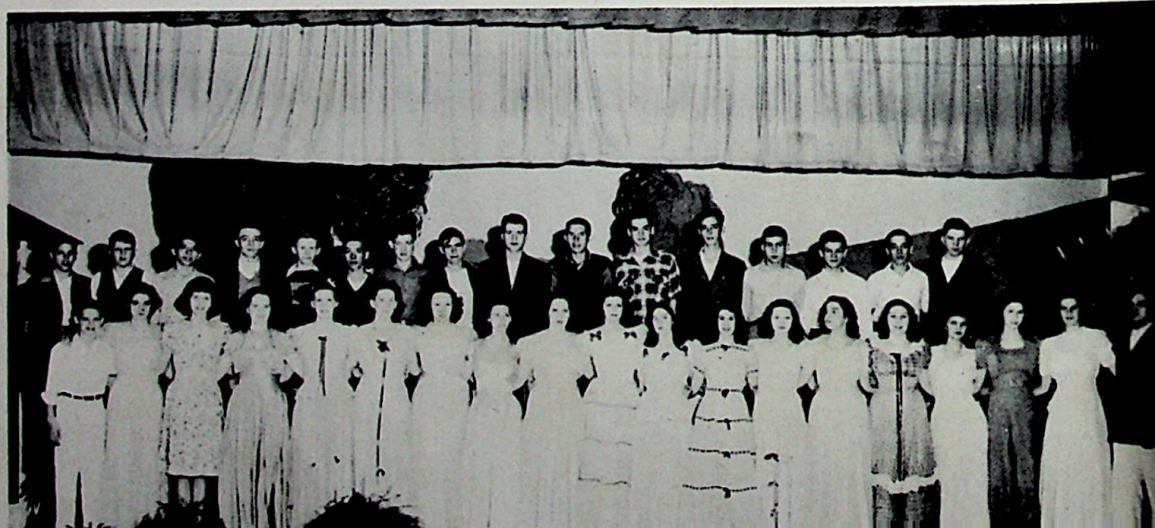




Sitting—Willa Jean Staggs, Jim Lambert, Delores Thompson, Forest Turner. Standing—Don Cregger, Paul Setters, Adah Harper, Wilma Lou Johnson, James Glascock, Mae O'Brien, Betty Lou Williams, Gwendolyn Hansgen, Juanita Fraley, Wilma Jean Johnson, Ernest Williams.

## "The Sunbonnet Girl"

Front row—Martin McFerren, Betty Jane Fraley, Joanne Purtee, Mary Christian, Gertrude Sherman, Carol Dheel, Phyllis Lang, Maxine Staggs, Thelma Rockwell, Mary Ann Moore, Pat O'Brien, Patty Smith, Lillian Sagraves, Vera Downs, Imogene Hull, Jean Chandler, Jane McLeod, Helen LeMaster, Paul Means. Back row—Gerald Hall, Jesse Ramey, Clarence Cardwell, Charles Thompson, Bill Hall, Charles Cooper, James Bennett, Maurice Cremeans, Sidney Smith, Don Williams, Tom Bowen, Ed Williams, Lawrence Thieken, James Kidd, Don Gleim, David McCarty.





Sitting—Donald Miller, Bob Scherer, Patty Smith, Maxine Bailey, Joanne Lallow, Mary Moore, Jane McLeod, Bob Klingman, David McCarty, James Lawson. Standing—Miss Mitchell, Roy Ellis, Bob Reese, Mrs. Fannin.

## Junior Play — “Date Bait”

## Senior Play — “The House of Horrors”

Sitting—Howard McHenry, Jane Lyon, Mary Ketter, Karl Kinker. Standing—Mr. Warren, Forest Turner, Mary Bowen, Laurence Thieken, Norma Montavon, Judy Carter, Jim Lambert, Marie Booth, J. T. Mauk, Mr. McCowen.



## Music

As we hear a bold rendition  
Of a lovely well-known air  
We are sure to put the accent  
On the "rend", which means "to tear".

## Shop

"Look! No hands" has been the boast  
Of countless youths who crave attention.  
Here in Shop, however, friend,  
We give the horrid thought no mention.

## Latin

Old Caesar was a mighty man  
Who came and saw and conquered.  
He overthrew the savage tribes  
In number without record.  
But as we ponder **Gallic Wars**  
We think, (you needn't doubt it)  
He'd be a more beloved man  
If he hadn't "wrote about it."

## Physical Education

We climb the rope and tumble and box,  
And wrestle and shoot the ball;  
It's a lot of fun, but our evening is spent  
With the rubbing alcohol.

## Math

Two and two are four  
(To which you will agree);  
Now what would be the difference  
If two and two were three?

## Home Economics

Lord Randall returned with a groan and a sigh  
And a "Make the bed, Mother, I'm ready to die."  
"Oh, where have you been, darling Randall,  
my son?"  
"To a meal that's been cooked by Home Ec  
Number One."

## Drawing

Here you see the red-faced students  
Gnash their teeth and scream and cry  
When a friend sits on a drawing  
Ere the ink on it is dry.

## English

In English we study of adverbs and things,  
An wear our poor brains to a frazzle.  
Till finally we see just what wisdom it brings,  
And set forth a fact that will dazzle—  
A statement I'll make before I am through  
Upon which the teacher will frown:  
You'll live just as long, and as happily, too,  
If you don't know a verb from a noun.

## Chemistry

A chemist mixed up a concoction,  
Said: "A jolt might make this explode."  
He was suddenly seized by the hiccups—  
They found parts of him miles up the road.

## History

A statement that's long been presented:  
"History is mystery to me."  
And yet it is better commented  
"History is **misery**", you see.

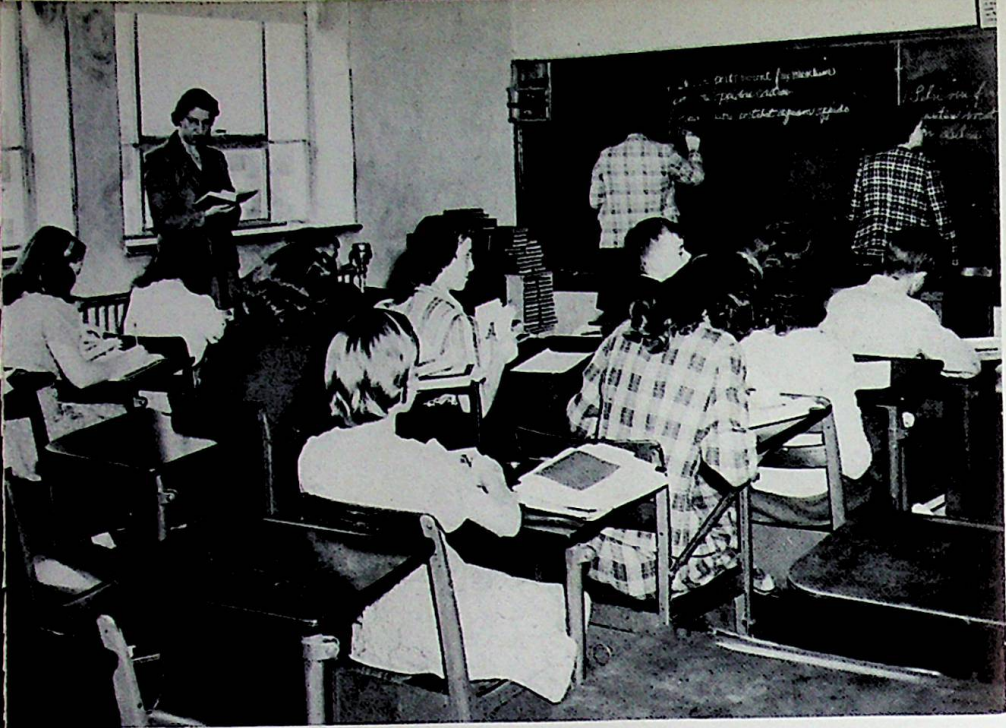




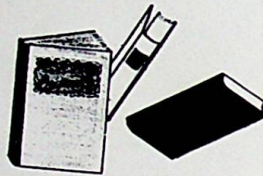
## Study Hall

High school just wouldn't exist if it were not for the classes we must attend. Like or dislike them as much as we please—we still must work out a schedule and attend classes. Oh, well, once you get used to it, it isn't too bad. So that is why we have devoted this section of our yearbook to classes. We have tried to get a representative picture of Wheelersburg at work.

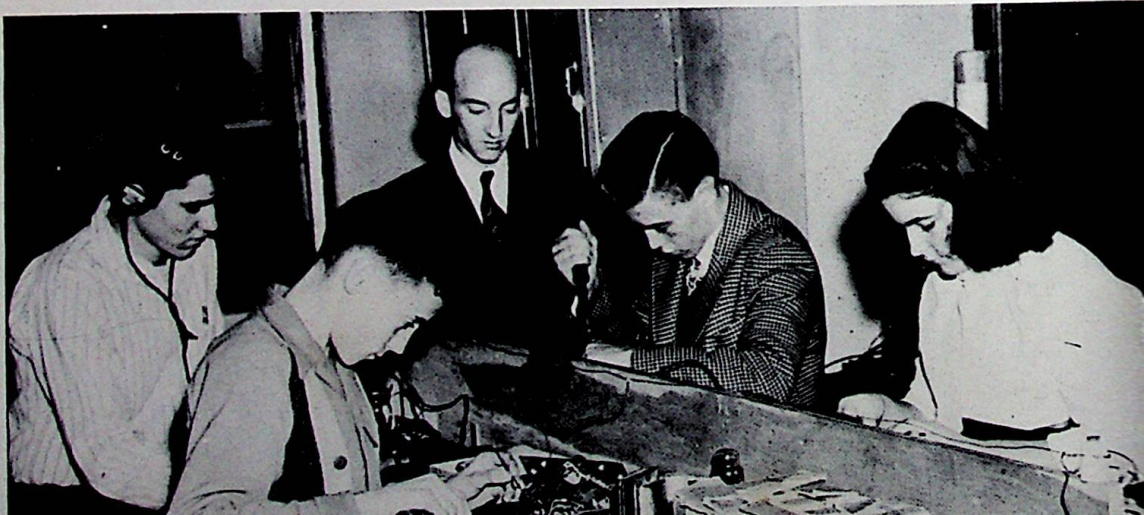
We are busy now working toward final exams, scholarship tests and then the end—graduation. It has been a great year. So that this year will never be forgotten we devote this section of our annual to life in the classroom at W. H. S.



Latin



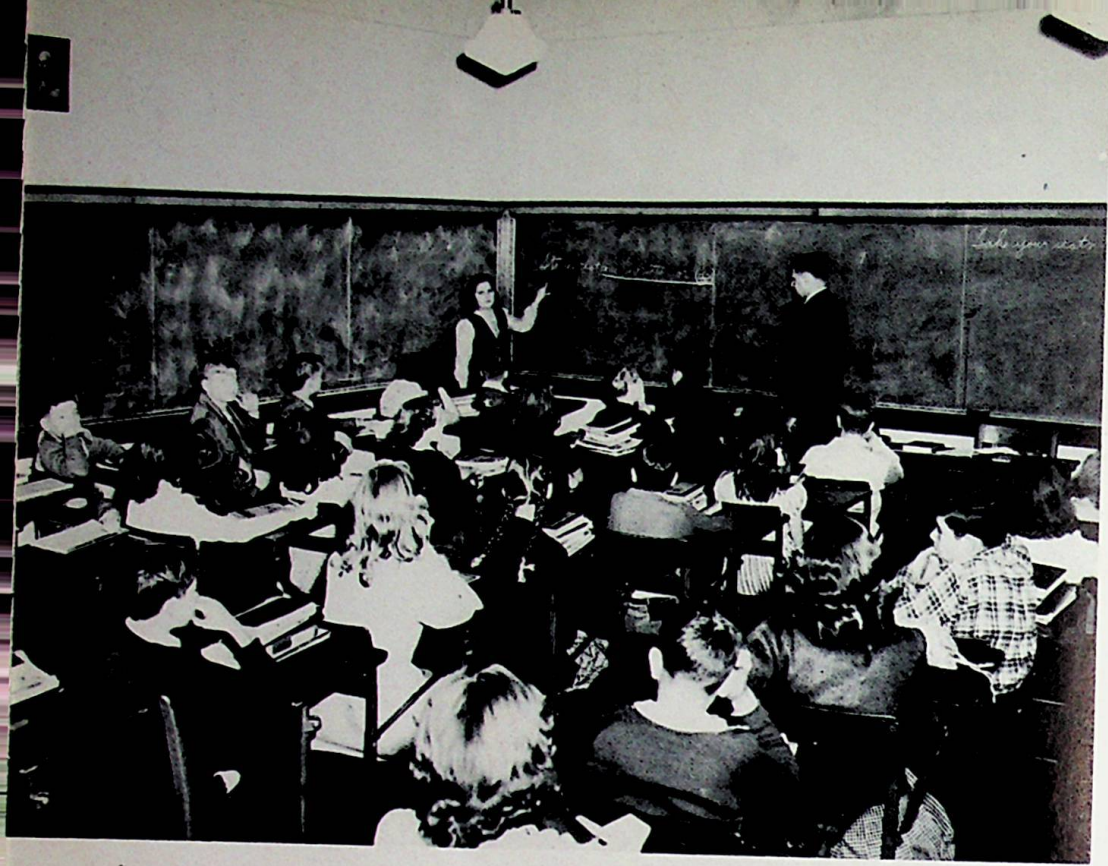
Radio





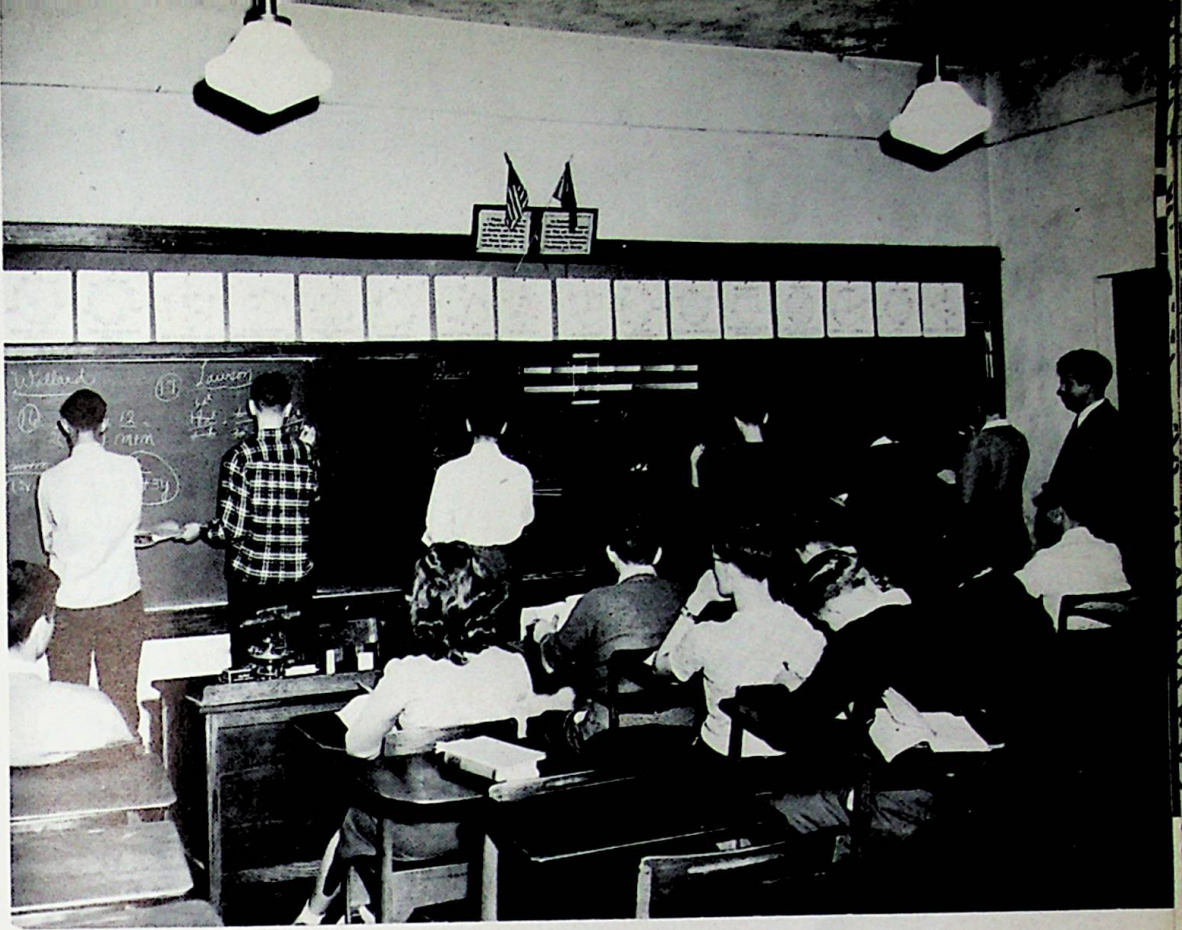
# Music



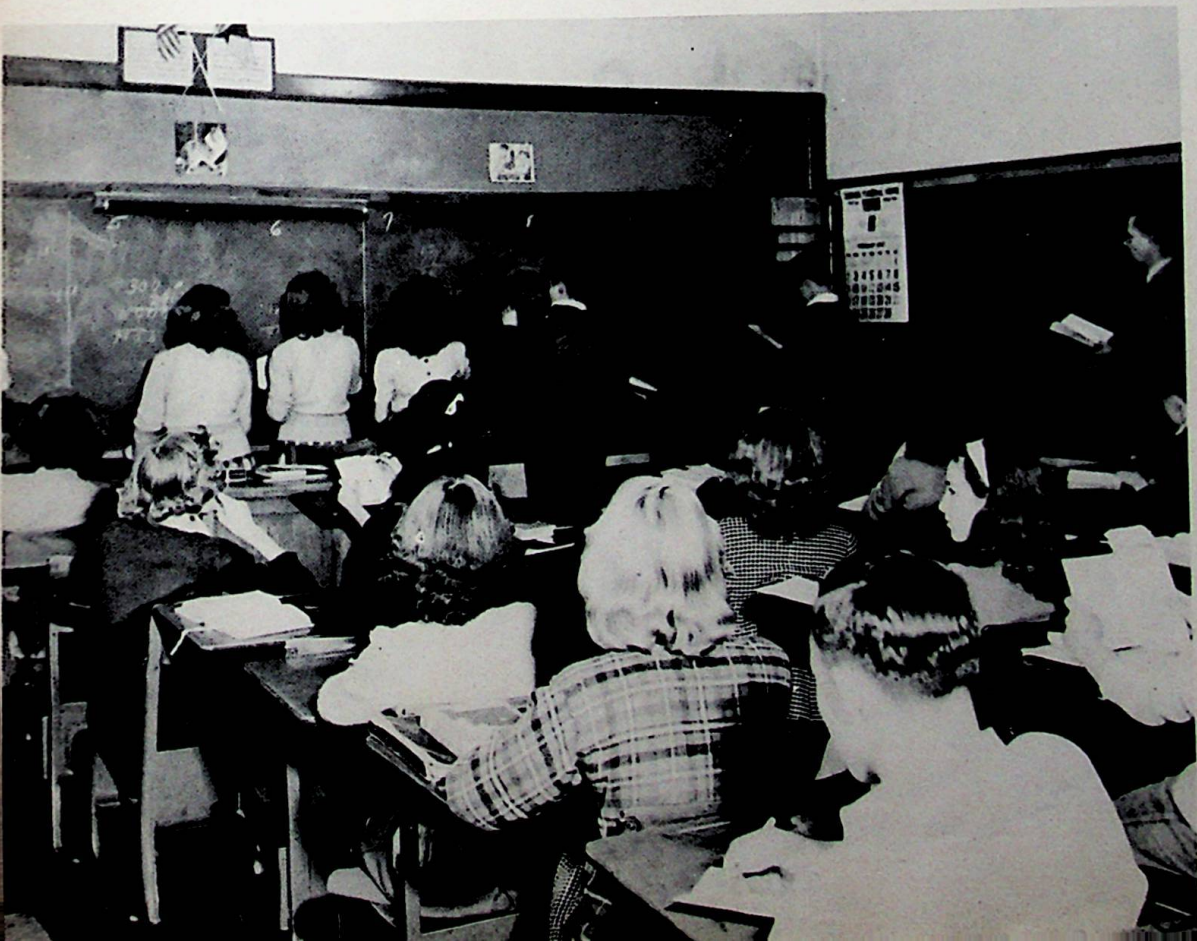


## English





# Math





Cooking

Sewing Lab



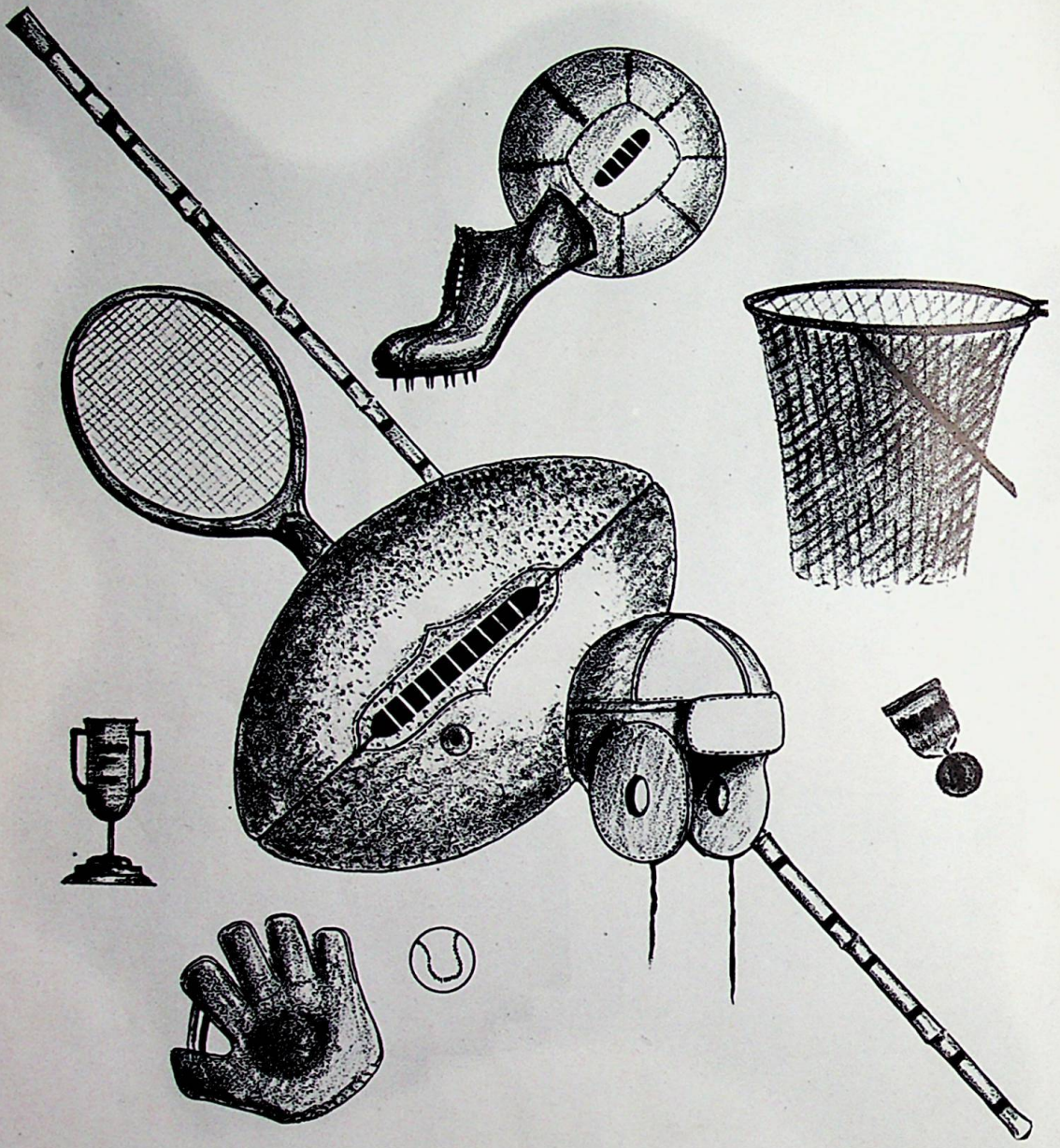


## Health Education

## Baseball Team

Sitting—Don Williams, Tom Bowen, Don Justice, Paul Ishmael, Bill Hall, Harold Percell, Junior Knapp, Gene Welch, Sidney Smith. Standing—Charles Roe, Gerald Hall, Kenneth Green, Carl Strickland, Charles Cooper, Paul Setters, Jesse Ramey, Mr. Harris, Everett Kelly, Earl Frazie, Gale Aeh, Roger Mullins, Donald Thompson, Max Warnock.





# ATHLETICS





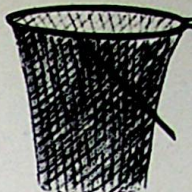


Front row—Hall, Fritz, Lawson, McCarty, McFerren. 2nd row—Turner, Colegrove, Lawson, Miller, Downs. 3rd row—Mr. Preston, Green, Skiver, D. Smith, S. Smith, Wright, Mr. Harris.

## Varsity

### Varsity Scores, Scioto County League

		We They				We They	
Oct. 18	McDermott	23	21	Dec. 27	Portsmouth Trojans	21	47
Oct. 23	Minford	35	42	Jan. 3	Minford	23	36
Nov. 1	P. I. B. C.	32	35	Jan. 10	Washington	28	42
Nov. 8	Clay	53	25	Jan. 17	Clay	39	40
Nov. 15	Rarden	48	27	Jan. 24	Rarden	66	19
Nov. 22	Green	29	50	Jan. 31	Green	36	28
Nov. 26	Lucasville	43	52	Feb. 4	South Webster	35	45
Dec. 6	Otway	67	32	Feb. 7	Lucasville	32	36
Dec. 13	South Webster	50	49	Feb. 13	Otway	54	35
Dec. 14	Washington	30	47	<b>County Tournament:</b>			
Dec. 17	McDermott	41	32	Feb. 15	Lucasville	31	30
Dec. 27	Portsmouth Trojans	21	47	Feb. 20	Clay	21	23
Dec. 28	Portsmouth East	28	45	Feb. 21	Minford	33	34



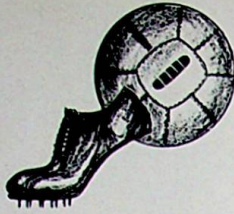
Wheelersburg is always proud of its Basketball Teams. This year has been no exception. Although our boys did not win all the games which they played, their fighting spirit showed that they were living up to true W. H. S. tradition.

The team this year was composed of freshman, sophomore and junior boys. Mr. Harris, boys physical education director and assistant coach, coached the Reserve Team. We are looking forward to a great season next year.

## Reserves

Front row—Gerald Hall. 2nd row—David McCarty, Junior Burgess, Harold Montavon, Junior Knapp, Don Williams, Ray Conley, Royal Fritz. 3rd row—Mr. Preston, James Lawson, Dick Willard, Don Setters, Bob Reese, Tom Bowen, Allard Lawson, Martin McFerren, Mr. Harris.

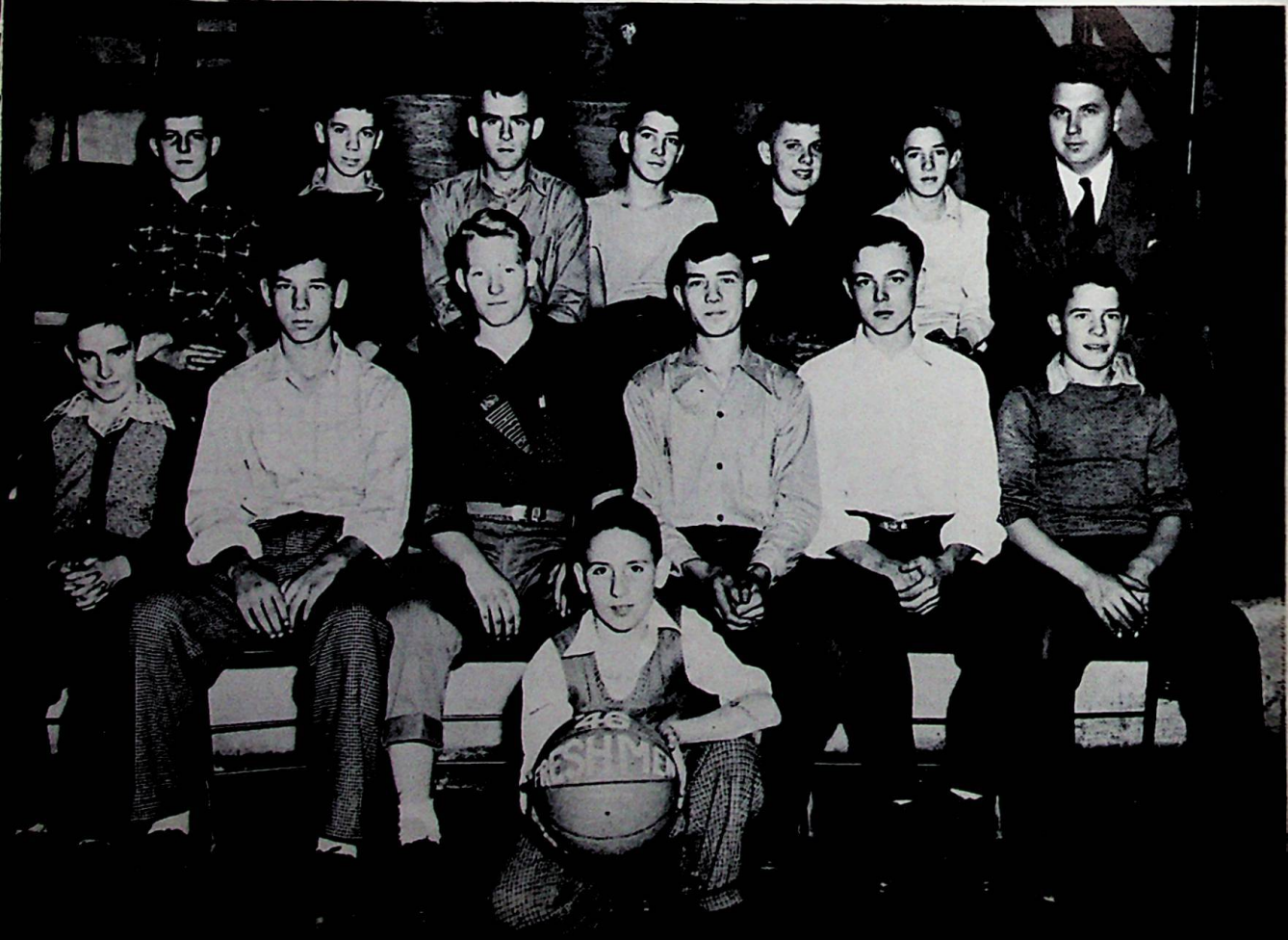




Although the Freshman Team did not play too many games this year, it provided fine entertainment in the ones it did play. They played very hard and were victorious in most of the games. They had some very tough opponents, but their hustling attitude brought them through. Some of the Freshman players were moved up to the Reserves this year, and we hope to see the rest of them there next year. Mr. See was coach of the Freshman Team this year and he did a good job.

## Freshman Basketball Team

Front—Ronald McCowen. 2nd row—John Fraley, Jack Stanley, Dave Stout, Robert Pyles, Bob Hibbitts, Bob Phipps. 3rd row—Howard Staker, Harold Montavon, John DeCamp, Howard Lyons, Stanley Braden, Paul Willard, Mr. See.

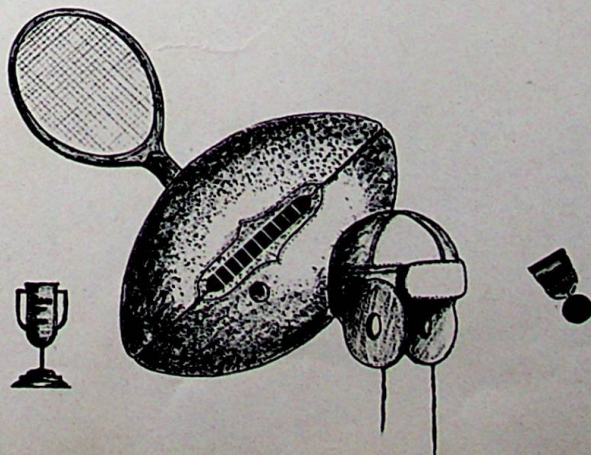




Left to right—Helen LeMaster, Helen Miller, Phyllis Bowen, Joanne Purtee, Juanita Wright.

## Cheerleaders

The score is tied, the time left to play is measured in seconds, the opposing team has the ball and our team is just about too tired to play any longer. Suddenly there comes a loud cheer from the sidelines. At once our boys seem to possess new life. They play just enough harder to win the game. This has proven true in many games. The ones who should get credit for these cheers are the cheerleaders. We have at Wheelersburg this year a fine group of cheerleaders. They have proven very valuable in the winning of our ball games. They have many yells with which to inspire our playing team. We should give them some of the credit in the winning of hotly contested games.





# ACTIVITIES



Left to right—Linden Hammond, Kenneth Piggney, Howard Staker, Sidney Smith, Juanita Weidner, Norma Montavon, Willa Staggs, Mr. Dudit, Forrest Colegrove, Mr. McCowen, Forest Turner, Bob Flanagan, Phyllis Lang, Stanley Braden, Helen Miller, Agnes Thornton, Helen Montavon.

## Student Council

Only in a democracy such as the United States can a student have a voice in the affairs of his school. This responsibility goes to the Student Council. The Student Council is made up of the officers of the various classes. The president of the Student Council this year is Forrest Colegrove, Senior class president. The vice-president is Donald Miller, Junior class president. Willa Staggs is secretary and Forest Turner is treasurer. This year the Student Council is in charge of the assemblies, which are held in the gym every Wednesday morning. They are doing a good job of it, too.

# Annual Staff

Forrest Colegrove .....	Editor In Chief
Joyce Johnson .....	Assistant Editor
Juanita Weidner .....	Feature Editor
Alma Harper .....	Feature Editor
Judy Carter .....	Variety Editor
Marie Booth .....	Variety Editor
Frank Wicker .....	Sports Editor
Don Justice .....	Sports Editor
Jeanne Purtee .....	Art Editor
Patty Smith .....	Photographic Editor

## Business Staff

Norma Jean Montavon .....	Business Manager
Renna Jean Stanley .....	Business Manager
Karl Kinker .....	Business Manager
Jim Lambert .....	Business Manager
Willa Staggs .....	Business Manager
Don Arbaugh .....	Business Manager

## Faculty Advisers

Miss Lyda Belle Shepherd	Miss Willa Sue Richards
Mr. Donald McCowen	Mr. James N. Warren
Mr. William F. Snook	

Seated left to right—Willa Staggs, Judy Carter, Renna Stanley, Norma Montavon, Alma Harper, Joyce Johnson, Forrest Colegrove, Jim Lambert, Karl Kinker, Marie Booth, Jeanne Purtee, Patty Smith, Juanita Weidner. Standing left to right—Don Justice, Mr. McCowen, Mr. Snook, Mr. Warren, Miss Richards, Miss Shepherd, Don Arbaugh, Frank Wicker.







The following students served in the Student Service Center: Norman Reiter, Charlotte Green, Forrest Colegrove, Doris Jean McFerren, Patty Dold, Helen LeMaster, Rachel Pauley, Ina Lee Erwin, James Benson, James Mauk, Judy Carter, Jeanne Purtee, Jane Lyon, Mary Jane Bowen, Royal Fritz, Joyce Johnson, Karl Kinker, Juanita Weidner, Stanley Braden, Dolores Thompson, Betty Fraley, Dorothea Rogers.

## Student Service Center

The Student Service Center is a new organization at Wheelersburg High School. In the past years minor injuries were treated in the office. This year, however, the Student Service Center has a desk at the end of the upper hall where a student is always ready to administer first aid. The Service Center takes care of all lost and found articles.

If you don't have change for the Coca-Cola machine just go to room twenty-four.

During the first semester the Student Service Center was on the second floor in room twenty-four under the supervision of Mr. Duduit. At the beginning of the second semester it was changed to the third floor where Mr. Burns is in charge.

The students were chosen from the Freshman, Sophomore, Junior and Senior classes.

This organization was welcomed by everyone at Wheelersburg as a very good thing and we all hope that it will continue next year.

All girls of the Junior class who want to be in the Sigma Tau Pi next year had better bring up those grades! This club is honorary. To be in it, you must have an average of B or above in your commercial subjects.

The club, under the leadership of Miss Shepherd, has a meeting once a month at the home of one of the members. The newspaper staff is chosen by the members of the Sigma Tau Pi.

In addition to the newspaper they also sponsor assembly programs. Each year they give the W. H. S. Basketball Teams a spring banquet. The Club is one of our most active organizations in Wheelersburg.

There are nineteen senior girls participating in the activities of the club this year.

Wilma Lou Johnson . . . . .	President
Wilma Jean Johnson . . . . .	Vice President
Norma Jean Bennett . . . . .	Secretary
Adah Harper . . . . .	Treasurer

## Sigma Tau Pi

1st row—Judy Carter, Wilma Chandler, Renna Stanley, Gwendolyn Hansgen, Wilma Allen, Dorothy Johnson, Juanita Fraley, Lucille Townsend. 2nd row—Norma Bennett, Wilma Jean Johnson, Wilma Lou Johnson, Alma Harper, Willa Staggs, Norma Montavon. 3rd row—Jeanne Purtee, Miss Shepherd, Marie Booth, Betty Lou Williams, Adah Harper.





Left to right—Wilma Chandler, Judy Carter, Ena Mae Wagner, Alma Harper, Jeanne Purtee, Willa Staggs, Dorothy Johnson, Betty Lou Williams.

## Newspaper Staff

In what newspaper can you find more news than in "Kampus Kapers"?

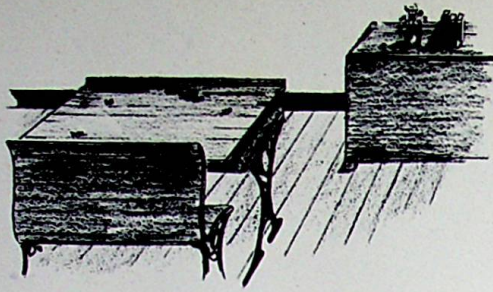
This year there are quite a few new teachers at Wheelersburg so each one must have a big write-up in our terrific newspaper. Everyone likes the articles in it and we are always anxious to receive our copy for the month.

If you want to know everything that is happening at W. H. S.—just read the latest issues of "Kampus Kapers". It knows all, tells all.

Not only the high school students read the newspaper but also the grade school students. They have a column of their own in "Kampus Kapers".

Each year before, the newspaper at W. H. S. has been good, but this year it has been better than ever!

Dorothy Johnson . . . . .	Editor-in-Chief
Ena Mae Wagner . . . . .	Associate Editor
Judy Carter . . . . .	Business Manager
Alma Harper . . . . .	Sports Editor
Jeanne Purtee . . . . .	Art Editor
Willa Staggs . . . . .	Society Editor
Adah Harper . . . . .	Poetess
Betty Williams . . . . .	Grade Reporter
Wilma Chandler . . . . .	Grade Reporter

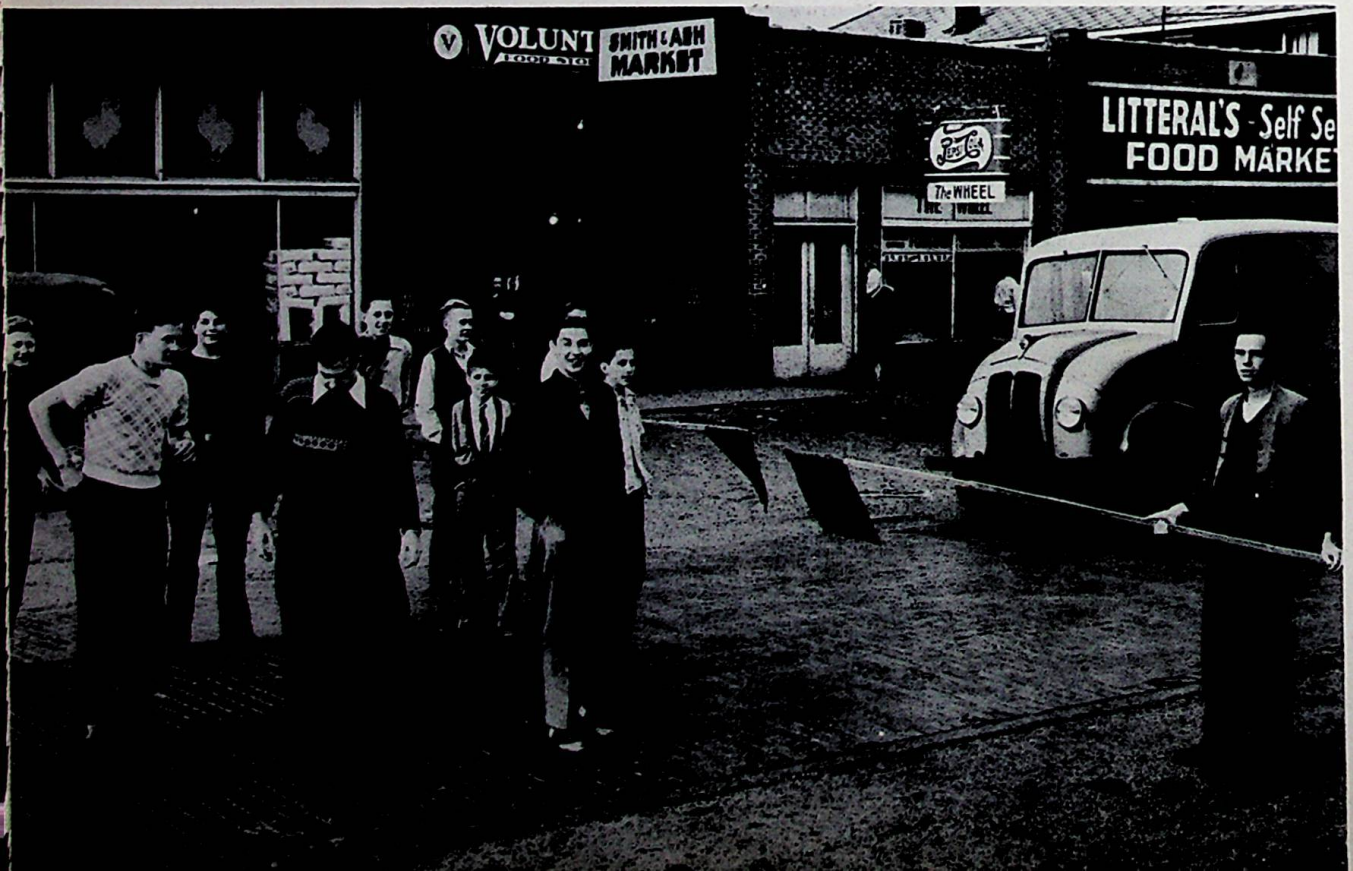


## Safety Patrol

The bell rings, the door flies open and down the sidewalk go a flock of students, heading for the restaurant. They run across the street, never looking to right or left. But—why should they? The safety patrol is on the job to see that they get to their destination safely.

This year the patrol has been more alert than ever, protecting the students of Wheelersburg High School as they cross the highways. The captain of the patrol has been Karl Kinker. We certainly appreciate what the patrol has done!

Bob Simon, Bob Flanagan, Aldon Wilder, Karl Kinker, Marvin Hull, Ernest Williams, Bill Flanagan, Bernard Evans, Jim Lambert, James Evans, Edward Williams.





1st row—Loretta Armes, Betty Lou Booth, Juanita Wright, Joanne Purtee, Phyllis Bowen, Helen Miller, Helen LeMaster, Patty Fairchild, Barbara Duncan. 2nd row—Helen Montavon, Doris Jean Ross, Mary Lou Turner, James Evans, Maurice Cremeans, Harold Billups, David Lang, Anna Lou Litteral, Agnes Thornton, Judy LeMaster, Ann Emery, Dorothy Watts, Gerald Hall, Martin McFerren, Peggy Polley, Norma Montavon, Juanita Fraley, Vera Downs. 3rd row—Kathleen Thompson, Patty Smith, Imogene Hull, Janet Turner, Jackie White, Juanita Weidner, Jeanne Purtee, Betty Hensley, Geraldine Bailey, Lucy Skaggs, Geneva Webb, Delores Storey, Phyllis Gose, Rosemary Collingsworth, Doris McFerren, Jane McLeod, Mary Ann Moore, Patricia Dold, Royal Fritz, Phyllis Lang, Thelma Hay, Norma Lykins, Jewell Jarvis. 4th row—Miss Shepherd, Geraldine Jarvis, Julia Fout, Thelma Rockwell, Joann Wright, David McCarty, Charles Thompson, Karl Willard, Bill Hall, Tom Bowen, Delores Cramer, Anna Mae Burgess, Tresa Conklin, Joanne Lallow, Norman Reiter, Robert Delabar, Bob Flanagan, Jack LeMaster, Sidney Smith, Donald Smith.

## Booster Club

"Let's win this game!" This is the cry of the Booster Club. This club was organized last year under the leadership of Miss Shepherd. The club members have attended every game which we have played and booster busses have run to all the away from home games. Enthusiasm plays a large part in winning games and boy we've got it! This club has more than done its share of work in boosting our boys to victory. In the last minute of a game, when the boys are tired and worn out, the cheers of the Booster Club are surely welcomed.

The president and vice president of the Booster Club this year are Robert Flanagan and Doris Jean McFerren. The secretary is Phyllis Lang and the treasurer is Betty Lou Booth. The Booster Club had various ways of making money. The members sold pirate emblems for sweaters and steel emblems for the car. The students of Wheelersburg should really get behind this club.



## Varsity W Club

For six years the Varsity W Club has been active in promoting better understanding among basketball players, cheerleaders, teachers and the student body. The club is composed of all boys who have won their Varsity letter either by playing on the team or being a manager. The following officers have served this year:

Harold Lawson . . . . . President  
Forest Turner . . . . . Vice President  
Stanley Myers . . . . . Secretary-Treasurer

**Left to right—Earl Downs, Forest Turner, Sidney Smith, Don Billups, Russell Colegrove, Mr. Preston, Stanley Myers, Don Miller, Ralph Frazie, Ed Skiver.**





1st row—Georgia Salley, Loretta Armes, Patricia Fairchild, Betty Lou Booth, Juanita Fraley, Willa Staggs, Betty Fraley, Renna Stanley, Betty Skeens, Barbara Underwood, Juanita Weidner, Patty Dold, Jane McLeod, Patty Smith, Opal Maggard, Janet Turner, Maxine Staggs. 2nd row—Mrs. Kelso, Judy Carter, Norma Montavon, Geneva Keeton, Delores Cramer, Lorena Stone, Norma Yeley, Francis Lewis, Juanita Monroe, Edith Hacker, Helen Justice, Mildred Hale, Barbara Wright, Jackie White, Emma Pierce, Betty Lou Arthurs, Mary Christian, Myrtle Rice, Rosemary Cleary, Rosemary Collingsworth, Phyllis Gose, Geraldine Bailey. 3rd row—Maurita Gleim, Betty Hensley, Ruth Bailey, Joanne Purtee, Juanita Wright, Helen Miller, Opal Courtright, Geneva Webb, Delores Storey, Lucy Skaggs, Anna Thieken, Juanita Staggs, Imogene Taylor, Joann Wright, Thelma Rockwell, Julia Fout, Tresa Burgess, Phyllis Bowen, Charlotte Green, Betty Lou Williams.

## G. A. A.

The Girls Athletic Association has been active the last few years in promoting better sportsmanship and cleaner athletics in Wheelersburg High School. It is composed of all high school girls interested in improving their sports ability. The G. A. A. is fortunate this year in having Mrs. Ruth Kelso as its sponsor. Mrs. Kelso has been very helpful in promoting better understanding among the girls.

As an incentive for better work, letters are given to senior girls who have obtained a score of from 300 to 500 points. Points may be received by participation in sockball, volleyball, basketball, soccer, ping-pong, badminton, hiking, horseback riding, teas, committees, officers, cheerleaders, and squad leaders, as follows: 40 points for cheerleaders, 30 points for officers, 25 points for activity committee, 15 points for squad leaders, 5 points for score keepers, 5 points for game participation, 5 points for referees.

### Officers

Joyce Johnson .....	President
Juanita Fraley .....	Vice-President
Anna Mae Burgess .....	Secretary
Juanita Weidner .....	Treasurer

### Activity Committee

Senior .....	Dolores Thompson
Junior .....	Patty Smith
Sophomore .....	Rosemary Collingsworth
Freshmen .....	Mary Ruth Christian



Left to right, standing—Patty Dold, Joann Hughes, Donald Chick, Sarah Johnson, Norma Yeley, Frank Wicker, Miss Humphrey, Don Justice, Patty Smith. Seated—Juanita Weidner, Howard Staker, Phyllis Lang.

## Library

Left to right, standing—Barbara Underwood, Betty Tussey, Frank Niemer, Gertrude Sherman, Edith Hacker, Mary Ruth Christian, Ruth Mucha, Kathryn Hinds, Thelma Rockwell, Jo Ann Gilpin, Thelma Hay, Sarah Johnson. Sitting—Opal Maggard, Juanita Wright.





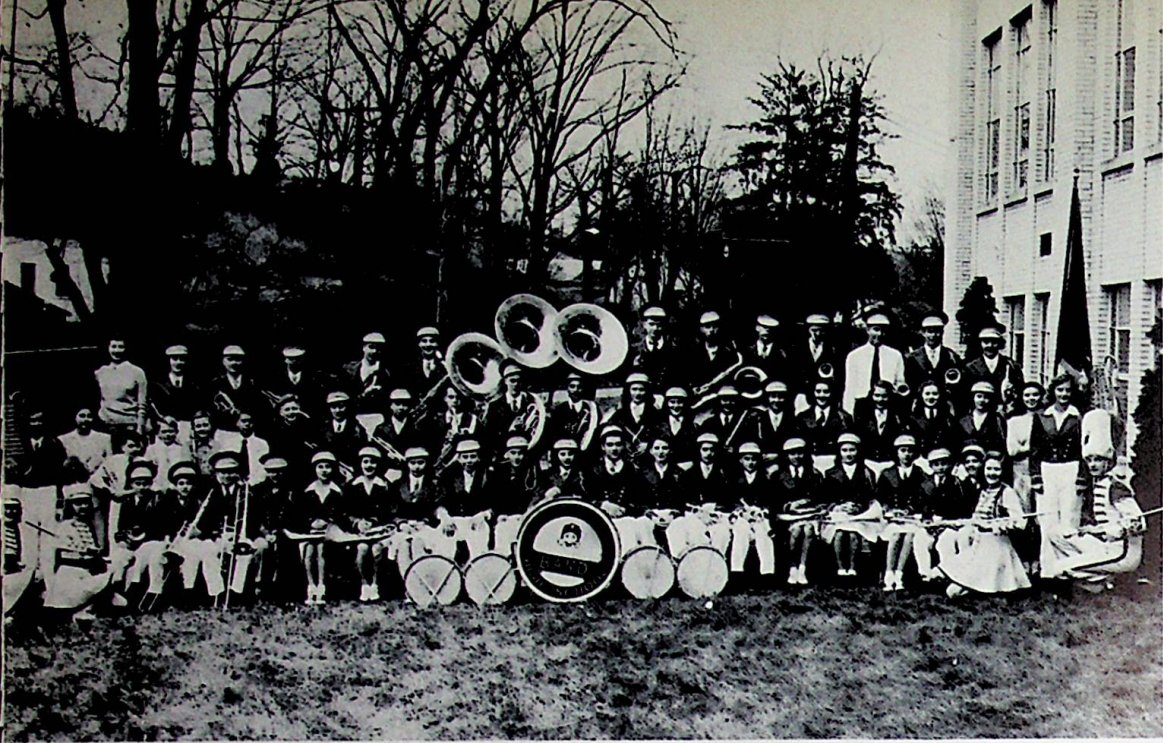


Left to right—Phyllis Gose, Jeanne Purtee, Juanita Fraley, Betty Lou Arthurs.

## Office Force

Left to right—Jackie White, Wilma Allen, Phyllis Bowen.





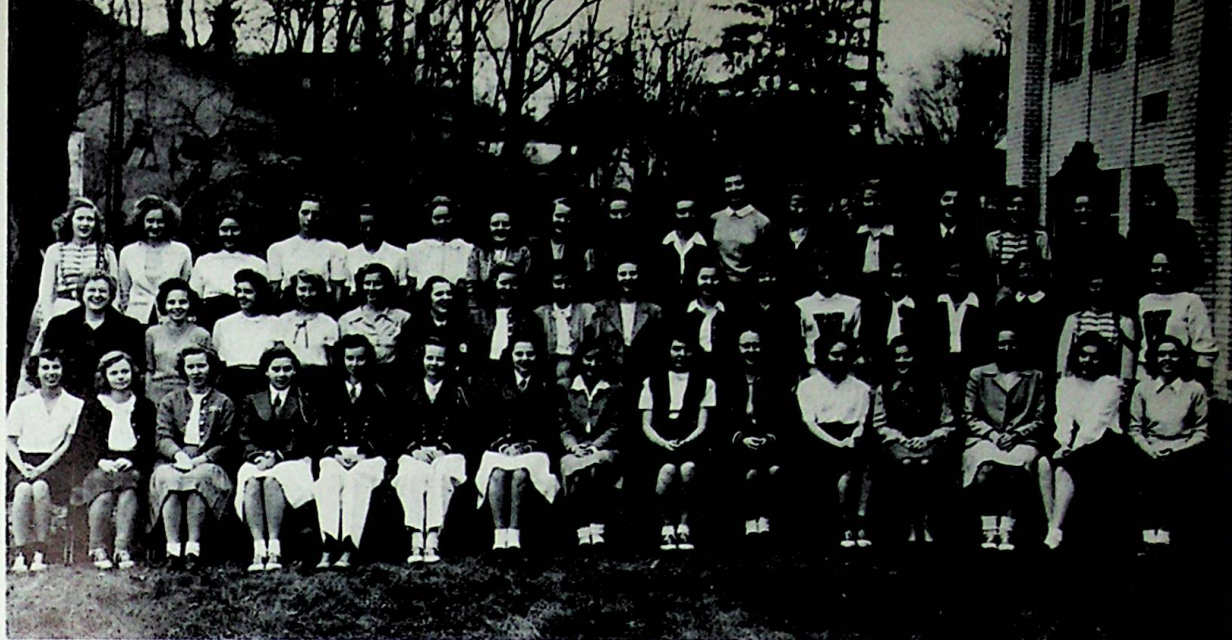
1st row—Geneva Keeton, Wilma Chandler, Donald Chick, Wallace Evans, James Evans, Emil McHenry, Dorothy Hall, Barbara Hinds, Wilma Allen, Bobby Joe Scherer, James Lawson, Dolores Thompson, James Glascock, Bob Klingman, Juanita Fraley, Wells Smith, Eva Brown, Virginia Jarvis, Doris Ross, Donald Gallion, Bernard Evans, Anna Mae Burgess, Robert Delabar. 2nd row—Jane Lyon, Miss Potts, Jim Blair, Jim Hibbitts, Jim Parlin, Kay Burke, Robert Simon, Norma Montavon, Harold Billups, Nick Felty, Bob Hibbitts, Ernest Williams, Jewell Jarvis, Janice McDaniels, Dorothy Watts, Mary Lou Turner, Delores Cramer, Betty Lou Arthurs, Lillian Sagraves, Gwendolyn Hansgen, Rachel Pauley, Renna Stanley. 3rd row—Joanne Lallow, Jean Bihl, Ray Danes, Charles Thompson, Karl Kinker, Jim Lambert, Joe Merrill, Karl Willard, Bob Reese, David McCarty, Royal Fritz, Earl Downs, Norma Lykins.

## Band

### DRUM MAJOR AND MAJORETTES

Left to right—Bob Delabar, Anna Mae Burgess, Geneva Keeton, Wilma Chandler.





#### JUNIOR-SENIOR GLEE CLUB

1st row—Maxine Staggs, Nellie Rice, Alma Harper, Wilma Allen, Jane Lyon, Gwendolyn Hansgen, Dolores Thompson, Renna Stanley, Kathryn Hinds, Phyllis Lang, Dorothy Johnson, Eula McCleese, Thelma Rockwell, Mary Jane Bowen, Vera Downs. 2nd row—Mrs. McGowan, Sarah Johnson, Lorena Stone, Georgia Salley, Jean Hacker, Judy Carter, Adah Harper, Wilma Lou Johnson, Wilma Jean Johnson, Imogene Hull, Doris Jean McFerren, Helen LeMaster, Patty Smith, Jane McLeod, Mary Ann Moore, Wilma Chandler, Phyllis Bowen. 3rd row—Anna Mae Burgess, Thelma Hay, Norma Yeley, Betty Price, Betty Fraley, Willa Staggs, Lucille Townsend, Jeanne Purtee, Norma Montavon, Juanita Fraley, Joanne Lallow, Betty Williams, Ruth Mucha, Jean Bihl, Geneva Keeton, Delores Cramer, Tresa Burgess.

## Music

#### MIXED CHORUS

1st row—Don Williams, Tom Bowen, Sidney Smith, Paul Setters, Ray Conley, Wade Wright, Clarence Cardwell, Bob Mauk, Maurice Cremeans, Charles Cooper, Paul Means, Don Hoover, Bill Hall, Jesse Ramey, Gerald Hall, Martin McFerren. 2nd row—Maxine Staggs, Nellie Rice, Alma Harper, Judy Carter, Wilma Allen, Jane Lyon, Gwendolyn Hansgen, Dolores Thompson, Renna Stanley, Kathryn Hinds, Phyllis Lang, Dorothy Johnson, Eula McCleese, Lawrence Thieken, Ralph Frazie, Vera Downs. 3rd row—Mrs. McGowan, Ernest Williams, Bobby Joe Scherer, Bob Klingman, Jim Lawson, Lorena Stone, Georgia Salley, Norma Yeley, Sarah Johnson, Thelma Hay, Betty Price, Betty Fraley, Willa Staggs, Lucille Townsend, Adah Harper, Jeanne Purtee, Wilma Lou Johnson, Wilma Jean Johnson, Juanita Fraley, Norma Montavon, Imogene Hull, Doris McFerren, Helen LeMaster, Patty Smith, Jane McLeod, Mary Moore, Thelma Rockwell, Jean Chandler, Jack LeMaster, Phyllis Bowen. 4th row—David McCarty, Bob Reese, Jim Lambert, Charles Thompson, Nick Felty, Jim Glascock, Forest Turner, Don Billups, Bob Delabar, Don Smith, Ed Williams, Donald Cregger, Joanne Lallow, Ruth Mucha, Betty Williams, Jean Bihl, Geneva Keeton, Delores Cramer, Tresa Burgess, Anna Burgess.





1st row—Maurita Gleim, Patty Dold, Jo Ann Gilpin, Betty Booth, Hazel Craft, Jackie White, Helen Miller, Betty Lou Arthurs, Margaret Noel, Rosiland Scott, Janet Hoover, Betty Bond, Janet Turner, Barbara Underwood. 2nd row—Mrs. McGowan, Marcella Wright, Elizabeth Hall, Myrtle Rice, Betty Skeens, Joan Hughes, Betty Tussey, Mary Christian, Agnes Blanton, Gertrude Sherman, Edith Hacker, Gracie Crabtree, Rosemary Cleary, Rosemary Collingsworth, Phyllis Gose, Jerry Bailey. 3rd row—Opal Courtright, Betty Jo Fraley, Charlotte Green, Betty Hensley, Ruth Bailey, Delores Storey, Lucy Skaggs, Lillian Sagraves, Joann Wright, Juanita Staggs, Anna Thieken, Kathleen Thompson, Jerry Jarvis, Ina Erwin, Carol Dheel, Wanda Jarvis.

## Glee Club

Tra-la-la-la-lal! These are some of the sounds you hear floating through the halls every Wednesday and Thursday mornings. These strains of music are coming from the Glee Club room on the first floor. Oh yes, do you hear that familiar rumbling of the piano? Well, that music is being made by Mrs. McGowan. She is assisted by Adah Harper and Dolores Thompson, part time accompanists for the Girls and Boys Glee Clubs.

There are 54 girls in the Junior-Senior Girls Chorus. They hold their meetings the first period on Wednesday. 42 boys make up the Boys Chorus. These boys are from each year in high school. Then there are the Freshman-Sophomore girls which make up a chorus of their own. This club is composed of 48 girls.

The Glee Club presented an operetta, "The Sunbonnet Girl," on April 11, 1947. Those taking principal parts were: Willa Staggs, Dolores Thompson, Wilma J. Johnson, Wilma L. Johnson, Adah Harper, Mary Bowen, Gwendolyn Hansgen, Betty Williams, Juanita Fraley, Joanne Purtee, Jim Lambert, Forest Turner, Paul Setters, Ernie Williams, Don Cregger, Jim Glascock. These people were supported by a chorus of 20 girls and 18 boys.

We have really enjoyed the music of the Glee Clubs this year.



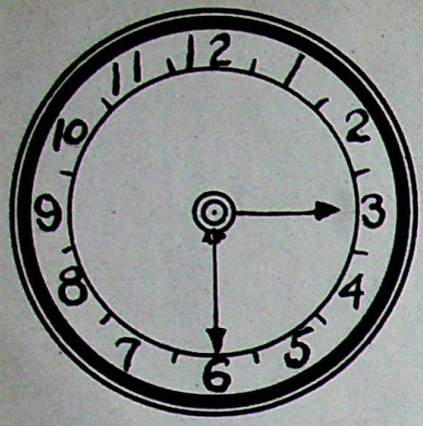
Left to right—Howard Staker, Paul Ishmael, Stanley Braden, Clarence Cardwell, Mr. McGowan, Joe Merrill, William Litz, Royal Fritz.

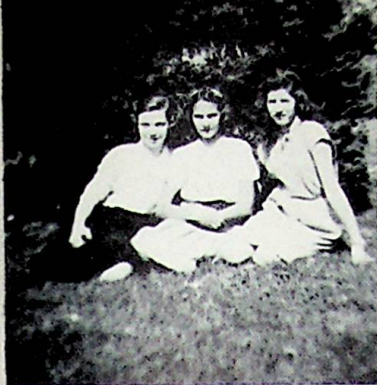
## Visual Ed.

## Ushers

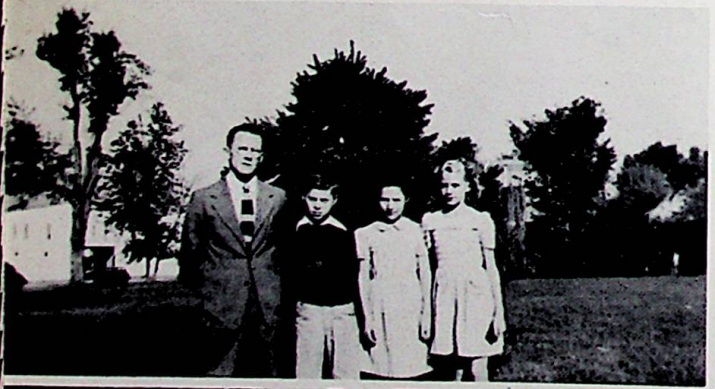
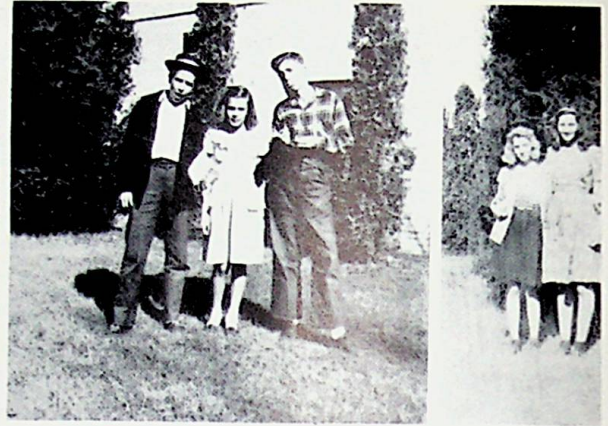
Left to right—Marie Booth, Wilma Lou Johnson, Wilma Jean Johnson, Norman Reiter.







AFTER - 330 P.M.



S N A P S





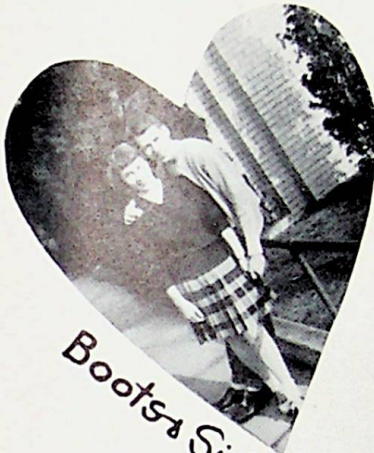
Ahmed & Sheik



Bud & Lou



Helen & Ralph



Boots & Sid



Bud & Nita



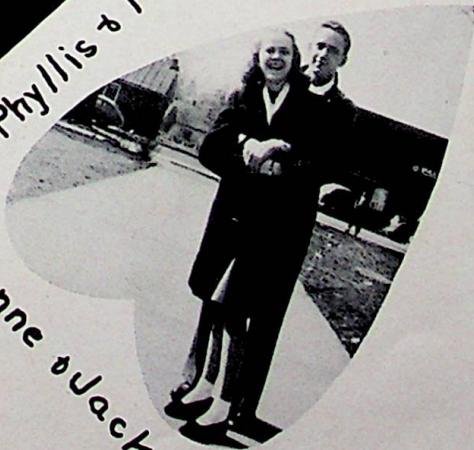
Marie & Jack



Phyllis & Fritz



Dodie & Uiggs



Jeanne & Jack



Karl & Wilma



Going Our Way?



Medusa.



Gad! Gams.



Unusual.



Huggin' and Chalkin'.



Seeing Double.



We Laugh Too.



Happy Landing.



No Bad Habits.

# COVERT'S SHOWS YOU HOW TO MAKE HOME MEAN MORE TO YOUR FAMILY



**HOME CAN MEAN REFUGE  
TO THE TIRED HUSBAND**

...A haven at the end of hectic days  
... where his easy chair, slippers  
and pipe are always at hand.



**HOME CAN MEAN RELAXATION  
TO THE BUSY WIFE**

...A place that's a dream world of  
mechanical housekeeping to bring  
new leisure into her days.



**HOME CAN MEAN FUN  
TO THOSE SWELL CHILDREN**

...A special playspot to bring their  
friends ... a place filled with their  
very own things.



**HOME CAN MEAN WELCOME  
TO FRIENDS**

... A warm, friendly hearthside ...  
a haven that says, "come into our  
home and join our fun."

Your home **CAN** say all of this... your home **SHOULD** say all of this... your home **WILL**  
say all of this... if only you'll start now to better your living by improving your home!

## COVERT FURNITURE CO.

3975 GALLIA

NEW BOSTON, OHIO

<p>Compliments</p> <p>CLIFF JONES MOTOR SERVICE</p> <p>TEXACO GAS and OILS</p> <p>Phone Scioto 9      5737 Gallia SCIOTOVILLE, OHIO</p>	<p>Thos. J. Gill      Jessie A. Gill</p> <p>GILL FUNERAL HOME</p> <p>AMBULANCE SERVICE</p> <p>Phone 100</p> <p>5602 GALLIA PORTSMOUTH, OHIO</p>
<p>W. ELTON SMITH, Pharmacist</p> <p>SCIOTO DRUG STORE</p> <p>A TRUE DRUG STORE</p> <p>224 Harding Ave. SCIOTOVILLE, OHIO</p>	<p>WHEELER &amp; SCOTT</p> <p>MEATS — PRODUCE GROCERIES</p> <p>Phone 88      226 Harding</p>
<p>Compliments of</p> <p>COOPER BROTHERS</p> <p>Phone Boston 82</p> <p>NEW BOSTON, OHIO</p>	<p>LEWIS BAKERY</p> <p>QUALITY BAKED GOODS</p> <p>Phone Boston 213-X      3802 Gallia</p> <p>NEW BOSTON, OHIO</p>
<p>DR. JAMES KELSO</p> <p>Optometrist and Chiropractor</p> <p>EYES EXAMINED GLASSES FITTED</p> <p>Phone Boston 2 NEW BOSTON, OHIO</p>	<p>CLEANING and PRESSING also</p> <p>WE LIVE TO DYE WE DYE TO LIVE THE MORE WE DYE THE BETTER WE LIVE</p> <p>McCLAIN CLEANERS</p> <p>3966 Gallia      New Boston, O.</p>

LEGG'S GARAGE

GENERAL REPAIRING

1017 Harding Ave.

PHONE Sc. 254-X

Burton & Davis  
Beauty Service

Phone 3050-X

918 Gallia St.  
PORTSMOUTH,  
OHIO

MEIXNER

SHOE REPAIR

Phone 836

921 Gallia

Skill Responsibility  
Integrity

J. F. WARNER & SONS

BUILDING CONTRACTORS

New Homes—Construction, Repair

Floor Sanding Furnaces

Compliments of

AUTOMOTIVE  
SUPPLY COMPANY

WHEELERSBURG, OHIO

Compliments to  
the Class of 1947

Opal's Beauty Shop

Phone 969-F

WHEELERSBURG, OHIO

CRAIGMILES

FURNITURE COMPANY

Homes Furnished Complete

936 GALLIA STREET

PAINT GLASS  
WALLPAPER

PORTSMOUTH  
PAINT COMPANY

928 Gallia St.

Phone 1816

ROYAL TYPEWRITERS  
Bohrer Typewriting

Co.

212 Chillicothe St.  
Portsmouth,  
Ohio

TONY'S

NUT SHOP

Across from Garden

Theatre

NUTS CANDY POPCORN

MEET AT THE

## CAMEO

FOR A BIT OF SWEET  
OR A BITE TO EAT

"Good Food is Good Health"

## E. H. RUSSELL GLASS COMPANY

GLASS FOR ANY PURPOSE

"Give us a break"

1106 GALLIA      PHONE 460

If a boy loves a girl  
that is his business.  
If a girl loves a boy  
that is her business.  
If they get married  
that is their business.  
If they furnish a home  
that is our business.

## THE SHEETS FURNITURE CO.

526-532 Second Street  
PORTSMOUTH, OHIO

SHOES FOR THE ENTIRE FAMILY

## SELBY SHOES

1007 GALLIA STREET

PORTSMOUTH, OHIO

## EDWARD STAEBLER

WATCHMAKER and OPTICIAN

1117 Gallia St.      Phone 1595

Portsmouth, Ohio

Blow your horn for the  
PIRATES  
but buy your horn at the

## MUSIC SHOP

703 Chillicothe St.      Phone 1958

BOB ROSSMAN, Mgr.

Purtee Supply Co.

WAYNE FEEDS

We Deliver

COAL AND BUILDING SUPPLIES

Center Street Phone 989-M  
WHEELERSBURG, OHIO

Compliments of

WALKER'S

Shoes for the entire family

402 Chillicothe Street  
PORTSMOUTH, OHIO

BLAIR'S BARBER SHOP

WHEELERSBURG, OHIO

Charles Pierce—Mitchell Blair

GLOCKNER'S  
CHEVROLET CO.

Your Chevrolet Dealer  
Since 1915

2ND & CHILLICOTHE STS.

Compliments of

YE OLD TAVERN  
CANDY SHOPPE

CARL HERMS, Prop.

WHEELERSBURG, OHIO

FARRIS & SON

ATHLETIC  
HIGH SCHOOL SUPPLIES

ATHLETIC AWARD JACKETS  
IN SCHOOL COLORS

"Where sportsmen serve sportsmen"

210 Chillicothe St. Phone 925

KELLOG'S FLORAL

FLOWERS FOR ALL OCCASIONS

Flowers Wired Everywhere

Phone 188-L Sciotoville, Ohio

Compliments of

GRAF LUMBER  
and BUILDING CO.

6467 Bahner Road  
SCIOTOVILLE, OHIO

Compliments of

YOUR  STORE

MODERN APPLIANCES  
FOR THE HOME

HOME SUPPLY COMPANY

605 CHILLICOTHE STREET

PHONE 47

It's smart to shop at

DENTON'S

42 years old

IT'S A HOME STORE FOR  
MEN AND BOYS

Out of high rents

The Door To Great Values

BRAGDON'S

THE VALUE STORE OF  
THE VALLEY

Your Home Owned Department  
Store Since 1897

Compliments of

MOORE'S SPOT GRILL

SANDWICHES OF ALL KINDS

Next Door to Bragdon's

Diamonds Watches Jewelry  
Radios Electrical Appliances

ROBERTS JEWELERS

CREDIT AT NO EXTRA COST

Morrey Wainstein, Mgr.

421 CHILLICOTHE STREET

RICHMAN BROS.

CLOTHES

DIRECT FROM OUR FACTORY  
TO YOU

No Middle-man Profit

311 CHILLICOTHE ST.

COMPLIMENTS OF



REG. U.S. PAT. OFF.

BIGGER - BETTER



STEWART'S  
DRUG STORE

Prescription Specialists

904 Gallia                      Phone 2447  
PORTSMOUTH, OHIO

Compliments of

SUMMERS & SON

YOUR OLD RELIABLE  
MUSIC DEALER

Our 77 years of fair dealing  
is your guarantee

906 GALLIA STREET

Compliments of

Portsmouth Interstate Business College

L. G. BLACKBURN  
Director

C. H. DUDUIT  
Assistant Director

Secretarial College and School of Accounting and  
Business Administration.

MEMBER OF OHIO BUSINESS SCHOOLS ASSOCIATION  
AND NATIONAL COUNCIL OF BUSINESS SCHOOLS

813-817 GALLIA STREET

PHONE 2630

PORTSMOUTH, OHIO

"KRAUSS"

FURNITURE                      APPLIANCES  
PHONOGRAPH RECORDS

831-833  
Gallia St.

830-832  
Sixth St.

PORTSMOUTH, OHIO

Firestone  
Service Stores

WE SPECIALIZE IN TRACTOR  
TIRES, SALES AND SERVICE

1408-10 Gallia St.                      Phone 456

PORTSMOUTH, OHIO

TEXACO

GASOLINE and OIL

Firestone Tires and Tubes

HENRY BUSSLER

Phone 964-X     Wheelersburg, O.

RAMEY'S FEED STORES

and HATCHERY

FLOUR—MEAL—FEED

Distributors of  
ESHELMAN FEEDS

Phone Scioto 233-L

WHEELERSBURG, OHIO

Compliments of

CONKLINS  
AUTO SERVICE

Compliments of

VIC STAKER  
AUTO BODY SERVICE

Modern auto body service  
Repairing and Painting

½ mile West of Wheelersburg  
on U. S. 52

Jake's  
Restaurant

PHONE SCIOTO 959-G

Wheelersburg, Ohio

"Everything is Jake at Jakes"

HARRY J. MILLER, Prop.

Thomas E. Keeton

LIVESTOCK

WE BUY, SELL OR TRADE

Phone 986-X

WHEELERSBURG, OHIO

# SAMUEL LEVI & COMPANY

FURNITURE

840-844 GALLIA

NEXT TO LaROY THEATRE

Compliments of  
Nan L. Murphy  
Apparel Shop

Headquarters for  
Junior and Misses Wear

813 Gallia                      Portsmouth, Ohio

Nora A. Wilhelm—Gladys Higgins—Bertha DeBoer

*Ford's out Front*

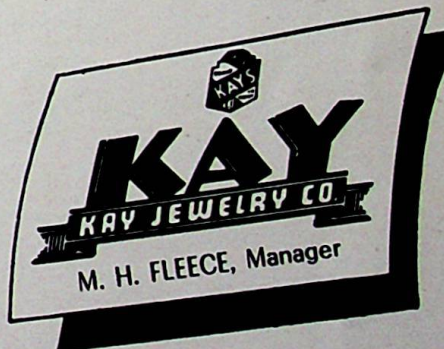
Your Friendly  Dealer

Portsmouth Motors, Inc.

1112 GALLIA ST.      PHONE 1924

Compliments of  
**CHABOT'S**  
**SUPER SERVICE**

Distributor  
PURE OIL GAS and U. S. TIRES



**GEMPERLINE**  
**FURNITURE CO.**

612-16 Second St.  
PORTSMOUTH, OHIO

Authorized Dealer of  
Westinghouse Electrical Appliances  
and Original Coles Hot Blast Heaters

**SCHINDELL'S**

DIAMONDS

WATCHES

Phone 2458

LaROY THEATRE BLDG.

Litteral's Self-Serve Food Market  
and  
Frozen Foods Locker Plant

HOME KILLED MEATS  
FROZEN FOODS

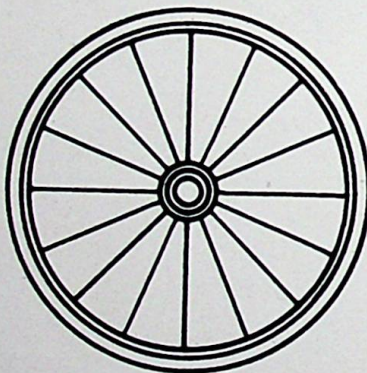
Phone Scioto 980-L

Wheelersburg, Ohio

MEET ME AT

THE WHEEL

F  
O  
U  
N  
T  
A  
I  
N



S  
A  
N  
D  
W  
I  
C  
H  
E  
S

LUNCH

FRANK LATHROP, Proprietor

SMITH & AEH  
MEATS and GROCERIES

We Deliver

Phone 22  
WHEELERSBURG, OHIO

Compliments  
To the Class of 1947

SCIOTO COUNTY  
FARM SUPPLY

G. M. ROSS, JR.

Congratulations  
to the Class of 1947

G. E. KOCH HARDWARE

PHONE SCIOTO 968-L

WHEELERSBURG, OHIO

THE

REIDENBACH PHARMACY

Prescription Druggist

MASONIC TEMPLE

PHONE SCIOTO 51-Y

WHEELERSBURG, OHIO

Compliments of

WHEELERSBURG  
BEAUTY SHOP

Phone 966-R      Gallia Street  
WHEELERSBURG, OHIO

Compliments of

LOWRY'S  
SHOE REPAIR

Anything for the shoe  
also  
Women and Infants house slippers

CENTER ST.  
Wheelersburg, Ohio

Compliments of

## DOERR'S HARDWARE

519 Second Street  
PORTSMOUTH, OHIO

## ROY ZUEFLE

Authorized Dealer for

HAMILTON ELGIN  
BULOVA GRUEN  
WATCHES

563 Second Street  
PORTSMOUTH, OHIO

Everything for the Sportsman

## SCOTT'S SPORTING GOODS

822 Sixth Street  
PORTSMOUTH, OHIO

## GRIMM'S

## SPORTING GOODS

"It's Wilson's Today  
in Sports Equipment"

EXPERT RACKET RESTRINGING

Phone 1589-R 1003 Gallia St.

## PITTS'

## DAIRY SHOPPE

CANDY SANDWICHES  
SUNDAES

Next to P. H. S. Phone 266

## STERN

## PAINT STORE

1006 Gallia Street  
PORTSMOUTH, OHIO

## RICHARDS' NEWS

Most complete selection of  
Newspapers and Magazines  
in the City

HALLMARK GREETING CARDS

1422 Gallia Street  
Opposite Trinity Church

## CRISPIE CREME

## DONUTS

1546 Gallia Street  
PORTSMOUTH, OHIO

Marc Canter's  
Kopy Kat  
and  
Canter's Kiddie Shop  
Wish you success

BEAUMONT  
FLUORESCENT  
SERVICE and ELECTRIC SUPPLIES  
536 Second Street Phone 2459-L

it's a fact!

WHATEVER YOUR PLANS—  
STROLLING, DANCING OR JUST  
GADDING ABOUT—SUITS, COATS  
AND DRESSES WITH EYE APPEAL  
APLENTY ARE HERE—WAITING  
YOUR CHOICE.

*Atlas Fashions*

Kobacker's

Portsmouth, Ohio

Compliments of  
Hunter's Lock  
and Bicycle Shop  
WHIZZER BICYCLE MOTORS  
LAWN MOWERS SHARPENED  
1538 Gallia Street  
PORTSMOUTH, OHIO

DRUMMOND  
IMPLEMENT STORE  
1634-1638 Gallia Street  
Phone 30  
PORTSMOUTH, OHIO

Compliments of  
ORTHMEYER'S  
BAKERY

5500 Gallia      Phone Scioto 47  
SCIOTOVILLE, OHIO

Compliments  
to the Class of 1947

BOURGHOLTZER'S  
DRUG STORE

SCIOTOVILLE, OHIO

C. H. MILLHUFF

DRY GOODS      NOTIONS  
GROCERIES

Phone 15  
SCIOTOVILLE, OHIO

Compliments  
of

JOHNSON BROS.  
GROCERY

1101 Mayo  
SCIOTOVILLE, OHIO

Hibbitts  
Hardware Company

Complete line of  
HARDWARE—HARNESS—SEEDS  
and SPORTING GOODS

315 Harding Avenue  
SCIOTOVILLE, OHIO

GILPIN DAIRY

FARM FRESH DAIRY PRODUCTS

Phone Scioto 921-L  
ON ROUTE 140

— STOP AT —  
MODERN GRILL  
FOR FINER LUNCHES

Good Service      Sodas & Sundaes

836 Gallia  
PORTSMOUTH, OHIO  
Next to Columbia Theatre

the smart little shop with the  
friendly air

Tilene's

gallia at gay



STAND UP—

PREACH UP—

PAY UP—

NEVER LET UP

OR SHUT UP

FOR A BETTER COMMUNITY

G. M. ROSS

Compliments of

*Mitchellace*

*The Shoe Lace of Quality*

ROBBITT

AWNING CO.

1515 TENTH STREET

PHONE 3367

ED LOCKNER'S  
AUTO SUPPLY

Distributors of

TIRES—BATTERIES—MOTOR OIL  
SEAT COVERS—PISTON RINGS

Phone 2937

Ninth & Chillicothe Sts.  
PORTSMOUTH, OHIO

Compliments

to the Class of '47

from the

SEARS ROEBUCK  
AND COMPANY

302 Chillicothe Street  
PORTSMOUTH, OHIO

HAVE YOUR KODAK FINISHED AT

FOWLER'S

824 GALLIA STREET  
PORTSMOUTH, OHIO

MARVIN JONES  
AUTO SALES

LINCOLN — MERCURY

Offnere and Gallia  
PORTSMOUTH, OHIO

Congratulations  
Class of 1947  
from

DeVoss and Donaldson

Architects

National Bank Building

PORTSMOUTH, OHIO

Our Best Wishes  
to the Graduates of  
Wheelersburg High School

DISTEL  
FURNITURE COMPANY

Phone 400 616 Chillicothe

Compliments  
to the Class of 1947

ZIMMERMAN'S

OFFICE SUPPLIES  
AND EQUIPMENT

UNDERWOOD TYPEWRITERS

Phone 2490 810 Chillicothe St.

PORTSMOUTH, OHIO

You'll Find  
What You Want  
In Our

HIGH SCHOOL  
SHOPS

*Marting's*

Portsmouth, Ohio

AUGIE'S NEWS

NEXT TO REID HOTEL

"Portsmouth's Down Town  
News Center"

Compliments  
of

THE PASTRY SHOP

708 Chillicothe Street  
PORTSMOUTH, OHIO

## HERFF-JONES COMPANY

*Designers and Manufacturers of*

SCHOOL & COLLEGE JEWELRY, GRADUATION ANNOUNCEMENTS,  
MEDALS, CUPS AND TROPHIES

1411 North Capitol Avenue

Indianapolis, Indiana

JEWELERS AND STATIONERS TO WHEELERSBURG HIGH SCHOOL

P. J. BURKHART, Representative

Compliments  
of

SOWARDS  
FUNERAL HOME

3983 Gallia  
NEW BOSTON, OHIO

Wedding and Birthday Cakes  
Our Speciality

BLUE BIRD BAKERY

JOHN COUNTS, Proprietor

Phone Boston 18  
4208 Gallia Street

<p>Compliments of <b>McCURDY &amp; SCOTT FUNERAL HOME</b></p> <p>PHONE SCIOTO 51-R Ambulance Service</p>	<p>SHOE SHINE AND REPAIR</p> <p><b>SERVICE SHOE REPAIR SHOP</b></p> <p>206 Chillicothe Street PORTSMOUTH, OHIO</p>
<p>DIAMONDS                  WATCHES</p> <p><b>ZOELLNER JEWELRY CO.</b></p> <p>Third and Chillicothe St. PORTSMOUTH, OHIO</p>	<p>GOOD CLOTHES FOR MEN AND BOYS</p> <p><b>WOLFF</b></p>
<p>Visit The <b>"OASIS"</b> <b>BAR &amp; GRILL</b> Complete line of Seafood, Steaks &amp; Chops</p> <p>Phone 2176      722 Chillicothe St. PORTSMOUTH, OHIO</p>	<p>Compliments</p> <p><b>PEERLESS LODGE 762</b></p> <p>LOYAL ORDER OF MOOSE PORTSMOUTH, OHIO</p>
<p><b>J &amp; S</b></p> <p><b>SANDWICH SHOP</b></p> <p>715 Chillicothe Street HARRY CARTER, Mgr.</p>	<p><b>DEHNER'S</b></p> <p>Clothing for the Family</p> <p>613 Chillicothe Street PORTSMOUTH, OHIO</p>

MURFIN'S  
INSURANCE AGENCY

"Insure In Sure Insurance"

1542 GALLIA STREET

Phone 446      Portsmouth, Ohio

Compliments of  
LOLA'S  
BEAUTY SHOP

Assistants

Irma Hunley      Beulah Fugitt

5832 FARNEY AVE.

Phone Scioto 92

Congratulations and Best Wishes

The Coca-Cola logo is rendered in its classic, flowing script typeface. The letters are thick and black, with a white outline that gives it a three-dimensional appearance. The 'C' and 'O' are particularly large and rounded, while the 'l' and 'a' are more slender and elongated. The overall style is elegant and iconic.

TRADE-MARK REG. U. S. PAT. OFF.

The Coca Cola Bottling Co.

PORTSMOUTH, OHIO

Compliments  
to the Class of 1947

Sherman Hibbitts  
& Sons

212 Harding Ave.      Phone 36-G

Congratulations  
and Best Wishes

Rolf's Wallpaper  
and Paint Store

Epp Rolf, Prop.

WHEELERSBURG, OHIO

# Hibbitts Department Store

DRY GOODS, SHOES and CLOTHING

Compliments of

Wheelersburg  
Dry Cleaning

WHEELERSBURG, OHIO

Phone 981-R

WAYNE C. HIBBITTS

ALTERATIONS—DYEING—REPAIRING

RUG SHAMPOOING—HAT BLOCKING

Pressing while you wait

Phone Scioto 968-M

CENTER STREET

WHEELERSBURG, OHIO

JOE MONTAVON, Proprietor

Compliments of

Wheelersburg  
Cut Rate Grocery

"Our Schools are tops,

We realize.

Top Schools—Quality Foods

We Specialize."

Phone Scioto 982-R

R. S. (PETE) HOSKINS, Prop.

GOOD COFFEE  
HOME MADE PIES

Ohio Valley Restaurant

Phone 982-R Gallia at Center Sts.  
WHEELERSBURG, OHIO

We specialize in home cooking  
MRS. JOHN L. WILLIAMS

FRESH PRODUCE

GROCERIES

MEATS

McCarty's  
Food Market

Phone Scioto 980-K

WHEELERSBURG, OHIO

PRESTON  
RADIO SERVICE

QUALITY RADIO  
& APPLIANCE SERVICE

Phone 950-K  
WHEELERSBURG, OHIO

FARM BUREAU  
INSURANCE

AUTO—FIRE—LIFE  
HEALTH & ACCIDENT  
HOSPITALIZATION LIABILITY  
BURGLARY & ROBBERY

Check Farm Bureau Rates  
Before You Buy

PEARL G. SMITH

Chester Street Phone Sc. 985-X  
WHEELERSBURG, OHIO



COMPTON ENGRAVING & PRINTING COMPANY

PAT'S  
TRUCK STOP

24 HOUR SERVICE

2½ miles East of Wheelersburg  
on U. S. Route 52

Compliments of

Ohio Pottery  
and Gift Shop

Phone 986-Y  
WHEELERSBURG, OHIO

on U. S. Route 52

SPRADLIN'S  
SERVICE STATION

SUNOCO PRODUCTS  
GAS and OIL

Washing and Lubricating

Stop by on your next trip

On U. S. Route 52  
WHEELERSBURG, OHIO

McGhees Service  
Station and Restaurants

TEXACO PRODUCTS

Phone 987-X  
WHEELERSBURG, OHIO

Compliments of  
POP'S PLACE

PUROL GASOLINE

RESTAURANT  
WHEELERSBURG, OHIO

RASES  
FOOD MARKET

STAPLE GROCERIES  
HOME KILLED MEAT

Phone 963-Y  
WHEELERSBURG, OHIO



<p>W. L. WILHELM Jeweler</p> <p>507 Chillicothe Street PORTSMOUTH, OHIO</p>	<p>JUSTICE IMPLEMENT and MOTOR CO.</p> <p>Complete line of HARDWARE, FARM MACHINERY</p> <p>HUDSON AUTO and WHITE TRUCKS</p>
<p>W. R. BRYAN</p> <p>CLEANING and PRESSING</p> <p>5704 Gallia Ave. Phone Sc. 60</p> <p>SCIOTOVILLE, OHIO</p>	<p>Compliments of</p> <p>ADRIAN'S GRILL</p> <p>5720 Gallia</p> <p>SCIOTOVILLE, OHIO</p>
<p>EAT AT</p> <p>HAMBURGER SHOP</p> <p>"Buy 'em by the sack"</p> <p>5721 GALLIA J. EVERETT REESE, Prop.</p>	<p>Shoe Repair Shop</p> <p>"First Class Shoe Repairing"</p> <p>C. G. TURNER, Prop.</p> <p>5723 Gallia SCIOTOVILLE, OHIO</p>
<p>Compliments of</p> <p>Chaboudy's Grocery</p> <p>Sciotoville, Ohio</p> <p>Sciotoville, Ohio</p> <p>Compliments of The H. Leet Lumber Co.</p>	<p>Compliments to the Class of 1947 from</p> <p>COOK'S BARBER SHOP</p> <p>227 Harding Ave. SCIOTOVILLE, OHIO</p>



© THE BORDEN CO.

*Borden's*

MILK—DAIRY PRODUCTS  
LADY BORDEN ICE CREAM  
HomoDee HOMOGENIZED MILK

"IF IT'S BORDEN'S—  
IT'S GOT TO BE GOOD!"

