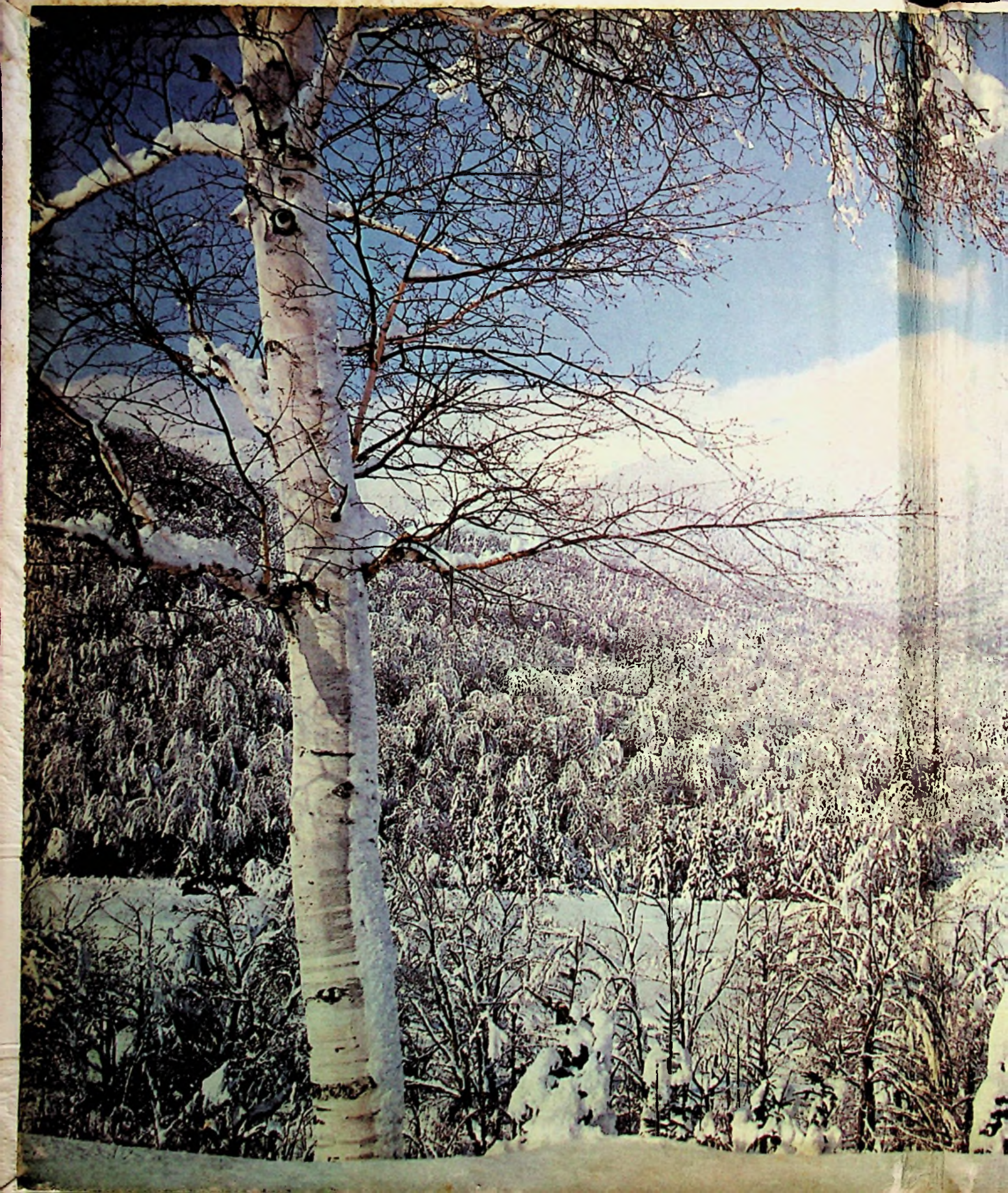


1965

M  
H  
S

FALCON

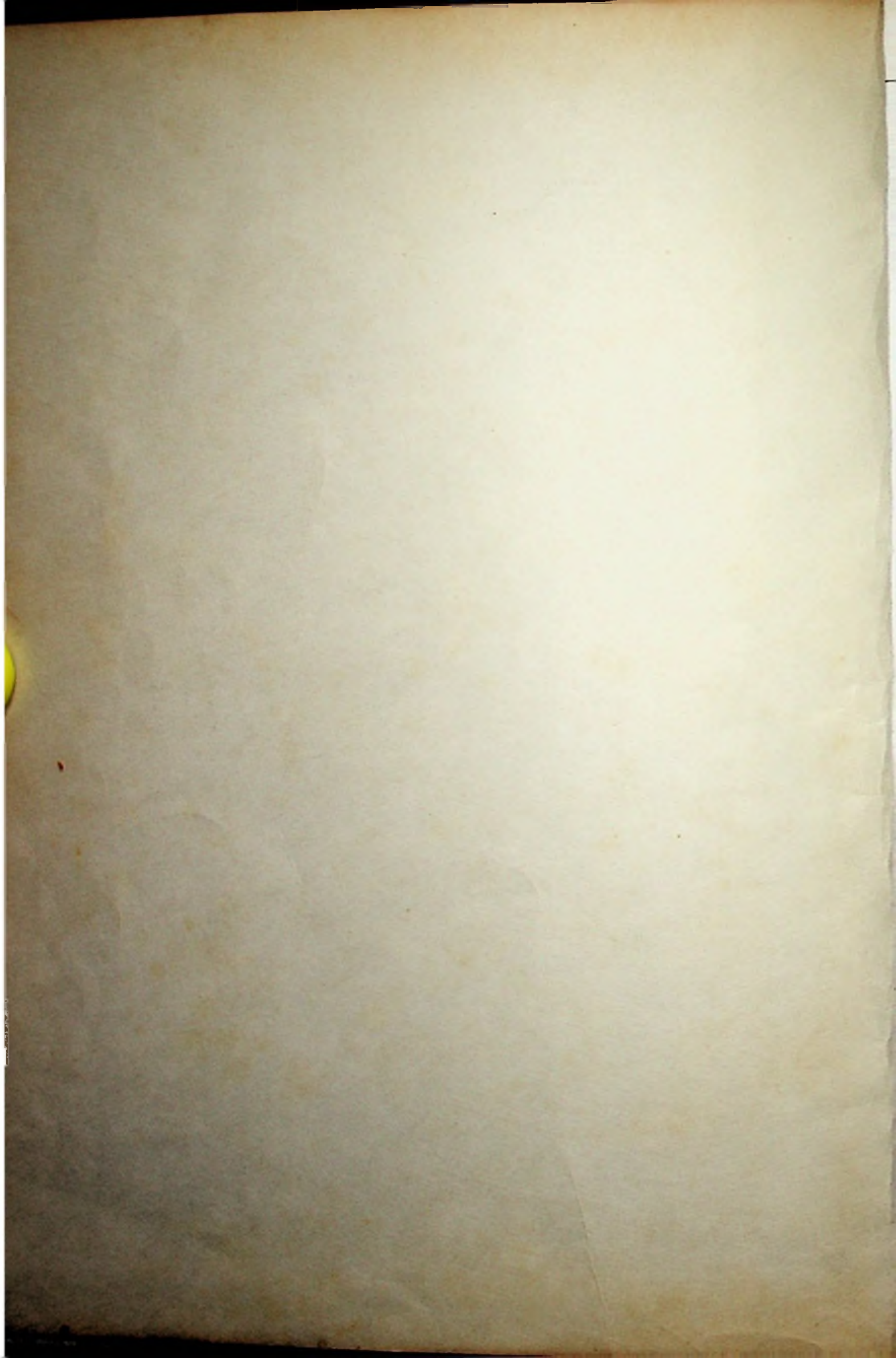
















GRADUATION  
EXERCISES  
*42nd Annual Commencement*

MINFORD HIGH SCHOOL  
May 25, 1965 8:00 P.M.  
MINFORD HIGH SCHOOL AUDITORIUM  
Minford, Ohio

THE 1965 FALCON

Presented by  
The Annual Staff  
Minford High School  
Minford, Ohio





Mr. and Miss Falcon are chosen by the Senior Class to represent the 1965 Falcon as typical seniors.

*Mr. Falcon  
Dale Willis*

*Miss Falcon  
Angie Aeh*





# Seniors . . .



OFFICERS: Rita Coriell, President; Lonnie Brown, Vice President; Martha Hagerman, Secretary; Patti Patterson, Treasurer.



ADVISERS: Mr. Gampp and Mrs. Steiff



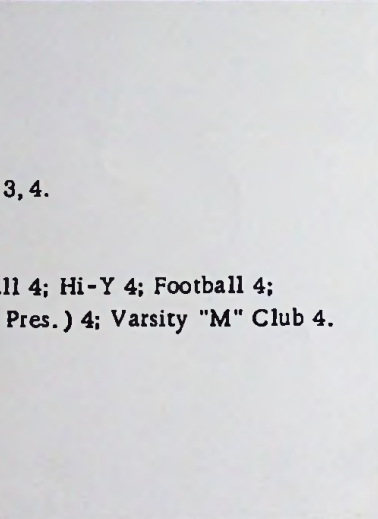
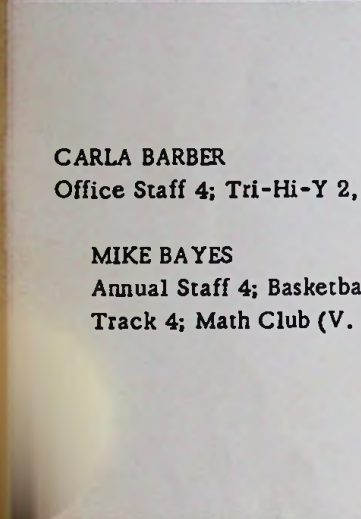
Gwen McKenzie, Karen Hay, Ted Birkhimer, and Rita Coriell enjoyed building a grass hut to honor Her Majesty Elaine Gahm at the Football Homecoming dance.





ANGELA AEH  
Business Club 4; Newspaper Staff 4; Miss Falcon 4.

TERRY ALLARD



CARLA BARBER  
Office Staff 4; Tri-Hi-Y 2, 3, 4.

MIKE BAYES  
Annual Staff 4; Basketball 4; Hi-Y 4; Football 4;  
Track 4; Math Club (V. Pres.) 4; Varsity "M" Club 4.



DONNA BENDER

DEAN BENNETT



DONNA BIRCHEM  
Glee Club 3, 4; Home Ec. Club 2; Office Staff 3.

TED BIRKHIMER  
Football 1; Science Club 1; Science Fair 1; Class  
President 1; Eastmoor High School (Columbus) 2, 3;  
Future Teachers (President) 4; Hi-Y 4; Scholarship  
Team 4; Newspaper Staff 4; Business Club 4; Track  
1, 4.





**HAROLD BLAINE**

**LARRY BLEVINS**

Baseball 2; Basketball 2; Football 3, 4; Track 4; Future Teachers 4; Varsity "M" Club 3, 4; Spanish Club, 3.



**NANCY BRADFORD**

G. A. A. 1, 2, 3, (Secretary) 4; Honor Society 3, (Secretary) 4; Class Reporter 1; Class Treasurer 2; G. A. A. 1, 2, 3, (Secretary) 4; Library Club (Vice-President) 3; (President) 4; Glee Club 1, 2, 3, 4; Class Play 3, 4; French Club 3, 4; Music Festival 1, 2, 3; Music Contest 3, 4; Newspaper Staff 1, 2; Senior Scholarship 4; Scholarship Team 4.

**JOHN BRAFFORD**

Newspaper Staff 3, 4; Business Club 3, (President) 4; Mixed Chorus 2, 3 (Vice-President); Bible Club 1; Music Contest 4.

**MARY BROOM**

French Club 3, 4; G. A. A. 1.

**LONNIE BROWN**

Baseball 1, 2, 3, 4; Basketball 1, 2, 3 (Co-Captain) 4; Honor Society 3, 4; Class Secretary 1, Class Reporter 3; Class Vice-President 4; Basketball S. O. C. 4; Basketball Homecoming Escort 4.



**WAYNE BRUMFIELD**

Baseball 1, 2, 3, 4; Basketball 1, 4; Varsity "M" Club 2, 3, 4; Track 4; Football 4; Future Teachers 4; Spanish Club 3; Student Council 2.

**DEBBIE CHANDLER**

Glee Club 1, (treasurer) 4; Music Festival 1, 4; Football Homecoming Attendant 1; Basketball Homecoming Queen 4; Cheerleader 2, 3, (captain) 4; Latin Club 1, 2; Newspaper Staff 4; Office Staff 4.





**LYNDA CHANDLER**  
 Music Festival 1, 3; Bible Club 1 (treasurer) 2; Girls' Ensemble 4; Basketball Homecoming Attendant 2; Football Homecoming Attendant 4; Cheerleader 2, 3, (captain) 4; Glee Club 1, (Vice-President) 4; Class Play 4; Office Staff 4; Tri-Hi-Y 3, (Chaplain) 4; Library Club 2, (Treasurer) 3, (Secretary) 4; Youth in Government 3; Class Treasurer 1; Vice President 3; National Honor Society 3 (Chaplain) 4; Home Ec. Club (reporter) 3; Senior Scholarship 4; Scholarship Team 2; Future Teachers 4; G. A. 1; Music Contest 4.

**SAM COLLINS**  
 Mixed Chorus 3; Intramural Sports 4; Music Festival 2

**GLEN COMPTON**  
 Football 4; Track 4.

**CLARA CONKEL**  
 Home Ec. Club 3.



**FRANK CONKEL**  
 Band 1, 2, 3; Baseball 1, 2, 4; Basketball 1, 2, 3; Football 1, 2, 3, 4; Intramural Sports 1, 2, 3, 4; Hi-Y Club 4; Varsity "M" Club 3, 4.

**DAVID CONKLIN**  
 Future Teachers 4; Spanish Club 3; Math Club 4; Scholarship Team 1, 2, 3, 4.

**JANICE CONKLIN**

**BUD CORIELL**  
 Intramural Sports 1, 2; Library Staff 3; Senior Scholarship 4, Scholarship 2, 3, 4; Honor Society 4.





**RITA CORIELL**

Band 1, 2, 3, 4; Glee Club 3; Class play 3, 4; Future Teachers 4; Music Festival 1, 2, 3, 4; G. A. A. 1, 2, (Treasurer) 3, 4; Honor Society 3, 4; Newspaper Staff 1, 3, 4; Class President 3, 4; President Honor Society 4; Pep Band 1, 2, 3, 4; Scholarship Team 1, 2, 3, 4; Senior Scholarship 4; Science Club 1, 2, 3, 4; Spanish Club 3.



**CHARLES CRABTREE**

Basketball 2, 3, 4; Track 2, 3, 4; Intramural Sports 1, 2, 3, 4; Student Council 2; Football Statistician 4.



**FAYE CRABTREE**

Office Staff 4.

**JEAN CREECH**

Bible Club 4; Glee Club 1; Class Play 4; Future Teachers 4; Mixed Chorus 4; Music Festival 1, 4; G. A. A. 1, 2, 3, 4; Spanish Club (president) 3; Scholarship Team 1, 2, 3, 4.

**LINDA CREEKBAUM**

Annual Staff (Co-Editor) 4; Class President 2; Girls' Ensemble 4; Music Contest 4; Office Staff 1, 2; Student Council 2; G. A. A. 2, 3; Class Play 3, 4; Library Staff 3, 4; Tri-Hi-Y 4; Glee Club 4; Mixed Chorus 3.



**JOHN DANIELS**



**ELIZA DAVIS**

Glee Club 2, 3, 4; Home Ec. Club 2.

**FRIEDA DAVIS**

Glee Club 4; Mixed Chorus 3; Music Festival 4; Newspaper Staff 4; Business Club 3, 4; Office Staff 4.





PAUL DINGUS

JANET DIXON  
Glee Club 3, 4.

KATHY DUDUIT  
Glee Club 2; Mixed Chorus 3; Music Festival 2, 3.

CHARLOTTE DUNHAM  
Glenwood High School 3; Home Ec. Club 4.



BOB DUPLAIN  
National Honor Society 3, (Vice-President) 4; Student Council 2, (Treasurer) 3; French Club 3 (President) 4; Annual Staff 4; Track 1, 2; Class Play 3, 4; Intramural Sports 1, 2, 3; Math Club 4; Scholarship Team 1, 2, 3; Senior Scholarship 4; Varsity "M" Club 3.

LINDA ESTEM  
National Honor Society (reporter) 4; Tri-Hi-Y 2, 3, (Vice-President) 4; Future Teachers (Secretary) 4; G. A. A. 1, 2, 3, (Treasurer) 4; Annual Staff (Business Manager) 4; Band 1; Glee Club 3; Class Play 4; Library Staff 4; Music Festival 3; Basketball Homecoming Attendant 3; Spanish Club (Secretary) 3; Newspaper Staff 4; Office Staff 4; Library Club 4.

ALLAN EVANS  
Track 3.

JANET FANNIN  
Band 1, 2, 3, 4; Library Staff 3; Music Festival 1, 2, 3, 4; G. A. A. 2, 3, 4; Music Contest 3, 4; Spanish Club (Vice-President) 3; Pep Band 3, 4; Scholarship Team 2.





**MARY FYFFE**

Home Ec. Club 1, 2; Business Club 4; Office Staff 4.



**ELAINE GAHM**

Newspaper Staff 4; Office Staff 4; Glee Club 1, 2, 4; Mixed Chorus 3; Home Ec. Club 1; Music Festival 1, 2, 3, 4; G. A. A. 1, 2, 3, 4; Football Homecoming Queen 4; Music Contest 4; Tri-Hi-Y 3, 4.



**LENNA GAMMON**

Glee Club 2, 3, 4; Music Festival 3.

**MIKE GAMPP**

Annual Staff 4; Class Play 3, 4; Library Staff 3, 4; Science Club 3 (Vice-President) 4; Hi-Y 4; Science Fair 3, 4; Math Club 4; All-Ohio Science Scholar 3; Intramural Sports 1, 2; National Honor Society 4; Senior Scholarship, Scholarship Team 2.

**PAM GOLDEN**

Future Teachers 4; Newspaper Staff 4; G. A. A. 4; Business Club 4; Office Staff 4; White Plains, New York, High School 1, 2, 3.



**PAT GOLDEN**

Class Play 4; Future Teachers 4; G. A. A. 4; Newspaper Staff 4; Office Staff 4; Business Staff 4; White Plains, New York, High School 1, 2, 3.

**BARBARA GREEN**

Glee Club 4; Music Festival 4; Business Club 4.



**MARTHA HAGERMAN**

Class Secretary 4; Glee Club 1, 2, 3 (Treasurer) 4 (Secretary); G. A. A. 1, 2, (point recorder) 3, 4; Class Play 4; Home Ec. 1, 2; Library Staff 2, 3, 4; Music Festival 1, 2, 3, 4; Music Contest 3, 4; Newspaper Staff 4; Business Club 4; Girls' Ensemble 2, 3, 4; Snowflake Queen 4; Tri-Hi-Y 4.





HAROLD HAMMOND

National Honor Society 4; Scholarship Team 4; Spanish Club 3; Math Club 4; Senior Scholarship 4.

MELODIE HAVENS

Future Teachers 4; National Honor Society 4; Office Staff 4; Business Club 3 (Treasurer) 4; Newspaper Staff 4.

SHARON HAWKINS

Annual Staff 4; Band 1, 2, 3, 4; Class Play 3; Future Teachers (Treasurer) 4; Home Ec. Club 1, (Historian) 2; G. A. A. 1, 2, (Secretary) 3, (President) 4; Music Contest 3; Newspaper Staff 4; Business Club 4; Office Staff 4; Pep Band 3; Band Council 3, 4; National Honor Society 4, Typing Contest, Scioto County, Second Place 4.

KAREN HAY

Band 1, 2, 3; Glee Club 2; Home Ec. Club 3; Music Festival 2; G. A. A. 1, 2, 3, 4; Music Contest 3; Business Club 4; Pep Band 2, 3.



PAUL HINZE

Intramural Sports 4; Spanish Club 3; Math Club 4.

RITA HOLBROOK

Band 1, 2, 3, 4.

CAROLYN JACKSON

DALE JENKINS

Football 1, 2.





ZANE JOHNSON

Track 1; Science Club 1, 2, 3, (President) 4; Scholarship Team 3; Senior Scholarship 4; Science Fair 1, 2, 3, 4; Buckeye Boys State 3; All Ohio Science Scholar 3; Navy Science Cruise 3; Math Club 4; Student Council 3; Hiram College Science Course 3.



GEORGE KEETON

Baseball 1; Basketball 1, 2, 3; Varsity "M" Club 3, 4.



KENT KNORE

Science Club 1, 2, 3, 4; Science Fair 1, 2, 3.

RAMONA LAMBERT

Library Club 2, 3, (Treasurer) 4; French Club 3; Class Play 3; Glee Club 4; Home Ec. Club 1, 2.

EDISON LANEY

BARBARA LOCKHART

Bible Club 1, 2, 3, (Treasurer) 4; Glee Club 2, 3, 4; Music Festival 3, 4; Tri-Hi-Y 2, 3, 4.



JAMES NEAL LOCKHART

MIKE MCGAREY





**GWEN MCKENZIE**

Annual Staff (Co-Editor) 4; Band 1, 2, 3, 4; Class Play - 4; Music Festival 4; G. A. A. 1, 2, 3, 4; Music Contest - Newspaper Staff 4; Office Staff 4; Tri-Hi-Y 2, 3, (Treasurer) 4.

**PAUL McLAUGHLIN**

Band 1, 2, 3, 4; Class Play 3, 4; Future Teachers 4; Mixed Chorus 3, 4; French Club 3, 4; Music Festival 1, 3, 4; Music Contest 3, 4; National Honor Society - Pep Band 4; Scholarship Team 1, 2, 3; Senior Scholarship 4.

**DAVID MARTIN**

Football 3, 4; Varsity "M" Club 4.

**LUANA MILLER**

Bible Club 1, 2; Glee Club 2, 3, 4; Home Ec. Club 1, 2, 3, 4; Music Festival 2, 3; G. A. A. 1, 2, 3.



**CATHY MOWERY**

Future Teachers 4; Newspaper Staff 4; Snow Queen Attendant 4; Tri-Hi-Y 4; Business Club 3, 4; Office Staff 4.

**RALPH MULTER**

**DAVID NEWSOME**

**CAROLE PACE**

Home Ec. Club 1, 2; G. A. A. 1, 2, 3; Newspaper Staff 4; Business Club 3, 4; Office Staff 3, 4.





**RONNIE PARKER**

Band 1; Football 3, 4; National Honor Society 3, 4; All Ohio Science Scholar 3; Scholarship Team 2, 3, 4; Senior Scholarship 4; Varsity "M" Club 3, 4; Math Club 4.



**PATTI PATTERSON**

National Honor Society 3, (Treasurer) 4; Football Homecoming Attendant 3; Basketball Homecoming Attendant 4; Music Contest 3, 4; G. A. A. 3, 4; Spanish Club 3; Office Staff 4; Band 1, 2, 3, 4; Band Council 3, 4; Annual Staff 4.



**CAROLYN PAXSON**

Glee Club 2, 3, 4; Music Festival 4.

**SUE PIGUET**

Business Club 4.

**JANIE PITTS**

**DONITA POLLARD**

Glee Club (President) 4; Music Festival 4; Girls' Ensemble 4; Business Club 4.



**JOANNA POWELL**

Glee Club 2, 3, 4; Music Festival 4; Business Club 4.

**KENNY POWELL**

Band 1, 2, 3; Track 1, 4; Mixed Chorus 3, 4; Music Festival 3, 4; Music Contest 3; Pep Band 1, 2, 3.







**BECKY PYLES**  
Glee Club 3.

**ELAINE RANKIN**  
Mixed Chorus (President) 4; G. A. A. 1, 2, 3, (Point recorder) 4; Office Staff 1, 2, 4; Bible Club 1, 3, 4; Glee Club 2, 3; Mixed Chorus 4; Future Teachers 4; Music Festival 2, 3, 4.

**GLENN RASE**  
Baseball 1, 2, 3; Intramural Sports 2, 3.

**DELORES REED**



**JIM RIDEOUT**  
Math Club (President) 4; Scholarship Team 3; Science Club 1, Basketball Manager 3.

**BONNIE RISNER**  
Newspaper Staff 4; Business Club 3, (Vice-President) 4; Office Staff 3, 4; National Honor Society 4.

**LARRY RISNER**

**WANDA ROE**  
Office Staff 4; G. A. A. 1, 2, 3; Football Homecoming Attendant 2; Home Ec. Club 1, 2, (reporter) 3.





PAT ROSS  
Glee Club 1, 2, 3, 4; Girls' Ensemble 4.

FRED RUBY



MARTHA RUTH  
Glee Club 3; Mixed Chorus 4; Music Festival 4; Mixed Chorus 4.

BOB SCHMIDT  
Football 1, 2, 3, 4; Track 1, 2, 3, 4; Class Play 4; Future Teachers (Parliamentarian) 4; Spanish Club 3; Hi-Y King 4; Hi-Y 4; Varsity "M" Club 2, 3, 4; Student Council 2; Football Homecoming Escort 4.

PAM SCHROEDER  
Library Staff 3, 4; Band Council 4; G. A. A. 2, 3, 4; Majorette 2, 3, 4.

AGNESS SCOTT



BARBARA SEIBERT  
Business Club 3, 4; Newspaper Staff 4.

SANDI SHORT  
Library Staff 3, 4; Business Club 3, 4.





**SHARON SHUTER**

Glee Club 3; Class Play 3; Mixed Chorus 4; Music Festival 3, 4; Music Contest 4; Tri-Hi-Y 2, 3, (President) 4; Snow Princess 4; National Honor Society 4; Girls' Ensemble 4; G. A. A. 1, 2, 3; Honor Society 4.

**BARBARA SISLER**

Band 1, 2, 3, 4; G. A. A. 1, 2.

**BONNIE SMITH**

Glee Club 2; Newspaper Staff 4; Business Club 4.

**TERRY SPARKS**

South Webster High School 1, 2, 3; Baseball 4; Business Club 4; Scholarship Team 4.



**BRIAN STANLEY**

**JOE STAPLETON**

Band 2, 3, 4; Drum Major 2, 3, 4; Band Council 4; Business Club 3.

**MIKE SWORDS**

**JOYCE THOMPSON**

Glee Club 2, 3, 4; Future Teachers 4; Home Ec. Club 1, 2, 3; Music Festival 4; Newspaper Staff 4; Business Club 4; Office Staff.





**GLEND A TURNER**  
Glee Club 4.

**PAUL WARREN**  
Football 4; Intramural Sports 2; Varsity "M" Club 4.



**JIM WHITE**  
Basketball 1, 4; Varsity "M" Club 3, 4; Football 3, 4;  
Track 3, 4; Spanish Club 3.

**MARVIN WIEHLE**  
Class Play 3, 4; Intramural Sports 1, 2.

**BARBARA WILLIAMS**  
G. A. A. 1, 2; Newspaper Staff 4; Business Club 4; Office  
Staff 4; Prince of Peace 3; Scholarship Team 3.

**REX WILLIAMSON**  
Band 1, 2, 3, 4; Intramural Sports 2; Music Festival 4;  
Music Contest 3, 4; Pep Band 2, 3, 4; Science Club 1,  
4; Science Fair 1, 4; Hi-Y 2; Math Club 4.



**DALE WILLIS**  
Baseball 1, 2, 3, 4; Varsity "M" Club 1, 2, (Vice-Presi-  
dent) 3, (President) 4; Basketball 1, 2, 3, (Captain) 4;  
Football 1, 2, 3, (Captain) 4; Intramural Sports 1, 2, 3, 4;  
Football Homecoming Escort 4; Basketball Homecoming  
Escort 4; Mr. Falcon 4; Football S. O. C. Honorable  
Mention 3; S. O. C. Football All Star 4.

**BARBARA WRIGHT**  
Glee Club 2, 3; Newspaper Staff 4; Office Staff 2;  
Business Club 4.





MIKE YOUNG

Football 3, 4; Intramural sports 1, 2, 3; Hi-Y 4; Var=  
"M" Club 4; Math Club 4; Spanish Club 3.

PATRICIA LAWHEAD

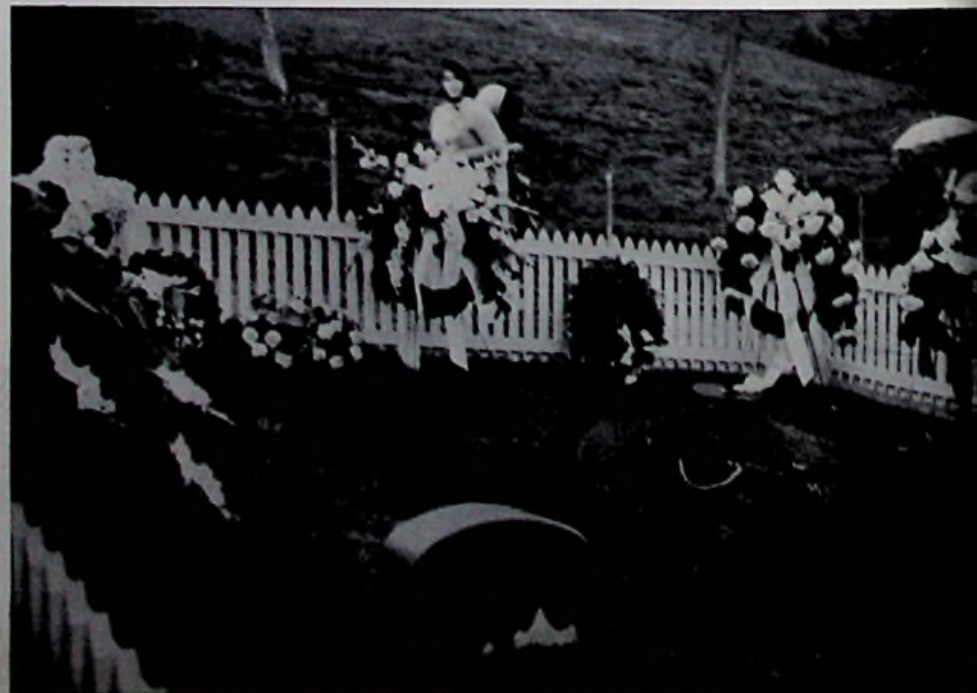


The floral tribute which the Class of '65 presented at President Kennedy's grave.

The members of the class watched in humble silence while class officers, Rita, Pati, and Martha presented a floral tribute from the Class of 1965 in memory of the late President.

These were certainly moments to remember...

The floral tribute which the class of 1965 presented is just left of the center.



#### MEMORABLE MOMENTS

A bus load of Seniors, chaperoned by Mrs. Steiff, Mr. Gampp, Miss Jordan, and Mr. Davis, "got off" Wednesday evening April 14, headed for Washington D.C. and Williamsburg, Virginia. All of us who went were impressed by the stately elegance of the Nation's Capital (tired as our chaperones made us), but the most poignant moment of all was the grave site of our late President John Kennedy which we visited on Thursday morning accompanied by a cold rain.



# Senior Class Play



ROW 1: Bob Duplain, Bob Schmidt, Mike Gampp, Jim White, Paul McLaughlin.

ROW 2: Pat Golden, Martha Hagerman, Jean Creech, Lynda Chandler, Linda Creekbaum, Rita Coriell, Gwen McKenzie, Mrs. Pelfrey, Linda Eshern.

Not pictured: Marvln Wiehle, John Brafford, Nancy Bradford.





# Juniors . . .



OFFICERS: Donna Hutchinson, Treasurer; Donna Wheeler, Vice President; Gary Wachenschwanz, President; Harold White, Secretary.



ADVISERS: Mrs. McCain and Mrs. Pelfrey.

## NOT PICTURED

Ginger Aldridge	Kenny Reed
Phyllis Fisher	Greg Reynolds
Glen Mitchell	Don Ruggles
Rita Newsome	Marie Sloan
Sam Patrick	Pamela Spradl
Donna Pitts	Richard Smith



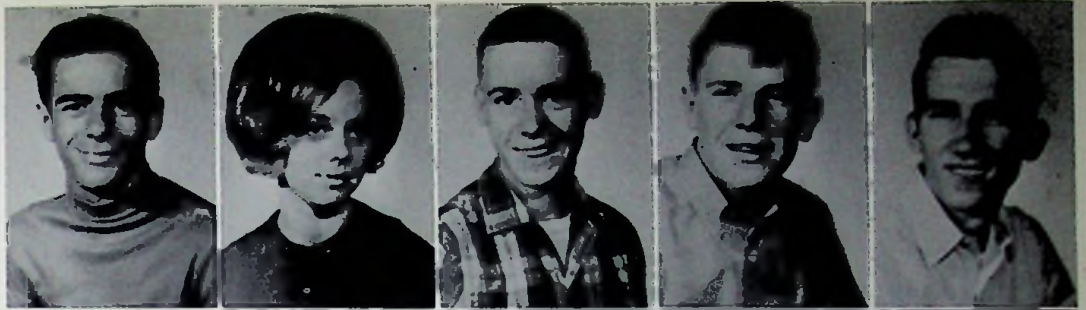
Greg Allen  
Bob Arnett  
Chester Barber  
Diane Bender



Faye Bender  
Dennis Bennett  
Bob Blackburn  
Darrell Bragdon  
Rawland Brame



Ronnie Brown  
 Judy Caudill  
 Dusty Clifford  
 Gordon Collins  
 James Comer



Ronald Compton  
 Brenda Conkel  
 Ray Conkel  
 Haroldean Coons  
 John Coriell



Ralph Cornwell  
 Richard Culp  
 Mildred Cambridge  
 Joy Doemer  
 Joan Diller



Danny Dingus  
 Susie Flanagan  
 Janie Gahm  
 Gary Gaines  
 Judy Gammon



Dale Gampp  
 Jim Garrett  
 Charles Gearheart  
 Bob Gilbert  
 Joy Gilbert



Eddie Gilliland  
 Cheryl Hall  
 Carolyn Hickman  
 Donna Hutchinson  
 Mary Hutchinson





Donna Jenkins  
 Ida Jenkins  
 Mary Jordan  
 Ellen Kallner  
 Ron Kelley



Gordon Knore  
 Ken Knore  
 Patty Lambert  
 Betty Locher  
 Jack Lore



Jim Lore  
 Linda Lute  
 Phillip Lykins  
 Don Lyons  
 Peggy Massey

Roxanna McCoy  
 Ray Messer  
 Wayne Middaugh  
 Judy Miller  
 Toni Miller



Ron Niner  
 Ralph Noel  
 Ron Pinson  
 Shannon Potters  
 Brenda Pratt



Phillip Purtee  
 Sharon Ratliff  
 Donna Reed  
 Ronita Rice  
 Carole Roe





Sharon Roffe  
 Terry Ross  
 Paul Royster  
 Linda Schisler  
 Theda Schomburg



Denny Seibert  
 Diane Shumway  
 Renold Skeens  
 Don Stone  
 Kenneth Slusher



Gary Smith  
 Vernon Smith  
 Kenny Snyder  
 Jonnie Sparks  
 Larry Sparks



Bill Spray  
 Ted Stanley  
 Joe Stockham  
 Robert Stone  
 Jack Strickland



Mary Sudbrook  
 Kathy Thompson  
 Connie Viars  
 Gary Wachenschwanz  
 Jim Walter



Linda Wessel  
 Donna Wheeler  
 Harold White  
 Mildred Williams  
 Sandy Williamson





# Jr. Class Play . . .



ROW 1: Linda Schisler, Pam Spradlin, Diane Bender, Mrs. Pelfrey, Mr. Gampp, Ellen Kallner, Faye Bender, Ronita Rice.  
ROW 2: Diane Shumway, Judy Miller, Peggy Massey, Ron Pinson, Ronnie Niner, Ken Knore, Jim Garrett, Ron Kelly, Robie Stone.

Scenes extracted from "The Katz' Whiskers"...









# Sophomores . . .



OFFICERS: Sharon Pratt, Secretary; Joyce Bradford, Vice President; Fred Duplain, President; Rita DeAtley, Treasurer.



ADVISER: Mr. Floyd

## NOT PICTURED

Nancy Dodridge  
Charley Dunham  
Bill Fannin  
Sandra James

Eric Johnson  
Russell Kelley  
Linda Maynard  
Janie Parker

Roy Pierce



Rita Adams  
Connie Barb  
Thelma Barber



Steve Barker  
Walter Barton  
Amber Bender  
David Bennett



Linda Bennett  
Ronnie Bennett  
John Berry  
Connie Blackburn  
Wayne Blackburn



Debbie Blevins  
 Donna Bloomfield  
 Joyce Bradford  
 Carolyn Brame  
 Brenda Brisker



Lillie Brisker  
 Tom Burchett  
 Patty Carter  
 Eddie Casteel  
 Mike Caudill



Carolyn Colgrove  
 Norman Collins  
 Glenn Conkin  
 Mary Cordle  
 Diana Coriell



Don Coriell  
 Jessie Coriell  
 Phyllis Cornwell  
 Donna Crabtree  
 Linda Cumbridge



Nancy Crabtree  
 Steve Crabtree  
 Mike Crawford  
 Ben Davis  
 Rita DeAtley



Jim Dodridge  
 Mike Donahoe  
 Becky Dudit  
 Fred Duplain  
 Tom Ellsesser





David Fell  
Rick Ferrell  
John Fisher  
Mike Flaig  
Mike Frazee



Diane Graff  
Connie Gulley  
Jim Haney  
Rita Holbrook  
Juanita Howell



Nancy Johnson  
Elyne Justice  
Virginia Justice  
Wanda Kailner  
Jack Kleinke

Joyce Knore  
Jack Langdon  
Phyllis Lewis  
Terry Looft  
Diane Lykins



Homer Magnet  
Robert Marcum  
Mike McGraw  
Terry McGraw  
Sara McLaughlin



Steve Miller  
Jean Moore  
Randy Murphy  
John Pace  
Bob Patterson





Mary Jo Pflieger  
 Bob Piatt  
 Bob Pigg  
 Dollie Pitts  
 Linda Poole



Sharon Pratt  
 Jeanne Pyles  
 David Rankin  
 Eva Rase  
 Angela Ross



Don Buggles  
 Tim Bante  
 Frances Scott  
 Diane Shoemaker  
 Wayne Shoemaker



Gary Shumway  
 Larry Shumway  
 Sue Shumway  
 Von Smith  
 Kay Spriggs



Sharon Sudbrook  
 Regina Turner  
 Connie Warner  
 Sandie Wheeler  
 Rocky Williams



Carl Williamson  
 Bonnie Wright  
 Vicki Yeley





# Freshmen . . .



OFFICERS: Robert Shirey, Treasurer; Rodney Niner, Secretary; Cheryl Turner, President; Phillip Stanley, Vice President.



ADVISERS: Mr. Wooddell and Mr. Davis



Herbie Allen  
Patti Barb  
Dollie Bellomy  
Doug Bishop  
Ronnie Blackburn

## NOT PICTURED

Pamela Bennett	Lawana James
Barbara Broom	Larry Justice
Dennis Broom	Eddy Muck
Anna Craft	Tim Schroeder
Paul Craft	Ernie Smith
Donald Hardin	Vernon Smith
Harry Stewart	



Roger Blackburn  
 Sheila Bloomfield  
 Serena Bonzo  
 Cynthia Brame  
 Fred Brisker



Paulette Caudill  
 Gene Cole  
 Vicki Coles  
 Patty Collins  
 Pauline Comer



Clarence Conkel  
 Mark Conkel  
 Barbara Conklin  
 Patty Crager  
 Jim Crawford



Rick Daniels  
 Lloyd Dingus  
 Diane Dummitt  
 David Dunnagan  
 Larry Fell



Debby Fields  
 Pam Fisher  
 Kathy Fugitt  
 Judy Gahn  
 Esther Gaines



Pat Gearheart  
 Monna Jo Graff  
 Ron Green  
 Maysel Hammond  
 Danny Harris





Lanny Harris  
 Alice Hickman  
 Brenda Hill  
 Jim Hobson  
 Harold Hutchinson



Phyllis Jarrell  
 Fayette Jesse  
 Linda Keller  
 Earnest Lambert  
 Reva Lancaster



Jim Lewis  
 Judy Lykins  
 Sharon Lykins  
 Glenn McLaughlin  
 Brenda Mason

Bill Melvin  
 Albert Miller  
 Ellen Miller  
 Donald Muck  
 Carl Mullins



Connie Murnane  
 Pat Murphy  
 Connie Newsome  
 Linda Niner  
 Rodney Niner



Tim Piguet  
 Jim Potters  
 Myla Powell  
 Joe Reynolds  
 Sherlyene Rice





John Risner  
Leonard Risner  
Joe Scott  
Randy Scott  
Ronnie Shaffer



Robert Shirey  
Eddie Sims  
Tom Sisler  
Gruder Smith  
Norene Smith



Phillip Stanley  
Margaret Strickland  
Steve Swords  
Jim Thompson  
Birdie Toland



George Traylor  
Robert Trowbridge  
Cheryl Turner  
Mike Vallandingham  
Steve Ward



Emily Webster  
Steve Wheeler  
Steve White  
Mary Will  
Judy Williams



Larry Williamson  
Harlan Willis  
Melba Willis  
Pam Wright  
Debbie Yates



# Eighth Grade . . .



ROW 1: William Sparks, Cecil Williams, David Shonkwiler, David Smith, Joe Smith, Charles Toland. ROW 2: Charles Turner, Beverly Scott, Linda Smith, Patty Stiltner, Carolyn Young, Patty Thompson, Mrs. Coriell. ROW 3: Rebecca Stout, Stephanie Sexton, Bob Sparks, Orville Traylor, Mike Williams, Jim White, Sandra Toland, Sharon Strickland. ROW 4: Joyce Skeens, Anita Williams, Beverly Wooten, Andrea Salsbury, Peggy Yeley, Tim Spradlin, Billy Sparks, Tim Schroeder.



ROW 1: Daryl Phipps, Randy Miller, Steve Purdy, Roger O'Dell, Dean McLaughlin, Gregory Muck, David Lute. ROW 2: Myron McRoberts, Steve Looft, Bobby Ruby, Herbie Ruggles, Peggy Neu, Valerie Nelson, Jonda Rice, Mr. Miller. ROW 3: Nancy Lindeman, LaVonda Nickell, Paul Rice, Cheryl Powell, Karen Reese, Barbara Powell, Diane Pace. ROW 4: Judy Mark, Betsy Parker, Joyce Roffe, George Like, Steve Melvin, Galen Powell, Vicki Raffel, Ruth Rase.



# . . . Eighth Grade



ROW 1: Steve Fannin, Marilyn Grose, John Holbrook, Rocky Jordan, Gary Daniels, Mike Kingery. ROW 2: Gerald DeAtley, Danny Johnson, Ben Davis, Sammy Dummitt, Beverly Kelley, Brenda Hutchinson, Janet Dever, Mr. Smith. ROW 3: Terry Dever, Vickie Kingery, Phyllis Harrison, Annette Dunnagan, Robert Keaton, Philip Gammon, Larry Fannin. ROW 4: Linda Gahm, Valorie Duplain, Debby Keller, Steven Gampp, Pat Kyle, Duane Fluty, Shirley Davis, Ruth Davis.



ROW 1: Nancy Bragdon, Karen Chaney, Stanley Bender, Bobby Arthur, Shirley Blackburn, Glenda Bishop, Karen Blackburn. ROW 2: Richard Bender, Janet Barber, Eddie Carr, Tony Coburn, Tom Clifford, Corky Aeh, Kenny Coriell, Earl Bennett, Mr. Edwards. ROW 3: Jerry Bennett, John Bentley, Debbie Brisker, Doug Bishop, Garnet Boren, Alberta Collins, (?), Sandra Burchett. ROW 4: Susie Bennett, Sue Casteel, Shirley Davis, Ronnie Bennett, Henry Coriell, Melvin Barton, Donna Cordle.



## Seventh Grade . . .



ROW 1: Terry Horsley, Randy Fankall, Jim Hughes, Mike Hutchinson, Veda Deemer, Vicki Diller, Debra Hicks.  
 ROW 2: Opal Davis, Ray Eshem, John Hinze, Darryl Green, Diane Estep, Linda Dodridge, Virginia Gilmore, Mrs. Brown.  
 ROW 3: William Dodson, Billy Fell, Bobby Figlestahler, Jerry Ellsesser, Thelma Gaines, Linda Davis, Debbie Dyer.  
 ROW 4: Sandra Dummitt, Anne Hayes, Carol Flanagan, Henrietta Dingus, Donald Jenkins, Bill Fields.



ROW 1: John Strickland, Howard Shonkwiler, Thomas Williams, David Shockey, John Raby, Mark Scott, Brenda Piatt, Brian Miller.  
 ROW 2: Sam Slusher, David Williams, Deborah Kleinke, Charles Shaffer, Keith Kelley, Tim Wright, George Sullivan, Kenneth Lauderback.  
 ROW 3: Calvin Seibert, Peggy Sullivan, John Young, Randy White, Sharon Snyder, Thomas Stockham, Donald Spriggs, Mr. Canter.  
 ROW 4: Mary Shirey, Carl Whitt, Melvin Turner, June Purtee, Donald Spriggs, Richard Trowbridge, Eunice Smith.



# . . . Seventh Grade



ROW 1: Dicky Robst, James Bishop, Charles Carrington, Gene Angle, Peggy Barb, Rosalee Curtis, Billy Creekbaum, Alan Brisher. ROW 2: Stanley Conklin, Gary Allen, Deatra Charles, Timothy Allen, Dewey Cordle, Mike Burns, Margaret Blackburn, Kathy Crawford, Mr. Yeagle. ROW 3: Mike Crawford, Nancy Allen, Juanita Blackburn, Jane Bennett, Maryellen Creekbaum, Brenda Bender, Donna Coburn, Connie Coriell. ROW 4: Sheryl Brown, Rosemary Collins, Peggy Allen, William Conkel, Kenneth Allen, William Colley, David Colley, Paul Blair.



ROW 1: Ernest Ruggles, Ken Parsons, Doug McGinnis, Judy Ross, Gary Lewis, Gary Muck. ROW 2: Beverly Kennedy, Sharon Roush, Kathy Pollard, Betsy Miller, Sue McLaughlin, Diane Pitts, Mr. Shaffer. ROW 3: Kathy Rattliff, Faris Lowder, Nelson Krueger, Mark Lockhart, Kyle Knore, Donna Rogers, Janet Kallner, Debra Myers. ROW 4: Robert Pelphrey, Danny Muck, Susan Nelson, Sheryl Nourse, Terry Lykins, Ray Lockhart, Roy Mullins, Ernest McCoy.



## Jr. High Baseball



ROW 1: Roger O'Dell, Bob Sparks, Darryl Phipps, Mark Scott, Gene Angle, Dennie Shonkwiler, Mr. Lykins.  
ROW 2: Mike Kingery, Steve Fannin, Danny Johnson, Eddie Carr, Keith Pelphrey, Alan Brisker, Gary Copley,  
Bob Keeton. ROW 3: Bill Sparks, Duane Fluty, Dennis Nichols, Toni Coburn, Harold James, Steve Melvin,  
Wayne Brown.

## Jr. High Cheerleaders



Left to right:  
Brenda Hutchinson  
Debbie Keller  
Ruth Rase





# Junior High Basketball



ROW 1: Wayne Brown, Keith Pelphey, John Strickland, Brian Miller, Gene Angle, Darryl Phipps, Mark Scott.  
 ROW 2: Coach David Patrick, Randy White, Pat Kyle, Duane Fluty, George Like, Henry Coriell, Billy Sparks, Jerry Bennett, Manager, Dennis Shonkwiler.

# Junior High Football



ROW 1: Mike Kingery, Stanley Bender, Roger O'Dell, Bobby Sparks, Mark Scott, Gene Angle, Jimmy Hughes, Pat Kyle. ROW 2: Darryl Phipps, Bill Sparks, Tony Coburn, Eddie Carr, Don Sparks, Keith Pelphey, Mike Crawford, Gary Copley. ROW 3: Orville Traylor, Steve Melvin, Tim Spradlin, Duane Fluty, John Bently, Sam Slusher, Henry Coriell, Bob Schroeder, Corky Aeh. Coach: (Not pictured) Frank Merrill.



# Junior High Band and Athens Contest



ROW 1: Pam Kallner, Debbie Kleinke. ROW 2: Harlan Willis, Larry Williamson, Cecil Williams, Judy Lykins, Carol Flanagan, Sue Casteel, Cheryl Powell, Vickie Yeley, Emily Webster. ROW 3: Valerie Duplain, Sharon Strickland, Janet Dever, Debbie Keller, Ellen Miller, Becky Stout, Cathy Crawford, Donna Coburn, Joyce Roffe, Gary Copley. ROW 4: Peggy Neu, Andy Salsbury, Sheryl Nourse, Stephanie Sexton, Don Sparks, Nelson Krueger, Ken Coriell, Billy Sparks, George Like, Steve Gampp. ROW 5: Charles Turner, Karen Reese, Susie Bennett, Larry Fell, Bobby Arthur, John Young, Steve Looft, Corky Aeh, Steve Purdy, Terry Dever, Ken Lauderback, William Dodson. ROW 6: Dave Burchett, Marty Williams, Ronnie Bennett, John Hinze, Tim Spradlin.



ROW 1: Marty Williams, John Hinze, Carl Williamson, Gary Copley, William Dodson, Terry Dever, Cecil Williams. ROW 2: Nelson Krueger, Cathy Crawford, Valerie Duplain, Peggy Neu, Donna Coburn, Sheryl Nourse, John Young. ROW 3: Don Sparks, Ken Lauderback, Suzie Bennett, Janet Dever, Carol Flanagan, Debbie Keller. ROW 4: Sharon Strickland, Andrea Salsbury, Steve Gampp, George Like, Joyce Roffe, Emily Webster.



# Sports . . .





Football Homecoming Queen and Escort





# Her Majesty's Court



SENIOR PRINCESS Lynda Chandler and escort  
Lonnie Brown



JUNIOR PRINCESS Donna Hutchinson and escort  
Ronnie Parker



SOPHOMORE PRINCESS Joyce Knore and escort  
Bob Schmidt



FRESHMAN PRINCESS Pam Fisher and escort  
Frank Conkel



# Football Cheerleaders



SITTING: Captain Lynda Chandler, Rita Adams, Donna Hutchinson.  
STANDING: Donna Wheeler, Sandy Wheeler, Debbie Chandler.

## FIRST TEAM S.O.C. IN FOOTBALL



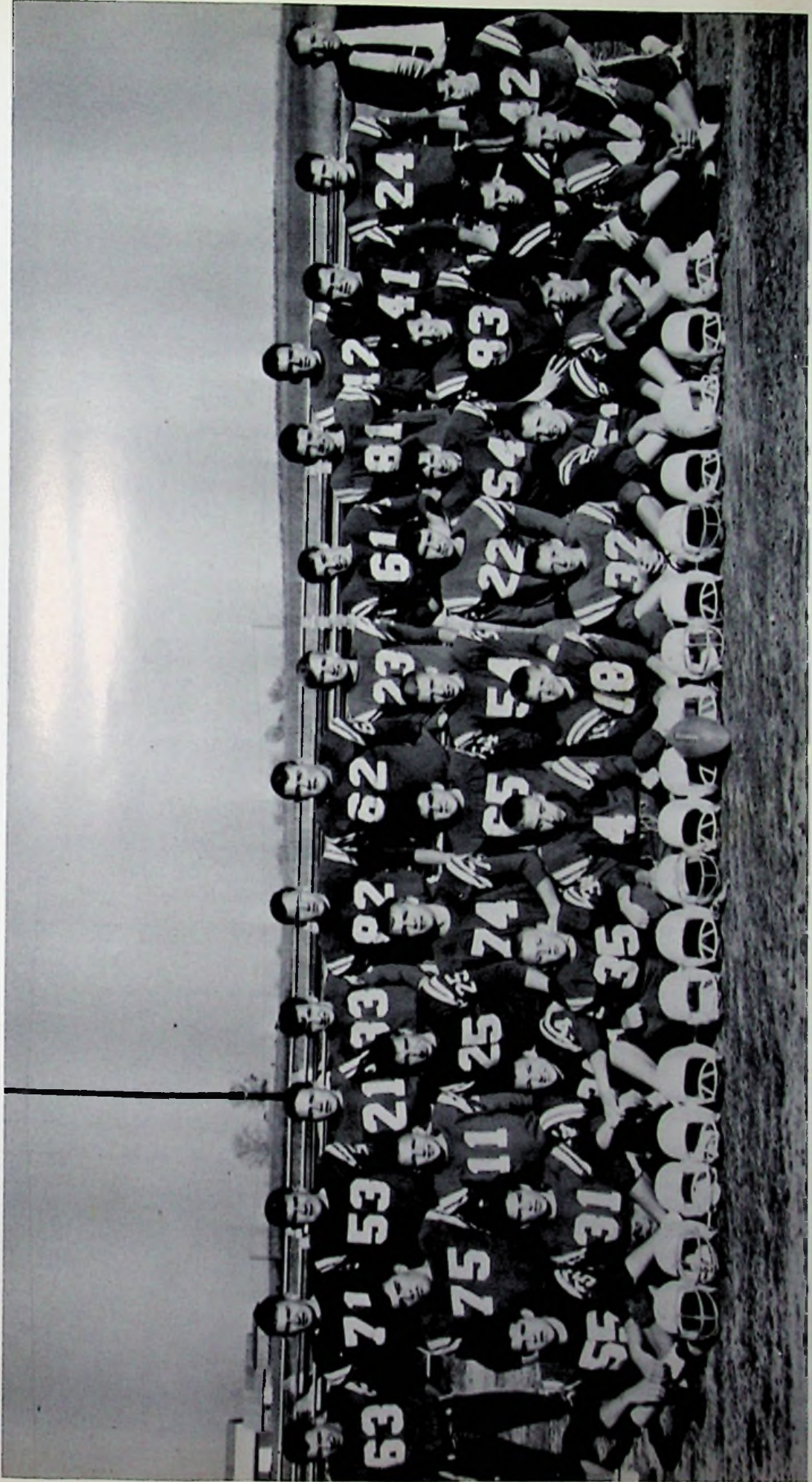
44 Dale Willis and Mike Flaig



"STRONGER THAN DIRT"



# Varsity Football



ROW 1: Fred Duplain, Bob Shirey, Jim Hobson, Tim Piguert, Mike Vallandingham, Randy Scott, Mark Conkel, Fred Brisker, Glen Conklin, Steve White. ROW 2: Mike Laig, John Berry, Larry Sparks, John Fisher, Paul Warren, Philip Stanley. Tim Santo, Don Slone, Ron Compton, Bill Spray, Ken Snyder. ROW 3: Mike Young, Jim White, Larry Blevins, Wayne Brumfield, Ron Parker, Bob Schmidt, Mike Bayes, Frank Conkel, Brian Stanley, Mike Swords, Lonnie Brown, Terry Ross, Ralph Cornwell, and Coach Caudill.





Ron Parker



Mike Swords



Lonnie Brown



Mike Young



Terry Ross



Mike Flaig



Jim White



Paul Warren



Mike Bayes





Don Stone



Frank Conkel



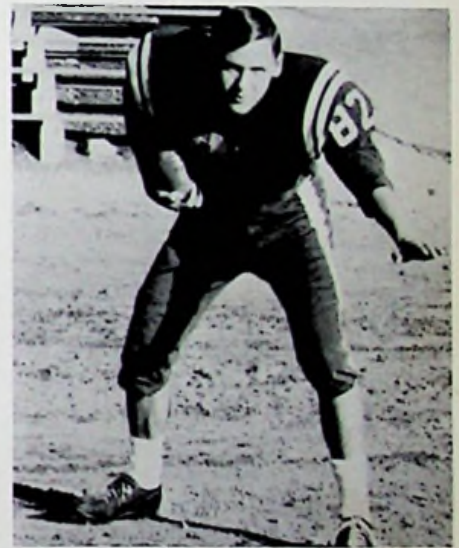
Kenny Snyder



Brian Stanley



Wayne Brumfield



Bob Schmidt



Ralph Cornwell



Larry Blevins



An eye on the ball!!



# Basketball Homecoming Queen and Escorts



Queen Debbie Chandler and escorts Dale Willis and Lonnie Brown



SENIOR: Attendant: Patti Patterson  
Escort: Jim White



JUNIOR: Attendant: Judy Miller  
Escort: Gary Wachenschwanz



SOPHOMORE: Attendant: Sandy Wheeler  
Escort: Tim Santo



FRESHMAN: Attendant: Judy Lykins  
Escort: Jim Hobson



# Varsity Basketball Cheerleaders



Debbie Chandler, Captain



Rita Adams



Lynda Chandler



Sandy Wheeler



Donna Hutchinson



Donna Wheeler



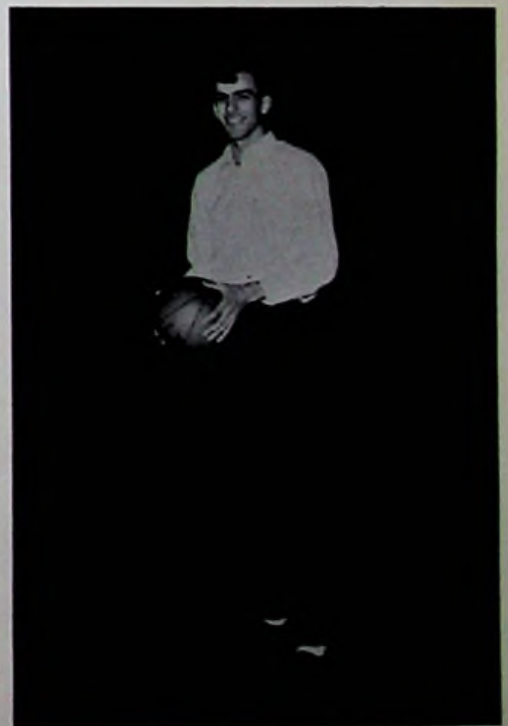
# Varsity Basketball



Ronnie Brown mgr., Dale Willis, Mike Flaig, Lonnie Brown, Rick Ferrell, Gary Wachenschwanz, Steve Crabtree, mgr. STANDING: Coach Gilbert, Wayne Brumfield, Skip Crabree, Jim White, Larry Sparks, John Coriell, Mike Bayes, Jack Strickland, Coach Caudill.

## COACH AND CO-CAPTAINS

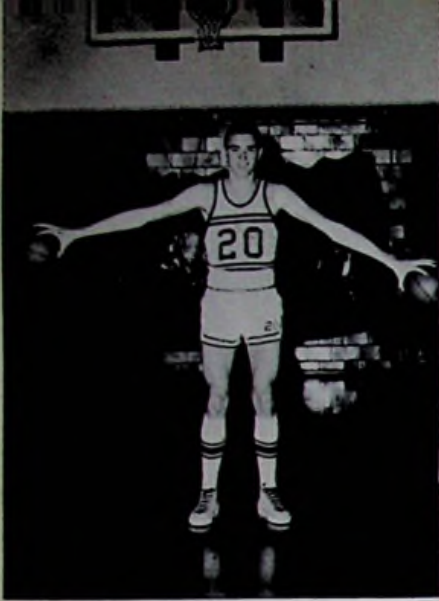
## S.O.C. ALL-STAR AND STATE HONORABLE MENTION



Dale Willis, Coach Gilbert and Lonnie Brown

Lonnie Brown





Rick Ferrell

Falcon

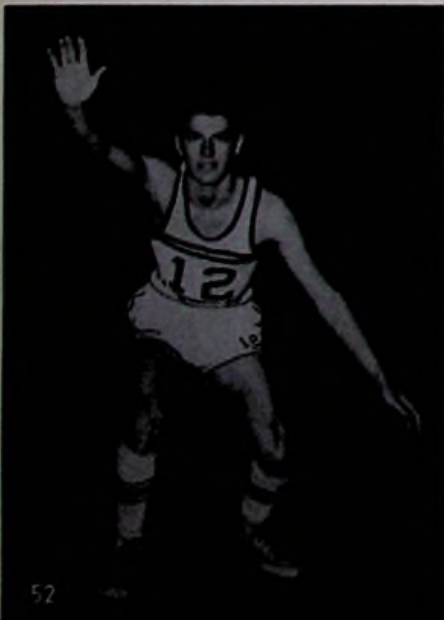


Lonnie Brown

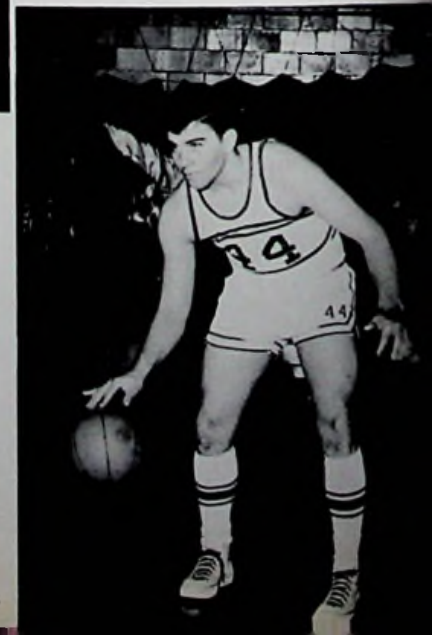


Dale Willis

Gary Wachenschwanz



Mike Flaig



Five



## Reserve Basketball Team



ROW 1: Wayne S. ... maker, Mgr., Coach Caudill, Fred Brisker, Mgr. ROW 2: Tim Piguert, Steve Miller, Jim Dodridge, Mike Velandingham, Jack Langdon, John Berry, Dave Rankin, Tim Santo, Larry Shumway, Steve White, Bob Piatt, Joe Reynolds, Jim Hobson, Randy Scott, Mark Conkel.

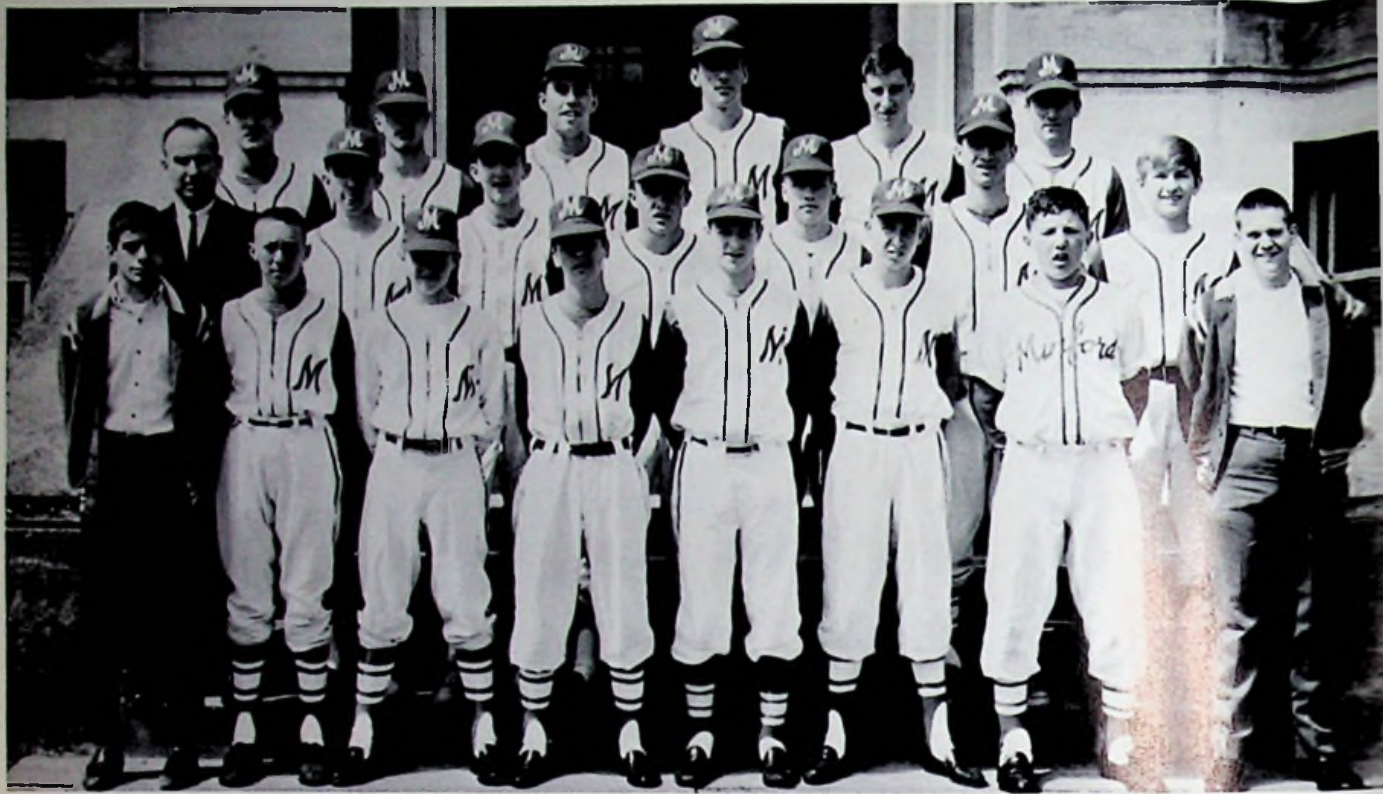
## Track Team



ROW 1: Bob Schmidt, Gary Shumway, Carl Williamson, Larry Williamson, Bob Patterson, Robie Stone, Ted Birkhimer. ROW 2: Coach Caudill, Bobby Gilbert, Kenny Powell, Don Coriell, Jim White, Kenny Snyder, Tim Santo, Larry Blevins, Mike Bayes. ROW 3: Tom Ellsesser, David Rankin, Skip Crabtree, Randy Murphy, John Fisher, Rick Ferrell, Ron Kelly, Bob Pigg, Ron Pinson.



# Varsity Baseball



ROW 1: Ronnie Brown, Mgr.; Mark Conkel, Randy Scott, Glen Conklin, Jim Hobson, Mike Vallandingham, Fred Brisker. ROW 2: Mr. Gilbert, Ronnie Niner, John Berry, Dale Willis, Mike Swords, Wayne Brumfield, Frank Conkel. ROW 3: Ralph Cornwell, Gary Wachenschwanz, Mike Flaig, Lonnie Brown, Larry Sparks, Terry Sparks.

## COACHES



Mr. Patrick, Mr. Edwards, Mr. Gilbert, Mr. Caudill.



# Baseball



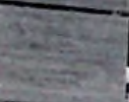
Lonnie Brown, Mike Flaig, Gary Wachenschwanz, Ralph Cornwell, Ronnie Niner.



Mike Swords, Terry Sparks, Dale Willis, Wayne Brumfield, Frank Conkel.











# ACTIVITIES





## Library Club

Martha Hagerman, Ramona Lambert, Nancy Bradford, Mrs. Gampp, Lynda Chandler, Theda Schomburg, Ronita Rice. ROW 2: Linda Eshem, Pam Schroeder, Shannon Potters, Lillie Brisker, Sandi Short, Cheryl Turner, Joy Gilbert, Sharon Roffe, Mike Gampp, Steve Crabtree, Donna Wheeler, Linda Creekbaum and Kathy Thompson.

## Bible Club



ROW 1: Ron Bennett, Steve Crabtree, Steve Miller, Barbara Lockhart, Jean Moore. ROW 2: Brian Miller, Jane Bennett, Cindy Brame, Donna Coburn, Cheryl Nourse, Mr. Miller. ROW 3: Elizabeth Miller, Betsy Miller, Larry Fell, Jerry Bennett, Toni Coburn. ROW 4: David Fell, Steve Gampp, Jean Creech, Elaine Rankin, Mylia Powell.



# Girls' Athletic Association



ROW 1: Sara McLaughlin, Sandi Wheeler, Linda Poole, Barbara Broom. ROW 2: Faye Bender, Donna Bloomfield, Linda Niner, Elaine Rankin; Point recorder, Nancy Bradford; Secretary, Sharon Hawkins; President, Linda Eshem; Treasurer, Linda Wessner; V. President, Mrs. Gampp, Pam Bennett, Donna Hutchinson, Judy Lykins. ROW 3: Sue Shumway, Elaine Gahn, Karen Hay, Angela Ross, Cathy Johnson, Mary Jo Pflieger, Donna Hutchinson, Joyce Knore, Eve Rase, Jean Moore, Rita DeAtley, Phyllis Cornwell, Pam Fisher. ROW 4: Martha Hagerman, Joan Diller, Linda Schisler, Diane Shumway, Patti Lawhead, Carolyn Jackson, Pam Schroeder, Emily Webster, Janet Fannin, Pam Golden, Regina Turner, Toni Miller. ROW 5: Pat Golden, Patti Patterson, Margaret Strickland, Diana Coriell, Gwen McKenzie, Peggy Massey, Joy Deemer, Joy Gilbert, Brenda Conkel, Becky Duduit, Joyce Bradford. ROW 6: Connie Blackburn, Theda Schomburg, Rita Coriell, Diane Bender, Paulette Caudill, Lillie Brisker, Mary Cordle and Jean Creech.

# Varsity 'M' Club



ROW 1: Coach Gilbert, Robie Stone, Larry Blevins, Tim Santo, Bob Schmidt, Coach Caudill. ROW 2: Steve Crabtree, Ron Kelly, Jim White, Paul Warren, Mike Young. ROW 3: John Coriell, Ralph Cornwell, Wayne Brumfield, Mike Bayes, Skip Crabtree, Dave Martin, John Berry, Glen Compton. ROW 5: Terri Ross, Mike Flaig.





## Snow Queen and King . . .

Queen: Martha Hagerman  
King: Bob Schmidt

## . . . Court

Princess: Cathy Mowery  
Prince: Mike Swords



Princess: Sharon Shuter  
Prince: Frank Conkel







F.T.A.



ROW 1: Wayne Humfield, Larry Blevins, Bob Schmidt, Ted Birkhimer, Linda Eshem, Barbara Seibert. ROW 2: Rita Coriell, Jean Creech, David Conklin. ROW 3: Elaine Rankin, Sharon Hawkins, Patti Patterson, Patti Lawhead, Joyce Thompson, Pat Golden. ROW 4: Lynda Chandler, Linda Creekbaum, Peggy Massey, Jane Gahm, Sandy Williamson, Faye Bender, Melodie Havens, Betsy Miller. ROW 5: Sherylene Rice, Vicki Coles, Sheryl Nourse and Sue McLaughlin.

## Business Club



ROW 1: Barbara Green, Elaine Gahm, Martha Hagerman, Donita Pollard, Cathy Mowery, Carole Pace, Toni Miller, Barbara Wright. ROW 2: Barbara Williams, Melodie Havens, Carolyn Jackson, Theda Schomburg, Pam Golden, Patti Lawhead, Sharon Hawkins. ROW 3: Bonnie Risner, Angie Aeh, Karen Hay, Debbie Chandler, Joyce Thompson, Sandi Short, Pat Golden, Ted Birkhimer. ROW 4: Barbara Seibert, Sue Piguert, Bonnie Smith, Jack Lore, Joanna Powell, Gary Gaines. ROW 5: Terry Sparks, Barbara Sisler, Frieda Davis, Mary Fyffe, Mrs. Steiff, and Mr. Scott.





## Home Ec. Club

ROW 1: Mrs. Dodson, Patti Lambert, Eva Rase, Luana Miller, Sharon Pratt, Diane Graff, Mona Graff. ROW 2: Jean Moore, Myla Powell, Sara McLaughlin, Kathy Fugitt, Judy Gahm, Phyllis Lewis, Toni Miller, Ida Jenkins, Diane Shoemaker, Pam Wright, Joyce Knore, Linda Bennett, Maysel Hammond.



## French Club



ROW 1: Faye Bender, Bob Duplain, Judy Miller, Sandi Wheeler, Joyce Bradford, Robie Stone, Mildred Williams. ROW 2: Agnes Scott, Judy Williams, Mary Jo Pfleger, Donna Wheeler, Rita Adams, Sharon Pratt, Diane Shoemaker, Mr. Floyd. ROW 3: Steve Miller, Fred Duplain, Tom Ellsesser, Rita DeAtley, Diane Coriell, Nancy Bradford, Eva Rase, Linda Broom, Linda Bennett. ROW 4: Brenda Pratt, Theda Shomburg, Pam Spradlin, Rawland Brame, Lillie Brisker, Joy Gilbert, Gordon Collins, Paul McLaughlin. ROW 5: John Berry, Von Smith, Mike Frazee, Larry Sparks, Robert Marcum.



# Tri-Hi-Y



ROW 1: Elaine Gahm Historian, Gwen McKenzie Treasurer, Linda Eshem Vice-President, Sharon Shuter President, Lynda Chandler Chaplain. ROW 2: Judy Miller, Vicki Yeley, Martha Hagerman, Barbara Lockhart, Thelma Barber, Linda Creekbaum, Linda Schisler, Carolyn Brame, Cathy Mowery. ROW 3: Joy Gilbert, Mrs. Pelfrey, Carla Barber, Janie Gahm, Connie Gully, Barbara Seibert, Ellen Kallner, Joy Deemer and Joyce Knore.



# Hi-Y



ROW 1: Ken Knore Vice-President, Robie Stone Treasurer, Mike Bayes, Greg Allen, Mr. Davis. ROW 2: Mike Swords, Ralph Noel, Mike Young, Bob Schmidt, Ted Birkhimer, Jim White, Ron Kelley, Jim Garrett. ROW 3: Mike Flaig, John Berry, Larry Sparks, Rawland Brame, Tom Ellsesser, Mike Gampp, Steve Crabtree.



# Boys' State



Ronnie Kelly and Jim Garrett



# Typing Contest



FRONT ROW: Mary Jo Pflieger, first year; Vicki Yeley; first year. BA  
ROW: Sharon Hawkins, second year; Joy Gilbert, second year.



Lucinda Lauderback.  
School Spelling Bee Champion.



# Newspaper Staff



ROW 1: Gwen McKezzie, Elaine Gahm, Martha Hagerman, Martha Ruth, Cathy Mowery, Toni Miller, Carole Pace, Barbara Green. ROW 2: Vicki Coles, Bonnie Risner, Melodie Havens, Barbara Wright, Carolyn Jackson, Theda Schomburg, Sue Piguet. ROW 3: Barbara Seibert, Becky Duduit, Joyce Thompson, Bonnie Smith, Pam Golden, Sandie Short, Barbara Williams, Pat Golden. ROW 4: Terry Sparks, Frieda Davis, Barbara Sisler, Joy Gilbert, Debbie Chandler, Karen Hay, John Brafford. ROW 5: Mrs. Stieff, Sharon Hawkins, Mary Fyffe, and Rita Coriell.

# District Band Contest



ROW 1: Paul McLaughlin, Rex Williamson, Ronnie Bennett, Rowland Brame, Jack Langdon, Bob Pigg. ROW 2: Sandy Williamson, Serena Bonzo, Faye Bender, Mary Jo Pflieger, Brenda Mason, Linda Keller, Joyce Bradford, Vicki Coles. ROW 3: Susie Flannagan, Sue Shumway, Becky Duduit, Patti Patterson, Linda Wessel, Nancy Bradford, Janet Fannin. ROW 4: Larry Sparks, Joy Gilbert, Rita Coriell, Carl Williamson, Von Smith and Ted Stanley.





Gwen McKenzie -  
 Co-Editor  
 Linda Eshem -  
 Bus. Mgr.  
 Patti Patterson  
 Mike Bayes  
 Bob Duplain  
 Linda Creekbaum -  
 Co-Editor  
 Mike Gampp  
 Sharon Hawkins



## The Falcon Staff



Left to right: Mike Bayes, Patti Patterson, Gwen McKenzie, Linda Eshem, Sharon Hawkins, Mike Gampp, Bob Duplain, and Linda Creekbaum.





## Science Club



ROW 1: David Williams, Tony Coburn, James Crawford, Stevie Gampp, Serena Bonzo, Ronnie Bennett, Judy Williams. ROW 2: Mike Gampp, Zane Johnson, Kent Knore, Joy Gilbert, Ruth Rase, Peggy Neu, Valerie Duplain, Sheryl Nourse, Virginia Gilmore, Janet Dever, Sherelyne Rice, Pam Bennett. ROW 3: Mr. Wooddell, Mr. Coriell, Rex Williamson, George Like, Eric Johnson, Jim Hobson, Jack Klienke, Carl Williamson, Larry Williamson.



## Math Club



ROW 1: David Conklin, Mike Bayes, Mike Young, Mr. Wheeler. ROW 2: Bob Duplain, Mike Gampp, Harold Hammond, Eddie Carr, Tom Ellsesser. ROW 3: Zane Johnson, Sharon Pratt, Sandy Wheeler, Brenda Pratt, Donna Wheeler, Ronnie Parker.



## District Scholarship Team



ROW 1: Ron Parker, Donna Hutchinson, Judy Miller, Brenda Pratt, Sharon Pratt, Pam Spradlin, Linda Eshem, Patti Patterson, Nancy Bradford. ROW 2: Becky Duduit, Jean Moore, Sharon Ratliff, Diane Bender, Jean Creech, Connie Gulley, Joyce Bradford, Joy Gilbert. ROW 3: Melba Willis, Linda Niner, Linda Kelly, Sherlyne Rice, Cheryl Turner, Regina Turner, Sandi Wheeler. ROW 4: Steve Miller, Terri Sparks, Gary Wachenschwanz, Mike Swords. ROW 5: Jim Garrett, John Berry, Tom Ellsesser, Bud Coriell, Harold Hammond, Rodney Niner, Jim Hobson.

## Senior Scholarship Team



ROW 1: Terri Sparks, Nancy Bradford, Rita Coriell, Barbara Sisler, Lynda Chandler, Zane Johnson. ROW 2: Mike Gampp, Bob Duplain, Harold Hammond, Ted Birkhimer, Mike Swords, Bud Coriell, Ron Parker, Paul McLaughlin.



# National Honor Society



ROW 1: Ronnie Parker, Lonnie Brown, Harold Hammond, Rita Coriell, President; Mr. Coriell. ROW 2: Paul McLaughlin, Bob Duplain, V. President; Patti Patterson, Treasurer; Nancy Bradford, Secretary; Sharon Hawkins. ROW 3: Linda Eshem, Reporter; Melody Havens, Mrs. Dodson, Lynda Chandler, Chaplain; Bonnie Risner, Mr. Gampp, Mike Gampp.

## SPRING INDUCTEES



ROW 1: Bud Coriell, Joy Gilbert, Judy Miller, Donna Hutchinson.  
ROW 2: Pam Spradlin, Sharon Shuter. TOP: Greg Reynolds.

## CEREMONY





# Glee Club



ROW 1: Janet Dixon, Sharon Roffe, Donita Pollard, Debbie Chandler, Frieda Davis, Susie Flannagan, Brinda Mason, Joyce Thompson. ROW 2: Lenna Gammon, Mildred Williams, Judy Lykins, Pam Fisher, Barbara Green, Nora Parker, Carolyn Hall, Melba Willis, Barbara Lockhart. ROW 3: Ronita Rice, Martha Hagerman, Elaine Gahm, Emily Webster, Nancy Bradford, Joanna Powell, Glenda Turner, Eliza Davis. ROW 4: Pat Ross, Donna Bircheim, Ramona Lambert, Judy Miller, Lynda Chandler, Patti Lawhead, Margaret Strickland. ROW 5: Sharon Pratt, Paulette Caudill, Peggy Massey, Pam Spradlin, Theda Shomburg, Carolyn Paxon, Luana Miller.



**GIRLS' ENSEMBLE**

Linda Creekbaum, Lynda Chandler, Sharon Roffe, Sharon Shuter, Martha Hagerman, Elaine Gahm.



**VOCAL DIRECTOR**

Mrs. Estepp



# Mixed Chorus



ROW 1: Cindy Brame, Thelma Barber, Diane Bender, Elaine Rankin, Joyce Bradford, Ronita Rice, Agnes Scott.  
 ROW 2: Vicki Yeley, Serena Bonzo, Sharon Shuter, Carolyn Brame, Ginny Justice, Elaine Justice, Joyce Knore, Judy Williams.  
 ROW 3: Connie Barb, Sharon Pratt, Connie Gulley, Vicki Coles, Martha Ruth, Jean Moore, Eva Rase, Linda Bennett, Diana Coriell.  
 ROW 4: Steve Miller, Lanny Harris, Regina Turner, Cheryl Turner, Jean Creech, Sherylene Rice, Larry Fell, Rodney Niner.  
 ROW 5: Steve Wheeler, Steve Crabtree, Paul McLaughlin, Bill Spray, Ted Stanley, Ken Powell, Homer Magnet, Dave Rankin, Ronnie Brown.



MIXED ENSEMBLE

ROW 1: Vicki Coles, Joyce Bradford, Nancy Bradford, Sharon Shuter, Steve Miller. ROW 2: Ted Stanley, Von Smith, John Brafford.



MIXED CHORUS ACCOMPANISTS

Joyce Bradford, Virginia Justice.





## Band

ROW 1: Peggy Massey, Pam Schroeder, Kathy Fugitt, Toni Miller, Debbie Blevins, Janie Galt, Elaine Shumway. ROW 2: Joe Stapleton, Vicki Coles, Debbie Keller, Mary Jo Pflieger, Sheryl Nourse, Sue Shumway, Sandi Williamson, Faye Bender, Linda Poole, Mr. Raines. ROW 3: Joyce Knore, Linda Wessell, Brenda Mason, Linda Keller, Joyce Bradford, Judy Williams, Serena Bonzo. ROW 4: Ida Jenkins, Rita Holbrook, Barbara Sisler, Gwen McKenzie, Rita Coriell, Joy Gilbert, Janet Fannin, Becky Duduit. ROW 5: Paul McLaughlin, Steve Miller, Robie Stone, Glen McLaughlin, Susie Flanagan, Patti Paterson, Sharon Hawkins. ROW 6: Rawland Brame, Jack Langdon, Bob Pigg, Ken Knore, Ralph Noel, Ron Kelly, Jim Garrett. ROW 7: Larry Sparks, Ted Stanley, Rex Williamson, Bob Marcum. Ron Bennett, Tom Ellsesser, Larry Williamson.



# Majorettes



Peggy Massey



Janie Gahm



Diane Shumway



Debbie Blevins



Debbie Kleinke and Pam Kallner



HEAD MAJORETTE Pam Schroeder



DRUM MAJOR Joe Stapleton 73



# Administration . . .



E. R. McCOWEN  
Scioto County Superintendent

H. E. EVERLING  
Executive Head



RICHARD RANNELLS  
High School Principal

BERNARD BENNETT  
Elementary Principal



WILLIAM E. CORIELL  
Certified Counselor

MILDRED ESTEM  
Clerk of Board



BOARD OF EDUCATION

Ferd Shumway, Elwood Brown, Roy Adams,  
Steve Like, Herman Eshem.



# Faculty . . .



BETTY BROWN  
Language Arts 7

DAVID CANTER  
Mathematics 7

WILLIAM CAUDILL  
Physical Education  
and Health



GLADYS CORIELL  
Reading 8  
Ohio History 8  
Geography 8

JEANE DODSON  
Home Economics

GILBERT EDWARDS  
History 8  
Health & Safety 8

LEO FLOYD  
Government  
French

RALPH GAMPP  
English

WILMA GAMPP  
Librarian

JIM GILBERT  
Physical Education  
and Health

JUNE GREEN  
Physical Education  
and Health

DONALD JUSTICE  
Spanish  
Typing I  
General Business

DEWEY LYKINS  
English

DORIS McCAIN  
World Geography  
Current History

AUDRY MILLER  
Language Arts 8





# ... Faculty



DAVID PATRICK  
Chemistry  
Physics  
Biology

VENTRUE PELFREY  
English  
Speech

ROY PFLEGER  
Mathematics

DENVER SMITH  
Mathematics 8

JO ANNE STEIFF  
Shorthand  
Typing  
Business English

CECIL WHEELER  
Mathematics

JOHN WOODDELL  
General Science

ARTHUR YEAGLE  
History 7

NOT PICTURED

JACK DAVIS  
World History  
American History

JEANNE ESTEPP  
Vocal Music

LARRY RAINES  
Instrumental  
Music

DAVID SCOTT  
Typing  
Bookkeeping

JOHN SHAFFER  
Industrial Arts









The Junior-Senior Banquet was held May 14, 1965 at the Elks City Club in Portsmouth.

The Prom Queen and King are members of the Senior Class and are elected to this high honor by members of the Junior Class. The Queen was Cathy Mowery and the King was Wayne Brumfield.







The theme of the Prom was "Apple Blossom Time". The Juniors worked for months preceding the prom to make this a memorable event in our book of memories.



Along with the Joe Childers Orchestra and the "Three Deuces" we were favored with musical numbers by the Girls' Ensemble.



MINFORD HIGH SCHOOL

Baccalaureate

Program

May 23, 1965

4:00 P. M.

The Processional - - "March" - - - - Mendelssohn

Invocation - - - - -The Reverend Julius Chandler  
(Audience Stands)

"The Prayer Perfect" - - - - - Riley  
Girls' Glee Club

Sermon - - Reverend Willis Coburn, Jackson, Ohio

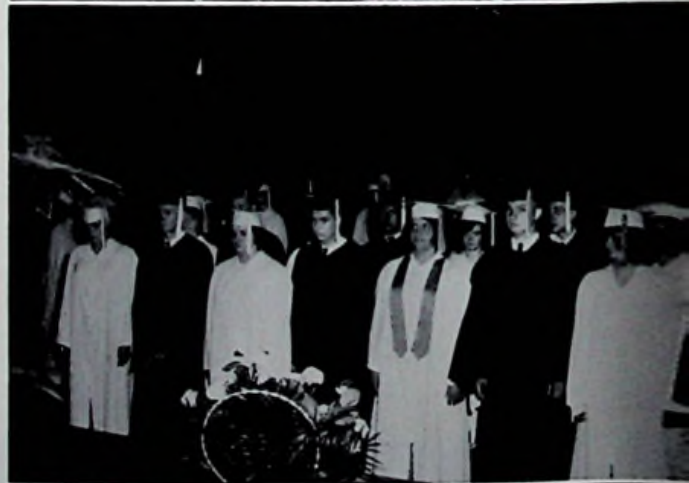
"The Halls of Ivy" - - - - - Knight  
Senior Girls' Ensemble

"I Believe" - - - - - Arr. Ades  
Girls' Glee Club

Benediction - - - - - Reverend Don Williams  
(Audience Stands)

Choral Amen - - - - - Girls' Glee Club

The Recessional



*Baccalaureate*  
*May 23, 1965*

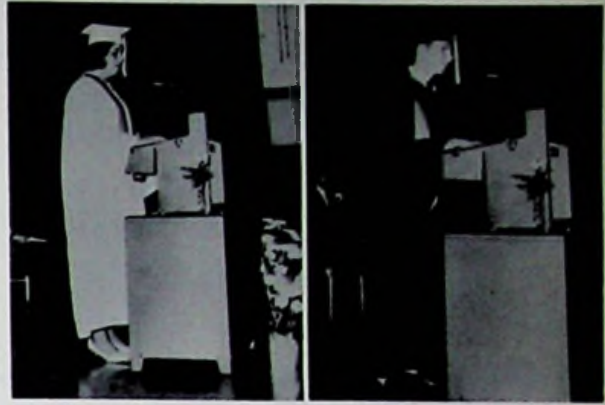


# Commencement

# May 25, 1965



"From the Halls of Ivy" . . .



COMMENCEMENT ADDRESSES  
Rita Coriell and Ron Parker



## PROGRAM

- Processional - "Pomp and Circumstance" - - - - Band
- \*Invocation - - - - - Rev. R. B. Frederick  
Church of Nazarene, Minford
- Eternal Father Strong to Save - Dykes - - - - - Band
- Class Address - - Rita Coriell, Highest Point Average -  
Girl
- Black Canyon of the Gunnison - Erickson - - - - - Band
- Class Address - Ronald Parker, Highest Point Average -  
Boy
- Awards - - - - Richard Rannels, High School Principal
- \*\*Presentation of Class - - - - - Harold E. Everling,  
Executive Head
- \*\*Presentation of Diplomas - - - - - Dr. Roy H. Adams  
President, Minford Board of Education
- \*Benediction - - - - - Rev. Victor McCormick  
Church of Christ, Sciotoville
- \*\*\*Recessional - - - - - Band

- Audience and Seniors stand for Invocation and Benediction
- \*\* Please refrain from applauding throughout program
- \*\*\* Seniors will form a line in front of stage following Recessional to receive Congratulations  
Music under direction of Larry Raines, Band Director

. . . *Farewell*



## KOBACKER'S

"Fashions for the entire family"

Complete Home Furnishings

405 Chillicothe Street  
Portsmouth, Ohio

Since 1895

# Atlas Fashions

"The best on the map"

The accent is on YOUTH

307 Chillicothe St.

EL 3-3191

## JORDAN'S STUDIO & CAMERA SHOP

Complete Portrait Service

Roll Film Developing

Weddings

Aerial Photography

Commercial

Family Groups

Oil Paintings

Pets (By Appn't)

815 Gallia Street

EL 3-8490

Portsmouth, Ohio

## LAWSON DAIRY



Wheelersburg, Ohio

PR 6-7523

## CLINE JENKINS SOHIO

5423 Gallia Street  
PR 6-9222

### SERVICE STATION



## SUNSET CLASSIC RAINBOW BOWLING LANES



Portsmouth, Ohio



## HIBBITT'S DEPARTMENT STORE

"Quality clothes for the entire family."

Sciotoville, Ohio

PR 6-2302

## MILHUFF'S DEPARTMENT STORE

Bobbie Brook's Clothing

## HIBBITT'S HARDWARE

315 Harding Avenue Sciotoville, Ohio

PR 6-2302

Harding Avenue

Sciotoville, Ohio

PR 6-6666

## SHOEMAKER'S SERVICE STATION



Minford, Ohio

SP 9-2446

## PINSON FARM EQUIPMENT COMPANY

John Deere

DeLaval  
Continental

Speedy  
Clay

Dealer

Fairground Road

Lucasville, Ohio

## NEWBERRY'S SPORTING GOODS STORE



Specializing in  
Team Equipment - Wilson Sporting Goods  
Voit Rubber Goods - Brunswick Bowling  
Equipment

816 Gallia Street Portsmouth, Ohio  
EL 3-0644



## GAMPP'S SERVICE STATION



Slocum Station

PR 6-2362

## KOCH HARDWARE

Hardware - Paint - Glass  
Plumbing and Electrical Supplies  
Housewares

Wheelersburg, Ohio

PR 6-2848

## THE CAMBRIA PACKING COMPANY

Echo Brand Meats

All meats - all cuts -

Rich in proteins, vitamins, minerals.

"We pay the highest  
market price for Livestock"

Jackson, Ohio

Dial 286-2922

## YORK AND GENE



Texaco Service  
Fuel Oil



Route 6  
Twin Valley, Ohio

Portsmouth  
GL 6-4291

## EVANS-KNOST FLORAL SHOP



*Flowers-by-Wire*

1229 - 17th Street

EL 4-3146

## LOGAN BROTHERS' SERVICE STATION

## BLUE BIRD BAKERY

Wedding and Birthday Cakes  
Our Specialty

Complete Line of Bakery Products

2 Locations to Serve You

4208 Gallia, New Boston  
222 Harding Avenue,  
Sciotoville

GL 6-4345

PR 6-7075



COMPLIMENTS OF

# ESHAM'S MARKET



Sunshine Grade School Pee Wee Football Team



## ERWIN-DODSON FUNERAL HOME • AMBULANCE

Minford, Ohio

SP 9-2543



# GILL FUNERAL HOME



422 Harding Avenue

PR 6-2115

Sciotoville, Ohio

---

## ADAM'S BAKING COMPANY

Fine quality bakery products  
for more than 55 years.

PAN DANDY BREAD

1009 Offnere Street

Portsmouth, Ohio

EL 3-0290



# OHIO HEATING COMPANY

SERVICE AND SALES

Located in New Boston at Portsmouth City Limits

Lower Prices

Quality Work

Low Overhead

7 Days a Week

MODERN AIRE  
Milwaukee Thermoflo

JACK JORDN - Owner  
"Over 9 Years Experience"

3238 Gallia Street

New Boston, Ohio

Phone: GL 6-5750

# BOURGHOLTZER'S DRUG STORE



225 Harding Avenue

Sciotoville, Ohio

Phone: PR 6-6966



# PFLEGER'S GENERAL STORE



Minford, Ohio

SP 9-2811

## **EASTERN SUPPLY**

8151 Ohio River Road  
Wheelersburg, Ohio  
PR 6-6380

## **CANTER'S SERVICE STATION**



Minford, Ohio

SP 9-2069

## **PORTSMOUTH INTERSTATE BUSINESS COLLEGE**

815 Gallia  
Portsmouth, Ohio  
LEO BLACKBURN, President  
EL 3-7880

## **NANCY RAE SUPER-VALU MARKET**

Wheelersburg, Ohio



## DISTEL FURNITURE

"Over 53 Years Serving Portsmouth"

Name Brands

Rowe - Franklin - Thomasville  
Sunglow

616 Chillicothe St.  
Portsmouth, Ohio EL 4-3161

## SCIOTO VALLEY WHOLESALE AND PRODUCE

1104 Chillicothe Street

## J. W. STIR FURNITURE AND APPLIANCES

514-516 Second Street EL 3-2105  
Portsmouth, Ohio



## DUVENDECK'S PAINT STORE

5619 Gallia Street  
Sciotoville, Ohio

## LONG AND COMPANY

729 6th Street EL 3-2025  
Portsmouth, Ohio

## STAPLETONS OFFICE SUPPLY

"Our Nineteenth Year"  
607 Chillicothe Street  
Portsmouth, Ohio EL 3-1187

## ALBRECHT'S TOWN HOUSE

736 5th Street  
Portsmouth, Ohio

Your Headquarters for Eating in  
Downtown Portsmouth

## WELCH'S GROCERY BETTER GROCERIES

Minford, Ohio SP 9-2344



## JOHNSON'S FLOWER SHOP

"Flowers for the Prom."

5414 Harrison Avenue  
Sciotoville, Ohio  
PR 6-7100



## RAY HOUCK'S FURNITURE STORE

Gallia Street

Sciotoville, Ohio

Compliments

of

## COEY'S BARBER SHOP

Sciotoville, Ohio

**IF IT'S GOOD FOOD  
YOU WANT..**

*Visit*



## POP'S PLACE RESTAURANT

"Where Eating Is a Pleasure."

Wheelersburg, Ohio

## ROE'S GROCERY



Camp Bennett

Sciotoville, Ohio

## CECIL CAUDILL ALUMINUM PRODUCTS CO.

Storm Windows Doors Awnings  
Aluminum Siding Railing  
Post Column

5737 Gallia Street  
Sciotoville, Ohio EL 3-0668

## SCIOTO DAIRY BAR



Sciotoville, Ohio



# FROWINE'S HARDWARE & APPLIANCES



Fuel Oil and Bottled Gas  
Sherwin-Williams Paints  
Youngstown Kitchens Dealer

Minford, Ohio

SP 9-2111

*Maytag*

**Hotpoint**



**TOPPS  
LAUNDRY**

505 Harrisonville

GL 6-5393

**PORTSMOUTH  
MONUMENT CO.**

"Dependable Since 1900"

1617 Offnere Street

EL 3-4055

**WHEELERSBURG  
LUMBER  
CO.**



Wheelersburg

PR 6-2101

**REESE HAMBURGER  
SHOP**



"Serving the food  
that makes you glad  
you're hungry."

5721 Gallia Street

PR 6-9205

**WILLIAMS  
FURNITURE**



Gallia Street

PR 6-2542

Congratulations

to

Class of '65



811 Gallia Street

EL 3-4480





Quality that is  
a little higher  
than necessary!

*Borden's*

*Thinking of a Party?...of Dieting?...*

*of family Nutrition?...of your Budget?*

*Any way you look at it, Borden's is the*

*one with all the right answers!*





Compliments of

**MR. & MRS. CARL RASE**

Minford, Ohio

**A. K. WHEELER MARKET  
ROYAL BLUE**

303 Ohio Avenue

GL 6-9266

New Boston

**GEMPERLINE  
FURNITURE**

Fine Furniture

and

Westinghouse Appliances

612 2nd Street

EL 3-2179

**CRISPIE CREME**



1012 Gallia Street

Portsmouth, Ohio

EL 3-5890

**BIHL  
OFFICE EQUIPMENT  
and SUPPLY COMPANY**

920 Gallia Street  
Portsmouth

EL 3-2311

**COCA-COLA  
BOTTLING COMPANY**

"Things Go Better With Coke"



**PEPSI-COLA BOTTLING  
COMPANY**

2415 Scioto Trail

EL 3-3126

Portsmouth, Ohio



## CITIZEN'S SAVINGS AND LOAN ASSOCIATION



305 Chillicothe Street

Portsmouth, Ohio

Phone EL 3-5168

## HERM'S FLORIST



837 Sixth Street Portsmouth, Ohio

EL 3-5159

## ELECTRONIC SERVICE COMPANY

Television Sales and Service

1017 Harding Avenue

Sciotoville, Ohio

PR 6-7666

## B&B LOAN & JEWELRY

Diamonds  
Watches  
Luggage

837 Gallia Street Portsmouth, Ohio

EL 3-4250

## ROCKWELL'S FLORIST



Corsages  
Boquets  
Funeral Designs  
Weddings

7450 Ohio River Road - Sciotoville, Ohio  
PR 6-2191

## WEST-END FURNITURE

518 Second Street Portsmouth, Ohio

EL 3-4165

## LEET LUMBER COMPANY

Everything in lumber

Building Materials - Paint - Hardware  
Prefinished Paneling  
Insulation

913 Washington Street Portsmouth, Ohio  
EL 4-3251



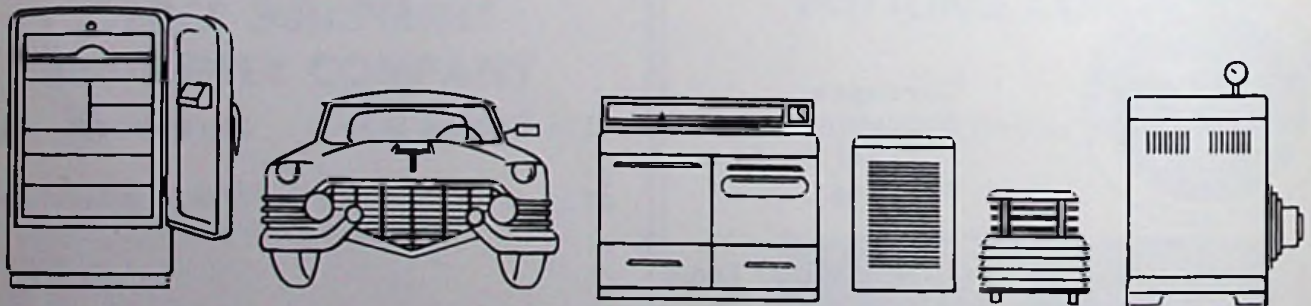
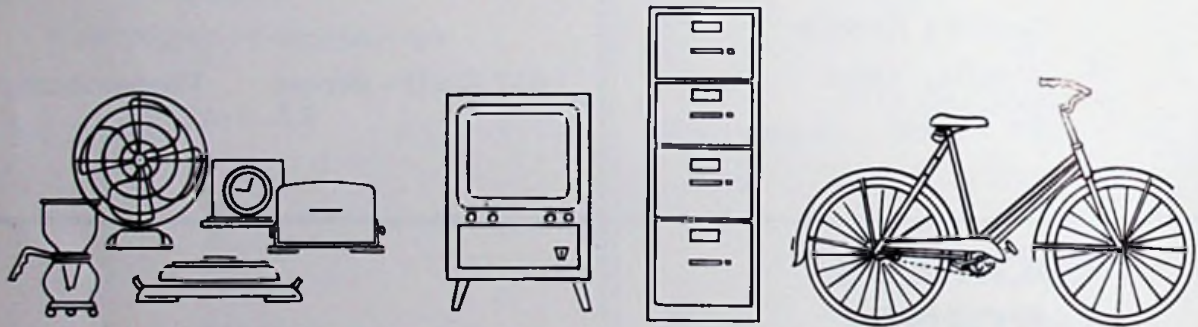
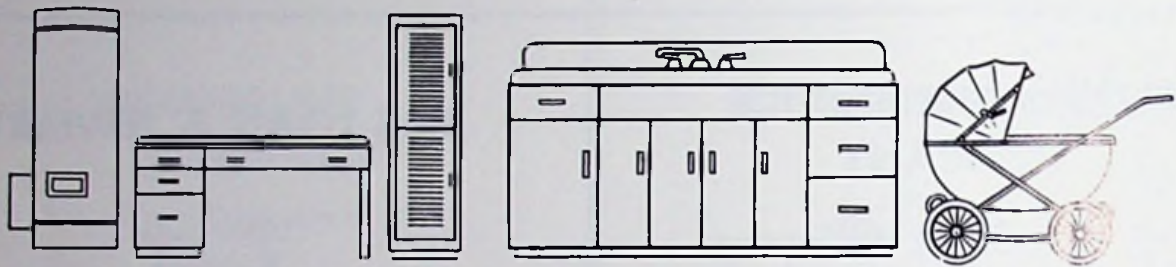
## JEWELRY COMPANY

817 Gallia Street Phone EL 3-6252  
"On the Square"



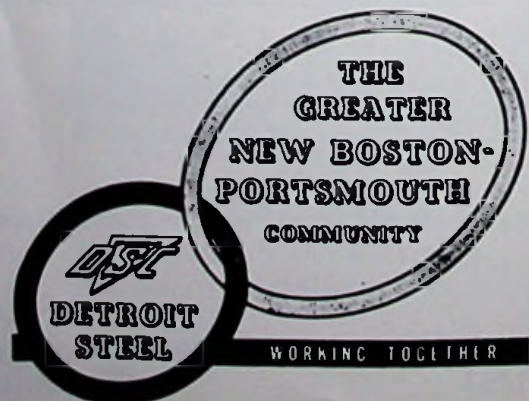


Detroit Steel and its employees are proud to be part of the American steel industry which has contributed so richly and so greatly to our nation's growth, prosperity and strength. On this page are a few of thousands of everyday items made from DSC quality steel.



# DETROIT STEEL CORPORATION

PORTSMOUTH DIVISION





**CUNNINGHAMS  
ACE HARDWARE**

Frigidaire - Maytag

Portsmouth

353-4330

**HERMANN'S  
MEAT PACKING CO.**

Choice Meats - Choice Cuts

Retail Store EL 3-3660

Packing House EL 3-0180

Retail Store EL 3-0815

Retail Store EL 3-5166

Our 53rd Year

**WOLFF**

Better Clothes for Men and Boys

Portsmouth, Ohio

EL 3-6110

Compliments of

**SCIOTO COUNTY  
NEW CAR DEALERS  
ASSOCIATION**

Portsmouth, Ohio

**ZUEFLE JEWELRY**

"Portsmouth's Oldest Jewelers"

533 2nd Street

Portsmouth, Ohio

EL 3-0450

**DODGE**

Darts Dodge Trucks

**DON EDWARDS**

Salesman

Representing

OBERLING MOTOR CO.

12th and Offnere St.

Portsmouth, Ohio

EL 4-2891

**THE OHIO VALLEY  
WHOLESALE COMPANY**

714 5th Street

Portsmouth, Ohio

EL 3-4174



## SKY HAVEN RESTAURANT



Stop by after church this Sunday

Located at the Scioto County  
Airport.

## HIBBITTS DEPARTMENT STORE



312 Harding Avenue  
Sciotoville, Ohio

U. S. Royal Tires    McCreary Tires  
Mr.  
Tire Man

## THOMPSON'S TIRE SERVICE

Portsmouth, Ohio

DON THOMPSON

EL 3-1260

1118 Chillicothe

## HERMAN POWELL AGENCY GRANGE INSURANCE

SP 9-2764

Minford, Ohio

## MINFORD TELEPHONE COMPANY

Congratulations to the

Class of

'65



## THE BRANT AND APPEL COMPANY

Distributors of Quality Building  
Materials

Lucasville, Ohio

BL 9-2401





## JOHNSON'S POLYCLEAN CENTER

1018 Harding Avenue

Sciotoville, Ohio



## JOHN AND JIM'S SERVICE STATION

5803 Harding Avenue

PR 6-9409

Sciotoville, Ohio



## MINFORD CLEANERS

*Quality cleaning*



Minford, Ohio

SP 9-2226

## THE HOUSE OF BEAUTY

Compliments  
to the Senior Class  
of '65  
From

MARY ELLEN KALLNER

Minford, Ohio

## PATSY'S STEAK HOUSE

"Feeling tied down? "

Go to PATSY'S

Minford, Ohio



## BETTER GROCERIES

at

## BUCKLE'S ROYAL BLUE MARKET

Clarktown, Ohio

## GENEVA'S BEAUTY SHOP

Complete Hair Care

Minford, Ohio

## JOE BENNETT'S TEXACO STATION



Minford, Ohio

SP 9-3236

## JUANITA'S BEAUTY SHOP

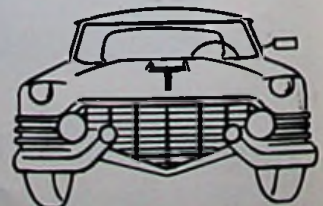
Complete Hair Styling

Lucasville-Minford Road

## GEORGE BENNETT USED CARS & BODY SHOP

SP 9-2611

Minford, Ohio





# ECONOMY HEATING CO.



Coal, Gas, and Oil Furnaces

Air Conditioning

Heat Pumps

Ohio River Road

PR 6-7127

Sciotoville, Ohio











TAYLOR-MADE  
YEARBOOKS